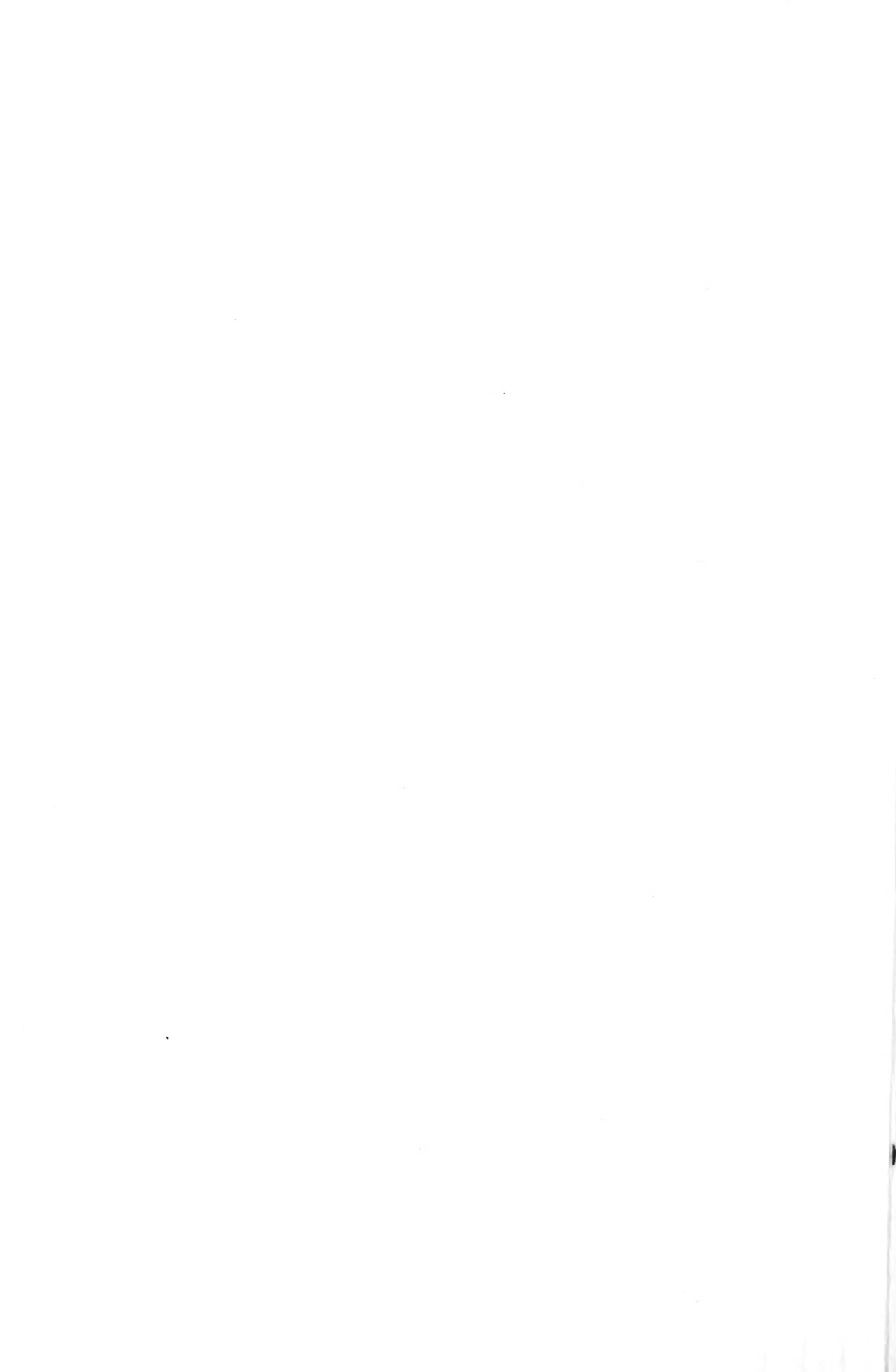


Historic, Archive Document

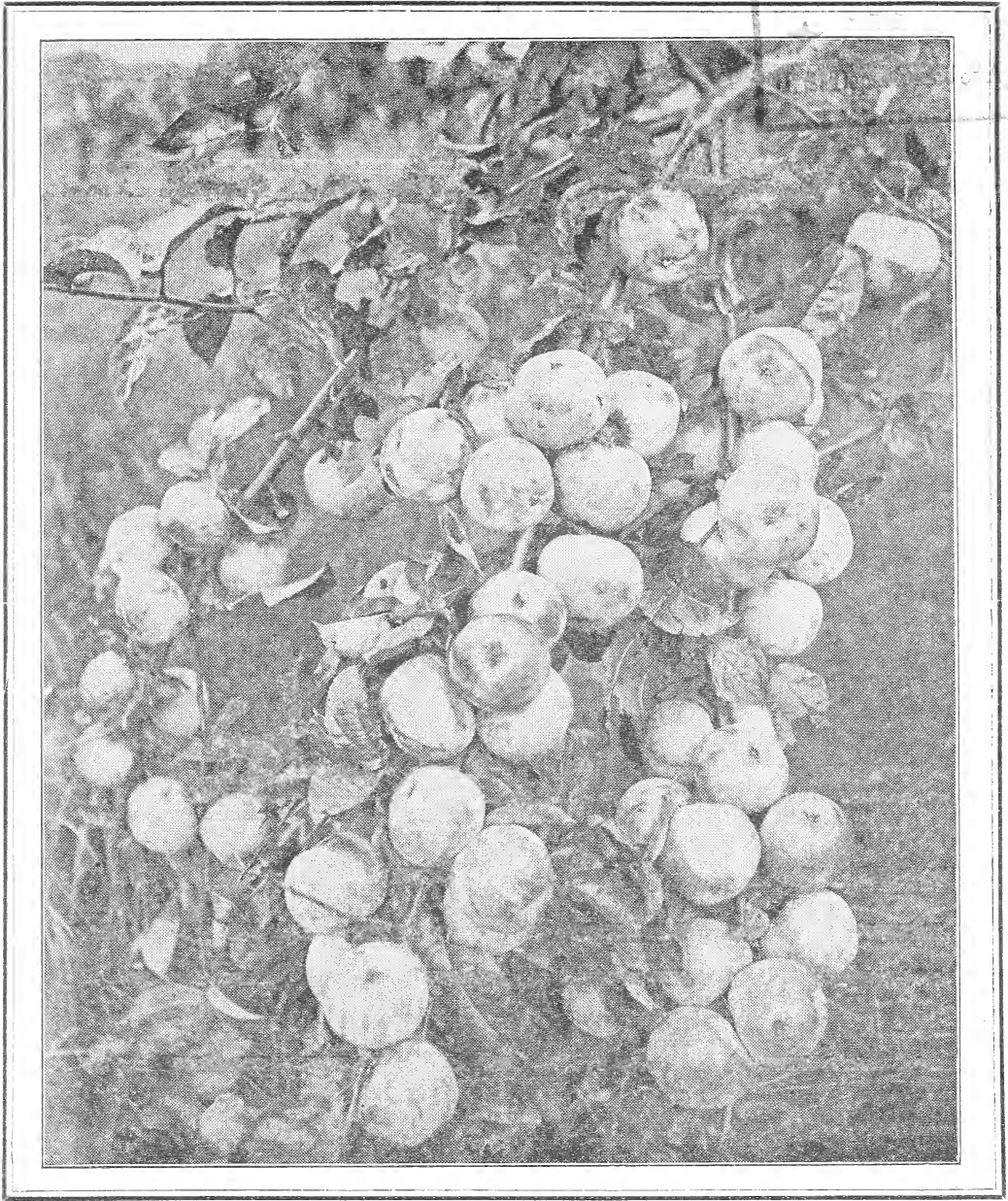
Do not assume content reflects current scientific knowledge, policies, or practices.



62. #3

192

LIBRARY
RECEIVED
★
MAY 1922



STRAND'S NURSER Y

Taylors Falls, Minn.

We Guarantee Stock

TRUE TO NAME—UP TO GRADE
SAFELY DELIVERED

Should any prove otherwise we will cheerfully rectify all just demands if reported promptly. In no case are we liable for more than the original purchase price. All claims for replacement must be filed promptly upon receipt of goods. At the prices we sell we do not assume the responsibility for its continued growth after delivery to our patrons in good condition. Do not return stock without our consent, but have notation made on your freight or express receipt if taken out in bad order or if there has been undue delay in delivery. We grow and offer only the hardiest stock adapted to the Northwest. Our experience is always at your command free of charge.

Parcel Post

WILL BRING TO YOUR DOOR
Any Small Items Postpaid at
Prices Listed.

Prices quoted include boxing and packing and are free on board cars here. Five of a variety will be supplied at 10 rates; 50 at 100 rates and 500 at 1,000 rates. On large orders we will be pleased to quote special or prepaid prices.

TERMS CASH BEFORE SHIPMENT or satisfactory reference. We will be pleased to book orders at any time without deposit. C. O. D. is needless expense, but we will ship thus when one-fourth of price accompanies order.

LIBERTY BONDS ACCEPTED AT FACE VALUE.

CANADIAN SHIPMENTS Take a much higher postage rate, and express shipments must be fully prepaid before they will be accepted; hence **INCLUDE 10% ADDITIONAL** to prepay or we will ship C. O. D. for balance. Only Strawberry plants, perennials and bulbs can be sent by mail. Currants and gooseberries we can not ship into Canada or west of the Minnesota line owing to Federal Quarantine, but will be shipped from a Dakota or Canada concern.



Direct From Grower to Planter

SAVES YOU 50 PER CENT; INSURES GETTING THE BEST OF STOCK IN THE BEST POSSIBLE CONDITION, at right prices. Your trees come in individual packages which remain undisturbed until you are home and ready to care for them. You buy and get what you want (not what some salesman is interested in selling you through verbal promises his company does not back up).

EARLY ORDERS Help us to give you better service, better stock, better prices. Get your order in before our packing season begins, if possible.

NURSERY STOCK IS SCARCE and it will be several years before much lower prices can be expected; especially is this true of some of the ornamentals, like Cut Leaf Birch, White Fringe, Flowering Almond, Norway Maple, Colorado Blue Spruce, etc.

Notification cards are sent upon receipt of order and also when shipment is forwarded.

If stock has been shipped and you do not receive it in due season, advise your agent to trace same and notify us and we will have it traced also. We pack all shipments well, so they should stand considerable delay without injury.

Kindly remember that we have thousands of orders to go forward as soon as the season opens and hence we cannot reply to casual inquiries or quote prices at that time. We get out a catalog for that purpose.

OUR NURSERY IS INSPECTED Annually by the State Entomologist
A Copy of the Certificate Accompanies Each Shipment.



Real Estate For Sale

70 ACRE FARM adjoining and part of the nursery grounds. Two miles north of Taylors Falls (noted for its scenic beauty, the Dalles of the St. Croix and Inter-State Park). Within 50 miles of St. Paul on excellent roads. One of the best fruit propositions in the Northwest and an excellent dairy, sheep or live stock farm. Well fenced with woven wire. Never failing supply of spring water. Large and profitable orchard and vineyard of the best new and standard sorts of apples, plums, cherries and grapes. (Premiums from same at the State Fair amount to \$200 or more annually). House 16x30; basement barn 40x56; cement silo 14x37; poultry house 14x32. Clay loam soil. Hardwood timber pasture about 25 acres. We will be pleased to reply to further inquiries or show to any parties interested. **Price \$10,000.** Federal Loan \$5,000 @ 5½%; balance cash.

Our Popular Collections

Our Selection of Varieties; By Express NOT Prepaid.

Composed of our best hardy sorts, carefully selected for your section. They offer to the average planter an assortment that will meet his needs without the selection from catalog lists. Regular prices apply where varieties are specified.

THE FARM ORCHARD	10 APPLE, CRABS—3 to 4 feet.	\$5.00
	5 PLUM CHERRY—3 to 4 feet.	
	Same in 4 to 6 feet trees (value \$ 8.75) for \$ 7.50.	
	Same in 5 to 7 feet trees (value 12.50) for 10.00.	

17 years ago we moved here from Iowa and upon the recommendation of Mr. Moyer we bought our nursery stock of you. Always have been perfectly satisfied with your stock. We always think of Strand when we expect our moneys worth.—Mrs. L. B., Montevideo, Minn.

THE FRUIT GARDEN	25 Everbearing Strawberries	\$5.00
	100 Strawberries	
	25 Asparagus	
	25 Raspberries	
	2 Juneberry	
	10 Blackberries	
	2 Gooseberries	
	2 Currants	
	2 Grapes	
	2 Pie Plant	
	2 Sand Cherry	

A model assortment for the farm or city garden. (Value \$7.00).

Have tried different nurseries, but when it comes to stock that will grow and do well your stock is at the head.—A. A. S., Ada, Minn.

30 HARDY FLOWERS	Consisting of many choice sorts of Peonies, Phlox, Iris, Hemerocallis, Daisies, Columbines, etc., which will come up year after year with added vigor and beauty to brighten your surroundings. (Value \$8.00).	\$5.00
-------------------------	---	---------------

Have sent to you for stock for 20 years and always been satisfied.—Mrs. G. L. S., Hewitt, Minn.

25 ROSES, SHRUBS, VINES	Just the assortment that will please anyone interested in "dressing up" the home grounds. (Value \$8.50).	\$5.00
--------------------------------	---	---------------

I want you to know that we appreciate your treatment. It helps to keep alive the old tradition that some of the "honest to goodness" dealers are still alive.—Y. F. Co., Lincoln, Neb., 12-5-21.

25 EVER-GREENS	Tell us what you would like to use them for—hedge, wind-break, grove or ornamentals—and we will forward an assortment or all of one variety, which should do well in your section. These are all once transplanted, 12-inch, and well rooted. With reasonable care they are sure to grow. (Value \$7.00).	\$5.00
-----------------------	---	---------------

We were much pleased with the nursery stock. The stand was exceptionally good.—Aberdeen Park Board, S. D., 11-5-21.

20 ORNAMENTAL TREES	A choice assortment that will prove hardy and desirable in your location. Worth many times the price for improving the place. (Value \$7.50)	\$5.00
----------------------------	--	---------------

Have you any * * Of the 100 trees I got of you last spring I did not lose one. H. B. L., Alta Vista, Iowa, 11-24-21.

50-FOOT HEDGE	We grow large quantities of hardy shrubs that are admirably adapted for this purpose, and will be pleased to quote prices or reply to inquiries regarding same. A hedge not only will add much to the attractiveness, of property, but may be useful as a screen, wind-break or division. Many shrubs require little or no attention to keep them in the desired form, while others must be sheared. If you will tell us the length, height desired to keep same at, location or position and class (evergreen, foliage or flowering), we will cheerfully suggest what we think would please you best. Plant most sorts about 18 inches apart. (Value \$7.00).	\$5.00
----------------------	--	---------------

JOIN THE MINNESOTA STATE HORTICULTURAL SOCIETY and get their monthly magazine, "The Minnesota Horticulturist" and a bound volume of some 500 pages of the best literature on this subject, also valuable plant premiums. Membership fee \$1.00 per year.

How to Care for Nursery Stock

WHEN RECEIVED—

Avoid any unnecessary exposure to sun or wind. Mud the roots thoroughly at once, and either place them in a rather damp cellar or else "heel" them in the ground in some cool, moist place until you are ready to plant. Do not wet the tops of evergreens and strawberries.

IF STOCK APPEARS RATHER DRY

when received or if the weather or ground is unfavorable, it will generally be best not to plant at once, but let it remain heeled in or buried in moist ground for a few days. By this method of handling, a much better stand of all kinds of nursery stock will be obtained, especially strawberries, the bunches of which should be cut open and plants spread out.

also most of our hardy perennials, such as peonies and rhubarb, can be planted to good advantage in September or October if given a light mulch as soon as the ground freezes.

How to Plant

Do not expose the roots unnecessarily. For seedlings, strawberries, etc., make a thin mud in which to place them before planting. This is better than "puddling" where planted. Tramp the ground very firm about the roots, leaving only an inch or so of the surface soil loose. Leave it level or dished toward it.

PREPARE GROUND THOROUGHLY

before planting. Keep grass out and do not plant in sod. When necessary to plant in sod, as in a lawn, remove all sod within a radius of three feet or so, keeping the ground well mulched or cultivated. If you must water, soak the ground thoroughly so that the water will reach the roots. Do not apply just a little frequently, for the soil then bakes and the tree or plant suffers more than if none had been applied. On most of our soils in this section we would not advise plowing under manure in the spring or placing it in the holes dug, but rather apply it as a top dressing around the tree. The soil is usually rich enough for most of our fruit trees. After they begin to bear is the time to apply it; applying it late in the fall as a mulch for winter protection and working it into the soil the following season.



Baled for Express
Guaranteed to Reach
you Safely.

FALL SHIPMENTS—

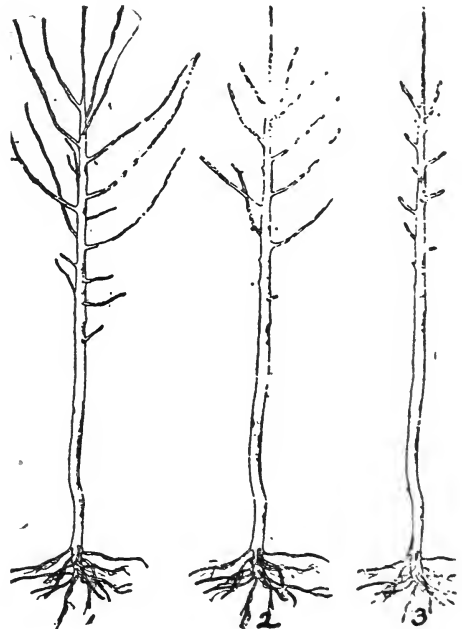
When received in the fall, a trench should be dug in some well-drained place, deep enough, and sloping so that all trees can be entirely covered. The bundles should be cut open and all straw or moss removed. The earth should be made firm about the trees, and after the ground is frozen cover with enough straw or litter to prevent alternate freezing and thawing. It is a good plan to get stock in the fall if proper care is given to heeling it. Evergreens and strawberries should not be shipped in the fall.

FROZEN STOCK—

Should any stock be received in a frozen condition, place in a cellar or some rather moist place, where it will thaw out gradually, and do not unpack until frost is out of the trees.

When to Plant

Throughout the Northwest it will be found far better and safer to plant almost everything as early in the spring as the ground is in good working condition. Bulbs, such as tulips and lilies,



Pruning Before setting, remove broken roots and nip back the others. About one-half of the previous season's growth on all branches except the leader should be cut off. (See Fig. 2.) This gives a well-branched tree in top and roots. Should the season or trees be rather dry, better results will be obtained if they are pruned closer as in Fig. 3. Large street trees do best when trimmed to a pole or only short spurs left at the top. After-pruning should consist in pinching back or cutting out interfering or damaged limbs—aiming to form a symmetrical tree. When large limbs must be removed, do it while the tree is dormant and wax over the wound. June is also a good time to prune, as wounds then heal over very soon. In this section all fruit trees should be branched low and pruned very little.

The Orchard

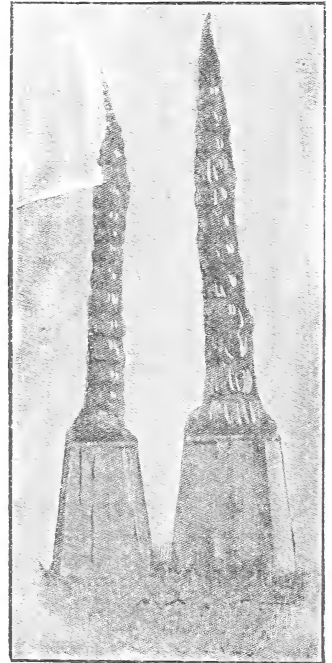
FOR COMMERCIAL PURPOSES the higher elevations and northern slopes have a decided advantage, and trees are usually set 20 by 20 feet apart or farther, using only a few sorts. In exposed situations a windbreak to the south and west, is a decided advantage, and in some cases a necessity. Red cedar should not be used for such purposes, for it seems to facilitate the spread of leaf rust, which has done much damage of late years, especially to crabs.

FOR THE HOME ORCHARD a plan that seems best is to plant the rows 35 feet or more apart and trees from 16 to 25 feet in the row, using a liberal assortment. Spreading growers should be set further apart than others. Between the trees in the same row may be planted currants, gooseberries, pie plant, etc. The plots between give a nice space for the small fruits, garden, corn or potatoes. When planted in this manner we have an opportunity of renewing the orchard by setting a row between later, and everything is more likely to receive its due proportion of care.

DEEP SETTING—Trees should be set a little deeper than they originally grew in the nursery, and on lighter soils they should be set deeper than on heavy soils. This is especially true of apples, plums and cherries, as they are often grafted on roots which are tender and unreliable in this section. This induces the tree to root from above the graft, and it soon becomes on its own roots, which are perfectly hardy. Trees not over 2 years of age root most readily. Some varieties root more readily than others, and hence the difference in hardiness. Apples especially will not thrive on wet, heavy soil. In such places and seasons they should be planted shallow and furrows plowed toward the trees, leaving a furrow between the rows for drainage. In severe winters, when there is little snow and the ground rather dry, a great many fruit trees are lost from root killing. We can prevent it to a great extent by thorough, continued cultivation, deep setting and by mulching around the trees late in the fall and moistening the soil.

THE KIND OF TREE that delights the average buyer is one with a fine-looking good-sized top. If you desire straight, pretty ones, buy only those termed upright growers. Spreading growers are invariably crooked growers in the nursery and many of our hardiest varieties belong to this class. They have stronger crotches, are not liable to split down and also protect their own trunks better. Plant varieties that are recommended by your most successful local grower, State Experiment Station or Horticultural Society. Buy a northern-grown, medium-sized, thrifty grade and you will get trees well-balanced in top and roots that will save you in every way. "The best is the cheapest," and especially is this true in the planting of trees.

ONE-YEAR-OLD TREES as commonly planted throughout the more favorable orchard districts of the West are really two-year-old trees. They are grown the same as our plum or cherry—by lining out the seedlings and grafting or budding after one season's growth. This gives a tree with one-year top and two-year-old root system. Where trees are subject to root killing this class of an apple tree is not reliable. Our piece-root grafted trees for our conditions will be found far more satisfactory.



The Way We Pack Large Trees
for Shipment.
Guaranteed to Reach You Safely

How Apples Are Propagated



All Northern nurserymen use the piece-root graft for propagating apples. These are made up during the winter by splicing a 6-inch twig (scion) onto a 3-inch piece of seedling apple root, as shown; waxed thread, paper or cloth being used to bind them together. We endeavor to use seedlings grown from our hardiest crabs and apples as far as possible, as they are unquestionably the best for this section.

PLUM GRAFTS are made much the same except covering the graft with wax. They are also grown by lining out the seedlings in nursery rows and budding or grafting after one season's growth. Grafts should be planted as early as possible in the spring, and orders must be in before April 1st to insure.

PLUM SEEDLINGS, 75c per 10; \$4.00 per 100, postpaid.

APPLE SEEDLINGS, 50c per 10; \$2.50 per 100, postpaid.

APPLE OR PLUM SCIONS, 50c per 10; \$2.50 per 100, postpaid.

Apple Grafts 50c per 10; \$3.50 per 100, postpaid.
PLUM GRAFTS, 75c per 10; \$5.00 per 100, postpaid.

Trowbridge Grafting Wax

75c per pound, postpaid.

A standard preparation that comes put up in 1-lb. packages. Just the thing for parties desiring to do a moderate amount of grafting, top-working or pruning. Melt and apply with a brush.

PRICES OF APPLES AND CRABS

Postpaid Size, 35c each.

	Each	Per 10	Per 100
3 to 4 feet.....	\$0.35	\$3.00	\$25.00
4 to 5 feet.....	.50	4.50	40.00
5 to 6 feet.....	.75	7.00	65.00
6 to 7 feet.....	1.00	9.00	80.00
7 to 8 feet.....	1.50	12.50	
1½ to 2 inch caliper..	2.00		
2 to 2½ inch caliper..	3.00		

Apples *Varieties are Hardest. Listed in Order of Ripening.

***YELLOW TRANSPARENT**—A choice, very early yellow sort. Comes into bearing very soon after planting, and annually, but blights some. Medium size, fine grained, juicy. August.

***TETOFISKY**—Hardy, upright grower. Fruit medium size, striped with red, choice eating. August.

***LOWLAND RASPBERRY**—Upright grower; free from blight. Fruit medium size, splashed with red and of good quality. A very handsome apple.

***DUCHESS**—Very hardy, free from blight, early and prolific bearer. Fruit large, handsomely striped with crimson; fine for cooking and eating. The standard early commercial sort.

***CHARLAMOFF**—Hardy, thrifty, spreading grower, early and regular bearer. Fruit similar to Duchess; better quality, longer, hangs to tree better. A choice dessert apple.

OKABENA—Tree is good grower and very free from blight. Similar to Duchess, but medium size and later.

IOWA BEAUTY—Strong, upright grower, reasonably free from blight. Fruit very large, good quality, a handsome red. Deserves more generous planting.

***PEERLESS**—Vigorous, upright, hardy. Fairly productive on upland or not too rich soil; good quality, size and color.

***HIBERNAL**—The hardiest; spreading grower, early and regular bearer. Fruit large, striped, excellent for cooking, but rather tart for eating until fully ripe. It is the best stock to plant for top-working with more tender sorts.

***EASTMAN**—A new medium season, red striped, good quality apple; regular bearer of very uniform fruit. Very hardy and a promising commercial sort.

***RED WARRIOR**—Beautiful, very productive and uniform; round, red fruit. Not as good quality as the Wealthy but otherwise superior in tree and fruit. 10c extra.

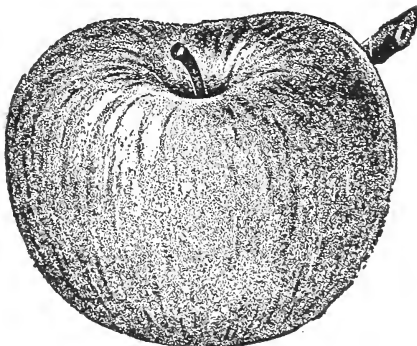
***WOLF RIVER**—A strong vigorous grower, producing fruit of the largest size and highly colored. A great show apple.

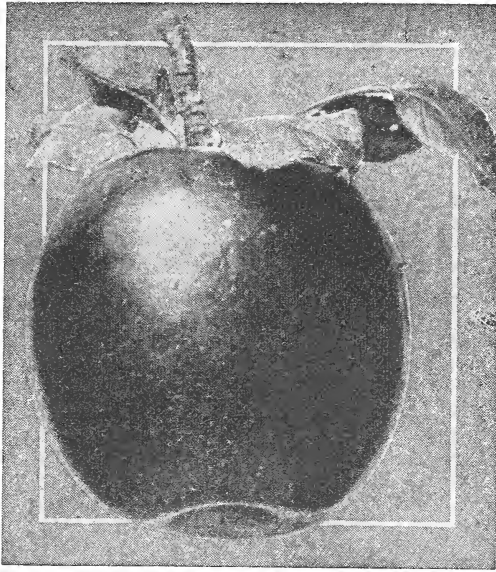
WEALTHY or PETER—This variety is without doubt the best quality and most popular apple grown in the state. Hardy, but somewhat subject to blight and sunscald. Upright grower, abundant and early bearer. Fruit large, red. Keeps well in storage.

***ANISIM**—Free from blight, very hardy and prolific. Upright grower, fruit dark red, medium size and of good quality. Its high color makes it a desirable commercial sort.

***PATTEN'S GREENING**—Very hardy, free from blight, vigorous, spreading grower, bears early and abundantly. Fruit large, yellow. Good eating and cooking apple. One of the best all-around varieties.

SUPERB—Similar to Patten's Greening but of more vigorous growth, and extra fine quality; fruit very uniform and free from defects. A newer sort of merit. 10c extra.





GOODHUE—Vigorous hardy tree and one of the best of the Perkins seedlings. Of good size, quality and bright red; keeps until February. 10c extra.

***RED WING**—Generally regarded as the best of the Perkins seedlings. Tree is a strong, vigorous grower and fruit keeps all winter; of good quality, medium size, bright red. A very promising addition to our list of winter apples. 10c extra.

McLEAN—Very hardy, spreading, vigorous tree; fruit of medium size, excellent flavor, dark red; bears young and continuously; keeps until February. Similar to Jonathan but much hardier. 10c extra.

*Ornamental Crabs

SOULARD—A large-fruited form of the wild crab. Its odd foliage and beautiful flowers make it a desirable ornamental. Fruit keeps all winter; of quince flavor. 4 to 5 ft., 75c; 5 to 6 ft., \$1.00.

Bechtel's Double Flowering Crab A double dwarf form of our native crab. Makes a small tree of great

*Crabs and Hybrids

In Order of Ripening. Prices on Page 8.
EARLY STRAWBERRY—Hardy, spreading grower. Earliest of all to ripen and very productive, but perishable. Season, August.

FLORENCE—This is one of the best all-around crabs. Hardy, productive, moderate grower, medium size, mild acid and finely colored.

WHITNEY—Hardy, thrifty, upright grower. Fruit large, handsome red and of good quality for eating.

SWEET RUSSET—Very hardy, spreading grower, early and prolific bearer. Fruit large, conical, russeted, yellowish. Highly prized by those liking a sweet apple and for pickling. Should be planted in every orchard.

DARTT—Thrifty upright grower. Very productive; good size, acid, well colored. An ideal tree and fine fruit.

TRANSCENDENT—One of the best all-around varieties; productive and very thrifty. Red, acid, juicy fruit. The standard commercial crab.

SALOME—A winter sort of merit that is proving very hardy and productive; fruit medium size, good quality, yellow splashed with red. Comes into bearing early, keeps until April.

McINTOSH—Vigorous, spreading grower and annual bearer. Fruit good size, aromatic, brilliant crimson. A choice early winter, commercial sort that does well in favorable locations.

MILWAUKEE—Spreading grower, comes into bearing early and is very prolific, ripens its wood well; free from blight. Fruit large, flattened, splashed bright red; juicy, acid.

***JEWELL'S WINTER**—Deserves a trial in every orchard. Very productive and an early bearer. Fruit good size, bright red and of fair quality; hangs to tree exceptionally well.

NORTHWESTERN GREENING—Vigorous, spreading growth; fruit large, pale green, sub-acid, good quality. Very popular as a commercial winter variety.

***MALINDA**—Of crab-like growth, hardy, free from blight, very productive. Fruit yellow, "sheep-nose" shape, mild acid and the best of keepers.

Many Other Varieties

At Regular Prices in Most Sizes.

- | | |
|-----------------|-----------------|
| Antonovka | Lord's L |
| Ben Davis | Perfect |
| Brett | Pewaukee |
| Christmas | Phoenix |
| Delicious | Plum Cider |
| Dominion Winter | Repka Malenka |
| Dudley | Red Wine |
| Evelyn | Spates |
| Fameuse | Summer Pear |
| Gilbert | Scotts Winter |
| Golden Russet | Stayman Winesap |
| Grimes Golden | Sugar Loaf |
| Haas | University |
| Jonathan | Walbridge |
| Kaump | Windsor Chief |
| Keep til June | Yahnke |
| McMahon | Yellow Sweet |
| Longfield | |

beauty when covered with its large, very double, rose-like blossoms. A hardy, choice ornamental. 3 to 4 ft., \$1.00; 4 to 5 ft., \$1.50.

PYRUS BACCATA—This is the hardiest form of the apple. Very desirable for ornamental planting because of their flowers and fruit. Apples are only about the size of a cherry and are borne in great profusion. 4 to 5 ft., 75c; 5 to 6 ft., \$1.00.

VIRGINIA—Very hardy, strong and spreading grower; fruit large, acid, bright red. Valuable also as a tree for top-working.

SUCCESS—A new, very thrifty, upright grower; fruit of good color and size, mild, acid; a very promising market sort.

HYSLOP—A large, late, dark red crab. An old favorite, but blights somewhat.

FARIBAULT—A large late winter crab or small apple. Tree is very hardy and free from blight; an annual bearer and very productive. Fruit bright red and keeps until March. For a hardy winter apple include a few Faribault.

SIBERIAN (Red and Yellow)—An exceedingly hardy crab that is valuable as an ornamental. Very productive and excellent for jelly. Both red and yellow sorts.

Alaska, Brier Sweet, Excelsior, Jenkins, Lymans Prolific, Milton, Minnesota, Shields, etc., we can supply at same prices.

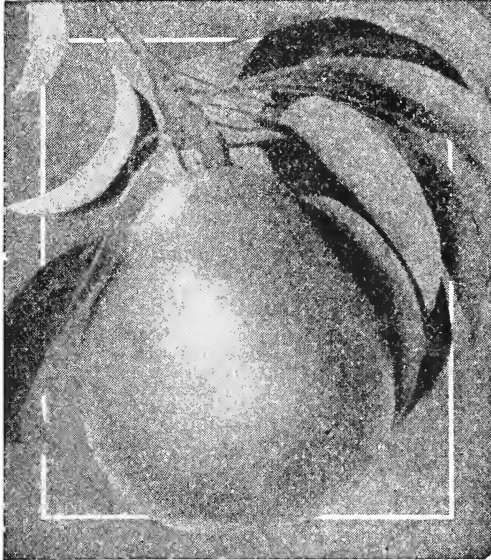
Dwarf Apple Trees

3 to 4 ft., 75c; 4 to 6 ft., \$1.00.

**YELLOW TRANSPARENT, WEALTHY
AND McINTOSH RED.**

Especially adapted for city planting or where space is limited. They can also be grown in tubs or barrels and usually begin

bearing the season after planting. As they are budded on Paradise or Doucine stocks which dwarfs the tree) the soil should be well mulched about the trees in the fall to prevent winter injury. There is a growing demand for these dwarf trees for both ornament and fruit, inasmuch as they are being successfully fruited and grown by many experimenters throughout the state.



Dwarf Pear Trees

What we have said relative to Dwarf Apples applies equally to the Dwarf Pear. These are budded on quince stocks and begin bearing usually two years after planting. Trees are hardy in any favorable location but very liable to blight if growth is unduly stimulated. **DUCHESS** and **SECKEL** seem to give the best satisfaction as dwarfs. 4 to 6 ft., \$1.00 each.

Standard Pears

We recommend for trial in favorable locations. A few sorts are quite hardy, but blight badly about the time they come into bearing. **FLEMISH BEAUTY** and **KIEFFER** 4 to 5 ft., 75c; 5 to 6 ft., \$1.00.

INSURE YOUR TREES

TREE PROTECTORS, 5c each, \$3.00 per 100. See Page 42.

*Plums and Hybrids

There is no fruit that we can grow with greater assurance of success and derive more pleasure and profit from than our improved grafted plums. When on native roots they are perfectly hardy and thrive anywhere throughout the Northwest. They invariably produce fruit the second or third season after planting; are subject to but few diseases, and require but little care to produce bountifully. It is a good idea to plant several varieties, giving not only a succession of fruit, but the cross-pollination that seems essential to a good crop.

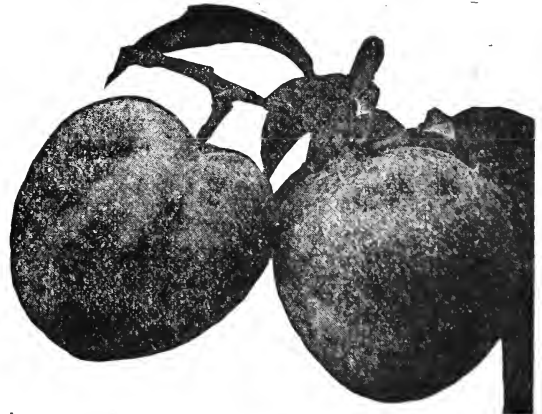
Plums will stand closer planting than apples, and may be set in rows 12 to 16 feet apart. The rows may be from 16 to 24 feet apart. They do best in a reasonably moist and rich soil. Branch trees from 2 to 3 feet from the ground. Manure liberally. Thin fruit in most varieties if you desire to keep up size, as most trees set twice as much fruit as it is possible for them to mature properly. Very little pruning is necessary other than nipping back a top-heavy growth or such as to give form to tree when young.

FOR BEST RESULTS with the Sand Cherry Hybrids (Compass, Sapa, Opata, Cheresota, Sansota, Wachampa), plant small trees. By cutting these back they will branch from the ground. Where grown in bush form some of the oldest wood can be cut out each season and a vigorous growth kept up, which will result in more and finer fruit.

	Each	Per 10	Per 100
3 to 4 feet, or (postpaid size).....	\$0.50	\$ 4.50	\$ 40.00
4 to 5 feet.....	.75	7.00	65.00
5 to 6 feet.....	1.00	9.00	80.00
6 to 7 feet.....	1.50	12.50	100.00
7 to 8 feet.....	2.50		

VARIETIES—(In Order of Ripening)
Compass Cherry Cross between the plum and Sand Cherry. Perfectly hardy; an early and abundant bearer; 2-year trees bearing in nursery rows before being sent out. Fruit dark red, and of exceptional quality for canning.

OPATA—Cross between Sand Cherry and Gold Plum, and is one of the most valuable of Prof. Hansen's hybrids. Like the Compass, it bears very heavy when 2 years old. Four-year-old trees having produced a bushel each. It blooms fully 10 days after the early plums and ripens early in August. Fruit is 13-16 inches in diameter, purple, very small pit, flesh green, sweet and pleasant.



Sapa Cross between Sand Cherry and Sultan Plum. Like the Opata, it is very early and a prolific fruiter. Makes a smaller, more bushy tree. Fruit is a little larger; 10 days later; dark purple and rich, red flesh.

CHENEY—Upright grower, at its best on rather sandy soils. Fruit one of the largest and earliest, red, has a very thin skin, and hence not desirable for shipping.

FOREST GARDEN—Very vigorous grower and profuse bearer of good sized reddish-yellow fruit of good quality.

WOLF—Very thrifty grower. Fruit large, good quality, freestone and ripens the last of August. A good market variety. Also a large clingstone, Wolf and Paul Wolfe (Bender) which ripens 10 days later.

Terry A very choice, extra large fruit, bright red overcast with blue, very productive and of good quality. A variety that deserves a generous planting.

SURPRISE—Upright, vigorous grower, dark red, very large and of finest quality for canning or eating. Has a long period of ripening; and when properly pollenized it fruits annually. We consider it the best quality plum that we have today for the Northwest.

WYANT—Spreading, thrifty grower, adapted to all soils. Fruit large, oblong, purplish-red, good quality and handles well; nearly a freestone. A very sure, heavy yielder.

HANSKA—Cross of the Plum and Chinese Apricot. Entirely unlike any of our native plums. Fruit has very small pit, firm yellow flesh, good quality—of an apricot flavor when cooked; 1½ inches in diameter, flat, with beautiful, heavy blue bloom.

STODDARD—A very productive, fine quality, extra large red plum with bluish bloom. A great favorite for market or home use. Adapted to all soils.

DE SOTO—Spreading grower; does well on most all soils. Fruit good size and quality; yellow turning to red. Very liable to overbear and fruit must be thinned.

Wachampa, Cheresota, Tokata, Hawkeye, and Omaha we can supply at above prices.

Waneta Cross between Terry and a Japanese Plum. Regarded as the largest and best all around newer sort. Bright red, delicious quality, small pit, skin free from acerbitity, very productive and an early bearer, often producing fruit 2 inches in diameter. This is Prof. Hansen's masterpiece in plums and you make no mistake in planting them liberally.

3 to 4 ft., 75c each, \$6.50 per 10; 4 to 5 ft., \$1.00 each, \$9.00 per 10; 5 to 6 ft., \$1.25 each, \$11.00 per 10; 6 to 7 ft., \$2.00 each, \$15.00 per 10.

Minnesota Fruit Breeding Hybrids

In these we have a new race of plums coming on that bids fair to revolutionize the plum industry of the Northwest. A visit to our State Fair or the Station has created a demand for them that it will take years to fill. We have a few of the following in 3 to, 4 and 4 to 5 ft. at above prices.

RED WING (*12)—Large freestone, firm—peels like a peach.

TONKA (*21)—A trifle earlier, and possibly harder than Red Wing.

UNDERWOOD (*91)—Very hardy, early, extra large. Very promising.

MINN. No. 56 and No. 83—These are crosses between the Nigra and Japanese, and are

extra early, large thrifty plums that should prove superior for northern planters, as they are not affected with plum pocket. Ripe August 1st.

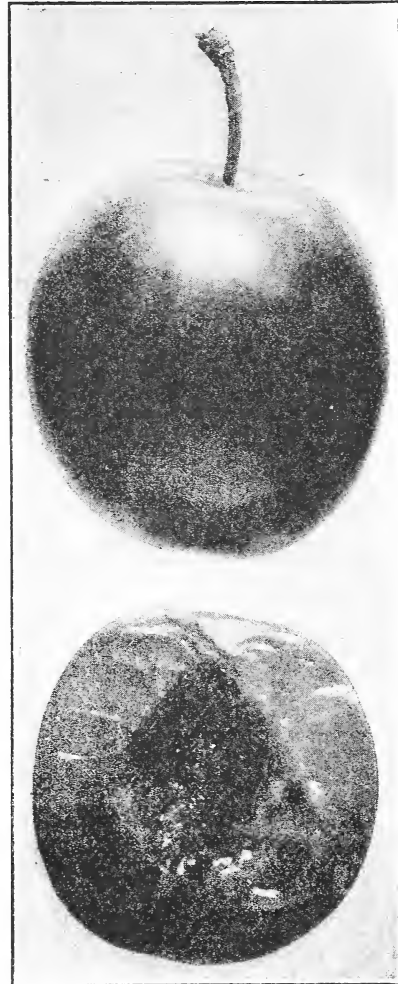
PLUM SEEDLINGS

We often have inquiries for Plum Seedlings for grafting, and for grove, ornamental or windbreak planting. These are grown from seed of our cultivated varieties and many of them may produce fully as good fruit.

1 yr., for Grafting
 (postpaid) 10c each, \$0.75 per 10, \$4.00 per 100
 2 to 3 feet. 20c each, 1.50 per 10, 12.50 per 100
 3 to 4 feet. 25c each, 2.25 per 10, 20.00 per 100
 4 to 5 feet. 40c each, 3.50 per 10, 30.00 per 100
 5 to 6 feet. 50c each, 4.50 per 10, 40.00 per 100
 6 to 7 feet. 75c each, 6.00 per 10, 50.00 per 100

Double Flowering Plum (Prunus Triloba)

—The choicest, early flowering, hardy shrub. Flowers very large, double, rosy pink and closely set on the branches, coming with the foliage. More thrifty, larger and brighter bloom than Flowering Almond. 2 to 3 ft., 75c each; 3 to 4 ft., \$1.00; 4 to 5 ft., \$1.50.



Red Wing

PURPLE LEAF SAND CHERRY

The best hardy purple leaf shrub; glossy purplish-red foliage; one of the choicest ornamentals, where color is desired. 2 to 3 ft., \$1.00 each.

*SAND or ROCKY MOUNTAIN CHERRY

Perfectly hardy anywhere in the Northwest. It forms a very ornamental bush about five feet high; is a very early and prolific bearer. Fruit black, of a rather puckery sweet taste; nearly as large as standards.

Those offered are seedlings grown from varieties improved by Prof. Hansen of the South Dakota Experiment Station, and should be vastly superior to the Sand Cherry commonly offered.

1 to 2 ft., or (postpaid)...	\$.25	\$2.00	\$15.00
2 to 3 ft., or XX.....	.35	3.00	25.00
3 to 4 ft., or XXX.....	.50	4.00	35.00

*DWARF JUNE BERRY

Perfectly hardy, very ornamental and fruitful. Fruit resembles the blueberry; borne in attractive clusters, bluish black (fine for canning); blossoms very early. Should be in every garden or grounds. Also a tall growing form. Prices the same as for Sand Cherry.



Cherries

Cherries delight in elevated or well-drained soils and gentle southern slopes. If not on their own roots, they should be planted deep and allowed to grow in bush form. Plant about the same distance apart as plums, spray to keep foliage healthy; that in turn will increase hardiness and productiveness. The varieties given below are giving the best satisfaction and deserve more extensive planting.

1 yr. or (postpaid size), 50c each, \$4.50 per 10; \$40.00 per 100. 3 to 4 ft., 75c each, \$7.00 per 10, \$65.00 per 100. 4 to 5 ft., \$1.00 each, \$9.00 per 10, \$80.00 per 100.

***HOMER**—A very hardy, early dark red sort that we have grown from sprouts or on their own roots; and hence sprouts coming up from them will be the same. If allowed to grow as a cherry thicket these will replace the original trees; and where the better sorts can not be grown successfully we especially recommend a trial of the Homer.

MONTMORENCY—Vigorous, productive, dark red; about 10 days later than Early Richmond. The most popular commercial sort.

WRAGG—Strong, spreading grower; early and prolific; dark red, good sized, rather acid fruit. Very highly spoken of wherever planted.

EARLY RICHMOND—A very popular variety. Fruit is about the same size and color as the Wragg, but earlier and more acid. A vigorous grower.

OSTHEIM—One of the best Russian varieties that is proving hardy and productive.

Very desirable. Fruit nearly black; juicy and of good size.

***NATIVE BLACK, RED and CHOKE CHERRY**—See page 37.

*Buffalo Berry

A very hardy, drouth-resisting shrub attaining a size of 12 to 15 feet. Fruit red, similar to currants, and valuable for jelly. Sets same close to branches and in great abundance. Hangs for a long time; very ornamental and desirable.

	Each	Per 10	Per 100
1 to 2 ft., or (postpaid)...	\$.35	\$3.00	\$25.00
2 to 3 ft., or XX.....	.50	4.50	40.00
3 to 4 ft., or XXX.....	.75	6.50	60.00

The trees arrived today in fine condition.—E. E. R., Antelope, Mont., 4-21-21.

I have had your stock before and have always been suited with it. I have tried * * * other nurseries but have come back to you.—J. W. C., N. Crandon, Wis., 4-5-21.

* * * although a very unfavorable season the evergreens did very well. I shall recommend your stock to anyone who may desire trees.—A. H., Northfield, Minn., 2-14-21.

Well pleased with all my dealings with you.—E. A. P., Prairie du Sac, Wis., 1-31-21.

I must say the trees I got from you * * * are doing fine.—B. G., Rogers, Minn., 1-20-21.

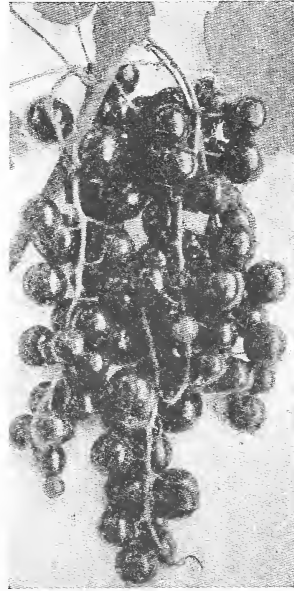
*High Bush Cranberry

Very similar in habit and appearance to the Snowball. Hardy, does well generally and is not subject to disease. A choice ornamental and is very beautiful in the fall when covered with its large clusters of red berries. They are acid, valuable for jelly. Prices the same as above for Buffalo Berry.

Russian Mulberry

Hardy but liable to kill back in some places in severe winters, which damage it soon outgrows. Fruit resembles the blackberry. Valuable as bird food and for canning when mixed with other berries, makes good low windbreak and a desirable ornamental. Prices quoted on smaller sizes if desired. See page 39.

3 to 5 ft., 35c each, \$3.00 per 10; 4 to 6 ft., 50c each, \$4.50 per 10; 5 to 7 ft., 75c each, \$7.00 per 10; 6 to 8 ft., \$1.00 each, \$9.00 per 10.



*Currants

Postpaid, 35c each, \$3.00 per 10, \$25.00 per 100.

FEDERAL QUARANTINE—See note under Gooseberries.

No fruit will better repay for generous treatment than currants. They do best in rich, cool soils. Mulching and cultivating between is a good plan. Currant worms can be destroyed by spraying with a solution of white hellebore one ounce to three gallons of water. Spray as soon as they appear.



*Gooseberries

Postpaid, 35c each, \$3.00 per 10, \$25.00 per 100.

FEDERAL QUARANTINE does not allow shipment of Currants and Gooseberries into Canada or west of the Minnesota line. We have made arrangements to fill orders for such stock from the nearest source of supply within that territory.

Gooseberries are easily grown and should be more extensively planted. Plant in rows 6 feet apart and 4 feet in the row. Trim out some of the old wood occasionally and apply manure or mulch to keep in a healthy and vigorous condition.

Carrie Very hardy, healthy and productive. Best all-around gooseberry grown. It is nearly thornless, and this fact alone brings it into popular favor. By its clustering habit, fabulous yields result. It will please all who give it a trial. 50c each, \$4.00 per 10, \$30.00 per 100.

***HOUGHTON**—Light red when ripe. Very hardy, productive and reliable.

DOWNING—Light green, larger than Houghton. Vigorous and productive.

PEARL—A newer sort, similar to the Downing, but generally reported as hardier, larger and free from mildew. 50c each, \$4.00 per 10.

***CHAMPION**—One of the most hardy, healthy and reliable sorts. In great demand. Grows like the Houghton, but more thrifty.

RED JACKET—The best of all large red varieties. Perfectly hardy; healthy and quite a vigorous grower. Prolific and well worthy of more general planting.

Perfection This variety has so many superior points that it is rightly named Perfection. A bright red, mild acid, very large berry. Prolific and healthy. 50c each, \$4.00 per 10, \$30.00 per 100.

POMONA—One of the best commercial sorts; very productive, good size and excellent quality. Bright red, ripens early.

RED CROSS—A vigorous, productive variety, long clusters of large, bright berries of best quality.

WILDER—An upright, vigorous, early variety. Fruit very large and mild acid, bright red, productive. A choice sort for all purposes.

CHERRY—Very large, vigorous, productive sort, especially when given good culture or on rich soils.

LONDON MARKET—A dark red variety of great merit. Vigorous growth and very productive. Bunches short, but fruit of good size and quality.

LONG BUNCH HOLLAND—The best of late red varieties, vigorous and productive, fruit clusters long and of large size.

WHITE GRAPE—Best white variety. Should be more extensively planted, as no variety is sweeter and better for table use.

BLACK NAPLES—The best of its kind, vigorous and productive, fruit good size and quality, fine for jelly; in great demand on some markets.

ALPINE and GOLDEN CURRANTS—See pages 29 and 30.

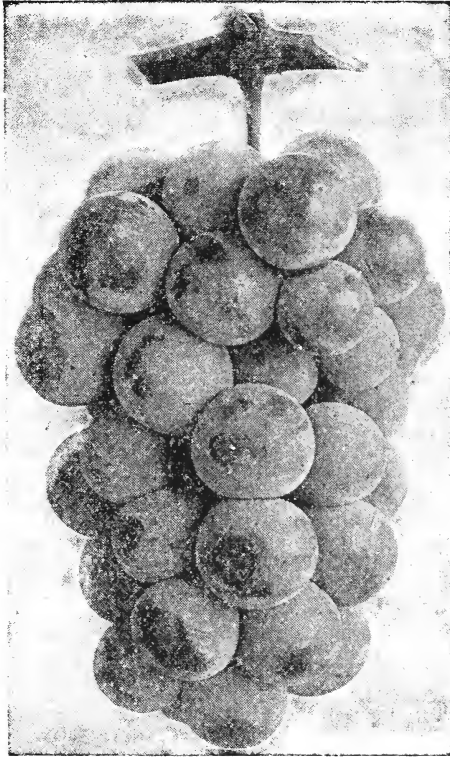
The trees were very fine.—W. H. P., Barron, Wis., 5-9-21.

Grapes

A few of the hardiest varieties should at least be planted by every lover of a home. They can be trained alongside of a building or fence, occupy but little space, and be ornamental as well as useful. They do best in a warm, sunny location, where there is a good drainage and circulation of air. Plant vines in a slanting position to facilitate covering. Plant in rows 8 feet apart each way. Prune in the fall and cover with earth. Erect a trellis for them to run on after the

Northwest especially this variety will not disappoint.

***Hungarian** Another excellent hardy grape first introduced by us. An early ripening sort, without the foxy flavor of the wild grape. Good size, sweet to the taste, compact bunch and vigorous as well as perfectly hardy without covering. Not as thrifty grower as Beta, but more productive and of better quality. An ideal commercial grape for this section.



Hungarian ($\frac{3}{4}$ Size)

second season, using four plain wires. Prune back the laterals to 2 or 3 buds each fall. This will give plenty of wood for the new fruiting growth to come from.

HARDY VARIETIES

Postpaid 40c each, \$3.50 per 10, \$30.00 per 100.

***Beta** A perfectly hardy, very early black grape, ripening about September 1st. Should be cut back the same as other varieties in order to keep up the size of the fruit. Its thrift, hardiness and productiveness make it especially valuable for general planting in the Northwest, also in covering arbors or porches.

***Alpha** This is a very hardy black grape of the Beta type, grown by Rev. Katzner, Collegeville, Minn., and introduced by us. It has proven to be the hardiest and most productive; over 90 good clusters counted on 6-year-old vines. A strong grower; matures early, bunches long, compact, and of good quality when mature. For the

STANDARD GRAPES

Postpaid, 35c each, \$3.00 per 10, \$25.00 per 100.

BLACK VARIETIES.

CONCORD—Black. The most popular and common American grape, but rather late for this section.

WORDEN—Similar to Concord. Larger and better berry. Ripens several days earlier, very hardy, vigorous, productive.

MOORE'S EARLY—Black. Larger berry than Concord. Standard early grape. Hardy and free from disease.

CAMPBELL'S EARLY—A fine, very large, black grape, combining the good qualities of the Concord and Moore's Early; ripens before the latter and is superior.

MCPIKE—If you desire a very large, early, black grape, the McPike will not disappoint; thrifty and productive.

WHITE VARIETIES

DIAMOND—Fine, white, very hardy, ripening a few days after Moore's Early; vigorous and productive, of fine quality.

NIAGARA—A vigorous and very productive white variety. Bunches very large and compact and of fine quality, ripens a few days before Concord.

POCKLINGTON—A late, very productive, large, compact, white sort, very healthy, hardy and of good quality.

RED VARIETIES

DELAWARE—Medium size, red, ripening early; very sweet. Best in quality and brings good price; very hardy and productive.

WYOMING RED—Similar to Delaware, but very early; sweet and spicy; more vigorous and larger; should be given more room and not pruned as close.

BRIGHTON—One of the best early red grapes. Good quality and size; vigorous, hardy and productive.

AGAWAM—Red, large berries having a rich aromatic flavor. Ripens with Concord and keeps well. Strong grower and productive.

Horseradish

Will thrive in any soil and is a useful condiment. Plant 12 inches apart in row alongside of the garden and about 2 inches below the surface. If in digging the crown or some of the smaller roots are left it readily renews itself.

MALINER KREN is much superior to the common variety, as they grow larger, whiter and are of better quality. **Strong sets, 10c each, 75c per 10, \$5.00 per 100, prepaid.**

Rhubarb or Pie Plant

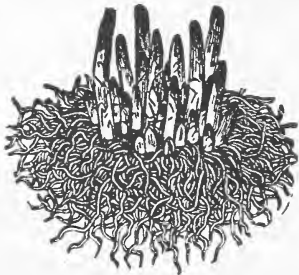


Deep, rich soil is necessary to secure large stalks; it cannot be too rich. Plant 4 feet apart and so that crowns are about 2 inches below the surface; apply manure in the fall as a mulch and fork it in early in the spring.

LINNAEUS—Early, large, productive, red and tender; the best of all; not so acid as others. Postpaid, 20c each. \$1.50 per 10, \$10.00 per 100.

Asparagus

A bed or row planted along the outer edge of the garden where it will not be disturbed in plowing will last indefinitely, with proper care; and give an increasing crop each season. It responds readily to high cultivation, rich soil and good care, but is perfectly hardy and at home on almost any well-



drained soil. A rich, sandy loam is best, as this warms up quickly and gives a much earlier crop. Rows should be three feet or more apart, and plants one to two feet in the row. Set them four to six inches deep, covering gradually as growth is made. Apply fertilizer in June and harrow in. An occasional use of salt will help to keep down the weeds.

CONOVER'S COLOSSAL—A standard commercial variety of large size, tender and excellent quality.

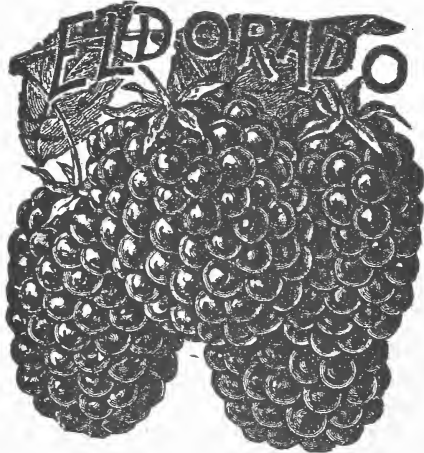
PALMETTO—One of the best all-around varieties. Early, good size and quality. 1-yr. roots (prepaid, 50c per 25, \$1.50 per 100); \$10.00 per 1000. 2-yr. roots (prepaid, 50c per 10, \$3.00 per 100); \$20.00 per 1000.

Blackberries

Postpaid, 10c each, 75c per 10; \$1.50 per 25; \$5.00 per 100.

They do best on a sandy loam. When given a reasonable show, they yield very abundantly and always find a ready sale at good prices. Plant in rows 3 by 8 feet, and give same care as for raspberries, pinching the canes back when two feet high. They should be covered in winter. Cover with earth, bending in the roots.

ANCIENT BRITON—A very popular variety for the North. Hardy, productive and of good size and quality.

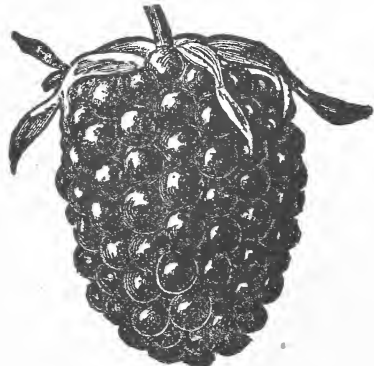


ELDORADO—A choice, very hardy variety that is a leader in all sections. Vigorous, prolific and earlier than Ancient Briton. Berries are large, very firm, sweet and have no hard core.

MERSEREAU—A very hardy, early sort; strong, healthy grower. Fruit is exceptionally large, firm and of good quality.

SNYDER—A very hardy, early variety. Berries are of medium size and good quality. A leader in this section.

Lucretia Dewberry



A low growing trailing form of the blackberry. Fruit of large size, soft, sweet and luscious; early and productive. Its habit of growth adapts it to the North and makes it easy to protect. Does best on light soils that are not too rich. Too much of the dewberry goes to the growth of new vines, which, if allowed to cover the fruiting vines, will smother the crop.

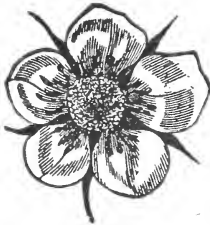
*Strawberries

ORDER EARLY AND PLANT EARLY in the spring in thoroughly prepared ground in rows $3\frac{1}{2}$ to $4\frac{1}{2}$ feet apart and from 1 to 2 feet in the row. If planted early while they are dormant, they have more stored-up vitality. The weather being cool favors safe transportation and rooting of the plant. Holes may be made with a spade or planting steel by pressing forward and back. It is best to trim plants back to one new leaf; also nip back the roots some. Insert the plant after giving the roots a shake so they will not be in a bunch and set very firmly.

Plant so the crown is at the surface—not too deep or too shallow. Keep roots moist while planting by carrying them in a pail having thin mud in it. Cultivate as soon after as possible, and often through season. Pick off the first set of blossoms from the everbearing sorts and all from the others the first season. Keep clean and when ground is frozen in fall, apply a light covering of clean straw, corn fodder or marsh hay. This will hold moisture, keep the berries clean and prevent winter injury.

There are two classes of strawberries, and many fail to raise good crops on this account. The staminate or perfect flowering

varieties will bear well by themselves (all of the following sorts are such), and as a rule our farmers and others will be better satisfied by planting only such, unless they will observe the difference. Pistillate or those of imperfect blossom, need at least one row of some staminate variety among them every third row



A Perfect Flower. as a pollenizer.

If plants appear rather dry when received, do not set at once unless weather is very favorable, but open the bunches and heel them in some shady, damp place for a few days. Do not wet the tops and leave them in the bunches, or decay will set in.

Our plants are fresh dug for each order and put up in bunches of 25. They are the best of plants, and with proper care will give the best of results. We guarantee them equal to any "Pedigree" plants on the market. Special prices made on large orders.

Standard Strawberries

Postpaid, 50c per 25, \$1.50 per 100. By Express, \$1.25 per 100, \$10.00 per 1000.

Sen. Dunlap (Per.)—Without question the most popular variety ever introduced. Berries medium size, firm, dark colored, uniform and very productive. a great commercial berry.

UNCLE JIM (Per.)—Large, late, mild acid berry, of best quality. Productive and especially valuable for fancy home trade. Plants are very large, strong and free from disease.

***BEDERWOOD** (Per.)—One of the best for home use. Light red, fine size and quality. A most reliable and productive early sort.

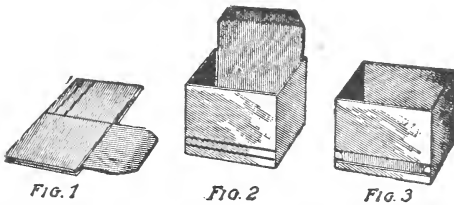
BRANDYWINE (Per.)—The most popular late variety. Reliable fruiter, large, dark red, very firm.

***MINN. No. 3** (Per.)—A seedling of the Sen. Dunlap, originated at the Minnesota State Fruit Breeding Station. Very thrifty and productive. Almost identical in color and shape to the Dunlap but larger, earlier and very firm.

Gibson (Per.)—An extra large, firm, dark red, very productive sort that is one of the best commercial berries introduced since the Dunlap.

Folding Berry Boxes

THE BEST BOX MADE



They come in 16-quart crates of 125, or 24-quart crates of 168, all made up and ready for use. The neatest, most convenient and serviceable box on the market, and they cost no more than others.

The Hallock Standard Dry Measure, holding 67 2-10 cubic inches, is the style offered, which is the legal quart box in Minnesota and Wisconsin.

All orders for boxes, etc., should be placed as early as possible. Special prices quoted on large orders. Samples mailed free.

Boxes—Quart or Pint (crated) 250 for \$3.50; 500 for \$6.00; 1000 for \$10.00.

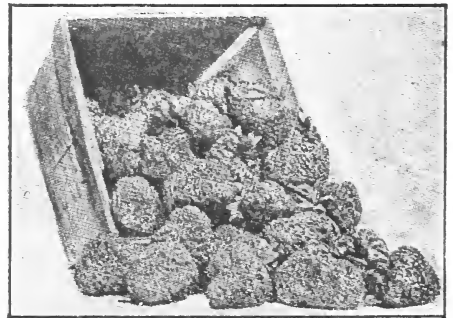
Crates—24 quarts (not made up), 30c each; \$25.00 per 100.

Crates—16 quarts (not made up), 25c each; \$20.00 per 100.

Crates—24 pints (not made up), 25c each; \$20.00 per 100.

Bushel Boxes (not made up), 30c each; \$25.00 per 100.

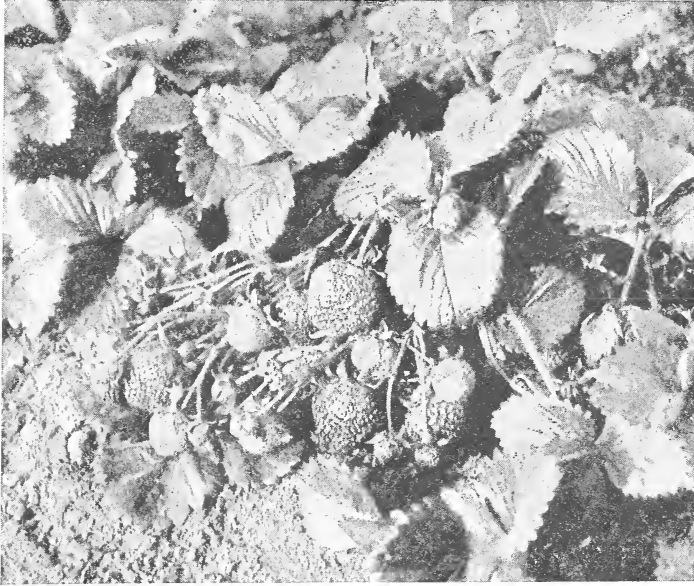
Bushel Baskets and Covers, 35c each; \$30.00 per 100.



Number of Plants to the Acre

Ft. Apart	No. Trees	Ft. Apart	No. Trees
1½ x 3	9680	10x12	363
1½ x 4½	6453	11x11	302
3 x 3	4840	15x15	193
3 x 4	3630	15x18	161
4 x 4	2722	16x16	170
3 x 5	2904	16x18	151
3 x 6	2420	18x19	134
4 x 5	2160	15x20	145
4 x 6	1815	16x20	136
5 x 5	1042	20x20	108
6 x 6	1210	20x25	87
6 x 8	905	25x25	69
8 x 8	680	25x30	58
10 x 10	435	30x30	49

*Everbearing Strawberries



Plants Set May 1st; Bearing Since July 25th; Photo Oct. 20th.

Have removed the "chance" entirely from the strawberry business, commercially, and for the home or city garden especially we can not recommend them too highly. For best results in fruiting they should be kept restricted or practically all late runners kept off. Their productiveness is almost beyond belief and one really has to see a bed in bearing to appreciate their virtues. They will yield as much the same season planted as the standard sorts do the second. A test patch of one square rod set May 1st (during 90 days from July 23d), produced 74¾ quarts. A Michigan grower (without irrigation), picked 5632 quarts from one acre in 1920, plants set 12 by 30 inches, within 223 days from planting. These sold for \$2.059.20.

PRICES OF EVERBEARING STRAWBERRIES

Postpaid, 75c per 25, \$2.50 per 100.

By Express, \$2.25 per 100, \$20.00 per 1000.

Progressive (Per.)—Fruit and plant resemble Senator Dunlap. A great plant maker and as it produces on runners it is an enormous yielder. An ideal, hardy plant and fruit that is generally considered the best of the ever-bearing sorts.

SUPERB (Per.)—Strong, healthy grower; seems to succeed everywhere. Berries are large, glossy, round, firm and of good quality. Produces a good crop on old plants the first season and equal to any of the standard sorts the second. For large berries plant this.

DULUTH (1017)—Hardy, vigorous plant, produces enormously when restricted; of excellent quality, size and form. As many as 345 berries and bloom were counted on a single plant. As a quality berry for home use it will please you.



Properly Trimmed and Planted.

"Amateur Fruit Growing"

By Prof. S. B. Green. Prepared for and used as a text-book at the Minnesota School of Agriculture. Just what you need as a guide to successful fruit-growing; 140 pages, well illustrated. Sent postpaid for \$1.00; or in paper covers, 50c.

"Popular Fruit Growing" By Prof.

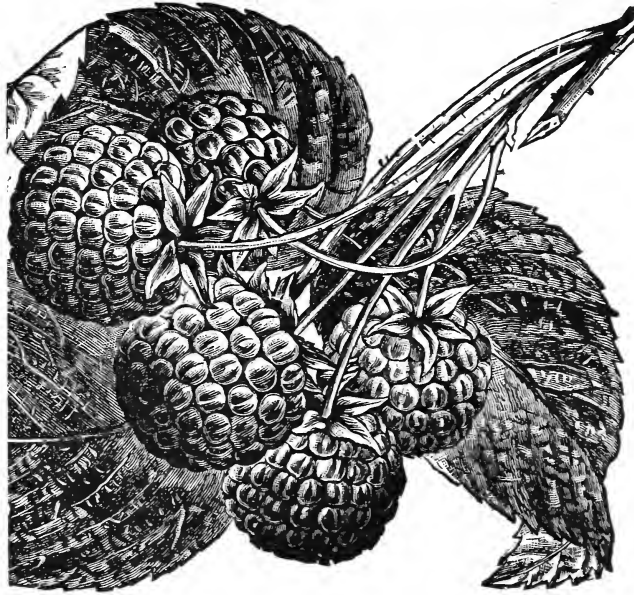
Green, is a later and more complete work than "Amateur Fruit Growing." Treats all phases of successful fruit-growing from the propagation to marketing. Three hundred pages, profusely illustrated, cloth bound, postpaid, for \$1.50; paper covers, 75c.

"Vegetable Gardening" Is another

of Prof. Green's popular and practical books. It covers that subject thoroughly and should be of interest to every owner of a garden. Two hundred and sixty pages, 122 illustrations. Sent postpaid for \$1.50, or in paper cover, 75c.

Trees arrived in fine condition—E. E. R., Antelope, Mont., 4-21-21:

Have received stock of you several times and it has always been satisfactory.—C. J. C., Chicago, Ill.



Raspberries

Succeed well on any good soil. May be planted either in fall or spring. Plant red varieties 3 feet apart in rows 6 feet apart. The blackcap and purple cap varieties should be planted in rows 3 by 8 feet apart. When they are about 18 inches they should be nipped back so as to cause them to branch. The black and purple caps give pleasing variety and are much preferred by many in flavor when canned. They do not sprout, but grow from the layered ends of branches (tips). The new growth comes from buds among the roots and they should be carefully handled; planted early, shallow and two in a hill for best results. Transplants are tips grown one year longer in the nursery, and when they can be had are superior in every way for planting.

TIPS—10c each, 75c per 10, \$1.50 per 25, \$5.00 per 100, postpaid.

TRANSPLANTS—15c each, \$1.00 per 10, \$2.00 per 25, \$7.50 per 100, postpaid.

Cumberland The largest black raspberry grown. Hardy, vigorous and very productive. A very firm and attractive berry, and one of the best.

OLDER, GREGG, KANSAS (Black Caps)—We can also supply at above prices.

Columbian Purple variety; very large, juicy and quite firm. Should be in every fruit garden, as they prolong the berry season often for a month after other varieties have disappeared. They are vigorous growers and very productive. Even if tops are severely killed they seldom fail a crop, as they will fruit on canes coming up from the base.

Royal Purple This new purple cap is almost ideal. Of vigorous growth, very free from thorns; large, firm, good quality fruit which does not stick to the stem. Has a very long fruiting season and harder than the Columbian. 20c each; \$1.50 per 10, postpaid.

RED AND YELLOW VARIETIES

Postpaid, 10c each, 75c per 10, \$1.50 per 25, \$5.00 per 100.

GOLDEN QUEEN—Very similar to the Cuthbert, only color is a beautiful yellow. Best of the yellow varieties.

St. Regis The wonderful new everbearing Raspberry. Very productive same season planted and has a very long fruiting season. Berry sweet, good size, brilliant crimson.

Latham (Minn. 4)—The best red raspberry introduced to date. Very hardy, thrifty, large, dark red; holds up well. An ideal berry for home use or commercially. You make no mistake in planting them, but order early as we never have enough plants to supply the demand.

OHTA—A new very hardy berry, superior to the Sunbeam. Bright red, very vigorous and productive, especially on newly set plants.

SUNBEAM—The hardiest and especially valuable for severe locations and prairie sections. Very thrifty, heavy foliage which smothers the fruit in more favorable sections. Berries good size, rather acid, dark red. Of everbearing habit and a great producer on new plants the same season planted. 50c per 10, \$1.00 per 25, \$3.50 per 100, postpaid. \$30.00 per 1000.

King Very hardy, thrifty and productive. Berries are large, bright red, firm and of good quality. The best early variety and one that is giving general satisfaction for home use or market. Price same as Sunbeam.

CUTHBERT—One of the best late market varieties, but needs winter protection. Berry good size and quality; firm, deep red. Price same as Sunbeam.

***Strawberry-Raspberry**—A beautiful Japanese hardy perennial growing to a height of 18 inches. Suckers freely, and hence should only be planted in permanent locations. Its deep green foliage, with flowers and large bright scarlet berries make it an attractive ornament. Fruits from July until October. Valuable for canning but not as a fresh fruit. Postpaid, 10 each, 75c per 10, \$1.50 per 25, \$5.00 per 100.

Peonies



Rival the rose in beauty and being perfectly hardy throughout the Northwest, they stand pre-eminently at the head of all hardy flowers. Many of the newer sorts are marvels of beauty, size and fragrance. Plant early in the spring or fall in rich, well-prepared soil, so the crowns are about two inches below the surface.

We have over 100 of the best sorts and will send Special List on request. Where not otherwise listed we will supply

NAMED SORTS or ANY COLOR—50c each, \$4.50 per 10, postpaid.

MIXED or Our Selection, 35c each, \$3.00 per 10, postpaid.

XX or BLOOMING SIZE at double list price.

White

FESTIVA MAXIMA—Very large, early, fragrant. Ideal. 75c.

MADAM CROUSSE—Extra fine, pure white. 75c.

MADAM de VERNEVILLE—Choice white, blush pink center. 75c.

COURRONE d'OR—Excellent late showing stamens. 75c.

SOPHIE—Best, early SINGLE. Very free bloomer.

QUEEN VICTORIA—Standard early, free bloomer.

CANARY—Large, thrifty, free, creamy white.

DUKE OF WELLINGTON—Large, late, sulphur white.

GOLDEN HARVEST—Creamy white, pink center and outer petals. 75c.

Red

FELIX CROUSSE—An excellent brilliant red. 75c.

KARL ROSENFELD—Ideal, bright velvety crimson. \$3.00.

OFFICINALIS RUBRA—Earliest and brightest crimson. 75c.

LA SUBLIME—Very choice, rich, dark crimson. 75c.

MISS MORRIS—SINGLE, very free, tall, large dark red. 75c.

TENUIFOLIA—Very attractive, early, crimson, cut-leaf form. \$1.00.

RUBRA SUPERBA—Best late brilliant crimson. \$1.00.

ANDRE LAURIES—Late, fragrant rose red.

CAROLINE MATHER—Free blooming bright crimson.

FRANCOIS ORTEGAT—Fine midseason crimson.

LOUIS VAN HOUTII—Bright crimson, showing stamens.

LAMARTINE—Free, vigorous rosy carmine. 75c.

DALACHEI—Choice late velvety crimson. 75c.

Pink

ACHILLEA—Early, flesh pink, very free bloomer.

ALEX. DUMAS—Large, free, bright pink, variegated center.

BELLE HOUGH—Very fine, tall, late, silvery pink. 75c.

ELLA ADAMS—Very large, free, tall, bright pink. 75c.

REINE de FRANCOIS—Flesh pink, tufted center, marked crimson.

DORCHESTER—Late fragrant flesh pink.

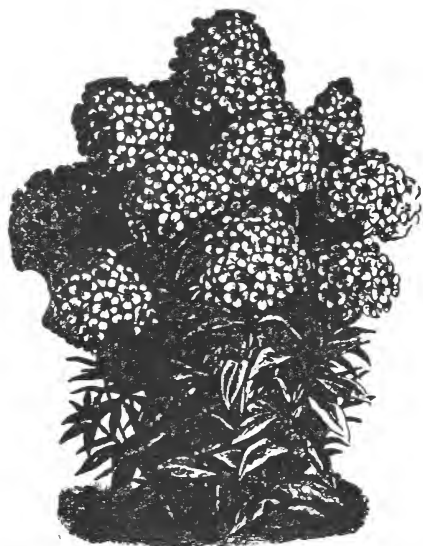
EDULIS SUPERBA—Early fragrant, bright pink.

EUGENE VERDIER—Large, late, fragrant blush pink. \$1.00.

LaTULIP—Late, fragrant blush, striped with crimson. \$1.00.

MODESTE—Vigorous, free, rosy pink.

VICTORIA TRICOLOR—Free, rosy pink with brighter center.



Perennial Phlox

A general favorite because of the great range of colors, perfect hardiness and ease of culture. Gives a succession of bloom from July until severe frost, if some of the shoots are pinched back. Divide the clumps every third year and enrich the soil for best results. They like plenty of moisture and do well in partial shade. Very effective in shrubbery plantings.

NAMED or ANY COLOR, 25c each, \$2.00 per 10, postpaid.

MIXED or Our Selection, 20c each, \$1.50 per 10.

ANTOINE MERCIÉ—Beautiful lilac with white center.

COQUELICOT—Best dwarf brilliant scarlet.

CHAMPS ELYSEES—Bright, vigorous, rosy magenta.

ETNA—Large pure scarlet.

ECLAIREUR—Brilliant rosy purple, white center.

GEN. von HEUTZ—Bright red with white center.

ISABEY—Bright salmon pink.

La SOLIEL—Large, beautiful bright pink.

La VAGUE—Lavender pink with red eye.

LOTHAIR—Tall, vigorous bright crimson.

MRS. JENKINS—Large fine pure white.

MISS LINGARD—An earlier type, long spike, pure white.

MACULATA ALPHA—Similar to above only lavender pink.

PANTHEON—Bright rosy pink.

PEARL—Very hardy, vigorous pure white.

RICHARD WALLACE—White with carmine eye.

R. P. STRUTHERS—Bright rosy carmine.

SUNSET—Dark rosy pink.

THEBAIDE—Bright rosy pink.

SUBULATA (Moss Pink)—Early blooming white and red sorts. Trailing, mossy, evergreen foliage; very popular for cemetery or border.

DIVARICATA—Dwarf native species, rosy lavender, blooms in May.

LILIES

Prepaid, 25c each, \$2.00 per 10.

Plant deep, from 6 to 8 inches, in well-drained soil, sandy loam preferred. Plant in fall or early spring. Do very well when planted near shrubbery and give pleasing variety.

AURATUM—Mammoth, fragrant, pure white flowers, studded with crimson spots and having a golden band in center of each petal. 35c each.

***BLACKBERRY LILY (Par. Sinensis)**—A hardy, odd form having orange-colored flowers, followed by berries which resembles a blackberry. Foliage like the Iris.

BATEMAN (Turks Cap)—Tall reddish-orange, free bloomer during August.

CANDIDUM, or Madonna Lily—Pure white, large, fragrant sort. Should be planted in August or September for best results.

***CANADENSE or Meadow Lily**—A native form which bears a profusion of drooping, bell-shaped red flowers. Also a yellow sort.

DAVURICUM—A beautiful, hardy Siberian of easy culture; grows 2 to 3 feet high and blooms in umbels of from 3 to 5 scarlet. Also a pure yellow.

***ELEGANS**—Very attractive, hardy, bright red; in upright clusters, the last of June. There are several distinct varieties. **Leonard Joerg**, a fine spotted rich apricot; and **Quilp**, a bright vermilion.

PARDALINUM (Leopard Lily)—Robust, free blooming scarlet and yellow, spotted with rich brown.

SPECIOSUM ROSEUM—White shaded with deep rose and red spots; quite hardy and very beautiful. Also a pure white form (**ALBA**). 35c each.

***TIGER LILY (Double and Single)**—Bears large clusters of orange-red flowers, spotted with black; both are very desirable and succeed well everywhere.

Always pleased with everything I bought of you.—Mrs. O. Y., Caldwell, Idaho, 4-21-21.



Hemerocallis

These are not true lilies, but have lily-like flowers and very ornamental grassy foliage. Very hardy, free bloomers and fine for cut flowers. Postpaid, 25c each, \$2.00 per 10.

GRAMINEA—Choice early yellow dwarf variety. 18 inches. Usually in full bloom for Decoration Day.

DUMORTERI—Dwarf and early blooming variety of rich yellow; exterior is a bronzy orange. Two feet.

GOLD DUST—Similar to above but taller and brighter yellow.

DR. REGEL—Deep golden yellow.

FLORHAM—Tall, rich golden yellow. July.

FLAVA—Lemon Lily—A fragrant, profuse bloomer of a handsome lemon yellow. Three feet. Blooms during July.

THUNBERGII—A sweet-scented, yellow, late blooming variety. Blooms in July. 3 ft.

FULVA—The tall, old-fashioned orange day lily. Blooms during July and August. Four feet.

KWANSO—A double flowering form of the above. Four feet.

Hardy Perennials

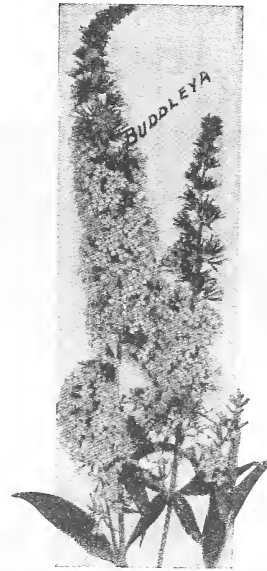
Postpaid, 25c each, \$2.00 per 10.

The ease with which this class of plants may be grown and the great variety offered is making them more popular each year. They can be worked in here and there among other ornamentals and produce pleasing effects. Once planted they practically care for themselves. Plant all rather deep in fall or early spring. They delight in rich soils and appreciate a mulch as soon as the ground freezes. Many sorts, such as iris, phlox, achillea and daisies, should be transplanted or divided every third season for best results.

ACHILLEA—Produces a wonderful profusion of double white flowers throughout entire summer; beautiful and useful particularly for borders or cemetery planting, 2 feet high.



HARDY ASTERS—Improved varieties of the New England aster. The last flower of the season to bloom. Dwarf and tall sorts of white, red and purple shades.



Butterfly Bush (Buddleia)—A shrubby plant; blooms freely the same season planted from July until severe frost; attains a height of 4 or 5 feet; flowers in long tapering panicles, fragrant and of beautiful lilac color, should be cut back in the fall and given a covering of earth and mulch for best results. They will please you. 35c each.

ANTHEMIS (Hardy Marguerite)—Succeed on any soil and produce a bountiful supply of yellow daisy-like flowers all summer; 15 inches.

BLEEDING HEART—Popular, hardy old favorite; fine foliage and drooping racemes of heart-shaped flowers. 60c each.

EVER-BLOOMING BLEEDING HEART (Dielytra Exima)—A dwarf form of the above, having delicate fern-like foliage and blooming in great profusion the entire season. Especially fine in shady, moist location. 60c each.

BOCCONIA (Plume Poppy)—Tall (5 to 6 feet), having odd tropical foliage and spikes of creamy white flowers during July and August. Choice for background, center or variety among shrubbery.

BOLTONIA—Very free blooming, aster-like plant, 4 to 5 feet tall. August to October. One of our showiest perennials. White and pink forms.

CAMPANULA (Bell-flower)—Very free bloomer from June until October. Clear blue, very hardy, compact grower; 1 foot.

COREOPSIS—Very popular hardy plant with rich golden yellow, daisy-like blooms from June until frost. Choice for cutting; 3 feet.

DELPHINUM, or Larkspur—One of the most attractive and satisfactory of hardy perennials. We have them in both tall and dwarf sorts of sky blue and dark blue. Their long spikes of flowers appear from June until frost.

SWEET WILLIAM (Dianthus Barbatus)—This popular old-fashioned flower is one of the choicest of our biennials. They bloom in June, are single and double; in a great variety of colors; very fragrant, and their tall stems and large heads make them excellent for cutting; 3 feet.

Hardy Flowers

25c each, \$2.00 per 10, postpaid.

7 VARIETIES (our selection).....\$1.00

30 VARIETIES (our selection)..... 5.00



COLUMBINE (*Aquilegia*)—Prolific bloomers and very desirable. Colors range in all shades of white, blue, red and yellow. Season, June; double and single, also long spur sorts.

HARDY GARDEN or GRASS PINKS (*Dianthus*)—Profuse bloomers of sweet, single and double, clove-scented flowers. May and June; 1 foot.

SHASTA DAISY—Requires some covering and should be transplanted every other season to keep up vitality. The blooms are very graceful, large, double and waxy white, having long stems. They will keep two weeks after being cut and have a long blooming season, **ALASKA** being the best improved variety.

PRINCESS HENRY DAISY (*Chrys. Maximum*)—Large white flowers similar to Shasta Daisy, but the plant is of a stockier growth. Season of bloom from June until frost.

HARDY DAISY (*Chrys. lacustrae, latifolium*)—This is the hardiest daisy; very thrifty and free bloomer; not as coarse as the Princess Henry or as graceful as the Shasta, but a choice plant for the hardy border or for cut-flower purposes; 3 feet high.

FUNKIA VARIEGATA (*Plantain Lily*)—A very hardy and excellent border plant with green and white heart-shaped foliage; lavender, lily-like flowers in August.

FUNKIA LANCEOLATA—A green foliage form similar to above but blooms later.

GAILLARDIA GRANDIFLORA (*Blanket Flower*)—A very showy, daisy-like flower that continues one mass of bloom the entire summer. Flower dark reddish-brown; petals vary from scarlet-orange to crimson; 1 to 2 feet.

GYPSOPHILA (*Baby's Breath*)—Blooms during August and September, forming a

mass two feet or more through, of minute pure white flowers; very graceful and dainty for cutting purposes.

HELIANTHUS—Hardy Sunflower. Very effective, free blooming, succeed in any soil. Bright double yellow. July to September. 4 to 6 feet. **HELIOPSIS** is similar but earlier, more compact and dwarf habit.

HOLLYHOCKS—This well known biennial is always admired and in demand for its attractive spikes. For planting among shrubbery or as a background it is without an equal. Single and double; red, pink, white and yellow.

HIBISCUS, or Mallow—A hardy perennial, much like the latter. Blooms in September; 4 feet. Their immense flowers make them very attractive.

LATHYRUS (*Perennial Peas*)—While lacking the delicious fragrance of the Sweet Peas, they are equally as beautiful and much earlier. Perfectly hardy, growing 6 to 8 feet tall, white, pink, red and purple.

LILY OF THE VALLEY—A well known little favorite. Does best in partly shaded locations.

LINUM Perenne—Graceful border plant, having large blue flowers all summer; 18 inches.

LOBELIA (*Cardinal Flower*)—Very attractive bright red, blooming during August and September on spikes about 2 feet tall. A native plant; prefers moist location.

LUPINE—A very attractive native plant (18 inches), having spikes of blue, pea-like flowers in May and June.

LYCHNIS CHALCEDONICA (*Rose Campion*)—A very hardy plant, free flowering, growing from 2 to 3 feet and having heads of bright scarlet; also a pink variety. July to September.

YELLOW LADY SLIPPER (*Cypripedium Pubescens*)—Minnesota State flower. These succeed best in partially shaded locations, moist, sandy loam preferable. 35c each.

MOCASSIN FLOWER, or Showy Lady Slipper (*Cyp. Spectabile*)—A rare and very beautiful white and pink form of the above. 50c each.

MINT—We often have a call for this plant which is valued for its pleasant aroma. Dark green foliage and small blue flowers. 6 inches.

ORIENTAL POPPY—Brilliant and free bloomers. For gorgeous display no other flowers equal them. Flowers are very large, crimson and the most attractive of all. After blooming in June the plants die back and do not re-appear until September, at which time they transplant most safely. Care should be taken then that they are not cultivated out. **Crimson, 35c; White, 50c; Salmon pink, 50c.**

PLATYCODON (*Bell-Flower*)—Very easy to grow in any well-drained soil and one of the best hardy flowers. Blue and white bell-shaped flowers from June to October.

PYRETHRUM HYBRID—Single and double daisy-like flowers in June. Very graceful and pretty. Mixed shades of white, red and pink; and splendid cut flowers; 2 to 3 feet high.

PYRETHRUM ULIGNOSUM (*Giant Daisy*)—Grows 4 to 5 feet high and is a very free bloomer during August and September. Large, pure white flowers with yellow center.

Received the evergreens in fine condition. They were dandies. Thanks.—C. E., Bald Eagle, Mian., 6-1-21.

RIBBON GRASS—Striped blades of green and cream color; 2 feet. Fine for borders and variety.

RUDBECKIA (Golden Glow)—Well worthy of a place in every garden. Makes a plant about six feet tall. Flowers yellow, large aster-like, produced in great profusion during August and September. Valuable for use in the background with other flowers or for a quick growing screen. Also a purple form with brown cone center.

STRAWBERRY-RASPBERRY—See page 18.

SEDUM—A low-growing, mossy or pulpy-leaved plant, much in use in cemetery or rockery work. Called also Stone Crop and Golden Moss. We have dwarf and tall forms. Brilliant, grows about 15 inches high and has very attractive heads of red flowers.

SPIREA ULMARIA, or Meadow Sweet—Elegant border plants with feathery plumes of double white flowers and neat, attractive foliage; well adapted to moist, half-shaded location.

VERONICA (Speedwell)—Elegant border plants with long spikes of bright blue flowers June to September; 18 inches.

VIOLET—Hardy double Russian. Large, fragrant, double and single, purple; very desirable for the hardy border or any rather moist location.

TRILLIUM (Wood Lily)—A pure white native, blooms during May; does well in shady location; 15 inches.

YUCCA (Adam's Needle, or Spanish Bayonet)—Foliage remains green the year round, and it is of a cactus nature; 4 feet. Flowers during July on a tall spike. Very ornamental and desirable. Glauca is hardier than Filamentosa.

Hardy Ferns

There is a growing demand for these native plants to use on the north and east (or shady side) of buildings, etc. We can supply the "Brake," Ostrich Fern, Hardy "Wood" Fern, "Maiden Hair" Fern, and many other native sorts.

Iris

This is one of the most desirable and easiest grown of our hardy plants, producing in May and June their showy flowers of exquisite coloring, combining the richest and most delicate tints. Many wonderful new sorts are being introduced and we will be pleased



HARDY WOOD FERN.



Irises are easily grown

to quote on any sorts not listed. For best results plant in the fall or early spring in a well-drained, sunny position, barely covering the roots. Avoid fresh manure in planting. They range in height from 6 inches to over 3 feet, and have a blooming season of nearly two months.

NAMED SORTS or Any Color, 25c each; \$2.00 per 10, postpaid.

MIXED or Our Selection, 20c each, \$1.50 per 10, postpaid.

ALBERT VICTOR (Pallida)—A fine lavender-blue.

AUGUSTINE—Rich yellow, heavily veined with reddish-brown.

ALCEST—Golden-yellow, veined bronze.

BLACK PRINCE—A very deep, rich, velvety royal purple; early.

BLUE BIRD—Early, indigo blue; thrifty, solid color.

BRONZE—Light yellow, veined and tinged with red.

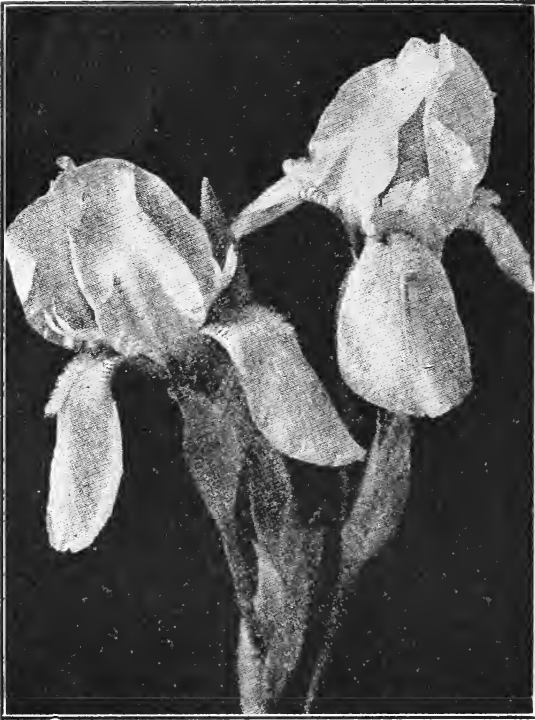
CELESTE—Azure blue, slightly deeper falls.

CUBERO—A rich, orange-yellow; falls penciled maroon.

DELICATA—Canary yellow, veined purple; very fragrant.

DONNA MARIA—Lavender and purple falls.

ENCATA—Blue flowers; narrow standards and falls.



FAIRY—White, delicately shaded soft blue. 35c.

GERTRUDE—Rare violet blue; very fragrant.

GRAMINEA—Blue flowers; narrow standards and falls.

GYPSY QUEEN—Lavender and bronze, tinged plum.

HECTOR—A very showy, velvety purple; light yellow standards.

HER MAJESTY—Large, lovely rose pink; falls bright crimson tinged darker.

HONORABILIS—Golden-yellow; falls beautiful bronze.

IGNITIA—Solid color, deep lavender shaded lighter.

JUANITA—Clear blue; tall and fine.

KERMESIANA (Beardless)—Rich, claret red with white markings. 35c.

L'AVENIR—Pure light blue; very good.

LOHENGRIN—Deep violet mauve; gigantic size. 35c.

LORD BALFOUR—Handsome rich violet and lighter blue falls.

LORD WOLSELEY (Beardless)—Tall, late, light blue with narrow foliage.

LORELY—Canary-yellow; F, deep ultramarine-blue, veined creamy-white bordered yellow. 35c.

MADAM CHEREAU—Pure white edged with azure blue.

MITHRAS—S, pale yellow; F, violet shaded with claret and yellow border. 35c.

MRS. A. W. TAIT (Beardless)—Soft porcelain blue having a blotch at the base; free bloomer; fine foliage. 35c.

MRS. H. DARWIN—Standards pure white; falls white veined violet at base.

NIBELUNGEN—Standards fawn yellow; falls violet blue with fawn margin. 35c.

NOTHA (Beardless)—Standards rich violet; falls blue spotted yellow; fine. 35c.

OTHELLO—Lavender; falls velvety dark blue.

PALCATA—Lavender; heavily veined with red and edged lighter.

PERFECTION—S, light blue; F, dark velvety violet; black and orange beard. 35c.

PRINCESS VIC. LOUISE—S, pure sulphur yellow; F, rich violet edged cream. 35c.

PRIMISMATICA—Blue flowers; narrow standards and falls.

PURPLE PRINCE—Velvety indigo blue; solid color.

QUEEN OF MAY—A soft rosy lilac; almost pink.

RHINE NIXE—Large, tall, white, veined purple; edged white.

SAMSON—Light yellow; falls white, veined red.

SAN SOUSI—Light yellow, veined with brown.

SAPPHO—Standards deep violet; falls deep velvety purple.

SILVER KING—Large, early, fragrant, solid lavender fading to white.

ST. CLAIR—Standards white; falls deep violet, margined white.

THYSPE—Standards old gold; falls light purple.

Pumila Dwarf (6 to 12 in.), early blooming. Especially desirable for border planting. Purple, light blue and white.

Siberian Blue Tall, late, thrifty, purple, very hardy, free bloomer. Long, grassy foliage.

***SIBERIAN WHITE**—Pure white, of medium size, very free bloomer, on tall spikes. Foliage and growth less sturdy than the blue form.

LADY GODIVA—An extra fine blush or rosy white.

SUPERBA—Large violet blue with handsome foliage.

***SNOW QUEEN**—Large, ivory-white flowers. Very thrifty and a later variety of merit.

Aurea Large, pure golden yellow. A Himalayan species, blooms late; 2 feet. 35c.

Japanese Iris Tall, late bloomers, of immense size and the most gorgeous coloring. For best results they should receive some protection during the winter and transplanted every second season. 35c.

Cannas

These most useful and showy garden plants deserve more general planting. They grow very rapidly from dormant bulbs, which should be stored and handled much the same as Dahlias. Their luxuriant foliage and bright coloring give them first place among decorative and bedding plants. Green and bronze foliage; both dwarf and tall sorts, all colors. Prices same as Dahlias.

Our Collections Will Please You

HARDY FLOWERS—OUR SELECTION
7 VARIETIES, postpaid.....\$1.00
30 VARIETIES 5.00

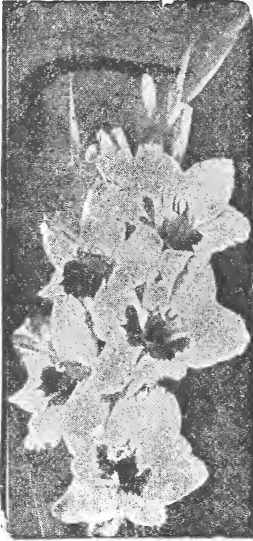
Dahlias

This well-known fall-blooming plant is deservedly becoming very popular. They are single, double and cactus types, ranging from white to purple and darkest red. Best results are obtained if dormant roots are set early in May in well-drained, sunny location, and not too rich soil. When plants are of blooming size apply fertilizer as a mulch or in liquid form. Take up in fall and store in cellar same as other root crops, leaving some of the earth adhering to roots. Separate in spring before planting, leaving one good bud with each clump. We can supply the best standard sorts.

NAMED or ANY COLOR, 25c each, \$2.00 per 10, postpaid; \$15.00 per 100.

MIXED or Unnamed, 20c each, \$1.50 per 10, postpaid; \$10.00 per 100.

Gladioli



The most attractive and useful of our summer flowering bulbs. Wonderful improvement is being made in them each season and they stand without a peer as our best fall flower for cut flowers or general purposes. They may be planted in succession any time from May 1st up to June with the assurance of blossoming that season. They will do well anywhere except on wet, cold and very heavy soils. Dig in the fall before severe freezing weather and keep in a dry place.

The ease of culture, great variety of colors, succession of bloom and many other points in their favor make the Gladiolus a universal favorite. We will cheerfully quote on any sort desired or send List of Varieties on request.

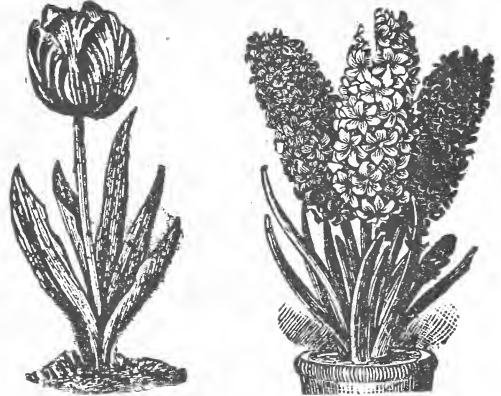
CHOICE MIXED, 50c per 10, \$3.50 per 100, postpaid.

NAMED or ANY COLOR, 10c each, 75c per 10, \$6.00 per 100.

SPECIAL—30 Mixed or 15 Named Gladioli for \$1.00.

Bulbs for Fall Planting

Tulips Plant in the fall about four inches below the surface and six inches apart. A covering of leaves and straw will be appreciated. They bloom early, and the great variety and brilliancy of colors makes them a universal favorite. We offer an extra fine mixture of Early Single, Early Double, Late Single, Late Double and Parrot. Prepaid, 50c per 10, \$4.00 per 100.



Crocus, Snowdrops, Chinodox and Scilla

These early blooming little favorites are hardy and give good satisfaction even under neglect. Culture the same as tulips, only plant about 2 inches deep. 35c per 10, \$2.50 per 100, prepaid.

Narcissus Or Daffodils—Culture is the same as tulips. All are very hardy except the Polyanthus, and are also well adapted to house culture. Some are very sweet scented; double and single; forming many charming combinations of white to pure yellow. Postpaid, 60c per 10, \$5.00 per 100.

Hyacinth Among all the bulbs used for winter flowers the Hyacinth stands foremost. Plant in a glass filled with water or in pots or boxes in soil. They should be allowed about three weeks to root before forcing into bloom. Single and double blue, red, white, with various shades. Not hardy for outdoor planting in the Northwest. Choice bulbs, postpaid, 15c each, \$1.20 per 10, \$10.00 per 100.

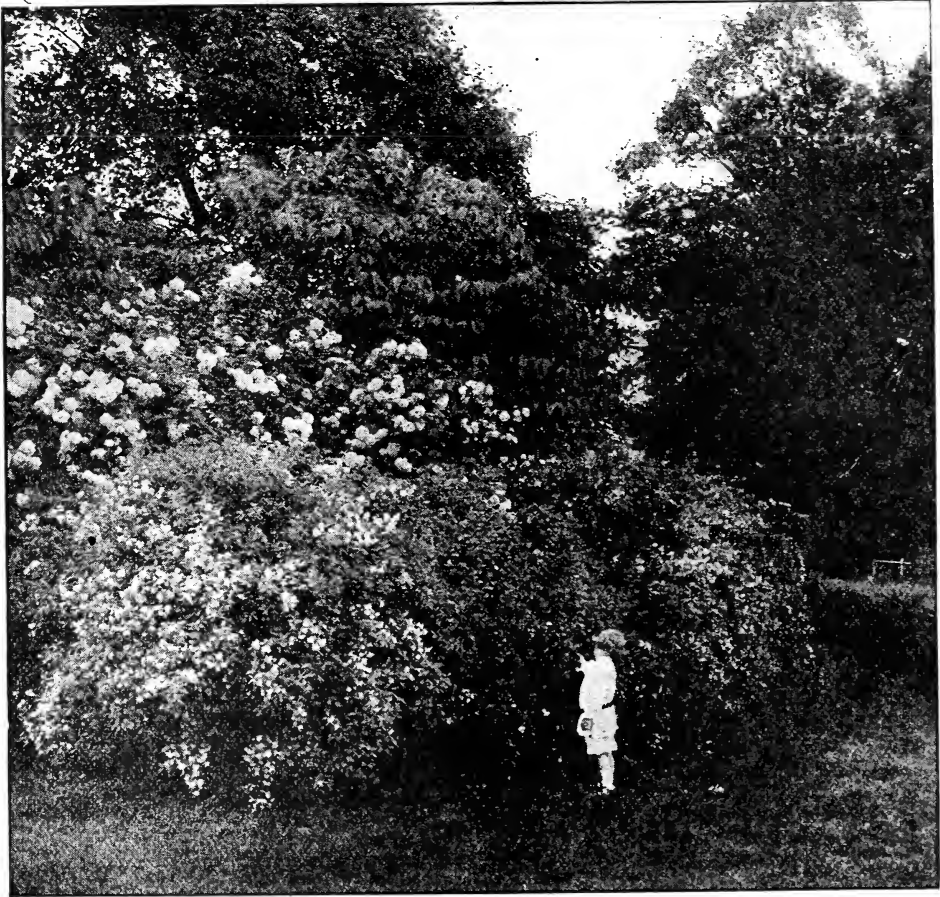
Have always been interested in Strand's Nursery, first because Mr. Strand was once associated with Mr. Webb in this company, and because I have always heard good reports of your stock. I had already planned to give you first chance on anything I bought in the future and your kindness certainly puts me more under obligation.—H. C. K., Webb Pub. Co., St. Paul, Minn., 8-1-21.

Every one of the trees and shrubs grown and of the 155 evergreens I got a fine stand. The kind of stock you put out grows and satisfies. It is a pleasure to deal with a man who can be fully relied on for in my 13 years in S. D. I have seen some rotten deals pulled off by nursery agents. I am in the market again this spring and it has to be "Strand Grown Nursery Stock."—C. B., Clark, S. D.

I received the goods in fine shape.—E. F. L., Pennock, Minn., 5-9-21.

Roses

60c each, postpaid; \$5.00 per 10.



Do best in rich, well-drained soils and sunny locations. The varieties offered are the hardiest and most desirable of the various colors for the North. Most of them should be laid down and covered with earth before the ground freezes. Or, if too large for this, wrap with hay, etc., or bend to the ground as far as possible and cover with leaves, etc., placing boards over them to keep in place or an A-shaped trough. Always bend a plant in the roots as much as possible. By setting a plant in a slanting position when planted and removing the earth on that side when covering will make this much easier. Do not uncover too early in the spring. The perpetual bloomers will bloom finer if cut back to about a foot from the ground in the fall, covering by mounding with earth and manure. They should also be watered well occasionally during a dry spell. We aim to sell, as far as possible, the hardiest sorts on their own roots. Budded roses are often a great disappointment owing to the seedling crowding out the true variety.

All roses should be cut back some when planted. The Hybrid Perpetuals especially should be cut back to about 6 inches from the ground.

HYBRID PERPETUALS

FRAU KARL DRUSCHKI—The best pure white perpetual bloomer; a vigorous grower and bloomer. 75c.

MARGARET DICKSON—Creamy white, large, free bloomer, very thrifty.

PAUL NEYRON—Deep pink, very double, fragrant; blooms all summer; flowers are the largest of any variety.

MAGNA CHARTA—Pink, suffused carmine. A choice and vigorous growing variety.

CLIO—A very fine, large, flesh pink variety. Vigorous, healthy and free bloomer.

MRS. JOHN LAING—Clear, soft pink, very large, full and finely shaped; fragrant and a free bloomer.

MARSHALL P. WILDER—Dark red; large, perfect flowers. Very free bloomer. One of the best.

GENERAL JACQUEMINOT—Dark crimson, double, fragrant. Very popular and desirable.

GRUSS AN TEPLITZ—The best rich crimson; very persistent bloomer; strong grower and very fragrant. 75c.

10 ROSES—One of Each of the Above Sorts **\$5.50**

ULRICH BRUNNER—A large, cherry-red variety of fine form and great substance. Vigorous and healthy.

CRIMSON BABY RAMBLER—Finest and best all-around rose ever introduced. A dwarf Crimson Rambler. Hardy, healthy; blooms in clusters from June until frost. Valuable also as a pot plant.

PINK BABY RAMBLER—Similar to and a splendid companion for the above; bright pink; very free bloomer.

WHITE BABY RAMBLER—A white, fragrant, free blooming sort; very pretty with its golden stamens.

The three for \$1.50, postpaid.

Tree Roses

These are grafted on hardy rose stalks about 3 feet high and are very ornamental. They bloom freely the same season they are planted. By wrapping thoroughly they can be wintered where they stand or lifted with a ball of earth and placed in a cool cellar. We offer only the best blooming red, white and pink Hybrid Perpetuals, \$2.00 each.

***Wild Roses** Our native Wild Roses are deservedly coming into favor for landscape and ornamental planting. Very attractive and desirable for any location. X or postpaid, 35c; XX, 50c; XXX, 75c.

Moss and June Roses

60c each, postpaid; \$5.00 per 10.

CRESTED MOSS—Deep pink, very hardy and a free bloomer. Buds are deeply mossed and very beautiful.

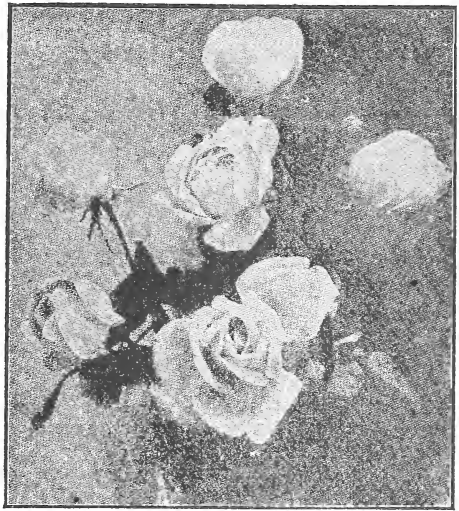
SALET MOSS—Light rose, profuse bloomer. One of the hardiest and best of its class.

RED VELVET—The best hardy, dark red June rose; vigorous grower, fragrant and prolific.

LINDEN—Large, full double, bright pink. Fragrant, free bloomer, quite vigorous and hardy.

MADAM PLANTIER—Pure white, very free bloomer. Nearly thornless, very hardy and vigorous. Sure to please.

PERSIAN YELLOW—Seldom injured if not covered. Flowers double and a free bloomer. Finest hardy yellow rose. 75c.



HARRISON'S YELLOW—A freer bloomer than the Persian, but not as double. Light yellow. 75c.

SWEET BRIER—Very strong grower, single pink flowers and very fragrant foliage.

RUGOSA and HYBRIDS

75c each, postpaid; \$7.00 per 10.

***JAPANESE, or RUGOSA (Red)**—Perfectly hardy. Foliage glossy, dark green, heavy and wrinkled; very odd and ornamental. Flowers are large, single, fragrant and produced in abundance until frost, followed by large scarlet fruits. A good hedge rose. 50c.

***RUGOSA ALBA (White)**—Same as above, only flowers are pure white.

***BLANCH DE COUBERT**—Very vigorous, perfectly hardy, free blooming; double white; a choice variety.

NOVA ZEMBLA—Very vigorous grower and perpetual bloomer. Large, ideal white flowers with pleasing bluish of pink.

SIR THOMAS LIPTON—Pure white; double. A strong grower, quite hardy, producing large, fragrant blooms from June until frost.

***KAMCHATKA**—Perfectly hardy, vigorous and a very free bloomer in June. Dark red and fragrant. Not a true Rugosa, as foliage is small like our native.

***BELLE POITEVINE**—Very hardy and vigorous; flowers are very large, double, deep rose.

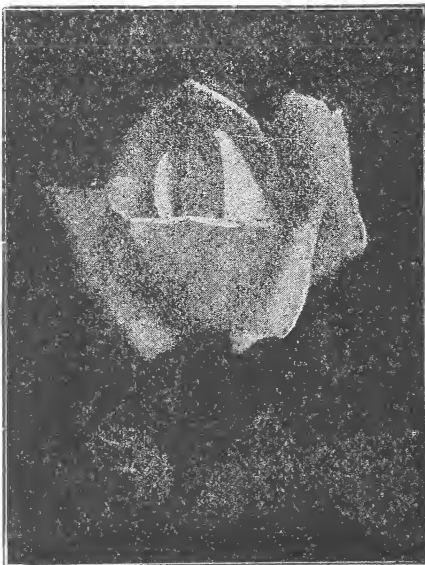
F. J. Grootendorst Foliage of the Rugosa; blooms continuously like the Baby Rambler, bright red, beautifully fringed; in clusters. A great addition to our list of hardy roses. (Colored circular on request.) \$1.00 each.

AGNES EMILY CARMEN—An extra fine, perpetual bloomer. It is of vigorous growth and quite hardy; has semi-double, deep red flowers.

***HANSA**—Double red, large flowers, very free bloomers; hardy and one of the best of the Rugosa type.

NEW CENTURY—The flowers are large, fragrant, double and bloom in clusters continuously through the summer. Deep red centers shading to pink outside.

CONRAD F. MEYER—An extra fine sort that has large double, silvery pink blossoms, which appear singly and freely throughout the season.



Climbing Roses

Postpaid, 50c each; \$4.50 per 10.

CRIMSON RAMBLER—Very vigorous grower. Produces its flowers in pyramidal clusters of large numbers. Remains in bloom for a long time. The profusion of blooms is marvelous, and the variety deserves the popularity and praise it receives.

BLUE RAMBLER—Violet blue, semi-double, prolific bloomer, good trusses that have an outstanding effect. Distinct and good.

DOROTHY PERKINS—A shell-pink variety of similar habit to the Crimson Rambler. Very vigorous, and a great bloomer. The best of its color.

EXCELSA—A Red Dorothy Perkins; lovely crimson-scarlet, very vigorous, good foliage, large trusses of evenly formed flowers of great substance, resistant to mildew.

BALTIMORE BELLE—One of the best climbing roses. Very free bloomer; nearly white or pale blush.

QUEEN OF THE PRAIRIE—Bright red, vigorous grower and profuse bloomer. Very popular and hardy.

SEVEN SISTERS—Blush; **TAUSENDSCHON**—Pink; **FLOWER OF FAIRFIELD**—Crimson; **DR. VAN FLEET**—Flesh pink; **HIAWATHA**—Crimson with white eye; and many other sorts we have a limited stock of.

Climbing Vines

Postpaid or X size, 35c each; XX size, 50c; XXX size, 75c each.

***VIRGINIA CREEPER**, or American Ivy—Hardy native, vigorous grower; one of the best for covering porches, walls of unsightly spots, foliage colors very brilliantly in fall.

***Engelman Ivy** Similar to above, only without artificial support. A rapid grower and the best hardy vine for general planting.

***BETA ALPHA** and ***WILD GRAPE**—Desirable for screens, arbors, etc. They are rapid growers and very hardy in any location.

***BITTER SWEET**—A strong-growing native vine of twining habit. Very attractive when covered with its orange-colored seed pods, which open late in the fall, exposing the dark red berries.

CHINESE MATRIMONY VINE—A rapid-growing, trailing shrub, having small lavender flowers throughout the summer, followed by crimson berries.

***VIRGIN'S BOWER**—A beautiful native clematis, hardy and strong grower. Flowers white, small, followed by downy seed clusters.

CLEMATIS JACKMANII—A very popular and desirable variety. Flowers rich, royal purple; produced in great abundance; needs winter protection; best of the large flowered varieties. X, 75c; XX, \$1.00 each.

CLEMATIS PANICULATA—A very hardy, vigorous white clematis. The large clusters remain in bloom for a long time; fairly cover the entire plant and are very fragrant.



***DUTCH PIPE**—A very beautiful and desirable hardy, strong growing vine, with large, peculiar heart-shaped leaves. Curious pipe-shaped flowers of yellowish-brown. X, 75c; XX, \$1.00 each.

HONEYSUCKLE, Scarlet Trumpet—Produces a constant supply of red trumpet-shaped flowers throughout the entire summer; very desirable. A strong rapid grower; hardy, but will do enough better to warrant winter protection.

***HOP VINE**—A rapid growing hardy perennial that is very attractive and desirable for covering arbors, fences, etc.

WISTARIA—Blue; **LATHYRUS**—Hardy Pea (see page 22).



Clematis Paniculata



Hardy Shrubs

Varieties preceded by (*) are hardiest.

Postpaid or X, 35c each; \$3.00 per 10; \$25.00 per 100.

XX, 50c each; \$4.50 per 10; \$40.00 per 100.

XXX, 75c each; \$6.50 per 10; \$60.00 per 100.

(Where not otherwise quoted.)

***Acacia** or Moss Locust—A beautiful bush form of the locust having bright pink flowers like clusters of sweet peas, in June. (See page 39.)

AILANTHUS, or Tree of Heaven—A semi-hardy shrub having very long fern-like leaves. Cut to the ground each season, its tropical growth well repays for planting.

***AMORPHA** Fruticosa (Indigo)—Very desirable for sunny, dry location; of spreading habit, light feathery foliage, dark violet flowers.

***RUSSIAN ARTEMESIA**—A vigorous, aromatic, hardy shrub. Desirable as an ornamental or for a quick growing hedge. Cut back to the ground in fall or spring.

FLOWERING ALMOND—Double white or pink, rose-like flowers, borne in great profusion before the foliage. One of the best early flowering shrubs. X size 75c, XX \$1.00, XXX \$1.50 each.

***BECHTEL'S CRAB**—See page 9.

***BUFFALO BERRY**—See page 12.

BUTTERFLY BUSH—See page 21.

***BLACK HAW** (Vib. lentago)—A hardy and very desirable native shrub having blooms similar to the High Bush Cranberry. Fruit dark blue, sweet, edible, borne in large drooping clusters. Foliage colors brilliantly in autumn; 8 feet.

Barberry (Japanese or Thunberg)—A dwarf variety, with fine foliage. Very pretty and useful for borders

and in front of taller shrubs; one of the very best hardy dwarf hedge plants; not subject to rust.

	Each	Per 10	Per 100
10 to 15 in. (postpaid)...	\$0.20	\$1.50	\$10.00
12 to 18 in. (postpaid)...	.35	3.00	25.00
18 to 24 in.50	4.50	40.00
24 to 30 in.75	7.00	60.00

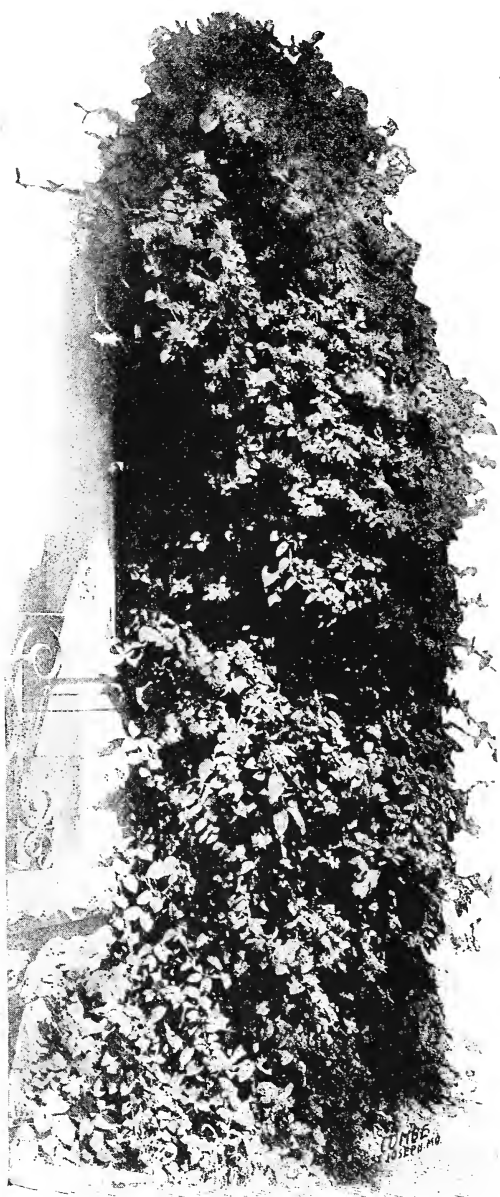
***Buckthorn** Very hardy and desirable for ornamental or hedge purposes. It endures shearing exceedingly well and is one of the best for general planting.

	Each	Per 10	Per 100
6 to 12 in. (postpaid)...	\$0.10	\$0.75	\$ 5.00
12 to 18 in. (postpaid)...	.20	1.50	10.00
18 to 24 in.25	2.00	15.00
2 to 3 ft.35	3.00	25.00
3 to 4 ft.50	4.00
4 to 5 ft.75	6.50

***Caragana** or Siberian Pea Tree—Very hardy and desirable for hedges or as an ornamental; makes a good-sized shrub, with fine locust-like foliage and yellow flowers. Very popular with prairie planters or in severe locations. Prices the same as for Buckthorn.

***COTONEASTER Acutifolia**—Hardy, very ornamental shrub, having thick, glossy foliage, small pink flowers and black fruit. A choice newer shrub for landscape or hedge planting. Stands shearing and has marvelous foliage and fall coloration. X size 50c, XX 75c, XXX \$1.00 each.

***ALPINE CURRANT**—An ideal dwarf, compact, clean hedge or border plant. Takes on a fine form with very little shearing; very hardy and free from disease. A rare shrub of great merit, which we have never been able to meet the demand for. X size 50c, XX 75c each.



Scarlet Trumpet Honeysuckle Vine

***GOLDEN CURRANT, Flowering**—A pleasing old favorite, blooming freely in May and June; very fragrant and a choice ornamental. Black fruit.

INDIAN CURRANT, Coralberry or Red-Fruited Snowberry—Hardy, graceful; makes a good low hedge or ornamental; fruit red, hangs on all winter.

***DOGWOOD, Red Barked Siberian**—The best red-barked shrub we have. Valuable for hedges or to liven up groups of other ornamentals. White flowers.

DOGWOOD, Variegated Leaved Red—This is a slow-growing form of the above and the best silvery and green-leaved shrub we have. At its best in sunny locations. X 50c, XX 75c, XXX \$1.00.

***GOLDEN ELDER**—Our finest tall, golden-leaved shrub. Very valuable for effect in groups. Best in sunny location. Flowers white; in July (followed by black berries).

***CUT-LEAF ELDER (American)**—A very graceful, cut-leaf variety that is perfectly hardy; very ornamental.

***RED ELDER**—A very hardy native; blooms earlier than the above sorts and very attractive later when covered with its loads of bright red berries.

***EUONYMUS, Burning Bush, or Strawberry Tree**—Very ornamental, native shrub. Flowers of reddish-brown followed by red fruits like the bitter sweet, which hangs on all winter.

FORSYTHIA (Golden Bell)—A moderately hardy, graceful, very attractive, early-flowering shrub. Golden yellow flowers borne in great profusion before the foliage.

***FRINGE WHITE**—A hardy, rare shrub having bunches of white, silky fringe, which hangs very gracefully among the foliage during June. X size 75c, XX size \$1.00 each.

FRINGE, PURPLE—Quite hardy and very ornamental, glossy, round foliage. Flowers are purple maturing into large, mist-like plumes (hence the name Smoke Tree). X size 50c, XX size 75c, XXX size \$1.00.

***Hydrangea (Paniculata)**—A perfectly hardy shrub, producing an abundance of immense clusters of bloom in August. Should have a place in all home grounds. Blossom same season they are planted. If they are cut back nearly to the ground each spring larger and finer clusters will be obtained. X size 50c, XX size 75c, XXX size \$1.00. Tree Form \$1.00 each.

***Snowball Hydrangea (Arborescens)**—Blooms are large, snow white and resemble the snowball. Season July and August. A choice addition that we cannot commend too highly. Does best in partial shade. X size 50c, XX 75c, XXX \$1.00.

***HIGH BUSH CRANBERRY**—See page 13.

***HAWTHORN, or Thorn Apple**—A hardy native that is useful for hedges or as an ornamental. Very attractive when covered with its flat heads or clusters of white and pink flowers, maturing into red fruits. See page 38.

***Honeysuckle** Very hardy, strong growing and attractive shrubs which bear a profusion of bloom in early spring, followed by bright orange or red berries. Fine also as a hedge plant. One of our best hardy ornamentals.

TARTARIAN—White, pink or red.

MORROW—Japanese variety of drooping growth; creamy white flowers and very attractive bright red fruits.

BELLA ALBIDA—Very fruitful and pretty during autumn months when covered with its crimson berries. White, fragrant; strong grower.

FRAGRANTISSIMA—Early pink and white, fragrant; of spreading growth; foliage is retained very late in the fall.

***HAZEL NUT**—A hardy, native shrub that produces an abundance of fine nuts. Valuable as an undergrowth in or near groves. Also used as an ornamental and for hedge planting where conditions are severe or on soils that are light and droughty. X size 20c, \$1.50 per 10; XX, 25c, \$2.00 per 10; XXX, 35c, \$3.00 per 10.

Hardy Shrubs

Where not priced otherwise.

	Each	Per 10	Per 100
X or postpaid.....	\$0.35	\$3.00	\$25.00
XX50	4.50	40.00
XXX75	6.50	60.00

***DOUBLE FLOWERING PLUM** (*Prunus tdioloba*)—See page 11.

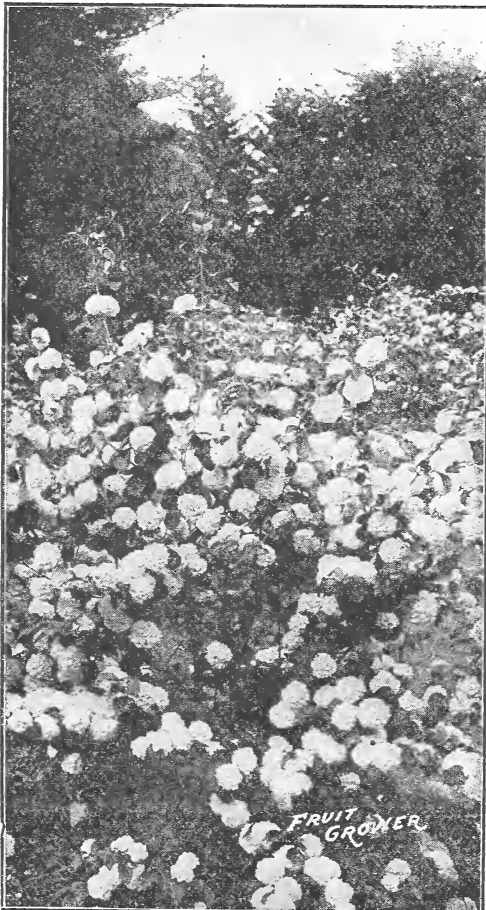
***PURPLE LEAF SAND CHERRY**—The best purple shrub. \$1.00 each. See page 12.

***JUNEBERRY**—Dwarf and tall sorts. See pages 12 and 39.

JAPAN QUINCE—A dwarf, semi-hardy, very showy shrub, having bright red flowers early in May. A good hedge plant for favorable locations.

PRIVET—None of the varieties are more than semi-hardy in this section; but where they do well they are the best hedge plant grown and excellent ornamentals. The **POLISH, IBOTA** and **REGELS** are the hardest and best of the group.

***Snowball** (*Vib. Sterilis*)—This well-known favorite is perfectly hardy. Filled with a mass of white balls of blooms during May.



***SNOWBERRY**—A hardy shrub, having small, pink flowers, followed by waxy-like berries which remain for some time after leaves have fallen.

***CUT-LEAF SUMACH**—A dwarf form of the sumach that is very hardy and handsome especially in fall, when its fern-like foliage turns a vivid red.

STAGHORN SUMACH—A large, hardy shrub or small tree. Very pretty in fall and winter, as foliage colors highly, and its large panicles of red fruit hang on all winter. Also a smooth variety (*Glabra*) of dwarfier growth that is equally desirable.

TAMARIX AMURENSIS—A choice, graceful shrub; should be cut back each fall or spring. It is a very rapid grower; fine, cedar-like foliage, pink flowers.

***VIBURNUM LENTAGO**—See Black Haw, page 29.

VIBURNUM DENTATUM, or **Arrow-wood**—A native shrub having clusters of white flowers in June, followed by flat, black berries.

VIBURNUM LANTANA, or **Wayfaring Tree**—Like the Haw, it blooms in large, flat heads and is very showy at that time as well as later, when laden with its crop of red berries, turning to black when ripe. Foliage rough and silvery beneath. A fine ornamental.

WEIGELA, Eva Rathke—The hardest and most desirable of its class. Dark red, trumpet-shaped, prolific bloomers. June and July. X size 50c, XX 75c, XXX \$1.00.

WEIGELA, Rosea—Similar to above and very popular. Rosy pink; also fine white variety—**CANDIDA**.

***WINTER BERRY** (*Ilex Verticillatus*)—Very desirable on account of its scarlet berries which remain after the foliage falls; a hardy native shrub, adapted to moist locations.

MOCK ORANGE

(*PHILADELPHUS*)

***GARLAND** (*P. Coronarius*)—One of our best large shrubs, producing a profusion of pure white, sweetly scented flowers during June.

***GRANDIFLORA**—A robust form, having very large flowers; later and not fragrant as the Garland.

***GOLDEN**—A dwarf variety, having rich, yellow foliage. The best dwarf, golden foliage shrub. X size 50c, XX 75c, XXX \$1.00.

***MONT BLANC**—Dwarf, sweet scented, free blooming form, having narrow leaves and slender branches. X 50c, XX 75c.

***AVALANCHE**—A very graceful, hardy and desirable form. Flowers white, very sweet and produced in such profusion that their weight bends the long, slender branches almost to the ground.

When I want anything in nursery stock I shall always order from Strand's Nursery and also recommend it to any one.—W. C., Altoona, Wis., 4-20-21.

The writer was much pleased * * * to find the trees in apparent perfect condition. * * * nice trees and in splendid condition, for which I want to thank you.—A. M. S., Minneapolis, Minn., 4-19-21.

25 ROSES, SHRUBS and VINES

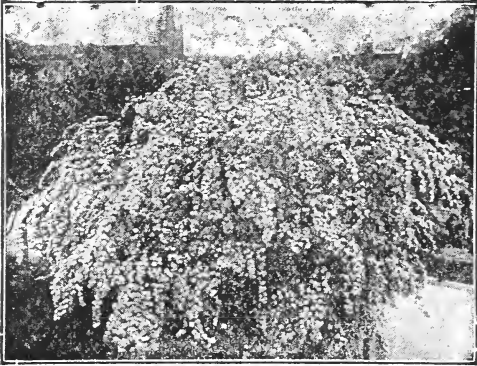
(Our Selection). Just the assortment that will please anyone interested in "dressing up" the home grounds, (Value \$8.50) **\$5.00**

Hardy Shrubs

Where Not Priced Otherwise.

	Each	Per 10	Per 100
Postpaid or X.....	\$0.35	\$3.00	\$25.00
XX50	4.50	40.00
XXX75	6.50	60.00

SPIREAS



***VAN HOUTTEI**—The most attractive and graceful hardy shrub we have. Produces an abundance of drooping sprays of white flowers early in June. Sometimes called "Bridal Wreath."

***ARGUTA**—Of more slender growth, earlier to bloom and clusters not as compact as the above.

***THUNBERG'S**—The earliest to bloom. Its fine foliage, which takes on a rich fall color, makes it a very charming hedge plant or ornamental.

PRUNIFOLIA, or BRIDAL WREATH—A choice double white sort. Blooms just before the Van Houttei.

***NINEBARK, or OPULIFOLIA**—A strong growing native shrub. Blooms in clusters of white. June.

***GOLDEN, or OP. AUREA**—A variety of the latter. One of our best golden foliage shrubs. At its best in sunny places.

***ANTHONY WATERER**—A dwarf form. Blooms throughout summer in flat terminal clusters of rose red color. Very popular for low borders.

CALLOSA ALBA—Similar to the latter, only very dwarf, compact grower and has white bloom.

FROBELI—A trifle taller and brighter red than A. Waterer. X size 50c, XX 75c.

BILLARDI, Red—Flowers in terminal, rose colored spikes from July until frost. Vigorous and hardy.

BILLARDI ALBA—Same as above, only it has white blooms.

DOUGLAS—Similar to Billardi, Red, but has very downy foliage and is not as vigorous.

TOMENTOSA—A late blooming deep rose; dense feathery panicles.

***ASH-LEAVED, or SORBIFOLIA**—A very distinct variety, having light, fern-like foliage; handsome spikes of white flowers in July and August. Hardy and thrifty.

*LILACS or SYRINGA

One of the very best of our hardy ornamentals, in which a great improvement is being made each year. Most people know only the common white and purple sorts, which sprout badly (when neglected) and are shy bloomers. These newer sorts are mostly grafted on ash roots, and hence seldom sprout, and are perfectly hardy, even in severe locations. For best results the seed clusters should be removed immediately after blooming, in order to insure a good crop of flowers each season. Suckering sorts should be gone over occasionally with a sharp hoe and mowed off at the surface. We have 25 distinct varieties in stock in either bush or tree form.

Where not priced otherwise: Postpaid or X size 50c, XX 75c, XXX \$1.00 each. TREE FORM 25c extra.

WHITE

PERSIAN, ROUEN or SIBERIAN WHITE—Small foliage and lavender white flowers in great profusion. Thrifty grower and quite distinct from ordinary sorts.

PRINCESS ALEXANDRIA—Finest single, pure white, immense panicles.

MADAM LEMOIN—An extra fine pure double white, free bloomer.

MADAM CASIMER PERIER—Very large flowers and truss; fragrant. The best double white lilac.

JAPANESE TREE—Blooms in June (month later than most sorts), in very large, creamy white panicles; makes a tree much like a cherry.

COMMON WHITE—Well known favorite. X size 35c, XX 50c, XXX 75c.

PURPLE, BLUE AND RED

PERSIAN PURPLE—Small foliage and bright purple flower. Blooms are very long, graceful and fragrant.

ROUEN or ROTHMAGENSIS—Similar to Persian only flowers are reddish purple.



CHAS. X.—Fine, reddish-purple. Strong, stocky grower, single. Very free bloomer.
CONGO—Very fine, large, single; wine-red.
LUDWIG SPAETH—Single, deep purplish-red. Choice.
MICHAEL BUCKNER—Double, clear lilac-blue; enormous flowers and spikes.
LAMARCK—Very large, double, rosy-lilac.
EMIL LEMOIN—Clear, double rose.
PRES. LOUBET—The darkest, double purplish-red. Extra long, large blooms.
PRES. GREVY—Double, extra large, sky-blue.

SEN. VOLLAND—Double, rose red.
BELLE DE NANCY—Double, brilliant satin rose.
HUNGARIAN, or JOSIKEA—Very distinct class of lilacs, having dark, heavy foliage, of stocky growth. Blooms very late with the Japanese and in open purple panicles. A fine sort.
VILLOSA—Is similar to the above, only flowers are a light pink. Very choice.
COMMON PURPLE—Very free blooming strain. Especially valuable for hedges, screens, etc. X size 35c, XX 50c, XXX 75c.

10 LILACS	OUR SELECTION	X Size	\$4.00
		XX Size	6.00
		XXX Size	8.00

*Evergreens

Among all classes of nursery stock the evergreen is the most perishable, and hence special care must be exercised in transplanting them. If the following two rules are observed it can be as successfully accomplished as with any other class. All of these offered have been transplanted one or more times and are fine, stocky trees. Sure to grow with reasonable care. All of our evergreens come direct from the field for each order. They are carefully packed and guaranteed to reach you in good growing condition.

When received, wet the roots but not the tops, and heel in some moist, shady spot. When ready to plant make a thin mud in a pail or tub, dip roots in or keep in until

planted. Absolutely prevent the drying of the roots. Firm ground well as planted, and keep well cultivated. Seedlings should be lined out about 6 inches apart in a row in the garden and given good culture for about three years before setting in their permanent place. For windbreak plant 8 to 12 feet apart each way, so as to alternate if two rows.

BURLAPPING WITH A BALL OF EARTH—When requested we will burlap each individual tree as dug with earth adhering. Such trees weigh considerably more, but with expensive ornamentals is warranted caution. Extra charge for 12 to 18 inch, 15c each; 18 to 24 inch, 20c; 2 to 3 feet, 25c; 3 to 4 feet, 35c; 4 to 6 feet, 50c.





Jack Pine Hardy native, drouth-resisting; very easily transplanted; very rapid grower; especially valuable for windbreaks on dry, loose soils or severe location.

Postpaid, 6 to 12 inch, 25c each.

	Each	Per 10	Per 100
6 to 12 inch	\$0.25	\$ 2.00	\$17.50
12 to 18 inch	.35	3.00	25.00
18 to 24 inch	.50	4.50	40.00
2 to 3 feet	.75	7.00
3 to 4 feet	1.25	10.00

Scotch Pine One of the hardiest, rapid growers. Probably the best known and most largely planted of any of the evergreens. Valuable for windbreaks and does well generally. (Prices and grades same as for Jack Pine.)

PONDEROSA PINE—A native of the Rocky Mountains; similar to Austrian but has longer and lighter-colored foliage. Very hardy and desirable. This and the Jack Pines are especially recommended for severe locations.

Postpaid, 6 to 12 inch, 35c each.

	Each	Per 10	Per 100
6 to 12 inch	\$0.35	\$ 3.00	\$25.00
12 to 18 inch	.50	4.50	40.00
18 to 24 inch	.75	7.00	60.00
2 to 3 feet	1.25	10.00
3 to 4 feet	2.00	17.50

AUSTRIAN PINE—A very hardy, robust grower; not as rapid as Scotch, but holds its lower limbs better; also more symmetrical. (Prices and grades same as for Ponderosa Pine.)

NORWAY PINE—One of our finest native pines; hardy, drouth resisting. Similar to the Austrian, but of more rapid, straighter growth and not as coarse foliage. (Prices and grades same as for Ponderosa Pine.)

DOUGLAS SPRUCE—A rapid growing, hardy variety from the Rocky Mountains, similar to the Balsam, having pointed buds. Of graceful proportions and fine color.

(Prices and grades the same as for Jack Pine.)

BALSAM FIR—A conical, upright and rapid grower; retains its silvery green color very well. A great favorite in many places, especially on heavy, retentive soil, where it makes one of the choicest evergreens for general planting.

(Prices and grades same as for Ponderosa Pine.)

NORWAY SPRUCE—Hardy, rapid grower. Valuable on retentive soils for shelter belts or ornamentals. The most common variety.

(Prices and grades the same as for Jack Pine.)

White Spruce A better, more compact and hardier variety than the Norway; holds its bright green color well in winter. A favorite for all purposes and does well generally.

(Prices and grades the same as for Ponderosa Pine.)

BLACK HILLS SPRUCE—Similar to White, only more compact and darker color. Very hardy, and especially valuable for hedge planting and general use on our western prairies.

(Prices and grades same as for Ponderosa Pine.)

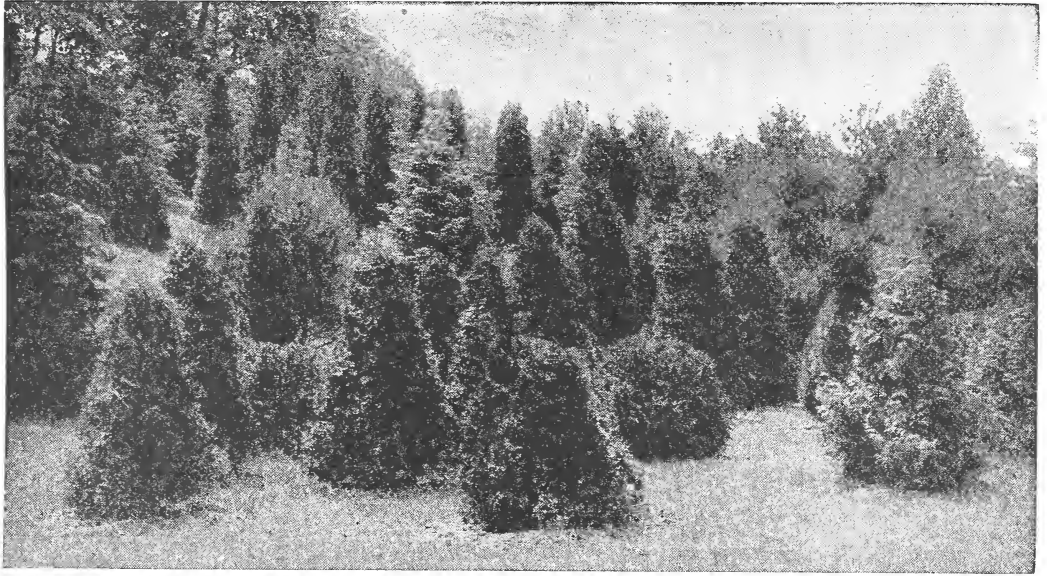
ENGLEMAN'S SPRUCE—Similar to the Colorado Blue, but does not take on as high coloring. The needles are shorter and more blunt. (Prices and grades same as for Ponderosa Pine.)

Arbor Vitae (American White Cedar) —One of our most beautiful evergreens for screens or hedges. A very popular evergreen for general planting. (Prices and grades the same as for Ponderosa Pine.) Also in 4 to 5 feet, \$3.00 each; 5 to 6 feet, \$5.00; 8 to 10 feet, \$10.00; 10 to 12 feet, \$15.00 each.

"Forestry in Minnesota" by Prof. Green. written for Northwestern planters and used as a text-book on forestry. A very practical, thorough and concise work on ornamental and windbreak planting. It will interest all. Four hundred pages, well illustrated. Cloth bound, postpaid, for \$1.00.



Red Cedar



ARBORVITAE PYRAMIDALIS—Similar to above; of very compact, upright growth and in great demand for cemetery or as a formal ornamental. 12 to 18 inch, \$1.00 each; 18 to 24 inch, \$2.00 each; 2 to 3 feet, \$3.00 each; 3 to 4 feet, \$5.00 each.

ARBOR VITAE GLOBOSA—Very hardy, round, bushy and compact. A beautiful and very desirable newer form. 12 to 18 inch, \$1.00; 18 to 24 inch, \$2.00; 2 to 3 feet, \$3.00; 3 to 4 feet, \$5.00.

ARBOR VITAE, DOUGLAS' GOLDEN—A valuable hardy golden bushy form that is particularly beautiful in contrast with other evergreens. 18 to 24 inch, \$2.00 each; 4 to 5 feet, \$5.00 each.

SIBERIAN ARBOR VITAE—A very hardy, compact, conical, dense grower of a darker green than the American form. 12 to 18 inch, \$1.00 each; 2 to 3 feet, \$3.00 each; 3 to 4 feet, \$5.00 each.

Colorado Blue Spruce A form of the spruce from Colorado; very hardy and symmetrical; foliage varies much in color from green to a deep blue. The very choicest of all ornamental evergreens.

(AVERAGE OR GREEN)

12 to 18 inch (postpaid).....	\$1.00 each
18 to 24 inch.....	1.50 each
24 to 30 inch.....	2.50 each
30 to 36 inch.....	3.50 each
3 to 4 feet.....	5.00 each

SELECTED BLUE SPRUCE at DOUBLE the above prices.

KOSTER'S BLUE SPRUCE—A grafted select blue form of the above. (Balled), 18-24 inch, \$5.00 each; 24-30 inch, \$7.50; 30-36 inch, \$10.00; 3-4 feet, \$15.00 each.

CONCOLOR SPRUCE, or Silver Fir—A rare evergreen; longer soft, silvery foliage, something like Balsam, but more open in growth. Very attractive and desirable.

(Prices and grades same as for Colo. Blue Spruce, Average.)

HEMLOCK—On retentive soils and favorable locations this is one of the most grace-

ful and pretty evergreens. Sometimes called the weeping spruce because of its habit and light, loose sprays.

(Prices and grades same as for Colo. Blue Spruce, Average.)

Red Cedar (Northern) — The hardest, easiest to transplant of all the evergreens. Rapid grower when young. Makes the best of low shelter belts and may be sheared into any form. Should not be used around apple orchards, as it encourages leaf rust.

Postpaid, 6 to 12 inch, 35c each.

	Each	Per 10	Per 100
6 to 12 inch	\$0.35	\$ 3.00	\$25.00
12 to 18 inch50	4.50	40.00
18 to 24 inch75	7.00	60.00
2 to 3 feet	1.25	10.00
3 to 4 feet	2.00	17.50

SILVER CEDAR—A bright silvery form of the above from the Black Hills, S. D. Very hardy and a choice ornamental.

(Prices and grades same as for Colo. Blue Spruce, Average.)

JUNIPER, Swedish or Common—A dwarf, hardy trailing form very similar to the Red Cedar. Valuable as an ornamental, or low hedge. (Prices and grades same as for Colo. Blue Spruce, Average.)

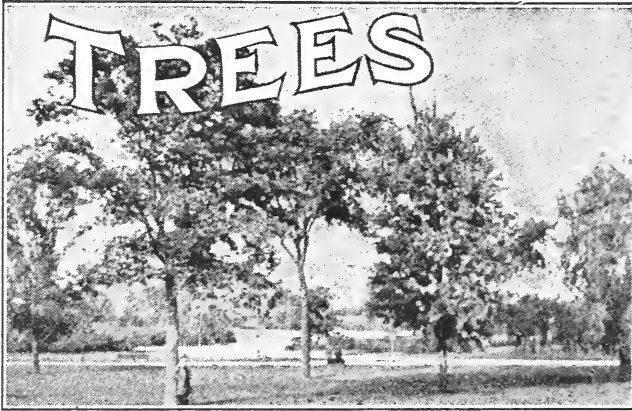
JUNIPER SAVIN—Very hardy and desirable dwarf form. Retains its green color well throughout the winter. Valuable for low border or specimens.

(Prices and grades the same as for Colo. Blue Spruce, Average.)

Mountain Pine (Dwarf Mugho) — A dark green, hardy shrub; valuable for lawn planting where a low hedge or border is wanted. Does well on all soils. (Prices and grades same as for Colo. Blue Spruce, Average.)

YEW, American or Canadian—Very hardy, dwarf, graceful and very rare evergreen that does well, especially in partial shade or on the north side of buildings. Foliage is rich dark green; stands shearing; has edible crimson fruit in the fall; rarely grows over 4 or 5 feet tall. 10 to 12 inch, \$1.00 each, postpaid.

2 EVERGREENS, 12-18 INCH (OUR SELECTION), POSTPAID **\$1.00**
4 EVERGREENS, 6-12 INCH (OUR SELECTION), POSTPAID.....



Street trees should be planted 40 feet apart. For windbreak or grove planting set 4 by 8 feet, aiming to get the ground shaded as soon as possible. Cut out the least desirable varieties, as they crowd too much. Before planting cuttings, soak them for about two days.

Postpaid Cuttings and 6 to 12-inch Seedlings at 100 rates; 1 to 2 feet and 2 to 3 feet at each and 10 rates.

Ash (Green or White)—One of our most valuable trees for ornamental or timber planting. Resists drouth well. Rapid, upright grower. The green Ash does not make as large a tree but is generally regarded as hardier.

	Each	Per 10	Per 100	Per 1000
6 to 12 in..	\$.00	\$ 0.00	\$ 1.00	\$ 6.00
1 to 2 ft..	.05	.40	2.00	15.00
2 to 3 ft..	.10	.75	5.00	25.00
3 to 5 ft..	.25	2.00	15.00
4 to 6 ft..	.35	3.00	25.00
5 to 7 ft..	.50	4.00	35.00
6 to 8 ft..	.75	6.00	50.00
8 to 10 ft..	1.00	8.50	75.00
Cal. 1½ to 2 in..	2.00	17.00	150.00
Cal. 2 to 2½ in..	3.00	25.00	200.00
Cal. 2½ to 3 in..	5.00	40.00

Mountain Ash (European)—A handsome lawn tree, hardy, very attractive when in blossom or when covered with its large clusters of red berries; of upright growth and fine foliage; a choice ornamental.

2 to 3 ft., (postpaid), 35c, \$3.00 per 10.

	Each	Per 10
3 to 5 feet.....	\$0.50	\$ 4.00
4 to 6 feet.....	.75	6.50
5 to 7 feet.....	1.00	9.00
6 to 8 feet.....	1.50	12.50
8 to 10 feet.....	2.00	17.50

MOUNTAIN ASH (Oak-Leaved)—A more compact form of the above; of slower growth and oak-leaved foliage. 4 to 6 feet, \$1.00; 5 to 7 feet, \$1.50; 6 to 8 feet, \$2.00.

WEeping MOUNTAIN ASH—A hardy, rapid-grower; very desirable for lawn planting. Very attractive when covered with its large clusters of flowers and red berries. 2-year heads (6 to 8 feet), \$2.50 each.

Basswood (Amer. Linden) — Hardy, drouth-resisting and one of the best of all for shade or ornamental purposes; blossoms are very fragrant. Should be more generally planted. Prices and grades the same as for European Mountain Ash. Prices quoted on larger sizes.

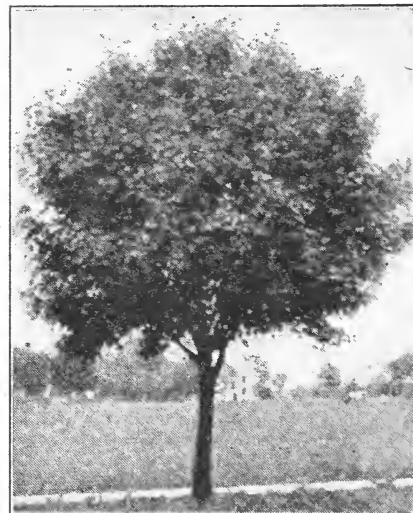
Cut-Leaf Weeping Birch The most erect, handsome and graceful tree for ornamental use. Its silvery bark, finely cut foliage and graceful habit makes it a universal favorite. They must be planted early to insure growth.

	Each	Each
4 to 5 feet.....	\$1.50	5 to 6 feet.....\$2.00
6 to 8 feet.....	2.50	8 to 10 feet..... 3.50

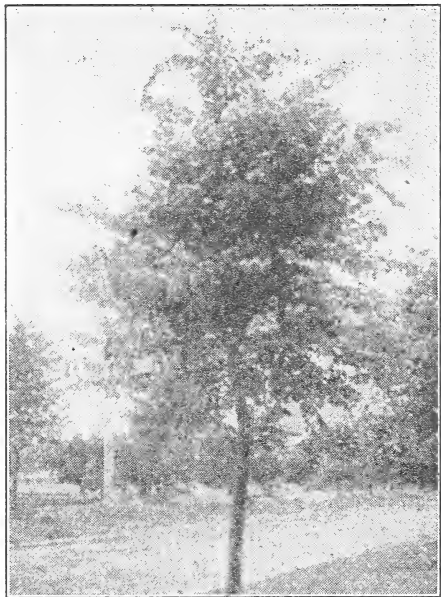
White Birch (European and American) A desirable lawn tree; its white bark gives pleasing variety to the scene; very popular. The European form has smaller, glossy leaves, and does not make as large a tree. Prices and grades the same as for European Mountain Ash. Prices quoted on larger sizes.

Box Elder or Manitoba Maple—A hardy, rapid-growing shade tree, and also useful in timber planting to mix with more valuable kinds. Very popular as a pioneer-tree. (Prices and grades same as for Ash.)

Buckthorn Very hardy and desirable for ornamental or hedge purposes. It endures shearing exceedingly well and is one of the best deciduous shrubs for that purpose. See page 29 for prices.



Box Elder



White Elm

Butternut A very rapid grower and early bearer. Does well as a grove tree or ornamental in any retentive soil. Nuts rich and sweet. Our finest hardy native nut-tree.

	Each	Per 10	Per 100
6 to 12 in.	\$0.10	\$0.75	\$ 5.00
12 to 18 in.20	1.50	10.00
18 to 24 in.25	2.00	15.00
3 to 5 ft.35	3.00
4 to 6 ft.50	4.50
5 to 7 ft.75	7.00
6 to 8 ft.	1.00	9.00
8 to 10 ft.	1.50	12.50
1½ to 2 in. caliper.....	2.00	17.50

Black Walnut Valuable for nuts, timber and one of the choicest ornamentals. Hardy; does best in rich, rather moist soils, but stands drouth well; makes a handsome round-topped tree of medium height. (Prices same as for Butternut.) Prices quoted on larger sizes.

Buckeye or Chestnut—A very hardy, desirable round-topped tree for ornamental planting. Fine foliage and yellow flowers. Much hardier than the Horse Chestnut.

	Each	Per 10
1 to 2 feet, (postpaid).....	\$0.35	\$2.50
2 to 3 feet50	6.00
3 to 4 feet	1.00	9.00
4 to 5 feet	1.50
5 to 6 feet	2.50

CHESTNUT (Amer. Sweet)—Deserves a trial in all favorable locations. Not as hardy as the Buckeye, but valued for its delicious nuts. 4 to 5 feet, \$1.00; 5 to 6 feet, \$1.50.

JAPAN WALNUT (Siebold and Cordiformis)—Resembles the butternut somewhat in appearance and nut. Rapid grower, moderately hardy; makes a fine ornamental; bears young and abundantly. (Prices and grades the same as for Buckeye.)

Hardy Catalpa A rapid growing tree of tropical nature, and desirable as an ornamental. Leaves heart-shaped and very large. Flowers in large clusters sweet-scented, ripening into long,

bean-like pods. In great demand farther south for fence posts and grove planting. Our trees are grown from seed raised 50 miles north of St. Paul and will prove the best available. (Prices quoted on seedlings and larger grades.)

	Each	Per 10
3 to 5 feet	\$0.35	\$ 3.00
4 to 6 feet50	4.50
5 to 7 feet75	7.00
6 to 8 feet	1.00	9.00
8 to 10 feet	1.50	12.50
1½ to 2 inch caliper	2.00	17.50

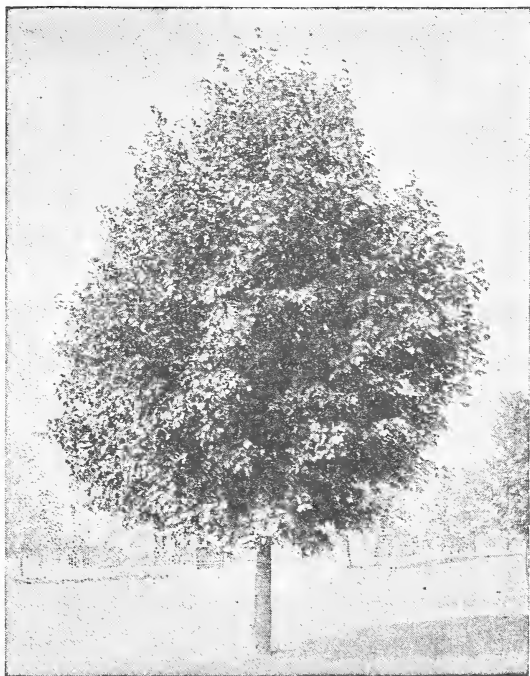
NATIVE RED CHERRY—A very hardy, small tree that deserves more attention in ornamental plantings. White, flat clusters of flowers in May. (Prices and grades the same as for Catalpa.)

CHOKO CHERRY—Small, spreading native tree that makes a very satisfactory ornamental; white flowers, black fruit. (Prices and grades the same as for Catalpa.)

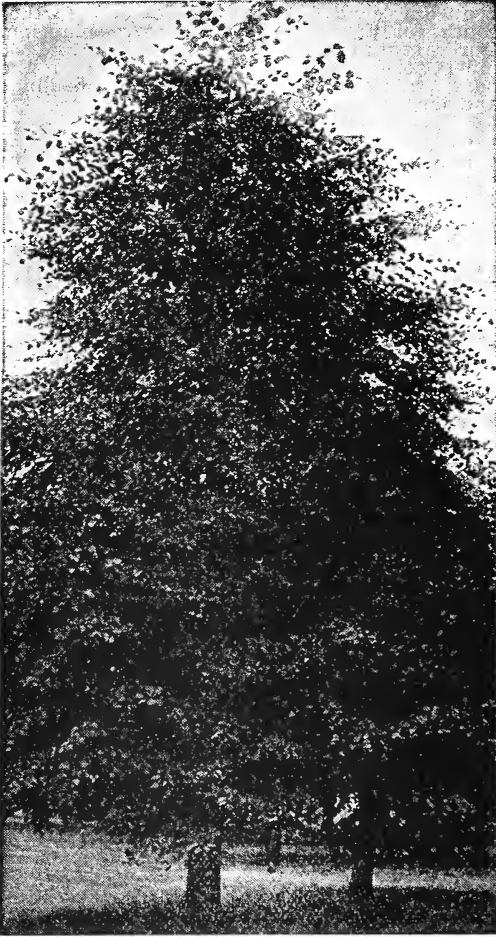
***WILD BLACK CHERRY**—A pretty, medium-sized tree, very hardy, rapid grower and valuable as an ornamental or to mix with timber plantings. (Prices and grades the same as Catalpa.)

Caragana or Siberian Pea Tree—Very hardy and desirable for hedges or as an ornamental; makes a good-sized shrub, with fine locust-like foliage and yellow flowers. See page 29 for prices. Extra heavy clumps, 6 to 8 feet, \$2.50 each; 8 to 10 feet, \$3.50; 10 to 12 feet, \$5.00.

Kentucky Coffee Tree A handsome native tree of medium size, with upright blunt branches and beautiful feathery foliage. A very desirable ornamental. Called Coffee Tree because the seed matures in pods and has some resemblance of the coffee bean. 5 to 7 feet, \$1.00 each; 6 to 8 feet, \$1.50; 8 to 10 feet, \$2.00.



Basswood



Cottonwood A very rapid grower, attaining a large size and long-lived, except in upland or drouthy soils. Where it can obtain plenty of moisture within 12 or 15 feet, is one of our most valuable trees. Popular with grove planters. 1 to 2 ft. seedlings, \$1.00 per 100, \$7.50 per 1000; larger sizes of transplants the same as Carolina Poplar. Cuttings, 50c per 100.

White Elm The best and most popular tree for any purpose; especially desirable as a street tree; hardy, rapid grower; resists drouth well and is long lived. (Prices and grades the same as for Ash.)

RED ELM, or Slippery Elm—Has large, rougher foliage than the White Elm; wood straight grained, hence more valuable for fuel. A rapid-growing, good ornamental. 6 to 8 feet, 75c; 8 to 10 feet, \$1.00.

CAMPERDOWN WEEPING ELM—A strong grower and one of the best weeping trees. \$2.50 each.

***HACKBERRY**—Similar to White Elm. Roots very deep and its twigs and leaves are of a lighter color; not as rapid a grower. Very valuable for timber or ornamental. Stands drouth and dry winds exceedingly well. 4 to 6 feet, 75c; 5 to 7 feet, \$1.00; 6 to 8 feet, \$1.50.

***HAWTHORN, or Thorn Apple**—A hardy native that is useful for hedges or as an ornamental. Very attractive when covered with its flat heads or clusters of white and pink flowers, maturing into red fruits.

	Each	Per 10
2 to 3 feet	\$0.35	\$ 3.00
3 to 5 feet50	4.00
4 to 6 feet75	6.50
5 to 7 feet	1.00	9.00
6 to 8 feet	1.50	12.50
8 to 10 feet	2.00	17.50

HAZEL NUT—See page 30.

SHELLBARK HICKORY—A hardy, slow-growing, very ornamental tree; bears an abundance of choice nuts, and should be freely planted. Our trees are grown from Wisconsin seed and will be found very hardy.

	Each	Per 10
1-year seedlings, postpaid.....	\$0.15	\$1.00
12-inch transplants, postpaid...	.25	2.00

***BITTERNUT HICKORY**—A very hardy and ornamental native. One of our most valuable timber trees. 6 to 8 feet, 75c; 8 to 10 feet, \$1.00.

IRONWOOD, or Hop-Hornbean—A pretty, medium-sized native tree that is very attractive when covered with its hop-like bloom and fruits. Very hardy; prefers sheltered locations. (Prices and grades the same as for Hawthorn.)



Buckeye

Juneberry TALL—Perfectly hardy, very ornamental and fruitful. Fruit resembles the blueberry; borne in attractive clusters, bluish-black; blossoms very early, white. Should be in every garden or grounds. (Prices and grades the same as for Hawthorn.)

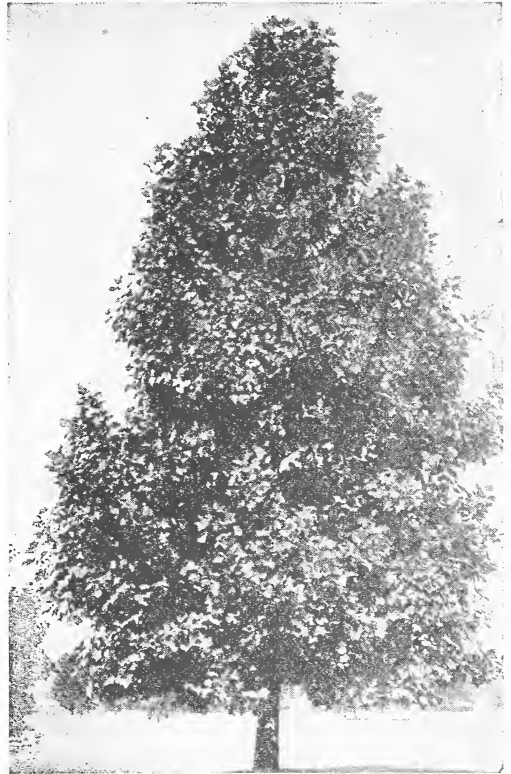
European Larch or Tamarack

Hardy, graceful, rapid grower; desirable ornamental or timber tree; similar in appearance to an evergreen, but is deciduous. Should be planted early in the spring before buds start much, to insure growth. (We also have the Japanese and native American sorts. 10 to 15 inch transplants, 25c each, \$2.00 per 10, postpaid; 6 to 8 feet, \$2.50 each; 8 to 10 feet, \$3.50 each; 10 to 12 feet, \$5.00 each. Prices quoted on larger sizes of the European Larch.

Black Locust A rapid-growing, thorny tree that is desirable on account of its pretty foliage and fragrant flowers. As a grove tree, for fuel and fence posts it is one of the very best; grows as rapidly as a willow and wood is hard and durable. (Prices and grades same as for Catalpa.)

Honey Locust Similar to the above, but has longer thorns (some are thornless), and does not sucker. The foliage is also finer. A hardy, vigorous, rapid grower that makes a choice ornamental and excellent hedge. We grow mainly the thornless, which we offer in transplants, 18 to 24 inch, postpaid, 20c each, \$1.50 per 10; 2 to 3 feet, 25c each, \$2.00 per 10; 5 to 7 feet, \$1.00 each; 6 to 8 feet, \$1.50 each.

MOSS LOCUST (Rose Acacia.) These vary in type from the dwarf mossy form to the tall bushy growth similar to the Black Locust. Blooms in June in graceful pea-like



Maple

clusters of rosy-pink. (Prices and grades the same as for Hawthorn.)

Russian Mulberry Hardy, but liable to kill back in some places in severe winters, which damage it soon outgrows. Fruit resembles the blackberry, rather insipid. Valuable as bird food and for canning when mixed with other berries, makes good low windbreak and a desirable ornamental. (Prices and grades the same as for Catalpa.)

WEeping RUSSIAN MULBERRY—A very graceful, medium sized, fairly hardy tree that deserves a place in ornamental planting. 6 to 8 feet, 2-year heads, \$2.50 each.

White Soft Maple Rapid grower and is largely used in street and grove plantings. One of the best shade trees for general planting. (Prices and grades the same as for Catalpa.)

***WIER'S CUT-LEAF MAPLE**—A variety of the white or soft maple with cut leaves and drooping habit. Makes a large, rapid-growing, straight tree or can be pruned into compact form. Hardy and very desirable in ornamental plantings. 6 to 8 feet, \$1.50 each; 8 to 10 feet, \$2.00 each.

RED or SCARLET MAPLE—A native form of the soft maple which takes on a very vivid coloration in the fall; not as rapid a grower as the soft maple but a very choice ornamental. (Prices and grades the same as for Hawthorn.)



Black Locust

Everything seems to be in fine condition. I wish to thank you very much for the trees and plants which you included free.—C. G. L., West Salem, Wis., 4-21-21.



White Elm, the Ideal Street Tree

Tartarian Maple (Ginnala)—A very hardy and beautiful low-growing form. Foliage is dense, small and finely cut, turning to the most attractive colors in the fall. Very desirable in ornamental planting. 12 to 18 inch, 20c each, \$1.50 per 10; 18 to 24 inch, 25c each, \$2.00 per 10; 5 to 7 feet, 75c; 6 to 8 feet, \$1.00. 8 to 10 feet, \$1.50; Extra Bushy, \$2.50.

HARD or SUGAR MAPLE—A very ornamental and desirable tree for heavy, retentive soils. Its fine form and foliage make it a favorite. (Prices and grades the same as for Catalpa.)

NORWAY MAPLE—Similar to our hard or sugar maple, but is a more symmetrical, round-topped tree and has dense, dark green foliage which hangs very late. Hardy and should be more generally used in all plantings. Prices and grades the same as for Hawthorn.

SCHWEDLER MAPLE—A variety of the Norway, having leaves and newer growth of a bright red, changing to purplish-green. Hardy and a choice ornamental tree. 6 to 8 feet, \$2.50 each; 8 to 10 feet, \$3.50 each.

Russian Olive Belongs to the same family as the Buffalo Berry; makes a medium-sized, very beautiful tree; foliage and newer growth is silvery white; fruit of same color, not edible, but hangs on the tree till late in winter. Flowers small, yellow but very fragrant. Very desirable for ornamental or hedge purposes. A rapid grower that pleases all who give it a trial. Generally regarded as the best tree we have for poor or drouthy soils for wind-break purposes. 6 to 12 inch seedlings, \$2.50 per 100, postpaid; 12 to 18 inch seedlings, \$5.00 per 100, postpaid; 18 to 24 inch seedlings, \$7.50 per 100, postpaid. (Prices and grades the same as Hawthorn.)

***SCARLET OAK**—A beautiful ornamental tree of quite rapid growth. The easiest of all oaks to transplant. Foliage colors brilliantly after frost. 5 to 7 feet, \$1.00; 6 to 8 feet, \$1.50; 8 to 10 feet, \$2.00.

***BURR, or Mossy Cup Oak**—A very hardy, long-lived variety, but rather slow grower. Resists drouth and adverse conditions the best of any tree and well worthy of a place in any planting. 5 to 7 feet, \$1.00; 6 to 8 feet, \$1.50; 8 to 10 feet, \$2.00.

***WHITE OAK**—Makes a handsome, round-

topped tree of compact and more rapid growth than the latter. All oaks are slow growers, but make choice ornamentals. 5 to 7 feet, \$1.00; 6 to 8 feet, \$1.50; 8 to 10 feet, \$2.00.

Norway Poplar A sturdy form of the Carolina Poplar adapted especially as a timber tree. Very rapid grower; has larger leaves and smoother bark. Experiments would indicate that they resist drouth better than either the Cottonwood or Carolina Poplar, owing to a stronger root system. In 14 years trees 17 inches in diameter and 55 feet tall have been grown, which, valuing timber at \$12.00 per 1,000 feet, would make the product per acre average over \$100.00 for each year. What better farm crop can you grow than this? Prices same as for Carolina Poplar.

Carolina Poplar Similar to Cottonwood, but has large leaves and is more symmetrical. Used considerably in park plantings, as it is free from cotton and also stands smoke and gas. A rapid-growing sort, popular as a grove and timber tree.

	Each	Per 10	Per 100	Per 1000
Cuttings	\$0.00	\$ 0.00	\$ 0.50	\$ 4.00
1 to 2 ft.....	.50	.50	2.50	15.00
2 to 3 ft....	.10	.75	4.00	25.00
3 to 4 ft....	.15	1.00	6.00	40.00
4 to 5 ft....	.25	2.00	15.00
5 to 7 ft....	.35	3.00	25.00
6 to 8 ft....	.50	4.00	30.00
8 to 10 ft....	.75	6.50	50.00
10 to 12 ft..	1.50	12.50	100.00
Cal. 1½ to 2 in..	2.50	20.00

LOMBARDY POPLAR—A rapid growing, tall spire-like form, with smaller leaves. Very useful and ornamental for landscape effects. Cuttings, \$1.00 per 100, postpaid.

	Each	Per 10
2 to 3 feet.....	\$0.20	\$1.50
3 to 5 feet.....	.25	2.00
4 to 6 feet.....	.35	3.00
5 to 7 feet.....	.50	4.50
6 to 8 feet.....	.75	6.50
8 to 10 feet.....	1.00	9.00
10 to 12 feet.....	1.50	12.50

Volga Poplar A thrifty, upright-growing form, more desirable than the Lombardy. Bark is a bright green. A newer sort of great promise. (Prices and grades the same as for Lombardy.)

20 Ornamental Trees

A choice assortment that will prove hardy and desirable in your location. Worth many times the price for improving the premises. (Value \$7.50.) **\$5.00**

BOLLEANA POPLAR—A very desirable silver-leaved variety of upright growth. Valuable in ornamental planting. 4 to 6 feet, 50c; 5 to 7 feet, 75c; 6 to 8 feet, \$1.00; 8 to 10 feet, \$1.50.

Silver Poplar Vigorous, very hardy, spreading grower and desirable ornamental. Foliage is larger than the Bolleana. Does well generally and is very desirable for grove or ornamental. (Prices and grades the same as for Lombardy Poplar.)

VAN GERT'S GOLDEN POPLAR—A desirable form having light yellow foliage. In demand for ornamental and park planting where some color is desired. 5 to 7 feet, 75c; 6 to 8 feet, \$1.00; 8 to 10 feet, \$1.50.

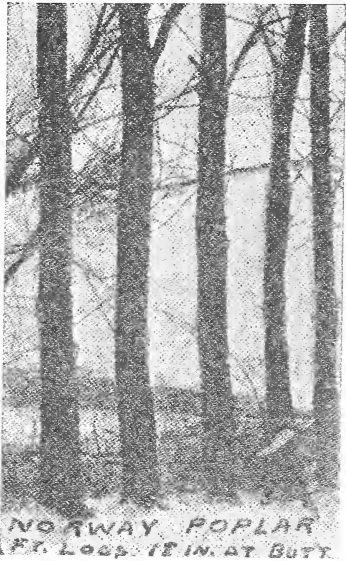
Niobe, Golden Willow Very hardy; rapid growing, beautiful golden variety introduced by Prof. Hansen of South Dakota. The best hardy weeper for the Northwest. Equally desirable for windbreaks. Cuttings, \$1.00 per 100, postpaid.

	Each	Per 10
2 to 3 feet, (postpaid).....	\$0.20	\$1.50
3 to 5 feet25	2.00
4 to 6 feet35	3.00
5 to 7 feet50	4.50
6 to 8 feet75	6.50
8 to 10 feet	1.00	9.00

WISCONSIN WEEPING WILLOW—A rapid-growing, handsome, moderately hardy tree; desirable for reasonably moist locations. (Prices and grades same as for Niobe.)

Russian Golden Willow A very hardy and beautiful variety; rapid grower, making a fine medium-sized, round-top tree. Bark is of a rich golden color in winter and spring. Desirable for windbreak planting, as a lawn tree or for variety in ornamental planting.

	Each	Per 10	Per 100	Per 1000
Cuttings	\$0.00	\$0.00	\$ 0.50	\$ 4.00
1 to 2 feet... ..	.50	2.50	15.00	15.00
2 to 3 feet... ..	.75	4.00	25.00	25.00
3 to 4 feet... ..	1.00	6.00	40.00	40.00
4 to 5 feet... ..	2.00	15.00
5 to 7 feet... ..	3.00	25.00
6 to 8 feet... ..	4.00	30.00



Laurel Leaf Willow Hardy, rapid grower, having thick, glossy leaves, which are very beautiful. Valuable as an ornamental and also for windbreaks. Together with the Golden Willow, they are without question, the most popular trees for starting a windbreak or grove. (Prices and grades the same as for Golden Willow.)

WHITE WILLOW—Well-known tree; valuable as a pioneer for windbreaks, except on high, dry land. (Prices and grades the same as for Golden Willow.)

DIAMOND WILLOW—This is the variety that is largely planted for post timber and claimed by some to be most durable. If treated with creosote any of the willows make very good posts. (Prices and grades same as for Golden Willow.)

URAL WILLOW—A very hardy, purple-branched basket willow that is the best sort for hedges; valuable for a low snowbreak and for tying purposes. (Prices and grades same as for Niobe Willow.)

PUSSY WILLOW—We have these in both the native (Discolor) and the European (Capria). Desirable hardy bush forms that are very attractive and valued because of their early and ornamental catkins. 1 to 2 feet, 20c each; \$1.50 per 10, postpaid.

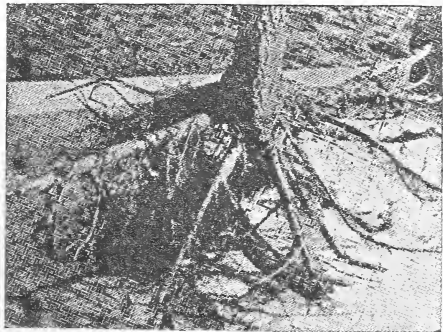
Received the trees and bushes in good condition. They were fine.—Mrs. E., Bald Eagle, Minn., 4-26-21.

Your goods received in good condition and I want to thank you for the extras. Certainly appreciate them.—Mrs. F. W. L., Cable, Wis., 4-20-21.

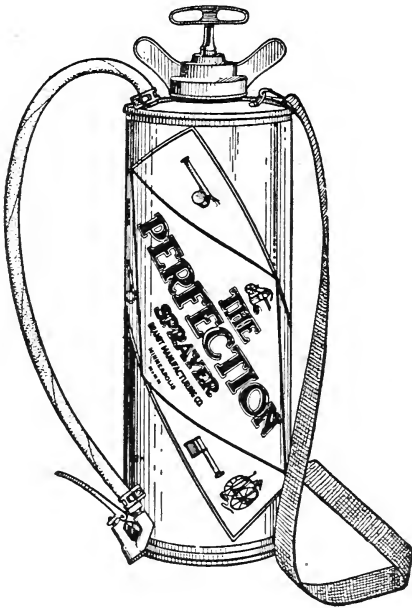
Am very much pleased with all my order. F. S., Lake Geneva, Wis., 4-28-21.

Everything grew. Thank you for the extras.—W. E. D., Deer River, Minn., 6-27-21.

All the trees we got from you this spring seem to be doing fine.—H. J. P., Deer River, Minn., 9-20-21.



Our trees are guaranteed to please, well packed and well rooted.



PERFECTION SPRAYER

is a high-pressure machine having an automatic shut-off nozzle, and is offered in full confidence that it is the

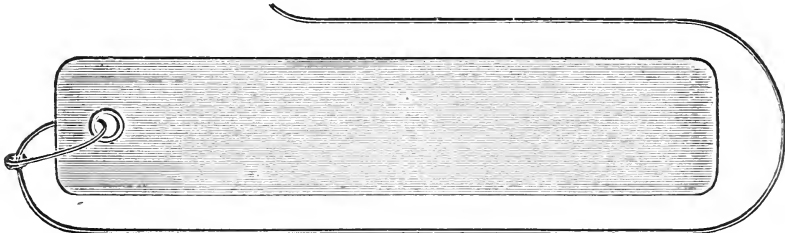
Best Hand Sprayer on the Market

The tank is 20 inches high and 7¼ inches in diameter; tested to 60 pounds pressure; weighs 8 pounds; capacity 3¾ gallons. It will handle white-wash, Bordeaux mixture, water paints and for all ordinary spraying will not disappoint.

- Galvanized Steel.....\$6.50
- All Brass 9.00

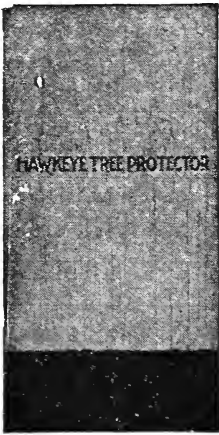
Special circular of other makes of sprayers sent on request.

COPPER TREE LABELS



5 cents each; \$2.50 per 100, postpaid.

AN INDESTRUCTIBLE LABEL, to be written on with a very hard lead pencil or stylus, writing always distinct. Just the thing to keep track of the names and date of orchard trees, top-working experiments, etc. Give the wire one turn around the branch, securing the end in loop. Remove to smaller branches every few years to prevent cutting wood. We advise the use of an additional or heavy wire as they will give away in time.



TREE PROTECTORS A PRACTICAL NECESSITY

They should be placed around all orchard trees and also some shade trees, such as Basswood, Mountain Ash and Butternut.

They are cheap, neat, easily supplied and last for about five years, serving as a protection from mice, rabbits, sun-scald, extremes of heat and cold and also prevent trees from becoming hidebound or damaged by whiffletrees, as far up as they reach.

They are made of the very best quality of rock elm veneer and are about 12 inches wide by 20 inches long. One end is dipped in a coal tar composition to prevent decay where they come in contact with the ground. If dry, they should be soaked in water before wrapping about the tree (to prevent cracking) and secure with two wires or strings.

Price, \$3.00 per 100. Put up in crates of 100 each. Postpaid, 5 cents each, 40c per 10.

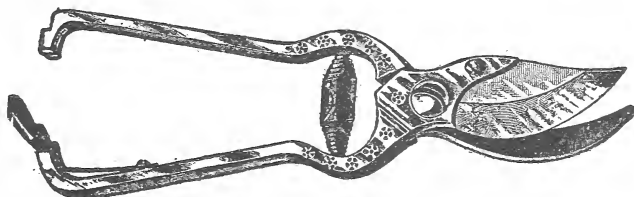


IF YOU DON'T SEE WHAT YOU WANT, ASK FOR IT.

Pexto Pruning Shears

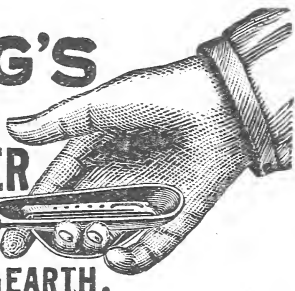
Postpaid, 6 inch, \$1.75; 8½ inch, \$3.00.

Many of our patrons ask us for same, and hence we are listing what we consider the best one on the market. This is a heavy shear of extra good quality and the same as we use in general nursery work. The one illustrated above is a light 6



inch rose or ladies' shear—desirable for cutting flowers and light trimming.

LANG'S
HAND
WEEDER
HANDIEST
TOOL
ON EARTH.

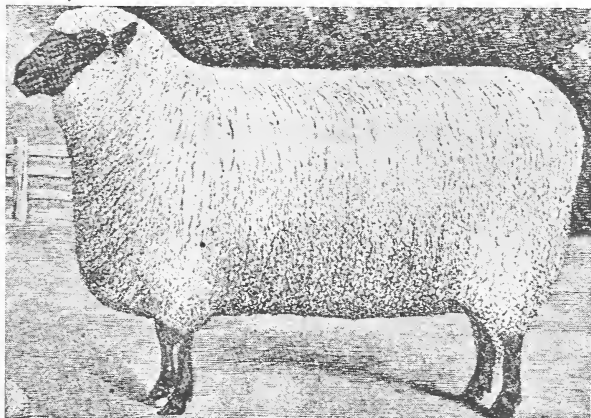
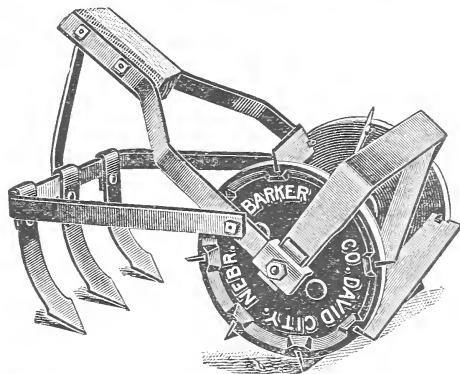


The Best Hand Weeder

For all purposes. Everyone owning a garden should have one. 25c each, postpaid.

Baker Weeder, Mulcher and Cultivator

Will do more satisfactory work, with the least effort of any tool you can purchase. We have used them in the nursery for several years and offer them to our patrons knowing that they will not disappoint. The machine has three shovels on one side (and leaf guards not shown in illustration), hence is reversible, using either hoe or shovels. The standard size cuts and pulverizes a row 8½ inches wide. Circulars and prices on other sizes cheerfully sent on request. Price, \$9.25, prepaid.



Oxford Sheep

FOR THE DIVERSIFIED FARMS of the Northwest this breed will give the best satisfaction. They are the largest of the medium wool breeds, docile, prolific and hardy; shearing from 10 to 15 pounds; mature males weighing from 200 to 275 pounds, ewes 200 to 250 pounds. Now is the time to get a start in pure-bred stock while prices are at their lowest. We have a fine registered flock and will be pleased to quote on your needs.

Bedding Plants, Vegetable Plants and House Plants



WE DO NOT GROW but will cheerfully book orders for delivery from the nearest available source of supply. These prices are postpaid or prepaid; safe delivery guaranteed; claims of any nature must be reported promptly or they will not be adjusted.

POSTPAID, 2 $\frac{1}{4}$ -inch Pot Plants, 25c each, \$2.00 per 10 (unless otherwise stated).

FERNS—Boston or Sword, Whitman or Ostrich Plume, Asparagus or Lace, Roosevelt and the various Hardy Wood Ferns.

GERANIUMS—Double and Single, Ivy-leaved and Lady Washington.

HYDRANGEA—French or Porch sorts.

CARNATIONS—Pink, crimson and white.

CANNAS—Any color; potted plants after May 15th.

CHRYSANTHEMUMS—All colors, large and pompon types.

COLEUS—All colors. 20c, \$1.50 per 10; \$10.00 per 100.

FUCHSIAS—Single and double, various colors.

BEGONIAS—Flowering and foliage sorts.

LANTANAS—Dwarf, Weeping and various colors.

PRIMROSE—Dwarf, pink, free blooming.

SALVIA or Scarlet Sage—20c, \$1.50 per 10; \$10.00 per 100.

VINCA VINE, Variegated—Best vine for window or porch boxes.

ASTERS, LOBELIA, PANSIES, PETUNIAS, VERBENAS, and many other sorts we can supply in transplanted seedlings. 75c per 10, \$5.00 per 100, postpaid.

CABBAGE—Transplanted; early and late. 20c per 10, \$1.25 per 100.

CAULIFLOWER—Transplanted; 30c per 10, \$2.00 per 100.

CELERY—Transplanted. 25c per 10, \$1.50 per 100.

EGG PLANT—50c per 10, \$3.50 per 100.

PARSLEY—50c per 10, \$3.50 per 100.

PEPPER—40c per 10, \$3.00 per 100.

TOMATO—40c per 10, \$3.00 per 100.

Blueberry, Cranberry and Wintergreen

These are native low-growing vines or plants. The blueberry especially under cultivation is capable of vast improvement and those interested should get Bulletin No. 334. U. S. Department of Agriculture. We have many calls for them for experimental planting and can supply. Prepaid, 5c each; 40c per 10; \$3.00 per 100.

Enclosed find my blank check as I have no catalog * * Have bought trees from you for over 10 years and always boost for you, knowing that you always furnish "the goods."—D. S., Foreston, Minn.

I have all my stock from Strand's Nursery and am well pleased.—L. S., Morgan, Minn.

\$1.00 BARGAINS

Prepaid any one lot for \$1.00

Any 6 Lots for \$5.00

Our Selection of Varieties

- 3 Apples, 2 years old.
- 3 Homer Cherry (own roots).
- 10 Plum Seedlings, 1 year.
- 2 Plum or Cherry, 3 to 4 feet.
- 3 Grapes, assorted.
- 5 Rhubarb or Pieplant.
- 50 Asparagus.
- 50 Raspberries (red).
- 25 Blackberries or Dewberries.
- 15 Black Raspberry.
- 4 Juneberry.
- 3 High Bush Cranberry.
- 100 Strawberries, Standard.
- 50 Strawberries, Everbearing.
- 5 Dahlias, assorted.
- 30 Gladiol, Choice Mixed.
- 15 Gladioli, Choice Named Sorts.
- 7 Hardy Perennials, assorted.

- 7 Hardy Iris.
- 5 Hardy Phlox.
- 5 Hardy Lillies.
- 3 Peonies, assorted.
- 3 Roses, assorted.
- 3 Lilacs, assorted.
- 4 Hardy Shrubs.
- 4 Hardy Vines.
- 4 Evergreen Transplants, 6 to 12 inch.
- 2 Evergreen Transplants, 12 to 18 inch.
- 10 Butternut, 12 inch.
- 200 Willow or Poplar Cuttings.
- 25 Willow or Poplar, 2 feet.
- 100 Box Elder, 6 to 12 inch.
- 25 Caragana, 6 to 12 inch.
- 25 Russian Olive, 6 to 12 inch.
- 4 Ornamental trees, assorted, 3 to 4 feet.
- 4 Niobe Weeping Golden Willow, 3 to 4 ft.

The Best Literature for North-western Conditions

Special List of the latest Farm Books mailed on request.

FORESTRY IN MINNESOTA—Will tell you all about trees; 400 pages, \$1.00, postpaid.

AMATEUR FRUIT GROWING—Just what you need as a guide to successful fruit-growing; 140 pages, postpaid, \$1.00; paper cover, 50c.

VEGETABLE GARDENING—Covers that subject thoroughly and should be of interest to every owner of a garden; 260 pages, \$1.50; paper cover, 75c.

POPULAR FRUIT GROWING—Treats all phases of successful fruit-growing, from the propagation to marketing; 300 pages, postpaid, \$1.50; paper cover, 75c.

MINNESOTA STATE HORTICULTURAL SOCIETY—Membership Fee, \$1.00 per year. Entitles members to a monthly magazine; annual report, 500 pages, and new fruits sent out for trial from the State Fruit Breeding Farm.

Direct From Grower to Planter

SAVES YOU 50 PER CENT



INSURE GETTING THE BEST OF STOCK IN THE BEST POSSIBLE CONDITION, at right prices. Your trees come in individual packages which remain undisturbed until you are home and ready to care for them. You buy and get what you want (not what some salesman is interested in, selling you through verbal promises his company does not back up).

Have tried various other nurseries but have come back to you as your stock always suited.—J. W. C., N. Crandon, Wis., 4-5-21.

Our plum trees bore last year and we are so pleased we want more. The trees and shrubs also grew fine.—Mrs. D. M., Willow Lake, S. D.

Always found it satisfactory and true to name.—I. L. A., Clarissa, Minn.

We Guarantee Stock

**True to Name
Up to Grade
Safely Delivered**



Home Beautifying Suggestions

Attractive landscapes or home plantings do not “happen,” but require forethought and knowledge of plant life. Our knowledge or experience is at your command.

Free of Charge; Without Obligation to Buy.

If you are interested in improving your home grounds, or prefer to work out your own problems we will mail you a booklet free upon request, and if we can be of further service we will be pleased to reply or offer suggestions to the best of our ability—any time before our shipping season opens.

If you require the services of a competent Landscape Architect to draw plans, supervise planting, etc., we will cheerfully refer you to parties who can give you real service at right prices.

Don't Wait Until Planting Time.

Let Us Solve Your Planting Problems NOW.



UNITED LITHO & PTG COB.,
ROCKESTER, N. Y.

OUR POPULAR COLLECTIONS

OUR selection of varieties by express NOT prepaid.

The Farm Orchard 10 Apple and Crabs, 3 to 4 feet. 5 Plum and Cherry, 3 to 4 feet. **\$5.00**
(Same in 4 to 6 feet trees for \$7.50)

The Fruit Garden 25 Everbearing Strawberries 100 Strawberries 25 Raspberries 10 Blackberries 2 Gooseberries 2 Currants 2 Grapes 2 Rhubarb 2 Junberries **\$5.00**

30 Hardy Flowers Many of these bloom the same season planted and will come up with renewed vigor each season to brighten your surroundings. **\$5.00**

25 Hardy Shrubs Vines, Roses Just the assortment you are looking for to "dress up" the home grounds. **\$5.00**

Strand's Nursery Taylors Falls Minn.

WE HAVE PLEASED OTHERS

Put this down as another square deal. Fine trees, nicely packed and extra count. It affords me great pleasure to extend the glad hand to a man that does business on the square. Wishing you the success you deserve.—C. B., Clark, S. D., 5-5-20.

I sincerely hope you will stay in the nursery business.—Prof. N. E. Hansen, Brookings, S. Dak., 3-19-20.

Thanks for your prompt delivery and extras contained in the shipment. I am more than pleased with the stock, and if I am in the market for more stock will certainly place my order with you.—W. K., St. Paul, Minn.

Inclosed find * * * Thanking you for your generous prices and also for the good quality of nursery stock sent us.—Park Board Commissioners, Aberdeen, So. Dak., 11-5-21.

Please ented my order for * * * Thanking you for the splendid service you have always given.—A. M. S., Minneapolis, Minn., 9-13-21.

Have you any * * Of the 100 apple trees I got of you last spring I did not lose one.—H. B. L., Alta Vista, Ia., 11-24-21.

Please send me * * * Trees I got of you last spring all lived and done well.—J. E. B., Nary, Minn., 11-30-21.

I want you to know we appreciate your treatment of us. * * * It helps to keep alive the tradition that some of the honest to goodness dealers are still alive.—Yule Floral Co., Lincoln, Neb., 12-5-21.



GEO. W. STRAND, Proprietor

Everyone grew fine. Always get what I order from your nursery.—T. H., Shelly, Minn.

The service you gave us was excellent.—W. H. B., Minneapolis, Minn.

Accept my thanks and believe me I am more than pleased at the treatment from your company.—R. G., Stillwater, Minn.

One of the professors recommended your firm as being the best in the state.—R. W., Minneapolis, Minn., 3-31-21.

The service you gave us was excellent.—W. H. B., Minneapolis, Minn., 12-30-20.

Received the apple trees in good shape.—C. H., Hawkeye, Iowa., 4-28-21.

Thank you for the extras. They are very much appreciated.—J. W. C., North Crandon, Wis., 5-6-21.

Thank you very kindly for the good measure. * * * Very well satisfied with order.—P. W. W., Anoka, Minn., 5-16-21.

The trees arrived in good shape.—J. B. C., Chisholm, Minn., 4-27-21.

They came in first class shape.—P. M. H., Duluth, Minn.

Received plants in fine condition.—M. J. K., White Bear Lake, Minn., 4-22-21.

Order was received yesterday in good condition. * * * Thanks for early shipment.—M. A. G., Albany, Minn., 4-23-21.

Received trees Saturday in fine shape and much pleased with them. Thanks.—Mrs. F. B., Duluth, Minn., 4-20-21.

I would like * * * The Scotch Pine and White Spruce I got of you in 1905 are standing up fine. I know, for our home is on the sheltered side. They are grand.—J. H. R., Springfield, Minn., 1-23-22.

Please accept my thanks and believe me I am more than pleased at the treatment received from your company.—R. G., Stillwater, Minn., 10-28-20.

The plants came in fine shape. I am well pleased with them.—Mrs. C. N. V., Crookston, Minn., 5-13-21.

We were much pleased with the nursery stock received from you and the stand was exceptionally good.—S. H. A., Aberdeen, S. D., 2-5-21.

The apple trees, etc. * * * proved very satisfactory. * * * We will recommend your nursery.—A. H., New Ulm, Minn., 4-28-21.

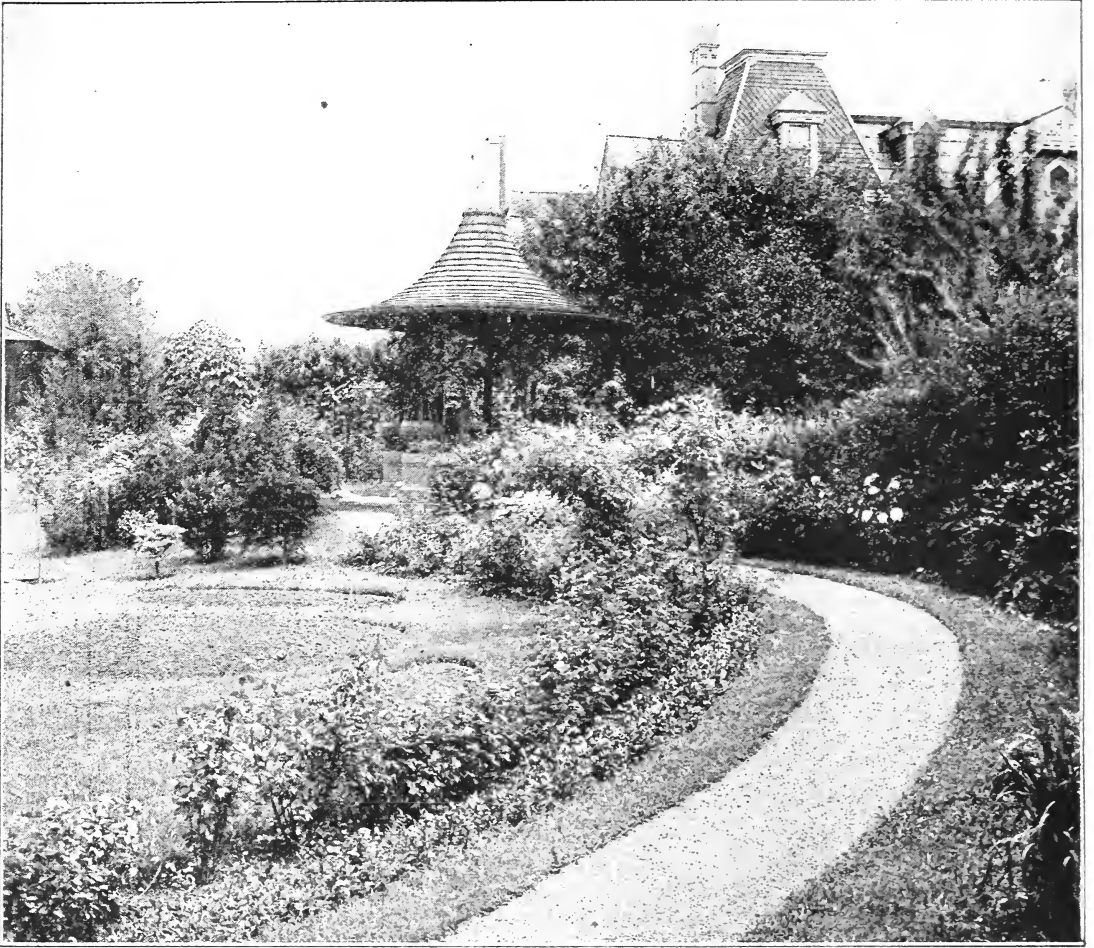
When in need of anything in future, I shall remember your firm and pass the good word along.—A. J. K., 5-2-21.

The nursery goods arrived in good condition; am very well satisfied.—A. B., Reedsville, Wis., 5-2-21.

Strawberry plants received—same being in perfect condition.—L. T., St. Paul, Minn., 5-20-21.

I want to thank you * * * a thousand times for the shipment of last spring. * * * Every one grew; not one did I lose.—A. A. S., Ada, Minn., 8-30-20.

WE CAN PLEASE YOU



*A DIRECT
DEAL*

*SATISFACTION
GUARANTEED*

HARDY TREES
STRAND'S
SHRUBS PLANTS

*STRAND'S
NURSERY*

*TAYLORS FALLS
MINN.*

Let Us Help You Solve
Your Planting Problems