

Historic, Archive Document

Do not assume content reflects current scientific knowledge, policies, or practices.

62, 515

Dahlias

of distinction
for

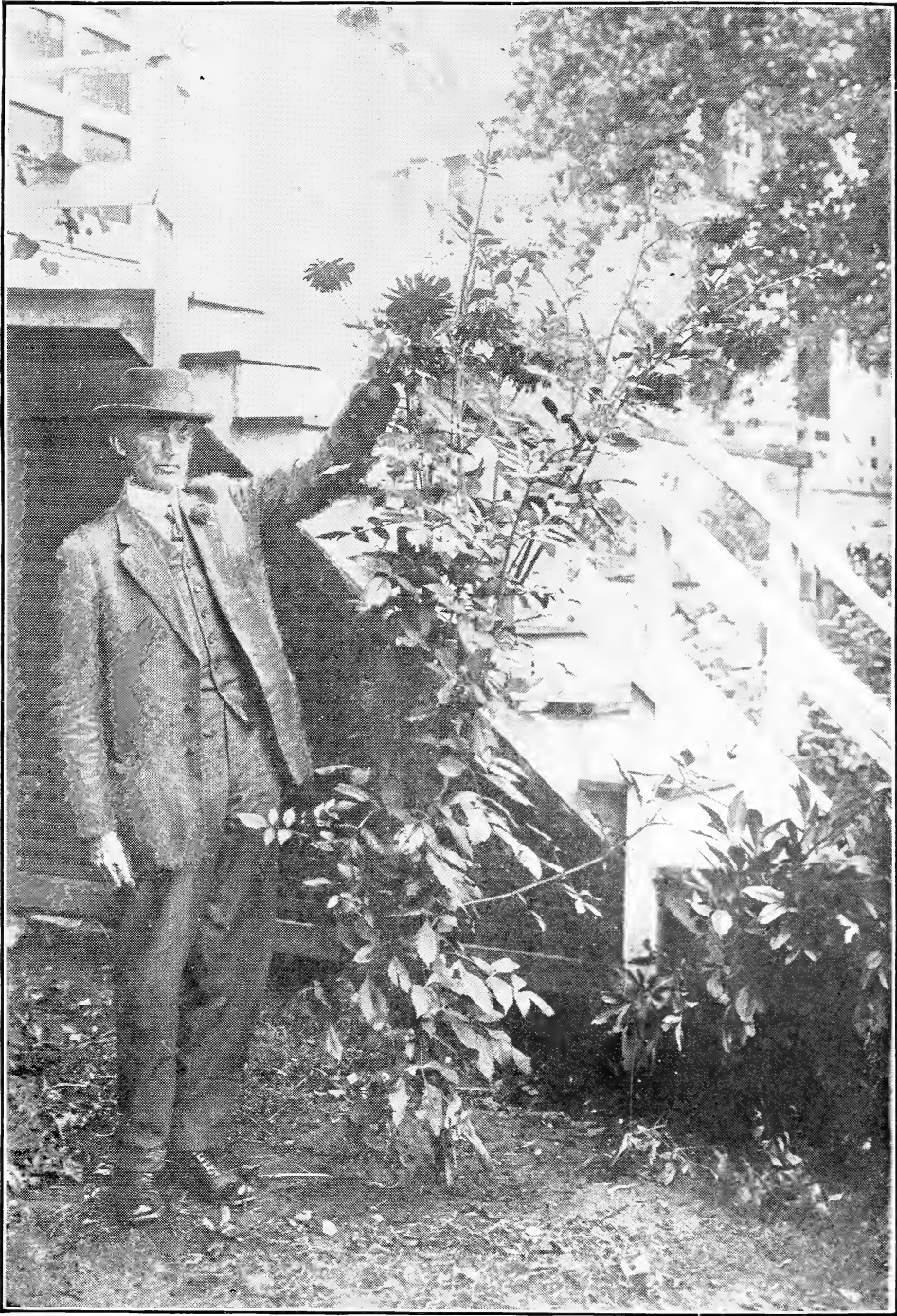
1922



U.S.A.
Beauties

Grown at
Westerly,
Rhode Island

George L. Stillman
DAHLIA SPECIALIST



THE NEW CACTUS DAHLIA "GEO. L. STILLMAN" AND ITS ORIGINATOR

The accompanying illustration is from a photograph taken to demonstrate what the necessary quantity of water will do for a Dahlia in a dry time. After one flower had nearly opened on this plant it appeared to come to a standstill. Buds died, the foliage grew bushy, lacked a lively color, and no more buds appeared. I immediately pulled up a ridge of soil a little away from the plant, forming a reservoir that held two pails of water. The plant was then supplied with four or five ten-quart pails of water every third day until rain came.

When this photo was taken there were seven full flowers, two half open, and nine buds that showed the color of the flower more or less. Three of these flowers measured 7 inches in diameter and all the others over 5 inches.

Very few people realize the quantity of water needed to carry a Dahlia through a dry period. Not only does a Dahlia absorb the moisture, but the dry ground around also draws on the supply.

Dahlias

of distinction for 1922

Describing my own creations,
and standard varieties of all
the different types, classes
and colors of this flower.

*Catalog and
price list for
1922*

George L. Stillman
DAHLIA SPECIALIST
Westerly, Rhode Island



RUTH VAN FLEET

Greetings to Customers, Old and New



THE time has come again for my annual handshake with my friends. I somehow feel that the relations with my customers the past season have been so pleasant and interesting because we are one big family of Dahlia enthusiasts, with mutual interest for the development of our favorite flower.

The congratulations received from you for the beautiful new creations brought about through my efforts to improve this popular flower—the Dahlia—give me great satisfaction and pleasure in holding this annual reception, as it were, with the great Dahlia family who will receive my 1922 book.

I thank you, dear friends and customers, for these expressions of appreciation for my labors. And I want you to feel at liberty at all times to write me if in any way I can render you assistance in making your home garden a spot of beauty. I believe that no flower can create more enthusiasm in the garden than the Dahlia. Its varying bright colors are beyond description. Its response to care and kind treatment is without rival in flower culture. No flower can be produced with less trouble and expense than the Dahlia, and at the same time make such pleasing returns.

Many of my customers and friends took advantage of the invitation to visit my fields the past season. Again I renew that invitation and earnestly urge all who possibly can to spend a whole day or as much of it as possible in my fields while they are in full bloom, and thus become acquainted with the newer varieties cataloged from year to year.

From experiments years ago I found that the possibilities within this flower were really unknown, and the same thing can be said of the Dahlia today. Every year brings about new ideas and every season rewards my labors with new specimens that only a few years ago I never even dreamed of producing. Through scientific methods we have seen the Dahlia developed into the most magnificent array of flowers of any plant under cultivation today.

This catalog and guide for 1922 contains many new and especially interesting varieties never before offered. Some have never been excelled in size and beauty. In all cases, I have endeavored to make the prices of them as reasonable as possible to compensate me with a fair profit.

It should be borne in mind by the beginner that in some seasons some varieties do not do as well as in others and that they can improve in their methods in growing year by year with experience.

You should carefully study the instructions on planting and growing printed in the following pages, and with that help there is no reason why you should not have satisfactory results the first year.

GEORGE L. STILLMAN

CLASSIFICATION OF DAHLIAS

AS ADOPTED BY THE AMERICAN DAHLIA SOCIETY

Cactus Dahlias. a. True, fluted type. Flowers fully double; floral rays (petals) long, narrow, incurved or twisted, with sharp, divided, or fluted points and with revolute (rolled back) margins, forming, in the outer florets, a more or less perfect tube for more than half the length of the ray.

b. Hybrid cactus or semi-cactus type: Flowers fully double; floral rays short as compared with previous type, broad, flat, recurved or twisted, not sharply pointed except when tips are divided (staghorn), margins only slightly revolute, and tubes of outer florets, if any, less than half the length of the ray.

Decorative Dahlias. Double flowers, full to center in early season, flat rather than ball-shaped, with broad, flat, somewhat loosely arranged floral rays with broad points or rounded tips which are straight or decurved (turned down or back), not incurved, and with margins revolute if rolled at all.

Ball-Shaped, Double Dahlias. a. Show type: Double flowers, globular or ball-shaped rather than broad or flat, full to center, showing regular spiral arrangement of florets; floral rays more or less quilled or with markedly involute margins and rounded tips.

(The class called Fancy Dahlias is not recognized separately in this classification, but is included in the sub-section A.)

b. Hybrid show, giant show or colossal type: Flowers fully double, broadly hemispherical to flatly globular in form, loosely

built so spiral arrangements of florets is not immediately evident; floral rays broad, heavy, cupped or quilled, with rounded tips and involute margins.

c. Pompon type: Shape and color may be same as A or B; but must be **under two inches in diameter.**

Pæony-flowered, or "Art" Dahlias. Semi-double flowers with open center, the inner floral rays being usually curled or twisted, the other or outer petals being either flat or more or less irregular.

Duplex Dahlias. Semi-double flowers, with center almost exposed on opening of bud, with petals in more than one row, more than 12, long and flat, or broad and rounded, not noticeably twisted or curled. Many so-called Pæony-flowered Dahlias belong here.

Single Dahlias. Open centered Dahlias, small to very large, with 8 to 12 floral rays, more or less in one circle, margins often decurved (turned down or back). There are no distinctions as to colors. The type embraces the large Twentieth Century, as well as small English varieties.

Collarette Dahlias. Single type: Open centered blossoms with not more than nine floral rays with one or more smaller rays, usually of a different color, from heart of each ray floret, making a collar about the disc.

Anemone-Flowered Dahlias. Flowers with one row of large floral rays like single Dahlias, but with each disc flower producing small, tubular petals.

GENERAL INSTRUCTIONS

IT IS IMPORTANT THAT YOU READ THESE CAREFULLY! ORDER EARLY

First of All.—Send me your order as soon as you receive my catalogue, as the demand for some varieties often exceeds the supply, and those who order early are less liable to disappointment than if they waited till the rush at the time of planting. ORDER bulbs sent *early* to avoid disappointment. Kindly order by *name* and not by number.

If you do not want to spare all of the money to send with the order, send the order along, together with one-quarter of the amount as a guarantee of good faith, and the balance can be remitted when you receive notice that your order is ready to ship.

Customers who are not personally known to me will be notified when to remit the amount of their bill.

Bulbs are shipped as soon after April 1st as convenient, unless otherwise specified.

When sending orders use the Order Blank furnished with this catalogue. Any number of additional Order Blanks may be had upon

application. When filling out the Order Blank, be sure to fill out the Second Choice columns as well as the First Choice.

It is well to mention the varieties that you are willing to have substituted in case some of those selected are all sold out. Or, if requested, I will select such varieties as will substitute to best advantage. Otherwise, money sent for such bulbs will be returned to the sender.

Size of Bulbs.—Some varieties of Dahlias always produce very small bulbs (or tubers), while other varieties make large ones. So do not consider small bulbs as worthless, for they are equally as good as large ones.

I Guarantee Every Bulb I Sell.—The utmost care is always exercised in selecting every bulb I send out, and every one is believed to have at least one good sprouting eye that will produce a good plant under proper care.

GENERAL INSTRUCTIONS—Continued

Bulbs to be replaced after June 1st will be booked for shipment the next season only, and in all cases the bulbs to be replaced must be returned.

I guarantee all bulbs to be true to name and sure to grow at the time they are sent out, but **I cannot guarantee** bulbs to grow if kept in a dry place a long time before planting.

The best way to send money is by registered letter, money order or express order.

Do not hesitate to send small orders. An order for one bulb will be as carefully filled as an order for one thousand.

Terms.—Cash invariably in advance, or C. O. D. On all retail orders fully paid for in advance I will prepay carriage to any part of the United States. This does not apply to special offers.

ATTENTION.—Orders taken in the **Fall not fully paid for** will be sent C. O. D., unless previous arrangement has been made.

Do not delay ordering until the time to plant, as many varieties may be sold out before that time. **ORDER EARLY.**

If bulbs are received before it is convenient to plant them, they should be covered with moist earth until planted.

I use the utmost care to prevent errors in labeling and packing, but if an error does occur, kindly notify me, that it may be rectified immediately.

Please bear in mind that orders are booked and assembled in rotation as received, and are packed to be shipped at the time your order specifies.

Address all orders and communications to George L. Stillman, Dahlia Specialist, Westerly, Rhode Island. **Important.**—It is essential that you use my initial "L." as there are several Geo. Stillmans in town..

LOCATION OF GARDENS

- No. 1—25 Granite Street (Residence). No. 2—Stillholme (Farm), Ashaway Road.
- No. 3—(Main field), Beach Street, opposite Cemetery on car line.
- No. 4—20 Newton Avenue, Office and shipping dept.

Do not hesitate about ordering Dahlia Bulbs on account of distance, for they go safely by mail or express to any part of the world.

POINTERS ON GROWING DAHLIAS

There are always some people who do not succeed in growing Dahlias with their first season's experience, and are naturally very much disappointed. To those I wish to say that it is not due to a fault of mine or of the bulbs, but is due wholly to your method of cultivation, kind of soil, or weather conditions. A glance through the hundreds of letters I receive from pleased, enthusiastic people who purchase their stock from me is positive proof that my stock is without fault. Exercise a little patience and a whole lot of good common sense and you will grow as nice Dahlias as anyone.

The Right Kind of Soil.—The kind of soil for Dahlias is a light loam or a stony knoll or side hill.

It is very essential that the soil has good drainage. A rich soil is all right if it has good drainage. Heavy, solid ground will produce an abundance of foliage and few and inferior blossoms.

It should be borne in mind that the poorer the soil, the more fertilizer it requires, and the lighter the soil, the more water it needs. See directions for watering elsewhere. It is a very unwise thing to advise no fertilizer in growing Dahlias, especially in the Eastern states. As a rule nothing will grow without sufficient nourishment. Heavy soil is usually quite rich and when lightened as directed elsewhere, will not need as much fertilizing as weak, light soil.

Heavy Soil.—If your soil is heavy with a clay sub-soil, it should be lightened with coal ashes or sand. If coal ashes are used, the coarser that they are the better, the main object being to make the soil light, more porous, and to give it a good drainage. I have seen Dahlias grown to perfection on a spot where the soil was nearly clear coal ashes.

In applying coal ashes they should be plowed, or spaded in, broad cast, 10 to 18 inches deep, and not dumped in one spot where the Dahlia is planted. One part coal ashes, or sand, and one part soil will not lighten it any too much. This will give a better drainage and allow the sun to act on the soil to a greater depth.

Ashes from either hard or soft coal will do, but on *very heavy* soil those from soft coal

POINTERS ON GROWING DAHLIAS—Continued

are preferable, being much coarser. Both kinds mixed together are also desirable.

Watering.—Watering is one of the most essential things in producing perfect blooms on your Dahlias. 90 per cent. of the failures in growing Dahlias is due to lack of water when the hot days of Summer come. Did you ever notice that the stalk of the Dahlia is about all water except the outside shell, and that where sufficient water is supplied the hole in the center of the main stalk is nearly full of water?

The Dahlia, as soon as it begins to bloom, will absorb the moisture from the soil for a distance of two or three feet. For example: Dig down deeply amid the roots of a Dahlia and then again about 4 or 5 feet from the plant and observe the difference. The dry, hot days come earlier some years than others, but usually when the buds begin to open it is time to begin watering.

The best method of doing this is to make

a basin-shaped mound of earth around the plant, about 2 feet in diameter, and into this basin turn three or four water pails full of water as often as every three or four days. Fertilizer is used to obtain size, water to make richness of color and perfection. Try it.

Planting.—The ground should be plowed or spaded to a depth of 8 to 10 inches. Make the drill to receive the bulb, 12 to 16 inches long and 6 inches deep, and about 6 inches wide. Lay the bulb down flat in the drill and then apply the fertilizer on both sides of the bulb, 4 to 6 inches from the bulb. If pulverized Sheep Manure is used, about one pint to one quart is usually sufficient to each bulb according to the strength of the soil.

It is very desirable to plow in a quantity of stable manure broadcast. If this cannot be obtained readily any kind of animal fertilizer mixed with the soil, before planting, will be very beneficial. Always stick the stake in the ground before covering the bulb and thus avoid piercing any part of the bulb.

FERTILIZER FOR DAHLIAS

I receive numerous inquiries every year as to the best fertilizer for Dahlias and where it can be obtained.

From my own personal experience, I find that manure from sheep stable is the best for Dahlias, and in order to make it convenient for my customers to obtain this kind of fertilizer, I procure a supply direct from the stockyards. It is absolutely pure and thoroughly kiln-dried and pulverized, and all germs of grass or weeds are destroyed in the process. It is put up perfectly dry in 100-pound bags, which is the most convenient form for shipping and handling. It is so dry that it is nearly odorless and easily handled. Price for the Sheep Manure, \$2.75 per bag.

A TALK FOR THE BEGINNER

A FEW THINGS THAT SHOULD BE CONSIDERED

Do not expect to grow as large flowers as an expert the first year that you try Dahlias, for with any flower you need some experience as well as instruction in order to have great success.

One of my customers said that he had no luck with Dahlias until he read my catalogue. There he found the very information that he needed, viz.: **How to lighten the soil and render it porous.**

If you have a heavy growth of plants and no flowers it is an indication of too heavy soil, or the same result will be encountered

on some dry, rich land. In the latter case water is what is needed and in great abundance, say three or four pails of water three times a week to each plant, with some liquid fertilizer once a week.

Notice that after a heavy rainfall Dahlias take on new life and the flowers are fuller in the center and more brilliant in color.

All the Dahlias described in this catalogue as to color and shape are described to the best of my ability, but I do not guarantee them to fully meet the ideas of all purchasers in regard to color shadings.

NEVER STAND THE BULB ON END WHEN PLANTING

The best method of planting in the field is to make the distance between every other row 3 and 5 feet, respectively, thus affording a passageway on one side of each row after the plant will become large and fill the 3-foot space. 2½ to 3 feet apart in the row accord-

ing to the nature of the plant is about the right distance when 3- and 5-foot spaces are used. Do not plant near trees or shrubs, as tree roots will take the strength of the soil from the Dahlia. In the open by themselves is the best place. Avoid the south side of a

POINTERS ON GROWING DAHLIAS—Continued

large building where the sun is extremely hot without a good circulation of air, for the flowers will burn on the back before fully open.

For early flowering they may be planted any time after May 1st or as soon as all danger from frost is passed.

Some people have an idea that the larger the bulb the better the plant it will make, but this is not the case. A small bulb is just as good as, and in many cases better than, a large one.

The Clumps should be divided about the time that you are to plant in the Spring. At this time you can readily see where the sprouts are and with the use of a knife the head of the clump can be split through between the sprouts, or eyes, taking whatever bulb, or bulbs, would come off with one sprout. One sprout is always better than more. If the sprouts are over 2 inches long when you plant the bulb it is better to cut them off a half-inch from the bulb and a new sprout will come and make a better one than the slender one that grew in the cellar.

Care of the Plants.—Keep the ground well cultivated and free from weeds. A frequent stirring of the surface is very beneficial. An application of some standard fertilizer raked into the surface of the soil around the plant two or three times during the season will be very helpful to the development of the flowers.

Never leave more than one or two stalks in a hill. You will have better plants and

larger flowers if you will allow only one sprout to grow.

When the buds begin to open a dressing of liquid fertilizer around the plants, several times in a season, will also be beneficial.

Stakes may be used to advantage to prevent plants from breaking down.

Disbudding.—The proper way to disbud the plants is as follows: If the first, or crown bud, appears to be weak or defective, cut it off.

Then when flowers appear on branches, cut them for decorative purposes, below one or two joints, thus removing with the flower whatever buds and foliage may be there. The flowers and foliage cut thus give a better effect for whatever purpose they are to be used. This method is a good invigorator for the plant and at the same time does all the disbudding required on the majority of Dahlias.

Remember, if bulbs are received before you are ready to plant them, cover them with moist earth to keep them from drying up.

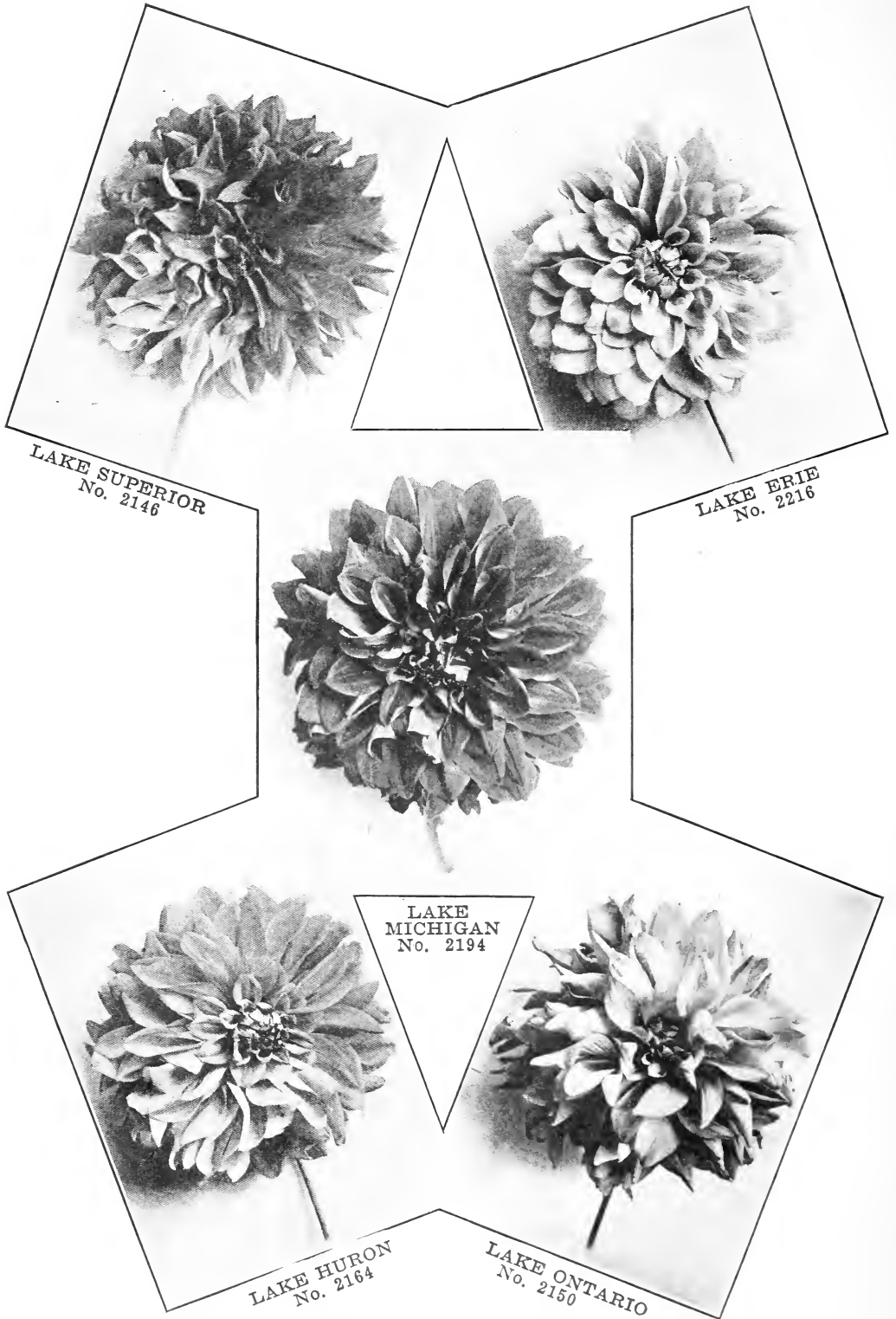
Care of the Bulbs in Winter.—After the frost has killed the foliage; lift the clumps with a spade fork and allow them to dry in the sun about half a day. They should then be stored in a place free from frost. If an old-style cellar without cement bottom or heat; they need not be covered, but if cemented and heated by furnace, they should be covered with papers and cloth to keep the air from them and thus prevent too much shriveling.

On the following pages will be found the 1922 prices for divided field-grown roots

For the convenience of my New York patrons and any others interested I have established a New York office at 51 East 42d St., Room 412. Personal consultation and advice on Dahlia Culture the first Thursday and Friday of each month. Catalogues for the asking. Phone Vanderbilt 7676.

"Say it with Flowers"

How little it costs, if we only give it a thought,
 To make happy some heart each day!
 Just one kind word, or a tender smile,
 As we go on our daily way;
 Perchance a flower will perchance to clear
 The cloud from a neighbor's face,
 And the press of a hand in sympathy
 A sorrowful tear efface.



LAKE SUPERIOR
No. 2146

LAKE ERIE
No. 2216

LAKE
MICHIGAN
No. 2194

LAKE HURON
No. 2164

LAKE ONTARIO
No. 2150

The Great Lake Group

THE FIVE GREAT LAKES

THE NEW GROUP FOR 1922

This new group of five are all 1920 seedlings and all have grown to an enormous size in 1920 and 1921 without any special care or disbudding whatever. The limit in size and beauty of these new Dahlias is simply unknown.

Lake Superior, No. 2146

The color of this mammoth Dahlia is deep orange salmon. A solid color throughout. The formation of it is of the Hybrid Cactus class and very much resembles its parent, the "U. S. A.," but of a softer shade and promises to be a larger flower. This Dahlia will be a rich prize in any Dahlia lover's garden.
Price, \$25.00.

Lake Erie, No. 2216

This is, without doubt, the largest lavender Decorative Dahlia in existence. The color is a clear deep lavender, while the form is quite flat with heavy, long, flat florets. A very unusual and beautiful Dahlia both in color and shape, which can only be realized by seeing it. Blossoms from 8 to 10 inches in diameter. Plants of medium height.
Price, \$25.00.

Lake Michigan, No. 2194

A rich, fiery scarlet Decorative Dahlia of immense size. This is a very large, deep, heavy flower, 10 to 13 inches in diameter. The stems are heavy, but the great weight of the blossom prevents it from being held erect, yet it is a wonderful exhibition Dahlia and a most attractive one in the garden. The plants are tall and strong.
Price, \$25.00.

Lake Huron, No. 2164

A very large, clear, bright canary-yellow Pæony-flowered Dahlia, 7 to 10 inches in diameter. This new Dahlia is a remarkably large size flower and is borne on long, heavy stiff stems which hold the flower erect. Its very free blooming qualities combined with its other unusual features place this Dahlia in the front rank. The plant is of medium height and an early bloomer.
Price, \$25.00.

Lake Ontario, No. 2150

Decorative Dahlia of unusual merit. The color is salmon and gold blended together in a beautiful manner. The flower is from 6 to 9 inches in diameter and is produced on long, heavy, stiff stems. The curly, twisting formation of its florets together with its beautiful combination of colors blended together give this Dahlia a very striking appearance.
Price, \$25.00.

The Entire Group \$100.00



PRIDE OF THE GARDEN

Five New Selections for 1921 THE NEW YORK GROUP

The following Dahlias are selected from nearly one thousand of my new creations. They are all entirely different in color and they possess the most beautiful colorings of any group I have ever introduced. To have this whole set in your garden would make the garden complete.

COMMODORE, No. 823

The color of this mammoth Pæony-flowered Dahlia is a beautiful deep flesh pink. The flowers are very large, often measuring 10 and 11 inches in diameter, and are borne on extra long, heavy stiff stems. It is a profuse bloomer and if disbudding is practised it can be made to produce enormous blooms.

Price, \$10.00.

BILTMORE, No. 2008

This magnificent Decorative Dahlia is the most beautiful combination of bright, rich carmine and white ever combined in a Dahlia. The groundwork is a bright, rich carmine and the petals are more or less tipped pure white. Occasionally some flowers are nearly all carmine with a few petals tipped white. The plant hanging full of these stunning blooms presents a sight rarely seen.

Price, \$10.00.

MURRAY HILL, No. 2022

An entirely new Pæony-flowered Dahlia of a beautiful, rich shade of purple. The flowers are simply huge in size and on good stems, which, together with their unusually attractive shade and hugeness, cause every passerby to stop and exclaim: "That's a monster!"

Price, \$10.00.

BELMONT, No. 2069

A beautiful, deep magenta is the color of this huge Cactus Pæony Dahlia. It is an abundant bloomer and a thrifty grower. To form an idea of the richness and beauty of this large flower one should see it growing.

Price, \$10.00.

ANSONIA, No. 2066

Without an exception the color of this large Pæony Dahlia is the most gorgeous and brightest deep canary yellow Dahlia I have ever seen. Its rich colorings never fail to catch the eye of every observer. This immense flower is carried well above the foliage on good, long, stiff stems.

Price, \$10.00.

Price for the whole group, as above, \$45.00

The New Group for 1920 FIVE WORLD WINNERS

These five new Dahlias I produced from seed in 1918 and in this season's trials have demonstrated qualities possessed by no other Dahlias. As a group they are the most unusual and attractive specimens in my catalogue. They are exceedingly cheap at the price charged.

AMERICAN HERO, No. 963

A most wonderful Pæony-flowered Dahlia. The color is difficult to describe accurately. The center of the florets is a beautiful shade of old rose, outer edges are bordered with light pink. The disc is surrounded with numerous small, curly florets possessing the same beautiful shades of pink. The whole flower possesses the most striking and desirable colors yet produced in a Dahlia. It has good stiff stems which hold these beautiful flowers very erect.

Price, \$10.00.

LEAGUE OF NATIONS, No. 908

Here is a new Cactus Dahlia of more than ordinary merit. The color is a most beautiful shade of canary-yellow. In size it is the largest Cactus Dahlia yet produced. The stems on which the flowers are borne are very long and heavy, holding the mammoth flower quite erect. The keeping quality of this Dahlia has proven the past season to be wonderful, while its beauty has attracted much attention from visitors.

Price, \$10.00.

N. C. 4, No. 901

This wonderful new Decorative Dahlia is a most unusually hard Dahlia to describe, as it is about equally divided with scarlet and white. The florets are more or less striped the whole length with yellow and white, while some are slightly clouded with yellow and tipped with light cream. The reverse side of petals is white with yellow shadings. The whole flower is simply beautiful and unusually attractive.

Price, \$10.00.

OVER-THE-TOP, No. 921

This new Pæony-flowered Dahlia is truly a mammoth and of a very unusual color, being a deep rose lavender as near as can be described. Some people have called it pure rose, others a lavender pink. However, it is a wonderful flower in every way, size, color, formation, and its free blooming qualities are unsurpassed.

Price, \$10.00.

R-34, No. 927

A mammoth Pæony-flowered Dahlia of a golden salmon shade. In size and formation this Dahlia is wonderful. The flower, which is borne on long stems, is extremely large; colorings unusually attractive.

Price, \$10.00.

The entire group, \$45.00



THE TEN SEA LIONS

THE GROUP OF WONDERS

The "Ten Sea Lions" comprise ten of the most magnificent Dahlias imaginable. They are selected from my new creations for 1919, none of which had ever been offered to the public before. This group of ten new Dahlias possess the most gorgeous new colors that Dahlias could be composed of. If you want the latest and best, buy the "Ten Sea Lions." No description on paper can fully describe the beauty of these flowers.

Was obliged to omit four of this group for lack of stock.

Aquitana, No. 758. The color of this gorgeous new Cactus Dahlia is a beautiful salmon pink. The flowers are very large and are borne on long stems with scant foliage, making it most desirable for cutting.

Price, \$5.00.

Substitute Mastodon for Arlanza.

Arlanza, No. 520. Style Cactus. The color is a bright medium carmine. The petals are very small and wire-like and stand up and incurve in a beautiful manner. A very peculiar feature of the flower is that each petal has a hair-like red and white long petal at its base. An extremely fine, large Cactus Dahlia.

Price, \$5.00.

Empress of Asia, No. 721. A wonderfully large, fine Pæony-flowered Dahlia. The color is a deep old gold with a strikingly bronze effect. This is another of those colors so desirable and hard to get in a Dahlia. A flower of exquisite beauty.

Price, \$5.00.

Mauretania, No. 738. This magnificent big, new Cactus Pæony Dahlia is simply a wonder in size, shape and color. It is a light golden mandarin, or on the light orange order. It is quite a tall growing plant and the flowers are produced in abundance. A very showy, attractive Dahlia.

Price, \$5.00.

Medina, No. 757. This Pæony-flowered Dahlia possesses one of the most striking colors that a Dahlia could possess. A *golden orange*. The flower is not as large as some of the other "Sea Lions," but the color is magnificent and desirable. It has good stems for cutting and is a very valuable member of the "Sea Lion" family.

Price, \$5.00.

Rochambeau, No. 811. A very bright, deep canary yellow of immense size and fine form. The Rochambeau is the tallest plant in the "Sea Lion" family, and would make a fine background in any Dahlia garden. It is a very free flowering plant and makes a fine showing above the other members of the group.

Price, \$5.00.

Price of the "Sea Lion" Group, \$25.00

THE FIGHTING TEN

The following ten wonderful new Dahlias which I have succeeded in originating by my own experimental process were offered for sale the first time for 1918. They have produced most gorgeous flowers the past season. To say they are wonderful in size, shape and coloring is indeed a mild statement. To own the *Fighting Ten* is to own a prize. Every bulb is guaranteed. Two varieties omitted for lack of stock.

Gen. Bell, No. 802. Pæony. Pure, glistening white. Petals numerous; very long and quite slim, curly and twisting. A beauty beyond description, and an enormous flower on extra long stems.

Price, \$3.00.

Gen. Edwards, No. 2114. Pæony. Color, a beautiful salmon pink. A very large flower on fine, long stems. The formation of this flower is exquisite.

Price, \$3.00.

Gen. Haig, No. 585. Decorative. A beautiful shade of peach pink, slightly clouded yellow at base of petals. A very odd and nice color and a wonderfully formed, large flower.

Price, \$3.00.

Gen. Joffre, No. 638. Decorative. A light canary yellow. Petals long, broad and tapering to a point. A very deep, heavy flower of enormous size. It is a monster yet is most beautifully formed.

Price, \$3.00.

Gen. Maurice, No. 639. Pæony. Intensely bright scarlet. The brightest mammoth scarlet Dahlia in existence. The petals are quite broad, long and pointed. The yellow disc is very bright and attractive.

Price, \$3.00.

Gen. Pershing, No. 617. Cactus. A beautiful bright shade of light carmine. A very full, heavy, deep flower with long, heavy stems. Some stems measured 24 inches long. The whole flower is much superior to the Kalif.

Price, \$3.00.



"THE MILLIONAIRE"

The Millionaire on Top

More Millionaires were exhibited at the American Dahlia Society's big show in Pennsylvania Hotel in September, 1920, than any one flower.

THE FIGHTING TEN—Continued

Gen. Petain, No. 647. Pæony. Butter yellow. Petals rolled back slightly lengthwise and twisting. This flower is another of the wonders in my collection of original Dahlias. Price, \$3.00.

Gen. Scott, No. 567. Pæony. Lavender pink, a beautiful clear shade, strong on the pink. Petals heavily clouded yellow about one-third their length from the center. An unusually attractive color. Petals twist and curl as a true Pæony shape. A monster flower. Price, \$3.00.

The group, \$21.00

For the convenience of my New York patrons and any others interested I have established a New York office at 51 East 42d St., Room 412. Personal consultation and advice on Dahlia Culture the first Thursday and Friday of each month. Catalogues for the asking. Phone Vanderbilt 7676.

NEW PÆONY-FLOWERED DAHLIAS

ORIGINATED BY GEO. L. STILLMAN

THE INDIAN FAMILY

These superb, new, giant Pæony-flowered Dahlias were originated by myself through very careful experimental processes with the largest and most superb colored Dahlias in existence. I have given them a thorough trial and find them to possess the most artistic and unusual colors ever seen in Dahlias. There are no two alike in the group, and all have fine stems for cutting. Four varieties omitted for lack of stock.

Black Hawk, No. 54. Deep velvety maroon. The darkest flower in the Indian Family. The colorings are extremely rich and the flowers are large. The petals are broad and twisted to a point at tips. Is an extra free bloomer. Price, \$1.00.

Canonchet, No. 66. An entirely new color shading on a grayish salmon. Petals are long and rolled to a point at tips. Slightly incurving. Small petals curled up around the yellow center in very unique manner. This is a large flower and the long petals are dotted with slightly deeper small blotches of pink and suffused with a pale gold which glistens faintly. Price, \$1.00.

Canonicus, No. 1036. Beautiful dark cerise. A very unusual shade and no other Dahlia like it in shape and size has ever been produced. A large full flower. Price, \$1.00.

Minnehaha, No. 78. Light red. This is an extra large, heavy, full flower with broad petals which are slightly pointed and twisted at tips. The plant grows quite high and being a very free bloomer is one of the most showy Dahlias of the "Indian Family." Price, \$1.00.

Minnewawa, No. 76. Bright cerise red. Base of petals yellow with white disc around the center. Balance of petals heavily clouded and tipped white. Very striking combination of colorings. Price, \$1.00.

Misquamicut, No. 1115. Golden yellow slightly tinged with pink. A very large, full flower with very broad petals, and very desirable color. Price, \$1.00.

Narragansett, No. 1033. Rich shade of

dark scarlet. This flower should be seen in order to be appreciated. It is large, finely formed, and a very full flower. It blooms very freely and has been a general favorite wherever exhibited. Price, \$1.00.

Ninigret, No. 151. Rich dark red, clouded and striped much lighter. The petals taper abruptly to a sharp point which is twisted in a very attractive manner. A full, heavy flower of unusual quality. Price, \$1.00.

Nokomis, No. 1112. Variegated yellow. The base of the flower is white and canary yellow mixed together. Heavily striped and speckled with dark red. Occasionally solid red blooms appear on the same plant. The plants are of a low growth and flowers stand high above the foliage. Price, \$1.00.

Pocahontas, No. 69. Light cream yellow. This flower is very large with flat, broad petals except in the center. Petals are flushed and veined deep pink, possessing some of the colorings of the Geisha. A very free bloomer and in every way desirable. Price, \$1.00.

Powhatan, No. 101. Dark crushed strawberry. This very large flower is another of unusually fine shading. While it has the colorings of the crushed strawberry, it also possesses a light tint of lavender and the free-blooming qualities. Price, \$1.00.

Queen Esther, No. 103. Color, "Du Barry," that dazzling new shade of red. An enormous, large, full flower and a beautiful rich color. The small twisting florets in the center of this flower give it a most unique appearance. A wonderfully free blooming Dahlia. Price, \$1.00.



THE U. S. A.

THE DAHLIA OF THE DAY

In the wonderful new hybrid Cactus Dahlia, "The U. S. A.," I have succeeded in bringing out some of the most important and desirable features that the flower lovers of the United States are pleased with; viz., color, formation and size. The color of this exquisite new mammoth Dahlia is a deep orange. That very unusual color so hard to get in a Dahlia. It beats everything for color that has ever yet been developed. The formation, too, as well as the color is so unique and novel that to attempt to describe it accurately would be an impossibility. To fully realize the magnificence of this new creation in the Dahlia family, for which I placed the price at the very moderate sum of \$10.00, a person should see the flower itself. It is a very free blooming Dahlia. Therefore, by growing it to the one flower system its size and beauty have no bounds. The U. S. A. is bound to win its way into the hearts of all Dahlia lovers.

Price for field-grown bulbs, \$10.00 each

Notice: To those to whom the price of \$10.00 may seem exorbitant they should know that it is said that at one time in Europe new varieties of Dahlias sold as high as \$500.00 each.

NEW PÆONY FLOWERED DAHLIAS—THE INDIAN FAMILY—Continued

Red Cloud, No. 84. Rich deep carmine. This is a large, full flower of a solid color and is borne in abundance on a plant of high growth. Price, \$1.00.

Samoset, No. 1007-1. Light yellow. Some of the petals of this flower are slightly shaded with pink, while the whole flower is full and of the true Pæony type. Small curly petals on the face of this flower give it a very desirable effect. A very free blooming variety. Price, \$1.00.

Uncas, No. 147. Pure white. A beautiful pure white somewhat resembling South Pole, but petals more curly and twisted. A very unique shaped, free-blooming Dahlia, and exceptionally desirable. Price, \$1.00.

Wadawannock, No. 1034. Light coral. This is a large flower with broad, flat petals and with just enough twisting, curling petals in the center to give it a nice Pæony effect. This is an entirely new shade and one of those very effective and desirable colors seldom seen in the Dahlia. Price, \$1.00.

Price of the above, one each of the set, \$14.00

THE LOMA FAMILY

ORIGINATED BY GEO. L. STILLMAN

The Wonderful Multiflorus Dahlia Group

THE NINE SISTERS OF THE LOMA FAMILY

Dorothy Palma, No. 441. A Pæony-flowered Dahlia of the faintest greenish yellow, almost white, with points of petals clear white. A lovely fluffy specimen with curly petals, and with the petals rolled together twisting about the center uniquely. Very good size on real long stems. Price, \$1.00.

Edna Rollins, No. 1460, Pæony-flowered Dahlia blotched with old rose. Streaks of yellow near center and slightly through petals. Light blotches of dull yellow mingle faintly with the dull rose. Numerous small curly petals around center of flower. Good size on long stems. Price, \$1.00.

Esther Du Barry, No. 489. A beautiful clear, velvety cardinal with long, slimly rolled petals, nice Pæony type, which twist and curl beautifully at points. Numerous small petals around central disc. Extra long, stiff stems which hold the flowers very erect. Price, \$1.00.

Substitute Alan Loma for Evelyn Loma.

Evelyn Loma, No. 448. A fluffy white Pæony-flowered Dahlia with long, slim pointed petals, curled and rolled in a pleasing manner. The very base of petals is slightly shaded yellow. A fine, large specimen erect on extra long stems. Price, \$1.00.

Frances Lane, No. 322. Pretty light, velvety lavender red Pæony-flowered Dahlia with pale lavender which streaks down

through the main petals. Petals broad and flat with tips slightly curled. A pleasing, striking specimen. Erect on good stems. A noticeable circle of canary yellow surrounds the pollen disc. Price, \$1.00.

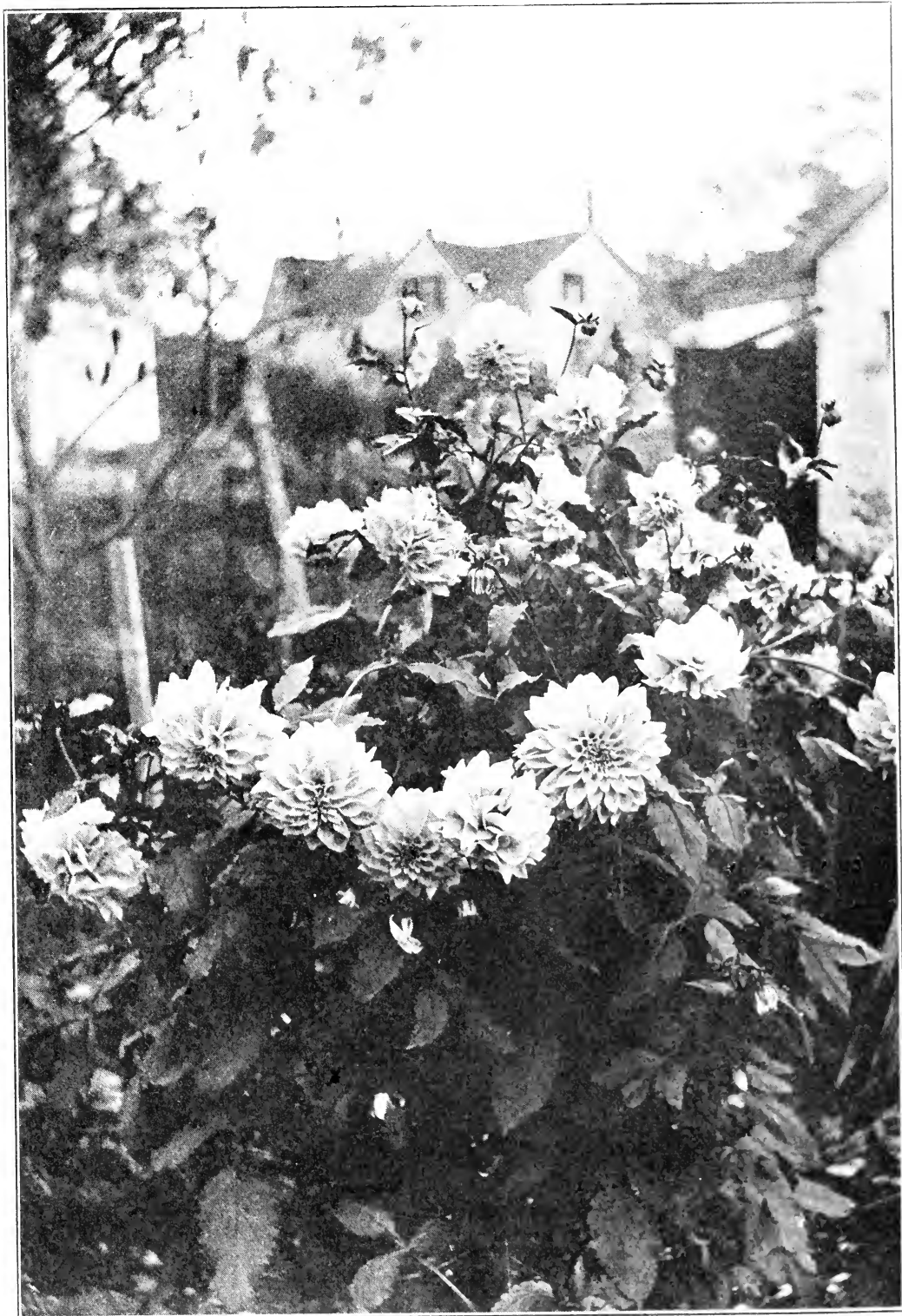
Hazel Van Allen, No. 1498. A lovely reddish magenta of the Decorative type, slightly shading cerise and clouded at base of petals lighter. A full, large flower with narrow, nicely formed petals. Erect on long, strong stems. Price, \$1.00.

Janet Cross, No. 432. A finely pointed Cactus type of a lovely shade of very rich salmon pink, almost clear save for a very few faint yellow petals in the center, which are finely bordered with pink. A large size Cactus on good stems. A fine specimen. Unusual long, stiff stems often measuring 16 inches. Price, \$1.00.

Ruth Van Fleet, No. 1451. Clear light canary yellow. The stems are extra long, often measuring 16 inches. The flowers are extremely large, measuring from 6 to 8½ inches in diameter and are held perfectly erect on its stiff, long stems. Hybrid Cactus. It should be seen to be appreciated. Price, \$3.00.

Vivian Jacoy, No. 1450. A mingling of white and light cerise, streaked and blotched through entire petals of a Pæony type. Petals toward center curl very pleasingly. An odd and pretty specimen on long stems, and a good sized flower. Price, \$1.00.

All the Nine Sisters, \$10.00



THE MILLIONAIRE

Photograph taken October 24, 1921, with 17 blooms and 20 buds.

THE SEVEN BROTHERS OF THE LOMA FAMILY

Alan Loma, No. 459. A pure waxy white Pæony-flowered Dahlia with large, broad, flat petals. Very prominent yellow pollen disc with a few small curling petals around it. A large, heavy flower. Certainly a splendid specimen. Very erect on long, stout stems. Price, \$1.00.

Forest Loma, No. 468. Deep cerise pink Pæony-flowered Dahlia, blotched and streaked canary yellow, with yellow at center. Petals are finely formed and numerous and curled at points. Very large and another erect specimen on good stems. Price, \$1.00.

Harry Loma, No. 438. A pretty pink Pæony-flowered, streaked artistically with white and with a faint bluish cast at tips, giving a lavender hue. A full flower with very curly petals in center. Another specimen with extra long stems. Petals long, slim, numerous, and sharply pointed. Price, \$1.00.

Kenneth Loma, No. 422. A lovely, clear, light canary yellow, or lemon, shading makes this a fine specimen in its family. It is of the Decorative style, standing very erect on good, strong stems, and a very large flower. Nice

fluffy petals slightly curled. A gorgeous flower and unusually fine clean color.

Price, \$3.00.

Robert Loma, No. 490. Golden amber shaded slightly with salmon pink, pink showing more on backs of petals, of full Pæony type. Good size with long stems. This is one of the new attractive colors so desirable in the flower garden. Price, \$1.00.

Rupert Loma, No. 456. A dull, old rose shading runs predominantly through the petals of this Dahlia, while a noticeable amount of lavender touches many of the petals' tips. It bears the appearance of being streaked lighter and darker shades of the rose and lavender. Difficult to describe. It has a very full blossom of perfect form, of Decorative type. Good size, standing boldly on its long, stout stems. This Dahlia's foliage is beautiful and scant in appearance, with long, jointed stalks. Price, \$3.00.

Stephen Loma, No. 1370. A very pleasing dark magenta of Pæony-flowered type. Very full toward center with slim, nicely formed petals. Extra large size, with stout stems. Price, \$1.00.

All of the Seven Brothers, \$10.00
The "Loma Family," \$18.00

On the Prize Contest for the largest "Cardinal Mercier" grown in 1921, \$10.00 in gold was won by Mr. Richard M. Buttle, 1514 Blewett St., Seattle, Wash., the flower measuring 12 $\frac{1}{8}$ inches.

For the second largest "Cardinal Mercier," \$5.00 in gold was won by Mr. Richard M. Buttle, 1514 Blewett St., Seattle, Wash., the flower measuring 11 $\frac{3}{4}$ inches.

On the "U. S. A." Contest the first prize of \$10.00 in gold was won by Mr. Richard M. Buttle, 1514 Blewett St., Seattle, Wash. The flower measured 11 $\frac{1}{2}$ inches.

For the second largest "U. S. A." \$5.00 in gold was won by Mrs. Mary Hauck, 1637 N. Third St., Harrisburg, Pa. The flower measured exactly 9 inches.

Note the Following

Do not plant your Dahlias in the shade.

Stunted plants, thick and bushy on top, with no blossoms, are the result of dry weather, or too heavy soil.

I guarantee every bulb I send out.

Do not wait for bulbs to sprout before planting. There is nothing like mother earth to sprout them. Plant them where you want them to grow.

The more flowers you cut the better Dahlias bloom.

Dahlias do well with me; they will with you, if you follow my instructions carefully, and above all, note what is said on another page in regard to watering.



F. E. JAMES



KING OF SHOWS



JANET
CROSS



FOREST LOMA



RUTH VAN
FLEET

NEW ORIGINAL INTRODUCTIONS FOR 1922

Ad. Grayson, No. 2250. Hybrid Cactus. The color of this beautiful Dahlia is an old rose slightly shaded a silvery rose. The petals are somewhat twisting and the whole flower is of a most exquisite formation. One of the best and most attractive cut flower Dahlias with extra nice long stems. Price, \$5.00.

Afterglow, No. 2154. Pæony-flowered. The color of this beautiful Dahlia is light orange. The petals are broad; the center ones stand up slightly, giving the flower a very fluffy appearance. A very large Dahlia with a very desirable color. Should be seen to be appreciated. Price, \$3.00.

Allie Haley, No. 2193. Cactus-Pæony. The color of this Dahlia is very bright carmine. The florets are quite slim and stand up in a nice fluffy manner. The blossoms are very large and are produced in profusion. Price, \$5.00.

Armenia, No. 2238. Decorative. Color, a deep canary yellow flower much of a Cactus formation. A clean, clear color on good stems and a very desirable Dahlia. Price, \$5.00.

Augusta, No. 2175. Pæony-flowered. The color of this Dahlia is a bright, medium shade of carmine red. This is a very large flower and is borne on nice extra long stems. One of the very best reds. Price, \$3.00.

Aviator, No. 2123. Show. Pure white heavily clouded pink. A very large beautiful flower of the Show Dahlia family. A very free bloomer. Blossoms are carried on good stems for cutting. Price, \$2.00.

Behave Yourself, No. 2195. Decorative. The color is near a magenta, while each petal is bordered with a dark maroon. The formation of the flower is very striking. The flower is large in size and beautifully marked. Price, \$3.00.

Billy Benson, No. 2124. Cactus-Pæony. Medium shade of carmine. This Dahlia has quite slim petals. It is very large and one of the best reds. Price, \$2.00.

Bishop's Hat, No. 2023. Cactus. Color, a light DuBarry. A full, large flower with long, curly petals. Price, \$2.50.

Black Servant, No. 2140. Duplex. Color, rich magenta, almost black. Petals veined and clouded lighter at tips. A very odd colored Dahlia, yet very desirable. Price, \$3.00.

Blazing Star, No. 891. Cactus. Color is a bright, rich carmine. An unusually good type of Cactus, but a rather small

flower. However, it is a very early and attractive specimen. Price, 50c.

Bonfire, No. 2149. Pæony-flowered. The color is bright scarlet. The formation of this flower is quite flat, but full. A very attractive, bright color. The blossom is an extra large one. Price, \$2.50.

Butterfly, No. 2034. Pæony. Color, a beautiful light orange. This is a very large flower of a true Pæony type. It is truly a prize in any garden. Price, \$3.00.

Capt. John Smith. Hybrid Cactus. Color, a rich, bright carmine red. A mammoth Cactus with a fine center and a wonder in size and color. The flower often measures 9 and 10 inches. Price, \$10.00.

Caruso, No. 2132. Hybrid Cactus. This mammoth flower is certainly a wonder. The color is yellow, pink and salmon blended together in a most unique manner. The formation of this Dahlia is extremely beautiful and is a very deep, heavy flower. Price, \$15.00.

Clara Barton, No. 2145. Decorative. The color is a very deep orange brown. The color of this Dahlia is very hard to describe with any accuracy, but it is a most desirable color. It is a Dahlia of wonderful formation, and it is truly a mammoth. It somewhat resembles its parent the U. S. A., but the color is slightly darker. This beautiful Dahlia is an unusually free bloomer, which fact, together with its mammoth size, make it worth a place in every Dahlia fancier's garden, both as an exhibition Dahlia and for garden decorations. Price, \$10.00.

Cloth of Gold, No. 2247. Pæony. Color, light butter yellow. This is a mammoth flower with broad, nearly flat petals. The flowers are borne on extra long stems. Price, \$5.00.

Commonwealth, No. 2210. Decorative. Color, pink with a slight lavender sheen. This flower is nearly an exact reproduction of the Millionaire. The petals of the Commonwealth have a tendency to curl on the face of the flower. One person expressed the belief that it would surpass the Millionaire in size, while the color is exactly the same. Price, \$15.00.

Crimson Cushion, No. 2185. Decorative. Color, crimson. Each petal heavily tipped white, though about half of the flowers come either wholly or partly solid crimson. This new Dahlia is an exceedingly attractive one and a very free bloomer. A very full, deep flower of good form and size. Price, \$5.00.



CARUSO, NO. 2132

NEW ORIGINAL INTRODUCTIONS FOR 1922—Continued

Diadem, No. 2160. Pæony-flowered. This Dahlia is a reddish salmon in color. It somewhat resembles a hybrid Cactus as the petals are quite numerous and slim. This is a mammoth flower. The formation and color give it a very unusual appearance.

Price, \$3.00.

Dr. Cooke, No. 2158. Pæony-flowered. The color is very deep velvety carmine. The formation of this Dahlia is very desirable. Its extra dark color makes it much more desirable than the Dr. Peary Dahlia, it being darker and more uniform in shading. It has good stems for cutting.

Price, \$5.00.

Earliana, No. 2105. Show. A beautiful shade of clear canary yellow. A large Show type of perfect form on good stems.

Price, \$1.00.

Edith L., No. 2182. Pæony. The color of this handsome Dahlia is a nice lavender pink overcast with a reddish shade. A very odd nice colored Dahlia on good stems. You should see this plant to appreciate it.

Price, \$5.00.

Edna Daley, No. 2202. Pæony. Color, pink with a slight lavender sheen. The formation of this flower is a true Pæony, the color is simply fine, and the size is large.

Price, \$3.00.

Edna Rogers, No. 2186. Pæony. Color, pure glistening white. This is a very large flower on good stems and an exceedingly free blooming Dahlia.

Price, \$5.00.

Elbert Hubbard, No. 2187. Pæony. The color of this Dahlia is a nice flesh pink with salmon shadings. A flower of good size and form with a very desirable color.

Price, \$3.00.

First of All, No. 2018. Pæony. Color, light salmon or apricot yellow. A nice full flower of large size. The blossoms are borne on long, stiff stems, good for cutting.

Price, \$3.00.

Florence Griswold, No. 2267. Decorative. Color, white. Each petal clouded and stained red at base. A medium sized flower, but very showy.

Price, \$2.50.

Golden Cluster, No. 2205. Hybrid Show. Color, light butter yellow with each petal slightly tipped and clouded pink. The reverse side of petals are pink. A large flower on good stems and a profuse bloomer.

Price, \$2.00.

Grand Malta, No. 2230. Pæony. Color, a medium carmine heavily clouded and tipped yellow. A bright showy flower of Geisha colors, but an entirely differently formed flower and much better for cutting.

Price, \$2.00.

Grete, No. 737. Duplex. Color, clear canary yellow. A clean colored flower with broad, flat petals and good stems for cutting.

Price, \$1.00.

Hall Mark, No. 2225. Decorative. Color, light canary yellow. A deep, full flower and a very clear, nice shade. This Dahlia can be grown to an immense size with a little care.

Price, \$5.00.

Immensity, No. 2262. Decorative. Color, a pure orange. A very attractive flower on good stems. A very desirable and unusual color.

Price, \$2.50.

International, No. 2218. Decorative. The color of this flower is strikingly odd and a true novelty. It is a sort of fawn color with cloudings of yellow and darker fawn. A nicely formed Decorative with a full center.

Price, \$10.00.

Jane Witherspoon, No. 2126. Pæony-flowered. The color is medium carmine. Each petal being heavily clouded canary at the tips. A very showy flower of good size.

Price, \$3.00.

Joseph's Coat, No. 1002-A. Pæony-flowered. Color, light red tipped white. It occasionally has a solid red blossom on the same plant with the tipped ones. This is a low plant and a good bloomer.

Price, \$2.00.

Justice White, No. 2196. Decorative. Color, bright carmine with each petal nearly half white at tips. A very large fluffy flower on good strong stems. Occasionally a flower comes solid carmine or nearly so. When grown to perfection this Dahlia is of immense size and a beauty.

Price, \$10.00.

Lady Bird, No. 2100. Decorative. Deep pink, heavily splashed and streaked white. Good stiff stems for cut flower purposes.

Price, \$2.50.

Lady Derby, No. 2189. Pæony-flowered. Color, pure white with florets clouded on the edges with bright red. An ideal Pæony Dahlia, large and very showy. You should see Lady Derby.

Price, \$5.00.

Lemon Pie, No. 2266. Pæony. Color, pure canary yellow. A nice flower of good size and color. The flowers have long stems.

Price, \$3.00.

Livermore, No. 2108. Pæony-flowered. Light butter yellow. Petals of this Dahlia are quite broad and slightly twisting being shaded pink at outer half. A very large flower and has good stems.

Price, \$2.00.

NEW ORIGINAL INTRODUCTIONS FOR 1922—Continued

Luxury, No. 2231. Pæony. Color, a beautiful light purple. A heavy, large flower with nice curly petals which give this Dahlia a very striking appearance.

Price, \$3.00.

Marillyn Miller, No. 2144. Decorative. Color, salmon, heavily shaded yellow. This is a medium sized flower, but has extra nice stems for cutting, making it a very desirable cut flower Dahlia of a fine color.

Price, \$1.50.

Mary Evelyn, No. 2243. Pæony. This flower is made up of several shades of salmon which are very striking. Reverse side of petals is nearly red. A beautiful large flower on good, strong, long stems.

Price, \$5.00.

Mattie Bull, No. 2142. Pæony-flowered. Color, light magenta, very heavily clouded white. This flower is very showy and the plant is quite tall. The flowers are large and borne on good stems. It should be seen to be appreciated.

Price, \$5.00.

May Flower, No. 2270. Pæony. Color, a deep orange. This Dahlia has a fine color, an attractive formation and good stems. A desirable color in every way.

Price, \$5.00.

Meadow Vale, No. 2112. Decorative. The color of this beautiful Dahlia is light canary yellow. Each petal is heavily tipped white. The softness of the colors of this medium sized Dahlia makes it a most wonderful and desirable flower. It is borne on good stems for cutting. A basket of these Dahlias presents a most striking appearance. A Meadow Vale should be in every Dahlia lover's collection.

Price, \$5.00.

Most Popular, No. 2261. Pæony. Color, butter yellow. A very large flower with petals which are quite broad and flat. Very much resembles the Billionaire.

Price, \$5.00.

Mrs. A. H. Smith, No. 888. Decorative. Color, a beautiful light canary yellow. A very large flower on good stems and is a prize in any garden.

Price, \$5.00.

Mt. Vernon, No. 2212. Pæony. Color, bright, light carmine. A heavy flower of immense size with rich, bright color. The florets of this flower are very broad and heavy.

Price, \$5.00.

Neapolitan, No. 2215. Pæony. Color, a light purple while each petal is bordered with light purple or deep lavender. A very attractive, large flower on good branching stems.

Price, \$5.00.

Nettie C., No. 2133. Cactus Pæony. The color is a beautiful yellow salmon. A full, deep flower of an unusual and desirable color. The fluffy formation of this flower, together with its nice colorings and good stems, makes it a desirable Dahlia for the garden.

Price, \$5.00.

Old Homestead, No. 2192. Pæony-flowered. Color of this flower is hard to describe; it is a deep, reddish peach pink and simply rich and most striking. It is of immense size and is borne on good stems. A very desirable Dahlia for any garden.

Price, \$5.00.

Orange Jelly, No. 2219. Hybrid Cactus. Color, pure canary yellow. A nice, lovely flower and beautiful color. This Dahlia is borne on good stems.

Price, \$5.00.

Overseas, No. 2177. Cactus-Pæony. The color is a very bright light carmine red. Petals fold back the entire length and are claw-shaped, making a very large, attractive flower.

Price, \$5.00.

Peppermint, No. 2125. Single. The color of this beautiful Single Dahlia is pure white. Each petal is heavily bordered with deep rich magenta. This is without doubt the most striking and beautiful Single Dahlia yet produced. The blooms are a good size, being borne on good long stems for cutting. The flowers stand well above the foliage and it is an unusually free bloomer.

Price, \$2.00.

Pinkie, No. 2152. Pæony. Color, light flesh pink. One of those nice shades of pink so desirable in a Dahlia.

Price, \$3.00.

Pink Wonder, No. 2173. Pæony. Color, a beautiful shade of deep pink. This massive pink flower should be seen to be appreciated. It has good stems and is worthy of a place in any garden.

Price, \$5.00.

Queen Charlotte, No. 554. Duplex. Color, bright butter yellow with darker shadings. A very striking shade and a nice cut flower Dahlia. Long, stiff stems.

Price, \$1.50.

Queen of Pinks, No. 2228. Pæony. Color, a beautiful pink slightly shaded lighter at tips and showing a slight overcast of lavender. A true Pæony type and a lovely flower in every way. If you add the Queen of Pinks to your collection you make a move in the right direction.

Price, \$3.00.

Quelque, No. 2156. Pæony-flowered. The color is lavender, the inner petals being shaded lighter. This Dahlia is of very large size and most desirable color. The blossoms are borne on extra long stems.

Price, \$5.00.

NEW ORIGINAL INTRODUCTIONS FOR 1922—Continued

Red Eagle, No. 2174. Pæony-flowered. Color bright rich carmine. The petals are rather slim and stand up gracefully. A most beautiful red. Price, \$5.00.

Red Letter, No 2102. Hybrid Cactus. Color, red magenta. A rich color with heavy rolled petals. Price, \$2.50.

Reward, No. 2171. Duplex. Color, bright butter yellow, slightly veined pink. Reverse side of petals red. A very large flower and of a fine color. Price, \$3.00.

Robert O. Fletcher, No. 2271. Decorative. Color, white striped and speckled with bright carmine. A beautiful flower and a lovely combination of colors. Price, \$5.00.

Rosy Star, No. 2223. Cactus-Pæony. Color, light yellow heavily shaded salmon pink. A very large flower with well folded petals which stand up in good form. Price, \$2.00.

Ruth Thompson, No. 2263. Pæony. Color, a reddish salmon and yellow clouded together in a most beautiful manner. A very large flower and fine for cutting. Price, \$5.00.

Savoy, No. 2170. Pæony-flowered. The color of this beautiful large Dahlia is a light lavender. It is a finely formed flower and has extra long stems for cutting. Price, \$2.50.

Sea Shell, No. 2188. Pæony. Color, medium carmine red while each petal is heavily tipped white. The petals are quite curling and some are slightly bordered with gold. A lovely, attractive flower. Price, \$2.00.

Spencer Marsh, No. 2235. Pæony. Color, deep velvety carmine. A very large flower of a beautiful shade of carmine. The petals are well folded and are of a twisting formation. Price, \$5.00.

Spring Maid, No. 2244. Pæony. Color, of this Dahlia is unusual, being a light purple, lilac or deep mauve. A good size and well formed flower. Price, \$2.50.

Sweetheart, No. 2116. Pæony-flowered. The color is light red. Each petal is heavily tipped white. The twisting formation of the petals of this flower give it a very attractive appearance. Price, \$3.00.

The Royal Peach, No. 2113. Hybrid Cactus. The color of this wonderful Dahlia is a deep peach pink. The petals are slightly shaded yellow toward the tips. The blossoms are very large and are borne on good



INSPECTING "LAKE ERIE"

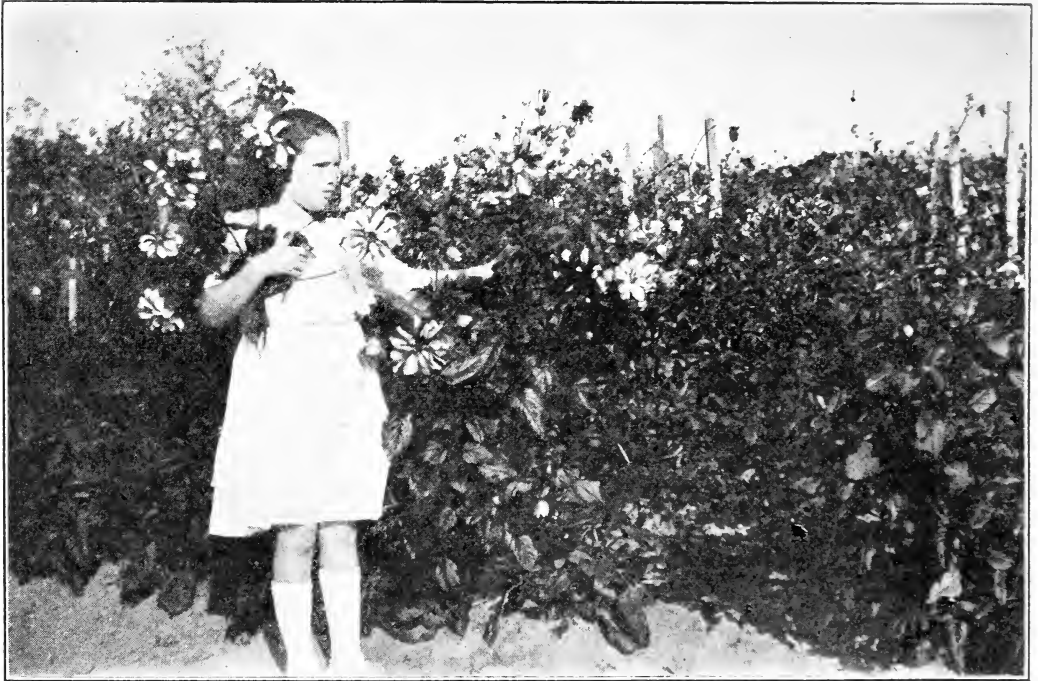
stems. This is truly a wonderful color. A desirable Dahlia in every way. Price, \$3.00.

Tennis Ball, No. 2265. Show. Color, a purple magenta. This flower is finely cupped and is borne on long, stiff stems. One of the best Show Dahlias. Price, \$2.00.

Wayahead, No. 2180. Cactus. The color of this large Cactus Dahlia is a deep, rich carmine red. Petals are of unique formation and the flower has good stems. Price, \$5.00.

Yarrow, No. 2232. Show. Color, canary yellow. This new Show Dahlia is the real thing which has been looked for so long in the Show Dahlia class. It is a clear, bright canary yellow and a large flower about the same size of the King of Shows. It is a perfectly quilled ball-shaped flower and is held upright on good stems. Price, \$3.00.

Yellowstone, No. 2224. Pæony. Color, pure canary yellow. Here is a flower that should be in every Dahlia lover's collection. The form, color and size are perfectly lovely. This Dahlia should be seen to form an idea of its beauty. Price, \$10.00.



PICKING "PEPPERMINT" (SINGLE DAHLIA)

NEW DECORATIVE DAHLIAS

ORIGINATED BY GEO. L. STILLMAN

The Millionaire, No. 1420. This remarkable mammoth new Decorative Dahlia exceeds any other Dahlia in existence in size. The color is a most dainty lavender with a pink sheen overcast. The flower is simply immense, very deep and heavy. After the first flower, it is produced on extra long, heavy, stiff stems. The Millionaire has won many first prizes, besides many medals, all over this country for the largest flower in the show. A Dahlia garden is not complete without a Millionaire. Price, **\$2.50.**

Black Beauty, No. 534. Nearly black. Medium sized flower larger than Eng. Blk. Price, **75c.**

Bolton, No. 1424. Golden amber. Flowers good size and odd color. Good length of stem. Price, **50c.**

Bonny Best, No. 577. Very light cream and shaded darker at base. Petals, broad and serrated at tips. A most beautiful, clean color and a good sized flower on heavy stems. Price, **\$1.00**

Clara Annette, No. 731. The color of this Dahlia is a rich, medium shade of carmine red. Each petal is slightly veined yellow and slightly tipped yellow. It is a fine flower in every respect and should be in every Dahlia garden. Price, **\$3.00.**

Daniel Webster, No. 566. Deep blush rose pink. A very odd and striking color. Petals are quite slim and tapering to fine points, also have a rolled and twisted appearance. The outer edge of each petal is bordered with a much lighter shade. Price, **50c.**

Douglas Fairbanks, No. 442. Crushed strawberry shaded to yellow at base. Price, **\$1.00**

E. J. Pease, No. 1428. Fire red Slight veins of yellow running lengthwise through petals giving the flower a prominent striped appearance. Price, **\$1.50**

Florine, No. 975. This new Decorative Dahlia is certainly desirable. The color is a beautiful shade of golden apricot. The flower is of a beautiful Decorative formation. A very free bloomer. The blossoms are borne on good stems. Price, **\$2.50.**

NEW DECORATIVE DAHLIAS—Continued

Gen. Markel, No. 750. A rich deep carmine in color and very bright. A deep, full flower which is much admired for its rich coloring. Price, \$1.00.

Geneva, No. 598. About 8 petals first stand out erect and roll backward and of a cerise shade. The center of the flower stands out like a Narcissus giving it the appearance of a mammoth Narcissus; the center unfolds and is a dark velvety maroon. Price, \$2.00.

Gladys L, No. 1018. Rich, soft shade of light magenta. A very heavy, deep flower on long stems. Each petal is deeply serrated at tips. One of the finest Decoratives. Price, 50c.

Gray Feather, No. 2097. This flower has a most peculiar formation and color. The face of the petals is a delicate gray pink while the reverse side is deep pink. They are broad, tapering to a long point and curl and twist in various shapes. A deep, large flower with a beautiful odd color. There is nothing like it in the whole Dahlia family. Price, \$3.00.

John Doyle, No. 829. A new Dahlia of old gold color and overcast with a brownish shade. It has very broad petals that are somewhat cupped. A very full Dahlia and one of the free blooming kinds. Price, \$2.00.

John Drew, No. 581. A very light pink, while the reverse side of the petals is darker pink. This is an elegant, large, full flower and should be seen to be appreciated. Price, \$3.00.

King Arthur, No. 307. A rich garnet red, solid color. This flower when beginning to bloom somewhat resembles a Narcissus, as the outer petals open usually about a day before the others begin to unfold. It is of large size and a beautiful Decorative shape with extra good stems. For richness of coloring this Dahlia is seldom equalled. Price, \$1.00.

Lady Betty, No. 1330. Nice rich, velvety purple with reddish cast. Good size, nicely formed petals, quite numerous. Very attractive. Price, \$2.00.

Lady Cardine, No. 2017. A large flower of the Decorative type and slightly oval face. The color is a medium rich carmine and each petal heavily tipped white. Occasionally a petal is bordered with gold on one side. One of the most beautiful flowers grown and on heavy stiff stems. A wonderful free bloomer. Price, \$10.00.

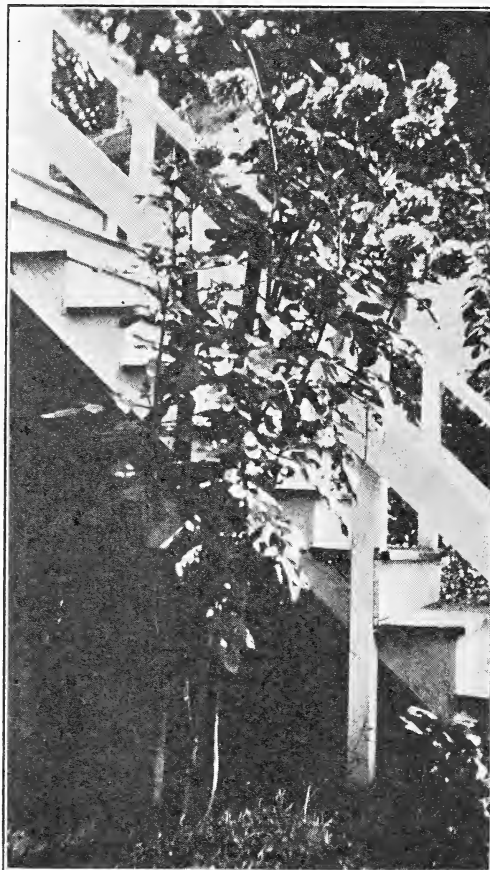
Mabel Normand, No. 1005. Very light canary yellow. A nice clean colored flower on good stems. Price, \$1.00.

Marcelline, No. 1353. Pure glistening white. Petals wide and curled, twisted in various shapes. Very long stems. Good sized flowers. Price, \$1.00.

Millbank, No. 305. Light lavender, shaded darker at tips. A beautiful shade and a fine flower for cutting. Price, 25c.

Mongolian, No. 1092. Very dark maroon. Nearly black. Medium sized flower and a very free flowering Dahlia. Price, 25c.

None-So-Pretty, No. 915. This new Dahlia can be mistaken for pure white when seen at a distance, but on close inspection it has an overcast of pink. The formation of the Dahlia is unusually attractive and its free blooming qualities are unsurpassed. To see the beauty of this Dahlia you should have one in your collection. Price, \$2.00.



LADY CARDINE—13 Blooms

NEW DECORATIVE DAHLIAS—Continued

Oweenee, No. 1117. Variegated cerise and white. This flower is of very delicate coloring, petals being fine and very numerous. They are splashed and clouded with light cerise and white. One of those very desirable light shades. Price, **\$1.00.**

Painted Lady, No. 784. The color of this new Decorative Dahlia is a purplish maroon, each petal has a shade darker running through the center making it very attractive and one of the rich colors in a dark flower. Price, **\$1.50**

Peculiarity, No. 740. The color of this Dahlia is a light purple, or might be termed a violet shade. This is a heavily built-up flower. In shape much resembles a hybrid show Dahlia, and its formation when grown to perfection is certainly a peculiar one; as each petal has at its base a small mite of a petal resembling the collar in a Collar-ette Dahlia. These small petals are about the same shade of the main flower and are usually striped with white. This is the only Dahlia that has come to my notice of such peculiar formation. When this Dahlia is grown to perfection these small collarette petals are produced in profusion, but under unfavorable circumstances the small petals do not show prominently. The name of this Dahlia is rightly applied; it is certainly peculiar. Price, **\$1.00.**

Perfect Beauty, No. 582. Bright light scarlet. Outer ends of petals heavily tipped white. The colors are divided about equally, half red and half white. A most beautiful flower of very large size. One of the most attractive flowers imaginable. Price, **\$5.00**

Plato, No. 799. Color, salmon red. A nice colored flower and about same shape as Mrs. Roosevelt. On fine, long, stiff stems for cutting. A very profuse bloomer. Price, **\$1.00.**

Pride of the West, No. 518. Golden orange. A very full, desirable colored flower. Good size on long stems. Very attractive. Price, **75c.**

Splendor, No. 1432. Color, salmon shaded to yellow at base. A fine nice flower. Fine long stems and erect flowers. Price, **\$2.00**

World's Wonder, No. 550. Color, golden salmon. Low plant and an early bloomer. This is a very large, deep, full flower with almost a never disappearing center. The keeping qualities of this flower are very unusual and it is borne on very long, stiff stems. A profuse bloomer. Price, **\$3.00.**



THE BRIDAL VEIL

Taken October 22, 1921, with 20 blooms and more than 20 buds.



THE NEW DAHLIA, "THE U. S. A."

NEW CACTUS DAHLIAS

The U. S. A., No. 749. The color of this exquisite, new mammoth Dahlia is a deep orange, that very unusual color so hard to get in a Dahlia. The formation as well as the color is so unique and novel that to attempt to describe it accurately would be an impossibility. It is a very free blooming Dahlia. Price, **\$10.00.**

Geo. L. Stillman, No. 67. The color of this beautiful new Cactus Dahlia is a very rich, velvety, deep carmine. The form is exquisite, while in size it is a mammoth, having been grown to measure 11 inches across with stems 26 and 31 inches long. It has been grown in all climates. It bears its originator's name and has won prizes everywhere. Price, **\$3.00.**

Big Surprise, No. 632. Bright canary yellow. Petals long, nicely rolled and slightly twisting at points. An immense large flower and extra good for cutting. Price **\$2.00.**

Bridal Veil, No. 2020. Pure glistening white. The petals of this flower are folded nicely and points are twisted in such a unique form that it is easily the most beautiful white Cactus Dahlia I have ever seen. The flowers are large and stand erect on good stiff stems superior to any other white Cactus. Price, **\$10.00.**

Carrie Hammond, No. 890. Deep pink shaded yellow at base. The petals are finely rolled and twisted. Price, **50c.**

Christy Hoxie, No. 1436. Color, pale pink. Good formed flower on good stems. Price, **\$1.50.**

Caroline Laffield, No. 1427. Hybrid Cactus. A beautiful, large, light, canary yellow Cactus. Very large and full, measuring 7½ inches in diameter. Extra fine. Good length of stem. A splendid specimen. Price, **\$2.00.**

Clawfish, No. 430. Deep carmine. Good size flower and a finely formed Cactus. Price, **\$1.00.**

Cuba Ward, No. 640. Medium carmine. Petals broad and sharp pointed and lightly tipped yellow and slightly yellow at base. A beautiful flower and most attractive. Price, **\$3.00.**

E. P. Thompson, No. 505. Light velvety cardinal. Petals small and rolling. Large flower and extra fine form. Price, **\$2.00.**

F. Earl James, No. 242. Color, deep mottled cerise pink. This flower is very large and finely formed, of Hybrid Cactus type. Petals are very curly and twisted and some turn backward. The whole flower is most beautiful and makes an exceedingly pleasing effect. Price, **\$5.00.**

F. L. Deery, No. 306. A Dahlia made up of numerous, finely formed, pointed petals of Cactus type. It is a lovely lavender pink blotched through the fine petals and in some instances tiny spots of the coloring appear like the head of a pin. The pale lavender is clearer at very tips. Yellow shows very slightly at center. A fine size. The long, stout stems hold the Dahlia very erect. Price, **\$1.50.**

King Tom, No. 2003. Pure deep rose. This is a Hybrid Cactus Dahlia of very large size and a beautiful color. The petals are long and fold back to a long, sharp point. The whole flower much resembles Lady Helen except in color and is borne on good long stiff stems. Price, **\$5.00.**

Lieut. Joe, No. 800. Color, medium carmine. Petals bordered with a light vermilion. A very beautiful Dahlia. Price, **\$1.50.**

Mae James, No. 179. Hybrid Cactus. Light cerise. Tips of petals clouded white. Extremely beautiful. Reverse sides of petal are nearly white, clouded cerise. Very attractive flower. Price, **\$2.00.**

Mary Sefton Thomas, No. 509. Canary yellow. Petals broad and pointed. Very heavy flower of a beautiful shade and shape. Large size and good stems. Very attractive. Price, **\$2.00.**

Mastodon, No. 822. Color, bright medium carmine. Petals slim and very twisting, standing in an upright and somewhat claw-shaped position. Extra large Cactus Dahlia of good form. Price, **\$3.00.**

Mt. Shasta, No. 268. Hybrid Cactus. Very light shell pink with slightly deeper shadings of pink through the petals. A faint tinge of yellow shows toward center. Petals, long, slim and rolled at points. An extra fine, full, deep flower and enormous size. This flower when grown to perfection is simply a wonder in size, shape and color. Stands very erect on good, stout stems. Price, **\$2.50.**

Queen Josephine, No. 519. A handsome Cactus Dahlia of light butter yellow shaded to light pink at points. Petals are quite incurved. A good sized flower and very attractive. Price, **50c.**

NEW CACTUS DAHLIAS—Continued

Rosa Bonheur, No. 669. Hybrid Cactus. Dark scarlet. Petals quite broadened out and rolled to a point at tips. Price, \$1.00.

The Perfect Jewel, No. 628. Deep velvety carmine. Each petal slightly tipped white. Petals clouded white. A very unusual beautiful flower and very low plant. Price, \$1.00.

Wonder of Nature, No. 2050. Hybrid Cactus of medium size. This wonderful Dahlia presents the most gorgeous array of beautiful flowers on the one plant of any Dahlia that has ever come to my no-

tice. The flowers are of a beautiful formation and are borne very profusely on nice stems for cutting. Some of the blossoms possess the five shades that these flowers are made up of, viz.: canary yellow, deep salmon, light salmon, pink and white. No person can accurately judge the beauty of this wonderful Dahlia by any description that can be put on paper. Hundreds of people who visited my fields and saw this Dahlia truthfully expressed it when they called it a real wonder. Bulbs for 1922 are limited. Price, \$5.00.

ADDITIONAL NEW PÆONY-FLOWERED DAHLIAS

ORIGINATED BY GEO. L. STILLMAN

The following new Pæony-flowered Dahlias were all recently originated by me after the most expensive and exhaustive experimental trials.

My original "New Dahlias" can truthfully be termed the best and most wonderful collection of elegant mammoth Dahlias in America.

The whole lot is made up of the most unusual gorgeous colors ever brought out in Dahlias.

Acquinas, No. 94. Cardinal. Large flower with a tint of white and yellow at base. A beautiful bright color. Price, 50c.

Adele, No. 1416. Beautiful canary yellow. Petals broad, slightly twisting. Numerous small, curly petals around center. Very good specimen and very free bloomer. Price, 25c.

Ad. Dewey, No. 413. Crushed strawberry. Canary yellow at base, slightly clouded through center yellow. Tips yellow. A very large, full flower on very long stems measuring at times 16 inches. Price, 50c.

Alaska, No. 935. Pure glistening white with quite broad, slightly rolling florets and numerous small curly petals around disc. The flower is borne on long jointed stems and is a very good Dahlia for cut flower purposes. Price, \$2.00.

Allbea, No. 92. Rich Phlox. Very heavily clouded white at base of petals. Veins of white running through petals. Price, 25c.

Alpena, No. 793. Red shaded cerise, slightly tipped yellow. Base of petals heavily colored yellow. Blooms stand erect on stiff stems. Price, \$1.50.

Amber Queen, No. 1120. Golden amber. Flowers are of good size and with quite broad, flat petals. A most desirable Dahlia of fine form. Price, 35c.

Artemus Ward, No. 257. Very deep pink cerise, veined and clouded with white. Each petal slightly tipped white. Stems good length and good size flowers. Price, 75c.

Aunt Basha, No. 296. Color, deep velvety maroon. Flowers very full and fluffy. Petals cup and roll the whole length with age. The most dazzling dark maroon flower yet seen. Splendid for cutting, with long stems, and a good sized flower. Price, 75c.

Autumn, No. 1017. Color, clear, light velvety carmine. A large, full flower with numerous petals which are quite pointed and twisted at tips. A very free bloomer and a most desirable flower. Price, 50c.

Avanella, No. 284. Color, a beautiful shade of pink. A large flower, very full and compact. This Dahlia won first prize for largest flower in the Hartford, Conn. Show. The color and form of this Dahlia are superb. Price, \$2.00.

Beethoven, No. 596. Color, white, overcast with a light tint of pink giving the flower a very light gray or lavender appearance. Reverse side of petals heavily clouded pink. Petals are pointed and slightly twisted giving the flower a fluffy shape. Price, \$1.50.

Shall I substitute for any that are sold out?
 About what date do you want them? *Early as possible*

HOW MANY BULBS	NAME OF DAHLIA	PRICE	HOW MANY BULBS	SECOND CHOICE	PRICE
25	Dahlia				
25	"				
25	"				
25	"				
25	"				

DO NOT Detach any Portion of This Order Blank

ORDER SHEET

Issued by

**GEORGE L. STILLMAN, DAHLIA SPECIALIST
 WESTERLY, RHODE ISLAND**

Date *May 15 1921* Amount inclosed *25 cents*

Your name *A. A. copy of the original order*
(Write it plainly. Ladies will please put the prefix Miss or Mrs.)

P. O. Street

State County

Shall I substitute for any that are sold out? *Yes*

About what date do you want them shipped? *at once*

How Many Bulbs	Name of Dahlia	Price	How Many Bulbs	2nd Choice	Price
----------------	----------------	-------	----------------	------------	-------

1	<i>Mrs. Roosevelt</i>	<i>25</i>			
---	-----------------------	-----------	--	--	--

I assure my customers that all orders, large or small, are cared for alike as shown by these illustrations.

Brought to *Mr Geo. L. Stillman*
Westerly R. I.

*Enclosed please find check for \$50.
 Please forward on once as usual
 of a Club of Cardinal roses on
 you can be parcel post.*

Paid

Mr. George L. Stillman,
 Westerly,
 R. I.

April
 Sixteenth
 1921

Dear Sir:

I desire to order the following Dahlia Bulbs:

<u>Quantity</u>	<u>Name of Dahlia</u>	<u>Price</u>
2	Cardinal Mercier No. 910	\$ 50.00
6	The Millionaire No. 1420	15.00
6	<i>George L. Stillman, No. 67</i>	18.00
2	The U. S. A.	20.00
6	<i>Grey feathers, No. 2097</i>	30.00
2	Black Beauty No. 534	1.50
1	"The New York Group"	45.00
1	"New Group for 1920"	45.00
1	"The Ten Sea Lions"	45.00
1	"The Fighting Ten"	27.00
1	"The Indian Family"	22.00
1	The Whole "Loma Family"	25.00
Total		\$295.00 \$343.50

A friend of mine in New York, who is also a friend and patron of yours, recommended your Dahlias to me very highly. I had already secured my stock for this year, but concluded to order a small quantity of specimens of your best Dahlias for my use in making my selections next year. They will receive the best of care, and I trust that you will send me Bulbs that will give each variety a fair test.

I desire to order some of your seed corn as follows:

4 qts. "Stillman's Special R. I. Double Cap Corn"	\$ 3.00
1 pt. of each of your three varieties of Sweet Corn	3.00
	<u>3.00</u> 349.50

I assure my customers that all orders, large or small, are cared for alike as shown by these illustrations.

ADDITIONAL NEW PÆONY FLOWERED DAHLIAS—Continued from page 31.

Bellflower, No. 937. Color, light pink. Petals slightly clouded white on face side, reverse side much darker. A very free blooming and attractive Dahlia.

Price, \$1.00

Belle Washburn, No. 733. A light cream Pæony-flowered Dahlia. This is one of those Dahlias with a clean, nearly white coloring.

Price, \$1.50.

Charlotte Laverne, No. 940. The color of this beautiful flower is a light, chrome orange, while the reverse sides of the petals are a salmon pink. The petals fold back to a long, sharp point giving the flower a curly effect together with its numerous small curly petals around the disc.

Price, \$2.00.

Cherry Pie, No. 2092. In color this flower is a light pink. Petals quite broad and pointed at tips. A beautiful color and an attractive flower.

Price, \$1.50.

Cinabar, No. 707. The color of this Dahlia is a deep, velvety, rich carmine, with darker and lighter streaks running through the petals. A beautiful flower and of nice formation.

Price, 75c.

Clara Lambert, No. 1313. Face of petals purple magenta at points, shading to white at center and base, resembling Philadelphia Pæony. Good size.

Price, \$1.00.

Cora L., No. 289. Color, a beautiful shade of light lavender. One of the most attractive colors for a Dahlia. A large-sized flower of extra fine form.

Price, \$1.50.

Coral Beauty, No. 1035. Clear Coral. This wonderful new color for a Dahlia attracted the attention of all who visited the garden. The petals of the flower are broad and heavy, and show well above the foliage.

Price, 50c.

Corine R., No. 946. This is without doubt the largest pure white Pæony-flowered Dahlia yet produced. The florets are broad, curling and twisting, giving the flower a slightly fluffy appearance.

Price, \$2.00.

Cousin Jerry, No. 433. Color, canary yellow. Petals slightly sharpened at points; and curled around center. A large, beautiful flower.

Price, \$1.00.

C. N. Landon, No. 292. Color, old gold or bronzy yellow. A very large flower of a beautiful type. The petals are very long and slim and incurved to a nearly upright position. A most attractive form and color.

Price, \$1.00.

Curious, No. 2046. A small Pæony flower with peculiar markings. The petals are white and bordered more or less with purple. It is a very profuse bloomer, and very showy in the garden.

Price, \$1.00.

Dana, No. 488. Color, light reddish buff shaded to red at center. Petals are rolling and curve slightly backward.

Price, 75c.

David Harum, No. 1403. Beautiful shade of scarlet. Large flower and extremely bright. A good form.

Price, 50c.

Dazzler, No. 471. Medium shade of red shaded to canary yellow at base and clouded white at tips. Petals slightly rolled and twisted. Extra good stems for cutting.

Price, \$1.00.

Donalda, No. 308. A beautiful shade of canary yellow. This is a large flower with long, slim, rolled petals, standing nearly upright. It is wonderfully attractive for the garden or exhibition table.

Price, \$2.00.

Dorothy Bernard, No. 264. Deep lavender. A beautiful color and finely shaped petals. Very desirable.

Price, \$1.00.

Dorothy Dewey, No. 446. Lemon yellow. Petals heavily shaded and bordered with pink. A very large, exquisitely formed flower and a fine shade.

Price, \$2.00.

Dr. Robert Taylor, No. 608. Deep peach pink. Petals long and quite slim, rolled and twisted in various shapes. A most beautiful shade and a very free bloomer on fine stems.

Price, \$3.00.

Dudley Palmer, No. 1122. A lovely salmon amber with broad, flat petals, curled enough to give the flower attraction. The petals are streaked and blended with a deeper shade of salmon, slightly more reddish. Smaller petals streaked in the same manner, are curled about the center. A very desirable good sized flower erect on strong stems.

Price, \$1.00.

Earle Williams, No. 1339. Ruby, striped and shading to white and pink. Large flower and inner petals very curly, outer petals broad and pointed. Fine stem.

Price, \$2.00.

Early Morn, No. 569. Lavender with a slight clouding of white. Petals slightly yellow at base. A nice shape and a very unusual combination of colors. Large size flower.

Price, \$1.50.

Eureka, No. 860. Color, deep pink. Petals long and roll forward. A heavy, deep flower of extra good formation. A fine attractive color.

Price, \$1.50.

Evening Sky, No. 2051. This Pæony-flowered Dahlia is certainly a beauty. Some of the flowers are a most beautiful canary yellow, while others on the same plant are yellow heavily tipped or bordered white. Either way the flowers are beautiful.

Price, \$1.50.

ADDITIONAL NEW PÆONY FLOWERED DAHLIAS—Continued

Evening Star, No. 250. Color, light fiery red, heavily colored yellow at base of petals. Petals are flat, sharply pointed and slightly tipped yellow. A medium sized flower, but a beautiful combination of colors and very attractive. Price, **75c.**

Ezra Dalton, No. 149. Light straw, heavily clouded and veined with light red. Price, **\$1.00.**

F. X. Bushman, No. 1348. Pink with shading of yellow running through petals. Petals long and flat and curving backward. Small, curly petals at center. Attractive combination of colors. Good size. Price, **\$1.00.**

Firebird, No. 1044. Bright red. Large sized flower of a very desirable color and full form. One of the bright colors that attract every one. Price, **75c.**

Fire Girl, No 156. Bright scarlet with heavy circle around the center of bright canary yellow. Petals are rolled and quite slim, sharp pointed and tipped yellow. Very showy and attractive. I was awarded a first-class certificate on this flower at N. Y. Horticultural Dahlia Show. Price, **\$1.00.**

Ford Sterling, No. 1389. Very light pink with dashes of deep pink. This flower is a most desirable one. Price, **75c.**

Frank Suplee, No. 2031. A Pæony-flowered Dahlia of a beautiful deep orange color. A large flower on good stems for cut flowers. Price, **\$2.00.**

Friedland, No. 668. Orange scarlet, slightly streaked and clouded yellow. A very showy flower. Lot of small curly petals around center. Price, **\$1.00.**

Frizzy, No. 261. White and cerise blended, together and yellow at base. Petals are of various sizes, small, sharp and twisted in various shapes. Plant is of low growth, medium size flowers and good length of stem. Price, **25c.**

General Appleton, No. 613. Deep pink, clouded light pink. A large, fine flower of exquisite colorings. Price, **\$2.00.**

G. H. James, No. 263. Color, light cream with a very wavy appearance, while the reverse side of the petals is clouded cerise. Petals are broad and flat and taper abruptly at ends to a sharp point. This is one of the most unique beauties of the whole Dahlia family. Price, **\$2.00.**

Golden Sun, No. 798. Color, rich old gold. The petals of this flower stand up and are slightly rolled. A very showy flower and quite tall growing. Price, **\$2.00.**

Harriet Hubbard, No. 366. Deep pink with a slight shade of lavender. Petals rather slim and twisting and curly around center. The flower is large and one of those most desirable colors for a Dahlia. Price, **\$1.00.**

Harry Lauder, No. 287. Color light lemon yellow. Heavy petals and somewhat cupped at the base. A very clean, beautiful shade. Price, **75c.**

Harry McCoy, No. 1336. Light, clear, canary yellow. Back of petals very curly at center and slightly rolled forward. A good shaped Pæony. Long stems. Price, **\$1.00.**

Helen of Troy, No. 768. Color, a beautiful shade of light orange. This flower is not very full, but a first-class Dahlia for cut flowers and a very desirable color. Price, **\$2.00.**

Hobby, No. 1322. Deep lavender pink. Streaks of white whole length of petals, giving the flower a clouded appearance. A beautiful flower. Medium size on good stems. Price, **50c.**

Icabod, No. 277. Light cream, heavily clouded cerise. Petals narrow, numerous and very curly and twisted. Price, **\$2.00.**

Isabelle, No. 1003. Large flower. Petals pinkish red shaded to yellow at base. Petals around center curled and twisted. Extra long stems. Price, **\$1.00.**

J. Austin Shaw, No. 1306. Beautiful Pæony of peach yellow. Each petal heavily veined with two lines of pink. Petals slim and pointed and heavily clouded pink. An attractive flower with extra good stems for cutting. Price, **75c.**

Jean Anderson, No. 1118. Salmon buff slightly clouded with deep yellow. The style of this flower is very unique, with its small twisting petals around the center and the curly features of the large ones. One of the entirely new shades. Price, **\$1.00.**

Jim Dandy, No. 117. Very rich velvety magenta. Base of petals is yellow and white, forming a circle 1½ inches in diameter. The petals are sharp, pointed and heavily tipped and veined with white. The brightest combination of colors imaginable. Price, **\$1.00.**

John Churchill, No. 478. Red salmon pink, or nearly peach pink. Petals broad and twisting. A beautiful flower in every way. Price, **\$1.00.**

Josh Billings, No. 254. Purple. Petals flat, points sharp and twisted. Flowers medium size, but good stems. Desirable. Price, **75c.**



BILTMORE

ADDITIONAL NEW PÆONY FLOWERED DAHLIAS—Continued

King Saul, No. 729. Color, very bright rich carmine, a very heavy, deep flower and solid color. This is one of the most beautiful shades in red that can be found in the whole Dahlia family. The flower is good size and of nice formation.

Price, \$2.00.

Kinney. Color, a beautiful shade of pink, growing lighter in center. Petals slightly twisted, making a fine shaped flower.

Price, \$2.00.

Klondyke, No. 760. Color, reddish apricot shaded to yellow in center. Center petals quite curly and good Pæony form.

Price, \$1.50.

Lady Gertrude, No. 745. The color of this new Pæony-flowered Dahlia is a light canary yellow while the reverse sides of the petals are pure white, being very broad and flat. The flower is borne on long, stiff stems holding the large blossom in good position.

Price, \$5.00.

Lady Gay, No. 708. Color, medium light carmine; outer half of petals heavily clouded yellow; veins of yellow and whole length of petals slightly shaded yellow at base.

Price, \$1.50.

Leading Lady, No. 107. Back rows of petals are a beautiful light cerise and are tipped and veined white, while the petals of the balance of the flower are tipped cerise and clouded white to the base. A wonderful, attractive combination.

Price, 50c.

Los Angeles, No. 245. Color, white, heavily clouded cerise. Some of the petals almost white. The flower is large and has broad, flat petals, giving it a very decorative effect. A beauty.

Price, \$1.00.

Marguerite Clark, No. 248. Color, very light cream on face of petals which are curled and twisted in fine shape. The reverse side of petals is heavily clouded cerise pink, which gives the flower a beautiful variation of colors. Large size.

Price, \$3.00.

Mark Twain, No. 298. Very light, bright red with heavy circle of yellow around disc much like Evening Star. Petals pointed and very twisting. A beautiful showy flower.

Price, \$2.00.

Marie Suplee, No. 936. The color of this beautiful Dahlia is a deep butter yellow with long, slim, twisting florets. A true

Pæony-flowered specimen borne on good stems. One of the most beautiful yellow Pæony-flowered Dahlias yet produced.

Price, \$2.00.

Matchless, No. 828. Color, cardinal shaded to white at base. A fine cut flower Dahlia. Flowers stand erect on good, stiff stems.

Price, \$2.00.

Maud Tripp, No. 250-D. The color and shape of this Dahlia are both novel. The flower is very large, with long, slim, rolled petals, standing up and incurved in a pleasing manner. The color is a purple lavender with lines of yellow whole length of petals. The flowers vary somewhat in shade.

Price, \$1.50.

Michael Angelo, No. 1426. Light purple, outer ends of petals deeply clouded white. A square built-up flower on good stems for cutting. An unusual combination of colors.

Price, \$1.50.

Mildred Lanphear, No. 844. The color of this Pæony-flowered Dahlia is a very light pink. The formation is beautiful with numerous curly petals in the center. A fine flower for cutting and produced on long stems.

Price, \$2.50.

Mina Davis, No. 603. Bright orange, heavily veined and clouded yellow, giving the flower a bright orange shade; a very nice, peculiar color. Petals are quite broad, but well shaped.

Price, \$2.00.

Minnie Foster, No. 2061. Tan or straw very closely describes the general color of this beautiful Pæony-flowered Dahlia. The flowers are very large and borne on long stems. Petals are quite broad and slightly fluffy with nice curly petals in center. A very unusual shade has this Dahlia.

Price, \$3.00.

Montana, No. 827. Light chrome orange with cloudings of pink and salmon. The Montana is one of those flowers that with a very little extra care and disbudding there is almost no limit to its size and beauty. It has fine stems for cutting and can be used with hundreds of other colors.

Price, \$5.00.

Morning Light, No. 735. A clear canary yellow, Pæony-flowered Dahlia with long, slim petals. The shape of this Dahlia is much like a Decorative and quite full.

Price, \$2.00.

I want every one of my customers to join the American Dahlia Society. The little news Bulletin published by the Society is full of interest and information for the Dahlia lover and is free to every member. Write William J. Rathgeber, Secretary, 198 Norton Street, New Haven, Conn.

ADDITIONAL NEW PÆONY FLOWERED DAHLIAS—Continued

Morning Star, No. 871. Light, bright carmine, with a large circle of bright canary yellow around center disc; very much resembling Evening Star except that it is a considerably larger flower. It is borne on stiff stems which carry the blossom in an upright position. Price, **\$2.50.**

Mozart, No. 622. Deep velvety carmine. Petals very broad and flat and quite pointed, with a deep magenta shading. Price, **\$1.00.**

Mrs. A. J. Moulton, No. 610. A beautiful shade of golden orange changing to canary at base of petals. Petals are broad and slightly rolled, giving the flower a fluffy appearance. Reverse side of petals is a red salmon, which shows on the face where the petals are rolled. Price, **\$3.00.**

Mrs. E. G. Layng. Color, pink and yellow, striped and clouded together, making a very showy flower. It is a very large flower on good stems. Price, **\$3.00.**

Mrs. Rockwell, No. 1048. Deep, rich cardinal. A large flower of an unusually rich color. This Dahlia should be seen to be appreciated. The flowers are borne on good stems well above the foliage and are very showy and attractive. Price, **50c.**

Naomi, No. 941. This Pæony-flowered Dahlia is very large in size. A rich orange color with a reddish cast; florets are faintly bordered with a redder shade. With fairly good treatment this Dahlia is certainly a mammoth. Price, **\$3.00.**

Old Grisley, No. 61. Crushed strawberry, cerise and yellow blended together about equally, but cerise and strawberry show more prominently. Petals quite slim and somewhat twisted. Price, **50c.**

Pat Nagel, No. 1444. Scarlet cardinal. Base of petals slightly shaded yellow. A heavy flower. Price, **75c.**

Peach Perfection, No. 978. The color of this beautiful Dahlia is a deep peach pink tinted slightly with yellow at the base. Florets are quite broad and pointed at the tips giving it a fine attractive appearance. A most unusual and desirable flower. Price, **\$5.00.**

Princess of Patches, No. 1050. Light cardinal, medium sized flowers borne on long stems. Occasionally the flowers show from one to four white petals. Price, **25c.**

Priscilla, No. 105. Ground color, dark American Beauty. Large, broad petals with sharp tips. Some of the petals are clouded dark maroon, while other petals are shaded

to light cerise at tips. Some are thickly mottled white. Small center petals are curled and twisted in a unique manner. Price, **25c.**

Prosper, No. 754. Color, apricot yellow, shading to light butter yellow at base. Each petal is serrated, forming a three saw-tooth tip. This is a very unusual flower with a very desirable color. Price, **75c.**

Purple Monster, No. 859. The color of this monster Dahlia is a very deep velvety purple. The formation of the flower is exquisite and it is borne on very long stems. It is certainly a mammoth. Price, **\$5.00.**

Radiant Charming, No. 161. White heavily clouded deep pink. A beautiful flower for cutting on long stems. Good size. Price, **50c.**

Red Dawn, No. 930. Color, dark, rich maroon. A very large flower of a rather unusual formation, the florets being very long and pointed, giving it an extremely fine appearance. Price, **\$2.00.**

Reinette, No. 358. Magenta and white beautifully blended together. Two heavy veins of white run whole length of petals. Base slightly tinted yellow. Price, **50c.**

Rhoda Greenway, No. 820. The color of this Dahlia is a sort of brownish salmon. It is very unusual in its formation as well as color. Price, **\$1.50.**

Rhode Island, No. 2010. Pure white and each petal bordered with very light red (almost a yellow) and the tips of petals are white. This is a medium size Pæony-flowered Dahlia on extra good stems which hold the flower erect. An extra good cut flower sort, very desirable, and very attractive in color. Price, **\$5.00.**

Robert Hole, No. 483. Orange red, shaded and mixed with yellow. Petals broad and slightly curved. A large flower with extra long stems. Price, **\$1.00.**

Rosy Blonde, No. 945. Color, deep salmon tinted with yellow at base of florets. Much resembling Jean Anderson, but with florets more twisting and a darker shade of orange. A fine cut flower Dahlia. Price, **\$2.00.**

Rosy Morn, No. 796. Color, old rose pink. One of the finest colors in Dahlias. Long stems and flowers stand up; good for cutting. Price, **\$1.50.**

Silverine, No. 93. White, clouded and veined pink. Good flower on long stems. Price, **75c.**

ADDITIONAL NEW PÆONY FLOWERED DAHLIAS—Continued

Si Perkins, No. 499. This flower presents a brindle appearance. Having a mixture of red and white, also a tint of yellow shows quite prominently. Rather an odd combination of colors, but an attractive flower. Price, **50c.**

Sister Jane, No. 437. Clear, light canary yellow, good sized flowers, true Pæony style with petals curled and pointed in artistic manner. Splendid, long, stiff stems hold it very erect. Price, **\$1.50.**

Society, No. 2089. Canary yellow heavily clouded light red. A very showy and attractive flower. Price, **\$1.50.**

Stillman's Red Cross, No. 1412. Bright deep carmine. Petals quite long and fluffy. Solid color. Large size flower. Fine stems for cutting. Price, **\$1.00.**

Strawberry, No. 79. Crushed strawberry. Fair sized flower and a very unusual color. Center petals are nicely twisted, giving it a good Pæony shape. Price, **25c.**

Summer, No. 108. Beautiful canary yellow. A large flat flower with broad petals. A fine color and very free blooming. Price, **50c.**

Sunflower Gem, No. 642. This striking new Pæony-flowered Dahlia is simply a wonder in the Dahlia family. The close resemblance of this flower to the Sunflower is very remarkable. The large open center, or disc, is especially beautiful. The flower itself is borne on long, stiff stems and is held in an upright position, making one of the most attractive of the Pæony-flowered Dahlias. Price, **\$3.00.**

Sunrise, No. 270. Petals light red. Long, twisted at points and in center. Heavily veined through center with yellow. Tips of petals yellow. Somewhat resembling Geisha. Stems good length and medium sized flower. Price, **\$1.00.**

Thanatopsis, No. 794. Color, red, shaded pink and base of petals yellow. A fine cut flower Dahlia. Price, **\$1.50.**

The Camouflage, No. 870. Color, carmine heavily tinted yellow. Yellow mixed with the carmine. A very desirable flower. Price, **\$2.00.**

The Chameleon, No. 123. Petals shaded yellow at base. Ruby red in center fading to dark cerise at tips of petals. The broad, flat petals of this large flower with their varied shading make this a most desirable Dahlia. Price, **50c.**

The Pink Lady, No. 30. A lovely shade of clear pink. Flowers are medium size and borne on long stems. A fine cut flower variety. Price, **\$1.00.**

The Royal Mayor, No. 594. Light butter yellow. Petals long, slim and rolled. Lots of smaller petals twisted and curled around center in a unique form. A large, fine colored flower of unusually fine appearance. Price, **\$5.00.**

Thomy Thompson, No. 239. Color, a shaded golden salmon. A large, beautifully formed flower with long, slim, curly petals. It is a very large, full, deep flower and of unusual quality. Price, **\$2.00.**

Thos. Galvin, No. 411. Body old gold, slightly shaded pink. A deep heavy fluffy flower. Petals broad and long and twisting. The reverse side of petals clouded pink and showing from the front where the petals roll up. A wonderfully fine, mammoth, new Dahlia. Price, **\$3.00.**

Verna Thompson, No. 77. White, heavily clouded cerise. This immense, large new Pæony Dahlia is a beauty beyond all doubt. It closely resembles Aunt Electa in color, but somewhat different in shape. A very full deep flower. Price, **\$1.00.**

Wedgwood, No. 692. A beautiful rose color. Petals broad and sharp pointed. Very desirable. Price, **\$1.00.**

W. F. Brown, No. 782. Color, yellow, red and deep pink, about equally divided in this beautiful Pæony-flowered Dahlia of various colors. This is a wonderful flower of exquisite formation. The petals are curling and twisting in fine shape and colors present a beautiful combination. It is one of the most free blooming Dahlias in the whole Dahlia family. Price, **\$3.00.**

White Cap, No. 318. Pure white with broad, flat petals of a glittering appearance. This Dahlia is large and possesses qualities of great merit for house decorations, in bunches or vases. Price, **\$1.00.**

White Climax, No. 2037. Pure white Pæony-flowered with long, slim, twisting petals. A medium size flower and desirable. Price, **\$1.50.**

White Dove, No. 470. Very pretty pure white Pæony. Petals small and slightly curled, giving fluffy appearance. Stems long. Slightly shaded light cream in center. Very full and unique. Price, **\$1.00.**

White Mammoth, No. 597. Pure white. This is simply a "mammoth" giant and passed for the largest white Dahlia exhibited the past season at any exhibition. The flower is unusually well formed and attracts the eye of everyone who sees it. Price, **\$2.00.**

ADDITIONAL NEW PÆONY FLOWERED DAHLIAS—Continued

White Pearl, No. 995. Pure glistening white. The florets of this beautiful white Dahlia are broad and flat, standing out like those of a single Dahlia. The plant makes a low growth and the flowers stand up above the foliage in beautiful shape. When planted in a row the whole row has almost the effect of a snowbank. The profusion in which these beautiful white blossoms are displayed is indeed wonderful.

Price, \$2.00.

White Rock, No. 1429. Pure white. Petals long and quite slim like South Pole,

curled and twisted somewhat. Small petals, around center. Very good size. Stems good length. Price, \$1.50.

W. T. MacFarlane, No. 1456. Bright cardinal, heavily clouded yellow at base of petals. Extra long, stiff stems, and good size. A splendid Dahlia for show and bouquet effects. Very desirable. Price, \$1.50.

Wyoming, No. 602. Light pink heavily clouded yellow on lower half of petals. Small curly petals around center give the flower a fine appearance. Price, \$1.00.

NEW CACTUS PÆONY DAHLIAS

Cherry Tree, No. 2057. The color of this Dahlia is a beautiful deep cherry pink. It is a very odd shade and of nice formation with good stems. Price, \$2.50.

Harold Darling, No. 739. The color of this Dahlia is one of those very unusual shades of light orange. The formation of the flower is on the order of a Cactus Pæony, the petals being quite slim and rolled. The color is very unusual and desirable and together with the formation of the flower it makes one of the most beautiful Dahlias of the Cactus Pæony class.

Price, \$2.00.

Lusitania, No. 291. Color, rose pink. The numerous long, slim petals are rolled enough to give them a very slim appearance, and stand out, forming large, attractive flowers.

Price, \$1.50.

Mrs. Stillman, No. 218. Color, a beautiful shade of pink. One of the most exquisite shades of pink in the Dahlia family. The flower is of large size and is made up of very long, slim, incurving petals that stand up in a most attractive manner. The color of this Dahlia is pleasing to everyone.

Price, \$2.50.

Mammoth Spider, No. 2062. A very large flower. Petals stand out straight without incurving and rolled quite small the entire length. The color is a fine straw color, and a very unusual flower, and immense in size, being 8 and 10 inches across.

Price, \$3.00.

Morning Mist, No. 2059. This is one of the largest Cactus Pæony Dahlias and a wonderful shade of light pink. It is a profuse bloomer and a valuable Dahlia for home and table decorations. Price, \$3.00.

Pink Crown, No. 2006. A beautiful flesh pink of a most desirable shade. The flower is of the Cactus Pæony type and very handsome. The most desirable shade of pink to be found in Dahlias. Price, \$2.00.

The Gay Boy, No. 682. Light scarlet. Petals twisted and pointed and stand up like a Cactus and tipped yellow. Base of petals heavily shaded yellow. A very gay flower on long, upright stems.

Price, \$2.00.

Velvet Spider, No. 2012. Rich, deep velvety carmine is the color of this new Cactus Pæony Dahlia. A nice heavy flower on a tall plant. Very noticeable.

Price, \$2.00.

Wild Bill, No. 479. Color, bright fiery red. Petals very pointed. A medium size flower, very showy and attractive.

Price, \$1.00.

W. W. Kennedy, No. 742. The color of this beautiful flower is a canary yellow. Reverse side of petals is of a pink shade. The petals fold and twist at tips slightly, showing the reverse side. It is of the Cactus Pæony type, a very free bloomer, and a most attractive flower. Price, \$3.00.

CORD FOR TYING DAHLIAS

In various lengths, but as good as new for this purpose. A very limited supply at 15 cents per lb.; 8 lbs. for \$1.00, F. O. B. Westerly. Your postmaster can tell you the cost of 8 lbs. by mail to your town. Order now and be sure to have it in time. It can be used for many other purposes.

NEW DUPLEX OR SEMI-PÆONY-FLOWERED DAHLIAS

ORIGINATED BY GEO. L. STILLMAN

This is an entirely new, and much needed, classification for a general favorite type of Dahlia. See Dahlia classification on another page.

These Dahlias are not an extremely large flower, but just the right size for cut flower decoration, and they possess the most beautiful combination of colors imaginable.

The following are all new varieties of my own origin:

Adelaida, No. 10. Bright cerise red. Petals tipped with yellow and yellow around base with two narrow stripes of yellow through center. Price, **50c.**

Altadena, No. 145. Cerise and white, clouded and mixed together. After the colorings of Mosel. A fine specimen for cutting. Price, **20c.**

Banner Girl, No. 1481. Color, pure white, clouded yellow at base of petals. Petals rolled back whole length. A nice flower. Price, **\$1.00.**

Ben Hur, No. 310. Scarlet with yellow circle around disc. Petals slightly tipped yellow. Two veins of yellow run lengthwise of petals. Price, **\$1.00.**

Buster Brown, No. 70. Beautiful shade of canary yellow. This is an immense large flower of unusual qualities. The flowers measure 7 to 8 inches in diameter and have heavy, broad petals, slightly streaked with carmine and borne on extra long stems that are very stout. It is simply a wonderful flower. Price, **\$1.00.**

Cygnnet, No. 818. Color, very deep purple of good size. The color of this flower is much to be desired. It is borne on good stems, making it a fine cut flower Dahlia with a rather unusual color. Price, **\$1.50.**

Golden Crown, No. 247. Color, a rich deep shade of cream. This is a very showy flower. The petals are broad and some are twisted at center. Being shaded red on reverse side gives the flower a pleasing appearance. Price, **\$1.00.**

Hubby Hapgood, No. 510. Color, cerise magenta, shaded white at base of petals. A fine Dahlia for cut flowers. Price, **\$1.00.**

Jennifer Hadden, No. 333. Color, cerise and white, yellow around base. Medium size on good length of stem. Price, **50c.**

Koros, No. 659. Color, a very bright shade of maroon. Petals curving around center. Price, **\$1.00.**

Latona, No. 420. Color, light coral red, shaded lighter at base. A very striking color. Tall, showy plant. Price, **\$1.00.**

Lenore, No. 329. White, clouded cerise, but very slightly, nearly white. Very beautiful flower, medium size, with long stems. Price, **50c.**

Lord Baltimore, No. 168. Color, red. Yellow at base and heavily veined yellow in center of petals. Price, **\$1.00.**

Maria White, No. 19. Color, magenta, heavily blended white at tips. The petals are occasionally heavily veined white. Price, **35c.**

Merigold, No. 2005. A light fawn as near as can be described. A clean, nice color and rather unusual. A medium size flower on good stems for cutting. Price, **\$1.00.**

Mona, No. 393. The color of this Dahlia is rather unique, being, as near as can be judged, a light crushed strawberry. Medium sized flower and a very desirable shade. Very free bloomer. Price, **25c.**

My Girl Sally, No. 472. Color, deep cherry red, shaded to yellow at base. Petals broad and flat. Fine for cut flowers. Price, **\$1.00.**

Princess Alice, No. 703. The color of this Dahlia is a beautiful peach pink heavily shaded to light canary at center. Petals are long and broad and roll back to a point at tips. The color is very unusual and the flower is very desirable. Price, **\$1.00.**

Rosy Gem, No. 840. Color, reddish salmon of various shadings, all of which are very desirable and attractive. Price, **\$2.00.**

Searchlight, No. 96. Bright, fiery scarlet. Center surrounded by heavy canary yellow disc. The broad, flat petals are pointed and tipped yellow. The New York Horticultural Society awarded me a first-class certificate on this Dahlia. Price, **50c.**

Show Girl, No. 1006. Yellow and cerise. Base of petals yellow. Balance light cerise shading to white at tips. Two veins of white run lengthwise through petals. It is a profuse bloomer and flowers are borne on extra long stems. Price, **25c.**

Song Bird, No. 304. White with faint lines of yellow, and shaded yellow at center. A fine Dahlia for decoration. Price, **25c.**

NEW DUPLEX OR SEMI-PÆONY-FLOWERED DAHLIAS—Continued

Speedway, No. 251. Rich, deep scarlet. Yellow at base of petals. Petals slightly veined lighter. Flowers very large and bright. Extra long stems. Price, 50c.

Stella Razets, No. 1459. Deep cerise, veined white. Base of petals white, forming a large circle. Petals broad and pointed, somewhat resembling Mme. J. Coissard. Medium size on good length of stem. Price, 35c.

Underhill, No. 1454. Color, deep canary yellow. Petals slightly shaded and clouded pink at outer edge. Center clear yellow. Petals wide and flat. Price, 50c.

Variation, No. 1445. Lemon yellow. Petals finely veined and clouded throughout with cerise. Some flowers lighter than others. Base of petals yellow. A very showy flower with good stems. Price, 50c.

Vassar Girl, No. 846. This new semi-Pæony-flowered Dahlia is a bright velvety magenta shaded to white in the center. The petals are well rolled and resemble the Cactus Pæony Dahlia. Its very bright, rich, attractive color makes it a very desirable garden Dahlia. Price, \$1.50.

Viola Dana, No. 1030. Color, very dark maroon, nearly black. Price, 50c.

White Eagle, No. 428. Pure white. Petals very slim and rolled to a tubular shape. Price, \$1.00.

Yawcob Strauss, No. 253. Light red, yellow at base. Heavily clouded and veined yellow. Petals stand up and edges roll back slightly. Long stems. Medium sized flowers. Price, 75c.

NEW SHOW DAHLIAS

ORIGINATED BY GEO. L. STILLMAN

Budd Fisher, No. 384. Hybrid Show. Color, deep striking carmine. A very rich, desirable color. Petals are quite pointed at the very tips. Price, \$1.00.

Butter Queen, No. 1490. Color, light butter yellow of large size. Tips of petals slightly shaded pink on front and more heavily shaded pink on reverse side. One of the finest new Show Dahlias. Price, \$2.00.

Ch. Dyker Dolly, II, No. 1486. Light brick red. A large flower and a fine bloomer. Price, \$1.50.

Deemocrates, No. 1106. Cardinal. Good sized flower, full center. Price, \$1.00.

Edna Browning, No. 1440. Hybrid Show. Deep cerise pink, shaded nearly white at base. Tips of petals serrated and lighter shade. Very large flowers. Stems good length. Very desirable. Price, \$1.00.

Frank Mallon, No. 202. Color, deep butter yellow slightly veined light red. One of the freest blooming Dahlias and good size. Price, 50c.

Gen. Booth, No. 1368. Beautiful shade of light purple. Flowers very large and has long stems, standing high above the foliage. Price, 50c.

General Custer, No. 1441. Reddish salmon clouded slightly yellow at base of petals. A very large flower on good length of stem. Price, \$1.00.

John Stanhope, No. 312. Very red salmon. Large flower on long stems. Most desirable rich color. Price, \$1.00.

King of Shows, No. 1439. Deep butter yellow of a solid color throughout. Every petal is most perfectly quilled and uniquely formed. A mammoth flower, on long stems. It is without doubt the finest Show Dahlia ever grown and should be seen to be appreciated. Price, \$3.00.

Largest of All, No. 1421. Beautiful shade of dark lilac. A mammoth Show Dahlia in every sense of the word. A beautiful color and form. Stems good length. Should be seen to be appreciated. Price, \$5.00.

Miriam Cooper, No. 381. Light canary yellow, slightly overcast with pink. Reverse side of petals heavily clouded pink. A large sized flower and a good form. Price, 75c.

Ox Blood, No. 210. A very clear red. Very large Show Dahlia on extra long stems, like "Le Colosse," and a trifle darker shade. Price, \$1.00.

Red King, No. 1487. Hybrid Show. Rich, deep carmine. Flowers extra large and extremely bright color. One of the giant Shows. Price, \$1.00.

Scarlet Giant, No. 1489. Deep fiery scarlet. A most wonderful flower both in color and size. A very free bloomer with good stems. The brightest and most attractively colored Show Dahlia. Price, \$1.00.

The Hermit, No. 1437. Deep brick red. Petals small, numerous, and slightly cupped with good stems for cutting. Good flower and very desirable and attractive. Stems good length. Price, 75c.

NEW COLLARETTE DAHLIAS

ORIGINATED BY GEO. L. STILLMAN

Annette, No. 271. Color, yellow at base of petals, balance of petals cerise, shading to white at tips. The collar is nearly white with cerise shadings. Price, 25c.

Capt. Roycroft, No. 1372. Dark maroon. Collar white, bordered with pink. A large, fine color in Collarette style. Long stems. Price, 35c.

Caroline, No. 1483. Deep velvety maroon. Petals broad and flat, collar maroon with clouds of white at tips. Price, 50c.

Color Blender, No. 128. Base of petals yellow for a quarter of an inch. Outer rim of petals from base to tips yellowish cream. The entire center of the petals is a bright crimson. In some of the flowers the crimson covers the entire petals, only the rim is a shade lighter. The most beautiful Collarette known. Free flowering. Price, 75c.

Daisy Smith, No. 132. Canary yellow, slightly clouded pink. Collarette lighter canary. Price, 50c.

Grace Loretta, No. 272. A very rich purple magenta with a nearly white collar. The very richest color of any of the Collarettes and the flower is of good size. Price, 50c.

Greyhound, No. 1027. Color, a combination of salmon, copper and brown. A very unusual, odd color. Large flower with broad, flat petals. A faint Collarette, of a lighter shade, surrounds the center. Price, 50c.

Heatherbelle, No. 130. Yellow, center is surrounded by Collarette of yellow, faintly tipped white. Price, 35c.

Jumbo, No. 126. Deep scarlet with shadings of yellow overspreading the flower. The collar petals are quite long and red and yellow in color. The largest Collarette. Price, 25c.

Peggy O'Neil, No. 1413. Deep ruby, shading lighter at tips of petals. Collar white with fine veins of ruby red. One of the finest. Price, 35c.

The Peach, No. 1123. Amber and red veined and striped. White collar. Price, 50c.

Wilda, No. 1397. Clear light purple or jacond. Base of petals yellow; a very striking contrast of colors. Price, 50c.

Winfield, No. 1361. Deep, velvety magenta with white collar shaded with magenta. A fine Collarette. Good size, on long stems. Price, 50c.

Yellow Prize, No. 133. Light canary yellow. Some of the flowers have blotches of red at base of petals. The collar is yellow and white blended together. This Dahlia has a most beautiful foliage for decoration and is a free bloomer. Price, 50c.

NEW SINGLE DAHLIAS

ORIGINATED BY GEO. L. STILLMAN

Alemeda, No. 44. Deep crimson magenta. Veined and shaded white. Lighter at base and tips of petals. Medium size flowers and fine for cutting. Price, 25c.

Anita King, No. 1341. Cardinal with two and three stripes of orange running through petals. Base of petals shaded yellow. A fine color. Price, 35c.

Aukum, No. 1073. Light pink. A very good cut flower Dahlia of medium size and with free-blooming qualities. Price, 25c.

Blushing Boy, No. 1096. Very dark maroon. Center of petals and tips pure white. Occasionally some of the petals come solid dark maroon. A striking combination. Price, \$1.00.

Chanticleer, No. 1366. Color, cinnamon, faintly streaked with gold. A very striking color. Price, 25c.

Chinese Lantern, No. 929. This new single Dahlia possesses very unusual coloring. Each petal is heavily bordered with a rich dark maroon. The flowers are very showy. A most desirable single Dahlia. Price, \$1.00.

Color Card, No. 1116. A Dahlia of many colors and shades, having yellow, red, pink and amber in very attractive shadings. Price, 35c.

Erebus, No. 645. Pink and white clouded together. A good, large flower and beautiful color. Price, \$1.00.

If you buy Dahlias from me your stock will be "UP TO THE MINUTE."

NEW SINGLE DAHLIAS—Continued

Fang de Charmer, No. 1097. Clouded pink. This is the most peculiarly marked Dahlia that has ever come under my observation. The tip of each petal is serrated in a diamond shape. At the base of the diamond are two fangs with sharp points, hence, the name "Charmer," one of the most profuse flowering single Dahlias in my collection. Price, 35c.

Imperial Elephant, No. 396. The largest and most wonderful single Dahlia ever originated. The color of this monster is most beautiful. There is a circle of canary yellow around the center which is 2 inches wide. Then the petals are a bright cardinal and clouded yellow at tips. The flower measures from 7 to 9 inches in diameter, with very broad, flat petals. The plant makes a heavy, stout growth of medium height. Price, \$3.00.

Jewel, No. 118. A beautiful shade of pink. Broad, flat petals; long, branching stems. One of the finest of singles. Price, 25c.

Laura H. Crews, No. 1012. A pretty light pink single with finely formed flat petals of good size. Price, 25c.

London Jockey, No. 1400. Very attractive single of deep velvety magenta shade. Tips and base white with a few very fine veins of white streaking into the body of flower. Large yellow center disc of good size. Long stems, and an odd color. Price, \$1.00.

Lorraine, No. 679. Color, dark red with a slight tinge of purple. Deep bright carmine and good for cutting. Price, 50c.

Margaret Ward, No. 1059. Deep lavender pink. Petals broad at base and sharp at point. Good size. Small white center. Price, 25c.

Mountain Pink, No. 952. Color, very beautiful shade of light pinkish lavender tinted with yellow around the florets. One of the very best singles yet produced. Price, \$1.00.

Niobe, No. 24. Color, fawn, slightly shaded pink. A very attractive, desirable color. Price, 50c.

Ox Eye, No. 1086. Carmine with yellow base. Has the appearance of the ox eye. Price, 20c.

Peggy Lundeen, No. 138. Color, slightly yellow, base of petals encircled with white. Then the petals are cerise tipped and clouded white. Beautiful colorings. Price, 25c.

Polly, No. 121. White, flushed with pink. Tips of petals serrated. A good single. Price, 15c.

Prince of Yellows, No. 142-2. Color, a beautiful rich canary yellow. Petals broad and flat. Price, 20c.

Prosperton, No. 810. Color, medium shade of carmine. Each petal is serrated at tips and heavily clouded yellow at tips; clouded and veined through the middle and nearly all yellow on lower half. A very showy, large flower for a single Dahlia. Price, \$1.00.

Radiance, No. 1014. Deep rich magenta, slightly tipped white. A beautiful thing for table decoration. Price, 25c.

Scipeo, No. 678. Light carmine and yellow at base of petals which are broad and flat. A beautiful flower. Price, \$1.00.

Single Jane, No. 21. Deep, velvety magenta with a shading of white and yellow at base of petals and a blending of white at tips. A fine combination. Extra long stems. Price, 35c.

Sir Gilbert Parker, No. 1109. Color, golden amber, heavily shaded orange and amber. An extra good single and large size. Price, 75c.

Snowflake, No. 2052. This Dahlia is pure glistening white with broad, flat petals forming a flat flower which stands erect on long stiff stems. The most perfect white single Dahlia yet produced. The beautiful large yellow disc in this flower gives it a beautiful finish. Price, \$1.50.

Star of the East, No. 1103. Magenta, yellow at base, edges and tips clouded white. Price, 15c.

Susie, No. 1081. Single Dahlia of a pleasing shade of rather dark velvety magenta with one to two faint streaks of light shade running through petals. Price, 15c.

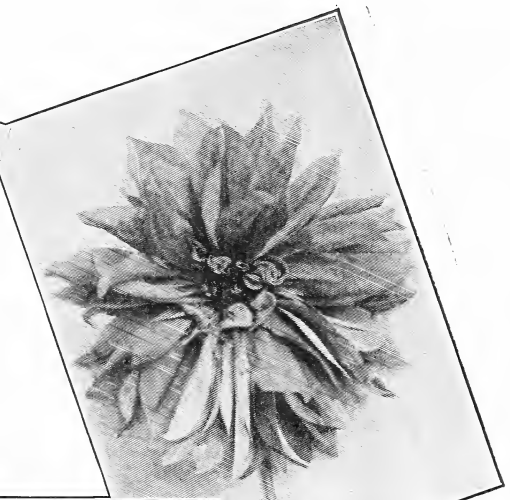
Tama, No. 1362. Magenta. This flower should have a place in every garden. Price, 50c.

DAHLIA STAKES

As many of my customers make inquiries of me as to where they may obtain strong Dahlia stakes, I have arranged to furnish a good, strong, **HARDWOOD** Stake, 1¼ inches square, and 6 feet long, in the rough, just as they come from the mill, at 11c. each, F. O. B. Westerly, R. I.



RHODE ISLAND



MURRAY HILL



BRIDAL VEIL



WONDER OF NATURE



BILTMORE

CACTUS DAHLIAS

Attraction. (Foreign.) Color, a very beautiful pink with a lavender sheen. The form and size of this Dahlia are equally good. The blossom is borne on nice long stems for cutting. Price, \$2.00.

Chastity. A very pretty pale pink of very finely twisted Cactus petals which stand up most attractively. As held up the center has the appearance of being white. Its stiff stems hold it erect. Should be seen to be appreciated. Fine size. Price, 50c.

Citizen. Dark maroon, large flower, shaded purple. Grows very strong and erect, and is free flowering. Price, 20c.

Columbia. Vermilion, tipped and striped with white. Long, narrow petals. The plants make very little foliage and the flowers are carried well above it. It blossoms profusely, and with its variety of coloring it presents a most striking appearance. Price, 25c.

Comte Da Ribeira. Yellow, tip sulphur color. Shading yellow and lilac at center. Color unique. Price, 35c.

Conservateur Lefebvre. Salmon, pink. Flowers very large and a free bloomer. The base of the petals is light buff, which shades toward the points to salmon and pink, giving the flower a delicate glowing pinkish appearance. Price, 25c.

Country Girl. Inner row of petals broader than outer; of a pleasing shade of yellow. Outer petals nicely rolled, base being yellow, tips orange. Price, 25c.

Cycle. Red, slightly of a pinkish shade, tips of petals tinged with a shading of white. With plenty of fertilizer this Dahlia will produce magnificent flowers. Although it sells for a very low price, it is an exceptionally desirable Dahlia. Price, 15c.

Dainty. The name Dainty aptly describes this charming novelty. The ground color is lemon yellow, which becomes paler with age and is more intense, almost approaching canary yellow, at base of petals. Price, 25c.

Delight. Pale pink center shaded yellow. Price, 25c.

Dr. Mene. Amber and yellow. Flowers are large and deep. In color, a rich amber, while the center is mottled amber and yellow. A most desirable Dahlia. Price, 25c.

Else. Salmon pink, slightly suffused yellow. Blooms very freely. A most beautiful shade. Price, 25c.

Emperor. Plum color, pale yellow at base of petals. A very desirable Dahlia. Price, 25c.

Etendard de Lyon. Broad, wavy petals, color between a rich carmine rose and royal purple. One of the best. Price, 75c.

Fantassima. Petals are long and narrow, curling upward, of true Cactus type. Inner rows of petals are salmon pink. Outer rows of petals are pinkish lavender shade. Backs of petals are much deeper in tone of a pinkish violet color. Price, 50c.

F. W. Fellowes. The blossom is huge and composed of long, narrow, straight petals. The color is unusual, orange or terra cotta. Stems are long and straight, making an excellent variety for cutting. Price, 75c.

F. I. Pateman. Lovely bright yellow. Of good size and unusually attractive. Price, 35c.

Flame. Orange scarlet. Florets are long and twisted. Flowers are carried on good stems. Very bright and attractive. One of the newest and best. Price, 25c.

Flieder. Lavender and white. A very large flower of unusual beauty, both in color and shape. Price, 25c.

Goodhope. Deep red striped with white. Price, 50c.

Golden Gate. A good flower of a deep golden yellow, tinted bronze or russet; very free; flowers immense size. Price, 50c.

Imperial. A large Cactus; color, yellow, disc quickly changing to reddish carmine. A vigorous grower. Price, 25c.

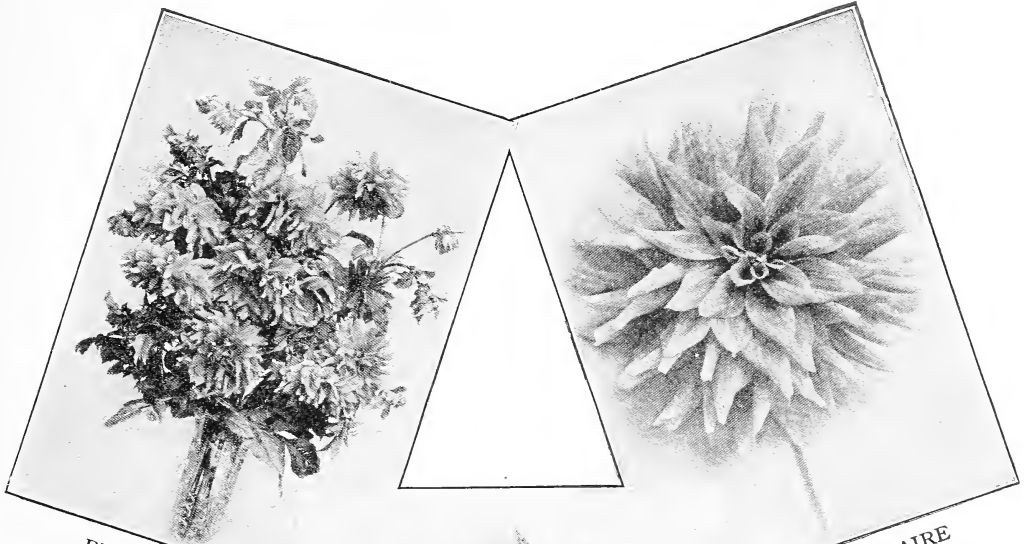
Ingleboro Edgealand. Medium size. Center of yellow, balance of flower of a good, clear, medium velvety red. Price, 35c.

J. B. Riding. Yellow base, shading to deep orange. Large flower of fine form. Very attractive. Price, 25c.

J. H. Jackson. This is one of the best black Cactus Dahlias. Its velvety black maroon shade is very striking. The flowers are very large with long stems and stand out well from the foliage. Every lover of Dahlias should plant a J. H. Jackson. Price, 25c.

J. Weir Fyfe. Dark maroon, sometimes shading to bright purple. A beautifully formed, free blooming Dahlia. Price, 20c.

Kalif. Medium carmine. A very large, solid color flower. Price, \$1.00.



BULL MOOSE

LADY CLAIRE



RUPERT
LOMA



BETTY DUKANE

MOUNT SHASTA

CACTUS DAHLIAS—Continued

Kathleen Bryant. Dark maroon. Large flower of a beautiful maroon shade and fine form. Price, **25c.**

Kapiolani. Hybrid Cactus. Very large flower, dark crimson in color. Petals broad but twisting to points at tips. Very attractive. Price, **\$2.00.**

Kleber. Dark scarlet. One of the most free blooming reds. Flowers are of large size and a very desirable color. Price, **25c.**

Libelle. Light purple. Flowers are very large and well formed, and present a beautiful appearance. A very desirable rich color. Blooms very freely. Price, **25c.**

Liberty. A very dark, velvety maroon with finely rolled and pointed petals. Medium size. Very pretty dark shade. Price, **35c.**

Lord Minto. Very light salmon pink, with delicate lemon yellow shading in center. Petals finely twisted and incurved. Points evenly and finely serrated. Flowers freely produced. Price, **25c.**

Mme. Ch. Compin. Lovely rich dark scarlet. The petals of this flower are slim and well rolled, straight and of compact form. Extremely beautiful. Price, **15c.**

Mme. Henri Martinet. Salmon pink shaded sulphur yellow at base of petals. A profuse bloomer and a beautifully formed flower of good size. Price, **25c.**

Maravigalla. Color, light rose, with golden tips. Florets slightly serrated at tips. Extra fine. Price, **50c.**

Marjorie Castleton. The outer florets are rose pink. The tips and inner florets are pure white. Price, **25c.**

Mary Farnsworth. White, slightly shaded light yellow at base. A very incurved variety. Price, **25c.**

Mary Keeling. Color, orange, shading toward yellow. Very pretty. Price, **25c.**

Master Carl. Deep, rich butter yellow. This Dahlia is a winner in every way. The flowers are immense, often measuring from 6½ to 7½ inches in diameter. Very full. Their beautiful bright color attracts the eye of all who see them. Price, **50c.**

Mayfield Beauty. Pink, shaded to yellow. A very unusual shade and one that attracts attention everywhere. A very desirable, medium size, low-priced Dahlia. Price, **25c.**

Mirifique. Purplish maroon. Flowers large, with long, slim, pointed straight petals. A fine bloomer and durable flower. Price, **50c.**

Miss Constance Farmer. Dazzling magenta. Very large flower, with long, slim petals, much claw-shaped and twisted. An elegant flower and most desirable in every garden. Price, **15c.**

Miss Fanny Foster. Variegated. Flowers of medium size. Some flowers a clear, deep red, others white with stripes of red. A fine Cactus Dahlia. Price, **25c.**

Miss Perry. Salmon with apricot shadings. Tips pinkish rose. Stems long and stiff. Price, **25c.**

M. Cazalis. Light magenta. Flowers of medium size and fine shape. Petals nicely pointed and curved. Flowers are white and magenta, beautifully blended together. A rare and striking combination of color. Price, **25c.**

M. Rodger Lecler. These flowers are of large size and light sulphur yellow. Tips of petals are a shade lighter. This is an extremely free bloomer, and flowers are borne well above the foliage. A beautiful Dahlia. Price, **75c.**

Mr. J. B. Bryant. Light sulphur yellow. Long, curly petals, finely twisted. Very good. Price, **25c.**

Mrs. Aaron Ward, No. 723. A new Dahlia of unusual merit. The color is of a light reddish shade, veined and tipped yellow. The petals are very slim and curling, twisting in a very attractive manner. The Dahlia itself is very large and should be in every home garden. Price **\$5.00.**

Mrs. C. H. Breck. Light red, tipped and overspreading more or less with white. A very showy, attractive Dahlia. Petals are broad at base and rolled to sharp points at the tips. A large flower and one of the most attractive Cactus Dahlias. Price, **75c.**

Mrs. Douglas Fleming. White. Petals serrated. A low plant. Price, **\$1.00.**

Mrs. F. Grinsted. Rich crimson and purple. Flowers finely curled and of large size. A most beautiful Dahlia. Price, **25c.**

Mrs. J. Emerson. A delicate lovely yellow, shading nearly white at tips. Some of the petals marked with very fine lines and dots of red. A large and beautiful specimen. Price, **20c.**

Mrs. J. Mace. Blush pink. Very large, fine formed flower of an exquisite color. The finest shade of pink yet produced. A strong grower. Price, **25c.**

CACTUS DAHLIAS—Continued

Mrs. Reginald Bailey. This Dahlia should be seen to be appreciated. A beautifully deep violet red. The long, rolled petals curl upward, making it a true Cactus. One of the best and most distinct.
Price, **50c.**

Mrs. Stephen Clarke. Pink shaded white. Good size and free.
Price, **25c.**

Nahida de Semelle. Color, light scarlet. Rolling petals, sharply pointed at tips. A very unique flower.
Price, **25c.**

Nero. Deep plum. Very desirable Dahlia of good form and size. Finely curled petals and quite free.
Price, **15c.**

Pearl De Lyon. Pure white. Very large, full flowers. Florets serrated at points, giving the flowers a fine feathery appearance.
Price, **25c.**

Premier. Scarlet. One of the most refined and desirably shaped Cactus Dahlias.
Price, **25c.**

Reine Wilmot. The center of this flower is yellow, shading out to a bluish pink. Handsome and attractive.
Price, **25c.**

Rheinkonig. Pure snow-white flowers of splendid form, 5 inches in diameter. They are of good substance and last splendidly when cut. Borne on long, stiff stems, held well above the foliage, making it as valuable for garden decoration as for cutting.
Price, **25c.**

Rupert. Pale amber yellow at base. A fine shape and color.
Price, **\$1.00.**

Sandy. Golden orange and fawn. A flower of great substance and durability. Most desirable in every way.
Price, **50c.**

Secretaire Fuld. Salmon and buff. Striped and mottled in a beautiful manner. Large size and a most desirable new free-blooming Dahlia.
Price, **15c.**

Sir A. Lamb. Crimson, shaded purple. Florets very pointed. A very attractive flower of fine form.
Price, **25c.**

Spotless Queen. Pure white. A very abundant bloomer of medium size. Fine for cut flowers.
Price, **25c.**

Success. Deep canary yellow. Petals small and sharp at ends.
Price, **35c.**

T. A. Havemeyer. Base of inner rows of petals is yellow. The rest of the petal is a brickish red, slightly tinted with purple. Petals are very slim, well rolled and curl upward in a charming manner. Very attractive.
Price, **25c.**

Una. A pretty Cactus Dahlia of a mixture of pink and white. The petals are *extremely* fine and each one serrated, giving a decidedly feathery appearance. The pink is somewhat spotted through the petals. Very good size and very desirable. Good stems.
Price, **\$1.50.**

Vater Rhein. Flowers over 6 inches in diameter, raised well above the foliage on stout stems. Petals broad, curled and twisted, the color of which is yellow, suffused with salmon-rose; a beautiful and attractive flower.
Price, **25c.**

Venezia. Clear magenta petals, serrated at points, making a very unusual feathery appearance. Very desirable in every way.
Price, **25c.**

Victor Von Scheffel. Exquisite, delicate light pink shading to pure white in center; somewhat resembles Kriemhilde in color. Blossoms medium size and borne on long stems.
Price, **25c.**

Viscountess Shearbroke. Reddish terra cotta. Large and free. Very showy.
Price, **25c.**

Zoo. Two inner rows of petals rich crimson, while the remainder of the petals around the outside are deep brilliant scarlet.
Price, **35c.**

NOVEMBER PEACE

Some there are who sorrow
For a summer sped;
Mourning for the Dahlias.
Withered now and dead.
There is time for dreaming,
And November's fleece
Wraps our lovely gardens
In a still, gray peace.

Remember, I send out Field-grown Bulbs, divided ready for planting, except where noted.



KING OF SHOWS—See page 42

DECORATIVE DAHLIAS

I prepay carriage on all retail bulb orders, accompanied by cash in full, in the United States. This does not apply to Special Offers.

Atlanta. Almost white, softly shaded with lavender. Blossoms somewhat resemble the Cactus variety. Flowers freely.

Price, 25c.

Autumn Gold. Light yellow petals bordered and heavily clouded pink. Petals medium, slim, and twisting.

Price, 50c.

Bermuda Red. Dark crimson. A good sized flower.

Price, 50c.

Blue Oban. Lavender, with a beautiful tint of blue. Very desirable on account of its peculiar color, perfect form and free blooming.

Price, 25c.

California. A beautiful bright rose pink. An extra good Dahlia.

Price, 25c.

Capt. Jack. Decorative. A very pretty Dahlia of yellow and deep amber. The outer petals are yellow, while those in and near the center are deep amber.

Price, \$1.50.

Chieftain. Clear, light red, heavily streaked and splashed canary yellow. Some of the flowers come clear red. Very large and attractive flower.

Price, \$1.00.

Creamo. Color, deep straw. This Dahlia is shaped like a Decorative, but each petal is a perfect quill like those of a Show Dahlia except the outer row which is more open. This is a very extraordinary specimen and the flower is borne on long, stiff stems.

Price, \$1.50.

D. M. Moore. Rich velvety maroon. Flowers of mammoth size. Extra good.

Price, \$1.00.

Dr. Tevis. The color of this monster Dahlia is a combination of pink, old rose, copper, and old gold. A beautiful flower on fine stems.

Price, \$3.00.

Esmeralda. White ground, with pinkish, violet petals. A fine combination of colors.

Price, 25c.

Gates Red. Dark, velvety carmine, good size, slightly darker toward center.

Price, 35c.

George Walters. Color, a rich deep flesh pink, or perhaps a shading of lavender overcasts it. A very large flower and of fine form.

Price, \$2.00.

Glory of Wilts. Extra large, beautiful blossoms. Color clear bright yellow.

Price, 25c.

Helen Charvet. Pure white with an occasional tint of pink. Of enormous size. Florets very broad. Excellent for decoration. Very attractive.

Price, 20c.

Jack Rose. Brilliant crimson red, similar in shade to the popular "Jack Rose," which suggested its name; perfect for garden decoration or for cutting.

Price, 15c.

John R. Baldwin. Yellow, buff suffused with red. Very fine.

Price, 35c.

Katherine Willcox. The color of this beautiful Dahlia is a very light pink while the tip of each floret is a very deep pink. It is a very large beautiful Dahlia.

Price, \$2.00.

Kalaokahio. Color, salmon pink, deeply shaded golden yellow in center. Good size flower and an odd color.

Price, \$2.00.

Le Grand Manitou. Ground color pale pink, striped, spotted and blotched with deep reddish violet. Flowers frequently come solid colors. Borne on stout, stiff stems, held well above the foliage.

Price, 50c.

Le Geant. Enormous, bright, velvety red flowers, borne on straight stems. A particularly handsome and very large Dahlia.

Price, 75c.

Lyon Comstock. Orange fawn, of medium size and very desirable.

Price, 20c.

Mme. Burel. A delicate shade of light pink, striped and spotted blood red. Petals slightly curled. Large blossoms borne on long, stiff stems. Very desirable.

Price, 25c.



PERFECT BEAUTY
The New Decorative Dahlia

DECORATIVE DAHLIAS—Continued

Mme. L. Tillier. Deep salmon, shaded down to light yellow at tips. A beautiful combination of colors. Price, 25c.

Mme. Louis Harriot. Large, beautiful yellow. One of those clear, light yellows that are so attractive in a Dahlia. Much the same shade as "Mrs. Chas. Turner." Try one and see if you are not satisfied that it is both large and beautiful. Price, 25c.

Mme. A. Nonin. Base of petals white, tips light lavender. Very pretty. Price, 25c.

Mme. Etta, No. 1430. Very dark lavender pink. Petals long, slim, rolled and twisted. A very full, large flower. Good length of stem. A nice specimen and very desirable. Price, \$2.00.

Maid of Kent. Rich cherry red, splashed and blotched with pure white. A variegated Dahlia with unusually peculiar markings. The center half of some of the flowers is white while the other half is rich ruby red. Attractive. Price, 15c.

Majestic. Brilliant scarlet, borne on long stems, making it a valuable variety for decorating purposes. Each broad petal is deeply notched. An unusual and beautiful Dahlia. Price, 35c.

Manitou. An immense amber bronze-colored blossom. Has a distinct shading of pink; is extra large and full, and unusually desirable. An excellent Dahlia, well worth adding to your collection. Price, 35c.

Marchioness of Bute. Pure white with slight tint of pink. An effective contrast of color very pleasing in appearance. Medium size. Price, 15c.

Mina Burgle. Deep scarlet, solid color. A large flower of fine form and a beautiful rich, bright color. A fine flower. Price, 50c.

Mlle. Marguerite Des Blanc. White. Very large, full, fluffy flower of clear white. An elegant variety and extremely desirable. Price, 50c.

M. Burel. Dark apricot yellow in center, shading lighter toward edge of petals, which are faintly lined and dotted with dark apricot. Large blossoms borne on good straight stems. A handsome variety. Price, 25c.

Mr. Layng. Color is a deep pink with lighter shadings. This is a mammoth flower on fine stems for cutting. A very free blooming and attractive Dahlia. Price, \$3.00.

Mrs. George Reed. White, deeply tipped pink. Edge of petals evenly notched. Good size. Flowers freely. Price, 15c.

Mrs. I. Devere Warner. Color, a light lavender purple. The blossoms of this Dahlia are very large and deep. It makes a very vigorous plant and is a very free bloomer. Price, \$5.00.

Mrs. Roosevelt. Delicate light pink, shading to soft rose toward the center. An exceptionally large and elegantly formed flower, measuring from 5 to 7 inches across. Greatly admired by all. Large, strong stems. Abundant bloomer. Price, 50c.

Papa Treyve. Brilliant orange scarlet; large flowers in great abundance on rather dwarf plants. Price, 15c.

Paul Bunyon. A beautiful salmon pink, with a luminous green sheen. The flowers are large, perfect in shape and very freely produced on long stems. Price, 50c.

Princess Juliana. Pure white, and of good form. This Dahlia is unsurpassed for decorative purposes, having long, strong stems. Of special merit. Price, 50c.

Prof. Mansfield. A remarkably large, variegated Dahlia. Flowers grow from 7 to 8 inches across and are of sparkling yellow, with clear white tips. A tinge of rosy red is noticeable toward the center. This peculiar combination of colors makes an exceptionally attractive flower. Strong, growth and free bloomer. Price, 50c.

Richest of All, No. 690. A beautiful light velvety and rich blood red at tip of petals, with a much lighter pink of reddish hue through remainder of petals, growing lighter nearer center. A striking novelty blending from the lightest shade of red, almost pink, to blood red at tips. Good size, nicely formed petals. Darker shade of rich, blood red runs down through center. Flowers stand erect on long, stout stems. Price, \$3.00.

Royal Scarlet. Color is aptly described by its name. Petals are flat and sharply pointed. Price, 35c.

Sapho. White, slightly shaded pink. Price, 15c.

Souvenir de Gustave Douzon. This is a decided novelty because of its gigantic size, closely resembling the Sunflower in this respect. Color is a pleasing orange red. On account of its extraordinary size and elegance of form and color, this is a very attractive Dahlia. Flowers full to center and often measure 9 inches in diameter. Price, 25c.

DECORATIVE DAHLIAS—Continued

Thompsonii. Solid light red, of good form and size and very desirable for cut flowers. Price, **25c.**

Treasure. Pink ground, striped and splashed with carmine. Price, **25c.**

Wabash. Color, a beautiful flesh pink. This beautiful flower resembles a Hybrid Show somewhat in appearance. It is a very large flower and in every way attractive. Price, **\$2.00.**

Wm. Palmer. An immense salmon red Dahlia. A splendid acquisition to any one's collection. Very good. Price, **35c.**

Yellow Duke. Clear bright canary yellow, good size, nicely formed petals, erect, and desirable. Price, **25c.**

Yellow Queen. Entirely new. A beautiful shade of yellow. Good size and fine florets perfectly formed. This Dahlia has a wonderful center, which never fully opens during the life of the flower. Price, **10c.**

PÆONY-FLOWERED DAHLIAS

I prepay carriage on all retail bulb orders, accompanied by cash in full, in the United States. This does not apply to Special Offers.

Annie Slocombe. Another new and choice Pæony-flowered Dahlia with a diameter measuring from 7½ to 8 inches. Its face is entirely of a bright, pleasing canary yellow, but the entire back of the petals is covered with a dull shade of salmon red streaked with the yellow of the face. It is very striking and when held to view one might think it was tipped salmon red for some of the petals turn at the points, showing the back coloring. It is on long stems, good for cutting. An extra nice variety. Price, **\$1.00.**

Betty Dukane, No. 286. Velvety carmine and crimson, streaked and splashed with yellow from base to center of petals. Reverse side of petals very much lighter. Flower is very full and heavy with long, quite slim petals which are rolled and slightly twisted at points. A very desirable flower with heavy, stiff stems. Price, **\$3.00.**

Caecila. Creamy white; very large. A splendid variety. Price, **25c.**

Dr. Peary. Dark velvety mahogany red, the darkest of all. A very large Dahlia and certainly a beautiful one. Price, **50c.**

Geisha. Yellow and red. A most wonderful Dahlia. If you love gorgeous coloring, here you will find it in the orange, red and yellow of this mammoth flower. Geisha flowers are held aloft on long stems in a stately manner, befitting their glorious coloring. Price, **\$1.00.**

Glenton. Color, mauve fawn. Of good size and very desirable. Price, **35c.**

H. J. Lovinck. White, shaded lilac, very fine form on long stems. A large and beautiful Dahlia. Price, **25c.**

Irva Varrelman, No. 816. The color of this beautiful flower is white, shaded to a light cream at base of petals. It should be seen to be thoroughly appreciated. The

flower is large and the colors are so pure and clean that it cannot fail to please the most critical eye. Flowers are produced very freely and on good stems for cutting. It should be in every Dahlia collection. Price, **\$3.00.**

Isaquah. Light purple. A very full flower. Price, **50c.**

Jack Currier. Semi-Pæony. Outer half of petals bright red streaked with yellow, while the base of the petals are canary yellow. Price, **50c.**

King Leopold. Yellow, shaded to white. Large flowers, colors exquisite. Price, **25c.**

Lady Winnifred. A large, full, yellow Dahlia, with petals curving and twisting in a pretty manner. The outer petals are faced underneath with a beautiful shade of pink which gradually becomes lighter toward the center. Price, **\$5.00.**

Mannakea. A large Pæony-flowered Dahlia of a beautiful shade of old rose, the tips of the outer petals being shaded to a rich pinkish lavender. The petals are long and graceful, giving the flower a fluffy appearance. Price, **\$5.00.**

Marie Doro, No. 152. Color, light cardinal slightly clouded white at tips. Petals very curly and twisted; of an unusual formation. Extra fine stems. Price, **\$1.00.**

Miss Adelaide M. Buttle. Pale lemon yellow. Large flowers with long twisting petals. Price, **\$1.00.**

Miss Watson (Duplex). Straw-colored disc surrounding deep yellow center, that is, base of petals straw, more than half the center clear, beautiful shade of cerise or Jacqueminot, with one or more narrow yellow stripes running through the cerise. Tips of petals white overspread cerise. Some of the petals have but a little cerise on them, and are mostly straw color, a little cerise and white. Price, **50c.**

PÆONY FLOWERED DAHLIAS—Continued

Mme. J. Coissard (Duplex). Very beautiful shade of deep cerise, shading to white in center. Whole flower more or less overspread with white. Good sized flowers and very desirable. Petals are broad and flat. Price, **50c.**

Mosel (Duplex). White, shaded to scarlet. Base of petals white, and varying from white to a beautiful scarlet the entire length. Price, **50c.**

Philmena. Very light pink shading to almost white. Very large deep flower of exquisite form and color. Price, **\$3.00.**

P. W. Janssen. Rosy salmon with a shade of yellow; an elegant flower, borne on stout, erect stem. A rich and pleasing shade. Price, **25c.**

Paul Kruger. Striped red and white. Very unique coloring. Price, **25c.**

Semiramis. Large, pink flowers with open, yellow center. Base of petals around center is yellow, with a broad line of yellow running down the pink petal to the tip. Outside rows of petals all pink ex-

cept for a tint of yellow at extreme point of petal. A very handsome Pæony.

Price, **35c.**

South Pole. Pure white. A very nice Pæony-flowered Dahlia. Long stems; good for cutting. Price, **75c.**

Telephone, No. 558. Pure salmon. This is one of the most beautiful flowers of the salmon shade. Fine for cut flowers with a few sprays of foliage. Early, free bloomer and a fine Dahlia. Price, **\$3.00.**

Tip Top, No. 1004-A. Light salmon and florets slightly bordered pink with numerous small curly florets at the base. The flower is good size and of exquisite formation. Price, **\$2.00.**

Westerly, No. 752. The color of this beautiful Dahlia, as near as can be described in general terms, in a deep, old rose with peach pink shading, a most unusual color and extremely attractive. The flower is of immense size and borne on extra long stems. I was awarded first prize on this Dahlia by the Mass. Hort. Society at their Dahlia Show in Boston, in September, where it was admired by everyone.

Price, **\$3.00.**

SHOW AND FANCY DAHLIAS

I prepay carriage on all retail bulb orders, accompanied by cash in full, in the United States. This does not apply to Special Offers.

A. D. Lavoni. Show. Delicate pink. Well-formed flowers with long stems. Very desirable for cutting. This is an old standard Dahlia which every Dahlia grower has retained from its introduction, on account of its exquisitely beautiful color and perfectly rounded ball-shaped flower. One of the freest blooming Dahlias in cultivation. Try a half dozen of these.

Price, **25c.**

America. Show. Light slate, with vivid crimson stripes. Often a solid color flower on same stalk. Sometimes the plant produces solid red flowers. Much admired.

Price, **20c.**

Arabella. Fancy. Sulphur yellow with pink tips. Desirable in every way as a fancy Dahlia.

Price, **25c.**

Bride. Show. Beautiful light lavender, edged heliotrope. Petals exquisitely quilled. Flowers very round and good. Clear, distinct outline.

Price, **25c.**

Black Velvet. Hybrid Show. A medium size flower of very deep maroon color on strong, long stems. A profuse bloomer.

Price, **50c.**

Buffalo Bill. Fancy. Buff striped vermilion. Occasionally flowers come solid color, no stripe. A finely formed flower and extremely attractive.

Price, **25c.**

Cuban Giant. Show. Dark reddish maroon. Flowers of great size, measuring 6 inches across; stands erect on very long stems well above the foliage. The immense number of large, richly hued flowers presents a magnificent appearance.

Price, **15c.**

I want every one of my customers to join the American Dahlia Society. The little news Bulletin published by the Society is full of interest and information for the Dahlia lover and is free to every member. Write William J. Rathgeber, Secretary, 198 Norton Street, New Haven, Conn.

SHOW AND FANCY DAHLIAS—Continued

Dreer's White. Show. A clear snow white. This beautiful show Dahlia is very large, finely formed and beautifully quilled. It flowers very freely, and is by far one of the best pure white show Dahlias. Price, **50c.**

E. F. Hill. Show. Deep lavender pink. A perfectly quilled Dahlia of good size and form on long stems. Price, **\$1.00.**

Elsie Burgess. Show. The color is a delicate white ground tipped and suffused with a beautiful lavender and faint light pink. The stems are straight and stiff. It is a free-blooming Dahlia and very desirable for cut flower purposes. Price, **25c.**

Ethel Maule. Show. Pure glistening white. One of the finest in its class. Large and beautiful. Faint tint of lavender on tips of petals in center. Price, **25c.**

Fascination. Show. White suffused lavender pink. A beautiful, free blooming Dahlia. Price, **20c.**

General Grant. Fancy Show. Deep orange, striped chocolate. Sometimes the flowers will come solid chocolate shade and even then flowers are extremely beautiful. Price, **25c.**

General Miles. Light violet striped and splashed with purplish magenta. An enormous flower borne on long, stout stems. The very best variegated show Dahlia in existence. Price, **\$2.00.**

Gloria De Lyon. Show. White. A very fine flowering Dahlia. Price, **25c.**

Gloria. Show. White. A round, full flower. Price, **25c.**

John Thorp. Show. Pink, slightly tinted white at base. A very striking combination of colors and in every way desirable. Price, **25c.**

Keystone. Fancy. Lilac, with pink shading. Regular stripes of glowing crimson on each petal. A unique combination of color, very bold and striking. Blooms profusely. Price, **10c.**

Les Amours de Madame. Fancy. Show. A very attractive lavender rose pink of fine form. Nicely rounded Dahlia of good size. The petals are marked and spotted somewhat with a much deeper shade, almost red. Very desirable; on good stems. Slightly variegated. Price, **25c.**

Mme. Alf. Moreau. Fancy Show. Base of petals white, edges and tips lavender. Good size and showy. Price, **35c.**

M. Con Varin. Dark purple, some of the petals having tips touched with white. Very pleasing. Price, **20c.**

Queen Victoria. Show. Lemon yellow Flowers unusually full and round. Strong stems and fine for cutting. Price, **15c.**

Red Fire. A very good light red Show Dahlia. Well worth owning. Price, **25c.**

Rose. Show. Aptly named. Remarkable resemblance to a Rose. Of a typical rose shade. Base of inner rows of petals much deeper reddish rose than outer petals which are somewhat paler. Price, **35c.**

Striped Banner. Tips of petals are white, jaggging down into the base of the petal, which is royal red or dark scarlet. A novel and striking blossom. Price, **25c.**

Surpasse Colosse. Show. Color, scarlet carmine, flowers large, with large quilled petals. Price, **35c.**

Sunburst. Show. Color, salmon. Fine form and a beautiful shade. Price, **25c.**

Susan. Show. A beautiful, delicate, soft shell pink, splendid form, early and free flowering, long stems. Splendid for cutting. Price, **25c.**

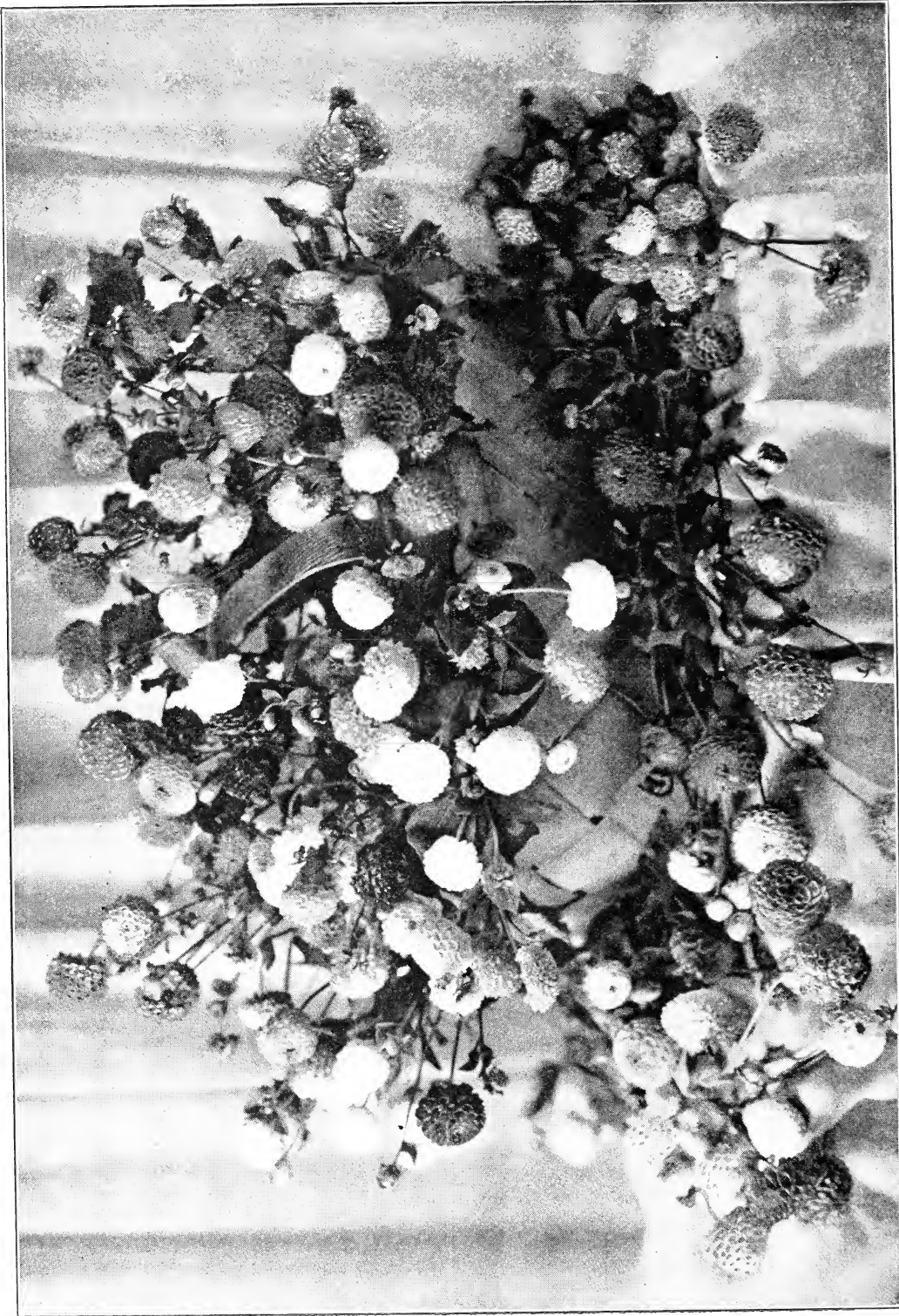
Tillamook. Show. Similar in shape to "Dreer's White." The whole blossom is very, very pale pink. Each petal is folded over neatly, making a beautiful flower. Price, **25c.**

Triomphe de Lorraine. Fancy Show. Light brickish red. Good, full flower and compact. Base of the many small petals is blended into a reddish salmon lighter than tips. Good stems. Price, **25c.**

Vivian. Show. Large and of beautiful colorings. Center of blossom dark magenta, the inside of the petal being much lighter cerise or Jacqueminot. A large and excellent Dahlia. Price, **25c.**

White Swan. Show. Pure white. Very nice specimen. Price, **25c.**

W. W. Rawson. Show. This popular novelty has been the admiration of all wherever shown the past season. The massive, perfect flowers, often measuring 6 inches across, are borne on stiff stems about 15 inches long. The entire flower is absolutely perfect in outline and formation. The color is pure white, overlaid with amethyst blue. Price, **25c.**



BASKET OF POMPONS

POMPON DAHLIAS

I prepay carriage on all retail bulb orders, accompanied by cash in full, in the United States. This does not apply to Special Offers.

Admiral Dott. Pink, with lavender tinge. Very free bloomer. Round, perfect blossoms. Price, 20c.

Ariel. Buff tinted orange. Very desirable. Price, 20c.

Belle of Springfield. Very pretty shade of light red. The smallest Dahlia known. Very round and regularly formed blossoms of diminutive size. Price, 50c.

Brunette. The center of this little Dahlia is a pale pink, in a circle about as large as a five-cent piece. Around this to the outer edge the petals are crimson, making an especially attractive flower. Price, 25c.

Codsall Gem. Rosy red, with white tips. The coloring of this flower is combined so as to make it most attractive and striking. Price, 25c.

Darkness. Deep, solid maroon, nearly black. Price, 15c.

Eunice. Lavender with white shading. A very desirable color. Price, 25c.

Kleindomiter. Clear, delicate buff color, shading lighter around outside edge of blossom. Price, 50c.

Klein Gretchen. White shaded crimson, leaving the blossom principally crimson. Base of petals white, while all the rest of petal is crimson. Striking and beautiful. Price, 25c.

Leuchstern. Orange, richly shading to deep orange red. Very fine. Price, 25c.

Little Jennie. Primrose yellow. A beautiful flower of diminutive size; free bloomer. Price, 25c.

Little Mary. About the size of Belle of Springfield, but it is a velvety dark maroon, about the shade of Darkest of All. Price, 50c.

Madeline. Pale primrose, edged with rose purple. Variegated. Price, 25c.

Marguerite. Deep lilac. Blooms freely on good stems for cutting. Price, 15c.

Mary Clift. Light maroon. A very compact flower on good stems. Price, 15c.

Snow Clad. Pure white. This dainty little white flower should be seen to be appreciated. It is very prolific, producing a great abundance of flowers. Price, 25c.

Tulla. Wine crimson. A very free bloomer and exceedingly beautiful. Price, 25c.

Viridi Flora—The Green Dahlia. The most unique novelty of Dahlia culture. The flower is a rich, verdant green, same shade as the foliage. Occasionally the flowers show a number of red petals. This Dahlia does best in a partially shaded location. Price, 50c.

Zoe. Base of petals and edges clear yellow. Tips white. This is a very attractive Dahlia and well worth having. Sometimes blossoms come all yellow. Price, 25c.

SINGLE DAHLIAS

Blush Century. Clear white, slightly overcast with delicate shade of pink. Price, 15c.

Blushing Maiden. This is a Dahlia of beautiful shadings. The florets are a light maroon mingled with a light carmine, and has a pure white stripe through the center of petals. Very attractive. Price, 15c.

Coquette. Deep cerise pink, sometimes edged with a deeper shade. Quite large. Price, 15c.

Dauntless. About one-fourth of petal at base yellow, remainder of petal rose pink, edged, dotted and streaked with magenta. Some of the petals have several stripes of the magenta through them, while others have somewhat less number of streaks. Price, 15c.

Falcon. Reddish purple, with white disc around the center; a large flower in which the color contrast is both striking and beautiful. Price, 25c.

G. H. Longman. Lavender pink. Petals broad and flat. Medium sized flowers; long stems; very desirable for cut flowers. Price, 15c.

Lady Mildred. Pure white. Now and then shows a very faint pink tinge. Flowers large and perfect. Extremely graceful, and one of the most desirable white single Dahlias. Price, 15c.

La Favorite. White, suffused rose. Striped with rich purple. An exquisitely dainty flower. Large and blossoms freely. Price, 20c.

SINGLE DAHLIAS—Continued

Mabel C. A single Dahlia of unusual merit. The color is a lavender pink, with an amethyst shading at base of petals. Flowers large and graceful. Price, **25c.**

Margaret Perkins. One of the most beautiful varieties of recent introduction. The flowers are very large, have rather pointed petals, are wide, but not overlapping, and are borne on very long, stiff stems. The color is pure white with about one-half of each petal tipped light pink; first flower being tipped cerise pink, and, like "Twentieth Century," of which it is a seedling, growing steadily lighter as the season advances, becoming a clear, soft pink later. Price, **25c.**

Madame X. Deep velvety carmine, occasionally blended and shaded lighter. Price, **25c.**

Miss Emma. Dark salmon yellow with light center. Very large and attractive. Price, **15c.**

Mrs. Evans. White, flushed pink, finely striped and spotted crimson. Price, **25c.**

Sensation. Single. Vivid vermilion, heavily tipped white. An early and profuse bloomer. Very popular. Price, **15c.**

Twentieth Century. Pure white at base and tip, with center of petals a beautiful rose pink. A very popular Dahlia and worthy of the highest praise. Flowers freely. Price, **25c.**

COLLARETTE DAHLIAS

I prepay carriage on all retail bulb orders, accompanied by cash in full, in the United States. This does not apply to Special Offers.

A. Mammene. Nice dark red Collarette Dahlia with white collar. Price, **25c.**

La Fusee. Petals twisted to give the flower the appearance of a single Cactus; color, deep ox-blood red, the collar being of same shade, marked with white. Price, **15c.**

Maurice Rivoire. A medium flower with broad petals of rich maroon, with deeper stripe down the center, and a pure white fringed collar. Price, **15c.**

Meteor. Positively the best of its color; ground color brilliant scarlet penciled, spotted and striped with rose color. Collar white. A flower of fine form. Price, **15c.**

Prince Carilie de Rohan. A pleasing pink touched and blended with bluish lavender. Tiny collar of same shading. Very good size, attractive and on good stems. Price, **50c.**

Souvenir de Chabanne. Ground color, lemon yellow, with coral red markings; collar petals very abundant and long, lemon yellow, tipped white. Price, **15c.**

Why not buy your Dahlias of the person who makes a specialty of Dahlias and who grows them exclusively? Isn't that a point worth considering?

Any one who has a few feet of garden soil can grow Dahlias. They are grown entirely in the open—you do not need to have a greenhouse to plant Dahlias. Improve the looks of your yard by planting a few of them.

SENTENCED TO DEATH!

In a sanitary and humane manner, that's the way of the

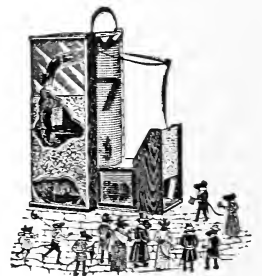
"PEERLESS"

Automatic Mouse and Rat Trap

Resets after each catch

Requires no attention. Let the "PEERLESS" take care of your rats and mice. Mouse trap \$3.00. Rat trap \$8.50.

Unconditionally guaranteed.



I can personally vouch for this trap as being the greatest mouse exterminator in existence. Sent by express upon receipt of price.

GEO. L. STILLMAN, Westerly, Rhode Island.

All the Dahlias described in this catalogue as to color and shape are described to the best of my ability, but I do not guarantee them to fully meet the ideas of all purchasers in regard to color and shadings.

SPECIAL OFFERS

Parcel Post or Express paid by purchaser. See table below.

For the benefit of those who are not familiar with the names, colors and characteristics of the Dahlia, and wish to have the selection made for them, I make the following collections at a special low price:

- No. 1 COLLECTION**, twelve named varieties, several classes, my own personal selection, no two alike, and each one labeled.....**\$1.00**
- No. 2 COLLECTION** contains twelve extra fine, high-priced varieties, my own personal selection, no two alike, and each one labeled. This collection contains not less than \$3.50 worth of bulbs..... **2.00**
- No. 3 COLLECTION** contains twelve varieties, or more, of extra nice assorted bulbs very carefully selected, no two alike, all labeled. The Dahlias in this collection amount to not less than \$7.00 worth..... **5.00**
- No. 4 COLLECTION** contains twenty bulbs, without labels, that have become mixed in handling. They are all standard varieties, but labels have accidentally become detached. The supply for this collection is limited. Price while they last..... **1.00**

Be Sure and Read This

It has been thoroughly demonstrated that nearly all small shipments of bulbs can be sent by mail and reach their destination quicker than by express.

Notice! The postage or express on all special offers must in all cases be paid by purchaser, and if by mail, postage must be sent with the order or pay C. O. D. charges to destination, which often amounts to more than the postage.

To ascertain the amount of postage to send.

- No. 1, 2 and 3 Collections weigh four pounds or less.
- No. 4 Collection weighs six pounds or less.

Your postmaster can tell you the cost of any number of pounds from Westerly, R. I., to your post office. Or you can use the following table. If you send more money than is used in postage, the surplus will be returned.

TABLE

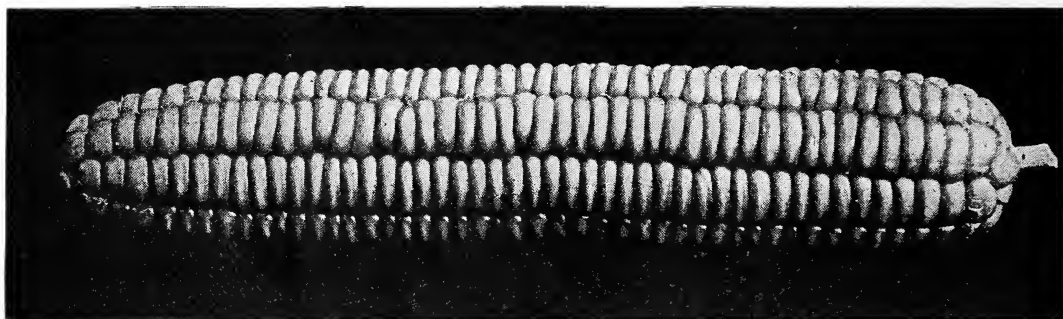
1st & 2d Zone	3d Zone	4th Zone	5th Zone	6th Zone	7th Zone	8th Zone
1 lb. 5c.	1 lb. 6c.	1 lb. 7c.	1 lb. 8c.	1 lb. 9c.	1 lb. 11c.	1 lb. 12c.
2 lbs. 6c.	2 lbs. 8c.	2 lbs. 11c.	2 lbs. 14c.	2 lbs. 17c.	2 lbs. 21c.	2 lbs. 24c.
3 lbs. 7c.	3 lbs. 10c.	3 lbs. 15c.	3 lbs. 20c.	3 lbs. 25c.	3 lbs. 31c.	3 lbs. 36c.
4 lbs. 8c.	4 lbs. 12c.	4 lbs. 19c.	4 lbs. 26c.	4 lbs. 33c.	4 lbs. 41c.	4 lbs. 48c.
5 lbs. 9c.	5 lbs. 14c.	5 lbs. 23c.	5 lbs. 32c.	5 lbs. 41c.	5 lbs. 51c.	5 lbs. 60c.
6 lbs. 10c.	6 lbs. 16c.	6 lbs. 27c.	6 lbs. 38c.	6 lbs. 49c.	6 lbs. 61c.	6 lbs. 72c.

War tax on 25c. postage is 1 cent, and 1 cent thereafter on every 25 cents or fraction thereof.

Make all checks and money orders payable to Geo. L. Stillman, Westerly, Rhode Island.

SEED FIELD CORN

During the last few years I have taken great pride in producing the best corn for family use than can be grown. I think I have now four varieties that contain all the desirable features that any person could wish for family use. One for corn meal and three for green corn. Illustrations and prices for selected seed follow.



STILLMAN'S SPECIAL RHODE ISLAND DOUBLE CAP CORN

Outer end entirely capped. Butt nearly capped. The best white northern corn grown. The ears are large, butt stems are exceedingly small. The ears are easily husked and broken off. It yields two and three ears to the stalk. The kernels are large and in straight rows. It makes the sweetest and best table meal. The kind that makes the best R. I. Johnny-Cakes. Always get the Stillman strain.

40c. pt.

75c. qt.

\$2.00 four qts.

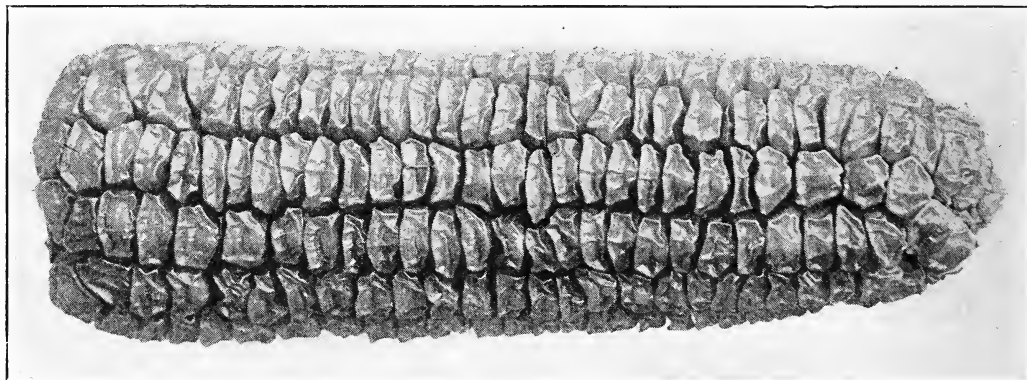
\$4.00 eight qts.

\$7.00 half bu.

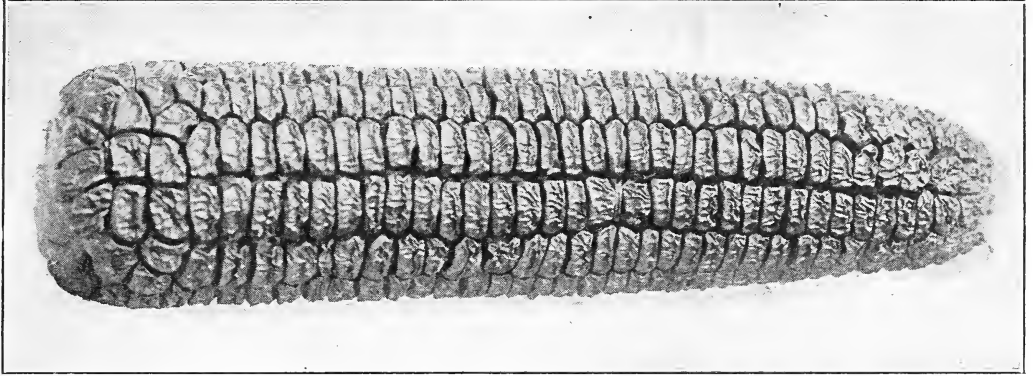
STILLMAN'S EXTRA SWEET CORN EARLY GIANT

matures the earliest and has the largest ears of any extra early sweet corn. Nothing like it for the earliest crop.

Selected Seed, 75c. per pint, 40c. per $\frac{1}{2}$ pint



Stillman's Extra Early Giant Corn. Ears 6 to 7 inches.



The New Sweet Orange Corn. Ears 7 to 8 inches.

THE NEW SWEET ORANGE CORN

Much larger than the Golden Bantam and one week later. The sweetest medium early green corn grown. Grows a medium height and ears profusely.

Selected Seed, 75c. per pint, 40c. per $\frac{1}{2}$ pint

CORN MEAL

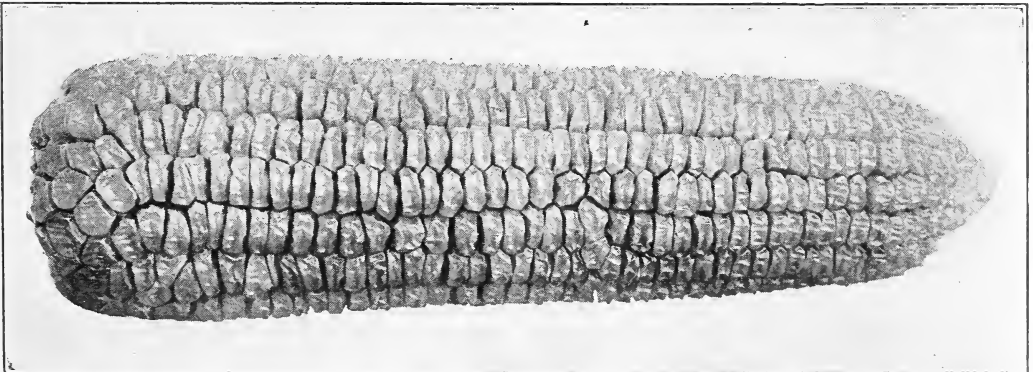
Made from Stillman's Special Rhode Island Double Cap Corn. It's the sweetest and best meal on the market. Ground in an old-fashioned stone "Grist Mill." Fresh every week. Price, 10lbs. \$1.25, postpaid in 1st and 2d Zone. Here is a sample of the many letters of praise I receive for my meal. This is from a lady in New Jersey:

"I have often thought you should charge more for your meal, which is the best I know of. Yours is so nice you could charge any price you like for it, it seems to me. There is none in New York fit to use in my opinion except that."

MT. SHASTA SWEET CORN

The largest and sweetest green corn in the world. This mammoth new corn is in a class by itself. Nothing can beat it for sweetness and its mammoth size.

Selected Seed, 75c. per pint, 40c. per $\frac{1}{2}$ pint



Mt. Shasta Sweet Corn. Ears 9 to 11 inches

DAHLIA SEED

To those who have never tried any of my Dahlia seed I must say that they are missing one of the greatest pleasures of the flower garden. I do not save seed from poor, insignificant flowers. The wonderful success my customers have with my seed is ample proof that it is far superior to any on the market.

Important.—It is very important that you understand that every plant you get from *seed* is an entirely new variety and may be even better than the flower it is taken from.

DIRECTIONS FOR PLANTING

In the latitude of New York City seed should be sown about March 15th. Flats or boxes about 3 or 4 inches deep is best. Cover the seed about $\frac{3}{4}$ inch deep and keep in a warm place until the plants are all above ground. Then they can be moved to a cooler place. They should be kept in the sun to avoid growing too slender. Transplant in the open when weather is free from frost, about 15 inches apart. Discard any undesirable ones as soon as they bloom, thus giving the other more room.

Prices in large packages as follows:

	Pkg.
The Five Great Lakes.....	\$25.00
The N. Y. Group.....	10.00
The Five World Winners.....	7.00
The Ten Sea Lions.....	5.00
The Fighting Ten.....	5.00
The Loma Family.....	4.00
The Indian Family.....	3.00
Mixed Cactus	3.00
Mixed Decoratives	3.00
Mixed Pæony	2.00
Mixed Show	2.00
Mixed Pompon	2.00
Mixed Collarette	1.00
General Mixture	1.50
Special Mixture from New Seedlings.....	10.00

To meet the wants of some of my customers I have kept the following four popular varieties of seed separate. Prices as follows:

	Pkg.
U. S. A.....	\$10.00
King of Shows.....	5.00
Rhode Island	7.00
Mt. Shasta	3.00

Full Cultural directions on every package.

Orders for bulbs will be booked for Spring delivery any time in the year.

NOTE.—Have you read instructions carefully about ordering and the best way to send money? Order by **name** and not by number.

Address all communications to

GEORGE L. STILLMAN, Dahlia Specialist

WESTERLY, RHODE ISLAND

TESTIMONIALS

A gentleman in N. J. wrote me Nov. 4, 1921, thus: "I thought I would write and advise you of the wonderful success I had with the seeds and bulbs purchased from you. This is my first experience in raising Dahlias. Never before having a place to plant anything. I followed your directions, especially in regard to watering and there was nothing in this town to beat them, so everyone told me and I had quite a few visitors who came especially to see them. You will hear from me after I receive your 1922 catalogue."

Nov. 3, 1921.—A gentleman in Pennsylvania wrote me as follows: "I received your letter of Nov. 1st, telling me about your new Dahlias. You can take my order for 'Lake Superior' and 'Lake Michigan.' I will give you the rest of my order about Jan. 3rd. The Billionaire is my favorite Dahlia."

July 5, 1921.—A gentleman in N. J. wrote thus: "It pleases me to state that 'The U. S. A.' planted May 20th was in bud June 12th and picked the first bloom July 2nd, 7 inches in diameter without any dis-budding whatever."

July 18th, 1921.—A gentleman in N. Y. wrote thus: "The Dahlias are all growing fine but one (Eunice). You certainly have fine Dahlias. They beat anything in our town; everyone thinks they are grand."

Sept. 6, 1921.—A lady in Ohio wrote me as follows: "I have been growing Dahlias for seven years, have 250 plants out but never saw such fine Dahlias as came from your place. Please send me a catalogue."

July 27, 1921.—A gentleman in Washington (State) wrote about his Dahlias thus: "Largest 'Cardinal Mercier' measured 12½ inches July 27, 1921; next largest 11¾ inches July 7, 1921. Largest 'U. S. A.' measured 11½ inches July 22, 1921. I am having wonderful success with your Dahlias. This season am growing six plants of 'Cardinal Mercier' and four plants of 'U. S. A.' I have had several blooms measuring 10½ inches to a little over 12 inches, all perfect in color, form, and long stems. One bloom on the "Commodore" measured 11½ inches. One on 'Murray Hill' 11⅞ inches. 'Biltmore' and 'Ansonia' are opening out. 'League of Nations' gave me the largest bloom so far this season, measuring 12½ inches. 'Aquitania' now in bloom, but not fully developed will measure about 10½ or 11 inches. 'Lady Cardine,' while not so large, is a most wonderful and beautiful flower with long rugged stems. Likewise the 'Wonder of

Nature.' Both of these blooms are certainly wonders of nature."

In September, 1921.—A lady in N. Y. wrote as follows: "I don't believe that even you have ever had such a flower as our 'Millionaire.' He is nine feet tall, and while he has buds coming out now, he has had but one bloom and *such* a flower. It was as big as a small head of cabbage, and formed a perfect ball, and was the most beautiful thing you ever saw. He lasted some time and I asked all the neighbors to come look at him."

Oct. 10, 1921.—A lady in N. J. wrote me "that the 'Ad. Dewey', ordered in the Spring, had bloomed constantly during the Fall, and such beautiful flowers."

Oct. 15, 1921.—A gentleman in Conn., writes me thus: "Enclosed please find an order to be shipped next May. I was so pleased with some of the wonderful Dahlias I saw this Fall, the best of them coming from you. Someone told me that you were a high-priced man, but I found on comparing prices that you were *no higher*, but in *many cases lower*."

Oct. 17, 1921.—A gentleman in Washington (State) wrote: "I enclose a clipping. You will note that the writer had the good fortune to clean up in the amateur classes. It may be of interest to you to know that Stillman's creations contributed largely to my success. My seedlings, which took first, were from a package of your 'Fighting Ten' seed."

Oct. 20, 1921.—A gentleman in Oregon wrote me as follows: "Just a line to tell you how well my Dahlias have done. These were the first I ever grew and I didn't lose one. The unnamed collection you sent me was worth *many, many* times the amount paid."

Oct. 27, 1921.—A gentleman writes from N. J.: "I have derived so much pleasure and satisfaction from the seedlings grown from your 'Five World Winners' that I am writing to tell you they bore beautiful flowers 6 to 8 inches in diameter and won for me two ribbons in our show, and one ribbon in another show."

A gentleman in Pa. wrote me as follows: "The first three blooms of the 'Murray Hill' were the most beautiful I ever saw. Everyone who saw this Dahlia said it was the finest they had ever seen. It is a sight fit for the gods. The color is very distinct. It is beautiful from the back, front, and sides."

Oct. 14, 1921.—A lady in N. J. writes:

"I have a confession to make. I have been buying my Dahlia seed from you for several years. Last year I heard and read of a wonderful exhibit of Dahlias in a New York store and another in another store in New York state that had taken a prize at some Dahlia show. I sent for their catalogue in which they claimed to be the best and largest growers in, I think, America, so I thought I would send there for seed. I did and gave them the best of care and waited for the beautiful blooms that I was going to surprise the natives with. Well, one bloomed, and it came up by the roots and went on the compost heap; another shared the same fate. Two more are standing as a reminder to me 'not to exchange old friends for new.' As I write a bunch of gloriously beautiful blooms from your seeds are standing before me. And I vow before them, hereafter I will stand by Stillman."

Sept. 20, 1921.—A gentleman in N. Y. wrote as follows: "Your Dahlia 'Bridal Veil' is a beautiful thing. I have had three blooms thus far, each with a long stem. They have been greatly admired by everyone."

Aug. 28, 1921.—A gentleman wrote me from Pa. the following: "I am very much pleased with the Dahlias I got from you this spring. I have won two prizes with them. I like your stock and will send you a big order next spring."

Sept. 29, 1921.—A gentleman in N. Y. wrote me as follows: "I am writing to let you know the results that we had with the package of seed we purchased from you at Madison Square Garden last winter. I must say they were elegant and we are very much pleased with the grand variety we had."

Sept. 30, 1921.—A gentleman wrote me from Mass. thus: "The Dahlia tubers I bought of you last spring have all done well and are still in bloom. The 'Frances Lane' has been covered with flowers all summer and 'Ninigret' was not far behind. While 'Powhatan' has not been as free it has made up in beauty."

Nov. 9, 1921.—I received word from a gentleman in Pa. that in spite of the poor weather conditions his Dahlia, "Ruth Van Fleet," purchased from me, produced a flower 7 inches in diameter.

Aug. 14, 1921.—A gentleman in Conn. wrote me as follows: "I thought I would pen you a report of my success with the varieties I purchased of you this Spring. The 'King of Shows' is just right, all hands in love with it. 'Perfect Beauty,' well, I guess its got them all crazy. 'Mt. Shasta' with me is the handsomest Dahlia I ever held in my hand; strong grower, good stems, delicate color. There is another 'The U. S. A.', you won't believe me, I know, but the bloom kept growing until it measured 9½ inches across."

A lady in Ky. writes August 30th: "I must write you of the package of Pæony-flowered Dahlia seed I bought of you in the spring. It is so human to find fault when things are wrong, why not praise when credit is due? I deliberated long over two dollars for a package of seed, but I never got so much for two dollars."

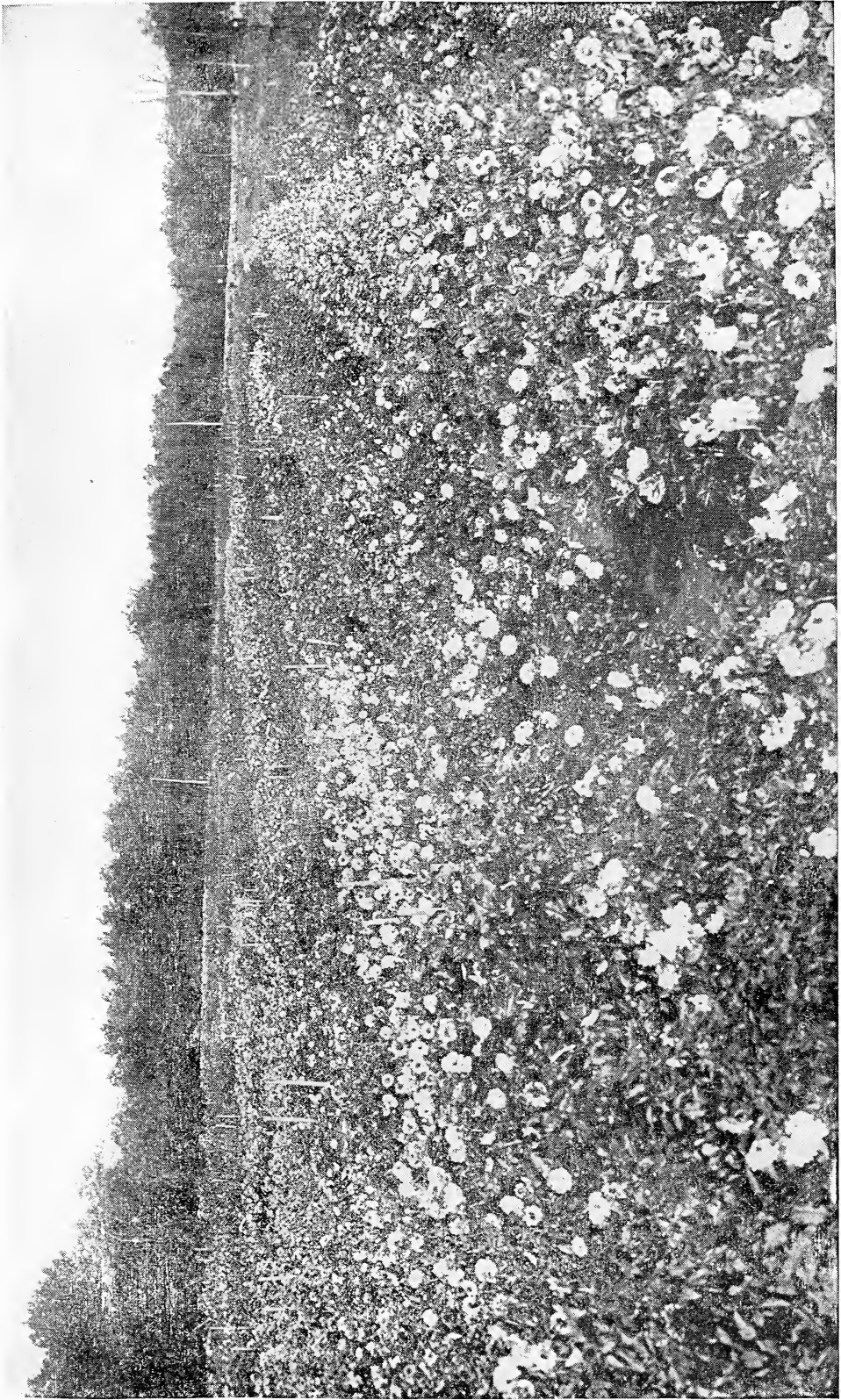
Sept. 21, 1921.—A lady in N. J. wrote me thus: "Wonderful seedlings grown from Five World Winners, Loma, and Indian seed were shown at our Dahlia Show. Some were so exceptionally fine. I exhibited Dahlias grown from one of your trial collections and won two first prizes."

Nov. 7, 1921.—I received a letter from a lady in W. Va. saying: "I thought you would be interested to know the results from my package of Loma Seed which I bought from you this spring. I was so pleased with them and so was everyone who saw them. They could not believe that they came from seed this spring. I grew about 100 from the package of Loma seed and I had some of the largest blooms I ever saw. I had also some of the finest blooms from that special collection of bulbs."

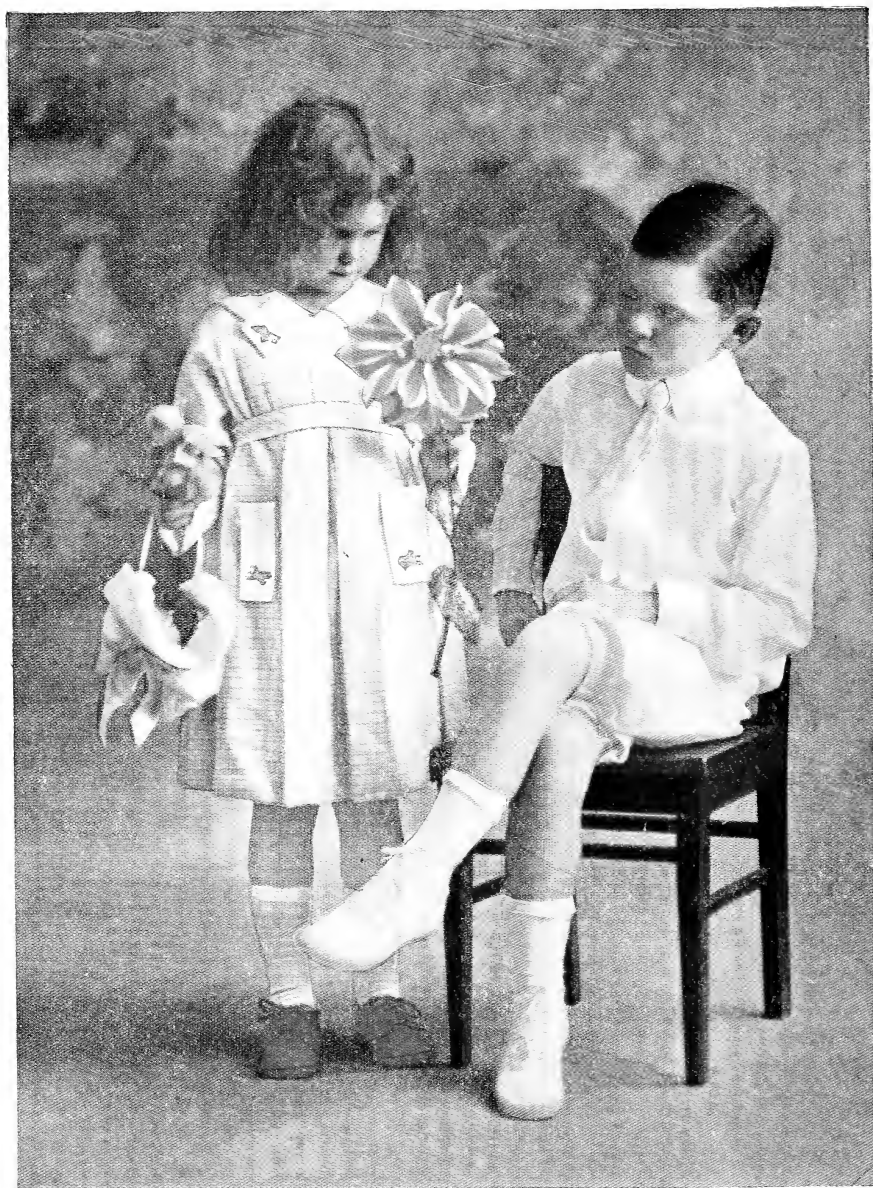
A gentleman in Rhode Island wrote me Sept. 28, 1921, as follows: "Our Dahlias are wonderful in spite of the continued dry weather. Have just cut a 'Maud Tripp' measuring 8½ inches in diameter and 4½ deep. Have also a 'Millionaire' plant 20 inches high carrying three 9 inch blooms. We took the special first prize again this year at the fair. I want to thank you again for both my wife and self for your kindness in showing us your wonderful seedlings. We certainly did enjoy it."

If you have good luck with your Dahlias, tell me so. I like to know that you are pleased. If you do not succeed be sure to tell me that, for there is a reason, and I may be able to advise you concerning it.

More order blanks if requested. Do not cut off this end



PARTIAL VIEW OF ONE OF MY DAHLIA FIELDS CONTAINING OVER FOUR ACRES OF DAHLIAS



THE AMERICAN HERO