

Historic, Archive Document

Do not assume content reflects current scientific knowledge, policies, or practices.

LANDSCAPING THE HOME GROUNDS

VALDESIAN NURSERIES

BOSTON, NORTH CAROLINA

|||||
Catalog of Evergreens
Shrubs, Vines, Roses
Perennials *and* Bulbs
Fruit Trees *and* Plants
|||||

1 9 2 2

*—Beautify your home
this season—Make its
surroundings pleasant*





Specimen Coniferous Evergreens near Packing House

“Just a Word”

WE are no new concern, own our own land, have no connection with any other nursery, our plant being situated in Bostic, where we own 8 acres running down to the depot on which are located our packing and storage house, offices and buildings, with three plantations a few miles out, where most of our stock is grown. You need not fear to place your order with us, as we know in your case, as with most others, the placing of even a small order will mean more orders and you will come back to us year after year. We did not engage in this business planning to get what we could out of it for a year or two and then stop. We have plants, thousands of them, growing in our nurseries that it takes years to develop. Some of those quoted herein we have been growing for ten years. Our one main object is to grow Specimen Evergreens, that one may beautify his home and get the effect NOW, without waiting years for his place to grow into beauty from small seedlings or other plants.

Any banker, or business house in your city, it differs not where you are, can tell you that we are reliable, and that you will be safe in placing your order with us. It will not only mean the selling to you, but to your neighbor, because we sell hundreds of customers every year to those learning of us by seeing our stock shipped to others.

If you want ornamentals, or other stock, if you want to beautify your home, that will bring beauty and cheer the whole year thru, or if you want to plant only a few rose bushes, small fruits for the garden, or an orchard, write us about it. If you don't know what you want, tell us; we can no doubt help you, and if we can't we will tell you so. We are looking for satisfied customers, which means continued business, and not for simply what there would be in one little order now.

If you wish to improve your surroundings, beautify your premises, at the smallest possible cost, write us about it. We can send our man to look over the proposed improvement, make you an estimate on the stock, supply it and send men to plant it out, or you can take your measurements, map out a general plan, send it with your man to our office and nurseries, and we will go over it with him, make out a planting list and planting plan, and go over our nurseries showing him the identical stock that we propose supplying.

For Quality and Service

VALDESIAN NURSERIES

BOSTIC, NORTH CAROLINA

Mill and Village Improvement

There are few Cotton Mill and other Mill villages, that are not beautifying and improving their premises. In most villages and cotton mill towns, and even around the walls of the mill, there is ample room for splendid improvement. Instead of the dull dingy walls and naked grounds, at little cost they may be turned into places of beauty, to the pleasure, moral and mental uplift of all concerned.

The writer of this booklet has often thought if he were a mill superintendent or other official having power to make such expenditures, he would strive to beautify and improve these surroundings.

A place where workmen are better contented and the employer has a pride in his surroundings, certainly has much to do with the services of the employer.

There is hardly a set of officials in these towns and villages, who, if the matter was called to their attention by the proper improvement official, would not give the "go-ahead" instructions to make such improvements, when if properly done will live as a monument to their services long after their work as official leaders are over.

A DISCOUNT TO MINISTERS AND CHURCHES

We have made it a custom for a number of years, to allow a discount to Ministers for their home or Parsonage planting, as we also do for Church planting. Quite a number have during the past season ordered for these plantings, and they have been highly pleased.

We have had various orders from parties seeing these plantings, who wished to beautify their own homes. Besides the benefit we get in this way, from parties seeing our plantings and ordering themselves, we feel that it is good for us to give to these causes so far as we are able, and we will be pleased to hear from Ministers and Churches regardless of Denominations, who wish to beautify their grounds, and the time has come when they are desirous of having pretty all-year surroundings.

We also allow a reduction in the prices of stock, for use in the improvement and beautifying of Cemetery grounds. We have thousands of plants especially suited for such plantings, and we will be glad to hear from any wishing to make these improvements.

We believe it is our duty, and one that we owe to those gone before us, to improve these grounds, that with a small expenditure we can change these silent Cities of the Dead from bare lonesome places, into all-year beauty.

Landscape Architecture

A Landscape Plan For Your Home—Change your grounds from an ordinary yard to a place of beauty, the cost is small and you will have something of enduring value, artistic and satisfying to show for the money you spend on your grounds. Many people come to us who have spent considerable time and money with no pleasing results. Here is the trouble with most of us. We plant a tree and a rose now, then two or three shrubs and a few more later, and have no definite scheme. We wind up just about where we started. The beauty of planting depends greatly on the preparing, grouping and arrangements.

When Landscape Gardening is mentioned many people think of vast estates and the expenditure of large sums of money, but this is a mistaken idea, for the small and medium sized places lend themselves to artistic treatment fully as well as larger ones.

Planting Plans—Parties desiring the services of a Landscape Gardener will do well to correspond with us before contracting this work, as we can have one of our men call, if within a distance of 200 or 300 miles of our nurseries, and look over the work, make out the planting plans, supply the nursery stock, and if a satisfactory man cannot be had to do the planting, we can send a man from our nurseries to oversee the planting.

**It Pays to Buy the Best, When
Buying Nursery Stock**

HARDY EVERGREENS

CONIFEROUS Evergreens are particularly valuable, in all classes of ornamental plantings. Every efficient Landscape Gardener knows that no grounds are complete without the plantings of coniferous as well as deciduous shrubs.

During the summer months, when every tree or shrub is full of foliage, deciduous stock looks all right, but it appears lonesome during six months of the year.

Your new house may be all that you can ask for, yet no matter how substantial or how costly, it is not complete until its surroundings are blended with a sprinkling of coniferous evergreens.

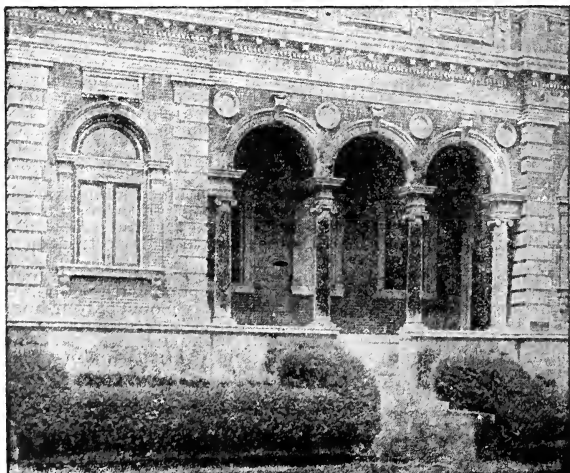
Winter landscapes without evergreens look lacking and incomplete. If the home is to be made beautiful it can not be done with shrubs alone. It is to be regretted that the owners of pretty homes and villages, in attempting to beautify them permanently, have in so many cases planted shrubs and trees alone. They are pretty during summer time, but at the first appearance of frost, the foliage and flowers are gone, and there is but little beauty until spring, when they again put on their summer foliage. But this is not the case with Hardy Evergreens. During the cold winter months, when all is so dreary and lonesome, lacking and wanting for beauty and cheer, there is nothing so desirable as the brilliant evergreen with its beautiful colors and forms. No other investment possible for one to make will bring as much pleasure, comment and beauty as the proper planting of Arborvitae, Biotas, Hemlocks, Junipers, Pines, Retinisporas, Thuyas Spruces and other like sorts.

Some homes do not require all of these, it is owing to the size of the building, premises and situation. But in our opinion no home is complete and affords the owner the satisfaction and pleasure it should until it has had the proper plantings of coniferous evergreens. Of course, the variety and sort should be suited to the size and height of the buildings and the surroundings. Some large and tall growing sorts not being suited to small homes and premises and the proper effect cannot be had unless the different sorts are arranged in an artistic manner.

Many public buildings, schools, towns, factories and other institutions could be wonderfully changed for the better, if instead of using Maples, Poplars, Elms, Oaks, Lindens and Willows, a few dollars were invested in Evergreens.

It is true that many cotton mill owners of today are leading the community in which they live by the beginning to beautify their surroundings with nursery stock, which are without taste and beauty, be the plantings ever so varied and extensive, without a mixture of Evergreens. The broad-leaved sorts are good and there are places for them, but no planting is what it should be without the coniferous sort.

For fifteen years we have made the growing of Evergreens our specialty. We have them growing in our nurseries, from the propagating beds to large specimens ten or more feet in height.



It is necessary in the proper growing of Evergreens that they should be transplanted a number of times, in order that they form a mass of fibrous roots.

This is one reason that so many fail in the transplanting of them. Most concerns who grow only a few Evergreens buy their stock of plants from an Evergreen Specialist, who supplies them from seed bed, or propagating frame, where they have been rooted. They are then lined out in rows in the nursery and there grown until they are dug for the customer. Hence they carry few roots and even if they are large specimen trees they have a poor root system, and while they may be dug and burlapped carefully, the earth becomes loose and when transplanted, even if it is done by an experienced gardener, they have not sufficient root system to take up enough nourishment from the soil to start them, and the result is you do not only suffer the loss and time in transplanting, but a year behind in securing successfully grown and transplanted ones.

We begin the planting of coniferous evergreens about September the first and continue until cold weather. Except in cold sections of the country, where the winters are severe and the ground frozen, we make shipments successfully throughout the winter, when the weather is favorable here, by ball and burlapping the roots and packing in paper lined cases. Our shipments continue in the spring until the new growth is too far advanced for removal of the plants.

The prices in this booklet are for plants packed and F. O. B. here for either express or freight shipment. Purchaser paying transportation charges unless otherwise noted.

To near-by points arrangements may sometimes be made that we make delivery by truck.

In carload shipments of evergreens they are dug with a ball of earth which is burlapped around the roots and placed in the car that they remain in perfect condition, the dirt not being molested but planted as they grew in nursery, insures their living, and the best result.

Parties in this and adjoining states, who wish to purchase in car lots can by arrangements with us, before shipment, secure at reasonable cost the services of our Landscape Gardener, who will direct the planting of the stock. This will be a man who has spent years in the growing of coniferous evergreens and who "Knows How."

SCREEN PLANTING

The planting of evergreens for screens or breaks can be made to do much more than beautify. For instance, possibly there is an unpretty view from some of your windows, an unkept vacant lot, the service yard, or a neighbor's place, or perhaps your own back yard, your own clothes line, is exposed to view, your house may be too close to your neighbor's, one can look into your windows, or vice versa. Light from the other's house or from the street may annoy you, you have not the feeling of seclusion you would most enjoy, and the planting of deciduous trees and shrubs could not be satisfactory. You have likely been on your vacation during the summer months when you would have enjoyed the foliage and beauty of these deciduous shrubs, but now during the winter months, when you spend more time in your home, the leaves are off, and a more serviceable and beautiful type of screen to plant would be our Hardy Coniferous Evergreens. We have many sorts suitable for screen planting, and where it is desirable can ship in car lots of large sizes that will bring beauty and seclusion NOW.

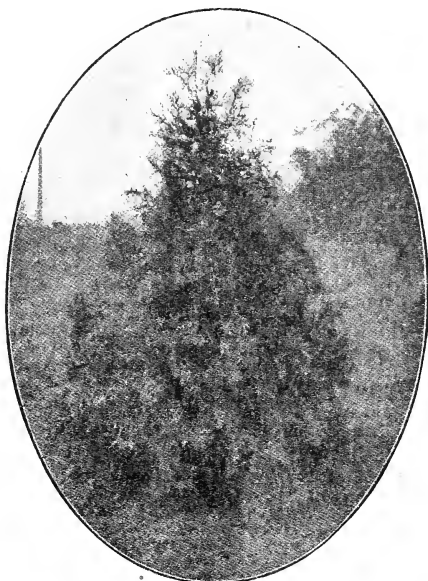
WINDOW BOXES

Nothing is prettier for the amount expended and there are few homes of today in which the women people have not planned for a few well filled Window Boxes for winter.

We have over a hundred thousand well kept plants suitable for boxes, in twenty different sorts and we can plant and start them for you if you wish, or we can pack so they will reach you in good order and give you directions whereby you can plant successfully yourselves.

We can supply the boxes where wanted, that run four feet in length, 9 by 10 inches, made from North Carolina pine lumber, and painted green. These hold six little evergreens, which of course are mixed according to taste and wishes. The boxes crated for shipment cost \$2.00 each f. o. b. here.

The evergreens for filling of boxes can be selected from this catalog, such as desired, the prices of each being given with a description of same.



ARBORVITAE

American Arborvitae (T. Occidentalis)—The most popular of the Arborvitae family, more widely planted for lawns, groups or hedges, makes a beautifully shaped tree, succeeding in all soil. It is especially valuable on account of its atmospheric odor. It forms an up-right conical tree of medium size. Is valuable for screens or hedges, and can be trimmed like privet. Where mixed conifers are used for grouping it is always used to advantage. We can supply all sizes in this variety, running as large as 7 to 8 feet at \$6.50 each.

	Each	Per 10
12 to 18-inch, B. & B.....	\$1.00	\$ 7.50
18 to 24-inch, B. & B.....	1.40	12.50
2 to 3 feet, B. & B.....	2.50	25.00

Compacta Arborvitae (T. Compacta)—Handsome cone shaped compact grower. Has fine foliage with limbs or branches extending from center as pages in a book. These are appropriate in various plantings, and a very desirable sort.

	Each	Per 10
12 to 18-inch, B. & B.....	\$2.00	\$20.00
18 to 24-inch, B. & B.....	3.00	30.00

Globosa (T. Globosa)—A dense thick evergreen of dwarf habit, grows naturally round like a ball and one of the best varieties, used in all plantings, and especially suited for tubs or box planting, or corners or outer edges and groupings.

	Each	Per 10
12 to 18-inch, B. & B.....	\$2.00	\$18.00
18 to 24-inch, B. & B.....	3.50	35.00

Orientalis (T. Orientalis)—A pretty pyramidal or torch-shaped evergreen with erect branches and dense flat foliage of bright green color. A very popular sort. One gardener told us he did not want a better evergreen than the Orientalis.

	Each	Per 10
12 to 18-inch, B. & B.....	\$0.90	\$ 8.00
18 to 24-inch, B. & B.....	1.25	10.00
2 to 3 feet, B. & B.....	2.00	20.00

Pyramidal (T. Occidentalis Pyramidalis)—A most compact and erect sort. In erect form it almost equals the Pyramidal Juniper. Foliage deep green retaining its

color throughout the year. Is called spiral shaped. Fine for tub, porch or special plantings.

	Each	Per 10
18 to 24-inch, B. & B.....	\$1.25	\$15.00
2 to 3 feet, B. & B.....	2.50	25.00
3 to 4 feet, B. & B.....	4.00	40.00

Tom Thumb—Smallest compact Arborvitae with feathery foliage, makes a beautiful ornament for box, porch or border planting.

	Each	Per 10
12 to 15-inch, B. & B.....	\$1.50	\$15.00
18 to 24-inch, B. & B.....	2.50	25.00

BIOTOS

Bioto Aurea Nana—We believe this to be the best dwarfish evergreen in cultivation. It is a compact grower with yellow foliage, always shapely and one of the most popular evergreens we have. For lawns, either singly or in groups, borders or banking in front of porches. Where small growing sorts are wanted we know of no other variety so desirable as this splendid sort. It should not be overlooked in the smallest planting, as they are a most satisfactory variety.

	Each	Per 10
8 to 10-inch, B. & B.....	\$1.25	\$12.00
10 to 12-inch, B. & B.....	1.75	15.00
12 to 18-inch, B. & B.....	3.00	25.00

Sheared specimens in this variety are very desirable for tub and porch planting. We can furnish these at \$8.00, \$12.00, \$16.00 and \$20.00 per pair.

Bioto Blue-Green—A handsome evergreen with beautiful bluish-green foliage that it retains throughout the winter. It is a dwarfish grower, making a pretty little tree and will add beauty to any collection.

	Each	Per 10
12 to 18-inch, B. & B.....	\$1.50	\$15.00
18 to 24-inch, B. & B.....	2.25	20.00
24 to 30-inch, B. & B.....	4.00	40.00

Bioto Conspicua—This is a beautiful little pyramidal evergreen of intense golden foliage. It is a new variety and one that we have never been able to get a large stock of because most everybody seeing them desire some of them among their planting. They are almost pyramidal and of dense foliage, and owing to their beautiful golden color they make a fine contrast among other varieties.

	Each	Per 10
12 to 18-inch, B. & B.....	\$1.50	\$15.00
18 to 24-inch, B. & B.....	2.50	25.00
2 to 3 feet, B. & B.....	4.00	40.00

Bioto Pyramidalis—Compact and of narrow pyramidal growth. Its branches are short and densely clothed with bright green foliage. It retains its color throughout the winter better than many other sorts, and for this reason together with its attractive pyramidal form, it is one of the most valuable evergreens. They are appropriately used for entrance, walks, corners, porch columns, piers, etc., and are also pretty and attractive in groups and various other plantings. Small ones are used among window box planting or tubs and porch boxes. We have never been able to get a large stock of these, but a few years ago we did one planting of four thousand, five hundred, in this variety, that are putting on nice growth, have been twice transplanted. We have a good lot of these that run 2 to 3 and 3 to 4 feet, many of which have been sheared, that are splendid specimen plants.

	Each	Per 10
12 to 18-inch, B. & B.....	\$1.25	\$12.50
18 to 24-inch, B. & B.....	2.00	20.00
2 to 3 feet, B. & B.....	3.00	30.00
3 to 3½ feet, B. & B.....	4.50	40.00

Bioto Rosedale—Foliage very fine, light green in summer, assuming a purplish hue in winter. This is a dwarfish variety growing very dense and distinctly different from all other evergreens. People who visit the nurseries to select plants about always include some Bioto Rosedale. A valuable sort for banking among evergreens and for various other plantings.

	Each	Per 10
10 to 12-inch, B. & B.....	\$1.25	\$10.00
12 to 18-inch, B. & B.....	1.50	15.00
18 to 24-inch, B. & B.....	3.00	30.00



CEDARS

Cedar Virginiana Glauca—Always popular and can be used ornamentally in various ways, thriving well and making a fine appearance. Its columnar form and rich foliage gives it a peculiar usefulness. It can be used as a hedge or break and is very ornamental. Bears shearing at any season of the year, though they naturally grow into tall dense and shapely plants without trimming.

	Each	Per 10
18 to 24-inch, B. & B.....	\$2.00	\$20.00
2 to 3 feet, B. & B.....	3.00	30.00
3 to 4 feet, B. & B.....	4.00	40.00

Cedrus Deodora (Indian Cedar)—A majestic tree of pyramidal outline from the Himalaya Mountains. Foliage grows in tufts or fascicles and of a bluish-green color. The color is nearly as deep blue as Koster's blue which it retains throughout the year, but it is unlike the Spruces in that it grows throughout the season, whereas the Spruces only grow in early spring. It is a most desirable variety for lawns, corners and various other plantings, but it is not suited for banking. For lawn planting they add greatly to the surroundings whether single or in small groups.

	Each	Per 10
2 to 3 feet, B. & B.....	\$5.00	\$50.00
3 to 4 feet, B. & B.....	7.50	75.00

CYPRESS

Lawsonian Cypress—Pendulous branches like ostrich feathers. Foliage has a silvery-gray sheen. They make fine specimen trees if planted alone. It is a very graceful tree. Its elegant drooping branches and dark glossy green foliage tinged with its glaucous hue, makes it one of the finest. A rare and valuable sort.

	Each	Per 10
18 to 24-inch, B. & B.....	\$2.00	\$20.00
2 to 3 feet, stocky plants	3.50	30.00

FIRS

Douglas Fir (*P. Douglassii*)—This succeeds better in the south, and in other sections south of Massachusetts than any other variety we know. Some years ago we bought several hundred dollars worth of stock plants of some of the firs, but had very few to live through the summer. The Douglas is a healthy grower, conical in form with spreading horizontal branches. Foliage light

blue above with silvery-white below. It is a handsome evergreen tree, and is an odd looking variety, making it conspicuous and justly so that it is worthy of a place in the finest plantings.

	Each	Per 10
12 to 18-inch, B. & B.....	\$2.00	\$20.00
18 to 24-inch, B. & B.....	3.00	30.00
2 to 3 feet, B. & B.....	5.00	50.00

Frazier's Fir—This is a distinct species from the highest peaks of the Carolina mountains, has dark green thick set foliage with blue underneath. It is compact and of pyramidal habit. In Maine or like latitude the Balsam succeeds but the Balsam Fir is not very satisfactory south of Massachusetts.

	Each	Per 10
12 to 18-inch, B. & B.....	\$1.50	\$15.00
18 to 24-inch, B. & B.....	2.50	25.00
5 to 6 feet, B. & B.....	7.50	75.00

HEMLOCK—Tsuga

Carolina Hemlock—This splendid new Hemlock is of distinct pyramidal growth. Its hardiness, dense, drooping foliage and beautiful form makes it rank among, if not ahead of the Japanese sorts. Its fine feathery-like foliage makes a splendid contrast among other evergreens for either box or lawn planting, and one could think of nothing finer for border or screen. It is said to be the coming American evergreen for the finest plantings.

	Each	Per 10
10 to 12-inch, B. & B.....	\$1.50	\$15.00
12 to 18-inch, B. & B.....	2.50	25.00
18 to 24-inch, B. & B.....	4.00	40.00

Hemlock (Canadensis)—A medium size graceful evergreen tree of dense growth, branches thickly set with beautiful drooping feathery foliage of a little darker color than the Hemlock Carolina and a very handsome tree. Fine for lawns boxes, tubs or group planting. It lends an attractive appearance in grouping owing to its drooping branches and feathery-like foliage. A sight of this tree as Natures Architect scatters them in the Appalachian mountains is something wonderful to behold. It is the one most noted and receives the most comment by travelers every year through western North Carolina. It is always beautiful and even during summer time when deciduous trees and shrubs are covered with foliage, its beautiful form and foliage appear pre-eminently among all other sorts. No wonder Mrs. Wheeler from Redona Beach, Cal., while traveling through the eastern Carolina mountains exclaimed "This wonderful mountain scenery surpasses anything I have ever seen." Without this Hemlock these mountains would be lacking. They not only grow singly but in groups and clusters appearing always beautiful and shapely. The noted Grove Park Inn at Asheville, being one of the finest resorts in the world has prominently used among its plantings this beautiful evergreen. They may be used to advantage in quantity on large estates, as well as among other large plantings, while among smaller plantings they certainly should have a place.

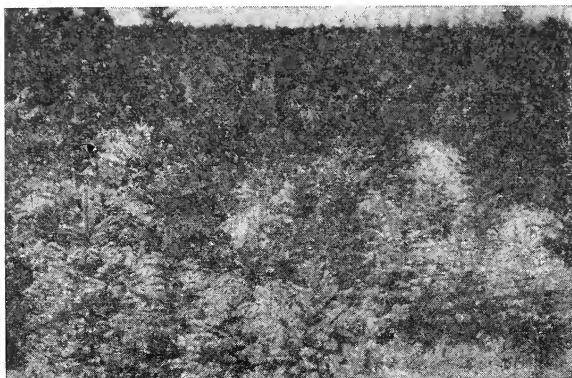
	Each	Per 10
10 to 12-inch, B. & B.....	\$1.25	\$10.00
12 to 18-inch, B. & B.....	2.00	18.00
18 to 24-inch, B. & B.....	3.50	30.00
24 to 30-inch, B. & B.....	4.50	40.00

JUNIPERS

Juniper Communis Hibernica (Irish Juniper)—One of the most popular Junipers in cultivation, slender rigidly up-right and formal evergreen in character, resembling a solid green column. The under side of its foliage is of a silvery-gray while the tip is green color. Perfectly hardy retaining its beautiful color throughout the year. They are used in various plantings, where groups are wanted and height is desired there is nothing prettier than a large clump of pyramidal Junipers. They are fine for piers and columns or corners.

	Each	Per 10
12 to 18-inch, B. & B.....	\$1.25	\$10.00
18 to 24-inch, B. & B.....	1.50	15.00
2 to 3 feet, B. & B.....	2.50	25.00
3 to 4 feet, B. & B.....	4.00	35.00
4 to 5 feet, B. & B.....	5.50	50.00
5 to 6 feet, B. & B.....	7.00	70.00
6 to 8 feet, B. & B.....	9.00	90.00

Juniper (New English)—A fine evergreen with pretty silvery-like foliage, is compact but not so dense or columnar as the Irish. Where a little more spreading



3,000 Spruces, Blue, Koster's and Norway

variety is desired, this is an ideal sort. They are always pretty, do not color up in the hardest of winter weather, and when planted singly in groups or used in banking, they stand up making a prominent and attractive outline, lending beauty and attractiveness to the surroundings.

	Each	Per 10
12 to 18-inch, B. & B.....	\$1.25	\$10.00
18 to 24-inch, B. & B.....	2.00	20.00
2 to 3 feet, B. & B.....	2.50	25.00
3 to 4 feet, B. & B.....	4.00	40.00
4 to 5 feet, B. & B.....	5.50	50.00
5 to 6 feet, B. & B.....	7.00	70.00
6 to 7 feet, B. & B.....	9.00	90.00

Juniper Communis Depressa—We believe this to be the best prostrate form of Juniper for ground covering. It will grow on sandy or gravelly hillsides, and where fully exposed to the sun. It varies somewhat in form from prostrate to ascending type occasionally two feet high. They have beautiful foliage, very much like the Irish, but a little more intensely grayish-green. Some little nook or corner or other plantings in this variety lend quite an addition to other sorts. While they may be appropriately used for borders, banks or edgings.

	Each	Per 10
12 to 18-inch, B. & B.....	\$2.50	\$25.00
18 to 24-inch, B. & B.....	4.00	40.00

Large specimen plants may be had at \$10.00 each.

Juniper Sabina (Savin Juniper)—A spreading form with dark green foliage. It is valuable for rockeries, grouping and borders, making a fine effect with other sorts.

	Each	Per 10
10 to 12-inch, B. & B.....	\$1.50	\$15.00
12 to 18-inch, B. & B.....	2.50	25.00
18 to 24-inch, B. & B.....	4.00	40.00

Juniper Excelsa Stricta—A very symmetrical conical outline with steel blue pointed leaves which stand erect. Foliage glaucous and arranged around the branches in threes. A fine compact variety for all purposes and especially where formal effect is desired. Fine decoration for box or tub planting.

	Each	Per 10
12 to 18-inch, B. & B.....	\$2.00	\$20.00
18 to 23-inch, B. & B.....	3.50	35.00

Juniper Excelsa Variegated—Exactly the same in color and form as the Juniper Stricta with the exception that it has beautiful golden tips. This is a pretty and rare variety which will add taste and beauty to the finest plantings. Our stock of this variety is limited but we are usually able to supply some of the sizes. At present we have 12 to 18-inch and 3 to 4-foot sizes only.

	Each	Per 10
12 to 18-inch, B. & B.....	\$3.00	\$30.00
2 to 3 feet, B. & B.....	7.50	75.00

PINES

Japanese Red Pine—This is a strikingly beautiful little pine, of refined habit, and used among the finest ornamental plantings. If you want a pretty little pine with fine form and distinct variety, this is the one.

	Each	Per 10
2 to 3 feet, B. & B.....	\$2.00	\$20.00
3 to 4 feet, B. & B.....	3.00	30.00
4 to 5 feet, B. & B.....	4.00	40.00

White Pine—It is the well known white pine that is grown in most sections of the country, has foliage of a delicate silvery-green and will grow in the poorest soil. We are unable to ship it in many places as The Federal Horticultural Board forbids the shipping of the white pine into most of the states. If you want it write us and we will advise you.

	Each	Per 10
3 to 4 feet, B. & B.....	\$2.00	\$20.00
4 to 5 feet, B. & B.....	3.00	30.00

RETINSPORA

Retinspora Plumosa Aurea—A compact tree of regular outline. Foliage plummy and graceful, tinged with a golden hue, which makes it a very striking and beautiful evergreen. A small group of this variety adds strikingly to the surroundings. They are used in various ways like other evergreens, making a beautiful contrast among groups and other planting.

	Each	Per 10
18 to 24-inch, B. & B.....	\$1.25	\$12.50
2 to 3 feet, B. & B.....	2.25	22.50
3 to 4 feet, B. & B.....	3.50	35.00
4 to 5 feet, B. & B.....	5.00	50.00

SPRUCES

Norway Spruce (P. Excelsa)—A most desirable evergreen for all purposes. For ornamental planting in groups around large estates or parks as a wind-break, for orchard, farm house or as a fence or hedge, it is a most desirable variety. It is absolutely hardy, a good grower, its branches being of a drooping habit. If planted in rows and not pruned it soon becomes an excellent screen, but it can be pruned to any height. If it is to be kept into a hedge it should be trimmed in June and October. It can be made dwarfish and very attractive by shearing off the ends of the branches each season. Bears transplanting well and will grow under all conditions, even in crevices of rocks and on hillsides where it would be impossible for other trees to get nourishment. Small trees are attractive and conspicuous, but it increases in beauty every year of its life, and are most conspicuous during winter time. It can be planted as a small bordering around large growing beds or at intervals along borders of flowering beds for winter ornament. When the snow covers the earth like a blanket, the foliage of a Norway Spruce brightens the surroundings and makes us forget the dreariness of old winter.

	Each	Per 10
18 to 24-inch, B. & B.....	\$1.50	\$15.00
2 to 3 feet, B. & B.....	2.50	25.00
3 to 4 feet, B. & B.....	4.00	40.00

White Spruce (Picea alba)—A compact pyramidal form and greater symmetry than Norway Spruce, is not as vigorous grower, has elegant silvery-gray foliage and makes a beautiful little tree. Can be used for all purposes for which the Norway is used, and more owing to its being a compact dwarfish grower. They may be used for bordering small plantings and also among groupings and other evergreens for near the outer edges, for front of porch or house banking. They too, like the Norway, will thrive in most all soil and perfectly hardy.

	Each	Per 10
12 to 18-inch, B. & B.....	\$1.50	\$15.00
18 to 24-inch, B. & B.....	2.00	20.00
24 to 30-inch, B. & B.....	3.00	30.00

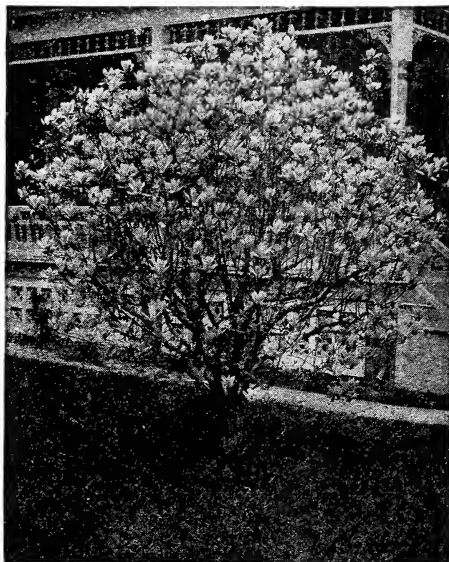
Colorado Blue Spruce (P. pungens)—A very shapely and popular Spruce. In color it is a bluish-green, and while even small plants are attractive, each years growth brings greater beauty. A few well grown specimens make an almost priceless addition to a well kept lawn. This tree is a native of Colorado, they are grown from seed and vary in color just a little, many of them being of a little deeper blue than others grown from the same seed bed. The intense blue can only be had in the grafted sorts known as "Koster's Blue," but the Colorado Blue is a most desirable sort.

	Each	Per 10
12 to 18-inch, B. & B.....	\$2.50	\$25.00
18 to 24-inch, B. & B.....	4.00	40.00
2 to 3 feet, B. & B.....	6.00	60.00

Koster's Blue Spruce (Picea pungens glauca Kosteriana)—A rare tree with brighter green foliage than any other Spruce. This variety is identical in growth with the Colorado Blue but has the bluest strain of foliage, being grafted from the famous Koster's variety. They

are healthy and make beautiful trees being attractive at all seasons. They do not make large trees but owing to their intense bluish color, if a few of them are scattered about the lawn they will lend attraction to the surroundings.

	Each	Per 10
12 to 18-inch, B. & B.....	\$3.00	\$30.00
18 to 24-inch, B. & B.....	4.50	45.00
2 to 3 feet, B. & B.....	6.50	65.00



Broad Leaved Evergreens

MAGNOLIA GRANDIFLORA

IT has been said there is no tree which creates such admiration and beauty as the Magnolia Grandiflora and there is no doubt about its being king among all broad-leaved evergreen trees. To prize it is only necessary to see its beautiful radiant green leaves, and not at any certain size, but anywhere from a small plant to a full grown tree, its fine foliage standing out in the coldest of weather, retaining its glistening, glossy green color, and so wondrously fine, that they are sold by the thousands every year for decorative purposes. The tree begins to blossom in June, and continues through July and August, displaying hundreds of great, large flowers. These beautiful cream-like and bell-shaped flowers emit a very rich perfume that can be detected fully a block away. Several years ago, the Brooklyn (N. Y.) Eagle, wrote half a column in praise of this splendid tree. We quote from one sentence in part. "It seems strange that a tree so beautiful is not cultivated to a greater extent hereabouts." The tree the Eagle referred to, is growing in Brooklyn, N. Y., and planted there some 30 years ago. It was secured on the Cape Fear river near Fayetteville, N. C., by a hunter who was spending the winter there. The paper stated, that the sight of the tree was something wonderful, and even a limb with its loads of bloom, which had been presented to one of the merchants of the city and placed on exhibition in his store was attracting the attention and admiration of thousands of customers who stopped to enjoy the sight. It used to be thought they were not suited for cold sections of the country, but time has proven that such is not the case, as we have them now growing in New York, New Jersey, Rhode Island, Pennsylvania, Ohio, Indiana, Missouri and other like cold section. A customer in Indiana, from whom we had an order wrote us a few weeks ago, "They are growing successfully in Cincinnati, Ohio, and we are no colder here than they are in Cincinnati." In cold sections of the country, where the thermometer gets below 15 to 18 below zero, they should be planted on the northern

side of buildings where they are protected from the southern sun during the wintertime. A number of these trees have been lately planted around the Washington home at Mount Vernon. There is one street planted to them in Los Angeles, Cal., which is said to be one of the most beautiful sights of that city. For the beautifying of mill villages, towns and parks, there is no tree that will afford the beauty, attraction and improvement as the *Magnolia Grandiflora*. Of course for lawn or resident planting, only a few trees are needed, but in our opinion you will make a mistake unless you buy at least a few of these trees. Our trees are being well and carefully grown on upland fields where they are plowed and hoed like corn. Here they make a better root system, and if properly handled otherwise, insures their successful transplanting. Trees grown in bottom land have less fibrous roots, do not make as shapely trees and not as easily transplanted.

We can ship them safely anywhere, having delivered them successfully in far away California and the Isle of Pines. Where wanted we can quote on large specimen trees, some of which have been successfully removed from our nurseries, to Providence, Rhode Island, and other distant sections. Special planting directions are given with each shipment. By all means plan to plant a few *Magnolia Grandiflora* this season and do it NOW. You will be pleased with them.

	Each	Per 10
18 to 24-inch,	\$1.00	\$ 9.00
2 to 3 feet,	1.25	12.00
3 to 4 feet,	2.00	17.50
4 to 5 feet,	3.50	30.00
5 to 6 feet,	5.00	40.00

Abelia Grandiflora (*A. rupestris*)—One of the most beautiful popular and satisfactory broad-leaved evergreen. The graceful drooping stems and branches are covered with dark glossy-green leaves, which in winter assumes a metallic sheen. From the middle of May until frost this beautiful little evergreen produces beautiful little bell shaped cream colored and fragrant flowers that almost covers the plant. It is hardy and a wonderfully fine thing, its foliage being attractive all the season. There is not a finer plant in cultivation than this *Abelia*. It is pretty anywhere and all the time. It seems almost to realize its own beauty, in that it is always trying to put on more loads of beautiful little fragrant flowers that always appear just at the right place so as to add more admiration and wonder to those who see it.

A most beautiful sight was a border of this *Abelia* about one of the government buildings in Washington, a few years ago, and it was so intensely beautiful the writer had to stop at the risk of being called "country-like" to enjoy the sight. You will not regret any money spent for this plant. We have never been able to get much stock ahead, but just now we have a nice lot of very fine plants, which have been several times transplanted, and run from one year, lightly branched, to busy sheared specimens.

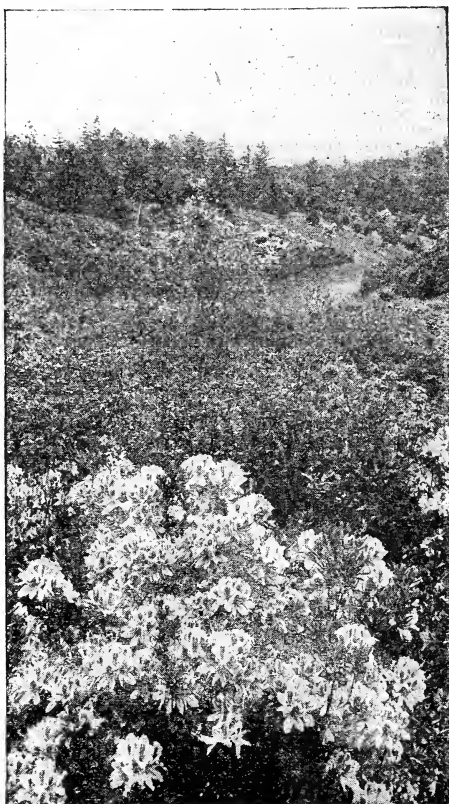
	Each	Per 10	Per 100
12 to 18 inch, B. & B.	\$0.75	\$ 6.50	\$50.00
18 to 24 inch, B. & B.	1.00	7.50	75.00
20 to 30 inch, B. & B.	2.50	22.50	
Heavy sheared specimens.....	4.00	40.00	

Acuba japonica aurea-maculata (Gold-Dust Tree)—A splendid ornamental tree or shrub with large handsomely variegated leaves. The bloom which comes in early spring is followed with clusters of pretty red berries, which it retains throughout the winter. The contrast with its pretty leaves and bright red berries make a very beautiful effect. They are hardy in the Southern states and about as far north as Washington. They are well adapted for city planting as they withstand dust and smoke to a considerable degree. They grow to a few feet high and can be used to good advantage in winter as indoor plants for vases and window boxes. They are especially effective when planted in masses or groups with other shrubbery.

	Each	Per 10
Small rooted plants.....	\$1.00	\$10.00
12 to 18-inch, B. & B.	2.00	20.00
18 to 24-inch, B. & B.	3.00	30.00
20 to 30-inch, B. & B.	4.00	40.00

Azelea Amoena—A very desirable little evergreen shrub, with dark glossy leaves. Flowers of a rich wine color, which are produced in such profusion as to quite envelop the plant when in bloom. Its leaves somewhat resemble boxwood in summer, but as the cold weather sets in they assume a beautiful shade of bronze. Perfectly hardy and a high class little evergreen shrub that is used among the finest plantings.

	Each	Per 10
12 to 15-inch, B. & B.	\$2.00	\$20.00
15 to 20-inch, B. & B.	3.00	30.00



Boxwood—Used for boxes, edging, and pyramids in various sizes. Its glossy leaves are always pleasing. They are long lived shrubs and many can be seen growing about old places which have stood perhaps several generations.

	Each	Per 10	Per 100
12 to 15-inch, B. & B.....	\$1.00	\$ 8.00	\$75.00

Cape Jasmine (*Gardenia Florida*)—An old Southern favorite evergreen shrub. The masses of showy white flowers make it graceful and attractive. Its flowers are very fragrant, which are pure white. They occupy their own prominent place in any planting, being unlike any other broad-leaved evergreen. It is very popular. Almost every housewife being desirous of having even one or two of these beautiful and attractive plants about the home. They are also valuable in landscape work. They are not hardy in the cold sections of the country, but are at home in the South.

	Each	Per 10
Small plants	\$0.25	\$ 2.50
12 to 18-inch,50	4.00
18 to 20-inch, bushy.....	1.00	10.00
Specimen plants.....	2.50	25.00

Laurocerasus (*English Laurel*)—A small tree, very bushy with handsome shining evergreen foliage. Native of Europe. It is one of the finest broad-leaved evergreens for mass planting, banking or mixing with other shrubby or conifers evergreens, as it has fine large leaves of a deep glossy-green color, which it retains throughout the year, and will make a beautiful addition to any collection.

	Each	Per 10
12 to 18-inch, B. & B.....	\$2.00	\$20.00
18 to 24-inch, B. & B.....	3.00	30.00
20 to 30-inch, B. & B.....	4.00	40.00

Kalima Latifolia—A valuable evergreen shrub which blooms in terminal clusters of clearest pink to a white. Has pointed shaped leaves which retain their color throughout the year. We have some very fine and shapely plants that are simply a mass of bloom during the last of May and into June. They are much used in

landscape work for banking and mixing in. They are a valuable addition.

	Each	Per 10
12 to 18-inch, B. & B.....	\$1.25	\$12.00
18 to 24-inch, B. & B.....	2.50	25.00

Rhododendron Maximum—Perfectly hardy in the coldest sections of the country where it retains its beautiful foliage throughout the year. Bears great clusters of pink colored flowers in May and June, which are nearly double the size of other Rhododendrons. They should be planted on the north side of the house, or where shaded by conifers or other trees or shrubbery. Even a few of these much admired broad-leaved evergreen shrubs will add taste and beauty to your planting that you will be pleased with. Get a few this time and it will be the cause of your buying more later. You will like them.

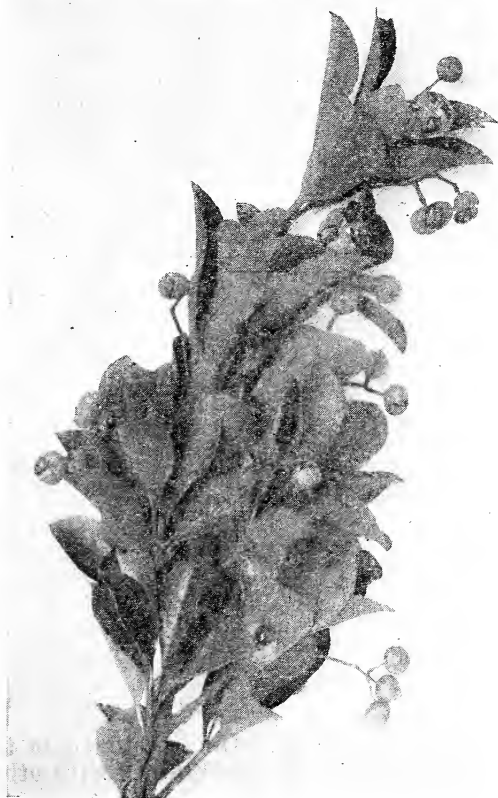
	Each	Per 10
12 to 18-inch, B. & B.....	\$1.50	\$15.00
18 to 24-inch, B. & B.....	2.50	25.00
24 to 30-inch, B. & B.....	3.50	35.00

LYGISTRUMS

Lygustrum Amurense—This is hardy and an evergreen in the South, and while it is mainly used for hedges, it is now by some gardeners among shrubbery planting, as broad-leaved evergreens. It bears freely of very fragrant and white-cream colored flowers that are, if untrimmed, followed by clusters of little blue berries that hang on until late in the spring.

	Each	Per 10
12 to 18-inch, B. & B., bushy.....	\$0.50	\$ 4.00
18 to 24-inch, B. & B.....	.75	7.00

Lygustrum Napelensis—A handsome and very hardy shrub with glossy-green foliage and beautiful cream colored fragrant and showy flowers. The leaves are larger than the *Abelia Grandiflora*, of a deeper glossy green and being in a class to itself, bearing no resem-



blance to other hardy broad-leaved evergreens, and holding its splendid cheerful coloring throughout the year. It is one of the finest shrubs for landscape, banking among coniferous evergreens or shrubbery. It grows rapidly until it gets a couple of years old when it seems to delight in a greater production of its beautiful glossy green leaves and fragrant flowers.

	Each	Per 10
12 to 18-inch, B. & B.....	\$1.50	\$15.00
18 to 24-inch, B. & B.....	2.25	22.50
24 to 30-inch, B. & B.....	3.00	30.00

Lygustrum Lucidum—A pretty little evergreen shrub which very much resembles the *Napalensis* except its leaves are a little larger, yet a lustrous green with somewhat spreading branches and cream colored fragrant flowers followed by black berries, which hang on through the winter. This is fine for banking among evergreens, grouping among shrubbery or side of walls.

	Each	Per 10
12 to 18-inch, B. & B.....	\$1.50	\$15.00
18 to 24-inch, B. & B.....	2.25	22.50
24 to 30-inch, B. & B.....	3.00	30.00

Lygustrum Japonicum—This is a valuable evergreen shrub, but does not have the glossy green leaves as the other varieties and is much used by landscape gardeners among shrubbery planting, lending a splendid contrast among other sorts.

	Each	Per 10
12 to 18-inch, B. & B.....	\$0.75	\$ 7.00
18 to 24-inch, B. & B.....	1.00	10.00
24 to 30-inch, B. & B.....	1.50	14.00

Lygustrums are now much used in landscape work. All of them making attractive and showy plants.

Mahomia Aquafolia (English Holly)—Holly-like leaves which remain throughout the winter, yellow flowers in May followed by great clusters of blue berries. Fine for mass planting or grouping among shrubbery or evergreens or under shade of trees.

	Each	Per 10
12 to 18-inch, B. & B.....	\$1.00	\$ 9.00
18 to 24-inch, B. & B.....	2.00	20.00
24 to 30-inch, B. & B., bushy.....	3.00	30.00

Japanese Holly—This is a fine little evergreen tree which has large and fine foliage and makes a beautiful little tree. They are fine for various places where small broad-leaved evergreens are wanted.

	Each	Per 10
12 to 18-inch, B. & B.....	\$1.50	\$15.00
18 to 24-inch, B. & B.....	2.50	25.00

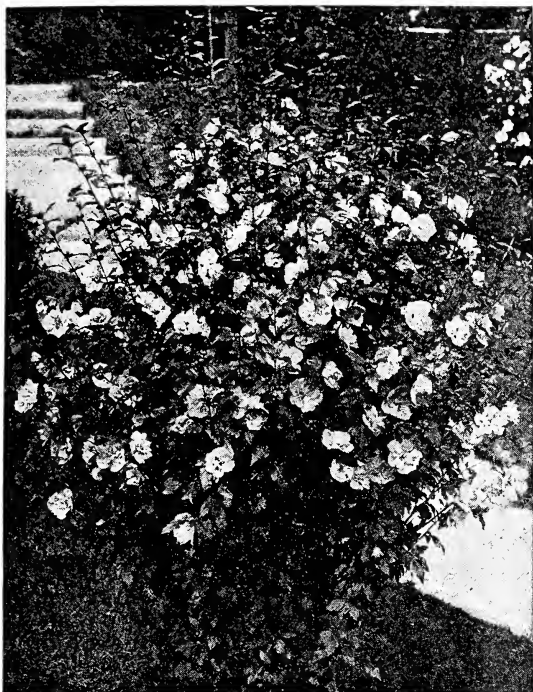
American Holly—Has spikes on the edges of its peculiar shaped evergreen leaves and makes a striking contrast among other shrubbery. It is hardy as far north as Pennsylvania and is becoming more in demand every year.

	Each	Per 10
12 to 18-inch, B. & B.....	\$1.00	\$ 9.00
18 to 24-inch, B. & B.....	1.50	14.00
2 to 3 feet, B. & B.....	2.50	24.00

AMERICAN HOLLY FOR CHRISTMAS DECORATION

We have some fine specimen trees that are usually loaded with berries that are much in demand for lawn planting or house decorating at Christmas time. These are well formed plants running 3 to 4, 4 to 5, and 5 to 6 feet, at from \$3.00, \$5.00 and \$7.00 each. We will try to select plants well fruited if advised when the order is sent. We move these with a large ball of earth to the roots, that they may be planted at some suitable place where they may grow and beautify the surroundings for years to come. They are hardy as far north as Pennsylvania, there being one in that state which is over two feet in diameter and said to be a century old, which bears beautiful red fruited berries every season.

Evergreens add a distinctive touch to the landscape that cannot be obtained with other ornamentals.



Rose of Sharon

Hardy Deciduous Ornamental Shrubs

IF one will select them with care a succession of bloom may be had from early spring until late in the fall. The list following is one of the finest collections for general decorative purposes.

AZALEAS

Azalea Vaseyi—A beautiful sort which bears delicate pink flowers with dots of begonia-pink at base of petals. Foliage dark crimson in the fall.

	Each	Per 10
Select plants, 12 to 18-inch.....	\$1.50	\$15.00

Azalea Viscosa—Flowers white, slightly tinted rose, fine for swampy ground, but suitable for any soil. It bears fragrant flowers in profusion during June.

	Each	Per 10
Price	\$1.50	\$15.00

Azalea Nudiflorum—Fine and popular old variety. Perfectly hardy and free bloomer. Flowers appearing in early spring.

	Each	Per 10
12 to 18-inch, bushy plants.....	\$1.00	\$10.00

ALTHEAS

Althea (Rose of Sharon)—A beautiful small flowering shrub, and if left untrimmed will grow five to six feet tall. This is much used for hedges and screens. Fine for a dividing line between houses. Many cotton mill owners use these as a hedge, dividing lots and tenant houses on the mill premises. They bloom from May until September and are attractive. They are also used in massing among other shrubbery. We have many differ-

ent varieties, and if you will state the color you desire, we will make a selection that will please you.

	Each	Per 10
18 to 24-inch,	\$0.30	\$ 3.00
2 to 3 feet,40	4.00

CALYCANTHUS

Calycanthus Floridus (Sweet scented shrub)—A native shrub, foliage luxuriant and rare. Chocolate color blossoms terminate the branches, and are delightfully fragrant.

	Each	Per 10
1 to 2 feet.....	\$0.25	\$ 2.00
2 to 3 feet.....	.50	4.00

CREPE MYRTLE

Crepe Myrtle, Pink (*Lagerstroemia*)—Vigorous shrub or tree, the leaves are a bright green with brown colored bark. Originated in Asia. Flowers appear in August, July and September, which are crinkled and ruffled, produced in panicles. Easily grown and will succeed on a wide range of soil. No other tree or shrub takes its place. They are among the most satisfactory flowering shrubs for Southern planting. It will not succeed in the cold North or Northwest, but is at home in the South.

Crepe Myrtle, Purple—A grand sort producing immense clusters of flowers of a deep rich purple.

	Each	Per 10
2 to 3 feet,	\$0.75	\$ 7.00
3 to 4 feet,	1.00	10.00

White Crepe Myrtle—Has pure white flowers bearing large clusters. A free bloomer and a showy shrub in any landscape.

	Each	Per 10
2 to 3 feet,	\$1.25	\$12.00
3 to 4 feet,	1.50	15.00

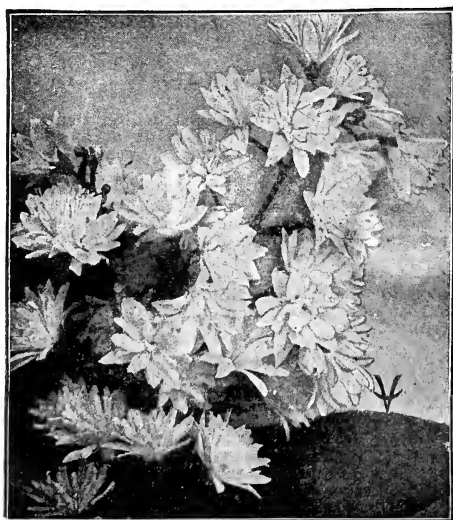
For screen or high shrubbery hedges the Crepe Myrtles are unsurpassed.

DEUTZIAS

Deutzia (Pride of Rochester)—A distinct and valuable variety. Blooms in June with fine double white flowers. It is much used by all gardeners.

Deutzia crenata (f. p.)—Flowers double white delicately margined with pink. This is evidently one of the most popular and desirable flowering sorts.

	Each	Per 10
12 to 18-inch,	\$0.25	\$ 2.00
18 to 24-inch,35	3.00
2 to 3 feet,60	5.50



Deutzias



Hydrangea

FORSYTHEAS

Forsythea Viridissima (Golden Bell)—Produces golden yellow flowers, profusely in very early spring. An old variety of shrub which for some years, seemed to have been almost forgotten, but lately is being used a great deal both in shrubbery gardens and landscape work.

Forsythea Weeping Suspensa—Handsome form, vigorous grower, and prolific bloomer. Flowers golden yellow which continue for some weeks. Conspicuous among other shrubbery. Has long curving branches used for covering arches and trellises. The stems and leaves retain their color until late in the fall.

Forsythea Intermedia—Erect in growth, somewhat slender, very profuse bloomer.

	Each	Per 10
12 to 18-inch,	\$0.25	\$ 2.00
18 to 24-inch,35	3.00
2 to 3 feet,50	4.50

HYDRANGEAS

Hydrangea Paniculata Grandiflora—A beautiful hardy shrub, with bright shiny green leaves, bearing huge panicles of flowers 6 to 7 inches in diameter, and 8 to 10 inches long. Begins to flower in July appearing white for three or four weeks, when it begins to change to a light pink, turning to brown later in the fall. A fine thing for planting with other shrubbery, banking with coniferous evergreens, clumps or border planting, or alone. This is the thing about which you hear so many exclaim Oh! What is that pretty flower yonder? It is so fine.

	Each	Per 10
12 to 18-inch,	\$0.30	\$ 2.50
18 to 24-inch,40	3.50
24 to 30-inch,50	5.00
2 to 3 feet, bushy, specimen plants.....	1.00	8.00

Hydrangea Alba Grandiflora—Resembles the *Paniculata* variety, in form and shape of flower petals, but is not so large and round, being borne in panicles 5 to 8 inches in diameter. They bloom earlier than the *Paniculata*, beginning to blossom early in June and if kept worked and the blooms pinched off for a few weeks after they first appear, they grow and bloom continuously until frost.

	Each	Per 10
12 to 18-inch,	\$0.40	\$ 4.00
18 to 24-inch,50	5.00

Hydrangea Otaksa—A Japanese sort, producing great clusters of pink flowers. This variety is extensively used in decorations. Hardy as far north as Philadelphia, and grown in pots in all parts of the country. The immense loads of bloom make them very conspicuous. Easily

transplanted and need no particular nursing. For decorative planting on the piazza or porch they produce a fine effect. This is the kind the ladies have always been inquiring for. We now have a good stock of nice plants that cannot help but please. It is no wonder they have always been wanting them because they are very beautiful and there is no other sort that we know of that will exactly fill their place. They bloom continuously throughout the growing season. They are attractive alone or with other shrubbery.

	Each	Per 10
Well rooted plants that will bloom the first season	\$0.50	\$ 4.00
Large, strong plants.....	1.00	8.50

LILACS

Persian Lilac—Five to six feet high with slender upright branches. Foliage rich green, blooming in early spring with pale lilac-colored flowers. A fragrant and popular variety.

	Each	Per 10
2 to 3 feet,	\$0.75	\$ 7.00

White Persian Lilac—Same as above with pure white flowers.

	Each	Per 10
2 to 3 feet,	\$0.75	\$ 7.00

PHILADELPHUS

Philadelphus Syringa or Mock Orange—The Syringa is an invaluable shrub of vigorous habit. Hardy with large handsome foliage, this variety bearing beautiful white flowers. Valuable in any collection of shrubbery.

Philadelphus Coronarius—A well known shrub, with pure white flowers, and a very early bloomer.

Philadelphus Grandiflora—Foliage bright green, blooms in June has large white flowers, with the exception of the center which is yellow.

Philadelphus LeMoinei—Branches slender and arching, flowers double in large racemes, very sweet scented, and a dwarfish grower.

	Each	Per 10
12 to 18-inch,	\$0.30	\$ 2.50
18 to 24-inch,40	4.00
2 to 3 feet,50	5.00



Philadelphus



Spirea Van Houtti

PONTENTILLA

Potentilla (Fruticosa)—A beautiful hardy shrub having distinctive narrow fuzzy leaves, growing to a height of 2 to 3 feet. Rather round in form and succeeds almost anywhere. Fine in dry soil. Has yellow blooms which resembles *Hypericum*s but are not quite as large, and blooming freely from June till September. Is especially fine for banking among other shrubbery, and most valuable for planting among evergreens owing to its attractive foliage and flowers. For shrubbery and perennial borders or as specimen plants.

	Each	Per 10
12 to 18-inch,	\$0.40	\$ 3.50
18 to 24-inch,50	5.00
24 to 30-inch,75	7.00

SPIREAS

Spirea Anthony Waterer—A fine new variety of the Spireas, growing about two feet high, covering themselves with blooms from June until frost. It is more dwarfish than the other Spireas. The blooms are of a rosy crimson which almost constantly cover the plant. This is a valuable addition to the shrubbery garden.

	Each	Per 10
12 to 18-inch,	\$0.40	\$ 3.50
18 to 24-inch,60	5.00
2 to 3 feet,75	7.00

Spirea Van Houttei (Bridal Wreath)—Five to six feet high with numerous arching branches, foliage dark green persisting until late autumn, blossoms in late spring, the white flowers often bending the branches in graceful curves to the ground under their profusion. The most popular sort, for specimens or hedges.

	Each	Per 10
12 to 18-inch, 2-year bushy plants.....	\$0.25	\$ 2.50
18 to 24-inch,35	3.00
2 to 3 feet,50	5.00

WEIGELIAS

Weigelia Candida—Pure white flowers, strong grower, but has a refined appearance.

Weigelia Rosea—A fine shrub with handsome rose colored flowers, which blooms in early spring. Perfectly hardy and occupies a prominent place in other shrubbery.

Weigelia Hendersonia—Fine, compact habit flowers medium size, outside of petals red.

	Each	Per 10
1 to 2 feet,	\$0.30	\$ 2.50
2 to 3 feet,50	4.50



Large Pyramidal Juniper for Beauty

Hedge Plants

WE can supply any variety of hedge plant at very reasonable cost, as we grow in quantity, shipping thousands every year to nurserymen for their retail trade, as well as supplying our own retail trade, shipping to almost every state in the Union. We have numerous large orders from land improvement companies, cotton mills, schools, parks, towns and cities.

PRIVET

California (ovaliflorum)—A well known and popular variety, is a vigorous grower, with deep green foliage, used much for hedges and borders, but will winter kill occasionally in the colder sections, though in the South generally it is very nearly an evergreen.

	Per 10	Per 100	Per 1000
12 to 18-inch,	\$1.50	\$ 4.00	\$40.00
18 to 24-inch,	2.00	6.00	60.00

Amoor River Privet (Evergreen)—This is a fast growing hedge either in sun or shade, and bears trimming into any desired shape. We hold this stock in storage until July and August from which we can make prompt shipment of plants that will prove satisfactory. Several years ago we shipped 2,000 to a Georgia nurseryman in July, who afterwards wrote us that he never had better success, that it all lived and grew off nicely.

	Per 10	Per 100	Per 1000
12 to 18-inch,	\$2.00	\$ 6.00	\$50.00
18 to 24-inch,	3.00	7.50	70.00
24 to 30-inch,	4.00	9.00	80.00

We can supply small well rooted and branched plants, every one a fine little plant, delivered prepaid to any address at \$5.00 per hundred. The only difference in this and the 12 to 18 inch stock as listed above is that they are little smaller plants, but stocky little fellows. We sell lots of them, as they soon make a pretty hedge, and for long distance there is some saving in transportation charges.

Privet. Northern type. Amoor River north—This variety is not an evergreen, but it is the kind that is hardy in Minnesota and other like cold climates. In habit of growth it is very much like the old California privet but does not winter-kill and is a most valuable variety, which is fast taking the place of California.

	Per 10	Per 100	Per 1000
12 to 18-inch,	\$2.50	\$ 6.00	\$50.00
18 to 24-inch,	3.00	7.50	65.00

Thunberg's Barberry—A beautiful shrub that is hardy anywhere. Even in cold Alberta, Canada, where the thermometer for months during the winter hovers around 40 degrees below, one of our customers grows it successfully. Has small round bright-green leaves, changing in autumn to a beautiful shade of orange scarlet and crimson, bearing bright red berries in profusion which do not drop off until late in the spring.

For low hedge or borders there is no better hedge plant

in existence. It will succeed everywhere. After the little yellow bloom in the spring it is followed by berries which hang on through the winter. The foliage coloring up nicely in September to a beautiful shade of scarlet and crimson. When this has shed the beautiful red berries appear which are very attractive. The plant needs no trimming, grows to a height of 2½ feet. It should be planted about 10 inches apart for hedges, and worked, the grass and weeds kept down and the soil well cultivated for one or two seasons after which it can be left alone when it will grow into a shapely, slightly drooping, graceful hedge or border. They are also much used among group planting.

	Each	Per 10	Per 100
8 to 12-inch,	\$0.35	\$ 2.00	\$15.00
12 to 18-inch,40	3.00	30.00

Beautifying Your Home Grounds Pays Big Dividends

Your new house may be all that you can ask, substantial and costly, even to the millionaire's liking, but the attractiveness lies in its surroundings. No home being complete until BEAUTIFIED, which enhances the value so quickly and brings that charm and fascination all its own. Don't wait. Write our Landscape Department for information NOW.

Hardy Deciduous Shade Trees

THE following list represents the most lasting and popular sorts of deciduous ornamental trees. We sell these in large quantities to towns, cities, schools, mill owners and land improvement companies.

The Sugar and Norway Maples are among the most popular sorts, as they are of hard wood, free from insects and disease, and do not break up by storms or snow as the soft wooded and many other varieties. They make pretty, well-formed tops and we have never had a dissatisfied customer who purchased these sorts. If you wish a good shapely hardy and lasting tree these will please you.

	Each	Per 10
3 to 4 feet,	\$0.40	\$ 3.50
4 to 5 feet,50	4.50
5 to 6 feet,75	6.00
6 to 7 feet,	1.50	14.00
10 to 12 feet,	3.00	30.00

Lombardy Poplar—This is a tall growing sort and remarkable for its columnar spiral-like growth. Breaks the monotony of the lower rounded sorts, and is used by all gardeners.

	Each	Per 10
4 to 6 feet,	\$0.50	\$ 4.50
6 to 8 feet,75	6.00
8 to 10 feet,	1.50	14.00
10 to 12 feet,	2.00	20.00

Tulip Poplar—A healthy, fast-growing tree, which bears fine large tulip shaped flowers of a greenish yellow, blotched with orange which almost covers the tree in May and followed by curiously shaped cones. This is a very lasting sort. We have some on one of our nursery farms that old men say are at least a century old. They are still beautiful and bear lots of pretty flowers every spring.

	Each	Per 10
4 to 6 feet,	\$0.75	\$ 7.00
6 to 8 feet,	1.25	12.00
8 to 10 feet,	2.00	20.00
10 to 12 feet,	3.00	30.00



Norway Maple

White Flowering Dogwood (C. Florida)—This is a splendid little tree which blooms in the spring before the leaves appear. Has distinct grayish-green foliage that flames to bright red in autumn, followed with scarlet berry clusters on the crimson winter twigs, making it one of the most beautiful trees at that season. It is rather a unique tree in its form and horizontal arrangement of its branches.

	Each	Per 10
2 to 3 feet,	\$1.25	\$12.00
3 to 4 feet,	2.00	18.50

Red Flowering Dogwood (C. Florida Rubra)—A new and rare variety which has proven very valuable for ornamental planting. Its beautiful red flowers create a most pleasing effect. Its new branches are of a pink showy color, making a stout stocky little tree which lends a pretty appearance among other trees. They are a wonder to many visitors here who have never seen the red flowering Dogwood.

	Each	Per 10
2 to 3 feet,	\$2.00	\$20.00
3 to 4 feet,	3.00	28.00

Siberian Dogwood (C. Alba)—This is possibly a form of the Cornus Sanguiana, with intensely colored bark of the deepest crimson. A very fine thing and classed as a shrub, but makes a pretty little bushy form three or four feet high.

	Each	Per 10
18 to 24-inch,	\$1.00	\$ 9.00
24 to 30-inch,	1.50	14.00

Yellow Bark Dogwood (C. Stolonifera Aurea)—This is a beautiful little shrub for winter coloring effect, which has bright yellow bark, and is invaluable for bringing out nature's coloring among other plantings.

	Each	Per 10
18 to 24-inch,	\$1.00	\$ 9.00
24 to 30-inch,	1.50	14.00

Horse Chestnut—Red flowering, somewhat smaller than the old variety, with darker leaves and splendid flower spikes a little later in the season, but of a beautiful red color. Fine contrast to plant among other trees owing to its odd-like foliage, flowers and splendid form. Perfectly hardy and popular but rare sort.

	Each	Per 10
3 to 4 feet,	\$1.50	\$15.00
4 to 5 feet,	2.00	20.00
5 to 6 feet,	3.00	30.00

We know of no investment that will give you better returns than the planting of Shade Trees.

Fruit Trees

All Fruits Are Scarce and High Priced. Now Is the Time to Plant Fruit Trees.

WE can do most sorts of peach and apple in 3 to 4-foot trees at \$6.50 per 10, and if the selection is left to us, we will select such varieties that are suited to the section for which they are wanted. Best to state whether mainly early or late sorts are wanted, and we shall be governed by your wishes.

Pears, Plums, Cherries, Figs, Quinces, Apricots, Damson are \$1.00 each or \$10.00 per dozen. Order the number wanted, stating when you want them to ripen, and we will make a selection that will please you.

Yellow Sandy River Seedling Cling—This is a fine large yellow seedling cling peach, which we have known for a number of years and is the only peach that we know of that comes true from seed. While we have never grown them into bearing trees, the writer has observed their growth by an old fruit grower, who has many bearing trees, which he has grown from seed. It is a wonderful variety, is very delicious—juicy and acid, ripening up well and a most valuable variety for canning, for eating, home use or market. We know of none better. If we were going to plant an orchard for ourselves, for either home use or for commercial purposes it undoubtedly would be Yellow Sandy River Seedling Cling.

A number of parties have heretofore asked that we supply them, which we could not do until this year, and at this time we have only a limited number and can only supply them in small lots.

Prices, 2 to 3 feet, \$1.00 each. \$10.00 per dozen.

Peach Trees

We can supply in quantity at very reasonable prices Elberta in size 2 to 3 feet. Write for prices on number wanted.

Apple Trees

Can furnish in quantity for commercial orchards most common lake varieties 2 year and also 1 year from bud. Prices on application.

Nut Bearing Trees

Grow Them for Profit.

ENGLISH WALNUTS

The well known commercial nut. Needs no description. Should be more generally planted.

	Each	Per 10
2 to 3 feet.....	\$1.00	\$7.50

PECANS

Of all the nuts grown in the world, none compare with the Pecan. Trees grow easily, are sure to bear good crops, live for generations, require no care after being well established, and the market for good nuts will never be glutted and they will always command a good price.

For home use, everyone should plant Pecan trees. Besides producing an abundance of rich, nutritious, wholesome food, they are highly ornamental and become magnificent and lasting shade trees. They grow in almost any soil and in any location.

Stuart—Size large; long, pointed; shell thin; meats plump, full separating easily; quality best; recommended by horticulturists, and the most popular sort for Southern planting. A good grower.

Van Deman Pecan

Van Deman—Large; oblong shell, moderately thin; cracks well; meats plump and full, of good quality.

	Each	Per 10
18 to 24-inch	\$1.00	\$ 8.00
2 to 3 feet	1.50	14.00
3 to 4 feet	2.00	20.00



Small Fruits

GRAPES

Grapes are one of the most productive and hardy fruits that we have. They can be grown in small spaces and trained up the sides of buildings or along fences, occupying very little room. Make the soil mellow and plant vines somewhat deeper than they stood in the nursery and about 8 feet apart by a fence or building.

A Wonderful New Grape

Old English Grape. We secured our stock plants of this variety from our friend and horticulturist, Joe DePriest. This grape has been in his immediate family for over fifty years. In fact, his father grew it from the time he can first remember, and why it was called by these older settlers "The Old English Grape" he does not know unless it was brought by them in coming to this country. He has never seen or heard of but one other vine that was of the same variety—this was grown by an old settler who has long been dead, and the place has many years ago gone down, and the vines from which we have secured our propagating plants are the only ones now known.

The vine is a strong grower, with large, healthy and fine foliage, which is not very particular in its growth as to its location, as is shown by some of these bearing vines, which this old horticulturist, who is one of the greatest fruit lovers we have ever known, has growing, not only on trellises and arbors, but some of them trained on growing trees, where it ripens to perfection, even among the shady foliage. It is a most delicious variety. If it ripened among the general run of bunch grapes, it would stand out pre-eminently as one of the most valuable sorts, but yet another and a most valuable characteristic about it is that it does not ripen until the last of September after all other bunch grapes are gone. In color it is a light pink to red, which ripens up splendidly, the bunches being well shouldered and medium large, which does not crowd on the bunches.

We have attempted several times to secure a supply of these vines, but have never been able to propagate them in quantity until this year. We have a limited amount of splendid and well rooted one year vines. We haven't enough of them to supply them in quantity for commercial purposes at present, and being desirous of supplying even a few vines to as many of our customers all over the country as possible, we would not like to offer more than one to three vines to a customer. We would advise parties who wish to secure them to notify us at once, that we may be able to supply them. Price prepaid, single plant \$1.50 each. 3 for \$4.00.

Agawam—Large, round, early dark red or brown; large bunched berries, meaty and free from sour pulp; has tough skin and bees never attack it; in flavor it is sprightly, moderately sweet. Midseason.

Concord—The most popular and widely planted black grape. Very hardy and productive. Ripens about the middle of September. Because of its adaptability and low cost of production Concord is widely planted for both home and commercial use.

Niagara—Large, slightly oval; pale yellow with a white bloom; the quality is equal to Concord and is the standard white grape of the country. Bunches are large and compact. Vine vigorous, hardy and very productive.

Moore's Early—Very large, round; black with a blue bloom; quality very fine and is classed as better and sweeter than Concord. Extremely hardy and productive.

	Each	Per 10
Price, well rooted vines.....	\$0.30	\$ 2.50

Lutie—Rich red, a good grape; succeeds better in the South; vigorous, heavy bearer and always dependable.

Green Mountain—From the Green Mountains of Vermont. Bunches rather large, and shouldered. Berries medium, greenish white; thin skin, juicy with tender and sweet pulp.

	Each	Per 10
Price, Lutie and Green Mountain.....	\$0.60	\$ 5.00

Scuppernong—Large, bronze-colored berry. Flesh sweet, pulpy and vinous. The most popular grape on the Southern market. Supply is seldom equal to the demand. Vines produce abundantly. Scuppernong wine is considered among the best.

	Each	Per 10
Price, Scuppernong.....	\$0.75	\$ 6.00

Brighton—Medium in size, red; flesh rich, sweet and of the best quality. Ripens earlier than Delaware. Vinous, vigorous and very hardy. Early.

✓ **Delaware**—Berries rather small, round, skin thin, light red, flesh juicy without any hard pulp; sweet and spicy and delicious flavor. Vine moderately vigorous, hardy and productive. Midseason.

	Each	Per 10
Brighton and Delaware well-rooted vines..	\$0.50	\$ 4.00

BLACKBERRIES

The Crop That Will Make You Money—Quick.

Blackberries make one of the best paying crops—five acres in berries will earn as much as 40 acres in corn or wheat, with less than one-eighth the upkeep or labor. Try out one-fourth, or better still, one acre; plant it in rows or “hill fashion.” Plant between the three rows in your orchard; make every foot of ground pay. Berries bring good prices and will go still higher.

✓ **Early Harvest**—The first to ripen—a most productive early bearer. Fruit medium size, roundish—oblong. Flesh tender, juice mild and of good quality. The very best early variety.

✓ **Snyder**—Extremely hardy, enormously productive, medium size, no hard, sour core. Easy to pick, fruit in clusters, mostly on top like raspberries.

✓ **Eldorado**—Very vigorous and hardy, enduring the winters of the far Northwest without injury, and their yield is enormous. The berries are large, jet black, borne in clusters, and ripen well together; they are very sweet, melting and pleasing to the taste; have no hard core.

✓ **Rathbun**—Berries very large; sweet, luscious; have no core and are firm enough to ship and handle well; canes make a strong, erect growth yielding fine crops.

	Each	Per 10	Per 100
Price, strong plants.....	\$0.20	\$ 1.50	\$ 6.50

DEWBERRIES

Plant in rows six feet apart, three feet distant in the row. Keep the soil mellow and clean.

✓ **Lucretia**—The very best of the dewberry family. Berries are far larger and incomparably better than any blackberry; of unequalled excellence. The Lucretia Dewberry has received the highest praise from the best horticulturists in the country. Hardy, a great bearer, fruit large, black and glossy, without hard core and very delicious. Ripens with early blackberries.

	Each	Per 10	Per 100
Price, strong plants.....	\$0.20	\$ 1.50	\$ 6.50

Hardy Climbing Vines

PROBABLY there is no element of decorative planting that is more essential than the climbing vine families.

They produce the desired effect and mass backgrounds of green so restful and pleasing to the human eye while occupying the minimum of space, and upon brick or stone houses a few of the Ivy family is especially desirable to break the monotony of the mass effects of blank walls.

AMPELOPSIS

American Ivy or **Virginia Creeper**—The well-known native vine with five parted leaves that change to rich crimson in autumn, berries are blue-black. Very rapid grower and entirely hardy. One of the finest for covering walls, verandas, trunks of trees.

	Each	Per 10
Price	\$0.60	\$ 5.00

Engelmanni (Engelmann Ivy)—Shorter jointed than *Quinquefolia*. A good climber, grows 6 to 10 feet in season.

Veitchi (Boston Ivy)—Of Japanese origin, entirely hardy, with foliage turning brilliant red in autumn. It clings tightly to walls, and is unsurpassed as a basket or vase plant.

ARISTOLOCHIA—Dutchman's Pipe

A. Siphon—A magnificent vine of climbing habit, with beautiful foliage, 8 to 10 inches in diameter and curious shaped yellowish brown flowers.

	Each	Per 10
Strong plants.....	\$0.75	\$ 6.50

BIGNONIA—Trumpet Vine

B. Radicans (American Climbing Trumpet Vine)—A splendid hardy climbing plant with large trumpet-shaped scarlet flowers in August.

	Each	Per 10
Strong 2-year old plants.....	\$0.60	\$ 5.00

CLEMATIS

A beautiful class of hardy climbers, excellent for pillars or trellises. They delight in a rich soil and sunny situations and are perfectly hardy.

C. Paniculata—A vine of very rapid growth, quickly covering trellises and arbors with handsome glossy-green foliage. The flowers are of medium size, pure white, borne in immense sheets and of a most delicious and penetrating fragrance.

	Each	Per 10
Strong 2-year old plants.....	\$0.50	\$ 4.00

HONEYSUCKLE

Japanese Bush Honeysuckle (L. Morrowi)—Four to six feet high with spreading branches, dark-green with light underside. Blooms from early spring until fall.

	Each	Per 10
Price, 2-year, strong	\$0.50	\$ 4.00
Price, 1-year,30	2.50

Hall's Japan Honeysuckle (Var. Halliana)—Pure white and creamy yellow, very fragrant flowers, in bloom the whole season. Almost evergreen. Besides its ordinary uses as a climber it is valuable for covering banks, bare places, etc., where grass will not grow.

	Each	Per 10
Price, 2-year, strong	\$0.50	\$ 4.00
Price, 1-year,30	2.50

WISTARIA

The Wistaria is one of the most decorative of vines, and for porch decoration without too much shade it has no superior. The long twining branches bear great sprays of foliage, while its charming flowers sway with ever passing breeze.

W. Sinensis (Chinese)—Flowers in clusters, pale blue, sometimes gives a second crop of flowers in the fall.

	Each	Per 10
Strong 2-year old plants.....	\$0.50	\$ 4.00

W. Sinensis Alba—Of similar habit to Chinensis, with pure white flowers.

	Each	Per 10
Strong 2-year old plants.....	\$0.50	\$ 4.00

WHY wait years to secure effect, when you can buy from this catalog large Evergreens and Ornamentals that bring beauty now?



Fields of Arborvitae, various sorts and sizes

EVERGREEN VINES

Euonymous Radicans—One of the finest evergreen vines, with small rich green foliage. For covering rocky mounds, rough walls, tree trunks and other objects it is a treasure. Much used for vases, baskets and borders.

	Each	Per 10
Price	\$0.40	\$ 3.50

Euonymus Radicans (Variegated)—One of the finest evergreen vines with small rich half green and half yellow foliage. Same as Euonymus Radicans except its beautiful variegated foliage. Fine for vases, baskets and borders.

	Each	Per 10
Price	\$0.50	\$ 4.00

English Ivy (Hedera helix)—A well-known old English Ivy. It is an evergreen and excellent for covering tree trunks, walls or unsightly objects, succeeding splendidly in shady locations.

	Each	Per 10
Price, 2-year, plants medium.....	\$0.50	\$ 4.00
Price, 2-year, strong plants.....	.75	6.00

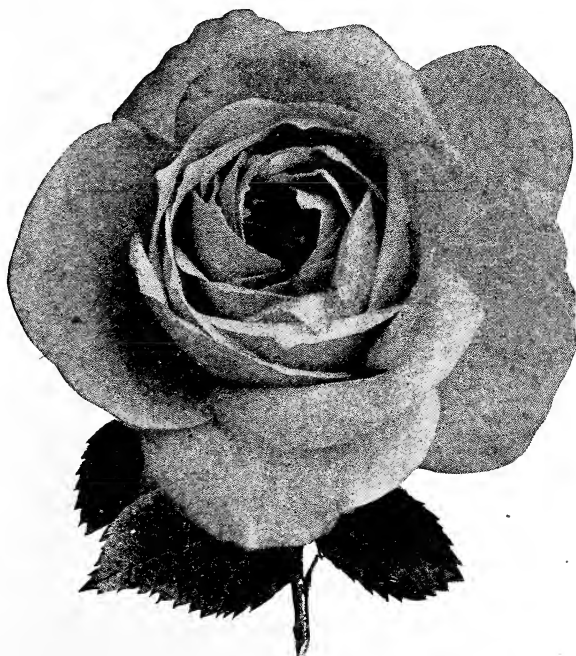
Myrtle—Has small, deep, glossy evergreen leaves. Fine for covering graves or mounds, and for hanging baskets, etc.

	Each	Per 10
2-year bushy plants.....	\$0.35	\$ 3.00

Vinca Variegated—A trailing plant with glossy green leaves, margined with creamy white. Flowers blue. One of the best plants for hanging baskets, vases or hanging over window or porch boxes.

	Each	Per 10
2-year, heavy.....	\$0.40	\$ 3.50

**Vines are Invaluable for Hiding
Unsightly Objects.**



Roses

THE very name of roses carries with it the suggestion of the greatest perfection and beauty of the world of vegetation. No arrangement is satisfactory that neglects them, in fact, they are indispensable. The stock we offer is all field grown, acclimated to the outdoor life and will make much quicker and more hardy growth than the greenhouse plants offered by rose specialists.

HARDY EVERBLOOMING VARIETIES

The everblooming roses are especially desirable for their profuse and continuous bloom, fragrance of their bloom, and the delicate beauty of their buds.

Killarney Pink—One of the most beautiful roses grown, strong, vigorous and perfectly hardy. Flowers are very large, buds long and pointed. Color an exquisite shade of deep seashell-pink.

Killarney White—An offspring of the pink with all the exquisite beauty of the parent in size and shape.

Killarney Brilliant—A very fine shining red rose. Has beautifully formed buds, as the other Killarnies. In nature of bloom, growth and hardiness it is the same. Beautiful red rose.

Mrs. Geo. Shawyer—Brilliant rose-pink or bright peach-pink. Flowers large, well formed, fairly full with petals of good substance. Freer in growth and bloom than Killarney, breaks in rapid succession, throwing up three to four foot canes, every shoot tipped with a bud.

Richmond—This is said to be the best red variety yet produced. Strong grower. Color deep red, long buds, elegant dark foliage.

	Each	Per 10
2-year strong plants.....	\$0.60	\$ 5.50

Ophelia—Brilliant salmon-flesh shaded with rose on outer edge of petals, with a heart of glowing peach-pink and orange yellow blendings. Fragrant as Richmond. Perfect flowers on long stiff stems. Free from mildew.

Sunburst—This magnificent grand yellow rose ranks in value and grandeur with the American Beauty. Pointed buds, color orange copper or golden orange and golden yellow, extremely brilliant in effect. This is the finest yellow rose in cultivation and pleases every one who sees it. Many grow it in preference to White American Beauty and other leading roses. It puts all the yellows to sleep when it comes to bedding in the garden. The golden-yellow stays right with the flower until the last. Be sure to include a few Sunburst.

Mrs. Chas. Russell—A fine new rose of American origin, considered equal to and we believe better than the American Beauty. Has strong large buds, produced on long stiff stems. It is crowned with a bloom of a beautiful shade of rosy-pink. Blooms large, double with full and magnificent formation.

	Each	Per 10
2-year	\$0.75	\$ 7.00
3-year strong plants	1.25	12.00

Los Angeles—We consider ourselves very fortunate in having been able to secure a number of this sensational new rose. It is described by various rose growers as the finest all round rose ever introduced. The stems are long and stout, and in growth resembles the American Beauty. Its very large and attractive flowers, freedom and continuous blooms, make it a most remarkable sort. It is described as shining with translucent gold at the base of petals, but its beautiful flame pink color underneath the petals with its distinctly different coloring on the face of the petals from cream to a tainted streak of yellow with a slight gold-like or coppery coloring at the base of the petals, seems to us to be a better description of its beautiful flowers which appear constantly, on the two-year plants which we transplanted here in late spring. They will be fine large plants for fall delivery and one or more of this attractive rose should be included in every collection.

	Each	Per 10
Price	\$1.25	\$12.00

CLIMBING ROSES

THE demand for climbing roses has always been constant. The rose-covered cottage still carries the charms of romance and sentiment that it has done for hundreds of years. We have specialized on all these beautiful climbers, and here we offer the best.

Pink Dorothy Perkins—A splendid new climbing rose. In foliage and habit of growth it is remarkably like Crimson Rambler. The flowers are double, of good size, and borne in clusters. The petals are very prettily rolled back and crinkled, the buds remarkably handsome, color a clear shell pink and holds a long time without fading.

Red Dorothy Perkins—It is a good deal to claim for a rose, but we are within bounds when we describe Ex-

celsea as a brilliant Crimson Rambler, flowers on glossy varnished Wichuraiana foliage. The flowers are very double, produced in large trusses of thirty to forty and almost every eye on a shoot produces clusters of flowers. The Color is intense crimson maroon, the tips of the petals tinged with scarlet. The finest of all Crimson Ramblers.

White Dorothy Perkins—This beautiful rose is the counterpart of the well-known Dorothy Perkins, except in the color, which is pure white, but it is quite as hardy and vigorous. It has now become a universal favorite.

Flower of Fairfield (Everblooming Crimson Rambler)—Similar to the Crimson Rambler, except that it blooms from early spring until frost. A rampant climber, but not a persistent bloomer.

Climbing American Beauty—The great and popular American Beauty Rose in a real climbing form. It has all the characteristics of its relative, including form and fragrance.

Lady Gay—Flowers of a delicate cherry pink color, which fades to a soft white. It has deep green foliage, a vigorous grower and perfectly hardy. Will cover a large porch or trellis in an incredibly short time. One of the most charming of all climbers.

	Each	Per 10
1-year plants	\$0.35	\$ 3.00
2-year plants65	6.00
3-year plants, heavy	1.00	10.00

American Pillar—Large single flowers of rich, rosy-pink, approaching brilliant carmine, golden yellow stamens and a profuse bloomer. Originated by the U. S. Government Department of Plant Introduction.

Thousand Beauties—Flowers when opening are a delicate shade of pink changing to rose carmine. It gets its name from its many flowers and the variation in coloring. A beautiful rose.

	Each	Per 10
2-year strong runners	\$0.75	\$ 7.00
Strong heavy plants	1.00	8.50

Silver Moon—Hardy Climber. Blooms very large, three or four inches in diameter, pure white in color and of good substance, beautifully cupped, forming a clematis-like flower. The large bunch of yellow stamens in the center makes it very attractive. The blooms are produced on long stems 12 to 15 inches in length. Sweetly scented and a rank grower. It is different from all other roses, and has beautiful glossy-green foliage. Will add attraction to any collection where running roses are used.

Dr. W. Van Fleet—Flowers, when open, run four inches and over in diameter. The center is built high, petals beautifully undulated and cupped. The color is a remarkable delicate shade of flesh-pink on the outer surface, deepening to rosy flesh in the center. The flowers are full and double, of delicate perfume, buds pointed. A strong and rapid grower. Immune from insects and disease. Foliage deep green the entire growing season.

	Each	Per 10
1-year old.....	\$0.35	\$ 3.00
2-year old.....	.75	7.00
3-year old.....	1.25	12.00

Golden Rambler—One of the prettiest ramblers, has golden yellow flowers. Very popular variety.

	Each	Per 10
2-year strong runners.....	\$0.75	\$ 7.00

Huganis—This is a rare new rose from China, and is as hardy as an oak. The color is an intense canary yellow, very bright and attractive, and the plant is noteworthy all the growing season by reason of its dainty foliage. When in bloom the entire plant is covered with its bright yellow blossoms and buds. It is in great demand, there being nothing like enough to supply the demand. We paid \$1.50 each for our stock plants which are only little rooted cuttings. We quote while they last.

	Each	Per 10
1-year-old plants	\$1.00	\$10.00

ROSA RUGOSA

This class of roses is especially adapted to hedge or for shrubbery collections, the splendid foliage, flowers and later the seed pods, makes this class one that should be more largely used in Landscape work.

Rugosa Alba—Single, pure white.

Rugosa Alba—Single, deep rosy carmine.

	Each	Per 10
Price	\$0.40	\$ 3.00

PRAIRIE ROSES—*Rosa Setigera*

Colors red and white.

	Each	Per 10
2-year strong plants	\$0.50	\$ 4.00

We have many other roses not listed here, and if you do not see what you want, write us about it. We can no doubt supply you.

There is Always a Place for More Climbing Roses.

"Aunt Harriet" Rose—This is the rose the Farm Journal advertised and sold so many of a year or two ago. It is said that it continues to grow in popularity and that those who had one bush as a trial now want more, that neighbors and friends who saw it or read about it are anxious to secure it. It is said that the demand has always been greater than the supply. It is a climbing rose being a cross between Appoline and Wichuraiana, retaining the splendid characteristic qualities of both the Appoline and Wichuraiana, with brilliant scarlet petals, pure white center with golden anthers. Has clean shining foliage which is not subject to mildew. It is a good runner, will cover porch, post, stump, rock pile or mound, will arch over the gate or arbor the front door. A very distinct and climbing variety.

	Each	Per 10
Price, one or two-year plants.....	\$0.50	\$ 4.50

Evergreen Gem—A new variety of running rose which has beautiful green foliage that it retains throughout the winter. It is perfectly hardy, being free from insects and disease. Has great clusters of beautiful red blooms of from thirty to fifty in a bunch. A beautiful bouquet or a pot of these roses may be had by cutting one stem containing a cluster of its beautiful blooms.

	Each	Per 10
Price	\$0.75	\$ 7.00

A ROSE HEDGE

WE have various sorts of roses that are fine for hedges. They have pretty foliage and besides the beautiful blooms which appear each spring, and in some varieties the blooms continues through the growing season, from May until December, or until the blooms are cut off by frost. If you will write us just where you want them and the space you wish to cover with this hedge, we will be glad to advise you the variety suited for same. For covering banks, gullies, nooks, corners and unsightly places there is nothing finer and better than some of the creeping roses. They only need to be planted about two to three feet apart each way and they will soon cover the ground. The vines taking root in the soil soon, making a solid bank or covering which protects banks from washing and turning places that did not once look so good into a place of ornament and beauty.

The Charm of Hardy Flowers

Much of the charm of the hardy garden lies in the varied and pleasant changes constantly taking place. Every day during the growing season brings something new to interest and delight.

Haven't you noticed the luxuriant tangle around the dooryard of an abandoned homestead? Observation will reveal nooks of elegant foliage effects and the old neglected flower beds in luxuriant bloom. Why? Nature has had her gardener work and crowded out the weak growers that had no place in the informal garden and placed in their stead strong growers and profuse bloomers that delight in the rich soil, sunshine or shade in which you find them. Why can't we flower lovers take a lesson from nature's garden? If we love roses and they do not adapt themselves to our garden then plant these sturdy, hardy flowers that require so little care. Roses should find a place at every home, but that place is not the informal garden, but a location where they can be tended.

Miscellaneous Hardy Perennials

THESE are so easily grown that almost without instructions a flower lover would give them proper care. Good garden soil well spaded to a depth of one or two feet, enriched with well decayed manure of bone meal, light stirring of the soil during the summer and a winter mulch.

Prices quoted are for good strong outdoor plants not the tiny plants offered in cheap collections by parcel post.

DELPHINIUM

Hardy Larkspur—These free flowering plants can be depended upon for the necessary touch of blue in the hardy garden, producing tall spikes of dainty spurred flowers in June and at intervals till frost if cut as they fade. Phlox and Larkspur make an excellent combination as they bloom alternately. Of easy culture and one of the most satisfactory plants in the herbaceous garden, and should be planted extensively even in the smallest garden.

	Each	Per 10
Large flowering	\$0.30	\$ 2.50

YUCCA—Adam's Needle

(Filamentosa)—Among hardy ornamental foliage and flowering plants this can be classed at the head of the list. Its broad sword-like foliage and tall branched spikes of large fragrant drooping creamy-white flowers during June and July make it an effective plant for all positions, easy to grow and with little care.

	Each	Per 10
Strong plants	\$0.25	\$ 2.00

TRITOMA

Pfizerii (Ever-blooming)—The best variety. The flower spikes, which are produced with considerably more freedom than in the old variety, grow as high as three feet, with blooms 6 to 10 inches long, which are of a rich orange-scarlet, shading to salmon-rose on the edge.

	Each	Per 10
Strong plants	\$0.25	\$ 2.00

SWEET WILLIAM

Sweet William (*Dianthus Barbatus*)—A well known attractive free-flowering hardy perennial, producing in mid-summer a splendid effect in beds and borders with their rich and varied flowers.

	Each	Per 10
Price	\$0.25	\$ 2.00

HOLLYHOCKS

Hollyhocks—Few hardy plants combine as many good qualities as the Hollyhock. For planting in rows or groups on the lawn or for interspersing among shrubbery they are valuable. The flowers form perfect rosettes of the most lovely shades of yellow, crimson, rose, pink, orange, white, etc. It requires a rich deep soil and will repay in quality and elegance of bloom any extra care.

	Each	Per 10
2-year strong roots	\$0.30	\$ 2.50

MALLOW MARVELS

Mallow Marvels—In brilliancy of color and profusion of bloom they surpass all other summer blooming perennials. They bloom during hot, dry weather better than almost any other flower, making bushy plants 4 to 6 feet high in one season. In winter cut off the old stalks to within 4 to 6 inches of the ground and they will come up again in the spring. We have found that a moist soil of average fertility with good cultivation gives better flowers than very rich soil, which sometimes causes so much top growth. Color red, pink, white and yellow.

	Each	Per 10
2-year strong roots	\$0.30	\$ 2.50

GERMAN IRISES

German Irises (Fleur des lis)—German Irises succeed in partial shade, but produces their best in full sun. They are not particular as to soil, will grow almost anywhere, but do best in well drained rich loam or garden soil, succeeding in quite dry locations. The beauty of their form and texture, shimmering in the sun with their delicacy and wide range of colors, has given them the name "Orchid of the Garden." Colors white, pink, blue and yellow.

	Each	Per 10
Strong bulbs, 2 nd and 3 eyes.....	\$0.25	\$ 2.00

SHASTA DAISIES

Shasta Daisies—The plants are as strong as a common field daisy, very tall, well branched, fine cut foliage and high white flowers borne in profusion on long stiff stems. Flowers are pure white with gold center, petals very long and center soft and velvety. Hardy plant and one of the novelties that has come to stay.

	Each	Per 10
Price	\$0.20	\$ 1.50

LILY OF THE VALLEY

Lily of the Valley—This wonderful Lily will thrive and throw up its beautiful modest, fragrant white bells in any kind of soil. It will make a carpet of refreshing green, daintily patterned by its pervading flower sprays, in the shady and cold spaces otherwise lost to ornamentation around every house.

	Each	Per 10
Price	\$0.10	\$ 1.00

SUPERB HARDY PHLOX

Brilliant summer effects may be produced with these easily grown hardy perennials. They are especially desirable for their great variety of color, and many are delightfully fragrant. They are excellent as single specimens or in the mixed border, but the most imposing effects are produced by planting masses of each color. Phlox are admirably adapted for cemetery planting. They commence blooming in early summer and if early, mid-season and late varieties are chosen and the flowers cut off as they fade they will bloom quite late. They succeed in almost any position or soil, but give best results in a rich, mellow soil, well prepared. Plant 18 inches to two feet apart. After three or four years take them up, divide the clumps, remove any dead portions and replant. A winter mulch of old manure is a great benefit.

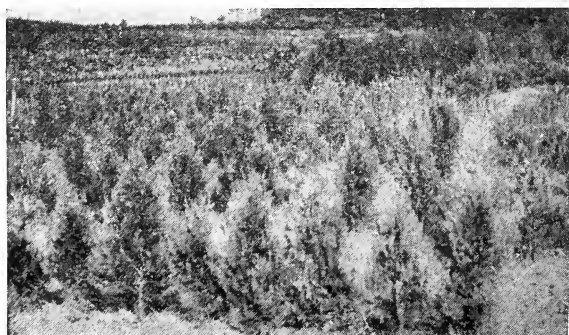
Bridesmaid—Pure white with large crimson center.

Lavogue—Pure Mauve-pink with red eye.

Richard Wallace—Pure white with violet center.

Snowstorm—Beautiful white.

	Each	Per 10
Strong plants	\$0.30	\$ 2.50
Mixed, all colors25	2.00



Compacta and Pyramidal Arborvitae on one of our farms

Ornamental Ferns

IN winter every home needs a touch of living green inside. Hallways can be made exceedingly attractive by the addition of a few ornamental Ferns. The dining and living-room also will immediately assume a more inviting and cozy look when a few of these graceful, lovely plants are used. Order a dozen Ferns now and grow them yourself for Christmas gifts.

Wilsonii—Has peculiar shaped foliage. A good healthy grower and one of the finest of all dish ferns.

Whitmanii—Rather dwarf in growth but very graceful, compact and feathery. Each frond has a double row of perfect little fronds set at right angles to the mid-rib.

Boston—A rapid growing, graceful house Fern, and many people prefer this to any other variety. It thrives in any ordinary living-room and specimen plants can be grown with fronds 5 to 6 feet in length. The sword-like fronds are produced in bewildering masses, arching, curving and strikingly beautiful. On account of its large growth the Boston Fern is particularly useful for hall decoration, where it can be placed on a stand and left undisturbed.

Roosevelt—In general characteristic it resembles the world-famous Boston Fern, but it is superior to it for two reasons. It produces many more fronds than the Boston making a bushier and handsomer plant. Then the pinnae are beautifully undulated, giving the Roosevelt a pronounced wavy effect, that is seen in no other fern.

Asparagus Plumosus—Leaves bright green, arched as finely woven as the finest silk mesh. Their lasting quality when cut is remarkable, retaining their freshness for weeks, hence it ranks as the most valuable plant we have for this purpose. It is also fine for hanging baskets and jardinieres.

Asparagus Spengeri—A desirable species, useful as a pot plant or for baskets, fronds frequently four feet long, a rich shade of green retaining freshness for weeks after cutting. A fine house plant, as it withstands dry atmosphere.

	Each	Per 10
Small plants	\$0.25	\$ 2.25
Medium size50	4.00
Large	1.00

Peonies

THERE is something of magnificence about this aristocrats of flowers, as they produce an effect that one will long remember. Great, gorgeous blooms, daintily dyed with the most exquisite shades from pure whites to the deepest reds, with almost every tint being shown among them. They are perfectly hardy, requiring no protection in the severest weather, and will thrive in all kinds of soil, succeeding better in a deep mellow soil, which if not already can easily be made so, when planting. For social functions, they are exceedingly effective and will last longer than most other flowers after being cut. They thrive everywhere in open sun or light shade, except where water is accustomed to stand. No wonder they are to be found on the broad vistas of the millionaire's estate and at the doorway of the humblest cottage.

In China, it is said the Peony has been their chief pride and glory for 1400 years, a theme for the poets and painters, praised by emperors for the beauty and fragrance of their flowers, but the modern peony had its birth among the nobility of France, where a greater part of them have originated in one locality by a few enthusiastic amateurs who have made the growing of them a study.

TIME FOR PLANTING—Peonies may be planted with perfect safety any time from the middle of August until the ground freezes in the fall, and in the early spring until the growth is too far advanced. September and October is the best time, so they make a good root before hard winter sets in, and they usually bloom the following spring; thereby a whole year is gained since late spring planting will not bloom until a year later. They must not be expected to bloom heavily the first year, as they must have a little time in which to establish themselves, but when once planted they continue to grow larger and stronger for many years. Plant so that the eyes will be four to five inches below the surface.

Andre Laurie—Big, full flowers, anemone shaped, violaceous, red, late. Owing to its good keeping qualities, its fine coloring and its fragrance, it is one of the standard cut flower varieties.

Humei (Anderson)—Immense bloom, carmined pink, very late.

Sarah Bernhardt—Usually large, perfectly double rose-formed flowers in clusters, color of apple blossoms, very fragrant.

	Each	Per 10
Price, 2 to 3 eyes.....	\$0.75	\$ 7.00

Festiva Maxima—Generally considered the finest white Peony grown. Though an old variety, it has never been surpassed, and the true variety is always scarce. Color snow white, center petals touched purplish carmine, enormous, full double bloom, very broad petals, handsome foliage.

Grover Cleveland—Large brilliant crimson, from mid-season to late variety. Is a good keeper, fine for cut flowers and one of the most fragrant.

Theodore Roosevelt—Semi-rose type; midseason. A variety purchased in England under number (1) and named in Holland for our ex-president. It is a deep, rich, brilliant red in color, different from any red we know and a grand Peony.

Mons. Jules Elie—Very large and full globular flower, finest glossy fresh pink, deepening at the base of the petals, reflex silvery pink, broad overlapping petals, strong, vigorous grower and free bloomer, probably the finest and most perfectly formed pink Peony in existence.

	Each	Per 10
Price, 2 to 3 eyes.....	\$1.25	\$10.00

Bulbous Plants

CANNAS

Of quick growth and tropical appearance. Throughout the summer and until they are killed down by the frost they present a mass of gorgeous bloom. They will grow in any soil, but will respond quickly to liberal treatment. In groups or for background for other plants they present a brilliant display. We offer large bulbs from which may be had continuous clusters of bloom the first season. They may be left in the ground south of Richmond, Va., and they seldom freeze.

Florence Vaughan—Flowers of the most brilliant golden yellow, dotted with brightest scarlet.

Italia—Red flowers with yellow border. Large flowers with heavy healthy foliage.

Chas Henderson—4 feet. Green foliage and crimson flowers.

Burbank—3 to 4 feet. Green foliage. Canary yellow flowers.

	Each	Per 10
Price, dormant roots	\$0.20	\$ 1.50

America—Bright lemon yellow with red spots.

King Humbert—Orange scarlet striped crimson. Foliage bronze, Brandywine and Wyoming.

	Each	Per 10
Price, dormant roots	\$0.25	\$ 2.00

CHRYSANTHEMUMS

Unaka—Strong grower with long stout stems, good foliage. Fine yellow incurved bloom from early buds. Color lavender-pink.

Mensa—Finest single white for cut flowers. A giant white of heavy substance and strong texture.

Mrs. Buckingham—The queen of singles, big flat flower with petals of wonderful texture. The loveliest shade of soft rose pink, very lasting both on and off the plant.

White Chieftain—Pure white sport of the variety Chieftain, duplicate of the parent in all respects save color, which is a pure white. One of the best varieties in cultivation.

Golden Wedding—A grand yellow Chrysanthemum maturing in October. It is claimed by some to be the finest yellow Chrysanthemum in cultivation. Fine incurved form and fully double, 4 to 6 inches in diameter, good stem and foliage.

	Each	Per 10
Price	\$0.25	\$ 2.00

DAHLIAS

Mina Burgle—Originated by Mr. Burgle, a Dahlia grower of California. It is claimed that this variety is the best yet introduced. Produces flowers of gigantic size and remarkably beautiful. Color a glowing and most brilliant scarlet. Flowers are of perfect decorative type, and are borne on long stems well above the foliage.

	Each	Per 10
Price	\$0.50	\$ 4.00

Souv. de Doazon—This is a good comparison to the Sunflower. It is the largest Dahlia in existence. The color is a pleasant shade of orange-red. Flowers are full to the center and often measure 9 inches and over in diameter. Has stout stems of upright type. It should be in every garden.

	Each	Per 10
Price	\$0.50	\$ 4.00

Mme. Henri Cayeux—A reliable variety, flowers are of the largest size with long narrow florets, forming a bloom of magnificent form. Color is a beautiful rich pink daintily tipped white.

	Each	Per 10
Price	\$0.50	\$ 4.00

Stern—A bright primrose-yellow. Said to be superior to the Golden West, which we have grown seven to eight inches in diameter. Flowers large, long and pointed. One of the most satisfactory varieties.

	Each	Per 10
Price	\$0.75	\$ 6.00

Winsome—Pure cream white, better than White Swan which is claimed to be one of the best white Dahlias.

	Each	Per 10
Price	\$0.35	\$ 3.00

HYACINTHS

Hyacinths are among the most popular and satisfactory hardy flower bulbs. Hyacinths succeed with every one and may be had in flower throughout the winter, grown either in pots of soil, fibre or glasses of water. Very popular for bedding.

Can mail promptly after the last of September all listed bulbs.

All separate colors, Dark Blue, Pink, Red, White.

	Each	Per 10
Price	\$0.15	\$ 1.25

GLADIOLI

A search of the floral kingdom, be it ever so painstaking and complete, will discover no flower to match the Gladiolus in ease of culture or another which shows so great a diversity of color in endless combination and variety. It is matchless as a cut flower. The great advancement recently effected in the size and colors of the blossoms justly entitle the Gladiolus to the position it now holds, aristocrat of the border.

The amateur gardener appreciates its sure blooming qualities, the stored up nourishment in the bulb making certain its vigorous growth. Seldom attacked by insects or disease, it blossoms under conditions which would discourage any less hardy bulb or plant.

We supply only, all color mixture, which includes every imaginable color, in big large bulbs that will bloom freely the first season.

	Each	Per 10	Per 100
Price, dormant bulbs.....	\$0.15	\$ 0.65	\$ 5.00

NARCISSI

Narcissi are fast coming to the front. They are easily grown and are unexcelled for beauty, fragrance, hardiness and value when cut for decorative purposes. Narcissi are perfectly hardy; they do well planted in any location and increase in size and flower year after year. For outdoor culture plant bulbs in October, November or December, 5 to 6 inches apart, according to size of bulbs. Never use fertilizer.

	Each	Per 10
Strong bulbs	\$0.08	\$ 0.65

PAPER WHITE GRANDIFLORA

Flowers pure snow-white and pure yellow, desirable for their beauty and delicious odor; forces admirably and flowers freely in dense clusters; will come into bloom as early as December. For indoor planting only. Paper Whites may also be grown in fibre or sand and water like Chinese Sacred Lilies.

	Each	Per 10
Strong bulbs	\$0.08	\$ 0.75

INDEX

	Page
Arborvitae	4
American Holly	14
Altheas	15
Azaleas	15
Ampelopsis	25
Aristolochia	26
Biotos	5
Broad Leaf Evergreens	10
Bignonia	26
Bulbous Plants	34
Blackberries	25
Climbing Roses	28
Cedars	6
Cypress	6
Calycanthus	16
Crepe Myrtle	16
Clematis	26
Cannas	34
Chrysanthemums	34
Delphinium	31
Dewberries	25
Dahlias	35
Deutzias	16
Evergreens, Hardy	2
Evergreen Vines	27
English Walnuts	23
Firs	6
Forsytheas	17
Fruit Trees	23
Grapes	24
Gladioli	35
German Irises	32
Hardy Evergreens	2
Hemlock	7
Hardy Deciduous Ornamental Shrubs.....	15
Hydrangeas	17
Hedge Plants	20
Hardy Deciduous Shade Trees.....	21
Hardy Climbing Vines.....	25
Honeysuckle	26
Hardy Everblooming Roses	28
Hollyhocks	31
Hyacinths	35
Hardy Perennials, Miscellaneous	31
Junipers	7
Lygustrums	13
Lilacs	18
Lily of the Valley.....	32
Magnolia Grandiflora	10
Mallow Marvels	31
Narcissi	35
Nut Bearing Trees	23
Ornamental Ferns	33
Pines	8
Philadelphus	18
Privet	20
Potentilla	19
Pecans	23
Prairie Roses	30
Peonies	33
Retinspora	9
Roses	27
Rosa Rugosa	29
Rose Hedge	30
Screen Planting	3
Spruces	9
Small Fruits	24
Spireas	19
Sweet William	31
Superb Hardy Phlox	32
Shasta Daisies	32
Tritoma	31
Window Boxes	3
Weigelias	19
Wistaria	26
Yucca	31

Garden Roots

For Every Home Garden.

ASPARAGUS

Asparagus Roots should be planted in a well-prepared bed, the roots covered about 5 or 6 inches and the soil made very rich with fertilizer each season. We recommend only one standard variety of large size.

	Per 10	Per 50
Two-year strong roots.....	\$0.75	\$ 2.00

RHUBARB

You should have a row of Rhubarb or Pie Plant in your garden; 10 or 20 plants are enough for any family, and if the roots are well fed and continuously pruned or reset, they will yield for 20 years. Easy to plant; cultivating consists merely in keeping the weeds down and preserving the mulch until the leaves cover the ground. The soil should be rich and deep and for an early start it should be warm. Prepare the bed or hill for each plant to a depth of two feet if possible, working in much compost or well-rotted manure. There is just one kind of Rhubarb to plant—that is the giant kind. It's a strong, vigorous grower.

	Each	Per 10
Myatt's Linnaeus, two-year roots.....	\$0.25	\$ 2.00

Raspberries

Raspberries are one of the most delicious and popular fruits grown, are easily cultivated and require little care. Cut out old and weak roots each year. Plant in good soil in hills about 4 feet apart. With a little care and attention they will produce large crops of berries. In large plantings it is advisable to plant them thickly the same as hedge row.

Cumberland—The largest of all the blackcaps; coal black berries; very firm and quality of the very best; excellent shipper. Bush a strong grower, stocky canes and unusually prolific. Midseason.

Golden Queen—Medium large; clear amber yellow with highest quality; for dessert and kitchen; one of the best yellow berries ever introduced. Bush vigorous, hardy, upright and productive.

	Each	Per 10	Per 100
Price, strong plants.....	\$0.25	\$ 1.50	\$ 7.50

St. Regis—Earliest of all, wonderful prolific; it equals most blackcap varieties; gives a crop of fruit all summer and autumn, fruiting on old canes in generous quantities until late in August, when berries begin to ripen on young canes. Berries bright crimson, of large size and surpassing quality; canes stocky, strong growth with abundance of dark green, leathery leaves. It succeeds upon all soils, whether light and sandy or cold, heavy clay, and canes are absolutely hardy.

	Each	Per 10	Per 100
Price, strong plants.....	\$0.20	\$ 1.50	\$10.00

Strawberries

GROWING this delicious fruit is the most fascinating of all occupations in the nature of garden growing.

They thrive on any kind of soil, well drained, and it is surprising the results that are had. Interesting stories are told by persons who have given it a thorough test, and which have come from men and women, as well as boys and girls. Any one living near a town or city can pick up many a dollar from this source, and if you are in the remote country places it is always a pleasure to have these splendid berries for home use. An acre of strawberries will bring more returns than the same quantity of land planted in any other farm or garden fruit or vegetable.



Progressive Everbearing Strawberry

The Progressive is without doubt the best everbearing strawberry plant in cultivation. The leading strawberry growers of the country agree upon this. It is the only one of the everbearing varieties that does well in the South. Though it is not a good shipping variety, but for home use and local market it is superior to any other sort. It is a good plant maker and will yield fruit the first year that is truly wonderful. Berries of medium size, smooth and good color, a single plant often producing a hundred berries in one season. We believe it will produce more berries with less care than any other sort. No lover of strawberries should fail to plant at least a few rows of this variety. It certainly is a wonderfully fine thing when a hundred or two of these fine plants will produce berries so abundantly that the good housewife can serve this most delicious fruit on her table fresh from the garden for nearly six months in the year. At present we have a good supply grown on new ground and can ship promptly.

	Per 100	Per 500	Per 1000
Price	\$2.00	\$ 7.50	\$12.50

BY ALL MEANS plant acclimated varieties that are best adapted for our climate. We list the kinds that do best in the South and East. You know the country is flooded with advertisements that list many kinds of berries that are not adapted to this part of the country.

Improved Lady Thompson—This variety has been grown world-wide in great variety of soils, and it seems to succeed quite well. It is early, very large, and quite productive.

Excelsior—Medium size, flesh firm, rich and red, rather tart, but is an unequaled shipper. Largely raised in the South for the Northern markets. Plants very productive. Perfect. Extra early.

	Per 12	Per 100	Per 1000
Price, common sorts, strong plants	\$0.50	\$ 1.25	\$ 6.00