

Historic, Archive Document

Do not assume content reflects current scientific knowledge, policies, or practices.

62,73

LIBRARY
RECEIVED
JUN 28 1923 ★
U. S. Department of Agriculture.

1923

Catalogue
SEEDS

“NATURE’S BEST”

ABBOTT & COBB

4903 FRANKFORD AVENUE

PHILA., PA.

SPECIAL NOTICE

When ordering seed by mail be careful to give your name, Post Office, County, State and Express office, that your order may go forward without delay. We will pay the postage on seeds forwarded by Parcel Post as quoted by the Ounce, Quarter Pound or Pound when cash accompanies the order. This does not include articles as quoted in five or ten-pound lots. If Peas, Beans and Corn are to be forwarded by Parcel Post, add postage as per Zone Rates.

Terms of Guarantee

The seeds, roots and plants offered in this catalogue have been carefully grown and selected and we believe them to be true to name and first class in every respect, but we cannot guarantee the crops as too many conditions enter into it; therefore, we give no warranty express or implied as to description, purity, productiveness or any other matter of any seeds, roots or plants we send out and we will not be in any way responsible for the crop. If the purchaser does not accept the goods on these terms, they are to be returned at once, and if the money has been paid for them it will be refunded.

ABBOTT & COBB.

Quantity of Seeds Required to Sow a Single Row of 100 Yards

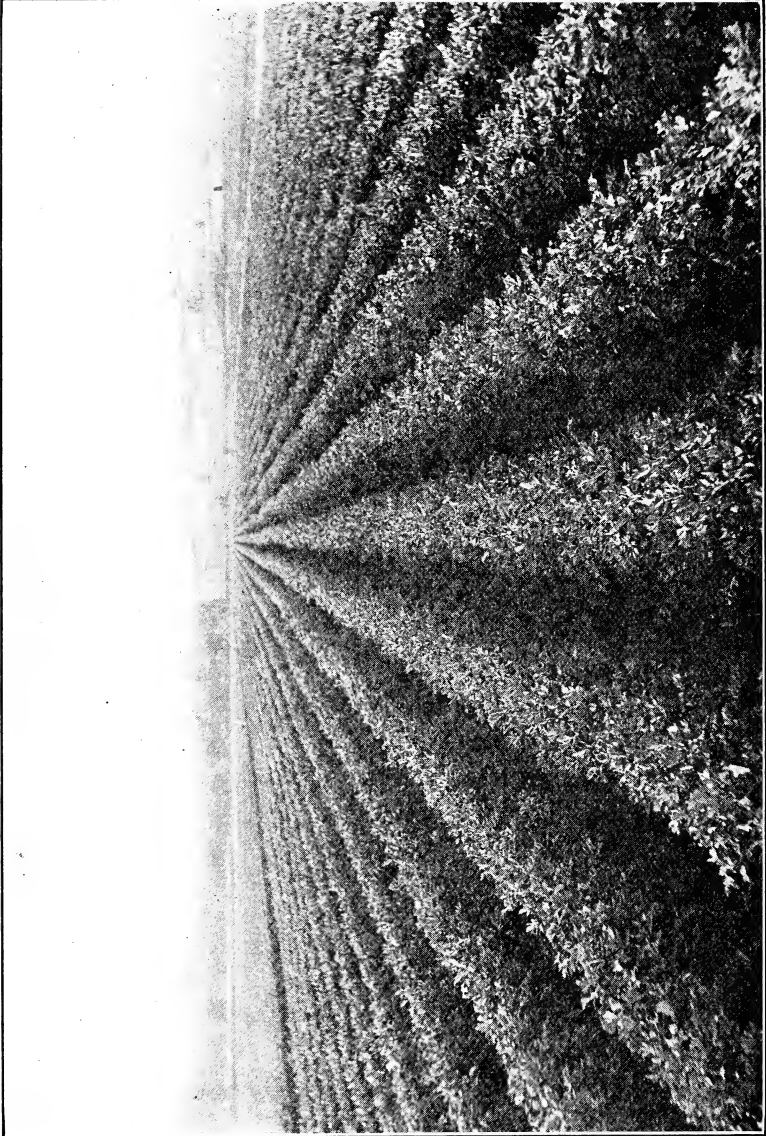
Asparagus	8 oz.	Melon, Citron	2 oz.
Beans, Bush	6 lbs.	Okra	12 oz.
Beans, Pole	3 lbs.	Onion for Sets	8 oz.
Beet	5 oz.	Onion for Large Bulbs	2 oz.
Cabbage	2 oz.	Parsnip	3 oz.
Carrot	3 oz.	Parsley	2 oz.
Cauliflower	½ oz.	Peas	6 lbs.
Chinese Cabbage	2 oz.	Pepper	1 oz.
Celery	3 oz.	Pumpkin	2 oz.
Corn	1 lb.	Radish	6 oz.
Cucumber	4 oz.	Salsify	4 oz.
Egg Plant	1 oz.	Spinach	6 oz.
Endive	2 oz.	Squash	3 oz.
Leek	2 oz.	Tomato	1 oz.
Lettuce	2 oz.	Turnip	3 oz.
Melon, Water	3 oz.		

Grass Seeds to the Acre

Red Clover	10 to 15 pounds
White Clover (Dutch)	10 pounds
Alfalfa of Lucerne	20 pounds
Alsike Clover	12 pounds
Sweet Clover, White Blossom	25 pounds
Sweet Clover, Yellow Annual	25 pounds
Crimson Clover	12 to 15 pounds
Timothy	12 pounds
Hungarian Grass	1 bushel
Pasture Grass	2½ to 3 bushels
Blue Grass	½ to 3 bushels
Rye Grass	1½ to 2 bushels
Orchard Grass	1½ to 2 bushels
Red Top Grass	1½ to 2 bushels
Mixed Lawn Grass	5 bushels
Millet	1 bushel

Quantity of Seeds Usually Sown Upon an Acre

Barley, broadcast	2 to 3 bushels
Beans, Dwarf, in drills	1½ bushels
Beans, pole, in hills	10 to 12 quarts
Beets, in drills	5 to 6 pounds
Broom Corn, in hills	8 to 10 quarts
Buckwheat	1 bushel
Cabbage, in beds, to transplant	¼ pound
Carrots, in drills	3 to 4 pounds
Corn, in hills	8 to 10 quarts
Corn, for fodder	3 bushels
Cow Peas	1½ to 2 bushels
Cucumber, in hills	2 pounds
Flax, broadcast	1½ bushels
Hemp	1½ bushels
Mustard, broadcast	½ bushel
Melon, Musk, in hills	2 to 3 pounds
Melon, Water, in hills	4 to 5 pounds
Oats, broadcast	2 to 3 bushels
Onions in drills	5 to 6 pounds
Onion Sets, in drills	6 to 12 bushels
Onion Seed, in drills	6 to 12 pounds
Parsnips, in drills	4 to 6 pounds
Peas, in drills	1½ bushels
Peas, broadcast	3 bushels
Potatoes, cut tubers	10 bushels
Pumpkins, in hills	4 to 6 pounds
Radish, in drills	8 to 10 pounds
Rye, broadcast	1¾ to 2 bushels
Sage, in drills	8 to 10 pounds
Salsify, in drills	8 to 10 pounds
Spinach, in drills	10 to 12 pounds
Squash, bush variety, in hills.....	4 to 6 pounds
Squash, running, in hills.....	3 to 4 pounds
Sugar Cane or Sorghum	10 to 12 pounds
Sudan Grass, broadcast	16 to 24 pounds
Sudan Grass, in rows	2 to 3 pounds
Tomato, to transplant	¼ pound
Turnip in drills	½ to 2 pounds
Turnip, broadcast	3 to 4 pounds
Vetches, broadcast	30 pounds
Wheat, broadcast	1½ to 2 bushels



Field of Golden Self-Blanching Celery grown by J. H. Snyder, New York, from Abbott & Cobb's seed

Asparagus

Giant Green

This variety is an exceedingly fine strain, the seeds having been selected from the largest stalks in the field. Color is light green. The tips remain solid or closed longer than most varieties of asparagus. We can highly recommend this seed for commercial purposes.

Pkt. 5c, oz. 20c, ¼ lb. 50c, lb. \$1.50

Columbia Mammoth White

Shoots of largest size and clear white. Most popular white variety.

Pkt. 5c, oz. 10c, ¼ lb. 25c, lb. 75c

Washington

New blight-resistant strain. Selected by the United States Department of Agriculture. Extra fine quality. Very productive. Color is rich dark green, tinted darker at the tips.

Pkt. 10c, oz. 40c, ¼ lb. \$1.50, lb. \$5.00

Asparagus Roots

We can supply strong one and two-year-old roots of the following varieties:

Giant Green.....	\$1.50 per 100,	\$12.50 per 1000.
Columbia Mammoth White.....	\$1.50 per 100,	\$12.50 per 1000.
Washington	\$3.00 per 100,	\$25.00 per 1000.

Green Pod Beans

Giant Stringless

Very productive, long, round, podded sort, maturing a trifle later than Red Valentine. Absolutely stringless.

Pkt. 10c, 1 lb. 30c, 10 lbs. \$2.25, 100 lbs. \$20.00

Red Valentine

If earliness is desired, this bean is ahead of all, maturing in six or seven weeks after planting. Pods are round and medium length.

Pkt. 10c, 1 lb. 30c, 10 lbs. \$2.25, 100 lbs. \$20.00

Black Valentine

Hardest and most productive green podded sort, with strong, vigorous vines. Pods are somewhat flat and very long, making a fine appearance. Their season is a trifle longer than Red Valentine.

Pkt. 10c, 1 lb. 30c, 10 lbs. \$2.75, 100 lbs. \$24.00

Wax Pod Beans

Round-Pod Kidney Wax

Very popular bean with the Kitchen Gardener, and also Market Gardener. Its productiveness has made it a favorite with a great many planters. Its season is early, and its rust-resistant qualities are very strong.

Pkt. 10c, 1 lb. 30c, 10 lbs. \$2.25, 100 lbs. \$20.00

Currie's Rust Proof

This variety is one of the most important of any of the wax-pod beans. It is about as early as any wax variety. Pods are flat, and sometimes grow six or seven inches in length.

Pkt. 10c, 1 lb. 30c, 10 lbs. \$2.25, 100 lbs. \$20.00

Wardwell's Kidney Wax

This is one of the later wax-pod beans, cropping with long, straight, broad and flat light golden rods. We particularly recommend this variety for commercial purposes. Its yielding qualities are above the average bean.

Pkt. 10c, lb. 30c, 10 lbs. \$2.00, 100 lbs. \$18.00

Soup Beans

White Marrowfat

Very fine variety for soup or baking purposes. Beans are large and oval shape.

Pkt. 10c, 1 lb. 30c, 10 lbs. \$2.25, 100 lbs. \$20.00

White Kidney

This is a white kidney-shaped variety about the same size of an ordinary string bean. We recommend growing these on soil that is not too rich, in order that the vines will stand erect, thus eliminating rusted or spotted beans when they are harvested.

Pkt. 10c, 1 lb. 30c, 10 lbs. \$2.25, 100 lbs. \$20.00

Lima Beans

Ford Hook Bush

This bean has been developed into a class of its own. As to type and its money-making possibilities it is the heaviest cropper of any Bush Lima on the market today. It is ready to pick at least two weeks before any pole beans. This makes it a valuable sort for market purposes.

Pkt. 10c, lb. 40c, 10 lbs. \$3.00, 100 lbs. \$24.00

Ford's Mammoth (Pole)

This is about the longest pod of any Lima Bean. They are very dark green, about six inches long, flat, and growing about four or five beans of fine quality to a pod.

Pkt. 10c, lb. 40c, 10 lbs. \$2.50, 100 lbs. \$18.00

King of the Garden (Pole)

The vines of this variety are very hard, although the beans are excellent quality. They do not grow quite as long or wide as the Ford's Mammoth, but on the market they usually demand a much larger price than most flat podded varieties.

Pkt. 10c, lb. 40c, 10 lbs. \$2.50, 100 lbs. \$18.00

Dreer's Improved (Pole)

Stout and vigorous grower, producing pods about four inches long and very thick, containing from three to five beans. Large, thick and fine quality. Later in maturing than most Lima Beans.

Pkt. 10c, lb. 40c, 10 lbs. \$2.50, 100 lbs. \$20.00

Beet

Crosby Egyptian (Special)

Fine new and extra early beet. Globe shape and very dark red. Top is medium size, making it a fine variety for cold frames. We recommend this type of beet for particular growers.

Pkt. 5c, oz. 20c, $\frac{1}{4}$ lb. 40c, lb. \$1.50, 10 lbs. \$11.00

Crosby Egyptian

This is also an excellent early beet, although tops are somewhat larger than our special Crosby Egyptian listed above. A very rich red color. Can be used throughout the season for bunching.

Pkt. 5c, oz. 10c, $\frac{1}{4}$ lb. 25c, lb. 85c, 10 lbs. \$7.50

Early Wonder

An early maturing variety, with dark flesh. Tops medium size, with globe-shape root. A fine second early or later variety for bunching.

Pkt. 5c, oz. 20c, $\frac{1}{4}$ lb. 40c, lb. \$1.50, 10 lbs. \$11.00

Early Eclipse

This beet is generally looked upon as the favorite for second early. While some market gardeners use it for first early, it is not as early as Crosby Egyptian. Root is globe-shaped and has small tap root. Very good variety for trenching purposes.

Pkt. 5c, oz. 10c, $\frac{1}{4}$ lb. 25c, lb. 85c, 10 lbs. \$7.50

Early Lentz

This stock of beet has been grown and selected by a Bucks County market gardener. He has gone to considerable trouble and expense to grow this stock of seed for us, and it can now be relied upon to be absolutely true to the type. Color is rather light, quality excellent; in fact, one of the best table beets we know of. Matures very early.

Pkt. 5c, oz. 15c; $\frac{1}{4}$ lb. 30c, lb. \$1.10, 10 lbs. \$10.00

Detroit Dark Red (Late)

Turnip-shaped beet of a very rich red color, largely used by Market Gardeners and Cannerymen. Flesh is very red throughout. Our stock of this important variety is very fine. One of our specials in beets.

Pkt. 5c, oz. 15c, $\frac{1}{4}$ lb. 40c, lb. \$1.25, 10 lbs. \$10.00

Model Red Globe

This is a similar beet to Eclipse, except that it is a trifle later. Perfect globe shape, with a rich crimson color. Flavor is fine and sweet. Beets are uniform in shape, with a rather heavy top. Fine middle-season variety.

Pkt. 5c, oz. 10c, $\frac{1}{4}$ lb. 25c, lb. 85c, 10 lbs. \$7.50

Bastin's Half Long

We have been working for some time to get a first-class stock of this variety, and the result is we now have an excellent stock to offer. This beet is grown principally in and around Philadelphia County for winter or storing purposes. The roots are dark red, very smooth and uniform in shape. The quality of this beet is also very fine. It retains its tenderness longer than most varieties. The tops are rather heavy, making a fine appearance while growing.

Pkt. 5c, oz. 15c, $\frac{1}{4}$ lb. 30c, lb. \$1.00, 10 lbs. \$9.00

Swiss Chard

Giant Lucullus

This is a variety of beet grown exclusively for its large tender leaves. Light-color leaves, cut and cooked the same as spinach. If cut within four inches from the ground it will regrow and produce another large crop. This can be done throughout the entire season. Also a valuable crop to grow for poultry feeding.

Pkt. 5c, oz. 10c, $\frac{1}{4}$ lb. 30c, lb. 85c, 10 lbs. \$7.50

Large Green White Ribbed

Large, quick-growing variety. Broad, green leaves with white ribs. Leaves are not as curled as the Lucullus.

Pkt. 5c, oz. 10c, $\frac{1}{4}$ lb. 30c, lb. 85c, 10 lbs. \$7.50

Mangel Wurzul Beet

FOR STOCK FEEDING

Long Red

A mammoth-growing variety, producing great bulk.

Pkt. 5c, oz. 10c, $\frac{1}{4}$ lb. 20c, lb. 60c, 10 lbs. \$5.00

Golden Tankard

Roots are very large, flesh yellow, zoned with white.

Pkt. 5c, oz. 10c, $\frac{1}{4}$ lb. 20c, lb. 60c, 10 lbs. \$5.00

Chirk Castle

Very large, long, red variety, somewhat sweeter than Mammoth Long Red, making it a fine variety for stock feeding.

Pkt. 5c, oz. 10c, $\frac{1}{4}$ lb. 20c, lb. 60c, 10 lbs. \$5.00

Cabbage

Extra Early Jersey Wakefield

One of the earliest and most popular pointed-head cabbage. Heads are medium size, solid and of excellent quality. Leaves are thick and stout. We recommend this variety for early setting.

Pkt. 5c, oz. 35c, $\frac{1}{4}$ lb. \$1.10, lb. \$4.00

Charleston or Large Wakefield

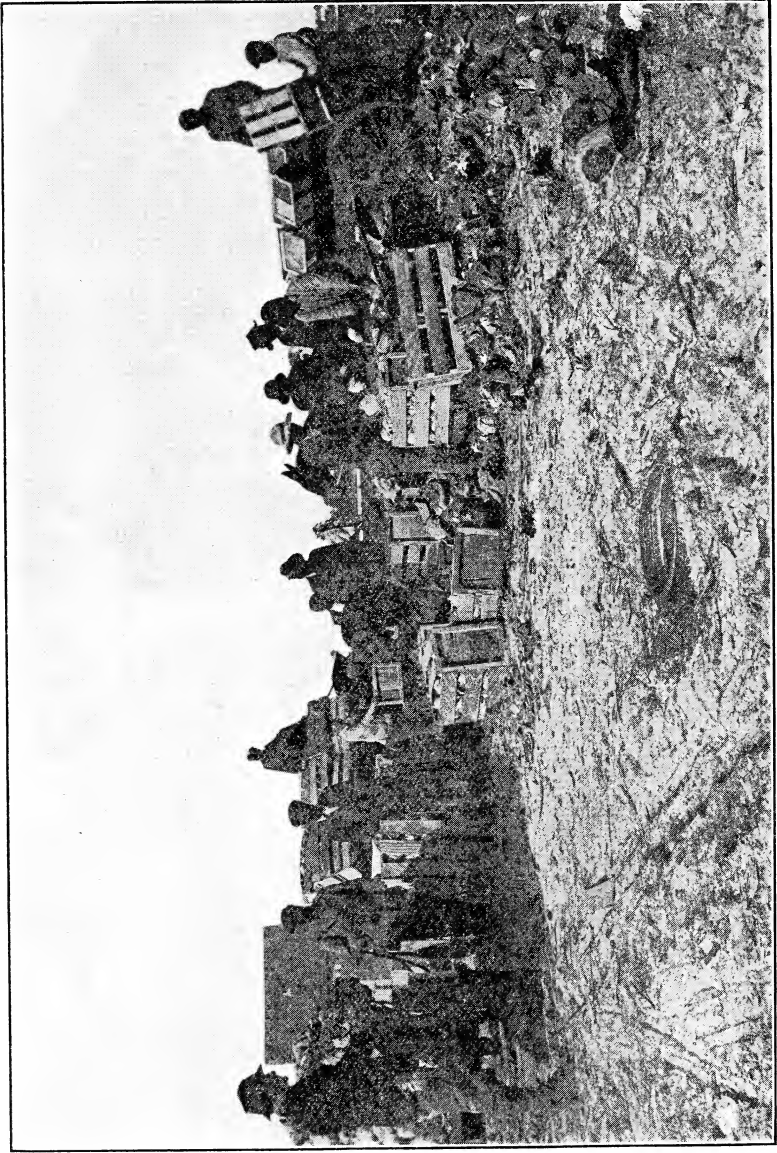
A week later than Extra Early Jersey Wakefield. Heads are larger and just as solid, but not quite as pointed. Good variety to follow the Early Jersey Wakefield.

Pkt. 5c, oz. 35c, $\frac{1}{4}$ lb. \$1.10, lb. \$4.00

Copenhagen Market

Earliest round-head variety ever offered. This variety is known throughout the country, and seems to be in a class by itself. Heads are very solid and often weighing ten pounds. It is about as early as Charleston Wakefield, but we would recommend sowing the seed for early use in February as the fall-sowed plants are apt to run to seed in the spring.

Pkt. 5c, oz. 35c, $\frac{1}{4}$ lb. \$1.10, lb. \$4.00



Packing Charlestown Wakefield Cabbage in Florida grown from Abbott & Cobb's seed

EARLY SUMMER VARIETIES

Succession

Fine second early sort, growing large, solid, flat heads, which will stand a long time before marketing.

Pkt. 5c, oz. 25c, $\frac{1}{4}$ lb. 85c, lb. \$3.00

All Seasons

Good variety to use any time throughout the season. Heads are large, trifle flat and mature early.

Pkt. 5c, oz. 25c, $\frac{1}{4}$ lb. 85c, lb. \$3.00

Lauderback's All Year Round

This fine old standard was originated by one of our Market Gardeners several years ago. For Summer or Fall it is excellent. Hearty grower, producing a fine and rather flat head. Excellent for sour kraut.

Pkt. 5c, oz. 25c, $\frac{1}{4}$ lb. 85c, lb. \$3.00

FALL OR WINTER VARIETIES

Late Flat Dutch

If a very large head is desired, we recommend this variety. Heads are very large, oval shape and of good quality. Keeping qualities are also very good.

Pkt. 5c, oz. 25c, $\frac{1}{4}$ lb. 85c, lb. \$3.00

Danish Ballhead

Medium size, very solid-heading sort. Popular variety for winter use. Grown principally by our New York Growers for shipping purposes.

Pkt. 5c, oz. 25c, $\frac{1}{4}$ lb. 85c, lb. \$3.00

Hard Heading Savoy (Special)

This variety can be used for early as well as late planting. The heads are large, solid, almost round and very curly. A fine sort to store for winter, as it will keep longer than any other variety. Used principally for boiling.

Pkt. 5c, oz. 40c, $\frac{1}{4}$ lb. \$1.25, lb. \$5.00

Mammoth Red Rock

Very large, round, solid head, slightly flat. This variety is fine for coleslaw, as the color gives it a fine appearance.

Pkt. 5c, oz. 25c, $\frac{1}{4}$ lb. 85c, lb. \$3.00

Chinese Cabbage (PAOTING WONG-BOK)

This vegetable should be used more in every garden. Grows very large tender head, and can be eaten like lettuce or boiled like cabbage. In a climate like Philadelphia or New York the seed should be sown August 1st. Very few have been successful sowing the seed in the spring, as the heads start to develop in hot weather, causing the plant to run to seed.

Pkt. 5c, oz. 40c, $\frac{1}{4}$ lb. \$1.25, lb. \$4.00

WE ARE MAKING A SPECIALTY OF CARROT SEED, AND OUR STOCKS ARE ALL TESTED FOR TYPE AND GERMINATION. THE GROWER CANNOT MAKE ANY MISTAKE IN USING THIS SEED.

Chantenay

Half-long, stump-rooted, smooth and fine color; top, medium heavy. It is a quick grower, and can be used for cold frame as well as outside use.

Pkt. 5c, oz. 10c, $\frac{1}{4}$ lb. 30c, lb. \$1.00

Danver's Half Long

Trifle longer than Chantenay, point rooted, orange color and late. Grown principally for topping and storing for winter use.

Pkt. 5c, oz. 10c, $\frac{1}{4}$ lb. 30c, lb. 85c

St. Valery

Roots long, pointed and dark orange color. Later carrot than Danvers Half Long. Fine variety to barrel.

Pkt. 5c, oz. 10c, $\frac{1}{4}$ lb. 30c, lb. 85c

CAULIFLOWER

Early Snowball

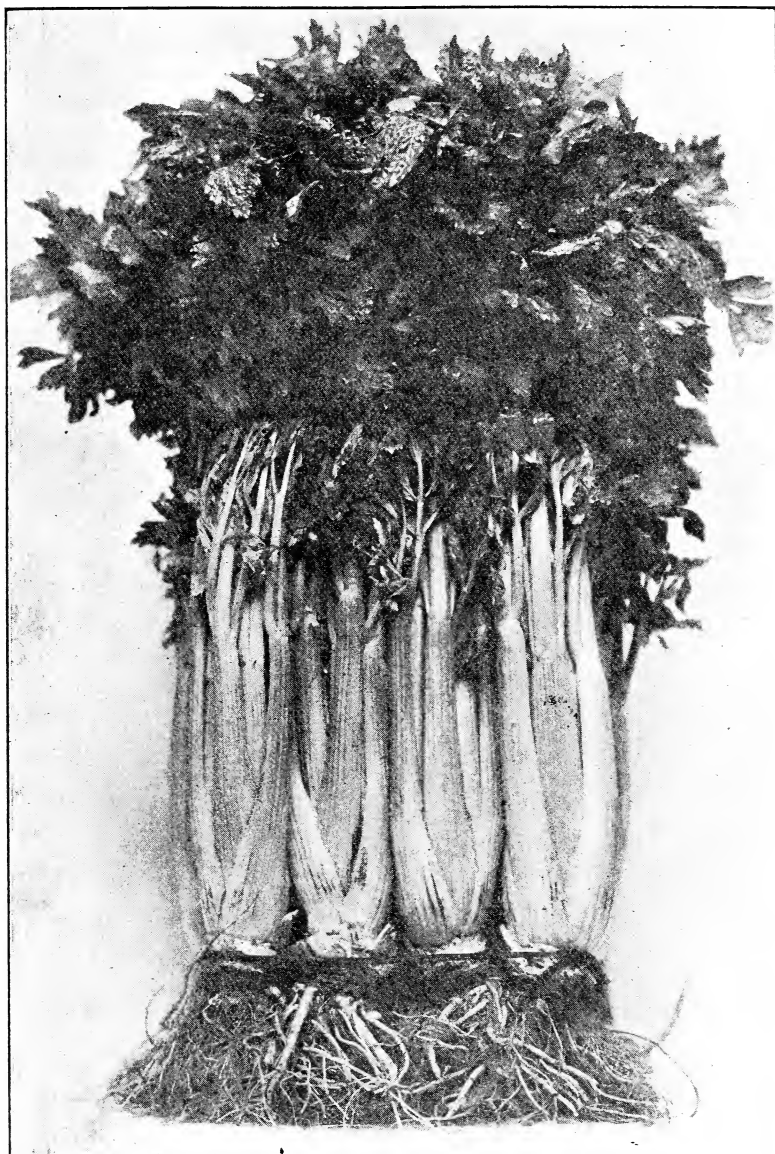
This is an extra selected stock, producing a fine snow-white flower. The growth is a trifle more hardy than most varieties of early cauliflower, thus forming sufficient shade to keep the flower white while growing.

Pkt. 25c, oz. \$3.00, $\frac{1}{4}$ lb. \$8.00, lb. \$30.00

Autumn Giant

A very large, late sort; leaves very large and hardy.

Pkt. 25c, oz. \$1.00, $\frac{1}{4}$ lb. \$3.00, lb. \$10.00



Abbott & Cobb's Special Golden Self-Blanching Celery grown by
Starkey Produce Company, Morrisville, Pa.



A field of Early Fortune Celery

Celery

Golden Self-Bleaching

Our stock of this variety is excellent. It has been grown in all celery sections of the United States, and the growers claim there isn't anything better. Our stock is tested one year before selling, to safeguard the grower against any poor stock. This particular sort is a vigorous grower, and is therefore more free from blight. It has a fine golden appearance. Very full-hearted and is true to type.

Pkt. 10c, oz. \$1.00, $\frac{1}{4}$ lb. \$3.25, lb. \$12.00

Early Fortune (Improved Golden)

In this variety we are offering something entirely new, it being a cross between Golden Self-Blanching and Easy Blanching. It has the same growing habits as Easy Blanching, quick and robust, and being far more blight resistant than Golden Self-Blanching, maturing about two weeks earlier.

Pkt. 25c, oz. \$4.00, $\frac{1}{4}$ lb. \$15.00, lb. \$60.00

Easy Bleaching (Special)

This is one of the most valuable varieties offered. Stalks are very stout and handsome, and is more free from blight than any variety of celery on the market. Color is light golden and will bleach almost as quickly with boards or paper as Golden Self-Blanching.

Pkt. 10c, oz. \$1.50, $\frac{1}{4}$ lb. \$5.50, lb. \$20.00

Easy Bleaching

Good early, easy bleaching variety; can be used for winter storing also.

Pkt. 10c, oz. 75c, $\frac{1}{4}$ lb. \$2.25, lb. \$8.00

Meisch's Green

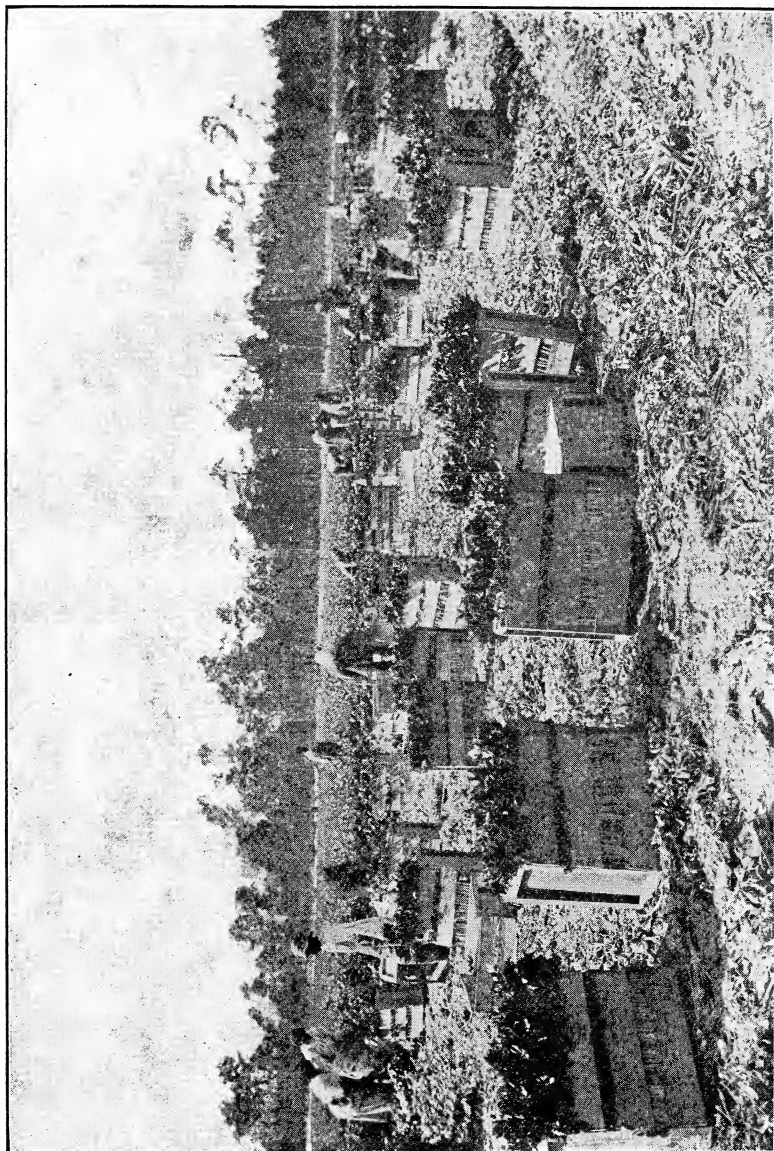
Another variety of the Easy Blanching type, growing stalks a trifle shorter than the Easy Blanching; full hearted and light golden color. This seed was grown by us from the original stock, and is absolutely true to type. A grower in New York State claimed it produced 425 twenty-four inch crates to the acre.

Pkt. 10c, oz. \$2.00, $\frac{1}{4}$ lb. \$7.00, lb. \$25.00

Columbia

Finest eating celery to be had. Ribs are round and very solid. Grows a very stout, light green stalk.

Pkt. 10c, oz. 50c, $\frac{1}{4}$ lb. \$1.75, lb. \$6.00



Packing Golden Self-Blanching Celery in Florida grown from Abbott & Cobb's seed

Meyers' White Plume

Very early celery. Ribs and leaves when bleached are white and requires only a short time before it is ready for market. First early celery that was originated and still holds its place among the early varieties.

Pkt. 5c, oz. 30c, $\frac{1}{4}$ lb. \$1.00, lb. \$3.00

No Fault Giant

Variety resembling Meyer's White Plume in many respects. It is without doubt the strongest grower and the stalks are much heavier. It is noted for standing dry weather better than any other early celery. Ribs resemble those of Giant Pascal.

Pkt. 5c, oz. 40c, $\frac{1}{4}$ lb. \$1.15, lb. \$4.00

Winter King (Special)

This variety is the principal winter sort and after laying in trench, it will be ready for market after Christmas. It is a fine keeper.

Pkt. 5c, oz. 50c, $\frac{1}{4}$ lb. \$1.75, lb. \$6.00

Winter Queen

An old standard, late-keeping, green sort. It is very stout and medium height.

Pkt. 5c, oz. 35c, $\frac{1}{4}$ lb. \$1.00, lb. \$3.00

Celeriac

Giant Prague

Very large, round roots and quite smooth.

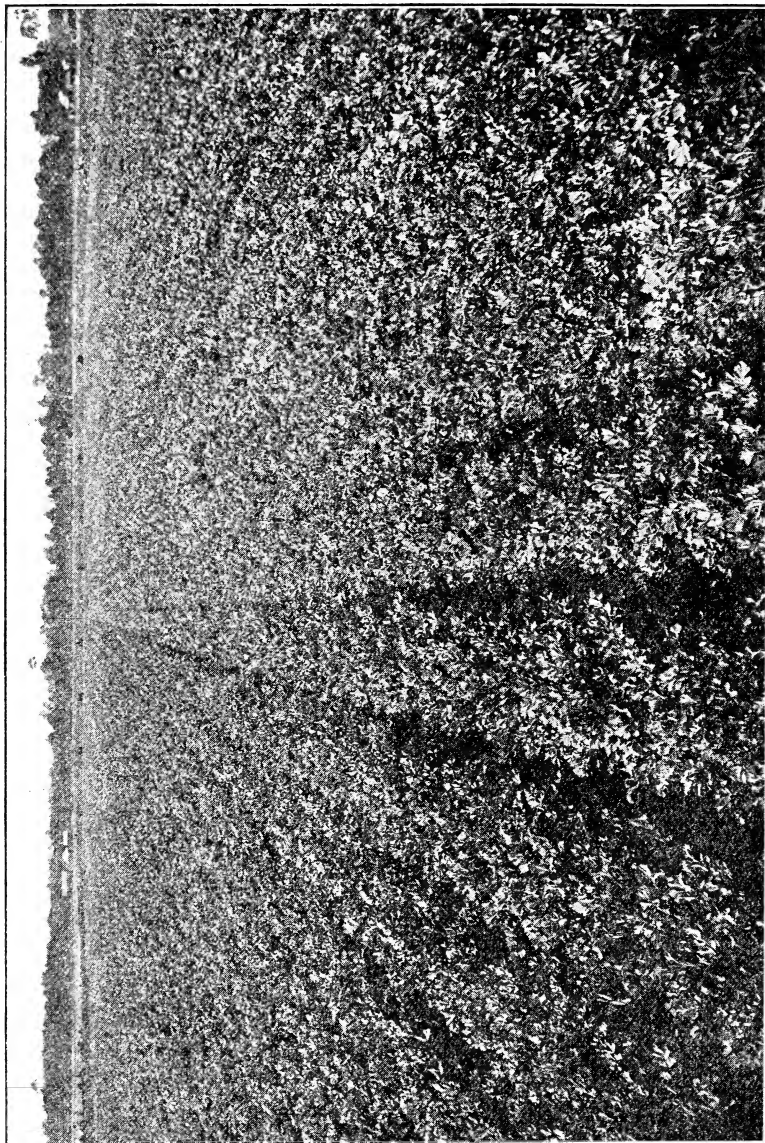
Pkt. 5c, oz. 35c, $\frac{1}{4}$ lb. \$1.00, lb. \$3.00

Corn Salad

Large Seeded Broad Leaf

Leaves large and broad. Best variety to grow under glass.

Pkt. 5c, oz. 15c, $\frac{1}{4}$ lb. 40c, lb. \$1.25



Field of Golden Self-Blanching Celery grown by American Fruit Growers, Inc., Florida, from Abbott & Cobb's seed

Sweet Corn

Abbott & Cobb's Early

This variety was originated by us and grown in Bucks County. We have eliminated the kiln-drying process, which guarantees a much better germination. Ears are large, with 14 rows to the ear, and about 60% of the stalks producing two fine ears of corn. This is a real sweet corn and is now a favorite with the farmers.

Pkt. 10c, lb. 40c, 10 lbs. \$3.00, 50 lbs. \$11.00

Howling Mob

Handsome very early corn. Ears are larger and a trifle later than the early corn. The seed we offer has been grown by a farmer in Bucks County and is absolutely straight and reliable.

Pkt. 10c, lb. 30c, 10 lbs. \$1.60, 50 lbs. \$7.00

Golden Bantam

This is becoming more and more a favorite in the small garden. The stalks grow from four to five feet high, producing a fine size golden ear. The color is very often misleading to those who do not know this variety, but a trial will convince any one that the quality is excellent.

Pkt. 10c, lb. 30c, 10 lbs. \$1.60, 50 lbs. \$7.00

Kendel's Early Giant

A large second early variety about a week later than Howling Mob. The ears are very thick and about 8 inches long, with real sweet flavor.

Pkt. 10c, lb. 30c, 10 lbs. \$1.60, 50 lbs. \$7.00

Stowell's Evergreen

This is a leading main crop for home use, market and canning. This stock has also been selected and grown in Bucks County and allowed to dry by natural process. This stock can be depended upon to produce large ears of fine quality. The grains are medium size and slender.

Pkt. 10c, lb. 30c, 10 lbs. \$1.50, 50 lbs. \$6.00

Early Metropolitan

Combines the essential features of earliness, productiveness and good flavor. Ears 8 to 9 inches long.

Pkt. 10c, lb. 30c, 10 lbs. \$1.60, 50 lbs. \$7.00

Country Gentleman

This is a late variety and can only be grown on ground that is rich. The ears are medium size and the grains are zigzag, slender and deep. The quality is extra fine.

Pkt. 10c, lb. 30c, 10 lbs. \$1.50, 50 lbs. \$6.00

Field Corn

Improved Leaming

Pkt. 10c, lb. 15c

1 pk. (14 lbs.) \$1.00, bu. (56 lbs.) \$3.00

Hundred Day Bristol

Pkt. 10c, lb. 15c

1 pk. (14 lbs.) \$1.00, bu. (56 lbs.) \$3.00

Eureka Ensilage

Pkt. 10c, lb. 15c

1 pk. (14 lbs.) \$1.00, bu. (56 lbs.) \$3.00

Cucumber

White Spine

Extra dark green white spine of fine shape and appearance. Season is about the same as the Arlington.

Pkt. 5c, oz. 15c, $\frac{1}{4}$ lb. 30c, lb. \$1.00

Long Green

Fine, long, dark green sort. Fine for pickling or shipping purposes.

Pkt. 5c, oz. 15c, $\frac{1}{4}$ lb. 30c, lb. \$1.00

Early Fortune

This is a very early, dark green, prolific variety. Fruit averaging about eight inches.

Pkt. 5c, oz. 15c, $\frac{1}{4}$ lb. 30c, lb. \$1.00

Dandelion

Improved Broad Leaf

Large, broad, thick leaves. This variety is considered the best by many growers. Very early and produces a larger crop than most varieties and is especially good for under glass.

Pkt. 10c, oz. 60c, $\frac{1}{4}$ lb. \$2.10, lb. \$8.00

Egg Plant

Black Beauty

Finest of all. Fruit is large, handsome and glossy black color. Very early and productive.

Pkt. 10c, oz. 40c, $\frac{1}{4}$ lb. \$1.50, lb. \$5.00

Endive

Mammoth Green Curled or Oyster

Main variety of Endive that is used by Market Gardeners. Plants are very large and curly. When tied up and allowed to bleach, the color is light yellow. For winter storing this is the best sort.

Pkt. 5c, oz. 15c, $\frac{1}{4}$ lb. 30c, lb. \$1.00

Broad Leaf (Escarolle)

Leaves are broad and thick, slightly wrinkled. The best of the broad leaf type.

Pkt. 5c, oz. 15c, $\frac{1}{4}$ lb. 30c, lb. \$1.00

Horse Radish Roots

The old standard variety, Philadelphia grown. Fine, strong sets. 100 \$1.00, 1000, \$7.00. By mail add 10c per 100.

Kale

Imperial Long Standing

Leaves are dark green and very curly. Fast grower and will stand much longer than most varieties without going to seed.

Pkt. 5c, oz. 10c, $\frac{1}{4}$ lb. 30c, lb. 80c

Kohl Rabi

Early Short Leaf White

Very early with small top. This variety is at least one week earlier than any other sort. Fine for forcing or outdoor use.

Pkt. 10c, oz. 25c, $\frac{1}{4}$ lb. 85c, lb. \$3.00

White Vienna

This variety is not as early as the short leaf. The tops and bulbs are somewhat larger, making a fine stock for second early or late.

Pkt. 10c, oz. 20c, $\frac{1}{4}$ lb. 60c, lb. \$2.00

Leek

Giant Italian

Very large, short, thick stems with broad, dark green leaves. It is very hardy and is the best sort.

Pkt. 5c, oz. 20c, $\frac{1}{4}$ lb. 60c, lb. \$2.25

Large Musselburg

The stems are short and very thick. It has broad, dark leaves.

Pkt. 5c, oz. 20c, $\frac{1}{4}$ lb. 60c, lb. \$2.00

Lettuce

Abbott & Cobb's Special Big Boston

This stock of Big Boston is without doubt the finest to be had. We have gone to considerable trouble and expense to get it the way it should be. It has tested the best out of 30 different stocks. Leaves are dark green, making a very hardy growth. Heads are very solid and white. We recommend this variety to all particular growers.

Pkt. 5c, oz. 15c, $\frac{1}{4}$ lb. 40c, lb. \$1.50

Big Boston

A fine solid heading variety. Very large with dark green heavy leaves.

Pkt. 5c, oz. 10c, $\frac{1}{4}$ lb. 30c, lb. \$1.00

White Big Boston (Special)

An extra selected stock. One of the finest strains to be had. Leaf is a trifle smoother than most varieties of White Boston. We recommend this for critical growers.

Pkt. 20c, oz. 50c, $\frac{1}{4}$ lb. \$1.25, lb. \$4.50

White Big Boston

One of the finest forcing varieties to be had. It will stand the heat under glass much better than the ordinary Big Boston and will not burn in the head.

Pkt. 5c, oz. 20c, $\frac{1}{4}$ lb. 75c, lb. \$2.50

All Seasons

A fine strain for Spring and Fall use. The leaves are very dark green, forming a very large, compact head. We do not recommend this for Summer growing.

Pkt. 5c, oz. 20c, $\frac{1}{4}$ lb. 60c, lb. \$2.00

Salamander

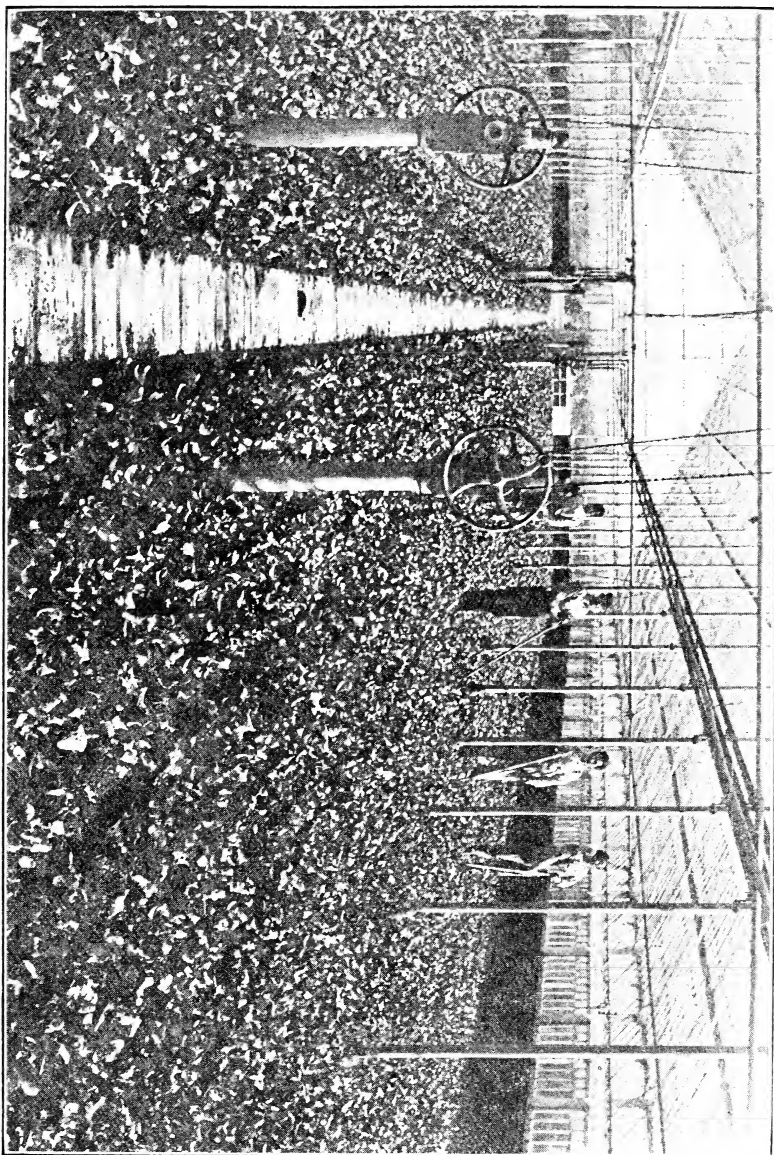
For all Season growing we offer this variety. Leaves are light green color and the heads are very solid and tender. Quality is excellent.

Pkt. 5c, oz. 15c, $\frac{1}{4}$ lb. 35c, lb. \$1.25

All Heart

Resembles Salamander in appearance. The frame and head are not quite as large. This is the best hot-weather lettuce that we know of and has stood the test on all hard land soil. This is one of our specials and the strain is unsurpassed.

Pkt. 5c, oz. 20c, $\frac{1}{4}$ lb. 60c, lb. \$2.00



Special White Big Boston Lettuce grown by Seabrook Farms Co., N. J., from Abbott and Cobb's seed

New York or Wonderful

Very large, coarse and dark green. Heads are very solid and white. Fine for Fall use.

Pkt. 5c, oz. 25c, ¼ lb. 75c, lb. \$2.50

Romaine or Cos Lettuce

An upright, quick-growing sort forming a solid head which bleaches as it grows. It is very crisp and is of fine flavor.

Pkt. 5c, oz. 15c, ¼ lb. 45c, lb. \$1.50

Grand Rapids

A loose leaf, quick-growing variety used especially for forcing in greenhouses. It is also used to sow in the open ground, and when three or four inches high, it can be cut off about one inch above the ground and it will regrow. It is sometimes called cut lettuce.

Pkt. 5c, oz. 15c, ¼ lb. 40c, lb. \$1.25

Morse

This is one of the best and truest to type of the curly lettuce. It grows upright with bright green wrinkled leaves.

Pkt. 5c, oz. 15c, ¼ lb. 40c, lb. \$1.25

Black-Seeded Simpson

One of the old stock of the leaf varieties. It is uniform and remains in excellent quality for some time.

Pkt. 5c, oz. 15c, ¼ lb. 40c, lb. \$1.25

Muskmelon

Salmon—Fleshed

Firm, close-netted melon, making a fine one for shipping purposes. Color is rich salmon and at first it was doubtful whether this melon would be satisfactory as the color was entirely new, but has proved to be one of the finest qualities to be had. Shape is oval and the skin is rather rough.

Pkt. 5c, oz. 15c, ¼ lb. 40c, lb. \$1.50



A field of Abbott & Cobb's wonderful Lettuce three weeks before cutting

Rocky Ford

Where green flesh variety is desired, this is the melon. Our stock is the improved type of Rocky Ford, having been bred to resist blight. Its shipping qualities are fine. Flesh is light green, the seed cavity is small and the flavor is extra fine.

Pkt. 5c, oz. 15c, ¼ lb. 40c, lb. \$1.25

Fordhook

This melon is somewhat flat, well netted and showing the sectors plainly. Flesh is deep and of the finest flavor.

Pkt. 5c, oz. 15c, ¼ lb. 40c, lb. \$1.25

Honey Dew

Delicious flavor of this new melon has met with public favor and is considered very fine by every one. Fruit is very large, rind is almost smooth and cream color. Flesh is very thick and a light green color and its sweetness and richness is unsurpassed.

Pkt. 5c, oz. 15c, ¼ lb. 45c, lb. \$1.50

Watermelon

Tom Watson

Most largely grown melon for shipping or any commercial purpose. Very similar in size and shape to Kleckley Sweets, but is much larger, very often weighing from 25 to 30 lbs. Rind is very solid and the flesh very heavy and sweet.

Pkt. 5c, oz. 10c, ¼ lb. 25c, lb. 75c

Kleckley Sweets

Lightest flavored watermelons under cultivation. Color of the rind is dark green, the length from 18 to 20 inches and about 12 inches in diameter. Rind is very thin, making it a poor shipper for long distance, but recommend it highly for local use. One of the easiest varieties to grow.

Pkt. 5c, oz. 10c, ¼ lb. 25c, lb. 75c

Onion

Yellow Dutch

Bulbs of this onion are large and flat. This is the variety that is used principally for growing sets and is the best sort for this purpose. Skin is straw color and the keeping qualities are excellent.

Pkt. 5c, oz. 15c, ¼ lb. 45c, lb. \$1.50

Southport Yellow Globe

Very hardy and exceedingly productive later main sort, growing a uniform, globe-shaped onion. Its color is rich golden. This variety is known to produce as high as 900 bushels per acre.

Pkt. 5c, oz. 15c, $\frac{1}{4}$ lb. 50c, lb. \$1.75

Yellow Globe Danvers

This is used extensively for main crop of yellow onion. Shape is somewhat flatter than the Southport strain, which we offer. Flesh is light, crisp and mild. Very fine keeper, making an excellent shipping onion.

Pkt. 5c, oz. 15c, $\frac{1}{4}$ lb. 50c, lb. \$1.75

Mammoth Yellow Prizetaker

Every small grower knows this onion and its qualities. It is without doubt a fine sort to grow, as it will crop better than most varieties of yellow onion. Good results can be obtained by sowing in cold frames and transplanting in the open ground 4 to 5 inches apart.

Pkt. 5c, oz. 20c, $\frac{1}{4}$ lb. 60c, lb. \$1.75

White Silverskin

Bulbs flattened and skin clear white and flesh is mild. This variety is grown principally for sets and small pickling onions and is the best white sort for this purpose.

Pkt. 5c, oz. 25c, $\frac{1}{4}$ lb. 70c, lb. \$2.50

Southport White Globe

Large, pure, white onion. Skin is silvery white, flesh is pure white and of fine flavor. This requires about a week longer to mature than most white sorts. Fine variety to sow in the spring for green bunch onions

Pkt. 5c, oz. 30c, $\frac{1}{4}$ lb. 90c, lb. \$3.25

Onion Sets

White Silverskin	pt. 15c, qt. 25c, pk. \$1.25, bu. \$4.50
Yellow Dutch	pt. 10c, qt. 20c, pk. \$1.15, bu. \$4.00
Yellow Danvers	pt. 10c, qt. 20c, pk. \$1.15, bu. \$4.00

Write for prices on larger quantities.

Parsley

Market Gardeners

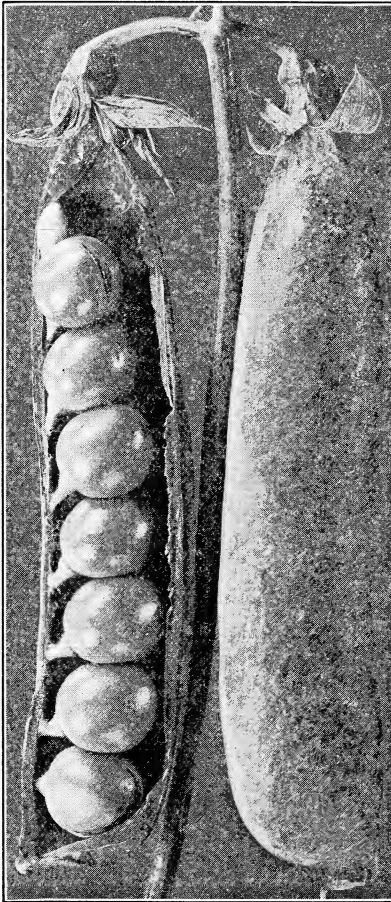
Our stock of Market Gardener's Parsley is excellent. It is a very strong grower and quite hardy. Extra curly and a very dark green color.

Pkt. 5c, oz. 15c, $\frac{1}{4}$ lb. 30c, lb. \$1.00

Hamburg or Parsnip Rooted

Grown principally for the root. Roots of our stock resemble a parsnip in shape and color, but somewhat smaller. Foliage is almost the same as plain or single parsley.

Pkt. 5c, oz. 15c, $\frac{1}{4}$ lb. 30c, lb. \$1



THOS. LAXTON

Parsnip

Hollow Crown

Stock we offer is medium length and very smooth. Roots have very few fibers and the color is pure white. This is exceptionally fine.

Pkt. 5c, oz. 10c, $\frac{1}{4}$ lb. 25c, lb. \$1.25

Peas

Record Extra Early

This variety will mature ahead of all others. Vines growing 18 or 20 inches. The pods are short, but well filled. They are excellent for canning.

Pkt. 10c, lb. 30c, 10 lbs. \$1.75, 50 lbs. \$7.50

Thos. Laxton

Pods of this variety grow about three inches long, well filled with very sweet peas. It is about one week later than our Record Extra Early. Vine grows about three feet, producing a heavy crop.

Pkt. 10c, lb. 40c, 10 lbs. \$2.50, 50 lbs. \$10.00

Gradus

This variety resembles Thos. Laxton in appearance. Vines are not quite as dark green as the Thos. Laxton. Quality is known by every one to be excellent. Length of vine about 24 inches.

Pkt. 10c, lb. 40c, 10 lbs. \$2.50, 50 lbs. \$10.00

Nott's Excelsior

Very productive, early variety. Length of vine about 2 feet, producing an abundance of well-filled pods about 3 inches long. Fine canning variety.

Pkt. 10c, lb. 40c, 10 lbs. \$2.50, 50 lbs. \$10.00

Pilot

Very fine sort. Seed can be sown in the open ground as early as the ground can be worked. Will stand as much cold weather as any round seeded variety. Extra large podded sort maturing about the same time as Thos. Laxton and Gradus. Valuable variety for commercial or home use.

Pkt. 10c, lb. 40c, 10 lbs. \$2.75, 50 lbs. \$11.00

Goliath

This is one of the newest varieties on the market and produces the largest pods known. They frequently measure 5 to 7 inches long, well filled with large sweet peas of excellent quality. Vines grow to be 5 to 7 feet long. Season about the same as Long Island Mammoth. We recommend this for a late crop.

Pkt. 10c, lb. 40c, 10 lbs. \$3.00, 50 lbs. \$13.00

Potlatch

A late dwarf variety with extra heavy dark green vines. Grow about 14 inches high. Pods about 4 inches long, well filled with fine large peas.

A good variety to grow without brush.

Pkt. 10c, lb. 40c, 10 lbs. \$2.50, 50 lbs. \$10.00

Pepper

Ruby King

A very large, mild sort. A popular variety with the Market Gardeners and Shippers. The plants grow about 2 feet high and produce a fine crop of handsome, scarlet fruit. Flesh is thick and quite mild.

Pkt. 10c, oz. 35c, ¼ lb. \$1.25, lb. \$4.00

Bell or Bull Nose

This is an old standard and is still on the market as a valuable pepper. The plant is very productive, ripening its fruit early. Fruit is large with thick flesh usually hot.

Pkt. 10c, oz. 35c, $\frac{1}{4}$ lb. \$1.25, lb. \$4.00

Long Red Cayenne

This is hot. Fruit is long and pointed. Color is deep green when the pepper is young. This variety is used principally for flavoring purposes.

Pkt. 10c, oz. 35c, $\frac{1}{4}$ lb. \$1.25, lb. \$4.00

Pumpkin

King of Mammoths

The largest of all. Fruit grows to be enormous size. Shape almost round. Skin orange color. Flesh deep and bright yellow color. Fine quality.

Pkt. 5c, oz. 15c, $\frac{1}{4}$ lb. 45c, lb. \$1.50

Winter Luxury or Pie

Medium size, nearly round. Skin smooth and yellow. Flesh light yellow, sweet and finely flavored. A fine keeper.

Pkt. 5c, oz. 15c, $\frac{1}{4}$ lb. 40c, lb. \$1.25

Cushaw or Crook Neck

A fine solid yellow crook neck. Nearly all flesh. A good, all-around pumpkin.

Pkt. 5c, oz. 15c, $\frac{1}{4}$ lb. 40c, lb. \$1.25

Radish

We make a specialty of Radish Seed. Our stocks are all selected and grown especially for us.

Scarlet Globe

Without question, this is the most popular radish grown both for commercial and home use. It is the earliest of all. Our stock will produce the best uniform, round and crisp radish that is possible to obtain. Color is bright red. Tops small. Excellent for forcing.

Pkt. 5c, oz. 15c, $\frac{1}{4}$ lb. 30c, lb. \$1.00

White Box (Special)

This is one of our specials. Our stock has been supplied from seed furnished by us, having been selected for three years before seed was grown. Radish is pure white, globe shaped, with a medium size top, and will stand longer on the ground without running to seed than most other stocks of White Box. Fine for under sash.

Pkt. 5c, oz. 15c, $\frac{1}{4}$ lb. 30c, lb. \$1.00

White Icicle

Best long early white sort for forcing or outside sowing. Radish grows about 7 inches long with very small top. Very tender and of a beautiful white color.

Pkt. 5c, oz. 10c, $\frac{1}{4}$ lb. 25c, lb. 75c

White Strasburg

The most popular long white sort for Market Gardeners. Roots long, and quite thick. Color white. It remains solid for a long time after maturing.

Pkt. 5c, oz. 10c, $\frac{1}{4}$ lb. 25c, lb. 75c

Early Long Scarlet

This is the best long red variety known. Fine, long scarlet roots. Very crisp. Tops are short.

Pkt. 5c, oz. 10c, $\frac{1}{4}$ lb. 25c, lb. 75c

Radish—Winter Varieties

White Chinese or Celestial

A very large, white sort, grown especially for bunching in the Fall or storing in the Winter. A profitable one to grow.

Pkt. 5c, oz. 10c, $\frac{1}{4}$ lb. 20c, lb. 70c

Half Long Black Spanish

Skin of the Spanish Radish is black, while the flesh is pure white. Very hard and crisp. This variety keeps fine during the Winter months stored in cellars or pits.

Pkt. 5c, oz. 10c, $\frac{1}{4}$ lb. 30c, lb. \$1.00

Round Black Spanish

This is similar to the Half Long, except the shape. Roots are round and black. Very hardy grower. Fine for late bunching.

Pkt. 5c, oz. 10c, $\frac{1}{4}$ lb. 25c, lb. 75c

Salsify

Mammoth Sandwich Island

This is the best variety known. Roots are light color, heavy and thick. Salsify requires deeply cultivated soil and should be sown early in the Spring.

Pkt. 5c, oz. 20c, $\frac{1}{4}$ lb. 55c, lb. \$1.75

Spinach

Bloomsdale Savoy

The earliest Spinach of all. It has thick, large leaves, and curled. Our stock has been grown under our own care and direction and is exceptionally fine. A fine sort for Fall sowing also.

Pkt. 5c, oz. 10c, $\frac{1}{4}$ lb. 15c, lb. 50c, 10 lbs. \$3.25, 50 lbs. \$15.00

Long Season

The finest of all Summer varieties. Leaves are very heavy dark green and curled, growing closer to the ground than Bloomsdale. Very productive.

Pkt. 5c oz. 10c, $\frac{1}{4}$ lb. 15c, lb. 50c, 10 lbs. \$3.75, 50 lbs. \$17.50

Giant Thick Leaf

A quick growing sort. Leaves very large, round and almost smooth. Most popular for can-house use.

Pkt. 5c, oz. 10c, $\frac{1}{4}$ lb. 15c, lb. 50c, 10 lbs. \$3.75, 50 lbs. \$17.50

Sorrel

Large Leaved

A fine variety for Market Gardeners. Leaves light green and very large. This sort can be cut several times during the Summer. Can be Wintered over and it will grow again in the Spring.

Pkt. 5c, oz. 15c, $\frac{1}{4}$ lb. 40c, lb. \$1.50

Squash

Mammoth White Bush Scalloped

A well-known variety of dwarf habit and upright growth. Color creamy white when matured. A fine early variety.

Pkt. 5c, oz. 15c, $\frac{1}{4}$ lb. 40c, lb. \$1.25

Boston Marrow

A fine Fall and Winter variety. Skin is thin and bright orange color. Flesh is yellow. An excellent sort.

Pkt. 5c, oz. 10c, $\frac{1}{4}$ lb. 30c, lb. \$1.00

Tomato

Bonny Best Forcing

Our stock of Bonny Best Tomato is grown and selected by us. No one else has been allowed to work on this stock of Tomato, as we are determined to put out a seed that is in a class by itself. The plants were grown on ground that is adapted for tomato growing, and from the time when they were planted until the seed is harvested, they showed no signs of blight. This point is essential when growing for greenhouse purposes. For four years our stock has been grown by some of the largest greenhouse men in the country and we have seen and heard excellent reports of our efforts.

Pkt. 25c, oz. \$2.00, $\frac{1}{4}$ lb. \$8.00, lb. \$30.00

Bonny Best

This is a fine tomato for outdoor early use. A fine sort to grow for home and commercial purposes. Used by a great many canners. Very heavy cropper.

Pkt. 5c, oz. 40c, $\frac{1}{4}$ lb. \$1.25, lb. \$4.00

Livingston's Globe

A medium large purple-fruited sort of excellent quality. Vines are medium heavy, but one of the best blight-resisting varieties known. Fine for shipping.

Pkt. 5c, oz. 40c, $\frac{1}{4}$ lb. \$1.10, lb. \$4.00

Stone

The best known tomato for general crop. This stock has been on the market for some time, and is still well liked.

Pkt. 5c, oz. 40c, $\frac{1}{4}$ lb. 90c, lb. \$3.00

Matchless

An improvement on the Stone tomato. Fine, handsome, red fruit. A vigorous grower. Fine for late crop.

Pkt. 5c, oz. 40c, $\frac{1}{4}$ lb. 90c, lb. \$3.00

Greater Baltimore

Another general or late-crop variety. Fruit large and uniform. Perfectly smooth and bright red color. The vines are strong and vigorous, producing fruit in large clusters.

Pkt. 5c, oz. 40c, $\frac{1}{4}$ lb. 90c, lb. \$3.00

Turnip

Purple-Top White Globe

The best sort for early sowing or winter use. The roots are perfect globe shape, the upper half being light purple and the lower half pure white. Has small root. Fine quality. Excellent keeper. Good for table or stock feeding.

Pkt. 5c, oz. 10c, $\frac{1}{4}$ lb. 20c, lb. 70c

Yellow Globe (Rutabaga)

This stock we offer is carefully selected and grown especially for us in Bucks County. It is without doubt the finest stock of Rutabaga that can be obtained, having taken first prize at several County Fairs. The root is globe-shaped. Skin yellow, with purple crown. Flesh deep yellow, excellent quality.

Pkt. 10c, oz. 30c, $\frac{1}{4}$ lb. \$1.50, lb. \$3.50

Purple Top Yellow Globe

Grows same shape and size as Purple Top White Globe Turnip. Color of skin is yellow with purple crown. Flesh deep yellow and of excellent quality.

Pkt. 5c, oz. 10c, $\frac{1}{4}$ lb. 25c, lb. 80c

Herbs

Thyme—Broad Leaf English

Best variety known. Plant grows upright, making it easier to cut. Hardy.

Pkt. 10c, oz. 50c, $\frac{1}{4}$ lb. \$1.75, lb. \$6.00

Summer Savory

Pkt. 5c, oz. 25c, $\frac{1}{4}$ lb. \$1.25, lb. \$4.00

Sweet MarjoramPkt. 5c, oz. 25c, $\frac{1}{4}$ lb. 80c, lb. \$3.00**Dill**Pkt. 5c, oz. 10c, $\frac{1}{4}$ lb. 25c, lb. 80c**Fennel Florence**Pkt. 5c, oz. 15c, $\frac{1}{4}$ lb. 40c, lb. \$1.25**Field Seeds****Canada Peas**

One of our best known varieties for plowing under for green manure. Also excellent for cutting green and cured like clover and fed through the Winter. We have secured quite a large quantity of these peas, and will be glad to quote special prices on large quantities.

Prices subject to change.

Per bushel \$4.75

Vetch (Hairy or Sand) : Lb. 25c, 100 lbs. \$20.00.

Rape (Dwarf Essex) : Lb. 20c, 100 lbs. \$12.00.

Wheat (Harvest King) : Lb. 10c, bushel (60 lbs.) \$2.00.

Timothy : Lb. 20c, bushel (45 lbs.) \$4.25.

Millet (Golden or German) : Lb. 15c, bushel (50 lbs.) \$3.00.

Winter Rye : Lb. 10c, bushel (56 lbs.) \$1.75, 100 lbs. \$3.00.

Clover: Medium Red: Lb. 30c, bushel (60 lbs.) \$15.00.

“ **Mammoth Red: Lb. 30c, bushel (60 lbs.) \$16.00.**

“ **Alsike: Lb. 25c, bushel (60 lbs.) \$13.00.**

“ **Alfalfa: Lb. 25c, bushel (60 lbs.) \$12.00.**

“ **White Dutch: Lb. 80c, bushel (60 lbs.) \$35.00.**

“ **Crimson: Lb. 25c, bushel (60 lbs.) \$13.00.**

As the market on all field seeds and grass seeds fluctuates, the above prices are subject to change.

FLOWER SEEDS



Flower Seeds

Ageratum

One of the very best bedding plants, being a mass of bloom from early Summer till frost. Its flowers, unlike many bedding plants, are not liable to be spoiled by rain, nor do its colors fade out.

Pkt. 5c, $\frac{1}{4}$ oz. 20c

Acroclinium (Everlasting Flower)

Showy, free-flowering annual plants.

Pkt. 5c, $\frac{1}{4}$ oz. 20c

Alyssum (Little Gem)

An ever-popular border flower, requires least care of all flowers; will bloom in six weeks from planting of seed.

For edges of beds or rockeries, its color effect is fine.

Very dwarf habit, 4 inches high, very erect.

Pkt. 5c, $\frac{1}{4}$ oz. 20c, oz. 50c

Antirrhinum (Snap Dragon)

A well-known, beautiful, stately plant, giving a wealth of bloom in pleasing colors; a great border flower.

Pkt. 5c, $\frac{1}{4}$ oz. 50c

Aquilegia (Mixed)

This beautiful plant thrives in all kinds of soil, either sunny or shaded spots; possesses graceful foliage; flowers abundantly from early May until last of June; varied colors.

Pkt. 5c, $\frac{1}{4}$ oz. \$1.00

Aster (Queen of the Market—Mixed)

An extra early variety, bearing large double flowers; plants of branching habit, having long stems, 2 feet.

Pkt. 5c, $\frac{1}{4}$ oz. 25c, oz. 75c

Aster (Giant Comet—Mixed)

Flowers borne on long, stiff stems, very double and showy, with recurved petals, 2½ feet.

Pkt. 5c, ¼ oz. 25c, oz. 75c

Balsam (Double)

An easy-growing annual of quick growth, very desirable for garden or pot culture. Set 15 inches apart in rich soil.

Pkt. 5c, ¼ oz. 25c

Balsam Apple

Pkt. 5c, ¼ oz. 25c

Calendula (Pot Marigold)

A most popular annual, very showy, grows in any kind of soil, makes a fine effect in mixed beds or borders, a good potting flower.

Pkt. 5c, oz. 25c

Calliopsis

Very hardy and showy annual, with bright yellow and reddish-brown single daisy-like flowers, easily grown and useful both for garden decorations and cutting.

Pkt. 5c, oz. 40c

Campanula (Canterbury Bells)

This old-fashioned flower is a favorite with all. Stately and showy, and of the easiest growth. Hardy biennials.

Pkt. 5c, ¼ oz. 50c

Candytuft

Candytuft is a very hardy plant, easily grown and flowers all summer. It is a universal favorite, and is used for beds, borders, pots, etc.

Pkt. 5c, ¼ oz. 20c, oz. 50c

Carnation (Mixed)

Always in demand and not hard to grow. Have a delightful clove fragrance. The "Marguerite" variety will bloom in four months from time of sowing seed.

Pkt. 10c, ¼ oz. 50c

Centaureas (Mixed)

Extremely popular annual, requiring little or no care, and flowering within eight weeks from the date of sowing. Its free and uninterrupted flowering habit, its tendency to branch freely and its value as a cut flower, as well as a garden decoration, is responsible in a great measure for its popularity.

Pkt. 5c, ¼ oz. 25c, oz. 75c

Chrysanthemum (Mixed)

Double, early flowering. Finest mixed. Flower in the open ground from August till November.

Pkt. 5c, ¼ oz. 30c

Celosia (Cockscomb—Dwarf—Mixed)

Hardy annuals producing peculiar heads of bloom rather resembling a cock's comb, hence the name.

Pkt. 5c, ¼ oz. 35c

Cosmos (Mixed)

One of our most satisfactory hardy annuals, flowering in late summer. Fine for cutting and easily grown. Can be sown anywhere and transplanted. Grows 4 to 6 feet high.

Pkt. 5c, ¼ oz. 40c

Dianthus or Pinks

There are few annual flowers that will produce such a brilliant display of color for so long a time as the various varieties of Dianthus. Seeds sown in the spring produce a beautiful display of flowers from July to November.

Pkt. 5c, ¼ oz. 25c

Digitalis (Finest Mixed)

Tall spikes of white, pink, rose and mottled flowers.

Pkt. 5c, ¼ oz. 25c

Eschscholtzia (California Poppy—Mixed)

The beautiful lace-like foliage covers the entire growth a foot high, and has a silvery sheen. The cone-shaped poppy flowers appear on fairly long stems from June until frost without interruption.

Pkt. 5c, oz. 30c

Gaillardia

A very showy flower and easily raised from seed, the annual varieties being about 18 inches high and free flowering. The perennial variety should be sown early to produce large plants for the following season.

Pkt. 5c, oz. 75c

Gypsophila (Baby's Breath)

Graceful, free-flowering plant, forming a symmetrical bush, covered with loose panicles of flowers; excellent for cutting and mixing in bouquets.

Pkt. 5c, $\frac{1}{4}$ oz. 10c

Hollyhocks

Hollyhocks require a rich soil, but it must be well drained. We have given special attention to this flower, and you will find our strains of seed of the finest quality. Once thoroughly established, they bloom stronger and more brilliantly every year. Seeds are sown early, and the younger plants transplanted several times, will bloom the same season; July and August sown seed, following year; 5 to 8 feet.

Pkt. 5c, oz. 30c

Larkspur (Mixed)

The finest class of all Larkspurs for cutting and borders, with long spikes of large, double flowers, 2 feet.

Pkt. 5c, $\frac{1}{4}$ oz. 30c

Marigold (Double—Mixed)

Plants grow 2 $\frac{1}{2}$ feet high, produce a profusion of large double flowers 2 $\frac{1}{2}$ to 3 inches in diameter. Sow in shallow drills in the open garden early in the spring after danger of frost is over.

Pkt. 5c, oz. 60c

Morning Glory (Mixed)

The morning glory is too well known to need a description, and one seldom finds a more satisfactory vine. The amateur gardener can be sure of a fresh supply of bright-colored, delicately-tinted flowers.

Pkt. 5c, oz. 25c

Myosotis (Forget-Me-Not)

Small, star-like flowers, borne on terminal racemes. Excellent for borders and flowering extremely early. Seed should be sown in August and young plants wintered in cold frames.

Pkt. 5c, $\frac{1}{4}$ oz. 25c

Nasturtium

A great variety of soft and pleasing colors. The seed we offer is a selected strain and mixed in proper proportions so that our customers may be assured of having all the effective shades of pink, rose, scarlet, crimson, brick claret, chocolate, brown, garnet, orange, primrose, yellow and white. Seed may be planted, one inch deep, early in April, in any convenient place, and the plants when large enough transplanted to their permanent places.

Dwarf (Tom Thumb) pkt. 5c, oz. 15c, ¼ lb. 50c
Tall Mixed pkt. 5c, oz. 15c, ¼ lb. 50c

Pansy (Mixed)

Pansies delight in a cool, moist soil and a situation that protects them from cutting winds as well as the midday sun. To obtain large flowers early in spring, seed should be sown in July or August and the plants protected with a frame during winter. Spring sown seed does very well, although the flowers produced are not so large.

Pkt. 25c, ¼ oz. \$1.25, oz. \$4.00

Petunias (Mixed)

Petunias are one of the most popular annuals on account of their ease of cultivation and freedom of blooming, succeeding everywhere and giving a constant supply of flowers from June to October. They are also good house plants, flowering freely in the spring or in a hot bed or cold frame, to be transplanted later to beds or borders. Height 1 to 1½ feet.

Pkt. 5c, ¼ oz. 30c

Phlox (Mixed)

Phlox makes a magnificent show in beds and masses where their brilliant and varied colors produce a gorgeous effect. Very easily raised and afford a bright display of flowers all through the summer. Sow seed in the open ground in the spring. A light soil is best.

Pkt. 5c, ¼ oz. 30c

Portulaca (Sun Plant—Double—Mixed)

Beautiful little plants which bloom profusely all summer. Their richly-colored flowers make an effective and brilliant display when planted in large beds and masses. Hardy annual.

Pkt. 5c, ¼ oz. 75c

Primula (Primrose—Mixed)

This is one of the most charming winter flowering house plants, and one that is entirely free from insect pests. Our seed has been specially grown for us by the most celebrated English Primula specialists. The flowers are remarkable, not only for size, beauty and brilliancy of the colors, but for the great substances of the petals.

Pkt. 10c, ¼ oz. \$1.00

Scarlet Sage (Salvia)

Very ornamental plants, for summer and autumn flowering; bloom in spikes, and continuing to bloom in the open ground until hard frost, forming compact bushes, which are literally ablaze with brilliant flowers. While tender perennials, they bloom like annuals the first season from seed. The plants may be started in a box in the house, or in the hot-bed, and when the wather becomes warm transplant in the garden. May be used as a hedge with striking effect.

Pkt. 25c, $\frac{1}{4}$ oz. 75c, oz. \$2.50

Sweet William (Dianthus Barbatus)

A universally admired perennial flower that when once started will last for years. Sow the seed in the open ground in the Spring or Fall.

Tall Mixed pkt. 10c, $\frac{1}{4}$ oz. 30c
Dwarf Mixed pkt. 10c, $\frac{1}{4}$ oz. 30c

Sweet Peas (Spencer Mixed)

A comparatively new class of Sweet Peas that is rapidly becoming same form as the Spencers and are beautifully waved or frilled. They remain in bloom for a much longer time than the Early Flowering Grandiflora sorts. When planted out of doors they will commence blooming a month or more earlier than the later flowering varieties planted at the same time.

Pkt. 5c, oz. 20c, $\frac{1}{4}$ lb. 60c, lb. \$2.00

Verbena (Mixed)

One of the finest bedding plants and also suitable for borders, with its heads of brilliant colored flowers, producing one mass of bloom throughout the summer. Seeds may be sown in March or April indoors and planted out when weather permits; succeeding well in any good garden soil.

Pkt. 5c, $\frac{1}{4}$ oz. 30c

Wallflower (Fine Double Mixed)

The spikes are closely set with double flowers of many shades, including chocolate-brown and orange-purple. The plants may be taken up in the fall and transplanted into pots.

Pkt. 10c, $\frac{1}{4}$ oz. \$1.60

Zinnia (Youth and Old Age—Mixed)

Splendid, hardy annual, succeeding well in any soil and making a brilliant show. The same flowers will retain their beauty for weeks, and a profusion will be produced until frost.

Pkt. 5c, $\frac{1}{4}$ oz. 40c

LAWN GRASS SEED

WE mix our own stocks of Lawn Seed and nothing but the best seeds obtainable are allowed in our formula. They can be depended upon to give the best results.

FANCY

Qt.
35c

Pk.
\$1.75

Bu.
\$6.50

SHADY SPOT

Qt.
50c

Pk.
\$2.25

Bu.
\$8.00



Abbott & Cobb's Special Meisch's Green