

## **Historic, archived document**

Do not assume content reflects current scientific knowledge, policies, or practices.



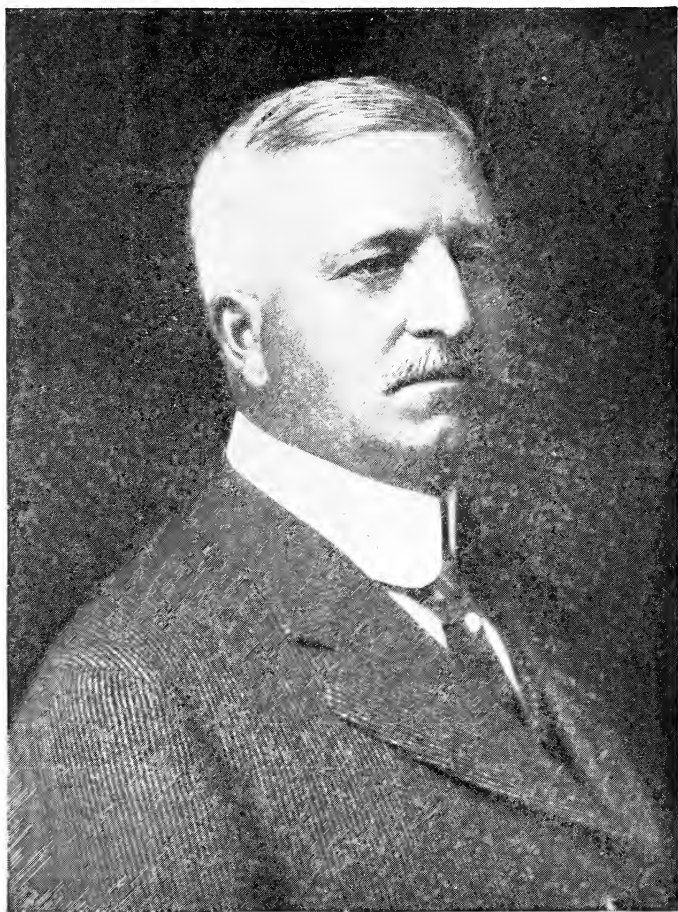
# BETTER BULBS—by Farr

LIBRARY  
RECEIVED  
★ MAY 28 1931 ★  
U. S. Department of Agriculture

AUTUMN  
1923



Bertrand H. Farr  
WYOMISSING  
NURSERIES CO.  
Wyomissing, Penna.



The bulbs which you order from this Catalog will be  
of the best-quality—that money can buy.

Sincerely yours,  
B. H. Ford







Crocuses can be easily naturalized in the lawn and garden. Scatter them over the surface, covering them as they fall

## A Word to Buyers of Farr Better Bulbs

**Discounts.** To encourage early ordering and thus be enabled to import more intelligently and economically—

A special discount of 10 per cent will be applied to Holland bulb orders received before July 1. An additional 2 per cent will be allowed on orders accompanied by cash.

**These discounts do not apply to collection offers.**

**Terms.** Cash should accompany order unless satisfactory credit references can be given.

**Time of Shipment.** Bulbs arrive in this country in late September or early October; they are shipped to you as soon as they can be repacked.

**Guarantee.** All shipments by express or parcel post are guaranteed to reach you in good condition. If you find any damaged bulbs, please inform us and we will replace them immediately.

**Prices.** Six bulbs of one variety may be ordered at the dozen rate; 50 at the 100 rate. Not less than 6 of any variety will be supplied, except where the rate for a single bulb is specifically quoted. **Prices are F. O. B. our station.**

**Large Quantities.** We will gladly furnish special quotations upon extra-large lots. Write for prices.

## **BETTER BULBS . . . by FARR**

Holland Bulbs represent the cheapest hardy plant in commerce and yet their beauty ranks with the best.

Holland Bulbs are so hardy, so easily grown, and so low priced that even the very smallest garden should not be without them. An otherwise dull-looking perennial garden in early spring, can be made to look like mother's new spring hat if bulbs are freely used. There is plenty of room to place them between perennials. They will be through blooming and can be lifted and stored before the perennial growth will interfere.

Few plants have the color range of Holland Bulbs. Do you know of any plant that blooms in blue, brown, yellow, white, lavender, and red, outside of the hyacinths and tulips? They are very few.

### **WHY MANY BULB-BUYERS PREFER COLLECTIONS**

The average gardener has little time or inclination to select from the many equally good varieties of bulbs in existence. We believe that many bulbs remain unsold for this reason.

A certain man received our bulb catalogue last year and promptly consigned it to the waste-basket out of bewilderment. Some time later he received our circular offering The Sunrise Collection of Bulbs. He immediately ordered the Collection and told us of his experience.

New and varied collections appear in "Better Bulbs—By Farr." All garden-lovers can now order bulbs conveniently and economically.

### **WHY YOU SHOULD BUY FARR COLLECTIONS**

Hundreds of varieties—the old gardener knows and loves them all; the bulb-breeder sees them as past achievements or future possibilities; to anyone else a maze of almost meaningless names hides our means of garden satisfaction.

Save yourself time and trouble by ordering a bulb collection, chosen by us from our stock of representative varieties. Watch them as they grow and bloom, and thus add something to your store of bulb knowledge.

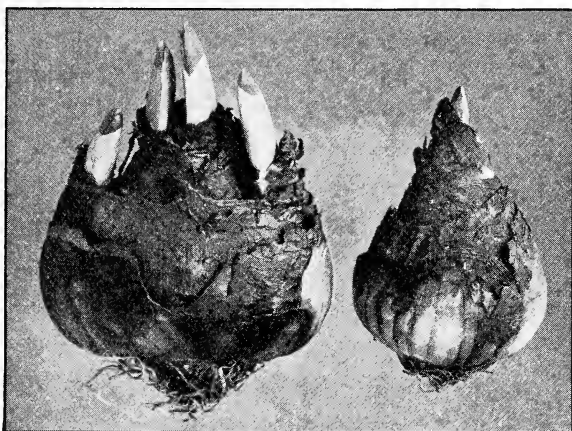
We have no set formula for making up these collections. Frankly, we use them as a means of preventing accumulation of over-large stocks of any varieties. Inferior or unsalable types are never included, because we handle only standard and accepted varieties. Furthermore, 90 per cent of the varieties listed in this catalogue have been previously offered for from two to seven years.

Because collections are as great a convenience to us as to our customers, we offer each collection at a rate based on the lowest priced variety included. The buyer saves from 20 to 40 per cent.

These collections may be found on the following pages:

<b>Tulips</b>	<b>PAGE</b>	<b>Narcissi</b>	<b>PAGE</b>
Single Early.....	9	Single Large Trumpet.....	5
Double.....	12	Single Medium Trumpet.....	6
Cottage.....	14	<b>Hyacinths</b> .....	20
Darwin.....	16	<b>Sunrise Collection</b> .....	19
Breeder.....	18	<b>Peonies</b> .....	23
		<b>Iris</b> .....	24





Two types of Narcissus bulbs, showing Farr's "Mother Bulb" in comparison with the ordinary first-size bulb. We buy the best bulbs obtainable.

## DAFFODILS and NARCISSI

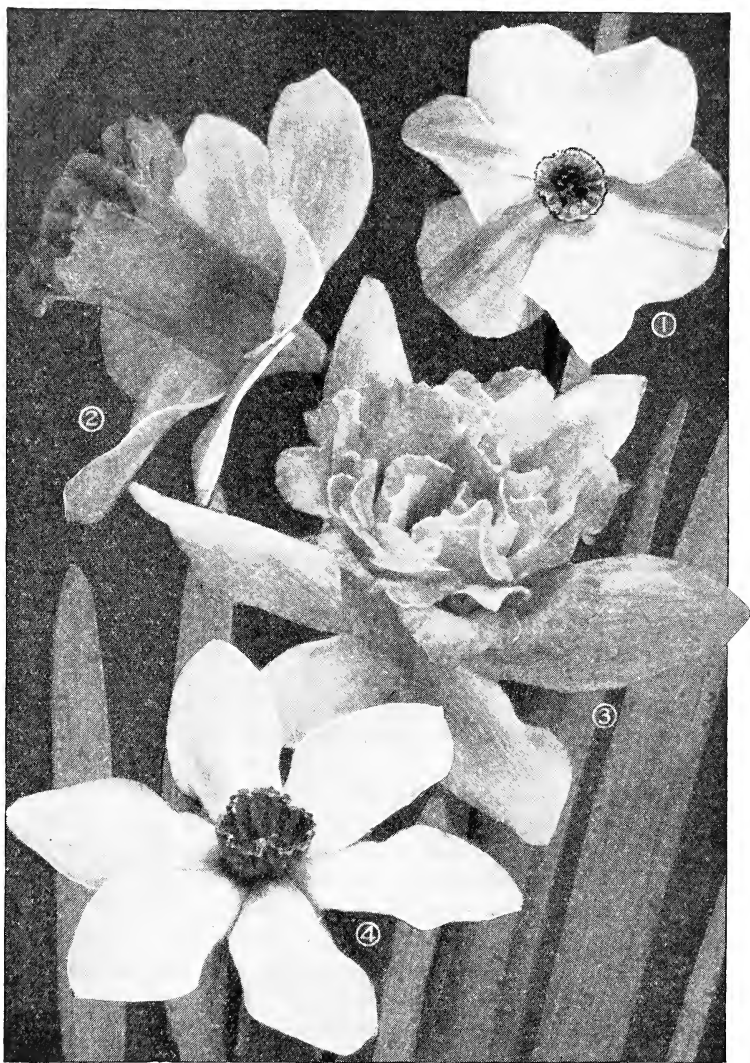
We are often asked to distinguish between the terms "Daffodil" and "Narcissus." There is no actual distinction beyond common usage. This common usage has classified Daffodils as the yellow and trumpet-shaped species and varieties; Narcissi, those with various colored eyes, and small, if any, trumpets. A recognized classification provides for ten sections.

Daffodils, or Narcissi, thrive almost everywhere. They dislike fertilization outside of a sprinkling of bone-meal after planting. Plant to a depth of about three times the diameter of the bulb. This applies to the other varieties of Holland Bulbs.

Use Daffodils, or Narcissi, for accent, borders, naturalizing, or indoor forcing. The main rule for forcing is to generate sufficient root-growth in a dark, cool place before bringing the pots into light and heat. A few Poeticus Narcissi will, in a few years, multiply into a host if allowed to naturalize. Other varieties will endure for years.

Daffodils will continue to increase every year, and, when naturalized on the lawn, in meadows, or in orchards, they will form great colonies. They are invaluable for planting among shrubs and in the hardy border, and especially among the peonies, their golden cups making a beautiful contrast with the bright red peony shoots coming out of the ground.

"Mother Bulbs" (often called "double-nose") are those that have reached maturity and are about to break into several smaller bulbs. The "Mother Bulbs" will send up several flower-stems, whereas the ordinary bulbs seldom produce more than one stem. So many of our customers call for "Mother Bulbs" that we have decided not to list the common "first-size" bulbs.



Here are shown the four types of Narcissi:  
No. 1 is the *Poeticus ornatus*; No. 2, the large Trumpet Daffodil;  
No. 3, the double *Von Sion*; and No. 4, the *Barrii conspicuus*

## SINGLE LARGE TRUMPET NARCISSI (AJAX)

These are the true Daffodils and produce the largest flowers. Colors range from pure white to darkest yellow.

*To obtain the dozen rate your order must be for 6 bulbs or more of one variety. Less than 6 bulbs will be charged at the single rate*

**Bicolor, Empress.** (Mother.) Large yellow trumpet with pure white perianth. This variety and Emperor are the most permanent sorts for naturalizing. \$1 per doz., \$7.50 per 100.

**Bicolor, Spring Glory.** Pure white perianth; large; very early. New. 20 cts. each, \$2 per doz., \$15 per 100.

**Bicolor, Van Waveren Giant.** Widely expanded, bright yellow trumpet, with broad primrose perianth; said to be the largest trumpet Narcissus in existence. Strong grower. 25 cts. each, \$2.50 per doz., \$17.50 per 100.

**Bicolor, Weardale Perfection.** A magnificent, large-flowering Daffodil, makes a fitting companion to King Alfred. The perianth is pure white, with sulphur-white trumpet. 35 cts. each, \$3 per doz., \$22 per 100.

**Emperor.** (Mother.) Deep yellow. Unsurpassed by any other Narcissus. \$1 per doz., \$7.50 per 100.

**Giant Princeps.** (Mother.) Sulphur-yellow. Extra early and adapted for forcing. 65 cts. per doz., \$4.50 per 100.

**Glory of Leiden** (King of Daffodils). Giant flowers of the deepest golden yellow. \$1.25 per doz., \$8 per 100.

**Glory of Sassenheim.** Large and very substantial flower; pure white perianth, yellow trumpet. 20 cts. each, \$2 per doz., \$15 per 100.

**Golden Spur.** (Mother.) Rich golden yellow. \$1.25 per doz., \$8 per 100.

**King Alfred.** (Mother.) The King of Daffodils. Immense yellow trumpet and broad golden yellow perianth. 20 cts. each, \$2 per doz., \$15 per 100.

**Mme. de Graaff.** Both trumpet and perianth pure white. \$1 per doz., \$7 per 100.

**Martha.** When grown outside the perianth is sulphur-white, but pure white when forced. The trumpet is pure, clear yellow. Forces easily and early. New. 25 cts. each, \$2.50 per doz., \$17.50 per 100.

**Olympia.** Bold, large yellow trumpet; pale yellow perianth. An enormous flower; splendid for pots. Double stock for exhibition, limited quantity. 25 cts. each, \$2.50 per doz., \$17.50 per 100.

**Sulphur Beauty** (Ajax). Petals pure white; trumpet light sulphury yellow. Beautifully shaped flower which stands well on the stem. Very free bloomer, and very early. We recommend this variety highly. 25 cts. each, \$2.50 per doz., \$17.50 per 100.

**Tresserve** (Ajax). Beautiful light yellow Trumpet Daffodil; extra-large flower; splendid exhibition variety. Fine for forcing or planting out. Special stock for exhibition; only limited quantity available. 50 cts. each, \$5 per doz.

## SINGLE MEDIUM TRUMPET NARCISSI

(Chalice Cup, or Star Narcissi)

In the *Barrii* type, which is a cross between the Trumpet and Poeticus groups, the crown or cup is about half the length of the perianth segments.

The *Incomparabilis* types are also crosses between the Trumpet and Poeticus groups, but the crowns are larger than *Barrii*, often three-quarters the length of the perianth and 4 inches across.

*Leedsii* Narcissi are crosses between the white Trumpet and Poeticus groups. The cup or crown is white or light yellow, and the perianth is always white.

**Barrii, Blood Orange.** Lemon-yellow perianth; orange cup. \$1 per doz., \$7 per 100.

**Barrii conspicuus.** (Mother.) Perianth broad, soft yellow; orange-scarlet cup. Splendid for borders. 75 cts. per doz., \$5.50 per 100.

**Barrii, Firebrand.** Primrose perianth, red cup. 85 cts. per doz., \$6.50 per 100.

**Barrii, Seagull.** White perianth; canary-yellow cup. 85 cts. per doz., \$6.50 per 100.

**Incomparabilis, Cynosure.** Primrose-yellow perianth; yellow and orange cup. 65 cts. per doz., \$4.50 per 100.

**Incomparabilis, Gloria Mundi.** Yellow perianth; orange-scarlet cup. 85 cts. per doz., \$6.50 per 100.

**Incomparabilis, Lucifer.** Large and beautiful. Sulphur-white perianth. Cup chrome-yellow, edged orange-red. 75c. per doz., \$5.50 per 100.

**Incomparabilis, Sir Watkin** (Giant Chalice Flower). Extra large; sulphur-yellow perianth, orange-stained cup. \$1 per doz., \$7.50 per 100.

**Incomparabilis, Will Scarlett.** Extremely large cup of fiery orange-red, an unusual color in the Trumpet Narcissi. 30 cts. each, \$3 per doz., \$21 per 100.

**Leedsii, Evangeline.** Pure white perianth; soft lemon cup. 20 cts. each, \$2 per doz., \$12.50 per 100.

**Leedsii, Fairy Queen.** Pure white perianth; creamy white cup. \$1 per doz., \$7.50 per 100.

**Leedsii, Mrs. Langtry.** Pure white perianth, with primrose cup. Free flowering; used extensively for massing. 65 cts. per doz., \$4.50 per 100.

**Leedsii, M. Magdalene de Graaff.** Long white perianth; orange-rose cup. Often bears two blooms to a stem. 80 cts. per doz., \$6 per 100.

**Leedsii, White Lady.** Elegantly formed flower, with white perianth and canary-yellow cup. \$1 per doz., \$7 per 100.

## DOUBLE NARCISSI

**Orange Phœnix.** Excellent for forcing. Flowers large, full double, white with reddish orange center. 80 cts. per doz., \$6 per 100.

**Sulphur Phœnix.** Silvery white, with sulphur-yellow center. These two varieties make a charming combination. 80 cts. per doz., \$6 per 100.

**Von Sion.** Flowers extra large, pure golden yellow. The most popular double for forcing. Extra-selected mother bulbs, 90 cts. per doz., \$7 per 100.

*One dozen each of two named varieties, our selection, from these three, for \$1.50*



## POET'S NARCISSI

**Poeticus.** The familiar "Poet's Narcissus," with pure white perianth and orange cup. One of the best for the border or for naturalizing, but not suitable for forcing. 60 cts. per doz., \$4.25 per 100.

**Poeticus, Horace.** Extra-large and unusually handsome flowers. Snow-white perianth, blood-scarlet cup. 30 cts. each, \$3 per doz., \$21 per 100.

**Poeticus ornatus.** Blooms earlier than the others, and can be used for forcing. Perianth is pure white, cup rich yellow with scarlet margin. Extra-size, double-nose bulbs, 65 cts. per doz., \$4.50 per 100.

**Poeticus ornatus maximus.** Largest and earliest of Poeticus type. Free bloomer. 30 cts. each, \$2.50 per doz., \$18 per 100.

**SUPERFINE MIXTURE POET'S NARCISSI.** The above varieties in mixture at 50 cts. per doz., \$3.50 per 100, \$32 per 1,000.

## PAPER-WHITE NARCISSI

Valuable for indoor forcing. 70 cts. per doz., \$5 per 100.

## JONQUILS

Old-fashioned familiar flowers; blooms in clusters, pure yellow, very fragrant, of medium size. A group will increase in size and value each year.

**Campernelle odorus plenus** (Queen Anne). Much larger than the common Jonquils. Color rich yellow. 50 cts. per doz., \$3.50 per 100.

**Campernelle rugulosus.** Handsome flowers, with broad, clear yellow imbricated cup. 50 cts. per doz., \$3.50 per 100, \$32 per 1,000.

**Single Jonquils.** 50 cts. per doz., \$3.50 per 100, \$30 per 1,000.

**Double Jonquils.** 50 cts. per doz., \$3.50 per 100, \$32 per 1,000.

*Two varieties, our selection, from this list of four Jonquils, 40 cts. per doz., \$3 per 100*

## Daffodil Collections

### Mr. Farr's Selection of Varieties

In each instance the varieties in these collections will be those I should like to have growing in my own garden. I have tried them here at Wyomissing, I have seen them growing and blooming in other places, and I know that they will be a distinct addition to the gardens of my customers. The bulbs are first-quality in all ways—you may be sure that they are Farr Better Bulbs.

### SINGLE LARGE TRUMPET NARCISSI

#### \$10 COLLECTION

Consists of five Named Varieties, one dozen bulbs each, our selection of varieties in this section, priced from \$2 to \$3 per dozen.

#### \$5 COLLECTION

As above, but including varieties priced from \$1 to \$2 per dozen.

#### \$2.50 COLLECTION

Five dozen assorted and unnamed, including varieties priced from 65 cts. to \$3 per dozen. Or in quantities, mixed and unnamed, 50 cts. per dozen, \$3.50 per 100.

### SINGLE MEDIUM TRUMPET AND POET'S NARCISSI

#### \$10 COLLECTION

Consists of five varieties, two dozen bulbs each, our selection of varieties priced \$1 to \$3 per dozen. (One dozen each for \$5.)

#### \$5 COLLECTION

Consists of eight named varieties, one dozen bulbs each, our selection of varieties priced from 65 cts. to \$1 per dozen.

#### \$3.50 COLLECTION

Consists of 100 assorted, unnamed Narcissi of varieties included in our list.

**Bulb discounts do not apply to these collections.**

**MORE THAN ONE COLLECTION AT PROPORTIONATE PRICES**

## TULIPS

The great variety of dazzling colors, in every conceivable combination, makes the Tulip the most popular of the spring-flowering bulbs. By planting bulbs of the different classes, a display of bloom may be had for several weeks, beginning first with the early-flowering section and ending with the Darwins.

Tulips may be planted any time from the first of October until the ground freezes, and if the beds are later to be occupied by shallow-rooting plants, such as geraniums, coleus, etc., they may be allowed to remain a second year without lifting, merely by removing the tops as soon as they turn yellow.

If necessary, the bulbs may be carefully lifted as soon as they have ceased blooming and hilled-in in an out-of-the-way place until they have completed their growth, when they may be stored in a cool, dry place until fall. Planted in the hardy border and among shrubbery, they may be allowed to remain undisturbed; but they will gradually deteriorate and will, in a few years, have to be replaced.

Many ways of using Tulips in the garden will give pleasing results, but the happiest way is to have the colors massed. Charming combinations can easily be had with reds, pinks, yellows, when planted in groups.



Single Early Tulips

### SINGLE EARLY TULIPS

All the varieties in this list may be used with equal success for bedding or for forcing.

*Not less than 6 bulbs of a variety sold.*

*Not less than 50 bulbs of any variety at the 100 rate, nor less than 500 bulbs of any one variety at the 1,000 rate.*

**Artus.** A bright scarlet variety, which is extra fine for bedding or for forcing. 55 cts. per doz., \$3.75 per 100.

**Belle Alliance.** One of the finest deep scarlet, single, early Tulips. 70 cts. per doz., \$5 per 100.

**Chrysolora.** A large and extra fine pure golden yellow Tulip; desirable for bedding with red and white sorts. 65 cts. per doz., \$4.50 per 100.

**Cottage Maid.** Soft pink, suffused with white. 75 cts. per doz., \$5 per 100.

**Cullinan.** Creamy white, flushed delicate rose at the edges of the petals. A very fine variety for both outside and forcing. \$1.10 per doz., \$8 per 100.

SINGLE EARLY TULIPS, continued



Chrysolora is a universal favorite for bedding

**Flamingo.** Deepest pink, shaded to white at the center of the petals. Flowers very large and of beautiful shape. 80 cts. per doz., \$6 per 100.

**Gen. De Wet.** A novelty that created a sensation at the National Flower Show, Crystal Palace, New York. Bloom is very large, brilliant orange-yellow. 35 cts. each, \$3 per doz., \$22 per 100.

**Keizerkroon.** One of the best Tulips for bedding. Flowers large, brilliant red, bordered with deep golden yellow. 75 cts. per doz., \$5.50 per 100.

**Lady Boreel** (Joost Van Vondel, White). A recent introduction. Pure white; large and extra fine. 70 cts. per doz., \$5 per 100.

**La Reine.** White, suffused with rosy blush. About 11 inches in height. 60 cts. per doz., \$4 per 100.

**Pink Beauty.** Rosy pink, slightly shaded white; unsurpassed in beauty and size. \$1 per doz., \$7 per 100.

**President Lincoln** (Queen of Violets). Flowers large, deep crimson-purple. Desirable for bedding and forcing. 75 cts. per doz., \$5.50 per 100.

**Prince of Austria.** Orange-red, and one of the best Tulips in color; very fragrant. 70 cts. per doz., \$5 per 100.

**Proserpine.** A rich carmine-rose, with tinges of purple. Blooms are very large and come quite early. \$1 per doz., \$7.50 per 100.

**Rising Sun.** Sport of Duchesse de Palma. Flower of enormous size on very tall stems. Golden yellow. \$1 per doz., \$7.50 per 100.

**Rose Gris-de-Lin.** A beautiful and useful variety. White shaded with delicate pink. 60 cts. per doz., \$4.25 per 100.

**Sir Thomas Lipton.** Brilliant crimson; large, cup-shaped flower; best of its color. 70 cts. per doz., \$5.25 per 100.

**Thomas Moore.** Bright orange, shaded with scarlet. Splendid for bedding. 65 cts. per doz., \$4.50 per 100.

**White Hawk.** One of the best white varieties; petals slightly fluted. 90 cts. per doz., \$6.50 per 100.

**Wouverman.** Dark violet. 90 cts. per doz., \$6.50 per 100.

**Yellow Prince.** Golden yellow; the best of the low-growing yellow Tulips; sweet-scented. 60 cts. per doz., \$4 per 100.



**SINGLE EARLY TULIPS IN SUPERFINE MIXTURE**

A choice collection made up from the best named Tulips. The bulbs will bloom at about the same time, and the flower-stems are about the same length—important points when selecting bedding varieties. The mixture is superior in every way. 50 cts. per doz., \$3.25 per 100, \$25 per 1,000.

**Tulip Collections**

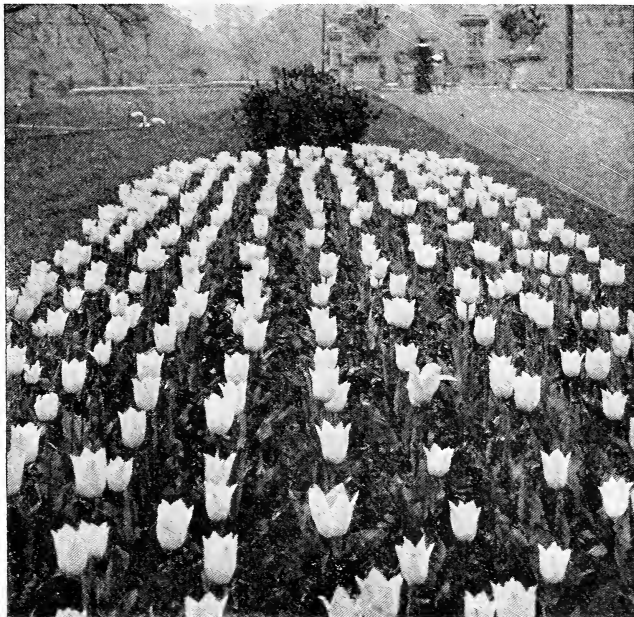
Mr. Farr's Selection of Varieties

**SINGLE EARLY TULIPS**

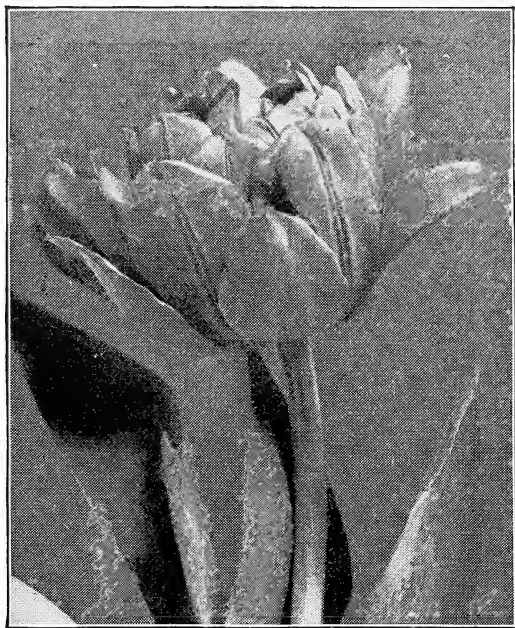
Mr. Farr's selection of named varieties priced from 55 cts. to \$1 per dozen.

10 varieties, 24 bulbs each variety	\$10 00
5 varieties, 50 bulbs each variety	10 00
10 varieties, 12 bulbs each variety	5 00
5 varieties, 25 bulbs each variety	5 00

Increased quantities at proportionate prices.  
Bulb discounts not applicable on collections.



Bed of Single Tulips



Couronne d'Or is a favorite for forcing

## DOUBLE EARLY TULIPS

With few exceptions the Double Tulips should be used for bedding only, as they do not force so well as the single varieties. While the Double Tulips may not be quite so effective as the single sorts, the flowers are more durable, and, as they bloom later, they prolong the flowering period.

Usually it is advisable to use only one variety of Double Tulips in a bed, rather than to combine them as with the Single Tulips. Beds of different varieties can usually be arranged within a few feet of each other, thus permitting the characteristics of each variety to stand out distinctly, and also to give the effect of one large bed of double flowers.

*Not less than 6 bulbs of a variety sold.*

*Not less than 50 bulbs of any variety sold at the 100 rate, nor less than 100 bulbs of one variety at the 1,000 rate.*

**Alba maxima.** Flower-stems of medium length, surmounted by pure white blooms. The flowers open a little in advance of the other white double varieties, thus making a close connection with the single sorts. 75 cts. per doz., \$5 per 100.

## SPECIAL LIST OF HOLLAND BULBS, AUTUMN, 1923

### DOUBLE EARLY TULIPS, con.

**Couronne d'Or** (Crown of Gold). A magnificent golden yellow flower, slightly shaded with orange; of great beauty and size, and one of the best for forcing. 75 cts. per doz., \$5.50 per 100.

**El Toreador.** Orange-scarlet, with edges of the petals margined with yellow. \$1 per doz., \$7.50 per 100.

**Imperator rubrorum.** A brilliantly glowing scarlet; good forcer. 75 cts. per doz., \$5.50 per 100.

**La Candeur.** Clear white; fine for bedding in contrast with pink and red sorts. 65 cts. per doz., \$4.50 per 100.

**Le Matador.** Scarlet, outside of petals tinged with purple. Good forcer and bedder. 80 cts. per doz., \$6 per 100.

**Mr. Van der Hoef.** A yellow sport of Murillo with all its superb qualities. One of the very finest of the primrose-yellow Double Tulips. A very lovely flower. Height 13 inches. \$1 per doz., \$7 per 100.

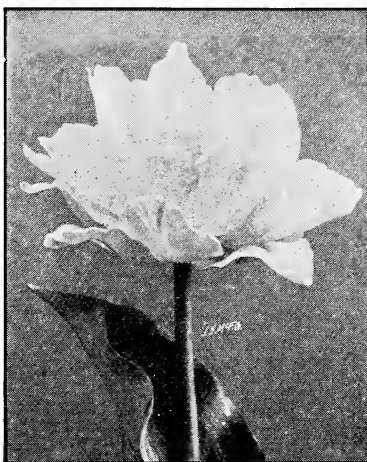
**Murillo.** Light pink blooms on medium height stems. Popular for either house or garden. 60 cts. per doz., \$4.25 per 100.

**Peach Blossom.** Sport of Murillo. Strong, large, very double flower. The color is deep pink and fills the desire of those who have wished for a Murillo of a deep pink shade. This will, without doubt, become a very popular variety; we advise all our customers to try it. 15 cts. each, \$1.75 per doz., \$12 per 100.

**Salvator Rosa.** Large, dark pink-and-white blooms; stems from 10 to 12 inches long. 75 cts. per doz., \$5 per 100.

**Tournesol.** A very showy Tulip, growing about 11 inches high; red bordered with yellow. \$1 per doz., \$7 per 100.

**Wilhelm III.** Orange-scarlet. Dwarf, useful for front of taller sorts, or in beds. 85 cts. per doz., \$6 per 100.



La Candeur Double Tulip

## DOUBLE EARLY TULIP COLLECTIONS

Mr. Farr's selection of named varieties priced from 60 cts. to \$1 per dozen.

8 varieties, 25 bulbs each variety . . . . .	\$10 00
5 varieties, 50 bulbs each variety . . . . .	10 00
8 varieties, 12 bulbs each variety . . . . .	5 00
5 varieties, 25 bulbs each variety . . . . .	5 00
In mixture, unnamed, 50 cts. per doz., \$3.50 per 100.	

Larger quantities at proportionate prices. Discounts not allowed on collections.

## COTTAGE TULIPS

### Single or May-Flowering

**Caledonia.** Bright orange-red, with dark stems; beautiful and effective. 65 cts. per doz., \$4.50 per 100.

**Ellen Willmott.** The finest May-flowering Tulip. Large, soft creamy yellow blooms. 60 cts. per doz., \$4.25 per 100.

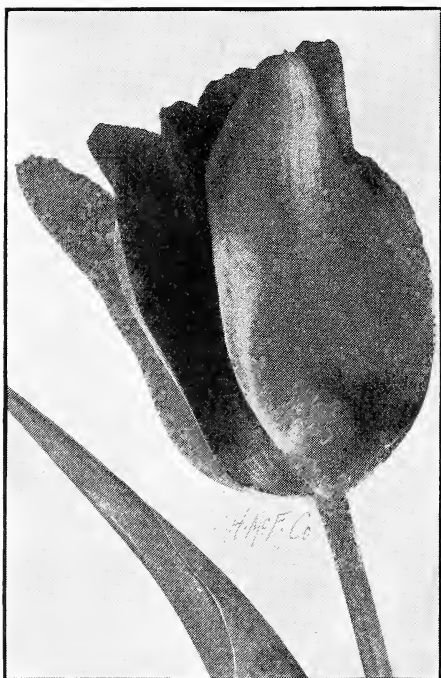
**Fairy Queen.** Rosy heliotrope, with broad amber-yellow margin. 60 cts. per doz., \$4.25 per 100.

**Gesneriana lutea** (Improved Bouton d'Or). Handsome yellow flowers on long stems. 65 cts. per doz., \$4.50 per 100.

**Gesneriana major** (Spathulata). Crimson-scarlet with blue-black center. The best of its class. 65 cts. per doz., \$4.50 per 100.

**Glare of the Garden.** Dazzling scarlet. 75 cts. per doz., \$5.50 per 100.

**Golden Crown.** Recommended for naturalizing, as it increases rapidly. Golden yellow with red edges. 60 cts. per doz., \$4.25 per 100.



Gesneriana major is most vivid when planted before a dark background

**Grenadier.** A grand, large Tulip of fine form and good substance borne on strong stem; dazzlingly brilliant orange-red, yellow base. Height, 21 inches. 20 cts. each, \$2 per doz., \$15 per 100.

**Inglescombe Pink.** Soft rose, flushed salmon. When the large blooms first open, they are quite pink. 60c. per doz., \$4.25 per 100.

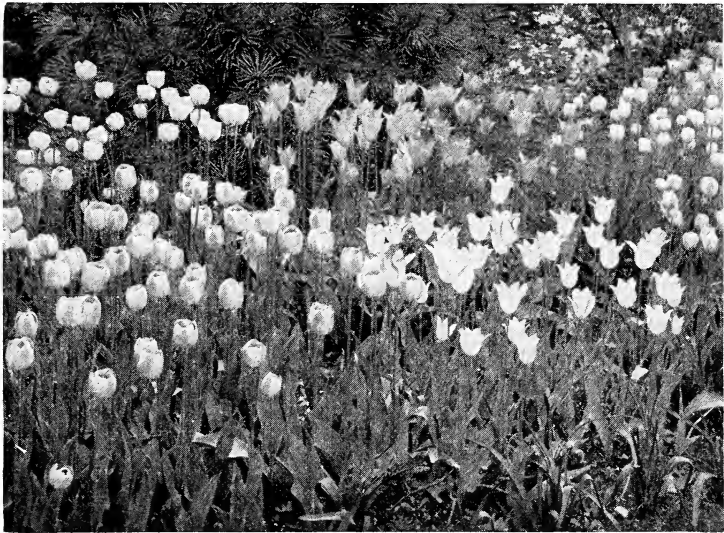
**Inglescombe Scarlet.** Brilliant scarlet with black base; large flowers. 60 cts. per doz., \$4.25 per 100.

**Inglescombe Yellow** (Yellow Darwin). Large globular flower. 60 cts. per doz., \$4.25 per 100.

**Isabella** (Shandon Bells). Carmine-rose, s h a d e d white; desirable with some of the more striking colors. 60c. per doz., \$4.25 per 100.

**John Ruskin.** Bronzy rose, with sulphur-yellow edge, rosy lilac inside. 85c. per doz., \$6.50 per 100.

**La Candeur** (Parisian White). White, changing to rose. 65 cts. per doz., \$4.50 per 100.



Bed of Cottage Tulips

COTTAGE TULIPS, continued

**La Merveille.** Salmon-rose, with yellow center; delicately scented, about 20 inches high. 65 cts. per doz., \$4.50 per 100.

**Moonlight.** Lemon-, or canary-yellow; long oval-shaped flower. One of the handsomest Cottage Tulips. 70 cts. per doz., \$5 per 100.

**Orange King.** Deep orange, with delicate shadings of rose. 55 cts. per doz., \$3.75 per 100.

**Picotee** (Maiden's Blush). Pure white, margined rose; petals recurved. Useful for naturalizing. 55 cts. per doz., \$3.75 per 100.

**Scarlet Mammoth.** Extra-large, dark crimson flowers. \$1 per doz., \$7.50 per 100.

**The Fawn.** Delicate pale rosy fawn, shading to blush-rose. An extra-fine variety. 65 cts. per doz., \$4.50 per 100.

COLLECTIONS OF COTTAGE TULIPS

Mr. Farr's selection of named varieties priced from 55 cts. to \$1 per dozen

10 varieties, 24 bulbs each variety . . . . .	\$10 00
5 varieties, 50 bulbs each variety . . . . .	10 00
10 varieties, 12 bulbs each variety . . . . .	5 00
5 varieties, 25 bulbs each variety . . . . .	5 00

Increased quantities at proportionate prices.  
Bulb discounts not applicable on collections.



Darwin Tulips. No other blooms of summer or fall can give such decisive sweeps of color

## DARWIN TULIPS

Darwin Tulips are highly recommended for massing in shrubbery and for providing contrasting colors in the spring garden. In form, the blooms are entirely distinct from all other classes of Tulips; they are unusually large and are borne on long stems. They may be forced if brought to the heat not earlier than January.

*Not less than six bulbs of a variety sold. Not less than 50 bulbs of any sort at the 100 rate, nor less than 500 bulbs of any one variety at the 1,000 rate.*

**Anton Roozen.** Rose-pink, tinged with apricot at base of the petals. 80 cts. per doz., \$6 per 100.

**Baron de la Tonnaye.** Bright rose, margined with blush. Extra-large flowers on long stems. 80 cts. per doz., \$5.50 per 100.

**Bartigan.** Very large; fiery red. Earliest to bloom of all the Darwins. Good forcer. 90 cts. per doz., \$7 per 100.

**Centenaire.** New semicolor. Violet-rose; blue center. \$1 per doz., \$7.50 per 100.

**Clara Butt.** Delicate salmon-pink. The best of its color. 60 cts. per doz., \$4.25 per 100.

**Dream.** Pale heliotrope, shaded violet. 65 cts. per doz., \$4.50 per 100.

**Edmee.** A splendid variety for late forcing; cherry-rose, edged with a lighter shade; large and beautiful. 80 cts. per doz., \$6 per 100.

**Europe.** One of the newer introductions. Bright scarlet, shading to rose. 70 cts. per doz., \$5 per 100.

**Gretchen.** Flesh-pink, cup-shaped. 60 cts. per doz., \$4.25 per 100.

**La Tulipe Noire** (The Black Tulip). Enormous flowers, nearly black. The most striking variety. 80 cts. per doz., \$6 per 100.

**Loveliness.** Soft rosy carmine, making a beautiful contrast with darker-colored varieties. 70 cts. per doz., \$5 per 100.

## SPECIAL LIST OF HOLLAND BULBS, AUTUMN, 1923

### DARWIN TULIPS, continued

**Mme. Krelage.** Bright lilac-rose with a lighter margin; extra-fine. 70 cts. per doz., \$5 per 100.

**Mr. Farncombe Sanders.** One of the best and showiest of the Darwins; blooms of immense size, brilliant scarlet in color. 80 cts. per doz., \$6 per 100.

**Nauticas.** Purplish rose, with dark violet center; desirable for garden or forcing. 65 cts. per doz., \$4.50 per 100.

**Painted Lady.** White, shaded with heliotrope; large and beautiful. 60 cts. per doz., \$4 per 100.

**Philippe de Commines.** One of the earliest Darwins for forcing; deep purple. 85 cts. per doz., \$6 per 100.

**Pride of Haarlem.** Violet-rose, with a blue base. Extra large blooms. 65 cts. per doz., \$4.50 per 100.

**Psyche.** Outside petals deep rose, inside shaded silvery rose, light blue base. 65 cts. per doz., \$4.50 per 100.

**Reverend Ewbank.** Soft heliotrope or lavender-violet. 65 cts. per doz., \$4.50 per 100.

**Suzon.** Soft salmon-rose, shading to blush. Good for forcing. 70 cts. per doz., \$5 per 100.

**Whistler.** One of the new Darwins. Maroon-crimson; base of petals dark blue, with white lines. 85 cts. per doz., \$6.50 per 100.

**White Queen (La Candeur).** Rosy white, changing to white. 65 cts. per doz., \$4.50 per 100.

**William Copland.** Extra large and early; flowers light lilac, borne on long stems. 85 cts. per doz., \$6 per 100.

**William Pitt.** Dark crimson; purplish tint on outer petals. \$1 per doz., \$7.50 per 100.

**Zulu.** Purplish black; splendid for forcing or for garden culture. \$1 per doz., \$7.50 per 100.

**Superfine Mixture of Darwin Tulips.** 50 cts. per doz., \$3.50 per 100, \$30 per 1,000.



Darwin Tulip

### COLLECTIONS OF DARWIN TULIPS

Mr. Farr's selection of named varieties priced from 60 cts. to \$1 per dozen.

10 varieties, 20 bulbs each variety . . . . .	\$10 00
5 varieties, 50 bulbs each variety . . . . .	10 00
10 varieties, 10 bulbs each variety . . . . .	5 00
5 varieties, 25 bulbs each variety . . . . .	5 00

Increased quantities at proportionate prices.  
Bulb discounts not applicable on collections.



## OLD DUTCH, or BREEDER TULIPS

The Breeder Tulips are the unbroken forms of the old florists' Tulips. The blooms strongly resemble the Darwin Tulips, excepting that they have an entirely different range of color, comprising artistic tones of bronze, terra cotta, orange, and brown. Breeder Tulips are May-flowering, producing blooms of enormous size, and because they are vigorous growers are valuable for the garden. We have taken great pains to select only choicest varieties, and can heartily recommend these to anyone who wishes something especially fine.

**Bacchus.** Large, long flower on a graceful stem. Dark violet-blue, with darker bloom on outside of petals; inside violet-blue, white base. The bluest of all Tulips. Height 33 inches. 30 cts. each, \$3 per doz., \$20 per 100.

**Bronze King.** A wonderful bronze-yellow for bedding or forcing. New. 15 cts. each, \$1.50 per doz., \$10 per 100.

**Cardinal Manning.** Wine-red, flushed with rosy brown. 70 cts. per doz., \$5 per 100.

**Clio** (Bronze Queen). Soft buff, inside tinged with golden bronze. 70 cts. per doz., \$5 per 100.

**Don Pedro.** The finest deep coffee-brown with narrow edge of golden brown. Good forcer. 15 cts. each, \$1.50 per doz., \$10 per 100.

**Godet Parfait.** Very large flower of striking color—deep purple with white base and blue halo. Height, 29 inches. 25 cts. each, \$2.25 per doz., \$15 per 100.

**Grand Maitre.** Dark purplish violet. 85 cts. per doz., \$6.50 per 100.

**Jaune d'Œuf** (Sunrise). Ruddy apricot, edged with golden yellow. 65 cts. per doz., \$4.50 per 100.



## SPECIAL LIST OF HOLLAND BULBS, AUTUMN, 1923

---

### OLD DUTCH, OR BREEDER TULIPS, continued

**Louis XIV.** Dark purple, flushed bronze with broad margin of golden brown. A unique Tulip of great and striking beauty. Height 25 inches. 40 cts. each, \$3.75 per doz., \$30 per 100.

**Marginata.** New and one of the best. Apricot, edged golden yellow. 35 cts. each, \$3.50 per doz., \$25 per 100.

**Medea.** Salmon-carmine, with heliotrope shading; an unusually large flower. 65 cts. per doz., \$4.50 per 100.

**Monsieur Tresor.** Brownish carmine-red. New. Moderate priced. 85 cts. per doz., \$6.50 per 100.

**Noire Veritable.** Extremely dark purplish black. 80 cts. per doz., \$6 per 100.

**Panorama (Fairy).** Large, goblet-shaped flower; rich chestnut-red, base and filaments chestnut-brown. Forces well and recommended very highly. 15 cts. each, \$1.50 per doz., \$10 per 100.

**Queen Alexandra.** Soft primrose, with black anthers. 80 cts. per doz., \$6 per 100.

**Vulcain.** Beautifully shaped flower. Reddish apricot, broad bright buff-yellow margin. Interior dark apricot edged yellow, dark green base starred yellow. Height 24 inches. 50c. each, \$5 per doz., \$35 per 100.

**Yellow Perfection.** Light bronze-yellow, edged with golden yellow. A Tulip of remarkable beauty. \$1 per doz., \$7 per 100.

**Mixed Breeder Tulips. 55 cts. per doz., \$3.75 per 100.**

### COLLECTIONS OF BREEDER TULIPS

Mr. Farr's selection of named varieties priced from 65 cts. to \$1 per dozen.

5 varieties, 40 bulbs each variety . . . . .	\$10 00
3 varieties, 70 bulbs each variety . . . . .	10 00
5 varieties, 20 bulbs each variety . . . . .	5 00
3 varieties, 35 bulbs each variety . . . . .	5 00

Our selection of named varieties priced from \$1 to \$2.25 per dozen.

4 varieties, 12 bulbs each variety . . . . .	4 00
4 varieties, 25 bulbs each variety . . . . .	8 00

Increased quantities at proportionate prices. No other discounts allowed.

---

### When Mistress Spring Comes to Your Garden

Her path should be lined with Daffodils and Tulips—those colorful blooms of May and June. For the gardener who wants an extra-choice assortment of spring flowers I recommend

### The Sunrise Collection No. 2

25 Narcissi, assorted varieties . . . . .	\$2 75
75 Single Early Tulips, assorted . . . . .	2 50
75 Darwin Tulips, assorted . . . . .	2 50
75 Breeder Tulips, assorted . . . . .	2 50
25 Hyacinths, assorted . . . . .	3 50

Any one collection at the price indicated. No discount applicable. \$13.75

**Complete Sunrise Collection No. 2, 275 Bulbs, for only \$12**

Send your order now—you need not pay until you receive them next fall.

## **HYACINTHS**

For garden culture, the treatment is about the same as for Tulips, except that the bulbs should be set farther apart—say 6 to 10 inches.

For indoor culture the bulbs may be potted any time from September to December, using a light, rich soil containing plenty of well-rotted cow or sheep manure. Set the bulbs so that the tops are just above the surface.

The pots should then be placed outside, and covered with coal-ashes or some litter for a period of ten to twelve weeks, when the bulbs will be thoroughly rooted. Bring them in, a few at a time, for a succession of bloom as wanted. They should be brought into heat gradually; to place them at once in a room having a high temperature will cause them to flower prematurely.

If it is desired to grow them in glasses of water, the base of the bulb should barely touch the water. They should then be set in a cool, dark place until the glass is full of roots.

### **FIRST-SIZE EXHIBITION**

Comparatively few bulbs of this quality come to this country—they are the very finest selections from the stock of several growers, are extra large and solid, and must not be confused with those often sold as “Exhibition Bulbs,” which the Hollanders consider a second size. We recommend these exhibition bulbs to all who wish the finest blooms.

Your selection, 20 cts. each, \$2 per doz., \$16 per 100



Note the well-filled trusses and sturdy growth

Single Red and Rose Hyacinths

Varieties marked \* can be supplied in second size at 15 cts. each, \$1.50 per doz., \$10 per 100. For first-size prices, see page 20

**General de Wet.** Extra-fine, soft pink, with large spike and bells.  
(Improvement on Baron Van Thuyll.)

**Gertrude.** Splendid, dark pink; large, compact spike.

**Gigantea.** Light pink; compact spike.

\***Lady Derby.** Rose; very large truss.

**La Victoire.** Brilliant carmine-rose; extra fine.

**Marconi.** Pink; large truss. New.

**Queen of the Pinks.** A lovely bright rosy pink.

\***Roi des Belges.** Extra fine; dark red.

Single Pure and Creamy White

**La Franchise.** Creamy white.

**La Grandesse.** Pure white; large bells; perfect truss.

\***L'Innocence.** Very fine; pure white.

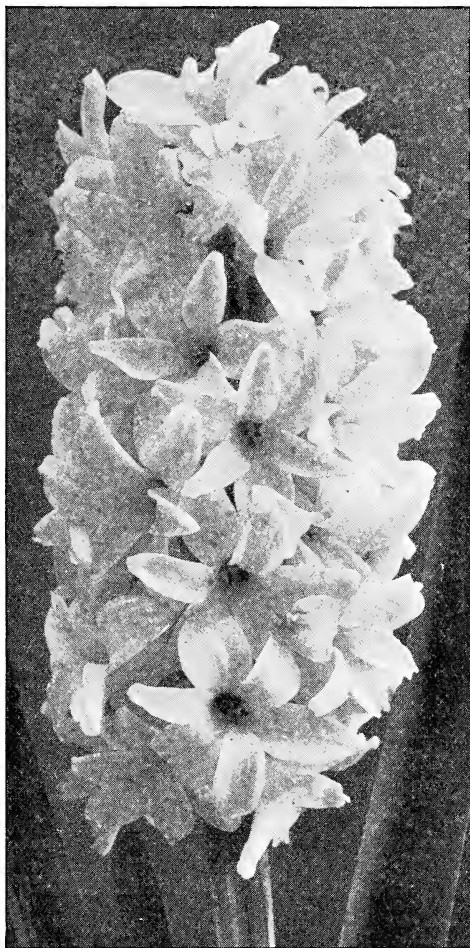
Single Light and Dark Blue

**Bismarck.** Light blue; large; early.

**Czar Peter.** Light lavender-blue.

**Duke of Westminster.** Large, deep purplish blue bells with white center.

**Enchantress.** Delicate porcelain-blue; splendid truss.



Hyacinth

## BERTRAND H. FARR—WYOMISSING NURSERIES CO.

### SINGLE LIGHT AND DARK BLUE HYACINTHS, continued

- \***Grand Maitre.** Deep sky-blue; large, compact spike.
- \***King of the Blues.** Rich dark blue; splendid form; late.
- Queen of the Blues.** Porcelain-blue; handsome spike.

### Single Violet and Purple Hyacinths

**Lord Balfour.** Violet; very early; enormous truss of fragrant bells.

### Yellow Single Hyacinths

- \***Yellow Hammer.** The best pure yellow.
- City of Haarlem.** Large, well-formed truss of a bright golden yellow. Fine exhibition flower.

## COLLECTIONS OF HYACINTHS

Mr. Farr's selection in named varieties of Hyacinths.	1st size	2d size
10 varieties, 1 bulb each variety . . . . .	\$1 50	\$1 25
10 varieties, 6 bulbs each variety . . . . .	8 50	6 50
10 varieties, 12 bulbs each variety . . . . .	16 00	12 50
5 varieties, 6 bulbs each variety . . . . .	3 75	3 00
5 varieties, 12 bulbs each variety . . . . .	7 50	6 00

## GRAPE HYACINTH

(Like a bunch of grapes)

Neat little early-flowering bulbs, good-sized colonies of which give dainty effects in the borders from February to May. Mostly dark purple in color. These old favorites are obtainable for the first time since 1918. 50 cts. per doz., \$3 per 100.

## CROCUSES

When the spring sun begins to warm the ground, the little yellow Crocuses quickly respond to the bright rays. They are among the very earliest spring flowers, and are most effective when dotting the lawn without any fixed plan of arrangement. The bulbs can be strewn thickly over the surface and be set where they fall, merely lifting the sod with a knife or trowel, slipping the bulbs underneath, and pressing the sod back into place.

**Mixed Crocuses.** All colors mixed. 20 cts. per doz., \$1 per 100, \$8 per 1,000.

**Named Crocuses, except where noted, 30 cts. per doz., \$2.25 per 100**

*Not less than six bulbs of any variety supplied*

**Albion.** Dark violet, with stripes of light blue.

**Baron von Brunow.** Dark blue; velvety and beautiful.

**King of the Whites.** Snowy white; large blooms.

**Mammoth Yellow.** Especially desirable for lawn planting. 50 cts. per doz., \$3 per 100.

**Maximilian.** Porcelain-blue; a new and large variety.

**Mont Blanc.** White and one of the best of its class.

**Purpurea grandiflora.** Largest purple of all. 50 cts. per doz., \$3 per 100.

**Sir Walter Scott.** Large dark blue flowers, striped with white.

**Yellow Giant.** Monster bulbs. 50 cts. per doz., \$3 per 100.

## FARR · BETTER PEONY GROUPS

I realize that there are many who have not the time or inclination, or who will not feel competent, to make a selection from a long list of Peonies, and for the assistance of such I offer the following groups. These have been arranged with great care, and cover as wide a range of color and blooming season as possible, with the idea of giving the greatest possible value for the amount invested. For descriptions, see "Better Plants by Farr." Quantity discounts are not allowed on these collections.

### Farr · Better Group 1

Special offer of ten Peonies at a low price; all free bloomers, with large handsome flowers.

6.9 Armandine Mechin . . . . .	\$1 00	6.1 Duchesse d'Orleans . . . . .	\$0 50
6.7 Arsene Meurit . . . . .	50	7.1 General Bertrand . . . . .	75
6.5 Beaute Francaise . . . . .	50	6.9 Louis Van Houtte . . . . .	60
7.1 Candidissima . . . . .	50	6.5 Madame Coste . . . . .	50
6.4 Dr. Bretonneau. (Verd.) . . . . .	50	6.8 Queen Victoria . . . . .	75

Amounting to \$6.10. Complete for \$5

### Farr · Better Group 2

Ten extra-choice Peonies of special merit.

8.0 Boule de Neige . . . . .	\$0 75	7.4 Admiral Togo . . . . .	\$1 50
7.8 Duc de Wellington . . . . .	75	7.7 Enchantment . . . . .	1 50
7.4 Mademoiselle Marie Calot . . . . .	75	7.6 Goliath . . . . .	1 50
7.3 Duke of Clarence . . . . .	75	7.2 Paul Fischer . . . . .	3 00
7.4 Princess Beatrice . . . . .	75	7.7 Mireille . . . . .	1 00

Amounting to \$12.25. Complete for \$10. Groups 1 and 2 for \$14

### Farr · Better Group 3

Ten of the best Peonies in existence, regardless of price.

8.4 Felix Crousse . . . . .	\$1 00	8.5 Germaine Bigot . . . . .	\$2 00
8.7 James Kelway . . . . .	2 00	8.6 Madame August Dessert . . . . .	2 00
8.8 Karl Rosenfield . . . . .	3 00	8.9 Madame Emile Lemoine . . . . .	1 50
9.0 Milton Hill . . . . .	3 00	8.1 John Richardson . . . . .	3 50
8.6 Albert Crousse . . . . .	3 00	8.5 La Fontaine. (Lem.) . . . . .	3 50

Amounting to \$24.50. Complete for \$20. Groups 2 and 3 for \$29

The three groups complete, amounting to \$42.85, for \$33

## SCILLA SIBIRICA

One of the prettiest early-flowering bulbs, with sprays of rich blue flowers. It is suitable for naturalizing or indoor forcing. Handle the same as crocuses. Obtainable from Europe for the first time since 1918. 65 cts. per doz., \$4.50 per 100.



## FARR IRIS MASTERPIECES

Iris introduced by Farr since 1908 have appeared in the catalogues of all well-known Iris-growers—even the English originators have purchased them extensively.

The check-list of the American Iris Society has dispelled any passing doubt concerning the merits of Farr seedlings. Farr seedlings *have never* been “fads of the moment”—rather, they are *masterpieces that have endured*.

### THE LATEST FARR CREATIONS

**Cecile Minturn.** Standards and falls uniform shade of cattleya rose; light beard; large flower; dome-shaped. Height 2 feet. A marked improvement in the pink varieties.

**Sea-Gull.** Standards white, dome-shaped; falls white, faintly shaded blue, covered with a network of narrow blue lines or veins. Large and distinct flower appropriately named. Height 2 feet.

**Seminole.** A dome-shaped and very distinct Iris of the Archevoque class, which makes it one of the richest colored sorts. Medium height; free blooming; very effective for mass planting. Standards soft violet-rose; falls rich velvety crimson; brilliant orange beard. Honorable mention by the American Iris Society, June, 1920.

**Japanesque.** An unusual and entirely different German Iris. Standards lavender-white, flecked lilac; falls deep violet-lilac edged pale lavender; coppery yellow beard; standards frequently marked like falls. The six petals spreading horizontally in the form of a Japanese Iris give the flower the effect of having six falls without standards.

### MASTERPIECE COLLECTION

Cecile Minturn . . . . .	\$5 00	Seminole . . . . .	\$2 50
Sea-Gull . . . . .	3 00	Japanesque . . . . .	3 00

Complete set (amounting to \$13.50) for \$12, f. o. b. our station

---

*The McFarland Publicity Service, Harrisburg, Pa.*



The grand display of the Irises reaches its climax in June, when the German varieties flood the garden with color

## BETTER IRIS—by Farr

---

---

**H**YBRIDIZING and raising seedling Irises is a fascinating pastime at Wyomissing. For more than a decade I have been sending out new varieties that have at once attained a high position among fanciers and with the trade. At the Panama-Pacific Exposition my collection of Iris received a gold medal, the collection containing many of my own seedlings, as well as the standard varieties and the finest European novelties.

At present I have many seedlings coming on, but I have not thought it advisable to list them, as the available stock is so small I can not hope to meet the demand that would come at once.

---

---

**BERTRAND H. FARR** Wyomissing Nurseries Co.  
WYOMISSING, PENNA.

# BETTER BULBS—by Farr

Since I undertook the distribution of Holland Bulbs it has been my effort to purchase from the most reputable growers only, and to order only bulbs that are first class in every respect.

The fact that my bulb business is increasing yearly is clear evidence that customers are entirely satisfied with the Better Bulbs by Farr that have been sent out in past seasons. The stock for 1923 is up to the same high standard.



**Bertrand H. Farr**

Wyomissing  
Nurseries Co.

WYOMISSING, PA.



EMPRESS

EMPEROR