

## **Historic, Archive Document**

Do not assume content reflects current scientific knowledge, policies, or practices.



SR. 17

1322/23

# THE EVERGLADES NURSERY COMPANY

FORT MYERS, FLORIDA



BOUGAINVILLEA CRIMSON LAKE



THE  
EVERGLADES  
NURSERY CO.

McGregor Boulevard

FORT MYERS, FLA.

---

SEASON 1922-23

---

HELP MAKE YOUR CITY ATTRACTIVE BY  
BEAUTIFYING YOUR HOME AND GROUNDS

---

ESTABLISHED 1909

## **TERMS OF BUSINESS**

---

Our Nurseries are located on the McGregor Boulevard 5 miles below Ft. Myers where the climate is so mild that we never use artificial heat, hence our plants are not forced but are strong and vigorous.

Terms are cash with order if for immediate shipment or 25% down for future shipment.

All prices in this catalogue net packing free. We ship only healthy, strong plants as our Motto is "Lose a customer rather than have a dissatisfied one."



## FOLIAGE PLANTS

- ACALYPHA godseffiana.** Dwarf Copper Leaf. A fine dwarf, compact form, having bright green leaves margined with cream and pink. Excellent for boxes. 25¢ and 50¢ each.
- ACALYPHA marginata.** Copper Leaf. A rapid grower and the largest of them all. Leaves coppery-green broad, pointed and margined a creamy pink. A gorgeous plant for either hedges or the border. 25¢; \$2.50 per dozen.
- ACALYPHA mosaica.** Mosaic-Leafed Acalypha. One of the most gorgeous of plants. Foliage curiously mottled with green, yellow, orange, pink and red, and very dense. Fine when planted among green-leafed plants. 25¢, \$2.50 per dozen.
- ACALYPHA tricolor.** Fire Leaf. A tender but vigorous shrub having large leaves of various shades of pink, green and red. A beautiful plant. 25¢ and 50¢ each.
- ARALIA Balfouri.** Leaves round, variegated green, cream and white. Stands clipping well and is excellent for shady places. 35¢ each; \$3.50 for 12. Larger, 50¢ and \$1.00 each.
- ARALIA Filicolia.** Foliage fern-like; a delicately beautiful plant. 35¢ and 50¢ each.
- ARALIA guilfoylei.** Compound leaves variegated green, cream and white. Excellent in shade. 25¢ and 50¢ each.
- ASPARAGUS elongatus.** An upright grower, sending out stems to 6 feet in length, terminating in a broad head of fine, dark green foliage. 35¢ and 50¢ each.
- ASPARAGUS plumosus.** Asparagus Fern. An excellent house plant and may be used as a climber out of doors in Florida. Foliage is very finely cut and lasts for days when used with bouquets, etc. 25¢, 35¢ and 50¢ each.
- ASPARAGUS madagascariensis.** An erect grower, about 6 feet in height, of recent origin and excellent for fern dishes. 35¢ each.
- ASPARAGUS sprengeri.** A valuable, trailing plant greatly used for hanging baskets, porch baskets, etc. A beautiful plant. 25¢ and 50¢.

**ASPIDISTRA variegata.** A broad-leaved plant forming large clumps. Leaves are a deep green richly variegated with creamy white. One of the finest house plants, doing well in dense shade. 35¢ and 50¢ each. Larger, \$1.00 each.

**CALADIUM esculentum.** Elephants Ear. A large succulent plant having green leaves 3-4 feet long. Fine for moist locations. Bulbs, 25¢ and 50¢ each.

**CODIAEUM variegatum.** Croton. A gorgeous plant, excellent for decorative purposes. Foliage colored in combinations of green, yellow, white, red, bronze, etc. Easily grown and much used in the North for bedding purposes. Fine shrub for planting out in South Florida. We can supply about thirty varieties in various sizes at 25¢ to \$1.00 each.

**CYPERUS alternifolius.** Umbrella Grass. Has been long known as a beautiful house plant. 15¢ and 25¢.

**DRACAENA.** Beautiful ornamental-leaved plants. Most of them are rather tender but some are very tough and make good house plants. We offer about twelve named varieties. 50¢ to \$2.00 each.

**FICUS altissima.** A very decorative plant while small and makes a splendid shade tree with its roundish leaves which are very thick and leathery. 50¢, 75¢ and \$1.00 each. Specimens, \$2.50.

#### FOLIAGE AND DECORATIVE PLANTS

**FICUS elastica.** This rubber is very extensively grown as a pot plant and is very decorative in all its stages, especially as it is of very easy culture. It, like all other rubbers, is used for out door planting in South Florida and makes a grand tree. 50¢ to \$2.50.

**FICUS elastica variegata.** This is a variegated form of the above and is a beautiful plant with its long leaves of green and yellow. \$1.00 and \$2.00.

**FICUS pandurata.** A beautiful decorative plant and shade tree, with huge green banjo-shaped leaves. Strong plants. \$1.00 and \$2.00.

**FICUS utilis.** Leaves unusually thick about ten inches long, deep green with midrib ivory white. \$1.00 and \$2.00..

**FICUS wendlandii.** Leaves rich dark green and heart-shaped. \$1.00 each.

**MONSTERA deliosa.** Ceriman of Trinidad. A semi-climbing aroid plant with enormous leaves, bearing fruit resembling the pineapple and banana in flavor. \$1.50 and \$2.00.

**PANAX.** These plants make beautiful subjects for the conservatory or for planting out in extreme South Florida. The leaves are mostly small and all are beautifully variegated. 25¢ to \$2.00.



**PANDANUS utilis.** (Screw Pine). A rare and beautiful plant. Resembles the pineapple plant while small and makes a good lawn plant for the extreme south. Attains a height of twenty feet. 50¢ to \$2.00 each.

**PANDANUS Veitchii.** One of the variegated forms of the above and is a very beautiful plant in all its sizes. Used very extensively both for pot culture and for out door planting. 50¢, 75¢, \$1.00 and \$2.00 each.

**PHYLLANTHUS nivosus, ROSEA-PICTUS.** A shrub with loose, wiry leaves with compound leaves mottled with white and pink. Used extensively as a hedge plant. 25¢ and 35¢.

**PHYLLANTHUS alba.** A beautiful more compact form of the above with more white in its foliage. 25¢ and 50¢ each.

**PHYLLANTHUS atropurpureus.** Almost identical with rosa-pictus but purple predominates in its leaves. 25¢ and 50¢.

**POINSETTIA (Euphorbia pulcherrima.)** Mostly classed as a flowering shrub although the bloom is insignificant, while the large scarlet braces resemble bloom and is one of the most extensively used plants for decorative purposes from November till March. Used very extensively in Florida and California for bedding and border purposes. 25¢; \$2.50 per dozen.

**RAVENALA madagascariensis.** The Traveler's Tree of Madagascar. This tree has a trunk like a palm and the leaves are two-ranked resembling those of a huge banana. Does well in sheltered places in South Florida. \$1.00 each.

**SANSEVERIA zeylanica.** Leaves sword-shaped, variegated with transverse markings of a grayish white. Makes a good house plant as it stands neglect better than any plant we know of. 15¢, 25¢ and 50¢.

**SANSEVERIA zeylanica laurentii.** Similar to above except it has a band of creamy yellow along the margins of the leaves in addition to the regular variegation. Rare. 50¢ and \$1.00.

#### FLOWERING PLANTS AND SHRUBS

**ACALYPHA Sanderi.** Chenilla Plant. A very striking garden plant which is cultivated mostly for its long red Amaranth-like flowers. 35¢ and 50¢.

**ALLAMANDA hendersonii.** The Allamandas are very easily grown and this variety as well as *Allamanda williamsii* are used extensively as vines. This is the commonest Allamanda and was introduced from Guinea about 1865. Flowers four to five inches across of golden yellow. 35¢; larger, 50¢.

**ALLAMANDA nerifolia.** A dwarf bush growing to about four feet. Flowers about two inches across of almost pure yellow. 35¢ and 50¢.

- ALLAMANDA williamsii.** Similar to *hendersonii* but flowers are smaller, about three inches, and stems are more slender. 25¢ and 50¢.
- BAUHINIA picta var alba.** Mountain Ebony. Small tree or large shrub which bears flowers of pure white 35¢ and 50¢.
- BAUHINIA purpurea.** Burma. One of the finest small trees for South Florida. Flowers are borne in great profusion 3 to 5 inches across, varying from white to a rich shade of purple. Blooms in winter and spring. 25¢ and 50¢.
- CAESALPINIA pulcherrima.** Dwarf Poinciana. A beautiful shrub of from 6 to 10 feet, having pinnate foliage and great clusters of gorgeous red and yellow flowers throughout the greater part of the year. 35¢ and 50¢ each.
- CALLISTEMON rigidus.** Bottle Brush. A compact shrub with stiff, dark green leaves. Flowers deep red and arranged along the branches, similar to a bottle brush. A very curious and ornamental plant. 35¢ and 50¢ each.
- CHALCAS paniculata.** Orange Jasmine. A beautiful shrub attaining a height of 6 to 10 feet. Foliage dark green and flowers white in clusters. Very fragrant and similar to orange blossom. 35¢ each; \$3.50 per dozen.
- DAEDALACANTHUS nervosus.** Blue Sage. A small growing shrub having deep blue flowers during the spring and winter. 50¢ each; \$5.00 per dozen.
- DATURA sauveolens.** Angels Trumpet. A vigorous shrub with immense leaves and large, fragrant, white flowers which are trumpet-shaped. 25¢ and 50¢ each.
- DOMBEYA wallichii.** Pink Ball. An attractive shrub having large leaves and balls of fragrant, pink flowers, in January. 50¢, 75¢ and \$1.00 each.
- DOMBEYA punctata.** Similar to above but with larger flowers of a deeper shade of pink. 50¢, 75¢ and \$1.00 each.
- DURANTA repens.** Golden Dewdrop. Brazil. Good sized shrub reaching fifteen feet with pendulous branches. Flowers are lilac colored and followed by small yellow fruits. 25¢ and 50¢.
- GARDENIA florida.** Cape Jasmine. An old time favorite with its dark green leaves and beautiful white, fragrant flowers. 35¢ and 50¢.
- HIBISCUS rosa-sinensis.** Chinese Hibiscus. The most satisfactory flowering shrub for Florida. Very easy of culture and wide variation of colors that can be used in most any planting. They stand trimming well and make very satisfactory hedges. Are also beautiful as specimens and massed plantings.

**HIBISCUS Double Crimson.** Flowers very double and of a deep shade of crimson. 35¢ and 75¢.

**HIBISCUS Double Peachblow.** A more robust grower than the preceding, with flowers of a delicate shade of pink. 25¢; \$2.50 per dozen; 50¢; \$5.00 per dozen.

**HIBISCUS Double Pink.** Similar to Peachblow with flowers of deeper shade of pink. 25¢; \$2.50 per dozen; 50¢; \$5.00 per dozen.

**HIBISCUS Single Pink.** Large flowers, single, four to six inches across; light shade of pink. 25¢ and 50¢.

**HIBISCUS Single Salmon.** Flowers four to five inches; color salmon. 25¢ and 50¢.

**HIBISCUS Single Scarlet.** The grandest of all the Hibiscus. Reaches a height of ten feet if allowed to grow, but can be kept to most any height by judicious trimming. The strain we offer have flowers of large size and of deepest red. 25¢, \$2.50 per dozen; 50¢, \$5.00 per dozen.

**HIBISCUS Schizopetalus.** Pendulous branches with small curiously cut flowers. Used somewhat as a climber. 35¢ and 50¢.

**HIBISCUS White Wings.** Flowers are light shade of pink when opening but change to perfect white. 50¢ and 75¢.

**IXORA.** The Ixoras are among the most showy of tropical flowering shrubs and are of very easy culture. All are dwarf shrubs reaching a height of ten feet and when in bloom are covered with small flowers in clusters or heads.

**IXORA coccinea.** Flame of the Woods. Flowers crimson-scarlet. 50¢.

**IXORA lutea.** Flowers yellow. 50¢.

**IXORA incarnata.** Flesh color. 50¢.

**JACOBINIA.** Brazil. Small shrub with flowers of deep crimson in dense terminal spikes. In bloom most of the year. 25¢; \$2.50 per dozen.

**JASMINUM sambac.** Arabian Jasmine. India. Climbing shrub with shining glabrous leaves. We offer Grand Duke (double) and Maid of Orleans (semi-double) white flowers. 50¢ each.

**LAGERSTROEMIA flos-reginae.** A noble plant from tropical India reaching tree-like proportions with flowers in large panicles varying from rose to purple. 35¢ and 50¢.

**LANTANA.** Shrubby plants reaching a height of five feet and are in bloom most of the year. Do well in window boxes and when too large may be transplanted in the open. Several colors at 25¢; \$2.00 per dozen.

## FLOWERING PLANTS AND SHRUBS

- MALVAVISCUS arboreus.** Turk's Cap. South America. A beautiful, fast growing shrub resembling the hibiscus both in habit and flower with the exception that the flowers never open widely. 25¢; \$2.50 per dozen. Larger, 50¢; \$5.00 per dozen.
- NERIUM oleander.** The famous Oleander is an old-fashioned shrub well known and cultivated in most semi-tropical countries. They are very useful for hedges and also for single specimens. Colors red, pink and white. 25¢; \$2.50 per dozen.
- NERIUM oleander VARIEGATA.** Variegated Oleander. This variety has large green leaves with broad band of creamy yellow along the margin. Flowers are double pink. 50¢; \$5.00 per dozen.
- FLUMBAGO capensis.** Small shrub with drooping branches producing sky-blue flowers phlox-like. Very attractive and easily grown. 35¢; \$3.50 per dozen. Larger, 50¢; \$5.00 per dozen.
- POINSETTIA.** See Foliage Plants.
- RUSSELLIA juncea.** Coral Plant. A tender shrubby plant with rush-like branches, pendulous, leaves very small; flowers scarlet. 25¢; \$2.50 per dozen.
- TABERNAEMONTANA coronaria.** Crape Jasmine. India. A tender shrub, six to eight feet high with glossy green, oblong leaves. Flowers pure white and fragrant. 25¢; \$2.50 per dozen.
- THUNBERGIA erecta.** Africa. Small shrub growing to a height of four feet, producing flowers at most any season of intense violet with orange throat. 25¢; \$2.50 per dozen. Larger, 50¢; \$5.00 per dozen.
- YLANG Ylang.** See Trees.

## VINES AND CREEPERS

- ALLAMANDA.** See Flowering Shrubs.
- ANTIGONON leptopus.** Mountain Rose. Love's Chain. Tropical tendril-climber; tuberous rooted; flowers in racemes of handsome rose-pink. 25¢; \$2.50 per dozen.
- BEAUMONTIA grandiflora.** A tall woody-growing vine with large trumpet-shaped flowers of pure white in clusters. Blooms during the winter months. \$1.00 each.
- BIGNONIA venusta PYROSTEGIA.** A grand tropical vine from Brazil, producing countless orange colored flowers in winter and spring. A very vigorous grower and reaches a height of 70 or 80 feet. 35¢; \$3.50 per dozen.
- BIGNONIA speciosa.** A handsome climber similar to the above sp. but bearing pale blue flowers. 35¢ or 3.50 per doz.

**BOUGAINVILLEA.** The Bougainvillea is now one of the most widely grown of the showy vines. Thousands of these beautiful plants adorn the yards of Florida, most of which are *Bougainvillea glabra sanderiana*. We are now offering several varieties of the different colors which are very handsome and rare. Our large blooming plants on our grounds are admired by all who see them. We have nine shades in bloom at one time. Most of the new varieties are very difficult of propagation and most of the ones we offer are grafted on *glabra sanderiana* stock.

**BOUGAINVILLEA braziliensis.** A very vigorous grower, flowering in February and March. Flowers are nearer blue than any other variety and the bracts are much larger than the common Bougainvillea. \$2.00 each.

**BOUGAINVILLEA Crimson Lake.** Considered by most people to be the finest of all the Bougainvilleas; with its masses of beautiful scarlet flowers. This vine must be seen to be appreciated. We sell more of this variety than all others combined. \$1.00; \$10.00 per dozen. Larger, \$2.00; \$20.00 per dozen.

**(I) BOUGAINVILLEA glabra SANDERIANA.** The common bougainvillea; used very extensively for pot culture and out-door planting. Produces some bloom all the year but in winter is covered with a mass of rich magenta-like flowers. 25¢; \$2.50 per dozen. Larger, 50¢, 75¢ and \$1.00 each.

**BOUGAINVILLEA Lindleyana.** The tallest growing of any; producing very large flower-bracts varying from light pink to deep crimson; according to light exposure. \$2.50 each.

**BOUGAINVILLEA refulgens.** Resembles *braziliensis* but does not produce such masses of bloom, although the blooming period is longer. \$2.00 each.

**BOUGAINVILLEA rosa-catalina.** A beautiful vine with its bracts a wonderful shade of pink. Not such a robust grower as the other. \$2.50 each.

**BOUGAINVILLEA rosea-speciosa.** Similar to *Lindleyana* although the flower bracts are smaller and the foliage is also smaller. \$2.00.

**BOUGAINVILLEA Spectabilis.** Taller and with thicker leaves than the type. Flower bracts deep shade of purple but not so floriferous. 50¢ and \$1.00.

**BOUGAINVILLEA spectabilis LATERITIA.** One of the best and still rare. Flower bracts are of a brick-red color. \$2.00.

**(I) BOUGAINVILLEA cypheri.** Similar to *glabra sanderiana* but a much larger and finer plant. The large and bright colored deep rose bracts are freely produced in long plumose clusters and are much larger than the type. \$2.00 each.

- CLERODENDRON Balfouri.** A beautiful quick-growing plant; flowers bright scarlet enveloped in a creamy-white calyx. 25¢; \$2.50 per dozen. Larger, 50¢.
- CLARODENDRON sp.** Similar to preceding except the calyx is a greenish white, turning bronze with age. 25¢; \$2.50 per dozen.
- CRYPTOSTEGIA madagascariensis.** Madagascar. A climbing glabrous shrub having flowers 2 to 3 inches across of a pink or whitish color. 25¢; \$2.50 per dozen. Larger, 50¢; \$5.00 per dozen.
- FICUS pumila.** Japan and China. Creeping Fig. A good vine for covering walls as it clings very closely. 25¢; \$2.50 per dozen.
- FICUS villosa.** Similar to preceding but with larger leaves. 25¢; \$2.50 per dozen.
- IPOMOEA horsfalliea BRIGGS.** The best of the Ipomoeas but the most difficult of all to propagate. Produces masses of beautiful, deep red flowers in winter and spring. \$1.00 and \$2.00 each.
- JASMINUM grandiflorum.** Spanish Jasmine. India. Foliage bright green with drooping branches. Flowers white; blooming almost constantly. 35¢; \$3.50 per dozen. Larger, 50¢.
- JASMINUM nitidum.** Admiralty Islands. Slender-branched plant. Flowers small, white and very fragrant. 50¢.
- JASMINUM pubescens.** India. One of the best Jasmines as it can be used both as a vine and shrub. Flowers, white. 35¢; \$3.50 per dozen.
- LONICERA japonica.** Honeysuckle. Evergreen, vigorous climber. Flowers white, changing to yellow with age; in bloom most of the year. 25¢; \$2.50 per dozen.
- PORANA paniculata.** Snow Creeper. India. Strong shrubby climber often thirty feet high, each branchlet terminating with a panicle of white flowers. \$1.00 each.
- POTHOS aureus.** Strong evergreen climber with wide leaves which are blotched and mottled with yellowish white. Fine for trunks of sabal palmettoes. 50¢.
- SOLANUM seafortianum.** West Indies. A medium sized vine with compound leaves and sky-blue flowers, followed by red berries. 25¢; \$2.50 per dozen.
- SOLANUM wendlandii.** Costa Rica. Tall climber with lobed leaves and flowers of pale lilac-blue. Considered one of the most showiest climbers. 35¢ and 50¢.
- TECOMA capensis.** Strong shrubby climber; flowers bright scarlet. A good vine for sunny positions. 35¢; \$3.50 per dozen.
- TRACHELOSPERMUM jasminoides.** Star Jasmine. South China. An evergreen climbing shrub with small dark green leaves and flowering in spring. Flowers are produced in large numbers; snow white and very fragrant. 50¢; \$5.00 per dozen.

## FERNS

- ADIANTUM farleyense GLORIOSA.** The Glory Fern. A new fern and one of the most beautiful of the Adiantums. Fronds very heavy with broad pinnae. 50¢.
- ADIANTUM hybridum.** The best for the amateur. 25¢ and 50¢.
- ALSOPHILA australis.** Australian Tree Fern. A very rapid growing fern, suitable for large ferneries. Fronds are broad and long, lace-like in appearance. Used in South Florida and California for out door planting, but must have shady location. \$1.00 each.
- LYGODIUM scandens.** Japanese Climbing Fern. A climbing fern which grows to a height of ten feet and makes a mass of fern-like foliage. 25¢; \$2.50 per dozen.
- NEPHROLEPIS bosteniensis.** The Boston Fern. The old favorite, with its arched and drooping fronds. 25¢ and 50¢.
- NEPHROLEPIS davallioides FURCANS.** Stag Horn Boston Fern. One of the best ferns as it grows to enormous size under ordinary conditions. The ends of the fronds are curiously divided and crested. 35¢, 50¢ and \$1.00
- NEPHROLEPIS exaltata.** Sword Fern. The old original sword fern of the tropics. 25¢; \$2.50 per dozen.
- POLYPODIUM aureum.** Broad coarse fronds and is found growing on the trunks of palmetto trees. 25¢.
- POLYPODIUM Mandianum.** This is a beautiful new fern, with very long, broad fronds, very crested. On well-grown specimens the fronds attain a length of five feet. \$1.00 each.
- PTERIS argyrea.** Grows to about eighteen inches, with coarse, variegated leaves. 25¢.
- PTERIS tremula.** Similar to preceding but larger in growth. 35¢.

## PALMS AND CYCADS

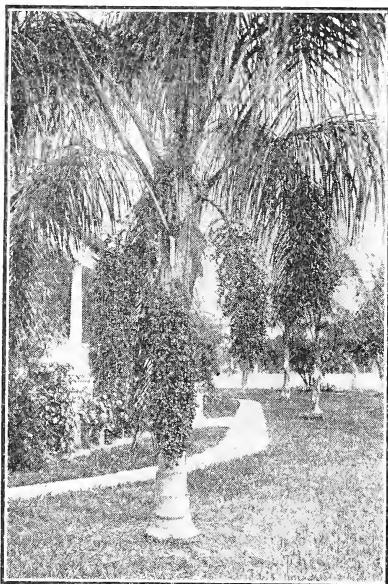
**ARECA lutescens.** Madagascar. One of the most beautiful and widely grown palms for house decoration and does well when planted out in extreme South Florida, but requires some shade to attain perfection. The leaf petioles are golden-yellow with beautifully arched green pinnate leaves.

All our Arecas are very bushy as we plant three to five plants in each pot. Small plants, 25¢; \$2.50 per dozen. Larger, 50¢; \$5.00 per dozen. Beautiful decorative plants, \$1.00, \$2.00, \$3.00 and \$4.00 each.

**AOROCOMIA totai.** Tropical America. Trunk thirty to forty feet, ten to fifteen inches in diameter, clothed with stout spines. A handsome palm for Florida. 75¢ and \$1.00 each.

**ARENGA saccharifera.** Malaya. A handsome palm with large deep green leaves, cut and jagged on the ends like the Fish Tail Palms. \$2.00 and \$3.00 each.

**CARYOTA urens.** Wine or Toddy Palm. India and Malaya. These palms are remarkable for their large fish-tail-shaped leaflets, which makes the graceful spreading fronds very attractive. Small plants, 25¢. Larger, \$2.00.



COCOS PLUMOSA

**COCOS plumosa.** Plumed Cocos. Brazil. This beautiful palm is used very extensively in Florida and California for yard and avenue planting. It resembles the royal palm somewhat but with longer leaves which are a very dark green color, and will stand some frost. A quick grower reaching an ultimate height of fifty feet. 4 in. pots, 24 to 30 inches high, 50¢; \$4.00 per dozen. 6-in. pots, 3½ to 4½ ft. high, \$2.00; \$20.00 per dozen. Larger, 5 to 6 ft., \$3.00 each; \$30.00 per dozen.

**COCOS nucifera.** The Coconut Palm. Produces the coconut of commerce and is widely grown in South Florida, especially along the sea coast. Probably the most graceful of the family, with its long branches and clusters of large nuts. From open ground. 15 to 20 inches high, \$1.50 each; \$15.00 per dozen. Larger, \$2.00; \$20.00 per dozen.

**CYCAS revoluta.** Sago Palm. Java. Usually classed as a palm although it is not one. Rough, palm-like trunk, with very dark green leaves. Will stand much abuse as a house plant and is hardy in Florida. Nice plants, 75¢, \$1.00 and \$2.00 each.



**DICTYOSPERMA alba.** Slender spineless palms resembling the *Seaforthia* somewhat; and is a beautiful palm for sheltered locations. Strong plants, 75¢ and \$1.00 each.

**DICTYOSPERMA rubra.** Similar to preceding but leaves darker green, the primary veins and margins dark red; the reddish color disappearing with age. Nice plants from 25¢ to \$3.00 each.

**HYDRIASTELE wendlandi.** Queensland. Tall slender palm with pinnate leaves. A fast grower and useful for house decoration. \$1.50 and \$2.00 each.

**HYOPHORBE verschaffeltii.** Mauritius. Showy ornamental palm with pinnae tinged with orange red. Leaves four to seven feet long. Young plants, 25¢. Decorative plants, \$2.00 to \$4.00.

**LATANIA borbonica.** Chinese Fan Palm. Hardy but of rather slow growth. Used extensively as a house plant, although does exceedingly well when planted in the open in South Florida. From 7- and 8-inch pots, \$2.00 and \$3.00 each.

**OREODOXA regia.** The Royal Palm of the Tropics. The most magnificent of all the palms. With its large, smooth bottle-shaped body and long, green leaves, it is truly the Prince of Palms. These beautiful palms are found in the Everglades of Florida, growing to a height of 100 feet. Tall and slender when young and not very ornamental. Tender while young but when matured will withstand quite a bit of frost. 25¢; \$2.50 per dozen. 50¢; \$5.00 per dozen. Larger, balled from open ground, \$2.00, \$3.00 and \$4.00 each.

**PHOENIX canariensis.** Canary Island Date. One of the hardiest as well as the most beautiful of all the dates. With its long, dark green leaves fifteen feet or more in length, and massive trunk, it is a splendid lawn specimen as well as a good avenue palm, where sufficient room can be given it. Small plants, 25¢; \$2.50 per dozen. 7- and 8-inch pots, \$1.25 and \$2.00. Grown in 12-inch wooden boxes, 3 to 3½ ft., \$3.00 each.

**PHOENIX reclanata.** A very quick growing palm, with small trunk and arched leaves. If the suckers are allowed to grow it will make a dense clump, but if they are removed for a few years they will cease to sprout. 25¢; \$2.50 per dozen. 50¢; \$5.00 per dozen. Larger, \$1.00 and \$2.00. In boxes 3 to 5 ft. high, \$3.50.

**PHOENIX rupicola.** Nice plant for out door planting as well as for house decoration. The leaves are of a light green color and beautifully arched. 50¢ and \$1.00.

**PRITCHARDIA pacifica.** Samoa and Fiji Islands. Spineless fan palm, rather tender. Trunk attains 30 to 40 feet high; leaves 4 by 5 feet. 6-in. pots, \$1.50 each; 8-in. pots, \$2.00 each.

**SEAFORTHIA elegans.** *Ptychosperma elegans.* Australia. One of the most decorative of the palm family. Trunk slender, leaves pinnate, about twelve feet long. Quite hardy in South Florida. Small plants, 25¢ and 50¢ each. Larger, \$1.00.

**WASHINGTONIA robusta.** California Fan Palm. California and Arizona. Very fast growing fan palm and used extensively in California and Florida for avenue planting. Resembles our native cabbage palmetto somewhat but a much faster grower and far more beautiful. Hardy. A large stock of this serviceable palm. 4-in pots, 25¢; \$2.50 per dozen. 5-in. pots, 50¢; \$5.00 per dozen. 6-in. pots, \$1.50. 8-in. pots, \$2.00. Field grown, 3 to 4 feet, \$3.00 each.

### TREES

**BAUHINIA.** Several species of this beautiful flowering plant make small trees. See flowering plants.

**CANANGIUM odoratum.** Ylang Ylang. Asia and Philippines. A handsome tree bearing a profusion of greenish yellow fragrant flowers, from which the celebrated Ilangilang is made. 50¢ and \$1.00.

**CASUARINA epuisetifolia.** Australian Pine. Beef Wood. This fast growing tree is now used very extensively for road planting in Florida. Also does well near the sea shore and seems to grow as well or better in white sand than in good soil. 25¢; \$2.50 per dozen. 50¢; \$5.00 per dozen. Prices on larger quantities on application.

**CINNAMOMUM cassia.** Cassia Bark Tree or Chinese Cinnamon. A very dense growing tree resembling the camphor. An excellent shade or street tree. 25¢; \$2.50 per dozen. Larger, 50¢.

**ENTERLOBIUM cyclocarpum.** West Indies. A tall growing tree resembling the Royal poinciana but flowers are insignificant. Seed pods curiously twisted. An excellent shade tree. 50¢ and \$1.00.

**FICUS.** All rubbers listed under foliage plants, (which see) make large trees when planted out.

**GREVILLEA robusta.** Australian Silk Oak. A very fast growing tree used for shade and road trees over most of Florida. Bears orange-yellow flowers in spring. 25¢, 50¢ and 75¢.

**JACARANDA mimosaeifolia.** Brazil. Ranks among the very best flowering trees for subtropical planting. Bears loose, pyramidal panicles of blue flowers about two inches long. 50¢ and \$1.00.

**MELALEUCA leucadendron.** Australia. Tall slender tree with thick spongy bark. This tree withstands salt air, wind and slight frosts. Flowers creamy-white in spikes from two to four inches long. 75¢.

**SPATHODEA campanulata.** Tropical Africa. Handsome evergreen tree with large pinnate foliage and handsome, showy orange-red or yellow flowers. 75¢ and \$1.00.

### TROPICAL FRUITS

**ACHRAS sapota.** Tropical America. A small tree with rather large, evergreen leaves. Bears russet fruits somewhat larger than a peach, containing several oblong black seeds. Bears two crops annually. Strong plants, 35¢; \$3.50 per dozen. Larger, 50¢ and 75¢ each.

**ANONA reticulata.** Bullock's Heart, Custard Apple. A native of Florida found growing along the banks of streams and lakes. A large rough fruit containing many seeds and edible. 25¢ and 50¢.

**CARICA papaya.** Pawpaw. Small trees, mostly unbranched. Foliage very ornamental and bearing fruits resembling the melon, which contain the papain of commerce. Dioecious. Strong plants from choice seed, 25¢; \$2.50 per dozen.

**CARISSA bispinosa.** Natal Plum. South Africa. A handsome, evergreen shrub of value for its fruit and for hedge purposes. Fruits are about 1½ inches long of a brilliant scarlet, from which a sauce is made very much resembling Cranberry sauce. Flowers white and fragrant. 25¢; \$2.50 per dozen.

**CARISSA grandiflora.** Similar to *bispinosa* but larger and finer fruits. Said to be the finest hedge plant in South Africa. Layered specimens from fruiting trees, 50¢ each; \$5.00 per dozen.

**COCOLOBA uvifera.** Sea Grape. Native of Florida coast and West Indies. Leaves large and roundish with red veins, and a beautiful tree in all its stages. Fruits are reddish purple, borne in racemes. 25¢, 50¢ and 75¢.

**ERIOBOTRYA japonica.** Loquat. Beautiful tree with thick evergreen leaves. Fruit ripens in winter and spring and is deliciously flavored. 25¢, 50¢ and 75¢ each.

**EUGENIA jambos.** Rose Apple. East Indies. Medium sized evergreen tree with long, pointed leaves and producing fruits about two inches through, of a delicate rose-like flavor and odor. 25¢ and 50¢.

**EUGENIA uniflora.** Surinam Cherry. Brazil. Shrub 5 to 20 feet producing berries ½ to 1 inch, ribbed, resembling a miniature tomato, edible, with a spicy acid flavor. Used in jelly making. 25¢; \$2.50 per dozen. Larger, 50¢; \$5.00 per dozen.

extensively during the past few years. The old seedling varieties have been grown in Florida for a great many years but it has been only of late years that the finer varieties have been imported from India, and their appearance has been the means of causing the mango industry to flourish in South Florida.

**MANGIFERA Indica.** The Mango. Considered one of the finest of tropical fruits and has been planted very

**MANGIFERA Haden.** A seedling of the Mulgoba and a much better fruiter. While the fruit is not considered quite equal to that of the parent, the difference is very slight. Grown in wooden boxes, \$2.50 each; \$25.00 per dozen.

**MANGIFERA Mulgoba.** Considered the finest of all the mangoes but a very shy bearer. Fruit has no fiber and can be eaten with a spoon. Price same as Haden.

**MUSA.** The Banana. Hart's Choice or Lady Finger. One of the best for planting in Florida. Hardier than most and of good flavor. Suckers, 25¢; \$2.00 per dozen.

**MUSA orinoco.** Horse Banana. A tall sort fruit somewhat like the plantain. Fine for cooking. Price same as Hart's Choice.

**PERSEA americana.** The Avocado. The Avocado is not only a grand fruit but is also of very high food value; and is not equaled by any other fresh fruit.

The Avocado is native of the West Indies and to Central and South America, and it has been only of late years planted in commercial quantities in Florida and California. The West Indian varieties are tender and should be planted only where the danger from frost is slight. The Guatemalan varieties are hardier than the West Indian but will not stand as much cold as the Mexican Avocado.

We offer a few varieties selected from each of the three types which have proven satisfactory in Florida.

#### WEST INDIAN TYPES

**FAMILY.** Matures fruit from July to September. Weight from one to two pounds. Color green, changing to purple when ripe. \$1.50 each; \$15.00 per dozen.

**POLLOCK.** Fruit very large and a very prolific bearer. Flesh rich yellow in color and entirely free from fiber. Weight from two to three pounds. Season, September and October. \$1.50 each; \$15.00 per dozen.

**TRAPP.** Fruit roundish, about five inches in length and weighing about one pound. The Trapp is considered the best commercial Avocado and is being planted very extensively. Season, December to February. \$1.50 each; \$15.00 per dozen; \$100.00 per hundred.

#### GUATEMALAN TYPES

**LINDA.** Fruit rather oblong of a dark purplish color when ripe. Seed very small and flesh of a rich creamy texture. Season, February and March. \$2.50 each; \$25.00 per dozen.

**TAYLOR.** This Avocado is also sold under the name Winslow. This is probably the best known of the Guatemalan Avocados and is a good grower and prolific bearer. Season, March and April. \$2.50 each; \$25.00 per dozen.

#### MEXICAN TYPES

**FUERTE.** Fruits green with a very thick skin and stands shipping well. Flesh yellow, smooth and buttery with very small seed which fits tight in cavity. An unusually strong grower and good bearer. One of the best. \$2.50 each; \$25.00 per dozen.

**PSIDIUM.** The Guava. We can furnish seedling from good varieties at 25¢ each; \$2.00 per dozen.

**PSIDIUM cattleyanum.** The Cattley Guava. More dwarf than the preceding and also more hardy. The leaves are small, thick and handsome. Fruit used extensively in jelly making. 25¢ each; \$2.00 per dozen; \$15.00 per hundred.

**TAMARINDUS Indica.** The Tamarind. Grows to a large size and is very ornamental, bearing pods containing edible pulp, used in making a very delicious drink. 25¢ and 50¢.



# BLOOMS OF NEW BOUGAINVILLEAS



BRAZILIENSIS

LATERTIA

CRIMSON LAKE

LINDLEYANA

ROSA-CATALINA