

Historic, archived document

Do not assume content reflects current scientific knowledge, policies, or practices.



62.61

1923

Indexed

LIBRARY
FEB 28 1923
U. S. Department of Agriculture



IMPROVED EUROPEAN FILBERTS

L. W. HALL COMPANY, Inc.

GROWERS OF HIGH GRADE NURSERY STOCK

ROCHESTER, NEW YORK

Improved European Filberts

Handsome Shrubs

100% USEFUL

Food Producers

Bear 2nd or 3rd year after planting, and at the tenth year yield 20 to 25 lbs. per bush.

"The time is coming when Nut trees will bear as important a relation to our food supply as the automobile does to transportation." And of all the Nut trees available, few hold out larger promise of greater rewards than our special

Improved European Filberts (Hazel Nuts)

NOW IS THE TIME TO PLANT THEM

Here is a beautiful shrub which yields such an abundant supply of large edible nuts that it not only fills an important place in ornamental plantings and in nut borders for walks and drives, but is an economical food producer as well, and you can now grow this great nut delicacy, big meaty filberts, on your own grounds.

All of our filberts are grown under the supervision of Mr. Conrad Vollertsen, who is acknowledged as the leading authority on improved filberts in the United States. He worked incessantly throughout a period of seven years, experimenting until his wonderful work enables us to offer the people of the United States filberts of the finest improved type that will produce abundantly as far North as Rochester, N. Y., where the temperature has registered five to ten degrees below zero, without the slightest injury to the plants or to the crop of the nuts, and we are the only firm in the United States who can supply these Special Varieties of Improved European Filberts.

HANDSOME AS A SHRUB—COMBINES BEAUTY WITH PROFIT.

In addition to its wonderful nut-bearing qualities (which increase each year as the bush grows larger), the Improved Filbert is one of the most beautiful of shrubs and has an important place in ornamental landscape plantings. The pride of many beautiful old European gardens are their nut walks, and beautiful effects can be produced in your gardens by planting the filberts each side of the walk or along driveways. Plants have a deep green, leathery foliage during the summer months, and are loaded with husks of delicious nuts, making a very effective contrast. The new catkins or staminate blossoms form late in the summer for the next season's crop and hang on the bushes all winter, giving a beautiful winter decoration after the foliage has gone.

Mighty glad to see the Filbert proposition so prosperous. In my imagination now I can see big Filbert orchards in York State in the not far distant future.

J. F. JONES, Vice Pres. Northern Nut Growers Association.

While the Filberts in the nursery have been grown for propagating new plants rather than for raising nuts, yet the nuts on them this year are sufficient to impress anybody with the possibilities of nut culture.

WILLARD G. BIXBY, Treas. Northern Nut Growers Association.

Lockport, N. Y., Sept. 14, 1922.

Everyone was much surprised and delighted to note the wonderful progress made in Filbert culture, proving what can be accomplished by anyone wishing to plant these valuable shrubs.

A. C. POMEROY.

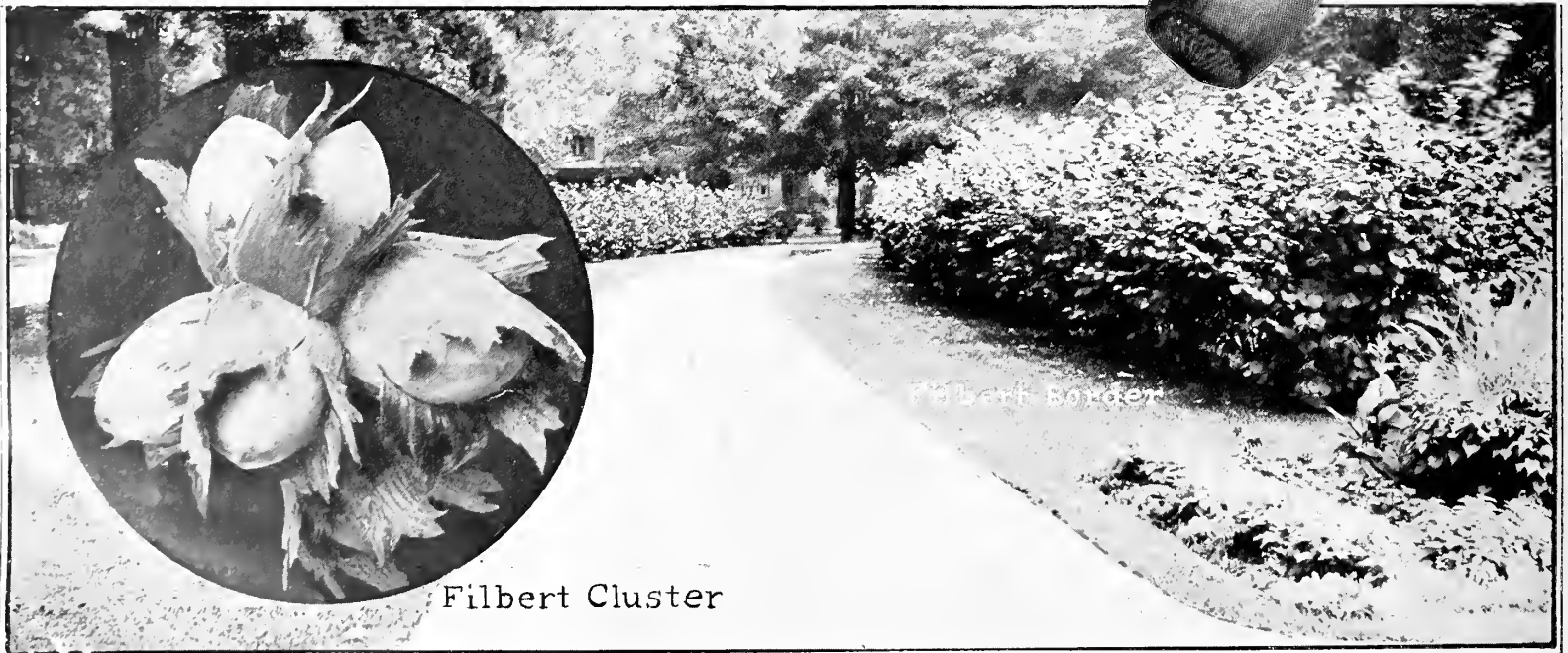
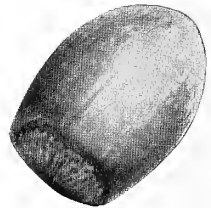
CULTURE OF FILBERTS.

The improved filberts will thrive anywhere that the native or wild American filbert will grow, which is practically the entire United States. They will grow in practically any soil that is moderately rich and well drained, and require very little cultivation, only sufficient to keep the ground free of grass and weeds. Fertilizer should be used sparingly, except where ground is poor and stony.

When planting, cut back the tops of the bushes about one-half. All filberts are inclined to produce suckers, or young shoots growing up from the roots, during the first few years. These suckers should be removed as soon as they appear. And for commercial orchard plantings the bushes should be pruned to form low-headed trees with trunks ten to fifteen inches high, with all weak and unnecessary wood removed from the center, not merely cut back.

For garden culture, or planted as ornamental shrubs, the plants should be set about six feet apart. For screen or hedge planting set about four feet apart.

For commercial orchards the improved filberts should be set twelve feet apart each way, making 300 bushes to the acre. We have produced over two pounds per bush on five-year-old bushes. Suppose we say these bushes will bear one pound per bush in the fifth year. It is estimated they will double in production for five years after, making a minimum production of 32 pounds per bush the tenth year. To be most conservative, figuring 25 pounds per bush at the tenth year, one acre should produce 7,500 pounds of nuts. This production, under proper care, will continue indefinitely.



Filbert Cluster



Showing Members of the Northern Nut Growers Association inspecting the Filbert Nursery and Orchard at Rochester, N. Y., during the convention held here September 7, 8, and 9, 1922. You are cordially invited to come to Rochester, N. Y., and from July to early September you will see thousands of young plants bearing abundant crops of these wonderful nuts. To anyone interested, we say, "Come and see for yourself."

Of the twenty-one varieties originally imported in 1912, we have selected eight of the best in habit of growth, hardiness, quality, and productiveness, which we now offer. All are highly desirable sorts that will give satisfaction and produce results.

In order to obtain the best results, at least three varieties should be planted, and we advise customers to leave the selection to us, and we will be pleased to select for each order varieties that will give best results and insure proper pollenization for fruiting.

Our Improved Filberts are specially valuable because of the very wide range of territory in which they can be grown. They thrive practically all over the United States, in any ordinary soil, and because of their hardiness are adapted to the more Northern parts of the country, where other kinds of nut trees cannot be successfully fruited.

PRICE OF THE IMPROVED EUROPEAN FILBERTS

	Each	Per Ten
18 inch	\$1.50	\$12.50
2 feet	1.75	15.00
3 feet	2.00	17.50

All plants are grown on their own roots and are absolutely true to type. Nuts ripen in September and should not be gathered until thoroughly ripened, the condition indicated by the browning of the husks.

Hartford, Conn., Sept. 22, 1922.

The filbert nursery is a delight to behold, and the first demonstration of the possibilities of the filbert in the East. It was a great sight for the members of the Association, long craving for just such a demonstration.
DR. W. C. DEMING.

Budded or Grafted English Walnuts

Succeed where Seedling Trees fail. Budded or grafted on Hardy Black Walnut stock. More vigorous, hardy in all sections, bear earlier, produce nuts in three to four years that equal the best imported sorts in size and quality. Recommended by the American and Northern Nut Growers Associations, and the United States Dept. of Agriculture as the only dependable English Walnuts to plant. We offer two of the best varieties, the **Vrooman Franquette** and **Wiltz Mayette**.

VROOMAN FRANQUETTE. Large, oblong; rich, exquisite flavor, a favorite for dessert. A popular variety, highly recommended and extensively planted. Tree robust, bears abundantly and regularly. The peer of all the French varieties. 3 to 4 ft., \$2.50 each.

WILTZ MAYETTE. Considered one of the finest that reaches New York markets, where it always brings highest prices. Large, smooth, fine appearance, flesh oily, rich, sweet, and very good. Tree strong, vigorous and handsome. 3 to 4 ft., \$2.50 each.

Budded or Grafted Black Walnuts

THOMAS. Originated in Pennsylvania, one of the finest and best of all large nuts in cracking qualities. Nut very large, with large kernel, and of very good quality. Tree a wonderful grower. 3 to 4 ft., \$2.50 each.



Wiltz Mayette English Walnuts.

Budded or Grafted Pecans

Best budded or grafted northern varieties: **Indiana, Busseron, Butterick and Posey.** 3 to 4 ft., \$2.50 each.

Seedling Nut Trees

BLACK WALNUT. Most valuable for timber; rapid grower; bears large, round nut of excellent quality. 5 to 6 ft., \$1.50 each.

ENGLISH WALNUT. Seedling trees, grown from selected nuts. Exceedingly handsome for lawn. Produce large crops of nuts, but apt to vary in size and quality. 3 to 4 ft., \$1.50 each.

JAPAN WALNUT (Sieboldi). Perfectly hardy, rapid grower; one of the finest ornamental trees. Nuts resemble butter-nuts, but somewhat smaller, with thinner, smoother shell. Worthy of extensive planting. 3 to 4 ft., \$1.50 each.

BUTTERNUT. Valuable for timber; bears an oblong, thick-shelled nut of delicious flavor. 5 to 6 ft., \$1.50 each.

Chestnuts

Because of Federal quarantine laws prohibiting the shipment of Chestnut trees into so many states, we are not offering these this year.

Everyone Who Has a Place to Grow Any Tree Should Grow a Nut Tree

Nuts should be so largely planted as to become a staple article of our food. They are most nutritious, rich in vitamins, and are one of our most important food products. For use as a luxury alone, thousands of acres of nut orchards should be set out.



The above reproduction is made from a photograph of the Genuine J. H. HALE PEACH—The King of all Peaches.

Peaches

Price (except where noted), strong, selected trees:

	Each	10	100
4½ to 6 feet	\$0.60	\$5.00	\$40.00
3 to 4 feet50	4.00	30.00

The Hale Peach

King of All Peaches. Combines all qualities most desired, either for home or market. Brilliantly colored, deep golden yellow with carmine blush. Skin thick, without fuzz, smooth as an Apricot. Flesh deep yellow, firm, fine grained, tender, melting, luscious flavor. Very solid and heavy peach of immense size, fully one-half larger and harder than Elberta; enormously productive. Perfect freestone. Wonderful keeper and shipper. **Sells for one-third more than ordinary sorts.**

4½ to 6 feet, 75c each; \$6.00 per 10; \$50.00 per 100.
3 to 4 feet, 60c each; \$5.00 per 10; \$40.00 per 100.

BELLE OF GEORGIA. Uniformly large and showy, skin white with red cheek; flesh firm, white, excellent flavor. Very prolific bearer, fine shipper, a most profitable commercial variety in the North as well as the South. Ripens with Crawford's Early.

CARMAN. Large, yellow, with deep blush. Fine flavor. Extra hardy; bears heavy. Nearly free.

CHAMPION. Best white freestone. Delicious flavor, sweet, rich, juicy. Hardy and productive.

CRAWFORD'S LATE. Very hardy; large, yellow, rich, sweet, free. September.

CRAWFORD'S EARLY. Very large, yellow, rich, sweet; luscious; free. September.

CROSBY. One of the hardiest; abundant, medium, bright yellow, fine quality. Middle September.

EARLY ELBERTA. Golden yellow with red blush. Ten days ahead of Elberta; larger, more highly colored, better quality; splendid shipper. Extra hardy, and a heavy and reliable bearer. Free.

ELBERTA. One of the finest yellow freestones. The standard market sort both North and South; a big money maker.

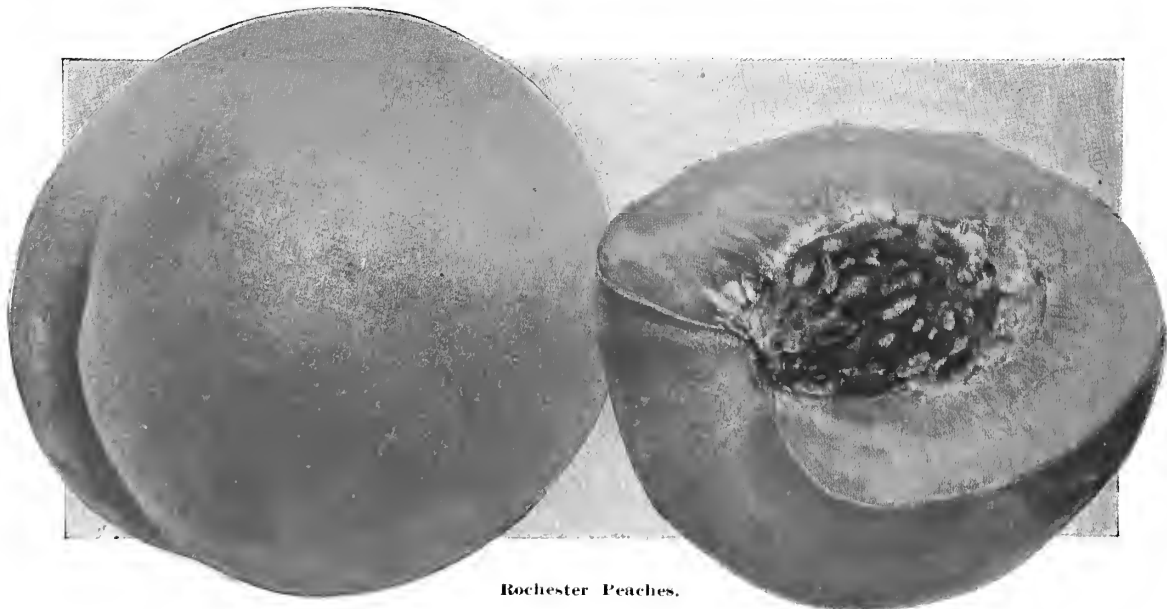
The Celebrated Rochester Peach

Earliest and best yellow freestone for home or market. Ripens two weeks before Early Crawford, when there is no other yellow freestone of quality on the market; commands double the price of any other variety of its season. Beautiful golden yellow and red peach of immense size, solid and heavy; very highly flavored, juicy and delicious; far sweeter than Crawford. Exceptionally hardy, more productive than Elberta and usually bears the second year after planting.

4½ to 6 feet, 75c each; \$6.00 per 10; \$50.00 per 100.
3 to 4 feet, 60c each; \$5.00 per 10; \$40.00 per 100.

GREENSBORO. Extra large, very early. Extremely hardy, productive. Semi-cling.

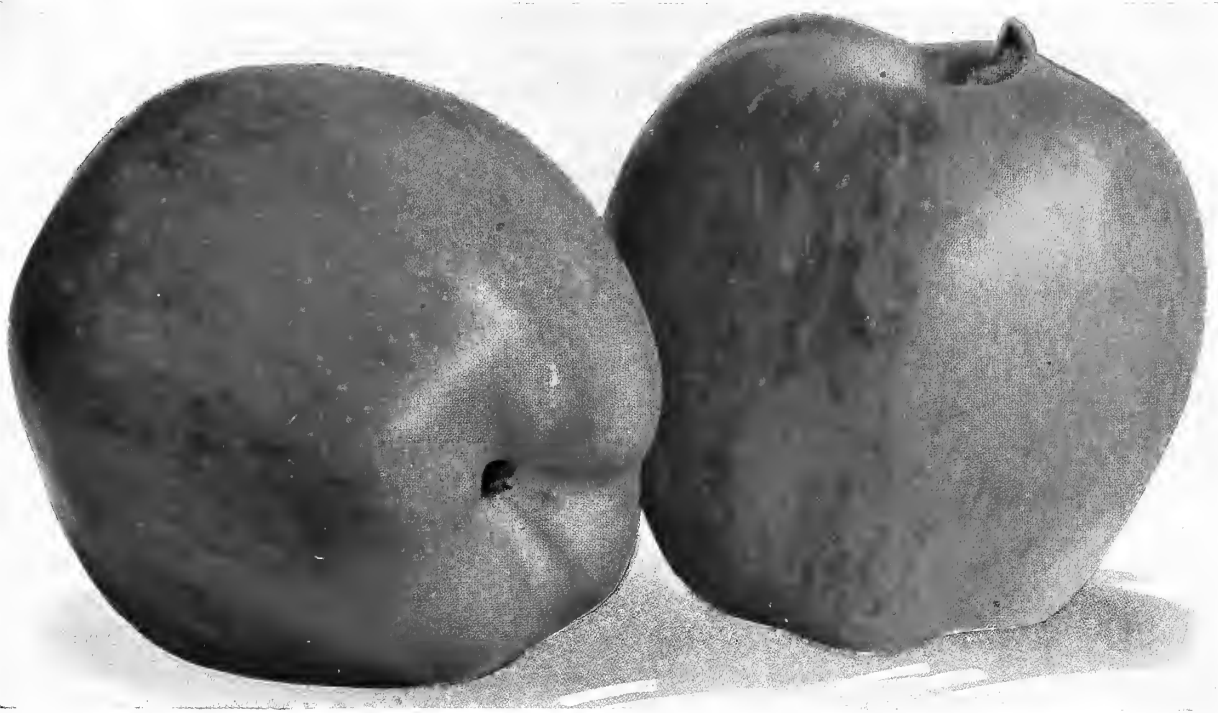
MOUNTAIN ROSE. Early white freestone; one of the best. Large, juicy, rich.



Rochester Peaches.

Northern Grown Apples

The Apple is the first in importance of all fruits. It will thrive on nearly any well drained soil. Its period of ripening, unlike other fruits, extends nearly through the whole year. By making a careful selection, a constant succession can be obtained. For family use there is no fruit that is more indispensable. No other fruit is so healthful. Besides this, and just as important, is the fact that the average price on the market is steadily increasing and the immense demand for home consumption, foreign shipping, canning, and evaporating assures high prices. The apple, if given the same care and attention as other farm crops, will yield greater returns per acre.



Delicious Apples.

The following list we consider to be the best for general planting.

Standard Apples and Crabs, grown on Best Imported French Whole Root Seedlings, extra strong, selected trees, 2 and 3 year:

	Each	10	100
5 to 7 feet	\$1.00	\$8.50	\$75.00
4 to 5 feet85	7.00	65.00

Summer Apples

EARLY HARVEST. Medium to large; pale yellow, fine flavor. Tree moderate, erect grower; a good bearer. Middle to end of August.

EARLY CRIMSON BEAUTY. Best early red apple. Good size, white flesh, tender, juicy, pleasant flavor. Sells better than Astrachan. Very hardy, bears young, very productive.

SWEET BOUGH. One of the finest summer apples. Bears young and abundantly. Fruit is large, pale green; flesh fine, very tender, juicy, sweet, with rich flavor. (August.)

ASTRACHAN, RED. Good size, deep crimson over-spread with thick bloom. Flesh tender, juicy and rich; excellent for cooking or dessert. Tree very hardy, vigorous grower, comes into bearing while very young. (August.)

YELLOW TRANSPARENT. One of the best extra early apples for all sections. Good size, clear white, turning to pale yellow; flavor acid, very good. Bears very young, yields immense crops every year. Extremely hardy.

Fall Apples

DUCHESS OF OLDENBURG. One of the best. Handsome, good size, streaked red and yellow. Excellent quality. Very hardy, bears very young and abundantly. An extra good shipper, one of the best money-makers; one of the most important varieties for all sections.

FAMEUSE (Snow Apple). One of our finest dessert fruits. Medium size, smooth, regular, deep crimson, with snowy white, tender, melting flesh of delightful flavor.

FALL PIPPIN. Very large, yellow, tender, juicy and rich. Tree vigorous.

GRAVENSTEIN. Large, greenish-yellow with red stripes. Juicy, sub-acid, aromatic; very good to best.

MAIDEN BLUSH. Medium to large; pale waxen-yellow with crimson blush. Flesh tender, juicy, sub-acid. Hardy, and a fine grower.

TWENTY-OUNCE. Very large, yellow and red, tender, juicy, crisp, sub-acid; productive.

A Well Pleased Customer

Easton, Pa., 9-13-20.

It is with a sense of pleasure that I am writing to tell you of the good fortune I have had with the trees ordered from you in the spring, 1919. One of the Dwarf Duchess of Oldenburg apple trees, planted on May 16, 1919, was fifty-one inches tall on August 19, 1920, and bore eight well formed apples this season. I have one other of this same variety, forty-one inches tall, which bore seven apples. Of the same lot of stock ordered last year there are still others that have borne or are still bearing apples this season. This speaks well for Hall nursery stock and now that the stock is fruitful, it has given me an opportunity to know that the stock is true to name.

COLLINS TRITENBACH.



Wealthy Apple.



Stayman's Winesap Apple.

Winter Apples



Duchess of Oldenburg Apples.

BALDWIN. Large, deep red; crisp and juicy, of fine, rich, sub-acid flavor and delightful aroma. Keeps splendidly well into winter; an excellent shipper. The market always pays well for Baldwins. A quick, strong grower.

DELICIOUS. The National Dessert Apple. Successful wherever Apples grow. Large, conical shaped, beautifully colored, striped red over yellow. Flesh tender, with rich, distinctive flavor, very aromatic and pleasant to the taste. Truly Delicious. Hardy, bears young and abundantly. Brings more money per box than other sorts bring per barrel.

GOLDEN RUSSET. Medium size, clear golden russet with slight blush. Juicy and high flavored.

GRIMES' GOLDEN. The most popular golden apple, prized for its beauty and quality. Golden, transparent yellow, tender, rich and delicious; keeps well without losing any of its crispness or flavor. One of the best for fancy box trade.

HUBBARDSTON (Nonesuch or American Blush.) Large, striped yellow and red; tender and juicy.

JONATHAN. Brilliant red apple of high flavor. Juicy, fine-grained, tender, productive; bears young.

KING OF TOMPKINS COUNTY. Superb red apple of extraordinary size and fair quality.

McINTOSH RED. Fruit bright red, wondrously beautiful, with tender white flesh of splendid flavor and highest quality; juicy and aromatic. An excellent shipper. Tree most hardy and vigorous; will bear in three to four years, and has heavy crops. Adapted to a wide range of territory.

NORTHERN SPY. Red, usually striped with yellow. Tender, crisp, highest quality. One of the best.

NORTHWESTERN GREENING. Tree vigorous, strong grower, productive. Fruit greenish-yellow, large, mild, sub-acid. Very hardy.

R. I. GREENING. A great and constant bearer in nearly all soils and situations. Large, greenish-yellow; flesh yellow, fine grained, tender, crisp, juicy, sub-acid; fine for cooking. Excellent variety to grow with Baldwin for the commercial orchard.

ROME BEAUTY. Large, handsome, bright red apple. Flavor and quality are above average. Comes into bearing in three years, and never fails to have heavy crops each year.

SPITZENBERG (Esopus). Medium, dull red; flesh yellow, firm, juicy, delicious, sub-acid.

STAYMAN'S WINESAP. Truly a great apple. Dark, rich red, striped with yellowish green. Firm, fine grained, exceedingly juicy and spicy. Wonderfully productive.

TALMAN SWEET. The best winter sweet apple. Medium, pale whitish-yellow; flesh white, fine grained; much esteemed for baking and cooking.

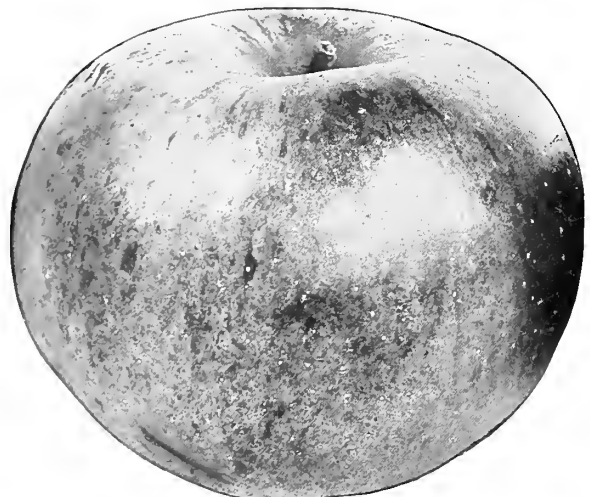
WEALTHY. One of the best money-making sorts. Bears young. Heavy crops annually. Brilliant red, large and handsome. Splendid quality. Good keeper. Extremely hardy. One of the most profitable varieties.

WINTER BANANA. An excellent new apple. Very showy in appearance, large size, roundish, deep yellow with red cheek, heavily waxed; attracts attention at once. Tender and delicious, with banana perfume.

WOLF RIVER. Highly colored red giant show apple. Flesh white, sub-acid, good quality. Tree very hardy and productive, bears early and annually; a most profitable commercial variety; 80 to 100 apples fill a bushel box.



Baldwin Apple.



Wolf River Apple.

Crab Apples

HYSLOP. Large, dark red, sub-acid.

TRANSCENDENT. Large, yellow with crimson cheek.

WHITNEY. Large, greenish, striped with carmine. Juicy and rich.

Dwarf Apples

Set trees 8 to 10 feet apart. Very productive, usually commence bearing the second year after planting. Excellently adapted to yard and small gardens.

Price of Dwarf Apples, \$1.25 Each.

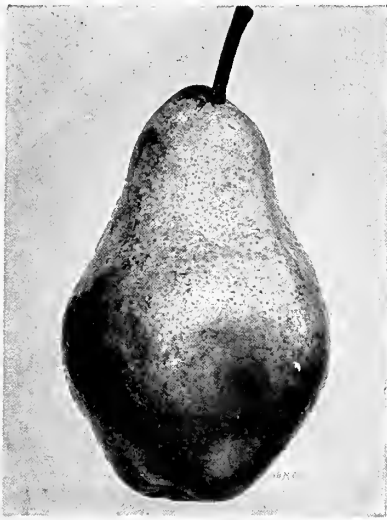
We can furnish the following varieties in Dwarf Apples; for descriptions of fruit see same varieties under Standards.

Yellow Transparent
Duchess of Oldenburg
McIntosh Red
Red Astrachan

Wealthy
Baldwin
Rhode Island Greening
Delicious



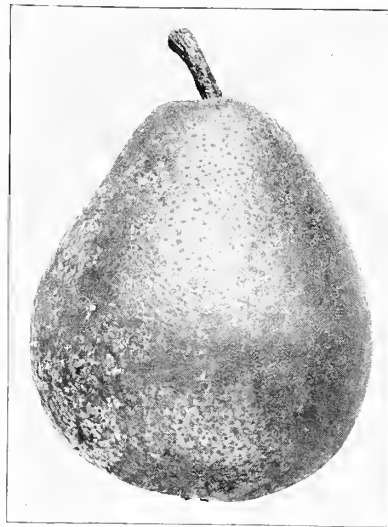
Transcendent Crab Apples.



Bartlett.



Seckel.



Beurre d'Anjou.



Clapp's Favorite.

Standard Pears

They thrive best on a strong loam with clay subsoil, but will succeed in any garden soil. Our blocks this year are the largest and as fine as any we have ever grown. Trees are all budded on imported French Whole Roots, which insures finest root system.

Price of Standard Pears (except Beurre Bosc), extra fine, selected trees, 2 and 3 year:

	Each	10	100
5 to 7 feet	\$1.25	\$11.50	\$100.00
4 to 5 feet	1.00	9.00	80.00

Summer Pears

BARTLETT. General favorite. Large, beautiful and excellent; yellow, tinged with red; buttery and melting; rich, musky flavor.
CLAPP'S FAVORITE. Large, showy, fine looking pear of good quality, profitable for market. Golden yellow with red cheek; melting, juicy, with sweet, delicate flavor.

Autumn and Winter Pears

BEURRE D'ANJOU. Equals Bartlett in quality. Large, handsome, greenish-yellow blushed with crimson. Tree hardy, succeeds everywhere, bears heavy crops.
BEURRE BOSCH (Thanksgiving Pear). Extra large, superb quality. Deep russet yellow. Flesh white, rich and delicious. Keeps well until Christmas. Price, \$1.50 each.
DUCHESS D'ANGOULEME. Large, greenish yellow; tender, buttery. Best as dwarf.
KIEFFER. Wonderfully abundant regular bearer. Always sells at good prices. Golden yellow when ripe; flesh white, crisp, juicy.
SHELDON. Medium size, round, russet and red, melting, rich, very juicy, delicious. Fine for dessert; very productive; keeps well; October.

SECKEL (Sugar Pear). Small, finest flavor; excellent for pickling and dessert.

WORDEN-SECKEL. An improved Seckel; golden yellow with bright crimson cheek; flesh white, buttery, fine grained, and melting; tree an upright, vigorous grower, very hardy, abundant bearer.

Dwarf Pears

2- and 3-year, extra fine, 3 to 4 feet: Each, 85c; per 10, \$7.50; per 100, \$65.00.

The dwarf varieties require less than one-fifth the space necessary for the standard varieties, and though the tree is dwarf the fruit is same size as standard, and is borne in large quantities. It is valuable both for the home garden and orchard planting for commercial purposes. It is a good filler for apple or standard pear orchards, because it is an early bearer and takes up but a small space. Trees should be planted ten feet apart. We can furnish the following varieties in Dwarf (for description see Standard Pears.)

Bartlett	Beurre D'Anjou
Clapp's Favorite	Duchess D'Angouleme
Seckel	

Plums

Extra fine, selected trees, 2- and 3 yr., 5 to 7 feet.....

	Each	10	100
.....	\$1.25	\$11.50	\$100.00

BEAUTY OF NAPLES. New, large greenish-yellow, very sweet; excellent flavor.
BRADSHAW. Large, handsome, bluish-purple; juicy, excellent. Very productive.
FELLEMBERG (Italian Prune.) Largest size, superb quality; rich, juicy, very sweet; productive.

GRAND DUKE. One of the best late plums. Dark, violet red; juicy, sweet, and mild.

GERMAN PRUNE. Grows to perfection everywhere; very hardy, very productive. Large, dark blue with dense bloom; juicy, sweet, rich and pleasant.

LOMBARD. Most popular and widely planted variety in America. Large, violet-red, juicy and good.

MONARCH. Large, dark purple, delicious quality, juicy, very free from stone. Tree strong grower, bears young, yields abundant crops. One of the most valuable and profitable varieties.

REINE CLAUDE (Green Gage). Large, juicy, melting, sugary, delicious. Hardy and very productive.

SHIPPER'S PRIDE. Very large, dark purple, juicy, sweet, fine quality. Excellent for all purposes.

SHROPSHIRE DAMSON (Prune Damson). Most popular Damson in America. Does well everywhere.

YELLOW EGG. Large, golden-yellow, sweet and mild.

Japanese Varieties

ABUNDANCE. Large; amber, turning to bright red. Juicy, tender, delicious; freestone. Hardy, productive.

BURBANK. Very large, rich dark red; tender, very juicy, rich, sweet, and aromatic. Hardy, productive.

RED JUNE. Fruit medium to large, deep vermilion red, very showy, flesh light lemon yellow, slightly sub-acid; half cling, pit small. Tree hardy, upright and productive. Very early.



Burbank Plums.

A.B.M. CO.

Cherries

Few fruits offer larger or better returns, and for either home use or commercial purposes the Cherry is without a rival. No fruit outside of apples generally does so well. Sandy or gravelly soil is best, but trees will thrive in any situation except a wet one. Trees are clean growers and steady bearers, coming into bearing when very young, and yielding most satisfactory financial returns.

Sour Cherries

Extra fine, selected trees, 2 yr., 5 to 6 ft., Each, \$1.00; ten, \$9.00; hundred, \$80.00.

EARLY RICHMOND. Medium size, dark red, melting and juicy, acid flavor. Very hardy, exceedingly productive.

ENGLISH MORELLO. The standard late sour cherry. Large and handsome, dark red, becoming almost black. Fruit good quality, tender, juicy, acid, rich.

MONTMORENCY. Beautiful, large, red, acid cherry of great value, very profitable; more largely planted for market than any other. Hardy, vigorous, very productive; the greatest money-maker in the list.

Sweet Cherries

Extra fine, selected trees, 2-and 3-year, 5 to 7 ft. . . Each 10 100
 \$1.25 \$11.50 \$100.00

BING. A new black cherry; size large; color blackish-purple; flesh very solid and of the highest flavor.

BLACK TARTARIAN. This fine old variety produces immense crops of very large, purple-black fruits of high quality; juicy, meaty, mild and sweet.

GOVERNOR WOOD. Very large, rich; light yellow with red cheek; juicy and sweet. One of the very best.

NAPOLEON. Very large, yellow and amber with bright red blush; flesh firm; juicy and delicious. Bears enormous crops.

SCHMIDT'S BIGARREAU. Unsurpassed in size. Glossy black, flesh crisp, firm, juicy, sweet, rich flavor.

WINDSOR. Large liver-colored cherry, remarkably firm and good.

YELLOW SPANISH. Large, pale yellow with light red cheek; firm and delicious.



Montmorency Cherries.

Quinces

Extra strong, 2- and 3-year, 4 to 5 feet: Each, \$1.25; ten, \$11.50; hundred, \$100.00.

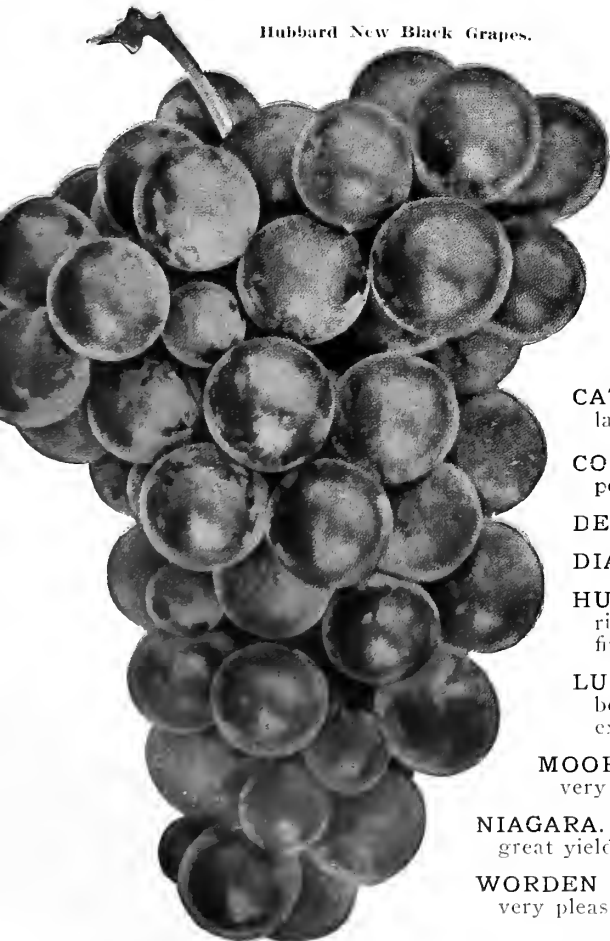
ORANGE (Apple). Best of the older sorts. Very large, bright golden yellow, fine quality.

REA'S MAMMOTH. Larger than Orange, tree more vigorous and productive. Ripens very early.

Apricots

SUPERB. The best Apricot now offered. Perfectly hardy, has no superior in productiveness. Beautiful yellow with slight blush; flesh firm and solid. One of its many desirable traits is its long season, covering a period of three weeks. Price, \$1.00 each.

Grapes



Hubbard New Black Grapes.

Extra strong select 2-yr. vines with long tops and good roots. Price, except noted, 50 cents each; \$4.00 per 10; \$35.00 per 100. If by parcel post, add 2 cents per plant.

BRIGHTON (Red). Large bunch and berry. Highest quality. Hardy.

CACO (Catawba Concord). A perfectly hardy grape that equals the finest hot-house product in its delicious quality and melting texture. Beautiful large berries, wine-red, with abundant bloom, rich in sugar. Bunch good size, compact and of good form. Ripens before Concord. Vines very strong growers, healthy, and prolific bearers. Price, 75 cents each.

CAMPBELL'S EARLY. New Early Black Grape; most valuable for market. Flavor rich, sweet. Bunch and berry extra large.

CATAWBA. One of the best late keepers, lasts till February or March. Fine quality, largely used for wine and champagne. Large, coppery-red berries, purplish when fully ripe.

CONCORD (Black). The great Business Grape; succeeds everywhere. 35 cents each; \$3.00 per ten; \$25.00 per hundred.

DELAWARE. A delicious little red table grape; juicy, sweet, hardy, productive.

DIAMOND. Delicious early white grape; large, juicy, rich. Hardy; productive.

HUBBARD. A superb new grape for table use. Ripens ten days earlier than Concord. A rich blue in color, bears heavy. Bunch and berry large and uniform, skin thin and very firm, pulp tender, with sweet and delicious flavor. Price, 75 cents each.

LUCILE. New red grape. Extra hardy; crops exceed Concord. Good quality, clusters and berries large, attractive in form and color. The beauty of the fruit will always sell it at extra high prices.

MOORE'S EARLY. Ten days earlier than Concord. Large, purplish-black berries, sweet and very good. Extremely hardy.

NIAGARA. The leading white grape for market. Bunch and berry large, fine flavor. Hardy, and a great yielder.

WORDEN (Black). Bunch large and compact, berry round, black with blue bloom; pulpy, juicy and very pleasant; ripens several days earlier than Concord.

Currants

Note.—On account of Federal quarantine, no orders for Currants can be accepted for shipment West of Mississippi River.

Price of Currants (except noted), Extra strong 2-year No. 1: Each, 25 cents; ten, \$2.25; hundred, \$20.00.

CHERRY. The standard red Currant. Fruit very large; valuable alike for market and garden; splendid quality.

FAY'S PROLIFIC. One of the very best and most popular red Currants. Very productive, hardy and vigorous; of the finest quality.

PERFECTION (New). One every small fruit grower should have. Originated at Rochester, N. Y., awarded the Barry Gold Medal and other first prizes. Hardy, very productive. Color an attractive red; flavor and quality the best; juicy, tender, sprightly, sub-acid. Clusters long and compact; berries are uniformly large to the tip of cluster. 35c each; \$3.00 per 10; \$25.00 per 100.

RED CROSS. A strong growing variety. Cluster long; berry medium to large, bright red; quality good to best. Exceedingly productive, and currants are of large size. Sweeter than ordinary currants.

WHITE GRAPE. Greatest of the white varieties. Delicious, mild, excellent quality; good for table use; very distinct and valuable. Immensely productive.



Perfection Currants.

Everyone who has a place to grow any tree should grow a nut tree.



Downing Gooseberries.

Gooseberries

NOTE.—On account of Federal Quarantine, no orders for Gooseberries can be accepted for shipment West of Mississippi River.

Strong 2- and 3-year plants.

CHAUTAUQUA. Light yellow, largest size, 1 to 1½ inches in diameter; very sweet and delicious. 50c each; \$4.00 per 10.

DOWNING. The Business Gooseberry. Pale green; juicy, sprightly and sweet. Strong grower, very productive. 35c each; \$3.00 per 10.

RED JACKET (Josselyn). The best of the American sorts, as large as the largest English variety. Strong, vigorous grower, hardy, wonderful cropper. Berry rich, juicy, highest quality. 50c each; \$4.00 per 10.

Note.—If by parcel post add 2 cents per plant.

Crum Lynne Pa., Jan. 19, 1922.
About four years ago I bought of you several peach trees of the New Hale variety, and the past year my trees were full of peaches and almost every one of them weighed about three-fourths of a pound. My neighbors all admired my peaches.

IGNATZ WAGNER

Blackberries

Price, strong root cuttings, not sucker plants, \$1.50 per doz., \$7.50 per 100. If by parcel post, add 1 cent per plant.

BLOWERS. The Best Blackberry. Originated in the celebrated small fruit belt of Chautauqua County, N. Y., where it has been thoroughly tested several seasons. Claimed to be the hardiest, most productive, the finest quality, and to bring on the market the highest price of all blackberries. Has produced 2694 berries on one bush, 2720 quarts on one-third acre. Large size, jet black, good shipper, best quality, unexcelled productiveness are the main characteristics of this splendid new sort.

ELDORADO. A strong growing hardy variety; very productive; fruit very large, jet black, in large clusters, ripening well together. Its keeping quality is unsurpassed. Fine quality, sweet, without core.

RATHBUN. Fruit borne in clusters, berries very large, color intense black with a high polish; small seeds; flesh juicy, high flavored, sweet and delicious. In season medium early.



Blowers Blackberries.

Asparagus

Strong 2-year plants, \$1.00 for 25; \$2.50 per 100.

GIANT ARGENTEUIL. Very early, produces heavy crops of the largest white stalks. Makes good show in market, always brings the best prices.

CONOVER'S COLOSSAL. Standard kind of first quality.

PALMETTO. Fine early variety of large size.

Note.—If by parcel post add 25 cents per 100 plants.

Rhubarb

Strong 2-year whole roots.

STRAWBERRY RHUBARB. Early, tender, without being in the least tough or stringy; color a beautiful strawberry red. 25c each; 10 for \$2.00.

CHAMPAGNE RHUBARB (New). Excels all in size, flavor, and delicate tenderness of its crimson stalks. Brings highest market price. 35c each; 10 for \$2.50.

Note.—If by parcel post add 2 cents per plant.

Charleston, S. C., May 6, 1922.
Trees and shrubs I received from you about a month ago are in full foliage now. Took right hold of our earth, and they were such sturdy, excellent specimens that they fully repaid us for waiting. Not a failure.
DR. N. S. LEA.

Raspberries

Raspberries are easy to grow and profits are large. Do best on upland, sandy or clay loam, but will succeed on any well drained soil. Set in rows 6 feet apart and 3 feet apart in the row. Keep ground light, rich and clean. Average yield about 2,500 quarts per acre, but a great many berry growers have larger returns.

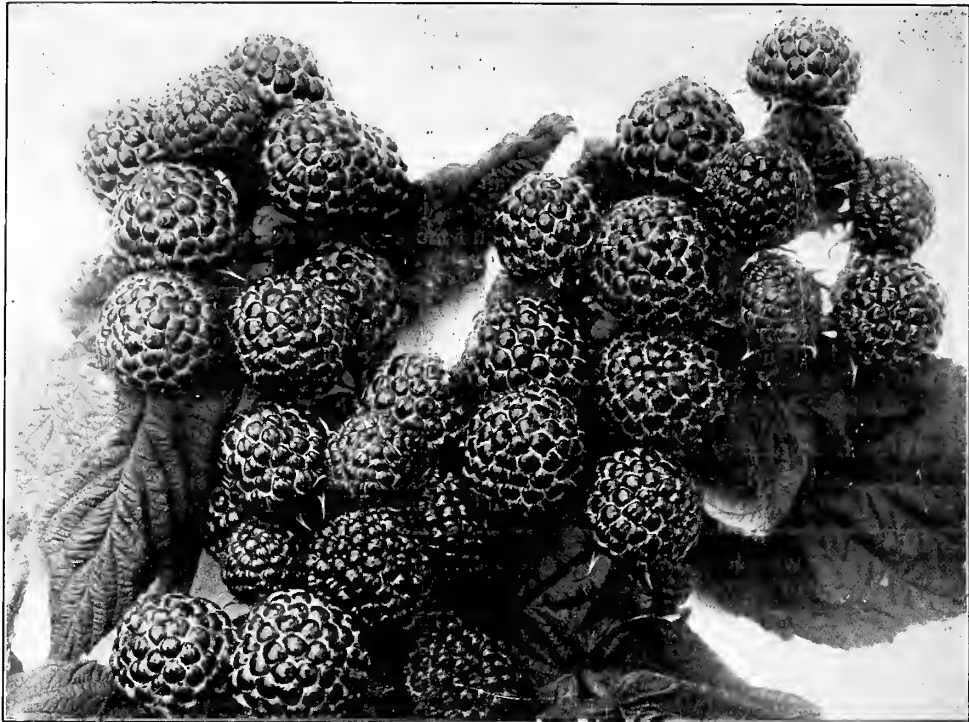
Black Raspberries

Price, \$1.00 per dozen; \$4.00 per 100.

Note.—If wanted sent parcel post add 1 cent per plant.

CUMBERLAND. Largest of the Black Caps. The most profitable variety for main crop. A healthy, vigorous grower, throwing up stout, stocky, well branched canes that produce immense crops of magnificent berries. Fruit very large, firm, quality about the same as Gregg; keeps and ships as well as any of the blacks. The most profitable market variety.

PLUM FARMER. Wonderful new berry, one of the best for all sections. This very large and productive black raspberry has been thoroughly tested in western New York, where it is a great favorite for market or home use. It is covered with a grayish bloom like the bloom on a grape. It ripens very early and quickly. The fruit is enormously large. It sells at highest price.



Cumberland Raspberries.

The New Blackcap Raspberry Honey Sweet

A distinct new variety, originated in Western New York, regarded by many as the best Black Raspberry yet introduced. Fruit very large, jet black, very attractive in color, with a flavor exceedingly rich, sweet and refreshing. Hardy, bears every year in great abundance. Price, \$2.00 per doz., \$10.00 per 100.

Millers Falls, Mass., May 2, 1921.

Your catalogue was handed to me by a man who has purchased from you several times and who claims he always got satisfaction because he dealt with you direct, and he recommended that I purchase from you to satisfy myself.

GEO. W. MERRIOTT.

Orleans, Mass., May 9, 1922.

Trees just received from you are so fine I am sending you another small order.

G. E. T. WARD.



Early June Raspberries.

Red and Purple Raspberries

Price of Raspberries (except where noted), \$1.00 per doz; \$4 per 100.

Note.—If by parcel post add 1 cent per plant.

COLUMBIAN. Fruit very large; color dark reddish purple; adheres firmly to the stem; seeds small; has a distinct flavor of its own, making it a most delicious table berry. For canning purposes it is much superior to any other. Bears enormous crops.

CUTBERT or QUEEN OF THE MARKET. Large, rich crimson; sweet, rich, luscious. Leading market variety for main crop. Hardy.

HERBERT. The Raspberry with the real Raspberry flavor. Takes first place in hardiness. Bright red; very sweet and juicy. Enormously productive. Price, \$1.25 per doz.; \$5.00 per 100.

GOLDEN QUEEN. Large, beautiful translucent yellow color and exceptionally firm; very productive. The canes are of the strongest growth and quite hardy. Price, \$1.25 per doz.; \$5.00 per 100.

EARLY JUNE. Earliest of all Red Raspberries, and the most valuable early variety. Ripens in June. Fruit large, quality the best, and one of the most productive. Keeps and ships well and on account of its early bearing, brings the highest prices. Price, extra strong plants, \$1.25 per doz.; 100, \$5.00.

ERSKINE PARK. A New Everbearing Red Raspberry for which there will be an immense demand as soon as its merits are known. A seedling of the Cuthbert, originated at Erskine Park, the Estate of Geo. Westinghouse, at Lee, Mass. Berries very large for a Red Raspberry, conical, juicy and of fine flavor. Very hardy, having stood the winters in Eastern New York, Western Massachusetts and Southern Vermont without injury. Plants very strong growers, surpassing St. Regis or Ranere in size and quality of fruit and in productiveness. This variety is a very heavy feeder, likes plenty of manure, and a few good waterings during the dry part of the summer helps out. Does best when canes are cut close to the ground every spring. Price, \$2.00 per doz.; \$10.00 per 100.

ST. REGIS (Ranere) EVERBEARING RED RASPBERRY. Greatest money maker ever produced. Bears fruit four months first season planted. Begins to ripen middle of June. Wonderfully prolific, main crop as great as any other red variety, summer or autumn crops full to heavy pickings all the time. Berries large, firm and full flavored until the very last; rich, sugary. Hardy.

Strawberries

Extra fine plants from fresh, new propagating beds.

Price of strawberries, postpaid, \$1.00 per 25; \$2.00 per 100; \$12.00 per 1,000.

PROLIFIC. (New). Originated at New York State Experiment Station; considered so desirable a commercial variety that it is being planted extensively. Perfect blossom. Plants vigorous and very productive; have yielded 14,502 quarts per acre. Fruit matures in mid-season, ripening period long; easily picked; berries very large, retaining size well as season advances. Color handsome, bright scarlet; flesh firm, well colored at center, juicy, pleasantly acid, aromatic; of good quality. On account of the vigor and productiveness of the plants and the attractiveness of the large, uniform, well colored berries, **Prolific** is well worthy of commercial planting.

BIG JOE. (Joe Johnson) (Joe). One of the most popular shipping berries on nearly all large markets. It is strong grower, making plenty of plants for a good fruiting bed. The berries are large, bright red, and have large, light green caps, which make the berries very attractive, and adds to the selling price. The quality is good and the berries are quite firm. It is a good shipper, and equally good for fancy local market purposes. One of the most productive.

BRANDYWINE. Berries very large, regular, conical form; color bright glossy red; flesh firm and of excellent quality. Its large size, beauty of form and color, firmness and high quality will make it a desirable variety for any purpose.

GIBSON (Per.) This variety is comparatively new and is forcing its way to the head of the list very rapidly; it begins to ripen with Senator Dunlap, but owing to its great productiveness it continues to produce till quite late. It is a strong grower, with long roots that withstand dry weather; has dark green, healthy foliage and lots of it. Berry is extra large and vines loaded with fruit. We advise planting Gibson; you will be delighted with them.

SENATOR DUNLAP (Perfect). A variety of great merit, and much admired. Fruit of large size, regular and attractive in form, deep red in color, firm and excellent in quality; season early and continues in bearing nearly a month.

BUSHEL BASKET. A new strawberry of wonderful promise; perfect in blossom, plant and fruit. Won the Barry Gold Medal for new fruits of commercial value. Some of the plants have grown so large that a bushel basket will not cover them, hence the name. Originated in the North, full of life and vigor, having the healthiest foliage of any variety grown. Very productive. Berries a beautiful shade of red, extra large, and slightly necked making picking easy; slightly flavored; a good canner, being red to the center, not hollow at the center, nor tough, seeds small. Retains its distinctive strawberry flavor after cooking. Price, \$2.50 per 25; \$7.50 per 100, postpaid.

Everbearing Strawberries

Price, \$1.50 per 25; \$2.50 per 100 (except where noted), postpaid.

PROGRESSIVE. Bears heavily the first summer and fall. Berry rather long, dark red, good quality, extra sweet; good shipper. Recommended by Horticultural Societies everywhere. Perfect blossom.

SUPERB. Produces splendid fruit; with us outyields all other fall bearers. Berries very large, dark red, finest flavor. Perfect blossom.

NEVERFAIL. New Everbearing Strawberry. Originated by D. J. Miller, Millersburg, Ohio. The most vigorous plant maker, most productive and profitable fall-bearing variety. Berries large, holding size well until the last berries ripen, beautifully colored, flesh dark red and of excellent flavor. Price \$2.00 per 25; \$6.00 per 100, postpaid.

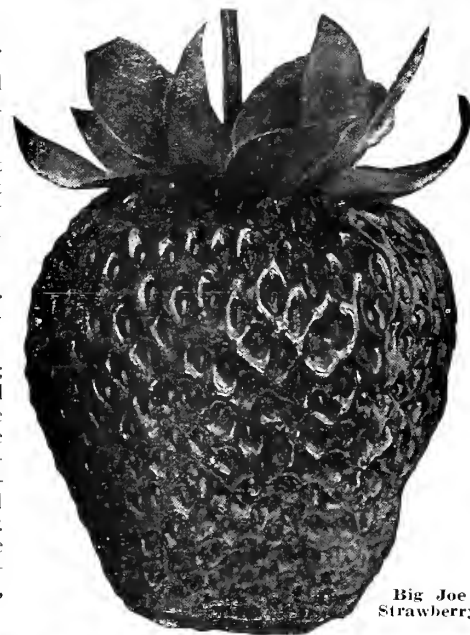
Honesdale, Pa., Sept. 20, 1922.

I bought of you this Spring trees, shrubs, bushes, etc., and beg to say they did well, and many looked them over and praised your stock; also prices reasonable.

P. SONNER.



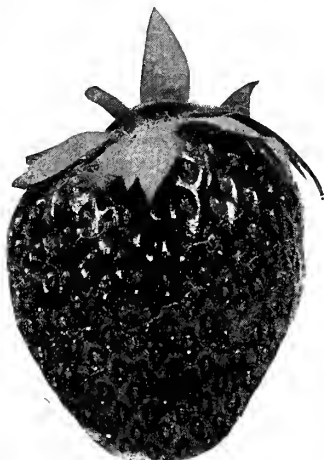
Prolific Strawberries.



Big Joe Strawberry



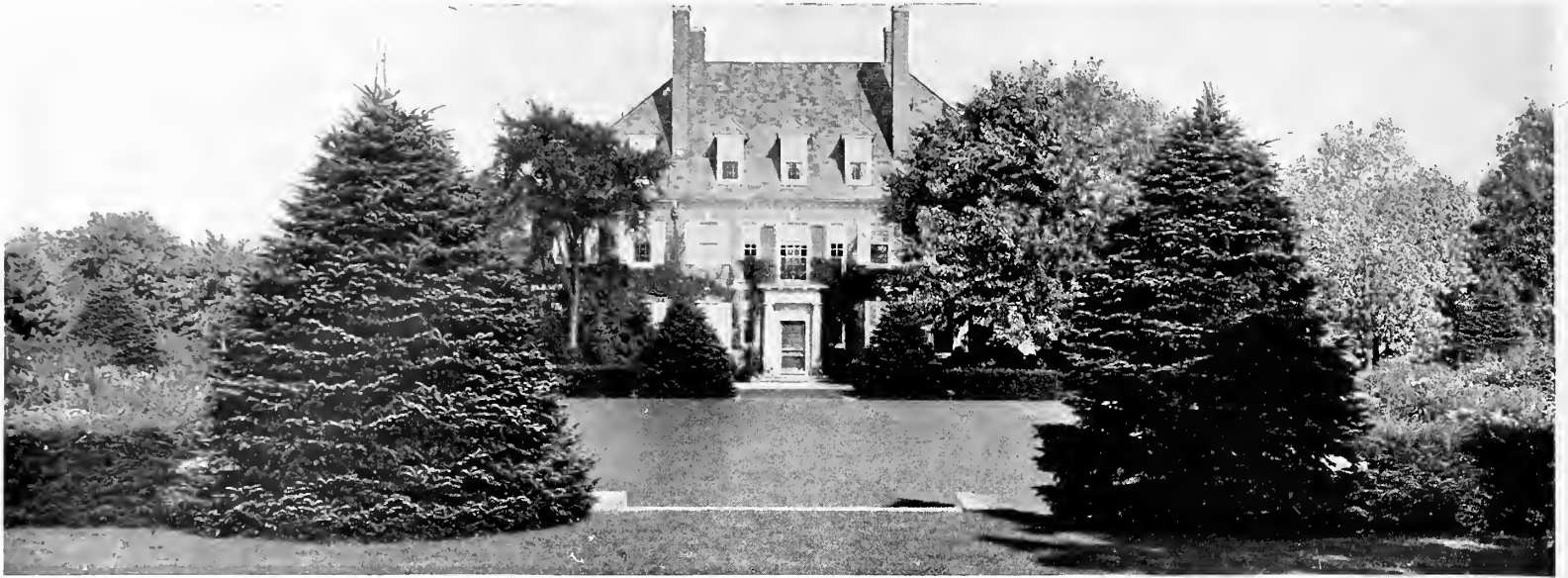
Neverfail Strawberry.



Progressive Strawberry.



Senator Dunlap Strawberries.



ORNAMENTAL DEPARTMENT

A fine, well-cut lawn is one of the handsomest features of a place. Do not make the mistake of planting at random all over the grounds. Trees and the larger shrubs may be planted along a lane or avenue leading to the house, or dotted about the lawn on lines radiating from it. This will secure light, air and a good view from the house. In laying out the grounds, take into consideration economy and labor, and make as few walks as possible. Upright shrubs, roses and flowers

should be planted in clumps, each kind by itself, and avoid making the lawn look like a checker board. These beds should be well cultivated and the plants pruned annually. Mass the trees and beds on the boundaries so as to leave a broad space for the lawn, and where there is a pretty view leave an opening. Where there is an unsightly object, conceal it by planting trees or climbing vines. Do not plant large trees near the house, except enough on the sunny side for shade.

Trees for Special Purposes

For City Streets and Avenues—Sugar Maple, Norway Maple, American Elm, Pin Oak, American Linden, Oriental Plane, Catalpa Speciosa, Silver Maple.

Rapid Growing Street Trees—Silver Maple, Carolina Poplar, Catalpa Speciosa.

Best Lawn Trees—Norway Maple, Schwedler's Maple, Cut-leaf

Weeping Birch, Catalpa Speciosa, Purple-leaf Beech, Mountain Ash, the Oaks, Elm, the Lindens.

Low Growing Lawn Trees—Catalpa Bungei, Double Flowering Thorns, Weeping Mulberry, Flowering Crabs, Camperdown Elm.

Trees for Screens—Carolina and Lombardy Poplar, Golden Willow, Norway Spruce.

Deciduous Trees for Shade and Ornament

BIRCH, CUT LEAF WEEPING. Tall, slender, vigorous growth; graceful, drooping; bark silvery white; foliage delicately cut. 6 to 8 feet, \$2.50.

BEECH, PURPLE (Copper Beech). Highly ornamental and desirable lawn tree. Dark purplish foliage, a striking contrast to the green of other trees. 3 to 4 feet, \$3.00 each.

CATALPA BUNGEI. (Umbrella Catalpa). A unique tree, desirable for lawn and park. Makes an umbrella-shaped top without pruning. Perfectly hardy. 6 to 7 feet, \$2.50 each.

CATALPA SPECIOSA. One of the most beautiful lawn or street trees, also valuable for timber. Very rapid growing. Has magnificent flowers early in spring. 8 to 10 feet, \$1.00 each.

CORNUS FLORIDA. (White-flowering Dogwood). American variety of irregular habit, with spreading, open top. The flowers are white, produced in May, followed by scarlet berries and gorgeous autumnal coloring of the leaves. 3 to 4 feet, 85c each.

CORNUS FLORIDA RUBRA. (Red-flowering Dogwood.) This merits all of the favor which has been shown it by the public. The flowers are like Cornus florida, except that they are a deep rose color, freely produced. A fit companion to the white form. 3 to 4 feet, \$2.00 each.

CRAB, BECHTEL'S DOUBLE FLOWERED. In early spring covered with beautiful double pink fragrant flowers. 3 to 4 feet, \$1.50 each.



Catalpa Bungei—Umbrella Catalpa.

CRAB, FLORIBUNDA. One of the handsomest and most satisfactory of all flowering trees. Blooms every year without fail. Rose red flowers in great profusion in May. 3 to 4 feet, \$1.50 each.

CRAB, PARKMANII. Bright rose-colored flowers hang on long, slender stems. One of the showiest. 3 to 4 feet, \$1.50 each.

ELM, AMERICAN WHITE. Noble, spreading, drooping tree. One of the grandest park and street trees. 8 to 10 feet, \$1.50 each; 10 to 12 feet, \$2.00 each.

ELM, CAMPERDOWN. One of the best weeping trees. Large, glossy, dark green leaves overlapping to form compact, roof-like head. 6 to 7 feet, \$2.50 each.

HORSE CHESTNUT. Has magnificent spikes of white flowers. 6 to 8 feet, \$2.00 each.

LINDEN, AMERICAN. (Basswood). Rapid growing; large, fragrant flowers. 7 to 8 feet, \$1.50 each; 8 to 10 feet, \$2.00 each.

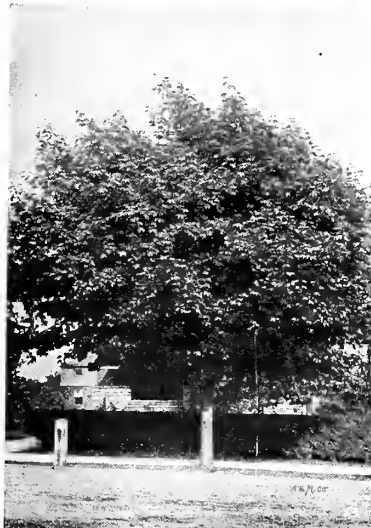
LINDEN, EUROPEAN. Fine pyramidal tree, large leaves, fragrant flowers. Smaller than American Linden, more valuable for lawn planting. 7 to 8 feet, \$1.50 each; 8 to 10 feet, \$2.00.



Cornus Florida—White-flowering Dogwood.



American Linden.



Sugar Maple.



Lombardy Poplar.



Norway Maple.



Cut-leaved Weeping Birch.



Paul's New Thorn.

MAPLE, Sugar or Rock. Excellent shade tree of large size. Its stately form, rapid growth and fine foliage make it a desirable tree for street, park or lawn. 8 to 10 feet, \$2.00 each; 10 to 12 feet, \$2.50.

MAPLE, Silverleaf, or Soft Maple. Fast growing, succeeds everywhere; in big demand where immediate shade is required. 8 to 10 feet, \$1.25 each; 10 to 12 feet, \$1.75.

MAPLE, Norway. (Hard Maple). Most popular shade tree in America. Ideal for street, drive or lawn. Large, handsome tree of fairly rapid growth, with symmetrical round head, broad, shining foliage of deep rich green. 8 to 10 feet, \$2.50 each; 10 to 12 feet, \$3.00.

MAPLE, Schwedler's Purple. Very large bronze-red leaves and young shoots of same color. Vigorous growing, handsome ornamental tree. Its beautiful foliage attracts attention at all seasons. 8 to 10 feet, \$3.50.

MOUNTAIN ASH, European. Fine, hardy tree, covered from July till winter with clusters of bright red berries. Very ornamental. 8 to 10 feet, \$2.00 each.

MULBERRY, Downing. Rapid grower. Bears mild, pleasant berries of good quality. 5 to 7 feet, \$1.50 each.

MULBERRY, Tea's Weeping. Perfectly hardy; fine lawn tree; forms natural umbrella-shaped top. 6 to 7 feet, \$2.50 each.

PIN OAK. A magnificent tree for lawn and street planting, with deep green foliage which changes to a rich scarlet and yellow in the fall; a most shapely and graceful tree. 6 to 8 feet, \$2.50.

RED OAK. Makes a tree of great height, 50 to 75 feet; a native of large size and rapid growth; leaves dark dull green, turning to orange and brown in autumn; acorns very large; a beautiful specimen tree for park and street planting. 6 to 8 feet, \$2.50.

PLANE, Oriental. Leaves heart-shaped at base, deeply cut. Is among our tallest trees, growing rapidly into massive proportions. Hardy and free from disease. 8 to 10 feet, \$1.50 each.

POPLAR, Carolina. Rapid grower; large, glossy leaves; fine for shade. 8 to 10 feet, 75c each; 10 to 12 feet, \$1.00 each.

POPLAR, Lombardy. A picturesque and ornamental tree, useful in landscape work for screen purposes and to break the average height and form of other trees. Tall, spire-like form, very rapid grower. 8 to 10 feet, 75c each; 10 to 12 feet, \$1.00 each.

PRUNUS PISSARDII. (Purple-Leaved Plum). One of the finest small trees with colored foliage. Covered with small white single flowers in early spring. 4 to 5 feet, \$1.25 each.

SALISBURIA. (Maidenhair). A rare, beautiful tree with remarkable fern-like foliage. Rapid growing, highly desirable lawn tree. 6 to 8 feet, \$1.50 each.

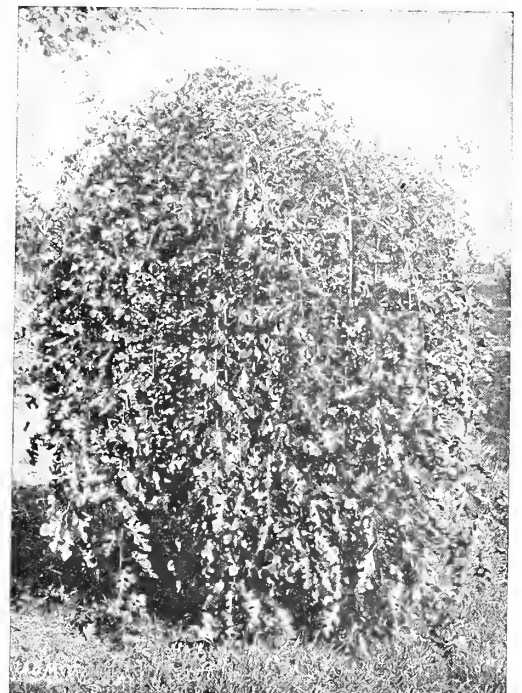
THORN, Paul's Double Scarlet, and Double White. Highly ornamental both in foliage and flowers. 3 to 4 feet, \$1.75 each.

WILLOW, Babylonian. (Weeping Willow). An old favorite. Tall, graceful, drooping tree with wavy, bright green foliage. 6 to 8 feet, \$1.00 each.

WILLOW, Golden. Upright growing, very showy variety with golden bark of high color, very conspicuous in winter. 6 to 8 feet, \$1.00 each.



Bechtel's Double Flowering Crab.



Weeping Mulberry.



Flowering Almond.



Spirea Van Houttei.



Althea, or Rose of Sharon.

Hardy Ornamental Shrubs

Our Shrubs Are All Strong 2- and 3-year Specimens That Will Give Immediate Effect.
Price, (except where noted), 50c each.

Shrubs for Special Purposes

Shrubs with Variegated or Colored Foliage. Althea Variegated, Barberry, Kerria Variegated, Elder Golden, Prunus Pissardii, Syringa Golden, Weigela, Spirea.

Shrubs that Flower in May. Almond, Forsythia, Honeysuckle, Japan Quince, Lilac, Snowball, Spirea.

In June. Clematis, Deutzia, Dogwood, Honeysuckle, Lilac, Pæonia Herbaceous, Rhododendron, Snowball, Spirea, Syringa, Weigela, Wistaria.

ALMONDS. Pink Double Flowered and White Double Flowered. Covered with small rose-like blossoms in May. **Price, \$1.25 each.**

ALTHEA, ROSE OF SHARON. Large, bell-shaped flowers in August and September. Colors white, red, purple.

Tree Form. The Althea, as a shrub, is fine and attractive, but grown in tree form becomes doubly beautiful and interesting. It is hardy and of easy cultivation. Colors same as preceding. **Price, \$1.00 each.**

BARBERRY THUNBERGII. (See description under Hedge Plants). **Price, 60c each.**

CALYCANTHUS—SWEET SHRUB. Flowers in June of a rare chocolate color; deliciously fragrant.

BUDDLEIA (Everblooming Butterfly Bush or Summer Lilac.) Flowers very sweet and fragrant, blooming in spikes of 6 to 10 inches long, continuing all summer until frost comes.

CLETHRA ALNIFOLIA (Sweet Pepper Bush). Very hardy. Flowers pure white, richly perfumed. **Price, 75c each.**

DEUTZIA GRACILIS. Dwarf grower, covered with white flowers in June. **Price, 75c each.**

DEUTZIA, PRIDE OF ROCHESTER. Very large double white flowers; blooms profusely.

DEUTZIA CRENATA. Double white flowers tinged with rose color.

DEUTZIA LEMOINEI. Pure white flowers on stout, upright branches. Dwarf grower, very free flowering.

In July. Clethra, Clematis, Spirea, Honeysuckle, Elder, Hydrangea Arborescens.

In August and September. Althea, Clematis, Honeysuckle, Hydrangea Paniculata Grandiflora.

Shrubs whose Flowers are Succeeded by Ornamental Fruit. Barberry, scarlet berries in September; Elder, purple fruit in August; High Bush Cranberry; Euonymus, red fruit; Rosa Rugosa, Snowberries.

ELDER, GOLDEN. Golden green foliage when planted in sun. White blossoms followed by handsome berries.

EUONYMUS ALATUS. (Winged Burning Bush). One of the most brilliant plants in the landscape in the fall, with its bright red leaves and berries. Branches winged with a corky layer. Fine specimen shrub or for massed plantings. **3 to 4 feet, \$1.00 each.**

EUONYMUS EUROPAEA. (European Spindle Tree). Bright yellow flowers in spring, followed by clusters of brilliant red berries which hang till mid-winter. Leaves turn to beautiful crimson scarlet in fall. **3 to 4 feet, 75c each.**

FORSYTHIA FORTUNEI (Golden Bell). Upright growing shrub with deep green foliage. Drooping yellow flowers early in the spring before leaves appear. **Price, 60c each.**

FORSYTHIA SUSPENSa (Weeping Golden Bell.) Similar to above but branches droop like arches of gold. **Price, 60c each.**

HYDRANGEA ARBORESCENS STERILIS (Hills of Snow). Grand, new, everblooming. Perfectly hardy. Enormous snow white flowers. **Price, 75c each.**

HYDRANGEA PANICULATA GRANDIFLORA. Hardy in all sections. Flowers immense; greenish white, changing to pure white and turning pink with age. **Price, 75c each.**

HYDRANGEA P. G., Tree Form. Same as above but in tree form with but a single stem. Very desirable. **Price, \$1.25 each.**



Deutzia—Pride of Rochester.



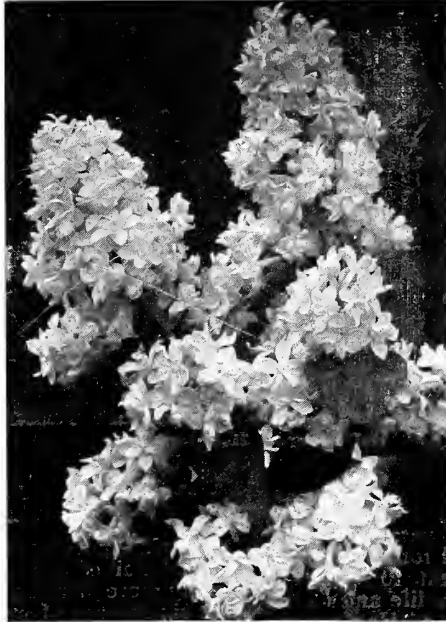
Hydrangea Paniculata Grandiflora.



Weigela, Eva Rathke.



Spiraea Anthony Waterer.



Lilac, Lemoine.



Philadelphus Virginalis.

UPRIGHT HONEYSUCKLES. Make very desirable and attractive shrubs, with bright flowers followed by showy berries in the fall. Varieties as follows:

Fragrantissima. Small pink and white fragrant flowers appearing early in the spring, before the leaves.

Grandiflora Rosea. Bright pink flowers.

Morrowii. Pure white flowers, followed by bright red fruit.

Pink Tartarian. Pink flowers in June.

White Tartarian. Creamy white, very fragrant flowers.

Ruprechtiana. Fine variety with showy white flowers, and valuable for its showy red fruit.

KERRIA JAPONICA (Globe Flower). Orange yellow double flowers. Handsome. Price, 75c each.

KERRIA VARIEGATED. Small green foliage, edged with white. A pretty dwarf shrub, with a profusion of bright yellow flowers. Price, 75c each.

LILAC, Purple. Bluish purple flowers. Standard variety; always good. Price, 75c each.

LILAC, White. Cream-colored flowers; very fine. Price, 75c each.

LILAC, Charles X. Large, shining leaves; flowers large, single, reddish purple. Price, \$1.00 each.

LILAC, Lemoine. A choice variety, bearing large clusters of double white flowers. Price, \$1.00 each.

LILAC, Ludwig Spaeth. New, and believed to be the finest of the class. Color, purplish red. Price, \$1.00 each.

LILAC, Pres. Grevy. Very large blue flowers; largest of all. Price, \$1.00 each.

PHILADELPHUS VIRGINALIS. (New). One of the most beautiful new varieties. Flowers pure white, sweetly scented, often as large as a silver dollar. Blooms in June and continues over a long period. A cluster of bloom resembles a bride's bouquet of orange blossoms. Price, \$1.00 each or \$9.00 per 10.

PHILADELPHUS FOLIIS AUREUS. (Golden Syringa.) The best golden-leaved shrub. Price, 75c each.

PHILADELPHUS CORONARIUS (Common Syringa or Moek Orange). Pure white, highly-scented flowers; blooms very early.

PHILADELPHUS, MONT BLANC. A charming variety, of dwarf habit, with very large, pure white, fragrant flowers produced in great abundance on slender, upright branches. Price, \$1.00 each.

QUINCE, JAPANESE SCARLET (Cydonia Japonica). One of the best hardy shrubs. Covered with brilliant scarlet flowers early in the spring. Makes a beautiful hedge.

SYMPHORICARPOS RACEMOSUS (Snowberry). Very ornamental hardy shrub. Small pink flowers, followed by large, waxy white berries which persist into mid-winter.

SYMPHORICARPOS VULGARIS (Coral Berry). Vigorous, quick-growing shrub, similar to Snowberry except its fruit is red.

SPIREA, Anthony Waterer. New, dwarf-growing variety, crimson flowers, blooms all season. Useful in foundation plantings in front of other shrubs. Price, 75c each.

SPIREA Billiardii. Fine foliage, with spikes of red colored flowers during summer and fall.

SPIREA Prunifolia (Bridal Wreath). A superb old-fashioned variety with graceful, upright, slender branches covered with a wreath of white flowers in May. Leaves turn to beautiful orange. Price, 75c each.

SPIREA Thunbergii. Dwarf growing shrub of graceful form; slender, drooping branches. Narrow, yellowish green foliage, giving a light feathery appearance. Pure white flowers, blooms very early in the spring.

SPIREA, Van Houttei. Grandest of all. A fountain of white flowers in early spring.

VIBURNUM Plicatum. (Japan Snowball). Completely covered with large balls of pure white flowers in June. Its dark plicated foliage and massive clusters of bloom are not equalled by any other shrub. Price, \$1.00 each.

VIBURNUM OPULUS STERILE. (Common Snowball or Guelder Rose). An old-time favorite, without doubt one of the best flowering shrubs. Handsome showy flowers in large, globular clusters. Price, 75c each.

VIBURNUM OPULUS. (High Bush Cranberry). Very fine in flower, and berries are scarlet and hang on well into winter. Flat-topped clusters of white flowers late in spring. Price, 75c each.

WEIGELA Candida. Pure white blossoms in great profusion in June. Price, 75c each.

WEIGELA Rosea. Rose-colored flowers in May and June. Price, 75c each.

WEIGELA, Variegated Leaved. One of the best dwarf shrubs. Silvery-variegated leaves, flowers nearly white. Price, 75c each.

WEIGELA, Eva Rathke. Charming new variety. Brilliant crimson flowers twice in one season. Price, \$1.00 each.



A very modest porch planting—this planting consists of twenty-seven shrubs and one evergreen; began to bloom May 7 and continued to flower for a period of eight weeks.



Ampelopsis Veitchii—Boston Ivy.



Hall's Japan Honeysuckle.



Clematis Paniculata.

Climbing Vines

Nothing lends such a pleasing effect to wall or veranda as the judicious use of vines. The hardy vine is best adapted for covering an unsightly wall or for furnishing shade and ornament to verandas. With the advent of spring the tendrils are given new life and as the season advances they soon become a beautiful covering. Hardy vines practically take care of themselves after once established, and are much more desirable and less trouble than the annual or tender varieties. Without climbing vines many beautiful homes would present a sad picture during the hot summers.

AMPELOPSIS VEITCHII (Boston Ivy). Requires no support, clings closely to smoothest surface. **50c each.**

CLEMATIS PANICULATA. Very popular. Blooms profusely; small, single, white flowers borne in large panicles. **50c each.**

CLEMATIS HENRYI. Finest white Clematis. Flowers very large; single. **\$1.00 each.**

CLEMATIS JACKMANNII. Best purple sort. Single, very large. **\$1.00 each.**

CLEMATIS, MAD. ED. ANDRE. Distinct and fine. Flowers deep crimson, velvety. **\$1.00 each.**

CLEMATIS, RAMONA. (New). Deep sky blue, distinct from any other kind; very attractive. Extremely hardy. **\$1.00 each.**

DUTCHMAN'S PIPE. Large, heart-shaped leaves. Brownish flowers resembling small pipe. Hardy, rapid grower. **\$1.50 each.**

EUONYMUS RADICANS VEGETUS. (Evergreen Bittersweet). Very hardy, dense-growing, trailing vine, covered the whole year with green foliage. **75c each.**

HONEYSUCKLE, HALL'S JAPAN. Almost evergreen. Covered from July to December with fragrant white flowers, turning to yellow. **50c each.**

WISTARIA, Purple. Perfectly hardy; very beautiful. Flowers in spring in long, drooping racemes. **75c each.**

WISTARIA, White. A very beautiful and choice variety, with pure white flowers, that hang in clusters like fringe. **\$1.00 each.**

Hedge Plants

A living fence—one made of plants, attractive with their green leaves, formal trained or arched branches, colored foliage or bright berries is surely more pleasing than the still, rigid, mechanical effect obtained by the similar use of wood or metal. A lawn hedge is permanent—once planted, only occasional pruning or shearing is required.

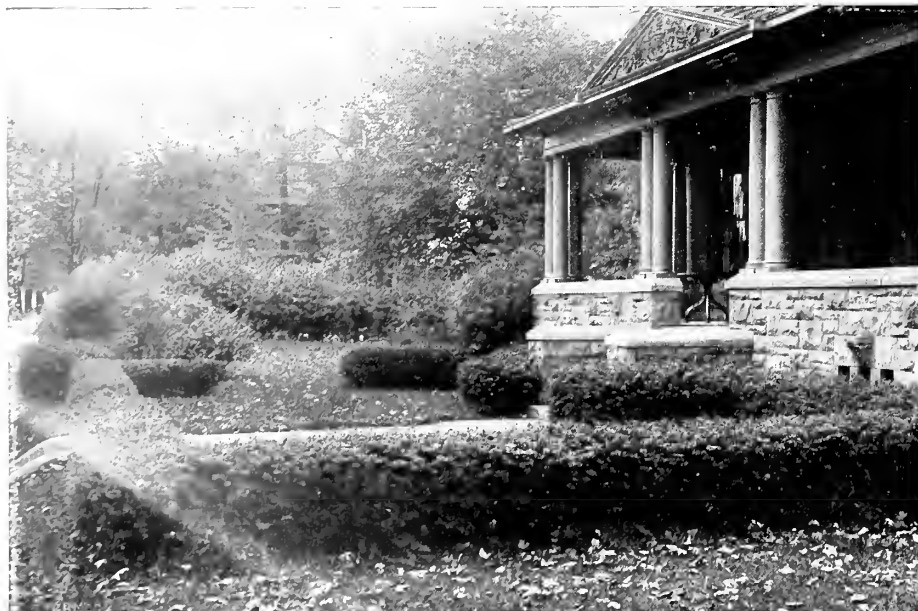
BARBERRY, THUNBERGII (Japan Barberry). Brilliant green foliage, turning to most glowing colors from autumn to December. Loaded with scarlet-crimson berries after leaves fall. Hardy where Privet is not. One of the best shrubs to plant against the foundations of a house or in front of taller growing shrubs. **12 to 18 inches, \$35.00 per 100; 18 to 24 inches, \$45.00 per 100.** Extra strong 3-year plants for planting as shrubs or for screen in front of porches, **60c each.**

BOX-BARBERRY. The new hardy dwarf hedge and border plant. A dwarf form of the popular Barberry Thunbergii; equally as sturdy, hardy and dependable, varying from it only in its dwarfer, compact and upright habit of growth. Excellent for low edging for formal gardens when set four to six inches apart and kept trimmed. Also makes a beautiful low hedge when set 6 to 12 inches apart. Price, strong, 2-year plants, **\$4.00 per 10; \$30.00 per 100.**

CALIFORNIA PRIVET. Most popular half-evergreen hedge. Remarkably beautiful, glossy, dark green foliage; strong, rapid grower. It transplants easily, grows quickly, making a hedge the first year, and succeeds in almost any soil. The plants should be set about 1 foot apart and cut to 3 or 4 inches above the ground after planting to make the hedge bushy at the bottom. **12 to 18 inches, \$5.00 per 100; 18 to 24 inches, \$7.00 per 100; 2 to 3 feet, \$10.00 per 100.**

AMOR RIVER NORTH PRIVET. Similar to California Privet, but hardier. A valuable ornamental shrub for hedges and borders in cold and exposed places. Fine upright growth, glossy green foliage. Its pure white flowers appear in June and are followed by bluish black seeds. **18 to 24 inches, \$15.00 per 100.**

Other desirable hedge plants, American Arbor-Vitae and Norway Spruce, Altheas, Hydrangeas, Spireas, Philadelphus. (See descriptions under Evergreens and Shrubs.)



Barberry Hedge.



California Privet.

The Peonies

Rival the Rose in Perfection of Bloom

Fine, hardy plants, rivaling the rose in perfection of bloom and coloring, requiring little extra care, as they thrive well in any soil. Our list of varieties has been made up with great care to include only the best and most distinct kinds. We give you sorts that are **really worth while**, presenting a wide range of color and shade, coming into bloom throughout the season. Prices are for divisions with three to five eyes, and good roots.

CHARLEMAGNE. Creamy white, center light lilac, flesh shaded with chamois. Large, globular, very compact. Late. 60c each.

COURONNE D'OR. Immense, very full, ball-shaped blooms, snowy white with yellowish stamens. Fragrant, perfect cut flower sort, very late, comes in after all other long-stemmed whites are gone. 75c each.

DELACHEI. Deep crimson purple, one of the best dark sorts. Late mid-season. 60c each.

EDULIS SUPERBA. One of the best early varieties. Large, loose, flat crown, bright mauve pink. 75c each.

FELIX CROUSSE. Brilliant, flaming red. By far the best red; very popular with florists. Late mid-season. \$1.00 each.

FESTIVA MAXIMA. Very large, a well known and almost perfect peony. High built flowers on long stems, pure white with inner petals slightly tipped carmine. The ideal early white. 75c each.

FRANCOIS ORTEGAT. Semi-double, large purplish crimson bloom with brilliant golden yellow anthers. Very striking. 60c each.

LA TULIPE. Late; very large, full, shell formed blooms on long, erect stems. Delicate rose, fading to creamy white. One of the best. 60c each.

LIVINGSTONE. (True Crousse Variety). Soft rosy pink, with silvery reflex. Large, compact, rose type, with tall, very strong stems. Best late pink. \$1.00 each.

MADAME CALOT. A grand variety, produces more flowers than any other and exceedingly fragrant. Pale hydrangea pink, with darker center. 75c each.



Livingstone.

Festiva Maxima.

Felix Crousse.

OFFICINALIS RUBRA PLENA. Very early. Old double red from Grandmother's garden. 75c each.

ROSEA SUPERBA. Brilliant deep cerise pink, compact, perfectly formed blooms on long stems. Keeps well. Midseason. 75c each.

Hardy Phlox

Very fine, perfectly hardy; beautiful plants. The following is a selection of the best varieties. Price, 25c each.

COQUELICOT. Crimson scarlet, a fine variety.

FRAULEIN G. VON LASSBURG. Pure white, immense panicles.

HODUR. Pink, shaded white.

IRIS. Light purple.

MME. BEZANSON. One of the best crimson sorts.

MRS. CHAS. DOOR. A beautiful shade of lavender.

MRS. JENKINS. Flowers large, pure white, early, free bloomer.

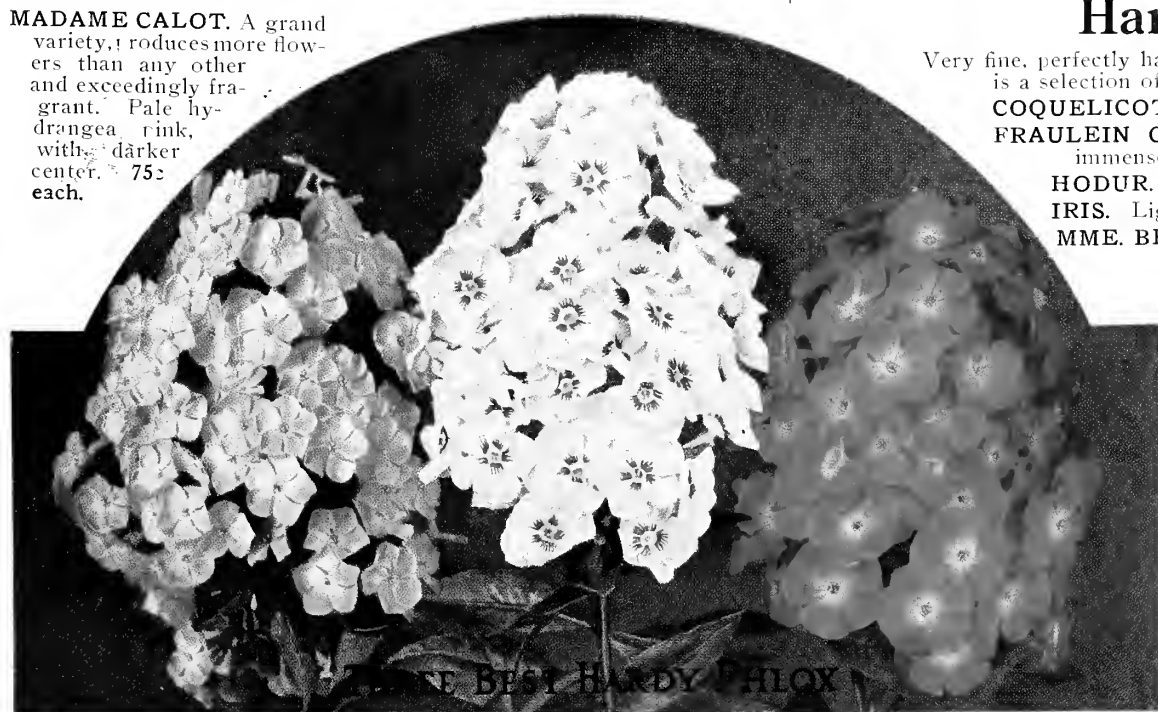
PANTHEON. Pink, or salmon-rose, large flower, extra fine.

RICHARD WALLACE. White with large carmine eye.

R. P. STRUTHERS. Cherry red, suffused with salmon.

RYNSTROM. (New). Beautiful clear pink, immense trusses and flowers, extra fine.

SUNSET. Dark, rosy-pink.



Pantheon.

Richard Wallace.

Coquelicot.

New York, Mar. 1922.
Am enclosing order for which find check enclosed. Send me the best you have, as yours has been the only Nursery Stock I ever bought that was true to name, shapely, and on which there was no loss after planting.

CHAS. A. SYKES.
1 Union Square.

Cliftondale, Mass.,
July 25, 1922.
The F. J. Grootendorst is a hummer.
A. E. BRIGGS.

Evergreens

Evergreens are used for specimens on lawns, also extensively for massing, shelter-belts, screens, hedges, etc. They form perfect backgrounds for the flowering shrubs of early spring, for the berries of autumn and winter's tracery of bright bark and twigs. Beautiful beds of permanent color are formed by grouping together sorts of moderate growth, with contrasting foliage.

In handling and planting evergreens, never allow the roots to become dry for an instant. Their juices are resinous, and when once dry, water has no power to restore them; dip the roots in "grout" or very thin mud, and plant quickly; cover the roots with fresh soil and with a heavy piece of wood beat the earth solid over them. Fill up and pound again, and finish by bringing fresh loose earth about the tree with a hoe. No wind can now bend the trees about so as to break the tender rootlets as fast as formed.

All specimen plants, lifted and shipped with ball of earth attached to roots.

ABIES (Fir). **Balsam.** Very hardy; rapid, slender grower, foliage silvery underneath. 2 feet, \$2.50 each; 3 feet, \$3.50 each.

Concolor or Silver Fir. One of the hardiest and most beautiful evergreens. Graceful habit, broad, handsome foliage, bluish above, silvery underneath. 2 feet, \$5.00 each; 3 feet, \$7.50 each.

JUNIPER, Irish. A distinct and beautiful variety, forming a neat tapering column of deep green foliage. Much used in cemetery plantings. 2 feet, \$1.50 each; 3 feet, \$2.50 each.

Savin's. Prostrate, spreading branches, with somber green foliage. Hardy, well adapted for hillsides, etc. 18 inch spread, \$3.00 each; 2 foot spread, \$4.00 each.

Virginiana (Red Cedar). A tall growing native of great beauty. Tapering form, bright, rich green foliage. 2 feet, \$2.50 each; 3 feet, \$3.50 each.

Virginiana Glauca (Blue Cedar). Probably the best variety of Cedar, a favorite for specimen work. Vigorous grower, compact and conical, beautiful, silvery-blue foliage. 2 feet, \$4.00 each; 3 feet, \$6.00 each.

PICEA (Spruce). **Excelsa (Norway Spruce.)** The most generally used of evergreen trees. Extremely hardy, of lofty, rapid growth and pyramidal form. One of the best for hedges and windbreaks. 2 ft., \$1.50 each; 3 ft., \$2.50 each; 4 ft., \$3.50 each.

Pungens Glauca (Colorado Blue Spruce). Hardy and beautiful, of pyramidal form, foliage rich blue or sage color. 2 ft. \$7.00 each; 3 ft., \$10.00 each.

Pungens Kosteriana (Koster's Grafted Blue Spruce). The highest colored, most strikingly beautiful of all evergreens for the lawn. Perfectly shaped tree of compact growth, with an abundance of foliage of the richest, silvery, glistening blue. 3 feet, \$15.00 each.

PINUS (Pine). **Austrian or Black Pine.** A robust grower with long, dark, stiff needles. Does well on all soils. 2 feet, \$2.50 each; 3 feet, \$3.50 each.

Sylvestris (Scotch Pine). A rapid grower with strong branches and short stiff bluish-green foliage. 2 feet, \$2.50 each; 3 feet, \$3.50 each.

Mughus (Dwarf Mugho Pine). Of low, dense, spreading growth, with very dark green foliage. Very hardy and suitable for covering slopes. 18 inch spread, \$4.00 each.

RETINISPORA (Japanese Cedar). **Plumosa.** A graceful tree with plume-like dark green foliage. Responds to pruning, particularly useful for hedges and mass plantings. 2 ft., \$3.50 each; 3 ft., \$5.00 each.

Plumosa Aurea. Bright golden foliage, retains its color all summer. Very distinct and beautiful. 2 feet, \$3.50 each; 3 feet, \$5.00 each.

THUYA (Arbor-Vitae). **Occidentalis (American Arbor-Vitae).** Very largely used, and perfectly hardy. A low-branched, bushy pyramid, foliage bright green above, yellowish beneath. Useful for screens and hedges. 2 feet, \$1.25 each; 3 feet, \$2.50 each; 4 feet, \$3.50 each.

Globosa. Low, thick, globe form. Very desirable. 1½ feet, \$2.50 each.

Geo. Peabody's Golden. Dwarf, dense-growing variety, holding its golden yellow color all summer. 2 feet, \$3.00 each.

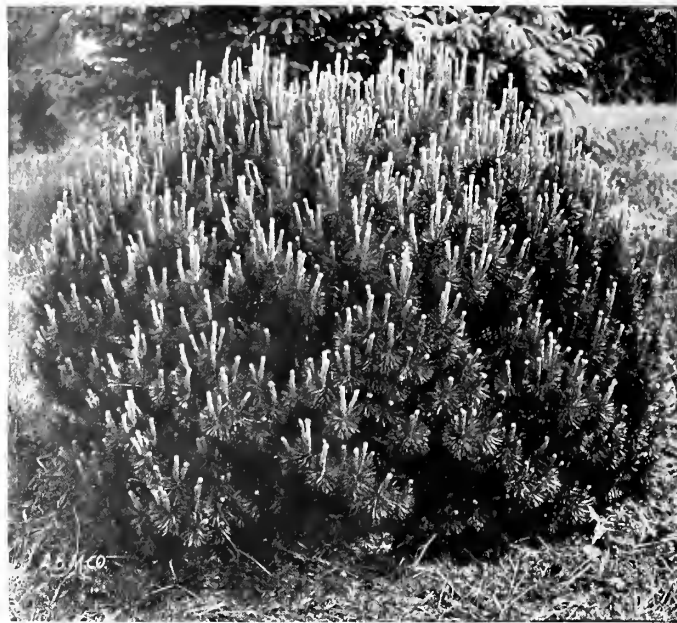
Pyramidalis. A valuable upright evergreen of dense, compact habit. Foliage light green. 2 feet, \$2.00 each; 3 feet, \$3.00 each.

Sibirica (Siberian Arbor-Vitae). Large, dark green foliage, strong, pyramidal growth, very good and hardy. 2 ft., \$2.50 each; 3 ft., \$4.00 each.

TSUGA (Hemlock). **Canadensis (Hemlock Spruce).** Remarkably graceful and beautiful native tree, with drooping branches and delicate dark foliage. Distinct from all other trees. Very useful for hedge planting, makes a fine specimen. 2 feet, \$3.00 each; 3 feet, \$4.00 each.

TAXUS CANADENSIS (Canadian Yew). A prostrate evergreen with wide-spreading, slender branches, brown bark; foliage pretty dark green; showy, deep crimson berries. This is a hardy variety and will thrive in partial shade. 18 to 24 inches spread, \$3.00 each.

TAXUS CAPITATA (Upright Japan Yew). The upright growing form of the Japan Yew. Rather open in growth, foliage rich, dark green. Desirable for specimens, foundation or hedge planting. 2 to 2½ ft., \$5.00 each.



Dwarf, or Mugho Pine.



Savin's Juniper.



An Attractive Arrangement of Evergreens.



Rhododendrons.

Evergreen Shrubs

Some of the most desirable material for landscape planting is found here. These shrubs present a magnificent display of beauty and color when in bloom during the early spring, particularly the Azaleas and Rhododendrons, with their dark green leaves contrasting sharply with the great clusters of bloom. Their fondness for shady places makes them available for planting about house foundations, in shady corners or other locations where it is difficult to get other plants to grow for lack of sunlight.

Rhododendrons thrive best massed or in groups, and at the edge of the Rhododendron planting, and blending it to the lawn the dwarf growing Junipers, Azaleas and Evergreen Euonymus are particularly pleasing and appropriate.

Directions for Planting

This class of plants is most at home in somewhat shady and damp situations, and in porous soil supplying plenty of humus. Limestone soils must be avoided. Sandy loam is favorable, but in all cases continuous supply of humus should be provided. Use soil rich in vegetable mold or humus, with about one-tenth sharp sand if soil is clayey and one-eighth to one-tenth well-rotted manure, but if possible to secure woods leaf-mold, that is better.

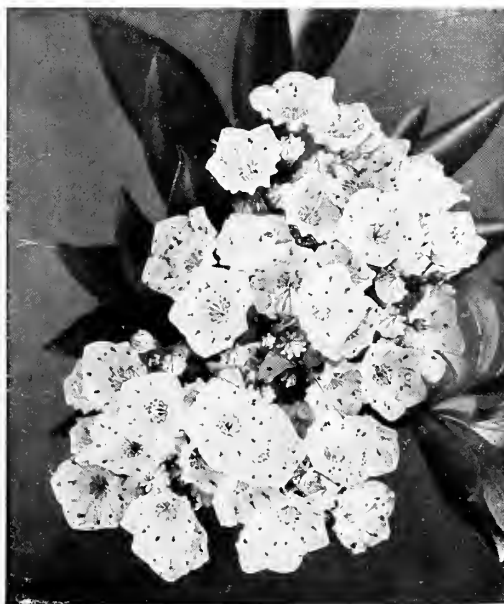
Plant to same depth as ball of earth shows. Plants are surface feeders and must not be planted deep. Do not pack soil, but press firmly. Mulch annually with leaves or any well-rotted vegetable matter and leave the mulch the year round, do not remove in the spring. Supply water in abundance whenever ground becomes dry. If exposed to winter winds protect by pine boughs or other windbreak. Pinch off blossoms as soon as they begin to wither to insure blooms for the next season.

Rhododendrons

Carolinianum (Carolina Rhododendron). Native. Most beautiful of American Rhododendrons. Flowers appear in June, in great profusion, their color being a beautiful pink. This variety will stand exposed locations and is perfectly hardy, thriving in either sun or shade. 2 to 3 foot clumps, \$4.00 each; \$35.00 per 10; \$300.00 per 100.

Catawbiense. Native. Flowers a bright rose-purple, borne in large clusters at the ends of the branches. Perfectly hardy in northern latitudes and one of our very finest broad-leaved evergreens. 2 to 3 foot clumps, \$4.00 each; \$35.00 per 10; \$300.00 per 100.

Maximum (Great Laurel). Native. A variety commonly used for mass and woodland plantings. Flowers white to pink. Blooms later than other American species, the flowers appearing in July. Grows naturally from Canada south. 2 to 3 foot clumps, \$3.00 each; \$25.00 per 10; \$200.00 per 100.



Kalmia Latifolia.

specimens in moist, open fields, the dark, shining leaves giving a brightness to the landscape. In May and June the gorgeous coloring of the large rose or white flowers lends an enchantment to the picture that one will not soon forget. It is of easy-culture in almost any situation. 2 to 3 foot clumps, \$4.00 each; \$35.00 per 10; \$300.00 per 100.

WRITE FOR SPECIAL PRICE ON CAR LOADS AND LARGER SIZES OF RHODODENDRONS AND KALMIA.



Azalea Hindigiri.

Azaleas

Amcena. Hardy Evergreen Azalea. A low, lushy shrub with small green leaves changing in winter to a rich bronze or coppery brown. In spring the whole plant is covered with a wealth of claret-purple flowers which continue to open for a period of 2 or 3 weeks. 15 to 18 inch, \$3.00 each.

Lutea (calendulacea). Flame-colored Azalea. Ranging from flame color through shades of red and yellow, remaining in bloom for several weeks. Grows in cultivation from 6 to 8 feet high. 15 to 18 inch, \$2.50 each; \$22.50 per 10.

Hindigiri. A compact growing variety, with beautiful, evergreen foliage and brilliant crimson flowers, produced in great masses. 12 to 15 inch, \$3.50 each.

Kalmia

Latifolia (Calico Bush; Mountain Laurel). Native. An evergreen shrub, growing luxuriantly along our mountain sides, forming large patches, or in single, round-topped specimens in moist, open fields, the dark, shining leaves giving a brightness to the landscape. In May and June the gorgeous coloring of the large rose or white flowers lends an enchantment to the picture that one will not soon forget. It is of easy-culture in almost any situation. 2 to 3 foot clumps, \$4.00 each; \$35.00 per 10; \$300.00 per 100.

Tree or Standard Roses

PRICE: \$2.50 each, or \$20.00 per 10.

Novel and beautiful plants. Budded on single upright stems or hardy Rugosa stock 3 to 5 ft. high, which reveals all the foliage and all the bloom in a rounded clump at the top. Unique effects are produced by planting in groups or as border lines by garden walks. Indispensable in rose and flower gardens to relieve the flat appearance and give the flowers individuality.

We offer the following varieties; for description of bloom see same varieties under Roses:

- | | |
|--------------------------|---------------------|
| Climbing American Beauty | Jonkheer J. L. Mock |
| Dorothy Perkins | Laurent Carle |
| Paul's Scarlet Climber | Mrs. Aaron Ward |
| Tausendschoen | Ophelia |
| Columbia | Radiance |
| Frau Karl Druschki | Sunburst |
| Gross an Teplitz | White Killarney |
| Paul Neyron | |

Dwarf Polyantha Roses

Very popular for bedding purposes and for edging borders of shrubs, roses or perennials they have no equal. Splendid, hardy, showy and compact bushy specimens about 18 inches high, producing immense trusses of small flowers in great profusion. Keep their color well and continue in full bloom through a remarkably long season. Price, \$1.00 each; \$9.00 per 10.

BABY RAMBLER. The original dwarf form of Crimson Rambler. The wonderful persistency of its bloom makes it one of the choicest plants in cultivation.

BABY TAUSENDSCHOEN. Dwarf bushy growth; flowers large, semi-double, in pretty clusters; a prevailing flesh-pink color. Flowers an exact counterpart of the beautiful climbing Rose Tausendschoen.

BABY DOROTHY (Pink Baby Rambler). A delightful flower of bright pink. Blooms in masses like the climbing Dorothy Perkins.

KATHARINA ZEIMET. (White Baby Rambler.) A very pleasing rose, flowers quite large, a creamy white in color, and each branch bears from 15 to 20 of them.

Roses

Strong 2-year field grown plants.

There is no more beautiful flower than the Rose and they are among the easiest of all to raise. The love of the Rose is universal, and with the selection of varieties we offer no one need look elsewhere for their supply. Price, except where noted, 85c each; \$7.50 per 10.

Superb Everblooming Roses

- AARON WARD.** Beautiful rich yellow, changing to pinkish fawn.
BETTY. Glorious coppery rose overspread with golden yellow.
BRITISH QUEEN. One of the finest white roses in existence. Large full flowers of Tea Rose form and refinement.
COLUMBIA. One of the finest new roses. Lovely shade of pink, shading deeper at center. Strong grower, almost thornless. Very free bloomer, and fragrant. \$1.00 each.
CRUSADER. A new free flowering red Rose that is a wonder. Beautifully formed big and double blooms of rich, velvety crimson. \$1.00 each.
DEAN HOLE. Gorgeous silvery carmine, shaded salmon.
DUCHESS OF WELLINGTON. Intense saffron yellow, stained crimson. Long pointed buds, wonderfully fragrant. \$1.00 each.
EDWARD MAWLEY. One of the finest of all dark crimson Roses.
EDITH PART. Rich red with suffusion of deep salmon and coppery yellow. Perfectly built flowers, sweetly perfumed.

FRANCIS SCOTT KEY. A glorious Rose. Perfectly formed buds opening into blazing red flowers of largest size, full and double, very fragrant. Strong, healthy grower, hardy everywhere.

GOLDEN OPHELIA. A valuable new yellow garden Rose, unusually free flowering. Sturdy, stiff-stemmed grower with beautiful glossy foliage. Fragrant, medium sized flowers from beautifully formed buds. Rich apricot yellow, slightly paler at edges. \$1.00 each.

GORGEOUS. Flowers large and full. Deep orange-yellow, heavily veined with reddish copper. One of the most striking Roses in existence, delightfully fragrant. \$1.00 each.

GRUSS AN TEPLITZ. Brilliant scarlet, shading to velvety crimson.

HADLEY. Rich velvety crimson. Large double, intensely fragrant.

HOOSIER BEAUTY. Glowing crimson-scarlet with darker shadings. Large and double, with velvety petals. A magnificent bloom of dazzling brilliance and delicious fragrance.

JONKHEER J. L. MOCK. Giant pink Rose.

KMSERIN AUGUSTA VICTORIA. Soft, pearly white, shading to creamy yellow. Very double, of exquisite formation. Fragrant, grant.

KILLARNEY BRILLIANT. Magnificent Rose of great substance, very fragrant. Rich blooms varying in color from bright pink to rosy carmine. Undoubtedly best of the Killarney type. Same habit of growth and freedom of bloom, but flowers more double and more brilliant. \$1.00 each.

KILLARNEY. Brilliant, sparkling pink. Very hardy.

LADY ALICE STANLEY. Shell-shaped outside petals of deep coral rose, inside pale flesh. Large, fragrant.

LADY HILLINGDON. Beautiful apricot yellow shaded to orange.

LAURENT CARLE. A large, brilliant, velvety carmine Rose of perfect form and intense fragrance.

LOS ANGELES. A magnificent Rose of enormous size. Color a luminous flame pink, toned with coral and shaded with translucent gold at the base of the petals. Fragrant as American Beauty. Buds long and pointed, expanding into flowers of mammoth proportions. Vigorous grower. By all admitted to be one of the finest Roses ever introduced. Beauty of form and ever-increasing wealth of color are maintained until the last petals fall. \$1.00 each.

MADAM BUTTERFLY. A glorified Ophelia; buds larger, color tints greatly intensified; a harmony of bright pink, apricot and gold. Perfect in form and texture, deliciously fragrant. Foliage and habit unsurpassed. \$1.00 each.

MADAM EDOUARD HERRIOT (Daily Mail Rose). Artists have raved over this variety. Gorgeous combination of terra cotta and bronze with flame shadings, almost impossible to describe. Foliage bright and glossy. \$1.00 each.

MAD. RAVARY. One of the most beautiful Roses. Fine, oval-shaped buds opening to large orange-yellow flowers. Exceedingly free flowering and hardy.

MISS LOLITA ARMOUR. Unique in coloring, absolutely distinct from any other. Won gold medal in France in 1921 as best novelty Rose. Large, fragrant, full and double flowers with petals of great substance. Expanding they develop a deep coral-red with golden, coppery-red suffusion, base of petals golden-yellow with coppery-red sheen. \$1.00 each.

MRS. A. R. WADDELL. Beautiful pointed buds of rosy-scarlet, opening into extremely showy, large blooms of coppery-salmon.

MRS. GEO. SHAWYER. Brilliant rose pink. Large, well-formed blooms, free in growth and bloom.

MRS. WAKEFIELD CHRISTIE MILLER. Large flowers of soft, pearly blush, shaded salmon. Outside of petals clear vermilion rose, with lighter shadings.

MY MARYLAND. Brilliant, glowing, intense pink.

OPHELIA. Brilliant salmon flesh shaded with rose, with a heart of glowing peach pink and orange yellow blendings. Fragrant; faultless in form and color.

PREMIER. Deliciously fragrant. Clear, pure shade of rose pink. Beautiful foliage, very free bloomer. A valuable addition to the good roses. \$1.00 each.

RADIANCE. Glorious new Rose, beautiful blendings of carmine rose with opal and coppery reflections.

RED RADIANCE. Splendid even shade of clear red without a trace of any other color. Large, bold, double flowers on heavy, erect stems, conspicuous even among the choicest kinds.

SUNBURST. Magnificent giant yellow Rose, suffused with orange copper, all intense shades, giving an extremely brilliant effect. Buds long and pointed.

WHITE KILLARNEY. One of the most exquisite pure white roses.

WILLOWMERE. A magnificent rich shrimp pink Rose, toning to carmine pink toward edges of petals. Beautiful coral red buds on stout stems, opening into very large, full flowers. \$1.00 each.



1. Ophelia.

2. Hoosier Beauty.

3. Double White Killarney.

4. Mrs. Aaron Ward.

5. My Maryland.

6. Red Radiance.

Best Hardy Hybrid Perpetual or June Roses

Price, 75c each; \$7.00 per 10.

- ANNA DE DIESBACH.** Lovely shell pink.
CLIO. (New). Flesh color, center shaded rosy pink.
FRAU KARL DRUSCHKI. (White American Beauty.) The ideal pure white Rose.
GENERAL JACQUEMINOT. Brilliant scarlet crimson.
GEORGE AHREND. (Pink Druschki.) Delicate pink, wonderfully beautiful.
GLOIRE LYONNAISE. Rich, creamy white to pale yellow.
J. B. CLARK. Intense deep scarlet. Immense size.
MARSHALL P. WILDER. Deep, rich, glowing red.
MRS. JOHN LAING. Soft pink, beautiful form; fragrant.
PAUL NEYRON. Largest size; bright, clear, shining pink.
PRINCE CAMILLE DE ROHAN. Deep velvety crimson, shaded black.
ULRICH BRUNNER. Bright cherry red, large and full.

Magnificent New Hardy Climbing Roses

Splendid new sorts of unusual beauty and merit that you will surely want to include in your planting. Climbing Roses can be put to so many good uses that it seems as if every household should have at least a few. They are perfectly hardy, requiring comparatively little care after once being planted, and they bear great quantities of lovely flowers.

- AVIATEUR BLERIOT.** A magnificent new variety. Rich, deep, copper color. Beautiful buds, opening into medium-sized, full fragrant flowers. Large clusters of bloom, borne in great profusion. **60c each.**
CLIMBING AMERICAN BEAUTY. Rosy crimson. Same exquisite fragrance as old American Beauty. Flowers large, produced profusely from spring until frost comes. **75c each.**
CLIMBING SUNBURST. A true Sunburst Rose of vigorous climbing habit. (See description under Sunburst). **\$1.00 each.**
DR. W. VAN FLEET. A superb variety. Flowers full and double, of delicate perfume, will run 4 inches and over in diameter when open; buds pointed; flesh pink on outer surface, deepening to rosy flesh in center. **60c each.**
GARDENIA. (Hardy Marechal Niel.) An extremely handsome sort of great worth, hardy as an Oak. Blooms profusely in large, drooping clusters. Double golden yellow flowers that shade to creamy white a few days after they fully expand. **60c each.**
PAUL'S SCARLET CLIMBER. Wonderful new climbing rose. Vivid scarlet, making a brilliant display during a long season. Blooms in clusters, strong climbing habit, perfectly hardy. **\$1.00 each.**
RED TAUSENDSCHOEN. (Rosiere.) An improved Tausendschoen, with same habit of growth, but superior in color—a deeper and more even shade of cerise—pink or carmine. A very free bloomer. **75c each.**
SILVER MOON. Grand new white climbing Rose. Clear, silvery white, with centers a mass of bright yellow stamens, giving a wonderful contrast. Petals of splendid substance, beautifully cupped. Exceedingly large, fragrant flowers. Vigorous grower and very free blooming. **60c each.**

Miscellaneous Hardy Climbing Roses

- DOROTHY PERKINS.** The only fragrant Rambler. Shell pink, very double. **50c each.**
WHITE DOROTHY PERKINS. **50c each.**
FLOWER OF FAIRFIELD (Everblooming Crimson Rambler). **75c each.**
EXCELSA (Red Dorothy Perkins). Finest of all crimson ramblers. Great quantities of full, double flowers, crimson maroon, tips of petals scarlet. Hardy everywhere. **50c each.**
CRIMSON RAMBLER. Immense clusters of rich, glowing crimson flowers, that remain for more than two weeks. **60c each.**
TAUSENDSCHOEN. (Thousand Beauties.) Covered with bright blossoms of every shade from white to deep pink, borne in clusters; quite double. **60c each.**

Rugosa and Hybrid Rugosa Roses

- These hardy roses can be used in so many places that they are almost indispensable. Sturdy, shrubby bushes, adapted for hedges and hardy borders, or to mix in other shrubbery. Foliage very ornamental, dark, shiny rich green.
BLANC DE COUBERT. A splendid double pure white. **75c each.**
CONRAD F. MEYER. Flowers very large and well filled. Clear, silvery rose. Very fragrant. **75c each.**
ROSA RUGOSA RUBRA. Crimson flowers are large and single, followed by glossy red berries. **60c each.**
ROSA RUGOSA ALBA. Single white flowers, followed by yellow berries. **75c each.**



New Everblooming Rugosa Rose, F. J. Grootendorst.

New Everblooming Rugosa Rose, F. J. Grootendorst

FOR MASS AND HEDGE PLANTINGS. Hardy as an Oak, will thrive in the North as well as in the South.

A Hybrid Between Rosa Rugosa Rubra and Red Baby Rambler

We consider this the most beautiful of any of the Rugosa Roses, and a most valuable acquisition. The foliage is of the true Rugosa type, always healthy and clean, attractive, and free from mildew. In habit the plant is of vigorous but compact, dwarfish growth. Flowers in clusters, good size for this class of rose, double, with edges beautifully fringed so that each cluster of bloom resembles a bunch of red carnations. Color a clear, fine red and holds exceptionally well. Blooms continuously from early summer until cut off by cold weather in the fall. Very effective, not only as a single specimen, but especially valuable in landscape work for massing and as a low-growing hedge or border. We predict very great popularity for it as soon as it becomes better known. Extra strong field grown plants. **\$1.00 each; \$9.00 per 10.**

Two hundred of our F. J. Grootendorst Roses planted last spring along one of the new driveways in Sleepy Hollow Cemetery at Tarrytown, N. Y., began blooming in June and were still a mass of bloom the latter part of August, when a member of our firm called there. Mr. Featherstone, the Superintendent, stated it was wonderful, and one of the most beautiful things he had ever seen for mass or hedge plantings.

Ogunquit, Maine, July 25, 1922.
 I feel that I must drop you a line to tell you how much I am enjoying the Everblooming Rugosa Roses. They are blooming finely and are much admired.
 MRS. W. U. STONEHILL.

Choice Hardy Perennial Plants

Hardy Perennials are ideal flowers for the home grounds; give great satisfaction when used for borders, along the front of shrubberies, along driveways and walks; do not have to be taken up in winter and planted the next year. They are the "old-fashioned" hardy garden plants, always beautiful, and a quantity of them should be found in every garden. We list the most desirable species, all showy, beautiful plants, easy of culture and of various seasons of flowering, from May to November. Price, except noted, 30c each; \$2.50 per 10.

ACHILLEA, The Pearl. Strong, showy heads of pure white double flowers, borne in great profusion. June to September.

ACHILLEA, Millefolium. Finely cut, deep green foliage. Flowers pink in dense heads, all summer.

ANCHUSA, Dromote. Strong, vigorous plant, with large, gentian blue flowers during June and July.

ANEMONE, Whirlwind. Showy autumn-blooming plant, very hardy, blooms freely from August till cut down by frost. Semi-double, white. 35c each.

ANEMONE, Queen Charlotte. Very large, semi-double flowers of a soft, silvery pink. 35c each.

AQUILEGIA, Columbine. Plants of elegant habit, free flowering. Both single and double varieties in many colors, blooming in spring and early summer.

CAMPANULA, Bluebells. The beauty of the Bluebell is well known and the plants are most hardy, very easily grown.

CARYOPTERIS, Blue Spirea. Low, free blooming plant producing lavender blue flowers in large, dense cymes from August to November.

COREOPSIS GRANDIFLORA. Splendid plant, rich golden yellow flowers from early summer until fall.

CHRYSANTHEMUM. Beautiful plants that produce a profusion of bloom at a time when other plants have been nipped by frost. Colors: White, Yellow, Brown, Red, Pink, and Bronze.

DAISY, Shasta. Large, snowy-white flowers in bloom all summer.

DELPHINIUM, Bella Donna. (Larkspur.) Beautiful, hardy plants, stately habit, handsome spikes of clear, turquoise blue flowers.

DELPHINIUM, Formosum. (Larkspur.) The old favorite, flowers dark blue with white center.

DIANTHUS. (Sweet William.) Old time favorites, bearing during May and June a profusion of round-topped clusters of flowers of all shades of red and pink to white.

DICENTRA, Bleeding Heart. Heart shaped, rose-colored flowers in drooping spikes, in early summer. 50c each.

DIGITALIS, Foxglove. Old favorite, producing bold masses of leaves and flower spikes. June-July.

GALLARDIA, Blanket Flower. Large showy flowers, yellow and orange-red, early summer to November.

GYPSOPHILA, Baby's Breath. Masses of minute pure white flowers during June and July.

IBERIS, Hardy Caudyft. Covered with fragrant white flowers in early spring.

HOLLYHOCKS. Double; Red, Pink, and White.

HIBISCUS, New Giant Flowering. (Mallow Marvels.) Wonderful improved new varieties, with richest colors, enormous flowers, frequently 10 to 12 inches in diameter. Perfectly hardy. Colors: Pink, White, and Crimson. 35c each.

GERMAN IRIS. The true "Fleur de Lis," the national flower of France. They are perfectly hardy, thrive anywhere, grow and blossom luxuriantly, particularly if plentifully supplied with water or if planted in moist situations, as on the banks of ponds, etc. Plants well established produce from 50 to 100 spikes of bloom, deliciously fragrant and fine for cutting. In beauty, the flowers rival the finest orchids, colors ranging through richest yellows, intense purples, delicate blues, soft mauves, beautiful claret-reds, white, primrose and bronzes of every imaginable shade.

JAPAN IRIS. Finest of all the Iris family. The flowers are of immense size, from 6 to 8 inches in diameter, and of the most beautiful and delicate shades. They are perfectly hardy, and flower in great profusion during June and July. A well established plant gives a dozen or more flower stalks 2 to 3 feet high, each stalk producing 2 to 4 enormous blooms.

PAPAVER, Oriental Poppy. Showiest of all poppies, large scarlet and red flowers on long stems.

PLATYCODON, Balloon Flower. Star-shaped, bluish flowers, very large. June-July.

STOKESIA, Cornflower Aster. Handsome plant with large flowers of sky blue color. July to early fall.

TRITOMA, Red-hot Poker or Flame Flower. Tall spikes surmounted by brilliant orange scarlet flower heads. August-September.

VERONICA—subsessilis. 2 feet. July to September. One of the handsomest blue-flowering plants. Perfectly hardy and increases in strength and beauty each year. Spikes completely studded with beautiful blue flowers; fine for cutting and one of the best plants for the hardy border.

PYRETHRUM. Sometimes called Spring Flowering Chrysanthemum. Hardy perennial plant of easy culture, with beautiful, large, daisy-like flowers in a variety of brilliant colors, ranging from intense scarlet to pure white. The flowers are borne on long stems and are splendid for cutting, lasting in water longer than almost any other flower. The plants have a long season of bloom.

YUCCA, Adam's Needle. Tropical looking plant with immense, pyramidal clusters of creamy flowers, June-July. 35c each.



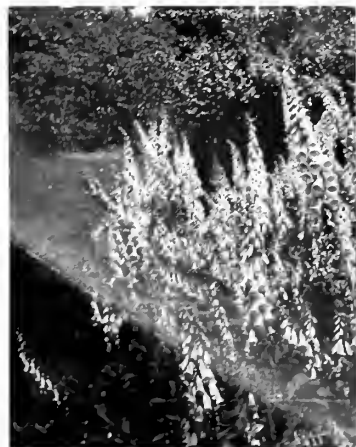
Aquilegia—Columbine.



Coreopsis.

Gladiolus

Most attractive and useful of all summer-flowering bulbs. As a cut flower during the summer and autumn months Gladioli hold a place that cannot be taken by any other flower, as they develop in water to a greater perfection than if left on the plant. Set bulbs 2 to 4 inches deep, in rows 12 inches apart, or plant in beds 4 to 6 inches apart each way.



Digitalis—Foxglove.



Hollyhocks.

CHOICE VARIETIES OF GLADIOLI

AMERICA. Beautiful delicate pink, faintly tinted lavender. 10c each.

LOVELINESS. Creamy white, throat slightly suffused with apricot. 15c each.

MRS. FRANK PENDLETON, Jr. Lovely flushed salmon pink with blood red blotches in the throat. 15c each.

PINK PERFECTION. Dainty apple blossom pink. 15c each.

PRINCEPINE. Dazzling scarlet, marked with white on the lower portion. 10c each.

SCHWABEN. Best yellow variety, clear, canary yellow with small blotch of garnet in throat. 15c each.



The Gladiolus as a Cut Flower is Exquisitely Beautiful.

Of Interest to Our Customers



WE TAKE PLEASURE in sending our latest catalogue and hope you will look it over carefully. You will find in it full information about the stock we grow, the best of the old kinds as well as many new varieties of merit that have been well tested. We have described our stock fully and honestly. Our statements of quality are just as direct promises of what we will deliver to you as if you were here in our office and we made these statements to you in person. We regard every order as important, and whether your order is large or small, we will look upon it as another opportunity to demonstrate that we can meet your planting needs satisfactorily.

QUALITY. Our constant aim is to produce trees and plants as nearly perfect as can be grown. And while price is important, **quality must always be considered first**, as the future growth of your trees depends largely upon the **quality** of the stock you buy. Every tree, plant or shrub we send out are specimens in their class, sure to please the most critical buyer. We offer you the best stock you can buy at prices as low as it is possible to grow and sell this strictly high grade stock. **Our stock is dug fresh from the ground in the spring**, is packed to reach you in perfect condition, and is backed by our iron-clad guarantee of **quality and satisfaction** or money cheerfully refunded.

ORDER EARLY. The production of nursery stock was largely curtailed during the war. It takes from 2 to 4 years to produce most kinds of trees and plants, so that on many items there has not been sufficient time to build up stocks to anything like normal quantities and **there is still a short supply on many items.** All indications point to a great revival of planting this coming season. It is therefore most important that you get your order in early to avoid disappointment. Don't wait until the last minute, but **prepare for your planting now**, while you have time to think and plan, and send us your order without delay.

TERMS are net cash with order, except where otherwise arranged.

SPECIAL DISCOUNT of 5% allowed on cash orders received before March 15th. 2% discount on all Cash orders after March 15th.

SHIPPING SEASONS. Our spring shipping season opens about the first of April and continues to about May 20th. In the fall we start shipping about October 10th and continue to about December 1st.

PLANTING SEASON is not governed by any particular date or condition of vegetation in your section, but by the **condition of stock on arrival.** Everything we ship in the spring is dug while still in dormant winter state, before it has commenced its new season's growth. The way we pack for shipment, stock keeps perfectly in this dormant state until received by you. So that regardless of the condition of vegetation in your section when you get our shipment—whether advanced or retarded—that does not affect our stock in any way, and if you will plant it according to directions and give it reasonable care you will find it will live and thrive.

To Our Canadian Customers

Nursery stock is admitted from the United States into Canada in the spring, commencing March 15th and continuing until May 15th, and in the fall, commencing September 26th and continuing until December 1st. Nursery stock is not admitted through the mails into Canada at any season of the year, so kindly order shipments made by freight or express. We cannot send by parcel post into Canada.

No Orders for Less than \$1.00 Accepted

As it costs us just as much to pack and prepare small orders as it does large ones, and inasmuch as the prices we ask are so close to the actual cost of production, we cannot afford to fill orders amounting to less than \$1.00.

Guarantee

We depend upon the merit of our stock to hold and extend our trade, and every tree, bush or plant is guaranteed up to size specified and strictly A No. 1, healthy thrifty, well rooted, true to name, and free from San Jose Scale or disease of any kind. We use the greatest precaution to have everything we send out true to name, but if through any fault of ours any stock proves not true to label, we will on proper proof, replace double the number of trees or plants not true, or we will refund the purchase price, plus 6 per cent per annum and also replace stock.

We are Members of the American Association of Nurserymen and are on the accredited list of The Northern Nut Growers' Association

General Planting Directions

CARE OF STOCK ON ARRIVAL. All stock should be planted immediately on arrival but if not convenient to do so, open bundle and heel roots in ground, covering them thoroughly.

PLANTING. Dig holes twice the size necessary to take in all the roots; throw out top soil to one side, and use it for filling around the roots; tread the earth hard after planting. The use of water around the roots when filling in the earth depends on the moisture conditions of the ground. If dry, use plenty of water. After planting and during the summer sufficient water should be used to keep the earth moist.

PRUNING. The limbs of all fruit and ornamental trees, shrubs and roses should be cut back two-thirds when planted. Remove all surplus branches from trees, leaving, say, three main stems as a basis for head. Always prune to an outside bud, thus insuring outward growth. Peach trees should be pruned to a whip and a head established the second year either high or low as preferred. All roots should be pruned smoothly before planting, cutting off the ends where bruised by digging and shortening others. This is as important as pruning the top.

MULCHING. Mulching is a most necessary factor in successful planting. Cover a space around the tree or shrub to a distance of three feet, using coarse manure, lawn clippings or grass is effective for this purpose if manure cannot be secured. The mulching retains moisture, retards the growth of weeds and facilitates quick growth. When straw or manure is left on the ground all winter, clear a space of 15 inches around the tree to avoid damage from mice.

LABELS. Labels should be removed and some other method adopted for recording varieties. The wires will cut and damage the limbs.

CULTIVATION. Hoe or cultivate frequently. Nothing can thrive if the weeds are allowed to sap the life of the soil.

Special Instructions

Grape Vines should be planted so that the first bud next to the stem will come on a level with the surface of the ground. Grape vines have two layers of roots, from 6 to 8 inches apart, and in planting spread the lower layer of roots in their natural position; fill in the earth and press down in the soil firmly, then spread the second layer of roots

and fill in the balance of the hole. After planting, trim the vines back to two buds. A strong stick four feet long should be driven in at each vine to support the canes the first two years. **Strawberries** should be planted so as to leave the crown even with the surface. Too deep planting will smother the plant. **All other small or bush fruits, such as raspberries, currants, gooseberries, etc.,** should be planted about one inch deeper than they stood in the nursery, and, after planting, the tops should be cut back to four or five inches of the ground. In pruning **ornamental trees** two-thirds of the top should be cut off on all ornamental trees except cut-leaved birch and horse chestnut, which should not be pruned at all.

Ornamental Shrubs should be planted two inches deeper than they were in the nursery, and the tops cut back one-half. **Roses** are planted three inches deeper and the tops cut back to within three or four inches above the ground.

Distances for Planting

Standard Apples	30 to 40 feet apart each way
Standard Pears and Strong Growing Cherries	20 feet apart each way
Duke and Morello Cherries	18 feet apart each way
Standard Plums, Peaches, Apricots, and Nectarines	16 to 18 feet apart each way
Dwarf Pears	10 to 12 feet apart each way
Dwarf Apples	10 to 12 feet apart each way
Quinces	10 to 12 feet apart each way
Grapes	Rows 10 feet apart; 7 to 8 feet in rows
Currants and Gooseberries	4 feet apart
Raspberries and Blackberries	3 to 4 by 5 to 7 feet
Strawberries, for Field Culture	1 by 3 to 3½ feet
Strawberries, for Garden Culture	1 to 2 feet apart
Asparagus, for Field Culture	1 by 3 feet
Asparagus, for Garden Culture	1 by 1½ feet

Rule.—Multiply the distance in feet between the rows by the distance the plants are apart in the rows, and the product will be the number of square feet for each plant or hill, which, divided into the number of square feet in an acre (43,560), will give the number of plants or trees to the acre.



1 *J. J. L. Mock* 2 *Duchess of Wellington*
3 *British Queen* 4 *Golden Ophelia*
5 *Columbia*
6 *Lady Alice Stanley*
7 *Francis Scott Key*
8 *Radiance* 9 *Crusader*
10 *Kaiserin Augusta Victoria*