

Historic, archived document

Do not assume content reflects current scientific knowledge, policies, or practices.

6289
Descriptive Catalog

of

TREES

==== and ====

PLANTS



W. T. Hood & Company

The Old Dominion Nurseries

3025 Chamberlayne Ave.

Richmond, Virginia

Price List 1923

We take pleasure in presenting herewith our revised price list for the season of 1923. We have, as you will note, materially improved list in that we have arranged the various fruits in order of ripening as well as describing in a concise manner their qualities. This we feel will very much aid the purchaser in selecting his trees. We, of course, continue to issue a large illustrated catalog which will be sent on request.

Shipping—We begin shipping the stock about November 1st and continue until about April.

Guarantee of Genuineness—We use constant care in keeping everything true to name and description.

Mistakes are avoided every possible way, but when they do occur, and when we are promptly notified of such mistakes on receipt of shipment we gladly correct them, and if any stock proves not true to name we will replace it with the genuine or return the price paid for same, but it is mutually agreed between ourselves and our purchasers that we are not to be held liable to pay any more than the original price received for the goods.

Location—Our office and packing grounds are at Stop 27, Ginter Park Car Line.

Our Prices are based upon cost of production and upon a reasonable profit, and are not in competition with cheap stuff grown in a cheap way.

Terms—Cash.

Money should be sent by Postal or Express Money Orders, Check or Registered Letter.

DISTANCE FOR PLANTING

Often trees are planted too close, thereby retarding their growth and development. The following we consider advisable:

	Feet apart each way.
Standard Apples	25 to 35
Peaches	15 to 20
Standard Pears	20
Dwarf Pears	10
Sour Cherries and Nectarines.....	20
Sweet Cherries	25 to 40
Plums and Apricots.....	20
Japanese Plums	20
Quinces	10
Grape Vines	8 to 10
Gooseberries and Raspberries.....	4
Pecans	40 to 60

NUMBER OF TREES OR PLANTS REQUIRED PER ACRE WHERE PLANTED VARIOUS DISTANCES APART

1 foot apart each way.....	43,560
2 feet apart each way.....	10,890
3 feet apart each way.....	4,840
4 feet apart each way.....	2,725
5 feet apart each way.....	1,742
6 feet apart each way.....	1,210
7 feet apart each way.....	888
8 feet apart each way.....	680
9 feet apart each way.....	587
10 feet apart each way.....	435
11 feet apart each way.....	360
12 feet apart each way.....	302
13 feet apart each way.....	257
14 feet apart each way.....	222
15 feet apart each way.....	193
16 feet apart each way.....	170
17 feet apart each way.....	150
18 feet apart each way.....	134
19 feet apart each way.....	120
20 feet apart each way.....	108
25 feet apart each way.....	69
30 feet apart each way.....	48
40 feet apart each way.....	27
50 feet apart each way.....	17
60 feet apart each way.....	12

If it is desired to plant a certain number of feet apart in the rows, and have the rows a different number of feet apart, then multiply the distance in feet between the rows by the distance apart the plants are in the rows, the product of which divided into 43,560 will give the number of trees, etc., required per acre.

Apples

Growing the Apple is a profitable commercial proposition, holding out to planters the possibility of an income from this source about four times as great as could be derived from a similar acreage devoted to ordinary farm crops.

The home garden that has the necessary space available is not complete without one or more Apple trees. The healthfulness of this fruit is proverbial, and surely it is more pleasurable to buy an Apple tree than it is to pay a doctor's bill.

The varieties we offer have been selected for their sterling worth, productiveness, flavor, time of ripening, and for other special reasons mentioned in the various descriptions.

Prices for Apple

	Each	Dozen	25 Trees	100 Trees
4 to 6 ft.	\$1.25	\$15.00	\$27.50	\$75.00
3 to 4 ft.	1.00	12.00	20.00	60.00

EARLY SUMMER

Yellow Transparent—Yellow, flesh, white, tender and juicy.

Early Harvest—Large pale yellow and rich flavor.

Early Ripe—Larger than Harvest, yellowish white, fine quality.

South Carolina Summer—Large bright red, flesh firm and crisp, bears young.

Wilson Red June—A beautiful large red, excellent quality, ripens last of July.

MID-SUMMER

Golden Sweet—Yellow, juicy, tender and sweet.

Maiden Blush—Red, flesh white, tender, good flavor.

Summer Rambo—Large yellow, striped with red, flesh tender, rich sub-acid flavor.

All items in the catalog
15% discount.



Delicious Apple.

Freight paid on all
order received before MAR - 1 1923

FALL

Bonum—Red, rich juicy, fine quality.

Delicious—Large, dark red, sweet aromatic, fine grained and juicy, good bearer.

Fall Cheese—Green, striped with red, fine flavor.

Fall Pippin—Large yellow, fine for cooking and eating.

Grimes Golden—Golden yellow, crisp, tender and juicy.

Smokehouse—Large, striped with red, crisp, firm and juicy.

WINTER

Johnson's Fine Winter, or York Imperial—Greenish yellow, nearly covered with red, flesh tender and crisp, enormous bearer.

Mammoth Blacktwig—Large, dark mottled red, fine grained, sub-acid.

Mogan Xmas—Large, dark red, fine quality, good keeper.

Lowry (Mosby's Best)—Red, fine flavor, sweet, bears young.

Stayman's Winesap—Large bright red, best quality.

Winesap—Red, fine crisp, highly flavored, does well everywhere.

CRAB APPLES

Price, \$1.50 each.

Hyslop Crab—Dark, rich red.

Transcendent Crab—Red Striped.

Standard Pears

All varieties of Pears are much better when picked a short time before they are ripe and matured in a cool, dark room.

Prices: 4 to 6 ft., \$1.50 each; \$15.00 dozen.

Bartlett—Large, sweet and juicy.

Clapp's Favorite—Large, yellowish green.

Early Harvest—Good bearer, large, yellow with a showy blush.

Koonce—Fruit large, yellow, onside covered with red.

Leconte—Fruit large and smooth.

FALL PEAR

Angouleme (Duchess)—Very large, flesh white, very juicy, rich and excellent flavor.

Dewey's Premium—Large, and showy fruit.

Garber—Large, yellow, good quality.

Japan Golden Russett—Early bearer.

Keiffer—Early and abundant bearer, valuable for market and family use.

Seckle—A great favorite, small, highest flavor.

DWARF PEARS

Bears earlier than the Standard Fruit, is similar, adapted for small yards.

Prices: \$1.50 each; \$15.00 dozen.

Bartlett

Duchess

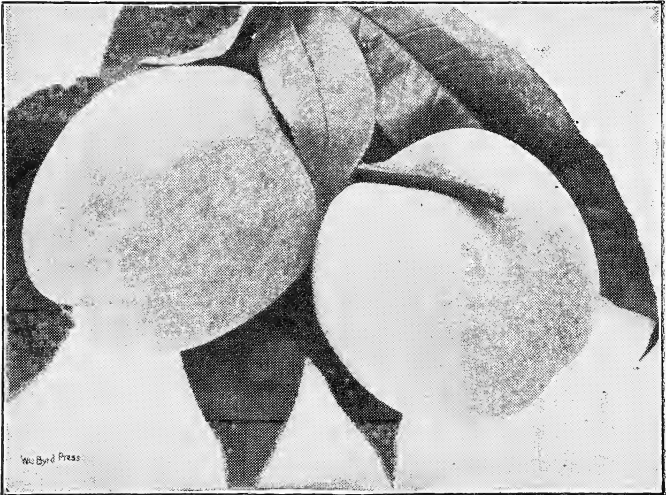
Seckle

Peaches

Extra selected, budded on natural seed to insure health, vigor and productiveness, and grown with the greatest care to insure purity in variety. Our peach trees are of superior quality and excellence, and must not be compared with June buds and Southern grown trees of cheap propagation offered at low prices.

F, Free; C, Cling; S. C., Semi Cling.

Prices:	Each	Dozen	25 Trees	100 Trees
3½ to 6 ft.	\$.75	\$7.00	\$12.00	\$45.00
2½ to 3½ ft.60	5.00	9.00	30.00



Elberta Peach.

JUNE TO JULY

Mayflower—The latest to bloom and earliest to bear, the best early peach. C.

Early Wheeler or Red Bird Cling—A beautiful peach, excellent quality.

Arp Beauty—Yellow, good quality. S. C.

JULY TO AUGUST

Greensboro—Fruit large, well colored, flesh white and juicy. S. C.

Connett's Early—Beautiful bright red, flesh white. S. C.

Carman—Large bright red cheek, flesh white, fine flavor. S. C.

Hiley's Early Belle—Rich creamy white, firm, excellent quality. F.

Sell one to five at each rate, sell six to eighteen at dozen rate, sell nineteen to 50 at 25 rate, sell over 50 at hundred rate.

AUGUST TO SEPTEMBER

- Champion**—Large, rich juicy delicious peach. S. C.
Belle of Georgia—The best of its season, white, excellent flavor. F.
Elberta—Yellow flesh, excellent for preserving and canning. F.
Hale—Large deep yellow, with red cheek, beautiful, good quality. F.
Chinese Cling—Large, cream color, flesh creamy white.
Lorentz—Yellow, free stone, good quality, sure bearer. F.
Ray—Flesh white, fine quality, resembles Belle of Georgia. F.

SEPTEMBER TO OCTOBER

- Allbright's**—October. C.
Butler's Late—Very large, flesh white, firm and good flavor. F.
Bilyeus Late—The latest peach, beautiful appearance, fair quality.
For Seedling—Large white, free stone, good quality. F.
Heath Cling (White Heath)—Fruit large, juicy and sweet.

Plums**JAPANESE VARIETIES**

Prices: 4 to 6 ft., \$1.50 each; \$15.00 dozen.

- Abundance**—Rich cherry color, flesh juicy and tender, great bearer.
Burbank—Large, purplish red, fine quality.
Red June—Red, flesh firm and juicy.
Shiro—Finest quality, yellow.
Wickson—Very large, flesh firm, fine good quality.

EUROPEAN VARIETIES

4 to 6 ft., \$2.00 each; \$20.00 dozen.

- Green Gage**—Greenish with reddish brown dots, juicy, fine flavor.
German Prune—Large, dark purple.
Shipper's Pride—Large, dark purple, flesh firm and sweet.

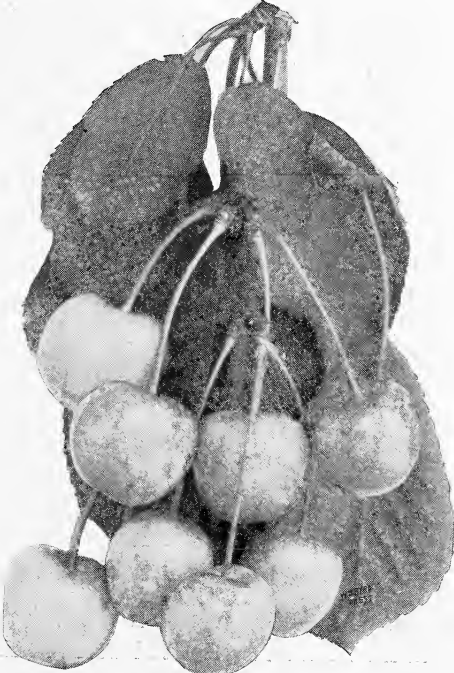
Damsons

\$1.50 each.

- Shropshire Damson**—Large dark purple.
Red Damson—Red, fine for jelly and preserving.

Cherries

- Hearts & Bigarreau**—4 to 6 ft., \$2.50 each.
Black Tartarian (Oxheart)—A very large black, fine.
Gov. Wood (Wax)—A large light yellow.



Early Richmond Cherry.

Napoleon—Large, pale yellow, red cheek (wax).

Schmidt's Bigarreau—Dark, flesh tender and juicy.

Dukes and Morello—3½ to 5 ft., \$2.00 each.

Dyehouse—Bright red, flesh soft and tender, acid.

Early Richmond—Medium size, rich acid flavor.

Montmorency—Large, red acid, cherry of good quality.

Wragg—Late red, good bearer, acid.

Nectarines

3½ to 6 ft., \$1.50 each.

Apricots

3½ to 5 ft., \$2.00 each.

Alexander—Russian variety, large yellow.

Early Golder—Small, orange color, sweet.

Large Early—Large, excellent, early.

Moorepark—One of the largest and finest apricots.

Quince

3 to 4 ft., \$2.00 each.

Champion—Smooth, good quality.

Meeches—Large and attractive.

Orange—Light yellow, good bearer.

Mulberries

80c each; \$7.20 dozen; \$22.50 for 50.

Hick's Everbearing—Black, rapid grower and a good bearer.

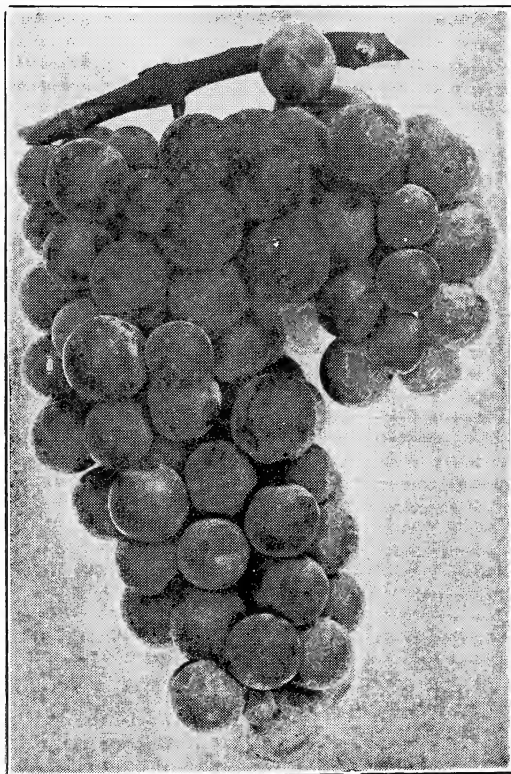
Grapes

This fruit is at home on any soil, requires little care and produces well.

Prices: 50c each; \$5.00 dozen.

Brighton—Red, fine quality.

Campbell's Early—Black.



Concord Grapes.

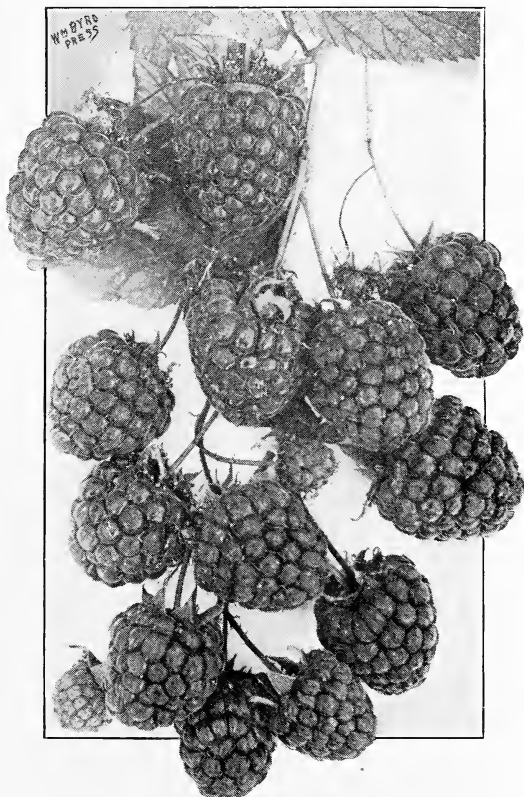
- Concord**—Large black, good bearer.
Catawba—Bunches and berries large, pale red.
Martha—White, medium size, very sweet and juicy.
Moore's Early—Black.
Moore's Diamond—White, very good.
Niagara—Large white.
Worden—Black, bunches large and compact, berry large.

Prices: 75c each; \$7.50 dozen.

- James**—Black scuppernong.
Lutie—Large dark red.
Scuppernong—White, a Southern variety.

Prices: \$1.00 each; \$2.50 for three.

- Caco**—Light red, tender and sweet.



Cuthbert Raspberries.

Raspberries

30c each; \$3.00 dozen; \$10.00 for 100.

- Cuthbert**—Large red.
Columbian—Large dark red.
St. Regis—Red everbearing.
Cumberland—Black, large and hardy.
Kansas—Black.
Munger—Black.
Golder Queen—Yellow.

Blackberry

30c each; \$3.00 dozen; \$10.00 for 100.

- Blowers**—Large and sweet.
Early Harvest—Medium size, very early.
Eldorado—Very large, good flavor.
Kittatinny—Very large and productive.
Wilson Early—Large and productive.
Austin's Dewberry—Early fruit, large and good bearer.
Lucretia Dewberry—Fruit large and good flavor.

Currants

75c each; \$6.50 dozen.

- Cherry**—Very large red.
Fays—The most popular red.
North Star Red—Vigorous and prolific.
Perfection—Large red.
Pomona—Bright red, very productive.
White Grape—Large white.

Gooseberries

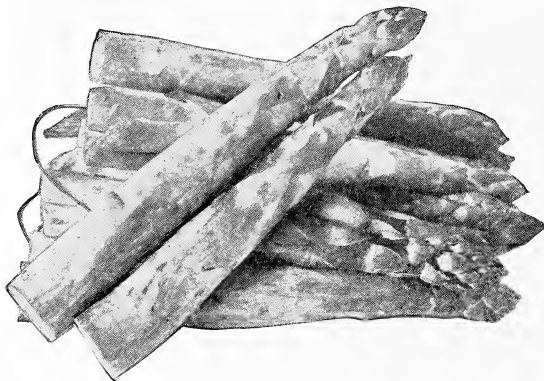
75c each; \$8.00 dozen.

- Downing**—Whitish green.
Houghton—Pale red, small.
Pearl—Large white.
Red Jacket—Large red.

Figs

\$1.00 each; \$10.00 dozen.

- Brown Turkey**—Brown, sweet and good.
Brunswick—Large, fine quality.



Asparagus

\$2.00 for 100; \$10.00 for 1,000.

- Barr's**—Large, tender, fine flavor.
Palmetto—Large and tender, fine for market.

Rhubarb (Pie Plant)

25c root; \$2.50 dozen; \$10.00 for 100.

Horse Radish

25c root; \$2.00 dozen.

Japan Persimmon

\$1.50 each.

- Hiyakume**—Very large, one of the best varieties.
Tane-Nashi—Large, light yellow.
Among or Yemon—Large, flat, fine quality.

Nuts

ALMONDS, \$1.00 each.

- Soft Shell**—Kernels sweet and rich.
Hard Shell—Fine hardy variety, large kernel.

BUTTERNUTS, \$1.25 each.

Oblong nuts with rich meat.

CHESTNUTS, \$2.50 each.

- American**—4 to 5 ft. Sweet and good quality.
Japan—3 to 4 ft. Large nut, bears young.

FILBERTS (Hazel Nut), \$1.00 each.

Large nut, good flavor.

PECANS (Budded or Grafted)

2 to 3 ft. \$2.50
 3 to 4 ft. 3.00

- Stuart**—An excellent commercial variety.
Moneymaker—Medium size, quality good.
Van Demon—Very large nuts, soft shell.

WALNUT

- American Black**—\$1.00.
 Valuable for timber and nuts.
English—Thin shell, \$3.50.
Japan—\$1.50.
 Shell harder than English, kernel sweet and good.

Ornamental Trees

	Each
Ash, Mountain —8 to 10 ft.	\$2.50
Birch —Cut leaf, 6 to 8 ft.	2.00
Beech —Purple leaf, 3 to 4 ft.	3.50
Deep purple leaves.	
Catalpa Speciosa —7 to 8 ft.	1.50
Western Catalpa, broad foliage, large white flower.	
Catalpa Bungeii —Grafted, 5 to 6 ft.	3.00
Umbrella Catalpa, large green leaves.	
Dogwood —White, 3 to 4 ft.	1.00
Dogwood —Pink or Red, 3 ft.	3.00



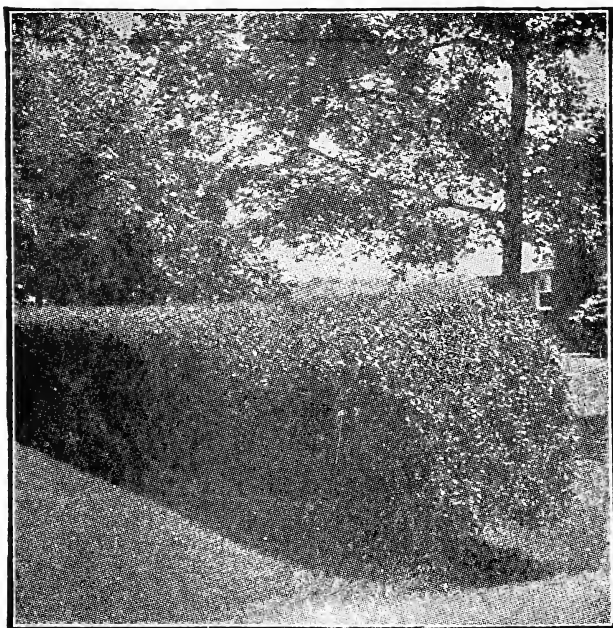
Catalpa Bungeii.

Elms —American, 8 to 10 ft.	2.00
A tall stately tree with graceful branches.	
Ginko —Maiden Hair, 8 to 10 ft.	1.50
A fine shade tree, leaves resemble the maiden hair fern.	
Horse Chestnuts —White flowering, 5 to 6 ft.	3.50
Judas (Red Bird) —5 to 6 ft.	1.25
Covered with deep pink flowers in spring before the leaves.	
Pink Oak —8 to 10 ft.	2.50
The most popular of all oaks and a rapid grower.	
Red Oak —8 to 10 ft.	2.50
In autumn the foliage turns a rich purplish red.	
Oriental Planes —8 to 10 ft.	1.00
A hardy rapid growing tree.	
Carolina Poplar —8 to 10 ft.	1.00
A large sized tree of very rapid growth.	
Lombardy Poplar —8 to 10 ft.	1.25
10 to 12 ft.	1.50
A tall, slender, rapid growing tree, useful for grouping.	
Tulip Poplar —8 to 10 ft.	1.25
A magnificent native tree.	
Texas Umbrella —3 to 4 feet.	2.50
A beautiful fast growing tree, but not extremely hardy.	
American Linden —8 to 10 ft.	2.50
A valuable lawn or street tree, large leaves and fragrant blooms.	
European Linden —8 to 10 ft.	3.00
A fine tree, but does not attain as large size as the American.	
Ash Leaf Maple —8 to 10 ft.	2.00
A rapid growing tree, the foliage resembles the ash.	
Norway Maple —8 to 10 ft.	4.00
10 to 12 ft.	5.00
Leaves deep green foliage, turning yellow in fall, a good lawn tree.	

Silver Maple —8 to 10 ft., \$13.50 per dozen.....	1.25
10 to 12 ft., \$21.00 per dozen.....	2.00
A rapid growing tree with light green leaves.	
Sugar Maple —8 to 10 ft.	2.50
10 to 12 ft.	4.00
Tall and stately with richly colored foliage in fall.	
Schwedlers —8 to 10 ft.	5.00
Purple leave in early spring.	
Mimosa —4 to 5 ft.	1.50
An ornamental tree with spreading branches and feathery foliage.	

WEeping TREES

Japan Weeping Cherry —4 to 5 ft.	5.00
One of the handsomest flowering trees. Pink flowers.	
Teas Weeping	3.00
The most graceful and hardiest among weeping trees.	
Weeping Willow —8 to 10 ft.	1.25
A graceful rapid growing tree.	



Hedge Plants

	Each	10	100	1000
Abelia Grandiflora —15 to 18 ins.....	\$1.00	\$9.00	\$75.00
Barberry Thumbergii —18 to 24 ins... .	.75	6.00	40.00
Barberry Thumbergii —12 to 18 ins.. .	.60	5.00	35.00
Box, Barberry —Dwf. 2 yr.75	6.00	40.00
Boxwood —8 to 10 ins.	1.25	11.00	100.00
Amoor River Privet —18 to 24 ins...	9.00	70.00
Amoor River Privet —24 to 30 ins...	12.00	100.00
California Privet —18 to 24 ins...	9.00	70.00
California Privet —24 to 30 ins.....	10.00	75.00
Spiraea Van Houttee —12 to 18 ins...	35.00

Evergreens

We move all of our Evergreens with the dirt around the roots, wrapped with cloth.

ARBOR VITAE

	Each
American —18 to 24 ins.	\$2.00
2 to 3 ft.	2.50
3 to 4 ft.	3.50
A well-known variety.	
Berckman's Golden Dwarf —15 to 18 ins.	3.50
Small and compact.	
Compacta —18 to 24 ins.	3.50
A round compact dense green foliage.	
Chinese —2 to 3 ft.	2.00
3 to 4 ft.	3.00
A fast but rather loose growth.	
Ellwangerii (Tom Thumb) —18 to 24 inches	3.00
Forms a low broad pyramid, dark green foliage.	
Globosa —15 to 18 inches	3.00
Globe shape.	
Pyramidalis —18 to 24 ins. ..\$3.00	
2 to 3 ft. 4.00	
3 to 4 ft. 5.00	
Forms a tall narrow pyramidal, foliage dark green.	
Siberian —15 to 18 ins.	3.00
Low growth, dense, dark green foliage.	



PINES

Austrian —2 to 3 ft.	3.50
Spreading habit with long, stiff, dark green needles.	
Scotch —2 to 3 ft.	3.50
A quick growing evergreen, with blueish green needles.	
White —2 to 3 ft.	3.50
The most graceful of all pines.	
Mugho —Dwarf, 15 to 18 inches.	4.00
Broad spreading bush, much broader than it is high.	

SPRUCE

Blue —18 to 24 inches	12.00
Deep blue, very attractive.	
Hemlock —18 to 24 ins.	3.00
2 to 3 ft.	3.50
3 to 4 ft.	5.00
Foliage deep glossy green, fine for planting singly or in groups.	
Norway —18 to 24 ins.	2.00
2 to 3 ft.	2.50
3 to 4 ft.	3.00
4 to 5 ft.	5.00
Hardy, grows rapidly, deep green foliage.	

RETINOSPORA

Plumosa —18 to 24 inches	3.50
Small dense plum like foliage, of light green color.	
Plumosa Aurea —18 to 24 inches.	3.50
Same as the above, except the foliage is golden.	
Tilifera —2 to 3 ft.	4.00
Foliage dark green.	



A Grouping of Sheared Retinospora.

- | | |
|--|------|
| Squarrosa —18 to 24 inches | 4.00 |
| Light blueish green foliage, dense growth. | |
| FIR | |
| Balsam —2 to 3 ft. | 2.00 |
| 3 to 4 ft. | 3.00 |
| Broad spreading nature, dark green needles. | |
| JUNIPER | |
| Irish —2 to 3 ft. | 2.00 |
| 3 to 4 ft. | 3.00 |
| Slender erect growth, foliage blueish green. | |
| English —2 to 3 ft. | 3.00 |
| Makes a dense pyramidal growth, grayish green. | |
| Sweedish —18 to 24 ins. | 3.00 |
| Tall with grey green needles. | |



Juniper Pfitzeriana.

- | | |
|--|------|
| Pfitzeriana —18 to 24 inches | 4.00 |
| Forms a very graceful plant of spreading habit, silvery green foliage. | |
| Virginiana Glaucea —2 to 3 ft. | 5.00 |
| One of the most beautiful Junipers, blue foliage. | |
| Virginiana —2 to 3 ft. | 3.00 |
| Common red cedar. | |

Broad Leaf Evergreens

Abelia —15 to 18 inches	Each
A beautiful shrub with small glossy green leaves and small white flowers.	\$1.00

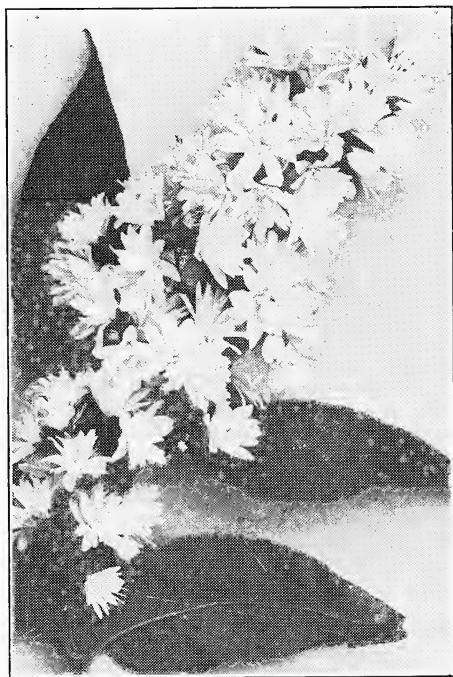


Magnolia Grandiflora.

Azalia —12 to 15 inches	4.00
15 to 18 inches	5.00
A dwarf bushy plant with small green leaves, covered with small dark pink flowers in early spring.	
Bamboo, Japanese75
An attractive tall growing evergreen, canes fine for screening.	
Boxwood —Bush, 15 to 18 inches	3.50
12 to 15 inches	3.00
10 to 12 inches	2.00
8 to 10 inches	1.25
Cherry Laurel —2 to 3 ft.	3.50
An attractive tree with small green leaves.	
Cataneaster Horizontalis —12 to 18 inches.....	2.50
Dwarf shrub with small dark green leaves, flowers pinkish, fine for borders.	
Euonymus, Japonica —2 to 3 ft.	2.00
Large glossy green leaves, holding their color all winter.	
Euonymus, Varigated —2 to 3 ft.	2.50
Similar to the above, except the varigated leaves.	
English Laurel —2 to 3 ft.	5.00
Beautiful broad shining foliage.	
Ilex Crenati (Japan Holly) —18 to 24 inches.....	5.00
A shrub with small glossy green leaves.	
Japanese Privet —2 to 3 ft.	2.50
A broad leaved evergreen shrub.	
Lucidium Privet —2 to 3 ft.	3.50
Large, thick, dark, shiny green leaves, very attractive.	
Mahonia Japonica —12 to 18 inches.....	2.50
Holly leaved barberry, glossy green foliage with pointed edges to the leaf.	
Mahonia Aquifolia —12 to 18 inches.....	2.50
Bright glossy green foliage, turning in autumn to rich bronze shade.	
Virburnum, Rhytidophyllum —18 to 24 inches.....	3.50
An attractive Chinese evergreen shrub, with broad tapering leaves, flowers yellowish white.	
Virburnum Tinus —12 to 18 inches.....	3.50
Beautiful evergreen shrub wearing clusters of white flowers in spring.	
Pyracantha Coccinea —18 to 24 inches.....	2.50
An evergreen shrub with low spreading habit.	
Photinia Serrulata —18 to 24 inches.....	2.50
A large evergreen shrub or tree, white flowers, foliage red in fall.	
Rhododendron —18 to 24 inches	6.00
Magnolia Grandiflora —2 to 3 ft.	2.00
3 to 4 ft.	3.00
4 to 5 ft.	4.00
5 to 6 ft.	5.00
Yucca75

Shrubs

	Each
Altheas, Rose of Sharon —Double assorted colors, a very desirable shrub, flowers large in late summer.....	.75
Barberry Thunbergii —Covered with small green foliage changing to beautiful red in autumn, red berries in winter. Dozen, \$7.5075
Box Barberry —Dwarf, makes a beautiful low hedge, \$7.50 dozen75
Butterfly Bush —Long spikes of lilac like flowers, all summer75



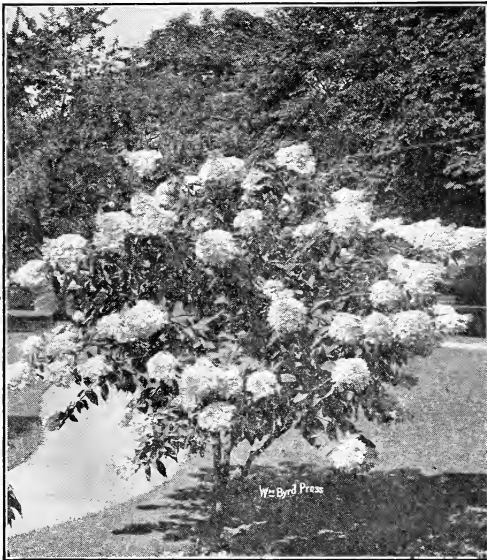
Deutzia Gracilis.

Callicarpa, Americana —A low growing shrub, bearing clusters of purple berries in fall.....	.75
Calycanthus —Sweet shrub, flowers double, chocolate color fragrant75
Caryopteris —Blue Spirea, showy blue flowers in late summer	1.00
Cape Jessamine (Gardenia) —A very tender evergreen with glossy green foliage	1.50
Crape Myrtle —The finest shrub for the South, commence blooming in July and last until frost.	
Pink	1.00
Red	1.00
Purple	1.00
White—The white is not as hardy as the other colors..	1.50
Deutzia Crenata —Clear white flowers of large size.....	.75
Deutzia Pride of Rochester —Double pinkish white.....	.75
Deutzia Lemoinei (Dwarf) —Early profuse bloomer, flower white75
Deutzia Gracilis —Dwarf, flowers white.....	.75
Exochordia Grandiflora (Pearl Bush) —A beautiful shrub with white flowers	1.00
Forsythia (Golden Bell).	
Intermedia —Early flowering shrub with bright golden flowers75
Suspensa, Drooping Forsythia —Slender drooping branches, dark green leave, flower yellow.....	.75
Fortunei —A more erect larger grower than the above....	.75
Virdissima —Erect green branches, yellow flowers.....	.75
Fringe —	
Purple (smoke tree), an elegant large shrub with pale purplish flowers	1.00
White—A native shrub with large glossy leaves, drooping pure white flowers.....	1.50
Flowering Almond —White; it blooms early, before the leaves appear	1.00

Flowering Almond —Pink, very handsome, double pink flower	1.00
Flowering Crab (Japanese) —Handsome deep pink flowers..	1.00
Bechtel's Double Flowering —Double, pink flower, very fragrant	1.50
Double Flowering Cherry (Japanese) —Producing deep rose flowers in early spring.....	3.00
Double Flowering Peach	1.00
Pink, flowers double.	
Red, flowers double.	
White, flowers double.	
Golden Elder —Golden leaved, flowers white.....	.75
Halesia —A neat shrub with dark green foliage and beautiful white flowers	1.50

HONEYSUCKLE BUSH

Fragrantissima —Fragrant almost an evergreen, flowers white75
Tartarica —Pink flowers	1.00
Morrowi, Japanese —White flower, valuable for the handsome red fruit75



Hydrangea.

HYPERICUM

H. Aureum —Low shrub, useful for edging borders, yellow flowers75
H. Mosorianum (Gold Flower) —A beautiful dwarf shrub, large single golden yellow flower.....	.75
H. Prolicicum —Medium tall, covered with yellow flowers in summer75

HYDRANGEA

H. Paniculata —The old reliable variety, producing large white flowers in late summer.....	.75
Hydrangea Tree —Same as the above, confined to a single stem	1.50
H. Arborescens (Hills of Snow) —White, everblooming....	1.25

HYDRANGEA HORTENSIS (French Varieties)

Hydrangea Blue	1.00
Hydrangea White	1.00
Hydrangea Pink	1.00

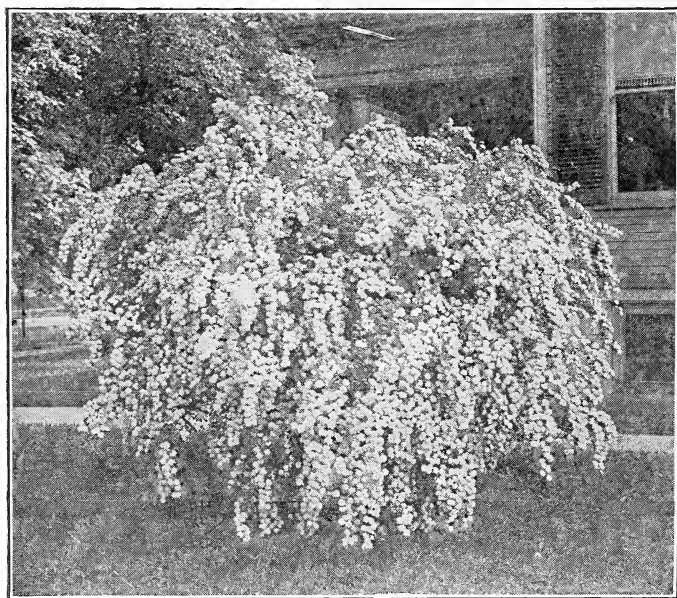
Jasminum Yellow —Slender green branches, pretty yellow flowers in early spring.....	.75
Jasminum Humile —Nearly an evergreen and almost a continual bloomer	1.00
Japan Quince —Bright green leaves, flowers red, large and showy75
Kerria Japonica, Flora Pleno —Double yellow flower.....	.75
Kerria White —Pure white flowers, blue black berries in winter75

LILACS

Charles X —Reddish purple, single.....	1.00
Mme. Lemoine —Fine double white.....	1.00
M. Buchner —Large double pale lilac.....	1.00
Paul's Thorn Red —A tall quick growing shrub, flowers red.	2.00
Paul's Thorn (White) —A tall quick growing shrub, flowers white	2.00
Purple Filbert —A large bush with dark purple leaves....	1.00
Russian Olive —Silvery foliage and yellow berries.....	.75
Syringa —Mock orange, creamy white flowers, fragrant....	.75

SPIREA

Anthony Waterer —A compact shrub, red flowers, continuous bloomer75
Billardi —Erect growing shrub, with rose pink flowers....	.75
Bridal Wreath, Prunifolia —Hardy old-fashion shrub.....	.75
Douglasi —Deep pink75
Opulifolia Aurea —Golden foliage75
Thunbergii —Small white flowers and tiny leaves.....	.75
Van Houtte —Among the finest shrubs, graceful drooping habit, good foliage, flowers white.....	.75



Spirea Van Houtte.

SNOWBERRY

Red —Red flower in summer, purple berries in winter.....	.75
White —Flowers white followed by snowy white berries..	.75

SNOWBALLS AND OTHER VIRBURNUMS

American —Well known shrubs, bearing large white flowers	1.00
Japanese —A very choice shrub, pure white flowers.....	1.25
Sebolds Virburnum —Vigorous grower, rich green foliage, white flowers	1.25
Tomentosum —Large white flowers, good foliage.....	1.25
Tamarix —Tall growing shrub with fine feathery foliage, pink flower	1.25

WEIGELA

Eva Rathke —Flowers deep red.....	1.00
Floribunda —Numerous crimson flowers.....	1.50
Rosea —Deep pink flowers	1.00
Variegated —Pink flower variegated leaf.....	1.00



JONKHEER J. L. MOCK.

Roses

Roses are the most beautiful of flowers, and they are among the easiest to raise in perfection. They require plenty of manure and good cultivation. Old and decayed branches, and at least half the previous season's growth, should be cut away early each spring, and a little cutting back after the first blooming will insure more late flowers.

\$1.00 each; \$10.00 dozen.

Everblooming Pink Roses

Bridesmaid—It is a charming, clear bright pink in color, and much superior to its well-known parent.

Bon Silene (Hardy, 1839)—Color bright rose, delicately tinted with fawn, sometimes quite light. Deliciously scented.

Catherine Mermet (Guillot, 1869)—Light rosy-flesh color; large, full and globular; a charming sort.

Columbia—A large rose with long stiff stem peach blow pink; deepening as it opens.

Helen Gould (Balduin) (H. T.)—Rosy pink; long, pointed buds. Fine.

Jonkheer J. L. Mock (Leenders, 1910)—The blooms are of largest size, highly perfumed. Color clear imperial-pink. Awarded two gold medals.

Killarney (Alex. Dickson, 1898)—The finest pink forcing Rose ever introduced. In coloring it is especially beautiful.

Madame Caroline Testout (Pernet Ducher, 1890)—Clear bright satiny-pink; flowers very large and extremely showy.

Radiance (Cook, 1909)—A brilliant rosy-carmine, displaying beautiful rich and opaline-pink tints in the open flower.

Maman Cochet (Cochet, 1893)—This is the famous Pink Cochet. Light pink shaded with salmon-yellow, outer petals splashed with bright rose; extremely large and full.

William R. Smith (Shellum, 1908)—The soft blending of the salmon-pinks and the rose-pinks and the beautiful flesh tints in this Rose give it a singular resemblance to the entrancing flush on a maiden's cheek.



GRUSS AN TEPLITZ

Everblooming Red Roses

Etoile De France (Pernet Ducher, 1905)—Color a lovely shade of clear, red-crimson velvet; very fragrant.

Gruss An Teplitz (Geschwindt, 1898)—Bright crimson, white, fiery-red center; cup-shaped; semi-double; flowers in clusters; so free in bloom as to present a blaze of scarlet.

Hadley (H. T.)—Deep, rich, velvety crimson. Well formed buds on long stiff stems. Very fragrant.

Hoosier Beauty (H. T.)—Crimson scarlet with darker shadings. Buds of good length with stiff stems. A strong grower.

Laurent Carle (Pernet Ducher, 1907)—Color brilliant velvety carmine. A very promising variety; another Rose it will certainly pay you to try. We know it has a future.

Meteor (Geschwindt, 1887)—Dark velvety crimson, shaded maroon. A grand garden Rose.

Radiance (H. T.)—Rosy carmine reverse of petals, beautiful silver tint, large, full, fragrant. Vigorous grower, free bloomer, long, stiff stems. This is one of the best we have seen in the South.

Maman Cochet (Red)—It is claimed to be the largest flowering and freest blooming Hybrid Tea Rose in existence, and the most beautiful and satisfactory rose for general planting ever offered. Color is a rich, vinous crimson.

Rhea Reid—Rich, dark velvety red double flowers, of large size. A very desirable garden sort.

Richmond (Hill, 1905)—Pure rich scarlet; very free and continuous flowering; splendid forcer.

Everblooming White Roses

Antoine Rivoire (Pernet Ducher, 1896)—Called by the trade Mrs. Taft. Rosy-flesh on yellow ground. Forces.

Devoniensis (T.)—An old favorite. Creamy white, flesh center; very fragrant. A good bloomer.

White Maman Cochet (Cook, 1897)—A sport from Maman Cochet, with creamy-white flowers faintly tinged with blush.

Kaiserin Augusta Victoria (Lambert & Reiter, 1891)—Pure white, with shadings of primrose-yellow.



Yellow Roses

Etoile De Lyon—Bright sulphur-yellow; buds very large and full; constant bloomer.

Harrison's Yellow (Harrisoni)—A slender but vigorous grower, with distinct golden yellow flowers.

Lady Hillingdon (Lowe & Shawyer, 1910)—Pointed bud of brilliant deep golden-yellow. Awarded gold medal, N. R. S.

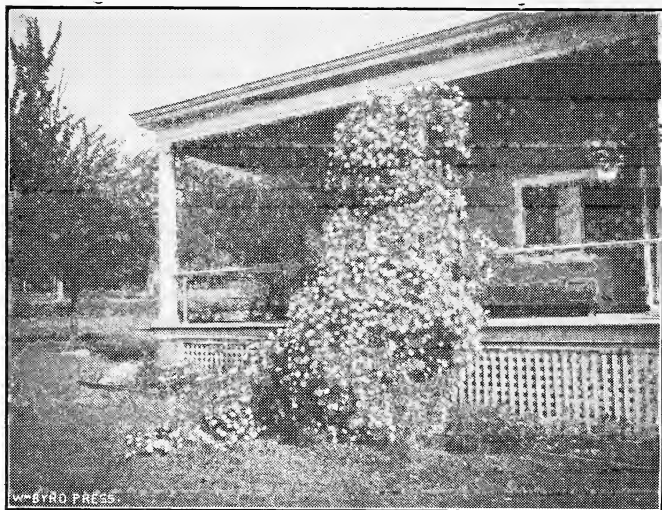
Sunburst (T.)—This beautiful Rose has been thoroughly tested, and it easily stands at the head of all sorts of its color. The color is a most pleasing shade of yellow and orange; buds long and pointed; plant vigorous and healthy; blooms keep for a long time after being cut. A grand Rose.

Safrano—Saffron and apricot; one of the oldest and best Roses; in the bud shape it can hardly be surpassed.

Yellow Cochet, or Madame Derepas Matrat—A pure Tea Rose, very free-growing and hardy in character, withstanding ten degrees below zero. It throws up fine, strong stems, crowned by solitary buds of grand size; the color is a good sulphur-yellow, blooms very large, perfectly double, splendid form and freely produced. It has every quality necessary to make the ideal yellow bedder, ranking with the White and Pink Cochets in value as a Summer Rose.

Rosa Hugonis

Rosa Hugonis (A Rare New Rose)—Known to be in bloom during a snowstorm! The color is intense canary-yellow, very bright and attractive. When in bloom the entire plant is covered with bright, sunshiny yellow blooms and buds making a wonderful early spring show. It later forms rich, scarlet berries which remain until winter and are very noticeable. Very rare. \$2.50.



Climbing Everblooming Roses

Captain Christy (H. P.)—Beautiful peachblow-pink, rich center, large and full.

Cl. Caroline Testout (Cl. T.)—Vigorous climber, producing abundance of large cup-shaped blooms of most beautiful delicate pink color. No collection is complete without this splendid variety.

Climbing Helen Gould (Good & Reese, 1912)—(C. H. T.)—Probably no red Rose has held its place secure in the hearts of Rose lovers for so long a period as has the beautiful Helen Gould. We have now the pleasure of introducing this famous Rose in climbing form. Everybody is familiar with the warm watermelon-red color of its charming flowers. This is a grand climber. Be sure and try it.

Climbing Killarney (Geo. Reinberg, 1908)—(C. H. T.)—An exact counterpart of Killarney in every respect except that it is of vigorous climbing habit; deep shell-pink.

Climbing Papa Gontier (Cherrier, 1904)—(C. T.)—A climbing sport of Papa Gontier. Color rich red; a beauty.

Etoile de France (C. T. H.)—One of the very best dark velvety crimson Climbing Roses; very hardy climber.

Climbing Meteor—Grows 10 to 15 feet in a season; blooms freely and persistently; deep, rich, velvety crimson; hardy with protection.

Clothilde Soupert (Soupert & Notting, 1890)—(H. Poly.)—Known the world over as one of the very best of all bedding Roses. The only rival of 'Hermosa' as a bedder and market pot plant. The color effect is beautiful ivory-white, shading towards the center to bright silvery-pink. Everybody's Rose.

Climbing Kaiserin Augusta Victoria (Dingee, 1896)—(C. H. T.) A strong climbing form of the variety of the same name. Pure white.

Deviensis (T.)—An old favorite. Creamy white, flesh center; very fragrant. A good bloomer.

Marechal Niel (Pradel, 1864)—(C. T.)—This is the old standby yellow Rose in the South, where it is hardy; indeed, it will bloom in any garden, but is not hardy in the North. Immense deep golden-yellow flowers with the deepest, richest tea fragrance of all Roses.

Climbing American Beauty—Rosy crimson, similar to its parent, the famous American Beauty; flower 3 to 4 inches in diameter and fragrant; finely formed, on long stems. Blooms very freely in May and June, and occasionally during the summer. The plant is a strong grower, making shoots 10 to 12 feet in a season, and perfectly hardy. Foliage of good size, deep glossy green color; does not mildew; is not subject to black spot, and remains on until frost.



Hybrid Roses

Alfred Colomb—Brilliant carmine-crimson; very large, full, and of fine globular form; extremely fragrant, and in every respect a superb sort; green wood, with occasional pale greenish thorns; foliage large and handsome. One of the most useful of all sorts for general cultivation. Budded and on own roots.

General Jacqueminot—Brilliant, velvety crimson; large, showy, and a fine grower; a magnificent variety.

Madame Charles Wood (E. Verdier, 1861)—Bright cherry-red; extremely free bloomer. A grand garden Rose. This is the same Rose as Dinsmore.

Prince Camille de Rohan—Deep velvety crimson; large; moderately full; a splendid rose.

Ulrich Brunner (Levet, 1881)—Cherry-red, of immense size, fine form and most effective in the garden.

Magna Charta (W. Paul, 1876)—Bright rose, very large and double, of good form and fragrant; extra.

Paul Neyron—Deep rose-color; splendid foliage and habit, with larger flowers than any other variety; a valuable acquisition.

White American Beauty, or Frau Karl Druschki—This magnificent variety has taken first prize at all the great flower shows of Europe. Pure snow-white, with long buds and immense, perfectly double flowers, 4 to 5 inches across, with waxy-like petals and very durable. It is one of the most continuous flowering roses in this excellent class. The bush is a vigorous grower, of upright habit and luxuriant foliage. Hardy everywhere that roses grow.

Madame Plantier (Plantier, 1835)—Extremely hardy; completely hides itself in June with its lovely pure white, sweet scented flowers; fine.

Ramblers

The Blue Rambler Rose (Schmidt, 1909) C. P.—This is a much better Rose than some give it credit for. It opens a reddish-violet, quickly changing to violet-blue.

Baltimore Belle—Pale blush, variegated carmine, rose and white; double.

Crimson Rambler—Especially adapted for covering trellises, training to side of the house, or can be cut back and grown in bush form.

Dorothy Perkins—The greatest climbing rose ever introduced. The flowers are borne in the greatest profusion in large trusses, and are of a most exquisite shade of shell-pink with beautifully quilled petals. The foliage is strong and bright green, and the plant, even when not in bloom, is a handsome adornment to the porch.

White Dorothy Perkins—Double white flowers in large clusters. Foliage deep glossy green.

Lady Gay—Flowers cherry-pink, fading to white; vigorous grower; hardy.

Philadelphia Rambler—An improvement on Crimson Rambler. The flowers are larger, more double and of a darker crimson color.

Silver Moon—Pure silvery white; large blooms; vigorous growth. 1 and 2 years.

Red Dorothy Perkins—This is identical with Pink and White Dorothy Perkins in growth and blooming qualities. The color is a brilliant crimson, making it one of the most showy Roses grown.

Baby Ramblers

Baby Pink Rambler—Same as White Rambler, except color of flowers, which are brilliant light carmine.

Red Baby Rambler—This is the original Baby Rambler Rose. A compact dwarf variety covered with a wealth of crimson flowers during the entire season. Very showy and useful for massing.

White Baby Rambler (Lambert, 1901)—Grows to a height of twenty inches and produces double pure white flowers in abundance.

Orleans (Levavasseur, 1910)—Showiest and prettiest of all Baby Ramblers. This charming and dainty Rose is of beautiful rounded habit and is a huge bouquet of deep cerise or Geranium-pink with distinct showy center of pure white; florets not crowded, but of beautiful arrangement, and cannot be beaten. The color is irresistible.

Climbing Vines

	Each.	Doz.
Ampelopsis Veitchii (Boston Ivy) —Rapid growth, leaves bright green, very dense, turning red in fall.	.50	5.00
Ampelopsis Quinquefolia (Virginia Creeper) —Large handsome leaves turning red in fall.....	.75	7.50
Dutchman's Pipe —Well adapted for porches and arbors, broad bright green leaves, purple flowers..	1.25
Clematis Paniculata —From Japan, Panicles of small white fragrant flower, in late summer, good foliage75
Clematis, Ed. Andre —Large bright red.....	1.25
Clematis, Henryii —Creamy white, large.....	1.25
Clematis, Jackmanii —Dark violet purple.....	1.25
Honeysuckle, Halls Japan —Fragrant, constant bloomer (evergreen)75	6.00
Ivy, English —Bright green foliage (evergreen).....	.50	5.00
Kudsa Vine —Most rapid growing vine, violet flowers.	.75
Trumpet Vine —Trumpet shaped, yellowish red flower75
Wistaria, Purple —A fine climber with purple flowers, borne in long open clusters.....	1.00
Wistaria, White —Same as above, except flowers are white	1.00

Bulbs and Hardy Perennials

Sell for Spring Only

	Each.	Doz.
Canna —A very attractive bedding flower.....	.40	3.50
Chrysanthemums —One of the most popular autumn flowers40	3.50
Dahlias —A beautiful late summer and autumn flower	.40	3.50
Gaillardi —The most attractive and useful of all summer flowers30	3.00
Gladiolus —The popularity of the Gladiolus is sure to continue and increase, as they are, without doubt, the most attractive and useful of all summer flowering bulbs, and as a cut flower through the summer and autumn months, holds a place that cannot be taken by any other flower. Colors: Red, pink, white and variegated.....	.30	3.00

For Spring or Fall

	Each.	Doz.
Anemone Japonica25	2.50
Golden Glow25	2.50
Iris, German25	2.50
Iris, Japan50	5.00
Phlox Hardy35	3.50
Peony —The most beautiful of all spring flowers. Should be planted in every garden. Colors: Pink, red, white	1.00	10.00

Sell for Fall Only

	Each.	Doz.
Crocus20	2.00
Hyacinth, assorted25	2.50
Hyacinth, Double30	3.00
Tulips, Double25	2.50
Tulips, Single25	2.50
Narcissus25	2.50



