

Historic, archived document

Do not assume content reflects current scientific knowledge, policies, or practices.

62-61

LIBRARY RECEIVED
APR 17 1923
U. S. Department of Agriculture

Indexed

**THE
GARDEN
HOUSE**

1923



**ISLIP
BAY SHORE
BRIGHTWATERS**

"If it's for the Garden, we have it"

To Our Friends

We have endeavored to make our 1923 Catalogue a complete reference for everything worth-while pertaining to practical and ornamental gardening. With the idea of making our catalogue complete in every detail we have not only listed and described flowers and vegetables of merit, but have included, garden tools, mowers, spray materials, insecticides, bedding and nursery stock, and we hope you will retain it as a handy garden guide. We have made every effort to eliminate many varieties that in our judgment have not proven satisfactory for Long Island.

It is our constant endeavor to maintain at all times a thoroughly complete stock of quality merchandise at moderately consistent prices. No stone is left unturned in our determined effort to establish a Garden House that will merit the confidence our many patrons have placed in us.

Efficient service is of primary importance with us and we make special effort to provide the needs of our customers with a minimum of delay or inconvenience. Orders whether received by mail, verbally or otherwise will receive prompt and careful attention and will be executed accordingly.

We earnestly request our patrons to consult us with regard to any problems pertaining to gardening in all its phases and we will courteously assist with helpful suggestions, planting information, color scheming, soil preparation, etc., for their benefit.

As weather conditions and other factors over which we have no control, influence the growth and life of all vegetation, we make no guarantee for the life of seeds. We do, however, guarantee to supply the very best quality seed procurable and with diligent care and proper culture, satisfactory results are assured.

Very truly yours,
THE GARDEN HOUSE,
W. C. McCOLLOM.

2nd Annual Catalogue



The
GARDEN HOUSE

1923

W. C. McCOLLOM



BAY SHORE

Phone Bay Shore 118

ISLIP

Phone Islip 919

BRIGHTWATERS

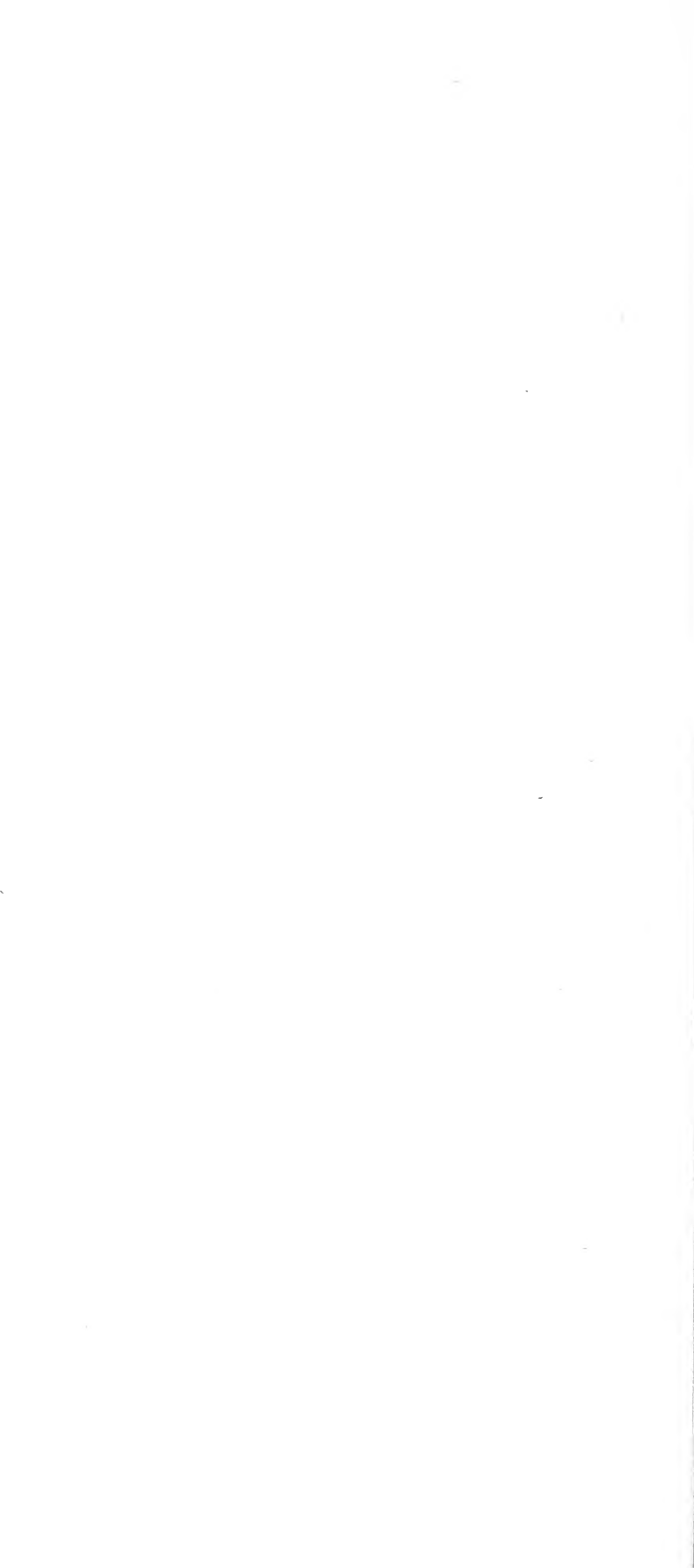
Phone Bay Shore 634-W



*Greenhouse & Nursery located at
Baldwin Drive, Brightwaters
Long Island*



"If it's for the Garden, we have it"



Novelties



Lima Bean, Early Giant Bush

A quick-growing variety. The short period in which this Bean matures enables it to be **grown for succession**, sowings being made from May 15 to July 10 in the neighborhood of New York. Other varieties of Lima Beans take so long to mature that more than one seeding is barely practical with them. The flavor of this variety is particularly refined, and the fine, luscious Beans, which are large, thick, and flat are produced in remarkable quantity. Pkt. 15 cts., $\frac{1}{2}$ -lb. 35 cts., lb. 60 cts., 2 lbs. \$1.15, 5 lbs. \$2.85, 15 lbs. \$8.45.

Spinach, S. & W. Co.'s Emerald Standing

A very large and vigorous type of compact, flat, spreading growth. The leaves are large, thick, slightly crumpled, very fleshy, and carried on long stems. The color is a very dark green. The most important point about this Spinach, however, is that **it stands fully one month longer than any other variety** before bolting to seed. In spite of this, it is quite early to mature, and it is ready for cutting most as soon as Bloomsdale. We predict a heavy demand for Emerald Standing by truckers, market gardeners, private gardeners, and amateurs. Seed is obtainable only in limited quantity. Pkt. 15 cts., oz. 25 cts., $\frac{1}{4}$ -lb. 80c., lb. \$2.50.

New Corn, De Lue's Golden Giant

One of the parents of this fine variety is Golden Bantam, but Golden Giant more than retains the sweetness of its ancestor. It is quite as early, averages more ears to the stalk, and the ear has three times the bulk and weight, averaging 8 inches in length. Golden Giant has a 12- to 20-rowed ear against the 8-rowed ear of Bantam. The plant has the same medium-dwarf habit of Bantam, and, on account of its heavy yield, it is the one Corn for the gardener who looks for the largest production of the best quality Corn on the smallest area of ground. **Pkt. 15 cts., ½-lb. 35 cts., lb. 60 cts., 2 lbs. \$1.15, 5 lbs. \$2.85, 15 lbs. \$8.45.**

Aster, American Beauty

Similar in type and growth to our well-known late branching Asters, but differs in that all the large blossoms are produced on longer and heavier stems. Some of the individual stems measure more than 2 feet in length. It makes an unusually heavy growth and is one of the latest flowering Asters we know of. We can supply in the following four colors: **Peach Blossom, Light Blue, Rose, Purple.** Each, **pkt. 25 cts., 5 pkts. \$1.**

New Double Cosmos

Some years ago, when we first offered in our Novelties and Specialties this splendid new form of Cosmos of Australian origin, we considered it a notable addition to this beautiful family of easily-grown annuals for cutting. We are pleased to announce, however, that, due to painstaking effort on the part of an American grower, this strain has been further improved upon, in size of flower, greater degree of doubleness, and general vigor of the plant. Many of the flowers are entirely double, while others have an attractive collar which rather adds, we think, to its beauty. **Double Mixed, Pink, White and Crimson.** Each, **pkt. 20 cts., 6 pkts. \$1.**

New Zinnias

New Double Dahlia-flowered

We are pleased to say that we have been able to secure this Zinnia in separate colors this year. The plants are of the same vigorous habit as our Giant Double-flowering varieties. They attain the height of 3 feet, producing mammoth flowers averaging 6 inches across by 3 to 4 inches in depth, similar in shape to the decorative dahlia. We consider them a fitting companion to our strain of Giant Double-flowering Zinnias. **Mixed, Red, Yellow, Pink and Buff.** Each, **pkt. 25 cts., 5 pkts. \$1.**

General Vegetable Seeds

Artichoke

One ounce will sow 100 ft. of drill

Sow outside April 15th or in flats during February

Pkt. Oz.

French Globe. Standard large headed... \$0.25 \$1.25

Jerusalem. Plant tubers Apr. 15th-30th.
\$5.00 per Bu., \$1.50 per peck.

Asparagus

One ounce will sow 100 ft. row. Sow early in April.

Pkt. Oz. Lb.

Palmetto. The best white variety. \$0.10 \$0.15 \$1.50

Conover's Colossal. Good stand-
ard variety10 .25 2.00

Asparagus Roots

Plant during April in rows 3 ft. apart, 15 in. centers

Palmetto. 2 Yr. \$2.00 per 100, 3 Yr. \$3.50 per 100.

Conover's Colossal. 2 Yr. \$2.00 per 100, 3 Yr. \$3.50 per 100.

Bush Beans—Green Podded

One pound will plant 50 ft. of drill

Sow in open ground every 3 weeks from
May 1st-Aug. 15th

1/2 Lb. Lb.

Black Valentine. 31 days; Rd. pods... \$0.15 \$0.30

Bountiful. 35 days; flat pods15 .30

Dwf. Horticultural. 35 days, heavy pods .15 .30

Ex. Early Red Valentine. 32 days; very
productive15 .30

Ex. Early Refugee. 30 days; Rd. pods.. .20 .35

Giant Str. Green Pod. 31 days; Rd. pods .20 .35

Refugee, 1000-1. 48 days; heavy pro-
ducer15 .30

Str. Green Pod. 30 days20 .35

Masterpiece. Forcing50 1.00

Navy or Pea. For shelling15 .30

Bush Beans—Wax Podded

1/2 Lb. Lb.

Davis White Wax. 35 days; flat pods... \$0.20 \$0.35

Imp. Golden Wax. 35 days; flat pods.. .15 .30

Sure Crop Wax. 35 days; flat pods20 .35

Hodson. Wax; 35 days; flat pods20 .35

Wardwell's. Wax; 40 days; flat pods... .15 .30

Bush Beans—Dwarf Limas

One pound will plant 50 ft. of drill

Sow May 1st and June 1st for succession

	$\frac{1}{2}$ Lb.	Lb.
Dreer's Improved. 60 days	\$0.20	\$0.40
Fordhook. 60 days20	.40
Henderson's. 50 days20	.35
New Improved. 60 days20	.40

Pole Liams

One pound will plant 25 hills

Sow May 1st to 15th

	$\frac{1}{2}$ Lb.	Lb.
Challenger. 85 days	\$0.20	\$0.40
Ford's Mammoth. 90 days20	.40
Imp. Green Seeded. 90 days25	.45
Leviathan. 85 days20	.40

Pole Beans—Shell

One pound will plant 50 hills

Sow May 1st and 15th

	$\frac{1}{2}$ Lb.	Lb.
Old Homestead. 60 days	\$0.20	\$0.35
Scarlet Runner. 70 days20	.40
Kentucky Wonder Wax. 65 days20	.40

Beets

One ounce will sow 50 ft. of drill

Sow April 1st and every 4 weeks until July 15th

	Pkt.	Oz.	$\frac{1}{4}$ Lb.
Crimson Globe. 40 days	\$0.10	\$0.20	\$0.60
Crosby's Imp. Egypt. 42 days10	.25	.80
Detroit Dark Red. 50 days10	.20	.60
Eclipse. 42 days10	.20	.60
Ex. Early Egyptian. 38 days10	.20	.60
Edmand's Blood Turnip. 50 days10	.20	.60

Swiss Chard

One ounce will sow 50 ft. of drill

Sow April 1st to 15th

	Pkt.	Oz.	$\frac{1}{4}$ Lb.
Giant Lucullus. 50 days	\$0.10	\$0.20	\$0.60

Sugar Beet

One ounce will sow 50 ft. of drill

Sow April 15th to May 15th

	$\frac{1}{4}$ Lb.	Lb.
Giant Rose. Half long; 70 days	\$0.25	\$0.75

Mangel-Wurzel

Sow six to eight pounds per acre

Sow April 15th to May 15th

	$\frac{1}{4}$ Lb.	Lb.
Golden Tankard. 90 days	\$0.25	\$0.75
Mam. Lg. Red. 110 days25	.75
Barrie's Sludstrup. 110 days25	.75

Brussels Sprouts

One ounce will produce 3000 plants

Sow May 15th to June 1st

		Pkt.	Oz.
Dalkeith.	130 days	\$0.15	\$0.40
Favorite.	130 days15	.40

Cabbage

One ounce will produce 3000 plants

Sow early cabbage in frames Mar. 1st, outside April 1st, late cabbage outside May 15th to June 1st

		Pkt.	Oz.	¼ Lb.
Early Jer. Wakefield.	70 days...	\$0.10	\$0.75	\$2.75
Charleston Wakefield.	75 days..	.10	.80	3.00
Early Flat Dutch.	80 days10	.75	2.75
Copenhagen Market.	90 days....	.10	.90	3.25
Early Summer.	100 days10	.75	2.75
Succession.	110 days10	.75	2.75
Late Flat Dutch.	120 days10	.65	2.25
Danish Ball Head.	120 days10	.70	2.25
Drumhead Savoy.	120 days10	.80	3.00
Red Dutch.	120 days10	.80	3.00
Red Rock.	120 days10	.80	3.00
Pe-Tsaie, (Chinese Cab).	110 days10	.80	3.00

Early started plants from our greenhouse ready April 1st, 20c per doz.

Carrot

One ounce will sow 100 ft. of drill

Sow April 1st and every 4 weeks to July 15th

		Pkt.	Oz.	¼ Lb.
Chantenay.	65 days	\$0.10	\$0.15	\$0.50
Danvers.	70 days10	.15	.50
Early Scar. Horn.	55 days10	.15	.50
Long Orange.	70 days10	.15	.50
Early French Forc.	55 days10	.20	.60
Ox-Heart.	65 days10	.15	.50

Cauliflower

One ounce will produce 3000 plants

Sow early crop indoors Mar. 1st, outside April 1st

Sow late crop outside May 15th to June 1st

		Pkt.	¼ Oz.	Oz.
Best of All.	90 days	\$0.25	\$1.00	\$4.25
Early Snowball.	100 days25	1.00	4.25

Early started plants from our greenhouse ready April 1st, 35c per doz.

Celery

One ounce will produce 3000 plants

Sow early inside Feb. 15th to Mar. 1st.

Late crop outside May 1st to 15th

		Pkt.	¼ Oz.	Oz.
Gold. Self Blanch.	120 days....	\$0.10	\$0.35	\$1.00
Easy Blanching.	120 days10	.50	1.75
Giant Pascal.	140 days10	.15	.50
Golden Heart.	110 days10	.15	.50
Imp. White Plume.	100 days10	.20	.60

Early started plants from our greenhouse ready May 1st, 25c per doz.

Celeriac

One ounce will sow 100 ft. of drill

Sow outside April 1st to April 15th

	Pkt.	Oz.
Large Smooth. 120 days	\$0.10	\$0.30

Chicory

One ounce will sow 100 ft. of drill

Sow outside April 1st to 15th

Roots lifeted and forced in winter

	Pkt.	Oz.
Whitloof	\$0.10	\$0.40

Chervil

One ounce will sow 100 ft. of drill

Sow outside April 1st and every 4 weeks
to Aug. 15th

Ex. Dble. Moss Curled. 35 days	\$0.10	\$0.25
--------------------------------------	--------	--------

Corn Salad

One ounce will sow 100 ft. of drill

Sow outside in Sept. and cover for winter,
ready the following spring

	Pkt.	Oz.
Large Seeded	\$0.10	\$0.15

Corn

One pound will plant 100 hills

Sow outside May 1st and every 3 weeks to July 15th

	$\frac{1}{4}$ Lb.	Lb.
Golden Bantam. 70 days	\$0.10	\$0.35
White Cob Cory. 65 days10	.30
Metropolitan. 80 days10	.35
Crosby's Early. 65 days10	.30
Early Evergreen. 75 days10	.30
De Lues Giant. 80 days20	.60
Stowell's Evergreen. 85 days10	.35
Country Gentleman. 80 days10	.35
Black Mexican. 75 days10	.30
Golden Rod. 75 days10	.35
Red Cob Cory. 70 days10	.30

Cress or Pepper Grass

One ounce will sow 150 ft. of drill

Sow every 3 weeks from April 1st to Sept. 1st

	Pkt.	$\frac{1}{4}$ Lb.	Lb.
Extra Curled	\$0.10	\$0.40	\$1.50

Cucumber

One ounce will sow 50 hills

Sow every 3 weeks from May 1st to Aug. 15th

	Pkt.	Oz.	$\frac{1}{4}$ Lb.
Cool & Crisp. 60 days	\$0.10	\$0.25	\$0.75
Davis Perfect. 55 days10	.25	.75
Imp. White Spine. 60 days10	.20	.75
Extra Long Green. 60 days10	.25	.75
Prolific Pickling. 55 days10	.25	.75
Fordhook Pickling. 55 days10	.25	.75

Cucumber—English

For growing under glass

	Pkt.
Improved Telegraph	\$0.25
Forcing White Spine25

Egg Plant

One ounce will produce 2000 plants

Sow indoors Feb. 15th to Mar. 1st

	Pkt.	Oz.
Imp. New York. 130 days	\$0.10	\$0.75
Black Beauty. 140 days10	.75
Early Lg. Purple. 125 days10	.75

Early started plants from our greenhouse ready
May 1st, 35c per doz.

Endive

One ounce will sow 100 ft. of drill

Sow every 3 weeks from May 1st to Aug. 1st

	Pkt.	Oz.
Broad Lf. Batavian. 45 days	\$0.10	\$0.25
Green Curled. 40 days10	.25
White Curled. 40 days10	.25

Herbs

	Pkt.	Oz.
Basil	\$0.10	\$0.25
Borage10	.25
Caraway10	.25
Dill10	.25
Fennel Sweet10	.25
Fennel Florence10	.25
Lavender10	.50
Sweet Marjoram10	.30
Rosemary10	.50
Sage10	.50
Summer Savory10	.25
Thyme10	.75

Kale

One ounce will produce 1500 plants

Sow outside May 1st to 15th

	Pkt.	Oz.
Green Curled Scotch. 55 days	\$0.10	\$0.25
Dwarf Brown. 60 days10	.25
Siberian Kale or Sprouts10	.25

Kohl Rabi

One ounce will sow 150 ft. of drill

Sow outside every 3 weeks from April 1st-July 1st

	Pkt.	Oz.
Early White Vienna. 60 days	\$0.10	\$0.30
Early Purple, Vienna. 60 days10	.30

Leek

One ounce will sow 100 ft. of drill

Sow indoors Mar. 1st or outside April 1st

	Pkt.	Oz.
American Flag. 80 days	\$0.10	\$0.30
Musselburgh. 80 days10	.30

Lettuce

One ounce will sow 100 ft. of drill

Sow inside Mar. 1st, outside April 1st, and every
3 weeks until Aug. 1st

	Pkt.	Oz.
All Season. 50 days	\$0.10	\$0.25
Big Boston. 50 days10	.25
Boston Market. 50 days10	.20
Hanson. 45 days10	.25
New York. 55 days10	.25
Iceberg. 50 days10	.20
Blk. Seeded Simpson. 50 days10	.25
Mignonette. 50 days10	.20
Simpson Ea. Curled. 40 days10	.15
May King. 40 days10	.25
Wayahead. 45 days10	.20
Salamander. 50 days10	.25

Early started plants from our greenhouse ready
April 1st, 20c per doz.

Cos Lettuce or "Romaine"

	Pkt.	Oz.
Paris White. 50 days	\$0.10	\$0.20
Trianon Cos. 50 days10	.20

Musk Melon

One ounce will plant 50 hills

Sow in frames April 15th or outside May 15th

	Pkt.	Oz.
Emerald Gem. 80 days	\$0.10	\$0.20
Ex. Early Hackensack. 65 days10	.15
Honey Dew. 90 days10	.35
Montreal Nutmeg. 80 days25	1.50
Rocky Ford. 70 days10	.20
Casaba. 80 days10	.30

English Forcing Melons

For growing under glass

	Pkt.
Blenheim Orange. 100 days	\$0.50
Royal Jubilee. 110 days50

Water Melon

One ounce will sow 30 hills

Sow outside May 1st-15th

	Pkt.	Oz.
Coles Early. 65 days	\$0.10	\$0.15
Kleckley's Sweet. 65 days10	.15
Tom Watson. 90 days10	.15
Mountain Sweet. 80 days10	.15
Citron10	.20

Mushroom Spawn

Ten bricks will plant a bed 100 square feet

American Pure Culture \$0.40 per brick

Okra or Gumbo

One ounce will sow 50 ft. of drill

Sow outside May 1st-15th

	Pkt.	Oz.
Kleckley's Favorite. 50 days	\$0.10	\$0.15
White Velvet. 60 days10	.15

Onions

One ounce will sow 100 ft. of drill

Sow outside April 1st-15th

	Pkt.	Oz.
White Portugal. 90 days	\$0.10	\$0.30
Southport White Globe. 120 days10	.40
White Pickling. 90 days10	.40
Yellow Globe Danvers. 115 days10	.25
Southport Yellow Globe. 110 days10	.35
Prizetaker. 90 days10	.35
Ailsa Craig. 100 days10	.75
Gigantic Gibraltar. 100 days10	.60
Red Wethersfield. 120 days10	.25
Southport Red Globe. 130 days10	.30

Onion Sets

One quart will plant 100 ft. of drill

Plant outside April 1st-June 1st

	1/2 Lb.	Lb.	5 Lbs.
Yellow	\$0.15	\$0.25	\$1.15
White20	.30	1.40
Red15	.25	1.15

Parsley

One ounce will sow 100 ft. of drill

Sow outside April 1st to May 1st

	Pkt.	Oz.
Champion Moss Curled. 45 days	\$0.10	\$0.15
Ex. Double Curled. 45 days10	.15
Plain. 50 days10	.15

Parsnip

One ounce will sow 100 ft. of drill

Sow outside April 1st to May 1st

	Pkt.	Oz.
Imp. Hollow Crown. 90 days	\$0.10	\$0.20

Pepper

One ounce will produce 1500 plants

Sow indoors Mar. 1st to 15th

	Pkt.	Oz.
Perf. Pimiento. 125 days	\$0.10	\$0.75
Chinese Giant. 140 days10	1.00
Large Bell. 120 days10	.75
Lg. Red Cayenne. 130 days10	.75
Sweet Mountain. 125 days10	.75
Ruby King. 130 days10	.75

Early started plants from our greenhouse ready May 1st, 35c per doz.

Peas

One pound will plant 50 ft. of drill
Sow outside April 1st-May 15th
For late crops, July 15th-Aug. 15th

	Lb.	2 Lbs.	5 Lbs.
Alaska. 49 days; height, 2 ft.;			
Rd. seed	\$0.35	\$0.65	\$1.60
American Wonder. 50 days;			
height, 1 ft.; wrinkled40	.75	1.80
First of All. 52 days; height			
2½ ft.; Rd. seed40	.75	1.80
Gradus. 54 days; height, 3 ft.;			
wrinkled45	.85	2.00
Laxtonian. 60 days; height, 1½			
ft.; wrinkled45	.85	2.00
Little Marvel. 52 days; height			
1½ ft.; wrinkled45	.85	2.00
Sutton's Excelsior. 50 days;			
height, 1½ ft.; wrinkled40	.75	1.80
Thos. Laxton. 54 days; height,			
2½ ft.; wrinkled40	.75	1.80
Potlach. 70 days; height, 2 ft.;			
wrinkled40	.75	1.80
Alderman. 70 days; height, 5 ft.;			
wrinkled45	.85	2.00
Champion of England. 70 days;			
height, 5 ft.; wrinkled40	.75	1.80
Quite Content. 70 days; height,			
6 ft.; wrinkled50	.95	2.25
Telephone. 65 days; height, 4			
ft.; wrinkled40	.75	1.80
Pilot. 50 days; height, 3 ft.;			
Rd. seed45	.85	2.00

Potatoes

We only list the very best grade of Maine grown seed. Don't gamble with your crop by trying cheap home-grown seed.

Ten bushels per acre
Plant April 1st to May 15th

	Peck	Bu.	Bbl.
Bovee. 80 days; very early	\$1.10	\$3.50	\$8.00
Carman No. 3. 120 days; good			
producer	1.10	3.50	8.00
Green Mt. 120 days; the standard			
late	1.10	3.50	8.00
Early Rose. 90 days; pink skin...	1.10	3.50	8.00
Beauty Hebron. 85 days; large			
early variety	1.10	3.50	8.00
Sir Walter Raleigh. 120 days;			
very large potato	1.10	3.50	8.00
Irish Cobbler. 80 days; one of			
the best cookers	1.10	3.50	8.00
New Queen. 90 days; light skin..	1.10	3.50	8.00
Late Rose. 110 days; good white			
skin	1.10	3.50	8.00

Potato prices subject to market fluctuations.

Pumpkin

One ounce will sow 50 hills
Sow outside from May 1st to May 15th

		Pkt.	Oz.
Connecticut Field.	65 days	\$0.10	\$0.20
Large Cheese.	65 days	.10	.20
Mammoth Tours.	110 days	.10	.25
New England Pie.	65 days	.10	.25

Radish

One ounce will sow 100 ft. of drill
Sow outside every 3 weeks from April 1st to Sept. 1st

		Pkt.	Oz.
Early Scarlet Globe.	20 days	\$0.10	\$0.20
Early Scarlet Turnip.	20 days	.10	.15
French Breakfast.	30 days	.10	.15
White Icicle.	30 days	.10	.20

Winter Radish

		Pkt.	Oz.
Long Black Spanish.	70 days	\$0.10	\$0.20
Rose China.	50 days	.10	.20
Rd. Black Spanish.	50 days	.10	.20

Rhubarb

Plant outside April 1st-May 1st
Fine divided roots three to six eyes, 20c each; \$2.00 per doz.

Salsify (Oyster Plant)

One ounce will sow 100 ft. of drill
Sow outside from April 1st to May 1st

		Pkt.	Oz.
Mam. Sandwich Island.	90 days	\$0.10	\$0.40
Scorzonera (Black Oyster Plt.).	90 days	.10	.40

Spinach

One ounce will sow 100 ft. of drill
Sow outside every two weeks from April 1st to May 30th

		Pkt.	Oz.
Savoy Leaved.	40 days	\$0.10	\$0.15
Viroflay.	45 days	.10	.15
Prickly or Winter.	50 days	.10	.15
Victoria.	50 days	.10	.15
New York Mkt.	50 days	.10	.15

New Zealand Spinach

One ounce will sow 50 ft. of drill
Sow outside April 15th-May 1st

		Pkt.	Oz.
New Zealand.	60 days	\$0.10	\$0.20

Squash

One ounce will sow 30 hills
Sow outside from May 1st-May 15th

	Pkt.	Oz.
Hubbard. 70 days	\$0.10	\$0.25
Warted Hubbard. 70 days10	.25
English Marrow. 70 days10	.25
Giant Summer Crookneck. 50 days10	.25
Golden Custard. 60 days10	.20
Imp. L. I. White Bush. 50 days10	.25
Boston Marrow. 60 days10	.15
Mammoth Chili. 70 days10	.25

Tomato

One ounce will produce 1500 plants
Sow indoors Mar. 1st to 15th; outside May 1st

	Pkt.	Oz.
John Baer. 110 days	\$0.10	\$0.75
Crimson Cushion. 120 days10	.75
Dwarf Stone. 115 days10	.60
Imp. Stone. 115 days10	.70
Ponderosa. 115 days10	.75
Earliana. 85 days10	.50
June Pink. 90 days10	.50
Matchless. 100 days10	.40
Golden Ponderosa. 100 days10	.50

Red Plum, Yellow Plum, Red Pear, Yellow Pear,
Red Peach and Yellow Peach, 10c per Pkt.

Early started plants from our greenhouse, ready
May 1st, 25c per doz.

Forcing Tomatoes

For growing under glass

	Pkt.
Westchester Pryde	\$0.25
Stirling Castle25

Turnip

One ounce will sow 150 ft. of drill
Sow outside April 1st-Aug. 15th

	Pkt.	Oz.
Early Snowball. 40 days	\$0.10	\$0.15
Early White Milan. 50 days10	.20
Red Top Strap Leaf. 45 days10	.20
Golden Ball. 60 days10	.20
White Egg. 50 days10	.15
Yellow Stone. 50 days10	.20

Ruta Baga or Swedish Turnip

Sow June 15th-July 1st

	Pkt.	Oz.
Long Island Imp. 90 days	\$0.10	\$0.25
Imp. Purple Top. 90 days10	.25

Grass Seed of Quality

Sow 1 lb. to 300 sq. ft., 100 lbs. to the acre

We guarantee our grass mixtures to be the very best obtainable regardless of price. The mixtures are made from our own formulas with choice seeds of the various grasses re-cleaned and free from chaff and weeds.

Sunnyside Grass Mixture

Our **SUNNYSIDE MIXTURE** for lawns in sunny locations is a mixture that we know will produce gratifying results on the light sandy soils of Long Island.

50c per lb., \$2.25-5 lbs., \$4.00-10 lbs.,
\$7.50-20 lbs., \$35.00-100 lbs.

Shadyside Grass Mixture

A mixture of grasses that are especially adapted for growing in shady locations, under trees, the north side of buildings, etc.

65c per lb., \$3.00-5 lbs., \$5.50-10 lbs.,
\$10.00-20 lbs., \$45.00-100 lbs.

Putting Green Mixture

This mixture is composed of grasses especially adapted for golf greens, bowling greens, lawn tennis courts and similar purposes.

70c per lb., \$3.25-5 lbs., \$6.00-10 lbs.,
\$11.00-20 lbs., \$50.00-100 lbs.

Permanent Pasture Mixture

A grass mixture suitable for the grazing of cattle or the laying down of fields for resting periods.

45c per lb., \$2.00-5 lbs., \$3.75-10 lbs.,
\$7.50-20 lbs., \$35.00-100 lbs.

We carry at all times a complete line of grasses such as **CANADA BLUE, KENTUCKY BLUE, RED TOP, TIMOTHY, CREEPING BENT, RHODE ISLAND BENT, CHEWINGS, FESCUE, NEW ZEALAND FESCUE**, which come direct to us from the largest importers and we are confident there are none better.

Farm and Field Seeds

Corn

Dent Varieties

	1/2 Pk.	Pk.	Bu.
Improved Leaming. One of the very best for both ensilage and grain; large ears of deep yellow.	\$0.60	\$1.00	\$3.75
Eureka. Earlier than Leaming; large ears	.60	1.00	3.75

Flint Varieties

Sandford White. Medium, silver gray	.60	1.00	3.75
Luce's Favorite. The best ensilage corn	.75	1.25	4.00

Fodder Corn

Sweet Fodder. Best for feeding green	.75	1.25	4.00
Southern Horsetooth. Large, heavy ears	.60	1.00	3.75

Canada Field Peas

Valuable for cattle feeding, also as ensilage or cut and used dry; full of nutrition	.75	1.25	4.50
--	-----	------	------

Clovers and Grains

	Lb.	100 Lbs.
Alfalfa. Most productive green crop grown for feeding green or cutting for hay	\$0.35	\$30.00
Alsike. One of the most hardy clovers	.30	28.00
Crimson. Used as cover crop for plowing under	.25	20.00
Medium Red. The most valuable for general planting	.40	35.00
Mammoth Red. Taller and coarser than Medium Red; makes excellent hay..	.40	35.00
White Clover. Best for lawns; stands drought	.80	75.00
Cow Peas	.10	7.00
Vetch	.22	20.00
Wheat	.05	4.00
Seed Oats	.08	7.00
Buckwheat	.06	5.00
Spring Rye	.08	7.50
Winter Rye	.05	2.50
Hungarian Millet	.08	7.00

Say It With Flowers

Special Flowers for Special Occasions
· OUR SPECIALTIES

Table Decorations Wedding Bouquets
Artistic Funeral Designs
Gift Boxes of Flowers
Floral Baskets Hanging Baskets
Ferns Palms Crotons
Flowering Plants

Always a fresh supply of selected seasonable cut-
flowers at either our Islip or Bay Shore Stores.

THE GARDEN HOUSE

W. C. McCOLLOM

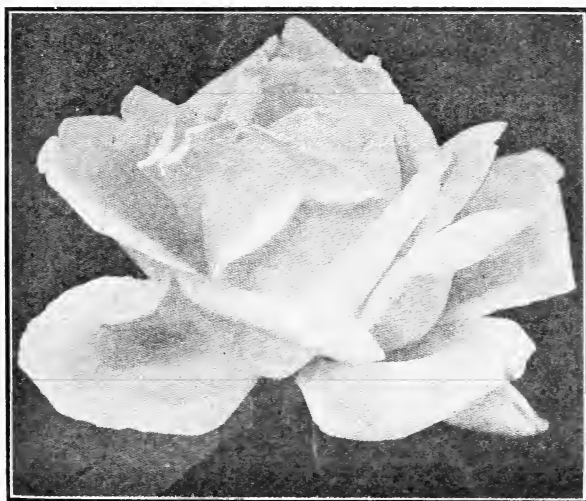
ISLIP

BAY SHORE

BRIGHTWATERS

Long Island

"Flowers Telegraphed Anywhere"



Flower Accessories

We carry at all times a complete line of all the quality grades of plant accessories, the very things that are needed to make flowers play their part in our homes.

FLOWER BASKETS, of all kinds for the effective arranging of cut-flowers; all shapes and colors.

FLOWER BOWLS, in all shades of color will be found to harmonize with the color scheme in the house; Flower Blocks to hold the flowers to match.

JARDINIERES, in several different styles and a considerable range of colors. We also have cheaper grades for those who wish something for temporary use.

HANGING BASKETS, in various weaves, to adorn the sun parlor or inside porch, complete with liners to hold either cut-flowers or growing plants.

WALL POCKETS, both natural and highly ornamental. No sun parlor is complete without these indispensable ornaments.

FLOWER VASES, in wicker for long-stemmed flowers and in various colored pottery for the shorter varieties.

FERNERIES, in wicker on stands, suitable for arranging large ferns, palms, etc.

BIRDS AND FISH

We also carry a selective stock of the best St. Andreasburg Roller Canaries, Bullfinches, Parakeets, etc., Goldfish, common, comet, fantail, telescopes, etc., together with a complete line of Aquaria, Fish Bowls, Bird Cages, etc., in a wealth of assortment and design.



General List of **FLOWER SEEDS**

Annuals

Annuals are raised from seed each year, mature their flowers and then die down the same season. They offer some of our very finest cut-flowers and can be used for all kinds of garden effects.

Acroclinium

	Pkt.
Everlasting Flower. Mixed; 1 ft.	\$0.10

Ageratum

Effective and showy dwarf bedding plants; flowers the entire season.

	Pkt.	¼ Oz.
Blue Perfection. Dark blue; 15 in.	\$0.10	\$0.50
Dwarf Blue. 9 in.10	.75
Dwarf White. 9 in.10	.50
Blue Star. Very compact; 6 in.25	
Swanley Blue. Fine color; 9 in.20	

Strong potted plants from our greenhouse ready May 1st, 25c each; \$3.00 per doz.

Alyssum

One of the best border plants, flowering the entire season.

	Pkt.	Oz.
Benthami.. 12 in.	\$0.10	\$0.50
Carpet of Snow. Very compact; 4 in... .	.10	1.00
Little Gem. The standard; 6 in.10	.75
Lilac Queen. Lilac color; 6 in.10	1.25

Amaranthus

Foliage plants of very strong colors; very attractive.

	Pkt.	¼ Oz.
Caudatus (Love Lies Bleeding). 3 ft..	\$0.10	\$0.25
Salicifolius (Fountain Plant). 2½ ft... .	.10	.40
Tricolor (St. Joseph's Coat). 2 ft....	.10	.50

Arctotis Grandis

	Pkt.
One of the grandest cut-flowers, of pale lilac and white; flowers all summer; 2 ft.	\$0.10

Antirrhinum (Snapdragon)

Tall Varieties—2½-3 Ft.

	Pkt.	¼ Oz.
Silver Pink. A wonderful color	\$1.00	
Feltham Beauty. Deep rose color25	
Salmon Beauty. Salmon Pink25	
Giant Pink10	\$0.60
Giant Coral10	.60
Giant Scarlet10	.60
Giant White10	.60
Giant Yellow10	.60
Giant Mixed10	.50

Intermediate Varieties—1½-2 Ft.

Nelrose. Light pink25	
Black Prince10	.75
Defiance10	.75
Queen of North10	.60
Golden Queen10	.60
Choice Mixed10	.60

Tom Thumb Varieties—9 Inches

	Pkt.
Crimson	\$0.10
Rose10
White10
Mixed10

Strong plants in flats from our greenhouse ready May 1st, per doz. 30c.

Aster

One of the most popular cut flowers, easy to grow and a big cropper.

Queen of the Market

One of the very best strains of early flowering types. Can be had in the following colors: White, Crimson, Flesh Pink, Rose, Dark Blue, Light Blue, and Mixed. 10c per Pkt., 50c per ¼ Oz.

Ostrich Feather Asters

A fine mid-season variety with loose, shaggy flowers, in the following colors: White, Dark Blue, Lilac, Rose, Crimson, and Mixed. 10c per Pkt.; ¼ Oz. \$1.00.

Semples Late Branching

One of the best Asters for cutting; loose, open growth, attaining height of 2½ feet; in the following colors: White, Pink, Purple, Light Pink, Lavender, Crimson, and Mixed. 10c per Pkt.; ¼ Oz. 50c.

Giant Comet Asters

One of the largest flowering types with long, wavy petals; in the following colors: White, Rose, Light Blue, Dark Blue, Crimson, Shell Pink, and Mixed. Pkt. 10c.; ¼ Oz. \$1.00.

Crego Asters

Flowers resemble Chrysanthemums. A fine grower. White, Rose, Pink, Lavender, Crimson, and Mixed. 10c per Pkt.; ¼ Oz. \$1.00.

Novelties—Asters

Daybreak. A beautiful soft pink.

Purity. A perfect white.

Mikado. A wonderful soft lavender.

Autumn Glory. A late branching type of soft shell pink.

Pink Enchantress. A very robust grower.

Peach Blossom, Early Upright White, Royal Purple, White Perfection, American Beauty, Lavender Gem and Royal Pink.

All these varieties are improved types that have been disseminated the past few seasons. They are worthy of a trial. Pkt. 15c; $\frac{1}{4}$ Oz. \$1.25.

The Six King Asters

Cross breeding has developed a strong grain of Asters in this type. The plants are vigorous; the flowers large and of a perfect type for cut-flower purposes of any kind.

Lavender King, Pink King, Violet King, White King, Rose King, Crimson King and Mixed.

All colors. 15c per Pkt.; \$1.25 $\frac{1}{4}$ Oz.

Balsam (Lady's Slipper)

One of the easiest of all annuals to grow. Will produce flowers in six weeks from seed. Fine for cutting; height, 2 ft. White, Scarlet, Salmon, Lilac, Purple, Primrose, and Mixed. Pkt. 10c.; $\frac{1}{2}$ Oz. 50c.

Begonia

Everblooming varieties for bedding

The Begonia is one of our grandest bedding plants, but to attain a high standard should be started indoors during March. Height, 1 ft.

Prima Donna, a fine rose color; **Bonfire**, a strong scarlet; **Luminosa**, a dark velvety red. Per Pkt. 25c.

Erfordii, rosy carmine; **Triumph**, a pure white; **Vernon**, a carmine. Per Pkt. 15c.

Potted plants ready for bedding out May 1st; 20c each, \$2.00 per doz.

Bellis (English Daisy)

One of the first of our spring flowers. Very hardy and can be started very early.

Snowball, a fine white; **Sunset**, a fine pink, and **Duroc**, a fine red. Per Pkt. 15c.

Calceolaria

One of the finest flowering plants for greenhouse cultivation.

Giant Strain of unusual coloring, 1 $\frac{1}{2}$ ft. Per Pkt. 50c.

Calendula (Pot Marigold)

One of the easiest of all the annuals to grow. Blooms the entire season and the yellow flowers are a great favorite because of their wonderful decorative value. 1 ft.

		Pkt.	¼ Oz.
Meteor. Large double flower; yellow..	\$0.10		\$0.25
Prince of Orange. Deep orange10		.25
Sulphurea. Sulphur yellow10		.25
Orange King. Rich orange25		.50
Pongei. White10		.25

Strong seedlings from flats, ready May 1st; 25c per doz.

Calliopsis

The best method of growing these desirable cut-flowers is to make several sowings through the summer season; 1½ ft.

		Pkt.	¼ Oz.
Golden Wave. A rich golden yellow....	\$0.10		\$0.50
Tinctoria marmorata. Light yellow....	.10		.50
Tall Mixed10		.40
Dwarf Mixed. 1 ft10		.40

Coreopsis (Tickseed)

Very showy, yellow daisy-like flowers; fine for cutting or garden effects; hardy perennials; 2 ft.

		Pkt.	¼ Oz.
Grandiflora. Deep golden yellow, long stem	\$0.10		\$0.40
Lanceolata. Petal fringed10		.75

Strong field-grown plants from our nursery. 15c each, \$1.50 per doz.

Campanula (Cup and Saucer or Canterbury Bells)

This type of plant requires planting each year as they are true biennials and die down after flowering. Very showy for garden effects; 3 ft.

Campanula medium (Canterbury Bells), White, Rose, Blue Striped and Mixed. Pkt. 10c, ¼ Oz. 50c.

Campanula calycanthema (Cup and Saucer), Blue, White, Rose, Striped and Mixed. Pkt. 10c, ¼ Oz. \$1.00.

Strong field-grown plants from our nursery, 20c each, \$2.00 per doz.

Candytuft

Very popular because of its early flowering habits and easy cultural requirements; 1 ft.

Empress, white; **Queen of Italy**, pink; **Dunnett's Crimson**, crimson; **White Rocket**; **Lilacina**, lilac; and **Purple**. Pkt. 10c., 1 Oz. 75c.

Marguerite Carnations

Very free flowering clove-scented flowers. Valuable for cutting. Easily cultivated. 1½ ft.

Pink, White, Crimson, Scarlet, Yellow and Mixed. Pkt. 10c, ¼ Oz. \$1.00.

Castor Oil Plant

Tall stately bedding plants with very highly colored foliage. All varieties, 10c per Pkt.

These should be started quite early to give results. Plants in pots from our greenhouses ready May 1st. 10c each, \$1.00 per doz.

Celosia (Cockscomb)

Dwarf bedding plants with very unusual flowers, the tops resembling the comb of a fowl. 1 ft.

Pkt. ¼ Oz.

Empress. Rich crimson	\$0.15	\$1.00
Glasgow Prize, very large15	1.00

Celosia Plumosa (Feathered Cockscomb)

Fine for bedding or cut-flower effects.

Pkt. ¼ Oz.

Crimson, yellow and mixed	\$0.10	\$0.50
Thompsonii. Crimson, yellow and mixed	.10	.50

Centaurea (Bachelor Button or Ragged Sailor)

One of our best cut-flowers; a favorite for many years. Sow in the open ground April 15th. 2 ft.

Pkt. ¼ Oz.

Cyanus. Blue, rose, white and mixed...	\$0.10	\$0.30
Cyanus Double. Blue; larger than other type10	.75

Centaurea Imperialis (Sweet Sultan)

Sweet scented flowers that are not as well known as they deserve to be; fine cut-flowers. Sow several times during season.

Pkt. ¼ Oz.

White, Pink, Purple, Lilac rose and mixed	\$0.10	\$0.50
Centaurea Americana. Lilac; large flower10	.60
Centaurea Americana. Alba, white15	

Cineraria

Very showy greenhouse plants; wonderful for decorations in pots. Best imported strains of seed. Blue, light blue, pink and white. Per Pkt. 50c.

Stellata. The tall flowering type; flower heads loose and branching. 3 ft. Per Pkt. 50c.

Chrysanthemum

The summer flowering types of this popular flower are very easy to cultivate. Sow outside May 1st. 2 ft.

	Pkt.
Beaconsfield. White with pink center	\$0.10
Chameleon. Brown with yellow center10
Evening Star. Large golden yellow10
Morning Star. Cream yellow10
Mixed10
Golden Queen. Double flowers of gold yellow..	.10
White Pearl. Double white10
Mixed Double Flowering10

PERENNIAL CHRYSANTHEMUMS of all the different varieties, strong field-grown clumps from our nursery; each 20c, \$2.00 per doz.

Cobaea (Cup-and-Saucer Vine)

A rapid climber of free-flowering habits. Will attain a height of 30 ft. in one season.

	Pkt.	¼ Oz.
Scandens. Large, bell-shaped purple flowers	\$0.10	\$0.25
Scandens Alba. Pure white10	.50

Early started plants in pots from our greenhouse 15c each, \$1.50 per dozen.

Convolvulus (Morning-Glory)

Fine for covering old fences and useful in many ways for garden plantings.

	Pkt.	Oz.
Dwarf Varieties	\$0.10	\$0.30
Tall Climbing Varieties10	.30
Japanese. Larger flowers, exquisite colorings10	.35

Cosmos

One of our finest fall flowers; tall and graceful; fine for cutting or garden effects. 6 ft.

	Pkt.	Oz.
Mammoth Tall. White, pink, crimson, and mixed	\$0.10	\$1.00
		¼ Oz.
Early Flowering. White, pink, crimson, and mixed10	.75
Lady Lenox. A very large flowered type, pink10	.50
		Oz.
Lady Lenox. White, a pure white variety10	1.00

Early started plants from our greenhouse ready May 1st, 25c per doz.

Cosmos—Curled and Crested

One of the best novelties of recent introduction. The flowers have a beautiful rosette center.

Pink, white, crimson and mixed, 20c per Pkt.

Cypress Vine (*Ipomoea Quamoclit*)

A very delicate fern-like vine, excellent for all kinds of trellises.

Crimson, white rose and mixed, 10c per Pkt., ¼ Oz. 25c.

Dahlia

This flower has become very popular in the last few years. There is a wonderful fascination about raising new varieties from seed.

Giant Peony Flowered Pompon. Cactus Type, Single Flowering and Double Flowering, 10c per Pkt.

Cyclamen

A grand decorative plant for greenhouse culture. After maturity it will continue to flower in the house all winter. Best imported strains in different colors. 50c per Pkt.

Delphinium (Hardy Larkspur)

An old-fashioned favorite that is again coming into its own, undoubtedly the most popular perennial of the day. 4 ft.

Pkt. ¼ Oz.

Belladonna. Light blue; long spikes...	\$0.25	\$2.00
Formosum. Rich dark blue10	1.00
Chinense. Dwarf; about 1½ ft.; deep blue10	1.00

Strong field-grown clumps from our nursery, 20c each, \$2.00 per doz.

Dianthus (Garden Pinks)

Very brilliant colored flowers of easy cultivation. Sow in the open ground around May 1st. 15 inches.

Double Flowering Variety

Pkt. ¼ Oz.

Chinensis. Large cluster of flowers	\$0.10	\$0.25
Diadematis. Fringed petals; lilac10	.75
Heddewigii. Rich crimson and rose10	.75
Fireball. Dark scarlet10	1.00
Snowball. Pure white10	.50
Salmon King. Brilliant salmon10	.50
Lucifer. Orange scarlet10	1.25
Laciniatus. Assorted shades10	.75

Single Flowering Varieties

Crimson Belle. Deep crimson10	.50
Queen of Holland. Beautiful white10	.75
Eastern Queen. Pale mauve10	.50
Salmon Queen. Fringed salmon10	.50
Vesuvius. Orange scarlet10	.50

Hardy Garden Pinks

These perennials are one of the grandest flowers of the garden. Very showy, free-flowering and of a very easy cultivation.

	Pkt.
Plumarius. Double mixed; very fragrant.....	\$0.10
Scotch Pink. Mixed colors25
Plumarius. Single mixed; finely fringed.....	.25
Latifolius. Bright red; free-flowering10

Strong flowering clumps of the above varieties from our nursery, 20c each, \$2.00 per doz.

Digitalis (Foxglove)

Invaluable for the hardy border or for formal garden effects. Also excellent as a cut-flower.

	Pkt.	¼ Oz.
Pupurea. Varieties—white, red, pink and mixed	\$0.10	\$0.50
Gloxiniaeflora. White, lilac, purple, rose, yellow and mixed10	.35

Fine heavy flowering plants from our nursery, 20c each, \$2.00 per dozen.

Dimorphotheca Aurantiaca (African Daisy)

One of the best golden orange cut-flowers. Pkt. 10c, ¼ Oz. 50c.

Eschscholtzia (California Poppy)

Very fine flowering border plants; excellent cut-flowers for bowls, etc.

	Pkt.	¼ Oz.
Californica. A large flowering yellow..	\$0.10	\$0.30
Alba. Creamy white10	.30
Carminea. Carmine10	.40
Golden West. Deep yellow10	.50
Rose Queen. Deep pink20	1.50
Mandarin. Rich orange scarlet10	.40

Forget-Me-Not (Myosotis)

The old favorite spring flower, fine for cutting or garden effects. 1 ft.

	Pkt.	¼ Oz.
Alpestris. Dark blue	\$0.10	\$0.75
Alpestris Grandiflora. Stronger grower	.10	.75
Alpestris Victoria. Clear light blue flowers10	.75
Alpestris. Mixed10	.50
Palustris. A fine everblooming variety	.10	2.00
Ruth Fischer. An improved large flowering type25	

Strong flowering clumps of the above varieties, 20c each, \$2.00 per doz.

Four O'Clock (Mirabilis)

Free-flowering annuals that open their flowers in the late afternoon, hence the name. 2 ft.

Mixed, 10c per Pkt., 30c per Oz.

Gaillardia (Blanket Flower)

Very showy garden plants used extensively for borders and cutting. 2 ft.

	Pkt.	¼ Oz.
Amblyodon. Rich, blood red	\$0.10	\$0.50
Aurea. Golden yellow10	.50
Picta Lorenziana. Double flowered10	.50

Perennial varieties of the Gaillardia are fine border plants, producing flowers all summer.

Grandiflora, orange and scarlet; **Sulphurea**, pale yellow; **Kermesina**, rich crimson. Each 10c per Pkt.

Strong flowering clumps of the perennial Gaillardia, 20c each, \$2.00 per dozen.

Godetia

Fine border plants; a great favorite in Europe, where it is very extensively grown. 1 ft.

Carmine, White, Pink and Mixed. 15c per Pkt.

Gourds

These freaks are grown for their peculiar fruit, which is very attractive, and when well placed, are very ornamental.

Mock Orange, Apple Shaped, Luffa, Dipper, Hercules Club, and Mixed. 10c per Pkt.

Gypsophila (Baby's Breath)

One of our choicest flowers for cutting and particularly adapted for mixing with other flowers in bouquets or vases. 1 ft.

	Pkt.	Oz.
Elegans grandiflora alba. A fine annual type	\$0.10	\$0.50
Elegans grandiflora rosea. A pink form	.10	.50
Muralis. A fine border plant10	1.00

Perennial Gypsophila

This is the most popular cut-flower for the hardy border. 2 ft.

	Pkt.	Oz.
Paniculata. White flowers on long stem.	\$0.10	\$1.00
Paniculata. Fl. Pl. double flowering type	.25	

Strong flowering clumps, Gypsophila, from our nursery, 20c each, \$2.00 per dozen.

Heliotrope

Used in all types of gardens for color effect and its wonderful perfume. 1½ ft.

	Pkt.	¼ Oz.
Lemoines Giant. Very large heads; deep blue	\$0.10	\$1.00
Queen Marguerite. Dark blue; best for cutting10	1.50
White Lady. Large flowering white10	1.00
Mixed. All colors10	.75

Fine strong potted plants, Heliotrope, from our greenhouse, ready May 1st, each 25c, \$3.00 per doz.

Helianthus (Sunflower)

Sow outside May 1st. One of the very easiest flowers to grow and very productive. The long-stemmed, yellow flowers are always desirable. 4 ft.

	Pkt.	Oz.
Cut-and-Come-Again. Yellow dark center	\$0.10	\$1.00
Cucumerifolius. Rich golden yellow10	.75
Stella. Very large flowers10	.75
Orion. Twisted petals; yellow10	.75
Perkeo. Dwarf and compact; 1 ft.10	1.00
Cucumerifolius. Fl. Pl. double flowering variety10	1.50
Globe of Gold. Double dwarf10	.50
		Lb.
Giant Russian10	.75

Strong flowering clumps, hardy Sunflowers from our nursery, each 20c, \$2.00 per doz.

Helichrysum (Strawflower)

Everlasting flowers of easy culture. Sow outside around May 1st. Flowers can be cut and dried for winter use. 2 ft. Per Pkt. 10c.

Heuchera (Alum Root)

A fine border plant for the hardy border, rock garden. Hardy perennial. 2 ft. Pkt. 25c, $\frac{1}{4}$ Oz. \$1.50.

Strong flowering clumps, Heuchera, from our nursery, each 20c, \$2.00 per doz.

Hibiscus (Marshmallow)

Very showy hardy perennials for the hardy border or can be used as specimen plants. 6 ft.

	Pkt.
Palustris. Large pink flowers	\$0.10
Moscheutos. Rosy red flowers; 6 in. across....	.10
Golden Bowl. Giant yellow; rich color10
Crimson Eye. White, with crimson eye10

Strong flowering clumps, Hibiscus, each 20c, \$2.00 per doz.

Honesty (Satin Flower)

The plant is covered with silvery seed pouches that are very attractive in the sunlight. 2 ft. 10c per Pkt., $\frac{1}{4}$ Oz. 50c.

Strong flowering plants, Honesty, from our nursery, each 20c, \$2.00 per doz.

Hollyhocks

An old-fashioned garden favorite, fine for all kinds of garden work. Plant in clumps for best effects. 6 ft.

Double Cerise, Lilac, Scarlet, Crimson, Pink, White, Primrose, Yellow and Mixed, 25c per Pkt.

Single Pink, Scarlet, Purple, White, Primrose, Yellow and Mixed, 25c per Pkt.

Strong flowering clumps, Hollyhock, from our nursery, each 20c, \$2.00 per doz.

Annual Hollyhocks

A fine introduction of recent years; flowers the first season from seed. 4 ft.

	Pkt.
Single Flowering. Mixed	\$0.10
Double Flowering. Mixed25

Humulus (Hop)

A very good summer vine of rapid growth; fine heavy foliage for screening purposes.

	Pkt.	Oz.
Japonica. A green leaf type	\$0.10	\$0.75
Japonica Variegata. Variegated leaves ..	.10	1.25

Hunnemannia (Tulip Poppy)

Fumariaefolia. One of the best yellow cut-flowers of easy cultivation; sow outside in May. 2 ft. Pkt. 10c, 1/2 Oz. 60c.

Ice Plant (Mesembryanthemum)

A fine bright-colored flowering plant; suitable for borders, rock gardens, or hanging baskets. 6 inches. 10c per Pkt.

Ipomoea

Wonderful free-flowering, climbing vines of rapid growth.

	Pkt.	Oz.
Bona Nox (Evening Glory). Lilac flowers	\$0.10	\$0.75
Grandiflora (Moonflowers). Pure white	.10	.75

Kochia (Firebush)

Trichophylla. A fine plant for formal gardening and border planting; grows very formal. In the fall the entire plant turns a very vivid crimson. 2 ft. 10c Pkt., 1/4 Oz. 25c.

Lavatera (Pink Mallow)

Very fine flowering plants of easy culture; flowers resembling native marshmallow; fine for cutting. 3 ft.

	Pkt.	Oz.
Splendens Rosea. Deep pink	\$0.10	\$0.50
Arborea variegata. Mottled leaves10	.25
Trimestris. Red10	.50

Linum (Flax)

Very showy border plants used in the hardy border, garden paths, etc.; hardy perennial. 1 ft.

	Pkt.	Oz.
Perenne. Blue; fine for cutting	\$0.10	\$0.75
Luteum. Cream yellow10	.75

Strong flowering clumps from our nursery, each 20c, \$2.00 per doz.

Lathyrus (Sweet Pea)

The only important point to consider in cultivating Sweet Peas is to have good rich soil and sow the seed very early. March seeding is the best, because of the improbability of most amateurs starting that early, we have started in our greenhouse Sweet Peas in pots that can be set out May 1st and will do as well and even better than early outside sowings. Plants ready April 15th, 15c each, \$1.50 per doz. Pots contain 3 plants each and they should be planted about 1 foot apart.

The Spencer Sweet Peas are the best type to grow, the stems are longer, the flowers better developed, and in fact the entire growth is preferable to the old small flowering type. We therefore omit listing the older varieties. All the following varieties are the improved Spencer type.

White

	Pkt.	Oz.
Etta Dyke. Very productive	\$0.10	\$0.50
King White. Long stems10	.60
White Spencer. Large, wavy flowers10	.40
Constance Hinton. Very hardy and early	.10	.60

Orange

Fiery Cross. Wonderful orange-scarlet	.10	.60
Helen Lewis. Clear orange10	.50
Thomas Stevenson. Light orange scarlet	.10	.60

Pink

Agricola. Light pink10	.60
Countess Spencer. Bright pink10	.40
Edith Cavell. New rose pink25	2.00
Elfrida Pearson. Pale pink10	.60
Florence Morse. Blush10	.40
Hercules. Brightest pink of all10	.60
Margaret Atlee. Salmon pink10	.60
Mrs. Sykes. Blush10	.50
Mrs. Hugh Dickson. Cream pink10	.50
Mrs. Routzahn. Pink tinted cream10	.50

Salmon

Barbara. Rich color10	.50
Sterling Stent. Deep salmon10	.60

Scarlet

Vermillion Brilliant. The best10	.60
--	-----	-----

Crimson

King Edward Spencer10	.40
-------------------------------	-----	-----

Carmine

Decorator. Deep cerise10	.60
George Herbert. Rosy carmine10	.50

Maroon

Nubian. Deep maroon10	.60
Othello. Bright maroon10	.40
Warrior. Rich chocolate10	.60

Lavender

	Pkt.	Oz.
Asta Ohn. Soft lavender10	.60
Florence Nightingale. Stronger color..	.10	.50
R. F. Felton. One of the best10	.60

Blue

Blue Jacket. Dark navy10	.60
Blue Monarch. Deep blue10	.60
Margaret Madison. Azure blue10	.50
Wedgwood. Silvery blue10	.60

Mauve

Tennant Spencer. A fine variety10	.50
---------------------------------------	-----	-----

Purple

Capt. of the Blues. Bluish purple10	.50
Royal Purple. Rich deep color10	.50

Primrose

Dobbies Cream. Deep cream10	.60
Primrose. Clear primrose10	.50
Queen Victoria. Bluish cream10	.40

Mixed Colors

	Pkt.	Oz.
Cherub. Cream, rose edges	\$0.10	\$0.50
Dainty Spencer. White, edge rose pink	.10	.40
Mrs. C. W. Breadmore. Cream, edge bright pink10	.50
Mrs. Townsend. White, edges pale blue.	.10	.50
Mrs. Cuthbertson. Standard rose, wings white10	.60
Blanch Ferry. Standard rose, wings white	.10	.40
Chas. Foster. Mottled mauve10	.60
Aurora Spencer. White striped orange	.10	.40
Senator Spencer. Brown striped white ..	.10	.50

Early or Winter-Flowering Sweet Peas

This type is used extensively for greenhouse forcing and they can also be used out of doors. Although they flower earlier they are not quite as satisfactory as the other types for general garden planting.

	Pkt.	1/4 Oz.
All White. A fine new white	\$0.50	\$1.00
Fair Maid. A beautiful blush pink50	1.00
		1/2 Oz.
Snowstorm. A good standard variety ..	.25	.75
White Orchid. An old favorite25	.75
Melody. Rose pink25	.75
Yarrowa. Rose pink25	.60
Songbird. Pale pink25	.75
Morning Star. Orange scarlet25	1.00
Amethyst. Royal purple25	1.25
Aviator. Scarlet25	1.25
Lavender King. True lavender25	.75
True Blue. Violet blue25	1.00
Cream. Primrose25	.75

Quality Mixture of Sweet Peas

Our mixture we know to be well balanced, being made up of equal proportions of all the best standard varieties which includes every color and shade of Spencer Sweet Peas. Pkt. 10c, Oz. 25c, $\frac{1}{4}$ Lb. 85c, $\frac{1}{2}$ Lb. \$1.50, Lb. \$2.50.

Lathyrus Latifolius (Hardy Sweet Pea)

These wonderful flowers should be more generally planted. They produce flowers on long stems suitable for cutting and once planted they are there to stay. Seeds can be supplied of all colors at 10c per Pkt.; also strong flowering clumps from our nursery at 15c each, \$1.50 per doz.

Annual Larkspur

One of the best of our annual flowers for cutting. Sow in the open ground around May 1st. Will flower from July until frost. 3 ft.

	Pkt.	$\frac{1}{4}$ Oz.
Snowstorm. Pure white	\$0.10	\$0.35
Stella. Sky blue10	.35
Loveliness. Shell pink10	.35
Attraction. Bright rose10	.35
King of Blues. Dark blue10	.35
Violet Queen. Violet10	.35
Lilac Perfection. Lilac10	.35
Tall Flowering. Mixed10	.30
Dwarf Flowering. Mixed10	.30
Exquisite. Pale pink10	.50

Lychnis

A grand race of garden perennials that are very popular because of their bright colors and long season of bloom.

Strong flowering clumps from our nursery, 20c each, \$2.00 per doz.

Lobelia

Very compact border plants only growing 6 inches in height, flowering the entire season.

	Pkt.	$\frac{1}{4}$ Oz.
Emperor William. Bright blue	\$0.10	\$1.00
Pumila splendens. Deep blue10	1.50
Pumila alba. Pure white10	1.50
Pumila. Red with white eye10	1.50
Crystal Palace. Dark blue, (new)10	2.00
Speciosa. Dark blue trailing10	1.00
Barnard's Perpetual. Blue and White10	1.00
Prima Donna. Maroon10	.75
Alba. Pure white10	.50

Hardy Varieties

We can supply strong flowering clumps of the different varieties of the hardy Lobelias that will flower this season. 20c each, \$2.00 per doz.

Matricaria (Feverfew)

Fine cut-flowers; in bloom all season. 2 ft.

Pkt. 1/4 Oz.

Grandiflora. Pure white, yellow center.	\$0.10	\$0.50
Golden Ball. Golden yellow flowers25	1.00

Monardia Didyma (Bergomat)

Perennials growing about 2 ft.; covered in summer with showy scarlet flowers; 25c per Pkt.

Strong flowering plants from our nursery, 20c each, \$2.00 per doz.

Lupins

The annual Lupin is a valuable cut-flower of easy culture. Sow outside May 1st. 2 ft. White, Rose and Blue. 10c Pkt., Oz. 50c.

Perennial Lupins have been greatly improved in the past few years due to cross breeding and the demand for newer sorts of this wonderful flower. 10c per Pkt.

We have a fine collection of new Lupins in our nursery. Strong flowering clumps, 20c each, \$2.00 per doz. Novelties, 25c each, \$2.50 per doz.

Marigold

Wonderful free-flowering border plants. Becoming very popular for cutting by reason of their exquisite colors and long graceful stems. 2 1/2 ft.

Pkt. 1/4 Oz.

Giant Flowering. Lemon; the largest flowering type	\$0.25	
Giant Flowering. Orange; a darker variety25	
Lemon Quilled. Bright yellow10	.50
Mixed10	.50
Light yellow. Bright clear yellow10	.50
Orange Quilled. Beautiful quilled flowers10	.40
Lemon Quilled. Bright yellow10	.50

French Marigolds

Dwarf varieties suitable for bedding. 12 inches.

Pkt. 1/4 Oz.

Legion of Honor. Crimson and brown..	\$0.10	\$0.60
Little Brownie. Golden yellow10	.50
Lutea. Double yellow10	.40
Mixed. All varieties10	.40

Mignonette

Well-known garden flowers. Very desirable for borders or cutting. 2 ft.

Pkt. 1/4 Oz.

Allen's Defiance. Large spikes	\$0.10	\$0.50
Golden Queen. Yellow tinted10	.25
Machet. Fine dwarf10	.50
Goliath. Reddish brown10	.50
Large flowering. Tall; for cutting10	.25

Nasturtiums—Dwarf Varieties

Fine garden flowers of the easiest culture; excellent border plants, also used extensively for cutting. 1 ft.

	Pkt.	Oz.
Aurora. Salmon rose	\$0.10	\$0.20
Beauty. Light scarlet10	.20
Brilliant. Deep scarlet10	.25
Chameleon. Variegated10	.20
Crystal Palace Gem. Sulphur yellow10	.20
Empress of India. Crimson10	.20
King Theodore. Maroon10	.20
Pearl. White10	.20
Ruby King. Red10	.20
Choice Mixed. All colors10	.20

Tall Varieties

Excellent for covering fences, old stumps, etc. 8 ft.

	Pkt.	Oz.
Chameleon. Variegated	\$0.10	\$0.20
Crimson10	.20
Pearl. White10	.20
Scarlet10	.20
Yellow10	.20
Mixed. All colors assorted10	.20

Phlox—Annual Varieties

A fine cut-flower or border plant of the easiest cultivation. 12 inches.

	Pkt.	¼ Oz.
Alba. Pure white	\$0.10	\$0.75
Chamoise Rose. Shell pink10	.75
Coccinea. Scarlet10	.75
Isabelliana.. Yellow10	1.00
Purple. Deep purple10	.75
Mixed. All colors10	.75

Dwarf Varieties

Most suitable for bedding. 8 inches.

	Pkt.	¼ Oz.
Chamoise Rose. Shell pink	\$0.10	\$1.25
Fireball. Scarlet10	1.25
Purple. Deep Purple10	1.25
Snowball. White10	1.25
Mixed. All colors10	1.25

Hardy Phlox

Require several years to flower from seed. We have strong flowering clumps of all the best standard varieties from our nursery, 25c each, \$2.50 per doz.

Nicotiana (Tobacco Plant)

Showy and fine flowering annuals of easy culture. 2½ ft.

	Pkt.	¼ Oz.
Affinis. Sweet scented pure white	\$0.10	\$0.25
Giant Red. Rich crimson10	
Sanderæ Hybrids. All new shades10	.50

Nigela (Love-in-the-Mist)

Very attractive low-growing flowers. Excellent for cutting.

Miss Jekyll. Pale blue; 1 ft. Pkt. ¼ Oz.
\$0.10 \$0.50

Physostegia

A fine subject for the hardy border growing 5 ft. in height with large spikes of flowers on the heads. Hardy perennials. Strong flowering clumps from our nursery, 20c each, \$2.00 per doz.

Pansies

One of our most popular garden flowers. Every garden should have extensive plantings of these garden gems. 6 inches.

Aristocrat Mixture. Blooms of enormous size with colorings that are all that could be desired. Pkt. 50c, ¼ Oz. \$3.00.

	Pkt.	¼ Oz.
Masterpiece. Curled and wavy petals ..	\$0.25	\$2.00
Trimardeau Giant. A fine, large flower- ing type25	1.50
Cardinal. Brilliant red10	1.50
Azure Blue. Light blue10	1.50
King of Blacks. Black10	1.50
Yellow King. Yellow dark eye10	1.50
Yellow Queen. Solid yellow10	1.50
Lord Beaconsfield. Violet blue10	1.50
Snow Queen. Pure white10	1.50
Prince Henry. Deep blue10	1.50

Plants ready in late March for planting out, 8c each, 75c per doz., \$6.00 per 100.

Petunia

One of the very best bedding annuals. Seed should be started early indoors to give best results.

	Pkt.
Aristocrat Strain. Giant flowering, fringed....	\$0.25
Single Fringed. White, yellow, rose, crimson, and mixed25
Double Fringed. White, rose, crimson and mixed50
Rosy Morn. Clear pink25
Snowball. Clear white25
Violet Queen. Violet blue25

Pentstemon (Bearded Tongue)

Fine hardy perennials for cut-flowers or garden effects. 2-3 ft.

Strong field-grown clumps from our nursery, 20c each, \$2.00 per doz.

Portulaca

Fine border plants. Spread rapidly, covering the ground and flower the entire season. A wonderful ground cover. 6 inches.

	Pkt.	¼ Oz.
Single Flowering. White, yellow, rose, crimson and mixed	\$0.10	\$0.50
Double Flowering. White, yellow, rose, crimson and mixed10	1.50

Polemonium (Jacob's Ladder)

Beautiful porcelain colored flowers for early spring beds. 12 inches.

	Pkt.	Oz.
All varieties	\$0.10	\$0.75
Strong flowering clumps from our nursery, 20c each, \$2.00 per doz.		

Poppies

Very fine flowers; are more popular than the Poppies. 2 ft.

	Pkt.	Oz.
Single Shirley. Carmine, rose, salmon, white and mixed	\$0.10	\$1.00
Double. Scarlet, rose, white and mixed	.10	.50

Hardy Poppies

	Pkt.	¼ Oz.
Iceland. Scarlet, white, yellow and mixed	\$0.10	\$1.00
Oriental Rose. Scarlet, orange and mixed	.10	
Strong flowering plants of all the Hardy Poppies from our nursery, 20c each, \$2.00 per doz.		

Primula (Primrose)

Greenhouse potted plants of easy culture.

Sinensis. Single blue, crimson, rose, salmon, white, and mixed. 75c per Pkt.		
Sinensis. Double white, scarlet, blue, pink, salmon and mixed. 75c per Pkt.		
Obconica Rose. White lilac and mixed. 25c per Pkt.		
Malacoides, Forbesii and Kewensis. 25c per Pkt.		

Hardy Primrose

Auricula, Japonica and Vulgaris. 15c per Pkt.

Pyrethrum (Painted Lady)

Hardy garden plants; extensively used in the hardy border for effects and cutting. 2 ft.

Double or Single Hybrids. All colors, 25c per Pkt.

Salpiglossis (Painted Tongue)

This flower is one of the grandest garden flowers for cutting. The large trumpet-shaped flowers are borne on long stems and the flowers have very remarkable colorings. 2 ft.

	Pkt.	¼ Oz.
Violet, Pink, Gold, Cream, Scarlet, Brown and Mixed	\$0.10	\$1.00
Emperor. A large flowering type10	.75

Scabiosa (Mourning Bride)

Wonderful flowers for cutting. To keep them producing, the seed pods must be kept removed, they will then flower all summer. 2½ ft.

Lavender, Scarlet, Pink, Red, Black, White and Mixed, 10c per Pkt., \$1.50 per Oz.

Salvia (Scarlet Sage)

One of our showiest bedding plants; flowers the entire season. The beds are very striking with their profusion of vivid scarlet flowers. 3 ft.

Pkt. ¼ Oz.

Splendens. 3 ft.; scarlet	\$0.10	\$0.60
Bonfire. 2½ ft.; scarlet10	1.50
Zurich. 2 ft.; scarlet10	1.50
Patens. 2 ft.; blue sage25	
Farinacea. 3 ft.; light blue10	

Potted plants from our greenhouse ready May 1st, each 20c, \$2.00 per doz. Seedlings, 25c per doz.

Schizanthus (Butterfly Plant)

Wonderful pot plants for the conservatory or home. *Wisetonensis*. Rose and white, 25c per Pkt.

Stocks

Very popular garden annuals of the easiest culture. Flowers produced on long spikes.

Tall White, Rose Crimson, Purple, Blue, Yellow and Mixed, 10c per Pkt., ⅛ Oz. \$1.00.

Dwarf White, Rose, Crimson, Blue, Yellow and Mixed. 10c per Pkt., ⅛ Oz. \$1.00.

Pkt. Oz.

Almond Blossom. White and carmine..	\$0.25	\$1.00
Beauty of Nice. Delicate pink25	1.00
Crimson King. Rich crimson25	1.00
Mont Blanc. Pure white25	1.00
Monte Carlo. Yellow25	1.00
Queen Alexandria. Lilac25	1.00

Early started plants from our nursery, 25c per doz.

Solanum (Jerusalem Cherry)

Very useful pot plants; grow about 1 ft. The plants are literally covered with bright red berries. Per Pkt. 10c.

Stokesia (Hardy Corn Flower)

Free-flowering perennials that flower the entire summer. 1 ft.

Cyanus, a rich blue, and **Alba**, a pure white; Pkt. 15c, ¼ Oz. \$1.00.

Strong flowering clumps from our nursery, 20c each, \$2.00 per doz.

Sweet William

Well-known attractive border plants for the hardy garden. 1 ft.

Pkt. ¼ Oz.

Single. White, Crimson, Pink, Red, Black Red and Mixed	\$0.10	\$0.50
Double. White, Crimson, Pink, Red, Black Red and Mixed10	1.00
Newport Pink. A distinct colored variety	.15	

Strong flowering clumps from our nursery, 20c each, \$2.00 per doz.

Verbena

Low-growing border plants for all sorts of summer bedding and also useful for cutting. 12 inches.

	Pkt.	Oz.
Scarlet, Blue, Pink, White, Yellow and Mixed	\$0.10	\$2.00

Vinca (Periwinkle)

Used in formal beds because of their free-flowering habits and bright colors.

	Pkt.	Oz.
White, Rose, White with pink eye, and Mixed	\$0.10	\$1.00

Veronica (Speedwell)

Wonderful free-flowering plants for the hardy border. The blue-flowering types are especially desirable. 1½ ft. Pink and Blue, 10c per Pkt.

Strong flowering clumps, Veronica, from our nursery, 20c each, \$2.00 per doz.

Viola (Tufted Pansy)

Small flowering types of pansies produce much more freely than the large flowering pansies and also seem to stand the heat better. 6 inches.

	Pkt.	Oz.
Blue, Purple, Mauve, White and Yellow and Mixed	\$0.10	\$3.00

Wallflower

Tender perennials that are well worth any trouble necessary to winter them safely. Flowers very early in spring and have a very pleasant odor.

	Pkt.
Single Mixed	\$0.10
Double Mixed10

Zinnia (Youth-and-Old-Age)

Due to its free-flowering habits and its easy culture the Zinnia has become our most popular garden flower.

Tall. White, Rose, Crimson, Yellow, Purple, Scarlet and Mixed. 10c per Pkt., \$2.00 per Oz.

Dwarf. White, Salmon, Crimson, Yellow, Purple, Scarlet and Mixed. 10c per Pkt., \$2.00 per Oz.

Curled and Crested. 10c per Pkt.

Lilliput. Very dwarf and small flowering. 10c per Pkt.

Gladioli

One of the grandest garden flowers of the easiest cultivation. For a succession of blooms plant a few bulbs each week from May to late July and you will have flowers from July until frost.

	Per	
	Each	Doz.
AMERICA. A beautiful lavender pink..	\$0.10	\$0.80
ATTRACTION. Crimson and scarlet...	.10	.80
AUGUSTA. Bluish white10	.80
BARON HULOT. Deep violet blue15	1.50
BRENCHLEYENSIS. Scarlet10	.80
EMPRESS INDIA. Dark red15	1.50
GIANT WHITE. Very large white.....	.25	2.50
GLORY. Soft pink ruffled20	2.00
GLORY OF HOLLAND. White and lavender15	1.50
HALLEY. Salmon pink; early10	1.00
MRS. FRANCIS KING. Very bright pink	.10	.80
MRS. FRANK PENDLETON. Salmon pink15	1.50
NIAGARA. Primrose15	1.50
ORANGE GLORY. Orange ruffled30	3.00
PANAMA. Rose pink15	1.50
PEACE. White and lilac15	1.50
PRINCEPS. Brilliant crimson15	1.50
SCHWABEN. Canary yellow15	1.50
SULPHUR KING. Sulphur yellow25	2.50
WAR. Blood red25	2.50
MIXTURE. All colors08	.75

Cannas

One of our very finest bedding plants, particularly when height is desired and for all kinds of tropical effects. The following varieties we offer in 4-inch pots, ready May 1st, and will start flowering very shortly after being planted out.

	Per Doz.
KING HUMBERT. Red foliage; orange-scarlet flower	\$3.00
SHENANDOAH. Foliage red; flowers light pink	3.00
ALPHONSE BOUVIER. Green foliage, crimson flower	3.00
CITY OF PORTLAND. Green foliage, intense pink	3.00
YELLOW KING HUMBERT. Green foliage; bright yellow	3.00
SALMON QUEEN. Green foliage, salmon-pink	3.00

Caladium (Elephant's Ear)

Tall-growing foliage plants of very rapid growth.

4 ft.	Each	Doz.
First Size Bulbs	\$0.25	\$2.50
Jumbo Bulbs60	6.00

Montbretias

One of the most desirable summer flowering bulbous plants. Invaluable for cutting. 2 ft.

	Each	Doz.
FIRE KING. Scarlet red	\$0.15	\$1.25
GERMANIA. Orange scarlet15	1.25
KING EDMUND. Golden yellow15	1.25

Perennials

No place is complete without a substantial planting of hardy plants; flowering the entire summer and coming up year after year, they offer the best means for abundance of bloom to the flower lover. All the plants we offer are strong field-grown clumps from our own nursery. No loss of time in shipping. You can get the plants the same day you order. Prices except where noted, 20c each, \$2.00 per doz.

Aquilegia. Columbine, large spurred hybrids..	2	Ft.
Alyssum. Hardy sweet alyssum	6	"
Anchusa. Deep blue	3	"
Anthemis. Yellow	3	"
Achillea. White	2½	"
Agrostema. Crimson	1½	"
Campanula. Cup and Saucer; pink, blue and white	3	"
Carnation. Hardy pink	1½	"
Chrysanthemum. All shades	3	"
Chelone. Salmon	3	"
Coreopsis. Yellow	2	"
Delphinium. All shades	4	"
	25c each, \$2.50 per doz.	
Digitalis (Fox-glove). All shades	4	"
Dianthus. Garden pink	1	"
Geum. Scarlet	1	"
Funkia. Plaintain lily	1	"
Gaillardia. All shades	1½	"
Gypsophylla (Baby's Breath). White	2	"
Helenium. Orange	4	"
Hibiscus. Mallow, all shades; 25c each, \$2.50 doz.	5	"
Hemerocallis. Daylight yellow	2	"
Hollyhock. All shades	6	"
Iberis (Hardy Candytuft). All shades	1	"
Lychnis. Scarlet	3	"
Lupin. All shades	2	"
Lathyrus (Hardy Sweet Pea)	8	"
Lobelia. Red	3	"
Linum (Flax). Blue and yellow	1	"
Myosotis (Forget-Me-Not)	1	"
Pyrethrum. All shades	3	"
Polemonium (Jacob's Ladder). Blue	1	"
Physostegia. Pink and white	4	"
Poppy Oriental. Orange scarlet	2½	"
Poppy Iceland. All shades	2	"
Platycodon. Blue and white	2	"
Pentstemon. All shades	3	"
Rudbeckia. Yellow	4	"
Sweet William. All shades	1	"
Shasta Daisy. White	1	"
Stokesia (Hardy Cornflower)	1	"
Thalictrum. Rose and white	4	"
Veronica. Blue	1½	"
Valeriana. Red and white	3	"

Tuberoses

Old time garden favorites of easy culture; 15c each, \$1.50 per doz.

German Iris

25c each, \$2.50 per doz.

- Albino. Pale lavender.
- Celeste. Azure blue.
- Canary Bird. Pale yellow.
- Florentina alba. Pure white.
- Honorabilis. Deep yellow.
- Mme. Chereau. White feathered blue.

Japanese Iris

35c each, \$3.50 per doz.

- Apollo. White, pink center.
- Oriole. Cerise pink.
- Pyramid. Lilac blue.
- Victor. White veined violet.
- Iso-nom-ami. Mauve.
- Kumo-no-obi. Lavender purple.
- Uchin. Cerulean blue.

Peonies

	Each
Andre Louise. Red	\$0.50
Faust. Pink50
Alba Perfection. White50
Festiva Alba. Ivory white50
Edulis Superba. Pale pink50
Festiva Maxima. The best white50
Queen Victoria. Pure white50
Rosea Superba. Deep pink50
Dorchester. Salmon	1.00
Francis Ortegat. Crimson50
Dutchess De Nemours. Sulphur white60

Hardy Phlox

25c each, \$2.50 per doz.

Lothier. Brilliant red	3	Ft.
Bridesmaid. White crimson eye	3	"
Elizabeth Campbell. Pale pink	3	"
Fraulein S. Von Lassburg. White	3 1/2	"
La Vague. Lavender	2 1/2	"
Independence. White dwarf	2	"
Miss Lingard. White pink eye	2 1/2	"
R. P. Struther. Cherry red	3	"
Sunset. Dark pink	3	"
Terra Neuva. Lavender, white center	3	"
Mrs. Chas. Dor. Soft lavender	3	"

Chrysanthemums

One of the most popular hardy perennial flowers. A wonderfully decorative flower in a wide range of richly colored shades.

25c each, \$2.50 per doz.

- Autumn Glow. Rosy crimson.
- Bronze Pom-Pom. Bronzy.
- Eva. Delicate pink.
- Golden Queen. Golden yellow.
- Julia. Orange scarlet.
- Victory. Pure white.
- Autumn Beauty. Brown.
- Glcra. Crimson.

Dahlias

Show Types

	Each
A. D. Livoni. Shell pink	\$0.15
Bertha Berstein. White shaded lavender20
Clara Seaton. Golden bronze50
Delighted. Very large white30
Grand Duchess Marie. Golden buff20
Mrs. J. P. Smith. Cherry red, very large40

Decorative Types

Ayesha. Yellow, very large30
Berch von Heemstede. Yellow rose reverse20
D. M. Moore. Almost black, perfect form40
Gluckauf. Deep red20
Hochasi. Yellow and red30
Purple Manitou. Purple25

Cactus Types

Countess of Lonsdale. Rose and salmon30
Flora. White, wide petals20
Golden Eagle. Deep buff20
J. B. Riding. Orange and apricot20
Juliet. Pink15
Nancy Mae. Scarlet, maroon shadings20

Pompom Types

Ariel. Orange buff15
Darksome. Wine crimson15
Graus Aus Wein. Strawberry color15
Klein Domitea. Bronze15
Little Beauty. Pink15
Vivid. Red15

Peony-Flowered

Electra. Salmon and mauve20
Golden Rose. Yellow tipped rose30
Hampton Court. White suffused rose-pink20
Mrs. Geo. Gordon. Creamy white20
Oregon Beauty. Oriental red and gold20
White Cap. Very large white30

New Dahlias

Attraction. Lilac rose75
Dream. Salmon and pink amber glow50
Golden Opportunity. Gold orange buff	1.25
Insulinde. Bronzy orange, extra fine	3.00
Jane Selby. Lavender pink	1.00
La Favorita. Deep orange	1.50
Mrs. Carl Salbach. Deep lavender	2.00
Mrs. Edna Spencer. Lavender pink	1.00
Millionaire. Lavender pink	2.00
Pride of California. Deep rich red	1.00
Ruth Gleadell. Soft yellow shading salmon50

Roses

Strong northern field-grown stock. When properly planted will produce full crop of flowers the first season. Dig the bed deep incorporating with the soil plenty of manure and a sprinkling of Bone Meal. Don't judge quality on a price basis. Our stock is the very best procurable and if we can establish lower prices that is to your advantage. Prices except where noted, \$1.00 each.

- Columbia.** Glowing pink; new Tea.
Dutchess Wellington. Saffron yellow; new Tea.
Frau Karl Druschki. Best white rose, Hybrid Perpetual.
General McArthur. Bright, scarlet Tea.
George Ahrends. "Pink Frau Druschki."
Golden Ophelia. Ophelia color suffused with golden yellow.
Gruss an Teplitz. Scarlet, constantly in bloom.
J. J. L. Mock. Deep pink; long stem; Tea.
Kaiserin Augusta Victoria. Cream white, long stem, Tea.
Killarney. Pink, favorite bedding rose.
Lady Hillington. Apricot yellow, Tea.
Los Angeles. Flame pink; new Tea.
Mme. Caroline Testout. Satiny rose; very large; Tea.
Mme. E. Herriot. Coral red, shaded salmon; Tea.
Mme. Abel Chatenay. Bright carmine rose; Tea.
Mme. Ravary. Rich orange yellow; Tea.
Mrs. A. R. Waddell. Saffron and orange; Tea.
Mrs. Geo. Shawyer. Large bud; deep pink; Tea.
Mrs. John Lang. Long stem; deep pink; Hybrid Perpetual.
Mrs. Aaron Ward. Yellow, sometimes shaded with salmon.
Margaret Dickson. Flesh pink; Hybrid Perpetual.
Ophelia. Pale salmon pink; Tea.
Radiance. Carmine pink; Tea.
Red Radiance. Crimson scarlet; Tea.
Sunburst. Coppery yellow; Tea.
Ulrich Brunner. Deep red; Hybrid Perpetual.
White Cochet. Snowy white, outside petals tipped pink; Tea.
Willowmere. Shrimp pink; new Tea.

Standard or Tree Roses

For the first time in four years these wonderful plants are again available. All varieties \$2.50 each.

Climbing Roses

\$1.00 each

- Gardenia.** A wonderful rose; pale yellow; single.
Tausendschon. Clear pink; fine climber.
Dr. Van Fleet. Red flesh pink; long buds.
Silver Moon. Clear silver white.
Excelsa. The best red.
Dorothy Perkins. Shell pink.
Climbing American Beauty. Large flower; deep pink.
American Pillar. Deep pink, white center.

Dwarf Rambler Roses

\$1.00 each

- Baby Tausendschon.** Pink.
Erna Teschendorff. Carmine red.
Mme. Cecil Brunner. Rose, yellowish center.
White Cecil Brunner. Pure white.

Fruit Trees

We have many other varieties than those listed below, but we have simply made a limited selection of varieties that we know will do well in this locality.

Grapes

Good strong canes. 60c each, \$6.50 per doz.

- Niagara.** The standard white.
Catawba. Dark red; fine flavor.
Delaware. Red, small bunch; good cropper.
Concord. Black; early; fine flavor.
Moore Early. Black; small berry; large cropper.
Worden. Black; very large berries.

Raspberries

15c each, \$1.50 per doz.

- Cuthbert.** Red; large berries; the standard.
Ohio. Red; large berries; good cropper.
Columbia. Purple; fine flavor.
Cumberland. Black; very large berry.
Golden Queen. Yellow; good sized berries.

Everbearing Raspberries

- St. Regis.** Produces several crops of fine berries.
 25c each, \$2.50 per doz.

Blackberries

15c each, \$1.50 per doz.

- Blowers.** Early; fine fruit.
Eldorado. Coal black; coreless.
Rathbun. Very large and productive.

Gooseberries

50c each, \$5.00 per doz.

- Downing.** Pale green; good cropper.
Houghton. Large berries; good producer.
Red Jacket. Pale red; good grower.

Currants

30c each, \$3.00 per doz.

- Boskoop Giant.** Large red; very productive.
White Imperial. The best white.
Black Naples. The best black.
Perfection. The best of all currant; (New); 40c each, \$4.00 per doz.

Apples

Our fruit trees are all acclimated in our nursery before making deliveries. XXX Grade \$1.50 each.

We have a few large producing trees in limited variety at \$3.50 each; will produce the second season.

Early Apple, Early Harvest, Red Astrachan, Yellow Transparent.

AUTUMN VARIETIES: Gravenstein, Dutchess Oldenburg.

WINTER VARIETIES: Baldwin, Delicious, King, Northern Spy, R. I. Greening, Russet, Spitzenburg, York Imperial, McIntosh, Twenty Ounce.

Pears

\$1.50 each.

EARLY VARIETIES: Bartlett, Clapp's Favorite.

MID-SEASON: Dutchess d'Angouleme, Seckel.

LATE: Beurre de Anjou, Beurre Bosc.

Cherries

\$2.00 each.

SWEET VARIETIES: Black Tartarian, Bigarreau, Windsor.

SOUR VARIETIES: Richmond, Montmorency.

Plums

\$2.00 each.

Abundance, Burbank, German Prune, Damson.

Peaches

\$1.00 each.

Belle of Georgia, white; Crawford's Early, yellow; Elberta, yellow; Mountain Rose, white; Greenboro, yellow; Crosby, yellow.

Quinces

\$1.50 each.

Champion, Bourgeat, Orange.

Lawn Mowers

The Ideal Power Lawn Mower

The Ideal Power Mower is undoubtedly the best type of power mower now on the market. We have sold a number of these machines and in every instance they have given satisfactory service. The machine cuts a 30-inch swath and will cut from four to six acres per day.

Our price includes delivery and a practical demonstration at your place, \$350.00.

The Ideal Jr. Power Lawn Mower

This machine is exactly the same as the larger model with the exception of the width of the cutting unit which in this case is 22 inches, making it a very desirable machine for small property owners. The machine can cut up close to all obstructions and is easy to turn.

Our price includes delivery and a practical demonstration at your place, \$230.00.

Townsend Triplex Horse Mower

Although it is easily drawn by one horse this machine cuts an 86-inch swath and is unquestionably one of the best machines where there is considerable cutting, such as large estates, golf courses, etc. Price delivered, \$375.00.

Hand Lawn Mowers

THE PENNSYLVANIA JR. HIGH WHEEL BALL BEARING is unanimously conceded to be the best hand lawn mower made.

15-inch cut...	\$26.00	19-inch cut...	\$33.00
17-inch cut...	29.00	21-inch cut...	37.00

THE GREAT AMERICAN HAND MOWER is a machine made by the Pennsylvania Mower Co. A high-grade machine in every detail.

15-inch cut...	\$19.00	19-inch cut...	\$24.50
17-inch cut...	22.00	21-inch cut...	27.00

THE PENNSYLVANIA GOLF MOWER is the acme of perfection for fine cutting. It is heavy and leaves no track as the wheels never skid when the knives are revolving.

17-inch cut...	\$35.00	19-inch cut...	\$39.00
----------------	---------	----------------	---------

Grass box for this mower, each \$8.00.

THE PENNSYLVANIA PUTTING GREEN MOWER will cut close on all surfaces as it has a roller bearing and can be adjusted very delicately.

14-inch cut...	\$30.50	16-inch cut...	\$32.00
----------------	---------	----------------	---------

THE RED CLOUD BALL BEARING MOWER is a Pennsylvania made mower. It is strong, durable and of simple construction with the same exclusive features of the higher priced machines.

14-inch cut... \$14.00 18-inch cut... \$16.00
 16-inch cut... 15.00

THE ELECTRA LAWN MOWER is a good, inexpensive, smooth-running mower. Suitable for small lawns.

14-inch cut... \$ 9.50 18-inch cut... \$10.50
 16-inch cut... 10.00

THE PENNSYLVANIA LAWN TRIMMER, for trimming around trees, close to walls, etc. Price, \$12.00.

PENNSYLVANIA UNDERCUT TRIMMER, \$12.50.

GRASS BOXES for all sizes Pennsylvania Mower.

PORTABLE GRASS CATCHER, fits all mowers; each \$1.00.

Pennsylvania Lawn Sweeper

A very practical machine for cleaning lawns of sticks, leaves, moss, dead grass, etc. 24-in. \$35.00, 36-in. \$50.00.

CULTIVATORS

PLANET JR. EDGER NO. 2\$10.00
PLANET JR. No. 4D—Cultivator and seeder complete 18.00
PLANET JR. No. 31D—Seeder and single hoe 12.50
PLANET JR. No. 11—Double and single wheel hoe 14.75
PLANET JR. No. 12—Combined double and single wheel hoe 11.50
PLANET JR. No. 16—Single wheel hoe, all attachments 9.25
PLANET JR. No. 17—Single wheel hoe 7.75
FIREFLY PLOW 4.00
HIGH WHEEL CULTIVATOR No. 119 5.00
IRON AGE No. 301—Double wheel hoe 12.00
IRON AGE No. 320—Single wheel hoe 9.00

LITTLE WONDER HEDGE TRIMMER

The machine that revolutionized hedge-trimming. Simple in construction, and easy to operate this machine makes hedge-trimming a pleasure instead of hard work. Used for trimming and not "cutting back" a hedge.

30-inch cut machine..... \$25.00
 40-inch cut machine..... 30.00

SPRAYERS

AUTO-SPRAY No. 9D. The best sprayer for general work. Galvanized tank. \$6.50 each.

AUTO-SPRAY No. 9B. Similar to 9D except tank which is brass, each \$9.50.

Extension Rod for above, solid brass, each 70c.

Brass Strainer, solid brass, each \$1.50.

Two Roll Attachment, solid brass, 1 nozzle, \$1.50 each.

Auto-Spray Nozzle, each 80c.

Auto-Pop Nozzle, complete, each \$2.00.

Hose for sprayer, each 75c.

Auto-Spray No. 5, double-acting; will reach trees twenty feet from the ground; all working parts brass, each \$5.00.

Knapsack for above, with shoulder straps, each \$3.50.

Auto-Spray No. 6, the best bucket pump for small spraying, each \$7.50.

Auto-Spray No. 40D, this sprayer is mounted on wheels suitable for orchard spraying; powerful pump, all brass, galvanized tank; each \$30.00.

Auto-Spray No. 40C, similar to 40D; brass tank; each \$35.00.

Auto-Spray No. 25D, galvanized tank, each \$1.75.

Auto-Spray No. 26C, brass tank, each \$1.50.

Auto-Spray No. 20E, three-jet atomizer, each \$1.00.

Jim Dandy, a new hand sprayer with an exceptional large range of spray; each \$3.25.

Pomona Spray Pump. The best barrel spray pump. All working parts are of brass and is adjustable for any size barrel. Pomona pump with agitator, \$23.00; fitted to barrel, \$31.50.

DUNHAM WATER ROLLER

No. 2. 18-in. diameter, 24-in. long; 75 lbs. empty, 300 lbs. filled; each \$23.00.

No. 3. 24-in. diameter, 24-in. long; 110 lbs. empty, 500 lbs. filled; each \$26.00.

WHEELBARROW GRASS SEEDER

Has a 14-ft. hopper; can be regulated to sow any quantity of seed. Each, \$15.00.

PORTABLE REFUSE BURNER

All metal cart on wheels with ash pan; fine for burning leaves. 1 cubic yd. capacity, \$38.00; ½ cubic yd. capacity, \$21.00.

CYCLONE SEEDER

Improved broadcast seeder for any kind of small seed; gives a big spread and equal distribution. Each \$3.00.



General List of *Garden Implements and Requisites*

Axes, Connecticut Brand, best quality; 1½-4 lb., each \$2.25-\$2.75.

Asparagus Knife, English, each \$1.50.

Asparagus Knife, American, each 50c.

Asparagus Buncher, each \$3.50.

Baskets—

Hanging wire painted, 8 in., 35c; 10 in., 40c.

Rustic, 10 in., \$1.50; 12 in., \$2.00.

Market Oak, No. 1, \$1.25; No. 2, \$1.40; No. 3, \$1.50; No. 4, \$1.75.

Picking, small 75c, medium 85c, large \$1.00 each.

Bail Handle, small 50c, medium 75c, large \$1.50.

Strawberry picking, \$1.15.

Vegetable, small \$1.00, medium \$1.15, large \$1.35.

Bean Poles, natural cedar, 12-14 ft.; heavy butts, 35c each, \$3.50 per doz.

Bellows, Woodason's, Powder, small \$3.00 each, large \$4.25 each.

Bellows, Acme, each \$1.75.

Corn Planter, Acme, each \$4.00.

Corn Knife, Eureka, 90c; folding 50c.

Celery Bleachers, 7x14-in. per doz. 75c; per 100, \$4.50.

Celery Tube for handling bleachers, brass, \$3.50.

Duster Gun, Corona, one of the best, \$3.50.

Duster Gun, Dickey, Bug, each 60c.

Duster Gun, Key, each \$3.00; Cartridges 15c each.

Dibblers, wood handle, steel point, 65c; all metal 70c.

Edging Knives, solid socket improved tread, each \$1.25; revolving wheel, hardened steel, each \$1.25.

Forks, Digging, best grade only. 4 tine, each \$2.25; 5 tine, \$2.75.

Forks, Manure, "D" handle, best grade. 4 tine, \$2.00; 5 tine, \$2.50.

Fork, Excelsior, digging; each \$1.00.

Forks, Manure, long handle; 4 tine \$1.75, 5 tine \$2.00.

Forks, Hay, long handle. 3 tine, \$1.50.

Flower Boxes, best grade cardboard, printed with your name and address, in lots of 100 or more; colors, mist gray, tan, and ivy green.

	Depth	Width	Length	Doz.	100
No. 50	3-in.	4-in.	16-in.	\$0.75	\$4.50
No. 51	3-in.	5-in.	18-in.	.85	5.00
No. 55	3½-in.	5-in.	24-in.	1.25	7.50
No. 57	5-in.	8-in.	24-in.	1.75	10.50
No. 60	4-in.	5-in.	30-in.	1.50	9.00
No. 62	7-in.	12-in.	30-in.	3.50	20.00
No. 65	6-in.	10-in.	36-in.	3.25	19.00

Flower Pots, best grade earthenware:

Size	Doz.	100	1000
2-in.	\$0.30	\$1.75	\$14.00
2½-in.	.35	2.00	17.50
3-in.	.50	3.00	23.00
4-in.	.70	4.00	35.00
5-in.	1.00	7.00	60.00
6-in.	1.50	10.00	85.00
7-in.	2.50	18.50	
8-in.	4.00	27.50	
9-in.	5.25	38.00	
10-in.	8.00	58.00	
12-in.	15.00	100.00	

Bulb Pans:

Size	Doz.	Size	Doz.
6-in.	\$2.00	12-in.	\$15.00
8-in.	3.75	14-in.	25.00
10-in.	7.50	16-in.	60.00

Fruit Pickers, wire; each 75c.

Floral Sets, Ladies', 3-piece, \$2.00; 4-piece, \$3.00.

Floral Sets, small hand, set of 3 pieces—rake, hoe and trowel, \$1.00.

Gem Hand Fork, for loosening soil, each 50c.

Grass Hooks, Imported English, each \$1.00.

Grass Hooks, Village Blacksmith, each 75c.

Grass Hooks, 1XL, each 60c.

Garden Line Reel, American, each \$1.25; Imp. English, each \$3.00.

Garden Line, Cotton braided, 100 ft., 75c; Italian Hemp, 100 ft., \$2.25.

Gloves, pruning and garden, \$1.00 to \$5.25 per pr.

Grafting Wax, per Pkt. 25c.

Hay Caps, heavy canvas, 4 ft. x 4 ft., each \$3.00.

Hoes, English Scuffle, with handles. 5-in. \$1.45, 6-in. \$1.55, 7-in. \$1.65, 8-in. \$1.75.

Hoes, Warren, small size, \$1.10; medium size, \$1.20.

Hoes, Draw or Garden, 5-in. \$1.10, 6-in. \$1.20, 7-in. \$1.30.

Hoes, Acme Weeding, each \$1.00; double prong, each \$1.20.

Hose, very best grade. We handle only the very best grade with corrugated surface. Try our non-kinkable if you are in need of a good hose. ¾-in. 20c per foot, ½ in. 16c per foot.

Hose Clamps, ¾-in. 10c, ½-in. 10c.

Hose Couplings, plain brass, ½-in. 25c, ¾-in. 25c; per clincher, ½-in. 35c, ¾-in. 35c.

Hose Connections for connecting hose to faucet without threading, brass, each \$1.00.

Hose Holder, for holding hose on lawn, 50c.

Hose Menders, cooper ½-in. or ¾-in., each 15c, \$1.50 per doz.

Hose Menders, perfect clincher menders, 20c each, \$2.00 per doz.

Hose Nozzles, Gem, \$1.00; Automatic, \$1.75; Boston, \$1.00.

Hose Nozzles, for spray pumps. Vermorel, \$2.00; Mistry Jr., \$1.50.

Hose Reels, made of tubular metal, \$5.00.

Knives, Budding American, each \$1.00; Imported English, each \$2.50-\$3.00.

Knives, Pruning, American, each \$1.25; English, each \$2.25-\$2.50.

Labels, Tree, copper wired ptd., 3½-in. per 100 50c; 1000 \$3.00.

Wooden pot and garden. Ptd.

	100	1000		100	1000
4-in.	\$0.35	\$2.50	8-in.	\$1.25	\$10.00
5-in.	.50	3.00	10-in.	1.60	11.50
6-in.	.60	3.50	12-in.	2.25	16.00

Mattocks, with handles, \$2.00.

Mole Traps, Reddick, each \$1.25.

Nails, English Wall, per doz. 40c.

Norcross Cultivators, 5 prong, each \$1.10; 3 prong, each 85c; small hand, each 45c.

Paper, any grade; specify weight; per lb. 8c-16c.

Paper, Tissue, per ream \$3.50.

Paper, Wax, any color, per ream, \$4.25.

Picks, pointed both ends, \$2.25.

Post Hole Digger, each \$1.50.

Potato Hooks, broad, flat, heavy prongs; 4 prong, \$1.50; 5 prong, \$1.75.

Rakes, Hay, wood bow, 12-tooth, each 75c.

Rakes, Lawn, steel bow, 24-tooth; each \$1.10; wood bow, each \$1.00.

Rakes, Lawn, reversible steel, 24-tooth, each 75c.

Rakes, Garden, all steel; 8-tooth, \$1.00; 10-tooth, \$1.05; 14-tooth, \$1.10; 16-tooth, \$1.15.

Rifles, Emery, each 15c.

Raffia, the best material for tying plants, lb. 50c.

Star Pulverizer, each \$6.50.

Shovels, Ames, Rd. nose, "D" handle, each \$2.25.

Shovels, Ames, Sq. nose, "D" handle, each \$2.25.

Shovels, Royal Steel, square nose, Canadian handle, each \$2.25.

Shovels, Royal Steel, round nose, Canadian handle, each \$2.25.

Shovels, Wyoming, round nose; the best shovel for service, \$2.50.

Shovels, Royal Steel, long handle, round nose, each \$2.25.

Spades, Royal Steel, long handle, round nose, each \$2.25.

Spades, Ames, "D" handle, each \$2.25.

Spades, Royal Steel, Canadian handle, each \$2.25.

Scythes, Imported English, 30-in. \$2.75, 32-in. \$3.00, 34-in. \$3.25, 36-in. \$3.50.

Scythes, best grade American, 32-in. \$2.00, 34-in. \$2.20, 36-in. \$2.40.

Scythes, Snath, good grade, each \$1.50; XX Special, each \$2.25.

Scythes, Bush, 18-in. \$2.00, 21-inch. \$2.25.

Scythes, Stones, Imported English 40c, Carborundum, 35c; Red End, 15c.

Saws, Pruning, Disston Paragon, \$2.40.

Saws, Pruning, Disston Duplex, \$1.50.

- Saws, Pruning, Disston No. 17;** excellent for clean cutting, each \$2.25.
- Scissors, Flower-gathering, 6-in.** \$2.50, 7-in. \$3.00.
- Shears, English Border, \$6.60;** American Border, \$3.50.
- Shears, Grass or Sheep, English, \$1.50;** American, \$1.00.
- Shears, Hedge, English, \$4.00;** American, \$3.00.
- Shears, Lop, Red Clipper, \$5.00;** Clyde, \$3.00; Rhodes, \$5.00.
- Shears, Wiss Pruning, 9-in.** \$4.00; 10-in. \$4.50.
- Shears, good grade, tempered, \$1.00.**
- Shears, French Hand, 9 in.** \$2.25, 10-in. \$2.50.
- Silkalene, Meyers, green, per spool, 35c;** per doz. \$4.00.
- Smilax Twine, 30c;** per doz. \$3.50.
- Sprinklers, scollay plant, each \$1.50.**
- Syringes, Brass, from \$1.50 to \$5.00.**
- Sprinklers, Cyclone Lawn, \$2.50.**
- Sprinklers, Universal Lawn, \$3.25.**
- Sprinklers, Fountain Lawn, \$1.10.**
- Stakes, Round Light:**
- | | Doz. | 100 |
|-------------|--------|---------|
| 2½ Ft. | \$0.75 | \$ 5.00 |
| 3 Ft. | .85 | 6.00 |
| 4 Ft. | 1.20 | 9.00 |
- Stakes, Heavy Square:**
- | | | |
|------------|------|-------|
| 3 Ft. | 1.35 | 10.00 |
| 4 Ft. | 1.95 | 15.00 |
| 5 Ft. | 2.40 | 19.00 |
| 6 Ft. | 2.90 | 23.00 |
- Stakes, Bamboo, natural, from 3 to 12 ft., 1c to 4c each.**
- Stakes, Hyacinth, green, 18-in., \$1.00 per hundred, \$9.00 per 1000.**
- Thermometers:**
- Tycos No. 5452, self registering, 8-in.** \$5.50, 10-in. \$6.50.
- Tycos No. 5400, good grade, 8-in.** \$1.40, 10-in. \$1.60.
- Tycos No. 5420, Oxidized brass, 8-in.** 90c, 10-in. \$1.00.
- Tycos No. 5154, copper case, 8-in.** 70c, 10-in. \$1.00.
- Tycos No. 5120, distant reading, 8-in.** \$1.25, 10-in. \$1.50.
- Tycos No. 5981, hotbed, each \$2.25.**
- Tin Foil, per lb. 40c.**
- Torches, Asbestos, 75c.**
- Tree Scrapers, \$1.00.**
- Tree Pruners, Telegraph, \$2.50.**
- Tree Pruners, Waters Imp., 8 ft.** \$2.50, 10 ft. \$2.75, 12 ft. \$3.00, 14 ft. \$3.25.
- Tree Pruners, Little Giant, pruner and saw combined, each \$4.00.**
- Trowels, Slim Jim, each 25c;** all metal, each 40c; hard forged, each \$1.00.

- Trowels, Transplanting, 75c.
Turving Irons, English, \$7.50.
Twines, Green Sea Island, 30c per ball; hemp, 60c.
Twines, Jute, 30c per ball; Carnation 20c per ball.
Twine, hard white, 35c; binders, each \$1.25 per ball.
Tool racks, for hanging tools, each 75c.
Weeders, Climax, excellent for cleaning lawns, 75c.
Weeders, Cleveland, \$1.00.
Weeders, Eureka, 3 prong, each 50c; Excelsior finger, 20c.
Weeders, triangle, onion, 75c.
Water Pots, Wotherspoon, \$3.50 to \$5.00, according to size.
Water Pots, Suburban, \$1.25 to \$2.00, according to size.
Water Pots, Haws Imported, \$5.50 to \$8.00, according to size.
Wheelbarrow, Garden, best grade, full bolted 2 $\frac{3}{4}$ -in. wheel; No. 2 \$8.50, No. 3 \$9.00.
Wheelbarrow, full-bolted canal, each \$4.50.



FERTILIZERS

PURE RAW GROUND BONE, one of the best fertilizing elements, clean and all available plant food. 5 lbs. 50c, 10 lbs. 75c, 25 lbs. \$1.25, 100 lbs. \$3.50, 1 ton \$65.00.

SHEEP MANURE, useful for all kinds of top dressing, a natural plant food. 5 lbs. 50c, 10 lbs. 75c, 25 lbs. \$1.25, 100 lbs. \$3.50, 1 ton \$65.00.

BLOOD & BONE, a high-priced fertilizer used for greenhouse work and special requirements. 100 lbs. \$4.25.

CLAY'S FERTILIZER, an imported fertilizer extensively used in greenhouse work for top dressing. 56 lbs. \$8.00, 112 lbs. \$14.00.

SCOTCH SOOT, used for coloring flowers, also good as a general cleanser. 5 lbs. 75c, 10 lbs. \$1.25, 25 lbs. \$2.50, 100 lbs. \$7.00.

SALT, used for top dressing asparagus bed. 100 lbs. \$2.25.

STIM-U-PLANT, a highly concentrated plant food for house plants. Pkts., 15c and 25c.

LIME, used to equalize soil acids. 5 lbs. 25c, 10 lbs. 30c, 25 lbs. 60c, 100 lbs. \$1.25, 1 ton \$20.00.

BON ARBOR, for house plants, highly concentrated fertilizer. Small 40c, medium 65c, large \$2.50.

NITRATE OF SODA, a plant invigorator and tonic. Lb. 10c, 5 lbs. 40c, 10 lbs. 75c, 25 lbs. \$1.50, 100 lbs. \$5.50.

V. C. PLANT FOOD, a fine top dressing for house plants. Tins, 25c and 50c.

MULFORD CULTURE, when properly used they will increase the yield as they inoculate the soil for Peas, Beans, etc. Small 50c, large \$1.50.

MAYFLOWER, 2-8-2, a good fertilizer for general garden use, all soluble. 5 lbs. 30c, 10 lbs. 50c, 25 lbs. \$1.00, 100 lbs. \$2.50, 1 ton \$42.00.

BLACK HAWK, 4-8-4, a high grade fertilizer for garden crops. 5 lbs. 30c, 10 lbs. 50c, 25 lbs. \$1.10, 100 lbs. \$3.25, 1 ton \$55.00.

CORN KING, 3-9-2, a good corn fertilizer. 5 lbs. 30c, 10 lbs. 50c, 25 lbs. \$1.00, 100 lbs. \$2.75, 1 ton \$46.00.

6% SPECIAL, 4-8-6, a special mixture, rather high in price but entirely satisfactory. 5 lbs. 35c, 10 lbs. 60c, 25 lbs. \$1.25, 100 lbs. \$3.50, 1 ton \$60.00.

INSECTICIDES

- APHINE**, used as a spray for all soft-bodied plant lice. Excellent for garden or greenhouse. $\frac{1}{2}$ Pt. 35c, Pt. 65c, Qt. \$1.00, Gal. \$3.50.
- ARSENATE OF LEAD PASTE**, for all eating insects, has high killing power. Lb. 45c, 5 lbs. \$2.00, 10 lbs. \$3.50, 25 lbs. \$6.50, 50 lbs. \$12.00, 100 lbs. \$22.00.
- ARSENATE OF LEAD POWDER**, the same qualities as the lead paste; will not burn. $\frac{1}{2}$ lb. 40c, 5 lbs. \$3.50, 10 lbs. \$5.00, 25 lbs. \$11.00, 50 lbs. \$20.00, 100 lbs. \$30.00.
- BORDEAU MIXTURE PASTE**, a fungicide of general use. 1 lb. 35c, 5 lbs. \$1.50, 10 lbs. \$2.75, 25 lbs. \$5.50, 50 lbs. \$10.00, 100 lbs. \$18.50.
- BLACK LEAF 40**, sometimes called nicotine-sulphate, the best tobacco spray. 1 oz. bottle 35c, $\frac{1}{2}$ lb. \$1.25, 2 lbs. \$3.50.
- CUT WORM KILLER**, very good for protecting plants in early spring. Lb. 35c, 5 lbs. \$1.50.
- CATTLE COMFORT**, the best remedy to keep cattle free of flies during summer. 1 Qt. 50c, $\frac{1}{2}$ Gal. 85c, Gal. \$1.50.
- FISH OIL SOAP**, used for sponging plants, also an excellent winter wash for trees. Lb. 35c, 5 lbs. \$1.50, 10 lbs. \$2.75.
- FUNGI BORDEAU**, this is a very good remedy for blight of all kinds. Try it on your peonies. Lb. 35c.
- FUNGINE**, a remedy for rust; if used in time will destroy celery rust. Pt. 50c; Qt. \$1.00, Gal. \$3.50.
- FORMALDEHYDE**, used for dipping potatoes to prevent scab. Bottle 75c, Keg 60-lb., \$20.00.
- GRAPE DUST**, used in the greenhouse and garden to destroy mildew. Try it on your Sweet Peas. Lb. 20c, 5 lbs. 85c.
- HALL'S NICOTINE SULPHATE**, an excellent tobacco spray for lice and soft-bodied insects. 1 oz. bottle 35c, $\frac{1}{2}$ lb. \$1.40, 2 lbs. \$4.25.
- HALL'S FUMIGATOR**, for fumigating in the greenhouse. 1 lb. tins, \$1.35, 2 $\frac{1}{2}$ lb. tins \$2.50, 10 lbs tins \$8.50.
- HERBICIDE**, kills grass, weeds, and other growth in paths, roads, gutters, tennis courts, etc. Qt. 60c, $\frac{1}{2}$ Gal. \$1.00, Gal. \$1.75, 5 Gals. \$7.50.
- HELLEBORE**, an old-time remedy for eating insects especially currant worm. $\frac{1}{4}$ lb. 20c, $\frac{1}{2}$ lb. 40c, lb. 75c.
- INSECTO**, a combination of Bordeaux Lead for spring. Has high killing powers. Lb. 60c, 5 lbs. \$2.50.
- DRY LIME SULPHUR**, used as a winter spray to kill scab and other insects. Lb. 40c, 5 lbs. \$1.75.
- MELROSINE**, the new remedy for rose bug. Pt. \$1.00, Qt. \$1.75, $\frac{1}{2}$ Gal. \$3.25, Gal. \$6.00.

- NICO-FUME**, the standard fumigant for the greenhouse. Tin of 24 sheets, \$1.25; tin of 144 sheets, \$5.50.
- NO-SCAB**, used for dipping potatoes to prevent scab. Pt. 60c.
- PARIS GREEN**, the old remedy for potato bug, very strong. $\frac{1}{4}$ lb. 20c, $\frac{1}{2}$ lb. 35c, lb. 55c, 5 lbs. \$2.50.
- PYROX**, a combination for diseases and eating insects. Lb. 45c, 5 lbs. \$1.75, 10 lbs. \$3.00, 25 lbs. \$6.25.
- READEANA**, rose bug exterminator; this spray is used to destroy rose bugs. 24-oz. bottle \$1.00, $\frac{1}{2}$ Gal. \$2.25, Gal. \$4.00, 5 Gal. \$17.50.
- SCALECIDE**, extensively used as a dormant spray for all trees. Qt. 60c, Gal. \$1.45, 5 Gal. \$6.45, 10 Gal. \$11.00.
- SULPHOCIDE**, a very strong spray for plant diseases, especially blights. Pt. 40c, Qt. 75c.
- SULPHUR**, used for dipping potatoes and for various blights. 1 lb. 15c, 10 lbs. \$1.00, 100 lbs. \$8.00.
- SLUG SHOT**, the best non-poisonous insecticide. You can use it on the cabbage, etc. Lb. box 20c, 5 lbs. 75c, 10 lbs. \$1.25.
- TOBACCO DUST**, a preventative for green fly. Lb. 10c, 5 lbs. 40c, 10 lbs. 75c, 50 lbs. \$3.00.
- TOBACCO STEMS**, for fumigating, also used for poultry nests as it prevents lice. 100 lbs. \$3.75.
- TUBER-TONIC**, a fine fungicide for potatoes; will prevent blight. 1 lb. 60c.
- WORM ERADICATOR**, the best worm eradicator for greenhouse and golf greens. 24-oz. bottle \$1.00, 1 Gal. \$4.00, 5 Gal. \$17.50.
- XL-ALL**, liquid insecticide; this is an imported product and is the best spray for aphids. Pt. \$1.25, Qt. \$2.35, $\frac{1}{2}$ Gal. \$4.25, Gal. \$7.75.
- ZINC BORDEAUX**, this preparation has strong killing qualities; excellent for potato bug. $\frac{1}{2}$ lb. 35c, lb. 60c.



BEDDING PLANTS

We can supply you with your requirements direct from our greenhouse; we try to have a complete stock of all varieties but can get you anything special on very short notice.

AGERATUM, dwarf bedding plants, blue flower, all season, pot-grown. 25c each, \$3.00 per doz., \$20.00 per 100.

GERANIUMS, strong plants from 4-in. pots. 25c each, \$3 per doz., \$20.00 per 100.

ALPHONSE RICARD, the best scarlet bedder.

BEAUTY POINTEVINE, salmon pink, fine color.

S. A. NUTT, dark red, good grower.

MME. SALEROI, the variegated leaf type.

HELIOTROPE, strong plant from 4-in. pots. 30c each, \$3.50 per doz., \$20.00 per 100. The best dark blue, large trusses of flowers.

VINCA, long trailing vines of green and white foliage, very effective for porch boxes. 4-in. pots 25c each, \$3.00 per doz., \$20.00 per 100.

ENGLISH IVY, strong pot-grown plants for bedding out or perennial work. 25c each, \$3.00 per doz., \$20.00 per 100.

GERMAN IVY, quick-growing; used for porch boxes, hanging baskets, etc. 15c each, \$1.50 per doz.

PANSIES, in baskets for bedding. Strong plants from frames, baskets 25c and 40c each.

PETUNIAS, these showy plants are extensively used for bedding; strong pot-grown plants, all colors. 20c each, \$2.00 per doz.

SALVIA, very strong bedding plants; intense scarlet, strong pot-grown plants. 20c each, \$2.00 per doz., \$15.00 per 100.

COLEUS, colored foliage plants, all colors; pot-grown. 12c each, \$1.25 per doz., \$10.00 per 100.

HANGING BASKETS, these we will fill with an assortment of flowering plants and vines; something to give color the entire season. \$1.50 each, large size, \$2.00 each.

BEGONIAS, for hanging baskets, bedding plants, borders, etc. 3 in. pots 15c each, \$1.50 doz.





