

Historic, archived document

Do not assume content reflects current scientific knowledge, policies, or practices.

62.13

1923

LIBRARY
RECEIVED
FEB 20 1923 ★
U. S. Department of Agriculture.

WM. F. JOST

Dahlias

EAST HAVEN, CONN.



WM. F. JOST
DAHLIA GROWER
AND
ORIGINATOR

GOLD MEDAL

New York, 1921

For New Cactus



BRONZE MEDAL

New Haven, 1922

EAST HAVEN, CONN.

To My Friends and Patrons.

I take pleasure in presenting to my many customers and friends, this catalog of dahlias which comprises varieties of my own introduction and the cream of other raisers.

I also take this opportunity of thanking my good friends for their past favors.

I have every confidence in highly recommending my own introductions, stock of some varieties is rather limited, when my stock of tubers is sold out I will supply green plants, if desired.

TERMS: Prices are for divided field grown roots or green plants, either will give equally good results; in fact, *green plants* are preferred by experienced growers.

Cash must accompany all orders from unknown correspondents.

Remittance should be made by Money Order, Bank Draft or Express Money Order.

Shipping — In filling out your order always give *Shipping Directions*, and write *Name* and *Address distinctly*.

Non-Warranty — I guarantee all roots and plants to be healthy and true to name, but will not be in any way responsible for the crop.

Stock of some varieties are low, so early orders are advisable.

No substitution unless directed.

This list cancels all previous prices.

CATALOG OF DAHLIAS.

KEY

"Cac" Cactus
"S" Show

"Dec" Decorative
"H. C." Hybrid Cactus

"P" Peony

ALICE UNGER (Dec) Unger

Large flowers, freely produced, colored deep amber shading to a yellow, a good variety for garden or exhibition.

Tubers \$5.00
Plants 2.50

ABUNDANCE (Dec) Jost

White, with a suffusion of delicate pale pink, distinctly striped yellow, the reverse petals of a lively pink, make this an unusually attractive variety, and an ideal cut-flower.

Tubers \$1.00
Plants .50

ATTRACTION (H C) Hornsveld

Large elegant flowers of a clear lilac rose; long, strong stems. It is an exhibition and garden sort of rare merit, being an attraction at every show in the world.

Tubers \$1.00
Plants .50

ANNA MAIER (Dec) Bessie Boston

A huge decorative of most peculiar coloring, one of those shades so difficult to do justice to in description. A pinkish red like old velvet, varying to soft yellowish red towards the centre. The blossoms are borne aloft on long wiry stems well above the foliage. A dahlia which will grace any occasion, excellent for exhibiting, beautiful for cutting and ornamental in the garden.

Plants *only*, \$1.50

BALLET GIRL (Cac) Bessie Boston

The highest English type of cactus, but with a better stem than most of those imported. A bush will contain such a variety of blooms that it is no fun to describe it. The biggest percentage of the flowers are orange with a white edge, but there are pure orange blooms, white flowers shading to orange, white flowers, edged orange and other variations all on the same bush. All are beautiful and very large. The stem with us was fair and the flower attracted much favorable notice. Free flowering and excellent centre to the end of the season.

Tubers \$2.00
Plants 1.00

BURMA (P) Jost

A beautiful lilac rose in color, having great big loose petals with a slight twist in them that makes it very attractive, and a free bloomer.

Tubers \$3.00

Plants 2.00

BEN WILSON (Dec) Murphy

Of perfect form, bright red faintly striped with gold, very distinct and attractive, free flowering.

Plants *only*, \$1.00

BONNIE BRAE (Dec) Broomall

Cream, shaded blush pink; the flowers are of true decorative form and immense in size, but not suitable for cutting, as the enormous flowers are apt to be too heavy for the stem.

Tubers \$3.00

Plants 2.00

BLUE BIRD (P)

Quite an exceptional color of the deepest tone of mauve or lilac, which in certain lights has a bluish sheen. A simply huge blossom held on stems long and as stiff as bamboo. The bushes are always laden with blooms; one of the most striking dahlias in the garden. We do not know of any dahlia of just this coloring.

Plants *only*, \$1.50

CHIEFTAIN (Dec) Slocombe

Fine formed flower, ground color is deep orange, striped and mottled with carmine-lake, most useful exhibition variety.

Plants *only*, \$.50

CALIFORNIA ENCHANTRESS (H C) Boston

A very striking pale pink flower, closely petaled, with splendid stem and valuable as a cut flower.

Plants *only*, \$2.00

CAMBRIA (Dec)

One of the finest decorative dahlias yet introduced, unusually large and perfectly formed flowers, exceptionally free flowering, carried on stiff erect stems, of an exquisite shade of soft rose-pink passing to a lighter pink towards the centre.

Plants *only*, \$3.00

DAKOTA (Dec) Marean

Enormous flowers standing erect on strong, stout stems, facing the garden boldly. The color may be described as being the shade of flame; it is a powerful flower, distinct and a prize-winner. Vigorous grower in the extreme and a very free bloomer.

Tubers \$2.50

Plants 1.00

DELLA V. POTTER (Dec) Broomall

A pleasing shade of lavender, part of the flowers coming with white tips; the flowers are very large and beautifully formed, an extra fine variety for the garden or exhibition.

Tubers \$2.50
Plants 1.00

DORIS FARRELL (Dec) Jost

Very free flowering, flowers large, of perfect shape, of a deep lilac pink, ideal for cutting.

Tubers \$2.50
Plants 1.75

DREER'S WHITE (S) Dreer

Clear snow white. Large and exquisitely quilled. Plants *only*, \$.25

DOROTHY DURNBAUGH (Cac) Broomall

A most attractive shade of deep rich pink, flowers are immense in size; of fine form and habit, with strong stems that hold up well; one of the best cactus dahlias in cultivation, fine for cutting. Strong field grown tubers.

Tubers \$1.50
Plants 1.00

ETHEL MOWER (Dec) Jost

Fine large flower, exceptionally good grower and very free, an exquisite shade of shell pink, carried on long stiff stems, fine exhibition variety.

Tubers \$7.50
Plants 3.75

ELM CITY (Hyb Show) Slocombe

A very attractive and free flowering variety, yellow ground, suffused amber, tipped with light red.

Tubers \$.75
Plants .50

EDNA STORY (Dec)

Pale flesh shading to white at the centre, ideal variety for garden decoration and cutting.

Tubers *only*, \$.50

EMILY (S)

Lavender overspread white. A beautiful flower. Tubers *only*, \$.25

EDITH CAVELL (Dec) West

Flowers carried on long stiff stems, perfectly formed, of a pleasing flame color shading to a reddish buff on the outer petals, splendid for garden decoration.

Tubers \$1.00
Plants .50



Goldwyn

EARL WILLIAMS (Dec) Doolittle

A large scarlet, with white well distributed; with me it comes more red than white. Blooms are very erect, on good stiff stems. There is a big demand for this variety.

Tubers \$5.00
Plants 2.50

F. W. FELLOWS (Dec) Stredwick

One of the very best cactus varieties ever raised, with flowers of unusual size for the long narrow petaled type of which this is one of the finest representatives. In color it is an intense coral red with deeper suffusion at the center; no collection of dahlias is complete without it.

Tubers \$1.00
Plants .50

FANTASTIQUE (P) Mastick

Wine crimson, tipped and bordered white. Irregular cup-shaped florets, curled and twisted.

Tubers \$1.00
Plants .75

GOLDWYN (Cac) Jost

This variety was awarded the Gold Medal by The American Dahlia Society at their New York Show 1921. All visitors to my garden have been loud in their praise regarding this variety, large well formed flowers of the highest type of English cactus, but with a stronger stem than any other cactus of its type. In color an exquisite blending of cream and pink being unusual in any other true cactus variety I can recall. Customers who paid \$25.00 for one plant of this dahlia last season told me it was the best cactus dahlia they ever grew.

Tubers \$10.00
Plants 5.00

GOLD DUST (Dec) Jost

Color amber and yellow, very attractive, and a heavy flower, one that if disbudded too much will be apt to get too heavy for the stem.

Tubers \$2.00
Plants 1.00

GLADYS SHERWOOD (H C) Broomall

As compared with other whites this is a giant among pygmies. Flowers will grow 9 inches in diameter without disbudding. The color is of the purest white.

Tubers \$2.50
Plants 1.50

MRS. RICHARD LOHRMANN (H C) Lohrmann

A most excellent dahlia for all purposes. Pure golden yellow hybrid cactus.

Plants \$1.00

MY LADY (P)

An unusual shade of red with a faint cerise suffusion and heavily tipped with gold. True peony form of large size with strong stems; free bloomer.

Plants *only*, \$.75

GEORGE WALTERS (H C) Carter

An enormous hybrid cactus. The color is pinkish salmon shading to yellow at base. Plants are strong growers and have every good habit. I can highly recommend this variety.

Plants *only*, \$.75

GLORY OF NEW HAVEN (Dec) Slocombe

A seedling of the well-known Mildred Slocombe. Color is a beautiful shade of pinkish mauve. It is larger than the parent variety, and has a slightly higher center. Plants are tall, robust growers, and produce large blooms with remarkable freedom on long, strong stems.

Tubers \$2.00

Plants 1.00

HAZEL WELTON (Dec) Jost

A variety very much admired by all visitors this year, some describing it Henna, certainly a most unusual color and difficult to describe, a suffusion of deepest bronze and brick red with a silvery sheen, flowers carried on stiff wiry stems, and freely produced, this variety is sure to become popular.

Tubers *only*, \$2.50

HORTULANUS FIET (Dec) Hornsveld

Large flowers of an exquisite shade of salmon pink, shading to yellow in the centre.

Plants *only*, \$.75

HELEN O'MEARA (P) Jost

A large flower of an unusual shade of yellow, one of most perfect peony dahlias I know of, fine form and a fine stem well able to hold the flower.

Plants *only*, \$5.00

J. J. McQUIGGAN (Dec) Jost

A good grower, producing unusually large flowers of a deep sulphur yellow, carried on long stiff stems, very free flowering.

Tubers \$3.00

Plants 2.00

JUDGE MAREAN (Dec) Marean

A most attractive decorative dahlia, perfectly formed flower, carried on stiff stems, of a striking shade of old rose, the entire flower suffused with a delicate tinge of pink shading to yellow towards the centre, the margin of each petal distinctly tipped with yellow, a most striking combination of color.

Tubers \$5.00

Plants 2.50

JOSEPHINE MENDILLO (H C) Jost

Well formed flower of medium size carried on long stiff stems, color an intense velvety red, considered by many growers as being the best red hybrid cactus to date. Without doubt the ideal red dahlia for cut flowers.

Plants *only*, \$2.50

KATHERINE LANGDON (Dec) Jost

A splendid flower of perfect form, its color is a rich saffron yellow, the margin of the petals slightly suffused bronzy red, very much admired by all visitors to our fields this year.

Tubers \$2.50
Plants 1.75

KATHERINE LYONS (Dec) Jost

Large well formed flowers carried on long stiff stems, a pleasing shade of cream suffused with an exquisite shade of salmon rose, very free flowering.

Tubers \$10.00
Plants 5.00

LUCIFER (Dec) Jost

An intense velvety red shading to a lighter red on the outside petals, the flowers are of large size, on good stiff stems, and produced very freely.

Tubers \$5.00
Plants 2.50

LAVENDERA (P) Burbank

This large lavender pink dahlia comes in the peony type for me, tho' I have seen it marked "Decorative" in some catalogs, still I can not class it as a decorative from what I have seen of it.

Tubers \$1.50
Plants 1.00

MAULMAIN (H C) Jost

An ideal variety either for garden decoration or exhibition, medium sized flowers carried on exceptionally long stems, center petals clear yellow passing to an exquisite shade of salmon buff, an unusual and attractive combination of color, and a fine keeper when cut.

Plants *only*, \$5.00

MON. LeNORMAND (Dec) Charmret

Immense flower of bright yellow, spotted and penciled with red and often tipped white. Constant bloomer all season; good stems. One of the most attractive and reliable.

Tubers \$.75

MRS. WARNAAR (H C) Hornsveld

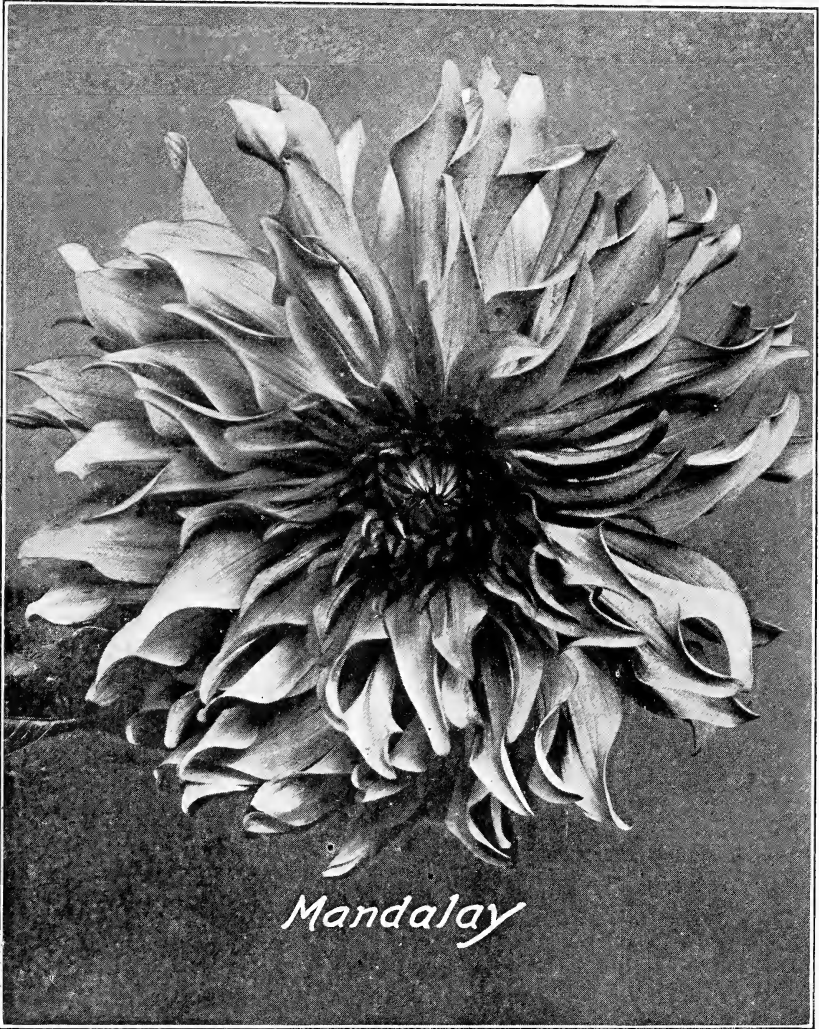
Creamy white, with suffusion of flesh pink, a most exquisite flower, very free flowering and fine for cutting.

Tubers \$1.00
Plants .75

MRS. EDNA SPENCER (H C) Spencer

One of the best of the narrow petalled cactus varieties, the large flowers are produced on strong stems, and are of a most delicate lavender pink color with white suffusion. One of the best for cutting, the color being of a tint that is universally admired; the flowers have wonderful lasting qualities.

Tubers \$1.00
Plants .75



Mandalay

MANDALAY (H C) Jost

Yellow ground overlaid with coppery bronze, the curled and twisted petals showing a distinct shade of reddish bronze, making the flower unusually attractive; very free flowering. This dahlia won first prize wherever exhibited in open competition. A stunning hybrid cactus which fairly glistens.

Tubers limited \$10.00
Plants 5.00

MRS. A. R. GALLATIN (P) Slocombe

Soft shade of yellow, suffused light red, good stems and very free flowering, a fine flower.

Tubers \$1.00
Plants .75

MABEL B. TAFT (Dec) Boston

A wonderful new gold medal dahlia that is winning favor everywhere; large perfect flowers on splendid stems. In color it is mostly yellow but suffused with a pinkish apricot, a strong grower and should be given plenty of room. A great bloomer and excellent as a cut flower.

Plants *only*, \$1.00

MARION McCREEDY (Dec) Jost

Large flowers of perfect form of an intense velvety crimson shading to a carmine red towards the outer petals, exceptionally good grower, and very free flowering.

Tubers \$10.00
Plants 5.00

MARION McQUIGGAN (Dec) Jost

A variety, on account of its brilliant color, fine form, and remarkable tree flowering habit, is bound to become popular, both as a cut flower and for garden decoration, its color is a rich Oriental red with a deep velvety sheen.

Tubers \$2.50
Plants 1.75

MARG. BOUCHON (Cac) Cayeux

Deep brilliant rose pink, with white center. A beauty.

Tubers \$.75
Plants 50

MARGARET BLANCHE (Dec) Jost

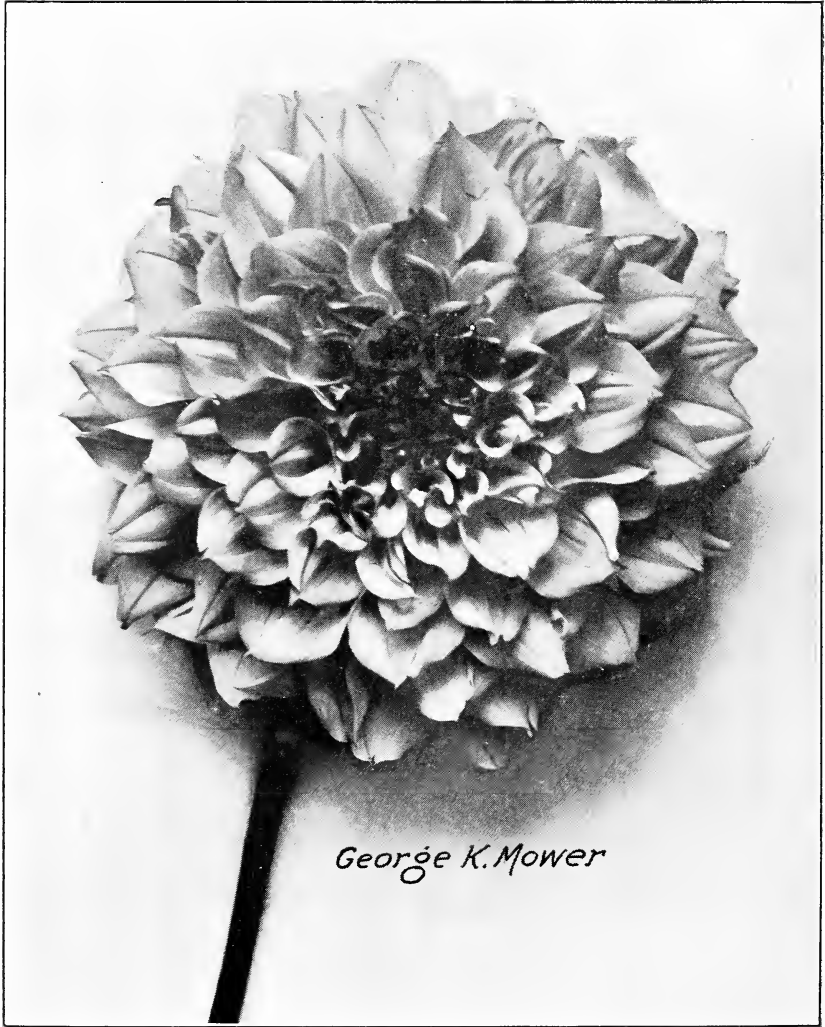
A frosty white, perfect form and medium size, a good cut flower.

Tubers \$2.00
Plants 1.00

MAURICE FULD (Dec) Slocombe

Beautiful pink, wavy and twisting petals. Fine for cutting and exhibition. This dahlia has the finest stems and very free flowering.

Tubers \$2.00
Plants 1.00



George K. Mower

GEORGE K. MOWER (Dec) Jost

An ideal variety either for cut flowers or for garden decoration, in color it is a pleasing shade of bronze overlaid with salmon pink, a most unique color combination, and a variety that will become popular, considered by many to be the best in my collection.

Tubers \$7.50

Plants 3.75

MAUDE ADAMS (S)

The color is a pure, snowy, white, very effectively overlaid clear delicate pink. This wonderful variety is unsurpassed in quality, in every respect, in reality a model of perfection.

Tubers \$75

MRS. E. C. BOSTON (Dec) Bessie Boston

The very best white decorative, for it is good in any climate and does not burn in the sunshine. Large regularly formed flower of great depth which holds its center to the end of the season. Best stem and good for any purpose.

Plants *only*, \$1.00**MRS. JOHN L. EMERSON (Dec) Slocombe**

Flowers of large size, well formed, of a pleasing combination of red and gold, the petals distinctly edged and striped with gold, a most attractive variety and ideal for garden decoration.

Tubers \$1.00

Plants .75

MRS. WM. J. ROWE (Dec) Slocombe

Very large flowers, freely produced, in color a delicate amber shading to clear yellow, a most useful variety for garden or exhibition purposes.

Tubers \$1.00

Plants .75

MRS. DOUGLAS FLEMING (Cac) Stredwick

As fine a white cactus as was ever grown, long stems, very narrow florets of great depth. Exhibitors should not be without this variety.

Tubers \$50

MRS. NIXSON (Cac) Rindfleisch

Fine large flower, deep coral pink shading to a lighter pink toward the center, carried on long wiry stems, an ideal variety.

Tubers \$5.00

MRS. HERMAN METZ (Dec) Rindfleisch

Large well formed flowers carried on long stiff stems of an exquisite shade of coppery bronze suffused with red and bronze, making this an unusually attractive variety, good grower and very free flowering.

Plants *only*, \$5.00

NANCY (Dec) Jost

Large, of perfect form, a pleasing shade of soft pink passing to a deep rose pink, carried on long wiry stems, very free flowering, a most attractive variety.

Tubers \$5.00

NIBELUNGENHORT (H C)

Immense flowers, 7 to 8 inches across. Color rich golden apricot, suffused old rose. Very free.

Tubers \$.75

Plants .50

PEACH BLOW (Dec) Jost

Medium sized flowers carried on stiff erect stems, of a beautiful soft shade of lilac pink, the petals prettily curled and twisted, and ideal variety for cut flowers. This can be grown into a large handsome exhibition flower.

Tubers \$1.50

Plants 1.00

PEARL WHITE (Dec) Jost

An ideal white dahlia for cut flowers, medium size, of perfect form, white with a suffusion of pale flesh pink, very free flowering.

Tubers \$3.00

Plants 1.50

PURITY (Dec) Slocombe

A large white carried on long, stiff stem. Exceptionally free flowering.

Plants \$.75

PEARL DeLYON (H C)

White, with cleft petals.

Tubers \$.75

PIERROTT (Cac) Stredwick

Deep amber, boldly tipped white. An exceptionally large and striking variety.

Tubers \$.75

Plants .50

PRINCESS PAT (Dec)

A magnificent new decorative of a glorious shade of old rose. Flowers are very large and perfectly formed, growing well above the foliage with long stiff erect stems. The best variety of this color in cultivation. One of the most beautiful varieties raised for exhibition purposes; has good keeping qualities and is always in demand as a cut flower.

Plants *only*, \$1.00

PRESIDENT WILSON (Dec)

Large deep velvety red, the points of the petals tipped white making this a most attractive variety, very free flowering and splendid for garden decoration, the best fancy decorative grown.

Plants *only*, \$1.50

PANTHEON (Dec) Jost

An exquisite shade of pink, the same shade as that well known pink show; A. D. Lavoni; a perfect decorative in every way, fine long stiff stems, and one of the best exhibition varieties. Plants *only*, \$5.00

ROSE NELL (Dec) Broomall

One of the most sensational of all dahlias. Clear bright rose — a rare color in dahlias — which attracts immediate attention. An immense bloom of very fine formation, with extra long, stiff stems, held high above a strong plant of fine foliage. Plants *only*, \$2.00

SHUDOWS LAVENDER (Dec) Boston

The very large bloom is a silvery lavender shading to white. The stem is absolutely perfect and holds erect the big blossom. Plants *only*, \$2.50

SUNBEAM (Dec) Slocombe

A flower of very refined form. Bright red, faintly striped with gold, the pointed and twisted tips of the petals touched with gold, make this variety distinct and attractive. A wonderful combination of color.

Tubers \$1.00
Plants .75

SNOWDRIFT (Dec) Broomall

This giant white deserves its name, a very full deep built flower with broad waxy petals. Plants \$1.00

SULPHEREA (Dec)

Large, clear sulphur yellow petals, which are narrow, slightly rolled and reflex, giving the appearance of a large comet aster. Good keeper on strong stems.

Tubers \$1.00
Plants .75

SETTING SUN (Dec)

Red, distinctly tipped yellow, a most effective and rich color combination, useful for garden decoration. Plants *only*, \$1.50

THE SHEIK (Dec) Jost

One of the best for exhibition purposes, flowers very large, of perfect form, of a rich lustrous velvety maroon, shading to a beautiful red towards the center, the twisted and curled petals showing distinct tips of reddish white, making the whole flower unusually attractive. Plants \$3.00



Susan Coe

SUSAN COE (P) Jost

A splendid flower of perfect form and size, carried on long stiff wiry stems, the outer petals a pleasing shade of rose pink passing to a yellow center suffused salmon, as the season advances this variety develops from a perfect decorative into a lovely peony dahlia, a very large flower.

Tubers \$7.50
Plants 3.75

SYLVANIA (Dec) Broomall

White, the outer petals shading to an exquisite lilac pink, exceptionally good for cutting.

Tubers \$7.75
Plants .50

TREASURE (Cac)

The most striking feature of this flower is its color, white at the base quickly changing to a deep rose, the extreme tips being yellow. Growth of plants is strong, sturdy, stiff stemmed and free flowering.

Plants *only*, \$.75

TINTS OF GOLD (Dec) Jost

Deep bronze yellow, reverse petals coppery bronze, so curled and twisted gives the whole flower a most striking combination of color, flowers large carried on long stiff stems, good grower and very free flowering.

Tubers, (limited) \$10.00
Plants 5.00

U. S. A. (P) Stillman

A truly beautiful dahlia of a vivid orange. Good stem and free flowering.

Plants *only*, \$2.50

VIOLA D. BRYANT (H C) Wiegand

A delightful shade of rose pink, very free flowering, medium size and long wiry stems, an ideal cut flower.

Plants *only*, \$1.50

VERA KENNEDY (H C) Jost

Of fine form, medium size flowers of a creamy white ground, the outer petals suffused a delicate flesh pink, very free flowering, ideal for cutting.

Tubers \$2.00

VICAR OF WASPERTON (Cac)

Large well formed flowers, coral pink shading to yellow towards the center, very free.

Tubers, \$.75

VENUS (Dec) Marean

This is a very lovely variety, large flowers being produced freely on strong stiff stems. While it is most attractive in the garden, its special value is for cut flowers. Considered by many exhibitors and dahlia experts as one of the most meritorious varieties. The color is a soft beautiful shade of creamy white with lavender suffusion. Extra fine grower. Average height 4 feet.

Tubers \$5.00

Plants 2.50

WHITE EXCELSIOR (Dec) Slocombe

Large well formed flowers, pure white, one of the finest white decorative dahlias grown for cut flowers.

Tubers \$.50

WILLIAM SLOCOMBE (Dec) Slocombe

A fine large flower carried on stiff stems, well formed, canary yellow shading to a pale lemon towards the centre, fine for cutting.

Tubers \$2.00

Plants 1.50

W. W. RAWSON

Pure white, overlaid amethyst blue. A large beautiful flower.

Plants \$.35

In reference to green plants, as there has been so much objection to green plants, I will say that I guarantee my plants to be strong and healthy and get to the customer in perfect condition, and submit following extracts from letters received, in reference to plants sent out by me.

TESTIMONIALS.

Must say that I never saw plants so carefully packed and in such good condition.

Yours very truly,

G. E. Winters, Westhampton Beach, N. Y.

They certainly are wonderful and am highly pleased with the experiment as other plants I received in former years from other growers were sickly and half dead and I can not express my feeling for the strong and sturdy condition they arrived in. Again thanking you for the fine plants you shipped me, I am

Very truly yours,

F. J. Adler, West New Brighton, Staten I., N. Y.

P. S. I almost forgot to mention about the manner in which you packed them. You certainly are a credit to the dahlia growers, as your methods are wonderful.

F. J. Adler.

Dear Mr. Jost:—The plants of President Wilson were received last Friday in splendid condition. Good plants, fine delivery, always makes for splendid satisfaction. I thank you.

Very truly yours,

J. A. Kemp, Little Silver, N. J.

Dear Mr. Jost:—The plants arrived last night, plants of the best color, and absolutely the best packing that I have ever received. Your boxes are the last word, absolute perfection, and so impressed me that I carried one down the road a furlong to the house of E. Stanley Brown, one of the oldest dahlia growers in the country, and he agrees with my eulogy. It is a pleasure to run into you and your business methods, and I assure you when I need plants of any variety that you list, you will hear from me again.

Very truly yours,

W. W. Darnell, East Moriches, L. I., N. Y.

CULTIVATION OF DAHLIAS.

Dahlias are easily grown, requiring no special soil or treatment to bring them to perfection. They love an open sunny location but succeed in partial shade. Prepare soil thoroughly by digging 12 to 18 inches deep, possibly in the fall and then again in the spring, before planting.

If the soil is poor, work in some well-rotted stable manure, or artificial fertilizer, but don't overdo this.

Dig holes 3 feet apart and about 6 inches deep; drive a stout stake in each hole, and lay the tuber down flat, with the eyes to the stake, and cover with two or three inches of fine soil, leaving the hole to be filled after the plant comes up.

Plant any time between April 1st and June 15th.

When the plants have made their third set of leaves, cut out the top, to make them branch.

The most important thing from now on is hoeing and cultivating the soil, until the buds appear; then give the beds a good mulching of manure, to keep the ground moist; and water the plants thoroughly once or twice a week.

Disbudding side buds leaving only terminal bud to develop will bring larger blossoms.

Tubers should be stored in a dry cellar or basement, cover them with dry sand or soil to keep from shriveling. Divide the tubers in the spring after the eyes show plainly, being careful that each tuber has an eye, cover them again and keep dry until planted.

Join the American Dahlia Society and receive the quarterly "Bulletin" of the Society, giving all the latest information regarding dahlias, and report of the Trial Grounds. Address for sample copy.

Wm. J. Rathgeber, 198 Norton Street, New Haven, Conn.



