

Historic, archived document

Do not assume content reflects current scientific knowledge, policies, or practices.



62.61

1923



Beautify
the
Home Grounds

WILLIAM C. MOORE & COMPANY
NEWARK, NEW YORK STATE

*Some
Suggestions*

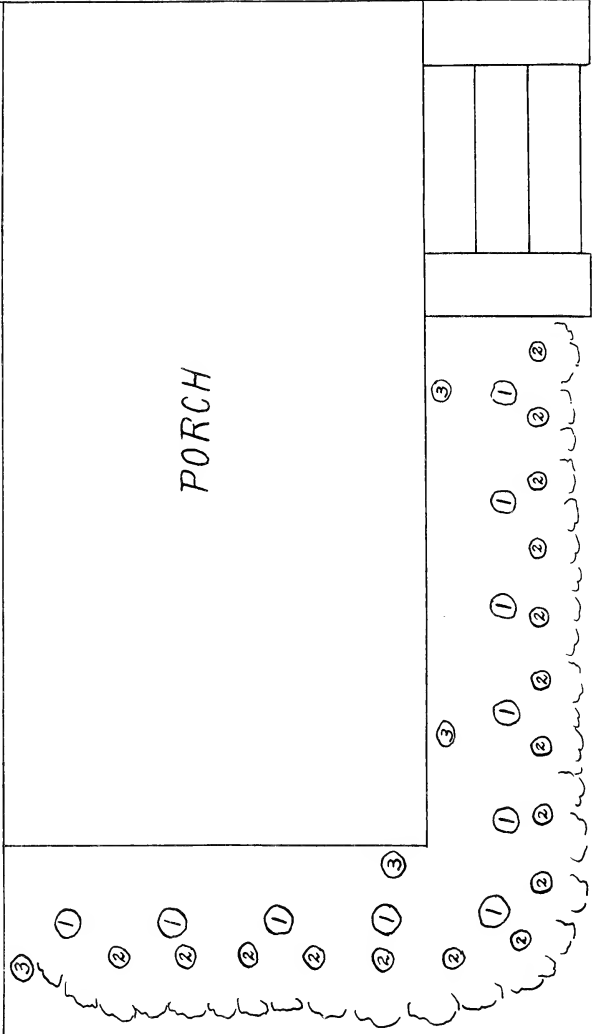
THE planting of shrubs, trees, roses, vines, etc., has a never ending, incalculable influence on those who live within the house, those who pass by and the entire community. Not only does it give keen pleasure to all who appreciate beauty, but it promotes self respect and esteem, sets a good example, adds to property values, in actual dollars and cents, and enhances the civic pride and good name of the entire street and community.

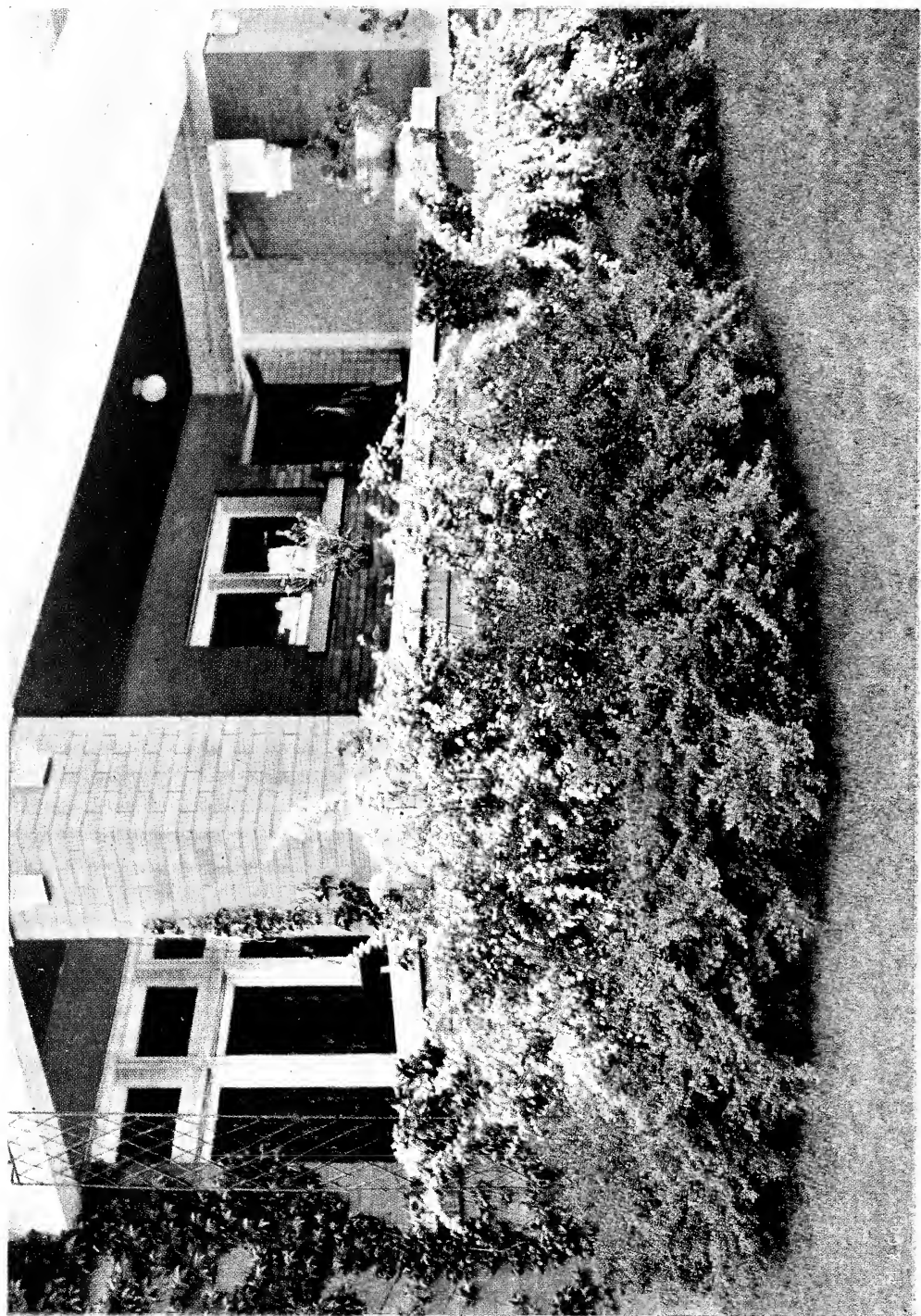
PLAN OF

BARBERRY-SPIREA PLANTING

HOUSE

- 10 SPIREA VAN HOUTTE No. 1
- 16 BARBERRY THUNBERGEI No. 2
- 4 AMPELOPSIS VEITCHII No. 3





BARBERRY-SPIREA PLANTING



PERENNIAL BED AGAINST SHRUB BACKGROUND



BARBERRY HEDGE PLANTING



M. & Co.

A DELIGHTFUL HOME

XXXXXXXXXXXXXXXXXXXXX
 NO. 32

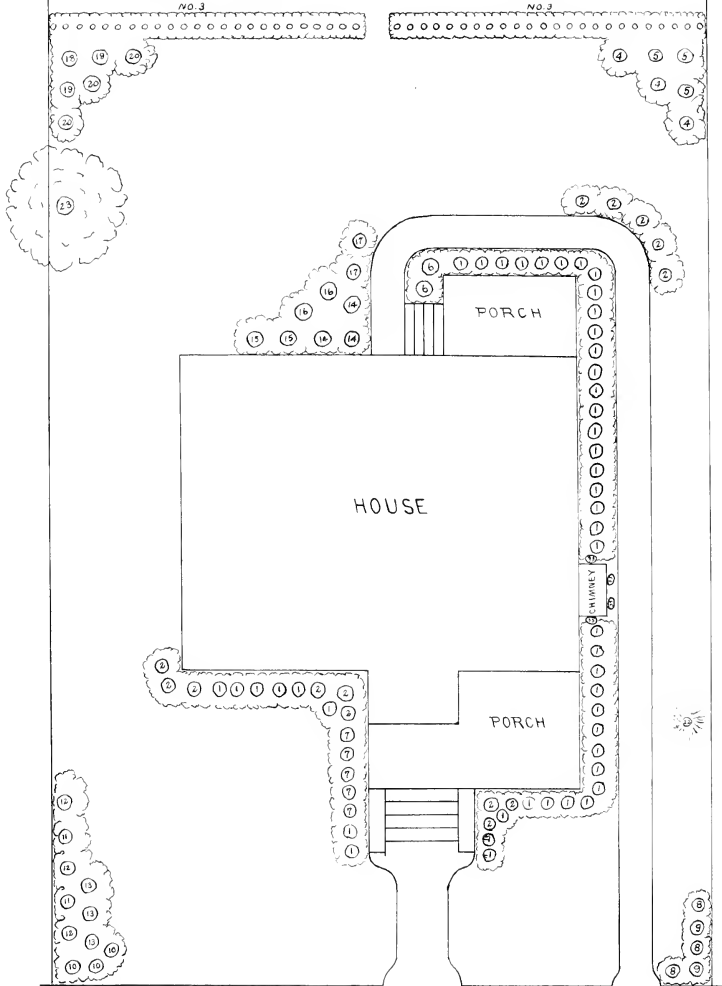
XXXXXXXXXXXXX
 NO. 31

KEY TO PLAN

KEY	COMMON NAME	Botanical Name	NO.
1	SPRAY BARBERRY	Berberis Thunbergii	46
2	BIRDAL WARTHEN	Spiraea-nanata	46
3	LAUREL PRINCE	Ligustrum Lindleyanum	48
4	HYDRANGEA P. G.	Hydrangea P. G.	3
5	HILLS OF SNOW	Yucca Grand	3
6	LARGE FLOWER DEUTZIA	Dutzira P. A. H.	3
7	LOW WHITE SPIREA	Spiraea Canad. Albo	3
8	YELLOW DOGWOOD	Cornus Lutea	3
9	RED DOGWOOD	Cornus Albo	3
10	CRIMSON SPIREA	Spiraea A. W.	3
11	VARIEGATED HIGUELA	Hortia Variegata	3
12	PINK WIGGLIA	W. Rosea	3
13	CRIMSON WIGGLIA	W. Rosea	3
14	JAPAN CROWBELL	Viburnum Plicatum	3
15	CRIMSON SNOWBALL	Malus Floribunda	2
16	GOLDEN STRINGA	Philadelphus Aureo	2
17	JUNEA GRANGE	Comarostaphylis	2

GARDEN

18	PINK HOWE ROSE	Rosa Grand Rosea	1
19	WHITE HOWE ROSE	Rosa Alba	2
20	RED HOWE ROSE	Rosa Rubra	3
21	NOBRYA MARLE	Aster Platanoides	3
22	COLORADO BLUE SPRUCE	Picea Canadensis	1
23	AMERICAN FLM.	Quercus Americana	1
24	CHERRY SOLE	Malus Americana	1
25	CHERRY SHEET	Malus Americana	1
26	PEAR	Pyrus	1
27	PLUM	Prunella	1
28	QUINCE	Cydonia	1
29	CURRANT	Cornus	4
30	RUBARB	Rheum	4
31	DOYBERRY	Opuntia	5
32	ASPARAGUS	Asparagus	15
33	BUSTON 159	Asplenium Platyneuron	4

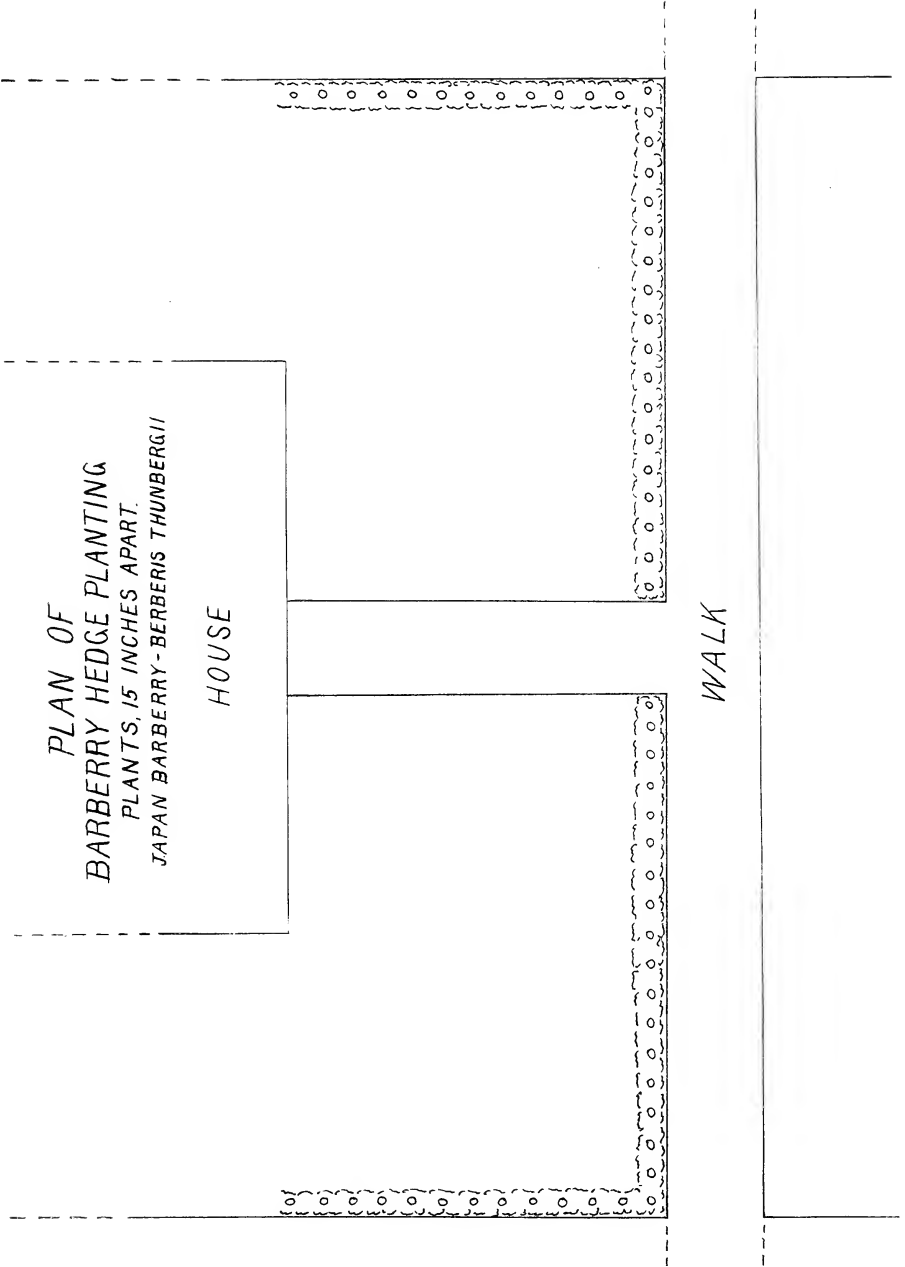


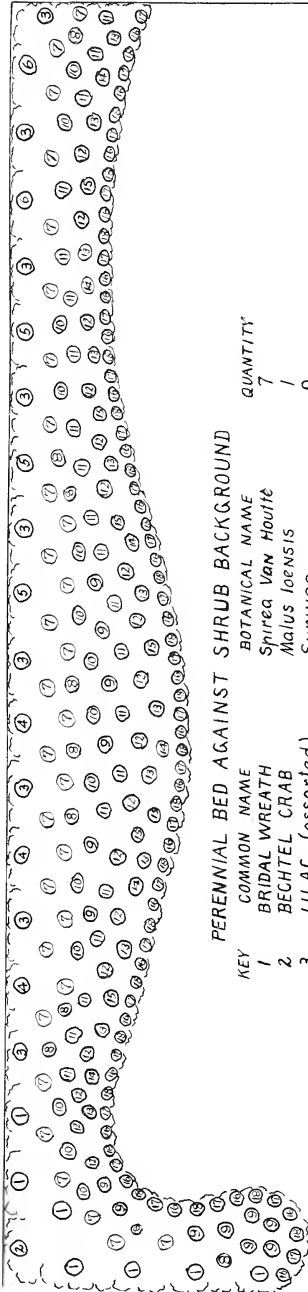
WALK

*PLAN OF
BARBERRY HEDGE PLANTING
PLANTS, 15 INCHES APART
JAPAN BARBERRY - BERBERIS THUNBERGII*

HOUSE

WALK

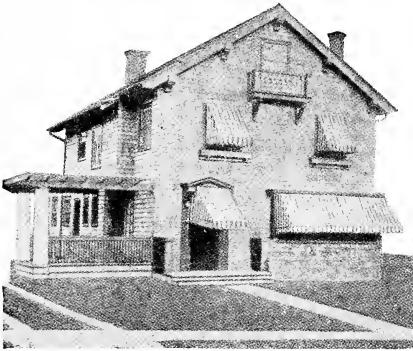




PERENNIAL BED AGAINST SHRUB BACKGROUND

KEY	COMMON NAME	BOTANICAL NAME	QUANTITY
1	BRIDAL WREATH	Spirea Van Houtte	7
2	BECHTEL CRAB	Malus loensis	1
3	LILAC (assorted)	Syringa	9
4	SWEET SYRINGA	Philadelphus Coronarius	3
5	BUSH HONEYSUCKLE	Lonicera Fragrantissima	3
6	TREE HYDRANGEA	Hydrangea P. G.	2
7	HOLLYHOCK	ALTHAEA Rosea	31
8	ADAM'S NEEDLE	Yucca Filamentosa	10
9	PHLOX (assorted)		14
10	RED HOT POKER		14
11	LARKSPUR	TRITOMA Uvaria	21
12	FOXGLOVE	Delphinium	18
13	CANTERBURY BELLS	Digitalis	12
14	GERMAN IRIS	Campanula	6
15	JAPAN IRIS	Iris Germanica	7
16	SWEET WILLIAM	Iris Kaempferi	25
17	PINKS	Dianthus Barbatus	25
18	ICELAND POPPY	Dianthus Plumaris	24
		Popover Nutriculae	24

THE finest architecture will not save a house from bareness if the planting of shrubs, trees, roses, vines, etc. has been neglected. On the other hand, the simplest sort of farm house can be made to look as inviting and cosy as the home of our dreams if the proper setting of trees and shrubs is built up around it.



Look on this picture—



—and then on this!

The above pictures, “before” and “after,” tell the story. One is a *house*, but the other is a **HOME**.

William C. Moore & Co.

Newark, New York State

Nurserymen



