

## **Historic, archived document**

Do not assume content reflects current scientific knowledge, policies, or practices.



# McGregor's Year Book

## 1923

Indexed

62.67

SUNBURST

McGREGOR'S  
GORGEOUS ROSE  
COLLECTION  
The full collection,  
6 var. 1 year plants \$1.00  
The full collection,  
6 var. 2 year plants \$2.25  
The full collection,  
6 var. 3 year plants \$4.50

LIBRARY  
MAR 15 1923

MAIDEN BLUSH

GOLDEN OPHELIA

COLUMBIA

Something  
for Every  
Garden  
Everything  
for some  
Gardens

The  
**McGREGOR**  
BROS. CO.  
SPRINGFIELD, OHIO, U.S.A.

THE GREATEST ROSE  
PRODUCING CENTER  
IN THE WORLD

DOUBLE WHITE KILLARNEY

RED LETTER DAY

DRAWN FROM  
NATURE FOR THE  
McGREGOR BROS. CO.  
SPRINGFIELD, OHIO, U.S.A.

COPYRIGHT 1923 BY  
THE McGREGOR BROS. CO. SPRINGFIELD, OHIO, U.S.A.



**EXHIBITION  
COLLECTION**  
 FANCY JAPANESE CHRYSANTHEMUMS.  
 ALL VIGOROUS GROWERS, LARGEST  
 FLOWERING KINDS WITH RICHEST COLORINGS.  
 KARA DOW . . . . . 28c  
 RAMPO . . . . . 24c  
 KOREA . . . . . 24c  
 OCONTO . . . . . 22c  
 MERRY JANE . . . . . 26c  
 KING OF PLUME . . . . . 30c  
**82c**

WONDERFUL  
 JAPANESE  
 CHRYSANTHEMUMS

KARA DOW  
 28¢

RAMPO  
 24¢

KOREA  
 24¢

OCONTO  
 22¢

MERRY JANE  
 26¢

KING OF PLUME  
 30¢

DRAWN FROM NATURE FOR  
 THE MCGREGOR BRUS. CO.  
 SPRINGFIELD, OHIO, U.S.A.

© 1927  
 MCGREGOR BRUS. CO.  
 SPRINGFIELD, OHIO, U.S.A.

# BARGAINS From the Bargain Counter

Something for Every  
Garden  
Every-  
thing  
for  
Some  
Gardens

OUR POPULAR

**49c, 89c and \$1.69**

## Bargain Collections

Plants Offered are of First Grade Only, Such as Will Give Satisfaction and Merit Further Orders

The choice of varieties in these sets must be left entirely to us, as we cannot afford, at the collection price, to permit customers to select the varieties of plants that make up the different collections. Collections cannot be broken, divided, or changed in any way. When ordering simply give the number of the collection and give price also.

### 49c---Any One of the Following Plant Collections---49c

- |  |   |
|--|---|
| B 1. 6 Charming Ever-blooming Roses; all different..... 49c                          | B 9. 1 Double Geranium, 1 Single Geranium, 1 Fragrant Geranium, 1 Ivy Geranium and 1 Silver-leaved..... 49c |
| B 2. 2 Tea Roses, 2 Hardy Roses, 2 Climbing Roses..... 49c                           | B10. 5 Fragrant Geraniums, all different..... 49c   |
| B 3. 2 Tea Roses, 2 Hardy Roses and 1 fine Moss Rose..... 49c                        | B11. 6 Splendid Carnations, beautiful colors and all fragrant..... 49c                                      |
| B 4. 2 Ever-blooming Roses, 2 Polyantha or Fairy Roses and 2 Climbing Roses..... 49c | B12. 5 Fine Hibiscus, the very best kinds..... 49c  |
| B 5. 6 Prize-winning Chrysanthemums—all different..... 49c                           | B13. 3 Fine Flowering Begonias. For the window..... 49c   |
| B 6. 5 Beautiful Double Geraniums. Choice colors..... 49c                            | B14. 6 Vines and Plants for a window basket..... 49c  |
| B 7. 6 Splendid Single Geraniums. Fine varieties..... 49c                            | B15. 5 Flag Iris, all different colors..... 49c   |
| B57. 4 Hardy Vines—for porch or trellis..... 49c                                     | B56. 6 Giant Petunias—never out of flower..... 49c  |
| B 8. 2 Double Geraniums, 2 Single, 1 Fragrant Geranium..... 49c                      |   |

### 89c---Special 89-Cent Bargains in Plants---89c

**Only 89 Cents** will buy any of the Collections named below. The Collections are all fine, strong plants of the best varieties, and are marvels of cheapness. Only by growing in immense numbers the plants that make up these Collections are we enabled to offer them at the Bargain Prices given.

- |  |   |
|--|---|
| B16. 12 Beautiful Ever-blooming Roses, splendid varieties..... 89c   | B26. 5 Splendid varieties of Carnations and 5 nice Sweet May or Scotch Pinks..... 89c   |
| B17. 4 Charming Tea Roses, 4 Hardy Roses and 2 Climbing Roses. This makes an elegant collection for..... 89c | B27. 13 Coleus—the best and most distinct varieties..... 89c  |
| B18. 5 Superb Hardy Roses and 5 Fine Hardy Climbing Roses. This will make a fine outdoor garden..... 89c     | B28. 10 Fuchsias—double and single—for window decoration..... 89c   |
| B19. 10 Lovely Pure White Roses. Fine cemetery plants; Tea and Ever-blooming varieties..... 89c              | B29. 10 Foliage Plants, viz.: 4 Coleus, 3 Achyranthus, and 3 Acalypha..... 89c  |
| B20. 12 Choice Double and Single Geraniums. Will make a very nice bed..... 89c                               | B30. 3 Heliotrope, 3 Feverfew, 3 Hibiscus and 1 Asparagus Plumosus..... 89c   |
| B21. 4 Double Geraniums, 4 Single and 2 Sweet-scented Geraniums and 1 Ivy Geranium..... 89c                  | B31. 2 Hibiscus, 2 Moon Vines, 2 Violets, 2 Heliotropes and 2 Coleus..... 89c   |
| B22. 3 Double Geraniums, 3 Single Geraniums, 3 Fragrant Geraniums and 1 Ivy Geranium..... 89c                | B32. 1 Hardy Rose, 1 Tea Rose, 1 Double Geranium, 1 Single Geranium, 1 Sweet-scented Geranium, 1 Hibiscus, 1 Heliotrope, 1 Feverfew, 1 Begonia and 1 Carnation..... 89c |
| B23. 2 Silver-leaved Geraniums, 2 Double and 2 Single Geraniums, 2 Fragrant and 2 Ivy Geraniums..... 89c     | B33. 2 Tea Roses, 2 Heliotropes, 2 Sweet-scented Geraniums, 2 Violets, 2 Carnations—sweet-scented collection..... 89c   |
| B24. 12 Chrysanthemums of the new large-flowering kinds, all different and labeled correctly..... 89c        | B34. 7 Beautiful large flowering Iris, all different..... 89c   |
| B25. 10 Choice Carnations—large, double and sweet-scented..... 89c   | B58. 8 Hardy Perennial plants—a fine planting for along the walk or foundation..... 89c   |

### \$1.69---Special \$1.69 Bargain Collection---\$1.69

The following collections are very desirable to those who want a nice flower bed and care nothing about having the names put on each plant, which, during the busy season, consumes valuable time. The plants in these collections are just as good in every way as the individual selected plants, at more than double the price. Give this mode of purchasing plants a trial. It will please you.

- |   |  |
|---|--|
| B35. 20 Tea and Ever-blooming Roses..... \$1.69             | B47. 20 Chrysanthemum—Japanese, Chinese, Pompon..... \$1.69                    |
| B36. 20 Geraniums, double and single, all kinds..... 1.69   | B48. 20 Roses, Geraniums, Coleus and Achyranthus..... 1.69                     |
| B37. 20 Verbenas, all sorts; will make a fine bed..... 1.69 | B49. 20 Geraniums, Verbenas, Coleus and Heliotropes..... 1.69                  |
| B38. 20 Petunias, double; a fine collection..... 1.69       | B50. 20 Coleus, Heliotropes, Verbenas, Lantanas and Feverfew..... 1.69         |
| B39. 20 Heliotropes, different shades..... 1.69             | B51. 20 Carnations, Geraniums, Fuchsias, Coleus & Begonias..... 1.69           |
| B40. 20 Coleus; will make a beautiful bed..... 1.69         | B52. 20 Petunias, Verbenas, Heliotropes, Lantanas and Feverfew..... 1.69       |
| B41. 20 Lantanas, in good variety..... 1.69                 | B53. 20 Roses, Geraniums, Verbenas..... 1.69                                   |
| B42. 20 Salvias, Splendens (scarlet)..... 1.69              | B54. 20 Carnations, Chrysanthemums, Achyranthus, Fuchsias and Coleus..... 1.69 |
| B43. 20 Carnations, splendid kinds..... 1.69                | B55. 20 Miscellaneous plants, all kinds..... 1.69                              |
| B44. 20 Hibiscus; a superb bed of plants..... 1.69          |  |
| B45. 20 Basket and Vase Plants, in variety..... 1.69        |  |
| B46. 20 Fuchsias, double and single..... 1.69               |  |

**SURPRISE OFFER After Season Sales** As a result of our propagations that must tax the capacity of our plant, made far in advance of our selling season, we generally have surplus of all kinds of plants, and rather than carry this stock over, we hold a clearance sale beginning June 15, and make up surplus collections of miscellaneous plants at 98c per collection; six collections for \$4.88. In these 98c collections, we give several dollars' worth of plants. All must be strictly our selection. Orders accepted any time during the spring for delivery beginning June 1.

# Add Postage, Boxing and Packing Charges for All Mail and Parcel Post Shipments. See Table Below.

**Notice** If goods are ordered by mail or parcel post, postage and packing charges must be added for every dollar or fraction of a dollar's worth of goods ordered—per table below, to cover boxing, packing and postage. This applies to all orders including seeds in pints and quarts. Seed in packets posted free. This enables us to give our customers the lowest possible selling prices with delivery charges fair to all. Simply add postage and packing charges for every dollar or fraction of a dollar's worth of goods ordered according to the state in which you live. If you live in Alabama, add 6 cents for every dollar; if in Kentucky, add 4 cents; if in Nebraska, add 7 cents for every dollar's worth ordered. Purchaser pays charges on all express shipments.

## Postage Table RATE PER DOLLAR

Remember that our premium offer more than offsets postage and packing charges, and that you may select 20 cents' worth of goods extra for every dollar's worth purchased, excepting on special offers and collections.

Alabama .....	Fifth Zone	6c	Maine .....	Fifth Zone	6c	Ohio .....	First Zone	3c
Arizona .....	Seventh Zone	9c	Maryland .....	Fourth Zone	5c	Oklahoma .....	Fifth Zone	6c
Arkansas .....	Fifth Zone	6c	Massachusetts .....	Fifth Zone	6c	Oregon .....	Eighth Zone	10c
California .....	Eighth Zone	10c	Michigan .....	Fourth Zone	5c	Pennsylvania .....	Fourth Zone	5c
Colorado .....	Sixth Zone	7c	Minnesota .....	Fifth Zone	6c	Rhode Island .....	Fifth Zone	6c
Connecticut .....	Fifth Zone	6c	Mississippi .....	Fifth Zone	6c	South Carolina .....	Fourth Zone	5c
Delaware .....	Fourth Zone	5c	Missouri .....	Fourth Zone	5c	South Dakota .....	Sixth Zone	7c
Dist. of Columbia .....	Fourth Zone	5c	Montana .....	Seventh Zone	9c	Tennessee .....	Fourth Zone	5c
Florida .....	Fifth Zone	6c	Nebraska .....	Sixth Zone	7c	Texas .....	Sixth Zone	7c
Georgia .....	Fourth Zone	5c	Nevada .....	Eighth Zone	10c	Utah .....	Seventh Zone	9c
Idaho .....	Seventh Zone	9c	New Hamp'tre .....	Fifth Zone	6c	Vermont .....	Fifth Zone	6c
Illinois .....	Fourth Zone	5c	New Jersey .....	Fourth Zone	5c	Virginia .....	Fourth Zone	5c
Indiana .....	Third Zone	4c	New Mexico .....	Seventh Zone	9c	Washington .....	Eighth Zone	10c
Iowa .....	Fifth Zone	6c	New York .....	Fourth Zone	5c	West Virginia .....	Third Zone	4c
Kansas .....	Fifth Zone	6c	North Carolina .....	Fourth Zone	5c	Wisconsin .....	Sixth Zone	7c
Kentucky .....	Third Zone	4c	North Dakota .....	Sixth Zone	7c	Wyoming .....	Seventh Zone	9c
Louisiana .....	Fifth Zone	6c						

### McGregor's Gorgeous Rose Collection

Hardy Everblooming Roses shown in colors on front of cover.

- SUNBURST** — Orange copper, golden orange and golden yellow shadings. Beautiful flowers, strongly fragrant. Ea. 1-yr., 28c; 2-yr., 70c; 3-yr., \$1.25.
- MAIDEN BLUSH** — Soft rose shading yellow. A grand garden rose. Ea., 1-yr., 27c; 2-yr., 65c; 3-yr., \$1.25.
- COLUMBIA** — Finest of pink roses. Strong growing; free flowering. Deep glowing pink, shading to lighter pink. Ea., 1-yr., 26c; 2-yr., 65c; 3-yr., \$1.25.
- GOLDEN OPHELIA** — Golden yellow, paling slightly as it opens. Flowers of large proportions. Fragrant. Ea., 1-yr., 29c; 2-yr., 75c; 3-yr., \$1.25.
- RED LETTER DAY** — Darkest crimson in color. Attractive in form. A striking rose in any garden collection. Ea. 1-yr., 28c; 2-yr., 70c; 3-yr., \$1.25.
- DOUBLE WHITE KILLARNEY** — Free flowering, producing large buds which open into immense double flowers of purest white. Strongly fragrant. Ea., 1-yr., 24c; 2-yr., 60c; 3-yr., \$1.25.
- Special Offer** The full set of McGregor's "Gorgeous Rose Collection" — 6 one-year plants for \$1.00; three collections for \$2.50; five collections for \$3.80. Full set in two-year plants, \$2.25; three collections \$6.50; five collections, \$10.00. The full set, in extra large three-year plants, \$4.50; three collections for \$12.50.

### World's Famous Double Flowering Geraniums

- See illustration in colors on back of cover. They represent the highest standard of development in this popular flower.
- AMERICAN BEAUTY** — Rich, velvety violet purple, gigantic size. 28c.
- MME. LANDRY** — Brilliant shade of apricot shading to copper. 22c.
- HELEN MICHELL** — Clearest shade of scarlet; early in bloom. 22c.
- REGALIA** — Striking shade of deep cerise-tinted violet. 24c.
- AROSA** — Soft salmon-rose; immense size; free blooming. 22c.
- KING EDWARD** — Darkest of red Geraniums. Bright dark crimson. 26c.
- MME. CHARLOTTE** — Distinct salmon; shading lighter toward edge. 24c.
- MME. RECAMIER** — Flowers purest white; enormous size; free flowering. 20c.
- MARQUIS DE CASTELLAIN** — Deep rosy-scarlet shaded pure scarlet. 24c.
- BERTHA DE PRESSILY** — Exclusive shade of silver-rose pink. Blooms double. 20c.
- MME. JAULIN** — Beautiful shade of delicate pink; bordered white. 22c.
- JEAN OBERLE** — Attractive shade of hydrangea or peach-pink. 22c.

**Special Offer** The 12 World's Finest Geraniums described above, \$2.42 Clubbing Rates—Three collections World's Finest Geraniums, \$7.00; six collections, \$13.50.

We guarantee the safe delivery of all Plants.

### McGregor's Fancy Japanese Chrysanthemums

- Illustrated on inside of cover.
- KARA DOW** — Color a rich bronze-yellow, with drooping, slightly recurved petals. Gigantic in size. 28c.
- KOREA** — Lavender-pink with light silvery tints of pink on the edges of petals. Ostrich Plume variety. 24c.
- MERRY JANE** — Coppery yellow of perfect form. Splendid stem and foliage. An exhibition variety. 26c.
- OCONTO** — A grand white. Extra large in size with broad, incurved petals of snow-ball type; growth robust, smooth heavy foliage. 22c.
- RAMPO** — Bright, rich yellow-gold always a favorite and perfect in form. Large. 24c.
- KING OF PLUMES (M. Fromont)** — Red Ostrich Plume Chrysanthemum. Strikingly beautiful in color and character of flower. 30c.

**Special Offer** The full set of McGregor's Fancy Japanese Chrysanthemums for 82c; three sets for \$2.40; five sets for \$3.68.

### McGregor's Richly Colored Lantanas

- Illustrated in colors inside of cover.
- VERSICOLOR** — Flowers are cream yellow with red center, but cream gradually changes to pink. 22c.
- PERFECTION** — Florets are pink with rose center; inside florets light sulphur yellow; orange center. 24c.
- AURORA** — One of the most beautiful Lantanas. Enchantress pink color. 22c.
- TETHYS** — Pretty lemon yellow flowers, golden yellow center. Plant is covered with blooms at all times. 26c.
- SNOWWREATH** — The best, largest and freest blooming white variety. 20c.
- RADIATION** — Brilliant scarlet with orange, yellow center. 24c.

**Special Offer** The full set of McGregor's Wonderful New Richly Colored Lantanas for 84c; three sets for \$2.27; five sets for \$3.78; ten sets for \$7.56. These popular Lantanas give us colors not found in other things. Always in bloom; literally covered with flowers at all times.

### McGregor's Giant Flowering Orchid

## Cannas

- Illustrated in colors on inside cover.
- SOUV. D'ANTOINE CROZY** — Very dark foliage, topped with a magnificent display of brilliant red flowers. 22c.
- MARTHA WASHINGTON** — Gigantic flowers of a delightful flesh pink, in immense clusters. Foliage green. 28c.
- BLACK WARRIOR** — Large flowers of a vivid crimson; compact, bushy growth; bronze foliage; exceptionally fine. 25c.
- FLAG OF TRUCE** — The finest White Canna. Masses of snowy-white. 26c.
- GLADIATOR** — Color, yellow spotted with red; green foliage. 24c.
- YELLOW KING HUMBERT** — Produces masses of golden yellow flowers, dotted red; green foliage. 26c.

**Special Offer** The full set of McGregor's Giant Flowering Orchid Cannas for 86c; 3 sets for \$2.33; five sets for \$3.88; ten sets for \$7.76.

# Three Wonderful Roses The National Trio

**A trio that earned its title. In size, color, form and fragrance, they are unexcelled. All hardy, vigorous growers. A wonderful combination.**

The National Trio offered here constitutes a very imposing and important Trio of Roses. In shapeliness and color, fragrance and form the three varieties offered here have no rivals among Roses. They are varieties for the amateur and professional. They thrive anywhere and bloom under more varying conditions than many other varieties. There are other Roses that are a real delight, and others that one should grow, but there are none that excel in all points the National Trio.

## The National Rose of America, The American Beauty

**The Prize Red Rose. Greatest of Them All**

**GARMINE RED** (Hardy June blooming, should be protected.) **32c**

Rose of the largest size, having the everblooming qualities of the Tea Rose with the delicious odor of the Damask or Moss Rose, and equally valuable for winter or summer flowering. The flowers are so eagerly sought that they sell in the larger cities during the holiday season at the extravagant price of from \$1.50 to \$2.00 for a single bud or flower. In color it is a deep, brilliant rosy-carmine, shaded toward the center with rich carmine-crimson. It makes the heaviest stems and the largest bush, it no being unusual to see a rampant bush with a dozen canes as thick as one's finger and several feet in height. The American Beauty is unquestionably the most popular Rose now before the public. It should be protected out doors in the winter. Sold under positive guarantee as to being true to name. Very nice one-year plants, 32c each; 3 for 90c; 12 for \$3.07. Two-year plants, 65c each; 3 for \$1.85; 12 for \$6.24. Three-year plants, \$1.00 each; 3 for \$2.85; 12 for \$9.60.

## White American Beauty Frau Karl Druschki

**SNOW WHITE** (Hardy June blooming.) This magnificent variety has taken **35c**

first prize at all the great flower shows of Europe. Makes splendid buds and immense flowers four to five inches across; perfectly double and delightfully fragrant. Bright, shining green leaves, elegantly veined; a healthy vigorous grower, entirely hardy and a constant and abundant bloomer. The most beautiful snow-white hardy Rose. Nice one-year plants, 35c each; 3 for \$1.00; 12 for \$3.36. Two-year plants, 65c each; 3 for \$1.85; 12 for \$6.24. Three-year plants, \$1.00 each; 3 for \$2.85; 12 for \$9.60.

## Pink American Beauty Radiance

**ROSE PINK** (Summer blooming, hardy with protection.) This grand, giant-flowering **24c**

Rose stand head and shoulders above all other Roses of its class. Flowers large and full, somewhat of the June Rose type. A lovely rose-pink color. A fine variety, especially on account of its value as a summer cut-flower variety. Very free in growth and production of bloom. Nice one-year plants, 24c each; 3 for 68c; 12 for \$2.30. Two-year plants, 65c each; 3 for \$1.85; 12 for \$6.24. Three-year plants, \$1.00 each; 3 for \$2.85; 12 for \$9.60.

## The NATIONAL TRIO Special Offer

Red, White and Pink American Beauty. A trio that has earned its title. In size, color, form and fragrance unexcelled. Special offer, 1 each, one-year size, for 82c; 3 collections for \$2.25. 1 each, two-year size, fine strong plants, \$1.55. Three-year size, 1 each, \$2.50.

The American Beauty Trio, the Unsurpassed Cut Flower and Garden Roses. Giant Flowers, Long Stemmed, Rosy-carmine in color.

THE MCGREGOR BROS. CO., Seed, Bulb, Plant Growers, Importers, Merchants, Springfield, Ohio, U.S.A.

A Collection of  
Wonderfully  
Beautiful  
Roses

3 for  
75c

All  
Prolific  
Bloomers

Will Grow  
Anywhere

A Grand  
Combina-  
tion

All  
Different  
Colors

A Beautiful  
Porch or  
Pillar Rose  
Soft,  
Glowing Red;  
Immense  
Size

Wonderful  
Climbing  
Rose



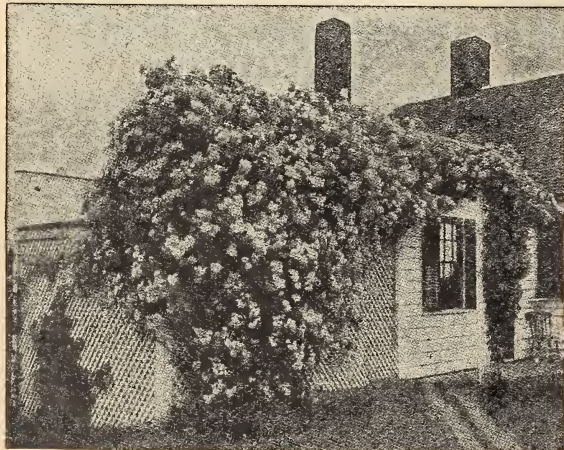
## Climbing American Beauty

"A hardy Climbing Rose which in size of flower, color, form and fragrance is equal to its parent, the grand cut-flower Rose, American Beauty."

### SOFT GLOWING RED

(Hardy June blooming.) Climbing American Beauty, the new porch Rose, gives us a new Rose of wonderful beauty and merit. It is a cross between the world famous cut-flower Rose, American Beauty, and an unnamed seedling. It is an American production, the product of American Rose growers. It is perfectly hardy, strong growing, making canes from ten to fifteen feet in a season; a perfect mass of bloom in June and produces flowers occasionally all through the growing season. The foliage is large, bright, glossy green, and never shows signs of any of the diseases that affect Roses. The color is a soft, glowing red; identical with the American Beauty, and with the same exquisite fragrance. The flowers are of a size three to four inches in diameter, finely formed on long stems, and are produced in great profusion. This new Rose will bloom in almost any situation where a climbing or pillar or porch Rose is desired. Success beyond expectations has been found in producing a climbing Rose of the same color, size of flower and fragrance of its pollen parent, the American Beauty, with the addition of better foliage and times as many flowers in June as the American Beauty bush

32c



Rose, Marechal Niel. "Its fame is world wide."

### Yellow Marechal Niel - 25c

"Its fame is world wide"  
(Summer blooming, hardy with protection.) The fame of this superb yellow Rose, with its large, deep, golden-yellow, fragrant flowers, is world wide. Almost universally held to be the finest Rose for indoors or outdoors, where the climate admits of its cultivation. In the North, should have careful protection in open ground during winter. Southern California growers tell of single plants showing one to two thousand blooms at a time. Strong one-year plants, own roots, 25c; 3 for 72c; 12 for \$2.70. Two-year, 50c; 3 for \$1.43; 6 for \$2.85. Extra large, 75c and \$1.00 each.

#### HARDY CLIMBING ROSE

"Flowers over four inches across."

### Dr. W. Van Fleet 24c

**FLESH PINK** (Hardy June blooming.) Its parents are the lovely sea-shell pink Rose Pres. Carnot and the fast growing Wichuriana. Open flowers are over four inches in diameter. The color is a delicate shade of flesh pink on the outer surface, deepening to rosy flesh in the center. Flowers are delicately perfumed; stems 12 to 18 inches long. Nice plants, 24c each; 3 for 68c; \$2.30 per dozen. Strong two-year plants, 50c each; 3 for \$1.43; \$4.80 per dozen. Heavy three-year plants, 75c and \$1.25 each.

**COMBINATION OFFER** 1 each of the three Roses on this page, 1-year size for 75c; 2-year size \$1.75; 3-year size, \$2.50. The 3-year plants should be sent by express.



# FIVE GRAND COCHET ROSES

## Here Are 5 of the Best

Hardy Everblooming Garden Roses in our catalogue for the amateur. All sizes will flower the first season.

### White Maman Cochet

"Has the vigor of an oak, being hardy everywhere."

Summer blooming, hardy with protection. Snow-white in color, sometimes faintly tinged pale blush. The best white Rose for open ground culture. Nice 1-year plants, 22c each; 3 for 63c; 12 for \$2.10. Strong 2-year plants, 50c each; 3 for \$1.43; \$4.80 per dozen. 3-year plants, \$1.00 each.

**22c**

### Yellow Maman Cochet

(Md. Matrat)

"Best Hardy Everblooming Yellow Rose." Summer blooming, hardy with protection. The best hardy ever-blooming yellow Rose. Its magnificent open flowers and blooming capacity make it the best of its class. Nice 1-year plants, 24c each; 3 for 68c; 12 for \$2.30. Large 2-year plants, 65c each; 3 for \$1.85; \$6.24 per dozen. 3-year plants, \$1.00 each.

**24c**

### Crimson Maman Cochet

(Etoile de France)

"As free-flowering as any Tea or Polyantha Rose."

It bears massive, large full cup-formed flowers singly on long, stiff stems; the color is new, clear red-crimson velvet, brightening in the center; exquisitely fragrant. Nice young plants, 24c each; 3 for 68c; 12 for \$2.30. Large 2-year plants, 55c each; 3 for \$1.57; \$5.28 per dozen. 3-year plants, \$1.00 each.

**24c**

### Special Offer

## 5 Cochet Roses

1 Year	one each of the 5 Cochet Roses	88c
2 Year	one each of the 5 Cochet Roses	\$1.84
3 Year	one each of the 5 Cochet Roses	\$4.00

### Pink Maman Cochet

"Buds beautiful; flowers superb; perfectly hardy."

Summer blooming, hardy with protection. The buds are beautiful. Flowers superb when open, extra large, perfectly double. The color is clear, rich pink, changing to silvery-rose. 26c each; 3 for 74c; \$2.80 per dozen; 2-year-old plants, 58c each; 3 for \$1.65; 12 for \$5.25. 3-year plants, \$1.00 each.

**26c**

### Red Maman Cochet

(Mrs. B. R. Cant)

"Better than American Beauty and without a Peer."

Summer blooming, hardy with protection. Grows in almost any soil. Flowers long and pointed. Color, warm rose-crimson. Strong. 1-year-old plants, 25c each; 3 for 72c; \$2.70 per dozen; 2-year-old plants, 55c each; 3 for \$1.57; 12 for \$5.94. 3-year plants, \$1.00 each.

**25c**

# Sweet Scented Carnations

## The Popular National Flower

When the people throughout the country were vainly seeking for an appropriate flower acceptable to all, as our National Emblem, nature opportunely came to their assistance by presenting the improved Carnation — the product of American soil.

### Nebraska--22c

**Scarlet** Tall, brilliant flaming scarlet flowers of large size, well rounded form. Strong growing, free flowering blooms being produced on long strong upright stems. Clove-scented; ideal for cut flowers. 22c; 3 for 63c; 6 for \$1.19; dozen for \$2.10.

### C. W. Ward--22c

**Cerise** Beautiful salmon-rose coloring, several shades lighter than the world famous Lawson Carnation produced a few years ago. It is constantly growing in popularity. 22c; 3 for 63c; 6 for \$1.19; dozen for \$2.10.

### Beacon--26c

**Crimson** "The Lighthouse Carnation" — A rich crimson Carnation, blooms average 3½ inches in diameter; of strong growth and unusually free blooming. 26c; 3 for 74c; 6 for \$1.40; dozen for \$2.50.

### White Wonder--20c

**Snow White** Flowers pure white, fragrant, large—three inches and over; center well filled, rounding the flower to a most pleasing form; the color is very pure. Price, 20c each; 3 for 57c; \$1.92 per dozen.

### The Herald--24c

**Vermilion Red** A Carnation of deepest crimson coloring. The color makes it a valuable sort. The flowers are of large size, ideal for cut flowers. Growth of the plant is strong and erect and the flower stems straight. 24c each; 3 for 68c; 6 for \$1.30; \$2.30 per dozen.

### Gaiety--24c

**Variegated** A grand variegated Carnation. The flowers of this kind of variety will always be popular because they give a life in the flower that is not to be had in some of the solid colors. 24c each; 3 for 68c; 6 for \$1.30; \$2.30 per dozen.

### Matchless--22c

**White** Regarded by many as the best white. At certain seasons the variety is known to carry a tinge of color, which, however, seems to enhance rather than detract from its beauty. Unusually fragrant. 22c each; 3 for 63c; 6 for \$1.19; \$2.10 per dozen.

### Enchantress Supreme--20c

**Salmon Pink** A light salmon-pink Carnation, having the characteristics of the popular and valuable Enchantress family of Carnations, which has proven so profitable to the commercial grower. Very highly recommended. Price, 20c each; 3 for 50c; \$1.90 per dozen.

**Special Offer** Any 5 Carnations on this page, \$1.15. Any 12 Carnations on this page, \$2.16.



### Three Grand Carnations

Enchantress Supreme (No. 1),  
Beacon (No. 2),  
Gaiety (No. 3).

### Aviator--26c

**Scarlet** One of the finest and brightest scarlets. Every flower perfect, a most satisfactory sort to grow. Color, form and habit perfect. 26c; 3 for 74c; per dozen, \$2.50.

### Laddie--24c

**Rose-Salmon** New awarded medals and prizes. Rose-salmon pink; splendid grower, blooms of wonderful size, very prolific. 24c; 3 for 68c; per dozen, \$2.30.

### Golden Sunshine--28c

**Yellow** (Maine Sunshine.) Rich yellow without any other color marking. Splendid, vigorous habit. Very popular. Fine growing qualities. 28c; 3 for 80c; per dozen, \$2.69.

### Betty Jane--24c

**Dark Pink** Deep rich pink. Splendid variety, strongly recommended. Large flowers, popular color. 24c each; 3 for 68c; per dozen, \$2.30.

## Hardy Garden Carnation 20c

Grows fifteen to twenty inches in sunny location, flowering in June and July.

**Her Majesty** New double white. 22c; 3 for 63c; dozen, \$2.10.

**Abbotsford** Rose-red, dark center. 24c; 3 for 68c; doz. \$2.30.

**Gertrude** White, with rich maroon and carmine markings. 22c; 3 for 63c; per dozen, \$2.10.

**Juliette** White, laced crimson. 20c; 3 for 57c; per dozen, \$1.92.

**Earl of Carlisle** White, blotched maroon. Vigorous. 20c; 3 for 57c; per dozen, \$1.92.

**Essex Witch** Dark maroon, blotched pink and white. 20c; 3 for 57c; per dozen, \$1.92.

**SPECIAL OFFER** One each of the six hardy Carnations (which includes the grand variety Abbotsford illustrated on right hand side of page) for.....\$1.12



Rich Rosy-Red Hardy Carnation Abbotsford, 24c.

GLADIOLUS

1 Pink Perfection and  
1 Mary Fennell, 32c

3 Pink Perfection  
and 3 Mary Fen-  
nell, 81c.

# NEW-FANCY AND RUFFLED GLADIOLUS

**War-Blood Red-12c** Crimson Blood-red with deeper shad-  
ings; very tall. Grand. 12c each;  
3 for 34c; per dozen, \$1.15.

**Peace--White--10c** White, center striped purplish car-  
mine. Nothing better. 10c each; 3  
for 28c; per dozen, 96c.

**Blue Jay-Bright Blue-18c** Bright light blue with white  
markings. Large flowers. 18c  
each; 3 for 52c; per dozen, \$1.73.

**Schwaben-Yellow 12c** Delicate yellow, dark blotch in  
center. The best yellow. 12c  
each; 3 for 52c; per dozen, \$1.73.

**White Glory--White 75c** White, Iris-blue throat. Un-  
usual variety. 75c each; 3 for  
\$2.14; dozen, \$7.20.

**Mrs. Dr. Norton--Soft White--\$1.00** Soft white,  
tips of petal  
suffused pink. Grand. \$1.00; 3 for \$2.85; dozen, \$9.60.

**Europa-Snow-White 22c** Very finest of whites; tall.  
22c; 3 for 63c; dozen, \$2.10.

**Crimson Glow-Scarlet 40c** Perfect scarlet of a deep  
tone. Best of the newer  
sorts. Elegant. 40c each; 3 for \$1.14; per dozen, \$3.84.

**Rouge Torch-White 19c** Giant white flower with rouge  
torch-like tongue. 19c each;  
3 for 54c; per dozen, \$1.82.

**Willy Wigman-White 12c** White with carmine blotch.  
12c; 3 for 34c; dozen, \$1.15.

**Mary Fennell-Deep Lilac 18c** Deep lilac shading  
paler to soft primrose.  
Very refined. 18c each; 3 for 52c; dozen, \$1.73.

**Mrs. W. E. Fryer-Orange Scarlet 30c** Very  
orange scarlet. Distinct and attractive. 30c each; 3 for 85c;  
per dozen, \$2.88.

**Pink Perfection, 16c** Giant in size. Large flowers  
of La France pink. Beautiful. 16c;  
3 for 46c; dozen, \$1.54.

**Lilywhite, 14c** Fine new pure snow-white, first-class.  
Good height, nice size blossoms, six to  
seven open at a time. Very prolific. 14c each; 3 for 40c; per  
dozen, \$1.34.

**Marshall Foch 60c** One of the sensations at the shows  
and big exhibitions. Many giant  
flowers open at a time. Color of finest salmon pink. Almost  
self color. 60c each; 3 for \$1.70; per dozen, \$5.66.

**Alice Tiplady, 32c** Primulinus species X yellow Kun-  
derdi. A grand, large Primulinus of  
most beautiful orange saffron color. Very choice. 32c each;  
3 for 90c; per dozen, \$3.07.

**Anna Eberius, Velvety Purple-50c** Velvet purple;  
throat deeper  
shade. 50c each; 3 for \$1.43.

**Baron Hulot, Violet Purple-11c** Dark violet, bor-  
dering on violet pur-  
ple. 11c; 3 for 31c; per dozen, \$1.06.

**Butterfly, Salmon Yellow-30c** Pale salmon-yellow.  
30c; 3 for 85c; per  
dozen, \$2.88.

**Evelyn Kirtland, Rose Pink-20c** Charming rose-  
pink. 20c; 3 for  
57c; per dozen, \$1.92.

**Prince of Wales--Apricot Pink-20c** Apricot-pink  
suffused - sal-  
mon. 20c; 3 for 57c; per dozen, \$1.92.

**Herada-20c** Clear mauve, deeper markings in throat. 20c;  
3 for 57c; per doz., \$1.92.

**Halley-8c** Salmon-pink rosette tinge. Choice cut flower.  
8c; 3 for 23c; per doz., 77c.

**Myrtle, Rose Pink-18c** Throat tinted primrose and  
white. 18c; 3 for 52c; doz.,  
\$1.73.

**Mrs. Frances King, Scarlet-7c** Giant flowers of  
scarlet. 7c; 3 for 19c;  
per dozen, 68c.

**Loveliness, Sulfrano Pink-17c** Cream tinted sulf-  
rano pink--very deli-  
cate. 17c; 3 for 48c; per dozen, \$1.63.

**Goliath, Blackish Crimson-12c** Blackish crimson.  
Darkest of all. 12c;  
3 for 34c; per dozen, \$1.15.

**Purple Glory, Purple Red-\$1.50** Deepest vel-  
vety purple-  
red. \$1.50 each; 3 for \$4.28; per dozen, \$14.40.

**Mrs. Watts, Wine Red-16c** Glowing wine-red. 16c;  
3 for 46c; doz., \$1.54.

**Yellow Hammer-22c** Pure yellow. Price, 22c each;  
3 for 69c; per dozen, \$2.10.



Two wonderful Gladiolus, Pink Perfection, soft rose Pink, 16c each and Mary Fennell, deep lilac, 18c each.

McGREGOR'S GIANT FANCY FLOWERING  
**Mixed Orchid Gladiolus**  
45c per doz. The new and fancy orchid flowering Glad-  
diolus in this mixture comprise numerous ruf-  
led varieties and some of the choicest named sorts, ranging in  
color from the delicate pinks through to deep crimson and won-  
derful yellow, tan, mauve, lavender and purple shades.  
The grower will obtain great pleasure in watching the flowers  
develop with their gay colors and odd markings. Bulbs should be  
planted in the open after severe frosts are past. Price, 5c each;  
3 for 14c; 6 for 27c; 12 for 45c; 25 for 88c; 100 for \$3.50;  
**Mammoth Bulbs** These are large, selected bulbs, the  
best to be had, extra large size, well  
worth their extra cost. Price, 7c each; 3 for 19c; 6 for 39c;  
12 for 80c; 25 for \$1.55; 100 for \$6.00.

McGREGOR'S SUPERB GLADIOLUS  
**All Type Mixture - 40c Doz.**  
McGregor's Hybrid Gladiolus have constantly improved year  
after year, give greatest variety of colors, making up first-class  
mixture of "Childsli," "Lemolne's," "Groff's Hybrids," "Ruffled,"  
"Primulinus," "Kunderds," etc. Choice selected bulbs, mixed  
colors. 4c each; 3 for 11c; 6 for 20c; 12 for 40c; 25 for 78c;  
100 for \$3.00.  
**Mammoth Bulbs-All-Type Gladiolus** Extra  
for 40c; per dozen, 75c; \$5.75 per 100. large, 6

McGREGOR'S HIGHLY COLORED LARGE FLOWERING  
**Butterfly Mixed Gladiolus**  
50c Per Doz. Obtained by crossing species Primulinus with  
larger varieties. Have retained graceful  
form of their Primulinus parent and have added beauty of ex-  
quisite coloring, from softest primrose to beautiful rose. 6 for 70c;  
50c per dozen; 100 for \$4.00.  
**Mammoth Bulbs--Butterfly Gladiolus** These  
are the  
largest bulbs to be had in the Butterfly strain. You will be well  
repaired in both quantity and quality of blooms for the slight ad-  
ditional first cost of these mammoth bulbs. 6 for 40c; per dozen,  
78c; 25 for \$1.45; \$5.75 per 100.

# THE WORLD'S FINEST DAHLIAS



Show Dahlia, Maud Adams. Large well-formed flowers, beautiful light pink in color. A very reliable variety, 50c.

## The Show Dahlias

are the Globular Dahlias of regular form; large in size and of brilliant colorings. Decorative Dahlias are very similar.

## Peony-Flowered Dahlias

Petals are often pointed, and twisted, and in some varieties the inner row of petals twists and curls over the center, giving the appearance of a Japanese Peony. The Dahlia of the day.

## Cactus Dahlias

The flowers of which are loosely arranged, with petals irregular in outline and long and twisted. They are strong growers and profuse bloomers.

## Maude Adams-White Overlaid Pink

(Show.) It is a distinct variety, in a class by itself. Blooms, sensational in size, borne in remarkable profusion from early summer until frost. Color, a beautiful combination of silvery white, effectively overlaid and predominated with clear pink. Each, 50c; 3 for \$1.43; doz., \$4.80.

## Geisha \$1.00

(Peony.) A remarkable combination of orange with yellow center paling toward the tips. Petals twisted and curled. Free bloomer of the highest type. Each, \$1.00; 3 for \$2.85; per dozen, \$9.60.

## Patrick O'Mara Orange Buff \$1.75

(Decorative.) Color an unusual soft pleasing shade of orange-buff, tinged with Rose. Very large. Vigorous grower and free bloomer. Each, \$1.75; 3 for \$5.00.

## Glory of Argonne

### Rose White (Show.) \$2.00

most beautiful rose, shading to white at center. Perfect, even form on erect stem. One of the very best. Ea., \$2.00; 3 for \$5.70.

## Mrs. J. Dick \$2.00

(Decorative.) Color citron yellow at center, outer petals overlaid salmon pink. Lovely and very effective. Strong grower and free bloomer. Each, \$2.00; 3 for \$5.70.

## Futurity (Decorative.) \$1.50

Color a beautiful bronze yellow. Flowers very large and freely produced. A splendid garden variety. Each, 50c; 3 for \$1.43; per dozen, \$4.80.

## John Green - 60c

(Peony.) Color a bright yellow, tipped bright scarlet. Petals pointed, giving it a star-like appearance. Very lasting. Each, 60c; 3 for \$1.70; per dozen, \$5.66.

## Break o' Day-\$1.00

(Decorative.) Of immense size, and irregular formation. Color clear sulphur yellow, tinting to white at the tips. Each, \$1.00; 3 for \$2.85; per dozen, \$9.60.

## Canada- \$3.50

(Peony.) Flowers are massive, with heavy petals of purest white. An early free, and continuous bloomer. Each, \$3.50; 3 for \$9.98.

## King Albert - \$1.00

(Decorative.) A magnificent flower. Large finely formed, rich royal purple. A vigorous grower and free bloomer. Each, \$1.00; 3 for \$2.85; per dozen, \$9.60.

## American Beauty- \$1.00

(Show.) Flowers of gigantic size, produced on long, heavy stems. Color a gorgeous wine-crimson. Each, 50c; 3 for \$1.43; per dozen, \$4.80.

## All-Type Collection

These unnamed varieties are for those who want Dahlia blooms in quantity and who care nothing for names. They take in all of the different classes, types and colors. Strong roots that will bloom this summer.

- RED—Shades of scarlet, maroon etc. 20c each.
- YELLOW—Shades of yellow ranging from dark to light. 20c each.
- PINK—Light pink, cerise pink, dark pink, etc. 20c each.
- WHITE—Pure white flowers. 20c each.
- PURPLE—Striking contrasted against red and pink, etc. 20c each.
- VARIEGATED—Fancy varieties from the Cactus, Peony, Show and Decorative types. 20c each.

Special All-type Dahlia Collection—One each of the six unnamed Dahlias above..... **92c**

## Garden Dahlia Collection

- JACK ROSE (Dec.)—Same shade of crimson red as Rose Gen. Jacqueminot. 35c each.
- LIBELLE (Cactus.)—A deep rose-magenta. Graceful in growth. 32c each.
- OBAN (Dec.)—Colossal flowers in a striking shade of mauve-amber. 35c each.
- VIVIAN (Show.)—Paper-white edged with a pleasing shade of violet. Colorings blend perfectly. 35c each.
- WHITE SWAN (Show.)—Full and round with fluted petals. Silver-white. 30c each.
- MRS. SEAGROVE (Peony.)—Enormous flowers of deep purple. An outstanding variety. 35c each.

Special Offer The Garden Dahlia Collection— six Dahlias in all..... **\$1.75**



### None Such Rose Collection

In this Collection are only such kinds as bloom freely. Stand zero weather, protected. **BURBANK**—(Deep pink.) **MARIE VAN HOUTTE**—(Yellow suffused with pink.) **C. SOUPERT**—(Pinkish-white.) **SAFRANO**—(Salmon-yellow.) **GRUSS AN TEPLITZ**—(Red.) **ETOILE DE LYON**—(Yellow.) **MRS. R. B. CANT**—(Rosy-pink.) **WHITE COCHET**—(White.) **HELEN GOULD**—(Crimson.) **MD. F. KRUGER**—(Pink, yellow center.) **RHEA REID**—(Red.) **SOUV. DE MALMAISON**—(Flesh.)

#### Special Offer

The twelve in one-year plants..... **\$1.48**  
The twelve in two-year plants..... **\$3.50**



### Hybrid Perpetual Rose Collection

Varieties suitable for coldest and most exposed location. Bloom freely. Hardy without protection.

**PAUL NEYRON**—(Rose Pink.) **GEN. JACQUEMINOT**—(Crimson.) **CLIQ**—(Shell Pink.) **GLOIRE LYONNAISE**—(Yellow.) **MAD. CHAS. WOOD**—(Crimson.) **MAD. PLANTIER**—(White.) **HIS MAJESTY**—(Velvety-red.) **GLOIRE DE BRUXELLES**—(Deepest red.)

#### Special Offer

The eight in one-year plants..... **\$1.75**  
The eight in two-year plants..... **\$3.75**



### Hardy Ever-Blooming Climbing Tea Roses

The varieties in this collection give you Climbing Roses which are summer-blooming and which flower over a longer season than June Roses. Require winter protection in northern states. **CLIMBING KAISERIN**—(Ivory white.) **CL. METEOR**—(Velvety red.) **CLIMBING TESTOUT**—(Delicate pink.) **CLIMBING MARIE GUILLOT**—(White.) **CLIMBING PILLAR OF GOLD**—(Yellow, flushed carmine.) **CLIMBING PINK COCHET**—(Imperial pink.)

#### Special Offer

The six in one-year plants..... **68c**  
The six in two-year plants..... **\$1.78**



### Ideal Rose Garden Collection

**BURBANK, MARIE VAN HOUTTE, CLOTHILDE SOUPERT, SAFRANO, GRUSS AN TEPLITZ, ETOILE DE LYON, MRS. R. B. CANT, WHITE COCHET, HELEN GOULD, MD. F. KRUGER, RHEA REID, SOUV. DE MALMAISON, PRES. TAFT, ETOILE DE FRANCE, WHITE KILLARNEY, SOUV. DE P. NOTTING, MD. J. GUILLEMONT, RED COCHET, YELLOW COCHET, BESSIE BROWN.**

#### Special Offer

The twenty in one-year plants..... **\$2.15**  
The twenty in two-year plants..... **\$6.25**



### Butterfly Rose Collection

Free flowering summer blooming Roses. Wonderful colorings. **MME. BUTTERFLY**—(Bright pink, apricot and yellow shadings.) **MRS. A. CARNEGIE**—(White.) **MME. C. MARTINETTE**—(Coppery orange.) **MELODY**—(Yellow.) **PREMIER**—(Rosy pink.) **CRUSADER**—(Dark blood red.)

#### Special Offer

The six in one-year plants..... **\$1.00**  
The six in two-year plants..... **\$2.00**  
The six in three-year plants..... **\$4.50**

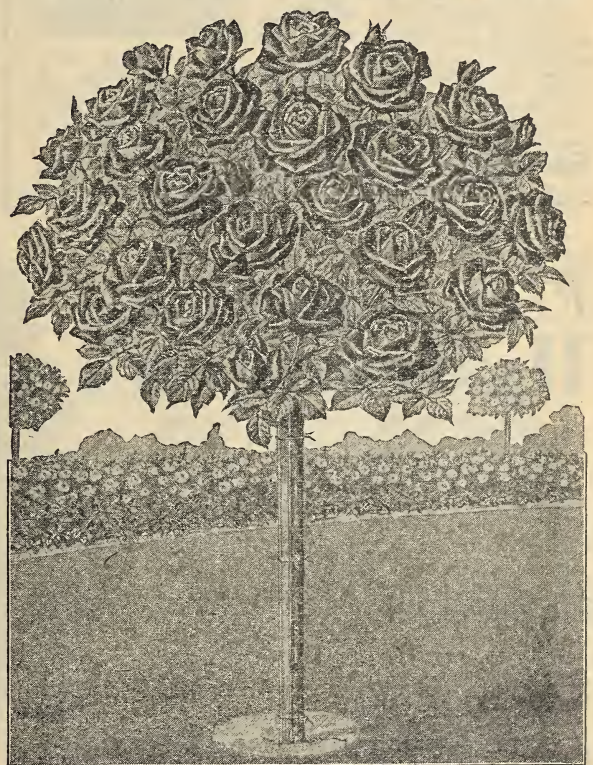


### Cemetery Rose Collection White Roses

The white Roses listed in this collection are hardy with protection, popular free blooming sorts. Very satisfactory for cemetery planting. **BRIDE**—(Large white blooms.) **MADISON**—(Ivory-white, sweet scented.) **WHITE COCHET**—(Snow-white, faintly tinged blush.) **MARIE GUILLOT**—(White.) **KAISERIN AUG. VICTORIA**—(Pure white, rich perfume.) **CLOTHILDE SOUPERT**—(Pinkish-white.)

#### Special Offer

The six in one-year plants..... **75c**  
The six in two-year plants..... **\$1.80**



### Tree Roses--\$3.00

The state-ly Tree Roses with their symmetrical globular heads are of great beauty, making very imposing plants for lawn or plant borders. We offer these in the **HARDY EVERBLOOMING** class in colors like in the Gorgeous Rose Collection on front of this catalog, **ORANGE, LIGHT PINK, DARK PINK, YELLOW, WHITE and CRIMSON.** The **HYBRID ROSES** in colors similar to the color of the roses offered on Page 7. State whether you wish the Everblooming or Hardy Hybrid Perpetual type and give color. Price, by express only, \$3.00 each; 3 for \$7.50; per dozen, \$30.00.

### Hardy Hedge Roses

We especially recommend these varieties for hedge plantings. They are the hardiest and sturdiest growers to be had. **SIR THOMAS LIPTON**—(Snow white Rugosa.) **NEW CENTURY**—(Red Rugosa.) **J. B. CLARKE**—(Rich crimson. Perpetual bloomer.) **CONRAD F. MEYER**—(Best red hedge rose grown.) **CLO. SOUPERT**—(White, pink center. Never out of flower.) **MD. PLANTIER**—(Silver-white. Perpetual bloomer.) Price, any of above hedge Roses, 1-yr. size, 6 for 89c; 12 for \$1.68; 25 for \$3.00; 50 for \$5.75; \$11.50 per 100. 2-yr. plants, 6 for \$2.00; 12 for \$3.85; 25 for \$7.50; per 100 plants, \$27.50.

# New Large Flowering FUCHSIAS



Superb New Double Fuchsia  
**White Giant** 22c

(See illustration above.) Undoubtedly the most perfect and beautiful double white Fuchsia ever raised. The short tube and sepals are a bright, rich, reddish crimson color; corolla extra large, full and double; flower of the largest size; is of robust upright growth, not coarse, but compact and very symmetrical. It has every qualification to recommend it—size, freedom of bloom, and constitution. Price, 22c each; 3 for 63c; \$2.10 per dozen.

**Speciosa** Well known variety, producing large flowers two inches in length, tubes and sepals of which are bluish, the corolla crimson. 22c each; 3 for 63c.

### Special Combination Offer

Any six of the large flowering Fuchsias described on this page for \$1.10. All twelve Fuchsias described on this page for \$2.00.

## French or Porch Hydrangeas

### FOR THE PORCH, LAWN AND GARDEN

These Hydrangeas are especially adapted for pot or tub plants for indoor, porch, lawn or garden decoration. In some soils the flowers turn blue, and this color can be secured artificially with one-half pound of broken alum added to one-half bushel of soil.

**Radiant** Color is a deep rosy-carmine effect with the large leaved showy foliage. Produces a wealth of bloom of a striking color. 24c each; 3 for 68c; 12 for \$2.30.

**Mad. Emile Moulere** One of the finest sorts. Very large flowers, frequently over two inches in diameter, of the purest white, with rose-carmine eye. 24c each, 3 for 68c; 6 for \$1.30.

**Gen. De Vibraye** Large, bright rose flowers. A grand variety, very popular. 24c each; 3 for 68c; 6 for \$1.30.

**Mme. Riverain** Bright rose color; very vigorous; one of the best. Price, 26c each; 3 for 74c; 6 for \$1.40.

**Bouquet Rose** One of the best varieties, popular deep rosy-amber turning to bright red, very attractive. Price, 26c each; 3 for 74c; 6 for \$1.40.

**Blue Bell** (The Famous Blue Hydrangea) — Beautiful Plumbago-blue. Flower heads are large and held erect; a decided acquisition. If you desire a beautiful deep Hydrangea flower get this one. 35c each; 3 for \$1.00; 12 for \$3.36.

**Trailing Queen** This Fuchsia is entirely new, differing with other large flowering varieties in its habit of growth, as it is a trailing vine. Flowers borne in drooping clusters. Price, 22c each; 3 for 63c.

**Purple Prince** Double; sepals scarlet, corolla beautiful distinct blue; very dwarf. Price, 20c each; 3 for 57c; \$1.92 per dozen.

**Phenomenal** Flowers of enormous size, sepals bright scarlet, with rich violet-purple corolla; double. Price, 22c each; 3 for 63c; \$2.10 per dozen.

**Black Prince** It makes a shapely bush, is robust in growth, free from disease and insects, and is probably the freest in blooming. Blossoms of a beautiful waxy-carmine or pink color. Certainly a plant of easy culture. 25c each; 3 for 72c.

Easily grown—sure to bloom.  
**Golden-Leaved Fuchsia**  
**Wave of Life** Golden foliage, dark purple, single flower. A beautiful variety. 18c each; 3 for 46c; \$1.50 per dozen.

**Fuchsia Mons. Thibaut**  
A splendid variety, with large, handsome foliage of a delightful green tint; flowers single, rose-vermilion, tinted violet. 18c each; 3 for 46c; \$1.50 per dozen.

**Gloire Des Marches**  
Brilliant deep scarlet. The corolla is very large and double and pure white. 19c each; 3 for 54c.

**Edmond About** Semi-double, white corolla, deep pink petals and tube. 18c each; 3 for 46c.

**Fuchsia Aurora Borealis**  
GIANT FLOWERING ROSE-PINK FREE BLOOMING  
Flowers are four inches or more in length; tube and sepals bright rose, corolla bright carmine. 19c each; 3 for 54c; \$1.82 per dozen.

**Fuchsia Monstrosa** 20c  
The flowers are extra large, full and double. Pure White. Price, 20c; 3 for 57c.



### LaFrance

Large trusses of well-formed flowers. Color fringed delicate rose. Produces a wealth of bloom. Price, 30c each; 3 for 85c; 6 for \$1.92.

### SPECIAL OFFER

Any four Hydrangeas described above, including the grand tub Hydrangea Bouquet Rose for 92c. The seven Hydrangeas for \$1.52.

Mrs. E. E. Anderson, Kan., writes: "Thank you for the Special Offer sent me. I never received as nice an order. They were in perfect condition and everything has grown."

# The Beautiful Japanese Lace Fern

One of the Most Beautiful and Popular Foliage Plants of the Century

A Decorative Plant of Unusual Value (Asparagus Plumosus) — **24c**

The family of Asparagus plants comprises a number of varieties. Some are climbers, some drooping or trailing, some erect and bushy. Many of them are highly prized for their beautiful and graceful foliage. The variety Plumosus (Asparagus Plumosus Nanus) is a tall climbing decorative plant and one of the rarest and of delicate beauty. Its bright green foliage is extremely fine and plume-like. The fronds grow from six to eight inches in width and when cut retain their color and shape for weeks. The plant may be grown as a pot plant, a bushy form or climbing. As a house plant it will thrive under practically all conditions. The Asparagus likes a good rich soil and fairly warm temperature. Nice plants, 24c each; 3 for 68c; 12 for \$2.30. Stronger plants, 36c each; 3 for \$1.08; 12 for \$3.65. Larger plants, 59c each; 3 for \$1.60; 12 for \$5.66.

## Silver Fern 32c

*Pteris Argyrea*.—A very showy Fern with variegated foliage; fronds large light green, with broad band of silver-white down the center of each. Very distinct. An oddity that should be in every collection of house plants. 32c each; 3 for 90c; 12 for \$3.07.

## Maiden Hair Fern 22c

A very beautiful form of *A. Cuneatum*, having long, graceful fronds, with the ends of the fronds developed into bunching, tasseled heads; a distinct and lovely variety. Price, 22c each; 3 for 63c; 12 for \$2.10.

## Shaking Fern

(*Pteris Tremula*.) The foliage of the *Pteris* varieties is large, very graceful. The slightest movement of the air shakes the leaves. It grows readily. Price, 24c; 3 for 68c; 12 for \$2.30.



Asparagus Plumosus (Lace Fern) richest Green. 24c. 38c. 59c.

## Moss Fern 26c

(*Selaginella Emilliana*.)—A new, upright-growing Moss, with numerous feathery stems branching from the base and forming a dense tuft. Well grown plants attain twelve to eighteen inches in height. We know of no other Fern of this type that can equal this variety, either as a Fern for dishes or as a pot plant. Will keep for long time if proper care is given. Highly recommended. 26c each; 3 for 74c; 12 for \$2.50.

Special Leaflet on culture of Ferns, mailed on request, for 2c (postage stamp).

## Ferns for Fern Dishes 84c

For a Fern Dish five to six inches in diameter we will send six Ferns, all different, our selection of varieties, the kinds most suitable for this purpose, 84c; for a Fern Dish seven to eight inches in diameter we will send eight Ferns for \$1.28; Fern Dish nine in diameter, our selection 10 Ferns, \$1.54.

## NIGHT-BLOOMING JASMINE

(*Cestrum Parqui*.) Highly prized. Foliage of deep green color; produces rich fragrant blooms, very fragrant at night. Popular. 26c each; 3 for 74c.

### FANCY FLOWERED SINGLE NEW

## French Types Geraniums

**Alice Lemon-38c** A new Geranium with grand foliage of good habit, large and beautiful flowers. Blooms continually summer and winter. Of clear rosy-salmon shading to white on edges. 38c each; 3 for \$1.00.

**Jacquirre-24c** Brilliant crimson scarlet. Immense trusses, exceptionally long stems. 24c; 3 for 68c; 12 for \$2.30.

**L'Aube-22c** Enormous Snow-White Flowers. Large, round florets, pure snow-white, retaining its pureness the entire season. 22c each; 3 for 63c; 6 for \$1.19; 12 for \$2.10.

**Granville-22c** Color Deep, Soft Pink — Magnificent bedding plant; trusses are of extraordinary size. 22 cents each; 3 for 63c; 6 for \$1.19.

**Eugene Sue-28c** Brilliant shade of russet orange; immense foliage of fine texture; semi-dwarf; robust and branching habit. 28c each; 3 for 80c; 12 for \$2.69.

**Mrs. Roosevelt-27c** Strong, compact grower; splendid bedding variety, enormous trusses of pure white flowers. 27c each; 3 for 77c; 12 for \$2.59.

**Mrs. E. G. Hill-22c** Beautiful Salmon Color. Has No Equal—Distinct and pleasing shade of salmon with light shading. 22c each; 3 for 63c; 12 for \$2.10.

**Alice of Vincennes-26c** This unusual Geranium is white in color with gradual gradation of violet crimson; magnificent flower heads. 26c each; 3 for 74c; 6 for \$1.40; 12 for \$2.50.

**Jean Padon-26c** Robust and free flowering; enormous trusses; held well above foliage; blood-red color, small white eye. 26c each; 3 for 74c; 12 for \$2.50.

**Telegraph-30c** One of the finest of the new single Geraniums. Flowers very latest size, stiff stems; color intense scarlet-crimson, exceedingly bright and striking; a great bloomer. 30c each; 3 for 85c; 6 for \$1.62; 12 for \$3.88.



**ALICE LEMON**  
Clear rosy salmon shading to white on edges. **38c**  
Price.....

One each of above French Type Geraniums, 10 in all, including the new variety, Alice Lemon for \$2.00,



Flowering Begonia Pres. Carnot.

**Pres. Carnot**

A remarkably strong growing variety, of stiff, upright habit; foliage large and somewhat in style of Begonia Rubra, but more than twice as large; upper side deep green, under side purplish-red, flowers beautiful coral-red, in large pendent panicles. 28c each; 3 for 80c; 12 for \$2.69.

**28c**



**Coralline Lucerne**

**30c**

Blooms last from a month to six weeks, borne in immense clusters, almost hiding the plant. Color bright coral-red, changing to delicate pink. 30c each; 3 for 85c; 6 for \$1.62; 12 for \$2.88. Larger plants, 50c each; 3 for \$1.43; 6 for \$2.70; 12 for \$4.80.



Mammoth Leaved King of Rex Begonias.

**Mammoth Leaved Rex Begonias**

The most wonderful Begonia in the world. Mammoth leaves of rich metallic lustre, and colors blending from brightest green, glistening silver and orange to beautiful plum hues. Flowers bluish-pink. Strong plants, 35c each; 3 for \$1.00; per dozen, \$3.36.

**35c**



**The Beefsteak Begonia (Feastii)**

Spreading habit, circular leaves of heavy texture, red beneath, above a glossy olive-green, oil-like cast. Dainty coral-red flowers. Grown as large plants, 40c; 3 for \$1.10. Extra large plants, 65c each. easily as a Geranium. 25c each; 3 for 72c; 12 for \$2.40.

**25c**



Begonia Pink Rubra,

**PINK**

**Rubra 24c**

One of the finest Begonias in cultivation. Its dark, glossy green leaves combined with its free-flowering habit, makes it one of the very best plants for house or conservatory decoration. The flowers are scarlet-rose color. 24c each; 3 for 68c; \$2.30 per dozen.



**Thurstonii 26c**

Has bright red foliage and veining underneath leaves, and bright metallic green, shading to red in the younger growth on top. Flowers beautiful deep pink in bud, when expanded, shell-pink. 26c each; 3 for 74c; \$2.50 per dozen.



Flowering Beg. Gracilis Luminosa—22c each.

**Gracilis Luminosa**

Foliage rich, glossy green, shaded deep bronze; flowers bright cherry, changing to coral-red. 22c each; 3 for 63c; 6 for \$1.19; 12 for \$2.10.

**22c**



Double Frilled Tuberous Begonia

**Tuberous-Rooted Begonia**

(Double Frilled.) The size and richness of the waxy double frilled flowers is almost marvelous. Very prolific. Price, 34c each; 3 for 97c; 6 for \$1.84; per dozen, \$3.26.

**34c**



Flowering Begonia Argentea Guttata

**Argentea Guttata**

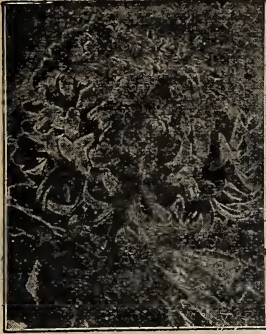
Purple-bronze leaves, oblong in shape with silver markings; white flowers. 22c each; 3 for 63c; 6 for \$1.19. SPECIAL OFFER—Any 5 Begonias offered on this page for \$1.24.

**22c**

Special Offer--All 9 Begonias offered on page, including Mammoth Rex; and Beefsteak Begonias for \$2.24



# Exhibition Cut Flower Chrysanthemums



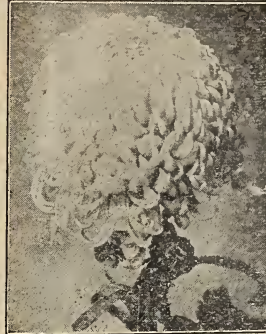
**Edward Seidwitz, 18c**

(Early.) Beautiful rich pink; largest of its color. Price, 18 cents each; three for 46 cents; twelve for \$1.50.



**Col. D. Appleton, 18c**

(Midseason.) Flowers Japanese incurved, lower petals reflexed. Clear yellow, immense size. 18c each; 3 for 46c; 12 for \$1.50.



**White Bonaffon, 19c**

Flowers large incurved petals. Grand white with splendid stem and foliage. 19c each; 3 for 48c; \$1.50 per dozen.



**Red Seidwitz, 20c**

A late variety of marvelous red coloring. Beautiful foliage; huge flowers. 20c each; 3 for 57c; 12 for \$1.60.

This page offers such sorts as are generally grown for exhibition purposes. The list embraces nearly every shade of color and variety of form. Our printed leaflet on culture of Chrysanthemums furnished on request at two cents each.



**Black Hawk, 20c**

Flowers of massive size. Deep velvety crimson with shade of brown or chestnut. 20c each; 3 for 50c; 12 for \$1.60.

**HARVARD** — Red crimson sometimes 7 inches across, petals reflexed. Large blooms, very showy. 24c each; 3 for 68c; 12 for \$2.30.

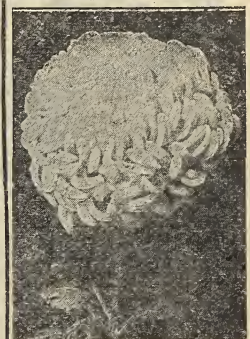
**TIMOTHY EATON (Late)** — Enormous, globular, Japanese incurved. Color, pure white. 20c each; 3 for 50c.

**WELLS' LATE PINK** — Produces an enormous bush; color is bright pink. 24c each; 3 for 60c; 12 for \$1.90.



**Man-O'-War** Color deep blood-red. (Latest Introduction.) **30c**

Height, four feet. Grows with a good stiff stem. The foliage is well up to the flower and it is one of the finest sorts for pot growing or for any collection, indoors or out. Richly colored and free blooming. 30c each; 3 for 85c; \$2.88 per dozen



**Major Bonaffon, 22c**

(Late.) Soft, clear yellow, 8 inches in diameter; perfect form and finish; dwarf. 22c each; 3 for 55c; 6 for 98c; \$1.75 dozen.

**YELLOW EATON (Midseason)** — Soft chrome-yellow. 18c each; 3 for 46c; 12 for \$1.50.

**ROMAN GOLD (Late)** — Intense yellow. 18c each; 3 for 46c; 12 for \$1.50.

**OCTOBER FROST** — (Early.) Pure white, first-class in every way. 18c each; 3 for 46c; \$1.50 per dozen.



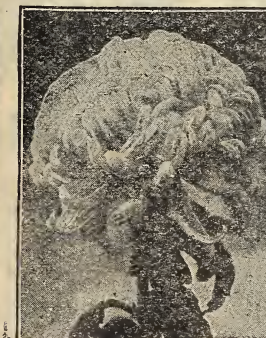
**Chieftain, 24c**

(Midseason.) Best pink of all; globular, incurved, rose-pink. Wonderful flower. 24c each; 3 for 68c; 12 for \$2.30.



**Early Frost 25c**

(Early.) Large size; broad petals of gray substance; smooth heavy foliage. A grand white. 25c; 3 for 62c; 12 for \$2.00.



**Dolly Dimple, 22c**

A clear yellow that pleases everybody. Flowers are always large. 22c each; 3 for 55c; 12 for \$1.75.



**Clementine Touse, 18c**

(Midseason.) Finest of early whites. Large and full. Flowers sometimes tinted pearl. 18c each; 3 for 46c; 12 for \$1.50.

**Special Offer** Any 5 Chrysanthemums on this page, including Man-O'-War, 85c; any 9 on this page, including Man-O'-War, \$1.60; and 12 for \$2.00.

# Giant Flowering Hibiscus

**AURANTIACA**—Beautiful double orange colored flowers.  
**COLLERII**—Flowers buff-yellow, with crimson-scarlet base.  
**GRANDIFLORA**—Rich scarlet-crimson; wonderful in size.  
**MINIATUS SEMI-PLENA**—Bright vermilion-scarlet flowers.  
**PEACHBLOW**—See illustration and description below.  
**SUB VIOLACEOUS**—Flowers enormous size, tinted violet.  
 Price, 22c each; 3 for 63c; \$2.10 per dozen. Large plants, 60c each; 3 for \$1.80; \$5.66 per dozen.

22c



Giant Hibiscus Peachblow.



Giant Double Fringed and Frilled Petunias. Flowers are extra large, 20c \$1.92 doz.

## Giant Double Flowered PETUNIAS

20c ea.; 3 for 57c; dozen, \$1.92; 100, \$12.50  
**Majestic** Deep purple; large flowers; first class. 20c each.  
**Snowball** Pure white; double, extra fringed. 20c each.  
**Vesuvius** Very dark magenta; richly colored; beautiful. 20c each.  
**Storm King** Flowers dark streaked with white. 20c each.  
**Striking** Deep purple streaked and mottled with white. 20c; 3 for 57c.

## HIBISCUS "PEACHBLOW"

One of the finest plant novelties offered in recent years; flowers are double; of charming rich clear pink color; an entirely new and most beautiful shade. 26c each; 3 for 74c; \$2.50 per dozen. Large plants, 60c each; 3 for \$1.70; \$5.66 per dozen.

26c

## Impatiens Sultan's Balsam

Impatiens Sultani — One of the most beautiful and free blooming bedding or house plants in cultivation. Each, 22c; 3 for 55c; 12 for \$1.75.

22c



Angel's Trumpet.

## Brugmansia or Angel's Trumpet

Here is a plant for the masses. It grows easily, blooms freely, and the flower is something to be proud of. The Brugmansia blooms indoors in winter and in the garden in summer. Large, tropical leaves, blooms eight inches long by six inches wide at the mouth. Pure white in color, and as fragrant as a jasmine. Price, 42c each; 3 for \$1.20.

42c

## Sweet-Scented Heliotrope

**Midnight** New Giant Flowered. Wonderful Heliotrope. Size of foliage and flowers are doubled and the plant is compact and husky, flowering heads sometimes measures 16 inches across. Price, 24c each; 3 for 68c; \$2.30 per doz.



Giant Flowered Heliotrope Midnight, 24c.



House Plant Impatiens Sultani, pink flowers.

# Brazilian Plume Plant

(*Justicia Sanguinea*)—This plant is a native of Brazil and of the easiest possible culture, and seems to do equally well in all kinds of soil, and in any situation, requiring but little attention—it is, in fact, one of the few plants that everyone can grow successfully. It is a strong, rapid grower, and throws long shoots, each of which is tipped with the beautiful pink, plume-like flowers, the ends of every petal drooping in a most charming manner. 24c each; 3 for 68c; 6 for \$1.30; 12 for \$2.30.

**24c**



Brazilian Plume Plant *Justicia*. A handsome foliage plant with beautiful pink flowers. 24c each.

# Giant Flowering Cineraria

An excellent pot plant. Flowers are in large clusters, and of the richest shades of blue, purple, white, pink and crimson. Price, 30c each; 3 for 85c; 6 for \$1.62; 12 for \$2.88.

**30c**



Giant Flowering Cineraria. One of the brightest colored flowering plants that grows. 30c each.

# Watermelon Begonia

*Peperomia Variegata* — Excellent for house, window or table. The leaves are distinctly variegated white and green, thick and waxy-like and have the appearance of being powdered with frosted silver. The leaves withstand the dry air of rooms better than the majority of plants. 30c each.

**30c**



Chinese Velvet Plant, 40c.

# Velvet Plant

(*Gynura Aurantiaca*) — The leaves are always taken as artificial. They and the stems are entirely covered with purple hairs. Shining, glistening, reflecting many new colors. Any change of position appears to change the color of the foliage. Price, 40c each.

**40c**



Giant Coleus, Christmas Gem.

# New Fancy Coleus CHRISTMAS GEM

(*Brilliance* or *Doctor Ross*)— Leaves immense, eight to twelve inches long. This beautiful and striking variety belongs to the giant leaved section. Leaves are of bright carmine shading off to a deep maroon, the margin being yellow and green, the whole leaf having a rich velvety luster. Exceptionally striking as a decorative pot plant. Price, 24c each; 3 for 68c; 12 for \$2.30.

**24c**

# Wandering Jew

(*Tradescantia Multicolor*). — Foliage most beautiful, variegated purple, scarlet, yellow and white, and producing small white flowers. Plants should have plenty water. The plant is usually used in connection with hanging baskets, porch boxes, etc. Price, 16c each; 3 for 46c; 12 for \$1.54.

**16c**

# Royal Purple Plant

*Strobilanthes Dyeranus* — Universally popular on account of its brilliant and exquisite coloring. Surpasses the finest Coleus, Begonia or Bertolonias in the exquisite color of the leaves. Price, 19c each; 3 for 54c; 12 for \$1.82.

**19c**



Wandering Jew, showy and effective, grows easily, 16c.



Watermelon Begonia or Peperomia, a most striking foliage plant, 30c each.



Royal Purple Plant, 19c.

Do not overlook Page 37 for "Something For Every Garden; Everything for some Gardens."

The World Famous  
**Boston Fern**

"No Single Decorative Plant Has Ever  
Proven More Popular"

This Fern is one of the best known varieties grown, and in the long years of its cultivation has proven worthy of a place in every home. Considered the most valuable house plant to be had. **19c**

It is easy culture and a very rapid grower, producing fronds of unusual length, frequently measuring six to eight feet in length. Its unusual freedom of growth without special care has made it popular with all admirers of house plants. Price, nice young plants, 19c; 3 for 54c; stronger plants, 35c; larger plants, 65c. Larger plants, \$1.00 each.

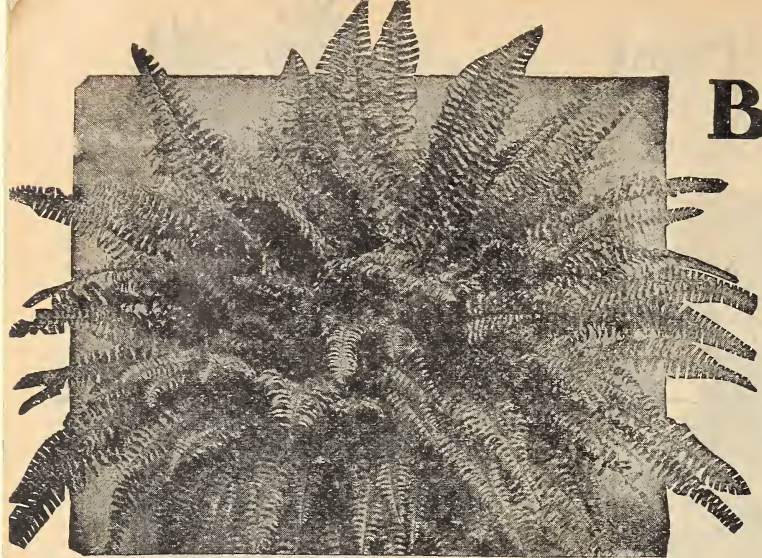
**HINTSON GROWING FERNS:** A special circular covering care of Ferns, given free on request with an order.



"Fluffy Ruffles Fern." *Nephrolepis Superbissima*. 50c, 85c, \$1.25.

**Fluffy Ruffles Fern**

*Nephrolepis Superbissima*. This new Fern is quite different from all Ferns. Its distinguishing characteristics are its dark green foliage, darker than any other Fern, its dense growth, much more compact, and its irregular shaped fronds, which gives it the name of "Fluffy Ruffles Fern." So formed as to resemble miniature Ferns, giving it the appearance of a Fern within a Fern. Price, nice plants, 50c each; 3 for \$1.43; 12 for \$4.80. Larger plants, 85c each; 3 for \$2.42; 12 for \$8.16. Extra large plants, \$1.25 each; 3 for \$3.56; 12 for \$12.00.



The Original Boston Fern, *Nephrolepis Bostoniensis*. Its freedom of growth without essential care has made it popular with admirers of beautiful house plants. 19c, 35c, 65c, \$1.00.

The Grand New "Teddy Jr." **23c**  
Dwarf Fern

Fronds are broad and beautifully tapered from base to tip; they droop just enough to make a shapely, graceful plant, permitting it to finish with fine center and perfect symmetrical spread. The pinnae are distinctly undulated, giving the fronds an attractive wavy appearance. It is such a compact, vigorous grower that it will thrive under most adverse conditions. Price, nice young plants, 23c; 3 for 65c; larger plants, 50c; 3 for \$1.40. Heavier plants, \$1.00.

The Ideal Plumed Fern

**Scholzeli**  
**28c**

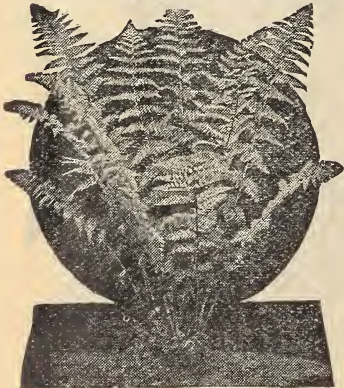
With the recent introductions of Ferns which have come from the original Boston type, there is no variety with heavier and more plummy fronds than Scholzeli. Its foliage is quite different from all other varieties of the family, and stands, in a class by itself. The plant makes a comparatively dwarf compact growth, the fronds, while dense, firm and rigid, are still graceful as the illustration shows. The foliage is also of a darker green than the original Boston Fern. All in all, it forms an ideal plumed Fern, possessing all the merits of former introductions while having a distinctive character that makes it of special value. Nice young plants, 28c each; stronger plants, 60c each. Large plants, \$1.00.



Dwarf *Nephrolepis* Fern. Teddy Junior. Price, 23c.

**Hardy Ferns for Shady Places**

These graceful and universally popular plants are of easy culture and afford a wide range of possibilities. A shady nook where the soil is moist and the drainage good will prove an ideal location, especially if a liberal amount of leaf mold or wood's earth is available; and better still, if rocks and stumps may unite in breaking the monotony of the ground's surface. Under such conditions Ferns require very little attention and amply repay in satisfaction and genuine pleasure. Price, 38c; 3 for \$1.08; 12 for \$3.65. Large clumps, 60c; 3 for \$1.70; \$5.66, doz. **38c**



Hardy Fern. A graceful growing and universally popular plant. 38c, 60c.



The Ideal Plumed Fern Scholzeli. 28c, 60c, \$1.00.

**SPECIAL OFFER—**We will send one each of the Ferns on this page (including the Hardy Fern), in the small size, five in all, for \$1.34. One each of the five ferns on this page, in the medium size, for \$2.82. One each of the five ferns in the larger size for \$4.36.

# Geraniums

**Fireball-30c** The large richly colored flower heads are a magnificent shade of dark crimson-maroon—a color seldom found in a Geranium. A giant incessant blooming Geranium that is without equal. Its gorgeous show of color and free blooming qualities are brought out to perfection when grown as a pot plant. 30c each; 3 for 80c; 12 for \$2.63.



Double Silver-leaved Geranium, Mrs. Parker. 30c each.

**Mrs. Parker 30c**

In this beautiful variety we have the only double flowering variety in the silver-leaved section. While the foliage is deep green, with a broad border and margin of pure white, the flower is perfectly double, and of clear, bright pink. In color an exact counterpart of that grand variety Centaure. Price, 30c each; 3 for 85c; 6 for \$1.62.



Giant growing, large flowering, dark velvety-crimson Geranium, Fireball. 30c each.

**Mme. Salleroi 14c**  
(Silver Leaf Geranium) — Pretty plant, about one foot high and wide; foliage bright green, edged white; pink flowers. 14c each; 3 for 40c; 12 for \$1.34.

**Happy Thought 28c**  
(Tricolor Geranium) — A Tricolor Geranium, with a very dark green foliage, having a light creamy, almost white center, with a dark zone. Flowers bright scarlet. 28c each; 3 for 80c.

## Trailing Ivy-Leaved GERANIUMS

"Especially adapted for Hanging Baskets and Window Boxes."

**Rycroft's Surprise-24c** One of the best; clear rose—the rich pink that seems to insist on being looked at. Price, 24c each; 3 for 68c; 6 for \$1.30; 12 for \$2.30.

**Caesar Franck-26c** Color is a magnificent shade of soft rich crimson, with an exquisite shading of tender rose at the base of the petals. Price, 26c each; 3 for 74c; 6 for \$1.40.

**Alliance-26c** Color is the most exquisite shade of delicate lilac-white; upper petals feathered and blotched crimson-rose; semi-double. Price, 26c each; 3 for 74c; 6 for \$1.40.



Silver-Leaved Geranium, S. A. Nutt. Flowers double, brilliant crimson-scarlet. 30c each.

**Silver-Leaved S.A. Nutt Geranium 30c**

Foliage distinctly edged with white. The variegated S. A. Nutt is a strong growing variety; flowers are large, produced in fine trusses, very free bloomer. Brilliant crimson-scarlet. 30c each; 3 for 85c; 6 for \$1.62; 12 for \$2.88.

**Pink Flowering Wax Plant 22c**  
(Desert Plant.) (Mesembryanthemum.) Suitable for rock work, hanging baskets; also for a pot plant. Bushy growth; free flowering. Frosted wax-like appearance. Beautiful pink flowers at all times. 22c each; 3 for 63c.

**SPECIAL OFFER** THREE Ivy-leaved Geraniums, selected varieties, strong vigorous growers and grand blooming sorts, red, white and pink, for **58c**



New Double White Ivy Geranium

**Joan of Arc 30c**

The flowers are of good size perfectly double, color snow-white, an easy grower, highly recommended. Price, 30c each; 3 for 85c; 6 for \$1.62.



Pink Flowering Wax Plant, 22c.

# Large Roses For Quick EFFECT

**Hardy** All Roses described on this page are strictly hardy and require no winter protection whatever. We recommend these varieties where permanent plantings are desired.

**Hedge Roses** The Roses listed on this page make first-class varieties for hedge plantings. However, we especially recommend for both the Southern and Northern States such varieties as *Roses Madam Plantier*, Md. Chas. Wood and J. B. Clark.

Also the variety *Clothilde Soupert*, These roses are perfectly hardy and are a show of bloom from early summer until frost.

## The Peony Rose CLIO

**Flesh Pink** We have **30c**

in this variety probably the most beautiful hardy Rose grown. Awarded two first-class certificates by the Royal Horticultural Society. Flowers very large, color flesh, shaded in center to rosy-pink. Large size, exquisite color and delicious fragrance of its flowers—which at perfection are as large as Peonies—make it desirable as a cut-flower Rose. Nice one-year plants, 30c each; 3 for 85c; per dozen, \$2.88. Large 2-yr. plants, 70c each; 3 for \$2.00; per dozen, \$6.72. Strong 3-yr. plants, \$1.35 each; 3 for \$3.85; per dozen, \$12.88.

## Roger Lamberlin Crimson, White Edge 30c

Petals are irregular on the edges like a double *Petunia*; color is glowing crimson throughout, except edges of the petals which are distinctly marked with a white band. 30c each; 3 for 85c. Large 2-yr. plants, 75c each; 3 for \$2.14. Strong 3-yr. plants, \$1.25 each; 3 for \$3.56.

SEE FREE OFFER  
ON PAGE I.

**Ulrich Brunner** (Hardy June Rose.) Considered **27c**  
**Cherry Red** the finest Red Rose in existence. Color brilliant cherry-red. A seedling of Paul Neyron, from which it derives its immense size. Is intensely fragrant. One-year size, 27c each; 3 for 77c; \$2.59 per dozen. Two-year-old plants, 75c each; 3 for \$2.14; 12 for \$7.20. Strong 3-yr. plants, \$1.25 each; 3 for \$3.56; per dozen, \$12.00.

**Anna de Diesbach** (Glory of Paris.) **24c**  
**Brilliant Pink** (Hardy June Blooming.) Brilliant pink; long, pointed buds very full and sweet. One of the best. Price, 24c each; 3 for 68c; 6 for \$1.62; 12 for \$2.88. Two-year-old plants, 60c each; 3 for \$1.70. Strong 3-yr. plants, \$1.00 each; 3 for \$2.85; per dozen, \$9.60.

**Hugh Dickson** (Hardy June Rose.) **25c**  
**Crimson**, son shaded scarlet; very large and of exquisite form. Very fragrant. Strong plants, 25c each; 3 for 72c; \$2.40 per dozen. Nice two-year-old plants, 65c each; 3 for \$1.85; \$6.24 per dozen. Strong 3-yr. plants, \$1.25 each; 3 for \$3.56; per dozen, \$12.00.

**Mrs. John Laing** (Hardy June Rose.) Clear, **25c**  
**Shell Pink** bright shell-pink, exquisitely shaded; buds long and pointed flowers extra large and full; on long stems and exceedingly sweet. Strong plants, 25c each; 3 for 72c; \$2.40 per dozen. Large 2-year plants, 65c each; 3 for \$1.85; \$6.24 per dozen. Strong 3-yr. plants, \$1.00 each; 3 for \$2.85; dozen, \$9.60.

**Glorie Lyonnaise** (Hardy June Rose.) This **26c**

**Sulphur Yellow** grand Rose is the very nearest yellow Hybrid Perpetual we have. Color a pale shade of chamois or salmon-yellow, deepest at center, sometimes passing to a rich, creamy-white, finely tinted orange and fawn. Delightfully sweet. Price, 26c each; 3 for 74c; \$2.50 per dozen. Large 2-year-old plants, 65c each; 3 for \$1.80; \$6.24 per dozen. 3-year plants, \$1.00. (See page 9.)

**Magna Charta** (Hardy June Blooming.) The **24c**

**Rosy Red** glory of the plant is in its flowers, as they are extraordinary in size, full and double, wonderfully fragrant, of great depth, and borne freely from the first year, on long stiff stems. Color, clear rosy-red, beautifully flushed with velvet-crimson. This Rose has proven hardy, even in Canada. Nice plants, 24c each; 3 for 68c; per dozen, \$2.30. Large 2-yr. plants, 65c each; 3 for \$1.85; per dozen, \$6.24. Strong 3-yr. plants, \$1.00 each; 3 for \$2.85; per dozen, \$9.60.

**Vick's Caprice** (Hardy June Rose.) Distinctly **24c**

**Pink, Striped Red** striped, novel and showy. Flowers large, ground color, soft, satin-pink, distinctly striped and dashed with carmine. Bud quite long and pointed; stripes and markings to great advantage. Nice plants, 24c each; 3 for 68c; \$2.30 per dozen. Two-year-old plants, 60c each; 3 for \$1.70; \$5.66 per dozen.

**Coquette des Alps** (Hardy June Blooming.) A **26c**

**Flesh White** fine formed, pure white Rose; occasionally shows light flesh when first opening; beautiful shell-shaped petals, evenly arranged. Flowers large, perfect, and of fine form and firtnish. One-year, 26c each; 3 for 74c. Two-year plants, 65c each; 3 for \$1.80. 3-yr. plants, \$1.00 each.

**Special Offer** We will express to any address in United States any 5 of the above Roses in the 3-year size for \$5.00; the 10 Roses for \$9.85. Any 5 of the above Roses in the two-year size for \$2.75; the 10 for \$5.70. Any 5 of the above in the one-year size for \$1.20; the 10 for \$2.24.

Clio, "The Peony Rose." As a hardy garden Rose it is without equal.



The Popular Hardy Pink Climbing Rose

# Dorothy Perkins 26c

THE MOST GRACEFUL, FREE-FLOWERING AND VIGOROUS CLIMBING ROSE  
Flowers produced in clusters—thousands of them on a single plant.

**SHELL PINK** (Hardy June Blooming.) A beautiful shell-pink Rose, of sweetest fragrance, useful for many purposes, and giving wonderful satisfaction. The flowers are large size, usually about one and one-half inches across; are borne in clusters of from ten to thirty and are very double; the petals are very prettily rolled back and crinkled; the buds are remarkably pretty, being pointed in shape and of just the right size for the buttonhole. The flowers are very sweetly scented, a characteristic not possessed by most other roses of this class. The foliage is of deep green and remains on the plant in perfect condition till well on into winter, making it almost an ever-green variety.

Price, one-year, 26c each; 3 for 74c; 6 for \$1.46; 12 for \$2.80. Two-year-old, 55c each; 3 for \$1.57; 6 for \$3.14; 12 for \$5.94. Three-year-old, 95c each; 3 for \$2.70; 12 for \$10.26. Heavy three-year-old plants, each, \$1.35; 3 for \$3.85; \$12.88 per dozen.

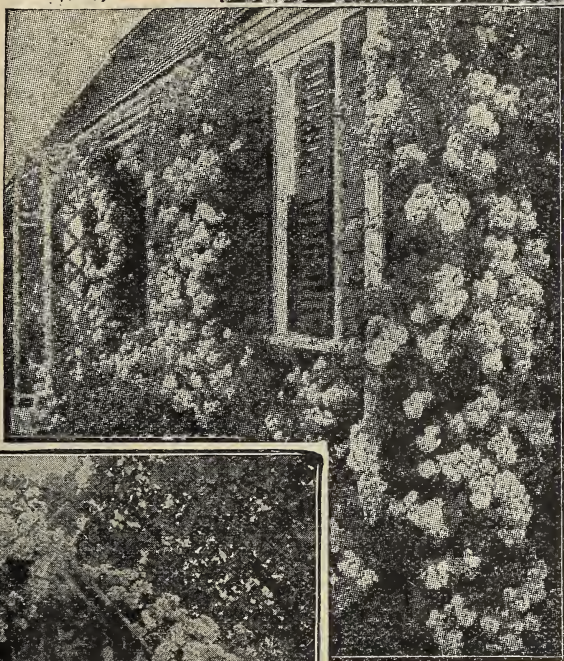
**26c**



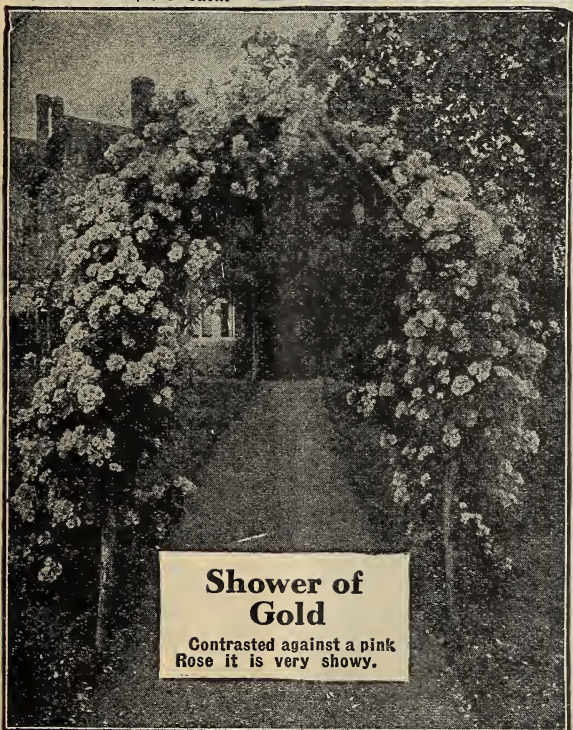
## Thousand Beauties

(Tausendschoen.) A single cluster of flowers is a whole bouquet in itself, hence the very fitting name, "Thousand Beauties." The colors run from delicate balsam or tender rose through the intermediate shades of bright rose and carmine, with white, yellow and various other delicate tints showing. One-year, 24c each; 3 for 68c; 12 for \$2.30. Two-year, 55c each; 3 for \$1.57; 12 for \$5.28. Extra large 3-yr., 75c and \$1.25 each.

**24c**



THE PERKINS



### Shower of Gold

Contrasted against a pink Rose it is very showy.

Shower of Gold.—A beautiful yellow climbing Rose; fragrant and exceptionally attractive. Price, 24c, 60c, \$1.00.

Dorothy Perkins—A beautiful pink Rose of the sweetest fragrance.

## Blue Rambler LIGHT VIOLET BLUE 24c

(Veilchenblau.) Hailed by Rose growers as the forerunner of a genuinely cornflower blue rose, is a seedling of Crimson Rambler. The color, on first unfolding, is either reddish pink or purplish pink, then turns amethyst, and finally steel blue as the flower fades. Price, strong one-year plants, 24c each; 3 for 68c. Two-year plants, 55c each; 3 for \$1.45. Larger plants, 75c each; 3 for \$2.14. Extra large three-year plants, \$1.25 each.

Hardy Climbing Rose plants, 24c each; 3 for 68c. Two-year American Pillar. A Porch plants, 55c each; 3 for \$1.45. Larger Pillar and Archway Rose plants, 75c each; 3 for \$2.14. Extra large three-year plants, \$1.25 each.

## Red Dorothy Perkins 22c

**RICH CRIMSON** (Hardy June blooming.) A distinct variety in form, color and habit. An intense crimson-maroon with tips of the petals tinted scarlet. Large and double, 15 to 25 on a stem. One-year, 22c each; 3 for 63c; 12 for \$2.10. Two-year, 50c each; 3 for \$1.43; 12 for \$4.80. Three-year, 75c each; 3 for \$2.14; 12 for \$7.20. Extra large plants, \$1.00.

## American Pillar 19c

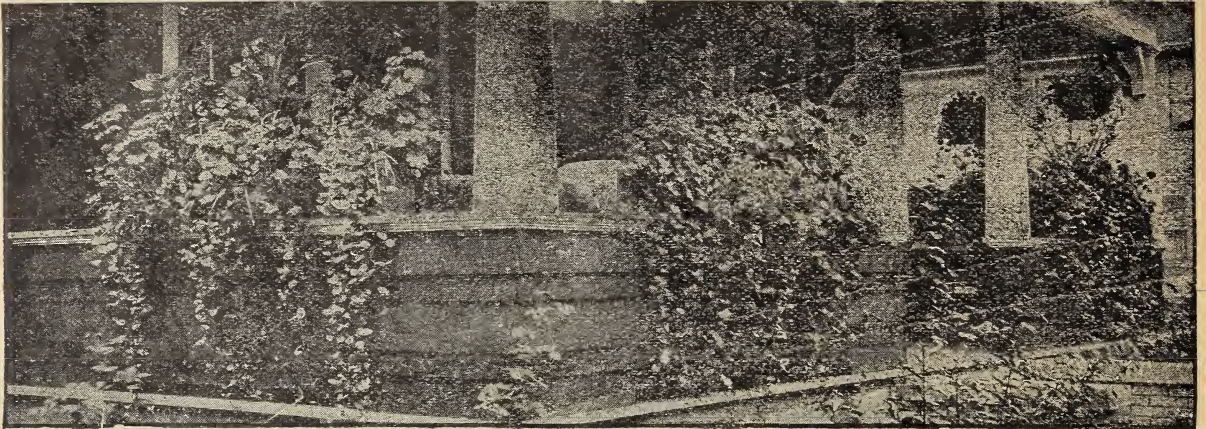
"Hardy as an Oak, Flowers Flaming Pink."

**FLAMING PINK** (Hardy June blooming.) A Rose constituted to stand the trying conditions of our American climate. Its great mass of bloom fairly covers the bush. Flowers measuring 3 to 5 inches across, very double. Color is a flaming-pink. A beautiful Rose—highly recommended. Never troubled with insects. One-year, 19c each; 3 for 54c; 12 for \$1.82. Two-year, 50c each; 3 for \$1.43; 12 for \$4.80. Three-year, 75c each; 3 for \$2.14; 12 for \$7.20. Extra large plants, \$1.00 each.

## Shower of Gold 24c

**GOLDEN YELLOW** (Hardy June blooming.) (Improved Yellow Rambler.) Color deep golden yellow with orange shadings. Beautiful metallic foliage. A fine yellow Rambler, 24c each; 3 for 68c; 12 for \$2.30. Strong 2-year plants, 60c each; 3 for \$1.70; \$5.66 per dozen. Extra large 3-year plants, \$1.00 each; 3 for \$2.85; 12 for \$9.60.

# Porch, Vase and Hanging Basket Plants



## Porch Box Collection No. 1

12 plants, all different, we select from Salvias, Dracena, Water Ivy, Wandering Jew, Ostrich Fern, Boston Fern, Vincas, Ivy Geraniums, Coleus, Petunias, Begonias, Verbenas, Geraniums, Cannas, Asparagus, Sprengerii, Russelia, Hibiscus. Price..... **98c**

## Porch Box Collection No. 2

For box 8 in. wide by 3 ft. long. 16 plants our selection, above list..... **\$1.28**

## Porch Box Collection No. 3

For box 8 inches wide by 4 feet long. 22 plants, of our own selection from list given in Porch Box Collection No. 1. In the fall basket can be taken in the house; or plants can be taken from basket and grown in pots. Price..... **\$1.76**

## Porch Box Collection No. 4

For box 8 inches wide by 5 feet long. 30 plants of our own selection from list given in Porch Box Collection No. 1. Price:..... **\$2.25**



**VASE COL. No. 1** 10 Plants for vase 10 to 15 inches in diameter, all different, which we will select from list below—Cannas, Asparagus, Sprengerii, Russelia, Boston Fern, Vincas, Ivy Geranium, Coleus, Double Petunias, Single Petunias, Flowering Begonias, Verbenas, Geraniums, Salvias, Dracena Indivisia, Wandering Jew, Water Ivy, Ostrich Plume Fern, Feverfew..... **98c**

**VASE COL. No. 2** For vase 15 to 18 in. in diam., 18 plants we will select from list above..... **\$1.54**



## Hanging Basket Collection No. 6

Made up of the choicest varieties for hanging baskets. Will give splendid satisfaction.

1 Boston Fern, 3 Vincas, 2 Water Ivies, 2 Bright Coleus, 2 Petunias, 2 English Ivies, 1 Red Achyranthus, 1 Begonia, 1 Lantana, 3 Geraniums.

**SPECIAL OFFER** — The entire collection of 18 plants. Price..... **\$1.69**



## Hanging Basket Collection No. 5

A collection of graceful decorative plants, especially suitable for hanging baskets. 1 Boston Fern, 1 English Ivy, 1 Lantana, 1 Asparagus, 1 Wandering Jew, 1 Dracena, 1 Double Geranium, 1 Variegated Vinca, 1 Single Petunia, 1 Coleus, 1 Single Geranium, 1 White Daisy.

**SPECIAL OFFER** — The complete collection of 12 plants. Price..... **\$1.35**



## Porch Boxes

We offer well-made painted (White or green) Porch Boxes, size 24x8x6 inches at 85c each. Large size 36x8x6 inches at \$1.25 each; with brackets, handles and screws. (Express only.)



# Attractive Lawn Bedding Designs

## Window Box Collection



### Window Box Collection No. 1

For Window Box per illustration, 8 Geraniums, all colors unnamed, and 5 trailing vines, 13 in all.

Price.....**\$1.05**

### Window Box Collection No. 2

For larger window box 12 Geraniums, all colors unnamed, and 8 trailing vines, 20 plants in all.....

Price.....**\$1.55**

### Bedding Phlox Offer No. 3

A solid bed of Phlox makes one of the showiest of all plantings. We offer colors, white, pink salmon and variegated. We select variety, purchaser stating color wanted.

Per dozen.....**\$1.75**

### Circular Bed Cannas and Salvias



#### Circular Bed No. 4

Circular bed, per illustration above; it is 3 feet in diameter, 9 red Salvias for border, 6 green leaved yellow flowering Cannas for center (15 plants in all.)

Price.....**\$1.43**

#### Circular Bed No. 5

Circular bed, 5 feet in diameter, 15 red Salvias for border, 13 green leaved yellow flowering Cannas for center (28 plants in all.)

Price.....**\$2.78**

#### Circular Bed No. 6

Circular bed, 4 feet in diameter, 12 red Salvias for border, 7 green leaved yellow flowering Cannas for center (19 plants in all.)

Price.....**\$1.96**

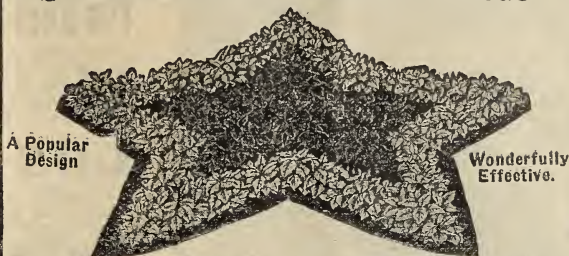
### Single Bedding

#### Petunias, Offer No. 7

For massing in beds and border planting. Some of the improved varieties are very choice plants and one would scarcely believe that they would represent the same species of the flower of twenty-five years ago. Mixed colors. Per 100, \$6.00;

Per dozen.....**93c**

## Star of Red and Yellow Coleus



A Popular Design

Wonderfully Effective.

**Star Bed No. 8** Star bed, 5 feet in diameter, 23 yellow Coleus for border, 8 red Coleus for center (31 plants in all.)

Price.....**\$2.17**

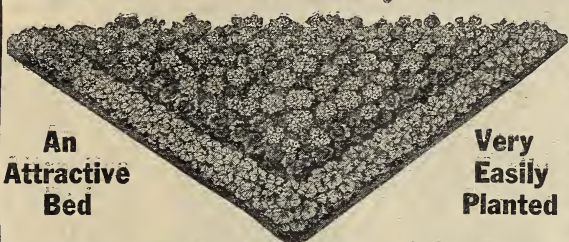
**Star Bed No. 9** Star bed, 7 feet in diameter, 30 yellow Coleus for border, 15 red Coleus for center (45 plants in all.)

Price.....**\$3.33**

**Star Bed No. 10** Star bed of Coleus, 9 feet in diameter, requiring 49 yellow Coleus for border and 50 red Coleus for center planted as in illustration (99 plants in all.) Price by express only.....

Price.....**\$6.92**

## Triangular Bed Geraniums and Dusty Millers



An Attractive Bed

Very Easily Planted

**Triangular Bed No. 11** Triangular bed, Geraniums and Dusty Millers, with sides equal to 4 feet in length, 10 Dusty Millers for border, 5 Geraniums for center (15 plants in all.)

Price.....**\$1.22**

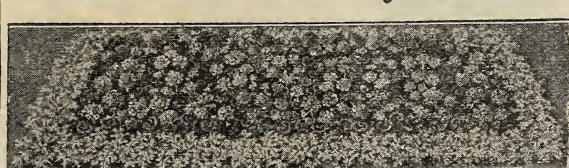
**Triangular Bed No. 12** Triangular bed, with sides equal 5 feet in length, 12 Dusty Millers for border, 7 red Geraniums for center (19 plants in all.)

Price.....**\$1.57**

**Triangular Bed No. 13** Triangular bed, sides equal 7 feet in length, 21 Dusty Millers for border, 12 red Geraniums for center (33 plants in all.)

Price.....**\$2.72**

## Rectangular Bed Geraniums and Dusty Millers



**Rectangular Bed No. 14** Rectangular bed, 2x3 feet, 14 Dusty Millers for border, 6 red or pink Geraniums for center (20 plants in all.)

Price.....**\$1.67**

**Rectangular Bed No. 15** Rectangular bed, per illustration above, 3x5 feet., 18 Dusty Miller plants for border, 15 all red or all pink Geraniums for center (33 plants in all.)

Price.....**\$2.83**

**Rectangular Bed No. 16** Rectangular bed, 4x7 ft., 28 Dusty Millers for border, 20 pink Geraniums for next inner row and 15 white Geraniums, pink center (63 plants in all.)

Price, by express only.....**\$5.01**

**Special Offer RED, WHITE AND BLUE BED**, 6 ft. in diameter, 10 Dwarf Salvias (red) for center; 12 Feverfew (white), next outer circle; 18 Ageratum (blue) for border; 40 plants in all, \$3.50 value. (Circular bed.)

Special price.....**\$3.14**

## Circular Bed Geraniums and Coleus



### Circular Bed No. 17

Geraniums and Coleus for a 4-ft. circular bed, 12 red Coleus for border, 7 red Geraniums for center (19 plants in all.)

Price.....**\$1.57**

### Circular Bed No. 18

Geraniums and Coleus for a 5-ft. circular bed, 15 red Coleus for border, 13 red Geraniums for center (28 plants in all.)

Price.....**\$2.14**

Purchaser is allowed option of Geraniums in colors, white, red, pink or salmon, and Coleus in red, yellow or variegated.

## Circular Bed Cannas Elephant Ears Ageratums



### Circular Bed No. 19

Circular bed, 6 ft. in diameter, per illustration, 12 Ageratums (18 in. apart) for border, 6 Elephant Ears, inner circle, 5 bronze foliage red flowering Cannas for center (23 plants in all.)

Price.....**\$2.57**

### Circular Bed No. 20

Circular bed, 7 ft. in diameter, 14 Ageratums (18 in. apart), for border, 7 Elephant Ears for next inner circle, and 7 bronze foliage red flowering Cannas for center (28 plants in all.)

Price.....**\$3.18**

### Circular Bed No. 21

Circular bed, 9 ft. in diameter, 18 Ageratums (18 in. apart), for border, 9 Elephant Ears for next inner circle, 12 bronze leaved red flowering Cannas for center (39 plants in all.)

Price.....**\$4.40**

## Special Offer 20 Hardy Perennial

Plants, such as — Hollyhocks, Sweet William, Campanulas, Columbines, Shasta Daisy, Coreopsis, Poppies, etc. We will send in this collection a grand variety of plants all colors that will give you flowers at all times from May until frost. This collection must be strictly our selection, and cannot be broken or divided. 20 Hardy Plants.

Price.....**\$2.50**

NOTE—In ordering from this page please give not only the name of the collection and the number, but number of the different kinds of plants included in the collection as well.

# ROSES OF LATE INTRODUCTION



**ROSE LOS ANGELES**

Flame pink toned with coral shaded with translucent gold. In richness of fragrance it equals in intensity the finest Marechal Neil.

**The Best Bloomers** The best bloomers for the yard and garden are included in these newer Roses of all kinds. Those offered are of unusual value. It is with confidence that we recommend the following magnificent varieties.

## Los Angeles

"Flame-pink, toned with coral and shaded with translucent gold. In richness of fragrance it equals in intensity the finest Marechal Neil."

**Flame Pink** Los Angeles is by all odds, one of the finest roses ever introduced. The growth is very vigorous, and produces a continuous succession of long stemmed flowers of a luminous flame-pink, toned with coral and shaded with translucent gold at the base of the petals. The buds are long and pointed, and expand into a flower of mammoth proportions, while the beauty of form and ever-increasing wealth of color is maintained from the incipient bud until the last petal drops. Price, one-year plants, 45c each; 3 for \$1.28; \$4.22 per dozen. Strong 2-year plants, 75c each; 3 for \$2.14; per dozen, \$7.20. Extra large plants, \$1.35 each; 3 for \$3.85.

## F. W. Dunlop

"Strikingly Beautiful Pink Cut Flower Rose."

**Brilliant Pink** (Summer blooming, hardy with protection.) This new variety will be found in every cut flower store. The color is brilliant pink, and wonderfully shaded. The blooms are of perfect form, large, full, long and pointed. After style of Killarney, but far more brilliant in color. A winner at the shows. Nice plants, 35c each; 3 for \$1.00; 12 for \$3.36. 2-yr plants, 60c each; 3 for \$1.70; 12 for \$5.66. Extra large plants, \$1.25 each; 3 for \$3.56.

## Pilgrim---30c

"New Pink Cut Flower and Bedding Rose."

**Rose Pink** (Summer blooming, hardy with protection.) This new Rose is a beautiful shade of bright Rose pink. The buds open perfectly long and of ideal form. Pilgrim is a Rose perfect in color and form of flower. Its fragrance will prove satisfactory to all Rose lovers. 30c each; 3 for 85c; 12 for \$2.88. 2-yr. 65c; 3 for \$1.85; 12 for \$6.24. Extra large plants, \$1.25 each.

## Lady Mary Ward

"Richly colored deep apricot orange."

**Apricot Orange** (Summer blooming, hardy with protection.) Color, rich orange, shaded deeper apricot orange, with a decided metallic veining, a most remarkable variety, and the greatest novelty in color yet seen in Roses. A bed of this Rose, on account of its wonderful color, would be one of the sights of any Rose garden. Awarded the Gold Medal of the National Rose Society. One-year plants, 27c each; 3 for 77c; per dozen, \$2.59. Strong 2-year plants, 75c each; 3 for \$2.14; per dozen, \$7.20. Extra large plants, \$1.25 each.

## Milady---24c

"One of the Sensations with Rose Growers."

**Dark Red** No Rose of recent introduction has impressed us as this one. Possesses all the desirable features of a Rose for the amateur grower, such as color, freedom of bloom and hardness. Rich velvety crimson, with darker shading toward the center. Nice plants, 24c each; 3 for 68c; 12 for \$2.30. 2-yr. plants, 65c each; 3 for \$1.85; 12 for \$6.24. Extra large plants, \$1.25 each.

## J. L. Mock 25c

**Imperial Pink** (Summer blooming, hardy with protection.) The flowers are of large size and perfect form, of a deep imperial pink, the outside of the petals rose-white, highly perfumed. 25c each; 3 for 72c; \$2.40 per dozen. 2-yr. plants, 65c each; 3 for \$1.85; \$6.24 per dozen. Extra large plants, \$1.25 each.

## Duchess of Wellington 28c

Intense saffron yellow, stained with rich crimson, which, as the flower develops becomes deep coppery saffron yellow — a shade hitherto unknown among Roses. 28c each; 3 for 80c. 2-yr. plants, 75c each; 3 for \$2.14. Extra large plants, \$1.25 each.

## White Killarney 26c

**White** One of the most exquisite White Roses grown. Strong and upright, beautiful, deep bronzy green foliage. Free-blooming, flowers of delightful fragrance and immense size. Unusually hardy. 26c each; 3 for 74c; 12 for \$2.50. 2-yr. plants, 70c each; 3 for \$2.00; 12 for \$6.72. Extra large 3-year plants, \$1.25 each.

## Mrs. Chas. Russell 25c

Buds long and pointed, produced on long, stiff stems 3 feet in length, each with a bloom of a beautiful shade of rosy pink. Blooms magnificent formation. 25c each; 3 for 72c; 12 for \$2.40. 2-yr. plants, 75c each; 3 for \$2.14; 12 for \$7.20. 3-yr. plants, \$1.25 each.

**SPECIAL OFFER**—One each of all the Roses on this page in the one-year size for \$2.27. One each of all the Roses on this page in 2-year size for \$5.32.

# American Wonder Lemon

Actual Weight of Fruit, Two to Three Pounds.

**FRAGRANT BLOSSOMS** American Wonder—A true ever-bearing Lemon. The tree has fruit in all stages of development, from the size of a pea up to the ripe fruit, showing it to be a true ever-bearer. Fruit weighing over four pounds has been taken from a tree. The American Wonder Lemon excels ordinary Lemons for making pies. The plant is of very easy culture, flowering and fruiting in ordinary soil. Flowers are fragrant as orange blossoms, which they greatly resemble. The growth can be pruned to any size or shape. In winter the soil for potted plants should be kept rather on the dry side and the leaves and stems sponged weekly with a strong solution of Ivory Soap. Price, 20c each; 3 for 57c; 12 for \$1.90. Larger plants, 50c each; 3 for \$1.25; 12 for \$4.50. 2-yr.-old plants, 75c; 3 for \$2.14; \$7.20 per dozen. 3-yr. plants, \$1.00 and \$1.25.



# Popular Oleanders

**OLEANDER ROSEA**—An old favorite; flowers pink, double and sweet. (See illustration on page 71.) 26c each; 3 for 75c. Large plants, 55c.  
**OLEANDER LILIAN HENDERSON**—Double white flowers; fragrant like the old favorite Rosea. 24c; 3 for 68c. Large plants, 55c.  
**OLEANDER RUBRA**—Semi-double flowers; watermelon-red. 26c; 3 for 75c. Large plants, 55c.

**OLEANDER MME. PEYRE**—Very double flowers; triple corolla; color pale flesh. 22c each; 3 for 63c. Large plants, 55c.  
**OLEANDER LUTEA**—Strong grower, flower double, color beautiful golden-yellow. 24c each; 3 for 68c. Large plants, 60c each.  
**SPECIAL OFFER**—1 each, white, pink, yellow, and red Oleander for 88c.



American Wonder Lemon, 20c, 50, 75c.

# Dwarf Fruiting Orange

"Fruits freely—easy to grow—beautiful blossoms—delightfully fragrant."

Dwarf free flowering variety, which is suitable for pot culture. While it will grow three feet high and branch freely, it is not an uncommon thing to see little cutting plants five or six inches high full of bloom, and even bearing one or two medium-sized oranges. The fruit at its best is not more than one-half the size of an ordinary orange, but it is very bright and beautiful in color, delicious in quality; but it is for its flowers more than its fruits which commends it to general cultivation. When it blooms it is so full that it seems to be all flowers. The pure waxy-white blossoms emit a delicate, yet powerful fragrance which is surpassed by no other flower. Price, 22c ea.; 3 for 63c; 12 for \$2.02. Large plants, 50c each; 3 for \$1.43; 12 for \$4.80. Larger plants, 75c each; 3 for \$2.14. Selected plants, \$1.00 each.

# Sweet Olive

(Olea Fragrans.) The Olea Fragrans is a fragrant house plant, similar to Camellia, and bears small clusters of delicate white flowers in great profusion during the fall and winter. Almost a continuous bloomer. Highly odoriferous both in foliage and flowers. The perfume is sufficient to fill a conservatory or room. Price, 75c each; 3 for \$2.14.



(SPECIAL OFFER—one each)  
Lemon and Orange.  
One-year, 39c. Large plants, 85c.

ORANGE BLOSSOMS

Special \$1.24 One lemon plant, one orange, one sweet olive and one Oleander (Four plants in all. Value, \$1.39) for \$1.24.



Giant Painted Leaf Begonia, Mikado.

## Giant Painted Leaf Rex Begonia Mikado

One of the freest growing Rex Begonias, throwing out great clusters of leaves which are exquisitely beautiful. They are edged with a narrow band of dull soft pink, especially prominent in the older leaves, which also have a pinkish cast. The body of the leaf is of a metallic-green with a dark center. The difference in the Begonia lies in the striking pinkish cast of the leaf. Price, 39c each; 3 for \$1.14; per dozen, \$3.94.

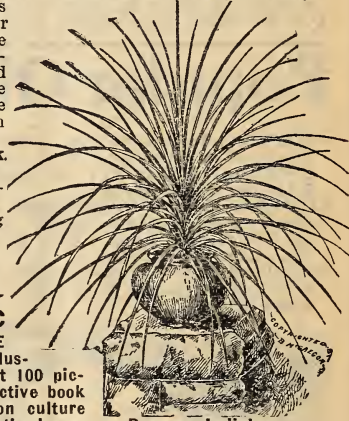
**39c**

## Tuberous Begonias

Handsome of our summer-blooming plants, flowering throughout the season in any nook or corner in complete shade. Nothing can exceed the brilliancy of their colors the delicacy of their tints the richness of their waxy flowers,

**34c**

Tuberous Begonias will be scarce for several years. We offer them from a limited stock, double and single including single Frilled and Double Crested nice bulbs in RED—Highly colored. PINK—Sparkling pink. SALMON—Prolific. YELLOW—Very striking. WHITE—Glistening white. 34c each; 3 for 97c; doz., \$3.26; 1 each of 5 colors listed, \$1.52.



Dracena Indivisa.

## BOOK—90c

"MILADY'S HOUSE PLANTS." Fully illustrated; about 100 pictures. Instructive book for women on culture of plants in the home.

## Resurrection Plant

(Rose of Jericho.) This peculiar novelty is a ball of tightly folded leaflets dried and apparently dead. But a transformation takes place when saturated or placed in a bowl of water the plant "coming to life" for in a very short time there is a great, loose, expanded rosette of fine fern-like leaves, odd and very beautiful. 14c each; 3 for 40c. Larger plants, 22c.

**14c**

## Hardy Bedding Begonia

### Evansiana

Very profuse bloomer, with beautiful foliage. Produces pink flowers. The roots start new growth in the spring, like Peony and Phlox. Price, 38c ea.; 3 for 85c; per dozen, \$2.78.

**38c**



(Amaryllis Formosissima) Gorgeous Mexican Scarlet Lily.

## Dracena Indivisa 15c

A beautiful plant, with slender, drooping leaves, often called a "Fountain Plant." Leaves of several shades of green with delicate stripings of yellow and red. 15c each. Larger plants, 25c and 50c.

## Scarlet Mexican Lily

(Amaryllis Formosissima) (Jacobean Lily)—Gorgeous flowers of dark velvety scarlet, shading to maroon, and having a satiny white stripe in the center of each petal. Plant in sand and pebbles covered with water, or in soil. 32c each; 3 for 81c; 6 for \$1.38; \$2.50 per dozen.

**32c**



The plant is found in Palestine and was first brought to Europe by the Crusaders. A very odd plant novelty.

**14c**

The Marvelous Resurrection Plant.

## STAR Begonia

(RICINIFOLIA)

So called from its likeness to the Ricinus, or castor oil plant. The leaf is very large—will average a foot or more in diameter, color a rich green, with reddish markings; surface velvety. In bloom it is magnificent. The great number of individual pink blooms, are lifted high and spray-like, quite clear of foliage. One of the best for winter bloom, besides being ornamental in foliage. Price, 42c; 3 for \$1.20. Larger size, 60c; 3 for \$1.70.

**42c**



Star

Begonia

# Summer Flowering Lilies

## Gorgeous Summer and Winter Blooming "Milk and Wine Lily"

This variety is the best of all the Crinum family. Usually two flower stalks of dark purplish color are sent up at the same time, each bearing a large umbel composed of a dozen or more enormous lily-like flowers of wondrous beauty and fragrance. The petals are broad and pure white; beautifully banded. 40c each; 3 for \$1.00; 6 for \$1.70; 12 for \$3.00.



**40c**

## Yellow Flowering Spotted Calla

(Calla Elliotiana)—Flowers very large, rich deep orange-yellow, often four to five inches across the mouth; leaves are spotted and white. Handsome foliage together with remarkable flowers. Large flowering Bulbs, 49c each; 3 for \$1.40; per dozen, \$4.70. Larger bulbs, 60c each; 3 for \$1.70; per dozen, \$5.66.



**49c**

**38c**

Beautiful Speckled Leaf Yellow Flowering Calla Elliotiana. 49c.



Milk and Wine Lily. Makes an exceptional striking window, porch, or garden decoration. 40c each.

### LARGE FLOWERING White Calla

Calla Ethiopica — It grows freely and requires an abundance of water, and produces very large pure white blossoms during the winter and spring; the resting period during June and July can be given by turning the pots on their sides, without watering in a shady place. 38c each; 3 for \$1.08; per dozen, \$3.65.

### Spotted Calla

Richardia — The leaves are of the richest green, spotted with pure white. The flowers are white with delicate chocolate throat. 30c each; 3 for 85c; per dozen, \$2.38. Large size, 45c each; 3 for \$1.25.



**30c**

## Large White Flowering Godfrey Calla

White Calla (New Godfrey) — A wonderful improvement over the old White Calla. The plant is very bushy, having double as many leaves as the old variety, and producing three times as many flowers. Flowers are unusually large, held high, and on stiff stems. The blooms are large size and of snowy whiteness. 19c each; 3 for 57c; per dozen \$1.82. Larger plants, 48c each; 3 for \$1.37; per dozen, \$4.60

**19c**



Excelsior Pearl Tuberose.

The White Godfrey Calla. 19c. Wonderful improvement over the old White Calla; blooms of snowy whiteness.

## Lily-of-the-Valley

(Mammoth Flowering) — The sweetest and loveliest spring blooming plants, used extensively as a border for shrubbery also along foundation walls. Will thrive in any common soil and do well in shady places where many other plants fail. We offer strong plants, especially suited for out-door planting, also for growing in pots after the fashion of Tulips or Hyacinths. Price, 6c each; 3 for 17c; 6 for 32c; 60c per dozen; \$4.50 per 100.

**6c**

## Double Tuberose

Grows about 18 inches high, blooms very early, matures perfectly. Flowers pure white, large size, very double and intensely sweet. Fine, extra large, well-ripened bulbs, all sure to bloom. Price, 10c each; 3 for 28c; 6 for 50c; per dozen 96c; \$7.75 per 100. (25 and 50 at 100 rate.

**10c**



Lily-of-the-Valley.—The sweetest and loveliest spring blooming plant, producing delightfully fragrant blooms.

Highly colored veined foliage ranges through red, pink, green, yellow.



**44c**  
each  
**3 for \$1.26**  
**12 for \$4.22**

# Fancy Leaved Caladium

(Multi-Colored.) Among ornamental foliage plants there are none more beautiful in design or gorgeous in coloring than the Fancy-Leaved Caladium. Of special value for pot culture, window and piazza boxes. Planted in partially shaded borders they succeed admirably. They make charming conservatory plants. Being of tropical nature they like a warm temperature. **44c** each; **3** for **\$1.26**; **12** for **\$4.22**.

**44c**

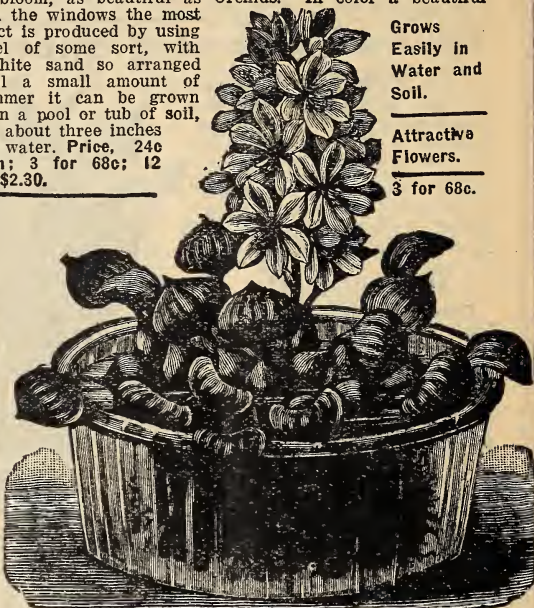
# Attractive Water Hyacinth

A striking aquatic plant. Odd, beautiful and valuable plant of easy growth. It forms a lovely rosette of its curious shining green leaves, and throws up spikes of the most exquisite flowers imaginable, resembling in form a spike of Hyacinth bloom, as beautiful as Orchids. In color a beautiful lilac-rose. In the windows the most beautiful effect is produced by using a glass vessel of some sort, with shells and white sand so arranged as to conceal a small amount of soil. In summer it can be grown in the yards in a pool or tub of soil, and about three inches of water. Price, **24c** each; **3** for **68c**; **12** for **\$2.30**.

**24c**

Grows Easily in Water and Soil.

Attractive Flowers.  
**3** for **68c**.



Water Hyacinth, Flowers Lilac Rose, 24c.

# Snake Plant

A new decorative house or porch plant of great value. There is scarcely a decorative plant listed that is more striking in foliage and habit than this, and certainly no other stands as much downright neglect and hardship. Nothing but frost or continued drenching with water has terrors for it. It will stand gas and dust and will go for months without a drop of water, yet remains as thrifty as ever. Singularly beautiful, as well as easily grown. Propagated easily. Price, **24c** each; **3** for **68c**; **\$2.30** per dozen. Larger size by express only, **48c**; **3** for **\$1.37**; **\$4.60** per dozen.

**24c**



# Parrot's Feather

(Myriophyllum Proserpinacoides.) Wonderful drooping water plant, for water tight vessels and aquariums; delicate feathery foliage. Nothing more interesting or attractive. **27c**; **3** for **77c**; **12** for **\$1.46**.

**27c**



Umbrella Plant (Cyperus), 19c.

# Umbrella Plant

An ornamental plant, handsome as a Palm, grows in water or soil. Indispensable for aquariums or fountains or pools. **19c** each; **3** for **48c**; **12** for **\$1.55**.

**19c**

# Elephant's Ear

(Caladium Esculentum)—Very effective. The growth is very rapid, and the ground must be made rich. Watering in dry season will help develop large leaves. Bulbs can be stored in dry sand in winter and kept from year to year. Must be sent by express at purchaser's expense. A very widely grown lawn plant. Price, nice bulbs, **14c** each; **3** for **40c**; **\$1.34** per dozen. Larger bulbs, **22c** each; **3** for **63c**; **\$2.10** per dozen. Large bulbs, **30c** each; **3** for **85c**. Mammoth bulbs, **46c** each; **3** for **\$1.32**.

**14c**

Elephant Ears. Each, **14c**; **3** for **40c**; **12** for **\$1.34**.

Grows easily. Tropical foliage. Very showy.



GIANT CALADIUM (Elephant's Ear) 14c. Mammoth leaves, showy and effective.



The Striking Decorative Plant, Sansevieria Zeylanica (Snake Plant) 24c, large plants 48c.

SPECIAL—3 WATER PLANTS: WATER HYACINTH, PARROT'S FEATHER, UMBRELLA PLANT, EASILY GROWN. 3 FOR 59c.

# OSTRICH PLUME Chrysanthemums

The term "Ostrich Plume" is applied to this type on account of the feathery growth with which the petals are thickly covered.

**M. Fromont** This variety gives **30c**

**Red Ostrich Plume** us the only red Ostrich Plume Chrysanthemum in cultivation. It is a wonderful variety, strikingly beautiful in color and character of flower. Price, 30c each; 3 for 85c; 6 for \$1.62; 12 for \$2.88.

**L'Infant des Mondes** **24c**

**White Ostrich Plume** Pure white. This grand white sport from L. Boehmer was well received, having many admirers at the shows. A strong grower, of good habit, and is considered the best white of the hairy type. Price, 24c each; 3 for 68c; 6 for \$1.30; \$2.30 per dozen.

**Louis Boehmer** Most beautiful shade of laven- **24c**

**Pink Ostrich Plume** der-pink, shaded with silver-pink on the end of petals. Good size, splendidly incurved. Price, 24c each; 3 for 68c; 6 for \$1.30; \$2.30 per dozen.

**Pearl of Lyonnaise** **24c**

**Yellow Ostrich Plume** Bright, clear golden-yellow, low, somewhat plumed; quite full; one of the very finest; medium size; beautiful globular form; new. Price, 24c each; 3 for 68c; 6 for \$1.30; \$2.30 per dozen.

**Single and Double Sweet-Scented Violets**

**Lady Campbell** Double purple; similar in growth and shape to Marie Louise; color a little lighter. 22c each; 3 for 63c; \$2.10 per doz.

**Marie Louise** Double; very fragrant; prolific. Dark blue. The favorite double or blue Violet. 22c each; 3 for 63c; \$2.10 per doz.

**Swanley White** Same growth as Marie Louise; richly perfumed. Individual flower large; pure white. 22c each; 3 for 63c; \$2.10 per doz.

**Princess of Wales** Violet known. Single flowers of true violet-blue that does not fade. Very fragrant. 19c each; 3 for 48c; 12 for \$1.55.



Large hardy free-flowering out-door Chrysanthemum, Homestead. 28c.

## Hardy Old-Fashioned Chrysanthemums

The Hardy Chrysanthemum gives us the most attractive outdoor fall flower. It is now universally planted, growing anywhere and producing wonderful results with little attention. It is a plant without equal, either in solid beds, mixed borders or planted against foundations.

- HOMESTEAD**—Strong shade of pink. Has no equal for size. 28c.
- EXCELSIOR**—Deep yellow flowers borne in clusters. 20c.
- VICTORY**—Leading large flowering white pompon. 28c.
- AUTUMN GLOW**—Coppery bronze with red tinge. 25c.
- PRINCE OF WALES**—Pure white; button type; mass of bloom. 20c.
- INDIAN**—Soft red flowers of good size. None better. 26c.
- ALICE HOWELL**—Rich shade of orange yellow. New. 20c.
- CHALDON**—Reddish crimson with gold tips. 24c.
- NORMANDIE**—Delicate pink of recent introduction. 20c.
- MISS F. COLLIER**—The new hardy popular pure white pompon. 24c.
- SPECIAL OFFER**—Any of three of the Hardy Chrysanthemums listed above, 68c; any five, \$1.10; all ten above, \$1.62.

**HARDY CHRYSANTHEMUMS** are unexcelled for planting along foundation walls, around porches, etc. Special, 20 Hardy Chrysanthemums, in assorted colors, our selection of varieties, \$1.69.

**Special Offer** One each of the Hairy Petaled Ostrich Plume Chrysanthemums, M. Fromont, L'Infant, Louis Boehmer, Pearl of Lyonnaise, 75c.

## McGregor's Masterpiece PANSIES

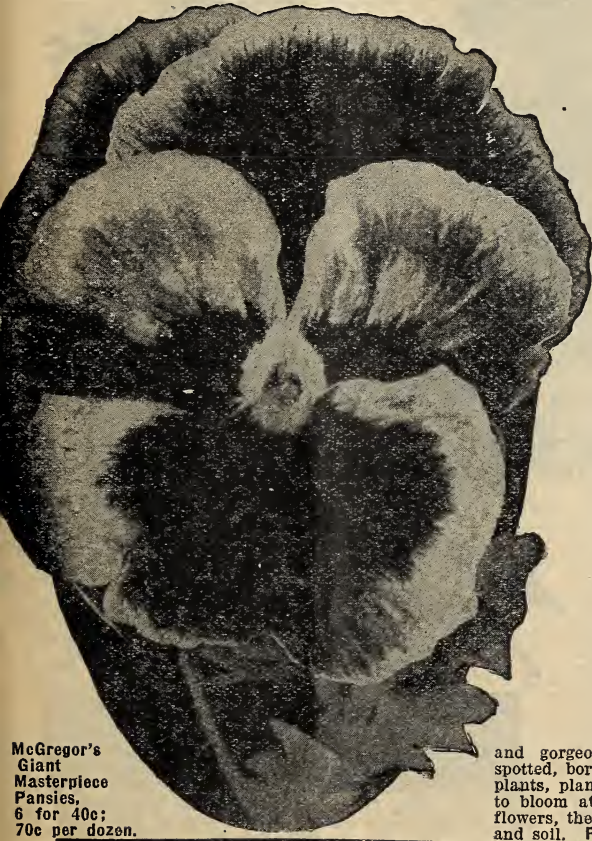
**POTTED PLANTS**—(Mixed, all colors.)—In this Masterpiece strain will be found flowers with petals crimped and curled and ruffled. Flowers are often three inches across. The flowers of this strain being distinguished by their magnificent frilled, ruffled and blotched petals of wonderful colors and striking markings. Price, (Potted Plants), 6 for 40c; 70c per dozen; \$5.50 per 100.

## Giant Flowering Mixed Pansies

Our **GIANT FLOWERING PANSIES** of genuine American strain comprising a marvelous number of new shades and varieties as well as improved types from other lands. All are of wonderful form, richest coloring, marvelous in size. There is no flower more admired than the Pansy; no flower border, be it ever so gay and gorgeous, is so interesting. The combination of colors embraces striped, spotted, bordered and fringed; in rainbow colors, with rich velvety textures. Pansy plants, planted in the spring as soon as the frost is out of the ground, will begin to bloom at once, and afford daily pleasure. To get best results and extra large flowers, the soil must be exceedingly rich—we use equal parts of well-rotted manure and soil. Price, 6 for 25c; 40c per dozen; \$4.00 per 100.

McGregor's  
Giant  
Masterpiece  
Pansies,  
6 for 40c;  
70c per dozen.

**Special Offer** ONE EACH OF THE FOUR VIOLETS—MARIE LOUISE, PRINCESS OF WALES, SWANLEY WHITE, AND LADY CAMPBELL, FOR 72c. (27)





# The Ideal Fern Roosevelt

A Notable and Valuable Novelty.  
Wins Prizes Everywhere.

The Grand Roosevelt Fern has had the most phenomenal sale of any decorative plant grown. Fronds broad and heavy, often measuring 6 inches or more across, and five or six feet long. Owing to the weight of the foliage, the plant assumes an exceedingly massive, yet graceful appearance, and owing to the fullness of the fronds even small plants make much more symmetrical and beautiful plants than the popular Boston Fern. The divided pinnae or miniature fronds which are so gracefully arranged, keep growing constantly, overlapping each other and showing two shades of green, while the center and main part of the frond is rich dark green, the contrast producing a beautiful effect. Price, nice young plants, 24c ea.; 3 for 68c. Stronger plants, 50c each. Larger plants, 85c each; 3 for \$2.42. Extra large plants, \$1.25 each.

**24c**

The New and Popular Roosevelt Fern. Fronds broad and heavy yet exceedingly graceful in appearance. Price 24c, 50c, 85c, \$1.25.

## Ostrich Plume Fern **Whitmanii**

Whitmanii is one of the few feathery foliage Ferns which everyone can succeed in growing. It is a healthy, vigorous grower, constantly unfolding fresh fronds, which often attain a width of twelve inches. Each frond is delicately and finely cut, possessing such elegance of form and willowy grace as to be compared to a beautiful ostrich plume. Its feathery, drooping form and compact, luxuriant growth will make the most sordid surroundings assume cheerfulness and verdant beauty. In decorative effect it far outdistances many of the other varieties of the family. It has taken gold medals wherever shown. Price, 24c each; 3 for 68c. Stronger plants, 35c. Larger plants, 60c. Heavy plants, \$1.00 each; 3 for \$2.85.

**24c**

## Newport Parlor Fern

Resembles the Boston, excepting that it has shorter fronds and three times as many of them. Plants present a more finished appearance than the Boston Fern, and are going to be more popular. 24c each; 3 for 68c. Stronger plants, 55c. Larger plants, \$1.00 each.

**24c**



Ficus elastica—Rubber Plant, \$1.00.

## Rubber Plant

(Ficus **\$1.00**  
Elastica)

— Ficus elastica, better known all over the country as the Rubber Plant is undoubtedly one of the most satisfactory house plants. The plant is of tropical nature, being at its best under moist conditions and high temperature, but if well cared for, the foliage kept clean, good drainage provided, and the soil kept sufficiently moist, it will continue growing throughout the year. Its wonderfully thick leathery leaves enable it to stand excessive heat and dryness, while its deep, glossy green foliage always presents a showy appearance. Adapted to house culture. Strong plants, \$1.00 ea. Larger specimen plants, \$1.50 each, by express.

## Gold Medal Fern

(Elegantissima Compacta.) Valuable on account of easy culture. A variety of comparatively recent introduction which is different and distinct in compactness of growth and the subdivision of its fronds. While fronds are broad and heavy, plants have a graceful appearance. Its distinguishing characteristics are its dark green foliage, its dense and compact growth and its irregular shaped fronds, which are heavily imbricated, the pinnae overlapping and so formed as to resemble miniature ferns. Price, nice young plants, 29c each; 3 for 83c. Stronger plants, 55c each. Large plants, 90c each; 3 for \$2.56.

**29c**

## Fan Leaf Palm

(Latania Borbonica.)—This is the typical Palm and is more largely grown than all other varieties combined (possibly excepting the Kentias.) Nothing is more satisfactory as a decorative plant than a well-grown specimen of Latania. This is the Palm from which the Chinese Palm Fans are made. Nice young plants, 35c each. Larger plants, 75c each. Strong plants, \$1.25 each. Large specimen plants, \$2.00, by express.

**35c**



Fan Leaf Palm (Latania Borbonica).



Gold Medal Fern, Elegantissima Compacta. Beautiful foliage, dense and compact, easily grown. 29c, 55c, 90c, \$1.25 and \$1.75.



THE GLOSSY GREEN

# Feather Fern

Unsurpassed for Window Boxes or Hanging Baskets

(Asparagus Sprengerii.) The Asparagus Sprengerii gives us a plant of the bushy and drooping form of the Asparagus family. The Feather Fern or Asparagus Sprengerii is of a hardier nature than the Plumosus. It is especially valuable for window box and hanging basket planting, for vases and as specimens when grown in pots or as tub plants. The Feather Fern or Asparagus Sprengerii gives us a more valuable house plant, being one of easy culture, the sprays growing four to five feet long, and when the foliage is used for cut-flower work it retains its freshness for an unusual length of time. 22c each; 3 for 63c; 12 for \$2.10. Strong plants, 40c ea.; 3 for \$1.14; 12 for \$3.84. Larger plants, 60c each; 3 for \$1.70.



FEATHER FERN  
ASPARAGUS SPRENGERII

Asparagus Sprengerii (Trailing Basket Fern). Sprays three to four feet long. 22c, 40c, 60c.

## Pansy Geranium Easter Greeting

Its blooming season extends from late winter to early fall, and through the summer the plants are gorgeous. Fiery amaranth-red. Some describe it as a brilliant rose. Each of the five petals being marked with a large dark brown or black spot in the center, the spot being bordered with scarlet daintily penciled with crimson. Price, 35c each; 3 for \$1.00; \$3.36 per dozen.

35c

## Sweet Scented Geraniums

These beautiful and useful Geraniums are very extensively grown for their highly fragrant foliage, and to be used among cut flowers which have no perfume of their own, as well as in making toilet waters, flavoring jellies, etc.

**Lady Mary 22c** Large, pelargonium-like, cerise flowers, blotched crimson. Nutmeg scented.

**Nutmeg 22c** Resembles the Apple Geranium in growth and fragrance. Pink flowers.

**Cut-Leaf Rose 25c** Indispensable in the formation of bouquets. Beautiful pink flowers. 25c each; 3 for 72c; 12 for \$2.50.



Pink Baby Primrose, 24c.



Sweet Scented Geranium Lady Plymouth, 30c.

## Sweet Scented Geranium Lady Plymouth-30c

Variegated Skeleton Leaved Sweet Scented Geranium. This new Geranium is one of the most beautiful that can be imagined. Grand foliage; striking in coloring. Blooms shell pink. 30c; 3 for 85c; 12 for \$2.88.

## St. Bernard's Lily-24c

(Anthericum Picturatum)—A beautiful plant, with recurved graceful foliage, which makes a handsome pot plant, and is also useful for vases. The leaves are dark-green, beautifully marked with broad stripes and bands of a creamy-white color; bears large spikes of white flowers. Price, 24c each; 3 for 68c.

## Baby Primrose-24c

It forms a dense rosette of somewhat fleshy leaves, from which spring flowering stems, twelve, fifteen and even twenty inches tall, supporting three tiers or whorls of dainty flowers of a delicate rosy-illiac, with eye of pale gold. The flowers are produced in great abundance. Price, 24c each; 3 for 68c; \$2.30 per dozen.

## Highly Colored Crotons

The leaves of all are more or less veined and margined; sometimes entirely variegated with shades of yellow, orange and crimson. Some have long, narrow leaves, arching gracefully fountain fashion; others are broad and short, oak-leaved. Crotons love heat, sunshine and moisture. Price, 40c each; 3 for \$1.14. Larger plants, 75c each; 3 for \$2.14; extra large plants, \$1.00.

40c

## Crested Fern

(Pteris Wimsetti.) The Leaves are very peculiarly crested. It is one of our best varieties for dishes being a short, compact grower. Price, 19c each; 3 for 54c.



Saint Bernard's Lily, 24c.



Clematis Paniculata—The most beautiful and satisfactory vine ever offered. Invaluable for porches and walls of all kinds, and is just as useful for planting among rock-work, sloping banks, covering graves, or in fact any position where a graceful vine or trailer is desired. 22c, 60c.

**HARDY SWEET-SCENTED**  
**Clematis**  
**Paniculata** 22c

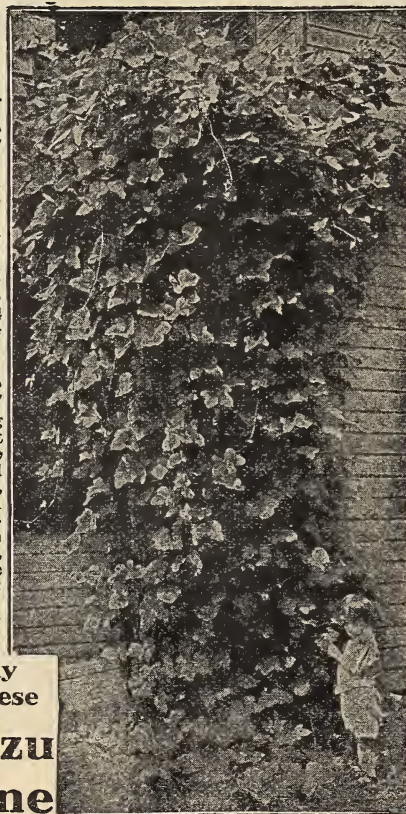
This handsome hardy climber is one of the choicest and most satisfactory climbing flowering plants we grow. The plant is of strong, rapid growth, with small, dense, cheerful green foliage, giving it an elegance possessed by no other climber. Flowers appear in greatest profusion during August and continue late in the fall, are a creamy white color, and most deliciously fragrant. Price, 22c each; 3 for 63c; \$2.10 per dozen. Two-year plants, 40c each; 3 for \$1.14; \$3.84 per dozen. Extra strong plants, 60c each; 3 for \$1.70; \$5.66 per dozen.

**Clematis Coccinea** 48c  
**PURPLISH RED** highly fragrant

A very handsome hardy climber bearing purplish-red or scarlet flowers from June until frost. Broad green leaflets. Well adapted for training on arbors, trellises, etc., and you can do no better if you desire a permanent porch vine. Recommended where a dense shade or screen is wanted. Price, strong plants, 48c each; 3 for \$1.37; \$4.60 per dozen.



**Hardy**  
**Japanese**  
**Kudzu**  
**Vine**



**HARDY JAPANESE KUDZU VINE.**

(Pueraria Thunbergiana, "Jack and the Bean Stalk" Vine)—A vine that will grow anywhere in the best or poorest soil. Remarkable and rapid, often making a growth of 50 to 75 feet in one season. Fragrant purple flowers; invaluable for covering porches, etc. Price, strong 1-yr. plants, 30c each; 3 for 85c; \$2.88 per dozen. Large 2-yr. plants, 45c each; 3 for \$1.28; \$4.32 per dozen. Extra large plants, 65c each; \$6.24 per dozen.

**Mignonette Vine** 12c

Heart-shaped leaves; feathery flowers; delicious fragrance. Here is what you want if a quick growth is desired. Roots, 12c; 3 for 34c; per dozen, \$1.15.

**Large Flowering Clematis** 50c

Clematis require rich, deep soil, good drainage, abundance of water, and should be planted so that the crown of the root is three or four inches beneath the surface of the soil.  
**RED CLEMATIS MD. ED. ANDRE**—A standard red Clematis, being the nearest approach to a scarlet yet produced. Strong plants, 50c each; 3 for \$1.43. Larger plants, \$1.25.  
**WHITE CLEMATIS HENRYII**—Fine, large, creamy-white flowers, strong growing, and one of the best. Strong plants, 50c each; 3 for \$1.43. Larger plants, \$1.25.  
**BLUE CLEMATIS JACKMANII**—The best known variety, with large violet-purple flowers, remarkable for their velvety richness. Strong plants, 50c each; 3 for \$1.43. Larger plants, \$1.25.

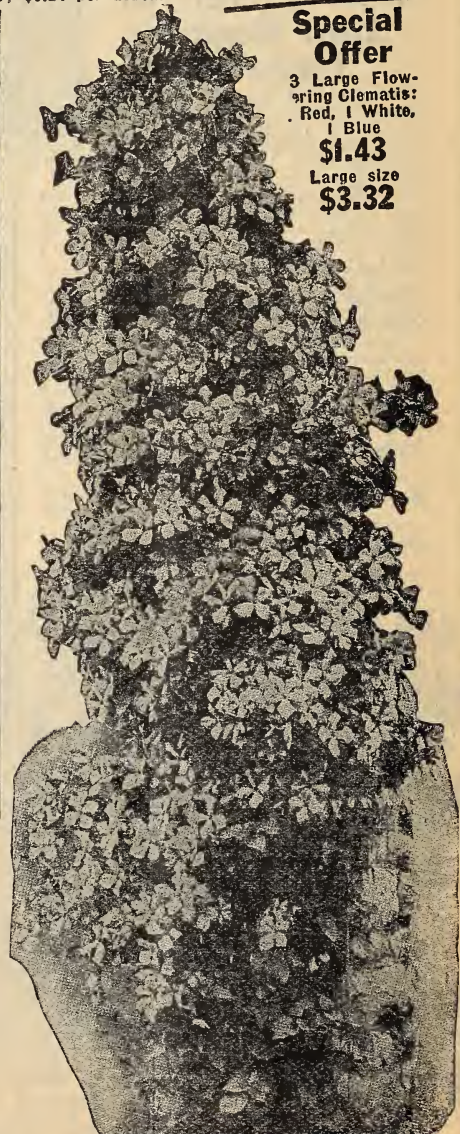
**Coral Honeysuckle** 25c

A high climbing variety. Leaves oval or oblong, bluish-green above, glaucous beneath. Flower scarlet, about two inches long, profuse and very showy; splendid for porches. 25c each; 3 for 72c; \$2.70 per dozen. Larger plants, 50c each.

**BITTERSWEET** 42c

(Celastrus Scandens.) A glossy foliage vine which forms large clusters of beautiful orange-crimson fruits retained all winter. Its graceful sprays of berries make charming winter house decorations. Strong plants, 42c each; 3 for \$1.20; per dozen, \$4.04. Larger plants, 65c each; 3 for \$1.85; \$6.24 per dozen.

**Special Offer**  
 3 Large Flowering Clematis:  
 Red, 1 White,  
 1 Blue  
**\$1.43**  
 Large size  
**\$3.32**



**Velvety Violet-purple Clematis, Jackmanii.**

Maderia or Mignonette Vine, 12c.

# Delphiniums

**Gold Medal Hybrids**—(Hardy. Grows 24 to 60 inches. Plant in sunny location. Blooms June to September.) The Delphinium or Hardy Larkspur gives us one of the most popular bold, attractive and meritorious hardy border plants. They will quickly establish themselves in almost any garden soil. They respond quickly, however, to good care and attention. Their long spikes of different shades of blue flowers as well as white blooms, appear in June, and the flower season covers a long period. "Gold Medal Hybrids" represent selected varieties. Strong plants, 30c each; 3 for 85c; \$2.88 per dozen.



Gold Medal Delphiniums or Large Flowering Larkspur. The most attractive, bold and meritorious flower we have.

## Golden Glow

(Rudbeckia) — A hardy perennial growing 8 ft. high, exquisite double blossoms of brightest golden color, as large as Cactus Dahlias. Strong plants which will bloom freely this season. Nice plants, 19c each; 3 for 54c; per dozen, \$1.82.

19c



Bleeding Heart, \$1.00.

## Bleeding Heart

(Dileytra Spectabilis)—(Hardy. Grows 24 inches. Plant in sun or shade. Blooms in May.) These pretty spring bloomers with their graceful drooping sprays of heart-shaped pink and white flowers are very ornamental, and bloom freely early in the season. Stock very limited. \$1.00 each; 3 for \$2.50.

\$1



Hardy Golden Glow. 19 cents.

**Plumy Bleeding Heart** — A more dwarf variety than the older sort. Perfectly hardy, pink flowers, very desirable. 55c each; 3 for \$1.57.

55c

## Gaillardia Grandiflora 18c

(Grows twenty-four inches, plant in sun or shade. Blooms June to November.) Flowers with center of brownish-red, white petals are shaded into rings of orange, crimson and red. Price, nice plants, 18c each; 3 for 52c; \$1.95 per dozen.



Gaillardia Grandiflora flowers, brownish red, 18c.

## Oriental Poppies

(Grow 36 to 42 inches; plant in sunny location; blooming in May and June.) Unequaled in gorgeous effect. Hardy and grow anywhere.

24c

**RED** (Oriental Fiery scarlet with deep blotch at the base of petals.) Flowers run five inches and over in diameter. 24c each; 3 for 68c; 12 for \$2.30.

**PINK** Apricot-pink, conspicuously blotched crimson. 38c each; 3 for \$1.08; 12 for \$3.65.

**WHITE** Pure satiny-white, with crimson-maroon blotch at base of petals. 50c each; 3 for \$1.43; 12 for \$4.80.

## Tritoma Pfitzerii

Red Hot Poker Plant. Grows two to four feet in sunny location. The flower spikes are of gigantic size, frequently four and one-half feet high, with heads of blooms over twelve inches long, from July to October, of rich orange-scarlet, shading to salmon-rose on edge. 30c each; 3 for 85c; \$2.88 per dozen.

30c



Hardy Oriental Poppy, gorgeous fiery-red flowers. Perfectly hardy. 24c.



## Veronica—Speedwell 24c

Longifolia Subsessilis—Handsone, bright blue flowers on long spikes. Late summer and fall. 2 feet high. 24c each; 3 for 68c; \$2.30 per dozen.

## Hardy Sweet Pea—35c

Free flowering, extremely attractive, looks like the regular sweet pea, but lives for years and gets better the older it gets. Recommended for porches, trellises, etc. A single plant when well established will make a great mass of vines.

**PINK BEAUTY**—A pure pink flower, quite popular. Nice plants, 35c each; 3 for \$1.00; \$3.36 per dozen.

**CRIMSON KING**—Crimson-red flowers in large clusters. Tall grower. Price, 35c each; 3 for \$1.00; \$3.36 per dozen.

**WHITE PEARL**—Pure white in color. Blooms entire season. Nice plants, 35c each; 3 for \$1.00; \$3.36 per dozen.

# Flower Beds That Make Our Yards Attractive



**Special Offer** Bed like illustration 8 feet in diameter, planted with 12 red flowering and mammoth red foliage Cannas for center; next outer planting; 15 giant leaved or Elephant Ear Caladiums; and border planting of 25 Pendacedum or Plume Grass, 52 plants in all, by express, safe delivery guaranteed—\$6.95. (Set plants 12 inches apart each way.) 5-ft. Bed—15 Pendacedum, 9 Elephant Ear Caladiums, 4 red-leaved Cannas for center, 23 plants in all, \$3.68.

**Special Offer Giant Flowering Heliotropes** 12 for \$1.12—Heliotropes are great favorites for bedding. Their delicious fragrance gives them a foremost position among fragrant flowers; the plants bear immense blooms, and in a color that is rare among bedding plants. 12 for \$1.12; 20 for \$1.60; 25 for \$2.00; 39 for \$3.12; 50 for \$4.00; 65 for \$5.20.

## Mammoth Verbenas 12 for 85c

**Special Offer** In every respect is one of our most desirable bedding plants, blooms freely and constantly and the various colors and shades of flowers are almost without limit. Trim slightly in the early stages of growth. 12 for \$ .85 25 for \$1.50 50 for \$3.00  
20 for 1.20 39 for 2.34 65 for 3.90

## Bedding Geraniums 12 for \$1.20

**Special Offer** For constant blooming and brilliant coloring there is no plant better adapted for bedding purposes. Easily grown. We offer all colors ranging from the darkest red through the different shades of pink, beautiful salmon, and white. 12 for \$1.20 25 for \$2.00 50 for \$4.00  
20 for 1.60 39 for 3.12 65 for 5.20

## Brilliant Salvias 12 for \$1.19

**Special Offer** They grow in bush form two to two and one-half feet high. The foliage is dense, forming a mound of vivid green, surmounted by blazing red flowers. 12 for \$1.19 25 for \$2.00 50 for \$4.00  
20 for 1.60 39 for 3.12 65 for 5.20

## Double Petunias 12 for \$1.25

**Special Offer** The much improved Double Petunia, blooming early and continuing until frost, is unsurpassed for a bedding or border plant. There is great richness in color, making an unusually attractive bed. 12 for \$1.25 25 for \$2.13 50 for \$4.25  
20 for 1.70 39 for 3.32 65 for 5.53

**Border Plants** If you desire border plants for beds, the number required would be as follows for (3 ft. bed, 9 plants.) (4 ft. bed, 12 plants.) (5 ft. bed, 15 plants.) (6 ft. bed, 18 plants.) (7 ft. bed, 21 plants.) (8 ft. bed, 24 plants.) Border plants for any of above beds are extra; but we will allow 100 rates on border plants as given below.

Ageratum . . . . . \$8.00 per 100	Althermantheras . \$7.00 per 100
Alyssum . . . . . 7.00 per 100	Heliotrope . . . . . 8.00 per 100
Achyranthus . . . . 7.00 per 100	Dustymiller . . . . 6.50 per 100
Mme. Salleroi Geraniums . . . . \$12.00 per 100	

**Special Offer Coleus Bed** Coleus are acknowledged the standard bedding plant. A bed 6½ feet in diameter, (Coleus set 8 inches apart in the circle and the circles 8 inches apart in the bed), would require 95 plants. Price, \$5.62. Same planting bed 4 feet in diameter, 37 plants, price, \$2.31.

**Special Offer Tuberos Begonias** Handsomest of our summer flowering plants, flowering throughout the summer in any nook or corner. Does well in complete shade. Nothing can exceed their brilliancy of colors or gorgeousness of effect enmassed in beds or borders. 12 Bulbs, for bed 3 ft. in diameter \$3.00. 20 Bulbs for bed 5 ft. in diameter \$4.50.

## Hardy Chrysanthemums 12 for \$1.44

**Special Offer** No other plant holds the same value for bedding or long borders on account of the profusion of bloom late in the summer and early fall, after many of the summer blooming flowers are past. Colors; Red, Yellow, Pink and White. 12 for \$1.44 25 for \$2.75 50 for \$5.50  
20 for 2.20 39 for 4.29 65 for 7.15

## Single Petunias 12 for 93c

**Special Offer** For outdoor decoration there are few plants that excel the single Petunia. They commence blooming when quite small, and when at their best display a gorgeous effect of flower and foliage. We offer the finest mixture for bedding purposes. 12 for \$ .93 25 for \$1.50 50 for \$3.00  
20 for 1.20 39 for 2.34 65 for 3.90

## Bedding Asters 12 for \$1.12

**Special Offer** The New Giant flowering Asters possess the quality of a satisfactory and constant blooming bedding plant, growing two and one-half feet high and bearing their large, Chrysanthemum-like flowers. 12 for \$1.12 25 for \$2.00 50 for \$4.00  
20 for 1.60 39 for 3.12 65 for 5.20

## Gorgeous Cannas 12 for \$1.80

**Special Offer** Cannas grow rapidly and bloom luxuriantly, and possess the quality of constant blooming. We offer Red and Green foliage varieties in pink, red, yellow, or variegated. 12 for \$1.80 25 for \$3.00 50 for \$6.00  
20 for 2.40 39 for 4.68 65 for 7.80

## Beautiful Gladiolus 12 for 45c

**Special Offer** We offer large-flowering and fancy orchid flowering, mixed Gladiolus which are easy to grow and produce gorgeous blooms. Our mixed bulbs contain the old dependable varieties together with some of the most choice new named sorts. 12 for \$ .45 25 for \$ .75 50 for \$1.50  
20 for .60 39 for 1.17 65 for 1.95

### NUMBER OF PLANTS REQUIRED FOR BEDS OF DIFFERENT SIZES

(3 foot bed, 12 plants.) (4 foot bed, 20 plants.) (5 foot bed, 25 plants.) (6 foot bed, 39 plants.) (7 foot bed, 50 plants.)  
(8 foot bed, 65 plants.) Prices are given to correspond with the above.

Mrs. J. D. B., Georgia: "Your plants, seeds and bulbs are the very highest prized by one who has bought from you years ago."

# Vining Plants

For Hanging Baskets  
Suspended Pots  
Boxes, etc.

## Climbing Firecracker Plant 23c

(Mannettia Bicolor)

Can be grown in the house or garden equally well. In the house it can be trained about a window, forming a wreath of bloom summer and winter. Flowers are intense scarlet, shading into flame, tipped with bright golden-yellow, and are covered with a thick scarlet moss. 23c each; 3 for 65c; 6 for \$1.24; 12 for \$2.20.

## Cigar Plant 19c

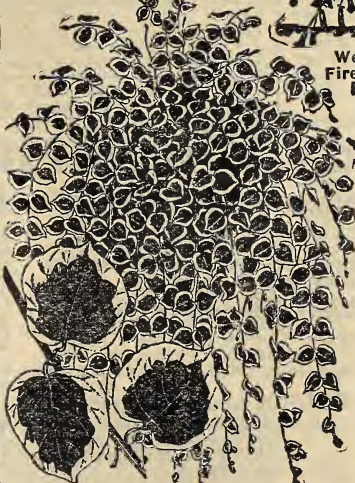
(Cuphea Platycentra)—Fine basket plant with scarlet, pendulous flowers; neat, compact habit. The plants are always in bloom when given proper care. It grows into a bushy plant about fifteen inches high and makes an elegant appearance for baskets or bedding. Price, 19c each; 3 for 48c; 6 for 94c; \$1.55 per doz.

## Coleus Trailing Queen

Excellent variety for hanging baskets, vases and plant boxes, etc., on account of its trailing habit of ferny crimson surrounded with deep maroon; deeply serrated edges of bright olive-green. Nice plants, 10c each; 3 for 28c.



Weeping Firecracker Plant, 22c.

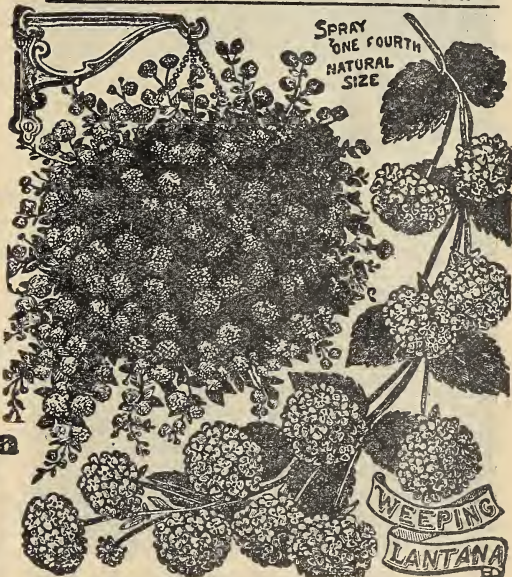


Parcels Post  
Makes a Greenhouse  
at your  
Door

Cigar plant. Never out of flower the year around. No better house or basket plant to be had.

## Weeping Fire Cracker Plant 22c

Scarlet Fountain Plant  
Russelia Elegantisima—A very striking semi-trailing plant, especially adapted for hanging baskets, vases, window-boxes, etc. The plant is of slender, arching, drooping habit, literally covered with brilliant coral-red buds and flowers, the full size being three-fourths to seven-eighths inches long. 22c each; 3 for 63c; 6 for \$1.19; 12 for \$2.10.



SPRAY ONE FOURTH NATURAL SIZE

WEeping LANTANA

A wonderful Porch box or Window box or Hanging Basket Plant, 19c.



Climbing Firecracker Plant, 23c.

## English Ivy 19c

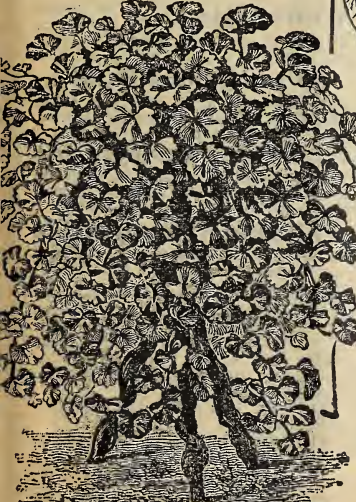
No plant can be put to more uses than this. Its dark green distinctly veined evergreen foliage makes it an incomparable hanging basket, porch box, or vining house plant. Also used for covering walls, graves, etc. 19c each; 3 for 54c.

## Parlor Ivy 14c

Seneio Scandens. A strong growing climbing vine with bright green foliage. Especially suitable for indoor hanging baskets, boxes, trellis work, or covering walls in conservatories. Price, 14c each; 3 for 40c; 6 for 76c; \$1.34 per dozen.

## Variegated Parlor Ivy 22c

(Glechoma Hederacea).—The foliage of this charming novelty is bright, marked with pure white, and has a refreshing fragrance similar to mint. Price, 22c each; 3 for 63c; 6 for \$1.19; 12 for \$2.10.



Variegated Parlor Ivy, 22c.

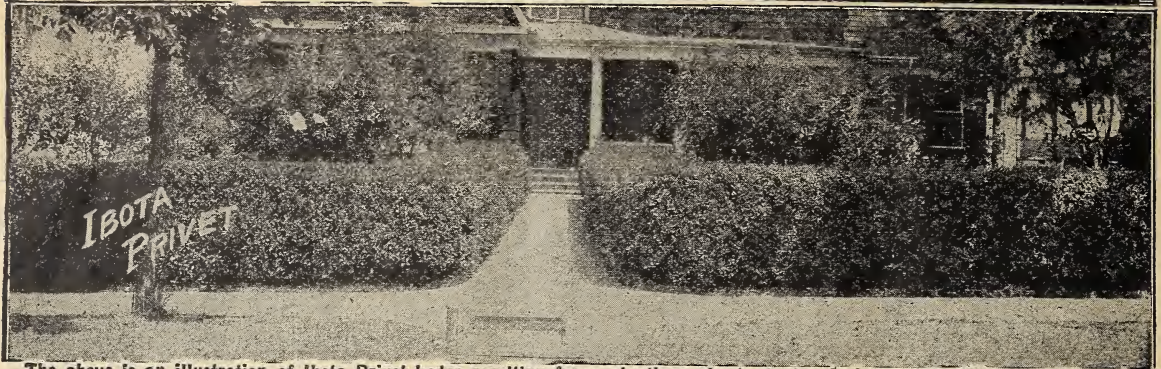
## The popular variegated Vinca. Trailing Vinca 14c

(Variegated Periwinkle)—A beautiful variegated trailing vine admirably adapted for hanging baskets and vases. The leaves are a glossy green, broadly margined, a creamy-white; flowers blue. Most popular vase plant grown. 14c each; 3 for 40c; 12 for \$1.34. Large plants, 30c each; 3 for 75c; 12 for \$2.40. Larger, 44c.

## Weeping Lantana 19c

New Weeping Plant of Great Beauty  
Graceful, drooping habit, grows very rapidly and blooms continually summer and winter, producing large clusters of flowers of lilac or rosy-pink. Foliage a beautiful dark green. Easily grown and gives wonderful satisfaction. Strong plants, 19c each; 3 for 48c; 12 for \$1.55.

# POPULAR HARDY HEDGE PLANTS



The above is an illustration of Ibota Privet hedge resulting from plantings six to twelve inches apart. When not trimmed, the appearance of growth is spreading, somewhat like the Japan Barberry, (described below) California Privet is very similar.

## California Privet

"Cheaper than Fences, far more beautiful."

Of all hedge plants this is the most popular, and more of it is planted than all others combined. It is of free growth and succeeds under the most adverse conditions, such as under dense shade of trees, where other plants would not exist. Its foliage is a rich, dark green nearly evergreen, remaining on the plant until mid-winter. Nice plants, 75c per dozen; \$5.00 per 100. Stronger plants, \$1.00 per dozen; \$7.50 per 100. Two-year plants, \$1.20 per dozen; \$9.00 per 100. Large two-year plants, \$1.50 per dozen; \$12.00 per 100.

## Ibota Privet

"The Most Valuable of the Privet Family."

This variety of Privet is more spreading than the California, and it is probably the variety of all the varieties. It is of dense growth, good green foliage, grows well in all soils. It can be trimmed as desired and will give the straight line hedge or the spreading type as would be represented by its natural growth. It is becoming more popular every year. Highly recommended. Nice plants, \$1.00 per dozen; \$7.50 per 100. Stronger plants, \$1.25 per dozen; \$10.00 per 100. Two-year plants, \$1.75 per dozen; \$14.00 per 100. Large two-year plants, \$2.50 per dozen; \$20.00 per 100.

## Japan Barberry

"Grows anywhere, branching gracefully; striking color."

(Berberis Thunbergii.) Where a dwarf deciduous hedge is wanted, nothing equals this beautiful Barberry. Requires but little pruning to keep in shape. The leaves are small, light green, and towards fall assume rich, brilliant colors, the fruit or berries becoming scarlet. Absolutely hardy in all parts of the country. Nice plants, \$1.10 per dozen; \$8.00 per 100. Stronger plants, \$1.50 per dozen; \$12.00 per 100. Two-year plants, \$2.00 per dozen; \$15.00 per 100. Large two-year plants, \$4.50 per dozen; \$35.00 per 100. Selected plants, 50c to \$1.00.

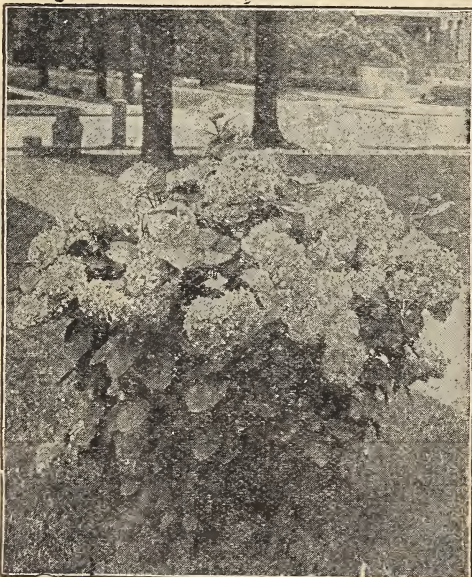
## Amoor River Privet

This Chinese variety, very hardy, has dark green leaves, which persist almost through the winter. Where a stiff, upright hedge is wanted nothing surpasses the Amoor. To add to its attractiveness in foliage, it bears erect panicles of beautiful, white flowers in June, followed by black berries. Price, nice plants, \$1.00 per dozen; \$7.50 per 100. Stronger plants, \$1.35 per dozen; \$10.00 per 100. Two-yr. plants, \$2.00 per dozen; \$15.00 per 100.

We issue a special leaflet on "Different Kinds of Hedges and Hedge Planting," which will be mailed on request.

# First-Class Hardy Flowering Shrubs

**Snowberry Alba** Flowers pure white, white berries. Grows 3 to 5 feet. Field-grown plants, 35c each; extra large plants, 75c.  
**Snowberry Rubra** (Indian Currant.) Flowers greenish red, berries purplish red. 25c each; large plants, 60c each.



Hydrangea Arborescens (Hills of Snow). One of the Most Valuable Shrubs Grown. 20c; 35c; 65c; 85c; \$1.25 each.

**Mock Orange** (Syringa Philadelphiae.) Hardy shrub, grows 6 to 8 feet. Creamy-white, fragrant flowers. Single, 35c each; larger plants, 50c; extra large, \$1.00 each.

**White Buddleya** White flowered winter Lilac. Flowers make their appearance in late fall. 35c each; large field-grown plants, 75c and \$1.00 ea.

**Golden Leaved Syringa** (Philadelphus Mock Orange.) One of the best golden-leaved shrubs. Very effective. 25c each; large field-grown plants, 65c each.

**Japan Quince** (Cydonia Japonica.) Brilliant scarlet flowers. One of the first bloomers. 35c each; large plants, 65c each.

**Eyonymus** (Alatus, Corky Bark.) Flowers in May and June. Foliage changes to rose color in fall. 60c each.

**Golden Bells** (Fortunei.) Vigorous, upright growth, arching branches, flowers golden yellow. One of the first shrubs to bloom. 35c each; large field-grown plants, 65c each.

**Golden Bells** (Viridissima.) Twisted golden yellow flowers. Large shrub, with erect green barked branches. 35c each; large field-grown plants, 65c.

**Silver Lace Vine** (Polygonum Auberterii.) Hardy climber, producing during summer and fall sprays of white flowers. Strong plants, \$1.25 each.

**Hydrangea Arborescens** (Hills of Snow.) 4 to 8 feet. Blossoms very large of pure white. Blooms through early June until August. 20c each; large plants, 35c each; larger plants, 65c each; strong field-grown plants, two and three years old, 85c and \$1.25 each.

**Lilac Purple** Best known of old-fashioned shrubs. Purple flowers, wonderfully fragrant. 35c each; large plants, 75c each.

**White Lilac** Same as purple variety, but with white flowers. 35c each; large plants, 75c each.

**Spirea Callosa Rubra** Exceptional for front of porch. Flowers pink. Long flowering season. 45c each; larger plants, \$1.00 each.

**Pink Bush Honeysuckle** 5 to 10 feet. Beautiful blossoms in spring, followed by shining berries. 35c each; field-grown plants, 75c.

**White Bush Honeysuckle** Identical with pink variety, excepting flowers are white. 35c each; field-grown plants, 75c each.

**Althea** (Rose of Sharon) — Very desirable; late summer flowering. 40c each; extra large plants, 75c each.

**ALTHEA BOULE DE FEU** — The prettiest double red.

**ALTHEA JEAN DE ARC** — Pure white, double.

**ALTHEA CERULEAN BLUE** — Double blue.

### SPECIAL OFFER

Red, White and Blue Althea, as described above, \$1.10.

# Hydrangea Paniculata

(Paniculata)—It attains a height of four to eight feet and is perfectly hardy in all parts of the country. The flowers are white, borne on immense pyramidal panicles nearly a foot in length. It commences flowering in July and continues until November. The plant should be cut back every spring at least one-half of the last season's growth, as the flowers are borne on new wood and are much finer when the plants are treated this way. This is the finest flowering shrub for cemetery planting we know of. (See illustration.) 35c each; 3 for \$1.00; per dozen, \$3.36. Larger plants, 50c each; 3 for \$1.43; per dozen, \$4.80. Field-grown plants, by express only, 75c ea.; 3 for \$2.14; doz., \$7.20. Extra large plants, \$1.00.



**Weigela Rosea** Flowers pink. 35c each; large plants, 50c; extra large, \$1.00.

**Weigela Rosea Variegata** Foliage yellow and green variegation. 35c; large plants, 50c; extra large, \$1.00.

**Oak-Leaved Hydrangea** Oak-leaf shaped foliage. Distinct novelty. \$2.50 each.

**Pink Flowering Almond** Double rose-colored flowers. Large field-grown plants, by express only, \$1.00.

**White Flowering Almond** Same as pink, but bearing white flowers. Large field-grown plants, by express only, \$1.00.

**Yellow Twigged Dogwood** Yellow branches make it very effective. 35c each; larger plants, 60c.

**Red Twigged Dogwood** Blood-red branches, flowers white. 35c each; large plants, 60 cents.

## Popular Spireas—35c

**Bridal Wreath** (Spirea Van Houttei.) The grandest of all Spireas, a complete fountain of pure white, blooms in May and June. Its riotous flowering makes it very striking. Requires no care to speak of and lasts a life time. 20c each; 3 for 57c; per doz., \$2.00; 2-yr. field-grown plants, 35c each; 3 for \$1.00; per doz., \$3.36. Larger plants, 50c each; 3 for \$1.43; per doz., \$4.80. Heavy 3-yr. plants, 75c each; 3 for \$2.14; per doz., \$7.20. Extra large specimen plants, \$1.00 and \$1.50 each.

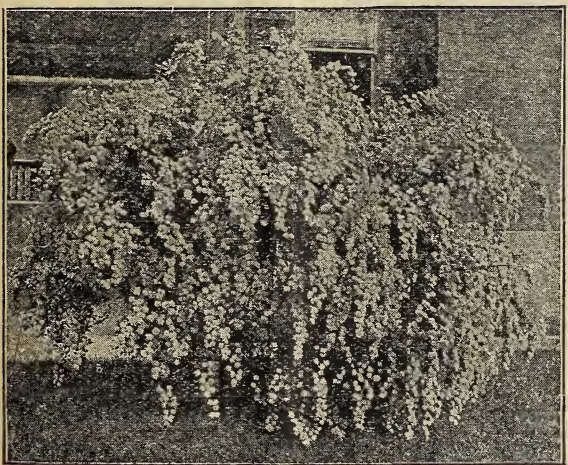
**Spirea Thunbergii** Dense feathery bush, high, the foliage changing to bright red and orange. Flowers pure white. Price, 35c each; 3 for \$1.00. 75c each; 3 for \$2.14.

**Spirea Prunifolia** (Flore Pleno)—(4 to 6 feet, flowers in spring.) Handsome, arching form, double showy white flowers. Price, 35c each; 3 for \$1.00 per dozen, \$3.36. Larger plants, by express only, 75c each; 3 for \$2.14; per dozen, \$7.20.

**Spirea Billardii** Deep rose-colored flowers. 35c; large plants, by express only, 50c; extra large plants, 75c.

**Butterfly Bush** (Summer Lilac) Free flowering. Blooms all summer. Attracts unusual attention. A deciduous bush, dying down in the winter. The blooms come from the new wood produced through the summer. Produces long panicles of lilac-colored flowers of miniature size. Nice plants, 20c each; 2-yr plants, 40c each; large field-grown plants, 75c each; extra large plants, \$1.00.

**Smoke Bush** (Purple Fringe.) — Long feathery flower stalks. 35c; larger plants, 75c.



Spirea Van Houttei (Bridal Wreath). Not excelled by any shrub grown; exceptionally graceful in growth, wonderfully striking in flower. 20c; 35c; 50c; 75c; \$1.00 and \$1.50.

Hardy Hydrangea Paniculata, admirably adapted for border or cemetery planting. No better shrub grown. 35c, 50c, 75c, and \$1.00 each.

**Sweet Scented Shrub** (Calycanthus Floridus)—(Grows 5 to 8 feet, flowers in spring.) The highly prized, strawberry scented flowers, when fully open, are about the size of a silver dollar, of a mahogany-brown color. Perfectly hardy. 35c each; 3 for \$1.00; per dozen, \$3.36. Large field-grown plants, by express only, 75c each; 3 for \$2.14; per dozen, \$7.20.

**Tamarix Africana** Delicate pink flowers; feathery foliage. 35c; large plants, 60c.

**Purple Persian Lilac** Larger florets than Common Lilac. Flowers purple. 60c each.

**Common Snowball** Handsome flowers of pure white. 35c each; larger plants, 70c.

**Deutzia Candidissima** Pure white double flowers. 35c each; field-grown plants, 75c.

**Deutzia Pride of Rochester** White flowers. 35c ea.; field-grown plants, 75c and \$1.25.

**Deutzia Crenata Rosea Plena** Flowers pink. 35c; field-grown, 75c.

**Prunus Pisardi** (Purple-Leaved Plum)—Small, pinkish-white flowers. \$1.00.

**Prunus Triloba** (Double-Flowered Plum)—Double light pink blossoms. \$1.00.

**Crimson Weigela** Flowers deep carmine red, produced in great profusion. 50c each; large field-grown plants, 75c each.

**Dwarf Boxwood** Fine plants for bordering, ornamental or decorative work. Foliage deepest green, very effective. Nice plants, about 6 inches high, 20c each; 3 for 57c; 6 for \$1.08; \$1.92 per dozen. Stronger plants, \$1.00 each; 3 for \$2.85; larger plants, \$2.00 each; 3 for \$5.70; selected plants, \$3.50 to \$5.00 each. Pyramid or globe shaped.

**Desmodium** Stems clustered, gracefully arching, 2 to 4 feet tall, literally loaded with drooping racemes of rose-purple flowers. Leaves rich green, compound, consisting of three elliptic leaflets. This shrub is a native of Japan. Should be cut to the ground each spring before the new growth starts. Field-grown plants, 40c each; 3 for \$1.14; per dozen, \$3.84. Extra large plants, 65c each; 3 for \$1.85; per dozen, \$6.24.

**New Philadelphia, Virginal** A wonderful, new grand sweet-scented shrub will take first place among white flowering shrubs. Should have been called the Snowstorm Philadelphia for its large double crested sweet-scented flowers make it a plant of solid white. Wonderful for specimen, shrubbery or hedges, blooming early and late. Grand shrub, highly recommended. 75c each; 3 for \$2.14; \$7.20 per dozen. Extra large plants, \$1.25.

**Spirea Anthony Waterer** 35c (Grows 2 to 3 feet, flowers in summer.) A fine dwarf Spirea with dark crimson flowers; one of the finest. 35c each; 3 for \$1.00; per doz., \$3.36. Large field-grown plants, by express only, 75c each; 3 for \$2.14; per dozen, \$7.20.

Mrs. J. R. Saul, N. Y., writes: "Roses and plants you shipped me have been the envy of all my friends. The young plants have done well, only lost one out of forty-five." (35)

# SOMETHING FOR EVERY GARDEN EVERYTHING FOR SOME GARDENS

On this page we list and give prices and short descriptions of a large list of plants so well known that they do not call for full descriptions and illustrations. This enables us to give through this Catalog a complete list of the large and varied stock we handle.

## TEA-HYBRID TEA EVERBLOOMING ROSES

Crimson Queen—24c; 65c; \$1.  
Mrs. H. Winnett, Red—25c; 70c.  
Eugene Bouillet—24c; 65c; \$1.  
C. Souper—26c; 75c; \$1.  
Segond Weber—24c; 70c; \$1.  
Lady Battersea—22c; 65c; \$1.  
Red Columbia—60c; \$2.  
Lady Plymouth—24c; 65c; \$1.  
F. Pemberton—26c; 70c; \$1.  
La Tosca, Pink—26c; 75c; \$1.25.  
Premier, Pink—32c; 60c; \$1.25.  
Francis Scott Key—24c; 65c.  
Alexander Hill Gray—22c; 55c.  
Papa Gontier—18c; 55c.  
Sov. Malmaison—18c; 56c.  
Antoine Rivoire—24c; 65c.  
Helen Good, Pink—22c; 60c.  
The Bride, White—18c; 50c.  
Marie Van Houtte—18c; 50c.  
Safrano, Apricot—18c; 45c.  
Isabella Sprunt—18c; 50c.  
Bessie Brown, Blush—25c; 60c.  
Red Radiance—25c; 60c; \$1.25.  
Caroline Testout—25c; 65c; \$1.  
Lady Ashtown, Pink—22c; 60c; \$1.

Marie Guillot, White—18c; 50c.  
National Emblem—26c; 75c; \$1.  
Mlle. Francisca Kruger—18c; 50c.  
Hoosier Beauty, Scarlet—25c; 65c.  
Marie Guillot, White—18c; 50c.  
D. de Brabant—22c; 55c; \$1.  
Burbank, Pink—18c; 50c.  
Bridesmaid—18c; 50c; \$1.  
Killarney Bri.—30c; 60c; \$1.25.  
Mrs. A. Ward—\$1.25; 65c; 25c.  
Crusader—\$1.35; 75c; 30c.  
My Maryland—\$1.25; 65c; 25c.  
Lady Alice Stanley—\$1.25; 70c.  
K. A. Victoria—\$1.25; 60c.  
Lady Pierre—\$1.35; 70c; 30c.  
Rose Premier—\$1.25; 60c; 32c.  
Rhea Reid—\$1.25; 60c; 24c.  
Mme. Butterfly—\$1.35; 75c; 28c.  
Hoosier Beauty—\$1.25; 65c; 24c.  
Amer. Legion—35c; 75c; \$1.25.  
Angelus, White—50c; \$1.  
La France—24c; 60c.  
Md. C. Martinette—28c; 75c; \$1.25.

Wm. Shean, Pink—24c; 60c; \$1.  
Chas. K. Douglas—60c; \$2.  
Lady Ursula—24c; 75c; \$1.25.  
Gorgeous—35c; 75c; \$1.25.  
Mrs. George Sawyer—22c; 65c.  
Robin Hood—26c; 70c; \$1.  
Queen's Scarlet—18c; 56c; \$1.  
Melody—26c; 65c; \$1.  
Blumenschmidt—18c; 55c; 85c.  
Etoile de France—24c; 65c; \$1.  
Pink Druschki—27c; 75c; \$1.  
Chateau Vougeot—26c; 70c; \$1.25.

Yellow Kaiserine—24c; 70c; \$1.  
Etoile de Lyon—22c; 65c; \$1.  
Helen Gould—22c; 65c; \$1.  
Md. J. Guillemont—20c; 50c; \$1.  
Pink Killarney—24c; 75c; \$1.25.  
President Taft—24c; 60c; \$1.  
Souv. de Notting—32c; 65c.  
Mrs. Charles Bell—30c; \$1.  
Wellesley—24c; 65c; \$1.  
Grass Teplitz—22c; 60c; \$1.  
Perle Des Jardins—25c; 70c.  
Madison—24c; 65c; \$1.  
Golden Gate—24c; 60c; \$1.

## HARDY MONTHLY BLOOMING BUSH ROSES

Baby Doll, variegated—26c; 65c.  
White Baby Rambler—20c; 50c.  
Jessie, Crimson—22c; 55c.  
Baby Rambler, red—22c; 55c.  
Orleans, Cerise—20c; 60c.  
Ellen Poulson, Pink—24c; 65c.  
George Elger, Yellow—24c; 65c.  
Erna Teschendorff—22c; 60c.  
Grass An Aachen—24c; 60c.

## HARDY JUNE ROSES

Soleil d'Or, Orange—85c.  
Gloire Bruxelles—28c; 75c; \$1.  
His Majesty—26c; 60c; \$1.25.  
Black Prince—24c; 65c; \$1.25.

P. C. de Rohan—24c; 60c; \$1.25.  
J. B. Clarke—24c; 60c; \$1.15.  
Madame Masson—25c; 65c; \$1.  
Pink Druschki—27c; 75c; \$1.  
Captain Christy—25c; 65c; \$1.  
Harrison's Yellow—\$1.  
Jubilee—26c; 85c.  
F. K. Druschki—35c; 70c; \$1.25.  
Gen. Jacqueminot—25c; 65c; \$1.10.

Anna de Diesbach—24c; 65c; \$1.  
Marshall P. Wilder—24c; 65c; \$1.  
Black Prince—24c; 65c; \$1.25.  
Glorie Lyonnaise—24c; 65c; \$1.  
Mme. Chas. Wood—24c; 65c; \$1.10.

Md. Planter—22c; 55c; \$1.  
Paul Neyron—25c; 65c; \$1.

## RUGOSA ROSES

Rugosa Alba, White—75c.  
Rugosa Rubra, Crimson—75c.  
Sir T. Lipton—24c; 60c; \$1.

## HARDY MOSS ROSES

Crimson Globe—25c; 60c.  
Blanche Moreau, White—25c; 60c.  
Henry Martin, Red—28c; 75c.

## HARDY MEMORIAL ROSES

Hiawatha, Scarlet—20c; 60c.  
Rosa Wichuraiana, White—20c; 60c.

## HARDY HEDGE ROSES

Clothilde Souper, Pink—22c; 48c.  
F. Meyer—25c; 60c; \$1.  
New Century—24c; 60c; \$1.

## CLIMBING TEA ROSES

Cl. Perle Des Jardines—26c; 75c.  
Cl. Etoile De France—24c; 65c.  
Cl. Guillot, White—22c; 45c.  
Cl. Pink Cochet—26c; 75c.  
Cl. Testout, Rose—24c; 75c.  
Cl. Grass An Teplitz—26c; 55c.  
Cl. R. Marie Henriette—22c; 50c.  
Cl. Pillar of Gold—24c; 65c.  
Cl. Meteor, Red—24c; 50c.  
Cl. White Cochet—22c; 60c.  
Cl. Helen Gould, Red—22c; 55c.  
Cl. Lady Ashtown—26c; 55c.  
Cl. Ophelia—32c; 75c.  
Cl. Malmaison, Flesh—23c; 55c.

## HARDY CLIMBING ROSES

Lady Gay, Pink—24c; 60c.  
Philadelphia—22c; 55c; \$1.  
Rosary—26c; 55c; 75c; \$1.  
Bess Lovett—26c; 60c; \$1.  
Mary Lovett—26c; 60c; \$1.  
Paul's Scarlet Climber—24c; 60c.  
Silver Moon—22c; 55c; \$1.  
White D. Perkins—22c; 50c.

## CANNAS

King Humbert, Orange—24c.  
Hungaria, Pink—25c.  
Wyoming, Orange—20c.  
Wintzer's Colossal, Orange—25c.  
Gigantea, Red—22c; 3 for 63c.  
J. D. Eisle, Scarlet—20c.  
Mme. Crozy, Scarlet—20c.  
Fireflame, Scarlet—19c.  
Firebird, Red—30c; 3 for 85c.  
Buttercup, Yellow—25c.  
Venus, Rose and Cream—22c.  
Louisiana, Scarlet—19c.  
Richard Wallace, Yellow—20c.  
Mt. Etna, Orange and Red—24c.  
The President, Scarlet—32c.

## EXHIBITION CHRYSANTHE- MUMS

Pacific Supreme—24c.  
Chrysolora, Yellow—20c.  
Black Hawk, Crimson—26c.  
White Bonaffon—22c.  
Major Bonaffon, Yellow—24c.  
White Chieftain—24c.  
White Turner—25c.  
Ivory, White—19c.  
Col. Appleton, Yellow—22c.  
Red Seidewitz—26c.  
Golden Glow, Yellow—22c.  
Early Frost, White—20c.

## COLEUS

10c; 3 for 25c; 12 for 85c.  
Sensation—Crimson Maroon.  
Verschaffeltii—Maroon-Yellow.  
Yellow Bird—Golden-Yellow.  
Empress of India—Light Maroon.  
Duneira—Variegated Crimson.  
Queen of the West—Variegated.  
Nero—Nearly Black.  
Trailing Queen—Cherry Red.  
Beckwith Gem—Dark Maroon.  
Grace Adams—Green and Red.  
Marie Levering—Splashed Crimson.

## DAHLIAS

Prima Donna, Pink—40c.  
Mary Pickford, Primrose—60c.  
Queen Mary, Pink—50c.  
Snowdrift, White—\$2.  
Breeze Lawn, Red—\$1.50.  
Insulinde, Orange—\$3.50.  
Dream, Apricot Pink—75c.  
Attraction, Lavender—\$1.  
Rube Girl, Coral Red—\$1.50.  
Bianca, Pink—\$1.25.  
Crystal, Pink—75c.  
Oregon Beauty—Red, 40c.  
Millionaire, Lavender—\$2.  
Mrs. M. W. Crowell—55c.  
Mrs. Bowen Tufts, Purple—50c.  
Madonna, White—65c.  
Zepelin, Mauve—65c.  
Golden West, Yellow—60c.

## GERANIUMS

Double Geraniums  
John Doyle, Scarlet—22c.  
Jean Viaud, Rose Pink—24c.  
S. A. Nutt, Dark Red—24c.  
Dutchess De Montmort—26c.  
Alphonse Ricard, Orange—20c.  
Marquis de Castelaire—24c.  
Mrs. Lawrence, Salmon—20c.  
La Favorite, White—18c.  
Cardinal, Scarlet—24c.  
Miss Frances Willard—22c.  
Beaute Poitevine, Salmon—24c.  
Mme. Barney, Pink—22c.  
Buchner, White—20c.  
Leopold Bouville, Carmine—30c.

## Geranium Novelties

Mrs. Pollock, Orange—30c.  
Fanny, Salmon Pink—36c.  
Cactus Geranium, Scarlet—50c.  
Bronze Bedder, Scarlet—28c.

## MISCELLANEOUS PLANTS

Dusty Miller—10c.  
Single Petunias—12c.  
Ageratum—12c.  
Strawberry Geranium—16c.  
Lobelia Gracilis—14c.  
Painted Leaved Sanchezia—34c.  
Little Gem Feverfew—16c.  
Magie Lily—88c.  
Giant Hybrid Amaryllis—60c.  
Christmas Cactus—35c.  
Begonia Speculata—35c.  
Blue Moonflower—24c.  
Calendulas—20c.  
Impatiens Sultani—22c.  
Variegated Abutilon—24c.  
Chinese Paper Plant—25c.  
Browallia—22c.  
Comet Flower—26c.  
Abutilon Eclipse—24c.  
Cape Jasmine—40c.  
Lemon Verbena—19c.  
Oxalis—26c.  
White Moonflower—24c.  
Fountain of Gold—24c.  
Swainsonia—22c.  
Crown of Thorns—26c.

## VERBENAS

Pink, 12c; White, 12c; Variegated  
12c; Blue, 12c; Crimson, 12c.  
SALVIAS  
Blue Salvia—15c.  
St. Louis—15c.  
White Salvia—15c.  
Spotted Salvia—15c.  
Splendens Bonfire—15c.  
Americana—15c.

## SNAPDRAGON

Red Snapdragon—16c.  
White Snapdragon—16c.  
Bronze Snapdragon—16c.  
Pink Snapdragon—16c.  
Yellow Snapdragon—16c.

## PALMS, DECORATIVE PLANTS

Kentia Fosteriana—40c; 85c;  
\$1.50.  
Cocos Palm—75c.  
Areca Lutescens—65c; \$1; \$1.50.  
Kentia Palm—40c; 75c; \$1.50.  
Ostrich Plume Palm—\$2.  
Pandanus Veitchii—\$1.  
Draena Terminalis—50c; \$1.  
Bird Nest Fern—45c; 75c.

## SUMMERING FLOWERING BULBS

Lilium Auratum, White—42c.  
Lilium Album, White—39c.  
Lilium Rubrum, Pink—42c.  
Lilium Melpomene, Orange—42c.  
Lilium Elegans, Red—40c.  
Lilium Tigrinum, Orange—39c.  
Lilium Speciosum Roseum—40c.  
Lilium Henryi, Yellow—38c.  
Lilium Candidum, White—38c.  
Hyacinthus Candicans—16c.  
Amaryllis Johnsonii—85c.  
Blue Lily of Nile—60c.  
Magic Lily, Pink—88c.  
Hybrid Amaryllis—60c.

## HARDY VINES

HONEYSUCKLES  
Evergreen—20c; 45c.  
Golden-leaved—20c; 45c.  
Variegated—22c; 45c.  
Japanese—20c; 40c.  
Trumpet Creeper—40c; 60c.  
Butchman's Pipe—50c; \$1.50.  
Cinnamon Vine—10c.  
English Ivy, Evergreen—19c.  
Boston Ivy—20c; 45c; 75c.  
Virginia Creeper—35c; 65c.  
Purple Wistaria—40c; 75c; \$1.25.  
Blue Wistaria—35c; 65c; \$1.25.  
Chinese Matrimony Vine—20c.

## PERENNIAL PLANTS

Yucca—35c; 75c.  
Hardy Blue Plumbago—28c.  
Cone Flower—26c.  
Anemones—26c; 45c.  
Lemon Lily—25c; 50c.  
Variegated Day Lily—26c.  
Agrostema—24c.  
Blue Bell—26c.  
Statice—34c.  
Hardy Alyssum—25c.  
Hardy Periwinkle—22c.  
Cardinal Flower—30c.  
Coreopsis—18c.  
Monarda Rosea—22c.

## HARDY ASTERS

Perry's White Aster—45c.  
Feltham Blue Aster—30c.  
Brussels Aster—45c.  
Novi Belgii Miss Eisele—40c.  
Mauve Cushion—30c.

## GOREGEOUS PEONIES

Festiva Maxima—85c.  
La Tulipe—90c.  
President Taft—\$2.  
Philomele—\$1.25.  
Adolphe Rousseau—\$1.75.  
L'Eoletante—95c.  
Princess Beatrice—80c.  
Officialis Rose—\$1.  
Officialis Albe—\$1.  
Officialis Rubra—\$1.

## FLEUR-DE-LIS—FLAG IRIS

Loreley—35c.  
Jacqueline—40c.  
Leda—50c.  
Perfection—50c.  
Isoline—60c.  
Wyomissing—50c.  
Parisiana—45c.  
Quaker Lady—40c.  
Lohengrin—24c.



# SEEDS FOR EVERY FLOWER GARDEN

In offering our complete stock—"SOMETHING FOR EVERY GARDEN; EVERYTHING FOR SOME GARDENS." Roses, Greenhouse Plants, Perennials, Shrubs, Evergreens, Fruit Trees and Flower Seeds, in the limited space of this catalogue it is impossible to fully describe and illustrate all of the different items. The Flower Seeds offered on this page are all high-grade, tested seeds—no better to be had from any other source in this country. Prices given are per packet.



Amaranthus, Salicifolius (Fountain Plant).

Aster—Grego's White, 15c.  
 Aster—Grego's Purple, 15c.  
 Aster—Grego's Lavender, 15c.  
 Aster—Grego's Shell-Pink, 15c.  
 Aster—Grego's Deep Rose, 15c.  
 Aster—Grego's Mixed, 18c.  
 Aster—Rochester, Rose Pink, 15c.  
 Aster—Rochester, White, 15c.  
 Aster—Rochester, Purple, 15c.  
 Aster—Rochester, Lavender, 15c.  
 Aster—Rochester, Mixed, 18c.  
 Aster—Daybreak, 15c.  
 Aster—Lavender Gem, 15c.  
 Aster—Red, "Sensation," 15c.  
 Aster—Hohenzollern, Mixed, 20c.  
 Aster—Early Wonder, Blue, 15c.  
 Aster—Early Wonder, White, 15c.  
 Aster—Early Wonder, Pink, 15c.  
 Aster—Late Branching, Mixed, 10 cents.  
 Aster—Excelsior Mixture, 25c.  
 Asterum—Mixed, 20c.  
 Abronia, 10c.  
 Acoelinum, Mixed, 10c.  
 Ageratum, Mixed, 10c.  
 Amaranthus Salicifolius, 5c.  
 Amaranthus, Tricolor, 5c.  
 Anthemis, 10c.  
 Amethyst—Browallia, 10c.

Bellis Perennis—Mixed, 10c.  
 Blue Lace Flower, 10c.  
 Balsam Apple, 10c.  
 Balsam, Carnation striped, 10c.  
 Balsam, prize double, 15c.  
 Begonia, Single, 12c.  
 Baby's Breath (Gypsophila), 10 cents.  
 Bachelor's Button (Globe Amaranth), 5c.

Calliopsis—Dbl. Mixed, 6c.  
 Campanula—Peach Bells, 8c.  
 Campanula—Canterbury Bells, 8 cents.  
 Campanula—Cup and Saucer, 8 cents.  
 Candytuft—Empress, 5c.  
 Candytuft—Mixed, 5c.  
 Canary Bird Vine, 5c.  
 Canna—Mixed, 12c.  
 Castor Oil Beans—Mixed, 10c.  
 Cerastium—15c.  
 Centaurea Imperialis—Mixed, 15 cents.

Cineraria—Mxd., 15c.  
 Clarkia Elegans—Mixed, 10c.  
 Cobia—Scandens, 10c.  
 Cowslip—Primula Veris, 15c.  
 Chrysanthemum—"Bridal" Robe, 12 cents.  
 Cypress Vine—Scarlet, 10c.  
 Cypress Vine—Mixed, 8c.  
 Coleus—Fine Mixed, 15c.  
 Coleus—McGregor's Mixed, 20c.  
 Cyclamen—Mixed, 20c.  
 Carnation, Malmaison, 15c.  
 Carnation, Everblooming, 20c.  
 Cheiranthus, 10c.  
 Columbine, Single, 10c.  
 Columbine, Double, 15c.

Columbine, New Hybrids, 15c.  
 Caecilia, 10c.  
 Celosia (Cockcomb) Plumed, 10c.  
 Cockseomb, Glasgow Prize, 10c.  
 Cockseomb, Crested Mixed, 10c.  
 Chinese Lantern Plant, 10c.  
 Calendulas, Favorite, 10c.  
 Calendulas, Orange King, 10c.  
 Calendulas, Pure Gold, 10c.  
 Cosmos, Mammoth Mixed, 10c.  
 Cosmos, Early Double, 20c.  
 Cosmos, Early Dwarf, 10c.  
 Carnation, Snow-Flake, 10c.  
 Carnation, Red, 10c.  
 Carnation, Yellow, 10c.  
 Carnation, Mixed, 10c.  
 Calceolaria, Mixed, 20c.  
 Candytuft—Scorpivirens, 10c.

Delphiniums, Hybrids, 20c.  
 Delphiniums, Belladonna, 20c.  
 Dahlia, Double Cactus, 15c.  
 Dahlia, Premium Double, 10c.  
 Dahlia, Giant Double, 15c.  
 Dahlia, Double Peony, 20c.  
 Justy Miller—Silver Leaved, 10 cents.  
 Daisies—African Mixed, 10c.  
 Daisies—Burbank's "Shasta," 10 cents.  
 Dianthus, Dbl. Pink, 15c.  
 Dianthus, Double Fringed, 15c.  
 Dianthus, Hardy, Double, 15c.  
 Dianthus, Excelsior Mixed, 10c.

Echeveria—Mixed, 10c.

Fern, Mixed Varieties, 20c.  
 Four O'clock—Mixed Colors, 5c.  
 Foxglove—Gloxinia Mixed, 10c.  
 Forget-Me-Not, Dwarf, 15c.  
 Forget-Me-Not, Mixed, 10c.  
 Forget-Me-Not, Pink Gem, 10c.  
 Forget-Me-Not, White Gem, 10c.  
 Forget-Me-Not, Blue Gem, 10c.  
 Fuchsias—Mixed, 20c.

Gaillardia, Splendens, 10c.  
 Gourd, Small Mixed, 7c.  
 Gourd, Large Mixed, 7c.  
 Gladiolus, New Hybrid, 15c.  
 Gloxinia—Mixed, 20c.  
 Geraniums—Zonal Mixed, 10c.  
 Geraniums—Sweet-scented "Apple," 20c.  
 Grevillea, 10c.

Heliotrope, Hybrids, 15c.  
 Hollyhocks—Chater's Double Mixed, 10c.  
 Hollyhocks—Scarlet Double, 10 cents.  
 Hollyhocks—Double Yellow, 10 cents.  
 Hollyhocks—Double White, 10c.  
 Hollyhocks—Newport Pink, Double, 10c.  
 Hollyhocks—Allegheny, Mixed, 15 cents.  
 Hollyhook—Exquisite, Mixed, 20 cents.

Hibiscus—Marshmallow, Mxd., 10 cents.  
 Hops—Variegated, 8c.  
 Jerusalem Cherry, 10c.  
 Larkspur, Tall, Dbl., Mxd., 8c.  
 Lupinus, Perennial, Mxd., 10c.  
 Lavender, 10 cents.  
 Larkspur—Annual Exquisite, 15 cents.  
 Lantana—Hybrid Mixed, 10c.  
 Lobelia—Compacta, 8c.  
 Lobelia—Graziillus, 8c.

Marigolds—African Mixed, 8c.  
 Marigolds—Orange Prince, 10c.  
 Marigolds—French Mxd., 8c.  
 Mexican Burning Bush, 8c.  
 Mignonette—Red Goliath, 10c.  
 Mignonette—White Pearl, 10c.  
 Moonflowers—True White, 10c.  
 Moonflowers—Scarlet Star, 10c.  
 Moonflowers—Sky Blue, 15c.  
 Morning Glory—Imp. Jap., Mxd., 10 cents.  
 Morning Glory—Rochester, 10c.  
 Musk, 15c.

Monkey Flower (Mimulus), 10c.  
 Mountain Fringe, 10c.

Nasturtium, Chameleon, 12c.  
 Nasturtium, Lady Bird, 12c.  
 Nasturtium, Dwarf Mixed, 12c.  
 Nasturtium, Dwarf Golden-Midnight, 15c.  
 Nasturtium, Dwarf Mxd., 10c.  
 Nasturtium, Tall Mxd., 15c.  
 Petunia—California Giants, 20c.  
 Petunia—Giant Fringed Mxd., 20 cents.  
 Petunia—Blotched and Striped, 8 cents.  
 Petunia—Rosy Morn, 12c.  
 Platycodon—Bell Flower, 10c.  
 Portulaca—Single Mixed, 8c.  
 Portulaca—Double Mixed, 10c.

Pansies—Panama Pacific, 20c.  
 Pansies—Germania Masterpiece, 20c.  
 Pansies—(Bush) Princess, 25c.  
 Pansies—Prince Henry, 15c.  
 Pansies—Ruby, 15c.  
 Pansies—Golden Gem, 15c.  
 Pansies—Black Mastodon, 20c.  
 Pansies—Bronze Mastodon, 20c.  
 Pansies—White, 20c.  
 Pansies—Mastodon Mixed, 25c.  
 Phlox—Double, 15c.  
 Phlox—Hardy Perennial, 15c.  
 Phlox—Dwarf, 10c.  
 Phlox Drummond—Mixed, 12c.  
 Phlox—Starred and Fringed, 12 cents.  
 Primrose—Fringed, 15c.  
 Primrose—Stellata, Mixed, 15c.  
 Primrose—Chinese, 15c.  
 Periwinkle—Mixed, 10c.  
 Poppy—Oriental, 10c.  
 Poppy—Iceland Poppies, 7c.  
 Poppy—Roseball, Double, 10c.  
 Poppy—Featherball, Double, 8c.  
 Poppy—Mixed, Single, 8c.

Rose Seed, 10c.

Stocks, Dbl. Dwarf, Mxd., 15c.  
 Stocks, Cut-and-Come-Again, 15 cents.  
 Smilax, 10c.  
 Sunflower—Double, 10c.  
 Sunflower—Red, 12c.  
 Sunflower—Mixed, 8c.  
 Sweet William—Dbl. Crimson, 10 cents.

## SWEET PEAS

Dorothy Eckford, White, 10c.  
 Flora Norton, Lavender, 10c.  
 Lord Nelson, Navy Blue, 10c.  
 Lovely, Soft Shell Pink, 10c.  
 Othello, Dark Maroon, 10c.  
 Hon. Mrs. Kenyon, Yellow, 10c.  
 Countess Spencer, 15c.  
 Primrose Spencer, 15c.  
 Helen Lewis, 15c.  
 White Spencer, 15c.  
 Beatrice Spencer, 15c.  
 King Edward Spencer, 15c.  
 Asta Ohn, 15c.  
 Perennial, Lathyrus, Pink Beauty, 15c.  
 Perennial, Lathyrus, White Pearl, 15c.  
 Lathyrus Perennial, Mixed, 15c.  
 Banner Mixture, 8c.  
 Grandiflora Mixed, 10c.  
 Early Flowering Mixed, 10c.  
 Spencer Mixed, 12c.  
 Tom Thumb, Mxd., 10c.

Sweet Alyssum, 6c.  
 Snapdragon, Giant Mixed, 10c.  
 Snapdragon, Dwarf, 10c.  
 Snapdragon, Queen Victoria, 10 cents.  
 Snapdragon, Othello, 10c.  
 Snapdragon, Venus, 10c.  
 Snapdragon, Torchlight, 10c.  
 Snapdragon, Delila, 10c.  
 Snapdragon, Orange Beauty, 10 cents.  
 Straw Flower (Helichrysum)—Mixed, 5c.

Straw Flower—Salmon-Rose, 5c.  
 Straw Flower—Sulphur, 5c.  
 Straw Flower—Fire Ball, 5c.  
 Scabiosa—(Pin Cushion Flower), Double Mixed, 8c.  
 Salvia—Splendens, 12c.  
 Salvia—"Zurich," 20c.  
 Salvia—Farinacea, 15c.  
 Torenia, 12c.  
 Tritoma—Red Hot Poker, 15c.  
 Verbenas, White, 12c.  
 Verbenas, Scarlet Defiance, 12c.  
 Verbenas, Pink Mixed, 12c.  
 Verbenas, Mammoth Mixed, 12c.  
 Violets—Odorata Alba, 15c.  
 Violets—Odorata The Czar, 18c.

Wallflower—Double Mixed, 10c.

## GIANT ZINNIAS

Zinnias, Crested, 10c.  
 Zinnias, Mixed, 8c.  
 Zinnias, Button, 10c.  
 Zinnias, Zebra Mixed, 8c.  
 Giant Double Flesh, 10c.  
 Giant Double, White, 10c.  
 Giant Double, Crimson, 10c.  
 Giant Double, Violet, 10c.  
 Giant Double, Scarlet, 10c.  
 Giant Double, Golden Yellow, 10c.  
 Giant Double, Purple, 10c.  
 Giant Double, Sulphur Yellow, 10c.  
 Giant Mixed, 10c.

Hardy Garden Collection—35c.  
 Aquilegia (Columbine), Hardy Oriental Poppy, Hollyhocks, Forget-Me-Not, Hardy Pinks, Foxglove (Digitalis), Sweet William, Double, 7 packets for 35c.

Cut Flower Collection—40c.  
 Aquilegia (Columbine), Asters, Carnations, Cosmos, Gaillardia, Mignonette, Larkspur, Zinnias. The 8 packets for 40 cents.

LAWN GRASS AND CLOVER  
 McGregor's Special Mixture, 40c quart.  
 Shady Nook, 60c per quart.  
 White Clover, \$1.00 per lb.

## VEGETABLE SEEDS

Beans, Improved Golden Wax, 10 cents.  
 Beans, Improved Bush Lima, 10 cents.  
 Beans, Semi-Dwarf, Bijou, 12c.  
 Beans, Dwarf Bounteous, 12c.  
 Beets, Early Eclipse, 10c.  
 Beets, Covent Garden Red, 7c.  
 Brussels Sprouts, 10c.  
 Cabbage, Althead Early, 10c.  
 Cabbage, True Danish Ballhead, 10 cents.  
 Cabbage, Primo, 15c.  
 Carrots, Danvers True, 5c.  
 Cauliflower, Dry Weather, 15c.  
 Celery, Golden Self-Blanching, 10 cents.  
 Cucumbers, Everbearing, 5c.  
 Endive, Giant Fringed, 10c.  
 Lettuce, Early Prize-head, 5c.  
 Lettuce, Prittle Ice, 10c.  
 Lettuce, Fletham King, 10c.  
 Muskmelon, Spicy Cantaloupe, 10 cents.  
 Onion, Prize Taker, 5c.  
 Peas, Premium, Gem, 10c.  
 Peas, Extra Early, 10c.  
 Peas, Peter Pan, 12c.  
 Parsley, Moss Curled, 10c.  
 Peppers, Chinese Giant, 10c.  
 Radishes, Icicle, 5c.  
 Radishes, Early Scarlet Button, 5 cents.  
 Sweet Corn, Golden Bantam, 10 cents.  
 Turnip, Early Flat, 10c.  
 Tomato, True Ponderosa, 10c.  
 Tomato, Earliana, 10c.  
 Tomato, Nonsuch, 10c.

# Fleur-de-Lis—Flag Iris



Orchid Flowering Iris—Pallida Dalmatica.

## Hardy Garden Phlox

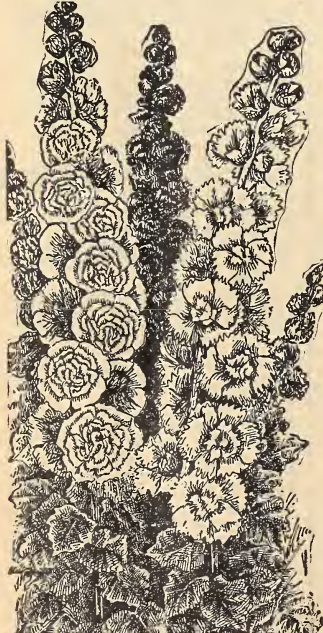
- Bridesmaid** White heads; center crimson-carmine. 25c each; 3 for 72c.
- Coquelicot** Bright orange-scarlet. 25c each; 3 for 72 cents.
- Von Lassburg** Immense pure white heads. 25c each; 3 for 72c.
- Pantheon** Salmon-pink; crimson eye. 25c each; 3 for 72c.
- Le Mahdi** Deep velvety purple. 25c each; 3 for 72c.

## Hardy Crimson Hibiscus

Deep crimson flowers. 20c; large, 40 cents.

**Hardy White Hibiscus** (Mallows)—White, deep crimson center. 20c; large, 40c.

**Hardy Pink Hibiscus** Clear even pink. 20c; large, 40 cents.



Giant Double Hollyhocks.



Double Sweet William.

## Ever-Blooming Sweet William

Crimson (Dianthus Latifolius) — Summer bedding plant, producing masses of velvety crimson-scarlet double flowers. 20c each; 3 for 57c.

## Giant Hardy Primrose

Immense trusses of large flowers from purest white, yellow and orange to richest crimson. 22c each.

## Long Spurred Columbine

18 to 36 inches. Long blooming season thru May and June.) Hardy; graceful flowers freely produced on long stems. Mixed colors only, covering shades of pink, lavender, white, etc., 24c each; 3 for 68c; 12 for \$2.30.

**Achillea** (Cemetery Plant) — Snow-white flowers produced in large sprays. Hardy. 22c.

## Sweet William

(Hardy.) Favorite of old-fashioned gardens. Fragrant. Colors: scarlet, maroon, pink. 24c; 3 for 57c; 12 for \$1.92.



Canterbury Bells.

**Campanula** (Canterbury Bells.) Hardy. Cup-shaped flowers. Colors: BLUE, PINK, CRIMON, WHITE. 24c each.

## Double Hollyhocks

Hardy. Waxy flowers. Colors WHITE, MAROON, PINK, RED, YELLOW. 20c each.

## Forget-Me-Not

(Myosotis)—A perennial. Hardy if given slight protection through winter. Flowers light blue. 24c each; 3 for 57c.

## Baby's Breath

Hardy. A mass of minute pure white flowers. Very dainty. 25c each; 3 for 72c.

**Lupinus** Velvety leaves; butterfly-like flowers. Easy culture. Flowers deep blue, on large spikes. 30c each; 3 for 85c.

**Fox Glove** (Digitalis) — Hardy; bears thimble-shaped flowers on long spikes. 24c each; 3 for 68c.



Hardy Sweet William.



Foxglove or Digitalis.

## Pink Achillea

(Rosy Milfoil)—A rose colored variety of the popular white Cemetery Plant. Finely cut foliage. Flowers from early spring until frost. 18 in. high. Fine for borders. 24c each; 3 for 68c; \$2.30 per dozen.

## Anemone

(Japanese Wind Flower.) Flowers pure white and silvery-pink. Hardy, summer blooming. 26c; 3 for 74c. Large plants, 45c each; 3 for \$1.28.



Aquilegia or Columbine, long spurred. 24c.



# Evergreen Trees and Shade Trees

**Cypress** (Green and Golden.) Vigorous and hardy. Remarkable trees, with either bright green, or golden yellow foliage. Very graceful branches. Specimen trees very ornamental. 3 to 4 feet, \$6.00; 2 to 3 feet, \$5.00.

**Compact Savin Juniper** (*Juniperus Sabina*.) Low grower, bushy habit. Foliage dark green; dense. 2 to 2½ feet, \$6.00 each; 1½ feet to 2 feet, \$4.00 each.

**(3) Dwarf Spreading Juniper** (*Juniperus Chinensis* Pfitzeriana.) Foliage silvery green; white markings; light and thread-like. Best of the dwarf-growing evergreens. 3 to 3½ feet, \$12.00 each; 2½ to 3 feet, \$9.00 each; 2 to 2½ feet, \$6.00; 1½ to 2 feet, \$4.00 each.

**(6) Hemlock Spruce** (*Tsuga Canadensis*.) Magnificent; grows rapidly in almost any soil and situation. 4 to 5 feet, \$9.00 each; 3 to 4 feet, \$6.00 each; 2 to 3 feet, \$4.00 each; 1½ to 2 feet, \$3.00 each.

**(4) Norway Spruce** (*Picea Excelsa*.) Best known of all the Spruces, used commonly for Christmas Trees. A tall, shapely tree, hardy, of rapid growth. 3 to 4 feet, \$5.00; 2 to 3 feet, \$3.50.

**Juniperus Communis Depressa** A shrubby bush rarely exceeding 4 feet in height. Very spreading, foliage dark green, short and thick. Very pleasing appearances are obtained when planted in front of taller varieties in masses. 2 to 2½ ft., \$6.00 ea.; 3 to 3½ ft., \$9.00 ea.

**(2) Irish Juniper** (*Juniperus Communis Hibernica*.) One of the finest junipers. Trunk straight, tree has a formal and columnar appearance. Foliage sea-green. 2 to 3 feet, \$4.50; 3 to 3½ feet, \$6.75.

**Red Cedar** (*Juniperus Virginiana*.) Our hardiest and most popular native evergreen. The natural tree forms a fine conical pyramid, but easily trained into almost any form desired. Extensively used for group and screen planting, and for hedges. Color varies from a reddish to a dark green, often of a glaucous tint. 4 to 5 ft., \$7.50 each; 5 to 6 ft., \$10.50 each; 6 to 7 ft., \$13.50 each; 7 to 8 ft., \$15.00 each.

**Blue Cedar** (*Juniperus Virginiana Glauc.*) The leading Cedar for specimen planting. Foliage bright silvery blue. Pyramidal. Beautiful variety. 2 to 3 feet, \$12.00.

**Globular Arborvitae** (*Thuja Occidentalis Globosa*.) Handsome round compact head. Foliage dark green; very dense. 1½ to 2 feet, \$6.00 each; 15 to 18 inches, \$4.00 each; 12 to 15 inches, \$3.00 each.

**Compact Arborvitae** (*Thuja Occidentalis Compacta*.) Dwarf dense-growing; neat, bright green foliage. 2 to 3 feet, \$6.00 each.

**Golden Arborvitae** (*Thuja Occidentalis Spicata Aurea*.) A very desirable variety of handsome pyramidal form. Foliage dark green in winter; light golden in summer. 2½ to 3 feet, \$6.00 each.

**American Arborvitae** (*Thuja Occidentalis*.) Pyramidal bright green foliage, lighter or yellow-green beneath. In winter taking on shades of bronze. Indispensable for the formal garden. 5 to 6 feet, \$9.00; 4 to 5 feet, \$6.00; 3 to 4 feet, \$4.00; 2 to 3 feet, \$2.00.

**(1) Pyramidal Arborvitae** (*Thuja Occidentalis Pyramidalis*.) Has a uniform pyramidal outline which it retains at all times. Foliage light green. Branches numerous and dense. 4 to 5 feet, \$9.00 each; 3 to 4 feet, \$4.00 each; 2 to 3 feet, \$3.00 each.

**Douglas Spruce** (*Pseudotsuga Douglasii*.) This beautiful evergreen resembles a spruce but is botanically different. Of graceful, symmetrical growth. Needles are soft and dark green, often showing a glaucous shade. ½ to 2½ feet, \$6.00; 2 to 3 feet, \$7.50.

**Austrian Pine** (*Pinus Austriaca*.) Handsome; graceful growth. Foliage deep green, stiff and prickly. Very hardy. Best for specimen planting. 2 to 3 feet, \$6.00; 3 to 4 feet, \$9.00.

**(5) Dwarf Mugho Pine** (*Pinus Montana Mughus*.) A low tree of dense compact habit. Foliage a deep full green. Tips of the branches curved upward. 18 to 24 inches, \$7.50 each; 15 to 18 inches, \$6.00 each; 12 to 24 inches, \$4.50 each.

**Scotch Pine** (*Sylvestris*.) Graceful, with round, shapely head. Leaves bluish green and rather stiff. Rapid grower and reaches considerable height. Widely planted as a timber tree. 8 to 10 feet, \$18.00; 6 to 8 feet, \$15.00; 5 to 6 feet, \$12.00.

**(7) Plume Cypress** (*Retinospora Plumosa*.) Erect tree; slender branches; dense feathery, dark green foliage. Fine for hedge or specimen planting. 3 to 4 feet, \$6.00 each; 2 to 3 feet, \$5.00 each.

**(8) Colorado Blue Spruce** (*Picea Pungens*.) Very hardy and of great beauty. Needles dull bluish green. 1½ to 2 feet, \$4.00; 2 to 3 feet, \$6.00; 3 to 4 feet, \$9.00.

**(9) Lombardy or Italian Poplar** (*Nigra Fastigiata*.) Ornamental. Tall; branches erect. Foliage dark green. 2 to 2½ in., \$3.75 each; 1½ to 1¾ in., \$3.00 each; 1¼ to 1½ in., \$1.50 each; 8 to 10 feet, \$1.20 each.

**(11) Norway Maple** (*Acer Platanoides*.) One of the best of all Maples. Tall, straight; handsome, round, spreading head. Leaves dark green, glossy; very dense. 2 to 2½ inches, \$7.50; 1¾ to 2 inches, \$6.00 each; 1½ to 1¾ inches, \$4.50 each; 1¼ to 1½ inches, \$3.75 each; 8 to 10 feet, \$3.00 each.

**(12) Umbrella Tree** (*Catalpa Bungei*.) Head spreads out in umbrella fashion. Leaves heart-shaped; 3-yr. specimen, \$5.25 each; 2-yr. specimen, \$3.75 each.

**(13) Pin Oak** (*Quercus Palustris*.) Superb. Foliage dark green, fiery scarlet in autumn. 2 to 2½ inches, \$7.50 each; 1½ to 2 inches, \$5.25 each; 8 to 10 feet, \$3.75 each; 6 to 8 feet, \$3.00. (See foot-note regarding designation of size.)

**(15) Common Weeping Willow** (*Salix Babylonica*.) Large tree; drooping branches. Leaves bright green. 8 to 10 ft., \$1.50 each; 6 to 8 ft., \$1.20 each.

**(16) Smooth-Leaved Ohio Buckeye** (*Arsculus Glabra*.) Leaves dark green. Greenish yellow flowers. 6 to 8 feet, \$3.00 each; 5 to 6 feet, \$2.25 each.

**Red or Scarlet Maple** (*Acer Rubrum*.) Large bold green foliage. Numerous scarlet flowers in spring. Leaves turn to scarlet in fall. 1½ to 2 inches, \$6.00.

**(14) Weeping Cut-Leaved White Birch** (*Betula Alba Laciniata Pendula*.) Weeping habit and beautiful white bark. Price, 10 to 12 feet, \$6.00 each; 8 to 10 feet, \$5.25 each.

**Judas Tree-Red Bud** (*Cercis Canadensis*.) Medium sized purplish flowers. Leaves heart-shaped; clear green. 3 to 4 feet, \$1.50; 2 to 3 feet, \$1.00.

**White-Flowering Dogwood** (*Cornus Florida*.) Large white blossoms appear before the leaves; in fall, bright red berries and beautifully tinted foliage. 6 to 7 feet, \$3.00 each; 5 to 6 feet, \$2.40 each; 4 to 5 feet, \$1.50.

**Sweet Gum** (*Liquidambar Straciflua*.) Low-growing tree; pyramidal. Leaves glossy green, of star-like appearance. Should be planted in spring. 6 to 8 feet, \$3.00 each.

**Tulip Tree** (*Liriodendron Tulipifera*.) Pyramidal. In May this tree bears a multitude of greenish yellow and orange tulip-shaped flowers. Gigantic size. 1¼ to 1½ inches, \$3.00 each; 8 to 10 feet, \$2.25 each; 6 to 8 feet, \$1.60 each.

**Teas' Weeping Mulberry** (*Morus Alba Pendula*.) Of low growth. Numerous vine-like branches droop to the ground. Foliage bright lustrous green. 2-year heads, \$5.25 each.

**(10) American White, or Water Elm** (*Ulmus Americana*.) Picturesque; stately. Branches curve gently downward at ends. 2 to 2½ inches, \$6.00 each; 1¾ to 2 inches, \$4.50 each; 1½ to 1¾ inches, \$3.00 each; 8 to 10 feet, \$1.50 each.

**NOTICE:** Sizes of Evergreens are given in height; Sizes of Shade Trees are given mostly in diameter of stem.

# Strawberries

**CHESAPEAKE.** (Late)—Highly flavored dark red flesh.  
**PREMIER.** (B) (Very early)—Uniform large, red berries.  
**DR. BURRILL.** (Early)—Dark berries unexcelled for canning.  
**FORD.**—Large berries of rich flavor. Dependable.  
**BIG JOE.** (Late)—Solid fruit of exceptional size. Delicious.  
**KELLOGG'S PRIZE.** (Late)—Glossy red fruit. A leader.  
**WM. BELT.**—One of the best varieties. Berries extra large.  
**WARFIELD** (P.)—Very dark color; best for canning.  
**SENATOR DUNLAP.**—Large, bright red, firm.  
**BRANDYWINE.**—Fine, large late berry of excellent quality.  
**HAVERLAND** (P.)—Large bright red. A fine grower.  
**GANDY.**—Large, firm berries of bright crimson.  
**GLEN MARY.**—Large berries, sweet, rich, good flavor.  
**AROMA.**—Strong grower. Fruit cannot be beaten for quality.  
**PRICE ANY VARIETY.**—Strong layer plants, 40c per dozen; 25 for 60c; 50 for \$1.00; \$1.75 per 100; \$15.00 per 1000.

## Everbearing Strawberry

Bear through summer and early fall. 60c per dozen; 25 for \$1.00; 50 for \$2.00; 100 for \$3.75; \$20.00 per 1000.

## Raspberries

**BLACK VARIETIES**—Black Diamond; Cumberland. 12c each; \$1.00 per doz.; 25 for \$1.75.

**RED**—Columbiana, Brandywine, Cuthbert. 15c each; \$1.25 per doz.; 25 for \$2.00.  
**NEW BLACK**—15c ea.; \$1.25 per doz.; 25 for \$2.00.

**ST. REGIS RASPBERRY**—Fruit first season. 15c ea.; per dozen, \$1.25.

## Horseradish

**MALINER KREN**—Enormous early yield. 50c per doz.; \$2.75 per 100, by express.

## Grape Vines

**BLACK or PURPLE**—Concord; Moore's Early; Worden.

**RED**—Brighton; Catawba; Delaware.

**WHITE**—Diamond; Niagara. Any of above varieties, 35c each; \$3.75 per doz.; 2-yr. plants, 50c each; \$4.80 doz.  
**GREEN MOUNTAIN**—Golden-yellow; very large. 1-yr., 65c; \$6.24 per doz.; 2-yr., 85c each; \$8.16 per doz.

## Rhubarb

**MYATT'S LINNAEUS;** QUEEN. 20c each; \$2.00 per doz.; \$8.00 per 100.



**Premier Strawberry.** Ideal. Fruit large, rich red and juicy. Stems large and strong. Foliage an ample protection for blossoms and fruit.

# Good Fruit Trees at Low Prices

## First Class Apples

**Delicious** Extra large, brilliant dark red, white flesh, tender and rich flavor.

**Early Transparent** Extra early summer apple, hardy, clear yellow with white fine grained flesh, heavy bearer.

**Grimes Golden** The best yellow apple, spicy like a peach. Very profitable.

**Gano** A very large handsome red apple, will stand a great deal of handling without injury. Good quality.

**Jonathan** A favorite everywhere. A brilliant red with highly flavored juicy flesh. Fine for home or market use.

**Malden Blush** One of the most beautiful and productive of the Fall varieties. Very handsome and fine for eating or cooking.

**Rome Beauty** A fine red apple, blooms late, bears heavily every year, good either in the North or South. A very profitable variety for orchardists.

**Stayman Winesap** Champion of all Winesaps, keeps very late in the Spring and of the finest quality. No orchard is complete without it.

**Winter Banana** A quick growing tree that bears young. Fruit is large, clear, pale yellow, tender and very good.

**York Imperial** A vigorous and long-lived tree. Bears large annual crops of clear yellow fruit.

**Prices** First-class trees, 3-4 ft., 58c each; 25 for \$13.00 and 50 for \$25.00; 100 for \$37.50 and 1000 for \$370.00. Express. 5 to 7 ft., \$1.16; 10 for \$10.00; 25 for \$23.30.

## Quality Peaches

**Belle of Georgia** A large free-stone peach. White flesh-ed, good quality, and ripens early in August. Very popular.

**Champion** A large creamy white free-stone peach with red cheek, excellent flavor and the highest quality white peach known.

**Crawfords Late** A very large yellow free-stone, ripens late in August.

**Elberta** The old reliable peach, large golden yellow fruit, very firm, juicy and sweet. More of this variety are planted and more money has been made from it than from any other variety.

**Hiley Free** One of the best for canning purposes, yellow flesh, tender and juicy, ripens in early August.

**Smock** A large yellow free-stone and enormously productive everywhere.

**Prices** First-class 2-3 ft. trees, 40c each; 25 for \$8.00; 50 for \$14.00; 100 for \$26.00 and 1000 for \$220.00. By express. 5 to 6 ft., 88c; \$6.00 for 10; 100, \$47.50.

## Best Pears

**Bartlett** One of the best canning pears, valuable for home or market use, large, yellow, juicy, highly flavored.

**Kieffer** One of the best keeping pears. Trees bear very young and heavily.

**Flemish Beauty** A large pale yellow pear, especially adapted to the Southwest. Grows large crops annually.

**Duchess** The largest among our really good pears. Has a greenish yellow skin and is a good producer.

**Prices** First-class 3-4 ft. trees, \$1.00 ea.; 10 for \$9.50; 25 for \$20.00. By express. 5 to 7 ft., \$1.25; 10 for \$10.00; 100, \$90.00.

## Thrifty Plums

**Abundance** A beautiful yellow plum, very large, yellow flesh, very hardy and prolific.

**German Prune** Large purple fruit, very sweet and delicious. An old standard, stand-by variety.

**Lombard** A violet red, yellow flesh variety, bears crops when quite young. A favorite for canning.

**Shippers Pride** A very large, showy dark purple plum. Sometimes reaching a diameter of 2 inches, very good for shipping.

**Bradshaw** A very good early plum, dark red, yellow flesh, juicy and good. A good market sort.

**Yellow Egg** A beautiful egg-shaped plum, large size. Bears very heavy crops.

**Prices** First-class 4 ft. trees and up, 88c each; 25 for \$16.25; 100 for \$60.00 and 1000 for \$550.00. By express. 5 to 7 ft., \$1.25; 10 for \$10.00; 100 for \$90.00.

## Finest Cherries

**Early Richmond** The best early variety. A quick growing and reliable producer. Large fruit.

**Large Montmorency** The best of the Montmorency strain, one of the best sour cherries. Large, dark red and handsome.

**Black Tartarian** A beautiful purplish cherry of fine quality, bears very heavily in June and July.

**Prices** First-class 3-4 ft. trees, \$1.00 each; 10 for \$9.50; 25 for \$20.00. By express. 5 to 7 ft., \$1.25; 10 for \$10.00; 100 for \$90.00.

**Dwarf Pears.** Will bear second year. New and novel. In great demand. Duchess, Clapps Favorite, Anjou, Flemish Beauty, Kieffer. 70c each; \$6.00 per 10; 100, \$50.00. Larger size, 80c each; \$7.00 per 10; 100, \$60.00.

McGREGOR'S WONDERFUL LANTANAS



VERSICOLOR  
22¢

AURORA  
22¢

SNOWWREATH  
20¢

PERFECTION  
24¢

RADIATION  
24¢

TETHYS  
26¢

McGREGOR'S WONDERFUL  
NEW RICHLY COLORED **LANTANAS**  
Versicolor - 22c Tethys - 26c  
Perfection - 24c Snowwreath - 20c  
Aurora - 22c Radiation - 24c  
The full collection (6) for **84¢**



FLAG OF TRUCE  
26¢

SOUV.  
D'ANTOINE CROZY  
22¢

GLADIATOR  
24¢

McGREGOR'S GIANT  
ORCHID FLOWERING **CANNAS**  
Souv. D'Antoine Crozy 22c Gladiator 24c  
Martha Washington 28c Flag of Truce 26c  
Black Warrior 25c Yellow King Humbert 26c  
The full collection (6) for **86¢**

MARTHA  
WASHINGTON  
28¢

BLACK WARRIOR  
25¢

YELLOW  
KING HUMBERT  
26¢

# World's Finest Geraniums

MADAME  
JAULIN  
22¢

MADAME  
CHARLOTTE  
24¢

McGREGOR'S  
COLLECTION OF  
WORLD'S FINEST GERANIUMS  
THE FULL COLLECTION OF TWELVE SHOWN  
IN COLORS FOR **\$2.42**  
(See Pages 3 and 57)

MARQUIS DE  
CASTELLANE  
24¢

MADAME  
RECAMIER  
20¢

MADAME  
LANDRY  
22¢

AROSA  
22¢

REGALIA  
24¢

JEAN  
OBERLE  
22¢

AMERICAN  
BEAUTY  
22¢

BERTHA DE  
PRESSILY  
20¢

HELEN  
MICHELL  
22¢

ORDER FROM  
CATALOGUE FOR  
THE McGREGOR BROS. CO.  
SPRINGFIELD, OHIO, U.S.A.

THE NEW  
COLUMBIAN  
LITHO CO.  
COLS. OH.