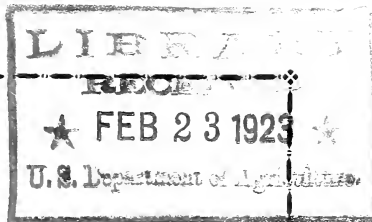


Historic, archived document

Do not assume content reflects current scientific knowledge, policies, or practices.

62.69

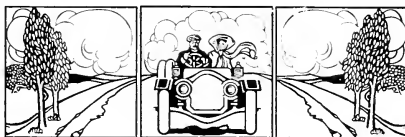
132228 TRAVELER



PRICE LIST

Noble Nursery

NOBLE, OKLAHOMA



THE following prices represent real tree and plant value direct from the grower. No agent's commission or middleman's profit to pay if you deal with us. This little folder is our only traveling salesman. His salary and expenses for the year amount to but a few cents. The saving to us and to you is easily seen by comparing our prices with those asked by the tree peddlers who visit you from time to time.

Twenty-three years experience in growing trees and plants here at Noble in south central Oklahoma demonstrate fully that in the production of high class nursery stock, our soil and climate are unsurpassed. You cannot buy better trees than ours, no matter what you pay.

We are growers of what we sell. Nearly everything we offer is grown here and may be seen in our own fields. The maintenance of our present scale of prices depends upon the production of stock in moderate quantities, and upon selling off close each season with as little waste as possible. Many items are always sold out early. We hope to have sold most everything before the spring planting season ends, hence we urge our friends to place orders as soon as possible while the stock is unbroken.

PRICE LIST—NOBLE NURSERY, NOBLE, OKLA.

PEACH TREES—Budded, 1-year tops, 2 to 3 ft., 12½c; 3 to 4 ft., 15c; 4 to 5 ft., 25c.

June Varieties—Mayflower, Wheeler Cling, Alexander, Carman.

July Varieties—Triumph, Mamie Ross, Early Crawford, Hiely, Ray.

August Varieties—Champion, Belle of Georgia, Lee Cling, Oldmixen Cling, Amrein Cling, Elberta, J. H. Hale, White Nectarine, Red Nectarine.

Later Varieties—Crosby, Heath Cling, Everett Cling.

Two Year Peach—5 to 7 ft., 35c; Wheeler Cling, Alexander, Hiely, Belle of Georgia, Lee Cling, Elberta.

APPLE TREES—First class 2-year stock from long grafts, commonly called whole root grafts, 4 to 5 ft., 30c; 5-ft. up, 35c.

One Year Budded Apple—2 to 3 ft., 15c; 3-ft. up, 25c.

Summer Varieties—Early Harvest, Live-land, Golden Sweet, Wilson June, Summer Pearmain, Boomer, Maiden Blush, Wolf River, Wealthy.

Fall Varieties—Grimes' Golden, Jonathan, King David, Delicious, Fall Orange, Rambo.

Later Varieties—Ben Davis, Missouri Pippin, Gano, Winesap, Black Ben Davis, Stayman, Mammoth Black Twig, Oklahoma Keeper.

Crabs, same price. Whitney, Hyslop.

If in the market for apple trees in hundred lots and up, ask for special price. We have a nice block of trees and will sell them if you give us a chance.

PLUM TREES—Budded, 1-year and 2-year, 2 to 3 ft., 15c; 3 to 4 ft., 25c; 4 to 5 ft., 50c. A few choice, extra heavy trees in some varieties, 75c. Abundance, Burwood, Hanska, Opata, Sapa, Wild Goose, Compass.

APRICOT—Same price as Plum.

CHERRY TREES—Best 2-year stock, 75c; second size, 50c. Varieties: Early Richmond, Montmorency, English Morello.

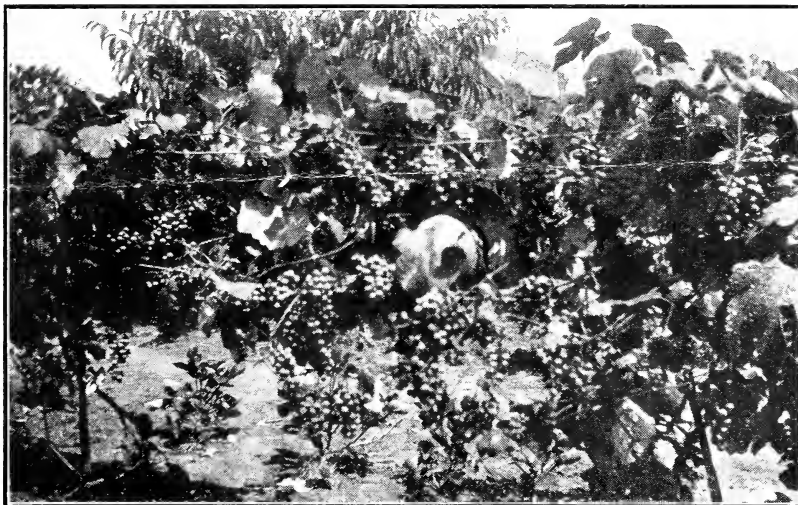
Moulton Sweet Cherry—No trees to offer this season.

PEAR TREES—Best 2-year, 75c. Best 1-year and second size 2-year, 50c; 2 to 3 ft., 25c. Varieties: Garber, Keiffer and a very few in other sorts.

GRAPES—No fruit gives quicker or surer results. The old idea of taking 3 years to establish a vineyard is a back number. If you make your trellis when you set the plants, cultivate well and get your vines running and climbing by the middle of the first summer, you can gather half to a full crop of grapes the second.

PRICE LIST—NOBLE NURSERY, NOBLE, OKLA.

A striking example of this is shown here. In March 1921 Newton Sisk and J. E. Smith planted about 20 yearlings on the line between their places in Noble. The vines were encouraged to run on the fence and had clean cultivation. In July 1922, sixteen months from planting, we took the photo from which this picture



was made. The grapes were then full grown but not ripe, and a lot of them were being used for jellies, etc. On 5 consecutive vines we counted over 400 clusters estimated to weigh 100 to 150 pounds.

What these men have done you can do. The varieties used were mostly Champion, Diamond and Concord.

Grapes carefully sprayed with Bordeaux, 4-4-50, when the fruit is half grown will usually be entirely free from all forms of rot and mildew which are often so destructive.

One year vines, \$1.00 per dozen, \$5.00 per 100. Two year vines, \$2.00 per dozen, \$10.00 per 100. Second size at reduced prices. Campbell's Early, Delaware and Carman at dozen rates only.

Black or Purple—Champion, Campbell's Early, Telegraph, Carman, Clinton, Ives, Concord.

Red or Brown—Brighton, Salem, Delaware, Agawam, Dracut Amber, Catawba.

White or Light—Diamond, Niagara, Elvira, Goethe.

BERRIES—We grow a few acres of Blackberries for market and have tested several varieties without finding one worth planting here except Early Harvest, which bears a good crop each season, and always makes a little money.

Choice nursery grown plants, per dozen, 50c; per 100, \$3.00; per thousand, \$25.00. Every plant a good one. Second size nur-

PRICE LIST—NOBLE NURSERY, NOBLE, OKLA.

sery plants and sucker plants from the field, half price.

Raspberries and Dewberries—\$3.00 per 100.

Everbearing Strawberries—\$2.00 per 100.

Common Strawberries—\$1.00 per 100.

Strawberries are not shipped with other stock, but go out by parcel post in time for spring planting. If wanted in thousands and lots and up, write for prices.

THORNLESS DEWBERRY—A new novelty of great merit, which promises to supercede all thorny varieties. Good bearer. Try it. Dozen \$1.00; per 100, \$5.00.

DWARF JUNE BERRIES, per dozen, \$1.00. This is the old fashioned service berry grown in great abundance on little bushes 2 to 3 feet high. Try them.

THOBURN CURRANTS—Introduced by us after several years trial. Collected from western Kansas and Oklahoma and eastern Colorado by former Secretary of Agriculture J. B. Thoburn. The bushes resemble those of the wild black currant found all over this country, and are just as hardy and prolific. Instead of black, they bear dull red, bright yellow, yellow with red stripe and greenish amber colored fruits of good quality, highly prized for pies, jellies and preserves. May be used either green or ripe and make a very acceptable substitute for gooseberries or for the eastern garden currants, none of which grow here with any marked degree of success. Per dozen, assorted, \$2.50.

FIGS—Not hardy here. Though killed back by freezing, they sprout from the stump and bear good fruit nearly every year. Banking up in the fall with a foot of earth is helpful. 1 to 2 ft., 25c; 2 to 3 ft., 50c each.

RHUBARB, WINEPLANT OR PIE-PLANT—The best variety we ever saw; big, early, pink tender stalks. Does not make seed and is propagated only by dividing the old crowns. Strong Divisions, per dozen, \$1.50; per 100, \$6.00.

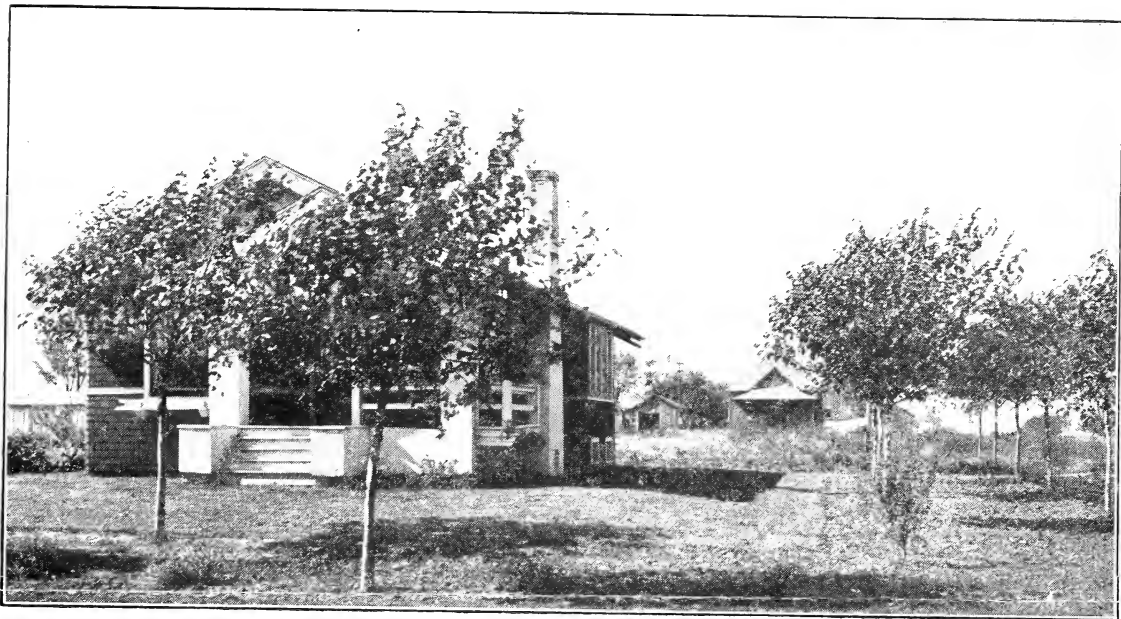
Linnaeus Seedlings, half price. We do not recommend the seedlings.

ASPARAGUS—One-year and two-year roots. Dozen, 35c; 100, \$2.00. Heavy 3-year roots for immediate results, dozen, \$1.00; per 100, \$6.00.

GARDEN SAGE—Good rooted clumps, each 25c.

HORSE RADISH SETS—Per dozen, 50c; per 100, \$3.00.

PAPER SHELL PECANS—Pecan culture is attracting considerable attention in parts of Oklahoma. The quickest results are obtained by top budding on native trees where they stand in partly cleared pastures and fields. We have a few very fine trees of this type, and can put you in the way of duplicating them. Many of the leading commercial varieties do well here; a few do not. Since the pecan is more difficult to transplant than some trees we recommend and sell only the small size trees. One year tops, \$1.00 each, \$10.00 per dozen.



Paper White, Non-Bearing Mulberry

At the residence of A. M. LaDue. Trees 7 to 8 feet with 1 1-2 inch stem, planted March, 1920; photo October, 1921, at the close of two season's growth, at which time they show an average spread of more than twelve feet and a stump diameter of 5 to 7 inches. An early frost had already removed about 15 per cent of the foliage, yet note the density of their shade.

Fastest Growing Tree of Temperate Climates

We grow more trees of this variety than all other Oklahoma nurseries combined. For sizes and prices, see our current price sheet.

NOBLE NURSERY
NOBLE, OKLA.

PRICE LIST—NOBLE NURSERY, NOBLE, OKLA.

SHADE TREES—If you are in a hurry for shade, plant the Non-Bearing, English, Paper White, Barren, French, Male or Shade Mulberry, and give it careful cultivation for two summers. Under right conditions it will make a spread of 8 to 10 feet the first season, and real shade the next. See picture on another page.

Not only is it the best tree for quick shade on good soil, but in hardpan and poor soils, it will respond to good care better than any other tree we ever saw, and has repeatedly shown its ability to live and make good where other trees have failed entirely.

It grows naturally into an immense spreading top without pruning, and appears to be absolutely free from the attacks of aphis, scale insects, borers, bag worms, army worms, web worms or fungus diseases, hence requires no spraying.

Under neglect it will do little or no better than other sorts. If you cannot give a tree or flower a decent chance to grow and show its good qualities, you will save regrets by not planting at all.

Our stock of Shade Mulberry is the largest and best now being offered to the public, and our prices are very low for first class, straight trees.

10 to 12 feet, 2½ inch and up, \$2.50 each
10 to 12 feet, 2 to 2½ in. stems, \$2.00 each
10 to 12 feet, 1½ to 2 in. stems, \$1.50 each
8 to 10 feet, 1¼ to 1½ in. stems, \$1.00 each
7 to 8 feet, 1 to 1¼ in. stems, ---75c each
6 to 8 feet, ¾ to 1 in. stems, ---50c each
5 to 6 feet -----25c each

Smaller sizes, \$1.00 and \$2.00 per dozen.

Maple, Poplar, Elm, Hackberry, Syc-

more, and other varieties at corresponding prices.

Catalpa Bungeii, top grafted, on common catalpa, \$1.00, \$1.50 and \$2.00 each.

FORESTRY SEEDLINGS—1-year old, just right for groves and windbrakes, or to plant out to grow your own shade trees. \$1.00 per 100; \$6.50 per 1000. Larger sizes, 2 to 5c each. Maple, Ash, Catalpa, Locust, Russian Mulberry, Elm, Osage Hedge.

ROSES—Everblooming, Teas, Hybrid, Perpetuals, Ramblers, etc., American Beauties, Killarneys, Cochetts, Russell, Sunburst, Kaiserin, about 30 choice varieties, both own rooted and budded plants, field grown, 50c each, \$5.00 per dozen.

EVERGREENS—Our Evergreens live and grow because we handle them right. Red Cedars, all sizes, single plants, 25c to \$1.00. Small sizes in quantities as low as \$12.50 to \$15.00 per 100. A dozen other varieties growing well here, priced at \$1.00 to \$2.50 each. Pine, Juniper, Box, Holly, Arbor Vitae. Every plant we offer stood 62 days without a drink in the past hot summer. We have discarded several fine varieties for no other reason than that they are too hard to keep alive through our Oklahoma Augusts.

Consult us about your needs in this line. We will give you A-1 service.

PRIVET FOR HEDGING—After trying several varieties here, we sell and recommend the Amoor River South and the California Privets. Both are hardy enough, and usually retain their beautiful green foliage most all winter, and neither is subject to the "blight" so fatal to some kinds. Heavy, well branched, 2-year

PRICE LIST—NOBLE NURSERY, NOBLE, OKLA.

plants, per 100, \$7.50; heavy 1-year and medium 2-year, per 100, \$5.00; light stock 12 to 15 inch, per 100, \$3.50.

HARDY SHRUBS—Japonica, Lilac, white and purple; Althea, all colors; Tree Honeysuckle, white and pink; Weigela, Spirea, five varieties; Deutzia, Pussy Willow, Philadelphus, Japan Barberry, Flowering Almond, Snowball, Hydrangea, Forsythia, Golden Elder, Fern Leaf Elder, Dogwood, Golden Osier Willow, Crepe Myrtle, and others.

Heavy field grown plants, 50c each. Straight dozens, \$4.00; assorted dozens \$5.00. Second size plants half price.

VINES FOR PORCHES AND ARBORS—Purple, White and Blue Wistaria, Ampelopsis, Kudza, Clematis Paniculata, Scarlet Trumpet, Honeysuckle in assortment. Prices same as for hardy shrubs.

HARDY BULBS—Earliest known flowers. Often bloom in the snow. Others follow through April and May. Sold for fall and winter planting only, as it is a waste of time to plant them late in spring. Mixed early Tulips, per dozen, 50c. Mixed late Tulips, per dozen, 50c. Named Tulips, separate colors, early or late, per dozen, 75c. Hyacinths, named colors, per dozen, \$1.00.

Every once in a while some scalawag breaks out in a new place with the story that our nursery has been condemned. Pay no attention to such rot. Since 1905 we have passed official inspection each summer. Under the law no nursery can do business in Oklahoma without inspection, and every shipment must carry a copy of the current year's health certificate. Watch for it.

Our business has been built upon the principle of giving each of you your money's worth, full value for every dollar you spend with us. If we succeed in pleasing you tell your friends about it. If we fail tell us, and if the fault is ours we will thank you for the chance to make it right. Come and see us.

PEONAS—Separate colors, 50c each, \$5.00 per dozen, mixed colors, \$3.50 per dozen. Two year clumps, any color, \$1.00 to \$1.50 each.

TENDER BULBS—For spring planting only. Cannas, Tube Roses, Gladiola; per dozen, 75c. Dahlias, all colors, per dozen, \$1.50. Mixed colors, \$1.00 per dozen.

HARDY PERENNIALS—Sweet Violets, Shasta Daisies, Dwarf Purple Iris, Ornamental Grasses, Santaline. Divided sets, \$1.00 per dozen; field grown clumps, 25c; extra heavy clumps, 50c each.

Santaline is a beautiful gray-green low border plant that changes color and foliage very little winter or summer. Try it.

LANDSCAPING SERVICE—We do not pose as expert landscape architects, yet have some ideas of the general fitness of things, and have learned a lot about the value and characteristics of many different ornamental plants here, and can often be quite helpful. Where this service is suggestive only, and is had in connection with the sale of stock, there is no charge. If extensive plans are wanted, requiring time for their elaboration and execution, a moderate charge will be made.

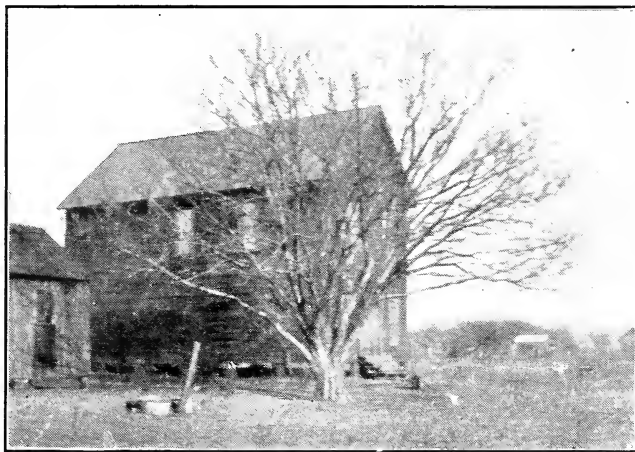
SHADE MULBERRY

(PAPER WHITE, NON-BEARING MULBERRY)

This is not a new variety, but an old one that is just now attracting much attention in Oklahoma, because of its rapid growth, and its remarkable ability to withstand hot dry weather; and that has recently had some very complimentary notices in several leading newspapers of the state. Of the origin and early history of the tree we know nothing.

People often ask us if it makes a big tree and lives to a good old age. We present in evidence this picture of the largest and oldest one we have seen. It stands in the older part of Purcell and has been described to us as "a good big tree thirty years ago." It has a stump diameter of over a yard, and a top spread of nearly 50 feet, and is as sound as an American dollar.

Note that this old timer has no center stem, just a stump and a top. The well grown young trees we offer are quite different in this respect, and will make magnificent specimens of a much finer type of shade tree and will do it in time for the present generation to enjoy the benefits.

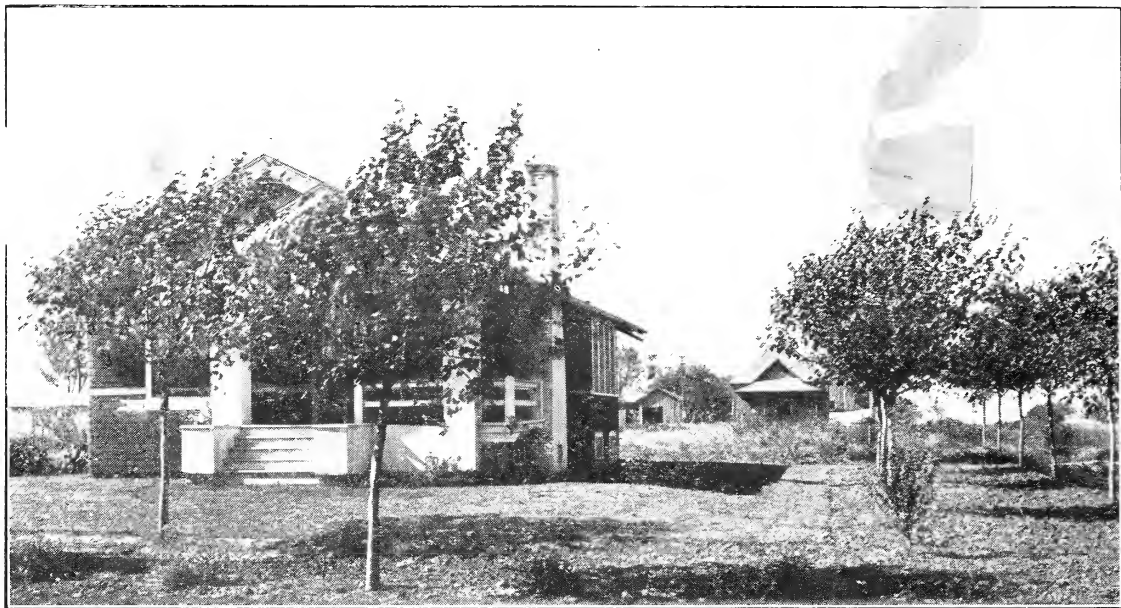


In Oklahoma City, at 1000 East Ninth Street, opposite the Fire Station, may be seen a group of these trees several years old, which show very plainly what they will do as compared with other varieties, also their immunity from bag worms and other pests.

In the streets and parkings of Noble, there are more Shade Mulberries growing than of all other trees combined, yet they were first planted here in 1912 and not more than a dozen were set before 1916. We doubt if 5 shade trees of any other variety have been planted in the town in the last five years. That shows what our neighbors think of this

FASTEST GROWING TREE OF TEMPERATE CLIMATES.

PRICE LIST—NOBLE NURSERY, NOBLE, OKLA.



SHADE MULBERRY

(PAPER WHITE, NON-BEARING MULBERRY)

At the residence of A. M. LaDue. Trees with 1½-inch stems planted March 1920; photo October 1921, after two summers' growth, at which time they showed a spread of over 12 feet and a stump diameter of 5 to 7 inches. Note the density of their shade.

In the fall of 1922, about 30 months after planting, the owner tells us they are about as big as he cares for, and he expects to plant Bermuda grass among them and stop cultivating in order to check their rapid growth. What he has done, you can do with this

FASTEST GROWING TREE OF TEMPERATE CLIMATES.

Peerless Pty. Co.—Norman