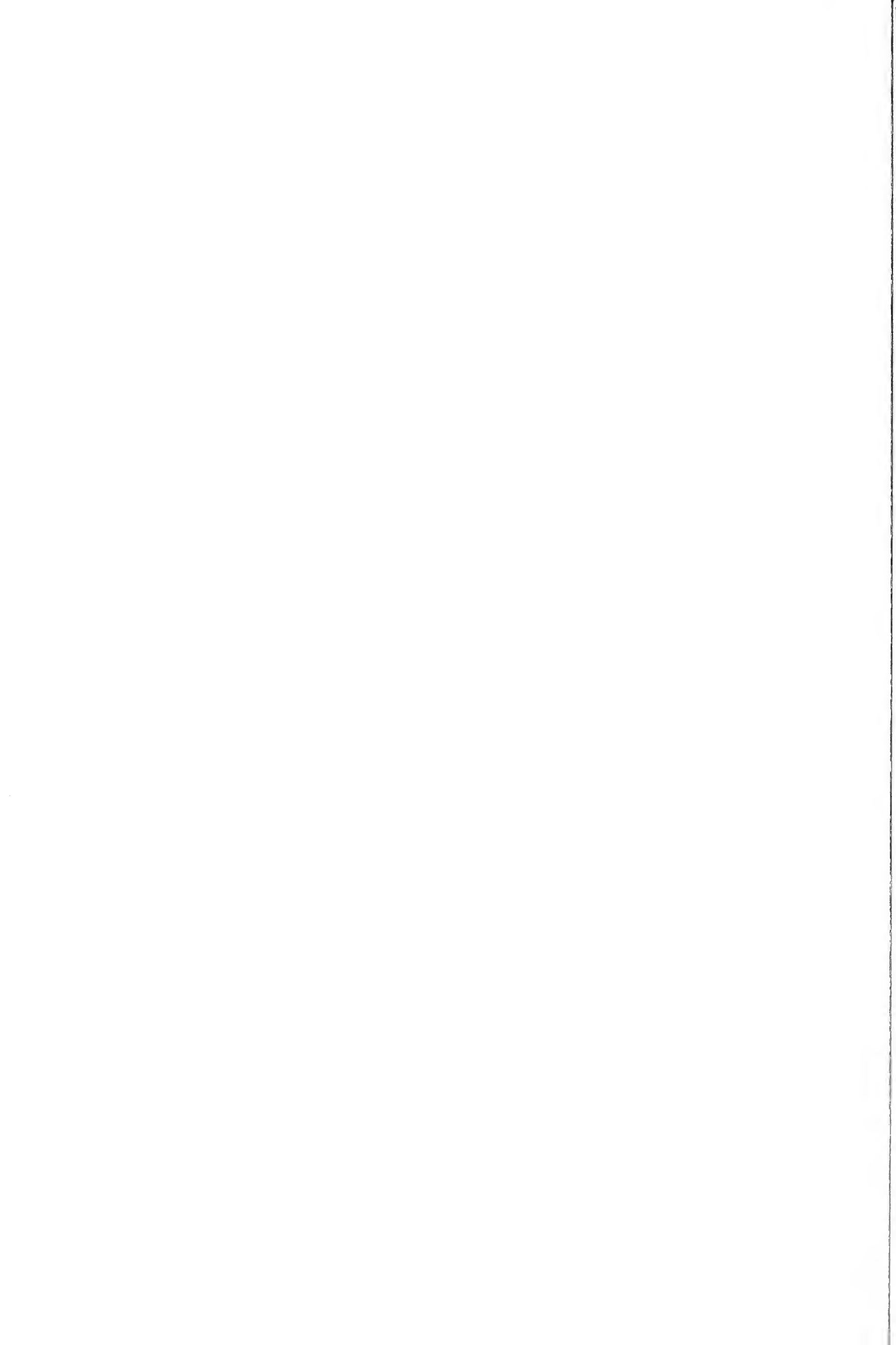


Historic, archived document

Do not assume content reflects current scientific knowledge, policies, or practices.



62,47



ROCK'S GARDEN BOOK

1923 FALL PLANTING EDITION

Rock's Flower Gardens

INDEPENDENCE, MISSOURI, U. S. A.

ROCK'S BULB COLLECTIONS

Sent Postpaid to Any Part of the United States or Possessions



Here Is Your Opportunity!

We offer these superb collections merely to acquaint you with the select high quality of our bulbs. It is an excellent opportunity also to become familiar with the different varieties of bulbs in their true types, and again, they are priced at a saving which we believe will be within the limitations of every flower lover.

We will not be able to make exchange of varieties, and in case of necessity we reserve the right to make substitutions; however, we will substitute as good if not better varieties than those offered.

COLLECTION NO. 1 \$2.10 POSTPAID

50 Darwin Tulips

If bought separately would cost \$3.00, exclusive of parcel post.

- 10 Clara Butt. Salmon pink.
- 10 La Tulipe Noire. "The Black Tulip."
- 10 Painted Lady. Creamy-white.
- 10 Pride of Haarlem. Cerise-rose.
- 10 Rev. H. Ewbank. Lilac.

COLLECTION NO. 2 \$2.15 POSTPAID

50 Breeder Tulips

If bought separately would cost \$3.20, exclusive of parcel post.

- 10 Bronze Queen. Soft buff.
- 10 Cardinal Manning. Wine red.
- 10 Marie Louise. Old-rose.
- 10 Medea. Carmine-salmon.
- 10 Yellow Perfection. Bronze yellow.

COLLECTION NO. 3 \$1.65 POSTPAID

50 Single Early Tulips

If bought separately would cost \$2.65, exclusive of parcel post.

- 10 Artus. Bright scarlet.
- 10 La Reine. White, suffused soft pink.
- 10 President Lincoln. Light violet.
- 10 Rose Gris de Lin. Delicate rose pink.
- 10 Yellow Prince. Rich golden yellow.

COLLECTION NO. 4 \$2.10 POSTPAID

50 Cottage Tulips

If bought separately would cost \$3.00, exclusive of parcel post.

- 10 Fairy Queen. Heliotrope, margined yellow.
- 10 Gesneriana Lutea. Bright yellow.
- 10 Inglescombe, Pink. Soft salmon pink.
- 10 La Merveille. Scarlet.
- 10 Picotee. White, margined rose.

COLLECTION NO. 5 \$3.65 POSTPAID

60 Narcissi

If bought separately would cost \$4.55, exclusive of parcel post.

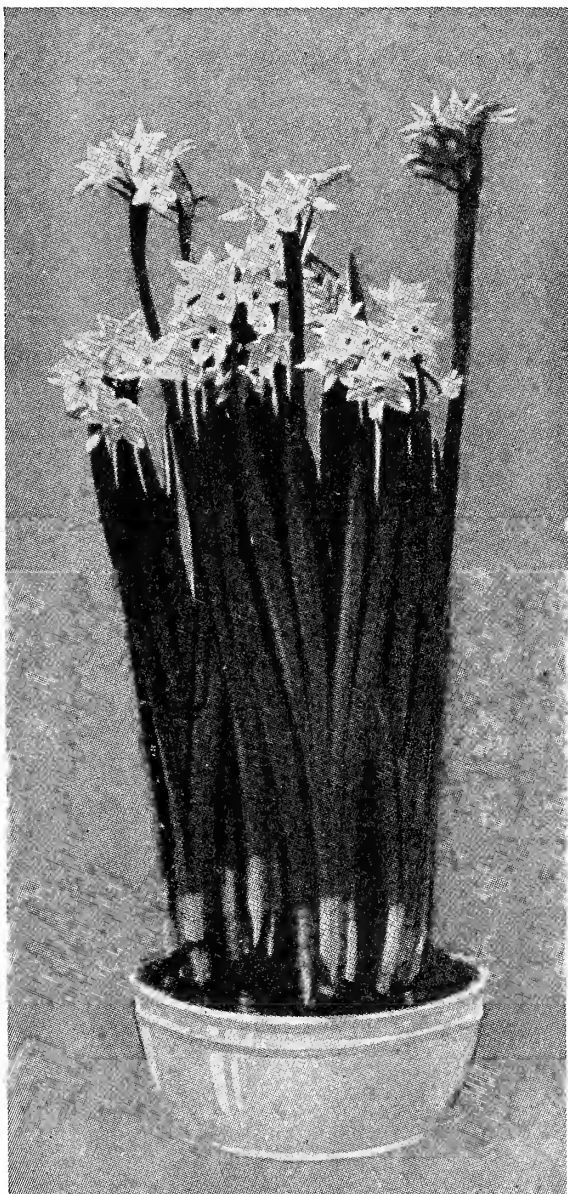
- 12 Large Trumpet, Bicolor. 12 Double White.
- 12 Large Trumpet, Yellow. 12 Mixed, Short-cupped.
- 12 Medium Trumpet, White

FOR A MORE COMPLETE DESCRIPTION OF VARIETIES SEE UNDER THE RESPECTIVE HEADINGS IN THIS BOOK.

THE BULBS OFFERED IN THESE COLLECTIONS ARE OF THE LARGEST SIZE IMPORTED FROM HOLLAND AND ARE ABSOLUTELY TRUE TO NAME.



ROCK'S FLOWER GARDENS OFFER COMPLETE LANDSCAPE SERVICE



We receive numerous inquiries each season regarding the planning and planting of gardens and various types of plants. It is indeed a great pleasure for us to be of any service possible that will benefit your gardens, and gladly offer these suggestions. We feel that all of us are striving for better homes, better gardens, and more happiness, and we know that interest in better flowers and plants is one of the main essentials toward these ideals. Let us help you solve your difficulties. It means no obligation whatever; in fact we consider it a favor.

Our landscape department is also at your service at all times; planning shrubbery borders, perennial and bulb gardens, formal gardens, drives, pools, or any type of landscape work. This cost is very little in comparison with the benefits derived. We shall be pleased to submit quotations upon request.

PLEASANT SECLUSION DURING THE DREARY WINTER MONTHS

A bowl of the beautiful Paper-White Narcissi ready to grow right in your own home.

A most fascinating charm and cheer and beauty may be had by growing a few of these delicate, sweet-scented flowers as they lend enchantment through the barren months of winter. Can be grown to perfection with little or no care.

We offer three largest sized Narcissus bulbs, set in an attractive white enamel bulb-pan, as shown in cut, with sufficient white marble gravel to hold bulbs in place. Soil is not necessary. Just set the bulbs upright in the gravel and fill bowl with water, place on a table near the light, or on the window sill. Within a few weeks you will have an array of the most delicate and delightfully scented flowers. For succession of bloom, start bulbs every two weeks until February.

Bowl of three bulbs, 50c; three bowls, \$1.35. Sent postpaid to any part of the U. S. and possessions.

Darwin Tulips

These stately aristocrats are the most popular and beloved type of all the Tulip family, bearing large, erect, globular flowers early in May. They are exceedingly effective when planted in beds of solid colors, interspersed in the shrubbery border, along drives, etc., and form the solid basis of all modern Tulip gardens. Also valuable as a cut-flower, the long-stemmed flowers remaining fresh for a long time in water.

CULTURAL DIRECTIONS FOR DARWIN TULIPS

The bed should be spaded at least 12 to 15 inches deep, pulverizing the soil thoroughly. An application of well-rotted manure or bonemeal will more than repay itself, producing much stronger and larger flowers. Plant the bulbs five inches apart each way and five to six inches deep (to the bottom of the bulb). This should be done before the ground becomes frozen. A light covering of straw or leaves will be beneficial.

For the convenience of those not familiar with the various heights and blooming periods, we have indicated these after each variety; the height in inches, and the letters E. F. G. H. representing the time of blooming; E being the earliest of this class. Prices net; postage extra. 12 bulbs weigh one pound. The largest size bulbs imported from Holland.

Ariadne. (F-28 in.) Brilliant rosy-scarlet, with a blue base. A large flower of great substance and one of the finest for outdoors. \$1.00 per doz.; \$7.00 per 100.

Baronne de la Tonnaye. (F-26 in.) Bright rose-pink, margined blush-pink. A beautifully shaped flower of large size. An excellent forcer and very effective in beds. 70c per doz.; \$4.50 per 100.

Bleu Aimable. (F-26 in.) A beautiful rich lavender-blue, shaded steel-blue. Large, handsome flower. \$1.00 per doz.; \$7.00 per 100.

Centenaire. (F-30 in.) Rich rose with light blue center. Immense flower of perfect shape. \$1.25 per doz.; \$8.50 per 100.

Clara Butt. (G-21 in.) A universal favorite. Clear self-colored, salmon-pink. The finest and most popular Darwin of its class. 70c per doz.; \$4.50 per 100.

Dream. (F-26 in.) Beautiful soft lilac. Very large flower on a tall stem. 80c per doz.; \$6.00 per 100.

Farncombe Sanders. (F-25 in.) Fiery rose-scarlet. Brilliant coloring, extremely large size and most excellent form. 90c per doz.; \$7.00 per 100.

Flamingo. (G-27 in.) Delicate shell pink. A lovely flower in every way. 90c per doz.; \$7.00 per 100.

Glow. (E-23 in.) Glowing vermilion, with light base. Exceptionally fine for cutting. \$1.00 per doz.; \$7.00 per 100.

Gretchen (Margaret). (H-24 in.) Soft silvery pink. Very delicate color. 70c per doz.; \$4.50 per 100.

King Harold. (G-24 in.) Deep blood red, a large flower and beautiful variety for either indoors or the garden. 80c per doz.; \$6.00 per 100.



Darwin Tulips, Pride of Haarlem.

La Tristesse. (G-25 in.) Pale slate-blue with white base. A very desirable light color. 75c per doz.; \$5.25 per 100.

La Tulipe Noire (The Black Tulip.) (G-25 in.) Almost black, with a velvety sheen. Large and very beautiful. 75c per doz.; \$5.25 per 100.

Madame Krelage. (F-28 in.) Bright lilac-rose, margined pale silvery rose, inside soft rose-pink. Very large flower of grand form. 80c per doz.; \$6.00 per 100.

Massachusetts. (F-25 in.) Vivid pink. Large flower of splendid form and color. 80c per doz.; \$6.00 per 100.

Mrs. Potter Palmer. (G-25 in.) Bright purplish-violet. Fine large flower. 75c per doz.; \$5.50 per 100.

Painted Lady. (H-26 in.) Creamy-white, slightly tinged soft heliotrope when opening. A beautiful flower resembling a water lily. 70c per doz.; \$4.50 per 100.

Pride of Haarlem. (F-26 in.) Brilliant cerise-rose. An enormous flower of superb form and beauty, and a stately plant for borders and among shrubs. For groups this variety is unsurpassed, both for its glorious color and stately habit. 70c per doz.; \$4.50 per 100.

Prince of the Netherlands. (F-30 in.) Glowing cerise-rose, flushed salmon-rose. Extremely large flower, highly praised for its striking color. \$1.50 per doz.; \$10.00 per 100.

Psyche. (G-27 in.) Soft rosy-pink, inside shaded silvery rose with pale blue base. A very beautiful delicate shade. 75c per doz.; \$5.00 per 100.

DARWIN TULIPS—Continued.

- Rev. H. Ewbank.** (F-20 in.) Vivid heliotropelilac, with light tint at the margin. Beautiful tulip for the garden as well as for forcing. 75c per doz.; \$5.00 per 100.
- Valentin.** (F-28 in.) Light violet with electric blue center. Very large and bold flower. Excellent for outdoor planting. \$1.20 per doz.; \$9.00 per 100.
- William Copeland.** (E-25 in.) Bright violet. The best early forcing Darwin tulip, and very desirable for outdoors. 80c per doz.; \$6.00 per 100.
- William Pitt.** (F-22 in.) A very dark scarlet with purple shade on outer petals; large flower of distinct color. \$1.00 per doz.; \$7.00 per 100.
- Zulu.** (F-26 in.) A large flower of rich violet-black. Excellent. 90c per doz.; \$6.00 per 100.
- Rock's Superb Darwin Mixture.** Includes the very best and most improved varieties of this lovely type. 65c per doz.; \$4.00 per 100; \$35.00 per 1000.

Breeder Tulips

The Darwin's greatest rival. As tall and stately as that superb variety, and the most popular of all late Tulips today.

Their wonderful color combinations in harmonious blendings of purple and bronze, yellow and bronze, gray and lilac, old-gold and maroon, and buff tones, justly reward the admiration of every flower lover. While they are late to bloom, they surpass the Darwins in brilliancy of color. The flowers are excellent for cutting, many of them being elegantly sweet scented. Same culture as the Darwin Tulips.

For the convenience of those not familiar with the various height and blooming periods, we have indicated these after each variety; the height in inches and the letters F. G. H. representing the time of blooming; F. being the earliest of this class. Prices net; postage extra. 12 bulbs weigh one pound. The largest size bulbs imported from Holland.

- Bronze Queen.** (G-27 in.) Soft buff, inside tinted apricot. Excellent for both garden and pot culture. 70c per doz.; \$4.50 per 100.
- Cardinal Manning.** (G-28 in.) A very interesting combination of dull wine-red changing to deep orange toward the extreme edges of the petals. 75c per doz.; \$5.00 per 100.
- Dom Pedro.** (G-25 in.) Rich coffee brown shaded maroon. Large and beautiful. \$1.25 per doz.; \$9.00 per 100.
- Feu Ardent.** (H-24 in.) Mahogany-red shaded scarlet. Of unusual brilliancy. Very large cup-shaped flower. \$1.25 per doz.; \$9.00 per 100.
- General Ney.** (F-25 in.) Old-gold shading to brown. Excellent to use in combination with deep red or purple. \$1.00 per doz.; \$7.00 per 100.
- Godet Parfait.** (G-30 in.) Deep rich plum-violet. A very large flower. \$1.25 per doz.; \$9.00 per 100.
- Hamlet.** (G-25 in.) Dark bronze bordered bronzy-yellow. Very large and striking. \$1.00 per doz.; \$7.00 per 100.
- Jaune d'Oeuf (Sunrise).** (H-24 in.) Dark apricot, edged yellow. An odd and very attractive flower. 80c per doz.; \$6.00 per 100.
- Louis XIV.** (G-28 in.) A wonderful dark purple flushed golden bronze. A most unique novelty. \$3.00 per doz.; \$22.50 per 100.



Breeder Tulips, Feu Ardent.

- Lucifer.** (G-20 in.) Bright terra-cotta orange. Large, well shaped flower on a graceful stem. \$1.75 per doz.; \$12.00 per 100.
- Marie Louise.** (G-23 in.) Old-rose flushed orange salmon. Very handsome. 85c per doz.; \$6.25 per 100.
- Medea.** (G-27 in.) Carmine suffused salmon. Large flower. Fine. 80c per doz.; \$6.00 per 100.
- Panorama.** (G-26 in.) A very large deep orange-red, shaded mahogany. \$1.00 per doz.; \$7.00 per 100.
- Prince of Orange. (Sunset.)** (G-20 in.) Orange-scarlet, edged light yellow. Flower of striking beauty. 80c per doz.; \$6.00 per 100.
- Superba.** (G-27 in.) Shining velvet-black tinted brown. Very distinct in color. \$1.10 per doz.; \$8.00 per 100.
- Turenne (MacMahon).** (F-28 in.) Purplish-brown with a margin of soft yellow. One of the largest and very early for this type. \$1.20 per doz.; \$9.00 per 100.
- Velvet King.** (H-21 in.) Dark glossy royal purple with a white base. A giant among giants. \$2.00 per doz.; \$15.00 per 100.
- Yellow Perfection.** (F-24 in.) Bronze-yellow, edged with golden yellow. A tulip of remarkable beauty. 80c per doz.; \$6.00 per 100.
- Rock's Select Breeder Mixture.** A carefully selected mixture of the finest varieties in a wealth of color. 70c per doz.; \$4.50 per 100; \$40.00 per 1000.



A Pleasing Display of Single and Double Early Tulips.

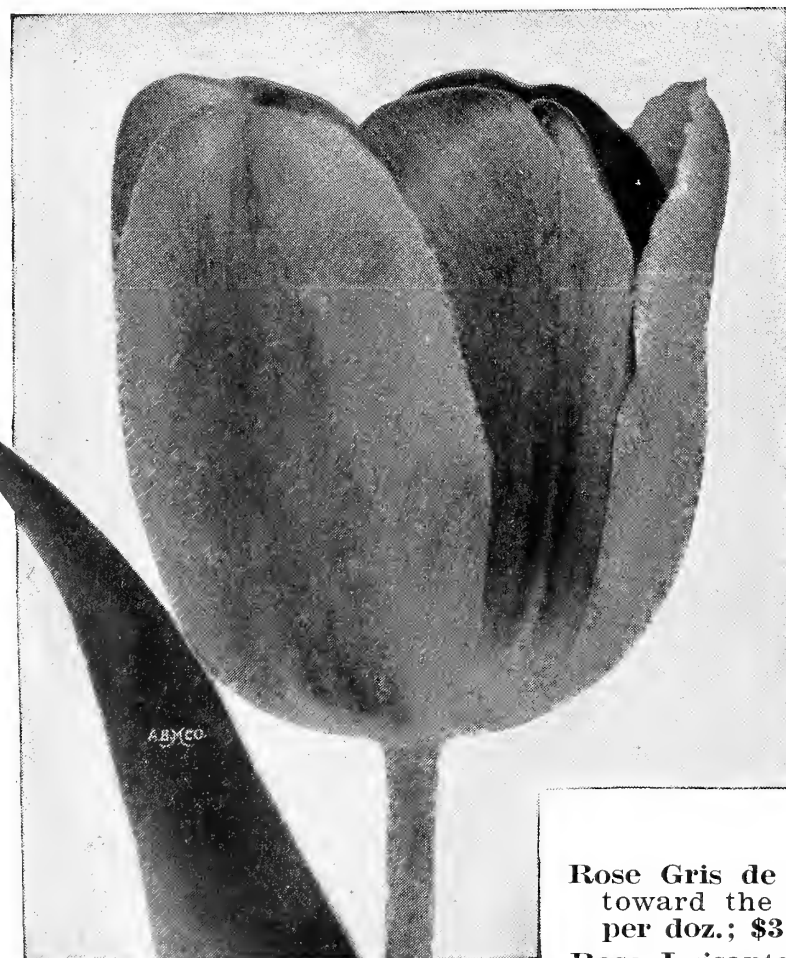
Single Early Tulips

An early flowering type well suited for beds or borders. Same cultural directions as for the Darwin Tulips. For the convenience of those not familiar with the various heights and blooming periods, we have indicated these after each variety; the height in inches, and the letters A, B, C, representing the time of blooming. A being the earliest of this class. Prices net; postage extra. 12 bulbs weigh one pound. All bulbs are the largest size imported from Holland.

Artus. (B-10 in.) Bright scarlet. Large elegant flower. 65c per doz.; \$4.00 per 100.

Belle Alliance. (B-11 in.) Brilliant scarlet. Large flower, excellent for both forcing and bedding. 80c per doz.; \$6.00 per 100.

Cramoisi Brilliant. (C-14 in.) Rich glowing scarlet. Very large flower; long stem. Excellent for forcing and splendid for bedding. 70c per doz.; \$4.50 per 100.



Single Early Tulip, Cramoisi Brilliant.

Chrysolora. (B-12 in.) Large pure golden yellow. One of the finest. 70c per doz.; \$4.50 per 100.

Cottage Maid. (C-9 in.) Lovely soft pink feathered white toward the center. 80c per doz.; \$6.00 per 100.

Duchesse de Parma. (C-14 in.) Large orange-red with bold irregular margin of deep yellow. 80c per doz.; \$6.00 per 100.

Joost Van Vondel. (B-12 in.) Rosy red, flaked with white and suffused with delicate rose on the outside. 65c per doz.; \$4.00 per 100.

Keizerkroon. (B-14 in.) Crimson-scarlet, edged bright yellow; very large; long stem. Very attractive in beds and splendid for forcing. 80c per doz.; \$6.00 per 100.

Lady Boreel. (B-12 in.) Considered the finest white in this class. Large flower of splendid shape. 80c per doz.; \$6.00 per 100.

La Reine. (B-12 in.) White, suffused with delicate pink. A fine bedding variety and very good for forcing. 55c per doz.; \$3.50 per 100.

Park Beauty. (B-12 in.) Deep orange-red; beautiful flower; excellent for bedding. 80c per doz.; \$6.00 per 100.

Pink Beauty. (C-13 in.) Bright rosy-pink, shading to bluish white. Very large. \$1.20 per doz.; \$8.00 per 100.

President Lincoln. (B-12 in.) Light violet, edged white. An excellent type for bedding. 70c per doz.; \$4.50 per 100.

Proserpine. (A-13 in.) Rich carmine-rose of a silky texture. Very popular for both forcing and bedding. \$1.10 per doz.; \$8.00 per 100.

Queen of the Netherlands. (B-14 in.) Soft rose-pink, flushed white. Of beautiful globular form and a very popular type. 80c per doz.; \$6.00 per 100.

Rose Gris de Lin. (C-10 in.) Delicate rose-pink shaded lighter toward the base. Excellent for both forcing and bedding. 55c per doz.; \$3.50 per 100.

Rose Luisante. (C-10 in.) Brilliant deep rose-pink. Fine large flower. \$1.20 per doz.; \$9.00 per 100.

SINGLE EARLY TULIPS—Continued.

White Hawk. (B-12 in.) Pure white, robust habit. One of the best white Tulips. 80c per doz.; \$6.00 per 100.

Wouverman. (C-11 in.) Rich dark purple. A most beautiful and unusual shade. 75c per doz.; \$5.50 per 100.

Yellow Prince. (B-11 in.) Rich golden yellow; sweetly scented; very handsome. 70c per doz.; \$4.50 per 100.

Rock's Rainbow Mixture of Single Early Tulips. Carefully selected bulbs of the largest size in equal proportion of the above varieties. 50c per doz.; \$3.50 per 100; \$32.00 per 1000.

Double Early Tulips

A double form of the early-flowering type. It is usually advisable to plant only one variety to a bed as they produce the best effect when planted in this manner. The letters B, C, represent their time of blooming; B being the earliest in this class. Same culture as the Darwin Tulips. Prices net; postage extra. 12 bulbs weigh one pound. All bulbs are the largest size imported from Holland.

Boule de Neige (White Peony). (B-10 in.) Pure white, very double and very large. 85c per doz.; \$6.50 per 100.

Couronne d'Or. (B-11 in.) Golden yellow, flushed orange. Large magnificent flower on a strong stem. One of the most popular double Tulips for bedding as well as forcing. 85c per doz.; \$6.00 per 100.

Imperator Rubrorum. (B-11 in.) Beautiful bright scarlet. Excellent for bedding and the finest double scarlet for forcing. 85c per doz.; \$6.00 per 100.

La Grandesse. (B-11 in.) Deep rose-pink, shading to blush pink at the center. 75c per doz.; \$5.50 per 100.

Murillo. (B-11 in.) Delicate blush pink. One of the best double Tulips for either forcing or bedding. 60c per doz.; \$4.00 per 100.

Rubra Maxima. (B-10.) Dazzling scarlet. We recommend this variety very highly for bedding. 80c per doz.; \$6.00 per 100.

Salvator Rosa. (B-12 in.) Splendid deep rose-pink, slightly shaded blush pink. Fine large double flowers. 85c per doz.; \$6.50 per 100.

Tea Rose. (B-12 in.) A beautiful large primrose yellow flushed salmon, developing into apricot pink. 70c per doz.; \$4.50 per 100.

Tournesol. (B-10 in.) Showy bright scarlet, tipped yellow and with a yellow base. Easiest of all double Tulips to force. 85c per doz.; \$6.00 per 100.



Single Early Tulips, Pink Beauty.

Tournesol, Yellow. (B-12 in.) Bright golden yellow, shaded orange. One of the showiest of double Tulips. 85c per doz.; \$6.00 per 100.

Wilhelm III. (C-12 in.) Orange-scarlet, good for late forcing and bedding. 80c per doz.; \$6.00 per 100.

Rock's Special Mixture of Double Early Tulips. A beautiful mixture of all colors. 65c per doz.; \$4.50 per 100; \$40.00 per 1000.

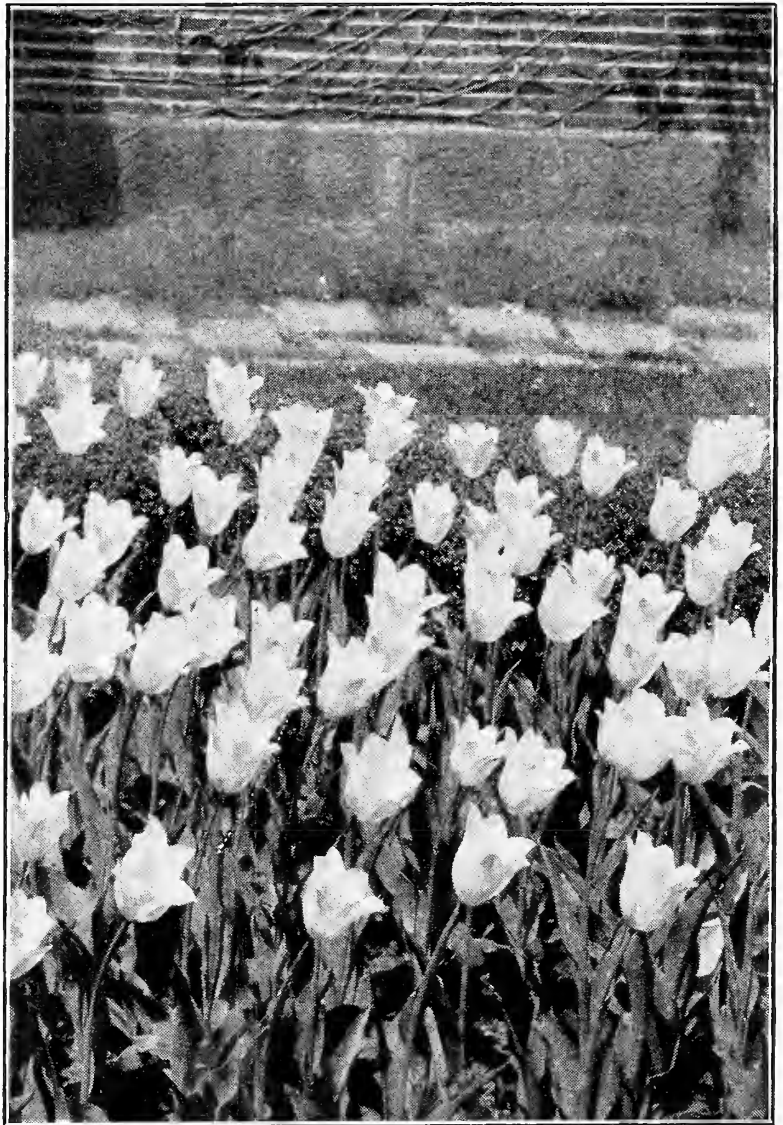


Double Early Tulips, Murillo.

Cottage Tulips

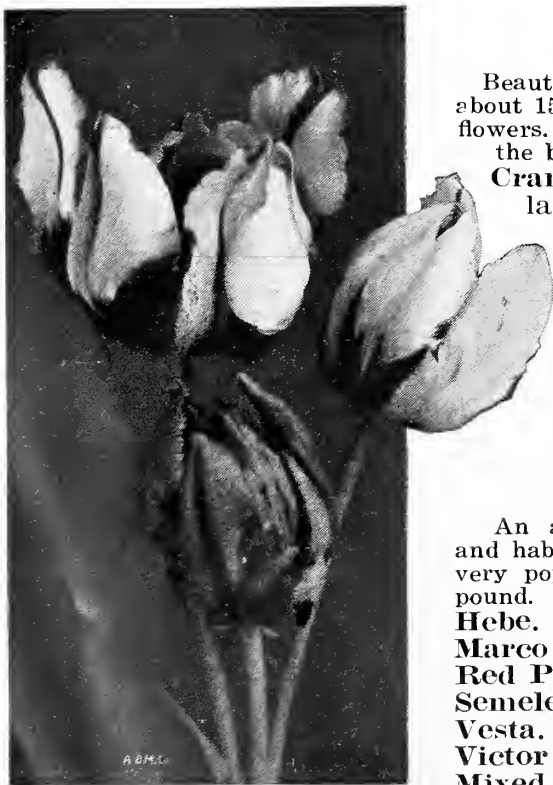
The Cottage or May-flowering Tulips follow the Single Early varieties in season. They comprise most exquisite colors and are charming when planted in borders of perennials or in beds. The flowers are mostly long, many of which are elegantly reflexed. Same cultural directions as given for Darwin Tulips. For the convenience of those not familiar with the various heights and blooming periods we have indicated these after each variety; the height in inches and the letters F, G, H and I representing the time of blooming. "F" being the earliest in this class. Prices net; postage extra, 12 bulbs weigh one pound. All bulbs are the largest size imported from Holland.

- Ellen Willmott.** (H-18 in.) Soft primrose-yellow. Large fragrant flowers. One of the most attractive of this class. 80c per doz.; \$6.00 per 100.
- Fairy Queen.** (G-20 in.) Rosy-heliotrope, with broad amber-yellow margin. Very large and beautiful. 70c per doz.; \$4.50 per 100.
- Golden Spire.** (G-20 in.) Golden yellow, edged with orange-red. Very large flower with pointed reflexed petals; beautiful. \$1.00 per doz.; \$7.50 per 100.
- Gesneriana Major** (Spathulata). (G-22 in.) Brilliant crimson-scarlet, with a purplish-black center; very large flower. 80c per doz.; \$6.00 per 100.
- Gesneriana Lutea.** (H-24 in.) Beautiful bright yellow, tall and handsome. 70c per doz.; \$4.50 per 100.
- Inglescombe Pink.** (F-22 in.) Soft salmon-pink. Large globular flower. One of the finest May-flowering Tulips. 75c per doz.; \$4.50 per 100.
- Inglescombe Scarlet.** (H-18 in.) Brilliant scarlet with black base. Same type as above. 75c per doz.; \$5.00 per 100.
- Inglescombe Yellow.** (H-18 in.) Often called the "Yellow Darwin." Large flower of perfect form. Glossy canary-yellow. Very charming. 70c per doz.; \$4.50 per 100.
- Isabella** (Shandon Bells; Blushing Bride). (F-15 in.) Creamy white, shaded carmine-rose. 80c per doz.; \$6.00 per 100.
- La Merveille.** (I-18 in.) Scarlet, flushed with orange-red. Large flower of exquisite form and beauty. Excellent for the border and splendid for vases. 75c per doz.; \$4.75 per 100.
- Mrs. Moon.** (H-24 in.) Golden yellow. Petals slightly reflexed. Large flower on a strong stem. One of the most beautiful of all Cottage Tulips. 80c per doz.; \$6.00 per 100.
- Picotee** (Maiden's Blush). (G-20 in.) Pure white, margined rose. A most elegant flower with gracefully recurved petals. 75c per doz.; \$5.00 per 100.



Cottage Tulips, Mrs. Moon.

- Sir Harry.** (G-22 in.) Large beautiful lavender-pink. Very desirable. \$1.10 per doz.; \$8.00 per 100.
- The Fawn.** (H-20 in.) Large oval flower of light salmon-cream, changing to soft rosy-white. Very distinct in color and very graceful. 80c per doz.; \$6.00 per 100.
- Rock's Ideal Cottage Mixture.** A beautiful well balanced mixture containing all of the above varieties. 60c per doz.; \$4.00 per 100; \$35.00 per 1000.



Parrot Tulips.

Parrot or Dragon Tulips

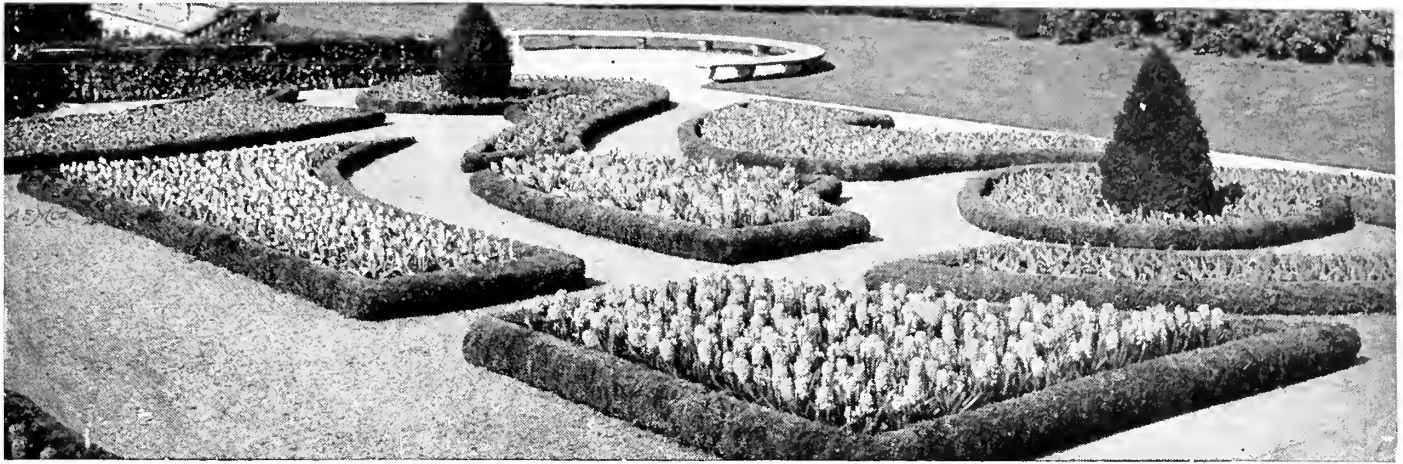
Beautiful late-flowering Tulips with curiously slashed and lacinated petals, growing about 15 inches in height, and bearing large flowers of striking colors. Excellent for cut flowers. Plant bulbs five inches apart each way and five inches deep (to the bottom of the bulb). 10 bulbs weigh one pound. Prices net; postage extra.

- Cramoisi Brilliant.** Rich blood crimson with blackish markings. Very large and handsome. 70c per doz.; \$4.50 per 100.
- Lutea Major.** Bright yellow, lightly striped and blotched with crimson and green. 70c per doz.; \$4.50 per 100.
- Markgraaf Von Baden.** Yellow, striped with green and scarlet. 70c per doz.; \$4.50 per 100.
- Perfecta.** Golden yellow, blotched deep scarlet. A very striking sort. 70c per doz.; \$4.50 per 100.
- Finest Mixture of Parrot Tulips.** 60c per doz.; \$4.00 per 100.

Rembrandt Tulips

An attractive class of late-flowering Tulips similar to the Darwins in season and habit but distinct from that type in color and marking. A variety that will become very popular when better known. Same culture as the Darwins. 10 bulbs weigh one pound. Prices net; postage extra.

- Hebe.** Pale lilac-white; deep brown markings. 90c per doz.; \$7.00 per 100.
- Marco Spado.** White flamed with brilliant scarlet. Doz., 90c; 100, \$7.00.
- Red Prince.** Rose flamed fiery red. Doz.; 90c; \$7.00 per 100.
- Semele.** Fine white with rose-pink feathering. Doz.; 90c; \$7.00 per 100.
- Vesta.** Lilac, feathered bright red. Doz., 90c; \$7.00 per 100.
- Victor Hugo.** Brilliant carmine flamed white. Doz.; 90c; \$7.00 per 100.
- Mixed Rembrandt Tulips.** A splendid mixture of all colors. Doz., 75c; \$6.00 per 100.



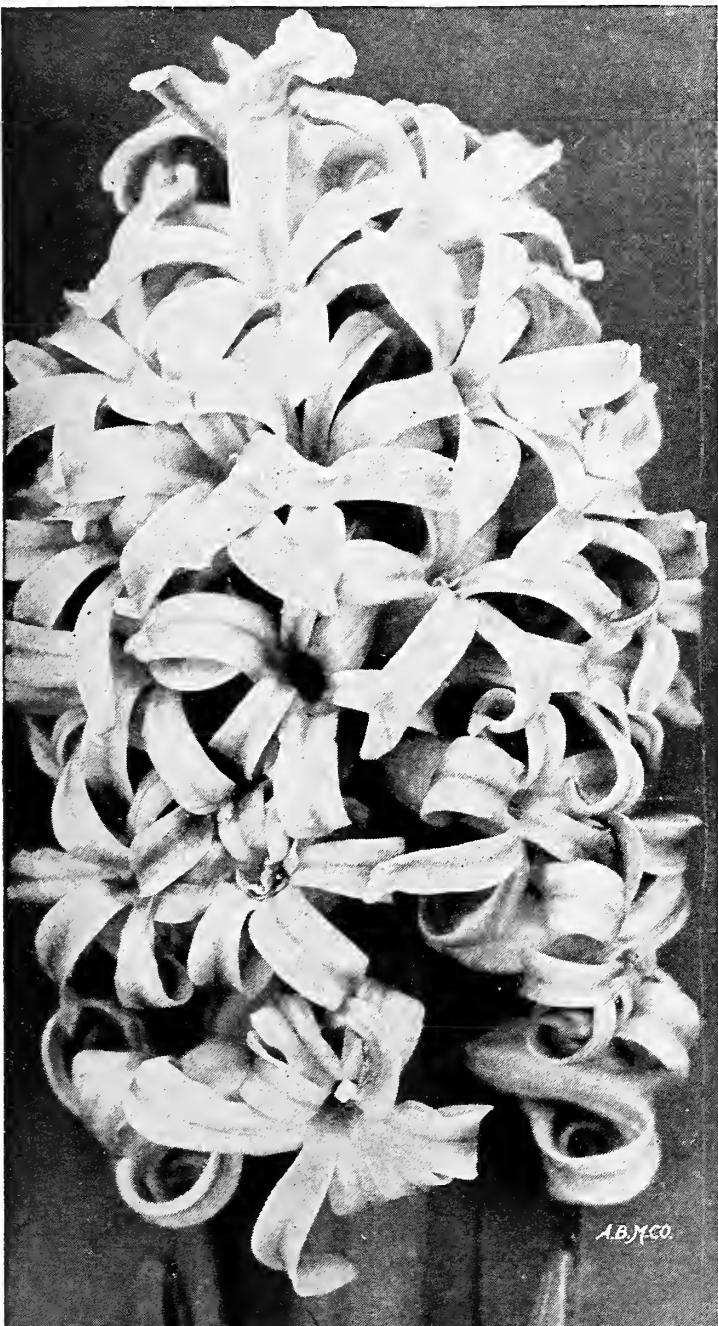
Hyacinths Adapt Themselves Admirably to the Formal Garden.

Hyacinths

Hyacinths are among the most popular of spring-flowering bulbs, not only popular for outdoor culture, but equally so for indoors. There is nothing more attractive than a well planted bed of good Hyacinths; their delicate colors and delightful fragrance lend an atmosphere of pride to any garden. Our **Exhibition Bulbs** are the first selection of the largest bulbs produced in Holland, suitable for indoor culture as well as in the garden.

Outdoor Culture. Hyacinths grow in any good garden soil, but an application of well-rotted manure or bonemeal induces more perfect growth and larger flower-spikes. Set bulbs 6 inches apart each way and 6 inches deep (to the bottom of the bulb). Plant before the ground becomes frozen. Hyacinths are perfectly hardy, but a light covering of straw or leaves is very beneficial. 10 bulbs weigh two pounds. Prices net; postage extra.

Indoor Culture. Use a pulverized soil mixed with well-rotted manure and a little sand; provide for drainage. One bulb requires about a five-inch pot, so proportionate space should be allowed when planting a number of bulbs. Plant the bulbs so that the top appears just above the surface of the soil, water thoroughly and place in a cool, dark but ventilated situation until the roots are well established, then bring to light. For succession of bloom make plantings about two weeks apart, starting in October.



Exhibition Hyacinth.

Exhibition Hyacinths

- Gertrude. Deep rose-pink.
- Gigantea. Blush pink.
- La Victoire. Brilliant red.
- Lady Derby. Bright rose-pink.
- Roi des Belges. Bright scarlet.
- Grandeur A'Merveille. Large bluish white.
- L'Innocence. Pure white, best forcer.
- Queen of the Whites. Large pure white.
- Enchantress. Porcelain blue.
- Grand Lilas. Deep lilac; early.
- Johan. Large light blue.
- King of the Blues. Dark blue; late.
- Queen of the Blues. Light porcelain blue.
- Lord Balfour. Purplish-violet; early.
- King of the Yellows. Deep yellow.

Prices for the above, 25c each; \$2.50 per doz.; \$15.00 per 100.

Rock's Exhibition Mixed. 25c each; \$2.35 per doz.; \$13.00 per 100.

Dutch Roman Hyacinths

The well known Dutch Roman or Miniature Hyacinths should find a place in every home as they are very easily grown indoors and make a most dainty display. The flower spikes are slender, yet full of flower bells. A most satisfactory bedding type also. The bulbs, being smaller, should be planted close together, about 4 inches apart each way and 5 inches deep (to the bottom of the bulb).

- Roi des Belges. Bright scarlet.
- Gigantea. Blush pink.
- La Grandesse. Pure white.
- Yellow Hammer. Golden yellow.
- Queen of the Blues. Light blue.
- King of the Blues. Dark blue.

Prices for the above, 75c per doz.; \$5.00 per 100.
Rock's Mixed. 70c per doz.; \$4.50 per 100.

Selected Bedding Hyacinths

This type is not suitable for forcing, but well adapted for bedding purposes as uniformity in color and height can be had by their use. All are single named varieties, but of our own selection.

- Red. Dark Blue. Yellow.
- Pink. Light Blue. Mixed Colors.
- Pure White.

Prices: \$1.20 per doz.; \$8.50 per 100.



A Planting of Large Trumpet Narcissi Is a True Source of Pleasure in Early Spring.

Narcissi or Daffodils

Narcissi are the most welcome of our early spring flowers, enriching the home gardens with a wealth of bloom soon after the snows have passed. With the exception of the Polyanthus type, they are all very hardy and do well in most any soil. Once planted they will increase and multiply, and flower well for years, making them very valuable for naturalizing. We call to your special attention that after 1925 Narcissi will not be allowed entry into this country and as ninety-five percent of these beautiful bulbs are imported from Holland, we would suggest to our patrons the advisability of planting liberal quantities each year until this quarantine becomes effective. Then again, in all probability, bulbs will be higher in price each season until 1925 owing to such a large demand over the regular production.

Plant the bulbs about 6 inches apart each way and 6 inches deep (to the bottom of the bulb). The Daffodils, especially the Large Trumpet varieties are easily grown in pots for winter blooming. 12 bulbs weigh 2 lbs.

Large Trumpet Varieties

Emperor. Deep primrose perianth with large golden yellow trumpet. One of the finest Daffodils for medium and late forcing, and outdoor culture. Double-nosed bulbs. \$1.25 per doz.; \$8.00 per 100.

Empress (Bicolor). Bright yellow trumpet of large size with white perianth. A strong grower and free bloomer. Splendid for pots, bedding, and naturalizing. Double-nosed bulbs. \$1.25 per doz.; \$8.00 per 100.

Glory of Leiden. Clear yellow. One of the largest of the Large Trumpet varieties. A fine exhibition sort and should be included in every collection. \$1.25 per doz.; \$9.00 per 100.

Golden Spur. Pure golden yellow perianth and trumpet. Very large size and one of the earliest Daffodils. Highly recommended for forcing, naturalizing, and bedding. Double-nosed bulbs. \$1.25 per doz.; \$9.00 per 100.

Madame de Graaff. The largest and finest white Daffodil. Upon opening, the trumpet is a delicate primrose, but soon passes to pure white. A most refined delicate flower, well adapted for forcing, naturalizing or bedding. Double-nosed bulbs. \$1.15 per doz.; \$7.75 per 100.

Princeps (Bicolor). Golden yellow trumpet of good size; sulphur-white perianth. Splendid for forcing and outdoor culture. 90c per doz.; \$7.00 per 100.

Victoria (Bicolor). Trumpet clear yellow, very large, beautifully ruffled and frilled at the edges. Perianth creamy white. A very bold and erect flower. Double-nosed bulbs. \$1.25 per doz.; \$9.00 per 100.

Willie Barr. A beautiful Trumpet Daffodil, with perianth clear soft yellow, and trumpet rich deep yellow. A strong, erect flower. \$1.25 per doz.; \$9.00 per 100.



Large Trumpet Narcissus, Empress.

Medium Trumpet Narcissi

A very interesting group, especially adapted for garden culture. The flowers are not so heavy as those of the Large Trumpet varieties, but are produced in greater abundance. They furnish the finest flowers for cutting and lend themselves admirably to artistic arrangement in vases and bowls.

Conspicuous (Barrii). Broad, soft yellow perianth; short cup, edged with orange-scarlet. A strong grower and a durable cut-flower variety. \$1.00 per doz.; \$7.00 per 100.

Lady Godiva (Barrii). "The White Conspicuous." White perianth, with broad yellow cup, edged orange-scarlet. Flower of elegant form. \$1.00 per doz.; \$7.00 per 100.

Lucifer (Incomparabilis). Large, handsome, white perianth; intense glowing orange-scarlet cup. \$1.10 per doz.; \$7.50 per 100.

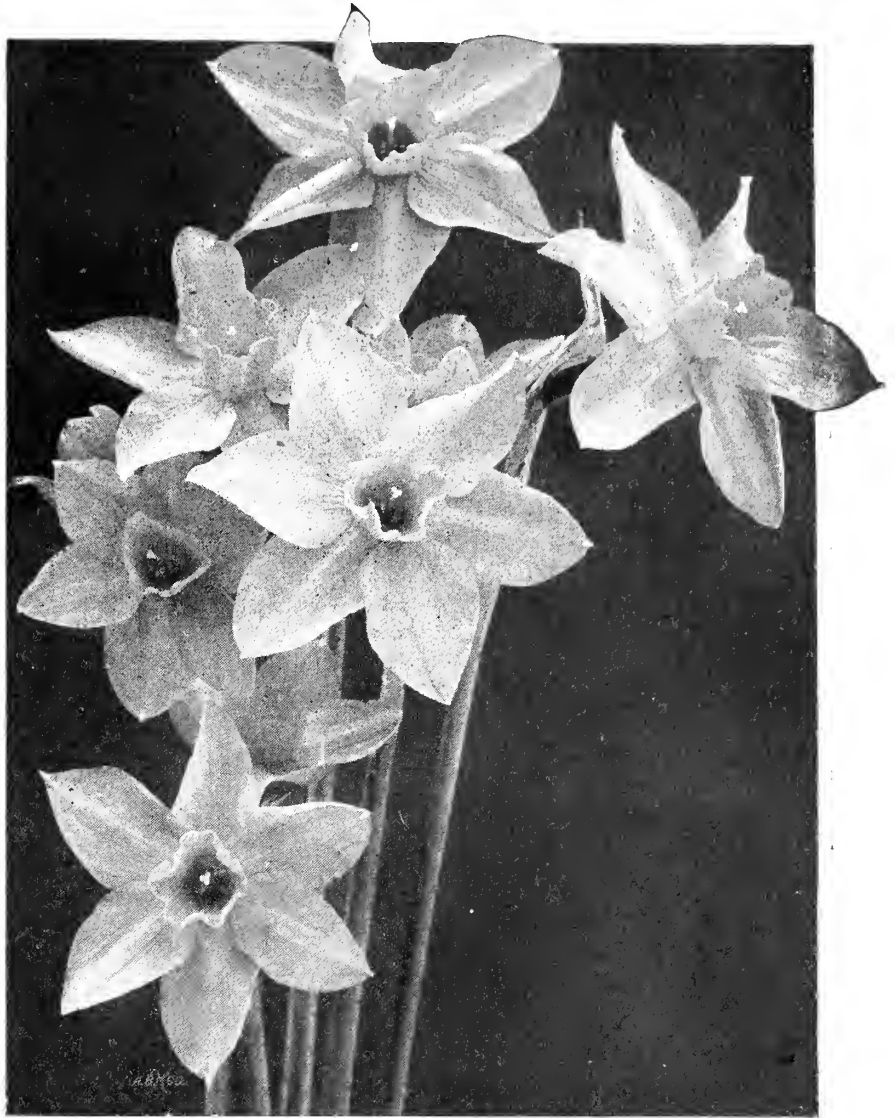
Mrs. Langtry (Leedsii). A remarkable free-flowering variety and one of the best for naturalizing. Broad white perianth and large white cup, edged delicate primrose. 90c per doz.; \$7.00 per 100.

Queen Bess (Incomparabilis). The earliest of all Medium Trumpet Daffodils. Perianth pure white with a large, well-expanded, light yellow cup. \$1.10 per doz.; \$7.50 per 100.

Seagull (Barrii). Large, spreading, pure white perianth, cup canary-yellow, edged apricot. A most beautiful flower. \$1.00 per doz.; \$7.00 per 100.

Sir Watkin (Incomparabilis). The Giant Welsh Daffodil. Huge sulphur yellow perianth, with deep yellow cup tinged bright orange. A bold, handsome, gigantic flower. \$1.25 per doz.; \$9.00 per 100.

White Lady (Leedsii). An exquisite flower with a broad white perianth of perfect form, dainty cup, prettily crinkled, very chaste. \$1.10 per doz.; \$7.50 per 100.



Medium Trumpet Narcissi, White Lady.

Mixed Trumpet Varieties. A splendid mixture of Large and Medium Trumpet Narcissi. Splendid for naturalizing. 90c per doz.; \$6.75 per 100.

Double Narcissi

Orange Phoenix. Large, double, white flowers, rose-shaped, with rich reddish-orange center. An ideal cut-flower. \$1.25 per doz.; \$9.00 per 100.

Alba Plena Odorata (Double Poet's Narcissus or Gardenia Daffodil). Double, pure white, very sweet scented. This beautiful variety cannot be forced. It succeeds best when planted in a rather heavy, moist soil and in partial shade. 80c per doz.; \$6.00 per 100.

Von Sion. The famous Old Dutch Daffodil. Flowers golden yellow. Valuable for grouping in beds or borders, also for forcing. Double-nosed bulbs. \$1.00 per doz.; \$7.00 per 100.

Short Cupped Narcissi

Poet's and Poetaz Narcissi. These are the old-fashioned favorite types with white flowers daintily edged bright red. Equally desirable for forcing and outdoor culture.

Poetaz Elvira. Broad white petals of great substance, and a golden yellow cup, edged bright orange-scarlet. Large flowers borne on tall graceful stems. Delicately fragrant. \$1.00 per doz.; \$7.00 per 100.

Poeticus Almira (King Edward VII). Snow-white petals and a beautiful canary-yellow cup, bordered red. Much larger and taller than the Poeticus Ornatus, which we offered last season. \$1.10 per doz.; \$7.50 per 100.

Mixed Short-Cupped Varieties. Including a mixture of named varieties. 75c per doz.; \$5.00 per 100.



Double Narcissus, Von Sion.

Polyanthus Narcissi

A most fascinating charm and cheer and beauty may be had by growing a few of these delicate flowers right in your own home. They lend enchantment through the dreary winter months, and may be grown to perfection with but very little care.

Set bulbs in a bowl or pan about one inch apart, filled with about one inch of sand and the balance with gravel. Keep filled with water. Place in a dark, cool situation until roots have started growth, then bring to light. Successive plantings may be made that will produce flowers from December to the latter part of March. For a succession make plantings about two weeks apart. 12 bulbs weigh two pounds. Prices net; postage extra.

Giant Paper-White Grandiflora. Pure white. The popular variety for early forcing. Extra large size bulbs, 85c per doz.; \$6.00 per 100. First size bulbs, 70c per doz.; \$5.25 per 100.

Giant Soleil d'Or. Golden yellow. Often called the Yellow Paper-White. Like the preceding, they are very popular. Extra large size bulbs, \$1.50 per doz.; \$11.00 per 100. First size bulbs, \$1.25 per doz.; \$9.00 per 100.

Jonquils

These dainty, fragrant, miniature Daffodils should have a place in every garden. They are splendid for pot culture and being very hardy, are fine for naturalizing.

Single Sweet Scented. The small yellow, sweet scented Daffodil. 80c per doz.; \$6.00 per 100.

Crocus

The harbingers of spring, blooming almost as soon as the snow has disappeared. The varieties listed below are a great improvement over the old-fashioned types. They are very hardy, multiply rapidly, and bloom for years, making them ideal for permanent plantings.

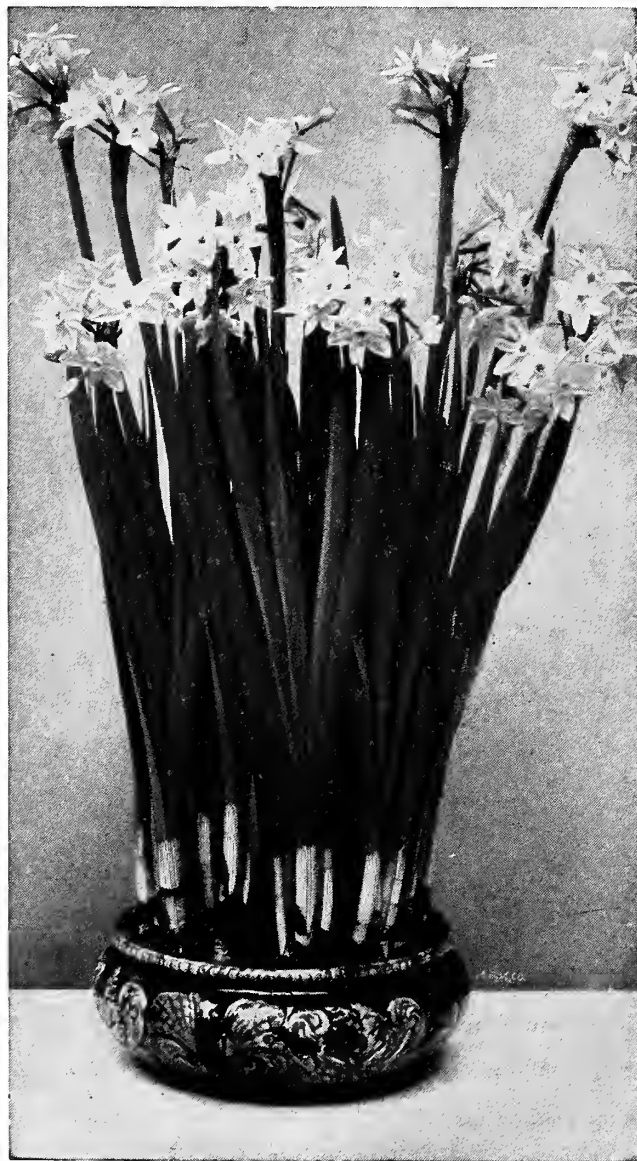
Set the bulbs three inches apart each way and three inches deep (to bottom of bulb). For indoor culture, plant 12 to 14 bulbs in a 6 or 7-inch pan or bowl, using a good, rich, loamy soil. 50 bulbs weigh one pound. Prices net; postage extra.

Cloth of Gold. Dark brown striped. Very early. 45c per doz.; \$3.00 per 100.

King of the Blues. Very large, deep purple. 35c per doz.; \$2.50 per 100.

King of the Whites. Pure white. Very large. 35c per doz.; \$2.50 per 100.

Large Yellow. Golden yellow. 55c per doz.; \$3.75 per 100.



Giant Paper-White Narcissi.

Maximilian. Pale lilac-blue. Fine. 35c per doz.; \$2.50 per 100.

Mont Blanc. Best white. 35c per doz.; \$2.50 per 100.

Purpurea Grandiflora. Large purple. Very broad, strong flower. Excellent. 35c per doz.; \$2.50 per 100.

Sir Walter Scott. White, striped purple. 35c per doz.; \$2.50 per 100.

Crocus in Mixtures

Blue and Purple Mixed. 25c per doz.; \$1.75 per 100.

White Mixed. 25c per doz.; \$1.75 per 100.

Striped and Variegated Mixed. 25c per doz.; \$1.75 per 100.

Freesias

A desirable flower for forcing indoors, exceptionally fragrant. 50 bulbs weigh one pound.

Purity. White. 60c per doz.; \$4.00 per 100.

Fardel's Hybrids. Comprising a large number of beautiful shades in mixture. \$1.00 per doz.; \$7.00 per 100.



Crocus.

Hardy Garden Lilies

Lilies are a very important addition to any perennial or herbaceous border, and by selection of the proper varieties, blooms may be had from June to October. They may be planted in borders, formal gardens, or interspersed amongst shrubs, and thrive well planted in semi-shaded positions. Deep planting is highly recommended, say, from 6 to 8 inches (to the bottom of the bulb), and 8 to 10 inches apart each way. An inch of sand beneath the bulb will provide sufficient drainage. Then cover with good, well-pulverized soil.

Candidum (Madonna or Annunciation Lily). Delivery August 15th to October. The favorite hardy white Lily found in old-fashioned gardens, producing an abundance of pure, glistening white flowers in June. Rock's stock is of the true, thick-petaled variety, elegantly scented, grown on our own grounds. They are unexcelled for any planting, being more vigorous and adapted to the climatic conditions of our country than the imported bulbs. **Largest size bulbs, 50c each; \$5.00 per doz.; \$40.00 per 100. Mammoth size bulbs, 40c each; \$4.00 per doz.; \$30.00 per 100. First size bulbs, 30c each; \$3.00 per doz.; \$20.00 per 100.**

Regale (Regal Lily). Bulbs ready in October. We consider this the finest of all Lilies. Large white flowers, delicately suffused pink with a beautiful shade of canary-yellow at the center, and extending part way up the trumpet. Delightfully fragrant, reminding one of the Jasmine. Blooms in June. **Largest size bulbs, 85c each; \$8.50 per doz.**

Auratum (The Golden-Rayed Lily of Japan). Bulbs ready in November and December. A most beautiful and popular type of hardy Lilies, producing very large glistening white flowers thickly studded with crimson spots, while through the center of each petal runs a clear golden yellow band. Thrives best in locations where the lower portion of the plant is shaded, as among Peonies or other low-growing perennials. Blooms from June to October. **Largest size bulbs, 65c each; \$6.50 per doz.**



Lilium Henryi.



Lilium Candidum.

The Regal Lilies are Superb—Don't Fail To Add Them To Your Garden.

Henryi (Yellow Speciosum). Bulbs ready November and December. A rare and very beautiful variety from China, similar in size, shape, and habit to the well known speciosum type. Grows from three to five feet high and produces five to eight large flowers of a rich apricot-yellow lightly spotted with brown. **Largest size bulbs, 50c each; \$5.00 per doz.**

Tigrinum Splendens (Improved Tiger Lily). Very large orange-red flowers, spotted black. Three to five feet high. Blooms in August. **Largest bulbs, 25c each; \$2.50 per doz.**

Tigrinum Flore Pleno (Double Tiger Lily). A double-flowering form of the above. **25c each; \$2.50 per doz.**

Lilium Speciosum

Bulbs ready in November and December. The Speciosum varieties are probably the most popular Lilies grown, bearing large flowers of a most delicate beauty in August. Height two to four feet.

Speciosum Album. Pure white. **Largest size bulbs, 60c each; \$6.00 per doz.**

Speciosum Rubrum. White, shaded and spotted deep rose-pink. **Largest size bulbs, 60c each; \$6.00 per doz.**

Speciosum Melpomene. White, heavily spotted deep crimson. **Largest size bulbs, 60c each. \$6.00 per doz.**

Lilies for Indoor Forcing

Calla Lilies

One of the best winter-flowering plants for house culture. Plant just below the surface in a four or five-inch pot. They are partial to a rich clay soil. Place in the cellar or other dark cool place until the bulb starts growing. Then bring to light and water thoroughly each day. We offer only the largest size bulbs.

White Calla. 50c each; \$5.00 per doz.

Yellow Calla. Fine. 50c each; \$5.00 per doz.

Sutton's Multiflora. Improved type of the common White Calla Lily. 75c each; \$7.50 per doz.

Lilium Formosum (Easter Lily)

The popular Lily grown by florists who "force" them as pot plants and for cut-flowers. Large, pure white trumpet-shaped flowers growing three feet high. Bulbs ready in September. Extra size bulbs, 9 to 10 inches in circumference. 50c each; \$5.00 per doz.

MISCELLANEOUS BULBS

Amaryllis

California Giant Hybrids. An excellent bulbous plant for growing indoors in pots, blooming year after year. This enormous flowering strain contains a most unusual diversity of color. Extra strong bulbs, \$1.00 each; \$10.00 per doz.

Chinese Sacred Lily

Often called "Water Fairy Flower, Joss Flower, or Flower of the Gods." It is a beautiful variety of Narcissi very similar to our giant Paper-White Narcissi, and may be grown in the same manner. The flowers are silvery white with golden yellow cups. Largest size bulbs, 30c each; \$3.00 per doz.

Scillas

(Wood-Hyacinth or Blue Bells)

Sibirica. Lovely spring-flowering bulbs producing masses of exquisite blue flowers almost before the snow has disappeared. They are usually planted in masses and literally make a carpet of bloom. Exceedingly effective if grown with Snowdrops and Crocus, also planted as an undergrowth in beds of Hyacinths. Also very desirable for indoor forcing. Successive plantings will produce blooms from Christmas until March and April. 50c per doz.; \$4.00 per 100.

Snowdrops

These delightful little flowers are among the first to bloom in the spring, and the prettiest. Beautiful beds may be made of these little beauties, planting them in the center and bordering the bed with bright blue Chionodoxas, and also very effective in Tulip and Hyacinth beds. Plant the bulbs just as early in the fall as possible.

Single Snowdrops. 50c per doz.; \$3.50 per 100.

Double Snowdrops. 60c per doz.; \$4.00 per 100.



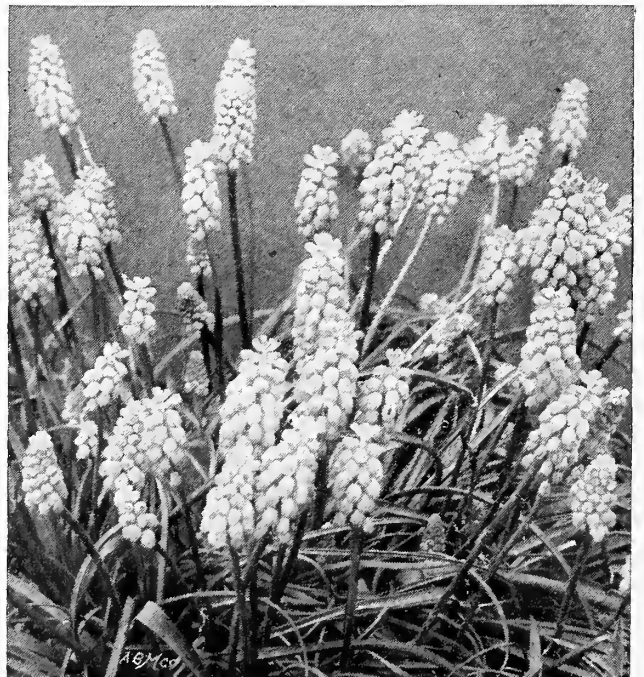
Calla Lilies.

Chionodoxa (Glory of the Snow)

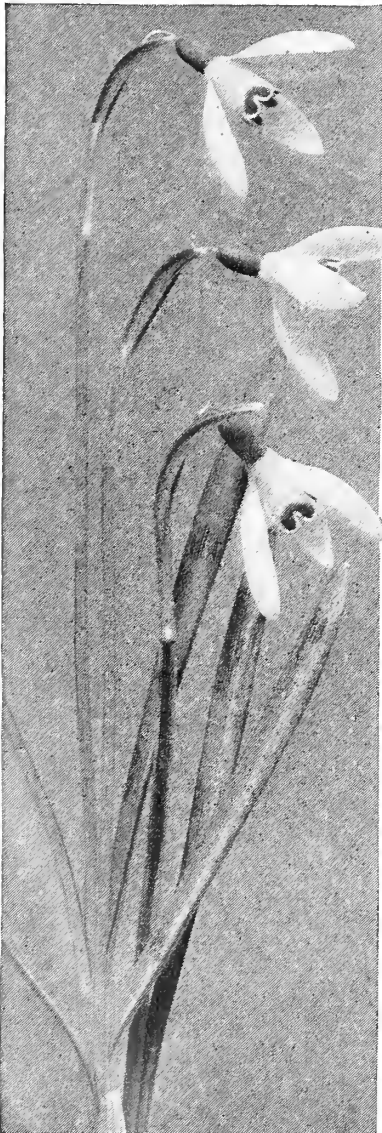
Lucilae. Beautiful spring-flowering bulbs, perfectly hardy and producing flower spikes bearing 10 to 15 lovely scilla-like flowers of bright blue with a large clear white center. Excellent for the border, rockery or naturalizing in the lawn. 50c per doz.; \$3.75 per 100.

Grape Hyacinth

Beautiful little flowers which are adapted for planting in shade or exposed to the sun; blooming in May. They may be planted in herbaceous borders and allowed to remain from year to year, as they reproduce rapidly. They are also excellent for pot culture. Blue or white. 40c per doz.; \$3.00 per 100.



Grape Hyacinths.



Single Snowdrops.

Iris Germanica

(Tall Bearded Iris, German Iris, or Fleur-de-Lis)

One of Rock's Leading Specialties.

The German Iris are among the most desirable and easiest grown of our spring-flowering hardy plants, and produce their wonderful sweet-scented flowers during May. Their exquisite coloring is only appreciated by the close observer, as their rare beauty and soft iridescence lies in the heart of the flower, some of the varieties being as delicate and interesting as the most cherished Orchid.

In the descriptions, "S" means the standards or upright petals, and "F" the falls or lower petals. The figures after each variety name are the ratings given by the Symposium of the American Iris Society. Ten points represents absolute perfection; nine points represents near perfection; eight points, extremely good; seven points, good; and six points, medium. We have dropped from our list all varieties which rate less than six points so if you miss some of the old favorites, you may know they have been replaced by a new and better variety.

Culture. Iris are partial to a dry, well-drained, sunny location. They are liable to decay if planted in wet places. Planting may be done either in spring or late summer and fall; however, July to October will furnish the best results. Cover roots just enough to hold the plant in an upright position. A light covering of straw or leaves during the winter months will be very beneficial. The roots may be taken up, divided, and replanted every two or three years. This should be done about ten days or two weeks after the blooming period.

Alcazar. 8.9. S. light bluish-violet; F. deep purple with bronze veined throat. A very large, rich and striking flower. **\$1.00 each; \$10.00 per doz.**

Amas. 8.3. S. rich blue; F. violet. Very large and handsome. **30c each; \$3.00 per doz.**

Ambassadeur. 9.4. Late. An almost regal flower that should have a great future. S. fascinating smoky purple; F. velvety purple-maroon, orange beard. Quite the Iris of the year. **\$6.00 each; \$60.00 per doz.**

Ambigu. 8.3. S. smoky red; F. reddish-brown, yellow beard; very large flowers. **\$5.00 each; \$50.00 per doz.**

Archeveque. 8.3. S. deep purple-violet; F. rich velvety-violet. An unusual and rich color combination. Excellent. **\$1.00 each; \$10.00 per doz.**

Aurea. 7.4. S. and F. rich chrome-yellow. Large flowers of perfect form. **25c each; \$2.50 per doz.**

Black Prince. 7.7. S. and F. rich royal purple. One of the very darkest. **\$1.25 each; \$12.50 per doz.**

B. Y. Morrison. 8.8. S. pale lavender-violet; F. velvety raisin purple, with broad lavender border. A very distinct Iris and one which we highly recommend. **\$4.00 each; \$40.00 per doz.**

Candelabre. 6.6. S. mauve and purple with spotted effect on the inside; F. violet with black and white veins. Unique in coloring and fine candelabra-like form. **25c each; \$2.50 per doz.**

Caprice. 7.5. S. reddish-purple; F. deeper, self-colored. Handsome. **25c each; \$2.50 per doz.**

Celeste. 7.1. Beautiful clear satiny-blue. One of the prettiest. **30c each; \$3.00 per doz.**

Clio. 7.3. S. white; F. clear blue. Very effective and unusual. **25c each; \$2.50 per doz.**

Crimson King. 7.9. S. and F. reddish-purple; very nice. **25c each; \$2.50 per doz.**

Crusader. 8.7. S. light violet-blue; F. slightly darker with an orange-yellow beard; very large flower and one of the prettiest. **\$3.00 each; \$30.00 per doz.**

Cypriana Superba. 8.7. S. soft blue; F. rich violet-purple. **25c each; \$2.50 per doz.**

Darius. 6.8. S. rich canary-yellow; F. lilac, margined white. Rich orange beard. **25c each; \$2.50 per doz.**

Dorothea. 7.6. An early dwarf flower of exceptional merit. S. mauve, deeper in the center; F. soft blue with bronze veins. **25c each; \$2.50 per doz.**

Edouard Michel. 8.6. S. Rosy-mauve; F. deeper mauve. Flowers unusually large, handsome, and distinct in color. **\$2.00 each; \$20.00 per doz.**

Eldorado. 7.8. S. lavender-blue shaded yellow; F. deep violet shaded bronze. Very distinct. **50c each; \$5.00 per doz.**

Fairy. 8.0. A very light lavender, almost white. One of the most showy and satisfactory for general planting. **30c each; \$3.00 per doz.**



German Iris.

IRIS GERMANICA—Continued.

Flavescens. 7.0. A delicate shade of soft yellow. Large flowers, elegantly sweet scented. 25c each; \$2.50 per doz.

Florentina Alba. 7.6. Large pure white fragrant flowers. 30c each; \$3.00 per doz.

Gajus. 6.7. S. light clear yellow; F. crimson reticulated white and yellow, with a clear yellow picotee edge. 25c each; \$2.50 per doz.

Gerda. 6.7. S. creamy-yellow; F. darker, veined yellow. Very large flowers; plant of dwarf habit. 30c each; \$3.00 per doz.

Gertrude. 6.5. Deep violet-blue. Very fragrant. 25c each; \$2.50 per doz.

Halfdan. 7.1. Dwarf. Creamy-white. Large flowers of good substance. 30c each; \$3.00 per doz.

Her Majesty. 7.3. S. lovely rose-pink; F. veined deep rose. A most unique and striking color. 35c each; \$3.50 per doz.

Ingeborg. 7.7. Light straw color nearly white with light yellow beard. Early bloomer. 35c each; \$3.50 per doz.

Isoline. 8.6. S. silvery-lilac; F. rosy-lavender shaded bronze; very large. Handsome flowers of splendid form. 75c each; \$7.50 per doz.

Jeanne d'Arc. 7.8. S. clear lilac, ruffled and spreading in the manner of Japanese Iris; F. pure white, bordered lilac. A large flower; very beautiful. 35c each; \$3.50 per doz.

Juniata. 8.1. S. and F. clear blue, slightly deeper than Pallida Dalmatica. Large fragrant flowers and the tallest of the bearded Iris. 50c each; \$5.00 per doz.

Katherine Fryer. 8.1. S. large yellow; F. velvety-maroon, veined white at the center and reticulated yellow at the base. Orange beard and very fragrant. \$2.00 each; \$20.00 per doz.

King of Iris. 7.9. S. bronze-yellow; F. deep maroon, edged gold. A combination of exceptionally rich colors and large flowers, making it one of the most beautiful of all. 50c each; \$5.00 per doz.

Kochii. 7.8. S. and F. deep rich claret-purple. The best of its color for mass effect. Very handsome. 30c each; \$3.00 per doz.

La Neige. 8.3. One of the best pure white Iris. Falls carried stiffly horizontal. \$1.00 each; \$10.00 per doz.

Lent A. Williamson. 9.6. S. broad, soft violet; F. very large, velvety royal purple. Brilliant golden yellow beard. Extra large flower, strong grower, unusually fine. \$3.50 each; \$35.00 per doz.

Leonidas. 7.3. S. clear mauve; F. rosy-mauve. Very odd and attractive. 25c each; \$2.50 per doz.

Lohengrin. 8.2. Large handsome flowers of deep violet-mauve. One of the most vigorous of all German Iris. 50c each; \$5.00 per doz.

Lord of June. 9.1. One of the largest and most beautiful Iris that has ever been introduced. S. clear lavender-blue; F. slightly deeper. \$4.00 each; \$40.00 per doz.

Loreley. 7.9. S. cream; F. ultramarine-blue, bordered cream. A very profuse bloomer. 25c each; \$2.50 per doz.



Iris Germanica, King of Iris.

Loute. 6.8. S. light blue and heliotrope; F. reddish-purple and bronze. An unusual, striking color of superb size and form. 75c each; \$7.50 per doz.

Madame Chereau. 7.4. One of the most popular of all Iris. Delicate white flowers, daintily penciled lavender on the edges. 25c each; \$2.50 per doz.

Magnate. 7.8. S. ageratum-blue; F. crimson-purple. Large, heavy blooms, rich in effect. \$3.50 each; \$35.00 per doz.

Mamie. 8.1. White frilled with a delicate blue. An improved type of Madame Chereau. 50c each; \$5.00 per doz.

IRIS GERMANICA—Continued.

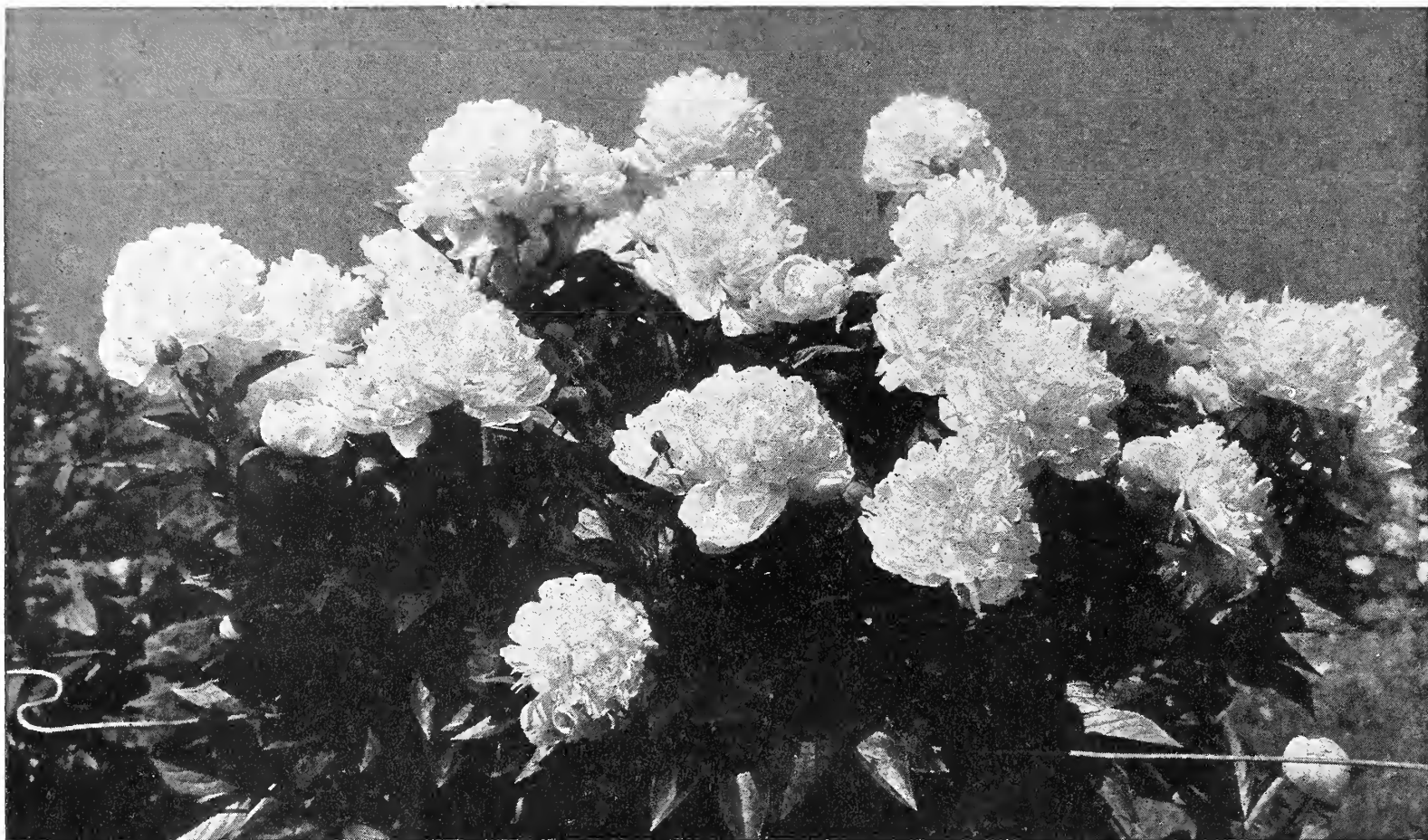
- Marian.** 6.0. S. lavender-pink; F. deep soft lavender-pink. A very distinct and elegant flower. 30c each; \$3.00 per doz.
- M. G. Peters.** 6.6. S. yellow; F. yellow, shaded brown and margined light yellow. Orange beard; very large and wonderfully fragrant. 75c each; \$7.50 per doz.
- Mrs. H. Darwin.** 6.8. A very fine, pearly white. Free-flowering. 25c each; \$2.50 per doz.
- Mrs. Neubronner.** 6.8. S. and F. deep golden yellow. Darker than Aurea and very fine. 25c each; \$2.50 per doz.
- Monsignor.** 8.4. Large blossoms borne in the greatest profusion on tall spikes. S. blush-lavender; F. violet with white pencilings at the throat. 50c each; \$5.00 per doz.
- Nibelungen.** 7.3. S. fawn-yellow; F. violet-purple with fawn margin. Large handsome flower and a profuse bloomer. 50c each; \$5.00 per doz.
- Oriflamme.** 7.8. S. light blue; F. rich violet-purple. Large flowers. 75c each; \$7.50 per doz.
- Ossian.** 6.3. S. soft yellow; F. reddish-violet. 25c each; \$2.50 per doz.
- Pallida Dalmatica.** 8.8. An excellent shade of lavender-blue. A beautiful Iris. Perfectly hardy, strong grower, and a very free bloomer. 35c each; \$3.50 per doz.
- Parc de Neuilly.** 8.1. A navy-blue of reddish tinge, with an ever-changing effect. Very free blooming. 35c each; \$3.50 per doz.
- Perfection.** 7.8. S. light blue; F. dark velvety violet-black, with an orange beard; a handsome, bold, conspicuous flower. 35c each; \$3.50 per doz.
- Pocahontas.** 7.7. S. pure white; F. white, faintly bordered pale blue. Large orchid type flower with elegantly frilled petals. \$1.00 each; \$10.00 per doz.
- Princess Victoria Louise.** 7.6. S. sulphur-yellow; F. plum colored, bordered primrose. Immense in size and a most striking color combination. 35c each; \$3.50 per doz.
- Prosper Laugier.** 8.3. S. light bronze; F. velvety-maroon, very dark, with orange beard. A very distinct flower. 50c each; \$5.00 per doz.
- Purple and Gold.** 7.0. The brilliant contrast of bright light mauve segments, cream white haft and intense orange beard is most attractive. 50c each; \$5.00 per doz.
- Quaker Lady.** 8.4. S. smoky lavender, with yellow shadings; F. ageratum-blue, and old-gold. Distinct and wonderfully effective. 75c each; \$7.50 per doz.
- Queen Alexandra.** 7.5. S. fawn, shot with lilac; F. lilac, reticulated bronze at the base. Yellow beard. 50c each; \$5.00 per doz.
- Queen Caterina.** 9.0. Pale lavender-violet with a yellow beard, white haft veined with bronze. A very strong grower. \$6.00 each; \$60.00 per doz.
- Queen of May.** 7.4. Lovely soft rose-lilac, almost pink. Beautiful. 25c each; \$2.50 per doz.
- Rev. Smith.** 6.0. S. bronze-crimson; F. maroon-red with yellow beard. Excellent coloring. 50c each; \$5.00 per doz.
- Rhein Nixe.** 8.4. S. pure white; F. deep violet-blue, edged white. A very pleasing color combination. 50c each; \$5.00 per doz.
- Rose Unique.** 6.9. Bright violet-rose. The only Iris of this color in the Germanica type. 50c each; \$5.00 per doz.



Iris, Madame Chereau. (See page 16).

- Sherwin Wright.** 7.6. S. and F. pure golden yellow. 35c each; \$3.50 per doz.
- Storm Cloud.** 7.6. S. slate-blue with bronze shadings; F. purplish-blue. Very large flowers and very fine. 75c each; \$7.50 per doz.
- Tamerlane.** 7.4. S. pale violet; F. deep purple. A handsome, bold, conspicuous flower, well recommended. 50c each; \$5.00 per doz.
- Twilight (Crepuscule).** 6.0. S. and F. delicate violet-purple, devoid of markings. An immense flower blooming very early. 50c each; \$5.00 per doz.
- Victorine.** 6.5. S. mottled blue; F. violet-blue, mottled white. 25c each; \$2.50 per doz.
- Walhalla.** 7.3. S. lavender; F. wine red. An excellent dwarf variety. 25c each; \$2.50 per doz.
- White Knight.** 8.3. A beautiful, absolutely snow-white Iris, without markings of any kind. Delicately sweet scented and a most desirable all-purpose variety. \$1.00 each; \$10.00 per doz.
- Wyomissing.** 7.2. S. creamy white, suffused soft rose; F. deep rose shading to a pale rose border. 50c each; \$5.00 per doz.
- Zephyr.** 6.9. S. and F. clear violet-blue with a satiny sheen. 35c each; \$3.50 per doz.

WRITE FOR PRICES ON SIBERIAN, SPANISH AND ENGLISH IRISES.



Peonies, Duchesse de Nemours (Calot).

ROCK'S SELECT PEONIES

Peonies, especially the modern introductions, are probably the most beloved of all perennial plants, and are as welcome to our gardens in the spring as roses during the summer. They afford a grand display of large, beautiful, fragrant blossoms during May, and thrive in either sun or semi-shaded situations. They always produce a glorious effect whether planted in single clumps or long beds, bordering lawns and drives, or interspersed in beds of shrubbery and perennials. As a cut-flower they are unrivaled, lasting longer in water than most perennials.

Planting and Culture. Their ease of culture is also a valuable asset which has greatly increased their popularity. They may be planted in either spring or fall, however, September and October are the most satisfactory months as a planting at this time will produce flowers the following spring. Plant in rich, well pulverized soil before the ground becomes frozen, covering the crown or eyes with two to three inches of soil. Avoid planting too deeply as this is often the cause of shy blooming. Keep the soil loose at all times, and free from grass and weeds. An over-abundance of fresh manure is detrimental to the best growth.

The numbers following each variety name are the ratings as given by the Symposium of votes by the American Peony Society. 10 points means perfect; 9 points, nearly perfect; 8 points, extra good; 7 points, good; and 6 points, medium. The sizes are referred to by the letters D, M, and L. D—Divisions, 3 to 5 eyes; M—Medium, 5 to 8 eyes; L—Large Clumps, 8 eyes and over.

Alexander Dumas. 7.1. Medium size, light violet-rose; crown type. Creamy white collar of narrow petals. Fragrant. Early midseason. Good cut-flower variety. **D, 75c; M, \$1.00; L, \$1.50.**

Andre Lauries. 6.5. Large, compact, globular, rose type. Dark Tyrian-rose, shading deeper in the center, with red reflex and white splashes. Very late; extra good. **D, 60c; M, 85c; L, \$1.25.**

Augustin d'Hour. 7.8. Large, medium compact, bomb type. Deep, brilliant solferino-red, silvery reflex. Medium tall, free bloomer. Mid-season; extra good. **D, 70c.**

Avalanche. 8.8. Large, compact crown. Milk white, creamy white collar, center tinted lilac, prominent carmine flecks lengthwise of the petals. Strong grower, free bloomer; late. **D, 75c; M, \$1.00; L, \$1.25.**

Belle Douaisienne. Large, globular, compact rose type. Hydrangea pink, center prominently flecked crimson. Very fragrant. Midseason. **D, 70c.**

Boule de Neige. 8.0. Very large, compact, semi-rose type. Milk white guards and center prominently flecked crimson. Tall, erect, free bloomer. Early midseason. Fine. **D, 75c.**

Couronne d'Or. 8.1. White with yellow tints arising from a few stamens showing amidst the petals. Center petals tipped with carmine. Large, rather full flower of superb form. Strong grower and very free bloomer. Good keeper. Late. **D, 75c; M, \$1.00; L, \$1.25.**

Delachei. 7.1. Large, medium compact, rose type. Violet crimson, slightly tipped silver. Strong erect, medium height, very free bloomer. **D, 75c; M, \$1.00; L, \$1.25.**

Delicatissima. 7.6. Large rose type, pale lilac-rose. Very fragrant. Very strong, tall grower; fine habit; free bloomer and a good keeper. Midseason. **D, 75c; M, \$1.00; L, \$1.25.**

Dorchester. Large, double rose type. Soft hydrangea-pink. A free bloomer and very fragrant. **D, 75c.**

Duchesse de Nemours (Calot). 8.1. Flowers of this splendid variety are cup-shaped, crown type. Sulphur-white, with greenish reflex. Very fragrant, strong grower and free bloomer. Follows Festiva Maxima in season. **D, 75c; M, \$1.00; L, \$1.50.**

Edulis Superba. 7.6. One of the earliest. Color is clear mauve-pink, with silvery reflex. Flowers of large size and fragrant. **D, 65c; M, \$1.00; L, \$1.50.**

ROCK'S SELECT PEONIES—Cont'd.

- Eugenie Verdier.** 8.6. Delicate flesh pink; very tall; free and very beautiful. Mid-season. We conscientiously recommend this as one of the best pink Peonies in cultivation. **D, \$1.00; M, \$1.50; L, \$2.00.**
- Felix Crousse.** 8.4. Very brilliant red. Of good size and typical bomb shaped. A strong grower and very fragrant. Mid-season. **D, 75c; M, \$1.50.**
- Festiva.** 8.0. Large, full rose shaped bloom, creamy white, flecked crimson in the center. Late. **D, 50c; M, 85c; L, \$1.00.**
- Festiva Maxima.** 9.3. Conceded to be the finest white Peony for all purposes. Very vigorous and erect in growth. Flowers clear white daintily flecked crimson. Enormous in size. Very early. **D, 75c; M, \$1.00; L, \$1.50.**
- Floral Treasure.** 7.5. Very large, full flower of clear pink shading to lighter pink toward the center. Delicate in color. Early midseason. **D, 75c; M, \$1.50.**
- Gloire de Charles Gambault.** 7.9. Large flowers of mauve-pink with a deep creamy white collar and a pink tuft in the center. Tall, strong stems. Very distinct. Midseason. **D, 85c.**
- Karl Rosenfield.** 8.8. Very large flower globular semi-rose type. Vigorous, tall and free flowering. As an early red it has no equal. **D, \$2.50.**
- La Perle.** 8.5. Large, compact rose type. Deep lilac-white, blush center, prominently flecked carmine. Fragrant. Mid-season. Extra fine. **D, \$1.75.**
- La Tulipe.** 7.5. Very large, flat, semi-rose type. Lilac-white, outer guard petals striped crimson. Fragrant, tall, strong grower and free bloomer. Late mid-season. **D, 75c.**
- La Rosiere.** 8.3. Large, compact, semi-double type. Outer petals pure white, shading to creamy white in the center. Midseason. **D, 75c; M, \$1.50.**
- La Vestale.** 7.1. Large, very deep, compact crown. Lilac-white; collar cream white; center flecked crimson. Strong, erect, tall, free bloomer. Midseason. **D, 90c.**
- Livingstone.** 8.1. Very large, compact, perfect rose type. Pale lilac-rose with silver tips, center flecked carmine. Very strong; medium height; free bloomer. An excellent variety. **D, \$1.25; M, \$1.75.**
- Madame DuceL.** 7.9. Large, globular, light mauve-rose, with a silvery reflex. Fragrant; strong grower; medium height, and very free bloomer. **D, \$1.00; M, \$1.60.**
- Madame de Verneville.** 7.9. This is undoubtedly the freest blooming of the white Peonies. The flowers are bomb shaped, pure white, suffused blush. Early. **D, 60c; M, \$1.00; L, \$1.50.**
- Marie Lemoine.** 8.5. Large, very compact, rose type. Pure white with creamy white center, occasionally tipped with carmine. Fragrant. Medium height; extra strong stem. Very late. An extra good commercial variety. **D, 60c.**
- Media Giant.** Clear deep pink of perfect form. Very large size. A most beautiful Peony, that was imported from England a few years ago; stocks have become very scarce indeed. **D, \$2.00.**
- Mikado.** 8.6. A large, cup-shaped Japanese Peony. Single row of dark crimson petals, encircling a cushion of golden petaloides, edged crimson. A marvelous novelty and strikingly beautiful. **D, \$2.50.**
- Monsieur Dupont.** 8.3. Large flat semi-rose type. Milk white center, splashed crimson, showing stamens. Erect, tall, free bloomer. Mid-season. **D, 85c.**
- Monsieur Krelage.** Large, compact, semi-rose type. Dark solferino-red, with silvery tips. Slightly fragrant. Strong, upright, free bloomer. late. **D, \$1.00.**



Peonies, Monsieur Jules Elie.

- Monsieur Jules Elie.** 9.2. Very large, globular, double blooms on erect stems. Beautiful silvery pink shading deeper toward the center. A vigorous grower, free bloomer, and very fragrant. One of the best pink varieties. Mid-season. **D, \$1.00; M, \$1.50; L, \$2.25.**
- Monsieur Martin Cahuzac.** 8.8. Globular, semi-rose, very dark purple garnet. Darkest Peony grown. Any description fails to convey what a distinct color this has. **D, \$4.00.**
- Octavie Demay.** 8.5. Very large, flat crown. Guards and center pale hydrangea-pink. Fragrant. Free bloomer. Early. **D, \$1.00; M, \$1.75; L, \$2.50.**
- Officinalis Rubra Plena.** The old-fashioned red "Piney" and the most brilliant of all red Peonies; however, it is an unreliable bloomer. Early and fine for cutting. **D, 75c.**
- Queen Victoria.** 6.8. Creamy white shading to milk white; outer petals tinted blush pink. Flowers large on erect stems; free bloomer. Midseason. **D, 65c; M, \$1.00.**
- President Roosevelt.** 7.5. Semi-rose type. Deep rich brilliant red. Midseason. **D, \$1.25.**
- President Taft.** 8.7. Very large, flat, compact, semi-rose type. Light shell pink, minutely splashed on a white background; center flecked crimson. Midseason. **D, \$1.50; M, \$2.00; L, \$3.00.**
- Ruy Blas.** 7.1. Medium size, flat, semi-rose type. Pure mauve, tipped silver. Dwarf, compact, free bloomer. Midseason. **D, \$1.25.**
- Therese.** 9.8. Very large, medium compact, rose type, developing later a high crown. Light violet-rose, changing to a lilac-white in the center. Strong, erect, medium tall, and a very free bloomer. Midseason. One of the most desirable varieties. **D, \$6.00.**
- Whitleyi.** Early midseason. Milk white, guards slightly flecked crimson and tinted pale lilac. Medium size, loose, globular, fragrant. **D, 60c; M, 85c; L, \$1.25.**
- Double Unnamed Peonies.** White, red, or pink. **D, 35c; M, 50c; L, \$1.00.**



A Border of Hardy Perennials Is an Important Adjunct to the Home.

Rock's Hardy Perennial Plants

There is nothing more delightful or satisfactory than the Hardy Perennial plants, and with a small border planting, carefully selected, there is no time during the entire season but what one will find a wealth of bloom from some one or more kinds of these popular plants, a great many of which will bloom before it is time to think of planting annuals. When once established they will bloom year after year, always furnishing an abundant supply of beautiful cut flowers.

We recommend either spring or fall planting, but fall planting has many advantages, for example—when planted in September or October the plants adapt themselves to the new soil before the ground freezes, and also produce new roots; this alone affords not only more flowers, but earlier and in greater quantity. Plants should be set slightly deeper than originally planted in good well pulverized soil. A slight covering during the winter of straw or leaves will be very beneficial. Place this mulch about the roots after the ground has become slightly frozen. Rock's Perennial Plants are all large size, strong, field-grown, transplanted stock, unexcelled for any planting. Write for special prices where quantities of 100 or more plants of a variety are wanted.

Achillea - Milfoil or Yarrow

The blossoms resemble small Pompon Chrysanthemums. Hardy and will thrive in almost any situation. Very desirable for garden or for cemetery decoration. Blooms nearly the whole season.

MILLEFOLIUM ROSEUM (Rosy Milfoil). Finely cut deep green foliage, flowers pink in dense heads; 18 inches high and blooms all summer. 30c each; \$2.50 per doz.

PTARMICA FL. PL. "The Pearl." Pure white flowers borne in the greatest profusion the entire summer on strong erect stems, 2 feet high; as a summer cut flower it is of great value. 30c each; \$2.50 per doz.

ACONITUM (Monkshood)

Showy and very hardy, growing well under trees or other shaded situations. Has long spikes of hood-shaped flowers, somewhat resembling the Delphinium. Blooming from August to October.

NAPELLUS BLUE. 30c each; \$3.00 per doz.

NAPELLUS WHITE. 30c each; \$3.00 per doz.

Agrostemma - Rose Campion

(Will Thrive Best if planted in Spring)

Alyssum

SAXATILE COMPACTUM. "Basket of Gold." An indispensable plant for the rockery or border, growing one foot high, blooming in April and May; masses of broad, flat heads of bright yellow flowers. 30c each; \$3.00 per doz.

Anchusa Italica

(The Improved Italian Alkanet)

For producing a mass effect of brilliant blue. The rich blue tones of their flowers fill a vacancy in this color of which there is never a superabundance, particularly during their flowering period of May, June and July. They should be treated as biennials, as the old plants exhaust themselves at the end of two to three years. The blooming season can be extended for several weeks by cutting the spikes as soon as the flowers fade. Height, 4 to 5 feet.

DROPMORE. Tall spikes of beautiful blue flowers. Rough broad foliage. 25c each; \$2.50 per doz.

Anemone - Japanese Windflower

One of the most important of hardy perennial plants, bearing most beautiful flowers in August. Excellent for cutting. Height, 2 to 3 feet.

WHIRLWIND. Large, semi-double pure white flowers; very free.

QUEEN CHARLOTTE. Very large semi-double flowers of La France pink, an unusual color among hardy plants, and very beautiful.

JAPONICA ALBA. Large snowy white, excellent.

JAPONICA RUBRA. Beautiful rosy-red; stamens bright yellow.

ST. BRIGID. Large, semi-double perfectly formed flowers in a mixture of the most brilliant and gorgeous colors.

Prices for any of the above: 35c each; \$3.00 per doz.

Anthemis - Marguerite

TINCTORIA. Handsome, finely cut foliage, and large, golden and cream yellow, daisy-like flowers produced the entire summer. Succeeds in the poorest soil. 15 inches high. 25c each; \$2.50 per doz.

Aquilegia - Columbine

As a cut flower, the Columbines are the daintiest of our outdoor grown flowers. They are not at all particular as to soil or location, although they prefer a sandy loam and a moist but well drained, sunny position, and usually make themselves at home in any hardy border or rockery. Their period of flowering covers the late spring and early summer months.

CHRYSANTHA (Golden Columbine). Beautiful golden yellow flowers; blooms for two months. 30c each; \$2.50 per doz.

COERULEA (Rocky Mountain Columbine). Bright blue and white long-spurred flowers. An excellent variety. 30c each; \$2.50 per doz.

ROCK'S LONG-SPURRED MIXED HYBRIDS. This is the most admired type of Columbines. The plants are of strong, thrifty growth. The flowers of largest size vary in color through charming tones of cream, pink, lavender, blue, white, red, etc., making a most vivid display in the spring. 30c each; \$2.50 per doz. Extra large clumps, 50c each; \$5.00 per doz.

Artemisia Lactiflora

(Hawthorn-Scented Mugwort)

Deep green, cleft foliage and compact bush shape make this choice perennial attractive throughout the summer, but doubly so in August and September, when in bloom. The creamy, white Spirea-like flowers are sweetly scented and are borne in large terminal panicles on erect stems 3 to 4½ feet tall. 30c each; \$3.00 per doz.

Asclepias Tuberosa - Butterfly Weed

Very attractive native plants, flowering during June and July, and growing about 2½ feet high. Their flowers are brilliant orange-scarlet in color. 25c each; \$2.50 per doz.

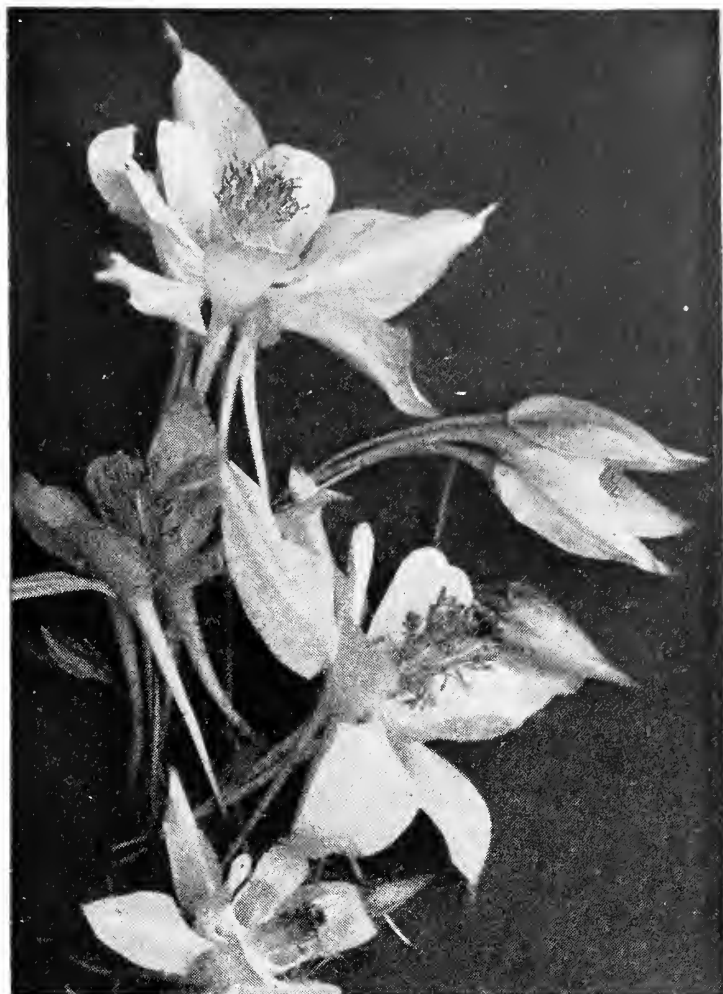
Hardy Asters - Michaelmas Daisies

NOVI BELGII CLIMAX. Plants of strong, vigorous habit, over 5 feet high, fully one-half of which consist of much-branched pyramidal-shaped flower stems filled with light lavender-blue flowers, each 1¼ inches or more in diameter. It blooms from August until October. 25c each; \$2.50 per doz.

NOVI BELGII WHITE CLIMAX. Same as above with pure white flowers; 5 feet. 25c each; \$2.50 per doz.



Hardy Asters.



Aquilegia, Rock's Long-Spurred Hybrids.

BAPTISIA

AUSTRALIS. A very attractive hardy perennial, producing beautiful racemes of bright blue, pea-shaped flowers in June and July. Height, 2½ feet. 30c each, \$2.50 per doz.

BELLIS - English Daisy

A perennial, blossoming freely all spring and summer. Plant is six inches high and is valuable for borders. Should be given a little protection through the winter—a mulch of leaves or straw. 30c each; \$2.50 per doz.

Bocconia - Plume Poppy

CORDATA. A noble, hardy perennial, beautiful in foliage and flower, and adapted for planting in the shrubbery borders, center of beds, and in bold groups. It will grow in any soil or situation, attaining 6 to 8 feet in height. Flowers creamy white in terminal panicles during July and August. 25c each; \$2.50 per doz.

Boltonia - False Chamomile

ASTEROIDES. A showy, native, hardy perennial plant with large, single Aster-like flowers; in bloom during the summer and autumn months, and with its thousands of flowers open at one time produces a very showy effect. Pure white, 5 to 7 feet. 25c each; \$2.50 per doz.

Canterbury Bells - Campanula

(Best Planted in Spring)

Hardy Carnations

These old-fashioned garden flowers are too well known for description. We offer two new varieties which are truly marvelous.

MOTHER'S DAY. Pure white. Very free flowering and very hardy. 30c each; \$3.00 per doz.

GRENADIN. A bright double red. Elegantly sweet scented and a very profuse bloomer. 30c each; \$3.00 per doz.

Centaurea

MONTANA (Perennial Corn Flower). Grows 2 feet high, bearing large, violet-blue flowers from June to September. 25c each; \$2.50 per doz.

Cerastium - Snow-in-Summer

TOMENTOSUM. A low growing rockery or carpet plant, with silvery foliage and white flowers. Flowers in June. 25c each; \$2.50 per doz.

Chelone - Shell Flower

BARBATUS COCCINEA. A hardy border perennial of Penstemon-like habit, producing long racemes of scarlet flowers. Blooms June and July. 3 feet. 25c each; \$2.50 per doz.



Shasta Daisy, Alaska.

Hardy Garden Chrysanthemums

A universal favorite for outdoor bedding and justly so considering their wonderful qualities. The gorgeous flowers, in numerous shades, are produced in September and October when most other flowers have passed. It is not uncommon for them to bloom as late as November.

The varieties listed below are a selection of the latest introductions, a great improvement over the older types. They should not be planted in wet places.

CAPT. R. H. COOK (Pompon). Large button-shaped flowers of a clear, deep, rose-pink. A tall upright grower.

CONNIE DICK (Pompon). Large flowering rich golden yellow.

CRANFORDIA. A splendid large early flowering double yellow.

HORTENSE MALGOT. A magnificent double pink, and a wonderful bloomer.

IDA CATHERINE SKIFF. A single type of bronze-amber, excellent cut flower.

LILLIAN DOTY (Pompon). Large tall-growing pink. Incurved petals.

MODEL OF PERFECTION (Pompon). Vigorous free white button.

MRS. HARRISON CRAIG. A most unique chrome yellow overlaid with brilliant orange crimson.

WHITE DOTY (Pompon). Beautiful pure white, globular aster form. Large.

Prices for above: 30c each; \$3.00 per doz.

Chrysanthemum Maximum

Shasta Daisy

The improved varieties of Marguerite, all allied to the Ox-eye Daisy that adorns our fields in the spring, are among the most useful of our garden flowers. Not only have these flowers been greatly improved in size and form, but there are now early and late-blooming varieties which give a succession of long-stemmed flowers so valuable for vase decoration during four months of the year. The Shasta Daisy has a small yellow center with long white petals, the slender stems springing from the base of the plant, and is attractive either in the perennial border or as a cut flower.

SUTTON'S MAY QUEEN. A giant Ox-eye Daisy which commences blooming early in May when long-stemmed flowers for cutting are scarce. Plants robust and very free-flowering. Height, 2 feet. 30c each; \$3.00 per doz.

SHASTA DAISY, "ALASKA." A decided improvement on the original, with blooms 3 to 3½ inches across, of pure glistening white. Very free-flowering and in bloom nearly all summer. 25c each; \$2.50 per doz.

CHRYSANTHEMUMS—Continued.

KING EDWARD VII. Very large, handsome pure white flowers of fine form. Height, 2½ feet. 25c each; \$2.50 per doz.

MRS. C. L. BELL. Pure white and undoubtedly the largest flowered variety of this class; they have been known to measure as high as 5 inches across; borne on long robust stems. Height, 2½ to 3 feet. 30c each; \$3.00 per doz.

Convallaria - Lily-of-the-Valley

MAJALIS. A great favorite for densely shaded situations, thriving as satisfactorily in such a position, if not better than any other perennial plant. Large beds are often neglected, causing shy blooming, but a liberal dressing of well-decayed manure in the fall or early spring will produce an almost immediate effect. The pips which we offer are delightful for indoor forcing; the clumps for garden culture.

Largest Size Pips: 25 crowns (1 bundle), \$1.50; 100 crowns, \$5.25.

Large Size Clumps: 50c each; \$5.00 per doz.; \$40.00 per 100.

Coreopsis

LANCEOLATA GRANDIFLORA. One of the best hardy plants. Flowers are rich golden yellow, borne in great profusion nearly the entire summer. It succeeds everywhere. 2 to 3 feet. 25c each; \$2.50 per doz.

Delphinium - Hardy Larkspur

Indispensable to the herbaceous garden. Their long, showy spikes of flowers persist from June until frost and furnish the most satisfactory blues to any color scheme.

BELLADONNA. The most continuous bloomer of all, never being out of flower from the end of June until cut down by hard frost. The clear turquoise-blue of its flowers is not equalled for delicacy and beauty by any other flower. 25c each; \$2.50 per doz.

BELLAMOSUM. This is a dark blue form of Belladonna with same habit of growth, freedom of bloom and other good qualities, but with intensely rich, deep blue flowers. 25c each; \$2.50 per doz.

CHINENSIS. Of dwarf habit with elegant fern-like foliage; flowers loosely panicked; in blue or white. 25c each; \$2.50 per doz.

FORMOSUM. The old-fashioned dark blue Larkspur with white center; very vigorous and one of the best. 3 to 4 feet high. 25c each; \$2.50 per doz.

REV. E. LASCELLES. A new variety of great beauty; long spikes of large and very double deep blue flowers, with white center. 30c each; \$3.00 per doz.

ROCK'S GOLD MEDAL HYBRIDS. The finest strain of mixed hybrids ever offered. The plants are of strong vigorous habit, with large flowers on spikes two feet and over in a variety of color from the lightest blue to the deepest purple, the majority running in the lighter shades of blue. 25c each; \$2.50 per doz.



Delphinium - Hardy Larkspur.

Desmodium

PENDULIFLORUM. Exceedingly effective when planted in masses in the shrubby border, and especially valuable. It produces clusters of rose and purple pea-shaped blooms from August to October. 2-year, 60c each; \$6.00 per doz.

Dianthus - Hardy Garden Pinks

These varieties are well adapted for beds and borders; delightful, refreshing, spicy odor, and make a fine edging to a hardy border. Should be in every garden where cut flowers are wanted.

PHEASANT EYE. Single white flowers with crimson eye.
PLUMARIUS (Grass Pink or Scotch Pink). A beautiful single hardy Pink, fringed-edged white flowers with a dark center.

SEMPERFLORENS (Everblooming Hardy Garden Pink). Very beautiful, sweet-scented, double, semi-double and single flowers in great diversity of color.

CHOICE MIXED. The very best varieties of Hardy Garden Pinks. The most beautiful semi-double and double flowers in a variety of colors.

Prices any of above, 25c each; \$2.50 per doz. Extra large clumps, 50c each; \$5.00 per doz.

Dicentra or Bleeding Heart

EXIMIA (Plumy Bleeding-Heart). A dwarf-growing sort with beautiful, finely-cut foliage and showy racemes of pretty pink flowers throughout the season. Too much cannot be said for this fine border plant as it thrives in full shade or sun and perfectly hardy everywhere. Blooms from April to August. About 15 inches high. 30c each; \$2.50 per doz.

SPECTABILIS (Bleeding Heart). An old-fashioned favorite; its long racemes of graceful heart-shaped pink flowers are always attractive; perfectly at home in any part of the hardy border, and especially valuable for planting in the shade. Stock of this item is very limited, so place your order early. 75c each; \$8.00 per doz.

Digitalis - Foxglove

(Spring Planting Best Suited)

Echinops - Globe Thistle

RITRO. Interesting and showy thistle-like plants with globular heads of deep metallic blue flowers, which can be dried and remain attractive for a long while; 2 to 3 feet. 30c each; \$3.00 per doz.

SPHAEROCEPHALUS. Thistle-like plant with large globular heads of bluish-white flowers. 3 feet. 30c each; \$3.00 per doz.

Eryngium - Sea Holly

AMETHYSTINUM. The true blue thistle, with amethyst stems and bracts. The flower heads, which are produced from July to September, are useful to cut for vases or dry for winter bouquets. 35c each; \$3.50 per doz.



Gypsophila Paniculata. (See page 24).

Funkia - Day Lily

LANCEOLATA. Desirable foliage plants which will thrive in sun or shade. Valuable by reason of its lilac flowers in July. 2 feet. 25c each; \$2.50 per doz.

SUBCORDATA GRANDIFLORA ALBA. Very large, pure white, lily-shaped, fragrant flowers in August and September; 2½ to 3 feet. 35c each; \$3.50 per doz.

Hardy Ferns

Hardy Ferns fill the ever desirable need for plants which thrive in shaded positions. They should be planted in rich well drained soil and accessible to water supply during dry weather.

ADIANTUM PEDATUM (Hardy Maidenhair Fern.) A graceful species with delicate fronds. 8-12 inches.

ASPIDIUM ACROSTICHOIDES (Wood Fern). An evergreen species with dark shining green leaves. 12 inches.

ASPLENIUM FILIX-FOEMINA MULTIFIDUM. A striking species, fronds divided into three graceful crests. 12 to 14 inches.

DRYOPTERIS CRISTATA (Crested Wood Fern). A common evergreen fern. 12 inches.

OSMUNDA CLAYTONIANA. Resembles loose wool when opening its fronds in the spring, afterwards becomes smooth. 2 to 3 feet.

OSMUNDA CINNAMOMAE (Cinnamon Fern). A very beautiful species and most satisfactory. 2 to 3 feet.

Prices of any of the above: 30c each; \$2.50 per doz.; \$18.00 per 100.

Galega - Goat's Rue

OFFICINALIS. Dwarf lilac. Showy racemes of pea-shaped flowers, freely produced in July and August. 25c each; \$2.50 per doz.

BICOLOR HARTLANDII. New. Blue and white flowers in great abundance, borne in splendid racemes. 25c each; \$2.50 per doz.

Hardy Ornamental Grasses

(Best Suited for Spring Planting)



Hardy Ferns.



Gaillardia, Rock's Superb Hybrids.

Gaillardia - Blanket Flower

One of the showiest hardy plants, growing about 2 feet high and succeeding in any soil in a sunny position; beginning to flower in June, they continue the entire season. No more brilliant and beautiful sight can be imagined than a large bed of Gaillardias, with its profusion of highly colored red and yellow, daisy-like flowers. 25c each; \$2.50 per doz.

GRANDIFLORA MIXED. An excellent type including many different shades. 25c each; \$2.50 per doz.

ROCK'S SUPERB HYBRIDS. A grand mixture of color. Plants of more compact growth. 25c each; \$2.50 per doz.

PORTOLA. This new type of Gaillardia which originated in California, is offered this year for the first time, and we consider it a most valuable perennial introduction. The plants are of compact upright growth with heavy leathery foliage. The flowers are of very large size; the petals, broad, and overlapping each other; rich brilliant coppery-scarlet in color, each petal being heavily tipped or margined with golden yellow. It is a marvelous improvement over the old type. Strong plants: 35c each; \$3.50 per doz.

Gypsophila - Baby's Breath

PANICULATA. Blooms June, July and August. Forms a symmetrical mass 2 to 3 feet in height and as much through, of minute white flowers, forming a beautiful gauze-like appearance. Gypsophila will thrive in any soil in a sunny position and should be in every garden as it affords an invaluable cut flower. 25c each; \$2.00 per doz.

PANICULATA FLORE PLENA. Double flowering form. 60c each; \$6.00 per doz.

Heliopsis - Orange Sunflower

PITCHERIANA. A desirable variety. Flowers deep golden yellow; a perpetual bloomer; fine for cutting. June and July. About 4 feet in height. 25c each; \$2.50 per doz.

SCABRA ZINNIAEFLORE. A semi-double flowering variety, growing about 4 feet high, producing golden yellow flowers, resembling a Zinnia in form; desirable for cutting. June and July. 25c each; \$2.50 per doz.

Hesperis - Sweet Rocket

MATRONALIS. A vigorous, hardy, herbaceous perennial plant, forming clumps 2 to 3 feet high, and covered with showy terminal pyramidal spikes of 4-petaled flowers, resembling stocks. Colors, white, lilac, pink and purple. 25c each; \$2.00 per doz.

Hemerocallis - Yellow Day Lily

A well known and popular species of hardy plants, similar to a sweet scented lily, blooming profusely and with attractive foliage.

DUMORTIERI. Very dwarf; 18 inches; flowering in June; rich cadmium-yellow; buds and reverse of petals bronzy-yellow. 25c each; \$2.50 per doz.

FLAVA (Yellow Day Lily). Best known variety; very fragrant; deep lemon-yellow flowers in June and July; height, 2½ to 3 feet. 25c each; \$2.50 per doz.

FULVA (Brown Day Lily). Coppery orange, shaded crimson. 3 feet. 25c each; \$2.50 per doz.

GOLD DUST. Of a bright Indian-yellow color; buds and reverse of petals bronzy-gold; 2½ feet. May and June. 25c each; \$2.50 per doz.

KWANSO, FL. PL. Large double dark flowers with darker shadings; July and August; 4 to 5 feet. 25c each; \$2.50 per doz.

THUNBERGII. Rich buttercup yellow, funnel-shaped flowers throughout July; 4 feet. 30c each; \$3.00 per doz.

Hibiscus

Extremely large, showy flowers often measuring 8 inches across. Very appropriate for mixed beds or shrubby borders, blooming all summer. Height, 4 to 5 feet.

NEW GIANT FLOWERING (Mallow Marvels). Wonderfully improved new varieties, enormous flowers frequently 10 to 12 inches in diameter. Thrive in dry or wet ground. Perfectly hardy. In separate colors, red, pink and white. 35c each; \$3.50 per doz. Extra strong, 3-yr.-old clumps, 75c each; \$7.50 per doz.

Hollyhocks

No hardy garden is complete without these stately plants. Their colossal spikes of bloom, 6 to 8 feet, produce a bold effect that cannot be secured in any other way when mingled among shrubs, in the background of the hardy border or in specimen clumps. Universal favorites everywhere.

DOUBLE. In separate colors. White, rose, yellow and red. 25c each; \$2.50 per doz.; \$18.00 per 100.

DOUBLE MIXED. 25c each; \$2.00 per doz.; \$12.00 per 100.

NEW ALLEGHENY. Immense semi-double flowers, with fringed edges. Very beautiful. 25c each; \$2.50 per doz.; \$18.00 per 100.

SINGLE MIXED. All colors. 25c each; \$2.50 per doz.; \$18.00 per 100.

Lupinus - Lupine

POLYPHYLLUS. Strong plants, with long spikes of pea-like flowers. Will succeed in any good garden soil. Height, 3 feet. Blooms in May and June. Blue, 50c each; \$5.00 per doz. White, 50c each; \$5.00 per doz.

MOERHEIMII. Flowers rose and white. 50c each; \$5.00 per doz.

Lychnis - Lamp Flower

CHALCEDONICA (Jerusalem Cross). Heads of vivid scarlet flowers, blooming a long time. One of the brightest plants in the hardy border. 3 feet. June and July. 25c each; \$2.50 per doz.

Lythrum

ROSEUM SUPERBUM. A strong growing plant; long spikes of rose colored flowers from June to September. An excellent cut flower. 3 to 4 feet. 25c each; \$2.50 per doz.

SALICARIA. Slightly longer spikes than the above and darker in color. 25c each; \$2.50 per doz.

Myosotis - Forget-me-not

PALUSTRIS. The true March Forget-Me-Not, with long sprays of deep blue flowers. Does best in damp places. 25c each; \$2.00 per doz.

Pachysandra

TERMINALIS. One of the best ground covering plants, averaging 6 to 8 inches in height and branching freely into a dense mat. Its shapely indented foliage is practically evergreen; thick rubbery, lustrous dark green. It bears small spikes of light colored flowers during June and July. 25c each; \$2.00 per doz.; \$15.00 per 100.



A Hardy Border Is Incomplete Without the Delightful Phlox.

HARDY PHLOX ONE OF ROCK'S SPECIALTIES

Among hardy perennial plants no class is of more importance than the Phlox, succeeding in almost any soil and position, and flowering through the entire season; and while they will continue in good condition and flower freely for many years without attention, they respond quickly to and are improved by liberal cultivation.

- ALBION. Pure white, with a faint red eye.
- ANTOINE MERCIÉ. Soft rosy lilac.
- ATHIS. Very tall, fine salmon.
- BEACON. Brilliant cherry-red. 45c each; \$4.50 per doz.
- BRIDESMAID. Pure white, with large crimson-carmine-eye.
- CHAMPS ELYSÉE. Fine, rich crimson.
- CREPUSCULE. White with delicate mauve suffusion and rosy purple eye.
- COQUELICOT. A fine scarlet with deep red eye.
- ECLAIREUR. Bright carmine with light halo, large flower.
- ELIZABETH CAMPBELL. Bright salmon pink with lighter shadings and dark crimson eye. 35c each; \$3.50 per doz.
- EUROPA. White, large red center, extra size truss.
- F. G. VON LASSBURG. Splendid pure white, very large.
- FRAU ANTOINE BUCHNER. Immense pure white, strongly recommended.
- JEANNE D'ARC. A good late flowering pure white.
- LA VAGUE. Pure mauve, with red eye.
- MRS. JENKINS. White, immense panicles.
- PANTHEON. Bright carmine red, very effective.
- PEACH BLOSSOM. Delicate pink.
- RHEINLANDER. A most beautiful salmon-pink, with flowers and trusses of immense size.
- ROSENBERG. Bright reddish violet with blood-red eye.
- R. P. STRUTHERS. Bright rosy-carmine, with claret red eye.
- RYNSTROOM. Lively rose pink.
- SIEBOLDII. Intense orange-scarlet. Beautiful.
- TAPIS BLANC. Large elegant pure white, dwarf habit. 35c each; \$3.50 per doz.
- W. C. EGAN. Delicate lilac.
- WIDAR. Light, reddish violet, with a large white center.

Except where noted. 25c each; \$2.50 per doz.

Early-flowering Phlox

- MISS LINGARD. This grand white variety is the best Phlox in cultivation; it grows about 2 feet high, and starts to bloom in May, continuing to flower until late in October. 25c each; \$2.50 per doz.
- DIVARICATA CANADENSIS. One of our native species, which is worthy of extensive planting, commencing to bloom early in April, and continuing through May, with large, fragrant lavender flowers on stems 10 inches high. 25c each; \$2.50 per doz.

Phlox Subulata

Moss, or Mountain Pink

- An early spring-flowering type with pretty moss-like evergreen foliage, which during the flowering season is hidden under the masses of bloom. Excellent plant for the rockery.
- ALBA. Pure white.
- LILACINA. Light Lilac.
- ROSEA. Bright rose. 25c each; \$2.50 per doz.

Large Oriental Poppies

Papaver Orientale

- Among the most welcome flowers that glorify the early spring and summer are the big, glowing, nodding Poppies. Although their blooming season is short, their foliage is attractive for some time.
- BRACTEATUM. Deep crimson, enormous flowers. 35c each; \$3.50 per doz.
- GERALD PERRY. Apricot-pink, conspicuously blotched crimson. 35c each; \$3.00 per doz.
- GOLIATH. Fiery scarlet, with deep blotch at the base of each petal. 30c each; \$2.50 per doz.
- MAHOGANY. Deep crimson maroon. 30c each; \$2.50 per doz.
- MRS. PERRY. Salmon-rose. 30c each; \$2.50 per doz.
- ORIFLAMME. A large, gorgeous orange-scarlet. 30c each; \$2.50 per doz.
- PERRY'S WHITE. Very distinct, pure satiny-white, with a crimson-maroon blotch at the base of each petal. 30c each; \$2.50 per doz.
- REMBRANDT. Magnificent orange-scarlet. 30c each; \$2.50 per doz.
- ORIENTALE HYBRIDS. A select strain of mixed colors. 25c each; \$2.25 per doz.

Physalis - Chinese Lantern Plant

- FRANCHETII. A very decorative plant about 1½ to 2 feet high, bearing many brilliant orange-scarlet seed vessels or "Lanterns," valuable for winter decorations. 25c each; \$2.50 per doz.



Sedum Spectabile.



Platycodon Grandiflorum.



Veronica Longifolia Subsessilis.

Physostegia - False Dragonhead

VIRGINICA. Forms large clumps 3 to 4 feet high, bearing long spikes of delicate pink flowers, tubular in form. July and August. 25c each; \$2.50 per doz.

VIRGINICA ALBA. Pure white. 25c each; \$2.50 per doz.

Platycodon

Balloon Flower, or Japanese Bellflower

GRANDIFLORUM. Magnificent spikes of cup-shaped flowers of long duration. White or blue. 25c each; \$2.50 per doz.

Pyrethrum

Large daisy-like flowers in brilliant colors, blooms all summer, excellent for cutting. Mixed colors, 30c each; \$3.00 per doz.

Rudbeckia - Coneflower

NEWMANNII. The perennial form of the "Black-eyed Susan." Deep orange yellow flowers, with a dark yellow cone; long wiry stems 3 feet high; blooms all summer. 25c each; \$2.50 per doz.

PURPUREA (Giant Purple Coneflower). Peculiar reddish purple flowers, with a large, brown cone-shaped center. Blooms from July to October. 3 feet. 25c each; \$2.50 per doz.

Salvia - Meadow Sage

AZUREA. A rocky Mountain species. 3 to 4 feet high producing during August and September pretty sky blue flowers in the greatest profusion. 25c each; \$2.50 per doz.

Saponaria

CAUCASICA. A hardy perennial sort with white flowers, produced in July and August. 2 feet. 25c each; \$2.00 per doz.

Sedum

SPECTABILE BRILLIANT. A new variety having flowers of a bright shade of deep crimson. 25c each; \$2.50 per doz.

Spirea

Meadow Sweet or Goat's Beard

FILIPENDULA, FL. PL. Numerous corymbs of double white flowers on stems 15 inches high during June and July, and pretty fern-like foliage. 35c each; \$3.50 per doz.

Statice - Great Sea Lavender

LATIFOLIA. Large spreading panicles of graceful, deep blue flowers, much prized for dried winter decorations. 30c each; \$3.00 per doz.

Sweet William - Dianthus Barbatius

A well known, attractive, free flowering hardy perennial, producing a splendid effect in beds and borders in early summer.

NEWPORT PINK. 25c each; \$2.50 per doz.

SCARLET. 25c each; \$2.50 per doz.

WHITE. 25c each; \$2.50 per doz.

MIXED. 25c each; \$2.00 per doz.

Tritoma - Red Hot Poker, Flame Flower, or Torch Lily

(For Spring Planting Only)

Thalictrum - Meadow Rue

(Spring Planting Best Suited)

Valeriana - Garden Heliotrope

Large panicles of delightful flowers, upright in form and produced abundantly from June to September. Excellent for both cutting and border effects. Height, 2 feet.

COCCINEA. Showy heads of reddish flowers. 25c each; \$2.50 per doz.

COCCINEA ALBA. A white flowered form. 25c each; \$2.50 per doz.

Veronica - Speedwell

LONGIFOLIA SUBSESSILIS (Japanese Speedwell). Handsome, bright blue flowers on long spikes the entire summer and fall. 2 feet. 30c each; \$3.00 per doz.

SPICATA. Spikes of bright blue flowers, while smaller than the Longifolia are produced more abundantly. 2 feet. July and August. 25c each; \$2.00 per doz.

Yucca - Adam's Needle

FILAMENTOSA. Among hardy ornamental foliage and flowering plants this can be classed at the head of the list. Its broad, sword-like foliage and 5 foot, branched spikes of large fragrant, drooping, creamy-white flowers during June and July make it an effective plant for all positions. 30c each; \$2.50 per doz.

We recommend only spring planting for Roses in the climate of the middle west, however, to those interested in fall planting, we cordially invite you to write for our complete list.



Rock's Landscape Service Is Complete in Every Detail.

Rock's Ornamental and Flowering Shrubs

It is surprising what a difference can be made in the appearance and comfort of the home grounds by a judicious planting of trees, shrubs and plants. Cleaning up the home grounds and planting a few shade trees, with clumps of shrubs to give fragrance, bloom and bright colored foliage, with borders of hardy perennials that will furnish a wealth of bloom almost the entire season, is a continual source of pleasure to yourself as well as a delight to your neighbors and friends.

To assist our patrons in making a judicious planting we offer the services of our landscape department and will be pleased indeed to offer suggestions at any time that will be of benefit to you in beautifying your home grounds.

Althea - Rose of Sharon

An attractive hardy shrub with handsome flowers from August to October. Decidedly welcome at this time as so few other shrubs are in bloom. Excellent for specimen planting.

TREE FORM. Grows to a height of 8 to 10 feet in the following colors. Double white, double pink, double red, double purple. 4 to 5 feet, \$1.00 each; \$10.00 per doz. Extra large specimen plants, \$2.00 each; \$20.00 per doz.

BUSH FORM. Height 8 feet. Double white, double pink, double red and double purple. 2 to 3 feet, 50c each; \$5.00 per doz. 3 to 4 feet, 60c each; \$6.00 per doz. 4 to 5 feet, 75c each; \$7.50 per doz.

Aronia - Chokeberry

Height, 8 to 10 feet. A tall growing shrub with clusters of small white flowers followed in August by bright red berries that remain until winter. Bright crimson foliage in fall. 2 to 3 feet, 60c each; \$6.00 per doz. 3 to 4 feet, 75c each; \$7.50 per doz.

Aralia

PENTAPHYLLA. 5 to 6 ft. A Japanese bush, with arching branches, crowned with bright green, shining foliage, which is its principal merit. 2 to 3 feet, 60c each; \$6.00 per doz.

SPINOSA (Hercules' Club). Height 10 to 12 ft. In shrubbery plantings often the most vigorous and conspicuous plant, with luxuriant, tropical foliage, 2 feet long. It is crowned by a wide cluster of small white flowers and black berries. 2 to 3 feet, 60c each; 6.00 per doz. 3 to 4 feet, 75c each; \$7.50 per doz. 4 to 5 feet, \$1.00 each, \$10.00 per doz.

Berberis - Barberry

THUNBERGII (Japanese Barberry). A beautiful shrub at all seasons. Small foliage, coloring beautifully in autumn, and brilliant scarlet berries, remaining all winter. One of the most valuable hedge plants. 2 year, 12 to 18 inch, 30c each; \$3.00 per doz.; \$20.00 per 100. 3-year, 18 to 24 inch, 50c each; \$5.00 per doz.; \$35.00 per 100.

BOX BARBERRY. This new dwarf type of Barberry comes to fill a long-felt need for an edging plant that is dwarf in growth, free from all diseases and insect pests and perfectly hardy any place in the U. S. They make shapely upright bushes that may be kept 6 inches high by trimming. Unexcelled for bordering flower beds, shrubbery borders, etc. Strong, 1-year plants, \$2.25 per doz.; \$12.50 per 100.

Buddleia - Butterfly Bush

One of the most popular of recently introduced plants, producing elegantly scented flowers the entire summer; excellent for cutting.

MAGNIFICA (or Summer Lilac). Height 6 to 7 feet. Immense lavender spikes larger than any other variety. Strong 2-year plants, 60c each; \$6.00 per doz. 3-year specimens, 75c each; \$7.50 per doz.

VEITCHII (or Summer Lilac). Height 4 to 5 feet. Slightly darker in color than the Magnifica and growing more compact. Deliciously fragrant. Strong, 2-year plants, 75c each; \$7.50 per doz. 3-year specimens, \$1.00 each; \$10.00 per doz.

Calycanthus

FLORIDUS. Height 6 feet. The old-fashioned Sweet Shrub. Very unique, strawberry scented, chocolate-colored flowers. 2 to 3 feet; 60c each; \$6.00 per doz.

Caragana - Pea Tree

ARBORESCENS. Height 10 to 12 ft. A vigorous shrub with bright green foliage and numerous clusters of bright yellow flowers. Excellent for the shrubbery border. 2 to 3 feet, 50c each; \$5.00 per doz.

Cephalanthus - Button Bush

OCCIDENTALIS. Height 4 to 6 ft. Globular white flowers borne in July, pleasingly fragrant. Thrives best in moist loam and is especially valuable for planting about ponds. 2 to 3 feet, 60c each; 6.00 per doz. 3 to 4 feet, 75c each; \$7.50 per doz.

Clethra - Pepper Bush

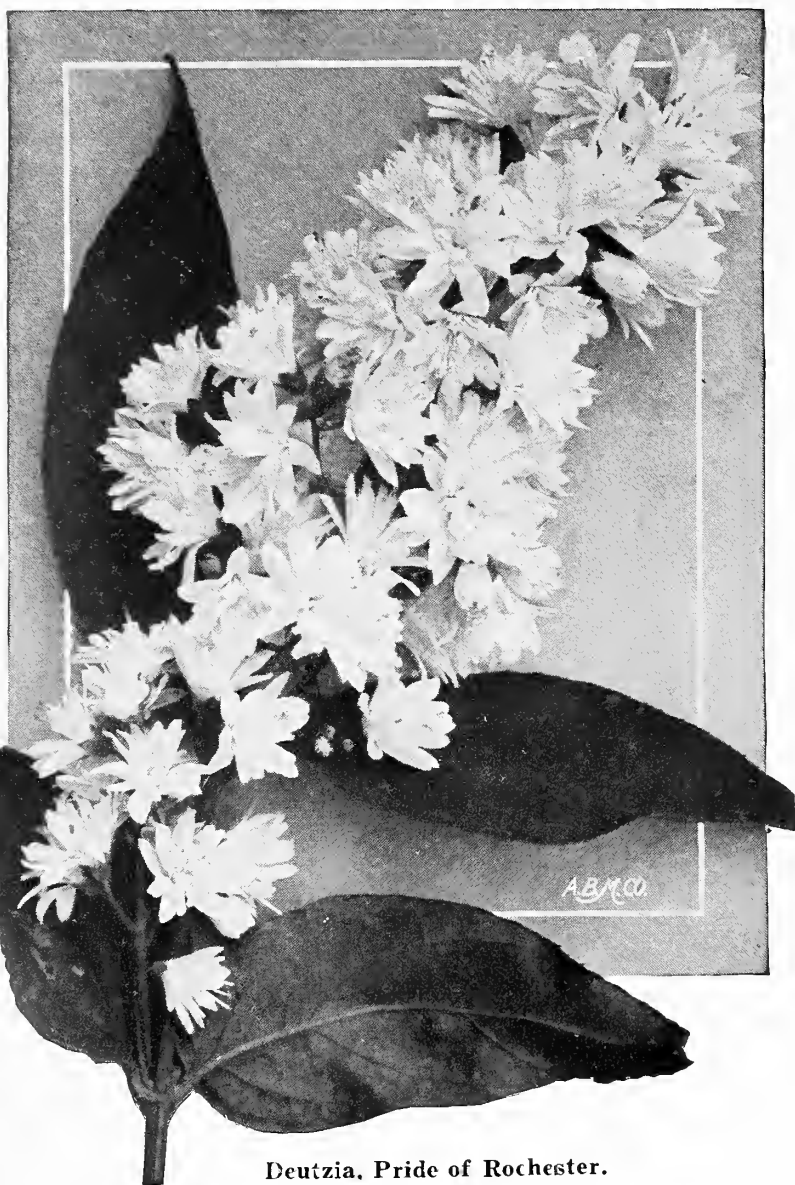
ALNIFOLIA (Sweet Pepperbush). 4 to 5 ft. Dark green lustrous leaves which turn to yellow tones in the fall. The fragrant, creamy white flowers are borne on erect racemes. It appears at its best in September when it is practically covered with the long, showy wands of white flowers. 2 to 3 feet, extra bushy plants, 75c each; \$7.50 per doz.

Corchorus - Globe Flower

JAPONICUS. A native of Japan, growing from 3 to 5 feet tall with bright green foliage and bark which shades to yellow in the fall. Numerous flowers of a beautiful yellow are borne the early part of May. A charming old-fashioned plant. 1½ to 2 feet, 50c each; \$5.00 per doz.

JAPONICUS FLORE PLENA. Height 3 to 5 ft. The double dwarf variety with small green foliage edged white. A very valuable dwarf shrub. 1 to 1½ feet, 60c each; \$6.00 per doz.

JAPONICUS FLORE PLENO. Height 3 to 5 ft. The double flowered type, the most beautiful of all. Of spreading habit bearing double yellow flowers early in May. An excellent shrub for mass plantings. 1½ to 2 feet, 50c each; \$5.00 per doz.



Deutzia, Pride of Rochester.

Cornus - Dogwood

SIBIRICA (Red Twigged). Clusters of beautiful white flowers, succeeded in the fall by ornamental berries; plants grow 6 to 10 feet high. Stems and branches turning blood red in winter. 2 to 3 feet, 50c each; \$5.00 per doz. 3 to 4 feet, 60c each; \$6.00 per doz.

STOLONIFERA AUREA (Golden Twigged Osier). A distinct and attractive type with golden yellow bark. Exceedingly effective if planted in masses with the red bark varieties. Perfectly hardy and extra bushy. 2 to 3 feet, 50c each; \$5.00 per doz. 3 to 4 feet, 75c each; \$7.50 per doz.

PANICULATA (Panicle Dogwood). Height 10 to 12 feet. This bush is distinctive because of the gray coloring of the stems. The white flowers are small, and borne profusely in great panicles early in spring. It grows quite compact, and is covered with white berries in fall which persist for a long time. 2 to 3 feet, 50c each; \$5.00 per doz. 3 to 4 feet, 75c each; \$7.50 per doz.

Cotoneaster

ACUTIFOLIA. Height 6 ft. A dense-growing shrub with dark green, glossy, oval leaves. One of the best hedge plants for the Middle West. Perfectly hardy and resembles Privet. 2 to 3 feet, 50c each; \$5.00 per doz.

Cydonia - Japanese Quince

JAPONICA. Height 6 ft. Invaluable for border or single specimen planting; one of the most brilliant flowering shrubs, producing bright scarlet flowers very early in the spring. 1½ to 2 feet, 50c each; \$5.00 per doz. 2 to 3 feet, 75c each; \$7.50 per doz.

Desmodium

PENDULIFLORUM. Height 4 ft. Exceedingly effective when planted in masses in the shrubbery border, and especially valuable. It produces flowers at a time when very few other shrubs are in bloom. Covered with clusters of rose and purple pea-shaped blooms from August to October. It dies to the ground each season. 2-year, 60c each; \$6.00 per doz. 3-year, 75c each; \$7.50 per doz.

Deutzia

The showy flowers and ease of culture make the Deutzia extremely popular for the shrub border. It will grow in almost any well-drained soil. Used extensively in combination with Philadelphus, Spirea, and Forsythia for mass planting.

GRACILIS. A neat, dense little bush, rarely over 2 feet high, that blooms in May, wreathing its drooping branches with pure white flowers. Equally valuable for shrubberies and forcing. 1 foot, extra bushy, 60c each; \$6.00 per doz.

PRIDE OF ROCHESTER. Grows 6 to 8 feet tall. A showy, early, and large-flowering sort that blooms in May before the others. The white flowers are large and double; the backs of petals being tinted with rose. Excellent as a specimen, and equally good for mass planting. 2 to 3 feet, 40c each; \$4.00 per doz. 3 to 4 feet, 60c each; \$6.00 per doz. 4 to 5 feet, 75c each; \$7.50 per doz.

Eleagnus - Russian Olive

ANGUSTIFOLIA. Height 20 ft. A large shrub with silvery branches, light green foliage above and silvery white beneath. Producing flowers, yellow within an outer shell of silvery white. Very fragrant. 3 to 4 feet, 50c each; \$5.00 per doz. 4 to 5 feet, 60c each; \$6.00 per doz. 5 to 6 feet, 75c each; \$7.50 per doz. Specimens, 6 to 7 feet, \$1.50 each; \$15.00 per doz.

Euonymus - Strawberry Tree

Hardy, mostly upright-growing shrubs that are in demand because of the showy fruits that come with autumn as well as for the brilliant autumnal coloring of the foliage. The flowers in May and June are rather inconspicuous. Thrives in any soil.

EUROPAEUS. Height 10 to 12 ft. Erect, tall-growing shrub; fruits lobed, rose-pink, the seeds invested with orange-colored arils. 3 to 4 feet, 75c each; \$7.50 per doz.

Forsythia - Golden Bell

The masses of bright flowers coming into bloom the first warm days of spring are one of the most striking features of the landscape.

FORTUNEI (Fortune's Golden Bell). Height 10 ft. Vigorous, upright-growing shrub, with arching branches; flowers golden yellow, with twisted petals. 2 to 3 feet, 50c each; \$5.00 per doz. 3 to 4 feet, 60c each; \$6.00 per doz. 4 to 5 feet, 75c each; \$7.50 per doz.

INTERMEDIA (Hybrid Golden Bell). Height 8 ft. Tall shrub, with slender, arching branches; leaves dark green and glossy; a great profusion of golden yellow flowers. 2 to 3 feet, 50c each; \$5.00 per doz. 3 to 4 feet, 60c each; \$6.00 per doz. 4 to 5 feet, 75c each; \$7.50 per doz.

SUSPENSIVA (Weeping Golden Bell). Height 8 ft. Medium-sized shrub, with long, slender, drooping branches; flowers in great profusion, golden yellow, very showy. 2 to 3 feet, 50c each; \$5.00 per doz.

Hydrangea

Highly ornamental shrubs that are generous with their large panicles of showy flowers. Well adapted for borders or shrubberies and unexcelled for foundation plantings. A partially shaded and moist location is best suited for Hydrangeas.

ARBORESCENS GRANDIFLORA (Snowball Hydrangea). Height 4 to 5 ft. Medium sized, with bright green foliage and creamy white flowers in flat-topped clusters in early summer. 2-year plants, 75c each; \$7.50 per doz.

PANICULATA GRANDIFLORA. 6 to 7 ft. The best known and probably the most popular shrub in cultivation. Immense panicles of snow white flowers in August, turning to rose-color in the autumn. 2-year plants, 75c each; \$7.50 per doz. 3-year plants, specimens, \$1.00 each; \$10.00 per doz.

PANICULATA GRANDIFLORA (Tree Form). Height 8 to 10 feet. Same as the former but grown in tree form. Most valuable for specimen planting because of its height and form of growth. 3 to 4 feet, \$1.25 each; \$12.50 per doz. 4 to 5 feet, \$1.50 each; \$15.00 per doz.

Ligustrum - Privet

Hardy, vigorous shrubs commonly used for hedges and screens but having merit for planting with other shrubbery by reason of the beauty of the flowers (appearing in June and July) and their succeeding berries. They thrive in almost any fertile soil and stand clipping admirably.

AMURENSE, NORTH (Amoor Privet). Height 7 ft. Exceedingly hardy, with dark green leaves somewhat smaller than the well known California type, but of a more branching habit. Excellent for formal hedges. 1½ to 2 feet, 30c each; \$2.75 per doz.; \$18.00 per 100. 2 to 3 feet, 35c each; \$3.50 per doz.; \$22.50 per 100. 3 to 4 feet, 40c each; \$4.00 per doz.; \$30.00 per 100. 4 to 5 feet, 50c each; \$5.00 per doz.; \$35.00 per 100.

IBOTA. Height 6 ft. A valuable hardy Privet for the western states. Splendid for either hedges or single specimens. Leaves long and shiny and of grayish green color. 1½ to 2 feet, 30c each; \$2.50 per doz.; \$18.00 per 100. 2 to 3 feet, 35c each; \$3.00 per doz.; \$22.00 per 100. 3 to 4 feet, 45c each; \$4.50 per doz.; \$30.00 per 100.

BALL-SHAPED IBOTA. Trimmed into ball-shaped plants resembling very much the ball type Boxwood. Excellent for vases, urns or specimens on the lawn. Perfectly hardy.

Sizes	Per Pair
12 x 12 inches, balled and burlapped.....	\$3.50
15 x 15 inches, balled and burlapped.....	4.00
18 x 18 inches, balled and burlapped.....	5.00
20 x 20 inches, balled and burlapped.....	6.50
24 x 24 inches, balled and burlapped.....	8.00
26 x 26 inches, balled and burlapped.....	10.00
30 x 30 inches, balled and burlapped.....	12.50

REGELIANUM (Regel's Privet). Height 5 ft. Branches dense and gracefully drooping, giving a distinctly attractive appearance. In autumn the foliage turns dark red. The plants are strong growers and are useful for hedge planting. 1½ to 2 feet, 25c each; \$2.50 per doz. 2 to 3 feet, 35c each; \$3.50 per doz.; \$25.00 per 100.

OVALIFOLIUM (California Privet). Height 6 ft. A well known and popular species of unusual beauty. For hedges, groups and specimens it is invaluable. 1½ to 2 feet, 20c each; \$2.00 per doz.; \$12.00 per 100. 2 to 3 feet, 25c each; \$2.50 per doz.; \$15.00 per 100. 3 to 4 feet, 30c each; \$3.00 per doz.; \$20.00 per 100. 4 to 5 feet, 50c each; \$5.00 per doz.; \$35.00 per 100. 6 feet, specimen plants, 75c each; \$7.50 per doz.; \$50.00 per 100.

Lilac - True Syringa

Lilacs are decidedly most effective when planted in groups. They produce an abundance of showy flowers in spring and early summer. During the last few years many new varieties have been introduced, including new types and colors.

PERSIAN PURPLE. Height 8 to 10 ft. Small glossy leaves that do not mildew. Sweet scented flowers. 2 to 3 feet, 60c each; \$6.00 per doz. 3 to 4 feet, \$1.00 each; \$10.00 per doz.

VULGARIS PURPLE (Common Lilac). Height 10 to 12 ft. Bluish-purple flowers. A standard variety. Always good. 2 to 3 feet, 50c each; \$5.00 per doz. 3 to 4 feet, 75c each; \$7.50 per doz.

Named French Lilacs

Rock's selection of the most popular and satisfactory types. 8 to 10 feet in height.

ALPHONSE LAVALLE. A variety bearing beautiful double flowers of a rare blue color. (Own roots.) 2 to 3 feet, \$1.00 each.

CHARLES X. Strong; rapid growing, with large shining leaves; trusses large, of a reddish purple color. 2 to 3 feet, \$1.00 each.

MAD. LEMOINE. Double pure white flowers, borne in large clusters. Strong bushes. (Own roots.) 2 to 3 feet, \$1.00 each.

MARIE LEGRAYE. Large panicles of white flowers. Valuable for forcing. The finest white Lilac. (Own roots.) 2 to 3 feet, \$1.00 each.

MICHAEL BUCHNER. Dwarf plant, vigorous. Double flowers of pale lilac color. (Own roots.) 2 to 3 feet, \$1.00 each.

PRESIDENT GREVY. Flowers double, large handsome blue trusses. 2 to 3 feet, \$1.00 each.

SOUVENIR DE LOUIS SPAETH. A distinct and most beautiful variety, having immense trusses of deep purplish-red flowers. 2 to 3 feet, \$1.00 each.



Amoor River Privet Hedge.

Lonicera - Bush Honeysuckle

Wonderfully fragrant flowers bedeck the Honeysuckles in early spring, and a planting of them near the living-porch gives added pleasure to the gathering there of the family group on warm spring evenings, for the fragrance of the flowers is subtly delicious and wholly enjoyable.

BELLA ALBIDA (Bella Honeysuckle). Height 8 ft. A handsome hybrid of strong growth. White flowers are borne in great clusters, followed by attractive ropes of red berries which remain all summer. 2 to 3 feet, 50c each; \$5.00 per doz.

FRAGRANTISSIMA (Early Fragrant Honeysuckle). Height 12 feet. Medium-sized, with many spreading branches; leaves bright green, long-persistent, rarely falling before mid-winter; flowers creamy white or light yellow, scenting the air with their exquisite fragrance in May and June. 3 to 4 feet, 60c each; \$6.00 per doz.

MORROWII (Japanese Bush Honeysuckle). Height 6 ft. A strong, vigorous growing type of spreading habit. Producing pure white flowers in May and June followed by brilliant red berries. 2 to 3 feet, 50c each; \$5.00 per doz. 3 to 4 feet, 60c each; \$6.00 per doz.

RUPRECHTIANA (Manchurian Honeysuckle). Height 10 ft. A very showy variety, flowers pure white, changing to yellow, followed by red berries. Grows 8 to 10 feet tall. 3 to 4 feet, 60c each; \$6.00 per doz. 4 to 5 feet, 75c each; \$7.50 per doz.

TARTARICA ALBA. Height 8 ft. Very large, pure white flowers of beautiful upright habit. 2 to 3 feet, 40c each; \$4.00 per doz. 3 to 4 feet, 60c each; \$6.00 per doz. 4 to 5 feet, 75c each; \$7.50 per doz.

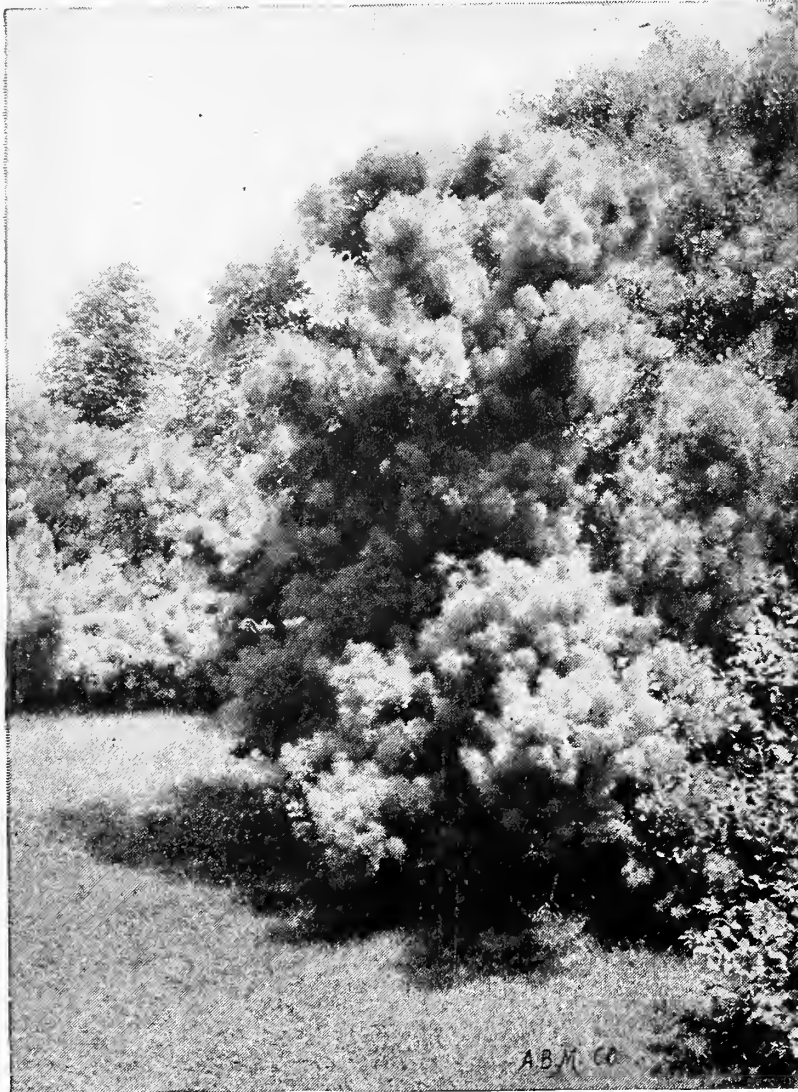
TARTARICA ROSEA. Height 8 ft. Very beautiful large bright red flowers striped with white in June. 2 to 3 ft., 40c each; \$4.00 per doz. 3 to 4 feet, 60c each; \$6.00 per doz. 4 to 5 feet, 75c each; \$7.50 per doz.

Philadelphus Syringa or Mock Orange

A showy family of shrubs that adds beauty, grace, and perfume to our gardens. The flowers appear in late May or June. If the plant needs pruning, do it after blooming-time, as the flowers appear on wood formed the previous year.

CORONARIUS (Garland Syringa). One of the earliest to bloom. Growing from 10 to 12 feet tall, bearing large white flowers which are delightfully scented. 2 to 3 feet, 40c each; \$4.00 per doz. 3 to 4 feet, 60c each; \$6.00 per doz. 4 to 5 feet, 75c each; \$7.50 per doz.

GRANDIFLORUS (Large Flowered Syringa). Height 10 to 12 ft. One of the most popular shrubs grown. Flowers pure white and very large. Blooms in June. 2 to 3 feet, 40c each; \$4.00 per doz. 3 to 4 feet, 60c each; \$6.00 per doz. 4 to 5 feet, 75c each; \$7.50 per doz.



Rhus Cotinus - Smoke Tree.

Potentilla - Cinquefoil

FRUTICOSA. Height 2 to 3 ft. Blooms all summer and being of a dwarf habit, it is a suitable shrub for outside border plantings. Flowers are bright yellow. 1 foot, bushy plants, 50c each; \$5.00 per doz.

Prunus

TRILOBA (Double Flowered Plum). Height 8 ft. A very desirable, vigorous shrub, producing very early in the spring delicate pink, double flowers, thickly set on long slender branches. 2 to 3 feet, \$1.00 each; \$10.00 per doz. 3 to 4 feet, \$1.25 each; \$12.50 per doz.

PISSARDII (Purple-leaved Plum). Height 15 ft. Tall-growing, upright, with purple leaves and dark wine-red fruit; flowers pinkish white. 2 to 3 feet, 60c each; \$6.00 per doz.

Rhamnus - Buckthorn

Handsome, hardy, vigorous shrubs, with large, bright green leaves and showy berries. Sometimes used for hedges. Moist, loamy soil and partial shade are prescribed for best growth.

CATHARTICA (Common Buckthorn). Height 15 ft. Tall, robust, with spiny branches, glossy foliage, and a great profusion of black berries. 2 to 3 feet, 40c each; \$4.00 per doz.

Rhodotypos - White Kerria

KERRIOIDES. Height 8 ft. A very ornamental Japanese shrub with handsome foliage and large single white flowers in the latter part of May, succeeded by numerous black berries. 2 to 3 feet, 60c each; \$6.00 per doz. 3 to 4 feet, 75c each; \$7.50 per doz.

Ribes - Flowering Currant

AUREUM (Yellow Flowering). Height 10 ft. A native shrub with glabrous shining leaves and yellow sweet scented flowers in June. 2 to 3 feet, 50c each; \$5.00 per doz.

Robinia - Flowering Locust

HISPIDA (Rose Acacia; Pink Locust). This shrub grows naturally from Virginia to Georgia in the mountains. It is of dwarf growth, generally not more than 6 feet tall. The younger limbs are generally covered with light bristles all the year. Showy rose-colored flowers appear in late spring or early summer. This shrub will be successful in almost any soil that is well drained. 2 to 3 feet, 60c each; \$6.00 per doz. 3 to 4 feet, 75c each; \$7.50 per doz. 4 to 5 feet, \$1.00 each; \$10.00 per doz.

Rhus - Sumac

Very attractive shrubs and small trees make up this family—a family that is highly prized in landscape work on account of the brilliant autumnal colors of its foliage. The showy clusters of berries likewise add to its value in the shrubbery planting. Any soil that is well drained is suitable for the Sumacs.

AROMATICA (Fragrant Sumac). Height 8 ft. Medium-sized spreading shrub with pretty lobed leaves; flowers yellow, in small clusters, in May and June, followed by bright red fruit. 2 to 3 feet, 50c each; \$5.00 per doz.

COTINUS (Smoke Tree). Height 12 ft. Large shrub, with bright pea-green leaves and odd, delicate, feathery flower-clusters in July and August. 2 to 3 feet, 60c each; \$6.00 per doz.

GLABRA (Smooth Sumac). Height 15 to 20 ft. Flowers are borne in large panicles at ends of the branches, and are followed by the crimson clusters of fruits which last all winter. Excellent for mass plantings. 2 to 3 feet, 40c each; \$4.00 per doz. 3 to 4 feet, 50c each; \$5.00 per doz.

GLABRA LACINIATA (Dwarf Cut-leaved Sumac). 4 to 5 ft. high. Low growth and fern-like foliage make this variety distinctive. Foliage is brilliantly colored in the fall months. 2 to 3 feet, 50c each; \$5.00 per doz.

TYPHINA (Tall Cut-leaved Sumac). Height 20 ft. Tall, showy shrub that grows in the driest soils and is gorgeous in its autumnal garb of richly colored foliage and crimson fruit-clusters. 3 to 4 feet, 40c each; \$4.00 per doz.

TYPHINA LACINIATA. Height 12 to 15 ft. A variety of the preceding with fern-like leaves and hairy stems; magnificent leaf-coloring in autumn of brilliant scarlet, crimson, and purple. 3 to 4 feet, 50c each; \$5.00 per doz. 4 to 5 feet, 60c each; \$6.00 per doz. 5 to 6 feet, 75c each; \$7.50 per doz. 7 to 8 feet, \$1.00 each; \$10.00 per doz.

Salix - Willow

DISCOLOR (Pussy Willow). Height 20 to 30 ft. A small tree or bush with upright branches. Catkins appearing in early spring before the leaves appear. Very handsome in flower. 3 to 4 feet, 40c each; \$4.00 per doz. 4 to 5 feet, 60c each; \$6.00 per doz. 5 to 6 feet, 75c each; \$7.50 per doz. 7 to 8 feet, specimens, \$1.00 each; \$10.00 per doz.

Sambucus - Elder

Familiar vigorous, hardy shrubs that are a dominant note in the planting of which they are a part. The pleasing foliage, of various shades of green, forms a fitting background for the large, flat-topped clusters of flowers and the succeeding showy berries.

NIGRA AUREA (Golden-leaved). Height 8 to 10 ft. Very desirable for its golden foliage. Effective when planted in shrub beds. 2 to 3 feet, 50c each; \$5.00 per doz. 3 to 4 feet, 75c each; \$7.50 per doz. 4 to 5 feet, specimens, \$1.00 each; \$10.00 per doz.

NIGRA LACINIATA (Cut-leaved Elder). Height 8 to 10 ft. The leaves of this variety are fern-like in formation, and the shrub is of half-drooping habit. One of the finest in cultivation, being especially effective in masses. 2 to 3 feet, 50c each; \$5.00 per doz.

RACEMOSA. 8 to 10 ft. Beautifully cut and drooping leaves give this a graceful aspect; the racemes of white flowers are followed by showy red fruit. 2 to 3 feet, 50c each; \$5.00 per doz.

Symphoricarpos

RACEMOSUS (Snowberry). A graceful shrub, 4 to 5 feet tall, with slender branches. Flowers white or pinkish, in loose racemes in summer. 2 to 3 feet, 50c each; \$5.00 per doz. 3 to 4 feet, 60c each; \$6.00 per doz.

VULGARIS (Coral Berry or Indian Currant). Height 4 to 5 feet. A grand shrub producing a wealth of red or purplish berries which remain on the branches all winter. Leaves ovate, bright green. 2 to 3 feet, 50c each; \$5.00 per doz. 3 to 4 feet, 60c each; \$6.00 per doz.

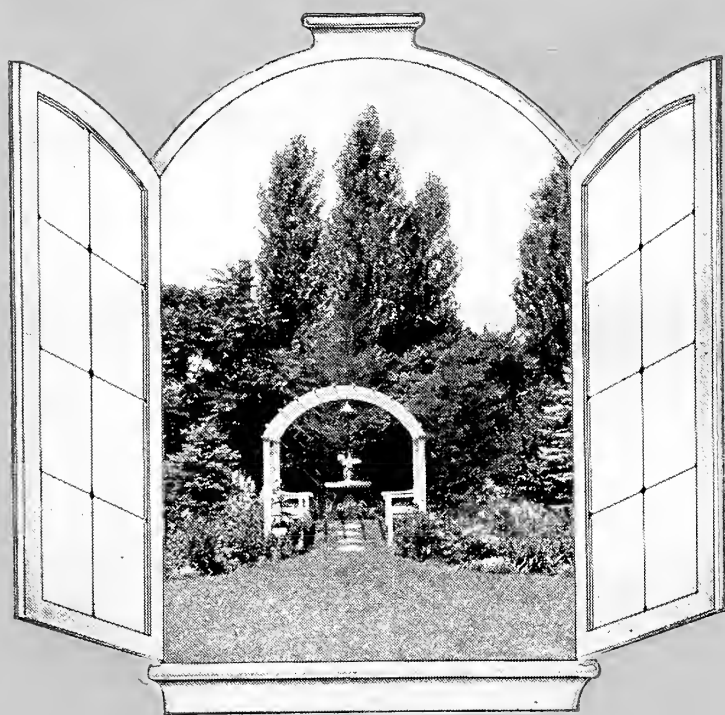
Sow Rock's Celebrated Country Club Lawn Grass Seed in September and October. These two months produce the best results.

From

Rock's Flower Gardens

Independence,

Missouri



WIZARD
TRADE BRAND MARK
PULVERIZED
Sheep Manure

*For Everything
That Grows*

Fall is the time to use Wizard

Wizard Sheep Manure Makes Beautiful Lawns and Gardens

IF YOU want a more beautiful lawn and garden, plan to do most of your garden work in Fall instead of Spring. Fall planting in a rich fertile soil is, according to successful gardeners, the real secret of success. So plant everything you can in Fall—and let your first thought be the preparation of a rich fertile soil to develop the full possibilities of your garden.

The Best Lawns Are Made in the Fall

Fall is nature's time to sow grass seed and experts claim that the only way to secure a thick turf of the finer and more desirable grasses is to make your lawn in Fall as these grasses develop best during the cool Fall months. Many failures in lawn making are due to the hot dry summer weather following close upon late Spring sowing. Make changes that you have planned and plant perennials and shrubs in their permanent location. Set out fruit trees and bushes and if you want a beautiful display of tulips and other bulbs next Spring, you must plant now. All Fall work insures an established planting ready to start off rugged and strong with the first breath of Spring, fully a month or more before you can begin any planting in Spring.

A Fertile Soil Insures Success

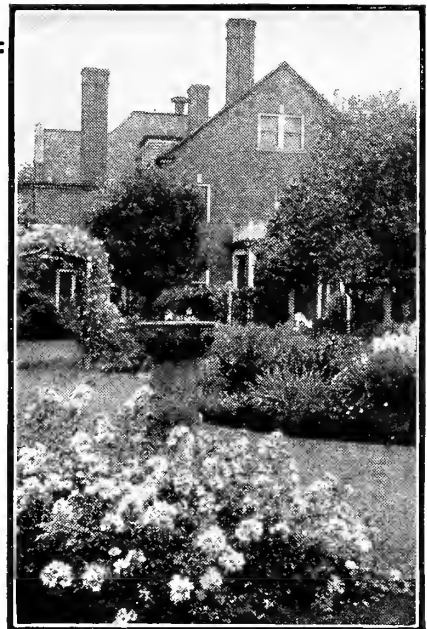
Whatever you do, don't forget the needs of your plants, because you cannot get results on a poor wornout soil. Wizard Sheep Manure improves the soil and gives it just what it needs to make plants grow to perfection. Wizard is economical, convenient and absolutely weedless. One bag will prove as effective as a **WHOLE WAGON LOAD OF STABLE MANURE**. Use Wizard this Fall and you will have a better lawn and garden next Spring.



Beware of the inferior substitutes now on the market, which are being sold as Sheep Manure. If you want results and the best Sheep Manure on the market — insist on Wizard Brand. Wizard is genuine Sheep Manure and you can depend upon it for results.



Don't Plant Without Wizard Brand



Beautiful Flowers Indoors During The Winter!

Rock's prepared bulb fibre offers a real fascination to flower lovers by growing bulbs right in your own home. It is a complete substitute for soil, perfectly clean, odorless, stainless, and no drainage required. Use one of your favorite bowls; color schemes may be carried out which adds an additional charm.

Bulbs will grow and bloom even better than in soil, for it absorbs and holds an even moisture, and on account of its fluffiness allows the roots to penetrate freely.

PRICES OF ROCK'S PREPARED BULB FIBRE
Quart 50c; Half Peck \$1.25; Peck \$2.25; Bushel \$7.00

DIRECTIONS FOR USING BULB FIBRE

Wet the Fibre thoroughly until it has absorbed all the water it can hold. This is best done in a pail or pan. Then squeeze out nearly all the water and it will be just right for planting. Fill the bowl three-fourths full, or to within a few inches of the top, according to the size of the bulb. Press down gently (never pack it down), set bulbs at the proper distances, and fill up with Fiber. Press it gently around the bulbs but *don't* pack it down. Keep the Fiber damp, by spraying it lightly every day, but never allow it to become too wet. All bulbs, except Freesias, Callas, and Lily-of-the-Valley should be kept in a dark place to develop roots before sprouting. By bringing in a few bowls at intervals and making additional plantings, one may enjoy blooming plants all through the winter months.

THE BULBS TO GROW IN OUR FIBRE

NARCISSI. Paper-White Grandiflora

NARCISSI. Soleil d'Or

DAFFODILS. Large Trumpet and double varieties

HYACINTHS. Exhibition Bulbs

HYACINTHS. Dutch-Roman or Pan Hyacinths

CHINESE SACRED LILIES.

CALLA LILIES

FREESIAS

LILY-OF-THE-VALLEY PIPS: (See Page 22 in our Fall 1923 Garden Book.) Especially selected and especially treated for growing in fibre. Most satisfactory for house culture. No failure. Will bloom in 21 days from the time of planting.



INDEPENDENCE, MISSOURI, U. S. A.

Rock's Lawn Grass Seed

For 1923 Fall Planting.

A well planted and well preserved lawn is a source of true pride to any home-owner as well as the admiration of every "passer-by"; therefore it should be primary in the planting of home-grounds. It is not impossible to produce such a lawn even in the hot, dry climate of the Middle West. One may be had with very little expense and trouble.

We shall consider it a pleasure to be of service in helping solve your turf problems. A few helpful suggestions may be found in Rock's, "Creating Beautiful Lawns," which will be mailed free upon request.

It is very important to take into consideration the character of soil which is to be sown. If patrons will kindly inform us we shall be very glad to select a suitable mixture.

ROCK'S COUNTRY CLUB LAWN GRASS SEED

One of the most celebrated mixtures of Grass Seed in the West, and justly so, considering its adaptability to the trying weather conditions of this climate. Many exhaustive trials covering a long period of years have produced this superb mixture, a combination of the fine-leaved, dwarf, hardy grasses that will produce and retain a beautiful lawn throughout the summer. It is prepared from our own formula and is absolutely free from weeds and chaff. For new lawns we recommend about 125 pounds per acre or for small plots, 1 pound to 17 feet square.

Lb., 45c; 3 lbs., \$1.25; 5 lbs., \$2.00; 10 lbs., \$3.75; 100 lbs., \$35.00.

ROCK'S SHADED LAWN GRASS SEED

An especially adapted mixture for the shaded lawn where so many unsightly bare spots are noticeable. It is well to make frequent applications of agricultural slacked lime under such places that are shaded heavily; this prevents the soil from becoming sour. Sow 125 lbs. per acre to 1 lb. to 17 feet square.

ROCK'S STANDARD MIXTURES

For Terraces—A selection of the grasses that root deeply and yet retain a rich velvety green so uncommon in terraces. Write for prices.

For Putting Greens—A close, fine, durable turf, particularly adapted to withstand hard usage. Should be sown at the rate of about 3 lbs. to every 17 feet square. Write for prices.

For Golf Courses—A mixture of the most suitable grasses that will survive hard weather and continuous wear. Write for prices.

ORDER BLANK

Rock's Flower Gardens

SEEDS—PLANTS—BULBS—SHRUBS

INDEPENDENCE, MO.

Date.....192.....

Name.....

Street }
P. O. Box }
R. F. D. }
Post Office.....

County..... State.....

Ship Via.....

(Freight, Express or Parcel Post)

Amount Enclosed	
Money Order	\$.....
Check or Draft	\$.....
Cash	\$.....
Stamps	\$.....
Total	\$.....

ALL GOODS SOLD SUBJECT TO TERMS STATED IN OUR CATALOGUE

Quantity	Article	Price

Carried Forward

HAVE YOU SIGNED YOUR NAME AND ADDRESS PLAINLY?

Quantity

Article

Price

Brought Forward

Total

HAVE YOU SIGNED YOUR NAME AND ADDRESS PLAINLY?



Spirea Van Houttei.

Spirea

Showy, free-flowering shrubs that offer a wide range of choice as to form and color as well as of blooming-time. Hardy and of easy culture, preferring sunny exposures and moist, fertile soils.

ANTHONY WATERER. Height 2 to 2½ ft. Perpetual blooming Red Spirea. Dwarf, bushy, spreading habit with large corymbs brilliantly colored rosy-crimson. Sufficiently dwarf to be used in foundation plantings. 12 inches, extra bushy, 50c each; \$5.00 per doz. 1½ feet, 75c each; \$7.50 per doz.

ARGUTA MULTIFLORA (Snow Garland). Height 4 to 5 ft. A slender, upright shrub bearing branches covered with masses of snow-white flowers in early May. 2 to 3 feet, 50c each; \$5.00 per doz.

BILLIARDII. Height 7 to 8 ft. An excellent subject for planting in masses, and makes a good cut flower. Blooms profusely from July to October. Dense panicles of rich pink flowers. 2 to 3 feet, 50c each; \$5.00 per doz. 3 to 4 feet, 60c each; \$6.00 per doz.

BILLIARDII ALBA. Height 7 to 8 ft. Similar to above except color of flowers being pure white. 2 to 3 feet, 50c each; \$5.00 per doz. 3 to 4 feet, 75c each; \$7.50 per doz. 4 to 5 feet, specimens, \$1.00 each; \$10.00 per doz.

CALLOSA ALBA. Height 3 feet. A form of the above with pretty white flowers that are in bloom the greater part of the summer. 1½ to 2 feet, extra bushy, 75c each; \$7.50 per doz.

CALLOSA ALBA (White Spirea). Height 3 ft. A form of the above with pretty white flowers that are in bloom the greater part of the summer. 1½ to 2 feet, extra bushy, 75c each; \$7.50 per doz.

OPULIFOLIA (Ninebark). A tall shrub with spreading branches growing 8 to 10 feet high. Flowers whitish in early summer, disposed in numerous clusters. Especially valuable for shady places. 2 to 3 feet, 40c each; \$4.00 per doz. 3 to 4 feet, 60c each; \$6.00 per doz. 4 to 5 feet, 75c each; \$7.50 per doz. 5 to 6 foot specimens, \$1.00 each; \$10.00 per doz.

OPULIFOLIA AUREA (Golden-leaved Ninebark). Golden yellow-tinted foliage, and white flowers in June. Very conspicuous; holds its color all summer. 3 to 4 feet, 60c each; \$6.00 per doz. 4 to 5 feet, 75c each; \$7.50 per doz. 5 to 6 feet, specimens, \$1.00 each; \$10.00 per doz.

SORBIFOLIA. Height 6 ft. Long, showy panicles of white flowers. A fine Spirea. 2 to 3 feet, 50c each; \$5.00 per doz. 3 to 4 feet, 60c each; \$6.00 per doz. 4 to 5 feet, 75c each; \$7.50 per doz.

THUNBERGII. Height 4 ft. Dwarf, with numerous slender, gracefully arching branches that are almost hidden by the mantle of white flowers in May. 2 to 3 feet, extra bushy plants, 60c each; \$6.00 per doz.

VAN HOUTTEI (Bridal Wreath). Height 8 ft. This is without doubt the most beautiful and useful of all shrubs. Always effective if planted singly or in groups on the lawn, in front of the porch, in shrub borders or in a hedge. Handsome throughout the entire year. Our stock is in splendid condition. 1½ to 2 feet, 35c each; \$3.50 per doz. 2 to 3 feet, 50c each; \$5.00 per doz. 3 to 4 feet, 75c each; \$7.50 per doz. 4 to 5 feet, specimens, 75c each; \$7.50 per doz. 4 to 5 feet, \$1.00 each; \$10.00 per doz. 5 ft., specimen plants, \$1.25 each; \$12.50 per doz.

Tamarix - Tamarisk

Relatively hardy shrubs that are exceedingly attractive with their feathery foliage and large panicles of showy flowers. A loamy or sandy soil, somewhat moist, is best adapted for their culture.

Amurense. Height, 12 to 15 feet. A very ornamental upright growing shrub, especially valuable for tall borders. Light feathery foliage and producing delicate silky pink tassels throughout the summer. 2 to 3 feet, 50c each; \$5.00 per doz. 3 to 4 feet, 60c each; \$6.00 per doz. 4 to 5 feet, 75c each; \$7.50 per doz. 5 to 6 feet, specimens, \$1.00 each; \$10.00 per doz.

HISPIDA AESTIVALIS. Height 8 to 10 ft. A new variety of vigorous growth. In May the branches are covered with numerous bright carmine pink flowers. 2 to 3 feet, 60c each; \$6.00 per doz. 3 to 4 feet, 75c each; \$7.50 per doz.

Viburnum - Snowball

A showy group of shrubs ranging from 6 to 12 feet in height, blooming lavishly in spring, and vividly brightening the autumn aspect with gleaming fruits and richly colored foliage.

DENTATUM (Arrow-wood). Height 8 to 10 feet. Foliage bright green, heart-shaped, taking on brilliant autumnal tinge; flowers in flat-topped clusters in May and June. 2 to 3 feet, 60c each; \$6.00 per doz. 3 to 4 feet, 75c each; \$7.50 per doz.

LANTANA (Wayfaring Tree). Height 8 to 10 feet. Leaves heart-shaped, wrinkled, dark green above, downy beneath; flowers white, in flat-topped clusters; berries bright red, changing to black. 2 to 3 feet, 60c each; \$6.00 per doz.

LENTAGO (Sheepberry). 10 to 12 feet. Foliage light glossy green; flowers creamy white, very fragrant; fruit black. 2 to 3 feet, 60c each; \$6.00 per doz. 3 to 4 feet, 75c each; \$7.50 per doz.

OPULUS (High Bush Cranberry). Height 8 to 10 feet. A very ornamental large sized shrub with white flowers and conspicuous red berries resembling cranberries, which remain until destroyed by late frosts. 2 to 3 feet, 50c each; \$5.00 per doz. 3 to 4 feet, 75c each; \$7.50 per doz.

OPULUS STERILE (The Common Snowball). 6 to 8 feet high. An old favorite in every garden. Large balls of white flowers. Very attractive. 2 to 3 feet, 60c each; \$6.00 per doz.

TOMENTOSUM (Japanese Snowball). 6 to 8 feet high. Flowers pure white, borne along the branch in flat symes. These flower-clusters are sometimes 3 to 4 inches across. The foliage is quite beautiful. Should be planted where it is sheltered from extremely cold winds. 2 to 3 feet, 50c each; \$5.00 per doz. 3 to 4 feet, 75c each; \$7.50 per doz.

Weigela

Spreading, free-flowering shrubs that are remarkably hardy. They are among the showiest of our garden ornaments. Thrive best in moist, loamy soil.

AMABILIS. Height 6 to 8 feet. Strong, erect, gradually spreading and drooping into the most graceful shape; they follow the Lilacs in bloom, producing large, pink, trumpet-shaped flowers. 2 to 3 feet, 50c each; \$5.00 per doz. 3 to 4 feet, 60c each; \$6.00 per doz. 4 to 5 feet, specimens, \$1.00 each; \$10.00 per doz.

HYBRIDA, EVA RATHKE. Height 5 to 6 feet. Free bloomer; large brilliant crimson flowers. Similar to the preceding variety in its trumpet-shaped blooms and in the general characteristics of growth. 2 to 3 feet, 75c each; \$7.50 per doz. 3 to 4 feet, \$1.00 each; \$10.00 per doz.

ROSEA. Height 6 to 8 feet. A very popular sort among the Weigelas. Tall growing and very vigorous, with deep pink flowers in the greatest abundance during June and at intervals throughout the summer. 2 to 3 feet, 60c each; \$6.00 per doz. 3 to 4 feet, 75c each; \$7.50 per doz.

All Shrubs, Perennial Plants, Vines and Ornamental Shrubs offered in this catalogue are suitable for Fall planting. More complete lists will be found in Rock's Spring Garden Book which is published in January.

ROCK'S HARDY CLIMBING PLANTS

AMPELOPSIS Englemannii (Englemann's Ivy). A greatly improved variety of the Virginia Creeper, with dense foliage of a glossy light green in summer, changing to a brilliant crimson in the autumn. On a rough stone surface it will cling without support in the same way as the Japanese Ivy. **Extra strong, 2-year plants, 50c each; \$5.00 per doz. 3-year, 60c each; \$6.00 per doz.**

AMPELOPSIS Quinquefolia (Virginia Creeper or American Ivy). Luxuriant in growth with handsome foliage turning to bright crimson in the fall. Very hardy vine for covering old tree trunks, walls or fences. **Extra strong, 2-year plants, 50c each; \$5.00 per doz. 3-year, 60c each; \$6.00 per doz.**

AMPELOPSIS Veitchii (Boston Ivy or Japan Ivy.) The most popular climbing plant for covering brick, stone or wooden walls, trees, etc.; when it becomes established it is of rapid growth, and clings to the smoothest surface; the foliage is a rich olive-green during the summer, changing to various shades of bright crimson and scarlet in the fall. **2-year plants, 35c each; \$3.50 per doz.**

ARISTOLOCHIA Siphon (Dutchman's Pipe). A hardy rapid-growing climber bearing brownish colored flowers resembling a Dutchman's pipe. While the flowers are ornamental, the vine is most desirable for the bright green foliage which retains the same color from spring until late fall. **2-year plants, 50c each; \$5.00 per doz.**

BIGNONIA RADICANS (Trumpet Vine). Dark red, orange throat; free blooming. Very hardy and rapid grower. Useful for covering unsightly places, stumps, or wherever a showy flowering vine is desired. **2-year plants, 50c each; \$5.00 per doz.**

CLEMATIS Paniculata (Japanese Clematis). The finest small flowered Clematis extant. A wonderfully rapid grower, quickly covering trellises, arbors, etc. The flowers are pure white, deliciously fragrant and produced with the greatest freedom. It flowers in September when few other vines are in bloom. This is the easiest to grow and most popular of all the small flowered vines. **Strong, 2-year plants, 30c each; \$3.00 per doz. Strong, 3-year plants, 50c each; \$5.00 per doz.**



Clematis Paniculata.

CELASTRUS Scandens (Bitter Sweet). One of our native climbing plants, of rapid growth, succeeding in almost any situation, sun or shade, with attractive light green foliage and yellow flowers during June, which are followed in the autumn with bright orange fruits which remain throughout the winter. **2-year plants, 50c each; \$5.00 per doz. 3-year, 60c each; \$6.00 per doz.**

HONEYSUCKLE Halleana (Woodbine.) Flowers pure white, turning to yellow; fragrant, hardy and almost evergreen; flowers freely. **2-year plants, 50c each; \$5.00 per doz. 3-year, 60c each; \$6.00 per doz.**

HONEYSUCKLE Sempervirens (Scarlet Trumpet Honeysuckle). Trumpet-shaped flowers of bright scarlet. **2-year plants, 50c each; \$5.00 per doz. 3-year, 60c each; \$6.00 per doz.**

LATHYRUS Latifolius (Hardy Sweet Pea). An excellent perennial climber for covering old stumps, fences, etc. A free bloomer, flowers greatly resemble sweet peas, on stems 4 to 5 inches long. Height 6 feet; blooms July to September. **Scarlet, pearl white, pink, mixed. Price, 30c each; \$3.00 per doz. Specimen plants, 50c each; \$5.00 per doz.**

POLYGONUM Auberti (Silver Lace Vine). One of the most desirable flowering climbers; the plant is of strong, vigorous growth, attaining a height of 25 feet or more, producing through the summer and fall great foamy sprays of white flowers, a well established plant and during its long flowering period is a mass of bloom. **2-year plants, 75c each; \$7.50 per doz.**

VITIS Humulifolia (Turquoise-berry Vine.) One of the most desirable very hardy climbers, with glossy dark-green leaves, which are insect and disease proof, always presenting a clean, fresh appearance. In late summer and fall the plant is loaded with berries, which are very attractive in the various stages of ripening, passing through many shades of blue, finally turning blue-black. **2-year plants, 35c each; \$3.50 per doz.**

WISTARIA Sinensis. The favorite variety producing thousands of pendulous clusters of delicate violet-blue blossoms, richly perfumed. One of the best hardy climbers, producing their great trusses of flowers during the month of May. **2-year plants, 75c each; \$7.50 per doz.**

TERMS OF SALE

Delivery Charges

Parcel post rates listed below. No charges are made for packing. Plants, shrubs and bulbs are forwarded at purchaser's expense, unless otherwise notified.

Charge Accounts

Parties ordering goods without remittance must furnish satisfactory reference for opening an account. A Kansas City reference is preferable, on account of the shorter delay pending investigation.

Remittances

May be made by Express Money Order, P. O. Money Order, Bank Draft, or Check. Stamps or Cash sent through the mail go at purchaser's risk, unless letter is registered.

In Ordering

Write plainly, using greatest care to copy the correct items. Be sure to sign your name and address. It may be well to keep a duplicate of your order for comparison.

We guarantee the Safe Arrival in the United States of all Goods Shipped by Express or Parcel Post.

C. O. D. Orders

We must decline sending orders C. O. D. unless 25% of the amount is remitted with the order. All transportation charges will be collected on delivery.

Non-Warranty

A great many of the failures with plants or bulbs are due to causes entirely beyond our control, such as unfavorable weather, soil conditions, too deep or too shallow planting, etc. While we exercise the greatest care to furnish only the best quality of bulbs and plants, and deem it necessary to our best interests to send out only such stock, we cannot guarantee productiveness. However, we shall be pleased to entertain any complaints to the interest of our customers. If any Shrubs, Perennial Plants or Bulbs prove untrue to the description under which they are sold, we hold ourselves in readiness, on proper proof, to replace all such stock that may prove otherwise, or refund the amount paid; but we shall in no case be liable for a sum greater than the amount originally received for said stock.

DOMESTIC PARCEL POST RATES.

Within the United States and Possessions.
First, Second and Third Zones, weight limit 70 lbs., other Zones 50 lbs.
Size limit, 84 inches for combined length and largest girth.

	First Pound (over 8 oz. rates as 1 lb.)	Each Additional Pound or Fraction
First Zone, within 50 miles of Independence, Mo.	5c	1c
Second Zone, within 50 to 150 miles of Independence, Mo.	5c	1c
Third Zone, within 150 to 300 miles of Independence, Mo.	6c	2c
Fourth Zone, within 300 to 600 miles of Independence, Mo.	7c	4c
Fifth Zone, within 600 to 1000 miles of Independence, Mo.	8c	6c
Sixth Zone, within 1000 to 1400 miles of Independence, Mo.	9c	8c
Seventh Zone, within 1400 to 1800 miles of Independence, Mo.	11c	10c
Eighth Zone, all over 1800 miles from Independence, Mo.	12c	12c

Independence, Mo., is located just 10 miles east of Kansas City, Mo.