

Historic, archived document

Do not assume content reflects current scientific knowledge, policies, or practices.

62.75

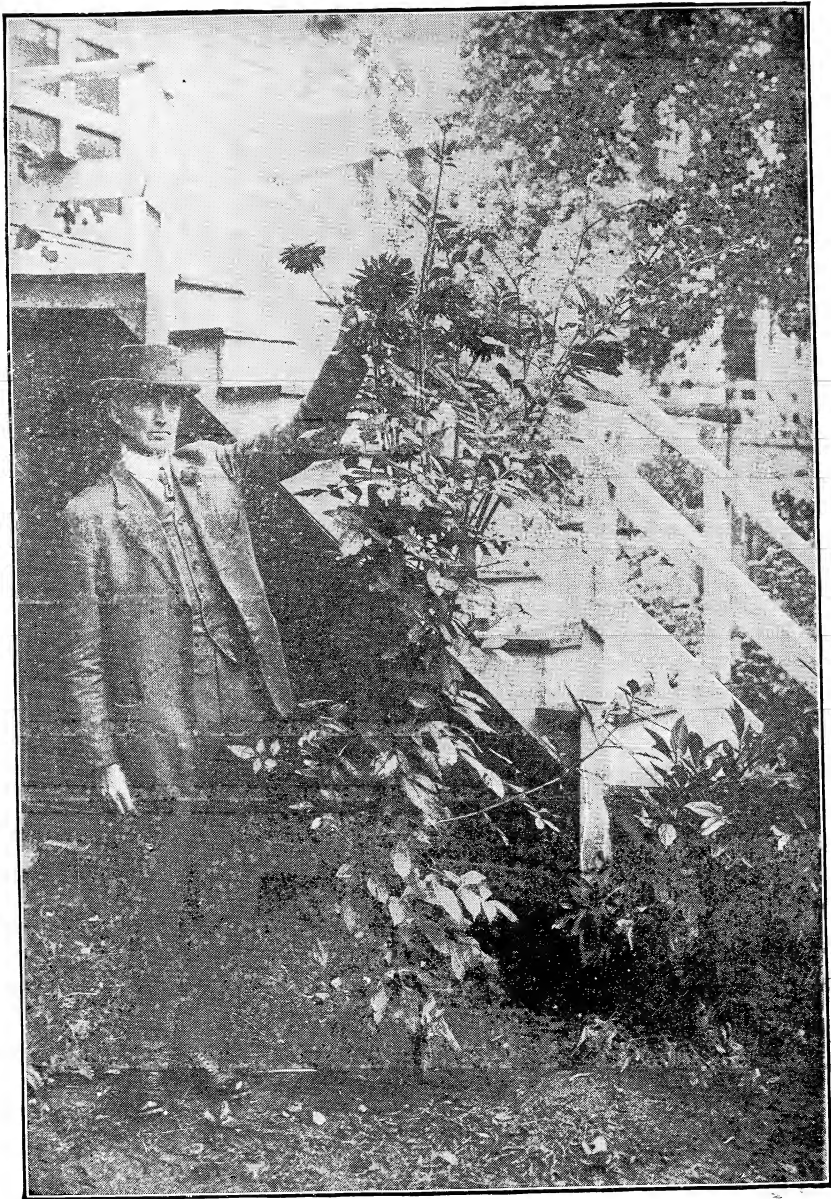
Dahlias of distinction for 1923



New Dahlia
"Our Country"

Grown at
Westerly,
Rhode Island

George L. Stillman
DAHLIA SPECIALIST



THE NEW CACTUS DAHLIA "GEO. L. STILLMAN" AND ITS ORIGINATOR

The accompanying illustration is from a photograph taken to demonstrate what the necessary quantity of water will do for a Dahlia in a dry time. After one flower had nearly opened on this plant it appeared to come to a standstill. Buds died, the foliage grew bushy, lacked a lively color, and no more buds appeared. I immediately pulled up a ridge of soil a little away from the plant, forming a reservoir that held two pails of water. The plant was then supplied with four or five ten-quart pails of water every third day until rain came.

When this photo was taken there were seven full flowers, two half open, and nine buds that showed the color of the flower more or less. Three of these flowers measured 7 inches in diameter and all the others over 5 inches.

Very few people realize the quantity of water needed to carry a Dahlia through a dry period. Not only does a Dahlia absorb the moisture, but the dry ground around also draws on the supply.

Dahlias

of distinction for 1923

Describing my own creations,
and standard varieties of all
the different types, classes
and colors of this flower.

*Catalog and
price list for*
1923

George L. Stillman
DAHLIA SPECIALIST
Westerly, Rhode Island



"OUR COUNTRY"

Greetings to Customers, Old and New



T hardly seems that a year has passed since I wrote my Greeting for this page of my 1922 catalog. It would seem sufficient to reprint those same Greetings this year, for the past season has duplicated its successes in many ways. The advancement in my favorite flower and the success I have enjoyed in my efforts to produce new and worth-while varieties has made me feel that 1922 set a high standard for my business and makes me feel that the years and the interest I have given the work have not been in vain.

Never have my efforts to produce new and better varieties been so successful as during the past twelve months. Never have I had so much friendly correspondence of congratulation from my customers from all over the country to add to the pleasure duplicated by growing these varieties in my own garden. Letters of appreciation have emphasized the joy at producing flowers in home gardens that made me feel proud of being the originator of the varieties referred to. Truly, the joy of working among flowers is beyond compare. No financial remuneration can equal the joy of spirit that comes from this prized occupation.

I am of the opinion that we who work among flowers are apt to talk of them by variety name, little realizing that like the name of individuals, they are but handles to a larger self. The characteristics of the individual are but marked on the outside of the body, while back of it all is the soul and spirit which in our own inmost consciousness is what comes to mind when that person's name is mentioned.

Who can say in words what a certain dahlia means to them? Certainly no description could equal the language of Nature from the flower to the soul. Then certainly you must agree that any shortcomings in this catalog must be laid to my realization that I cannot say in words what the flowers can say themselves.

Again an earnest open hearted invitation is extended to you to visit my garden fields while the dahlias are in flower. This invitation is open to all who love and admire the beauties of Nature.

GEORGE L. STILLMAN

Regarding New York Office: For the convenience of folks in the vicinity of New York who wish to consult me personally on the subject of dahlias, I have established an office at 489 Fifth Avenue, New York, Room 303 (opposite the Public Library). I make this my headquarters the first Thursday and Friday of each month when both days come the same week. It will be a pleasure to meet you there. Information and advice on dahlia culture, selection of varieties, etc. given cheerfully.

CLASSIFICATION OF DAHLIAS

AS ADOPTED BY THE AMERICAN DAHLIA SOCIETY

Cactus Dahlias. a. True, fluted type. Flowers fully double; floral rays (petals) long, narrow, incurved or twisted, with sharp, divided, or fluted points and with revolute (rolled back) margins, forming, in the outer florets, a more or less perfect tube for more than half the length of the ray.

b. Hybrid cactus or semi-cactus type: Flowers fully double; floral rays short as compared with previous type, broad, flat, recurved or twisted, not sharply pointed except when tips are divided (staghorn), margins only slightly revolute, and tubes of outer florets, if any, less than half the length of the ray.

Decorative Dahlias. Double flowers, full to center in early season, flat rather than ball-shaped, with broad, flat, somewhat loosely arranged floral rays with broad points or rounded tips which are straight or decurved (turned down or back), not incurved, and with margins revolute if rolled at all.

Ball-Shaped, Double Dahlias. a. Show type: Double flowers, globular or ball-shaped rather than broad or flat, full to center, showing regular spiral arrangement of florets; floral rays more or less quilled or with markedly involute margins and rounded tips.

(The class called Fancy Dahlias is not recognized separately in this classification, but is included in the sub-section A.)

b. Hybrid show, giant show or colossal type: Flowers fully double, broadly hemispherical to flatly globular in form, loosely built so spiral arrangements of florets is not immediately evident; floral rays broad, heavy, cupped or quilled, with rounded tips and involute margins.

c. Pompon type: Shape and color may be same as A or B; but must be **under two inches in diameter.**

Pæony-flowered, or "Art" Dahlias. Semi-double flowers with open center, the inner floral rays being usually curled or twisted, the other or outer petals being either flat or more or less irregular.

Duplex Dahlias. Semi-double flowers, with center almost exposed on opening of bud, with petals in more than one row, more than 12, long and flat, or broad and rounded, not noticeably twisted or curled. Many so-called Pæony-flowered Dahlias belong here.

Single Dahlias. Open centered Dahlias, small to very large, with 8 to 12 floral rays, more or less in one circle, margins often decurved (turned down or back). There are no distinctions as to colors. The type embraces the large Twentieth Century, as well as small English varieties.

Collarette Dahlias. Single type: Open centered blossoms with not more than nine floral rays with one or more smaller rays, usually of a different color, from heart of each ray floret, making a collar about the disc.

GENERAL INSTRUCTIONS

IT IS IMPORTANT THAT YOU READ THESE CAREFULLY! ORDER EARLY

First of All.— Send me your order as soon as you receive my catalogue, as the demand for some varieties often exceeds the supply, and those who order early are less liable to disappointment than if they waited till the rush at the time of planting. ORDER bulbs sent *early* to avoid disappointment. Kindly order by *name* and not by number.

If you do not want to spare all of the money to send with the order, send the order along, together with one-quarter of the amount as a guarantee of good faith, and the balance can be remitted when you receive notice that your order is ready to ship.

Customers who are not personally known to me will be notified when to remit the amount of their bill.

Bulbs are shipped as soon after April 1st as convenient, unless otherwise specified.

When sending orders use the Order Blank furnished with this catalogue. Any number of additional Order Blanks may be had upon

application. When filling out the Order Blank, be sure to fill out the Second Choice columns as well as the First Choice.

It is well to mention the varieties that you are willing to have substituted in case some of those selected are all sold out. Or, if requested, I will select such varieties as will substitute to best advantage. Otherwise, money sent for such bulbs will be returned to the sender.

Size of Bulbs.— Some varieties of Dahlias always produce very small bulbs (or tubers), while other varieties make large ones. So do not consider small bulbs as worthless, for they are equally as good as large ones.

I Guarantee Every Bulb I Sell.— The utmost care is always exercised in selecting every bulb I send out, and every one is believed to have at least one good sprouting eye that will produce a good plant under proper care, or replace it with another.

GENERAL INSTRUCTIONS—Continued

Bulbs to be replaced after June 1st will be booked for shipment the next season only, and in all cases the bulbs to be replaced must be returned.

I guarantee all bulbs to be true to name and sure to grow at the time they are sent out, but **I cannot guarantee** bulbs to grow if kept in a dry place a long time before planting.

The best way to send money is by registered letter, money order or express order.

Do not hesitate to send small orders. An order for one bulb will be as carefully filled as an order for one thousand.

Terms.—Cash invariably in advance, or C. O. D. On all retail orders fully paid for in advance I will repay carriage to any part of the United States. This does not apply to special offers.

ATTENTION.—Orders taken in the **Fall not fully paid for** will be sent C. O. D., unless previous arrangement has been made.

Do not delay ordering until the time to plant, as many varieties may be sold out before that time. **ORDER EARLY.**

If **bulbs** are received before it is convenient to plant them, they should be covered with moist earth until planted.

I use the utmost care to prevent errors in labeling and packing, but if an error does occur, kindly notify me, that it may be rectified immediately.

Please bear in mind that orders are booked and assembled in rotation as received, and are packed to be shipped at the time your order specifies.

Address all orders and communications to George L. Stillman, Dahlia Specialist, Westerly, Rhode Island. **Important.**—It is essential that you use my initial "L." as there are several Geo. Stillmans in town.

LOCATION OF GARDENS

No. 1—25 Granite Street (Residence). No. 2—Stillholme (Farm), Ashaway Road.
No. 3—(Main field), Beach Street, opposite Cemetery on car line.
No. 4—20 Newton Avenue, Office and shipping dept.

Do not hesitate about ordering Dahlia Bulbs on account of distance, for they go safely by mail or express to any part of the world.

POINTERS ON GROWING DAHLIAS

There are always some people who do not succeed in growing Dahlias with their first season's experience, and are naturally very much disappointed. To those I wish to say that it is not due to a fault of mine or of the bulbs, but is due wholly to your method of cultivation, kind of soil, or weather conditions. A glance through the hundreds of letters I receive from pleased, enthusiastic people who purchase their stock from me is positive proof that my stock is without fault. Exercise a little patience and a whole lot of good common sense and you will grow as nice Dahlias as anyone.

The Right Kind of Soil.—The kind of soil for Dahlias is a light loam or a stony knoll or side hill.

It is very essential that the soil has good drainage. A rich soil is all right if it has good drainage. Heavy, solid ground will produce an abundance of foliage and few and inferior blossoms.

It should be borne in mind that the poorer the soil, the more fertilizer it requires, and the lighter the soil, the more water it needs. See directions for watering elsewhere. It is a very unwise thing to advise no fertilizer in growing Dahlias, especially in the Eastern states. As a rule nothing will grow without sufficient nourishment. Heavy soil is usually quite rich and when lightened as directed elsewhere, will not need as much fertilizing as weak, light soil.

Heavy Soil.—If your soil is heavy with a clay sub-soil, it should be lightened with coal ashes or sand. If coal ashes are used, the coarser that they are the better, the main object being to make the soil light, more porous, and to give it a good drainage. I have seen Dahlias grown to perfection on a spot where the soil was nearly clear coal ashes.

In applying coal ashes they should be plowed, or spaded in, broad cast, 10 to 18 inches deep, and not dumped in one spot where the Dahlia is planted. One part coal ashes, or sand, and one part soil will not lighten it any too much. This will give a better drainage and allow the sun to act on the soil to a greater depth.

Ashes from either hard or soft coal will do, but on *very heavy* soil those from soft coal

POINTERS ON GROWING DAHLIAS — Continued

are preferable, being much coarser. Both kinds mixed together are also desirable.

Watering.— Watering is one of the most essential things in producing perfect blooms on your Dahlias. 90 per cent. of the failures in growing Dahlias is due to lack of water when the hot days of Summer come. Did you ever notice that the stalk of the Dahlia is about all water except the outside shell, and that where sufficient water is supplied the hole in the center of the main stalk is nearly full of water?

The Dahlia, as soon as it begins to bloom, will absorb the moisture from the soil for a distance of two or three feet. For example: Dig down deeply amid the roots of a Dahlia and then again about 4 or 5 feet from the plant and observe the difference. The dry, hot days come earlier some years than others, but usually when the buds begin to open it is time to begin watering.

The best method of doing this is to make

a basin-shaped mound of earth around the plant, about 2 feet in diameter, and into this basin turn three or four water pails full of water as often as every three or four days. Fertilizer is used to obtain size, water to make richness of color and perfection. Try it.

Planting.— The ground should be plowed or spaded to a depth of 8 to 10 inches. Make the drill to receive the bulb, 12 to 16 inches long and 6 inches deep, and about 6 inches wide. Lay the bulb down flat in the drill and then apply the fertilizer on both sides of the bulb, 4 to 6 inches from the bulb. If pulverized Sheep Manure is used, about one pint to one quart is usually sufficient to each bulb according to the strength of the soil.

It is very desirable to plow in a quantity of stable manure broadcast. If this cannot be obtained readily any kind of animal fertilizer mixed with the soil, before planting, will be very beneficial. Always stick the stake in the ground before covering the bulb and thus avoid piercing any part of the bulb.

FERTILIZER FOR DAHLIAS



I receive numerous inquiries every year as to the best fertilizer for Dahlias and where it can be obtained.

From my own personal experience, I find that manure from sheep stable is the best for Dahlias, and in order to make it convenient for my customers to obtain this kind of fertilizer, I procure a supply direct from the stockyards. It is absolutely pure and thoroughly kiln-dried and pulverized, and all germs of grass or weeds are destroyed in the process. It is put up perfectly dry in 100-pound bags, which is the most convenient form for shipping and handling. It is so dry that it is nearly odorless and easily handled. Price for the Sheep Manure, \$2.75 per bag.

A TALK FOR THE BEGINNER

A FEW THINGS THAT SHOULD BE CONSIDERED

Do not expect to grow as large flowers as an expert the first year that you try Dahlias, for with any flower you need some experience as well as instruction in order to have great success.

One of my customers said that he had no luck with Dahlias until he read my catalogue. There he found the very information that he needed, viz.: **How to lighten the soil and render it porous.**

If you have a heavy growth of plants and no flowers it is an indication of too heavy soil, or the same result will be encountered

on some dry, rich land. In the latter case water is what is needed and in great abundance, say three or four pails of water three times a week to each plant, with some liquid fertilizer once a week.

Notice that after a heavy rainfall Dahlias take on new life and the flowers are fuller in the center and more brilliant in color.

All the Dahlias described in this catalogue as to color and shape are described to the best of my ability, but I do not guarantee them to fully meet the ideas of all purchasers in regard to color shadings.

NEVER STAND THE BULB ON END WHEN PLANTING.

The best method of planting in the field is to make the distance between every other row 3 and 5 feet, respectively, thus affording a passageway on one side of each row after the plant will become large and fill the 3-foot space. $2\frac{1}{2}$ to 3 feet apart in the row accord-

ing to the nature of the plant is about the right distance when 3- and 5-foot spaces are used. Do not plant near trees or shrubs, as tree roots will take the strength of the soil from the Dahlia. In the open by themselves is the best place. Avoid the south side of a

POINTERS ON GROWING DAHLIAS — Continued

large building where the sun is extremely hot without a good circulation of air, for the flowers will burn on the back before fully open.

For early flowering they may be planted any time after May 1st or as soon as all danger from frost is passed.

Some people have an idea that the larger the bulb the better the plant it will make, but this is not the case. A small bulb is just as good as, and in many cases better than, a large one.

The Clumps should be divided about the time that you are to plant in the Spring. At this time you can readily see where the sprouts are and with the use of a knife the head of the clump can be split through between the sprouts, or eyes, taking whatever bulb, or bulbs, would come off with one sprout. One sprout is always better than more. If the sprouts are over 2 inches long when you plant the bulb it is better to cut them off a half-inch from the bulb and a new sprout will come and make a better one than the slender one that grew in the cellar.

Care of the Plants.—Keep the ground well cultivated and free from weeds. A frequent stirring of the surface is very beneficial. An application of some standard fertilizer raked into the surface of the soil around the plant two or three times during the season will be very helpful to the development of the flowers.

Never leave more than one or two stalks in a hill. You will have better plants and

larger flowers if you will allow only one sprout to grow.

When the buds begin to open a dressing of liquid fertilizer around the plants, several times in a season, will also be beneficial.

Stakes may be used to advantage to prevent plants from breaking down.

Disbudding.—The proper way to disbud the plants is as follows: If the first, or crown bud, appears to be weak or defective, cut it off.

Then when flowers appear on branches, cut them for decorative purposes, below one or two joints, thus removing with the flower whatever buds and foliage may be there. The flowers and foliage cut thus give a better effect for whatever purpose they are to be used. This method is a good invigorator for the plant and at the same time does all the disbudding required on the majority of Dahlias.

Remember, if bulbs are received before you are ready to plant them, cover them with moist earth to keep them from drying up.

Care of the Bulbs in Winter.—After the frost has killed the foliage, lift the clumps with a spade fork and allow them to dry in the sun about half a day. They should then be stored in a place free from frost. If an old-style cellar without cement bottom or heat, they need not be covered, but if cemented and heated by furnace, they should be covered with papers and cloth to keep the air from them and thus prevent too much shriveling.

On the following pages will be found the 1923 prices for divided field-grown roots

"Say it with Flowers"

How little it costs, if we only give it a thought

To make happy some heart each day!

Just one kind word, or a tender smile,

As we go on our daily way;

Perchance a flower will perchance to clear

The cloud from a neighbor's face,

And the press of a hand in sympathy

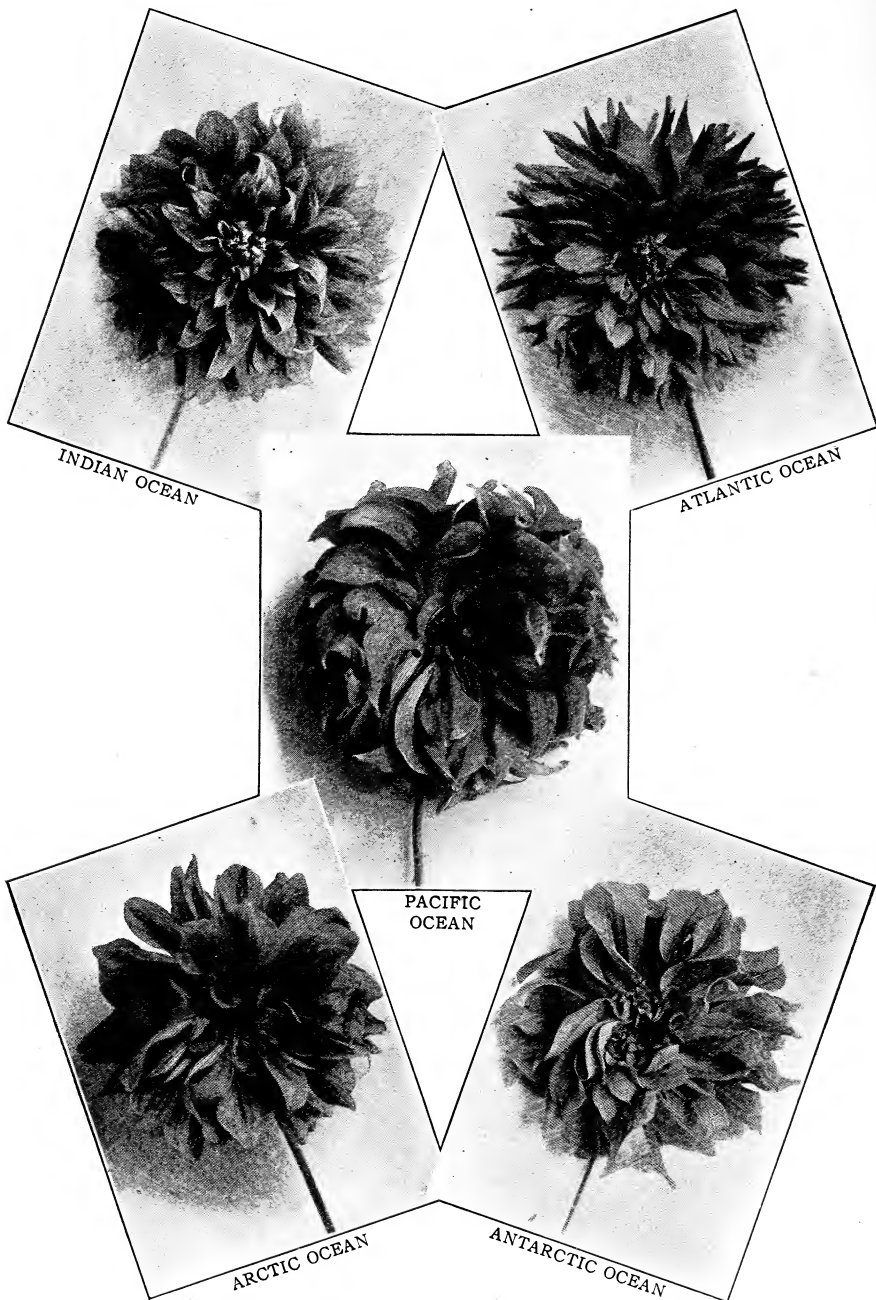
A sorrowful tear efface.

"Say It With Flowers" while life is sweet,
Ere hope and joy have fled;
Oh, say it now—wait not until
I'm numbered with the dead.

"Say It With Flowers" while yet my hands
Their petals may caress;
Wait not until my soul is freed
And clothed in heavenly dress.

"Say It With Flowers" while still my life
May utter grateful thanks;
Oh, say it soon—wait not 'til death
Numbers me in his ranks.

A. B. Briggs.



The Ocean Group

THE OCEAN GROUP

NEW GROUP FOR 1923

In this new selection for the 1923 group it would seem that they could not be excelled for color, size, and beauty. Each one is a prize in itself.

Antarctic Ocean, No. 2160

This new Pæony-flowered Dahlia in color is of a most exquisite red salmon. It is a mammoth flower with well folded florets which have a very pleasing twisting and curling effect. It also possesses a slight shading of yellow at the base of florets. A charming flower in any garden. Price, **\$25.00.**

Pacific Ocean, No. 2348

A mammoth Pæony-flowered Dahlia of a salmon pink color clouded darker in some flowers. The florets fold nicely, and twist and curl in a most exquisite manner. An exceptionally beautifully formed flower and an attractive color. Price, **\$25.00.**

Arctic Ocean, No. 2326

This beautiful Pæony-flowered Dahlia in color and form is all that can be desired in a dahlia. It is borne on long, stiff stems and is a beautiful peach pink with a few lines of cream. A very attractive, mammoth flower. Price, **\$25.00.**

Indian Ocean, No. 2444

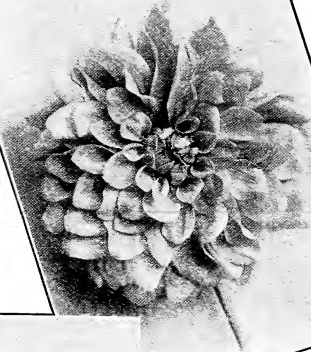
This mammoth Decorative Dahlia is truly beautiful in color, form, and size. The color is a medium carmine red heavily clouded yellow at base of petals which are slightly clouded and veined light cream; some petals are slightly tipped yellow. A huge flower finely formed. Price, **\$25.00.**

Atlantic Ocean, No. 2346

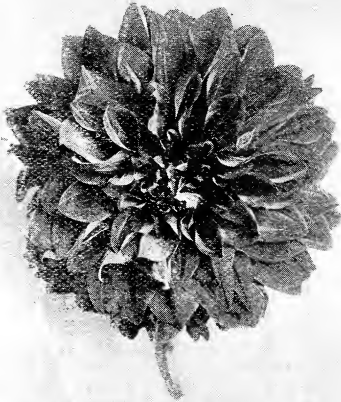
This is the largest Hybrid Cactus in my collection, and of a most beautiful shade of canary yellow. A very full flower with long pointed folded petals, slightly curving. Strange as it may seem this dahlia is a very free bloomer and the flower holds to a large size very late without disbudding. Price, **\$25.00.**



LAKE SUPERIOR
No. 2146



LAKE ERIE
No. 2216



LAKE
MICHIGAN
No. 2194



LAKE HURON
No. 2164



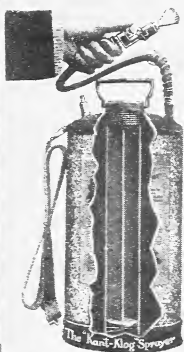
LAKE ONTARIO
No. 2150

The Great Lakes Group

A Special Offer for You

To introduce the "Kant Klog" Sprayer we make a very special offer to the first reliable applicant in each locality.

If you need a sprayer for your own use—or if you want to book the orders of your neighbors and friends, fill in and send this blank to address given below.



283



Name _____

P. O. _____

St. _____ State _____

Mail this to Rochester Spray Pump Co.
177 Broadway, Rochester, N. Y.

(OVER)

\$1700 Made by One Man

Selling the "Kant-Klog" Sprayer in his home County during spare time



The "Kant-Klog" has distinct features found on no other sprayer. It is the first and only nozzle to give both flat and round sprays and solid streams. Has cleaning device for removing obstructions without stopping the spray. The new spring Hose-Cock starts or stops the spray instantly, so preventing waste of fluid.

**Sprays Trees, Potatoes, Vegetables,
Vines, Whitewashing, Disinfecting
and many other uses.**



A Special Offer for You

If you wish either to book the orders in your section, or want a sprayer for your own work, fill out the blank on opposite side and we will send special proposition, descriptive matter, etc.

(OVER)



Try This →

1000 Pages
1000 Pictures
1000 Ways to
make money--
all in the most
widely read farm
paper in the
World

big live Magazine NOW ONE YEAR, ONLY 25¢

You will be delighted with it, and wonder how such a splendid illustrated magazine can cost so little. Sign this Coupon below, and mail AT ONCE with only 25 cents, coin or stamps. Money refunded to you any time you say so.



TO THE FARM JOURNAL, Philadelphia :

Enclosed find 25 cents for which send me THE FARM JOURNAL one year on trial. I'm not now a subscriber.

My name is.....

R. F. D..... Box..... or Street.....

P. O..... State.....

IMPORTANT: This trial Coupon must be sent direct to The Farm Journal, Philadelphia, Pa.
If you live in Philadelphia, Canada, or a foreign country, send 50 cents instead of 25, to cover extra postage.

SEE OTHER SIDE

"Mutual Benefit"

The price of The Farm Journal is \$1.00 for 4 years; but since we believe that to read this wide-awake farm and household paper is the greatest benefit to our friends and patrons, and so indirectly to us, we have persuaded the publishers to make us this

**SPECIAL
TRIAL
RATE OF**

25c

for a year's trial of the paper.

The Farm Journal is published monthly; 64 to 168 pages of new, reliable, practical, up-to-date articles and fine pictures. 45 years old, has over 5,500,000 readers from Maine to California.

"UNLIKE ANY OTHER PAPER"

Full of Gumption—Full of Sunshine

Care of stock, horses, cows, sheep, swine; big poultry department; soil building and fertilizers; all about tractors, engines, autos; orchard, garden, vegetables; insect pests and how to control them; big Bird Club; pages for young people; dressmaking, fashions, patterns, embroidery; new economy recipes; farm law; beautiful poetry, Walt Mason's "poems in prose"; absorbing stories of love, adventure, and mystery.

Mail this Mutual Benefit Coupon today with twenty-five cents, silver or stamps, direct to The Farm Journal. DO NOT SEND IT TO US.

GEO. L. STILLMAN
"Dahlia Specialist"
Originator of world-known Dahlias
Westerly, R. I.

THE FIVE GREAT LAKES

THE NEW GROUP FOR 1922

This new group of five are all 1920 seedlings and all have grown to an enormous size in 1920 and 1921 without any special care or disbudding whatever. The limit in size and beauty of these new Dahlias is simply unknown.

Lake Superior, No. 2146

The color of this mammoth Dahlia is deep orange salmon. A solid color throughout. The formation of it is of the Hybrid Cactus class and very much resembles its parent, the "U. S. A.," but of a softer shade and promises to be a larger flower. This Dahlia will be a rich prize in any Dahlia lover's garden.
Price, **\$25.00.**

Lake Erie, No. 2216

This is, without doubt, the largest lavender Decorative Dahlia in existence. The color is a clear deep lavender, while the form is quite flat with heavy, long, flat florets. A very unusual and beautiful Dahlia both in color and shape, which can only be realized by seeing it. Blossoms from 8 to 10 inches in diameter. Plants of medium height.
Price, **\$25.00.**

Lake Michigan, No. 2194

A rich, fiery scarlet Decorative Dahlia of immense size. This is a very large, deep, heavy flower, 10 to 13 inches in diameter. The stems are heavy, but the great weight of the blossom prevents it from being held erect, yet it is a wonderful exhibition Dahlia and a most attractive one in the garden. The plants are tall and strong.
Price, **\$25.00.**

Lake Huron, No. 2164

A very large, clear, bright canary-yellow Pæony-flowered Dahlia, 7 to 10 inches in diameter. This new Dahlia is a remarkably large size flower and is borne on long, heavy stiff stems which hold the flower erect. Its very free blooming qualities combined with its other unusual features place this Dahlia in the front rank. The plant is of medium height and an early bloomer.
Price, **\$25.00.**

Lake Ontario, No. 2150

Decorative Dahlia of unusual merit. The color is salmon and gold blended together in a beautiful manner. The flower is from 6 to 9 inches in diameter and is produced on long, heavy, stiff stems. The curly, twisting formation of its florets together with its beautiful combination of colors blended together give this Dahlia a very striking appearance. Price, **\$25.00.**

The Entire Group \$100.00



PRIDE OF THE GARDEN

FIVE NEW SELECTIONS FOR 1921

THE NEW YORK GROUP

The following Dahlias are selected from nearly one thousand of my new creations. They are all entirely different in color and they possess most beautiful colorings. To have this whole set in your garden would make the garden complete.

COMMODORE, No. 823

The color of this mammoth Pæony-flowered Dahlia is a beautiful deep flesh pink. The flowers are very large, often measuring 10 and 11 inches in diameter, and are borne on extra long, heavy stiff stems. It is a profuse bloomer and if disbudding is practised it can be made to produce enormous blooms.

Price, \$10.00.

BILTMORE, No. 2008

This magnificent Decorative Dahlia is the most beautiful combination of bright, rich carmine and white ever combined in a Dahlia. The groundwork is a bright, rich carmine and the petals are more or less tipped pure white. Occasionally some flowers are nearly all carmine with a few petals tipped white. The plant hanging full of these stunning blooms presents a sight rarely seen.

Price, \$10.00.

MURRAY HILL, No. 2022

An entirely new Pæony-flowered Dahlia of a beautiful, rich shade of purple. The flowers are simply huge in size and on good stems, which, together with their unusually attractive shade and hugeness, cause every passerby to stop and exclaim: "That's a monster!"

Price, \$10.00.

BELMONT, No. 2069

A beautiful, deep magenta is the color of this huge Pæony Dahlia. It is an abundant bloomer and a thrifty grower. To form an idea of the richness and beauty of this large flower one should see it growing.

Price, \$10.00.

ANSONIA, No. 2066

Without an exception the color of this large Pæony Dahlia is the most gorgeous and brightest deep canary yellow Dahlia I have ever seen. Its rich colorings never fail to catch the eye of every observer. This immense flower is carried well above the foliage on good, long, stiff stems.

Price, \$10.00.

Price for the whole group, as above, \$45.00

THE NEW GROUP FOR 1920

FIVE WORLD WINNERS

These five new Dahlias I produced from seed in 1918 and in this season's trials have demonstrated qualities possessed by few other Dahlias. As a group they are most unusual and attractive specimens. They are exceedingly cheap at the price charged.

AMERICAN HERO, No. 963

A most wonderful Pæony-flowered Dahlia. The color is difficult to describe accurately. The center of the florets is a beautiful shade of old rose, outer edges are bordered with light pink. The disc is surrounded with numerous small, curly florets possessing the same beautiful shades of pink. The whole flower possesses the most striking and desirable colors yet produced in a Dahlia. It has good stiff stems which hold these beautiful flowers very erect.

Price, \$5.00.

LEAGUE OF NATIONS, No. 908

Here is a new Cactus Dahlia of more than ordinary merit. The color is a most beautiful shade of canary-yellow. In size it is the largest Cactus Dahlia yet produced. The stems on which the flowers are borne are very long and heavy, holding the mammoth flower quite erect. The keeping quality of this Dahlia has proven the past season to be wonderful, while its beauty has attracted much attention from visitors.

Price, \$5.00.

N. C. 4, No. 901

This wonderful new Decorative Dahlia is a most unusually hard Dahlia to describe, as it is about equally divided with scarlet and white. The florets are more or less striped the whole length with yellow and white, while some are slightly clouded with yellow and tipped with light cream. The reverse side of petals is white with yellow shadings. The whole flower is simply beautiful and unusually attractive.

Price, \$5.00.

OVER-THE-TOP, No. 921

This new Pæony-flowered Dahlia is truly a mammoth and of a very unusual color, being a deep rose lavender as near as can be described. Some people have called it pure rose, others a lavender pink. However, it is a wonderful flower in every way, size, color, formation, and its free blooming qualities are unsurpassed.

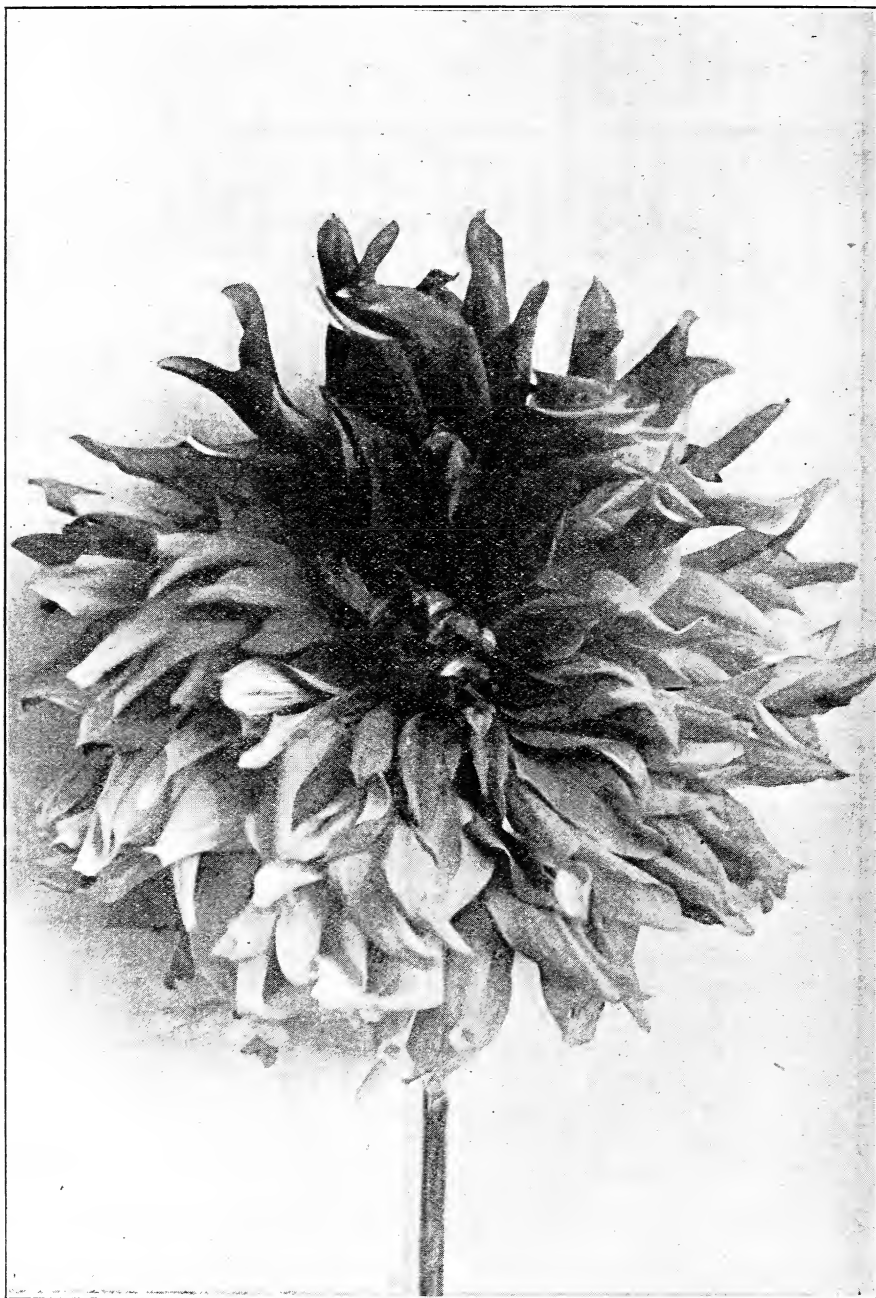
Price, \$5.00.

R-34, No. 927

A mammoth Pæony-flowered Dahlia of a golden salmon shade. In size and formation this Dahlia is wonderful. The flower, which is borne on long stems, is extremely large; colorings unusually attractive.

Price, \$5.00.

The entire group, \$20.00



CARUSO, NO. 2132

THE TEN SEA LIONS

THE GROUP OF WONDERS

The "Ten Sea Lions" comprise ten of the most magnificent Dahlias imaginable. They are selected from my new creations for 1919, none of which had ever been offered to the public before. This group of ten new Dahlias possess the most gorgeous new colors that Dahlias could be composed of. If you want the latest and best, buy the "Ten Sea Lions." No description on paper can fully describe the beauty of these flowers.

Was obliged to omit three of this group for lack of stock.

Aquitana, No. 758. The color of this gorgeous new Cactus Dahlia is a beautiful salmon pink. The flowers are very large and are borne on long stems with scant foliage, making it most desirable for cutting.

Price, \$3.00.

Empress of Asia, No. 721. A wonderfully large, fine Pæony-flowered Dahlia. The color is a deep old gold with a strikingly bronze effect. This is another of those colors so desirable and hard to get in a Dahlia. A flower of exquisite beauty.

Price, \$3.00.

Lapland, No. 730. Pure, glistening white is this noble flower. The petals are broad and good formation. It is a free blooming variety and has fine stems for cutting. If you want a beautiful white, buy a Lapland.

Price, \$3.00.

Mauretania, No. 738. This magnificent big, new Cactus Pæony Dahlia is simply a wonder in size, shape and color. It is a light golden mandarin, or on the light orange order. It is quite a tall growing plant and the flowers are produced in abundance. A very showy, attractive Dahlia.

Price, \$3.00.

Medina, No. 757. This Pæony-flowered Dahlia possesses one of the most striking colors that a Dahlia could possess. A *golden orange*. The flower is not as large as some of the other "Sea Lions," but the color is magnificent and desirable. It has good stems for cutting and is a very valuable member of the "Sea Lion" family.

Price, \$3.00.

Olympic, No. 817. This gigantic Pæony-flowered Dahlia is very hard to describe as to color. It is on the order of old rose, but there are so many colors somewhat resembling this shade that it cannot be stated with accuracy. But to say the color is most beautiful, is putting it mildly. It is a huge flower and perfectly formed.

Price, \$3.00.

Rochambeau, No. 811. A very bright, deep canary yellow of immense size and fine form. The Rochambeau is the tallest plant in the "Sea Lion" family, and would make a fine background in any Dahlia garden. It is a very free flowering plant and makes a fine showing above the other members of the group.

Price, \$3.00.

Price of the "Sea Lion" Group, \$18.00

THE FIGHTING TEN

The following ten wonderful new Dahlias which I have succeeded in originating by my own experimental process were offered for sale the first time for 1918. They have produced most gorgeous flowers the past season. To say they are wonderful in size, shape and coloring is indeed a mild statement. To own the *Fighting Ten* is to own a prize. Every bulb is guaranteed. Three varieties omitted for lack of stock.

Gen. Bell, No. 802. Pæony. Pure, glistening white. Petals numerous; very long and quite slim, curly and twisting. A beauty beyond description, and an enormous flower on extra long stems.

Price, \$3.00.

Gen. Edwards, No. 2114. Pæony. Color, a beautiful salmon pink. A very large flower on fine, long stems. The formation of this flower is exquisite.

Price, \$3.00.

Gen. Haig, No. 585. Decorative. A beautiful shade of peach pink, slightly clouded yellow at base of petals. A very odd and

nice color and a wonderfully formed, large flower.

Price, \$3.00.

Gen. Joffre, No. 638. Decorative. A light canary yellow. Petals long, broad and tapering to a point. A very deep, heavy flower of enormous size. It is a monster yet is most beautifully formed.

Price, \$3.00.

Gen. Mann, No. 578. Decorative. Light Du Barry. Petals rolled and twisted at point. Color much resembles Queen Esther. A fine noble flower of immense size.

Price, \$3.00.



VASE OF RUTH VAN FLEET

THE FIGHTING TEN — Continued

Gen. Maurice, No. 639. Pæony. Intensely bright scarlet. The brightest mammoth scarlet Dahlia in existence. The petals are quite broad, long and pointed. The yellow disc is very bright and attractive. Price, \$3.00.

Gen. Petain, No. 647. Pæony. Butter yellow. Petals rolled back slightly lengthwise and twisting. This flower is another of the wonders in my collection of original Dahlias. Price, \$3.00.

The Group, \$18.00

NEW PÆONY-FLOWERED DAHLIAS

ORIGINATED BY GEO. L. STILLMAN

THE INDIAN FAMILY

These superb, new, giant Pæony-flowered Dahlias were originated by myself through very careful experimental processes with the largest and most superb colored Dahlias in existence. I have given them a thorough trial and find them to possess most artistic and unusual colors. There are no two alike in the group, and all have fine stems for cutting. Four varieties omitted for lack of stock.

Black Hawk, No. 54. Deep velvety maroon. The darkest flower in the Indian Family. The colorings are extremely rich and the flowers are large. The petals are broad and twisted to a point at tips. Is an extra free bloomer. Price, \$1.00.

Canonicus, No. 1036. Beautiful dark cerise. A very unusual shade and no other Dahlia like it in shape and size has ever been produced. A large full flower. Price, \$1.00.

Minnehaha, No. 78. Light red. This is an extra large, heavy, full flower with broad petals which are slightly pointed and twisted at tips. The plant grows quite high and being a very free bloomer is one of the most showy Dahlias of the "Indian Family." Price \$1.00

Minnewawa, No. 76. Bright cerise red. Base of petals yellow with white disc around the center. Balance of petals heavily clouded and tipped white. Very striking combination of colorings. Price, \$1.00.

Misquamicut, No. 1115. Golden yellow slightly tinged with pink. A very large, full flower with very broad petals, and very desirable color. Price, \$1.00.

Narragansett, No. 1033. Rich shade of dark scarlet. This flower should be seen in order to be appreciated. It is large, finely formed, and a very full flower. It blooms very freely and has been a general favorite wherever exhibited. Price, \$1.00.

Ninigret, No. 151. Rich dark red, clouded and striped much lighter. The petals taper

abruptly to a sharp point which is twisted in a very attractive manner. A full, heavy flower of unusual quality. Price, \$1.00.

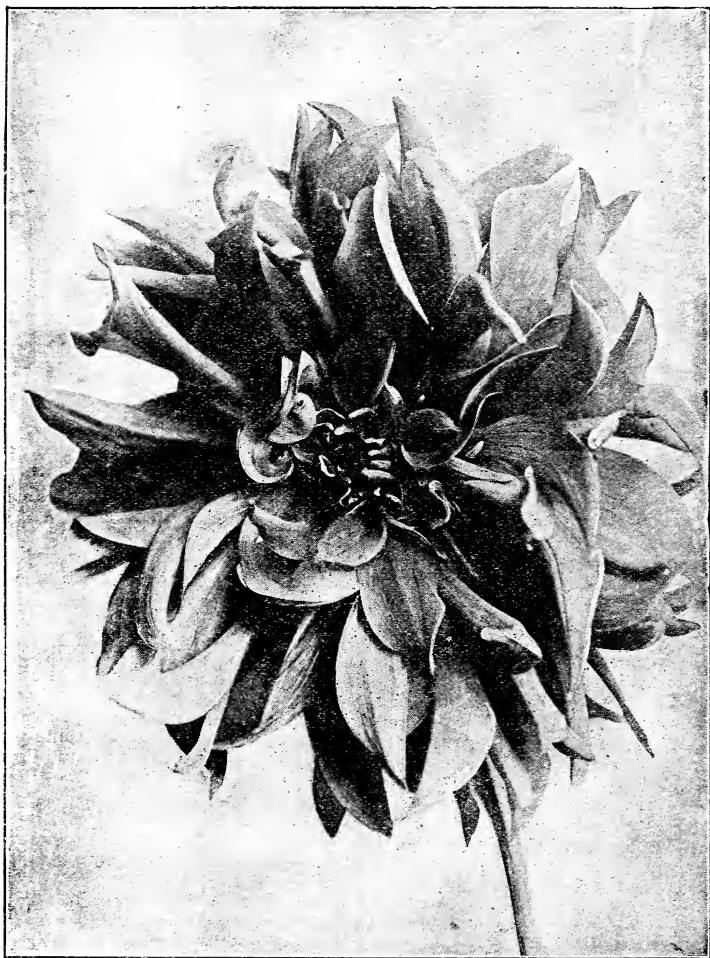
Nokomis, No. 1112. Variegated yellow. The base of the flower is white and canary yellow mixed together. Heavily striped and speckled with dark red. Occasionally solid red blooms appear on the same plant. The plants are of a low growth and flowers stand high above the foliage. Price, \$1.00.

Osceola, No. 39. Very light canary yellow. An enormous flower and beautifully formed. The most delicate shade of light yellow imaginable. This is a very free blooming dahlia and should be seen to be appreciated. Plants only. Price, \$1.00.

Pocahontas, No. 69. Light cream yellow. This flower is very large with flat, broad petals except in the center. Petals are flushed and veined deep pink, possessing some of the colorings of the Geisha. A very free bloomer and in every way desirable. Price, \$1.00.

Powhatan, No. 101. Dark crushed strawberry. This very large flower is another of unusually fine shading. While it has the colorings of the crushed strawberry, it also possesses a light tint of lavender and the free-blooming qualities. Price, \$1.00.

Queen Esther, No. 103. Color, "Du Barry," that dazzling new shade of red. An enormous, large, full flower and a beautiful rich color. The small twisting florets in the center of this flower give it a most unique appearance. A wonderfully free blooming Dahlia. Price, \$1.00.



THE U. S. A.
THE DAHLIA OF THE DAY

In the wonderful new hybrid Cactus Dahlia, "The U. S. A.," I have succeeded in bringing out some of the most important and desirable features that the flower lovers of the United States are pleased with; viz., color, formation and size. The color of this exquisite new mammoth Dahlia is a deep orange. That very unusual color so hard to get in a Dahlia. It beats everything for color that has ever yet been developed. The formation, too, as well as the color is so unique and novel that to attempt to describe it accurately would be an impossibility. It is a very free blooming Dahlia. Therefore, by growing it to the one flower system its size and beauty have no bounds. The U. S. A. is bound to win its way into the hearts of all Dahlia lovers.

Price for field-grown bulbs, \$5.00 each

NEW PÆONY FLOWERED DAHLIAS — THE INDIAN FAMILY — Continued

Red Cloud, No. 84. Rich deep carmine. This is a large, full flower of a solid color and is borne in abundance on a plant of high growth. Price, \$1.00.

Samoset, No. 1007-1. Light yellow. Some of the petals of this flower are slightly shaded with pink, while the whole flower is full and of the true Pæony type. Small curly petals on the face of this flower give it a very desirable effect. A very free blooming variety. Price, \$1.00.

Uncas, No. 147. Pure white. A beautiful pure white somewhat resembling South Pole, but petals more curly and twisted. A very unique shaped, free-blooming Dahlia, and exceptionally desirable. Price, \$1.00.

Wadawannock, No. 1034. Light coral. This is a large flower with broad, flat petals and with just enough twisting, curling petals in the center to give it a nice Pæony effect. This is an entirely new shade and one of those very effective and desirable colors seldom seen in the Dahlia. Price, \$1.00.

Price of the above, one each of the set, \$14.00

THE LOMA FAMILY

ORIGINATED BY GEO. L. STILLMAN

THE WONDERFUL MULTIFLOROUS DAHLIA GROUP

THE SEVEN SISTERS OF THE LOMA FAMILY

Edna Rollins, No. 1460. Pæony-flowered Dahlia blotched with old rose. Streaks of yellow near center and slightly through petals. Light blotches of dull yellow mingle faintly with the dull rose. Numerous small curly petals around center of flower. Good size on long stems. Price, \$1.00.

Esther Du Barry, No. 489. A beautiful clear, velvety cardinal with long, slimly rolled petals, nice Pæony type, which twist and curl beautifully at points. Numerous small petals around central disc. Extra long, stiff stems which hold the flowers very erect. Price, \$1.00.

Frances Lane, No. 322. Pretty light, velvety lavender red Pæony-flowered Dahlia with pale lavender which streaks down through the main petals. Petals broad and flat with tips slightly curled. A pleasing, striking specimen. Erect on good stems. A noticeable circle of canary yellow surrounds the pollen disc. Price, \$1.00.

Hazel Van Allen, No. 1498. A lovely reddish magenta of the Decorative type, slightly shading cerise and clouded at base

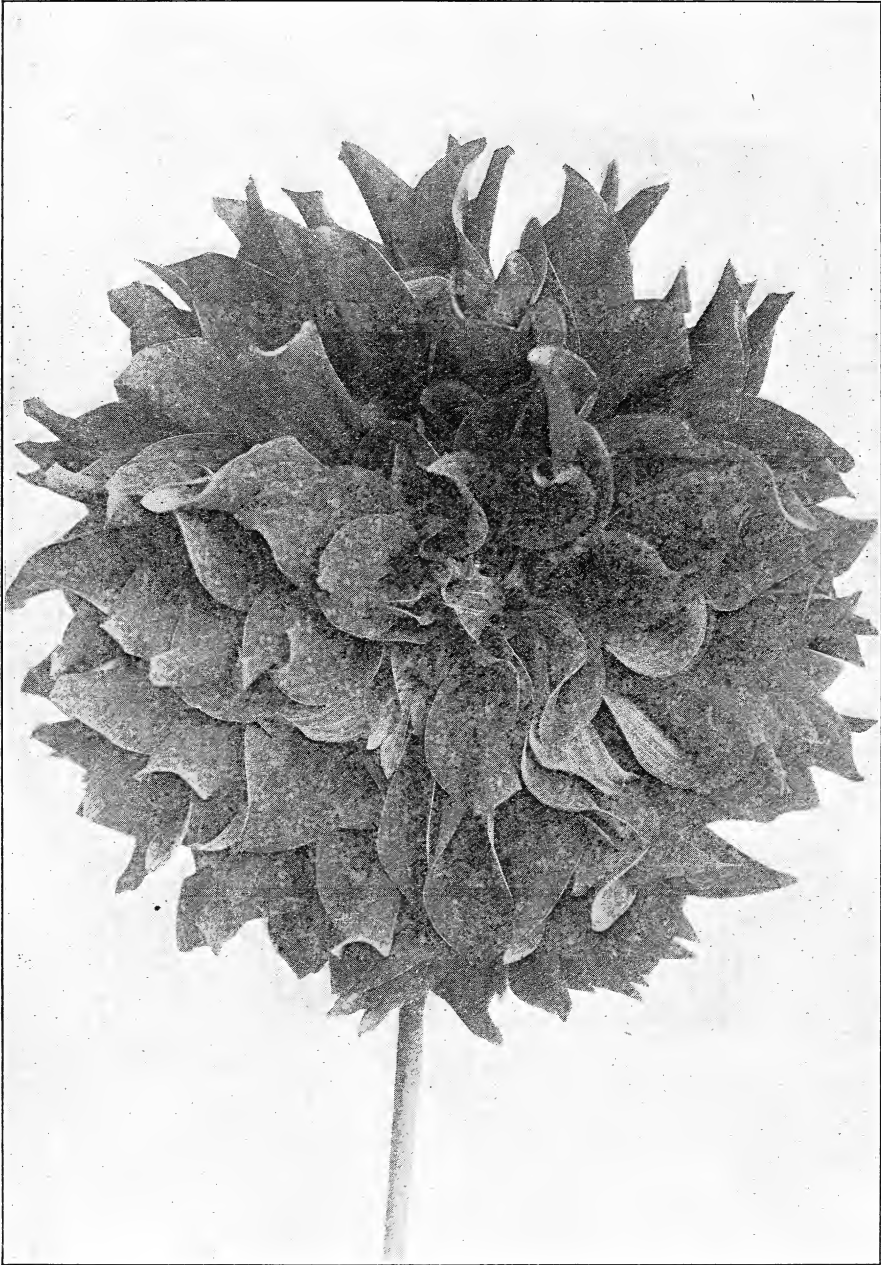
of petals lighter. A full, large flower with narrow, nicely formed petals. Erect on long, strong stems. Price, \$1.00.

Janet Cross, No. 432. A finely pointed Cactus type of a lovely shade of very rich salmon pink, almost clear save for a very few faint yellow petals in the center, which are finely bordered with pink. A large size Cactus on good stems. A fine specimen. Unusual long, stiff stems often measuring 16 inches. Price, \$1.00.

Ruth Van Fleet, No. 1451. Clear light canary yellow. The stems are extra long, often measuring 16 inches. The flowers are extremely large, measuring from 6 to 8½ inches in diameter and are held perfectly erect on its stiff, long stems. Hybrid Cactus. It should be seen to be appreciated. Price, \$3.00

Vivian Jacoy, No. 1450. A mingling of white and light cerise, streaked and blotched through entire petals of a Pæony type. Petals toward center curl very pleasingly. An odd and pretty specimen on long stems, and a good sized flower. Price, \$1.00.

All the Seven Sisters, \$6.00



“ CLARA BARTON ”

THE NINE BROTHERS OF THE LOMA FAMILY

Alan Loma, No. 459. A pure waxy white Pæony-flowered Dahlia with large, broad, flat petals. Very prominent yellow pollen disc with a few small curling petals around it. A large, heavy flower. Certainly a splendid specimen. Very erect on long, stout stems. Price, \$1.00.

Eugene Loma, No. 418. A light canary yellow to the center of this fluffy Pæony-flowered Dahlia. The shading runs lighter toward points and the very faintest of pink shows on sides and back of petals. Petals slim and rolled to a cup, twisted and curled around the center in a very peculiar manner. A very unusual flower. Erect on good stems. Price, \$1.00.

Forest Loma, No. 468. Deep cerise pink Pæony-flowered Dahlia, blotched and streaked canary yellow, with yellow at center. Petals are finely formed and numerous and curled at points. Very large and another erect specimen on good stems. Price, \$1.00.

Harry Loma, No. 438. A pretty pink Pæony-flowered, streaked artistically with white and with a faint bluish cast at tips, giving a lavender hue. A full flower with very curly petals in center. Another specimen with extra long stems. Petals long, slim, numerous, and sharply pointed. Price, \$1.00.

Kenneth Loma, No. 422. A lovely, clear, light canary yellow, or lemon, shading makes this a fine specimen in its family. It is of the Decorative style, standing very erect on good,

strong stems, and a very large flower. Nice fluffy petals slightly curled. A gorgeous flower and unusually fine clean color.

Price, \$1.00.

Robert Loma, No. 490. Golden amber shaded slightly with salmon pink, pink showing more on backs of petals, of full Pæony type. Good size with long stems. This is one of the new attractive colors so desirable in the flower garden. Price, \$1.00.

Rupert Loma, No. 456. A dull, old rose shading runs predominantly through the petals of this Dahlia, while a noticeable amount of lavender touches many of the petals' tips. It bears the appearance of being streaked lighter and darker shades of the rose and lavender. Difficult to describe. It has a very full blossom of perfect form, of Decorative type. Good size, standing boldly on its long, stout stems. This Dahlia's foliage is beautiful and scant in appearance, with long, jointed stalks. Price, \$1.00.

Philip Loma, No. 447. A beautiful large Pæony-flowered Dahlia of a rich, soft, velvety, deep carmine. Large curled petals make it very pleasing. Numerous smaller curled petals are about center in a unique manner. Fine strong stems. Price, \$1.00.

Stephen Loma, No. 1370. A very pleasing dark magenta of Pæony-flowered type. Very full toward center with slim, nicely formed petals. Extra large size, with stout stems. Price, \$1.00.

All of the Nine Brothers, \$8.00

Note the Following

Do not plant your Dahlias in the shade.

Stunted plants, thick and busky on top, with no blossoms, are the result of dry weather, or too heavy soil.

I guarantee every bulb I send out.

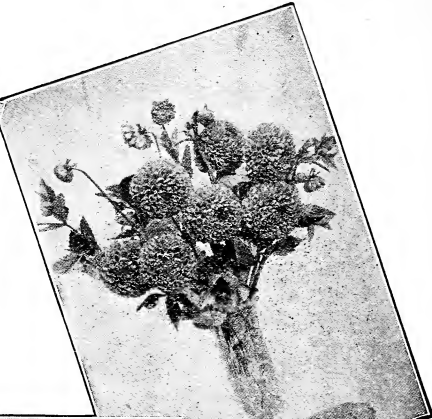
Do not wait for bulbs to sprout before planting. There is nothing like mother earth to sprout them. Plant them where you want them to grow.

The more flowers you cut the better Dahlias bloom.

Dahlias do well with me; they will with you, if you follow my instructions carefully, and above all, note what is said on another page in regard to watering.



F. E. JAMES



KING OF SHOWS



JANET CROSS



FOREST LOMA



RUTH VAN FLEET

NEW ORIGINAL INTRODUCTIONS FOR 1923

Alys, L. VI. Pæony. Color, bright carmine heavily clouded yellow. A beautiful flower of very large size. Tips of some flowers are yellow. A prize in any garden. Price, **\$5.00.**

Amethyst No. 2355. Decorative. Color light purple or lilac. A heavy flower and one of those desirable colors so much sought for. Price, **\$5.00.**

Ann Hathaway. Color, a bright deep shade of carmine. A large flower on good stems. Price, **\$3.00.**

Aurea, No. 2161. Pæony. Color, light salmon pink. A most desirable color and a very attractive flower. Inner petals slightly clouded yellow at base. Price, **\$3.00.**

B. P. O. E. No. 2324. Decorative. Color, light purple or lilac. A large deep full flower held on good, stout stems. This is a dahlia of more than usual merit. The color is a very desirable one and it combines many desirable features that few dahlias possess. Price, **\$10.00**

Big Ben, No. 2068. Pæony. Color, medium deep carmine. A very large heavy flower carried on long, heavy stems. One of those good shades of red. Price, **\$5.00.**

Checkerboard, No. 2389. Pæony. Color, white. Florets bordered with bright red; some flowers are bordered heavier than others. A very showy, attractive flower. Price, **\$3.00.**

Cheerful, No. 824. Cactus-Pæony. Color, bright light scarlet. A very showy flower on good stems for cutting. A very free bloomer. Price, **\$1.00.**

Clara Belle, No. 2221. Decorative. Color of this flower is a beautiful shade of pink. The petals are long and fold in curly. The whole flower is very attractive. Price, **\$3.00**

Crackerjack, No. 2369. Pæony. Color, pure white with each floret heavily bordered deep red or carmine. A very noticeable plant when in flower. Price, **\$2.00.**

Daybreak, No. 2429. Pæony. Color, light golden yellow with reverse side of petals heavily clouded pink. A nicely formed pæony dahlia. Price, **\$3.00.**

Early Fortune, No. 2300. Decorative. Color, light canary yellow, darker in center and shaded to white at tips. A very clean nice color. A flower blooming very early. Price, **\$2.00.**

Eclipse, No. 2388. Pæony. Main color magenta while some flowers are nearly white and look as if stained with pink; others come

solid magenta with the outer part white or nearly so. A beautiful cut flower of medium size. Price, **\$3.00.**

Eee Zee, No. 2403. Decorative. Color, a deep rich salmon pink. A very rich desirable color. Flowers on fine stems for cutting. A free bloomer. Price, **\$5.00.**

Emma Hoxie, No. 795. Decorative. Color, light gold with cloudings of pink. The florets are quite slim and curling forming a most beautiful flower in shape, color, and large size. Price, **\$3.00.**

Florence Nightingale, No. 2325. Decorative. Color, butter yellow with slight veins of salmon. Petals fold to a sharp tip. Price, **\$3.00.**

Frieda Hempel, No. 2229. Pæony. Color, a beautiful shade of light pink. Some of the flowers are heavily striped with heavier pink. A very large handsome flower that attracts the eye of everybody. Price, **\$5.00.**

Gentlemen Sir, No. 2363. Pæony. Deep magenta with each petal heavily tipped white; some flowers produced are nearly solid magenta. A very showy, noticeable dahlia. Flowers very large and velvety. Price, **\$3.00.**

Gilbert McClurg, No. 2326. Hybrid Cactus. Color, a light butter yellow with a light salmon sheen. A good sized flower on long stems which hold the flower erect. This beautiful dahlia is a very unusually free bloomer and a very unusually fine one for cut flower purposes. Every garden should contain one of these beauties. Price, **\$5.00.**

Golden Rod, No. 2399. Hybrid Show. Color, canary yellow while petals are tipped white. A large Show dahlia. Price, **\$3.00.**

Happy Days, No. 2453. Single. Color, magenta with each petal heavily tipped white. One of the most beautiful and attractive single dahlias I have ever seen. Fine for cut flowers. Price, **\$1.50.**

Happy Thought, No. 2067. Pæony. Color, a deep purple. Petals heavily tipped white while quite a few of the flowers come solid purple. A large flower with wide petals. Both flowers, solid or variegated, are very attractive. Price, **\$5.00.**

Hocus Pocus, No. 2401. Decorative. Color, a yellow salmon, or very light red, while some florets are nearly white and occasionally flowers are more than half white. A large flower and a very odd, but attractive combination. Price, **\$5.00.**

NEW ORIGINAL INTRODUCTIONS FOR 1923 — Continued

Ideal, No. 2222. Pæony. Color, a nice salmon yellow. A fluffy flower with twisting petals forming a fine flower. Price, **\$2.00.**

Jennie Lind, No. 2379. Pæony. Color, red salmon; one of those nice rich shades of salmon so desirable. Price, **\$2.00.**

Lady Finger, No. 2242. Cactus Pæony. Color, light orange with each petal heavily tipped white. Here is a very unusual combination of color and a very beautiful dahlia. In my field this dahlia has been a great attraction. You should surely have one in your collection. Price, **\$5.00.**

Lady Lenox, No. 2374. Decorative. Color, medium orange and medium in size, but very good both in color and form. Some flowers come clouded white, but an extra nice dahlia. Price, **\$5.00.**

La La, No. 2253. Pæony. Color, light purple or deep lavender. A nice, large flower with long slim petals. The color and form are very attractive in this flower. Price, **\$3.00.**

Laura G. Crowell, No. 2275. Cactus Pæony. Color, very bright carmine with each petal tipped yellow. A very showy, attractive plant, and always covered with a mass of blooms. Price, **\$2.00.**

Lilac Gem, No. 2442. Pæony. Color, lilac. A large flower splendid form and of a most desirable color. Price, **\$3.00.**

Marion Weller, No. 2273. Decorative. Color, a fine shade of peach pink. The striking color together with the form of this dahlia places it in the list of very desirable dahlias. Price, **\$3.00.**

Market Surprise, No. 2098. Pæony. Color, light magenta shaded lighter at base of florets. Petals very broad and long while center ones are quite twisting. A beautiful large flower. Price, **\$5.00.**

Ming Toy, No. 2227. Pæony. Color, rose pink shaded lighter at tips of florets which slightly fold forward. A nice color in any decoration. Price, **\$2.50.**

Minnie Best, No. 2004. Cactus Pæony. Color, light salmon pink. Florets are quite numerous and narrow and stand quite upright. Price, **\$2.50.**

Mock Orange, No. 2086. Pæony. Color of this flower is a light canary yellow, shaded just enough with pink to give it a beautiful, attractive, and rather unusual color. A fine dahlia for cut flowers. Price, **\$5.00.**

Modesty, No. 2065. Decorative. Color, butter yellow. Outer half of petals white with a pink sheen. A very unusual color and a very attractive flower erect on fine stems. Price, **\$3.00.**

Nature's Crown, No. 2055. Cactus Pæony. A beautiful shade of salmon pink. A good size for cutting. One of those very desirable shades of pink. Price, **\$2.50.**

New England Beauty, No. 2198. Hybrid Cactus. Color, a medium carmine red. A very large flower with a good center and a fine form. Very desirable dahlia in any garden. Price, **\$5.00.**

Orange Prince, No. 2392. Decorative. Color, light butter yellow. A clean, nice color and a nicely formed flower. Petals curl at tips. A very desirable large flower. Price, **\$3.00.**

Our Country, No. 2458. The color combination of this wonderful, new decorative dahlia is superior to anything I have ever produced in a dahlia. The ground, or main color is a very deep purple while the florets are heavily tipped pure white. It is truly a mammoth and the formation is truly wonderful. It is a very deep, heavy flower with a never failing center; and the colors run very uniform. It has never been known to produce solid purple, or solid white flowers as in many cases with variegated dahlias. It is offered to the public in 1923 for the first time. Price, **\$50.00.**

Peep o' Day, No. 2328. Duplex. Color, purple and bordered white; occasionally some petals are all white and some all purple. A large flower for a duplex and a very showy and cheerful flower in any garden. Price, **\$1.50.**

Portia, No. 2332. Pæony. Color, bright crimson with magenta shadings. A mammoth flower with a large yellow disc surrounded with fine curly petals. Occasionally some petals have markings of white. Price, **\$5.00.**

Pride of the Garden, No. 2032. Decorative. Color, deep canary yellow with petals tipped white. Occasionally some flowers come all yellow and in that case is a most beautiful flower. The flowers are large and the buds which appear in numbers should be pinched off to one in a place. It is truly a pride in any garden. Price, **\$15.00.**

Purse of Gold, No. 2305. Decorative. Color, deep butter yellow. A dahlia as good as a purse of gold. A very large flower and a full decorative pattern with long stems. The color would be hard to beat. Price, **\$15.00.**

NEW ORIGINAL INTRODUCTIONS FOR 1923 — Continued

Pussy Willow, No. 968. Pæony. A very desirable shade of medium yellow. The flower is formed of broad twisting petals and is borne on good stems for cutting. Price, \$2.00.

Saffron, No. 876. Duplex. A good sized flower of beautiful shade of peach pink. Price, \$1.00.

Salmon Boy, No. 2301. Pæony. Color, red salmon. The reverse side of petals are a deeper shade which gives the flower a nice combination of colors. The florets are finely pointed while the center is surrounded by lots of curly ones. A beautiful flower and very large. Price, \$10.00.

Silva Quarta, No. 2264. Show. Color, pure lavender. This is an entirely new species of Show dahlia of a most unique form. The quills are very perfect and each one contains an inner quill like the outer one making a double quill which shows very pronounced. A new novelty; a double quilled Show Dahlia! It is perfectly ball-shaped and a very desirable color. The finest Show dahlia I have ever produced. Price, \$25.00.

Sir Roger, No. 2184. Show. Color, light pale red. A large Show dahlia. The flowers are coarse and well quilled, and are borne on long, stout stems. Price, \$2.00.

Speaker of the House, No. 2330. Pæony. Color, deep purple with each petal heavily tipped white. This wonderful dahlia makes the most showy plant in my whole collection with one exception. The flowers are very large and uniformly marked, and with the great contrast in the colors it is a very noticeable plant among the others. Therefore, it can be easily termed "The Speaker of the House." Price, \$15.00.

St. Lawrence, No. 2373. Hybrid Cactus. Color, light butter yellow. A finely formed flower on good stems for cutting. A large flower and upright on the stems. Price, \$5.00.

Stonewall Jackson, No. 2163. Decorative. Color, scarlet magenta. A very rich velvety color. A finely formed flower with rather curly petals at tips. A very showy flower on good stiff stems. Price, \$3.00.

Summer Sun, No. 2319. Decorative. Color, clear butter yellow. A medium sized flower of good formation for cut flowers. Price, \$2.00.

The Colored Jockey, No. 2208. Pæony. Color, deep maroon and clouded magenta. Petals wide and rolled to a sharp point. The

reverse side of petals are a light pink. A very unusual flower and one which attracts the notice of all visitors to the garden. Price, \$5.00.

The Deacon, No. 2391. Decorative. Color, very light red. A very deep, heavy, large flower on long stems and a very profuse bloomer. By disbudding this dahlia would reach an immense size. Price, \$5.00.

The Great Mogul, No. 2315. Hybrid Decorative. Color, light red with a shading of salmon over-cast. This flower is a monster. It is very full and deep, making a very heavy flower of unusual size and shape. Price, \$5.00.

Thesens. Pæony. Color, a beautiful shade of salmon pink. A monster flower and of a most lovely color. A Thesens would be a fine addition to any garden. Price, \$5.00.

Thyme, No. 2168. Pæony. Color, magenta clouded and veined white. A very showy flower and one that attracts the eye of all. Price, \$2.50.

Timothy, No. 2427. Decorative. Color, deep orange is the main color, but in some flowers all the petals are tipped white. A beautiful flower in either color and of medium size for cutting. Price, \$1.50.

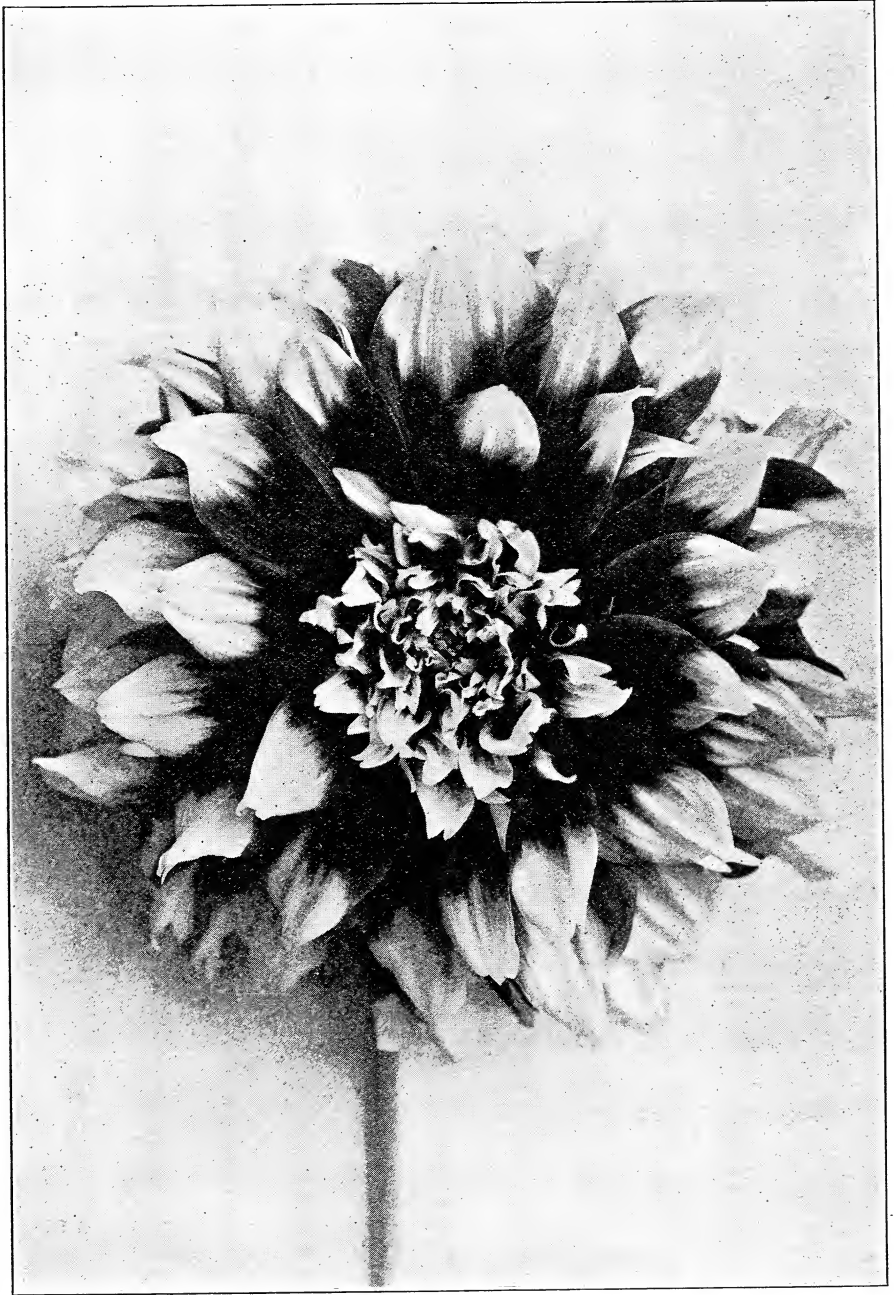
White Navy, No. 2336. Pæony. Color, pure glistening white. The florets are quite numerous and are finely formed. A nice cut-flower variety on good stems. Price, \$2.00.

Winter Queen VII. Pæony. Color, a beautiful shade of medium pink with a lavender sheen. Here is one of the best pinks for cutting. It has long stems which carry the flowers in good position. The color and formation of this flower are certainly beautiful. Price, \$3.00.

Yellow Boy, No. 2398. Hybrid Show. Color, clear canary yellow. A fine yellow flower and of large size. The petals are broad and twisting at tips. Price, \$3.00.

Yellow Mountain, No. 2099. Pæony. This mammoth dahlia is a beautiful shade of canary yellow. Petals slim and stand like a cactus. An unusually beautiful large center, or disc, surrounded by an immense quantity of short florets formed in curls. An unusually attractive and huge flower. Price, \$10.00.

Yorkshire Hero, No. 845. Pæony. Color, golden orange with reverse side of petals shaded pink. This is a large flower of good form with numerous curly petals in center, giving it a very attractive appearance. Price, \$2.00.



“OUR COUNTRY”

THE NEW DECORATIVE DAHLIA

"Our Country," No. 2458. The color combination of this wonderful, new decorative Dahlia is superior to anything I have ever produced in a dahlia. The ground or main color is a very deep purple while the florets are heavily tipped pure white. It is truly a mammoth and the formation is truly wonderful. It is a very deep, heavy flower with a never failing center. The colors run very uniform. It has never been known to produce solid purple, or white flowers as in many cases with variegated dahlias. It is offered to the public in 1923 for the first time. Price of bulbs or plants **\$50.00 each.**

Baby Mae, No. 700. This unique flower is a beautiful shade of lavender pink changing to a lighter shade in center. It is nearly a duplicate in color to the Millionaire, but much smaller in size. Price, **\$2.00.**

Beacon Light, No. 591. White changing to a beautiful cream at base of petals. A most clear, beautiful flower. Fine for cutting. The formation of this flower together with the color is most desirable. Price, **\$3.00.**

Black Beauty, No. 534. Nearly black. Medium sized flower larger than Eng. Blk. Prince. Price, **75c.**

Bolton, No. 1424. Golden amber. Flowers good size and odd color. Good length of stem. Price, **50c.**

Bonny Best, No. 577. Very light cream and shaded darker at base. Petals, broad and serrated at tips. A most beautiful, clean color and a good sized flower on heavy stems. Price, **\$1.00.**

Clara Annette, No. 731. The color of this Dahlia is a rich, medium shade of carmine red. Each petal is slightly veined yellow and slightly tipped yellow. It is a fine flower in every respect and should be in every Dahlia garden. Price, **\$3.00.**

Daniel Webster, No. 566. Deep blush rose pink. A very odd and striking color. Petals are quite slim and tapering to fine points, also have a rolled and twisted appearance. The outer edge of each petal is bordered with a much lighter shade. Price, **50c.**

Douglas Fairbanks, No. 442. Crushed strawberry shaded to yellow at base. Price, **\$1.00**

E. J. Pease, No. 1428. Fire red. Slight veins of yellow running lengthwise through petals giving the flower a prominent striped appearance. Price, **\$1.50.**

Florine, No. 975. This new Decorative Dahlia is certainly desirable. The color is a beautiful shade of golden apricot. The flower is of a beautiful Decorative formation. A very free bloomer. The blossoms are borne on good stems. Price, **\$2.50.**

Gen. Markel, No. 750. A rich deep carmine in color and very bright. A deep, full

flower which is much admired for its rich coloring. Price, **\$1.00.**

Geneva, No. 598. About 8 petals first stand out erect and roll backward and of a cerise shade. The center of the flower stands out like a Narcissus giving it the appearance of a mammoth Narcissus; the center unfolds and is a dark velvety maroon. Price, **\$2.00.**

Giant Geysler, No. 1393. Dark velvety carmine. A beautiful, large, full flower. The largest Dahlia in the Decorative family of this beautiful shade. A wonderful flower and the color is simply magnificent. Price, **\$5.00.**

Gladys L., No. 1018. Rich, soft shade of light magenta. A very heavy, deep flower on long stems. Each petal is deeply serrated at tips. One of the finest Decoratives. Price, **50c.**

Gray Feather, No. 2097. This flower has a most peculiar formation and color. The face of the petals is a delicate gray pink while the reverse side is deep pink. They are broad, tapering to a long point and curl and twist in various shapes. A deep, large flower with a beautiful odd color. There is nothing like it in the whole Dahlia family. Price, **\$2.00.**

Hall Mark, No. 2225. Color, light canary yellow. A deep, full flower and a very clear, nice shade. This Dahlia can be grown to an immense size with a little care. Price, **\$5.00.**

Immensity, No. 2262. Color, a pure orange. A very attractive flower on good stems. A very desirable and unusual color. Price, **\$2.50.**

John Doyle, No. 829. A new Dahlia of old gold color and overcast with a brownish shade. It has very broad petals that are somewhat cupped. A very full Dahlia and one of the free blooming kinds. Price, **\$2.00.**

John Drew, No. 581. A very light pink, while the reverse side of the petals is darker pink. This is an elegant, large, full flower and should be seen to be appreciated. Price, **\$3.00.**

NEW DECORATIVE DAHLIAS — Continued

Justice White, No. 2196. Color, bright carmine with each petal nearly half white at tips. A very large fluffy flower on good strong stems. Occasionally a flower comes solid carmine or nearly so. When grown to perfection this Dahlia is of immense size and a beauty. Price, **\$10.00.**

King Arthur, No. 307. A rich garnet red, solid color. This flower when beginning to bloom somewhat resembles a Narcissus, as the outer petals open usually about a day before the others begin to unfold. It is of large size and a beautiful Decorative shape with extra good stems. For richness of coloring this Dahlia is seldom equalled. Price, **\$1.00.**

Lady Betty, No. 1330. Nice rich, velvety purple with reddish cast. Good size, nicely formed petals, quite numerous. Very attractive. Price, **\$2.00.**

Lady Cardine, No. 2017. A large flower of the Decorative type and slightly oval face. The color is a medium rich carmine and each petal heavily tipped white. Occasionally a petal is bordered with gold on one side. One of the most beautiful flowers grown and on heavy stiff stems. A wonderful free bloomer. Price, **\$10.00.**

Lady Retta, No. 417. Beautiful light pink with a very noticeable lavender tint. Fine stiff stems. Price, **\$1.00.**

Mabel Normand, No. 1005. Very light canary yellow. A nice clean colored flower on good stems. Price, **\$1.00.**

Marcelline, No. 1353. Pure glistening white. Petals wide and curled, twisted in various shapes. Very long stems. Good sized flowers. Price, **\$1.00.**

Mme. Etta, No. 1430. Very dark lavender pink. Petals long, slim, rolled and twisted. A very full, large flower. Good length of stem. A nice specimen and very desirable. Price, **\$2.00.**

Meadow Vale, No. 2112. The color of this beautiful Dahlia is light canary yellow. Each petal is heavily tipped white. The softness of the colors of this medium sized Dahlia makes it a most wonderful and desirable flower. It is borne on good stems for cutting. A basket of these Dahlias presents a most striking appearance. A Meadow Vale should be in every Dahlia lover's collection. Price, **\$5.00.**

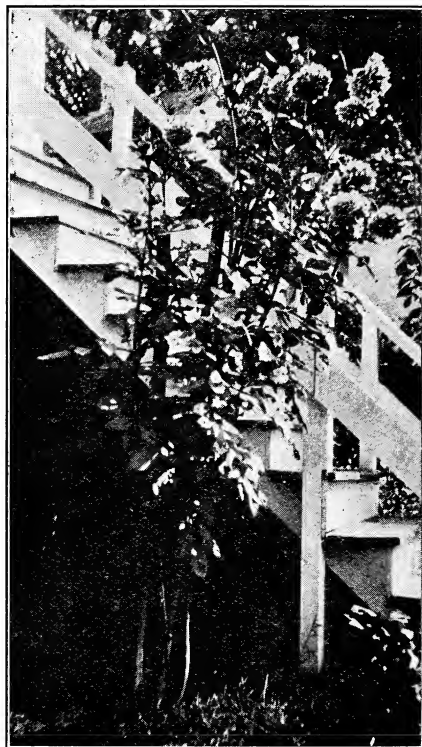
Millbank, No. 305. Light lavender, shaded darker at tips. A beautiful shade and a fine flower for cutting. Price, **25c.**

Mrs. A. H. Smith, No. 888. Color, a beautiful light canary yellow. A very large flower on good stems and is a prize in any garden. Price, **\$5.00.**

None-So-Pretty, No. 915. This new Dahlia can be mistaken for pure white when seen at a distance, but on close inspection it has an overcast of pink. The formation of the Dahlia is unusually attractive and its free blooming qualities are unsurpassed. To see the beauty of this Dahlia you should have one in your collection. Price, **\$2.00.**

Oweenee, No. 1117. Variegated cerise and white. This flower is of very delicate coloring, petals being fine and very numerous. They are splashed and clouded with light cerise and white. One of those very desirable light shades. Price, **\$1.00.**

Painted Lady, No. 784. The color of this new Decorative Dahlia is a purplish maroon, each petal has a shade darker running through the center making it very attractive and one of the rich colors in a dark flower. Price, **\$1.50.**



LADY CARDINE — 13 Blooms

NEW DECORATIVE DAHLIAS — Continued

Perfect Beauty, No. 582. Bright light scarlet. Outer ends of petals heavily tipped white. The colors are divided about equally, half red and half white. A most beautiful flower of very large size. One of the most attractive flowers imaginable.

Price, \$5.00.

Plato, No. 799. Color, salmon red. A nice colored flower and about same shape as Mrs. Roosevelt. On fine, long, stiff stems for cutting. A very profuse bloomer.

Price, \$1.00.

Pride of the West, No. 518. Golden orange. A very full, desirable colored flower. Good size on long stems. Very attractive.

Price, 75c.

Robert O. Fletcher, No. 2271. Color, white striped and speckled with bright carmine. A beautiful flower and a lovely combination of colors.

Price, \$5.00.

Splendor, No. 1432. Color, salmon shaded to yellow at base. A fine nice flower. Fine long stems and erect flowers.

Price, \$2.00.

The Millionaire, No. 1420. This remarkable mammoth new Decorative Dahlia

exceeds any other Dahlia in existence in size. The color is a most dainty lavender with a pink sheen overcast. The flower is simply immense, very deep and heavy. After the first flower, it is produced on extra long, heavy, stiff stems. The Millionaire has won many first prizes, besides many medals, all over this country for the largest flower in the show. A Dahlia garden is not complete without a Millionaire.

Price, \$2.00.

Watch Hill, No. 588. The color of this new Decorative Dahlia is a light pink of a beautiful shade. A nice deep flower of large size and one of those very desirable colors for the home garden.

Price, \$3.00.

Waxwork, No. 902. Color, very light cream, almost white. These flowers are of a very unusual appearance and of a very waxy texture, so much so that it presents a most waxy appearance.

Price, \$3.00.

World's Wonder, No. 550. Color, golden salmon. Low plant and an early bloomer. This is a very large, deep, full flower with almost a never disappearing center. The keeping qualities of this flower are very unusual and it is borne on very long, stiff stems. A profuse bloomer.

Price, \$3.00.

NEW CACTUS DAHLIAS

The U. S. A., No. 749. The color of this exquisite, new mammoth Dahlia is a deep orange, that very unusual color so hard to get in a Dahlia. The formation as well as the color is so unique and novel that to attempt to describe it accurately would be an impossibility. It is a very free blooming Dahlia.

Price, \$5.00

Ad. Grayson, No. 2250. Hybrid Cactus. The color of this beautiful Dahlia is an old rose slightly shaded a silvery rose. The petals are somewhat twisting and the whole flower is of a most exquisite formation. One of the best and most attractive cut flower Dahlias with extra nice long stems.

Price, \$5.00.

Big Surprise, No. 632. Bright canary yellow. Petals long, nicely rolled and slightly twisting at points. An immense large flower and extra good for cutting.

Price, \$2.00.

Bishop's Hat, No. 2023. Color, a light DuBarry. A full, large flower with long, curly petals.

Price, \$2.50.

Blazing Star, No. 891. Color is a bright, rich carmine. An unusually good type of Cactus, but a rather small flower. However, it is a very early and attractive specimen.

Price, 50c.

Bridal Veil, No. 2020. Pure glistening white. The petals of this flower are folded

nically and points are twisted in such a unique form that it is easily the most beautiful white Cactus Dahlia I have ever seen. The flowers are large and stand erect on good stiff stems superior to any other white Cactus.

Price, \$5.00.

Bull Moose, No. 338. Hybrid Cactus. Color of outer petals a beautiful shade of pinkish yellow. Petals slim and quite plentiful. Center petals changing to canary yellow. A good flower with long stems. Large size and a fine specimen. Free bloomer.

Price, \$3.00.

Capt. John Smith. Hybrid Cactus. Color, a rich, bright carmine red. A mammoth Cactus with a fine center and a wonder in size and color. The flower often measures 9 and 10 inches.

Price, \$10.00.

Caroline Laffield, No. 1427. Hybrid Cactus. A beautiful, large, light, canary yellow Cactus. Very large and full, measuring 7½ inches in diameter. Extra fine. Good length of stem. — A splendid specimen.

Price, \$2.00.

NEW CACTUS DAHLIAS — Continued

- Carrie Hammond, No. 890.** Deep pink shaded yellow at base. The petals are finely rolled and twisted. Price, **50c.**
- Caruso, No. 2132.** Hybrid Cactus. This mammoth flower is certainly a wonder. The color is yellow, pink and salmon blended together in a most unique manner. The formation of this Dahlia is extremely beautiful and is a very deep, heavy flower. Price, **\$15.00.**
- Christy Hoxie, No. 1436.** Color, pale pink. Good formed flower on good stems. Price, **\$1.50.**
- Clawfish, No. 430.** Deep carmine. Good size flower and a finely formed Cactus. Price, **\$1.00.**
- Cuba Ward, No. 640.** Medium carmine. Petals broad and sharp pointed and lightly tipped yellow and slightly yellow at base. A beautiful flower and most attractive. Price, **\$2.00.**
- E. P. Thompson, No. 505.** Light velvety cardinal. Petals small and rolling. Large flower and extra fine form. Price, **\$2.00.**
- F. Earl James, No. 242.** Color, deep mottled cerise pink. This flower is very large and finely formed, of Hybrid Cactus type. Petals are very curly and twisted and some turn backward. The whole flower is most beautiful and makes an exceedingly pleasing effect. Price, **\$5.00.**
- F. L. Deery, No. 306.** A Dahlia made up of numerous, finely formed, pointed petals of Cactus type. It is a lovely lavender pink blotched through the fine petals and in some instances tiny spots of the coloring appear like the head of a pin. The pale lavender is clearer at very tips. Yellow shows very slightly at center. A fine size. The long, stout stems hold the Dahlia very erect. Price, **\$1.50.**
- Geo. L. Stillman, No. 67.** The color of this beautiful new Cactus Dahlia is a very rich, velvety, deep carmine. The form is exquisite, while in size it is a mammoth, having been grown to measure 11 inches across with stems 26 and 31 inches long. It has been grown in all climates. It bears its originator's name and has won prizes everywhere. Price, **\$3.00.**
- King Tom, No. 2003.** Pure deep rose. This is a Hybrid Cactus Dahlia of very large size and a beautiful color. The petals are long and fold back to a long, sharp point. The whole flower much resembles Lady Helen except in color and is borne on good long stiff stems. Price, **\$5.00.**
- Lady Helen, No. 217.** A beautiful Hybrid Cactus Dahlia as distinctly new in quality and excellence as in origin; standing erect on long stems with finely formed and curled petals spreading out, making a diameter varying from 7½ to 8½ inches. It is a striking and beautifully toned pink in the main body coloring, with slight veins of white, almost cream, running through the petals. Prominent cream tips make a decidedly new and altogether forcible addition to the whole flower. The Dahlia should be seen to be fully appreciated, for words of pen cannot do it justice. A profuse bloomer. Price, **\$3.00.**
- Lieut. Joe, No. 800.** Color, medium carmine. Petals bordered with a light vermilion. A very beautiful Dahlia. Price, **\$1.50.**
- Mae James, No. 179.** Hybrid Cactus. Light cerise. Tips of petals clouded white. Extremely beautiful. Reverse sides of petal are nearly white, clouded cerise. Very attractive flower. Price, **\$2.00.**
- Mastodon, No. 822.** Color, bright medium carmine. Petals slim and very twisting, standing in an upright and somewhat claw-shaped position. Extra large Cactus Dahlia of good form. Price, **\$3.00.**
- Mrs. Aaron Ward, No. 723.** A new Dahlia of unusual merit. The color is of a light reddish shade, veined and tipped yellow. The petals are very slim and curling, twisting in a very attractive manner. The Dahlia itself is very large and should be in every home garden. Price, **\$5.00.**
- Mt. Shasta, No. 268.** Hybrid Cactus. Very light shell pink with slightly deeper shadings of pink through the petals. A faint tinge of yellow shows toward center. Petals, long, slim and rolled at points. An extra fine, full, deep flower and enormous size. This flower when grown to perfection is simply a wonder in size, shape and color. Stands very erect on good, stout stems. Price, **\$2.50.**
- Queen Josephine, No. 519.** A handsome Cactus Dahlia of light butter yellow shaded to light pink at points. Petals are quite incurved. A good sized flower and very attractive. Price, **50c.**
- Red Letter, No. 2102.** Hybrid Cactus. Color, red magenta. A rich color with heavy rolled petals. Price, **\$2.50.**
- Rosa Bonheur, No. 669.** Hybrid Cactus. Dark scarlet. Petals quite broadened out and rolled to a point at tips. Price, **\$1.00.**
- The Perfect Jewel, No. 628.** Deep velvety carmine. Each petal slightly tipped white. Petals clouded white. A very unusual, beautiful flower and very low plant. Price, **\$1.00.**

NEW CACTUS DAHLIAS — Continued

Wonder of Nature, No. 2050. Hybrid Cactus of medium size. This wonderful Dahlia presents the most gorgeous array of beautiful flowers on the one plant of any Dahlia that has ever come to my notice. The flowers are of a beautiful formation and are borne very profusely on nice stems for cutting. Some of the blossoms possess the five shades that these flowers are made up of, viz.: canary yellow, deep salmon, light salmon, pink and white. No person can accurately

judge the beauty of this wonderful Dahlia by any description that can be put on paper. Hundreds of people who visited my fields and saw this Dahlia truthfully expressed it when they called it a real wonder.

Price, \$5.00.

Yuletide, No. 2080. Pure glistening white, a very large flower with a full center. Petals are slightly curled and twisted. A gorgeous white.

Price, \$5.00.

ADDITIONAL NEW PÆONY-FLOWERED DAHLIAS

ORIGINATED BY GEO. L. STILLMAN

The following new Pæony-flowered Dahlias were all recently originated by me after the most expensive and exhaustive experimental trials.

My original "New Dahlias" can truthfully be termed the best and most wonderful collection of elegant mammoth Dahlias in America.

The whole lot is made up of the most unusual gorgeous colors ever brought out in Dahlias.

Acquinas, No. 94. Cardinal. Large flower with a tint of white and yellow at base. A beautiful bright color. Price, 50c.

Ad. Dewey, No. 413. Crushed strawberry. Canary yellow at base, slightly clouded through center yellow. Tips yellow. A very large, full flower on very long stems measuring at time 16 inches. Price, 50c.

Adele, No. 1416. Beautiful canary yellow. Petals broad, slightly twisting. Numerous, small, curly petals around center. Very good specimen and very free bloomer.

Price, 25c.

Afterglow, No. 2154. The color of this beautiful Dahlia is light orange. The petals are broad; the center ones stand up slightly, giving the flower a very fluffy appearance. A very large Dahlia with a very desirable color. Should be seen to be appreciated. Price, \$3.00.

Alaska, No. 935. Pure glistening white with quite broad, slightly rolling florets and numerous small curly petals around disc. The flower is borne on long jointed stems and is a very good Dahlia for cut flower purposes.

Price, \$2.00.

Allbea, No. 92. Rich Phlox. Very heavily clouded white at base of petals. Veins of white running through petals.

Price, 25c.

Alpena, No. 793. Red shaded cerise, slightly tipped yellow. Base of petals heavily colored yellow. Blooms stand erect on stiff stems.

Price, \$1.50.

Amber Queen, No. 1120. Golden amber. Flowers are of good size and with quite broad, flat petals. A most desirable Dahlia of fine form.

Price, 35c.

Artemus Ward, No. 257. Very deep pink cerise, veined and clouded with white. Each petal slightly tipped white. Stems good length and good size flowers. Price, 75c.

Augusta, No. 2175. The color of this Dahlia is a bright, medium shade of carmine red. This is a very large flower and is borne on nice extra long stems. One of the very best reds.

Price, \$3.00.

Aunt Electa, No. 1084. This new giant pæony-flowered dahlia, possesses the most beautiful colorings that can be imagined in a dahlia, being a light cerise and white blended together in such a manner that it makes the color scheme simply wonderful. The flowers are very large and are borne on long stems above the foliage. The plants are medium height, prolific, and have the desirable free-blooming qualities. Price, plants where bulbs cannot be supplied, each, \$3.00.

Aunt Basha, No. 296. Color, deep velvety maroon. Flowers very full and fluffy. Petals cup and roll the whole length with age. The most dazzling dark maroon flower yet seen. Splendid for cutting, with long stems, and a good sized flower.

Price, 75c.

Autumn, No. 1017. Color, clear, light velvety carmine. A large, full flower with numerous petals which are quite pointed and twisted at tips. A very free bloomer and a most desirable flower.

Price, 50c.

Avanella, No. 284. Color, a beautiful shade of pink. A large flower, very full and compact. This Dahlia won first prize for largest flower in the Hartford, Conn. Show. The color and form of this Dahlia are superb.

Price, \$2.00.

ADDITIONAL NEW PÆONY-FLOWERED DAHLIAS — Continued

Beethoven, No. 596. Color, white, overcast with a light tint of pink giving the flower a very light gray or lavender appearance. Reverse side of petals heavily clouded pink. Petals are pointed and slightly twisted giving the flower a fluffy shape. Price, **\$1.50.**

Belle Washburn, No. 733. A light cream Pæony-flowered Dahlia. This is one of those Dahlias with a clean, nearly white coloring. Price, **\$1.50.**

Bellflower, No. 937. Color, light pink. Petals slightly clouded white on face side, reverse side much darker. A very free blooming and attractive Dahlia. Price, **\$1.00.**

Betty Dukane, No. 286. Velvety carmine and crimson, streaked and splashed with yellow from base to center of petals. Reverse side of petals very much lighter. Flower is very full and heavy with long, quite slim petals which are rolled and slightly twisted at points. A very desirable flower with heavy, stiff stems. Price, **\$3.00.**

Blood Stain, No. 2011. Pure white with edges of petals deep rich carmine at the base, balance of petals pure white. The flower has the appearance of having been stained near the base with blood. A beautiful flower. Price, **\$2.00.**

Charlotte Laverne, No. 940. The color of this beautiful flower is a light, chrome orange, while the reverse sides of the petals are a salmon pink. The petals fold back to a long, sharp point giving the flower a curly effect together with its numerous small curly petals around the disc. Price, **\$2.00.**

Cherry Pie, No. 2092. In color this flower is a light pink. Petals quite broad and pointed at tips. A beautiful color and an attractive flower. Price, **\$1.50.**

Cinabar, No. 707. The color of this Dahlia is a deep, velvety, rich carmine, with darker and lighter streaks running through the petals. A beautiful flower and of nice formation. Price, **75c.**

Clara Lambert, No. 1313. Face of petals purple magenta at points, shading to white at center and base, resembling Philadelphia Pæony. Good size. Price, **\$1.00.**

Coral L., No. 289. Color, a beautiful shade of light lavender. One of the most attractive colors for a Dahlia. A large-sized flower of extra fine form. Price, **\$1.50.**

Coral Beauty, No. 1035. Clear Coral. This wonderful new color for a Dahlia attracted the attention of all who visited the garden. The petals of the flower are broad and heavy, and show well above the foliage. Price, **50c.**

Corine R., No. 946. This is without doubt the largest pure white Pæony-flowered Dahlia yet produced. The florets are broad, curling and twisting, giving the flower a slightly fluffy appearance. Price, **\$2.00.**

Cousin Jerry, No. 433. Color, canary yellow. Petals slightly sharpened at points; and curled around center. A large, beautiful flower. Price, **\$1.00.**

C. N. Landon, No. 292. Color, old gold or bronzy yellow. A very large flower of a beautiful type. The petals are very long and slim and incurved to a nearly upright position. A most attractive form and color. Price, **\$1.00.**

Curious, No. 2046. A small Pæony flower with peculiar markings. The petals are white and bordered more or less with purple. It is a very profuse bloomer, and very showy in the garden. Price, **\$1.00.**

Curlycue, No. 2035. Deep reddish pink of the Pæony type. Petals very long and slim and lie flat. Center half of flower is very curly and twisting. The flower is large and a flat shape; also has a nice color. Price, **\$2.00.**

Dana, No. 488. Color, light reddish buff shaded to red at center. Petals are rolling and curve slightly backward. Price, **75c.**

David Harum, No. 1403. Beautiful shade of scarlet. Large flower and extremely bright. A good form. Price, **50c.**

Dazzler, No. 471. Medium shade of red shaded to canary yellow at base and clouded white at tips. Petals slightly rolled and twisted. Extra good stems for cutting. Price, **\$1.00.**

Donalda, No. 308. A beautiful shade of canary yellow. This is a large flower with long, slim, rolled petals, standing nearly upright. It is wonderfully attractive for the garden or exhibition table. Price, **\$2.00.**

Dorothy Bernard, No. 264. Deep lavender. A beautiful color and finely shaped petals. Very desirable. Price, **\$1.00.**

Dorothy Dewey, No. 446. Lemon yellow. Petals heavily shaded and bordered with pink. A very large, exquisitely formed flower and a fine shade. Price, **\$2.00.**

Dr. Robert Taylor, No. 608. Deep peach pink. Petals long and quite slim, rolled and twisted in various shapes. A most beautiful shade and a very free bloomer on fine stems. Price, **\$3.00.**

Dudley Palmer, No. 1122. A lovely salmon amber with broad, flat petals, curled enough to give the flower attraction. The petals are streaked and blended with a deeper shade of salmon, slightly more reddish. Smaller petals streaked in the same manner, are curled about the center. A very desirable good sized flower erect on strong stems. Price, **\$1.00.**

Earle Williams, No. 1339. Ruby, striped and shading to white and pink. Large flower and inner petals very curly, outer petals broad and pointed. Fine stem. Price, **\$2.00.**

ADDITIONAL NEW PÆONY-FLOWERED DAHLIAS — Continued

Early Morn, No. 569. Lavender with a slight clouding of white. Petals slightly yellow at base. A nice shape and a very unusual combination of colors. Large size flower. Price, **\$1.50.**

Edith L., No. 2182. The color of this handsome Dahlia is a nice lavender pink overcast with a reddish shade. A very odd nice colored Dahlia on good stems. You should see this plant to appreciate it. Price, **\$5.00.**

Edna Daley, No. 2202. Color, pink with a slight lavender sheen. The formation of this flower is a true Pæony, the color is simply fine, and the size is large. Price, **\$3.00.**

Eureka, No. 860. Color, deep pink. Petals long and roll forward. A heavy, deep flower of extra good formation. A fine attractive color. Price, **\$1.50.**

Evening Sky, No. 2051. This Pæony-flowered Dahlia is certainly a beauty. Some of the flowers are a most beautiful canary yellow, while others on the same plant are yellow heavily tipped or bordered white. Either way the flowers are beautiful. Price, **\$1.50.**

Evening Star, No. 250. Color, light fiery red, heavily colored yellow at base of petals. Petals are flat, sharply pointed and slightly tipped yellow. A medium sized flower, but a beautiful combination of colors, and very attractive. Price, **75c.**

Ezra Dalton, No. 149. Light straw, heavily clouded and veined with light red. Price, **\$1.00.**

Firebird, No. 1044. Bright red. Large sized flower of a very desirable color and full form. One of the bright colors that attract every one. Price, **75c.**

Fire Girl, No. 156. Bright scarlet with heavy circle around the center of bright canary yellow. Petals are rolled and quite slim, sharp pointed and tipped yellow. Very showy and attractive. I was awarded a first-class certificate on this flower at N. Y. Horticultural Dahlia Show. Price, **\$1.00.**

First of All, No. 2018. Color, light salmon or apricot yellow. A nice full flower of large size. The blossoms are borne on long, stiff stems, good for cutting. Price, **\$3.00.**

Ford Sterling, No. 1389. Very light pink with dashes of deep pink. This flower is a most desirable one. Price, **75c.**

Frank Suplee, No. 2031. A Pæony-flowered Dahlia of a beautiful deep orange color. A large flower on good stems for cut flowers. Price, **\$2.00.**

Friedland, No. 668. Orange scarlet, slightly streaked and clouded yellow. A very showy flower. Lot of small curly petals around center. Price, **\$1.00.**

Frizzy, No. 261. White and cerise blended together and yellow at base. Petals are of various sizes, small, sharp and twisted in various shapes. Plant is of low growth, medium size flowers and good length of stem. Price, **25c.**

F. X. Bushman, No. 1348. Pink with shading of yellow running through petals. Petals long and flat and curving backward. Small, curly petals at center. Attractive combination of colors. Good size. Price, **\$1.00.**

General Appleton, No. 613. Deep pink, clouded light pink. A large, fine flower of exquisite colorings. Price, **\$2.00.**

G. H. James, No. 263. Color, light cream with a very wavy appearance, while the reverse side of the petals is clouded cerise. Petals are broad and flat and taper abruptly at ends to a sharp point. This is one of the most unique beauties of the whole Dahlia family. Price, **\$2.00.**

Golden Feather, No. 919. This Pæony-flowered Dahlia is of an unusually golden yellow mixed with a slight shading of pink. The florets are quite broad and pointed at the tip. A beautiful formation. Price, **\$3.00.**

Golden Sun, No. 798. Color, rich old gold. The petals of this flower stand up and are slightly rolled. A very showy flower and quite tall growing. Price, **\$2.00.**

Grand Malta, No. 2230. Color, a medium carmine heavily clouded and tipped yellow. A bright showy flower of Geisha colors, but an entirely differently formed flower and much better for cutting. Price, **\$2.00.**

Harriet Hubbard, No. 366. Deep pink with a slight shade of lavender. Petals rather slim and twisting and curly around center. The flower is large and one of those most desirable colors for a Dahlia. Price, **\$1.00.**

Harry Lauder, No. 287. Color light lemon yellow. Heavy petals and somewhat cupped at the base. A very clean, beautiful shade. Price, **75c.**

Harry McCoy, No. 1336. Light, clear, canary yellow. Back of petals very curly at center and slightly rolled forward. A good shaped Pæony. Long stems. Price, **\$1.00.**

Helen of Troy, No. 768. Color, a beautiful shade of light orange. This flower is not very full, but a first-class Dahlia for cut flowers and a very desirable color. Price **\$2.00.**

Henry Clews, No. 410. Golden amber. Petals broad and pointed. Slightly twisted and curled around center. Three to four rows of petals. Price, **\$1.50.**



BILTMORE

ADDITIONAL NEW PÆONY-FLOWERED DAHLIAS — Continued from p. 33

Hobby, No. 1322. Deep lavender pink. Streaks of white whole length of petals, giving the flower a clouded appearance. A beautiful flower. Medium size on good stems. Price, 50c.

Icabod, No. 277. Light cream, heavily clouded cerise. Petals narrow, numerous and very curly and twisted. Price, \$2.00.

Irish Cobbler, No. 914. Color, reddish brown salmon clouded slightly yellow in the center of flower. This is one of the very ordinary yet desirable colors. An unusually large flower. Price, \$5.00.

Isabelle, No. 1003. Large flower. Petals pinkish red shaded to yellow at base. Petals around center curled and twisted. Extra long stems. Price, \$1.00.

J. Austin Shaw, No. 1306. Beautiful Pæony of peach yellow. Each petal heavily veined with two lines of pink. Petals slim and pointed and heavily clouded pink. An attractive flower with extra good stems for cutting. Price, 75c.

Jane Witherspoon, No. 2126. The color is medium carmine. Each petal being heavily clouded canary at the tips. A very showy flower of good size. Price, \$3.00.

Jean Anderson, No. 1118. Salmon buff slightly clouded with deep yellow. The style of this flower is very unique, with its small twisting petals around the center and the curly features of the large ones. One of the entirely new shades. Price, \$1.00.

Jim Dandy, No. 117. Very rich velvety magenta. Base of petals is yellow and white, forming a circle 1½ inches in diameter. The petals are sharp, pointed and heavily tipped and veined with white. The brightest combination of colors imaginable. Price, \$1.00.

John Churchill, No. 478. Red salmon pink, or nearly peach pink. Petals broad and twisting. A beautiful flower in every way. Price, \$1.00.

Joseph's Coat, No. 1002-A. Color, light red tipped white. It occasionally has a solid red blossom on the same plant with the tipped ones. This is a low plant and a good bloomer. Price, \$2.00.

Josh Billings, No. 254. Purple. Petals flat, points sharp and twisted. Flowers medium size, but good stems. Desirable. Price, 75c.

June, No. 619. Peach pink, clouded and streaked with gold at base of petals. A fine

large flower on long stems. Very graceful for house decoration and a superb color.

Price, \$3.00.

King Saul, No. 729. Color, very bright rich carmine, a very heavy, deep flower and solid color. This is one of the most beautiful shades in red that can be found in the whole Dahlia family. The flower is good size and of nice formation. Price, \$2.00.

Kinney. Color, a beautiful shade of pink, growing lighter in center. Petals slightly twisted, making a fine shaped flower.

Price, \$2.00.

Kit Carson, No. 444. Deep pink shaded lighter at points. Center petals beautifully rolled and curled. A large flower. Price, \$1.50.

Klondyke, No. 760. Color, reddish apricot shaded to yellow in center. Center petals quite curly and good Pæony form. Price, \$1.50.

Lady Gay, No. 708. Color, medium light carmine; outer half of petals heavily clouded yellow; veins of yellow and whole length of petals slightly shaded yellow at base.

Price, \$1.50.

Lady Gertrude, No. 745. The color of this new Pæony-flowered Dahlia is a light canary yellow while the reverse sides of the petals are pure white, being very broad and flat. The flower is borne on long, stiff stems holding the large blossom in good position.

Price, \$5.00.

Leading Lady, No. 107. Back rows of petals are a beautiful light cerise and are tipped and veined white, while the petals of the balance of the flower are tipped cerise and clouded white to the base. A wonderful, attractive, combination.

Price, 50c.

Lemon Pie, No. 2266. Color, pure canary yellow. A nice flower of good size and color. The flowers have long stems.

Price, \$3.00.

Los Angeles, No. 245. Color, white, heavily clouded cerise. Some of the petals almost white. The flower is large and has broad, flat petals, giving it a very decorative effect. A beauty.

Price, \$1.00.

Mabel Martin, No. 1323. Bright cerise or phlox, heavily clouded and striped white. Petals long and slim. Medium size, with long stems.

Price, \$1.00.

Marguerite Clark, No. 248. Color, very light cream on face of petals which are curled and twisted in fine shape. The reverse side of petals is heavily clouded cerise pink, which gives the flower a beautiful variation of colors. Large size. Price, \$3.00.

I want every one of my customers to join the American Dahlia Society. The News Bulletin published by the Society is full of interest and information for the Dahlia lover and is free to every member. Write William J. Rathgeber, Secretary, 198 Norton Street, New Haven, Conn.

ADDITIONAL NEW PÆONY-FLOWERED DAHLIAS — Continued

Marie Doro, No. 152. Color, light cardinal slightly clouded white at tips. Petals very curly and twisted; of an unusual formation. Extra fine stems. Price, **\$1.00.**

Marie Suplee, No. 936. The color of this beautiful Dahlia is a deep butter yellow with long, slim, twisting florets. A true Pæony-flowered specimen borne on good stems. One of the most beautiful yellow Pæony-flowered Dahlias yet produced. Price, **\$2.00.**

Mark Twain, No. 298. Very light, bright red with heavy circle of yellow around disc much like Evening Star. Petals pointed and very twisting. A beautiful showy flower. Price, **\$2.00.**

Mary Evelyn, No. 2243. This flower is made up of several shades of salmon which are very striking. Reverse side of petals is nearly red. A beautiful large flower on good, strong, long stems. Price, **\$5.00.**

Matchless, No. 828. Color, cardinal shaded to white at base. A fine cut-flower Dahlia. Flowers stand erect on good, stiff stems. Price, **\$2.00.**

Maud Tripp, No. 250-D. The color and shape of this Dahlia are both novel. The flower is very large, with long, slim, rolled petals, standing up and incurved in a pleasing manner. The color is a purple lavender with lines of yellow whole length of petals. The flowers vary somewhat in shade. Price, **\$1.50.**

Michael Angelo, No. 1426. Light purple, outer ends of petals deeply clouded white. A square built-up flower on good stems for cutting. An unusual combination of colors. Price, **\$1.50.**

Mildred Lanphear, No. 844. The color of this Pæony-flowered Dahlia is a very light pink. The formation is beautiful with numerous curly petals in the center. A fine flower for cutting and produced on long stems. Price, **\$2.50.**

Mina Davis, No. 603. Bright orange, heavily veined and clouded yellow, giving the flower a bright orange shade; a very nice, peculiar color. Petals are quite broad, but well shaped. Price, **\$2.00.**

Minnie Foster, No. 2061. Tan or straw very closely describes the general color of this beautiful Pæony-flowered Dahlia. The flowers are very large and borne on long stems. Petals are quite broad and slightly fluffy with nice curly petals in center. A very unusual shade has this Dahlia. Price, **\$3.00.**

Montana, No. 827. Light chrome orange with cloudings of pink and salmon. The

Montana is one of those flowers that with a very little extra care and disbudbing there is almost no limit to its size and beauty. It has fine stems for cutting and can be used with hundreds of other colors. Price, **\$5.00.**

Morning Light, No. 735. A clear canary yellow, Pæony-flowered Dahlia with long, slim petals. The shape of this Dahlia is much like a Decorative and quite full. Price, **\$2.00.**

Morning Star, No. 871. Light, bright carmine, with a large circle of bright canary yellow around center disc; very much resembling Evening Star except that it is a considerably larger flower. It is borne on stiff stems which carry the blossom in an upright position. Price, **\$2.50.**

Mountain Giant, No. 2096. The color of this mammoth Pæony-flowered Dahlia is a bright, rich carmine red. The flowers are very large and deep and the plant a great producer. Price, **\$5.00.**

Mozart, No. 622. Deep velvety carmine. Petals very broad and flat and quite pointed, with a deep magenta shading. Price, **\$1.00.**

Mr. Layng. Color is a deep pink with lighter shadings. This is a mammoth flower on fine stems for cutting. A very free blooming and attractive Dahlia. Price, **\$3.00.**

Mrs. A. J. Moulton, No. 610. A beautiful shade of golden orange changing to canary at base of petals. Petals are broad and slightly rolled, giving the flower a fluffy appearance. Reverse side of petals is a red salmon, which shows on the face where the petals are rolled. Price, **\$3.00.**

Mrs. E. G. Layng. Color, pink and yellow, striped and clouded together, making a very showy flower. It is a very large flower on good stems. Price, **\$3.00.**

Mrs. Rockwell, No. 1048. Deep, rich cardinal. A large flower of an unusually rich color. This Dahlia should be seen to be appreciated. The flowers are borne on good stems well above the foliage and are very showy and attractive. Price, **50c.**

Mt. Vernon, No. 2212. Color, bright, light carmine. A heavy flower of immense size with rich, bright color. The florets of this flower are very broad and heavy. Price, **\$5.00.**

Naomi, No. 941. This Pæony-flowered Dahlia is very large in size. A rich orange color with a reddish cast; florets are faintly bordered with a redder shade. With fairly good treatment this Dahlia is certainly a mammoth. Price, **\$3.00.**

ADDITIONAL NEW PÆONY-FLOWERED DAHLIAS — Continued

Neapolitan, No. 2215. Color, a light purple while each petal is bordered with light purple or deep lavender. A very attractive, large flower on good branching stems.

Price, \$5.00.

Nora Belle, No. 18. Very light yellow, heavily clouded cerise. Petals curl backward and very much twisted.

Price, \$2.00.

Old Grisley, No. 61. Crushed strawberry, cerise and yellow blended together about equally, but cerise and strawberry show more prominently. Petals quite slim and somewhat twisted.

Price, 50c.

Orange Border, No. 612. Reddish orange, shaded and clouded old gold. One of those very desirable colors.

Price, \$2.00.

Orange Reliance, No. 990. Color, a very delicate orange buff. Broad florets which are very pointed at the tips which are serrated in saw-tooth shape. A very attractive color.

Price, \$1.50.

Pat Nagel, No. 1444. Scarlet cardinal. Base of petals slightly shaded yellow. A heavy flower.

Price, 75c.

Peach Perfection, No. 978. The color of this beautiful Dahlia is a deep peach pink tinted slightly with yellow at the base. Florets are quite broad and pointed at the tips giving it a fine attractive appearance. A most unusual and desirable flower.

Price, \$5.00.

Philmena. Very light pink shading to almost white. Very large deep flower of exquisite form and color.

Price, \$5.00.

Pink Jewell, No. 2040. The color of this flower is a beautiful light pink. Petals broad nearly flat. This is a very delicate shade of pink and a very desirable flower for the home garden.

Price, \$2.00.

Princess of Patches, No. 1050. Light cardinal, medium sized flowers borne on long stems. Occasionally the flowers show from one to four white petals.

Price, 25c.

Priscilla, No. 105. Ground color, dark American Beauty. Large, broad petals with sharp tips. Some of the petals are clouded dark maroon, while other petals are shaded to light cerise at tips. Some are thickly mottled white. Small center petals are curled and twisted in a unique manner.

Price, 25c.

Prosper, No. 754. Color, apricot yellow, shading to light butter yellow at base. Each petal is serrated, forming a three saw-tooth tip. This is a very unusual flower with a very desirable color.

Price, 75c.

Purple Monster, No. 859. The color of this monster Dahlia is a very deep velvety purple. The formation of the flower is exquisite and it is borne on very long stems. It is certainly a mammoth.

Price, \$3.00.

Radiant Charming, No. 161. White heavily clouded deep pink. A beautiful flower for cutting on long stems. Good size.

Price, 50c.

Red Dawn, No. 930. Color, dark, rich maroon. A very large flower of a rather unusual formation, the florets being very long and pointed, giving it an extremely fine appearance.

Price, \$2.00.

Red Hot Poker, No. 916. The color of this new Dahlia is a very bright shade of carmine. The Dahlia is large in size and a free bloomer. A most desirable color both for exhibition and cut flower use. Its unusually bright color has given it its name.

Price, \$2.00.

Red Rover, No. 172. Dark cardinal. Each petal has the appearance of being thickly striped with a darker shade. Faint stripes of yellow are occasionally seen in this flower and the small curly petals in the center give it a fine appearance.

Price, 50c.

Reinette, No. 358. Magenta and white beautifully blended together. Two heavy veins of white run whole length of petals. Base slightly tinted yellow.

Price, 50c.

Rhoda Greenway, No. 820. The color of this Dahlia is a sort of brownish salmon. It is very unusual in its formation as well as color.

Price, \$1.50.

Robert Hole, No. 483. Orange red, shaded and mixed with yellow. Petals broad and slightly curved. A large flower with extra long stems.

Price, \$1.00.

Rosy Blonde, No. 945. Color, deep salmon tinted with yellow at base of florets. Much resembling Jean Anderson, but with florets more twisting and a darker shade of orange. A fine cut flower Dahlia.

Price, \$2.00.

Rosy Morn, No. 796. Color, old rose pink. One of the finest colors in Dahlias. Long stems and flowers stand up; good for cutting.

Price, \$1.50.

Ruth Thompson, No. 2263. Color, a reddish salmon and yellow clouded together in a most beautiful manner. A very large flower and fine for cutting.

Price, \$5.00.

Shellflower, No. 960. The color of the outer petals of this flower is light lavender while the center ones are white. The petals are slim and twisting to a point. An unusually attractive flower.

Price, \$1.50.

ADDITIONAL NEW PÆONY-FLOWERED DAHLIAS — Continued

Silverine, No. 93. White, clouded and veined pink. Good flower on long stems. Price, 75c.

Si Perkins, No. 499. This flower presents a* brindle appearance. Having a mixture of red and white, also a tint of yellow shows quite prominently. Rather an odd combination of colors, but an attractive flower. Price, 50c.

Sir Galahad, No. 346. Carmine, heavily blended with bronze yellow. The combination of colors in this flower is very striking. It might well be termed a "Brindle Giant Curio." Price, \$3.00.

Sister Jane, No. 437. Clear, light canary yellow, good sized flowers, true Pæony style with petals curled and pointed in artistic manner. Splendid, long, stiff stems hold it very erect. Price, \$1.50.

Society, No. 2089. Canary yellow heavily clouded light red. A very showy and attractive flower. Price, \$1.50.

Spencer Marsh, No. 2235. Color, deep velvety carmine. A very large flower of a beautiful shade of carmine. The petals are well folded and are of a twisting formation. Price, \$5.00.

Spring Maid, No. 2244. Color, of this Dahlia is unusual, being a light purple, lilac or deep mauve. A good size and well formed flower. Price, \$2.50.

Strawberry, No. 79. Crushed strawberry. Fair sized flower and a very unusual color. Center petals are nicely twisted, giving it a good Pæony shape. Price, 25c.

Summer, No. 108. Beautifully canary yellow. A large flat flower with broad petals. A fine color and very free blooming. Price, 50c.

Sunflower Gem, No. 642. This striking, new Pæony-flowered Dahlia is simply a wonder in the Dahlia family. The close resemblance of this flower to the Sunflower is very remarkable. The large open center, or disc, is especially beautiful. The flower itself is borne on long, stiff stems and is held in an upright position, making one of the most attractive of the Pæony-flowered Dahlias. Price, \$2.00.

Thanatopsis, No. 794. Color, red, shaded pink and base of petals yellow. A fine cut flower Dahlia. Price, \$1.50.

The Billionaire, No. 552. Another monster Dahlia to class up with the "Millionaire" which I introduced. The color is a

beautiful shade of golden orange. Though the Billionaire is an entirely different style of flower it is fully equal to the Millionaire in its own family. It is simply a wonderful production. The color is wonderful, the size is wonderful, the shape is wonderful, the stems are wonderful, and the plant itself is wonderful. The plant making a low growth and the flowers being of an immense size, produced on extra long stems, and being a profuse bloomer gives the plant a most beautiful appearance and makes it surely a wonder. It should occupy a place in your garden.

Price, \$5.00.

The Camouflage, No. 870. Color, carmine heavily tinted yellow. Yellow mixed with the carmine. A very desirable flower. Price, \$2.00.

The Chameleon, No. 123. Petals shaded yellow at base. Ruby red in center fading to dark cerise at tips of petals. The broad, flat petals of this large flower with their varied shading make this a most desirable Dahlia. Price, 50c.

The Heroine, No. 650. Velvety magenta, heavily veined and clouded light pink. A mammoth flower with an elegant combination of colors. Should be seen to be appreciated. Price, \$5.00.

The Pink Lady, No. 30. A lovely shade of clear pink. Flowers are medium size and borne on long stems. A fine cut flower variety. Price, \$1.00.

The Royal Mayor, No. 594. Light butter yellow. Petals long, slim and rolled. Lots of smaller petals twisted and curled around center in a unique form. A large, fine colored flower of unusually fine appearance. Price, \$5.00.

Thomy Thompson, No. 239. Color, a shaded golden salmon. A large, beautifully formed flower with long, slim, curly petals. It is a very large, full, deep flower and of unusual quality. Price, \$2.00.

Thos. Galvin, No. 411. Body old gold, slightly shaded pink. A deep heavy fluffy flower. Petals broad and long and twisting. The reverse side of petals clouded pink and showing from the front where the petals roll up. A wonderfully fine, mammoth, new Dahlia. Price, \$3.00.

Tip Top, No. 1004-A. Light salmon and florets slightly bordered pink with numerous small curly florets at the base. The flower is good size and of exquisite formation. Price, \$2.00.

ADDITIONAL NEW PÆONY-FLOWERED DAHLIAS — Continued

T. N. T., No. 2030. Reddish salmon changing to lighter salmon at tips of petals. Petals are broad and flat. A very large flower and a rather odd color. Price, \$2.00.

Verna Thompson, No. 77. White, heavily clouded cerise. This immense, large new Pæony Dahlia is a beauty beyond all doubt. It closely resembles Aunt Electa in color, but somewhat different in shape. A very full deep flower. Price, \$1.00.

Victor Herbert, No. 1302. Purple. Petals quite long and slim and of a perpendicular shape, also incurving. A fine flower. Price, \$2.00.

Waycliffe, No. 1357. Bright cardinal faintly streaked with cerise, giving slight amber shade. Centre of flower yellow. Good size on good stems. Price, \$1.00.

Wedgwood, No. 692. A beautiful rose color. Petals broad and sharp pointed. Very desirable. Price, \$1.00.

Westerly, No. 752. The color of this beautiful Dahlia, as near as can be described in general terms, is a deep, old rose with peach pink shading, a most unusual color and extremely attractive. The flower is of immense size and borne on extra long stems. I was awarded first prize on this Dahlia by the Mass. Hort. Society at their Dahlia Show in Boston, in September, where it was admired by everyone. Price, \$2.00.

W. F. Brown, No. 782. Color, yellow, red and deep pink, about equally divided in this beautiful Pæony-flowered Dahlia of various colors. This is a wonderful flower of exquisite formation. The petals are curling and twisting in fine shape and colors present a beautiful combination. It is one of the most free blooming Dahlias in the whole Dahlia family. Price, \$3.00.

White Cap, No. 318. Pure white with broad, flat petals of a glittering appearance. This Dahlia is large and possesses qualities

of great merit for house decorations, in bunches or vases. Prices, \$1.00.

White Dove, No. 470. Very pretty pure white Pæony. Petals small and slightly curled, giving fluffy appearance. Stems long. Slightly shaded light cream in center. Very full and unique. Price, \$1.00.

White Mammoth, No. 597. Pure white. This is simply a "mammoth" giant and passed for the largest white Dahlia exhibited the past season at any exhibition. The flower is unusually well formed and attracts the eye of everyone who sees it. Price, \$1.00.

White Pearl, No. 995. Pure glistening white. The florets of this beautiful white Dahlia are broad and flat, standing out like those of a single Dahlia. The plant makes a low growth and the flowers stand up above the foliage in beautiful shape. When planted in a row the whole row has almost the effect of a snowbank. The profusion in which these beautiful white blossoms are displayed is indeed wonderful. Price, \$2.00.

White Rock, No. 1429. Pure white. Petals long and quite slim like South Pole, curled and twisted somewhat. Small petals, around center. Very good size. Stems good length. Price, \$1.50.

W. T. MacFarlane, No. 1456. Bright cardinal, heavily clouded yellow at base of petals. Extra long, stiff stems, and good size. A splendid Dahlia for show and bouquet effects. Very desirable. Price, \$1.50.

Wyoming, No. 602. Light pink heavily clouded yellow on lower half of petals. Small curly petals around center give the flower a fine appearance. Price, \$1.00.

Yellowstone, No. 2224. Color, pure canary yellow. Here is a flower that should be in every Dahlia lover's collection. The form, color and size are perfectly lovely. This Dahlia should be seen to form an idea of its beauty. Price, \$5.00.

CORD FOR TYING DAHLIAS

In various lengths, but as good as new for this purpose. A very limited supply at 15 cents per lb.; 8 lbs. for \$1.00, F. O. B. Westerly. Your postmaster can tell you the cost of 8 lbs. by mail to your town. Order now and be sure to have it in time. It can be used for many other purposes.

NEW CACTUS PÆONY DAHLIAS

Cherry Tree, No. 2057. The color of this Dahlia is a beautiful deep cherry pink. It is a very odd shade and of nice formation with good stems. Price, **\$2.50.**

Fiery Queen. Color fiery carmine red. A medium sized flower on good stems. Its rich coloring and beautiful form make it a very desirable dahlia for house or table decoration. Price, **\$1.50.**

Forest Fire, No. 414. The color of this Dahlia is a bright, light fiery carmine. The flower is a very good formation. Price, **\$1.00.**

Harold Darling, No. 739. The color of this Dahlia is one of those very unusual shades of light orange. The formation of the flower is on the order of a Cactus Pæony, the petals being quite slim and rolled. The color is very unusual and desirable and together with the formation of the flower it makes one of the most beautiful Dahlias of the Cactus Pæony class. Price, **\$2.00.**

Lusitania, No. 291. Color, rose pink. The numerous long, slim petals are rolled enough to give them a very slim appearance, and stand out, forming large, attractive flowers. Price, **\$1.50.**

Mammoth Spider, No. 2062. A very large flower. Petals stand out straight without incurving and rolled quite small the entire length. The color is a fine straw color, and a very unusual flower, and immense in size, being 8 and 10 inches across. Price, **\$1.50.**

Morning Mist, No. 2059. This is one of the largest Cactus Pæony Dahlias and a wonderful shade of light pink. It is a profuse bloomer and a valuable Dahlia for home and table decorations. Price, **\$1.50.**

Mrs. Stillman, No. 218. Color, a beautiful shade of pink. One of the most exquisite shades of pink in the Dahlia family. The flower is of large size and is made up of very long, slim, incurving petals that stand up in a most attractive manner. The color of this Dahlia is pleasing to everyone. Price, **\$2.50.**

Pink Crown, No. 2006. A beautiful flesh pink of a most desirable shade. The flower is of the Cactus Pæony type and very handsome. The most desirable shade of pink to be found in Dahlias. Price, **\$2.00.**

Pink Ribbon, No. 2026. The color is a nice salmon pink with a heavy shading of canary yellow at base of petals which are slightly veined in center with yellow. A beautiful flower. Price, **\$2.50.**

The Gay Boy, No. 682. Light scarlet. Petals twisted and pointed and stand up like a Cactus and tipped yellow. Base of petals heavily shaded yellow. A very gay flower on long, upright stems. Price, **\$2.00.**

Velvet Spider, No. 2012. Rich, deep velvety carmine is the color of this new Cactus Pæony Dahlia. A nice heavy flower on a tall plant. Very noticeable. Price, **\$2.00.**

Wild Bill, No. 479. Color, bright fiery red. Petals very pointed. A medium size flower, very showy and attractive. Price, **\$1.00.**

W. W. Kennedy, No. 742. The color of this beautiful flower is a canary yellow. Reverse side of petals is of a pink shade. The petals fold and twist at tips slightly, showing the reverse side. It is of the Cactus Pæony type, a very free bloomer, and a most attractive flower. Price, **\$2.00.**

NEW DUPLEX OR SEMI-PÆONY-FLOWERED DAHLIAS

ORIGINATED BY GEO. L. STILLMAN

This is an entirely new, and much needed, classification for a general favorite type of Dahlia. See Dahlia classification on another page.

These Dahlias are not an extremely large flower, but just the right size for cut flower decoration, and they possess the most beautiful combination of colors imaginable.

The following are all new varieties of my own origin:

Adelaida, No. 10. Bright cerise red. Petals tipped with yellow and yellow around base with two narrow stripes of yellow through center. Price, **50c.**

Altadena, No. 145. Cerise and white, clouded and mixed together. After the colorings of Mosel. A fine specimen for cutting. Price, **20c.**

Banner Girl, No. 1481. Color, pure white, clouded yellow at base of petals. Petals rolled back whole length. A nice flower. Price, **\$1.00.**

Ben Hur, No. 310. Scarlet with yellow circle around disc. Petals slightly tipped yellow. Two veins of yellow run lengthwise to petals. Price, **\$1.00.**

NEW DUPLEX OR SEMI-PÆONY-FLOWERED DAHLIAS — Continued

Black Servant, No. 2140. Color, rich magenta, almost black. Petals veined and clouded lighter at tips. A very odd colored Dahlia, yet very desirable. Price, \$3.00.

Black Valentine, No. 950. In color this Dahlia is rich, dark velvety red. The blossoms of this Dahlia are borne on stiff stems which hold the Dahlia very erect. Fine for cutting. Price, \$1.50.

Buster Brown, No. 70. Beautiful shade of canary yellow. This is an immense large flower of unusual qualities. The flowers measure 7 to 8 inches in diameter and have heavy, broad petals, slightly streaked with carmine and borne on extra long stems that are very stout. It is simply a wonderful flower. Price, \$1.00.

Camille, No. 474. Color, a purple pink. Base of petals shaded yellow and white. Long, stiff stems. Nice for cut flowers. Price, 50c.

Cygnets, No. 818. Color, very deep purple of good size. The color of this flower is much to be desired. It is borne on good stems, making it a fine cut flower Dahlia with a rather unusual color. Price, \$1.50.

Golden Crown, No. 247. Color, a rich deep shade of cream. This is a very showy flower. The petals are broad and some are twisted at center. Being shaded red on reverse side gives the flower a pleasing appearance. Price, \$1.00.

Hazel Dawn, No. 1376. Light cerise carmine, heavily veined and clouded yellow. Showy flower with fairly good stems. Price, 75c.

Hubby Hapgood, No. 510. Color, cerise magenta, shaded white at base of petals. A fine Dahlia for cut flowers. Price, \$1.00.

Jennifer Hadden, No. 333. Color, cerise and white, yellow around base. Medium size on good length of stem. Price, 50c.

Koros, No. 659. Color, a very bright shade of maroon. Petals curving around center. Price, \$1.00.

Latona, No. 420. Color, light coral red, shaded lighter at base. A very striking color. Tall, showy plant. Price, \$1.00.

Lenore, No. 329. White, clouded cerise, but very slightly, nearly white. Very beautiful flower, medium size, with long stems. Price, 50c.

Lord Baltimore, No. 168. Color, red. Yellow at base and heavily veined yellow in center of petals. Price, \$1.00.

Maria White, No. 19. Color, magenta, heavily blended white at tips. The petals are occasionally heavily veined white. Price, 35c.

Merigold, No. 2005. A light fawn as near as can be described. A clean, nice color and rather unusual. A medium size flower on good stems for cutting. Price, \$1.00.

Mona, No. 393. The color of this Dahlia is rather unique, being, as near as can be judged, a light crushed strawberry. Medium sized flower and a very desirable shade. Very free bloomer. Price, 25c.

My Girl Sally, No. 472. Color, deep cherry red, shaded to yellow at base. Petals broad and flat. Fine for cut flowers. Price, \$1.00.

Not So Bad, No. 2029. Pure white, while each petal is slightly bordered with bright rich carmine. One of the most showy and attractive duplex Dahlias known. Price, \$2.00.

Princess Alice, No. 703. The color of this Dahlia is a beautiful peach pink heavily shaded to light canary at center. Petals are long and broad and roll back to a point at tips. The color is very unusual and the flower is very desirable. Price, \$1.00.

Queen Charlotte, No. 554. Color, bright butter yellow with darker shadings. A very striking shade and a nice cut-flower Dahlia. Long, stiff stems. Price, \$1.50.

Rosy Gem, No. 840. Color, reddish salmon of various shadings, all of which are very desirable and attractive. Price, \$2.00.

Searchlight, No. 96. Bright, fiery scarlet. Center surrounded by heavy canary yellow disc. The broad, flat petals are pointed and tipped yellow. The New York Horticultural Society awarded me a first-class certificate on this Dahlia. Price, 50c.

Show Girl, No. 1006. Yellow and cerise. Base of petals yellow. Balance light cerise shading to white at tips. Two veins of white run lengthwise through petals. It is a profuse bloomer and flowers are borne on extra long stems. Price, 25c.

Song Bird, No. 304. White with faint lines of yellow, and shaded yellow at center. A fine Dahlia for decoration. Price, 25c.

Speedway, No. 251. Rich, deep scarlet. Yellow at base of petals. Petals slightly veined lighter. Flowers very large and bright. Extra long stems. Price, 50c.

Stella Razets, No. 1459. Deep cerise, veined white. Base of petals white, forming a large circle. Petals broad and pointed, somewhat resembling Mme. J. Coissard. Medium size on good length of stem. Price, 35c.

Sunrise, No. 270. Petals light red. Long, twisted at points and in center. Heavily veined through center with yellow. Tips of petals yellow. Somewhat resembling Geisha. Stems good length and medium sized flower. Price, \$1.00.

Sunshine. Color, a lovely shade of deep canary yellow. Petals broad and flat. A fine dahlia for cut flowers. Price, \$1.50.

NEW DUPLEX OR SEMI-PÆONY-FLOWERED DAHLIAS — Continued

Underhill, No. 1454. Color, deep canary yellow. Petals slightly shaded and clouded pink at outer edge. Center clear yellow. Petals wide and flat. Price, 50c.

Variation, No. 1445. Lemon yellow. Petals finely veined and clouded throughout with cerise. Some flowers lighter than others. Base of petals yellow. A very showy flower with good stems. Price, 50c.

Vassar Girl, No. 846. This new semi-pæony-flowered Dahlia is a bright velvety magenta shaded to white in the center. The petals are well rolled and resemble the

Cactus Pæony Dahlia. Its very bright, rich, attractive color makes it a very desirable garden Dahlia. Price, \$1.50.

Viola Dana, No. 1030. Color, very dark maroon, nearly black. Price, 50c.

White Eagle, No. 428. Pure white. Petals very slim and rolled to a tubular shape. Price, \$1.00.

Yawcob Strauss, No. 253. Light red, yellow at base. Heavily clouded and veined yellow. Petals stand up and edges roll back slightly. Long stems. Medium sized flowers. Price, 75c.

NEW SHOW DAHLIAS

ORIGINATED BY GEO. L. STILLMAN

Budd Fisher, No. 384. Hybrid Show. Color, deep striking carmine. A very rich, desirable color. Petals are quite pointed at the very tips. Price, \$1.00.

Butter Queen, No. 1490. Color, light butter yellow of large size. Tips of petals slightly shaded pink on front and more heavily shaded pink on reverse side. One of the finest new Show Dahlias. Price, \$2.00.

Ch. Dyker Dolly, II, No. 1486. Light brick red. A large flower and a fine bloomer. Price, \$1.50.

Deemocrates, No. 1106. Cardinal. Good sized flower, full center. Price, \$1.00.

Edna Browning, No. 1440. Hybrid Show. Deep lavender pink, shaded nearly white at base. Tips of petals serrated and lighter shade. Very large flowers. Stems good length. Very desirable. Price, \$1.00.

Frank Mallon, No. 202. Color, deep butter yellow slightly veined light red. One of the freest blooming Dahlias and good size. Price, 50c.

Gen. Booth, No. 1368. Beautiful shade of light purple. Flowers very large and has long stems, standing high above the foliage. Price, 50c.

General Custer, No. 1441. Reddish salmon clouded slightly yellow at base of petals. A very large flower on good length of stem. Price, \$1.00.

Golden Shore, No. 1438. Canary yellow; tips of petals shaded pink. A most strikingly clean, perfectly formed flower and very large. A perfectly cupped flower and full center. Price, \$2.00.

H. P. Clark, No. 1492. Lavender Show, shaded to light pink, medium sized flowers, with good length of stem. Very desirable. Price, \$2.00.

John Stanhope, No. 312. Very red salmon. Large flower on long stems. Most desirable rich color. Price, \$1.00.

King of Shows, No. 1439. Deep butter yellow of a solid color throughout. Every petal is most perfectly quilled and uniquely formed. A mammoth flower, on long stems. It is without doubt the finest Show Dahlia ever grown and should be seen to be appreciated. Price, \$3.00.

Largest of All, No. 1421. Beautiful shade of dark lilac. A mammoth Show Dahlia in every sense of the word. A beautiful color and form. Stems good length. Should be seen to be appreciated. Price, \$5.00.

Miriam Cooper, No. 381. Light canary yellow, slightly overcast with pink. Reverse side of petals heavily clouded pink. A large size flower and a good form. Price, 75c.

Ox Blood, No. 210. A very clear red. Very large Show Dahlia on extra long stems, like "Le Colosse," and a trifle darker shade. Price, \$1.00.

Red King, No. 1487. Hybrid Show. Rich, deep carmine. Flowers extra large and extremely bright color. One of the giant Shows. Price, \$1.00.

Scarlet Giant, No. 1489. Deep fiery scarlet. A most wonderful flower both in color and size. A very free bloomer with good stems. The brightest and most attractively colored Show Dahlia. Price, \$1.00.

Tennis Ball, No. 2265. Color, a purple magenta. This flower is finely cupped and is borne on long, stiff stems. One of the best Show Dahlias. Price, \$2.00.

The Hermit, No. 1437. Deep brick red. Petals small, numerous, and slightly cupped with good stems for cutting. Good flower and very desirable and attractive. Stems good length. Price, 75c.

NEW COLLARETTE DAHLIAS

ORIGINATED BY GEO. L. STILLMAN

Annette, No. 271. Color, yellow at base of petals, balance of petals cerise, shading to white at tips. The collar is nearly white with cerise shadings. Price, **25c.**

Capt. Roycroft, No. 1372. Dark maroon. Collar white, bordered with pink. A large, fine color in Collarette style. Long stems. Price, **35c.**

Caroline, No. 1483. Deep velvety maroon. Petals broad and flat, collar maroon with clouds of white at tips. Price, **50c.**

Color Blender, No. 128. Base of petals yellow for a quarter of an inch. Outer rim of petals from base to tips yellowish cream. The entire center of the petals is a bright crimson. In some of the flowers the crimson covers the entire petals, only the rim is a shade lighter. The most beautiful Collarette known. Free flowering. Price, **75c.**

Daisy Smith, No. 132. Canary yellow, slightly clouded pink. Collarette lighter canary. Price, **50c.**

Grace Loretta, No. 272. A very rich purple magenta with a nearly white collar. The very richest color of any of the Collarettes and the flower is of good size. Price, **50c.**

Greyhound, No. 1027. Color, a combination of salmon, copper and brown. A very unusual, odd color. Large flower with

broad, flat petals. A faint Collarette, of a lighter shade, surrounds the center.

Price, **50c.**

Heatherbelle, No. 130. Yellow, center is surrounded by Collarette of yellow, faintly tipped white. Price, **35c.**

Jumbo, No. 126. Deep scarlet with shadings of yellow overspreading the flower. The collar petals are quite long and red and yellow in color. The largest Collarette. Price, **25c.**

Peggy O'Neil, No. 1413. Deep ruby, shading lighter at tips of petals. Collar white with fine veins of ruby red. One of the finest. Price, **35c.**

The Peach, No. 1123. Amber and red veined and striped. White collar. Price, **50c.**

Wilda, No. 1397. Clear light purple or jacond. Base of petals yellow; a very striking contrast of colors. Price, **50c.**

Winfield, No. 1361. Deep, velvety magenta with white collar shaded with magenta. A fine Collarette. Good size, on long stems. Price, **50c.**

Yellow Prize, No. 133. Light canary yellow. Some of the flowers have blotches of red at base of petals. The collar is yellow and white blended together. This Dahlia has a most beautiful foliage for decoration and is a free bloomer. Price, **50c.**

NEW SINGLE DAHLIAS

ORIGINATED BY GEO. L. STILLMAN

Alameda, No. 44. Deep crimson magenta. Veined and shaded white. Lighter at base and tips of petals. Medium size flowers and fine for cutting. Price, **25c.**

Anita King, No. 1341. Cardinal with two and three stripes of orange running through petals. Base of petals shaded yellow. A fine color. Price, **35c.**

Aukum, No. 1073. Light pink. A very good cut flower Dahlia of medium size and with free-blooming qualities. Price, **25c.**

Blushing 'Boy, No. 1096. Very dark maroon. Center of petals and tips pure white. Occasionally some of the petals come solid dark maroon. A striking combination. Price, **\$1.00.**

Chanticleer, No. 1366. Color, cinnamon, faintly streaked with gold. A very striking color. Price, **25c.**

Color Card, No. 1116. A Dahlia of many colors and shades, having yellow, red, pink and amber in very attractive shades. Price, **35c.**

If you buy Dahlias from me your stock will be "UP TO THE MINUTE."

NEW SINGLE DAHLIAS — Continued

Erebus, No. 645. Pink and white clouded together. A good, large flower and beautiful color. Price, \$1.00.

Fang de Charmer, No. 1097. Clouded pink. This is the most peculiarly marked Dahlia that has ever come under my observation. The tip of each petal is serrated in a diamond shape. At the base of the diamond are two fangs with sharp points, hence, the name "Charmer." One of the most profuse flowering single Dahlias in my collection. Price, 35c.

Imperial Elephant, No. 396. The largest and most wonderful single Dahlia ever originated. The color of this monster is most beautiful. There is a circle of canary yellow around the center which is 2 inches wide. Then the petals are a bright cardinal and clouded yellow at tips. The flower measures from 7 to 9 inches in diameter, with very broad, flat petals. The plant makes a heavy, stout growth of medium height. Price, \$3.00.

Laura H. Crews, No. 1012. A pretty light pink single with finely formed flat petals of good size. Price, 25c.

Lorraine, No. 679. Color, dark red with a slight tinge of purple. Deep bright carmine and good for cutting. Price, 50c.

Margaret Ward, No. 1059. Deep lavender pink. Petals broad at base and sharp at point. Good size. Small white center. Price, 25c.

Mountain Pink, No. 952. Color, very beautiful shade of light pinkish lavender tinted with yellow around the florets. One of the very best singles yet produced. Price, \$1.00.

Oakland, No. 111. Center of bloom yellow. Tips yellow. Space between is light red. Broad petals, a large bloom, on good stems. Price, \$1.00.

Ox Eye, No. 1086. Carmine with yellow base. Has the appearance of the ox eye. Price, 20c.

Peggy Lundeen, No. 138. Color, slightly yellow, base of petals encircled with white. Then the petals are cerise tipped and clouded white. Beautiful colorings. Price, 25c.

Phidias, No. 652. Rich magenta with a light cream ring around disc. Tips of petals lighter. A fine single. Price, 50c.

Polly, No. 121. White, flushed with pink. Tips of petals serrated. A good single. Price, 15c.

Prince of Yellows, No. 142-2. Color, a beautiful rich canary yellow. Petals broad and flat. Price, 20c.

Prosperton, No. 810. Color, medium shade of carmine. Each petal is serrated at tips and heavily clouded yellow at tips; clouded and veined through the middle and nearly all yellow on lower half. A very showy, large flower for a single Dahlia. Price, \$1.00.

Radiance, No. 1014. Deep rich magenta, slightly tipped white. A beautiful thing for table decoration. Price, 25c.

Single Jane, No. 21. Deep, velvety magenta with a shading of white and yellow at base of petals and a blending of white at tips. A fine combination. Extra long stems. Price, 35c.

Snowflake, No. 2052. This Dahlia is pure glistening white with broad, flat petals forming a flat flower which stands erect on long stiff stems. The most perfect white single Dahlia yet produced. The beautiful large yellow disc in this flower gives it a beautiful finish. Price, \$1.50.

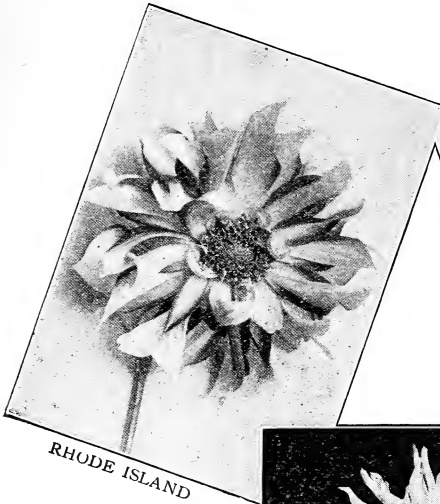
Star of the East, No. 1103. Magenta, yellow at base, edges and tips clouded white. Price, 15c.

Susie, No. 1081. Single Dahlia of a pleasing shade of rather dark velvety magenta with one to two faint streaks of light shade running through petals. Price, 15c.

Tama, No. 1362. Magenta. This flower should have a place in every garden. Price, 50c.

DAHLIA STAKES

As many of my customers make inquiries of me as to where they may obtain strong Dahlia stakes, I have arranged to furnish a good, strong, Oak Stake, 1½ inches square, and 6 feet long, in the rough, just as they come from the mill, at 11c. each. Also Locust stakes same dimensions as the oak 12c. each, FOB Westerly.



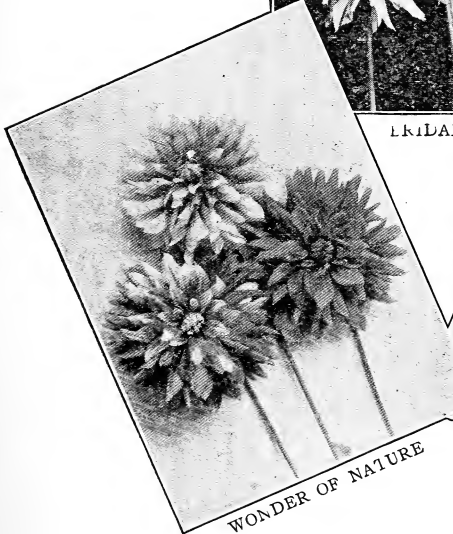
RHODE ISLAND



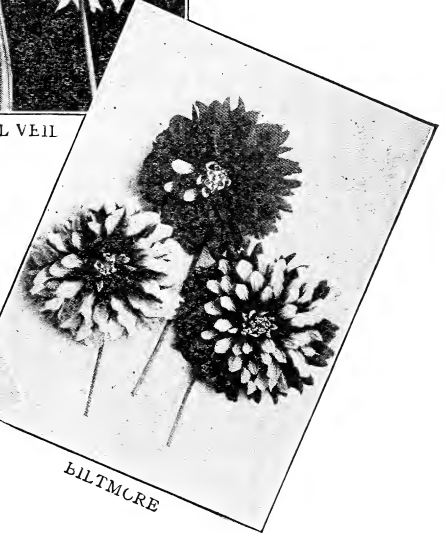
MURRAY HILL



BRIDAL VEIL



WONDER OF NATURE



BILTMORE

CACTUS DAHLIAS

Advance. Light red, this Dahlia is one of the largest of the Cactus varieties. The flowers are very full to the center and the best of form. Price, **25c.**

Alexander. Dark crimson, flushed maroon. Extra fine form and good, free bloomer. Good habits of growth and very productive. Price, **50c.**

Attraction. (Foreign.) Color, a very beautiful pink with a lavender sheen. The form and size of this Dahlia are equally good. The blossom is borne on nice long stems for cutting. Price, **\$2.00.**

Cardinal. A very good Dahlia of a cardinal red shade. Price, **25c.**

Chas. Parnot. Color, lilac rose, striped and blotched with carmine. An elegant flower. Price, **50c.**

Chastity. A very pretty pale pink of very finely twisted Cactus petals which stand up most attractively. As held up the center has the appearance of being white. Its stiff stems hold it erect. Should be seen to be appreciated. Fine size. Price, **50c.**

Citizen. Dark maroon, large flower, shaded purple. Grows very strong and erect, and is free flowering. Price, **20c.**

Clara G. Stredwick. Clear, bright salmon, shading yellow at base of petals. Large flowers, with long, slim, twisted petals. Very attractive and free. Price, **25c.**

Colada. Rich carmine-cerise, shading to crimson at tips; fine for exhibiting. Price, **\$1.00.**

Comte Da Ribeira. Yellow, tip sulphur color. Shading yellow and lilac at center. Color unique. Price, **35c.**

Countess of Malmsbury. Inner row of petals white, outer rows pale pink, shading toward white. A dainty and pleasing variety. Price, **25c.**

Country Girl. Inner row of petals broader than outer; of a pleasing shade of yellow. Outer petals nicely rolled, base being yellow, tips orange. Price, **25c.**

Cycle. Red, slightly of a pinkish shade, tips of petals tinged with a shading of white. With plenty of fertilizer this Dahlia will produce magnificent flowers. Although it sells for a very low price, it is an exceptionally desirable Dahlia. Price, **15c.**

Dainty. The name Dainty aptly describes this charming novelty. The ground color is lemon yellow, which becomes paler with age and is more intense, almost approaching canary yellow, at base of petals. Price, **25c.**

Delicatissima. A beautifully formed Dahlia. Color, white veined and lightly suffused pale lilac rose. Price, **25c.**

Dorothy Vernon. Crushed strawberry. This is entirely different from any other Dahlia having all shades of crushed strawberry. The flowers are of a beautiful form and very attractive. Price, **25c.**

Dr. Mene. Amber and yellow. Flowers are large and deep. In color, a rich amber, while the center is mottled amber and yellow. A most desirable Dahlia. Price, **25c.**

Edith Carter. A large flower of unusual grace and refinement in form and color. Color, a bright yellow, delicately suffused bright, rosy carmine. Price, **50c.**

Else. Salmon pink, slightly suffused yellow. Blooms very freely. A most beautiful shade. Price, **25c.**

Emperor. Plum color, pale yellow at base of petals. A very desirable Dahlia. Price, **25c.**

Etendard de Lyon. Broad, wavy petals, color between a rich carmine rose and royal purple. One of the best. Price, **75c.**

Fairy. A dainty medium size flower of pure white; an exceptionally free bloomer. Price, **50c.**

Fantassima. Petals are long and narrow, curling upward, of true Cactus type. Inner rows of petals are salmon pink. Outer rows of petals are pinkish lavender shade. Backs of petals are much deeper in tone of a pinkish violet color. Price, **50c.**

Faunus. One of the best. Color soft yellowish buff, tipped salmon. Large flowers. Price, **25c.**

F. W. Fellowes. The blossom is huge and composed of long, narrow, straight petals. The color is unusual, orange or terra cotta. Stems are long and straight, making an excellent variety for cutting. Price, **75c.**

F. I. Pateman. Lovely bright yellow. Of good size and unusually attractive. Price, **35c.**

CACTUS DAHLIAS — Continued

Flame. Orange scarlet. Florets are long and twisted. Flowers are carried on good stems. Very bright and attractive. One of the newest and best. Price, 25c.

Flieder. Lavender and white. A very large flower of unusual beauty, both in color and shape. Price, 25c.

Foxhunter. Bright scarlet. Very large, with incurved petals. A beautiful flower and free bloomer. Price, 25c.

Gen. Buller. Rich, velvety crimson, variegated. This beautiful dahlia should be seen to be appreciated. The rich crimson flowers, with their white tips, together with some that are nearly all white, and some all red, present a most striking appearance. Price, 25c.

Goodhope. Deep red striped with white. Price, 50c.

Golden Gate. A good flower of a deep golden yellow, tinted bronze or russet; very free; flowers immense size. Price, 50c.

H. W. Sillem. Vermilion scarlet, large and good form, and a beautiful color. Price, 25c.

H. Shoesmith. Dark carmine, of a very rich shade. Long, slim petals finely rolled. Very large flower. One of the most beautiful deep red Dahlias grown. Price, 25c.

Hyacinth. Yellow and pink. Combination of colors of unusual attractiveness. Good size and blossoms freely. Price, 25c.

Imperial. A large Cactus; color, yellow, disc quickly changing to reddish carmine. A vigorous grower. Price, 25c.

Ingleboro Edgealand. Medium size. Center of yellow, balance of flower of a good, clear, medium velvety red. Price, 35c.

Ivanhoe. Salmon pink, with pale yellow center. Very round, long, straight petals, closely and finely twisted. Large, full flower. Very effective coloring. Price, 20c.

J. B. Riding. Yellow base, shading to deep orange. Large flower of fine form. Very attractive. Price, 25c.

J. H. Jackson. This is one of the best black Cactus Dahlias. Its velvety black

maroon shade is very striking. The flowers are very large with long stems and stand out well from the foliage. Every lover of Dahlias should plant a J. H. Jackson. Price, 25c.

Juliet. Magnificent rose tinted pink. A very distinct flower. Price, 25c.

Kalif. Medium carmine. A very large, solid color flower. Price, \$1.00.

Kathleen Bryant. Dark maroon. Large flower of a beautiful maroon shade and fine form. Price, 25c.

Kapiolani. Hybrid Cactus. Very large flower, dark crimson in color. Petals broad but twisting to points at tips. Very attractive. Price, \$2.00.

Kleber. Dark scarlet. One of the most free blooming reds. Flowers are of large size and a very desirable color. Price, 25c.

Kreimhilde. Light pink with white center. Flower has curly petals, and is one of the most attractive Cactus Dahlias. This Dahlia should be in every collection. Price, 25c.

Libelle. Light purple. Flowers are very large and well formed, and present a beautiful appearance. A very desirable rich color. Blooms very freely. Price, 25c.

Liberty. A very dark, velvety maroon with finely rolled and pointed petals. Medium size. Very pretty dark shade. Price, 35c.

Lord Minto. Very light salmon pink, with delicate lemon yellow shading in center. Petals finely twisted and incurved. Points evenly and finely serrated. Flowers freely produced. Price, 25c.

Marion. Old gold in center, passing to a lovely swamp pink; the middle of petals being veined and suffused with old gold, while the reverse of petals is a rich carmine pink, making it a most lovely combination of colors. The blossoms are large and produced very freely. Price, 25c.

Marroko. Beautiful shade of very dark pink, changing to purple. Medium size, very rich in appearance and most desirable. Price, 25c.

Make all checks and money orders payable to Geo. L. Stillman, Westerly, R. I.

CACTUS DAHLIAS — Continued

Marguerite Bouchon. A beautiful shade of light pink with lighter center. The largest pink cactus dahlia known. The petals are long and slim, and are produced in unlimited numbers. A most wonderful production in cactus dahlias.
Price, \$1.00.

Mme. Henri Martinet. Salmon pink shaded sulphur yellow at base of petals. A profuse bloomer and a beautifully formed flower of good size.
Price, 25c.

Maravigalla. Color, light rose, with golden tips. Florets slightly serrated at tips. Extra fine.
Price, 50c.

Marjorie Castleton. The outer florets are rose pink. The tips and inner florets are pure white.
Price, 25c.

Mary Farnsworth. White, slightly shaded light yellow at base. A very incurved variety.
Price, 25c.

Mary Keeling. Color, orange, shading toward yellow. Very pretty.
Price, 25c.

Mayfield Beauty. Pink, shaded to yellow. A very unusual shade and one that attracts attention everywhere. A very desirable, medium size, low-priced Dahlia.
Price, 25c.

Miniature. A rosy carnation carmine. An exquisite mixture of these delicate colorings. Entirely new.
Price, 25c.

Mirifique. Purplish maroon. Flowers large, with long, slim, pointed, straight petals. A fine bloomer and durable flower.
Price, 50c.

Miss Constance Farmer. Dazzling magenta. Very large flower, with long, slim petals, much claw-shaped and twisted. An elegant flower and most desirable in every garden.
Price, 25c.

Miss Fanny Foster. Variegated. Flowers of medium size. Some flowers a clear, deep red, others white with stripes of red. A fine Cactus Dahlia.
Price, 25c.

Miss Perry. Salmon with apricot shadings. Tips pinkish rose. Stems long and stiff.
Price, 25c.

M. Cazalis. Light magenta. Flowers of medium size and fine shape. Petals nicely pointed and curved. Flowers are white and magenta, beautifully blended to-

gether. A rare and striking combination of color.
Price, 25c.

M. Pol Varin. Bronze yellow. Unique form and a shade rather unusual and yet desirable.
Price, 25c.

M. Rodger Lecler. These flowers are of large size and light sulphur yellow. Tips of petals are a shade lighter. This is an extremely free bloomer, and flowers are borne well above the foliage. A beautiful Dahlia.
Price, 75c.

Mrs. J. B. Bryant. Light sulphur yellow. Long, curly petals, finely twisted. Very good.
Price, 25c.

Mrs. C. H. Breck. Light red, tipped and overspreading more or less with white. A very showy, attractive Dahlia. Petals are broad at base and rolled to sharp points at the tips. A large flower and one of the most attractive Cactus Dahlias.
Price, 75c.

Mrs. Douglas Fleming. White. Petals serrated. A low plant.
Price, \$1.00.

Mrs. F. Grinsted. Rich crimson and purple. Flowers finely curled and of large size. A most beautiful Dahlia.
Price, 25c.

Mrs. J. Emerson. A delicate lovely yellow, shading nearly white at tips. Some of the petals marked with very fine lines and dots of red. A large and beautiful specimen.
Price, 20c.

Mrs. J. Mace. Blush pink. Very large, fine formed flower of an exquisite color. The finest shade of pink yet produced. A strong grower.
Price, 25c.

Mrs. D. B. Crane. Pure white. Flowers of medium size and free blooming.
Price, 25c.

Mrs. DeLuca. Golden yellow, tipped with orange. Large, bold flowers, with very curly, incurved petals. A very attractive Dahlia. Free bloomer.
Price, 25c.

Mrs. J. W. Wilkinson. Fine pink. Petals very incurving and of beautiful form.
Price, 25c.

Mrs. Seale. A charming and pleasing novelty. Inner rows of petals more than half way to tips are blackish red. The red is so very dark it seems almost to be touched with black. Tips of petals white. Outer rows of petals are broader, and about half of the petal is white, while the base is not as dark red as on the inner petals.
Price, 35c.

CACTUS DAHLIAS — Continued

Mrs. T. W. Willis. A very large and exquisitely colored blossom, with very narrow florets its entire length. White in the center with edgings of lilac on the younger florets, the greater part of the bloom being rose lilac. Price, 50c.

Mrs. Reginald Bailey. This Dahlia should be seen to be appreciated. A beautifully deep violet red. The long, rolled petals curl upward, making it a true Cactus. One of the best and most distinct. Price, 50c.

Mrs. Stephen Clarke. Pink shaded white. Good size and free. Price, 25c.

Nahida de Semelle. Color, light scarlet. Rolling petals, sharply pointed at tips. A very unique flower. Price, 25c.

Nero. Deep plum. Very desirable Dahlia of good form and size. Finely curled petals and quite free. Price, 25c.

Nibelungenhorte. Rich golden apricot suffused old rose. The plant is a giant being very strong and vigorous, producing massive flowers early and freely on very long stiff stems. Price, \$1.00.

Pearl De Lyon. Pure white. Very large, full flowers. Florets serrated at points, giving the flowers a fine feathery appearance. Price, 25c.

Premier. Scarlet. One of the most refined and desirably shaped Cactus Dahlias. Price, 25c.

P. W. Tullock. Light salmon red, tinted purple. A very showy, free bloomer. Petals much incurved and resemble the chrysanthemum very closely. Price, 25c.

Pink Pearl. Rosy pink. Beautiful and delicate shading. Should be seen to be appreciated. Price, 25c.

Queenie. Base of petals orange colored, shading out to bright scarlet. A perfectly handsome, very large specimen. Petals slim and long, and somewhat curled, making it a charming variety. Price, 25c.

Reine Wilmot. The center of this flower is yellow, shading out to a bluish pink. Handsome and attractive. Price, 25c.

Richard Box. Light cream. Large flower with slim and sharp petals. Price, 50c.

Rupert. Pale amber yellow at base. A fine shape and color. Price, \$1.00.

Sardigna. Dark purple; very large flower of rich shade. Full to the center and free bloomer. Price, 35c.

Southern Belle. Deep maroon with center petals almost black. A very claw-shaped Dahlia. Price, 50c.

Standard Bearer. Rich, light carmine. A standard variety of superior merit. An excellent color and a very free flowering variety. Price, 25c.

Sir A. Lamb. Crimson, shaded purple. Florets very pointed. A very attractive flower of fine form. Price, 25c.

Spotless Queen. Pure white. A very abundant bloomer of medium size. Fine for cut flowers. Price, 25c.

Success. Deep canary yellow. Petals small and sharp at ends. Price, 35c.

T. A. Havemeyer, Base of inner rows of petals is yellow. The rest of the petal is a brickish red, slightly tinted with purple. Petals are very slim, well rolled and curl upward in a charming manner. Very attractive. Price, 25c.

Una. A pretty Cactus Dahlia of a mixture of pink and white. The petals are *extremely* fine and each one serrated, giving a decidedly feathery appearance. The pink is somewhat spotted through the petals. Very good size and very desirable. Good stems. Price, \$1.50.

Uncle Tom. Dark maroon, nearly black. Medium size and quite free. Price, 25c.

Vater Rhein. Flowers over 6 inches in diameter, raised well above the foliage on stout stems. Petals broad, curled and twisted, the color of which is yellow, suffused with salmon-rose; a beautiful and attractive flower. Price, 25c.

Venezia. Clear magenta petals, serrated at points, making a very unusual feathery appearance. Very desirable in every way. Price, 25c.

Victor Von Scheffel. Exquisite, delicate light pink shading to pure white in center; somewhat resembles Kriemhilde in color. Blossoms medium size and borne on long stems. Price, 25c.

Viscountess Shearbroke. Reddish terra cotta. Large and free. Very showy. Price, 25c.

Zoo. Two inner rows of petals rich crimson, while the remainder of the petals around the outside are deep brilliant scarlet. Price, 35c.

Remember, I send out Field-grown Bulbs, divided ready for planting, except where noted.



KING OF SHCWS — See page 42

DECORATIVE DAHLIAS

I prepay carriage on all retail bulb orders, accompanied by cash in full, in the United States. This does not apply to Special Offers.

Atlanta. Almost white, softly shaded with lavender. Blossoms somewhat resemble the Cactus variety. Flowers freely. Price, 25c.

Autumn Gold. Light yellow petals bordered and heavily clouded pink. Petals medium, slim, and twisting. Price, 50c.

Bermuda Red. Dark Crimson. A good sized flower. Price, 50c.

California. A beautiful bright rose pink. An extra good Dahlia. Price, 25c.

Capt. Jack. Decorative. A very pretty Dahlia of yellow and deep amber. The outer petals are yellow, while those in and near the center are deep amber. Price, \$1.50.

Chieftain. Clear, light red, heavily streaked and splashed canary yellow. Some of the flowers come clear red. Very large and attractive flower. Price, \$1.00.

Creamo. Color, deep straw. This Dahlia is shaped like a Decorative, but each petal is a perfect quill like those of a Show Dahlia except the outer row which is more open. This is a very extraordinary specimen and the flower is borne on long, stiff stems. Price, \$1.50.

Crimson Giant. Deep crimson flowers, and produced very freely on tall plants. Price, 25c.

D. M. Moore. Rich velvety maroon. Flowers of mammoth size. Extra good. Price, \$1.00.

Dr. Tevis. The color of this monster Dahlia is a combination of pink, old rose, copper, and old gold. A beautiful flower on fine stems. Price, \$3.00.

Esmeralda. White ground, with pinkish, violet petals. A fine combination of colors. Price, 25c.

F. Lawton. Pale, delicate shade of light yellow. Flowers borne on good stems. Petals curled somewhat around center like Peony-flowered Dahlias. Very pleasing specimen. Price, 25c.

Gates Red. Dark, velvety carmine, good size, slightly darker toward center. Price, 35c.

George Walters. Color, a rich deep flesh pink, or perhaps a shading of lavender overcasts it. A very large flower and of fine form. Price, \$2.00.

Glory of Wilts. Extra large, beautiful blossoms. Color clear bright yellow. Price, 25c.

Hort. Budde. A rich rosy scarlet. A good size flower and a very free bloomer. Price, 75c.

Hortulanus Fiet. Most delicate shade of pink, tip of each petal barely tipped with gold. The entire flower has a suffusion of delicate tints of red and yellow, which gives a glow, yet softness of color difficult to describe. Large flowers, often measure 8 inches. Price, \$2.00.

Jack Rose. Brilliant crimson red, similar in shade to the popular "Jack Rose," which suggested its name; perfect for garden decoration or for cutting. Price, 15c.

John R. Baldwin. Yellow, buff suffused with red. Very fine. Price, 35c.

Katherine Willcox. The color of this beautiful Dahlia is a very light pink while the tip of each floret is a very deep pink. It is a very large beautiful Dahlia. Price, \$2.00.

Kalaeokahio. Color, salmon pink, deeply shaded golden yellow in center. Good size flower and an odd color. Price, \$2.00.



PERFECT BEAUTY
The New Decorative Dahlia

DECORATIVE DAHLIAS — Continued

Le Grand Manitou. Ground color pale pink, striped, spotted and blotched with deep reddish violet. Flowers frequently come solid colors. Borne on stout, stiff stems, held well above the foliage.

Price, **50c.**

Mme. Burel. A delicate shade of light pink, striped and spotted blood red. Petals slightly curled. Large blossoms borne on long, stiff stems. Very desirable.

Price, **25c.**

Mme. L. Tillier. Deep salmon, shaded down to light yellow at tips. A beautiful combination of colors.

Price, **25c.**

Mme. Louis Harriot. Large, beautiful yellow. One of those clear, light yellows that are so attractive in a Dahlia. Much the same shade as "Mrs. Chas. Turner." Try one and see if you are not satisfied that it is both large and beautiful.

Price, **25c.**

Mme. A. Nonin. Base of petals white, tips light lavender. Very pretty.

Price, **25c.**

Maid of Kent. Rich cherry red, splashed and blotched with pure white. A variegated Dahlia with unusually peculiar markings. The center half of some of the flowers is white while the other half is rich ruby red. Attractive.

Price, **15c.**

Majestic. Brilliant scarlet, borne on long stems, making it a valuable variety for decorating purposes. Each broad petal is deeply notched. An unusual and beautiful Dahlia.

Price, **35c.**

Manitou. An immense amber bronze-colored blossom. Has a distinct shading of pink; is extra large and full, and unusually desirable. An excellent Dahlia, well worth adding to your collection.

Price, **35c.**

Moonbeam. An immense flower borne on excellent stems. Color, clear canary yellow. The plant is a sturdy grower. Blooms very freely and is an excellent keeper when cut.

Price, **50c.**

Marchioness of Bute. Pure white with slight tint of pink. An effective contrast of color very pleasing in appearance. Medium size.

Price, **15c.**

Mina Burgle. Deep scarlet, solid color. A large flower of fine form and a beautiful rich, bright color. A fine flower.

Price, **50c.**

M. Burel. Dark apricot yellow in center, shading lighter toward edge of petals, which are faintly lined and dotted with dark apricot. Large blossoms borne on good straight stems. A handsome variety.

Price, **25c.**

Mrs. George Reed. White, deeply tipped pink. Edge of petals evenly notched. Good size. Flowers freely.

Price, **15c.**

Mrs. I. Devere Warner. Color, a light lavender purple. The blossoms of this Dahlia are very large and deep. It makes a very vigorous plant and is a very free bloomer.

Price, **\$5.00.**

Mrs. Roosevelt. Delicate light pink, shading to soft rose toward the center. An exceptionally large and elegantly formed flower, measuring from 5 to 7 inches across. Greatly admired by all. Large, strong stems. Abundant bloomer.

Price, **50c.**

Princess Juliana. Pure white, and of good form. This Dahlia is unsurpassed for decorative purposes, having long, strong stems. Of special merit.

Price, **50c.**

Royal Scarlet. Color is aptly described by its name. Petals are flat and sharply pointed.

Price, **35c.**

Salisbury White. Medium sized flower of good form, and suitable for cut flowers.

Price, **25c.**

Sapho. White, slightly shaded pink.

Price, **15c.**

Souvenir de Gustave Douzon. This is a decided novelty because of its gigantic size, closely resembling the Sunflower in this respect. Color is a pleasing orange red. On account of its extraordinary size and elegance of form and color, this is a very attractive Dahlia. Flowers full to center and often measure 9 inches in diameter.

Price, **25c.**

Thompsonii. Solid light red, of good form and size and very desirable for cut flowers.

Price, **25c.**

Treasure. Pink ground, striped and splashed with carmine.

Price, **25c.**

Wabash. Color, a beautiful flesh pink. This beautiful flower resembles a Hybrid Show somewhat in appearance. It is a very large flower and in every way attractive.

Price, **\$2.00.**

Wm. Palmer. An immense salmon red Dahlia. A splendid acquisition to anyone's collection. Very good.

Price, **35c.**

Yellow Duke. Clear bright canary yellow, good size, nicely formed petals, erect, and desirable.

Price, **25c.**

Yellow Queen. Entirely new. A beautiful shade of yellow. Good size and fine florets perfectly formed. This Dahlia has a wonderful center, which never fully opens during the life of the flower.

Price, **25c.**

PÆONY-FLOWERED DAHLIAS

I prepay carriage on all retail bulb orders, accompanied by cash in full, in the United States. This does not apply to Special Offers.

Annie Slocombe. Another new and choice Pæony-flowered Dahlia with a diameter measuring from $7\frac{1}{2}$ to 8 inches. Its face is entirely of a bright, pleasing canary yellow, but the entire back of the petals is covered with a dull shade of salmon red streaked with the yellow of the face. It is very striking and when held to view one might think it was tipped salmon red, for some of the petals turn at the points, showing the back coloring. It is on long stems, good for cutting. An extra nice variety.
Price, **\$1.00.**

Bertha Von Suttner. Salmon pink, shaded yellow. Large flowers held erect on long, stiff stems. The flower is remarkable in form, with broad petals twisted at points most artistically.
Price, **\$1.00.**

Caecilia. Creamy white; very large. A splendid variety.
Price, **25c.**

Dr. Peary. Dark velvety mahogany red, the darkest of all. A very large Dahlia and certainly a beautiful one.
Price, **50c.**

Geisha. Yellow and red. A most wonderful Dahlia. If you love gorgeous coloring, here you will find it in the orange, red and yellow of this mammoth flower. Geisha flowers are held aloft on long stems in a stately manner, befitting their glorious coloring.
Price, **\$1.00.**

Glenton. Color, mauve fawn. Of good size and very desirable.
Price, **35c.**

Golden West. A very nice yellow Pæony-flowered Dahlia. Of good size. Price, **35c.**

H. J. Lovinck. White, shaded lilac, very fine form on long stems. A large and beautiful Dahlia.
Price, **25c.**

Isaquah. Light purple. A very full flower.
Price, **50c.**

Jack Currier. Semi-Pæony. Outer half of petals bright red streaked with yellow, while the base of the petals are canary yellow.
Price, **50c.**

King Leopold. Yellow, shaded to white. Large flowers, colors exquisite. Price, **25c.**

Mannakea. A large Pæony-flowered Dahlia of a beautiful shade of old rose, the tips of the outer petals being shaded to a rich pinkish lavender. The petals are long and graceful, giving the flower a fluffy appearance.
Price, **\$5.00.**

Miss Adelaide M. Buttle. Pale lemon yellow. Large flowers with long twisting petals.
Price, **\$1.00.**

Miss Watson (Duplex). Straw-colored disc surrounding deep yellow center, that is, base of petals straw, more than half the center clear, beautiful shade of cerise or Jacqueminot, with one or more narrow yellow stripes running through the cerise. Tips of petals white overspread cerise. Some of the petals have but a little cerise on them, and are mostly straw color, a little cerise and white.
Price, **50c.**

Mme. J. Coissard (Duplex). Very beautiful shade of deep cerise, shading to white in center. Whole flower more or less overspread with white. Good sized flowers and very desirable. Petals are broad and flat.
Price, **50c.**

Mosel (Duplex). White, shaded to scarlet. Base of petals white, and varying from white to a beautiful scarlet the entire length.
Price, **50c.**

P. W. Janssen. Rosy salmon with a shade of yellow; an elegant flower, borne on stout, erect stem. A rich and pleasing shade.
Price, **25c.**

Paul Kruger. Striped red and white. Very unique coloring.
Price, **25c.**

Pretoria. Medium sized Pæony, slightly yellow at base, main body velvety red of a dark hue.
Price, **50c.**

Semiramis. Large, pink flowers with open, yellow center. Base of petals around center is yellow, with a broad line of yellow running down the pink petal to the tip. Outside rows of petals all pink except for a tint of yellow at extreme point of petal. A very handsome Pæony.
Price, **35c.**

South Pole. Pure white. A very nice Pæony-flowered Dahlia. Long stems; good for cutting.
Price, **75c.**

Make all checks and money orders payable to Geo. L. Stillman, Westerly, R. I.

SHOW AND FANCY DAHLIAS

I prepay carriage on all retail bulb orders, accompanied by cash in full, in the United States. This does not apply to Special Offers.

A. D. Lavoni. Show. Delicate pink. Well-formed flowers with long stems. Very desirable for cutting. This is an old standard Dahlia which every Dahlia grower has retained from its introduction, on account of its exquisitely beautiful color and perfectly rounded ball-shaped flower. One of the freest blooming Dahlias in cultivation. Try a half dozen of these. Price, **25c.**

America. Show. Light slate, with vivid crimson stripes. Often a solid color flower on same stalk. Sometimes the plant produces solid red flowers. Much admired. Price, **20c.**

Arabella. Fancy. Sulphur yellow with pink tips. Desirable in every way as a fancy Dahlia. Price, **25c.**

Bride Show. Beautiful light lavender, edged heliotrope. Petals exquisitely quilled. Flowers very round and good. Clear, distinct outline. Price, **25c.**

Buffalo Bill. Fancy. Buff striped vermilion. Occasionally flowers come solid color, no stripe. A finely formed flower and extremely attractive. Price, **25c.**

Cuban Giant. Show. Dark reddish maroon. Flowers of great size, measuring 6 inches across; stands erect on very long stems well above the foliage. The immense number of large, richly hued flowers presents a magnificent appearance. Price, **25c.**

Columbus. Fancy. Deep, golden yellow. Each petal heavily bordered with mahogany red, giving the flower a beautiful red appearance. A very large flower of unusual merit. Price, **50c.**

Crown Prince. Show. Buff, deep rich color. Good formed blossoms. A very desirable ball-shaped flower. Price, **25c.**

Dreer's White. Show. A clear snow white. This beautiful show Dahlia is very large, finely formed and beautifully quilled. It flowers very freely, and is by far one of the best pure white show Dahlias. Price, **50c.**

E. F. Hill. Show. Deep lavender pink. A perfectly quilled Dahlia of good size and form on long stems. Price, **\$1.00.**

Elsie Burgess. Show. The color is a delicate white ground tipped and suffused with a beautiful lavender and faint light pink. The stems are straight and stiff. It is a free-blooming Dahlia and very desirable for cut flower purposes. Price, **25c.**

Ethel Maule. Show. Pure glistening white. One of the finest in its class. Large and beautiful. Faint tint of lavender on tips of petals in center. Price, **25c.**

Fascination. Show. White suffused lavender pink. A beautiful, free blooming Dahlia. Price, **20c.**

Frank Smith. Fancy. Dark, rich red.

Petals tipped with pinkish white. A beautiful mixture of color and universally admired. Fine form. Stand well above foliage. Very showy. One of the most pleasing fancy Dahlias grown. Price, **50c.**

General Miles. Light violet striped and splashed with purplish magenta. An enormous flower borne on long, stout stems. The very best variegated show Dahlia in existence. Price, **\$2.00.**

Gloria De Lyon. Show. White. A very fine flowering Dahlia. Price, **25c.**

Gloria. Show. White. A round, full flower. Price, **25c.**

Henri Depresie. A very full and solid show Dahlia of a very clear shade of red, slightly orange red. Decidedly erect on heavy, strong stems. Price, **50c.**

James Service. Black maroon. Flowers almost black, very round and full to the stem. Price, **25c.**

Jesse McIntosh. Fancy show. Base of petals brick red, with tips of pale fawn color. Very attractive combination of colors. Price, **25c.**

John Thorp. Show. Pink, slightly tinted white at base. A very striking combination of colors and in every way desirable. Price, **25c.**

Keystone. Fancy. Lilac, with pink shading. Regular stripes of glowing crimson on each petal. A unique combination of color, very bold and striking. Blooms profusely. Price, **50c.**

Les Amours de Madame. Fancy. Show. A very attractive lavender rose pink of fine form. Nicely rounded Dahlia of good size. The petals are marked and spotted somewhat with a much deeper shade, almost red. Very desirable; on good stems. Slightly variegated. Price, **25c.**

Mad. M. Anagnostaki. Fancy. A sensational wonder. Remarkable for its dainty blending of colors, being snowy white, delightfully shading to a beautiful rose pink. Price, **50c.**

Mme. Alf. Moreau. Fancy Show. Base of petals white, edges and tips lavender. Good size and showy. Price, **35c.**

M. Con Varin. Dark purple, some of the petals having tips touched with white. Very pleasing. Price, **20c.**

Mrs. Saunders. Fancy. A beautiful lemon yellow with white tips. Good size, with a very rare combination of coloring. Price, **25c.**

Puritan. Fancy show. White, striped maroon. Medium size and one of the handsomest Show Dahlias for solid color bouquets. Price, **25c.**

Queen Victoria. Show. Lemon yellow. Flowers unusually full and round. Strong stems and fine for cutting. Price, **15c.**

SHOW AND FANCY DAHLIAS — Continued

Rebecca. Fancy. Lilac, striped crimson. Shell shaped petals. Price, 25c.

Red Fire. A very good light red Show Dahlia. Well worth owning. Price, 25c.

Rose. Show. Aptly named. Remarkable resemblance to a Rose. Of a typical rose shade. Base of inner rows of petals much deeper reddish rose than outer petals which are somewhat paler. Price, 35c.

Stradella. Show. Purplish crimson with cup-shaped petals, of fine form with very long stems. Price, 25c.

Striped Banner. Tips of petals are white, jaggng down into the base of the petal, which is royal red or dark scarlet. A novel and striking blossom. Price, 25c.

Surpasse Colosse. Show. Color, scarlet carmine, flowers large, with large quilled petals. Price, 35c.

Sunburst. Show. Color, salmon. Fine form and a beautiful shade. Price, 25c.

Susan. Show. A beautiful, delicate, soft shell pink, splendid form, early and free flowering, long stems. Splendid for cutting. Price, 25c.

Tillamook. Show. Similar in shape to "Dreer's White." The whole blossom is very, very pale pink. Each petal is folded over neatly, making a beautiful flower. Price, 25c.

Triomphe de Lorraine. Fancy Show. Light brickish red. Good, full flower and compact. Base of the many small petals is blended into a reddish salmon lighter than tips. Good stems. Price, 25c.

Vivian. Show. Large and of beautiful colorings. Center of blossom dark magenta, the inside of the petal being much lighter cerise or Jacqueminot. A large and excellent Dahlia. Price, 25c.

White Swan. Show. Pure white. Very nice specimen. Price, 25c.

W. W. Rawson. Show. This popular novelty has been the admiration of all wherever shown the past season. The massive, perfect flowers, often measuring 6 inches across, are borne on stiff stems about 15 inches long. The entire flower is absolutely perfect in outline and formation. The color is pure white, overlaid with amethyst blue. Price, 25c.

POMPON DAHLIAS

I prepay carriage on all retail bulb orders, accompanied by cash in full, in the United States. This does not apply to Special Offers.

Admiral Dott. Pink, with lavender tinge. Very free bloomer. Round, perfect blossoms. Price, 20c.

Ariel. Buff tinted orange. Very desirable. Price, 20c.

Belle of Springfield. Very pretty shade of light red. The smallest Dahlia known. Very round and regularly formed blossoms of diminutive size. Price, 50c.

Brunette. The center of this little Dahlia is a pale pink, in a circle about as large as a five-cent piece. Around this to the outer edge the petals are crimson, making an especially attractive flower. Price, 25c.

Catherine. Light buttercup yellow. Excellent for cutting. Very showy. Price, 35c.

Cruss Aus Wien. This is one of the finest shaped Pompon Dahlias ever offered. It is a strong grower with dwarf habit, the flowers are of extra fine form, and very compact. The color is a crushed strawberry. Price, 25c.

Darkness. Deep, solid maroon, nearly black. Price, 15c.

Eunice. Lavender with white shading. A very desirable color. Price, 25c.

Fascination. Pink and lavender, sometimes blotched white. Price, 15c.

Jessica. Buff, slightly speckled with red. Very attractive. Free bloomer. Price, 20c.

Kleindomiter. Clear, delicate buff color, shading lighter around outside edge of blossom. Price, 50c.

Klein Gretchen. White shaded crimson, leaving the blossom principally crimson. Base of petals white, while all the rest of

petal is crimson. Striking and beautiful. Price, 25c.

Leuchstern. Orange, richly shading to deep orange red. Very fine. Price, 25c.

Little Bessie. Pure white. Good form. Abundant bloomer. Price, 20c.

Little Jennie. Primrose yellow. A beautiful flower of diminutive size; free bloomer. Price, 25c.

Madeline. Pale primrose, edged with rose purple. Variegated. Price, 25c.

Marguerite. Deep lilac. Blooms freely. On good stems for cutting. Price, 25c.

Mary Clift. Light maroon. A very compact flower on good stems. Price, 15c.

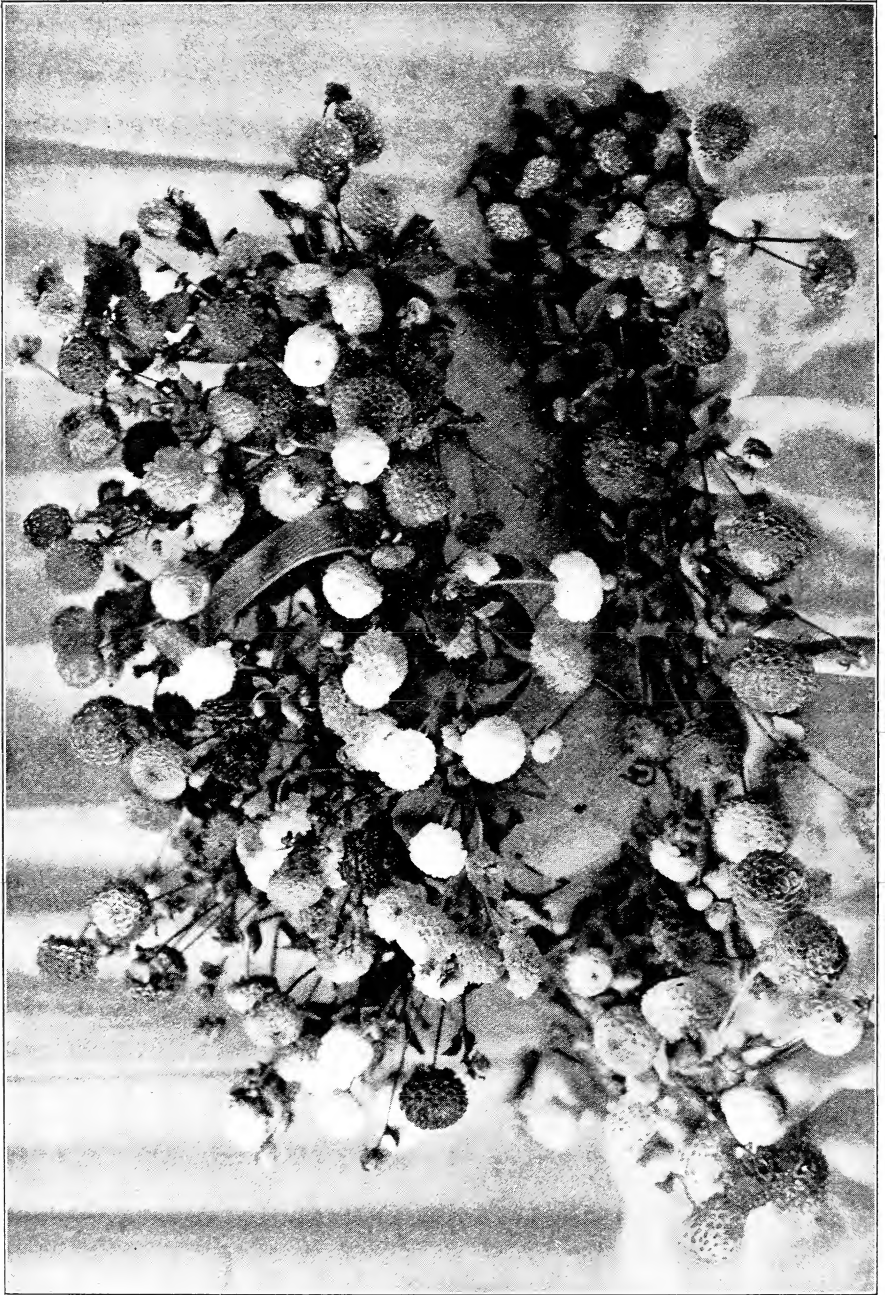
Santoy. White very heavily tipped carmine. Price, 25c.

Snow Clad. Pure white. This dainty little white flower should be seen to be appreciated. It is very prolific, producing a great abundance of flowers. Price, 25c.

Tulla. Wine crimson. A very free bloomer and exceedingly beautiful. Price, 25c.

Viridi Flora — The Green Dahlia. The most unique novelty of Dahlia culture. The flower is a rich, verdant green, same shade as the foliage. Occasionally the flowers show a number of red petals. This Dahlia does best in a partially shaded location. Price, 50c.

Zoe. Base of petals and edges clear yellow. Tips white. This is a very attractive Dahlia and well worth having. Sometimes blossoms come all yellow. Price, 25c.



BASKET OF POMPONS

SINGLE DAHLIAS

Blush Century. Clear white, slightly overcast with delicate shade of pink.

Price, 15c.

Blushing Maiden. This is a Dahlia of beautiful shadings. The florets are a light maroon mingled with a light carmine, and has a pure white stripe through the center of petals. Very attractive.

Price, 15c.

Coquette. Deep cerise pink, sometimes edged with a deeper shade. Quite large.

Price, 15c.

Dauntless. About one-fourth of petal at base yellow, remainder of petal rose pink, edged, dotted and streaked with magenta. Some of the petals have several stripes of the magenta through them, while others have somewhat less number of streaks.

Price, 15c.

Falcon. Reddish purple, with white disc around the center; a large flower in which the color contrast is both striking and beautiful.

Price, 25c.

"Grey Cote." A rich, deep peach pink and a very large Single Dahlia of beautiful shade and form. This Dahlia is borne on long, stiff stems and is a very robust, stocky plant. A fine specimen for cut flowers.

Price, 50c.

G. H. Longman. Lavender pink. Petals broad and flat. Medium sized flowers; long stems; very desirable for cut flowers.

Price, 15c.

Lady Mildred. Pure white. Now and then shows a very faint pink tinge. Flowers large and perfect. Extremely graceful, and one of the most desirable white single Dahlias.

Price, 15c.

La Favorite. White, suffused rose. Striped with rich purple. An exquisitely dainty flower. Large and blossoms freely.

Price, 20c.

Mabel C. A single Dahlia of unusual

merit. The color is a lavender pink, with an amethyst shading at base of petals. Flowers large and graceful.

Price, 25c.

Margaret Perkins. One of the most beautiful varieties of recent introduction. The flowers are very large, have rather pointed petals, are wide, but not overlapping, and are borne on very long, stiff stems. The color is pure white with about one-half of each petal tipped light pink; first flower being tipped cerise pink, and, like "Twentieth Century," of which it is a seedling, growing steadily lighter as the season advances, becoming a clear, soft pink later.

Price, 25c.

Madame X. Deep velvety carmine, occasionally blended and shaded lighter.

Price, 25c.

Mildred C. Saunders. Yellow, blotched and splashed with red. A large, bold flower of unusual merit, and very desirable for cutting, often measuring 6 inches in diameter. The gorgeous colors present a most striking appearance.

Price, 15c.

Miss Emma. Dark salmon yellow with light center. Very large and attractive.

Price, 15c.

Mrs. Evans. White, flushed pink, finely striped and spotted crimson.

Price, 25c.

Pink Century. Pink and white background, thickly striped rich, dark red. Large and graceful flowers, one of the best single Dahlias.

Price, 25c.

Sensation. Single. Vivid vermilion, heavily tipped white. An early and profuse bloomer. Very popular.

Price, 15c.

Twentieth Century. Pure white at base and tip, with center of petals a beautiful rose pink. A very popular Dahlia and worthy of the highest praise. Flowers freely.

Price, 25c.

COLLARETTE DAHLIAS

I prepay carriage on all retail bulb orders, accompanied by cash in full, in the United States. This does not apply to Special Offers.

A. Mammene. Nice dark red Collarette Dahlia with white collar.

Price, 25c.

La Fusee. Petals twisted to give the flower the appearance of a single Cactus; color deep ox-blood red, the collar being of same shade, marked with white.

Price, 15c.

Maurice Rivoire. A medium flower with broad petals of rich maroon, with deeper stripe down the center, and a pure white fringed collar.

Price, 15c.

Meteor. Positively the best of its color; ground color brilliant scarlet penciled, spotted and striped with rose color. Collar white. A flower of fine form.

Price, 15c.

Prince Carilie de Rohan. A pleasing pink touched and blended with bluish lavender. Tiny collar of same shading. Very good size, attractive and on good stems.

Price, 50c.

Souvenir de Chabanne. Ground color, lemon yellow, with coral red markings; collar petals very abundant and long, lemon yellow, tipped white.

Price, 15c.

PLEASE NOTICE

Every dahlia offered in this catalogue is described to the best of my ability as they are while growing in my fields without any disbudding; and every statement as to size is positively correct as they grow for me with no extra care. If disbudding with proper care is resorted to they will exceed sizes stated. If a purchaser does not grow them to sizes stated the fault is not mine. It may be the weather, the kind of soil, lack of water, and a dozen other things. One year's trial is not sufficient to try out a new variety. Experiments in your own garden are the best education.

PRICES.

Orders received prior to Jan. 1st for shipment the following season will be subject to prices quoted in the new catalogue even though they have been reduced from the last issue.

All shipments to Canada after being delivered to the Express Company or the U. S. mail are at purchaser's risk as to delays or loss.

SPECIAL OFFERS

Parcel Post or Express paid by purchaser. See table below.

For the benefit of those who are not familiar with the names, colors, and characteristics of the Dahlia, and wish to have the selection made for them, I make the following collections at a special low price to even up stock. They consist of an assortment of classes and colors and the entire selection must be left to me.

- | | |
|---|---------------|
| No. 1 COLLECTION , twelve named varieties, several classes, my own personal selection, no two alike, and each one labeled..... | \$1.00 |
| No. 2 COLLECTION contains twelve extra fine, high-priced varieties, my own personal selection, no two alike, and each one labeled. This collection contains not less than \$3.50 worth of bulbs..... | 2.00 |
| No. 3 COLLECTION contains twelve varieties, or more, of extra nice assorted bulbs very carefully selected, no two alike, all labeled. The Dahlias in this collection amount to not less than \$7.00 worth..... | 5.00 |
| No. 4 COLLECTION contains twenty bulbs, without labels, that have become mixed in handling. They are all standard varieties, but labels have accidentally become detached. The supply for this collection is limited. Price while they last..... | 1.00 |

Be Sure and Read This

It has been thoroughly demonstrated that nearly all small shipments of bulbs can be sent by mail and reach their destination quicker than by express.

Notice! The postage or express on all special offers must in all cases be paid by purchaser, and if by mail, postage must be sent with the order or pay C. O. D. charges to destination, which often amounts to more than the postage.

To ascertain the amount of postage to send.

No. 1, 2 and 3 Collections weigh four pounds or less.
No. 4 Collection weighs six pounds or less.

Make all checks and money orders payable to Geo. L. Stillman, Westerly, R. I.

Your postmaster can tell you the cost of any number of pounds from Westerly, R. I., to your post office. Or you can use the following table. If you send more money than is used in postage, the surplus will be returned.

TABLE

1st & 2d Zone	3d Zone	4th Zone	5th Zone	6th Zone	7th Zone	8th Zone
1 lb. 5c.	1 lb. 6c.	1 lb. 7c.	1 lb. 8c.	1 lb. 9c.	1 lb. 11c.	1 lb. 12c.
2 lbs. 6c.	2 lbs. 8c.	2 lbs. 11c.	2 lbs. 14c.	2 lbs. 17c.	2 lbs. 21c.	2 lbs. 24c.
3 lbs. 7c.	3 lbs. 10c.	3 lbs. 15c.	3 lbs. 20c.	3 lbs. 25c.	3 lbs. 31c.	3 lbs. 36c.
4 lbs. 8c.	4 lbs. 12c.	4 lbs. 19c.	4 lbs. 26c.	4 lbs. 33c.	4 lbs. 41c.	4 lbs. 48c.
5 lbs. 9c.	5 lbs. 14c.	5 lbs. 23c.	5 lbs. 32c.	5 lbs. 41c.	5 lbs. 51c.	5 lbs. 60c.
6 lbs. 10c.	6 lbs. 16c.	6 lbs. 27c.	6 lbs. 38c.	6 lbs. 49c.	6 lbs. 61c.	6 lbs. 72c.

Sentenced to Death

In a sanitary and humane manner,
that's the way of the

"PEERLESS"

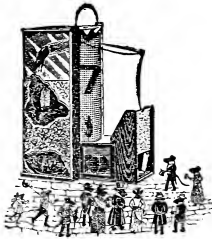
Automatic Mouse and Rat Trap

Resets after each catch.

Requires no attention. Let the

"PEERLESS"

take care of your rats and mice.



Mouse trap \$3.00. Rat trap \$8.50.
No. 2 Mouse trap \$2.00.

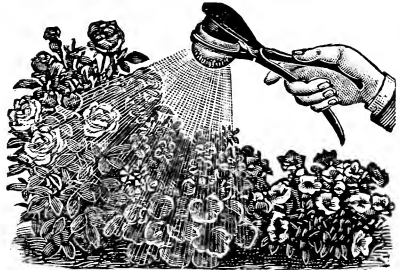
Unconditionally Guaranteed

I can personally vouch for this trap as being the greatest mouse exterminator in existence. Sent by express upon receipt of price.

GEO. L. STILLMAN
Westerly, Rhode Island.

SPRAYING UNDER THE LEAVES

An excellent hand plant sprayer to keep the insects and dust off and otherwise keep them healthful



Makes House Plants Bloom. Let Your Wife See This
FOR INDOOR PLANTS



Price
60^c

Postpaid

Spraying Under the Leaves

THE THING LONG NEEDED
Just what mother was long looking for.

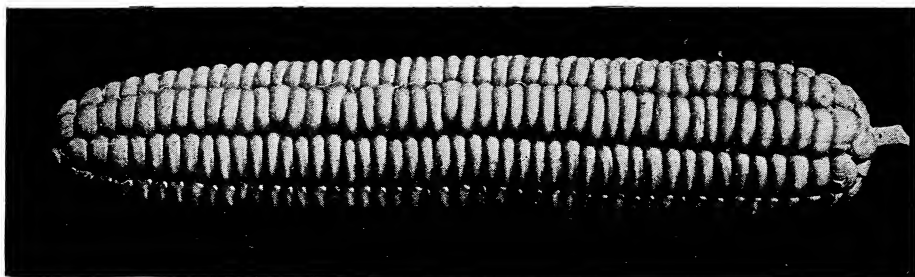
A Cake of Tobacco Soap Free with Each
Make Suds and Spray
Your Plants Will Surprise You

Also 2 extra bulbs for Laundry use all \$1.10
Do not forget to order one with your seeds,
you need it

Make all checks and money orders payable to Geo. L. Stillman, Westerly, R. I.

SEED FIELD CORN

During the last few years I have taken great pride in producing the best corn for family use that can be grown. I think I have now four varieties that contain all the desirable features that any person could wish for family use. One for corn meal and three for green corn. Illustrations and prices for selected seed follow.



STILLMAN'S SPECIAL RHODE ISLAND DOUBLE CAP CORN

Outer end entirely capped. Butt nearly capped. The best white northern corn grown. The ears are large, butt stems are exceedingly small. The ears are easily husked and broken off. It yields two and three ears to the stalk. The kernels are large and in straight rows. It makes the sweetest and best table meal. The kind that makes the best R. I. Johnny-Cakes. Always get the Stillman strain.

40c. pt.

75c. qt.

\$2.00 four qts.

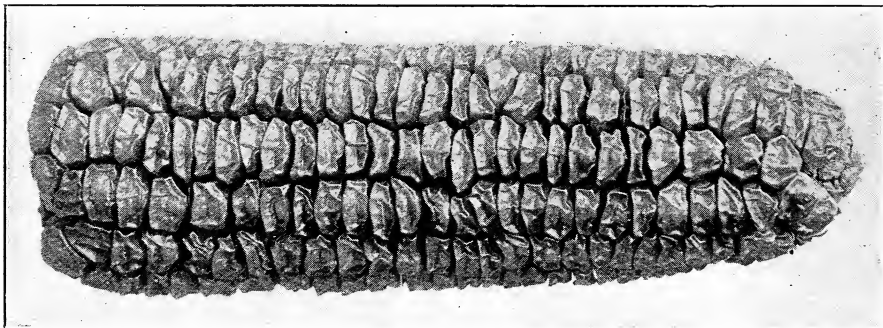
\$4.00 eight qts.

\$7.00 half bu.

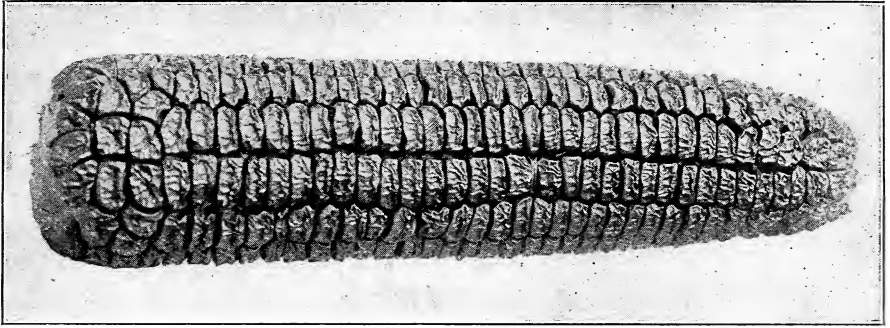
STILLMAN'S EXTRA EARLY GIANT SWEET CORN

matures the earliest and has the largest ears of any extra early sweet corn. Nothing like it for the earliest crop.

Selected Seed, 75c. per pint, 40c. per $\frac{1}{2}$ pint



Stillman's Extra Early Giant Corn. Ears 6 to 7 inches.



The New Sweet Orange Corn. Ears 7 to 8 inches

THE NEW SWEET ORANGE CORN

My entire stock of the Sweet Orange Corn was destroyed. Year old seed in first class condition at half price.

Much larger than the Golden Bantam. The sweetest medium early green corn grown. Grows a medium height and ears profusely.

Selected Seed, 75c. per pint, 40c. per $\frac{1}{2}$ pint

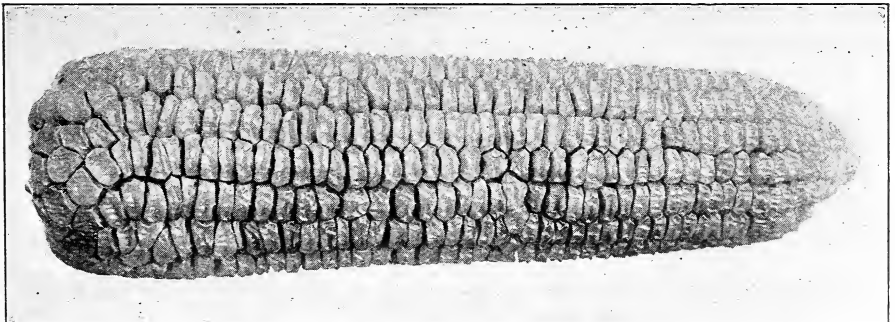
CORN MEAL

Made from Stillman's Special Rhode Island Double Cap Corn. It's the sweetest and best meal on the market. Ground in an old-fashioned stone "Grist Mill." Fresh every week. Price, 10 lbs. \$1.25, postpaid in 1st and 2d Zone.

MT. SHASTA SWEET CORN

The largest and sweetest green corn in the world. This mammoth new corn is in a class by itself. Nothing can beat it for sweetness and its mammoth size.

Selected Seed, 75c. per pint, 40c. per $\frac{1}{2}$ pint



Mt. Shasta Sweet Corn. Ears 9 to 11 inches

DAHLIA SEED

To those who have never tried any of my Dahlia seed I must say that they are missing one of the greatest pleasures of the flower garden. I do not save seed from poor, insignificant flowers. The wonderful success my customers have with my seed is ample proof that it is far superior to any on the market.

Important. — It is very important that you understand that every plant you get from seed is an entirely new variety and may be even better than the flower it is taken from.

DIRECTIONS FOR PLANTING

In the latitude of New York City seed should be sown about March 15th. Flats or boxes about 3 or 4 inches deep is best. Cover the seed about $\frac{1}{4}$ inch deep and keep in a warm place until the plants are all above ground. Then they can be moved to a cooler place. They should be kept in the sun to avoid growing too slender. Transplant in the open when weather is free from frost, about 15 inches apart. Discard any undesirable ones as soon as they bloom, thus giving the others more room.

Prices in large packages as follows:

	Pkg.
The Ocean Group.....	\$25.00
The Five Great Lakes.....	25.00
The N. Y. Group.....	10.00
The Five World Winners.....	5.00
The Ten Sea Lions.....	3.00
The Fighting Ten.....	5.00
The Loma Family.....	4.00
The Indian Family.....	3.00
Mixed Cactus.....	3.00
Mixed Decoratives.....	3.00
Mixed Pæony.....	2.00
Mixed Show.....	2.00
Mixed Pompon.....	2.00
Mixed Collarette.....	1.00
General Mixture.....	1.00
Special Mixture from New Seedlings.....	10.00

To meet the wants of some of my customers I have kept the following five popular varieties of seed separate. Prices as follows:

	Pkg.
Ruth Thompson.....	\$5.00
Mrs. Stillman.....	3.00
Geo. L. Stillman.....	3.00
Mt. Shasta.....	3.00
Snowflake.....	1.00

Full Cultural directions on every package.

Orders for bulbs will be booked for Spring delivery any time in the year.

NOTE. — Have you read instructions carefully about ordering and the best way to send money? Order by **name** as well as by number?

Address all communications to

GEORGE L. STILLMAN, Dahlia Specialist
WESTERLY, RHODE ISLAND

TESTIMONIALS

May 1, 1922.—A gentleman in Pa. wrote: "One year ago I sent you an order for dahlia bulbs which came in due time and I want to thank you for the many surprises they gave me. To say they were the most beautiful I had ever seen would but express it mildly. They were the admiration of all who saw them. They also won first prize at the fair."

Sept. 3, 1922.—A lady in New York wrote me: "Last Spring I sent you a small order for dahlias which included your one dollar collection of unmarked roots. Six or eight are *very nice* ones. Each one of them is well worth the dollar I paid for the whole."

Sept. 11, 1922.—A gentleman in West Va. wrote me thus: "The dahlia seed purchased of you this Spring are producing the most wonderful blooms I have ever seen. I have grown dahlias in great quantities and in many varieties, but have never witnessed such gorgeous blending of colors. The size and shape of the flowers are magnificent."

Aug. 21, 1922.—A lady in Mass. wrote me: "I want to tell how pleased I am with the dahlias I purchased of you last Spring. They are wonderful and many are the compliments they receive."

July 21, 1922.—A lady in Conn. wrote me thus: "My Ruth Thompson now in bloom measures 8 inches across and has not as yet reached full bloom. A beauty!"

June 25, 1922.—A gentleman in New Mexico wrote: "Some time ago I sent you an order for some dahlias and I wish to say I have some of the most beautiful flowers I have been able to find in this section. I am more than pleased with my order."

June 5, 1922.—A gentleman in New York wrote me thus: "I wish to advise you that your dahlias were the best I had last year and I purchased from many dealers. Yours came true to name (something I cannot say of any other dealer last year). As they were your choice selection I was more than pleased."

May 18, 1922.—A lady in New York wrote as follows: "I have been purchasing

your bulbs for the last six years and have always found them true to name and of the finest quality."

Oct. 23, 1922.—A gentleman in R. I. wrote me thus: "I should have written you before this to thank you for the delightful day we spent at your fields. We most certainly did enjoy being with you very much and seeing the dahlias. You have a wonderful flower in "Our Country" and cannot be praised enough for it."

Sept. 10, 1922.—A gentleman in Mass. wrote me thus: "It is with much pleasure that I report splendid success with my seedlings of the 'Ten Sea Lions.' I cannot tell you how much I have enjoyed them."

Sept. 14, 1922.—A gentleman in Penn. wrote me thus: "I have California's best dahlias. I never saw a California dahlia as good as the dahlia you sent me called 'Caruso. I had three flowers on the bush at one time as large as the 'U. S. A.' and looked like big hydrangeas. This dahlia is a leading feature in my dahlia garden."

Sept. 5, 1922.—A gentleman in New York wrote me as follows: "The bulbs you sent me this Spring have done fine all summer. Thank you for the fine selection."

Sept. 2, 1922.—A lady in Wisc. writes me: "The dahlias I purchased of you this Spring are now in their full glory. I have never seen anything quite as glorious as the 'U. S. A.' It blooms constantly and the flowers are enormous. 'Clara Barton' is a close second. The plant is six feet tall and the flowers are exquisite on stems two feet tall."

Oct. 2, 1922.—A gentleman in Mass. wrote as follows (this is only a few lines of his praises for my stock): "Just a word to tell you of my success with the seeds I bought from you last Spring. From 100 seeds I planted I have 65 blooming plants. I exhibited 39 seedlings at the Garden Club Flower Show; 45 blooms at the Churches' Flower Show. Blue ribbon awards at both occasions. Do you not think I have had mighty good luck? I will subscribe to the fact that Stillman's seeds are good enough for me. You have my best wishes for continued success in giving to the public the best dahlias I have ever seen."

Sept. 22, 1922.—A lady in Conn. wrote me thus: "This Spring I sent you one dollar for a collection of twenty bulbs because I had never planted dahlias and wanted to experiment. I cannot begin to tell you of the pleasure we have all derived from that dollar. Only one bulb failed to sprout and such a wonderful variety of blooms. We had all kinds and colors."

Sept. 22, 1922.—A lady in New Jersey wrote me thus: "I have derived so much pleasure from my seedlings grown from the seed of the 'Fighting Ten' that I am sending you one so you can see for yourself."

October 7, 1922.—A gentleman in Ohio wrote thus: "Last spring I purchased dahlia seed from you and am pleased to tell you that the results were more than I expected. I would like to purchase some tubers and would ask you to kindly choose a number of those you like and think would be good sellers."

October 9, 1922. A gentleman in Conn. wrote me of his success thus: "I must write you what wonderful success I have had with my dahlias this season. That most beautiful dahlia, Geo. L. Stillman, was the first to bloom and there has not been a single day that I have not cut fully opened blooms from it. Dr. Robert Taylor has done splendidly. Blooms very large, almost as large as the Cardinal Mercier. Sunflower Gem has shown up fine and deserves a place in every dahlia bed. Marguerite Clark, a gem for color. Forest Loma, a picture in itself. Ruth Van Fleet, Gray Feather, World's Wonder, and Mrs. Stillman have fully shown up to all you claim for them. This town has the fever and we have had local exhibitions and have all shown specimens of the wonderful Geo. L. Stillman dahlias and have received awards."

October 12, 1922.—A gentleman in Ontario, Canada, wrote me thus: "I had some gorgeous blooms this year from your Mercier. It certainly is a wonder."

Oct. 12, 1922.—A gentleman in Pa. wrote me as follows: "We have several dahlia growers in our neighborhood, but am glad to say I did not have to take a back seat with any of them with your dahlias. To say I am well pleased is putting it very mild. This is my first year at growing dahlias."

Oct. 12, 1922.—A lady in N. J. wrote me as follows: "Just a line in reference to the dahlia seed I bought from you. I thought two dollars was a good bit to pay for seed but we get more pleasure from our seedlings than all others together. Now I would like to have some more for next year. Out of the package of seed this year I raised 130 plants. Surely no one could expect more."

Nov. 3, 1922.—A lady in Tenn. wrote me as follows: "Last Spring I ordered No. 1 and No. 4 Collections of you and I simply want to tell you that we have had more pleasure from them than any flowers we ever had, and they have been much admired by all who saw them. All expressing themselves something like this, 'They are wonderful! I never saw anything like them!'"

Oct. 29, 1922.—A gentleman in New Brunswick, Can., sent me a photograph of his seedling dahlias from the Loma Family and said they had had great praise from the people at the Hotel.

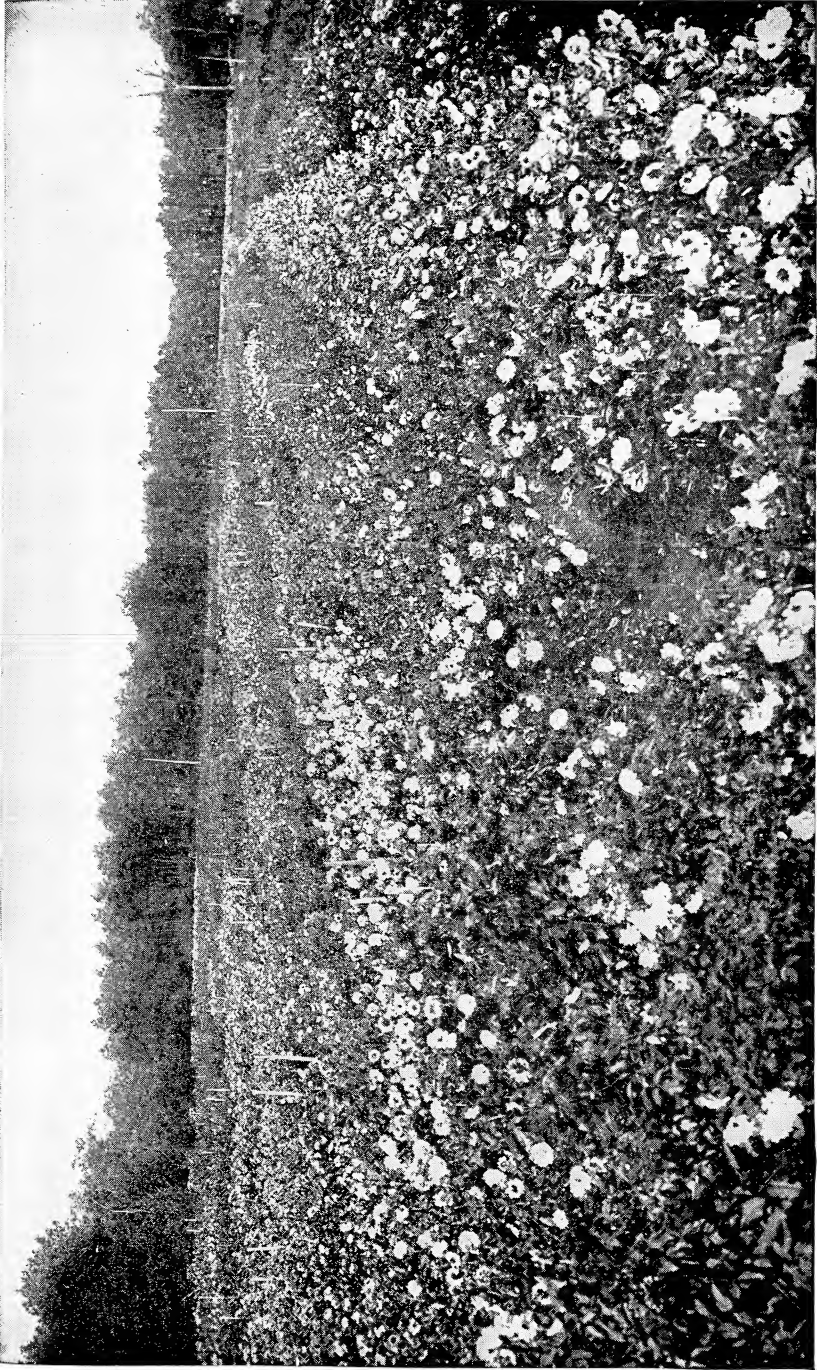
Oct. 25, 1922.—A lady in Ky. wrote me thus: "I intended all last year to write and tell you what splendid success I had from the seed of the 'Loma Family.' Three fourths of the blooms were large and gorgeous, and this year the same bulbs did wonderfully well and were the admiration of everyone."

WORM KILLER

THE WILLIAMS WORM KILLER

I have taken the agency for this new device for killing the borer inside the Dahlia stalks. It is a handy little tool and works to perfection without the slightest injury to the plants.

Price, 50c. Postpaid



PARTIAL VIEW OF ONE OF MY DAHLIA FIELDS CONTAINING OVER FOUR ACRES OF DAHLIAS

