

## **Historic, archived document**

Do not assume content reflects current scientific knowledge, policies, or practices.



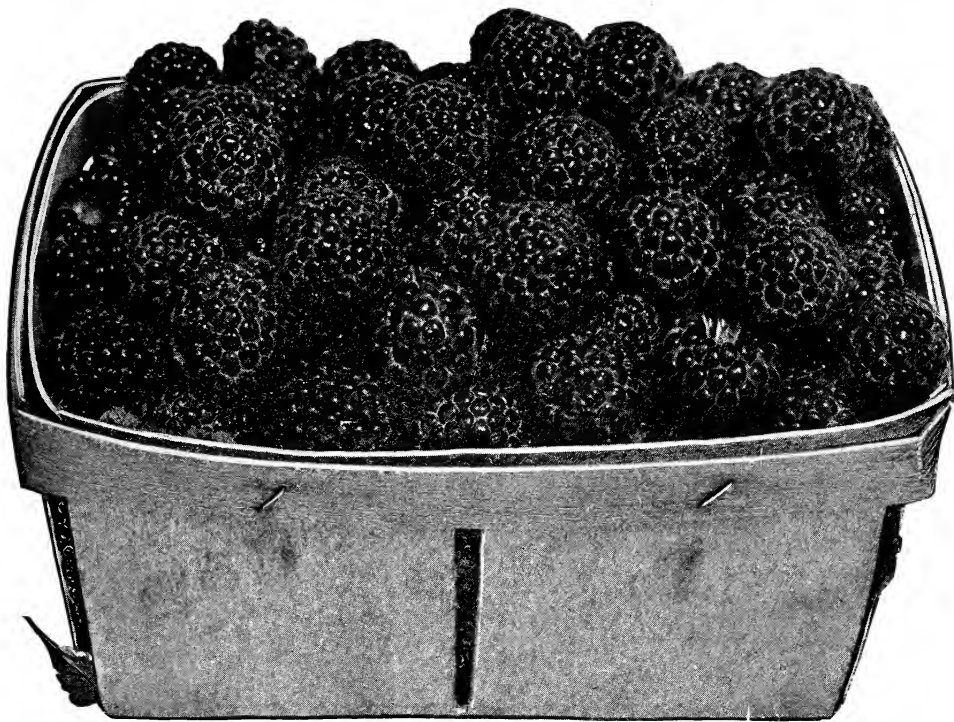
6237 1-51-1923

# Wisconsin Nurseries

W. J. MOYLE & SONS

Twenty-first  
Annual Catalog

Union Grove, Wisconsin **1923**



## ALASKA

Again we take pleasure in calling our friends attention to this wonderful hardy black Raspberry. In fact, it is the only variety that is absolutely dependable with us, as we can always look for a crop of berries in season no matter how cold the winter or dry the summer preceding.

First—Fruit largest size.

Second—Possesses extreme hardiness.

Third—Bears second year.

Fourth—Most Delicious flavor.

Fifth—Remarkably prolific.

Prices of Alaska Raspberry. Nice Plants, 15c each; \$1.25 per 10; \$10.00 per 100.



W. J. Moyle & Sons

## A GREETING TO OUR FRIENDS

Yes, we have consolidated and here is where the boys jump in to help Dad steer the ship of State. The past season has been one of the finest growing summers we have ever had. Our nurseries are full of excellent grown trees, shrubs vines and plants. We solicit your patronage, feeling confident that we can please you as well as save you money.

Most cordially yours,

W. J. MOYLE & SONS.

## CONDITIONS AND TERMS

**Order at Once** Make sure of getting what you want by ordering early. If you are short of funds now, send one-third cash with order, and we will hold stock; and balance can be remitted later, before shipping season.

**Terms Cash**, or part cash with order, and balance as above stated. **The Prices** given in this catalogue are for quantities named, and cancel all previous quotations.

**Shipping.** We make no charge for packing, boxing, etc., and all stock is delivered to forwarders in good order, properly labeled and correctly packed. Freight and express charges are in all cases paid by the purchaser.

**Special Low Express Rates** are granted by all express companies on shipments of plants, about 20 per cent less than merchandise rates.

**Complaints**, if any, must be made at once upon receipt of stock, and, if just, will be cheerfully rectified.

We guarantee good stock and good packing.

While we exercise the greatest care to have all stock genuine, we do not give any warranty, and in case of any error on our part it is mutually agreed that we shall not at any time be held responsible for a greater amount than the original price of the goods.

**Plants by Parcel Post.** Gooseberries, currants, raspberries, blackberries, strawberries, grapes, shrubs, roses, peonies, and vines, in limited quantities, can be cheaply sent by parcel post. As we have no method of telling what the postage on your shipment will be until packed, ready to go, we suggest that when your order is sent by mail, you agree to refund the postage due us on receipt of your stock.

Light apple trees can also be sent by parcel post, but large apples, pears, cherries, plums and shade trees should in all cases be shipped by freight or express.

**Reference.** State Bank, Union Grove, Wisconsin.

# APPLES

4 to 6 feet .....	Each	10	100
3 to 4 feet .....	\$ .50	\$4.50	\$42.00
	.40	3.50	32.00

Those starred (\*) are the hardiest kinds.

## SUMMER APPLES

\***Red Astrachan**—Large, beautiful deep crimson. Valuable for market.

\***Tetofsky**—Medium, yellow, striped red, fine for eating. The best early summer apple.

**Golden Sweet**—Large, pale yellow, tender, sweet.

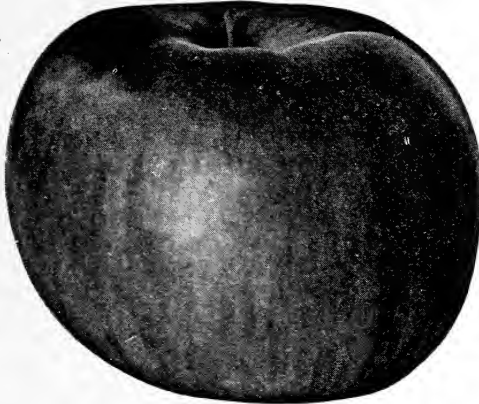
**Sops of Wine**—Medium, dark crimson, sweet.

\***Yellow Transparent**—Earliest and best; white, tender, juicy, sprightly, subacid.

**Lowland Raspberry** — Russian origin; clear white, shaded crimson, most beautiful apple; flesh white, hardy, long lived. Ideal for home use. Fruit of quality.

\***Duchess of Oldenburg**—Good size, yellow, streaked red, juicy, rich, subacid, productive. Valuable for market.

**Lubsk Queen**—The most beautiful apple on earth.



Lowland Raspberry

## AUTUMN APPLES

**Autumn Strawberry**—Tender, juicy, productive, fine for home orchard.

**Alexander**—A large, beautiful red apple.

**Fall Orange**—Fruit large to very large, deep yellow and covered with small black dots; excellent quality. Tree a free grower and very productive.

\***Patten's Greening**—Large, round, slightly flattened, yellowish green with bronze blush, sub-acid. Very hardy.

**St. Lawrence, or Fall Stripe**—Large, streaked red and greenish yellow; fine quality. Tree hardy.

\***Wolf River**—Large, handsome; yellow shaded and striped red, juicy, pleasant, spicy flavor, very hardy. Our biggest apple.

\***Dudley, or North Star**—Originated in Maine. Tree thrifty, perfectly hardy; a good cropper. Fruit, size and appearance of Duchess, but more solid and richer flavor; a few weeks later than Duchess.

\***Wealthy**—Originated in Minnesota. Hardy. Vigorous and very productive.

**Beautiful Arcade**—A great big yellow, splashed with red, sweet apple. A fine baker. Tree is hardy as the Duchess.

**Lowell, or Greasy Pippin**—Large, Golden yellow with waxy skin; delicious quality. The finest eating apple.

**Okabena**—Similar to Duchess, but later and preferred by many to that variety.

## WINTER APPLES



Salome

**Ben Davis**—Large, handsome, striped, valuable.

**Delicious**—Good size, fine quality. Tree good grower and hardy.

**Grimes' Golden**—Good size, yellow, of highest quality, very productive.

**Hubbardston**—Large reddish russet, crisp, juicy.

**Golden Russet**—Medium, dull russet, quality the best. Tree enormous and early bearer. Valuable for the market.

**Stayman's Winesap**—A very popular winter apple. Largely planted.

**Winter Banana**—A beautiful golden yellow, crimson cheeked apple with a decided banana flavor. Tree hardy.

**Gano**—An improved Ben Davis, nearly covered with deep, dark red.

**Fameuse**—(Snow)—Medium, deep crimson, flesh white, of best quality.

\***Hibernal**—Russian, large showy fruit, striped red.

**Jonathan**—Medium, red, extra quality.

**Pewaukee**—A hardy winter apple, good grower and keeper.

**McIntosh**—Medium size, dark red, good quality, juicy, sub-acid.

\***Northwestern Greening**—Hardy, yellow, rich, of good size, extra long keeper.

**Northern Spy**—Large, striped, mild, sub-acid and tender, with a rich, delicious flavor.

**Salome**—Long keeper, annual bearer, medium and uniform size; good quality.

\***Scott's Winter**—Hardy and vigorous; bright red; crisp, spicy; and of a brisk acidity; long keeper.

**Seek-No-Further**—(Westfield)—Medium to large, round, striped with dull red, russet dots; fine grain, tender, rich and excellent.

\***Tallman Sweet**—Medium, yellow, rich. Good keeper.

**Windsor**—Large, oblate, slightly conical, light greenish yellow covered with marbled dull red and russet; fine grained, spicy, sub-acid. Very good.

We can also supply Yellow Bellflower, Pound Sweet, Bailey Sweet and Maiden Blush; 3 to 4 ft. trees at 45c each. \$4.25 for 10.

## CRAB APPLES

	Each	10	100
4 to 6 feet .....	\$ .50	\$4.50	\$42.00
3 to 4 feet .....	.40	3.50	32.00

Perfectly hardy, succeed everywhere, early and annual bearers.

**Hyslop**—Large, deep crimson; one of the most beautiful; very popular.

\***Florence**—One of the best crabs to plant. It is very hardy and an early bearer. Fruit is large, red and of good quality. Originated in Minnesota. Tree is very hardy.

\***Sweet Russet**—Large, roundish oblong, greenish yellow, mild, sweet.

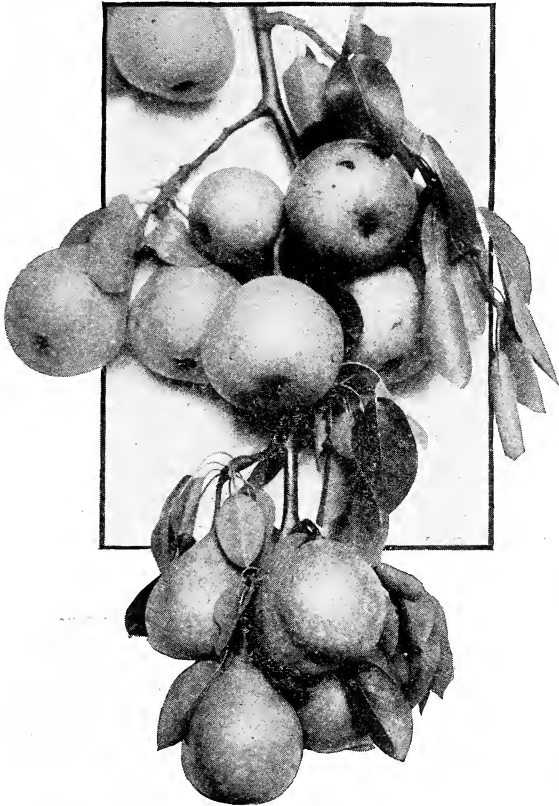
**Transcendent**—Immensely productive, bright red, one of the most popular.

**Whitney**—One of the largest, glossy green, splashed carmine, firm, juicy, pleasant, great bearer. Fine to eat out of the hand.

## PEARS

Standard	Each	10	100
4 to 6 feet .....	\$ .65	\$6.25	\$60.00
Dwarf—			
3 to 4 feet .....	.60	5.50	52.00

Dwarfs, Howell, Seckel, Flemish Beauty, Anjou, Bartlett.



Anjou Pears

**Bartlett**—Large, buttery, juicy, high flavored, great bearer; very popular.

**Clapp's Favorite**—Very large, yellow and red, with russet specks, melting rich.

**Howell**—Large, yellow, with red cheek, rich, sweet, melting, early bearer, productive.

**Flemish Beauty**—Large, juicy, rich; one of the hardiest and most popular.

**Seckel**—Small, skin rich, yellowish brown, when fully ripe, with deep brownish red cheek; flesh very fine grained, sweet, exceedingly juicy, melting, buttery, one of the richest flavored pears known.

**Anjou**—Large, buttery, melting, rich vinous. The best late fall and early winter variety.

**Sheldon** — Medium size; yellow, with a richly shaded cheek; flesh a little coarse, melting, juicy, with a very brisk, vinous, highly perfumed flavor; of first quality. Tree vigorous, erect and handsome, hardy and productive.

**Keiffer**—Its large size, handsome appearance and remarkable keeping and shipping qualities make it exceedingly profitable for market.

## RUSSIAN APRICOTS

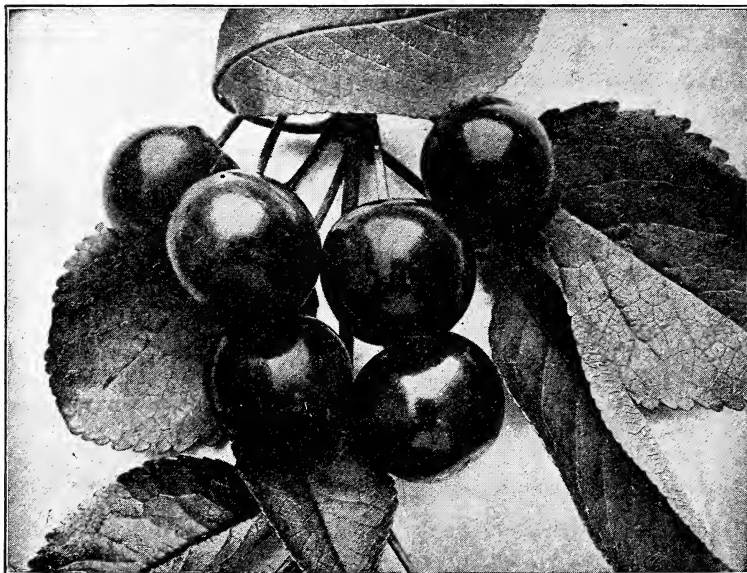
50c each—\$4.75 per 10

These are quite distinct from the European varieties, hardier and will produce fruit when other apricots fail. Recommended where peaches cannot be grown. They are early bearers and productive.

**Superb**—A hardy seedling from Kansas. The best flavored, most productive, hardy apricot yet produced. Golden yellow.

## CHERRIES

	Each	10	100
3 to 4 feet .....	\$.65	\$6.25	\$60.00



Montmorency

**Montmorency**—Large, bright crimson, very juicy, strong, upright growers and one of the best late varieties.

**\*Early Richmond**—An early variety of extreme hardiness bearing large annual crop of medium sized fruit, light to dark red, very juicy.

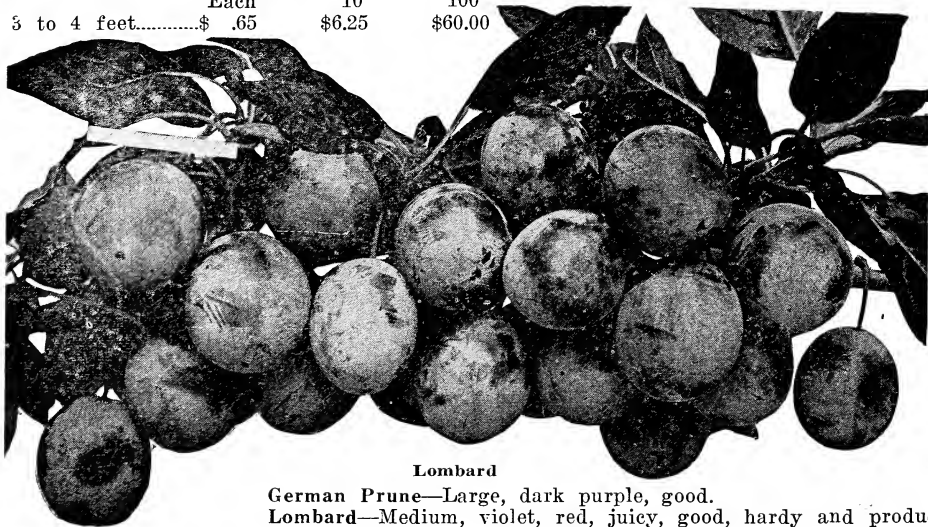
**English Morello**—Large, dark red, juicy, tree somewhat dwarf in growth.

**\*Napoleon**—Large, pale yellow or red; firm, juicy, sweet and productive.

**Dikeman**—From Northern Michigan. The original tree has attained large size and is still producing immense crops; fruit large, black, firm, of excellent quality; fine for keeper and shipper; the latest of all sweet cherries.

## PLUMS

	Each	10	100
3 to 4 feet.....	\$.65	\$6.25	\$60.00



Lombard

**German Prune**—Large, dark purple, good.

**Lombard**—Medium, violet, red, juicy, good, hardy and productive, the leading market variety.





Sapa Plum

**Blue Damson** — Small, purplish - black, juicy, sweet; immense bearer; one of the hardiest in bud and bloom.

**Reine Claude**—(Bavey's Green Gage)—Very large, greenish, fine flavor.

**De Soto**—The fruit is of medium size, dappled red and yellow, ripening in September, and is firm, sweet and juicy. The tree is hardy and productive. Good for general planting and market purposes.

**Forest Garden**—The fruit is very large and round, purplish red, mottled with yellow, juicy, sweet and rich. The tree is clean, healthy, vigorous and productive.

**Hammer**—Of large size, firm, juicy and delicious. Tree is a good strong grower.

**Hawkeye**—The tree is hardy, thrifty and an annual bearer. The fruit is large, light in color, mottled with red, of superior quality, very firm and an excellent shipper. It ripens in September.

**PROF. HANSEN'S NEW PLUMS**

We have fruited these wonderful plums on our grounds and can truthfully say they are the most remarkable creations in fruits of the present day.

**Hanska**, with its beautiful appearance, high color and rich fragrance and flavor, is a real acquisition.

**Opata** is a cross between the Sand Cherry and the Gold Plum. Bears the second year; fine quality and as hardy as a willow.

**Sapa** much like a large Ox-heart cherry, dark flesh and juice. Fine quality. Five-foot trees at three years bear 1 to 1½ bushels, and **keep it up**. Every home in the country should possess from one to a dozen of these wonderful trees.

**Waneta**—Best of Hansen's Hybrids; good thrifty grower; very hardy. Fruit very large and of finest quality.

Prof. Hansen's Plums, nice little trees—

	Each	10	100
3 to 4 feet .....	\$ .70	\$6.50	\$60.00

**PEACHES**

	Each	10	100
4 to 5 feet .....	\$ .40	\$3.75	\$35.00

**Crawford's Early**—A magnificent, large yellow peach of good quality. Early in September.

**Crawford's Late**—A superb, large, yellow peach. One of the best. Last of September.

**Rochester**—One of the hardiest, abundant bearer; medium size, bright yellow, fine quality. Middle of August.

**Champion**—A large, handsome early variety, creamy white with red cheek, sweet, rich and juicy. Hardy and productive. August.

**Elberta**—Large, yellow with red cheek; flesh yellow, firm, juicy. Exceedingly prolific, sure bearer and hardy. The leading market variety. Follows Early Crawford.

**SUCCESS JUNE BERRIES**

**Success June Berries**—One of our most desirable fruits for the garden. Very hardy and productive. Much like blue berries. **25c each; \$2.00 per 10.**

## GOOSEBERRIES

	Each	10	100
Houghton or Downing..\$	.25	\$2.25	\$20.00
Chautauqua or Carrie..	.30	2.75	25.00

**Downing**—Large size, oval, greenish white; plant very vigorous and hardy, with stiff, strong shoots; foliage heavy, covering the fruit from the sun, and resisting mildew; bears most abundantly and is profitable for market and home use.



Carrie Gooseberries

**Houghton's Seedling**—A vigorous American sort; very productive; free from mildew. Fruit medium, roundish, smooth, of a pale red color; tender, sweet and of delicious flavor.

**Chautauqua**—One of the most prolific large gooseberries grown. Bush strong and vigorous, berries light yellow, free from spines and hair; veined and transparent; sweet and delicious.

**Carrie**—Is extremely vigorous and healthy in foliage, and promises good. Of fine quality and the most productive of all. The berries hang in clusters like grapes on the branches.

## CURRANTS

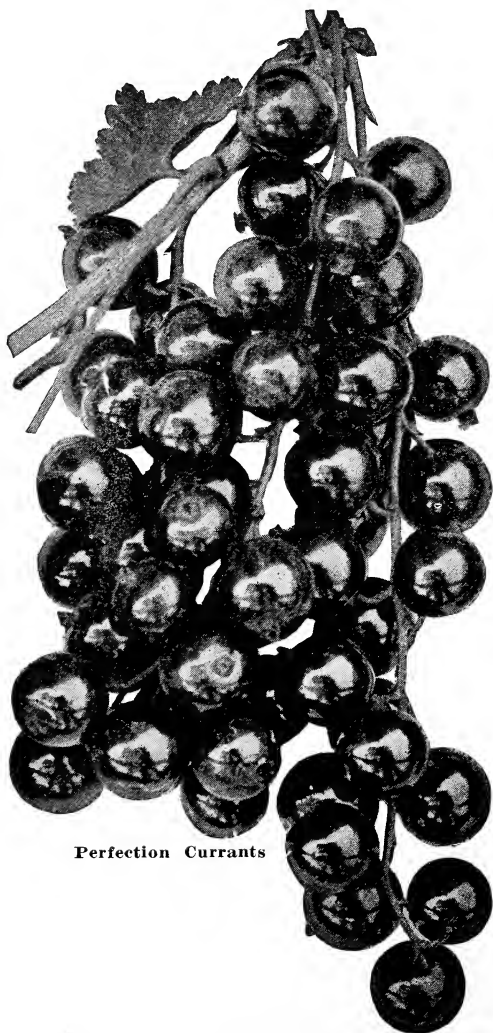
	Each	10	100
Prices .....	\$.25	\$2.25	\$20.00

**Fay's Prolific**—The leading market variety. Extra large stems and berries, uniform in size, easily picked, exceedingly productive.

**White Grape**—Very large, yellowish white; sweet or very mild acid; excellent quality and valuable for the table. Productive.

**Black Victoria**—A strong, vigorous grower, making a neat bush of unending productiveness; fruit of fine flavor and enormous size; the largest black in cultivation.

**Perfection**—A grand currant, large berry of finest quality; two weeks later in ripening than Fay.



Perfection Currants

# RASPBERRIES



**Latham**—This is a wonderful red Raspberry. The past season on our grounds it beat all the other varieties in yield and the berries were, many of them, one inch in diameter. Cuthbert froze to the ground while Latham came through live to the tips.

Each 20c; per 10 \$1.50; per 100 \$10.00.

**St. Regis Everbearing Raspberry**—This wonderful raspberry marks a new era with this popular fruit. We have a large planting of St. Regis and during September and October we picked crates of the most delicious berries, in fact there were berries on the canes all summer long.

**Erskine Park**—A new everbearing red raspberry. This berry originated at Lee, Massachusetts. It was found growing in a Cuthbert plantation and is no doubt a seedling of this old favorite. It bears a good June crop and then after the old canes have been cut fruit buds begin forming on the tip ends of the new growth and begin to ripen about September 1st and continues to ripen until late in fall. The fruit is quite large and of excellent flavor. We have a fine stock of these plants that hung full of delicious red berries all through last September and October. Try it.

**Latham**—This variety originated at the plant breeding farm at Excelsior, Minnesota, where it has proven to be entirely hardy. The canes are strong, clean growers, very healthy, and free of diseases. They are very productive and the fruit is large, good color and very firm. Each 20c; per 10 \$1.50; per 100, \$10.00.

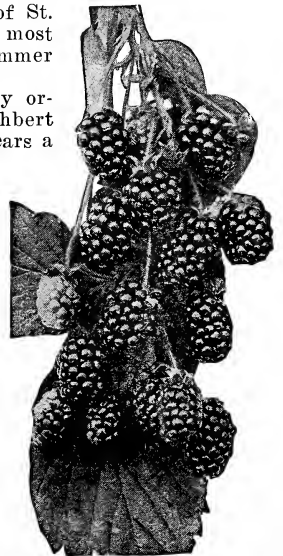
	Each	10	100
Prices .....	\$ .10	\$ .80	\$ 6.00

**Kansas**—Jet black, firm and delicious, as large or larger than Gregg. The hardest black cap known, successfully withstanding the winters.

**Columbian**—A vigorous grower; canes often ten to fifteen feet in length and over an inch in diameter. Never suckers from the roots. Very hardy, enduring 28 degrees below zero. Fruit very large, dark red, bordering on purple; adheres firmly; rich, sprightly flavor.

**Cuthbert**—(Queen of the Market)—Large conical, deep, rich crimson; firm, of excellent quality. A vigorous grower, entirely hardy, and immensely productive.

**Golden Queen**—Rich golden yellow. The flavor is of the highest quality, pronouncedly some superior to Brinskle's Orange. In size equal to Cuthbert; immensely productive; a very strong grower and hardy enough even for extreme northern latitudes.



**ELDORADO**

The hardest, most vigorous and productive of all blackberries.

# BLACKBERRIES

	Each	10	100
Prices .....	\$ .10	\$ .80	\$ 6.00

**Snyder**—Extremely hardy; enormously productive; medium size; no hard sour core.

**Eldorado**—On account of the peculiar thick and elastic composition of the leaf of the Eldorado it stands in a class by itself. Rust or scalding sun do not affect them. If you have been disappointed in growing Blackberries, take our advice and try the Eldorado. We have the true blue stock.

**Ancient Briton**—One of the best.



Dr. Burrill

## STRAWBERRIES

Warfield, Minnesota No. 4, Burrill, Dunlap, Splendid, per 10, 25c; per 100, \$1.00; per 1000, \$7.00.

**NOTICE**—To parties wishing plants sent by mail add 10 cents per hundred to cover cost of postage and packing. We can ship any distance by mail and plants will arrive in fine condition.

**Warfield**—Imp. Medium size, roundish conical, dark red, very firm and a good shipper. A leading market variety.

**Splendid**—Large size, good quality, and very productive. Medium to late.

**Senator Dunlap**—Medium to large, conical, dark red, firm and of first quality, midseason. A vigorous grower and usually makes too many plants for best results, unless growth is restricted. It is as productive as Warfield, berries are better colored and a third larger.

**Dr. Burrill**—An improved Dunlap; very fine.

**Minnesota No. 3**—The hardiest plant in our nursery; berries large; dark red.

## EVERBEARING STRAWBERRIES

**Duluth**—Best of all in our estimation.

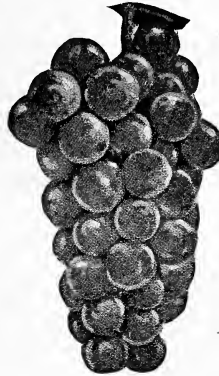
**Progressive**—All that the name implies; everybody should grow them.

Prices, per 10, 40c; per 100, \$2.75; per 1000, \$25.00.

THREE GOOD GRAPES



Moore's Early



Pocklington



Brighton

GRAPES

	Each	10	100
One year, first class .....	\$ .25	\$2.25	\$20.00

**Campbell's Early**—The berries are large, often an inch or more in diameter, glossy black with a purple bloom, sweet and juicy, with few seeds. They ripen from the fifteenth to the last of August. As a keeper and shipper this variety is unequalled by any other American grape, while as a dessert grape it is delicious.

**Concord**—The well known standard variety, succeeds wherever grapes will grow.

**Brighton**—Bunch large, well formed; berries above medium to large; round; excellent flavor and quality; one of the earliest in ripening.

**Delaware**—Bunches small, compact, shouldered; berries rather small, round, skin thin, light red; flesh very juicy; sweet, spicy and delicious.

**Lindley**—(Roger No. 9)—Berries medium to large, red; flesh tender, sweet and aromatic; ripens early.

**Diamond**—The leading early white grape, ripening before Moore's Early. White, with rich yellow tinge; juicy, few seeds, almost free from pulp; excellent quality; above medium size, adheres firmly to the stem. Fine variety for both market and home garden.

**Moore's Early**—Bunch large, berry large, round, with heavy bloom, vine exceedingly hardy. Its earliness make it desirable for an early market. Its hardiness particularly adapts it to Canada and the northern portions of the United States.

**Pocklington**—Bush and berries large, when fully ripe a light golden yellow; juicy, tender, sweet and with little pulp. Vine thoroughly hardy, strong grower, free from mildew; productive. One of the most satisfactory white varieties.

**Worden**—A splendid grape of Concord type, larger, better quality and earlier. Vine vigorous; hardy and productive.

**Niagara**—Occupies the same position among white varieties as Concord among the black; the leading profitable market sort. Bunch and berries large, greenish white changing to pale yellow when fully ripe. Skin thin but tough; quality much like Concord.

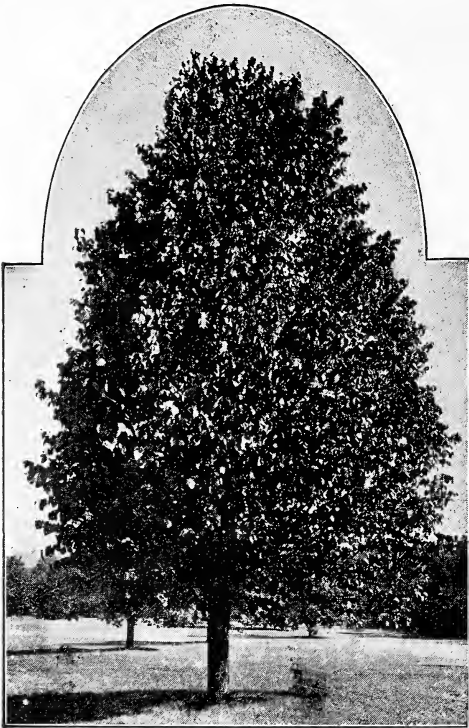
	Each	10	100
Hardy Minnesota Grapes .....	\$ .40	\$3.50	\$30.00

**Alpha**—A fine black grape found growing wild in Minnesota; has stood 25 to 30 degrees below zero and bore a good crop.

**Beta**—A very hardy hybrid wild grape; fine for jellies and grape juice.

**Hungarian**—Much like Concord but earlier and a great deal harder; a great acquisition.

## SHADE AND ORNAMENTAL TREES



Linden or Basswood

	Each	10	100
Norway Maple, 6 to 8 ft.	\$1.50	\$14.00	\$125.00
Sugar Maple, 6 to 8 ft.	1.50	14.00	125.00
Soft Maple, 6 to 8 ft.	1.00	9.00	80.00
White Elm, 6 to 8 ft.	1.00	9.00	80.00
White Ash, 6 to 8 ft.	1.00	9.00	80.00
Linden, 6 to 8 ft.	1.00	9.00	80.00
Catalpa, 6 to 8 ft.	1.00	9.00	80.00
Mountain Ash, 6 to 8 ft.	1.00	9.00	80.00
Poplar, Carolina, 6 to 8 ft.	1.00	9.00	80.00
Box Elder, 6 to 8 ft.	1.00	9.00	80.00
Horse Chestnut, 4 to 5 ft.	1.00	9.00	80.00

## RARE TREES AND SHRUBS

- Purple Leaf Maple**—A beautiful lawn tree 6 to 8 feet, \$2.00 each.
- Spirea Arguta**—Blooms first thing in the spring. Beautiful, 40 cents each.
- Double White Lilac**—Most charming and sweet, 40 cents.
- Golden Syringa**—Beautiful yellow leaves, 40 cents.
- Betchels Flowering Crab**—3 to 4 feet, 75 cents.
- Red Bud**—3 to 4 feet, 75 cents.
- Strawberry Tree**—3 to 4 feet, 50 cents
- Tamarix**—1 to 2 feet, 25 cents.

## WEeping TREES

	Each	10	100
Cut-leaf Birch, 5 to 6 ft.	\$2.00	\$18.00	—
Mountain Ash, 5 to 6 ft.	2.00	18.00	—
Elm, Camperdown, 5 to 6 ft.	2.00	18.00	—
Mulberry, Teas, 5 to 6 ft.	2.00	18.00	—
Willow, Kilmarnock, 5 to 6 ft.	2.00	18.00	—

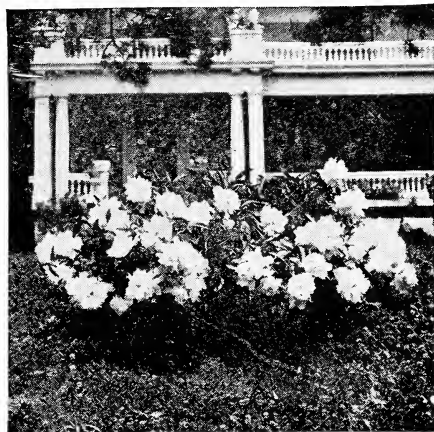
## GARDEN ROOTS



	Each	10	100
Rhubarb or Pieplant .....	\$.10	\$1.00	\$ 8.00
Horse Radish .....	.10	1.00	8.00
Asparagus, Conover .....	.05	.30	2.50

## PEONIES

We have a very fine collection of this noble flower, and invite your especial attention to our very low prices on good, strong roots of the following named sorts at 40c each; \$3.50 per 10; \$30.00 per 100.



Festiva Maxima Peonies

**Modesta**—Purple, sweet scented, fine cut flower.

**Bromwell**—Soft, silvery pink, very fragrant. Great bloomer.

**American Beauty**—Just like the American Beauty Rose, with delightful fragrance.

**Floral Treasure**—The most beautiful pink imaginable, great bloomer.

**Delachii**—Glorious, purplish crimson. One of the best.

**Grandiflora Rubra**—Very late and large, blood red.

**Golden Harvest**—Fine yellow, blush guard petals.

**La Esperance**—Early, delicate pink, sweet scented.

**Victoria**—White creamy center; fine as a cut flower.

**Crown of Gold**—A very rare and new variety. Pearly white with golden center, splashed with red.

**Superba Purpurea**—Dark purple, very double, one of the finest.

**Festiva Maxima**—The best white, charming, waxy, center splashed red.

## CLIMBING VINES

**Varieties**—Virginia Creeper, Trumpet Creeper, Scarlet Honeysuckle, Purple Wisteria.  
Each, 25c; per 10, \$2.00; per 100, \$20.00.

## HARDY ROSES

Good strong field-grown bushes that will bloom nicely the first summer.

	Each	10	100
Prices, except as noted .....	\$ .40	\$3.75	\$35.00

**J. B. Clark**—This splendid new Rose is placed by some cataloguers among the Hybrid Teas; but it is perfectly hardy, unusually large and expresses in every way the characteristics of the Remontant type. It is robust in growth, with clean, heavy foliage. Flowers are large and superbly constructed; deep scarlet overlaid with crimson.

**Anne de Diesbach**—Beautiful shade of carmine; very large and fragrant; quite hardy and a good forcing rose.

**Baron de Bonstetten**—Rich, velvety, maroon, large and full; a splendid sort.

**Frau Karl Druschki**—Very large, perfect form and snow white; a vigorous grower and a free bloomer.

**General Jacqueminot**—One of the most popular of the red roses; brilliant crimson, large and very effective; very fragrant and one of the hardiest.

**Magna Charta**—Extra large and full, bright rosy pink; a profuse bloomer and very hardy.

**Madam Gabriel Luizet**—Rich, soft pink with deep, flesh-colored center; large, full and sweet.



**Excelsior or Red Dorothy**

**Geo. Arends**—(Pink Druschki.)—Without a doubt has few equals; lovely pink.

**Hugh Dickson**—Magnificent crimson, shaded with scarlet. Flowers very large, of perfect shape and fully double. Plant strong, vigorous, productive.

**Conrad Ferdinand Meyer**—Extra large, full deep pink; a free bloomer; very handsome, and extremely hardy.

**Paul Neyron**—Said to be the largest rose in cultivation; bright, clear pink; very fragrant, hardy and a strong grower.

**Prince Camille de Rohan**—Very dark, velvety crimson, almost black, large and full; a beautiful sort.

**Moss Roses**—Blanche Moreau, Crimson Globe, Princess Adelaide, Blanche Roberts, Rosa Rugosa, red and white.

**Climbing Roses**—Crimson Rambler, Empress of China, Prairie Queen, Yellow Rambler, Baltimore Bell, Seven Sisters, Russell Cottage, Dorothy Perkins, Philadelphia Rambler, Flower of Fairchild, Excelsa and Austrian Yellow.

**Baby Rambler**—Red, White, Pink, and Yellow. Nice little bushes that will bloom all summer.





SPIREA VAN HOUTTEI

## ORNAMENTAL SHRUBS

	Each	10	100
All good bushes from 1 to 2½ feet, prices.....	\$ .25	\$2.25	\$20.00

**Flowering Almonds**—Pretty double pink flowers in early spring.

**Amoor River North Privet**—Very hardy, makes a fine hedge.

**Hydrangea Arborescens or Hill of Snow**—Beautiful hardy native shrub.

**Barberry Thunbergii**—Dwarf grower, bright red berries.

**Deutzia Gracilis**—Pure white, fragrant flower.

**Dogwood**—Red bark, pretty in winter.

**Flowering Currants**—Sweet scented blossoms in early spring.

**Golden Elder**—Yellow foliage, very attractive.

**Hardy Hydrangea**—Blossoms late in fall.

**Lilac—Common**—Fragrant, single lilac colored flowers.

**Lilac—White**—Pure waxy white.

**Lilac—Charles the Xth**—Enormous, purplish red blooms.

**Lilac—Pres. Loubert**—A fine double sort, color sky blue.

**Lilac—Lamark**—Double, color porcelain blue.

**Spirea Van Houttii—Bridal Wreath**—white flowers in May.

**Japan Quince**—Brilliant scarlet, flowers in early spring.

**Snowball**—Large clusters of blossoms in June.

**Snowberry**—Pink flowers with red and white berries in the fall.

**Wiegelia—Rosea**—Pink flowers in June.

**Wiegelia—Floribunda**—Flowers dark crimson.

**Syringa—(Mock Orange)**—Flowers large, sweet and pure white.

**Honeysuckle Tartarian**—Pink blossoms, sweet scented.



Moore's Early

# Wisconsin Nurseries

Union Grove

- - -

Wisconsin