

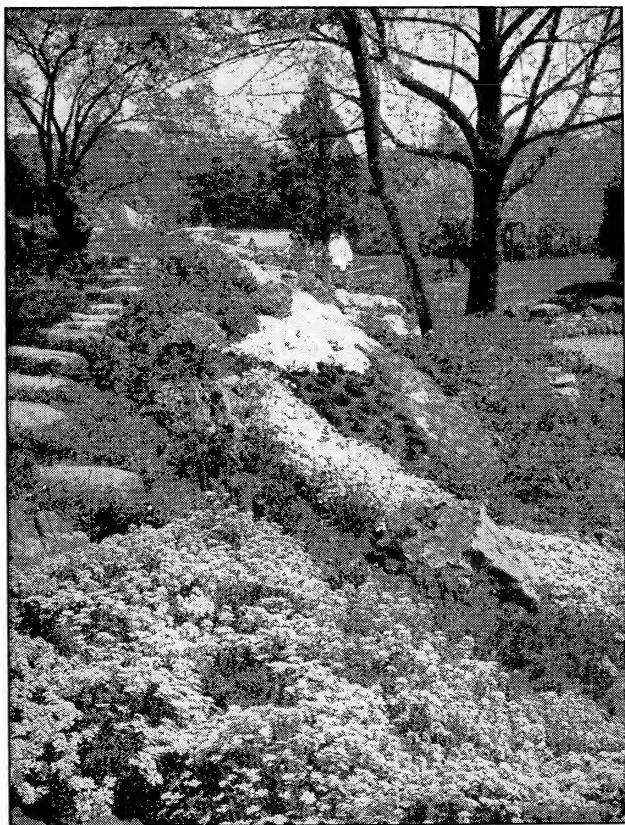
## **Historic, archived document**

Do not assume content reflects current scientific knowledge, policies, or practices.

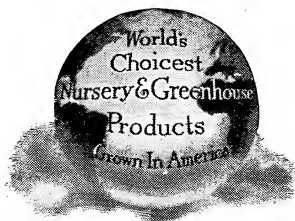


62.57 Fred 1924

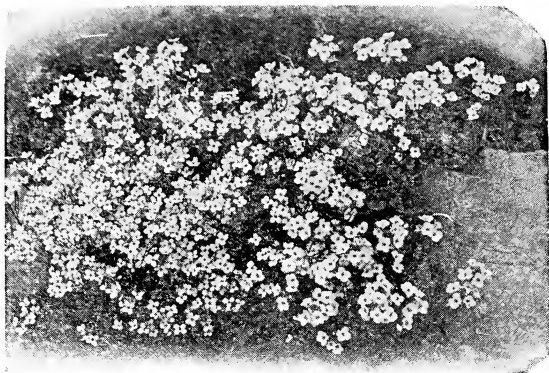
# Plants for the Rock-Garden



**BOBBINK & ATKINS**



**RUTHERFORD, NEW JERSEY**



*Arabis alpina*. See page 4

## *Rock-Gardens*

**T**HERE is probably no branch of horticulture so well known, and so full of interest, as the Alpine Garden. Smaller gardens are made more interesting on account of many miniature plants peeping out of crevices and corners which would in all probability be overlooked in a rockery of more extensive proportions.

The site chosen for the Rock-Garden should, so far as possible, be naturally picturesque and in harmony with its surroundings. It is advisable to select rocks that do not crumble with exposure; old, moss-grown rocks that have a weather-beaten appearance are also to be preferred to newly broken rock.

Another point of great importance is the proper building of the garden. This should be done step by step, building both soil and rock together, which eliminates the possibility of holes between the rocks, as is often the case with so-called rockeries that are merely a heap of stones with soil thrown over them, or vice versa.

The rocks should be placed more or less flat, in such manner that the water will run into the soil and not drain off. When in this position, the rocks protect the roots from heat and drought in summer and severe frost in winter. The pockets should be large enough to allow ample space for soil, and in places where roots can grow unobstructed between the rocks.

An annual top-dressing of soil in spring aids in keeping the trailing stems in place, as well as being beneficial to all the plants. The soil should be watched in summer and kept moist by watering.

It is advisable to plant small evergreens throughout the rockery, so that a winter effect can be obtained, even when the flowering plants have died down. The latter should be selected from those varieties that will collectively cover a long season of bloom. The bog-plants, if any, should be near the pool or stream.

All the varieties named in this list have been tried and have proved highly satisfactory for Rock-Garden planting, the majority being essentially rock-plants.

Varieties marked with an asterisk (\*) are potted plants. These are extra-strong, and when transplanted in your Rock-Garden will start growth at once, producing their charming effect much sooner than the ordinary field-grown plants. They are a splendid investment and produce quick results.

## Hardy Perennial Plants

30 cts. each, \$2.20 for 10, \$18 per 100, except where noted. Five of any variety will be sold at 10 rate, 25 at 100 rate. Special prices on large quantities.

- Aceranthus diphyllus roseus*. See *Epimedium diphyllum roseum*.
- \**Achillea tomentosa* (Woolly Yarrow). Bright yellow flowers. 8 in. June.
- Adonis amurensis* (Bird's-Eye). Pretty fern-like foliage; large yellow flowers. 1 ft. April, May. 75 cts. each, \$6.50 for 10.
- amurensis fl.-pl.* A double-flowering form. 1 ft. April, May. 75 cts. each, \$6.50 for 10.
- \**Ægopodium Podagraria variegatum*. Rapid-growing foliage for edging. Also good in shady places. 12 to 14 in.
- \**Æthionema coridifolium*. Rosy lilac flowers. 4 to 6 in.
- \*—*grandiflorum*. Flowers rose-colored. 1 ft.
- \*—*persicum*. Flowers deep rose.
- \**Ajuga genevensis*. Blue flowers. 8 in. May, June.
- \*—*reptans* (Bugle). Blue flowers; compact grower. 6 in. May, June.
- \*—*reptans rubra*. A lovely variety of the preceding with dark purple flowers. 6 in. May, June.
- \**Alyssum rostratum* (Beaked Madwort). Dense heads of yellow flowers. 20 in. June—August.
- \*—*saxatile* (Golden-Tuft). Clusters of golden yellow flowers in abundance. 1 ft. April, May.
- \*—*saxatile fl.-pl.* A double-flowered form of *A. saxatile*. 1 ft. May, June. 50 cts. each, \$4.50 for 10.
- Anchusa myosotidiflora*. New. Produces graceful panicles of bright blue flowers. April, May. 75 cts. each, \$6.50 for 10.
- \**Androsace lanuginosa*. Gray silky foliage; flower rose with yellow eye. 6 in. 35 cts. each, \$3 for 10.
- \*—*sarmentosa Chumbyi*. A creeping plant bearing an abundance of rose-colored flowers in dense rosettes, in early spring. 35 cts. each, \$3 for 10.
- \**Anemone Pulsatilla*. A beautiful border or rock-plant. 9 in.
- \*—*Pulsatilla rubra*. A red form of the above. 9 in.
- \*—*sylvestris*. Large white flowers. 9 in.

All Anemones, 35 cts. each, \$3 for 10

- \**Anthericum (Paradise) Liliastrum major* (St. Bruno's Lily). Narrow, grass-like foliage; white flowers. 50 cts. each, \$4.50 for 10.
- Aquilegia alpina superba*. Blue-and-white flowers. 2 to 3 ft. May, June.
- cærulea* (Rocky Mountain Columbine). Large, blue-and-white, long-spurred flowers. 2 to 3 ft. May, June.
- californica hybrida*. A fine collection of distinct colors, such as yellow, pink, orange, red, etc. 2 to 3 ft. May, June.
- canadensis* (American Columbine). A compact plant with red and yellow flowers. 2 to 3 ft. May, June.
- chrysantha* (Golden-spurred Columbine). Very showy variety with an abundance of yellow, fragrant flowers. 2 to 3 ft. May, June.

## Perennials for the Rock-Garden

- Aquilegia vulgaris* alba fl.-pl. Double white flowers. 2 to 3 ft. May, June.  
—*vulgaris nivea grandiflora*. A compact grower, with an abundance of large white flowers. 2 to 3 ft. May, June.
- \**Arabis alpina* (Rock Cress). Pure white flowers. 5 in. April, May.  
\*—*alpina* fl.-pl. A double-flowering form of the preceding. 5 in. April, May. 50c. each, \$4.50 for 10.
- \**Arenaria montana* (Sandwort). White flowers. 4 in. April, May.
- Armeria*. See *Statice*.
- \**Asperula odorata* (Sweet Woodruff). A sweet-scented herb with white flowers. 6 to 8 in. May, June.
- \**Aster alpinus*. Flowers vary from pink to white. 5 to 10 in. May, June.  
\*—*alpinus albus*. Pure white. 6 to 12 in. May, June.  
\*—*subcæruleus magnificus*. Beautiful light blue with orange disk. June. 12 in. 35 cts. each, \$3 for 10.
- \**Aubrietia deltoidea* (False Wall Cress). Dark violet flowers. 6 in. April, May.  
\*—*deltoidea græca*. Dwarf, compact variety with large, violet-purple flowers. 6 in. April, May.  
\*—*deltoidea Hendersonii*. Violet. 6 to 12 in. April, May.  
\*—*deltoidea purpurea*. Large purple. Erect in habit. 6 to 12 in. April, May.  
\*—*deltoidea, Violet Queen*. Violet-purple. 6 to 12 in. April, May.
- All Aubrietias, 35 cts. each, \$3 for 10
- \**Calamintha*. See *Satureia*.
- \**Callirhoë involucrata* (Poppy Mallow). An elegant trailing plant with finely divided foliage and large, saucer-shaped flowers of deep rosy crimson with white center. 1 ft. June–September.
- Calystegia*. See *Convolvulus*.
- \**Campanula carpatica* (Harebell). Large, erect, light blue flowers. 5 to 7 in. July, August.  
\*—*carpatica alba*. A white form of the above. 5 to 7 in. July, August.  
\*—*carpatica turbinata*. More dwarf and compact, with purplish blue flowers more bell- or top-shaped and often 2 inches across. 9 to 15 in.  
\*—*lilacina*. Light blue.  
\*—*Raineri*. Dark purplish blue. One of the choicest rock-plants. 8 to 12 in.  
\*—*rotundifolia* (Blue Bells of Scotland). Bright blue, bell-shaped flowers. 1 ft. June–August.
- Centaurea dealbata*. Compact habit; deep pink flowers. 1½ ft. July, August.
- \**Cerastium tomentosum* (Snow-in-Summer). Bright, silvery foliage; white flowers. 6 in. May, June.
- \**Ceratostigma plumbaginoides*. See *Plumbago Larpentæ*.
- \**Chrysanthemum arcticum* (Arctic Daisy). Large white flowers, sometimes tinged lilac or rose. 12 to 18 in. September–November.
- Convallaria majalis* (Lily-of-the-Valley). Pure white flowers. 8 to 10 in. May, June. Field-grown clumps. 50 cts. each, \$4.50 for 10.
- \**Convolvulus japonicus* fl.-pl. (*Calystegia pubescens* fl.-pl.). A creeping vine with double, flesh-colored flowers. May–August.

## Perennials for the Rock-Garden

- \***Crucianella stylosa** (Crosswort). Small, crimson-pink flowers in round heads  $\frac{1}{2}$  inch in diameter. 6 to 9 in. June–September.
- \***Delphinium grandiflorum chinense**. Large blue flowers, varying to white, the spur and lower petals often violet. 12 to 18 in. June–September.
- \*—**grandiflorum chinense album**. A pure white variety of the preceding. 12 to 18 in. June–Sept.
- Dianthus delicata**. Single; rose-pink, petals striped red.
- \*—**deltoides** (Maiden Pink). A dwarf variety with sprays of pink flowers. 8 in. May, June.
- \*—**deltoides alba**. A white-flowered form of the preceding. 8 in. May, June.
- , **Her Majesty**. Best large pure double white.
- , **Homer**. Deep rose with darker center.
- , **Juliet**. White, laced crimson.
- latifolius atrococcineus fl.-pl.** (Everblooming Hybrid Sweet William). Double, crimson flowers. 10 to 12 in. May, June.
- , **Lord Lyon**. Double; rosy pink, striped red.
- \*—**neglectus**. One of the finest for rockwork; carmine. 5 in. 50 cts. each, \$4.50 for 10.
- Dicentra formosa**. Long scapes of pendent, deep rose flowers; finely divided foliage. 1 ft. May–August.
- spectabilis** (Bleeding-Heart). Flowers rose-crimson, heart-shaped, in long, drooping racemes. 1  $\frac{1}{2}$  ft. April–June. 75 cts. each, \$6.50 for 10.
- \***Dodecatheon Meadia** (Shooting Star). Reddish purple flowers with rich orange eyes. 1 ft. May.
- \***Draba bruniaefolia**. Dense, dwarf rosettes of yellow flowers. 3 in. 35 cts. each, \$3 for 10.
- \*—**fladnizensis (androsacea)** (Whitlow Grass). White, sometimes yellowish flowers in spring. 2 to 3 in. 35 cts. each, \$3 for 10.
- Dracocephalum grandiflorum** (Dragon's Head). Flowers blue; foliage dark green; compact. 1 ft. June, July.
- Ruyschiana**. Spikes of purple flowers. 1 ft. June, July.
- Epigaea repens** (Trailing Arbutus). Dainty pink flowers; fragrant. 2 to 4 in. April, May.
- Epimedium alpinum**. Flowers grayish, dark crimson, and yellow. 9 in. May, June.
- diphyllum roseum (Aceranthus diphyllum roseus)**. Small, rose-colored flowers. 9 in. May, June. 50 cts. each, \$4.50 for 10.
- macranthum violaceum**. Beautiful lilac flowers. 9 in. May, June.
- Musschianum**. Whitish or pale yellow flowers. 9 in. May, June.
- pinnatum colchicum**. Bright golden yellow flowers. 9 in. May, June.
- All Epimediums, 50 cts. each, \$4.50 for 10
- \***Erigeron glabellus**. Flowers violet-purple or white. 6 to 20 in. June, July.
- , **Quakeress**. A continuous bloomer with mauve-colored flowers. 2 ft. June–October.
- \***Erinus alpina**. Rosy purple. 6 in. 35 cts. each, \$3 for 10.
- Euphorbia epithymoides (polychroma)** (Flowering Spurge). Chrome-yellow flowers in early spring. 1 ft.

## Perennials for the Rock-Garden

**FERNS.** A shaded position is necessary. Of easy culture; use a liberal amount of leaf-mold or good earth from the woods.

**Asplenium Filix-fœmina.** A very attractive species with finely cut fronds. 2 to 3 ft.

—**multifidum.** Fronds divided into three graceful crests. 1 ft.

**Dennstædtia punctilobula** (*Dicksonia punctilobula*; Hay-scented Fern). One of the best native Ferns for massing. 15 to 18 in.

**Dryopteris Filix-mas** (*Lastrea Filix-mas*; Male Fern). A rare evergreen species. 15 to 18 in.

**Polystichum acrostichoides** (*Aspidium acrostichoides*; Christmas Fern). An evergreen species with shining dark green leaves. 1 ft.

**Filipendula hexapetala** (*Ulmaria Filipendula*; Dropwort). Creamy white flowers. 1½ ft. May 1.

**Funkia undulata variegata** (*Hosta lancifolia undulata variegata*). Ovate leaves with creamy white center and margins deep green; pale lilac flowers. 1½ to 2 ft. July, August.

—**subcordata grandiflora.** Snow-white flowers. 50 cts. each, \$4.50 for 10.

**Galax aphylla** (Colts Foot). Pretty little evergreen leaves with flower stalks 12 inches, bearing small white flowers.

\***Gaultheria procumbens** (Wintergreen). Low-growing evergreen; bright green leaves and white flowers followed by red berries. 35 cts. each, \$3 for 10.

\***Gentiana acaulis** (Gentianella). Large, intense, deep blue flowers. 3 in. \$1 each, \$9 for 10.

—**Andrewsii** (Closed or Bottle Gentian). Flowers of lovely blue, appearing late in the autumn.

**Geranium sanguineum lancastriense.** Light red-veined purple flowers; small lobed leaves. 1 ft. July, August.

\***Geum atrosanguineum fl.-pl.** Flowering during the summer with large number of fire-red flowers.

\*—**heldreichii.** Orange; very free flowering; fine foliage. 1½ ft. May–July.

\*—**Mrs. J. Bradshaw.** A splendid new variety. Double dark red flowers the greater part of summer and fall. 2 ft. June–September.

\***Globularia trichosantha** (Glove Daisy). Blue, daisy-like flowers. 6 in. May–August.

\***Gypsophila cerastioides.** Large white or lilac flowers, veined pink. 6 in. June–Aug. 35 c. each, \$3 for 10.

\*—**repens.** Large white flowers. 6 in. June, July.

\*—**repens monstrosa.** Same as *repens* with larger flowers. 6 in. June, July. 35 cts. each, \$3 for 10.

### HARDY CACTUS.

**Echinocereus viridiflorus.** A green-flowering *Cereus* covered with red, purple, and white spines.

**Opuntia arenaria.** Large yellow flowers; long, white and straw-colored spines.

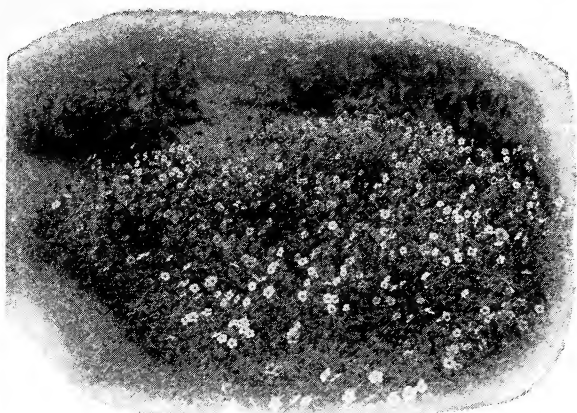
—**Camanchica** (Comanche Cactus). Flowers large, yellow, showy; purple fruit.

—**humilis (Rafinesquii).** Large, sulphur-yellow flowers freely produced.

—**phæcantha major.** Rapid grower, forming large clumps; yellow flowers.

—**polyantha** (Many-spined Cactus). Long, white, brown and purple or black spines.





Helianthemums

\***Helianthemums.**

- Album Plenum.** Double. White.
- Aureum.** Single. Yellow.
- , **Ball of Fire.** Double. Red.
- , **Bride.** White.
- , **Double Orange.**
- macranthum.** White.
- , **Mrs. Earle.** Double. Red.
- , **Proceux.** White.
- , **Rosy Gem.** Double. Rose.
- , **Sudberry Gem.** Buff color.

\***Hepatica triloba** (Liverleaf). Very pretty blue flowers. 4 to 6 in. April, May.

\***Heuchera brizoides** (Alum Root). Large, pale pink flowers. 1½ ft. May–September. 35 cts. each, \$3 for 10.

\*—**sanguinea.** Bright crimson flowers in long, graceful, arching sprays. 1½ ft. May–September. 35 cts. each, \$3 for 10.

**Hosta lancifolia undulata variegata.** See **Funkia undulata variegata.**

\***Hutchinsia alpina.** Snow-white flowers in early spring. 6 in.

\***Hypericum calycinum** (Aaron's Beard). Rapidly spreading subshrub, with golden yellow flowers. 1 ft. 50 cts. each, \$4.50 for 10.

\*—**Moserianum** (Gold Flower). Lovely golden yellow flowers, with crimson stamens. 1½ ft. June–September. 50 cts. each, \$4.50 for 10.

\***Iberis gibraltarica** (Hardy Candytuft). An evergreen plant forming dense masses of pretty foliage and covered with fragrant, delicate lilac flowers in May and June. 1 ft.

\*—**sempervirens.** Spreading habit; white flowers. 10 in. April, May.

\*—**sempervirens, Little Gem.** Snowy white flowers; compact dwarf habit. 6 in. April. 35 cts. each, \$3 for 10.

**Incarvillea Delavayi.** Large, rose-colored, trumpet-shaped flowers, produced in clusters on stems 1½ feet long. June. 50 cts. each, \$4.50 for 10.

\***Inula ensifolia** (Fleabane). Small yellow flowers. 8 in. July–September.

## Perennials for the Rock-Garden

- Iris cristata** (Crested Iris). Handsome amethyst-blue flowers; short, thick, green foliage. 4 to 8 in. May.
- pumila hybrida cyanea**. Rich purple, with dark shadings. 4 to 8 in. May.
  - pumila hybrida eburnea**. White, with cream-white shadings. 6 in. May.
  - pumila hybrida excelsa**. Deep yellow splashed maroon.
  - pumila hybrida florida**. Lemon-yellow, with dark yellow shadings. 6 in. May.
  - pumila hybrida formosa**. Dark violet, with light violet shadings. 6 in. May.
  - pumila hybrida gracilis**. Light grey. 6 to 8 in. May.
  - pumila, Schneekuppe**. Pure white. 8 in.

All Iris, 25 cts. each, \$2.20 for 10

\***Lamium maculatum**. A variegated Nettle with deep purple flowers. 10 in. July, August.

\***Leontopodium alpinum** (Edelweiss). This plant is well known to tourists who have traveled in Switzerland. It is as hardy as any plant can be and very distinct; fine for rockeries. 5 in. June, July. 75 cts. each, \$6.50 for 10.

**Limonium latifolium** (Sea Lavender). Fine panicles of small blue flowers; very showy and lasting. 2 ft. August, September.

—**tataricum**. Flowers purplish red; attractive foliage. 1 to 2 ft. August, September.

\***Linaria hepaticæfolia** (Toad Flax). A small creeper spreading fast. Light blue flowers. 2 to 3 in.

\*—**pilosa**. A dwarf, creeping variety with white and purple flowers. 3 in.

\***Linum perenne**. Lovely azure-blue flowers. 1 ft. May–August.

\*—**perenne album**. A white-flowered form of the above.

\***Lithospermum prostratum, Heavenly Blue**. Sky-blue. Spring to autumn. 4 in. 75 cts. each, \$6.50 for 10.

\***Lychnis alpina**. Flowers pink. A good plant for the rockery. 6 in. April.

\*—**Flos-cuculi** (Ragged Robin). Loose clusters of red or pink flowers. 1 to 2 ft. May–August.

—**Haageana**. Large, brilliant orange-scarlet flowers. 1 ft. May, June.

—**Viscaria splendens fl.-pl.** (German Catchfly). Double crimson flowers. 1 ft.

**Lycoris squamigera**. The attractive green foliage disappears in July, after which the delicate pink flowers are borne. 2 ft. July. 50 cts. each, \$4.50 for 10.

\***Lysimachia Nummularia** (Creeping Jenny; Moneywort). A creeper with yellow flowers. 2 to 3 in. June, July.

\***Mazus rugosus**. A dwarf, creeping variety.

\***Muehlenbeckia nana**. An elegant rock-plant with wiry stems only a few inches long, densely clothed with small dark green leaves. 6 in.

**Mertensia virginica** (Bluebell). Blue, funnel-formed flowers in nodding clusters. 1½ ft. May, June.

\***Myosotis alpestris robusta grandiflora** (Forget-me-not). Pale blue flowers. 8 in. May, June.

\*—, **Nixenaugé**. Pale blue flowers. Best of all Forget-me-nots. 3-in. pots.

## Perennials for the Rock-Garden

---

- \***Nepeta hederacea** (Glechoma). A beautiful creeping evergreen; blue flowers. 5 in. May, June.
- \*—**hederacea variegata** (*Glechoma hederacea*). Pretty, variegated form of above.
- \*—**Mussini**. Constantly in bloom; mauve flowers. 8 in. April–June.
- \***Nierembergia rivularis** (White-Cup). A dwarf, creeping alpine plant with cup-shaped creamy white flowers. 8 in. June–August.
- \***Oenothera missouriensis**. Large yellow flowers. 10 in. June–August.
- \***Pachysandra terminalis**. Small spikes of greenish white flowers. 6 to 9 in. May, June.
- \***Papaver nudicaule** (Iceland Poppy). A beautiful class of hardy Poppies, bearing cup-shaped flowers, ranging in color pure white to yellow and orange-scarlet, on long stems. 1 ft. May–August.
- \***Paradisea**. See **Anthericum**.
- Phlox amœna**. Bright pink flowers in dense heads. 4 to 6 in. April, May.
- \*—**argillacea**. A new species of Dwarf Phlox. Various shades of white, pale lavender, and lilac.
- \*—**divaricata (canadensis)**. Large, fragrant, lavender flowers. 10 in. May. 35 cts. each, \$3 for 10.
- \*—**divaricata alba (canadensis alba)**. White. 10 in. May.
- \*—**divaricata Laphamii, Perry's Variety**. Large, lilac-blue flowers. 1 ft. 50 cts. each, \$4.50 for 10.
- ovata**. Bright rosy red flowers. 1 to 1½ ft. June, July.
- stolonifera**. Low-growing, with the purple or violet flowers appearing in May and June. 6 to 12 in.
- \*—**subulata** (Moss Pink). Low-spreading stems and narrow, moss-like leaves; flowers light blue, pink, or white in great profusion. 3 to 6 in. April, May.
- subulata alba**. Large white flowers.
- subulata atropurpurea**. Purplish rose flowers.
- subulata lilacina**. Flowers light blue.
- subulata Nelsonii**. Small white flowers.
- subulata, The Bride**. White flowers with red centers.
- \*—**subulata, Vivid**. The brightest *Phlox subulata*. 50 cts. each, \$4.50 for 10.
- \***Physostegia virginiana grandiflora**. Pink with lavender shade. 10 to 12 in. August. 35 cts. each, \$3 for 10.
- \***Plumbago Larpentæ** (*Ceratostigma plumbaginoides*; Blue Leadwort). Dwarf plant of spreading habit, literally covered with beautiful deep blue flowers. 6 to 12 in. August, September.
- \***Polemonium reptans** (Greek Valerian). Loose, panicle-like clusters of light blue flowers; dwarf, compact grower. 8 to 12 in. April, May.
- Polygonatum multiflorum** (Solomon's Seal). Arching sprays of greenish white flowers. 2 ft. May, June.
- \***Primula acaulis (vulgaris)** (English Primrose). Bright lemon-yellow; fragrant. 6 to 9 in. April, May.
- \*—**auricula**. Flowers yellow; leaves covered with sulphur-like powder. 6 in. May.
- \*—**japonica**. Whorls of large purple-crimson flowers 9 in. June.

## ***Perennials for the Rock-Garden***

---

---

- \***Primula veris** (Cowslip). Fragrant, bright golden or light yellow flowers, sometimes purplish. 6 to 9 in. April, May.
  - \*—**veris, Rich Red, Rich Yellow, and Selected Blues.**
- \***Prunella grandiflora** (Large Self-Heal). Dense, short spikes of purple flowers. 1 ft. June, July.
- Pulmonaria angustifolia azurea** (Lungwort). Attractive, funnel-shaped flowers of deep gentian-blue. 1 ft. April, May.
- \***Rhexia virginica**. Rosy purple flowers with golden anthers. 1 to 1½ ft. July–October.
- Salvia pratensis**. Deep blue flowers. 2 ft. June, July.
  - virgata (nemorosa)**. Dark blue flowers. 2 ft. May, June.
- Sanguinaria canadensis** (Bloodroot). Very pretty white flowers, followed by large, heart-shaped leaves. 6 in. April, May.
- \***Saponaria ocymoides** (Rock Soapwort). Bright crimson flowers. 1 ft. May–July.
- \***Santolina Chamæcyparissus incana** (Lavender Cotton). A dwarf evergreen perennial, with silvery white foliage. 1½ ft.
- \***Satureia alpina**. Purple flowers. 6 in. June.
- \***Saxifraga (Megasea) crassifolia**. Flowers in pink panicles; large waxy leaves. 1 ft. April, May. 35 cts. each, \$3 for 10.
  - \*—**pedemontana**. Large, milk-white flowers. 2 to 4 in. July.
- \***Scutellaria baicalensis coelestina**. An alpine plant with light blue flowers. 9 to 12 in. July, August.
- \***Sedum acre** (Golden Moss; Stonecrop). Bright yellow flowers. 2 to 3 ft. May–July.
  - \*—**spectabile atropurpureum**. Deeper pink than above variety. 1½ ft. August, September.
  - \*—**album**. White flowers in much-branched cymes. 4 to 6 in.
  - \*—**cuprium**. Foliage narrow, flowers yellow.
  - \*—**dasyphyllum**. A dwarf compact variety. 35 cts. each, \$3 for 10.
  - \*—**Middendorffianum**. Flowers yellow; foliage narrow. 6 in. July. 35 cts. each, \$3 for 10.
  - \*—**pulchellum**. Thick, fleshy foliage; pink flowers. 6 in. June, July.
  - \*—**sarmentosum**. A rapid growing, spreading Sedum.
  - \*—**sexangulare**. Dark green compact foliage; yellow flowers. 4 in. June, July.
  - \*—**Sieboldii**. Charming rose-pink flowers; foliage changes from blue and cream to coral-rose. 9 in. August, September. 35 cts. each, \$3 for 10.
    - spectabile**. Large heads of pink flowers. 1½ ft. August, September.
    - stoloniferum**. A flat, trailing variety, with pink flowers. 6 in. July, August.
    - stoloniferum coccineum (spurium coccineum)**. Crimson flowers. 6 in. July, August.
- Sempervivum, in variety**. These are evergreen plants that resemble the sedums but they increase by rosettes sent out by the parent plant. Leaves often bright-colored at tips; flowers large, in showy clusters, in shades of red and yellow. 5 to 10 in. June, July. Entire list of varieties in stock upon request. 20 cts. each, \$1.50 for 10.

## ***Perennials for the Rock-Garden***

- Shortia galacifolia.** Flowers white, 1 inch across. Evergreen; bronze-green foliage. Shady places. 6 to 9 in. May, June.
- \***Silene alpestris** (Alpine Catchfly). Forms dense masses of white flowers. 4 to 6 in.
- \*—**maritima fl.-pl.** A dwarf, creeping plant. Few rock-plants remain in flower as long as this one. Double white flowers. 6 in. 75c. each, \$6.50 for 10.
- \*—**Schafta** (Autumn Catchfly). Pink flowers. 4 to 6 in. June–September.
- Stachys grandiflora superba** (Woundwort). Spikes of large, showy flowers of intense mauve or rich purplish violet. 1 ft. June, July.
- grandiflora rosea.** Spikes of rosy purple flowers. 1 ft. June, July.
- lanata** (Woolly Woundwort). Spikes of purple flowers; soft silvery foliage.
- Statice latifolia and tatarica.** See **Limonium.**
- \***Stokesia laevis (cyanea)** (Cornflower Aster; Stokes Aster). Sky-blue flowers. 3 to 4 inches across. 2 ft. July–October.
- laevis alba.** A white form of the above.
- laevis rosea.** Pink flowers attain a diameter of 4 inches. 2 ft. 35 cts. each, \$3 for 10.
- \***Teucrium canadense** (American Germander). Spikes of light purple flowers; dark green foliage. 1 ft. July, August.
- Thalictrum aquilegifolium.** Graceful foliage and masses of white flowers. 1 to 3 ft. May–July.
- \*—**diptercarpum** (Meadow Rue). Graceful flowers on stems 4 feet high; rosy purple, with citron-yellow anthers. August, September. 50 cts. each, \$4.50 for 10.
- minus.** A dwarf variety with greenish yellow flowers. 1 to 2 ft. June, July.
- Thymus Serpyllum** (White Mountain Thyme). Forms dense mats of dark green foliage and clouds of white flowers. 3 to 4 in. June, July.
- Serpyllum lanuginosus** (Woolly-leaved Thyme). Small roundish gray leaves. 5 in. June–August.
- Trillium erectum** (Erect Purple Wood Lily). Flower varies from brown-purple to green-purple. One of the first spring flowers. 1 ft. May. 35 cts. each, \$3 for 10.
- grandiflorum** (Wake Robin). Large white flowers. 1 ft. May. 35 cts. each, \$3 for 10.
- \***Tunica Saxifraga.** An attractive rock-plant with rosy pink flowers; minute dark green foliage. 6 in. July–September.
- Ulmaria.** See **Filipendula.**
- Veronica Allionii** (Speedwell). A dwarf variety with blue flowers. 6 in. May, June.
- gentianoides.** Pale blue flowers in splendid spikes. 1½ ft. April, May.
- \*—**incana.** Silvery gray foliage and spikes of violet-blue flowers. 1 ft. July, August.
- \*—**pectinata.** Deep blue, white center. May, June.
- \*—**repens.** A trailing variety covered with blue flowers in spring. 2 to 4 in. May.
- rupestris.** Dwarf and spreading; deep blue flowers. 4 in. May, June.
- \*—**rupestris alba.** A white form of the above. 4 in. May, June.

## Perennials for the Rock-Garden

- \***Veronica rupestris**, **Heavenly Blue**, flowers earlier than preceding variety. 35 cts. each, \$3 for 10.
- \*—**rupestris Trehani**. Deep blue flowers. Foliage greenish yellow. 4 to 6 in. May, June.
- \*—**spicata erica**. A heather-like Speedwell with delicate pink flowers. June, July.
- Teucrium**. Dwarf, spreading dense habit, with blue flowers. 6 to 12 in. May, June.
- \***Vinca minor** (Periwinkle). Evergreen trailer; fine for covering bare places; lilac-blue flowers. 3 to 6 in. April, May.
- minor aurea** (Golden-variegated Periwinkle). Golden leaves. Fine for banks and rough places or growing under trees where other plants will not live; also used in window-boxes. 35 cts. each, \$3 for 10.
- minor variegata**. Leaves variegated with white; blue flowers. 10 in. April, May.
- \***Viola cornuta**, **G. Wermig** (Horned Violet). The large blue flowers are produced in great numbers from summer until frost.
- \*—**gracilis**. Medium-sized flowers of violet or yellow. 1 ft. 50 cts. each, \$4.50 for 10.
- \*—**pedata** (Bird's-foot Violet). A native variety with finely cut foliage and showy blue flowers. 6 in. 50 cts. each, \$4.50 for 10.
- Violets**, **Governor Herrick**. Purplish violet.
- , **Prince of Wales**. Color rich violet.
- , **Rose Pearl**. Beautiful pink with darker center.
- Yucca filamentosa** (Adam's Needle). Of tropical appearance, with immense pyramidal clusters of creamy white flowers. 4 to 6 ft. June, July.
- glauca (angustifolia)**. The foliage of this variety is very narrow and glaucous green. 3 ft. June, July.
- Either of the **Yuccas**, 2-year-old plants, 25 cts. each, \$2.20 for 10; 3-year-old plants, 35 cts. each, \$3 for 10



*Trillium grandiflorum*. See page 11



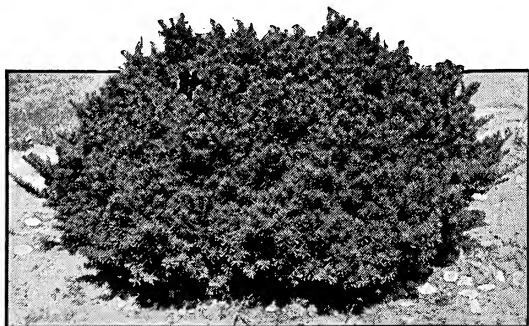
Mugho Pine. See page 14

## Evergreens

- Juniperus chinensis albo-variegata.** A beautifully variegated variety in which numerous sprays of white are prettily interspersed among the dark green foliage. A formal, erect grower. 15 to 18 in., \$2 each, \$18 for 10.
- chinensis japonica (japonica).** Very solid green foliage; oblique, spreading habit. 1½ ft., \$2.50.
  - communis aurea.** Same habit as preceding variety, but tips of branchlets are golden yellow. 1½-ft. spread, \$1.50 each, \$13.50 for 10.
  - communis depressa (canadensis).** Forms broad patches, with stems ascending from a procumbent base, rarely exceeding 2 feet in height. Leaves shorter and broader than the variety. 12- to 15-in. spread, pot-grown, \$1.25 each, \$11 for 10; field-grown, 18 to 24 in., \$2 each, \$17.50 for 10.
  - excelsa stricta.** Very symmetrical, conical outline. Foliage glaucous and arranged around the branches in threes, dense and prickly. 9 to 12 in., \$1.25 each, \$11 for 10; 12 to 15 in., \$1.75 each, \$16 for 10.
  - horizontalis (prostrata).** Dull green leaves. Grows rapidly and makes a very pleasing effect when planted on terraces. Pot-grown, 12 to 15 in., \$1.25 each, \$11 for 10; field-grown, 18 to 24 in., \$2 each, \$17.50 for 10.
  - Sabina tamariscifolia (Gray Carpet Juniper).** A distinct trailing variety of Sabina. The needle-shaped leaves have a deceptive shade of gray-green. Fine for edging. 15- to 18-in. spread, \$1.50 each, \$13.50 for 10.
  - squamata.** Prostrate variety with thick branchlets, ascending at the apex; foliage crowded, grayish or bluish green; bluish black fruit. 1½- to 2-ft. spread, \$2.25 each, \$20 for 10; 2- to 2½-ft. spread, \$4 each, \$35 for 10.
- Picea excelsa compacta nana.** A dwarf, compact Spruce; dense and distinct; foliage light green. 2 ft and bushy, very dwarf, \$6 each.

## *Evergreens Suitable for Rock-Gardens*

- Picea excelsa Maxwellii***. A very dwarf, almost prostrate grower. 12- to 15-in. spread, \$3 each, \$27 for 10. Specimens, 2-ft. spread, \$7.50 each.
- Pinus montana Mughus*** (Dwarf Mugho Pine). A distinct variety, resembling *P. montana*, but of more compact, prostrate habit, with the tips of the branches ascending; the leaves are slightly twisted. 1½-ft. diam., \$2 each, \$18 for 10.
- Retinispora filifera pendula aurea***. An irregular stunted grower, with pendulous branches and striking golden appearance. 2-ft. diam., \$5 each.
- obtusa Crippsii***. The hardiest and most beautiful of golden *Retinisporas*. Slow grower; very rare and choice. 1½ ft., \$2.50 each, \$22.50 for 10.
  - obtusa gracilis***. Dark foliage; compact growth. Leaves are small and closely adpressed. Used in Japan for dwarfing. 1½ ft., \$2 each, \$18 for 10.
  - obtusa nana***. Very dwarf, seldom attaining a height of 3 feet. The curious sprays of little foliage are shining green. 1 ft., \$3.50 each.
  - plumosa sulphurea***. This is a most beautiful variety; sulphur-tinted shoots; of compact growth; quite distinct. 15- to 18-in. diam., \$2.50 each, \$18 for 10.
- Sciadopitys verticillata*** (Japanese Umbrella Tree). Very long leaves, much wider and thicker than those of other conifers, shining green above, and a line of white underneath. 1½ to 2 ft., \$5 each, \$45 for 10.
- Taxus baccata adpressa***. A low grower with short, dull green leaves. Very hardy. 1 ft., \$2 each, \$18 for 10; 1½ ft. \$3.50 each; 2 ft. \$5.50 each.
- baccata repandens***. Fine for hedging, grouping, and covering banks. The slender, pointed leaves gently curve upward and are of a lustrous green. 1½- to 2-ft. diam., \$3 each, \$27 for 10; 2½- to 3-ft. diam., \$8 each.
  - cuspidata nana***. An excellent Yew with fine, bushy habit, spreading branches, and short, rich deep green leaves. 15 in., \$2.25 each, \$20 for 10; 1½ ft. \$3.25 each, \$27.50 for 10.
- Thuja occidentalis globosa*** (Globe Arborvitæ). Round, compact form and dense foliage. 12 to 15 in., \$1.50 each, \$13.50 for 10.
- occidentalis Rosenthalii***. Dark green dense foliage; the growths terminate with a little whitish ball. Compact grower; very choice. 2 ft. \$3 each, \$27 for 10.



*Taxus baccata repandens*





**Azalea amoena**

## Broad-Leaved Evergreens

\***Abelia chinensis (rupestris).** The graceful, arching stems are clothed with dark, glossy, nearly persistent leaves; the white flowers, tinged with pink, are about an inch long, and are borne in profuse clusters from early summer until checked by frost. Pot-grown plants, 50 cts. each, \$4.50 for 10.

**Andromeda japonica.** A compact grower; branches and foliage quite smooth. Panicles of buds dull red, opening white in spring. 15 to 18 in., \$2 each, \$18 for 10.

—**speciosa.** Upright or arching branches; quite glabrous; oval to oblong leaves; flowers white, 1 to 2 inches long, in slender, nodding clusters. 2 to 2½ ft., \$2 each.

**Azalea amoena.** A superb, low-growing evergreen shrub of bushy habit and perfect hardiness. Flowers are bright rosy purple, and are produced in a solid mass in May. The hairy foliage assumes a pleasing bronze tint in the fall and winter months, presenting a neat, cheerful appearance.

	Each	10
12 to 15 in. ....	\$1 50	\$13 50
15 to 18 in. ....	2 75	25 00

—**Bengiri.** Rather narrow, slightly concave, evergreen leaves; nice compact habit. Flowers deep bright red, almost scarlet. 12 to 15 in., \$2 each; 15 to 18 in., \$3.50 each; 18 to 21 in., \$5 each.

—**Hinodigiri.** A bright scarlet form of the well-known and charming *A. amoena*, but far surpassing it in brilliancy and general beauty; a profuse bloomer; foliage round in shape and evergreen.

	Each	10
9 to 12 in. ....	\$1 50	\$13 50
12 to 15 in. ....	2 50	22 50
15 in. ....	3 50	31

## ***Broad-Leaved Evergreens Also Desirable***

---

**Azalea indica alba.** Pure white flowers; luxuriant grower and profuse bloomer. 15 to 18 in., \$2.50 each, \$22.50 for 10.

—**indica rosea.** Rose-colored flowers; a fitting companion to *A. indica alba*. 1 ft., \$1.75 ea., \$15 for 10.

—**Kaempferi.** Large, beautiful, dull brick-red flowers. Being absolutely hardy, it is a fine variety for our climate. Grows tall and bushy. 12 to 15 in., \$2.25 each, \$20 for 10.

—**Yodogawa.** A spreading shrub with handsome, dark green foliage and double, rosy lilac flowers, spotted dark purple. 1½ ft., \$2.50 each; 21 in., \$5 each.

\***Cotoneaster horizontalis.** Curious, dwarf shrub of trailing habit, densely and regularly branched, of striking effect. Fine for rockeries. In autumn and winter this plant is covered with brilliant red berries and the foliage turns to soft tints of red and bronze before falling. Pot-grown plants, 8- to 10-in. spread, 85 cts. each, \$7.50 for 10.

\***Daphne Cneorum.** A trailing evergreen plant, with narrow, glossy green leaves; flowers fragrant, bright pink, \$1 each, \$9 for 10.

\***Erica carnea (herbacea).** Grows about 6 inches high; leaves arranged in fours, nodding, bell-shaped flowers along the stems.

\*—**Tetralix (Bell Heather).** Rosy flowers; grayish foliage; leaves arranged in fours. 8 to 10 in.

\*—**Mackayana plena.** Deep rose-colored flowers. Very double spreading light green foliage. 6 in. July, August.

\*—**vagans alba (Cornish Heath).** More or less trailing in habit, with axillary white flowers. Leaves arranged in whorls, four or five together.

\*—**vagans rubra.** Purplish red flowers; leaves arranged in fours and fives.

\*—**stricta (Corsican Heath).** A compact erect grower with pink flowers. July–September.

\*—**stricta erecta.** Flowers light pink and at ends of branches; upright grower. 12 to 15 in. July, August.

\*—**vulgaris (Calluna vulgaris; Scotch Heather).** A dense-growing shrub, with erect branches, covered with short, closely adpressed leaves. Bell-shaped flowers occur in great profusion toward the top of the shoots, and with their pretty rosy color create an agreeable impression.

All *Ericas*, 50 cts. each, \$4.50 for 10

**Euonymus radicans.** Low, procumbent shrub, with often trailing and rooting or climbing branches; flowers greenish white; fruit pale pink. Pot-grown, 50 cts. each, \$4.50 for 10; field-grown, 30 cts. each, \$2.70 for 10, \$20 per 100.

\*—**radicans acuta.** Low, spreading shrub, reaching a height of 5 feet, with attractive foliage and fruits which remain on the branches a long time. 75 cts. each, \$6.50 for 10.

\*—**radicans minimus (kewensis).** A rare little trailing plant with very small, round leaves, light green with whitish veins. Always remains close to the ground. 50 cts. each, \$4.50 for 10.

## Broad-Leaved Evergreens Also Desirable

**Ilex crenata** (Japanese Holly). Small, oval, smooth, green leaves about  $\frac{1}{2}$  inch long; a rapid grower, forming a dense, compact bush which can be clipped into shapes like boxwood.

	Each	10
*12 to 15 in., pot-grown plants.....	\$1 00	\$9 00
15 to 18 in., pot-grown plants.....	1 50	13 50
1½ to 2 ft.....	2 00	18 00
2½ to 3 ft.....	3 50	31 00

—**glabra** (Inkberry; Winterberry). An upright, bushy shrub 3 to 4 feet high, with rather narrow leaves, dark green shiny above, pale beneath; a profusion of fine black berries in the fall. 15 to 18 in., bushy, \$1.50 each, \$13.50 for 10.

**Kalmia latifolia** (Mountain Laurel; Calico Bush). The rose-colored flowers, in large clusters at ends of shoots, are of elegant shape and appear in June. Few broad-leaved evergreens are so beautiful in foliage, and none can excel in the beauty and delicate form of its exquisite flowers.

	Each	10
1½ ft.....	\$2 00	\$18 00
2 ft.....	3 50	31 00

**Leucothoë Catesbæi**. A valuable shrub for planting under trees on the margins of woodland drives, and in other shady positions. The fine white flowers are borne on long, pendulous racemes and have a characteristic fragrance. 1 to 1½ ft., \$1 each, \$9 for 10.

\***Menziesia polifolia**. Usually planted with heather. Dark green glossy leaves and spikes of large, drooping, purple bell-shaped flowers. 1½ ft. July–October. 50 cts. each, \$4.50 for 10.

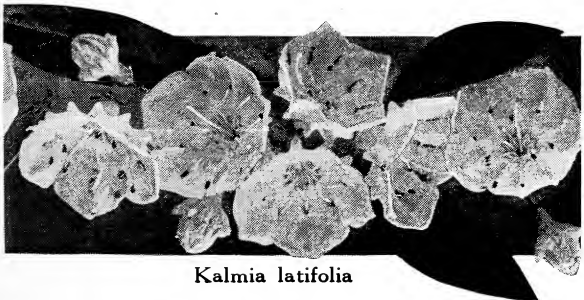
\*—**polifolia alba**. A white variety of the above. 50 cts. each, \$4.50 for 10.

**Pyracantha coccinea Lalandii** (Evergreen Thorn). White flowers; orange-colored berries. The leaves are rich and glossy.

	Each	10
1 to 1½ ft., pot-grown plants ..	\$1 50	\$13 50
1½ to 2 ft., pot-grown plants ..	2 25	20 00
2 to 2½ ft., pot-grown plants ..	3 00	27 00

**Rhododendron, Boule de Neige**. A dwarf grower with beautiful white flowers. 15-in. diam., \$3 each.

**Viburnum rhytidophyllum**. A striking evergreen shrub with remarkable foliage. The deep green leaves are 8 to 9 inches long and 2 to 2½ inches broad. Yellowish white flowers, followed by deep red berries. Very rare. Pot-grown plants, \$1.75 each, \$15 for 10.



**Kalmia latifolia**

## Flowering Shrubs

**Azalea mollis.** One of the most popular families of plants in cultivation. Useful for undergrowth among tall trees, or as a border for large shrubberies. We offer well-budded plants that will bloom this season.

Mixed Colors—	Each	10	100
1 ft.....	\$1 10	\$10 00	\$90 00
1 ½ ft.....	2 50	22 50	
2 ft., bushy.....	4 00	36 00	
Specimens.....	\$5 to 25 00		

\***Daphne Genkwa** (Garland Flower). Grows 3 feet high; slender branches, densely covered with silky flowers of lilac color. Pot-grown plants, \$1 each, \$9 for 10.

\*—**Mezereum** (Mezereon Pink). A small, hardy shrub, blooming in March. The deep flowers appear closely along the stems and have a delightful, penetrating fragrance. 75 cts. each, \$6.50 for 10.

**Desmodium.** See **Lespedeza**.

\***Jasminum nudiflorum** (Naked-flowering Jasmine). Rich golden yellow flowers are borne in advance of the foliage in early spring. Fine for trellises. Pot-grown plants, 50 cts. each, \$4.50 for 10.

**Lespedeza Sieboldii** (*Desmodium penduliflorum*). Rosy purple or reddish flowers arranged in pretty pendulous bunches; very free-flowering. It is the latest-blooming shrub. 3 to 4 ft., 50 cts. each, \$4.50 for 10.

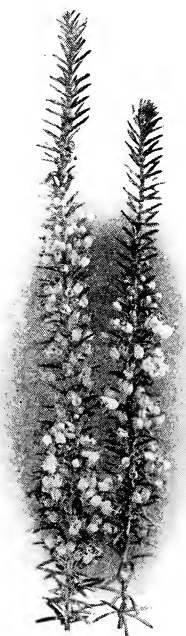
**Viburnum Carlesi.** Has round heads of white flowers faintly tinted rose at first, possessing a delightful fragrance. Nice bushy habit, and flowers freely when established. \$1.75 each, \$15 for 10.



**Saponaria ocymoides** (Soapwort). See page 10

## Semi-Shade

- |  |  |
|--|--|
| <i>Aceranthus diphyllus</i><br>roseus              | <i>Primula veris</i> , Rich Yellow                                       |
| <i>Adonis amurensis</i><br>—amurensis fl.-pl.      | <i>Pulmonaria angustifolia</i><br>azurea                                 |
| <i>Æthionema coridifolium</i><br>—grandiflorum     | <i>Rhexia virginica</i>  |
| —persicum  | <i>Saxifraga</i> (Megasea) <i>cras-</i><br><i>sifolia</i>                |
| <i>Anchusa myosotidiflora</i>                      | <i>Sedum acre</i><br>—album  |
| <i>Androsace lanuginosa</i><br>—sarmentosa Chumbyi | —cuprium   |
| <i>Anemone Pulsatilla</i><br>—Pulsatilla rubra     | —dasyphyllum   |
| —sylvestris  | —Middendorffianum  |
| <i>Aubrietia deltoidea</i><br>—deltoidea græca     | —sexangulare   |
| —deltoidea Hendersonii                             | <i>Sempervivum</i>   |
| —deltoidea purpurea                                | <i>Teucrium canadense</i>  |
| —deltoidea, Violet Queen                           | <i>Viola pedata</i>  |
| <i>Draba brunifolia</i><br>—fladnizensis           | <i>Violets</i> , Governor Herrick<br>—, Prince of Wales<br>—, Rose Pearl |
| <i>Epimedium alpinum</i><br>—macranthum violaceum  |  |
| —Musschianum                                       |  |
| <i>Erica Tetralix</i><br>—Mackayana plena          |  |
| —rubra   |  |
| —stricta   |  |
| —stricta erecta                                    |  |
| <i>Erinus alpinus</i>                              |  |
| <i>Galax aphylla</i>                               |  |
| <i>Gaultheria procumbens</i>                       |  |
| <i>Hosta lancifolia undulata</i><br>variegata      |  |
| —subcordata grandiflora                            |  |
| <i>Incarvillea Delavayi</i>                        |  |
| <i>Leontopodium alpinum</i>                        |  |
| <i>Linaria hepaticæfolia</i>                       |  |
| <i>Lithospermum prostratum</i>                     |  |
| <i>Menziesia polifolia</i><br>—polifolia alba      |  |
| <i>Muehlenbeckia nana</i>                          |  |
| <i>Myosotis alpestris robusta</i><br>grandiflora   |  |
| —Nixenaugæ   |  |
| <i>Pachysandra terminalis</i>                      |  |
| <i>Primula acaulis</i><br>—auricula                |  |
| —japonica  |  |
| —veris   |  |
| —veris, Selected Blues                             |  |
| —veris, Rich Red                                   |  |



Erica

The varieties given in this list are best suited in semi-shade, but will all grow in sunny or shady places.

## Shady Places

- |  |  |
|--|--|
| <i>Convallaria majalis</i>             | <i>Sanguinaria canadensis</i>            |
| <i>Epigæa repens</i>                   | <i>Saxifraga pedemontana</i>             |
| Ferns                                  | <i>Shortia galacifolia</i>               |
| <i>Gentiana Andrewsii</i><br>—aucaulis | <i>Trillium erectum</i><br>—grandiflorum |
| <i>Mertensia virginica</i>             | <i>Vinca minor</i><br>—minor variegata   |
| <i>Polygonatum multiflorum</i>         |  |

All other varieties mentioned in this pamphlet are suitable for sunny places.



## Visit Our Nurseries

The plants described in this list, as well as many others, may be seen growing in our Nurseries.

We shall be glad to mail you pamphlets and lists describing our products.

If you desire further information on Rock-Gardens, or any other branch of horticulture, we will be glad to supply it. Do not hesitate to write to us.

Rutherford is the first and Carlton Hill the second stop from Jersey City on the Erie Main Line. Arriving in Rutherford, take taxi to Nursery. Carlton Hill Station is a few minute's walk from Nursery.

For automobiles, the Dyckman Street Ferry, from 204th Street to Palisades Avenue, is the best route.

# BOBBINK & ATKINS

*Nurserymen and Florists*

RUTHERFORD . . . NEW JERSEY