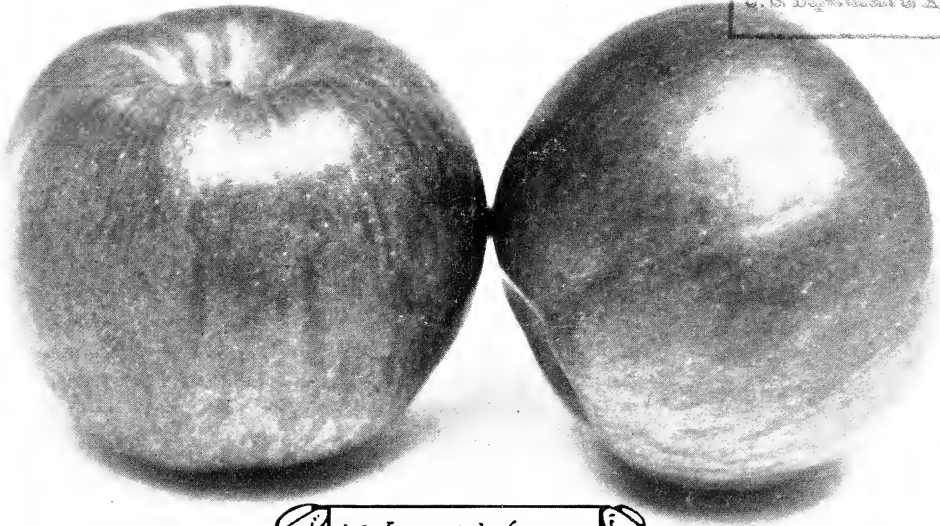


## **Historic, archived document**

Do not assume content reflects current scientific knowledge, policies, or practices.



MAR 25 1924  
U. S. Department of Agricul



McJEAN'S WINTER

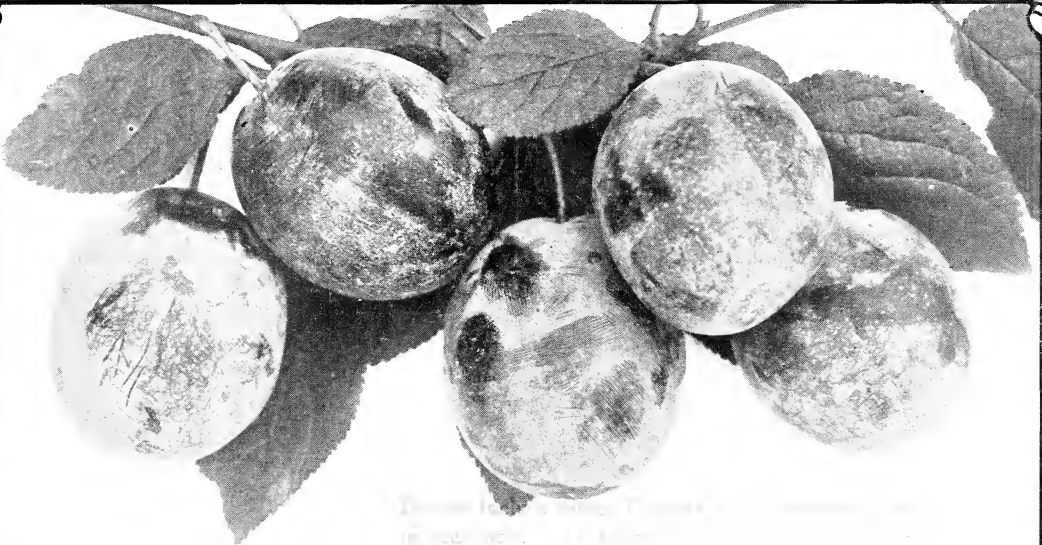
# BRAND NURSERY COMPANY

FRUITS AND ORNAMENTAL TREES

SHRUBS AND PLANTS

ESTABLISHED 1867

FARIBAULT, MINNESOTA



UNDERWOOD

# Suggestions to Our Customers

## Read Before Making Out Your Order

**Size of Order.** We cannot accept orders for less than \$1.00. It takes just as much office work to make up a 50c order as it does to make up a \$5.00 one and almost as much work to pack it, so we will not accept any order for less than \$1.00.

**Order Sheet.** In making out your order please use the order sheet enclosed. Be careful to fill out all the spaces on the order sheet and very few mistakes will be made in filling the order.

**Keep a Copy of Your Order** so you may check goods received and know whether or not your order has been filled correctly.

**Order Early.** As near as it is possible for us to do so we fill orders in rotation in the order in which they are received. For this reason we advise you to place your order early.

**Premiums.** We have to do a great deal of office work on all orders before they are sent to the packing department. To encourage our customers to send in their orders early so that we may do some of this work before the spring rush begins we offer a special discount on all orders amounting to \$5.00 or more if sent in on or before March 1st. On all orders amounting to \$5.00 or more, you may select 5 per cent of the amount of your order extra in nursery stock. For example, if your order amounts to \$5.00 you may order stock to the value of \$.25. A \$6.00 order would give you thirty cents worth of additional stock, etc.

**Transportation Charges** are paid by the customer except where stated otherwise in the catalog.

**Care of Stock on Arrival.** As soon as stock and plants arrive they should be unpacked and the roots submerged in a tub of water for twenty-four hours. Then the plants should be planted without letting the roots dry at all. Unless you plant when soil is wet use one-half pail of water in the hole where each grape vine, currant, gooseberry, raspberry bush, etc. is planted and a full pail of water for each apple, plum and cherry tree, etc. Put the plant in the hole, fill hole half full of dirt and then tramp this soil about the roots as hard as you can with your full weight and the heel of your shoe. Then pour in the water and wait until this entirely soaks into the soil. Then fill the hole with dirt and tramp again, then fill about the tree or plant with loose soil and leave it loose.

Cultivate once a week from the time you plant until July 15 either with a horse cultivator or by hoeing deep. Follow these instructions and you will not lose a plant.

**Our Guarantee.** Our orders are filled by experienced help and we use every effort to have every order filled with stock true to name and in the best possible condition. We guarantee every order to be in good growing condition when it is delivered to the transportation company. If your shipment is delayed in transit or your package is broken and goods damaged, you must have the freight or express agent write upon the receipt as follows: "Received in damaged condition." If you find the roots of your stock dried out through delay in shipment, notify us at once.

We also guarantee all stock to be exactly as described in our catalog, but if through an error on our part, your stock is not as represented we will refill order. However, we must be notified within ten days after you receive your order, if you wish to make any complaint.

We agree to replace all trees and shrubs which fail to grow at one-half price if we are notified of such failure before July 1st, following receipt of stock. This guarantee does not apply to Evergreens, Blackberries, Strawberry plants or Peonies.

**Our Responsibility.** To those who have not dealt with us before we wish to refer you to the Security Bank of our city regarding our responsibility. In writing to the bank, please enclose a stamped envelope for a reply.

**How to Find the Number of Plants Required for an Acre.** A square acre is 209 feet on a side. The number of square feet in an acre is 43,560. Divide this amount by the number of square feet required for each plant. Thus to find how many currants are required for an acre planted 4 feet by 6 feet. 6 times 4 equals 24; 43,560 divided by 24 equals 1,815, the number required for an acre.

In our northwestern states, fruit trees do not grow to be as large as in the southern and eastern states, and can therefore be planted closer. We have adopted the distances here given, the same as used by the Minnesota Horticultural Society, but in southern localities, it will be best to plant farther apart.

Apples, 20 by 22 feet	100
Cherries, 16 by 16 feet	170
Plums, 16 by 16 feet	170
Peaches, 16 by 16 feet	170
Pears, 16 by 16 feet	170
Blackberries, 4 by 6 feet	1,815
Dewberries, 3 by 6 feet	2,420
Currants, 4 by 6 feet	1,815
Gooseberries, 4 by 6 feet	1,815
Grapes, 8 by 8 feet	680
Juneberries, 4 by 6 feet	1,815
Strawberries, 1 by 4 feet	10,890
Asparagus, 1 by 2½ feet	17,424
Rhubarb, 3 by 6 feet	2,420

**Terms.** Our terms are cash with the order, or before shipment. Occasionally we are asked to make shipment C. O. D., but we do not like to do this. But in case we do accept order to go C. O. D. we insist on ½ payment before shipment is made.

**Shortage.** Where we are short of stock at shipping time that should go into an order, we report the shortage with the notice we send of shipment. We return the money to cover the shortage just as quick as our rush is over and we have time to look the matter up. Do not worry, it will come to you, but it may be six weeks after shipment.

**Parcel Post Shipment.** Oftentimes a parcel going by post will not take all the money allowed. In such cases we do not return the few cents that may have been sent extra. We have just as many post shipments where not enough money is remitted as we have where too much is sent and the one about evens up the other. Then in the next place we have to be more careful in doing up post packages than we do with express. It costs us much more to handle them. We try our very best to put in extra good stock and we must let it go at that.

We send no Apple Trees by parcel post. Our trees are too large to go that way, and it spoils them to cut them back so much that they can be mailed.



An Old-Fashioned Perennial Garden.

## About Our Nursery and Business Methods

**Owners.** This Nursery was established by O. F. Brand in 1867. Mr. Brand was the pioneer nurseryman of Minnesota and this nursery is the oldest nursery in the state. It was managed by Mr. Brand personally from 1867 until the year 1900, when he took into partnership with him his son A. M. Brand who has grown up in the business with him. This partnership was continued until 1911, when O. F. Brand, because of advancing age, retired from the business, and moved to California, where he passed away in January, 1921. A. M. Brand has continued to manage the business under the name of the Brand Nursery Company. About five years ago Myrtle Gentry became associated with him in the business.

**Early Method of Doing Business.** Up to and including the year 1918 we employed a large number of agents, and our business covered more or less thoroughly the states of Minnesota, Wisconsin and North and South Dakota. The business was done on a purely agency basis, all stock being sold to customers through agents. This was a very satisfactory way of doing business until the coming of the war. At this time the increased cost of labor and materials made it necessary to increase the cost of everything, including nursery stock. About the same time the automobile came into general use and livery stables ceased to do business. This made it necessary to provide our agents with expensive automobiles. Then, too, hotel rates and railroad fares became almost prohibitive. This increased cost of production and distribution, together with the high commission paid to agents, made the cost of nursery stock to farmers enormously high. Since the war closed the prices of farm products have decreased rapidly, while the conditions that have made nursery stock high have remained practically unchanged.

**Our New Method of Doing Business.** We decided last year that the only way to bring nursery stock within the reach of the farmer was to cut out the commissions and expenses of agents. So last year for the first time we employed no agents and began selling directly to the consumer. By ordering your stock through this catalog you get it at just about one-half the price that must be charged if sold through an agent. We want to emphasize that you receive exactly the same grade of stock that you would receive if you were paying twice the price to an agent.

**Why You Are Safe in Buying Nursery Stock From Us.** You are buying from a firm that has been growing nursery stock and selling it through the Northwest for fifty-six years. You are buying from a nursery that has built up during all these years a reputation for fair and square dealing second to that of no nursery in the Northwest. Fifty-six years devoted to one business under practically

the same management has enabled us to perfect an organization that is bound to give our customers the best of service. At the head of our organization is Mr. A. M. Brand who was born in the nursery here over fifty years ago. Forty-five years of active nursery experience has given him a thorough knowledge of the nursery business in all its details.

The propagating is done under his personal supervision as is also all the detail work relative to the handling of the stock from the time it leaves the ground until it is delivered to the transportation company to be forwarded to the consumer. These fifty-six years have also enabled us to gather about us a corps of thoroughly practical nursery help, the most of our men having been with us in the neighborhood of twenty years. During the course of all these years we have built up immense storage buildings with packing rooms attached so that all of our operations in the handling of the stock which we send out are carried on under cover from the time it is dug until it is ready for shipment. These buildings are insulated, having two air spaces in the walls and ceilings. This gives us control of temperature conditions with the result that we are enabled to deliver stock in the very best of condition. Myrtle Gentry, the other member of the firm, looks after your orders from the time they are received in the office until you receive your stock.

**Last Season's Work.** Last year was our first year doing business through and by means of a catalog. We had a splendid season's work. We recognized in the orders that came to us many old friends and customers. We also met many new ones. We tried hard to give our customers satisfaction in every transaction. We think we succeeded in most cases as is evidenced by the many pleasant letters received from satisfied customers. We made some mistakes. We expected to. Everybody does. But taken as a whole, it was a very pleasant and satisfactory year.

**This Year's Business.** Profiting by last year's experience, we intend to make this year a better one. We have been very careful in the grading of our stock and in the handling of it so as to conserve its utmost vitality that we may pass it on to our customer in the very best possible condition. We intend that orders shall be filed by old and experienced help to reduce the chances of mistakes to a minimum. Many wrote us last year that they never received stock in such splendid condition. This was because of the careful attention given by us to the packing of every individual order. We assure you this coming season the same care and attention will be given your order, no matter how large or how small it may be.

## Winter Apples

**BALDWIN.** A large, dark red apple. Flesh yellowish white, with an agreeable mild acid yet very agreeable flavor. Season, November to March. Where this variety does well, it is one of the most profitable and extensively grown of all apples.

**BLACK BEN DAVIS.** Season, December to April. One of the most productive and profitable varieties grown. Trees rapid and upright growers. Fruit large and conical in shape. Color an all-over dark deep red. Flesh white and although not of the finest quality still they taste mighty good when all other apples are gone. Will bear when all others fall.

**DELICIOUS.** Season, December to April. Tree bears young and annually, seldom blights. The fruit is large, distinctive in shape, conical, beautiful in color, brilliant dark red blending to yellow at blossom end. Flavor is sweet, slightly acid, with a delightfully fragrant aroma. Tree reported perfectly hardy in Iowa, Wisconsin, South Dakota, Montana, etc., having withstood a temperature of 35 to 40 below.

**LONGFIELD.\*** A splendid medium-sized apple that always does wonderfully well in Minnesota. Ripens in the late fall and keeps well into the winter. Color deep green turning to yellow with pink cheek when fully ripe. Flesh firm, crisp, and juicy. An apple of a very pleasant flavor. Bears immense crops when all others fall.

**MALINDA.\*** A thrifty, spreading crab-like growing tree that makes a splendid orchard tree and is very hardy when once established. As the tree takes on age, it becomes a very heavy bearer of medium-sized fruit of a beautiful yellow color when fully ripe. Many people call this the pear apple. A mild flavored, nearly sweet apple very much liked by most people in the spring when it becomes mellow and fully ripe. The demand for the Malinda is very great and orders should be placed early as our supply is limited.

**WINESAP.** One of the oldest and most popular of all our apples. Planted extensively from the Atlantic to the Pacific coast. Does best on deep, fertile soils. Fruit medium size, conical in shape, deep, bright red. A splendid keeper in the ordinary cellar. Quality splendid.

**McINTOSH RED.\*** A large deep crimson apple that is very beautiful. The tree is hardy and vigorous and is found doing splendidly in the favored fruit locations of Minnesota and Wisconsin. Flesh is pure white, crisp and very tender. Flavor splendid. The McIntosh is one of the strictly finest apples that we can grow in Minnesota and we recommend it very highly for growing in favored locations in the southern third of the state.

**NORTHWESTERN GREENING.\*** Season, December to March. Very hardy, bears young and yields big crops of fine apples. Fruit large to very large, oblong; transparent yellowish green. Flesh firm, juicy, sub-acid and good. A long keeper. It is claimed this tree has withstood a temperature of 50 degrees below zero without damage.

**GRIMES GOLDEN.** Season, November to January. The nearest to perfection of any variety now in general cultivation. In it are combined the rich aromatic flavor relished by us all and excellent culinary qualities along with a rich golden yellow color and a long season of usefulness. It is a wonderful apple and should be planted on every farm and city lot. In the commercial orchard it does not have a peer, the market never being overstocked.

**JONATHAN.** Season, November to January. One of the very best varieties; plant it and you'll have a surprisingly pleasing table luxury all through the fall and early winter. Commercially it is the best for the fancy trade during the holiday season. Brilliant red of medium size, flesh white, fine grained, juicy, tender and delightfully flavored. We cannot recommend this variety too highly.

**SALOME.\*** Season, January to May. Does remarkably well in the Northwest. Tree is hardy, vigorous grower, bears young and very abundantly. Its hardness, good quality, and uniform size recommend it. Fruit round of medium size. Skin pale yellow, shaded and splashed with red. The flesh is whitish yellow, tender and juicy. The best very late winter apple for Minnesota.

**SNOW APPLE OR FAMEUSE.** Season, November to January. This is one of the finest of all apples that can be grown in favorable locations in the North and it is only for those that do have such a favorable location that we advise its planting. Apple of medium size and produced in quantity. Flesh pure white, juicy, and crisp. Flavor of the very finest quality. If you want an extra choice apple this is the variety. Does well in favored locations in Minnesota and Wisconsin.

**FOLWELL APPLE (Minnesota No. 237).** Another of the best of the Minnesota State Fruit Breeding Farm's new seedlings. A seedling of Malinda. Tree very vigorous, free growing, producing a well shaped head, with a strong branching habit. An annual bearer, and hardy as far north as the fruit breeding station. Fruit slightly irregular, roundish in form, very large size (about like Northwestern Greening), greenish yellow blushed with red, or in well colored specimens nearly full red; flesh tender, fine grained, pleasant sub-acid; quality very good. Keeps until midwinter. Our trees are mostly budded onto Hibernial bodies. 4 to 5 foot trees, \$1.00 each; 5 to 6 foot trees, \$1.25 each.

**STAYMAN'S WINESAP.** A great apple that succeeds almost everywhere in the winter apple regions. Equal to the Winesap in every way but color. Stayman is splashed and striped with crimson, whereas Winesap is an all over red apple. Seems to prefer dry soils to those that are rich and heavy, making it a most desirable variety for general planting throughout the West and Southwest. Probably the best all purpose variety of apple grown.



Delicious Apple.



## McLean's Winter Apple

**MCLEAN'S WINTER APPLE** is a remarkable apple, that originated four miles east of Faribault, Minnesota, over thirty-five years ago. The original tree still stands on the open prairie east of the city and is as sound as a dollar. Tree tall, spreading, and a rapid grower. Fruit medium in size and of excellent flavor, the flavor being similar to that of the Jonathan. Color light green, overlaid with bright dark red, making it a red apple. Young trees rapid growers and absolutely hardy. Last winter was an unusually hard and trying winter for apple trees in Minnesota. There was no moisture in the ground when we went into winter quarters. Then came the severe cold weather of early December with practically no snow on the ground. The temperature dropped to twenty below zero and stood there several days with the wind blowing a gale from the northwest. The result was that when spring came old orchards in many parts of the state were killed out and entire blocks of apple trees in the nursery rows were so badly injured as to be almost worthless. With other nurserymen we received severe injury to many of our apple trees, but our McLean's Winter trees came through uninjured, showing them hardier even than such varieties as Peerless, Duchess and Hibernial. Commences to bear young and is a continuous bearer.

The original tree on the farm of D. A. McLean, four miles east of Faribault, is thirty feet high and thirty to thirty-five feet through the spread of the limbs. This single tree bore twenty-one bushels in 1913, thirty-one bushels in 1915, and twenty bushels in 1917. These apples sold right on the place for \$1.00 per bushel, making \$72.00 taken from a single tree in three years. The fruit keeps well into the winter.

The foregoing part of this description we wrote seven years ago and now that we have had so many additional years to test the tree out in we can but emphasize what we said then. We wish to emphasize the beautiful color of the fruit which is a rich dark all-over red, the red giving the apple a very beautiful appearance. Added to this is a flavor unequalled by that of any other apple but the Jonathan which in flavor it much resembles. The tree is still the hardiest tree we grow in our nursery out of some forty different varieties of crabs and standard apples. The old tree continues to bear its enormous crops and the young trees, now that they are coming into bearing, bid fair to outdo the parent tree. We believe the McLean's Winter has gone far towards the solution of the late apple problems of the Northwest. We carry an unusually fine stock of this wonderful variety for this spring's trade.

## Prices

	Each	Per 12
Strong, 4 to 5 ft. trees .....	\$0.70	\$8.50
Strong, 5 to 6 ft. trees .....	.85	8.00
Bearing size trees, 6 to 8 ft., selected .....	1.50	12.00



## The Haralson Apple

Ever since the first lover of a good apple came into Minnesota to make that state his home there has been an increasing search for a good real winter apple that was hardy enough to stand the peculiar conditions of our winter climate. It seems that at last this much-sought-for apple has been found. Among the many different fruits that the Minnesota State Fruit Breeding Farm has been experimenting with, the apple and the plum have probably received the most attention. I had the pleasure of visiting the station this summer just at the time when the plums were at their best and when the apples although not yet ripe were all colored up and showing to wonderful advantage. I saw many trees of Folwell, Minnehaha and Wedge, three of the station's best new varieties just literally loaded with their immense crops of large, fine shaped, well colored apples. But of all the apples I saw in the station orchards on this trip I was most impressed with the variety named Haralson. The trees of this variety were younger than those of the other sorts and because of this not so large, but every tree was loaded with every apple it could well carry. And such apples. Great big red fellows that just made one's mouth water to look at them. I had heard of the Haralson for several years and had noticed it at the winter meetings and was very much impressed with its appearance and keeping qualities, so much so that I was keeping very close track of the apple and when I received word from Secretary McIntosh of the State Horticultural Society last March that they had some specimens in the cellar and that if I would come up we

would sample them, I jumped at the suggestion and the next day found me at the University Farm. In company with Secretary McIntosh I was piloted by Mr. Fred Haralson, now in charge of the Breeding Farm to the basement of the Horticultural Building of the University Farm and here we found several very promising new apples at that late date, March 8th, still in splendid condition. None of these apples had been in storage. They simply lay in apple boxes in a cool cellar, the temperature of which was regulated as best it could be by the opening and shutting of a single side window. Of all the apples tasted, the Haralson was far and away the best. Truly an apple of outstanding merit. The apples were very large in size, averaging about four inches in diameter, rather flat, and of a beautiful red color. When cut the flesh was white, firm and crisp as would be a Wealthy a few days after being taken from the tree in the early fall. And the flavor was splendid. I believe we have in this apple all that can be desired in a winter apple. I have never seen or tasted a better one. It is a true winter apple. An apple that will rank as to quality and appearance right up with such apples as the Jonathan, Spitzenberg and the Delicious. Notwithstanding the fact that the trees which I saw at the Fruit Farm had been heavily cut for propagating wood during previous years, they were carrying a great crop of fruit and I felt that we were very fortunate to be in possession of a small stock of this wonderful variety to offer our customers.

We offer 150 trees only in strong one-year whips, 3 to 5 ft., at \$1.25 each.





Early Strawberry Crab Apple.

## Crab Apples

The hardy and improved varieties of Crab Apples, some of which are of recent introduction and promise great excellence, supply a much needed want in the more northern portions of the United States and Canada, where little else in the line of fruits can be grown. And even in the more favored localities, where other fruits are grown in abundance, Crab Apples are every year becoming more esteemed and cultivated. They combine the qualities of extreme hardiness and productiveness, being capable of enduring an extremely cold climate, and bearing annually large crops of highly desirable fruit.

Their extreme hardiness, early productiveness, beauty and value for culinary purposes, as well as the value of some varieties for desserts, entitle them to a place in every garden.

Sizes and prices for Crab Apples the same as for Apple trees.

**EARLY STRAWBERRY.\*** Season, August. Tree hardy, spreading, very productive and the earliest of all to ripen; the fruits are of medium size, greenish yellow with carmine stripes and splashes and of a mild, sweet flavor; one of the best crabs for eating. An old-time favorite in the Northwest.

**DARTT.\*** Tree a rapid, upright grower and very hardy. Comes into bearing very young and bears great crops of crabs about the size of the Transcendent. Fruit conical, color yellowish green overlaid with a blush of bright red with minute white spots. Good to eat from the hand. A splendid pickling crab.

**MINNESOTA.** Season, October and November. This is probably the hardest and will do the best the farthest North of all crab trees. Color a pale yellow covered with dull greenish blotches. When fully ripe a splendid crab to eat. Grows to a good size. Essentially an eating and cooking crab.

**FLORENCE.\*** Originated by Peter M'Gideon who produced the Wealthy apple. Tree a low spreading grower. Comes into bearing at three years old and bears almost every year immense crops of bright red fruit. About same size as Transcendent. The most successful crab for the far North. Very hardy. Does not blight. We advise this crab very strongly for the northern half of Minnesota and Wisconsin.

**HYSLOP.\*** Season September and October. A nice sized crab of a deep crimson color, that when fully ripened becomes so dark as to be almost black. Flesh fine grained, yellow, and tart. A great crab for pickles and jelly.

**FARIBAULT (Hybrid).** Season, November to February. A large, handsome hybrid, red over greenish yellow ground. Tree upright, vigorous, hardy, very free from blight. A splendid variety, which originated here at Faribault, and has given the Northwestern planter the utmost satisfaction. This kind has proven itself through continued trials here in the North to be the most hardy of any variety of crabs which we have to offer. The trees grow to an immense size and are annual and heavy bearers. The crabs are large in size and splendid keepers. Very desirable to eat in the middle of winter.

**SUCCESS CRAB.** The Success is a new crab that originated in Southern Minnesota quite a few years ago and has proven itself one of our best crabs. We have been looking for years for a crab that would take the place of the Transcendent, a crab that has the wonderful quality of the Transcendent and that does not blight. We have this in the Success. Trees hardy and thrifty growers. Fruit similar in size to Transcendent. Bright red. A splendid cooking and preserving crab. 5 to 6 ft.

**TRANSCENDENT.\*** Grows into an immense great tree that with us often produces 20 bushels of fine fruit to the tree per year. Color bright dark red. Crisp and juicy. When canned, preserved or pickled, this is the finest flavored of all crab apples. Strictly first class.



Whitney Crab Apple.

**WHITNEY.\*** A universal favorite. Tree a rapid, upright grower. A young and annual bearer of immense crops of dark red fruit. This crab where well cared for runs fairly large. Fruit conical and sweet. One of the best for making sweet pickles. A very nice fruit to eat direct from the tree.



Montmorency Cherries.

## Cherries

Cherries do best on sandy or gravelly, well drained soils and southern slopes, but will do very well in almost any situation, except a wet and exposed one. They are desirable for planting near dwellings where beauty and shade, as well as fruit, are so much sought for.

### Prices for Early Richmond and Montmorency:

Cherry Trees	Each	Per 12
Select 3 to 4 ft. ....	\$0.75	\$8.00
Select 4 to 5 ft. ....	1.00	11.00

**EARLY RICHMOND** (English Pie Cherry). A well known old standard variety. Tree is hardy, healthy, a free grower, very productive and regular in bearing. Fruit clear bright red, of medium size, acid, rich and one of the best for canning and for pies. The most popular of the true Kentish cherries. Ripens in June.

**MONTMORENCY.** A beautiful, large, red cherry, larger and finer than Early Richmond, but fully ten days later. Being extraordinarily prolific and very hardy, it can be highly recommended. Valuable for canning and preserving.



Early Richmond Cherries.

**ROCKY MOUNTAIN CHERRY** (Sand Cherry). A reliable, hardy, dwarf cherry, very productive. This cherry is generally grown in bush form like currants; it is hardly ever troubled with insect pests or fungus diseases. The fruit is of a beautiful rich crimson color when ripe, of fair size, good flavor, excellent for jelly and preserves. To be recommended for exposed locations where the other cherries will not thrive. Tree is very ornamental and deserves a place in every yard. Price for bushy plants: 2 to 3 ft. trees, each 25c; 12 for \$2.50. 3 to 4 ft. trees, each 30c; 12 for \$3.00.

**CHOKE CHERRY.** In the summer of 1888 while on the road selling nursery stock one day, I was driving across the almost treeless prairie of Southern Lyon Co., Minnesota. It was towards evening and I had been on the road all day and hadn't seen a sign of fruit that day in all that country. Towards the latter part of the afternoon I came across one of those old tree claim plantings so common in that country in those early days. There were probably forty or fifty rows of trees in all with the rows about forty rods long. I noticed that the first two rows towards me seemed from a distance to be heavily laden with reddish black clusters of fruit. And when I was close enough to see what it was I was surprised to find that the fruit was great bunches of choke cherries. Why, there were bushels and bushels of fruit and seemingly no one but the birds to pick it. I was a boy then with a boy's appetite. I got out of my buggy and just picked my hat full of those cherries and before or since I do not think anything ever tasted better to me than those choke cherries did. That was thirty-five years ago and I have still the memory with me of how good those cherries tasted. One's tastes change with the passing of the years. But I believe the taste of boys and girls is much the same now as when I was a boy. And I have always thought since that if I were a farmer with a large grove about the house I would plant within the grove many choke cherries for the children and for the birds. We have some nice little two-year Choke Cherry trees, 6 to 12 inches at 12 for 90c. 25 for \$1.80; 100 for \$5.00 postpaid.

## Compass Cherry Plum

No one fruit that has ever been brought out, with the possible exception of the Wealthy apple, has brought more blessings to the Middle Northwest than has the Compass Cherry. Where no other good cherry can be grown, the Compass does well. It seems to do equally well in the far North on the prairies of Southern Manitoba and Saskatchewan, in Montana, North and South Dakota, and throughout Western Minnesota. It will withstand a winter temperature of 60 degrees below freezing, and bear a full crop of fruit the next season. This cherry was originated at Springfield, Minnesota, and is a cross between the native Sand Cherry and the American Plum. It is larger than the Richmond cherry, and is about the same bright red color. In quality it is good, with a different flavor from any cherry or plum. It is fine for canning and preserving. Compass Cherry Plum ripens in July, before any of the Hansen plums are ripe. It comes into bearing when only two years old, as a rule, and never fails to bear an enormous crop of fruit. Last summer (1923) we picked five bushels of Compass Cherries from the small three-year-old trees standing in the nursery row. The very same trees that we are delivering to our customers this spring. We canned two bushels for our own use. This fall Miss Gentry's sister, who lives down in Central Illinois, right in the midst of the Early Richmond and Montmorency cherry belt, was with us. We used a good deal of this sauce while she was with us. She often said she preferred it to the sauce of either Early Richmond or Montmorency. The tree presents a very beautiful appearance when the fruit is ripe, as the branches are simply masses of bright red fruit. The fruit brings a good market price, and there has never been enough of it to supply the demand. Compass should be in every garden and orchard.

Prices as follows: 3 to 4 ft. trees, each 50c, 12 for \$5.00. 4 to 5 foot trees, each 60c, 12 for \$6.25. 5 to 6 ft. trees, each 70c, 12 for \$7.50. Strong 6 to 8 ft. trees, each 85c, 12 for \$9.00.



## Zumbra Cherry

The Minnesota State Fruit Breeding Farm has not only given us some wonderful new plums that are as fine as anything that comes to us from California, but it has also originated a new cherry. The fruit of this new cherry! is much like the great black sweet cherries that come to us in little boxes from the Pacific coast and for which we willingly pay forty cents a pound.

We have been blessed for a long time with the Compass Cherry but this is a red cherry and the fruit when made into sauce resembles that of the sour or Early Richmond type of cherries.

The Zumbra cherry was brought about in the first place by crossing the wild red cherry of our northern woods, pin cherry, with a large black sweet cherry, like the Bing. This cross gave us a tree that bore at the station in one year about a thousand cherries. This tree stood by the side of a row of Western Sand Cherries the year it bore its crop of fruit. The fruit of this cross-bred tree was saved and the pits planted. Many of the pits germinated and out of the resulting seedlings came one seedling that was very noticeable. It was saved and tried out over a very large territory and found very desirable and hardy, growing away up in Manitoba. This cherry was named the Zumbra.

The Zumbra ripens in August and in size, color, appearance, and flavor resembles the great black sweet cherries shipped in here from Oregon and California. The fruit reaches an inch in diameter and is borne on the one-year-old wood. The color is very dark, nearly black; flesh firm, greenish with a tinge of red. The pit is very small and separates easily from the flesh. Quality sweet and good, resembling its sweet cherry parent. Recommended highly for sauce and preserves. When cooked the sweet cherry flavor is especially noticeable. Zumbra hangs well to the tree and ripens over a period of three weeks. It is not subject to the brown rot.

The Zumbra is an immense bearer. It begins to bear when the tree is two years old. It is absolutely hardy and gives to us of the Northwest practically a sweet black cherry better than heretofore we have had to import and pay almost prohibitive prices for.



**Zumbra Cherries** (about three-fourths actual size).

Professors Alderman and Dorsey of the Minnesota State Experimental Station and Supt. Haralson of the Fruit Breeding Farm, state in the Minnesota Horticulturalist that the Zumbra is one of the most promising of the Fruit Breeding Farm productions. This is a very strong recommendation as it comes from men who are authoritative and who have watched the Zumbra since it originated.

The Zumbra Cherry is very hardy and seems to do well on almost all soils. It comes into bearing as a two-year-old and if the trees are well cared for will bear immense crops every year. Having the Sand Cherry blood in it as it does it will do best if grown in bush form. That is if it is allowed to throw branches right from the ground up. Every spring the old wood should be cut out. This causes the tree to be at all times practically a young tree and insures good crops.

We believe that there is no way in which a little extra money can be raised more easily on the farm or on small town places than by growing say a half acre of Zumbra cherries. There would be easy sales for the fruit at very attractive prices at least at twenty cents a quart or at \$6.40 per bushel which means several hundred dollars clear a year per acre over and above all expense. There is a surplus of wheat in the world, there is no surplus of Zumbra cherries nor will there be for years to come. Why not try it? We have a large stock of well grown Zumbra cherry trees in 3 to 4 ft., and 4 to 5 ft. sizes but we urge everyone who wants to be sure of getting these trees this spring to order early as last year the call was so great that long before the season was over our stock was exhausted and we had to return the money.

	Each	Per 12
2 to 3 ft. trees.....	\$0.65	\$6.50
3 to 4 ft. trees.....	.75	8.00
4 to 5 ft. trees.....	1.00	11.00



**Three-year Zumbra Cherry Tree.**



Kieffer Pears Are Profitable for Market.

## Pears

Pears have grown successfully in certain localities of Southern Minnesota for many years. In Blue Earth county around Lake Crystal a good many trees are to be found as large as eight inches in diameter. Many of these trees have borne many bushels of pears each year.

Pears should be planted in sheltered and favorable locations as far North as the two southern tiers

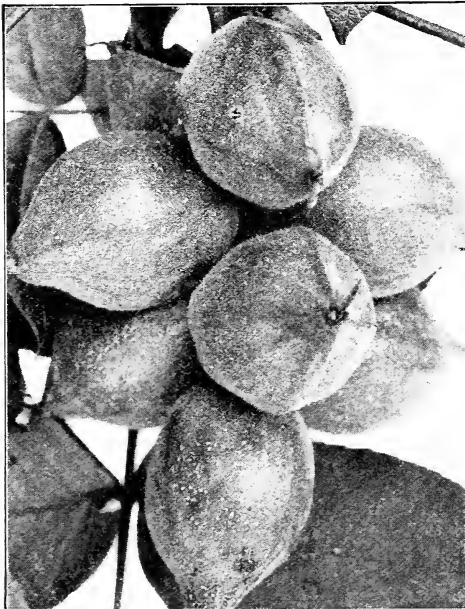
of counties of Southern Minnesota. Pears are one of the very best fruits that we have and for which we always find a good market with high prices. Don't fail to place your order with us for this delicious fruit. The following three varieties are the hardiest and most reliable.

**FLEMISH BEAUTY.** Fruit large, beautiful, very sweet, rich and melting, pale yellow, almost covered with light russet, turning reddish brown when ripe. Tree very hardy, vigorous and fruitful. Succeeds well in most parts of the country, especially recommended for the North and for Montana. Season September to October. We recommend this variety especially for the North.

**KIEFFER.** Very profitable market sort on account of its good shipping and keeping qualities. A favorite for canning and preserving. Fruit large, rich golden yellow. Tree is a vigorous grower, an early and prolific bearer, resisting blight to a very large degree. Most planted of any variety in the Northwest; does well in Kansas, Oklahoma and Texas. Season, October to November.

**DUCHESS.** A most desirable pear. Fruit medium size, very handsome, yellow with bright carmine cheek; flesh rich, juicy, aromatic, of best quality. Tree hardy and a vigorous grower. Season, September to October.

Price: 4 to 5 ft., extra selected trees, each 80c; 12 for \$8.50.



Butternuts.

## Butternuts

One of the finest native trees. Does especially well in damp heavy soils. Perfectly hardy in Minnesota. We have always had butternuts on our place and have seldom missed a crop. A tree valuable for its wood as well as for its nuts, which are large, oily and rich, and of delicious flavor. We have had trees bear ten bushels per tree a year.

Nice one-year trees at 15c each; \$1.50 per doz.; \$5.00 per 100.

# The New Minnesota Plums

Sixteen years ago the legislature of the State of Minnesota made an appropriation that the Horticultural Society of the state might purchase a tract of land such as might be selected by a committee of the society as suitable for the establishment and maintenance thereon of a State Breeding Farm. This farm was to confine its work to the breeding or production of new varieties of fruit of a quality superior to those already existing and such as would be suitable to the extremes of our Minnesota climate. The object in view was such an improvement of the existing fruits of Minnesota that in time the people of our state might have fruit as good if not better than those of any other state similarly situated. Prof. Haralson was placed in charge of the plant breeding work and during the course of the sixteen years he has had charge, has produced many wonderful new creations, principally in grapes, currants, gooseberries, raspberries, strawberries, plums and apples. And of these different fruits probably his most notable fruits so far are his Latham or Minnesota No. 4 Raspberry, Minnesota No. 3 Strawberry, and his different Hybrid Plums. Some wonderful apples have also been produced but the time has been too short in which to test these out and work up stocks so as to place them on the market for sale. But Prof. Haralson's plums have been tested out long enough so that we know just what they are and we do not hesitate to make the assertion that we have in these new plums a list of varieties that in every way are unsurpassed by any line of plums ever produced. Heretofore, we who have made the great middle Northwest our home, in the line of plums have had to depend upon selected varieties of our native wild plum. These have given us some very fine plums indeed such as the DeSoto, Forest Garden, Surprise, Stoddard, Wolf, etc., all good plums in their place and for the making of plum sauce, plum jellies, and plum preserves unsurpassed by any fruit in existence. But still for years we have longed for something along the line of the great big plums which have come to us from a distance of thousands of miles shipped in from California. Now

in these new Minnesota plums we have just what we have been looking for as they are all crosses between these great California plums and our native plum, mostly the Wolf. From their native parent they have the hardiness to withstand the rigors of the northern climate and from the California plums the size and eating qualities we have long been looking for. The varieties which we are listing are those which so far out of thousands of seedlings produced and tested out have proven the best in quality, productiveness and hardiness. In our Minnesota climate these have done exceedingly well. We believe they will do equally well in the eastern half of South Dakota. Wherever they have been tried out farther south they have done even better than here, the fruit coming much larger. So we do not hesitate to say that through Nebraska, Kansas, Iowa, Illinois, Wisconsin, Indiana, Michigan and Ohio, into which states our trade extends they will be exceedingly desirable fruits.

These plums have been so thoroughly tested out now that we do not hesitate at this time to advise their planting not only for the private garden where they are most desirable but for commercial planting. These plums should be set 17 by 18 feet apart which takes 140 trees to the acre. In four years after setting, the yield is 70 bushels per acre. California plums sell on our local markets when in season at from \$3.00 to \$5.00 per bushel wholesale. Figured at \$3.00 per bushel, these plums would bring \$210.00 an acre the fourth year after setting. The plums are large and easy to pick. Our market is unlimited right at our door and cannot be supplied for years to come. Our farmers should turn from raising grain and selling it as they have had to for the last two years at less than cost and raise fruit like this.

The past year, 1923, was a regular plum year in Minnesota and we had a splendid chance to again see what these new plums would do. On our own grounds the trees were all three-year-olds. That is, they were such trees as we send out to our customers growing their second year in the orchard rows. These young trees, not much more than 8 feet high, were all literally loaded with fruit. And such fruit we had never raised before here in Minnesota. We visited the State Breeding Farm several times during the fruiting season and were more and more impressed each time we went there with the great possibilities in store for those who ventured into the growing of these great plums in a commercial way for the local markets. We think we are safe in saying that the State Fruit Breeding Farm produced a thousand bushels of plums this year and wherever they had time to pick the fruit they received \$5.00 per bushel for it right on the place. For those who will venture into the plum orcharding business throughout the section where this catalog goes there is good money awaiting them in their undertaking. We send out strong 4 to 5 and 5 to 6 foot trees. These trees will, if well cared for, bear a good crop the second year from planting and by the fourth year will be in full fruit. Put up in quart and two-quart boxes the fruit will sell readily at twenty cents per quart or \$6.40 per bushel. The plum tree is adapted to backyard planting as well as in the farm orchard. The people who go into these plums for the next ten years, before many go into them, as will eventually be the case, will reap a harvest.



Red Wing Plums on 3-year-old Trees.

**ELLIOTT** (Minnesota No. 8). This tree is a strong grower and is very hardy. It ripened a crop of fruit in 1921 up north of Winnipeg. The Elliott is a very productive variety and bears a crop every year. Season about September first. Medium to large in size. Firm, clingstone, pit small, quality good, color yellow overlaid with red. This is a splendid late plum to sell in the home market.

MINNESOTA PLUMS—Continued.

**GOLDENROD** (Minnesota No. 120). A Shiro crossed by Howard Yellow. Tree is tall, vigorous, upright in form, hardy, productive; fruit medium to large in size, round, clear yellow. Flesh firm, moderately juicy, moderately sweet; fair to good in quality, stone medium in size, cling; season last of August. Very promising as a market plum. The most beautiful of all yellow plums.

**MONITOR** (Minnesota No. 70). An unusually strong growing tree that naturally develops into a shapely tree without much pruning. Very strong shouldered which enables it to carry its immense loads of fruit without breaking down. It is an annual bearer having borne a large crop every year for the last seven years, 1916-1922. The fruit is of the very best quality, firm flesh, and very large size averaging one and one-half to one and three-fourths inches. It is a splendid shipper. A very attractive dark red plum.

**RED WING** (Minnesota No. 12). A regular bearer and hardy as far north as the Twin Cities. The fruit is very large, firm, and of the best quality; color yellow overlaid with bright red; stone small and entirely free; very sweet. An exceedingly fine eating plum. Season, third week in August. A good shipping plum and splendid for cooking. Very easy to peel. A wonderful plum.

**ST. ANTHONY** (Minnesota No. 115.) This remarkable fruit is a sand cherry hybrid of a breeding similar to that of the Zumbra. The tree is vigorous, very hardy, and immensely productive, slightly larger than Zumbra in tree and fruit. Fruit round, dark, purplish black; flesh moderately firm, juicy and of fine quality when fully ripe. Excellent for preserving. Season, late August. We advise the planting of one tree of St. Anthony with every half dozen or dozen Zumbra planted as it blooms at the same time and fertilizes the Zumbra blossoms.

**STELLA.** The Stella is not one of the Minnesota Station seedlings but the station authorities have been so impressed with the good qualities of the



Stella Plums on 3-year-old Tree.

Stella that they are urging the planting of the variety. In sending out their list of varieties they list this variety with them because of its wonderfully good qualities and because of its being such a splendid plum to ship. A regular and annual bearer. Fruit large, oval, semi-clingstone. When fully ripe a dark purplish red. Flesh very firm. Quality fair. Season, September 1st. Especially desirable as a market plum.

**UNDERWOOD** (Minnesota No. 91). This is the earliest of the large new plums. Ripens from about August 1st to 15th and attains a size of one and three-fourths inches. The tree is one of the strongest growers of all these new plums and gets to be very large, furnishing a large bearing surface to produce wonderful crops of beautiful fruit. Limbs well and heavily shouldered enable it to carry its great loads without injury to the tree. This is the hardiest of all these new plums and in favored locations we do not hesitate to advise its planting far north. Fruit is very attractive; red, firm juicy flesh, very small pit, free stone. Splendid quality. Hangs well to the tree and ripens over a period of two weeks. An annual bearer, having borne eight successive heavy crops.

**WINONA** (Minnesota No. 30). Tree a very vigorous grower with a spreading compact top. Requires little pruning. Hardy and an annual bearer. Fruit large, yellow background, turning red when ripe, roundish, semi-cling, juicy, very sweet and of fine quality. Ripens first week in September. The excellent quality of this plum and its firm meaty flesh recommend it especially as a market variety.

Our Minnesota plums are all graded in 4 to 5 foot and 5 to 6 foot trees, except the Underwood, which we make into three grades having some nice 3 to 4 foot trees in this variety.

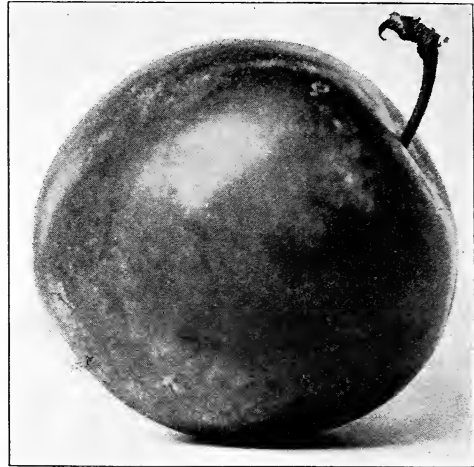


Three-year-old Underwood Plum Tree.

	Each	Per 12
Strong 4 to 5 ft. trees	\$0.80	\$9.00
Strong 5 to 6 ft. trees	1.00	11.00
Underwood 3 to 4 ft. trees	.60	6.50

# Loring Prize Plum

For many years Mr. C. M. Loring of Minneapolis had a standing prize which he offered through the Minnesota State Horticultural Society of \$100.00 in cash for a new plum of exceptional merit. This \$100.00 cash prize stood for many years and during the course of those years many new plums, some of them possessing a great deal of merit, were entered for the prize but invariably they were found by the committee to be lacking in those qualities which were demanded. Finally a new plum of immense size was entered for the prize from Lonsdale, Rice County, Minnesota. These plums were so large that many of them would just squeeze through the opening of a mason fruit jar, or to be exact, measured two and one-fourth inches in diameter. The plums were also of splendid flavor, had a surprisingly small pit and were of a beautiful red color. Immediately the committee recognized the superior merit of this remarkable plum. As soon as they had examined the original tree and some of the trees grafted from it and had ascertained that it was hardy, they awarded it the \$100.00 cash Loring Prize and the plum was named the Loring Prize.



Loring Prize Plum (Exact Size).

Many years ago some Burbank plum trees were planted in a cluster of native American plum trees comprised mostly of DeSoto and Weaver. These plums grew apace and in due time were covered with a profusion of bloom. Bees and the winds deposited the pollen from the blooms of the hardy American sorts on the pistils of the blooms of the larger, finer fruited, but more tender Burbank plums. Some of the Burbank blooms so fertilized set fruit which ripened and was picked. The seeds of these great Burbank plums were saved and planted, and from one of these seeds came the new plum which since has been named the Loring Prize.

The little seedlings were planted out in the old orchard where the seed was gathered, took root and grew. The cold Minnesota winter swept down upon the mother orchard and these little trees and when spring came many of the little seedlings sickened and died. But one strong lusty fellow threw forth new leaves and during its second summer made a wonderful growth. It passed through its second trying winter in fine shape and as a three-year-old gave marked indications of its final fitness. It bore

fruit and such fruit as had never been seen in that neighborhood before. Great big red plums as large as good sized peaches and much resembling a peach in shape, and of such wonderful flavor too.

The old tree still stands and this together with many young trees grafted from it has borne great crops of fruit. The tree is hardy, a spreading grower with good strong shouldered limbs which do not easily split down.

The Loring Prize plum is without a doubt the most sensational introduction in the plum line in a century and we heartily recommend it to all of our customers.

	Each	Per 12
Strong 5 to 6 ft. trees .....	\$2.00	\$20.00
Nice strong 4 to 5 ft. trees .....	1.50	15.00
Nice strong 3 to 4 ft. trees .....	1.00	10.00

## Special Collections of New Minnesota Plums

We had many inquiries from our customers last season to make up collections of these plums for them so this year we have decided to make up three special collections which we offer. In making these collections we have included in them just what we would want to plant for ourselves were we doing the planting in our own orchard. We have tried to put into each collec-

tion, plums of every type and for every purpose and to cover as long a fruiting period as possible. In fact, plums to eat out of hand, plums that are good for making sauce cooked with skins and pits, plums that can be pared and pitted, plums that can be picked August 1st and plums that will be found on the trees towards the latter part of September.

### OUR SPECIAL PLUM OFFER A

1 Underwood, 1 Monitor, 1 Red Wing, 1 Winona, 1 St. Anthony, 1 Elliott, in 4 to 5 ft. trees, for \$4.60; in 5 to 6 ft. trees for \$5.65.

### SPECIAL PLUM COLLECTION B

2 Underwood, 1 Monitor, 1 Red Wing, 1 Winona, 1 Elliott, 1 St. Anthony, 1 Hanska, 1 Waneta, 1 Sapa, 1 Opatá, 1 Wachampa. all in 4 to 5 ft. trees, for \$8.75; all in 5 to 6 ft. trees for \$10.75.

### SPECIAL PLUM COLLECTION C

5 Underwood, 2 Monitor, 2 Red Wing, 2 Winona, 2 Elliott, 2 St. Anthony, 2 Hanska, 2 Waneta, 2 Sapa, 2 Opatá, 2 Wachampa, all in 4 to 5 ft. trees, for \$17.50; all in 5 to 6 ft. trees, for \$20.00.

Any of the above collections will make one a splendid orchard and will fit almost anyone's wants.



# American Varieties

No matter what improvements are made in our stock of plums through the introduction of the blood of Japanese or European varieties we in this part of the United States cannot get along without the improved varieties of our Native Plums. The introduction of this foreign blood makes an entirely different plum from what we had. When these new plums are cooked they give an entirely different tasting jelly, sauce or preserve from what our native plum does. And so that we may still have in our cellars when winter comes those preserves we all like so much, we must still grow in the orchard some of our old varieties of plum.

Prices on all American plums as follows:

	Each	Per 12
3 to 4 ft. ....	\$0.45	\$4.50
5 to 6 ft. ....	.90	9.00

**DE SOTO.** The most popular of all American plums. Tree is very hardy and productive, inclined to overbear. Extensively planted in Minnesota and the Dakotas. Fruit is of medium size, fine quality and flavor, bright red, with firm, yellow flesh. One of the best for home use. Finest of all plums for cooking as the skin is very tender.

**FOREST GARDEN.** A good early kind. Tree is strong, a splendid bearer. Fruit is large, round, deep purplish red, mottled with a thin bloom. Flesh deep orange yellow, very sweet, firm, and of pleasant flavor.

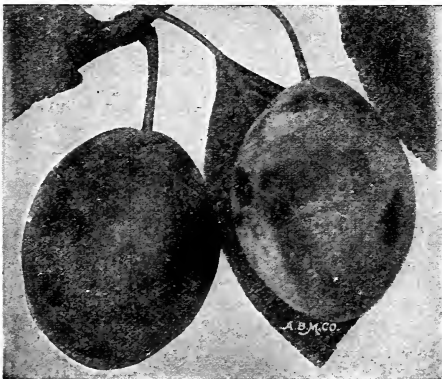
**SURPRISE.** One of the best and hardiest plums for the North. It originated at Sleepy Eye, Minnesota. Tree is beautifully symmetrical, and an excellent bearer. Fruit is very large, bright red, with many light spots; has small pit. Flesh is meaty, pale yellow, and of fine flavor. A good keeper and shipper, and one of the best for home use. Does especially well in sandy soils.

**WOLF.** A very popular plum in the Northwest; a rapid grower which comes into bearing early and is very prolific. Tree is hardy in Canada and a good bearer. An excellent market sort. Fruit large, orange, overlaid with red; freestone. Flesh yellow, of good quality and flavor. Ripens about September 1st.

**WYANT.** A very large, reliable sort. Is extremely hardy and a good bearer, producing a heavy crop annually. Tree is of spreading growth. Fruit is medium sized, purplish, red, oval; flesh yellow, of rich flavor and quality. A good variety for home and market. Ripens with Wolf. Can be depended on for a crop every year.



Forest Garden Plums.



Shropshire Damson Plums.

## Seedling Plum Trees

For the last ten years we have made a business of going through our bearing orchards of American plums and selecting from the trees while in bearing the fruit from the heaviest bearing trees in Surprise, Wyant, Wolf, DeSoto, Forest Garden, and Stoddard. We have planted the seed from this selected fruit and have offered the resulting trees for sale. These trees are giving to our old customers the greatest of satisfaction as they come into bearing. Being seedlings each tree produces a different plum. A dozen trees will give one as many different kinds of plums. Early and late; red and yellow; some freestone and some clingstone. Being seedlings we are selling them at the following unusually low prices:

	Each	Per 12
Nice 3 to 4 ft. trees .....	\$0.20	\$2.00

## Shropshire Damson

A small black or very dark blue plum extensively grown throughout Illinois, Indiana, Ohio and Michigan for kitchen purposes. Very popular as a cooking plum. Tree is not a rapid grower but the fruit grows abundantly in great clusters. Season, October.

	Each	Per 12
Nice 4 to 6 ft. trees .....	\$1.00	\$10.00

## The Hansen Hybrid Plums

No man ever conferred a greater blessing on mankind in the line of fruit than that conferred by Prof. Hansen of the South Dakota College of Agriculture when he produced and gave to the world his new Hybrid Plums. The most of these plums are a cross between the Sand Cherry which grows wild in the western part of the Dakotas and in Montana, and Japanese varieties grown in California. Many of these fruits are very large, as a rule come into bearing when they are two years old and produce wonderful crops of fruit of the most exquisite flavor.

At first it was thought that these plums did well only on the drier soils of the West. But gradually they have been making their way all over the country and it is now found that they may be planted clear across the country. We recommend them very highly. They are different from any other plums and all are splendid varieties.

Prices of all varieties of Hansen Plums:

	Each	Per 12
Nice 3 to 4 ft. trees .....	\$0.50	\$5.00
Nice 4 to 5 ft. trees .....	.75	7.00
Nice 5 to 7 ft. trees .....	.85	8.50

**HANSKA.** Tree is very hardy and of rapid growth; very symmetrical. Hanska was produced from a wild American plum and the Chinese apricot plum, *Prunus simoni*. The fruit is large, beautiful red with heavy blue bloom; flesh is firm of finest quality and flavor, similar to the apricot. Hanska is especially fine for canning and preserving.

**OPATA.** A vigorous grower and bearer; fruit buds forming on one-year shoots in the nursery. A cross of the Sand Cherry and the rich Luther Burbank Gold plum. Fruit of medium size. Dark purplish red, with blue bloom. Flesh of fine flavor, sweet and juicy. Fruit remains on tree a long time and does not rot. Opata took first prize as a seedling plum at Minnesota State fair. Season very early.

**SAPA.** An extremely early, vigorous bearer. Fruit medium size, glossy black; flesh deep reddish purple, excellent flavor, skin very tender. Fine for eating fresh and makes good preserves and jellies. Sapa plums raised at Brookings, S. D. were one and three-eighths inches in diameter and weighed five-eighths ounce, from one-year trees set out the preceding year. This year we had the greatest crop of Sapa plums that we ever had. We had about one hundred three-year trees bear in the orchard. These little trees were so loaded that their limbs just bent to the ground on all sides. We ate all we could of the fruit, we canned it, preserved it, made jelly of it. Sapa trees should be in every orchard. We had trees of this among our two-year-old nursery stock not more than two feet high that bore as many as 36 great dark purple plums to the tree.

**WANETA.** One of the newer varieties of the Hansen Hybrids. This variety is a cross between the Terry, the largest of all American plums and the Apple plum, a Japanese variety originated by Bur-



Opata Plums.

bank. Specimens of this variety have been exhibited that have weighed two ounces, and measured two inches in diameter. The fruit is of immense size, deep bright red, skin very thin, and the flavor is delicious. Prof. Hansen's best plum, and, in fact, one of the greatest of all plums. We have a splendid stock of Waneta.

**WACHAMPA.** One of the very best of the Hansen plums but one that is seldom found listed for sale. We got our stock from Prof. Hansen in the very first lot of trees we ever received from him. We have always considered it one of our finest plums. A nice, straight, rapid grower that soon grows into a shapely tree. An early bearer of large, dark purplish fruit resembling the Sapa but sweeter and darker, almost black. Wonderful.

## The Russian Mulberry

This is a very hardy, rapidly growing tree that should be planted in every fruit garden. It bears an abundance of good quality fruit, which makes splendid pies, preserves and jelly, if used in combination with currant, gooseberry, rhubarb or lemon. If the small trees are planted, it makes one of our most beautiful hedges. If one is growing small fruits it is splendid to plant a long row of Russian Mulberry on the north and west sides as a windbreak. This windbreak will not only break the wind, but will

furnish quantities of fruit which the birds like very much and which will keep them from the fruit being grown for market. The Russian Mulberry once planted needs no cultivation after the first year, and from then on will take care of itself.

	Each	Per 12
3 to 4 ft. trees .....	\$0.15	\$1.50
4 to 5 ft. trees .....	.35	3.50
5 to 6 ft. trees .....	.50	5.00

## Peaches

We have had many inquiries from our customers who live in the peach belt asking us why we do not carry peach trees. Now we cannot successfully grow peach trees here in Minnesota and we do not pretend to say so. But to supply this demand we made arrangements with one of the growers of the very best peaches in America to grow our peach trees for us. And we have in our cellars some of the finest peach trees we have ever seen.

Price, strong 5 to 6 foot trees, each 60c; \$6.00 per 12.

**ELBERTA.** One of the greatest of all peaches. A most beautiful extra large, golden yellow peach, with a brilliant red cheek, firm and very juicy, fine flavored, rich and sweet. The greatest of all peaches. Freestone.

**CHAMPION** (Freestone). Skin creamy white, with red cheek, fruit large, sweet, rich and juicy. A splendid shipper. Early. Hardy and very productive.

**CRAWFORD'S LATE** (Freestone). Very late. A great peach of splendid size and appearance. A rich yellow peach with deep red cheeks. Flesh deep yellow. Usually needs thinning.

**HEATH CLING.** This is the well known white cling variety that is so valuable for preserving. A most delicious peach. Season, September. The best peach for sweet pickles.

**SALWAY.** A large creamy yellow peach, juicy, rich and sweet. One of the very best of the late varieties. October.

**HALE.** Probably there has never been a new peach introduced that has so rapidly come into favor as has the Hale. Color a beautiful deep, golden yellow, overlaid with bright carmine. Flesh firm and very fine grained. Late August.

## Dwarf Juneberry

(Amelanchier Botryapium)

The berry for the extreme North and South. Very hardy, enduring the coldest winters and hottest summers without injury. Bushy plants with leaves and flower stalks whitish woolly when young, white flowers in racemes. Berries of good flavor, reddish purple, changing to black when ripe. Splendid for canning and making pies. Very prolific, often producing a quart of fruit from a young bush. Every garden should contain some of this remarkable fruit. Strong transplants, each 25c; 12 for \$2.00, not prepaid. By mail: each 30c; 12 for \$2.20.

## Blackberries

Plant in rows 5 to 6 feet apart and 4 feet apart in the rows. To keep the bed in good, productive condition, the old, weak and dead wood should be cut out every season, and in spring the weakest suckers should also be removed, leaving only 4 to 5 strong ones in each hill. Cover with earth in winter, bending the canes at the roots. The plants do best on a clay loam.

Prices of the following varieties: Strong, transplanted plants, 12 for \$1.00; 25 for \$1.75; 100 for \$5.00, not prepaid. We furnish 6 plants at dozen rate, 50 at 100 rate. Price by mail, postpaid, 3 for 30c; 12 for \$1.15.

**ANCIENT BRITON.** One of the hardiest. A reliable market variety of medium size and of the best quality. Berries large and sweet. Sells well on the market and is very profitable. One of the best known and most planted in the North Central States.

**ELDORADO.** One of the hardiest of all blackberries, enduring the winters of the Northwest without injury. The yield is enormous, berries large, jet black, borne in large clusters. Very sweet, have no core; will keep eight to ten days after picking.

**SNYDER.** This is one of the best blackberries for market in the North and very hardy. The canes are vigorous and annually productive. Berries are medium in size, very sweet, juicy and of fine flavor. It also lacks the hard core found in many of the other varieties. Good shipping qualities.

**STONE'S HARDY.** For the northern sections of Minnesota, and similar latitudes this variety is especially adapted. Canes upright, very vigorous and exceptionally hardy. Berries of medium size, juicy, sweet and of fine flavor and good quality. For market as well as for home use. A dependable sort.

## Dewberries

**LUCRETIA.** In quality and size, this low growing or trailing blackberry fully equals any of the upright sorts. Wherever known, it is preferred to common blackberries, on account of the superior flavor, immense size, and fine quality of its fruit. Very prolific, robust, and does not sunburn. Vines should be covered with straw during winter in cold climates. Strong transplants, 6 for 60c; 12 for \$1.00; 100 for \$5.00. By mail postpaid, 6 for 70c; 12 for \$1.15.

## Loganberry

(Raspberry-blackberry Hybrid)

Fruit, size of large blackberries and of the same form and shape. Color, a bright dark red. The fruit partakes of the flavor of both the blackberry and the red raspberry. Mild, pleasant, vinous. Excellent for both the table, when just picked, and for canning, jellies, pies, etc. Seeds few and small. Strong plants, 25c each; 12 for \$2.50, not postpaid. Strong plants, 30c each; 12 for \$2.75 postpaid.



Lucretia Dewberries.



Beta Grapes.

## Grapes

The grape is one of the finest and most wholesome fruits we have. It grows in almost any kind of soil but seems to do best in a clay with considerable gravel in it. If a southern slope is to be had such a location is preferable, as the grape likes the sun. The rows should run north and south if possible so as to bring about an even ripening of fruit. The Beta, Alpha and Hungarian are absolutely hardy with us in the Northwest and need no protection whatever. All the other varieties will do well here in the far north and will pay for the work, if the vines are put down on the ground in the fall and covered with a few shovelfuls of earth. Farther south this is not necessary. Plant in rows eight feet apart each way. Prune the plants in the fall after the leaves have fallen, cutting back the limbs to from two to three eyes and leaving but three leaders. We always have a certain amount of complaint about grape vines not growing. Now there is never any reason why a person should lose a grape vine if it is properly planted and properly cared for right after planting. Almost invariably grape vines are planted too shallow. A one- or two-year-old grape vine always consists of three parts. The roots, the old piece of cutting from which the new plant was grown and the new top. Now almost everyone plants the grape vine with just the roots covered with soil leaving the true top and all of the old cutting above the roots of the ground. The vine should be planted so that the entire old cutting is beneath the soil. If the soil comes up on the lower two or three inches of the top so much the better. See illustration.

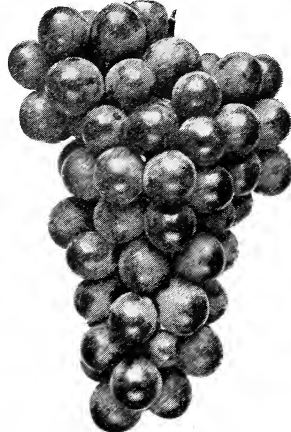
Price of all grapes except where otherwise noted: Strong 2-yr. plants, 20c each; \$2.25 per 12, not prepaid. Strong 2-yr. plants, 25c each; \$2.50 per 12, postpaid. If wanted in larger quantities we shall be glad to quote prices.

**ALPHA GRAPE.** This is the new hardy grape which is receiving such favorable mention wherever it has been tried out. It is the largest of all this class of grapes. The Alpha grape was discovered by Father Katchener of St. Joseph's College, St. Joseph, Minn., in the woods nearby growing wild, and from the size of the grape we believe it must be a cross between the Concord and the wild grape. It has the general appearance of the Concord although a little smaller in size together with the leaf, vine, growth, and hardness of the wild grape. It has been extensively grown in the college grounds at St. Joseph for quite a period now and has proven thoroughly dependable, passing through the severest winters without injury while all other varieties but Beta suffered. Strong one-year-old plants, each 50c; 12 for \$5.00, not prepaid. 55c each; \$5.25 per 12, postpaid.

**BETA.** One of the hardiest of all grapes. It will stand our cold northern winters without any protection at all. This wonderful grape was introduced by the Minnesota Experiment Station many years ago and has now been thoroughly tested out, and has proven itself an immense bearer, a grape of good quality, and a successful grape to grow almost anywhere over the Northwest. The plant is a strong, vigorous grower and often makes a growth of twenty feet in one year. This makes it very desirable for covering arbors as it then answers two purposes, that of making a dense shade and at

the same time producing big crops of fruit. One man raised four bushels per vine in a single year. The bunches are long, very compact with a small shoulder. The color is jet black covered with a blue bloom, and this grape has a very pleasant flavor. Every family should have at least a dozen Beta grape vines. This would furnish an abundance of grapes for grape juice and jelly. The Beta makes as good jelly as the wild grape. It is one-half wild and just as hardy. It ripens about September 1st. Strong 2-yr. plants, each 25c; 6 for \$1.35; 12 for \$2.50, not prepaid. Strong 2-yr. plants, each 30c; 6 for \$1.55; 12 for \$2.80 prepaid.

**BRIGHTON.** Red. Bunches and berries large, dark red color, fine rich flavor, juicy and sugary. Almost seedless pulp. Quality very fine. Extremely hardy, bears abundantly and stands the heat of summer well. Ripens extra early.



Delaware Grapes.

**CAMPBELL'S EARLY,** Black. A fine variety that cannot be too highly recommended. Of strong, vigorous growth, very hardy, foliage perfectly healthy; very early and abundant bearer. The berries are large, nearly round, dark blue. skin thick and tough, making it a good shipper; flesh sweet, with a slight aroma. The bunches are always large and beautiful. Will keep on or off the vine several weeks, after fully ripened. An excellent dessert grape and early market variety. Best 2-yr.-old plants, each 25c; 12 for \$2.50, not prepaid.

GRAPES—Continued

**CONCORD.** Black. The well known fine old market sort, which is so largely planted in all sections, being decidedly the most popular grape in America. Large, handsome bunches of large, luscious berries, covered with a rich bloom. Skin tender but firm, making it a good shipper; flesh juicy, sweet and tender. Vine, a strong, healthy grower, very hardy and productive. For general cultivation the most reliable variety, succeeding well over a great extent of our country. **Best 2-yr.-old plants, each 15c; 12 for \$1.25; 100 for \$10.00, not prepaid. 20c each; 12 for \$1.50, postpaid.**

**DELAWARE.** Red. Holds its own as one of the finest grapes. Bunch small, compact, shouldered. Berries rather small, round. Skin thin, light red. Flesh very juicy, without any hard pulp, with an exceedingly sweet, spicy flavor. Vines moderately vigorous, very hardy and productive. Should be planted in every garden and vineyard. Ripens early and is a good keeper.

**HUNGARIAN.** Black. An early sort with the hardiness of the wild grape; withstands our Northern winters, without covering. It is claimed to have come from Hungary. Bunches compact, large, fruit black, of good quality, sweet and aromatic. **1-yr. old plants, each 35c; 12 for \$3.50, not postpaid. 40c each; 12 for \$3.75, postpaid.**

**MOORE'S DIAMOND.** White. A seedling of the Concord, partaking of all its good qualities. Of a beautiful greenish-white color, without any of the yellow spots so common with white grapes. Berries are large, sweet, and of as good a quality as some of the more delicate varieties. It is hardy as the Concord, a profuse bearer, and in all one of the best sorts. Ripens early, a few days before the Concord. Very hardy.

**Special Grape Collection:** We offer 12 good strong vines, 2 each of Beta and 1 each of the other 10 varieties of grapes listed above, for \$2.75, not prepaid; or for \$3.00 postpaid.

## New Seedling Grapes

One of our neighbors has a nice vineyard of Beta, Alpha and Hungarian Grapes. The pollen of these grapes has been crossed and the seeds of the grapes saved and planted. From these have sprung many very choice grapes all of which seem hardy here in Minnesota. Among all these thousands of seedlings are bound to come some varieties much more desirable than even their parents. This year we have for sale several thousand one-year No. 1 choice seedlings which we are offering at the exceedingly low price of 10 for \$1.00, or 100 for \$5.00 postpaid.

## The New Caco Grape

A great big sweet juicy red grape produced by a cross between the black Concord and the red Catawba. A wonderful new grape that ripens earlier than the Concord and takes on an excellent flavor two weeks before it is fully ripe. Pronounced by many old grape growers "the best of all." **Strong select one-year vines, 75c each; 12 for \$7.50, not postpaid. 80c each; 12 for \$7.75, postpaid.**

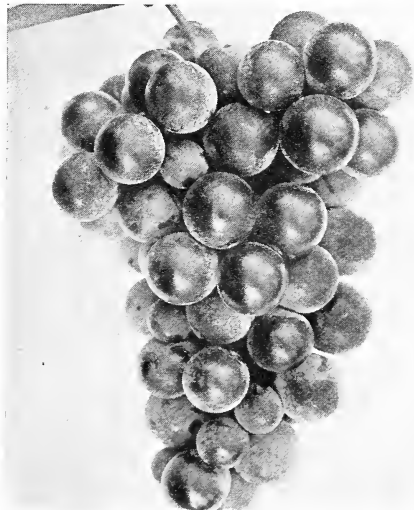


Niagara Grape.

**MOORE'S EARLY.** Black, with heavy blue bloom. This variety we recommend especially to our Northwestern orchardists and farmers. It is considered the best market variety in the grape growing districts of Minnesota, always yielding well and fruit selling at top prices. The bunches are of medium size, rarely shouldered. Berries large, round, of excellent quality. Desirable for market on account of its earliness. Berries larger than Concord, very much like it in flavor, and of the same good quality. Vine a moderate grower, very healthy and hardy; foliage thick and leathery. Ripens so early as to be nearly out of market before Concord is ripe. Well suited to Canada and northern portions of the United States by its hardiness.

**NIAGARA.** White. Home and market growers seem to agree that this is the most valuable of all the white grapes. Its clusters are large and handsome, compactly filled with large berries, having a thin but tough skin. When fully ripe they are a fine pale yellow, with a thin white bloom. The flesh is slightly pulpy, tender, sweet and delightful, with a flavor and aroma peculiarly its own, and agreeable to most tastes. Vine is remarkably vigorous and productive. Foliage thick and leathery. Succeeds well in both North and South. Ripens with Concord.

**WORDEN.** Black. Bunch large, sometimes shouldered, compact; berries very large, skin thin. Superior to the Concord in the following points: It is better in quality, has a larger berry, a more compact and handsome cluster and ripens five to ten days earlier. It fully equals Concord in vigor, health and productiveness. In berry it is about the size of Moore's Early, but of better quality, more vigorous and productive, and ripens but a little later. We recommend it strongly. It is perhaps not quite so good a shipper as the Concord, but nevertheless a good market sort.



The New Caco Grape.

## Currants

We cannot accept orders for Currants and gooseberries to be shipped west of the west line of Minnesota, Iowa, Missouri, Arkansas and Louisiana. The United States government prohibits any nursery east of that line from shipping currant or gooseberry plants west of it. So we ask of our customers living west of the line not to order either of these fruits.

**PERFECTION.** A new variety of great merit. We have fruited this variety in our trial grounds for several years and consider it the finest currant, everything considered, that is grown. It is a cross between the Fay's Prolific, which is the largest and most productive red currant grown in the East, and the White Grape which heretofore has been considered the sweetest currant grown. The Perfection resembles both parents. It has the immense size, the beautiful red color and the productiveness of the Fay and the wonderful sweetness of the White Grape. It is also remarkable in that it has very few seeds. It is essentially the currant for the home garden. **Extra strong 2-yr. plants, 25c each; 12 for \$2.50, not prepaid.**

**LONDON MARKET.** We consider the Perfection the finest currant where just a few bushes are wanted for the home table. But where one is planting in large numbers or where sweetness of the fruit does not mean so much, we certainly advise the planting of the London Market through the Northwest where heavy soils are the rule. And where one is growing for market, it is without question the only variety to plant. The bush is wonderfully strong and robust. Grows very large and retains its leaves well in the summer after those of other varieties have fallen. This gives protection from the sun to the fruit. The fruit is medium to large, of a very bright red color and borne in wonderful crops. We consider the London Market the greatest of all currants. **Strong 2-yr. plants, each 20c; 12 for \$2.00, not prepaid.**

**DIPLOMA.** Ten years ago we purchased our first plants of Diploma currant and ever since, as the years go by, we have been more and more pleased with it. It does splendidly here and produces great crops of very large bright red currants that are much sweeter than the ordinary red currant. The bunches are long, the berries a beautiful red, and unusually sweet. If you wish something choice in currants you should try a few Diploma. **25c each; 10 for \$2.00.**

**WHITE GRAPE.** Bush is vigorous and rather spreading, producing immense crops of fruit. Bunches are very large and full, with large sweet berries, translucent white. The flavor is mildly acid, and in quality, the White Grape is superior to most red varieties. The best of all currants for table use.



Carrie Gooseberries.



Perfection Currants.

**LONG BUNCH HOLLAND.** When the writer was a small boy, Father bought his first stock of Long Bunch Holland currant bushes. I remember we planted a thirty-rod row of them between two rows of large apple trees. The apple trees were far enough apart so as not to crowd the currants and still close enough so as to afford some shade which the currant likes. The soil was heavily enriched and these currants grew as I have never seen any other currant grow. Why the bushes actually grew five feet high and a single great bush would be four feet through the top. These immense bushes bore great crops of fruit. The single berry of the Long Bunch Holland is not as large as is the berry of the Perfection, London Market or Diploma, but the bunches are very much longer and carry their fruit well to the end of the bunch. It is the latest of all the varieties that we offer and starts to ripen as the other sorts are gone. It carries its foliage very late which protects the fruit until it is fully ripe. An immense money-maker. Very late. **Strong 2-yr. plants, each 20c; 12 for \$2.20; 100 for \$14.00.**

**RED DUTCH CURRANT.** An old and well known standard variety. Berries of medium size and bright red. Produces immense crops that always command a good price on the market. The bush is extremely hardy and will do well on almost any soil. We have an immense stock of this old variety and are offering it very cheap to reduce it. **Strong 2-yr. plants, 6 for 60c; 12 for \$1.00; 100 for \$7.00.** Where currants are wanted postpaid add 5c each or 25c for 12.

## Gooseberries

Plant gooseberries three to four feet apart in good rich soil and give a liberal dressing of manure every year. Trim out each spring late in March one-half the old wood and you will have lots of great big gooseberries.

We list four varieties which we believe are the best, judging from our long experience.

**CARRIE.** This is a new variety originated in Minnesota by the late Wyman Elliott. We consider it the hardiest, healthiest and most productive gooseberry grown. The plant is a very strong grower which gives it a great fruiting surface and enables it to produce and carry its immense crops of fruit. It is a wonderful cropper. As compared to other gooseberries, the Carrie is nearly thornless and this is a wonderful advantage when it comes to picking the fruit. The berries are large where well cared for, a light red in color when ripe, and of fine flavor. We consider this the most profitable of all gooseberries both for home consumption and for the market. **Strong 2-yr. plants, each 25c; 12 for \$2.50, not prepaid.** Same plants, each 30c; 12 for \$2.75, by mail, postpaid.

**GOOSEBERRIES—Continued**

**OREGON CHAMPION.** Berries very large, greenish white touched with brown. Very sweet. One of, if not the most prolific, of all the large gooseberries. A variety that originated on the Pacific coast where it is considered the greatest gooseberry grown. We have thoroughly tested it out here and recommend it very highly for size, quality and productiveness. Nice 2-yr. plants, each 20c; 12 for \$2.00, not prepaid. By mail, postpaid, each 25c; 12 for \$2.25.

**PEARL.** A most prolific and hardy variety that has borne great crops of fruit for us. Free from mildew. The fruit is large, pale green, and of the best quality. We sell this variety in great quantities to market gardeners who find it one of the most profitable sorts to grow. Strong selected 1-yr. plants, each 20c; 12 for \$2.00, not prepaid. By mail, postpaid, each 25c; 12 for \$2.25.

**RED JACKET OR JOSSELYN.** A beautiful smooth bright red berry of the very largest size. In fact, the largest of all our gooseberries. A vigorous grower, clean, healthy, and free from mildew. Has proven hardy everywhere and is enormously productive. Nice 2-yr. plants, each 25c; 12 for \$2.50, not prepaid. By mail, postpaid, each 30c; 12 for \$2.75.

**Quarantine on Gooseberry and Currant Bushes.**

Customers living west of the west line of Minnesota are requested not to include either currant or gooseberry bushes in their orders as no nursery situated east of that line is permitted by the United States government to ship either of these plants west of the line.

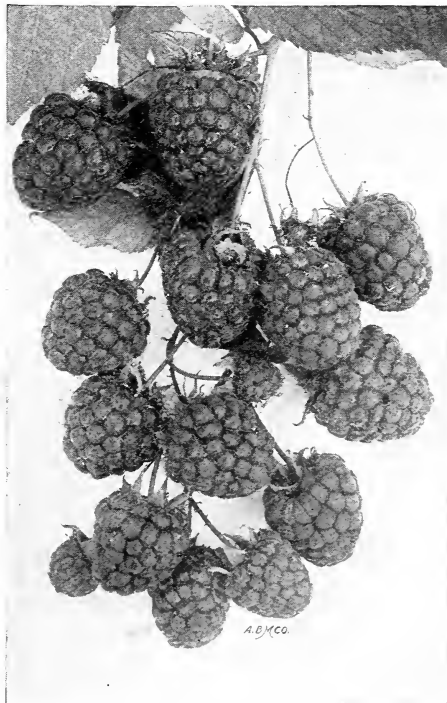
# Raspberries

Raspberries are among the easiest of fruits to care for. The fruit is always in demand, and brings higher prices than any other small fruit. A good clay loam soil is the best adapted to the growing of Raspberries, although they will do well on almost any soil but a damp wet one. The black and purple varieties should be planted in rows seven feet apart with the plants four feet apart in the row. For red raspberries, the rows should be five feet apart, with the plants two feet apart in the row. In training, allow only a few suckers to grow about each plant, cutting away the balance so as to throw all the strength into these few. Cultivate well until July 15th and then stop to allow the wood to ripen. The varieties we list need no covering over winter.

For the past ten years we have grown raspberries on an extensive scale with the growing of the plants for sale our main object. We plant our roots either in the fall or in the early spring. Taken one year with another we have had better luck with spring planting than with fall planting, but if the best results are to be expected the plants should be gotten in as early in the spring as possible, the earlier the better. Early planted stock will generally produce enough fruit the first fall to pay for the plants. The second year we look for a big and paying crop. With us red raspberries have always been a big money-maker. We have had years when we have cleared a thousand dollars an acre on our raspberries.

In these days when the one crop farmer is finding it so hard to make both ends meet and our economists and our would-be economists are casting about in all directions for some means to help the farmer out, we have often wondered why small fruits and especially red raspberries have not been thought of. Dairying and the diversified farming that necessarily goes with it is the cure-all advocated in the great farming districts of our country. But dairying, like all other branches of farming, if carried too far will be overdone. It is only a question of time when this will occur. On the other hand but few people think of the growing of small fruits in a commercial way. Now every town of a thousand inhabitants will furnish a market for at least one good small fruit grower. Red raspberries are the easiest fruit in the world to grow. Four acres planted out to two or three good varieties and well cared for will put at least one family in every farming community right on to its feet. Then let some other farmer try strawberries, another Beta grapes, another the new Minnesota and Hansen plums and you have in that way and to that extent solved an urgent and difficult problem.

**ST. REGIS EVERBEARING.** The only raspberry known that will yield two full crops of berries in a single season. It was awarded a certificate of merit by the American Institute of New York. It produces a very heavy crop at the regular season. Then all the new suckers produce a crop as they mature and then if the latter part of the season is fairly moist with frequent showers an immense fall crop is produced, as heavy as the first crop. Fruit of the very finest quality, large in size, and a brilliant red in color. The originator of the St. Regis gives the following description: "Raspberries for four months, that is what you get when



St. Regis Everbearing Raspberries.

## RED RASPBERRIES—Continued

you plant St. Regis, for it is the highest in grade, in size, in brilliancy of color, in firmness and in flavor. Its iron-clad hardness is certainly a wonder and its foliage never suffers by sunburn or scald. The fruit is large, of a beautiful rich crimson color when ripe, rich in sugar, and will stand shipping better than any other variety we know of. It is the earliest raspberry to ripen, and gives a crop of berries all summer and autumn. It succeeds well on all soils." 6 for 60c; 12 for \$1.00; 100 for \$4.50, not prepaid. 6 for 70c; 12 for \$1.15; postpaid.

## Latham or Minnesota No. 4

If the Minnesota State Breeding Farm had originated no other fruit of promise, the production of this one superb red raspberry would have repaid the state for all the funds expended at the station. When we first took this berry up, we were not greatly impressed with it as the canes on our soil were not as rank growers as many of our other varieties. But when our original planting became two years old and the plants came into full bearing we recognized that we had in the Minnesota No. 4, as it was then called, the most remarkable red raspberry ever sent out to date. The berry is of immense size and the bushes are just loaded to the ground with the great crop of fruit. The plant is not as great a multiplier as some varieties of reds which is a very desirable feature. Still enough strong hardy plants are produced each year to keep the bed renewed and in good thrifty bearing condition. Berries are dark red in color, very large, and firm. An easy variety to pick, shows up splendidly in the box, and because of its immense size readily demands the best price when sold. The raspberry growers about Lake Minnetonka, Minnesota's great fruit growing district, are discarding almost all other varieties for Latham or Minnesota No. 4, which they claim produces two to one of any other variety. We

heartily recommend this wonderful raspberry. We made several trips during the fruiting season all through the Lake Minnetonka fruit section. This is the greatest red raspberry section of the entire middle Northwest. Here hundreds, yes thousands of acres are devoted to red raspberries. There was an immense crop of as fine berries as I had ever seen and what was surprising, everything I saw was Latham. No other berry was grown. We have furnished this great raspberry district with plants for the past thirty years. Years ago we sold thousands and thousands of Marlboro, a few Cuthberts, then it was Miller. I remember that we shipped 120,000 Miller alone into this district one spring, and almost as many King. Then for nearly fifteen years it was King and Miller and now I don't see a single field of these old sorts. It is Latham and Latham only with here and there a small planting of the newer variety Redpath.

The growers say that the Latham is so far ahead of everything that they have ever tried they will try nothing else. One of our customers has purchased over 60,000 plants for early spring planting.

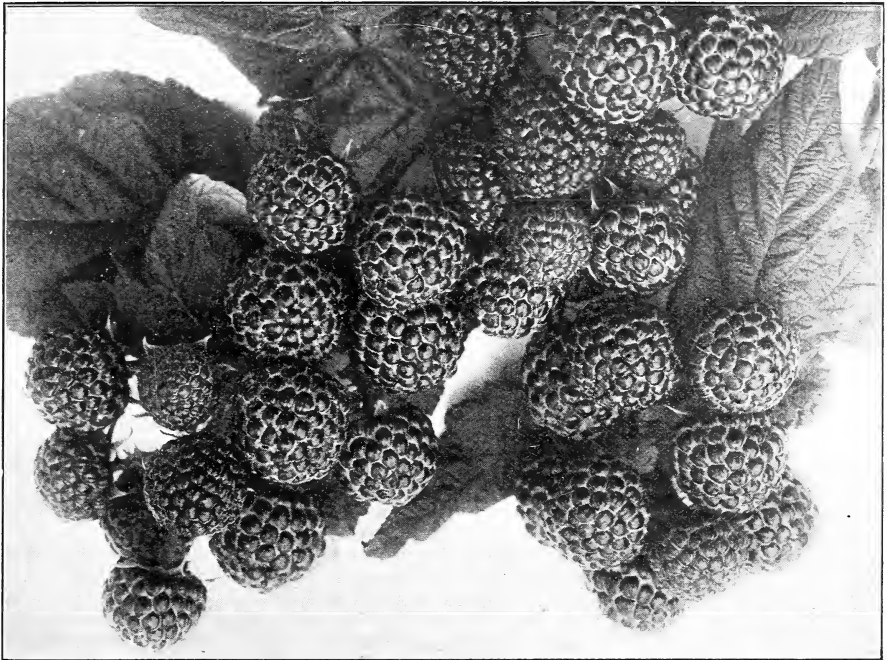
We have for this spring's trade what we consider the largest and best stock of Latham red raspberry plants in the world. All these plants have been grown on new soil that has never had raspberries on it before. The field has been grown entirely for the plants and every possible attention has been given these plants with the sole end in view of producing just the best possible plant for our customers. The plants will be well furnished with good tops and a splendid root system and are guaranteed absolutely true to name.

Price of strong, select, well rooted plants: Not prepaid, 3 for 50c; 6 for 90c; 12 for \$1.50; 25 for \$2.75; 100 for \$6.00; 1000 for \$40.00. 3 for 55c; 6 for \$1.00; 12 for \$1.65; 100 for \$6.50, postpaid. If wanted in larger quantities, price a matter of correspondence.



Latham Red Raspberry.





Plum Farmer Black Raspberries.

**RED RASPBERRIES—Continued.**

**REDPATH.** This is the latest of the new red raspberries coming from the Minnesota State Breeding Farm. It is a question whether it is not the best. Year before last we bought a thousand plants and set them out about May 4th. These plants grew very thrifty that first year and at the regular fruiting season started to bear and gave us a good picking every other day until September, and every few days after that until freezing weather came. The fruit is very large and a brilliant light red in color. The canes grow remarkably strong and send out lots of laterals giving it an immense fruiting surface, of which it takes full advantage and produces immense crops. The berries run a full inch in diameter and 25 will cover the top of the regular pint box. See illustration on inside back cover. **Strong, select plants, each 25c; 6 for \$1.35; 12 for \$2.50; 100 for \$12.00, not prepaid. If red raspberry plants are wanted by mail prepaid, add 5c for 3, 10c for 6, 15c for 12, 20c for 25.**

**Purple Raspberries**

**COLUMBIAN.** This is one of the most remarkable raspberries ever sent out. The canes grow to an immense size. We have seen bushes fully seven feet high with the ends of the canes bending over and touching the ground. This gives an immense fruiting surface which is covered with great purple berries of the most luscious flavor. A dish of Columbian purple raspberries dressed in sugar and cream is the last word in what is fine in small fruits. The Columbian does not spread. **Strong tip plants, 6 for 55c; 12 for \$1.00, not prepaid. 6 for 60c; 12 for \$1.15, postpaid.**

**Black Raspberries**

**OLDER.** We offer but two varieties of black raspberries or Blackcap. Our sales of this fruit are made mostly through Minnesota and Wisconsin where the very hardiest varieties are demanded. We have found that for this latitude there are no varieties that will compare with the Older and the Plum Farmer. The Older is very juicy and sweet. It is a wonderful bearer, the branches grow low and are easy to protect during the winter where covering is necessary. The Older is one of the hardiest black varieties grown. **Strong, transplanted stock, 6 for 75c; 12 for \$1.30; 100 for \$9.00.**

**PLUM FARMER.** A very popular berry in this section of the country. Considered the most profitable market variety yet known because of its splendid flavor, immense size and great productiveness. Plum Farmer is very hardy and we have never had any trouble with it in carrying it through our most severe winters without protection. Fruit large, jet black, and of the best quality. Ripens mid-season. Our stock of this variety is all strong, transplanted stock and is priced at: **6 for 70c; 12 for \$1.30; 25 for \$2.50; 100 for \$9.00, not prepaid.**

Do not confuse our prices on black raspberry plants with cheaper prices made by some on small tip plants. Note that our prices are for strong No. 1 transplanted stock. **If wanted postpaid add 10c for 6 plants; 15c for 12 plants; 45c for 100 plants.**

# Strawberries

Dr. Burrill  
Strawberry.

The Strawberry is the favorite of all small fruits and we have improved the varieties to the point where the Strawberry will do well in almost any soil and in almost any location. Where you are going to cultivate with the horse, plant in rows three and one-half feet apart with the plants placed 18 inches apart for the everbearing sorts and two feet apart for Dunlap and Minnesota No. 3. After the ground is frozen in the fall so it will hold a team and wagon without cutting in, mulch the bed with from four to six inches of wild hay, coarse straw or corn stalks. Corn stalks are good as there is no danger of foul seed in them. In the spring about May 1st, draw the mulch to the center between the rows leaving a small quantity between the plants to keep the fruit clean and also keep the ground moist.

We ship all strawberry plants postpaid or express paid, and get the plants out fresh the day they are dug. We do not ship your strawberry plants with anything else you order. Your strawberry package should be left open at the ends so as to allow the air to penetrate the leaves. We offer for sale only those sorts which have perfect blossoms which fertilize themselves and so produce great crops of fruit if the one variety is planted by itself.



## JUNE-BEARING VARIETIES

✓ **DR. BURRILL** (Perfect Blossom). We have always been very cautious indeed in introducing a new strawberry to our customers as many varieties that will do exceedingly well in one location will do nothing at all in other places. And what we have always looked for is a strawberry that will do practically equally well in all locations. In looking about for a good new strawberry we have finally decided upon Dr. Burrill. After several years' trial with us and close watching of its behavior over a widely scattered territory, we have made up our minds it is just the variety that we were seeking. This is a berry to all intents and purposes as good as the Senator Dunlap, but earlier. It is in season just ahead of Dunlap and the last of its berries are going as the first Dunlaps are ready to pick. This together with its other good qualities makes it a very desirable berry. It is one of the strongest growers and exceedingly productive. The fruit is medium to large, well shaped and a rich glossy red through and through. This is a cross between the Dunlap and the Crescent. Is one of the cleanest plants grown, no rust at any time, does well where many of the most promising varieties fail. **Price same as Minnesota No. 3.**

✓ **SENATOR DUNLAP** (Perfect Blossom). Just as the fruit of Dr. Burrill is passing, comes the Senator Dunlap, probably the most universally satisfactory of all strawberries. Does well wherever planted. Bears enormous crops of good sized, regular formed, beautiful deep red berries.

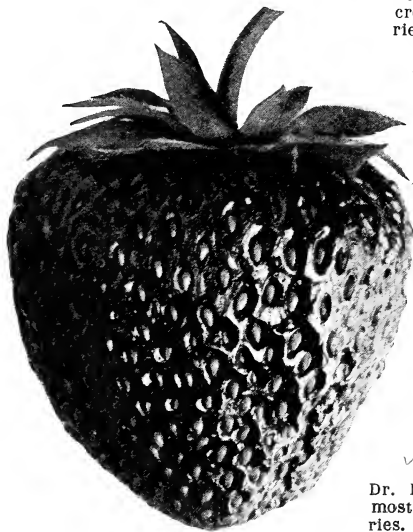
A firm berry that keeps

well and holds up well in shipping. Of the very best quality. It is a great plant maker. In fact, this is its greatest fault, and to get the best results one should cut out one-half the new plants. This will insure larger and more uniform sized fruit. **Price, 25 for 40c; 100 for \$1.25; 500 for \$5.00; 1000 for \$9.00, prepaid.**

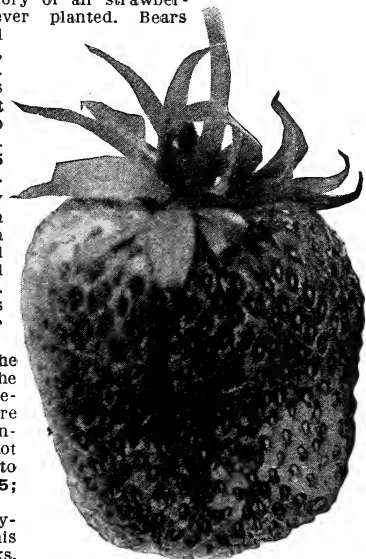
**MINNESOTA NO. 3.** (Perfect Blossom). This great strawberry originated at the Minnesota Breeding Farm and has now been thoroughly tested out all over the country. The reports from everywhere are universal in its favor. The plant is deep rooted and very robust and sets many runners. The fruit is large and uniform in size, deep bright red in color, with bright red flesh. Very firm. A good market berry and fine for home use. Comes just as the Dunlap is going. **25 for 50c; 100 for \$1.50; 500 for \$5.50; 1000 for \$10.00, prepaid.**

**MINNESOTA NO. 935** (Perfect Blossom). This is the very latest of the good strawberries that have been sent out by Prof. Haralson of the Minnesota State Breeding Farm. It is a splendid large berry that resembles the Dunlap very much in appearance only the Dunlaps are entirely gone when the 935 begins to ripen. The plants are wonderfully healthy and so far show no indication of rust. Does not make as many plants as the other varieties which enables it to produce very large fruit. Extra fine. **25 for 60c; 100 for \$1.75; 500 for \$8.00; 1000 for \$15.00, prepaid.**

For making up a fine strawberry bed we could not suggest anything better than equal amounts of the above four varieties. This would give a bed that should fruit steadily for fully three weeks. All made up of strictly first-class varieties.



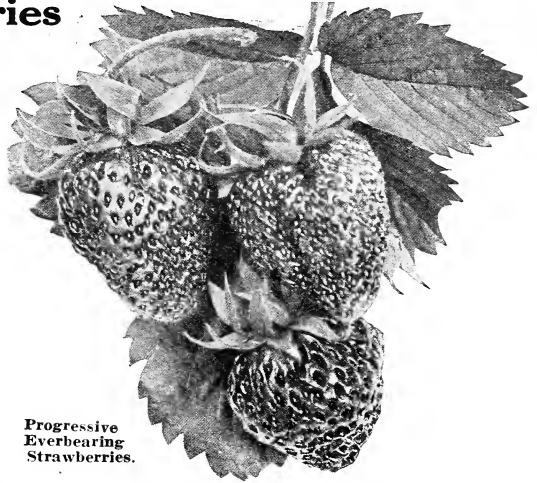
Senator Dunlap Strawberry.



Minnesota No. 935 Strawberry.

## Everbearing Strawberries

**PROGRESSIVE.** When the everbearing strawberry first began to be talked of we thought it was mostly a humbug. We had tested out for many years the many new fruits that were coming out from year to year, and we had seen so few turn out well that when the everbearing strawberry first came to our attention we placed little faith in the claims that were made for it. But one spring we had a lot of nursery stock that we could not dispose of otherwise. An everbearing strawberry man offered to exchange his everbearing plants for this stock of ours. We traded this stock for 2000 everbearing strawberry plants at \$80.00 per 1000. This was early in the spring. We planted the plants with but little faith. But soon blossoms appeared and following directions we were kept busy keeping these blossoms pinched off until the middle of July. They would persist in blooming. From then on we let the blossoms develop and by August 15th we were making a nice picking of luscious strawberries every other day. We had a favorable season for the everbearers that summer and fall and had an almost continuous crop up to the middle of October. We sold over \$160.00 worth of fruit from the patch and had all the berries we wanted to eat. From that time on we have been firm believers in this most wonderful fruit. We consider the everbearing strawberry the greatest boon in fruit ever bestowed on mankind. The everbearing strawberry should be planted for best results, very early in the spring. In our latitude by April 15th. This enables the plants to get well established and produce a good stand of new plants. The blossoms should be kept picked from the new set bed until July 15th when they should be allowed to remain. By August 15th, if the weather is favorable, the first picking may be made and from then on with right weather conditions it is a steady crop of berries until



Progressive Everbearing Strawberries.

heavy frosts. By favorable weather we mean a normal amount of rainfall fairly evenly distributed. In time of drought the everbearer will do very little, but it responds at once with the coming of rain. We have tried out many varieties of everbearers but have finally concluded to offer only the Progressive. Everything considered we think it the best everbearer yet introduced. The berries may not be as large as those of some other varieties but is a good berry of fair size, fine dark glossy red, is the greatest of all everbearing strawberries. 12 for 40c; 25 for 75c; 100 for \$2.00; 500 for \$9.00; 1000 for \$16.00, prepaid.



Conover's Colossal Asparagus.

## Garden Roots

### Asparagus

No garden is complete without its bed of Asparagus, one of the earliest and most healthful of vegetables. It is easily grown, and when once planted and established if fairly well cared for it proves a source of pleasure and profit as long as one lives. Plant eight to twelve inches apart in the row with the rows from two and one-half to three and one-half feet apart. Set the roots deep enough so that the crowns are two inches below the surface. Fertilize freely each fall and work the fertilizer in in the spring. We recommend No. 1, year-old plants for planting.

**CONOVER'S COLOSSAL.** The oldest named and best known variety in cultivation. A very reliable sort. A wonderful producer. Of the very best flavor. Strong 1-yr.-old plants, 12 for 40c; 25 for 75c; 100 for \$1.50, not prepaid. By mail, postpaid, 12 for 45c; 25 for 85c; 100 for \$1.85.

### Rhubarb or Pie-plant

Every family should have at least a half dozen stools of Pie-plant in the garden as it is the first vegetable of the spring. Set roots out in the early spring and by midsummer a dozen roots will produce enough stalks for a large family. Fertilizing in the fall with well rotted cow manure will produce large crops and more tender Rhubarb. Extra nice, 2-yr. roots, each 10c; 12 for 80c; not prepaid. By mail, each 15c; 3 for 35c; 12 for \$1.00, prepaid.

# Ornamental and Shade Trees

(Shipped by Express Only)

**ASH, American White.** This is a very valuable native tree of rapid growth, which forms a straight trunk with broad oval shaped head. It is very desirable for ornamental planting as well as for timber and windbreak work. We consider the White Ash the most valuable tree for park uses, planting as street trees or as an individual shade tree, for the greater portion of North and South Dakota and portions of Western Minnesota. In locations where the rainfall is somewhat uncertain and where the winter climate is very trying, it is above all trees the tree to plant. Parties wishing large quantities should write for special prices. Fine straight bodied trees, all transplanted stock.

	Each	Per 12	Per 100
4 to 5 ft. trees	\$.20	\$2.00	\$10.00
5 to 6 ft. trees	.25	2.50	20.00
6 to 8 ft. trees	.35	3.85	30.00
8 to 10 ft. trees	.50	5.50	50.00

**CATALPA Speciosa (The Hardy Catalpa).** A very rapid growing lawn and park tree. The leaves are very large, heart shaped; the flowers, which come in June in great panicles, are white and very sweet scented. A single tree in full bloom will scent the atmosphere of an entire block. When the blooms fall they are followed by great long bean-like pods which hang on the tree all winter. We have a splendid stock of Catalpa with nice straight bodies grown from Minnesota grown seed. 5 to 6 ft., each 50c; 6 for \$2.50.

**Box Elder.** The hardiest of all of our rapid growing trees. Will do well where almost all other trees fail. Should be planted where an extremely rapid growing tree is wanted. 5 to 6 ft., each 35c; 12 for \$3.50.



American Mountain Ash.



American White Elm.

**ELM, American White.** The White Elm has always been the favorite shade tree in the northern states and is the best park and street tree for general planting in this section. It is also one of the very best trees for prairie planting, standing second only to the Ash. Grows to the very largest size, with an open spreading head, and graceful drooping branches. The most beautiful of all northern trees when properly grown. The Elm and the Hackberry are the only trees for city street planting in this section of the country.

	Each	Per 12	Per 25
5 to 6 ft. trees	\$.25	\$2.75	\$ 5.00
6 to 8 ft. trees	.50	5.50	10.50
8 to 10 ft. trees	1.00	10.00	19.00

**HACKBERRY.** One of the hardiest and most beautiful of all our deciduous trees for both a lawn and a boulevard tree. The tree is found growing wild on dry sandy river bottoms and is our best tree for planting where dry or sandy conditions prevail. We earnestly recommend this tree to those looking for a most beautiful tree for city planting. Nice, 6 to 8 ft. trees, each 90c; 12 for \$10.00.

**LINDEN (American Basswood).** One of the most beautiful of all our deciduous trees. Grows with a perfectly straight trunk and its top forms a perfect globe. Very large roundish green leaves in the summer change to a bright yellow in the autumn. Very hardy. 5 to 6 ft., each 80c; 12 for \$8.00.

**MAPLE (Soft or Silver).** One of the most rapid growing of our street trees. Makes a splendid tree also for planting in groves on the farm.

	Each	Per 12
5 to 6 ft. trees	\$.35	\$3.50
6 to 8 ft. trees	.50	5.50



Catalpa Speciosa—Western Catalpa.

**ORNAMENTAL AND SHADE TREES—Continued**

**MAPLE, Schwedleri (Red Maple).** One of our very best trees for planting on the lawn as an ornamental tree. Related to the Norway Maple from Europe which it very much resembles except in foliage. In the springtime during the entire growing period of the tree, the leaves are of a deep red color which makes the tree very beautiful. The most satisfactory red leaved tree we have. Perfectly hardy in Minnesota. Attains about the size of the Hard Maple. A wonderful tree. **6 to 8 ft., each \$2.00.**

**MOUNTAIN ASH, European.** A fine ornamental tree for the lawn, forming, almost without pruning, a magnificent, fairly dense, well shaped head, which is covered from mid-summer till winter with large clusters of beautiful scarlet berries, giving a brilliant color to the landscape. The foliage is very handsome. It is one of the choicest trees for the northwestern territory, and deserves extensive planting.

	Each	Per 12
4 to 5 ft. trees	\$0.35	\$3.75
5 to 6 ft. trees	.65	7.00
8 to 10 ft. trees	.85	9.00

**POPLAR, Canadian.** An extremely hardy tree of the Poplar family that grows farther north and withstands the cold better than any other cultivated variety. This tree is extremely desirable for exposed positions where other varieties will not grow. Much more desirable than the cottonwood as it does not shed cotton.

	Each	Per 12
5 to 6 ft. trees	\$0.25	\$2.50
6 to 8 ft. trees	.35	3.50
8 to 10 ft. trees	.50	5.00

**POPLAR, Silver.** A tree of wonderfully rapid growth and wide-spreading habit, with large leaves which are glossy green above and white as snow beneath. It flourishes everywhere. The large leaves are on slender stalks and easily stirred by the wind, when the white underside is shown to fine effect.

	Each	Per 12
4 to 5 ft. trees	\$0.25	\$2.75
5 to 6 ft. trees	.35	3.75

**PURPLE LEAVED PLUM.** We have long needed a purple leaved tree that was hardy to set off our plantings in the North. This splendid ornamental tree comes from the Minnesota Fruit Breeding Farm and is absolutely hardy here. The bark of the new growths of the tree together with the leaves are an intense deep purple from early spring until late fall. Covered all over in the spring with beautiful white plum-like blossoms. Grows to be a fair sized tree. Very hardy and ornamental. Bears plums of good eating quality. **Nice, 2 to 3 ft. trees, each 75c.**

**SIBERIAN PEA TREE (Caragana Arborescens).** A very hardy tree from Siberia. Used much for hedge purposes, for wind and snow breaks, and for ornamental purposes. Covered in the spring with racemes of yellow flowers which later develop into pods like peas. This tree is very extensively planted in Northwestern Canada, North Dakota, South Dakota, Nebraska and western Minnesota for windbreak purposes. Grows into a dense windbreak when so planted; about 10 feet high which makes one of the best possible snow breaks that one can have.

	Each	10	100	1000
12 to 18 inch		\$0.75	\$3.00	\$25.00
18 to 24 inch		.85	6.00	50.00
2 to 3 ft.	.25	1.00	8.00	65.00
3 to 4 ft.	.35	2.00	15.00	
4 to 5 ft.	.50	3.50	25.00	

**Weeping Trees**

**NIobe WEeping WILLOW.** This is the only Weeping Willow that will stand the northern climate. The tree has the graceful weeping growth of the well known Wisconsin Weeping Willow, is much hardier and has in the winter the beautiful golden bark of the Russian Golden Willow. A splendid lawn tree. **5 to 6 ft., each 75c; 6 for \$4.00.**

**WIer CUT LEAF WEeping MAPLE.** Hardest, longest lived, and most beautiful of all the Weeping trees that we are now able to grow in the North. The leaves are finely cut and the branches droop as gracefully as those of the Cut Leaf Weeping Birch. **Strong, 5 to 6 ft. trees, each \$1.00.**



Canadian Poplar.

# Evergreens



**Black Hills Spruce.**

We have heretofore always carried in stock all varieties and great stocks of evergreens. But to handle this stock properly has always greatly delayed the delivery of stock in the Spring as we have to dig all our evergreens in the Spring and where evergreens went into an order, the order, if everything had to be sent together, had to be held back until the evergreens could be dug, to go with the balance of the stock, and if the Spring was at all late this retarded such shipments very much. So to avoid this delay we have of late years worked our evergreen stocks off until now we carry but two varieties. **Black Hills Spruce** for ornamental purposes and **Norway Spruce** for windbreak trees. Where these trees are ordered in connection with other stock we will not hold the forwarding of the other part of the order back for the evergreens unless instructed by the purchaser to do so. The other stock will go forward as early as we can get it out and the evergreens will follow at the proper time.

**BLACK HILLS SPRUCE.** A hardy, handsome evergreen, rarely over 25 feet high, with slender pendulous

branches and dark short needles. In graceful form and beauty, it ranks with the Blue Spruce, and is very desirable for lawn planting, hedges and windbreaks, as it grows dense and compact. Black Hills Spruce does well in cold climates and light, dry soils. The most desirable of all the Spruces for the prairies.

Fine specimen plants.	Each	Per 12	Per 100
12 to 18 inch.....	\$0.50	\$5.00	\$40.00
18 to 24 inch.....	.75	7.50	60.00
24 to 30 inch.....	1.00	10.00	

**NORWAY SPRUCE.** The Norway Spruce, taking everything into consideration, has proven the best windbreak evergreen for Minnesota, Wisconsin, and northern Iowa, from which states we have the greatest demand for a windbreak tree. In Norway Spruce we are offering windbreak stock only. All of our own growing; well grown and well rooted.

	Per 100	1000
Once transplanted, 8 to 12 inch .....	\$10.00	\$90.00
Twice transplanted, 12 to 15 inch .....	15.00	

## Windbreak Trees

We grow Willows, Poplar and Russian Olive as forest windbreak trees in enormous quantities and each year for several years past our sales of such trees have mounted well up towards a million trees. Our stock is all well grown, thrifty, and is priced at prices that are bound to move it.

**ASH, White.** The hardest of all timber trees for the Dakotas. 18 to 24 inches, \$2.00 per 100; \$11.00 per 1000.

**BLACK LOCUST.** A rapid growing timber tree that quickly enables the farmer to raise his own fence posts. Hardy through Southern Minnesota and Eastern South Dakota. 18 to 24 inches, \$1.25 per 100; \$10.00 per 1000.

**BOX ELDER.** Where a quick growing tree is wanted none better can be had than the Box Elder. 18 to 24 inches, \$2.00 per 100; \$12.00 per 1000.

**CATALPA Speciosa.** Another very fast growing tree extensively grown for fence posts. Fence posts can be grown on any little patch of what otherwise would be waste. Our Catalpas are the hardy Northern variety, grown from Minnesota seed. 8 to 24 inch, \$2.00 per 100; \$15.00 per 1000.

**ELM, American White.** A splendid fast growing tree that will do well all over Minnesota and Wisconsin and the eastern part of the Dakotas. In trying locations, it must be planted within breaks of other trees to give it a start. 18 to 24 inches, \$2.00 per 100; \$15.00 per 1000.

**MAPLE, Soft or Silver.** One of the very best of trees for windbreak planting. A rapid grower, and a beautiful tree. 18 to 24 inches, \$2.00 per 100; \$15.00 per 1000.

**RUSSIAN MULBERRY.** Extensively used as a low windbreak just inside taller trees to break the ground winds as it makes a very dense growth. Produces lots of fruit greatly relished by birds. 18 to 24 inches, \$2.00 per 100; \$14.00 per 1000.



**Norway Spruce Windbreak.**

**CANADIAN POPLAR.** The hardest of the Poplars.

Will grow farther North and do better than any other poplar. Valuable in the extreme North where a hardy rapid growing windbreak tree is wanted. Produces no cotton. Per 100 1000

12 to 18 inch .....	\$1.50	\$10.00
18 to 24 inch .....	2.00	15.00
2 to 3 ft. ....	2.50	20.00

**NORWAY POPLAR.** This is the fastest growing of all the Poplars. We have had one-year-old trees twelve feet high from cuttings planted in the spring. This Poplar is known as the sudden saw-log. Very hardy. Splendid windbreak tree. Price same as Canadian Poplar.

**LAUREL LEAF WILLOW.** A beautiful tree that grows to a medium height. Grows a very dense top which makes a wonderfully close and beautiful windbreak or grove tree. The leaves are a deep dark green, of thick leathery appearance and glisten as though varnished. Very desirable. Prices of trees same as for Canadian Poplar.

**RUSSIAN GOLDEN WILLOW.** Now very extensively used through the Northwest for a windbreak tree about the farmsteads. Most desirable because of its beautiful golden bark in the winter time. Nothing livens the somber greys of the winter landscape as will a grove of Golden Willow. Prices of trees same as Canadian Poplar.

# Ornamental Shrubs

Shrubs should be planted in groups, or in borders around the house, and along the boundary divisions; the taller growing varieties in the background, or in the center of the group, then medium-sized plants, with shrubs of low, dwarf spreading habit for the foreground or border. Shrubs should be arranged so as to have some in bloom all the time with those of bright or variegated foliage and berries for late autumn and winter effect or for contrast.

For large plantings use as a background such shrubs as the Sweet Syringa, the Bush Honeysuckles and Lilacs. In front of these should be planted the lower growing shrubs, Spirea van houttei, with Hydrangeas, Barberry Thunbergi, Flowering Almond and Spirea anthony waterer in the foreground.

For many years we have given a great deal of attention to the growing of ornamental shrubs and at one time we were the largest growers of hardy shrub plants in Minnesota. But we have cut down considerably the long list we once grew, confining ourselves now just to those varieties which do best in this climate. These we recommend strongly to planters in the Northwest as they have been thoroughly tested out. Our shrubs are well grown and in most cases you are getting shrubs that we have grown for three years.

If you wish to order 6 of any variety of shrub, multiply the single price by 5.

**ALMOND, Double Flowering, Pink.** A beautiful May flowering shrub that grows four feet high. Should be planted in a sunny place. Does especially well planted close to the south side of buildings. The branches are covered just as the leaves begin to come, with small very double rose-like flowers that are deep pink. Very showy. One of our most beautiful shrubs. All our Almond are either on their own roots or are budded on the root of the wild plum. This makes them absolutely hardy. One of these should be in every yard. **Fine 2-yr. stock, 2 to 3 ft., 85c each.**



Double Flowering Almond.

**BERBERIS Thunbergi** (Japanese Barberry). This Barberry is not subject to rust. One of the best all around shrubs for the Northwest, thriving under all conditions. Slender, graceful branches with fine bright green foliage, turning to brilliant crimson and orange in fall. Branches are covered with small yellow flowers in June, followed by scarlet berries that stay on the bushes almost all winter. This is the best low hedge for the Northwest. **12 to 18 inches, heavy transplanted stock, 30c each; 12 for \$3.30; 100 for \$25.00.**

**BUCKTHORN.** A shrub generally used for hedging purposes. Few people realize what a beautiful plant it makes when grown as an individual shrub for the lawn. Grown thus it makes one of our prettiest shrubs. It can be kept trimmed to any height and in any shape. A very graceful shrub with beautiful dark green foliage. I once saw a single Buckthorn specimen trimmed into the form of a ball. It formed a solid, dense, green ball 8 feet in diameter and absolutely round.

	Each	Per 12
2 to 3 ft. ....	\$0.25	\$2.50
3 to 4 ft. ....	.35	3.50
4 to 5 ft. ....	.45	4.50

**CRAB, Bechtel Double Flowering.** This is one of the most beautiful of all our large growing shrubs. Can be planted on the lawn to take the place of a small tree. Grows to the size of a small tree. In the blooming season is covered all over with very double delicate pink blooms that look almost exactly like medium-sized roses. The perfume is wonderfully sweet and scents the atmosphere for a long distance with the perfume of the wild crab. The small trees look more like tree roses than anything else. Very fine. **2 to 3 ft., each 75c.**

**CORNUS Sibirica** (Red Siberian Dogwood). A tall, spreading shrub, which is extremely hardy, and splendid for hedges or groups of shrubbery. Panicles of white flowers in June are followed by clusters of berries. Its chief beauty, however, is in its bark, which turns bright crimson as autumn approaches. Planted extensively for winter effect. **2 to 3 ft., each 30c; 3 to 4 ft., each 40c.**



Cornus Sibirica—Siberian Red Dogwood.



Tree Hydrangea.

**ORNAMENTAL SHRUBS—Continued**

**ELDER, Golden** (*Sambucus Aurea*). A very striking shrub similar to the common American Elder in appearance with the exception of the color of the leaves, which are a beautiful bright gold from their first appearance in the spring until they drop in the fall. The best of our golden leaved shrubs. **18 to 24 inches, each 25c; 12 for \$2.50; 2 to 3 ft., each 30c; 12 for \$3.00.**

**ELDER, Cut Leaved** (*Sambucus Laciniata*). A beautiful variety, with fern-like leaves of drooping habit. The greyish-green foliage forms a pleasing contrast to the deep green of other shrubs, making it indispensable for landscape gardening. Flat panicles of creamy flowers appear in June and July. **Prices same as for Golden Elder.**

**EUONYMUS** (Wahoo; American Strawberry Tree). One of our native shrubs that works splendidly into large plantings of shrubs. Grows to be from 6 to 8 feet high. Carries beautiful green leaves which with the first touch of frost take on the most gorgeous colors of red and purple. As the leaves fall the naked branches are covered with bright, deep, pendulous, star-shaped pods that burst open and expose their bright red linings surrounding the enclosed seeds. Very hardy and striking.

	Each	6
3 to 4 ft. ....	\$0.35	\$1.75
4 to 5 ft. ....	.50	2.50

**HONEYSUCKLE** (Upright or Bush). This is one of our favorite shrubs. Absolutely hardy, does splendidly even in the drier portions of the Dakotas and Montana. A nice trim, clean looking shrub that grows to a height of from 6 to 10 feet. It is covered in May and June with a myriad of small star-shaped flowers either white, light pink, and deep pink or red, when it is very fragrant. Very desirable for hedging as it makes a beautiful hedge that never dies out. Splendid for planting as a screen to shut off the view of objectionable buildings and as a tall background for lower growing shrubs. We have the white and light pink in the larger sizes quoted here and deep pink or red in the hedging size only, for which see hedging stock.

	Each	Per 12
2 to 3 ft. ....	\$0.30	\$3.00
3 to 4 ft. ....	.40	4.00
4 to 5 ft. ....	.50	5.00

**HYDRANGEA Arborescens** (Hills of Snow). This is the early blooming outdoor Hydrangea. It comes into bloom just after the early spring flowers. The branches are well clothed in large, beautiful deep green leaves and each branch is terminated with a great glistening snow white bloom of immense size. Does best in partial shade. One of our best shrubs. **Strong, 2 ft. plants, 60c each. Special Offer of Hills of Snow. We have some very fine 1-yr. Hills of Snow that are nice topped, nice rooted plants that we are making a special price of 25c each, not postpaid; 30c each, postpaid.**

**HYDRANGEA Paniculata grandiflora.** The most beautiful and striking of all flowering shrubs. Bears immense clusters of creamy white flowers in August, turning to bright pink and rose, and finally to bronze in September, as they grow older. Grows 3 to 4 feet high, does well in sunny locations. Valuable for specimen planting and for borders, and should be in every garden. Should be cut back in spring before growth starts. The flowers dry like everlastings and can be kept indoors all winter. The plants are as hardy as the oak. **18 to 24 inches, each 60c; 12 for \$6.00.**

**HYDRANGEA, Tree.** The lovely Hydrangea Paniculata in tree form. These fine trees are three to four feet high, with strong, erect stems and splendid crowns, bearing great trusses of flowers. They are very effective for lawn; or if planted along the walk or driveway, they are wonderful when in bloom. By planting several of these beautiful trees you can prove to your friends that these



Spirea Anthony Waterer.



**ORNAMENTAL SHRUBS—Continued**

Tree Hydrangeas are exceptionally nice and not commonly seen. Perfectly hardy here.

**Note.** The Tree Hydrangea is very hard to ship alone without breaking. We cannot send them by mail. Neither should they be sent alone by express but they should be shipped together with other tall shrubs so we can pack them so as to insure safe arrival. **Each \$1.50.**

**PRUNUS Triloba** (Double Flowering Plum). The favorite spring flowering shrub in Minnesota, and one of the finest in cultivation. It is of dwarf tree habit, every branch completely covered with small double pink flowers, in May, before the leaves appear. Should not be planted among other shrubs. We consider the Double Flowering Almond, the Bechtel Crab, and the Prunus Triloba the three most beautiful of the early flowering shrubs that can be grown in the Northwest. **2 to 3 ft., each 85c; 3 to 4 ft., each 95c.**

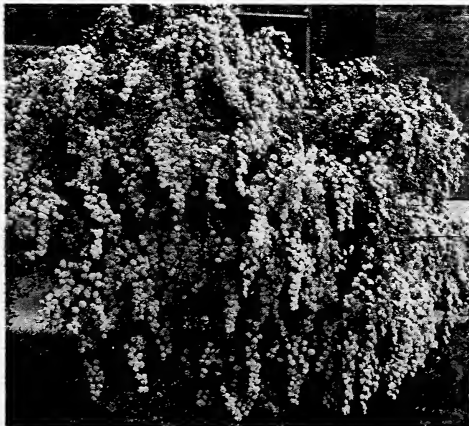
**PURPLE LEAVED PLUM.** We have long needed a purple leaved shrub that was hardy to set off our planting in the North. This splendid ornamental shrub is absolutely hardy here. The leaves are an intense deep purple from early spring until late fall. In the spring it is covered with beautiful white plum-like blossoms. Grows to be a fair sized tree. Very hardy and ornamental. **2 to 3 ft., each 75c.**

**SPIREA Anthony Waterer.** One of the finest flowering shrubs of low, dwarf growth. In constant bloom from June to September. Flowers of bright rose are borne in broad flat clusters, completely covering the bush. The best shrub for low borders and hedges. **Strong plants, 8 to 12 inches, each 25c; 12 to 18 inches, each 45c.**

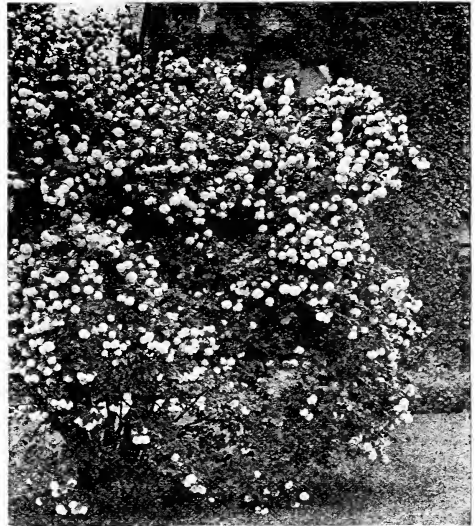
**SPIREA Aurea.** A beautiful tall growing Spirea covered from early spring until late fall with deep yellow leaves. This added to the pronounced yellow bark of the shrub makes it a very attractive plant on the lawn or about the house.

	<b>Each</b>	<b>6</b>
<b>3 to 4 ft.</b> .....	<b>\$0.35</b>	<b>\$1.75</b>
<b>4 to 5 ft.</b> .....	<b>.50</b>	<b>2.50</b>

**SPIREA Eilliardi.** A handsome tall-growing Spirea with brown hairy branches and fine foliage. Vigorous and hardy, growing six feet tall. Bright pink flowers are borne in long spikes during July and August. **18 to 24 inches, each 25c; 2 to 3 ft., each 30c.**



Spirea Van Houttei.



Old-Fashioned Snowball.

**SPIREA, Brand's.** This is not the correct name of this Spirea, but we have never been able to find out the correct name, although we have asked many florists. We discovered it on a farm that we bought some twenty years ago and have grown it ever since. The bush and leaf resemble Van Houttei somewhat, although the leaf is larger and more elongated. The blossom also resembles that of Van Houttei except that it is about four times as large. Something scarce and very fine.

	<b>Each</b>	<b>6</b>
<b>2 to 3 ft.</b> .....	<b>\$0.50</b>	<b>\$2.50</b>
<b>3 to 4 ft.</b> .....	<b>.75</b>	<b>3.75</b>

**SPIREA Sorbifolia.** A splendid Spirea growing to a height of about five feet covered with large, clean bright green leaves that resemble the leaves of the mountain ash. Produces a world of great white feathery blooms about six inches long by four inches in diameter. A splendid Spirea to plant about the house.

	<b>Each</b>	<b>6</b>
<b>2 to 3 ft.</b> .....	<b>\$0.40</b>	<b>\$2.00</b>
<b>3 to 4 ft.</b> .....	<b>.60</b>	<b>3.00</b>

**SPIREA Van Houttei.** One of the finest shrubs ever produced. Its good qualities and beauty cannot be exaggerated. Very graceful, with lovely foliage growing four to six feet tall; extremely hardy everywhere. In May and June the whole bush is simply covered with small clusters of minute white flowers. For lawn and cemetery planting and for hedges, it cannot be equalled. **18 to 24 inches, each 25c; 2 to 3 ft., each 35c; 3 to 4 ft., each 50c.**

**SNOWBALL.** That good old bush that hardly seems to need description so well known is it. A tall growing, absolutely hardy shrub covered in late May and early June with great masses of snowball-like blooms. **Strong 18 to 24 inch bushes, each 50c; 6 for \$2.50.**

**SNOWBERRY, White.** A low-growing shrub of neat appearance that in the fall is literally covered with large round white waxy-like seed pods. Very striking and pretty. Works in very nicely into shrub plantings intermediate between the Spirea Van Houttei and the smaller shrubs. **Strong 18 to 24 inch plants, each 30c; 6 for \$1.50.**

**SNOWBERRY, Red (Coralberry).** A beautiful little shrub of delicate appearance much used in plantings among the smaller shrubs. Slender drooping branches covered with delicate light green leaves and small bright pink or red berries. **Strong 18 to 24 inch plants, each 30c; 6 for \$1.50.**



Barberry Thunbergi.

## Hedge Plants

There is nothing as effective for boundaries of a lawn, or property division, as a hedge. It requires no repairs, paint, nor does it decay, and is therefore much more economical than a fence of wood, wire or iron. For a stiff, formal hedge, Buckthorn is the best for the Northwest, for it is absolutely hardy, and can be trimmed very closely. If a low hedge is wanted, plant Barberry Thunbergi, which is one of the most attractive. Where a tall hedge is required for screening, we recommend Lilac, Spiraea van houttei, Upright Honeysuckle and Caragana.

As a rule we do not furnish as heavy stock for hedge stock as we do for individual shrubs. So prices may differ somewhat on plants of the same height that may happen to be quoted in both places.

**BARBERRY THUNBERGI.** This is the very best shrub where a low growing hedge is desired. Can be grown either as trimmed hedge or natural. Generally attains a height of about 2½ feet. Leaves turn crimson in fall. Covered with pretty red berries during winter. Heavy plants quoted under shrubs. Nice hedge stock, 12 to 15 inches, 25 for \$3.75; 100 for \$10.00.

**BUCKTHORN** (*Rhamnus cathartica*). If planted in single rows, plant twelve inches apart. If planted in double rows, plant the rows twelve inches apart with the plants eighteen inches apart in the row and alternate as you plant so as to break joints. The best hedge plant for this section. Thick, lustrous green leaves, spiny branches and black berries; extremely hardy and stands clipping well. 12 to 18 inches, 25 for \$3.75; 100 for \$10.00. 18 to 24 inches, 25 for \$5.00; 100 for \$15.00. 2 to 3 ft., 25 for \$6.25, 100 for \$20.00.

**CARAGANA** (Siberian Pea Tree). For a low hedge, plant a foot apart. For a screen plant five feet apart. Delicate foliage, similar to that of locust, with bright yellow flowers in May. 12 to 18 inches, 25 for \$2.50, 100 for \$8.00. 18 to 24 inches, 25 for \$3.00; 100 for \$10.00. 2 to 3 ft., 25 for \$4.00; 100 for \$15.00. 3 to 4 ft., 25 for \$5.00; 100 for \$18.00.

**LILAC** (White and Purple). The common white and purple lilac make splendid hedges. If allowed to grow naturally with just a little trimming they make a splendid tall screen. But they respond readily to close shearing when the result is a beautiful, dense bright green hedge. Either color. Nice 18 to 24 inch stock, 25 for \$5.00; 100 for \$15.00.

**SPIREA Van houttei.** One of the finest shrubs ever produced. Its good qualities and beauty cannot be exaggerated. Very graceful, with lovely foliage, growing 4 to 6 feet tall; extremely hardy everywhere. For lawn and cemetery planting, and for hedges, it cannot be equalled. 12 to 18 inches, 25 for \$4.00; 100 for \$15.00. 18 to 24 inches, 25 for \$5.00; 100 for \$18.00. 2 to 3 feet, 25 for \$6.00; 100 for \$20.00.

**UPRIGHT HONEYSUCKLE.** The Upright Honeysuckle makes a splendid hedge for a division line where a tall hedge is wanted. It is covered with bright green foliage and beautiful light pink, or dark pink blossoms. Blossoms followed by long red berries in September which hang on into the winter after the foliage has dropped. This can be grown as either a tall, medium or low hedge, just as desired. When grown in the two larger sizes it is usually covered all winter with red berries.

	Per 25	100
Light pink, 12 to 18 inches	\$3.75	\$10.00
Light pink, 18 to 24 inches	5.00	15.00
Dark pink, 12 to 18 inches	4.00	15.00
Dark pink, 18 to 24 inches	6.00	20.00



Buckthorn Hedge.

## Hardy Garden Roses

Of all hardy plants, none are so well liked, or as valuable as roses. There are roses for every purpose. Rugosa roses for hedges and borders. Climbing and Rambler roses for arbors, porches, and pergolas, and Hybrid Tea and Perpetual Roses for the garden. Roses should be planted as early as possible, in rich, rather moist soil, with good drainage. They require a great deal of sunlight, and, in this locality, some protection during the winter. Leaves, straw, or manure may be covered over them. Roses should be well pruned when planted, and cut back each year, before leaf buds begin to swell. If infected with insects or blight, spray with tobacco dust or Hellebore (one part) and flour (two parts) early in the morning, so the dew and flour forms a paste on the leaves. Hellebore and tobacco dust are listed in this catalog under "Fungicides and Insecticides."

Our roses are all strong 2-year No. 1 field-grown stock and are not to be confused with the small tender roses sent out in pots from greenhouses.

We had decided not to carry roses any more, and have written some of our old customers to that effect. But so many orders are at this early date coming in for them that we have decided to carry just a few varieties, what we consider only the very best white, the very best red, and the very best yellow in bush roses and one good red climbing rose. The one great reason why people do not have better success with roses is that they do not trim them right before planting and then they do not plant them right. All the branches of a rose should be trimmed back to five inches before the bush is planted, and then the plant should be put so deep into the ground that the dirt comes right up into the branches so



Paul Neyron.

that not more than two inches of the ends of the branches are above the ground. We are going to trim all of our roses back to five inches before sending them out this spring and ask our customers to plant them very deep. **Strong 2-yr. plants, not prepaid, each 60c; 12 for \$6.00. Strong 2-yr. plants by mail postpaid, each 70c; 12 for \$6.30.**

**FRAU KARL DRUSCHKI.** This we consider the finest and best of all white roses. The largest and most beautiful white. Beautiful long pointed buds. Very large petals, pure waxy white.

**GRUSS AN TEPLITZ.** This we consider the very finest deep red rose that we can successfully grow in Minnesota. Many visits to the Minneapolis Rose Gardens, undoubtedly the finest collection of roses in this part of the country, have finally led us to this conclusion. Always in bloom. A rich intense velvety crimson.

**PAUL NEYRON.** Blooms without cessation from June to November on long, stiff, thornless stems. Flowers cup-shaped and of the largest size. 4 to 6 inches across. Color a bright deep pink. This we would call the best all around pink rose.

## Climbing Roses

**FLOWER OF FAIRFIELD.** Most people are familiar with the Crimson Rambler. When it was first introduced it was sold all over the country. It is a beautiful rose. When in blossom it is just a mass of bloom but it lasts only two or three weeks at the most. The Flower of Fairfield is an improved Crimson Rambler. Just as beautiful a flower and is in bloom all summer continuously.

One each of the above 4 best of all roses, strong two-year-old plants for \$2.25 not prepaid, or for \$2.35 postpaid.

**ROSA RUGOSA.** Besides the four foregoing roses we also keep the hardy Japanese Rugosa Roses, so much used for landscape work and hedging. Rosa Rugosa is a large, single rose, much larger than our common wild rose and is generally pink, although occasionally a white specimen, Rugosa alba, appears. Beautiful because of its highly attractive, large slightly foliage. Very hardy. **Each 50c; 12 for \$5.00; 5 for \$20.00.**



Flower of Fairfield.



Hall Japan Honeysuckle.

## Hardy Climbing Vines

In Climbing Vines we are offering only strictly No. 1 stock. Prices of all vines except where noted, each 30c; 6 for \$1.50, not prepaid. By mail, post-paid, each 35c; 6 for \$1.65.

**AMPELOPSIS Engelmanni** (Engelmann Ivy). One of the finest vines for training about porches and for covering stone walls. It is the best and hardest vine for the Northwest. Especially beautiful in Autumn when it turns crimson and orange. It is the only perfectly hardy vine that will cling to brick, stone or cement. It is used extensively on churches and large buildings.

**BIGNONIA RADICANS** (Trumpet Vine). A robust tall climber with great leathery trumpet-shaped flowers of scarlet, that last all summer. A beautiful showy vine, useful for fences, screens, stumps, etc.

**HALL JAPANESE HONEYSUCKLE.** A vigorous grower and continuous bloomer. The sweet scented flowers open white, changing to cream. The foliage remains green almost all winter.



Clematis Paniculata.

**SCARLET TRUMPET HONEYSUCKLE.** The best known and most popular variety. Broad, deep green leaves in pairs, united at base, remaining until late. Clusters of long, scarlet, trumpet-shaped flowers are followed by red berries in fall.

**CLEMATIS Jackmani** (Large Flowering). The most satisfactory of its class. Immense, velvety, deep purple flowers, borne in clusters. Blooms profusely all summer, on young shoots; should be pruned in spring. Jackmani is the liveliest and most vigorous large flowering Clematis. 75c each, not prepaid; 85c each, prepaid.

**CLEMATIS Paniculata** (Small Flowering). This is one of the handsomest and most satisfactory flowering climbers. Of strong, rapid growth, with small dense foliage forming a most effective background for the delicate white flowers, which are deliciously fragrant. Flowers last from August to October and are followed by silvery feathery seed pods. Thrives in any location and soil, is free from blight and insects. A splendid vine for porches, trellises, also for covering fences, sloping banks, walls, etc. Strong 2-year-old plants, each 35c, not prepaid. Strong 2-year-old plants, each 40c, prepaid.

**KUDZU VINE.** A remarkably rapid-growing vine for ornament and shade. It produces many graceful twining stems, 20 to 30 feet long, in a season. Leaves are dark green and of soft, woolly texture. Purple flowers resembling miniature Wisteria, are borne in clusters.

**CHINESE PURPLE WISTERIA.** One of the handsomest climbers with beautiful foliage which remains green until late autumn. The great trusses of purple flowers appear in May and again in August and September. Wisterias succeed in any kind of soil, but to insure abundance of flowers, the soil must be liberally enriched when first planted. One of the best climbers. Strong 2-year-old plants, each 50c; 6 for \$2.50.

**BETA GRAPE.** Where a rapid climbing vine is wanted to cover a screen, south porch, arbor in the garden, a partition fence between lots, nothing is better than a planting of vines of the Beta Grape. It is absolutely hardy, does not have to be taken down in the fall. Will run 16 to 20 feet in a single year and not only fulfil the purposes called for in a vine but will also bear an abundance of luscious fruit at the same time. Strong 2-year plants, each 25c; 6 for \$1.35; 12 for \$2.50, not prepaid. Strong 2-year plants, each 30c; 6 for \$1.55; 12 for \$2.80 prepaid.



## Peonies

For over fifty years we have grown peonies on a large scale. For the past twenty-two years we have been giving a good deal of our time to the breeding of new varieties of this wonderful flower until the fame of our Peony fields has encircled the globe. We have built up an immense business in this one flower alone and this last fall we shipped Peony roots as far away as New South Wales, Australia. Our collection contains over 1000 varieties and in quality is second to none in the world. For of the 22 varieties of the Peony that rank highest as to beauty we originated and gave to the world 4 of them. In fact, the Peony is our speciality. We issue a 64-page catalog devoted entirely to the Peony and the Iris. This catalog covers thoroughly and in detail practically all one would desire to know of the varieties, history, and care of the Peony. It is in fact, a Peony Manual. This Peony Book has cost us fifty cents per copy to have printed. It is too expensive a book for us to send free to everyone so we make a nominal charge for it of thirty-five cents which sum can be remitted to us in stamps. This will be credited back on the first order out of the book amounting to \$2.00. Everyone interested in the Peony should have this catalog.

The Peony will give the greatest returns with the least care of any flower that we know of. But it gives wonderful results with just a little extra attention. It should be planted in naturally rich soil, with good drainage, for best results. They may be set out in the fall from September 1st on until it freezes up and in the early spring with equally good results.

Do not plant Peonies in low places where the water stands in the spring. Do not plant in the lawn in grass where the soil is sapped of its nourishment and moisture by the roots of large trees close by. Plant in full sun if possible, with the roots 4 to 5 feet apart. Plant the roots so that the small pink, red, or white buds have their tops just about two inches under the surface of the soil. Keep the soil well cultivated until July 15th each year. Fertilize with well rotted barnyard manure about once in three years but not oftener. Do not let this manure get into the crown of the plant or it will cause decay. Plant good varieties and follow these instructions and you will have wonderful Peonies.

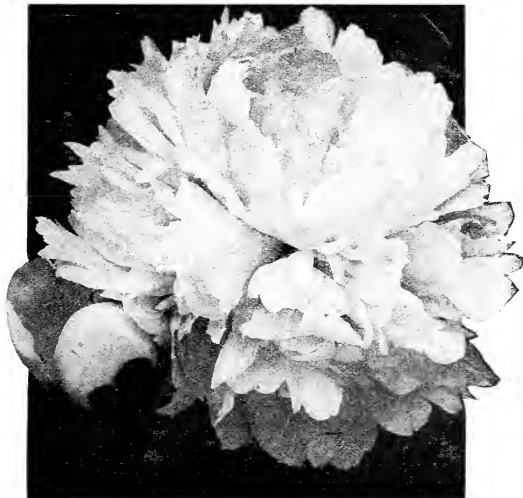
We have selected from our large collection consisting of hundreds of varieties a very select representative list taking the best sorts for the prices at which they are listed. We have tried to pick

out the very best of the cheaper sorts and also the choicest of the high priced varieties, giving a good list of varieties at a range of prices that should fit every pocketbook.

### WHITE VARIETIES

**FESTIVA MAXIMA** (Early). White. Extra large, full, globular, rose type. Pure white, with bright, carmine flakes on the edges of the center petals. Fragrant. Heavy and abundant clean, bright foliage. Abundant bloom on long, strong stems. The most popular all-around white peony in existence. Ranks seventh among the world's 22 best peonies. **Large divisions, 75c each.**

**DUCHESS DE NEMOURS** (Early). One of the very best pure whites. Follows Festiva Maxima by a few days. A splendid cup-shaped sulphur-white flower with a greenish reflex that lights up the entire blossom, which gradually changes to a pure white. Exceptionally beautiful in the half-opened bud stage. **Large divisions, 50c each.**



Duchesse de Nemours.

## PEONIES—Continued

**MME. DE VERNEVILLE** (Early Midseason). White. Very large, finely formed anemone-shaped flowers. Guard petals sulphur white, center petals rose white with carmine touches. Flower of good substance. Stems long and strong. A splendid cut flower. Later than Festiva Maxima and equal to it in beauty. Pleasing fragrance. We consider this one of the best whites. **Large divisions, 75c each.**

**QUEEN VICTORIA** (Late Midseason). Medium size, loose globular flower with fine broad guard petals. Opens flesh-white and fades to milk-white. Center petals tipped with coral blotches. A fragrant, free bloomer. Extra fine in bud. The very best white for shipping or storing in cut bloom. **Large divisions, each 50c.**

**COURONNE D'OR** (White). Very large imbricated blooms of perfect form. Color milk-white reflecting yellow with golden stamens showing between the petals and adding to the brightness of the flower. Very fragrant, a splendid bloomer and a strong plant. A first class flower in every respect. One of the best of all whites. Very late. **Large divisions, each 75c.**

## PINK VARIETIES

**EDULIS SUPERBA** (Pink). Very early. Often in bloom with us on Decoration Day. Large beautiful cup-shaped flower. Bright pink with slight violet shadings at base of petals. Very fragrant. Strong and upright in habit, and a free bloomer. Best early cut flower pink. **Large divisions, each 50c.**

**DR. BRETONNEAU** (Pink). (Early Midseason). A splendid pink coming into bloom just as Edulis Superba is gone. Very beautiful in the bud. Makes a splendid long keeping flower when displayed in a vase. A bright and very pleasing shade of deep pink. **Large divisions, each 50c.**

**GRANDIFLORA CARNEA PLENA** (Late Midseason). Flowers large, full double, very fragrant. One of the most profuse blooming of all the good pinks. Plants strong and robust. A splendid variety to have to prolong the blooming season of the pinks after Dr. Bretonneau. **Large divisions, each, 50c.**

**EUGENIE VERDIER** (Early Midseason Pink). A large beautiful flower. Ideal in form being open, saucer-shaped, showing its great wealth of tints and blending of coloring to fine advantage. Opens a



Eugenie Verdier.



Prince of Darkness.

fresh delicate hydrangea pink, center flushed crimson. Fragrant. Tall. We think this one of the best of all pinks. **Large divisions, each \$1.00.**

**ROSE OF SHARON** (Late Deep Pink). One of our very best low priced deep pinks. Flowers are large, borne on straight stiff stems, in great numbers. Of good and pleasing color. Comes into bloom when most of the other pinks are all gone. Very late. Very good. **Large divisions, each 75c.**

## RED VARIETIES

**PRINCE OF DARKNESS** (Dark Black Red). This is one of our own productions. A large loose semi-rose type flower. A rich dark maroon in color, almost black. One of the very darkest peonies in cultivation. Petals slightly fringed with darker shadings on the edges. Opens early and lasts long. Free bloomer. Fine for cut flowers and as a landscape variety. **Large divisions, each \$1.00.**

**LOUIS VAN HOUTTE** (Bright Dark Red). One of the very brightest of the deep full reds. Flowers of good size, borne in great profusion, and of beautiful form. Where a bright red is wanted this is a good one. **Large divisions, each 50c.**

**H. F. REDDICK** (Bright Red). Of all our reds this variety probably produces the most bloom. Off a 40-rod row of H. F. Reddick, I think we have sold more cut flowers than from a similar number of plants of any other red sort. Flowers are of good size and generally come five or six on a stem and all in bloom at one time. Splendid. **Large divisions, each \$1.00.**

**RACHEL** (Deep Bright Red). Here is a splendid flower. We are considered the greatest producers of red peonies in the world. Rachel is the mother plant of the most of the good reds that we have produced. A midseason red of medium height and medium size. Of beautiful form and the very best color. Surely a splendid red. **Large divisions, each \$1.00.**

**RICHARD CARVEL** (Very Early Red). A very early bright dark red. In bloom with the earliest whites and earliest pinks, which fact makes it a most desirable variety to have. The most valuable cut flower on the market today. At the 1923 show of the American Peony Society this was classed as one of the ten best peonies in the world. Cut flowers of Richard Carvel command double the price of any other red on the market. Very early, very large, very fine. **Large divisions, each \$5.00.**

**PEONIES—Continued**

**SPECIAL PEONY OFFER**

We always have a great many varieties of peonies in storage in the spring, when the shipping season is closing, that are not listed in our catalog. We will have many such sorts this spring. A few of a kind, so few that it would not pay for us to catalog them all. We will offer from this lot of peonies three collections, a collection of three, a collection of six, and the other a collection of twelve all strong roots. These varieties are all good. None of them worth less than 50c, the most of them running in value from 75c to \$1.00. Those are all named varieties and all good varieties, but we are going to put them into these collections not labeled with their names.

**SPECIAL PEONY COLLECTION A**

One each of the above 14 beautiful peonies, leaving out the one variety, Richard Carvel, amounts to \$10.00. To anyone sending us \$9.25 we will send the 14 roots in regular strong No. 1 size, or for \$13.50 we will include a strong root of the beautiful Richard Carvel.

**SPECIAL PEONY COLLECTION B**

A collection of three nice strong peony roots, ranging in price from 50c to \$1.00 each. 1 white, 1 pink, 1 red, all for \$1.25, postpaid.

**SPECIAL PEONY COLLECTION C**

A collection of six nice strong peony roots, ranging in price from 50c to \$1.00 each. Six varieties all different. 2 white, 2 pink, 2 red all for \$2.25, postpaid.

**SPECIAL PEONY COLLECTION D**

A collection of 12 nice strong peony roots ranging in price from 50c to \$1.00 each, all different. 4 white, 4 pink, 4 red all for \$4.35, postpaid.



Grandiflora Carnea Plena.



A.B.M. CO.

Festiva Maxima.

# The Popular Gladioli

Within recent years American hybridizers have produced Gladioli such as we did not dream of twenty years ago. The flower has become a thing of the most wonderful beauty for the Northern garden, standing second only to the peony.

In cutting Gladioli for the house, it is best to cut the spikes as soon as the first lower flower is open. Placed in water, the remainder will open in the house. Wonderful improvements have been made in the size, color and beauty of these flowers and our list comprises only the best both in mixtures and in named sorts.

For mass color effect, we advise planting from twelve to twenty-five bulbs of a kind. Water freely during the blooming season.

The bulbs should be planted in a trench about five inches deep. They should be removed from the ground before heavy frosts appear, and after drying they should be kept in a cool dry place where it does not freeze, for the winter.

**AMERICA.** Beautiful soft flesh-pink, faintly tinged lavender. A magnificent cut flower. Very large spike. One of the most beautiful of the very delicate pinks. 6c each; 60c per dozen; \$4.00 per 100.

**AUTUMN QUEEN.** Cream yellow, suffused with pink, with carmine stripe. 8c each; 85c per dozen; \$6.00 per 100.

**BARON HULOT.** A very rich, deep indigo blue. The best real blue gladiolus. Very strong grower. 12c each; \$1.25 per dozen.

**BLACK HAWK.** A deep cardinal red with a nearly black blotch. 8c each; 85c per dozen; \$6.00 per 100.

**CHIEF OSHKOSH.** A beautiful medium deep pink with darker shadings. Splendid sort. 6c each; 60c per dozen; \$4.00 per 100.

**CRACKER JACK.** Very dark red with throat mottled yellow. One of the most striking of the reds. 10c each; \$1.00 per dozen; \$7.00 per 100.

**CHICAGO WHITE.** A splendid new variety with tall straight stems nicely filled with well opened flowers. Very early. Flowers pure white with faint lavender streaks on lower petals. 8c each; 80c per dozen; \$5.00 per 100.

**EMPRESS OF INDIA.** A wonderful rich dark mahogany red, curiously veined. 10c each; \$1.00 per dozen.

**EVELYN KIRTLAND.** Very tall stately flowers fairly radiating a wonderfully beautiful lustre. Rosy pink, a trifle darker at edges, and becoming shell pink at the center. Bright scarlet blotches on lower petals. 12c each; \$1.25 per dozen.

**GOLDEN KING.** Intense deep yellow with crimson blotch in the throat. 8c each; 85c per dozen.

**GLORY OF HOLLAND.** White, slightly flushed pink. Many flowers open at once. A beautiful variety and much used as a cut flower sort. 10c each; \$1.00 per dozen; \$7.00 per 100.

**HOHENSTAUFEN.** Large white with blotch on lower petals. Very pretty. 8c each; 85c per dozen; \$6.00 per 100.

**HALLEY.** Delicate salmon-pink, slightly roseate, the lower petals showing a creamy blotch bisected by a red stripe. One of the earliest to bloom. 8c each; 75c per dozen; \$5.00 per 100.

**HERADA.** Blooms of immense size on tall straight spikes. Color pure mauve, glistening and clear, with deeper markings in throat. 12c each; \$1.25 per dozen.

**KLONDIKE.** Light yellow with crimson markings. Very profuse bloomer. 8c each; 85c per dozen; \$6.00 per 100.

**LILY LEHMAN.** A delicate combination of pink and white, extremely large and strong growing. Purest ivory-white fleshed pink at tip of petals, with very conspicuous lavender anthers. 8c each; 80c per dozen; \$5.00 per 100.

**MEADOWVALE.** Splendid white with a touch of crimson in the throat. 6c each; 60c per dozen; \$4.00 per 100.

**MRS. DR. NORTON.** Immense flower, creamy white overlaid or tinted soft pink, end of petals showing a charming touching of deeper pink. This is one of the most beautiful of the recent introductions and one of the most noted show flowers for the past five years. 35c each; \$3.50 per dozen for first size bulbs. 25c each; \$2.50 per dozen for second size bulbs.

**MRS. FRANCIS KING.** Brilliant vermilion scarlet. Most popular and effective variety grown. Always fine grower with long spikes and large well expanded flowers. Very fine. 6c each; 60c per dozen; \$4.00 per 100.

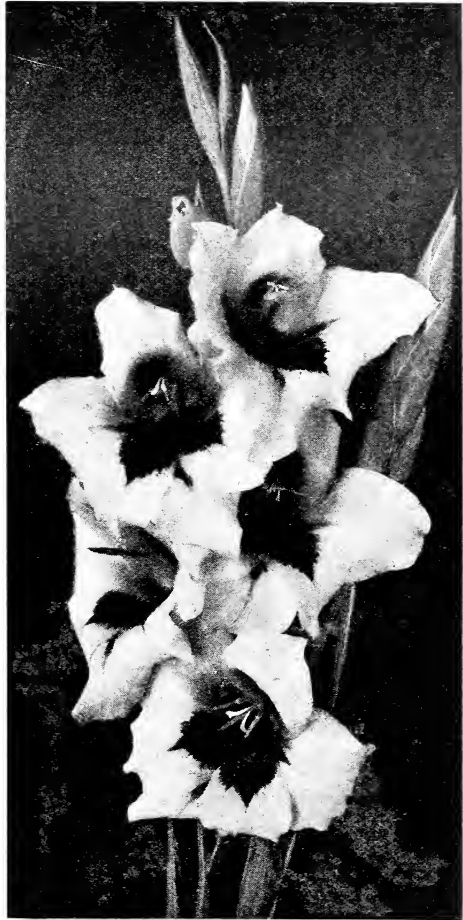


Gladiolus, America.



GLADIOLI—Continued

- MRS. FRANK PENDLETON.** A magnificent variety which has been awarded many prizes. Every bud will open up fully in water. Flowers large and well expanded. A lovely flushed salmon pink; with blood-red blotches in the throat. **8c each; 85c per dozen; \$6.00 per 100.**
- MRS. WATT.** A most beautiful kind displaying many open flowers at one time, borne in great profusion from midseason on, on thick stout stalks. The color is a glowing American Beauty shade of red unmingled with any other shade. Very fine sort. **8c each; 85c per dozen; \$6.00 per 100.**
- MRS. WHITNEY** (Primulinus). Apricot center shaded lighter. Very artistic, splendid cut flower sort. **8c each; 85c per dozen; \$6.00 per 100.**
- NIAGARA.** Resembles America in the style of flower on spike, but larger. Color a rich cream deepening to canary yellow on lower petals. A faint carmine blush at tips of petals and streak of same color in throat, with purple stamens and carmine stigmas, make a lovely combination. **8c each; 80c per dozen; \$6.00 per 100.**
- PRESIDENT TAFT.** Salmon-pink, darker at edge of petals, with crimson blotch in throat. **6c each; 60c per dozen; \$4.00 per 100.**
- PANAMA.** A flower resembling America very much only larger. The largest and most noticeable spike of bloom among all pinks. **8c each; 80c per dozen; \$6.00 per 100.**
- PEACE.** A very strong grower often reaching a height of five feet, with a correspondingly long flower spike; pure white with faint lilac markings on lower petals. One of the largest whites. **8c each; 80c per dozen; \$6.00 per 100.**
- PINK PERFECTION.** A beautiful flower. A delicate shade of apple blossom pink. **15c each; \$1.25 per dozen.**
- PRIDE OF GOSHEN.** A deeply ruffled bud and flower. A giant among the many choice varieties of the Glory type. A beautiful salmon-pink. **12c each; \$1.00 per dozen.**
- PRIMULINUS HYBRIDS.** A South African introduction that gives us something entirely new in Gladioli. The range of colors is from the purest and lightest of yellows to the deepest orange and from the softest shade of salmon-pink to the richest crimson. Because of their slender and graceful habit, delicate colors and peculiar taking shape of the flowers they are very fine for vases. They remind one very much of Sweetheart Roses. In assorted colors only. **6c each; 60c per dozen; \$4.50 per 100.**



Gladiolus, Mrs. Frank Pendleton.



Bleeding Heart.

- PRINCEPINE.** A beautiful red with a large white blotch in the throat. Very beautiful. **8c each; 85c per dozen; \$6.00 per 100.**
- ROUGE TORCH.** Creamy white, with a torch-shaped spot of rouge on base of lower petals. **7c each; 70c per 12; \$5.00 per 100.**
- SCHWABEN.** Extremely showy, both as a cut flower and in the border. The color is pure canary yellow shaded sulphur, the golden yellow throat slightly blotched with carmine, but so deep as not to interfere with all-yellow general effect. Flower spikes tall and strong, and well set with perfect flowers. **10c each; \$1.00 per dozen; \$7.00 per 100.**
- WAR.** Deep blood-red, shaded crimson-black. One of the most desirable of all the large deep reds. **8c each; \$1.00 per dozen; \$6.00 per 100.**

## Bleeding Heart

An old-fashioned flower which has always been a great favorite. It has been very scarce of late years and almost impossible to get. A herbaceous plant with long racemes of graceful, heart-shaped, pink flowers. Foliage is fern-like and dainty. Valuable for planting in the shade. Very hardy and lives year after year. Grows one to two feet tall and blossoms in May. **75c each.**



The Flowers of the Iris are as Beautiful as the Rarest Orchids.

## Beautiful Iris

Every garden must have Iris nowadays. There are many reasons for the increasing demand for the Iris. In the first place, the flowers are as beautiful as the rarest orchids. Their form is perhaps more distinctive and their coloring more varied. Many new varieties have been brought out in the past few years and they have

given us new colors and wonderful new combinations of color. In a field of Iris all shades, from the palest lavender to the deepest purple, and from the most delicate cream to the deepest gold, may be seen. Then there are pure white, delicate blue and deep blue, pink, rose, maroon and bronze. Now, if never before, the flower justifies its name—Iris, the rainbow.

We carry in our nursery about 100 varieties of the very choicest Iris, ranging in price from **25c up**. We do not list them in this catalog as Iris is one of our specialties and we make our shipments in July, August and September to give our customers the most satisfactory results. Iris do not make much showing above ground until about the middle of May and we cannot send out nice plants until after the time other stock should be planted.

If you are interested in obtaining some choice Iris, send for our Iris folder in June.

## Native White Birch

Of all our hardy ornamental trees there is none that gives more pleasure and greater satisfaction as a purely lawn tree than does the White Birch. It is very hardy, being a native of Minnesota and Wisconsin, and is to be found all over the wooded portions of these states, along the hillsides bordering on their many streams.

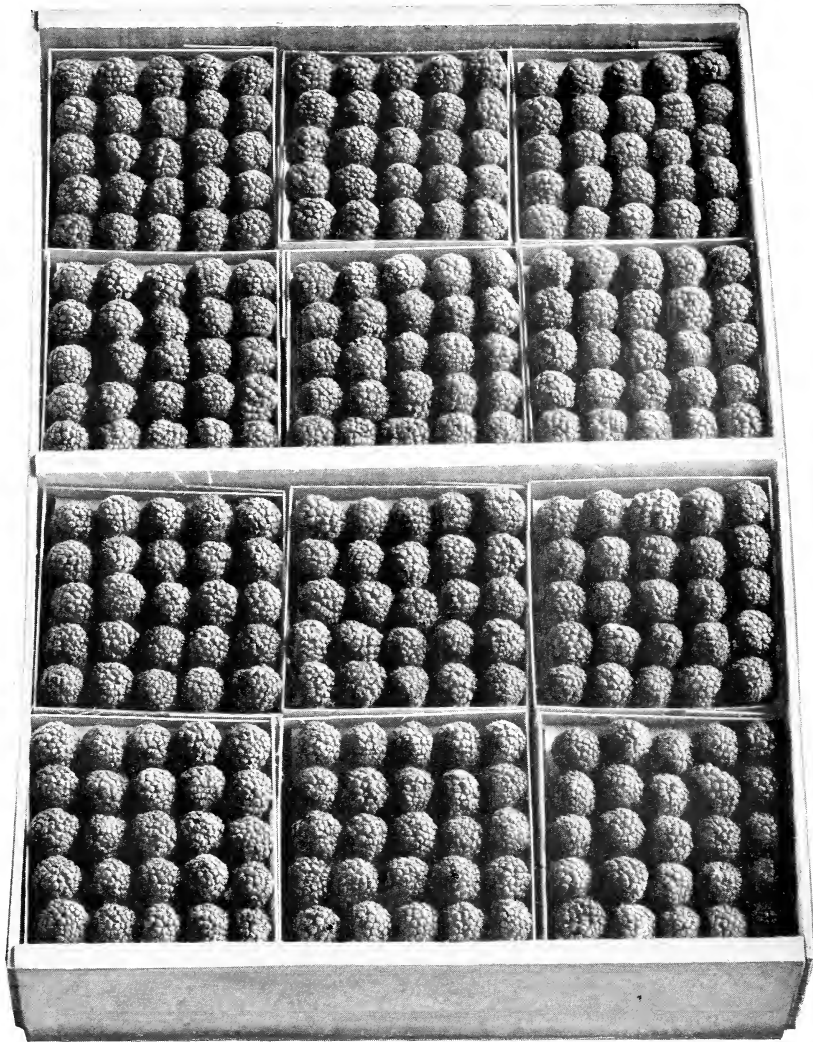
The bark is not white on the young tree until the tree reaches an age of about six years, when beginning at the bottom the bark gradually turns white up the entire trunk of the tree and along the greater part of the larger limbs. The tree then forms a beautiful contrast on a well-kept green lawn. **Strong 5 to 6 foot trees, each 75c; 6 for \$3.75.**



Native White Birch.





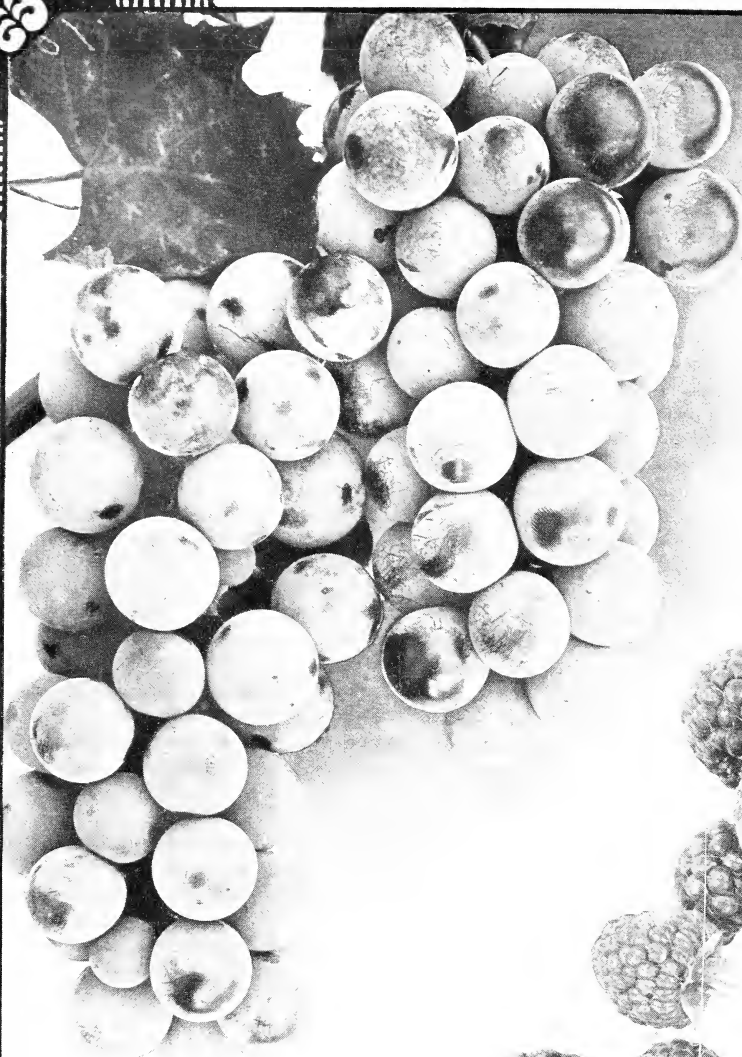


## Redpath Red Raspberry

---

The above is a photographic reproduction of a crate of the Redpath. Note the size of the berries. Twenty-five of them make a full layer in the boxes, the berries being an inch in diameter. The boxes shown are regular size pint berry boxes. The yield of this splendid berry is equal to the size of the berry, for it is an unusually heavy bearer. The quality is of the best, and it is a market favorite.

**Brand Nursery Co., Faribault, Minn.**



*BETA*



*LATHAM*

BRAND  
NURSERY  
COMPANY  
FARIBAULT  
MINNESOTA