





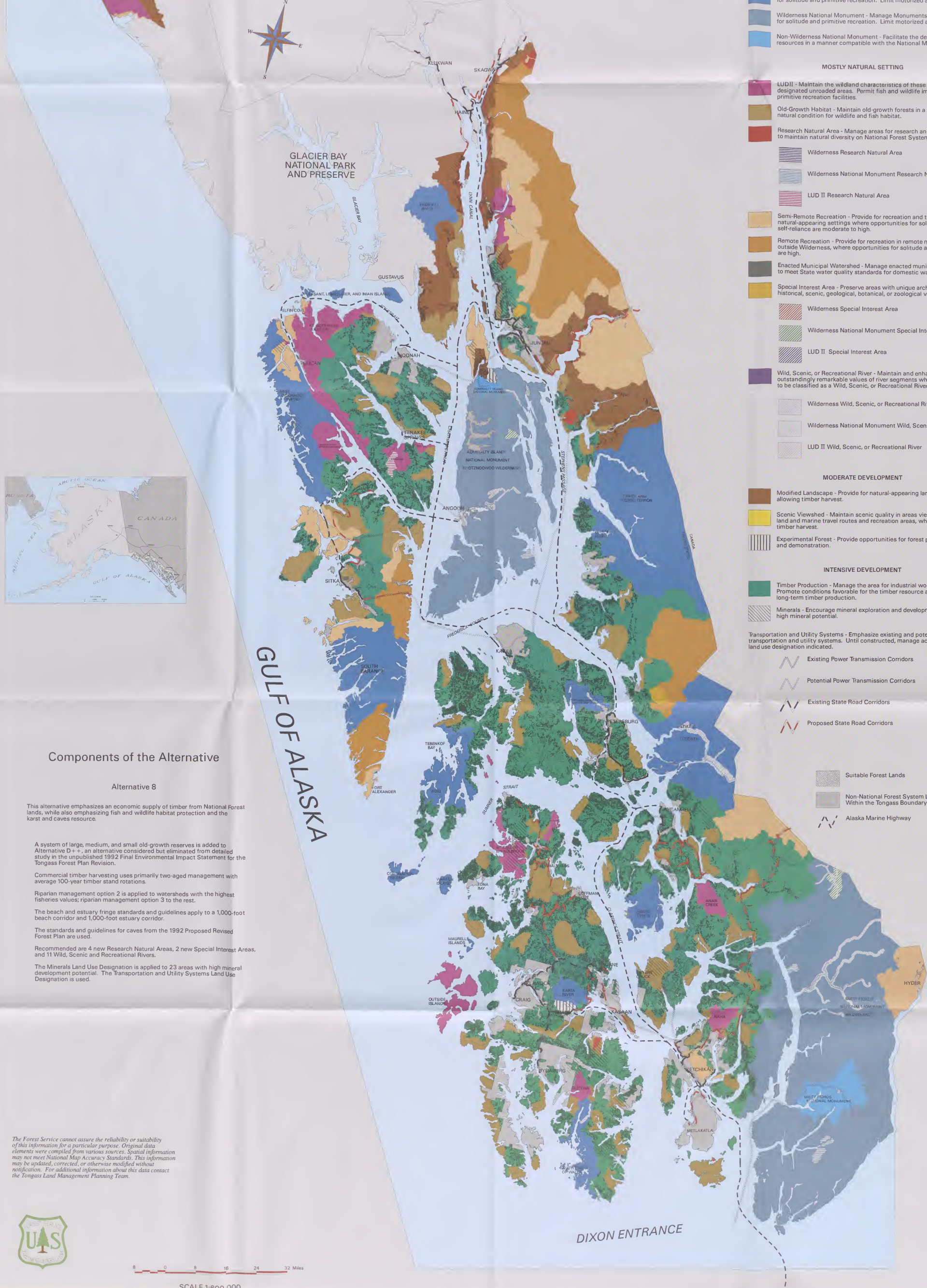


# Alternative 8

## Tongass National Forest

### Land Management Plan Revision

#### Revised Supplement



- WILDERNESS AND NATIONAL MONUMENT**
- Wilderness - Preserve essentially unmodified areas to provide opportunities for solitude and primitive recreation. Limit motorized access.
  - Wilderness National Monument - Manage Monuments to provide opportunities for solitude and primitive recreation. Limit motorized access.
  - Non-Wilderness National Monument - Facilitate the development of mineral resources in a manner compatible with the National Monument purposes.
- MOSTLY NATURAL SETTING**
- LUD II - Maintain the wildland characteristics of these congressionally-designated unroaded areas. Permit fish and wildlife improvements and primitive recreation facilities.
  - Old-Growth Habitat - Maintain old-growth forests in a natural or near-natural condition for wildlife and fish habitat.
  - Research Natural Area - Manage areas for research and education and/or to maintain natural diversity on National Forest System lands.
    - Wilderness Research Natural Area
    - Wilderness National Monument Research Natural Area
    - LUD II Research Natural Area
  - Semi-Remote Recreation - Provide for recreation and tourism in natural-appearing settings where opportunities for solitude and self-reliance are moderate to high.
  - Remote Recreation - Provide for recreation in remote natural settings outside Wilderness, where opportunities for solitude and self-reliance are high.
  - Enacted Municipal Watershed - Manage enacted municipal watersheds to meet State water quality standards for domestic water supply.
  - Special Interest Area - Preserve areas with unique archaeological, historical, scenic, geological, botanical, or zoological values.
    - Wilderness Special Interest Area
    - Wilderness National Monument Special Interest Area
    - LUD II Special Interest Area
  - Wild, Scenic, or Recreational River - Maintain and enhance the outstandingly remarkable values of river segments which qualify the river to be classified as a Wild, Scenic, or Recreational River.
    - Wilderness Wild, Scenic, or Recreational River
    - Wilderness National Monument Wild, Scenic, or Recreational River
    - LUD II Wild, Scenic, or Recreational River
- MODERATE DEVELOPMENT**
- Modified Landscape - Provide for natural-appearing landscapes while allowing timber harvest.
  - Scenic Viewshed - Maintain scenic quality in areas viewed from popular land and marine travel routes and recreation areas, while permitting timber harvest.
  - Experimental Forest - Provide opportunities for forest practices research and demonstration.
- INTENSIVE DEVELOPMENT**
- Timber Production - Manage the area for industrial wood production. Promote conditions favorable for the timber resource and for maximum long-term timber production.
  - Minerals - Encourage mineral exploration and development of areas with high mineral potential.
- Transportation and Utility Systems - Emphasize existing and potential major public transportation and utility systems. Until constructed, manage according to the other land use designation indicated.**
- Existing Power Transmission Corridors
  - Potential Power Transmission Corridors
  - Existing State Road Corridors
  - Proposed State Road Corridors
  - Suitable Forest Lands
  - Non-National Forest System Lands Within the Tongass Boundary
  - Alaska Marine Highway

### Components of the Alternative

#### Alternative 8

This alternative emphasizes an economic supply of timber from National Forest lands, while also emphasizing fish and wildlife habitat protection and the karst and caves resource.

A system of large, medium, and small old-growth reserves is added to Alternative D+, an alternative considered but eliminated from detailed study in the unpublished 1992 Final Environmental Impact Statement for the Tongass Forest Plan Revision.

Commercial timber harvesting uses primarily two-aged management with average 100-year timber stand rotations.

Riparian management option 2 is applied to watersheds with the highest fisheries values; riparian management option 3 to the rest.

The beach and estuary fringe standards and guidelines apply to a 1,000-foot beach corridor and 1,000-foot estuary corridor.

The standards and guidelines for caves from the 1992 Proposed Revised Forest Plan are used.

Recommended are 4 new Research Natural Areas, 2 new Special Interest Areas, and 11 Wild, Scenic and Recreational Rivers.

The Minerals Land Use Designation is applied to 23 areas with high mineral development potential. The Transportation and Utility Systems Land Use Designation is used.

The Forest Service cannot assure the reliability or suitability of this information for a particular purpose. Original data elements were compiled from various sources. Spatial information may not meet National Map Accuracy Standards. This information may be updated, corrected, or otherwise modified without notification. For additional information about this data contact the Tongass Land Management Planning Team.



0 8 16 24 32 Miles

SCALE 1:600,000