

Historic, archived document

Do not assume content reflects current scientific knowledge, policies, or practices.

LIBRARY
SECRETARY
1924
SALD... ..

DEATON NURSERIES

Wholesale and Retail Growers of

ORNAMENTAL NURSERY STOCK



Forest and Shade Trees

WASE, NORTH CAROLINA



Deaton Nurseries

Wholesale and Retail Growers of

ORNAMENTAL NURSERY STOCK



Forest and Shade Trees

VASS, NORTH CAROLINA

We grow particularly for landscape planting and appreciate what this means: A plant for landscape use must be good to look at, and if it is not good to look at it matters very little how large it is. Its value is in its appearance.

We invite correspondence and consultation concerning landscape plans, planting lists and work.

We have a great many specimen plants which are not listed, but which are indispensable for immediate effect in fine landscape work.

A visit to our Nursery will convince prospective buyers that the special prices on our plants are reasonable.

The beauty of your home-ground is not only a source of pride and satisfaction to you, but it is the strongest declaration of your civic pride and interest in the general welfare.

NOTICE TO CUSTOMERS

The following quotations are for immediate acceptance, subject to stock being sold.

Shipments of plants are forwarded at purchaser's risk, by express, purchaser paying charges.

Most of the failures with plants are due to causes entirely beyond our control, such as unfavorable weather or soil conditions, too deep or too shallow planting, etc., which renders it impossible for us to guarantee success and although we exercise great care in selecting and packing our plants, we do not guarantee them to live and grow.

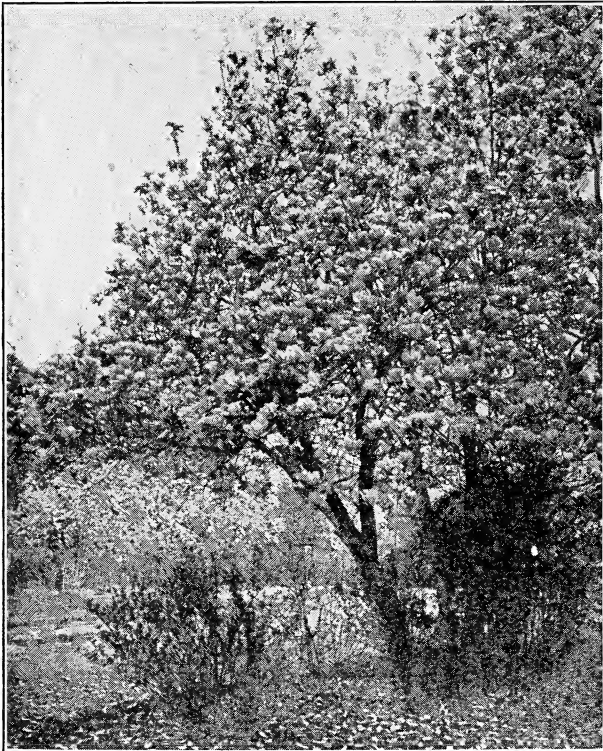
A State Certificate of inspection is attached to all shipments.

TERMS: Cash, unless by special arrangement.

Our Nursery is located half-way between CARTHAGE and VASS.

Deciduous Shade Trees

ACER Rubrum (Scarlet Maple):		Each
4 to 5 ft.....	\$.50
6 to 8 ft.....		.75
8 to 10 ft.....		1.00
A. Saccharum (Sugar Maple):		
One of our finest shade trees. Has dense foliage.		
4 to 5 ft.....		.50
6 to 8 ft.....		.75
8 to 10 ft.....		1.00
10 to 12 ft.....		1.50
CERCIS Canadensis (Judas Tree):		
It has beautiful pink flowers in the early Spring before the leaves come out.		
3 to 4 ft.....		.50
5 to 6 ft.....		.75
6 to 8 feet.....		1.00
8 to 10 ft.....		1.50



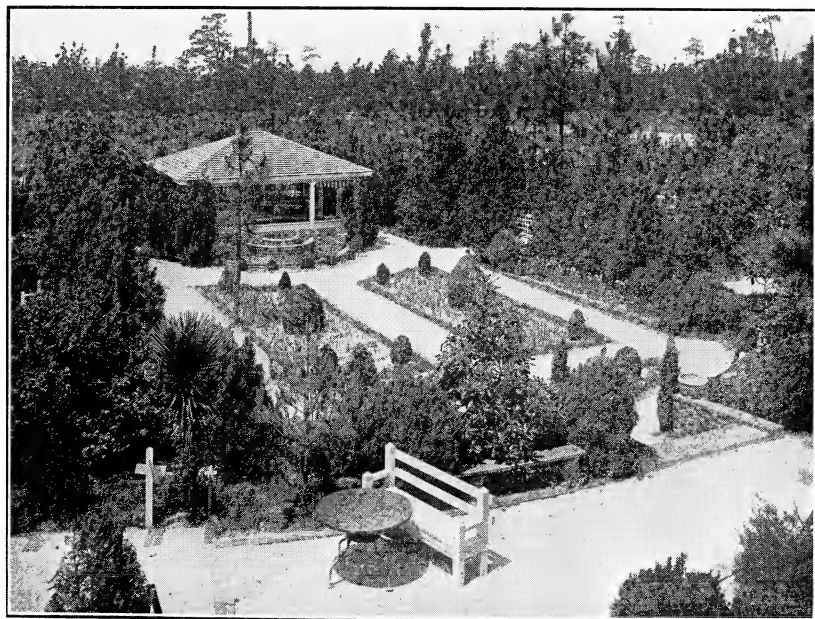
. **Cornus Florida** (Dogwood)

CORNUS Florida (White Fl. Dogwood):	Each
3 to 4 ft.....	\$.50
5 to 6 ft.....	.75
6 to 8 ft.....	1.00
8 to 10 ft.....	1.50
C. Rubra (Red Fl. Dogwood):	
3 to 4 ft.....	1.50
JUGLINS Nigra (Black Walnut):	
3 to 4 ft.....	.75
5 to 6 ft.....	1.00
6 to 8 ft.....	1.50
LIRIODENDRON Tulipifera (Tulip Poplar):	
5 to 6 ft.....	.50
6 to 8 ft.....	.75
8 to 10 ft.....	1.00
MELIA (Umbrella China Tree):	
2 to 3 ft.....	.50
3 to 4 ft.....	.75
5 to 6 ft.....	1.00
6 to 8 ft.....	1.50
PLATANUS (American Sycamore):	
5 to 6 ft.....	.50
6 to 8 ft.....	.75
8 to 10 ft.....	1.00
10 to 12 ft.....	1.50
POPULUS Fastigiata (Lombardy Poplar):	
5 to 6 ft.....	.50
6 to 8 ft.....	.75
8 to 10 ft.....	1.00
10 to 12 ft.....	1.50
12 to 15 ft.....	2.00

Hardy Flowering Shrubs

ALTHEA (Rose of Sharon) (White):	
2 to 3 ft.....	\$.50
3 to 4 ft.....	.75
AMALANCHIER Canadensis (Service Berry):	
3 to 4 ft.....	.50
4 to 6 ft.....	.75
AMYGADALUS Nana (Fl. Almond) (Double Pink):	
2 to 3 ft.....	.50
ASIMINA (Papaw Tree):	
A small shapely tree, valuable as an ornamental, also for its delicious fruit.	
2 to 3 ft.....	.50
3 to 4 ft.....	.75
4 to 6 ft.....	1.00

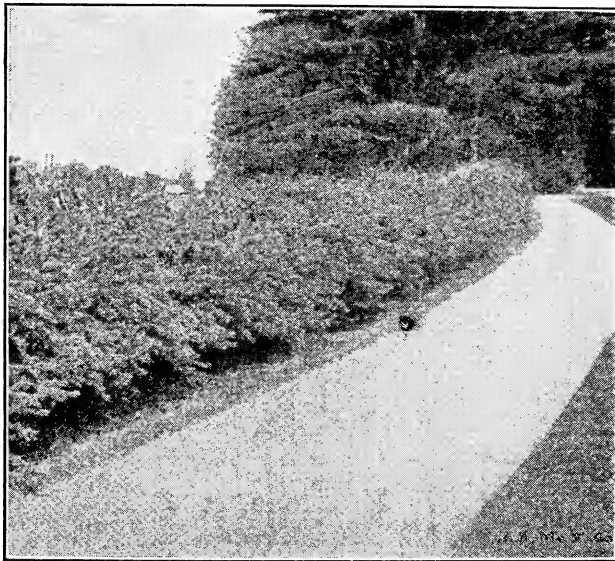
ARONIA Arbutifolia (Red Choke Berry):	Each
2 to 3 ft.....	\$.35
4 to 6 ft.....	.50
CALYCANTHUS Florida (Sweet Shrub):	
2 to 3 ft.....	.50
3 to 4 ft.....	.75
CALLICARPA Americana:	
2 to 3 ft.....	.35
3 to 4 ft.....	.50
CITRUS Trifoliata (Hardy Orange):	
It has real orange blossoms and small oranges. Useful as a stock-proof hedge.	
2 to 3 ft.....	.35
3 to 4 ft.....	.50
4 to 6 ft.....	.75
CLETHRA Alnifolia (Sweet Pepper Bush):	
1½ to 2 ft.....	.25
2 to 3 ft.....	.35



Planting on the grounds of James Barber. Pinehurst, N. C.
Shrubs furnished by Deaton Nurseries

CORNUS Siberica (Red-Stemmed Dogwood):	Each
2 to 3 ft.....	\$.50
CYDONIA Japonica (Japanese Quince):	
Pink blossoms in early Spring, followed by fruit.	
1½ to 2 ft.....	.35
2 to 3 ft.....	.50
CYRILLA Racemosus :	
It is a low-growing tree or shrub, with racemes of small white flowers.	
3 to 4 ft.....	.35
4 to 6 ft.....	.50
6 to 8 ft.....	.75
DEUTZIA (White and Pink):	
2 to 3 ft.....	.50
3 to 4 ft.....	.75
FORSYTHIA Suspensa (Golden Bell):	
1½ to 2 ft.....	.35
2 to 3 ft.....	.50
HALESIA Tetraptera (Silver Bell Tree):	
A fine-shaped shrub or small tree, which is covered with white bell-shaped flowers in the Spring.	
3 to 4 ft.....	.50
4 to 6 ft.....	.75
6 to 8 ft.....	1.00
HYDRANGEA Quercifolia :	
Blooms for a long time, and the leaves in early Winter are very attractive.	
2 to 3 ft.....	.50
3 to 4 ft.....	.75
HYPERICUM (Golden St. John's Wort):	
A low-growing shrub, which has yellow flowers throughout the Summer.	
1½ to 2 ft.....	.50
2 to 3 ft.....	.75
ILEX Monticola (Red Thunderberry):	
Has bright red berries, which remain on plant through the Winter.	
2 to 3 ft.....	.35
3 to 4 ft.....	.50
4 to 6 ft.....	.75
KERRIA Japonica (Globe Flower) (Yellow):	
It blooms all through Spring, Summer and Fall.	
2 to 3 ft.....	.35
3 to 4 ft.....	.50

LAGERSTROMIA Indica (Crape Myrtle) (Purple and Pink):	Each
2 to 3 ft.....	\$.50
3 to 4 ft.....	.75
4 to 6 ft.....	1.00
LAVENDULA Vera (Lavender):	
1-year.....	.25
2-year.....	.50
LONICERA Fragrantissima (Bush Honeysuckle):	
The fragrant blooms appear as early as Christmas and continue through the Spring months.	
1½ to 2 ft.....	.35
2 to 3 ft.....	.50
3 to 4 ft.....	.75
MYRICA Cerifera (Wax Myrtle):	
1½ to 2 ft.....	.35
2 to 3 ft.....	.50
PERSICA Amgdalus (Double Fl. Peach) (Red and White):	
3 to 4 ft.....	.75
SPIREA Thunbergii (Dwarf):	
1½ to 2 ft.....	.35
2 to 3 ft.....	.50



Spirea Van Houttei

S. Van Houttei (Bridal Wreath):	Each
2 to 3 ft.....	\$.35
3 to 4 ft.....	.50
S. Reevesiana (Double White):	
2 to 3 ft.....	.35
3 to 4 ft.....	.50
The Spireas are indispensable for mass or border planting. They bear a profusion of showy white flowers in the late Winter and early Spring.	
SYMPHORICARPUS Racemosus (Coral Berry):	
2 to 3 ft.....	.35
3 to 4 ft.....	.50
SYRINGA (Lilac) (White and Purple):	
2 to 3 ft.....	.50
3 to 4 ft.....	.75
WEIGELA (Pink):	
2 to 3 ft.....	.50

Broad-Leaved Evergreens and Conifers

ABELIA Grandiflora:

This plant fills a wider usage than perhaps any other evergreen. It can be trimmed as a specimen plant, used in groups in screening about buildings, or trimmed as a dense hedge plant. The graceful drooping stems and branches are covered with dark, glossy leaves. It is covered from May until frost with small tubular-shaped white flowers.

12 to 18 in.....	\$.50
18 to 24 in.....	.75
2 to 3 ft.....	1.00

BIOTA Orientalis (Chinese Arborvitae):

This is the finest lot of Arborvitae we have ever grown. They are compact, thrifty-growing plants, in globe, oval, pyramidal and narrow-column shapes.

6 to 10 in.....	.35
12 to 15 in.....	.50
18 to 24 in.....	1.00
2 to 3 ft.....	1.50
3 to 4 ft.....	2.00
4 to 5 ft.....	3.00
5 to 6 ft.....	4.00
6 to 7 ft.....	5.00
7 to 8 ft.....	6.00
8 to 10 ft.....	8.00



Biota Orientalis (Chinese Arborvitae)

B. Aurea Conspicua (Chinese Golden Arborvitae):	Each
18 to 24 in.....	\$ 2.00
2 to 3 ft.....	3.00

B. Aurea Nana (Dwarf Golden Arborvitae):	
12 to 18 in.....	1.50
18 to 24 in.....	2.50

BUXUS Sempervirens (Tree Boxwood):	
12 to 15 in.....	1.50
15 to 18 in.....	2.00
18 to 24 in.....	3.00
2 to 3 ft.....	4.00

B. Suffruticosi (Dwarf Boxwood):	
6 to 8 in.....	.35
8 to 10 in.....	.50
10 to 12 in.....	.75

CRATAEGUS Lelandii (Evergreen Thorn):	
Fine for specimen evergreen plants, or for hedges. It is covered in Fall and Winter with orange-colored berries.	
3 to 4 ft.....	1.00
5 to 6 ft.....	1.50
6 to 8 ft.....	2.00



Cupressus Thuoides (Native Juniper)

CUPRESSUS *Thuoides* (Native Juniper):

Pyramids—	Each
4 to 5 ft.....	\$ 2.50
5 to 6 ft.....	3.50
6 to 7 ft.....	5.00
7 to 8 ft.....	6.00
Standards—	
4 to 5 ft.....	5.00

EUONYMOUS *Japonica*:

1½ to 2 ft.....	.75
2 to 3 ft.....	1.00

ILEX *Opaca* (American Holly):

1 to 2 ft.....	.75
2 to 3 ft.....	1.00
4 to 5 ft.....	2.00
6 to 8 ft.....	4.00
8 to 10 ft.....	6.00

I. Glabra (Gallberry [Inkberry]):

1½ to 2 ft.....	.15
2 to 3 ft.....	.25

1924

I. Cassine (Dahoon Holly):

The leaves are bright and glossy, with branches covered with bright red berries.

2 to 3 ft.....	\$ 1.50
3 to 4 ft.....	2.00

I. Cassine "X" Ilex Opaca:

This is a cross between the American and Dahoon Hollies.

It is a valuable introduction.

1½ to 2 ft.....	1.50
2 to 3 ft.....	2.00

I. Vomitoria (Yaupon):

A form of Holly, with small evergreen leaves and bright red berries.

1½ to 2 ft.....	.75
2 to 3 ft.....	1.00

JUNIPERUS Chinensis (Chinese Juniper):

10 to 12 in.....	.50
12 to 15 in.....	.75

J. Hibernica (Irish Juniper):

12 to 18 in.....	.50
18 to 24 in.....	1.00
2 to 3 ft.....	1.50
3 to 4 ft.....	2.00
4 to 5 ft.....	3.00

J. Sabina (Trailing Juniper):

12 to 15 in. spread.....	.50
15 to 18 in. spread.....	.75

J. Virginiana (Red Cedar):

2 to 3 ft.....	.50
3 to 4 ft.....	.75
4 to 6 ft.....	1.00
6 to 8 ft.....	1.50
8 to 10 ft.....	2.00

KALMIA Latifolia (Mountain Laurel):

1½ to 2 ft.....	.50
2 to 3 feet.....	.75

LAURUS Americana (Sweet Bay):

A small, fine-shaped evergreen tree, with large light-green foliage and black berries.

2 to 3 ft.....	.50
3 to 4 ft.....	.75
4 to 6 ft.....	1.00
6 to 8 ft.....	1.50

LIGUSTRUM Amurense (Hardy Amoor Privet):

1-year.....	.05
2-year (sheared).....	.25

L. Japonicum:	Each
2 to 3 ft.....	\$.50
3 to 4 ft.....	.75
4 to 6 ft.....	1.00

L. Lucidum (Wax Leaf Privet):

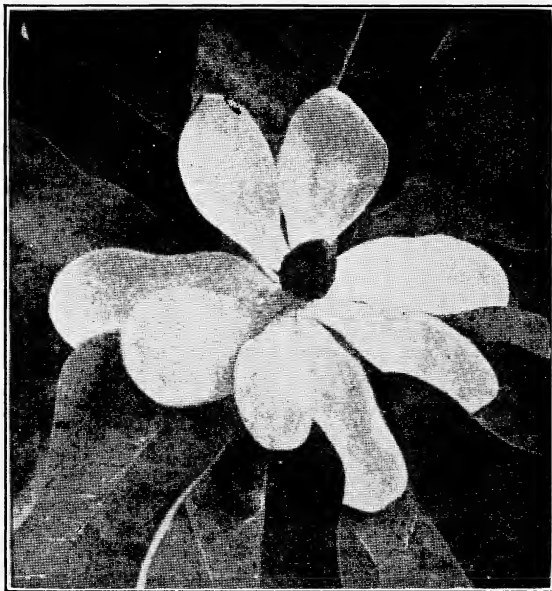
A beautiful form of evergreen Japanese Privet, with large, dark-green leaves and large heads of white flowers in May, followed by black berries, which are retained throughout the Winter. Indispensable for landscape work.

8 to 12 in.....	.25
12 to 15 in.....	.50
18 to 24 in.....	1.50
2 to 3 ft.....	2.00

MAGNOLIA Glauca (White Bay):

This small tree is conspicuous for its fragrant blooms during the Summer.

3 to 4 ft.....	.50
5 to 6 ft.....	.75
6 to 8 ft.....	1.00



Magnolia Grandiflora

M. Grandiflora:

The grandest of our Southern broad-leaved evergreen trees. The waxy-white, lemon-scented flowers, often eight to thirteen inches across, are produced throughout a period of three to four months. We have the largest stock in this State to select from.

6 to 8 in.....	\$.25
8 to 12 in.....	.35
12 to 18 in.....	.50
18 to 24 in.....	.75
2 to 3 ft.....	1.00
4 to 5 ft.....	2.00
6 to 7 ft.....	3.50
7 to 8 ft.....	5.00
10 to 12 ft.....	10.00
12 to 14 ft.....	15.00

MYRICA (Evergreen Sweet Myrtle):

A native evergreen shrub. Fine for hedge or specimen plants. Foliage is olive-green, berries gray and covered with wax.

12 to 18 in.....	.50
18 to 24 in.....	.75
2 to 3 ft.....	1.00

PINUS Palustris (Longleaf Pine):

12 to 18 in.....	.50
------------------	-----

P. Echinata (Shortleaf Pine):

12 to 18 in.....	.50
------------------	-----

PRUNUS Caroliniana (Evergreen Cherry):

This is our fastest-growing evergreen tree. Suitable for shade tree or for hedge.

8 to 12 in.....	.25
12 to 18 in.....	.35
18 to 24 in.....	.50
2 to 3 ft.....	.75
3 to 4 ft.....	1.00
4 to 6 ft.....	1.50

QUERCUS Sempervirens (Live Oak):

6 to 12 in.....	.25
18 to 24 in.....	.50
2 to 3 ft.....	.75
3 to 4 ft.....	1.00
5 to 6 ft.....	1.50
6 to 8 ft.....	2.00
8 to 10 ft.....	3.00

Q. Phellos (Cape Fear Live Oak):

This is a new introduction in the Live Oaks. It was found near the Cape Fear River in North Carolina. It is a true evergreen and one of the fastest growing Oaks we have.

2 to 3 ft.....	.75
3 to 4 ft.....	1.00
5 to 6 ft.....	1.50
6 to 8 ft.....	2.00
8 to 10 ft.....	2.50
10 to 12 ft.....	3.00

THUJA Occidentalis (American Arborvitae):	Each
12 to 15 in.....	\$.50
18 to 24 in.....	1.00
2 to 3 ft.....	1.50
3 to 4 ft.....	2.00
4 to 5 ft.....	3.00
5 to 6 ft.....	4.00

Vines and Climbers

AMPELOPSIS Quinquifolia (Virginia Creeper):	
1-year.....	\$.35
BIGNONIA (Cross Vine):	
A splendid evergreen Climber, which has trumpet-shaped blooms throughout the Summer. Red and Yellow.	
1-year.....	.35
B. Radicans (Trumpet Vine):	
2-year.....	.25
ELEAGNUS Reflexa (Japanese Oleaster):	
2-year.....	.50
EUONYMOUS Radicans :	
A small evergreen vine. Fine for covering rock or brick walls, etc.	
2-year.....	.25
HEDERA Helix (English Ivy):	
2-year.....	.25
JASMINUM Nudiflorum (Yellow Jasmine):	
2-year.....	.25
J. Nitida (Carolina Jasmine):	
Fine for climber or for ground cover for terraces.	
2-year.....	.25
LONICERA Chinensis (Chinese Honeysuckle):	
2-year.....	.25
L. Rubrum (Coral Honeysuckle):	
2-year.....	.35
SMILAX :	
These vines are used extensively by florists for festooning and decorating.	
2-year.....	.50
VINCA Minor (Creeping Myrtle):	
Blue flowers, small leaves. Used for ground covering.	
1-year.....	.15

V. Major:	Each
Blue flowers, large leaves, also used for ground covering.	
1-year.....	\$.15
WISTARIA Chinensis (Purple):	
2-year.....	.50



A Street in Southern Pines, N. C. Plants furnished by Deaton Nurseries.

Bamboo

BAMBUSA Aurea (Golden Bamboo):	Each
Large clumps.....	\$.50
B. Metake (Green Bamboo):	
Large clumps.....	.50
BAMBUSA (Dwarf Bamboo):	
Large clumps.....	.50

Bulbs

NARCISSUS:	
Double White.....	\$.10
Single Yellow.....	.05

DAHLIAS:	Each
New varieties.....	\$.25
IRIS (German):	
Blue.....	.10
CANNAS:	
Yellow.....	.10

Roses

BANKSIA (Evergreen Climber) (White or Yellow):	
2-year.....	.50
CHEROKEE (White or Red):	
2-year.....	.50
WICHURIANA:	
2-year.....	.50
HYBRID Rugosa:	
2-year.....	.50

We can furnish a good assortment of Tea, Hybrid Tea, Hybrid Perpetual, Dwarf Polyantha, Ramblers and Climbing Roses, mostly ever-blooming.

Date



