

## **Historic, archived document**

Do not assume content reflects current scientific knowledge, policies, or practices.



62,37

LIBRARY  
APR 28 1924  
of Agriculture

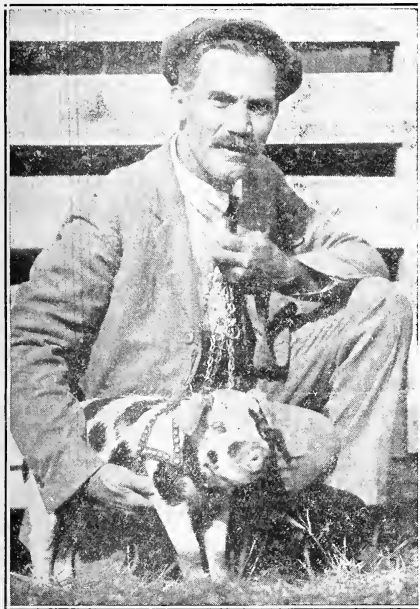
# FIELD'S SEED SENSE

Printed and Published in the Private Printshop of the Henry Field Seed Company, Shenandoah, Iowa

Vol. 12

Shenandoah, Iowa, February, 1924

No. 1



## Henry Field, Seedsman, Gardener, Farmer

You always like to see a picture of the man you are dealing with, so I am putting my picture here, not because I think it is at all handsome, but so that you can see just exactly what I look like.

This is a snap shot taken in an attempt to get a good picture of "Samanthy" the little pig mascot who went with us to the state fairs. It is a good picture of her, and incidentally a good picture of H. F., so my friends say.

Anyway, good or not, it shows me up for just what I am, wrinkles, old clothes, and all.

You know I got rather crowded into this big seed business more or less against my inclinations. Of course, I like the seed business and never expect to do anything else, but I had no idea at the start of such a big business. What I wanted was a nice little home made affair that could be run by me and the children, and maybe a hired man or two, with Mrs. Field to help out on the office work, but somehow we couldn't stop there, and instead we now have one of the half dozen big seed businesses of the country (and some say the biggest of all).

But I want you to know that it is still run on the same

plans as the small business I first planned. The same good seeds and good service and good natured liberality. The people who work for me have learned to do business my way, in fact, they have grown up in the seed business with me. Some day I am going to introduce them all to you through Seed Sense.

And whether your order is large or small, you will get the same courteous, prompt and dependable service, good seeds, good measure, and good advice.

### To the New Customer

This issue of Seed Sense is going to lots of new people who have never been with us before, and I want to say to you new folks that you are perfectly welcome, and I want you to just join in with us and be "one of the bunch," and we will give you the best we've got. If you have not received our big catalog, write for it at once. It's free, also samples, and advice such as it is.

### Anything in Seeds or Plants

We can supply you absolutely everything you need in seeds, plants, bulbs, garden tools, and, in fact, everything you need for the garden. Lots of people don't seem to know this. For instance, John S. Capper, the great clothier of Chicago, had bought grass seed of us for his farms for years and never knew that we sell roses till he happened to ask about it, and then he bought \$200 worth of roses. Look through the catalog and this Seed Sense and if you don't see what you want, ask for it. And everything we sell is sold with the guarantee that it will reach you safely and certainly and will be satisfactory to you on arrival or no trade. *All small stuff is sent postpaid.*

### 11 Years of Seed Sense

This issue starts our twelfth year of Seed Sense. I have been in the seed business for anywhere from 30 to 45 years, according to where you start to count from, and have been issuing catalogs for 25 years, but it was not till 1913 that we started mailing Seed Sense regularly. We tried to start twice before and gave it up, but that time I bought a carload of paper and decided to stay with it till the paper was gone anyway, and we never did quit then.

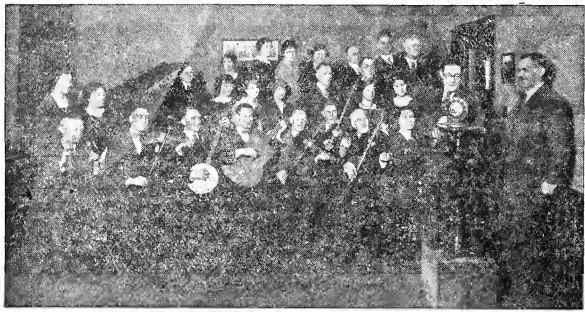
It's been a lot of fun, and I have made the business acquaintance of a lot of the finest people on earth. They say they like to read Seed Sense, and if that's the case with a good share of you, why we'll simply keep on till you warn us to stop.

Anyway, don't forget us, and if you need any seeds or plants we will appreciate your order, and if you get time, write me a letter.

### Seed Sense is Sprouting Wings Now

Yes, in order to be up with the times, Seed Sense is now taking to the air. We are putting in our own broadcasting station and maybe by the time you read this we will be entertaining you with old fashioned music from our very own broadcasting station. Listen for us some where between wave lengths 300 and 350 along in the evening any time after the middle of February. See 'm' about it on another page.

H



The Seedhouse singers and the fiddling gang, and G. R., and all the rest of those who took part in the Henry Field concert of old fashioned music on January 1, 1924. Meet us all again on the night of February 14th.

## Who They All Are

(Sitting, left to right)

- Wm. McKee**  
Who "rattled the bones."  
**Clifford Robinson**  
The man from Oklahoma.  
**Lester Smith**  
Who played the banjo and called.  
**Wilbur Smith**  
Who played "Buffalo Girls."  
**Frank Comstock**  
"Uncle Frank", the fiddler.  
**John Belding**  
Who played "Dill Pickles."  
**Wm. Balfour**  
79 year old G. A. R. veteran fiddler.  
**Lena Sanman**  
Organist for the singers.  
(Standing at the microphone)  
"G. R.", **Gene Rouse**  
Announcer with the heavenly voice.  
**Henry Field**  
Who stands on the sidelines.  
(First row, standing up)  
**Marian Hunter**  
Who sang "Gathering Home."  
**Jeannette Regester**  
Who sang "Throw Out the Life Line."  
**Kyrie Blackford**  
Sang "Pass Me Not O Gentle Savior."

- Irma Ray**  
Who sang in the girls' chorus.  
**Mrs. Wilbur Smith**  
Organist for Wilbur and Comstock.  
**Walt Pitzer**  
Sang "Will Jesus Find Us Watching."  
**Mrs. Lester Smith**  
Organist for brother, John Belding.  
**LuEtta Minnick**  
Who sang "He Leadeth Me."  
(Back row, left to right)  
**The Baldwin Grand**  
Which got a rest that night.  
"L. P.", **Lester Palmer**  
Assistant announcer at W O A W.  
**Frances Burnham**  
Hostess at W O A W studio.  
**Hazel Simmons**  
Who sang in the girls' chorus.  
**Nell Howard**  
Who sang in the girls' chorus.  
**Forrest Walden**  
Who sang "Darling Nellie Gray."  
**Fred Tunnici Cliff**  
Who came in strong on the chorus.  
**Tom Keenan**  
Sang "What Will the Harvest Be."  
**L. D. Corbin**  
Who sang "The Lily of the Valley."  
**Ed. Tunnici Cliff**  
Who sang "Only an Armor Bearer."

## Why We Did It

I suppose a lot of you are wondering why folks, as busy as we are, should take the time and trouble to drive 60 miles to Omaha in snow drifts and zero weather to sing and fiddle old fashioned music.

Well, we did it simply because we liked to—and that's really reason enough. And then, besides, we wanted to show the world that there were still young folks who could sing the good old songs, and fiddlers who could really fiddle.

And I'll tell the world we showed 'em, too, if you can judge by the letters we have been getting. More even than we got on the other concert. 6,000 maybe. I say more. I don't know. They're still coming. Greatest letters you ever saw.

So we are coming again the night of February 14th, same kind of music, you like it, tune in.

P. S., Does "G. R." look like you thought he would?

## Seed Sense Takes to the Air

It is likely that by the time you are reading this, "Seed Sense" and the Henry Field Seed Company will be "on the air" with their own radio broadcasting station, powerful enough to be heard easily all over the central part of the United States, and at times over the entire country.

We have been talking of this for two years or more, as the older readers will remember, but we had not succeeded in working out our plans until recently, and in fact at the time this is written, the plans are not entirely completed, but it really looks now like we would have our own broadcasting station up and running by the latter part of February.

I cannot tell you the exact wave length as yet, but we will probably come in either just above or just below K D K A (Pittsburgh). At least at first we will not try to broadcast every evening, but one or two evenings each week. Say, Wednesday and Saturday evenings. If you are interested, write in, and we will give you the exact information later.

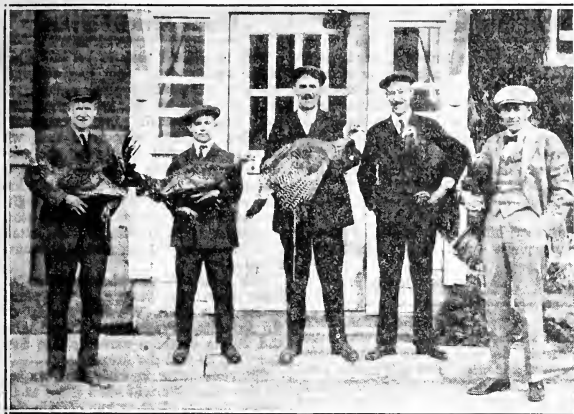
Our aim will be to entertain and rest our friends. There will be no heavy lectures, no heavy classic music, and no jazz. We will have no axe to grind, and no propaganda to put over. We believe that you folks are tired of being lectured at and fussed at and uplifted and bored with high brow stuff, and that what you want is wholesome restful clean entertainment, and that is what we seedhouse folks try to give you.

We will have no hobby to push, unless you call old fashioned music a hobby. We will go strong on that. Our friends will help us, and we will try to show you that Shenandoah is what I have always claimed—the brightest, cleanest, best natured, and jolliest town in the world. A little old fashioned, maybe, but not ashamed of it. H. F.

## A Sample of Our Listeners

"Last night, January 1, 1924, with a one tube receiving set I heard distinctly your program put on by the sweet singers from Shenandoah, Iowa. My wife and self both for more than an hour held hands and returned our lives to the wonderful sweet melodies of long ago. Please send me a picture of the sweet singer of Evangeline, and also enter me in the contest for long distance for a one tube set. May you continue to delight thousands of fans everywhere. I do not believe that broadcasting stations are fully cognizant of the great pleasure that they afford thousands. Sincerely yours,"  
—H. R. Thompson, M. D., Sec. Y. M. C. A., Clifton Forge, Virginia.

"I often pick up your station and sure do enjoy the concerts. Picked you up last night. By the way William McKee rattled those bones, you wouldn't think he was 80 or 82 years old. Would like to hear him and Frank Comstock again soon. It was like old times to hear music like that. Also enjoyed the singing. Am fond of sacred music and like to pick up your station, also Zion, Ill."  
—Mrs. Moorcroft, Stanton Creek, Manitoba, Canada.



## Turkey Day at the Seed House

Yes, we all ate turkey at the seed house Thanksgiving time, or at least all the families represented in this picture did. And the finest part of it was that the turkeys didn't cost us a cent. How's that for luck? It happened this way: Mr. Case was up in Dakota buying hardy alfalfa seed and was visiting our good friend, Bill Sewright of Buffalo Gap, and saw there the greatest herd of turkeys he had ever seen. It seems that up there they raise turkeys to eat up the grasshoppers that would otherwise ruin the alfalfa seed crop. Well, while Case was admiring the turkeys, Sewright offered to give him one for Thanksgiving dinner, and finally wound up by sending us five of the finest turkeys you ever saw. Here they are. The folks that got them (from left to right in the picture) are: Asa Holman, who is in charge of the shipping room, Fred Tunnicliff, the treasurer; H. F.; Lou Hunter, our secretary; and Harold Case, our grass seed man. Yes, the turkeys were fine, and we will all swear that grasshoppers are an ideal feed for turkeys.

## Asparagus

### Washington Rust Resistant

We have dropped all other varieties which we have listed for years, and will carry this one alone.

It was developed at Cambridge, Mass., by the Bureau of Plant Industry working with the Massachusetts Experiment Station. It is practically immune from rust, a disease that is spreading over the country, which weakens and often kills the plants of all other varieties of asparagus. Seed, per pkt., 10c; ounce, 25c;  $\frac{1}{4}$  lb., 75c. Plants strong 1 year, \$2.00 per 100.

### Mangels for Chickens

If you don't grow mangel beets for anything else, grow them for your chickens. They furnish a very important food element for your laying hens. Your hens will loaf on the job if they do not have green food of some kind like sprouted oats, cabbage or beets. Mangels are easy to grow and make enormous yields. Store them in a pit or cave where they will keep more or less damp so they will not wither up.

$\frac{1}{4}$  lb. 3 lb

Giant Feeding Sugar	---20	60	1.50
Golden Tankard Mangel	---20	60	1.50
Genuine Sugar Beet	---15	45	1.25
Mam. Long Red Mangel	---25	90	2.00
Giant Sludstrup	---25	90	2.00

## A Tub of Cucumbers

Did you ever hear of growing cucumbers in a tub? A half barrel will do. Best plan would be to set it near the well so you will not have to carry water far. However, it can be set out in the lawn or garden if you prefer. Place three or four bricks under it to keep it off the ground and fill with soil made up of good garden soil with about one-fourth well rotted manure at least a year old.

Plant a couple of dozen seed or so, and when plants begin to crowd, thin out to about half dozen, spaced so all will have room to grow. After they begin to vine, water frequently, but not so often that soil becomes soggy. Work the surface soil over frequently and keep it mellow.

The vines will run over the sides and spread out over quite a space. Cut the cucumbers when they reach a size you like, but do not allow them to ripen. You will be surprised at the very large crop you will be able to cut from these few vines. Most any variety will do, but I believe *Henderson's Perfected White Spine* will be best. Per pkt., 10c; ounce, 20c.

Write and let us know how many cucumbers you get. It will make interesting reading. To everyone giving us this information next year we will send a packet of a cucumber novelty for you to try out.

## How to Pop Popcorn

A good liberal supply of popcorn during the winter months is appreciated by all members of the family, from Dad down to the youngest. It is fine any time, for that matter, but most of us like it best during the long winter evenings after the day's work is done and when the family is all gathered in. Then a pan of snowy white popcorn is fine.

You really don't need a popper. My wife much prefers a deep porcelain kettle with a handle. Use a tablespoon of lard, a little salt, and put in two-thirds of a cup of popcorn when the lard is good and hot, and the corn will pop out with a noise like a dozen machine guns. The corn should not be stored in a warm dry room, but out in the cold where it will not be wet.

The newer varieties are a great improvement over the old sorts. The *Baby Golden* and *Little Giant* are very popular. Both grow a small ear, sharp pointed grains, one yellow and the other white. They yield as well as the larger eared varieties for there are so many ears to the stalk. They both have the sharp pointed grains that is a pretty good indication of good quality in popcorn.

*Baby Golden*, per packet, 10c;  $\frac{1}{4}$  lb., 15c; lb., 45c, postpaid.

*Little Giant*, per packet, 10c;  $\frac{1}{4}$  lb., 15c; lb., 45c, postpaid.

We can also furnish either of the above for popping purposes in corn not good enough for seed, but all right for popping, as follows:

10 pounds	-----	\$1.25
25 pounds	-----	2.75
50 pounds	-----	5.00

The popping corn to go parcel post or express at your expense. Be sure to allow for postage if wanted parcel post.

## Asparagus Easy to Grow

It really grows like a weed. Just give it room and decent cultivation, and you can't help but succeed. It's mighty good eating in the spring of the year, too. Nothing better.

Plant the seed or set the plants early. It's all bosh, this talk about trenching and all that. Just get the roots in the ground right side up and covered about three or four inches deep. That's all. Keep the weeds hoed, of course. Plants ten inches apart in the row. Rows any convenient distance apart.

No crop the first year but a crop the next year and plenty from then on for twenty years to come. Cut every day or every other day from early spring till peas come. Great money maker. Can't freeze out or dry out or drown out or hail out. Sure income. Regular pension.

"If you wish your house to be a home it must have a garden 'round it."

## Why We Do Photo Finishing

I suppose you wonder why a seedsman has a Photo finishing department, so I am going to tell you just how it happened. I am, as you know, an amateur photo crank myself, and like lots of other amateurs have had trouble sometimes to get my finishing done right. I finally found a man who does beautiful work, carefully, promptly, and at a reasonable price. He finally drifted to California and I liked him well enough to send work clear there to him.

Finally, he talked of coming back to Iowa, so I got him to locate here at Shenandoah on the promise that I would help get work enough to keep him busy. He does our own photo work and yours, and it is all good, and it is right in price. We guarantee it. He knows we will not help him to get work unless it is right. It all goes through our hands.

If you could realize, as we do, how extra good his work is and how prompt and careful he is, you would all send us your photo work. Try a bunch of it.

## Photo Finishing of All Kinds

We do printing and developing work from every state in the Union. Why not yours? At your service is a first class skilled photographer, who takes great pride in the products of his department. Be sure to write your name plainly on the outside of the films as well as on the inside. You will find a complete price list following, which will enable you to figure the proper amount to remit. If you don't care to send the money with your pictures, tell us to send them C. O. D., and we will do so. It is our desire that every one of our customers secure the very best quality of pictures at all times, and if there is anything about your camera or pictures that you don't understand, feel free to ask us any questions. Our expert advice is free. Also, remember, we do enlarging, and that enlargements make splendid Holiday gifts. Have your favorite film enlarged. We can make a beautiful large picture from good, sharp film negatives. Don't send paper prints for enlarging, if you have the original film. A charge of 50c for a new negative will be made if you send a paper print for enlarging.

### Developing

(Any size film)	Film packs, each.....	25c
Six exposure rolls, each.....	10 and 12 exposure rolls, each.....	15c

### Prints

Gloss Finish Without Extra Charge			
1 1/2 x 2 1/2 each.....	3c	4 x 5 each.....	6c
2 1/4 x 3 1/4 " ".....	4c	3 1/4 x 5 1/2 " ".....	6c
2 1/2 x 4 1/4 " ".....	5c	5 x 7 " ".....	10c
3 1/4 x 4 1/4 " ".....	5c	Post Cards, each.....	6c
2 1/2 x 4 1/6 " ".....	6c	Post Cards, in 100 lots of a kind, per 100.....	\$4.00

### Enlargements

Inches	Not Mt.	Sepia Brown	Hand Colored	Inches	Not Mt.	Sepia Br.	Hand Col.
5 x 7	\$.25	\$.35	\$.75	7 x 11	\$.50	\$.65	\$1.50
5 x 8	.30	.45	.80	11x14	1.00	1.25	2.50
8 x 10	.50	.65	1.50	10x16	1.00	1.25	2.50

Please send 10c extra on all enlargements to cover packing charges. If you want the enlargements mounted, please remit double the not mounted price. These prices for enlargements from good original films only. Alterations and changes in negatives at owner's risk, and an additional charge will be made for same. State size, color, and whether mounted or unmounted enlargements are wanted. Scratches or defects are magnified in enlargements, so send good films. Get your orders in early to avoid the Holiday rush.

## Hen Jewelry

### Aluminum Adjustable Legbands



PRICES:—12 for 20c  
25 for 30c, 50 for 45c,  
100 for 75c, all postpaid

These are the latest style, pure aluminum, adjustable to any size poultry, numbered 1 to 12, 1 to 25, and 1 to 100. We carry a good supply in stock all the time and send them postpaid at prices named above.

## Common Strawberries

We have arranged with a first class grower to furnish us plants of the Senator (Dunlap) which we consider by far the best of the ordinary strawberries, and we can furnish you what you want of them at the following prices:

Senator Strawberries, 50 for 65c; 100 for \$1.25; 200 for \$2.25; 500 for \$4.00, all postpaid in zones 1, 2, 3, and 4. Add 10 per cent per zone beyond zone 4.

We can also furnish fine plants of Aroma, the great southern strawberry, at the same prices as the Senators.

## Plant Strawberries

This is a good year to set out small fruits because you want to plant such crops as will produce quick results.

Strawberries are the ideal quick fruit crop, and especially the Everbearers, for they are the only fruit that will make a crop the first year they are planted. We have the best crop of plants this year that we have ever had and will be so fixed that we can give you both good service and good stock because we are devoting special attention to small fruits and ornamental shrubs.

Our prices on strawberry plants are lower than last year and the plants better than ever. We can supply the old favorite, Progressive Everbearer, and in the common varieties, the Senator Dunlap and the Aroma.

Put your order in early and we will do the rest. We will send them at the proper time to plant or any certain time you name.

Here are our reduced prices:		
Improved	Progressive	Everbearing
25 plants	-----	\$.60
50 "	-----	1.10
100 "	-----	2.00
200 "	-----	3.75
300 "	-----	5.00
500 "	-----	8.00

These prices are all postpaid by parcel post, safe delivery guaranteed. Lower prices on large amounts. Plants are guaranteed to be genuine Everbearing or I will replace them 2 to 1. Send your order now and we will send you the plants by parcel post at the proper time for planting.

## The New Catalog

I can't help talking about the new catalog. Of course, I am especially proud of it because we wrote it and printed it and made it all ourselves. No, we didn't print it quite all ourselves. Wish we had, though. Thought we didn't have time to do it ourselves, so let out the printing of that 4 page colored insert, and got a bum job. Never again. But I really believe it's a pretty good seed book, anyway.

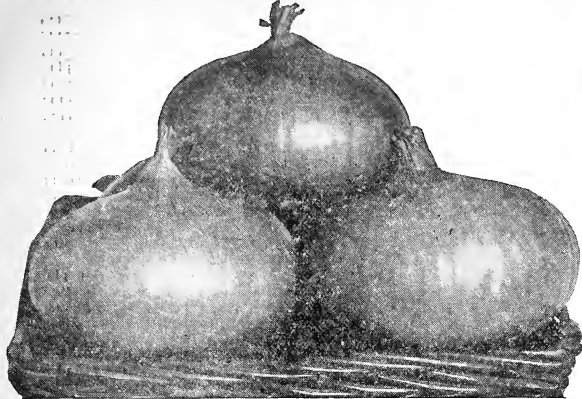
I suppose you have yours by now. If not, just holler and I will see that you get one. And when you get it I want you to take an evening off and read it clear through. If you don't want to read all of it, you can look at the pictures, anyway.

And after you have read it through, loan it to your neighbor. I believe it would be appreciated. And just mention it and I will send you another one, or all you want, for that matter.

I have tried to make it more than a seed catalog. I have tried to make it a real book on gardening. A book that will be a great help to you whether you buy seeds or not.

And, of course, I want your order. And send it early. It will be better for both of us.

H. F.



### Onions a Good Money Crop

One of the best money crops for the gardener to grow is Onions. They can be grown practically anywhere in the United States and find universal sale, generally at good price.

An enormous quantity can be grown on a single acre. I have had them in fairly large fields, yield as high as 750 bushels per acre, while the ordinary, average crop you can expect is at least 300 to 400 bushels per acre. A field like the one shown in the picture above, would probably yield easily 400 bushels per acre. In the irrigated regions of the west, yields of as high as 1,000 bushels per acre are not at all rare.

Ordinarily, they will bring anywhere from \$1.50 to \$3.00 per bushel. They can be grown either from seed or from sets. Onions grown from seed keep the best during the winter, but the ones grown from sets come on the market earlier and often sell better on that account. Also, they are less work to weed.

In growing Onions from seed you should use about five pounds of seed per acre, and the favored varieties are Red Wethersfield, Red Globe, Prizetaker and Mountain Danvers. You will find all of these described in our large catalog, and we can furnish you the seed in wholesale amounts at from \$1.90 per Pound up, according to variety. *Prizetaker is \$2.15; Red Wethersfield \$2.15; Red Globe \$2.15, and Mountain Danvers \$3.00 per lb.* This is the very best new crop seed, high purity and germination. If you are anxious to grow some kind of a money crop, try an acre of Onions. Take good, rich soil, get it well prepared, and put the seed in as early as possible in the spring. New land is good, but any land will be all right if not too thin. You really ought to have a combined drill and wheelhoe such as we sell in our big catalog, as it will save time and enable you to grow a large acreage with the same work.

**FREE WITH YOUR ORDER**

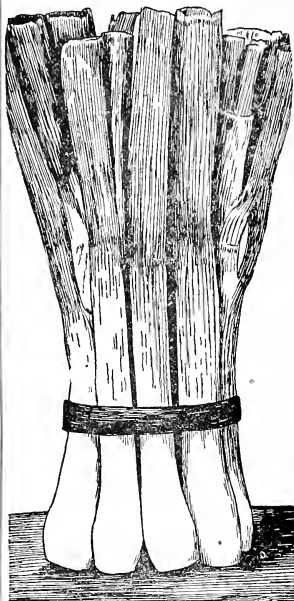
### A Conglomeration for the Children's Garden

Of course grownups can plant it too, if they want to, and there are no children around that want it, but it is especially meant for children. Every child just naturally wants to dig in the dirt and have a garden. And they want a little of everything in the garden. It would take a hundred packets of seed to supply everything a boy and girl would like to plant. So we have rolled the hundred packets into one. That is, we have taken over a hundred different kinds of seeds and mixed one big mix of it that will just suit the kids. They can plant it mixed that way or sort out each kind by itself. There's enough seed here to make a wagon load of garden stuff and a whole garden of flowers. I really believe a bright boy can grow \$5.00 worth of garden stuff from it. Count it and see how many seeds there are. And when they grow, keep account of how many kinds you have. Plant in good ground and give plenty of room to grow. Children generally plant stuff too crowded, and other folks do, too.

**\$65.00 From \$3.00 Worth of Seed**

*"Just a few lines to let you know how well I did with my tomatoes last year. I made \$65.00 out of \$3.00 worth of seed. Be sure, Mr. Field, and send me a catalog, for I sure want to order some more seed. I do have my own canned tomatoes. Yours truly,"*

*—Mrs. J. J. Hitch, 321 So. 13th St., Mt. Vernon, Ill.*



### Growing Onions From Sets

The quickest, easiest and surest way to grow a crop of onions is from bottom sets planted very early in the spring. They are more expensive than the seed, but take less weeding and come in much earlier. They should be planted in rows anywhere from 1 to 3 feet apart in the rows, about 3 inches deep and carefully set, right end up.

It will take anywhere from 300 to 1000 pounds per acre of the sets, say 9 to 30 bushels, according to how thick they are planted. They can be pulled and sold green for bunch onions, or allowed to ripen down for big, dry onions for fall and winter sale. The best sets should be small, sound, dry, unsprouted, not over an inch and not less than one-fourth inch in diameter. Our bottom grown sets are especially fine.

These sets are generally sold by the pound, and run all the way from 100 to 500 to the pound, according to size. When sold by the bushel they are counted at 32 pounds to the bushel. Can be had in red, white or yellow.

### Postpaid Prices Onion Sets

	(Either red, yellow, or white)	
	½ lb, 15c;	lb, 25c; 3 lbs, 65c
Postpaid Quantity	Prices	Gal. Peck
Zone 2	-----	\$.84 \$1.48
Zone 3	-----	.89 1.57
Zone 4	-----	.98 1.74
Zone 5	-----	1.07 1.91

# Pure Bred Poultry for Immediate Delivery

While the Henry Field Seed Co., itself, is not doing much in poultry, two of our men are growing a fine assortment of pure bred birds, and we are helping them with the handling of it. Send your orders direct to us and we will see to it in good shape, and guarantee you a square deal.

	Good Breeders			Good Breeders	
	Utility	Stock		Utility	Stock
<b>COCKERELS</b>					
B. P. Rocks	\$3.50	\$4.50	B. P. Rocks	\$2.00	\$3.00
W. Rocks	3.50	4.50	W. Rocks	2.00	3.00
W. Wyandottes	3.50	4.50	W. Wyandottes	2.00	3.00
R. C. Reds	3.50	4.50	R. C. Reds	2.00	3.00
S. C. Reds	3.50	4.50	S. C. Reds	2.00	3.00
Buff Orpingtons	3.50	4.50	Buff Orpingtons	2.00	3.00
Light Brahmas	4.00	5.00	Light Brahmas	2.50	3.50
Black Langshans	3.50	4.50	Black Langshans	2.00	3.00
S. C. Anconas	2.00	2.50	S. C. Anconas	1.75	2.50
S. C. Brown Leghorns	2.00	2.50	S. C. Brown Leghorns	1.75	2.50
S. C. W. Leghorns	2.00	2.50	S. C. W. Leghorns	1.75	2.50
S. C. Buff Leghorns	2.00	2.50	S. C. Buff Leghorns	1.75	2.50

Ask for prices on quantities.

We have a few good quality yearling cock birds and hens that we used in our breeding pens last season: Cock birds at \$4.50; Hens at \$3.00.



No order filled  
for less than  
25 of a kind.



## 1924 Prices on Baby Chicks, Via Prepaid Parcel Post

Big, healthy, sturdy fellows, delivered to your door, parcel post prepaid, 97 cent live delivery guaranteed. The parent stock is of pure blood lines. They are hatched right. They are sold right. Place your orders now, as we can make shipment right at the time you want your chicks. These prices are delivered to your door, parcel post prepaid, 97 per cent live delivery guaranteed.

	25	50	100	200
Barred Plymouth Rocks	\$5.00	\$ 9.75	\$19.00	\$37.50
White Plymouth Rocks	5.00	9.75	19.00	37.50
Buff Plymouth Rocks	5.50	10.75	21.00	41.50
Rhode Island Red, R. C.	5.00	9.75	19.00	37.50
Rhode Island Red, S. C.	5.00	9.75	19.00	37.50
White Wyandotte	5.00	9.75	19.00	37.50
Silver Laced Wyandottt	6.00	11.75	23.00	45.50
Buff Orpington	5.50	10.75	21.00	41.50
White Orpington	6.00	11.75	23.00	45.50
Black Langshan	5.00	9.75	19.00	37.50
Light Brahma	6.75	13.25	26.00	51.50
Anconas	5.00	9.75	19.00	37.50
White Leghorn	4.00	7.75	15.00	29.50
Brown Leghorn	4.00	7.75	15.00	29.50
Buff Leghorn	4.00	7.75	15.00	29.50
Odds and ends for broilers	3.75	7.50	14.00	---

When your chicks arrive, examine them. Open the box in a warm room, in the presence of the Postmaster or Mail Carrier. Count the number of live chicks you receive. We always add extra chicks to allow for small losses. Please remember that any claim for loss or shortage in your shipment must be certified by Postmaster or Mail Carrier, and mailed to us day shipment is received.

We Guarantee all our chicks to be from Standard Bred Flocks, and will deliver to the post office only those that are strong and healthy so they can stand to travel to any state in the United States, and to be 97 per cent live delivery of your total order. No other claims or adjustments will be allowed.

A Word About Orders. Sometimes there is quite a run on chicks of one special kind, and we are unable to supply them at once, but generally we fill the order in a day or two after we receive it. Please give second and third choice if you are in a hurry. Please do not ask us to ship C. O. D.

## Sign Name and Address

No, I don't suppose you would be guilty of such a thing, but just the same there are lots of pretty smart people that will leave out their name, or town, or their state, or all three. We get probably 20 a day of such letters. Some we can trace in one way or another and get them straightened out, but lots of them we just have to wait until they holler again. We have a box we call the "Dead File", and when we get a big roar from some one about an order that has not been filled or a letter that never was answered, we look there first thing, and sure enough, we generally find him. But we are generally too polite to mention it. We just take the blame for being dilatory and promise to do better.

A letter head would fix it all in good shape. No chance for a mistake then. I don't see why more people don't use them. They don't cost much and they sure make a letter look business like.

## STIM-U-PLANT

PLANT STIMULANT TABLET

Trade Mark Registered U. S. Patent Office

An All-the-Year Fertilizer for Garden and House Plants

Stim-U-Plant is the most effective concentrated fertilizer manufactured. It can be used easily and profitably on flowers, shrubs, vegetables, fruit and ornamental trees, and will promote more rapid growth and earlier maturity than any other grade of fertilizer. The guaranteed chemical analysis shows 11 per cent nitrogen, 12 per cent phosphoric acid, 15 per cent potash.

### Convenient to Use

Stim-U-Plant comes to you in the form of small tablets, wrapped in wax paper. A hundred can be put in a drinking cup, yet they are so highly concentrated that each tablet contains enough food to feed a large plant from ten days to two weeks.

### Absolutely Odorless

Stim-U-Plant tablets are pleasant to handle; there is absolutely no odor nor other unpleasant feature about them. They may be used on house plants of all kinds—palms, ferns, bulbs, fuchsias, geraniums, and other indoor bloomers.

### Stim-U-Plant Tablets

can be used in tablet form, or dissolved in water at the rate of one tablet to the quart, or four to the gallon, which makes a liquid fertilizer of just the right strength. Order Stim-U-Plant tablets with your seed and plant order. Price, 10 tablets for 15c; 30 for 25c; 100 for 75c; 1,000 for \$3.50.

## An Old Customer

"We gave you our first order 23 years ago this spring. We have always been well pleased with your seeds and nursery stock, finding them of first quality. Enclosed find our order for \$21.35. Yours truly,"

—Charles W. Sapp, Tecumseh, Nebr.



## Seed Corn Situation

I don't know of a year for a long time when the seed corn situation was so serious as it is now. Here in Southwest Iowa we were favored, on account of our quick, warm, fertile soil, and our corn ripened pretty well. Besides, we missed the frosts of the last of August and the middle of September that killed the corn in so much of the corn belt. Our corn was late and took lots of drying out, but the men who got busy like we did and hung up the corn and dried it out will have plenty of seed. But the trouble is, so many men did not take the trouble to do this. Next spring the man who depends on picking seed out of the crib is going to be badly fooled. It is my belief that any corn that goes into the crib will be as dead as a mackerel by New Years. Probably by the time you read this, it will be too late for you to get out and hang up corn. It will be hard freezing weather, and the germ killed in all corn that is not dried out. But we have seed here for you if you haven't hung up seed of your own. Good, sound, bright seed, that nearly every grain will grow. But you will have to speak early. There's not enough of this kind to go around.

## Our Spotted Hog Sales

We are arranging for a series of hog sales through the spring, and I am picking the dates and printing them in advance, so that you can be making your plans to come.

If you have been at any of our other sales, it's no use telling you what a good time everybody has at our sales. We always have a big crowd, and they have a big time, and everybody seems to enjoy it, even the pigs.

I want you to be sure and come to any one or all of these sales, for you can learn more about the Spotted Poland Chinas that way than any I know of. It will be well worth your while to come to the sale whether you want to buy any hogs or not.

**Tuesday, February 19, 1924.**

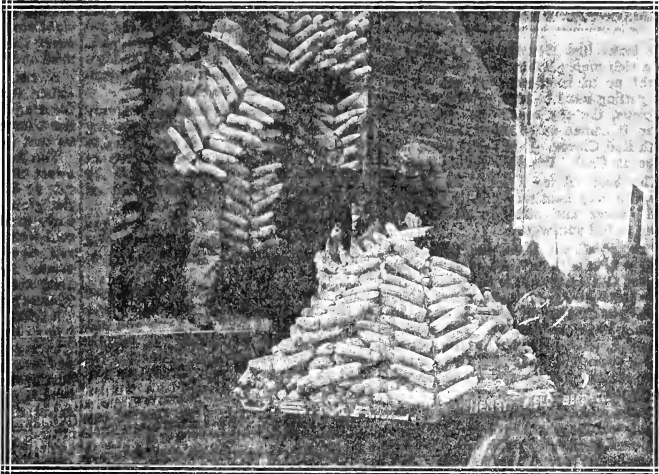
**Tuesday, March 18, 1924.**

**Tuesday, April 15, 1924.**

## Wonderful Hyacinths

*"Received my Hyacinths in fine condition, placed them in the pots as directed, and I know they will be wonderful."*

—Mrs. Fred C. Meirhofer, Hancock, Wis.



## The Way We Are Handling Seed Corn This Year

This picture will give you a good idea of how we are making sure of good seed corn this year. That's the only sure way. Hang it up and get it dried out before it freezes. We have had a gang of men at work since in September, and we have thousands of bushels of seed hung up. All big, fine, sound ears, too. And they will all grow. You couldn't kill 'em with a club. It takes money and work and storage room and nerve to do it on the scale we have been doing it this year, but when it's done you've got something.

## Sow Sweet Clover This Year

There is an increasing demand every year for Sweet Clover, and this year I look for a bigger boom than ever, partly because it gave such good results last year and partly because the seed this year is cheap in comparison to Red Clover.

Of course, the price may advance later, and, frankly, I believe it will. I believe along towards spring it will sell right up with Red Clover, but for the present it is selling around \$12.00 per bushel for the finest quality of seed, while Red Clover is bringing \$18.00 per bushel. For a great many conditions I believe the Sweet Clover is the better one of the two.

You can either use the White or the Yellow. I used to think the White was the only kind to sow, but I am getting so I think more and more of the Yellow, and I find many of my customers feel the same way about it. In fact, we sell just about as much Yellow now as we do White, and it would not surprise me if, at the end of this season, we found that the Yellow was selling ahead of the White.

I am talking about the Yellow Biennial, for the Yellow Annual is worthless. The seed looks entirely different, and it is easy to distinguish. The Yellow Biennial grows just like the White except that it is earlier, not quite so coarse,

and branches closer to the ground, which makes it better.

The land is in Winter Wheat now, and we are going to sow this Alfalfa and Sweet Clover right on the Winter Wheat, along in March, just the same as you would seed Red Clover. If we get a good patch, as we are practically certain to do, we will pasture it with hogs this fall, and then next summer we will pasture the Sweet Clover until about the first of June and then take the hogs off and cut a hay crop or a seed crop from the Sweet Clover, and plow it under in the fall, to be followed by Corn. The Alfalfa we expect to keep permanently for hog pasture, but we will pasture it light enough so that we can also cut hay off from it, which will keep it down short for the hogs.

What I started out to tell you was to sow Sweet Clover this year along with your small grain or in with your Winter Wheat just like you would Red Clover. It will improve the land better and faster than any Clover you could sow, and will make you a lot of valuable pasture, hay or feed.

Use about 10 pounds of seed per acre and by all means, use the hulled scarified seed. That is the way we always ship it unless you specify otherwise. The seed this month will cost you 30c per pound, or \$18.00 per bushel, but will probably be higher in January, and will increase steadily throughout the spring. At least, that is my guess.

## Alsike—A Friend in Need

It looks like Red Clover is going to be a rich man's hobby this season. No doubt about it either. Of course, we are getting used to high prices, but, my gracious, the sky must be the limit when it comes to Medium and Mammoth Red Clover. Don't take these pictures as final. I'm only telling you.

The best advice I know of to give you, the very best way out, is to forget Red Clover and stick to Alsike. I'm going to tell you why.

First of all, no doubt the all important question with any one of us who has a piece to seed down, is the price. The very best Alsike is worth today about \$13.00 per bushel of sixty pounds, including bags weighed in. The seed is so small, about 700,000 to the pound, that a little will go a long ways and 5 or 6 pounds per acre sown alone will be plenty.

In the second place, Alsike is a perennial, will last from three to five years and even longer. So you are bound to get more for your money you see. Red Clover is a biennial—just lasts two years, that's all. Once in a while, a third crop is produced but that's unusual. The worth of Alsike as a pasture and hay crop is interesting. It is adapted to low, sour, wet land, or high, stiff clay soil, but does well on a rich loam. What a wide range for a Clover. Sweet Clover is the only legume that can compare at all with this range.

It is always best to use Timothy or Red Top or Orchard Grass with Alsike. Not only does Alsike add quality to the mixture but the hay crop is more easily handled, for Alsike will lodge usually when sown alone, unless the seeding is quite heavy. On moist land I would suggest using ten pounds of Timothy, five pounds Alsike, and five pounds Red Top. On other land we like to use six pounds Alsike with ten or twelve pounds Orchard Grass or Timothy.

The hay is somewhat richer than the ordinary Red Clover pound for pound. Compared with an Alfalfa hay, a surprising similarity is shown in the accompanying table, emphasizing only the important elements.

	Ash	Protein	Nitrogen	Fat
Alfalfa Hay-----	7.4	14.3	42.7	2.2
Alsike Hay-----	9.7	12.8	40.7	2.9

There will only be one crop of hay in a season, but the after growth affords fine pasture. The hay is leafier and finer than Red Clover and stock like it, and do well. It grows usually from twelve to twenty-four inches high, depending on the location, of course.

Several years ago the Montana Experiment Station experimented with Alsike under irrigation. Five acres furnished pasture for eighteen steers and heifers for 102 days, during which period the animals gained 4560 pounds. Feeders then were worth 4c a pound,

(not so very long ago, either) so a gain of \$182.40 was obtained, making a return for the land of \$36.48 per acre. Figure up this same gain at today's market value of feeders and the return for the land would be doubled.

If a crop of seed is desired, the very first crop may be used, by clipping early, and especially so if the spring is wet. This will make a better crop of seed. The bloom is very desirable for bee pasture. Makes a fine quality of honey, equal to basswood honey.

Seeding may be done any time in the spring. It is a very hardy Clover and seldom winter kills. That alone is in its favor.

Anyway, Alsike is "Good Medicine" as the Indian says. I have just about the nicest seed I ever did have, and can sell it right if you order this month. Look out for prices after January first. That is when the real fireworks will start in clover seed prices.

## Buy Clover Seed Right Now

I want to impress on you the fact that you should buy your clover seed as soon as possible.

There is going to be much more clover seed sown than usual. The clover seed crop is short and seed is going to be scarce. All that keeps it down reasonable in price now is the shortage of money.

Most people will wait until the last minute to buy clover seed, and then there will be a great scramble for seed, advancing prices, and no good seed to be had at any price. You will simply have to take what you can get no matter how poor.

Better get busy now and get your seed ready. Don't accept any but good seed. It is reasonable in price now but no telling how long it will stay that way. Ask for samples and prices. We can sell you good new home grown seed worth the money.

If you don't want the seed shipped yet, you send the order and the pay for it now, and we will set the seed aside for you and hold till you are ready to have it shipped. This way you will be sure and have the seed when you want it, and know it is where it is safe. We call them "Tag and Hold" orders.

## Winter Sown Sweet Clover

From what experience I have had in sowing sweet clover, and from what I have heard of the successes and failures of our customers, I believe that the very best way to sow sweet clover is to sow it in the winter on frozen ground. It can be sown any time during the winter or up until the last freezing weather in the spring.

It seems to do best sown right on top of the ground and not covered at all. It will work into the ground during the freezing and thawing which always takes place during the winter and

spring, and it seems to do best to be right close to the top. It will naturally cover itself a little by working into the mud and that is plenty of covering for it.

Sweet Clover has a harder hull than either red clover or alfalfa, and this freezing and thawing process during the winter, softens and cracks the hull so that every grain of it will grow.

You know this is the natural way for sweet clover to grow. It falls off in the fall or early winter and lays on top of the ground all winter and then grows early in the spring. It will stand more cold weather when it is little than either red clover or alfalfa, and in fact, it seems to like cold weather. It will start and grow in the spring when you wouldn't think a single thing could live.

I tried a little patch of it last spring late in February, when the ground was freezing nights and thawing day times, and was in a sort of a honey comb condition on top. I put on a rather thin seeding, but every seed of it grew and made a beautiful stand. I never saw nicer looking sweet clover.

Of course sweet clover can be sown just exactly like red clover along with a nurse crop in the spring, and it will do all right. It catches easier than red clover and it will do still better if you will sow it during the winter. The earlier in winter, the better, I believe.

## Don't Buy Weed Seed

You have enough of them already on your farm. Don't pay a big price for more. The place you generally buy them is in clover, alfalfa, and timothy seed. Don't do it, you don't need to. You can examine the seed yourself and find most of the weed seed. Or better yet, you can send a sample to your state college or your state seed bureau or the national seed testing laboratory and get a report from them. I can furnish you samples of any of the grass seeds for this test, or on any seed you buy from us you are at perfect liberty to send samples to any state college or such place, and I am willing to abide by their test. If they do not give their O. K. to my seeds you can ship it back to me at my expense and have your money back and I will pay the freight both ways.

## Tomatoes in New Jersey

"I received my Seed Sense and enjoy reading it. I am sending you the names of three friends of mine. I got seeds from you last year and I planted six plants of Red Head tomatoes, and I only wish you could have seen them. I used stakes and tied them up, some were four feet tall and loaded with tomatoes. I canned four bushels of ripe ones and three bushels of green ones I used for pickles. We ate twice a day. I gave to my friends in my city, put green ones in the cellar, and had ripe tomatoes till after Thanksgiving. If we had not had an early frost I would have had about two more bushels, for they were loaded with small green tomatoes and blossoms."

—Mrs. Patrich Lynch, Corbin City, N. J.

"If you wish your house to be a home it must have a garden 'round it."

## Prices of Dalea

1 pound	-----	50c postpaid
5 pounds	-----	\$2.35 postpaid
15 pounds (for 1 acre)	-----	\$6.60 postpaid
60 pounds (1 bu.)	-----	\$23.00 by freight
30 pounds (½ bu.)	-----	\$12.00 by freight

A lot of us have failed with alfalfa and sweet clover and red clover because our soil was too sour or too thin to get them started, and if this new clover will start easily on thin or sour land and build it up to 75 bushel corn land, it is sure worth trying. Better get some of the seed, and try it on your own soil and see what it will do.

## Sweet Corn Wanted

We can use some good sound sweet corn, and if you have any to offer, please mail us sample and write us as to variety, quantity, condition, and price per bushel. We can use most of the standard varieties, but cannot use that is not sound, bright, and unmixed. We prefer to have it picked over and shelled before shipment. Can use either small or large amounts. We cannot pay fancy prices, but will pay a reasonable price for good seed.

Be sure to enclose sample and tell us all about it in the first letter.

## Sow Phlox and Larkspur Seed Now

Lots of people do not know that the hardy Phlox and the beautiful hardy Larkspur or Delphinium can be grown easily from seed. We grow lots of them that way for plants to sell.

The seed can be sown either fall or spring, but does best sown in the fall or winter. Now would be a good time.

We gathered a good supply of extra fine seed from our own gardens this fall for our own use, but we find after sowing what we want for ourselves, we have some left, and will divide with you if you wish to try it.

Get it, and sow it right away now. Just plant it like radish or lettuce seed, and with good luck you will get some blooms late next summer, and worlds of them the following summer.

Price—Large pkt., either one, 25c postpaid; or 1 pkt. each for 45c.

## Fathers, Mothers

Don't discourage your children if they think of selling seeds for a premium. They should be encouraged. The time is coming when they will have to shift for themselves. There is no better way to help a boy or girl to know the value of money than to have him or her earn something. Besides earning a cash commission or valuable premium, boys and girls learn self-reliance. They learn how to hustle. They get confidence in themselves, and in a hundred ways learn experience which will help them through life. The best way to help the children is to help them help themselves.



A field of Dalea, the new sour land clover, growing on the farm of Mr. Wood on the Missouri river bottom in western Iowa. This was taken in September, following a crop of winter wheat. This growth was all made after being cut off with the wheat early in July. Our seed is from this field.

## Dalea—A Sour Land Clover

The Iowa State College people have discovered growing in Western Iowa a new plant of the clover family called Dalea, which grows readily and abundantly on sour soil, where other clovers will not thrive. It is a true legume with nodules and supplies nitrogen to the soil. It looks a little like vetch but stands up straight like clover, has a small seed like clover, yields abundantly of both fodder and seed, and will make a big growth following winter wheat when sown with it in the spring.

The Ames people have had it under observation for two or three years now and have sent it to various places for testing on widely different soils, and while of course, they do not consider it a panacea nor a bonanza, they strongly advise farmers to try it out, as they think it contains great possibilities. They think its greatest value is as a green manure crop, but the hay analysis is about the same as clover, and Mr. Wood, who is growing it on his farm, tells me that the cattle ate up the straw greedily after he threshed his seed crop.

This Mr. Wood has been growing it in his winter wheat for 17 years now, and has had the same land in wheat every year all this time, with the yield getting better every year. And when he changed a part of the land to corn one year, it made 75 bushels per acre, when similar land alongside, which had not had this clover, made only 50 bushels. It is not a perennial, but will seed itself and come up year after year on the same ground if plowed under after the seed is formed.

Personally, I believe it has a great future, and I have arranged with Mr. Wood to distribute a part of the seed he has grown, and I prefer to sell it in small amounts so as to get as wide a distribution as possible, for the supply of seed is very limited as yet. Try enough for one acre, a few acres, or buy a pound and plant in a small patch where you can save all the seed for another year. It grows from 2 to 3 feet high, stands up well, and is easily harvested and threshed.

### Cultural Directions

Handle the same as Red Clover, that is, sow it with small grain early in the spring at the rate of 15 lbs. per acre. Or in a small patch for test, drill in rows alone. Plow under in the fall for green manure or cut for hay or seed.

## Money in a Garden

Mrs. T. M. Heim of Rutland, Iowa, has asked us "How to get rich farming one-fourth block."

Of course Mrs. Heim does not expect to make her entire living on the one-fourth block, but she can meet her table expenses from what she sells and uses, besides storing and canning an abundance for winter, even if she has a good sized family.

Suppose the rows in Mrs. Heim's garden are 150 feet long, and she plants four rows of early cabbage, such as Norseman. From this she ought to grow 275 heads, which would weigh anywhere from 3 to 5, or even 10 pounds, and should average, say 4 pounds each. You can figure what this would bring in your town, but for our purpose, we will say they are worth 3c per pound, which certainly is conservative, as early cabbage should sell around 5c. This would total \$33.00 for the four rows, 150 feet long.

Then you should plant not less than a couple of rows of cucumbers. It is hard to say what these should be worth. However, they should supply her with all the cucumber pickles she will need for the year and plenty of slicers and some to sell. I would say, at a very conservative figure, these cucumbers ought to be worth \$10.00, counting what she sells.

She should plant plenty of onions, as the surplus is very easily sold. Say not less than twenty rows. This would not be too many. This would require about six ounces of seed. You can drill this by hand if you are careful. However, your worst trouble will be to get the seed just the right depth and an even depth so you will get a good stand. It would really pay you to get a small drill like the *Little Midget* for this purpose alone, if for nothing else. A perfect stand on this piece of ground would mean something over 1,200 bushels, which is possible and has been made. Say, Mrs. Heim's onions would yield a third of this, which is reasonable, you will have a yield of about 30 bushels at a fair price of \$1.50 per bushel, or \$45.00.

Then, if Mrs. Heim planted 4 rows of tomatoes across her garden, and handled them as Mr. Lawless of Marshall, Mo., did his, gathering 9,000 lbs. from one-fourth acre, it would amount to 2,000 pounds. If she valued her crop at what Mr. Lawless' crop brought him, it would amount to \$200.00 or better. But, again to be conservative, we will cut the yield down half, and say her crop is valued at \$100.00.

Sixteen rows of potatoes at 200 bushels to the acre would be a little over 30 bushels, figured at \$1.00 a bushel, or \$30.00. Four rows of sweet potatoes at the same yield, but \$2.00 a bushel, would amount to \$15.00.

Then, as late cabbage is a ready sale and easy to grow, we will say Mrs. Heim planted ten rows, 150 feet long, or what should produce about 400

heads. A good, late variety, with reasonable care and good soil, should average, say 5 pounds each, or a crop of 2,000 pounds for her. This ought to be valued at 2c per pound, which would amount to \$40.00.

And there are vegetable plants that can be grown for sale locally. This will require a small space, brings in early money and big profits, too. Cabbage plants ought to sell for from 15c to 25c a dozen, and tomatoes, pepper, egg plant and cauliflower at from 25c to 40c a dozen for stocky plants. The hot bed should be six feet wide, rows four or five inches apart, and an inch or two apart in the row. Say 36 plants to the row, which on cabbage would mean about 60c a row, and on other plants say 90c a row, which would be conservative. Or, in a ten foot hot bed, \$18.00 for cabbage and \$27.00 for other plants, or a total of \$45.00 from plants.

This makes a total of \$328.00 from this garden of about one-half acre, or at the rate of \$656.00 per acre, and the best part of it is, all the labor required is furnished at odd times.

In my figures I have been very conservative, both as to yield and in valuing the crop. The prices I have mentioned are what these crops should bring in any market, and the yield is what any gardener with average intelligence and fairly good soil can produce.

There are a number of vegetables that I have not mentioned that can readily be grown by any one, in fact, a fairly complete vegetable list should total about 20, and we have included 8 in Mrs. Heim's garden. The total space mentioned would not occupy all of one-fourth of an average town block. There would still be some room left for odds and ends or other items of her choice.

The seed required for planting this crop would probably amount to a couple of dollars or so, with the potatoes extra. If any of you folks want to try this garden, we will be glad to furnish you a little booklet telling you how to grow all these vegetables. I know of no easier way to make \$328.00.

### Grow Your Vegetables

## World Beater Pepper

This is a sweet pepper, very large, and matures its crop medium early. It is larger than Ruby King but smaller than Chinese Giant. The Chinese Giant is one of the best selling varieties we have, but there is one objection to it, especially in our section, and that is, it will not mature very much of a crop before frost. It is just a little late. It may not be so with you. **The World Beater** is not as large, but is earlier and matures a big crop. It is large enough for any purpose, and the quantity is exceptional. Better try it. Price, packet 10c, ounce 50c.

### Grow Your Groceries

## Grow Your Own Groceries

Now that prices on groceries are beginning to come down it is a matter of getting the money with which to buy them. For several years past money has seemed to be plentiful but prices were out of reach. If it isn't one thing it is another. And of all the living expenses the grocery bill is brought most forcibly to our attention.

Would you be willing to give your groceryman three or four hours work each week if he would cut your grocery bill in two in the middle? Yes? Well, three or four hours in the garden will do the trick and you will probably come nearer earning your money in the garden than in a grocery store. No matter about your past experience as a gardener. Gardening is comparatively easy if you have a few simple instructions to follow.

The newer and better methods are a guarantee of success if you will do your part. Rich soil and good garden tools play a big part. Garden tools are worth all they cost you. In any event we will see you safely through if you are not an experienced gardener or if you need information.

Plant plenty. Use freely during the growing season. Can and store for winter use. Use vegetables the year around. They are good for your health to say nothing of your pocket book. We will furnish you full information on canning if you ask it. Don't be discouraged if you have had bad luck in the past. Ask us. It is our business to know. Our family is using canned corn, beans, and other vegetables right now, of a quality that cannot be bought.

### Grow Your Groceries

## The Clover Seed Situation

The clover seed situation is the worst I have seen for several years. Over most of the central part of the country, practically all of the great corn and clover country, there is practically no seed at all. Where the seed is to come from, I don't know.

There is very little chance for imported seed, and if there was any I wouldn't want it anyway. It's doubtful stuff at the best.

Good, pure, bright American grown seed is mighty scarce, and it would be a wise plan for you to be looking after your supply as soon as possible. Get the seed and hide it and forget it till spring.

It is hard to say what the seed will be worth. It all depends on the demand. There is certainly not a half a crop, and what there is, lots of it is too poor to sell. Look at your own neighborhood. How much good seed is there in comparison to the usual amount? It's the same everywhere. It looks to me like clover seed never had a better chance to go to \$200 per bu., for good seed.



Le Marechal Foch.

The best Gladiola grown.

Large bulbs, 15c; dozen, \$1.50.

## Buy Gladiola Bulbs Now

Now is the time to buy your Gladiola bulbs. You can get special prices now, and have the bulbs ready for early planting in the spring.

We have the best crop we ever harvested. Bigger bulbs, better varieties, and more of them. And we are going to price them accordingly.

We have over 100 varieties, but I like the *Le Marechal Foch* the best of all. It is the largest of any, blooms early, very hardy, and sure to bloom; the ideal kind for cut flowers, and a most beautiful shell pink in color. Is somewhat like America, but better every way.

### Special Offer

All this for only \$2.00 postpaid, or 3 collections for \$5.00

6 large bulbs ----- \$ .75

50 small bulbs ----- 1.50

200 bulbets ----- 1.00

All *Le Marechal Foch* -----

Total regular price ----- \$3.25

All for only \$2.00, or half for \$1.25.

The extra large bulbs will generally make two extra large spikes each. The small bulbs will also nearly all bloom and will make large bulbs for next year. You can sell more than enough flowers the first year to pay for the collection, and have probably 300 good bulbs to bloom next year, for the bulbets will all bloom the second year.

## Other Fine Gladiolas

We have a lot of wonderful varieties of Gladiolas, and I wish I had room here to tell you about all of them, but there are three or four that I must mention anyway.

*Le Marechal Foch*—See description and special offer above.

*Mary Fennell*—A beautiful lavender with creamy throat.

*Gretchen Zang*—Very large pink with deeper blotch in throat.

*Heroda*—Deep lilac mauve, glistening and clear. Very large. Blooms wide open.

*Helen Franklin* Ruffled white of the *Glory* type.

All of these are very hardy, sure to bloom, large and ideal for cut flowers. If you want to grow blooms and bulbs for sale, you can't beat these varieties. Better get a start of them.

*Prices*—Any of above varieties, large bulbs 2 for 25c; \$1.20 dozen.

*Small Bulbs* (will mostly bloom), \$3.00 per 100.

*Bulbets* (will all bloom second year), 50c per 100.

*SPECIAL OFFER*—6 large bulbs, 50 small bulbs, and 200 bulbets, all one variety, for \$2.00 postpaid. 3 collections as above, either all alike or different varieties, for \$5.00. One collection each of the 5 kinds. \$8.00.

Gladiolas are as easily grown as potatoes. They increase very fast, and there is ready sale for both the blooms and the bulbs. We will give full cultural directions with all orders.

One of our customers living on a main traveled road, had an acre or so of Glads and sold thousands of the bulbs to auto parties at from \$1.00 to \$1.50 per dozen blooms. If you want a little extra money this is a mighty good way to get it.

## Mixtures of Gladiolas

We advise named sorts, especially when grown for sale, but we have thousands of bulbs in good mixtures and can make you low prices on them. It might be a good plan to buy some of these to grow along with your named sorts. Here are special fall prices, postpaid.

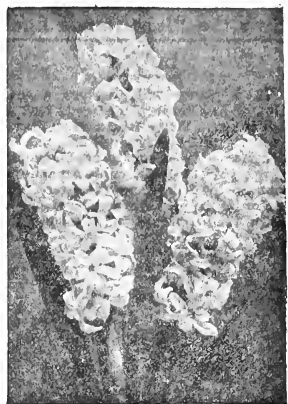
*Field's Finest Mixed*—Large bulbs, \$2.50 per 100, \$1.50 for 50, 40c doz.

*Small Bulbs*, (will mostly bloom), \$1.25 per 100.

*Bulbets*, (will bloom second year), \$1.00 per 1,000.

## 100 Named Varieties

We have over 100 named varieties of gladiolas and you will find a lot of them described in our big catalog, which will be mailed in January. The ones named above are ones I especially like, but we have lots of other kinds in every color. We may get out a special list of them later, besides what we list in the big catalog.



## Potted Hyacinths Ready to

### Bloom

About this time of year we always get a mail from people who want Hyacinths for spring blooming, but have forgotten to order and plant them in the fall. I am ready for you this time for I potted up several thousand Hyacinth bulbs in the fall and have them growing nicely in 3 inch pots. They are down in the dark, making roots, and will be ready to shoot up and bloom quickly as soon as they are brought up to the light and warmth.

These bulbs can be slipped out of the earthenware pots they are in, put into paper pots the same size, and mailed to you with perfect safety.

On arrival, you can put them in a flower pot or can or box of any kind, in ordinary dirt, and they will go right ahead and bloom fine.

We have all colors of these, except yellow, and unless otherwise ordered will send you an assortment of colors.

We guarantee safe arrival in good condition. We send them by parcel post, prepaid.

Now, if you want some of the finest flowers you ever saw, and want them quickly, either in the house or out of doors, order some of the potted Hyacinth bulbs.

Price, postpaid, 3 for 50c; 6 for 95c; 12 for \$1.80.

## Good to Hear Old Songs

"I was one of your interested listeners on January 1st, when you broadcast the old time music and songs. I surely enjoyed it very much. I heard this party of artists on November 6th, and so was anxiously waiting for the January 1st program, and can assure you that I will be on the receiver on February 14th. It sure seems good to hear those good old songs, and the fiddling was grand. Kindly convey my congratulations and thanks to all the 'Bunch from Shenandoah'. Would be glad to receive one of the pictures of the 'Bunch and announcer'. Yours truly,"

—H. F. Mergenthal, Hillsboro, N. D.

## How the Plant Bands Look

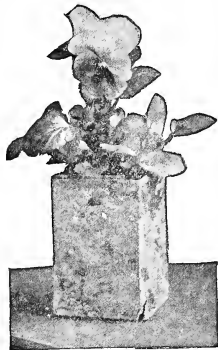
### in Use

These photos will give you a good idea of how these plant bands look in actual use. You can see at a glance what a great help they will be.

Remember that square bands or pots have nearly twice the cubic capacity of round pots of the same diameter. You can order the next size smaller than you are in the habit of using in round pots.



Potted tomato plants are increasing in demand and rightly so, for they sure do transplant nice. Never wilt or lose a leaf. Generally they cost about 10c each if grown in regular flower pots, but you can grow them in these square paper pots at a very slight expense, and they will sell like hot cakes.



This shows how pansy plants look in the square plant bands. Pansy plants are always good sellers and bring a good price. They will bring a still better price in these pots, and the cost of the pots is very small. Also, it saves wrapping the plants separately, which would cost almost as much as the pots.

See page 19 for prices on these plant bands.



It is not so common to handle potted cabbage plants, but I believe we are overlooking something in that regard, and I believe that it would pay well. With the square paper pots we can do it cheaply, and I believe we can get out cabbage 10 days earlier that way. Try it. The pots will cost you less than a quarter of a cent each in quantities.

See page 19 for prices on these plant bands.

### Plants for Money

I am getting lots of inquiries about raising Cabbage and Tomato plants to sell and bring in early money, and I think I have answered it one or two other places in this issue of Seed Sense but it is worth repeating.

There is a splendid chance in the business and especially for women. I give you a picture elsewhere in this issue showing how to make a hot bed. You can raise the plants either in a hot bed or cold frame, or right in the open, and you ought to do all three. The plants sell according to quality and time of the year, anywhere from 30c per dozen down to 50c per 100, and there is money in them all along the line and all the way down.

The seed will not cost very much and the seed would be your only expense outside of your own labor, unless you wanted to buy some hot bed sash which would be a nice thing to do. We don't have the hot bed sash for sale, but you can probably buy them from your local dealer, or you can buy them from Gordon-Van Tine & Co., Davenport, Iowa.

These sash are generally made in size 3x6, so make your hot bed 6 ft. wide, and if you want to use sash you can, and if you don't want to use sash you can sew two strips of muslin together and stretch that over the hot bed. Start your hot bed early, for that is when the plants bring the highest price. You can keep making later plants, however, in another hot bed or in a cold frame out of doors. Arrange to have plants coming along all spring.

There is no reason why a good energetic woman could not sell \$300.00 worth

of plants from a little patch in the back yard, and it wouldn't do a bit of harm if you put it in the front yard.

Advertise a little in your local paper, also stick up a sign in front of the house and you can probably arrange with the local store keepers to keep your plants for sale in their stores for a commission.

Cabbage and Tomato plants are the main sellers, but you can also sell Cauliflower, Eggplant, Pepper and Ground-cherry plants, also such flowers as Pansies, Asters and Verbenas.

### Send for Our Big Catalog

This issue of Seed Sense is being sent to a great many people who do not receive our big catalog, and if you are one of them, please consider this an invitation to send for one.

The catalog is free, all you need to do is to ask for it. It is not very fancy nor fussy, but aims to tell the plain truth about seeds and help you as much as possible.

You will probably find in this Seed Sense a little slip to be filled out to ask for a catalog, but if you don't find it, just write a postal card or letter in your own way and it will be all right.

#### Substitutes for Red Clover

The enormous demand for Clover seed this year is liable to cause a shortage and high prices. Why not try Sweet Clover or Alsike instead. They are both cheaper than clover this year, and in many cases, better.

### Pecans 35c and 60c

While we were getting Pecans for ourselves, we got some extra, and can fix you out if you are hungry for some. The regular Oklahoma kind, good average quality, we can furnish at 35c per pound. We also have a limited amount of the big, soft shell Pecans from southern Alabama, which we can furnish at 60c per pound, postpaid.

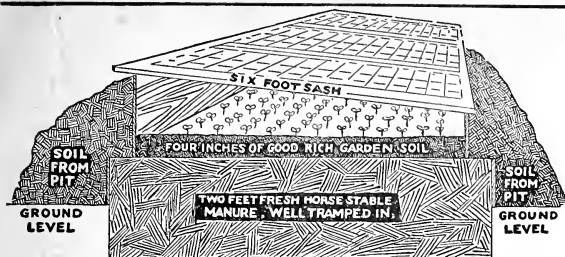
### Clover Seed Wanted

If you have clover seed to sell, send us a small sample in a letter and tell us how much you have, what shape it is in, and what is the bottom price that will buy it. We cannot use seed that contains dodder, buckhorn, or sourdock, but if seed is of good quality we will try and buy it. A little later we will also be wanting good alfalfa seed.

### Indiana Likes Our Music

"Dear Friends: This epistle is sure from the bottom of my heart. If I ever enjoyed a radio program, this was the one. The loud speaker poured out the old time selections nearly perfect, and the whole house was filled with the most wonderful music I have listened to in many a year. Accept my hearty thanks for the New Year entertainment. Surely there was a 'Hot Time in the Old Town Fontenoy'."

—Sherman O. Myers, Nappanee, Ind.



## How to Make Hot Beds

It is time you were getting busy on your hot beds, especially for planting early cabbage and tomato plants.

You will find lots of pictures and descriptions printed showing how to make a hot bed, but from my own practical experience, I consider most of the printed directions wrong in showing a box frame going clear down to the bottom of the pit, as most of them do.

I have made hundreds of hot beds, and my plan is to dig an ordinary hole in the ground, two or three feet deep, and a little larger than the size of the hot bed I expect to make. For instance, if I am going to make a six foot bed I make the hole about seven feet across.

I then fill this full of manure, preferably fresh horse manure with plenty of straw in it, distribute it evenly and tramp it down solidly so that when finished it is at least four inches above the ordinary ground level.

Then make your frame of ordinary 1 inch boards, put in on top of this manure pile and fill it inside with dirt, four inches deep, and you are ready.

The dirt that was thrown out in excavating the hole can be used to bank up around the frame, practically to the top of it and extending back a foot or so on each side to protect the hot bed from the cold weather. The back side of the hot bed should be the highest, and I generally get this by using a 12 inch board at the back side and an 8 inch board at the front, although it might be well to give it even more pitch than this.

The hot bed can be covered with either cloth or glass frames. Glass frames are a little the best, but they are quite expensive. They will cost you now about \$4.00 each for the 3x6 size, glazed. You can, however, use ordinary window sash or any kind of glass you happen to have. You can get along very nicely without any glass at all by using muslin for a cover. It can either be stretched clear across in one long sheet or cut and nailed to frames.

The operating of the hot bed is best learned by actual experience. You have to make two or three of them and spoil part of them before you learn how, but that is the only way to learn.

The main thing now is to get started on them, and get your cabbage and tomato seed planted.

## Cold Frames

If you don't want to go to the trouble of making a hot bed or haven't enough good manure on hand to build one, you can do very well with a cold frame.

A cold frame is built same as you build the frame for a hot bed. It should be about eighteen inches high at the back side and twelve inches at the front. Place it in a sheltered sunny situation and bank around so that the wind will not get in. Cover with glass or a heavy grade of muslin.

Plant seed in a cold frame a week or so later than you would in a hot bed. You can grow all hardy vegetables such as cabbage, cauliflower, beets, lettuce, radish, onions and kohlrabi.

Beets, lettuce and onions transplant as easily as cabbage. And you can advance radish a couple of weeks by planting them in this cold frame. Of course, the soil should be rich and mellow.

## Starting Plants in the House

A hot bed is the best place to start plants if you are willing to go to the trouble to make a good one. However, a box of good dirt placed in a south window of the house where it will get as much sunshine as possible and in a room where the temperature does not vary too much, is good.

If the soil you use does not already contain a large percent of humus, use about 50 per cent of well rotted manure. This amount is only suggestive, as there is a wide difference in different samples of dirt. What I mean by "well rotted manure" is manure that could almost be classed as dirt. Don't use fresh manure.

Cover all small seed at least one-half inch deep. Make the rows 3 or 4 inches apart. Keep the surface soil moist until the plants are up or you may have trouble in getting a stand.

## Pure Alfalfa Seed

"Can you furnish Alfalfa seed free from wild carrots?"

—Wm. Lokay, Merrifield, N. Y., Rt. 1.

Yes, we can furnish Alfalfa seed free from Wild Carrot seed and are willing to sell it to you with that guarantee. If you find any Wild Carrot seed in it, ship it back at our expense and have your money back.



## Plant Bands or Paper Pots

These plant bands are all right. They are the finest thing in the world to transplant plants of every kind. They are cheap, easy to use, and very satisfactory.

They come already folded and set up. All you have to do is open them, set them in a box close together, and fill with dirt, and put in the plant. They can be had either with or without bottoms.

We do not bother with bottoms in them at all, but just use the sides, and we find they handle just as good when they are ready to move as if there were bottoms in the bands, and it is easier when they are in the dirt for the roots to get out on account of there being no bottom to the band.

They come in various sizes, but we like the 2x2 size the best. We can however, furnish the other sizes if wanted, but the 2x2 we expect to always have on hand and can furnish promptly, and they are the kind that most people want.

Here are the prices, delivered to you postpaid:

2x2 inches	-----	\$1.25 per 250
3x3 inches	-----	1.50 per 250
4x4 inches	-----	2.00 per 250

All delivered postpaid.

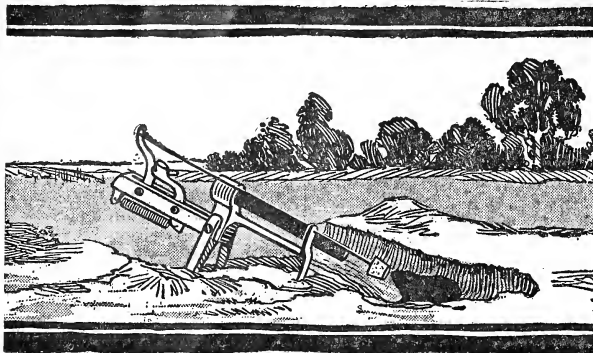
If you can use them in larger quantities, we can make special prices by the 1,000, and lower prices in full case lots, to go by express at your expense either from our place or from the factory in Minnesota.

For instance, size 2x2, which is the popular size, would cost you \$2.75 per 1,000, or \$11.00 per case of 5,000, and other sizes in proportion.

If you want them with bottoms, add 20 per cent to all prices.

I have experimented with both the round and the square paper pots and I find that the square ones work out much better than the round ones in every way, and as a rule they are cheaper.

Food for Growing Plants—in the most cleanly, convenient and effective form. Stim-U-planT Tablets. We sell them.



### The Getsem Gopher Gun

#### A Sure Way to Get Rid of Pocket Gophers

Last year in Iowa, Kansas and Nebraska alone, pocket gophers destroyed over \$15,000,000 in crops, an increase of 400 per cent over damage done in 1918. This tremendous loss can be stopped. You don't have to stand for pests robbing you of from \$3.00 to \$5.00 an acre for alfalfa and \$1.00 an acre for meadows.

The Getsem Gun pictured above is being used extensively throughout the country for getting rid of gophers and other pests. It is the most effective means ever found. It's as simple as A, B, C, and yet it never fails to get the gopher. It's just as good for rats, coons, or skunks, etc.

The Getsem Gun is built like a miniature shot gun, firing a .410 standard shot gun shell. The gun is spiked in an opened gopher burrow and when the gopher comes up to close the opening he touches the trigger wire and thereby commits suicide. It isn't accidental—it gets them every time.

The gophers are the worst pest we have on Alfalfa, and I am mighty anxious to help you in any way I can to make a success with alfalfa. This gun will sure solve one problem, the gophers, and solve it quick. There is no guess work about it. It gets them every time. Far more certain than either traps or poison. And cheap, too. You don't need to be bothered with gophers any more.

It is sure death, too, on rats, weasels, skunks, and similar varmints. All you have to do is to fasten some bait on the end of the wire and poke it into the hole and leave it there. It never fails. We use these guns ourselves and can endorse them most heartily. Price, \$3.85 each, or 3 for \$11.00. Postpaid anywhere in the United States. Satisfaction guaranteed or your money back. Send your orders to us here at Shenandoah, and we will send you the gun by return mail either from here or from the factory.

### We Will Store Seed for You

In the face of advancing markets on all kinds of field seeds, and the serious danger of not being able to get the seed at all by spring, hundreds of our customers are buying seed now and storing it so as to have it ready when they want it.

I suppose we have sold ten times, yes fifteen times, as much clover seed this fall as we generally sell in the fall. They are not getting it now, but storing it for next spring.

The same is true to a less extent with Alfalfa, Sweet Clover, and Alsike. And now there is a big trade started in on seed corn. We are selling hundreds of bushels right now.

Lots of people write in, however, that they cannot take delivery on the seed now, because they have no good place to keep it.

All right. We will keep it for you. We have a perfectly good fire proof,

rat proof, water proof seed house, and would just as soon carry the seed for you as not.

Send along your order now, and we will book it for you, and make what we call a "Hold for Advice" order. That means we will hold it till you order it shipped. We give you the order number, and when you are ready you write and tell us the number, and tell us to ship the seed.

Hundreds of customers do that every year, and it is a good plan for all concerned. You get the benefit of the present prices which are probably much lower than you would have to pay in the spring, you are sure you will have the seed when you want it, and you assume no risk.

We would expect you to pay for the seed when you order it, for we have to take the money to buy other seed to replace what we sell to you. We have to keep things moving and keep the money turning. It's just like any other order, except that the seed is set aside here

for you, marked with your name and number, instead of being shipped at once.

If this plan suits you, send along your order for clover or alfalfa or sweet clover, or seed corn, or whatever else you may want, and your seed worries will be over.

### Big Demand for Alfalfa

I never did see such a demand for alfalfa seed. So much of it got frozen out last winter that there is lots of re-seeding to do and it was so dry in the fall that very little was sown then.

They are all going to sow this spring. Mostly with oats or wheat. And I don't know but what that's a pretty good plan. It's easier to get a stand with alfalfa than with clover sown in the same way.

The seed supply is of good quality and fair quantity. The seed is cheaper than either clover or alsike or sweet clover, and there is no excuse for not buying it now.

We have either Kansas, Nebraska, Dakota, or Montana, as you prefer. Or if you want to go into named sorts, we have Grimm, Baltic, and Liscomb, all supposed to be extra hardy.

Write for samples and prices.



### Sale Tags 3c Each

We can furnish the big aluminum sale tags with black numbers on them, the same kind we put on our hogs when we put them in the sale. In fact, we use two full sets, putting one in each ear and hanging them on with ordinary hog rings of the fish hook type.

These tags come in sets of 50, 65, or 100, numbered serially from 1 up.

The price is 3c each, which would be \$1.50 for 50, \$1.95 for 65, or \$3.00 for 100. No extra charge for postage. Send along your order and we will make prompt delivery.

We also have what is known as herd tags, at \$2.50 per 100. These are smaller, but heavier, and made of brass, and are numbered serially, so you can number your hogs and keep track of them. We can furnish whatever you want of them at \$2.50 per 100, postpaid.

### Send for the Catalog

If you have not yet received our big Seed Catalog better send for it at once. You will find a blank right next here to be filled out.





*"If you are in debt, get an old sow by the tail and she will pull you out"*

## Come and See Us Sale Day

I want you to plan to come and see us at the time of one of our hog sales, February 19th, or March 18th.

Of course, I want you to come and see us any time, but if you are at all interested in the spotted hogs, sale day will be a good time to come, for it will be worth a lot to you to see the hogs and see the breeders that will be here from all over the country. And it will be lots of fun to watch the bidding, and a liberal education, too, to watch how the experienced breeders bid and which ones they bid on.

Come prepared to take time to visit the seed house, too. We expect to lay off work that day and visit with our friends. This sale will be held in the new sales pavilion. It is two blocks from the main seed house, right across from our No. 4 seed house.

## Which Sale to Come to

### Feb. 19 or March 18?

I suppose you have wondered which sale to come to. Well, here is the answer. The sows in the first sale are to farrow in March. The ones in the second sale are to farrow in April. The professional breeders like March farrow the best and the general farmers like April the best, and there you are. If you are a breeder and like early pigs, and are prepared to take care of them, come to the first sale and you can shut your eyes and bid.

But if you are a general farmer and want the pigs to come when the grass is green and the weather pretty and no special care necessary, then come to the second sale, March 18. There will be tried sows, fall yearlings, and spring gilts in both sales, and plenty of quality in all of them.

It will be well worth your while to come to the sale whether you buy anything or not, for you will get to see lots of good hogs and lots of other breeders, and you can learn a lot.

Don't miss the free feed at noon, sale day at the sale pavilion. The seed house girls will feed you in great shape.

## What Will They Bring?

Lots of people ask me "Henry, what will your registered Spotted Poland sows bring at the sale?" And I tell them truly, "darned if I know." And that's about as much information as I can give you. We have been selling a few at private sale at from \$50 to \$100 each, and they will probably sell about that same way in the sale.

It will be a big sale, plenty of hogs for everybody—the old timers tell me I am putting in too many—that it will make low prices. I don't know. I do know, though, that a lot of you folks are coming here a long ways to get a sow or two, and I don't want you to go home disappointed. I want to have plenty so you can be sure and get one. There may be some bargains. That's always the case at a big sale.

My experience at sales has been that the fellows who buy in early in the sale get the best bargains.

One nice thing about buying at a sale you can get to see a lot of hogs and can pick out just what you want and use your own judgment as to what you ought to pay for it.

Yes, they are all vaccinated. Double vaccinated long ago. And most of them have had the flu preventative vaccination, too. In fact, they've had everything they wanted or ought to have so far as I know.

All registered? Sure! Papers in the envelopes all ready to hand over to you. You don't have to wait and fuss a long time to get your papers. No registry fees to pay either. Transfer all signed up in blank and ready to send in, or we will send it in for you if you prefer.

## We See to the Shipping

After you get your hog bought you will not need to worry about the shipping. We will see to that. We are used to it and know what to do. As a rule we will ship the next day after the sale, but can ship that night if you prefer.

If you live close enough, come in your car and take your hog home on the running board. Lots of our customers do.

## Send a Bid for a Pig

If you can't possibly come to our hog sale Feb. 19th, I want you to be sure and send a bid. Of course, I would rather you would come yourself, but if you can't possibly come, you can still buy a pig anyway, if you are lucky.

I buy lots of pigs that way at sales myself. I just write to the owner or some field man or the auctioneer and tell him to buy me something, if he can get what he wants inside my price limit. You are perfectly safe and always get a square deal.

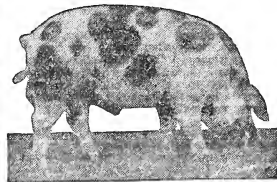
So at our sale you can send a bid on any particular ones, or better yet, send a general bid on any good sow that will fill your requirements.

All you need to do is to write a letter telling about what sort of a sow you want, what age and size, what color, and about what your top price limit is. I will place this letter in the hands of one of the field men, or with some good farmer, and have him use his own judgment in bidding for you. He will buy for you as cheaply as he can, and stop when your limit is reached.

If you get anything I will wire you the night of the sale, and then you can send me your check.

As to what price to offer, that is up to you. You probably saw the list of hogs they sold in the February and March sales last year, and you know about how I am selling them on mail orders, \$50 to \$100 each for bred sows, according to age, size and quality.

You will be treated right, and the sow bought for you as much under your price as possible, and if she don't look like your money's worth when you get her, you don't have to keep her. You know our guarantee. It's the limit.



## Our Junior Champion

Here is the latest picture of our Junior Champion spotted pig. Giant Corrector. Ain't he a bird. You have an invitation to visit him February 19, when we have our big brood sow sale.

## Male Pigs of Any Age

We always have a fine lot of male pigs on hand of any age, from 3 months to 1 year, and priced at from \$30 to \$75, according to size, age, color, and quality. We have all kinds of blood lines and can mate well with anything you already have. Ask for what you want.

# WANTED:

## 50,000 Boys and Girls In the Seed Business With Me

### BOYS AND GIRLS, HOW WOULD YOU LIKE TO GO INTO THE SEED BUSINESS WITH ME?

I have at the present time, 30,000 successful Junior Seedsmen, and want 20,000 more. It doesn't cost you one red cent to start. I will furnish the seeds for your start and give you a good, big share of the profits. When I started selling garden seeds, I was younger, probably than any of you, and didn't have anyone to start me in the business. Today the Field Seed Company is the largest mail order seed house in the world. If I started this large business of ours by selling garden seeds from house to house, why can't you do the same? Who knows but what this start that I am willing to give you, may some day land you at the top of the ladder in the seed world. Parents should encourage this proposition as it teaches the children to rustle for themselves, something they will have to learn sooner or later.



My first start in the Seed Business

We are offering this year, the same reliable, tested and guaranteed seeds that we have for the last 25 years. Since our seeds are so well known from coast to coast, it will be an easy matter to sell them if you will let the people know that you are selling Henry Field's seeds. Lots of our agents sell as high as fifty and a hundred dollars worth of seeds, and I don't see why you can't do equally as well if you get an early start. All you need to do to take advantage of this proposition of mine is to fill out the application blank at the bottom of this page, send it in to me, and I will rush the seeds to you by return mail. After you sell the first box of seeds, I will send more as soon as you remit for the first box. I know you are honest, and I am willing to trust you with the seeds, as well as dividing the money. How does that suit you? Henry Field.

P. S. If you are not interested in selling our seed, please give this page to some live boy or girl in your neighborhood. Thanks.

### HERE'S MY PROPOSITION

1. Fill out the coupon below and send it to me and I will send you at once by parcel post 10 of the 35c collections for you to sell. You need not send the money till they are all sold, but if you do not sell them within a month, you are to return them.
2. When you have sold ten collections you get one-third the total for your share, either in cash or one of the premiums. By buying these premiums in big quantities and getting the manufacturers interested in my plan for starting boys and girls in business, I have made your one-third cover the wholesale cost of each one.
3. You send me the \$3.50 you receive for the 10 collections and tell me which premium you want, and I will send it to you at once by parcel post, except in the case of some expensive premium requiring a little more work.
4. If you would rather have your share in cash, keep out your third and send the rest to me. I trust you to do the dividing.
5. In case you cannot sell the 10, sell all you can, return the rest by mail, keep one-third of the money and remit the rest.
6. The collections must all be sold at the same price, 35c. We believe in one price to everyone. It's the only way.

### OUR PREMIUMS

The premiums we offer you this season are better than ever before and we have a larger variety for you to select from. The market conditions have made premium buying very hard, but we have made a nation wide search for suitable goods and I really believe you will have a hard time deciding which one you want, for no doubt you will want them all.

Every premium is fully guaranteed to be just as represented, and we are able to offer them for your share simply because we buy in enormous quantities direct from the factory. The stock we carry on hand is worth thousands of dollars.

Here's some of the premiums our new illustrated premium list will contain this season: *Boy Scout Knife, Boys' Wrist Watch, Pocket Watch, Cosmetics, Pencil Sharpener, Fountain Pens, Doll, Flag, Air Rifle, Bible, Dictionary Flashlight, Tool Kit, Lavalliere, Ring, Base Ball Outfit, Roller Skates, Camera, Manicure Set, Spotted Poland China Pig, Foot-Ball, Vanity Case and Neck-lace, Scholar's Companion and Story Book, Handbag and Handkerchiefs, Binoculars, Base Ball Suit, Parrot, 3 Piece Sauce Pan Set.*

You will notice we have added quite a number of new premiums this year, and our premium list will be sent with your seeds. Send in your application today and get an early start. Don't wait until some other Junior Seedsmen has supplied your neighborhood.

## Junior Garden Seed Collection

As usual, we are offering our *Junior Garden Seed Collection* again this year. We have had an enormous demand for it ever since we introduced it 4 years ago, and the demand grows as people realize its excellent value and how nearly it fills the wants of small gardeners. This collection is going to be better this year than ever. The reason we offer this big collection for such a price is simply to get new customers acquainted with our seeds and allow us to get acquainted with new customers. The price is so low everyone will buy. *Think of it! 10 packages for 35c.*

And we are going to make the quality so good that it will be a living and growing advertisement for us all summer. The seed is all new crop, tested and vigorous—the kind you always get from us.

## A Whole Garden for 35 Cents

For Either Town, City or Country

And of course we are putting in some flowers, for a garden isn't right unless it has flowers. Here's the list:

**Vegetables:** Cabbage, Radishes, Lettuce, Tomatoes, Beets, Mushrooms, Onions, Cucumbers.

**Flowers:** Asters and Sweet Peas.

One package each of the above varieties, 10 in all, for 35c. Can you beat it? Think what a fine garden for a boy or girl! We can't change the listed assortment as we can make this low price only by putting up the collection in enormous amounts a long way ahead. If you want other things you can order from regular list in catalog. Remember, these are no little skimpy sample packets, but real sure-enough garden size, and good tested stock of the very best varieties.

## Henry Field Seed Co.

Shenandoah, Iowa

Fill out this application. Send it to us,

Send no money with this.

Please send me at once by parcel post the 10 collections of seed. I will do my best to sell them at 35c each, and if I do not sell them, I will divide the money, keeping for my share one-third in money, or one of the premiums and will turn the other two-thirds over to you.

Name \_\_\_\_\_ Age \_\_\_\_\_ Town \_\_\_\_\_

Street, R. F. D., or Box No. \_\_\_\_\_ State \_\_\_\_\_ Have you ever sold our seeds? \_\_\_\_\_

(Have your father, mother or guardian fill out this part)

To Parent or Guardian: Please write your name here so I will know that the boys and girls are consulting with you as they should, and that you understand the deal between me and the boy and girl.

Name \_\_\_\_\_

# ORDER SHEET

Date.....

To HENRY FIELD SEED COMPANY, Shenandoah, Iowa

Name.....

Postoffice..... State.....

County..... Rt. No., Box, or Street and No.....

R. R. Station..... County..... State.....

What Railroad?..... Is Yours a Prepay Station?  
(Into Your Town)

Mark in Square Which Way You Want Order Sent

Mail or Parcel Post  Express  Freight  Whatever Way Best

In Case Price is Wrong or Price Has Changed:—  
Shall we fill exact amount ordered and adjust price later?..... Or shall we fill exactly the amount of money sent?..... If out of variety ordered do we have your permission to substitute equal or better in the nearest we can supply?.....

**Please Answer Above Information Each Time You Write**

*Your Money's Worth or Your Money Back*—It is mutually agreed and understood that any seeds or other goods ordered of us may be returned at any time within ten days after receipt, if not satisfactory, and money paid for them will be refunded, but we do not and can not in any way warrant the stand or the crop as they depend on so many conditions beyond our control. Henry Field Seed Co.

		\$	Cts
Total Am't of Order			
<i>Paid in</i>			
P. O. Money Order			
Express Money Order			
<i>Check</i>			
We like checks			
<i>Draft</i>			
Currency			
O. K. if Registered			
Silver			
O. K. if Registered			
Paid in stamps			
Stamps are O. K.			
Total Am't Paid			

Please Don't Write in This Space

Amount	Articles Wanted	\$	Cts.
.....	.....		
.....	.....		
.....	.....		
.....	.....		
.....	.....		
.....	.....		
.....	.....		
.....	.....		
.....	.....		
.....	.....		
.....	.....		
.....	.....		
.....	.....		
.....	.....		
.....	.....		
.....	.....		
.....	.....		
.....	.....		
.....	.....		
.....	.....		
.....	.....		
.....	.....		
.....	.....		
.....	.....		
.....	.....		
.....	.....		
.....	.....		
.....	.....		
.....	.....		
.....	.....		
.....	.....		
.....	.....		
.....	.....		
.....	.....		

Write us a letter but don't put it on the same sheet with the order. Put the letter on a separate sheet, please. The letter can then be answered while the order is being filled and neither one will have to wait.

Cut Here

# Request for Special Quotations

Let Us Figure Your Wants

Please Do Not Write in Space Above

I know we can do you some good on anything you may want in the seed line, for we have the quality and will make the price right. The only way for you to find out about this is by asking. So I am putting this sheet in here for your convenience. It will cost you nothing but a stamp to find out just what it will cost you for what you want, delivered to you. This will not obligate you in any way to buy. I will tell you the exact lowest wholesale price on each item you want, what the freight or express will cost and which will be the best way to send it. Then you can do exactly as you please about ordering. I want to know what you want. You want to know what it will cost. All right, I'll put my time against yours and we'll both get some information. And if we can trade, we will probably both make some money. No object in trading unless we do. Write here the amounts and names of seeds you want prices on. (This is not an order, simply an inquiry for prices).

To HENRY FIELD SEED CO., Shenandoah, Iowa. Date \_\_\_\_\_

I would like to have you quote me your lowest wholesale price on the seeds listed below. Also tell whether it would be best to have them shipped by freight, express, or parcel post, and about what the charges will be. Or quote prices delivered here, all charges prepaid.

Quantity	VARIETY	Leave this space blank
-----	-----	-----
-----	-----	-----
-----	-----	-----
-----	-----	-----
-----	-----	-----
-----	-----	-----
-----	-----	-----
-----	-----	-----
-----	-----	-----
-----	-----	-----

Please fill out plainly the blanks below.	
Name _____	Freight or Express Office _____
P. O. _____	What Railroad is it on? _____
County _____ State _____	If more than one R. R., which do you prefer? _____
R. F. D., St., or Box No. _____	

**Don't Use This Sheet for Family Garden Lists** On all small seeds, hulhs, etc., the catalog prices stand unchanged. We never quote any different prices on them. But on field seeds, clover, etc., and on implements and large amounts of garden seeds, plants, etc., prices vary and we prefer to quote special prices on seed corn, etc., and large lots of garden seeds, plants, etc.

HENRY FIELD SEED CO.

Cut Here

# My Big FREE ALUMINUM Offer

To Advertise—To Make More Friends—To Gain More Customers  
For Earlier Orders—Bigger Orders—Club Orders

The biggest bid for all of your seed business, and that of your neighbors, I ever made. I know that lots of my customers send me only part of their order—it costs very little more to pack and ship all the seeds planted, than just part of them, and that added business means a big thing to me. I want your order for garden seeds, flower seeds, field seeds, and nursery stock this year, and I am willing to pay the price for it.

## ORDER BEFORE MARCH 1st

**Here is another thing:** We want the orders to come early. In fact, we must have a lot of them early. We can't take care of them all unless a lot of them do come early. Every year we are swamped with business in March and April and standing around idle, waiting for orders in January and February.

Pick out the utensils wanted, figure the amount of the order required to get them, then send me your order for all the seeds to be planted this season. You can get your neighbors or relatives to send their orders with yours, and, if you send it in, I will give you credit for the total amount of all orders. In this way you can get an entire collection of cooking utensils free that would probably cost you seventeen to twenty-five dollars, if purchased from the store. Be sure to give me the names and addresses of all those sending their seed orders with yours. And be sure to name your premium on the order. Practically every utensil needed in the modern kitchen is listed in these pages. They are the highest quality aluminum goods I could find on the market. You will be pleased with every piece. Send me your order right away, so you will have the Aluminum ware to use immediately. You can order plants, bulbs, or any kind of seeds.

When I say "seed order" I mean plants and bulbs, too.

The request for the premium must come with the order and on the same sheet.



No. 2312  
**MEASURING CUP**  
9 ounce capacity, embossed graduations on sides as shown. Given with an order for \$2.50 worth of seeds.

No. 2573 N  
**COMBINATION COOKIE AND DOUGHNUT CUTTER**  
Inside center detachable, 2 1/4 inches in diameter. Free with \$2.50 order.



No. 2520 N  
**TEA OR COFFEE STRAINER**  
Aluminum tea or coffee strainer as shown. Free with a \$2.50 seed order.



No. 2568  
**GRATER**  
Hand grater, as shown. Dip finish. Free with a seed order amounting to \$2.50 or more.

No. 2418  
**CASTER SET**  
Shakers 2 inches high, non-tipping bases. Given with \$2.50 seed order.



No. 7311 L  
**MIXING BOWL**  
One quart aluminum mixing bowl. Polished finish. Rounded edges. Free with \$3.50 order.



No. 4014 L  
**JELLY CAKE PAN**  
9 inch jelly cake pan. Has tightly rolled sanitary edge. Natural bright finish. Given with seed order amounting to \$2.50.

No. 2309  
**CUP**  
9 ounce capacity aluminum cup. Polished finish. Free with a seed order for \$2.50.



No. 3055  
**SOAP DISH**  
Aluminum soap dish, as shown. Polished finish. Free with \$2.50 order.

No. 2569  
**POTATO MASHER**  
Wood handle potato masher. Polished finish. Free with \$3.50 seed order.



No. 2404  
**COMBINATION CONDIMENT SET**  
Shakers are 2 inches high. Tray, 5 1/2 by 3 1/2 inches. Free with order for \$3.50.



No. 7111 L  
**PUDDING PAN**  
One quart aluminum pudding pan. Polished finish. Free with \$3.50 order.



No. 5009 L  
**PIE PAN**  
9 inches in diameter. Natural bright finish. Tightly rolled edge. Free with \$2.50 order.



No. 3207  
**PARING KNIFE**  
Handle of thumb-grip aluminum, polished steel blade. 6 1/2 inches over all length. Free with \$2.50 order.

No. 2987  
**DIPPER**  
One quart aluminum dipper with 14 inch hollow handle and 6 inch bowl. Free with \$5.00 order.



No. 5029 N  
**BREAD PAN**  
Aluminum bread pan. Dip finish. Rounded corners and edges. Free with \$5.00 order.



No. 5585  
**SINK STRAINER**  
Natural bright finished aluminum sink strainer, as shown. Free with seed order amounting to \$5.00.



No. 5151  
**REFRIGERATOR DISH**  
Aluminum refrigerator dish, as shown. 1 1/2 quart capacity. Rounded corners and edges. Given Free with \$5.00 order.



No. 5482  
**BISCUIT PAN**  
Seamless biscuit pan with rounded corners and edges. Free with \$7.50 order.



Henry Field Seed Company : : : Shenandoah, Iowa

No. 5112  
PUDDING PAN  
Two quart pudding pan.  
Polished finish. Sanitary  
c.o.s. Free with \$7.50 order.



No. 5081  
CONVEX SAUCE PAN  
One quart aluminum  
sauce pan. Polish finish.  
No-burn knob. Cool  
handle. Free with \$7.00  
order.

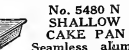


No. 2240  
NESTED CUPS  
Nest of six cups as shown.  
Polished finish. Free with a  
\$7.50 order.

No. 5591 1/2  
SHALLOW  
DRISSALY PAN  
1 1/2 quart dairy or  
custard pudding pan. 9 inch. Polished  
finish. Free with \$7.50 order.



No. 5480 N  
SHALLOW  
CAKE PAN  
Seamless alumi-  
num cake pan, as  
shown. Size 8x12. Rounded corners and  
edges. Free with \$7.50 order.



No. 5241  
LIPPED  
STEW PAN  
One quart  
lipped stew pan as shown.  
Twin lipped, polished  
finish. Free with \$7.50 order.



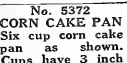
No. 5370  
MUFFIN PAN  
Six cup muffin pan  
as shown. Cups are  
3 inches across.



Free with \$7.50 order.



No. 2726 N  
WASH BASIN  
Aluminum wash basin  
with natural bright  
finish. Rolled, sanitary  
edge. Free with \$10.00  
order.



No. 5372  
CORN CAKE PAN  
Six cup corn cake  
pan as shown.  
Cups have 3 inch  
tops. Natural bright finish. Given Free  
with \$10.00 order.



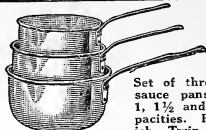
No. 7082 L  
CONVEX  
SAUCE PAN  
Two quart sauce pan, as  
shown. Polished finish. No-  
burn knob on inset cover.  
Free with \$10.00 order.



No. 7743 L  
COLONIAL  
LIPPED  
SAUCE PAN  
Twin lipped. Colonial de-  
sign sauce pan with cool  
handle, 3 quart capacity.  
Polished finish. Free with  
order for \$10.00 or more.

No. 2875  
COLONIAL DRISSLESS  
SYRUP PITCHER

Polished aluminum syrup  
pitcher of Colonial design. 1  
quart capacity. Spring closing  
cover. Free with \$10.00  
order.



No. 5387  
DEEP SQUARE  
CAKE PAN  
Seamless aluminum  
square cake pan  
with loose bot-  
tom, as shown.  
9 1/2 inches square.  
Polished finish.  
Rounded edges and  
corners. Free with \$12.50 order.



No. 5244  
LIPPED  
SAUCE PAN  
Four quart lipped sauce  
pan with cool handle.  
Twin lipped. Polished  
finish. Given with order  
amounting to \$15.00.



No. 3776 L  
WATER PITCHER  
2 1/2 quart aluminum  
water pitcher. Polished  
finish. Special thumb-  
grip handle. Given with a  
seed order amounting to  
\$10.00.



No. 5317  
MIXING BOWL SET  
Set of three aluminum  
bowls. 1, 1 1/2 and 2  
quart capacities. Pol-  
ished finish. Rounded  
edges. Free with \$15.00  
order.

No. 4970 L  
BAKING DISH  
Three quart capacity,  
aluminum baking dish.  
Polished finish. Tightly  
rolled, sanitary edge.  
Given Free with \$15.00 order.

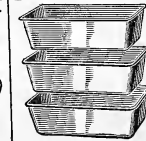


No. 7056 L  
LIPPED  
PRESERVING KETTLE  
Six quart preserving ket-  
tle as shown. Has 16 inch  
top. Polished finish. Til-  
ting handle with holes for  
hanging. Free with order  
amounting to \$17.50.

No. 5304  
ANGEL CAKE PAN  
Angel cake pan as is  
shown. Legs project 1 1/2  
inches above top of  
pan. Polished finish.  
Free with \$17.50 order.



No. 5560  
COLANDER  
Substantial, aluminum  
colander, as shown.  
Polished finish. Rolled  
sanitary edge. Given  
with a \$17.50 order.



No. 5229 N  
BREAD PAN SET  
Set of three bread  
pans of seamless  
aluminum. Rounded  
edges and corners.  
Free with \$17.50 or-  
der.



No. 5117  
PUDDING PAN SET  
Set of three aluminum  
pudding pans as shown.  
1, 1 1/2 and 2 quart ca-  
pacity. Polished finish.  
Given with a seed order  
amounting to \$20.00.



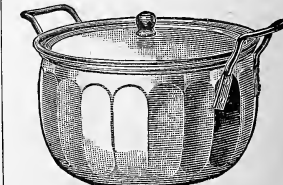
No. 4971  
CASEROLE  
Two quart capacity  
aluminum cas-  
serole as shown.  
Polished finish.  
Cast aluminum  
knob. Tightly  
rolled sanitary  
edges. Given Free  
with a seed order amounting to \$25.00.

No. 2694  
COLONIAL  
TEA POT  
1 1/2 quart aluminum  
tea pot as shown.  
Colonial design. Pol-  
ished finish. Weld-  
ed spout. Detachable  
handle. Nickel-  
plated brass hinge. Tea ball  
can be raised by  
pulling suspension chain through the knob.  
Given Free with a seed order of \$25.00.



No. 5247  
LIPPED STEW PAN SET  
Set of three lipped stew  
pans as shown. 1, 1 1/2 and 2 quart  
capacities. Cool handles. Polished finish. Rolled  
sanitary edge. Free with \$25.00 order.

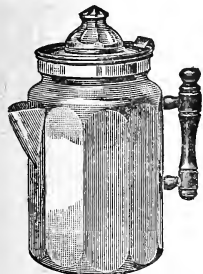
No. 5574 L  
COMBINATION  
COOKER  
Three piece combination  
cooker as shown. Four  
quart kettle and three-  
quart kettle pan. Polished fin-  
ish. Ball rest ears. Til-  
ting handle with hole  
for hanging. These  
three pieces are com-  
bined into number of  
needed utensils, double  
boiler, baking dish, pre-  
serving kettle, etc. Free  
with \$30.00 order.



No. 7954 L  
COLONIAL CONVEX SAUCE PAN  
4 quart capacity. Polish finish, special No-  
burn knob. Given Free with seed order  
amounting to \$15.00 or over.



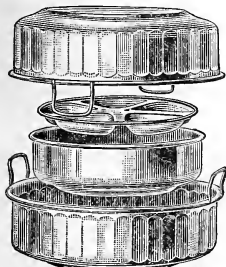
No. 5598 DAIRY PAN  
Shallow dairy pan, 8 quart capacity; 15 inch top. Free with a seed order amounting to \$20.00 or more.



No. 5432 L COLONIAL PERCOLATOR  
Beautiful and efficient coffee percolator in Colonial design, exactly as shown above. Given with seed order amounting to \$20.00 or more.



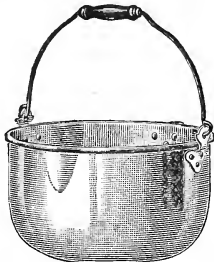
No. 2754 COLONIAL WATER PITCHER  
2½ quart water pitcher in universally admired Colonial design as shown above. Polished finish. Heavy, thumb-grip handle. Given Free with an order for \$30.00 worth of seed or more.



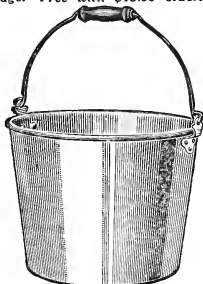
No. 5721 L  
COLONIAL FOUR-PIECE  
COMBINATION ROASTER  
Outside parts of this roaster have a capacity of 3½ quarts. Polished finish. Self basting cover. Inside pan has 1¾ quarts capacity. Given Free with a seed order amounting to \$25.00.



No. 5393 TURBAN CAKE MOULD  
Colonial pattern turban cake mould as shown. Polished finish and tightly rolled sanitary edge. Free with a seed order amounting to \$12.50 or more.



No. 7055 L LIPPED PRESERVING KETTLE  
Five quart, lipped preserving kettle made from one piece of heavy, rolled plate aluminum. Polished finish. Bail rest ears. Tilting handles with hales for hanging. Sanitary edge. Free with \$15.00 order.



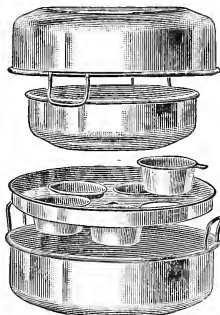
No. 7810 L DAIRY PAIL  
Ten quart aluminum dairy pail. Polished finish. Bail rest ears. Sanitary edge. Free with \$25.00 order.



No. 5060 LIPPED PRESERVING KETTLE  
Ten quart lipped preserving kettle made of one piece of heavy rolled plate aluminum. Polished finish. Bail rest ears. Tightly rolled, sanitary edge. Given Free with a seed order for \$25.00 or more.



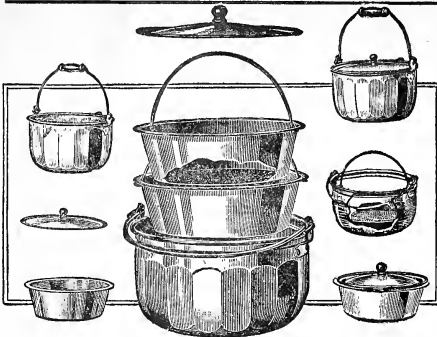
No. 2934  
SIX PIECE COMBINATION FUNNEL  
Consisting of fruit funnel with strainer, 1 pint capacity; dipper; fruit funnel; spout funnel with strainer, 17 ounce capacity; and spout funnel. Polished finish. Given Free with order for \$5.00 worth of seed.



No. 5012 L NINE PIECE COMBINATION  
DOUBLE ROASTER  
A double roaster with a dozen uses. Consists of nine separate pieces as shown. Polished finish. Self basting covers. Custard cups of ¼ quart capacity and cup tray fit into lower pan. Free with \$30.00 order.



No. 7096 L CONVEX KETTLE  
Six quart convex kettle with 10 inch top and 5½ inches deep. Polished finish. No-burn knob on inset cover. Tightly rolled, sanitary edge, upturned on cover. Free with \$20.00 order.



**No. 5471 L. COLONIAL 4 PIECE COMBINATION COOKER**

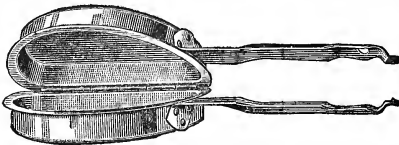
An entire cooking set in one. Makes the different utensils shown Polished finish, detachable bails on inside pans. No-burn knob, inset cover. Colonial design as shown. Kettle, 6 quart capacity; pans, 2½ quart capacity; 9½ inch cover. *Given Free with a seed order amounting to \$35.00 or more.*



**No. 5138**

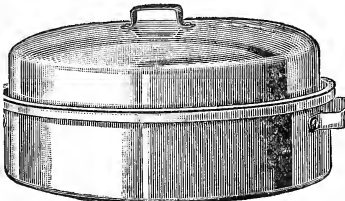
**LIPPED FRY PAN**  
Large size fry pan made of rolled plate aluminum of uniform thickness. Cool

handle. Polished finish. Twin lipped. *Free with \$30.00 order.*



**No. 5134 OMELET PAN**

Aluminum omelet pan with cool handles which come together to insure a firm grip. Polished finish. *Given Free with a seed order amounting to \$20.00.*



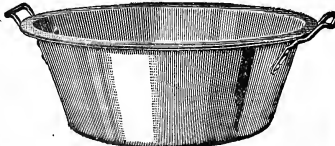
**No. 7366 L OVAL ROASTER**

Heavy, rolled plate aluminum roaster as shown. 15 inches long. Polished finish, self basting, snug fitting cover. Cool handles. Raised bottom prevents burning and warping.

*Given Free with a seed order amounting to \$30.00 or more.*

**No. 7610 L. DISH PAN**

Ten quart seamless dish pan with rounded edges. Extra good quality. Polished finish. *Given Free with a seed order amounting to \$20.00.*



**No. 7035 L TEA KETTLE**

Five quart aluminum tea kettle with welded, easy filling spout No-burn knob. Polished finish. Wide quick heating bottom, 9 inches in diameter. Bail rest ears. Tightly rolled, sanitary edge. *Given free with a seed order amounting to \$30.00.*



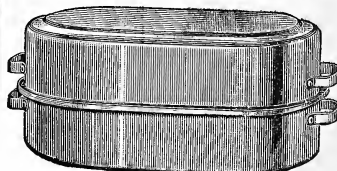
**No. 7601½**

**COLONIAL DOUBLE BOILER**  
Double boiler as shown. Colonial design. Cool, easy-lifting handles. No-burn knob Extra large bottom vessel to avoid cooking dry Inside pan has 1½ quart capacity. Outside pan is 2 quart capacity. Polished finish. *Free with \$20.00 order.*

**No. 7627 L COLONIAL**

**TEA KETTLE**

Seven quart tea kettle in Colonial design. Polished finish. Welded, easy filling spout. Bail rest ears. Wide quick heating bottom. Tightly rolled sanitary edge. No-burn knob. *Given Free with a seed order amounting to \$35.00.*



**No. 5004 DOUBLE ROASTER**

Heavily constructed double roaster 19 inches long. Large enough to handle the biggest fowls. Self basting cover. Polished finish. Cool handles.

*Given Free with \$35.00 order or more.*



**No. 5245 LIPPED STEW PAN**

Large size lipped stew pan as shown. 5 quart capacity. Polished finish. Twin lipped. Sanitary edge. *Free with \$17.50 order.*



## Gladioli Bulblet Collection

### Grow Your Own Bulbs

These are the little wee fellows about as big as a pea, from which we grow blooming size bulbs to sell a year from now. Some of them will bloom this year, but all will grow and make a bulb that will bloom next year. These are from our best mixture. Most growers refuse to sell these bulblets, but I have decided to offer a limited amount of them at 200 for 25c or \$1.00 per 1,000, sent postpaid. I will send out with each package full directions for growing them to blooming size.

## Horse Radish

**Maliner Kren or Improved Bavarian.** This is an improved variety of horse radish from Bavaria, which is being adopted all over the United States as the standard variety. It can be grown from either cuttings or crowns. The crowns are the top portion of the large roots and will make a big hill the first year.

	Each	Doz.	100
Horse Radish Crowns (3, 25c)	10c	75c	\$4.00
Horse Radish Cuttings	.....	.30	\$1.25

Large lots horse radish cuttings same price as asparagus plants

## Everbearing Strawberries

### Improved Progressive or Champion

I want you to be sure and read what we have to say in our catalog about the new improved strain of Progressive Everbearing strawberry, for we consider it a real achievement, and you will agree with us when you fruit it.

The same strain or at least one that seems identical is also being sold under the name of *Champion*, which is a good name, but I prefer to call it simply *Improved Progressive*, which certainly describes it and gives you an idea of what it is like.

If you prefer the name *Champion*, we can sell you plants, the parents of which were bought under that name, but, frankly, we can't tell them from our *Improved Progressive*, and I don't believe you could.

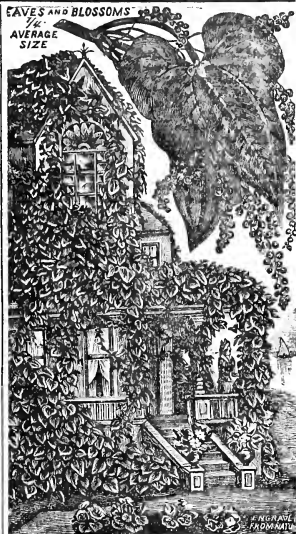
Anyway, we won't quarrel about the name, for it's sure a good berry under any name, and you should grow it by all means.

Here are the prices:

25 plants	-----	\$ .60
50 plants	-----	1.10
100 plants	-----	2.00
200 plants	-----	3.75
300 plants	-----	5.00
500 plants	-----	8.00

Send your order now and we will send you the plants by parcel post at the proper time for planting.

These prices are all postpaid by parcel post, safe delivery guaranteed. Ask for prices on large amounts. Plants are guaranteed to be genuine Everbearing or I will replace them 2 to 1.



## Chinese Cinnamon Vine

The Cinnamon vine makes a really nice vine for porches or windows or for a trellis or arbor. The leaves are bright and clean, and while the flowers are not large they are neat and fragrant.

The vine is perfectly hardy, coming up each year from a bulb which lives over in the ground and gets larger and goes deeper each year. The vine has no insect troubles, blight, or disease.

It also makes a nice house plant, winter or summer, and is fine for window boxes, either as a climber or a trailer.

For training over windows, plant two bulbs at each side of each window. For porches, plant bulbs singly every 8 inches along front and side of porch. Furnish twine or wire for support. Plant any time, like potatoes, any kind of soil.

Price, 10c each; 4 for 25c; 18 for \$1.00—all postpaid.

2 yr. extra large, 20c each. 3 for 50c, 7 for \$1.00

## Lilies Not 4 for 35c

I find that a lot of people are mistaking the price on lilies on page 49 of the catalog, and ordering Lemon Lily, Day Lily, and Tiger Lily at the price of Lily of the Valley, 4 for 35c. The correct price on the other three is 25c each, 2 for 45c, or 6 for \$1.00, as stated at the head of the page under the Sweet William picture, where it says that all plants *except as noted* sell at those prices. The Lily of the Valley are much cheaper so I named the low price of 4 for 35c on them, but that does not apply to the other lilies. Watch for this.

H. F.



## Special Bargain Collection of Gladioli Bulbs

### 60 Blooming Size Bulbs \$1.10 Postpaid

We had the finest crop of gladioli bulbs this year we have ever grown and we are going to celebrate by offering the greatest bargain in them that has ever been offered. I believe—60 fine bulbs for \$1.10. Good bulbs, too.

Most people prefer a mixture of colors so 50 of the bulbs will be a mixture of all the best colors. Everything from white to dark red, with plenty of striped and spotted and variegated tints in between. A really first-class mixture, with good colors, big flowers and a long season of blooming. Then I will put in 5 each of the two best named sorts, America and Crackerjack. You have doubtless seen them and admired them, but they have always been high priced till now and you had to admire them at a distance.

5 *America*, the great "peach pink" colored one, big and fine, used to sell at 50c each.

5 *Crackerjack*. Velvety dark red with yellow throat, irregularly marked with amaranth red. Free blooming.

50 *Mixed Hybrid Seedlings*, all colors, all good.

60 *Bulbs in all*, all blooming size, young bulbs, two to four inches in circumference, well packed in a box, with directions for growing; guaranteed to reach you safely and to bloom with ordinary care and soil. Sent postpaid for only \$1.10 for the box of 60 bulbs.

## Brilliant Flowered Geraniums

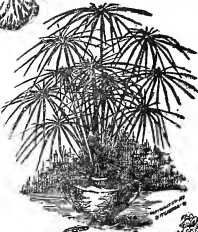
**FIREBALL**—Darkest and richest Geranium grown. Dark, deep, rich velvety maroon. 25c each.  
**JEAN VIAUD**—Bright rose-pink, with white blotch in the center. Dwarf, and free blooming. 20c each.  
**BUCHNER**—A very free flowering type, with pure white bloom. 20c ea.  
**MME. LANDRY**—Brilliant shade of apricot, shading to copper with white eye. Constantly in bloom. 20c each.  
**AMERICAN BEAUTY**—A dwarf variety with blooms of rich velvety violet purple. 20c each.  
**BERTHA DE PRESSLY**—Exquisite shade of silver-rose pink, shading to white in center. Very large and double. 20c each.  
**SPECIAL OFFER**—Any 3 of above Geraniums, 57c; the six for \$1.10.



Strawberry Geranium

### Ivy-Leaved Geraniums

Trailing Geraniums with leaves resembling those of the Ivy. Flowers extra large. Colors, red, white, pink. 25c each, 1 each of the three colors, 60c.



Umbrella Plant

### Most Choice Aquatic Plants

**UMBRELLA PLANT**—A large specimen as handsome as a Palm. Throws up stems about two feet high, surmounted with a whorl of leaves, diverging horizontally. Grows luxuriantly in water, and is therefore indispensable for aquariums or fountains, etc. 20c each; 3 for 55c.

**WATER HYACINTH**—Flowers resemble a Hyacinth bloom in form, color rose. Grows in water. 28c each.



Roosevelt Fern

### Sweet Scented Geraniums

**PRICE**—25c ea.; 3 for 72c; 12 for \$2.40.  
**BALM**—Strong fragrance; lilac colored flowers. Very fine.  
**LADY MARY**—A nutmeg-scented Geranium, pink flowers.  
**CUT-LEAF ROSE**—Very fragrant foliage, often used in making perfumes, etc. Odd shaped leaves. Pink blooms.

### Strawberry Geranium

(*Saxifraga Sarmatosa*)—A gem of many colors. Exceedingly rare and beautiful. Leaves striped freely with silver bands—blooms white. Adapted for hanging baskets, vases, etc. 22c each; 3 for 63c.

### Everblooming Begonia

(*Luminosa*)—Foliage rich, glossy green, shaded deep bronze; flowers bright cherry, changing to coral-red. 28c each.

### Fragrant Oleanders

The dark rich green foliage and beautiful blooms makes it more handsome than a Palm for pot, tub, or box culture, for house or yard. Can be wintered in cellar. Varieties: Pink, White, Dark Red and Yellow. 25c each.

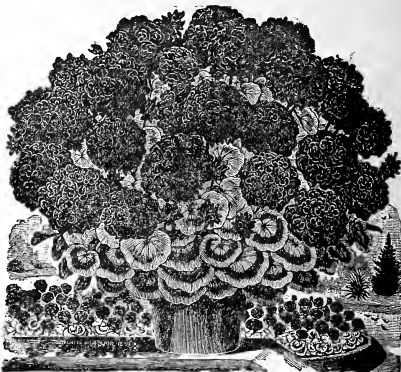


Pink Oleander

### Easily Grown Ferns

**PRICE**—25c each; larger size, 48c; extra large size, 75c and \$1.50.

**COMPACT A**—The es-trich plume fern. Fronds often over 8 inches wide.  
**BOSTON**—Long drooping fronds. A fern that looks well anywhere.  
**ROOSEVELT**—Dense massive fronds; erect in growth. Exceedingly graceful in appearance.  
**FEATHER FERN** (*Asparagus Sprengeri*)—The foliage is composed of dense, glossy green, graceful drooping branches. Can be grown as a vase, pot, or tub plant. Sprays four to five feet long. 24c each; larger plants, 50c and 75c.  
**LACE FERN** *Asparagus Plumosus*—Fronds are bright green, gracefully arched, and as finely woven as the finest silken mesh. Their lasting quality when cut, is remarkable, retaining their freshness for weeks. 24c each; 3 for 68c; larger plants, 60c each.



Wonderful Double Geranium "Fireball"



Everblooming Begonia

### Fancy Plants for Constant Bloom

#### EVERLASTING BLOOMER.

(*Impatiens Sultanii*)—One of the most beautiful and free blooming bedding or house plants in cultivation. 22c each; 3 for 55c.

**LITTLE GEM FEVERFEW**—Of great value for summer, fall or winter. Flowers large, and pure white. 24c each; 3 for 63c.

**ST. BERNARD'S LILY**, (*Anthericum*)—Recurved graceful foliage which makes a handsome pot plant, also useful for vases. Leaves are dark green, beautifully marked with broad stripes and bands of a creamy-white color; bears large spikes of white flowers. 28c each.



**WANDERING JEW**—Foliage variegated purple and scarlet; fast grower. 20c each; 3 for 50c.

**COLEUS TRAILING QUEEN**—Excellent variety for hanging baskets, vases, etc., on account of its trailing habit. Leaves are fiery crimson surrounded with deep maroon. Edges are bright olive green. 20c each.

**TRAILING VELVET PLANT**—Very popular on account of its brilliant and exquisite coloring. Surpasses the finest Coleus. 19c each; 3 for 54c.

Asparagus Sprengeri



Beautiful Wandering Jew, 20c.

## Monthly Roses for Every Yard

One-year plants, 28c; 3 for 75c; 2-year plants, 70c; 3 for \$2.00  
**COLUMBIA**—A perfect peach-blow pink which deepens as it opens. Long stiff stems and perfect foliage. Blooms very large and full, of perfect form.  
**GOLDEN OPHELIA**—Golden yellow, paling slightly as it opens. Flowers are of large proportions. Very fragrant.

**ROBIN HOOD**—A very attractive Rose. Grand grower and very vigorous. Flowers are freely produced on long, stiff stems.

**RED LETTER DAY**—Darkest crimson in color. A striking Rose in any garden collection.

**KAISERIN**—A royal Rose surpassing any other White Rose. Continuous bloomer. Color, pearl white. Sweetly perfumed.

**OPHELIA**—Salmon flesh in color, shaded with rose. Large flowers, long stems, and fine for cutting.

**SPECIAL OFFER**—One each of the six "Monthly Roses for Every Yard" 1-yr., \$1.40; 2-yr., \$3.25.

## Hardy June Blooming Roses

One-year plants, 30c each; 3 for 72c; 2-year plants, 75c; 3 for \$2.14. These Hardy June Roses in large 3-year size, \$1.25 each.

**WHITE AMERICAN BEAUTY**—The best snow-white Rose we have. Splendid buds and immense flowers.

**PAUL NEYRON**. The largest of all. A beautiful deep rose pink color. Very distinct.  
**PRINCE CAMILLE ROHAN**—Dark velvety crimson, almost black. The darkest red Rose to be had.

**I. B. CLARKE**—Blooms very large; color intense scarlet. It is shaded crimson-maroon.

## Hardy Climbing Roses

One year plants, 28c each; 3 for 72c; 2-yr., 60c each; 3 for \$1.70. These Hardy Climbing Roses in large 3-yr. size, \$1.00 each.

**CLIMBING AMERICAN BEAUTY**. Same as American Beauty with climbing habit. Dark crimson.

**BLUE RAMBLER**—Flowers metallic blue, borne in large clusters. A perpetual source of wonder.

**DOROTHY PERKINS**—Beautiful shell-pink rambler. Sweetly scented. Flowers borne in large clusters.

**PAUL'S SCARLET CLIMBER**—New everblooming climber. Flowers large double scarlet. Very hardy.

New Everblooming "Monthly" Rose, Columbia.



Beefsteak Begonia

**DOROTHY PERKINS**—Beautiful shell-pink rambler. Sweetly scented. Flowers borne in large clusters.  
**PAUL'S SCARLET CLIMBER**—New everblooming climber. Flowers large double scarlet. Very hardy.

## THESE PLANTS MAILED DIRECT FROM GREENHOUSE

The plants on these two pages are mailed to you direct from the greenhouses of our plant grower in another state. They come to you in green growing condition, postpaid from there. They of course are mailed separately from other seeds or plants you may order from us.



Baby Primrose

**BABY PRIMROSE**—(Primula Malacoides)—Flowers pretty pale mauve, produced tier upon tier to a height of about two feet. Price, 28c each.

**SNAKE PLANT**—The ideal house plant, its thick leathery sword-like leaves standing the heat, dust and gas with impunity. Leaves are dark green in color striped with white. Nice plants, 30c each; large plants, 60c each.

**CIGAR PLANT**—Fine basket plant, scarlet flowers. 24c ea. 3, 65c.



Snake Plant



Peperomia

**TRAILING QUEEN**—Beautiful trailing Coleus for pot culture. Leaves cherry-red, bordered deep maroon. Price 25c ea., 3 for 63c; \$2.10 doz.

**FLOWERING AND FRUITING ORANGE**—A true Orange, bearing masses of waxy-white fragrant blossoms followed by bright colored, very sweet fruit. Grows as easily as a Fern or Geranium. 28c each; large plants 75c and \$1.25.

**AMERICAN WONDER LEMON**—Fruit often weighs over 3 pounds. Excellent for lemonade, pies, etc. Blossoms very sweet-scented. Fruits at all stages of growth. 30c each; large plants, 75c and \$1.25 each.

**HELIOTROPE MIDNIGHT**—New Giant flowered. A wonderful colored Heliotrope. Size of foliage and flowers are doubled and plant is compact and husky. Fragrant purple blossoms. 24c ea.; 3 for 68c.

## Giant Flowering Hibiscus

Price, 25c each; 3 for 72c; 12 for \$2.40. **SPECIAL OFFER**—One each of the five varieties, \$1.00.

**COLERII**—A wonderful flowering variety. Flowers buff-yellow, with crimson-scarlet base.

**GRANDIFLORA**—Rich scarlet-crimson flowers; wonderful in size.

**SUB VIOLACEOUS**—Flowers of enormous size, tinted violet. Very fine and free flowering.

**HIBISCUS PEACH-BLOW**—Flowers are double; of charming rich clear pink color; an entirely new and more beautiful shade.

**ROYAL PURPLE PLANT** (Strobilanthus Dyeranus)—Of brilliant and exquisite coloring. It surpasses the finest Coleus, Begonia. 28c each.

**EVERBLOOMING CALLA**. 24c ea.; large plants, 50c each.



Everblooming Calla



Brazilian plume plant

**BRAZILIAN PLUME PLANT**—Strong rapid grower. Through sturdy shoots, each of which is tipped with beautiful pink plume like flowers. Reddish green foliage. 25c each.

**CROWN OF THORNS** (Euphorbia Splendens). Foliage is bright green and the flowers are a beautiful coral pink.

The stems are covered with stout sharp spines nearly an inch long. Price, 28c each.

**TRAILING QUEEN**—Beautiful trailing Coleus for pot culture. Leaves cherry-red, bordered deep maroon. Price 25c ea., 3 for 63c; \$2.10 doz.

**FLOWERING AND FRUITING ORANGE**—A true Orange, bearing masses of waxy-white fragrant blossoms followed by bright colored, very sweet fruit. Grows as easily as a Fern or Geranium. 28c each; large plants 75c and \$1.25.

**AMERICAN WONDER LEMON**—Fruit often weighs over 3 pounds. Excellent for lemonade, pies, etc. Blossoms very sweet-scented. Fruits at all stages of growth. 30c each; large plants, 75c and \$1.25 each.

**HELIOTROPE MIDNIGHT**—New Giant flowered. A wonderful colored Heliotrope. Size of foliage and flowers are doubled and plant is compact and husky. Fragrant purple blossoms. 24c ea.; 3 for 68c.



Hibiscus

## Some of the Things We Sell

It would require a catalog twice the size of our new one for this year, were we to list and describe all of the various things we offer in Seed Sense during the year. Seasonable things they are, which are very nicely offered to you from time to time in our monthly magazine, as the season for their use arrives.

However, that you may know right now that we do handle quite an assortment of other things pertaining to the house and garden and farm, here is a list, briefly described. A letter from you will bring back a more complete description of any or all the things given here in which you may find interest; and price.

**Smoke Houses**—cure your own meat. 3 hog and 5 hog sizes.

**Plant Bands and Pots**—paper—for transplanting vegetable and flower plants.

**Stim-U-Plant Tablets**—fertilizer in compact form for house and garden Bee Supplies.

**Poultry Supplies.**

**Poultry Breeding Stock** most all breeds.

**Baby Chicks** shipped day old. Go anywhere.

**Pop Corn**—for popping.

**House Plants**—all kinds.

**Sweet Potato Plants**—also tomato, cabbage, pepper, etc.

**Plants**—Pansy, aster, salvia, verbena, geranium.

**Sale Tags**—ear tags and markers.

**Hubam Honey.**

**Pecans**—both paper shell and common.

**Gopher Gun**—best way to kill all rodents.

**Iceless Coolers**—best and cheapest home refrigeration.

**Peony Blooms.**

**Berry Boxes and Crates.**

**Bulbs**—Tulips, hyacinths, narcissus, and all other fall bulbs.

**Dust Guns**—several good makes, with *All-in-One* Dust for bugs and blight, too.

**Small Sprayers**—for home gardens.

**Pull Easy Hand Plows.**

**Dandelion Rakes.**

**Seeders**—small hand like Cyclone, Horn, etc.

**Folding Auto Table.**

**Books**—for farm and garden.

**Plant Jardinieres**—various sizes.

**Canaries and Love Birds**—cages, bird seed.

**Gold Fish**—bowls, fish food.

**Fern Dishes**—bulb bowls.

**Sulphur**—for field sowing or for dusting.

**Poultry Markers**—of celluloid.

**Scratch Feed**—oyster shell, etc.

**Powdered Buttermilk**—for chicks.

**Cold Pack Canners.**

**Wall Vases or Pockets.**

**Insecticides.**

## Cure Your Own Meat and Save Money

### Empire Smoke House!

It is the only equipment needed aside from what is found on every farm. This Smoke House makes home butchering and curing easy, and meat smoked in the Empire has an unusually sweet flavor, owing to the scientific method of cooling the smoke before it enters the meat chamber. Made in 3-Hog and 5-Hog sizes. Absolutely safe and fire-proof.

#### An Ideal Storage House

As a storage chamber alone the Empire Portable Smoke House is worth more than its cost. It is sanitary, and being made entirely of metal it will last indefinitely. Can be used either in or out of doors. Absolutely safe and fire proof.

PRICE—3 hog size -----\$25.00

5 hog size -----\$30.00

These weigh, crated for shipment, 115 and 135 lbs., and are shipped by freight from Eastern Iowa. Send orders to Henry Field Seed Company, Shenandoah, Iowa.

## Here is What One of Our Customers Says About It

"Gentlemen: I received the 3 hog size smoke house you shipped to me February 23. I received it, set it up, put the meat into it, and had it going in 4 1/4 hours. I have my meat smoked, and want to say that your smoke house is the most complete and practical apparatus for smoking meat I have ever experienced. There are a lot of good things that can be said about it, and a few objections. Respectfully," H. J. Wetsel.

## Plant Radishes Often

Plant radishes once every two weeks anyway, if you want them crisp and tender. It takes only a short time to mature them and you can plant them between tomato or melon rows or most anywhere so they are on rich ground. Don't plant them too thick. A radish every three inches is enough. Thin out if they come up too thick. The *Leicle*, *Crimson Giant*, *Early Round Dark Red*, *Scarlet Globe* or *Long Scarlet* are good. Take your choice.

## Ask for New Wave Length

When our new radio broadcasting station gets to running we will be on a different wave length from the one where you have been getting us heretofore when we were broadcasting from the Omaha station. It will probably be clear at the other end of the dial. Write and ask for exact information, as we do not know yet exactly what space in the air will be allotted to us, but will know in a week or two.

## Champion High Yield Corn

In the state wide corn yield contests in Iowa and Illinois, the outstanding varieties or types seem to be the *Krug* corn in Illinois, and the *Clyde Black* corn in Iowa. Over a period of several years they seem to have consistently outyielded other varieties of yellow corn, and at the same time ripened in good season.

Last spring we secured from original sources enough seed of each of these two to plant a 40 acre field and grew them on our own farms, well isolated from each other and from other corn by pasture and meadow land.

We sowed all the best of it for seed and can offer you good seed of our own growing, mostly hung seed, at \$6.00 per bushel, net f. o. b. here. This is a flat price for much or little, as long as it lasts. Germination to be good and satisfactory to you on arrival or no trade.

The two varieties are very similar, and are both of the Reid type. The *Clyde Black* corn is possibly a little the bigger and rougher of the two, the *Krug* corn being more on the smooth order, which most authorities now say is the best type to grow. Both are deep yellow color, medium size, medium early, rugged thrifty growth, and apparently very free from disease of any kind. They both made very heavy yield for us on ordinary land and ripened easily.

We strongly advise that you try out one or both of these kinds. Price, 1 bu., \$6.00. Seed for 1 acre (8 lb.), \$1.25. Express, freight or parcel post extra.

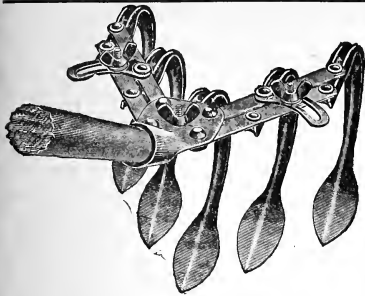
## Grow Your Groceries

### The Leafy Vegetables

The "Vegetable Growers Association of America", the largest organization of the kind in our country are putting on a big advertising campaign, using as a slogan "Eat Vegetables for Vitamines." The most that we know about vitamines is through feeding experiments. They are found in fruits, vegetables and grains, but mostly in the leafy vegetables. Yellow corn contains vitamines, but white corn does not. They are found most abundantly in most fruits and such vegetables as spinach, cabbage and lettuce.

Every one, especially growing children, should have plenty of fresh vegetables, fruits, milk, butter and eggs and cereals. Without these we are living at a disadvantage and will not make the physical or mental development that we otherwise would.

Among the Leafy Vegetables containing vitamines are cabbage, cauliflower, swiss chard, spinach, endive, lettuce, collards, chinese cabbage or celery cabbage, kale, mustard, celery and parsley. Plant a part or all of these and plant often so that you will have a continuous supply all summer.



## Pull Easy Hand Cultivator, \$1.25

This is a cultivator equipped simply with a hoe handle instead of frame and wheel. Quickly adjustable for any width up to 11 inches. Handles easily and prepares the soil in great shape. Price \$1.25. Allow postage for 3 pounds. (7c for zone 2, 10c for zone 3, 15c for zone 4).

## Extra Early Varieties

So many people want the earliest varieties. About as often as not they want to beat their neighbors with the first picking of the season. Sometimes it is the dry farmer of the west who has learned that it is the early variety that is most likely to mature before it dries up and blows away. Again, it may be the short seasons where they must have a variety that will mature before the early frosts.

It occurred to me that a list of our earliest varieties might come in handy. *Bush Beans*—Field's First Early, New stringless Yellow Pod, Early Wonder Wax. *Pole Lima*—Extra Early Lima. *Bush Lima*—Henderson's Bush Lima. *Pole Bean*—Improved Missouri Wonder.

*Table Beet*—Crosby's Egyptian No. 0116, Detroit Dark Red No. 0117, Early Wonder. *Corrot*—Chantenary ad Oxeheart. *Cabbage*—Norseman and Extra Early Jersey Wakefield.

*Cucumber*—Early Cluster, Chicago Pickle. *Lettuce*—Black Seeded Simpson, May King *Watermelon*—Princess, Harris Early and Ice Cream.

*Muskmelon*—Knights Early, and for a large melon of very high quality and still early, the Greeley Wonder.

*Onion*—Mountain Danvers, Australian Brown and Mountain Red Globe.

*Peanuts*—Early Northern.

*Sweet Pepper*—Neapolitan.

*Parsnip*—Hollow Crown and Improved

Half Long.

*Squash*—Summer Bush Crookneck, Fordhook Bush, Table Queen, and all the summer squashes.

*Sweet Corn*—White Mexican, Early Mayflower and Golden Bantam.

*Tomato*—Field's Early June, Redhead and Earliana.

*Peas*—Early Alaska, Improved Extra Early, Filbasket and Little Marvel.

*Radish*—Practically all varieties will mature in a very short season and can be grown anywhere.

*Turnip*—Extra Early Milan, Early White Milan, Purple Top Globe, and Purple Top Strap Leaf.

*Odds and Ends*—Endive, Kohl Rabi, Leek, Parsley, Kale Mustard, Spinach, Swiss Chard.

### Grow Your Groceries

## Extra Early Cabbage

Would you be interested in an extra early pointed cabbage? We have what is, to the best of my knowledge, the earliest cabbage known. It is a pointed head like Jersey Wakefield, in fact, it is called *Extra Early Jersey Wakefield*.

It is not as sure a header as Early Jersey Wakefield or Norseman, and is small, but there is no question about it being early. And you who garden for the market know that the earliest cabbage on the market brings the fancy prices.

Then we have a very large cabbage, the *Dala*. Did you try it last year? We carried it for the first time last season. There are several varieties of large cabbage but most of them are rather loose head and of no particular value except size. This is a good, solid head, maturing medium early and keeping good. Better try both of these cabbages.

*Extra Early Jersey Wakefield*, per packet 15c; ounce 60c.

*Dala*, per packet 20c; ounce 75c.

## Market Gardening

The Market Gardening business is a good paying business. There is a good living in it with money coming in throughout the season and through the winter, if you want to plan it that way.

There is considerable business even in a small town. And you would be surprised at the trade you can get right out in the country among the farmers. When we were in the market gardening business, years ago, we always made trips out through the country, late in the season, with onions, sweet potatoes and cabbage.

If you live on a main traveled road, you will be able to sell a lot of stuff right at home, especially when melon time comes. People will drive miles in their car to get good melons, and while they are there you can sell them some good sweet corn, tomatoes, cabbage, or other vegetables, as well as fruit.

Vegetable plants is another good crop to grow if you live on a main traveled road, especially near town. However, if you do not, don't let it hinder you from growing them, as they can be grown in shallow boxes or "flats", where they will keep fresh indefinitely. When empty they should be returned.

Do not undertake too much if you are new at the business. Plant some standard crop that you feel reasonably sure of realizing something on, and grow other crops more or less experimentally. It is very hard for you to state just how much to put in. There are so many things dependent on the answer we might give. Use your own best judgment.

Among items most easily grown and profitable most anywhere are such as cabbage, onions, tomatoes, sweet corn, muskmelons, watermelons, late turnips, squash and field beans. Of course, there are many other important and profitable lines, but these crops are easily grown and disposed of. They all require rich soil, as do practically all vegetable crops. New clover or alfalfa sod would be ideal for any of them.

Personally, we like the plan of selling direct to the consumer. You get everything there is in it then. However, if

you are short of help, it might be better to sell to the grocery. In this case, you might lose some of your stuff at times, owing to an inactive demand which you might otherwise stimulate if you were doing the selling yourself. Nevertheless, wholesaling saves time.

Would suggest you subscribe for the *Market Growers' Journal*, Louisville, Ky. Send and get a sample copy anyway. This is the best publication I know of for the commercial grower.

## Head Lettuce From Plants

### New York or Wonderful

I never have seen any vegetable increase in popularity as has head lettuce during the last three or four years. Thousands of carloads are now grown in the west and shipped east to the consuming centers. You can buy good head lettuce at most any grocery store in the small towns now, but you will pay as much for it as for a good head of cabbage.

It is a cool weather plant and most of our growing season here in the corn belt is too hot for it. There is time however, to produce a crop earlier in the season if you will either plant the seed in the open very early or late in the fall, or better yet, plant early in the house or hot bed same as you do cabbage and transplant out doors later. In fact, give it just about the same care all the way through you do cabbage, both in the seed bed and after it has been set in the open.

Set the plants twelve to fifteen inches apart each way on rich soil and give good cultivation. The right variety is another important point. Practically all the shipped in head lettuce sold on our markets here in the middle west is the *New York or Wonderful*. Sometimes your groceryman will call it Iceberg. This is a mistake, but there is an *Iceberg*, and we list it. It is a good head variety. There is an endless list of head varieties, but my choice is the two above.

*New York or Wonderful*, per packet 15c; ounce 25c; ¼ lb 75c.

*Iceberg*, per packet 10c; ounce 20c; ¼ lb 50c.

## High Quality Sweet Corn

The quality of Sweet Corn deteriorates faster, after being gathered, than any other vegetable I know of. It is said that the sugar content will begin to decrease, through chemical action, within thirty minutes after being picked.

Any way, I know that there is a wonderful difference between the quality of freshly picked sweet corn and corn that has laid around a day or so. So if you want really first class corn, better grow it yourself and pick it just before you use it.

While the extreme early varieties are really not as good as the intermediate or late sorts they always taste better for we are always hungry for corn when the first mess is ready to pick.

And another thing, corn gets old and hard, losing its good quality very quickly, so better have another planting coming on as you need it, or, better yet, plant three varieties at one time—an early, an intermediate, and a late. There are several good combinations such as follows, or you can make one up to suit yourself.

*Peep O'Day*, early; *Black Mexican*, intermediate; *Ziz Zag Evergreen*, late.

*White Mexican*, early; *Early Champion*, intermediate; *Stowell's Evergreen*, late.

*Early Mayflower*, early; *Early Evergreen*, intermediate; *Country Gentleman*, late.

## A Wilt Resistant Tomato

The *Norton tomato*, a wilt resistant variety, was originated by the United States Department of Agriculture and is like the New Stone in appearance, season of ripening, and other characteristics, but will resist tomato wilt, a disease that is spreading over the country. This tomato is being boomed under several other names, but *Norton* is the correct name. The early stage of the wilt disease is shown by the wilting of the plant and an upward and an inward rolling of the leaves. Later the leaves turn yellow and the plant slowly dies. This is a different disease from tomato blight, which can be controlled to some extent by spraying with Bordeaux.

You should rotate your crops and always burn the dead vines and trash. Spraying or dusting for wilt will do no good. If you have been troubled with this disease try the *Norton*. Price, 10c per packet, or 50c an ounce.

## Measles at Our House

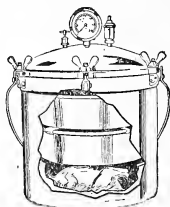
No, there is no picture of John Henry and Letty this month, but, confidentially, they were in no shape to have their pictures taken.

They have been having the measles, and while they were not very sick any of the time, they were sure a sight to behold for a week or two, and just when I had aimed to have a picture taken of them, too.

I have always claimed our kids never

got sick, but they do have measles and such and have to be kept in for a while. And you can imagine they kept Mrs. Field pretty busy.

They're all right now. Watch for them next month.



## National Pressure Cookers

10 qt. size \$16.00, complete with all extras.

I consider the steam pressure cookers and canners of the National type the nearest to the ideal cooking utensil for the home that has yet been invented, and the only reason we have never handled them is because they have always seemed to me to be too high in price. Also they were at first made in steel which made them too heavy.

They are now made in aluminum, however, which does away with the question of weight, and they have been much improved in every way.

And, best of all, I have gotten a deal on them that will allow me to sell them to you at a right price.

The owner of the National factory was out here to see me and we had a long discussion on price, and finally he allowed me to test out my idea that farm women would buy them if the price was lowered. And now I want you to prove that I am right.

All extra expense in selling is cut out. We will take your order at the special price, and the cookers will be sent by parcel post direct from the factory to you. It will be guaranteed by both me and the factory to be absolutely satisfactory or no trade. Your money's worth or your money back. You can't lose.

You know what they are. They will cook quicker, cheaper, and better than any other way on earth. Ask your county club leader about the steam pressure cookers in general and the National in particular.

They are made in various sizes, but I advise these three:

10 quart capacity	-----	\$16.00
12 quart capacity	-----	20.00
17 quart capacity	-----	25.00

All prices include delivery by parcel post or prepaid express anywhere in the country. They are sold subject to your approval. Send your order at once and we will make prompt shipment. Full directions included of course. Ask for booklet if you want to know more about them, but better just order one and let it talk for itself.

## Seed Sweet Potatoes

Yes, we will have seed sweet potatoes when the time comes, which will be along in April. It is impossible to tell the exact price now as it depends some on how they keep through the winter. It will probably be about the same as last year, however.

Watch March and April Seed Sense for prices, or write in at that time for special quotations. We will treat you right on price and quality.

### Grow Your Groceries

## Iowa Grown Persimmons

A friend of mine, P. F. Edris, has a persimmon tree that seems to be absolutely hardy here in Iowa, although as a rule persimmons do not do well here. Also it is very large, the largest and best flavored native persimmon I have ever seen. The original tree is over 60 years old and is still standing at Oskaloosa where Mr. Edris formerly lived. He lives in western Iowa now and took some of the seed there with him and has them growing nicely in the new home.

It seems to come true from seed so he has grown several hundred seedlings and I asked him to let me offer them to Seed Sense readers for trial. These are 1 year seedlings, maybe a tree high, maybe more. Some I think are as much as 2 feet. He says they are easy to transplant and get to live if handled with reasonable care. They should of course be moved early.

I advise planting a few of these for trial, as I believe they are really worth while. He says they do better planted at least three trees in a group, so as to fertilize each other, so I am offering the trees in groups of 3 as follows:

Price, 3 1 yr. trees for \$1.40 postpaid. A very few 2 yr. at 3 for \$2.25.

### Grow Your Groceries

## Jerusalem Artichokes

Yes, we have them. Not many, but some. You know what they are I guess. They are tubers that look like potatoes, but grow on a plant that looks like a wild sunflower. They are good to eat, good hog feed, and make a big yield. I read in the Des Moines Register the other day that some man here in Iowa got a yield of 1100 bu. per acre. I doubt that story a little, but anyway, they yield a lot. They live over in the ground and come up next spring. You can dig them either fall or spring. Plant and tend just like Irish potatoes. Cut in pieces for planting. I don't advise planting a big field of them, but they are interesting to try on a small scale, so we are offering them in small lots only. Price, 3 lbs. for 65c, postpaid.

An All the Year Fertilizer for Garden and House Plants. Stim-U-plan-T. We sell it.

# Condensed Postpaid Price List of Garden Seeds For 1924

This is a condensed list of all the garden seeds that are described and priced in the 1924 catalog. I have written short descriptions here of each item and put down the correct postpaid price.

Everything is listed here, and the prices are the same as in the body of the catalog. You can make up your order from this even better than from the complete catalog, as it is handier to get at.

**Wholesale Prices.** For prices on large amounts of garden seeds to come by freight or express at your expense, ask for Market Gardener's list.

I Guarantee Safe Arrival of all money sent me by check, draft, money order, or registered letter, and I guar-

antee safe arrival of the goods to you. If for any reason goods fail to arrive, I will refill.

**These Prices are Prepaid.** Unless otherwise specified, these prices include prepayment of all postage, delivered anywhere in the United States.

**How to Send Money.** You can send the money any way you please, only it is not safe to send loose silver, and loose stamps are a nuisance. *Silver is almost sure to break out of the envelope unless extra well wrapped.*

Send Money Order, Draft, or Check, if you can. Next best is paper money in a registered letter. Failing there, send silver in a card wrapper, and use as a last resort, stamps. Canadian stamps we can't use.

FIELD BEANS				POLE BEANS				CARROT SEED (Cont.)								
	Pkt.	¼ lb	lb	3 lb		Pkt.	¼ lb	lb	3 lb		Pkt.	Oz.	¼ lb	lb		
<i>Lady Washington.</i> An improved small white navy	5	15	45	1.20	<i>Cutshort or Cornhill.</i> Short straight pod, thrifty vine, late	5	10	35	1.00	<i>White Belgian.</i> Pointed; for stock	5	10	25	.75		
<i>White Wonder.</i> The small white navy	5	10	35	.90	<i>Dutch Case Knife.</i> Large-podded, white seeded, prolific	5	10	35	1.00	<i>White Vosges.</i> Late stock carrot	5	10	25	.75		
<i>Teputy.</i> Dry weather navy beans	5	10	35	.90	<i>Honeydew or Cranberry.</i> Medium long pod; late	5	10	35	1.00	<i>Yellow Belgian.</i> Like White Belgian	5	10	25	.75		
<i>Great Northern.</i> White bean for winter use	5	15	45	1.20	<i>Improved Missouri Wonder.</i> Early, heavy yielder, splendid quality	5	15	50	1.25	<b>CABBAGE SEED</b>						
<i>Mexican Pinto.</i> Speckled bean for dry countries	5	10	35	.90	<i>Kentucky Wonder.</i> Long pod, early	5	15	45	1.25	<i>Early and Second Early.</i> Pkt. Oz. ¼ lb						
<b>BEANS</b>					<i>White Creaseback.</i> Small pod, late	5	10	35	.90	<i>All Head Early.</i> Large, flat heads, full in center, second early	10	40	1.25			
<i>Green Podded Snap Beans—Black Valentine.</i> Very early, resembles Round Pod Valentine	5	10	35	1.00	<i>Lazy Wife.</i> Late except in south	5	10	35	.90	<i>All Seasons.</i> Mid-summer or late	5	25				
<i>Stringless Green Pod.</i> Very prolific and tender, round pods	5	15	45	1.25	<i>White Seeded Kentucky Wonder.</i> Medium large pod, fair yielder	5	10	35	1.00	<i>Charleston or Large Wakefield.</i> Follows Jersey Wakefield	10	40				
<i>Early Six Weeks.</i> Early flat pod	5	10	35	1.00	<i>Wax Podded Pole Beans—Golden Cluster Wax.</i> Medium early	5	15	50	1.35	<i>Copenhagen Market.</i> Early, medium, large round heads	10	40				
<i>Field's First Early.</i> Very early, large, flat pod, high quality	5	15	50	1.25	<i>Kentucky Wonder Wax.</i> Pods long and broad. Quality fine, early	5	15	50	1.35	<i>Danish Summer Ballhead.</i> Very hard, round heads	10	40				
<i>Giant Stringless Green Pod.</i> Round pod	5	10	35	1.00	<b>POLE LIMA BEANS</b>						<i>Early Flat Dutch.</i> Mid-season, flat	5	25			
<i>Refuges or 1000 to 1.</i> Late heavy yielding, round pod	5	10	35	.90	<i>Extra Early Lima.</i> Small yields enormously, earliest pole lima	5	15	45	1.25	<i>Early Jersey Wakefield.</i> Extreme early, pointed heads	10	40	1.25			
<i>Round Pod Valentine.</i> Very early and prolific	5	15	45	1.25	<i>King Lima.</i> Large, high quality	5	10	35	1.00	<i>Extra Early Jersey Wakefield.</i> still earlier than above but some smaller	15	60				
<i>Round Pod Kidney Wax.</i> Very highest quality	10	15	50	1.25	<b>TABLE BEETS</b>						<i>Glory of Enkhuizen.</i> Medium early, blue heads	5	25			
<i>Stringless Black Wax.</i> Small round pod, prolific, very early	5	15	45	1.25	<i>Blood Turnip</i>	10	15	40	1.15	<i>Early Winningstadt.</i> Medium early, pointed heads	5	25				
<i>Davis' White Kidney Wax.</i> Large, flat pod, good shelling or snap	5	10	35	1.00	<i>Crimson Globe</i>	10	15	40	1.15	<i>Henderson's Early Summer.</i> Flat head, medium size	5	25				
<i>Golden Wax.</i> Medium size, flat pod, of good quality	5	15	45	1.25	<i>Crosby's Egyptian</i>	10	15	40	1.15	<i>Norseman.</i> Early round heads, best early cabbage grown	15	60	1.75			
<i>New Stringless Yellow Pod.</i> Medium size, round tender pods	Crop failure				<i>Detroit Dark Red</i>	10	15	40	1.15	<b>LATE CABBAGE SEED</b>						
<i>Wardwell's Kidney Wax.</i> Early, large, flat pod, does not rust	5	15	45	1.25	<i>Eclipse (Special Strain)</i>	10	15	40	1.15	<i>Cornbelt</i>	Pkt.	Oz.	¼ lb			
<i>Pencil Pod Black Wax.</i> Round pod, like Black Wax	5	10	35	1.00	<i>Extra Early Flat Egyptian</i>	5	15	35	1.00	<i>Holland or Danish Ballhead</i>	10	40	1.25			
<i>Sure Crop Wax.</i> Long, slender pod, very tender and stringless	10	15	50	1.25	<i>Long Blood.</i> Medium size smooth, very early; dark red, small tops	5	15	35	1.00	<i>Mammoth Red Rock</i>	5	25				
<i>Early Wonder Wax.</i> Very early; yields heavy	10	35	95		<b>STOCK BEETS</b>						<i>Large American Drumhead</i>	5	25			
<i>Bush Varieties for Shell Beans—Wilson's Bush Lima.</i> An early, large seeded limo	20	60			<i>Kentucky Wonder.</i> Oz. ¼ lb	10	30			<i>Premium Flat Dutch</i>	10	40				
<i>Burpee's Bush Lima.</i> Good bean, but requires long season	5	15	45	1.25	<i>Golden Tanhard Mangel.</i> Medium size, easily harvested	5	20	60	1.50	<i>Savoy</i>	5	25				
<i>Dreer's Bush Lima.</i> Quality and yield good, bush low and spreading	5	10	35	1.00	<i>Genuine Sugar Beet.</i> Formerly Klein's Wanzleben	5	15	45	1.25	<i>Succession</i>	5	25				
<i>Dwarf Horticultural Shell bean</i>	5	10	35	1.00	<i>Mammoth Long Red Mangel.</i> Yields enormously. Large and long	10	25	90	2.00	<i>Surehead</i>	10	40	1.25			
<i>Fordhook Bush Lima.</i> Best large podded bush lima	5	15	45	1.25	<i>Giant Studstrup.</i> Very high feeding value; yields heavy	10	25	90	2.00	<b>CELERY SEED</b>						
<i>Henderson's Bush Lima.</i> Very prolific, small bean	5	15	45	1.25	<b>CARROT SEED</b>						<i>American Crown—</i>	Pkt.	Oz.	¼ lb		
<i>Red Kidney.</i> Used as shell bean	5	10	35	.90	<i>Chantenay.</i> Early and tender, medium size	10	15	45	1.25	<i>Giant Pascal.</i> Large, late variety	5	25	.85			
<i>White Kidney.</i> Similar to above but has white seeds	5	10	35	.90	<i>Danvers Half Long.</i> Yields well, good quality	10	15	45	1.25	<i>Golden Self Bleaching.</i> A creamy white, easy to reach	10	50	1.75			
					<i>Long Orange.</i> Late, very tender	5	15	45	1.25	<i>White Plume.</i> Tender, delicate flavor	10	40	1.25			
					<i>Osheart.</i> Short, stump root early	10	15	45	1.25	<b>CAULIFLOWER</b>						
										<i>Dry Weather (Copenhagen)</i>	20	.75	2.50			
										<i>Earliest Dwarf Early</i>	15	.75	2.50			
										<i>Early Snowball</i>	20	.75	2.50			
										<b>CUCUMBERS</b>						
										<i>Chicago Pickle.</i> Short pickling sort	10	20	50	1.50		
										<i>Cool and Crisp.</i> Early strain of White Spine	5	15	40	1.25		
										<i>Davis Perfect.</i> Long green slicer	5	15	45	1.35		
										<i>Early Cluster.</i> Short, good slicer	10	20	50	1.50		
										<i>Early Russian.</i> Early and short, good pickle	5	15	40	1.25		
										<i>Emerald.</i> Large, late slicing, dark green	5	15	40	1.25		
										<i>Evergreen.</i> Med. size good all purpose variety	10	20	50	1.50		

CUCUMBERS (Cont.)	Pkt.	Oz.	¼ lb	lb
<i>Everbearing.</i> Short, Early	10	15	40	0
<i>Essian Superior.</i> Very large	10	15	40	1.25
<i>Goliath.</i> Very large, late variety	5	15	40	1.25
<i>Henderson's Perfected</i>				
<i>White Spine.</i> Medium early, prolific, fine slicer	10	20	50	1.50
<i>Long Green.</i> Large, long slicer	10	20	50	1.50
<i>White Pearl.</i> Medium size, good for slicing	5	15	40	1.25
<i>White Spine.</i> Medium long slicer, good cropper	15	50	150	1.50

## EGG PLANT

	Pkt.	Oz.
<i>Black Beauty.</i> Earliest large variety	10	40
<i>Rich, glossy</i>	10	40
<i>Early Long Purple.</i> Small and early	5	30
<i>New York Purple.</i> Good size, pear shape; very popular	10	40

## HEAD LETTUCE

	Pkt.	Oz.	¼ lb	lb
<i>Big Boston.</i> Large, butter head, good shipper	10	15	45	1.35
<i>Bronze Head.</i> High quality	10	15	45	1.35
<i>California Cream Butter.</i> Smooth leaf and small head, fine quality	10	15	45	1.35
<i>Hanson.</i> Cabbage head type; good summer variety	10	15	45	1.35
<i>Iceberg.</i> Crisp head variety; large	10	20	50	1.50
<i>May King.</i> Early, butter-head type	10	15	45	1.35
<i>New York or Wonderful.</i> Dark green, solid head	15	25	75	2.50
<i>White Heart Cos.</i> Elongated head, medium size	5	15	40	1.25
<i>Loose Leaf Lettuce</i>				
<i>Black Seeded Simpson.</i> Large early loose head	10	20	50	1.50
<i>Grand Rapids.</i> Good forcing bunching variety, very pretty	10	15	45	1.35
<i>Prizehead.</i> Reddish brown leaves, Quality bunching	10	20	50	1.50

## PEANUTS

	¼ lb	lb
<i>Early Northern</i>	15	45
<i>Jumbo</i>	15	45

## POPCORN

	Pkt.	¼ lb	lb
<i>Baby Golden.</i> Very small, yellow	10	15	45
<i>Little Giant.</i> Small, white	10	15	45
<i>Queen's Golden.</i> Large, yellow sort	5	10	30
<i>Monarch White Rice.</i> Sharp-pointed grains	5	10	30
<i>Japanese Hullless.</i> A short, chunky ear and a sharp pointed grain	5	15	45

## ONION SEED

	Pkt.	Oz.	¼ lb	lb
<i>Australian Brown</i>	5	15	50	1.65
<i>Barlette</i>	5	35	100	3.50
<i>Globe Red Wethersfield</i>	10	25	65	2.15
<i>Giant Prizetaker</i>	10	25	65	2.15
<i>Large Red Globe</i>	10	25	65	2.15
<i>Mountain Danvers</i>	10	35	100	3.50
<i>New Queen</i>	10	35	100	3.50
<i>Ohio Yellow Globe</i>	10	25	65	2.15
<i>Red Wethersfield</i>	10	25	65	2.15
<i>Silver King</i>	10	35	100	3.50
<i>Silverskin or White Portugal</i>	10	25	75	2.25
<i>Southport White Globe</i>	10	30	75	2.50
<i>Yellow Danvers Flat</i>	5	15	50	1.65
<i>Yellow Globe Danvers</i>	10	25	65	2.15
<i>Yellow Straws</i>	5	15	50	1.75
<i>Mountain Red Globe</i>	20	50		

## PEAS

	Pkt.	¼ lb	lb	3 lb
<i>Smooth Early</i>	15	45	1.20	
<i>Alaska.</i> Best extreme early	5	15	45	1.20
<i>Fillbush.</i> Long, fat pod, follows Alaska and Improved Extra Early	5	15	45	1.20
<i>Improved Extra Early.</i> Good yielder, well filled pods	5	15	45	1.20
<i>American Wonder.</i> Very dwarf, high quality, early	5	15	45	1.20

## PEAS (Cont.)

	Pkt.	¼ lb	lb	3 lb
<i>Gradius.</i> High quality, medium tall, large pods	5	10	35	1.00
<i>Laxtonian.</i> Very large, well filled pods, highest quality, fine dwarf	5	15	45	1.20
<i>Little Marvel.</i> High quality, good cropper, dwarf	5	15	50	1.20
<i>No. 5 Excelsior.</i> Similar to American Wonder	5	10	35	1.00
<i>Premium Gem.</i> (Little Gem)				
<i>Dwarf.</i> Med. size, prolific	5	10	35	1.00
<i>Thomas Baxton.</i> Like Excelsior	5	10	35	1.00
<i>Genius</i>				
<i>Advancer.</i> Dwarf, medium-sized pod	5	10	35	.90
<i>Bliss Everbearing.</i> Dwarf, strong grower, small crop	5	15	45	1.20
<i>Champion of England.</i> Very late, should be staked	5	10	35	.90
<i>Dwarf Champion.</i> Good quality, prolific, dwarf	5	15	50	1.35
<i>Dwarf King Sugar.</i> To be used like snap beans	5	15	45	1.20
<i>English Early.</i> Dwarf, vigorous grower, large pods, of high quality	5	15	50	1.35
<i>English Gem.</i> Very dwarf, large pods	5	15	50	1.35
<i>English Main Crop.</i> High quality, lots of pods	5	15	50	1.35
<i>Marrowfat.</i> Late, tall, smooth shelled	5	10	35	.90
<i>Stratagem.</i> Large pods, high quality, late	5	10	35	1.00
<i>Telephone.</i> Very large pods, should be staked	5	10	35	1.00
<i>Alderman.</i> Like Telephone, but better	5	15	45	1.20
<i>Field's Tom Thumb.</i> Early good yield	10	20	60	

## PEPPERS

	Pkt.	Oz.	¼ lb	lb
<i>Hot Peppers</i>				
<i>Cayenne.</i> Long, hot pepper	10	45		
<i>Red Chili.</i> Used extensively in south for chili sauce	5	35		
<i>Red Cluster.</i> About an inch long, grows in clusters	10	45		
<i>Anaheim Chili.</i> Large hot pepper	10	45		
<i>Mango or Sweet Peppers</i>				
<i>Chinese Giant.</i> Largest mango; late	10	50	1.75	
<i>World Beater.</i> A large sweet pepper. If Chinese Giant is too late for you grow this	10	50	1.75	
<i>Golden Queen.</i> Yellow, medium sized	5	35		
<i>Large Bullnose.</i> Medium sized, early, red mango	10	45	1.00	
<i>Spanish Pimento.</i> Genuine variety	10	45		
<i>Ruby King.</i> Larger and thicker meat than Bullnose	10	45	1.25	
<i>Sweet Neapolitan.</i> Very early, medium sized, prolific	10	45		
<i>Ruby Giant.</i> In size between Ruby King and Chinese Giant	10	45	1.25	

## PUMPKINS

	Pkt.	Oz.	¼ lb	lb
<i>Buff Pie.</i> Flat, buff color, fine grained, good for either pies or stock	10	20	50	1.35
<i>Big Tom.</i> Special strain of Yankee field. For stock	5	15	45	1.25
<i>Large Cheese.</i> Large heavy yielding, buff, flat, well known and well liked	5	15	40	.90
<i>Yankee Field.</i> Large heavy yielding, etc. pumpkin	5	15	40	1.00
<i>Winter Luxury.</i> For pies, Good keeper. Med. size	10	20	50	1.50
<i>Small Sugar.</i> Small yellow.				
<i>Also known as New England Pie</i>	10	20	50	1.50
<i>Exhibition Collection</i> of pumpkins and squashes. Grow this for size, quality and variety	20			

## SQUASH

	Pkt.	Oz.	¼ lb	lb
<i>Banana.</i> Good keeper	10	20	60	
<i>Thick Shelled</i>	5	15	45	1.35
<i>Blue Hubbard.</i> Large, late	5	15	45	1.35
<i>Boston Marrow.</i> Soft-shelled Hubbard	5	15	45	1.35

## SQUASH (Cont.)

	Pkt.	Oz.	¼ lb	lb
<i>Cushaw or Crookneck.</i> Old-fashioned variety	5	15	45	1.35
<i>Delicious.</i> Medium size, high quality	5	15	45	1.35
<i>Early Golden Bush Scallop.</i> To be used while green	5	15	45	1.35
<i>Italian Vegetable Marrow</i> or <i>Cocozelle.</i> Slice and fry in egg and cracker crumbs. Use while young and tender	10	20		
<i>Fordhook.</i> Small; fine for baking	5	15	45	1.35
<i>Golden Hubbard.</i> Fine quality; not a long keeper	5	15	45	1.35
<i>Genuine Hubbard (warty).</i> Large, good keeper	10	20	55	1.65
<i>Genuine Hubbard (Wolf Stock).</i> Colo. grown	15	30		
<i>Mammoth White Bush Scallop.</i> Very early	5	15	45	1.35
<i>Mammoth or Hundred-weight.</i> Very large	5	15	45	1.35
<i>Pattypan</i> or <i>Cymelon.</i> White, flat, scalloped	5	15	45	1.35
<i>Sibley</i> or <i>Pike's Peak.</i> Medium size	10	20	55	1.65
<i>Table Queen.</i> Little individual size baking squash. Good keeper	10	25	75	
<i>Summer Bush Crookneck</i>	10	20	55	1.65

## SWEET CORN

	Pkt.	¼ lb	lb	3 lb
<i>Peep O'Day.</i> Early, but small	5	10	35	1.00
<i>White Mexican.</i> (Sloux City). Best real early	5	15	45	1.20
<i>Adams' Extra Early.</i> Not a sweet corn; early and hardy	5	10	35	1.00
<i>Squash Corn.</i> Very early	5	10	35	1.00
<i>First of All.</i> Early dwarf, pink, 8-rowed	5	10	35	1.00
<i>De Lu's Golden Giant.</i> Early or intermediate, of high quality	5	15	45	1.20
<i>Golden Bantam.</i> Mountain grown. An extra good strain of this popular variety	5	15	45	1.20
<i>Large Early.</i> Early good quality	5	10	35	1.00
<i>Early Champion.</i> Midseason, large ear, good yielder	5	15	40	1.20
<i>Early Evergreen.</i> High quality, midseason	5	10	35	1.00
<i>Black Mexican.</i> Medium late, shallow grained, fair quality	5	10	35	1.00
<i>Early Moynflower.</i> Extremely early, good quality	5	15	45	1.20
<i>White Corn.</i> Standard early variety	5	10	35	1.00
<i>White Mexican.</i> (Home grown). Later and larger than regular strain	5	15	45	1.20
<i>Zig Zag Evergreen.</i> Good quality, medium sized ear	5	10	35	1.00
<i>White Evergreen.</i> Large deep grained, very juicy and sweet	5	15	45	1.20
<i>Stowell's Evergreen.</i> Rank growing, large eared, late	5	15	45	1.20
<i>Country Gentleman.</i> Small ear, high quality, deep grain	5	15	40	1.20
<i>State Fair Stowell's.</i> An exceptionally fine strain of Stowell's Evergreen	10	20	60	1.50

## TURNIPS

	Pkt.	Oz.	¼ lb	lb
<i>Amber Globe</i>	5	10	25	.75
<i>Cowhorn</i>	5	10	25	.75
<i>Extra Early Milan</i>	10	20	50	1.45
<i>Early White Milan</i>	10	20	50	1.45
<i>Early Snouball</i>	10	15	35	1.00
<i>Purple Top Strap Leaf</i>	10	15	35	1.00
<i>Purple Top Globe</i>	10	15	35	1.00
<i>Rutabaga. American Purple</i>	10	15	40	1.25
<i>Save Top Turnip.</i> For greens	5	10	25	.75
<i>White Globe</i>	5	10	25	.75





**GIANT PANSY COLLECTION** 50c Postpaid

A bed of pansies with all the colors shown in the picture above is a beautiful sight and something you could just as well have as not. It would be admired by your friends and a lasting pleasure to yourself.

They do well in either partial shade or full sunshine. Pick the largest and the oldest blooms, but leave plenty in the bed at all times.

This strain grows large blooms, long stems, and lots of color. The collection consists of 8 named varieties, a package of mixed color, and complete cultural instructions, all for 50c.

Or if you want blooming plants instead of seed, we can furnish them early in the spring, at 75c per dozen or 3 dozen for \$2.00 postpaid. Order plants now and we will send at the proper time.

**HENRY FIELD SEED CO., Shenandoah, Iowa**



**SPENCER SWEET PEAS COLLECTION**  
**50c, POSTPAID**

This collection contains just about every sweet pea color imaginable. It includes eight named varieties and to make sure we had all colors we put in a package of mixed. You will find most everything from the bold striking colors to the most delicate tints and all deliciously fragrant.

There is enough seed in this collection to plant a fifty foot row which will give you a continuous supply of bloom with enough extra to supply your friends. With the instructions we give with every collection anyone can grow large blooms and lots of them, with very little effort.

Eight named varieties, and one of mixed, all for 50c.

**HENRY FIELD SEED CO.**  
Shenandoah, Iowa

# Send for This Money Guide On Poultry Raising

The Old Trusty Incubators produce strong, raisable chicks from your own eggs at a cost of less than one cent per chick. Why pay more and get uncertain quality?

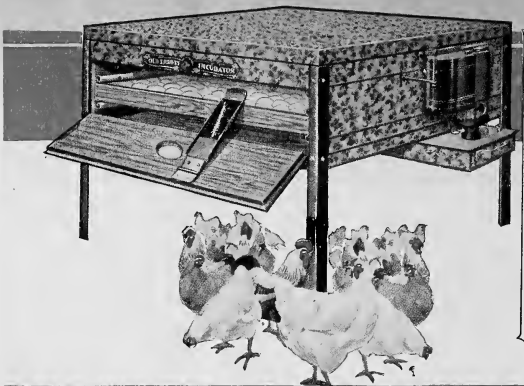
Send for big, free Catalog.

M. M. JOHNSON CO., Clay Center, Neb.

Name .....

P.O. Address ..... State .....





# Old Trusty

Incubator is made in four sizes. It will hatch strong chicks in any kind of weather. Costs less than good hens and is less trouble. It has triple walls, a heavy copper, hot water heating tank, a regulator that regulates, the best grade of special incubator thermometer made and strong solid egg trays. No incubator no matter what the price, is made better, none its equal in hatching. Hatches chickens, turkeys, ducks, geese, etc.

Sign your name and give address on the other side of this coupon.

**M. M. JOHNSON CO.**  
Clay Center, Neb.

(Over)

MUSKMELONS

	Pkt.	Oz.	¼ lb	lb
Banana, Long, yellow, fair quality	10	20	50	1.50
Burrell's Gem. Extra fine pink meated	5	15	45	1.25
California Cream Cantaloupe. Large, old fashioned yellow variety	5	15	45	1.25
Edward's Perfecto. A new salmon fleshed Rocky Ford	10	20	50	1.50
Emerald Gem. Medium sized salmon fleshed, fine quality	5	15	45	1.25
Extra Early Hackensack. Said to be ten days earlier than Hackensack	5	15	45	1.25
Field's Yellow. Yellow flesh, high quality	15	25	75	2.50
Fordhook. Small, red flesh, fair quality	5	15	45	1.25
Green Meated Nutmeg. Medium size, early	10	20	50	1.50
Hackensack. Large, round, green flesh	5	15	45	1.25
Honey Dew. Yellow flesh	10	25	75	
Honey Dew. Gold	10	25	75	
Abbott's Pearl. Yellow all over and all through	10	20	75	
Knight's Early. Earliest of the Rocky Ford type	10	25	75	
Oage. Thick, yellow flesh, fine quality	5	15	50	1.50
Perfection. Large, yellow fleshed	10	20	60	2.00
Pollock Ten-Twenty-Five. Best pink meated Rocky Ford	10	20	50	1.50
Standard Rocky Ford. Best strain grown in Rocky Ford district	10	20	50	1.50

WATERMELONS

	Pkt.	Oz.	¼ lb	lb
Alabama Sweets. Long striped melon, good shipper	5	10	25	.75
Golden Honey. Best yellow fleshed	10	20	50	1.50
Halbert Honey. Long, dark green melon of finest quality	10	15	40	1.20
Colorado Kieckley. Selected strain, originated at Rocky Ford	10	20	50	1.50
Kieckley Sweet. Large, oblong, dark green skin, thin rind, red flesh	10	15	40	1.20
McIvor's Wonderful Sugar. Long striped; fine quality, good shipper	5	10	25	.75
Monte Christo. Similar to Kieckley	10	15	40	1.20
Sweetheart. Large, round light green, good shipper	5	10	25	.75
Tom Watson. High quality, good shipper, large	10	15	40	1.20
Boys' Watermelon Collection. Large pkts.	20			
Cole's Early. Small, early, round, striped melon	5	10	25	.75
Florida Favorite. Medium-sized, long striped melon	5	10	25	.75
Fordhook Early. Rather short and blocky, solid red flesh	5	10	25	.75
Harris Early. Like Cole's Early, but earlier	5	10	25	.75
Ice Cream or Peerless. Med. early, med. sized, thin rind, red flesh	10	15	40	1.20
Pinney's Early. Very early, small fruit, oblong and striped	5	10	25	.75
Princess. Small, individual size	10	20	50	1.50
Irish Gray. Large, long, light gray, good shipper	5	15	40	1.20
Excell. Large, oblong, good shipper and good quality	10	15	40	1.20
State Fair. Something new. High quality, very large and a tough thin rind	20	35	1.00	
Giant Kieckley. Like the Kieckley but larger	15	25	75	

Sweet Siberian. Apple seeded and early... 15 25 75  
 Volga. The winter melon... 20 40 1.00

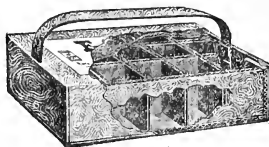
RADISHES

	Pkt.	Oz.	¼ lb	lb
Non Plus Ultra. Very early forcing. Round bright red, small tops	10	15	40	1.00
Crimson Giant. Grows large and remains tender and sweet	10	15	40	1.00
Crimson Marble. Slightly flattened, globe-shaped; uniform	5	10	30	.90
Early Round Dark Red. Early, mild and sweet	10	15	40	1.00
Early Scarlet Globe. Bright red, comes quick	10	15	40	1.00
Early Bird. Similar to above	10	15	40	1.00
French Breakfast. Very early; gets pithy quick	10	15	40	1.00
Round White. Best round white sort	5	10	30	.90
Scarlet Turnip White Tip. A very pretty early round radish	10	15	40	1.00
Sparkler. Special strain of above	10	15	40	1.00
Charlier. Long, red, good quality	5	10	30	.90
French Forcing or Paris Beauty. Half long, bright scarlet, very early	5	10	30	.90
Icelet. Early, crisp, sweet, medium large, white	10	15	40	1.00
Lady Finger. Long white. Main crop	10	15	40	1.00
Long Brightest Scarlet. In-early, mild and sweet	5	10	30	.90
Long Scarlet. Large, medium late, good variety	5	15	40	1.00
Strasburg. Large, half long, white, good summer radish	10	15	40	1.00
All Seasons. All of the above and more in mixture	5	10	30	.90
Chinese Rose Winter. Standard for winter use	10	15	40	1.00
Chinese White Winter or Mikado. Very large; similar to above	5	10	30	.90
Nerima. Large, long white, Japanese winter variety	10	25		

TOMATOES

	Pkt.	Oz.
Redhead. Very early, large bright red. ¼ oz. 50c	15	1.50
Field's Early June. Good size, smooth solid red, productive	10	60
Pink Early June. Smooth medium-sized, compact bush, good bearer	10	60
Earliana. Standard, early red	10	35
June Pink. Early, somewhat rough	5	35
Norton. Wilt resistant	10	50
John Baehr. Early red	5	35
Benny Best. Good size, fairly early red fruit	10	35
Dwarf Champion. Early pink tree	5	35
Chalk's Early Jewel. Strong grower, smooth red tomato	5	35
Acme. Second early, pink tomato, good shipper	5	35
Golden Beauty. Main crop, yellow variety	10	35
Beauty. Main crop, pink, large, good canner	5	35
Mississippi Girl. Large, smooth, bright red	10	60
New Stone. Good size, solid, bright red; good canner	10	35
Moneyless. Large, smooth, dark red	10	35
Livingstone's Globe. Medium size, pink, high quality	5	35
Ponderosa. Solid and meaty, very large, pink	10	45
Yellow Ponderosa. Standard preserving	10	50
Yellow Ponderosa	10	45

The "Eyrle" Egg Box



Safely Carries Eggs for Hatching We use and recommend the Eyrle and Anderson egg boxes, and offer them for sale to our customers. We carry a car load of them in stock here at Shenandoah. We have tried other makes, but have found none that carries the eggs so safely as these. We recommend them as absolutely the best to be had. Ask for special prices on lots of 5 dozen or over of either.

The Eyrle box is made of high-grade grained Jute paper, which is tough and pliable. The box is lined on all sides, top and bottom, with double-faced corrugated paper. The insertion of the wooden handle automatically locks the box. This feature of locking the box insures the shipper against a substitution of common eggs while they are in transit.

The 50 egg size are made in what is called the Anderson style, which is simply the same thing without a handle. They are all the same boxes, made by the same people, except that the 15 have handles and are called Eyrle, and the 50 have no handles and are called Anderson.

These boxes come to you set up ready to use. All you have to do is to put in the eggs and insert the handle. The handle is inside of the box when shipped to you.

These prices are f. o. b. here, and they can be sent either by express or parcel post. Add postage for the weight indicated.

	Doz.	Each	Wt. d.z.
15-egg size	-----	\$3.00	30c 10 lb
50-egg size	-----	6.00	60c 29 lb

Jar Fountain

This jar fountain is right in style this time of the season. It is one of the best fountains for baby chicks. Price 25c postpaid.

We have a round Baby Chick Feeder with either 8 or 12 holes in the top. 8-hole, 35c; 12 hole, 50c, postpaid.

Sanitary Feeding Troughs in 12, 18, and 24 inch at 85c, \$1.10 and \$1.45.

Besides the above mentioned we carry quite a stock of other waterers and feeders, and also Leg Bands and Poultry Punches. Ask for our complete Poultry Supply Catalogue.

Seeds Very Satisfactory

"I want to tell you that the seeds ordered from you last spring have been very satisfactory. I was not able to give my garden as much attention as usual, but the plants grew and did very well. I have no criticism

to offer on any of the seeds. The Black Beauty eggplant is an excellent producer. I raised enough for a half dozen families, and they were of fine quality and very large. I hope to have as good a garden this year, or better if possible!"  
 —Fred H. Foster, Oxford, Ind.

# Wholesale Net Prices February 1, 1924

GOOD TO MARCH 1, 1924  
(SUBJECT TO BEING UNSOLD)

Address all orders to Henry Field Seed Co., Shenandoah, Iowa

**We Want Early Orders**—So we have made these prices very low. We have the seed in the house, bought right, and up to March 1, if possible, we will sell at these prices. When it is gone and we have to buy more at higher prices, you will have to pay more. Better buy now while the buying is good. Write for special quotations after March 1, or send order and I will fill it at lowest price.

These prices are the ones ruling at this time, Feb. 1, and we hope to be able to continue them without change up to March 1, but we will not promise positively to do so, as there are indications of sharp advances in many lines. It will be all right to order at these prices with understanding that there may be changes either way. Early orders are practically certain of getting filled at these prices.

These prices are f. o. b. Shenandoah, customer to pay the freight. If you want delivered prices we will make a special estimate for you on request.

No extra charge for sacks, except for wheat and rye. All other seeds sold "sacks weighed in." Remember this when comparing prices.

Prices are strictly net, spot cash; no discount.

Safe arrival guaranteed. We guarantee that all seeds will reach you in good order.

Sold on approval. These seeds are priced and sold with the understanding that if not found strictly satisfactory they may be returned at our expense and your money will be refunded. You can be the judge of quality

Reference. First National Bank, of Shenandoah, Iowa.

Free Samples. We will gladly send free samples of any kind of seed quoted here.

Subject to Sale. All prices are subject to stock being unsold on receipt of order.

## YOUR MONEY'S WORTH OR YOUR MONEY BACK

It is mutually agreed and understood that any seeds or other goods ordered of us may be returned at any time within ten days after receipt if not satisfactory, and money paid for them will be refunded, but we do not, and cannot, in any way, warrant the crop, as it is dependent on so many conditions beyond our control.

	Per 100 lbs.	Equals
<b>Alfalfa (Dry land northern grown, hardy)</b>		
Poor but Honest	\$15.00	\$ 9.00
Mixed Hardy, second grade	18.00	10.80
Midwest (Kan.-Nebr.)	25.00	15.00
Northwestern grown, hardy	27.00	16.20
Dakota No. 12, extra hardy	28.00	16.80
Grimm	50.00	30.00
Cossack, Super Hardy	55.00	33.00

<b>Clover Seed (60 lbs. per bu.)</b>	Per 100 lbs.	Equals
Medium or Common Red	30.00	18.00
Mammoth Red	30.50	18.30
Alsike	22.00	13.20
White Dutch	65.00	39.00
Crimson Clover	20.00	12.00

<b>Sweet Clover (All hulled and scarified)</b>	Per 100 lbs.	Equals
White Biennial	20.00	12.00
Yellow Biennial	20.00	12.00
New Grundy Co. White Biennial	25.00	15.00
HUBAM (Annual White)	40.00	24.00

<b>Timothy and Timothy Mixtures (45 lbs. per bu.)</b>	Per 100 lbs.	Equals
Timothy, best home grown	11.00	4.95
Timothy-Alsike Mixture (20 per cent Alsike)	12.00	5.40
Timothy-Red Clover Mixture (20 per cent Clover)	14.00	6.30
Timothy-Mammoth Mixture (20 per cent Clover)	15.00	6.75

<b>Blue Grass</b>	Per 100 lbs.	Equals
Kentucky Blue Grass	30.00	4.20
Canadian Blue Grass	32.00	4.48
English Blue Grass	18.00	

<b>Other Grasses</b>	Per 100 lbs.	Equals
Red Top, fancy solid seed	20.00	2.80
Red Top, unhulled or rough seed	12.00	
Orchard Grass	25.00	3.50
Pacey's Rye Grass	18.00	2.52
Italian Rye Grass	18.00	2.52
Perennial Rye Grass	18.00	2.52
Bromus Inermis	15.00	2.10
Bermuda Grass	30.00	

These are wholesale prices, good for amounts of 10 pounds of a kind, or over. Add 2c per pound for amounts of 5 to 10 pounds. Add 5c per pound for amounts below 5 pounds.

## DON'T NEGLECT TO INOCULATE AT PLANTING TIME

Your Clover—Alfalfa—Sweet Clover—Soy Beans—and Cow Pea Seed

### Nitragin

(Bu. sizes instead of acre sizes)

1/4 bu. size can	\$.40
1/2 bu. size can	.60
1 bu. size can	1.00
5 bu. size can	4.75
Garden size, Peas and Beans only	.20

	Per 100 lbs.	Equals
<b>Other Grasses Cont.</b>		
Lawn Grass Mixture	40.00	
Shady Nook Lawn Grass	45.00	
New Zealand Chewings Fescue	50.00	
Red Fescue	50.00	
Permanent Pasture Mixture	18.00	
Permanent Meadow Mixture	18.00	
Lowland Pasture Mixture	18.00	

<b>SUDAN</b>	Per 100 lbs.	Equals
DWARF ESSEX RAPE	10.00	
SUNFLOWER SEED	12.50	
HOG PASTURE MIXTURE	8.00	
KAFFIR CORN AND MILO MAIZE	5.00	2.80
FETERITA	5.00	2.80
FODDER CANE	4.00	2.00
SYRUP CANE (Several varieties)	15.00	7.50
VETCH—Winter	22.00	13.20

<b>Soy Beans and Stock Peas (60 lbs. per bu.)</b>	Per 100 lbs.	Equals
Soy Beans, Ito San, extra early, yellow	6.00	3.60
Soy Beans, Midwest, improved Med. Yellow	6.00	3.60
Soy Beans, Pekin, fine for ensilage, black	6.00	3.60
Soy beans, Manchu, fine main crop, yellow	6.00	3.60
Soy Beans, Virginia, soiling and hay, brown	6.00	3.60
Soy Beans, Columbian, hogging down and hay	6.00	3.60
Cow Peas, Whippoorwill	7.00	4.20
Cow Peas, New Era	7.00	4.20
Cow Peas, Mixed	6.50	3.90
Canadian Field Peas	7.00	4.20

<b>Millet (50 lbs. per bu.)</b>	Per 100 lbs.	Equals
Golden	5.00	2.50
Common or Fodder	4.50	2.25

<b>Small Grain</b>	Per 100 lbs.	Equals
Spring Wheat, Marquis	Ask for prices	
Buckwheat	5.00	2.40
Oats, Iowa No. 103 (White Kherson)		1.00
Barley, bearded, \$1.25 per bu., lots under 5 bu.;		\$1.10
lots 5 to 50 bu.; \$1, lots 50 bu. and over.		

<b>Broadcast Seeders</b>	Per 100 lbs.	Equals
Cyclone, each (allow postage for 5 lbs.)		\$2.00
PULVERIZED SHEEP MANURE	2.55	3.00

Inoculation is crop insurance for every legume you sow in the field, or the peas and beans in your garden, and sweet peas. It insures the seed, increases the yield and enriches the soil. See prices opposite.