

Historic, archived document

Do not assume content reflects current scientific knowledge, policies, or practices.



62.61

1924

LI
MAR 6 1925

Catalog for Your Fall Planting



“It’s Not a Home Until It’s Planted”

**Green’s Nursery Co.,
Rochester, New York**

Direct from NURSERY to YOU

ON OUR NEW LIBERAL TERMS

ABOUT 50 years ago, Mr. Charles A. Green, the founder of Green's Nursery Company, started a new method of selling nursery stock. That is direct from nursery to grower. In the half century of our history other nursery companies, using what seemed like the same methods, have come and gone.

But our business grew year after year. Customers to the number of thousands, in every state and in foreign countries, became steadfast friends.

What is it, do you suppose, that has caused the constant growth of our business, the steady increase in the number of our customers, who buy year after year.

To please individual people living almost everywhere, without opportunity to see them or speak with them; to have them write voluntarily, in words of glowing praise and supreme satisfaction, tells more than we can say here, no matter what words we use, of the service and quality that is back of everything we ship.

To us the whole plan of our service is simple and founded on common sense.

We grow only the best and in the ways that 50 years' experience has taught. We take infinite pains to select from our own grown stock only the strongest, hardiest and best rooted. Extreme caution in dozens of operations guide us in naming and tagging varieties.

Since we love plants and trees and shrubs, we pack them and ship them only as one can who has such a feeling for the living things he handles.

And then our first consideration is for our customers. Without them we cannot exist, so quite naturally we strive to please. The tree or the shrub or plant we send out must always bear living testimony to the painstaking care with which we reared it.

All this we do with the idea in mind to furnish superior stock at lowest possible prices. We seek but a small profit on each item.

And our prices are low because we sell only in one way—*Direct From Our Nurseries To You*. Our catalog and our friends are our only salesmen. We pay no commissions to anybody. We assume full responsibility for the quality of our trees, shrubs, vines and plants, and here is our guarantee stated in simple terms:

GREEN'S GUARANTEE

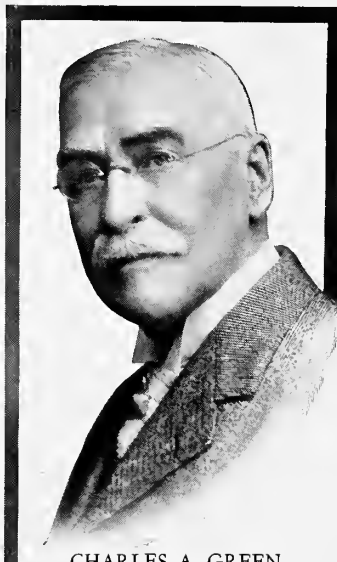
Delivery: We guarantee delivery in good condition—If the customer will notify us promptly that our shipment arrived in unsatisfactory condition because of delay in transit or other cause, we will be pleased to replace the shipment.

True to Name: No human caution could be more exacting than ours. If any of Green's trees prove untrue to name, we will gladly replace the items. Obviously we cannot assume further responsibility than that.

GREEN'S REMARKABLE TERMS

1. We prepay all transportation charges.

2. We give an extra cash discount for early orders.
3. We offer a liberal cash discount.
4. We ship C. O. D. if desired.



CHARLES A. GREEN
Founder

Ever since Green's Nursery Company was founded, we have had but *one* policy. In years past, *everybody* was requested to send cash with the order. Rich and poor alike, individuals and corporations—all were obliged to send cash or nothing, no matter how far the order was in advance of shipment.

We gave no discount whatsoever, except on quantity prices and no shipments were prepaid.

This fall we make the most liberal change in our old policy to establish stronger than ever our faith in what we offer and our faith in our customer's fairness.

OUR TERMS IN DETAIL

1. *We Prepay All Transportation Charges.*

You do not have to pay any transportation charges if shipment is made to Pennsylvania, New York, Massachusetts, Ohio, Connecticut, Indiana, Illinois, Michigan, Wisconsin, West Virginia, Virginia, Kentucky, Maryland, Delaware, New Jersey, Rhode Island, Vermont, New Hampshire, Maine and District of Columbia. We prepay all transportation charges to these States. To all other states we prepay transportation charges on shipments by Parcel Post only. It is our desire that the customer may know the total cost of any order sent to Green's Nursery Company.

2. *6% Discount for Cash Orders, Sent Before October 15th.*

Cash orders save bookkeeping and special record keeping. Early orders help us greatly to avoid the rush at the end of the season. They also assure you of getting everything you order, because they are reserved before the large drain on our stock is made. 6% is a bank's rate of interest on money for a whole year. It's worth saving.

3. *3% Discount for Cash Orders After October 15th.*

The customer who sends cash with the order is entitled to some discount over an order on which we must keep accounts, special records and a collection system.

4. *We Ship C. O. D. if Desired.*

This is how we show our faith in you and our firm belief in what we offer. You can order at catalog prices any time (the earlier the better for you and for us). Pay for the goods to the mailman, expressman or freight agent.

Our Guarantee applies whether you order early or late, for cash or on our C. O. D. plan.

These, we believe, are the most liberal terms ever offered in the nursery business, made possible by our plan of selling only—

DIRECT FROM NURSERY TO YOU

WE PAY TRANSPORTATION CHARGES—SHIP C. O. D.—ALLOW A LIBERAL DISCOUNT FOR CASH

AUTUMN PLANTING—*by those who know*

MR. JOHN DUNBAR, Assistant Superintendent of Parks, Rochester, N. Y., says: "With few exceptions, I regard the Fall as the best time for planting most deciduous trees and shrubs and I think this rule will apply with safety to New England and the northeastern states. I have planted large quantities of deciduous trees and shrubs in the Rochester parks during the past thirty-one years in both Spring and Fall and I have no hesitation in saying that in rapid start made in growth, and in by far the smallest percentage of losses, Fall planting is immensely superior to Spring planting."

MR. CHARLES A. GREEN, who had 50 years' experience as a fruit grower, nurseryman, and editor of Green's Fruit Grower, says: "Trees and plants set out in the Fall become well established during the Winter, will start growth very early the following Spring and be in better condition to withstand the dry, hot days of the following July and August. It has been our experience that Fall planting of trees and shrubs is very successful."

The fall planting season begins about October 1st and lasts until the ground freezes in the early winter.

APPLES

We offer apples in both standard and dwarf trees. Fruit, season, etc., (everything but growth of tree) is same on dwarfs as standards. Dwarfs are especially adapted to garden planting where space is limited.

STANDARD APPLE TREES

ALL VARIETIES EXCEPT CORTLAND

	Each	10	100
Large size, 5 to 7 ft., XXX.....	\$1.00	\$9.00	\$65.00
Medium size, 4½ to 6 ft., XX.....	.90	8.00	55.00

DWARF APPLE TREES

	Each	10
Large size, 4 to 5 ft., XXX.....	\$1.45	\$11.50
Medium size, 3 to 4 ft., XX.....	1.15	10.25

We offer only the following eight varieties of dwarf trees:

Baldwin	McIntosh	Wealthy
Delicious	Red Astrachan	Yellow Transparent
Duchess of Oldenburg	Winter Banana	

EARLY APPLES

DUCHESS OF OLDENBURG—The best very early red subacid dessert apple. July.

GRAVENSTEIN—An excellent variety to follow Duchess in season. Red, subacid. September.

RED ASTRACHAN—A handsome red apple. Excellent for cooking, but too tart for dessert. July.

TRANSCENDENT CRAB—The best crab apple. Large, yellow striped with red. Bears young. September.

YELLOW TRANSPARENT—The best early yellow apple. Subacid. Bears young. August.

LATE APPLES

BALDWIN—This celebrated apple is the backbone of most eastern orchards. Large, deep red, juicy, subacid. Vigorous, productive. Absolutely reliable. November.

BLENHEIM—A high quality, subacid, red and yellow apple. Should be planted more extensively. November.

CORTLAND—It is predicted that this variety will soon take first place as the leading apple of the East. A cross between McIntosh and Ben Davis which combines the desirable characteristics of both varieties. Originated on the grounds of the New York State Agricultural Experiment Station at Geneva, New York. A beautiful apple of exceptionally high quality, large, very attractive, and of very rich flavor. Season, one to three weeks later than McIntosh.

Prices: Two years old, Largest size, 5 to 7 feet, \$2.00 each.

Two years old, Medium size, 4½ to 6 feet, \$1.50 each.

Write us for special prices on one year old trees for orchard planting.



MCINTOSH APPLES

No illustration can do it justice because its greatest value lies in its beautiful color and delicious flavor



RED ASTRACHAN DWARF, 3 YEARS OLD

DELICIOUS—A large, conical, subacid, red apple, largely planted in the middle west. December.

FAMEUSE (Snow)—Small size, beautiful red apple of unusually high quality and pleasing flavor. Subacid. November.

GRIMES GOLDEN—Considered by authorities the highest quality of all yellow varieties. Subacid. January.

HUBBARDSTON NONESUCH—Large, red, subacid. Not as high in quality as some of the others. November.

JONATHAN—A medium size, beautiful dark red apple of excellent flavor. Grown extensively in the middle west. Subacid. November.

KING—An old favorite. Very large, red striped, good quality. Productive. December.

McINTOSH—The leader of them all. The best variety for both garden and orchard. Beautiful bright red, with tender, white, crisp flesh of excellent flavor and quality. Very hardy and productive. November.

NORTHERN SPY—Consider by many the best flavored of all. Large, conical, red striped, slightly subacid. Very hardy and productive. December.

POUND SWEET—Large, greenish white, sweet and good. October.

R. I. GREENING—Celebrated chefs use this exclusively for pie, baking, etc. Large, greenish white, subacid. November.

ROME BEAUTY—Handsome red apple. Flesh coarse grained but excellent flavor. Bears young. October.

ROXBURY RUSSET—Large deep russet, crisp, rich, subacid. January.

STAYMAN'S WINESAP—Dark red, fine grained, very juicy. Wonderfully productive. February.

WEALTHY—A good, medium size, yellow and red apple. Juicy, subacid. November.

WINTER BANANA—Golden yellow with red blush. Slightly subacid with distinct banana flavor and odor. October.

PEACHES

Peaches can be successfully planted in the fall in the southern states and in localities where winters are not severe.

	Each	10	100	CRAWFORD'S LATE —Late yellow freestone. Last of September.
Large size, 4½ ft. and up, XXX.....	\$0.85	\$7.00	\$55.00	CHAMPION —Large, sweet white freestone. August.
Medium size, 3½ ft. to 4½ ft., XX.....	.75	6.00	45.00	GREENSBORO —Very early, white, clingstone. July.

ELBERTA—Leading market peach. Large, yellow, freestone. Middle September.

CRAWFORD'S EARLY—High quality, yellow, freestone. Early September.

CROSBY—Very hardy, yellow freestone. Follows Early Crawford.

CARMAN—High quality, creamy yellow, freestone. September.

ROCHESTER—Finest early, yellow peach. Excellent flavor. Middle of August.

HALE—Very large, yellow freestone. Ripens week ahead of Elberta.

PEARS

Like apples, pears are also grown both as dwarfs and standards. Dwarf pears are largely planted where space is limited, but are also used extensively for orchard planting.

STANDARD PEAR TREES

	(EXCEPT BOSC) Each	10	100
Large size, 5 to 7 ft., XXX.....	\$1.55	\$14.00	\$100.00
Medium size, 4½ to 6 ft., XX.....	1.40	11.50	80.00

DWARF PEAR TREES

	Each	10	100
Large size, 4 to 5 ft., XXX.....	\$0.85	\$7.50	\$50.00
Medium size, 3 to 4 ft., XX.....	.75	6.50	40.00

EARLY PEARS

WILDER EARLY—The earliest good pear. Medium size, greenish yellow with red cheek. July. Standard and Dwarf.

BARTLETT—The leading commercial pear. Large, yellow tinged with red, buttery and melting. Rich flavor. August. Standard and Dwarf.

CLAPP'S FAVORITE—Large, showy, golden yellow with red cheek. Very productive. August. Standard and Dwarf.

LATE PEARS

ANJOU—Large, greenish yellow shaded with crimson. Prolific. October. Standard and Dwarf.

BOSC—Best quality of all. Large gourd shaped, deep russet yellow. Fine flavor. A long keeper. Standard only. Largest size, 6 to 7 ft., \$2.00 each, \$19.00 per 10. Medium size, 5 to 6 ft., \$1.50 each, \$14.00 per 10.

DUCHESS—A fine commercial sort when grown as dwarf. Large, greenish yellow, very prolific and a fine keeper. October. Dwarf only.

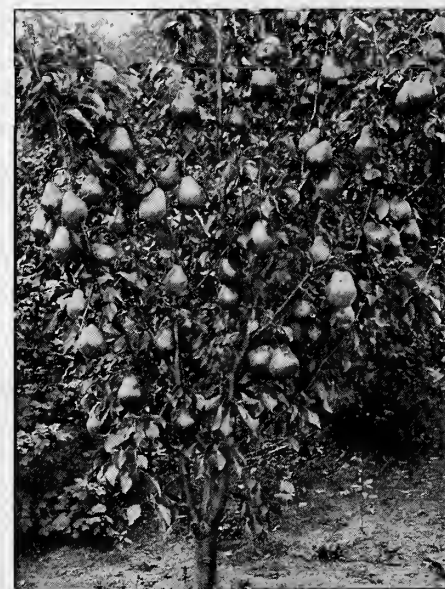
KIEFFER—Good commercial variety. Not as high quality as Bartlett, but a good canner. Strong grower, prolific. Golden yellow. October. Standard only.

LAWRENCE—Best very late variety. Medium, golden yellow. December. Standard and Dwarf.

SECKEL—Small, fine flavor. Excellent for pickling. September. Standard and Dwarf.

SHELDON—A large round golden russet pear of the finest flavor. October. Standard only.

WORDEN SECKEL—An improved Seckel. Golden yellow with crimson cheek. October. Standard and Dwarf.



DUCHESS DWARF PEAR TREE

A row of dwarf apples and pears across your garden will make a beautiful hedge and supply you with plenty of delicious fruit.

ALL ITEMS OFFERED IN THIS CATALOG EXCEPT TREES CAN BE SENT BY PARCEL POST



MONTMORENCY
CHERRIES

The pie cherry De Luxe, the kind that mother made those delicious pies with.

CHERRIES

	Each	10	100
Large size, 5 to 6 ft., XXX..''	\$1.45	\$11.50	\$70.00
Medium size, 4 to 5 ft., XX.....	1.25	10.50	60.00

SOUR VARIETIES

EARLY RICHMOND—Medium size, dark red, juicy. About 10 days earlier than Montmorency. June.

MONTMORENCY—The leading commercial cherry. Large, red, juicy, prolific. Very profitable. June.

ENGLISH MORELLO—Dark red, very juicy. Not as tart as other sour varieties. About 10 days after Montmorency.

SWEET VARIETIES

BLACK TARTARIAN—Best black. Large, heart shaped. Sweet. Middle of June.

GOVERNOR WOOD—A large, delicious, light red cherry. June.

NAPOLEON—Large, yellow with red cheek. Excellent. July.

WINDSOR—Large, livered colored. Fine quality. July.

PLUMS

	Each	10	100
Large size, 6 to 7 ft., XXX.....	\$1.45	\$11.50	\$70.00
Medium size, 4½ to 6 ft., XX.....	1.25	10.50	60.00

BRADSHAW—Large, handsome, bluish purple; juicy, excellent. Very productive. August.

BURBANK—Large, dark red, juicy, sweet. Hardy, productive. August.

LOMBARD—Large, violet red, juicy and good. September.

SHROPSHIRE DAMSON—Medium dark blue, very productive. Most popular variety for preserving. October.

YELLOW EGG—Large, egg shaped, golden yellow. Sweet. August.

YORK STATE PRUNE—Most popular prune. Large, dark blue, juicy, sweet and rich. September.

CURRANTS

Strong two-year-old bushes

Prices: Red Cross and Diploma—15c each, \$1.25 per 10, \$3.00 per 25, \$5.00 per 50, \$7.50 per 100, \$50.00 per 1000.

Prices: Fay's Prolific, White Grape and Wilder—20c each, \$1.75 per 10, \$4.00 per 25, \$7.25 per 50, \$12.50 per 100.

Prices: Perfection—25c each, \$2.25 per 10, \$5.00 per 25, \$8.50 per 50, \$15.00 per 100.

DIPLOMA—The best and largest of all red currants. Received World's Fair diploma.

FAY'S PROLIFIC—An old favorite red. Very productive.

PERFECTION—An excellent red variety. Large berries and clusters.

RED CROSS—A good teammate for the Diploma. Very sweet, requires less sugar in canning. Red.

WHITE GRAPE—The best white currant. Delicious, excellent quality.

WILDER EARLY—A good early red currant for the home garden.

GOOSEBERRIES

Strong two year bushes

CHAUTAUQUA—The best yellow variety for home garden. Very large, sweet and delicious. 50c each, \$4.50 per 10.

DOWNING—The commercial gooseberry. Vigorous, productive and a fine keeper. Yellow. 25c each, \$2.00 per 10, \$4.00 per 25, \$7.00 per 50, \$12.00 per 100.

RED JACKET—The best red gooseberry. Large, rich, juicy, good quality. 50c each, \$4.50 per 10.

QUINCES

	Each	10
Large size, 4 to 5 ft., XXX.....	\$1.55	\$14.00
Medium size, 3 to 4 ft., XX.....	1.25	11.00

ORANGE—Best variety. Large, round, golden yellow. Fine flavor. October.

APRICOTS

	Each	10
Large size, 4 to 5 ft., XXX.....	\$1.45	\$14.00
Medium size, 3 to 4 ft., XX.....	1.25	11.50

ROYAL—Large, pale orange with red cheek. Excellent quality. Best variety.



DOWNING GOOSEBERRIES

Did you ever eat one of those delicious deep gooseberry pies so dear to the heart of all good Englishmen? Nothing can quite compare with them



A BUNCH OF CACO GRAPES FROM OUR FRUIT FARM
Some folks say that you really do not know what a good grape is until you have tasted the Caco. It certainly is a very delicious variety.

JAPAN WALNUT—Shell but little thicker than English Walnut, meat comes out whole. Very delicious. 3 to 4 ft., 85c each; \$7.50 per 10.

BLACKBERRIES

Strong one year bushes. 20c each, \$1.00 per 10, \$2.00 per 25, \$3.75 per 50, \$7.00 per 100.

GREEN'S HARDY—New variety of great promise. Large vigorous and very productive.

BLOWERS—Exceptionally productive. Large, sweet luscious fruit. Hardy.

ELDORADO—Recommended for its extreme hardiness. Large, sweet, no hard core.

RASPBERRIES

Strong one year bushes—20c each, \$1.15 per 10, \$2.50 per 25, \$4.50 per 50, \$8.00 per 100

PLUM FARMER—The best black raspberry. Ripens early. Fruit good size and quality.

CUTHBERT—The standard of quality. Not as large as some others, but dependable and a favorite.

HERBERT—The hardest red raspberry. Large, good flavor. Excellent for both garden and commercial use.

SYRACUSE—The best home garden variety. Very large, unusually fine flavor and very productive. Price, 65c each, 5 for \$3.00.

COLUMBIAN—This purple variety is the most productive and profitable of all. Large, good quality, an excellent canner.

GRAPES

Strong two year vines (except Concord and Caco), 40c each, \$3.75 per 10, \$7.50 per 25, \$13.75 per 50, \$25.00 per 100.

BRIGHTON (Red)—Large, compact bunches, delicate skin, tender.

CAMPBELL'S EARLY (Black)—Bunches and berries extra large. Early.

CACO (Red)—The finest quality grape we know. Bunches medium size, berries large, very sweet and rich. Strong grower and heavy bearer. 85c each; \$7.50 per 10.

CONCORD (Black)—The great commercial grape. Midseason. Large berries and bunches. Good quality. Absolutely reliable. Prices—30c each, \$2.50 per 10, \$5.00 per 25, \$8.75 per 50, \$15.00 per 100.

DIAMOND (White)—Delicious early grape, large, juicy and rich.

DELAWARE (Red)—A delicious little red table grape. Juicy and sweet.

LUCILE (Red)—Extra hardy and prolific. Large bunches and berries.

NIAGARA (White)—The leading white grape. Large, fine flavor, prolific.

WORDEN (Black)—High quality, black grape, juicy and very pleasant.

AGAWAM (Red)—Noted for its large bunches and berries. Excellent keeper.

CARMAN (Black)—Very late. Hangs long on the vine. Good keeper.

CATAWBA (Red)—An excellent table grape. Very high quality.

EATON (Black)—Not as high quality as Concord but more attractive in appearance.

LINDLEY (Red)—Has a peculiarly rich aromatic flavor. Bunches medium size.

McPIKE (Black)—Very large berries and bunches above average in size.

MOORE'S EARLY (White)—Very early. Good size and quality.

NUT TREES

BUTTERNUT—Prized for its large, sweet, nutritious kernels. 4 to 5 ft., 85c each; \$7.50 per 10.

BLACK WALNUT—Used extensively by furniture manufacturers. Large, oily nuts of excellent flavor. 4 to 5 ft., 85c each; \$7.50 per 10.

ENGLISH WALNUT (Thomson)—Seedling from grove near Rochester. Very hardy. 2 to 3 ft., \$1.75 each; \$16.00 per 10.

HAZELNUT (Filbert)—Medium size, thin shelled nuts, meaty, sweet and excellent flavor. Easy to grow. 2 to 3 ft., 85c each; \$7.50 per 10.

ASPARAGUS

Strong two year plants—60c per 10, \$1.15 per 25, \$2.00 per 50, \$3.50 per 100, \$12.00 per 1000

CONOVERS—An old favorite. Large, vigorous.

PALMETTO—Earlier, better yielder and of more even growth than Conovers.

WASHINGTON—A new variety that gives great promise of taking first place in popularity. Large, vigorous, rustproof.

Strong two year old selected roots—\$1.25 per 10, \$2.50 per 25, \$4.00 per 50, \$7.00 per 100, \$25.00 per 1000

RHUBARB

(Pieplant)

MYATT'S LINNAEUS—The best variety. Large, tender, sweeter than other kinds. Roots 30c each, \$2.50 per 10, \$4.00 per 25, \$7.00 per 50, \$12.00 per 100.

You will be allowed a liberal discount if cash is sent with order. All transportation charges are paid by us.
See page two.

SHADE AND ORNAMENTAL TREES

BECHTEL'S CRAB—Low bushy tree, rarely over 20 ft. in height. Rose-like pink blossoms. 3 to 4 ft. \$1.45 each.

CATALPA BUNGEII—Umbrella shaped dwarf tree, grows at maturity, 8 to 10 ft. high. Flowers in large clusters. Very ornamental. 6 to 8 ft. \$3.00 each.

CATALPA SPECIOSA (Hardy Catalpa)—Large foliage tree, fine for lawn planting. Flowers in July. Grows 50 ft. and upwards. Fast grower. 5 to 6 ft., 75c each; 6 to 8 ft., \$1.00 each.

AMERICAN ELM—A handsome vase-shaped tree, unsurpassed for street and park planting. Attains 60 ft. and upwards. 6 to 8 ft., \$1.00 each; 8 to 10 ft., \$1.75 each.

WHITE HORSE CHESTNUT—A superb tree 60 to 80 ft. tall. Covered in May with great upright spikes of white flowers. 3 to 4 ft., 85c each; 4 to 6 ft., \$1.15 each.

AMERICAN LINDEN (Basswood)—A stately tree growing 60 to 80 ft. tall. Flowers appear in July. 5 to 6 ft. \$1.55 each.

ASH LEAVED MAPLE (Box Elder)—A very hardy, fast growing tree attaining a height of 60 ft. and upwards. Withstands cold and drought alike. Grows where others cannot thrive. 5 to 6 ft., \$1.15 each; 6 to 8 ft., \$1.75 each.

NORWAY MAPLE—The finest of all shade trees for street planting. Dense, handsomely cut foliage. Attains height of 60 ft. or more. 6 to 8 ft., \$3.00 each; 8 to 10 ft., \$3.75 each.

SUGAR MAPLE (Rock Maple)—Straight, spreading, symmetrical, of grand proportions, often 80 ft. high. Roots deeply, allowing grass to grow close about its trunk. The producer of maple syrup and sugar. 8 to 10 ft., \$2.75 each.

SILVER MAPLE—A quick growing tree with leaves of a bright green, silvery white on under side. Grows 60 ft. and upwards. 6 to 8 ft., \$1.50 each; 8 to 10 ft., \$2.25 each.

RUSSIAN MULBERRY—A hardy, rapid growing tree. Fruit of little value except to attract birds. 4 to 5 ft., \$1.00 each; \$9.00 per 10.

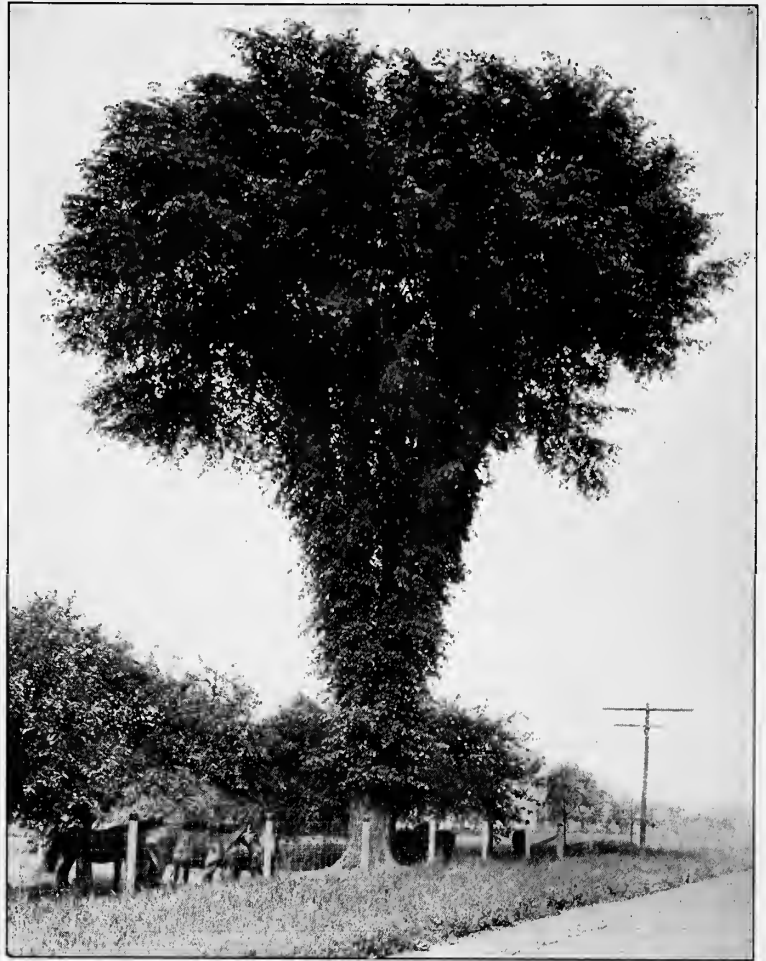
PURPLE LEAVED PLUM—A handsome purple leaved tree about 20 feet tall, with small white flowers in the spring. 5 to 6 ft., \$1.75 each.

CAROLINA POPLAR—An exceedingly fast grower with bright green heart-shaped foliage. Thrives where others fail. 5 to 6 ft., 50c each, \$4.50 per 10, \$35.00 per 100; 6 to 8 ft., 75c each, \$7.00 per 10, \$50.00 per 100; 8 to 10 ft., \$1.25 each, \$10.00 per 10, \$60.00 per 100.

LOMBARDY POPLAR—A very tall, picturesque, spire-like tree. Often 150 ft. tall. Fine for formal planting along avenues or marking the boundary line, etc. 5 to 6 ft., 75c each, \$6.50 per 10; 6 to 8 ft., \$1.00 each, \$9.00 per 10.

GOLDEN WILLOW—A fine tree at all seasons, but especially showy in winter for its bright yellow bark. Grows 60 ft. tall. 4 to 5 ft., 85c each.

DOUBLE WHITE THORN—Double white showy flowers. Ornamental fruit in autumn. 3 to 4 ft., \$2.50 each.



AMERICAN ELM

We certainly would crown this "King of Freedom." What would one like it, planted near your home, be worth to you?

ENGLISH OAK—The Royal Oak of England. Spreading, rather slow grower. 4 to 5 ft., \$2.00 each.

SPECIAL EVERGREENS

While Norway Spruce and American Arbor Vitae are hardy enough to plant at any time during the regular fall planting season, the following varieties of evergreens cannot be successfully transplanted after the fifteenth of September. As this catalog will not reach you in time to permit planting this fall, we recommend ordering now for next spring planting during April and May. Prices include balling and burlapping.

Pyramidal Arbor Vitae:	18 to 24 inches, \$4.00 each
Colorado Blue Spruce:	18 to 24 inches, \$5.80 each
Dwarf Mountain Pine:	18 to 24 inches, \$4.60 each
Pfitzer's Juniper:	18 to 24 inches, \$5.90 each
Siberian Arbor Vitae:	12 to 18 inches, \$3.00 each
Silver Juniper:	18 to 24 inches, \$4.00 each



CATALPA BUNGEII

Doesn't a home make a beautiful picture with a few of these as a proper setting? How much would a few "Bungeii" add to your home?

UNITED STATES DEPARTMENT OF AGRICULTURE ADVISES YOU TO BUY YOUR TREES DIRECT

This is what they say: "If the farmer makes his purchases direct from the nurseryman he will save the expense of the agent and is less liable to mistakes and injury that may occur through repeated handling." United States Department of Agriculture, Farmers' Bulletin Number 113.

GREEN'S QUALITY TREES GROW



One of our blocks of Norway Spruce—50,000 Spruce trees in this block. A row of these trees around your orchard will protect the fruit trees from severe winds and greatly increase your crop. Or, a few trees planted as single specimens on your lawn will make your home grounds much more attractive. They are often planted in hedgerows in place of wire fences.

EVERGREENS AND HEDGES

NORWAY SPRUCE—The most popular Spruce. Strong, sturdy, growing 40 to 60 ft. high. Planted for hedges, windbreaks, screens, backgrounds. Prices: 1½ to 2 ft., 85c each, \$7.00 per 10, \$50.00 per 100. 2 to 3 ft., \$1.15 each, \$9.00 per 10, \$70.00 per 100. 3 to 4 ft., \$1.45 each, \$12.50 per 10. 4 to 5 ft., \$2.00 each, \$17.00 per 10.

AMERICAN ARBOR VITAE (White Cedar)—Most popular for hedge 6 to 20 ft. high. When allowed to develop grows 40 ft. tall. Does well in moist soil. Handsome green spray-like foliage. Prices: 18 to 24 in., \$1.15 each, \$10.00 per 10, \$75.00 per 100. 2 to 3 ft., \$1.45 each, \$12.50 per 10, \$95.00 per 100.

CALIFORNIA PRIVET—The universal hedging plant. Best for hedges. 4 to 6 ft. tall. Can be sheared to any shape desired. Flowers in June. Deciduous. Prices: 18 to 24 in., 25c each, \$1.40 per 10, \$6.00 per 100. 2 to 3 ft., 30c each, \$1.85 per 10, \$8.00 per 100. 3 to 4 ft., 40c each, \$2.75 per 10, \$12.00 per 100.

DWARF BARBERRY—A beautiful dwarf shrub. 2 to 3 ft. high. Yellow flowers followed by scarlet berries. Leaves turn to scarlet and gold in autumn. Best for low hedge, 2 to 3 ft. high. Prices: 12 to 18 inch, 30c each, \$2.75 per 10, \$25.00 per 100. 18 to 24 inch, 50c each, \$4.50 per 10, \$50.00 per 100.

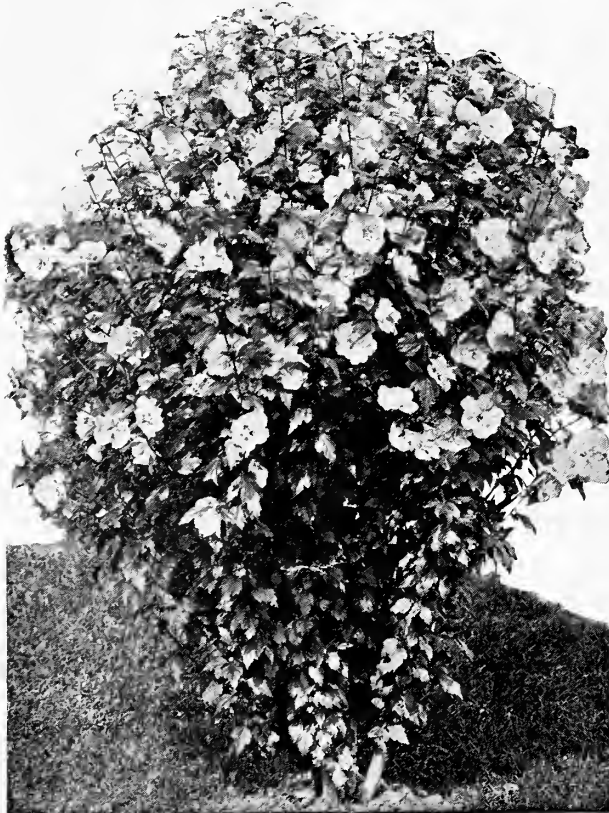
SHRUBS FOR IMMEDIATE EFFECT

In addition to our regular 2 to 3 ft. grade we have some extra large 3 to 4 ft. shrubs of the following varieties: Spirea Van Houtteii, Spirea Billardi, Spirea Collosa Rosea, Deutzia Candissima, Double Pink Deutzia, Deutzia Pride of Rochester, Weigelia, Altheas (all colors), Forsythia and Mock Orange. Price, 85c each; \$7.00 per 10.

ORNAMENTAL SHRUBS

Strong bushes—2 to 3 ft., 55c each; \$5.00 per 10
(except where otherwise noted)

- ALTHEA (Rose of Sharon)**: Resembles small flowering tree 8 to 10 ft. high. Blooms from August until frost. Popular for flowering hedges. We can furnish both double and single flowering varieties in white, red and purple, also double rose with darker center and double white with dark center.
- BUTTERFLY BUSH (Buddlea)**—Will mature to full size the first summer. Makes a handsome bush 4 ft. high. Produces graceful stems of lilac colored blossoms often ten inches long. Blossoms from early summer until frost.
- DEUTZIA CANDIDA**—A vigorous erect grower, grows 6 to 8 ft. high. Pure white double flowers from June throughout summer.
- DEUTZIA CRENATA ROSEA**—Beautiful double white flowers tinged with rose. Height, 6 to 8 ft.
- DEUTZIA PRIDE OF ROCHESTER**—Beautiful large, white, double flowers in May. Very popular. Grows 6 to 8 ft. high.
- FORSYTHIA VIRIDISSIMA (Golden Bell)**—Golden yellow flowers appear very early in spring before leaves, sometimes when snow is on the ground. Strong grower. Grows 8 to 10 ft. high.
- GOLDEN LEAVED ELDER**—Beautiful golden yellow leaves. White, flat topped flowers early in summer. Grows 10 to 15 feet high.
- INDIAN CURRANT (Coralberry)**—A showy shrub, growing 3 to 5 ft. high with dull red berries along the stems which droop beneath their weight.
- LILACS**—New French Varieties. We have a large assortment of both single and double flowering varieties in the following colors: Violet, purple, white, red, blue, deep rose and blue carmine. When ordering state whether double or single varieties are wanted and what color.
- Prices: 2 to 3 ft. high, \$1.15 each; \$10.50 per 10.*
- PINK BUSH HONEYSUCKLE**—An upright bush honeysuckle 8 to 10 ft. tall. Attractive pink flowers in late spring followed by orange or red berries, which literally cover the bush in summer and autumn.
- WHITE BUSH HONEYSUCKLE**—Similar to the pink bush honeysuckle in growth and height. Creamy white flowers in May and June followed by the orange berries in summer and autumn.



ALTHEA (ROSE OF SHARON)

We have them in many colors. See descriptions on this page

SHRUBS, PRIVET AND BARBERRY CAN BE SENT BY PARCEL POST

TREE CRANBERRY—Grows 10 to 15 ft. high with heart-shaped crinkly leaves and showy white flowers in May and red berries later in the season.

WEIGELIA—Large trumpet-shaped flowers in May and June in great profusion. Grows 6 to 8 ft. high. We offer red, pink and white flowering varieties.

GOLDEN SYRINGA—A beautiful 4 to 5 ft. shrub with golden yellow foliage. Makes a striking contrast with green leaved shrubs. 12 to 18 in., 55c each, \$5.00 per 10.

JAPAN QUINCE—A fine old shrub growing 3 to 6 ft. high with dazzling scarlet flowers very early in the spring. With its stout branches and fierce thorns it makes a fine defensive hedge.

LILAC VULGARIS (Common Purple)—Familiar to everyone. Grows 10 to 12 ft. with heart-shaped leaves and purple flowers in May.

LILAC ALBA (Common White)—Similar to above with pure white, fragrant flowers.

MOCK ORANGE (Common Syringa)—Large size shrub, growing 12 to 15 ft. high with fragrant white flowers resembling orange blossoms in June.

SNOWBALL—A hardy shrub, growing 6 to 8 ft. high with white flowers in compact balls. Last of May.

SPIREA ANTHONY WATERER—A dwarf shrub, growing 2 to 3 ft. high with large clusters of rosy crimson flowers in May. Valuable for planting in front of taller varieties. Price, 12 to 18 in., 85c each; \$8.00 per 10.

SPIREA BILLARDI—A narrow dense shrub 6 ft. high with rich pink flowers in summer and fall.

SPIREA COLLOSA ROSEA—Large panicles of deep rosy blossoms nearly all summer. Grows 4 to 6 ft. high.

SPIREA VAN HOUTTEI—Most popular of all shrubs, growing 6 to 8 ft. high with a profusion of white flowers in late spring. Very graceful.

GOLDEN SPIREA—Bright yellow leaves in spring gradually changing to golden bronze in fall. Grows 6 to 8 ft. tall.



SPIRAEA VAN HOUTTEI

A few "Van Houttei" here or there in beds or in borders add surprising beauty to any home. Yes, and value too

SNOWBERRY—Unusually attractive shrub 3 to 5 ft. high; with rose colored flowers in June and July and large clusters of milk white berries until late winter.

HYDRANGEA ARBORESCENS (Hills of Snow)—A very beautiful shrub 8 to 10 ft. high with large heads of pure white flowers similar to the familiar "Snowball" in appearance. Blooms in July, August and September. Grows well under all conditions.

HYDRANGEA PANICULATA GRANDIFLORA (Bush form)—Larger flower heads than Arborescens. White blooms in August and September, changing finally to pink and bronzy green. If allowed to dry on bush they change to pinkish brown and are valuable for winter decoration of the home. Grows 10 to 12 feet high. Prices, 18 to 24 in., 70c each, \$6.50 per 10; 2 to 3 ft., 90c each, \$8.00 per 10; 3 to 4 ft., \$1.15 each, \$10.00 per 10.

TREE FORM HYDRANGEA—Same as above except small plants have been trained to a single item resembling small trees. Price, 2 to 3 ft., \$1.75 each, \$5.50 per 10; 3 to 4 ft., \$2.00 each, \$18.50 per 10.

FLOWERING VINES

55c each; \$5.00 per 10
(except where otherwise noted)

BOSTON IVY (Ampelopsis Vetchii)—A fast growing vine with dense foliage. Will cling to stone or brick structures.

VIRGINIA CREEPER (American Ivy or Woodbine)—Similar to above with larger leaves.

CLEMATIS PANICULATA—A fast growing, hardy vine with fragrant pure white star-shaped flowers in September.

CLEMATIS JACKMANNI—Large, lilac-purple flowers 4 to 6 inches in diameter from July until frost. Strong vines, 85c each, \$8.00 per 10.

HALL'S JAPAN HONEYSUCKLE—An almost evergreen vine with creamy white flowers from May to December. Very fragrant.

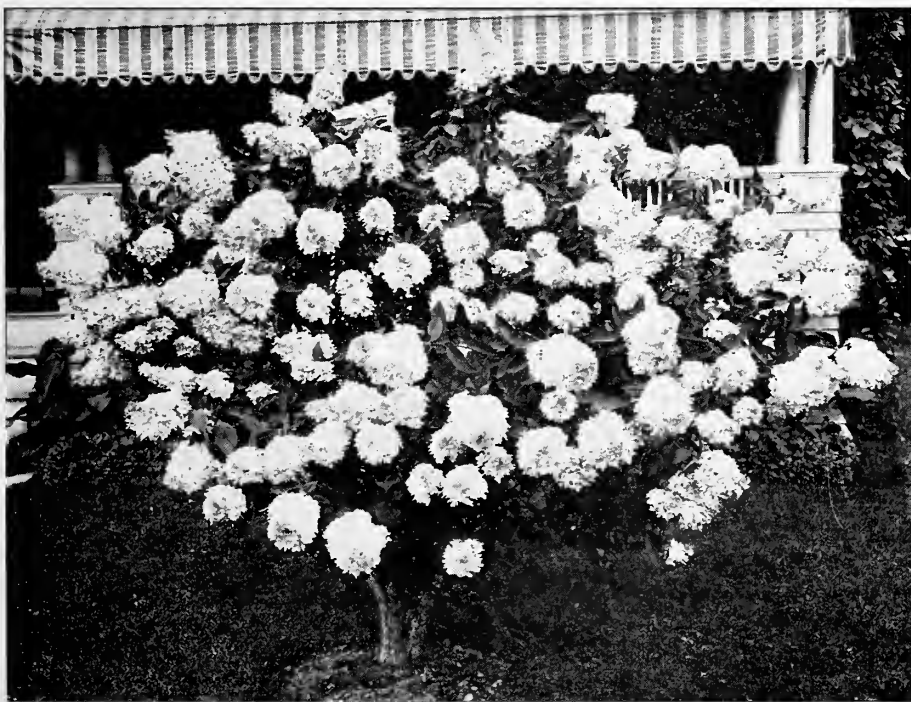
TRUMPET VINE—Strong growing vine with scarlet trumpet-shaped flowers in August.

PURPLE WISTERIA—An excellent climber for any purpose. Handsome purple flowers shaped like the sweet pea in large clusters. July.

BLUE WISTERIA—Same as above with pale blue flowers in spring and autumn.

WHITE WISTERIA—Similar to purple except flowers are a pure white.

DUTCHMAN'S PIPE—Large heart shaped leaves with brownish flowers resembling in shape a miniature pipe. Very desirable for a sunny veranda. Price, \$1.15 each; \$10.00 per 10.



HYDRANGEA PANICULATA GRANDIFLORA

You always feel that "you get loads for your money" when you buy a few of these, probably because they blossom so profusely and the blossoms are so large and beautiful.

YOU CAN HAVE YOUR ORDER SENT C.O.D. IF YOU LIKE. SEE TERMS ON PAGE TWO



A CLUMP OF PAEONIES

Some say they rival the rose in beauty; others say the rose rivals the peony. It is a question hard to decide—they are both so beautiful

PAEONIES

DELACHEI—Violet crimson slightly tipped with silver. Late midseason.

DORCHESTER—Pale hydrangea pink. Fragrant. Medium dwarf. Late.

EDULIS SUPERBA—Bright mauve pink. Collar striped with narrow lilac. Fragrant. Early.

ELLA CHRISTINE KELWAY—Lilac white guards cream white central petals, crimson carpels and stigmas. Fragrant. Mid-season.

FESTIVA MAXIMA—Pure white center, prominently flecked with crimson. Outer petals sometimes faint lilac white on first opening. Early.

GREEN'S MIXTURE—In addition to the above named varieties we have a mixture of red, white and pink unnamed sorts, which are very desirable for mass planting where separate colors are not required.

Prices of Named Varieties—75c each; \$7.00 per 10.

Prices of Green's Mixture—50c each; \$4.50 per 10.

MISCELLANEOUS ROSES

MOSS ROSES—Admired for the beautiful moss covering of the buds. We can furnish them in white, pink and red. Strong two year bushes, 95c each, \$9.00 per 10.

WHITE BABY RAMBLER—Compact bush about 2 ft. high with clusters of medium size white flowers. Strong two year bushes, 95c each, \$9.00 per 10.

CRIMSON BABY RAMBLER—A bush form of Crimson Rambler. 90c each, \$9.00 per 10.

MULTIFLORA—Medium size mottled pink and white double flowers. Fine for hedge. 50c each, \$4.50 per 10, \$35.00 per 100.

DON'T FORGET—You do not have to pay any transportation charges—you can have your order sent C.O.D.—you will be allowed a liberal discount for cash with order. See page two.

ROSES

It has been our experience that roses planted in the fall do fully as well, if not better, than spring set bushes, if a mound of earth one foot high is thrown up around each bush at planting time.

HYBRID TEA ROSES

Strong two year bushes, 95c each; \$9.00 per 10.

Noted for their free and everblooming characteristics. Commonly known as monthly roses.

COLUMBIA—New strong and sturdy variety. Large glowing pink blossoms.

GRUSS AN TEPLITZ—Large, full, fragrant blossoms, dark rich crimson to fiery red.

RADIANCE—Unique and beautiful. Bright carmine rose with opal and coppery reflection.

RED RADIANCE—A "Sport" of Radiance. Flowers a brilliant crimson.

W. R. SMITH—Cream color with soft pink shading, the base of the petals buff yellow.

EDWARD MAWLEY—Large, full deep crimson blooms with darker shadings.

MADAM F. KRUGER—Outer petals cream or light flesh color, center yellow to copper.

MRS. AARON WARD—Indian yellow, occasionally washed with light rose.

OPHELIA—Salmon-flesh color, deepening towards center to light orange salmon.

SUNBURST—Cadmium-yellow, with darker yellow center, verging on saffron.

LOS ANGELES—Silvery salmon-pink, shaded with golden orange.

HYBRID PERPETUAL ROSES

Strong two year bushes, 95c each; \$9.00 per 10.

Not as free blooming as the Hybrid Teas, but very hardy. Bloom profusely in June and sometimes sparingly until autumn.

FRAU KARL DRUSCHKI (White American Beauty)—Vigorous, hardy. Flowers snow white. Large, full, double.

GENERAL JACQUEMINOT—Flowers are brilliant crimson, not very full, but large and very effective. Fragrant.

MADAM PLANTIER—Large, white, double flowers. Fragrant.

PAUL NEYRON—Largest rose in existence. Bright, cerise red. Very free and continual bloomer.

MAGNA CHARTA—Pinkish carmine. Very large size.

CLIMBING ROSES

Strong two year bushes, 70c each; \$6.50 per 10

CRIMSON RAMBLER—Unusually vigorous. Produces a great profusion of medium size double red blossoms.

DOROTHY PERKINS—Full double shell pink flowers in large clusters, very attractive.

CLIMBING AMERICAN BEAUTY—Large double flowers, carmine to rich imperial pink.

DR. VAN VLEET—Lightest shell-pink to silver-flesh. Double.

HIAWATHA—Single crimson flowers with white base.

GOLDFINCH—Deep yellow bud opening to light lemon to cream colored blossom. Semi-double.

SILVER MOON—Primrose buds opening to pure waxy white flowers with yellow stamens. Semi-double.

TAUSENSCHON—Varies in color. A beautiful combination of colors including several shades of pink. Semi-double.

VEILCHENBLAU—Double flowers of light lilac, fading to light purple and blue.

WHITE DOROTHY PERKINS—White double flowers in large clusters.

Total from front of order sheet—

QUANTITY	NAMES OF VARIETIES AND KINDS	SIZE	AMOUNT	

We Pay	}	Total Amount . . \$ _____
Transportation		Deduct 6% if order is sent with cash before October 15 . . \$ _____
Charges		Deduct 3% if order is sent with cash after October 15 . . \$ _____
		Total to remit on cash orders . . \$ _____

No discounts on C. O. D. orders.

NOTICE—We use the greatest care to avoid mistakes. If any nursery stock sold by us should prove untrue to name, we stand ready to replace or refund the purchase price. This is the limit of our liability.

GREEN'S NURSERY COMPANY, ROCHESTER, N. Y.



A BED OF YUCCA

Don't overlook this subtropical plant. It is very distinctive.

PERENNIALS

Prices of all varieties except Hardy Phlox, 30c each, \$2.75 per 10.

LARKSPUR (*Delphinium Belladonna*)—Plants 2 to 3 feet high, bearing mammoth spikes of turquoise-blue flowers.

FOX GLOVE (*Digitalis Gloxinaeflora*)—Tall spires, 4 to 6 feet high, of inflated, bell-shaped flowers in shades of white, rose and purple mixed together. Beautifully spotted.

CANTERBURY BELL (*Campanula Medium*)—Handsome spikes of bell-shaped flowers of porcelain-blue, rose-pink, and white. Plants 2 to 3 ft. high.

COREOPSIS (*Lanceolata Grandiflora*)—Grows 15 to 18 inches high and produces its bright golden yellow flowers from June until frost.

COLUMBINE (*Aquilegia*—Long spurred Hybrids)—An abundance of graceful peculiar-shaped flowers with long slender spires. A most varied and delicate combination of colors, blue, white, yellow pink, cream, lavender, red, scarlet and orange mixed together. Height, 2 to 3 ft.

HOLLYHOCKS—Towering spikes, 4 to 6 feet high, are a mass of flowers all summer. We offer a fine collection of double sorts in four distinct colors, pink, white, yellow and scarlet. Order by color.

HARDY CHRYSANTHEMUMS (Pompons)—We offer a fine collection of Pompon varieties in four distinct colors, white, red, pink and yellow. Order by color.

OXSLIP (*Primula-Primrose*)—Large, bright yellow flowers in early spring.

SHASTA DAISY (*Chrysanthemum Maximum*)—Large snow-white flowers with bright yellow centers. Plants 1 to 2 ft. high.

HARDY ASTER (*Michaelmas Daisy*)—We offer a fine collection in three distinct colors, white, blue and purple. Order by color.

HEPATIC (*Liver Leaf*)—One of the very earliest to bloom in the spring. We offer them in mixed colors of dark blue, light blue, pink and white.

GOLDEN GLOW (*Rudbeckia Laciniata*)—Produces a multitude of large, double, golden yellow flowers in August and September.

OSTRICH PLUME (*Ornamental Grass*)—Long narrow green leaves, 4 to 6 ft. long with white stripes along center. Beautiful plumes resembling ostrich plumes when dry.

ANCHUSA (*Dropmore*)—It is fully covered with pure blue

flowers an inch in diameter, which are of a surpassing beauty and loveliness.

YUCCA FILAMENTOSA—Resembles the Century plant in foliage with tall spikes of large bell-shaped white blossoms resembling the Lily.

HARDY PHLOX

MRS JENKINS—Immense panicles of pure white flowers.

PANTHEON—Cerise-salmon, white center; branching spikes.

PERCHEAU d'ISLAND—Deep red.

RHINELANDER—Salmon pink with claret eyes.

ATHIS—Deep, clear salmon pink. Large and strong.

LA VAGUE—Clear silvery rose.

SIR EDWIN LANDSEER—Very bright crimson. Free grower.

GREEN'S MIXTURE—We offer in addition to the above named varieties, our own mixture of unnamed sorts, ranging in color from pure white to dark red, and including almost all shades and combinations of colors. Very desirable for mass planting where distinct colors are not required.

Prices of Named Varieties—40c each; \$3.00 per 10.

Prices of Green's Mixture—25c each; \$2.25 per 10.



A CLUMP OF HARDY PHLOX

Brighten up your border planting with a few of these brilliantly colored plants. Sometimes referred to as "nature's paint brush."



Digging trees at Green's farm. We use 10 teams — 20 horses — on our tree digger. Plenty of power like this enables us to keep the blades of the digger down deep in the soil. This insures plenty of strong fibrous roots.

WHAT OTHERS SAY ABOUT OUR TREES

Best Packed Nursery Stock Ever Seen

Green's Nursery Company: The trees and rose bushes I bought from you were received in good condition and now have started growing nicely. The trees and shrubs I bought from you last year have made good growth and are looking fine. Your nursery stock was the best packed and liveliest looking that I ever received from any nursery and I have been buying for the last twenty-five years.

A. W. C. FURCRON,
The Plains, Virginia,
May 21, 1924.

Bore 14 Months After Planting

Green's Nursery Company: My last shipment of trees came in on time and are set. The Montmorency cherries and Clapp's Favorite pears that were set last spring have blossomed and promise to bear a good basket of fruit each, and not yet fourteen months in the ground. Here in Warren County, deep in the Adirondacks, for fruit trees to flourish thus seems to me remarkable. Of all my settings of two spring times, including plums, cherries, grapes, vines and ornamental trees, not a single one has died. Thanking you for good plants at very reasonable prices.

H. W. RIGGS,
North Creek, New York,
June 12, 1924.

All Speak Highly of Your Trees

Green's Nursery Company: Enclosed please find check to cover cost of enclosed order of five peach trees. My back yard of forty fruit trees of different kinds, all bought of your good firm, have done splendidly and we have always mentioned your firm as the place to purchase trees. Your catalogs have been handed over to interested parties and all speak highly of the trees they have received.

JOSEPH H. SMITH,
31 Gooch St., Melrose 76, Mass.,
April 16, 1924.

Bought of You Almost Every Year for 50 Years

Green's Nursery Company: Trees came today in fine condition. They were nice trees and I opened and heeled them in soon after coming. I have bought of you every year but one or two for nearly fifty years.

J. M. SNYDER,
Contoocook, New Hampshire,
April 24, 1924.

Third Year My Cherries and Plums Were Loaded with Fruit

Green's Nursery Company: About eight years ago I gave your house an order for some seventy trees. They grew beautifully. The third year my cherry trees were real bouquets and were loaded with fruit and the Burbank was heavy with lovely big plums. Mr. Green deserves a monument just for holding the apple tree and its fruit before the public and preaching its benefits.

E. K. MILLER,
McLean, Virginia,
March 9, 1924.

Commenced Buying of You 31 Years Ago

Green's Nursery Company: Enclosed please find my order with draft for \$108.00 in payment. We commenced buying your nursery stock thirty-one years ago and we have been well pleased with all the trees and plants and the treatment.

J. N. BARNEY,
Pana, Illinois,
February 18, 1924.

Agent Stated He Could Not Furnish Hedge for Less Than Twice I Paid You

Green's Nursery Company: Received the hedge in due time and found it to be the best I ever bought. Planted it on the 4th of April and glad to say every one is growing. One of my neighbors bought some from one of our local agents and only 31 grew out of 100. Just the other day an agent from one of our Home Nurseries came by my home and stated he could not furnish hedge like I had for less than twice the price of what I paid. I highly recommend your goods.

H. E. MOYER,
240 Horton St., Wilkes-Barre, Pa.
May 12, 1924.

You Have Many Customers Here— All Very Satisfied People

Green's Nursery Company: Enclosed please find order and check for \$20.30. I am an old customer and my plants and trees have always done fine. You have many customers here, all very satisfied people. Wish you could see some of our peaches. They are the largest in this part of the country.

PAUL ERNST,
Mountain View, New Jersey,
March 14, 1924.

Better Than Others Bought From Two Other Firms

Green's Nursery Company: I am enclosing check in payment of order and wish to say I was well pleased with the order. Everything was exceptionally fine, better than others I bought from two other firms. The order was packed in excellent shape. Will send you another order this Fall.

E. A. MEEKS,
422 Dunham Ave., Clinton, Iowa,
May 1, 1924.



A corner of one of our blocks of Standard Pear Trees. The leaves have been removed from some of the trees in the immediate foreground to show how well the tops of the trees are branched.

PLEASE READ OUR LIBERAL TERMS ON PAGE TWO BEFORE ORDERING