

Historic, archived document

Do not assume content reflects current scientific knowledge, policies, or practices.

62.61 1924 LIBRARY
★ FEB 29 1924 ★
U. S. Department of Agriculture

HART & VICK'S

SPECIAL
PRICE LIST

for

**Market Growers
Florists and
Farmers**



**HART & VICK :: SEEDMEN
ROCHESTER, NEW YORK**





THIS Wholesale Catalog is for the Commercial Grower of Vegetable, Flower and Farm Seeds, the Market Gardener, Florist and Farmer, those who make their living by growing and selling the crop the seed produces.

No one else is entitled to these Wholesale Prices.

We Sell Tested Seeds—Every lot of seed, except in small packets, is marked with the test to show you how it germinates.

Only One Grade of Seed is carried in stock and listed in our Catalogs. You will not find two grades of the same variety, listed as "Special Select" and "Ordinary." We do not know of a grower who wants any but the "Special Select" or highest grade he can get. Your orders are filled with the best seed that can be grown; we do not carry any other.

Order Early—We strongly advise our customers to order early, not only to avoid the spring rush, but to insure having their list filled in full. Some varieties of which there may be a crop shortage will be more scarce as the season advances.

We pay for the Delivery of all Flower and Vegetable Seeds when purchased at the prices for Trade Packets, fractions of an ounce, ounce, fractions of a pound and pound. On larger quantities that take a lower price, such as 10 lbs. of Sweet Corn, etc., purchaser pays transportation. We do not pay charges on Field Seeds or on bulbs or roots except where noted in this Book.

Express—On packages weighing 25 lbs. or more, the Express rates are a little lower than Parcels Post. For smaller packages, parcels post is cheaper. Unless postage is included in order, packages will be sent by Express Collect.

Freight—Shipments over 100 lbs. are much cheaper by freight, but it takes longer for these to go through.

Terms—Cash with order, or references from new customers.

The following tables give the Parcel Post rates to different parts of the country:

	Each 1 lb.	Each additional lb.		Each 1lb.	Each lb.
Alabama	\$.08	\$.06	Montana	\$.11	\$.10
Arkansas	.08	.06	Nebraska	.09	.08
California	.12	.12	Nevada	.12	.12
Colorado	.11	.10	New Jersey	.06	.04
Conn., Western half	.06	.02	N. Hampshire, East	.07	.04
Conn., Eastern half	.07	.04	N. Hampshire, West	.08	.02
Delaware	.07	.04	New York, West half	.05	.01
Florida	.09	.08	New York, East half	.06	.02
Georgia	.08	.06	North Carolina	.07	.04
Idaho	.12	.12	North Dakota	.09	.08
Illinois, Eastern half	.07	.04	Ohio, Eastern half	.06	.02
Illinois, Western half	.08	.06	Ohio, Western half	.07	.04
Indiana	.07	.04	Oklahoma	.09	.08
Iowa	.08	.06	Oregon	.12	.12
Kansas	.09	.06	Rhode Island	.07	.04
Kentucky, East half	.07	.04	South Carolina	.08	.06
Kentucky, West half	.06	.06	South Dakota	.08	.08
Louisiana	.09	.08	Tennessee	.08	.06
Maine	.07	.04	Texas, Eastern part	.09	.08
Mass., Eastern half	.07	.04	Texas, Western part	.11	.10
Mass., Western half	.07	.04	Vermont	.06	.02
Maryland, North	.07	.04	Virginia	.07	.04
Maryland, South	.08	.06	Washington	.12	.12
Michigan	.07	.04	Wisconsin, East half	.01	.04
Minnesota	.08	.06	Wisconsin, West half	.08	.06
Missouri	.08	.06	Wyoming	.11	.10
Mississippi	.08	.06			

We Guarantee our seed to grow under favorable circumstances. Since there are so many conditions upon which the crop depends, we give no warranty, expressed or implied, as to description, quality or productiveness, and we will not in any way be responsible for the crop. If the purchaser does not accept the goods on these terms, they are to be returned at once and money refunded. Hart & Vick, Rochester, N. Y.

Vegetable Seeds

We solicit the orders of Growers, knowing that the strains of vegetable seeds we offer are the very best that can be grown in this and European countries. Our aim has always been to supply you with seeds you can depend on. The success of our business depends entirely upon our ability to please you.

ARTICHOKE

	Oz.	¼ lb.	lb.
Green Globe -----	\$.50	\$1.50	----

ASPARAGUS

	Oz.	¼ lb.	lb.
Vick's Mammoth -----	\$.10	\$.20	\$.60
Palmetto -----	.10	.20	.60
Giant Argenteuil -----	.10	.20	.60
Washington (new) for description see our Retail Seed Book-----	.25	.85	3.00
Plants of Washington Pedigreed Asparagus, \$18 per 1,000 Plants of other varieties, \$12.00 per 1,000			

BORECOLE OR KALE

	Oz.	¼ lb.	lb.
Dwarf Green Curled -----	\$.10	\$.30	\$1.00

BEANS

Beans sell 60 lbs. per bushel. We sell 10 lbs. or more at the 100-lb. rate.

WAX PODDED BUSH BEANS

	1 lb.	100 lbs
Burpee's Kidney Wax-----	\$.23	\$18.00
Curries Rustproof Black Wax-----	.22	17.00
Davis White Wax-----	.22	17.00
Hodson Wax -----	.22	17.00
Pencil Pod Black Wax-----	.22	17.00
Refugee Wax -----	.22	17.00
Rustless Golden Wax-----	.22	17.00
Surecrop Stringless Wax-----	.23	18.00
Wardwell's Kidney Wax-----	.22	17.00
Webber Wax -----	.22	17.00
Earliest of Wax varieties, pods, long, flat, good quality. The first in the market.		

GREEN PODDED BEANS

Bountiful -----	\$.22	\$17.00
Keeney's Stringless Refugee-----	.23	18.00
Refugee or 1000 to 1-----	.20	14.00
Stringless Green Pod-----	.22	17.00

POLE VARIETIES

Golden Cluster Wax-----	\$.32	\$30.00
Kentucky Wonder (Old Homestead)-----	.30	25.00
Scotia -----	.25	20.00
London Horticultural (Speckled Cranberry) .23		18.00

LIMA BEANS—POLE AND BUSH

Early Jersey Lima, Tall-----	\$.30	\$25.00
Seibert's Early Lima, Tall-----	.30	25.00
Early Leviathan, Tall-----	.30	25.00
Fordhook Bush Lima, Dwarf-----	.40	35.00
Burpee's Bush Lima (Early Wonder Strain) .32		28.00

BEETS

Our strains of Detroit Dark Red and Crosby's Egyptian are especially fine. Growers say they have never seen beets that grow more true to type than those they raise from our seed. We are very proud of both of them. Let us send you some seed this season.

	Oz.	¼ lb.	lb.
Detroit Dark Red-----	\$.12	\$.35	\$1.25
A market Beet uniform in size, small tap root, dark, smooth skin and very dark red flesh.			
Early Wonder -----	.10	.30	1.00
Crimson Globe (Rochester)-----	.15	.45	1.50

A Perfected Strain of Crosby's Beet

After several years of careful selection we have now grown seed of a greatly improved strain of Early Crosby's Egyptian Beet that for earliness, uniform size, globe shape, small tap root, short top and very dark red skin and flesh, is almost perfect. In fact, several growers, who have been watching the improvements in it each year, now pronounce it "as perfect as any beet can grow." We urge every beet grower to try this strain of Crosby's. It will satisfy the most critical. These very reasonable prices will permit its being sown in quantity. Oz., 12c; ¼lb., 35c; pound, \$1.25.

MANGEL WURZEL

	Oz.	lb.
Golden Tankard—best long yellow kind-----	\$.15	\$.40
Long Red—enormously productive-----	.15	.40
Golden Giant—extra large, flesh white-----	.15	.40
Double Sugar—true Denmark Grown—extra fine -----	.15	.40

SWISS CHARD

Large Ribber Silver-----	\$.10	\$.75
Giant Lucullus -----	.10	.75

BROCCOLI

White Cape -----	.40	1.25
------------------	-----	------

BRUSSELS SPROUTS

	Oz.	¼ lb.	lb.
Danish Market -----	\$.30	\$.85	\$3.00
Paris Market -----	.30	.85	3.00

CABBAGE

Our strain of Danish Ballhead, Copenhagen Market and Glory of Enkhuizen is grown for us by one of the most reliable cabbage seed growers in Denmark. Our seed is produced from the cabbage head. Inferior seed is grown from the stump.

EARLY VARIETIES

	Oz.	¼ lb.	lb.
Early Jersey Wakefield-----	\$.30	\$.85	\$3.25
Copenhagen Market -----	.30	.95	3.50
Golden Acre, a new splendid variety, 7 to 8 days earlier than Jersey Wakefield. Heads round, weighing from 5 to 6 lbs. Leaves small, bright green color. Heads uniform and every plant will produce a perfect head. One of the very best varieties for the early market -----	1.25	4.50	-----
Glory of Enkhuizen-----	.25	.75	2.75
Allhead Early -----	.25	.70	2.50
Early Summer -----	.25	.75	2.75
Six Weeks, extra early, small, solid -----	.75	2.50	-----

LATE OR MAIN CROP VARIETIES

Danish Ballhead (short stem)-----	\$.25	\$.80	\$3.00
Danish Ballhead (tall stem), the old original Danish Ballhead-----	.25	.80	3.00
Succession -----	.25	.75	2.50
All Seasons -----	.25	.75	2.50
Surehead -----	.20	.60	2.25

SAVOY CABBAGE

Perfection Drumhead -----	\$.25	\$.80	\$3.00
---------------------------	--------	--------	--------

RED CABBAGE

Mammoth Rock Red-----	\$.30	\$.95	\$3.50
Mammoth Danish Stonehead-----	.30	1.00	3.75
Heads large, solid and of delicious flavor. Planted in April, heads are ready in July and August.			

HART & VICK'S Special Growers' Catalog

CHINESE OR CELERY CABBAGE (PE TSAI)

	Oz.	¼ lb.	lb.
Poating -----	\$.25	\$.85	\$3.00

This is the best of the different varieties of Chinese Cabbage. We have proven this to our own and the satisfaction of our local Market Gardeners through trials made by Robert Smallridge of Irondequoit. For description, see our Retail Catalog.

CARROT

Carrots are considered more of a field than garden vegetable, and oftentimes care in selecting seed stocks is neglected. We use the same care selecting for shape and quality, for seed of our Danver's Half Long and Chantenay as we do with Celery, Onions or Cauliflower. You may depend upon its quality.

	Oz.	¼ lb.	lb.
French Forcing (Short Horn)-----	\$.15	\$.40	\$1.25
Nantes Half Long (Coreless), best for bunching -----	.10	.30	1.00
Guerande or Oxheart-----	.10	.25	.90
Chantenay Stump Rooted-----	.10	.25	.90
Danver's Half Long-----	.10	.25	.90
Long Orange -----	.10	.25	.80
White Belgian -----	.10	.25	.80

CAULIFLOWER

Our Cauliflower seed is grown for us by a specialist in Europe. You can rely on our Early Snowball and other varieties to be the best strains that can be produced. No better seed can be grown.

	¼ oz.	oz.	¼ lb.	lb.
Early Snowball -----	\$.50	\$1.75	\$6.50	\$24.00
Erfurt Earliest Dwarf-----	.50	1.75	6.50	24.00
Danish Giant, "Dry Weather"-----	.60	2.00	7.50	27.00
Large Algiers -----	.40	1.25	3.50	12.50

CHICORY

There is a steadily growing demand for "French Endive" in all city markets, and it is a crop that can be very easily raised with big profit in many places now going to waste. You can grow them in the winter under the greenhouse bench or in a cellar—any place where the temperature can be kept around 60 degrees. Grow outside same as parsnips. Dig in the fall and store in pits or cellar where it is cold.

	Oz.	¼ lb.	lb.
Witloof or French Endive-----	\$.25	\$.85	\$3.00
Large Rooted -----	.30	.90	3.25

CORN SALAD OR FETTICUS

Large Leaved -----	\$.15	\$.35	\$1.25
--------------------	--------	--------	--------

CRESS

Fine Curled Garden-----	\$.15	\$.30	\$1.00
-------------------------	--------	--------	--------

Pleased Customers Are Our Best Advertisements

"Your celery and lettuce seed you sent me is exceptionally fine stock. Some of the commission men told me I had the finest two acres of celery, grown from your seed, in Fulton. It yielded greater and brought more money than ever before from any other seed."

Jan. 9, 1922.

E. J. RUDE, Fulton, N. Y.

From one ounce of your Mammoth Rock Red Cabbage seed, sown last year, I raised about \$150.00 worth of cabbages. Our shipment to _____ of Boston netted me a little over \$84.00.

March 12, 1923.

CHESTER BLODGETT,
Leominster, Mass.

Celery

One of the difficulties of the Celery Grower is to procure seed that will produce plants without pithy stalks and with as few green plants among them as possible. To be absolutely certain of his seed, he should buy it a year in advance and try it out before planting his main crop. This plan is not generally followed by the grower, so we are doing it for him by carrying in stock a two years' supply of seed. The seed we are offering this year was tested thoroughly last summer (1923), therefore is strictly proven seed. In this way we know exactly the quality of our Celery Seed and can recommend it to you.

WILLIAMSON CO-OPERATE VEGETABLE ASSN., INC.

"We have been users of quite large quantities of both Celery and Lettuce Seed purchased from Hart & Vick of Rochester, N. Y., during the past two years.

We have found their seed running very uniform and true to strain, and would not hesitate to recommend their seed to any prospective purchasers."

Respectfully yours,

Williamson Co-Operative Vegetable Assn., Inc.
W. G. Pallister, Mgr.

Hart & Vick.

"Dear Sirs:—We have used your seeds for the past three years and have found them in line with the best. This year we had a crop of Celery from your strain of Golden Dwarf Self-Blanching and it was the finest crop of Celery we ever grew. Will use a lot of your seed again next year."

We are yours truly,

Leenhouts Bros.,

Per James Leenhouts.

Williamson, N. Y., Nov. 21, 1923.

Our Golden Dwarf Self-Blanching Celery is the Old Original strain. Dwarf growing, solid and good keeper. It has been tried out and tested. We know it is right.

	Oz.	¼ lb.	lb.
Golden Dwarf Self-Blanching-----	\$1.10	\$4.00	\$15.00
Improved Early Golden, Self-Blanching (tall growing)-----	.90	3.25	12.00
Easy Blanching -----	.65	2.00	7.00
Dwarf, compact in growth like Golden Self-Blanching. Easily and quickly blanches pure white, leaves green. A good variety to follow Self-Blanching. Fine keeper.			
French's Success -----	.90	3.00	10.00
A green Celery with good length stalks, thick, firm and brittle. Will keep in good condition well into March. This variety is a money-maker. Market Gardeners like it very much.			
Emperor—(New). Dwarf, second early, very good keeper, round stemmed, very high quality-----	.50	1.35	5.00
Columbia -----	.30	1.10	4.00
Giant Pascal -----	.30	.75	2.50
Golden Heart -----	.25	.60	2.25
White Plume -----	.30	.85	3.00
Winter Queen -----	.30	.85	3.00

CELERAIC

	Oz.	¼ lb.	lb.
Giant Prague, Stump Rooted-----	\$.20	\$.50	\$2.25

Sweet Corn

We sell Sweet Corn 50 lbs. to the bushel. 10 pounds or more at the hundred rate. Good Seed Corn is very scarce, so we urge you to order your seed early.

Shempp's 60-Day—Shempp's 60-Day is the earliest white Sweet Corn you can raise. It's a money-maker because it is early. It will grow big ears, 8 to 10 inches long. Its size will sell it. It's the sweetest extra early Sweet Corn, the nearest approach to Golden Bantam in quality. The sweetness and tenderness will make it popular with your buyer's trade. It's a mighty good yielder. You will find it hardy, for it can be planted early enough to have ripe ears early in July. Shempp's 60-Day has every quality that makes a sweet corn sell. It's a money-maker for any grower. 25c per lb.; 100 lbs., \$18.00.

Early Irondequoit—Here is a white Sweet Corn that ripens ahead of Whipple's Early; has a large ear well filled with deep kernels and is of fine quality. In Irondequoit, where it originates, it was first on the market and brought mighty good prices. We have purchased the entire seed stock of Mr. Titus, its originator, and offer it to you this spring at 25c per lb.; \$18.00 per 100 lbs.

Whipple's Early—As early as Cory and as large as Evergreen. Ears 8 inches long, very large around; 16 to 20 rows of long, narrow, sweet, tender, delicious kernels of very high quality. Big yielder, very profitable for the market grower. Try Whipple's Early and let us hear from you. 25c per lb.; 100 lbs., \$18.00.

Golden Bantam (Double Yield Strain)—Twice as many ears of the same famous flavor. Since the introduction of the Golden Bantam Sweet Corn many new and supposedly superior varieties have been introduced. We have tested a number of them and have yet to find one its equal in sweetness. The only objection to Golden Bantam has been its tendency to produce few and small ears. This fault we have overcome by years of selection, saving our seed from the largest and most perfectly formed ears and the strongest and most productive plants. In this way we have worked up a strain of Golden Bantam with two or three large ears to the stalk and have retained the same sweet, juicy flavor that has made Golden Bantam the most sought for corn on the market. 25c per lb.; 100 lbs., \$18.00.

Bantam Evergreen—Golden Bantam crossed with Stowell's Evergreen. Large 8-inch ears, 14-rowed; a fine variety to follow the first early sorts. Rich golden-yellow, sweet and tender. Give Bantam Evergreen a trial. It's a money-maker. 23c per lb.; 100 lbs., \$16.00.

Stowell's Evergreen—This very choice strain of Stowell's Evergreen is grown for us in Monroe County and receives the same careful attention in the growing of the crop and the selection of ears for seed that we give to our Golden Bantam and Shempp's 60-Day and other varieties. The ears for seed are carefully cured, tipped and butted and our seed stocks very fine. 22c per lb.; 100 lbs., \$15.00.

	1 lb.	100 lbs.
Earliest of All.....	\$.23	\$16.00
Mammoth White Cory.....	.22	15.00
Early Evergreen20	14.00
Golden Nugget23	16.00
Black Mexican20	14.00
Country Gentleman23	16.00

DANDELION

Improved Thick Leaved.....	\$.75	\$2.80	\$10.50
----------------------------	--------	--------	---------

EGG PLANT

Black Beauty	\$.40	\$1.25	----
New York Spineless Purple.....	.40	1.25	----

Cucumbers

The best Cucumber on the Market. Read what Growers all over the country say about Deltus

For more than 20 years "Dell" Titus, one of the most progressive and successful vegetable growers in Irondequoit, N. Y., has been at work perfecting this Cucumber. The fruit is long, uniform diameter its entire length, ends are very blunt, cutting down the waste in slicing; skin smooth, rich dark green; flesh solid, crisp and tender.

Greenhouse grown seeds especially selected by Mr. Titus for forcing. $\frac{1}{8}$ oz., 75c; $\frac{1}{4}$ oz., \$1.25; $\frac{1}{2}$ oz., \$2.00; oz., \$3.75; pound, \$55.00. Not less than half pound at pound rate.

Outdoor Grown Seed for Field and Garden Crops—Since we introduced Deltus two years ago, the demand has been so great and the call so persistent for seed of this strain of Cucumber, at a price that will allow it to be grown as a general out-of-door crop, that we grew several acres from the Original Greenhouse Grown Selected Seed. Field grown Deltus Cucumbers are as perfect as those grown under glass. They have the size, shape, color and quality of the perfect cucumber and are money-makers for the grower. The cost of the seed puts it within the reach of every grower. Oz., 30c; $\frac{1}{4}$ lb., 60c; pound, \$2.00.

From Victoria, B. C., Canada—

"We have been growing Cucumbers under glass for some twenty years and have tested many varieties during that time. Have now grown your 'Deltus' for two seasons and can freely state that in both quantity and quality of crop produced it greatly exceeds any variety we have grown previously. We intend to stick to it, as we do not expect to find a better one for our requirements."

"J. L. HILBORN."

From Rockford, Illinois—

"I bought some 'Deltus' Cucumber seed from you and put it on the market in 1919. Had several varieties in the field. The 'Deltus' was the only one that furnished any "cucks" that year. They weathered the drought of 1919. All I can say is, they produced and others did not. Hence my order for 'Deltus.'"

"C. S. CRAWFORD."

From Connersville, Indiana—

"The Deltus Cucumber seed we got from you this spring raised the finest Cucumbers we ever had. They held their color for weeks."

"CHAS. A. RIESS & SON."

From Columbus, Ohio—

"I found the Deltus Cucumber to be earlier and bear longer than any other cucumber I have ever raised. It is a good variety and sells well."

F. H. HETZER."

From Oakwood, Missouri—

"We bought Deltus forcing cucumber seed from you two years ago and they have proven to be a wonderful cucumber."

"GIBNEY BROS."

Early Fortune—A new strain of White Spine, very productive and early. Fruit is rich dark green, 8 to 9 inches long, and retains its color when shipped. Oz., 15c; $\frac{1}{4}$ lb., 30c; pound, \$1.00.

	Oz.	$\frac{1}{4}$ lb.	lb.
Improved White Spine	\$.10	\$.30	\$1.00
Davis' Perfect	.10	.30	1.00
Improved Long Green	.15	.40	1.35
Chicago Pickling	.10	.30	1.00
Vick's Lemon	.20	----	----
Japanese Climbing	.20	----	----

ENDIVE

Broad-Leaved Batavian—

(Escarolle)	\$.15	\$.30	\$1.00
Moss Curled	.15	.30	1.00
Green Curled	.15	.30	1.00

FLORENCE FENNEL

A bulb-like vegetable, formed above the ground at the base of the leaf stalk.

Florence Fennel	\$.15	\$.45	\$1.50
-----------------	-------	-------	--------

KOHL RABI

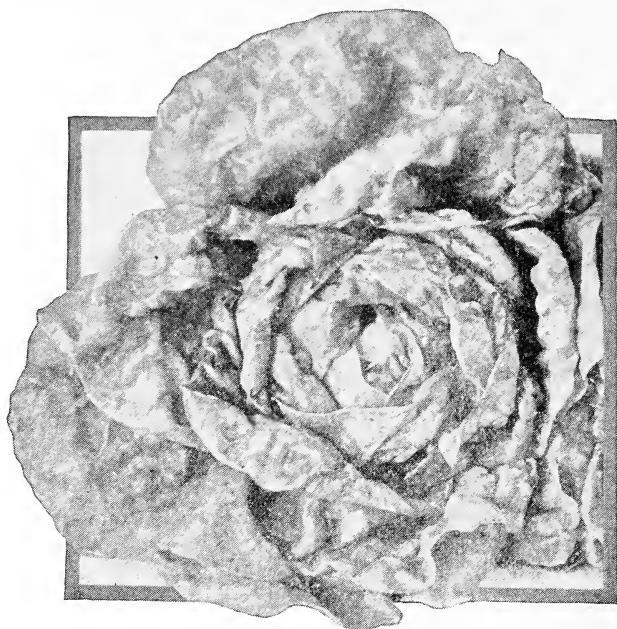
	Oz.	$\frac{1}{4}$ lb.	lb.
Early White Vienna	\$.15	\$.45	\$1.60
Purple Vienna	.15	.45	1.60

LEEK

Montrous Carenton	\$.15	\$.40	\$1.50
-------------------	-------	-------	--------

Lettuce

Big Boston—This solid, compact head Lettuce is the most popular for outside growing. It's the best for late summer and fall market. Our strain is equal to any. We have but one grade of seed—the best that can be grown. Oz., 15c; ¼ lb., 35c; pound, \$1.25.



Big Boston Lettuce

Early May King—Our strain of this excellent forcing variety has been tried out and declared very fine by Lettuce Growers. We recommend it to you as the equal of any. Oz., 15c; ¼ lb., 35c; pound, \$1.25.

Grand Rapids—Most popular Curled Leaf kind. There is a lot of our strain of Grand Rapids grown under glass in Irondequoit. Growers say its the finest they have ever used. Rapid grower; leaves upright and can be planted close. Oz., 15c; ¼ lb., 35c; pound, \$1.25.

California Cream Butter—Grown quite extensively in the South for the Northern market. Heads large size and solid. We are informed by a representative of the United States Department of Agriculture that considerable experimenting has been done with this variety on muck soils. The tests so far have proven it free from the different diseases the Big Boston is subject to. We have secured sufficient seed of the original stock to allow Lettuce Growers to give it a thorough trial, but only in a small way at first. Price, oz., 15c; ¼ lb., 35c; lb., \$1.25.

	Oz.	¼ lb.	lb.
Salamander or Satisfaction.....	\$.15	\$.35	\$1.20
Crisp as Ice.....	.15	.35	1.25
Black Seeded Simpson.....	.15	.35	1.15
Hanson10	.30	1.00
New York or Wonderful.....	.20	.60	2.25
Prize Head15	.35	1.25
Iceberg15	.40	1.50
Golden Queen15	.40	1.50
Cos or Romaine—Trianon Self-Folding15	.35	1.25

Muskmelon

Irondequoit—This old favorite was introduced to the Growers by Charles H. Vick, of this firm, in 1889, and named Irondequoit after that famous Market Garden section, by George Cooper, a pioneer grower. It is a cross between Montreal Green Nutmeg, from which it gets its size and heavy netting, and the old Surprise, from which comes the thick, juicy, sweet, orange flesh. This is a very profitable Melon on the market. Our strain of Irondequoit is very fine. Growers using it declare it the best they have had. Oz., 20c; ¼ lb., 60c; pound, \$2.00.

Bender's Surprise—A selection from Surprise and a close kin to Irondequoit, differing from that variety in being more oblong, more full and rounded at the ends, not quite as thickly netted and a little later. A very delicious, large, salmon-fleshed Melon, with superior shipping and keeping qualities. Our seed is of the true Bender. A very choice strain that is giving satisfaction to Growers. Oz., 40c; ¼ lb., \$1.35; pound, \$5.00.

"When we are satisfied, we believe in telling about it. Perhaps this sounds exaggerated, but it is the truth. From 400 hills planted with your seed of Bender Muskmelon, we picked and marketed 6,000 melons, some of them weighing 12 and 14 lbs.—all true to type.

"WM. SHEMPP & SON,
"Barnards, N. Y."

Extra Early Knight—An extremely early, medium size, oblong Melon. Skin deep green, turning golden when ripe, thick gray netting, distinctly ribbed. Flesh is thick, sweet, medium green, blending to light pink near center. The earliest high quality Melon. A good shipper. Oz., 15c; ¼ lb., 40c; pound, \$1.50.

	Oz.	¼ lb.	lb.
Extra Early Osage	\$.15	\$.45	\$1.65
Rocky Ford	.10	.30	1.00
Paul Rose or Petosky	.15	.35	1.25
Emerald Gem	.15	.40	1.40
Honey Dew	.15	.45	1.50
Hearts of Gold	.15	.35	1.25

WATERMELON

Cole's Early	\$.10	\$.25	\$.80
Harris Earliest	.10	.25	.80
Sweetheart	.10	.25	.80
Tom Watson	.10	.25	.80
Citron, Red Seeded	.10	.20	.70

MUSTARD

Ostrich Plume	\$.10	\$.25	\$.80
Giant Southern Curled	.10	.25	.80

OKRA

White Velvet	\$.10	\$.20	\$.60
Perkins' Mammoth Long Pod	.10	.20	.60

PARSLEY

Extra Triple Curled	\$.10	\$.25	\$.75
Double Moss Curled	.10	.25	.75
Plain Leaf	.10	.20	.70
Turnip Rooted	.10	.20	.70

PARSNIP

Long Hollow Crown (special strain)	\$.10	\$.30	\$1.00
------------------------------------	-------	-------	--------

HERBS

	Oz.	¼ lb.	lb.
Thyme, Summer	\$.60	\$2.00	----
Thyme, Winter	.75	2.25	----
Sweet Marjoram	.20	.60	2.00
Dill	.10	.25	.75
Lavender	.50	1.60	----
Sage	.30	1.00	3.75
Savory, Summer	.20	.50	1.50

Onion Seed

Danver's Yellow Globe—Our Danver's seed comes to us from its originator. In our opinion and from the results growers are getting from it, we believe it cannot be beaten for quality. Onion Growers on the muck around Sodus, Williamson, Fulton, North Rose, Albion and Holly, N. Y., as well as in other parts of the country, know its high quality and that they can depend upon our Onion seed the same as they can rely on every seed stock of ours that they put in. It is not bragging when they say that the seed of every variety of vegetable and flower we have cannot be excelled. We thoroughly know how much it means to the Grower to get good seed and keep quality first always. You can depend on seed you get from Hart $\frac{7}{8}$ Vick. Let us prove it to you this season. Oz., 15c; $\frac{1}{4}$ lb., 45c; pound, \$1.65. Special prices quoted on large quantities.

	Oz.	$\frac{1}{4}$ lb.	lb.
Southport Yellow Globe.....	\$.15	\$.50	\$1.75
Southport Red Globe.....	.20	.60	2.00
Southport White Globe.....	.30	.85	3.00
Prizetaker—fine for Fall Market..	.15	.50	1.75
Red Wethersfield15	.50	1.75
White Portugal15	.70	2.50
White Queen or Barletta.....	.15	.50	1.75
Ailsa Craig20	.60	2.00

ONION SETS

	Lb.	8 lbs.	32 lbs.
Yellow Sets	\$.25	\$1.25	\$4.00
White Sets25	1.30	4.50
Ebenezer Sets35	1.35	5.00
Egyptian or Perennial Tree Onion..	.25	1.10	----

Danvers
Yellow
Globe



ONION GROWERS EVERYWHERE LIKE OUR STRAIN OF DANVER'S ONION

"Your onion seed this year is very close to perfection, judging from present appearances. Put me down for 35 pounds for 1924 of the same strain."

OSCAR T. DAY, Fulton, N. Y.

"We were very well pleased with the onion seed we had from you last year. It was our first trial of your seed. We were satisfied to the extent that we intend ordering all of our seed from you the coming season."

W. A. NICHOLS & SON, Sodus, N. Y.

Peas

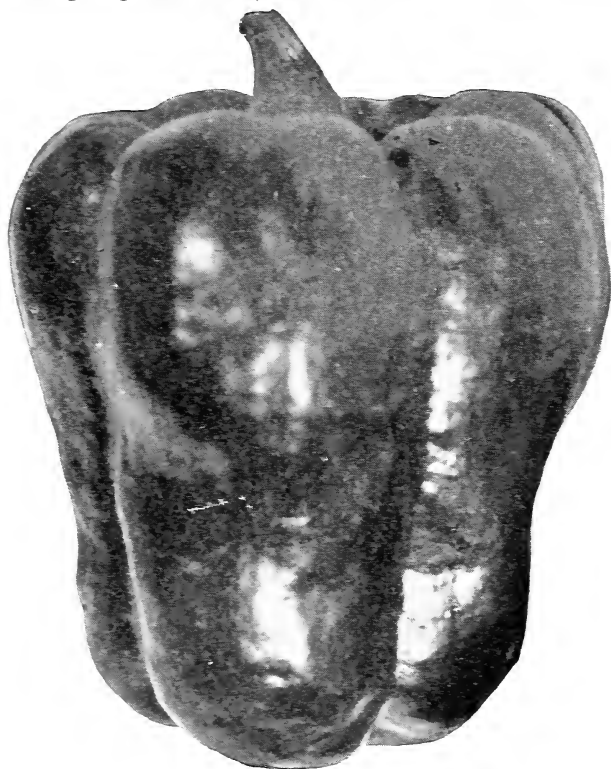
We sell Peas 56 lbs. to the bushel. Orders for 10 lbs. or more of a variety take the hundred rate.

EARLY VARIETIES

	1 lb.	100 lbs.
Alaska—Smooth, 2½ ft.-----	\$.21	\$15.00
First and Best—Smooth, 3 ft.-----	.22	16.00
Thomas Laxton—Wrinkled, 3 ft.-----	.24	18.00
Gradus—Wrinkled, 3 ft.-----	.24	18.00
Laxtonian—Wrinkled, 18 in.-----	.24	18.00
Little Marvel—Wrinkled, 15 in.-----	.23	17.00
Nott's Excelsior—Wrinkled, 15 in.-----	.22	16.00
Sutton's Excelsior—Wrinkled, 18 in.-----	.23	17.00
Premium Gem—Wrinkled, 15 in.-----	.22	16.00
American Wonder—Wrinkled, 15 in.-----	.24	18.00

MEDIUM LATE VARIETIES

Daisy or Dwarf Telephone—Wrinkled, 20 in.-----	.23	17.00
Telephone—Wrinkled, 4 ft.-----	.23	17.00
Champion of England—Wrinkled, 4½ ft.-----	.23	17.00
Stratagem—Wrinkled, 2 ft.-----	.24	18.00
White Marrowfat—Smooth, 4 ft.-----	.20	14.00
Black Eyed Marrowfat—Smooth, 4 ft.-----	.20	14.00
Melting Sugar—Smooth, 4 ft.-----	.35	24.00



Harris' Earliest Pepper

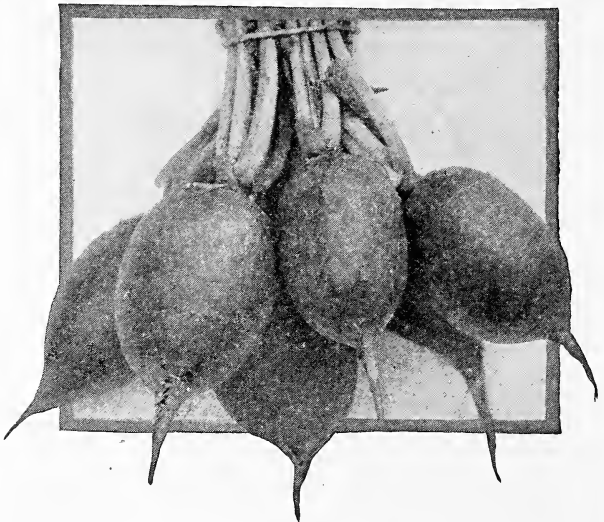
PEPPER

	Oz.	¼ lb.	lb.
Sweet Mountain -----	\$.30	\$1.00	\$3.50
Pimento -----	.40	1.25	4.50
Chinese Giant -----	.50	1.60	6.00
Ruby Giant -----	.40	1.25	4.00
Large Bell -----	.25	.85	3.00
Giant Long Red Cayenne-----	.35	1.15	4.00

Harris Earliest—This is the very best early Sweet Pepper that we know of. It is a wonderful bearer and ripens Peppers for the market before any other kind. Oz., 50c; ¼ lb., \$1.85; pound, \$7.00.

Radish

Vick's Scarlet Globe—We have an exceptionally fine strain of this superb variety. The seed is Eastern grown, each bulb is selected for uniformity of size, shape, color and general high quality and transplanted by hand for seed growing. Vick's Scarlet Globe is one of the very earliest of forcing varieties and does equally well outside. Roots are globe shaped, with a very small top; always crisp and tender; bright scarlet color. Oz., 10c; ¼ lb., 25c; pound, 90c.



Vick's Early Scarlet Globe Radish

OTHER VARIETIES OF RADISH

	Oz.	¼ lb.	lb.
Sparkler—White Tipped, Forcing—	\$.10	\$.30	\$1.00
We have a very superior strain of this popular forcing variety.			
Saxa—Extra Early Round Red Short Top. About 6 days earlier than Scarlet Globe—	.10	.30	1.00
Extra Early Scarlet Turnip, White Tipped, Forcing —	.10	.25	.90
French Breakfast —	.10	.25	.85
Icicle —	.10	.25	.95
Long Brightest Scarlet—	.10	.25	.95
Round Black Spanish Winter—	.10	.25	.85
California Mam. White Winter—	.10	.25	.85
Chinese Rose Winter—	.10	.25	.85

PUMPKIN

Winter Luxury —	\$.10	\$.25	\$.85
Sugar or Pie —	.10	.25	.75
Connecticut Field —	.10	.20	.60

RHUBARB

Recleaned Seed —	\$.10	\$.35	\$1.25
Good, strong roots, \$7.00 per 100.			

SALSIFY

Mammoth Sandwich Island—	\$.20	\$.70	\$2.50
--------------------------	--------	--------	--------

Our strain of Vick's Scarlet Globe Radish has probably done more in the way of advertising for us than any other seed we sell. Growers who are using it are very generous in their praise of its excellent qualities.

Winter and Summer Squash

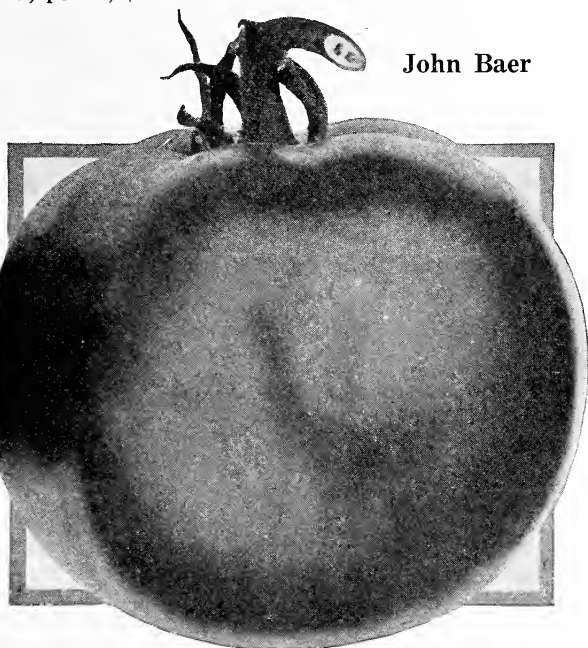
	Oz.	¼ lb.	lb.
Mam. Bush Summer Crookneck	\$.10	\$.35	\$1.10
White Bush Scallop (Patty Pan)	.10	.30	1.00
Chicago Warty Hubbard	.15	.35	1.10
Improved Hubbard	.15	.35	1.10
Golden Hubbard	.15	.35	1.25
Marblehead, resembles Hubbard, early, smooth, blue-gray skin, orange-yellow flesh	.15	.40	1.50
Cocozelle or Summer Asparagus	.15	.45	1.50

Tomato

Earliana—An extra early tomato, smooth, solid and firm. It brings good prices on the market and is a profitable crop to raise. Our strain of Earliana is especially fine. Growers who have tried it say it cannot be beaten. Oz., 30c; ¼ lb., \$1.00; pound, \$3.75.

John Baer—For a medium early market this nearly round, smooth, bright scarlet Tomato is very fine. We can recommend our strain to any grower. Oz., 30c; ¼ lb., \$1.00; pound, \$3.75.

John Baer

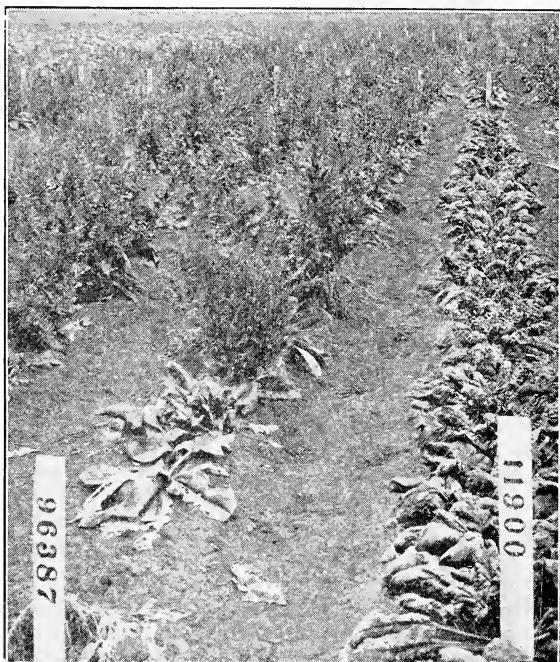


	Oz.	¼ lb.	lb.
Chalk's Early Jewel	\$.25	\$.80	\$3.00
Early Avon (new). Considered one of the best extra early scarlet fruited varieties. Very productive. Large and smooth	.60	2.00	7.50
Bonny Best	.30	1.00	3.75
Improved Stone	.30	.90	3.50
Dwarf Stone	.35	1.15	4.00
Dwarf Champion	.30	.90	3.50
Ponderosa	.45	1.25	4.75
Wayhead. A very early, smooth, solid, red variety, with potato- leaved foliage; fruit about the size of Earliana and will ripen with it if not a few days earlier	.60	2.00	7.50
Golden Queen	.30	.90	3.50
Pear Shaped Red	.50	1.50	---
Pear Shaped Yellow	.50	1.50	---
Red Cherry	.50	1.50	---
Yellow Cherry	.50	1.50	---

Spinach

King of Denmark—This broad, heavy, thick, crumpled, dark green-leaved Spinach will stand two weeks longer than any other variety before going to seed. Every grower will appreciate this quality, as he does not have to sell his whole crop within a very short time, as with other kinds. Oz., 10c; ¼ lb., 20c; pound, 60c.

	¼ lb.	lb.
Bloomsdale -----	\$ --	\$.35
Victoria -----	--	.35
Improved Thick-Leaved (Montrous Virolay) -----	--	.35
Long Season -----	--	.35
New Zealand -----	.25	.85
Prickley or Fall -----	.20	.70



This Picture shows very plainly how other varieties of Spinach have run to seed while King of Denmark Spinach in row 11900 is still in good condition.

TURNIP

	¼ lb.	lb.
Purple Top White Globe -----	\$.20	\$.60
Purple Top Strap-Leaved -----	.20	.60
Early White Snowball (Six Weeks) -----	.20	.65
Golden Ball or Orange Jelly -----	.20	.65
Cowhorn -----	.20	.60

RUTA BAGA

Imperial Purple Top Yellow -----	\$.20	\$.60
White Sweet -----	.20	.75

The tomato pack this year is estimated by the U. S. Dept. of Agriculture at 13,159,000 cases of No. 3 cans. This is the largest pack ever made except the pack of 17,085,000 cases of No. 3 cans in 1918.

The value of the tomatoes used in the pack this year at canneries was \$15,928.00; last year it was \$14,757.00. Canners paid tomato growers \$13.29 per ton this year and \$12.59 per ton last year. The yield of canning tomatoes per acre was 4.2 tons, the lowest yield since 1919. About 283,900 acres were devoted to the raising of tomatoes for canning.

Farm Seeds

TWELVERO FLINT CORN

(Monroe County Grown)

This Yellow Flint Corn is turning out to be such a success wherever it has been grown that we are feeling mighty proud of having introduced it. As good as it has proved to be, however, we don't think it's perfect yet, and are still working on it. In fact, you will find the ears from this year's seed just a little longer and the kernel a little deeper than they were last season. We describe "Twelvero" for those who do not know it. A twelve-row, yellow flint, with large ears 11 to 12 inches long, deep kernels and a small cob. Matures early and yields greater than any other flint we know of. Stalks grow 7 to 8 feet high, are covered with leaves and make good fodder. Price, Peck (14 lbs.), 60c; bushel (56 lbs.), \$2.25.

CORNELL NO. 11 DENT CORN

(Monroe County Grown)

This new Dent Corn bred up at the Cornell Agricultural Experiment Station, is a selection from Pride of the North, and matures here in Western New York in from 115 to 140 days. It is a week or two later than Early Huron, but has larger and longer ears and will shell a larger portion of grain than this or almost any other variety. It is well adapted to Western New York for both grain and silage. The stalks grow 8 feet tall and have an abundance of leaves. Our seed is from carefully selected ears, tipped and butted and was certified when growing last summer. Peck (14 lbs.), 85c; bushel (56 lbs.), \$3.00.

EARLY HURON

(Monroe County Grown)

For those who want to raise large crops of corn that will ripen in September we highly recommend our Monroe County Grown Early Huron. It will mature in northern parts of the country where the ordinary Dent Corn will not ripen. The ears are of medium length, 8 to 9 inches long, compact and heavy, and have 14 to 16 rows of yellow, deep, well-formed kernels. The cob is small, dries out quickly and is easily husked. Early Huron Dent Corn makes mighty good fodder, as it grows 7 feet tall. Price, Peck (14 lbs.), 75c; bushel (56 lbs.), \$2.75.

IMPROVED EARLY LEAMING CORN

Most of our readers know Leaming as one of the best two purpose corns for ensilage and fodder they can sow. Its tall stalks and many heavy leaves make it ideal for ensilage, while its good crop of medium to large ears matures early, in this improved strain, and puts value into it as a Corn for fodder. Price, Peck (14 lbs.), 50c; bushel (56 lbs.), \$1.75.

WELCOME OATS

This heavy, white branching oat, developed by the New York State College of Agriculture, where tests with other varieties gave it the highest yield per acre, has given the greatest satisfaction wherever it has been grown. Welcome is very early, vigorous and wonderfully productive. The seed we offer has been very thoroughly cleaned, is free from all impurities and of very high quality. Bushel (32 lbs.), \$1.50. Special prices on large quantities.

ROBUST PEA BEANS

A vigorous growing, heavy bearing, absolutely rust-proof Pea Bean. Free from "Mosaic" disease and root-rot. Endorsed by Prof. G. P. McKostie of Cornell Agricultural Experiment Station. Peck (15 lbs.), \$2.00; bushel (60 lbs.), \$7.00.

Seed Potatoes

Our Seed Potatoes are selected from carefully inspected fields and will give satisfaction. Shipments are made as soon as danger of their freezing is past.

Early Ohio—Extra early, round, pink skin; flesh solid, cooks dry and mealy. Peck, 75c; bushel, \$2.50; sack (165 lbs.), \$6.50.

Irish Cobbler—Most popular early kind, round, white, heavy cropper. Peck, 70c; bushel, \$2.35; sack (165 lbs.), \$6.00.

Early Rose—Early, oblong, pink skin, fine quality. Peck, 75c; bushel, \$2.50; sack (165 lbs.), \$6.50.

Heavy Weight—A new late variety that yields an immense crop of splendid looking potatoes of the highest quality. The tubers are oblong with a smooth white skin. Vines are stocky, vigorous growing and disease resistant. Peck, 65c; bushel, \$2.25; sack (165 lbs.), \$6.00.

Number Nine—A popular late potato, heavy yielding and strong growing; flat oval shape; large, solid and heavy. Peck, 65c; bushel, \$2.25; sack (165 lbs.), \$5.75.

Dibble's Russet—New, late, round, white, plump, russet skin; excellent quality. Peck, 65c; bushel, \$2.25; sack (165 lbs.), \$5.75.

Green Mountain—Medium late, large, flat, oval shape, white flesh. Peck, 65c; bushel, \$2.25; sack (165 lbs.), \$5.75.

Certified Seed Potatoes

This certified seed is being used more every year. If everyone would plant it we would soon be through with potato diseases. We offer these five varieties. Write to us for prices:

Irish Cobbler
Number Nine

Green Mountain
Russet

Heavy Weight

Lawn Grass Mixtures

Highland Park Lawn Mixture—A mixture that has proven its worth by producing beautiful and permanent lawns for the city home, the public park and the country estate. It is a careful blending of varieties that produce a thick, deep-rooted, velvety, evergreen sod that will hold the moisture and remain fresh and green during the dry season in summer. $\frac{1}{2}$ lb., 30c; pound, 50c; 3 lbs., \$1.40; 5 lbs., \$2.25; 20 lbs. (1 bushel), \$8.00.

Shady Nook Lawn Mixture—This is a special mixture of varieties that will grow quickly and make a fine, rich, green grass in shaded places under trees, shrubbery and overhanging building. $\frac{1}{2}$ lb., 35c; pound, 65c; 3 lbs., \$1.85; 5 lbs., \$2.75; 20 lbs. (1 bushel), \$10.00. No charge for bags.

Grass and Clover Seed

We carry a full line of Field Seeds, but owing to the fluctuation in their prices cannot quote on them when this book is printed. Write to us and we will gladly send samples and prices to you.

Canada Blue Grass
Hungarian Grass
Kentucky Blue Grass
Orchard Grass
Red Top Grass
Sheep's Fescue
Timothy
Alfalfa (Northern Grown)
Alfalfa (True Grimms)
Clover, Medium Red
Clover, Alsike
Clover, White Dutch
Clover, White Sweet

Buckwheat, Japanese
Buckwheat, Silver Hull
Dwarf Essex Rape
Winter Vetch
Millet, Japanese
Millet, Hungarian
Millet, Golden
Soy Beans, Mam. Yellow
Barley, Beardless
Rye, Rosen
Clover, Crimson
Canada Field Peas
Cow Peas, Whipporwill

Flower Seeds

Hart & Vick's Famous Asters

Our reputation for Aster seed, grown from strong, healthy, selected plants, free from stem rot and other Aster plant diseases, is favorably known in all parts of the country. Make sure when you buy your seed that it comes from healthy, disease-free plants.



American Beauty Aster

American Beauty Asters—This is a new branching type of Aster with giant flowers, very double and full petaled, held erect on strong stems 15 to 24 inches long. The plants are hardy, strong growing, thrifty and bloom abundantly for a longer season than any other variety. There is always a demand for American Beauty. It is the ideal cut-flower for the florist.

Early American Beauty Asters—They will bloom very early, at about the same time as Royals.

	1/16	1/8	1/4	Oz.
White -----	\$.20	\$.35	\$.60	\$2.00
Lavender -----	.20	.35	.60	2.00
Rose -----	.20	.35	.60	2.00
Purple -----	.20	.35	.60	2.00
Pink -----	.20	.35	.60	2.00
All Colors Mixed -----	.20	.35	.60	2.00

Late American Beauty Asters—These begin blooming after Late Branching and continue until hard frost.

	1/8	1/4	Oz.
Azure Fairy (new), Blue -----	\$.30	\$.50	\$1.75
Rose -----	.30	.50	1.75
Purple -----	.30	.50	1.75
Lavender -----	.30	.50	1.75
Pink -----	.30	.50	1.75
All Colors Mixed -----	.30	.50	1.75

HART & VICK'S Special Growers' Catalog

Queen of the Market Asters—This extra-early variety should be started in the hot-bed or greenhouse in March and transplanted to the open ground as soon as the weather permits.

	1/8	1/4	Oz.
White	\$.20	\$.30	\$1.00
Shell Pink20	.30	1.00
Lavender20	.30	1.00
Purple20	.30	1.00
Rose20	.30	1.00
Crimson20	.30	1.00
All Colors Mixed20	.30	1.00

Vick's Royal Asters—This early flowering Aster blooms after Queen of the Market and about 10 days before Late Branching. The flowers are of good size and quality and the plants very productive.

	1/8	1/4	Oz.
White	\$.25	\$.45	\$1.50
Shell Pink25	.45	1.50
Lavender25	.45	1.50
Purple25	.45	1.50
Rose25	.45	1.50
Mixed20	.40	1.25



Vick's Branching and Royal Type

Vick's Branching Asters—The best known Florist variety, large, full flowers on tall, strong stems. Sown in the open ground and transplanted they make strong plants, blooming at a season when prices are unusually high.

	1/8	1/4	Oz.
White	\$.25	\$.45	\$1.50
Peerless Pink (shell pink)25	.45	1.50
Enchantress Pink25	.45	1.50
Shell Pink25	.45	1.50
Moreton Pink25	.45	1.50
Lavender Pink25	.45	1.50
Lavender25	.45	1.50
Blue25	.45	1.50
Purple25	.45	1.50
Rose25	.45	1.50
Crimson25	.45	1.50
Heart of France—Pure Red35	.60	2.00
Golden Glow (Fancy Yellow)35	.60	2.00
All Colors Mixed25	.40	1.25



Vick's Imperial Type of Aster

Vick's Imperial—Daybreak Type of Aster—A wonderful Aster for bedding and pot growing, as the plants make round-headed, compact bushes, literally covered with bloom. Salmon is a great favorite with the Florist.

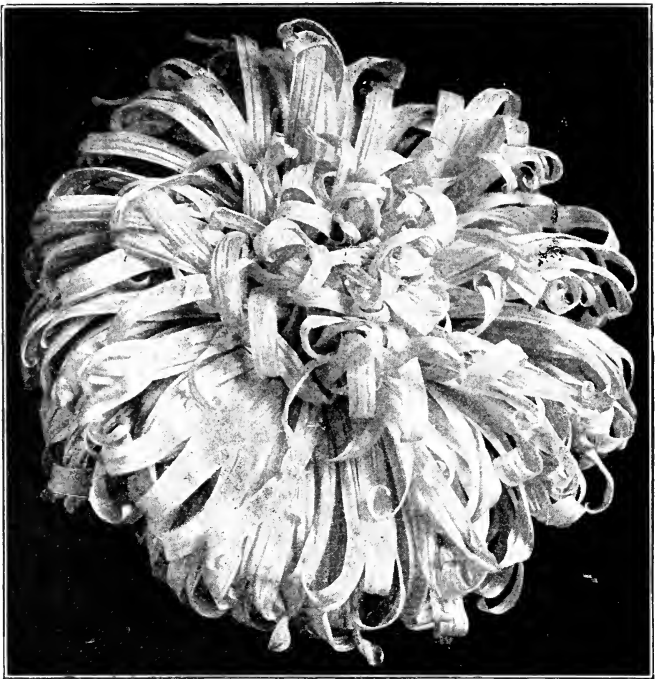
	1/8	1/4	Oz.
Purity—White -----	\$.30	\$.50	\$1.75
Pink -----	.30	.50	1.75
Rose -----	.30	.50	1.75
Blue -----	.30	.50	1.75
Lavender -----	.30	.50	1.75
Salmon -----	.30	.50	1.75
Mixed -----	.25	.45	1.50

Giant Crego Aster—Long Curled petals, similar to Rochester.

	1/8	1/4	Oz.
White -----	\$.25	\$.45	\$1.50
Shell Pink -----	.25	.45	1.50
Lavender -----	.25	.45	1.50
Rose -----	.25	.45	1.50
Crimson -----	.25	.45	1.50
Purple -----	.25	.45	1.50
Mixed -----	.25	.40	1.25

Vick's King Aster—This Aster is entirely distinct from other kinds. Its long, narrow petals are folded lengthwise, giving the large, double flowers a bold, quilled and striking appearance. See picture on page 20.

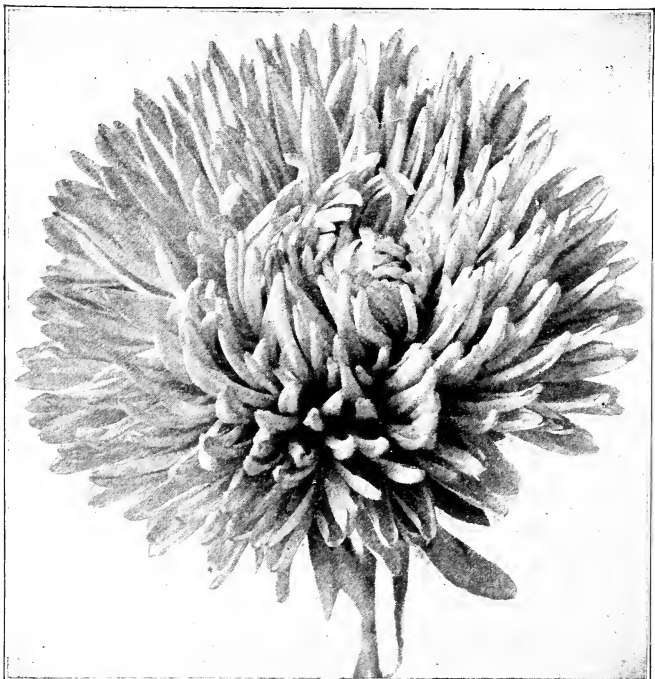
	1/8	1/4	Oz.
White -----	\$.25	\$.45	\$1.50
Pink -----	.25	.45	1.50
Lavender -----	.25	.45	1.50
Violet -----	.25	.45	1.50
Rose -----	.25	.45	1.50
Crimson -----	.25	.45	1.50
Mixed -----	.25	.40	1.25



Vick's Rochester Aster

Vick's Rochester Aster—This is the best long, narrow-petaled, shaggy Chrysanthemum-like Aster for the Florist. The flowers are always full-petaled, very double and have a very full, high center that makes a deep, ball-like flower that is perfect.

	1/8	1/4	Oz.
White -----	\$.25	\$.45	\$1.50
Pink (original Rochester) -----	.25	.45	1.50
Lavender Pink -----	.25	.45	1.50
Lavender -----	.25	.45	1.50
Violet -----	.25	.45	1.50
Rose -----	.25	.45	1.50
Mixed -----	.25	.40	1.25



Vick's King Aster (See page 19)

HART & VICK'S Special Growers' Catalog

ACHILLEA

	$\frac{1}{8}$	$\frac{1}{4}$	Oz.
Ptarmica, fl. pl., "The Pearl"-----	\$1.00	\$1.75	\$6.00

ADLUMIA

Cirrhosa (Allegheny Vine)-----	\$.25	\$.40	\$1.50
--------------------------------	--------	--------	--------

AGERATUM

Little Dorrit Blue, grows 6 inches high -----	\$ --	\$.15	\$.50
Blue Perfection, best dark blue, 12 inches high-----	--	.15	.50
Little Blue Star, dainty plant, very dwarf -----	.45	.85	3.00
Imperial Dwarf White, grows 8 inches high -----	--	.15	.50
Mixture of All Colors-----	--	.15	.40

ALYSSUM

Sweet (Alyssum Benthami), $\frac{1}{4}$ lb. 60c -----	--	.10	.20
Little Gem, very dwarf, compact growing; $\frac{1}{4}$ lb., \$1.50-----	--	.15	.50
Procumbens, Carpet of Snow; $\frac{1}{4}$ lb., \$1.50-----	--	.15	.50
Lilac Queen, dwarf, compact; lilac flowers -----	--	.15	.50
Saxatile Compactum, perennial; yellow -----	--	.20	.60

AMARANTHUS

Sunrise -----	\$.20	\$.30	\$1.00
Mixed Varieties -----	--	.10	.30

ANCHUSA

Italica, Dropmore variety-----	\$ --	\$.20	\$.75
Capensis (Cape Forget-Me-Not), Annual, Blue -----	--	.15	.40

ANTHEMIS (Hardy Marguerite)

Kelwayi, Daisy-like flowers, yellow --	\$.30		\$1.00
--	--------	--	--------

ANTIRRHINUM (Snapdragon)

TALL, LARGE FLOWERED

Garnet—a very rich color-----	\$ --	\$.20	\$.75
Rose—Rich Rose -----	--	.20	.75
Queen Victoria—White -----	--	.20	.75
Rose Pink -----	--	.20	.75
Yellow—Rich Yellow -----	--	.20	.75
Scarlet—Bright and Fiery-----	--	.20	.75
Finest Mixed—All Colors-----	--	.20	.60

MEDIUM, LARGE FLOWERED

Firebrand—Dark Red -----	--	.20	.75
Queen of the North—Pure White--	--	.20	.75
Golden Queen—Yellow -----	--	.20	.75
Crimson Queen -----	--	.20	.75
Rose Queen—Rose Pink-----	--	.20	.75
Silver Pink—Pearly Pink-----	--	.20	.75
Mixture of All Colors-----	--	.20	.75

AQUILEGIA

Coerulea—Blue, Rocky Mountain Columbine -----	\$.35	\$.60	\$2.00
Long Spurred Hybrids, Mixed-----	.35	.60	2.00
Long Spurred Hybrids, Mrs. Scott Elliott's strain -----	.70	1.25	4.00

ARABIS

Alpina—Rock Cress, Dwarf White-\$	--	\$.15	\$.50
-----------------------------------	----	--------	--------

ARCTOTIS

Grandis—African Lilac Daisy-----	\$ --	\$.20	\$.65
----------------------------------	-------	--------	--------

ASPARAGUS

Plumosus Nanus (greenhouse grown, 1,000 seeds, \$4.00. Sprengeri, 1,000 seeds, \$1.25.	
--	--

HART & VICK'S Special Growers' Catalog

BALSAM

	1/8	1/4	Oz.
Perfection, White -----	\$.15	\$.25	\$.75
Perfection, Pink -----	.15	.25	.75
Perfection, Scarlet -----	.15	.25	.75
Perfection—Mixture of All Colors	.10	.15	.50

BRACHYCOME

Swan River Daisy—Blue Flowers_ --	\$.20	\$.75
-----------------------------------	--------	--------

BEGONIA SEMPERFLORENS

	1/32	1/16	1/4 oz.
Erfordia, Carmine Rose-----	\$.85	\$1.50	----
Gracilis Luminosa, Scarlet-----	1.50	----	----
Glorie de Chatelaine, Trade Packet \$1.00 -----	4.00	----	----
Prima Donna, Rose, Trade Pkt., 50c	1.75	----	----
Single Mixed, oz., \$2.50-----	--	.25	.75

CALCEOLARIA

Hybrida Grandiflora—Choice Mixed. Trade Packet, \$1.00.		
---	--	--

CAMPANULA

	1/8	1/4	Oz.
Medium Single Mixed (Canterbury Bell) -----	\$ --	\$.15	\$.35
Calycanthema (Cup and Saucer) --	.20	.35	1.25
Medium Dean's Hybrids, double and single, finest mixed -----		.25	.75

CALENDULA

Orange King—Florists' very special strain. We do not as a rule carry more than one stock of a variety, but in this case must call your attention to a very special strain of Orange King Calendula that far surpasses any other we have ever seen. The blooms are all very double, very large and of a rich orange color that is far the best we have seen. The stems, for Calendula, are very long. Try some of this very special strain—you will appreciate its quality. 1/4 oz., 25c; oz., 75c.

	Oz.	1/4 lb.
Orange King, very full double, lb., \$2.00----	\$.15	\$.60
Meteor, Orange Yellow, Cream Center-----	.15	.50
Lemon Queen, Yellow-----	.15	.50
Mixed -----	.15	.50

CALLIOPSIS

Mixed -----	\$.20	\$.60
-------------	--------	--------

CANDYTUFT

Carmine, bright rosy carmine-----	\$.20	\$.75
Dark Crimson, deep purplish crimson-----	.20	.75
Lavender, very fine, excellent for cutting---	.20	.75
Empress—lb., \$4.00 -----	.40	1.25
Hyacinth Flowered—lb., \$5.00-----	.40	1.50
Mixed -----	.20	.60
Iberis Sempervirens, 1/8 oz., 35c; 1/4 oz., 60c-	2.00	----
Gibraltarica, Lilac-----	.30	.50

CANNA

New Hybrid, mixed-----	\$.30	----
------------------------	--------	------

CARDINAL CLIMBER

	1/8	1/4	Oz.
-----	\$.30	\$.50	\$1.50

CARNATION

	1/16	1/8	1/4	Oz.
Giant or Malmaison, double mixed -----	\$.20	\$.30	\$.50	\$1.50
Marguerite, finest double, mixed -----	.15	.20	.30	1.00
Chabaud's Ea. Ever- blooming, mixed-----	.20	.30	.50	1.50

CELOSIA

CHRISTATA COCKCOMB

Scarlet -----	\$.20	\$.30	\$.50	\$1.75
Yellow -----	.20	.30	.50	1.75
Mixed -----		.30	.50	1.50

PLUMOSA—FEATHERED

Thompson Magnifica, mixed -----		.15	.20	.75
Chinese Woolflower -----	.20	.35	.60	2.00

CENTAUREA

Both the Cyanus and Imperialis varieties are now very popular as cut flowers. The white-leaved kinds, Gymnocarpa and Candidissima, are used for border plants, vases and baskets.

CYANUS—BACHELOR BUTTON

Single Mixed, all colors, $\frac{1}{4}$ lb., 75c-----		$\frac{1}{4}$ oz.	Oz.
Double, blue, $\frac{1}{4}$ lb., \$1.50-----			\$.20
Double Lawson's Pink (extra)-----			.15
Double Mixed, $\frac{1}{4}$ lb., 75c-----			.20
			.25

IMPERIALIS—ROYAL SWEET SULTAN

White -----	.25	.75
Lavender -----	.25	.75
Purple -----	.25	.75
Rose, very pretty -----	.25	.75
Americana Alba -----	.25	.85
Americana Rosy Lavender-----	.25	.85
Suaveolens, Yellow Sweet Sultan-----	.20	.60
Gymnocarpa, Foliage Plant-----	.20	.60
Candidissima, Foliage Plant, $\frac{1}{8}$ oz., 25c-----	.45	1.50

CHRYSANTHEMUM

Annual Single Flowered, fine for cutting

Evening Star, Rich yellow-----	\$.10	\$.25
Morning Star, Pale Primrose Dark Yellow Disc -----	.10	.25
Northern Star, White Dark Eye-----	.10	.25
Double Mixed, all kinds and colors-----	.10	.20

CINERARIA HYBRIDA GRANDIFLORA

Semi-Dwarf, Special Mixed. Trade Packet, \$1.00; 1/64 oz., \$2.75.
Stellata Mixed, 1/64 oz., 60c.

CLARKIA

Snow Queen, double white-----	\$.15	\$.50
Salmon Pink, double flowers-----	.15	.50
Brilliant Scarlet, double flowers-----	.15	.50
Orange Scarlet, double flowers-----	.15	.50
Rosy Carmine, double flowers-----	.15	.50
Purple, double flowers-----	.15	.50
Double Mixed Colors-----	.15	.50
Single Mixed Colors-----	.15	.50

COBAEA SCANDENS

Purple -----	\$ 1/16	\$ 1/8	\$ 1/4	Oz.
White -----		.15	.25	\$.35
				.80

COIX LACRYMA

Job's Tears, $\frac{1}{4}$ lb., 30c---				.15
--	--	--	--	-----

COLEUS

H. & V. Special Mixture-----	.85	1.50	2.75	--
Splendid Mixture -----		.75	1.25	4.00

CONVOLVULUS

Major, Tall Morning Glory, mixed, $\frac{1}{4}$ lb., 25c-----	\$.10
Minor (Dwarf Morning Glory), $\frac{1}{4}$ lb., 35c-----	.15
Morning Glory Rochester, Tall-----	.25
Imperial Japanese, mixed, extra large flowered, $\frac{1}{4}$ lb., 60c; pound, \$2.00-----	.20

HART & VICK'S Special Growers' Catalog

COREOPSIS

	1/4 oz.	Oz.
Lanceolata Grandiflora, Large Flowered, Golden Yellow, hardy perennial-----	\$.10	\$.30

CYCLAMEN

A very choice strain that comes to us from an expert grower.

Persicum Giganteum in the following colors:

Pure White, White with Dark Eye, Pink with Dark Eye, Dark Salmon, Light Salmon, Dark Red. \$1.50 per 100 seeds; \$12.00 per 1,000.

COSMOS

	1/4 oz.	Oz.
Early Mammoth Flowered White-----	\$.15	\$.40
Early Mammoth Flowered Pink-----	.15	.40
Early Mammoth Flowered Crimson-----	.15	.40
Early Mammoth Flowered Mixed-----	.15	.35

NEW EARLY DOUBLE CRESTED COSMOS

This variety of Double Crested flower will bloom in 70 days from the time the seed is sown and will continue to bloom until frost cuts it down. It is early enough for Florists in the North, and will prove as valuable as the early single varieties. 1/8 oz., 25c; 1/4 oz., 45c; oz., \$1.50.

DAHLIA

	1/8	1/4	Oz.
Double, Mixed -----	\$.30	\$.50	\$1.50

DAISY

	1/16	1/8	1/4	Oz.
Longfellow, Pink -----	\$.20	\$.35	\$.60	\$2.00
Snowball -----	.20	.35	.60	2.00
Mixed -----	.20	.35	.60	2.00

MAMMOTH FLOWERED

Monstrosa Rosea -----	--	.70	1.25	4.00
Monstrosa, Alba -----	--	.70	1.25	4.00
Shasta Daisy (Alaska)---	--	.35	.60	2.00

DATURA WRIGHTII

Angels' Trumpet -----		.15	.50
-----------------------	--	-----	-----

DELPHINIUM

These are the perennial varieties—the annual kinds will be found under Larkspur.

	1/16	1/8	1/4	Oz.
Large Flowered Hybrids, Excelsior Srtain-----	--	.25	.40	1.50
Belladonna, Light Blue--	.30	.50	.75	2.50
Bellamosum, Dark Blue--	--	.60	1.00	3.50
Nudicaule, Scarlet, 1/32 oz., 35c; 1/16 oz., 60c; 1/8 oz., \$1.00; 1/4 oz., \$1.75.				

DIANTHUS (PINKS)

	1/16	1/8	1/4	Oz.
Plumarius, Mixed -----	--	\$.15	\$.25	\$.75
Double Diadem, Pink-----	--	.15	.25	.75
Chinese Double, Mixed---	--	.10	.15	.50
Heddewigii, Single, Mixed	--	--	.15	.40
Heddewigii, Double, Mixed	--	--	.20	.60

DIDISCUS

Coeruleus (Blue Lace Flower)----	.25	.35	1.25
----------------------------------	-----	-----	------

DIGITALIS (FOXGLOVE)

Gloxinaflora, Mixed-----	--	.10	.20	.60
--------------------------	----	-----	-----	-----

DIMORPHOTHECA AURANTIACA

Golden Orange African Daisy Hybrids -----	--	--	.20	.70
--	----	----	-----	-----

DRACAENA INDIVISA

Foliage plant for vases, porch boxes-----	.10	.30
---	-----	-----

ESCHOLTZIA (CALIFORNIA POPPY)

	¼ oz.	Oz.
White	\$ --	\$.25
Crimson, Rich Crimson15	.50
Golden West; Large Golden Yellow	--	.25
New Hybrids, Mixed—Rich, unusual colors15	.50

EUPHORBIA

	¼ oz.	Oz.
Variegata (Snow on the Mountain)	\$.10	\$.30

GAILLARDIA (BLANKET FLOWER)

Grandiflora, Perennial15	.40
Lorenziana, Annual, Double Mixed15	.50

GOURDS

Pear Shaped	--	.20
Pipe	--	.20
Dipper	--	.20
Dish-rag	--	.20
Hercules Club	--	.20
Mixed Varieties	--	.20

ANNUAL LARKSPUR

Our list of separate colors is made up of the Tall Double Stock—flowered Larkspurs, which produce the finest spikes of flowers and may be cut all summer long.

	¼ oz.	Oz.
Shell Pink	\$.15	\$.50
Exquisite Shell Pink25	.80
Pure White15	.50
Dark Blue15	.50
Lavender15	.50

Emperor Mixed—A very choice mixture of colors of the tall, double large, flowering kinds. Oz., 30c.

Double Dwarf Mixture—This is a choice mixture of colors of the dwarf growing varieties. Oz., 30c.

GYPSOPHILA (BABY'S BREATH)

Elegans Alba Grandiflora, Annual. Oz., 15c; ¼ lb., 50c; pound, \$1.50.

Paniculata fl. pl.—Hardy, double-flowering; very fine for cutting. 1/64 oz., 40c; 1/32 oz., 75c; 1/16 oz., \$1.25; ½ oz., \$2.00.

	¼ oz.	Oz.
Paniculata (Baby's Breath)	\$.15	\$.40

"Snow White"—A new hardy variety that is pure white and produces a much larger percentage of double flowers than any other kind. An English importation and sold in the original packets at 25c each, 2 for 40c.

HELIANTHUS (SUNFLOWER)

	⅛	¼	Oz.
Extra Double Dwarf	\$ --	\$ --	\$.25
Double Chrysanthemum Flowered, Yellow	--	--	.30

HELIOTROPE

Finest Mixed	\$.35	\$.60	\$2.00
--------------------	--------	--------	--------

HOLLYHOCK

DOUBLE

White	\$.20	\$.30	\$1.00
Pink20	.30	1.00
Rose20	.30	1.00
Red20	.30	1.00
Yellow20	.30	1.00
Maroon20	.30	1.00
Mixed15	.25	.85

HART & VICK'S Special Growers' Catalog

HUNNEMANIA

	1/8	1/4	Oz.
Fumariaefolia (Giant Yellow Tulip Poppy). Very good for cutting. Blooms from midsummer until frost -----	\$ --	\$.15	\$.40

IPOMEA

Bona Nox, Moonflower, White-----	--	.10	.35
Giant Pink Hybrids-----	--	.10	.35
Quamoclit, Cypress Vine-----	--	.10	.35

JAPANESE HOP

Humulus Japonica -----	--	.15	.40
------------------------	----	-----	-----

KOCHIA

Trichophylla, Summer Cypress (Childsii) -----	--	--	.20
---	----	----	-----

LOBELIA

Crystal Palace Compacta, Dark Blue -----	\$.35	\$.65	\$2.25
Erinus Gracilis, Blue Trailing-----	--	.25	.85

LUPINUS

Mixed Colors -----	--	--	.15
--------------------	----	----	-----

LYCHNIS

Chalcedonica, Bright Scarlet-----	--	\$.10	\$.35
Haageana Hybrida, Mixed-----	.40	.65	2.00
Viscaria, Bright Rosy Red-----	--	.20	.75

MARIGOLD

AFRICAN

Prince of Orange, Finest Golden Orange -----	--	\$.25	\$.75
Lemon Queen, Lemon Yellow-----	--	.25	.75
Tall, Double Mixed-----	--	.10	.35

FRENCH

Tagetes Signata Pumila, Dwarf Yellow -----	--	.25	.75
Legion of Honor or Little Brownie Dwarf, Single Golden Yellow flowers marked with large spot of velvety crimson at base of each petal.	--	.10	.30
Double Dwarf, Mixed Kinds and Colors -----	--	.10	.30

MARVEL OF PERU

Mixed—(Four O'Clocks), 1/4 lb., 50c-----	--	--	\$.15
--	----	----	--------

MATRICARIA—FEVERFEW

Capensis, fl. pl., Double, White, fine-----	\$.15	--	\$.40
---	--------	----	--------

MAURANDIA

For baskets, vases and porch baskets -----	\$.30	\$.50	\$1.50
--	--------	--------	--------

MESEMBRYANTHEMUM

Crystallinum (Iceplant) -----	--	\$.15	\$.40
-------------------------------	----	--------	--------

MIGNONETTE

Machet, Extra Select Giant Flowering, 1/4 lb., \$1.25-----	--	\$.15	\$.50
Allen's Defiance, very Large spikes	--	.15	.50
Sweet Scented, large flowering, 1/4 lb., 35c -----	--	--	.15

MIMULUS

Mochatus (Muskplant), fine for hanging baskets. Yellow flowers, fragrant foliage.					
---	--	--	--	--	--

1/64	1/32	1/16	1/8	1/4
\$.50	\$.75	\$1.25	\$2.00	\$3.75

MYOSOTIS (FORGET-ME-NOT)

	1/16	1/8	1/4	Oz.
Alpestris Royal Blue. Indigo Blue -----	\$ --	\$.20	\$.30	\$1.00
Alpestris Mixed. Various Colors -----	--	.20	.30	1.00
Palustrus Semperflorens. The popular everblooming variety, clear blue sprays -----	.25	.40	.65	2.00

NICOTIANA

Sanderae Hybrids -----	--	--	.15	.50
------------------------	----	----	-----	-----

NIGELLA (LOVE IN A MIST)

Damascena, double mixed	--	--	--	.20
Miss Jekyll, very fine for cutting. Beautiful clear blue -----	--	--	.10	.30

NASTURTIUM

Dwarf, mixed, from named kinds, 1/4 lb., 25c; pound, 75c.
 Tall or Climbing, mixed, from named kinds, 1/4 lb., 20c; pound, 60c.
 Lobbianum, mixed, 1/4 lb., 30c; pound, \$1.00.

PETUNIAS

This Petunia Seed was grown for us by specialists in this country and in Europe. We have secured the very best strain of each variety. We do not believe that it can be beaten anywhere.

Fringed and Ruffled Giants, Special—Very large size, deeply fluted, edges fringed, very handsome; 1,000 seeds, \$1.50.

	1/64	1/32	1/16	
Giants of California, giant fringed and ruffled flowers in many bright colors -----	\$1.00	\$1.75	\$3.00	

Double Fringed Choice—Mixture of largest fringed double varieties in bright colors and tints; 75c for 500 seeds; \$1.50 per 1,000.

	1/16	1/8	1/4	Oz.
Choice Mixed, Blotched and Striped, all colors -----	\$ --	\$ --	\$.30	\$1.00

DWARF—SINGLE FLOWERED

Balcony White -----	.50	.85	1.50	--
Balcony Rose -----	.50	.85	1.50	--
Snowball, Pure White ---	.20	.35	.60	2.00
Rosy Morn, Soft Pink, White Throat, very fine	.25	.40	.70	2.50

PENNISETUM

Longistylum -----	--	--	.20	.75
Ruppelianum -----	--	--	.20	.75

PHYSALIS

Franchetti, Chinese Lantern Plant -----	--	.15	.20	.60
---	----	-----	-----	-----

PHLOX DRUMMONDI GRANDIFLORA

Large Flowering White -----	\$.20	\$.35	\$1.25
Large Flowering Shell Pink -----	.20	.35	1.25
Large Flowering Bright Scarlet ---	.20	.35	1.25
Large Flowering Rose -----	.20	.35	1.25
Large Flowering Purple -----	.20	.35	1.25
Large Flowering, Choice Mixed ---	.20	.30	1.00
Star Phlox, Cuspidata Mixed -----	.20	.30	1.00

PORTULACA

Single Large Flowering Mixed, 1/4 lb., \$1.50 -----	--	.20	.60
Double Large Flowering Mixed ---	.30	.50	1.50

PYRETHRUM

Roseium Hybridum Double Mixed, 1/32 oz., 60c; 1/16 oz., \$1.00.
 Aureum Golden Feather, 1/4 oz., 20c; oz., 60c.

Steele's Pansies

Mastondon is the name for a genuine American strain of Pansies originated by Steele, and comprising a marvelous number of new shades and varieties, including improved types from other lands. All are of excellent form and great size. These Pansies represent 25 years of constant selection from the finest kinds and colors grown by specialists everywhere. We recommend this strain of Pansies as the best in the world.

Steele's Mastodon Mixture—This is as fine a mixture as can be made. The flowers are of the largest size and most perfect form and texture. It is a wonderful selection of beautiful shades and colors and sure to please the most critical grower. 1/16 oz., 65c; 1/8 oz., \$1.00; 1/4 oz., \$1.75; 1/2 oz., \$3.25; oz., \$6.00.

Choice Mixture—Large flowers in a wide range of colors. A first-class mixture at a moderate price. 1/8 oz., 60c; 1/4 oz., \$1.00; oz., \$3.50.

STEELE'S NAMED PANSIES

Steele's Panama Pacific—A huge deep yellow; some with dark centers, some without.

Steele's Parisian Yellow—A pure yellow of the grandest form and size.

Steele's Bronze Mastodon—Very large. All the different shades from burnished brass to gold; wonderfully tinged with nearly every color known to Pansies.

Steele's White Mastodon (dark center)—The largest Pansies we have ever seen.

Steele's Grand Duke Michel (Improved Candidissima)—The finest and largest all-white Pansy in the world.

Steele's Madame Perrett—A beautiful and distinct type with edges of petals frilled and bordered white; colors, dark wine, pink and red.

Steele's Black Mastodon—Nearly all jet black; a few very dark purple and all velvety in substance and of immense size.

Steele's Mastodon Madame Steele—Elk's purple; immense blooms; a perfect self.

Steele's Prince Henry—A splendid dark blue of great size.

Steele's Improved Beaconsfield—New. A fine bluish purple with a distinct lavender tinge on the upper part of the upper petals. A beautiful European variety, but having the size of the true Mastodon type.

Steele's Mastodon Adonis—New; of huge size; light blue, baby blue and lavender shades.

Prices of the above varieties, 1/16 oz., 50c; 1/8 oz., 85c; 1/4 oz., \$1.50 1/2 oz., \$2.75; ounce, \$5.00.

Poppies

SINGLE FLOWERED ANNUAL

	1/8	1/4	Oz.
Shirley, finest mixed colors, 1/4 lb., 60c -----	\$ --	\$.15	\$.50
Glaucum (Tulip Poppy), Dazzling Scarlet -----	--	.15	.50
English Scarlet or Flanders -----	--	.10	.30

DOUBLE FLOWERED ANNUAL

Carnation Flowered. All colors, mixed, 1/4 lb., 60 -----	--	--	.20
Peony Flowered, all colors mixed, 1/4 lb., 60c -----	--	--	.20

PERENNIAL

Orientele, Large Oriental Poppy --	--	.20	.75
Nudicaule Iceland White -----	.20	.35	1.25
Nudicaule Iceland Yellow -----	.20	.35	1.25
Nudicaule Iceland Orange -----	.20	.35	1.25
Nudicaule Iceland Mixed -----	.20	.35	1.25

PRIMULA OR PRIMROSE

Sinensis Fimbriata (Fringed Chinese)—Choicest mixed. A mixture of the finest named varieties. Trade packet, \$1.00.

Obconica Grandiflora (large, free flowering)—Alba, pure white. Trade packet, 30c per 100 seeds; \$1.00 per 1,000.

Appleblossom, soft pink. Trade packet, 30c per 100 seeds; \$1.00 per 1,000.

Rose, 30c per 100 seeds; \$1.00 per 1,000.

Malaceoides Grandiflora (Baby Primrose)—Lilac, 1/64 oz., 35c; 1/32 oz., 60c; 1/16 oz., \$1.00; 1/8 oz., \$1.75.

Hardy Primrose—Elatior, 1/16 oz., 25c; 1/8 oz., 45c; 1/4 oz., 85c.

Vulgaris, 1/16 oz., 25c; 1/8 oz., 45c; 1/4 oz., 85c.

RICINUS

Zanzibariensis Mixed, 1/4 lb., 50c; oz., 15c.

RUDBECKIA

Purpurea -----	\$.30	\$.50	\$1.50
	1/8	1/4	Oz.

SALPIGLOSSIS

Emperor, very large flowering, mixed colors -----	\$ --	\$.25	\$.75
	1/8	1/4	Oz.

SALVIA

Splendens, the old-fashioned Scar- let Sage -----	.25	.45	1.50
Clara Bedman or Bonfire. Com- pact grower -----	.40	.70	2.50
Zurich. New Dwarf Early Flow- ering -----	.50	.85	3.00

SCABIOSA

Improved Large Flowering Double Mixed. Very desirable for sum- mer cut flowers -----	--	.15	.40
Caucasia (Perennial), Lilac -----	.75	1.25	--

SMILAX

Every Florist should grow some; always needed -----	--	.15	.40
--	----	-----	-----

SCHIZANTHUS

Wisetonensis (Special Strain)----	.60	1.00	--
-----------------------------------	-----	------	----

SOLANUM

Capsicrastum. Jerusalem Cherry--	--	.30	1.00
Celestial Pepper. Christmas Pepper	--	.15	.40

STOKESIA CYANEA

Stokes Aster -----	--	.30	1.00
--------------------	----	-----	------

SWEET WILLIAM

Holborn Glory -----	--	.20	.60
Pink Beauty -----	--	.30	1.00
White -----	--	.20	.60

VINCA

Alba Pura—Pure White -----	--	.30	1.00
Rosea—Rose with darker eye ----	--	.30	1.00
Delicata—Pink -----	--	.30	1.00
Mixed—All Colors -----	--	.20	.75

VIOLA (TUFTED PANSIES)

Cornuta Mixed, all colors, splendid mixture -----	.40	.75	2.50
--	-----	-----	------

Sweet Peas

EARLY ORCHID FORCING

	Oz.	¼ lb.
Early Blanche Ferry or Christmas Pink— The most popular of all; flowers pink and white, large and wavy-----	\$.45	\$1.50
Early Blue Bird—A splendid rich, deep blue	.45	1.50
Early Columbia—Salmon rose standards white wings -----	.45	1.50
Early Cream or Meadow Lark—Bright prim- rose yellow -----	.45	1.50
Early Fair Maid—Blush pink similar to the late flowering Elfrida Pearson-----	.45	1.50
Early Glitters—The sensational new orange scarlet. Very bright-----	.45	1.50
Early Irene—Exquisite pale lavender-----	.70	2.50
Early Madonna—This is the best and strongest growing white forcer. Black seeded -----	.70	2.50
Early Rose Queen—A popular rose-pink forcer -----	.50	1.75
Early Mrs. A. A. Skach—A beautiful rich pink -----	.50	1.75
Early Venus—White and pink, picotee edge, orange blossom fragrance-----	.45	1.50
Early Yarrowa—Bright rose-pink with light wings -----	.45	1.50
Early Zvolenak's Red—Splendid bright red	.50	1.75
Early Zvolenak's Rose—A large and wavy rose-pink -----	.70	2.50

ORCHID FLOWERING OR SPENCER

	Oz.	¼ lb.	lb.
Aurora—Striped, pink and white-----	\$.25	\$.75	\$2.50
Asta Ohn—Lavender suffused mauve -----	.25	.75	2.50
Constance Hinton, largest and finest white flowers, frequently 2½ inches across. A strong, vigorous grower and long, strong stems -----	.25	.75	2.50
George Herbert, Rosy Carmine-----	.25	.75	2.50
Countess Spencer, lovely clear pink	.25	.75	2.50
Dobbie's Cream, finest primrose yellow -----	.25	.75	2.50
Elfrida Pearson, largest wavy light pink -----	.25	.75	2.50
Illuminator, bright salmon cerise	.25	.75	2.50
King Edward, crimson scarlet-----	.25	.75	2.50
Mrs. Tom Jones—The latest and best bright blue-----	.25	.75	2.50
Orchid Flowered Mixed-----	.25	.45	1.50
Perennial Pea Mixed-----	1/8	1/4	Oz. .50

THUNBERGII

Mixed Colors -----	.20	.75
--------------------	-----	-----

TEN WEEKS STOCKS

CUT AND COME AGAIN

Brilliant—Blood-red -----	.40	.70	2.50
Creole—Creamy-yellow -----	.40	.70	2.50
La France—Delicate pale pink-----	.40	.70	2.50
May Queen—Pale blue-----	.40	.70	2.50
Princess Alice—Pure white-----	.40	.70	2.50
Rose -----	.40	.70	2.50
Mixture of All Colors-----	.30	.55	2.00

WALLFLOWER

Annual Single Mixed-----	.10	.30
Perennial, doublt mixed, 1/16 oz., 45c; 1/8 oz., 75c; 1/4 oz., \$1.25.		

Verbena

MAMMOTH FLOWERING

	1/8	1/4	Oz.
Blue -----	\$.20	\$.35	\$1.25
Pink -----	.20	.35	1.25
Scarlet -----	.20	.35	1.25
White -----	.20	.35	1.25
Mixed Colors -----	.20	.30	1.00

"Royal Bouquet." See Retail Catalog for description.
25c each; 2 packets for 40c.

Giant Zinnias

Many will remember our display of Zinnias last fall at the Rochester Exposition Flower Show. Their enormous size and brilliant colors attracted everyone's attention.

GIANT DOUBLE

	1/8	1/4	Oz.
Crimson -----	\$.20	\$.30	\$1.00
Rose -----	.20	.30	1.00
Purple -----	.20	.30	1.00
Scarlet -----	.20	.30	1.00
White -----	.20	.30	1.00
Yellow -----	.20	.30	1.00
Mixed, all colors -----	.15	.20	.75

DWARF DOUBLE

Sunrise—Salmon Rose -----	.15	.20	.60
---------------------------	-----	-----	-----

CURLED AND CRESTED

Mixed, all colors -----	.15	.20	.75
Petals curiously curled and twisted. Very like a Cactus Dahlia.			

PICOTEE

Mixed, all colors -----	.25	.40	1.50
Dark petals tipped light, light petals tipped dark.			

DAHLIA FLOWERED

Mixed, all colors, immense size, formed like a Decorative Dahlia	.30	.50	1.75
--	-----	-----	------

Everlasting Flowers

The old-fashioned Everlastings are again in style; causing a greatly increased demand for the dried flowers for bouquets and baskets. Our list comprises some of the choicest varieties for this purpose.

	1/8	1/4	Oz.
Acroclinium -----	\$ --	\$.10	\$.30
Rhodanthe, mixed -----	--	.15	.50
Gomphrena Globosa, mixed -----	--	.10	.30
Helichrysum, Fireball -----	--	.20	.60
Goldenball -----	--	.20	.60
Rose Queen -----	--	.20	.60
Salmon Queen -----	--	.20	.60
Violet Queen -----	--	.20	.60
Silverball -----	--	.20	.60
Bright Crimson -----	--	.20	.60
Bright Terra Cotta -----	--	.20	.60
Mixed -----	--	.15	.50
Lunaria (Honesty), White -----	--	.15	.40
Crimson -----	--	.20	.60
Statice Sinuata, White -----	--	.10	.30
Blue -----	--	.10	.30
Rose -----	--	.20	.60
Latifolia (Hardy) -----	--	.35	1.25

GLADIOLUS

We carry but one size bulb, Firsts, 1½ and up. Very carefully graded, true to name, you will like them. For a more complete description of these varieties, see our Retail catalog; 25 or more bulbs at the hundred price.

	100	1000
America—Soft, lavender pink.....	\$2.00	\$18.00
Attraction—Deep crimson, white center...	3.75	32.00
Augusta—White with blue anthers.....	3.25	27.50
Chicago White—Earliest and best forcer...	3.50	30.00
Dawn—Salmon, shading to scarlet.....	4.00	35.00
Glory of Holland—Very good white.....	3.25	27.50
Halley—Salmon pink.....	3.25	27.50
Mrs. Francis King—Leading decorative Gladiolus, flame pink, tall spike, large flowers.....	2.50	22.00
Niagara—Creamy yellow, splashed with carmine.....	4.00	35.00
Panama—Deeper pink than America.....	3.50	30.00
Peace—White, feathered, pale lilac.....	4.00	35.00
Pink Beauty—Splendid flower, deeper pink than America.....	3.50	30.00
Princes—Rich dazzling scarlet, marked with white.....	3.50	30.00
Schwaben—Delicate pale yellow, dark blotch.....	4.00	35.00
War—Large, brilliant red flower.....	4.50	40.00
Willie Wigman—Creamy white with scar- let blotch.....	4.00	35.00
Yellow Hammer—Pure yellow, lightly marked with red in the throat, a beau- tiful variety for cutting.....	4.25	37.50
Special Florists' Mixture—A fine mixture, containing a wide range of the lighter colors.....	2.00	17.00

DAHLIAS

You will find on Pages 50 and 51 of our Retail Catalog a list of the varieties of Dahlias and a description of each. Your prices are 10 per cent less than these quoted.

GIANT FLOWERING CANNAS

	Doz.	100
Gladitor—Deep yellow, dotted red, green foliage, 4½ ft.....	\$.85	\$6.00
King Humbert—Orange scarlet, bronze foliage, 5 ft.....	.75	5.00
Orange Bedder—Bright orange suffused scarlet, green foliage, 5 ft.....	.85	6.00
Pennsylvania—Vermillion scarlet, green foliage.....	.60	4.00
Wyoming—Orange flowers, bronze foliage, 6 ft.....	.50	3.00

Fertilizers

Pure Raw Bone Meal—Finely ground bone decomposes more rapidly in the soil than coarser grades and is more quickly beneficial. Bone Meal forms an excellent permanent improvement and is less likely to waste than other fertilizer. It is safe and there is no danger of burning the plants. 25 lbs., \$1.50; 50 lbs., \$2.50; bag of 167 lbs., \$6.75.

Nitrate of Soda—Forces rapid growth in all plants. Do not apply until plants are above ground. 25 lbs., \$1.75; 50 lbs., \$3.00; 200 lbs., \$9.00; ton, \$75.00.

Pulverized Sheep Manure, "Grozit Brand"—Do not confuse this with the ordinary commercial Sheep Manures. "Grozit Brand" is absolutely free from all weed seeds. It is especially adapted to Florists' and Market Gardeners' use. Put up in bags of the following sizes:

50 lbs.	\$ 2.00	1000 lbs.	\$26.00
100 lbs.	3.50	2000 lbs.	50.00
500 lbs.	14.00		

Clay's Fertilizer—This valuable imported fertilizer is recommended to all who wish to bring their flowers and vegetables to a state of the highest perfection. 56 lbs., \$6.00; 112 lbs., \$11.50.

Laxtonian

The Coming Pea

for

Market Growers

This handsome wrinkled pea is the largest podded of the dwarf varieties. The dark green pods are similar to Gradus in shape and splendid quality, are nearly as large in size and often mature a little earlier.

The vines are vigorous and very productive. They grow from 15 to 18 inches high, with dark green foliage.

Our seed stock of this splendid pea is very fine. We can recommend it to every grower.

Price, 24 cents per pound; 100 pounds, \$18.00; 10 pounds or more at the 100 pound price.

HART & VICK :: SEEDMEN
ROCHESTER, NEW YORK