

Historic, archived document

Do not assume content reflects current scientific knowledge, policies, or practices.

62.77 1924

HUMPHREY-COKER SEEDS

LIBRARY
RECEIVED
★ JAN 9 1924 ★
U. S. Department of Agriculture



CAROLINA-FOSTER BREEDING PLOT
FROM OUR BREEDING PLOTS COME VALUABLE NEW STRAINS OF SEEDS

HUMPHREY-COKER SEED COMPANY
HARTSVILLE, S. C. GREENWOOD, MISS.
S PRESSLY COKER, MANAGER.

A Foreword

IN PRESENTING this, our fourth Seed Catalogue, we are reminded of the fact that it is made possible by our customers and friends who have given us their patronage and support during the past four years. We take this opportunity to give expression to our appreciation of this patronage and to express the hope that the service we have rendered through our seeds has been such as to warrant the continued patronage and support of every one of our customers.

We have received many letters from our customers in appreciation of the results obtained with our seeds and we are deeply grateful for these kind words which serve to give us the URGE for higher endeavors. There is nothing that encourages so much as the kind words of satisfied customers and we hope that those who like our seeds will not only tell us but will tell others as well. If you do not like our seeds or for any reason do not get results we would like to know it. If we are at fault, it will help us to serve better in the future.

TO THE BUSINESS MEN—

Agriculture is fundamental in our nation. All other business prospers and develops as the farming interests prosper. By devoting our time and energies in the production of better seeds, which mean better crops, larger farm profits, we are making our contribution to the general business prosperity of the country. Ours is a work that tends to make for general prosperity and it should receive the hearty support and endorsement of every thoughtful business man. We appeal to you to read this catalogue, investigate our case, convince yourself of the value of the work we are doing, and, then, get behind us in our efforts to render a worthy service to the farmers of the South. Your interest and co-operation will be greatly appreciated.

A WORD FROM OUR PRESIDENT

TO ALL GROWERS OF STAPLE COTTON:

At the time of the organization of the Humphrey-Coker Seed Company the policy of the proposed concern was outlined and it was made clear that the business must always be run on the principles of scrupulous honesty and fairness to its customers.

Under the active management of Mr. S. Pressly Coker and his assistants at Hartsville, S. C., and with the Mississippi Branch in charge of Mr. J. B. Dick these business methods have been carried out to the letter and any statements we make about our seed are recognized as exact facts.

A quick profit was not the reason for the organization of this business. Better and proven cotton seed is of such importance to cotton growers everywhere, and particularly to the growers of extra staple cotton, that there was room and need for a concern to work out the development of superior and proven strains of cotton seed that would be of particular value, especially to the great Yazoo-Mississippi-Delta.

Any interested persons will find it interesting and profitable to visit our test and breeding plots at Schlater, Mississippi, which Mr. Dick will take pleasure in showing. Mr. Dick will also show that the same excellent results have been obtained with our seed on an adjacent plantation with over two thousand (2000) acres in our strains of seed. Will any season ever be a more severe test of the qualities of staple cotton seed? Come to Schlater and see for yourselves what these seed have done under the severe test of the present adverse crop conditions.

W. R. Humphrey
President

HIGHEST QUALITY SEEDS



HUMPHREY-COKER SEED CO.
HARTSVILLE, SOUTH CAROLINA

AN INTRODUCTION

It is our aim in the very beginning of this seed catalogue to explain the Plans and Purposes of Our Organization, to Introduce Our Men and to set forth our System of Seed Breeding and Handling, that all who read this catalogue may know who we are and the quality of the seed we sell.

We are especially anxious that all who are interested in farming and those who appreciate the value of high quality seed, as the first step towards profitable crop production, may know us; may understand our qualifications as Seed Breeders and our reliability as a source of genuine Pedigreed Seeds.

All of our customers know us, some have visited us, some we have met at the Fairs, while others know us only by the quality of the seed we have shipped them. There are many other people, however, who would be interested in our seeds, who do not know us at all. It is that all may know us better and that we may have the opportunity of making many new acquaintances and customers that we offer this Introduction.

AN INTRODUCTION—(The Testimony of Others)

COOPERATIVE EXTENSION WORK
IN
AGRICULTURE AND HOME ECONOMICS

STATE OF SOUTH CAROLINA

Clemson College, S. C.

August 29, 1923

EXTENSION SERVICE

CLEMSON AGRICULTURAL COLLEGE
OF SOUTH CAROLINA AND
UNITED STATES DEPARTMENT OF
AGRICULTURE COOPERATING

TO WHOM IT MAY CONCERN:

It gives me pleasure to make the following statement. The Humphrey-Coker Seed Company has been in the business of growing Pedigreed seed for the past several years. It gives me pleasure to testify as to their integrity, efficiency and progressiveness. I have known Mr. Pressly Coker of the firm personally for a good many years. He is not only a successful and reliable business man but a trained Scientific Plant Breeder.

Yours very truly,

W. W. Long
W. W. Long, Director.

10137



THE FIRST NATIONAL BANK

OF HARTSVILLE

HARTSVILLE, S.C.

October 6th, 1923.

J. W. MC COWN, PRESIDENT
J. W. GOODSON, VICE-PRES.
L. S. KING, CASHIER

To The Public:

The Humphrey-Coker Seed Company of Hartsville in my opinion is one of the best concerns of its kind to be found anywhere so far as reliability and satisfactory dealings are concerned. Back of it are some of the best business men of Hartsville - thoroughly honorable men.

Their statements of claims as to seeds can be relied upon entirely. The man in charge of the growing and handling of their seed, Mr. S. P. Coker, is eminently fitted for the place, having had long and successful experience. He takes pride in the careful and scientific handling of seeds.

I unhesitatingly recommend the Company to the Pedigreed Seed buying public.

Yours very truly,

J. W. Goodson
President.

HIGHEST QUALITY SEEDS



HUMPHREY-COKER SEED CO.
HARTSVILLE, SOUTH CAROLINA

AN INTRODUCTION—(Our Organization)

ORGANIZED: April, 1920—**MAIN OFFICE,** Hartsville, S. C.; **BRANCH OFFICE,** Greenwood, Miss.

THE AIM: To render the highest type **SEED SERVICE.**

THE PURPOSE: To UP-BUILD Southern agricultural conditions through the production and distribution of finest Pedigreed Seeds.

THE PLAN: To Breed, Grow, Handle, and Distribute Pedigreed Seeds at Hartsville, S. C.

To Breed, Grow, Handle, and Distribute Pedigreed Seeds at Greenwood, Mississippi, adaptable to Delta conditions.

THE EQUIPMENT: Efficient, trained Plant Breeders, Breeding Farms, Increase Farms, Breeding and Experimental Equipment, Seed-cleaning Equipment and Facilities, Storage Facilities at Hartsville, S. C., and at Schlater, Miss.

AN INTRODUCTION—(Our Men)

OUR PRESIDENT

Mr. W. R. Humphrey, of Greenwood, Mississippi

(Regret that we do not have his photograph)

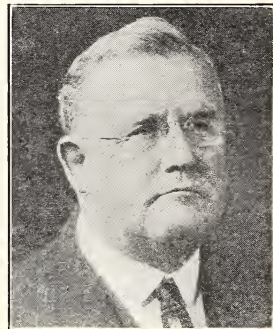
is our President and is largely responsible for the organization and work of our Company in Mississippi. Being one of the largest Long Staple Cotton buyers in the United States and a large landowner in the Delta of Mississippi, he, more than anyone else, could see the great need for the development and introduction of better seeds in the Delta. He saw that such work would not only help the cotton buyers and spinners to get more desirable staples, in length and quality, but that it would help the farmers through larger crop yields and bigger revenues.

Mr. Humphrey is a man of wide interests and wishes to see the whole State of Mississippi helped by improved methods of farming and through the development and introduction of better strains of Farm Seeds that are bred and adapted to Mississippi conditions.

OUR VICE-PRESIDENT

Mr. A. M. McNair, Vice-President and Director

of our Company is a merchant, cotton buyer and farmer of wide reputation; one of Hartsville's oldest and most successful business men. As a farmer he is deeply interested in the development of better seeds and better farm practices; as a merchant he is interested in every undertaking that has as its aim and purpose the increasing of values and the betterment of conditions among the farmers in the community and throughout the South. His ideal for our Company is, that it may stand at the top in Seed Service.



OUR HEAD PLANT BREEDER AND MANAGER

Mr. S. Pressly Coker,

is the one entrusted with the leadership and responsibility of conducting this business. He has made the plans, set the standards, and bears the responsibility of carrying them out.

He is thoroughly trained for the work in hand. As a farm-boy he gained much information and inspiration for the highest type farming from his father. His agricultural training in college came first at the Virginia Polytechnic Institute, where he took a general agricultural course. Here he worked and paid his way and gained much valuable experience outside of his regular studies. After finishing at V. P. I. he spent two years at Cornell University where he specialized in Plant Breeding work, graduating in 1911.

Since 1911 he has been actively engaged in the breeding and handling of Pedigreed Seeds and in managing large farming and seed interests. His ideals for the Seed Business are the highest. He has a high sense of accuracy and carefulness in all of his work and his productions of Pedigreed Seeds have made good throughout the South. His character and training fit him for valuable service to the farmers of the South.





Our Mississippi Manager and Plant Breeder—



Mr. J. B. Dick is eminently fitted by his character, his talent, his college training, and his practical experience, to render a large and useful service to the farmers of Mississippi through the breeding and handling of valuable seeds adaptable to conditions there.

His training in Plant Breeding Work began as a boy when he worked for two years as assistant to our Head Plant Breeder, then in the employ of another seed concern. He then entered Clemson Agricultural College, graduating about the time the World War broke out. He spent some time in France and was sent back to Harvard University as instructor in military tactics until the war was over. In 1920 he joined our organization and went to Mississippi to take charge of our work there. No better man could be found to carry out the ideals of our Company, since his ideals and those of our Head Plant Breeder are the same.



C. F. WYATT

R. S. CATHCART

EDITH L. ANDERSON

H. J. WEST

Mr. C. F. WYATT, Assistant Plant Breeder and Salesman for North and South Carolina, needs no introduction to many of our customers. He has had many years of practical seed experience in association with our Head Plant Breeder at Hartsville, S. C. He is an exhibit man of first rank and has complete charge of our exhibit work. You will meet him at the fairs with our exhibit and he will take pleasure in showing you our seeds and in giving you first-hand information as to our system of breeding and handling seeds.

Mr. RICHARD S. CATHCART, Assistant Plant Breeder and Manager of our Seed Storage and Shipping Departments, is a graduate of Clemson Agricultural College. He has been with us for the past four years and appreciates fully the value of extreme care and accuracy in the handling of Pedigreed Seeds. He has complete charge of our Cleaning, Storage and Shipping Departments, where he exercises every care to have our seeds measure up to the high standards we set for them.

Miss EDITH L. ANDERSON, a graduate of Winthrop College, is well qualified by training and experience as Seed Analyst for our business. For the past seven years she has been associated with our Head Plant Breeder in the testing of seeds for germination and purity. She is in complete charge of our Seed Laboratory and Office Departments, and she is extremely careful to see that all seeds we sell measure up to highest standards for germination, purity and vitality.

Our Mississippi Salesman, Jackson, Miss.

Mr. H. J. WEST, our Salesman for Mississippi, Arkansas and Louisiana, is a man known to much of the seed-buying public of the above States. While he has had no seed-breeding experience, he has visited our seed-breeding farm at Schlater, Miss., a number of times so that he might know how to properly represent our seeds and give intelligent information as to our work and breeding methods.

The close personal supervision given every phase of our seed breeding and production work by our Head Plant Breeder insures finest seed quality.



Many Others Help us to Produce Our Seeds



THESE FOLKS ARE GROWING 2,000 ACRES OF OUR PEDIGREED COTTON SEED FOR US AT SCHLATER, MISS.

AN INTRODUCTION—(Our Methods)

A. SEED BREEDING SYSTEM—

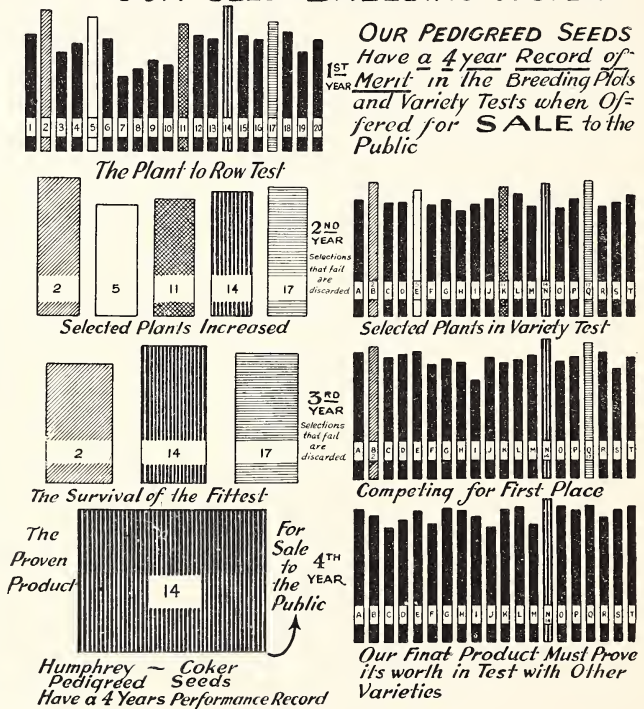
The chart below is a graphic illustration of our Seed Breeding System, which is the system recommended by the best agricultural thought of today. A careful study of this chart will reveal the plans we follow. This system is used with all crops, the changes necessary are such changes in the method of conducting the Plant-to-Row test as adapt it to the particular crop in question (for instance, corn being an open-fertilized plant requires a little different procedure in the Plant-to-Row test than does cotton or oats and wheat for best results).

THE PLAN (Cotton used as example):

The first year a large number of plants are selected from a variety of cotton we desire to improve. They are picked and ginned separately, notes of each with all characteristics are recorded. Each plant is then planted in a comparative test plot, side-by-side, which is known as the **Plant-to-Row test**. This test is run in duplicate so as to give best indications of value. Here the plants compete for highest yield, best type, earliness, and best staple characters. Careful notes are made through the season, each row is picked separate and the best five rows are saved for separate increase. The second year these five are increased separately, are tested in Variety test with other varieties and the best two or three go on to the third year. The same procedure the third year gives the **ONE BEST** for increase and testing the fourth year. Its record through the four years is its Pedigree and it goes out to the public on its own **RECORD OF MERIT**.

This system of breeding is a continuous process. Each year we have a new Plant-to-Row test, selecting plants from the best **PROVEN STRAINS**, with the idea of producing still better strains.

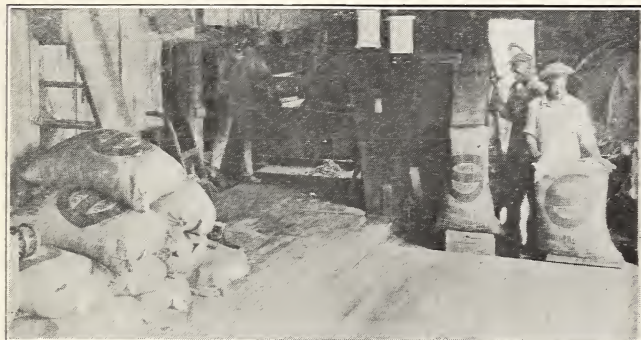
OUR SEED-BREEDING SYSTEM





B. GRADING AND HANDLING—

The grading and handling of seed is of much greater importance than many have imagined. The proper GRADING AND CLEANING of seeds eliminates all immature and faulty seeds, insures more even planting, regular stands, better quality, and will increase the yield many pounds per acre (with oats increase twelve bushels per acre).



CLEANING, GRADING AND SACKING OUR COTTON SEED AT THE GIN

The proper HANDLING of seeds insures good germination, strong vitality, and eliminates, as far as possible, the danger of poor and broken stands. Thousands of dollars are lost each year by the planting of seed poor in vitality.

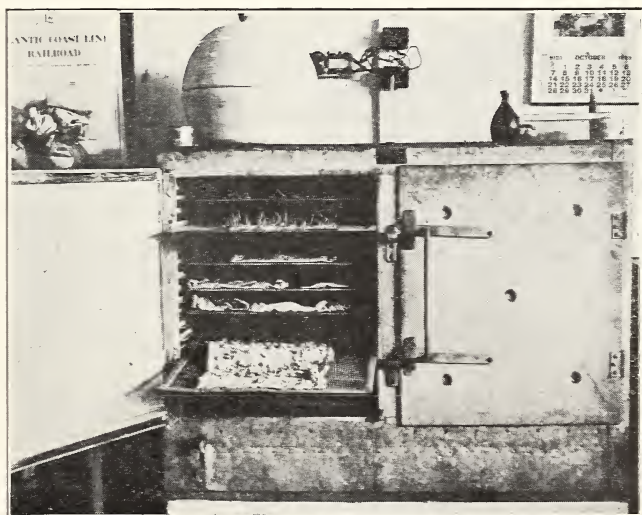
WE TAKE PRIDE IN THE CLEANING AND HANDLING OF OUR SEEDS. Our equipment for this work is the best to be found anywhere. Our men have a high sense of appreciation and care in this work.

C. TESTING FOR GERMINATION, PURITY AND VITALITY—

In handling our seeds we not only handle and store them by variety names but by LOT NUMBERS as well. These lot numbers indicate to us, in a minute's time, the very fields where these seeds grew and the conditions under which they grew. A sample of EVERY LOT of seed we handle goes to our SEED TESTING Department and there it must measure up to the highest standards for germination, purity and vitality. If it fails, it is discarded forever from our planting seed list.

We spend a great deal of time and money in this department. OUR SEED TESTING WORK IS NO FAKE, we do the job right and just as we represent it. EVERY LOT of seed we sell has been TESTED TWICE before we ship it. This is for your good and for our protection. We must know the quality of the seed we sell in order to stand back of our MONEY BACK GUARANTEE.

We venture the assertion that the members of our organization have done more actual seed testing work than those of any other seed business in the South. A germination and purity tag on every bag of seeds we sell sets the standard for that bag.



OUR SEED GERMINATOR



Designation of Our Seeds

By these Signs You Can Know They are Genuine

1. OUR TRADE NAME "HUMCO"

"HUMCO"—A contraction of the two names Humphrey and Coker—is the TRADE NAME we have adopted for use on all seeds bred and developed by our organization.

2. OUR TRADE MARK

Embodies the four essentials of
FINEST SEEDS

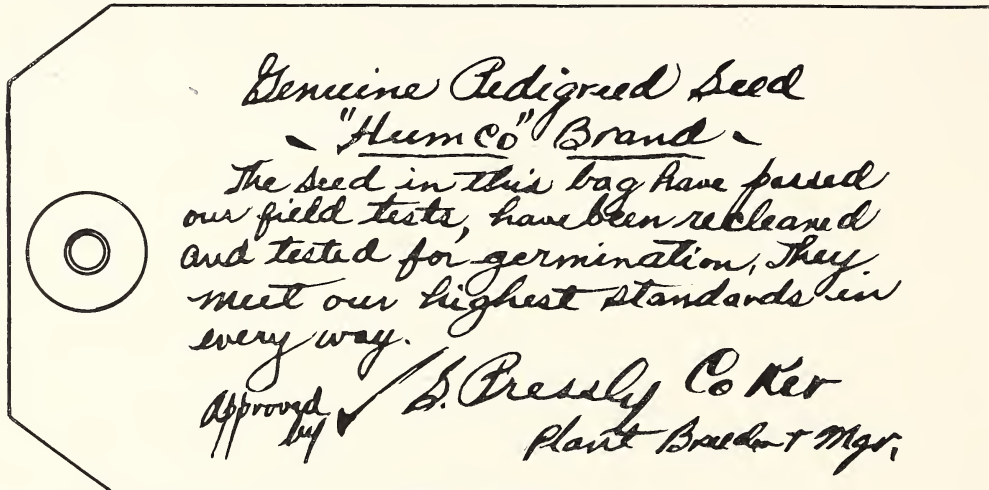
- (1) Good Breeding
- (2) Proper Grading
- (3) Strong Vitality
- (4) "HUMCO" Breeding and Supervision



This TRADE MARK on every bag of our seed is a
GUARANTEE OF SATISFACTION
to our customers

3. OUR STAMP OF APPROVAL

Breeding, growing, handling and selling Pedigreed Seeds is the one work of our Head Plant Breeder and Manager, Mr. S. Pressly Coker. Every phase of the work is watched and inspected by him. Before any seed are shipped they must meet every test and receive his final approval, which will be found on the back of every shipping tag.



4. OUR GUARANTEE AND RESPONSIBILITY

ON PEDIGREED SEEDS

Our Pedigreed Seeds represent the increase from individual plants of proven quality. Bred by the Plant-to-Row method, tested over a series of years. Increased for sale to the public. We guarantee them true to name.

EXAMINE OUR SEEDS when you receive them and test them in any way you see fit. If for any reason they are not satisfactory, they may be returned to us within ten days after they are received, in the original package, AT OUR EXPENSE. WE WILL REFUND ENTIRE PURCHASE PRICE. We waive all responsibility for seeds which have been in a customer's hands more than ten days, as the vitality of any seed may be lessened or killed after leaving our warehouse, by subjection to moisture, heat or other conditions. Under no circumstances will we be responsible for the germination of seed after they are planted, whether within ten days or not, as there are many reasons for imperfect germination of planted seeds other than their vitality. If the purchaser does not accept seed under this condition, they are to be returned at once.



The Value of Humphrey-Coker Seeds



**BREEDING PLOT—WEBBER ELITE COTTON
AT SCHLATER, MISS., 1921**

This chart illustrates very forcibly the value of HUMPHREY-COKER SEEDS. It gives a comparison between our Pedigreed Seeds and General Seeds of the same variety, as to yield per acre.

SEE WHAT IT SHOWS WITH OATS

Increased Yield
Bus. Per Acre

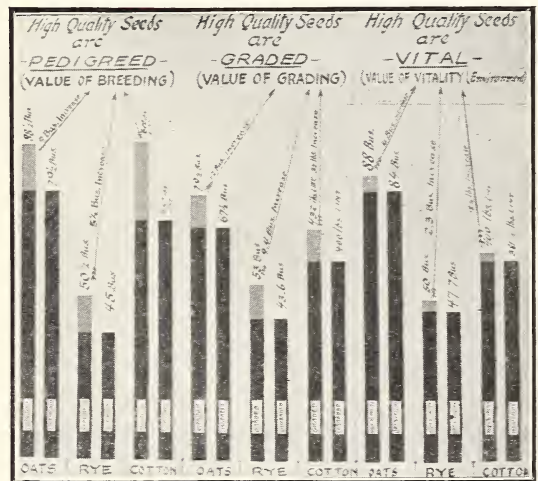
- Breeding . . . 9 bus.
- Grading . . . 12 bus.
- Vitality . . . 4 bus.

It Shows a —

Total of 25 Bushels Per Acre Increase

The results with rye and cotton are also shown. Study the chart—it is worth while.

*It Pays to Plant the Best
Pedigreed Seeds*



ILLUSTRATION—VALUE OF BREEDING—GRADING AND VITALITY OF SEEDS WITH DIFFERENT CROPS

A Word of Caution

Be careful where you buy your seeds. Seed bred and grown by expert plant breeders can be depended upon to give good results. The best proof of this statement lies in the fact that such seed carry a guarantee of satisfaction as to Purity and High Quality. General seeds do not carry such a guarantee.

Don't take a chance. When you plant low quality seed you are losing time and money. We offer you Highest Quality, Guaranteed Seeds.



A Comparison *Pedigreed Seed vs. General Seed*

A CROP FROM PEDIGREED SEED
OATS



YIELD 50 BUSHELS PER ACRE
Planting Seed Cost \$4.00
Crop Value, 50 Bushels at \$1.00
\$50.00; Net Value, \$46.00

A CROP FROM GENERAL SEED
OATS



YIELD 28.5 BUSHELS PER ACRE
Planting Seed Cost \$2 00
Crop Value, 28.5 Bushels at \$1.00,
\$28.50; Net Value, \$26.50.

An
Actual Representation
of Two Crops
Grown at
Hartsville, S. C.
in
1922

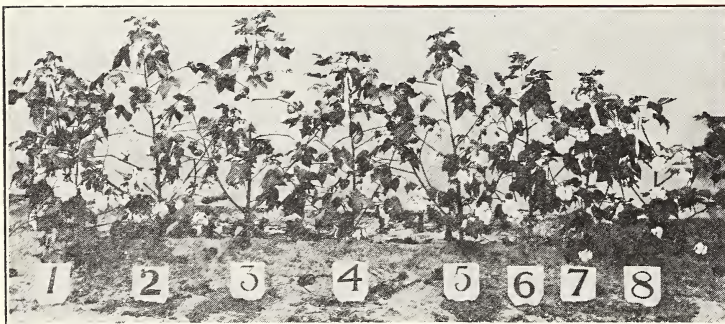
Note 1—The Yield Per Acre

	Bu. Per Acre
Pedigreed Seed	50.
General Seed	28.5
Difference	21.5

Note 2—The Value Per Acre

Pedigreed Seed	\$46.00 Net
General Seed	26.50 Net
Difference	\$19.50

Gain \$19.50 Per Acre From Pedigreed Seed



NOTE THE VARIATIONS IN THESE 8 PLANTS GROWING IN FIELD

The Need for Seed Selection Work

(Illustrated)

Humphrey-Coker Seeds represent the increase from productive plants—like No. 2 and No. 5, which have proved their worth under actual field tests.

HIGHEST QUALITY SEEDS



HUMPHREY-COKER SEED CO.
HARTSVILLE, SOUTH CAROLINA

Our Offerings

South Carolina Seeds

FALL SEEDS

PEDIGREED ABRUZZI RYE

Surpasses all other varieties of Rye for the South



YIELD 28 BUSHELS PER ACRE, 1923

ABRUZZI RYE, introduced from Italy in 1900, tested by the United States Department of Agriculture and found valuable, was distributed to the public in 1907. Plant breeders began selection work on this variety and in 1913 offered a strain for sale which produced 11.4 bushels per acre more than the original rye as introduced. Our seed of this rye represents the best production to date.

As a **Winter Cover Crop** for the Coastal Plain section of the South, this rye has no superior. It makes a heavy growth of vegetable matter in Fall and early Winter. Careful tests show four tons per acre from October 15th to February 11th.

As a **Winter Grazing Crop**, the best we know of. It grows upright. It is easy to graze.

As a **Seed Producer** it has no superior in the South. On good land you can depend on 18 to 28 bushels per acre, against 8 to 10 bushels for ordinary rye.

PRICES—(Cash with order)

Per bushel	\$3.00
Lots of ten bushels and over.....	2.75
Lots of fifty bushels and over.....	2.50

All Prices F. O. B. Hartsville, S. C.

**IT PAYS TO PLANT THE BEST
PEDIGREED SEEDS**

RESULTS OF OUR RYE VARIETY TEST

	1922	1923
Abruzzi (General), Improved.....	30.7	54.2
Abruzzi (Pedigreed)	34.1	63.3
Virginia Winter	13	
Rosin	24.8	

SEEDING PER ACRE FOR GRAIN

(These Results Apply to Best Quality Seeds)

FOR RYE—Carefully conducted tests prove conclusively that RYE, for **SEED PURPOSES**, when sown on good land around the 15th of November, should be seeded at the rate of three pecks to one bushel per acre. On light lands seeding should be heavier (1 to 1½ bushels), as the stooing capacity of rye is not as good on poor land. Always sow grain heavier when planted late in the season.

FOR OATS—On good soils, where oats are sown in October, the best rate of seeding for average conditions is from 1½ to 2 bushels per acre. Heavier seedings (2 to 2½ bushels) should be made if oats are put in during December and January. 1½ bushels of good seed planted in October on good land will stool rapidly and make much finer quality grain and a larger yield than will heavier seedings.



A Sheaf of Pedigreed Red Appler Oats

Pedigreed Red Appler Oats

THE HEAVIEST YIELDING OATS FOR THE SOUTH

Pedigreed Red Appler Oats trace back in their ancestry to the Red Rust Proof Variety. Selections made from this variety early in 1900 have been bred and tested for the past ten years, and as yet there is no variety known that will make as much per acre. We offer the best strain of these oats, properly bred, graded and tested. The seeds we offer for sale come from heavy producing crops last season. If it's High Yield and Money Value Per Acre you wish, Plant These Oats.

PRICES—(Cash with order)

Per bushel	\$1.60
Ten bushels	1.50
In lots of 100 bushels and over.....	1.35

Pedigreed Fulghum Oats

The Fulghum Oat was selected from a field of Red Appler Oats. It is **Beardless**. It is **Early**. It is a **Heavy Producer**. This oat is very popular because of its early maturity. It gets out of the way early, giving the farmer more time to get his hay crop planted before the rush of other work sets in.

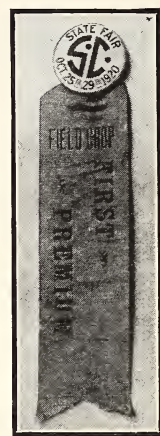
If it's **Early Maturity** you desire, plant these oats. **Our recommendation:** If you plant many oats divide your crop, put one-half in Red Appler Oats and one-half in Fulghum Oats. This will lengthen your cutting period and enable you to save your crop in good shape. Our Pedigreed Fulghum Oats, the best of this variety you can buy.

PRICES—(Cash with order)

Per bushel	\$1.60
Lots of ten bushels	1.50
Lots of 100 bushels and over.....	1.35

All Prices F. O. B. Hartsville, S. C.

Our Seed Oats are Free from Smut



Our Oats and Rye Took All First Prizes S. C. State Fair, 1920

GENERAL FALL SEEDS

The following seeds were not grown by us, but we have selected them from the very best sources. We have carefully tested them for germination and purity and we know them to be of excellent quality. We aim to handle only the best. Read our guarantee on these seeds.

OUR GUARANTEE

ON GENERAL SEEDS not grown by us, "We give no warranty, express or implied, as to description, quality, productiveness, or any other matter of any seed we send out and will not be in any way responsible for the crop. If the purchaser does not accept the goods on these terms, they are to be returned and amount paid for them will be refunded."

FALL SEEDS

	Per lb.	10 lb.	100 lb.
Alfalfa	26	24	21
Crimson Clover.....	26	24	21
Italian Rye Grass.....	16	14	13
Rape (Dwarf Essex)....	15	10	.09
Hairy Vetch	26	24	21

Virginia Seed Wheat

	1 Bu.	10 Bu.	25 Bu.
Stoner Bearded	\$2.20	\$2.10	\$2.05
Fulcaster (Bearded)	2.20	2.10	2.05
Leap's Prolific (Beardless)	2.20	2.10	2.05
Red May (Beardless)	2.20	2.10	2.05

Prices on General Seeds are Continually Changing. Ask for Prices When Ready to Buy

For General Spring Seeds See Page 18

FALL
1923

PRICE LIST

SPRING
1924

PEDIGREED COTTON SEED



One bale per acre—CAROLINA-FOSTER—1923

Prices F.O.B. Hartsville, S. C., or Greenwood, Miss.

VARIETY

	Less Than Ton Lots Per Bus.	One Ton Lots Per Bus.	Car Lots 15 Tons Per Bus.
(South Carolina Seeds)			
"HUMCO" Carolina-Foster	\$4.50	\$4.25	\$3.75
Pedigreed Webber Elite	2.25	2.00	1.75
"HUMCO" Webber Elite—8	4.50	4.25
"HUMCO" Carolina-Webber	4.00	3.75
Pedigreed Webber 49 (Special)	2.00	1.75	1.50
"HUMCO" Carolina-Express	3.50	3.25
Watson's Wilt Resistant (L-Staple)	3.00	2.75
Pedigreed Cleveland Big Boll-1	2.25	2.00	1.75
"HUMCO" Cleveland Big Boll-20	3.50	3.25	3.00
Dixie-Triumph (Wilt Resistant)	2.50	2.25	2.00

(Mississippi Seeds)

"HUMCO" Webber 49-32	4.00	3.75
Pedigreed Webber Elite	2.25	2.00	1.75
"HUMCO" Improved Delfos	3.00	2.75	2.50
Pedigreed Express-26	2.00	1.75	1.50
Pedigreed Webber 49 (Special)	1.75	1.50	1.25

All Prices Subject to Change Without Notice

Above Varieties Recommended for Boll-Weevil Conditions

Humphrey-Coker Seed Co.

Operating Seed Breeding and Growing Farms

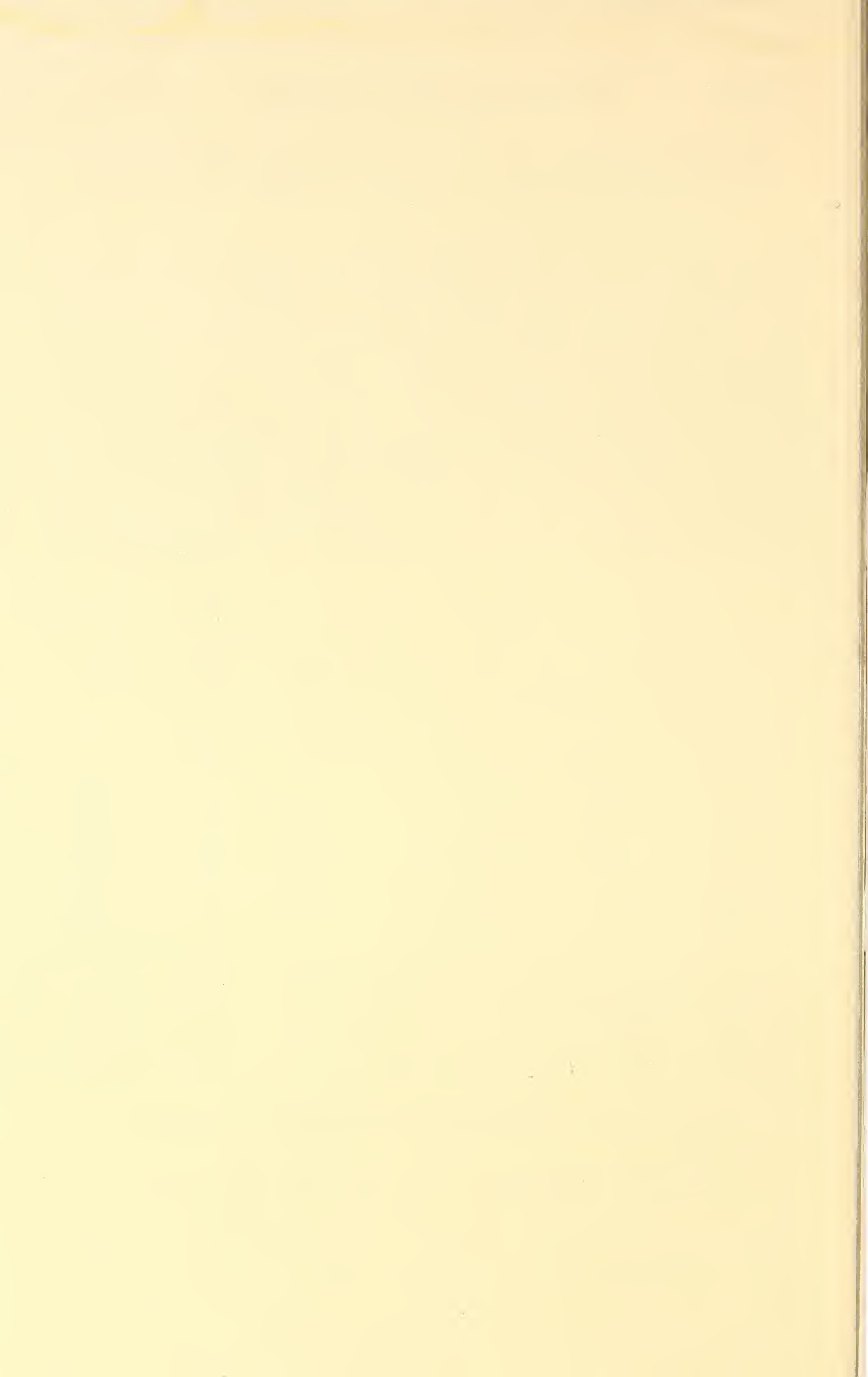
HARTSVILLE, S. C.

GREENWOOD, MISS.

S. PRESSLY COKER, Manager

SPECIAL OFFER

20% off on all "HUMCO" strains long staple cotton seed



SPRING SEEDS

Our Pedigreed Cotton Seed

“HUMCO” Pedigreed CAROLINA-FOSTER (Long Staple)

The
“Ideal” Type
Cotton
For
Boll-Weevil
Conditions

Staple, 1 3-16”
Per cent. lint, 34.6
Bolls per lb. Seed
Cotton, 80



TYPICAL PLANTS, CAROLINA-FOSTER

Special Points of Excellence

1. Its extremely LIGHT FOLIAGE admits the sunshine.
2. Its SMALL, FRUITING-BRANCH TYPE adapts it for rich, heavy lands.
3. Its EARLY, RAPID FRUITING tends to get ahead of the Weevils.
4. Its HIGH LINT PERCENTAGE and HEAVY PRODUCTION makes it a leader among staple cotton varieties.



PICTURE SHOWING THIN FOLIAGE TYPE

The Thin Foliage
of our
**CAROLINA-
FOSTER**

Operates Against
the Boll Weevil

HIGHEST QUALITY SEEDS



HUMPHREY-COKER SEED CO. HARTSVILLE, SOUTH CAROLINA



ONE
BALE
PER
ACRE
CAROLINA-
FOSTER
1923

FOSTER COTTON--

Foster Cotton traces back in its ancestry to a CROSS between Sunflower and Triumph cottons made by Mr. D. A. Saunders at Greenville, Texas, about 1904. Selections from this cross were later grown and selected by the Mississippi Experiment Station and from them we obtained a small amount of Foster 120-6102 seed in 1919 from which our **CAROLINA-FOSTER** was developed.

Our first strain of Carolina-Foster is the increase from three high-yielding selections made in 1920. These three selections were increased separately in 1921, but proving to be identical in all of their characters and highly valuable under boll weevil conditions, they were thrown together for rapid increase.

TYPE NOT ABSOLUTELY FIXED

Like all hybrid cottons, the type of this variety is not entirely uniform and occasionally there will be found a stalk of Broad Leaf or OFFTYPE cotton.

A TESTIMONIAL FROM HARTSVILLE FARMERS

TO WHOM IT MAY CONCERN:

We, the undersigned, grew CAROLINA-FOSTER Cotton for the Humphrey-Coker Seed Company the past season, 1923, and were very much pleased with the crop obtained.

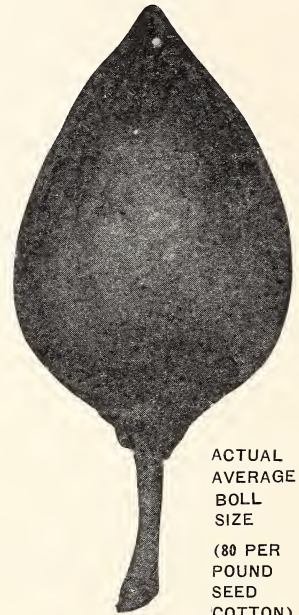
It is a very early, quick fruiting variety of the fruiting branch type with very light foliage and a medium sized boll. Our crops of this variety made exceptionally high yields of Seed Cotton and gave an excellent turn-out at the gin for staple cotton, 1500 pounds of seed cotton giving 500 pounds of lint and more from dry cotton with a staple of 1 3/16 inches.

The light foliage of this cotton we consider of special advantage in helping to control the Boll Weevil and its type of growth recommends it highly for growing under Boll-Weevil conditions. The fact that it does not grow as large as some varieties and has light foliage makes it suitable for planting on rich or stiff lands where other varieties would not do.

We do not hesitate to recommend it as a very productive and desirable variety of staple cotton for growing under Boll Weevil conditions.

Signed:

J. E. Cannon *J. L. Long*
W. S. McKinnon *J. M. Lutes*
W. M. Remington *D. A. Saunders*
G. Jones *W. B. Kelly*



ACTUAL
AVERAGE
BOLL
SIZE

(80 PER
POUND
SEED
COTTON)

Test Plot Results Prove Its Value

	Yield Lint	Cotton	Per Acre
	1922	1923	
Carolina-Foster	459 lbs.	488 lbs.	
Deltatype Webber	368 lbs.	381 lbs.	
Express	394 lbs.	369 lbs.	
Cleveland Big Boll	504 lbs.	468 lbs.	

Our supply of these Seeds is small---Order Early.



Pedigreed Webber "Elite" Cotton (Long Staple)

This cotton is our selection of Deltatype Webber. It has no superior as an upland staple cotton in boll size, staple length and quality, and it has proven its ability to produce excellent crops under heavy weevil infestation.

This cotton was bred for a **FRUITING BRANCH TYPE** and it has very few vegetative branches, making its foliage much lighter and its adaptability to boll weevil conditions much better. Wherever tried this cotton has won an enviable reputation. Its **EARLINESS**, its **OPEN FRUITING BRANCH TYPE**, its **LARGE BOLL** (with thick boll rind) and its **EXCELLENT STAPLE** (length and quality) recommend it as a most desirable cotton for every Southern farm. We offer this variety grown in South Carolina or Mississippi, as desired.

Staple 1 5/16 to 1 3/8 inches; Per Cent. Lint, 33; Bolls Per Pound Seed Cotton, 65; Staple Very Strong—Spinning Quality Very Good.

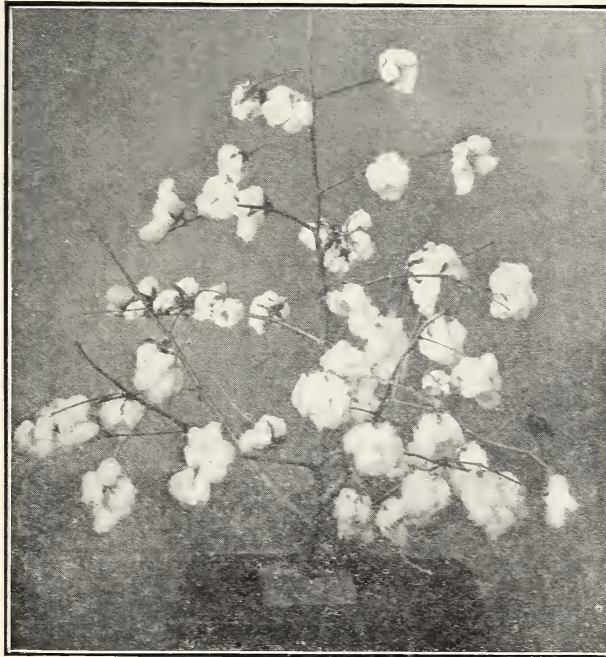


Elite-8

Actual Average
Boll Size

59 Bolls
per pound
Seed Cotton

"HUMCO" Pedigreed WEBBER ELITE-8



"HUMCO" WEBBER ELITE-8

CHARACTERS—

- Staple, 1 5/16 to 1 3/8 Full.
- Staple Strength and Drag Excellent.
- Per Cent. Lint, 34.
- Bolls Per Pound of Seed Cotton, 59 Average.
- Bolls, Roundish (OVATE).

This cotton is descended from our Elite Cotton and traces back to the highest yielding selection in our 1920 Breeding Plot.

It is superior to its parent strain in boll size and shape, percentage of lint, length of staple and productiveness. For the past four years it has made an average of 76 pounds of seed cotton per acre more than the parent strain. It opens more fluffy and its blooming and picking record prove it to be earlier.

This cotton fruits very rapidly and we highly recommend it for weevil conditions. Its staple commands the highest prices.

See price list for prices on these Seed. A very limited quantity for sale this season



“HUMCO” Pedigreed CAROLINA-WEBBER

(Long Staple)

CAROLINA-WEBBER is a selection from Webber 49 that has given remarkably good results for the past four years. It came from our 1920 Breeding Plot where it made a very excellent showing, leading all rows in earliness, type and rapidity of fruiting. It will give 1 5/16 inch staple and is turning out 34½ per cent. lint at our gin this season (including bagging and ties).

This cotton in comparison with other strains of Webber 49 is making a very fine showing. It is small in type, a rapid, early fruiter and highly adaptable under boll weevil conditions.

Those who like Webber 49 will be more than pleased with our CAROLINA-WEBBER cotton.

**SUPPLY OF SEED VERY
LIMITED
SEE PRICE LIST FOR PRICES**



“HUMCO” CAROLINA-WEBBER

Staple 1 1/4 to 1 5/16 inches Full; Lint, 34½ Per Cent.
Bolls, Per Pound Seed Cotton, 65.

Pedigreed Webber 49 (Special)

(STAPLE 1 1/4 to 1 5/16 INCHES)

For many years Webber 49 Cotton has been a favorite among staple cotton growers from South Carolina to Texas. It combines in its make-up the qualities of **EARLINESS, OPEN TYPE, RAPIDITY OF FRUITING, BOLL SIZE, STAPLE QUALITY AND PRODUCTIVENESS** which appeal to the best farmers. **Sixty-five Bolls** of this variety will make a pound of seed cotton, and it carries a staple of 1 1/4 to 1 5/16 inches of fine quality.

The bolls of this variety open wide. It is easy to pick and it should be picked promptly to secure the very best grades. No strain of Webber 49 Cotton is more largely planted than our Pedigreed Webber 49 Special under boll weevil conditions.

We offer seed of this variety grown in South Carolina or Mississippi, as desired.

Express Cotton

Express Cotton is one of the new varieties, bred, named and established by the United States Department of Agriculture. To Dr. D. N. Shoemaker, of the Bureau of Plant Industry, is due the credit for this variety.

The **EXTREME EARLINESS** of this cotton is its most distinctive characteristic. It is especially adapted to planting on the overflow lands in the Mississippi Delta where plantings must be made late in the Spring. For South Carolina conditions we have not found Express to be as profitable as the other varieties we offer.



“HUMCO” Pedigreed CAROLINA-EXPRESS

(Long Staple)

This is our first strain of Express Cotton bred and developed under our organization. It is descended from Express 26, seed of which we obtained from the Georgia State Board of Entomology. This strain of Express is much superior to its parent strain, being earlier, with larger boll, full 1 3/16 inch staple and more productive. This strain led all other strains of Express in our variety test this year, making 75 pounds of seed cotton per acre more than the best and 261 pounds more than the poorest strain tested.

IN TYPE it is small growing and does not have the objectionable feature of growing too tall and switchy as some other strains. It takes 73 bolls of CAROLINA EXPRESS to make a pound of seed cotton, seven bolls better than its parent strain. 1,600 pounds of seed cotton gives 500-pound lint bale. No Express better in lint percentage.



CAROLINA-EXPRESS

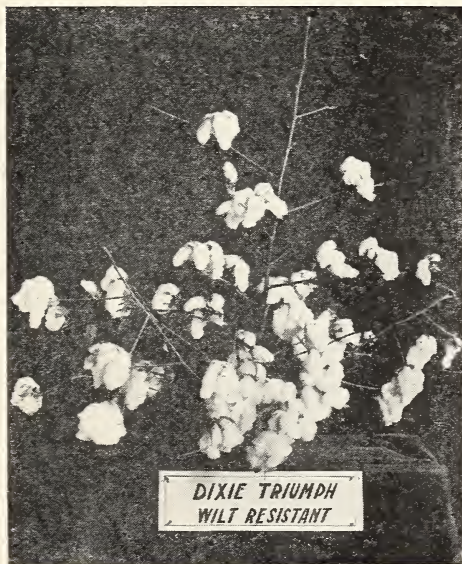
Watson's Wilt Resistant Long Staple

AT LAST, A WILT RESISTANT LONG STAPLE. There has long been a demand for such a cotton but no variety in the past has successfully met this demand. This new variety was bred and developed by Mr. L. O. Watson, Florence, S. C., after a number of years of careful breeding on thoroughly and uniformly infested Wilt Land. This cotton was developed from a highly resistant strain of one of the best known wilt resistant cottons and has proved decidedly superior to the parent strain in every respect.

Plants of this cotton are medium sized, open growing with large roundish bolls. It produces 1 3/16 inch staple under good conditions, and about 1,475 pounds of seed cotton will give 500 pounds of lint.

This cotton has proved highly satisfactory as an early long staple variety and is very productive on all types of soil. The grower who has wilt lands and wishes to plant staple cotton will find this variety very valuable.

SEE INCLOSED PRICE LIST FOR PRICES



DIXIE-TRIUMPH (Wilt Resistant) (Short Staple)

The Department of Agriculture and Southern Experiment Stations have thoroughly tested the DIXIE TRIUMPH with such remarkably good results that it is now recommended as THE EARLIEST AND BEST wilt resistant cotton.

In the breeding of this variety special attention was given toward the production of a type of plant resistant to wilt and best adapted to boll weevil conditions, and this cotton meets this double standard to a high degree.

Plants are medium sized, open growing. Bolls large—open wide and fluffy. 1,285 to 1,300 pounds of seed cotton will give 500 pounds of lint. Staple, 1 inch full.

The seed we offer are from the latest strain and are the best to be had.

SEE INCLOSED PRICE LIST FOR PRICES

NOTICE

Don't plant Wilt Resistant Varieties of Cotton on lands heavily infested with Root-knot and expect all the plants to live. Plant such land to crops not affected by Root-knot for at least three years.



Pedigreed Cleveland Big Boll-1

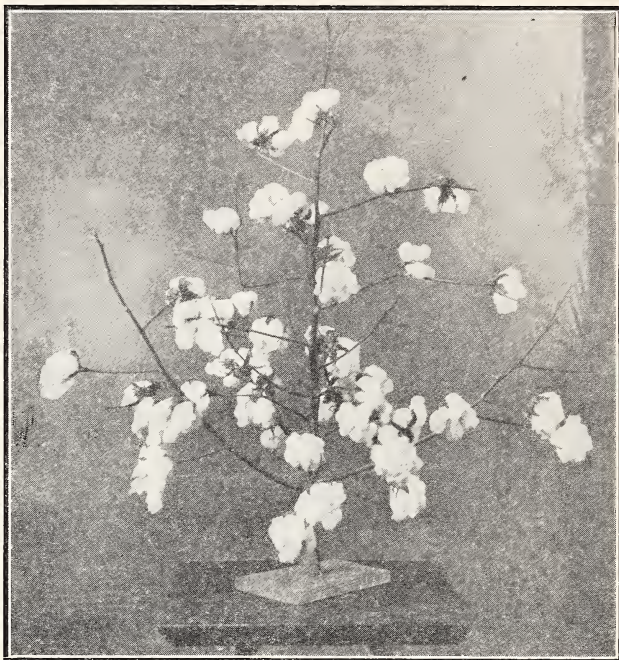
(Short Staple—1 Inch)

Cleveland Big Boll needs no introduction to Southern farmers. It is planted on the majority of our farms. It is recognized as the **BEST SHORT STAPLE** variety. It is recommended as the one best short staple cotton to plant under boll weevil conditions on land free from cotton wilt.

Our pedigreed Cleveland Strain-1, for **EARLINESS, LARGE BOLL TYPE** and **PRODUCTION** is a leader among short staple varieties. Staple, 7/8 to 1 inch. Lint, 38 per cent. In every test our seed of this variety has proven its high value. In our test plots at Schlater, Mississippi, it is one of the leaders in early yield.

Our seed of this variety all South Carolina grown.

ALWAYS A BIG DEMAND FOR THIS COTTON—ORDER EARLY—SEE PRICE LIST



"HUMCO" CLEVELAND BIG BOLL—20

"HUMCO" Pedigreed CLEVELAND BIG BOLL-20 Our New Cleveland Cotton a Prize Winner

It is very early, has open type, turns out forty per cent. lint with 1-inch staple, and 65 bolls make a pound of seed cotton.

For the past four years this new strain of Cleveland has produced more than any other strain of Cleveland we have tested. Its record shows an increased yield over the parent strain of 100 pounds of seed cotton per acre for the past four years. With cotton selling at 25 to 27 cents

per pound, this increase in yield means at least \$10 per acre more from this cotton. Figure a little and see the value of this cotton planted on your farm another year.

This is our first year to offer these seed and our supply is small. Order early and get, at least, enough for a seed patch next year.

Price on this very low for its value—See price list.



"HUMCO" CLEVELAND BIG BOLL—20



Seed Corn

“HUMCO” Pedigreed MARLBORO PROLIFIC-21

(Two-Eared Variety)

Marlboro Prolific is a white corn with a white cob. It produces two large ears to the stalk and in our corn tests has always been a leader. Taking into consideration its yield, its quality, and its resistance to weevil attack, we consider **MARLBORO PROLIFIC** the **BEST WHITE CORN** we have tested.

Our **MARLBORO PROLIFIC-21** is a new strain of this variety developed from our 1921 Ear-to-Row test. We are offering it for the first time this year.

This corn, in our 1921 Test Plot, made ten bushels per acre more than any other selections, and in our 1922 Variety test led the parent strain by seven bushels per acre, making a yield of 89.9 bushels, which was 3.2 bushels higher than any other variety.

Its weevil resistance is the best of any Prolific Corn. The shuck covering at the tip end of the ears fits tight and prevents much weevil injury.

Price: Bushel, \$4.00; 10 bushels, \$3.75 per bushel.



CORN “EAR-TO-ROW” TEST

We carefully test and study hundreds of ears of corn to find the **Best Producers**. The best we increase for sale.

Improved Fulcrop White

This is a single ear variety, producing large white ears with a white cob. In shelling it gives 87 per cent. corn.

This variety has been a high yielder in our tests and is very resistant to weevil attack. We offer field selected seed of this variety for the present. We expect to offer Pedigreed Strains later. No better single ear, white corn, and none more resistant to weevil injury.

Price: One bushel, \$3.75; 10 bushels at \$3.50 per bushel.

Improved Golden Dent

(FOR EARLY CROP OR LATE PLANTINGS)

We know of no **EARLY, QUICK MATURING** variety of corn the equal of Golden Dent. In yield and quality it is a leader. It makes large ears of fine quality.

We handle the best **SELECTED SEED** of this variety to be had at present. We will offer Pedigreed Strains later.

Price: Bushel, \$4.00; 10 bushels, \$3.75 per bushel.

HIGHEST QUALITY SEEDS



HUMPHREY-COKER SEED CO.
HARTSVILLE, SOUTH CAROLINA

GENERAL SPRING SEEDS

SPRING OATS. If you expect to plant oats in the Spring, January or February, **do not plant Burt or 90-Day Oats.** They will not pay. Plant Fulghum or Red Appler Oats. Numerous tests prove the accuracy of this advice. Fulghum or Red Appler Oats will out-yield Burt Oats 50 per cent. if planted as late as the 25th of February.

MAMMOTH YELLOW SOY OR SOJA BEANS. The Soja Bean is one of the valuable leguminous crops for Southern conditions. It is used largely as a hay crop and is especially valuable as a grazing crop for hogs. As a hay crop it compares with alfalfa hay in feeding value.

The Mammoth Yellow variety is the best variety for the South, making largest yields of grain and forage. It should have a place on every Southern farm. **Ask for Our Prices.**

VELVET BEANS. We believe the Velvet Bean is the most valuable soil-building legume for the South. It will make more growth on poor land than any other legume we know of. Planted with corn, it will make a heavy yield of seed and these can either be gathered or left for the hogs and cattle to graze after the corn is gathered. Their heavy growth, their ability to stand adverse conditions and bad weather without injury makes them very valuable. **Our Advice:** Plant with corn and harvest when mature with hogs and cattle. The **100-Day Early Speckled** and the **Osceola** varieties are considered best. These varieties will mature their crop before cold weather. They have been selected for their adaptability to Southern conditions. **Write for Prices.**

PEARL OR CAT-TAIL MILLET. The best millet for use as a **green feed** for cattle and other stock. **You can cut and it will come again.** Valuable as a hay crop when sown broadcast. Plant in Spring after weather is warm. In drills three inches apart at rate of ten pounds per acre. Broadcast for hay at rate of forty pounds per acre. **Write for Prices.**

SUDAN GRASS. A very valuable grass for hay and forage purposes. Resembles Johnson Grass but does not have the objection of spreading from the roots. It is recommended specially as a drought-resisting plant and has made yields of four tons of hay per acre. It makes a good crop to plant with peas, furnishing them an upright plant to grow on. Buy reliable seed, free from Johnson Grass. Ours best grade, certified stock. Plant in drills eighteen inches to two feet apart, about five pounds per acre. Broadcast twenty to twenty-five pounds per acre. **Ask for Prices.**

LESPEDEZA (Japan Clover). It grows naturally on many roadsides and farms in the South. It should have a distinct place on every farm. On wornout lands, where other crops fail, it will grow and furnish nutritious, permanent pasturage. It is splendid in lawn mixtures for the Coastal Plain sections of the South. It will reseed itself and thicken rapidly. Sow in March or April, about twenty pounds per acre. **Ask for Prices.**

CARPET GRASS. The U. S. Department of Agriculture considers this the most valuable **pasture grass** for damp lands throughout the South. It is a vigorous grower on such lands and will soon make a very excellent, nutritious pasture. It is taking the day where tried out. Seed are very scarce and hard to get. Sow in March and April, about ten pounds per acre, with five pounds of Lespedeza seed. **Ask for Prices.**

BERMUDA GRASS is as valuable to the South for grazing as Kentucky Blue Grass is to the North. It make a vigorous and persistent growth in every part of the South, lasts for years, stands a long, hot summer without injury, grows well in any soil that is not too wet, bears heavy grazing and trampling with little injury, recovers quickly when grazed down, and as a grazing and fattening grass has few equals.

For lawns, golf courses and athletic grounds, it makes a tough even turf without clumps, and recovers quickly after cutting. To have an all-the-year green it should be grown mixed with Perennial Rye Grass, as Bermuda turns brown after frost. **Ask for Prices.**

PRICE ON GENERAL SEED. At the time this catalogue is published we cannot quote prices on our general seed, as our stocks are not yet in. We handle only the highest quality stuff, and while our prices will be higher than some others, they will be right for the quality we sell. Highest quality is worth more. Poor quality costs more than it sells for. **Write for Prices in Season.**

FOR OUR GUARANTEE ON GENERAL SEEDS, SEE PAGE 10

HIGHEST QUALITY SEEDS



HUMPHREY-COKER SEED CO.
GREENWOOD, MISSISSIPPI.

THE FOLLOWING PAGES,
19 thru 23,
DESCRIBE

*Our Mississippi Work and
Our Mississippi Seeds*



GINNING AND HEADING OUR PEDIGREED SEEDS IN MISSISSIPPI

Better Seeds

Bred, Grown, Properly Handled and Adapted
under Mississippi conditions

*The Aim and Purpose of Our Organization
at Greenwood, Mississippi*

HIGHEST QUALITY SEEDS



HUMPHREY-COKER SEED CO.
GREENWOOD, MISSISSIPPI.

We Breed and Grow Pedigreed Seeds in Mississippi



PLANT-TO-ROW TEST AT SCHLATER, MISS. A CAREFUL STUDY NECESSARY TO DETERMINE THE BEST ROWS

AT SCHLATER, MISSISSIPPI

Four years ago we started the BREEDING and GROWING of Pedigreed Seeds in Mississippi. We started with the very finest pedigreed selections from South Carolina with the idea of producing and growing strains of seeds better suited to Mississippi conditions.

Our BREEDING WORK there now embraces six varieties of cotton, one variety of corn, two varieties of oats, and one variety of rye. We are testing hundreds of plants each year trying to find higher producing, more desirable selections. We now have several new selections of cotton that are making fine records, and we offer one of these for sale this season.

Until such time as we are in position to offer all of our seed BRED IN MISSISSIPPI, we are offering the finest Pedigreed Seed from our South Carolina stocks, which have been GROWN and HANDLED under our personal supervision at SCHLATER, MISS. Our seed crops are properly inspected in every way to insure purity before harvesting and after harvest they are properly housed, handled, ginned, cleaned, stored and tested to insure purity and vitality. This makes possible the GUARANTEE, which goes with every seed we sell, of SATISFACTION OR YOUR MONEY BACK.

We take great pride in the CLEANING OF OUR SEEDS and we have the very best machines obtainable to properly grade and clean all the seed we sell. This fact alone insures big crop returns.

The HANDLING OF SEED to insure Purity and Vitality is a matter of extreme importance. We have men in our organization who have had more actual experience in handling, storing and testing Pedigreed Seeds than have the men in any other like organization in the South. This insures the farmer the very best protection against low quality seed.

THE MANAGEMENT OF OUR WORK

The management of our Mississippi work is under the direct supervision of Mr. J. Blanding Dick, who is stationed at Schlater, Miss. He is a college-trained man, a plant breeder by actual study, training and experience through a number of years. He fully appreciates the value of the greatest care, accuracy and cleanliness in the production of Pedigreed Seeds. At such times and as often as necessary our Head Plant Breeder and General Manager, Mr. S. Pressly Coker, works and advises with him on matters of greatest importance. Nothing is left undone that would add to the quality of our breeding and growing work. We invite a thorough inspection by all as to our men, our equipment, and our methods. COME TO SEE US.



The Value of Acclimated Seed

The SUPERIORITY OF SEED grown and bred in Mississippi, for planting in Mississippi, over seed brought in from other sections is a fact attested by all the best agricultural authorities. Seed that are acclimated, when they are of proper quality, will give better results than seed brought in from other parts of the country. In support of this argument, we refer you to the article below by the Mississippi State Commissioner of Agriculture and to the Experiment Stations or the U. S. Department of Agriculture. The seed we are now offering have already become acclimated to Mississippi conditions and will give you better returns than seed shipped in from other States.

Mississippi Cotton Growers Advised to Buy Mississippi Seed

Commissioner of Agriculture Warns Against Peril of Importing

Starkville, Miss., July 19.—According to the permits on file in the office of the State Plant Board, the farmers of Mississippi apparently have broken all former records this Spring for buying cottonseed for planting purposes from other States. This year permits were issued for the shipment of 102,112 bushels of planting seed into Mississippi, or more than four times the amount purchased outside the State in 1921. This amount covers planting seed only and does not include seed for crushing or other purposes.

Though Mississippi has a strict quarantine against cottonseed from Texas, Oklahoma, New Mexico and Western Louisiana, on account of the pink boll worm, there is always the possibility of shipments coming from an undiscovered infestation in an unquarantined State. Because of this serious danger of bring-

ing in the pink boll worm or other pests from other States, and also on account of the high price of the imported seed and the high express and freight charges the Mississippi buyers are paying, it will be a progressive step, says P. P. Garner, Commissioner of Agriculture and Chairman of the State Plant Board, if farmers will begin now to make preparations to save their own planting seed for the crop of 1923.

Where a farmer is not satisfied with the cotton that he is growing, he could make arrangements with one of his neighbors or with some other reliable Mississippi planter or cotton breeder to supply his needs. It is a matter of pride that Mississippi has within her borders some of the outstanding leaders in cotton breeding.

IMPORTANT NOTICE

Much of the Planting Seed offered for sale by seedsmen in Mississippi has not been cleaned or tested, and is not handled in a way to insure **Purity** and proper **Vitality**.

Our seed are **Cleaned Properly, Tested for Germination, Handled to insure Purity and Vitality, and they are GUARANTEED RIGHT.**

If you will inspect our work at Schlater, Miss., and see the extreme care we take to produce and sell the finest seed in Mississippi, you will buy our seed.

WE INVITE INSPECTION

HIGHEST QUALITY SEEDS



HUMPHREY-COKER SEED CO.
GREENWOOD, MISSISSIPPI.

OUR OFFERINGS

Mississippi Seeds

“HUMCO” Pedigreed WEBBER 49-32

Our First Strain of Seed Bred and Grown in Mississippi

“HUMCO” Webber 49-32 is a very superior strain of Webber 49 Cotton. The original selection made a yield of 1300 pounds of seed cotton per acre, under poor conditions, in 1920, with a lint percentage of 33.6 and a staple of 1 5/16 Full to 1 3/8 inches; boll size, 65 to pound of seed cotton.

It has held its record. This year it has led all other strains of Webber 49 in our variety test by 112 pounds of seed cotton per acre and shows 1 5/16 inch staple. It is a selection from Webber 49 strain 2, and carries a much stronger vitality than is found in other strains of 49 cotton.

Its **STRONG VITALITY**, **PRODUCTIVENESS**, **STAPLE LENGTH**, **DESIRABLE TYPE** and its **ADAPTABILITY** to Mississippi conditions recommends it highly to growers of Staple Cotton in Mississippi and Arkansas.

SEE PRICE LIST FOR PRICES.

Supply limited. Get a few seed as a starter

Pedigreed Webber Elite

(STAPLE 1 5/16 to 1 3/8 INCHES)

This cotton is our selection of **Deltatype Webber**, which we have grown, selected and handled under Mississippi conditions for the past two years. It has become acclimated and is proving highly valuable in the Delta country. It has no superior as an upland staple cotton in boll size, staple length and quality and it has proven its ability to produce excellent crops under heavy weevil infestation.

This cotton was bred for a **FRUITING BRANCH TYPE** and it has very few vegetative branches, making its foliage much lighter and its adaptability to boll weevil conditions much better. Wherever tried this cotton has won an enviable reputation. Its **EARLINESS**, its **OPEN FRUITING BRANCH TYPE**, its **LARGE BOLL** (with thick boll rind) and its **EXCELLENT STAPLE** (length and quality) recommend it as a most desirable cotton for every Southern farm. We offer this variety grown in South Carolina or Mississippi, as desired. We strongly recommend our Mississippi seed for Mississippi farmers.



A FIELD—WEBBER ELITE—1923



Importance and Value of Seed Cleaning

(See Chart on Page 7)

The results of carefully conducted tests show what GOOD CLEANING does to increase crop yields and farm revenues.

	Per Acre Yield	Value
Good cleaning increases yield of oats.....	.12 Bus.	\$12.00
Good cleaning increases yield of rye.....	9.4 Bus.	18.80
Good cleaning increases yield of LINT COTTON.....	.32 Lbs.	8.00

(Value figured on present market prices.)

Carefully conducted tests by our Plant Breeders and by the Government Experiment Stations prove the **EXTREME IMPORTANCE OF SEED CLEANING** as a means of **INCREASING CROP YIELDS**.

This matter cannot be stressed too much. Every farmer should have a **GOOD CLEANER** on his farm, and see to it that all of his seeds are cleaned before they go in the ground. Small, light, inferior seeds lower crop yields much more than many imagine.

The Standard Seed Cleaner

We have tried several makes of **SEED CLEANERS** and for **FARM USE**, where simplicity, ease of operation, durability and uniform, dependable work are so essential, we are convinced that the **STANDARD** is the best machine to be had.

SPECIAL POINTS OF EXCELLENCE

1. Special Hopper—

Designed by us to handle cotton and all other field seeds.

2. Automatic Vibrators—

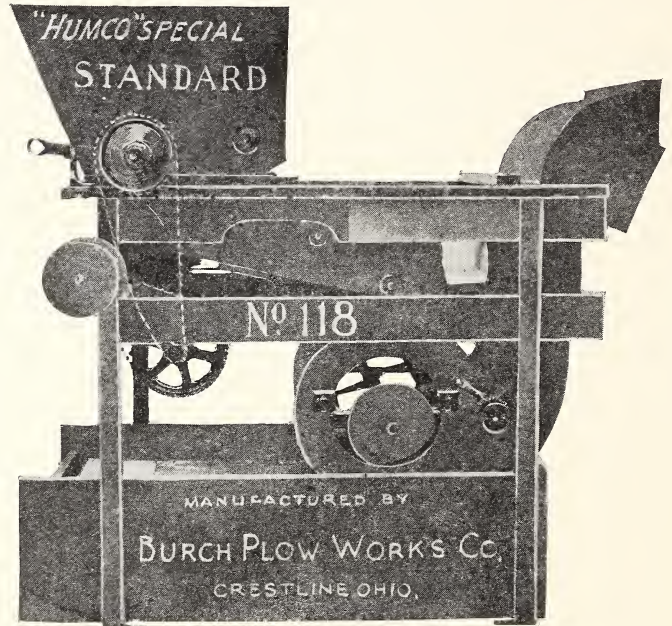
These vibrators under each screen operate to keep the screens open and insure uniform cleaning work.

3. Air Blast Control—

The turn of one valve regulates the air current and gives perfect control. There are no doors to open and close for air control.

4. Durability—

This machine is built very substantially and designed to stand hard, rough farm usage.



PRICES F. O. B. HARTSVILLE, S. C.

Number 102 Machine, regular hopper (12 screens)	\$46.00
Number 110 Machine, regular hopper (12 screens)	56.00
Number 118 Machine, special hopper (12 screens)	60.00

Ask for literature and information on large power machines.

WE HAVE THE SOUTHERN AGENCY FOR THESE MACHINES AND WE ARE READY TO SERVE YOU PROMPTLY

HIGHEST QUALITY SEEDS



HUMPHREY-COKER SEED CO.
HARTSVILLE, SOUTH CAROLINA

Our Customers Praise the Standard Cleaner

L W SHOOK,
PRESIDENT

H G BROWN,
VICE-PRESIDENT

V R HERMAN,
SECRETARY, TREASURER AND MANAGER
(EXPERT PLANT BREEDER)

The Edgecombe Seed Breeders' Association, Inc.

BREEDERS AND GROWERS OF PURE BRED SEED

MEMBERS

L W SHOOK
H G BROWN
B B HOWELL
B F SHELTON
T A WIGGINS
W W EAGLES
W W BULLUCK
G C PHILLIPS



TARBORO, N C., March 29, 1923

Mr. Presley Coker,
Hartsville, S. C.

Dear Sir;

I had the pleasure of seeing the seed cleaner you shipped Mr. G. C. Philips at work on cotton seed the other day. I am very much pleased with the machine and the work it was doing. We are using three Clippers that we have had some time. Your machine seems to give a lighter draft, is more substancially built, and the feed roll is quite superior to the Clipper. Mr. Philips is very well pleased with the machine.

Yours very truly,

W. W. Coker

Registered in the United States Dec. 6th, 1898.

26 YEARS AGO.



Awarded Gold Medal
Worlds Fair—
St. Louis—1904.
20 YEARS AGO.

THE ORIGINAL SOIL INOCULATOR

Alfalfa, clovers, soybeans, vetches, peas, beans, cowpeas, peanuts and other legumes should always be inoculated with Nitragin. The lack of necessary bacteria in the soil is often the cause of a poor legume crop—a weak start—or a total failure.



Inoculated Soybeans
Be sure and name crop to be inoculated.

BENEFITS OF INOCULATION

First—Inoculated legumes take nitrogen from the air to supply the plant, resulting in faster growth, earlier maturity and larger crops. Second—Inoculated legumes take up more nitrogen than the plant itself requires, the surplus remaining to the benefit of future crops. Third—Inoculated legumes develop larger root systems than when not inoculated and therefore reach the immense stores of potash and phosphorus in the sub-soil, bringing them up to supply the plant. When the roots and stubble decay these elements are also returned to the soil in a form available for future crops. Fourth—Inoculated legumes, by taking their nitrogen from the air, save the soil. When not inoculated they drain the soil of its nitrogen just the same as wheat or timothy or other leguminous plants. Summary—Inoculation hastens maturity, increases the crop, improves its quality, enriches the soil and saves fertilizer bills.

PRICES FOR FIELD NITRAGIN

1/4-bu size inoculates 15 lbs seed \$.40
1/2-bu size inoculates 30 lbs seed .60
1 -bu size inoculates 60 lbs seed 1.00
5 -bu size inoculates 5 bu seed 4.75

EVERY GARDEN NEEDS NITRAGIN

Garden size is for Peas, Sweet Peas and Beans, only including Lima (3 in one). Price 20c.



BUSHEL basis—not acre sizes. The one bushel size will inoculate one bushel of any legume seed, price \$1.00, other sizes in proportion. Sold in tins—not glass—packed in a rich soil-like medium.

We carry a Fresh Supply of Nitragin in stock and can fill your requirements promptly

Insecticides and Spray Materials

BORDEAUX MIXTURE

This mixture not only prevents blight, scab, rust, mildew, black-rot, and other fungus diseases of plants and fruits, but improves the quality and largely increases the yield. It should be used on all vine crops, grapes, cucumbers, melons, tomatoes, etc. Potatoes especially respond generously to thorough spraying. **Price:** 1 lb., 40c; 5 lbs., 35c; 25 lbs., \$6.50.

ATOMIC SULPHUR—

The complete fungicide for the growing period spraying of all fruit trees. Effective, safe, always uniform. To control scab and brown rot, use at rate of three to four pounds to fifty gallons of water. **Price:** 1 lb., 25c; 10 lbs., 20c; 100 lbs., 16c.

ARSENATE OF LEAD—

For Leaf-eating Insects—Sticks to the leaf better than Paris Green and remains longer in suspension; requires fewer applications; does not burn the leaf, thus allowing stronger solutions. White in color, and shows just where it has been applied. These advantages make it preferable to Paris Green for destroying leaf-eating insects. Use one pound to fifty gallons of water for general spraying. **Price:** 1 lb., 40c; 10 lbs., 35c.

B. T. S. or BARIUM SULPHUR—

For San Jose Scale—Dry insecticide and fungicide for spraying fruit trees. As effective as Lime-Sulphur Solution, more economical and more convenient. As a dormant spray, use 12 to 14 pounds to fifty gallons of water. For growing period, spray 1½ to 2 pounds to fifty gallons of water. **Price:** 1 lb., 25c; 10 lbs., 20c; 100 lbs., 15c.

BLACK LEAF 40—

For Sucking Insects—Kills plant lice on roses, shrubbery, fruits and vegetables. A concentrated solution of nicotine sulphate, guaranteed to contain not less than forty per cent. nicotine. A solution in the proportion of a teaspoonful to a gallon of water, to which add four pounds of soap to each one hundred gallons of solution, will kill the garden pea louse and not injure the vine. **Price:** 1 oz. bottle, 35c.

FISH OIL SOAP—

Sometimes Called Whale Oil Soap—Effectually destroys the mealy-bug and nearly all lice on indoor plants and scale on palms. Recommended for San Jose Scale and insects that infest the bark of trees. It has been used with good results against the pea louse. **Price:** 1 lb., 25c; 5 lbs., \$1.00.

Spray Pumps

We handle the E. C. Brown Company's line of Spray Pumps. We carry in stock Compressed Air Sprayers, Bucket Spray Pumps, Continuous Knapsack Sprayers, Barrel Sprayers, and Hand Sprayers. We can furnish these in different sizes. There is no better line of Sprayer Pumps to be had.

In addition to Spray Pumps we handle the Feeny Hand Dust Gun for use in applying Arsenate of Lead to control tobacco worms and Calcium Arsenate Dust for controlling the boll weevils.

When you need a good Spray Pump or Dust Gun, write us. We will send you complete information about any pump or gun you may desire and we are prepared to serve you promptly and at the right price.

Garden Seeds

We are not breeding and selecting garden seeds, but we are offering the very best garden seeds we can buy to our customers. We exercise extreme care in buying our garden seeds from the very best sources. Every lot of seed we buy and sell is carefully tested in our laboratory to insure high germination quality, and those who buy from us will get as good quality garden seeds as can be had from any source.

We do not handle all the varieties, but we try to handle the best of each kind and those best suited to Southern conditions.

We are giving no descriptions of these seeds, we are simply listing what we sell and will be glad to fill orders for our customers. When you give us an order for field seeds, why not let us fill your garden seed requirements also?

HIGHEST QUALITY SEEDS



HUMPHREY-COKER SEED CO. HARTSVILLE, SOUTH CAROLINA

LIST OF GARDEN SEEDS WE OFFER

BEANS—

BUSH—GREEN PODS

Black Valentine	lb.	.35	5 lbs.	@	1.75
Bountiful	lb.	.35	5 lbs.	@	1.75
Burpee's Stringless	lb.	.35	5 lbs.	@	1.75
Red Valentine	lb.	.35	5 lbs.	@	1.75
Refugee—1,000 to 1,000	lb.	.35	5 lbs.	@	1.75

WAX PODS

Improved Golden Wax	lb.	.35	5 lbs.	@	1.75
Refugee Stringless Wax	lb.	.35	5 lbs.	@	1.75
Sure Crop Wax	lb.	.35	5 lbs.	@	1.75

BUSH LIMAS

Burpee's Bush Lima	lb.	.35	5 lbs.	@	1.80
Henderson's Bush Lima	lb.	.30	5 lbs.	@	1.50

POLE BEANS

Kentucky Wonder (Old Home-head)	lb.	.30	5 lbs.	@	1.50
Lazy Wife	lb.	.30	5 lbs.	@	1.50
Red Speckled—Cut Short	lb.	.30	5 lbs.	@	1.50
Cornfield	lb.	.30	5 lbs.	@	1.50

POLE LIMAS

Carolina or Sewee	lb.	.35	5 lbs.	@	1.80
-------------------	-----	-----	--------	---	------

BEEFS—

Crimson Globe	oz.	\$.10	1 lb.	\$.30	1 lb.	\$1.00
Detroit Dark Red	oz.	\$.10	1 lb.	\$.30	1 lb.	1.00
Edmunds Early Blood Red	oz.	\$.10	1 lb.	\$.30	1 lb.	1.00

CABBAGE—

Charleston Wakefield	oz.	\$.20	1 lb.	\$.65
Early Jersey Wakefield	oz.	\$.20	1 lb.	\$.65
Early Drumhead	oz.	\$.20	1 lb.	\$.65
Early Flat Dutch	oz.	\$.20	1 lb.	\$.65
Large Late Drumhead	oz.	\$.20	1 lb.	\$.65
Large Late Flat Dutch	oz.	\$.20	1 lb.	\$.65

CARROT—

Chantenay	oz.	\$.10	1 lb.	\$.25	1 lb.	\$.80
Danvers Half Long	oz.	\$.10	1 lb.	\$.25	1 lb.	\$.80
Long Orange	oz.	\$.10	1 lb.	\$.25	1 lb.	\$.80

CAULIFLOWER—

Early Snowball Best	oz.	\$.40
---------------------	-----	-------

CELERY—

Golden Self Blanching	oz.	\$.30	1 lb.	\$1.00
-----------------------	-----	-------	-------	--------

COLLARDS—

Georgia or Southern	oz.	\$.10	1 lb.	\$.30
Cabbage Collards	oz.	\$.10	1 lb.	\$.30

SUGAR CORN—

Black Mexican	lb.	\$.15	10 lbs.	@	\$1.25
Country Gentleman	lb.	\$.15	10 lbs.	@	1.25
Golden Bantam	lb.	\$.15	10 lbs.	@	1.25
Snowells Evergreen	lb.	\$.15	10 lbs.	@	1.25
Adams Early	lb.	\$.15	10 lbs.	@	1.25
Truckers Favorite	lb.	\$.15	10 lbs.	@	1.25

FIELD CORN—

Golden Dent	lb.	\$.10	10 lbs.	@	\$.98
White Dent	lb.	\$.10	10 lbs.	@	\$.98

POP CORN—

White Rice	lb.	\$.15	10 lbs.	@	\$.12
------------	-----	-------	---------	---	-------

CUCUMBER—

Gherkins or Burr	oz.	\$.10	1 lb.	\$.30	1 lb.	\$.95
Long Green Improved	oz.	\$.10	1 lb.	\$.30	1 lb.	\$.95
Davis Perfect	oz.	\$.10	1 lb.	\$.30	1 lb.	\$.95

EGGPLANT—

Large Round Black or Black Beauty	oz.	\$.40	1 lb.	\$1.00
New York Improved	oz.	\$.40	1 lb.	1.00

KALE—

Siberian Extra Curled	oz.	\$.10	1 lb.	\$.30
-----------------------	-----	-------	-------	-------

LETTUCE—

Prize Head or Satisfaction	oz.	\$.10	1 lb.	\$.35
Big Boston	oz.	\$.10	1 lb.	\$.35
Hanson	oz.	\$.10	1 lb.	\$.35
Iceberg	oz.	\$.10	1 lb.	\$.35
May King	oz.	\$.10	1 lb.	\$.35

CANTALOUPE—

Rockyford Extra Select	oz.	\$.10	1 lb.	\$.75
Rockyford "HUMCO" Pedigreed	oz.	\$.15	1 lb.	1.00

WATERMELON—

Bradford	oz.	\$.10	1 lb.	\$.25	1 lb.	\$.85
Irish Gray	oz.	\$.10	1 lb.	\$.30	1 lb.	1.00
Kleckley Sweet	oz.	\$.10	1 lb.	\$.25	1 lb.	\$.85
Tom Watson	oz.	\$.10	1 lb.	\$.25	1 lb.	\$.75

MUSTARD—

Giant Southern Curled	oz.	\$.10	1 lb.	\$.25	1 lb.	\$.65
-----------------------	-----	-------	-------	-------	-------	-------

OKRA—

Long Green Pod	oz.	\$.10	1 lb.	\$.25
Dwarf Green Pod "HUMCO" Select	oz.	\$.10	1 lb.	\$.25
Long White Velvet	oz.	\$.10	1 lb.	\$.25

ONIONS—

Prizetaker	oz.	\$.20	1 lb.	\$.60	1 lb.	\$2.00
Yellow Globe Danvers	oz.	\$.20	1 lb.	\$.60	1 lb.	2.00
White	oz.	\$.20	1 lb.	\$.60	1 lb.	2.00

PARSLEY—

Champion Moss Curled	oz.	\$.10	1 lb.	\$.25	1 lb.	\$.75
----------------------	-----	-------	-------	-------	-------	-------

PARSNIP—

Bloomdale	oz.	\$.10	1 lb.	\$.30
-----------	-----	-------	-------	-------

PEAS—

Alaska or Earliest of All	lb.	\$.25	5 lbs.	@	\$.20
Thomas Laxton	lb.	\$.25	5 lbs.	@	\$.20
Champion of England	lb.	\$.25	5 lbs.	@	\$.20
Large White Marrowfat	lb.	\$.25	5 lbs.	@	\$.20

PEPPER—

Bull Nose or Large Bell	oz.	\$.35	1 lb.	\$1.20
Giant Ruby King	oz.	\$.35	1 lb.	1.20
Long Cayenne	oz.	\$.35	1 lb.	1.20
Pimento	oz.	\$.35	1 lb.	1.20

PUMPKIN—

Connecticut Field	oz.	\$.10	1 lb.	\$.30
-------------------	-----	-------	-------	-------

RADISH—

Crimson Giant	oz.	\$.10	1 lb.	\$.30
Early Scarlet Globe	oz.	\$.10	1 lb.	\$.30
French Breakfast	oz.	\$.10	1 lb.	\$.30
Long White Icicle	oz.	\$.10	1 lb.	\$.30
Celestial Chinese	oz.	\$.10	1 lb.	\$.30

RAPE—

Dwarf Essex	lb.	\$.15	10 lbs.	@	\$.10
-------------	-----	-------	---------	---	-------

SALISIFY OR OYSTER PLANT—

Sandwich Island	oz.	\$.20	1 lb.	\$.60
-----------------	-----	-------	-------	-------

SPINACH—

Bloomdale	oz.	\$.05	1 lb.	\$.15	1 lb.	\$.50
New Zealand	oz.	\$.10	1 lb.	\$.30	1 lb.	1.00

SQUASH—

Early White Bush	oz.	\$.10	1 lb.	\$.35	1 lb.	\$1.20
Giant Summer Crook Neck	oz.	\$.10	1 lb.	\$.35	1 lb.	1.20

SUNFLOWER—

Large Russian	oz.	\$.05	1 lb.	\$.20
---------------	-----	-------	-------	-------

TOMATOES—

Bonny Best	oz.	\$.15	1 lb.	\$.55
Earliana	oz.	\$.20	1 lb.	\$.75
Stone	oz.	\$.15	1 lb.	\$.55
Acme	oz.	\$.15	1 lb.	\$.55
Ponderosa	oz.	\$.35	1 lb.	1.20
Norton Wilt Resistant Best	oz.	\$.35	1 lb.	1.20
Nordpize Wilt Resistant	oz.	\$.35	1 lb.	1.20

TURNIP—

Aberdeen Yellow	lb.	\$.45	5 lbs.	@	\$.40
Cowhorn	lb.	\$.45	5 lbs.	@	\$.40
Large Purple Top White Globe	lb.	\$.45	5 lbs.	@	\$.40
Early White Flat Dutch	lb.	\$.45	5 lbs.	@	\$.40
Golden Ball	lb.	\$.45	5 lbs.	@	\$.40
Rutabaga	lb.	\$.45	5 lbs.	@	\$.40
Seven Top	lb.	\$.45	5 lbs.	@	\$.40
Southern Prize	lb.	\$.45	5 lbs.	@	\$.40

FLOWER SEEDS AND BULBS

We list below our offerings of Fall Bulbs. These are very fine quality, selected bulbs and they will please you. We do not handle flower seeds, except Nasturtiums and Sweet Peas. We have excellent stocks of these seeds in mixed colors, but do not handle the colors separately.

HYACINTHS (ALL COLORS):

Double	10c each; 75c per dozen
Single	10c each; 75c per dozen

TULIPS (DARWIN):

Fiery Scarlet Red	7c each; 60c per dozen
Darwin Mixed	7c each; 60c per dozen

NARCISSUS:

Emperor (Single)	10c each; 75c per dozen
------------------	-------------------------

Empress (Single)	10c each; 75c per dozen
Grandiflora (Paper white)	7c each; 60c per dozen
Walden West	10c each; 75c per dozen
PURITY FREESIA	7c each; 60c per dozen
SPENCER MIXED SWEET PEAS	oz., \$.20; 1 lb., \$2.00
NASTURTIUMS:	
Dwarf Mixed	oz., \$.10; 1 lb., \$1.00
Tall Mixed	oz., \$.10; 1 lb., 1.00



Growing Cotton Under Boll Weevil Conditions

OUR METHOD AND RECOMMENDATIONS

So much is being written and said with reference to boll weevil control these days, and there is such a divergence of opinion on the subject, that one tires of reading and hearing about it and many people are being confused as to what method to follow.

It is not the intention of this article to go into the discussion of the relative values of the different methods of control now being advocated, but simply to state in short form the method we are using on our farms with excellent results. This method, intelligently followed, will give paying returns. We have our views on the different poisoning methods advocated. We are conducting numerous tests to guide our views and we will be glad to give anyone the results of our tests and our conclusions and opinion as regards the various methods advocated, if so requested.

The following is the system we follow and recommend to you:

INDIRECT CONTROL MEASURES

1. **Early Destruction of all Cotton Stalks.** Extremely important. If everybody would destroy all stalks before frost, boll weevil troubles for the following year would be practically eliminated.

2. **Thorough Clean-up** of all places on the farm where weevils might spend the Winter.

3. **Thorough Breaking and Preparation of Land** to insure finest seed bed before planting.

4. **Liberal Application of Fertilizer** of such analysis as to give early maturity of plants on your type soil. Apply before planting. On light sandy soils it is advisable to make side applications of Nitrate in early season.

5. **Plant on Old Beds** slightly above level to insure quick stands.

6. **Do Not Rush Planting.** Early plantings not advised under weevil conditions. For our conditions April 10th to 20th safest time as a rule.

7. **Leave Cotton Thick**, preferably two to three stalks to the hill, fifteen to eighteen inches apart in four-foot rows for average land.

8. **Cultivate Shallow and Often** to induce quick growth and rapid fruiting. Keep this up throughout the season.

9. **Plant Small Acreage** so that it can be worked carefully, quickly, and as often as necessary.

DIRECT CONTROL MEASURES

10. **Make One Application of Molasses-Calcium Arsenate Mixture** (1-1-1 formula) just before cotton begins to square and when the weevil is in the bud.

11. **Locate Spots Where Weevils Appear First** and poison in these spots by the use of a Hand Dust Gun or small power machine.

12. **Watch These Spots** and poison them as often as necessary and keep squares picked up in these places. Weevils can be held in check until migration sets in. Foolish to poison whole fields until necessary.

13. **When Migration Begins Poison Over Whole Area** to protect immature bolls. Use dry dust and apply with such machine as best suits your needs. Two dustings at this time will usually be sufficient.

14. **Use Your Mind** and prove your superiority to the boll weevil. **Intelligence is Very Essential in This Fight.** Haphazard work and methods waste time, energy, money and do not produce desired results.

Good Farming—a Mind to Work at the right time and **Intelligent Work**, done every time it is needed, will certainly defeat the boll weevil and insure a profitable crop.

Write us if you are interested in the results of our 1923 Boll Weevil tests with the various poisons now being recommended.

A Final Word

As we come to the close of this catalogue, we realize how much we have left out that we wanted to include, things that we feel would be of much interest to all of our customers.

We have been able to give only a glimpse of the plans and purposes of our organization, of our men, of our seed breeding methods and work and a very short description of our seeds. We have not considered at all our boll weevil tests, our variety tests, our fertilizer tests, our cotton spacing tests and other tests of this character which we are conducting.

All of these things are very interesting and full of practical value and any results we have are for the use of our customers and friends who desire them. Call on us, we have no secrets, nothing to hide, but everything to show.

WE WANT TO BE OF SERVICE

We invite correspondence and consultation on agricultural problems. We have capable men in our organization who have had the very best agricultural training; men who have had long, practical experience in farming; men who are devoting their entire time and thought to agricultural interests. In addition to this we have an Agricultural Library as good as will be found outside of our colleges and experiment stations. We do not claim to know it all, but we will be glad to give any information we can to those who inquire.

WE WANT YOU TO VISIT US

We wish every one of our customers and friends would visit us. We would like to meet you and we are anxious for you to see at first hand who we are and what we are doing.

If you are near our Greenwood, Mississippi, Office you will be repaid for your time by a visit to our Breeding Farm at Schlater, Mississippi. Mr. J. B. Dick will be there and glad to see you at any time.

If you live nearer to our Main Office at Hartsville, S. C., we will be delighted to show you our South Carolina work.

We are doing the HIGHEST CLASS SEED BREEDING WORK and we covet an opportunity of showing it to you.

S. PRESSLY COKER,
Head Plant Breeder and General Manager.

Our Terms

We Sell for Cash. Unless you enclose the money with your order it will be necessary to delay shipment until we write you and receive the money. To persons having proper credit rating we will make shipment by freight, sight draft with bill of lading attached, or by express C. O. D., but others must send cash with order. All our prices are F. O. B. Hartsville, S. C., or Greenwood, Miss. Remittance may be made by check, money order, cash or stamps. We are not responsible for your order until it reaches us.

<p>A Bag of HUMPHREY- COKER SEEDS Ready for Shipment</p>		<p>Genuine Humphrey-Coker Seeds are known by</p> <ol style="list-style-type: none">1. Our Trade Name.2. Our Trade Mark.3. Our Name and Address.4. Our Approval Stamp <p>on Every Bag of Seed.</p>
--	--	---

Book Your Order Now

We have a very limited supply of our new strains of seed this year and we advise that you place your orders early, so that we can serve you. We do not ship any cotton seed out before January, as we must have time to make our triplicate germination tests before they go out. This procedure is to protect your interest, so let us have your order for January or February shipment. Where orders are booked we require a deposit of ten per cent. on the order.

HUMPHREY-COKER SEED COMPANY

HARTSVILLE, S. C.

GREENWOOD, MISS.