

Historic, archived document

Do not assume content reflects current scientific knowledge, policies, or practices.

King Brothers Nurseries

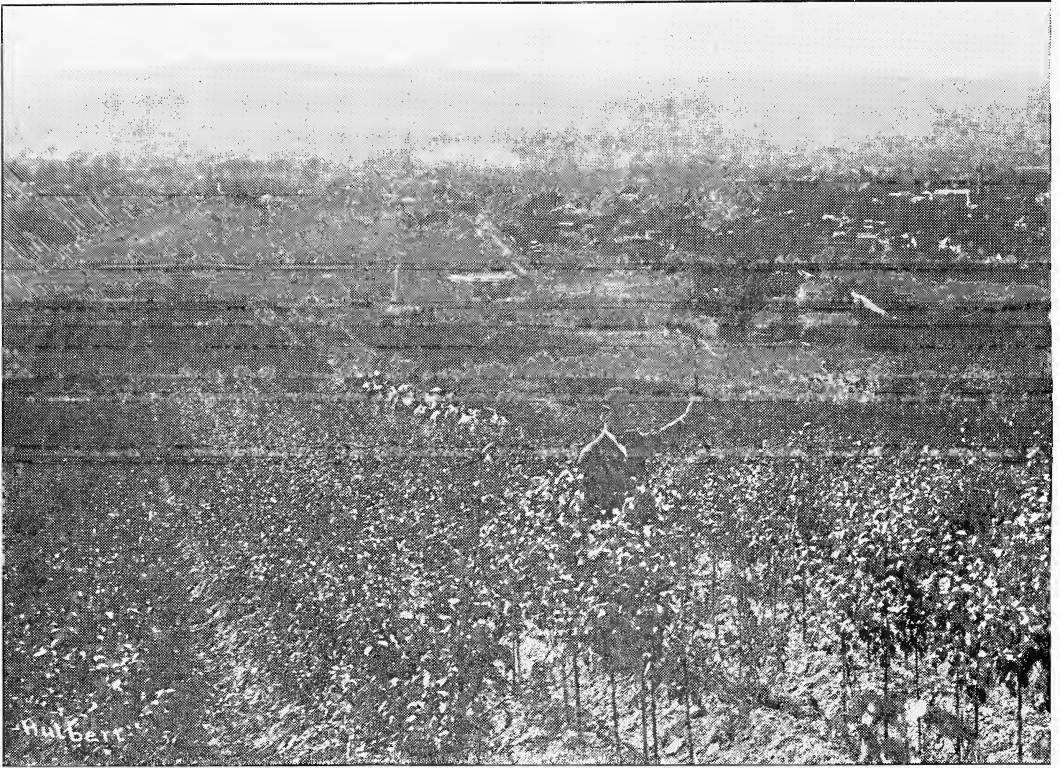
DANVILLE, NEW YORK

ESTABLISHED 1878

1924

RECEIVED
FEB 20 1924
U.S. Department of Agriculture





Fruit trees ready to harvest, grown on heavy soil above Dansville, the home of King Brothers Nurseries. Stock grown here have firm texture, hardiness and vitality.

Introductory

THIS latest edition of our annual catalogue is gotten up in a plain, concise manner to aid you in choosing and planting your nursery stock. We have described our nurseries, the stock we have to sell, and the reasons why we can serve you this year, as in the past, and make you one of our permanently pleased and satisfied customers. We have spared no effort to put into these pages descriptions and pictures that will be of the most help to you in choosing the varieties of fruit trees, small fruits, and ornamental stock best suited and most profitable for your orchard, garden, or lawn. We could not picture all our varieties. The ones shown will give you a better idea of what our stock is like. They will serve as a help in reading the descriptions. The varieties offered are the ones that in our years of experience have proven of real merit, best adapted to the soil and climate of our country, and to the needs of planters.

We have included, this year, valuable suggestions about planting and the care of trees. We ask all our customers to save the catalogue as a book of reference, or if opportunity offers, present it to some friend or neighbor who is interested in trees, and write us for another copy.

Our thanks and appreciation are extended to all who by their patronage and good will have contributed to the ever-increasing expansion and success of our business. We wish we could meet each friend and customer personally, and extend our appreciation for their patronage and the confidence placed in us.

We are prepared this season with a splendid assortment of nursery stock, to meet the demands of our trade. Our nurseries are larger, with more stock and better organized than ever before, since our establishment in 1878. However, there is a general shortage of many varieties this year. We urge planters to get your order into our hands as early as possible in the season, as it is to our mutual interest for you to order early.

We offer a special discount for all orders sent us before March 15th. Early orders receive first attention. High quality stock, square dealing, prompt service, are the watchwords with which we open this new catalogue and New Year for our customers.



From small beginnings in 1878—our modern packing and shipping cellar, one of the largest in the United States. Capacity for handling over 2,000,000 trees and plants during the Spring season. Shipping facilities unexcelled.

Planting Instructions

CARE OF STOCK ON ARRIVAL. The best results are obtained by planting all stock immediately on arrival. If not convenient to do so, open the bundles and heel the roots in a well drained moist piece of sandy ground. Pack the earth thoroughly around the roots and water frequently until the trees are planted.

PRUNING ROOTS AND TOPS. All broken and mutilated portions of roots should be cut off so as to leave smooth, sound ends. Cut back one-half of the limb growth on all fruit trees. When planting evergreens, prune the roots only.

SOIL DRAINAGE. All hollows or wet places must be avoided when selecting positions for planting. Well drained soil is absolutely necessary.

PLANTING. Dig the holes deep enough so that the trees with the roots spread out will set one inch deeper than they were in the nursery row and wide enough to admit all the roots without twisting them out of their natural position. One person should hold the tree upright while another fills the hole about one-fourth with rich, moist, pulverized earth. This is packed around the roots thoroughly and a bucket of water put in. The balance of the hole is then filled and packed firmly. A mulch of straw or litter is then placed around the tree to a depth of from 3 to 5 inches.

WATERING NEWLY PLANTED STOCK. If the ground is dry, the stock should be watered frequently and the top 2 or 3 inches of the soil loosened up and pulverized to prevent evaporation of moisture from the soil underneath this layer. A mulch of straw or grass clippings may be placed around the trees for this same purpose.

SHAPING THE TREES. When the new growth starts there should be from four to five limbs allowed to grow on most fruit trees. The remaining sprouts should be removed as they start growth. After these new branches have grown out from 1 to 2 feet, the ends should be pinched off and they will be forced to branch again. This should be done several times during the first summer until well shaped heads have been formed. Evergreen trees should be allowed to branch close to the ground and kept headed back occasionally.

CULTIVATION. The soil should be kept loosened up for a depth of from 2 to 3 inches around newly planted trees during the first summer. This should be done frequently as it prevents the soil underneath from drying out. Where it is impossible to keep the soil cultivated a mulch of straw or long manure 4 or 5 inches deep should be employed.

TRIMMING SHRUBBERY. From one-third to one-half of the top of newly planted shrubbery should be removed unless the planting is done in the fall, when the trimming should be deferred until early in the following spring.

PROTECTION DURING WINTER MONTHS. The more delicate varieties require some winter protection. This is secured by placing a mulch about 2 inches deep around the plants after the ground has become frozen. This prevents the alternate freezing and thawing which breaks off the more delicate roots just below the frost line.

STATE OF NEW YORK
DEPARTMENT OF FARMS AND MARKETS
BERNE A. PYRKE, Commissioner.

Certificate of Inspection of Nursery Stock

This is to certify that the nursery stock of **King Brothers Nurseries**, of Dansville, County of Livingston, State of New York, was duly examined in compliance with the provisions of Article 14 of the Farms and Markets Law, and was found to be apparently free from any contagious or infectious disease or diseases, or the San Jose scale or other dangerously injurious insect pest or pests. This certificate expires September 1, 1924.

Dated, Albany, N. Y., October 4, 1923.

BERNE A. PYRKE, Commissioner.

By GEO. G. ATWOOD, Director Bureau of Plant Industry.

Conditions of Sale

Prepaid Transportation

to all points in the following states on orders of \$7.50 or more:

New York, Massachusetts, Rhode Island, Connecticut, Maine, New Hampshire, Vermont, New Jersey, Pennsylvania, Delaware, Maryland, West Virginia, Ohio, Indiana, and Michigan.

To all other states east of the Rocky Mountains we pay one-half the transportation charges and our customers the other half. States west of the Rockies, we pay one-fourth transportation charges.

This applies to all orders of \$7.50 or more.

Customers pay the express on orders of less than \$7.50. The charge which you pay the expressman will run on these small orders from 25c. to \$1.00, depending on the size of the bale and distance.

On all orders amounting to \$7.50 or more, we lay the stock down at your Station, fresh from our nurseries, all transportation charges paid by us.

OUR GUARANTEE:

First—We guarantee our trees to reach you in a live, thrifty condition, and to be free from all plant diseases.

Second—It is obviously to our advantage to have all stock that leaves our nursery true to name and satisfactory to the purchaser. In the event that any nursery stock sold by us should prove untrue to name under which it is sold, we hereby agree, on proof of such untruthfulness to name, to replace the original order or to refund the purchase price. Except to such liability and in respect to all nursery stock sold by us, we give no warranty, expressed or implied, as to description, quality, productiveness, or any other matter.

TERMS:

Our terms are cash with the order. You may send us the money by Registered Letter, Post Office Money Order, New York Draft, or your own personal check.

RATES:

Fifty trees or plants at hundred rates, provided there is not less than ten of any one variety.

ORDER EARLY—8% DISCOUNT

We allow 8% discount on all cash orders sent us before March 15th. ORDER EARLY so we may reserve the trees to be shipped when you want them. After March 15th, 3% discount will be allowed.

NUMBER OF TREES TO PLANT PER ACRE

Number of trees required per acre planted in squares.

Feet apart	Number per acre	Feet apart	Number per acre
50x50.....	17	15x15.....	205
40x40.....	27	12x12.....	302
35x35.....	35	10x10.....	433
30x30.....	50	8x8.....	680
33x33.....	40	5x5.....	1,725
25x25.....	70	4x4.....	2,725
20x20.....	108	3x3.....	4,840
18x18.....	133		

DISTANCES FOR PLANTING

Apples 25 to 30 feet for fillers, 40 to 50 feet for permanent trees. Standard Pears, 20 to 25 feet apart. Dwarf Pears, 10 to 12 feet. Peaches, Plums and Apricots, 16 to 20 feet. Sour Cherries, 18 to 23 feet. Sweet Cherries, 25 to 40 feet. Quinces, 10 to 12 feet. Grapes—rows, 10 to 16 feet apart, 8 to 10 feet in rows. Currants and Gooseberries, 4 feet apart. Raspberries and Blackberries, 4 to 5 feet apart.


KING BROS. NURSERIES
 DANSVILLE, N.Y.
 



Large Trees

Seven to Eight Feet Tall
FOR QUICK RESULTS

“EXTRA SIZE GARDEN TREES”

Reduce the high cost of living, make every available foot of space in your garden produce something. Our “Extra Size Garden Trees” are nearly ready to fruit. They are the best you can buy at any price for quickest results.

The Gardener and Fruit Grower who desire quickest and best results in planting fruit trees, should set out our “Extra Size Garden Trees,” 7 to 8 feet tall, listed in this catalog. We have a large supply and complete assortment to meet the needs of those who desire fruit the earliest after planting. Freight and express paid by us on orders of \$7.50 or more.

Advantage of Buying our “Extra Size Garden Trees”

These trees, carefully grown in our nurseries, have developed larger than the regular two year stock. They are the cream of the flock; the sturdiest, biggest and best in the field. You will save time waiting for your trees to bear by choosing our “Extra Size Garden Trees.” During these times of high cost of living, it is important for you to get your planting bearing at the earliest possible date, and the labor in setting out these larger trees is very little extra to what it would be in planting a smaller grade, and, when once planted, the cost in caring for them is the same. Why not have the best? Remember that the price for our “Extra Size Garden Trees” includes all transportation charges paid by us to your shipping station on orders of \$7.50 or more.

Home-made jellies, syrups, cider, delicious drinks of all kinds, and fruit for the entire family can be produced right in your garden in a short time by planting a dozen of our “Extra Size Garden Trees.”

Note the astonishingly low price on “Extra Size Garden Trees”: Each \$1.20, 10 trees for \$11.00, 100 trees for \$100.00. **APPLES, PEARS, PLUMS, PEACHES, CHERRIES.**



Apples

Apple growing in the United States has become one of the most important and profitable branches of horticulture. The American people are consuming more and more apples in proportion to population with each passing year. Plantings have not kept pace with our growth in population and the increasing popularity of this most healthful fruit.

Our trees are all budded on whole root apple seedlings, producing a vigorous root system.

Prices on all the varieties

	Height		Each	Per 10	Per 100
Extra size garden grade.....	7 to 8 ft.	XXXX	\$1.20	\$11.00	\$100.00
Largest size, 2-year.....	6 to 7 ft.	XXX	.75	6.50	55.00
Medium size, 2-year.....	5 to 6 ft.	XX	.70	6.00	50.00
Smaller size, 2-year.....	4 to 5 ft.	X	.65	5.50	45.00
Largest size, 1-year.....	3 ft. and up,	Sturdy buds	.70	6.00	50.00

AKIN. A beautiful dark red winter apple, of good quality. Fine for dessert and fancy trade.

ALEXANDER. A very large apple, attractive red, coarse in texture, medium in quality, suitable for culinary rather than dessert use. Ripens from September to November.

ARKANSAS (Mammoth Black Twig). A late keeping winter apple, rather large, of good red color and good quality.

BALDWIN. The Baldwin is a bright red winter apple, above medium in size or large, and very good in quality. It is a favorite market variety because of its desirable season, good size, attractive red color, and good quality.

BANANA (Winter Banana). A very large, clear, pale yellow apple, with a beautiful pinkish red blush, characteristically aromatic, of good dessert quality.

KING'S APPLE TREES MONEY MAKERS

Read this letter from one of the largest fruit growers in Pennsylvania:

FREDERICK W. FLEITZ, EST. OWNERS OF 1600 ACRES OF ORCHARDS IN PENNSYLVANIA

WILLIAM C. SPROUL

FARMS AT
VOSBURG
BENTON
MECANICSBURG

FLEITZ & SPROUL
FRUIT FARMS

HOMER B. HOWE
GENERAL MANAGER

GENERAL OFFICE: BENTON, COLUMBIA CO., PA.

King Brothers Nurseries,
Dansville, N. Y.

Gentlemen: We have just completed this season's work in several of our young orchards and we are so well pleased with the particular orchards, planted from trees purchased from you, that we feel that we owe you the recognition that your trees and business dealings with us merit, especially so after taking into consideration some lots of trees purchased elsewhere and handled identically, that have not done near as well for us.

The carload of trees we purchased from you and planted in the Spring of 1916 are now beginning to show fruit. We are much pleased with these trees, as we have found them true to name, and healthy.

These young trees came through the very cold Winter of 1917-1918 in good shape, while you know many orchards were killed out entire by that season's severe cold weather. We give your healthy, northern grown, acclimated trees credit for their extreme hardiness.

There is now very little difference in the size of the one- and two-year-old trees planted in 1916. The plantings from your trees made in 1917 and 1918 are growing nicely, but of course have not shown fruit yet.

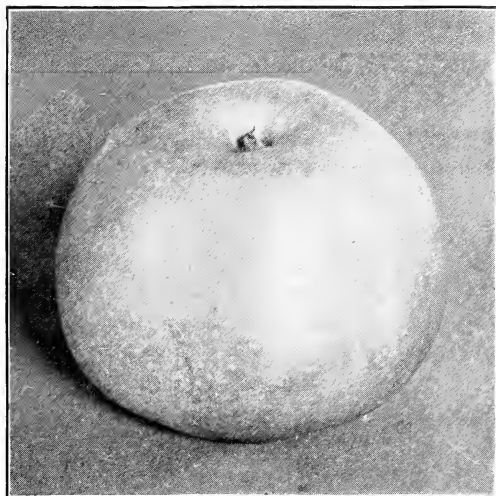
We shall make some additional plantings this coming season, and will be pleased to receive your catalogue and prices.

Wishing you continued success,

We remain,
Very truly yours,

FLEITZ & SPROUL.
Per HOMER B. HOWE,
Gen. Mgr.

APPLES—Continued



Red Astrachan Apple

- BEN DAVIS.** The tree is hardy, healthy and vigorous, comes into bearing at an early age and bears annually and abundantly. The fruit is beautiful in appearance, but of fair quality.
- BOUGH (Sweet Bough).** The Bough is one of our finest summer apples, having all the good qualities which would recommend the fruit for general cultivation.
- CHENANGO.** Fruit is yellowish white, striped with red. Fine for either dessert or culinary use.
- DELICIOUS.** A comparatively new variety of tested merit. It has its own distinctive shape and dark red color shading to golden yellow at the blossom end. The flesh is fine grained, juicy and melting. It is a good cropper and a good shipper. The trees are hardy and vigorous, bear heavily and regularly.
- EARLY HARVEST.** One of the earliest summer apples, of medium size, pale yellow, sub-acid flavor, excellent for dessert or culinary use.
- ESOPUS SPITZENBERG.** A large red striped apple, sub-acid in flavor, the standard of excellence of the Baldwin class as regards quality. Splendid for dessert or culinary use.
- FALL PIPPIN.** A large yellowish green apple, pleasant sub-acid flavor, fine quality for kitchen or market use.
- FAMEUSE (Snow Apple).** A handsome, small, deep red apple with white flesh of distinctive and delicious flavor.
- GANO.** Similar to Ben Davis but of better quality. Less striped in appearance, has more of a solid deep red color, stands handling well and a good keeper.
- GRAVENSTEIN.** Fruit large; red, striped with yellow. Crisp, tender and of delightful flavor, fine for culinary use.
- GRIMES' GOLDEN.** This is a beautiful rich golden apple of splendid quality for dessert or culinary use, of rich sub-acid flavor.
- HUBBARDSTON NONSUCH (American Blush).** This apple is one of the earliest bearers we have. It ripens between the fall varieties and the late ripening winter apples. Its quality is of the very best, crisp, tender and rich; attractive pale red color.
- JONATHAN.** Bears early and abundantly; fruit of medium size, deep red and yellow, with flesh tender, juicy and rich.
- McINTOSH RED.** Fruit medium sized, of attractive red color; flesh white and of excellent flavor, tender and juicy.
- MAIDEN'S BLUSH.** A beautiful apple of pale lemon color with crimson cheek; flesh white, sprightly, of fair flavor and quality.
- NORTHERN SPY.** The standard of excellence for quality; commands the best price in the eastern market. Fruit large, red and of delightful flavor; keeps well, ships well, splendid for both dessert and culinary use.
- NORTH WESTERN GREENING.** A very large, round, greenish yellow winter apple, splendid for dessert use. It is a fine keeper and shipper.
- OLDENBURG (Duchess of Oldenburg).** Red striped and white in color, of splendid flavor; greatly esteemed for cooking. It ripens early and can be classed as a summer or early fall apple.
- OPALESCENT.** This is one of the most beautiful apples grown and we know of no variety better fitted to compete with the showy fruit from the Northwest than this variety.
- RAMBO.** Medium sized, yellow streaked with red, flesh tender and crisp.
- RED ASTRACHAN.** A beautiful early summer apple of medium size; yellow covered with light and dark red; highly esteemed for home use.
- RHODE ISLAND GREENING.** Fruit large, light greenish yellow, rich, tender and juicy; excellent for cooking; a valuable commercial sort.
- ROME BEAUTY.** A handsome red apple, now being extensively planted even as far north as New York, on account of the early bearing habit of the trees and the excellent quality of the fruit, combined with its good keeping qualities.
- ROXBURY RUSSET.** A popular russet apple of medium size, excellent keeper.
- SMOKEHOUSE.** A pleasant flavored dessert apple; fruit medium in size, yellow and red color.
- STARK.** Fruit large to medium, pale green becoming yellow and blushed and mottled with red, striped with darker red; tender, juicy, sprightly, mild sub-acid flavor; it is a good keeper.

APPLES—Continued

STAYMAN'S WINESAP. A dark red apple with indistinct stripes, absolutely the best of all the Winesaps. Flesh firm and crisp, of the very finest quality.

SUTTON BEAUTY. Its uniform size, symmetrical shape, beautiful color and pleasant quality combine to make Sutton an excellent dessert apple.

TOLMAN SWEET. Esteemed for pickling, boiling and baking. A large yellow apple of excellent quality.

TOMPKINS KING. Fruit large, beautiful, of excellent quality; commands the highest price in the fall.

TWENTY OUNCE. Fruit very large, yellow striped with red; flesh firm, rich and sweet.

WAGENER. Bears young and is an apple of superior excellence. Fruit medium to large, deep red in the sun; flesh firm, well flavored, sub-acid.

WEALTHY. Tree a medium grower, with moderately stout curved branches; an early and abundant bearer.

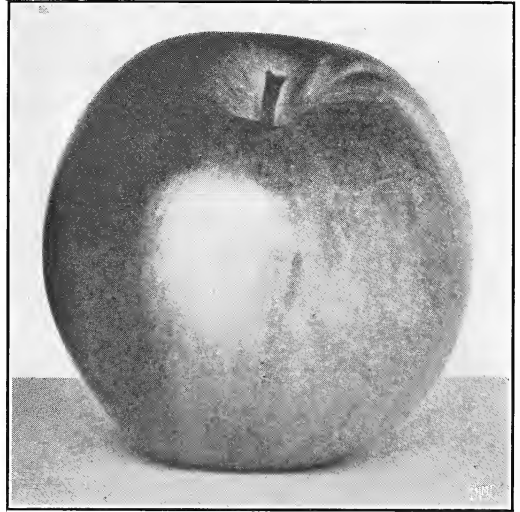
WINESAP. One of the oldest and most popular varieties in America. Fruit medium sized and deep red, good quality.

WOLF RIVER. A valuable hardy variety. Tree a very good grower and early bearer. Fruit sells well because of its attractive appearance; it is of the largest size and of fair quality.

YELLOW NEWTOWN (Albemarle Pippin). It is a large yellow apple of excellent quality and a good keeper.

YELLOW TRANSPARENT. An early and prolific bearer. Fruit medium sized, slightly conical, pale yellow color; flesh tender, juicy, sub-acid. One of the best summer apples.

YORK IMPERIAL. A beautiful red apple of excellent flavor. Splendid shipper.



Winter Banana Apple—See page 4

Crab Apples

Same Price as Standard Apple

GEN. GRANT. Large; yellow striped with dark red; mild, sub-acid.

HYSLOP. Large; very dark brilliant red; vigorous and hardy.

TRANSCENDENT. Fruit from one and one-half to two inches in diameter. Yellow, striped with red; juicy, crisp and the best of its class for cider and all other purposes. Bears young and produces immense crops annually.

Dwarf Apple Trees

Prices on Dwarf Apple Trees

	Height		Each	Per 10
1st Class, 2 to 3-year.....	4 to 6 ft.	XXX	\$.85	\$8.00
2 to 3-year.....	3 to 4 ft.	XX	.70	6.00

Dwarf apples are especially desirable for village or city gardens. They bear very early and require very little space to develop. We produce these dwarf trees by budding the varieties on Doucin and Paradise stocks imported from Europe. The village and city man with a small garden will enjoy growing a few select trees of the following varieties: Duchess of Oldenburg, Fameuse, McIntosh, Red Astrachan, Wealthy, Winter Banana, Yellow Transparent.

One of hundreds of testimonial letters received from pleased customers everywhere.

ROSSLANDS

Valatie, N. Y., Jan. 4, 1924.

King Bros., Dansville, N. Y.

Gentlemen: Will you kindly send me your catalogue of fruit trees. Several years ago I purchased some trees of you for my farm at Lakewood, N. J., and I want to say that they were the finest lot of trees I ever saw, and they proved very satisfactory. The Peach trees bore the second year, and the Apples came along the third year after planting.

Very truly,
C. S. GREENE, Mgr.

Mr. Collingwood of the *Rural New Yorker* recommended you to me.

Peaches

Peaches thrive on light sandy soils and the hardier varieties withstand the severest climate in our Eastern States. They come quickly into bearing and yield money making crops. Our list of varieties meets the needs of both orchardist and suburban planter.

	Height	Each	Per 10	Per 100	
Extra size garden trees.....	7 to 8 ft.	XXXX	\$1.20	\$11.00	\$100.00
Largest size, 1-year.....	5 to 6 ft.	XXX	.55	4.75	35.00
Medium size, 1-year.....	4 to 5 ft.	XX	.50	4.00	30.00
Smaller size, 1-year.....	3 to 4 ft.	X	.45	3.50	25.00

BELLE OF GEORGIA. Fruit large, white fleshed, firm and delicious, color red and white; freestone; ripens early.

CAPT. EDE. A handsome yellow peach, with a faint blush of carmine, resembles Elberta. Fine quality and a splendid shipper. Early Sept. Freestone.

CARMAN. A large, oval shaped peach of yellowish white color; flesh creamy white, tinged slightly with red; excellent flavor; freestone; ripens early.

CHAIR'S CHOICE. Form round, of large size; color of skin yellow with red cheek; flesh yellow, of fair quality; freestone; ripens late.

CHAMPION. One of the leading white peaches; fruit large, creamy white, of highest quality. It is a freestone and ripens early.

CROSBY. Semi-clingstone, medium sized, a good bearer, yellow flesh and very good quality; ripens very late.

EARLY CRAWFORD. Its quality is unsurpassed. A yellow fleshed peach, freestone; ripens middle season.

EARLY RIVERS (Freestone). Light straw color, with delicate pink cheek; flesh juicy and melting, with very rich flavor. Early August.



Crawford Peaches

Every garden should have an assortment of peaches. They cost little to buy. They bear quickly and abundantly.

QUALITY :-: PRICE :-: SERVICE

King's quality stock are produced by a combination of soil, climate and workmanship.

SOIL. We have sixteen distinct soil types to choose from in making our plantings in the Genesee Valley, the home of our nurseries. (See photograph on inside page of front cover.)

CLIMATE. Our Winters ripen up our trees, giving them hardiness and vitality.

WORKMANSHIP. Three generations of experience with trained nurserymen have taught us the best methods to follow in producing your stock.

PRICE. Our plan of selling direct to the planter through the mails, cuts out all middlemen and agents' commissions, and saves you money.

SERVICE. Our facilities for handling nursery stock are second to none in the country. We have a large, modern, packing house, where our men work inside, and your trees are assembled, graded and prepared for shipment without exposure to sun or wind. We are located on the direct line of the Delaware, Lackawanna & Western Railroad, also branch of the Erie Railroad, and can make prompt deliveries East or West.

A Combination of Quality, Price and Service that Means Money Saved and Satisfaction to the Planter.

PEACHES—Continued

ELBERTA. It is extra large; color golden yellow shading to red; flesh yellow, firm, juicy and excellent; freestone; ripens middle season.

FITZGERALD. A large, golden-yellow peach of good quality; hardy in bud and wood; freestone; ripens early.

FOX SEEDLING. A freestone, of medium size, white fleshed and medium quality; ripens late.

GREENSBORO. Extremely hardy, and one of the earliest sorts; greenish white shaded with red; juicy and good; semi-clingstone.

HALE. Of recent introduction. Similar to Elberta.

HEALTH CLING (Clingstone). Very large; flesh white, juicy and melting. Good keeper and shipper. Excellent quality and flavor. October.

HILEY (Belle). Of excellent quality; flesh creamy white; freestone; ripens early and is a good shipper.

HILL'S CHILI (Freestone). Medium size; oval; skin yellow, shaded with dark red; flesh half melting, sweet, of medium quality, but hardy and a good bearer. September.

IRON MOUNTAIN (Freestone). Fruit very large; white; quality good. Very hardy in bud; white inside at pit. September.

KALAMAZOO (Freestone). Grows to medium size, color yellow with red cheek, yellow flesh moderately tender and juicy, flavor fairly sweet. Early September.

KRUMMEL OCTOBER. A very big, yellow peach of the highest quality; freestone; ripens very late.

LATE CRAWFORD. A large, handsome peach, the standard of excellence for quality. Delicious flavor; yellow fleshed; freestone; ripens late.

LEMON CLING (Clingstone). Tree erect and vigorous with dark green foliage.

McNEIL'S EARLY (Trade Mark). Originated at Dansville, the original tree has a remarkable record for hardiness. It has produced a full crop of the very finest peaches, ripe August 1st, when other varieties failed, having been frozen out by our bitter cold weather with the thermometer 15 degrees below zero.

MOUNTAIN ROSE. A white peach, very good for home use; freestone; medium sized; good bearer and fine quality; ripens early.

NIAGARA. The flesh is yellow, tender, rich and juicy, ripening clear to the pit. It is a freestone, and ripens early, about one week before Elberta.



Champion Peach—See page 7

OLD MIXON (Freestone). A white fleshed peach, with a red cheek, presenting a good appearance in the basket.

ROCHESTER. A new, very early, yellow fleshed peach of the Crawford type.

SALWAY. An extra large, very late peach, of high quality and established merit.

SMOCK'S (Beer's Smock). This is an old standard variety, highly prized and valuable for either home use or market.

TRIUMPH (Semi-Cling). A valuable commercial variety to follow Alexander. The peach is yellow with sweet, rich flavor. Early August.

WONDERFUL (Freestone). Rich, golden yellow color, nearly covered with bright crimson. Very handsome and attractive. Flesh yellow, rich and highly flavored. Middle of October.

YELLOW ST. JOHN. It is large and handsome; flesh yellow and juicy and of delightful flavor; ripens early.

Standard Pears

Pear trees do best on heavy clay soils, but will thrive in most any variety of good ground. Dwarf pears are produced by budding with pear scions on quince roots, and in planting dwarfs it is important to plant the tree deep enough to cover the junction of pear and quince. Big crops of luscious fruit are produced on both the dwarfs and standards. Our list comprises the old tested standard varieties.

Prices on all the varieties

	Height		Each	Per 10	Per 100
Extra size garden trees.....	7 to 8 ft.	XXXX	\$1.20	\$11.00	\$100.00
Largest size, 2-year.....	6 to 7 ft.	XXX	.90	8.50	80.00
Medium size, 2-year.....	5 to 6 ft.	XX	.85	8.00	70.00
Smaller size, 2-year.....	4 to 5 ft.	X	.80	7.50	65.00
Largest size, 1-year.....	3 ft. and up,	Sturdy buds	.90	8.50	80.00

ANJOU (Beurre d'Anjou). A late fall pear, of the highest quality; large, yellowish green with blushes of pale red and russet.

BARTLETT. It is a large, crisp pear, yellow when ripe, juicy and melting and of delicious flavor; ripens about the first of September.

BEURRE BOSCH. Greatly esteemed. A large yellow pear; flesh white, rich and delicious.

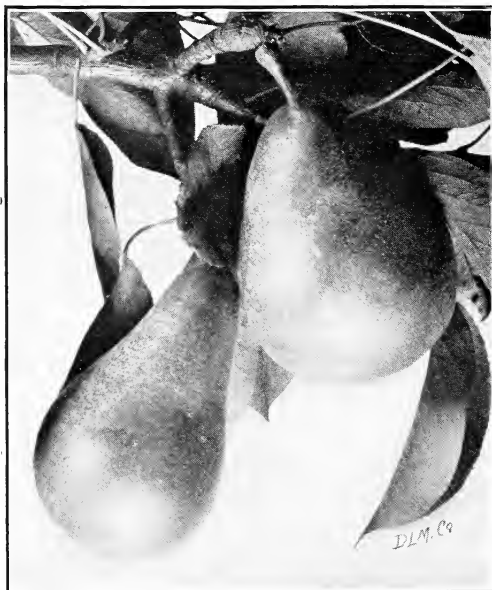
CLAPP'S FAVORITE. Pale lemon color with bright blush; unexcelled for flavor and high quality.

DUCHESS d'ANGOULEME. A late pear, of fair quality; very large, greenish yellow with dull red cheek.

FLEMISH BEAUTY. The fruit is of large size, greenish yellow and brown; it ripens in September.

KIEFFER. Tree has large, dark green, glossy leaves and is of itself very ornamental. It is an early and prolific bearer, the best grower we have; extremely hardy; never blights.

LAWRENCE. Greenish yellow marked with russet; flesh white and of fine quality.



Clapp's Favorite Pears

SECKEL. A small pear of yellowish russet color with a spicy, honeyed flavor of supreme excellence.

SHELDON. Of medium size and roundish, greenish russet and brown color; flesh somewhat coarse but melting; juicy and of excellent flavor.

WILDER. A summer pear, medium sized, small cored, tender and juicy.

GARBER. A good market and canning pear, large, yellow, with red cheek.

WINTER NELIS. A medium-sized yellow pear, often russeted. Flesh is yellow, fine grained, sweet, of very highest quality.

KOONCE. A very popular early variety. Fruit medium to large, yellow, one-half nearly covered with red.

LINCOLN. The Lincoln is a very large, clear yellow pear, with bright red cheek on the sunny side; juicy, high quality.



Seckel Pears

Dwarf Pears

Dwarf pears are produced by budding pear on quince roots. They make trees of heavy, stocky bodies, but they do not grow tall. The fruit is the same size as that produced on standards, and the trees are inclined to bear younger. We offer the same dwarf varieties as listed under Standard Pears.

Price: 4 to 5 ft., 75c. each; \$7.00 per 10; \$60.00 per 100. 3 to 4 ft., 65c., each; \$6.00 per 10; \$50.00 per 100.



Dwarf Pears

Plums

Annual spraying with Bordeaux Mixture keeps away the leaf blight and fungus, and the thinning of too heavy crops of fruit prevents fruit rot of plums. For home use, the fruit should be allowed to ripen on the tree, but for shipment to distant markets it must be gathered a few days earlier. The Japanese sorts grow and bear fruit about as quickly as peach trees. They are enormously productive and perfectly hardy. The fruit of all Japanese varieties is large and of fine quality. The European sorts which we offer are all old favorites.

Prices on all the varieties

	Height		Each	Per 10	Per 100
Extra size garden trees.....	7 to 8 ft.	XXXX	\$1.20	\$11.00	\$100.00
Largest size, 2-year.....	6 to 7 ft.	XXX	.90	8.50	80.00
Medium size, 2-year.....	5 to 6 ft.	XX	.85	8.00	75.00
Smaller size, 2-year.....	4 to 5 ft.	X	.80	7.50	70.00
Largest size, 1-year.....	3 ft. and up,	Sturdy buds	.90	8.50	80.00

Japanese Sorts

ABUNDANCE. Fruit large and beautiful; amber turning to bright cherry red. Flesh yellow, tender, juicy and rich.

BURBANK. Fruit very large; clear cherry red; flesh deep yellow, sweet, with a very agreeable flavor.

CLIMAX (Very Early). A large, dark red plum marked with faint radiating streaks.

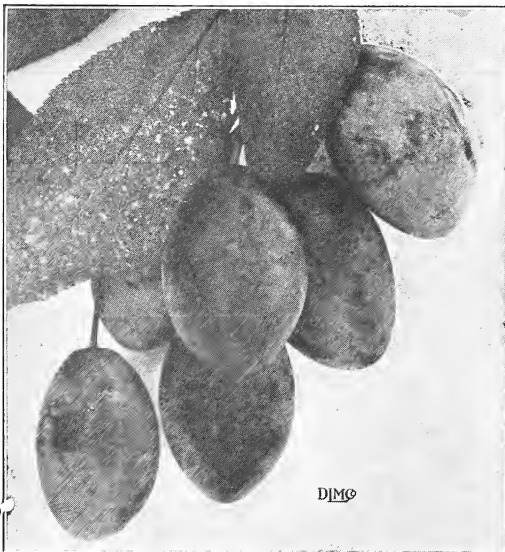
OCTOBER PURPLE (Late). Fruit frequently measures seven inches in circumference.

RED JUNE. Medium to large. Fruit deep vermilion red, makes a fine appearance. Flesh light, lemon yellow, firm, delightful.

SATSUMA (Midseason or later). A fine plum, with solid flesh and a purplish crimson color from pit to skin; juicy and of fine quality. September.

SHIRO (Very Early). A brilliant, transparent, yellow plum; large, round, tapering slightly at the end, covered with thin bloom and becoming deeper yellow as the season advances.

WICKSON (Early). It is of large size, handsome color and distinct form, firm flesh, and peculiar flavor, generally considered pleasant. August.



German Prune

European Plums

ARCTIC (Moore's Arctic). Color dark purple; flesh light yellow, juicy, coarse and fibrous but tender, sweetish, mild, of fair quality.

BRADSHAW. Fruit very large and of the highest quality; dark violet red; flesh yellowish green, juicy and pleasant.

GERMAN PRUNE. A large, long, oval variety, much esteemed for drying; color dark purple; of very agreeable flavor.

PLUMS—Continued

GOLDEN DROP (Coe's Golden Drop). Fruit ripens very late; golden yellow color with a faint bronze blush; flesh light golden yellow, juicy.

GRAND DUKE. The fruit is of large size, of dark reddish purple overspread with thick bloom.

GREEN GAGE (Reine Claude). Fruit ripens about midseason; color yellowish green. Should be in every home collection.

GUEII. The fruit ships well, ripens about mid-season; color dark purplish black, overspread with thick bloom.

IMPERIAL GAGE. Fruit dull greenish yellow in color; flesh golden yellow, juicy, firm, but tender, sweet, mild, of excellent quality.

LOMBARD. One of the best and most extensively planted varieties of the East. Fruit medium, round, oval, violet red, juicy, pleasant and good.

MONARCH. Fruit ripens late, of dark purplish red color, juicy, somewhat fibrous, tender, sweet next to the skin, pleasantly tart toward the center, aromatic.

POND SEEDLING (Hungarian Prune). Distinguished for its large size, form and color.

SHIPPER'S PRIDE. A large, blue plum, very hardy and productive.

SHROPSHIRE DAMSON. The fruit is of good size; color purplish black. Flesh golden yellow, juicy, firm and tender, agreeably tart at full maturity.

YELLOW EGG. The largest and the handsomest of the yellow plums.

YORK STATE PRUNE. More productive than German Prune and of as good quality.

Cherries

In no place in the United States do cherry, plum and pear trees grow in larger numbers and of better quality than at Dansville. Ideal climatic conditions exist here for the development of firm textured, vigorous trees. The largest cherry orchardists and nurserymen in the West come to us at Dansville for cherry, plum and pear trees. Cherry trees do best on light, well drained soils. The sour varieties are extremely hardy and are planted extensively for canning. The sweet sorts are noted for their rapid growth, fine shade and luscious fruit.

Prices on all varieties.

	Height		Each	Per 10	Per 100
Extra size garden trees.....	7 to 8 ft.	XXXX	\$1.20	\$11.00	\$100.00
Largest size, 2-year.....	6 to 7 ft.	XXX	.90	8.50	80.00
Medium size, 2-year.....	5 to 6 ft.	XX	.85	8.00	75.00
Smaller size, 2-year.....	4 to 5 ft.	X	.80	7.50	70.00
Largest size, 1-year.....	3 ft. and up,	Sturdy buds	.90	8.50	80.00

Sweet Sorts

BING. A comparatively new variety. Fruit delicious, black when ripe. Tree a very strong grower, bears early and abundantly.

BLACK TARTARIAN. A standard sort. Very large; purplish black; mild and pleasant. Tree a vigorous grower and immense bearer.

GOVERNOR WOOD. Very large, light red, juicy, rich and delicious.

LAMBERT. One of the largest of all; almost jet black when ripe. Tree a strong grower and heavy bearer.

NAPOLEON. Very large, pale yellow or red; very firm, juicy and sweet; very productive; one of the best.

SCHMIDT'S BIGARREAU. A very large, black, sweet cherry of the finest quality; coming to be known more and more for its superior excellence and worth; ripens July.

WINDSOR. Large, dull red, almost liver colored; a very hardy variety; ripens late.

YELLOW SPANISH. Large, pale yellow, firm flesh and excellent; light colored cherry. Ripens the last of June.



Napoleon Cherries

CHERRIES—Continued

Sour Sorts

BALDWIN. Fruit large, dark, transparent; excellent grower; hardy. Ripens in June.

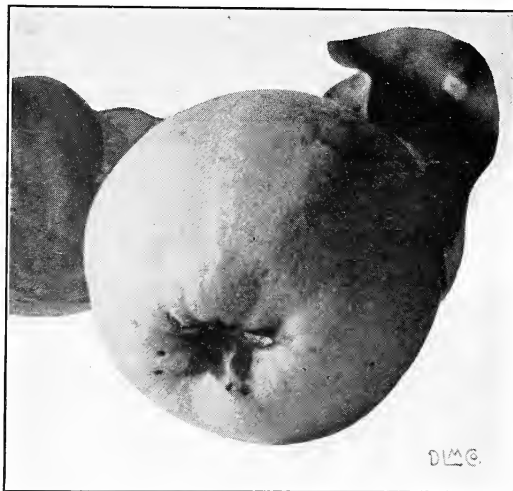
DYEHOUSE. A very early and sure bearer, ripens a week before Early Richmond. Excellent quality.

EARLY RICHMOND. Trees grow rapidly with a spreading head. Hardy everywhere. Fruit of medium size, dark red; melting, juicy, sprightly, acid flavor. Ripens early.

ENGLISH MORELLO. Medium to large; blackish red, rich, acid, juicy and good; very productive. Ripens late, best kind to follow Montmorency.

LARGE MONTMORENCY. A large red, acid cherry, larger than Early Richmond and fully ten days later. The leading commercial variety.

MAY DUKE. A rich, dark red, sub-acid cherry. The tree is a strong grower and early bearer.



Orange Quince

Quinces

Quince trees grow well on any good soil, but prefer a deep, moist loam. They are highly esteemed for preserves, jellies and canning. The trees are easy to prune, grow low, are highly ornamental and need but little attention.

Prices of Our Select Varieties of Quince Trees.

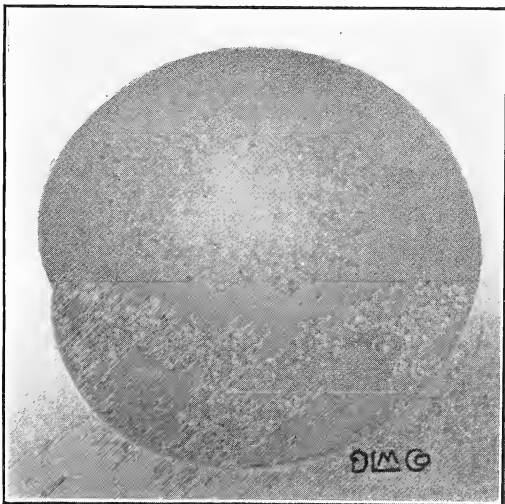
	Height		Each	Per 10	Per 100
Largest size.....	4 to 6 ft.	XXX	\$.90	\$8.50	\$80.00
Medium size.....	3 to 4 ft.	XX	.85	8.00	75.00

CHAMPION. A prolific and abundant bearer; quality fine and a long keeper; bears extremely young.

ORANGE. A large, golden yellow fruit of unsurpassed quality.

MEECH. The fruit is large, lovely orange yellow, of great beauty and delightful fragrance.

BOURGEAT. Fruit of largest size, round, rich golden color, smooth, very tender when cooked.



Moorpark Apricot

Apricots

The apricot is a delicious fruit. They can be had a month or two earlier than the best early peaches. The trees should be planted in a northern or western exposure to prevent early blooming.

4 to 6 ft., XXX, 75c. each; \$7.00 per 10.

ALEXANDER. Medium sized, orange yellow color, of good quality for dessert; ripens medium season.

MOORPARK. Very large, orange red color, free-stone, of excellent quality.

HARRIS. Medium sized, orange red, good quality; ripens very early.

ORANGE. Medium sized, orange red color, semi-clingstone.

Currants

Hardy, easily cultivated, standing neglect well and readily responding to cultivation and generous treatment, indispensable for table use, jellies, etc., **no garden is complete without them**, and large quantities are required for market. A well kept plantation will yield 4,000 pounds of fruit to the acre, and they may be planted to advantage between fruit trees in the orchard and a large yield secured at small cost. **Set four feet apart in rich ground, mulch heavily, prune out all old wood.**

Prices on all varieties of Currants.

Strong, healthy, two year vines: each 25c.;
\$2.25 per 10; \$20.00 per 100.

CHAMPION. One of the finest and best black currants of European origin. Large in bunch and berry and of fair quality. A very strong, robust grower.

CHERRY. Berries sometimes more than half an inch in diameter, bunches short, vigorous and productive when grown on good soils and well cultivated.

FAY'S PROLIFIC. The leading market variety. Extra large stems and berries, uniform in size, easily picked, exceedingly productive. No variety ever made as quick a jump into popular favor, the demand most seasons being in excess of the supply.

NORTH STAR. Red. A very vigorous grower. Extremely hardy, productive and very mild in flavor.

PERFECTION. New, red. A cross between Fay's Prolific and White Grape, but superior to either in size of bunch and berry, quality and productiveness. The only small fruit ever awarded the Gold Medal by the Western New York Horticultural Society.



Perfection Currants



Red Cross Currants

RED DUTCH. An old, well known sort, good quality berry; medium, long bunch. Very productive.

RED CROSS. A fine red currant of large size, long clusters and mild flavor. Vigorous and very productive.

VERSAILLES. Very large, red; bunch long, of great beauty and excellent quality; one of the finest and best.

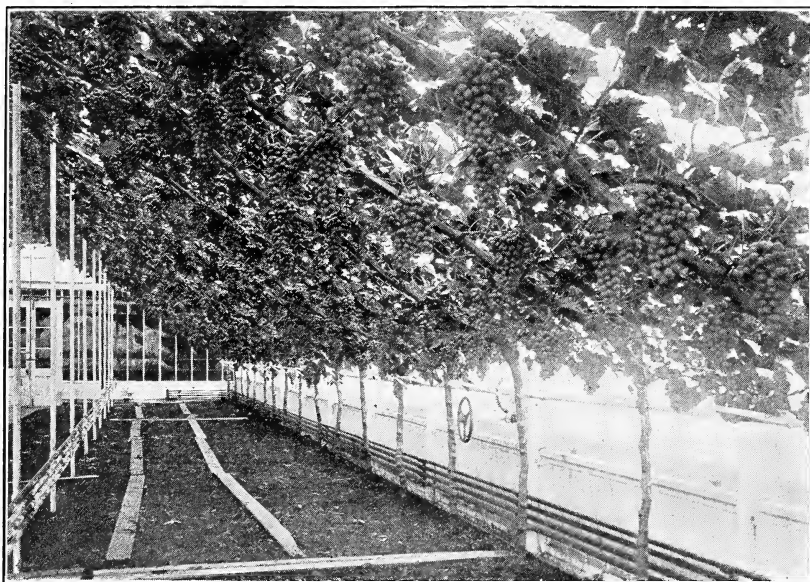
VICTORIA. Large, bright red, bunches extremely long; berries medium size, of excellent quality. Good erect grower, very productive. Ripens late, making it one of the most valuable sorts.

WHITE GRAPE. Large, mild, of excellent quality and productive. Best of the white varieties for home use and market.

WILDER. One of the largest red currants known and of good quality; mild sub-acid. The bush is a strong, vigorous grower and holds its foliage so well and fresh that its fruit, though ripening early, is kept perfect until late. Very prolific. One of the best.

Grapes

Grapes come quickly into bearing, yielding fruit oftentimes the second year after planting; require but little space, and when properly trained are an ornament to the yard, garden or vineyard. They thrive everywhere, but do best on dry soil in a warm, sunny exposure. Our select three year plants are unexcelled.

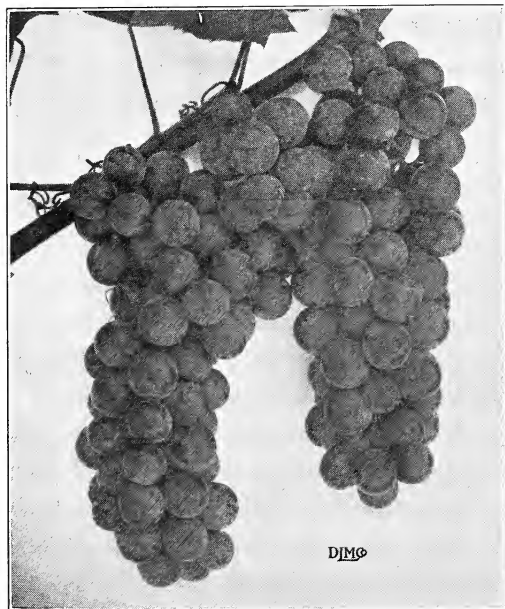


A Well-Kept Grape Arbor

Prices on All Varieties of Grapes.

Select three year, No. 1 strong, healthy plants, 45c. each; \$4.00 per 10; \$35.00 per 100.
 Two year, No. 1 Vines, 25c. each; \$2.35 per 10; \$22.50 per 100.

We offer the following complete assortment of the best varieties:



Delaware Grapes

- AGAWAM.** Dark red; large bunch and berry; productive.
- BACCHUS.** Small, black, good quality.
- BARRY.** Black, attractive, high quality.
- BRIGHTON.** Bunches large, berries of medium size, dark red; flesh sweet, tender and of the highest quality.
- CAMPBELL'S EARLY.** Vines vigorous and hardy; berries ripen earlier and are of better quality than Concord. Highly recommended everywhere.
- CATAWBA.** An excellent red grape; ripens late.
- CLINTON.** Black small berries; very late popular wine grape.
- CONCORD.** A popular variety where the choice kinds fail to ripen; universally healthy, vigorous and productive; flesh moderately juicy and sweet. The leading standard variety.
- COTTAGE.** A black grape of good quality, valuable for market; vine a rank grower, healthy and hardy.
- DELAWARE.** One of the finest grapes, bunches small, compact, shouldered; berries rather small and round; skin thin, light red; flesh very juicy, without any hard pulp, with an exceedingly sweet, spicy and delicious flavor. Vines moderately vigorous, very hardy and productive.

GRAPES—Continued

DIANA. Bunches a little above medium size, compact; berries large, bright red, very juicy and sweet, with distinct spicy, refreshing flavor; vine a vigorous grower and bears well.

DUCHESS. Bunch medium to large, berries round, greenish white. Ripens with Delaware.

EARLY VICTOR. One of the best early grapes. Pure in flavor, exceedingly sweet, sprightly and vinous. Adheres firmly to the bunch.

EARLY OHIO. Black, good quality.

ELVIRA. Greenish white, slightly tinged yellow, good quality; healthy, vigorous, hardy, productive.

EMPIRE STATE. Bunches large, berry medium, color white with very little tinge of yellow; flesh tender, juicy, rich, sweet and sprightly. Vine very hardy and productive.

GREEN MOUNTAIN. Greenish white, sweet and of excellent quality.

HARTFORD. A good early black grape. Ripens four or five days earlier than Concord.

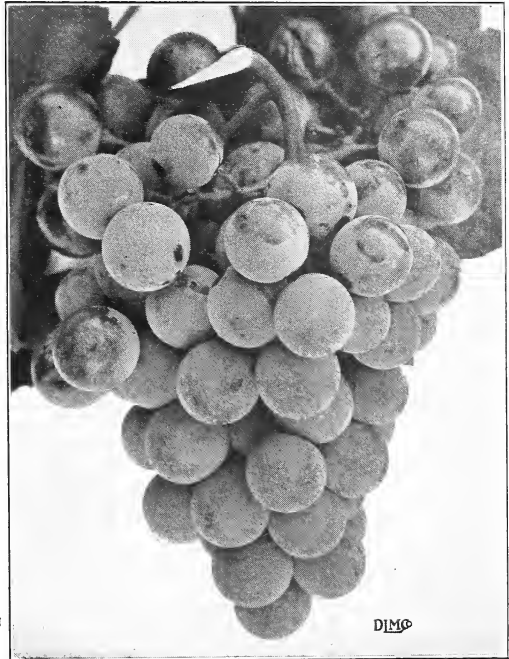
HERBERT. Fine quality, large deep red, a good keeper.

IVES. Hardy and productive, fair quality.

JEFFERSON. Large, light red berries; flesh meaty or solid, fine for market.

LUCILE. A dark red grape, unsurpassed in vigor and hardiness.

MOORE'S EARLY. An early grape, similar to Concord.



Barry Grapes

MOYER. Vine hardy, healthy and productive; bunches and berries rather small. Resembles Delaware in appearance; ripens early.

MARTHA. Bunch of good size and berry large, of pale green or light color; buttery, sweet, juicy and sprightly.

MOORE'S DIAMOND. A prolific bearer, bunches large and compact, color delicate greenish white, pulp tender and juicy with very few seeds. Ripens about two weeks earlier than Concord.

NIAGARA. Vine a remarkably strong grower and hardy; the leaves are thick and leathery and dark glossy green; bunches very large and uniform and very compact. Quality the best, very little pulp. Melting and sweet.

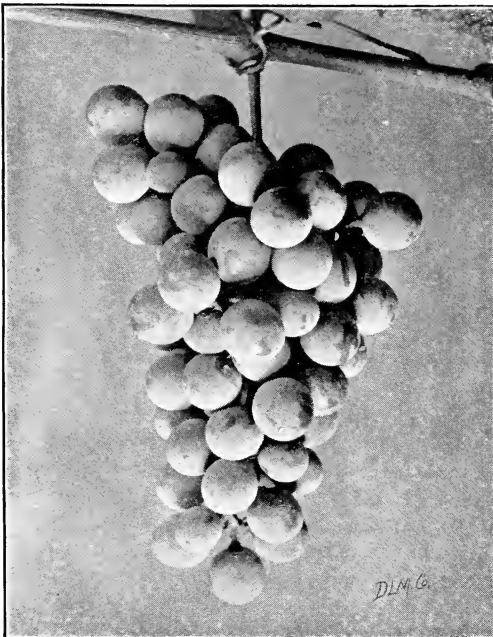
POCKLINGTON. Strong grower, never mildews, is a light golden yellow; clear, juicy and sweet to the center. Bunches large, berries round and very large, and thickly set.

SALEM. Handsome red, splendid for table or wine.

VERGENNES. Free from mildew, very productive; clusters large, berries large, color light amber; rich and delicious; a splendid grape for arbors.

WORDEN. A seedling of Concord which it greatly resembles in appearance and flavor, but the berries are larger.

WYOMING RED. An early red grape, desirable for the garden and vineyard; bunch and berries small to medium with a sweet flavor.



Niagara Grapes



**Cumberland
Blackcaps**

Raspberries

Thorough preparation of the soil before planting is just as important with the Raspberry as with other fruits. Planting in rows and then restricting the plants to hills is the usual method. The rows should be from four to six feet apart and the plants four to five feet apart in the rows. Clean cultivation is important because if the plants become choked with grass or weeds, it will check their growth and not only the fruiting canes will suffer for moisture, but those intended for the next season's crop.

It is not advisable to plant too deeply and at the same time of planting, cut the canes down close to the surface of the soil, as the entire forces of the plants are required the first season to produce canes if anything like a crop of fruit is expected the next.

Very little pruning is necessary with the Raspberry except to go over the plantation after fruiting and cut close to the ground all of the old and weak canes. Some growers believe, however, that the bearing canes should be pruned in the Spring, heading back the leading shoots and shortening the lateral ones. They claim that when pruned in this manner, the fruit will be larger and the plant will yield as many quarts as though the canes were left their full length.

Prices on all varieties.

Strong, healthy plants, 70c. per 10; \$1.50 per 25; \$4.00 per 100; \$30.00 per 1000.

COLUMBIAN. Dark red or purple, similar to Shaffer's Colossal, but a much better grower and bearer, larger and firmer. The most prolific raspberry known and best for canning and drying. Although red, it propagates from the tip only and never suckers. Late.

CUMBERLAND. New. The largest black raspberry known, averaging 7-8 inch in diameter. Good and firm as the Gregg, but bush is hardier, having successfully withstood 16 degrees below zero. A strong, vigorous grower and wonderfully productive. Midseason.

CUTHBERT. The most extensively planted red raspberry. Fruit bright red, good and very large, bush very vigorous, hardy and prolific. Medium to late. Land should not be too rich.

EUREKA. An excellent blackcap; a great producer.

GREGG. Very large and late blackcap. Bush a strong, upright grower, productive and very desirable for market and home use.

GIBRALTAR. A new variety from Canada. We are the introducers of this splendid new Canadian sort. It is thought to be a cross between Hilborn and Gregg, in color and productiveness, resembling the latter. Among its exceptional qualifications are hardiness, productiveness and strong growth of canes.

GOLDEN QUEEN. New. Similar to the Cuthbert, of which it is a seedling, except in color, which is what its name implies. Very large, hardy, vigorous and productive. No garden should be without it.

JUNE. This is the new early red raspberry lately originated by the New York State Agricultural Experiment Station. It is a cross between the old Loudon and Marlboro. It has been grown long enough to show its general adaptability and remarkable characteristics. There is no other early red raspberry that can equal or approach it in its large and beautiful colored berries.


KING BROS. NURSERIES
 DANVILLE, N.Y.
 



June Red Raspberries. Big Money Makers.

RASPBERRIES—Continued

KANSAS. New. Originated in Kansas, where it is prized as the best blackcap. Ripens early and is as large or larger than the Gregg. Jet black, firm, handsome and of best quality. Very vigorous and productive. Very popular East and West.

KING. Pronounced the best early red raspberry by many of the leading horticulturists. Plant a strong grower, very hardy and productive. Berry is firm, a good shipper; large size; beautiful bright scarlet color; ripens with the earliest. Prof. W. J. Green of Ohio Exp. Station, says: "King has proved the best early red raspberry. It is large, bright red, quite firm, and of good quality."

LOUDON (Red). Large, deep red, of good quality.

MARLBORO. A very large, bright red berry, ripening with the earliest, firm and of good quality. Very hardy, and a fair grower and great bearer. Needs good soil.

OHIO (Black). A strong growing sort; large and very productive.

PLUM FARMER (Black). It ripens very early and quickly. The fruit is of large size, often measuring an inch in diameter. It sells at the highest price.

ROYAL PURPLE. A new variety that is being extensively planted by the leading berry men throughout the country. It is fully as good, if not better, than Columbian. The plants are strong, sturdy and almost thornless. Its great point is its hardiness. Has endured 35 degrees below without injury. An excellent shipper, excelling all other kinds in this respect. Get in on the ground floor. Plant Royal Purple now.

RUBY (Red). Ripens a few days before Cuthbert. The fruit holds out large to the last picking and arrives in the market in good condition.

ST. REGIS EVERBEARING. A new variety, very large, juicy and of the highest quality. The canes are strong, vigorous and hardy. The main crop is very early. The old canes continue to produce till late August when the new season's growth begins to ripen some fruit. Be sure to plant some of this variety.

SHAFFER'S COLOSSAL PURPLE. A very large raspberry, both in cane and fruit. Canes are of wonderful vigor and size, hardy and enormously productive; berries are very large and of purplish color.

Garden Roots

Asparagus

Price: 90c. per 25; \$2.25 per 100.

PALMETTO. Early and very productive.

CONOVER'S COLOSSAL. Of superior excellence; remarkably tender and fine flavored.

Rhubarb

Price: 12c. each; \$1.00 per 10; \$9.00 per 100.

EARLY SCARLET. Early and good.

MYATT'S LINNÆUS. Large, early, tender, excellent.

Blackberries

Prices on our select assortment of leading varieties: 80c. per 10; \$1.90 per 25; \$5.50 per 100; \$40.00 per 1000.

ANCIENT BRITON. It is very hardy, vigorous, healthy and exceedingly productive. Large and late.

BLOWERS. Originated in the Chautauqua "Grape Belt," and is no doubt the most productive blackberry known. 2,694 berries have been grown on one bush, and 2,720 quarts on one-third acre. Of good size and quality. Jet black and a good shipper. Hardy.

ELDORADO. A good grower, healthy, very hardy and exceedingly productive. Berries are large, jet black and of best quality. Very reliable.

ERIE. One of the earliest, very large, round and of excellent quality. Bush is vigorous, hardy and productive.

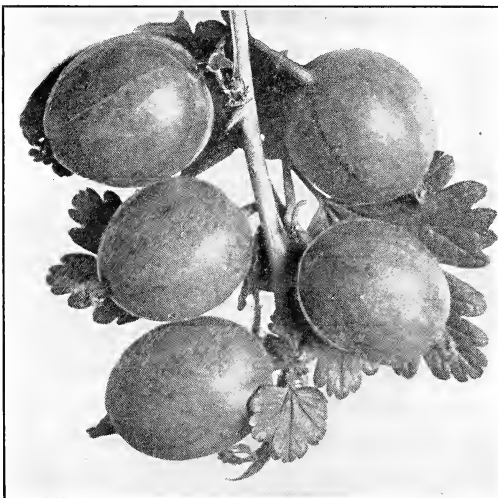
MERSEREAU. A very hardy, strong, upright grower and great bearer of brilliant black berries that retain their color. Sweet, rich and melting, without core.

RATHBUN. Large, early and productive. Does not sucker freely, but roots from the tip of its cane like the black raspberry. Very hardy, sweet and free from core.

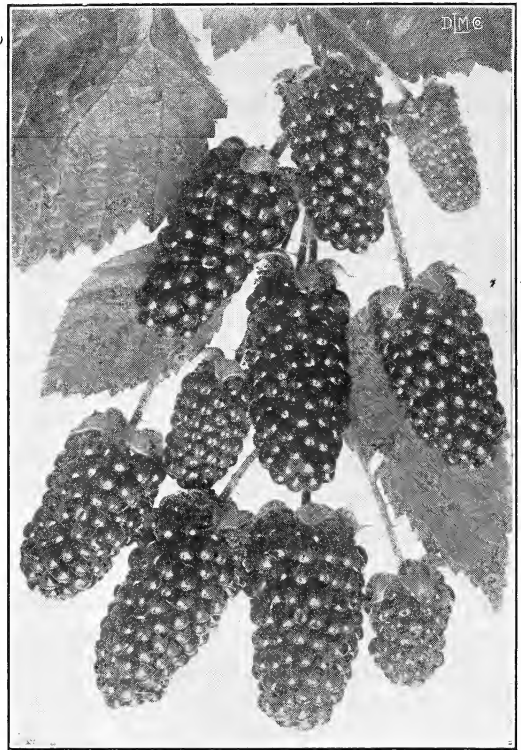
SNYDER. Extremely hardy, enormously productive, medium size, no hard, sour core; sweet and juicy. Ripens early.

DEWBERRY

LUCRETIA. A running or trailing blackberry. May be left to sprawl on the ground or else tied up on stakes or trellises like grape vines. Propagates from tips like black raspberries and never suckers.



Chautauqua Gooseberry



Eldorado Blackberry

Gooseberries

Prices on select two year old plants, 40c. each; \$3.00 per 10; \$25.00 per 100.

CHAUTAUQUA. A very vigorous, stout, stiff, upright grower and exceedingly productive. Leaves are large, glossy and dark green; its fruit is a beautiful light yellow, perfectly free from spines and down, veined and translucent.

DOWNING. The largest of the American varieties. Whitish green, and of good quality. Bush is a strong, stout, upright grower, and quite prolific and healthy.

HOUGHTON. Pale red, medium sized berries of good quality. Vigorous but slender grower. Healthy and very productive.

INDUSTRY. Very large, dark red and of a rich, pleasant flavor, but not of robust constitution.

JOSSELYN (Red Jacket). A vigorous, upright growing bush, healthy and productive. Fruit is light red and of about the size of the Downing.

PEARL. All about the same if not identical with the Downing.

SMITH'S IMPROVED. Large, yellow; skin thin. Of best quality and unsurpassed for table use and cooking. Good grower and free from mildew.



Nut Trees

The varieties of nut trees which we offer can be successfully grown in sections of the country where the temperature reaches an occasional 10 or 20 degrees below zero and can be depended on to produce liberal crops of nuts.

AMERICAN SWEET CHESTNUT. Valuable as a nut producing tree and for timber.
 4 to 5 ft., 95c. each; \$9.00 per 10.

ENGLISH WALNUT. Fruit in great demand and planted extensively of late years. A tall growing tree with spreading head; produces large crops of thin shelled nuts.
 3 to 4 ft., \$1.50 each. 2 to 3 ft., \$1.00 each.

BUTTERNUT. A native tree, of well known worth. 5 to 6 ft., \$1.00 each; \$9.00 per 10.

WALNUT, BLACK. The common, well known Black Walnut, the wood of which is most beautiful and valuable. It is very productive in nuts which are liked by many.
 5 to 6 ft., 90c. each; \$8.50 per 10.

Ornamental Trees

A home is made beautiful and attractive by setting out shade trees and ornamental stock. There is no other way possible of increasing the value of a home at such little cost as the planting of ornamentals. People everywhere are attracted to a home surrounded by shade and flowers. The character of the owner is reflected in a well-kept yard, lawn or grounds. Improving the home not only gives pleasure and happiness, but enriches the owner and enriches our country.

AMERICAN ELM

This well known tree ranks among the very best for avenue or park, especially in deep or wet soil. It grows rapidly and makes tough branches, rarely being damaged by wind or snow. Its spreading head, drooping branches and stately growth give it the name of the "Monarch of the Forest."

Price: 6 to 8 ft., \$1.00 each; \$9.00 per 10.
 8 to 10 ft., \$1.25 each; \$11.00 per 10. 10 to 12 ft. \$1.75 each.

BECHTEL'S DOUBLE FLOWERING CRAB

A medium sized, hardy ornamental tree of great beauty. When in bloom this tree presents the appearance of being covered with roses. Flowers large, fragrant and beautiful.

Price: 3 to 4 ft., 90c. each.

BEECH, CUT-LEAVED

An erect, free-growing tree, foliage light green and deeply cut or incised. A fine lawn tree.

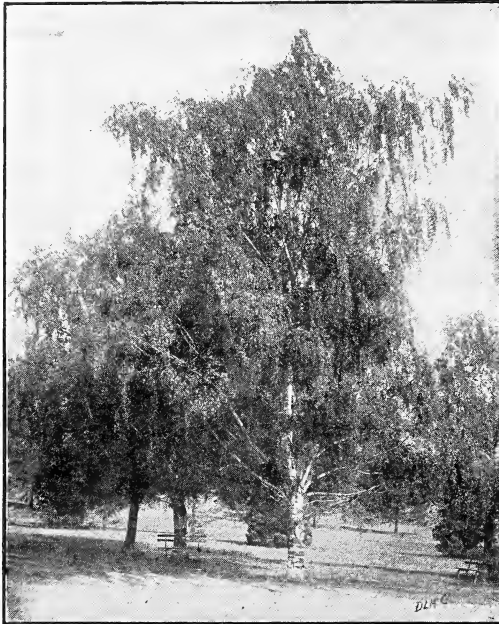
Price: 3 to 4 ft., \$1.50 each.



American Elm

Letters asking for advice about planting nursery stock receive our painstaking attention.

ORNAMENTAL TREES—Continued



Cut-Leaf Weeping Birch

BIRCH, CUT-LEAF WEEPING

This fine tree excels all others in its tall form and graceful beauty, its upright center trunk covered with white bark, its drooping branches and pendent leaves increasing its attractiveness. It is hardy and thrifty in all locations.

Price: 5 to 6 ft., \$2.50 each. 6 to 8 ft., \$3.50 each.

CATALPA BUNGEI

A small species that grows 8 to 10 feet high and twice as broad, forming a great bush, clothed with a dense mass of large, heart-shaped leaves. Among our hardy shrubs are but few, if any, that are more effective as foliage plants for park or lawn. When grafted on a stalk of one of the tree species 5 or 6 feet high, makes a handsome standard tree, with a very dense and symmetrical globular head, without trimming.

Price: 6 ft. stems, \$2.00 each.

CATALPA, SPECIOSA

This medium to large tree, with its tropical-like foliage and its pyramids of white flowers, is worthy a place in every collection.

Price: 6 to 8 ft., 80c. each; \$7.50 per 10. 8 to 10 ft., \$1.00 each; \$9.00 per 10.

CAMPERDOWN ELM

This old favorite is the largest of the "umbrella-topped" trees; foliage large, growth spreading and pendent. It produces dense shade and is the best arbor tree for lawns.

Price: 2 year heads, \$2.25 each.

HORSE CHESTNUT

A very beautiful, well-known tree, forming a round, compact head, with dark green foliage and an abundance of showy flowers early in spring. Very desirable on account of its hardy, healthy habit. When fully grown, 40 to 50 feet high.

Price: 5 to 6 ft., \$2.00 each. 8 to 10 ft., \$3.00 each.

LABURNUM, OR GOLDEN CHAIN

A native of Europe, with smooth shining foliage, attaining the height of 20 feet. The name of the Golden Chain alludes to the length of the drooping racemes of yellow flowers which, as Cooper elegantly described them, are "rich in streaming gold." They appear in June.

Price: 4 to 5 ft., \$1.25 each.

LINDEN

The American and European Lindens are our best large-leaved shade trees. Specially adapted to lawn planting. Foliage is dense, and when in bloom their fragrance is delightful.

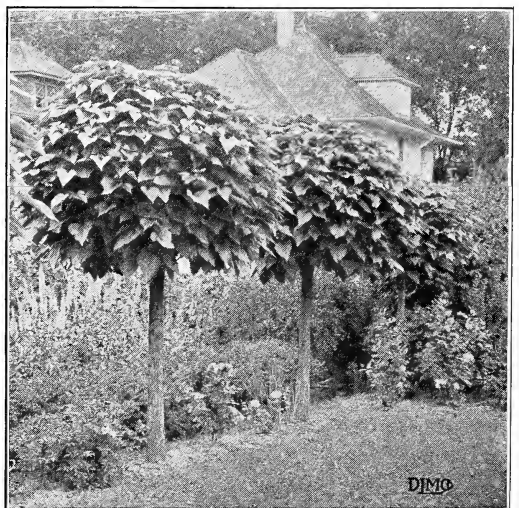
The Lindens are all beautiful, and merit more notice than they receive. They possess many valuable qualities.

Price: American or European, 6 to 8 ft., \$1.50 each. 8 to 10 ft., \$2.00 each.

MULBERRY, WEEPING

This weeping tree is without doubt the best for general planting of all small lawn or cemetery trees. Its willowy, pendent branches are covered with large, light green, deeply-lobed foliage. The tree is hardy and thrives in a variety of soils.

Price: 2 year heads, \$2.25 each.



Catalpa Bungei

KING BROS. NURSERIES DANVILLE, N.Y.

ORNAMENTAL TREES—Continued



Catalpa speciosa

MAPLE ASH-LEAVED, OR BOX ELDER

Of rapid growth and spreading form; foliage small and of light green color. Transplants easily and does well in dry soil.

Price: 8 to 10 ft., \$1.00 each; \$9.00 per 10.

MAPLE, NORWAY

The dense, dark foliage of this lovely tree and its compact, strong habit of growth, its freedom from attacks of insects, combine to make this the very best street, avenue or lawn tree for all situations. It rivals the oak, and the oldest trees known are still young in appearance.

Price: 6 to 8 ft., \$1.75 each; \$16.00 per 10. 8 to 10 ft., \$2.25 each; \$20.00 per 10. 10 to 12 ft., \$3.00 each.



Weeping Mulberry—See page 20

MAPLE, SILVER-LEAVED OR WHITE

A hardy, rapid-growing native variety of the largest size; foliage bright green above and silvery underneath.

Price: 6 to 8 ft., 75c. each; \$6.50 per 10. 8 to 10 ft., \$1.00 each; \$9.00 per 10. 10 to 12 ft., \$1.50 each.

MAPLE, WIER'S CUT-LEAVED SILVER

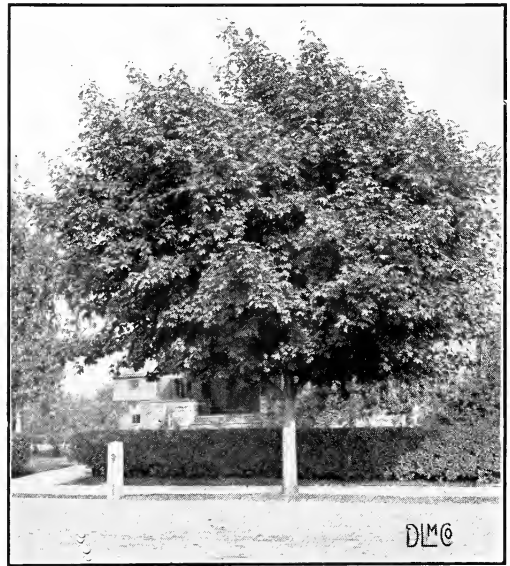
This is one of the most remarkable and beautiful trees with cut foliage. Its growth is rapid, shoots slender and drooping, giving it a habit almost as graceful as the Cut-leaved Birch.

Price: 6 to 8 ft., \$1.00 each; \$9.00 per 10. 8 to 10 ft., \$1.35 each; \$12.50 per 10.

RUSSIAN MULBERRIES

Trees very hardy, stood forty degrees below zero and bore a full crop of berries the next season. They are an annual and abundant bearer.

Price: 5 to 6 ft., 75c. each; 6 to 8 ft., \$1.00 each.



Norway Maple

PALUSTRIS, OR PIN OAK

A tall, upright growing variety when young, but with age the branches droop. Foliage bright and glossy. One of the best Oaks for street planting and becoming very popular.

Price: 5 to 6 ft., \$1.50 each.

ORIENTAL PLANE

A favorite avenue tree in Europe, and becoming very popular in this country.

Price: 6 to 8 ft., \$1.25 each. 8 to 10 ft., \$1.60 each.

KING BROS. NURSERIES DANVILLE, N.Y.

ORNAMENTAL TREES—Continued

CAROLINA POPLAR

This rapid growing tree, with its large glossy leaves, open head and symmetrical habit of growth, is the best of all poplars for shade and street planting.

Price: 6 to 8 ft., 45c. each; \$3.00 per 10; \$20.00 per 100. 8 to 10 ft., 55c. each; \$4.00 per 10; \$30.00 per 100. 10 to 12 ft. 65c. each; \$5.00 per 10; \$40.00 per 100.

LOMBARDY POPLAR

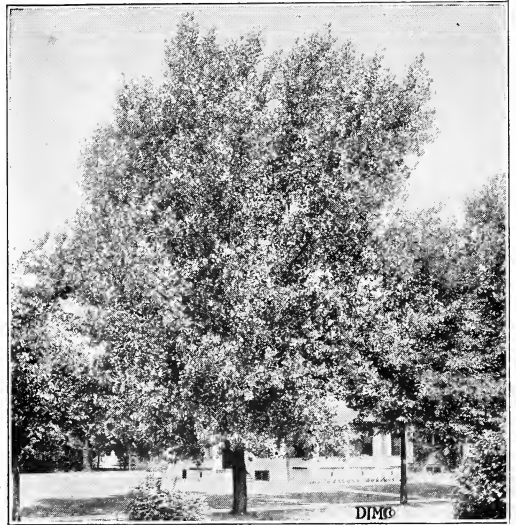
This is an old favorite. Well known and remarkable for its erect, rapid growth, and tall spiral form. Indispensable in landscape gardening to break the ordinary and monotonous outline of most other trees.

Price: 6 to 8 ft., 60c. each; \$5.50 per 10; \$40.00 per 100. 8 to 10 ft., 70c. each; \$6.50 per 10; \$45.00 per 100.

DOUBLE FLOWERING THORN

Among the small trees the thorns are classed as leaders, and grow more popular every year. They are dense and low in habit, showy in flower, resembling masses of miniature roses. Hardy and adapted to all soils. Especially valuable for small grounds. Flowers white and scarlet.

Price: 4 to 6 ft., \$1.25 each.



Carolina Poplar

WILLOW, BABYLONICA

Our common well known weeping variety; forms a large round-headed, graceful tree; requires plenty of room, and where space can be spared, is quite desirable.

Price: 7 to 8 ft., 75c. each; \$7.00 per 10.

We Prepay Transportation Charges

On all cash orders of \$7.50 or more to all points in the following States: New York, Massachusetts, Rhode Island, Connecticut, Maine, New Hampshire, Vermont, New Jersey, Pennsylvania, Delaware, Maryland, West Virginia, Ohio, Indiana and Michigan.

When buying of us you know just what your trees will cost you delivered. (See Conditions of Sale on Page 2.)

Desirable Trees to Plant

A List of Trees Recommended for Various Purposes

FOR STREETS, ROADS AND WIDE AVENUES.

American Elm, Norway, Silver and Sugar Maples, Carolina Poplar.

FOR DRIVEWAYS THROUGH LAWNS AND PARKS.

Norway Maple, Silver Maple, Catalpa Speciosa, American and European Lindens; American Elm.

SINGLE SPECIMENS OF LARGE GROWTH.

Cut-Leaved Beech; Cut-Leaf Weeping Birch, Camperdown Elms; American and European Lindens; Norway and Cut-Leaf Maples; Horse Chestnuts; Scotch Pines; Norway and Colorado Spruces.

SINGLE SPECIMENS OF MEDIUM GROWTH.

Catalpa Bungeii, Laburnum, Flowering Thorns, Hemlocks, Siberian Arborvitae, etc.

STRONG-GROWING TREES OF PYRAMIDAL HABIT.

Lombardy Poplars.

TREES THAT THRIVE IN MOIST LOCATIONS.

American Elm, American Linden, Catalpas, Poplars and Willows.

TREES THAT THRIVE ON DRY KNOLLS OR POOR SOIL.

Silver-Leaf and Ash-Leaf Maples and Poplars.

BEST TREES FOR WINDBREAKS.

Norway Spruce (evergreen), Carolina Poplars and Silver Maples.

FLOWERING TREES.

Laburnum, yellow; Lindens; Catalpa; Thorns.

CUT-LEAVED TREES.

Cut-Leaved Birch, Wier's Cut-Leaved Maple, Cut-Leaved Beech.

PURPLE AND SCARLET-LEAVED TREES.

Beech, Birch, Elm, and Maple.

WEeping OR PENDULOUS TREES.

Beech, Birch (Cut-Leaved), Elm (Camperdown), Linden (White-Leaved), Maple (Wier's), Mulberry (Teas), Babylonica Willow.

Evergreens

Evergreen trees are stately and majestic as individuals, and strikingly effective and imposing in masses. They are invaluable as screens against objectionable objects, windbreaks and hedges. Planted in informal masses, forming a background against which showy flowers of Spring blooming shrubs may be contrasted, or the bright Winter colors of the twigs and bark of small trees and shrubs, evergreens make possible some of the most enchanting results in ornamental planting. Our evergreens have been frequently transplanted and are shipped with compact balls of roots, wrapped in burlap. This method of handling insures the planter against loss.

BALSAM FIR

Very erect and regular, pyramidal in shape; foliage dark green and lustrous above, pale on under side. Grows rapidly and is hardy.

Price: 2 to 3 ft., \$1.75 each; \$15.00 per 10.

SIBERIAN ARBORVITÆ

Exceedingly hardy, keeping color well in Winter; growth compact and pyramidal; makes an elegant lawn tree of great value for ornaments, screens and hedges.

Price: 18 to 24 in., \$1.75 each; \$15.00 per 10.

AMERICAN ARBORVITÆ

A tree of variable height and pyramidal outline, especially beautiful when young. Grows naturally from Nova Scotia and Manitoba to North Carolina and Illinois. Foliage bright green, yellow green beneath, or in Winter assuming tones of brown and bronze.

Price: 2 to 3 ft., \$1.25 each; \$11.00 per 10. 1½ to 2 ft., \$1.00 each; \$9.00 per 10.

COLORADO BLUE SPRUCE

Unquestionably the most beautiful of the spruces for garden or lawn. Foliage silvery-blue, densely disposed on the numerous branchlets.

Price: 1½ to 2 ft., \$4.00 each. 2 to 3 ft., \$4.50 each.

NORWAY SPRUCE

A tall and picturesque tree, and the most widely cultivated of all the spruces. Extensively planted as an ornamental tree and for shelters and windbreaks. Handsome and hardy.

Price: 1½ to 2 ft., \$1.00 each; \$9.00 per 10. 2 to 3 ft., \$1.25 each; \$11.00 per 10.

HEMLOCK SPRUCE

A most graceful and beautiful variety. Branches droop and the dark bluish foliage is very delicate.

Price: 1½ to 2 ft., \$2.00 each. 2 to 3 ft., \$2.50 each.

RETINOSPORA PLUMOSA

A dwarf variety rather irregular in habit with short, dark green foliage.

Price: 1½ to 2 ft., \$3.00; 2 to 3 ft., \$3.50.



Hedge of Arborvitæ

IRISH JUNIPER

A slender columnar form with numerous upright branches very closely appressed.

Price: 1½ to 2 ft., \$1.00 each. 2 to 3 ft., \$1.25 each.

SCOTCH PINE

A large tree with horizontal, sometimes pendulous branches of pyramidal outline, or in age with a broad rounded top.

Price: 1½ to 2 ft., \$2.50 each. 2 to 3 ft., \$3.00 each.

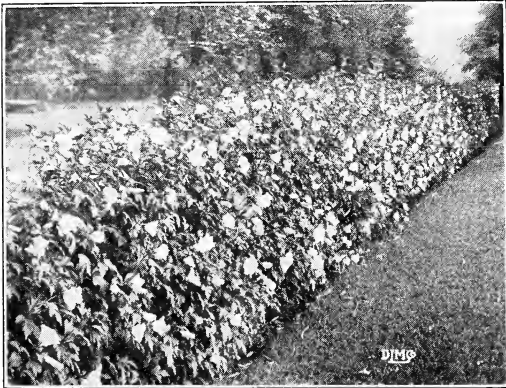
RHODODENDRONS

We have them in a variety of colors, white, red and purple being the most attractive; strong bushy plants, well set with flower buds.

Price: 18 to 24 in., \$3.00 each.

Ornamental Shrubs

We offer a fine assortment of shrubs at a minimum cost. These beautiful plants will give distinctive character to your home, and delight and pleasure the whole year around.



Althæas make a beautiful hedge

ALTHÆA

Vast improvements have been effected in this variety, and in consequence its old time popularity has been revived. We can supply it in red, purple or white color.

Price: 60c. each; \$5.00 per 10.

CALYCANTHUS FLORIDUS (Strawberry Shrub)

An admirable and very ornamental shrub, widely cultivated for its large fragrant flowers.

Price: 60c. each; \$5.00 per 10.

DEUTZIA

A hardy class of plants of fine, rather dwarf habit, luxuriant foliage and greatest profusion of attractive flowers, rendering them the most desirable of flowering shrubs. The most popular are *Pride of Rochester*, producing large double white flowers, the back of the petals being slightly tinted with rose; *Gracilis*, or *Slender Branched*, a charming species with pure white flowers and fine for pot culture; *Lemoine*, the newest and perhaps the finest of the family, the branches being entirely covered with pure white flowers of exquisite form.

Price of three varieties: 60c. each; \$5.00 per 10.

EXOCHORDA Grandiflora

A rare and beautiful shrub from China. Hardy and easily transplanted; of compact growth, and can be trimmed in dwarf form if desired. Pure white flowers, somewhat resembling the *Syringa*.

Price: 3 to 4 ft., 60c. each; \$5.00 per 10.

FORSYTHIA (The Golden Bells)

Few if any of the Spring flowering hardy shrubs can surpass the splendor and brilliancy of the Forsythias. Both grace and beauty are combined in all their attributes and give them rank for any station in the shrub plantations. They thrive in almost any fertile soil.

Price: 50c. each; \$4.50 per 10.

FORSYTHIA INTERMEDIA (Hybrid Golden Bell). A tall shrub with slender arching branches, of garden origin; leaves simple or three-parted, dark green and lustrous.

FORSYTHIA SUSPENS A (Drooping Golden Bell). A graceful shrub with long and slender drooping branches.

FORSYTHIA SUSPENS A FORTUNEI (Fortune's Golden Bell). Similar to the preceding, but of more vigorous upright growth.

FORSYTHIA VIRIDISSIMA (Dark Green Forsythia). A large shrub with erect green-barked branches. Native of China. Leaves simple, very dark green, relatively narrow.

LILAC

These old-time favorites have again sprung into wonderful popularity, and justly so, as wonderful improvements have been made in both form and coloring, and they are now one of our most attractive classes of large growing shrubs.

In ordering, state color desired.

Price: Tree form, 3 to 4 ft., \$1.25 each. Bush form, 18 to 24 in. 90c. each; \$8.50 per 10.



Lilac

KING BROS. NURSERIES DANVILLE, N.Y.



Philadelphus coronarius

PHILADELPHUS CORONARIUS (Mock Orange or Garland Syringa). One of the best known and most popular of all shrubs, having a profusion of large, creamy white, deliciously fragrant flowers that are among the earliest to bloom. Large size, perfectly hardy, and will succeed in all soils, even under trees. When in flower the bush is a solid mass of white and is one of the most satisfactory shrubs. Plant them in groups about the house and on the lawn; fine for high hedging or as a screen to shut out unsightly views.

Price: 50c. each; \$4.50 per 10.

PHILADELPHUS GORDONIANUS (Gordon's Syringa). A handsome shrub having a profusion of white flowers. Blooms late—in July—nearly two months later than *P. coronarius*; therefore both should be planted.

Price: 50c. each; \$4.50 per 10.

King's Special Shrub Collection for the Suburban Home

6 Shrubs Worth \$3.30 for \$2.50

- 1 Althæa Red
- 1 Deutzia Pride of Rochester
- 1 Philadelphus Coronarius
- 1 Philadelphus Gordonianus
- 1 Hydrangea Paniculata Grandiflora
- 1 Spiræa Van Houttei

HYDRANGEA PANICULATA GRANDIFLORA.

This is undoubtedly the best and most effective shrub for all locations, and the tree form of this well known, late blooming shrub, as it attains age, becomes conspicuous and beautiful beyond description.

Price: Standard or tree form, 3 ft., \$1.00 each. Bush form, 2 ft., 60c., each; \$5.50 per 10.

HYDRANGEA ARBORESCENS STERILIS (Hills of Snow)

An upright shrub usually four to eight feet tall, with bright green leaves. Flowers ray-like and sterile, resembling a snowball. A handsome, floriferous, hardy shrub, literally loaded with dazzling white flowers and continuing to blossom for a large part of the summer until late fall.

Price: 18 to 24 in., 50c. each; \$4.50 per 10.

JAPAN QUINCE

Spiny shrubs, with bright green glossy leaves, a native of China and Japan. Flowers scarlet, large and showy. Fruit is about two inches in diameter, yellowish green, aromatic and fragrant.

Price 75c. each; \$6.00 per 10.

JAPAN SNOWBALL

Handsome plicated leaves; globular heads of pure white neutral flowers, early in June. It surpasses the common variety in several respects. Its habit is better, foliage much handsomer, flowers whiter and more delicate. One of the most valuable flowering shrubs. These can also be supplied in tree form and are very effective.

Price: Bush Form, 2 to 3 ft., 60c. each; \$5.50 per 10. Tree Form, 4 to 5 ft., 90c. each; \$8.50 per 10.



Hydrangea Paniculata Grandiflora

ELÆAGNUS LONGIPES

A handsome, shapely, silver-leaved shrub, with ornamental reddish-brown bark in winter; perfectly hardy and easy to grow. The bright yellow flowers appear in June on long stalks.

Price: 2 to 3 ft., 60c. each; \$5.50 per 10.



Spiraea Van Houttei

ORNAMENTAL SHRUBS—Continued

SPIRÆAS

Anthony Waterer

A new dwarf shrub of great beauty. Its broad flat heads of red flowers continue in perfection many months. Bumalda (pink) and Callosa Alba (white), have the same form and the three make a beautiful combination.

Price: 18 to 24 in. 60c. each; \$5.50 per 10.

Van Houttei

The best white Spiræa. The annual growth is long and abundant and covered in June with a wealth of pure white blossoms in a perfect cascade of bloom. Perfectly hardy. Should be in every collection.

Price: 2 to 3 ft., 50c. each; \$4.50 per 10.

WEIGELA

These are among the finest Japanese flowering shrubs, forming large symmetrical bushes with a drooping tendency, covered in June and July with large trumpet-shaped flowers of varying colors, while some have variegated foliage.

Price: 50c. each; \$4.50 per 10.

CANDIDA. Flowers purest white.

Eva Rathke. Flowers deep bright red, borne freely during the summer.

Floribunda. Flowers dark crimson with white stamens; blooms early and continues during the summer.

Rosea. Flowers are large and of deep rose color, produced in great profusion. One of the most desirable shrubs on the list.

Climbing Vines

AMPELOPSIS VEITCHII

Boston or Japan Ivy

This variety which came from Japan in 1868 has found great favor throughout this country, and may be seen as a carpet of green on brick or stone walls all through the summer months. It adheres without nailing to brick or stone.

Price: 50c. each.

HALL'S JAPAN HONEYSUCKLE

A strong variety, almost evergreen, holding its foliage until late in January. The flowers are pure white and yellow, very fragrant, and cover the vines from July until December. The best of all the honeysuckles.

Price: 50c. each.

8 per cent discount on all cash orders received before March 15th; 3 per cent after that date.

CLIMBING VINES—Continued

WISTARIA

Sinensis (Blue Wistaria)

A very strong grower, after once established, that climbs high and twines tightly. It blooms very profusely early in the summer, and again more sparingly later in the season.

There is also a **White Flowering** variety which is equally beautiful.

Price: 70c. each.

ARISTOLOCHIA SIPHO

Dutchman's Pipe

A rapid growing climber, with large heart-shaped leaves and curious pipe-shaped yellow and brown flowers. Perfectly hardy and grows 20 feet or more in a season, making a dense shade.

Price: \$1.50 each.

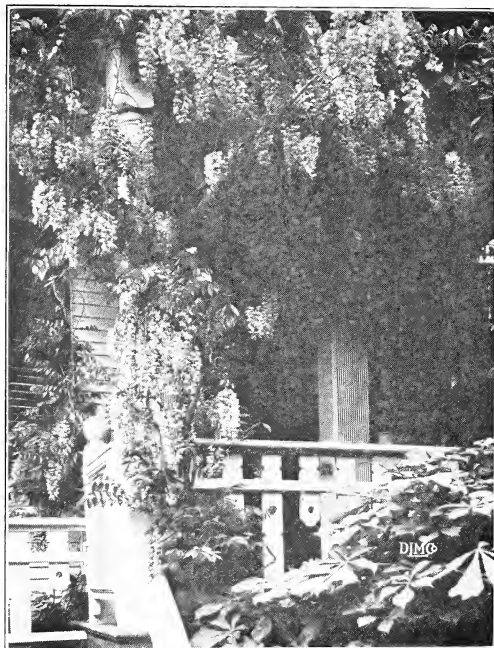
CLEMATIS

Paniculata. A vine of rapid growth suitable for covering trellises with glossy green. The small white flowers cover the plant in autumn with a "sheet of bloom."

Price: 50c. each.

Jackmanii. Flowers, when fully expanded, are from 4 to 6 inches in diameter; intense violet purple, with a rich velvety appearance. An abundant bloomer.

Price: 75c. each.



Wistaria

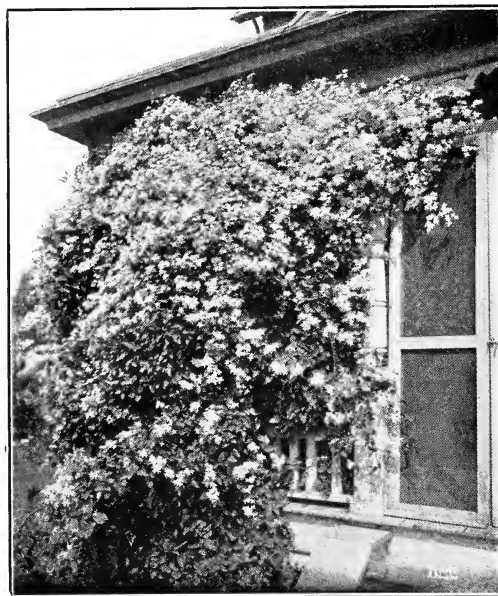
Clematis Henryi. Creamy white. A robust, free-flowering variety.

Price: 75c. each.

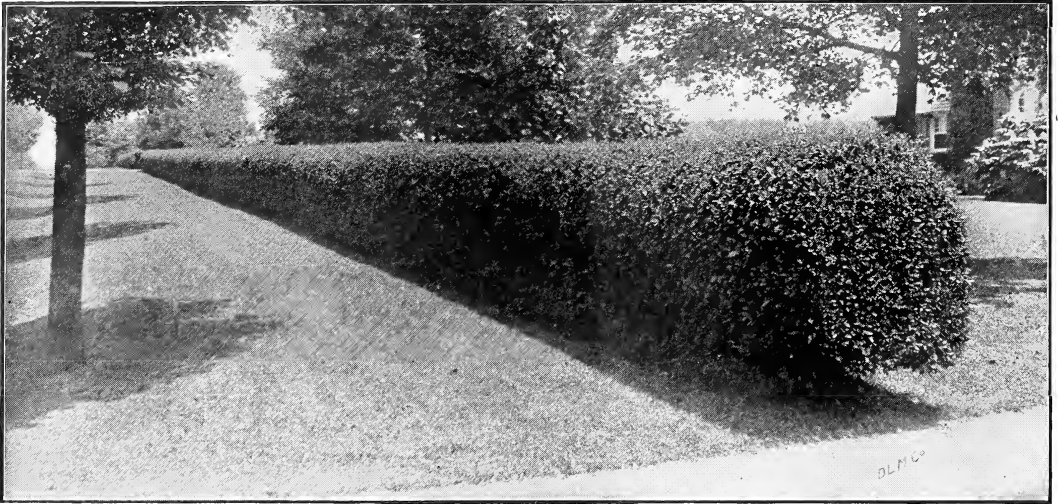
Whether your order is large or small it receives our painstaking attention. 46 years' experience back of the stock you buy of us.



Clematis Jackmanii



Clematis Paniculata



California Privets

Hedge Plants

To screen unsightly objects from view, to mark lines or boundaries, hedges are most useful, and with proper attention very ornamental.

For permanent all-around effect evergreens are desirable, and the best sorts for the purpose are American Arborvitæ in variety, Norway and other Spruces. These can be allowed to grow at will or kept in any desired shape by shearing.

Among deciduous shrubs for ornamental hedges the **California Privet** is very popular, having a foliage of great beauty and permitting a shearing to an extent that would ruin most plants. But in certain situations and for certain uses there is another even better, the **Berberis Thunbergii**, which for a low hedge has no equal.

This beautiful species from Japan, with round drooping habit, spoon-shaped leaves of fine bril-

liant green in summer, takes on from early autumn till December the most glowing colors of any shrub or tree—crimson orange, bronze and green, with all the intermediate shades, blended in the foliage of a single bush, the effect being most extraordinary and beautiful. After the leaves fall, the branches are seen to be loaded down with scarlet-crimson berries, and these often hang until April, presenting a most beautiful object, and it is also of great value to plant as "cover" where quails or other game birds are protected, as they feed greedily on its seeds. For a hedge 3 to 4 feet high it is the very best of all plants, being impenetrable, as it is thickly set with spurs.

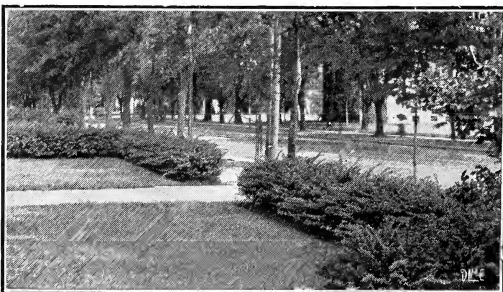
No other plant so fully meets every requirement of a hedge, combining beauty in all seasons, hardiness, compact growth, impenetrability and ease with which it may be kept in proper form.

We urge all intending to plant hedges to thoroughly prepare and enrich the soil, if of poor quality.

PRICE OF HEDGE PLANTS

California Privet, 18 to 24 inches, 15c. each; \$1.25 per 10; \$6.50 per 100. 2 to 3 ft., 20c. each; \$1.50 per 10; \$7.50 per 100.

Barberry Thunbergii 18 to 24 inches, 45c. each; \$4.00 per 10; \$30.00 per 100. 15 to 18 inches, 35c. each; \$3.00 per 10; \$25.00 per 100.



Barberry Thunbergii



Roses

The Rose is the greatest source of delight and pleasure to all lovers of the beautiful. They are a necessity to every well planned garden. We make a specialty of growing only choice roses of hardy habit. Our plants will thrive in a wide range of soils, but will amply repay any effort made to afford them fertile and congenial surroundings.

Prices of all varieties of Roses.

First class 2 year No. 1 plants: 65c. each; \$6.00 per 10.

COQUETTE DES ALPES

White, shaded with carmine, strong grower, very popular.

BARON DE BONSTETTEN

Large flowers, very solid, round and full; dark, rich crimson, delightfully scented; free bloomer and of hardy and vigorous habit.

ULRICH BRUNNER

One of the finest red roses in existence. Color brilliant cherry-red. This variety is a seedling of Paul Neyron from which it derives its immense size. It has fine form, is intensely fragrant, and the flowers have great lasting qualities, which make it valuable for cutting. The flowers are borne freely on long, stiff stems. Foliage very strong and healthy.

MAGNA CHARTA

Extra large full flowers of unusual depth and substance; bright rosy pink; very profuse bloomer, on long, stiff stems.

J. B. CLARK

An intense scarlet rose, shaded blackish crimson, color like the sheen of a plum, often 7 in. in diameter. It has created a great sensation throughout the United States and Europe. Flowers borne freely the first year, on long stiff stems; fragrance very sweet. Hardy even in Canada.

AMERICAN BEAUTY

Color a deep pink to crimson and intensely fragrant. A great favorite.

HERMOSA

Well known as one of the best for general planting; blooms in clusters all the season; clear, bright pink; very double and fragrant; quite hardy.

JOHN HOPPER

A hardy rose; an abundant bloomer; solid and regular flowers, perfectly double; clear, bright rosy pink; very fragrant.



Frau Karl Druschki—See page 30.

ROSES—Continued

GENERAL JACQUEMINOT

This lovely rose is seldom if ever omitted from any collection, and will ever be a favorite. Its clear, rich, brilliant crimson-scarlet color, large and elegant form, free-flowering habit and strong erect growth, all combine to captivate the heart of every lover of the beautiful. Perfectly hardy.

KILLARNEY

A very beautiful coral pink Hybrid Tea Rose. Free in growth, producing strong, hardy shoots which are crowned with buds. A great favorite for winter flowers and worthy the high place it has attained. Needs protection in severe climates. The flowers are lasting, remaining clear and bright to the last. Delicate Tea Rose fragrance.

ANNA DE DIESBACH

Color a beautiful shade of carmine pink; flowers very large and sweet.

ALFRED COLOMB

A noble rose; large, globular flowers; bright rich crimson, dark and handsome. The bush is a strong, erect grower, entirely hardy and an abundant bloomer.



Paul Neyron—See page 31



Rose Alfred Colomb

MARGARET DICKSON

Of magnificent form; white, with pale flesh center; petals very large, shell-shaped, and of great substance; fragrant, a very beautiful variety; foliage very large; dark green.

FRAU KARL DRUSCHKI
(Snow Queen)

This exquisite rose is the only absolutely pure white rose ever introduced. Of German origin. It is perfectly hardy everywhere and a most vigorous grower. Although we have many so-called white roses, it is a fact that before the introduction of Frau Karl Druschki we had no pure white hardy rose.

LA FRANCE

Both buds and flowers are of lovely form, grand size and exceedingly sweet; color peach blossom pink, elegantly clouded with rosy flesh. Begins to bloom while very small and continues bearing until stopped by freezing weather.

Baby Ramblers

Ever-blooming Dwarf Crimson Ramblers

In this variety we have the wonderful Crimson Rambler reproduced in dwarf or bush form, with this added quality that the Baby Rambler is a ceaseless bloomer. Indoors it may be kept in flower all the year around, and out-of-doors it blooms continuously from June till after late frosts. In addition to the foregoing, these may be had in pink and white, known as Pink Baby and White Baby Ramblers. Very desirable for bedding and borders.

ROSES—Continued

PAUL NEYRON

Flowers of immense size; one of the largest roses grown and one of the finest; color deep shining rose, very fresh and pretty. It is a strong grower and remarkably free bloomer.

MADAM PLANTIER

Enormous bloomer, extremely hardy, splendid for cemetery planting.

CLOTHILDE SOUPERT

Beautiful, creamy white color; flowers large, full, double, and deliciously sweet; constant bloomer.

GRUSS AN TEPLITZ

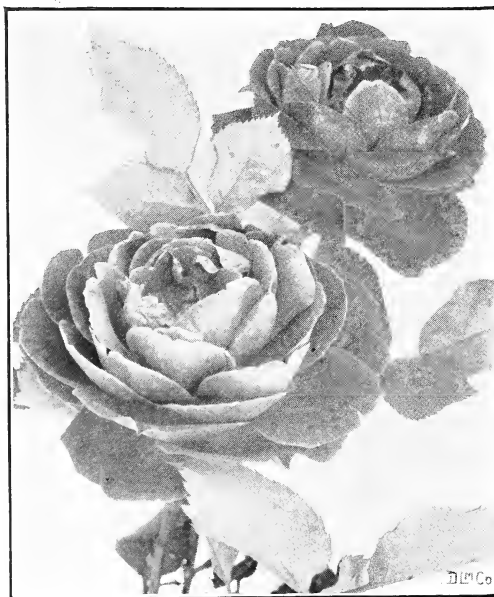
A splendid sort; bright clear crimson; very sweet; flower fine form; very showy; a free bloomer.

MADAM CAROLINE TESTOUT

A grand rose, with large, full flowers and handsome buds which resemble the famous La France rose, but the color is clear, rich pink, finely edged with silvery rose. A strong grower and abundant bearer.

MARSHALL P. WILDER

Extra large full flowers; dark deep red; very strong grower and free bloomer; very handsome.



Gruss an Teplitz

PERSIAN YELLOW

Flowers are double and deep golden yellow. This rose belongs to the Austrian Briar class. Hardy and makes an interesting addition to the rose garden.



Rose General Jacqueminot



American Beauty Rose

Climbing Roses

CLIMBING AMERICAN BEAUTY

This variety retains the deep pink to crimson color of the same beautiful flowers of the bush American Beauty. It grows to a height of fifteen feet and produces hundreds of perfect blooms at one time. The foliage is very handsome, and as this rose is perfectly hardy it can be grown practically anywhere without winter protection. It is without question one of the handsomest climbing roses ever introduced.

BALTIMORE BELLE

Very double; blush white blossoms in large clusters.

CRIMSON RAMBLER

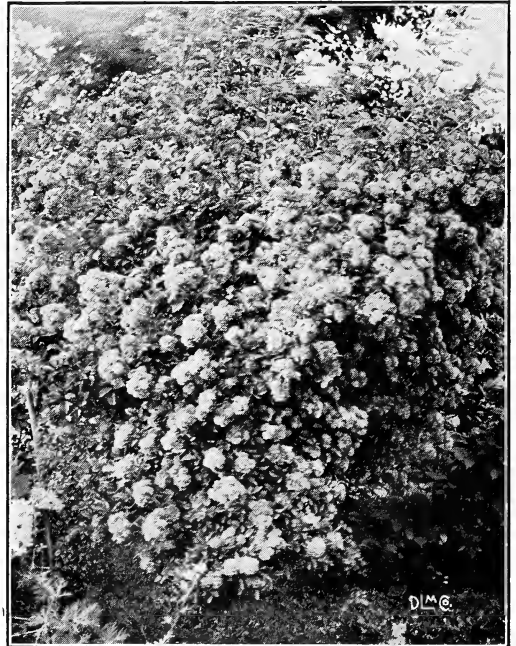
Glowing crimson flowers produced in great profusion in large, pyramidal trusses. A grand rose for porches or arbors or for training over a fence. One of the most popular varieties of the period.

DOROTHY PERKINS

Shell pink; extremely hardy, vigorous and a free bloomer, withstanding the most severe winters. Shoots grow frequently ten to fifteen feet in one season. Flowers are borne in enormous clusters of thirty or forty. They are perfectly double, and excellently adapted for cutting and decorating.

FLOWER OF FAIRFIELD

A sport from the Crimson Rambler, which blooms at intervals during the summer until frosts.



Crimson Rambler

QUEEN OF PRAIRIES

Bright pink flowers, full and compact, produced in profusion. Very hardy.

Hardy Perennials and Bulbs

Perennials are hardy and easy to care for. By a careful selection of varieties, the garden and lawn can be made into a veritable fairyland from spring until fall. Perennials may be planted when the ground is mellow and warm in either fall or spring. They will thrive in any good soil.

BUTTERFLY BUSH (Buddleia). Of quick growing, bushy growth; when the lovely bloom spikes appear in July, it has grown usually to a height of four feet, radiating a delightful perfume.
Price: 50c. each; \$5.00 per doz.

CANTERBURY BELLS (Campanula). Conceded to be one of the most beautiful border plants in cultivation, very free of bloom. Colors blue or white.
Price: 25c. each; \$2.50 per doz.

CHRYSANTHEMUMS. Strong growing bushy plants that produce their large daisy-like flowers. Bloom from July to September. **Assorted colors, 25c. each; \$2.50 per doz.**

CANNAS. The tallest and bulkiest of the summer bedding plants. Foliage of large size, rich shades of green, bronze, red and chocolate. The surmounting flower trusses are uniformly large and free, brilliant with colors.
Price: 25c. each; \$2.50 per doz.

DAHLIAS. A well known perennial. Blooms in autumn. Selected hardy varieties in assorted colors. **Price: 25c. each; \$2.50 per doz.**

GOLDEN GLOW (Rudbeckia). Grows five to seven feet and blooms from early summer until frost. Golden yellow flower. **Price: 25c. each; \$2.50 per doz.**



GLADIOLUS. One of the best bulbs for summer flowering. Makes a splendid effect when planted among roses, peonies and shrubbery. Varieties, white, red and pink. **Price: 25c. each; \$2.50 per doz.**

HOLLYHOCKS. Tall growing plants with large leaves and tall spikes of large funnel-shaped flowers. **Assorted colors, 25c. each; \$2.50 per doz.**

GERMAN IRIS. The tall sword-like leaves are interesting in themselves until the gorgeous flowers, with their unusual form, their beautiful variegation and numerous shades of color, make their appearance in May. **Assorted colors, 25c. each; \$2.50 per doz.**

JAPANESE IRIS. Blooms in June and July. For size of plant and flowers, shapeliness, richness of coloring, beauty of pattern and splendor of general effect, this variety is a general favorite. Flowers often measure ten to twelve inches across. **Assorted colors, 25c. each; \$2.50 per doz.**

LARKSPUR (Delphinium). Stately, tall growing perennial with many lobed leaves and long spikes of light and dark blue flowers in July and August. **Price: 25c. each; \$2.50 per doz.**

SWEET WILLIAM (Dianthus). Hardy, beautiful and free flowering; all stems from a tufted base bear round, numerous-flowered clusters of various tints and shades. **Price: 25c. each; \$2.50 per doz.**

Perennial Phlox

Hardy and succeeds in any climate. Can be planted in large groups on the lawn, or in a row along the border of the roadway. Red, pink or white.

Price: 25c. each; \$2.50 per doz.

Pæonia

One of the chief points in favor of the Pæonia is its hardiness. In the severest climate the plants require no protection. Their vigorous habit, healthy growth, freedom from disease and insects are in favor of their cultivation. When the Pæonia is once planted, all that is necessary has been done; they require no further care, and each succeeding year adds to their size and beauty. The foliage is rich and glossy, and of a beautiful deep green color, thus making the plants highly ornamental even when they are not in flower. The Pæonia can be planted either singly, on the lawn, or it can be used to excellent advantage to plant as a border line between lots. A large bed makes a most magnificent appearance.

Varieties

- Albion.** Cherry rose, edged paler.
 - Artemise.** Rosy pink, center petals delicate rose and blush white, full double.
 - Camille Calot.** Light rose.
 - Clarissa.** Rosy pink, inner petals sulphur.
 - Comte de Diesbach.** Dark red, early.
 - Comte de Niepperg.** Dark rose-pink, large bloom.
 - Delacheii.** Deep crimson-purple, one of the best dark kinds, late.
 - Grandiflora Rosea.** Light rose, outer petals very large; inner smaller and bunched; vigorous grower.
 - Hesperia.** Pink.
 - Phyrne.** Blush white.
 - Prince Imperial.** Brilliant, purplish-scarlet, free bloomer.
 - Queen Victoria.** The standard pure white market variety.
 - Rosea Plena Superba.** Very full flower, delicate pink and salmon.
- Price: Strong plants, with three to five good eyes, 50c. each; \$4.50 per 10.**

KING BROTHERS NURSERIES

DANSVILLE, NEW YORK

ROME BEAUTY

WEALTHY

BALDWIN

DELICIOUS

STAYMAN WINESAP

SPY

