

Historic, archived document

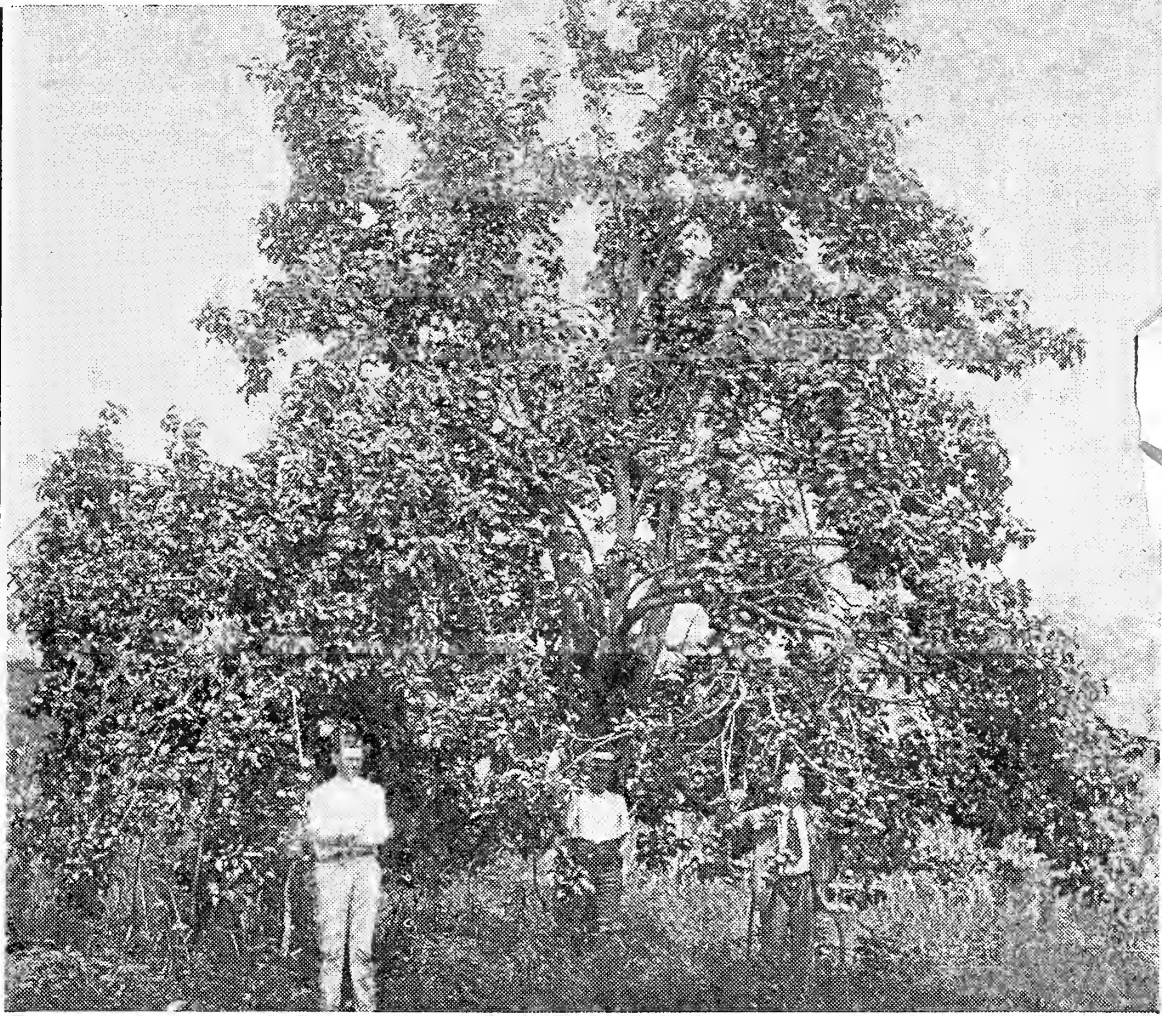
Do not assume content reflects current scientific knowledge, policies, or practices.

6245

1937

Pigford Nursery

Lumberton, Miss.



BLIGHTLESS PINEAPPLE SAND PEAR TREE.

34 years old, produced in 1922 60 bushels fine fruit which sold on premises for \$1.00 per bushel. Owned by H. E. Smith. The yield and profits from established Sand Pear Orchards of this variety are remarkable.

*Pigford Nursery
Lumberton, Miss.*



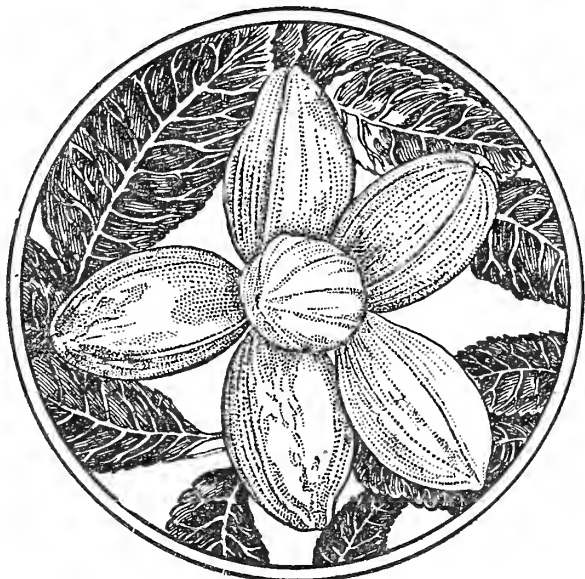
U. S. DEPARTMENT OF AGRICULTURE

WASHINGTON

BUREAU OF PLANT INDUSTRY,
Horticultural Investigations.

8-4767

Why You Should Have A Home Orchard.



Recreation and diversion for the man or woman can be obtained in no better or more profitable way than in the planting and intelligently caring for a Home Orchard of ones favorite varieties of peaches, apples, pears, plums, grapes, satsumas, etc.

Truly there is no other diversion which gives one more pleasure, a greater thrill than growing fruits and nuts in your own "Garden of Eden." In this day of man, practically everything is artificial or imitation but to set trees, watch them grow, bloom, fruit, then to gather and eat the fruit directly from

the trees will make any man or woman healthier, happier and more contented with their lot in life. How often have you seen a man when trouble or grief arises unconsciously pick up a hoe or shovel and make for the garden or orchard as though to bury the thing bothering him. Especially does growing a Home Orchard furnish the ideal diversion, both mental and physical, for the professional and business man and woman whose work is of necessity confining. Practically every man and woman either owns or expects to own a Home, sooner or later. Many people own houses or places. It is true, no matter how much money is put in a house and grounds, unless it has that full homey appearance that fruit trees lend, namely "the horn of plenty," it is incomplete. There is a barrenness, a coolness, but the home with one or more grape vines running over trellis or pergola, a few satsumas, pecans, pears, peaches, plums, or apples with strawberry plants set in between trees is thoroughly attractive and inviting. Now, did you ever see a house and lot but that needed one or more of these providing they haven't them already—and few have. Our most learned dietitians are unanimous in stating one of the greatest needs of our diet is the addition of plenty fresh, raw fruit in order to obtain certain important vitamins. Fruits brought from market, as a rule, are gathered before ripe and lack the natural flavor that fresh fruit allowed to ripen on tree has.

Following is a list of home grown fruits we have here in South Mississippi every month of the year:

- January—Strawberries, Satsumas, Grapefruit, Kumquats, Pecans (stored.)
- February—Strawberries, Satsumas, Grapefruit, Kumquats, Pecans (stored.)
- March—Strawberries, Satsumas, Grapefruit, Kumquats, Pecans (stored.)
- April—Strawberries, Satsumas, Grapefruit, Kumquats, Dewberries.
- May—Strawberries, Peaches, Plums, Blackberries, Dewberries.
- June—Strawberries, Peaches, Plums, Apples, Grapes.
- July—Pears, Peaches, Apples, Grapes, Figs, Scuppernongs.
- August—Pears, Peaches, Apples, Grapes, Figs, Scuppernongs.
- September—Pears, Peaches, Apples.
- October—Pears, Pecans, Apples, Walnuts.
- November—Pears, Pecans, Satsumas, Kumquats, Grapefruit, Walnuts.

PIGFORD NURSERY

A. A. PIGFORD
Big Level, Lumberton, Miss.

You Will Find Here a Tree or Plant for the Orchard, Field, Garden or Yard. These Plants are of Best Variety, from Hardy Stock and Free from Disease.

PIGFORD NURSERY

A. A. PIGFORD
Big Level, Lumberton, Miss.

ORANGES



SATSUMA—Owari Variety.

Not until a few years ago did we know we had a variety of orange that would grow profitably in this section, thinking that only Southern Louisiana, Florida and California climate and soils were suited to oranges. But now the Satsuma has been given a thorough trial, has succeeded far beyond our expectations. Personally I always wanted to own an orange grove never thinking such a thing would some day materialize in South Mississippi. But now we have Satsumas, Navel Oranges, Kumquats and Grapefruit growing on both sides of the house, in other words, we are practically living in an orange grove and do not realize hardly how it came about. We derive great pleasure and satisfaction from the rich green foliage during winter when other trees are bare, in the spring the delicate, sweet odor of real orange blossoms, the setting of fruit then the ripening and finally the eating. Oranges are much better when pulled directly from tree and eaten right then and there.

The Satsuma is the so called "kid glove" orange because the skin peels off like a kid glove. It bears beginning second year after setting usually where tree is properly grown and handled, mature early in season before other oranges thereby commanding a fancy price. It is medium size, deep orange color, flattened, meat juicy, tender, sweet, delicious, different from any other variety, very hardy, standing cold remarkably well. Positively every home in the citrus belt should have one or many Satsuma trees.

Large commercial orchards of Satsumas are being set in Mississippi, Alabama, Louisiana and Florida. The supply of nursery stock has never been sufficient to enable many growers to put trees out on a large scale. There is no doubt that a commercial Satsuma orchard is ONE OF and some growers are of the opinion THE BEST investment can be made in our lower Gulf Coast sections. Judging from trees grown at Lumberton by Mr. Bass and at Poplarville by Mr. Scarborough this is true. Both of these gentlemen set Satsumas as long as 15 years ago when this variety of orange was first introduced in this section of the country. These trees, as all well cared for Satsumas usually begin bearing anywhere from 1 to 5 dozen fruit, second year after setting out, increasing rapidly after they become well established. Mr. Bass has trees at six years of age producing 600 oranges and Mr. Scarborough in 1922 had trees that produced 2200 oranges per tree at 15 years of age. Now, if you can draw on your imagination enough to see one tree loaded to the ground with 2200 fruit, you will see a sight one can never forget. From about 100 trees of different ages in their orchards these men are prepared for old age and can well live on the income from his orchard. Why, is it everyone can't see far enough ahead and set out orchards of Satsumas, Pecans, Pears, Etc., to keep them comfortable and not dependent upon their children or friends, in old age?

OUR TREES are budded and grafted onto the hardy citrus trifoliata root which stands the cold. Our wood came from old bearing trees, the past year bearing estimated from 1500 to 2000 oranges per tree. For several years nurserymen have not been able to supply the demand for trees. We have several thousand fine, thrifty trees but have not anything like enough to supply the demand; therefore,

we urge you to place your order at once to be sure of getting them.

Distance for setting from 15 to 20 feet. The first 3 or 4 years most growers bank dirt up around tree about 2 feet high to give protection during winter time and remove this as soon as the ground begins to warm up in spring.

We have some very choice specimen trees for lawn purposes. Be sure to order some Satsumas early. See Price List.

Kumquats.

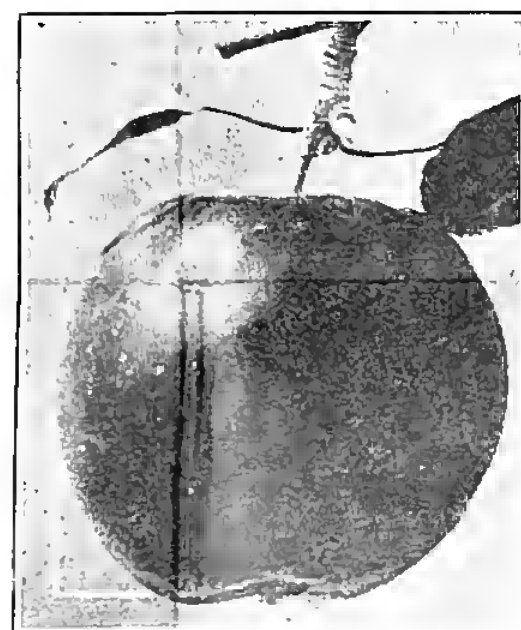
This is one of the most decorative fruits we have also fine for eating raw as well as making marmalades, etc. The foliage is rich evergreen and with clusters of the small yellow fruit it puts the finishing touch to the fruit basket. They are as hardy as Satsuma. Our stocks grafted on the hardy Citrus Trifoliata stock.

You would enjoy having one or more trees in your yard. See Price List.

GRAPEFRUIT—Duncan Variety.

This is the very best variety of Grapefruit. The tree grows off rapidly, fruits early usually second year after setting. Grapefruit grows anywhere the Satsuma does. Our trees are fine and vigorous, budded on Citrus Trifoliata stock. The fruit is large, bright yellow, smooth skin, flesh juicy and melting. For a breakfast dish and for salads the Grapefruit has no superior. Be sure to set enough trees for home use at least. See Price List.

APPLES



Don't you remember the fine big red and yellow apples of the old home place? Somehow for the past few years we have depended upon the northern and western grown apples, when we can and do have fine apples right here at home. The old orchards have been neglected and we have failed to set new ones. It is not necessary to have many varieties of apples in order to have all the fruit one needs for home use. Like peaches the orchard should contain varieties which ripen in succession all during season. Be sure to set a few trees this season.

Early Harvest. This is one of the earliest varieties, beginning to ripen in June. It is round, yellow, flesh white, tender juicy, crisp with a rich subacid flavor. Tree very prolific and hardy.

Red June. This is the other early apple best for home. It is a rich red, round, fine flavor. Ripens in June. Tree very productive. A beautiful sight in June when loaded with red apples.

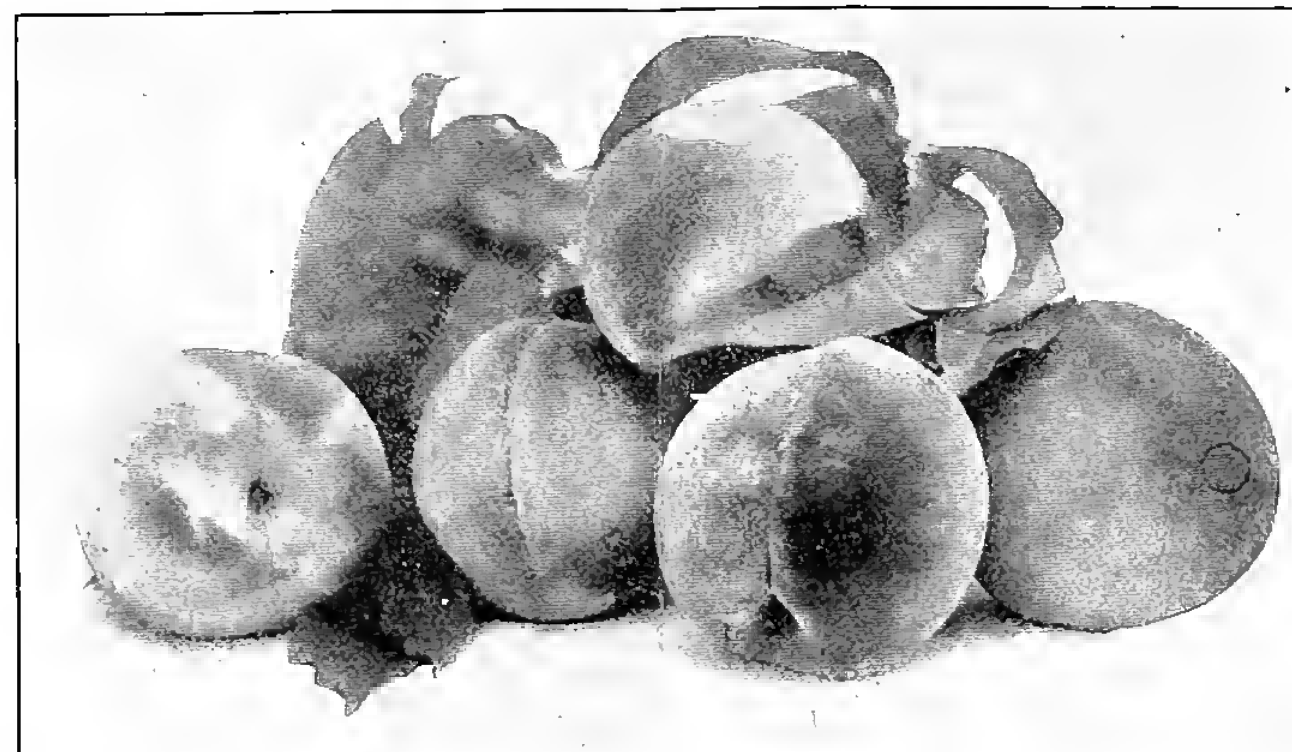
Horse. Everyone knows this variety. Large, yellow flesh, coarse, subacid. Fine for cooking. Very popular in the South. Fine for storing and mellowing. You will need one or more trees of this variety.

Delicious. This is a very popular variety for fall and early winter use. Fruit, large, brilliant dark red, flesh fine grained, crisp, melting, juicy, with a delightful aroma. Very high quality. Fine keeper and shipper.

Stayman's Winesap. Large, bright red, fine, juicy, extremely productive. Tree vigorous grower, adapting itself to different soils. Ripens in Fall. One of the best varieties.

Our Trees are the finest we ever saw. They are grafted, grown on new ground and have a heavy root system. See Price List.

PEACHES



Peaches are at home on the clay subsoil of the South. Our climate is ideal for peach growing and many large commercial orchards are being set. For family use by setting two or more varieties which ripen in succession we have peaches from about May 20th through the summer months to middle of September. No one except those who have tried it knows how fine it is to have fresh ripe peaches directly from the tree any time you want to eat them.

We grow the best varieties only. We have both the June buds and 2-year trees. Trees should be set about 18 feet apart.

Early Rose. This is one of the earliest varieties. Fine, large, juicy red blush, very hardy. Early to bear and last to bloom. Prolific.

Mayflower. This is the other early variety we grow and have found to be very fine. By having early fruit, if one has a surplus, you can always get a fancy price for it. It is beautiful red, large, juicy, very prolific, late to bloom thereby missing late frosts.

Carmen. One of the best varieties that grows. It is the second variety to ripen. Large, round, flesh white, skin yellow with red blush, sweet, juicy. None better.

J. H. Hale. Very popular, ripens after Carmen; large, golden yellow skin, deep yellow flesh, red blush fine and sweet. Tree very hardy and prolific.

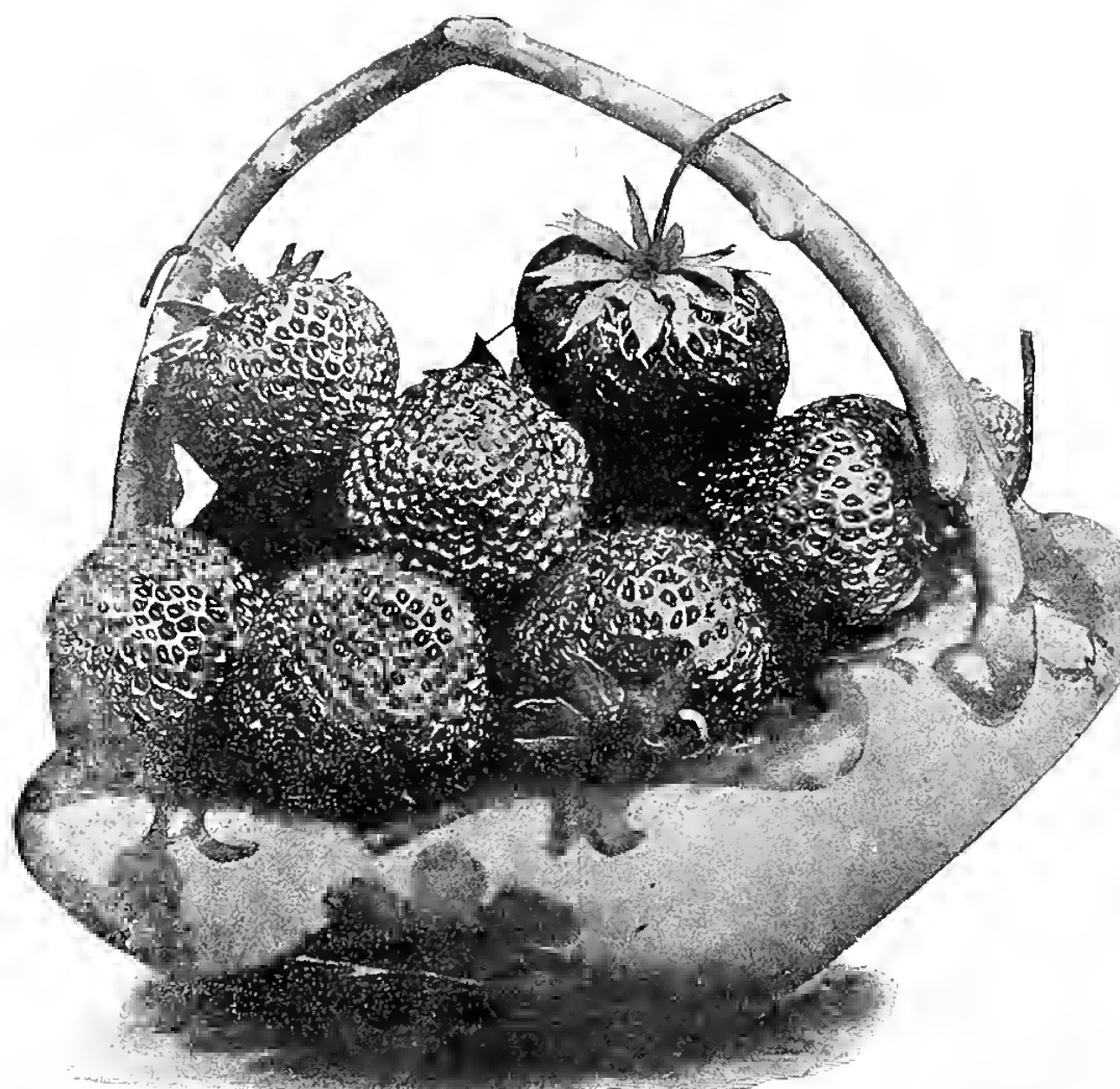
Hiley Belle. This variety ripens also right after Carmen. It is a very fine variety. Rich, creamy white with fine blush, firm, excellent, free.

Elberta. A well known variety, large yellow, red cheek, firm, fine for eating, preserving or shipping. Leading market variety. Freestone.

September Cling. Some people like a late peach. This is the best late variety, large white with red cheek, fine flavor cling. Heavy bearer.

It is a good idea to set a few trees every year or two, in this way have new trees coming on all the time. See Price List.

STRAWBERRIES



The Strawberry is the first fruit to ripen and for this reason especially it is important to have. By growing an early variety like Excelsior and a medium to late like Klondike we have strawberries from Xmas through June, at which time many other fruits are beginning to come in freely. Who does not like strawberries with sugar and cream with or without a cereal for breakfast? Somehow it sets one off in tip top shape for the days work. How about a straw-

berry short-cake topped with whipped cream for lunch? It requires only 100 to 300 plants to furnish all the berries for the ordinary size family. If you want a surplus 1,000 plants are not too many. Our plants are strong, thrifty, healthy, filled with fruit-bearing stamina.

Best Time To Set Plants here in South is from October to March. By setting them early in winter they make a splendid crop of fruit the following spring.

STRAWBERRIES

Excelsior. This is the best early berry for this section. It begins to ripen often in January (depending on weather conditions) and fruits a heavy crop in Spring. We seldom fail to harvest berries for desert Xmas, New Years, Etc. Fruit is delicious aromatic, beautiful and red. Vines rapid growers, vigorous.

Klondike. This berry is the one grown most extensively of all strawberries, both for home and market purposes. It is a large, dark red berry, fine shipper; being firm, not easily bruised, fine flavor. We know a party who actually sold \$600.00 worth from one-third of an acre of this variety last spring. Could any one want anything better? Plants are strong, rapid growers, healthy.

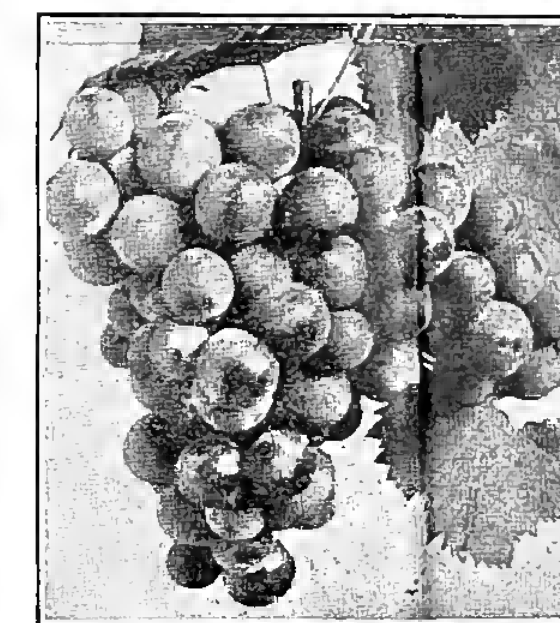
Be sure to get a strawberry patch. Prepare ground as for garden purposes, make rows either 18 inches or three feet wide, set plants 12 to 15 inches in drill. Keep free of grass and weeds. See Price List.

PLUMS.

This is a fruit everyone could have and should have as they are so easily grown, bear so early and so heavy, fine for eating raw and for canning. For the past few years they have brought fancy prices on local market here, from 10c to 25c per dozen. Single trees this season bore several bushels of fine fruit. Canning factories were eager for all surplus fruit, at attractive prices. Our trees are grown on plum stock, choice, stocky, thrifty trees.

Large Red June is no doubt the best Plum for all purposes. Fruit big, juicy, sweet, flesh light lemon yellow, firm, cling to half cling, small pit. Fruit cordate and very prominently elongated at apex; suture deep, deep red all over with handsome bloom. Very showy. Tree extremely productive and vigorous. Don't fail to include several in your order. See Price List.

GRAPES



The grape vine when properly trained makes a beautiful covering for trellis and is an ornament in any yard. It is very hardy, comes into bearing early usually second year, requires little space and yields a heavy crop of delicious fruit practically never missing a crop. Grape juice is easily and quickly made at home, is one of the most cooling, thirst quenching drinks.

Niagara. This is the very popular and profitable early grape. It is white or cream colored when full ripe, large, full clusters, large fruit, sweet, juicy. The two year vines in our nursery bore as many as 22 large full bunches per vine this past season, in fact, at the time of bearing they were only 17 months old. Vines are vigorous, rapid growers. You will never regret setting several.

Concord. The Concord ripens a few days later than the Niagara. It is the well known bluish purple or black grape. Used very extensively for market purposes. Bunches large and compact; berries large, round, juicy sweet, aromatic. Vines vigorous, rapid grower. Juices, jellies, etc., made from it has that rich purple color.

Delaware. Ripens after the Concord. Bunches medium size, rather compact, berries small to medium, skin beautiful red color turning dark as they ripen, very sweet, vinous and aromatic. Makes beautiful jellies, etc. Vines rapid grower, thrifty.

Grapes do best on well drained soil, and a warm sunny exposure, although they will grow and fruit well on most any soil. They should be set about 8 feet apart. Keep well fertilized and cultivated. See Price List.



EVERGREENS.

Most home grounds need more Evergreens, in other words, more LIFE during the winter months, especially when other shrubs and trees are bare of foliage. We, in the lower South have such a choice of so many different kinds of Evergreens. Usually there is plenty of color given by many different flowers but there is a lack of greenery. You have, we are sure, when driving along either in town or country noted, that with just a little touch of greenery to some otherwise beautiful grounds what a vast improvement it would make. And right here is where the Satsuma comes in, being an Evergreen it retains that glossy green foliage all winter besides bearing fruit in spring and summer.

PALMS—Sabal Palmetto.

The Palm lends charm and dignity to the Home Grounds that at once stamps the owner in the eyes of the public as being progressive, up to date a lover of the best in ornamentals. Only in recent years have we known there was a variety of Palm that would grow this far North. The tall stately palm gives such a tropical air to a home especially if combined with orange trees. We hope some time that we will have growing along our up-to-date highways the hardy palms as we now have in South Florida and California.

The Sabal Palmetto is a fan shaped, dark, rich green leafed Palm. It grows very tall, making a beautiful specimen tree for lawn purposes or a fine tree for background, giving height. Also fine for massing other shrubs around. It is claimed to grow as far north as Cape Hatteras. The first few years it is well to play safe and use some protection. After it is four or five years old, with the usual winters, it is safe. Our trees will be two years old this winter and at this age it is a good time to transplant them. All evergreens grow very slowly the first two years, therefore, these are now 12 to 18 inches high. They should double this growth next year by proper handling. For the first few years they make fine tub or large pot plants.

This is your chance to get as many as your yard needs. Plants are shipped B. & B. i. e. baled and burlapped. See below. Price for nice, thrifty, branched trees, \$1.00 each.

Arbor Vitae—American. (Thuja Occidentalis) This is the leading and popular Arbor Vitae used for lawns, backgrounds, hedges, etc. It is very hardy, beautiful rich green foliage, compact globular shaped growth. Can be sheared to any desired shape. Price—12" to 18" trees B&B \$1.25 Price—18" to 24" trees, B&B \$1.75 Very Choice—24" to 36" trees, B&B \$2.50

What Is Meant By B. & B. In order to prevent stopping or checking growth of tree a sufficient size ball of dirt is taken up with roots, packed in such a way to insure soil adhering to roots therefore is no loss of growth by transplanting. This is a tedious, particular job. When trees are set, do not remove the burlap from trees. After tree is set proper depth take knife and slash the burlap in 3 or 4 places.

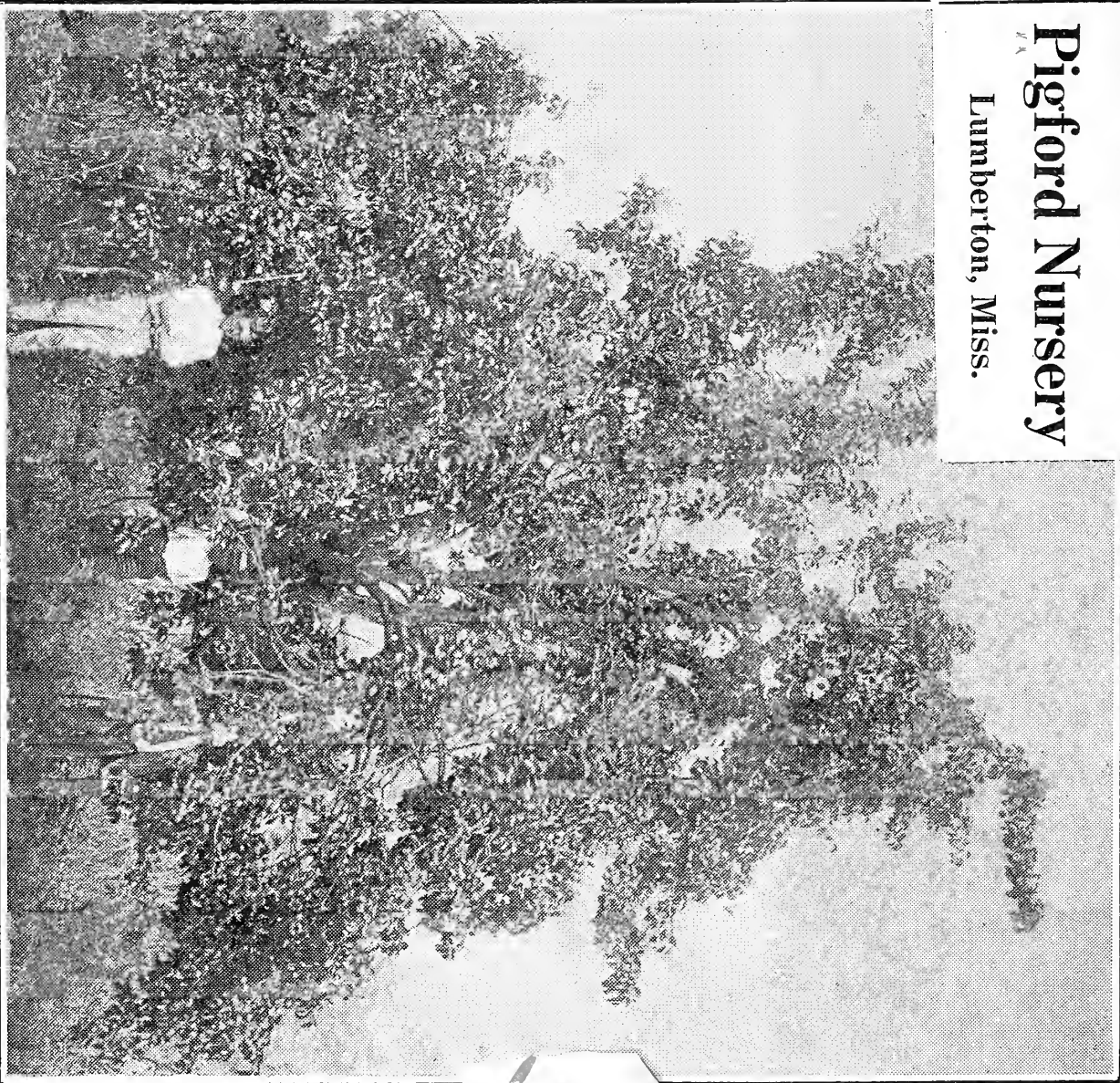
DECIDUOUS TREES.

Lombardy Popular. This is one of the finest trees for sky line and therefore used so much in the best planned Home Grounds. Some landscape gardeners claim it is their salvation because there is no other tree that adds so much. Its foliage is rich, glistening in the sunlight and wind, a mingling of reddish brown on beautiful green leaf. Extremely rapid grower, tall, stately, holding its branches close and upright. We offer only the choicest trim trees. Heavy root system. Price—4-Ft. to 8-Ft., each 50c

Silver Poplar. Because so many customers admire the beautiful Silver Poplar we decided to grow some for sale, consequently have several hundred choice trees. They grow rapidly, make a fine shade tree for lawn, street or any place where a rapid growing shade is desired. The top of leaves are a rich green and the underside is a velvety silver color. They are very attractive when the least bit of wind is blowing with the two colors dazzling in the sunlight. Price—3-Ft. to 6-Ft., each 50c

Pigford Nursery

Lumberton, Miss.



BRIGHTLESS PINEAPPLE SAND PEAR TREE.
34 years old, produced in 1922 60 bushels fine fruit which sold on premises for \$1.00 per bushel. Owned by H. E. Smith. The yield and profits from established Sand Pear Orchards of this variety are remarkable.

Pigford Nursery
Lumberton



Penalty for private use to avoid the
payment of postage, \$300.

U. S. DEPARTMENT OF AGRICULTURE,

WASHINGTON, D. C.

BUREAU OF PLANT INDUSTRY,
Horticultural Investigations. 8-4767 GOVERNMENT PRINTING OFFICE

MAIL ROOM

BLUEBERRIES

Our "Cluster Blueberry Tree" was discovered growing in North Florida about 35 years ago. They were so much superior to other varieties growing that many trees were set in orchards, fertilized and cultivated until now there has been developed a wonderful industry in Blueberry culture.

It grows well on various soils, from light sandy to heavy wet, also on acid peatty soils where nothing else thrives. The tree grows rapidly and comes into bearing generally second year after setting out, producing about 1 quart per tree, third year 3 quarts per tree, etc. Average yield for an eight year old tree is 25 to 30 quarts and for a ten year tree 35 to 50 quarts. The tree is unusually healthy, never any disease or insects found to disturb them.

The berry is large, blue black, tender skin, flesh juicy, delicious flavor. Most of us know how good huckleberries are but the Blueberry is many times superior. Nothing is better than Blueberries with sugar and cream unless it is a Blueberry pie with whipped cream.

There is no limit to the market for this wonderful fruit, bringing from 40c to 50c per quart. They ship remarkably well even without refrigeration.

We have a few thousand trees selected by and purchased from the most reliable Blueberry expert in Florida. Place your order early. A dozen trees should be in every home orchard.

PRICE

	Each	10	100	1000
1/2-inch caliper or about 2 feet high.....	55c	\$5.00	\$45.00	\$350.00
1 to 1 1/2-in. caliper or about 2 to 3 ft. high....	85c	8.00	75.00	650.00

FIGS

Let's not forget to find a few vacant places in the Home Orchard for that wonderful fruit, the Celestial Fig, which every one likes both raw and preserved. Trees do best in corners about the house where the roots will not be broken. We grow the small blue fig because it is best and hardiest.

PRICE—2 to 3 feet, each 50c; 10 for \$4.50.
3 to 4 feet, each 65c; 10 for \$6.00.

PIGFORD NURSERY

Big Level

Lumberton, Mississippi

