

## **Historic, archived document**

Do not assume content reflects current scientific knowledge, policies, or practices.



62, 83



OUR NEW HOME

# SATEX SEED COMPANY

SAN ANTONIO, TEXAS

# 1924

SEED AND POULTRY  
SUPPLY ANNUAL

# Stop --- Just a Minute

We know that this is one of the many catalogs you will receive, but before laying this book aside, kindly look it over as it will pay you. Comparison of prices and quality will convince you that we are the logical people with whom to place your order for Seed and Poultry Supplies.

## DID YOU EVER WAIT

until the last minute to buy your garden seed and then rush to the nearest grocery or hardware store for your supply. Do not wait this year until planting time to place your order for seed. Select what you will need from this catalog and send in that order now and know that you are going to get seed that are absolutely fresh, tested for germination and true to name. Commission seeds are placed with the merchants during the months of June, July and August, and as new crop seeds do not come in until October to December, the commission seed are at least a year old when you buy them. These seeds are not tested and the best grade of seed cannot be placed in commission packages or the seed merchant could not come out on the enormous overhead in selling them. Satex Seeds are a year fresher, better germination and large packages. You do not pay for the high priced salesman, freight on cases both ways, returned seed and merchants profit.

We maintain an expert poultry man who will be pleased to answer your poultry problems and help you in any way to make your poultry raising profitable.

For the benefit of Stock and Poultry Raisers, we issue a monthly price list of feeds and will be pleased to mail you a copy every month upon receipt of your name and address. This price list will keep you posted on the grain market.

---

## GENERAL INFORMATION

### Read Carefully

The prices in this catalog cancel all previous prices and are subject to change without notice.

#### POSTAGE CHARGES

Satex Seed Company deliver free all seed in packets, ounces and pounds, given in this catalog. For seeds shipped into Mexico, add 6c per pound to catalog price for each pound ordered. We do not deliver free any plants, trees, roots, or nursery stock, nor any bulbs, (unless priced as postpaid), nor any insecticides, tools, implements, etc. Potatoes and Field Seeds are quoted always f. o. b., San Antonio, Texas.

**NONE-WARRANTY—Note.** There are many contingencies to be encountered in growing plants from seed and in setting out plants that are dependent on the weather and other conditions over which we have no control, that success in planting is not altogether dependent on the seed or plant. We send out only seed that have been tested for germination, and which we believe will produce the kind of variety and plant represented; but:

Satex Seed Company gives no warranty, express or implied, as to description, quality, productiveness or any other matter of any seeds, bulbs, plants or trees they send out and they will not be responsible in any way for the crop. If the purchaser does not accept the goods on these terms, they are at once to be returned.

# HOW TO ORDER BY MAIL

**YOUR NAME AND ADDRESS**—Be sure that your name and address in full are written very plainly. We have on file quite a few orders without any name and address, and if you should have mailed us an order and failed to receive same during the past year, kindly write us, giving approximate date of order and copy of order, and if on file, we will give same our attention. If you do not receive any goods ordered from us within ten days after the order is sent, kindly let us hear from you, and we can then avoid further delay. We fill all orders the day received, unless unable to supply same at the time, and will advise you accordingly, so do not hesitate to write us, if the goods do not show up.

**CASH WITH ORDER**—The proper way is to send remittance in full to cover order and postage. We send orders C. O. D. only if 25 per cent of the amount of order is enclosed. **Plants are never sent C. O. D.**

**REMITTANCES** should be made by Postoffice or Express Money Order or Bank Draft. On orders up to One Dollar, we will accept clean unused postage stamps. If currency is sent, letter should be registered, and if local checks are sent they should be certified. We do not accept responsibility for orders, which never reach us.

## FREE SEEDS FREE POULTRY SUPPLIES FREE

We want the names of five gardeners or poultry raisers. Send us your order for \$1.00 worth of garden or flower seeds and the names and addresses of five of your friends interested in gardening or poultry raising, and we will send you absolutely free twenty-five cents worth of flower or garden seeds, your own selection or your choice of any of the following premiums. **This offer does not apply to order of Poultry Feeds, Remedies or Supplies, Garden Tools or plants. Orders must be strictly Garden or Flower Seeds.**

### Free Offer with \$1.00 Seed Order:

- No. 1—25c Garden or Flower Seed Assortment.
- No. 2—Star Fountain and Feeder.....Page 40
- No. 3—12 Moes Aluminum Leg Bands.....Page 43
- No. 4—12 Spiral Leg Bands.....Page 43
- No. 5—1 No. 11 Moes Chick Feeder.....Page 41

### PARCEL POST RATES AND RULES GOVERNING FORWARDING OF SEEDS, BULBS, PLANTS, POULTRY SUPPLIES.

DOMESTIC PARCEL POST RATES		First Pound	Each Addi-
On Seeds, Bulbs, Plants, Poultry Supplies, etc.,		or Fraction	tional Pound
			or Fraction
FIRST ZONE—Within 50 miles of San Antonio.....		5c	1c
SECOND ZONE—Within 50 to 150 miles of San Antonio.....		5c	1c
THIRD ZONE—Within 150 to 300 miles of San Antonio.....		6c	2c
FOURTH ZONE—Within 300 to 600 miles of San Antonio.....		7c	4c
FIFTH ZONE—Within 600 to 1000 miles of San Antonio.....		8c	6c

**WEIGHT LIMIT**—Packages are subject to a limit of maximum weight in the first, second and third zone of 70 pounds; in all other zones of 50 pounds.

**ZONE RATES** may be had by applying to your postmaster who will tell you which zone you are in, with reference to San Antonio, or consult parcel post schedule above.

**POSTAGE** has to be prepaid and customers will kindly add same to their valued orders,

as packages cannot be mailed charges collect at destination. This refers to larger quantities than prices quoted postpaid.

**PARCEL POST, C. O. D.**—Packages may be sent C. O. D. at an extra expense of 10c, which amount is added to the order.

**INSURED PARCEL POST**—If customers want their packages sent insured they will kindly add cost to their remittance. Rate—Up to \$5, 3c; up to \$25, 5c.

## BEANS

One pound to 100-foot row.

INOCULATE THIS  
SEED WITH  
FARMOGERM



LONGFELLOW

### BUSH WAX BEANS

**Improved Golden Wax**—One of the best beans in cultivation. Pods are long, nearly straight, broad and flat, and golden yellow; seed white, more or less covered with two shades of purplish red. Pkt., 10c; lb., 40c, postpaid.

**Prolific Black Wax**—Early; pods round, about five inches long, fleshy, brittle and stringless, deep yellow in color and attractive. A standard sort. Pkt., 10c; lb., 40c; postpaid.

**Pencil Pod Wax**—Early and very productive. Pods large, 5 to 6 inches long, round, straight and creaseback, strictly stringless, free from fiber, fleshy and brittle; of highest quality; color very clear yellow. Pkt., 10c; lb., 40c, postpaid.

**Crystal White Wax**—Pods small, about 3½ inches long, round and curved with crease in back, very fleshy and brittle. Color greenish-white with silvery shade. Used mostly for canning. Pkt., 10c; lb., 50c, postpaid.

### POLE BEANS

**Kentucky Wonder**—An excellent greenpodded variety; enormously productive, the long pods hanging in great clusters along the entire vine. They cook very tender and melting. Seed dark brown. Pkt., 10c; lb., 40c, postpaid.

**Kentucky Wonder (Wax)**—One of the earliest of the pole wax sorts. Pods eight to nine inches long, thick, decidedly crease-back; very fleshy, brittle, but stringy. Attractive and fair quality. Color light yellow. Pkt., 10c; lb., 45c, postpaid.

### BUSH GREEN BEANS

**Hopkins Improved Red Valentine**—A very hardy, early and productive standard sort. Pods 4½ inches long, round and creaseback, medium green, slightly stringy and of good quality. Pkt., 10c; lb., 35c, postpaid.

**Black Valentine**—Beautiful large pods about 6 inches long, slender, round and nearly straight, fine grained, dark green in color. Seed black. An early, productive, profitable gardeners variety. Plant more vigorous and productive than Red Valentine and pods darker green. Pkt., 10c; lb., 35c, postpaid.

**Stringless Green Pod**—The pods are medium green, five to six inches long, cylindrical, larger than those of the Red Valentine, but not quite as fleshy, of equally high quality and remain crisp and tender longer. Absolutely stringless. Pkt., 10c; lb., 40c, postpaid.

**Longfellow**—Moderately early and productive. Pods dark green, 6 to 7 inches long, very slender, straight and round; very slightly stringy, tender, fine grained, attractive and of good quality. Pkt., 10c; lb., 35c, postpaid.



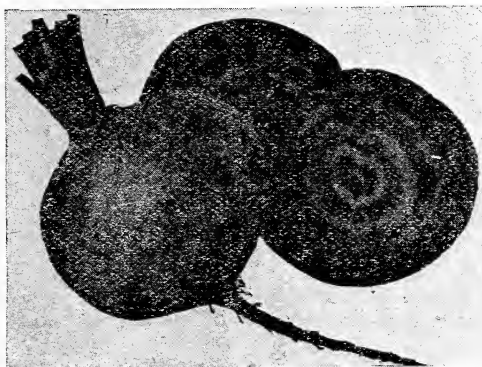
BUSH LIMA

**POLE LIMA BEANS**

**Carolina or Sieva**—Beans small and white on the order of Henderson Bush Lima. Plant of large growth, very early, vigorous and productive. Pkt., 10c; lb., 40c, postpaid.

**BUSH LIMA BEANS .**

**Henderson's Dwarf Lima**—The earliest variety of dwarf Lima Beans, fully two weeks earlier than any other variety. Plants about 16 inches high and very prolific. Beans are small. Recommended to anyone desiring early lime beans. Pkt. 10c; lb., 35c, postpaid.

**DETROIT DARK RED**

**Landreth's Best**—45 days, five days earlier than Detroit, more ball-shaped—altogether a superior sort. Slimmer tap roots—more mouse tailed. Flesh solid, deep blood red, of excellent quality, sugary. Skin smooth and free from side fibers. Pkt., 5c; oz., 30c; ¼ lb., 45c; lb., \$1.25.

**Early Blood Turnip**—A standard medium early variety of excellent quality; also good for summer and fall use. The flesh is deep red, zoned with lighter shade; sweet, crisp and tender; nearly round. Pkt., 5c; oz., 10c; ¼ lb., 30c; lb., 75c.

**Crosby's Egyptian**—We have an unequalled strain of this superb, extra early sort. A flattened globe shape; skin very dark red, flesh a trifle lighter in color and slightly zoned; tops small. Pkt., 5c; oz., 10c; ¼ lb., 30c; lb., 90c.

**CABBAGE**

½ oz. to 100-foot row.

**Early Jersey Wakefield**—The most widely known and popular extra early variety. Heads are broad cone shaped and very solid. Pkt., 5c; oz., 20c; ¼ lb., 60c; lb., \$1.50.

**Charleston Wakefield**—About one week later than Early Jersey Wakefield, but the conical heads are fully one-half larger. Pkt., 5c; oz., 20c; ¼ lb., 60c; lb., \$1.50.

**Stein's Early Flat Dutch**—An early and excellent type of Early Flat Dutch, with a medium stem; heads round, flat and solid. Pkt., 5c; oz., 20c; ¼ lb., 60c; lb., \$1.50.

**Copenhagen Market**—Very fine; stem short, heads large, round and solid, with few outer leaves of an upright growth. Nearly as early as Jersey Wakefield. Pkt., 5c; oz., 25c; ¼ lb., 75c., lb., \$2.00.

**Early Drumhead**—We recommend this sort for markets that require a very large and deep head. Plant large, with few outside leaves, stem of medium length. A sure heading variety of excellent quality. Pkt., 5c; oz., 15c; ¼ lb., 50c; lb., \$1.50.

**BEETS**

**Swiss Chard or Spinach Beet**—No other garden vegetable will produce more nutritious food from a small space than Swiss Chard. Of rapid growth. The foliage and leaf-stalks used same as asparagus or spinach. Pkt., 5c; oz., 10c; ¼ lb., 30c; lb., 90c.

**Extra Early Eclipse**—A fine early table beet, top-shaped or tapering, globe shaped. Flesh deep crimson, zoned with pink. Crisp and sweet. Pkt., 5c; oz., 10c; ¼ lb., 30c; lb., 80c.

**Detroit Dark Red Turnip**—Roots roundish, smooth; dark red; flesh bright red, zoned with lighter; crisp, tender, sweet; a good keeper. Pkt., 5c; oz., 10c; ¼ lb., 30c; lb., 90c.

**EARLY JERSEY WAKEFIELD**

## CABBAGE

**Surehead** — A compact-growing, maincrop cabbage of uniform large size; thick, solid heads. **Pkt.**, 5c; **oz.**, 20c;  $\frac{1}{4}$  lb., 60c; lb., \$1.75.

**Volga, or Russian**—A new medium sized sort, with round, solid heads, which are deep through. It is extremely hardy. **Pkt.**, 5c; **oz.**, 35c;  $\frac{1}{4}$  lb., \$1.00; lb., \$3.00.

**Chinese Cabbage (Pe Tsai)**—Sometimes called Celery Cabbage; resembles Cos Lettuce as much as cabbage, though with a decided cabbage flavor. **Pkt.**, 5c; **oz.**, 50c;  $\frac{1}{4}$  lb., \$1.50; lb., \$4.50.

**Red Rock**—The largest and surest heading red cabbage, round, solid and dark red, medium to long stem. **Pkt.**, 5c; **oz.**, 25c;  $\frac{1}{4}$  lb., 75c; lb., \$2.00.

**Drumhead Savoy**—Heads round, compact and solid; leaves numerous, deep green and coarsely crimped. **Pkt.**, 5c; **oz.**, 25c;  $\frac{1}{4}$  lb., 75c; lb., \$2.00.



STEIN'S FLAT DUTCH

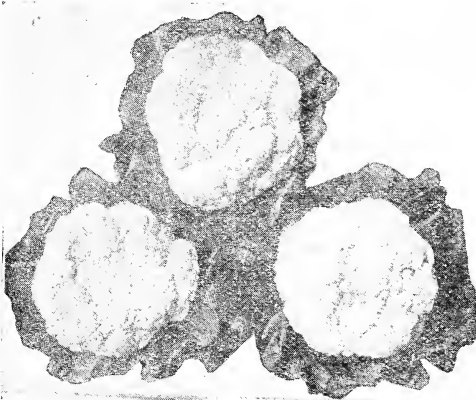
**Danish Ball Head**—One of the very best winter sorts and one of the most hardy; heads round and very solid. Our selected stock of this cabbage is unexcelled. **Pkt.**, 5c; **oz.**, 20c;  $\frac{1}{4}$  lb., 60c; lb., \$1.75.

**Large Late Drumhead**—A favorite winter cabbage for shipping. The heads are large, solid and of good texture, flattened on top, but very deep. Can be kept in good condition until late in spring. **Pkt.**, 5c; **oz.**, 25c;  $\frac{1}{4}$  lb., 75c; lb., \$2.00.

## CAULIFLOWER

$\frac{1}{4}$  oz. to 100-foot row.

**Early Snowball**—We believe this to be the very best variety in existence. It is early, of dwarf compact growth and sure to produce fine heads. Very much depends on the quality of Cauliflower seed. We handle only the very best Danish-grown seed from a well-known, reputable grower, which we confidently recommend. **Pkt.**, 25c; **oz.**, \$2.75;  $\frac{1}{4}$  lb., \$8.00.



EARLY SNOWBALL

## CELERY

**GOLDEN SELF-BLANCHING**—The best market variety, especially for early summer. The plant is naturally golden-yellow (both stem and leaves), but needs to be blanched to make it brittle and fit for table use. Forms a rather small bunch. **Pkt.** 10c; **Oz.** 75c;  $\frac{1}{4}$  Lb. \$2.00.



## CARROTS

1 oz. to 100-foot row.



OX HEART

**Orange Danvers Half Long**—Broad shouldered, cylindrical, admirable in color. Always a favorite because reliable and attractive in form, color and weight. Most popular sort. **Pkt., 5c; oz., 10c; 2 oz., 20c; ¼ lb., 30c; lb., \$1.00.**

**Oxheart or Guerande**—One of the most popular and best croppers among the short carrots. The shape is particularly desirable for heavy soil. The true type is about four and one-half inches long and three and one-half inches thick at the shoulder. It tapers slightly to the bottom, and is very stump rooted. **Pkt., 5c; oz., 10c; 2 ozs., 20c; ¼ lb., 30c; lb., \$1.00.**

## CORN

### SWEET OR TABLE VARIETIES

½ lb. to 100-foot row.

**Golden Bantam**—Early; golden yellow in color and of highest quality. Ears 6 to 7 inches long, 8 rowed, bearing from 2 to 4 ears to a stalk. **Pkt., 10c; lb., 35c; postpaid.**

**Extra Early Adams**—This is not a Sugar Corn, but is earlier. The ears are short, 12-rowed, and while in condition for roasting cannot be told from Sugar Corn. It will stand earlier planting than Sweet Corn and is a favorite wherever worms work badly on early corn. **Pkt., 10c; lb., 25c, postpaid.**

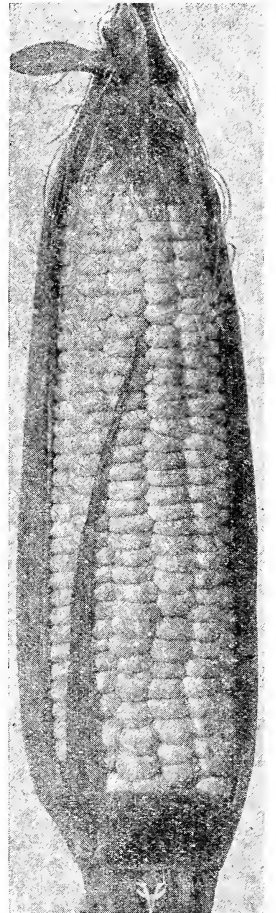
**Country Gentleman**—An especially fine quality corn. Ears 7 to 8 inches long, cob small, white and densely covered with long slender white grains without row formation. **Pkt., 10c; lb., 35c, postpaid.**

**Truckers Favorite**—A splendid early white Corn coming in directly after Adams Early, but much larger. Has a deep white soft grain. **Pkt., 10c; lb., 35c, postpaid.**

## COLLARDS

¼ oz. to 100-foot row.

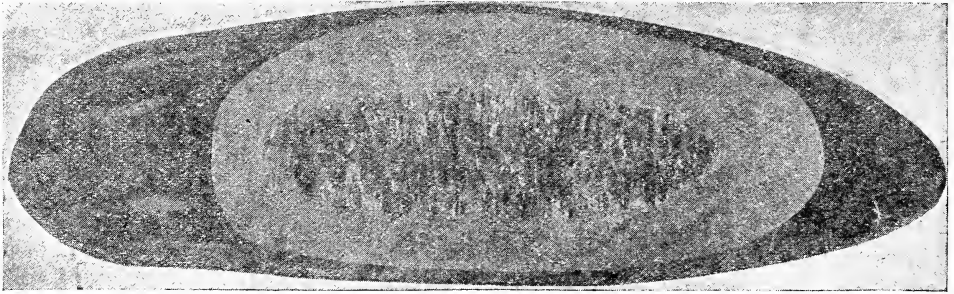
**Georgia Southern**—Plant 2 to 3 feet high, forming a cluster of tender undulating leaves at the top of its rather long stem; used as greens. **Pkt., 5c; oz., 15c; ¼ lb., 45c; lb., \$1.25.**



GOLDEN BANTAM

## CUCUMBERS

½ oz. to 100-foot row.



### IMPROVED LONG GREEN

**Improved Early White Spine**—Vines vigorous, fruiting early and abundantly. Fruit good-sized, straight and smooth. Splendid for table use and especially desirable for pickles. **Pkt., 5c; oz., 15c; ¼ lb., 40c; lb., \$1.25.**

**Improved Long Green**—Uniform in size, straight, smooth, and deep green in color. A great favorite for slicing. **Pkt., 5c; oz., 15c; ¼ lb., 40c; lb., \$1.25.**

**Improved Chicago Pickling**—Meets the most exacting requirements of critical pickle makers. Vines healthy and very productive. Fruit the right size, shape, color and quality. **Pkt., 5c; oz., 10c; ¼ lb., 30c; lb., 90c.**

**Early Fortune**—Early, good dark color and prolific. Fruits average about 10 inches. **Pkt., 5c; oz., 15c; ¼ lb., 45c; lb., \$1.25.**

**Arlington White Spine**—One of the most popular White Spine sorts. The fruits are very uniform, averaging 7 to 8 inches. It is extra early and very prolific. **Pkt., 5c; oz., 10c; ¼ lb., 30c; lb., \$1.00.**

**Extra-Long White Spine, or Evergreen**—A fine strain; smooth; frequently 10 inches long; round, handsome, very regular. **Pkt., 5c; oz., 20c; ¼ lb., 60c; lb., \$1.50.**

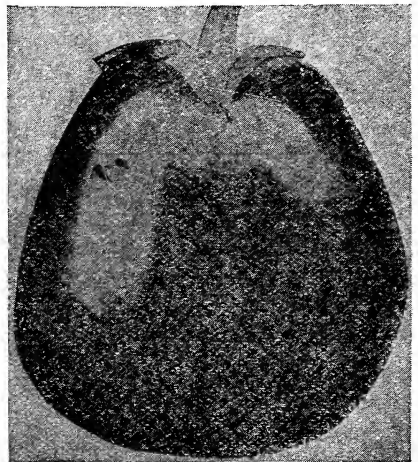
**Burrell's Earliest of All**—Earlier than any other strain of white spine and as well colored as any cucumber grown. The fruit is 6 to 7 inches long, very dark green with pale green stripes about one-third the length from the blossom end. **Pkt., 5c; oz., 15c; ¼ lb., 40c; lb., \$1.00.**

## EGG PLANT

¼ oz. to 100-foot row.

**Black Beauty**—Rich dark purple, large and symmetrical, maturing a little earlier than our Improved Large Purple, but usually not quite as large. Very desirable for the market, as the fruit holds its color for a long time. **Pkt., 5c; oz., 50c; ¼ lb., \$1.50; lb., \$5.50.**

**Improved Large Purple (Spineless)**—This variety is a general favorite both for market and home garden. The plant is spineless, large and spreading, with light green foliage. It usually produces four to six large, oval fruits of a splendid dark purple color. The vigor and productiveness of the plant and the large size, earliness and fine quality of the fruit makes it a most profitable variety for market gardening. **Pkt., 5c; oz., 50c; ¼ lb., \$1.50; lb., \$5.00.**



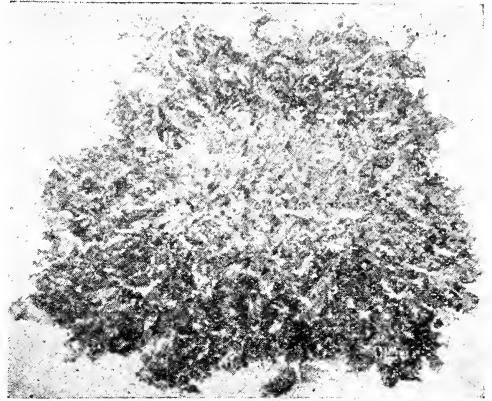
BLACK BEAUTY EGG PLANT

## ENDIVE

1 oz. to 100-foot row.

**Large Green Curled**—Has very curly leaves, the mid-ribs being white and whitish, and the outer edges very much indented and crested. A very attractive plant and one of the best varieties. **Pkt., 5c; oz., 15c; 2 ozs., 25c; ¼ lb., 40c; lb., \$1.25.**

**Ever White Curled**—The plants are moderately dense, with divided leaves, which are very light yellowish-green in color, even the outer ones being very light. This variety blanches readily to an attractive creamy white. **Pkt., 5c; oz., 15c; 2 ozs., 25c; ¼ lb., 40c; lb., \$1.25.**



GREEN CURLED SUMMER ENDIVE

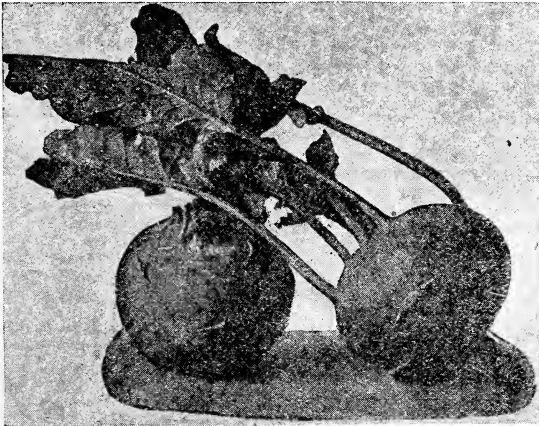
## KALE

¼ oz. to 100-foot row.

**Dwarf Curled Scotch**—A finely curled, spreading, low growing variety, very hardy and much used for greens. This sort sometimes called Norfolk, is grown extensively in the South for shipment, and is largely planted for the home garden. The leaves are long, and attractive bright green. This sort is often used for garnishing. **Pkt., 5c; oz., 10c; 2 ozs., 20c; ¼ lb., 30c; lb., \$1.00.**

## KOHL RABI

½ oz. to 100-foot row.



EARLY WHITE VIENNA

**Early White Vienna**—A turnip-like bulb, formed above ground, combining somewhat the flavor of cabbage and turnips. The bulb is large enough to be used in 10 to 12 weeks from time of sowing, and is most tender and deliciously flavored before fully matured. **Pkt., 5c; oz., 20c; ¼ lb., 60c; lb., \$2.00.**

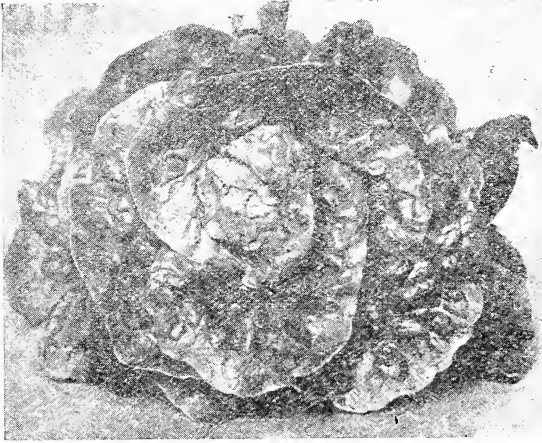
**Large Green**—This sort is also called Large White. It is hardy, quite late, and used for feeding stock. Bulbs large, weighing 8 to 10 pounds when fully grown; whitish green in color, leaves large and very numerous. **Pkt., 5c; oz., 20c; ¼ lb., 60c; lb., \$2.00.**

## LETTUCE

½ oz. to 100-foot row.

**Early Prize Head**—Forms a mammoth plant, in which even the outer leaves are crisp and tender; color bright green tinged with brownish-red. It is of superb flavor and very hardy. **Pkt., 5c; oz., 15c; ¼ lb., 45c; lb., \$1.25.**

## LETTUCE



BIG BOSTON LETTUCE

**Satex Special New York**—It is easily the most popular of all the lettuce on the market, and one you will be proud to have in your garden. Our stock of this seed is of the highest quality, and market gardeners will use no other than our Special strain. **Pkt., 5c; oz., 25c; ¼ lb., 75c; lb., \$2.00.**

**Big Boston—50 days.** A popular market variety, used largely in the South to grow winter lettuce for the northern markets. A light-green cabbage variety, slightly tinged with brown in the head. Has a fine golden buttery head. **Pkt., 5c; oz., 15c; ¼ lb., 45c; lb., \$1.25.**

**Hanson**—A fine large-heading variety. Leaves curled on the edges, light yellowish-green in color. The head is crisp and brittle and flavor excellent. Stands warm weather extremely well. **Pkt., 5c; oz., 15c; ¼ lb., 45c; lb., \$1.25.**

**Cos**—Forms oblong heads of large size. Considered by many as superior to any other kind. An entire distinct type of lettuce. Sometimes called Romaine Celery Lettuce. **Pkt., 5c; oz., 15c; ¼ lb., 45c; lb., \$1.25.**

**Iceberg**—A large crisp lettuce, always tender. Iceberg stands hot weather remarkably. Give each head 14 inches in row. The color is light green, lightly tinged with brown. Try this either for home or market garden. A little larger than Los Angeles and similar. **Pkt., 10c; oz. 15c; ¼ lb., 45c; lb., \$1.25.**

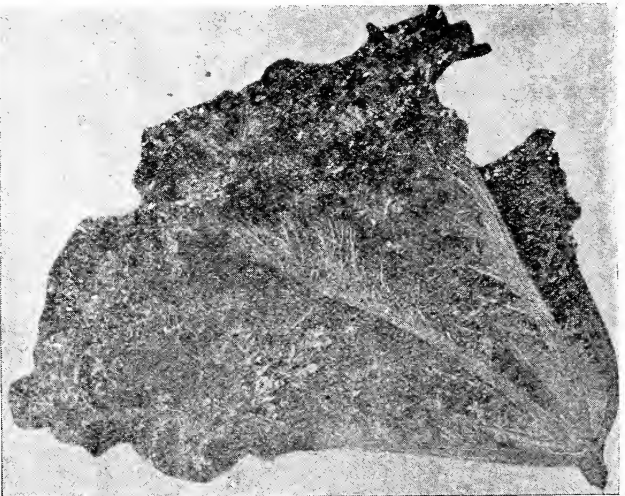
## MUSTARD

1 oz. to 100-foot row.

**Southern Giant Curled—30 days.** Leaves are large, light green with tinge of yellow, much crimped and frilled at edges. Plant is upright and slightly spreading in growth. This variety is highly esteemed in the South for the market, as well as for the home garden on account of its vigorous growth, hardiness and good quality. **Pkt., 5c; oz., 10c; ¼ lb., 30c; lb., 75c.**

**Large Smooth-Leaved** — 30 days. An excellent sort with very large, light green, plain or comparatively smooth leaves, borne well above the ground. This sort is preferred by many, as it is more easily prepared for the table than the rougher-leaved varieties. **Pkt., 5c; oz., 10c; ¼ lb., 30c; lb., 75c.**

**Chinese**—Leaves twice the size of White English; sweet and pungent. **Pkt., 5c; oz., 10c; ¼ lb., 30c; lb., 75c.**

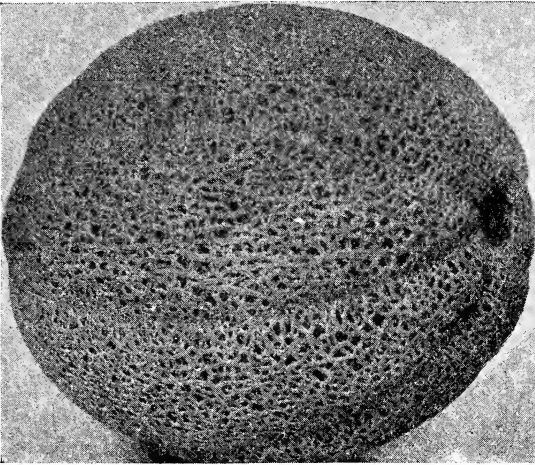


SOUTHERN GIANT CURLED MUSTARD

## MUSKMELON

½ oz. to 100-foot row.

**Rocky Ford, or Netted Gem**—The most largely cultivated variety in use. Grown in great quantities in Colorado. Fruit is slightly oval, finely netted and slightly ribbed. Flesh thick, green, very sweet and of fine quality, and high flavor. **Pkt., 5c; oz., 10c; 2 ozs., 20c; ¼ lb., 40c; lb., \$1.25.**



ROCKYFORD

the large melon growing districts of the South and West. **Pkt., 5c; oz., 20c; ¼ lb., 60c; lb., \$1.75.**

**Texas Cannonball Cantaloupe.** Medium in maturity and size and of flattened, rounded shape. In flavor it is first-class, and its dense netting makes it almost sun and insect proof, this being an immense advantage where insects are troublesome and melons liable to sunscald. Is almost all meat, seed cavity small. **Pkt., 5c; oz., 15c; ¼ lb., 40c; lb., \$1.25.**

**Extra Select Rocky Ford**—70 days. This seed is selected out of hand-selected fruit and is superior to the ordinary run. Flesh light green and of a delicate spicy flavor. Melon well ribbed and netted. No strain of Rocky Ford is better than this, which we offer as Extra Select. **Pkt., 5c; oz., 20c; ¼ lb., 70c; lb., \$2.00.**

**Honey Dew**—The delicious honey-like flavor of this new melon has met with instantaneous public favor and created a sensation wherever used. The fruit is of large size, weighing 8 to 10 pounds each. The rind is perfectly smooth and cream colored. The flesh is from 1½ to 2 inches thick, light green in color, very sweet and juicy. **Pkt., 10c; oz., 25c; ¼ lb., 75c; lb., \$2.00.**

**CASABA—GOLDEN BEAUTY**—Golden Beauty is bright yellow, about globular, with wrinkled skin, slightly pointed at stem end. The fruits are about 6 to 8 inches in diameter. The flesh is pure white and very thick. **Pkt., 5c; oz., 25c; ¼ lb., 75c; lb., \$2.00.**

## WATERMELON

1 oz. to 100-foot row.

**Halberts Honey**—Fully equal to Kleckley's Sweet, which it resembles. It is more even in outline, is blunter at the end, and the skin is of a richer, darker color. **Pkt., 5c; oz., 10c; ¼ lb., 25c; lb., 65c.**

**Pineapple**—One of the largest and sweetest varieties on the market. It is deep ribbed and heavily netted. It is twice as large as the Rocky Ford. The flesh is deep green, and of a most excellent flavor.

**Pkt., 5c; oz., 15c; 2 ozs., 25c; ¼ lb., 40c; lb., \$1.25.**

**Burrell's Gem**—An excellent small melon of the Netted Gem type; somewhat later than that variety and a fourth larger; fruit oblong, distinctly but not deeply ribbed and well netted; flesh deep salmon, of fine quality. **Pkt., 5c; oz., 15c; ¼ lb., 45c; lb., \$1.25.**

**Pollock's No. 25**—Best described as a salmon fleshed Rocky Ford, being identical in every way except color of flesh. It is rapidly superseding the green fleshed variety in

the large melon growing districts of the South and West. **Pkt., 5c; oz., 20c;**

**¼ lb., 60c; lb., \$1.75.**

**Texas Cannonball Cantaloupe.** Medium in maturity and size and of flattened, rounded shape. In flavor it is first-class, and its dense netting makes it almost sun and insect proof, this being an immense advantage where insects are troublesome and melons liable to sunscald. Is almost all meat, seed cavity small. **Pkt., 5c;**

**oz., 15c; ¼ lb., 40c; lb., \$1.25.**

**Extra Select Rocky Ford**—70 days. This seed is selected out of hand-selected fruit and is superior to the ordinary run. Flesh light green and of a delicate spicy flavor. Melon well ribbed and netted. No strain of Rocky Ford is better than this, which we offer as Extra Select. **Pkt., 5c; oz., 20c; ¼ lb., 70c; lb., \$2.00.**

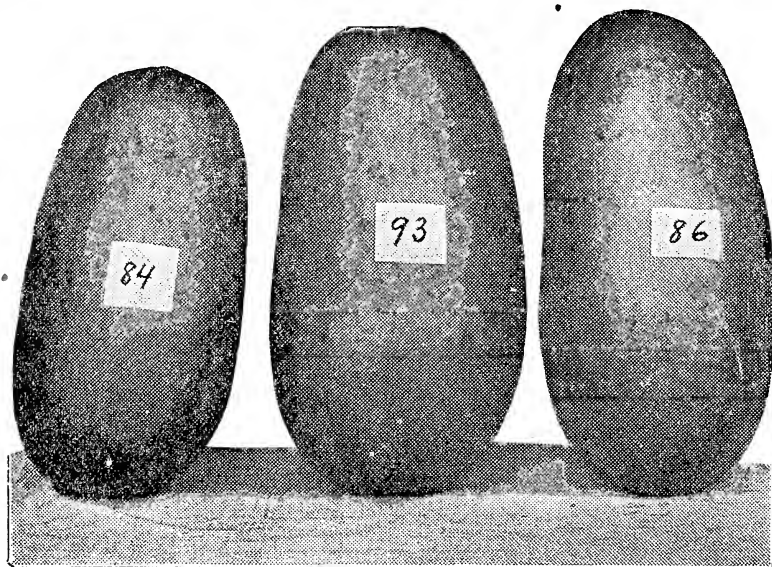
**Honey Dew**—The delicious honey-like flavor of this new melon has met with instantaneous public favor and created a sensation wherever used. The fruit is of large size, weighing 8 to 10 pounds each. The rind is perfectly smooth and cream colored. The flesh is from 1½ to 2 inches thick, light green in color, very sweet and juicy. **Pkt., 10c; oz., 25c; ¼ lb., 75c; lb., \$2.00.**

**CASABA—GOLDEN BEAUTY**—Golden Beauty is bright yellow, about globular, with wrinkled skin, slightly pointed at stem end. The fruits are about 6 to 8 inches in diameter. The flesh is pure white and very thick. **Pkt., 5c; oz., 25c;**

## WATERMELON

1 oz. to 100-foot row.

**Gypsy or Georgia Rattlesnake**—The melon is long, smooth, distinctly striped with light, mottled and wavy dark green stripes. Flesh bright scarlet and very sugary. **Pkt., 5c; oz., 10c; ¼ lb., 25c; lb., 65c.**



### SPECIMENS OF NEW EXCEL MELONS GROWN FROM OUR SEED

**Wonder Melon**—Here is a watermelon that every grower in the South will plant sooner or later. In quality of flavor there is nothing that will compare with it. A large and long melon resembling the Tom Watson. The rind is rather thin, but tough, cutting a big red heart of the finest melon meat you have ever tasted. White seed, with few to the melon. **Pkt., 5c; oz., 20c; ¼ lb., 50c; lb., \$1.25.**

**Dale**—This splendid large melon is oblong in shape. The tough skin is a dark green color irregularly striped with lighter green. Flesh is dark red in color, fine grained, sweet and luscious. White Seed. An excellent shipper. You will find our strain of this excellent melon to be the best. Limited amount of seed. **Pkt., 10c; oz., 32c; ¼ lb., 75c; lb., \$2.25.**

**Kleckley Sweet**—80 days. A very desirable variety for the home garden or nearby markets. Fruit medium-sized, oval, and skin dark green, flesh bright red and sweet. Skin is brittle. It is the very sweet, honey-like flavor that makes it especially distinct from all other varieties. **Pkt., 5c; oz., 10c; ¼ lb., 25c; lb., 65c.**

**Tom Watson**—85 days. Long, dark green. More tracery on skin than Kleckley Sweet, and longer. Fine variety, creamy-brown seed, flesh deep red, finest flavor, no core. Often weighs from 50 to 60 pounds to the melon. One of the most popular shipping melons on the market. **Pkt., 5c; oz., 10c; ¼ lb., 25c; lb., 65c.**

**Tom Watson**—Special seed. Saved from the finest melons in the field. **Pkt.,**

**5c; oz., 15c; ¼ lb., 30c; lb., 75c.**

**Florida Favorite**—Fruit long, dark green, mottled and striped with a lighter shade. Rind thin but firm. **Pkt., 5c; oz., 10c; ¼ lb., 25c; lb., 65c.**

**New Excel**—85 days.—Fruit long and of mammoth size. Skin a solid green. Rind thick and tough. Meat blood-red. Contains less seed than usual. This excellent melon stands dry weather better than any melon on the market, and will make larger melons in drought than the Tom Watson. The flesh is very sweet. **Pkt., 5c; oz., 10c; ¼ lb., 25c; lb., 65c.**

**New Excel**—Special seed. Saved from the finest melons in field. **Pkt., 5c; oz., 15c; ¼ lb., 30c; lb., 75c.**

**Alabama Sweet**—30 days. A very large, long melon of excellent quality; popular in the South, where it is grown extensively for shipping. The color is rather deep green, with dark, irregular striping. The rind is thin, but very tough. The flesh is bright red, fine grained and sweet. **Pkt., 5c; oz., 10c; ¼ lb., 25c; lb., 65c.**

**Irish Grey**—New. A valuable melon, producing more melons under any conditions than any other variety. Also a fine eating melon, and a grand shipper. The red flesh is very sweet and free from stringiness. The rind will not sunburn and will keep in excellent condition long after picking. **Pkt., 5c; oz., 10c; ¼ lb., 30c; lb., 75c.**

**Citron, for Preserving**—90 days. A round, light and dark-striped melon, meat greenish-white; used for preserving only. Seed red and small. Tough rind. **Pkt., 5c; oz., 10c; ¼ lb., 25c; lb., 75c.**

## OKRA

2 oz. to 100-foot row.

**White Velvet**—Round, white, smooth pods of extra large size produced in great abundance. **Pkt., 5c; oz., 10c; ¼ lb., 25c; lb., 60c.**

**Perkin's Mammoth Long Pod**—This variety is about three feet high, very early and productive. The pods are deep green, very long, slender, slightly corrugated, very tender and of good quality. This is a desirable market as well as home garden sort. **Pkt., 5c; oz., 10c; ¼ lb., 25c; lb., 60c.**



MAMMOTH LONG POD

## ONION SETS

1½ lbs. to 100-foot row.

Onion Sets can be planted in spring as well as fall. The Red, White and Yellow bottom sets can be planted in spring, and these same varieties can also be planted in fall, as well as the White Pearl, White Bermuda and Crystal White Wax sets.

Red Bottom Sets .....lb., 30c, postpaid  
 White Bottom Sets .....lb., 30c, postpaid  
 Yellow Bottom Sets .....lb., 30c, postpaid  
 Onion Plants .....30c per 100, postpaid



CRYSTAL WHITE WAX

## ONIONS

1 oz. to 100-foot row

**Crystal White Wax**—This is the waxy white onion seen in our market in the early spring, and it is one of the most beautiful onions on the market. It is absolutely pure white, of the finest flavor, and will always command a premium on the market. **Pkt., 10c.; oz., 45c; ¼ lb., \$1.25; lb., \$3.50.**

**White or Yellow Bermuda**—This is the standard variety, and is grown very largely among the large Texas onion growers. It is more hardy, less affected by disease, and more prolific than the other onions. **Pkt., 5c; oz., 30c; ¼ lb., \$1.00; lb., \$2.50.**

## PARSLEY

½ oz. to 100-foot row

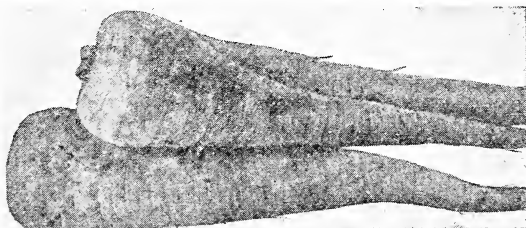
**Plain or Single**—A very hardy variety. The leaves are flat and not curled. The best flavored variety. **Pkt., 5c; oz., 10c; ¼ lb., 35c; lb., \$1.00.**

**Champion Moss Curled**—A very finely curled, green and very ornamental variety. **Pkt., 5c; oz., 10c; ¼ lb., 35c; lb., \$1.00.**

## PARSNIPS

½ oz. to 100-foot row.

**Hollow Crown**—An excellent variety for the table. The roots are long, with smooth, white skin, uniform in shape, tender and of the best quality. The variety is easily distinguished by the leaves growing from the depression on top or crown of the root. **Pkt., 5c; oz., 10c; ¼ lb., 20c; lb., 65c.**



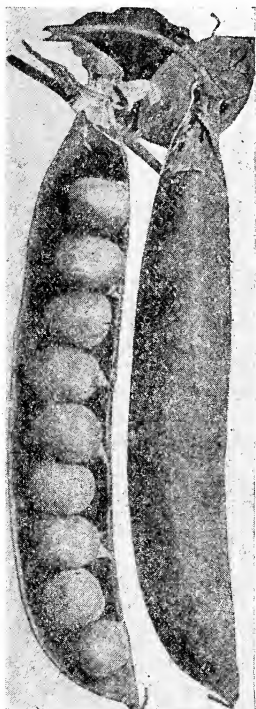
HOLLOW CROWN

## PEAS

1½ lbs. to 100-foot row

**INOCULATE THIS  
SEED WITH  
FARMOGERM**

**Landreth's Extra Early**—A critical gardener wants the best strain as respects earliness, size of pod, flavor, uniformity of ripening, vigor and uniformity in habit of the plant. All these desirable qualities can be found in this pea. This type will produce peas fit for table in 44 to 50 days, according to soil and climatic conditions of the season of their growth. **Pkt., 10c; lb., 35c, postpaid.**



TOM LAXTON

**First and Best**—One of the earliest tall varieties, with smooth, round peas, which ripens almost at one time. Grows two to two and one-half feet high, seed yellow-white, pods straight, short and well filled. Quality best of the smooth-seeded early varieties. **Pkt., 10c; lb., 35c, postpaid.**

**Mammoth Podded Extra Early**—On the order of Extra Early, but pods one-fourth larger. Matures practically with Extra Early and much more productive; seed large, smooth, white. Bound to take first place as a leading market gardener's first early pea. Height 3 feet. **Pkt., 10c; lb., 40c.**

**World's Record**—A valuable, early, large podded English pea of the highest quality; pods very long, dark green and well filled. Height 3 feet. **Pkt., 10c; lb., 50c.**

**Alaska**—A blue pea of excellent quality. The earliest of all the blue sorts. A desirable early pea for market gardeners, growing from 2 to 2½ feet and very productive. **Pkt., 10c; lb., 35c.**

**Thomas Laxton**—Excepting color of foliage and pods, in growth this is identical with the Gradus, two or three days later, but much more productive. **Pkt., 10c; lb., 40c.**

**White Marrowfat**—A very heavy yielding, late variety. Pods large and well filled. The dry peas are of large size and excellent for cooking. **Pkt., 10c; lb., 35c.**

**Bliss' Everbearing**—An old standard late, main crop variety. Height 3 feet. Vine and foliage sturdy and strong, dark green; pods usually in pairs, medium green, 3 inches long, straight and pointed, containing 4 to 5 light green peas of good quality; matures following Telephone. **Pkt., 10c; lb., 35c.**

**Canada Field**—Seed small, white; for field culture only. Height 4 feet. Vine moderately stout and medium green; pods light green, 2¼ inches long, square ended, six small, light green peas in pod; matures with Telephone. **Pkt., 10c; lb., 30c.**



## PEPPER (SWEET)

½ oz. to 100-foot row.

**Worldbeater**— This is, without doubt, the finest introduction in peppers in ages. It is a cross between Chinese Giant and Ruby King, having the shape of the Ruby King, except that it is broader at the pointed end and almost the size of the Chinese Giant. It is far more prolific than Chinese Giant. **Pkt., 5c; oz., 40c; ¼ lb., \$1.25; lb., \$4.00.**

**Chinese Giant**—Plant dwarf, fruit of mammoth size, very broad, but rather short. It is very late and a rather shy yielder. Popular on account of its large size and mild flavor. Our stock is pure and is as good as can be obtained. **Pkt., 5c; oz., 75c; ¼ lb., \$2.00; lb., \$6.00.**

**Ruby King**—This variety grows to an extraordinary large size. When ripe, a handsome, bright, ruby-color; remarkably mild and pleasant to the taste. For stuffing, no other variety can equal it. **Pkt., 5c; oz., 40c; ¼ lb., \$1.20; lb., \$3.50.**

**Pimiento or Perfection**—A medium early, prolific, perfectly mild variety with extremely thick flesh. On account of its thick flesh it will hold up for a long time and is an excellent sort for canning whole. **Pkt., 5c; oz., 40c; ¼ lb., \$1.25; lb., \$4.00.**

### HOT, or PUNGENT VARIETIES

**Red Chili**—A rather small, bright red variety, about two inches long and pointed. The pods are used in making Chili sauce, and are very pungent and hot. **Pkt., 5c; oz., 40c; ¼ lb., \$1.25; lb., \$3.75.**

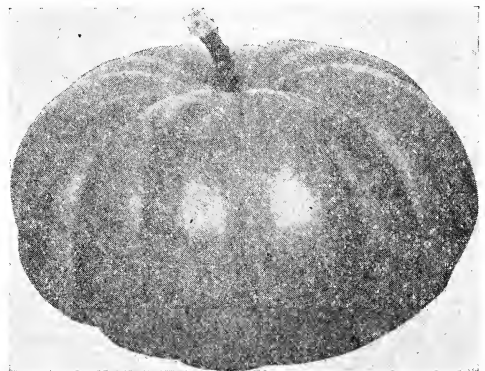
**Long Red Cayenne**—110 days. A strong, pungent variety, having well pointed fruit, which is bright scarlet when ripe. A very popular variety. **Pkt., 5c; oz., 40c; ¼ lb., \$1.25; lb., \$3.75.**

## PUMPKINS

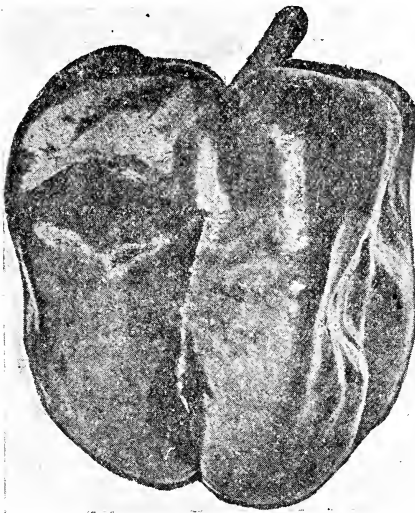
½ oz. to 100-foot row.

**Green Striped Cushaw**—70 days. Fruits very large, with crooked neck. Color, creamy white, irregularly striped or traced with green. Flesh light yellow, very thick, rather coarse but sweet. This sort is very productive and popular in some sections. **Pkt., 5c; oz., 15c; ¼ lb., 45c; lb., \$1.25.**

**Marrow**—A very large round, flat pumpkin, brilliant vermilion orange in color, and the handsomest pumpkin in existence. The flesh is very thick and solid and is bright orange-yellow in color. The seed cavity is amazingly small and on this account there is but little seed, which means that it will never be a cheap variety. **Pkt., 10c; oz., 15c; ¼ lb., 45c; lb., \$1.25.**



LARGE CHEESE PUMPKIN



RUBY GIANT

**Magnum Dulce**—140 days. The largest of all the Sweet Peppers, sometimes growing six to seven inches in length, and five to six inches in diameter. Very prolific. Plant about three feet high. Fruit deep green when young, crimson when fully matured. Flavor very mild. The most popular variety for market gardeners, and also for home gardens. **Pkt. 5c; oz., 60c; ¼ lb., \$1.75; lb., \$6.00.**

## PUMPKIN—Continued

**Cheese**—65 days. A very good table variety. Shape flat, like a cheese box; a good keeper. Often 15 inches across the top. Pkt., 5c; oz., 15c;  $\frac{1}{4}$  lb., 45c; lb., \$1.25.

**Kentucky Field**—90 days. Sometimes called Large Cheese. A very large, flattened pumpkin, averaging about two feet through. When ripened the skin

is a rich cream color. Flesh yellow and of fine quality. Pkt., 5c; oz., 10c;  $\frac{1}{4}$  lb., 30c; lb., 90c.

**Pie Pumpkin**—65 days. A small round, yellow sort, with fibre pinkish netting. Flesh is thick, sweet and of excellent quality. Pkt., 5c; oz., 15c;  $\frac{1}{4}$  lb., 35c; lb., \$1.00.

## GENUINE MAINE GROWN SEED POTATOES

How often have you been disappointed in your seed potatoes. Big Bushes and lots of potatoes no larger than marbles. Your order for Seed Potatoes placed with us will assure your getting the genuine Aroostook County, Maine, grown Seed Potatoes. Experience has proven to the large market gardeners that the Aroostook County Seed Potatoes are the only sure crop Potato on the Texas market. They will make a small bush and from three to ten large potatoes under every bush. We ship in many cars every year direct from Aroostook County, but would advise placing your order early for future shipment, so that we can assure you that you will get the genuine stock. One dollar deposit per sack, will hold your order for February or March shipment. Unless you have a rich soil would advise fertilizing with a mixture of 75% Acid Phosphate and 25% Cotton Seed Meal, using same at the rate of 600 lbs to the acre.

**Irish Cobblers**—This variety is one of the most reliable and popular of the early varieties. It is of handsome creamy-white color and of excellent quality, making it most desirable for the best trade. It is a vigorous grower, ripens uniformly and a good keeper; in short, one of the best all-around early potatoes on the market. Peck, \$1.00.

**Bliss Triumph or Red Bliss**—This is the most standard red variety in the Southern States. It is very early and matures quickly. The potatoes are round and uniform in shape, eyes

**NOTICE**—At the time of issuing this catalogue seed potato prices are fluctuating and the market is so unsettled that we are unable to quote a price for any length of time. When you are ready to buy write us for prices, which we guarantee to be as low as good seed potatoes can be bought.

5 lbs. to 100-foot row.



IRISH COBBLER

slightly depressed and a beautiful bright red color. It is very hard, and not susceptible to disease. Peck, \$1.00.

## ENCOURAGE GOOD HEALTH BY THE FREE USE OF VEGETABLES

**Asparagus** assists in the cure of kidney trouble.

**Lettuce, Onions and Celery** are good nerve tonics.

**Parsley and Endive** are good for dyspepsia

**Beets and Potatoes** are fat producing.

**Parsnips** are a good spring medicine. **Carrots** aid digestion.

**Lettuce** is a remedy for insomnia.

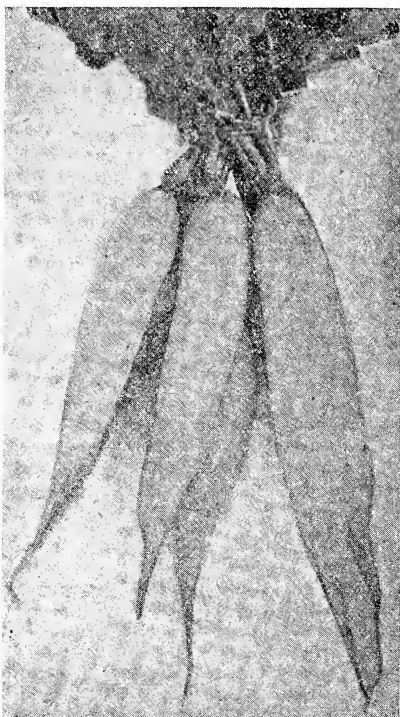
**Spinach** is excellent for the kidneys

**Tomatoes** will stimulate the liver.

**Water Cress** is a good bracer.

A liberal use of the above will save doctors' bills.

## RADISH



LONG WHITE VIENNA

**Scarlet China.** One of the best of the winter varieties. The roots are cylindrical, or largest near the bottom, stump rooted or blunt at both ends. The skin is smooth and of a bright deep rose color. Pkt., 5c; oz., 15c; ¼ lb., 30c; lb., \$1.00.

**Long White Vienna**—A very fine, long, white variety; quick growing and ready for use when very young. The flavor is mild and sweet. Pkt., 5c; oz., 15c; ¼ lb., 30c; lb., \$1.00.

**Long Black Spanish**—70 days. One of the latest and hardiest long garden radishes; especially adapted for winter use. The roots are long, thick, almost black, somewhat wrinkled. The flesh is white, of firm texture, decidedly pungent, but well flavored. The roots when matured are usually seven to nine inches long by two or three inches in diameter at the thickest part. Pkt., 5c; oz., 15c; ¼ lb., 30c; lb., \$1.00

**Early Scarlet Turnip, White Tipped**—One of the most popular and attractive short varieties. It is globe shaped, bright rose carmine with bottom and tip clear white. Stems and leaves are small. Very valuable for forcing, as well as for the garden and market. Pkt., 5c; oz., 10c; 2 ozs., 15c; ¼ lb., 25c; lb., 90c.

**French Breakfast**—A quick growing, small, olive-shaped radish about one and one-half inches long by five-eighths to three-fourths of an inch in diameter when fully grown. The color is beautiful deep rose scarlet except a little clear white about the tip. This is an excellent variety for planting outdoors for the home garden. Its small tops and earliness make it also desirable for growing under glass. Pkt., 5c; oz., 10c; 2 ozs., 15c; ¼ lb., 25c; lb., 90c.

**Wonderful Half-Long Scarlet**—23 days. So rapid in growth as to develop perfectly in 23 days. Grows about 2½ inches long, contrasting from a broad shoulder to a sharp point; very symmetrical and uniform in shape; color a bright scarlet, and altogether a gem. Pkt., 5c; oz., 15c; ¼ lb., 30c; lb., \$1.00.

**Chartier or Shepard Radish**—A variety of Long Scarlet. Deep crimson at top, almost white at bottom. Pkt., 5c; oz., 15c; ¼ lb., 30c; lb., \$1.00.

## SPINACH

1 oz. to 100-foot row.

**Bloomsdale**—40 days. As an autumn sort it is superior to all others, but in the spring is inclined to shoot early. The leaves are twisted and bloated, giving them, when ready for shipment, an elasticity adapting them for transportation to long distances and at the same time giving the crop large measuring qualities. Pkt., 5c; oz., 10c; lb., 50c.

**King of Denmark or Antvorskov.** Undoubtedly the most valuable introduction of spinach in recent years. Remains in condition from one to two weeks after other varieties have gone to seed. Pkt., 5c; oz., 10c; ¼ lb., 30c; lb., 90c.



BLOOMSDALE

## SQUASH

½ oz. to 100-foot row.

**Early White Bush Scallop—50 days.** A very early variety, with flat, creamy white scalloped squashes, 4 to 6 inches in diameter. The vine is bush in habit and rather dwarf. This variety is the common "patty pan" squash. **Pkt., 5c; oz., 15c; ¼ lb., \$1.25.**

**Mammoth White Bush Scallop—60 days.** An early maturing, somewhat flattened, scalloped bush squash of largest size, and the handsomest of the summer varieties for home garden and market. The vines are vigorous and productive. **Pkt., 5c; oz., 15c; ¼ lb., 45c; lb., \$1.25.**

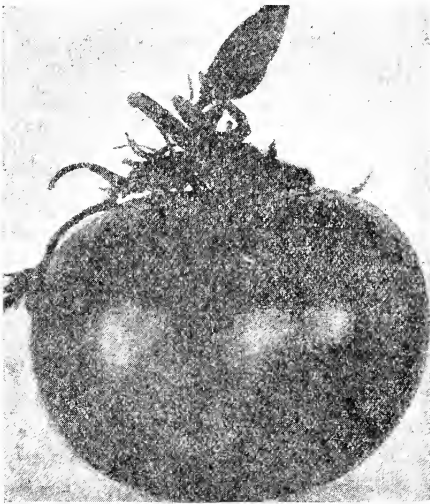
**Yellow Crookneck—**The well known summer variety. Fruit long, skin very fine and tender when young. **Pkt., 5c; oz., 15c; ¼ lb., 45c; lb., \$1.25.**



MAMMOTH WHITE BUSH

## TOMATOES

⅓ oz. to 100-foot row.



GULF STATE MARKET

**Earliana—90 days.** Very early. Habit of vine dwarf and compact. Fruit borne in clusters of from 10 to 15 in a bunch. A remarkable variety and one which is in good favor with market gardeners. **Pkt., 5c; oz., 35c; ¼ lb., \$1.00; lb., \$3.00.**

**Dwarf Champion—100 days.** A dwarf variety, sometimes called the tree tomato on account of its upright growth and its ability to stand alone without trellising. Fruit medium-sized, smooth, uniform and of a purplish-carmine color. **Pkt., 5c; oz., 40c; ¼ lb., \$1.20; lb., \$3.50.**

**Dwarf Stone.** Claimed to be the largest dwarf tomato known, almost double the size of Dwarf Champion, and is similar in habits of growth; very popular with market gardeners and home canners. **Pkt., 10c; oz., 40c; ¼ lb., \$1.25; lb., 3.75, postpaid.**

### GULF STATE MARKET TOMATO

This globe-shaped purplish-pink tomato was developed from Early Detroit and is as early as that variety. It is

said to be especially adapted to the Gulf states and California. The fruits are large, showing little depression around the stem, and free from cracks. **Pkt., 25c; ½ oz., 90c; oz., \$1.50.**

**Chalk's Early Jewel—95 days.** A wonderful new variety in that it is early and bears continuously throughout the season. The fruit is large, smooth, uniform and well ripened clear to the stem, and the flavor and quality are specially fine. Color bright scarlet. **Pkt., 5c; oz., 35c; ¼ lb., \$1.00; lb., \$3.00.**

**Early Detroit—**A new tomato of merit; fruit smooth, uniform, nearly globe-shaped, firm and of fine quality; color purplish-pink, season early. Is a fine shipping variety. **Pkt., 5c; oz., 40c; ¼ lb., \$1.20; lb., \$3.50.**

**June Pink—95 days.** A very early and productive pink form of Earliana. The best early pink on the market. Fruit solid and borne in profusion. **Pkt., 5c; oz., 45c; ¼ lb., \$1.25; lb., \$4.00.**

**Beauty (Livingston's)—**A second-early large, smooth purple-fruited sort of good quality. **Pkt., 5c; oz., 35c; ¼ lb., \$1.15; lb., \$3.50.**

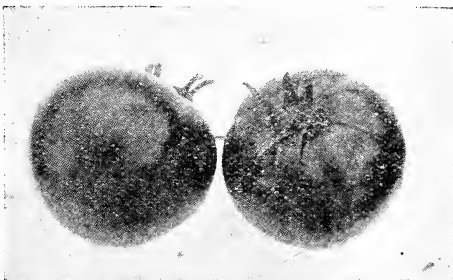
## TOMATOES—Continued

**John Baer**—An early variety, maturing with Bonny Best, producing fruit equally as good as Chalk's Jewel. Color, bright scarlet; good size and smooth. The seed we offer was grown from the introducer's stock. Pkt., 5c; oz., 40c; ¼ lb., \$1.20; lb., \$3.50.

**McGee**—Well known in this state on account of its heavy-bearing qualities. It will yield splendid crops when all other varieties fail. Bright crimson, solid and good flavor. Pkt., 5c; oz., 40c; ¼ lb., \$1.20; lb., \$4.00.

**Early Acme**—The plants are of strong and vigorous growth; very productive; fruit of medium size, perfect form, round, slightly depressed at the ends, very smooth (never rough); color a glossy red, with purplish tinge; ripens all over and through at the same time. Pkt., 5c; oz., 30c; ¼ lb., \$1.00; lb., \$3.00.

**Ponderosa**—A purple-fruited tomato of largest size. Vine vigorous. Fruit very solid, fairly smooth and considered very good quality, especially by those who prefer a tomato quite free from acid. This variety is more suitable for home use than for the market. Pkt., 5c; oz., 60c; ¼ lb., \$1.75; lb., \$5.00.



JOHN BAER

## AVON EARLY TOMATO

This is a scarlet fruited variety of the very earliest class. It bears as quickly as Earliana, produces fruits of good size, round or slightly flattened, smooth and free from cracks and of fine quality. It is very productive and its season is longer than other first earlies. Pkt., 10c; ½ oz., 45c; oz., 75c.

**Stone**—115 days. The best main-crop tomato for all purposes, and largely used for canning. Vine tall and prolific. Fruit smooth, large and uniform. Color bright scarlet. Pkt., 5c; oz., 30c; ¼ lb., 90c; lb., \$2.50.



AVON EARLY

**Yellow Plum**—95 days. A small-fruited, bright golden yellow variety, very attractive; for salads or preserves. Pkt., 5c; oz., 40c; ¼ lb., \$1.25.

**Yellow Pear**—Same as Yellow Plum, except that it is the shape of a pear and a trifle smaller. Pkt., 5c; oz., 40c; ¼ lb., \$1.25.

Tomato, Pepper and Egg Plants will set more fruit if they are fertilized with a mixture of two-thirds 16% Acid Phosphate and one-third Cotton Seed Meal. This also applies to Watermelons, Muskmelons and Cucumbers.

## RUTABAGA

½ oz. to 100-foot row.

Rutabagas should be treated the same as turnips, only should be planted a little earlier, as they take longer to mature.

**American Purple Top or Long Island**—One of the best and most popular varieties, with yellow flesh. It is yellow below ground, with purple top above, and the leaves are small. A good stock-feeder or table variety. Pkt., 5c; oz., 10c; ¼ lb., 25c; lb., 75c.

## TURNIPS

½ oz. to  
100-foot  
row.



EARLY WHITE FLAT DUTCH STRAP-LEAVED TURNIPS

**Yellow Aberdeen**—A large sized, round, late maturing, long keeping, yellow-fleshed turnip. It is hardy, productive, and valuable for stock feeding. The roots are yellow with purple top. The flesh is pale yellow, firm, tender and sweet. Pkt., 5c; oz., 10c; ¼ lb., 30c; lb., 75c.

**Cowhorn Turnip**—This turnip grows very long, often 12 inches or more, and 2 inches in diameter and nearly half above ground. It is very popular for stock feeding, and is clear white except a little shade of green at the top. Pkt., 5c; oz., 10c; ¼ lb., 30c; lb., 75c.

**White Egg**—A sort forming root the shape and size of egg in an incredibly short period after sowing. Flesh always palatable. Pkt., 5c; oz., 10c; ¼ lb., 30c; lb., 75c.

**Early White Flat Dutch**—Strap Leaved. A medium-sized flat variety, clear white, early and of fine flavor. A fine table variety. Pkt., 5c; oz., 10c; ¼ lb., 30c; lb., 75c.

**Purple Top Flat Dutch**—Strap Leaved. An early flat variety. White with purple top. It matures quickly and has fine grained flesh of fine flavor. It forms early a fine root, even in shape and of the best quality. Pkt., 5c; oz., 10c; ¼ lb., 30c; lb., 75c.

**Purple Top White Globe**—An early, medium-sized, globular shaped turnip of good quality for either table or stock. A heavy producer and good keeper. The flesh is white, and of good eating quality while young. Pkt., 5c; oz., 10c; ¼ lb., 30c; lb., 75c.

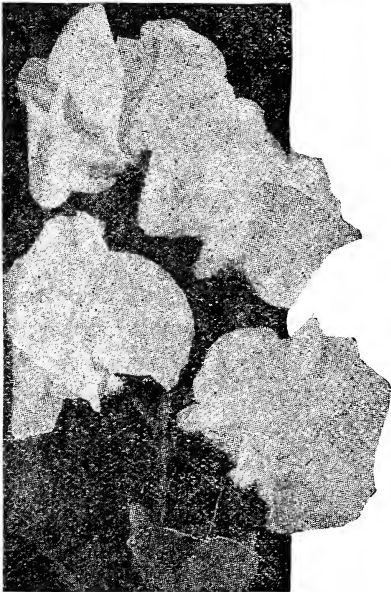
**Pomeranian White Globe**—Large white variety, used largely for stock. Is globe shaped, large leaves, hardy. Pkt., 5c; oz., 10c; ¼ lb., 30c; lb., 75c.

### EXTRA EARLY PURPLE-TOP MILAN

An excellent medium size turnip, almost as early as White Milan, smooth white surface, purple top, flat shape, white flesh—its growth is very uniform and quality the best. Pkt., 10c; oz., 20c; ¼ lb., 50c; lb., \$1.50.

## FLOWER SEED

INOCULATE THIS SEED WITH FARMOGERM



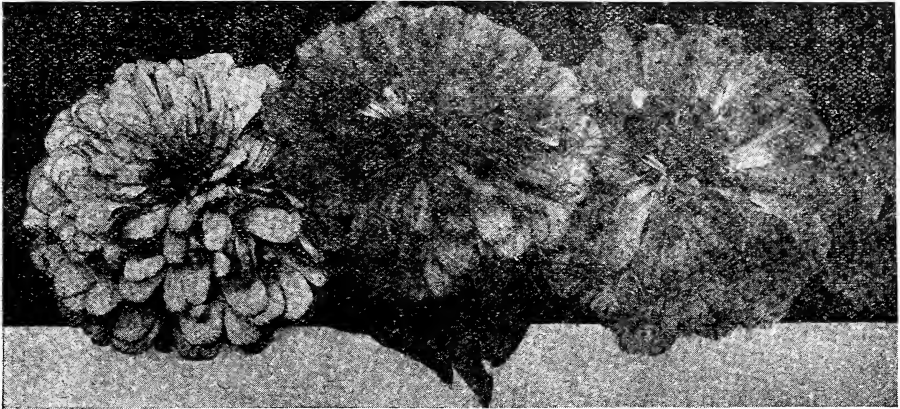
SWEET PEAS

**Sweet Peas—Spencer Variety (Mixed)**  
Sweet Peas will grow and blossom in any good garden soil. For best success sow early, as early as the ground can be worked in the spring. Regardless of the weather sow early, in trenches 4 inches deep; cover about 1 inch with soil, and fill the trench as plants grow. Set the support early and hoe often. The Spencer mixture which we offer contains a beautiful mixture of colors and of large, gracefully frilled blossoms.

Superb Spencer Mixed Pkt., 10c; oz., 30c.  
Choice Mixed ..... Pkt., 10c; oz., 15c.

FLOWER SEED

**StimUplant**  
 Makes a  
 Wonder Garden



- Aster—Queen of the Market.....10c
- Aster—American Branching.....10c
- Aster—Glove Quilled.....10c
- Bachelor's Button—Mixed.....10c
- Balsam—Camelia, Fine Mixed.....10c
- Balsam—Dwarf Mixed.....10c
- California Poppy.....10c
- Candytuft—White.....10c
- Candytuft—Fine Mixed.....10c
- Carnation—Marguerite, Fine Mixed.....10c
- Castor Bean—Mixed.....10c
- Cockscomb—Dwarf Mixed.....10c
- Chrysanthemum—Mixed.....10c
- Chrysanthemum—White.....10c
- Chrysanthemum—Yellow.....10c
- Cosmos—Giant Mixed.....10c
- Cypress Vine—Mixed.....10c
- Forget-Me-Not—Alpestris.....10c
- Four-o'clock.....10c
- Glove Amaranth.....10c
- Hollyhoek—Mixed.....10c
- Hyacinth Bean—White.....10c
- Hyacinth Bean—Purple.....10c
- Hyacinth Bean—Mixed.....10c
- Morning Glory—Sky Blue.....10c
- Morning Glory—Japanese Mixed.....10c
- Larkspur—Hyacinth Mixed.....10c
- Marigold—Prince of Orange.....10c
- Mignonette—Machet.....10c
- Momordica—Balsam Pear.....10c
- Momordica—Balsam Apple.....10c
- Moon Flower.....10c
- Narturtium—Dwarf Mixed.....10c
- Nasturtium—Tall Mixed.....10c
- Pansy—Non Plus Ultra.....10c
- Pansy—Trimardeau Mixed.....10c
- Petunia—Mixed.....10c
- Phlox Drummondii—Choice Mixed.....10c
- Pinks—Double China Mixed.....10c
- Pinks—Double Japan Mixed.....10c
- Poppy—Shirley.....10c
- Poppy—Double Carnation Mixed.....10c
- Portulaca—Single Mixed.....10c
- Snadragon—Finest Mixed.....10c

- Salvia—Splendens.....10c
- Stock—German Ten Weeks, Mixed.....10c
- Sweet William—Fine Mixed.....10c
- Sweet William—Double Mixed.....10c
- Verbena—Hybrida Mixed.....15c
- Vinca—Periwinkle, White.....10c
- Vinca—Periwinkle, Rose.....10c

**SATEX MAMMOTH ZINNIA**

**Don't Fail to Order Some of These  
 Wonderful Zinnias**

You may have often passed by a bed of mammoth Zinnias, and if you will ask the owner where he procured the seed of same, he will invariably answer that he procured from us. Our strain of Mammoth Zinnias are known all over the State, and you cannot procure seed anywhere which will give you a better strain than our mammoth variety. This strain produces flowers as large as the finest Dahlias, magnificent in petalage and of the brightest imaginable coloring.

- Double Pink.....Pkt., 10c; oz., 75c
- Double White.....Pkt., 10c; oz., 75c
- Double Red.....Pkt., 10c; oz., 75c
- Double Yellow.....Pkt., 10c; oz., 75c
- Double Scarlet.....Pkt., 10c; oz., 75c
- Double Mixed Giant.....Pkt., 10c; oz., 75c

**GIANT DAHLIA FLOWERED ZINNIA**

Latest development in Zinnias with flowers of enormous size and resembling the decorative Dahlia very much in shape. Mixed Colors. Pkt., 20c., ¼ oz. 75c

**GIANT QUILLED ZINNIA**

Flowers of very large size and gorgeous color. Petals quilled similar to the quilled Aster. Pkt., 20c; ¼ oz., 75c.

## FLOWER BULBS

**StimUplanT**  
Makes a  
Wonder Garden



CROCUS

## TUBEROSES

**Mexican Everblooming**—The most beautiful single Tuberose that was ever brought to our attention. It begins to produce its fragrant flowers in June and blooms continually until frost. Plant them in good soil and water them occasionally during extreme warm weather, and an abundance of lovely flowers will be the reward. In the southern part of the state the bulbs may be left in the ground all winter. **Doz., 40c; 10, \$2.00.**

**Chinese Sacred Lily.** Also called Joss Flower, Water Fairy Flower. The flowers are satiny white with golden yellow cup. They are borne profusely in clusters and are very fragrant.

They may be grown in pots of earth but usually do best in bowls or dishes of water, by which method the bulbs may be brought into profuse bloom in four to six weeks from planting. **Each, 20c; doz., \$2.00, postpaid.**

**Antigonon Leptopus**—(Rosa Montana, Mountain Rose or Queen's Wreath.) A lovely flowering vine, bearing most profusely immense racemes of beautiful rose colored flowers. Hardy along the coast, but inland it is liable to be killed down by frost but will come away from the ground again the next spring and quickly attain considerable height. **Each 35c and 60c.**

**Dutch Hyacinths**—We only attempt to handle them mixed, and the following separate colors: Rose, blue, white,

pink, and yellow. These are choice large bulbs and will make fine flower spikes. Our prices are very low for the size and quality of bulb furnished.

All colors or mixed, **10c each, 6 for 50c; 90c per dozen; \$7.25 per 100, postpaid.**

**Jonquils**.—**Single Yellow**—A rich deep yellow, sweet scented. **Doz., 20c; 100, \$2.00, postpaid.**

## NARCISSUS

**Paper-White Grandiflora**—Pure white, very early. Our Paper White bulbs are selected size. **8c each, 6 for 35c; 65c per doz.; \$4.50 per 100, postpaid.**

**Emperor**—Both the Trumpet and Perianth are very massive and of a pure, rich yellow color. Excellent for all methods of culture. **Doz., 75c, postpaid.**

**Empress**—This one has a pure white perianth, and rich, full yellow trumpet. **Per doz., 75c, postpaid.**

**Crocus**—About the earliest to blossom in spring is the beautiful little flower, lifting its head almost before the snow has disappeared. The showy funnel-shaped flowers borne erect from the grass-like leaves are most welcome visitors in the early spring sunshine. **Per doz., 25c, postpaid.**

**Darwin Tulips**—The remarkable brilliant coloring and splendid substance of their distinctly globular or cup-shaped flowers of large size make them unsurpassed for blooming in the garden. **Per doz., 50c, postpaid.**



## VEGETABLE PLANTS

**Cabbage Plants**—Early Jersey Wakefield, Early Flat Dutch for spring planting. **Doz., 15c, postpaid; 55c per 100; \$3.75 per 1000. Ready Jan. 1st.**

**Cauliflower Plants**—Select Early Snowball for spring or fall planting. **Doz., 30c, postpaid; \$8.00 per 1000. Ready Feb. 15th.**

**Egg Plant**—Black Beauty and New York Purple for spring planting. **Doz., 30c, postpaid; \$6.00 per 1000. Ready April 1st.**

**Sweet Pepper Plants**—Chinese Giant and Magnum Dulce for spring planting. **Doz., 30c postpaid; \$6.00 per 1000. Ready April 1st.**

**Hot Pepper Plants**—Red Chili and Long Red Cayenne for spring planting. **Doz., 20c, postpaid; \$5.00 per 1000. Ready April 1st.**

**Tomato Plants**—Earliana, McGee, Dwarf Champion for spring planting. **Doz., 15c, postpaid; \$3.00 per 1000. Ready April 1st.**

**Onion Plants**—Crystal White Wax. **30c per 100; \$2.50 per 1000, postpaid. Ready Jan. 1st.**

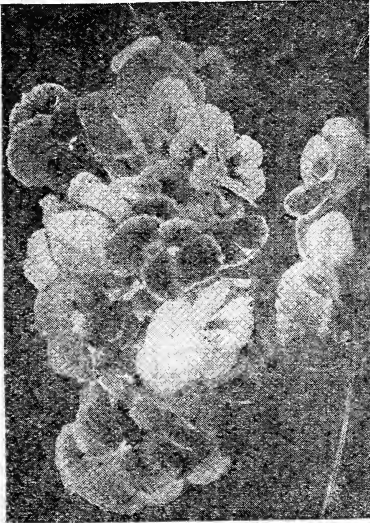
## FLOWER PLANTS

**StimUplant**  
Makes a  
Wonder Garden

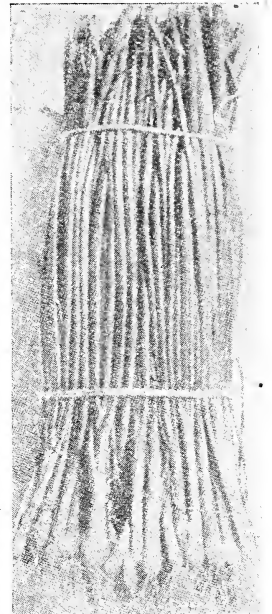
**NOTE**—Add 10c per dozen or each according to way listed. If you want flower plants sent by parcel post. We will refund difference if any.

**Antirrhinum**—Snapdragon. Makes a very showy border plant, are profuse bloomers, and while they bloom well the first year, their biennial nature shows up in the South, and the second year the blossoms are much larger. **Doz. 25c.**

**Shasta Daisy**—A fine perennial plant, bearing large white single blossoms, with yellow centers. **Doz., 25c.**



PANSY



ONION PLANTS READY FOR SHIPMENT

**Pansy Plants**—(Steele's Mastodon.) Special mixed. A wonderful collection of rich, velvety shades, many light colors, in great variety and huge in size with fine long stems, and containing all the newest and finest types. **40c per Doz.**

**Calendula**—Pot Marigold. Colors running from a yellowish-white to a deep orange, and from single to double in all degrees. **Doz. 25c.**

**Carnations**—The popularity of the Carnation is on the increase very rapidly. Next to the Rose, the Carnation is most sought after. **Doz. 35c.**

**Non Plus Ultra**—A very large flowered pansy. **25c per doz.**

**Petunia**—The Petunia has no peer among the annual flowers. Is easy to grow, and no other flower has a greater diversity of color. **Doz., 25c.**

**Phlox Drummondii**—Mixed Phlox. Their various colors and length of flowering, with easy culture, make them favorites with every one. One foot high. **25c per doz.**

**Pinks**—(Dianthus.) Splendid large flowers of the most brilliant colors and markings, constantly in bloom from July until after severe frosts. **25c per Doz.**

**Salvia Splendens**—This is the most brilliant red flowered plant in cultivation. It is mostly grown in masses and should have a dark background of some kind by way of contrast. **40c per Doz.**

**Verbena**—Among the best known and most easily grown annuals, making an excellent color display as bedding plants, or in window boxes. 35c per doz.



SWEET WILLIAM

## FERNS

**StimUplant**  
Makes a  
Wonder Garden

**Boston Sword Fern**—A rapid grower of very easy culture, soon forming a large, graceful plant; its beautiful fronds often attaining a length of 4 to 5 feet, which arch and droop so gracefully that it is sometimes called the Fountain Fern. 25c each.

**Ostrich Plume Fern**—The most popular Fern. Rather dwarf in growth, but graceful, very compact, dense and feathery. Each frond or branch has a double row of perfect little fronds set at right angles to the midrib, and so thick they seem almost crowded. 25c each.

**Asparagus Sprengeri (Also called Emerald Feather)**—A magnificent porch or basket plant in the South. The fronds or leaves grow four to five feet long. Hundreds of magnificent plants of this are seen every summer on the porches in Atlanta, and when cold weather comes they make a splendid house plant. It succeeds under almost any conditions. 25c each.

**Asparagus Plumosa (Wonderful Lace Fern)**—A finer and more delicate plant than the Sprengeri, but hardy and

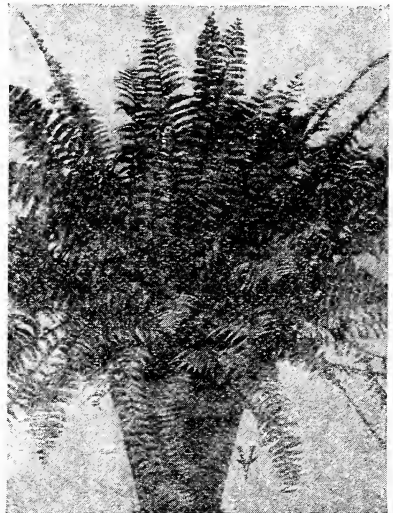
**Sweet William**—The improved varieties of this popular flower are very beautiful, and should find a place in every garden. A great variety of rich flowers, eyed and variegated with other shades. 25c per Doz.

## GERANIUMS

**Jean Viaud**—This is the best large-flowering double pink Geranium in cultivation. The color is the richest deep pink, shading near the base of the petals to light pink, the base of the upper petals creamy-white. 20c each.

**Mrs. Lawrence**—This is one of the finest Geraniums. The color is an artistic shade of bright satiny salmon-pink, slightly tinged white. 20c each.

**La Favorite**—In this Geranium we believe we have the finest double Geranium in cultivation. The flowers are borne in large trusses of the snow-white retaining this pure whiteness even in the height of summer, and for winter blooming they are all that can be desired. 25c each.



BOSTON SWORD FERN

easily grown; very satisfactory for windows and house culture; an extremely graceful window climber, bright green feathery foliage as fine as the finest silk or lace. The fronds retain their freshness for weeks when cut, and are greatly admired for floral decoration. 25c each.

## FIELD SEEDS

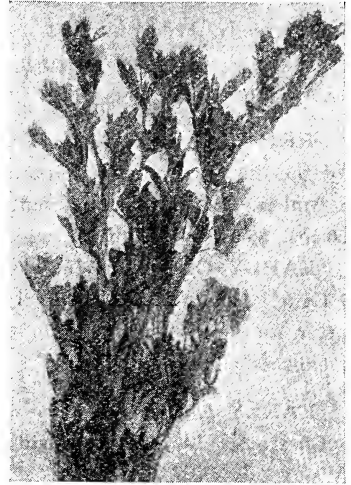
The varieties of field seed listed are adapted to the climatic conditions of Southwest Texas. They are grown for us by one of the best growers of field seeds in the state, and you will find them of the best quality and true to name. Owing to market changes we are unable to quote quantity prices in catalog so will thank you to write us asking quantity price. It will pay you.

### ALFALFA

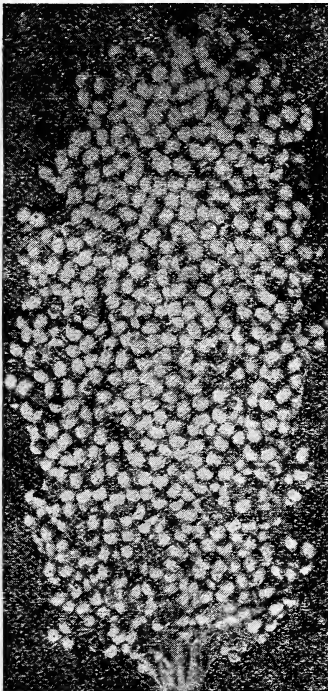
INOCULATE THIS  
SEED WITH  
FARMOGERM

**Chilean**—We handle only one grade of alfalfa seed, and that is the best. It is grown for us by one of the most reliable growers in New Mexico, and it is thoroughly re-cleaned and free from weed seed. Our customers say it is the best alfalfa seed they have ever planted, and we want you to be one of our pleased customers. **Lb., 40c, postpaid.**

**Hairy Peruvian Alfalfa Seed**—Facts you should know. It is impossible to distinguish Hairy Peruvian from other varieties of Alfalfa seed. Plant five pounds more to the acre than other varieties, must have thick stand to give you good quality hay, otherwise stems will be very woody. Plants grow taller, stems larger with hair on full length of stem; also hair on under sides of leaves. Color of leaves grayish-green, with the veins in them showing very prominent. **Lb., 45c, postpaid.**



ALFALFA



FETERITA

## NON-SACCHARINE SORGHUMS

**Dwarf Straight Neck Yellow Milo Maize**—This variety is the most popular Milo Maize and stands the drought well. It is earlier than Kaffir Corn and White Milo Maize, and very prolific. Stock seems to prefer it to corn, and it has a laxative effect on them, keeping them in good condition. **20c lb., postpaid.**

**Dwarf Black Hull White Kaffir**—It makes a straight upright growth and has a strong stem with enormous wide leaves. The stalks keep green and are brittle, making excellent fodder, either green or dried, which is highly relished by cattle and horses. The heads form at the top of each stalk. For the grain sow in rows 3 feet apart, 3 to 5 pounds of seed to the acre. For fodder sow one-half to one bushel, either broadcast or in drills. **20c lb., postpaid.**

**Feterita**—The best drought-resisting non-saccharine sorghum, and pretty well known in this state. Earlier than Kaffir Corn, and a very heavy yielder. The grain is similar to Milo, but is pure white and also larger and softer. It does not shatter badly and yields as high as 80 bushels to the acre. **20c lb., postpaid.**

## SACCHARINE SORGHUMS

The Sorghum plant is a strong, rapid grower and a greedy feeder, so that it succeeds best on a deep, rich moist soil. Use about twenty-five pounds to the acre when sown in drills, and from 100 to 150 pounds to the acre when sown broadcast.

**Red Top or Sumac Cane**—This is the most popular variety for our state, and the one that is most generally planted. Seed is smaller than that of the Orange or Amber. Produces an immense quantity of fodder. **20c lb., postpaid.**

**Early Orange**—This variety has taller and heavier stalks than any variety of cane. It is not quite as early as the Early Amber, but is a better producer, and is better for syrup-making. **20c lb., postpaid.**

**Early Amber**—This is the earliest sort, and makes fine hay, which is relished by all stock. **20c lb., postpaid.**

**Japanese Honey Drip**—Known in some sections as Japanese Seeded Ribbon Cane. It makes an unusually large stock, sometimes as large in diameter as Ribbon Cane and much taller. Yields as much as four to five hundred gallons of the very best syrup to the acre. **35c lb., postpaid.**



JAPANESE HONEY DRIP

## SEED CORN

25c per lb., postpaid.

**Giant Strawberry**—We consider this to be the finest variety of corn to grow for feed. It is very productive and makes fine big ears. First-class seed of this variety is very scarce this year.

**Hickory King**—Has the smallest cob of any corn grown. Makes a very large, white, flat grain and is very largely planted for roasting ears.

**Bloody Butcher**—The standard variety of large, red grain corn. Enormous yielder.

**Surecropper Corn**—A truly remarkable drought resisting power. As old as is the history of corngrowing in the South and Southwest is the search for a corn able to hold up and make a crop on the scanty moisture which we have in so many fields at some period of almost every season. In Surecropper we have found that corn.

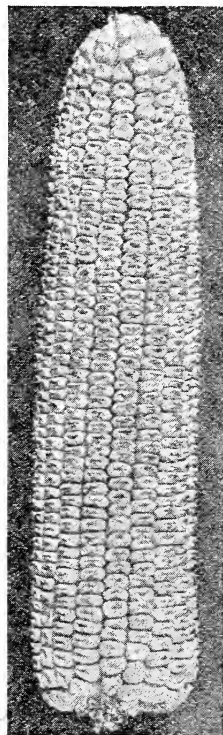
**Giant White Red Cob**—Makes a very large ear of the finest corn. Grains very large, deep, wide and thick. cob red, very popular wherever tried. We recommend this as being the finest variety of White Red Cob Corn. Has a very large, deep, wide, thick grain. Ears of medium size.

**Giant Yellow**—This beautiful yellow Corn is deeply grained and very uniform in size. It is a sure cropper and good yielder. Matures in 90 to 100 days.

**Native Squaw Corn**—A drough-resisting variety, plantable in the summer months. It has blue and white grains, therefore not so desirable by the market gardener. However, it makes a sweet and very juicy roasting ear.

**Texas Grown June Corn**—The stalks under favorable conditions grow from 7 to 8 feet high, and yields from 30 to 60 bushels to the acre. For best results it should not be planted until June or July, as it stands the hot weather better than any corn. Seed can be procured at any time after May 15th.

**Champion White Pearl**—An extra early pure white variety of dent corn. Matures in 100 days from time of planting. is very productive and the ears are exceedingly heavy. The grains are extra deep and white, and the cob is very small. A great favorite.



SURECROPPER

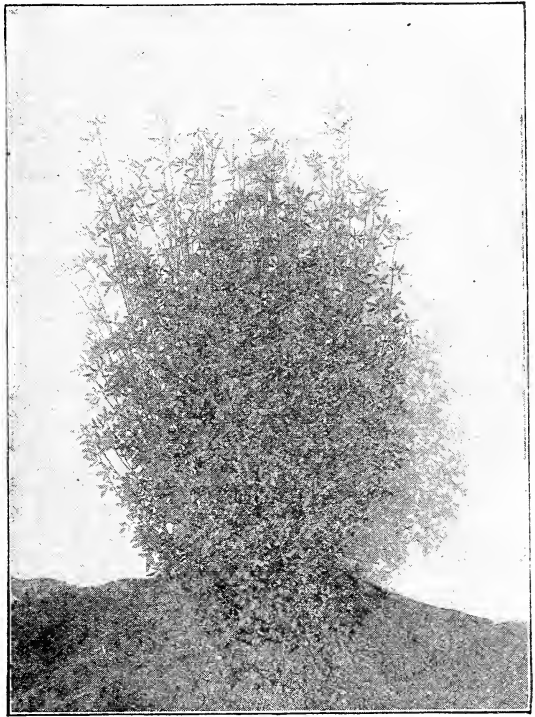
## HUBAM CLOVER

The Wonderful New Giant  
Annual White Clover

The merits of Hubam Clover were first called to our attention by Mr. D. Anderson, who had planted a test plat on his truck farm near San Antonio. We were so astounded at the wonderful crop that he had grown that we made a thorough investigation of this wonderful clover, and honestly believe that it is the best variety for the Southwest.

Hubam Clover grows very rapidly, reaching a height of about four feet in ninety days, and growing as high as eight and nine feet. It is an annual legume, making its growth all in one season, yielding as much in that time as is produced from the biennial White or Yellow in two years' growth. **Oz., 25c; lb., \$1.25.**

INOCULATE THIS  
SEED WITH  
FARMOGERM



## COW PEAS

**Whippoorwills**—Has brown, speckled seed, easily gathered on account of the upright, bushy growth of the plants. The most generally planted pea on the market, being one of the earliest and best varieties on the market. **20c lb., postpaid**

**Blackeye**—Grown extensively, as the dry peas find a ready market during the winter. The vines furnish excellent forage, and produce large quantities. **30c lb., postpaid.**

**Cream Peas**—This is the most beautiful table Peas we have ever had the pleasure of offering our customers. It has given the best satisfaction of any variety we have ever offered for table use, and very deservedly so, as there are none that can surpass it in splendid flavor. In point of yield they double the well-known Blackeye, command a higher price on the market, cook quicker and are in every way superior to it as a table sort. It grows in bunch form. Peas are of a cream color. **25c lb., postpaid.**

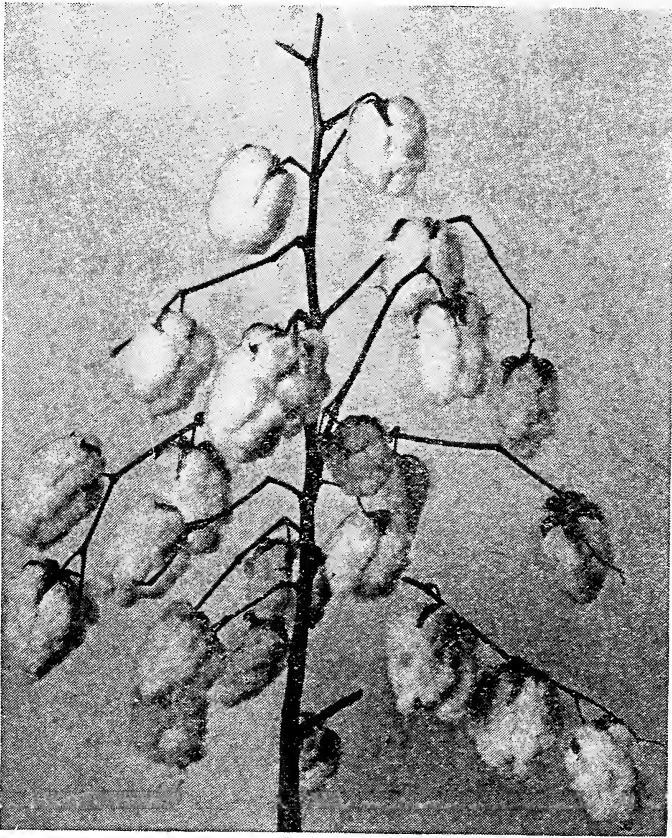
**Pink Beans**—Grown extensively as a dry bean and finds a ready market. **Lb., 25c, postpaid.**

**Pinto Beans**—Grown mostly for a dry bean but makes a good snap bean when the pod is young and green. Pods flat and tender. **Lb. 25c postpaid.**

## COTTON SEED

Antons Improved Early Triumph.

There are quite a few different varieties of Cotton Seed on the market, many of which are good. After many exhaustive tests we have found the Anton's Improved Early Triumph to be the best money maker for the cotton grower. Prove it to yourself by planting this cotton seed in comparative test with some that you are now using. So great has been the success of Anton's Cotton that many growers are now offering the Anton's Cotton Seed. To assure the grower of getting the genuine Anton's Cotton Seed this year, every sack will be printed with Antons Copyrighted Trade Mark. If you are offered this seed without the trademark on the sack, beware, as it is not genuine. We are the only dealers in Bexar County authorized to sell this splendid seed and would advise placing your order early to avoid disappointment. See brief description on next page.



## ANTON PEDIGREED COTTON SEED

### Early Maturing Big Boll

The Cotton produces a strong, vigorous, well developed, deep rooting drought resisting stalk; which has long limbs, short joints; extra big, well formed, five lock bolls, pointing downward, thereby preventing injury from rain. The open bolls are heavy, solid, and do not string making a good storm resisting cotton. The lint is very easily picked, in fact it has been proven that from 75 to 150 pounds per day more has been picked than of other improved varieties. The Cotton produces a staple of from  $11/16$  to  $13/16$  inches which brings a premium over the shorter staple varieties, combined with a profitable lint outturn of 38 to 42 per cent.

We have given special attention to the Early Maturing and Rapid Fruiting qualities of this cotton, which is a great advantage in case of insects or a drought. The Anton Cotton generally matures in from 75 to 90 days from time of planting and it has been proven that it is from two to three weeks earlier than other varieties.

Place your order today. If it reaches us after our supply is sold, it with any money will be promptly returned to you. We do not substitute you will get only the highest grade Anton seed grown under our own strict supervision or none. **\$3.00 per bu., 10 bu., or more, \$2.75 per bu.**

## MANGEL WURZEL BEETS

**Giant Feeding Sugar or Half Sugar Mangel**—A beet which is superior to Mangels for stock feeding purposes, as it is more nutritious, having a large amount of sugar. It is oval in shape and grows partly out of the ground. It is of large size and yields enormous crops. Pkt., 5c; oz., 10c;  $\frac{1}{4}$  lb., 20c; lb., 60c.

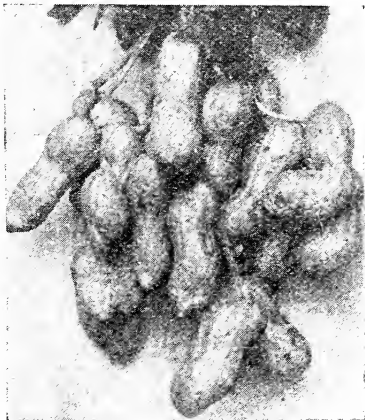
**Improved Mammoth Long Red**—The largest of all the Mangels and the heaviest croper. Skin is red, flesh white zoned with red. This variety produces a larger amount of good feed than any other beet, and is recommended as superior to all other. Pkt., 5c; oz., 10c;  $\frac{1}{4}$  lb., 20c; lb., 60.

## PEANUTS

INOCULATE THIS  
SEED WITH  
FARMOGERM

**Spanish**—The earliest variety grown, pods are small, but remarkably well filled and solid, and the yield per acre is very large. Can be cultivated with the plow. Because of its early habit and easy cultivation it is best variety to grow for fattening hogs. 25c lb., postpaid.

**White Jumbo**—This is the standard variety for roasting. The peanuts are three times as large as those of the ordinary Spanish peanut. The nuts proper grow in fine double jointed hulls of beautiful white appearance, are from one-half to one inch in length, and of fine flavor. An excellent variety worthy of the highest recommendation. 30c lb., postpaid.



SPANISH PEANUTS



DWARF ESSEX RAPE

## MILLET

**Fancy Big German**—The most popular of all the Millet for hay or seed. It matures in six to eight weeks after planting. If wanted for hay, it should be cut while in bloom, as the hay quality decreases as soon as the seed hardens in the head. Our variety of Millet is the best and you will find it superior to any variety. 20c lb., postpaid.

## POP CORN

There is always a good market for Pop Corn, and every corn grower should plant it.

**White Rice**—This is the best variety of white Pop Corn for popping. 30c, postpaid.

## RAPE SEED

One of the best forage crops on the market, making excellent feed for hogs, sheep, cattle and poultry. Very similar to Collard greens, and may be cooked and eaten like Collards. Sow at the rate of three pounds to the acre.

**Dwarf Essex**—This is considered the most desirable variety of Rape, and should be planted on every farm and in every garden. Furnishes rich, nutritious pasture and green feed six to seven weeks after planting. 30c lb., postpaid.

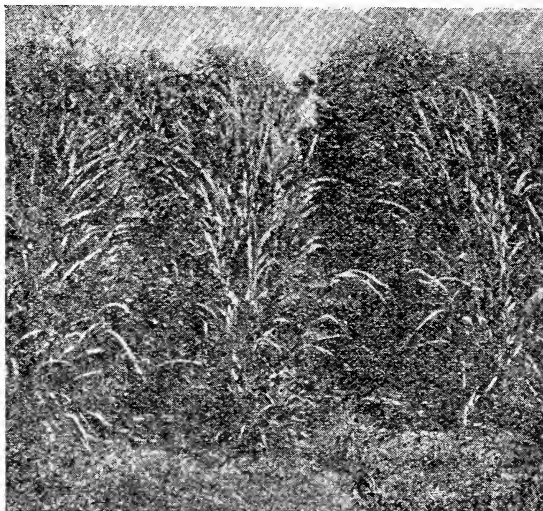
## SUNFLOWER

**Mammoth Russian**—Produces very large heads sometimes 15 inches across. The seeds are valued very highly as a feed for poultry. The seed can be planted on a waste piece of ground any time in the early spring and until the middle of July. Should be sown at the rate of about three pounds to the acre. Lb., 30c, postpaid.

# GRASSES FOR FIELD AND LAWN

## SUDAN GRASS

The great hay and forage crop. This wonderful new grass seems to be taking the country by storm. This grass has been grown very extensively in Texas the past season and has been tested out in a number of other states and the verdict is unanimous everywhere it has been grown it spells success. It seems to grow successfully on all kinds of land, stands dry weather and does not blight under ample rainfall. Sudan Grass is thought to be the original wild form of the cultivated sorghums. It is an annual, the seed having to be sown every year. It looks very much like Johnson Grass when growing but has a different root growth. Johnson Grass reproduces itself from underground root stalks as well as from the seed. Sudan Grass will not sprout from the roots after frost has killed the plant. Ranges in height from five to ten feet, stems small and somewhat more leafy than Johnson Grass. Like the sorghum crops, it must be planted each spring and dies when the frost comes. 30c lb. postpaid.



SUDAN GRASS

## RHODES GRASS

A subtropical grass of African origin and introduced into the United States a short time ago. Has proven since then as one of the best species for pasture or dry soil and is of great agricultural importance. It is a perennial sort which does not spread by underground rootstocks, but produces running branches which took at the joints, thereby producing new plants. It grows from three to four feet high, with a large number of very long, narrow and tender leaves. \$1.00 lb., postpaid.

## BERMUDA GRASS

**Synodon Dactylon**—Almost everybody living in this section of the country knows this grass. It is planted as a lawn grass, and nothing will stand the sun better, or will make a prettier carpet, when kept short, than this grass. It is also very valuable as a pasture and hay grass, which therefore had to be propagated by the roots. \$1.00 lb., postpaid.

## ENGLISH OR PERENNIAL RYE GRASS

(London Perenne)—Is largely sown by our landscape gardeners for winter lawns on Bermuda soil. The Bermuda blades being easily affected by frost, become red and rusty looking, while English Rye during winter presents a most beautiful appearance, being of a vivid green, and as the Bermuda during April and May makes its appearance it overgrows the English Rye, causing the latter to decay and act as a fertilizer to the existing grass. It should be sown from September to March at the rate of 3 to 4 bushels of seed per acre. 35c lb., postpaid

## SATEX SPECIAL LAWN FERTILIZER.

Gives the young shoots a quick and vigorous start and maintains a healthy growth. Will make your lawn have that bright dark green color which you so much desire. Use at the rate of 25 lbs to every 1000 square feet of lawn. 5 lbs 30c; 25 lbs \$1.25; 100 lbs \$4.00.



# FEED YOUR GARDEN WITH FERTILIZER SO YOUR GARDEN CAN FEED YOU

For the intensive cultivation of plants in the home garden and grounds fertilizers play a very important part.

The following fertilizers represent the best for the home garden and the lawn:

## STIM-U-PLANT

**PLANT STIMULANT TABLET**

lutely under control, for he can feed his plants as they need food. They increase production, hasten maturity, improve quality and better the color of the plants and products. Trial size, 15c; small size, 30c; 100 tablets, 85c, postpaid.

Plant success is a matter of feeding crops definite amounts of stimulating foods as plants need them. Stim-U-plant Tables enable the planter to keep development abso-

## FARMOGERM

Farmogerm means increase in all legume crops, such as peas, beans, alfalfa, clover, vetches.

Farmogerm, used on your seed, furnishes Nitrates to the plants. It increases their growth and enriches the soil. When the seed sprouts the bacteria enters the root and makes large supplies of Nitrates, which benefit greatly the growing crop and the crops that follow. Soils can be built up to a high standard of fertility at small cost and little labor. Assures substantial saving in your fertilizer bill.

Farmogerm is sold in three sizes as follows: Bottles containing enough bacteria to inoculate seed for five acres, \$4.50; one acre, \$1.00; garden size (quarter acre,) 50c.

## SWIFTS FERTILIZERS

**NOTE**—Prices on all fertilizers are subject to market changes. Write for prices.

**Acid Phosphate**—16%—It gives excellent results on nearly all crops, but is especially recommended for use on grains and grasses. Lb., 4c; 100 lbs.

**Truckers Favorite**—This brand has been especially prepared for such crops as require a quick strong fertilizer. Adapted for potatoes, sugar beets, cabbage, cauliflower, etc. Lb. 5c; 100 lbs.

**Blood & Bone**—For Cabbage, Cauliflower, Corn, Flowers, and other crops of big surface growth. Not desirable for root crops. Lb. 5c; 100 lbs.

**Bone Meal**—Ground very fine. Acts very quickly. There is no better fertilizer for the home garden than this splendid material. Splendid for rose beds, pot plants, etc., Lb. 6c; 100 lbs.

**Lime (Hydrated)**—For the sweetening and renovating land that has become sour. It promotes growth and has a tendency to prevent weeds. Lb. 2c; 40 lbs. 55c.

**Nitrate of Soda**—A fertilizer very quick in action and used for the nitrogen it contains. Will mature a crop several weeks earlier and greatly improves it. Lb., 15c; 100 lbs.,.....



**ODORLESS—CLEAN—EFFICIENT**

Sold only in 25 lb. white cotton bags  
125 lb. gunnies.....  
1 and 2 lb. packages.....

**No Filler—No Bulk—All Fertilizer**  
**BEST MONEY CAN BUY—BEST EARTH CAN PRODUCE**

**For Lawns, Flowers, Gardens, Shrubs**  
**House Plants, Fields and Orchards**  
**Book FREE—Tells just HOW**

A 25 lb. bag covers a lawn space of 1200 square feet. Lasts a year or more.  
A tablespoonful to hill of potatoes, tomatoes or ordinary rose bush means abundant flowers, crisp and early vegetables.  
A teaspoonful for 6 to 8 in. potted plant. Ferns love it. Fully Guaranteed.

**DISTRIBUTOR**

1-Lb. Package.....	25c
2-Lb. Package.....	50c
<b>25 Lb. White Cotton Bag</b>	
<b>\$3.00</b>	

# SPRAY SCHEDULE

SEE OPPOSITE PAGE FOR PRICES ON INSECTICIDES

Disease or Insect	Remedy	Injury and Remarks
Cabbage Worm	Bordeaux Mixture	Spray at intervals of 10 days to 2 weeks
Rust or Blight	Lime Sulphur	Spray while trees are dormant
San Jose Scale	Arsenate of Lead Calcium Arsenate	Holes in leaves Dust or Spray
Tomato Worm	Hammonds Slug Shot Calcium Arsenate Paris Green	Leaves eaten. Dust or Spray. Can be used within three weeks of picking
Plant Louse or Aphids	Arsenate of Lead Black Leaf 40 Vaycide 40 Dust Tobacco Dust	Misshapen and Curled Leaves, drying up in 1 to 3 days. Spray or dust under side of leaf
Potato Beetle	Kerosene Emulsion Calcium Arsenate Vaycide 40 Dust Arsenate of Lead	Chewed Leaves. Hand pick if small patch. Spray two or three times if large patch
Blister Beetle	Arsenate of Lead London Purple	Spray at first sign of beetle.
Cut Worms	Paper Bands Poison Bait	See next page for poison bait formula
Harlequin Bug	Kerosene Emulsion with Black Leaf 40	Hand pick. Plant trap crop of radish or mustard when bugs attack. Use raw kerosene spray or cactus burner
Damp Off Fungus	Proper Management	Avoid extremes of drought and moisture in seed bed
Cucumber Beetle	Bordeaux Mixture Arsenate of Lead Calcium Arsenate Tobacco Dust Vaycide 40 Dust	Chewed Leaves. Plants wilt. Begin to dust or spray as soon as plants are up and beetles appear
Sweet Potato Weevil	Fumigation of seed roots Arsenate of Lead Paris Green	Fumigate seed roots 30 hours in tight container at rate of 5 lbs carbon bisulphide to 100 bu., roots. Spray vines with Arsenical spray
Squash Bug or Stink Bug	Hand picking or Kerosene Emulsion	Trap under boards laid on ground and spray with Kerosene
Flea Beetle	Bordeaux Mixture	Not a serious pest. Bordeaux mixture acts as a repellent and keeps down fungus disease.
Smut	Formalin Solution	Mix with grain and allow 24 hours to dry before planting
Bean & Corn Weevil	Carbon Bisulphide	Put seed in airtight container. Use ½ pint to every 450 cubic feet of air space
Boll Weevil	Calcium Arsenate	Dust on cotton before squares commence to set and repeat every 14 days.
Web Worm	Arsenate of Lead Paris Green	Use as a dust or spray
Slugs and Sow Bugs	Hammonds Slug Shot	Use as a dust
Mildew and Red Spider	Dry Milled Sulphur	Apply by dusting

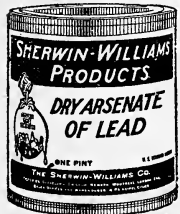
# INSECTICIDES AND FUNGICIDES

See opposite page for Insecticide required. Write for quantity prices. Prices quoted f.o.b. San Antonio, Texas.

**Slug Shot, Hammond's**—Guaranteed to destroy potato bugs and those in tomato and egg plants, currant worms, cabbage lice and worms. 1 lb., 15c; 5 lbs., 60c.

**Wolf's Gardite**—A non-poisonous insecticide for garden use. 50c.

**Dry Calcium Arsenate**—For dusting on cotton for eradicating the boll weevil, etc. 1 lb., 45c; 5 lbs., \$2.00.



**London Purple**—Used for killing potato and other bugs. Lb. 60c.  
**Fish Oil Soap**—For insects and lice in plants and shrubbery. 20c lb.  
**Tobacco Dust**—most effective against the cabbage fly and worms which are so injurious and destructive to cabbage and cauliflower plants, and to cucumbers and melons. 10c lb. postpaid.  
**Dry Arsenate of Lead**—For all leaf eating insects, such as codling moth, potato beetle, cabbage worms, etc., 1 lb., 45c; 5 lbs. \$2.  
**Insecto**—A combination of Arsenate of Lead and Bordeaux Mixture in dry powder form. 50c lb.

**Tuber Tonic**—Combining the quick killing properties of Paris Green, the fungeous preventive properties of Bordeaux Mixture, and the adhesiveness of Arsenate of Lead. 45c lb.

**Dry Lime Sulphur**—Particularly effective in the control of San Jose Scale. 1 lb., 35c; 5 lbs., \$1.65.

**"Black Leaf 40"**—A concentrated solution of nicotine sulphate, 1 oz. bottle, 35c; ½ lb. can, \$1.25; 2 lb. can \$3.50.



**Paris Green**—Effective against all chewing insects. 1 lb. 60c.

**Dry Milled Sulphur**—a fine powdered sulphur. Lb., 10c.

**Copper Sulphate**—(Blue Stone) Used for making Bordeaux Mixture. Lb., 20c.

**Bordeaux Mixture**—The best cure for Fungicide. Lb., 40c.

**Vaycide Forty**—Lb. 35c., 3 lbs., 95c; 5 lbs., \$1.40.

**Lees Insecticide**—For the Family Garden. 35c and 60c.



**SPRAY-TABS** **BORDEAUX-ARSENATE TABLETS**  
**Spray Tabs**—A combined insecticide and fungicide. A convenient spray material in tablet form for the destruction of leaf eating insects and the control of plant diseases, eliminating mixing poisons from bulk packages. Especially put up for home gardens. Packed in 3 sizes, 15c, 30c, and 85c, postpaid.

**Poison Bait**—Mix 2 pounds of Paris Green or Arsenate of Lead with 100 lbs., of Wheat Bran. Add molasses to sweeten and some water to make a mash. Place small quantities along the rows of plants.

**Formalin Solution**—½ ounce Formalin to 1 gallon of water.

## BORDEAUX MIXTURE

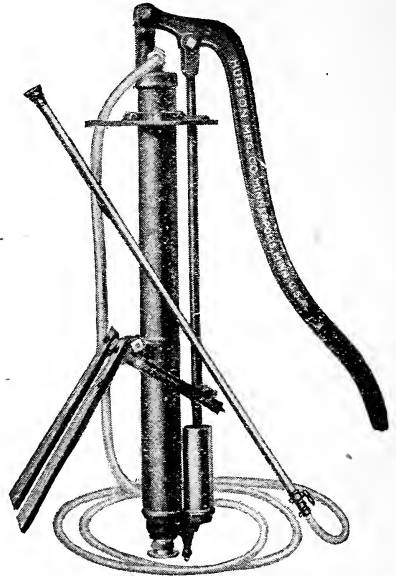
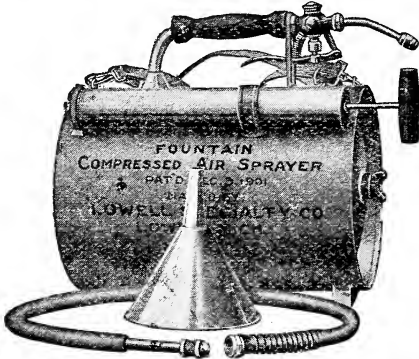
Copper Sulphate, 6 pounds — Quicklime, 4 pounds — Water 40 gallons.

Dissolve the copper sulphate by putting it in a bag of coarse cloth and hanging this in a vessel holding at least 4 gallons, so that it is just covered by the water. Use an earthen or wooden vessel. Slake the lime in an equal amount of water. Then mix the two and add enough water to make 40 gallons. It is then ready for immediate use. For rots, moulds, mildews, and all fungous diseases.

# BARREL SPRAY PUMP

In our No. 4, we have developed a pump that will meet every requirement of a perpendicular Barrel Pump. It is powerful, light and durable and will develop better than 250 pounds pressure with ease. Can be used with either one or two lines of hose.

No. 4A—Outfit consists of No. 4 Pump, 15 feet 1/2-inch Sprayer Hose, Fog Nozzle, Leakless Shutoff, and 8 feet of 1/4-inch iron Extension Rod, ready for use. \$14.00.



**LOWELL FOUNTAIN COMPRESSED AIR SPRAYER**

## LOWELL BABY FOUNTAIN COMPRESSED AIR SPRAYER

Capacity of tank, one gallon

No. 120 .....\$4.50

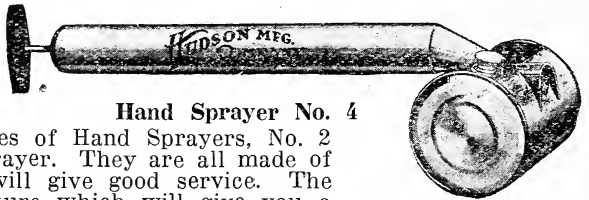
The Lowell Fountain Compressed Air Sprayer is well adapted for the fruit grove, farmer, stockman, poultryman, florist, and for use of general disinfectants. It is the strongest small tank sprayer ever made,

being constructed of heavy galvanized steel.

No. 110—3 gallon capacity.....\$6.00

No. 111—Same as No. 110, only that the tank is constructed of heavy sheet brass instead of galvanized steel. \$8.25.

## SPRAY PUMPS



**Hand Sprayer No. 4**

We carry in stock four styles of Hand Sprayers, No. 2 and No. 4 and a continuous Sprayer. They are all made of good grade of material, and will give good service. The Continuous Sprayer has a feature which will give you a continuous spray as long as there is any air left in the tank, and for this reason is used a great deal, as it is not as fatiguing to operate same.

No. 2 Hand Sprayer (not postpaid).....35c Continuous Sprayer (not postpaid) 1.25

No. 4 Hand Sprayer (not postpaid).....50c



## DUST BLOW PUMP

An ideal pump for dry powders and insecticides, such as Slug Shot, Tobacco Dust, for spraying on flowers and vegetables. Made of heavy material. \$1.00.

**Kerosene Emulsion**—Take 1 pound of whale oil (fish oil) soap. Dissolve into half gallon boiling water and then pour (away from fire) while still boiling hot into one gallon kerosene. Churn rapidly 8 to 10 minutes. Churn with bucket pump by pumping back and forth into bucket. Dilute 1 part Emulsion to 15 parts water for spraying.



**BARRELL SPRAY PUMP**

Has a tank made like a steam boiler. The all-riveted seams give the necessary strength for developing a high pressure, which is absolutely essential for good results. The all-brass pump is placed inside the tank and is easily removed. \$6.50.

**HUDSON BUCKET PUMP**

The best all-around Bucket Pump on the market. Made of good heavy material, and will last a life-time. It is the best all around pump for the average poultryman. \$5.00.

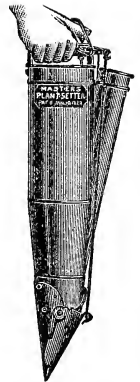


**SAVE THOSE  
BABY CHICKS**

See outside back cover catalog which will show you how to raise more and better chicks. The way the successful poultry farmers do it.

**MASTER RAPID PLANT  
SETTER**

Makes transplanting a pleasure instead of a labor. Will set, water and cover in one operation, such plants as Cabbage, Cauliflower, Celery, Pepper, Tomatoes, Sweet Potatoes and Strawberries. One man can set 10,000 plants daily. You work in an upright position all the time; no stooping and no lame backs. Each, \$6.00.



**CYCLONE  
SEED SOWER**



A machine of very simple construction. This seeder will sow any seed that is sown broadcast, such as Oats, Wheat, Rye, Millet, Clovers, Grass Seeds, etc. It can be very easily adjusted to suit the seed being sown. We sell a world of them every year and our customers say they give good satisfaction. \$2.25 each; customers paying transportation charges. Mailing weight 6 pounds.

**FOUR-TINE SPADING FORKS**

**OLD. X.**—Spading Fork. Four tempered steel tines. Strap ferrule. Iron D handle. \$1.25 each.

**OLD. S. P.**—Spading Fork. Same construction as OLDX only a little lighter built. \$1.00 each.





**STEEL GARDEN HOES**

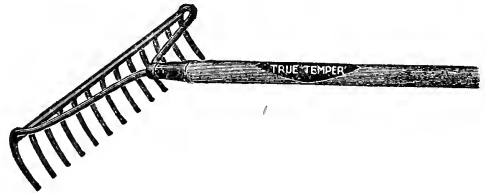
**R7**—Shank Pattern Standard Quality, Strong and Durable, Tempered 7 inch Steel Blade. 4 1/3 foot hardwood handle. 45c each.

**SMO 8**—Solid Socket Steel Garden Hoe. Tempered 8 inch steel blade, one piece steel socket. Selected 4 1/3 foot hardwood handle. 85c each.

**No. 2P**—Weeding Hoe. Sheet Steel Blades, Iron Shanks, 3 inch Blade. Two prongs. 4 1/2 foot handle. 40c each.

**STEEL GARDEN RAKES**

**B14**—Solid bow steel rake. 14 curved teeth spring tempered. 5 1/2 foot hardwood handle. \$1.00 each.

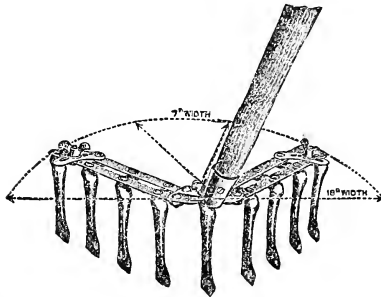


**SB14**—Steel Garden Rake. 14 spring tempered teeth. Bows well braced. Hardwood handle. 75c each.

**PULL-EASY GARDEN CULTIVATORS**

**No. PEJ4**—Same as PEC. Has 4 teeth adjustable 2 to 6 inches wide. Each 75c.

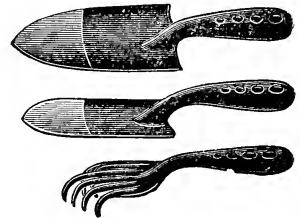
**No. PEC**—Adjustable 6 to 18 inches wide. 9 teeth. All steel parts enameled Royal Blue. French Polished handle 4 1/2 feet long. Middle tooth removable for cultivating rows of small plants on both sides at the same time. Better than a rake for preparing the soil. Each \$1.25.



**MOE'S ALL STEEL GARDEN TROWELS AND WEEDERS**

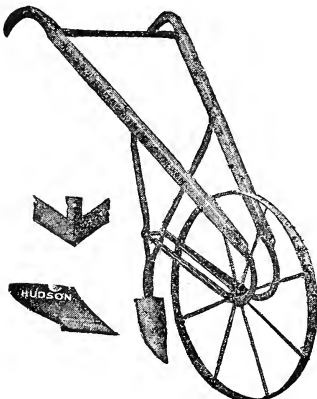
Heavy pressed steel black enamel finish with polished points. No loose wood handles.

- No. 80 Garden Trowel—6-inch blade.....Each, \$0.25
- No. 81 Transplanting Trowel.....Each, .25
- No. 32 Garden Weeder.....Each, .25



**HUDSON GARDEN PLOW**

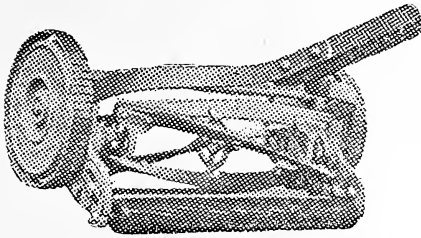
A counterbalance plow, with a 24-inch high wheel made of the very best material and most careful workmanship. This is a good, strong, durable tool and can be used in the largest gardens. Is very popular and the best of its kind. Shipped with tools as shown. Weight 28 pounds. No. 242, each, \$4.00.



**COMPARE OUR PRICES.**

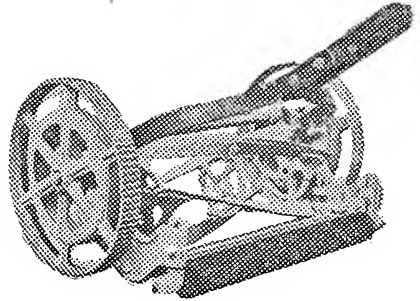
Quality considered, and you will find them to be less than other houses are asking for the same merchandise. Keep this catalog where it will be convenient for ready reference.

## BALL BEARING LAWN MOWERS



**Colonial Lawn Mower**—A first class ball bearing machine which can be purchased at a price within reach of all. 8-inch driving wheels. Four blade revolving cutter insuring fineness and evenness of cut, adjustable bearings, 14 inch \$10.00, 16 inch \$10.50.

**Great Southern Lawn Mower**—Open side frame and drive wheels reduce the weight making it a light and easy mower to handle. Height of wheels 10 inches. Large open four blade revolving cutter. Coldwells patented adjustable ball bearings. 14 inch \$12.25, 16 inch, \$13.00.



**Amazon Lawn Mower**—A strictly high grade ball bearing Lawn Mower. Large driving wheels and fine cut gears insure ease and quietness of running. Large diameter revolving cutter with blades, patented adjustable ball bearings. 14 inch \$13.50; 16 inch, \$14.50.

**Adjustable Grass Catchers**—Galvanized bottoms, canvas sides \$1.00 each.

## MOLDED RUBBER GARDEN HOSE

SEAMLESS-NON-KINKABLE-DURABLE

Made with two seamless double braided jackets over a tube of high grade rubber incased in a heavy molded rubber outside cover. We recommend this hose for long service. ½ inch hose 25 ft. length \$2.75; 50 ft. length \$5.00; ¾ inch hose 50 ft. length \$5.50. These prices include couplings.

**Hose Nozzle**—Boston Pattern Brass Hose Nozzle 75c each.

**Ring Sprinkler**—Made entirely of brass and distributes water evenly over a large area. 85c each.

**Rubber Hose Washers.** 10c per dozen.



### SEEDS FOR PARROTS, CANARY BIRDS AND PIGEONS

Canary Seed.....	15c per lb.
Hemp Seed.....	10c per lb.
Millet Seed.....	10c per lb.
Canada Peas.....	10c per lb.
Cuttle Fish Bone.....	10c per oz.
Rape Seed.....	15c per lb.
Mixed Bird Seed.....	15c per lb.
Sunflower Seed.....	15c per lb.
Bird Manna.....	15c each 2 for 25c
Bird Grit, 2 lbs.,.....	20 Pkg.

Postage on all bird seed extra.

# FLOWER POTS



	Each
2-inch .....	\$.03
3-inch .....	.03
4-inch .....	.05
5-inch .....	.06
6-inch .....	.10
8-inch .....	.20
9-inch .....	.35
10-inch .....	.40
12-inch .....	.75
14-inch .....	1.15
16-inch .....	1.50

## POT SAUCERS

	Each
4-inch .....	\$.04
6-inch .....	.05
8-inch .....	.10
10-inch .....	.15
12-inch .....	.20
14-inch .....	.35
16-inch .....	.40

## FERN OR BEGONIA POTS

They are not so deep as the regular flower pots and are used a great deal for growing ferns and Begonias in; also asparagus plants, etc.

	Each
6-inch .....	\$.10
8-inch .....	.15
10-inch .....	.25
12-inch .....	.40
14-inch .....	.55
16-inch .....	.75

We pack as carefully as possible but they are shipped at purchaser's risk of breakage. Shipping charges not prepaid.

## STONE JARS

With lids

Splendid for preserving or pickling meats, kraut and cucumbers, etc.:

1 gallon size.....	\$.35
2 gallon size.....	.55
3 gallon size.....	.80
5, gallon size.....	1.35
6 gallon size.....	1.55
8 gallon size.....	2.00
10 gallon size.....	2.25

# STOCK AND POULTRY FEEDS

## NOTICE

All Prices Subject to Market Changes

Blood Meal .....	Per 100 lbs.....	\$2.50; Lb. 8c.
Linseed Meal .....	Per 100 lbs.....	\$2.50; Lb. 8c.
Oyster Shells, fine or coarse.....	Per 100 lbs.....	\$1.50; Lb. 2½c.
Grit, fine, medium or coarse.....	Per 100 lbs.....	\$1.75; Lb. 2½c.
Charcoal, fine, medium or coarse .....	Per 100 lbs.....	\$4.50; Lb. 7½c.
Beef Scraps, 50 per cent protein .....	Per 100 lbs.....	\$5.00; Lb. 6c.
Choice Pea Green Alfalfa Meal .....	Per 100 lbs.....	\$2.25; Lb. 4c.
Bone Meal.....	Per 100 lbs.....	\$4.75; Lb. 6c.
Pepper Seed.....	Per 100 lbs.....	\$5.00; Lb. 6c.
Cotton Seed Meal.....	Per 100 lbs.....	Lb. 4c.
Red Cross Health Grits.....	Per 100 lbs.....	\$4.50; Lb. ....
Alfalas .....	Per 100 lbs.....	
Mazolas .....	Per 100 lbs.....	
Economy Stock Feed.....	Per 100 lbs.....	
Old Trusty Scratch Feed.....	Per 100 lbs.....	
Wheat .....	Per 100 lbs.....	
Corn Chops .....	Per 100 lbs.....	

## WRITE US

FOR PRICES ON

Alfalfa Meal
Wheat Bran
Corn Bran
Rice Bran
Whole Ground Corn
Corn Chops
Shorts
Wheat
Mild Maize
Kaffir Corn
Corn
Salt
Lime
Cotton Seed Meal
Oats

We carry a full line of feed and can make prompt shipment.

**Seamless Cotton Bags**—These are extra heavy cotton bags and are fine for sacking corn meal, etc. Used extensively for sacking grain, holding two bushels each. These bags have been used only one time, and are in first class condition. Value 65c when new. Offer you same at 25c each.



# SUPERIOR STOCK AND POULTRY FEED

IN THE RED CHAIN BAGS

## SUPERIOR BUTTERMILK STARTING FOOD

Superior Buttermilk Starting Food will put vim and vigor into your baby chicks at the time they need it most. It will make them strong and husky, so that they can fight off most of the chick diseases that carry off so large a percentage of the yearly hatch.

Superior Buttermilk Starting Food gives your chicks buttermilk in a dry, sanitary form, not too much and not too little. The lactic acid is just what is needed by the delicate digestive tract of the baby chick as an aid in the prevention of digestive and bowel troubles.

These prices are not postpaid. 5-lb. bag, 45c; 10-lb. bag, 80c; 50-lb. bag, 100-lbs. bag—write for prices.

## SUPERIOR GROWING MASH

A perfectly balanced mash feed for safe, uniform and rapid development of young growing chickens.

**Superior Scratch Feed and Little Chick Feed**—Are composed of the very best of grains which are cleaned; good enough for human consumption. The cracked grains are all steel cut and scoured and separated by the very latest type of machinery.

## SUPERIOR EGG MASH

(With Dried Buttermilk)

A proven laying mash that is being fed by more large poultry farms than any other egg producer sold in Texas.

## SUPERIOR DAIRY RATION

Perfectured by years of scientific as well as practical feeding tests.

Insures maximum milk production at minimum cost and will extend the period of lactation.

**Superior Calf Meal** is composed of the very best known milk substitutes; and is scientifically balanced to produce safe and economical results.

## SUPERIOR PIG FEED

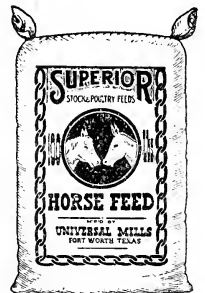
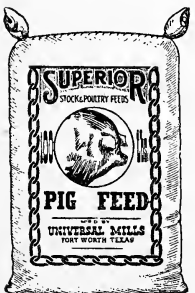
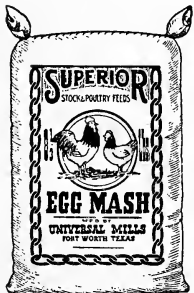
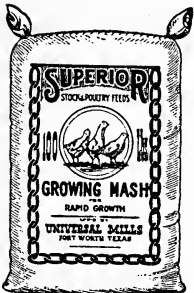
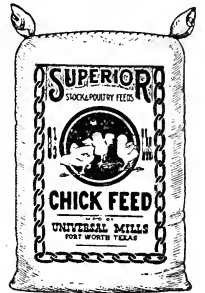
A scientific prepared feed for quick and healthy development and has the endorsement of swine breeders everywhere it has been fed.

**Superior Chicken Fattener**—Is one of the most perfect balanced feeds. Mixed to fatten poultry quickly for the market. If you fatten poultry for the trade you should not be without this feed.

**Superior Pigeon Feed**—Is a mixture of Canada peas, wheat, kaffir, milo and millet, containing no corn. These ingredients are recommended by the United States Department of Agriculture.

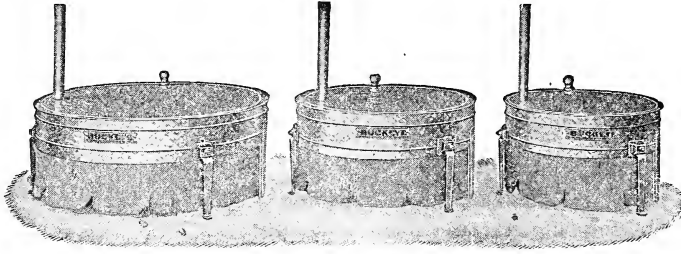
**Superior Horse Feed**—Is the heaviest grain ration on the market, being made nearly entirely of cracked corn and crushed oats. It produces more horse power at less cost.

**Superior Beef Ration**—A balanced feed for fattening steers for the market.



# BUCKEYE PORTABLE BROODERS

THE GREATEST OIL-BURNING BROODERS EVER INVENTED



No. 22

No. 21

No. 20

**GUARANTEED** to raise more and bigger chicks than any oil burning brooder on the market.

**GUARANTEED** to furnish an abundance of heat in any temperature down to freezing.

**GUARANTEED** to be absolutely free from all gases and odors whatsoever and to provide a circulation of pure, fresh air every minute in the day.

**SOLD ON 30 DAYS APPROVAL**

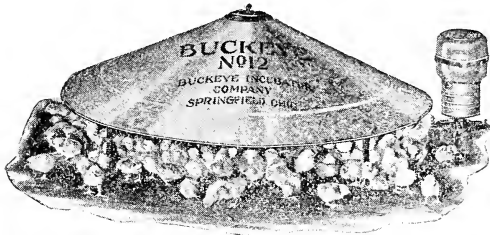
and you write your own

**MONEY BACK GUARANTEE**

No. 20  
60 Chick Size  
\$11.75

No. 21  
100 Chick Size  
\$15.50

No. 22  
150 Chick Size  
\$19.00



## BUCKEYE BLUE-FLAME BROODER

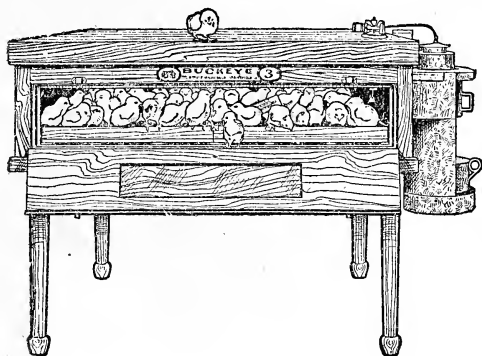
We have now ready for distribution the "New" Buckeye Blue-Flame Brooder which we believe to be vastly superior to any brooder of this type which has been offered to the public. We are of the opinion that no brooder has ever been tested so thoroughly under such a variety of conditions as we have tested this brooder, because we insisted upon knowing beyond any question of doubt that it was going to perform satisfactorily under any and all conditions. We therefore are in a position to place our endorsement on this brooder and recommend it to the trade in the same broad terms as we recommend the Buckeye Coal-Burning Brooders.

No. 27  
Diameter 34 Inches.  
200 Chick Size.  
\$17.50

No. 28  
Diameter 42 Inches.  
350 Chick Size.  
\$20.00

No. 29  
Diameter 52 Inches.  
500 Chick Size.  
\$22.50

# BUCKEYE INCUBATORS



Buckeye Incubators and Brooders enable poultry raisers to save an additional 25 to 50 per cent of their chicks.

Ask for the big Buckeye Catalog that tells all about these wonderful machines.

## BUCKEYE INCUBATOR, STYLE E

60 Egg Size  
\$16.50

110 Egg Size  
\$27.50

210 Egg Size  
\$36.75

## BUCKEYE STANDARD INCUBATORS

This Machine is insurable and bears the underwriters Label. An improved feature of all standard incubators is the enclosed lamp.

No. 1  
120 Egg Size  
\$37.50

No. 2  
175 Egg Size  
\$44.50

No. 3  
250 Egg Size  
\$57.75

No. 4  
350 Egg Size  
\$68.00

No. 5  
600 Egg Size  
\$107.00

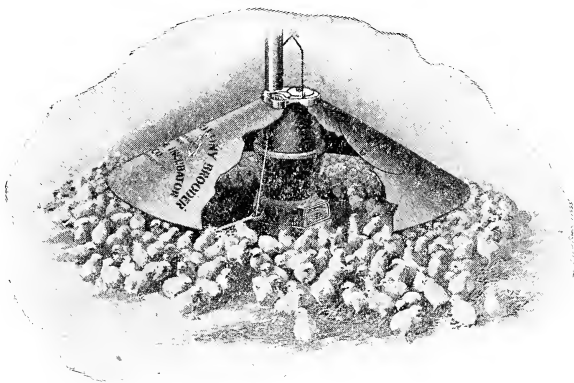
## STANDARD COAL BURNING BROODERS

### GROWS THREE CHICKS

### WHERE ONE GREW

### BEFORE

This is the coal-burning Brooder that took all the gamble out of the chicken business by eliminating the excessive death loss that was so common with the older types of oil-burning brooders.



### "STANDARD" BROODER NO. 18

Capacity Up to 500 Chicks  
Height of Stove, 20 Inches.  
Diameter of Base, 11 Inches.  
Diameter of Grate, 8 $\frac{1}{4}$  Inches.  
Diameter of Canopy, 42 Inches  
Stove Equipped with Rocker Grate.  
Self-Cleaning and Anti-Clog.  
Equipment Includes Portable Ash Pan for Stove, Rope and Pulleys for Canopy  
Weight—Crated for Shipment, 75 Pounds  
Price, \$21.50

### "STANDARD" BROODER NO. 19

Capacity Up to 1,000 Chicks  
Height of Stove, 21 $\frac{1}{2}$  Inches.  
Diameter of Base, 12 Inches.  
Diameter of Grate, 9 Inches.  
Diameter of Canopy, 52 Inches.  
Stove Equipped with Rocker Grate.  
Self-Cleaning and Anti-Clog.  
Equipment Includes Portable Ash Pan for Stove, Rope and Pulleys for Canopy  
Weight—Crated for Shipment, 95 Pounds  
Price, \$26.50

# RELIABLE BABY GRAND INCUBATOR

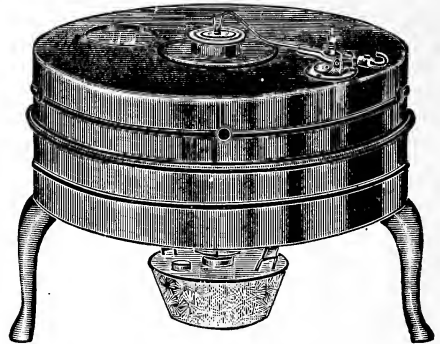
Give it a fair trial in your own home

The Little Baby Grand All-Steel Incubator is a life-time machine. It can be depended on to maintain a perfect hatching condition for 25 years.

### 50-Egg Hot Air

It is double-walled with a circulation of warm air between walls, window in top to see thermometer without opening machine. It is self-regulating and a positive success. Can be shipped by parcel post, express or freight packed all in a carton ready to operate. **Price \$7.50.**

Capacity, 50 chick. Weight, 18 pounds.

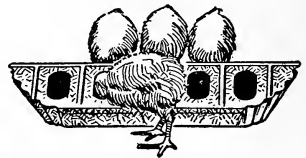


## GALVANIZED WARE FOR POULTRY

### CHICKEN FEED TROUGHS

Accurately stamped with dies. No sharp or rough edges to injure the chicks. Top slides off, so pan is easily filled and cleaned.

- 10-inch size ..... Each 25c
- 20-inch size ..... Each 40c



### MOE'S BABY CHICK FEEDERS

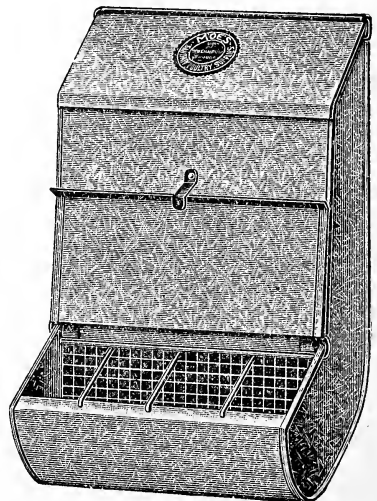
A great feed saver, and can also be used for water or milk. Accurately stamped with dies. Top fits snugly, yet is easily taken off for filling and cleaning.

- No. 11. Diam. 6 in. with 8 holes, ea. 15c
- No. 12. Diam. 8¼ in. with 12 holes " 25c

### HANDY DRY MASH HOPPER

The curved bottom of the Hopper keeps the feed within easy reach of the birds. The gradual enlargement from the top to base prevents clogging. The wire grid and the wire running from the flange through the wire grid prevents any chance of the fowls throwing out or wasting the feed. The sloping cover prevents the birds from roosting on the Hopper, and when both covers are closed, it is rat and mouse proof. A trial will convince you that it is a Hopper of the greatest merit. Manufactured of heavy galvanized iron in four sizes.

- No. 1— 8½ in. wide, each.....\$1.75
- No. 1—12 in. wide, each..... 2.25
- No. 3—24 in. wide, each..... 2.50
- No. 4—36 in. wide, each..... 3.75



**GRIT AND SHELL BOXES**



Grit, shell and charcoal have now become a recognized essential part of the diet insuring healthy fowls. They cannot be more economically supplied than in one of our inexpensive compartment boxes. Can also be used as a feed hopper for little chicks.

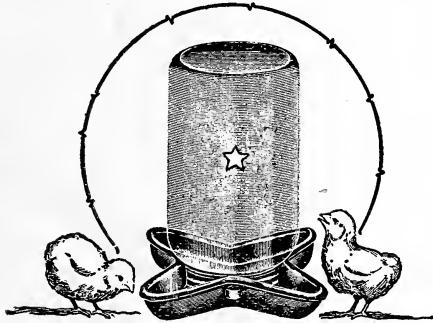
- No. 45—For baby chicks, each.....\$0.45
- No. 9—For grown birds, each..... 1.10

**TWO-PIECE DRINKING FOUNTAINS**

This fountain consists of a coneshaped bucket or can, and a stamped pan which forms the base and the trough from which the fowls drink.

Both parts are made of galvanized sheet steel and all parts are well soldered. The top is pointed so as to prevent chickens from standing or roosting on it. Made in two sizes.

- 1-quart size, 35c each, shipping weight 1 pound.
- 2-quart size, 50c each, shipping weight 1½ pounds.



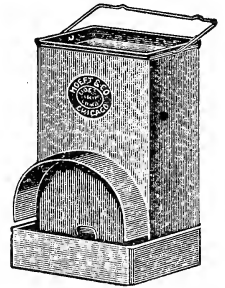
**STAR FOUNTAIN AND FEEDER**

Made of a single piece of heavy metal. No solder, no seams, no loose parts, Suitable for feed as well as water. Little chicks can not drown. Fits any Mason jar in 1 pint, 1 quart, and 2 quart sizes: No. 32 (Glass jar not included) Each 10c.

**SQUARE, DROP BOTTOM FOUNTAIN**

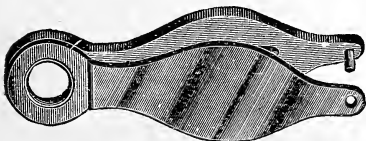
Are easy to clean and fill, keeps water cool and fresh at all times. This fountain was designed to provide the poultryman with a labor-saving fount that could be opened for cleaning and refilling. To fill this fount the bottom is unlocked and swung back, the reservoir is inverted, filled, swung back into place, and is ready to hang on the wall. They are made in three sizes.

- 2 quart .....\$ .95
- 1 gallon ..... 1.25
- 2 gallons ..... 1.45



**MOE'S POULTRY PUNCH**

A popular and practical punch. Makes a clean perforation and does not bruise the foot. No. 38 Moe's Punch, each.....25c



**MOE'S IDEAL POULTRY PUNCH**

A new improved punch. Works easily, cuts clean, and does not pinch the foot. Length 3½ in. Nickel plated.

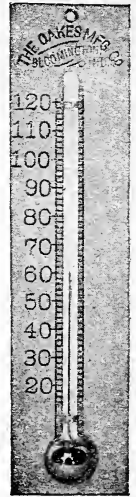


No. 39 Moe's Ideal Punch, each.....50c

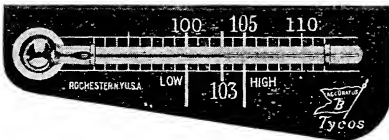
**BROODER THERMOMETER**

The illustration shows our 4-inch metal back brooder thermometer finished black with white lines and figures. It is a neat, convenient and accurate thermometer for brooders, brooder houses and general purposes. Buckeye Coal-Burning and Blue-Flame Brooder.

Price, each .....\$1.00  
 Buckeye Brooder Thermometer, each..... 1.25



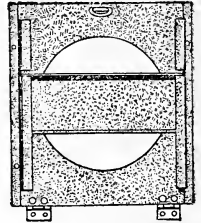
**TESTED INCUBATOR THERMOMETERS**



Standard Grade, postpaid.....\$0.75  
 Tycos Incubator Thermometer, postpaid..... 1.00

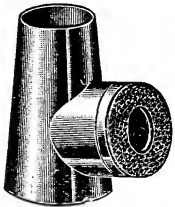
**MOE'S TRAP NEST FRONT**

It places trap nests within the reach of all. For with its use an old orange box can be converted into a double nest at a cost of \$1.30. They are simple in operation with no small parts to get out of order. The front works on hinges, making it easy to remove the birds or clean the nest. Each 65c.



**MOE'S EGG TESTER**

Used to test fertility to eggs during first week of incubation. Use on an ordinary lamp. (No. 2 burner) in a dark room. It will illuminate interior of egg so that you will know if the chick is alive. Also shows size of air-cell. Each 35c.



**INCUBATOR LAMP WICKS**

Made of felt. The best wick to use in your incubator lamp. State size when ordering. Each 5c.



**MOE'S ALUMINUM LEG BANDS**

No. 130—Aluminum, with extra large raised numbers. Easy to read, adjustable for any size fowl. Quickly applied. Price, 12 bands, 15c; 25 bands, 30c; 50 bands, 50c; 100 bands, 80c.

**SPIRAL LEG BANDS**

Sizes—Asiatic, American, Mediterranean and Chick.

Spiral Leg Bands are light as a feather and are easily put on and taken off without tools, and are so designed that they cannot be lost or removed by the bird. Colors, red, black, white, yellow, blue, green, light blue and pink. Prices, 12 bands, 15c; 25 bands, 30c; 50 bands, 50c; 100 bands, 80c.



**MEDITERRANEAN**

**NOTE**—In ordering Spiral or Bignum Poultry Bands state variety or breed of poultry you have, so that we may send you the correct size.

**BIGNUM POULTRY BANDS**



**Poultry Sizes.** The Standard poultry sizes with two large black numbers from 1 to 100, with black ink on celluloid. Size No. 3 (For Leghorn Hens.) 3c each.

Size No. 4 (For Rhode Island Red, Plymouth Rock, and Orpington Females, and Leghorn Males.) One-half inch wide, two and one-half inches long from slot to shoulder. 3c each.



**NAPHTHALENE NEST EGG**

This egg is used not in reality as a nest egg, but is put into the nest to remove and kill the lice. If one of these nest eggs is placed in a nest with the nesting material, it will remove all vermin, if put in a corner of the nest under the setting hen, it will keep the hen free from lice and mites.

Price.....Per doz., 75c; postpaid, 85c

**GLASS NEST EGGS**

Price.....Per doz., 35c; postpaid, 45c

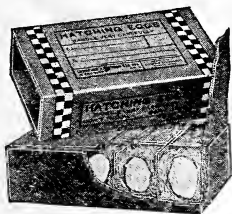
**SHIPPING BOXES FOR DAY OLD CHICKS**

During the last few years the day-old chicks business has grown wonderfully. Much of the success of the undertaking depends upon the condition in which the chicks reach their destination. Our shipping boxes are well made of corrugated board. They are strong enough to prevent crushing, light to reduce express charges, perfect insulation to afford protection against heat and cold. Prices: 25 chick size, 25c; 50 chick size, 35c; 100 chick size, 50c.



**ANDERSON EGG BOXES FOR SHIPPING**

Made of extra heavy corrugated cardboard; built so as to stand rough handling and carry your setting eggs safely.



15 egg size.....	30c each
30 egg size.....	45c each
50 egg size.....	55c each
100 egg size.....	80c each

1-Gal.—Stone Drinking Founts.....	25c each
2-Gal.—2 Piece Stone Drinking Founts.....	80c each

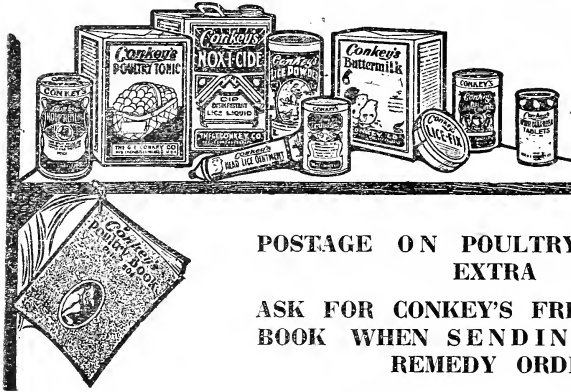
**SALT                      SALT                      SALT**

We carry large stocks of salt and will be pleased to quote you special prices on large quantities. All prices quoted are subject to market changes:

25 lb sack Fine Salt.....	35c per sack
100 lb sack Fine or Coarse Salt.....	\$1.10 per 100 lbs.
Ice Cream Salt.....	1.10 per 100 lbs.
Rock Salt.....	1.00 per 100 lbs.
Sulphur Salt Blocks 50 lbs.....	70c Each

Flower Sulphur for mixing with salt for stock. 10c per lb., 10 lbs., 80c; 100 lbs. \$6.50.

# GUARANTEED POULTRY REMEDIES



## (GUARANTEE)

We guarantee to refund purchase price without question or quibble on any stock or poultry remedy that we send you, on your statement that you were not satisfied with the results.

### POSTAGE ON POULTRY REMEDIES EXTRA

ASK FOR CONKEY'S FREE POULTRY BOOK WHEN SENDING IN YOUR REMEDY ORDER

#### ROUP

- Conkeys Roup Remedy.....30c, 60c and \$1.20
- Conkeys Roup Pills.....30c, 60c and \$1.20

#### CHOLERA

- Conkeys Cholera Remedy.....25c and 50c
- LeGears Cholera Remedy.....25c

#### SORE HEAD

- Conkeys Sorehead Remedy.....25c and 50c
- LeGears Sorehead Remedy.....25c

**.....Satex Sorehead Preparation**—A mixture of certain drugs that has been very successfully used by practical poultrymen for a number of years. Does away with the bother of catching and treating each individual bird. It is fed mixed with Egg Mash or any soft food which you may feed. 50c size for 50 lbs., Mash; 90c size for 100 lbs Mash.



#### WHITE DIARRHOEA

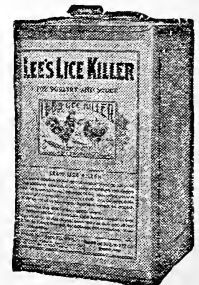


- Conkeys White Diarrhoea Tablets.....25c and 50c
- LeGears White Diarrhoea Tablets.....25c
- Lees White Diarrhoea Remtdy.....25c not available.
- Conkeys Canker Special.....50c
- Conkeys Limberneck Remedy.....50c
- Conkeys Rheumatic Remedy.....50c
- Conkeys Blackhead Remedy.....50c
- Martins Turkeystone—a splendid remedy for turkeys.....75c
- Conkeys Poultry Worm Remedy.....25c and 50c
- Conkeys Poultry Conditioner.....25c
- Conkeys Poultry Laxative.....25c
- Conkeys Scaly Leg Remtdy.....25c
- Conkeys Cape Remedy.....25c

#### LEE'S LICE KILLER

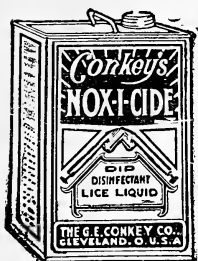
It kills by vapor and contact. It gives double service. Painted on the roosts, it kills insects with which it comes in contact, and the vapor arising from it kills lice on the bodies of the chickens as they roost over night, also the insect causing scaly leg. Not available. Price—Quart can, 60; ½ gallon 90; gallon can \$1.50.

ASK FOR IT WHEN SENDING IN ORDER.





# POULTRY VERMIN DESTROYERS.



Conkeys Lice Powder.....	35c and 60c
LeGears Lice Powder.....	25c
Conkeys Head Lice Ointment.....	10c and 25c
LeGears Head Lice Ointment.....	25c
Conkeys Lice Fix.....	25c and 50c
Conkeys Flea Salve.....	25c
Conkeys Lice Liquid.....	Qt. 60c; 2 Qt. 90c; 1 gal. \$1.50
Conkeys Nox-i-cide.....	Pt. 50c; Qt. 80c; 2 Qt. \$1.25; 1 gal. \$2.00.
Conkeys Nox Tablets.....	25c
LeGears Dip & Disinfectant.....	Qt. 70c; 2 Qt. \$1.15; 1 gal. \$1.75.

**Martin's Blue Bug Exterminator**—Guaranteed to absolutely rid fowls of Blue Bugs, Lice, Fleas and other vermin or money refunded. Blue Bug Exterminator is not a dope that you have to catch the fowls to apply but a food that is fed with the other feed. 36 hen size, 50c; 100 hen size, \$1.00.

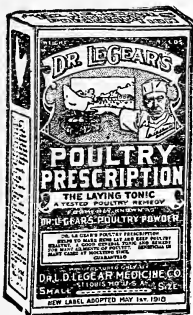
**Martin's Sure Death** to all kinds of insects and germ life. Kills Bed Bugs, Roaches, Moths, Blue Bugs, Ants, Mosquitoes, Fleas, Chiggers, Chicken Lice and all kinds of vermin. Disinfects Sinks, Outhouses, Closets, Basements, etc., etc. Small size, 25c; qt. 75c; Not mailable.



# POULTRY TONICS.

**Frenchs Poultry Mustard**—Ground of pure mustard seed and used by mixing into an egg mash. A gentle stimulant for poultry and can be fed the whole year round without harm to poultry. Lb., 30c; not postpaid.

Conkeys Poultry Tonic 25c and 50c packages, 12 lb. pails \$1.75.
Le Gears Poultry Prescription, 25c, 50c and \$1.00 packages, 25 lb pails \$2.50.



## LEE'S EGG MAKER

Hastens the moult, tones up the system, stimulates the egg-producing organs without injury, and lengthens the period of egg productions, when eggs mean money. Helps you raise your little chicks. 2 lb. pkg., 50c; 5 lb. pkg. \$1.00; not postpaid.

## PRATT'S POULTRY REGULATOR

Contains the necessary drugs to help the hen lay eggs, and is also a fine regulator. It will build up your fowls and help prevent the breeding of diseases. Pkgs., 25c and 50c.

## GERMOZONE (Not Mailable)

is a most effective remedy for distases affecting the skin and semi exterior mucous membrane of man, fowl or beast. It is particularly valuable to have always on hand for first aid treatment and as a preventative through its strong germicidal action.

**For Poultry**—Roup, colds, canker, chicken-pox, sore head, swelled head, cholera, bowel trouble, etc.

**For Stock**—Cuts, sores, wounds, sore eyes or mouth, saddle or harness galls, swelling, skin distases, etc.

4 oz. at.....	\$ .40
12 oz at.....	.75
Quart size.....	1.00
Gallon size.....	4.50

## GERMOZONE TABLETS (Mailable)

Small size, 20 tablets.....	25c
Large size, 75 tablets.....	65c





**EGG-OLATUM**

Rub a fresh egg with Egg-o-latum. Set it away on end in a cool, dry cellar and it will keep perfectly fresh for one year. Eggs coated with Egg-o-latum can be boiled, fried, poached or whipped, same as fresh eggs. In fact, they are fresh eggs. Price 50c.

**STOCK REMEDIES**

Conkeys Gall Salve.....	25c
LeGears Gall Salve.....	25c
LeGears Heave & Distemper Remedy.....	50c
LeGears Worm Remedy.....	50c
LeGears Healing Powder.....	25c
Lee's Healing Powder.....	25c

LeGears Stock Powders.....25c and 50c pkgs., 25 lb. pails \$2.50  
 Conkeys Stock Tonic.....25c and 50c pkgs., 12 lb. pails \$2.25  
 Martins Screw Worm Killer.....35c not mailable.

**GUARANTEED TO KEEP FLIES AWAY**

**Conkey's Fly Knocker.** A liquid spray for stock which will relieve them of the fly pest in summer. Should be sprayed lightly on stock, and after a few applications a fly will not dare to bother any animal sprayed with this liquid from 24 to 43 hours after spraying. Price, Qt. 60c; ½ Gal. \$1.00; Gal. \$1.75. Not Mailable.



**LEE'S SMOKE FLAVOR**

The modern way of curing sausage, hams and bacon. No smoking necessary. Does away with the worry of having your meat house and smoke house go up in flames and saves lots of time and worry and cures your meat better. 12 oz. bottle 50c; not mailable.



**Austin's Dog Bread**—A splendid conditioner and ready prepared food for the Dog. Contains ingredients in such a combination as to make a healthful, nourishing dog food. Good for the teeth, for sweet breath, for glossy coat and regular habits. 15c per lb.; 2 lbs., 25c; 25 lbs., \$2.50.



**Epsom Salts**—Well known cathartic. Bowel regulator for stock and poultry. 1 lb 15c; 2 lbs. 25c; 10 lbs. \$1.00.

**"RAX"**—The scientific destroyer of Rats, Mice and all rodents. Harmless to human beings and all animals not rodents. 75c, not postpaid.

**WHEN TO ORDER YOUR SEEDS**

Now is the time to order your seeds, while you have the subject fresh on your mind. Don't put it off until tomorrow. By sending in an order now you will have the seeds when wanted.



## We Sell and Recommend Burrell-Dugger Guaranteed Poultry Remedies



### DON SUNG Makes Hens Lay!

**We Guarantee you--More Eggs or No Pay**  
 "Hens won't lay in Fall and Winter," used to be accepted as a fact. But anyone who has tried Don Sung knows that hens will lay right through the zero spells of winter, and all other cold or wet seasons.

Some may doubt this—and you may be one of them. But if you don't at least try Don Sung, you are missing some sure, easy profits from extra eggs.



#### A Mineral Compound that Scientifically Helps Nature

Don Sung doesn't force or hurt the hen in any way. It is a balanced mineral conditioner. It improves the hen's health, tones up her egg-laying organs, and makes her stronger and more productive. It helps supply, during Fall and Winter, those mineral elements, lacking in the feed at that time.

**Costs Nothing to Try—Give Don Sung to 15 hens for 30 days.** If it doesn't show you a big increase in eggs, if it doesn't pay for itself and a good profit, your money will be promptly refunded.

Prices: Trial size, 50c; Large size, \$1, holds 3 times the 50c size; SPECIAL SIZE (6 times the \$1 size)—\$5.

### To Kill Chicken Lice!

The U. S. Dept. of Agriculture says, "Nothing is as satisfactory as Sodium Fluoride. It kills both old and young lice, including the young which hatch from the eggs present on the fowl at time of treatment." Talcimized Sodium Fluoride is the form for poultrymen to use. Here it is, Ready to Use.

Here is T. S. F., specially made for poultry. It is less irritating, and is so light and fluffy that it penetrates the plumage. It is in a handy sifter-top can that keeps it protected. Carries the Government's directions for use by the "dusting," "dip" and "pinch" method.

**Prices of T. S. F. Delivered**  
 Small Size (enough for 40 chickens) ..... 40c  
 Large Size (Twice as much) ..... 70c  
 Special Size (Five times the large size) ..... \$2.65

**TALCIMIZED SODIUM FLUORIDE**  
 (Called "T.S.F.")

(All these prices include packing and postage.)



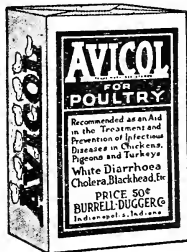
### Stops Chicks Dying

**The Wonder Remedy for WHITE DIARRHOEA or Cholera in chicks, and Black-Head in Turkeys**  
**Does work in 48 Hours**

White Diarrhoea kills half of nearly every hatch of chicks. The strange thing is that so many people think this loss can't be stopped. But it can be stopped, without extra work, without troublesome dosing, and at almost no cost. For years, thousands have saved their sick chicks and raised nearly every chick in every hatch, by keeping Avicol in the drinking water.

Avicol is a bowel antiseptic. It makes chickens healthy and keeps them healthy. Costs less than a cent a day for an ordinary flock. Guaranteed.

Price 50c; Large Size (Almost 3 times as much) \$1.



### Roup-Over

"The Over-Night Roup Remedy"

#### A New Prompt and Positive Guaranteed Treatment for Roup, Canker and Colds in Poultry

Roup works fast. It usually begins with a cold. After that, the disease progresses rapidly. It is very contagious and can soon kill every chicken you own. Roup is one of the most serious of poultry diseases.

Keep Roup-Over on hand and at the first symptoms of a cold in your flock, give it to every affected bird. It clears the air passages and brings relief with magic quickness. Easily given. Comes in a liquid form and a few drops does the work. Fully guaranteed.

Price 50c; Large Size \$1 (Three times 50c size)

### For Gapes in Chicks!

When gapes starts in your flock, get the best of it promptly, or it may kill all your chicks. Get Trakol and watch it quickly master the situation. Easily given in the drinking water. Guaranteed. Price 50c.

**Trakol**  
 For Gapes  
 In Chicks

Scientifically made in the Laboratories of the Burrell-Dugger Company

# **STOP ROUP AND CHICKEN POX LOSSES VACCINATE NOW**

## **Millions Saved Through Vaccination!**

Thousands of poultrymen now realize that vaccination is the most scientific and most reliable method of preventing and treating poultry diseases. Agricultural Advisors, County Agents, Farm Bureaus, Veterinarians, too, recommend and advise the use of vaccination for the prevention and treatment of roup and its associated secondary infections such as Chicken Pox, colds, canker, catarrh, diphtheria, cholera, etc. The cost is only a few cents per bird and the extra eggs laid and the improved health of vaccinated birds soon pay for that.

### **FIDELITY AVIAN MIXED BACTERIA.**

Made under U. S. Government License. Will solve your disease problem. Safe, Scientific and Inexpensive Treatment. Send for free booklet "Health Insurance" tells you all you want to know about vaccination.

Put up in three convenient size containers.

60 doses.....	\$2.00	Hypodermic Syringe for administering.
250 doses.....	5.00	Eight dose glass syringe.....
500 doses.....	7.50	Ten dose all metal syringe.....
		1.50

### **MILK BOTTLE CAPS**

Will fit any standard milk bottle. 25c lb.

### **BUTTER PAPER**

For wrapping 1 lb., moulded butter. 35c lb.

### **YOUR KICKS**

or complaints. We wish to assure you that we stand behind our merchandise and desire to please you, so if you have any complaint to make about our merchandise, seeds, service, etc., kindly write us, as by receiving these complaints you are doing us a favor, as this will enable us to improve our service to you. Our aim is to please you, and with assistance from you, we can improve our methods of handling your business.

Trusting that we may have the pleasure of serving you, and with best wishes for a Prosperous 1924, we are,

Respectfully yours,

**SATEX SEED COMPANY.**

# GARDEN SEEDING TABLE

Name of Vegetables	Seeds required for		Distance for Plants		Ready for use from seed in about
	100 ft. Row	One Acre	In Rows	Rows apart	
Artichoke .....	1 oz.	6 oz.	2 ft.	3 to 4 ft.	8 months
Asparagus .....	2½ oz.	4 lbs.	1 to 2 ft.	3 to 4 ft.	3 to 4 years
Beans, Bush .....	1 qt.	1¼ bush.	6 in.	2 ft.	45 to 65 days
Beans, Pole .....	1 qt.	10 to 12 qts.	3 ft.	4 ft.	65 to 90 "
Beet, Table .....	2 oz.	5 lbs.	4 in.	1 to 1½ ft.	60 to 75 "
Beet, Mangel .....	1 oz.	5 lbs.	8 in.	2 to 2½ ft.	150 "
Broccoli .....	½ oz.	2 oz.	2 ft.	2½ ft.	120 "
Brussels Sprouts .....	½ oz.	2 oz.	2 ft.	2 ft.	100 to 120 "
Cabbage, early... ..	½ oz.	6 oz.	18 in.	2½ ft.	100 to 120 "
Cabbage, late... ..	½ oz.	6 oz.	2½ ft.	3 ft.	125 to 180 "
Carrot .....	1 oz.	3 to 4 lbs.	4 in.	1½ to 2 ft.	75 to 120 "
Cauliflower .....	½ oz.	½ lb.	2 ft.	2½ ft.	100 to 135 "
Celery .....	½ oz.	2 oz.	6 in.	3 to 4 ft.	125 to 150 "
Corn, Salad .....	3 oz.		4 in.	12 to 18 in.	65 "
Corn, Sweet .....	½ pt. 100 hills	8 qts.	3 ft.	4 ft.	65 to 100 "
Cress .....	½ oz.	2 to 3 lbs.	1 in.	1 ft.	30 "
Cucumber .....	1 oz.	2 lbs.	4 ft.	4 ft.	60 to 85 "
Egg Plant .....	½ oz.	4 oz.	2½ ft.	3 ft.	150 to 160 "
Endive .....	1 oz.	4 lbs.	1 ft.	1½ ft.	50 to 75 "
Kale .....	½ oz.	2 oz.	2 ft.	2½ ft.	100 to 120 "
Kohlrabi .....	½ oz.	4 lbs.	6 in.	1½ ft.	75 "
Leek .....	1 oz.	4 lbs.	6 in.	1½ ft.	20 to 160 "
Lettuce .....	1 oz.	3 lbs.	1 ft.	1½ ft.	65 to 100 "
Melons, Musk .....	½ oz.	2 to 3 lbs.	4 ft.	5 ft.	115 to 140 "
Melons, Water .....	1 oz.	4 lbs.	8 ft.	8 ft.	120 to 140 "
Okra .....	2 oz.	10 lbs.	1½ ft.	2 ft.	90 to 125 "
Onion .....	1 oz.	5 to 6 lbs.	3 in.	1 ft.	135 to 150 "
Parsley .....	½ oz.	3 to 5 lbs.	4 in.	1½ ft.	'00 "
Parsnip .....	½ oz.	3 to 5 lbs.	6 in.	1½ ft.	125 to 150 "
Peas .....	1 to 2 pts.	2 bush.	2 in.	2 to 4 ft.	50 to 75 "
Pepper .....	½ oz.	½ lb.	2 ft.	2 ft.	140 to 150 "
Potato, cut .....	5 lbs.	7 to 10 bush	1 ft.	2½ ft.	80 to 140 "
Pumpkin .....	1 pkt.	4 lbs.	8 ft.	8 ft.	100 to 120 "
Radish .....	1 oz.	8 to 10 lbs.	2 to 4 in.	1½ ft.	20 to 50 "
Salsify .....	1 oz.	8 lbs.	6 in.	1½ ft.	125 to 150 "
Spinach .....	1 oz.	10 lbs.	4 in.	15 in.	30 to 60 "
Squash, Bush .....	½ oz.	4 lbs.	3 ft.	4 ft.	60 to 75 "
Squash, Late ... ..	½ oz.	4 lbs.	7 ft.	8 ft.	00 to 125 "
Tomato .....	½ oz.	2 to 4 oz.	4 ft.	4 ft.	100 to 125 "
Turnip .....	½ oz.	2 lbs.	6 in.	1 ft.	60 to 75 "

## SOME REASONS WHY YOU SHOULD BUY SATEX GARDEN SEED IN BULK:

1. Because you get more for your money.
2. Because you get fresh seed instead of seed which may have been in packages for several years and sent back and forth over the country.
3. Because Satex Bulk seeds are carefully tested before they are sent out to be sold.
4. Because over 5000 Gardeners around the city of San Antonio use Satex Bulk seed every year and prefer them to all other kinds.
5. Because you get better varieties in Bulk seeds and they will produce larger crops.

### THE TIME TO PLACE YOUR ORDER

is when this catalogue is received. This will insure that your order will be filled without any substitution or errors and you will have the seeds on hand when it is time to plant. Don't put it off until tomorrow, for you may be busy with something else, so — — — **ORDER NOW!**

# SUPERIOR

STOCK & POULTRY FEEDS

## **STOP** Losing Those Baby Chicks!

Millions of Baby Chicks Die Every Year Through Improper Feeding.

We submit the  
**SUPERIOR METHOD OF FEEDING BABY CHICKS**  
—realizing that it will revolutionize the baby chick raising business.

**SUPERIOR** fed chicks develop with a wonderfully regular growth and they do not appear to be troubled with bowel trouble or diarrhoea. This is because the **SUPERIOR BUTTER MILK STARTING FOOD** is so well balanced that it does not overtax the digestive system, yet it provides all the ingredients necessary to the promotion of rapid development.

**SUPERIOR BUTTER MILK STARTING FOOD** is a complete baby chick feed in itself. It is very easily digested, so that the delicate baby chicks do well on it. **SUPERIOR** fed chicks have no trouble growing plumage; they develop so fast and remain so healthy that they are seldom affected with common baby chick ailments.

When chicks are taken from incubator or nest, feed nothing but fine grit and pure water for the first forty eight hours, after which feed a very small amount of **SUPERIOR CHICK STARTER**, either dry or moistened. Use care to feed only small amount at two feeds the first day. Beginning the second day feed four or five times, but use care not to overfeed.

**OVERFEEDING KILLS MORE CHICKS THAN UNDERFEEDING.** After the third day feed a small amount of **SUPERIOR CHICK SCRATCH** in litter to induce exercise. Keep plenty of grit in litter and fine ground charcoal within easy reach of the little fellows at all times. Keep Drinking fountain supplied with pure fresh water, being sure to wash fountain once each day with hot water. After feeding **SUPERIOR CHICK STARTER** for five weeks add **SUPERIOR GROWING MASH** gradually so that by the end of six weeks you will have the chicks on growing mash entirely.

Supply chicks with green food after the first week. Chicks should be fed the first few days on a removable board, using care to clean board thoroughly before each meal.

Warm, well ventilated quarters, cleanliness and **SUPERIOR CHICK STARTER** spells **SUPERIOR CHICKS** in **QUALITY** and **NUMBER**.

A Booklet every Poultryman should have.

A complete 72 page poultry book describing the proper way to raise chicks, how to build poultry houses, select layers and breeders, cure poultry diseases, etc., will be mailed to you free by writing direct to **UNIVERSAL MILLS**, Fort Worth, Texas, or

**SATEX SEED COMPANY,**

529 South Flores Street

San Antonio, Texas

See page 37 for full list of Superior Feeds.