

Historic, Archive Document

Do not assume content reflects current scientific knowledge, policies, or practices.

No. 2.

February, 1876.

CATALOGUE

OF

Greenhouse, Bedding

AND

NEW PLANTS,

CULTIVATED AND FOR SALE AT THE

FRUITLAND NURSERIES,

AUGUSTA, GA.

P. J. Berckmans, Proprietor.



AUGUSTA, GA.:

JAS. L. GOW, BOOK AND JOB PRINTER,
No. 255 BROAD STREET,
1876.

TO OUR PATRONS.

IN presenting our ANNUAL SPRING CATALOGUE, we take pleasure in stating that, thanks to a large and rapidly increasing demand for Greenhouse and Bedding Plants, our efforts in establishing this branch of our business have met with such satisfactory results as to need the annual enlargement of our greenhouses, thus giving increased facilities for producing large quantities of healthy plants, and reducing their prices to such an extent as to bring them within the reach of all. Being favored with mild Winters, our plants are grown without the aid of excessive fire heat, which allows us to have them well hardened off before shipping, and increasing their safety in transit. We have demonstrated practically that "*we can produce first class stock as low as the most extensive Northern floral establishments, and can save our patrons a heavy per centage of loss resulting from distant carriage, besides lessening the expense of expressage.*"

OUR COLLECTIONS OF PLANTS

Are most extensive, and embrace every class usually found in first class establishments. Besides those enumerated in this Catalogue, we possess numerous classes which are seldom found elsewhere, and whose money value being beyond the general demand, must necessarily cause them to be omitted here. Special price lists will be given to amateurs on application.

NEW PLANTS.

Our aim is to keep pace with the latest floral introductions, and test these thoroughly before advertising them. This gives our patrons a guarantee that any novelty sent out by us possesses sufficient merits to be desirable. Many favorite classes of Northern florists fail utterly, or are of questionable value when cultivated South. For this reason we omit these from our Catalogue.

PLEASE READ THIS BEFORE ORDERING.

Write your order plainly, and separate from the body of the letter.

FILLING ORDERS.

Orders are filled as soon after reception as practicable, seldom later than two days. Should certain varieties of Plants ordered be exhausted at the time the order is received, or if they are not in proper shipping condition, the order will only be filled so far as our assortment will allow. We *never substitute unless fully authorized.* Patrons are respectfully requested to state if substitution is allowed should Plants first ordered be exhausted.

SMALL ORDERS.

The Postage Law authorizes the sending by mail of seeds, bulbs plants, etc., at the rate of one cent per ounce in weight, the weight of the package not to exceed four pounds. Bulbs, seeds and small plants will be sent by mail, if preferred by the purchaser, upon receipt of the amount of the order, to which must be added 10 cents for every pound in weight. *No order sent by mail if for less than one dollar.* We can, however, send but small plants by mail; and although we use every care in putting them up for this mode of transit, still we cannot be held responsible should they fail to reach their destination, or be damaged on arrival. Wherever practicable Plants should be ordered by Express, as we can then send larger and stronger plants, and always add enough extras to compensate in part for cost of expressage.

PACKING

Free of charge on all orders netting five dollars; for orders less than that amount, 25 cents each is charged.

FORWARDING.

Bedding Plants should, in all possible cases, be forwarded by Express, as rapid carriage is of the utmost importance. There is no economy in the differences of charges between *Express* and ordinary Rail Road freight lines. We guarantee every Plant to be in perfect healthy condition when leaving our hands, *but after a proper shipment, all losses resulting from delays are at the risk of purchaser.*

TERMS.

Invariably Cash with order, or C. O. D. by Express, with collecting charges added. Our prices are too low to allow any deviation from this rule.

REMITTANCES

Preferred by Draft on New York or Postal order, otherwise by registered letter. Money sent through mail in ordinary letters is, in all cases, at sender's risk.

ATTENTION TO CUSTOMERS.

It is our earnest desire that all the requirements and directions of our customers be scrupulously attended to by our assistants, and we practice the utmost personal supervision, to see that it is carried out. We would, therefore, respectfully request that we be informed if at any time there is cause of dissatisfaction, that we may have it rectified at the earliest possible moment.

TIME OF PLANTING.

The tender Bedding Plants enumerated in this Catalogue must not be planted out in open ground until Spring frosts are no longer to be apprehended. Although the stock of nearly all varieties is ready for shipment when this Catalogue is issued, we would particularly urge patrons not to order Plants intended for bedding until they can be safely cared for on arrival. Those possessing Greenhouses or pits, or

even ordinary cold frames, would, however, be benefitted by ordering early in March, except in the case of new Plants, of which the number is yet limited, and which are noted as to time when they can be supplied.

CARE OF PLANTS WHEN RECEIVED.

The Plants should be potted in a size larger pot than they have been grown in, placed in a common cold frame or greenhouse, if possible, until they begin to grow freely. Shade and water must be used as needed. If the Plants are required merely for the border, they can be placed in permanent place on receipt, if the weather is somewhat cloudy; but in general it is preferable to allow the Plants to recuperate from the effect of the packing and carriage, by being kept in a shady place for a few days.

Plants are forwarded without pots. This is a saving of expressage to the buyer, and adds to safety of carrying.

CATALOGUES.

The following Catalogues will be mailed free on application :

No. 1.—**DESCRIPTIVE CATALOGUE** of Fruit Trees, Grape Vines, Strawberry Plants, Evergreens, Roses, Flowering Shrubs, issued August 15th.

No. 2.—**SPRING CATALOGUE** of Bedding and Greenhouse Plants, etc., issued February 1st.

No. 3.—**WHOLESALE CATALOGUE** for Nurserymen and Dealers, issued in July.

Address: **P. J. BERCKMANS, Augusta, Ga.**

SELECT BEDDING PLANTS.

THIS class comprises Plants suitable for the Summer decoration of flower gardens. Several varieties are also very desirable for green-houses and parlor collections. Those marked with an asterisk (*) are perfectly hardy in this climate, and require no protection, although several kinds whose stems die off in the Fall, but whose roots remain alive, are much benefitted by a slight covering of leaves or litter during the Winter.

TIME OF PLANTING.

The most suitable seasons to plant these varieties is from the time that Spring frosts cease until June, providing the weather is suitable.

PRICES,

Unless specially noted, 15 cents each ; \$1.50 per dozen. It must be understood that these prices are for Plants grown in two and three inch pots, and of the ordinary shipping size. Larger specimens at proportionately increased prices.

SPECIAL COLLECTIONS.

Many persons unacquainted with the most desirable classes of plants often find some difficulty in making suitable collections. To prevent disappointment when plants are selected injudiciously, we would suggest to our patrons to order special collections, which are composed of the most desirable classes and of such as we grow in large quantities for that purpose.

In making these selections we guarantee that they will give satisfaction, and the utmost liberality will be observed in the quantity sent.

100 Bedding Plants, all distinct.....\$10.00

50 " " " 5.00

1000 " " of all classes..... 75.00

*ACHILLEA—Free bloomer, dwarf; suitable for rock work or baskets.

Millefolia Rubra, red.

Tomentosa, yellow.

*AGAVE—(Century Plant.)

American green; small plants, 25c.; large, 50c. to \$1.

*ALOYSIA—Lemon Verbena, lemon scented foliage. Small, 25c.; large, 50c.

AGERATUM CŒLESTUM—Perpetual bloomer, flowers pale blue; if potted in fall will continue to bloom all winter.

*AGERATUM TOM THUMB—A dwarf-growing plant, seldom exceeding six inches in height; flowers produced in great profusion during the entire year; color, bluish white.

AGERATUM MEXICANUM VARIEGATUM—Leaves finely variegated, flowers blue, stands the sun well; a first-class variegated plant.

*ANEMONE JAPONICA—Quite hardy, but thrives best in a moist, shady place; two varieties, *Red* and *Honorine Jobert* white.

*BAMBUSA JAPONICA VARIEGATA—Dwarf variegated cane, very neat; fine for rock work; requires rich, moist soil.

- BOUVARDIA**—Most effective bedding as well as winter-blooming plants; almost continuous bloomers—strong plants. 25c. each.
 Bride, blush.
 Davidsonii, white.
 Hogarth, crimson.
 Leiantha, scarlet.
 Elegans, crimson.
- ***CANNAS**—Indian Shot. Plants combining broad foliage of various tints, with a profusion of flowers, ranging in colors from crimson, orange to yellow, and the intermediate shades. When planted in groups in rich soil they make an admirable effect. The following are among the best new varieties: Annei Rosea, Caledoniensis, Spectabilis, Discolor, Floribunda, Patens, Aurantiaca. Annei Superba, Musæfolia Hybrida, Purpurea Hybrida, Krelaagi Discolor, Warscewizi, Peruviana. Price, 20c. each, or \$2 per 12 varieties.
- ***CARNATIONS**—Monthly or tree; very valuable and continuous bloomers during the summer and winter; 10 varieties, all colors. Small plants, 25c.; large, 50c.
- CESTRUM**—Free blooming shrubs. 25c.
 Parqui, night-blooming Jasmin; very fragrant at night.
 “ DIURNUM—Flowers white.
- CUPEEA PLATYCENTRA**—Most profuse bloomer; flowers tubular, red, tipped black and white; very desirable plant.
 Danielsiana, flowers purple.
- CUPHEA HYSSOPIPHYLLA**—A very neat miniature plant, of dwarf habit, and with bright blue flowers, which are produced in great profusion.
- CUPHEA GALLEOTTIANA**—Flowers deep purple brown and red.
- ***CHRYSANTHEMUMS**—Indispensable for fall blooming; a very large collection of one hundred varieties, including all the varieties of merit of last year; all colors. Three classes: 1st, Large Flowering; 2d, Lilliputian, or very small flowering; 3d, Japanese, with flowers of immense size 15c. each; \$1.50 per dozen.
- ***CHRYSANTHEMUM LASCINIATUM**—Japanese fringe flower; pure white, petals very neatly fringed; an excellent winter bloomer, and exquisite for bouquets. By pinching first flower buds as they appear, the plant can be had in bloom until January in the conservatory. 20c.
- CHRYSANTHEMUM**—New Japanese, with large flowers of most unique shape and brilliant colors; very distinct and desirable; six varieties, 25c. each; \$2.50 per dozen.
- DATURA**, or **BRUGMANSIA SUAVOLENS**—A shrubby plant, growing to a height of six to eight feet in rich ground; flowers white, very large, trumpet-shaped and fragrant, a most excellent plant for effect. 25c.
- FERDINANDA EMINENS**—Foliage luxuriant; plant attains a height of eight to ten feet in a single season; very attractive in a lawn as single specimen. 50c.
- ***GAZANIA**—Showy plants, flowers yellow or orange, with brown or black band.
- HELIOTROPE**—Universal favorite; flowers very fragrant, of various shades of bluish purple; excellent for bedding out or for pot culture as winter bloomers. Ten varieties.

- *HYDRANGEA HORTENSIS—25 and 50c., according to size.
 “ *IMPERATRICE EUGENIE—Large heads of pale blue and pink flowers. 50c.
 “ *JAPONICUM—Flowers blue; 25c.
 “ *JAPONICUM ALBUM—White. 50c.
 “ *PANICULATUM GRANDIFLORUM—New; produces large panicles of pure white flowers, an excellent plant. 50c.
 “ *OTASKA—Flowers pink, very profuse bloomer, a valuable plant. 50c.
- IBERIS SEMPERVIRENS—Neat dwarf, hardy shrub, with pure white flowers; fine winter bloomer, if kept in the house.
- LANTANA—Very desirable class of plants; continually in flower from May until frost; flowers generally of two colors; excellent bedders. Fifteen varieties. 20c.; \$2 per dozen.
- MESEMBRYANTHEMUM—Ice plants; suitable for vases, baskets or ribbons; stand hot weather well; summer bloomers.
 CORDIFOLIUM VARIEGATUM—Handsome variegated leaves.
 AURANTIACUM—Orange.
 BLANDUM—White.
 NITIDUM—Pink.
- *NIEREMBERGIA GRACILIS—Profuse blooming plant; flowers pale blue.
 *RIVULARIS—Creeping; fine for baskets; quite new; flowers white.
- NERIUM—Oleander. 25c.; large plants, 50c.
 Splendens, double rose.
 Album Maximum, semi-double white.
 Grandiflorum Plœnum, new double rose.
 Macrophyllum, very large flowers.
 Shaw's Seedling, deep crimson, single.
 Variegatum, flowers striped, single.
- *OTHONNA CRASSIFOLIA—A low-growing succulent plant, which will doubtless prove invaluable for ribbons or edging off flower beds, or for rock work. Newly introduced.
- PLUMBAGO CAPENSIS—An excellent plant, almost continuous bloomer; flowers pale blue. 25c.
- PANSIES—Strong plants, seedlings from best English, French and Belgian varieties. \$1 per dozen.
- PETUNIAS—Double. Twelve best varieties, all colors; continuous bloomers.
- PRIMULA JAPONICA—Flowers deep magenta, produced in four or five separate whorls upon stalks one foot high; a very handsome plant for early spring blooming. 25c.; large plants, 50c.
- *PYRETHRUM—Double white feverfew, a most valuable bedding plant; perpetual bloomer.
 *Golden Feather; foliage golden yellow, very fine.
- PENSTEMON—A very desirable class of plants, of comparatively recent introduction, very hardy; flowers shaded and mottled, and of all shades of white, blue, scarlet, crimson and pink; continuous bloomers.
- PHLOX—Perennial, free blooming and hardy plants, well adapted for bedding; all colors, from pure white to dark crimson, with darker or lighter centres, striped, etc. Fifty varieties. 20c.; \$2 per dozen.
- PINKS—Carnation; several fine varieties; colors white, red, pink, striped, spotted. Small plants, 25c.; large, 50 to 75c.
 Paisley, more dwarf than Carnation; flowers of various shades; clove-scented. 25c.

- SALVIA—A popular class of plants; should be in every collection. 20c.; \$2 per dozen.
 Splendens, scarlet; best for bedding.
 Involucrata, pink.
 Skinnerii, crimson; fine winter bloomer.
 Splendens Alba, pure white, sometimes striped red, or half white and half red.
 Leucantha, purpled white; blooms in fall.
- *SEDUM—In variety; fine for ribbons or edging in flower garden or rock work.
- *SEMPERVIVUMS—(House Leek.) Succulent plants of various forms, and well adapted for culture in sitting rooms, as they grow freely in a dry atmosphere. Six varieties. 25c. each; \$2 per 12.
- *SOLANUM CAPSICASTRUM—Jerusalem Cherry; dwarf bush, covered during winter with bright scarlet berries; fine for winter decoration. 25c.
- *TRITOMA—Very showy plants; flower spikes from ten to twelve inches; deep orange and yellow; constant bloomers, perfectly hardy. 25c.
- *VERBENA—Our collection of this universal favorite is very select, and comprises all the best varieties of this and former years. Colors white, red, scarlet, crimson, blue, with all intermediate shades, variegated, spotted, etc. \$1 per dozen.
- *VIOLETS—Sweet-scented; double. 10c. each; \$1 per dozen.
 DBL. BLUE NEAPOLITAN—Light blue.
 KING OF VIOLETS—Very large, dark blue.
 MARIE LOUISE—New, very large, deep blue, best of the class.
- VICTORIA REGINA—A new single flowering variety, flowers dark purple, of unusual large size and fragrance. 50c. each.

COLORED FOLIAGE PLANTS.

THE introduction of variously colored plants of great decorative effect and susceptible of standing through our driest summers, has added much to the resources of our flower gardens. Most of these plants show to best advantage when planted in masses, ribbons or borders, bringing the different colors in pleasing contrast. The great advantage of these plants is that they retain their varied and brilliant colors when other favorite flowers cease to bloom. We grow these very extensively, and can supply the most desirable classes for massing or ribbon planting, at very low rates, when ordered in large quantities.

Prices, (unless noted) 15c. each; \$1.50 per dozen; \$10 per 100, at purchaser's choice, but not less than twelve of a kind. If selection is left to us, we will furnish as follows: 10c. each; \$1 per dozen; \$8 per 100.

- ACHYROCLINE SAUNDERSONII—Silvery white foliage. 25c.
 ACALYPHA TRICOLOR—Foliage mottled and blotched crimson and scarlet, a fine bedding plant. 50c.

ACHYRANTHUS—Plants of great value for massing of ribbon borders, by their brilliant foliage.

Aureus Reticulatus, light green foliage, marked with gold and crimson.

Acuminata, violet crimson foliage, robust grower.

Caseii, habit of *Acuminata*, leaves gold, green and crimson.

Lindenii, foliage deep blood red, veined lighter, most distinct and valuable; the best of its class. For planting in alternate rows with other foliage plants it has no superior.

Verschaffeltii, bright violet crimson; fine bedder.

***ARTEMISIA STELLERIANA**—Dwarf, trailing habit, foliage silvery white.

ALTERNANTHERA—Dwarf, bushy habit; growth from six to twelve inches; foliage purple, yellow, pink, etc.; especially effective for ribbon borders.

Amœna, yellow, brown and rose.

Magnifica, brown, red and yellow.

Panorychoides, green, crimson and straw color.

Versicolor, rose and deep crimson, foliage broad.

ABUTILON THOMPSONII—Shrubby plant, leaves exquisitely mottled with gold, stands our dryest weather to perfection. Small plants, 20c.; \$2 per dozen; large, 50c.

AGERATUM VARIEGATUM—Leaves beautifully variegated white, and produces a profusion of pale blue flowers; very desirable.

BASELLA VAR—A shrubby species of the Madeira Vine; leaves finely variegated.

CENTAUREA GYMNOCARPA—A most striking and valuable bedding plant; foliage silvery grey, beautiful; strictly a first-class plant. 25c.

***CINERARIA MARITIMA**—"Dusty Miller," foliage silvery white; fine plant for ribbon borders, in connection with *Althernanthera* and *Achyranthus*.

***CINERARIA TOMENTOSA**—Foliage narrow, silvery white, growth compact.

COLEUS—A class well-entitled to the first position as ornamental foliaged plants; the colors vary from the deepest crimson to maroon, bronze, golden yellow, with various colored markings; very thrifty, and indispensable in flower garden, whether as single plants or for massing in groups; should not be sent until the end of March, as they are susceptible of being injured by cold weather. Our collection embraces all the varieties of merit.

GOLDEN.

Beauty of Widmore, red, green and yellow.

Aurea Marginata, crimson, yellow edge, leaves laciniated.

Chameleon, changeable in color, pink, white, yellow, rose and crimson on dark ground; at times plants are entirely without variegation.

Golden Gem, crimson and gold margin, and crimson markings.

Laciniated, yellow and crimson, deeply cut leaf.

Her Majesty, deep purple red, narrow beaded gold edge.

Princess Louise, crimson scarlet, broad yellow edge.

Princess of Wales, deep purple red, blotched narrow gold edge.

Queen Victoria, bronzy crimson, broad yellow margin.

Setting Sun, red crimson centre, bright yellow edge.

Zanzibar, purple, violet and gold.

DARK OR VELVET COLEUS.

Beauty, deep crimson and green.

Columbia, green and purple.

Charm, deep brown.

Glow Worm, claret crimson, very distinct.

Othello, blackish purple.

Spangle, green-veined crimson.

Verschaffeltii, velvety crimson; finest bedder.

FEVERFEW—Golden Feather; golden foliage.

*STACHYS LANATA—Leaves downy white, good bedder; excellent to plant in ribbon borders with Coleus and Althernanthera.

B U L B S

FOR SPRING PLANTING.

AMARYLLIS FORMOSISSIMA—Japonica Lily, crimson, superb. 50c.

“ JOSEPHINE—White striped pink. \$1.

“ LONGIFLORA—White and pink. 50c.

“ PLATYPETALA. 50c.

“ VITTATA SPLENDENS. 50c.

DAHLIAS—Our collection comprises nearly two hundred extra selected varieties, embracing every shade of red, yellow, brown, white, lilac, purple, deepest maroon, variegated and tipped, together with the Lilliput or Bouquet varieties, a class now much esteemed. Dahlias should be planted out as late as possible, in order to prevent the plants from flowering during the dry summer months, their best season of flowering being September and October. If the plants have been allowed to exhaust themselves by profuse blooming during the summer, no fine flowers can be expected at their proper blooming season. Dry roots can be furnished until the first of May at 25c. each; \$2.50 per dozen. Fifty varieties, our choice, \$10; strong plants from spring cuttings at \$2 per dozen.

GLADIOLUS—Plant in ordinary garden soil; set bulbs two to three inches deep. To keep a constant flowering from May to fall, plant at different times from March until June. Fine named varieties, 25c. each; \$3 per dozen. Unnamed, in good mixture, \$1 per dozen.

TUBEROSES—Double, \$1 per dozen; \$6 per hundred.

TUBEROSE “PEARL”—A great improvement upon the old double variety, flowers larger, and produced in greater abundance; habit compact; flower stalk seldom growing above two feet in height. 25c.

All these bulbs, except Amaryllis Longiflora, should be taken up in the fall, kept free from frost in dry sand, and planted in early spring.

BASKET PLANTS.

For the convenience of persons unacquainted with the most desirable varieties of this class, we will send 12 distinct varieties for \$2, or 6 plants for \$1. This quantity is sufficient to fill a basket with bowl 12 inches wide.

CLIMBERS.

Price, 25 cents, except when noted. Those marked with an asterisk (*) are hardy; the others are for house culture.

- ***AKEBIA QUINNATA**—Of rapid growth, flowers deep maroon, in early spring.
- ***AMPELOPSIS VEITCHII**—A new Japanese plant of rapid growth; excellent for covering walls.
- BIGNONIA**—Venusta; rich orange.
- BIGNONIA ARGYREA VIOLACEA**—Foliage green, veined white, reverse purple; good for walls.
- CISSUS DISCOLOR**—Foliage beautiful crimson, white and green; stems die in winter, unless kept under high temperature.
- CLERODENDRON BALFOURII**—A plant of exquisite appearance; flowers bright scarlet, encased in a bag-like calyx of pure white, very desirable. Plants in 3 inch pots, 25c.; 6 inch, 50c.
- COBEA SCANDENS**—Flowers bluish purple, fine for outdoor culture.
- “ “ **ALBIFLORA**—New; flowers pure white.
- DIPLADENIA UROPHYLLA**—Flowers pink, with yellow; a good house climber.
- ECHITES PICTA**—Foliage veined white, requires much heat. 50c.
- FICUS REPENS**—Evergreen; excellent for walls, rock work, or for covering rustic work in greenhouses.
- HOYA CARNOSA**—Wax plant; a popular plant. 25c.; large plants, 50c.
- ***IPOMEA SELOWII**—Flowers pink, convolvulus shaped, root tuberous; perennial; very desirable.
- IPOMEA MORTONII**—Pinkish lilac, new.
- IVY, GERMAN or PARLOR**—Desirable for trellis work.
- JASMINUMS CATALONIAN**—Flowers white.
- “ **OFFICINALIS**—Flowers white, star shaped.
- LOPHOSPERMUM SCANDENS**—Flowers tubular, pink; excellent for house culture.
- MIKANIA VIOLACEA**—Foliage purplish green.
- PASSIFLORA**—Plants of great beauty.
- *Cærulea, blue and purplish.
- Decaisneana, blue and red.
- Kermesina, crimson.
- Trifasciata, foliage with three broad light stripes.
- ***MANETTIA CORDATA**—Produces innumerable scarlet tubular flowers, constant bloomer, roots perennial; excellent for trellis.
- MYSOPHYLLUM ASPARAGOIDES**—Indispensable for window gardening; excellent.
- ***SOLANUM JASMINOIDES**—Potato vine; flowers white; very desirable for outdoor culture.
- ***SOLANUM JASMINOIDES VARIEGATA**—With variegated leaves; growth less rapid.
- ***SOPLYA HETEROPHYLLA**—Flowers blue; hardy.
- TECOMA JASMINOIDES**—Flowers with carmine centre; a fine house plant.

- TRADESCANTIA ZEBRINA—Foliage striped; valuable for baskets and rock work.
- TRADESCANTIA VITATA—Striped white and green.
- TACSONIA LEVIS—Crimson; most profuse bloomer; excellent for outdoor culture in summer.
- TACSONIA BUCHANANII—Flowers brilliant red.
- “ VAN VOLXEMIL.
- THUNBERGIA LAURIFOLIA—Flowers pale blue, very fine.
- “ FRAGRANS—Flowers white; one of the best house climbers; perpetual bloomer.

GESNERIACEOUS PLANTS,

For Furnishing and Ornamenting Greenhouses During Summer Months.

THESE PLANTS are held in great esteem in Europe, where, together with *Begonias*, *Caladiums*, etc., they are most desirable for the purpose above stated. When greenhouses are emptied of the plants which they are destined to contain and protect during winter, the Gesneriaceous Plants are ready to take their places, and by their varied and admirable colors amply repay for their cultivation. We have for years possessed large collections of *Gloxinias*, *Achimenes*, *Naegelias*, etc., which have attracted much attention when in bloom. These plants vegetate during the summer only. The tubers must be kept in dry sand during winter, and potted off in March. Plunge the pots in a hot bed, where they will soon commence to grow. As they increase in size, give larger pots and water regularly during their period of vegetation. *Dry tubers* can be furnished from November to March. After the 1st of April we can only supply the plants in vegetation, and as they must then be shipped in pots, the prices will be from 50 to 100 per cent. advance upon those of the dry tubers.

ACHIMENES—30 varieties (3 tubers of each;) all shades of white, red, blue; 25c. each; \$2 per doz.

GLOXINIAS—15 varieties, (dry tubers) new...50c. each; \$2.00 per doz.
“ 25 “ “ older...25c. each; \$2.50 per doz.

Exquisite summer bloomers; flowers large tubular, pendant in some varieties, erect in others; colors blue, white, red, with every imaginable shade and combinations; remain in bloom during several months.

NAEGELIA—Many varieties combine, besides magnificent thyrses of variously colored flowers, the most admirable velvety foliage. In some varieties the leaves are of bronze maroon, in others crimson, bronze, or deep green, marbled with black, purple and deep red. 30 varieties of the latest novelties; 25c. per tuber; \$2.50 per doz.

TYDCEA—Profuse bloomers, flowers of various shades, pink, red and crimson, spotted and mottled. Their period of blooming extends from April to October. 6 varieties, (dry tubers,) 25c. each.

KOLLIKERIA ARGYROSTIGMA—Foliage sprinkled with white, flowers white in spikes. 25c.

EUCODONIAS—Foliage downy, flowers red and lilac; 3 varieties. 50c.

DOLICHODEIRA TUBIFLORA—Flowers white, fragrant. 50c.

GERANIUMS.

ZONALE OR HORSE SHOE.

OUR collection of this most valuable class for bedding and greenhouse culture is very select, and comprises all the varieties of value which have been introduced in the trade. To give descriptions of all would not give a correct idea of the particular merits of each variety, hence we will only state that we send out nothing but well tested kinds, and that the colors embrace all the shades of scarlet, crimson, pink, salmon, white, etc. The oculated varieties are exceedingly handsome for pot culture; of this section we have 30 varieties; the flowers are of light shades, white, salmon, pink or buff, and with darker centres.

Price for Plants grown in 2½ inch pots, 15c. each; \$1.50 per doz.; \$10 per 100.

DOUBLE—Aglaia, deep pink. 25c.

Aline Sisley, white, rather indifferent flower. 25c.

Asa Gray, salmon, dwarf, free bloomer, excellent. 25c.

Ascendency, deep rose.

Alice Crousse, peach, salmon centre. 25c.

Baron Von Jungenfeld, magenta rose. 25c.

Charles Lyell, apricot, margined white. 25c.

Charles Darwin, purplish crimson. 25c.

C. Glym, orange scarlet. 25c.

Carl Vogt, orange salmon. 50c.

Capitaine l'Hermite, rose amaranth.

Dr. Wm. Neubert, scarlet. 25c.

Deuil de Strasbourg, claret.

E. J. Lowe, red. 25c.

Francois Pertusati, white salmon centre. 50c.

Gambetta, bright red.

George Sand, white, semi-double. 50c.

Imperatrice Eugenie, beautiful pink.

LeNegre, bright crimson maroon, fine. 25c.

LeProgres, magenta.

Louis Blanc, cerise lilac. 50c.

L'Annee Terrible, orange scarlet. 50c.

Marie Elizabeth, light pink.

M. Gladstone, cherry red.

Mme. Rendatler, mauve.

Mme. Rudolph Abel, pink.

Mme. Hock, bright pink.

Miss M. C. Saul, rosy pink.

Scintillant, scarlet, dwarf.

Speculum, blackish carmine. 50c.

Price, 15c., except where noted. One dozen, our selection, \$1.50.

SCENTED—Apple. 25c.

Cocoanut.

Dr. Livingston, Otto of Rose.

Oak Leaved, rose scented.

Oak Leaved, citron scented.

Fern Leaved. 25c.

Musk or Pepper.

Nutmeg or Spice.

Pennyroyal.

Peppermint. 25c.

Rose Scented.

Little Pet.

Shrubland Pet.

SILVER-LEAVED, GOLD-LEAVED, BRONZE, TRI-COLOR, etc.

These are very handsome classes, and each comprise many varieties. Leaves are finely marked with silver, gold, bronze, with light margins or dark zones, but they will not stand our summers, and can only be kept in growing condition until July, when most varieties shed their leaves or die. For pot culture in winter and spring they are very valuable. Price, 25c. for Silver, Gold and Bronze, and 50c. for Tricolors.

IVY-LEAVED—All of trailing habit, and well suited for hanging baskets, or to be trained on trellis. The flowers vary from pure white to deep lilac and pink. 12 varieties, 15c.; \$1.50 per dozen; large plants, 25c.; \$2.50 per dozen.

Pelargoniums and Hybrid Perpetual Geraniums.

This class is remarkable for their large showy flowers, which combine various colors and markings. They are also known as "Lady Washington," or "Royal Family" Geraniums. Their period of blooming extends through the spring months. 20 varieties; prices, 25c. each; \$2.50 per dozen. Large plants, 50c. each; \$5 per doz.

CALADIUMS.

THIS magnificent genus is most valuable for decorative purposes during summer. They do not require a greenhouse, and thus are available to all. The dry roots should be treated like the *Gesneriaceous Plants*, but towards fall water must be gradually withheld; and when leaves are well dried, the tubers should be put in dry cotton and pulverized charcoal and kept in a warm place during winter.

The leaves are of every imaginable color and markings, spotting, veining and marbling. Keep plants well watered during vegetation, and give frequent repottings of rich earth.

Our collection comprises nearly 100 varieties.

We offer 25 distinct varieties at 50c. each, \$5 per dozen; or 30 newer sorts, 75c. to \$1 each.

N. B.—Dry roots furnished from November to March 1st; after that date Plants are furnished in growing state.

ORNAMENTAL GRASSES,

ALL HARDY IN THIS LATITUDE.

- GYNERIUM ARGENTEUM**—Pampas Grass, a most ornamental plant, with silvery plume-like spikes of flowers; very hardy, and thrives in any ordinary rich soil. 50c.
- ERIANTHUS RAVENNA**—Attains a height of ten to twelve feet, throwing up numerous flower spikes. Flower spikes greyish white; blooms profusely, and remains in bloom a long time; needs space to show its merits. 25c.
- PANICUM PLICATUM**—Grows to a height of three feet; leaves evenly pleated and streaked white. 25c.
- CYPERUS ALTERNIFOLIUS**—A showy variety; 2 feet. 25c.
 “ “ variegated; “ “ 25c.
- FESTUCA GLAUCA**—Very dwarf, of a bluish green, good for ribbons. 10c. \$1 per doz.
- EULALIA JAPONICA**—A new variegated hardy grass from Japan. In appearance it somewhat resembles the ribbon grass while in a young state. It forms compact clumps of six feet in diameter. Its flower stalks are very graceful and numerous, and after several years trial in our ground, we highly commend it as a very desirable ornamental grass. Price, 25c.

GREENHOUSE PLANTS.

THIS CLASS is intended to be cultivated under glass or in the house, although several varieties are effective bedding plants.

- ABUTILON**—Vigorous growing plants, almost perpetual bloomers; flowers bell shaped. 25c.
 Boule de Neige, white, best of its color.
 Striatum, orange striped crimson, good bedder.
 Herbortii, crimson, very large.
 Santana, flowers very large, crimson, extra fine.
 Santana Alla, flowers white.
 Thompsonii, leaves mottled gold, extra,
 Vexillarum or Mesopotamicum, scarlet and yellow; fine for trailing on pillars.
 Vexillarum or Mesopotamicum Variegatum, leaves variegated.
- ANGELONIA GRANDIFLORA**—An old plant, not sufficiently appreciated. Flowers deep blue, free bloomer. 25c.
- ACACIA FARNESIANA**—Popinac, flower yellow, very fragrant. 25c.
 Several Australian varieties at from 25 to 50c.
- ADAMEA VERSICOLOR**—Panicle of flowers, white tinted lilac. 25c.
- ÆSCHINANTHUS BOSCHIANUS**—Flowers orange red. 50c.
- AGAPANTHUS UMBELLATUS**—African Lily, blue. \$1.
 “ “ VARIEGATA—Variegated leaves. \$1.

- ALLAMANDA CATHARTICA—Flowers yellow, profuse bloomer. 25 to 50c.
- ALLAMANDA HENDERSONII—Flowers orange yellow, tinged brown. 50c.
- “ NOBILIS—Flowers very large, deep yellow, trailing habit. 50c.
- “ SCHOTTII—Flowers very large, bright yellow, trailing habit. 50c.
- ANTHURIUM REGALE—Leaves rich velvety green, of the Caladium class. \$2 to \$5.
- AZALEA—Hardy shrubs, but well worth a place in the conservatory. Twenty-five varieties. Plants with buds from 25c. to \$1.
- ASPIDISTRA ELATIOR VARIEGATA—Leaves broad glossy green, striped white. 50c.
- BASELLA VAR.—A shrubby species of the Madeira Vine; leaves finely variegated. 25c.
- BEGONIA**—Succulent soft-wooded plants of great beauty; indispensable in any greenhouse; foliage beautifully marked with various colors and shades; require sandy leaf mould, plenty of pot room and shade. Forty hybrid varieties of REX, all distinct, in 3 inch pots, 30c. each; \$2.50 per dozen; in 5 and 6 inch pots, 50c. each; \$5 per dozen.
- WINTER-BLOOMING VARIETIES—All of easy culture and desirable plants. 20c. each; \$2 per dozen, except when noted.
- Dregii, flowers white.
- Fuchsioides, flowers red.
- Multiflora Hybrida, flowers pink.
- Nitidia Alba, flowers white.
- Weltoniensis, flowers pink. Best of its class.
- Saundersii, flowers scarlet crimson.
- Argyrostigma Veitchii, foliage spotted white, flowers white; an excellent new variety. 25c.; large plants, 50c.
- Glaucophyllum, a trailing variety, fine for baskets; flowers orange red; a desirable new plant. 25c.; large plants, 50c.
- Incana, foliage downy white, flowers white. 25c.
- Manicata, leaves deeply cut, bright green. 25c.
- Parnellii, olive shaded green, spotted white. 25c.
- Ricinifolia, leaves deeply cut, large, green mottled bronze. 25c.
- Palmata, leaves palmated. 25c.
- Discolor, leaves dark green, red underneath. 25c.
- BEGONIA TUBEROUS ROOTED**—Newly introduced, free bloomers, flowers large and of brilliant colors. 10 varieties, in dry tubers. 50c. each.
- BROODIA COCCINEA—A low-growing bulbous plant, flowers crimson, tipped yellow. 50c.
- BELLEPORONA OBLONGATA—Profuse bloomer from October until spring; flowers crimson scarlet. 25c.
- BILBERGIA—Plants of great beauty, flowers in thyrses red or blue. \$1 to \$2 each.
- BRYOPHYLLUM CALYGINUM—A succulent of rapid growth; flowers green, in form of bladders. 25c.
- CALCEOLARIA—Beautiful blooming plants from spring until fall; require rich loam and shade; several varieties of different colors. 25c. each.

- CALLA ÆTHIOPICA—Lily of the Nile, white trumpet-shaped flower. 50c. *Nana*, a dwarf variety, both as to growth and size of flower. 50c.
- CENTRADENIA—Dwarf, soft-wooded plants, foliage dark green and red. Winter bloomers for conservatory. *Rosea*, *Floribunda* and *Grandiflora*. 25c.
- CACTUS—Several varieties of *Cereus*, *Opuntia*, *Epiphillum*, etc. 50c. to \$1.
- COLUMNEA SCHIEDEANA—Soft-wooded greenhouse plant, with singular shaped flowers. 50c.
- CITRUS—The orange tribe, fine plants, from 50c. to \$3. Chinese Dwarf, *Havana Sweet*, *Maltese Blood*, *Mandarin*, *St. Michaels*, etc.
- CHOROZEMA VARIUM—Most desirable winter-blooming plant, flowers pea-shaped, orange and purple, continues in bloom for several weeks. 50c.
- COCOLOBA PLATYCLADA—Flat stems, a curious plant for ferneries, a good bedder. 25c.
- CYCAS REVOLUTA—Sago Palm. \$1 to \$3.
- CORDYLINE CANEFOLIA—Allied to *Dracœna*, of rapid growth, foliage green. 50c. to \$2.
- CROTON DISCOLOR—Dark green foliage, with carmine back. 50c.
 “ *VARIEGATUM*—Leaves narrow, green and mottled bright yellow. 50c.
- CURCULIGO RECURVATA—A palm-like plant, with long pleated leaves; very ornamental for conservatories. 50c.; large, \$1.
- CAMPYLOBOTHRYIS—Handsome foliage plants; require a shady place in greenhouse, and much heat in winter.
 “ *ASSAMICA*. 50c. to \$1.
 “ *DISCOLOR*. 50c.
 “ *REGALE*. 50c.
- CLERODENDRON FRAGRANS—Flowers pure white, fragrant, foliage with rather unpleasant odor. 50c.
- DELECHAMPIA ROEZLIANA ROSEA—Flowers with large rose-colored bracts. 50c.
- DIPTERACANTHUS AFFINIS—Flowers red, summer bloomer. 50c.
- DRACÆNA—Dragon Tree. Handsome ornamental plants, attaining a large size, foliage colored in many varieties.
 “ *FERRA*—Foliage dark red. 50c. to \$1.
 “ *GUILFOYLII*—Green striped white and pink. \$1.50.
 “ *TERMINALIS*—Bronzy green, flaked crimson. 50c. to \$2.
 “ *STRICTA*—Bright reddish crimson. 50c. to \$2.
- DAPHNE INDICA—Sweet-scented Daphne. 75c. to \$1.50.
- DURANTA PLUMIERII—Tall-growing conservatory shrub; flowers blue, succeeded by yellow berries, which are retained all winter. 50c.
- EUPATORIUM—Winter-blooming plant, flowers white.
- ECHEVERIA—Soft-wooded plants, with bright flowers, and of easy culture for rooms or conservatory. Small, 30c.; large plants from 50c. to \$1.
 “ *METALLICA*—Shell-like leaves, metallic hue.
 “ *SANGUINEA*—Leaves bright red.
 “ *PUMILA*—Smaller than *Metallica*.
 “ *SPLENDENS*—Leaves large and flower stalks 2 feet high.
- EUCHARIS AMAZONICA—Bulbous plant, with white fragrant flowers. 50c.
- EUPHORBIA SPLENDENS—A thorny shrub, with bright red flowers; continuous bloomer. 50c.; large plants, \$1.

EUPHORBIA JACQUINIEFLORA—Flowers bright orange, fine winter bloomer. 50c.

FUCHSIA—Ladies' ear-drop, a very popular class of plants, where they succeed. Our protracted summers are unfavorable to their growth, and but few varieties will stand the hot weather. Valuable for spring and winter. Among the best varieties we name the following:

DOUBLE—Avalanche, Curiosity, Elm City, Symbol, etc.

SINGLE—Arabella improved, Alpha, Jolly, Lustre, Monarch, Peerless, Rose of Denmark, Speciosa, Mrs. Shirly Herbert, Fulgens, Rose of Castille, Maori Chief, Virgo, Cerberus, etc.

FICUS ELASTICA—India rubber tree, with broad leaves. 25 and 50c.

“ **AUSTRALIS**—Australian gum tree, foliage smaller. 50c.

“ **REPENS**—A creeping plant, valuable for covering pillars, walls, or rock work in conservatories. 25c.

FERNS—A large collection, comprising **ADIANTUMS**, **CYRTOMIUM**, **DOODIAS**, **LOMARIA GIBBA**, **GYMNOGRAMMAS**, **NEPHRODIUMS**, **PTERIS**, **ONYCHIUMS**, etc., etc. 25c. to \$1.

FITTONIA ARGIRONEURA—A low-growing hothouse plant, with leaves exquisitely veined with silver, a perfect gem. 25c.

FITTONIA VERSCHAFFELTII—Of large growth, with bright rose-veined leaves, exquisite. 25c.

FITTONIA GIGANTEA—The largest of its class, leaves veined with pale pink. 25c.

GOLDFUSSIA ANISOPHYLLA—Flowers lilac; good bloomer. 25c.

HABROTHAMNUS ELEGANS—Flowers tubular carmine, of easy culture; constant bloomer. 25c.

HIBISCUS SINENSIS—Chinese, double red and yellow, single red; very effective shrubs, constant bloomers, and very desirable. Small plants, 25c.; large, 50c.

HIBISCUS COOPERII—Foliage tricolor. 50c.

HETEROCENTRON—Good winter bloomers; alba, white; rosea, pink. 25c.

ISOLEPIS GRACILIS—An elegant grass-like plant, suitable for hanging baskets. 25c.

IMANTOPHYLLUM MINIATUM—An amaryllidaceous plant, with rich salmon or light flame colored flowers; blooms in spring. \$1 each.

INGA PULCHERRIMA—**CRIMSON POPINAC**—Flowers bright crimson, produced in great profusion. Small plants, 25c.; larger, 50c. to \$1.

JASMINUMS—Fragrant flowering shrubs.

Sambac, Arabian Jasmin, flowers white; very profuse bloomer. 30c.; large plants, 50c.

Grand Duc of Tuscany, very double white. 50c.

Officinalis, climber; flowers white. 25c.

Grandiflorum, Catalonian Jessamine. 30c.

Multiflorum, Star Jessamine, flowers white, star-shaped. 50c.

JUSTICIA—Winter-blooming plants.

Carnea, pink. 25c.

Nervosa, blue. 25c.

LIBONIA PENRHOSIENSIS—A neat greenhouse shrub, flowers orange and scarlet; free winter bloomer. 25c.

LOPEZIA ROSEA—Flowers pink, very neat; winter bloomer. 25c.

LYCOPODIUMS—Of varieties, for rock work and hanging baskets, from 25 to 50c.

- LINUM TRIGYNUM—Free bloomer, flowers bright yellow. 25c.
 MAKEYA BELLA—Flowers blue; quite new. 50c.
 MARANTA—Handsome foliage plants, of various colors.
 “ ARGYREA—Leaves veined white. \$1.
 “ BICOLOR. 50c.
 “ LINDENII—Deep green striped, under surface violet. \$1.
 “ DISCOLOR—Leaves deep green, under surface purple. 25 to 50c.
 “ EXIMIA. \$1.
 “ MICANS—Green, with white centre. 50c.
 “ PORTEANA—Green mottled purple. 25c.
 “ ZEBRINA—Green striped, deeper green. 25 and 50c.
 MAHERNIA ODORATA—Flowers yellow, fragrant; fine for baskets. 25c.
 MIMULUS MOSCHATUS—Musk plant; dwarf, with strong odor of musk. 25c.
 MELASTOMA ELEGANS—Beautiful hothouse plant; winter bloomer; flowers purple. 50c.
 MEYENIA ERECTA—Dwarf shrub, flowers violet. 25c.; large size, 50c.
 “ “ Alba, flowers white. 25c.
 MURRAYA EXOTICA—A rare shrub of the orange tribe; flowers white, very fragrant. \$1 to \$2.
 ORNITHOGALUM CAUDATUM—Bulbous plants; flowers green and white. 50c.
 PALMS—*Latania Borbonica*, a showy species, of easy culture. 50c. to \$1.
 PENTAS CARNEA—Profuse bloomer; flowers pink. 25c.
 PLUMBAGO CAPENSIS—An excellent plant; almost continuous bloomer; flowers light blue; a fine bedding plant, and for winter decoration. 25c.
 PLUMBAGO ROSEA—Flowers pink. 25c.
 PANICUM VARIEGATUM—A variegated grass of creeping habit; fine for baskets or vases. 25c.
 PEPEPROMIA MACULOSA—Trailing plant, with foliage blotched white; good for vases. 50c.
 PERISTROPHE ANGUSTIFOLIA—Variegated leaves; suitable for rock work. 25c.
 PILEA MUSCOSA—Artillery plant; exceedingly curious; flowers very small, emitting a puff of smoke on opening. 25c.
 PLEROMA BENTHAMIANA—Flowers purple; winter bloomer. 50c.
 PRIMULA SINENSIS—Chinese Primroses; fine seedlings of different shades and colors. Small plants, 25c.; large, 50c.
 PRIMROSE—Double white Chinese; very valuable winter bloomer. Small plants, \$1; large, \$1.50.
 POTHUS ARGYREA—Foliage marbled white, trailing habit. 50c.
 POINSETTIA PULCHERRIMA—Tall growing plants, valuable for decorative purposes in winter; leaves preceding the insignificant flowers are bright crimson; requires high temperature in winter to bring it to perfection. 50c.; large plants, \$1 to \$2.
 PITCAIRNEA SPLENDENS—Flowers yellow, with white bracts; a fine hot house plant. Small, 50c.; strong, \$1 to \$3.
 ROGERIA—Winter blooming shrub; flowers pink. 25c.
 RONDELETIA—Profuse flowering plant; flowers scarlet. 25c.
 RUSSELLIA JUNCEA—Foliage resembling the bulrush; flowers scarlet; very neat and desirable. 25c.
 ROCHEA FALCATA—Flowers scarlet. 50c.

- RUELLA ANISOPHYLLA—Flowers light lilac; good winter bloomer. 25c.
 RUELLA FORMOSA—Flowers deep scarlet; perpetual bloomer. 25c.
 REINECKA CARNEA VARIEGATA—A plant resembling the ribbon grass; very neat and desirable, of dwarf habit. 25c.
 RICHARDIA ALBA MACULATA—A bulbous plant of the Calla tribe, with beautiful spotted leaves; flowers shaped like those of the calla; pure white; bulbs need to be kept dry and from frost during winter. 50c. each.
 SCUTTELLARIA—Flowers on terminal spikes; bloom during spring; fine for house culture. 25. each.
 Purpurea, rosy purple.
 Mocciana, scarlet; a magnificent plant.
 STEVIA—Popular winter-blooming plant; flowers white. 25c.
 STAPELIA—Curiously shaped and colored flowers; soft-wooded house plants of easy culture. 25 and 50c.
 SANCHEZIA NOBILLIS VARIEGATA—Leaves twelve inches long, of intense green, veined with golden yellow; one of the finest new foliage house plants. 50c.
 SAXIFRAGA—Strawberry Geranium, low growing plants, suitable for rock work or baskets. Leaves quite ornamental. Tomentosa, Fortunii and Tricolor. 25c.
 TABERNAMONTANA CORONARIUS—Evergreen shrub, flowers white, very fragrant, resembling the Grand Duke Jasmin. 50c.
 TORENIA ASIATICA—Flowers blue; very desirable. 25c.
 THRYCIRTUS HIRTUS—A new Japanese plant, blooms in the fall; color lilac, marbled white; require shade; keep roots dry in winter. 25c.
 THRYSACANTHUS RUTILANS—Flowers crimson; very graceful. 50c.
 VALLOTA PURPUREA—(Amaryllis.) Bulbous plant; blooms in August; flowers scarlet; 50c.
 VERONICA—Shrubby summer-blooming plants; flowers blue and white. 25c.; large, 50c.

Special Collections.

When selection is left to us, we will furnish as follows :

12	Greenhouse Plants, all distinct.....				\$3.00
25	“ “ “ “				5.00
50	“ “ “ “				10.00
100	“ “ “ “				20.00

ORCHIDS.

These plants are quite easily grown in any greenhouse where the temperature is maintained in winter from 45 to 60 deg. for the Central American varieties.

They are best cultivated in perforated pots or baskets, and need a potting material of fibrous turf, sphagnum, or swamp moss, broken pots and charcoal, all well mixed. Syringe freely while the growing season lasts, and decrease the quantity of water when in a dormant state.

ÆRIAL OR EPIPHYTAL.

Of these we possess a good stock, principally Central American, and will furnish 10 distinct varieties for \$25. Special prices given for large specimens. Single plants, \$2 and \$3 each.

TERRESTRIAL.

BLETIA TANKERVILLÆ, or Veiled Nun Flower, of easy culture in conservatory. Flowers in March and April. Blooming plants, \$1; very large, \$2 to \$3.

CYPRIPEDIUM INSIGNE—Blooms in December and January. 50c. to \$2.

Camelia Japonica.

A very large Collection of Standard Varieties.

Double white, 2 and 3 years, grafted, \$1.50; 4 years, \$2.

Colored varieties from 50c. to \$2.

Our plants are now without flower buds, but of vigorous growth.

RHODODENDRONS,

Of best hybrid varieties. Extra fine plants, with flower buds, \$2 to \$3 each. Twelve varieties.

Hardy Evergreen Trees and Shrubs.

All pot grown. Can be furnished until April 1st.

CONIFEROUS.

CUPESSUS, Pyramidalis, Funebris, Ericoides, Goveneana, Lambertina
Macrocarpa, Horizontalis, Lawsoniana, etc., etc.

JUNIPERS—Common, Irish, weeping, Savin, Creeping.

ARBOR VITÆ—Golden, Filiformis Pendula, Meldensis, Lobbii, Parson's
Hovey's, Plicata, Warreana, Globosa, Gigantea Vervaeneana, *Semper
Aurea, Heath-leaved, Tom Thumb, etc., etc.

*CEDRUS DEODORA, or Himalayan Cedar; fine stock.

*CUNNINGHAMIA SENENSIS, or Chinese Pine; fine stock.

*RETINOSPORAS—Squarrosa, Obtusa, Pisifera Aurea, Plumosa, etc.

Price of Plants vary as to size. Those marked * at one dollar each;
the others from 25c. to \$1.

Broad-Leaved Evergreens.

Ardisia, Aucuba, Buxus, (tree box,) in variety; Cerasus Laurocerasus
(English Laurel,) Colchicum and Caucasian Laurels, Cleyria Japonica,
Erybothrya, Escallonia, Evonymus, Gardenia (Cape Jasmin,) 8
varieties; Illicium, Laurus Nobilis, Nerium, Tea Olive, Magnolia
Fuscata, or Banana Shrub; Photinia, Pittosporums, Viburnums, etc., etc.
Prices from 25c. to \$1. (See DESCRIPTIVE CATALOGUE, No. 1.)

FLOWER SEEDS.

We give a list of the most desirable varieties for this climate.

N. B.—Recent judicial decisions, hostile to seed dealers, have compelled all those engaged in that business, in order to protect themselves from ignorant or designing parties, to print a disclaimer of liability on their packages. In common with the trade, we wish it distinctly understood that we give no guarantee as to our seed; but while thus disclaiming our liability, we expect, as heretofore, to use our best efforts in good faith to give our customers full satisfaction.

PRICE—5c. per packet, except where noted; 15 fine varieties, our selection, \$1; 25 very choice varieties, our selection. \$1.50; 50 fine varieties, our selection, \$3; 100, \$5.

- Ageratum Mexicanum—Blue Ageratum. Dwarf.
 Althea Rosea—Hollyhocks from prize flowers. 25c.
 Alyssum Wierbecki.
 Alyssum Maritimum—Sweet Alyssum.
 Amaranthus Tricolor—Joseph's Coat.
 " Gigantens. 10c.
 Antirrhinum—Snap Dragon from named flowers.
 " " " Dwarf. 10c.
 Aster Chinensis—Quilled China Asters.
 Balsamina—Balsams, double mixed.
 Balsamina—Rose flowered. 10c.
 Balsamina—Camelia flowered. 10c.
 " Carnation striped. 10c.
 Bartonia Aurea—5c.
 Browallia—Mixed, 10c.
 Cacalia—Tassel Flower.
 " Fl. luteo.
 Calliopsis—Coreopsis.
 Campanula—Canterbury Bell, mixed.
 " " " white. 10c.
 " " " Double Blue. 10c.
 Celosia Cristata—Cockscombs, extra fine from selected flowers. 10c.
 " Japonica " new Japanese. 10c.
 Centaurea Cyanus—Corn Bottle.
 " Sweet Sultan—Mixed varieties.
 Chrysanthemum Dunnetti—Fl. pl. 10c.
 Clarkia—Clarkia mixed.
 Convolvulus Major—Morning Glory, in variety.
 Collinsia Bicolor.
 Clianthus Dampierii—Australian Glory Pea. 25c.
 Cucurbita—Ornamental Gourds, several varieties small sorts mixed. 10c.
 Cypress Vine—White and crimson. Each 5c.
 Datura Wrightii—Large sweet Datura.
 " Fastuoso—Huberiana mixed. 10c.
 " Humilis—Alba Plœna. 10c.
 Delphinium Sinensis—Larkspur, Chinese, new varieties, mixed.

- Delphinium—Larkspur, Dwarf Rocket.
 Delphinium—Tall branching, mixed varieties.
 Dianthus Sinensis, fl. pl.—Double Chinese Pinks.
 “ Heddewigii—Japan Pinks, beautiful. 10c.
 “ Imperialis—Dbl. Imperial Pinks, beautiful. 10c.
 “ Barbatus—Sweet William, finest colors, mixed.
 Eschscholtzia California—California Poppy, yellow.
 “ “ “ “ white.
 “ “ “ “ rose.
 Gaillardia Picta—Gaillardia.
 Glaucium Phoeniceum.
 Gomphrena Globosa—Bachelor's Buttons, purple white, in separate colors
 or mixed. 5c. each.
 Gypsophila Muralis. 10c.
 Helichrysum Minimum—Dwarf Everlasting. 10c.
 “ Tall “ 10c.
 Helianthus—Dwarf Double Sun Flower.
 Hibiscus Africanus—African Hibiscus.
 Iberis Amara—White Candytuft.
 “ Umbellata Carneae—Pink.
 “ Lilacina—Lilac.
 “ Purpurea—Purple.
 Ice Plant. 5c.
 Linum Grandiflorum—Scarlet Flax.
 Lupinus—Lupins, mixed.
 Lunaria Biennis. 10c.
 Malope Grandiflora Alba.
 “ “ Purpurea.
 Malva Miniata.
 Maurandia Barclayana—Maurandya, mixed. 10c.
 Mirabilis Jalapa—Marvel of Peru from new varieties; very fine.
 Nasturtium—Mixed, 10c.
 Nemophila Insignis—Nemophila.
 “ Discoidalis.
 “ Maculata.
 “ Atomaria.
 “ Coam Beoides Oculata.
 Nigelia Damascena, fl. pl.—Love in a Mist; double flowering.
 “ “ Nana—Love in a Mist; dwarf.
 Obeliscaria Pulcherrima.
 Oenothera Drummondii.
 Pansies, fine imported. 25c.
 Papaver—Double Carnation Poppy.
 “ “ Paeony, flowered.
 Peas—Sweet, mixed.
 Perilla Nankinensis—Purple Perilla.
 Petunia—Hybrida, fine mixed. 25c.
 Portulaca—Single. 5c.
 “ Double. 20c.
 Phlox Drummondii—Drummond's Phlox. 10c.
 Reseda Odorata Ameliorata—Improved.
 “ Parson's White.

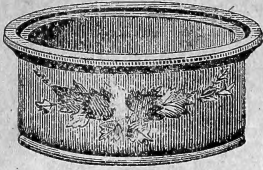
- Rhodanthe Manglesi. 10c.
 Ricinus Sanguineus—Scarlet Palma Christi.
 Salvia Fulgens—Red Sage. 10c.
 “ Splendens—Scarlet Sage. 25c.
 Sanvitalia Procumbens—Dwarf Sanvitalia. 10c.
 Salpiglossis Nana. 10c.
 Scabiosa Grandiflora—Mourning Bride, mixed varieties.
 Silene Armeria—Catchfly, red and white.
 Senecio Elegans—Double mixed.
 “ “ Dwarf Double mixed.
 Stocks—German, ten weeks. Dwarf. 10c.
 Tagetes—French Marigold.
 “ African “
 “ Pumila—Dwarf Marigold.
 Thunbergia Alata—Winged Thunbergia, climber. 10c.
 Verbena—Verbena from 100 different varieties. 10c.
 Viscaria Oculata, or Rose of Heaven.
 Wall Flower—Single, mixed.
 “ Double, “ 25c.
 Whitlavia Grandiflora—Blue Whitlavia.
 Zinnia Elegans—Double Zinnia, mixed colors. 10c.
 “ “ Double, pure white. 10c.

WATERMELON.

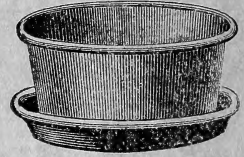
RATTLESNAKE—This variety has of late years become well known in the Northern markets for its superior excellence, and it is conceded that the finest Melons of this variety are raised in the vicinity of Augusta. The seed which we offer is perfectly pure, having been saved from selected Melons planted at great distance from other fields. Price per packet, 25c.; per lb., \$3.

MUSKMELONS.

PERSIAN—A most delicately flavored green fleshed variety, unsurpassed in quality; fruit large oblong. Per Packet, 25c.



ESTABLISHED
1765.



SEND TO
A. H. HEWS & CO.

NORTH CAMBRIDGE, MASS.

This Cut is the exact size
of our

WHOLESALE PRICE LIST.		Per M.
2 1/4-Inch Pots,		\$6 50
2 1/2-Inch Pots,		7 00
2 x 3-Inch Pots,		8 00
2 3/4-Inch Pots,		9 00
2 1/2 x 3 3/4-Inch Pots,		10 00
3-Inch Pots,		10 00
3 1/4-Inch Pots,		12 50
3 1/2-Inch Pots,		13 00
3 3/4-Inch Pots,		15 00
4-Inch Pots,		17 50
4 1/2-Inch Pots,		22 50
5-Inch Pots,		30 00
6-Inch Pots,		45 00

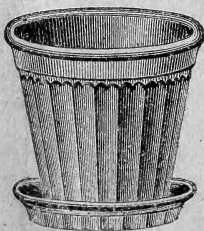
2 1-4 inch Flower Pots,

Price, \$6.50 per thousand.

For their
ILLUSTRATED CATALOGUE

—OF—

Flower Pots and Fancy Earthenware,



THE BEST
IS
THE CHEAPEST!

AND WE CLAIM TO MAKE

The Best and Cheapest

IN

THE UNITED STATES.

