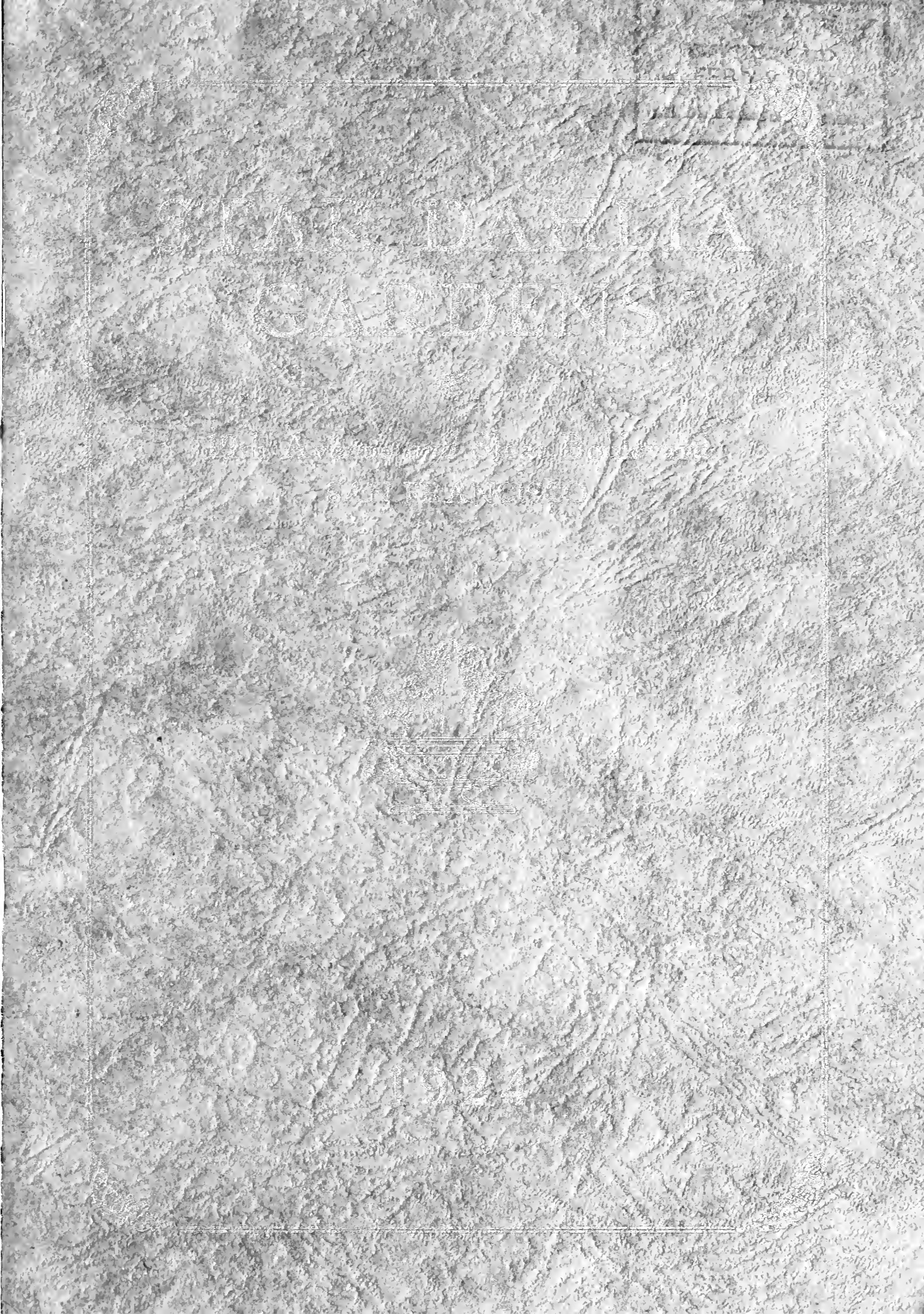


Historic, archived document

Do not assume content reflects current scientific knowledge, policies, or practices.



SIXTH EDITION

1924

Our 1924 Catalog brings greetings to you, and we take this opportunity to express our deep appreciation for your liberal patronage during the past. We trust that you as well as our newer customers, will enjoy the greatest possible success with your Dahlias this season. We have one of the largest and best collections of Dahlias in the West. Our roots are all field grown, without being forced or over-fertilized—grown as you grow them. Our stock has been selected from the finest American and European varieties. We specialize in the latest California novelties, which in our estimation, are unexcelled.

Thanking you in advance for any orders you may favor us with, which we assure you, will be given our personal attention.

Sincerely yours,

R. McWHIRTER.
J. P. BONGARD.



GENERAL INFORMATION

Order Early—As orders are filled in rotation, ordering early will insure the reservation of varieties that later may be sold out.

Terms—Cash with order unless parties are known to us. No goods sent C. O. D. unless 50 per cent of purchase accompanies order.

Remittances should be made by bank draft, postoffice money order, or registered letter, payable to Star Dahlia Gardens.

Claims—No claims for rejections or deficiencies will be entertained unless made within ten days after arrival of goods. We want you pleased with every shipment, so if everything is not perfectly satisfactory, please report it at once.

We Guarantee all tubers true to name, and also their arrival in good growing condition. We do not substitute unless requested.

Time of Shipment—Tubers will be shipped after April 1st unless otherwise notified. All retail orders shipped prepaid.

Name and Address should be written plainly and forwarded to

STAR DAHLIA GARDENS

Nineteenth Ave. and Sloat Blvd.

San Francisco, Calif.



MRS. ELEANOR MARTIN
New Pink Decorative Dahlia
For Description See Page 2

Decorative Dahlias

Introductions for 1924

***Pride of San Francisco** (McWhirter).

New California decorative, which we take great pleasure in introducing, for 1924. The plant is a strong vigorous grower, which attains a height of from four to five feet, and requires no staking or support of any kind. The flowers are borne on stout stiff stems, and under ordinary conditions, without disbudding, will develop blooms from six to seven inches in diameter, which are of perfect decorative form. The color of this new variety is its chief attraction, a brilliant golden salmon pink, which makes it very desirable for cutting and garden decoration.....

\$3.50

***Mrs. Eleanor Martin** (Pelicano).

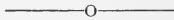
A wonderful new decorative of deep mulberry and rose colorings, the flowers are very large and are held erect on long, stiff stems. The freedom of flowering and habit of plant are very good, average height about five feet. A splendid variety for exhibition and decorative purposes

\$5.00

***Black Jack** (Dressler).

We have grown this new California decorative on trial, and can recommend it very highly. The plant is very vigorous, growing to a height of about six feet. The flowers are extremely large, with long, stout stems, and the color is a very rich dark maroon, almost black, does not burn and has good keeping qualities; a grand exhibition variety.....

\$5.00



Decorative Dahlias

General Collection

***Amun Ra**—A decorative of immense size and a beautiful shade of coppery orange. The stems are long and stiff, and the flowers have splendid keeping qualities. A consistent prize-winner

\$3.50

***Anna Maier**—Peculiar shade of red suffused with yellow; large flower.....

1.50

***Al Koran**—A very large free-flowering golden yellow, great substance and good formation on strong stems well above the foliage, very fine for exhibition purposes

5.00

***Al Malaikah**—One of the favorite autumn shades, excellent for cut-flower purposes. A pleasing shade of apricot suffused with bronze, good stems.....

2.50

***Aurora B**—Color is a striking shade of purple, with reverse of petals suffused white. Comes in full decorative form, with a white collar between each row of petals. A free-bloomer with large flowers on long, straight stems.....

1.50

***Byron**—Large flowers of crimson maroon with strong, stout stems.....

.50

Ben Wilson—Color is an orange red, tipped yellow, large flowers with good stems. Good for exhibition.....

1.00

***California Superba**—One of the largest pink dahlias grown. Fine for exhibition....

5.00

***Carmencita**—A very attractive variety of golden yellow striped and splashed red. A dwarf compact grower, very free.....

1.50

Dahlias marked * originated in California.

Cardinal King —Very large flowers of bright red. Good for both exhibition and cutting. Good stems.....	1.50
* Carolyn Wintjen —Beautiful shade of salmon pink, with rose shadings. A favorite cut-flower and very free-bloomer.....	.75
* Champagne —One of the best of recent introductions. The flowers are immense and the color is a beautiful shade of golden champagne, with chamois shadings. A wonderful free-bloomer. Good for both exhibition and cutting.....	7.50
* Comstock —An immense yellow flower, with fluted petals, on long, straight stems. A tall-growing variety.....	1.00
* Dolores —A beautiful shade of golden apricot, large flowers with long, strong stems. An abundant bloomer, good for both exhibition and garden.....	1.00
* Dr. H. Tevis —Immense blooms of soft salmon rose suffused with old gold.....	.75
* Earle Williams —Scarlet tipped, with white, very large flowers with good stems. Fine for exhibition.....	5.00
* Eva Pelicano —A new white decorative which has proved very satisfactory. Very large flowers, on long, strong stems. Excellent for cutting and good for exhibition	1.50
* Gloriana —Large gold colored flowers with long stems.....	1.50
* Golden Glow —Striking shade of golden apricot. Flowers have unusual serrated petals. Very strong grower.....	1.00
Gladys Meyers —A splendid, new decorative, with immense flowers, on very long, stiff stems. The color is a lovely shade of creamy yellow; great depth of bloom, with excellent keeping qualities.....	2.00
* Halvella —1923 introduction. We have had very favorable reports from several growers praising this variety very highly. Color is a beautiful shade of rose-pink, with flowers of very large size, which stand erect on long, stiff stems. We advise planting this variety early, as it is a late bloomer. Good for both exhibition and cutting. A prize-winner.....	3.50
* Harry Davidson —A rich mulberry color with golden shadings. Flowers are large with good, long stems.....	.75
Insulinda —Large orange buff flowers, with broad, curling petals, on very long, erect stems. A prize-winner.....	1.00
* John Lewis Childs —Very attractive variety. Deep yellow splashed and striped, a brilliant red with white tips. Large flowers produced on long, stiff stems.....	2.00
* Jane Selby —Exceptionally large flower of a delicate mauve pink. Great substance and good formation, on strong stems well above the foliage. A prize-winner	1.00
* Jessie McRorie —Extra large flowers of a tomato red color. A fine exhibition variety, with good stems; very desirable for all purposes.....	1.00
Judge Marean —Color is a glowing salmon pink, suffused with orange and gold. This variety is well adapted to a warm climate. Free-flowering with good stems..	2.50
* John Alden —Large blooms of very deep purple with long, stiff stems. Free-bloomer and good for exhibition.....	3.00
* Kitty Dunlap —A very popular shade of American beauty rose color. Free-bloomer and fine formation. The stems are long and stiff. One of the best.....	4.00
* Lady Diana —A wonderful shade of peach bloom pink. Large flowers produced on long, stiff stems. An exceptionally good dahlia. A free-bloomer and good for exhibition and garden decoration.....	5.00
* La Paloma —The color is a combination of red and yellow, with orange and white suffusions, very attractive in the garden.....	1.00
Le Grande Manitou —White ground striped and speckled violet. A very popular and useful Dahlia. A free-bloomer with good stems. Fine for exhibition.....	.50
* Lou Colmore —Immense blooms of a blend of orange, yellow and tan shadings. Free-flowering with good stems.....	1.00

Dahlias marked * originated in California.



HALVELLA

For Description See Page 3

* Loyalty —One of the best in cultivation of this color, which is a beautiful shade of royal purple. A prolific bloomer, on long, stiff stems.....	2.00
* Maryan —Giant California Decorative of great merit. The color is a rich apricot with orange and buff shadings. Flowers very large, on good, strong stems. Remarkable keeping qualities.....	.75
* Mabel B. Taft —A beautiful shade of apricot suffused with yellow. Very free-flowering and should be well disbudded to obtain best results. Flowers are large, with good stems.....	.75
* Mary C. Burns —Large flowers of a pleasing color combination; a luminous old gold with reddish reverse. Good stems and a popular cut-flower; very attractive....	2.00
* Millie Rodgers —A beautiful color of old gold shading to amber. Good for cutting and exhibition	1.00
Millionaire —One of the largest varieties in cultivation. The color is lavender, shading to white. Flowers are of great depth and substance, on strong stems. Always attracts attention.....	1.00
* Miss Worn —A beautiful shade of coppery old rose, large blooms which are borne well above the foliage on long, stiff stems. A free-bloomer and equally good for garden and exhibition.....	4.00
Mrs. I. De Ver Warner —Considered one of the best of Judge Marean's introductions. The color is a deep orchid mauve pink. The flowers are large, of perfect form, on long, stiff stems.....	4.00
* Mrs. Carl Salbach —A new Californian of exceptional merit. The largest and most perfect variety of its color, which is a very attractive shade of lavender pink, with long, straight stems. Unexcelled for exhibition. Consistent prize-winner....	1.00
* Mrs. Paul J. Auditte —The color is a pleasing shade of apricot, very large flowers, with splendid stems and good habit. Our stock of this variety is limited.....	1.00
* Mrs. O. D. Baldwin —A new shade of American beauty rose. Flowers of medium size with very long, stiff stems. Fine for garden decoration and cutting.....	1.50
* Mrs. F. C. Burns —A variety which is greatly in demand. The color is a pretty shell pink, very striking, with long, stiff stems. Good for all purposes.....	1.00
* Marechal Foch —Bright scarlet, tipped with gold. Large, deep flowers on good stems. Very free-flowering and good for exhibition.....	1.50
* Osam Shudow —Old rose suffused with lilac, shading to yellow at the center. The plant is very tall and the large blooms are held well above the foliage on good stems	4.00
* Paul Michael —1922 introduction. Won First Prize for the largest Dahlia exhibited at Palace Hotel Show, 1921, also highest certificate of merit at the California Dahlia Society trial gardens. An immense flower of bright apricot, with bronze shadings; good stems and unexcelled for exhibition.....	2.50
* Princess Pat —A beautiful shade of old rose, deepening at the center. Flowers are very large and perfectly formed, growing well above the foliage on long, stout stems	1.00
* Pride of California —The best red decorative of recent introduction. Bright scarlet flowers of immense size, held erect on long, heavy stems. Fine for exhibition and good keeping qualities when cut.....	.75
Proxie —A giant velvety red decorative of fine form. The flowers average from 8 to 10 inches across. The stems are good and the habit of the plant is excellent. A fine exhibition variety.....	1.00
* Rainbow —Unusual coloring of oriental red, suffused with old gold. The stems are long and stiff, large flowers and a free-bloomer.....	1.50
* Ruth Denahy —Extra large blooms of great substance. A grand exhibition variety, with good stems. Color, deep amber shading to old gold. Stock is limited.....	2.00
* Rosa Nell —A sensational Dahlia. Immense blooms of clear, bright rose, on long, stiff stems. The flowers are of great depth and the formation is good. Unequaled for exhibition	1.50

Dahlias marked * originated in California.

* Royal Gold —A beautiful shade of golden amber, with average size flowers. Wonderful free-bloomer, with good stems; indispensable for garden and decorative purposes	1.00
* Rookwood —Introducer's description: "An entirely new shade of pink, which is more like the popular Russel rose than any other flower. It is a pure, bright cerise rose." The habit of the plant is dwarf, with very large blooms on excellent stems	5.00
* Senorita —Immense blooms of a rich dark red, with good stems. A prize-winner and a grand exhibition flower.....	3.00
* Sequoia Gigantea —A large yellow decorative, with a slight tinge of red. Fine exhibition flower	1.50
* Shower of Gold —The color is a striking shade of golden apricot. Petals are slightly fluted and the flowers are large, with good stems. Free-flowering and good for all purposes.....	1.00
Sulphurea —Large flowers of light yellow on strong, upright stems. Fine for cutting and exhibition. Splendid habit.....	.75
* Suffragette —Bright canary yellow, with petals sometimes tipped white, very attractive, good form, strong stems.....	2.50
* Sunny California —Large flowers of an attractive coloring of orange red suffused with gold. Good stems and a free-bloomer.....	3.50
* St. Francis —Immense blooms of soft cream shading to pink. A low-growing variety with good stems. Good exhibition flower.....	7.50
* Shudow's Lavender —The best lavender decorative to date. Very large flowers, on long, stout stems. The variety is tall-growing and is good for all purposes....	5.00
* Stunner —Large canary yellow flowers of good form. Stems and habit are very good75
* Sunshine —Brilliant scarlet, tipped with gold. Very large flowers, with good stems. Very attractive	1.00
* T. A. Leonard —Giant flowers of a deep cerise, with peculiar formed petals. A very free-bloomer, with good stems.....	3.50
* The Grizzly —Large flowers of deep maroon with great substance. Form of flower perfect and good stems. A grand exhibition variety, well adapted to warm climates..	1.50
* Theodore Vail —Old gold, shading to apricot. One of the most lasting when cut. Large size and excellent formation on long, strong stems.....	.75
* W. E. Cooper —Large blossoms of a lovely shade of pink. Good stems and a free-bloomer. Low grower.....	5.00
* Woozy of Oz —Color is salmon pink overlaid and blending to yellow at the center. Large flowers with good form and stem.....	.75

Dahlias marked * originated in California.

Special Offer on California Decoratives

We will send postpaid anywhere in the U. S. or Canada the following ten new California dahlias for \$7.50

Aurora B.	Dr. H. Tevis	Grizzly
Mrs. Carl Salbach	Sunshine	Golden Glow
Carolyn Wintjen	Earle Williams	Pride of California
Princess Pat		

Cactus and Hybrid Cactus Dahlias

General Collection

* Ambassador —This variety won for us the prize for the largest flower in the show, held by The Dahlia Society of California at the Palace Hotel, 1923. The color is a soft, yellow buff shaded salmon pink. Very large flowers on good strong stems. Fine formation and good keeping qualities.....	\$10.00
* Amber Glow —Bright amber deepening to pale orange at the center. Splendid exhibition variety, with a good stem.....	2.00
* Arthur Twitchett —American cactus. White, with a faint tinge of pink. Habit is ideal. Good stems and very free-flowering.....	2.00
A. R. Perry —Old rose, tipped with gold. Large flowers, with long incurved petals. Grand exhibition variety.....	.75
Alabaster —The best white for exhibition. Good form.....	1.00
Dr. Roy Appleton —One of the best. Color is lemon yellow suffused with salmon. Good stems75
* Ballet Girl —Very attractive. Orange, splashed and tipped with white; perfect formation. Fine for exhibition.....	2.00
* Cardinal Superba —Color is a clear glistening cardinal red, with flowers of large size and good form. Good stems and a free-bloomer. Fine for exhibition and cutting. Hybrid cactus.....	3.50
* California Enchantress —A beautiful shade of pink, and a very free-bloomer. Large flowers with good stems. A popular variety.....	1.50
* Charles Snieder —Uncommon shade of watermelon red, with yellow suffusion. Stems are excellent. A very useful variety.....	1.00
Curlew —Deep lavender. Fine incurved formation. Exhibition flower.....	.75
* Claremont —Hybrid cactus. Color is a delicate shade of soft rose with cream shadings. Large blooms on long, stiff stems.....	2.00
Conquest —Dark crimson maroon. Fine form and habit.....	.50
* Empire —Immense blooms of raspberry color. A free-bloomer and a splendid exhibition variety. Good stems.....	4.00
E. F. Hawes —A wonderful free-bloomer producing large flowers of clear, delicate pink on long, stiff stems.....	1.00
* El Rubio —Large flowers of twisted shaggy appearance, with a wonderful coloring of spectrum red, marked and tipped with gold. Good for exhibition. A splendid hybrid	5.00
F. W. Fellowes —True cactus form, with narrow curling petals. Very large orange-colored flowers, with good stems.....	.75
* Galli Curci —A beautiful shade of orange, good sized flowers on long, stiff stems. An excellent variety for garden decoration and cutting.....	2.00
* G. A. B. S. (Hybrid) —Deep golden orange shading to bronzy red at the center. Large flowers, with a strong, upright stem which carries it well above the foliage.....	1.50
* George Walters —One of the largest and best hybrid cactus in cultivation. The color is a rich salmon pink, with good stems. A consistent prize-winner.....	.75
* Gladys Bates —Large blooms with incurved petals. Color is a pretty shade of tan with a reverse of rose. Good stems.....	2.00
* Helen Durnbaugh —Color is a delicate blush, shading to white. A very free-bloomer, with good stems. Hybrid.....	.75
Herbert Raby —A good exhibition cactus. Color is wine crimson.....	.50
Kalif (Hybrid) —A majestic flower of good exhibition size. Color is a bright red. Free-flowering, with long, erect stems.....	.50

Dahlias marked * originated in California.

* La Favorita (Hybrid)—New California variety which has become very popular on account of its color—a beautiful shade of orange. Flowers are large, with good, long stems.....	1.00
Matador (Hybrid)—One of the best hybrid cactus grown. The color is a beautiful shade of old rose. Immense flowers on long, strong stems.....	1.00
* Mariposa (Hybrid)—Large blooms of great depth and substance. The color is a lovely shade of violet pink. The stems are good, and the habit of the plant is all that could be desired.....	5.00
* Minamoto (Hybrid)—Very large flowers of bright velvety red, with long, stiff stems. A free-bloomer and good for exhibition.....	1.00
* Milton Edwards —An unusual shade of rich coral red. Large blooms of incurved formation on good stems. Hybrid.....	1.50
Mrs. C. Cooper —The color is a brownish tan with long straight petals. One of the largest cactus dahlias.....	.75
Mrs. Margt. Stredwick —New English incurved variety. The form is perfect and the flowers are large, with good stems.....	1.50
* Mrs. Edna Spencer —American cactus. Color is lavender-pink. A good variety for cutting and exhibition.....	1.00
* Mrs. Richard Lohrman (Hybrid)—Giant golden yellow hybrid cactus which always attracts attention. Flowers are held well above the foliage on long, upright stems.....	1.50
Mrs. Warnaar —Hybrid cactus. Delicate shade of blush suffused with white, long twisted petals. Large flowers with good stems.....	1.00
* Mrs. W. E. Estes (Hybrid)—An exceptionally good white hybrid. Large, deep, full flowers on long stems. Good for exhibition and cutting.....	1.00
Pennant —Incurved English variety. Color is a bright coral red. Good stems.....	.75
Ruth Van Fleet (Hybrid)—Large flowers of light yellow with long, strong stems. Good form and habit.....	1.00
* Ruth C. Gleadell (Hybrid)—One of the best late introductions. Beautiful, large blossom of soft yellow, shading to pink. Excellent form and fine stem.....	.75
* Regent —A clear mauve pink with incurved petals. Large blooms of good formation on strong stems.....	2.00
* Shirley Brown (Hybrid)—A splendid addition to the hybrid cactus class. Exceptionally large blooms of old gold coloring. We have grown flowers of this variety measuring 10 to 12 inches in diameter. Has been grown on trial in other localities with great success.....	2.00
Skagerrak —A beautiful clear lemon yellow hybrid cactus. The flowers are held erect on good, long stems; very large blooms of fine form. Good for both exhibition and cutting.....	1.50
* San Francisco (Hybrid)—Beautiful large blossoms of deep red, distinctly tipped yellow. Firm, erect stem. Good for cutting and exhibition.....	.75
Sovereignty —The best yellow for exhibition. Very large, bold flowers with straight petals.....	.75
* The Eagle (Hybrid)—Color is a sulphur yellow. Large flowers with long, stiff stems. Good for exhibition and cutting.....	1.00
* Tom Lundy —Color is rich dark crimson. The flowers are immense, with good stems. This variety does well in a warm climate.....	.75
Valient 11 —Considered the best red cactus for exhibition. Nicely incurved, with long, narrow petals.....	1.00
* White Enchantress —A sport from California Enchantress, which is now established. We have grown this variety for three years without showing any variation. The color is a beautiful creamy white. Limited stock.....	5.00
Yellow King (Hybrid)—Very large, bold flowers, on stout, upright stems. The color is a clear lemon yellow. One of the best.....	.50

Dahlias marked * originated in California.

SPECIAL OFFER

We will send postpaid anywhere in the U. S. or Canada the following eight new California Hybrid Cactus Dahlias for \$5.00.

Geo. Walters
Mrs. R. Lohrman
Helen Durnbaugh

Mrs. W. E. Estes
La Favorita
Charles Snieder

Mrs. Edna Spencer
Ruth C. Gleadell

Peony Dahlias

General Collection

* Agnes Boston —The unusual coloring of this variety, which is royal purple shading to white, is one of its chief attractions. Exceptionally large flowers on good stems. Fine for exhibition.....	\$3.50
* Beatrice Boston —Immense flowers of an amaranth shade, changing to deep mauve. One of the largest in this class. Fine for exhibition.....	1.00
Billionaire —Color is a beautiful shade of old gold. A wonderful free-bloomer with fair stems. Good for exhibition.....	.75
* Bluebird —Large flowers with good stems. Color is deep mauve.....	1.50
City of Portland —An Oregon introduction of great merit. Very large flowers of clear deep yellow, on long, straight stems. Grand exhibition variety.....	2.00
Cream King —Magnificent blooms of a soft creamy coloring. The stems are long and habit of plant is good. Good for cutting and exhibition.....	.50
* Elsa —The best white Paeony. Very large flowers of perfect form on good stems. Fine for exhibition and garden.....	.75
* Elizabeth Boston —Large flowers of scarlet tipped with gold. Very attractive. Free flowering with good stems.....	3.50
Edith Cavell —Large flowers of reddish bronze, with old gold shadings. Good stems and fine habit.....	1.50
Geisha —A Holland variety which is still a great favorite with Dahlia lovers. Large flowers of good formation. Colors—Golden yellow suffused with scarlet..	.75
* Gorgeous —Wonderful new red and yellow Paeony. Flowers average from 8 to 10 inches in diameter. Very attractive in the garden. Long, strong stems and a good bloomer.....	2.50
* Haida —An immense flower of soft creamy pink. Nothing better for exhibition. Free-bloomer	1.00
* Howitzer —An attractive combination of yellow splashed with red. Immense blooms. Good for exhibition.....	1.50
Meyerbeer —An introduction from France in 1914 which is still popular. Extra fine variety of large size. Color is dark cardinal with purplish center. It has all the points a good Dahlia calls for—size, color and stem.....	.75
* Mrs. John Bray —Very attractive fancy. Color is a combination of white, striped and splashed with maroon. Free-bloomer and good stems.....	1.00
* Mrs. Jessie Seal —A beautiful shade of salmon pink. Large flowers on long, stout stems. Good for all purposes.....	1.00
* My Lady —An unusual shade of tomato red suffused with cerise and gold. Stems are good and formation is perfect.....	1.50
* Natalie Mai —The color is an unusual shade of burgundy with maroon suffusions. Flowers are large and stems are good. Very popular.....	1.00
* Pacific Glow —Very large flowers of a beautiful shade of pink. Unequaled for exhibition	1.00

Dahlias marked * originated in California.

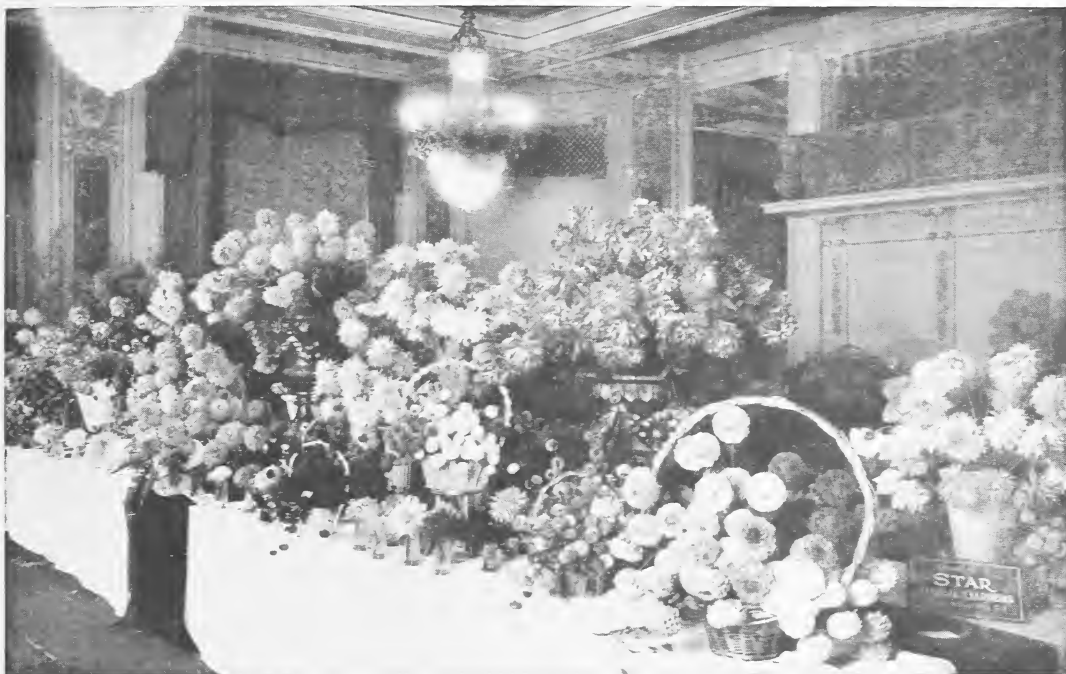
* Pearl Ruggles —1920 introduction. Color is carmine rose suffused with pink and white shadings. Good for cutting and exhibition.....	1.50
* Petti Sing —A brilliant shade of oriental red suffused with gold. Always attracts attention. Free-flowering75
* Rising Beauty —A very attractive combination of scarlet and gold. Immense flowers on long, straight stems. Invaluable for exhibition and a splendid cut-flower. This variety is an improvement on the well-known Geisha. Also has a record as a prize-winner. Net.....	1.50
* The Oriole —Very striking combination of burnt orange, red and yellow. One of the best new introductions. The flowers are very large on good, long stems. One of the most popular varieties in our gardens last season.....	2.50
U. S. A. —A wonderful color of deep orange. Flowers of large size and good formation on excellent stems. Good for all purposes.....	2.00
* Walta Linforth —Warm carmine coloring. Very free-bloomer and good stems. A useful variety.....	.75

Show Dahlias

General Collection

Anna Rehorst (Hybrid)—Purple; very large.....	\$.50
A. M. Burnie —Orange lightening to yellow.....	.50
Clara Seaton (Hybrid)—Rich golden bronze. A giant flower.....	.50
Daniel Cornish —A grand exhibition variety. Color is an odd shade of raspberry red. Good stems.....	.75
Dr. Keynes —Buff shaded red. Perfect formation.....	.50
Diadem —Deep maroon. One of the best.....	.50
Gold Medal —Canary yellow, striped and flaked red.....	.50
General Haig —Best scarlet show. Remarkably fine.....	.75
General Miles (Hybrid)—One of the largest in this class. Color is a violet shade, splashed with magenta.....	.50
Henry Walton —Yellow and vermilion. Large and true type.....	.50
James Cocker —Very deep purple. Large and fine form.....	.50
John Walker —The finest white show Dahlia.....	.50
Les Amours —Good for exhibition and cutting. Large flowers of cerise, striped darker35
Magenta King (Hybrid)—Largest red hybrid show. Giant flowers.....	.50
Maritana —Lilac or mauve. Fine for exhibition.....	1.00
Mrs. Bottomley —Rosy peach. Extra fine variety.....	.50
Mrs. J. P. Smith —Extra large red, American type show.....	.75
Mr. Chamberlain —Dark, velvety maroon. Immense flowers.....	.50
Mrs. Browning —Clear yellow with white tips. Good formation.....	.50
William K. —Yellow tipped with red. Large flowers.....	.50
Yuban (Hybrid)—Yellow, striped and speckled red. Immense blooms.....	.75

Dahlias marked * originated in California.



Our Prize Winning Exhibit at the Palace Hotel Show, which won the Gold Medal donated by the American Dahlia Society for best general display, 1922 and 1923.

Collarette Dahlias

Abbe Hugonard—Purple with white edging. White collar.....	\$.50
Ami Nonin—Pretty shade of old rose. Lighter collar.....	.50
Dora Fisher—Best pink collarette. Fine for cutting.....	.50
Geant de Lyon—Velvety maroon with white collar. Very distinct.....	.75
Herald—Rosy pink. White collar. Good.....	.50
William Welsh—Clear yellow. Long yellow collar.....	.50

Pompon Dahlias

General Collection

*Aimee—Color is a very popular shade of bronze. Free-bloomer with long stems..	\$.50
Arthur Kerley—Small, compact blooms of a rich red. Good stems.....	.50
Amber Queen—Lovely shade of amber. Good for cutting.....	.35
Barbara Purvis—Best white for exhibition and cutting.....	.35
Bronze Beauty—Golden apricot. Very free-bloomer.....	.35

Dahlias marked * originated in California.

Cheerfulness —Orange suffused red. Free-bloomer.....	.35
*Coral Queen —A beautiful shade of coral red. Small, compact blooms, with good long stems. Very free-flowering.....	.50
Cruso —Pretty shade of pink. Fine for cutting.....	.50
Cyril —Dark red. Good for all purposes.....	.50
Daisy —Salmon rose. Very popular.....	.50
Darkest of All —Maroon, almost black. Truet stock.....	.50
Darkey —Pink with lavender center. Good.....	.50
Douglas Tucker —Golden yellow, with crimson center.....	.50
Doris —A pretty shade of cream.....	.35
Eunice —Light lavender shading to pink. Good for cutting.....	.35
Elsie —Pretty shade of blush pink suffused with white.....	.50
*Frankie —New. Golden apricot tipped red. Good formation and unexcelled for cutting and decoration.....	.75
Glow —A lovely shade of old rose. One of the best for all purposes.....	.50
Geo. Ireland —Color is mauve. Very compact.....	.50
Hecla —Pure white. Small, perfect flowers.....	.50
Ideal —Grand little variety. Pure yellow.....	.50
Johnnie —Maroon, with crimson center. Small and compact.....	.50
Lilac —New. A pleasing shade of lilac suffused with rose. Good.....	1.00
Little Beeswing —Golden yellow, tipped with red.....	.50
Little Donald —A very good red; small flowers, with good stems.....	.50
Little Julia —Brilliant shade of orange.....	.50
*Little Joe —Pretty shade of deep cerise. Exceptionally long, stiff stems. Good formation and a splendid cut-flower.....	.50
Madeline —Pale primrose, edged with rosy purple.....	.50
Mars —Bright scarlet. Well-formed flowers.....	.50
Neatness —A beautiful color of bronzy apricot; very effective for decorative purposes.....	.50
Nerissa —Soft rose, tinted with silver.....	.50
Nelly Fraser —Pretty shade of lavender pink.....	.50
Phyllis —Yellow, heavily shaded red. Extra good.....	.50
Phoebe —Deep golden orange. Of fine form and habit.....	.50
Pure Love —One of the best lavenders. Good stems and form.....	.50
Rosa —A pretty shade of bluish lilac.....	.50
Rosebud —White ground, edged rosy pink. Good.....	.50
Regulus —Bright purple. Small and compact. Good.....	.50
Sunset —Orange. Very popular.....	.35
Sunny Daybreak —Apricot, edged rosy red.....	.50
Tommy Keith —Red, tipped with white. Very attractive.....	.50
*Yellow Gem —New. Considered by experts to be the best yellow pompon yet introduced. A strong, vigorous grower and a remarkably free-bloomer. Good for both exhibition and cutting.....	1.00

Dahlias marked * originated in California.

Special Offer on Pompons

12 varieties, your selection.....	\$3 50
12 varieties, our selection.....	2.50

HOW TO GROW AND CARE FOR DAHLIAS

If possible, plant in open, sunny situation. Prepare the soil thoroughly by deep digging. Be moderate in the use of both manure and water. Never plant when the soil is wet. Lay the tuber flat on its side and cover it four inches deep, pressing the soil firmly on the tuber. Keep the soil loose and mellow by frequent hoeing. Cultivation is the secret of growing good Dahlias.

Three by three feet is about the proper distance to plant apart.

Keep all dead flowers trimmed off.

Dahlia blooms keep much better if cut in the evening—about sunset—and the less foliage taken off with the flowers the better for both plant and flower. If green is desired, use some other green of better keeping qualities.

After frost has killed the tops, dig the tubers carefully, remove the soil from the roots, and store away in a box or barrel, secure from frost. As a precaution it would be well to cover the tubers so stored with sand, leaves or moss.

All clumps should be divided into several pieces before being reset the following spring.

To have large blooms, it is absolutely necessary to disbud, leaving only one bud to each shoot.



DAHLIA SEED

Growing Dahlias from seed is one of the most interesting stages of Dahlia cultivation. Our seed is carefully selected from the choicest varieties. We sent postpaid to any postoffice in the United States, Dahlia seed in packets.

Package of 50 seeds.....	\$1.00
Package of 100 seeds.....	1.50

