

Historic, archived document

Do not assume content reflects current scientific knowledge, policies, or practices.

62,09

LIBRARY
MAY 15 1924
U. S. Department of Agriculture

Citrus and Tropical Fruit Trees

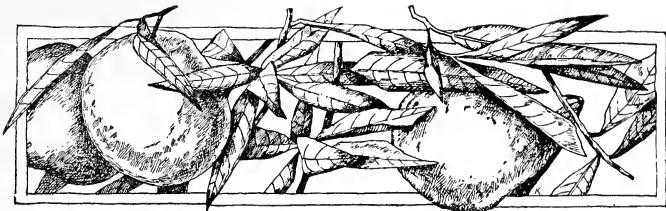
Economic and Ornamental Varieties



PRICE LIST 1924

Founded in 1889 by R. M. Teague

The R. M. Teague Nurseries
San Dimas, California, U. S. A.
Los Angeles County



FOR OVER THIRTY YEARS we have been engaged in the production of quality nursery stock, during all of which time we have never lost sight of the fact that quality was determined by the growth and productiveness of the tree after it had left the nursery. While this depends largely on proper care and management by the grower, yet it is incumbent on the nurseryman to deliver to the planter trees that under proper care will produce maximum results.

To that end we have ever been on the alert to improve our stock wherever possible. The foundation of a tree is its root stock and we make a practice of selecting only the most vigorous sour orange seedlings for this purpose, discarding all inferior and off type seedlings.

With the advent of bud selection (pedigreed buds) we have discarded the use of all others and for our citrus trees use only buds supplied by the Fruit Growers' Supply Company, from the best record bearing trees.

Vigorous roots, selected buds and proper care are the three essentials necessary to produce the highest quality nursery stock, but the planter must not lose sight of the fact that he has a part to perform after buying the stock (in order to attain maximum results) and that is proper irrigation, fertilization and cultivation. With proper care Teague Quality Trees will fill every requirement.

We are always willing and anxious to advise and consult with our customers regarding the care and management of their groves as we realize that it is to our interest to see that they make a success of their plantings. In a word our aim is to give entire satisfaction, and on this basis we solicit your patronage.

THE R. M. TEAGUE NURSERIES

SAN DIMAS, LOS ANGELES COUNTY, CALIFORNIA, U. S. A.



A block of Well Grown Citrus Trees

SERVICE

We hold that the Nurseryman's service to his patrons is not complete when delivery of the stock is made and that whenever necessary or desirable patrons should have the benefit of our experience and advice to the end that they may get the best possible results from their plantings.

Satisfied customers are the Nurseryman's greatest asset and we therefore want all of our patrons to feel at liberty to advise with us at any time they find their orchards are not growing or producing as they should.

Our book on "Citrus and Tropical Fruit Trees," covering the planting, culture and care of these fruits, was especially prepared to assist our patrons to properly care for their trees from time of planting to the mature grove. The price of this book is 50c which barely covers its cost together with mailing charges, but it is free to everyone purchasing stock from us.



Fragrant blooms of Kumquat

THINGS TO BE OBSERVED

Terms—State specifically the size and variety of trees you want, and give a few general hints as to your soil and climatic conditions. From unknown parties we demand a remittance or deposit of 50% of order or good references. Send money by bank draft, postoffice or express order, or registered letter.

Our New Location in the Southwest section of the San Fernando Valley, nine miles from the ocean, on the Ventura Boulevard, affords an ideal growing ground for Citrus and Tropical Trees. Sheltered from cold and wind by the adjacent hills, with the finest virgin alluvion soil and abundance of water makes it unsurpassed for the production of uniform, high-grade nursery stock. Being a newly developed section it is free from all insect pests, assuring clean stock to buyers of Teague Trees.

Quality of Stock—All of our trees are grown to stakes, and are straight and thrifty, and well rooted. "He who plants trees, plants for generations"—hence, in choosing stock be careful to get only the best obtainable.

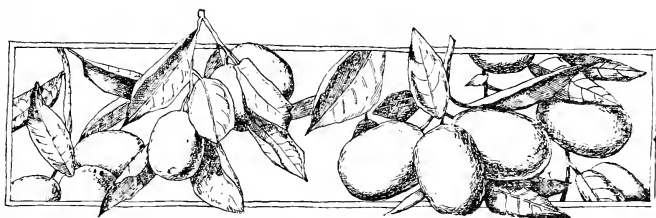
Packing—We pack all trees in the best possible manner, in bales and boxes, according to the size of order and distance of shipment. Trees can be sent with safety to any part of the United States or foreign countries.

Guaranteeing Trees—We guarantee all trees shipped from our nurseries to be as represented. We personally attend to the budding of all our trees, and use the utmost care to insure them true to name.

Transportation Facilities—Our transportation facilities are excellent, being within easy access to the Southern Pacific, Santa Fe and Pacific Electric.

Shipping Instructions—Please furnish explicit directions for shipping and by what route. In the absence of any instructions we ship according to our best judgment, but in no case do we assume any responsibility for condition or safe delivery of trees after same have been properly packed and delivered to transportation companies.

Claims—Legitimate claims for errors and mishaps will be promptly recognized if made within ten days of the receipt of the goods, otherwise we will entertain no claims of this nature.



The delightfully fragrant Kumquat

Important Add 25c each on all balled trees shipped by express or freight, in less than carload lots, to cover cost of packing material.

PRICES for SEASON 1924

These Prices Supercede and Cancel all Previous Lists

Standard Varieties of Oranges, Lemons and Pomelos

	Each	Per 10	Per 100
1 year, 1/2 to 5/8-in. caliper.....	\$1.75	\$16.50	\$150.00
1 " 5/8 to 3/4-in. "	2.00	19.00	175.00
2 " 5/8 to 3/4-in. "	2.00	19.00	175.00
2 " 3/4 to 1-in. "	2.25	21.50	200.00
2 " 1-in. and up "	2.50

Varieties of Oranges:

Washington Naval	Valencia Late	Navelencia
Thompson Improved Naval	Paper Rind	St. Michael
Malta Blood	Ruby Blood	Joppa

Varieties of Lemons: Eureka, Lisbon

Varieties of Pomelos: Marsh Seedless

Standard Kid Glove Oranges

Dancy Tangerine, Willow Leaved Madarin, Satsuma

	Each	Per 10	Per 100
One-year-old.....	\$2.25	\$20.00	\$175.00
Two-year-old.....	2.50	22.50	200.00

Standard Varieties of Limes

Tahiti Seedless Mexican

One-year-old	\$2.25	\$20.00	\$175.00
Two-year-old.....	2.50	22.50	200.00

Kumquat Orange Trees

	Each	Per 10	Per 100
One year.....	\$2.25	\$20.00
Two year.....	\$2.50	\$22.50

New and Rare Varieties

Sweet Lemon	Pondrosa Lemon	Citron of Commerce
Sweet Lime	Lue Gim Gong	Algerian Tangerine
Cedrola	Sampson Tangelo	

	Each	Per 10	Per 100
One year.....	\$2.25	\$20.00
Two year.....	2.50	22.50

Combination Citrus Trees

Budded to 4 to 6 Varieties

Two-year-old stock, balled, 60 to 75 lbs.....each, \$5.00



SPECIMEN TREES

Suitable for Pot Plants, Lawn and Garden Planting

These trees have large well-shaped heads, ranging from 18 to 36 inches in diameter, giving them a very ornamental appearance, which makes them desirable for potting where an immediate showing is desirable. They are taken up with large balls of earth weighing from 125 to 250 pounds, and are established here on our grounds ready for transplanting. Prices from \$7.50 to \$10.00 each, according to spread of top and size of specimen.

Varieties: Navelencia and Valencia Late oranges; Lisbon Lemons; Marsh Seedless, Triumph pomelos; Willow Leaved Mandarin oranges.

THE CITRUS FRUITS

ORANGES

Washington Navel. The standard early orange for commercial planting in California. Tree of moderate growth, nearly thornless and an early and regular bearer. Fruit large, free from rag and seedless. Possesses a flavor peculiarly its own. An excellent shipper. Ripens from December to February.

Valencia Late. The leading variety for summer shipping. Its lateness in ripening and the fact that it will remain on the tree in perfect condition until late Fall makes it a most popular variety for commercial planting. The Valencia Late and Washington Navel are the two varieties most extensively planted in California and make it possible to pick and ship ripe oranges every day in the year.



Washington Navel Oranges

Thomson Improved Navel. Evidently a sport from the Washington Navel. Fruit similar to the Washington, but the peel is more smooth. Its outward appearance is more attractive than the Washington but contains more rag and does not possess as good a flavor. Season, last of November to February.

Navelencia. Resembles the Thomson Improved Navel in appearance and quality. Supposed to combine the flavor and quality of the Navel with the late ripening of the Valencia Late. Season, January to June.

Paper Rind St. Michael. Fruit rather small, very solid and heavy, peel very thin, has an abundance of juice. A good shipper. Tree a strong upright grower and a good bearer. Season, April to June.

Ruby Blood. Tree a good grower, nearly thornless and very prolific. Fruit of medium size, peel, thin, flesh a ruby red showing through the peel when fully ripe. Season, February to April.

Malta Blood. Ripens about the close of the Navel season. Tree of slow but persistent upright growth; a heavy bearer. Fruit oval and almost seedless; has a peculiar refreshing flavor. When ripe the pulp is splashed with crimson streaks, sometimes almost solid crimson.

Joppa. Tree similar in growth and appearance to the Valencia, excepting that it is thornless, and very prolific. Fruit medium to large, of good quality and flavor; practically seedless. Season, April to July.

STANDARD KID GLOVE ORANGES

Dancy Tangerine. A favorite for commercial planting. Tree a strong upright grower and a heavy bearer. Fruit medium size, flattened and very highly colored. Flesh dark orange. Very juicy. Season, February to May.

Willow Leaved Mandarin. Tree very ornamental, a thrifty grower and good bearer. Fruit medium size, flattened, deep yellow, skin thin, flesh dark orange yellow, spicy and aromatic. Season, January to April.

Satsuma (Oonshiu). Tree thornless and of dwarf habit; never attains large size. Fruit medium, flattened, not so highly colored as the Tangerine, but deeper yellow than the Mandarin. Excellent flavor and entirely seedless. The earliest orange to ripen. Season, November to March.



Dancy Tangerine

POMELOS

Marsh Seedless. The favorite variety for commercial planting in California. Tree a strong vigorous grower and heavy bearer. Fruit medium and practically seedless. Quality good. Season, January to July. Being planted extensively in the Imperial and Coachella Valleys, and Arizona.

LEMONS

Eureka. The most extensively planted variety in California. Tree a good grower and prolific bearer, blooming and setting fruit every month in the year, nearly thornless. Fruit medium to large, peel smooth and of good texture. Abundant juice and little pulp. One of the best commercial varieties.

Lisbon. Tree an upright grower, thorny, very vigorous, a good bearer. Fruit of the best quality and nearly seedless. Considered superior to any other lemon by many growers.



Eureka Lemon

STANDARD VARIETIES OF LIMES

Tahiti (Bearss Seedless). Tree of good shape and fairly vigorous. Fruit about the size of a small lemon, very thin peel, abundance of juice of the true Lime flavor. Seedless.

Mexican. Tree rather a slow grower, quite thorny and very tender. Should not be planted in cold locations. Fruit small, peel smooth and thin, full of juice of excellent Lime flavor.

KUMQUATS

Kumquat. The tree has a dwarf bushy habit and usually attains a height of 8 to 10 feet when mature. Very ornamental for yard or tub planting. An enormous bearer and retains its golden yellow fruit for months which adds to its beauty. Fruit about an inch long and egg shaped. Peel (which is edible), smooth, aromatic and spicy to the taste. The entire fruit can be eaten or preserved in sugar and is quite delicious.



A Promising Young Orchard

NEW AND RARE VARIETIES

Algerian Tangerine. A recent introduction from Algiers. Tree a compact upright grower, quite ornamental and very prolific. Fruit similar to the Dancy Tangerine, but matures much earlier.

Lue Gim Gong. A late introduction from Florida, said to be superior to the Valencia Late. Will remain on the tree for two years without deteriorating.

Vanilla Orange. Tree a strong upright grower and quite prolific. Fruit medium size, round and has a distinct vanilla flavor when thoroughly ripe.

Sweet Lemon. Unlike the ordinary lemon, this variety contains less acid and more sugar, giving it an agreeable sweet flavor.

Ponderosa Lemon. Fruit very large, rough and coarse but full of juice of excellent quality. Tree inclined to be of dwarf habit and quite thorny. Very prolific; having bloom and fruit of all sizes the year around. A desirable variety for home use but of no commercial value.

Sweet Lime. Very much like the Sweet Lemon excepting that it has the lime flavor. Tree very tender and should be planted only in warm localities.

Citron of Commerce. Tree of dwarf habit and irregular growth, somewhat susceptible to frost. Blossoms and sets fruit throughout the year. Fruit large and lemon shaped. Peel very thick from which the citron of commerce is manufactured.

Sampson Tangelo. A hybrid of recent introduction, being a cross between a Tangerine and a Pomelo. Tree a vigorous upright grower and quite productive. Fruit of medium size, peel smooth and thin. Flavor slightly sub-acid, somewhat sweeter than the Pomelo.

All Trees are offered subject to prior sale and an advance in prices



A young bearing orchard of Avocados

TROPICAL FRUIT TREES

The enthusiasm shown by California plantsmen in the culture of tropical fruits, particularly the Avocado, has prompted us to add the propagation of Avocados and some of the other more important varieties of tropical fruit trees to our Nursery business. It will be our aim to give the growing and handling of this line of stock the same careful attention that has made Teague Citrus Trees so well and favorably known throughout the citrus planting districts of the world.

AVOCADOS (PERSEA GRATISSIMA)

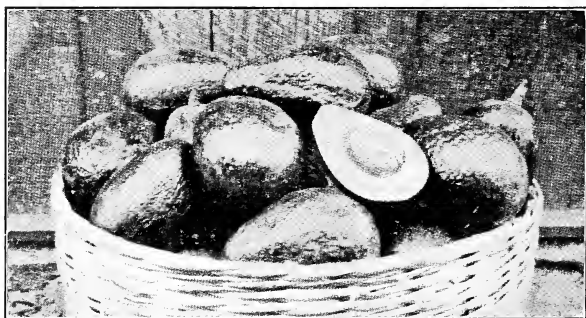
**Puebla.* Tree very rapid grower, erect with drooping branches, very prolific. Fruit obovate in shape and weight 10 to 12 ounces. Skin nearly smooth and a dark purple. Flesh yellow and has a rich flavor. Ripens November to January.

**Fuerte.* Tree vigorous grower. Fruit pyriform, weight 12 to 14 ounces. Skin smooth and green in color; carries a high percentage of oil and is of good flavor. Ripens from January to April. One of the leading varieties for commercial planting.

**Spinks.* Tree a precocious and prolific bearer. Fruit obovate to pyriform in shape. Weight, 16 to 20 ounces. Skin roughened and purplish black in color. Flesh cream colored and a rich flavor. Ripens March to October.

**Dickinson.* Tree a vigorous grower and very prolific. Fruit oval to obovate. Weight, 7 to 12 ounces. Skin very rough, dark purple with large maroon colored dots. Flesh a pale greenish yellow and has a pleasant flavor. Ripens May to September.

**Sharpless.* Tree a strong grower, inclined to become tall and slender, but a very good producer. Fruit pyriform, rather elongated. Weight, 16 to 24 ounces. Skin slightly pitted or roughened and of a dark purple maroon color. Flesh cream colored and of unusually pleasant flavor. Ripens from September to January.



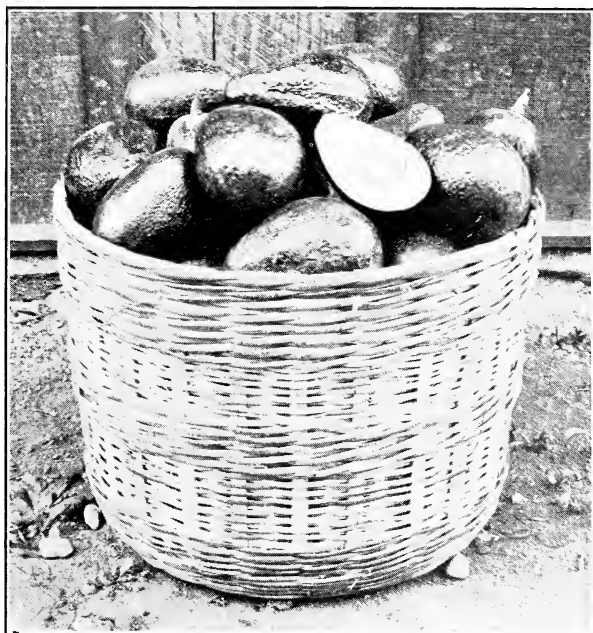
Avocados: the Fruit with a Future

Dickey J. A new Guatemalan variety of great promise. Fruit nearly spherically, average weight 1 to 1½ lbs., brownish purple in color. Flesh fine and buttery, with a very rich flavor. Ripens February to May.

Dorothea. Tree vigorous, productive and fairly hardy. Blooms in April and May. Ripens in December and January. Fruit light green in color with many yellow spots. Skin leathery, flesh attractive yellow, of good texture, no fibre, and excellent quality. Weighs 8 to 12 ounces; seed 1 to 1¼ ounces.

Queen. Tree vigorous and of a spreading habit, very productive. Fruit oblong pyriform. Weight, 1½ pounds. Skin rough and deep purple in color. Flesh yellowish in color, and has a very rich nutty flavor. Ripens early summer.

Taft. Tree a rapid grower of spreading habit. Fruit Obovate to Pyiform. Weight 16 ounces. Skin somewhat rough and green in color. Flesh cream colored and of excellent flavor.



Avocados, the Fruit with a Future

Tiger. Tree an upright grower and has borne well. Fruit weighs from 10 to 16 ounces, and matures from January onward pear shaped; skin rough; purple color; flesh clear light yellow; excellent flavor. Originated at Highland and stands the hot dry air of the interior better than the Guatemalan varieties growing near it.

Linda. Tree vigorous and hardy and a good producer. Fruit round, weighing about 2 pounds. Skin rough and a deep purple in color. Flesh yellowish and has a rich nutty flavor. Ripens October to March in Guatemala.

Lyon. For early and prolific bearing the Lyon has no superior; fruit large, usually 16 to 18 ounces; shape broadly conical; flavor rich and nutty; quality excellent; skin thick, dark green. The tree comes into bearing usually the second or third year. April to August.

The Lyon tree does not grow as high in the same length of time as other varieties, hence a separate price is made.

Price for Lyon, field or box grown:	Each	Per 10	Per 100
3 to 4 feet.....	\$5.00	\$45.00	\$400.00
4 to 5 feet.....	6.00	55.00	500.00

MEXICAN THIN SKINNED VARIETIES

Ganter. Medium size, form oval to oblong; skin thin, of greenish color; flavor and quality excellent; tree vigorous, uniform and one of the most dependable bearers, fruit early; desirable for home use in interior sections. October to December.

Northrop. Tree extremely hardy, vigorous and prolific. Fruit pear shaped; weight 8 to 10 ounces; quality good. Skin thin and of purplish color. Bears two crops a year; the main crop ripening from October to December and a lighter crop from April to June.

*Varieties recommended by the California Avocado Association.

AVOCADO PRICES

	Each	Per 10	Per 100
Balled.....2 to 3 ft.	\$3.50	\$32.50	\$.....
Balled.....3 to 4 ft.	4.00	35.00	300.00
Balled.....4 to 5 ft.	5.00	45.00	400.00
Balled.....5 to 6 ft.	6.00	55.00	500.00
Balled.....6 to 8 ft.	7.50	65.00	600.00

COMBINATION AVOCADO TREES

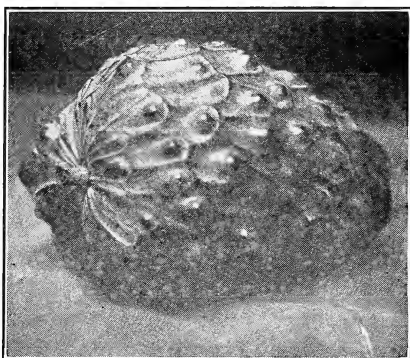
Budded to grow three varieties. For home planting, where space is limited, these trees afford a variety of fruit over practically the entire year. Price, balled 2-year stock, each \$10.00.

Choice of Combination Varieties:

Puebla, Fuerte, Spinks, Dickenson, Lyon.

Queen, Ganter, Blake, Northrup.

✕ Mexicola and Caliente.



Anona Cherimoya or Custard Apple

CHERIMOYA

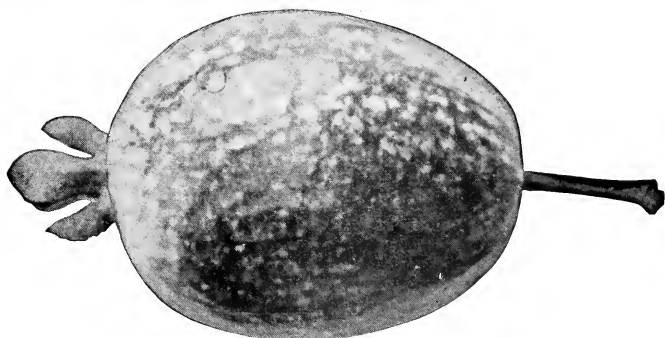
Anona Cherimoya (Custard Apple). Tree grows to a fair size with a well-shaped top. Fruit can be eaten out of hand or as a table delicacy, the pulp being of a custard-like consistency. A delicious sub-tropical fruit that should be in everyone's garden. Delicious. A fine variety originating at Hollywood on the grounds of Mr. C. F. Wagner. Fruit large, weighing up to 1½ pounds. Ripens in January. Budded trees, \$3.00 each.

FEIJOAS

Feijoa Sellowiana. An attractive shrub growing to a height of about 8 feet. The leaves are a glossy green with a silvery white beneath, and if kept pruned makes a very compact and striking shrub. Has a showy and attractive flower. The fruit of the better varieties is about the size of a large hen's egg, and its delicious flavor reminds one of a combination of pineapple and bananas. Very hardy and of easy culture. Fruit ripens in the Fall. As seedlings do not always come true to type, we carry only the grafted trees, the scions having been taken from the best and largest fruiting specimens. Fine bushy plants, \$1.50 each. Extra size, \$2.50 each. Special price on quantities.

Choiceana. An oblong variety of large size and excellent quality.

Superba. A round fruit of good size and quality.



Feijoa Sellowiana

SAPOTA

Casimiroa Edulis (White Sapota). A strong growing tree of rather spreading habit. Attains a height of 15 to 20 feet. Has large five-fingered leaves. It thrives well in all the milder sections of California. The fruit is about the size and shape of a quince. It has a thin skin and the pulp has a melting peach-like flavor, very sweet and delicious. Balled trees budded from best varieties, 2 to 3 feet, \$2.50 each.

Chapman. A very fine variety of this delicious fruit originating at Lomita. The fruit is round, slightly ribbed and very large, averaging 4 inches in diameter, with a yellowish green skin and a creamy white, melting interior. The flavor is delightful. Ripens September to January. Growing in 6x6-in. boxes, budded \$2.50.



Strawberry Guavas

GUAVAS

Strawberry Guava. Fruit about the size of large strawberries, and round, and a deep reddish brown color. Very desirable as a table fruit or for jams and jellies. Strong potted plants, 50c each. \$4.00 per ten.

Yellow Strawberry Guava. Fruit larger than the red variety and yellow in color. Potted plants, 50c each; \$4.00 per ten.

WALNUTS

Our walnut trees are grown from selected scions grafted on Northern California black walnut stock and are clean, thrifty and well rooted.

Placencia Perfection. The standard commercial variety for Southern California planting. Except for a few districts where late spring frosts are liable to occur this variety is preferable to all others. Bears heavy crops of uniform, well filled nuts of excellent quality.

Eureka. A vigorous growing tree and good producer. On account of its late blooming it is especially desirable for planting in those districts having late frosts.

	Each	Per 10	Per 100
4 to 6 ft.....	\$1.75	\$15.00	\$125.00
6 to 8 ft.....	2.00	17.50	150.00
8 to 10 ft.....	2.25	20.00	175.00
10 to 12 ft.....	2.50	22.50	200.00
12 to 15 ft.....	Price on application		



ORCHARD PLANTING

We are always pleased to consult with our patrons with reference to the soils and climate of their particular locality as regards their adaptability for the growing of the different varieties of fruit trees, also methods of planting, irrigation, cultivation, fertilization, etc., and whenever necessary or possible for us to do so we will be glad to personally look over their properties.

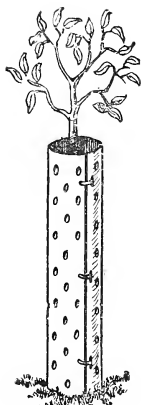


Approved varieties of Avocados endorsed by the California Avocado Association for Commercial and Home Planting

Varieties	Season Dates (Inclusive)	Ave. Weight of Fruit in Ounces	Ave. Weight of Seed in Ounces	Percentages of Oil or Fat	Shape of Fruit	Color of Mature Fruits
Spring Varieties						
Fuerte	January to April....	12 to 16	1½-3	30.72	Pyriform	Green
Spinks	March to October...	16 to 20	2-3½	16.46	Obovate* to Pyriform	Purplish Black
Summer Varieties						
Spinks	March to October....	16 to 20	2-3½	16.46	Obovate to Pyriform	Purplish Black
Dickinson	May to September..	14 to 20	1½-2½	20.36	Obovate	Purplish Black
Fall Varieties						
Dickinson	May to September..	14 to 20	1½-2½	20.36	Obovate	Purplish Black
Sharpless	September to Jan..	16 to 20	2-3	24.23	Pyriform	Dark Purple Maroon
Winter Varieties						
Sharpless	September to Jan..	16 to 20	2-3	24.23	Pyriform	Dark Purple Maroon
Puebla**	November to Jan..	14	1½-2½	26.68	Obovate	Dark Purple
Fuerte	January to August..	16	1½-3	30.72	Pyriform	Green

* Obovate, a term used to designate the shape of an inverted egg.

** Puebla is not strictly a Guatemalan type, but is supposed to be a hybrid.



The "EXPAN" Tree
PROTECTOR
 For Citrus and Tropical
 Fruit Trees



Every newly planted tree should have some protection from the sun until it has made sufficient top to protect the trunk.

These protectors not only answer this purpose but are a protection against rabbits and squirrels and prevent sucker growth on the young stock.

Will not crack or split; are tough and durable, waterproof, and will last on the trees from two to four years.

Provided with wire fasteners—can be put on the tree or removed in a moment's time.

Made in two weights of heavy paraffined paper—No. 1, medium; No. 3, extra heavy; perforated as shown in illustration, or solid, as desired. **AND THEY ARE CHEAP.**

When ordering, state whether perforated or plain protectors are wanted.

Length Inches	Price Per 100	Price Per 1000
24	\$2.25	\$18.50
18	2.00	15.00
14	1.75	12.50
12	1.50	11.25

YUCCA TREE PROTECTORS. Made from the Yucca Palm, being light, porous and efficient.

24	2.25	18.00
18	2.00	15.00
14	1.75	12.50
12	1.50	11.25



