

Historic, archived document

Do not assume content reflects current scientific knowledge, policies, or practices.

62.67

The

JAN 8 1926

American Rose & Plant Co.

Producers of Plants that Grow and Bloom



**SPRINGFIELD
OHIO**

Abelia Grandiflora

JUST a few years ago this was thought to be a warm climate plant only; today there are many fine specimens in northern gardens and as it becomes known that it is hardy, it will be universally popular. From May till frost the graceful arching branches are covered with clusters of tubular shaped white flowers faintly tinted pink. The leaves are small, lance shaped and glossy green, turning to a purplish bronze with metallic sheen at the approach of winter. It is particularly useful as specimens, for hedges, or in groupings for mass plantings around foundations or elsewhere. Ultimate height, 4½ to 5 feet, but if the long tender shoots are pinched back during the growing season, the plant becomes very dense and compact. It may be kept quite dwarf by trimming.

**Fine Strong Field Grown Plants, 75c each;
3 for \$1.75.**



Abelia Grandiflora

INSTRUCTIONS FOR ORDERING

When ordering, please use the Order Sheet and Envelope provided for that purpose.

DELIVERY CHARGES PAID

All stock we offer is shipped by parcel post, **postage paid** by us, so there are no charges to be collected when shipment is received. The prices asked cover these **delivery charges**.

TIME OF SHIPMENT

Unless you instruct us otherwise when sending your order in, **immediate shipment** will be made. If you want us to hold plants until proper time to set out in your locality, kindly state this when ordering.

TERMS

Our terms are cash with order, and your remittance should be made in Cash, Post Office Money Order or Draft.

PACKING

Special care is exercised in packing, thus avoiding all chance for damage on the way, no matter how far the plants have to go. Our perfect packing insures safe arrival, and we guarantee all stock to reach our customers in good, healthy condition. With each package we send complete directions for planting, care and culture.

GUARANTEE

We guarantee that all plants we send out will be in good, healthy growing condition when they leave our packing room and to reach destination in the same condition. Complaint should be made immediately upon receipt of goods, if they arrived damaged in any way.

We cannot guarantee plants to grow for you, as this is governed by planting, care and attention given them, but each and every one we send you will respond eagerly if set out in good garden soil and furnished with water and sunlight.

A Trio of Distinctive New Roses



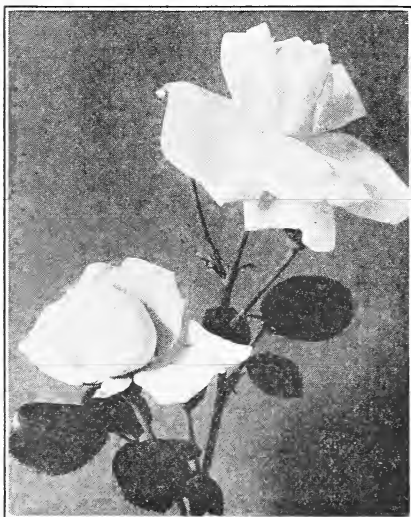
Mary Wallace

EMILY GRAY—The delightful new large flowering yellow climber which will find a place in every garden. It has proved itself decidedly hardy having withstood severe weather far below zero. The growth is particularly fine and the foliage so beautiful and individual that one would want it even if it did not bloom. It has a thick, waxy texture and the young leaves are deep crimson. The blooms are unusually large in size, borne on individual stems; very lasting; most gorgeous clear yellow color, even the mature flowers becoming a pleasing ecru. A really yellow, robust, climbing rose.

Fine One-Year Old Plants 35c each; 2 for 50c.
Large Two-Year Old Plants 65c each; 2 for \$1.00

MARY LOVETT—Can you imagine a robust, sturdy climbing rose with glossy, deep green foliage, immune to disease and covering itself with a profusion of large, double, creamy white flowers, which are borne on individual stems, perfect for cutting? This new variety has all these characteristics with many other valuable ones. It makes rapid, strong growth which is very pliable; easy to train over trellis, arbor, doorway, fence or wherever wanted. Size, shape and delicacy of the most exquisite tea rose.

Fine One-Year Old Plants, 35c each; 2 for 50c.
Large Two-Year Old Plants, 65c each; 2 for \$1.00.



Mary Lovett

MARY WALLACE (New Hybrid Wichuraiana Rose)—Produced as the first of the series of "dooryard" roses by the late Dr. Van Fleet, who has given us so many meritorious sorts. A marvelous pillar rose of vigorous climbing habit, six to eight feet high with large glossy foliage which is very abundant and disease resisting. It blooms profusely in June and again in September bearing very large, semi-double cupped flowers which are very lasting. Buds are large and pointed, borne several together on long stems, which have few thorns. Color is bright rose pink with salmon base to the petals; fragrance sweet. Allowed space to develop, it makes a graceful bush clothed all over with its splendid foliage which is the elusive quality that Dr. Van Fleet has striven for.

Fine One-Year Pot Plants, 50c each; 3 for \$1.00.
Large Two-Year Old Field Grown Plants, \$1.00 each or 3 for \$2.00.



Emily Gray

SPECIAL OFFER—One each of these three new hardy climbing roses in fine one-year plants for \$1.00 or in large two-year plants for \$1.75.

Beauty and Fragrance in this

Special Garden Collection

These New and Beautiful Roses Delivered to You
Six Fine One-Year Plants for \$1.00,
or Strong Two-Year Plants for \$2.25.

CRUSADER—Velvety-crimson. **OPHELIA**—Salmon orange. **PEACE**—Rich creamy white. **SUNBURST**—Orange copper. **COLUMBIA**—Clear rose-pink. **RADIANCE**—Carmine-rose.



An Annual Message for Our Flower-Loving Friends

WHY NOT have a garden of your own this year to supply flowers for your house indoors and beautify the exterior, adding seclusion, charm and dignity to the home? Entrancing little gardens may be developed with flowering shrubs, vines and hedge plants with a generous intermingling of beautiful roses and gay perennials.

Aside from the pleasure and beauty a judicious planting affords, the advantage in "dollars and cents" is of important consideration. A property well planted is far more salable than one having a barren and unsightly appearance and you shouldn't neglect the future market value of your own.

A few specially meritorious items have been added to the selection we offer you this season, but the entire list is confined to the distinct, typical and best varieties of the various classes to which they belong. Every effort has been made to produce thrifty plants, brim-full of vitality, ready to grow and bloom as soon as planted in your garden.

The appearance of the home is thrust upon you every day of the year, so devote an hour's time of enjoyment now to making up your order for some of the exquisite productions named in this book, to make and keep it attractive and pleasing.

Satisfied Customers is our aim and this we endeavor to obtain and retain by Quality Stock and First Class Service. Do we get your order?

Own Root Roses—Our Pride



Our One-Year Old Rose Bush

HERE IS a photographic reproduction which shows how our one and two year roses appear ready to be packed for shipment. They are delivered to you all covered with bright, clean foliage, in a thrifty growing condition and may be set out in the open ground any time during the season after danger of hard freeze is past.

They are produced under as natural open ground conditions as possible, made to rest as nature demands, through the winter months, which results in a slower and sturdier growth of both roots and tops. This enables them to store up months of vigor and strength, so that when they reach you, they are ready to bloom with the first days of sunshine.



Our Two-Year Old Rose Bush



New and Distinct Novelties of Great Merit



Mrs. H. R. Darlington

THE ROSES listed on this page comprise the best and most beautiful productions of the extra choice novelties. From the many varieties tested, these have our highest recommendation, and were carefully selected as those nearest to perfection. Nature has bestowed her charms upon them with a lavish hand and with them in your garden, you can enjoy a season of perpetual bloom.

Fine One-Year Plants, 30c each. Your choice of four for \$1.00.
Entire list of nine for \$2.00.

Large Two-Year Plants, 75c each. Your choice of any three, \$2.00.

AMELIA GUDE—This fine new variety fills a long-felt need for a beautiful yellow rose. Buds are long-pointed, with medium-size flowers, having reflexing outer petals. Color, deep, soft yellow, shading to cream; delightfully fragrant. Vigorous, upright grower and very free bloomer. Foliage, handsome, dark green.

AMERICA—A majestic new rose, worthy of its illustrious name. Immense in size, but beautifully proportioned; the buds are long and pointed, and the flowers are perfectly double. Color is a deep rose-pink, very lasting and lively. Vigorous grower, absolutely thornless, with unusually large foliage of rich, deep green color.

COVENT GARDEN—A plant of rigid, upright habit, very vigorous grower, well covered with bronzy green foliage and having reddish bark. The buds are long-pointed, with strong necks and open into broad-petaled flowers of uniform glowing crimson that will be popular with all rose lovers. In cool weather especially, the buds and blooms are wonderful.

J. G. GLASSFORD—A splendid variety for garden and cutting purposes. Quite vigorous in growth, free branching, proving decidedly hardy in northern localities. The blooms are marvelously large with high pointed center and of perfect form. It is a rich carmine-crimson, vivid and sparkling in its purity of color and possesses sweet fragrance. Foliage large, dark green.

LOS ANGELES—A rose that wins its way to the heart of every observer. It produces a continuous succession of long-stemmed flowers of a luminous flame-pink, toned with coral and shaded with translucent gold at the base of the petals. The buds are long and pointed and expand into immense flowers that are beautifully formed and possess an intense fragrance of pure deliciousness.

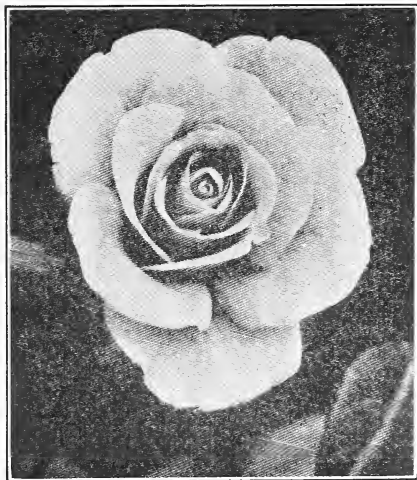
MME. EDOUARD HERRIOTT (Daily Mail Rose)—One of the most exquisite colored roses ever produced; its buds are coral-red, shaded with yellow at the base. The fully developed flowers are a superb coral-red, shaded with yellow and bright rosy-scarlet, passing to shrimp red. After it is well established, it thrives in any good garden soil and is an amazingly free bloomer. Flowers are medium in size, of perfect formation.

MRS. CALVIN COOLIDGE—A new golden yellow rose deepening to rich orange as the flower develops. The bud is medium size, long-pointed while the flower is almost double of very lasting substance but of exquisite delicacy in texture and coloring. They are borne, several together on long stems, which are practically thornless and possess delicate sweet fragrance. Foliage is medium size, leathery, glossy dark green, covering the branches generously. Vigorous grower; profuse and continuous bloomer.

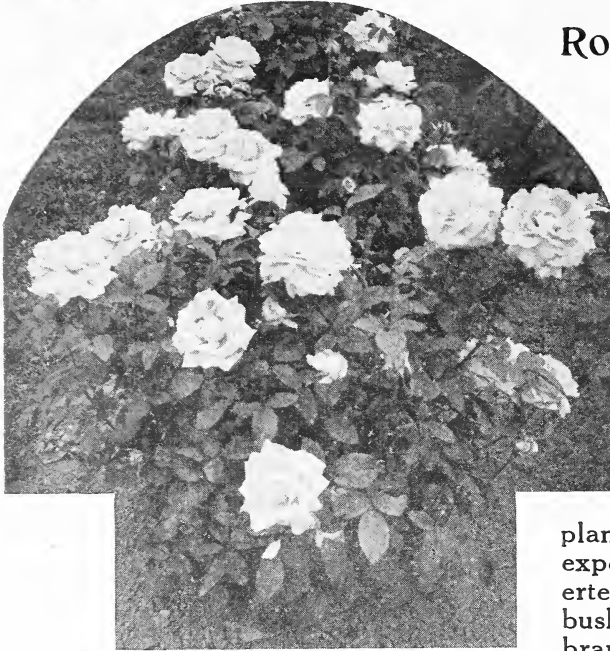
MRS. HENRY MORSE—A rose for the connoisseur to go into ecstasies over. It is a gorgeous rose-pink in color, with old gold shadings and a lighter surface to the broad petals with clear vermilion veining. Flowers are perfect in form, the largest and most pointed of its type. The marvelous freedom of blooming and habit of growth with delicious fragrance make an ideal combination for the Perfection Rose.

MRS. H. R. DARLINGTON—An ideal creamy white rose with very large, long buds of faultless form and full double flowers of exquisite shape. Fragrance is delightful and flowers are produced in amazing profusion the entire season. The plant is a strong vigorous grower of upright branching habit, clothed with handsome green foliage. A decided acquisition to any garden and the best white for bedding purposes yet produced.

Islip, L. I., May 5, 1924.
The Rose plants came alright. Am well pleased with them. I thank you for them. I hope they grow and bloom so nice as those that I received from you before. **MRS. HERMAN BOHLMANN.**



Mrs. Calvin Coolidge



W. R. Smith

Roses—Two-Year Old Special

Large Finished Bushes

THOSE of our customers wanting plants for immediate effect will find these Special Large Finished Bushes ideal for their requirements, and at price offered, no home of even moderate means need be deprived of a wealth of beautiful, fragrant Roses this summer.

In the production of these plants, all the care and skill of old experienced growers has been exerted in an effort to produce rose bushes with such heavy, sturdy branches and strong, vigorous roots that they could be safely transplanted to the open ground and

depended upon for an abundance of flowers with massive foliage effect the first season. They possess an individuality all their own, which is seen in the remarkable vigor, in their adaptability and tenacity of life, so that the first year they will have the appearance of well-established plantings.

SPECIAL OFFER—\$1.00 each.

YOUR CHOICE OF ANY SIX FOR \$5.00.

AMERICAN BEAUTY—Deep glowing crimson.

CLIMBING AMERICAN BEAUTY—Rosy-crimson.

CLIMBING GRUSS AN TEPLITZ—Dazzling scarlet.

ETOILE DE FRANCE—Dark velvety red.

ETOILE DE LYON—Rich golden yellow.

FRANCES SCOTT KEY—Deep, rich crimson.

GENERAL McARTHUR—Scarlet-crimson.

JONKHEER J. L. MOCK—Silvery-rose.

LA FRANCE—Clear soft pink.

MARECHAL NIEL—Rich golden yellow.

MRS. A. R. WADDELL—Wonderful apricot yellow.

MARSHALL P. WILDER—Vivid crimson.

PAUL NEYRON—Clear rose-pink.

PAUL'S SCARLET CLIMBER—Rich, bright crimson.

PEACE—Creamy white.

PINK MAMAN COCHET—Deep, soft, rosy pink.

RADIANCE—Clear carmine-rose.

RED LETTER DAY—Brilliant scarlet.

ULRICH BRUNNER—Deep, glowing crimson.

WHITE AMERICAN BEAUTY—Clear, pure white.

WHITE MAMAN COCHET—Soft, blush white.

W. R. SMITH—Rose pink with creamy tints

Clearfield, Pa., July 21, 1924

I wish to compliment you on my two orders from you. They are doing fine, the one-year old as well as the two-year old. I will be looking for a catalog from you this fall.

J. W. SORIE.

Schuylkill Haven, Pa., June 11, 1924.

I am very much pleased with my rose plants. They were all in fine condition and are all starting to grow. Thanking you for your prompt delivery, I remain,

MRS. JAS. A. FRITZ.

Choice Hardy Ever-Blooming Roses

THE HOME planter will find varieties for every place and purpose listed in this group, as some of the most remarkable specimens of the whole rose family are offered. They appear in many shades and hues, developing luxuriantly great masses of flowers that possess wondrous fragrance. Without question, the most valuable and popular Rose today, superseding all other classes for general planting. They partake of the hardiness, vigorous growth and size of flowers of the "June Rose" and of the beauty and delicacy of the "Tea Rose."

Fine One-Year Plants, choice of any 5 for \$1.00, 8 for \$1.50. Large Two-Year Plants, 60c each. Your choice of any 4 for \$2.00.

AMERICAN LEGION—A rival of our American Beauty, commanding the greatest admiration. Pure cerise-red throughout in color, of heavy, lasting texture, which is retained as the flowers open, and a glorious satiny sheen over all that fairly glows. Buds are well shaped and globular, opening into large, full flowers, having a most entrancing fragrance. The growth is robust and rapid, with large, glossy, reddish-green foliage not subject to mildew and very hardy. Profuse bloomer, borne proudly on long, stiff, erect stems.

One Year Plants, 30c each.

ANGELUS—One of the very newest varieties for our customers. An American production of exquisite pure beauty, well worthy of its honored name. Color a pure pearly white. A big, rounded rose, very full and quite double, unfolding into a massive flower, borne on long regal stems which are gracefully clothed with dark-green foliage, very resistant to disease. A vigorous, upright grower; very free bloomer the entire season.

One Year Plants, 30c each.

COLUMBIA—This rose is simply wonderful. Enormous, full and perfectly formed flowers of clear, rose-pink, borne on nice, stiff, upright stems, are unequaled for cutting. A very desirable characteristic of this variety is that the color becomes more intense until the full maturity of the flower is reached, and this color is enduring. Growth is very vigorous and bushy; a prolific bloomer the entire season; ideal for the garden.

One Year Plants, 25c each.

CRUSADER—A brilliant, velvety crimson rose that endures—just the hue to produce a dazzling touch of color to your garden. The blossoms are gorgeous in every respect, with a decided fragrance. They come with unusual freedom, perfectly formed, borne upright on big, heavy stems, and appear like gay signals beckoning the beholder to come near and admire the exquisite texture of the petals, the glowing color and delicious fragrance. The vigorous, sturdy bush with its wealth of fine, clean, dark-green foliage is an addition to the garden.

One Year Plants, 25c each.

HADLEY—This is a rose of unusual individuality and charm. Its magnificent, deep, velvety, crimson flowers, superb large buds and exquisite fragrance, are a few of its desirable features. Strong, healthy grower, excellent foliage and constant bloomer; makes an ideal variety for outdoor planting.

One Year Plants, 25c each.

OPHELIA—The queen of fancy roses, so superb in its rich beauty as to be almost indescribable. Color is salmon-orange, tinted rose; buds and flowers are unusually attractive, very fragrant, opening full and double. Growth is excellent, foliage handsome, hardy in all localities and it booms all summer.

One Year Plants, 25c each.

PRISCILLA—An opportunity for our customers to secure this fine, new rose. It is a strong, robust grower, making heavy canes freely, on which are borne an amazing crop of immense, double, full flowers of a most attractive, soft deep pink, retaining this exquisite uniform color until the flowers are gone. Buds are long and shapely, with petals that are not greatly reflexed, and they develop into huge, symmetrical blooms.

One Year Plants, 30c each.

SUNBURST—The ideal garden rose, thriving in practically any soil to a perfection seen in no other rose. The splendid flowers, borne on stiff, upright stems, are produced in amazing profusion; few varieties to compare with it in freedom of bloom. Immense in size and the color is an exquisite orange-copper and golden-yellow, extremely brilliant; exquisitely beautiful.

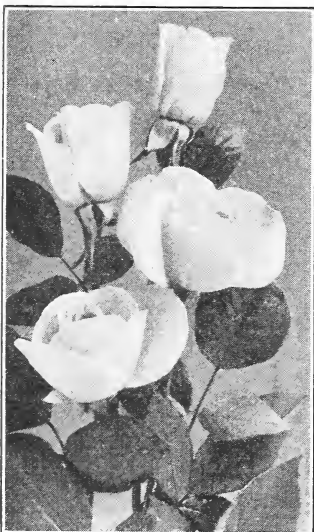
One-Year Plants, 25c each.



Priscilla



Angelus



Ophelia



A PLANTING OF OUR SPECIAL SELECTED VARIETIES FROM OUR MAINE TO CALIFORNIA ROSE TRAIL

FROM Coast to Coast, no matter where you live, they form magnificent plants, thriving vigorously and blooming with the utmost lavishness all summer through and making strong, sturdy bushes which last for years.

They have every requisite necessary to perfect roses, sturdy habit of growth, ornamental foliage, exquisite flowers, delicious fragrance, constancy and freedom of bloom, in short, each a perfect gem in its particular form and color.

Fine One-Year Plants, 25c each.
Your Choice of any 6 for \$1.00;
Entire List of 14 for \$2.00.

Fine Two-Year Plants, 50c each.
Your Choice of any 5 for \$2.00;
Entire List of 14 for \$4.50.

ETOILE DE FRANCE—An upright, sturdy, grower with beautiful, bronzy green, insect proof foliage and masses of large, rich, velvety crimson flowers.

GENERAL McARTHUR—One of the most brilliant reds (of all the Everbloomers). Flowers are large, full and fragrant, produced constantly from early Spring until late Fall.

GOLDEN OPHELIA—A real golden yellow without a tinge of any contrasting color. Vigorous grower, bearing an abundance of perfectly formed, deliciously fragrant flowers on stiff, heavy stems.

KAISERIN AUGUSTA VICTORIA—A continuous bloomer of full, double flowers which are a creamy white slightly lemon-tinted near the center. One of the best garden roses for general planting.

KILLARNEY—The magnificent sturdy habit of growth, beautiful foliage, delicious fragrance and deep brilliant, sparkling pink flowers makes this one of the most beautiful and popular roses ever produced.

LADY ASHTOWN—Large, soft rose pink flowers are produced abundantly on long, stiff stems; splendid for cutting. Grows perfectly under all weather conditions.

MME. BUTTERFLY—The full, fragrant flowers are a perfect harmony of bright pink, apricot and gold. Buds are medium size, splendid for corsages and low table decorations.

MME. ABEL CHATENAY—Strong and erect grower, producing a profusion of deep, gorgeous flowers the petals of which are handsomely curled. Color is a lovely carmine-rose shaded salmon.

MME. CAROLINE TESTOUT—Luxuriant grower, producing a profusion of lovely flowers which are a satiny rose, deepening to clear red in the center.

MRS. AARON WARD—One of the most beautiful roses in existence. Strong, hardy grower, bearing large, full, cupped flowers and everyone loves the color which is coppery orange shading golden orange.

MRS. A. R. WADDELL—A superb garden variety. Buds are long and pointed, developing an open flower that is rather loose and gracefully irregular. Color is a wonderful apricot yellow, orange and salmon.

PREMIER—Of all the clear, rich pinks, this is one of the largest and most striking. Growth remarkable; foliage dark, glossy green, free from insects and disease.

RED LETTER DAY—Brilliant, velvety, glowing scarlet-crimson in color. Robust grower and wonderfully free bloomer.

WHITE KILLARNEY—Exceptionally healthy grower, producing large, globular, snow-white flowers with delicious fragrance.



Lafayette

YOU cannot resist being enthusiastic over this splendid class of Roses, for they surpass all others in continuous blooming qualities from early spring until after frosts. Ideal for bordering beds, edging walks and planting in solid masses, the growth is rapid and symmetrical, although dwarf; these characteristics, with their entire hardiness, complete a most desirable combination for cemetery planting. Once planted, they are there to stay and increase in beauty each year.

Hardy Polyantha or Baby Roses

**THREE NEW NOVELTIES
of this TYPE and the
FREEST FLOWERING
YET PRODUCED**

**Fine One-Year Plants, 35c each;
all three for 85c.**

**Large Two-Year Plants, 75c each;
three for \$1.75.**

CHATILLON—A very interesting variety rapidly attaining great popularity. Its color, graceful habit of growth and abundant flowering are some of its good characteristics. The blooms are semi-double about 1½ to 2 inches in diameter produced in great sprays of from fifty or more flowers, these frequently remaining in good condition for three weeks. Color is a silvery crimson which gradually passes to a white center, giving a pleasing bicolor effect.

IDEAL—The darkest and most striking colored of all baby roses; an intense, rich, lustrous garnet. The medium sized flowers are produced in very large trusses, in the greatest profusion. Growth is very compact but rapid and the abundance of bloom is remarkable.

LAFAYETTE—A variety for massing or wonderfully effective as a single specimen. A decidedly distinct type as the brilliant cherry-crimson flowers of immense size are produced on great branched trusses (as many as forty flowers on one branch). The largest flowering Polyantha yet produced.

Your Choice of any of the Fine Standard Kinds named below at the following prices;

Fine One-Year Plants, 25c each; entire list of 5 for \$1.00.

Large Two-Year Plants, 50c each; entire list of 5 for \$2.00.

BABY DOROTHY (Pink Baby Rambler)—One of the very finest types of the Polyantha Roses. It produces in constant profusion large trusses of beautiful, soft, pink blooms, which retain their lovely color. Its flowers are large and well formed; the growth rapid and symmetrical. Perfectly hardy, its presence in your garden will prove a constant source of delight.

CATHERINE ZEIMET (Double White Baby Rambler)—A most beautiful companion to the Crimson Baby Rambler; growth rapid and sturdy and a free bloomer of great masses of double, pure white, glistening flowers, which are delightfully fragrant. Fine for bedding or potting purposes.

CRIMSON BABY RAMBLER—One of the most useful and ornamental roses, blooming in im-

mense clusters every day of the season, making it the perfect variety for single specimens, dwarf hedges and for bedding. The color is clear, brilliant, ruby-red; foliage dark and glossy.

GEORGE ELGER—The first pure yellow ever introduced of its class. Erect growth with smooth, reddish wood and brilliant, dark green foliage, brown underneath. Dainty pointed buds and beautifully formed flowers in big clusters, golden coppery-yellow, passing to clear yellow when expanded.

RED ORLEANS—A brilliant, clear, Geranium-red, remarkably free blooming, and of unexcelled keeping qualities. Although the flowers of this charming variety are numerous, they are not crowded; each individual bloom standing out distinctly in pleasing arrangement.

Sharpsburg, Pa., Feb. 22, 1924.

Please send me your Spring rose Catalog. I enjoyed and had such good luck with the four roses I got from you last year. They were exactly as you represented them and proved to be more than I ever expected.

MRS. W. H. GREESE.

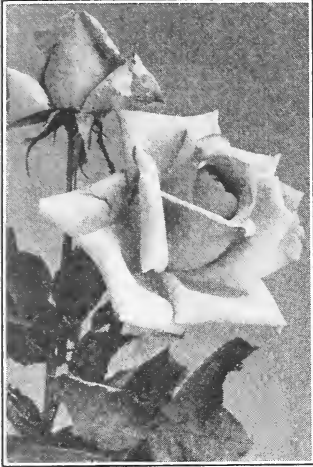
Kitty Hawk, N. Car., Feb. 19, 1924.

I thank you so much for the beautiful plants which arrived in such good condition. You have given me many happy moments which I would not have had without my beautiful flowers.

MRS. W. W. MIDGETTE.



Hybrid Perpetual or June Roses



Paul Neyron



American Beauty

PERHAPS the most valuable of all hardy bushes for permanent planting and frequently called "June Roses," as the greatest masses of flowers are produced that month. They flourish over a wider range of latitude and thrive under more varying conditions any other class, and blossom to a degree of boldness and profusion that is inspiring.

FINE ONE-YEAR PLANTS,

Your choice of any four for \$1.00; entire list of seven for \$1.75.

LARGE TWO-YEAR PLANTS,

Your choice of any four for \$2.00; entire list of seven for \$3.50

AMERICAN BEAUTY—Known the world over for its magnificent, large, glowing-crimson flowers. Foliage large, leathery, hardy in all sections, it produces a constant profusion of massive, rich, fragrant bloom.

Fine One-Year Plants, 30c each.

Large Two-Year Plants, 75c each.

GENERAL JACQUEMINOT—Buds and flowers are models of perfection, unequaled in beauty of form, brilliant intensity of color and elegant velvety richness of texture.

Fine One-Year Plants, 25c each.

Large Two-Year Plants, 50c each.

GEORGE DICKSON—A new and wonderfully rich, deep and glowing crimson of splendid form, blooming profusely under very adverse conditions. Huge blooms, vigorous growth, thick, leathery green foliage, are only a few of its many fine characteristics. A most valuable addition to this class of Roses.

Fine One-Year Plants, 30c each.

Large Two-Year Plants, 75c each.

GLOIRE LYONNAISE—Absolutely hardy everywhere, it bears a great quantity of large, pointed buds and massive, double flowers on long, stiff stems. Rich, creamy-white, passing to a delicate salmon-yellow, deepest at the center. Makes strong, upright bush with deep-green foliage; practically thornless.

Fine One-Year Plants, 25c each.

Large Two-Year Plants, 50c each.

J. B. CLARK—Deep, velvety maroon in color. Fragrant, full, double flowers of long, strong stems, making it ideal for cutting. While classed as a Hybrid Perpetual Rose, it blooms many times during the season.

Fine One-Year Plants, 25c each.

Large Two-Year Plants, 50c each.

PAUL NEYRON—A beautiful, clear rose-pink, immense in size, sometimes measuring six inches across. A strong, upright grower and an abundant bloomer.

Fine One-Year Plants, 25c each.

Large Two-Year Plants, 50c each.

WHITE AMERICAN BEAUTY—The best snow-white Rose ever produced, a single plant bearing hundreds of massive, charmingly veined, marvelously fragrant white flowers.

Fine One-Year Plants, 30c each.

Large Two-Year Plants, 75c each.

Moss Roses

THIS type Rose gets its name from the peculiar hairiness or mossiness of the buds and stems, which are covered with small, hair-like thorns. The buds are especially graceful, attaining a marked degree of perfection. All are hardy, very fragrant and once established, are practically permanent.

Fine One-Year Plants, 25c each; 3 for 50c.

Large Two-Year Plants, 50c each; 3 for \$1.00.

ELIZABETH ROWE—A hardy and vigorous variety of bright, rosy-pink, sweetly fragrant and splendidly mossed. The flowers are extra large, full and double.

HENRI MARTIN—Deep-carmine flowers, shaded with bright crimson, are produced in abundance. The buds are especially well mossed, and the fragrance is delightfully sweet. One of the most beautiful and striking bold varieties.

MOUSSELINE—The best white moss Rose. The large, full blossoms are the purest white with fine fragrance. Both buds and flowers are invested with a wealth of green moss and are produced almost constantly.

A Garden of Fragrant Dewy Roses

YOUR opportunity to start with choice and beautiful kinds in the hardy everblooming the greatest of all garden Roses.

Six Fine One-Year Plants for \$1.00.

Six Strong Two-Year Plants for \$2.25.

GENERAL McARTHUR—Scarlet crimson

GRUSS AN TEPLITZ—Glowing crimson.

LA FRANCE—Silvery-pink.

MME. CAROLINE TESTOUT—Soft, satiny pink

RADIANCE—Carmine rose.

SUNBURST—Orange copper.

Huntington, W. Va., October 14, 1924
The roses I received from you in Spring all grew and are blooming. Many thanks!

MRS. H. J. NIEHANS

Climbing Roses

THESE Roses are necessary for the home, particularly adapted for covering porches, pillars, fences and for screening undesirable views and buildings. They are hardy everywhere except the Climbing Teas, which, in the North, must be protected to withstand the winters. This list comprises the most desirable kinds and will please all who plant them.



Alida Lovett

Fine One-Year Plants, 25c each.

Your Choice of any Six for \$1.00.

Large Two-Year Plants, 50c each.

Your Choice of any Five for \$2.00.

ALIDA LOVETT—A fine, new hardy variety, with large, glossy, green, mildew-proof foliage. Strong grower and free bloomer, flowers produced on long, stiff stems, of a lively, bright, shell-pink, with shadings of rich sulphur at the base.

AVIATEUR BLERIOT—A strong grower, with beautiful, glossy, insect-proof foliage, bearing large, clusters of full, double flowers of a deep saffron-yellow, tinting pure gold in the center.

CLIMBING AMERICAN BEAUTY—A sturdy, vigorous variety, producing an abundance of vivid rosy-crimson flowers in June and occasionally throughout the season, which possess the same delicious fragrance as the old American Beauty. Perfectly hardy and immune to disease and insects.

CLIMBING KAISERIN AUGUSTA VICTORIA—A strong, climbing pillar Rose, having glossy foliage. Flowers creamy-white, faintly tinted lemon; large and free, with a distinct magnolia-like fragrance; produced constantly on long, graceful stems.

CLIMBING LADY ASHTOWN—A true, ever-blooming climber. Exquisite flowers of pale carmine-pink, shading to golden-yellow at the base. Blooms are large, well-formed, and deliciously fragrant; produced the entire season.

CLIMBING SUNBURST—Glorious orange-copper and golden-yellow flowers, identical with the bush form, but having a vigorous climbing growth, ideal for pillar or veranda use.

DR. VAN FLEET—An exquisite pink, deepening to rosy-flesh, and having a delicious fragrance. Flowers are produced abundantly, measuring over 4 inches in diameter, composed of beautifully undulated and cupped petals. Rapid, hardy grower, with deep-green foliage.

DOROTHY PERKINS—Entirely hardy, having exceptionally fine foliage, which is thick and glossy. A very free bloomer, producing flowers in immense clusters; the color is an exquisite clear shell-pink, deepening to a darker shade near the center.

GARDENIA (Hardy Marechal Niel)—Deep, rich, golden-yellow flowers, passing to creamy white. Blooms profusely and is hardy as an oak. Flowers large, making it fine for cutting.

MARECHAL NIEL—It is fairly riotous in growth, having an abundance of beautiful, thick, glossy foliage. It is universally claimed the most profuse bloomer of all climbers, single plants producing as many as two thousand blooms at one time. Color is faultless, the waxy petals showing rich, golden shades, the form of the bud perfectly rounded and luxuriantly massive in size.

PAUL'S SCARLET CLIMBER—Without question the most important addition to the Climbing Roses in many years; no other Rose can compare with it for brilliance of color, which is a vivid scarlet, retained until the petals fall. The flowers are of medium size, semi-double, very freely produced in clusters of from three to six flowers each, the plants being literally covered with bloom. It is of strong, climbing habit and perfectly hardy.

RED DOROTHY PERKINS—A rampant grower, with an abundance of glossy, green foliage. The flowers are borne in large clusters of rich, scarlet-red.

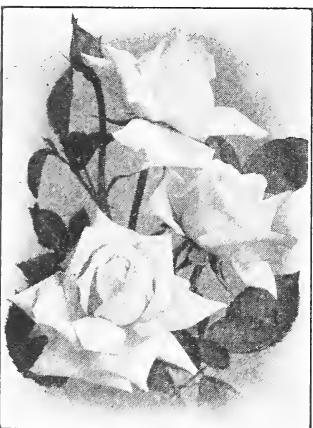
SHOWER OF GOLD—Well named, as the great clusters of deep, golden-yellow flowers entirely cover the plant. Hardy, sturdy grower, with lovely, glossy foliage and of extremely free-flowering habit; blooms are very double and of heavy, lasting texture.

SILVER MOON—Sturdy, rapid grower, producing a wonderful profusion of extra-ordinary large, Clematis-like flowers, silvery-white in color, with bright, golden-yellow stamens in the center.

TAUSENDSCHOEN—No other Rose like it, well deserving its title, "Thousand Beauties." A strong grower with but few thorns, absolutely hardy, magnificent foliage immune to mildew. Large clusters of double flowers, ranging from delicate pink to bright rose and carmine, with white, yellow and various other indescribable tints.



Pink



White

Glorify Your Garden With Roses Like These

IF YOU want to cut an abundance of beautiful, fragrant, dewy roses every day from early spring to late fall, plant this assortment of the ever-popular and gorgeous Cochets.

They have remarkable vigorous growth, handsome, fresh, green foliage, and may be grown successfully in any good garden soil. The flowers are large, bold, full and double, of exquisite rich colors, and all possess delicious fragrance.

Fine One-Year Plants, 25c each,
 or the four for 65c.

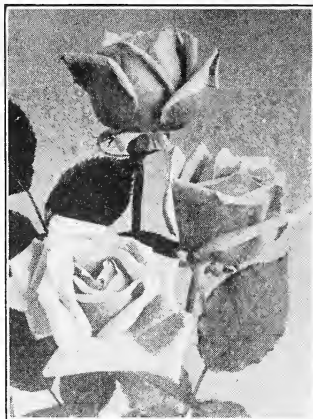
Large Two-Year Plants, 50c each,
 or the four for \$1.35.

PINK MAMAN COCHET—Deep, soft rosy pink, uniform in color. Buds are full, firm and pointed; flowers are extra large and perfectly double.

RED MAMAN COCHET—Bright, rosy-red flowers, shaded deep crimson. Fine, large buds and lovely, full flowers, with beautiful reflexed petals.

WHITE MAMAN COCHET—A marvelous bedding kind, which produces ideal flowers for cutting; full and double, of dainty white, sometimes tinged pale blush.

YELLOW MAMAN COCHET—Long, pointed buds and large, shapely flowers of deep-lemon yellow.



Yellow



Red

BUDDLEIA VARIABILIS MAGNIFICA

BUTTERFLY BUSH

ONE OF the most desirable summer flowering shrubs, blooming uninterruptedly from early June until late frost. The long cylindrical panicles of bloom (from twelve to fifteen inches) contain hundreds of miniature flowers of beautiful, deep purple lilac color, and have a pleasing fragrance which greatly attracts scores of butterflies, hence its name "Butterfly Bush." It succeeds in any good garden soil, flowering freely the first season planted, and the long, gray-green leaves add greatly to its beauty. Makes a delightful specimen and is very attractive in groups. After the first frost, the tops should be cut off nearly to the ground and a good mulch given the plant. New and sturdy growth is thus assured for the following season.

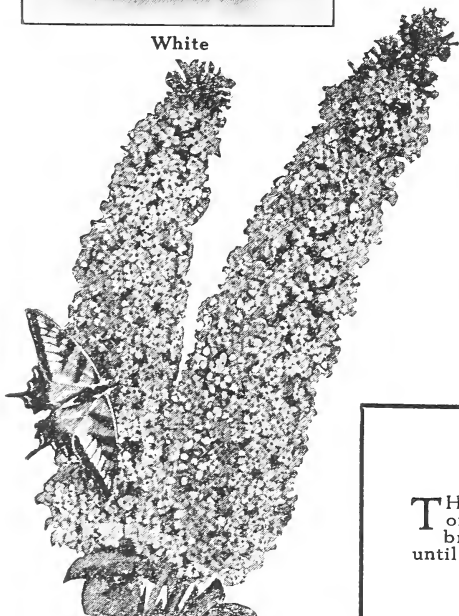
FINE, STRONG, FIELD GROWN PLANTS
 75c each; 3 for \$1.75.

HERMOSA

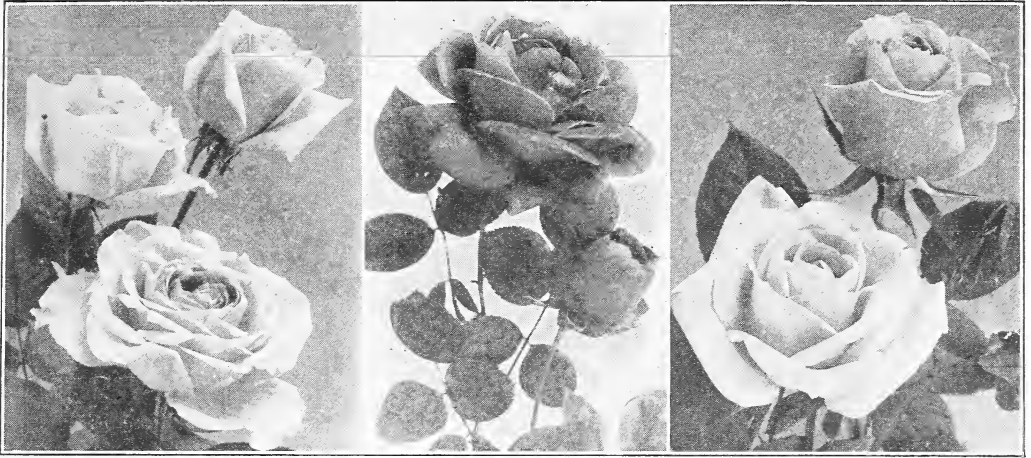
Old Favorite Ever-bloomer

THIS charming well-known variety is still very popular on account of the amazing profusion of fragrant, bright pink flowers, which are produced from early June until late Fall. Hardy, robust grower with medium, green, insect-proof foliage.

Fine One-Year Plants, 25c each.
Strong Two-Year Plants, 40c each.



Buddleia Variabilis Magnifica



Gems for Your Garden

AN ATTRACTIVE list of the most cherished varieties that all rose lovers know and desire.

Everyone should have at least some of them in their garden as they commence to bloom early in June and produce a profusion of flowers every month of the season.

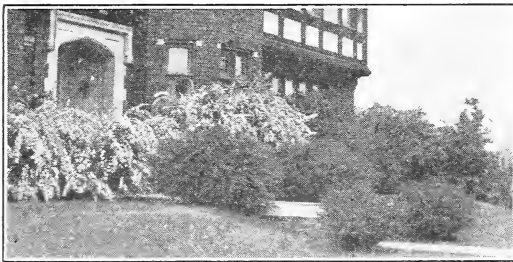
Fine One-Year Plants, 30c each; entire list of 9 for \$1.50.

Large Two-Year Plants, 65c each; your choice of 4 for \$1.75.

Entire list of 9 for \$3.50.

CONRAD F. MEYER—Clear, silvery rose.
ETOILE DE LYON—Rich golden yellow.
HOOSIER BEAUTY—Glowing crimson-scarlet.
JONKHEER J. L. MOCK—Carmine-rose, tinting silvery rose.

LA FRANCE—Lovely soft silvery-pink.
RADIANCE—Beautiful carmine-rose.
RED RADIANCE—Dazzling crimson-scarlet.
SIR THOS. LIPTON—Pure white.
YELLOW MAMAN COCHET—Lemon-yellow



The possibilities of Barberry in groups and individual specimens

Barberry Thunbergii

(Japanese Barberry)

A "BLAZE of Glory" during the fall months with its abundance of brilliant, scarlet berries, and attractive foliage of varied tints from deep green to bronze and gay crimson. Ideal for grouping, particularly around the base of a porch or veranda and where a dwarf, hardy hedge is wanted nothing equals this beautiful Barberry. It succeeds in sun or shade and needs very little pruning to keep it in the best shape. The growth is slender and graceful and the branches are prickly with small thorns, which makes it very desirable for a defensive hedge. Absolutely hardy in all localities. Plant 12 to 15 inches apart in any good garden soil.

Strong Plants—10 to 12 inches.

20c each; 10 for \$1.75.

15 to 18 inches,

50c each; 10 for \$4.50.

Gruss An Teplitz

(Crimson Hermosa)

Famous Everbloomer for Bedding

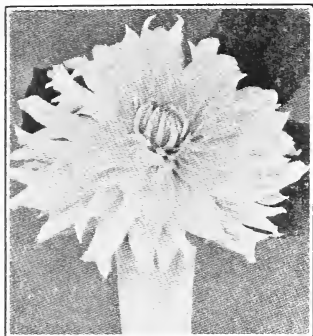
It blooms continuously from early June until stopped by frosts. The flowers are large and full, of the brightest crimson-scarlet; fragrance is delicious and lasting. Growth is rapid, sturdy and erect with splendid healthy foliage. There is no other rose to compare with it for blooming.

Fine One-Year Plants, 25c each.

Strong Two-Year Plants, 40c each.



Fine Named Dahlias



Mrs. Warnaar

THEY are grown chiefly for garden effect because they alone produce a wealth of color and bloom during the fall, but with the new varieties now obtainable there is nothing in the Floral Kingdom so well adapted for cutting purposes.

An assortment of the best varieties in various types, covering a wide range of colors to suit everyone's taste is offered below.

Dahlias do well in any good garden soil, in an open, sunny location, away from trees and buildings. Lay the tuber flat on its side, with an eye pointing upward. Plant about four to six inches deep and about three feet apart.

CHOICE NEW VALUABLE SORTS ONE EACH OF THE FIVE NAMED FOR \$1.50.

KING OF AUTUMN (Peony)—Color is a charming combination of salmon, tan and old gold. An upright, sturdy grower, with long cutting stems and remarkably free flowering. The flowers measure four to six inches across, with broad, even petals. 50c each.

MARGUERITE BOUCHON (Cactus)—A beautiful new variety, well adapted for cut flowers and garden blooming. Flowers are very large and borne on stiff stems well above the foliage. Color is a brilliant rose-pink, with delicate white center. 50c each.

MINA BURGLE (Decorative)—Glowing, brilliant scarlet flowers of gigantic size and remarkable beauty, borne on long, wiry stems well above the foliage. 35c each.

MRS. WARNAAR (Cactus)—A choice variety of exquisite beauty, wonderful for garden blooming and cut flowers. The coloring is a delightful creamy white with a soft apple blossom pink suffusion; flowers are of gigantic size on strong, stiff stems; petals long and peculiarly twisted and curled. 75c each.

WODAN (Cactus)—A dahlia of colossal size, having long, broad petals. An extremely vigorous grower, producing the flowers profusely on very long stems. Color, a gorgeous old gold at center, shading to a salmon-rose. 50c each.

ONE EACH OF THE FOLLOWING SIX NAMED FOR \$1.50.

A. D. LIVONI (Show)—Beautiful, soft pink. Perfectly round, ball-shaped flowers, each petal very tightly quilled. Very free flowering. 25c each.

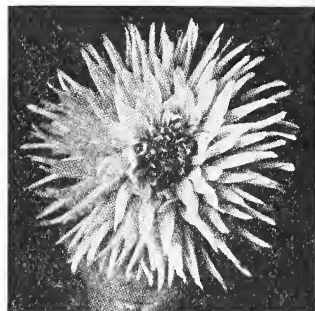
COUNTESS OF LONSDALE (Cactus)—Deep, salmon-red. One of the best ever produced. 35c each.

DELICE (Decorative)—Charming pink, suffused lavender pink. Fine for cut flowers. 25c each.

DREER'S WHITE (Show)—Pure, glistening white, perfectly formed. Very free flowering, strong, bushy grower, ideal for garden and hedges. 35c each.

J. H. JACKSON (Cactus)—Finest, dark, velvety, crimson-maroon. 25c each.

MAUDE ADAMS (Show)—Early and very free-blooming variety; dainty, shapely flowers on long stems. Pure white, with a slight lavender suffusion more distinct at the center. 35c each.



Marguerite Bouchon

ONE EACH OF THE FOLLOWING EIGHT NAMED, \$1.50.

JACK ROSE (Decorative)—Brilliant crimson-red. 25c each.

JEAN CHARMET (Decorative)—An exquisite lilac-pink, daintily shading to pure white towards the center, with a tinge of creamy yellow at the margins. Flowers are very large, borne in great profusion on long, strong stems. 35c each.

PRINCF OF YELLOWS (Cactus)—A deep, soft, uniform yellow. Perfect in form and color. 25c each.

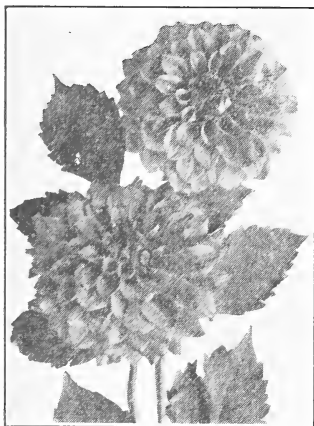
QUEEN VICTORIA (Show)—Lovely golden-yellow, tightly quilled flowers produced in the greatest profusion. Fine for cutting. 25c each.

ROBERT BROOMFIELD (Show)—Tall, majestic, glistening white. Vigorous grower and abundant bloomer. 25c each.

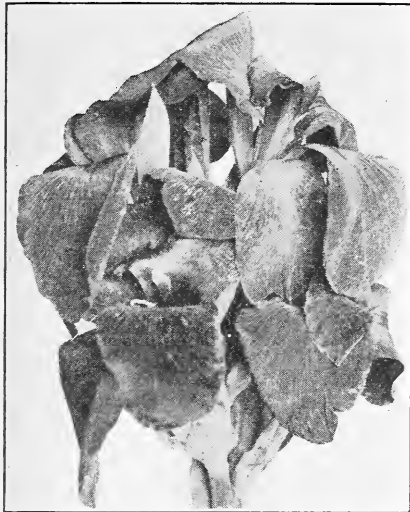
SOUV. DE GUSTAV DOAZON (Decorative)—Pleasing orange-red. Largest Dahlia in existence. 25c each.

SYLVIA (Decorative)—Fine for cutting. Medium size, deep-pink flowers tinting to white at the center. Early and prolific bloomer. 25c each.

WM. AGNEW (Decorative)—Large, beautiful flowers of glistening crimson-scarlet. An ideal variety for the garden. 25c each.



Delice



The President

Flowering Cannas

THEIR brilliancy of color, perfect flower spikes, and free blooming qualities, combine to make them the most popular of flowering plants for lawn decoration. Their foliage is of wonderful size, making a full, compact mass that is very effective.

Cannas will grow in any good garden soil, and attain their fullest development in an open, sunny location. Plant about three inches deep with the eyes face upward and set about 15 to 18 inches apart.

CHOICE SORTS OF RARE BEAUTY

One each of the entire list of eight for \$1.25.

EUREKA—Very fine pure white; the large, substantial, waxy-like flowers are freely produced in good, full trusses. Growth is sturdy, foliage fine. Height, 4½ feet. 25c each; \$2.50 per doz.

HUNGARIA—A magnificent soft, rose-pink, with large, waxy-like flowers produced in round, full trusses. Height, 3½ feet. 25c each; \$2.50 per doz.

LAFAYETTE—An intensely vivid and striking scarlet, produced in large clusters. Tall, majestic grower, with handsome green foliage. Height, 5 feet. 20c each; \$2.00 per doz.

MORNING GLOW—An unusual color combination; foliage deep, olive green, striped and veined with bronze. Flowers exquisite, soft shell-pink, with orange-red center. Height 3½ feet. 25c each; \$2.50 per doz.

MRS. ALFRED CONARD—Large, exquisite, salmon-pink flowers produced in abundance. Handsome green foliage. Height, 4 feet. 20c each; \$2.00 per doz.

ROSEA GIGANTEA—Rich, soft rose-pink flowers produced in broad, massive heads. A very prolific bloomer, with large, deep-green foliage. Height, 3½ feet. 20c each; \$2.00 per doz.

THE PRESIDENT—The best dark-red, retaining its pure, glowing scarlet color indefinitely. Flowers are immense, round and firm, of extra quality, and borne in the greatest profusion. Rich green foliage. Height, 4 feet. 20c each; \$2.00 per doz.

WINTZER'S COLOSSAL—The largest-flowered canna yet produced. Flowers are vivid scarlet, eight inches in diameter. Lovely green foliage, free flowering and very attractive. Height, 5 feet. 20c each; \$2.00 per doz.

STANDARD SORTS FOR EVERY PURPOSE

Your choice of any six for 75c.

One each of entire list of twelve for \$1.25.

ALLEMANIA (Orchid Flowered)—Salmon, with golden markings. Height, 5 feet. 15c each; \$1.50 per doz.

CITY OF PORTLAND—A wonderful, bright rose-pink. Free flowering and vigorous grower. Height, 3½ feet. 20c each; \$2.00 per doz.

CRIMSON BEDDER—Dazzling crimson-scarlet. One of the most showy and lasting varieties. Height, 3½ feet. 15c each; \$1.50 per doz.

DAVID HARUM—Foliage dark, glossy-bronze plum; flowers orange-scarlet. Height, 4 feet. 15c each; \$1.50 per doz.

KING HUMBERT (Orchid flowered)—Orange-scarlet flowers produced freely; rich bronze foliage. Height, 4½ feet. 20c each; \$2.00 per doz.

MME. CROZY—Very large showy flowers of glowing orange-scarlet are produced profusely. Rich, bright green foliage. Dwarf. 15c each; \$1.50 per doz.

PENNSYLVANIA (Orchid Flowered)—A vigorous grower, with profusion of bright, red flowers. Height, 6 feet. 15c each; \$1.50 per doz.

PILLAR OF FIRE—Flowers bright, crimson-scarlet. Invaluable for center of beds. Height, 6 feet. 15c each; \$1.50 per doz.

RICHARD WALLACE—Flowers, enormous, pure yellow. Height, 4 feet. 15c each; \$1.50 per doz.

SHENANDOAH—Soft rose-pink flowers; foliage large and deep bronze. Height, 5 feet. 15c each; \$1.50 per doz.

YELLOW KING HUMBERT (Orchid Flowered)—Bright, golden-yellow flowers, dotted red. Height, 4 feet. 15c each; \$1.50 per doz.

VENUS—Warm rose-pink edged with creamy white. The perfectly formed blooms are very free flowering. Height, 4 feet. 20c each; \$2.00 per doz.

SPECIAL OFFER—FOR ROUND BEDS

Plant 18 inches apart each way with one canna in center.

6 FOOT BED—

Center—1 Pennsylvania
First row—2 Pennsylvania.
Sc'd. row—10 King Humbert.
Delivered for \$1.00.

8 FOOT BED

Center—1 Richard Wallace.
First Row—8 Richard Wallace.
Second row—14 The President.
Delivered for \$1.50.



Crimson Bedder



Choice Gladioli in the Newer Sorts

BELOW we offer a special collection of the most desirable kinds in the exclusive varieties. Every one was thoroughly tested in our trial garden this summer and they all have our highest recommendation.

THE ENTIRE LIST OF SEVEN FOR \$1.00.

ANNA EBERIUS—Brilliantly beautiful, deep carmine-rose, overlaid with dark, velvety-purple, throat deeper shade. Strong, marvelously tall spike, with immense, compact blooms well covering them. Flowers of excellent substance, very lasting; most prolific bloomer.

25c each; \$2.50 per doz.

BYRON L. SMITH—White, daintily overlaid lavender-pink, throat and base of lower petals stippled a deeper color. Orchid-like coloring, making it invaluable for cutting, as the exquisite tints blend harmoniously with any decorative scheme. Spike is strong and tall; flowers are compact, of wide, open lily-form.

30c each; \$3.00 per doz.

GOLDEN MEASURE—A real yellow, uniform in its perfect richness of Golden color. Flowers broad, wide open, lily shaped, tips reflexing, edges slightly ruffled. Spike is strong and stout, very tall, bearing the immense blooms proudly; they come very compact, of lasting substance, and many open at one time. Has no equal for cutting.

40c each; \$4.00 per doz.

LILLIAN WEBB—Strawberry pink with light maroon velvety center; sometimes slightly striped with chocolate. Stems are slender, but erect, giving the appearance of a lily; flowers are five inches in diameter and spikes five feet high.

35c each; \$3.50 per doz.

LITTLE DIAMOND—A tall fine grower and prolific bloomer. Color a gorgeous salmon-pink, flaked deeper, with a brightly mottled throat. An exquisite color combination; blooms are beautifully ruffled, very large and open.

35c each; \$3.50 per doz.

MONALISA (Ruffled)—A beautiful, soft shell-pink or blush-white. Very large wax-like flowers of heavy, lasting substance, many open at one time. Strong, vigorous grower, throwing a majestic tall spike, very compact and straight. Fine for cutting.

40c each; \$4.00 per doz.

REV. EWBANK—Delicate shade of deep, porcelain-blue, with pronounced red markings in the throat, contrasting beautifully with the rare color in the petals. Flowers are quite large, very compact, keeping wonderfully well in water and buds will open entire length of the flowering spike

30c each; \$3.00 per doz.

BEAUTIFUL GLADIOLI

To Produce a Wealth of Bloom this Summer

SELECTED varieties are offered in this assortment including kinds of recent introduction. Flowers are of exceptional size, embracing a variety of exquisite tints and shades in endless combinations and markings.

THE ENTIRE LIST OF TEN FOR \$1.00.

ARIZONA ROSE—Ideal for cut flowers. Large, clear rose-pink which blends so nicely for indoor decoration. Fine bloom produced freely and a sturdy, vigorous grower.

30c each; \$3.00 per doz.

BLUE JAY—Soft blue, with markings of deeper blue and delicate cream in the throat.

20c each; \$2.00 per doz.

GLORY (Kunder's Ruffled)—Color a rosy-pink with creamy tints and attractive crimson stripe, each petal exquisitely ruffled and fluted.

15c each; \$1.50 per doz.

GOLIATH—Claret-red overlaid purple-red and deep cardinal with brilliant velvety sheen, shading to dark maroon. Perhaps the darkest colored variety in existence.

15c each; \$1.50 per doz.

LE MARECHAL FOCH—Pure delicate rose-pink, beautiful, uniform shade.

20c each; \$2.00 per doz.

LOUISE—A beautiful clear lavender, with a blotch of velvety maroon towards the throat.

30c each; \$3.00 per doz.

LUCY—Deep, pure golden, which is

retained until the bloom is gone.

20c each; \$2.00 per doz.

MAJESTIC—Startling in its rich beauty, as the immense orange-salmon flowers fairly glow.

20c each; \$2.00 per doz.

MURIEL—A most delicate, soft blue with deep purple blotch on lower petals.

20c each; \$2.00 per doz.

WHITE GIANT—A pure, glistening white. Typically lily-like in contour, the wide outspread petals reflexing at the tips.

25c each; \$2.50 per doz.

PRIMULINUS HYBRIDS

Choice Mixed Blooming Gladiolus Bulbs, Twelve for 50c.

Flowers of distinct form, possessing the clearest tints of color to be found. The spikes are tall and graceful, especially suitable for cutting. Very dainty and exquisite with their elf-like "hood" formed by the drooping of the upper petal.



Oshkosh, Wisc., May 26, 1924.

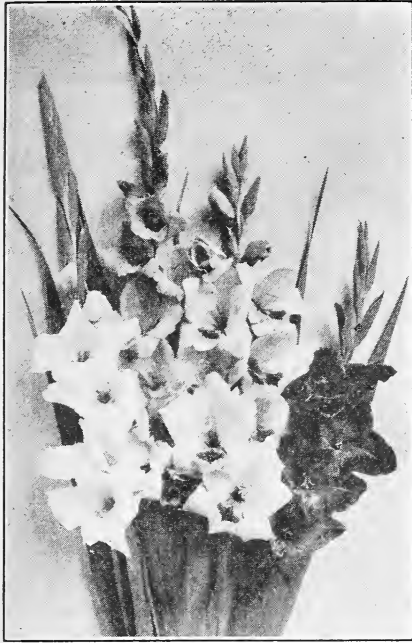
My order of roses received in the finest of shape. Thank you for filling my order so promptly.

JAMES TITUS.

Erie, Pa., May 5, 1924.

Received Roses and Dahlias O. K. They were in fine condition. Many thanks for your promptness.

JOHN FISHER



GLADIOLI

For House and Garden

THERE never need be a day through the summer when you cannot find the closely capped buds unfolding into wonderful hued blooms with unexpected arrangements of markings and tints. While we give you colors appearing in the flowers, you cannot know their marvelous beauty until you have seen them blooming in your garden.

Entire list of ten, fine, large bulbs for 75c.

AUGUSTA—Lovely pure white with blue anthers. Strong, straight spike. 10c each; \$1.00 per doz.

BARON HULOT—A rich, royal violet that is at once attractive and unusual. 15c each; \$1.50 per doz.

CRIMSON GLOW—A real beauty of deep, glowing scarlet, lower petals having a small, white base. 20c each; \$2.00 per doz.

LOVELINESS—As exquisite as its name; a soft, creamy-yellow which will appeal to the most fastidious tastes. 15c each; \$1.50 per doz.

MARY FENNEL—A dainty sort, beautiful deep lavender, lower petals penciled with primrose yellow, exquisite and distinct. 20c each; \$2.00 per doz.

MRS. DR. NORTON—Deep cream, blending to white and flesh-pink with bases of lower petals and throat penciled and stippled rose and crimson. 20c each; \$2.00 per doz.

NIAGARA—Magnificent, large flowers, soft primrose-yellow, tinged rose pink in the throat. 10c each; \$1.00 per doz.

PINK PERFECTION—A wonderful, uniform pink, its soft coloring and magnificent bloom makes it one of the choicest of the newer varieties. 15c each; \$1.50 per doz.

RADIUM—Upper petals delicate pink; lower petals creamy-white with pink edge, accentuated by brilliant ruby dashes. 15c each; \$1.50 per doz.

WAR—Color, marvelously striking, pure, rich red, shading to crimson black, perfect in its exquisite beauty. 10c each; \$1.00 per doz.

SELECT STANDARD SORTS

NO MATTER what other plants may be found in your garden, the Gladioli will dominate them all with their rainbow array of color, stately and graceful spikes of bloom.

10c each—the entire list of twelve for 75c.

AMERICA—Beautiful, soft, flesh-pink.

ATTRACTION—Soft, deep rose-pink with creamy throat.

CONSPICUOUS—Dainty violet-blue.

CRACKERJACK—Rich, velvety, dark red.

EMPRESS OF INDIA—Rich, dark-maroon, almost black.

EVELYN KIRTLAND—Beautiful, ruffled rosy-pink.

GLORY OF HOLLAND—Glistening, pure white with lavender markings.

GOLDEN WEST—Brilliant orange.

MRS. FRANK PENDLETON—Salmon pink.

PEACE—Clear, pure white, with delicate lilac feathering.

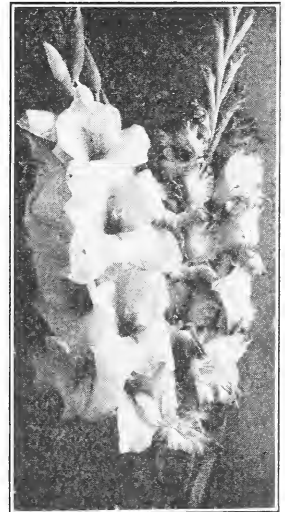
PINK BEAUTY—Lovely pink with crimson blotch.

SCHWABEN—Clear citron yellow.

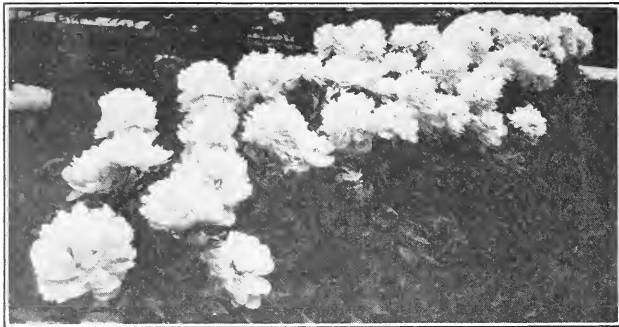
Large Flowering Mixed Gladioli

SELECTED QUALITY BULBS
Twelve for 50c.

Grown for the express purpose of supplying our customers with a superb strain of exquisite sorts and colors, this mixture is made up of only choice, named sorts that give you really fine results.



Cleveland, O., May 8, 1924.
I received my order today and I just want you to know that I am well pleased. The Teddy, Jr. fern is especially nice and I hope I can keep it so. I will get some sort of fertilizer as soon as I can and I know the plants will grow if properly cared for.
MRS. JAS. RUSSELL.



Germaine Bigot—Two-Year Old Plants. Notice How Profusely It Blooms.

PEONIES

NO OTHER plant adapts itself to so many uses as the peony. It is of such simple culture and so easy to grow that but little attention will be necessary to produce the finest blooms. Plant the Peony, and it will last for years, increasing in value and beauty. The varieties listed are among the finest and, in our opinion, those best adapted for general planting in all localities. They embrace a variety of colors.

form of flowers and cover a wide range of blooming time.

We guarantee our Peonies to be absolutely true to name, and the quality of our stock is exceptional. We know you will be pleased with the strong, clean roots with big, plump eyes that mean success which may be depended upon to produce strong, thrifty growth the first season planted.

SPECIAL TRIAL OFFER—The entire list of thirteen varieties for \$7.00.

Your choice of any four in this list for \$1.50; entire list of six for \$2.50.

Your choice of any three in this list for \$2.75; entire list of seven for \$5.00.

COURONNE D'OR—Famous Crown of Gold. Immense, very full, ball-shaped bloom. Solid and compactly built. Color snow-white reflecting golden-yellow stamens, which make the flowers fairly glow. Delicate carmine pencilings on edges of petals. Unusual water-lily effect. Late bloomer, but makes a gorgeous show. 75c each.

EDULIS SUPERBA—A wonderful, clear mauve pink, with silvery reflex, blossoms often measuring seven inches across. Delicious fragrance and strong grower, and prolific bloomer. Very early, as it is always in bloom on Decoration Day. 50c each.

FELIX CROUSSE—The best red variety. Abundant bloomer, vigorous grower, large, globular flowers. Brilliant red color, with magnificent fragrance. 75c each.

FESTIVA MAXIMA—The most popular and best known of all white varieties. Very large, globular flowers, pure white, with center flecked crimson. Tall, vigorous grower, free and early bloomer. 50c each.

LA FRAICHEUR—Very early. Large semi-single flower having more than one row of petals. Beautiful, soft flesh pink which changes to white as the flower develops showing a mass of deep golden stamens. Very tall, erect and prolific bloomer. 75c each.

PIERRE REIGNOUX—Large semi-rose type of dwarf, erect growth. Soft, rosy pink with center slightly flecked crimson. A beautiful variety. 50c each.

GERMAINE BIGOT—A fine, midseason blooming variety; very large and compact. Delicate lilac-rose, center prominently flecked crimson. Strong, erect grower, very free flowering and fragrant. \$1.00 each.

GLOIRE DE TOURAINE—Lively, velvety, crimson with brilliant amaranthine reflex. Late blooming variety; none better of its color. \$1.50 each.

LA TENDRESSE—Very full large flowers borne in clusters. Color milk-white, sometimes splashed with carmine. Tall, strong grower, free bloomer and fragrant. 75c each.

MONS. JULES ELIE—Very large, compact, high-built flower. Soft, lilac-rose, shaded amber yellow at the base. Exceedingly robust grower, free-flowering. Very early, with wonderful fragrance. \$1.00 each.

PRINCESS MAUDE—Faint lilac-white guards, center amber cream, reflecting soft yellow lights with green carpels and pink stigmas. Large well-formed flowers of wonderful lasting qualities. Tall, erect grower and free bloomer. \$1.50 each.

REINE HORTENSE (Syn. PRES. TAFT)—Enormous, compact, flat flower of soft flesh color deepening to shell pink. Well formed and very striking. Fine for cut flowers and usually blooms profusely just about Decoration Day. \$2.00 each.

SUZETTE—Fine bloom borne on strong stems. Bengal-rose, lightly shaded carmine purple with silvery reflex. \$1.50 each.

Herbaceous Perennials

THE WONDERFUL, striking and perpetual charm of the hardy garden flowers has made them indispensable to any garden. Their beauty is ever appealing, ever varying, as each day some new bloom is displaying its beauty. Season after season we find new uses for them with their myriad shapes, colors, time of bloom, and their captivating train of enchantment. Let us help plant your hardy garden with the really choice varieties as listed below.

DELPHINIUM BELLADONNA (Larkspur)—They are valuable and picturesque for group plantings in beds or borders, as they bloom continuously from early June until cut down by hard frosts. They are clear turquoise-blue in color, which is not equalled for delicacy and beauty by any other flower. 25c each; 3 for 60c.

DELPHINIUM CHINESIS ALBA—A shorter growing kind, with fine feathery foliage and pure white flowers in open panicle. 25c each; 3 for 60c.

DIANTHUS BARBATUS (Sweet William)—A beautiful bedding variety, which produces great masses of extremely rich and varied-colored flowers. They are of excellent substance, ideal for cutting. 20c each; 3 for 50c.

DICENTRA SPECTABILIS (Bleeding Heart). A beautiful plant, with clustered stems, one to two feet tall. Flowers large and heart-shaped, deep, rosy-red, in nodding graceful, drooping racemes. Will grow in any good garden soil and is especially partial to shady locations. 50c each; 3 for \$1.25.

DIGITALIS (Gloxiniaeflora) Foxglove—Digitified and stately, it is very effective in masses or among shrubbery. Strong flower spikes rise from a rich and luxuriant mass of foliage. We offer these beautiful, fine spotted varieties in white, purple or rose. 20c each; 3 for 50c.



A Gay and Charming Garden.
Developed with Perennials Alone.

GAILLARDIA GRANDIFLORA—One of the showiest and most effective hardy plants, growing about 2 feet high and succeeding in any soil in a sunny position, flowering the whole season through. The large flowers are gorgeously colored, center red-brown, petals marked with rings of brilliant crimson, orange and vermilion. Excellent for cutting. 20c each; 3 for 50c.

GOLDEN GLOW—Indispensable for the hardy border. Strong, robust grower of about five to six feet and produces masses of double golden-yellow cactus dahlia-like flowers from June until September. They will thrive anywhere, giving a wealth of bloom, well suited for cutting. 20c each; 6 for 75c.

HARDY FERNS

GRACEFUL and universally popular. A shady nook, where the soil is moist, will prove an ideal location. They are entirely hardy, requiring no special care or attention, so that many barren spots shut out from sunlight may be converted into veritable beauty spots by clumps of ferns of various kinds.

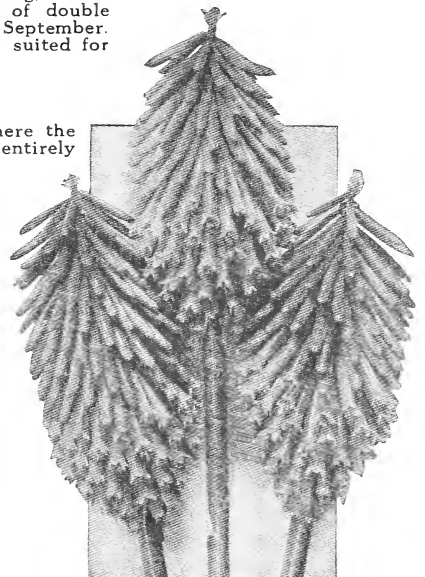
One Each of the Three Named for 65c

OSMUNDA CINNAMOMEA (Cinnamon Fern)—Very tall and broad foliage, clothed with a rusty wool when young, but smooth when full grown. Thrives in quite wet soil in sunny or shaded places. Very beautiful. 25c each; 5 for \$1.00.

OSMUNDA REGALIS (Flowering Fern)—One of the prettiest of the tall ferns, with pale-green fronds. It can be grown in still water, 2 or 3 inches deep; also in moist soils, sun or shade. 25c each; 5 for \$1.00.

OSMUNDA STRUTHIOPTERIS (Ostrich Fern)—Large, plume-like fronds, about 2 to 3 feet high and 6 to 10 inches wide. Can be grown in open sun or shaded nook. 25c each; 5 for \$1.00.

HIBISCUS (Mallow Marvel)—A desirable border plant succeeding in sun or shade. Grows three to five feet high, with large foliage and enormous showy flowers of the richest shades of crimson, pink and white, produced the entire summer. 20c each; 6 for \$1.00.



Tritoma (Red-Hot Poker Plant)



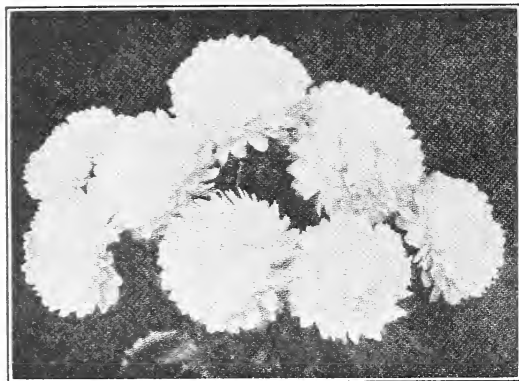
HERBACEOUS PERENNIALS—Continued.

HOLLYHOCK (Double)—Stately, majestic plants, from 6 to 8 feet high, ideal for interspersing with shrubbery, as clumps or in borders, where their immense spikes of bloom produce bold and showy effects. Their large, Camellia-like flowers form perfect rosettes of the most lovely shades of color. We can supply red, pink, yellow and white shades. 20c each; 3 for 50c.

HYPERICUM MOSERIANUM (St. John's Wort)—Gold Flower—A most desirable border plant, of free and graceful habit, producing long, slender, much-branched stems, leafy to the base. It is marvelously free flowering, bearing all summer, a profusion of waxy, clear, yellow flowers, like roses. Fine for massing. Height, 2 to 3 feet. 30c each; 3 for 75c.

ROSEMARY (Rosmarinus Officinalis)—A hardy, low growing shrubby herb of from 2 to 4 feet high with beautiful aromatic leaves which are used for seasoning. It has small light blue flowers in short racemes borne in early spring and these are much sought for by bees. For dry and rocky places near the coast it makes splendid hedges. 25c each; 5 for \$1.00.

TRITOMA PFITZERI (Red-Hot Poker)—The early and continuous blooming qualities of this variety has made it one of the greatest bedding plants. In bloom from mid-summer to late fall, with spikes 3 to 4 feet high and heads of bloom a rich orange scarlet. It succeeds in any ordinary garden soil. 25c each; 6 for \$1.25.



Oonto Chrysanthemum

CHOICE CHRYSANTHEMUMS For Garden Planting

THE LATENESS of the blossoming period of these hardy plants, when every other flower in the garden has succumbed to the frost, commends them and accounts for their universal popularity. They are unaffected by ordinary freezing, so hold full sway in the garden with their wealth of rich, oriental coloring, lending a cheerful aspect in late Fall and early Winter. When planted at the base of walls, buildings or shrubbery, the hardy Pompon Chrysanthemums are wonderfully satisfactory. Fine Plants 20c each; entire list of 6 for \$1.00.

AUTUMN GLOW—Deep rose crimson, a shade both warm and bright.

EVA—Deep pink, semi-double flowers and very early bloomer. Makes a dwarf, globe shaped plant about 1½ feet high and as symmetrical when in bloom as though it had been sheared. Especially valuable for border or bedding.

LADYSMITH—Single flowering type, producing a profusion of rose pink flowers with a golden eye.

L'ARGENTUILLAIS—Amazingly prolific, bearing large clusters of real autumn chestnut brown flowers.

ONCOTO—Very large, double pure white. Fine Japanese variety.

OLD HOMESTEAD—Large flowering pompon type; fine for cutting as the blooms are borne on long stems. Color, a delightful, soft pink.

German or Liberty Iris

THEY fairly outrival the orchids in delicacy of structure and wide range of coloring, as the standards and falls furnish striking contrasts, shadings, veinings and combinations. The blooms are beautiful when cut, and they are very effective for massing or borders, or for the foreground of tall-growing shrubs. Perfectly hardy in all localities, they thrive in any good garden soil with practically no care or attention. Plant shallow and give them a sunny location, if possible.

"S" means standards or upper petals. "F" means falls or lower petals.

Your choice of any six assorted varieties for \$1.25.

One each of the entire list of twelve for \$2.00.

FRO—"S" deep gold; "F" brilliant chestnut-brown, with border of gold. 35c each; \$3.50 per doz.

HER MAJESTY—"S" lovely rose-pink; "F" bright-crimson, tinted darker. Exquisite. 25c each; \$2.50 per doz.

IRIS KING—"S" clear lemon-yellow; "F" rich maroon, bordered yellow. Large flowers and stately tall grower. 35c each; \$3.50 per doz.

KHARPUT—Velvety violet and purple. Very large, handsome flowers. 35c each; \$3.50 per doz.

LOHENGRIN—Uniform soft rosy-mauve. Very large. 35c each; \$3.50 doz.

LORELEY—"S" light-yellow; "F" ultramarine-blue, bordered cream. 25c each; \$2.50 per doz.

MME. CHEREAU—White, exquisitely frilled with a wide border of clear blue. 25c each; \$2.50 per doz.

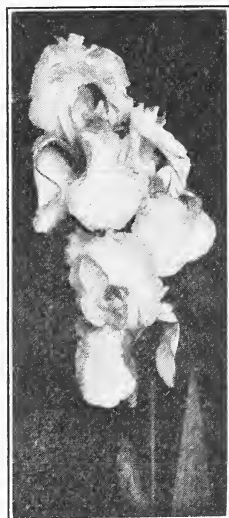
MAORI KING—"S" rich golden yellow; "F" velvety crimson, margined gold. Late bloomer and should be used as a border plant. 25c each; \$2.50 per doz.

MRS. H. DARWIN—Pure white, falls slightly reticulated violet at the base. Very free flowering. 25c each; \$2.50 per doz.

NIBELUNGEN—"S" fawn yellow; "F" violet-purple, with fawn margin. Very handsome. 25c each; \$2.50 per doz.

PALLIDA DALMATICA—"S" fine lavender; "F" clear lavender. Extra large and very fine for cutting. 25c each; \$2.50 per doz.

QUEEN OF MAY—A lovely, soft rosy-lilac. 25c each; \$2.50 per doz.



Mme. Chereau



Seclusion May Be Secured by Training These Roses on Lattice Screen.

Large Flowering Climbing Roses

5 Fine, Strong, One-Year Plants delivered to you for 85c.

5 Large, Two-Year Plants delivered to you for \$1.85.

THE NEW TYPE of climbing rose that will prove a revelation to those who do not already know them. Beautiful, large, fragrant flowers borne on long, individual stems and having delicious fragrance. Glossy, insect proof foliage. If you want a magnificent rose hedge, arbor, pergola or summer house, this is your opportunity to get the best sort in cultivation.

ALIDA LOVETT—Soft pink.

AVIATEUR BLERIOT—Golden yellow.

CLIMBING AMERICAN BEAUTY—Rosy red.

DR. VAN FLEET—Flesh pink.

PAUL'S SCARLET CLIMBER—deep crimson.

SPIREA VAN HOUTTEI

Bridal Wreath

A GRAND, graceful shrub, with numerous arching branches and dark green foliage with incised border, persisting until late autumn.

It will thrive in any ordinary garden soil, quickly forming a symmetrical, compact bush, which attains a height of about five to six feet. Ideal as a single specimen or marvelously beautiful as a hedge.



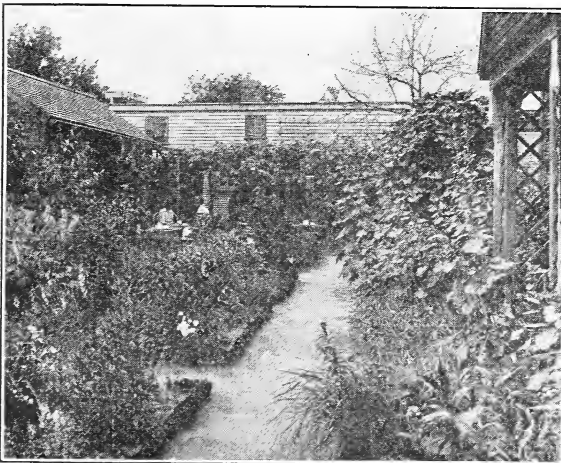
Flowers are produced in such profusion in late spring as to completely cover the bush with masses of snow-white bloom. They are borne in large, spray-like clusters, which resemble a wreath, hence its name, "Bridal Wreath." Universally the most popular of all hardy flowering shrubs, and certainly one of the most deserving.

Fine Large Plants, 50c each; 3 for \$1.00.

A HARDY AND HERBACEOUS PLANTING

To Produce a Garden Gay and Beautiful the Entire Season

SPECIAL OFFER of the following plants delivered for \$5.00



A Charming Garden Where One May Entertain Their Friends at Tea.

MAKE YOUR background of hardy flowering shrubs and vines. Plant your beds and borders with herbaceous perennials that bloom at different times of the summer and the result will be a garden of continuous and constant source of delight.

For Background—

- 1 Spirea Van Houttei (Bridal Wreath).
- 1 Forsythia (Golden Bell).
- 1 Lonicera Fragrantissima (Bush Honeysuckle).
- 1 Hydrangea Paniculata.
- 1 Althea Bush (Rose of Sheron).
- 1 Honeysuckle Hall's Japan.
- 1 Clematis Paniculata.

For Beds and Borders—

- 1 Delphinium Belladonna (Larkspur).
- 2 Peonies—Assorted Colors.
- 2 Hollyhocks—Assorted Colors.
- 1 Gaillardia Grandiflora.
- 1 Dianthus Barbatus (Sweet William).
- 1 Tritoma Pfitzeri (Red Hot Poker).
- 1 Rosemary.
- 1 Iris.
- 1 Hardy Chrysanthemum.



HARDY FLOWERING SHRUBS

WHETHER planted individually or collectively, the shrub is an important feature in the adornment of any ground.

At the edges of the lawn, along walks or drives, or in distant corners, a collection of shrubs may be gathered that will give a succession of bloom from the opening of spring until frost comes to destroy the flowers.

In the list that follows will be found shrubs for all these purposes. The possibilities of effective combinations are unlimited.

These are all strong, field-grown plants that will make well-developed specimens, giving immediate effect, and will all bloom profusely this season.

ABELIA GRANDIFLORA (See detail description inside front cover page)—75c each.

ALTHEA BUSH (Rose of Sharon)—Double red, white and pink. Grand, free-growing, flowering shrubs. Perfectly hardy. Very desirable as they bloom in August and September. Of easiest culture, fine for hedges or single specimens. 50c each.

AMYGDALUS ROSEA FLORE PLENO (Flowering Almond)—A beautiful dwarf shrub, with erect, slender branches, which are covered in early May with showy, double pink flowers, very fragrant, before the leaves appear. Splendid garden subjects, thriving in any good garden soil. 75c each.

BUTTERFLY BUSH (Summer Lilac)—See detail description on page ten. 75c each.

CALYCANTHUS FLORIDUS (Sweet Scented or Strawberry Shrub)—Has an abundance of reddish-brown deliciously sweet-scented flowers in late spring. Very hardy, with broad, dark-green, handsome foliage. Grows about four to six feet high. 50c each.

CORNUS SIBERICA (Dogwood)—A hardy, vigorous shrub with upright, bright blood-red branches. Flowers are creamy-white in numerous, flat-topped clusters followed with light-blue fruit. 50c each.

DEUTZIA ROSEA—Showy, hardy and ornamental. Of easy cultivation and rapid growth, with a wealth of double, rosy-pink, drooping, bell-shaped flowers. 50c each.

FORSYTHIA VIRIDISSIMA (Golden Bell)—Large, graceful variety, with a profusion of golden-yellow flowers produced early. Foliage narrow and very dark-green. 50c each.

HYDRANGEA AROBORESCENS GRANDIFLORA ALBA (Hills of Snow)—See detail description on inside of back cover page. 75c each.

HYDRANGEA PANICULATA GRANDIFLORA—One of the most popular and showy shrubs, with large, rosy-pink, pear-shaped clusters of bloom. Handsome, dark-green foliage. 75c each.

KERRIA JAPONICA (Double Flowered)—An attractive variety, with slender, green branches and showy, yellow, double flowers. Very vigorous grower and hardy. 50c each.

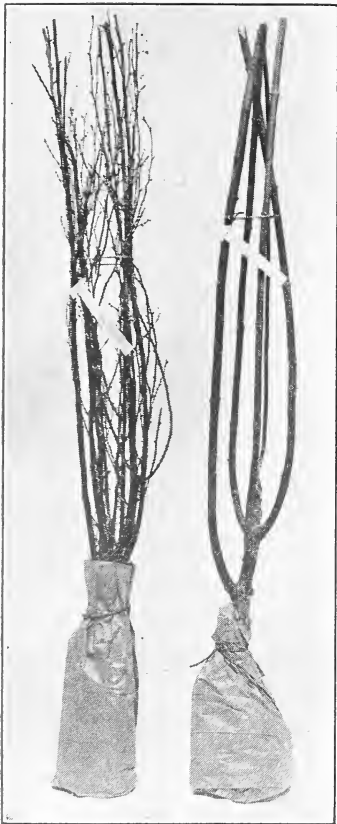
SPIREA BILLARDI (Pink)—Very showy and attractive, and splendid for cut flowers. Blooms bright-pink, produced in long, dense panicles later in the summer than most Spireas flower. 50c each.

SPIREA ANTHONY WATERER (Everblooming Spirea)—A remarkable free-flowering shrub with upright branches, attaining a height of about two feet. Very hardy and robust. Leaves bright-green and flowers bright rose, produced in dense clusters, blossoming throughout the summer. Especially desirable where dwarf or low-growing plants are wanted. Fine for massing or single specimens. 50c each.

SPIREA THUNBERGI (Snow Garland)—A graceful, slender grower, forming a dense feathery bush three or four feet tall. Has an abundance of narrow, green leaves, which assume brilliant tones of orange and scarlet in the fall. Flowers are pure white, covering the plant as with a mantle of snow. Although perfectly hardy, it can be grown and bloomed indoors in pots. 50c each.

SNOWBERRY—A popular, hardy shrub of medium size and bushy form. Foliage oval and smooth; soft pink flowers are produced in the summer, followed by large, waxy, white berries in autumn, persisting into midwinter. Very ornamental. 50c each.

WEIGELIA ROSEA—A free-flowering shrub, with numerous spreading branches. Flowers, rose-colored, large and showy, produced in great profusion. 50c each.



Dormant, Field-Grown Shrubs.
Showing How They Will
Come to You.

LONICERA FRAGRANTISSIMA (Bush Honey-suckle)—A tall, vigorous grower, very hardy, with broad, oval foliage which remains on the bush until very late fall. Flowers are creamy-white or delicate yellow, deliciously fragrant, expanding with the first breath of spring. 50c each.

PHILADELPHUS CORONARIUS (Mock Orange); Very desirable, growing upright with arching branches. Flowers creamy-white, deliciously fragrant, borne in great profusion. 50c each.

PRUNUS PISSARDI (Purple-Leaved Plum)—A dwarf, slender grower, about three to four feet high, covering itself with small, white, fragrant flowers in early spring. Foliage is a lustrous crimson when first appears, but changes to a rich purple when matured. A most unusual and striking variety. 75c each.

RED SNOWBERRY—Has a wealth of red berries which remain on the branches all winter. Very hardy and vigorous, with bright-green leaves, often tinted with reddish-purple when young, persisting until early winter. Flowers, light-pink, produced in early summer. 50c each.

SNOWBALL (*Opulus Sterilis*)—Handsome, showy, globular clusters of flowers appearing in compact balls in early spring, usually about Decoration Day. Very hardy and vigorous, growing to perfection in any sunny situation. 75c each.

SPIREA VAN HOUTTEI (Bridal Wreath)—See detail description on page 19. 50c each.

HEDGE PLANTS

AMOR RIVER PRIVET (North)—Unlike a fence, which needs paint and repairs, and then never looks well, a hedge that is hardy is no further expense after planted, and it adds dignity and charm to the home. This variety is a rapid, erect grower of compact habit, with small, glossy-green leaves. Has numerous panicles of white flowers in early June and in autumn, the branches are loaded with conspicuous steel-blue berries.

Strong Plants—18-24-inch,
25c each; 10 for \$2.00; \$12.50 per 100.

BARBERRY THUNBERGII (Japanese)—See detail description on page 11.

Strong Plants—10-12-inch, 20c each; 10 for \$1.50.
15-18-inch, 35c each; 10 for \$3.00.

CALIFORNIA PRIVET—Very vigorous and compact grower of upright habit, widely used for hedges. The foliage is dark-green, glossy, broad and firm, clothing the branches very densely. Can be clipped in any form or height wanted. If planted in a single row, set 10 to 12 inches apart; if in a double row, place every 18 inches, so that the plants will be 9 inches apart diagonally in the rows.

Strong Plants—12-18-inch, 20c each; 10 for \$1.00; \$8.00 per 100.
18-24-inch, 25c each; 10 for \$2.00; \$10.00 per 100.



Lodense—Very Decorative for
Tubs, Pots and Boxes.



Barberry Thunbergii—Showing
Dormant Field-Grown Plant
As It Comes to You.

IBOLIUM PRIVET—An absolutely hardy variety with beautiful, glossy round foliage very similar to that of California Privet. Growth is upright, vigorous, hardy and very compact at the bottom which makes it fine for close shearing. Anyone living in the far north may have a beautiful, dark green, glossy hedge now without danger of freezing out.

Strong Plants—15-18-inch, 15c each; 10 for \$1.00; \$8.00 per 100.
18-24-inch, 20c each; 10 for \$1.50; \$10.00 per 100.

LODENSE PRIVET—This is a new, dwarf and distinct form of Privet of extremely compact and low growing habit. The foliage is rich, dark green, small and very compact. It is particularly useful for low hedges and borders filling a long-felt need for an easily grown, medium priced hedge. It stands shearing beautifully and makes a fine decorative plant for tubs, pots and boxes.

Strong Bushy Plants—8-12 inch, 20c each;
10 for \$1.50; \$12.00 per 100.

HARDY CLIMBING VINES

AMPELOPSIS VEITCHII (Boston or Japanese Ivy)—A hardy, rapid grower that clings closely to any surface. Foliage, bright, glossy green that turns a brilliant red in autumn. Fine for city culture. 35c each.

ARISTOLOCHIA SIPHO (Dutchman's Pipe)—A vigorous, tall, twining vine, with very large leaves and curious flowers, well adapted for porches and arbors. Perfectly hardy, it thrives in any good garden soil. Flowers are purplish and yellow-green, resembling a pipe in shape. 35c each.

CLEMATIS PANICULATA—Strong, luxuriant grower, fine green foliage. Produces a mass of starchy, white, fragrant clusters of bloom in late summer. 35c each.

HONEYSUCKLE HALL'S JAPAN—The finest of all Honeysuckles. Rampant in its growth, with dark-green leaves densely covering the vines. Flowers white and buff, deliciously fragrant, borne in great profusion all summer. 25c each.

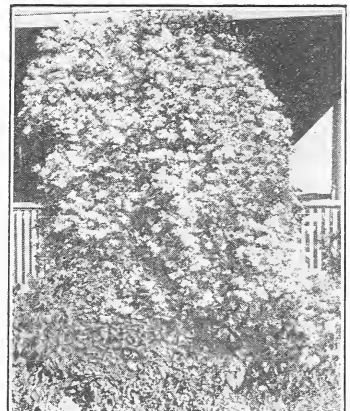
WISTARIA CHINENSIS (Purple or White)—Especially good for city culture, withstanding the grime and smoke. Very hardy, vigorous grower, with a profusion of pea-shaped flowers in dense clusters, 7 to 12 inches long, opening in mid-spring. We can furnish either the purplish-blue or pure white. 35c each.

NOTE—We will supply all Shrubs and Vines on pages 20 and 21 in Assorted Varieties priced at—

25c each at \$2.50 per doz. 50c each at \$5.00 per doz.

35c each at \$3.50 per doz. 75c each at \$8.00 per doz.

Prices Are Delivered, Parcel Post, Charges Paid.



Clematis Paniculata.

St. Louis Mo., May 15, 1924.
I have received the Rose plants in good condition and they sure look fine. I thank you many times for the plants and I know I will have good luck with them as they look fine. Many thanks!

MRS. IDA RAHM



LOVELY, GRACEFUL FERNS

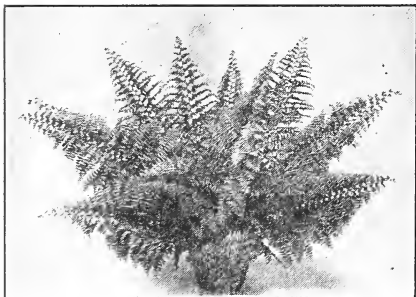


Teddy, Jr.

WHITMANII

"The True Ostrich Plume"

Its feathery drooping form and compact, luxuriant growth merits the name of "Ostrich Plume;" each frond delicately and finely cut. A healthy, vigorous grower, having a wealth of fronds, often attaining a width of 12 inches. Fine Young Plants, 30c each. Large Specimen Plants, 50c each.



Whitmanii

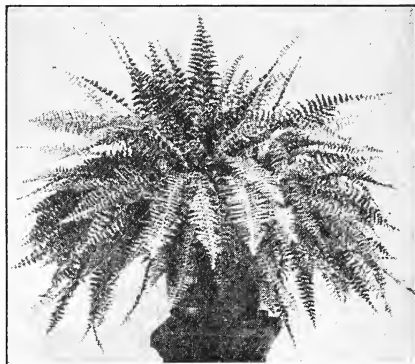
FOR CHARMING decorative effects, as the peculiar beauty to be found in their singular, matchless habit of growth, beautiful outline and texture of foliage, has given them first place among plants which are grown for their foliage alone.

SPECIAL OFFER—One each of the five Ferns named, in strong, young plants, for \$1.00.

One each of the first four Ferns named, in large specimen plants, for \$1.75.

TEDDY, Jr.

Of semi-dwarf habit and compact, vigorous growth, it will produce about four times more foliage than any other variety. The leaves are broad and beautifully tapered; distinctly undulated, giving the plant a wavy, graceful appearance. Very decorative. Fine Young Plants, 30c each. Large Specimen Plants, 50c each.



Roosevelt

BOSTON

An old favorite. Vigorous grower, producing a mass of arching, curving, drooping fronds. Ideal for house culture. Fine Young Plants, 25c each. Large Specimen Plants, 50c each.

ROOSEVELT

Strongest growing variety ever produced, withstanding unfavorable growing conditions better than any other. Healthy, rapid grower, producing in masses, wide, massive fronds, which droop gracefully; distinctly undulated, presenting a wavy, attractive effect. Fine Young Plants, 25c each, Large Specimen Plants, 50c each.

Asparagus Plumosus

"Lace Fern"

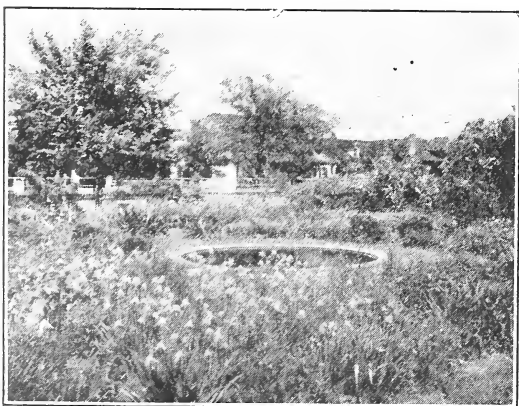
Very popular, its bright, rich, green foliage as fine and delicate as the most exquisite lace. Has strong, vigorous constitution. Fine Young Plants, 20c each.

BED AND BORDER BLOOMING PLANTS

Your Opportunity to Start a Garden Like This to which You Can Add from Time to Time

For \$1.50 delivered to you

- 5 Gladioli, assorted colors.
- 2 Hardy Chrysanthemums.
- 3 Dahlias, assorted colors.
- 2 Cannas.
- 2 Liberty Iris.
- 1 Peony.



A Restful Spot of Beauty and Bloom



CHOICE FLOWER SEEDS

OUR SUPERIOR grade of flower seed that excels in blooming and growing qualities, producing an amazing profusion of flowers of the most desirable and beautiful types. Fresh, clean seed to give the planter entirely satisfactory returns.

Any packet named below at 10c each, or your choice of any three for 25c, or any six for 50c.

FINE SPENCER SWEET PEAS

Our own special unsurpassable mixture of exclusive Giant Spencer varieties, blended in proper proportion of bright shades, exquisite, soft tints and pure whites. Flowers are beautifully formed and daintily waved, and bear four to five queenly blossoms on long, strong stems.

10c each; 3 for 25c.

OUR SPECIAL SELECTED LARGE FLOWERED SWEET PEAS

Especially suitable for garden decoration, selected for adaptability in all localities. All are bright colors and pleasing shades of the Large Flowered Types, borne three or four on long stems. Packet contains one ounce.

10c each; 3 for 25c.

FINE DWARF NASTURTIUM

The dwarf family is a delightful one, especially valuable for beautiful bedding and border effects. A splendid mixture of all the gay and brilliant colors, with lovely markings and tints. Packet contains one ounce.

10c each; 3 for 25c.

CLIMBING OR TALL NASTURTIUM

Invaluable for covering unsightly spots, as a climbing variety or a creeper. A wonderful mixture of all gorgeous colors, marked and tinted with exquisite shades. Packet, one ounce.

10c each; 3 for 25c.

AGERATUM (Dwarf Blue)—Flowers rich, deep blue.

ASTER (Tall Mixed)—Bright cerise, blue, light-blue, shell-pink, delicate rose and pure white flowers.

CARNATION (Marguerite Mixed)—Large, richly spicy fragrant, double flowers.

CELOSIA (Cockscomb)—Tall mixed. Magnificent spikes of feathery looking flowers.

FORGET-ME-NOT (Myosotis)—Blue clusters. Thrives well in the shade or open border.

HELIOTROPE (Fine Mixed)—Produces, small flowers in graceful clusters. Very fragrant.

PANSY (Giant Mixed)—The very best strain in cultivation.

PETUNIA (Fine Mixed)—Single and Double mixed.

PORTULACA (Fine Mixed)—They are in bloom about the first day of July until killed by frost.

SWEET WILLIAM (Double Mixed)—Pure colors and variegated.

SALVIA—Splendens (Scarlet Sage)—Brilliant red, fragrant blossoms.

SHASTA DAISY (Alaska)—Large, glistening, white flowers, borne from early summer to late fall.

VERBENA (Mammoth Mixed)—A fine bedder, brilliant in colors, excellent habit of growth, and of long duration of bloom.

Any packet named below at 5c each, or your choice of any six for 25c, or any twelve for 50c.

ANTIRRHINUM (Snap Dragon)—The dense, well-formed trusses contrast beautifully with the deep-green foliage. Splendid, large, double, Camellia-like flowers.

CALENDULA (Double Mixed)—Very showy.

BALSAM (Camellia Flowered)—Double mixed. Border Plant. Large, double flowers, varying in colors of rich orange and yellow.

CALLIOPSIS (Tall Mixed)—Flowers of brilliant, golden yellow, showing a vivid reddish splotch in the center.

CAMPANULA (Canterbury Bells)—Dainty, bell-shaped flowers.

CANDYTUFT (Fine Mixed)—Large spikes of purest white flowers. Growth, low and compact.

CENTAUREA (Batchelor's Button)—Large, thistle-like, beautifully colored flowers of white, mauve and purple.

COSMOS (Giant Flowering)—Feathery foliage and large, showy blossoms. Colors, gorgeous reds, pinks and whites.

DELPHINUM (Larkspur)—Their long, showy spikes of clear turquoise-blue flowers are not equalled in delicacy and beauty by any other.

DIANTHUS (Chinese Double Pinks)—This mixture contains the largest and most fragrant sorts of varied shades and markings.

ESCHOLTZIA (California Poppy)—Beautiful velvety, cup-shaped flowers of rich and varied hues. Fine Mixed.

FOXGLOVE Digitalis—Lovely bell-shaped flowers produced on long spikes. Fine Mixed.

GALLARDIA (Single and Double)—Color combinations varying between gold and maroon.

MARIGOLD (African Tall Mixed)—Enormous, Globular flowers; primrose to yellow and deep-orange.

MIGNONETTE (Large Flowering)—Pyramidal shaped spikes of exceedingly fragrant blossoms.

MORNING GLORY (Fine Mixed)—Very useful for covering lattice work, verandas, etc.

POPPY (Fine Double Mixed)—Gloriously brilliant.

SWEET ALYSSUM (Snow Carpet)—Pure white flowers of sweet honey fragrance.

ZINNIA (Elegant Tall Mixed)—The improved, compact, large-flowering Zinnia.

Whitestown, Ind., May 25, 1924.

Many of my friends ask where I get my roses, and I am glad to recommend your firm as to honesty and reliability.

MRS. JULIA SCOTT.

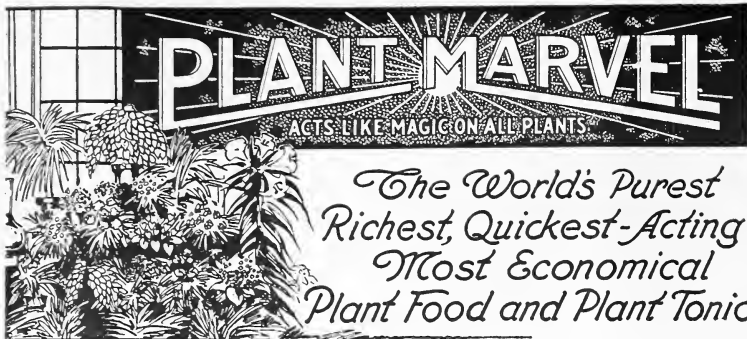
Hanging Rock, Ohio, Apr. 26, 1924.

Received the Rose Plants all right on the 24th of April. They are nice plants and I ought to get them growing. Much obliged.

MRS. CHRIS SCHILLING.



The American Rose and Plant Co.



Plant Marvel is pure plant food. Its guaranteed 15.30 per cent of ammonia grows wondrous foliage. Its 14.50 per cent of potash gives plants health, pep and beauty. Its 31.50 per cent of Phosphoric acid insures prolific bloom, of rare fragrance and dazzling colors.

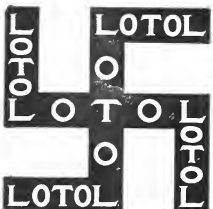
USE PLANT MARVEL and you will enjoy house plants and flowers of thrilling beauty. Your waste spots will become a Fairyland—you will have gorgeous roses, rampant climbing vines, thrifty shrubs; your kitchen garden will pay.

READ THIS GUARANTEE—Order a package of Plant Marvel today. We assume all risk. If plant Marvel doesn't show delightful, amazing and better results, go farther, and prove more economical than any other plant food, we will gladly refund your money.

It's so easy to use Plant Marvel now. No Trouble! No Worry! No digging; no damage to the most delicate roots. Merely a small aluminum spoonful of Plant Marvel added to the water—and water the plants as usual. (A handy spoon is now enclosed in every package.)

In 3 Size Packages—25c, 60c, \$1.00.

There's a big difference in plant foods that everyone should know. Plant foods and fertilizers that won't dissolve in water can't be digested by plants. All food must be served to them in "soup" form. The plant foods must be soluble in water. Only then can the porous root hairs take up the needed nourishment.



LOTOL

A New Form of Contact Insecticide Against Many Species of Aphis (Plant Lice) and Other Insect Pests. IN JELLY FORM NO FUSS—NO MUSS

Comes in a tube—a teaspoonful makes a gallon.

GENERAL DIRECTIONS

Dissolve 1 teaspoonful of Lotol in 1 gallon of hot or cold water. No soap required. Spray with sufficient pressure to reach all the insects and wet them thoroughly. (For smaller quantities squeeze out about 2 to 3 inches from a one-ounce tube and dissolve in 1 quart of water.)

The one-ounce tube contains 6 teaspoonfuls as usually measured, and will make from 3 to 8 or more gallons, in accordance with the proportions used.

Lotol dissolves readily in hot or cold water—being free from all insoluble particles, it forms at once a perfect spray-solution that cannot clog the spray-nozzles. The fine misty spray destroys many forms of insect life by mere contact. It is harmless to man, birds and domestic animals.

Its jelly-like consistency enables it to be offered in the smaller sizes in convenient, collapsible metal tubes. There is nothing to spill, leak, break or spoil as with liquids in glass.

1-oz. tubes, 35c each. 3-oz. tubes, 75c each.

AUTO SPRAY

For All Light Spraying and Disinfecting

A strong atomizer made of heavy tin. It is single acting and throws a fine, misty spray. The pump of this Sprayer is fitted with an oil-treated leather cup that lasts.

75c each, Delivered Parcel Post.

MELROSINE

Certain Death to Rose Bugs



The blooms are saved without spot or blemish. PERFECT—for not only the dreaded Rose Bugs, but other insects are destroyed. Moreover, the plants are cleansed and sanitized, thus preventing disease, and adding resistance to winter killing. Strengthened, invigorated and refreshed, they produce a greater number of blooms, enhanced in color, beauty and size.

MELROSINE

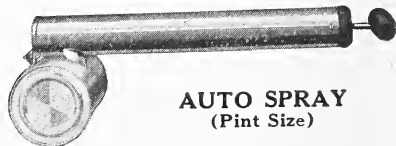
The One Universal Contact Insecticide

offering all the convenience and economy of having on hand one preparation to combat various sucking insects. It is effective for most species of Plant Lice, Black Flies, Green Flies, Soft Scale Insects, Rose Leaf Hoppers, Saw Flies, Japanese Beetles, Thrips, Red Spiders, Aster Bugs, Mealy Bugs, etc.

MELROSINE is a concentrated liquid insecticide. The simple directions on every can make it easy to use.

Trial Size50c each.

Pint Size\$1.00 each.



AUTO SPRAY
(Pint Size)



Large Specimen Plant Showing the Compact Rounded Form.

Hydrangea Arborescens Grandiflora Alba

(Hills of Snow)

A GORGEOUS variety admirably adapted for border planting either as a specimen or in masses. It fits in beautifully for foundation concealment, hinging the house to the ground. Growth is very vigorous and hardy, round and compact, usually attaining a height of from four to six feet but may be trimmed to any desired height.

It covers itself with ornamental bright green leaves which grow clear to the ground, and starts to bloom after the passing of early flowering shrubs which enhances its value. Flowers are produced in numerous flat-topped clusters, literally loading the plant with the dazzling pure white bloom in early summer and continuing to blossom for a large part of the season. One of the most handsome and valuable of all varieties.

to the ground, and starts to bloom after the passing of early flowering shrubs which enhances its value. Flowers are produced in numerous flat-topped clusters, literally loading the plant with the dazzling pure white bloom in early summer and continuing to blossom for a large part of the season. One of the most handsome and valuable of all varieties.

SPECIAL OFFER—Large Field Grown Plants, 75c each; 3 for \$1.50.

IDEAL COLLECTION FOR ROSE LOVERS

These Roses will prove a constant source of delight, blooming the entire season.

6 Fine One-Year Plants for \$1.00
6 Strong Two-Year Plants for \$2.25

- American Beauty—deep glowing crimson
- Golden Ophelia—rich golden yellow
- Jonkheer J. L. Mock—silvery rose
- Peace—rich creamy white
- Red Radiance—dazzling scarlet
- W. R. Smith—rose pink with creamy tints

12 FINE SHRUBS FOR \$3.00

A Permanent and Complete Planting Delivered to You.

They require no special care and attention, and once they are planted, they will thrive for years to come, increasing in beauty each season.

- 1 Althea Bush
(Rose of Sharon)
- 3 Barberry Thunbergi
- 1 Deutzia White
- 1 Hydrangea Arborescens
Grandiflora Alba
- 1 Hydrangea Paniculata
Grandiflora
- 1 Red Snowberry
- 1 Spirea Anthony Waterer
(Everblooming Spirea)
- 3 Spirea Van Houttei
(Bridal Wreath)



An Attractive Arrangement for Foundation Planting.

