

Historic, archived document

Do not assume content reflects current scientific knowledge, policies, or practices.

69,00

1000000000

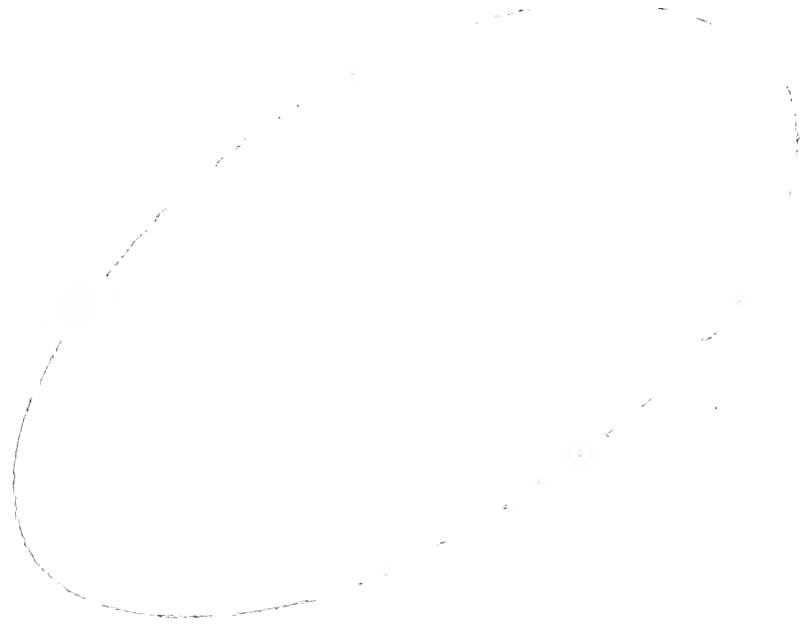
AMS FEB 10 1978

519235



ALLEN'S
Water Gardens
Los Angeles, Calif.







There's an individuality in the loveliness of a cluster of vari-colored water-lilies, waxy petals and golden hearts dripping fragrance and beauty

“Fringed Pools” for Gardens

THE reflected beauty of flowers unfolding on water gives the last exquisite touch to the allure of a garden. Nor is a lily pool a difficult thing to establish and maintain even in the simplest and smallest of grounds.

A sunken tub, or a half barrel, filled with aquatic plants, can be made into a thing of beauty at very little expense—while concrete basins, fountains and formal pools planned for more spacious lawns or gardens, may be made as stately and elaborate as individual taste demands.

Once planted in a favorable, sunny pool with rich soil for its roots, the water garden can be forgotten—till one bright summer day from among the green leaves at rest on the

water, glorious blossoms of white, or blue, or pink, or red, will shout the morning's greetings across the water's edge.

No other part of your garden will give, for twice the care, one-half the beauty and satisfaction to be found in a clear, sweet pool in which are planted water lilies, the sacred lotus, hyacinths and other lovely water growing flowers.

It may be that you would like advice and help in planning a pool for your garden. If so, a request will bring the best we have to offer after our many years in the successful growing of these plants. We are glad to be of service now—or at any time in the future.



*Where "Every morning seems to say,
'There's something happy on the way.'"
A NATURAL pool—artificially made—in
a home garden.*

Hardy Varieties of Water Lilies

Hardy Nymphaeas deserve first place in the hearts of water gardeners. They increase from year to year—their variety is great—their perfume of varying sweetness—their time of blossoming ranges from early spring to late fall—and they may be had in large or dwarf varieties to suit the size of any pool.

The Choicest are Here of New and Rare Hardies; and of old favorites as well.

Paul Hariot. A magnificent flower of large size; clear yellow, with delicate shadings of red at base of petals; continuous flowering. A most satisfactory variety, meeting with approval wherever seen. \$2.50 each.

Rose Arey. A grand variety of the Odorata type; free-flowering and free-growing. Cerise-pink; distinct. \$2.00 each.

Eugenia de Land. This grand variety belongs to the *N. odorata* group, and is unequaled by any of the same genus. Flowers extra large, of true *N. odorata* type, floating, petals long and lanceolate; color an exquisite shade of deep iridescent rose-pink hues, with yellow stamens. Vigorous and free-flowering. \$1.50 each.

Gloriosa. A superb variety with flowers of deep carmine-rose 4 to 6 inches across. A free, continuous bloomer and a very desirable lily for general use in tubs or pools. \$3.00 each.

James Brydon. A lily with rose-crimson flowers, 4 to 6 inches in diameter. \$3.00 each.

Escarboucle. The most brilliant hardy Water Lily yet introduced. The flowers, which are produced very freely are a brilliant crimson carmine with bright orange center. 6 to 8 inches across. \$10.00 each.

Lucida. A free grower and good bloomer. Flowers are large, star-shaped; rosy vermilion; darker centers; stamens orange; leaves blotched reddish brown. A magnificent variety. \$2.50 each.

Comanche. The largest and finest of all the varieties having apricot tints. The flower has a wonderful combination of orange and glowing amber red. \$5.00 each.

William Falconer. The most brilliant dark red, hardy water-lily in cultivation. Flowers 5 to 6 inches across. \$5.00 each.

Marliacea albida. A vigorous variety; flowers large, of sparkling whiteness, stamens light yellow, petals flushed pink; fragrant and produces freely and continuously through the season. \$1.00 each.

Marliacea carnea. Similar to the preceding save in color, which is of a soft flesh pink, deepening toward the base of the petals. \$1.00 each.

Marliacea chromatella. A free and vigorous grower; flowers 6 to 8 inches across, bright canary-yellow, stamens deep yellow, leaves deep green, beautifully blotched with brown. This variety should be included in every selection. \$1.50.

Marliacea rosea. Resembles N. M. Carnea in habit and growth; flowers large, deep rose color. Young leaves purplish red, changing to deep green. One of the very best pink hardy water-lilies in cultivation. Also good for cutting. \$1.50 each.

Oderata sulphurea grandiflora. Flowers fragrant, very large, sulphur yellow, standing well above the water. A very desirable and unique variety. \$1.50 each.

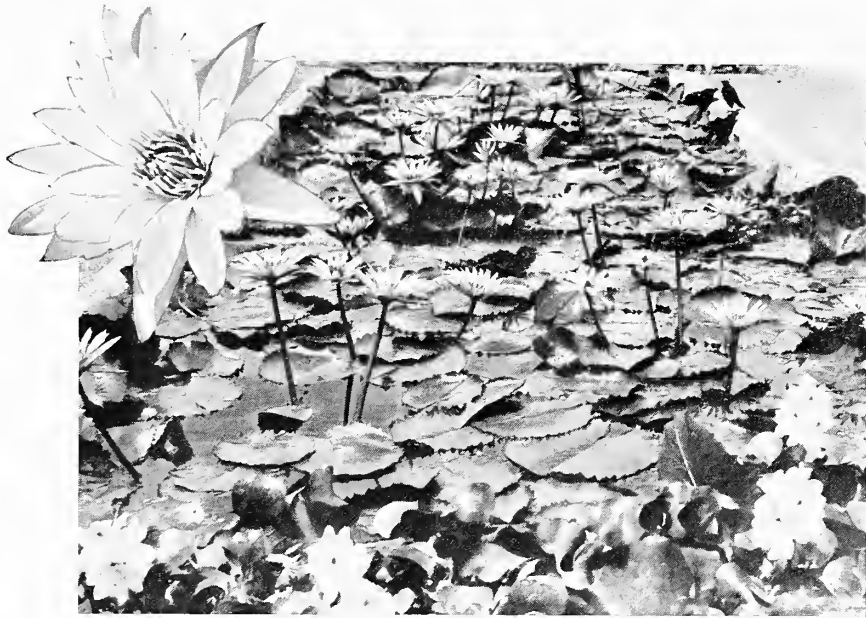
Pygmaea Helvola. A yellow N. pygmaea, a very dainty lily and extremely free-flowering; flowers 1½ to 2 inches across; quite a novelty and well adapted to tub culture. 50c-\$1.00 each.

Robinsoni. Large floating flowers of dark orange red. A free bloomer and should be in every collection. \$2.50.

William Doogue. A magnificent lily. Flowers cup shaped. 5 to 6 inches across, of beautiful shell pink; deliciously fragrant. The plant is a continuous bloomer and very desirable. \$1.50 each.



A beautiful arrangement of hardy and tender lilies in the background in a small artistic pool. Above—an enlarged hardy, showing the full charm of its many-petaled loveliness.



Tender lilies grow high above the water, as though flaunting their beauty for all the world to see. The enlargement shows the detail of the graceful blossom.

Tender lilies are both day and night bloomers which grow luxuriantly, produce flowers of magnificent size, and of exquisite coloring—including beautiful shades of blue, a color not found among the Hardies.

Tender Nymphaeas

Mrs. Woodrow Wilson. A hybrid of *N. Daubeniana*. A strong and vigorous grower, of free and continuous blooming habit, and excellent for winter blooming in the conservatory. The flower is of a lovely shade of light blue, stamens yellow, tipped blue. \$3.50.

Panama-Pacific. A new, everlasting, viviparous variety, and one of the most desirable of the late introductions. The buds are bronzy green, marked and spotted reddish brown; on opening, the petals are a rich deep rosy red, very pronounced when in the full sun; the same color is diffused on the overlapping sepals. When fully open the flower is a rich reddish purple, with yellow stamens, a unique and distinct color in water-lilies. \$5.00 each.

Ernst Ludwig. This hybrid of the *Stellata* type produces enormous flowers of deep violet-blue. It is a very early and continuous bloomer, a vigorous grower and should be allowed ample space. \$2.50 each.

Caerulea. Flowers 3 to 6 inches across; buds conical pointed; sepals thickly marked with black lines and dots; petals lanceolate-acute, light blue above, lower half dull white, stamens yellow. \$1.50.

Daubeniana. The most striking difference between this and other *Nymphaeas* is that young plants spring from the upper surface of the leaf, just over the insertion of the petiole, these young plants producing flowers at a very early stage. The flowers are of a light blue, delicately fragrant. Blooms without intermission summer and winter. \$1.50 each.

Wm. Becker. An improved form of Wm. Stone, which has long been one of the best hybrid Water-Lilies. It belongs to the same family, identical in every respect, save color and size of flower, being larger and of a rich violet-purple. \$2.50 each.

Capensis. (Cape Blue Water Lily.) Flowers are rich sky blue, 6 to 8 inches across, sepals green outside; whitish within, flushed blue. Useful for cutting. \$1.50.

Gracilis. The only white day-flowering tropical species in cultivation. Leaves green, 15 to 17 inches across; flowers white, 6 to 8 inches across; stamens deep yellow; distinct and free flowering; the flowers stand a foot or more out of the water; are delicately fragrant. Desirable for cutting. \$1.50.

Mrs. C. W. Ward. A hybrid of *N. Gracilis*. Flowers 6 to 8 inches across; on stout stems, high above the water; deep rosy pink with golden yellow stamens. \$2.50.

Pennsylvania. An improved *N. Pulcherrima*, but with flowers much larger and of a deeper, richer blue. This variety possesses all the good points of that grand free and continuous flowering blue *Nymphaea*. \$3.00.

Mrs. Edwards Whitaker. The largest flowering day blooming hybrid. The enormous flowers are often 13 inches in diameter. The color upon opening the first day is lavender-blue, lightening as the flower matures in four or five days. Very fragrant. Price \$5.00.

William Stone. A hybrid of *N. gracilis*. The flowers are 5 to 8 inches across, of a rich violet blue; stamens purple, with yellow center. Blooms stand well out of the water; open early and remain open all day. \$2.50.

Zanzibariensis. This is the true royal purple Water Lily of Africa, and ranks as the best dark blue water-lily in cultivation. The surface of the leaves is deep green, the reverse being green and violet; they are from 8 to 15 inches in diameter. The flowers measure from 5 to 8 inches across; the petals are deep blue, sepals green on the outside, purplish blue on the inner side. \$1.50.

Zanzibarensis azurea. Similar to the above. Flowers open wider and are lighter blue. \$1.50.

Zanzibarensis rosea. Flowers of various shades of rose, otherwise like the preceding. \$1.50.

NIGHT BLOOMING NYMPHAEAS

Dentata Superba. It has a beautiful pure white flower measuring from 8 to 12 inches in diameter, with yellow stamens. The sepals are green, with greenish white stripes on the outside, the inner side being white. The leaves are large, deep glossy green, finely dentate. The plant flowers very freely and the flowers are very sweet scented. \$3.00 each.

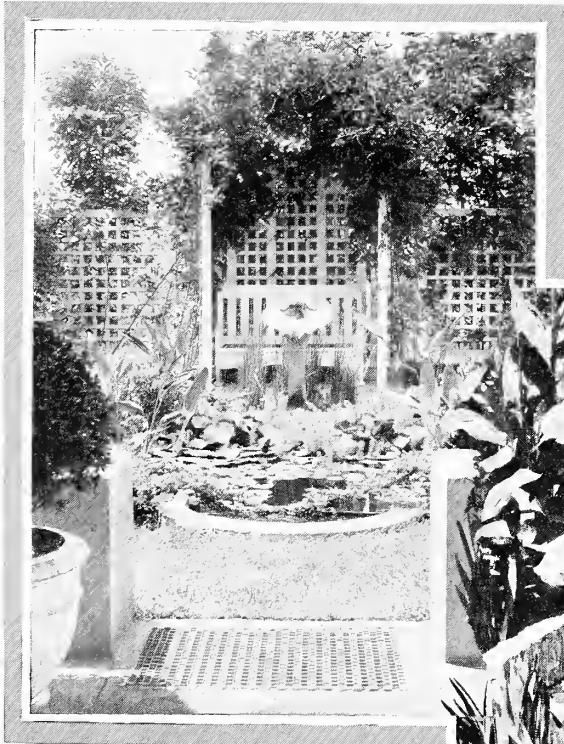
Devoniensis. Flowers 8 to 10 inches across; of bright rosy red; borne on stout stems well above the water. The plant blooms freely and is one of the most desirable varieties. \$1.50 each.

Frank Trelease. A superb variety. The rich crimson flowers are 8 to 10 inches in diameter, and the stamens are mahogany red. The leaves are very attractive, being dark bronzy red. A most desirable variety. Price \$1.50 each.

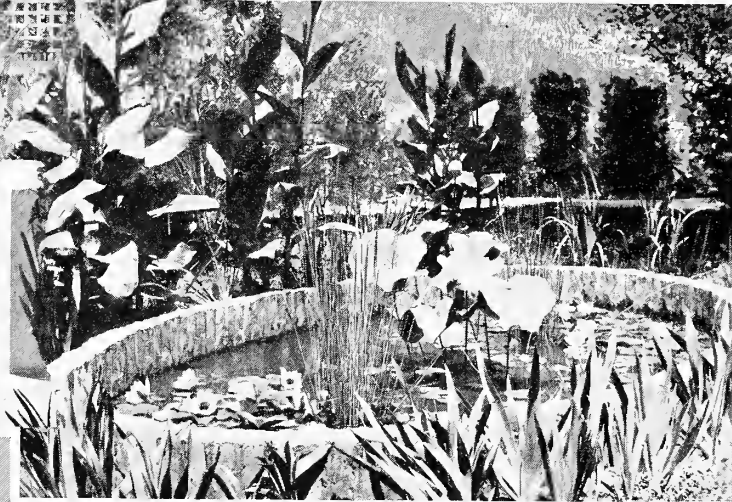
Bissetii. A night-bloomer of unusually free-blooming habit. The flowers are of a beautiful rose-pink color, 8 to 10 inches across; the petals are broad and slightly concave, giving the bloom a cup-shaped form. Price \$2.00 each.

Bits of Loveliness Transplanted

Designed and planted under the supervision of Mr. Allen, lily and lotus pools add the last perfect touch to the beauty of these Southern California gardens.



A tiny spot, but perfect in every detail, is the lily pool in Mr. A. Getty's garden, Los Angeles, Calif.



Between these lilies, the piquant features of Kathryn Williams is often-times reflected.

d from Allen's Water Gardens

In many ways the gardeners of Southern California have the advantage over those in other portions of our country—but not in the culture of water gardens. These are not only possible, but easy of cultivation in every State of the Union.

A restful pool, where lilies "fold their sweetness up" and dream away their days—Polytechnic High School, Venice, California.



A setting for a lovely lady—where Fanny Ward spends many hours of leisure when "off location."

The Lotus

(Nelumbiums)

Perhaps no plant carries such an atmosphere of ancient lore—of history, mystery, religion and romance, as does the Lotus—the sacred flower of many nations. The lovely Lotus blossom is borne on tall stems towering above handsome leaves. It begins to bloom in June and continues to flower generously throughout August.

Tubers are for sale only in March and April. After that Nelumbiums—or Lotus must be purchased in tubs as they do not blossom well when disturbed.

Shiroman. This superb variety, with large, full, double snow-white flowers, borne on stalks well above the foliage, is a vigorous grower, free flowering and very hardy. Dormant tubers \$5.00; pot plants \$6.00.

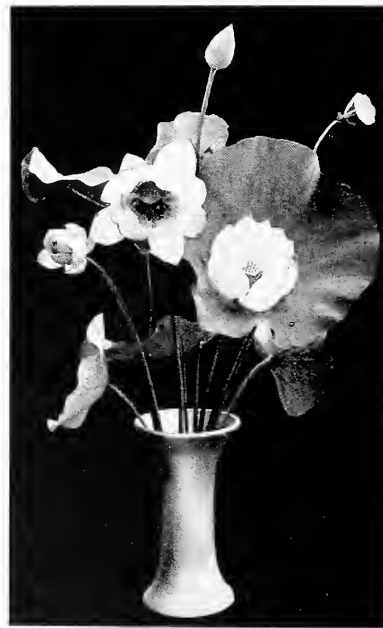
Album striatum. A beautiful globular flower, pure white; petals delicately striped and margined rich carmine; exquisitely fragrant. A distinct and very choice variety. \$2.50 each; pot plants \$3.50.

Kermesinum. A delicate rose pink; the earliest flowering. \$2.00; Pot Plants \$3.00.

Luteum. The American Lotus. This is a native variety indigenous to the southern and western states. The flowers are creamy yellow. This plant is very good for large plantings. \$2.00; Pot Plants \$3.00.

Roseum plenum. A magnificent variety with large, full, double, bright rose flowers. This is one of the finest Nelumbiums in cultivation. \$5.00; Pot Plants, \$6.00.

Speciosum. (Egyptian Lotus.) Exquisite flowers of a beautiful rose color; vigorous and free flowering. \$2.50; Pot Plant \$3.50.



*Stately as an Ancient Chant, their
Serene Beauty Greets the New Day.*

Attractive Miscellaneous Aquatics

Myriophyllum proserpinachoides. (Parrot Feather). An aquatic plant having long, trailing stems, covered closely with whirls of most delicate foliage. 15c each.

Pontederia cordata. (Pickerel weed). A free-flowering plant, growing about 2 feet high and producing spikes of closely set blue flowers. A very artistic aquatic. 25c each.

Sagittaria Montevicensis (Giant Arrowhead). Attains gigantic proportions, growing 4 to 5 feet high, leaves 15 inches long, flower-scape towers above the foliage, bearing white flowers, suitable for margins or damp spots. 25c each.

Sagittaria Paponica. The double-flowering Arrowhead; very desirable for planting in shallow ponds and for border of pools. 50c each.

S. Sinensis (Giant Sagittaria). Leaves broad and strong; dark green; free grower. 50c each.

Thalia dealbata. A fine and stately aquatic, with canna-like leaves, to be grown in shallow water or wet soil. Effective for the margin of a pool. 50c each.

Eulali Japonica zebrina (Zebra Grass). A very ornamental grass, 3 to 4 feet high; the blades are barred with green and yellow. 25 cents each.

Iris Kaempferi (Japan Iris). Grows well around the water gardens in moist, rich spots. This is the finest iris that grows and comes in many different colors. \$4.00 per doz.

Cyperus alternifolius (Umbrella Palm). A very ornamental plant for the water side. Also grows well in the water and moist ground. 50c.

C. Papyrus (Egyptian paper plant). Grows to a height of 6 to 8 feet, surmounted with a tuft of long thread-like leaves. 50c up.

Limnocharis humboldtii (Water Poppy). A very pretty aquatic plant, with floating leaves and large, yellow poppy-like flowers. Continuous bloomer. 15c each.

Eichhornia crassipes major (Water Hyacinth). Flowers delicate lilac-rose in trusses like a Hyacinth. The plant is a floater and only requires placing in water, where it will take care of itself. For the best results it should be confined to shallow water 2 to 8 inches deep, where it will root into the mud and be a mass of bloom from July to October. \$1.00 per dozen.

A bed of floating Hyacinths is like a bit of the sky dropped down into a corner of your garden.



A Few Facts Concerning Planting and Growing

Water lilies do best in still waters, for it is in water, comparatively without motion, that they find their happiest environment.

Smaller pools may be about two feet in depth, while in larger ponds the deepest water may be three or four feet.

Water lilies should be planted in sunken boxes a foot deep; or, if preferred, the whole pool may be prepared with one foot of good soil in which one part of well rotted cow manure has been well mixed with three parts of earth. Over the top of this spread one inch of sand.

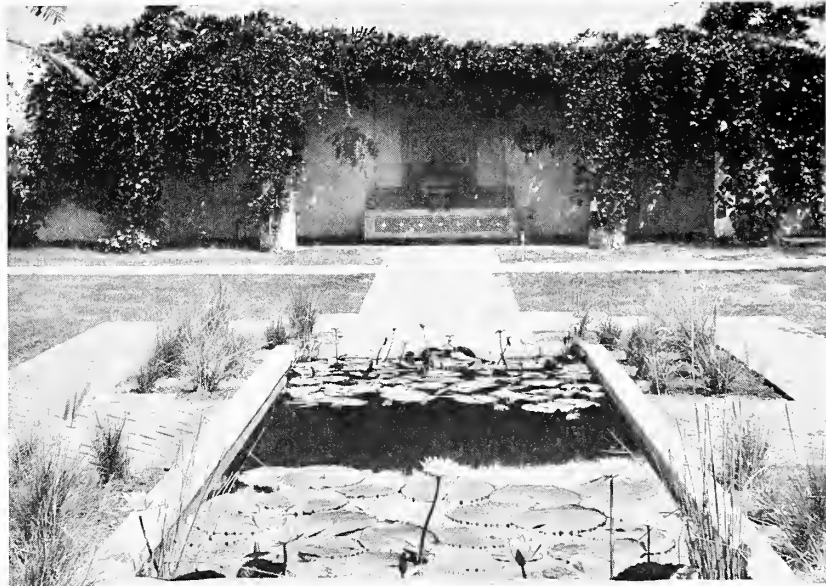
Press the roots into the soft soil in box or bottom of pool till the crown of the plant is covered with soil.

Plant from two to four feet apart—in large pools allowing from ten to twenty-five feet between groups, which may contain one or two each of several varieties.

Tender Night Blooming varieties are the strongest growers and should be allowed from ten to twelve feet in which to spread. Tender day blooming plants need an area of eight feet in diameter, while large hardy varieties demand from six to eight, and the dwarfs but two or three.

In still pools care should be taken that water lost through evaporation is replaced.

Nature and Art have here combined and produced Beauty passing fair.



Aquarium Lore---Satisfactory Plants and Snails

TO keep an aquarium sweet and pure, the water need not be changed often—it is really unnecessary to change it at all.

The aquarium must not be overcrowded—animal and plant life must be well balanced—and snails should be provided to consume the natural decay and decomposition that takes place in the aquarium. The best varieties for this purpose are the Japanese, African paper shell, and red European Ramshorn snails. These we can supply at from ten to twenty-five cents apiece.

In the aquarium one sees beauty and grace made animate. The flash of gold among the dark green fronds of swaying aquatic plants, seen through clear, crystal water in which both fish and plants live and thrive, creates an object of never flagging interest and beauty.

Anacharis. One of the best aquarium plants, as it is a good oxygenator. In form it is moss-like, the leaves growing on a fragile stem, the entire plant being submerged at all periods. A very attractive plant of dark green growth and very easy to keep in the globe or aquarium. 15c a bunch.

Myriophyllum verticillatum. A very pretty aquarium plant with fine hair-like leaves of a bright green color. Very useful for spawning, as it is a clean plant and does not harbor enemies of little fish. 15 cents each.

Nitella. A slender leaf aquatic. Grows well in the aquarium. 15c each.

Ludwigia. This is one of the most important aquarium plants on account of the decorative value and pronounced individuality. 15 cents a plant.

Trainea. This is an attractive, small floating plant with heart-shaped leaves. The leaves are dark green with red on the under side and the silvery roots are very pretty in aquarium. 15 cents a plant.

Vallisneria. A very pretty, long-leaved plant that is very useful as well as ornamental in the aquarium. 15 cents a plant.

Sagittaria natans (Ribbon Arrowhead). One of the best aquarium plants. Has ribbon-like leaves and thrives under any conditions; a very good oxygenator and quite attractive. 15 cents a plant.

Goldfish

Gold fish are most satisfactory and beautiful for the water garden. They consume the larvae of mosquitoes and other insects.

We have all varieties, in season, at reasonable prices and will be glad to advise as to number and kind best suited to your pool.

A Special Offer for Small Pools

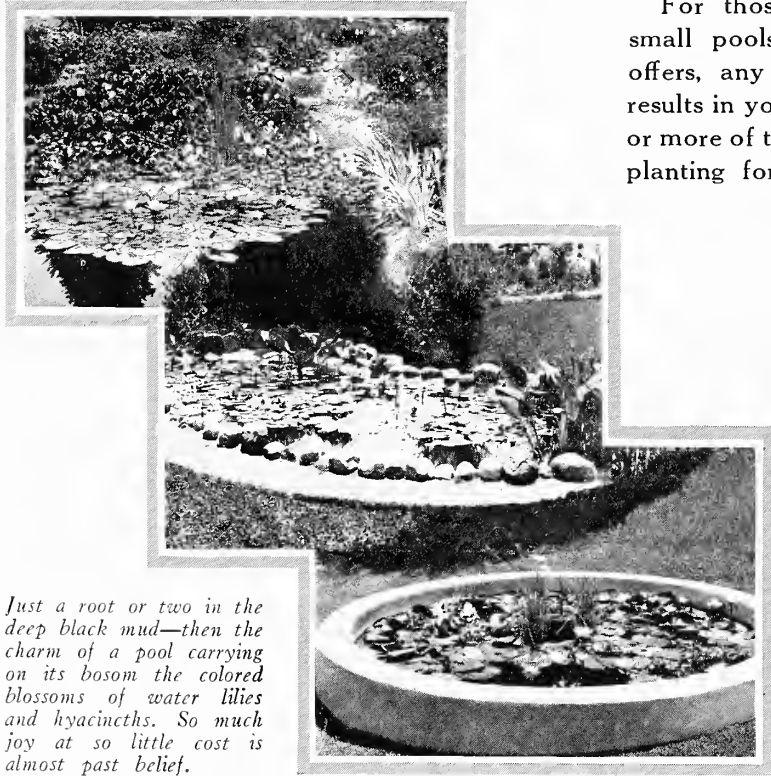
For those who wish to experiment with small pools, we have planned four special offers, any one of which will give beautiful results in your garden. A combination of two or more of these offers will give a well balanced planting for larger pools.

Offer 1. Three hardy lilies—yellow, white and shell pink; \$2.50.

Offer 2. Two hardy lilies—yellow and shell pink; two tender lilies—blue and deep pink; \$4.00.

Offer 3. Six lilies—all different colors, \$6.00.

Offer 4. 10 lilies—our own selection—six hardy and four tender or tropical, \$10.00.



Just a root or two in the deep black mud—then the charm of a pool carrying on its bosom the colored blossoms of water lilies and hyacinths. So much joy at so little cost is almost past belief.

Making Up Your Order

Print names of varieties desired and give price quoted so no mistake can be made.

Place orders early—preferably NOW—for Spring deliveries. This will prevent delay of shipment after plants are ready.

All care will be used in packing, and every precaution taken to secure safe transit, but we assume no responsibility for delay or damage in transit.

All shipments are inspected by the State Horticulture Inspector before being packed,

and bear the tag of his inspection when leaving our gardens.

We ship by express—purchaser to pay all transportation charges.

Our prices are quoted net and cash is expected with your order.

We are always glad to give any advice regarding the construction and cultivating of water gardens. Detailed instructions for planting will be given with orders whenever requested.

ALLEN'S WATER GARDENS

Childs and Rowena Streets

Los Angeles, Calif.

Allen's Water Gardens

Childs and Rowena Streets
One Block South of Los Feliz Boulevard
Los Angeles, California



