

Historic, archived document

Do not assume content reflects current scientific knowledge, policies, or practices.

722

~~1924~~

Baker Bros. Nursery

ESTABLISHED 1884

Fort Worth, Texas

~~1924~~

Duplicate

PRICE LIST

FALL, - 1924

SPRING, 1925

A Growing Sense of Beauty



THE NURSERY business in the Southwest is growing by leaps and bounds. Especially is this true in the ornamental line; there is an ever-increasing desire for the adornment of the home surroundings. Our stock this season is probably twice as large as that of any previous year, and yet already before preparing our catalogue, we are sold out on some items. Good rains, big cotton crop, cheap money and a better appreciation of trees; all conspire to make an unusual demand. Orders should be sent in early before the stock is broken or picked over.

WHY BUY FROM US. In addition to giving better stock than is offered by most other nurserymen, we think we can sell good stock cheaper than others, because we do not employ agents or solicitors in any capacity. We do not publish an expensive catalog and do not maintain an expensive city office, but grow our own trees on our own land, and sell only for cash, thus eliminating much of the usual overhead expense and heavy losses from bad accounts. In this way we give our customers the benefit of these advantages in reduced prices and better stock.

OUR GUARANTEE. We guarantee to send out healthy trees, true to name and free from disease, and if we fail in this we stand ready, upon proper proof, to replace such stock, or refund the purchase price, but we do not hold ourselves liable for an amount greater than the original price. **BUT WE DO NOT GUARANTEE STOCK TO LIVE.** We are unwilling to be responsible for improper planting, handling and cultivation; for droughts, freezes, bad soil, insects, rabbits, diseases or anything else that

might prevent a tree from growing.

If goods are not accepted on these conditions they must be returned at once. Not in one case out of ten is the nurseryman responsible for the failure of trees to grow, and for this reason we are unwilling to assume any responsibility.

We are always glad to have visitors. If you come by auto, go out East Third Street and follow the street car line right to our office. If by street car, take any car and ask for transfer to the Riverside line, getting off at Third and Main; walk one block east where you get the street car which runs right through our nursery.

TERMS. Cash with order. We deliver our trees in good condition to the transportation companies, but do not give any guarantee as to their safe delivery or as to their growing. All prices f. o. b. Fort Worth.

RELIABILITY. We are members of the American Association of Nurserymen, and no one can obtain or retain membership in it who is not honorable and fair in his dealings. Address:

Baker Bros. Nursery
Fort Worth, Texas





The Setting of Shrubs Softens the Severe Lines of This Colonial Residence.

Ornamentals

The demand for ornamental trees for home beautification, for parks, etc., seems to be almost doubling every year. By confining our efforts solely to the nursery business we have been able in the past few years to increase our production many fold, so that now we are able to take care of almost any order, no matter how large or varied.

When carload lots of evergreens, shade trees and shrubs are needed it is always best to come to the nursery and pick out the trees. We make a specialty of supplying parks, cemeteries, subdivisions and large estates. In car lots the freight and packing are much cheaper, and we can sell at a lower price in quantities. In addition to what is offered in the following list, we have some specimens of much larger sizes, for quick effects in landscape planting. We can also furnish a few each of many kinds not listed.

Shade Trees

ASH, Native:	Each	Doz.
3-4 feet	\$0.25	\$ 2.50
6-8 feet50	5.00
10-12 feet	1.00	10.00
2-2½ inch caliper	2.00	20.00
3-4 inch caliper	3.00	

BLACK WALNUT:	Each	Doz.
3-4 feet	\$0.50	\$ 5.00
5-6 feet	1.00	10.00
7-8 feet	1.50	15.00
Specimens, \$3.00 to \$6.00 each.		

CHINA, Umbrella. While the Umbrella China does not live more than 10 to 20 years, it is the best tree to plant for quick and dense shade. A few large Chinas planted on a new place will begin making good shade the first Summer. This will allow the permanent trees, like pecans, elms, etc., to become large when the Chinas may be cut down. They do well in almost any kind of soil, and seem to flourish in the hottest weather.

	Each	Doz.
4-5 feet	\$0.50	\$ 5.00
5-6 feet75	7.50
6-7 feet	1.00	10.00
Heavy, well branched	1.50	15.00
Extra heavy	2.00	20.00



A Block of Baker Umbrella Chinas.

BAKER BROTHERS NURSERY, FORT WORTH, TEXAS

CATALPA:	Each	Doz.
4- 5 feet	\$0.50	\$ 5.00
6- 8 feet75	7.50
9-10 feet	1.00	10.00
2-2½ inch caliper	1.50	15.00
3-4 inch caliper	2.50	25.00
C. bungei	2.50	25.00
COTTONWOOD:	Each	Doz.
6- 7 feet	\$0.50	\$ 5.00
10-12 feet	1.00	10.00
ELM, American or White:	Each	Doz.
5- 6 feet	\$0.50	\$ 5.00
7- 8 feet75	7.50
9-10 feet	1.00	10.00
1¼-1½ inch caliper	1.50	15.00
1¾-2 inch caliper	2.00	20.00
Specimens, \$3.00 to \$10.00 each.		
HACKBERRY:	Each	Doz.
6- 7 feet	\$0.50	\$ 5.00
8- 9 feet75	7.50
9-10 feet	1.00	10.00
JUDAS TREE (Redbud). The value of the Redbud does not seem to be appreciated until it begins to bloom in the Spring, then everybody wants it. We advise our friends to order a few right now while it is on their minds.		
	Each	Doz.
4- 5 feet	\$0.50	\$ 5.00
6- 7 feet	1.00	10.00
9-10 feet (heavy)	2.00	20.00
LOCUST, Black. Largely used in the plains country of West Texas and New Mexico. A rapid grower and very easy to transplant.	Each	Doz.
4- 5 feet	\$0.25	\$ 2.50
6- 7 feet50	5.00
8- 9 feet75	7.50
10-12 feet	1.00	10.00
2-2½ inch caliper	1.50	15.00
3-4 inch caliper	2.00	20.00
MAPLES, Soft or Silver:	Each	Doz.
3- 4 feet	\$0.25	\$ 2.50
5- 6 feet50	5.00
7- 8 feet75	7.50
9-10 feet	1.25	12.50



The Driveway Should be Carefully Planned.

MULBERRY, Russian:	Each	Doz.
8-10 feet	\$1.00	\$10.00
2-3 inch caliper	2.00	20.00
OAKS, Pin:	Each	Doz.
6-8 feet	\$1.00	\$10.00
1¼-1½ inch caliper	1.50	15.00
2 -2½ inch caliper	2.50	25.00
3 -3½ inch caliper	4.00	40.00
We also have a few large specimens of Chestnut, Burr and Scarlet Oaks. Same price.		
PECANS. One of our very best shade trees and should be more generally planted. They grow slowly the first two or three years, but once they become established they grow rapidly, and in ten or twelve years will be as large as most other trees of the same age. For prices on our fine paper-shelled varieties see page 16.		



A Screen Planting of Evergreen and Deciduous Trees



Sycamores Are Very Satisfactory in Street Plantings.

POPLAR, New Chinese. Promises to be a very desirable tree. Upright in its habit like the Lombardy and Bolleana, but altogether distinct in its foliage. A good grower and very handsome.

	Each	Doz.
4-5 feet	\$0.50	\$ 5.00
6-7 feet75	7.50
7-9 feet	1.00	10.00

P. Carolina:

	Each	Doz.
4- 5 feet	\$0.25	\$ 2.50
6- 7 feet50	5.00
9-10 feet	1.00	10.00

P. Lombardy:

	Each	Doz.
6- 7 feet	\$0.50	\$ 5.00
9-10 feet	1.00	10.00

P. Bolleana:

	Each	Doz.
4- 5 feet	\$0.50	\$ 5.00
6- 8 feet	1.00	10.00
9-10 feet	2.00	20.00

SOPHORA japonica:

	Each	Doz.
6-8 feet	\$1.00	\$10.00

STERCULIA platanifolia (Japanese Var-nish):

	Each	Doz.
3- 4 feet	\$0.50	\$ 5.00
5- 6 feet	1.00	10.00
7- 8 feet	2.00	20.00
9-10 feet (heavy)	4.00	

SYCAMORE, American. Still the best all around shade tree for the Southwest. Every five or six years, the entire top of the tree should be cut off, leaving only a bare stem fifteen feet high and a few spurs two or three feet long. In a few months a beautiful new top will be formed. Treated this way, the leaves do not become small and yellow, and fall off in Summer. If any one is afraid to do this, let him try one tree and be convinced. Each Doz.

4-5 feet	\$0.50	\$ 5.00
6-7 feet75	7.50
8-9 feet	1.00	10.00
1¼-1½ inch caliper	1.50	15.00
1½-1¾ inch caliper	2.00	20.00
1¾-2 inch caliper	2.50	

Extra large trees, \$4.00 to \$10.00 each.

S. European. Similar to the American variety. In the North and East it is preferred to the American, but with us it is not as thrifty a grower nor does it hold its foliage as well. Price same as for the American in the three smaller grades.

WILLOW, Weeping:

	Each	Doz.
3-4 feet	\$0.50	\$ 5.00
5-6 feet75	7.50
6-8 feet	1.00	10.00

W. Pussy:

	Each	Doz.
Small trees	\$0.50	\$5.00



The Stately Lombardy Poplar.



Evergreens

In no other class of nursery stock has there been such an increased demand as in evergreens. In fact, nearly all the increase in the use of nursery stock has been in evergreens. Perhaps there are not as many shrubs planted as formerly, for the reason that many people are throwing away their old shrub beds and replacing with evergreens. In fact, just now they are the style. Especially is this true in the North and on the Pacific Coast, where fine landscape work is more in evidence than it is in the Southwest. Here we have had to overcome the prejudice in the minds of some that evergreens have a "graveyard" effect. This prejudice is also due to the fact that only the commoner kinds of arbor-vitae and cedars have been used. Another reason for their unpopularity is that people have tried to grow the kinds seen in the North, such as firs, spruces, rhododendrons and other kinds wholly unsuited to our soils and climate. But the truth is we have more and prettier evergreens that thrive here than they have in the North or East. In our nursery at present we have more than one hundred different kinds growing successfully, and this list is being added to every year as we try new ones. Just as fast as we can work up sufficient stock of the new kinds they will be offered. We are offering several new kinds this season. All the evergreens listed below, both broad leaf and conifers, are growing luxuriantly in our nursery at Fort Worth, and that too, during the last two or three extremely hot and dry Summers. Another cause for failure is that heretofore it was the custom to plant evergreens bare rooted, just as you do a tree. But this should never be done except with the Chinese Arbor-Vitae, the Euonymus and some of the other broad-leaf evergreens. The way to handle evergreens successfully is to move them with a ball of earth around the roots, securely held by burlap—"balled" as we call it. In this way even trees 15 to 18 feet high can be moved successfully. The foliage of evergreens should be sprinkled every day or two during the first season. The roots should be watered once a week. If these directions are observed, evergreens may be grown with as much success as shade trees.

There are two distinct classes of evergreens, namely Broad-leaved and Conifers. Many of the broad-leaved are good bloomers, such as the Magnolias, Cape Jasmine, Abelias and some of the Ligustrums. These are useful for massing, for hedges and as individual specimens. The conifers may be used as individual specimens, or in groups on the lawn, for street planting and also for massing. The proper use of the finer evergreens as foundation plantings around the house, will produce the very finest results, and this is the class of work that is certain to become very popular. Already many people are taking out their old shrubs that have grown too large and ragged, and in their places are setting the many colored Junipers, Cypresses, Arbor-Vitae, Fines, etc., or the various broad-leaves such as Euonymus, Abelia, Ligustrum nepalense, etc. With a proper use of evergreens the beds will look pretty the year around, and especially is this appreciated in Winter when everything else looks bleak and bare.



Permanent Foundation Planting of Broad Leaved Evergreens.

Broad Leaved Evergreens

- ABELIA.** Produces continually thousands of light pink flowers. 12 to 18 inches, 50c each; \$5.00 per doz. Large plants, \$1.00 to \$2.00 each.
- BUXUS** (Boxwood). Several kinds, including *arborescens*, *sempervirens*, *japonicus* and *elegans*. Natural shapes. 12 to 15 inches, \$1.00; 15 to 18 inches, \$1.50, each. Sheared plants, 12 to 15 inches, \$2.00; 15 to 18 inches, \$2.50; 18 to 24 inches, \$3.50; 30 to 36 inches, \$5.00, each.
- COTONEASTER** *pannosa*. 2 to 3 feet, \$1.50.
- CRATAEGUS** *pyracanthus*. 3 to 4 feet, \$2.00.
- CAPE JASMINE.** White flowers, large and fragrant. Large, \$1.00 each; extra large, \$1.50 each.
- ELEAGNUS** *edulis*. Large plants, \$3.00 each.
- E. reflexa.** 2 to 3 feet, \$2.00 each.
- EUONYMUS** *japonica*. Perhaps the best of our broad-leaved evergreens. Grows easily in sun or shade, and any soil. 12 to 15 inches, 50c; 18 to 24 inches, \$1.00; 2 to 3 feet, \$1.50; 3 to 4 feet, \$2.00.
- E. japonica compacta.** Neat, compact form. Fine for vases and tubs. 12 to 15 inches, 75c; 18 to 20 inches, \$2.00.
- E. japonica aurea.** Golden leaf. 18 to 20 inches, \$1.50; 24 to 30 inches, \$2.50.
- E. japonica argentea.** Silver leaf. 18 to 20 inches, \$1.50; 24 to 30 inches, \$2.50.
- E. japonica compacta.** Silver leaf. 10 to 15 inches, \$1.00; 15 to 20 inches, \$2.00.
- E. japonica, Duc d'Anjou.** Fine golden-leaved. 2 to 3 feet, \$2.00 each.
- E. radicans.** 50c to \$1.00 each.
- E. sieboldiana.** 50c to \$2.00 each.
- FEIJOA.** See fruit trees, page 16.
- LIGUSTRUM** *amurense*. Fine feathery foliage. 2 to 3 feet, 25c; 4 to 5 feet, 50c; 5 to 6 feet, \$1.00.
- L. japonicum** (Japan Privet). Large leaf; very popular. 2 feet, 50c; 3 to 4 feet, 75c; 4 to 5 feet, \$1.50; 6 to 7 feet, \$2.00.
- L. nepalense.** Compact grower, waxy foliage. 2 feet, bushy, \$1.50; 3 feet, \$3.00.
- MAGNOLIA** *grandiflora*. 3 to 4 feet, \$3.00; 4 to 5 feet, \$4.00; 5 to 6 feet, \$6.00.
- MYRTUS** *communis* (Sweet Myrtle). Beautiful evergreen, small shrub. 12 to 15 inches, 75c; 18 to 20 inches, \$1.50; 2 to 3 feet, \$2.50.
- NANDINA.** Very attractive. Foliage is a beautiful bronze all Winter. 10 to 12 inches, \$1.00; 2 feet, \$2.50; 3 feet, \$4.00.
- FITTIOSPORUM** *tobira*. \$1.00 each.
- P. tobira.** Silver leaf. \$1.00 each.
- SOUTHERN LAUREL.** Sometimes called Wild Peach. 1½ to 2 feet, \$1.50; 3 to 4 feet, \$3.50; 4 to 5 feet \$5.00. All fine, sheared specimens.
- YUCCA.** Several kinds. \$1.00 each.



Mass Planting of Conifers With a Few Broad Leaved Evergreens.

Coniferous Evergreens

The following Coniferous Evergreens are especially suited to the climatic conditions of the Southwest, which, roughly speaking, comprises the territory west of the Mississippi to the Rocky Mountains, and from Nebraska to the Gulf of Mexico. Not that all these will not grow well east of the Mississippi and on the Pacific slope, because they will, but that there are many evergreens that succeed in the other localities that will not stand the hot, dry Summers and heavy winds of this section. For instance, we list below nine different varieties of arbor-vitae; all of these seem to delight in the heat and drought of our worst Summers. But these are all of the Oriental or Chinese type of arbor-vitae, while all of the many varieties of the American type, which grow well in the North and East, will burn up in our section of the country. And so it is with the other evergreens of this list. The cypresses, cedars and cedrus deodora, and many of the junipers, seem to do better here than almost anywhere else. The moral is that planters in the Southwest should use only such evergreens as are grown in the Southwest. Then there will be fewer disappointments.

ARBOR-VITAE (Thuya).

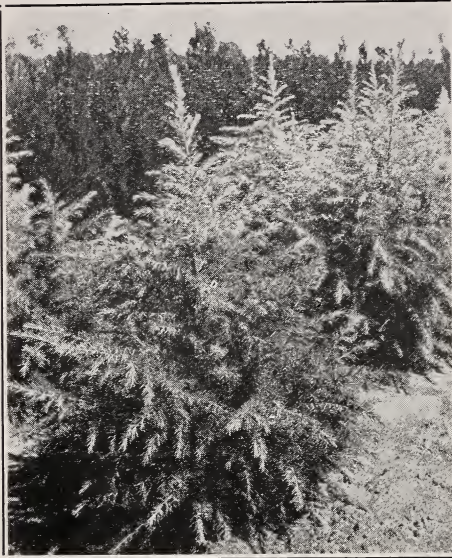
T. aurea nana. Dwarf Golden.	
12-15 inches	\$1.50
15-18 inches	2.00
18-24 inches	2.75
24-30 inches	3.50
30-36 inches	5.00

T. aurea conspicua. Tall growing, very golden.	
18-24 inches	\$2.00
24-36 inches	3.00

T. Baker's. The best of compact pyramidal green forms.	
12-15 inches	\$0.75
15-18 inches	1.25
18-24 inches	1.75
2-2½ feet	2.50
2½-3 feet	3.00
3-3½ feet	4.00
3½-4 feet	5.00
4-4½ feet	6.00
4½-5 feet	7.50



Block of Baker's Arbor-Vitae and Aurea Nana.



Cedrus Deodara. Photographed Sept. 23, 1924.

T. Rosedale. Neat, compact grower; fresh, glaucous green color. Inclined to be dwarf. Very pretty when young, but loses its beauty after a few years or after it grows four feet high. Useful in mixed evergreen beds, and may be removed as the other plants grow and need more space.

12-15 inches	\$0.75
15-18 inches	1.00
18-24 inches	2.00
24-30 inches	2.50

T. texana glauca. Another Arbor-Vitae of the Rosedale type, with fine, feathery, glaucous foliage, but it is a tall, rapid, open grower and will attain a height of 40 feet. By shearing, the foliage becomes dense. Easy to transplant. Useful for massing or as large specimens.

2-3 feet	\$1.00
3-4 feet	1.50
4-5 feet	2.50
5-6 feet	4.00

T. compacta. Dwarf, bushy, green.

18-24 inches	\$1.50
24-30 inches	2.00
30-36 inches	3.00

ARBOR-VITAE (Biota).

B. Chinese. Fast grower; easy to transplant.

2-3 feet	\$1.00
3-4 feet	1.50
4-5 feet	2.00
5-6 feet	3.00
7-8 feet	4.00
8-10 feet	5.00
10-12 feet	6.50

B. Chinese Fyramidal.

2½-3 feet	\$2.50
-----------------	--------

B. Chinese, Compact Blue. Neat dwarf variety, very compact and in Winter takes on a pretty bluish cast.

15-18 inches	\$1.25
--------------------	--------

B. Ramsey, Hybrid. A beautiful, upright, tall growing variety. Very striking when it gets up eight feet or more, but rather "straggly" when small. Those who know it are always anxious to buy it.

3-4 feet	\$2.00
4-5 feet	3.00
5-6 feet	4.00
6-8 feet—fine specimens	7.50

CEDRUS deodara. Undoubtedly the prettiest and grandest evergreen for the Southwest. In fact, many people consider it the handsomest evergreen that grows.

2½-3 feet	\$5.00
3-3½ feet	7.00
3½-4 feet	10.00
4-4½ feet	12.50
4½-5 feet	15.00

C. atlantica.

2½-3 feet	\$3.50
3-3½ feet	5.00
3½-4 feet	6.50
4-5 feet	8.00

CEDARS.

18-24 inches	\$1.00
30-36 inches	1.50
3-4 feet	2.00
4-5 feet	3.00
5-6 feet	4.00
6-7 feet	5.00
7-8 feet	6.00
8-9 feet	7.50
9-10 feet	10.00
10-12 feet	12.50

CYPRESS, Monterey.

15-18 inches	\$1.50
3-4 feet	2.50
4-5 feet	4.00

C. Arizona. Beautiful bluish, feathery foliage. Extremely hardy and a very rapid grower. One of the most delightful evergreens one would wish to see. Yet, on account of its poor root system, it has proved rather difficult to transplant; yet more than half the plants we sell grow. We have reduced our prices almost one-half, so one can afford to try again. We think, however,



Arizona Cypress.

that our plants will move much more successfully now. Last Spring we root-pruned all the plants in the field, thus causing them to develop a better root system. We did not water them, thus causing them to make a slower and harder growth, so that we think the chances are much better for their growing. Bear in mind they are native of a hot, dry country, and do not want much water. Many people kill these as well as other evergreens by giving them too much water. Water the foliage often but not the roots. Once a week is often enough when it does not rain.

12-18 inches	\$1.25
18-24 inches	1.75
2-2½ feet	2.50
2½-3 feet	3.00
3-3½ feet	3.75
3½-4 feet	4.50
4 -5 feet	5.25
5 -6 feet	6.50
6 -7 feet, beautiful specimen	7.50

C. Italian.

2½ feet	\$3.00
3 feet	4.50
4 feet	6.00
5 feet	7.50
6 feet	9.00
7 feet	12.00

C. Horizontal.

2-3 feet	\$1.50
3-4 feet	2.00
6-7 feet	5.00

JUNIPER, Common.

12-18 inches	\$0.75
18-24 inches	1.25
24-36 inches	2.00

J. Japanese.

18-24 inches	\$1.50
24-30 inches	2.50
36-40 inches	4.00

J. depressa.

15-18 inches	\$1.50
--------------	-------	--------

J. Irish.

18-24 inches	\$1.00
24-30 inches	1.50
36-40 inches	2.00



Mugho Pine.

J. procata.

12-18 inches	\$1.50
18-24 inches	2.00

J. Savin.

12-18 inches	\$1.50
18-24 inches	2.00

J. Swedish.

15-18 inches	\$1.00
18-24 inches	1.50

J. sinensis.

15-18 inches	\$1.00
18-24 inches	1.50
24-30 inches	2.00
30-36 inches	2.50
36-42 inches	3.00

J. sinensis stricta.

12-15 inches	\$1.50
15-18 inches	2.00
18-24 inches	2.50

J. sinensis argentea (Spotted).

12-15 inches	\$1.50
15-18 inches	2.00
20-24 inches	3.00

J. scopulorum (Silver Cedar).

12-15 inches	\$1.00
15-18 inches	1.50
18-24 inches	2.00

LIBOCEDRUS decurrens (Incense Cedar).

2-3 feet	\$3.00
3-4 feet	4.00
6-7 feet	10.00

SEQUOIA sempervirens. The Redwood or Big Tree of California.

12-15 inches	\$1.50
3-4 feet	4.00
4-5 feet	6.00

FINE, Scotch.

18-24 inches	\$1.00
24-30 inches	2.00

P. Jack.

18-24 inches	\$1.00
24-30 inches	2.00
Also a few large specimens, \$5.00 to \$10.00 each.		

P. Mugho.

15-18 inches	\$1.50
18-24 inches	2.50



A Block of Our Young Evergreens. Sept. 23, 1924.



Shrubs and Vines Add Immeasurable Attractiveness to the Home.

Hedge Plants

CALIFORNIA PRIVET.	100
18-24 inches	\$ 8.00
2-3 feet	10.00
3-4 feet	15.00
AMOOE RIVER PRIVET.	100
18-24 inches	\$10.00
2-3 feet	15.00
3-4 feet	20.00

Bush Roses and many of the flowering shrubs make beautiful hedges. If Roses are used it is best to plant only one variety. Pink Radiance, Red Radiance, American Beauty, Maman Cochet, etc., are good for this purpose. If shrubs are used, Crape Myrtles, Altheas, Deutzias and Spireas are fine, and the Salvia Greggii for low growing. Write for special prices on large lots.

Hardy Vines

AMPELOPSIS quinquefolia (Virginia Creeper).	35c.
A. Veitchi (Boston Ivy).	50c and \$1.00.
ANTIGONON leptopus (Queen's Wreath).	Beautiful pink flowering vine. 50c.
BIGNONIA (Trumpet Creeper).	35c.
CLEMATIS paniculata. White.	50c. Extra heavy, \$1.00, each.
EUONYMUS radicans. Trailing evergreen.	50c.
HONEYSUCKLE, Chinese Evergreen.	35c.
H. Belgian.	35c.
H. Red Coral.	50c.
IVY, English.	25c and 50c.
VINCA, Trailing. Evergreen; fine for shady places.	25c each; \$2.50 per dozen.
WISTERIA, Purple.	50c each.

Shrubs

PRICE:	Each	Doz.
Strong, 1-year-old	\$0.40	\$4.00
Strong, 2- to 3-year-old75	7.50
AITHEA. Mixed colors.		
BERBERIS vulgaris.		
B. Thunbergi.		
BUCKEYE. Yellow.	50c, \$1.00, \$1.50,	ac-
	ording to size.	
BUDDLEIA magnifica (Summer Lilac).	50c	and \$1.00.
CARAGANA (Siberian Pea Shrub).		
CEPHALANTHUS (Button Willow).		
CHILOPSIS linearis (Purple Flowering Willow).		
C. linearis alba (White Flowering Willow).		



Ampelopsis Veitchi—Boston Ivy.

CRAPE MYRTLE. The best shrub for Texas. Crimson, pink, purple, white and dwarf blue.

CORNUS florida (White Dogwood). 75c.

C. stolonifera (Red Bark Dogwood).

DEUTZIA candidissima.

D. Pride of Rochester.

DESMODIUM pendulifolia. 50c each.

EUONYMUS alatus. \$1.00 each.

ELEAGNUS edulis. \$1.00 each.

EXCOCHORDA grandiflora. 75c and \$1.50 each.

FOESYTHIA. Four varieties.

HONEYSUCKLE. Bush or Upright. Pink and white.

HYDRANGEA grandiflora. 75c each.

H. arborescens. Large white, the best variety for this climate. 75c each.

HYPERICUM prolificum. 75c each.

H. dissiflora. Upright. 50c each.

H. calycinum. 50c each.

HARDY LANTANA. Orange-yellow, continuous bloom; stands zero weather. The best low growing shrub we know. Large plants, \$1.00 each.

JAPANESE QUINCE (*Cydonia japonica*). 50c and \$1.00.

JASMINE nudiflora.

J. primulinum.

JUDAS TREE or REDBUD. For price see page 3.

LESPEDEZA, Bicolor.

LILAC, Purple Persian. The best bloomer here.

MEEHAN'S MALLOWS (Improved Hardy Hibiscus).

PHILADELPHUS (*Syringa* or Mock Orange).

POINCIANA Gilliesi (Bird of Paradise).

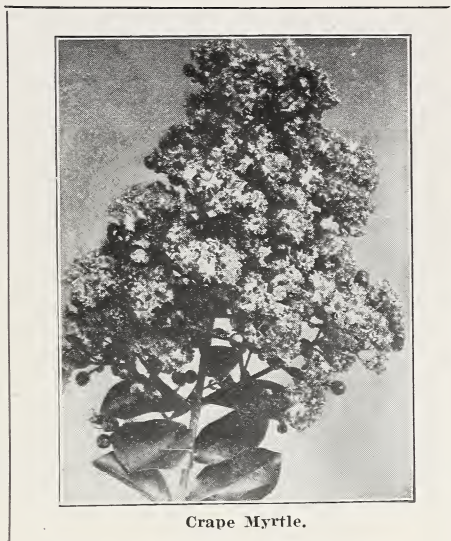
POMEGRANATE. Double flowering. Beautiful shrub.

PRIVET, Ikota. Bushy.

P. California. Upright.

P. Regel's. Drooping.

NOTE. For other Privets, see Ligustrums under Evergreens, page 6.



Crape Myrtle.

RHODOTYFOS kerrioides. White.

RHUS typhina (Staghorn Sumac).

RUSSIAN OLIVE.

SALVIA Greggii. Popular low growing shrub; red.

S. Greggii alba. White flowering.

SAMBUCUS nigra. Well known elder.

S. aurea. Golden.

SPIREA Reevesi. Double white.

S. Van Houttei (Bridal Wreath).

S. Billiardi. Pink.

SYMPHORICARPOS vulgaris (Coralberry).

S. racemosus (Snowberry).

TAMARIX hispida aestivalis. Pink; the best.

T. odessana.

T. japonica plumosa. Beautiful foliage.

VITEX. Easiest growing shrub.

WEIGELA. Pink. \$1.00 each.



Weigela.



An Ideal Rose Garden.

Roses

Roses should be planted extensively where they will do well, but they should not be attempted unless the conditions are just right. The Rose is worth nearly all other flowers combined where it succeeds properly, but unless it can be grown successfully, there are bitter disappointments in store for the planter. In the first place Roses are very selfish. They do not want anything else growing near them. They do best on new ground, preferably any heavy, rich native soil, whether black or red, though they do splendidly on sandy soil if the clay is not more than two or three feet below the surface. They should be planted in a solid bed by themselves out in the full sunlight, though they may be put on the east or west side of a building or fence. Do not plant them on the north, and especially avoid planting them near trees, shrubs or vines. And where Roses have been growing successfully a number of years, they should not be planted in the same soil again. Better make a new bed in the backyard or wherever an open place can be found that has no roots of trees nearby. If such a place cannot be found, then give up trying to grow Roses, and plant shrubs or evergreens. Roses are valuable only for the blossoms they produce. They are useless as a shrub, hence they should not be planted around the house, or in any other locality where a shrub effect is desired. Climbing Roses, however, may be planted around the porch if desired, but it is even better to plant these on trellises.

While Roses are great feeders, it is the safer plan not to use any fertilizer the first season. After they have made one or two seasons' growth and are well established, it is beneficial to put two or three inches of stable manure on the ground in November and leave it there all Winter. In the Spring it may be spaded in. Much of the so-called "dairy loam" that is sold is a light, porous, chaffy soil that often does more harm than good, especially where it is applied in the Spring. Bush Roses require a good pruning every year or two, but this should not be done here until the end of February. If pruned early the young growth starts too soon and may be killed by the late freezes. Climbing Roses must not be pruned, except to remove unhealthy or undesired wood. The blossoms of Climbing Roses come from the previous season's growth, and if you cut this off, you cut off your crop of blooms.

Only everblooming varieties should be planted in this climate. In the North most of the ever bloomers will not stand the severe Winters, and so they have to use the hardier annual-flowering kinds. It is also a mistake to try to grow too many kinds. Too many varieties are selected on account of the color or perhaps the blooms are pretty, never taking into consideration that the plant may be a weak grower and a poor bloomer. For best results, it is well to confine your plantings largely to the varieties that bear an abundance of the largest and prettiest blossoms, full and double, on long stems, and are strong, vigorous growers and free from mildew and other diseases. Such a combination of good qualities can be found in the Pink Radiance, Red Radiance, Kaiserin Augusta Victoria, Lady Hillingdon, White Cochet, Pink Cochet and a few others. A solid bed of any one of the above varieties will look prettier than any bed of mixed varieties.

PRICE:	Each	Doz.
Strong, 2-year-old, field grown..	\$0.50	\$5.00
Extra heavy75	7.50

American Beauty. Deep rose.
Antoine Revoire. Salmon-pink.
Bessie Brown. White.
Baby Rambler. Crimson cluster.
Columbia. Pink.
Dudley Cross. Light yellow.
Etoile de Lyon. Yellow.
Etoile de France. Crimson.
Edward Mawley. Crimson.
Erna Teschendorff. Red cluster.
Frau Karl Druschki. White American Beauty.
Francis Scott Key. Red. \$1.00.
Gen. McArthur. Red.
General Jacqueminot. Crimson.
Helen Gould. Bright watermelon red.
Hoosier Beauty. Crimson.
Jonkheer J. L. Mock. Pink.
Kaiserin Augusta Victoria. Best white.
Killarney. Pink.
La Detroit. Pink.
La France. Silvery pink.
Los Angeles. Copper colored. \$1.00.
Lady Hillingdon. Golden yellow.
Luxembourg. Fine yellow.
Marie Delesalle. Red.
Maman Cochet. Pink.
Mad. J. Grolez. Red.
Mary, Countess of Ichester. Pink.
Mlle. Cecile Brunner. Cluster of small salmon-pink.
Mad. Caroline Testout. Silvery pink.
Mad. Jenny Guillemot. Yellow and pink.
Mrs. A. Waddell. Apricot.
Mad. Masson or Queen of Bedders. Large crimson.



Maman Cochet Roses.

My Maryland. Pink.
Meteor. Deep crimson.
Mad. A. Chatenay. Salmon-pink.
Ophelia. Light pink.
President Taft. Pink.
Faul Neyron. Large pink.
Radiance. Best pink.
Rena Robbins. Lemon-yellow.
Red Radiance. Best red.
Sunburst. Yellow.
Soleil d'Or. Deep yellow.
V. R. Coxé (Gruss an Teplitz). Crimson.
White Maman Cochet. White, tinged pink.
White La France. Pearly white.
Wellesley. Pink.
White Killarney. Pure white.

Climbing Roses

American Pillar. Pink cluster.
Christine Wright. Large pink.
Cl. American Beauty. Red.
Cl. Caroline Testout. Pink.
Cl. Kaiserin Augusta Victoria. White
Cl. Meteor. Crimson.
Dorothy Perkins. Pink cluster.
 \$2.50 per dozen.
Excelsa. Red cluster.
 dozen.
Hiawatha. Red cluster, white center.
Marechal Niel. Yellow.
Faul's Scarlet.
Reine Marie Henrietta. Cherry-red; large.
Silver Moon. Large, single white.

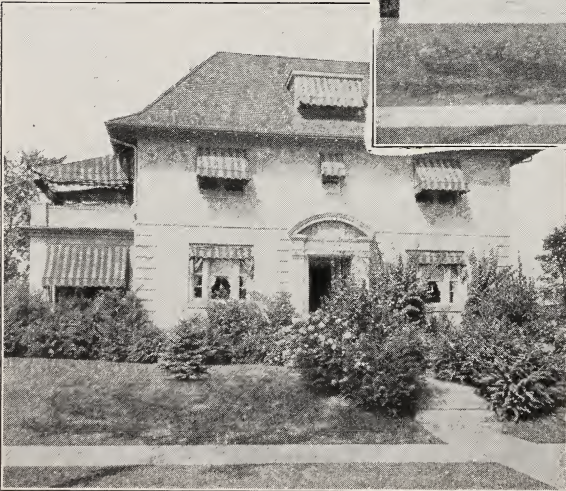
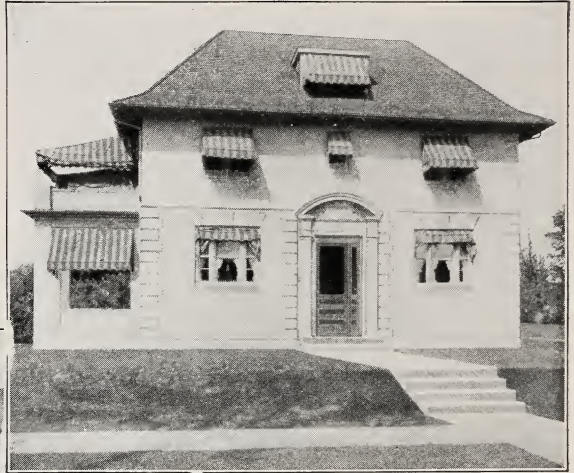


Climbing American Beauty Roses.

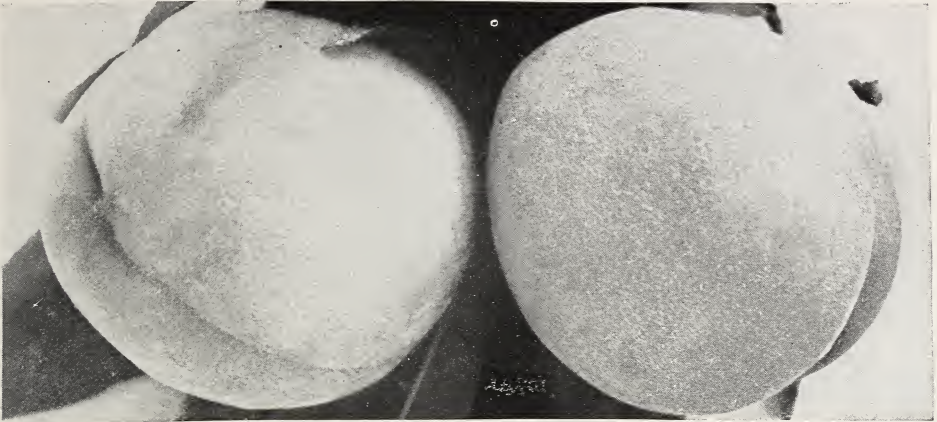


An Attractive Shrubbery Foundation Planting.

These two views will illustrate the great improvement that a few shrubs make in the appearance of the home.



A little thought of the effect desired and a study of the character of growth, foliage and flowers will enable you to make a satisfactory planting.



Belle of Georgia Peaches.

Fruit Department

Peaches

	Each	Doz.	100
4-5 feet	\$0.35	\$3.50	\$25.00
2-3 feet20	2.00	15.00

We have a few extra heavy trees 6-7 feet at 75c each; \$7.50 per dozen.

The time of ripening is given for the latitude of Fort Worth. South of here they ripen earlier and north of here later.

- Arp.** Yellow; freestone. June 15.
- Alexander.** Semi-cling. May 20.
- Belle of Georgia.** White; freestone. August 1.
- Chinese Cling.** Large white. August 1.
- Elberta.** Yellow; freestone. July 15.
- Early Wheeler.** White with red; cling. June 1.
- Gov Hogg.** Semi-cling. White. June 20.
- Greensboro.** Semi-cling. White. June 10.
- Henrietta.** Yellow; cling. August 25.
- Heath.** White; cling. September.
- J. H. Hale.** Yellow; cling. July 20.
- Lemon Cling.** Yellow. August 20.
- Old Mixon Cling.** White with pink. August 1.
- Mamie Ross.** White with pink. June 15.
- Stinson.** White; cling. October.

Apples

	Each	Doz.
4-5 feet	\$0.50	\$5.00
2-3 feet25	2.50

Ben Davis, Delicious, Early Harvest, Gano, Jonathan, Maiden Blush, Missouri Pippin, Red Astrachan, Red June, Winesap, Yellow Transparent.

Pears

	Each	Doz.
Large	\$1.00	\$10.00
Small50	5.00

Kieffer, Garber.

Apricots

	Each	Doz.
Large	\$1.00	\$10.00
Small50	5.00

Plums

	Each	Doz.
Large	\$1.00	\$10.00
Medium60	6.00
Small35	3.00

American, Botan or Abundance, Burbank, Bartlett, Eagle, Early May, Red June, Early Six Weeks, Gold, Wild Goose, Wickson.



Kieffer Pear.

Figs

	Each	Doz.
Large	\$1.00	\$10.00
Small50	5.00

The everbearing varieties of Figs should be planted by everyone, as they are about the most satisfactory fruit one can plant. If planted in rich ground and watered freely they will bear abundantly the first season.

Cherries

	Each	Doz.
Large	\$1.50	\$15.00
Small75	7.50

Early Richmond, Montmorency, Compass Cherry-Plum.

Japan Persimmons

	Each	Doz.
Large	\$1.00	\$10.00
Medium50	5.00

Pecans

	Each	Doz.	100
1-2 feet	\$0.75	\$ 7.50	\$60.00
2-3 feet	1.25	12.50	
3-4 feet	1.75	17.50	
4-5 feet	2.50	20.00	
6-7 feet (extra heavy) ..	4.00		

Leading Paper-Shellled varieties.

Jujube

	Each
Small trees	\$1.50

Feijoa

Another interesting new fruit from China.

	Each
15-18 inches	\$1.50
24-36 inches	2.50

Should be balled and burlapped.



Dallas Blackberries.



Fig.

Blackberries and Dewberries

	Doz.	100	1000
Austin Dewberry	\$0.50	\$3.00	\$25.00
Thornless Dewberry	1.00	5.00	
McDonald Blackberry50	3.00	25.00
Dallas Blackberry50	3.00	25.00
Early Wonder Blackberry75	4.00	30.00
Haupt Blackberry75	4.00	30.00

Grapes

	Each	Doz.	100
Strong, 1-year	\$0.20	\$2.00	\$12.00
2-year35	3.00	20.00

America, Agawam, Black Spanish, Brilliant, Concord, Carman, Delaware, Herbemont, Niagara, Rommel.

Raspberries

	Doz.	100
Blackcap and Red	\$0.75	\$5.00

Ness Berry

A cross between our native dewberry and the red raspberry. Promises to be to Texas what the loganberry is to the Northwest. Plant vigorous and hardy. Fruit dark red. Very large and of delicious flavor. Makes jam equal to that of the red raspberry. Developed by Prof. H. Ness of the A. & M. College. A few plants sent us by Prof Ness three years ago have borne three good crops, but on account of the dry Summer we have not been able to propagate many plants. To those who wish to test this interesting fruit we will sell a few plants at **50c each**.

Strawberries

	Doz.	100
Klondike. Very hardy	\$0.50	\$3.00
Senator Dunlap. Late50	3.00
Progressive Everbearing75	5.00

