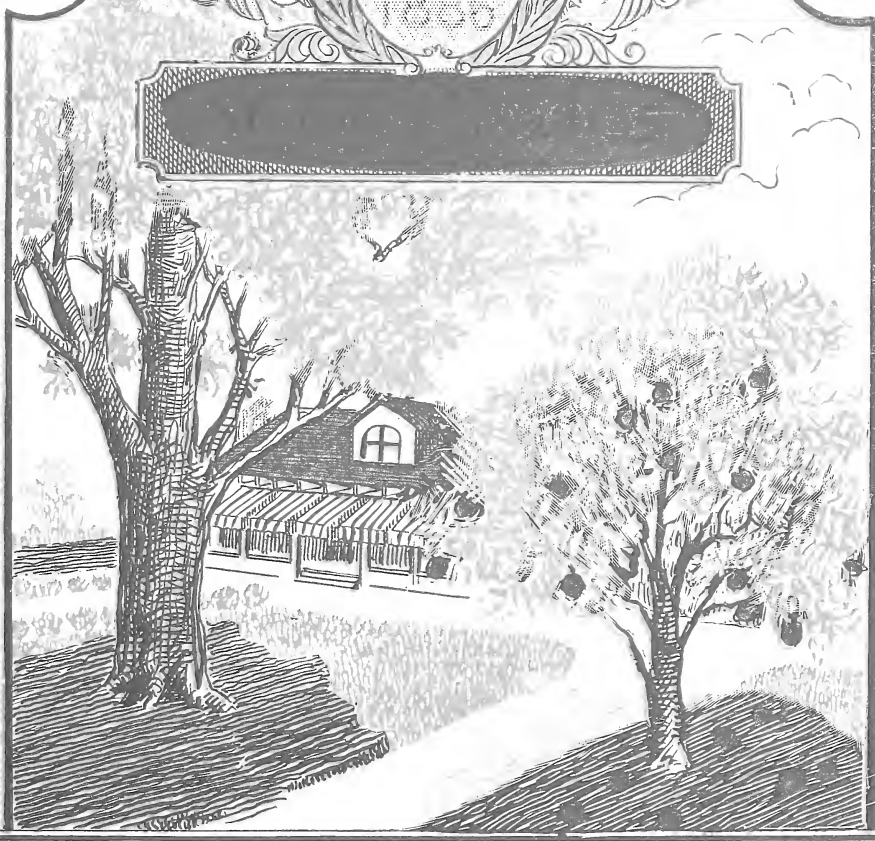
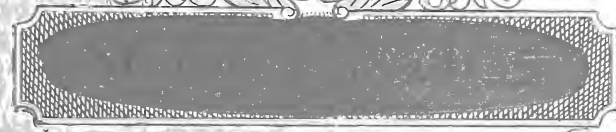


Historic, archived document

Do not assume content reflects current scientific knowledge, policies, or practices.

COMAL SPRINGS
NURSERY



OTTO LOCKE
PROPRIETOR

NEW BRAUNFELS, (COMAL COUNTY) TEXAS.

To My Thousands of Friends and Customers in the South—

Varieties of trees and seeds that have mostly originated here on our grounds, which are the result of my own work in horticulture all these years, are well known to many of my friends and customers. Their own success with these varieties have been the strongest possible recommendations for them.

For, of course, the varieties, having originated here, are the best for this section.

Way back in 1886 we started here in the nursery business. We have been at it ever since. We began on a little 5-acre patch, but soon outgrew this place. Now we have over 100 acres in Nursery Stock.

We have planted more roses and fruit trees this year than ever before. These have made good growth, too, and are fully up to our usual well known standard. Our stocks of evergreens, ornamentals and flowering shrubs are the largest and finest in the South. So we feel we can please you. We have no agents. This is our sole representative. We do but very little advertising. We depend on the high quality of our goods to hold our customers and bring us new ones. Our prices are reasonable—very low, in fact, quality considered—so low we have to sell for cash only.

SHIPPING INSTRUCTIONS.

Customers will please state whether they wish their order to be sent by Parcel Post, Express or Freight. The size limit of Parcel Post is 84 inches in combined girth and length. For this reason no tree over 3 feet high can be sent by Parcel Post and must be sent by Express.

On Parcel Post orders about 10c to 25c extra should be added to each dollar to partly pay the cost of packing and postage.

Express is the most satisfactory for shipping trees from 10 pounds to 300 pounds, and not more costly than freight, and much quicker.

We guarantee all trees to be healthy, free from disease, and true to name.

We pay no transportation charges.

We do not employ any agents or salesmen, and have no connection with any other nursery. We deal direct with all our customers and are directly responsible to them and no one else.

We ship our orders just as soon as possible after receiving same and do most work ourselves and take great pride in packing in the best manner possible in order that our customers get their trees in good condition.

Yours for more and better Texas fruits,

OTTO LOCKE,

Comal Springs Nursery, New Braunfels, Comal County, Texas.

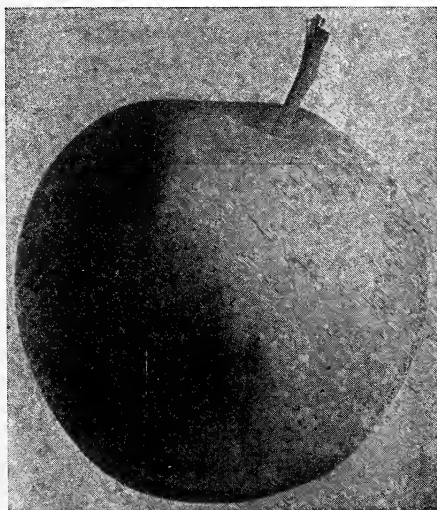


FRUIT TREES

Apples

The Apple is not very profitably grown in Southern and Western Texas. There are a few varieties that grow, and only certain localities where these succeed. The latter are in the mountainous regions of Texas and Mexico. The best results are obtained on heavy clay soil. Light or sandy soil must be manured before apples can successfully be grown on same. The apple we grow in our state has a very fine aromatic flavor, more so than that grown in the North, and people who think their soil may be adapted to its culture should experiment with a few trees. Trees grown in the North should, however, never be planted; they will never prove a success. The following is a collection of those that I have found worthy of planting in the South.

PRICES: Strong 4 to 6 feet, 2 years old, grafted on whole roots, 50 cents each, \$5.50 per dozen, \$40.00 per 100.



Delicious—Large, dark red, flesh is fine grained; crisp, juicy; very attractive and a great market apple; the tree is very hardy and a thrifty grower.

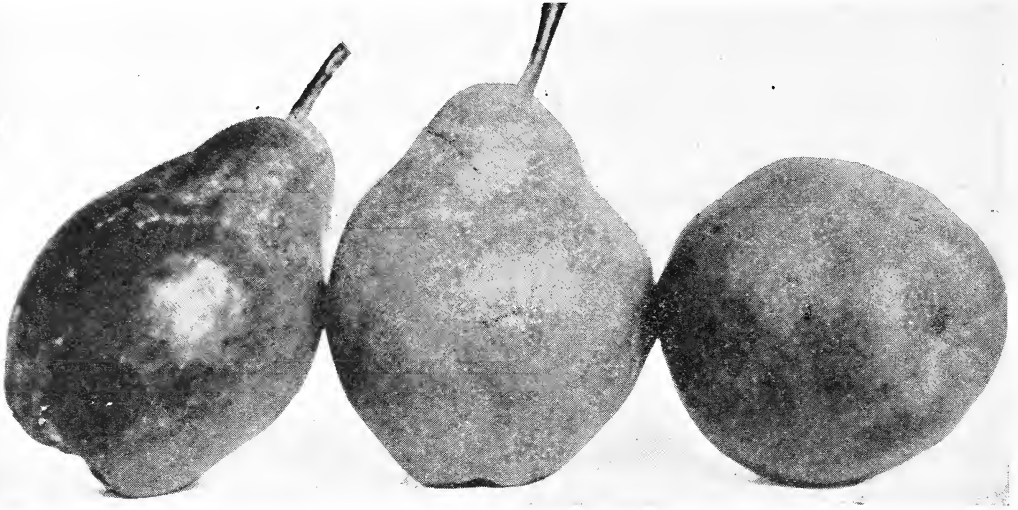
Jonathan—A great favorite; medium size; red and yellow; tender white flesh; juicy and rich; very productive.

Mammoth Black Twig—Large; bright yellow; shaded red; of good quality.

York Imperial—Medium; whitish shaded with crimson; firm; crisp; juicy; pleasant; mild; sub-acid; vigorous and productive.

Red Astrahan—Large; very handsome; juicy; very hardy; a good bearer.

Early Harvest—Large; pale yellow; tender; with a fine flavor; a good grower and a heavy bearer; about the first to ripen.



Crab Apples

Price, two-year-old trees, 50 cents each,
\$5.50 per dozen,

This pretty apple is especially adapted for preserves and is always sure to bring a good crop.

Transcendent—(Siberian.) An attractive yellow color, splashed and striped with red; bears very young, annual crops thereafter. We value it highly for preserves. Buds and blossoms exquisitely beautiful. Ripens in July.

Pears

4 to 5 feet high, 50 cents each; \$5.50 per dozen; 6 to 7 feet high, 75c each, \$8.00 per dozen.

In order of ripening. One and two-year-old trees.

The pear is the most profitable fruit we know of. After a tree has once begun to bear, it will bear regularly every year. The tree is very long-lived if it has a favorable locality where it can send its roots deep into the ground for a supply of moisture; for this reason pear trees should only be planted where the sub-soil is rich and deep.

The soil most adapted to pear culture is rich loam, which contains a good supply of humus. Sandy soil with clay sub-soil is also good if well manured. Pear trees should however, never be planted on soil where roots of cotton and potatoes rot, as such soil has the same effect upon pear trees. The following are the best varieties:

Summer Beauty—First raised in 1873, and introduced in 1893 by us. This pear is the finest and the surest bearer of all varieties that ever have been tested so far south. The trees have not failed to produce heavy crops every year since 1880. It is a vigorous, symmetrical grower and late bloomer so that spring frost

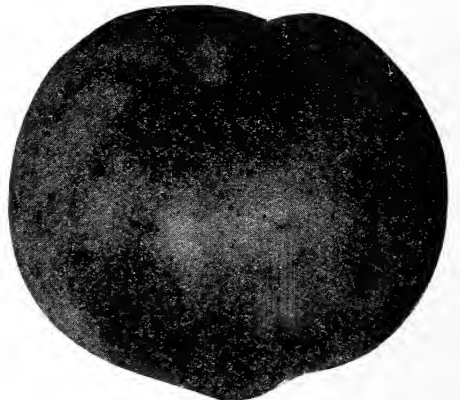
will not injure it. The fruit is very large and handsome, of yellow color with a bright red cheek, flavor sweet sugary, rich, aromatic and pleasant, excellent quality, always grows in clusters of from three to five. One of the rarest and most productive pears in cultivation. Ripening the end of July.

Le Conte—Of remarkable vigor and beauty of growth. The fruit is bell-shaped, of a rich, creamy yellow when ripe, very smooth and fine looking, and a good shipper.

Bartlett—Standard and dwarf. Everyone is acquainted with this large yellow pear. Fruit very rich and highly aromatic—the reason why this pear can always be sold while others may be refused. Tree grows dense and of even and conical shape.

Keiffer Hybrid—Called by many the "Queen of Pears." Fruit large to very large, skin yellow with a brilliant vermilion cheek, flesh brittle, very juicy, with a marked musky aroma. Tree very vigorous and very prolific. Considered the best all-around pear.

Garber Hybrid—Oriental strain, like the Smith's fruit resembles the Kieffer in size, shape and color; ripe three weeks before.



Quince

Quinces

50 cents each, \$6.00 per dozen.

The Quince likes a rich, deep, moist and at the same time loose soil, and requires careful cultivation. The fruit is only used in a cooked state and it is a great favorite with the housewife owing to its rich aroma, which makes it fit for all kinds of preserves and jellies.

Orange—Large, roundish, bright golden yellow; cooks tender and is of excellent flavor. Valuable for preserves and flavoring; very productive; one of the most popular and extensively cultivated of old varieties. Ripens in October.

Champion—Fruit very large, fair and handsome. Tree very productive, bears when young; flesh cooks as tender as the apple; flavor very delicate, imparting an exquisite taste and odor to any fruit with which it is cooked.

Pecans

2 to 3 feet, \$1.00 each, \$10.00 per dozen; 4 to 5 feet, \$1.50 each, \$15.00 per dozen; 6 to 8 feet, \$2.50 each; 8 to 10 feet, \$4.00 each.

This is by far the choicest table nut that is grown in America. Each year the demand is increasing; the supply can never equal the demand for good nuts. They are a healthful, nutritious article of food. Plant a tree if you have only a small place, and a thousand trees if you have the land for them. You can count on a good income for your children and your grandchildren. The pecan tree grows on any deep soil, clay with gravelly sub-soil preferred. If you have a river bank that washes badly and you want to make this ground valuable, we can enlighten you, by advising to plant it in a

pecan orchard; after the trees are 4 to 5 feet high plant the ground in Bermuda grass for sod, and you have more than doubled the value of your land. If it's a shade tree you want to plant this winter, stop and think it over; why not plant a pecan tree?

Lone Star—Seedling of the Daisy pecan. Larger and thicker, slightly harder shell; a wonderful bearer, fills well, a fine grower, large leaves, same as its parent, the Daisy.

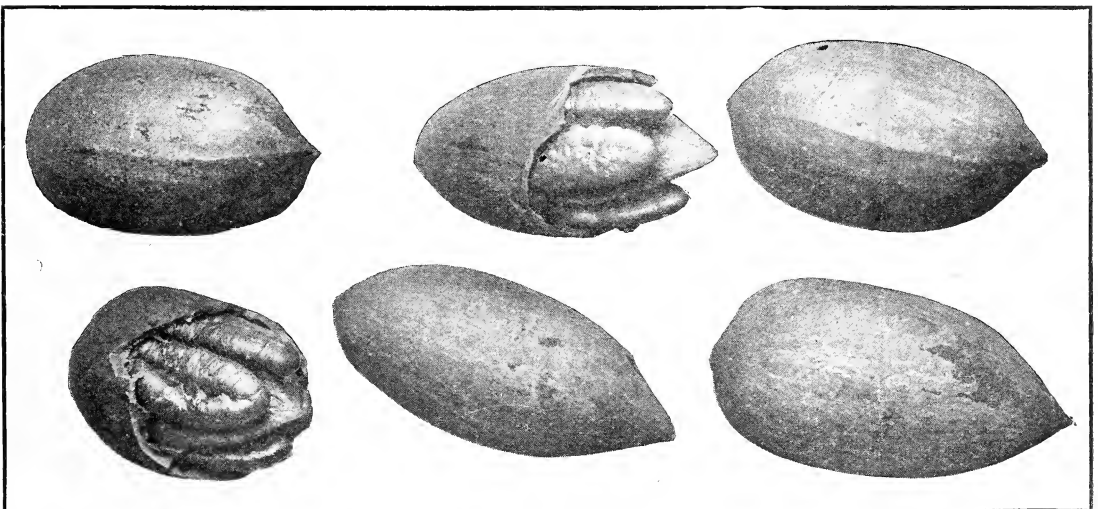
"Daisy"—Takes the first place of all commercial nuts; is not only the largest paper shell in existence, but it is well filled, of a fine, sweet flavor; a regular bearer and it has not failed to bear a good crop since it first began in 1894.

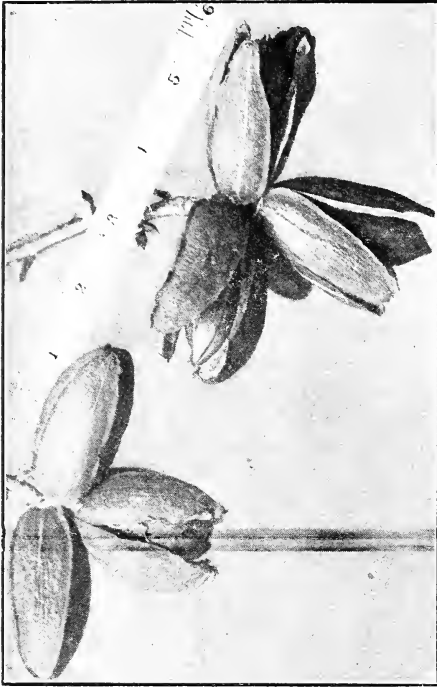
Frotscher—A large oblong nut, bright yellowish brown in color, with a few purplish black markings, shell very thin, cracking easily, kernels large, easily removed, full of good quality. One of the handsomest nuts grown.

Schley—Size medium to large, oblong, somewhat flattened; light reddish brown with a few markings of purplish brown; shell thin, separating easily from the kernel, kernel full, plump, bright yellowish brown in color, flavor rich nutty, in quality one of the best. Tree a good grower and an excellent variety.

Stuart—One of the oldest of the named varieties, but somewhat short; ovoid in shape, shell thin, partitions somewhat corky, kernel plump, quality very good.

Success Pecan—Originated in Southern Mississippi. Large size, shell thin, kernel very plump, quality good, flavor good; highly prolific; one of the very best and most promising sorts.

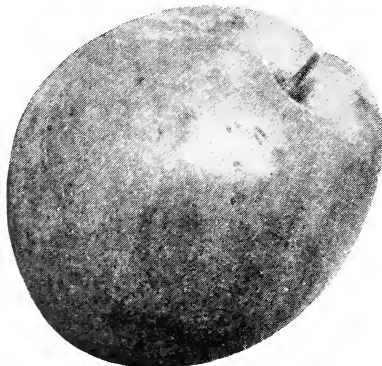




Walnuts

Juglans Cordiformis—Nuts medium size, thin shell; if cracked longitudinally kernel can be removed entire. Meat is of good quality; tree is a vigorous grower and forms a fine head. Perfectly hardy. We consider it the best of all walnuts. Two years, 2 to 3 feet, \$1.00 each, \$10.00 per dozen.

Juglans Sieboldiana—A native of the mountains of Japan. Extremely hardy and vigorous grower. Three-year-old trees have produced nuts. Wonderfully productive. Meat sweet and of best quality. \$1.00 each; trees 2 to 3 feet, \$10.00 per dozen.



Figs

35 cents each, \$3.50 per dozen; \$30.00 per 100. Strong trees.

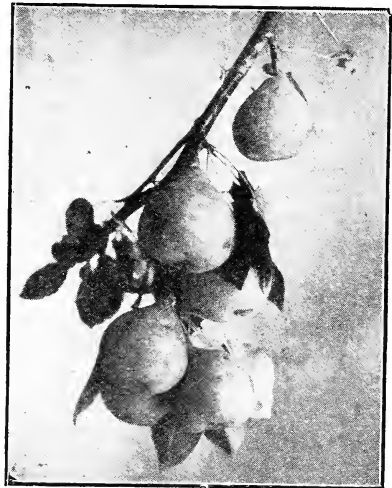
We might also say there is no tree which so abundantly repays its owner for the little trouble it requires as the fig. From June to October ripe fruit may be had almost daily from the same tree, providing there is enough moisture to constantly keep the tree growing during this time. The best place for a fig tree is near a well or a spring or any other place where there is always a plentiful supply of water. During extreme cold weather figs sometimes freeze to the ground, but they sprout from the roots again in the spring. This, however, only happens every ten or fifteen years, if only the hardiest varieties are planted.

Green Ischia—Green; medium size; of excellent quality.

Magnolia—Large; rich fruit, yellowish brown. Hardy here. Small one-year trees bear fruit first summer.

Brown Turkey—Medium, brown, very sweet and excellent; very prolific and hardy. The most reliable fig for open field culture.

Celestial—Small pale violet; very sweet; prolific, hardy.



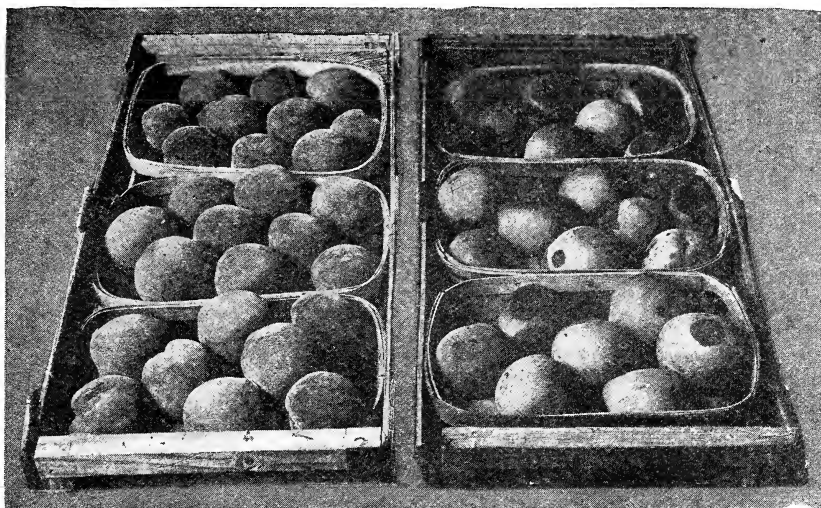
Apricots

One-year trees, 4 to 6 feet, 50 cents each, \$5.50 per dozen.

The apricot is one of those fruits that do fairly well on limestone soil; a rich, heavy soil, however is preferred. As the apricot blooms early it should not be planted extensively in localities visited by late frosts. The fruit is much beloved for its rich and aromatic flavor, and the apricot should be represented by a few trees, at least, in every garden. The culture is about the same as that of the peach.

Royal—Fruit large, oval; color of skin dull yellow, tinted with red on the sunny side; flesh pale orange color, firm, juicy, rich and vinous; freestone. Ripens end of June.

Moorpark—Large, excellent; an old favorite and one of the best bearers. This is the best of all apricots.



Peaches

Prices, except where noted, 2 to 3 feet, 25 cents each, \$2.75 per dozen; 3 to 4 feet, 35 cents each, \$3.75 per dozen; 5 to 7 feet, 50 cents each, \$5.50 per dozen.

The peach is probably more extensively cultivated in our country than any other fruit, and it well deserves its popularity among the American people, as there is nothing that excels a luscious, red-ripe peach. There has, however, been much complaint of late that the finer varieties do not bear enough in Texas. People attribute this to the drought, yet the failure in most cases is due to the ignorance of the people. The traveling tree agents from other states introduce new varieties every year that are in most cases not at all adapted to our climate. Therefore, never buy a tree unless you know that it was grown by a reliable nurseryman in your own state. West Texas is a dry country, but nevertheless good peaches can be raised, and plenty of them, provided proper varieties are planted.

The peach succeeds in almost any soil, but it prefers sandy soil with red clay sub-soil to any other. The following varieties are all thoroughly tested by me, and I consider them the best collection that can be made for our climate. They are selected from 400 different varieties, and as each variety has a ripening period of from ten to fifteen days, peaches may be had at all times from the middle of May until November. I have arranged them in order of ripening, for the convenience of the buyer.

1. Ripening Here from May 20 to June 10.

Mayflower—A new variety of extreme early ripening; a late bloomer, and being almost entirely covered with red, it is a good market variety. Tree a strong thrifty grower, very prolific; size large, nearly round.

Victor—Larger than Mayflower but not so highly colored; very sure and prolific; white; nearly free.

Early Wheeler—Prolific; white, blush cheeks, flesh white, extra firm, of better quality than Alexander, with true clingstone flavor. The best shipper among early varieties.

Dwarf Japan Blood—Tree of dwarf habit, surest bearer of all the early peaches; fruit is large, pointed; red cheek and end, and sometimes blood-red flesh.

Alexander—Good quality, high color; flesh greenish white. Best bearing May peach.

Greensboro—Earlier and larger than Alexander; fine flavor and attractive appearance.

Arp Beauty—A rival to Elberta; character, size, color and quality the same, and ripens two to three weeks earlier. The value of this as a market and family peach will be easily seen, and no other statement will be necessary to place it at the head of good peaches.

Triumph—"The earliest yellow peach in the world." A perfect yellow freestone; of excellent quality. Ripens after Alexander. A good keeper, very prolific. Two-year-old trees bore half a bushel each.

Honey—The sweetest of all peaches we have, and about the best bearer. Late frosts have never killed the young fruit here. Color is attractive and it always sells easily. Honey is about the best peach for general planting we have in the South and the Gulf Coast.

Indian Cling or Blood Cling—Red inside, ripens in August, bears regular, trees very hardy; a good peach.

Bokara—The hardest peach known. It is of fine quality and a good bearer. Does remarkably well here.

Mamie Ross—A seedling of Chinese Cling. Fruit very large, nearly covered with a delicate carmine, flesh white, juicy and of good quality; a regular and prolific bearer.



II. Ripening June 20 to July 15.

Pallas—Large, flesh white, melting with a rich, vinous aroma; profuse annual bearer; as sweet as Honey peach.

Carman—A large, white free-stone with red cheeks, that originated in Limestone County. Fine flavor; ripens July 5.

Early Bell—Very large; skin white, with red cheeks; flesh white, firm and excellent flavor; tree a rapid grower and very prolific; a seedling of Chinese Cling.

Dixie—A seedling from Elberta; large; two weeks earlier and a better shipper. Fine flavor; beautiful color, yellow with pink cheeks. Tree is a fine grower and the best bearer in San Marcos, Texas, where it originated. A gentleman working in the Wood National Bank bought a peach many years ago, and it being of such fine flavor and large size, he planted the seed just back of the bank building, where it grew vigorously, and after bearing, everyone seeing it was astonished at the size and good color of the fruit, as well as the productiveness of the tree. Mr. F. M. Johnson sent us the first buds and named it the "Dixie" peach. We find it to be superior to Elberta in flavor. It is the finest peach that ever originated in Southwest Texas. Peach is yellow like Elberta.

J. H. Hale—Huge; beautiful golden yellow; freestone; solid; delicious; round as a ball; a great shipper; a splendid keeper; brings top prices and big prices; vigorous, sturdy trees. No orchard complete without this peach.

Belle of Georgia—Very large, white free-stone of excellent flavor. Trees grow and bear well; fruit a very good shipper.

Elberta—The peach that everyone knows. A large yellow free-stone, red to the pit. The peach for the market.

Southern Early—This is the largest of all early peaches. Good quality; very prolific; sweet and juicy. Ripens in June.

Augbert—Yellow, resembling Elberta; ripening later; more prolific and fruit is of highest quality. Sometimes called late Elberta.

Old Mixon Cling—The juiciest and best flavored white cling-stone peach; of very large size and best bearing qualities.

Hero—A splendid variety for canning purposes. The tree grows to a very large size and produces beautifully colored, white fleshed, juicy clingstone peaches in great abundance; sure to bear every year; flowers very resistant against frost.

Chinese Cling—Spreading habit; healthy; not very prolific; the largest peach in cultivation; flesh white with little red at seed; tender, very juicy.

III. Ripening from September 1 into October.

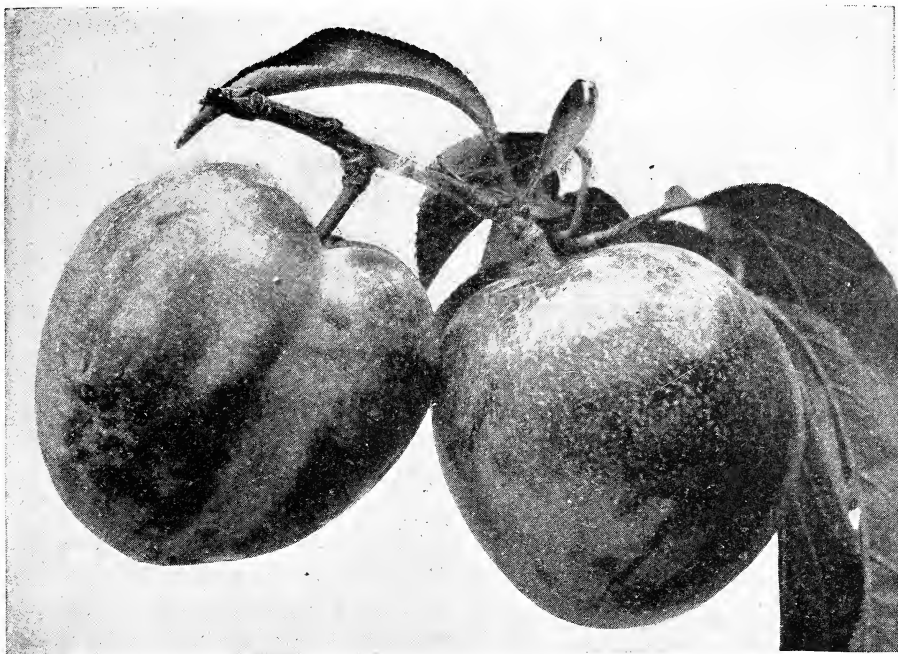
Henrietta—The best late clingstone. Very large, yellow, crimson cheek; a regular bearer.

Plums

In order of ripening. Prices, except where noted: 2 to 3 feet, 30 cents each, \$3.25 per dozen; 3 to 4 feet, 40 cents each, \$4.50 per dozen; 5 to 6 feet, 50 cents each, \$5.50 per dozen.

There is no fruit tree that bears such an abundance of fruit at so early an age as does the plum. Many varieties bear the first year after planting, and for this single reason should be most extensively planted. A plum tree requires very little care, but for the fact that it produces its fruit in such great abundance the tree does not live very long, and new trees ought to be planted every year to always have an abundance of this useful fruit. The American or Chickasaw varieties are mostly used for preserves and jellies, while Japanese varieties are for the table.

Rich loam with gravel sub-soil is the best soil for plum culture, while sandy soil is almost as good if manured.



The following is the best collection for the South and cannot be excelled by any:

McCartney—Originated in Texas; larger than Wild Goose; 14 days earlier; egg-shaped, golden yellow color; enormous bearer. This is the best yellow plum.

Shiro—A combination of Robinson, Myrobolan and Wickson. Rank grower, enormously productive; fruit will keep a month, and is so transparent the pit can be seen through the flesh; apple-shaped; the earliest of all Japanese plums.

Gonzales—A cross between the American and Japanese plum. The fruit is larger than a Botan, it is sweet and juicy and will keep for a week after ripening. The tree is a good grower and is very prolific. It ripens the middle of June.

Happiness—A new hybrid. The fruit is very large, color glowing red, and in quality it is rarely equaled. It is really the most productive of all plums. Tree is a good grower. Pit very small. Three-year-old trees averaged \$5.00 per tree this year, as this variety was not damaged by the late frost last spring.

Adele—A good Texas plum, originated at Brenham, Texas, at the Yates Nursery. Seedling of Nona. Very large, juicy plum, very

productive; ripens in July. Bright red cheek to sunny side. Tree very hardy grower.

Bartlett—Has the quality and flavor of the Bartlett pear. Fruit turns a deep crimson when fully ripe, light salmon colored flesh. Tree has a beautiful upright growth.

Sweet Botan—Japanese; one of the finest and oldest varieties which is too popular to need a long description.

Wickson—Japanese; tree grows in vase form, sturdy and upright. The fruit is evenly distributed all over the tree. It changes to white when about half grown, and remains so until a few days before ripening, when it changes to a glowing carmine. Small stone; the flesh is of a fine texture, firm, sugary and delicious and will keep two weeks after ripening. A fine rare plum.

The Santa Rosa—No one fruit has so strongly individualized the name of Luther Burbank as the plum. Some twenty varieties, now well known and very widely grown, are the result of his creative genius, all of which have stood the test of experience with growers and in the market of the world. As a result, his latest, the Santa Rosa, is in every way not only a superior fruit from every point of view, but must be regarded as the best thing in the way of plums that has come from his hands. The

Santa Rosa is a medium bloomer; quality of fruit is unequaled; as a shipping plum it is the peer of them all. Plums are a deep purplish crimson, each fruit averaging 6 inches in circumference each way; the flesh near the skin is purple shaded with rosy scarlet and pale amber towards the stone, which is very small; the eating quality is unequaled; rich, fragrant, delicious. Ripens a week before Climax and two weeks earlier than the Burbank. Tree is strong, vigorous, upright grower.

Burbank—Japanese; named after the introducer of this and most of the other good plums. The best bearing variety we have. When fully ripe the fruit is deliciously sweet.

Satsuma—A large and well flavored plum with blood red flesh, skin bluish red, pit is very small; trees grow large and old, and is a very good bearer.

Excelsior—Fruit medium, sweet, juicy, melting, color reddish purple; a good plum and very productive.

Compass Cherry—In size larger than the largest cherry; rather a small plum. It will succeed where the true cherry will not. The tree is vigorous and bears well; fruit is red; fine for jellies and preserves; ripens in June.

Mulberries

5 to 6 feet, 40 cents each, \$4.50 per dozen.

6 to 8 feet, 50 cents each, \$5.50 per dozen.

As a shade tree for the chicken yard the mulberry is about the best to be had. Chickens eat the fruit as soon as it drops from the tree. The finer varieties are also eaten by children. The tree grows very quickly and is easily transplanted.

Hick's Everbearing—Profuse; ripens three months; fine grower for shade and the best of all trees for the fowl yard.

Russian—Unquestionably the best shade tree. The tree is very hardy and long-lived, and grows rapidly to a beautiful round shape. The fruit is small and does not drop from the tree when ripe; some trees do not produce fruit at all. It is very much sought for street planting, for the shining leaves stand the dust well.

English—A very quick growing mulberry, with very large and well shaped leaves. The fruit is large and black of color; stem is very straight, and can be topped at any desirable height. 4 to 5 feet, 35 cents each, \$3.50 per dozen; 6 to 8 feet, 50 cents each, \$5.00 per dozen.

Japan Persimmons

(*Diospyros Kaki*)—A fruit from the Orient that has come to stay. The growing of this fruit in the South, both for the market and home consumption, is no longer an experiment. It has proven itself adapted to the whole cotton belt, and is becoming quite popular on the northern fruit market.

Trees of the native persimmon will grow on any soil in the South, but are not long-lived in wet, low places; high, well-drained, sandy soil suits them best, and they will do better on very poor land than any other kind of fruit tree. They are especially suited for planting in old peach orchards, as the old trees become worthless, or to replant the land after a peach orchard has been destroyed.

Fruit should be shipped just before it begins to soften, and directions how to eat it should

be printed on wrappers to be used with each fruit, and dealers instructed to display only ripe fruit.

Price of Japanese Persimmons on native Persimmon Roots, 50 cents each, or \$5.50 per dozen, \$40.00 per 100.

Hachiya—Very large, oblong, conical, with a sharp point; very showy; diameter $3\frac{1}{2}$ inches longitudinally and 3 inches transversely; color of skin reddish yellow, with occasional dark spots or blotches and rings at apex; flesh dark yellow; some seed; astringent until fully ripe, then very good. Tree vigorous and very shapely.

Hyakume—Large to very large, varying from roundish oblong to roundish oblate, but always somewhat flattened at both ends, generally slightly depressed at the point opposite the stem; nearly always marked with rings and veins at the apex; skin light buffish yellow; flesh dark brown, sweet crisp and meaty; not astringent; good while still hard; a good keeper; one of the best market sorts. Trees of good growth and sure bearer.

Triumph—Originated near Sanford in Orange County, Florida, from seed from Japan. Its quality is the best, size medium, tomato-shaped; color of skin dark red, handsome and showy, flesh with but few seeds. It is very productive, the fruit of a single tree having been sold for \$17.00. Ripe in October and holds on the tree until January.

Tane-Nashi—Very large, roundish, conical, pointed; very smooth and symmetrical; color of skin light yellow, changing to bright red at full maturity; flesh yellow, generally seedless, astringent until fully ripe, then one of the best.

Yemon—Large flat, tomato-shaped, somewhat foursided; diameter $2\frac{1}{2}$ inches longitudinally and 3 inches transversely; very smooth and regular in outline; skin bright orange yellow, flesh yellow, generally seedless, quality very fine. Tree rather an open grower with distinct foliage of light shade.

Pomegranates

The Pomegranate seems to have been created especially for our dry climate. It succeeds in any soil and bears regularly an abundance of the most refreshing fruit.

Little trouble is required for its culture. It is always free from all diseases, and grows in any deserted corner of the garden where no other fruit succeeds. The fruit is very sweet and refreshing, and ripens during August and September.

Old Favorite—Is the best of all the fruiting pomegranates. I call it Old Favorite because it has been grown here at New Braunfels for at least fifty years, and it has been proven to be far superior to all the other fruiting kinds which were introduced later. The fruit is the very largest, refreshing and sweet. The tree or shrub is extremely hardy and has glossy green leaves. Flowers are large and crimson color. 50 cents each.

Grape Fruit

The increase in cultivation, production and use of the Grape Fruit is without parallel in American horticulture. We have the best seedless variety. 1-year trees \$1.00 each.

Oranges

Satsuma—Experience has taught us that orange culture here for a profit is a failure. A good many of our customers made large investments in orange orchards in Texas, and on account of frost have not realized anything on their investments, and we are growing only a few for such customers who want them and can protect them in winter. One-year-old, \$1.00 each, \$11.00 per dozen; \$85.00 per 100.

Lemons

The "New Wonder" Lemon is a true ever-bearing variety. On a plat six feet high, not less than 90 lemons were growing at a single time. Fruit has been taken from this tree weighing 4 pounds. It is not uncommon to make twelve lemon pies from one lemon. Will fruit freely the second year. Field grown, 1 year; 75 cents each, \$8.00 per dozen.

Grapes and Berry Plants

Grapes—Standard List

In succession. Finest quality. This list contains the best and most successful. 25 cents each, \$2.50 per dozen, \$20.00 per 100, except where noted.

The grapes thrive in almost any soil and are successfully grown all over the South. With but little skill and labor they bring abundant crops every year. The following are the best southern varieties.

Ladano—Hybrid of Salado and Headlight; vine vigorous, healthy; foliage similar to that of Headlight; cluster medium, compact; berry translucent, round; skin thin, tough; pulp tender, melting, rich, pure and sweet; seeds few; fine for hot climate and limy soils.

Baily—Growth strong; clusters large to very large; berries black; skin thin and tough; juicy, sprightly; of pure, very good quality; a valuable market grape.

Volney—Clusters very large; berries large and slightly oval; a week later than Ellen Scott; violet color.

Muench—Vine, very vigorous and free from all diseases; clusters large to very large; purplish black; sells readily in the market; fine for table.

Fern Munson—Growth very strong; clusters medium to large with long peduncles; berries globular, medium to large, very dark purplish red to nearly black; skin thin, tough; free from black rot.

Lomanto—Vine vigorous, prolific; no rot nor mildew; leaf medium, dark purple or black color of grapes; excellent quality.

Cloeta—Vine vigorous and healthy; fruit handsome, medium sized conical clusters with rich black, medium sized berries; fine for wine.

Ellen Scott—Vine beautiful, healthy, prolific; clusters large to very large, conical; berry large, translucent, violet covered with a delicate bloom; skin thin and tough; pulp tender, very juicy and pure; high quality.

America—Cluster conical, sufficiently compact; berries very persistent, medium size, globular, black, very prolific; rich in agreeable acid.

Edna—Finest white grape in Texas. A tested variety gave largest crops regularly of any white grape ever introduced. No vineyard complete without this wonderful white grape. Very

hardy one year strong plants, 25 cents each, \$2.50 per dozen.

Brilliant Grape—Growth strong; vines endure winters anywhere. Clusters large, cylindrical, or somewhat conical; berries large, light to dark red, translucent, with a thin bloom; very handsome when well ripened; skin thin, rather tender but seldom cracks; pulp meaty yet very tender, melting and delicious.

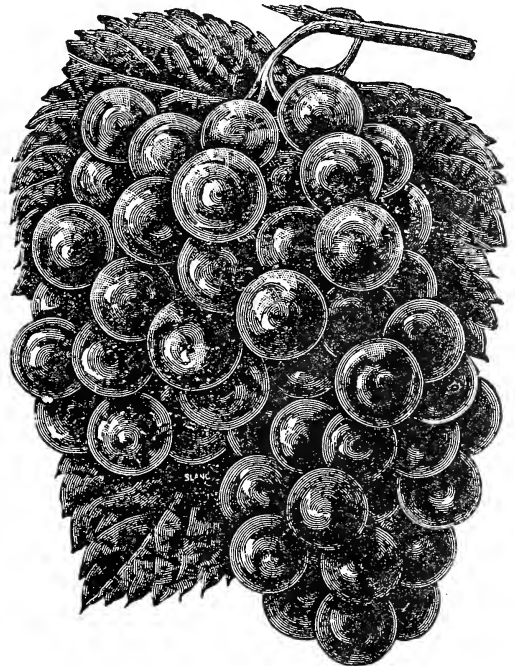
R. W. Munson—Growth strong; clusters medium to large, cylindrical, often shouldered; berries black, never crack; pulp tender, juicy, very fine quality; good wine grape.

Mustang Grape—1 year from seeds, 15 cents each, \$1.50 per dozen, \$12.00 per 100.

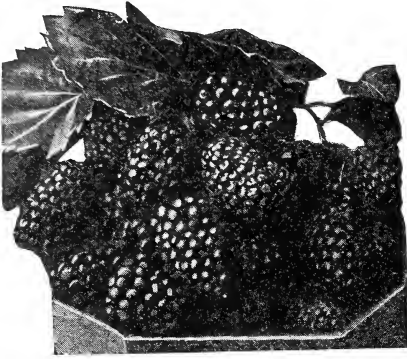
Niagara—Large, white; very good table and market grape.

Jacques—(Black Spanish, Le Noir, Blue French); berry small; large clusters; black; red wine.

Herbemont—(McKee, Bottsi, Brown French.) Small; large clusters; purple; finest quality; table, wine; best old grape in Southwest Texas.



Dewberries and Blackberries IN SUCCESSION



Prices 35 cents per dozen, \$2.50 per 100, \$15.00 per 1000.

The Blackberry is not so successfully cultivated in our part of the state as it is in North Texas, but the Mayes Dewberry reaches its greatest perfection here. It produces fruit of enormous size, of good flavor and in great abundance. Every lover of berries ought to have it.

Austin's Thornless Dewberry—We gave this variety a thorough test and find it to be thornless, a good bearer and easy to pick; large berries of uniform size. It is all that the introducer claims it to be and we recommend it to our customers, \$1.00 per dozen, \$7.00 per 100, \$50.00 per 1,000.

Mayes' Dewberry—New; very large, highly

flavored. It roots deep, is very prolific and never fails.

McDonald Berry—It is hard to decide whether this is a dewberry or blackberry. It bears in clusters like a blackberry, but tips like a dewberry. It grows on any soil and is the most productive of all berries. Berries are large, juicy, and of the best quality.

Dallas—(Blackberry.) Very vigorous, drooping, thorny, productive; large, fine.

Strawberries

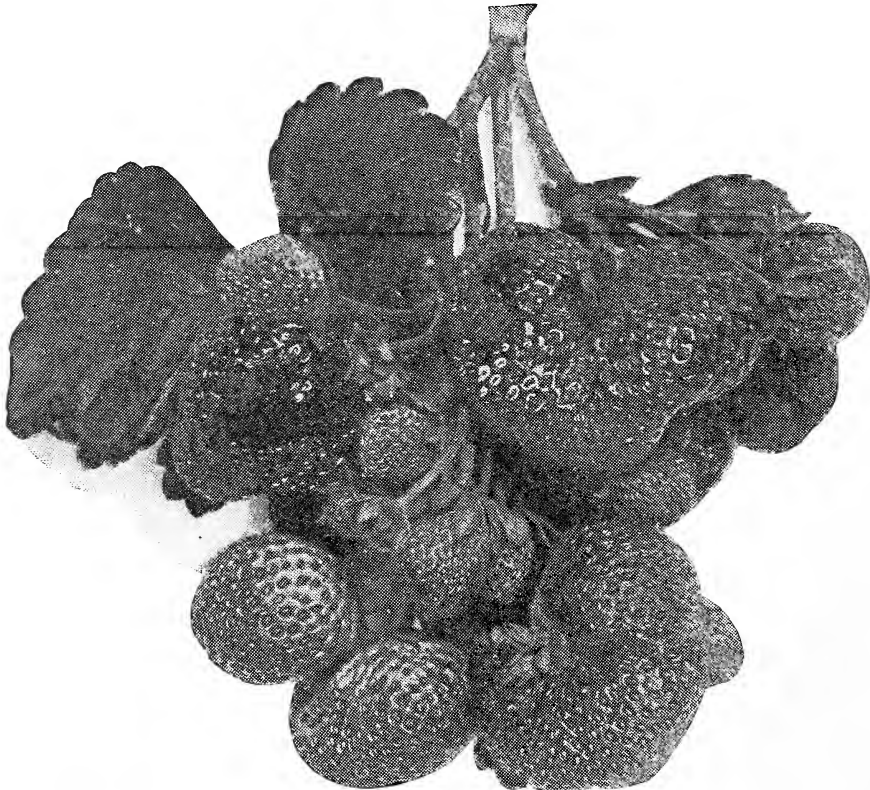
Prices 25 cents per dozen, \$1.25 per 100, \$8.00 per 1000.

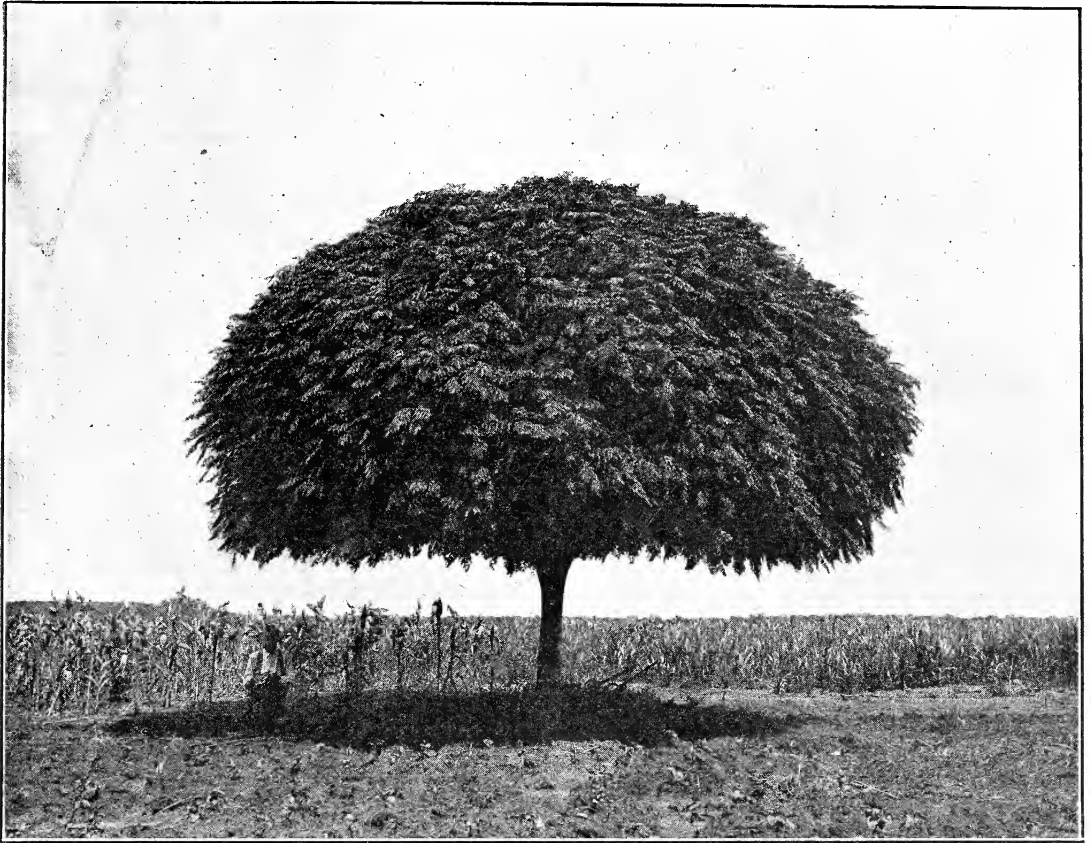
To grow Strawberries with success irrigation is required in Western Texas, but where water may be had plentifully it is very valuable, being about the first fruit in spring.

Klondyke—The plant is exceedingly vigorous, seems to be absolutely rust proof, and as near drought proof as a variety can be. Every berry is firm and brilliantly colored. This makes it the greatest and safest money-maker. On good or well manured soil it is simply wonderful.

Lady Thompson—A great favorite with all growers. Mid-season; fine large berries.

Texas—The money making strawberry of the South. Besides being an immense producer of fine flavor and beautiful color, it is a thrifty grower and a splendid drought resister. During the hot summer months we often lose our strawberry plants; the Texas strawberry, however, is perfectly hardy and stands the heat well.





Shade and Ornamental Trees

All shade trees are nursery grown, are straight and have splendid roots.

The physical welfare of yourself and those that you hold dear is greatly advanced by the trees and plants which surround your home. What a deserted impression does a splendid house make if not a tree or plant is near, and what a pleasant feeling comes to you if you see a small hut surrounded by beautiful shade and ornamental trees. What a comfort does a single shade tree afford a farmer, when after he comes home from his toil in the field he can recline under the same and take his afternoon nap.

Therefore, plant shade and ornamental trees around your house and you will be repaid for your trouble in many different ways.

Umbrella China—A native of Harris County and now widely known over the state. It is the finest and quickest growing of all shade trees. We have all sizes at the following prices: 4 to 5 feet, 25 cents each, \$2.75 per dozen, \$20.00 per 100; 6 to 7 feet and over, 50 cents each, \$5.50 per dozen. We are the largest growers of Umbrella China trees in Texas, and have over 20,000 this year to offer.

American Elm—Long-limbed, fast growing, is always admired; grows well on any ordinary soil. Price, 6 feet, branched, 50 cents each, \$5.50 per dozen; 8 to 10 feet, \$1.00 each.

Ligustrum Japonicum makes a splendid evergreen shade tree; leaves dark green, pointed.

2 to 2½ inches long; produces large bunches of creamy white flowers, followed in autumn by purple berries. Price of trees, well trimmed, 3 to 4 feet, 50 cents each; 5 to 6 feet, 75 cents each, \$7.50 per dozen; 6 to 8 feet, extra heavy, \$1.50 each, \$15.00 per dozen.

Populus Alba—Silver leafed poplar. Quick growing shade tree; a compact rapid growing tree; very hardy, 5 to 6 feet, 35c each.

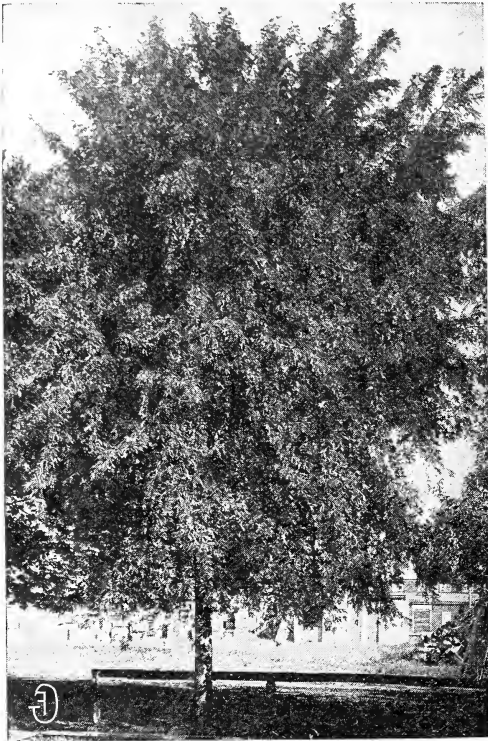
Salix, Discolor—Pussy Willow. A quick growing hardy shade tree, very ornamental when in bloom in the early summer. 4 to 5 feet, 50c each.

Carolina Poplar—A rapid growing native shade tree; is very largely planted as a street and avenue tree, and is very popular. 5 to 6 feet, 50 cents each; 6 to 8 feet, 75 cents each.

Judas Tree or Red Bud—A very long-lived shade tree; very hard wood; large round leaves, making a dense shade. It is not a quick grower. The first tree to bloom in spring; has very pretty red flowers which last a few weeks. Price, 4 to 6 feet, 50 cents each; 8 to 10 feet, \$1.00.

American Ash—A tree which is particularly well adapted to this latitude; makes quick growth and forms nice tops; leaves are a lively green color. 6 to 8 foot trees, 50 cents each, \$5.50 per dozen.

Chinese Elm—Quickest growing Elm tree. Makes a quick shade; does not break. The finest shade tree for street planting. Trees 5 to 6 feet, 50c each; 7 to 8 feet, \$1.00 each.



Streculia Platanaefolia (Japan Varnish Tree)
—A very hardy and at the same time very beautiful shade tree. It is particularly adapted to this climate, but not very well known. The stem is always straight and smooth and has the same color as the leaves, which are a beautiful light green. The leaves are from 6 to 10 inches across. Tree produces a spreading and dense top, and grows to a very large size. A tree of fancy appearance, but stands as much drought as a hackberry. 4 to 6 feet, 50 cents; 6 to 8 feet, 75 cents; 8 to 10 feet, \$1.00 each, extra heavy, \$1.50.

Sycamore—A lofty wide-spreading tree, hand shaped leaves; valuable for its handsome foliage and free growth. 5 to 6 feet, 50 cents. 6 to 8 feet, 75c each.

Weeping Willow—A grand old tree for the cemetery and for the lawn. Should be planted in deep, rich soil where it is constantly moist. 4 to 6 feet, 60 cents each.

Tamarix

4 to 5 feet, 40 cents each, \$4.00 per dozen.

Tarifloracans—Large, dark green foliage, upright growth; can be grown into a tree.

Canaris Jap. Plumosa—Finest of them all. Upright, curly light green, feathery leaves.

Casyuca—Like the Indica in growth and foliage, upright curly light green, feathery leaves.

Estivalis—A constant bloomer. Pink blooms, greyish foliage; very attractive.

Indica—Upright; dark green, thick foliage; a late bloomer; flowers come in clusters, light pink color.

Oddeseana—Neat grayish foliage; flowers rose colored; very profuse bloomer; blooms from June to August.

Tamarix Africana—Fine feathery foliage, like that of the Juniper; valuable in sand or soil where most shrubs will not do well; upright growth; small pink flowers on long stems.

Shrubs

All the following shrubs have been tested for years and found to be especially adapted to the South. I have a splendid stock of fine plants for this year's trade.

Altheas

Grafted on hardy stock.

One of the best hardy flowering shrubs that we know of, and most especially adapted to West Texas, for the reason that it blooms during the entire summer, even when monthly roses and other everblooming flowers are not in bloom. The flowers are not in the least affected by the sun in July and August, but are just as beautiful as they are in the cooler months. Price of strong plants, 2 to 3 feet, 35 cents each, \$3.50 per dozen.

Beule de Feu—A good double red variety; opens well.

Duchess de Braband—White, red inside; very double.

Lady Stanley—Large double pink.

Tota Alba—Single, pure pearly white; dwarf habit; earliest of all Altheas to bloom and blooms freely. Don't overlook this sort because it is single. It is very desirable.

Althea Rosea—(Seedling.) Mixed, all colors from best seed. Strong plants, 2 to 3 feet, 20 cents each, or \$15.00 per 100. The best and finest summer bloomer.



Syringa—Lilacs

35 cents each, \$3.50 per dozen.

Purple Lilac—A well known favorite.

Syringa Rothomagensis—Red Persian Lilac; very profuse bloomer.

White Lilac—Double.

Crape Myrtles

The Crape Myrtle has reached such a high degree of popularity that there is hardly a flower garden without a few of these lovely flowering shrubs. They are lately being used for hedges, which produce the most striking effect, and such a hedge is admired by all who see it. The first flowers appear early in May, and from then until frost the plant is continually a mass of flowers. Price of strong plants, 2 to 3 feet, 35 cents each; 2 years, at 50 cents each, or \$5.50 per dozen.

Pink—The earliest of all Crape Myrtles to bloom. Tree is of rather a dwarfish habit, but produces more flowers in one season than any of the others.

Crimson—Grows to a good sized tree, and is almost always in bloom. The flowers are of a very rich crimson color.

Purple—The largest of all; produces very pretty purple flowers in great clusters.

White—Is a very profuse bloomer, but slower grower.

Spirea

Spirea Van Houttei—A splendid new garden shrub, and one of the most beautiful of all. Immense bloomer with snow white flowers. Extra strong, 35 cents each.

Anthony Waterer—A fine hardy perpetual blooming shrub, particularly desirable for the door yard and lawn, or wherever fine hardy flowering shrubs are wanted. Rich, rosy red flowers in large round clusters; very free bloomer. Price, 50 cents each.

Miscellaneous Shrubs

Abelia Grandiflora—One of our most beautiful, popular and satisfactory broad leaved evergreens. The graceful drooping stems and branches are covered with dark glossy leaves which in winter assume a metallic sheen. From the middle of May till frost this plant produces and immense quantity of tubular shaped white flowers, about an inch long which are borne in clusters. We strongly recommend this plant for single specimens, groups or for hedges. Price, 2-year plants from open field, 75 cents each.

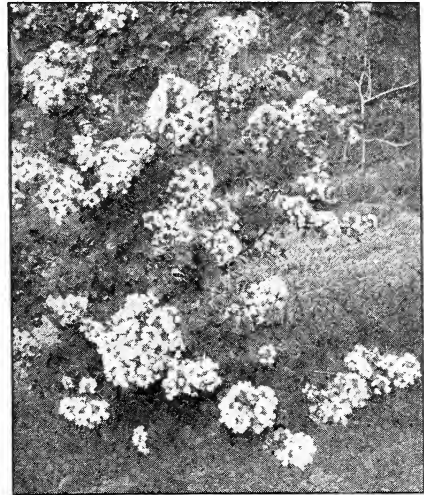
Buddleia Lindleyana (Summer Lilac)—One of the most desirable summer flowering shrubs. Beginning to bloom in July, it continues until cut by severe frost. The flowers are of a pleasing shade of violet mauve, and are borne in dense cylindrical spikes. It succeeds everywhere, and flowers freely the first season planted. Price, 50 cents each.

Ligustrum Lucidum—Rapid growing evergreen with thick glossy leaves. 2 to 3 feet, \$1.00 each.

Lonicera (Upright Honey Suckle)

Alba (White Tartarian Honeysuckle)—Forms a high bush, with creamy white, fragrant flowers. 2 to 3 feet, 35 cents each.

Lonicera Morrowi (Bush Honeysuckle)—A handsome Japanese variety with white flowers during May, but especially valuable for its



bright red fruit during the summer and autumn months. Price, 35 cents each.

Lonicera (Red Bush Honey Suckle)—This upright honeysuckle has pretty fragrant pink flowers, fine for florists; grows in round bush 4 to 5 feet.

Flowering Willow (Chilopsis Linearis)—Native of the dry sections of Western Texas and Mexico. They bloom constantly from May till late fall; grow on any soil and are long-lived. The lace-like followers are about an inch and a half long and are borne in clusters. Color, purple, 4 to 5 feet, 35 cents each; white, 4 to 5 feet, 35 cents each.

Nandina Domestica—Japanese Nandina. Upright growing evergreen shrub with reed-like stems springing from roots. Leaves glossy green when young tinged with red. In winter beautiful bronze tones are assumed. Flowers white on long panicles followed by masses of small bright red berries that are held all winter. Good in group planting or as specimens. Price, ½ ft., pot grown, \$1.00 each.

Philadelphus Grandiflora—(Syringa or Mock Orange)—The Philadelphus is an invaluable shrub. Of vigorous habit, very hardy, with large handsome foliage and beautiful white flowers produced in the greatest profusion in the blooming season. It merits a prominent place in all collections of shrubbery. 2-year-old plants, 35 cents each.

Salvia Greggii—New, hardy, everblooming, red-flowering shrub. A native of West Texas. Extremely hardy, is a great drought resister and has stood a temperature of ten degrees below zero. It flourishes and blooms profusely in hottest and driest weather. It is as near an everblooming plant as we have ever seen. It begins to bloom in early spring. The blossoms literally cover the plant. It requires a killing frost to check its flowering and a light frost in fall does not stop the blooming. The color is an indescribably lovely shade of red. It is a hard wooded shrub, and adds another good shrub to the already good assortment of the Southwest. Grows 3 to 4 feet high, and is very

full and neat in appearance. Field grown plants, 25 cents each, \$2.50 per dozen.

Salvia Greggii, White—New. We, having propagated the first plants of this new Salvia, are the only house that can furnish genuine stock of this new white everblooming flowering shrub. The white Salvia is a seedling of Salvia Greggii. The shrub is just as hardy and vigorous a grower. It blooms from early spring until late in the fall, and blooms continually throughout the hot, dry summer. The flowers are larger than those of its parent, and of a creamy white color. This new shrub excels all other outdoor summerblooming plants, and is excellent for bouquets, wreaths and all design work. It is a hard wooded shrub. Grows 2 to 3 feet wide. Field grown plants, 25 cents each, \$2.50 per dozen.

Vitex Agnus Castus—(Chaste Tree)—A very large, showy shrub with compound leaves com-

posed of five to seven leaflets, dark green above and downy grey green beneath. The flowers are borne profusely during the late summer, in long, dense, terminal racemes. **Lilac and White**, 3 feet, at 50 cents each.

Coral Berry—A hardy shrub, that is very useful for borders, hedges and general landscape work; has red berries in the autumn, the bush being covered with brilliant red berries. Price, 2 years, 35 cents each; per dozen, \$3.50.

Pomegranate—Red, flowering double; much used for parks. Blooms all summer, is very hardy. 2 years, 25c each; \$2.50 per dozen.

Deutzias—Pride of Rochester. Grows strong and upright, 4 to 6 feet high; flowers very double and full. Pure white tinted with blush. Price, 50 cents each; \$5.50 per dozen.

Plumbago

Capensis—A well known variety; sky blue flowers. Price, 35 cents.

Broad Leaved Evergreens

These are easily transplanted and grow very rapidly, therefore they should never be overlooked when ordering. You will always have a vacant place for a few. All the leaves should however, be cut off before planting, otherwise they often fail to grow.

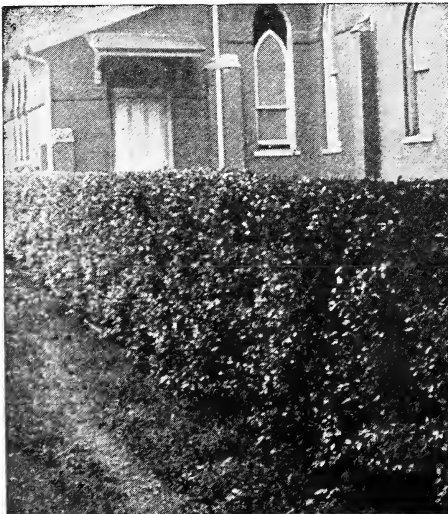
Broad-Leaved Evergreens

Buxus Arborea (or English tree box)—Succeeds almost every where. It is of rather slow growth, compared with other evergreens. Remarkable for its longevity, and finally gets to be 10 or 12 feet high. The Buxus makes the finest evergreen hedge. Strong, two-year-old bushes, 50 cents each, \$5.00 per dozen.

California Privet—Splendid for specimens, screens, hedges. 2 to 3 feet, 10 cents. For hedging, \$5.00 per 100; \$40.00 per 1,000. Two years, extra heavy, \$7.00 per 100.

Amor River Privets (South)—Of similar form and habit to the California type, not so shiney, but hardier, leaves small, round, very dense. 2 to 3 feet, 25 cents each; \$2.50 per dozen; \$12.00 per 100.

Ibota—Spreading and tall, the hardest privet; color greyish green; fruit black. 2 to 3 feet, 20 cents each; \$2.00 per dozen; \$15.00 per 100.



Euonymus Japonica—One of the fastest growing evergreen shrubs, suitable for either hedge or single specimen; can be greatly improved by cutting back to induce bushy form. No evergreen has such a bright dark green color in winter as this. For quick results this excels. Fine 2-year plants, 25 cents each; \$2.50 per dozen; 2 feet, strong, 50 cents each.

Rosemary—Evergreen with greyish green foliage highly perfumed, used for medicinal purposes. 2 years, 50 cents each; per dozen, \$5.50.

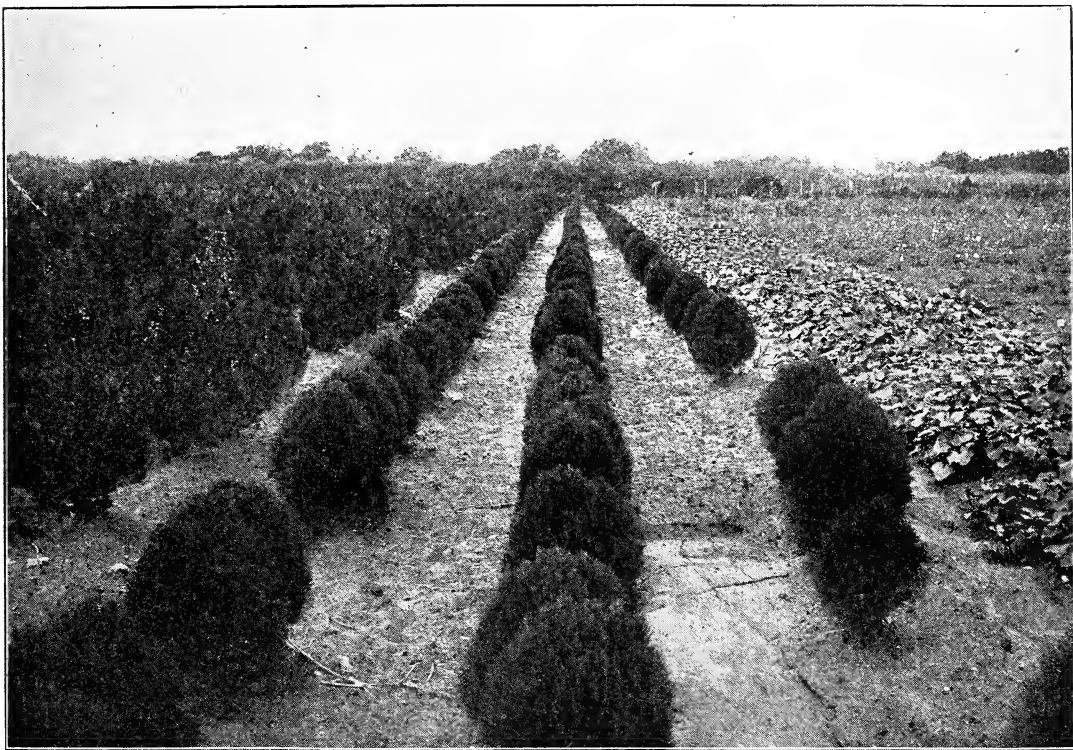
Japan Medler—Trees of medium height, with long, glossy leaves, which are evergreen; flowers white in spikes, and produced in winter. Fruit of the size of a wild goose plum, round or oblong, bright yellow, and produced in clusters; sub-acid and refreshing; maturity from end of February to April. 2-year field plants, \$1.50 each.

Pittosporum Tobira—One of the finest evergreen shrubs. Well adapted for trimming. Grows round and compact. Pot grown, 75 cents each; field grown, balled, \$1.50 each.

Cape Jasmine—Flowers large, white, fragrant; foliage rich, glossy. Price, large plants, 40 cents each; \$4.00 per dozen.

Magnolia Grandiflora—Its large, shining green foliage, accompanied in summer with large, fragrant, milky-white flowers, places it pre-eminently above all ornamental trees. This, as well as all other evergreens, should be handled and planted very carefully, as they are extremely sensitive to injury from drying. Their roots should never be allowed to get dry when out of the ground. In planting, the soil should be pressed firmly about the roots. Two feet, 75 cents; 3 feet, \$1.00 each; 4 to 5 feet, \$1.75 each.

Yucca Filamentosa—Evergreen. This plant is an object of beauty the year round. The leaves are 2 feet long, bristling out of all angles, with sharp points; flower stalks stout. Four feet high, with 100 to 200 bell-shaped creamy white blossoms hanging from branching arms. Perfectly hardy and lives to a great age. Two years old, 25 cents; \$2.50 per dozen.



Bonita Arbor Vitae Originated in Comal Springs Nursery.

Cone-Bearing Evergreens

Bonita—A new Arbor Vitae of the greatest merit, a chance seedling originated in our nursery. It is of a perfect round growth, dwarf and as round as a ball; has the beautiful green color of the Arbor Vitae, but the leaves are much thinner. This is the only Arbor Vitae to plant in the cemetery, as it has the round, compact form, and never gets over three feet high. It is a seedling among 3,000 Compacta Arbor Vitae; is better than the Biota Nana and more dwarf than any yet in existence. We have some nice, round plants 10 to 12 inches, \$1.50; 2 feet \$2.00.

Golden Arbor Vitae—This is the handsomest and most compact of the Arbor Vitae. Green, with a beautiful golden tint. True grafted trees. 2 ft., \$1.00 each; 4 ft., \$2.50 each.

True Berkman's (Biota Aurea Nana)—A new Golden Arbor Vitae of a dwarf and compact habit; a perfect gem for small gardens or cemetery lots; will not grow higher than 6 to 8 feet. 2 ft., \$1.00 each; 4 ft., \$2.50 each.

Chinese Arbor Vitae—Dark green, vigorous, hardy, desirable. Two to 3 feet, 75 cents each; 4 to 5 feet, \$1.00 each.

Golden Pyramidalis Arbor Vitae—Like the Golden, but grows tall and slender. A very ornamental sort. Do not confuse this with Cupressus Pyramidalis. 2 to 3 feet, \$1.00 each.

Compacta Arbor Vitae—A seedling, compact growing Arbor Vitae, of a lively dark green color, and of globular shape. 2 to 3 feet, \$1.50 each.

Cupressus Pyramidalis—This is a beautiful tall, columnar evergreen. Does well in Texas; a little tender in far North. Pot grown, sure to live. One foot, \$1.00; 2 feet, \$2.00; 3 feet, \$3.00.

Rosedale Arbor Vitae—Very compact growth, with sugar loaf form of the Golden Arbor Vitae, but with fine, cedar-like foliage of a bluish cast. Makes a beautiful ornament, perfectly hardy and vigorous growth; the most beautiful of all Arbor Vitae. One to 2 feet, \$1.00 each.

Seeding Arbor Vitae—5 to 6 ft., \$1.00 each; \$10.00 per dozen.

Hardy Out-door Palms

Washingtonia (*Prichardia Filifera*)—The hardiest of the Washingtonia type, quick grower, more erect. Large plants, weight 50 to 100 pounds, 3 feet, \$2.00 each; 4 feet, \$3.00 each.

Sabal Palmetto—The famed cabbage Palmetto. This forms a tall tree with a large head of fan leaves. This tree can be grown all over the South, and is very hardy here. 2 to 3 feet, \$2.00 each.

Roses



Strong field grown, 1 year old, 35 cents each; \$4.00 per dozen, except where otherwise noted;
2 year old, extra strong, 50 cents each; \$5.50 per dozen;
3 year old, extra strong, 75 cents each; \$8.00 per dozen.

Of all the flowers which man has taken into care, the rose has reached the highest degree of popularity. It is the queen of flowers, the flowers of poets, and will always be the dearest of flowers to the lover of the beautiful.

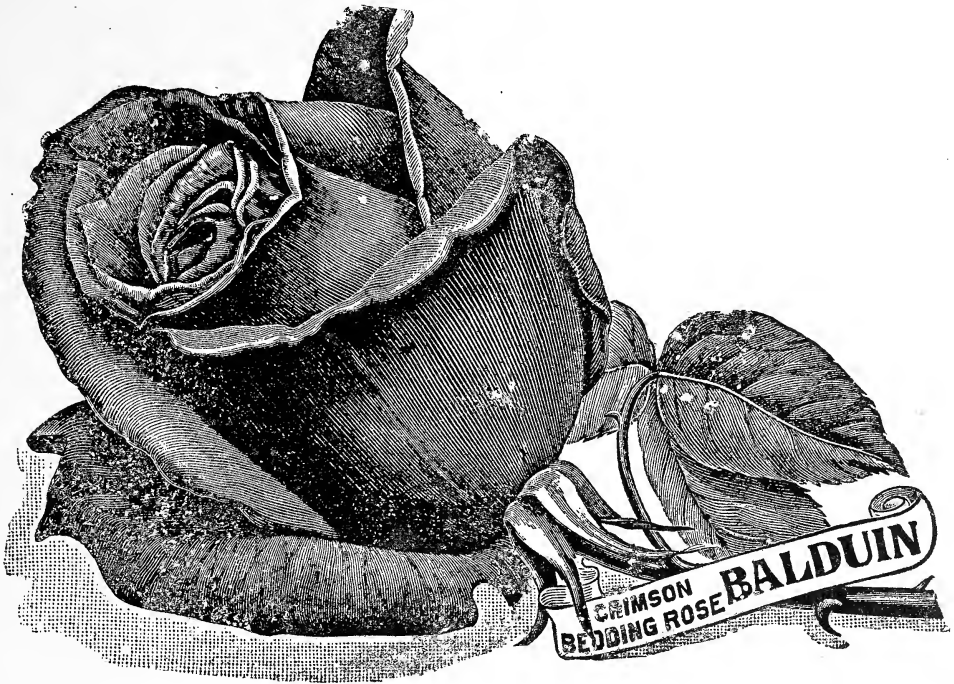
While wild roses are met with in almost every country, the cultivation of the rose began probably at the same time when the cultivation of man began, and with the cultivation of man that the roses has kept pace, being now at the same height of development as is humanity.

Of the many thousands of varieties which have for centuries been introduced by the hybridizers, those of each succeeding century show a marked improvement over those of the foregoing. Of the roses which were considered the best only a century ago, very few are grown today.

Many hundreds of different varieties have been tried on our grounds, and of all only such are described in the following list, which in our judgment, are the very best for outdoor planting.

Fortunately, we live in a climate where even the tenderest roses stand the winter without cover, and any of the roses in this catalogue may be planted outdoors.

Plant your roses in an open place. Never try to grow roses in the shade of trees. The plants you receive from us are grown by the latest methods of cultivation which we practice together with a means of accumulating power and strength in the young plants, and which is just the opposite from forcing roses in greenhouses for bloom. Do not set out your



roses the way you get them, but trim off at least one-half of the wood. Slow growing sorts should be trimmed more severely than the quick growing varieties. We are one of the largest rose growers in Texas, and have this year 40,000 extra strong plants to offer.

Crimson and Red

American Beauty—Hardy rose of largest size, having the everblooming qualities of the Tea Rose, with the delicious odor of the Damask or Moss Rose. In color it is brilliant red, shading to a rich carmine crimson. The flowers are borne on long, stiff stems, hence a splendid rose for cutting. 75 cents each.

American Legion—Bright cerise red; a strong, vigorous growing variety with large, full flowers; very free. Price, 75c.

Baby Rambler (Mme. Levasseur)—This rose is so well known as hardly to need a word of description. It is a dwarf form of Crimson Rambler, which produces flowers absolutely continuously. Invaluable either for pots or for outside bedding.

Etoile de France (Hybrid Tea)—The gold medal rose of France, and claimed by the raiser, J. Pernet Ducher, to be the finest rose he has ever sent out. A very strong, vigorous grower, with handsome green-bronze foliage and exceedingly free flowering. The flowers are very large and borne on long, stiff stems. Color, a clear red crimson velvet. Very fragrant and keeps well. Without any exaggeration, we may assert that Etoile de France will be appreciated by all lovers of the queen of flowers.

Balduin—A new hybrid Tea rose. About the best crimson outdoor bedding rose we now have. It is very strong growing and healthy, and produces very large and double roses of a glowing carmine color, which are as sweet as a June rose.

Crimson Queen—A beautiful crimson hybrid Tea of the Hadley type, but different in tone; a fine grower with broad, beautiful foliage.

Crimson Druschki or **His Majesty**—Dark crimson, shaded deep vermillion crimson toward edges and frequently overlaid with a rich velvety shading; opens well to a large and splendid form with a high pointed center; fragrant; upright, vigorous, free and perpetual; fine foliage.

Crusader—Rich, velvety crimson, heavily petaled, big double blooms open perfectly, supported on long necked stems. Robust, strong growing, free flowering, disease-resisting. At 75 cents each.

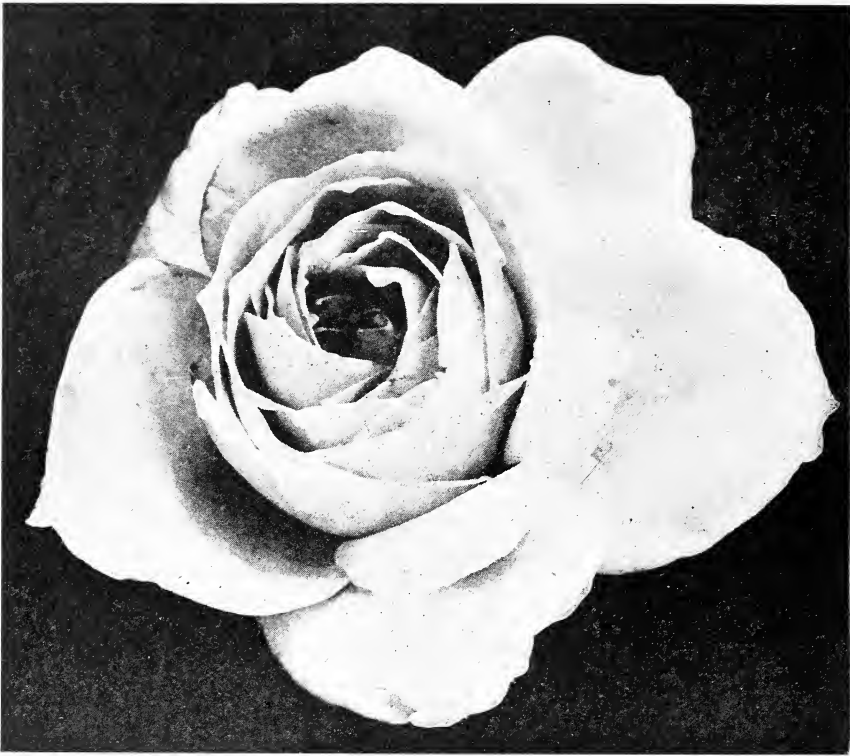
Mad. Mason—It is entirely hardy, blooming nearly all the time, bearing numbers of large, full double flowers of unusual beauty and wonderful fragrance. Clear, bright rose. Distinct and charming, a great rose.

General McArthur—A grand, new, everblooming crimson scarlet rose. In all the rose family we know of nothing that can compare with this in dazzling color, fragrance of flower and profusion of bloom. Is as fragrant as a rose can be, has good sized flowers, blooms continuously the whole season through, and gives fine stems for cutting. It makes a strong, stately plant that may be depended upon for strong flower shoots.

Gruss an Teplitz—We unhesitatingly say that for bedding no rose we offer will compare with Gruss an Teplitz. It is a perfect sheet of rich crimson all summer. When we say that we know of no rose that has such bright colors in it as this variety, we are stating facts. The richest velvety crimson overlaid with the brightest penetrating scarlet.

Luxenburg—Bright crimson.

Marie de la Salle—Deep, brilliant cerise; reverse of petals shaded carmine; long shapely buds with large petals opening to full bloom of splendid form. A free growing and continuous flowering bedder.



Mrs. Chas. Russell—Large globular, well formed flowers; very double; of a rosy carmine, with rosy scarlet center. It is of strong branching habit with splendid foliage and very free flowering; one of the very popular cut flower varieties and equally good for the garden. Price, 75c.

Meteor—A very velvety red everbloomer of the deepest glowing crimson, as fine as a hybrid. Flower very double and petals slightly recurving. A beautiful open rose.

Orleans—A Baby Rose, with charming and dainty clusters of deep cerise flowers with a pure white center. Always in bloom; looks like a large bouquet.

Glorie des Belians—This rose is superior in every respect both in growth and beauty of flower and form to Helen Gould. We know that of all the new roses that have proven of such wonderful qualities; a fine free bloomer; flowers large, and extra fine for cut flowers. This rose should be in every rose order. It will give more flowers and pleasure than any two others together. Extra strong plants. 75 cents each.

Rhea Reid—A fine double red; very free in bloom and growth. Makes good flowers in summer. An extra good bedder. Flowers very large perfectly double, and of fine deep red color.

Red Letter Day—An exceedingly beautiful rose of infinite grace and charm. Its velvety, brilliant, scarlet crimson buds and fully opened flowers never fade. Awarded highest medals. Price, 75c.

Rose Marie—This is the finest garden bedding rose in existence either old or new. We had to pay a special price for this wonderful rose. This rose was awarded first prize in the leading flower shows. The buds are long pointed. Color deep pink. A rose that can be used for all occasions. Long stems; very free bloomer. Price, 75 cents each.

Red Radiance—Same rank grower as Radiance, bright red color flowers, double, borne on long stiff stems; one of the finest for cut flowers.

Sensation—As large and more brilliant than Premier. Well supplied with a heavy, luxuriant foliage. The flowers are fine any season of the year. The color is an entrancing shade of red. The bud long pointed and strong, with ample foliage. A good keeper and shipper. Price, 75c.

William Notting—Bright rosy cerise with deeper center; large, full; free with pronounced fragrance.

Pink

Antoine Rivoire—A grand fancy bedding rose, very large, very full, perfect in form. Color flesh tints with orange center and carmine edge.

Bridesmaid—The pink sport of Catherine Mermet. It is a stronger grower than its parent; has handsome foliage and the flowers are a much livelier pink. The most popular pink rose ever introduced.

Burbank—Raised by Mr. Luther Burbank of California, known the world over as the "Wizard of Horticulture." The color is cherry crimson. It is, in other words, the very deepest and brightest pink rose in cultivation. One of the freest bloomers and perfectly hardy.

Catherine Mermet—A fine pink rose; a good grower and bloomer; one of the best pink roses for outdoor culture.

Columbia—Too well known to need description; glowing pink, deepening as it opens; a marvel of freedom in growth and bloom, with long stems, nearly thornless, quite fragrant, lovely in the bud state, and handsome in the full open flower which turns to deep rose. Own roots, strong plants. 75 cents each.

Conrad Ferdinand Meyer—An early flowering hybrid combining the ornamental qualities of its Rogusa foliage with the blossom beauty and perfume of the hybrid perpetuals. Flowers large, cup shaped and double; delicate silvery pink.

Jonkherr J. L. Mock—Although introduced only four years ago, this beautiful rose quickly found its place among our best bedding varieties. The flowers, which are produced in the greatest freedom on long, stiff stems, are of large size and perfect in form, of a deep imperial pink, the outside of the petals silvery rose white; highly perfumed.

Henri Martin—Rich glossy pink, tinged with crimson. Moss rose.

Champion of the World—A perpetual bloomer, summer and winter. The flowers, which are produced in the greatest profusion, are perfectly double and of perfect shape. They are of a deep rosy pink and delightfully fragrant.

F. R. Patzer—Free-flowering character; growth very robust and erect; with large and handsome foliage. The blooms are produced with great freedom. They are carried on long



stiff stems. The color is creamy buff, back of petals warm pink; as it opens it changes to light orange pink.

Killarney—No rose has attracted so much attention as Killarney. The color is brilliant sparkling pink. The flowers are extra large and full, with broad, thick petals and delightful tea fragrance.

Wm. R. Smith—As a summer bedder this variety ranks above all others; produces immense quantities of fine flowers of creamy white with pink shading; strongest growing of all the summer bedders, making a fine branching bush in one year's time. Has fine, firm, glossy foliage; long flowering stems.

La France—Perhaps no rose is more widely known or more highly valued for a garden rose than La France. It is a hybrid Tea of very beautiful form and color; an early and constant bloomer, producing a wonderful profusion of buds and flowers all through the growing season. It is exceedingly sweet and handsome, and altogether one of the loveliest and most desirable roses one can plant. The color is a delicate shade of peach blossom, changing to amber rose, elegantly tinged with crimson.

Lady Ursula—Color a most beautiful shade of flesh pink; fine form.

Los Angeles—We would not consider any collection of roses complete without Los Angeles, one of the finest roses ever introduced. The growth is very vigorous and produces a continuous succession of long-stemmed flowers of a luminous flame pink, toned with coral and shaded with translucent gold at the base of the petals. Buds are long and pointed and expand into a flower of mammoth proportions, while the beauty of form and ever-increasing wealth of color is maintained from the incipient bud until the last petal drops. At 75 cents each.





Mme. Caroline Testout—A magnificent hybrid Tea, of the very loveliest shade of pink.

Mrs. Chas. Bell—A shell pink sport of Radiance. It has no characteristics which make it distinct from Radiance except that it is shell pink. Mrs. Chas. Bell, Radiance and Red Radiance offer a range of color that will be welcome and there are no finer garden roses for America than these three. Price, 75c.

Maman Cochet—A magnificent pink rose of the Mermet type. The grandest of outdoor bedders in pink, making an enormous growth in one season. Color very bright, rose with shading of yellow in center.

Malmaison—This is certainly one of the choicest, and as a rose for general cultivation is unsurpassed. The color is a beautiful rich, creamy flesh, with a rose center; flowers very large, perfectly double and deliciously fragrant; a strictly first class rose in every respect.

Paul Neyron—Deep pink, very large and extra fine rose, and very free bloomer. A rose without thorns.

Souv. De President Carnot—Rosy flesh, shaded white; large, fine form; semi-double.

President Taft—This is without question the most remarkable of all pink roses. It has a shining intense deep pink color possessed by not other rose. It is a fine grower, free bloomer, good size and form, fragrant, and in a class by itself as to color. Mr. Frank Good, who is probably familiar with more roses than any man in America, says: "Talk all you want to about the rose President Taft, and then you will not say enough."

Radiance—A grand free-growing, big habited rose, with long stems and globular blooms of

intense rose pink color; very fragrant. A fine summer variety and the finest of all the outdoor pink bedding roses. Always in heavy demand.

Winnie Davis—Good cut flower roses; long pointed buds on fine stems. One of the very best pink roses.

Papa Gontier—Old red rose, pretty in bud; free bloomer; in good demand.

Yellow

Alexander Hill Gray—The respect of all rose lovers warrants the issuing of a champion rose, and a tea at that, to pay due homage to one of the world's greatest tea rose growers. It is wonderfully floriferous, every shoot being crowned with a flower bud, which develops into a bloom of very large size, great substance and perfect formation, with high pointed center from which the petals gracefully reflex. The best and largest pure yellow tea rose yet introduced. Its color is a solid deep throughout, Marechal-Neil like lemon-yellow; strongly tea scented.

Amelia Gude—A unique and charming yellow rose; color of Sunburst, with deeper shadings on the reverse; a true fancy yellow. The blooms have an individual beauty not always found in the big buds of the modern varieties. It is ideal for table decorations, corsage bouquets, baskets. It keeps well. Price, 75c

Aaron Ward—A color that catches the eye at once, copperage, golden orange in the full flower; fine pointed buds; very popular.

Baby Doll or Tip Top—Brilliant golden yellow tipped with clear, bright cerise, lovely miniature "Sweetheart" buds and blooms of perfect form and finish, borne in erect panicles of single, deep, glossy green foliage, narrow,



long and sharply pointed; in the Brunner class for corsage and dainty floral work.

Souvenir de Pierre Notting—This is a beautiful rose, seedling of Marechal Niel and Maman Cochet, with beautiful closely-set foliage and strong, sturdy habit of growth. The bloom is very large, perfectly full, of elegant form, has a beautiful long bud. The colors are very bright, distinct and clear, and have no unpleasant tones—orange yellow, bordered in carmine rose.

Etoile de Lyon—Many new varieties of yellow roses have been introduced since this was a novelty, but none combine more good qualities than this good old sulphur-yellow rose. Buds are of beautiful shape and flower is very full.

Golden Ophelia—Similar in habit of growth and freedom to Ophelia but with a pretty golden yellow suffusion. Price, 75c.

Gloire Lyonnaise—Creamy white, the nearest yellow hybrid perpetual rose, and a grand one.

Mrs. Arthur Waddell—A strong, rampant grower; buds long and pointed; rose scarlet, opening coppery salmon; large and semi-double, but a wonderful keeper. One of the showiest roses extant; a splendid forcer.

Francisca Krueger—A strikingly distinct and handsome rose. One of the very best for open culture. The flowers are deeply shaded copper-yellow in color and are of large size. Always in bloom.

Helene Gambrier—This lovely yellow hybrid Tea everblooming rose will fill a long-felt want from the fact that everybody has been looking and longing for a good yellow rose that combines vigorous hardiness with rich color and free blooming qualities. This Helene Gambrier does. Flowers are of a delightful shade of deep, rich yellow.

Luxemburg—Grand golden yellow rose, H. P. strong grower, heavy foliage; a good rose.

Mme. Jenny Gillemot—Buds long and pointed, deep saffron-yellow; immense; opens very freely. A fine upright grower of branching habit; exquisitely beautiful, very large in size, bud very long and pointed.

Mme. Cecile Brunner—Synonyms: Mignon and Sweetheart. The tiny pink Polyantha rose, extremely useful in the cut flowers trade, where it has acquired new popularity the past two years; forces nicely in winter time.

Mme. Butterfly—Sport of Ophelia. Of freer growth than its parent. All the color tones of Ophelia are intensified, making it a harmony of bright pink, apricot and gold. It averages more petals to the bloom. It produces more blooms to the plant, because it makes more branches, every one carrying a bud, consequently requires fewer plants to fill the bench. The tight buds are a lovely shade of Indian red, yellow at base. They are unique for corsage and for low table decorations. The opening flowers are perfect in form and texture, clear and brilliant in color and of delicious perfume.

Perle des Jardins—Golden yellow, large, double free bloomer; the finest yellow rose in cultivation.

Lady Hillington—A very popular yellow forcing variety, already planted in considerable quantity in this country. It is of very quick, free growth, with pretty narrow foliage, and is one of the freest in the tea section in the continuous production of flowers. The buds are slender and graceful, a deep shade of yellow which does not easily fade. Everybody can grow this pretty yellow rose and have it in quantity.

Ophelia—Is grown by every wide-awake florist. The queen of fancy roses; orange salmon. No forcing variety ever attained such wide popularity so promptly and it tops the list of profit. It has the handsomest foliage in the family, ample, large and of wonderful texture; noted for its splendid stems. It is



the most fragrant of forcing varieties, with the full June-rose fragrance. Ophelia stands charged with pushing Killarney off the stage. There ought to be room for both. 75 cents each.

Sunburst—This big yellow rose is in a class by itself. It has proven a valuable summer variety and has made many friends. It is also a fine cut flower variety throughout summer, and is a marvelous keeper, the color being beautiful, whether it comes light or deep orange. Being an all-the-year round rose makes it profitable. 75 cents each.

White

Catherine Zeimet (White Baby Rambler)—This is surely a beauty. It grows to a height of 15 to 20 inches, and produces double pure white flowers in wonderful abundance. It has a fragrance similar to hyacinths. Of free, compact growth and very attractive, a sheet of white and always in bloom. Extra strong. 50 cents each.

White Killarney—With many growers used in preference to the original White Killarney, as it has many more petals and makes a finer flower for warm weather use.

Kaiserin Augusta Victoria—This is one of the grandest of all roses. It is a strong, vigorous grower, producing buds and flowers of enormous size. Color pure ivory white. We have no hesitancy in saying that this rose is unequalled by any other in its color. A grand garden rose on account of its vigorous growth and hardiness.

Bessie Brown—This rose is considered one of the finest of the roses of late introduction, and is well worthy of the place it occupies among roses. It is of the Hybrid Tea class and will stand frost if slightly protected. Blooms are enormous size; of heavy substance and perfect shape, lasting splendidly when cut. The color is snow-white, faintly flushed and tinged with pink. A fine, strong free growing, producing long stems.

Clothilde Soupert—Flowers are borne in large clusters all over the bush. They are large, perfectly full and double, and most deliciously sweet. Color beautiful creamy white,

splendidly tinged with amber, deepening at the center to a clear bright pink, and sometimes both red and white roses are borne on the same plants. Very vigorous bush.

Frau Karl Druschke (White American Beauty)—Form of flower identical with American Beauty. Color clear white, beautiful in bud and half open.

The Bride—This is decidedly the most beautiful white tea rose. It is a sport from Catherine Mermet with which it is identical in growth and shape of flowers. The flowers are very large and double, on stiff stems of fine texture and substance, and last a long time after being cut; makes one of the best varieties for corsage wear or bouquets. During extremely hot weather it becomes a pinkish white; at other times a beautiful pure white.

White Cochet—The charming new white tea rose. Another new American rose. Its habit is exceedingly strong and upright, like its parent, Maman Cochet. It possesses the same large, beautiful, healthful foliage, and it is a most profuse and constant bloomer. The flowers are of enormous size, round and delicately tea-scented. It is without doubt the largest white rose, both in bud and flower.

White Malmaison—The best everblooming white rose. Pure white; best rose for designs and floral offerings. Growth and habit same as the Pink Malmaison.

White La France—This rose is identical with La France, except in color, which is almost pure white. The shading in fawn it has only enhances its beauty. A grand rose.

White Ophelia—Erect habit, faultless form, stiff long stems; handsome bright foliage; pure white; a perfect rose.

Climbers

Climbing American Beauty—A seedling of American Beauty crossed with Wichuriana. Same size, color and fragrance as American Beauty. A vigorous climber. Good foliage and profuse bloomer.

Climbing Helen Gould—Probably no red rose has held its place in the heart of rose lovers for so long a period as has the beautiful Helen Gould. We have now the pleasure in introduc-

ing this famous rose in a climbing form. Every-one is familiar with this warm-watermelon red color of its charming flowers. This is a grand climber.

Climbing Etoile de France—Brilliant red, crimson velvet. Centering to vivid cerise. Identical with Etoile de France, except in its vigorous climbing habit.

Climbing Clothilde Soupert—Rich, creamy white flowers, sometimes tinted with blush and borne in immense profusion. A fine hardy climbing rose that will bloom all the time.

Climbing Kaiserin Augusta Victoria—Flowers same as the Kaiserin, which is too generally known to require description here. Stout canes, very quickly covers verandas, etc. Always in bloom.

Climbing Killarney—A vigorous climber otherwise possessing all of the splendid qualities of the parent Killarney.

Climbing Meteor—Is of strong, vigorous habit of growth, producing in great profusion throughout the season magnificently formed buds and flowers, which in color are of a dark velvety crimson, the equal of any rose in cultivation, and possibly more glowing than its illustrious parent.

Climbing Gruss An Teplitz—A climbing form of Gruss an Teplitz. Unquestionably one of the finest climbing roses ever introduced. The color when first opening is very dark rich crimson, quickly changing to bright scarlet, shading to velvety fiery red. The flowers are very showy and handsome. Remarkably healthy and vigorous; almost immune from all diseases.

C1 Maman Cochet—Same as Maman Cochet a strong pink climber and good bloomer, flowers are double and keep well.

Climbing Paul Neyron—Clear satiny rose, large beautiful flowers, few thorns; a good climber.

Climbing White Maman Cochet—Perfect white climbing rose. It blooms continuously all summer; one of the finest white everblooming white climbing roses.

Crimson Rambler—The most popular out-of-door climber of today; a rapid producer of long, heavy canes, reaching a height of ten to twenty feet in one season; rich clusters of bloom form a mass of vivid crimson beauty until late in the season. Perfectly hardy in the most trying climates, being a native of Japan.

Climbing, Clinging and Creeping Plants

These long-lived plants are the most popular and best for the South to cover arbors, galleries, old trees, etc., in a very short time.

Kudzu—The famous Chinese Kudzu grows more in three months than most vines do in five years. Adaptable to porches, arbors, fences, rockeries, old trees, etc. If you wish a vine that will grow anywhere in the bed or poorest soil, then plant the Chinese Kudzu. The large, bold, green leaves afford a dense shade. The clusters are deliciously fragrant. 25 cents each, \$2.50 per dozen.

Ampelopsis Veitchii (Boston Ivy)—This plant resembles very much our ivy, but grows very rapidly, covering a large wall in one season. The foliage is small and neat and blood-red in color in fall. 25 cents each.

Reine Marie Henriette—A congenial companion to the Marechal Niel; a sturdy climber and everbloomer, thriving especially well in the South. Elegant in bud, with large, full, finely formed flowers of rich brilliant crimson.

Dorothy Perkins—Beautiful, hardy pink, blooming in clusters. An extra good climber for the South.

Doctor Van Fleet—One of the newer type of climbers which combines absolute hardiness with flowers large, as in the tea and Noisette class. This variety shows a mass of beautiful clustered buds, which open out into large, shapely flowers; delicate; flesh white. An admirable cutting variety with stems 12 to 18 inches long.

Flower of Fairchild—A counterpart of crimson Rambler in every respect, except that it shows ever blooming tendencies.

La Marque—A rampant climber; large clusters of full, very double and sweet pure white flowers. A beautiful rose for which there is always a great demand.

Marechal Neil—Beautiful, deep yellow; very large, full globular form, sweet, free bloomer; the finest climbing rose; two years, budded.

Veilchenblau—The blue rose. Color steel-blue or amethyst, sometimes reddish lilac; a seedling of Crimson Rambler, with double florets in fine clusters. It is probably the most beautiful grower, with handsomest foliage of any climbing rose in existence; the leaves are exceedingly long and slender, with high gloss. Indications point to its becoming a very popular novelty.

Tausendschoen—Soft pink, blooming in clusters. The branches look like large pink ostrich plumes; a splendid forcing variety under the same treatment given the Crimson Rambler. Very valuable.

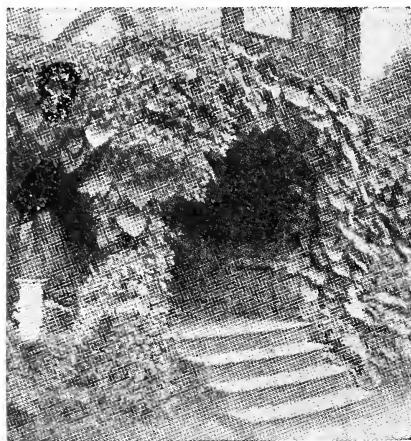
Yellow Banksia—Yellow, small flowers; very fragrant. Both Banksia roses are very hardy.

Climbing Wooten—One of the best of the red climbers. Blooms large and full. Crimson shaded with almost violet crimson. Strong grower, good foliage and profuse constant bloomer.

Banksia White—Small white flowers in great profusion, making one of our most popular climbers.

Ivy, Hardy English—The hardy evergreen vine that remains so all the year, making it one of the most valuable of all hardy vines. It is used in covering walls and has become popular for covering graves, especially in the shade where grass will not succeed. Price, 25 cents each, pot grown.

Antignoum Leptophus (Queen's Wreath)—A splendid plant from Central Mexico, producing rose-colored flowers in racemes two feet long. The profusion of bloom is such as to give the resemblance of roses at a distance, hence its name, "Rosa de Montana," or Mountain Rose. Will live out in the winter anywhere in the South. The vines are killed by frost, but it quickly shoots up in the spring and develops its flowers from May until frost. This is one



of the most lovely vines. Bulbs, 25 cents each
Smaller bulbs, 15 cents each.

Clematis Paniculata—One of the most beautiful of our hardy climbing vines. The flowers are pure white, and are borne in great panicles or clusters of bloom, which fairly cover the plant so that a mass or sheet of fleecy white. The fragrance is delicious, resembling the English Hawthorne blossoms, and so subtle and penetrating that a large plant in bloom fills the air with exquisite fragrance. 25 cents each.

Clematis Drummondii—Many varieties of Clematis grow wild in Texas. Among them this is the best. When in bloom the plant is covered with white flowers, which come in such profusion that it attracts attention along fences in the moonshine, being as white as cotton. Flowers are not fragrant. A rapid climber. Strong plants, 25 cents each.

Wistaria Senesis (Purple Wistaria)—A quick-growing climber, producing long racemes of purple flowers. 35 cents each.

Wistaria Sensis (White Wistaria)—A long, drooping cluster of pure white color, very elegant, strong two-year plants. 35 cents each.

Vinca, Evergreen (Trailing)—Dark green, 15 cents each; \$1.50 per dozen.

Vinca Varigata—Shaded green and white. 25 cents each.

Vinca Harrisemii (Trailing)—Two shades of green and gold. Strong plants, 15 cents each; \$1.50 per dozen.

Honeysuckles

Prices 35 cents each; \$3.00 per dozen.

Coccinea—Flowers red, good bloomer; stands Texas sun well.

Halleana—One of the finest Honeysuckles grown. Blooms from May till November; is always evergreen and one of the most fragrant; flowers white, changing to yellow.

Ornamental Grasses



Zebra Grass

No garden is complete without a few of these beautiful grasses. They are so easily transplanted and grow with so little care that everybody can afford to have them. The beautiful plumes they produce keep for years if cut at the right time and properly dried. 15c each.

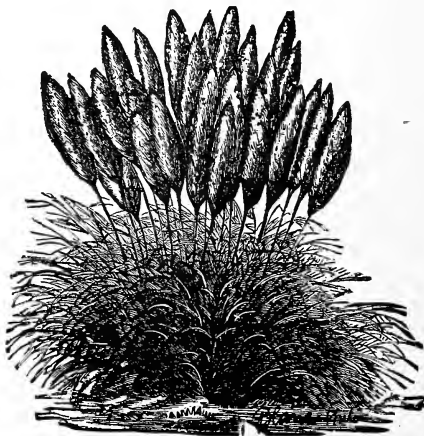
Eulalia Japonica Variegata—A variegated hardy grass from Japan. In appearance it somewhat resembles the Ribbon Grass while in a young state. It forms compact clumps. Its flower stocks are very graceful and numerous. 15 cents each.

Eulalia Japonica Zebrina (Zebra Grass)—Bright green blades with yellow bars across them; grows to a height of 5 to 6 feet; produces fine-lace-like plumes which last for years if cut when fresh; perfectly hardy. 15 cents each.

Eulalia Univittata—Plumes silvery white, produced upon very long stems; blooms early; a graceful new variety, 4 to 5 feet. 15 cents each.

Umbrella Plant (Cyperus Alternifolius)—A splendid plant, throwing up stems two or three feet high, surmounted at the top with a whorl of leaves diverging horizontally, giving it a novel appearance. Fine for center vases or aquariums. Price, 25 cents each.

Gynerium Argenteum (Pampas Grass)—Enormous bunches of long, handsome, dark green blades, producing long stalks of silver-white plumes, grow light. 50 cents each.



Cannas



Dry, divided roots, the best to transplant, 15 cents each; \$1.50 per dozen, except where noted.

This is one of the most thankful flowers. It produces its flowers from spring until frost kills the tops of the plant, and in such different and exquisite colors that nobody can help admiring them. The plant needs plenty of watering, and can only be had where there is a plentiful supply of same.

David Harum—Foliage bronze, height 3 feet, growth sturdy, habit moderately clean, flowers similar to King Humbert, but color is reddish yellow orange.

Louisiana—Foliage green, height 5 to 6 feet, growth luxuriant. The finest red Canna. Large flowers, deep crimson, darker than Duke of Marlborough, with crinkly edges and silky sheen. Flowers often 6 inches across.

Flambeau—Foliage green, height 6 to 7 feet growth luxuriant, habit clean. Color a glowing fiery vermilion or orange red with golden borders and throat; in size immense, often 6 to 7 inches across with wavy edges; flowers' stalk rise a foot higher than the foliage. It is ideal for the center of a Canna bed. New.

Mercedes—Foliage green; height 3 feet; growth sturdy; habit clean. A quietly elegant flower. A pure lemon yellow shading to white with throat spotted with vermilion; petals have a silky sheen.

King Humbert—Foliage bronze, height 3 feet. The finest bronze-leaved Canna. A gorgeous thing. An orange scarlet flower streaked with crimson and gold. True orchid type.

Alemania—The giant of all Cannas. Produces the largest flowers. The outer petals are scarlet, with a very broad, golden yellow border; inside of bloom is scarlet and dark red.

Austria (New)—The gorgeous new orchid-flowered Canna; a hybrid with "Canna Flaccida" as one parent. Flowers of immense size, 5 to 6 inches across. Color golden yellow.

Feuermeer—Dark red, medium height, good bloomer. 25 cents each.

Hungaria—Fine rosy pink, very free bloomer. 25 cents each.

Eureka—The best white canna for all purposes, large substantial flowers, very freely produced on strong vigorous plants. 25 cents each.

City of Portland—A wonderful bright rosy pink, much deeper in color than Hungaria, a free flowering, vigorous growth. 25 cents each.

The President—Immense florets of bright red color insured its immediate popularity. 25 cents each.

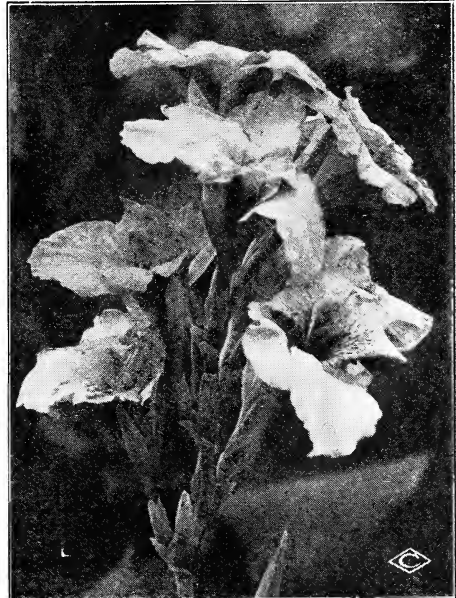
Fanal—An intense fiery cinnabar red, that compels attention, an ideal grower, producing a great abundance of flowers on upright stems, well above the foliage, a fine bedder. 25 cents each.

Mrs. Alfred Conard—One of the very best cannas in commerce today. Large, exquisitely shaded salmon, pink flowers in great abundance, upright stalks. 25 cents each.

Orange Bedder—Superior to all preceding varieties of this color, bright orange with just enough scarlet suffusion to intensify the dazzling mass of color. 25 cents each.

Rosea Gigantica—Large flowers, beautiful rose pink color. 25 cents each.

Golden Eagle—Clear golden yellow of fine upright growth. Flowers produced in large clusters well above the foliage; 4 feet. 25 cents each.



Bananas (Musa)

Orinoco—The hardiest and commonest sort. Plants of large size with dark green leaves, very robust and easily grown. Strong suckers, \$1.00 each.



Bulbs

Amaryllis Johnsonii—Brilliant red flower, 5 inches in diameter, with a distinct white stripe in the center of each petal; very fragrant. 35 cents each. Large bulbs, 50 cents each.

Crinum Lilly—Nice strong bulbs of these beautiful summer blooming outdoor lilies. Wine and milk colored. 25 cents each, \$2.50 per dozen.

German Iris (Flag)—Color ivory white and yellow; very hardy. 15 cents each; \$1.50 per dozen; \$10.00 per 100.

Gladiolus—Blooms only once, and although its beauty lasts only a short time, it is beloved by everybody who knows it. The flowers are borne on spikes 2 to 3 feet long and blooms in success for 8 to 12 days, the lower flowers blooming first. To have a continuance in bloom the bulbs ought to be planted at intervals of every two weeks from March 1 until the end of May. My bulbs are extra large, well matured and taken only from the best varieties. Bulbs, extra large, of the finest varieties that money can buy. 50 cents per dozen; \$3.50 per 100.

Try a hundred of my extra large and extra fine bulbs, and have the grandest flowers you ever saw in colors.

We can furnish the following named varieties large bulbs, true to name.

America—A fine pink variety, much used by florists, opens well. Price, 10 cents each; \$1.00 per dozen.

Velvet King—The best Scarlet Gladiolus. 10 cents each; \$1.00 per dozen.

Francis King—Beautiful vermilion-scarlet, very useful for cutting. 10 cents each; \$1.00 per dozen.

Chicago White—The pure White Gladiolus, rare. 10 cents each; \$1.00 per dozen.

Caladium Esculentum (Elephant's Ear)—One of the most effective plants in cultivation for

the flower border or for planting out upon the lawn. It will grow in any good garden soil, and is of the earliest culture, but to obtain the best results it should be planted in rich compost and plentifully supplied with water. Price, medium bulbs, 25 cents each; \$2.50 per dozen. Large, 50 cents each.

Mexican Tuberoses—Unlike any other variety it has stiff, tall stems; flowers pure white, single, delightfully fragrant, blooms continuously. Invaluable either for pots or open garden. Large bulbs, 5 cents each; 25 cents per dozen, \$2.00 per 100.

Yellow Day Lily (Hermerocallis Formosissima)—One of the hardiest of all lillies; single. Once planted you have it always. Rich gold color, striped inside. Price 10 cents each; \$1.00 per dozen.

Peonies

Peony—We have bulbs of the very best varieties, double, in different colors. No. 1 bulbs, 50 cents each; \$5.00 per dozen.

Dahlias

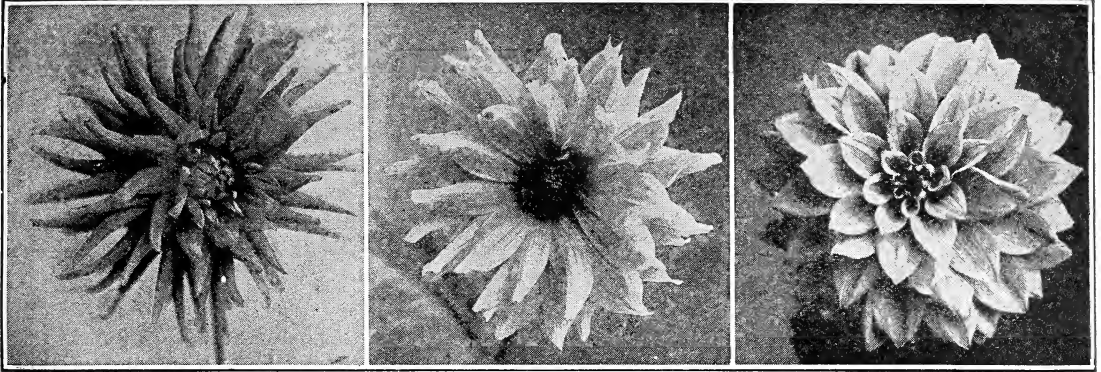
Strong bulbs, 25 cents each; \$2.50 per dozen; \$20.00 per 100.

Another beautiful perennial of great magnificence, raising its brilliantly colored flowers on lofty stems. We have only the very latest and best varieties.

For many years we have tried to get the Dahlia true to name, and have never succeeded in getting them until this year. We purchased the highest priced varieties from the Dahlia King at Bridgewater, Mass., of the Dahlias that were awarded the first prize at the World's Fair at St. Louis, and we are now able to furnish bulbs of highest quality and true name. We have secured them directly from the Dahlia King regardless of price, and are sure our customers would rather pay a little more and get the very best than any others.

The Dahlia thrives best in a sunny location with ordinary soil.





Mina Burgle—Beautiful, deep glowing crimson; finest crimson variety in existence; good for cut flower purposes, having long stems and being extra free bloomer. Price 50 cents each.

Maud Adams—The color is pure white, very effectively overlaid clear, delicate pink. This wonderful variety is unsurpassed in quality in every respect, in reality, a model of perfection. The most popular variety for florists. I cannot recommend this variety too highly. Price 50 cents each.

Oregon Beauty—Originated by an Oregon seed firm. A seedling from Wm. Agnew. Color a glowing fiery scarlet. 75 cents each.

Souvenir de Gustav Douzon—Orange, red, extra large flowers. One of the best.

Cactus Dahlias

Clara G. Stedwick—Clear, bright salmon; large and very free.

George Walters (Cactus)—The most wonderful dahlia ever offered. Bright salmon pink color, artistically suffused with old gold. It is the largest Hybrid Cactus Dahlia ever introduced. The flowers are borne on long stiff stems well above the foliage. It won first prize at the Dahlia show last summer. Price, 50 cents each.

J. H. Jackson—This is the best dark Dahlia yet out, almost black.

Kriemhilde—Pleasing shade of pink, white center. Extra.

Mrs. C. H. Breck—A new hybrid Cactus Dahlia of exceptional merit. Color creamy passing to various shades of rose pinks. 50c.

Show and Fancy Dahlias

Dr. J. P. Kirkland or Cuban Giant—Dark crimson, large and free.

Fascination—Rose pink, large. One of the best.

Robert Broomfield—Pure white, large flower, free.

Storm King—Pure snow white. One of the very best, very free.

Stradella—This is one of our seedlings and can be highly recommended. The color is rich deep purple crimson. 25 cents each.

Holland Peony Flowered Dahlia

Leo XIII—The habit of this plant is all that can be desired, producing large flowers upon splendid stems, well above the foliage. Beautiful deep yellow. 50c.

Flowering Plants

Golden Glow—This plant attains a height of 3 to 4 feet and blooms from July till fall. Easy to grow. Strong bunches, 25 cents each, \$2.50 per dozen.

Tritoma, Everblooming—The greatest plant ever introduced, surpassing the finest Cannas for attractiveness and brilliancy, equal to the Gladiolus as a cut flower, and blooms incessantly from June until December. Plants are hardy in open ground. Strong roots. 25 cents each; \$2.50 per dozen.

Shasta Daisies—Burbank's great production. Largest flowers and constant bloomers of all daisies. Wonderfully hardy, especially in summer. Strong plants. 5 cents each; 50 cents per dozen.

Malvaviscus Drummondii—A native of Texas, producing during summer a profusion of nice scarlet flowers and edible fruit. 25 cents each; \$2.00 per dozen; \$15.00 per 100.

Sweet Williams—Best mixed, strong plants. Per dozen, 25 cents.

Carnations

The Carnation excels all other flowers, the rose alone excepted. If planted in the open ground it will bloom all summer, and if taken out and brought indoors at the approach of cold weather, it will bloom in winter.

Mixed Color (Seedlings)—Grown from the very best Italian seed. 35 cents per dozen.

Violets

Prince of Wales (New Single Violet)—This violet is far ahead of any violet known. It is wonderfully free-flowering, with stems from 10 to 12 inches long; large, green leaves of thick leathery texture. The grand single flowers of a true violet color that does not fade, are of round symmetrical form, almost as large as pansies, and of the richest and most delicate fragrance. 5 cents each; 50 cents per dozen.

Hollyhocks

Best varieties, in all colors, strong plants. 10 cents each; \$1.00 per dozen.

Pansies

Giant-Flowering Pansies (Viola Tricolor Maxima)—I have imported the finest mixed pansy seed that I could get in Europe, and have very strong plants to offer at 20 cents per dozen; \$1.50 per 100 plants.

We have a large stock of Pansies and Carnations.

Phlox—Hardy; fine clumps in different colors—red, pink, white and violet color; will grow on any soil and live and flower freely for many years. 30 cents each; \$3.00 per dozen.



Flower Seeds

All the flower seeds that I offer are guaranteed to be fresh and of the highest quality. All seeds are now grown by us.

Aster Seeds—We have grown for the last two years beautiful, double, large branching Asters and having received so many inquiries for good seed, we are glad to offer this year seed of the best mixed varieties at 25 cents per package.

Globe Amaranth—Very hardy straw like flower, easy to grow, fine for cut flowers in the hot summer months. Per pkt., 10 cents.

Corn Flower (Centuarea Imperialis)—Purple, good summer bloomers. Per pkt., 10 cents.

Cosmos Klondyke—A gorgeous orange yellow flower with very handsome foliage; more coarsely lacinated than others. Per pk., 10c.

Hollyhocks—Large double mixed, extra fine. Per package, 10 cents.

Impomea (Japan Morning Glory)—Mixed. 10 cents per package.

Pansy—The best mixture of giant-flowering kinds, all colors. Large package, 20 cents each.

Zinnias—Large colossal flowers. No other flower will stand the summer heat as well as

the large Zinnias. They should be planted every month during summer to have flowers until frost. Our Mammoth Colossal Zinnias were admired by all visitors. We have them in a fine mixture of all the best colors. 10 cents per package.

In named varieties, separate colors as follows:

White, Golden Yellow, Sulphur Yellow, Flesh Color, Crimson, Scarlet and Purple.

15 cents per package.

Zinnias, Dahlia Flowered—The plants of this new race are very sturdy and produce many flowers with stout stems. In formation the broad petals are closely imbricated, sometimes almost seeming to be piled one upon the other. The flowers often measure 6 to 8 inches in diameter. Mixed, of the six best named varieties, 25c per pkt.

Delphinium—Double, in white, pink and mixed. No other spring flower will give so much joy as a bed of double Larkspur. Fine for city parks. 10 cents each.

Antirrhinum (Snapdragon)—*Najus grandiflora*. Per package, 10 cents.

Scabiosa (Mourning Bride)—Sweet Scabious. Very desirable for summer cut flowers. Useful in making up. Very hardy and can stand our long hot summer well. Per package, all colors, mixed, 10 cents.

Sunflower (Helianthus)—Double Chrysanthemum flowered. Rich golden yellow flowers perfectly double, resembling a Chrysanthemum. Per pkt., seed, 10 cents.

Marigold—French, dwarf. Form dense bushes and bloom through the entire summer. Price per pkt., 10 cents.

Sweet Peas—Grandiflora and Spencer Sweet Peas of the very best varieties. Price 15 cents per package; per pound, \$2.00.

Dianthus Chinensis (Chinese Pinks)—Very best, mixed. 10 cents per package.

Dahlia Variabilis—Double mixed. 15 cents per package.

Dianthus Caryophyllus Barbatius (Sweet William)—Package, 10 cents.

Balsams—Improved rose, extra double. 10 cents per package. (Home grown).

Cypress Vine—A most beautiful climber with delicate dark green, feathery foliage and an abundance of bright, star-shaped scarlet and white blossoms. 10 cents per package.

Verbenas—Giant flowered. 10 cents per package.

Vinca Rosea—Red and white mixed. 10 cents each.

Vegetable Seeds

Tomatoes—For many years I have devoted a great deal of my time in testing the old and new varieties of tomatoes, as they are introduced, and among them all I have found only two varieties that I can highly recommend as the best for the Southland. All those who have planted seeds from the President Roosevelt and our new Triumph Pink Tomato know that they are the best ever offered in the South. We are the largest tomato seed growers in the South, and take seed from choice, full-ripe tomatoes.

Tomato, President Harding—This new tomato originated on our grounds; outyields and outsells any tomato on the market. The yield of President Harding is marvelous. Produces at every joint, large clusters of large, smooth, firm, beautifully shaped fruits, uniform in color shape and size. At times the vines are so full that they can hardly hold all the fruit that they produce. They ripen evenly and color up well; keep vigorous and green until frost. The skin of this tomato is tough and meat tender; a solid mass of red meaty flesh. Is a good shipper and a good cropper. Another point of this new tomato is that it is blight resistant. We can furnish on application, testimonials of



Roosevelt Tomatoes Grown on Trellis.

some of our best friends who planted a few plants last spring to test this new tomato at Lockhart, San Marcos, San Antonio, Palestine, etc., and all say it is the best tomato they ever planted, so this variety has been thoroughly tried before we put it on the market. Our San Marcos Friend writes: It is the best tomato that I ever saw and that I ever planted. Price, per package seed, 25c; oz., \$2.00; per pound, \$25.00.

Locke's New Triumph Pink Tomato—This tomato is an improved McGee tomato, having been selected and grown from the best pink tomato which was selected from a lot of Prof. N. C. McGee's variety which bears his name. As Prof. McGee's tomatoes were of different shades of pink and red, we have so improved this tomato that the plants grown from our seed will all produce pink tomatoes of large size. The tomato is round and smooth, and immensely productive, of large size—we had some weighing a pound each. This variety is unexcelled for black land. Uniform packages containing about 1,000 seeds, 15 cents each; per ounce, \$1.00; per pound, \$15.00.

Tomato, President Roosevelt—The earliest, best and most productive of all the round, smooth, large tomatoes existing. Upon several years' trial we found the new tomato President Roosevelt, the earliest, best, smooth, new tomato up to now existing. It is immensely productive, nearly all meat, having very little seed; firm and of very mild flavor. The growth of the plant is very vigorous, 5 to 6 feet high; the foliage is large, the bright, scarlet, solid fruits weigh on an average of 1 pound each; in clusters of 4 to 8. Packages, 15 cents each; per ounce, \$1.00; per pound, \$15.00.

Cucumber, Locke's New Ideal—The best cucumber ever grown in Texas. Improved by us and acclimated to our conditions. Very vigorous and healthy, and grows throughout the summer. We raised the finest green cucumbers in the middle of July and August. Flesh white and crisp, of excellent flavor. Early, and immensely productive. Color is dark green with pale green stripes. Without doubt the best cucumber for the market gardener. Splendid for fall planting. Package, 10 cents; 1 ounce, 20 cents; ¼ pound, 50 cents; per pound, \$1.50.

Melon Seeds

Alabama Sweet—The best watermelon for sandy soil. All our melon seed is taken from selected melons. 10 cents per ounce; 50 cents per pound.

Tom Watson—Best watermelon introduced to date. Perfect in shape; no strings; delicious in taste; splendid shipper. Package, 10 cents; 1 pound, 50 cents.

Cantaloupes

Rocky Ford Cantaloupe—The best cantaloupe for the Southwest. Too well known to need any further description, home grown seed. Price, per ounce, 10 cents; per pound, 50 cents.

Seed Corn

Mexican June Corn—This corn will bring a good crop if planted at any time from April to the middle of July. It stands our hot, dry summer well. The seed, and every stalk of poor quality is cut out before it pollinates the other corn. This corn is adapted for our conditions, as we have grown it for several years. Price, \$2.50 per bushel.

Dawson Early, or Sure Cropper Corn—We are glad we can offer seed of this corn. It is the surest corn to plant, matures early, makes a low, stout stalk, and can stand more drought than any other variety known. Price, \$2.50.

Best for our semi-arid country. Our seed corn is all raised on our grounds, without irrigation, and is well selected by myself. Price, \$2.50 per bushel. Place your orders for seed corn early.

NUMBER OF TREES OR PLANTS TO THE ACRE

Distance Apart	No. of Trees
3x 3 feet.....	4840
6x 6 feet.....	1210
8x 8 feet.....	680
10x10 feet.....	435
12x12 feet.....	302
15x15 feet.....	193
16x16 feet.....	170
18x18 feet.....	134
20x20 feet.....	108
25x25 feet.....	69

Proper Distance of Planting

Peaches, Apricots,

Nectarines.....	12 to 16 feet each way
Pears.....	18 to 20 feet each way
Plums, Cherries.....	10 to 15 feet each way
Persimmons.....	10 to 12 feet each way
Apples.....	16 to 20 feet each way
Grapes.....	6 to 8 feet each way
Dewberries, Blackberries,	rows 3 to 6 feet apart, 2 feet in row.



Certificate of Inspection of Nursery Stock

No. 55

STATE OF TEXAS

Department of Agriculture

OFFICIAL NURSERY INSPECTION CERTIFICATE

This is to certify that the Nursery Stock grown additional at land for sale by Comal Spring Nursery, in New Braunfels, County of Comal, State of Texas, has been inspected by a duly authorized inspector of this department in accordance with the provisions of the Orchard and Nursery Inspection Laws of the State of Texas, and was found to be apparently free from dangerous and non-beneficial insects and plant diseases.

A printed copy of this certificate on any shipping tag attached to any shipment of Nursery Stock is authority to any grower of expenses incurred in Texas or Mexico for transportation. This certificate is void after September 30, 1927.

G. J. SCHOLL,

Chief Inspector of Orchard and Nurseries

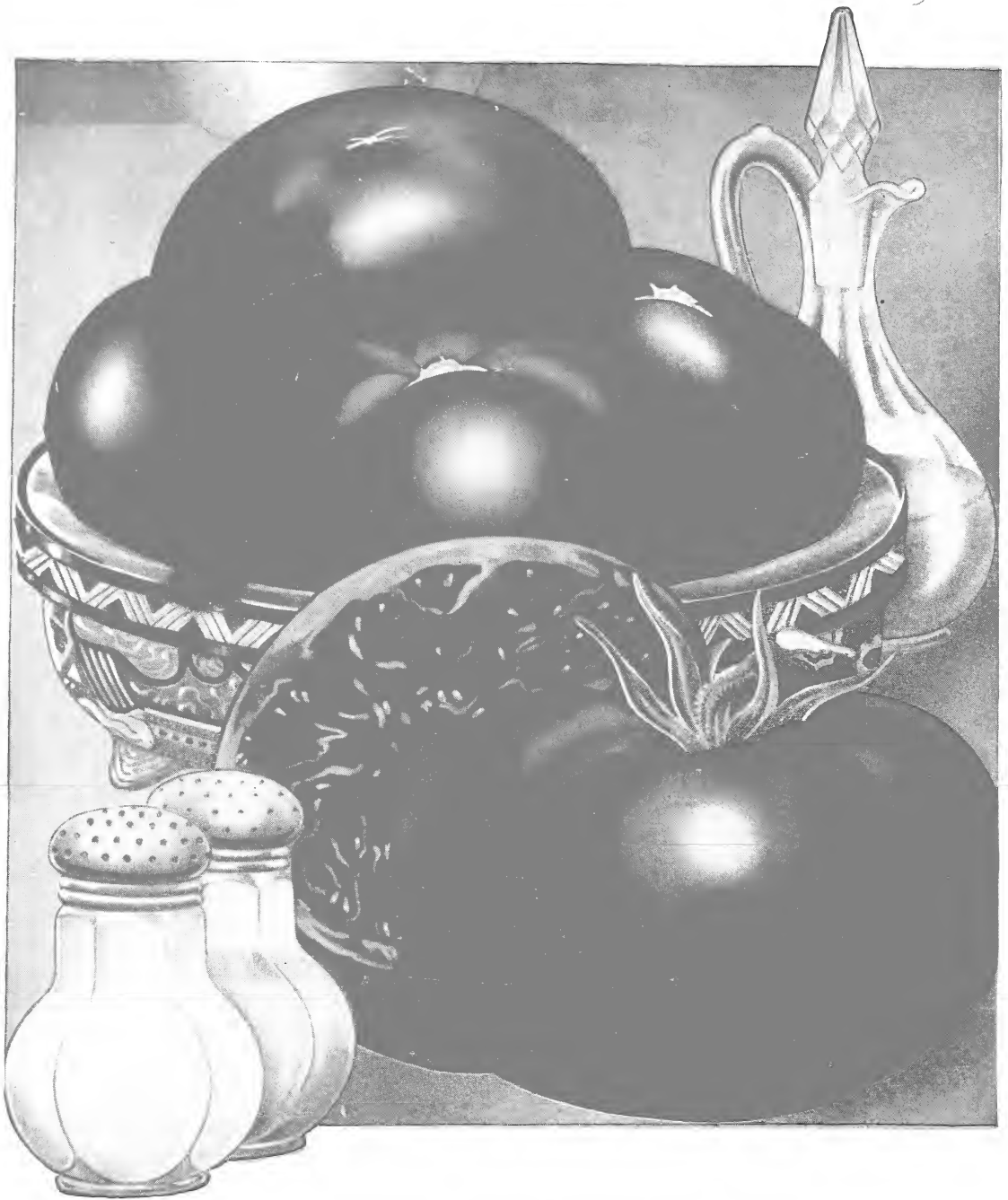
Approved:

GEO. B. TERRELL,

Commissioner of Agriculture

AH000, TEXAS, 7-21-26.

Certificate of Inspection of Nursery Stock will be on every shipping tag we send out, and on every shipment. The State Nursery Inspector found our stock in a good healthy condition.



President Harding Tomato

Most Productive Tomato on Earth

Originated on our grounds the same year our good President passed away and we gave it his name. Try all this new tomato and you will have the finest red tomatoes from June till frost.