

Historic, archived document

Do not assume content reflects current scientific knowledge, policies, or practices.

62,43

RECEIVED
MAR 20 1925 ★
U.S. Department of Agriculture

Daniels Utility Plants 1925



Plants that satisfy

Varieties that succeed

Service that counts

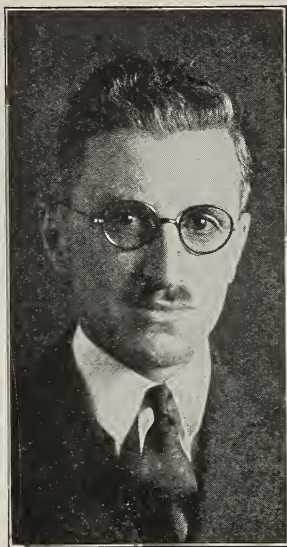
Prices that please

The Daniels Nursery

The Northwest's Leading Utility Plant Producers

FRANC P. DANIELS, Proprietor

Long Lake, Minnesota



FRANC P. DANIELS, Proprietor

more complete assortment of varieties than heretofore.

I am grateful to our old customers and thank them for the liberal patronage they have given us. Their continued patronage, together with the many testimonials we receive yearly is ample proof that we have pleased them. To those who have placed their first order with us this year we assure the same satisfactory service.

I depend upon the merits of our stock, and the service we give to maintain and increase our business. That I have succeeded is clearly shown by the fact that each season's business is far greater than that of the previous year. The reason for this great and continued increase is not hard to find. Well-grown, hardy stock, true to name, of the best varieties available for the Northwest, sold direct to the planter at truly planter's prices, and under a "Satisfied Customer" policy, is the explanation.

Another factor which has contributed liberally to the remarkable growth of our business is that I personally stand back of every sale and do not consider the transaction closed until the purchaser is satisfied. I will see to it that you are pleased with your dealings with us.

And we are here to give service. I want our plants to continue to do their best in your hands. At any time you are welcome to our help in your planting or growing problems. Your letters will receive my prompt and careful attention. Read the paragraph relative to our service elsewhere in this catalog.

Planting season is not far off. Plans should be completed soon, and orders sent in early. We both benefit from early orders; you in better choice of varieties, for some are always sold out early, and we in being able to get the office work done before the big spring rush. So order early. Why not today?

I want your order not only this spring, but in years to come, and I am glad at all times to let the quality of our plants and our service decide whether or not you will buy from us in the future. I am confident that you will.

Respectfully yours,

FRANC P. DANIELS, Proprietor.

N. B. I am printing my picture above, not because I am proud of it but because most people like to know what the man they are dealing with looks like.

December 20, 1923.

"I have grown Minnehaha berries for two years and am highly pleased with them. Had it not been for the Minnehaha this last season I would not have made much more than expenses. They were the finest berries I ever saw anywhere. Cannot sing their praises too highly."—N. B., Lester Prairie, Minnesota.

Pointed Paragraphs

for

Prospective Purchasers

About Utility Plants Our speciality is UTILITY PLANTS. By UTILITY PLANTS we mean particularly plants of PRODUCTIVE USEFULNESS, as well as plants that serve useful purposes but are not productive of usable crops. No group of plants gives greater returns for the amount of money invested than do DANIELS' UTILITY PLANTS.

About Our Varieties Our list of varieties is strictly up-to-date. We have chosen them purely and simply on their merits,—because they have proven themselves to be the best varieties in existence for our rigorous Northwest climate. Old varieties of less merit have been discarded. Our varieties bear the official stamp of approval of the highest Horticultural Authorities of the State and the Northwest. You have heard much of the new varieties we offer through the agricultural press and the radio.

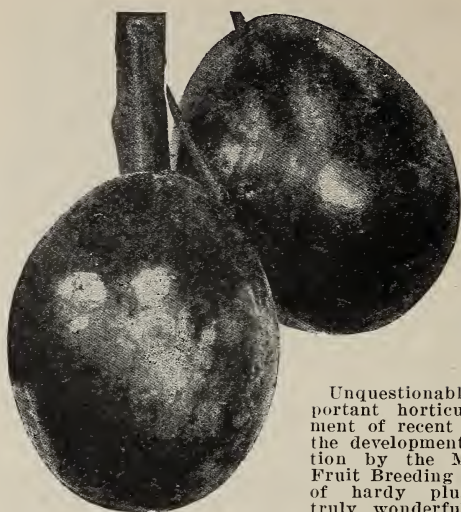
About the Minnesota State Fruit Breeding Farm Varieties These new horticultural wonders that are so rapidly changing the fruit growing situation in the Northwest are undoubtedly, as a group, the most remarkable class of fruit varieties that have been introduced for many, many years; possibly in all times. These new varieties are making it possible for the fruit growers of the Northwest to do things that a few years ago were supposed to be impossible. They have driven out of the state the bugaboo of "poor climatic conditions" and steadily advanced the frontier of fruit growing until gardens and orchards in all parts of Minnesota can now produce fruits of the highest quality. They have opened up new fields of commercial fruit growing with heretofore undreamt of possibilities for profit.

About Our Plants We make every effort to produce plants of the highest possible quality. We have a wide variety of soil types and can select the one best suited to each nursery crop. No pains are spared in the preparation, building up and fertilizing of our soils before planting so that our stock will develop the most desirable type of root system and top. At digging and packing time everything possible is done to insure that our plants will reach the customer in 100% perfect condition. All stock is carefully graded and individuals not up to standard are discarded.

About Our Price We put quality above price. A poor plant is dear at any price. Plants lower priced than ours can be purchased. It is our firm belief, however, that they will prove more expensive in the end. We have put our prices as low as is consistent with the cost of producing strictly first class stock. And higher priced plants may be bought, too. But the fact that they are higher priced than ours does not necessarily make them any better than ours. The difference in price is usually explainable by less economical production, desire for greater margin of profit, or, and usually, by the different method of selling.

About Varieties we do not list We are growing many varieties of fruits and ornamentals that are not listed here because of the small stock we have of each. These are grown primarily for our large local trade. If you want something you do not see listed, write us. The chances are that we have it and can save you money on it, too.

About Our Service We maintain for our customers three types of service. First, a **General Service Department** to which our customers may write at any time for help in solving their various problems,—be they pruning, insect control, the price to pay pickers, or what not. Second, a **Landscape Service Department** from which our customers can get help in solving their landscape gardening problems, whether only a list of shrubs to plant is needed or a complete planting plan is called for. Third, our **Commercial Growers Service Department**. This latter service can be of the greatest help to the prospective planter who desires to embark on a commercial fruit growing enterprise and wants sound, dependable advice applicable to his own local situation as to varieties, labor, market, etc. Our questionnaire blanks to be filled out by the prospective planter will prove of tremendous value to him. Write us at any time. We are always pleased to receive and answer your letters.



The New Plums

Underwood

Unquestionably the most important horticultural development of recent years has been the development and introduction by the Minnesota State Fruit Breeding Farm of a race of hardy plums. They are truly wonderful fruits. Many of them reach the size of a hen's egg and the quality is second to none. No longer

need we import eating plums from the west. We can grow better fruit, sweet tree ripened fruit, on our new Minnesota varieties here at home. The trees are hardy and heavy annual bearers. These new varieties should not be confused with the older sorts that have been grown here for years. These new plums bear every year, start bearing at an early age and produce enormous crops. Judging from past performances these new plums will be one of our most profitable fruit crops in Minnesota and the adjoining states. Many trees have already shown an average annual fruit production of over \$10, and with 140 trees per acre the possibility for profit are tremendous.

PLUM PRICES

(Except Minnesota No. 157)

	Per 1	Per 10	Per 100
Extra large, two-year (5½ to 7 feet).....	\$1.25	\$10.00	\$90.00
Large (5 to 6 feet)	1.00	9.00	80.00
Standard (4 to 5 feet)90	8.00	70.00
Medium (3 to 4 feet).....	.80	7.00	60.00

UNDERWOOD

(Minnesota No. 91.)

One of the strongest growing trees of the new varieties. Fruit is large, attractive red, with a firm juicy flesh. Excellent for home and market use. Fruit hangs well to the tree and ripens over a long period.

The season is early, usually covering the first two weeks in August. One of the best commercial plums for the Northwest and because of its long season, large, high quality fruit, and finely formed hardy tree, is one of the very best home orchard plums.

September 23, 1924.

"Plants I bought last spring are doing excellently."—R. S. C., Minneapolis.

June 20, 1924.

"All the plum trees and grapes I got from you this spring are coming fine."—A. L., Fairfax, Minnesota.

July 5, 1924.

"The everbearing strawberries and raspberries and plum trees are doing just fine."—Mrs. A. S., Constance, Minn.

Oct. 8, 1924.

"I received those Red Wing Plum and Zumbra cherries in good shape and they were fine as any plum I ever tasted." — P. B. B. Rich Hill, Mo.



Tonka

TONKA

(Minnesota No. 21)

Tonka is considered one of the most promising plums yet produced, particularly where early returns are desired. The fruit is large, yellowish, overlaid with red, and the flesh is very firm. When ripened the stone is free. The flavor is sweet and the quality is good. The season is about August 15th. A very fine market plum, because of its splendid keeping and shipping qualities, and because of its very regular, heavy production. A commercial winner.



RED WING

(Photo by Univ. of Minn.)

RED WING

(Minnesota No. 12)

One of the largest of the new plums, an unexcelled variety for home use or for market. The stone is small and entirely free. When thoroughly ripe this plum may be peeled like a peach and eaten with cream and sugar. The color is yellow, overlaid with bright red. Quality very good. No planting is complete without Red Wing. Season late August.

MINNESOTA (No. 157)

The earliest and probably the largest plum so far introduced by the State Fruit Breeding Farm. This plum was the feature of the fruit exhibit at the Minnesota State Fair where a contest was conducted for a name for the variety. The new name has not yet been announced. Heralded by fruit growers and experts as being one of the most profitable varieties yet introduced. We have only a limited supply of Minnesota No. 157 this year. Order early to avoid disappointment. Prices on Minnesota No. 157:

Large size, each \$1.50; 10 for \$13.00.

December 22, 1923.

"The strawberry plants received from you were exceptionally fine and did remarkably well in productiveness."—H.W.E., Carrington, N. D.



Hennepin

Deservedly popular because of its highly colored dark red flesh and juice which makes it especially valuable for preserving. The flesh is firm, sweet and juicy and the quality very good. Valuable for both home and market use. Early mid-season.

WINONA

(Minnesota No. 30)

Winona fruit is sweet and juicy with a tough, protective skin. The quality is of the highest. A regular annual producer of large well colored fruits. Produces a vigorous well balanced tree. A profit producer.

HENNEPIN

(Minnesota No. 132)

LA CRESCENT

(Minnesota No. 109)

One of the best home orchard plums of the new Minnesota creations. Color bright yellow. Quality of the very highest. Equally valuable for cooking and dessert use. Belongs in every home orchard. Season very early.

GOLDEN ROD

(Minnesota No. 120)

Another yellow plum. Not as high in quality as La Crescent but a good market plum. Large round fruit with firm flesh. The Northwest's best yellow market plum. Season, late August.

MOUND

(Minnesota No. 50)

A hardy tree and a heavy regular producer. Red. Because of its large size, firm flesh, and attractive appearance promises well for a leading market variety. Season September first.

ELLIOTT

(Minnesota No. 8)

A strong growing, hardy tree. It has been fruited successfully as far north as Winnipeg. A productive, regular bearer of large red plums. One of the best late market plums. Season about September first.



La Crescent

WACONIA

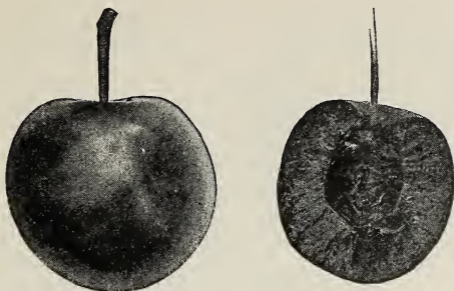
(Minnesota No. 10)

One of the more recently named varieties. Tree is large, vigorous, hardy and a free bearer of medium to large red fruit of good quality. Flesh firm and moderately juicy. A promising variety. Mid-season.

MONITOR

(Minnesota No. 70)

One of the most popular late plums. Makes an excellent tree, hardy and productive. The fruit is especially large, red, well colored and of fair to good quality. A leading market plum. Late mid-season.



Zumbra Cherry
(Photo by Univ. of Minn.)

Cherries ^{FOR} _{THE} Northwest

At last we can grow cherries in the Northwest. For years fruit growers have longed for a cherry sufficiently hardy to stand our trying Northwest conditions. Only recently has there been made available through the scientific plant breeding work of the State Fruit Breeding Farm, cherries that are not only hardy in Minnesota and surrounding states but are regular and heavy bearers of fruit of satisfactory cherry quality.

Because of their growth habit the cherries, especially Zumbra, should be headed low and we have made a practice of this in our nursery rows. This results in a shorter tree but gives a tree that will prove infinitely more satisfactory than some of the high headed trees being sold by nurseries who do not understand fully the growth and bearing habits of these fruits.

CHERRY PRICES

	Per 1	Per 10	Per 100
First size	\$1.00	\$9.00	\$80.00
Second size90	8.00	70.00
Third size80	7.00	60.00

ZUMBRA CHERRY

This remarkable cherry hybrid contains the blood of the Sweet Cherry, Sandcherry, and wild Pin Cherry. The quality is good, and it has the flavor and crispness of flesh somewhat resembling its Sweet Cherry parent. It is especially recommended for sauce and preserves, for when cooked the Sweet Cherry flavor is especially noticeable. The season extends from the last week in August to the middle of September, and the fruit hangs well to the tree. The tree is low growing, of a decidedly dwarf type, and is a very vigorous grower and extremely productive. The fruit reaches an inch in diameter, and is born in thick, ropelike clusters along the wood of the last season's growth. The color is very dark, nearly black when ripe, and the flesh firm, greenish, and sometimes touched with red when fully matured. The stone is small and entirely free. This has been described as one of the most promising of the Minnesota Fruit Breeding Farm products. It bears at a very early age, nearly always blooming the year after planting. It has been fruited successfully as far into Canada as Winnipeg.

ST. ANTHONY CHERRY

(Minnesota No. 145)

The parentage of St. Anthony is somewhat similar to that of Zumbra and it has the same characteristic hardiness and bearing habit that makes the Zumbra so valuable. The tree is vigorous, productive, and small in size but slightly larger than Zumbra. The fruit is small to medium, round, and dark purplish black in color. Firm, juicy flesh. Of good quality when fully ripe and excellent for preserving. Season the same as Zumbra.



Haralson

Apples

New Varieties of Merit

DANIELS' RED DUCHESS. We are glad to be able to offer for the first time this year trees of our new **DANIELS RED DUCHESS** which we announced in our catalog last spring would be ready at this time. This is unquestionably the most remarkable early apple that is thoroughly hardy and adapted

to the Northwest, and probably the most valuable early red apple in the country. It is what scientists have termed a true bud sport of a Duchess or Oldenberg. It has all the characteristics of the old Duchess including its hardiness and heavy regular bearing habits and is superior to it in that it has as striking a red color as the Wealthy. This color sells the apple readily on all markets at a premium of from 50c to \$1.00 a bushel above other apples of the same season as there are practically no apples of bright red color on the market at that time. It is unquestionably the most profitable early apple available at this time. We own all the propagating wood and control the propagation rights of this variety so trees can be secured only from us. We will be glad to give additional information regarding this remarkable variety. All trees are sold under restriction and all orders must be accompanied by a signed restriction agreement before we will enter them. We offer this year only small one year old whips. We will be able to offer larger trees next year. Prices: Each, \$3.00; 2 for \$5.00; 10 for \$22.50.

HARALSON (Minnesota No. 90). At last we have a real winter apple. Haralson is now too well known to need an introduction. It is the Northwest's best winter apple and Minnesota's only high quality, red, winter eating apple that will keep until late spring or early summer in ordinary storage. Tree is a vigorous upright grower, entirely hardy and an early bearer. A heavy producer of bright red fruit of high quality that hangs on to the tree until picked. A very valuable variety. We can offer this year only 1 year whips. Prices: Each, \$1.50; 10 for \$12.50.

FOLWELL (Minnesota No. 237). Vigorous, free growing hardy tree of excellent crotch and branching habit. A hardy, regular bearer. Fruit greenish yellow, strongly blushed with red, and large, about like the Northwestern Greening. Quality very good, keeps longer than the Wealthy. Really worth planting. Size and prices same as for Haralson.

STANDARD VARIETIES



Wealthy

We offer well grown standard size trees, 4½ to 6 feet, well rooted with strong two year top; best size for planting. Each, 85c; 10 for \$7.50; 100 for \$65.00.

DUCHESS (Oldenberg). The best known early apple of the Northwest. A heavy regular bearer.

HIBERNAL. The hardiest apple known. Long lived and especially valuable for top working. A regular bearer of cooking apples.

NORTHWESTERN GREENING. A high quality, long keeping greening. Tree more tender than Patten Greening and should be grown only in favorable locations.

PATTEN GREENING. The best "greening" for the Northwest. Very hardy and a heavy regular fruiter.

WEALTHY. The Northwest's most popular apple for both home and market. Hardy, beautiful red fruit, flavor unexcelled.

TRANSCENDENT CRAB. Hardy, strong growing tree but subject to blight some seasons. An excellent cooking and pickling crab.



Beta

The Hardy Grapes

When we say hardy we mean just that. Beta and Alpha are able to withstand our severe northern winters without any protection. They may be grown on fences, over a building or on a windmill and should bear heavily every year. For real heavy production they should be trained on trellises and cultivated. Their chief use is for jelly and grape juice, although when fully ripened they may be used as a dessert grape. Last fall, as for several years previously, the hardy grapes have been one of the states most profitable fruits. Many growers report yields of \$1,000 per acre. Professor W. H. Alderman of the University Division of Horticulture and President of the State Horticulture Society made the following statement regarding grapes in his report of 1924 to that body: "Ordinarily Beta grapes found a ready market at \$4.00 per bushel, a price which leaves a neat margin of profit to the grower." Grapes can be sold at profitable prices in all parts of the state, in fact there is no community in which a proper planting of hardy grapes will not prove a true "mortgage lifter."

BETA

The "standard" hardy grape of the northwest. The most widely grown and probably the most profitable grape grown in the northwest. A heavy annual bearer, hardy as the wild grape and produces enormous crops of medium size black fruit of good quality and ripens so early that it can be grown far north. An essential part of any home garden and wonderfully profitable as a commercial grape. The demand is greater than the supply and increasing every year. Financially Beta is a permanent investment that will prove lasting and highly profitable. We offer one year plants that are extremely fine and at unusually reasonable prices. **Prices: Each, 20c; 12 for \$2.25; 25 for \$4.50; 100 for \$16.00; 1000 for \$145.00.**

ALPHA

More recent introduction than Beta and preferred to it by most of those who have grown it. Originated near St. Cloud, Minnesota. Equal to the Beta in hardiness and yield. The size of the fruit is slightly larger and the quality somewhat superior. It is worthy of extensive cultivation. **Prices: Each, 25c; 12 for \$2.50; 25 for \$4.75; 100 for \$18.00; 1000 for \$170.00.**



Como

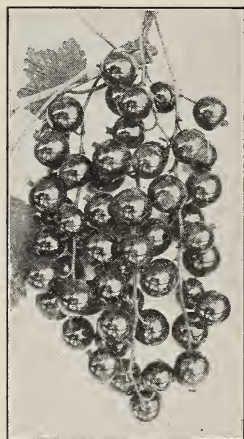
COMO GOOSEBERRY

(Minnesota No. 43)

Cross of Pearl and Columbus. Described by the originators, the Minnesota State Fruit Breeding Farm, as follows: "A vigorous productive plant with exceptionally healthy foliage. Fruit large, roundish, or slightly oblong. Ripens green, quality fair, holds on the bushes a long time in good market condition without scalding, even in the hottest weather. The plant is only moderately thorny, many thorns dropping from the two year old wood." The advent of Como marks the greatest advancement made in mid-western gooseberry culture in many years. We are very fortunate to be able to offer a few plants of this remarkable new gooseberry this spring. Prices:....Each, \$1.00; 12 for \$11.00.

CARRIE GOOSEBERRY

The Carrie Gooseberry has been the most popular gooseberry in Minnesota and the adjoining states. The berries



Perfection

are of good size and the plant is a prolific yielder. One of our customers told us recently of picking two twenty-four quart crates from a single plant of Carrie gooseberry. Perfectly hardy. Foliage free from disease. Sometimes called the "thornless gooseberry" due to the absence of thorns on older wood. We offer good strong plants ready to fruit next year. Prices: Each, 25c; 12 for \$2.50; 25 for \$5.00; 100 for \$16.00.

PERFECTION CURRANT

Perfection is one of the largest and finest of the currants and the outstanding variety for home use where quality, size, and appearance are most appreciated. The bunches are of a large size and the berries an attractive bright red. It has won the Barry \$50.00 gold medal of the Western New

York Horticultural Society and the Pan-American Exposition medal at the St. Louis Exposition of 1904. In addition to preserving all of its fine qualities it has often out-yielded many of the older sorts. It is a wonderful fruit and should be in all gardens.

PRICES: Each, 30c; 12 for \$3.00; 25 for \$6.00; 100 for \$20.

WILDER CURRANT

One of the leading commercial varieties. In some places a more vigorous grower and heavier yielder than the Perfection. The bunches are not as large as the Perfection but they are a good size and well filled out. In the Northwest, Wilder is preferable to Perfection as a commercial berry except on particular local markets.

Prices: Each, 20c; 12 for \$2.00; 25 for \$4.00; 100 for \$15.00.

The Strawberry

The list of strawberry varieties recommended for Minnesota by the State Horticultural Society, a list commonly accepted as the most authentic available, now contains the name of only one June bearing strawberry variety recommended five years ago, the Dunlap. We have kept up with this rapidly changing condition, and while other nurseries have contented themselves with offering their customers only the old fashioned kinds we have continually added to our propagating beds the newer and better varieties of proven worth. We offer this year one of the Northwest's finest assortments of these up-to-date varieties.

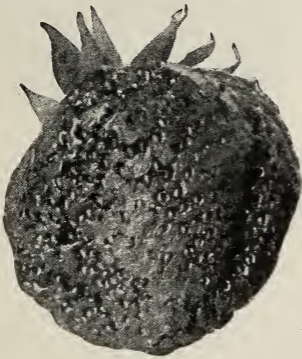


Progressive

PROGRESSIVE (Everbearing)

The best, most prolific and highest in quality of the everbearers. Yields two crops a year. It is the one best general utility berry. No planting is complete without it. Plants set this spring will bear this summer and fall. Progressive does well everywhere. Do not let another summer go by without providing yourself with this delicious strawberry from your own garden.

PRICES: 25 for \$1.00; 100 for \$2.00; 500 for \$9.00; 1000 for \$17.50.



Deephaven

DEEPHAVEN (Everbearing)

(Minnesota No. 41)

The most promising everbearer for the Northwest. A State Fruit Breeding Farm origination. The fall berries are larger than Progressive and borne heavily. The spring crop is nearly as early as Progressive and the berries about as large as Dunlap. Order early if you want some of these as our supply is limited.

PRICES: 12 for \$1.50; 25 for \$2.50; 100 for \$8.00.

PREMIER

Early. Accepted throughout northern United States as the one best early berry. Highly profitable. Just glance through this long list of its good points; vigorous grower; very heavy producer; extra early; unusually long season; berries hold up in size to the end; quality of the best; shape, color, and general appearance unexcelled; color and flesh solid to the center; excellent shipper; fine for canning and preserving; healthy foliage; resists drought well. No commercial grower can afford to be without Premier.

PRICES: 25 for 75c; 100 for \$1.50; 500 for \$6.00; 1000 for \$10.

DUNLAP

Mid-season. Dunlap needs no introduction as it is the best known strawberry there is. A good market and home garden berry.

PRICES: 25 for 75c; 100 for \$1.25; 500 for \$4.50; 1000 for \$8.00.

MINNEHAHA

(Minnesota No. 935)

Late. We consider this our most profitable June bearing variety. Especially valuable as a shipper. MINNEHAHA is at its best just after the heaviest picking season for other varieties, when good berries are scarce and prices for good fruit are going up again. Then turn your pickers into a field of MINNEHAHA and you no longer have a picking problem for the berries are extraordinarily large, easy to pick, firm (even in wet weather) and keep in good picking condition on the vines for three or four days. Plants are unusually healthy and vigorous. Berries hold their size well to the end of the



Minnehaha
(Photo by Univ. of Minn.)

season. Plant MINNEHAHA heavily, you will not regret having three-fourths of your acreage planted to Daniels true-to-name MINNEHAHA plants.

PRICES: 25 for 75c; 100 for \$1.50; 500 for \$6.00; 1000 for \$10.00.

EASYPICKER

(Minnesota No. 775)

Imperfect. Mid-season. Easy-picker is increasing in popularity very rapidly. It is one of the heaviest fruiterers yet produced and exceedingly easy to pick. The fruit is medium to large with a dark red flesh entirely lacking in core or fiber at the center. Quality of the highest, an unexcelled home garden berry. Must be planted with some other variety for pollination.

PRICES:....25 for \$1.00; 100 for \$1.75; 500 for \$6.50; 1000 for \$12.00.



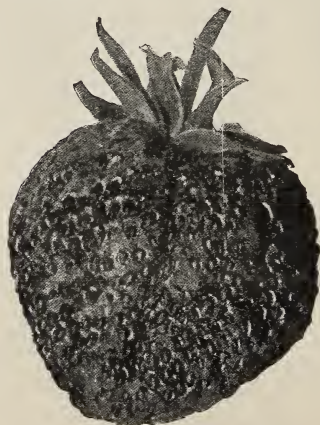
Easy-picker
(Photo by Univ. of Minn.)

CHASKA

(Minnesota No. 801)

Early mid-season. Another very popular berry with all those who know it. Fruit large, dark glossy red. A heavy yielder and a good shipper. High quality. The unusual feature of this berry is that it requires very few pickings but in these few pickings it produces as heavily as any of the other mid-season berries. Coming moderately early when prices are still high the entire crop brings a high price.

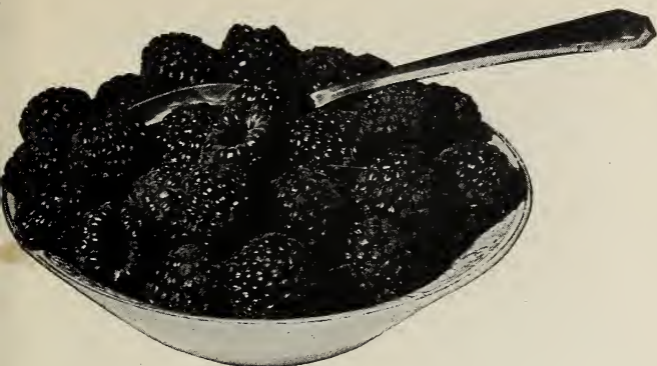
PRICES: 25 for \$1.00; 100 for \$1.75; 500 for \$6.50; 1000 for \$12.00.



Chaska

January 16, 1924.

"We purchased Minnehaha strawberries of you. It was the best variety we had. It stood the drought, bore large berries and lots of them, where other varieties did not stand the drought and what did had only few and small fruit on."—
H. A. S., Osceola, Wisconsin.



Latham
(Photo by Univ. of Minn.)

The Latham Red Raspberry

Minnesota No. 4

One of the most valuable originations of the State Fruit Breeding Farm. It has been generally admitted among those in a position to know that this raspberry has already produced more wealth for Minnesota than the entire cost of the State Fruit Breeding Farm to date.

It has met with phenomenal success not only in Minnesota but in other states as well and has been put on the official fruit list of several other states. Recent comparative tests in Connecticut showed it far superior in that state to any of the older varieties. It is entirely hardy throughout the northwest without winter protection. The strong vigorous canes are well able to support its enormous loads of fruit. The berry is large, easily picked, of high quality and produced in great abundance. In many places it brings a premium of from 50 cents to \$1.00 per crate above other varieties. Unquestionably the one best raspberry for home or market use.

We list below two groups of Latham raspberries, the ordinary stock as sold by most nurseries and the so-called Mosaic Free Latham which in the past has been called by many the Redpath raspberry. Possibly the most important and far reaching development in the field of horticulture in Minnesota this year was the realization of the importance of raspberry Mosaic disease together with the steps taken by the State Nursery Inspection Service to control it. This disease is present in practically all raspberry plantings in the country and presents the most serious problem facing the raspberry grower of today. Many raspberry plantations which are free from this disease have been producing fruit worth \$1000 or more per acre. The successful grower of the future will grow only Mosaic free plants.

It has been shown conclusively that the raspberry plant sold so widely throughout the Northwest during the past few years under the name of Redpath is nothing more than a Latham relatively free from Mosaic. Unfortunately, most of the so-called Redpaths which have been distributed in the past are now seriously infected with Mosaic. It should be noted that unless so-called "Redpath" plants are sold as Mosaic free with the State Nursery Inspector's special certificate to that effect, they are no better than other Latham. We are able to offer this spring a limited quantity of the Latham plants which have been granted the "double inspection Mosaic free certificate" of the State Nursery Inspection Service. In keeping with our usual policy of planters' prices we are offering these at a very low price. They will not last long at these quotations.

We are offering also a small block of the ordinary Latham plants which have been selected from the field in which very little Mosaic is present. While these plants will not prove as satisfactory as the mosaic free ones they will be found to be vastly superior to most of the Latham plants offered for sale this year, and will give excellent results.

Prices for Latham plants:

	12	25	100	500	1000
Selected plants	\$0.80	\$1.25	\$3.50	\$16.00	\$30.00
Mosaic free plants.....	2.00	3.00	10.00	40.00	75.00



Asparagus

Asparagus furnishes the earliest and most cherished of garden greens, and may be used from early spring until late June. Once properly established an asparagus bed will last for many years. An essential part of every home garden.

WASHINGTON

This giant asparagus is the result of fourteen years of plant breeding by the United States Department of Agriculture in an effort to develop a rust resistant asparagus superior to all other varieties in yield and quality. It is the most palatable and tender variety known, producing enormous stocks of a brilliant dark green color. It retains its tenderness and the shoots do not branch out until they are well above

Washington Asparagus

cutting height. It has proven itself to be a tremendous producer and best of all it is entirely free from rust. Until you have grown Washington you have not known what real asparagus is. We offer both large, strong, one-year roots and three-year twice transplanted roots. The one-year is the best for establishing a large or commercial planting while for immediate results and quick production the three year roots will give surprising results.

PRICES:	12	25	100	500	1000
One year roots	\$0.75	\$1.00	\$3.00	\$12.50	\$20.00
3-yr. transplanted roots	2.50	4.00	12.50		

Rhubarb

The most all around satisfactory vegetable. Year after year from early spring until late fall fresh stems may be pulled, and in winter time the roots may be forced in the cellar. Pie plant, or wine plant, as it is sometimes called is used for pies, sauces and satisfying beverages.



VICTORIA

Victoria is probably the most widely grown and most popular variety of rhubarb. We offer strong root division plants from a stock selected by a market gardener for especially high quality and fine red coloring of the stem. These strong division plants that will produce uniformly tender, crisp stalks of an attractive red color should not be confused with the ordinary low quality seedling roots so commonly sold on the market.

Victoria

PRICES: Each, 15c; 6 for 80c; 12 for \$1.50; 25 for \$3.00; 100 for \$10.00.

Evergreens

NORWAY SPRUCE is one of the most generally satisfactory evergreens grown in the northwest. It is hardy, adapts itself to varying soil types, is long lived, and a rapid grower, forming an even symmetrical tree of beautiful color. Our well grown trees have been root pruned and transplanted several times and should grow successfully anywhere. An excellent tree for either windbreak or ornamental purposes.



Norway Spruce

Prices on Norway Spruce:

	1	10	100
12 to 18 inches.....	\$0.75	\$ 6.00	\$50.00
18 to 24 inches.....	1.00	8.00	65.00
24 to 36 inches.....	1.25	10.00	80.00

Ornamentals

HARDY PERENNIALS

We list below the most satisfactory perennial flowers for the northwest. Once established they will be a source of regular, annual delight as they will flower abundantly for many years to come. We offer large strong plants.

Prices: Each, 25c; \$2.00 per 10 (except Bleeding Heart.)

Fall Daisy.
Gaillardia.
Iris (in variety.)
Physostegia.
Golden Glow.
Chinese Lantern.
Achillea the Pearl.
Buttercup.
Bleeding Heart,
50c each.



Golden Glow

DAHLIA

Large, red, free blooming variety. Each, 15c; 12 for \$1.00.

Ornamental Trees

NEWPORT (Red Foliage Plum)

(Minnesota No. 116)

A beautifully colored plum tree. Foliage a deep reddish purple throughout the entire season. A strikingly beautiful ornamental tree. Especially beautiful in bloom. The best red foliage tree for the northwest. Each, \$1.00.

Betchtel's Double Flowering Crab

A beautiful flowering tree entirely covered with delicately colored blossoms in the spring. Unexcelled as a small ornamental flowering tree. Each, \$1.50.

Niobe Weeping Willow

The most satisfactory weeping willow of the northwest. Superior to all older varieties. Each, \$1.00.

Lombardy Poplar

Always a favorite where tree of tall slender, spire like growth is wanted. Hardy and a quick grower. Each, \$1.00.

European Pussy Willow

(Salix Caprae)

A highly ornamental pussywillow which produces catkins far superior to those on our native willows, often measuring an inch in length. Foliage especially attractive. A pleasing ornamental lawn tree which will furnish an annual source for forced or natural blooming pussywillows. Each, 75c; 10 for \$6.

Soft Maple

A hardy quick growing maple that makes an excellent shade tree. Each, \$1.00.

Nut Trees

We are growing the two nut trees best suited to Northwest conditions. The Butternut and the Black Walnut thrive in practically all parts of Minnesota. They are attractive shade and ornamental trees as well as heavy producers of valuable nuts. The walnut tree in particular produces extremely valuable timber. At our low prices they may be planted freely in the woodlot.



Butternut

Prices on Black Walnut and Butternut.

	1	10
2 to 3 feet.....	\$0.20	\$1.50
3 to 4 feet.....	.40	3.00
4 to 5 feet.....	.60	5.00

WINDBREAK TREES

Golden Willow and Laurel Leaf Willow are the best quick growing deciduous windbreak trees for the Northwest, as in addition to the protection they produce so quickly they present at all times an interesting and attractive appearance.

Prices on Golden and Laurel Leaf Willow:

	10	100
3 to 5 feet.....	\$1.50	\$10.00
5 to 7 feet.....	2.50	20.00

Hardy Shrubs

We offer here a choice list of selected hardy ornamental shrubs. Our plants are well grown with good roots and tops, exceptionally fine plants for our low price. Each, 50c; \$4.50 per 10; (except Hydrangea Pee Gee.)



SPIREA VAN HOUTTEI

- | | |
|----------------------------|-------------------------|
| Thunberg's Barberry. | Lilac . |
| Buckthorn. | Russian Olive. |
| Caragana. | Mock Orange. |
| Coralberry. | Snowberry. |
| Tartarian Honeysuckle. | Spirea Anthony Waterer. |
| Red Twig Dogwood. | Spirea Billardi. |
| Hydrangea Pee Gee, 75c ea. | Spirea Van Houttei. |

HEDGING SHRUBS

A small size shrub, suitable for starting "live fences." Strong, well rooted plants. \$2.25 for 10; \$20.00 per 100.

Thunberg's Barberry, Buckthorn, Caragana, Tartarian Honeysuckle, Spirea Van Houttei.

ROSES

The hybrid Rugosa Roses, three varieties of which we are growing, are the most satisfactory hardy roses for the Northwest. They grow satisfactorily throughout Minnesota and the Dakotas without winter protection. The beautiful double blossoms are vastly superior to those of the old Rosa Rugosa. Fortunately the perpetual blooming habit of the Rugosa parents has been retained in these varieties.

PRICES: Each, 75c; 10 for \$6.00.

Conrad F. Meyer, (silver pink), Hanska (deep red), Sir Thomas Lipton, (pure white.)

Please use this Order Sheet

The Daniels Nursery

FRANC P. DANIELS, Proprietor

LONG LAKE, MINNESOTA

Date.....

Please forward the following stock to:

Name

Street or R. F. D.....

Post Office

State

Express Office

Ship by..... on or about.....

We exercise the greatest precaution to have all plants we furnish true to name, and will replace free of charge any plants proving otherwise. In no case will we be liable for more than the original cost of the plants. See our full guarantee on page 19.

CUT ON THIS LINE

No.	Name of Variety Wanted	Size	Price
TOTAL			

(OVER)

DANIELS RED DUCHESS PURCHASE AGREEMENT

(Read Carefully, Fill in the Blanks Properly).

No DANIELS RED DUCHESS trees will be shipped unless this agreement is signed by the purchaser.

The following agreement, between the undersigned and The Daniels Nursery, Franc P. Daniels, Proprietor, of Long Lake, Minnesota, refers to the purchase of DANIELS RED DUCHESS apple trees by the undersigned. Owing to the great expense of securing this valuable variety of apple, of propagating and thoroughly testing it, and the great cost of its introduction, The Daniels Nursery desires to hold all trees and all propagating wood of this variety in restriction, thereby protecting itself and the public from the imposition and substitution often practiced by unscrupulous individuals or firms who may thereby be prevented from falsely naming other varieties of less merit than the original DANIELS RED DUCHESS apple. Therefore, in consideration of the agreement of the undersigned not to give away or sell or permit anyone else to take these DANIELS RED DUCHESS trees or their progeny or scions or buds or cuttings from these trees herein mentioned or their progeny or any other DANIELS RED DUCHESS trees or their progeny that may be furnished to the undersigned in the future by The Daniels Nursery for a period of twenty-five years after any such trees are so furnished, and the further consideration of \$.....The

Daniels Nursery agrees to furnish..... DANIELS RED DUCHESS apple trees to the undersigned.

Date.....192.....

Purchaser's Signature

Purchaser's Address

Purchaser must sign here or DANIELS RED DUCHESS will not be shipped.

Did You Order These— The "INDISPENSABLE FOUR"?

- LATHAM RASPBERRY
- MINNEHAHA STRAWBERRY
- UNDERWOOD PLUM
- HARALSON APPLE

PLEASE give below the names and addresses of any of your friends you think would like to receive a copy of this catalogue. We will appreciate your kindness.

.....

.....

.....

.....

.....

.....

.....

.....

.....

.....

THANKS!

INSTRUCTIONS FOR ORDERING

When to Order. As early as possible. "First come, first served," is the rule. Early ordering is a big help to us, and frequently late orders cannot be filled in full. For the last six years we have been sold out on some items before the end of the season. Send your order now. It will be carefully booked and shipped to you at the time you want it.

PRICES: Prices quoted in this catalog annul and supersede all previous prices listed. All prices are f. o. b. Long Lake, Minnesota.

Special Discount. On all orders with full cash payment sent in before March 15th, we will allow a special discount of 5 per cent.

Dollar Minimum. Please do not ask us to fill orders for less than \$1.00. We lose money on them, as the office expense and packing room expense is as high as on larger orders.

Terms. Net cash with order. By adhering strictly to this policy we can keep down costs and maintain low prices.

Reserve Orders. We will reserve stock for those who so desire upon payment of 25 per cent with the order.

Method of Shipping. Express is the safest and generally the best way of shipping plants. All express orders are shipped transportation charges collect. Many of our small orders are now shipped satisfactorily by Parcel Post. We do not recommend it for any but small orders, as it is very expensive on larger shipments. If you desire plants to go by Parcel Post add the following amounts to your remittance to cover in part the costs of postage and special packing.

For each 100 Strawberry plants, add 10c.

For each 100 Raspberry plants, add 15c.

For each 12 Currants, Gooseberries, or Grapes, add 15c

No orders for more than 400 Strawberry plants, or 200 Raspberry plants, or 50 Gooseberry, Currant, or Grape plants should go by Parcel Post. No trees except the smallest size can go by Parcel Post. When stock is ordered to be sent by Parcel Post and no remittance is enclosed, we will have to send it postal charges C. O. D. This is a bother for you and for us, so please include the postage.

Quarantine. Federal laws prohibit shipments of Gooseberries and Currants to points west of Minnesota.

Complaints. Any complaints will be taken care of promptly, and satisfactorily. If there is anything wrong let us know at once, while there is still time to make amends. Please give us a chance to make it right, for we want only satisfied customers.

Replacement. We will replace plants that fail to grow at one-half the purchase price providing that: First, all replacement orders must be sent to reach us by October 1st, of the year stock is planted, and second, the claim is accompanied by a signed statement that the failure to grow was not due to negligent or improper handling, planting or care of the stock, nor due to any accident in the hands of the purchaser. We want our stock to give satisfaction but it is not fair to hold us responsible for troubles over which we have no control.

Planting Instructions. Our Planting Instruction Guide will be sent free on request, whether or not you send an order.

Our Guarantee. We exercise the utmost care in labeling and packing our plants and we guarantee them to be true to name, and correctly counted; and we will replace free of charge any which prove to be otherwise. In no case will we be liable for more than the original cost of the plants. We cannot be held responsible for inability to make delivery because of strikes, fires, act of nature or any other causes beyond our control. We deliver plants to the transportation company in first class condition, guarantee safe arrival at destination.

Write plainly, order early, and rest assured that you will have the best plants that money can buy.

SEND ALL ORDERS TO

The Daniels Nursery
LONG LAKE, MINNESOTA

“Words of the Wise”

**Furnish Food for Thought
But unless we heed them
They count for naught.**

“The commercial apple grower will pin his faith on the Wealthy, Patten Greening and Duchess and in the south-eastern regions, particularly along the Mississippi Bluffs, the Northwest Greening.

* * * * *

“The Latham raspberry originated and introduced by the State Experiment Station has not only proved itself to be a bonanza to Minnesota fruit growers but is being highly spoken of wherever it is grown from New England to Oregon.

* * * * *

“With the advent of the new hybrid plums it would seem that a commercial plum industry is about to be launched in this state. With such varieties as Underwood, Tonka, Red Wing, Monitor, and other of the Fruit Breeding Farm and the Waneta introduced by Professor Hansen of South Dakota, one can grow plums successfully anywhere within the boundaries of the state and produce fruit superior in appearance and quality to those transported two thousand miles from Sunny California.

* * * * *

“The Premier, Dunlap and Minnehaha strawberries are a trio of money makers that are hard to beat.

* * * * *

“The Beta, Alpha and Hungarian grapes thrive without exception in the northernmost parts of the state, are abundantly productive and find a ready market at high prices.”

—Prof. W. H. Alderman, Chief of University Division of Horticulture and President Minnesota State Horticultural Society in Northwest Farmstead, 9/1/23.

“Minnesota No. 157 Plum. The fruit was well ahead of the Underwood in ripening. It was equal in size to that variety and of very high quality. It takes on a beautiful red color and is unquestionably a promising new fruit. It will be given a name before long.”—F. E. Haralson, Supt. of State Fruit Breeding Farm, Minnesota Horticulturist, January, 1925.

“Tonka in the Sioux language means big. The Tonka Plum is big in more ways than one. It is big in size, yield and profits and in what it adds to the joys of life for the planter.”

“The Latham Red Raspberry which originated in Minnesota a few years ago and which has been tested out in Connecticut beside the standard varieties commonly grown has proved to be a winner.”—Connecticut Agricultural College Review, November, 1924.

“The Haralson apple again demonstrated its ability to cling to the tree. This year the fruit remained unpicked until October 22. At that time only a very small proportion of the fruit had fallen in spite of a number of high winds. This feature is a very valuable attribute of this new apple.”—Northwest Farmstead, January 1, 1925.

WHY stick to certain old fashioned fruits when better, hardier and more productive varieties are at your command?

WHY experiment with novelties or so-called “order catchers,” untested and untried sorts that have not yet been endorsed by those best able to judge true value and true merit in fruits?

The successful fruit grower of the future will grow only the varieties approved and recommended by the highest horticultural authorities of the northwest.

The most careful investigation will show that the varieties we offer have received such official endorsement.

The Daniels Nursery, Long Lake, Minn.