

Historic, archived document

Do not assume content reflects current scientific knowledge, policies, or practices.



62,73



BETTER PLANTS

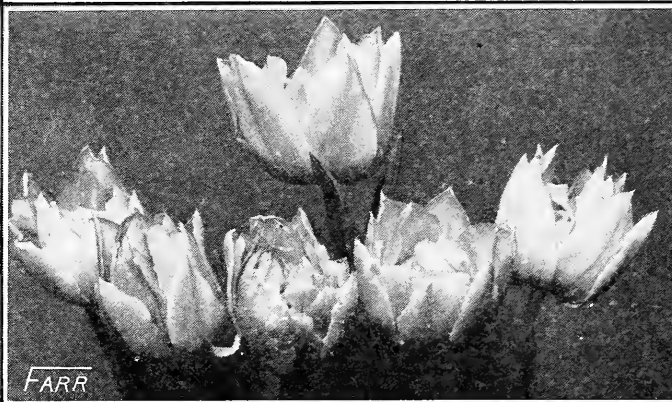
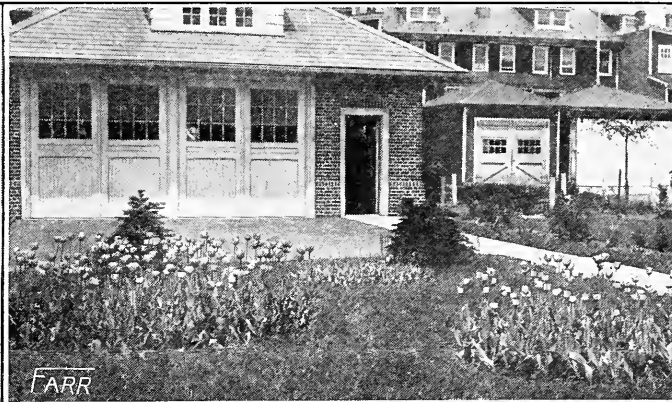


God's first gift to man was a Beautiful Garden

VOLUME III

MAY—JUNE, 1925

NUMBER 3



Farr's Single Early Tulips in a city park
Farr's Tulips in a Wyomissing garden

Farr's Cottage Tulips in a Wyomissing back yard
Blooms from Farr's selection of Double Tulips

Holland Bulbs in American Gardens

CONCISE, DEFINITE, AND COMPREHENSIVE INFORMATION

Use. Holland bulbs are useful in the smallest home and in the largest estate—for indoor forcing in earth or water, or for outdoor bedding and naturalizing. Being the earliest of spring bloomers, they represent the Easter Bonnet of the Garden. Their wide color-range includes shades and combinations of blue, brown, yellow, white, orange, purple, lavender, red, pink, crimson, black, and violet. Holland bulbs as a class are the lowest priced hardy plants, while their beauty ranks with the best. No one who can buy plants of any kind, can afford to be without Holland bulbs.

Outdoor Culture

When to Plant. In Holland the bulbs are dug during June, stored for drying until September, and then are shipped to America. All Holland bulb planting should be done during October, November, and December, so long as the bulbs can be gotten into the ground. If winters are early in your locality, prepare the ground in advance and cover thickly with straw until bulbs arrive.

How to Plant. Plant all bulbs at the same depth, to produce even height and simultaneous bloom. This is best done by setting the bulbs in furrows or trenches so that they will be covered with ground equal to $1\frac{1}{2}$ times their diameter. The use of dibbles and trowels is not to be recommended.

Soil Conditions. Bulbs thrive best in a light, rich soil, well drained but not dry. To break up a clay soil, add ashes or sand. Fertilizer is directly beneficial but never use fresh manure. Bone-meal and sheep-manure are most convenient and safest.

After Planting, leave the bulbs alone until the ground is frozen, then apply a top dressing of leaves straw, hay, or well-rotted manure. If the top dressing is put on before frosts it may cause premature fall sprouting and will harbor mice which are still looking for winter homes. If bulbs are to be lifted after blooming, wait until the foliage is wilted; then lift them, sun-cure them, and store in a cool, dark, dry room until fall. When bulbs are not lifted, do not cut the foliage; at least, not before it is thoroughly withered.

Indoor Culture

Remember that paper-white narcissi are the only bulbs which can be strongly recommended for forcing in water. Other bulbs grown for indoor bloom produce best results when potted. The potting procedure follows.

1. It pays to use the best garden soil available or to prepare a special mixture. Use plenty of sand and well-rotted manure—sheep-manure and bone-meal are excellent.

2. Fill the bottom inch of pots with coarse stones or pieces of pots so as to provide drainage. Set the bulbs so that the tops are barely covered with ground.

3. Store the pots in a cool, dark room or, far better, in a 20-inch trench outside. Fill the trench, covering the pots, with ground or coal-ashes and mound for drainage. Cover liberally with straw or leaves so that the ground will remain open for winter digging.

4. From January 15 on, the pots can be brought indoors as desired and stored in a cool, dark corner for one week. Bring them into heat and sunlight by degrees,

keep watered, and you will soon be amply rewarded for all your efforts. By bringing in pots at intervals, you can have indoor bloom throughout the winter.

How to Order

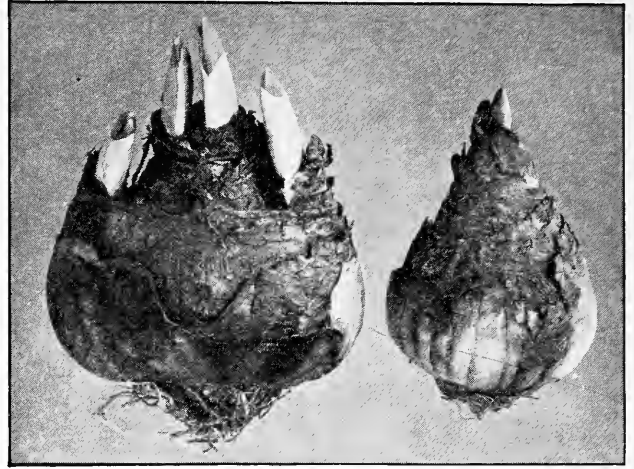
We have already told you how to use and grow Holland bulbs indoors and outdoors. In telling you how to order, remember that we will be glad to obtain and keep your patronage. For ten years we have been importing Holland bulbs of the highest quality from the same reputable firms of Van Leeuwen and Warnaar, Sassenheim, Holland. Remember also that all Farr plants, including Holland bulbs, are shipped subject to buyer's approval. If they are not more than satisfactory, we do not want you to accept them.

When. Order Holland bulbs now. Practically all importers are able to save money by placing import orders early. This enables them to extend the saving to customers. *On Farr bulbs a discount of 10 per cent will be allowed on all orders re-*

ceived before July 1. An additional 2 per cent may be deducted for cash with order.

How. It is more economical to order bulbs in quantity, from a price viewpoint and also in proportion to the results obtained from massed plantings. *Farr dozen rates are applicable on 6 or more bulbs of one variety; hundred rates on 50 or more bulbs of one variety.*

You can readily make up an order from the Farr bulb list contained in this issue of BETTER PLANTS. Since 1923, the list has been reduced by more than 75 lesser varieties, so that this 1925 list includes only the very best varieties of each type and color. Run through the list and select your favorite



Two types of Narcissus bulbs showing "Farr's Mother Bulb" in comparison with the ordinary first-size bulb. We buy the best bulbs obtainable

colors. Look ahead to spring 1926 and use the enclosed order sheet accordingly.

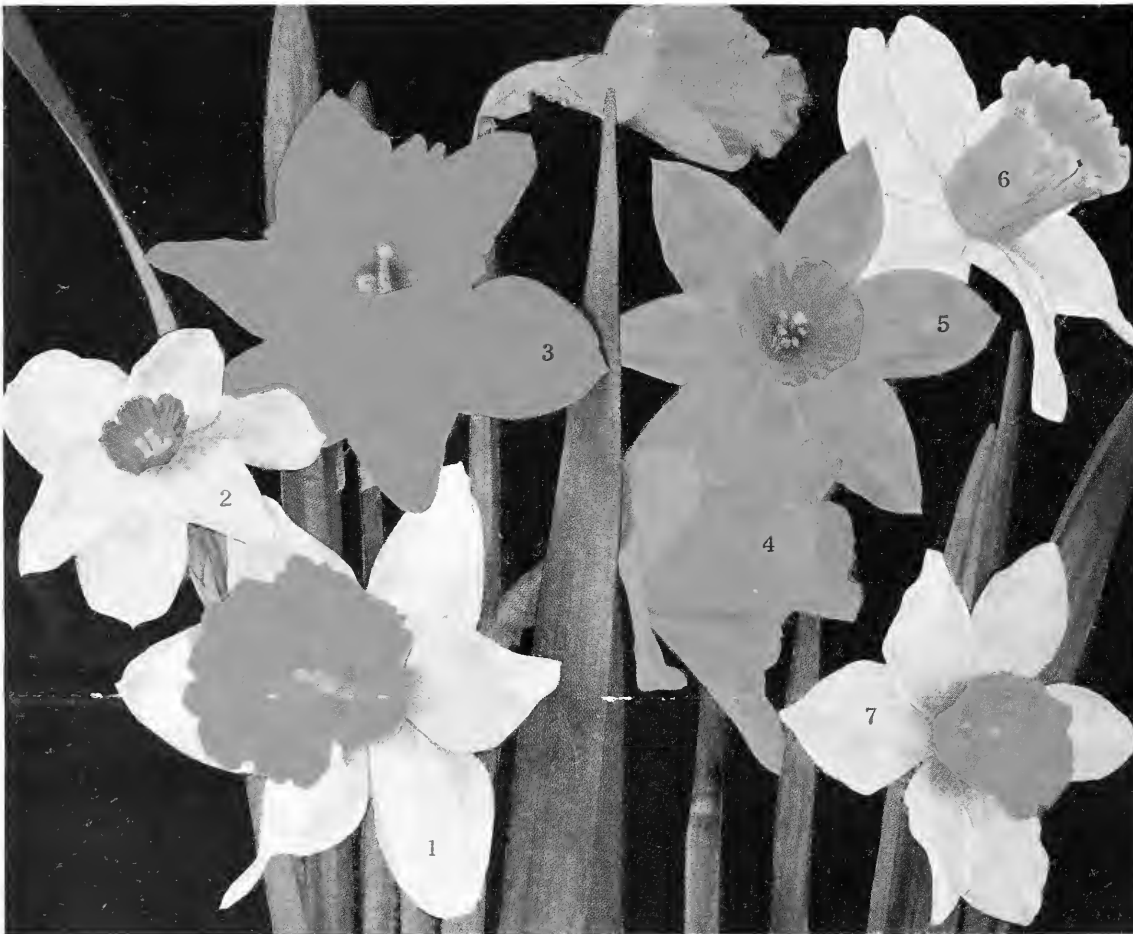
If you are uncertain on any point of culture, selection, or location, ask us for advice and suggestions. We will appreciate the opportunity and will not consider you to be obligated to order from us.

Our Sales Depend on Repeat Orders

Farr bulbs have never been advertised extensively and yet our sales are among the largest in the country. We depend on quality, service, and fair price to produce repeat orders and permanent customers.

Prices Include Delivery by Parcel Post

Do not forget that Farr prices include parcel-post delivery to your door. You know exactly what the bulbs will cost in advance. If express shipment is desired, add 5 per cent to the order total.



FARR'S "WORDSWORTH" COLLECTION OF NARCISSI

*"A host of golden daffodils—
Fluttering and dancing in the breeze."*

- | | | |
|-------------------------------------|--------------------------------|---|
| 1 Empress. \$1.35 per doz. | 3 King Alfred. \$3.50 per doz. | 5 Medium Trumpet, Barrii conspicuus. 80 cts. per doz. |
| 2 Poet's Narcissi. 65 cts. per doz. | 4 Emperor. \$1.50 per dozen. | 6 Sulphur Beauty. \$2.50 per doz. |
| | | 7 Medium Trumpet, Barrii, Seagull. \$1.35 per doz. |

The seven varieties here pictured include Single Large Trumpet varieties, Single Medium Varieties, and Poet's Narcissi. The price per dozen is indicated, but in the collection we will sell

One dozen bulbs of each variety (84 bulbs, value \$11.65), for \$10, parcel post prepaid

A special discount of 10 per cent will be allowed on all Holland Bulb orders mailed before July 1. An additional 2 per cent will be allowed on orders accompanied by cash.

DAFFODILS AND NARCISSI

Many people refer to daffodils as the large cupped narcissi. In botanical practice they are synonymous.

There is no better hardy plant than daffodils, from the standpoint of utility. They are at home anywhere, either in pots indoors or in irregular masses outdoors. Once established, practically all varieties naturalize themselves. They do best in partial shade and moist soil. When planting, cover with 4 inches of soil. Perennial, shrub, and evergreen borders are incomplete without them.

Due to the Federal Plant Exclusion Act, Narcissi Cannot be Imported Next Year. Some are being grown in this country but they represent only a fraction of the number formerly imported. Even if you are fortunate enough to obtain home-grown narcissi in 1926, you will probably pay twice as much as present prices. **Stock up Now on Narcissi.**

Single Large Trumpet Narcissi (Ajax)

These are commonly referred to as Daffodils and produce the largest flowers. Colors range from pure white to darkest yellow. Our trade has been built up on mother size bulbs and we do not list the smaller "first size" bulbs.

6 or more bulbs of one variety at the dozen rate; 25 or more at the 100 rate.

Bicolor, Empress. (Mother.) Large yellow trumpet with pure white perianth. This variety, Victoria, and Emperor are the most permanent sorts for naturalizing. \$1.35 per doz.; \$9 per 100.

Bicolor, Van Waveren's Giant. Widely expanded, bright yellow trumpet, with broad primrose perianth. Said to be the largest trumpet Narcissus in existence. Strong grower. 40 cts. each; \$3.50 per doz.; \$27 per 100.

Bicolor, Victoria. Golden yellow trumpet; pure white perianth. Flowers large; fine for forcing. \$1.50 per doz.; \$9.50 per 100.

Emperor. (Mother.) Deep yellow. Unsurpassed by any other Narcissus. \$1.50 per doz.; \$9.50 per 100.

Giant Princeps. (Mother.) Sulphur-yellow. Extra early and adapted for forcing. 95 cts. per doz.; \$7 per 100.

Glory of Leiden (King of Daffodils). Giant flowers of the deepest golden yellow. \$1.35 per doz.; \$9 per 100.

Golden Spur. (Mother.) Rich golden yellow. \$1.50 per doz.; \$9.50 per 100.

King Alfred. (Mother.) The King of Daffodils. Immense yellow trumpet and broad golden yellow perianth. 40 cts. each; \$3.50 per doz.; \$27 per 100.

Sulphur Beauty (Ajax). Petals pure white; trumpet light sulphury yellow. Beautifully shaped flower which stands well on the stem. Very free bloomer and very early. We recommend this variety highly. 25 cts. each; \$2.50 per doz.; \$18 per 100.

Superfine Mixture of Single Large Trumpet Narcissi. All of the above varieties in mixture, 70 cts. per doz.; \$5 per 100; \$42 per 1,000.

Single Medium Trumpet Narcissi

In the Barrii type, the crown or cup is about half the length of the perianth segments.

In the Incomparabilis types, the crowns are larger than Barrii, often three-quarters the length of the perianth and 4 inches across.

In Leedsii Narcissi, the cup or crown is white or light yellow, and the perianth is always white.

Barrii Conspicuous. (Mother.) Perianth broad, soft yellow; orange-scarlet cup. Splendid for borders. 80 cts. per doz.; \$6 per 100.

Barrii, Seagull. White perianth; canary-yellow cup. \$1.35 per doz.; \$9 per 100.

Incomparabilis, Lucifer. Large and beautiful. Sulphur-white perianth; cup chrome-yellow, edged orange-red. \$1.10 per doz.; \$7.50 per 100.

Incomparabilis, Sir Watkin (Giant Chalice Flower). Extra large; sulphur-yellow perianth; orange-stained cup. \$1.75 per doz.; \$10 per 100.

Leedsii, M. Magdalene de Graaff. Long white perianth; orange-rose cup. Often bears two blooms to a stem. 85 cts. per doz.; \$6.50 per 100.

Leedsii, White Lady. Elegantly formed flower, with white perianth and canary-yellow cup. \$1.10 per doz.; \$7.50 per 100.

Superfine Mixture, Single Medium Narcissi. 75 cts. per doz.; \$5.50 per 100; \$45 per 1,000.

Double Narcissi

Orange Phoenix. White, reddish orange center. \$1.15 per doz.; \$8 per 100.

Sulphur Phoenix. Silvery white, with sulphur-yellow center. These two varieties make a charming combination. \$1.15 per doz.; \$8 per 100.

Van Sion. Flowers extra large, pure golden yellow. The most popular double variety for forcing. Extra-selected mother bulbs, \$1.15 per doz.; \$8 per 100.

One dozen each of two named varieties (our selection from these three) for \$1.50

Poet's Narcissi

Poeticus. The familiar "Poet's Narcissus," or "Pheasant's Eye," with pure white perianth and orange cup. One of the best for the border or for naturalizing, but not suitable for forcing. 65 cts. per doz.; \$4.50 per 100.

Poeticus ornatus. Blooms earlier than the others; can be used for forcing. Perianth pure white, cup rich yellow with scarlet margin. Extra-size, double-nose bulbs, 75 cts. per doz.; \$5.50 per 100.

Superfine Mixture Poet's Narcissi. The above varieties in mixture, 65 cts. per doz.; \$4.50 per 100; \$38 per 1,000.

Paper-White Narcissi

Valuable for indoor forcing; commonly grown in water. 100 bulbs, some bowls and pans, pebbles, water, and a cool, dark room will supply bloom for the winter. 90 cts. per doz.; \$7 per 100.

JONQUILS

Old-fashioned familiar flowers; blooms in clusters, pure yellow, very fragrant, of medium size. A group will increase in size and value each year.

Campernelle rugulosus. Handsome flowers, with broad, clear yellow imbricated cup. 75 cts. per doz.; \$5.50 per 100; \$45 per 1,000.

Campernelle rugulosus flore-pleno. Flowers fragrant, quite double, and borne on tall, sturdy stems. A very desirable variety. 75 cts. per doz.; \$5.50 per 100; \$45 per 1,000.



Breeder and Darwin Tulips are the long-stemmed late-flowering varieties

TULIPS

The great variety of dazzling tulips, in every conceivable color combination, makes them the most popular of the spring-flowering bulbs. By planting bulbs of the different classes, a display of bloom may be had for several weeks, beginning first with the early-flowering section and ending with the Darwins and Breeders. Even a dozen bulbs will make a brilliant corner in the garden.

Single Early Tulips

All the varieties in this list may be used with equal success for bedding or for forcing. Stems 10 to 15 inches high. Plant 4 to 5 inches deep; 5 to 6 inches apart. Bloom in late April.

6 or more bulbs of one variety at the dozen rate; 25 or more bulbs of one variety at the 100 rate.

Belle Alliance. One of the finest deep scarlet, single, early Tulips. Extensively used in massed groups with *Chrysolora* and *White Hawk*, the combination making a wonderful showing of Single Early blooms. 80 cts. per doz.; \$6 per 100.

Chrysolora. A large and extra-fine pure golden yellow Tulip; desirable for bedding with red and white sorts. 75 cts. per doz.; \$5.50 per 100.

Cottage Maid. Soft pink, suffused with white. 80 cts. per doz.; \$6 per 100.

Couleur de Cardinal. A rich crimson-scarlet. Particularly fine for bedding. \$1 per doz.; \$7.25 per 100.

Flamingo. Deepest pink, shaded to white at the center of the petals. Flowers very large and of beautiful shape. 95 cts. per doz.; \$7 per 100.

Gen. de Wet. Deep orange, shading to golden yellow at base of petals. One of the finest newer sorts. No other orange Tulip equals it in brilliance. We recommend it for bedding and for forcing. 30 cts. each; \$3 per doz.; \$22 per 100.



Can you imagine the brilliancy and beauty of these Darwin Tulips?

Keizerkroon. One of the best Tulips for bedding. Flowers large, brilliant red, bordered with deep golden yellow. 90 cts. per doz.; \$6.75 per 100.

Pink Beauty. Rosy pink, slightly shaded white; unsurpassed in beauty and size. \$1.75 per doz.; \$10 per 100.

Rose Luisante. Beautiful white and rose of very attractive form; unsurpassed as a later forcing sort. \$1.10 per doz.; \$7.50 per 100.

White Hawk. One of the best white varieties; petals slightly fluted. 85 cts. per doz.; \$6.50 per 100.

Single Early Tulips in Superfine Mixture

A choice collection made up from the best named Tulips. The bulbs will bloom at about the same time, and the flower-stems are about the same length—important points when selecting bedding varieties. The mixture is superior in every way to the cheap mixtures which are often offered at bargain prices. 60 cts. per doz.; \$4 per 100; \$35 per 1,000.

Double Early Tulips

With few exceptions the Double Tulips should be used for bedding only. The flowers are very durable and, as they bloom later, they prolong the flowering period. Stems 12 to 15 inches high. Bloom during late April and remind one of peonies. Alternate rows of Single Early and Double Tulips are very effective.

6 or more bulbs of one variety at the dozen rate; 25 or more at the 100 rate

Couronne d'Or (Crown of Gold). A magnificent golden yellow flower slightly shaded with orange; of great beauty and size, and one of the best for forcing. 90 cts. per doz.; \$6.75 per 100.

Murillo. Light pink blooms on medium height stems. Popular for either house or garden. 75 cts. per doz.; \$5.50 per 100.

Peach Blossom. Sport of Murillo. Strong, large, very double flower. The color is deep pink and fills the desire of those who have wished for a Murillo of a deep pink shade. We advise all our customers to try it. \$1.75 per doz.; \$12 per 100.

Schoonoord. A pure white sport of Murillo, and probably the best of the double sorts. Flowers large and beautiful. 95 cts. per doz.; \$7 per 100.

Tournesol. A very showy Tulip, growing about 11 inches high; red bordered with yellow. May be called a "Double Keizerkroon." 95 cts. per doz.; \$7 per 100.

Superfine Mixture of Double Early Tulips, including all of the above, 65 cts. per doz.; \$4.50 per 100; \$38 per 1,000.



Breeder and Darwin Tulips make splendid borders for walks

Cottage Tulips (Single or May-flowering)

Cottage Tulips are fine for naturalizing in permanent borders. They come up and bloom year after year. When alternated with Single Earlies, the blooming season is prolonged. Height 18 inches. Bloom May 15. Originated in England among the English cottages.

6 or more bulbs of one variety at the dozen rate; 25 or more bulbs of one variety at the 100 rate.

Ellen Willmott. The finest May-flowering Tulip. Large, soft creamy yellow blooms. 75 cts. per doz.; \$5.50 per 100.

Gesneriana Major (Spathulata). Crimson-scarlet with blue-black center. The best of its class. 70 cts. per doz.; \$5 per 100.

Golden Crown. Recommended for naturalizing, as it increases rapidly. Golden yellow with red edges. 70 cts. per doz.; \$5 per 100.

Grenadier. A grand, large Tulip of fine form and good substance borne on strong stem; dazzling brilliant orange-red, yellow base. Height 21 inches. \$1.25 per doz.; \$8.50 per 100.

Inglescombe Pink. Soft rose, flushed salmon. When the large blooms first open, they are quite pink. 70 cts. per doz.; \$5 per 100.

Inglescombe Scarlet. Brilliant scarlet with black base; large flowers. 70 cts. per doz.; \$5 per 100.

COTTAGE TULIPS, continued

Inglescombe Yellow (Yellow Darwin). Large globular flower. 75 cts. per doz.; \$5.50 per 100.

John Ruskin. Bronzy rose, with sulphur-yellow edge, rosy lilac inside. 90 cts. per doz.; \$6.75 per 100.

Moonlight. Lemon or canary-yellow. Long oval-shaped flower. One of the handsomest Cottage Tulips. 80 cts. per doz.; \$6 per 100.

Orange King. Deep orange, with delicate shadings of rose. 70 cts. per doz.; \$5 per 100.

Picotee (Maiden's Blush). Pure white, margined rose; petals recurved. Useful for naturalizing. 65 cts. per doz.; \$4.50 per 100.

Superfine Mixture of Cottage Tulips, including all of the above varieties, 60 cts. per doz.; \$4 per 100; \$35 per 1,000.

DARWIN TULIPS

Darwin Tulips are highly recommended for massing in shrubbery and for providing contrasting colors in the spring garden. In form, the cupped blooms are entirely distinct from all other classes of Tulips; they are unusually large and are borne on long stems. They may be forced if brought to the heat not earlier than January. Garden bloom, May 15. Height from 2 to 3 feet. Brilliant; prolific; most popular species of Tulips.

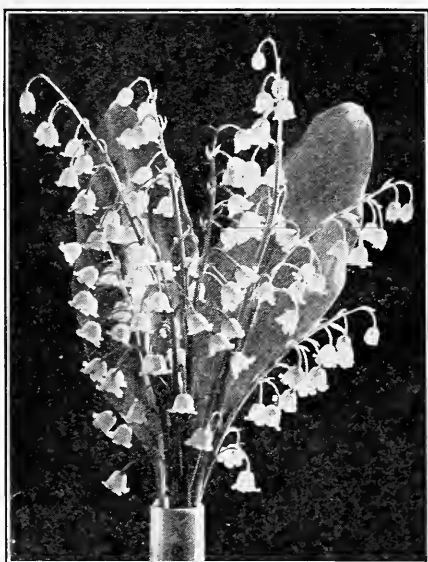
6 or more bulbs of one variety at the dozen rate; 25 or more bulbs of one variety at the 100 rate.

Baron de la Tonnaye. Bright rose, margined with blush. Extra-large flowers on long stems. 70 cts. per doz.; \$5 per 100.

Bartigan. Very large; fiery red. Earliest to bloom of all the Darwins. Good forcer. \$1.10 per doz.; \$7.50 per 100.

Clara Butt. Delicate salmon-pink. The best of its color. 65 cts. per doz.; \$4.50 per 100.

Dream. Pale heliotrope, shaded violet. 70 cts. per doz.; \$5 per 100.



Lily of the Valley

Strong clumps of 4 pips each, 35 cts. each, \$2.50 for 10, \$18 per 100

Edmee. A splendid variety for late forcing; cherry-rose, edged with a lighter shade; large and beautiful. 90 cts. per doz.; \$6.50 per 100.

Gretchen. Flesh-pink, cup-shaped. 65 cts. per doz.; \$4.50 per 100.

La Tulipe Noire (The Black Tulip). Enormous flowers, nearly black. The most striking variety. 95 cts. per doz.; \$7 per 100.

Loveliness. Soft rosy carmine, making a beautiful contrast with darker colored varieties. 75 cts. per doz.; \$5.50 per 100.

Mme. Krelage. Bright lilac-rose with a lighter margin; extra-fine. 85 cts. per doz.; \$6.50 per 100.

Mr. Farncombe Sanders. One of the best and showiest of the Darwins; blooms of immense size, brilliant scarlet in color. 80 cts. per doz.; \$6 per 100.

Philippe de Commines. One of the earliest Darwins for forcing; deep purple. 80 cts. per doz.; \$6 per 100.

Pride of Haarlem. Violet-rose, with a blue base; extra-large blooms. 70 cts. per doz.; \$5 per 100.

Reverend Ewbank. Soft heliotrope or lavender-violet. 70 cts. per doz.; \$5 per 100.

Whistler. One of the new Darwins. Maroon-crimson; base of petals dark blue, with white lines. \$1.10 per doz.; \$7.50 per 100.

White Queen (La Candeur). Rosy white, changing to white. 75 cts. per doz.; \$5.50 per 100.

William Copland. Extra large and early; flowers light lilac, borne on long stems. 85 cts. per doz.; \$6.50 per 100.

William Pitt. Dark crimson; purplish tint on outer petals. \$1.35 per doz.; \$9 per 100.

Yellow Darwin. See **Inglescombe Yellow** above.

Zulu. Purplish black; splendid for forcing or for garden culture. 80 cts. per doz.; \$6 per 100.

Superfine Mixture of Darwin Tulips. 60 cts. per doz.; \$4 per 100; \$35 per 1,000.

OLD DUTCH or BREEDER TULIPS

The Breeder Tulips are the unbroken forms of the old florists' Tulips. The blooms strongly resemble the Darwin Tulips, excepting that they have an entirely different range of color, comprising artistic tones of bronze, terra-cotta, orange, and brown. Breeder Tulips are May-flowering, producing blooms of enormous size, and because they are vigorous growers are valuable for the garden. We have taken great pains to select only



Roi des Belges King of the Blues Yellow Hammer Queen of the Pinks

choicest varieties, and can heartily recommend these to anyone who wishes something especially fine.

6 or more bulbs of one variety at the dozen rate; 25 or more bulbs of one variety at the 100 rate.

Bacchus. Large, long flower on a graceful stem. Dark violet-blue, with darker bloom on outside of petals; inside violet-blue, white base. The blucst of all Tulips. Height 33 inches. \$3 per doz.; \$20 per 100.

Bronze King. New. A wonderful bronze-yellow for bedding or forcing. 95 cts. per doz.; \$7 per 100.

Cardinal Manning. Wine-red, flushed with rosy brown. 80 cts. per doz.; \$6 per 100.

Dom Pedro. The finest deep coffee-brown with narrow edge of golden brown. Good forcer. \$1.35 per doz.; \$9 per 100.

Godet Parfait. Very large flower of striking color—deep purple with white base and blue halo. Height 29 inches. \$2 per doz.; \$12 per 100.

Grand Maitre. Dark purplish violet. 95 cts. per doz.; \$7 per 100.

Jaune d'Œuf (Sunrise). Ruddy apricot edged with golden yellow. 80 cts. per doz.; \$6 per 100.

Louis XIV. Dark purple, flushed bronze with broad margin of golden brown. A unique Tulip of great and striking beauty. Height 25 inches. 35 cts each; \$3 per doz.; \$20 per 100.



An example of the variety and contrast of color to be found in Irises

MAY-JUNE IRIS COLLECTION

Our old-time friends will recognize the above colored illustration of Irises as having appeared in former Farr catalogues. Many of the varieties from which this illustration was made have now been improved upon. A list of the newest things which answer to the color plate is here given. For all practical purposes, selections can be made accordingly.

No. 1. Lady Foster.....	\$1 00	No. 5. Ivanhoe.....	\$1 00	No. 9. Dusky Maid.....	\$1 00
No. 2. Assyrian.....	3 00	No. 6. Onnoris.....	50	No. 10. Fairy.....	35
No. 3. Cecile Minturn.....	3 00	No. 7. Lurline.....	1 00	No. 11. Knysna.....	1 00
No. 4. Nuee d'Orange.....	35	No. 8. Mary Orth.....	2 00		\$14 20

The above eleven Irises, amounting to \$14.20, will be furnished for \$12 complete, including parcel post delivery. Ask for May-June Iris Collection. Any one or more varieties can be furnished at prices listed. Orders filled in the order received. Shipment during July and August, as desired.

May-June Pcony and Iris collections together (a total value of \$35.20), for \$28, including parcel post delivery.

OLD DUTCH or BREEDER TULIPS, cont'd

Le Mogol. Delicate lavender suffused with deep mauve. A medium-sized flower. \$1.10 per doz.; \$7.50 per 100.

Medea. Salmon-carmine with heliotrope shading; an unusually large flower. 75 cts. per doz.; \$5.50 per 100.

Panorama (Fairy). Large, goblet-shaped flower; chestnut-red, base and filaments chestnut-brown. Forces well; recommended highly. \$1 per doz.; \$7.25 per 100.

Professor Schotel. Heavenly blue. \$1.35 per doz.; \$9 per 100.

Mixed Breeder Tulips. 65 cts. per doz.; \$4.50 per 100; \$38 per 1,000.

Tulips by Color (At special prices)

Here is an opportunity to purchase first-grade Tulips at low prices. We have not placed any Holland order for Tulips by color. *Orders will be filled from our supply of named varieties.* The name of the variety will appear on the container; the bulbs are guaranteed true to name.

Our selection of named varieties. Your selection by color.

Single Early Tulips. White, Yellow, Pink, Red. 70 cts. per doz.; \$5 per 100.

Cottage Tulips. Choice of above colors. 70 cts. per doz.; \$5 per 100.

Darwin Tulips. Choice of above colors. 70 cts. per doz.; \$5 per 100.

Double Early and Breeder Tulips cannot be included in this offer.

HYACINTHS

Holland Hyacinth prices have advanced from 40 to 50 per cent. Our former exhibition size of bulbs is practically unobtainable. We are, therefore, importing a smaller size of 18-19 centimeter circumference. Every bulb is guaranteed to throw a fine specimen and to be only slightly smaller than previous years. Culture is similar to other bulbs. Setting

HYACINTHS, continued

the bulbs on a layer of sand improves the bloom. Plant 6 inches apart and cover with 4 inches of ground. They are best in beds and other formal arrangements. A most popular indoor plant. Anyone can handle them. Unexcelled for fragrance.

All named Hyacinths, 25 cts. each; \$2.50 per doz.; \$19 per 100.

Single Red and Rose

General de Wet. Extra-fine, soft pink, with large spike and bells. An improvement on Baron Von Thuyll.

Queen of the Pinks. A lovely bright rosy pink.

Roi des Belges. Extra-fine dark red.

Single Pure and Creamy White

La Grandesse. Pure white; large bells; perfect truss.

L'Innocence. Very fine; pure white.

Single Light and Dark Blue

Enchantress. Delicate porcelain-blue; splendid truss.

Grand Maitre. Deep sky-blue; large, compact spike.

King of the Blues. Rich dark blue; splendid form; late.

Single Yellow

Yellow Hammer. The best pure yellow.

Hyacinths by Color (At special prices)

An offering of Hyacinths by color, at lower cost, will be appreciated by many bulb-lovers. We have, accordingly, ordered a quantity of Hyacinths in grade and quality exactly the same as for the named varieties. Because of the latitude of selection allowed our Holland grower, the price is lower.

The colors are Rose, Red, and Blue. Prices, 22 cts. each; \$2.20 per doz.; \$17 per 100. Specify colors when ordering.

CROCUSES

When the spring sun begins to warm the ground, the little yellow Crocuses quickly respond to the bright rays. They are among the very earliest spring flowers and are most effective when dotting the

lawn without any fixed plan of arrangement. The bulbs can be strewn thickly over the surface and be set where they fall, merely lifting the sod with a knife or trowel, slipping the bulbs underneath and pressing the sod back into place.

Mixed Crocuses. All colors mixed. 35 cts. per doz.; \$1.65 per 100; \$13 per 1,000.

King of the Whites. Snowy white; large blooms. 35 cts. per doz.; \$2.25 per 100; \$20 per 1,000.

Mammoth Yellow. Especially desirable for lawn planting. 50 cts. per doz.; \$3.50 per 100; \$32 per 1,000.

Maximilian. Porcelain-blue; new. 35c. per doz.; \$2.25 per 100; \$20 per 1,000.

Not less than six bulbs of any variety supplied



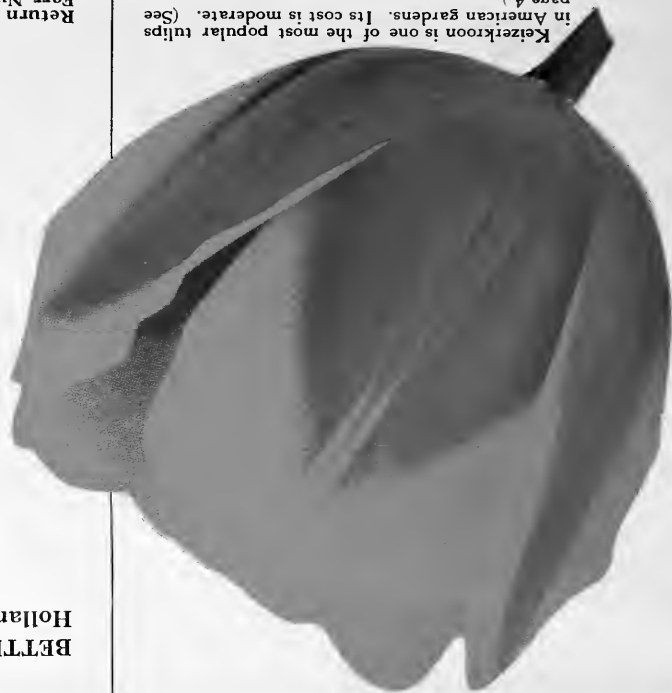
Peonies are exceedingly effective as cut-flowers and will last for many days

MAY-JUNE PEONY COLLECTION

This colored illustration of Peonies includes the following varieties. Further comment is superfluous.

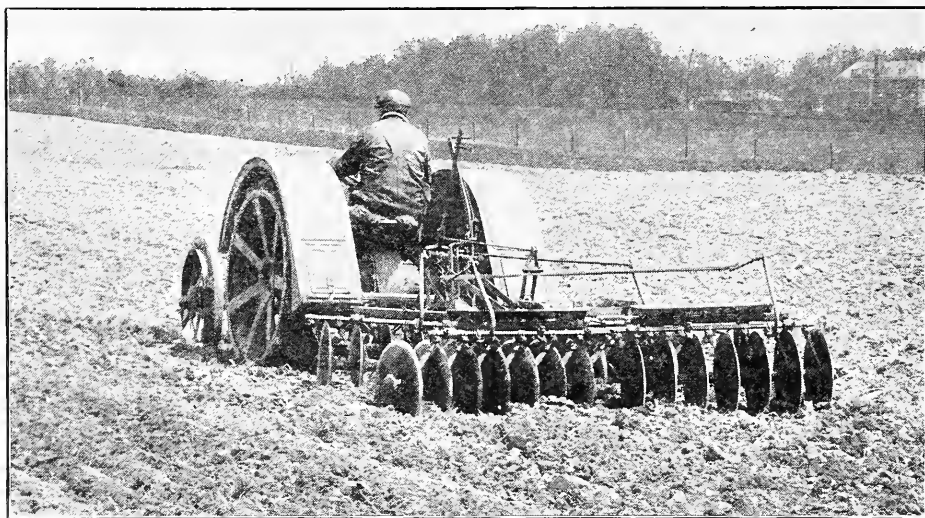
No. 1. Charlotte Cushman..\$2 00	No. 4. Mme. Reignoux.....\$2 00	No. 7. Goliath.....\$2 00
No. 2. Monsieur Jules Elie.. 1 50	No. 5. Eugenie Verdier..... 2 00	No. 8. Eugene Bigot..... 2 50
No. 3. Adolphe Rousseau... 2 00	No. 6. Lamartine..... 4 00	No. 9. Lafayette..... 3 00
\$21 00		

The above nine Peonies, amounting to \$21, will be furnished for \$17.50 complete, including parcel post delivery. Ask for May-June Peony Collection. Any one or more varieties can be furnished at prices as listed. Orders filled in rotation as received. Shipment in early fall.



BETTER PLANTS—MAY-JUNE, 1925
Holland Bulb Edition

BETTER PLANTS



The Fordson is our heavy duty soil tiller. Invaluable for deep plowing, quick soil preparation and heavy pulling of all sorts. Another unit of the equipment which produces Better Plants—By Farr.

1925 SUNRISE COLLECTIONS OF SPRING
BLOOMING BULBS

Coax spring into your 1926 garden with any or all of the attractively low-priced collections here offered. When spring comes, her path will be lined with daffodils, tulips, hyacinths, and crocuses.

“Brimming the April dusk with color, cheering the morn with glow.”

Here is an economical and easy opportunity

50 Narcissi in mixture.....	\$2 50	50 Double Early Tulips, Assorted..	\$2 75
50 Single Early Tulips, Assorted....	2 75	20 Hyacinths, Mixed.....	3 75
50 Darwin Tulips, Assorted.....	2 75	100 Crocuses, Mixed.....	1 50
50 Breeder Tulips, Assorted.....	2 75		
50 Cottage Tulips, Assorted.....	2 75		\$21 50

Complete 1925 Sunrise Collection (420 bulbs) for only \$18, parcel post prepaid. This collection, if desired in half quantities, for \$9.50 complete.

No further discount except 2 per cent for cash with order.

If any one or two parts of this collection are not desired, they may be deducted at cost. Example—1925 Sunrise Collection, excluding Cottage Tulips, would amount to \$18 less \$2.75, or \$15.25.

These Collections will make spring mornings still more beautiful. Their abundance of colorful bloom will be worth many times the cost of the bulbs. Most, if not all, of the bulbs will bloom for many more springtimes.

MISCELLANEOUS BULBS

For carpet beds, clusters, and lines throughout the garden.

The Federal Quarantine has been temporarily lifted on a number of old-time favorites for the spring bulb-garden. The most desirable varieties are included in this list.

Chionodoxa (Glory-of-the-Snow). An almost necessary companion to the crocuses and snowdrops. Easily naturalized and comes up each year. Dark blue flowers with white eye; 6 to 10 blooms on a stem; 4 to 6 inches high. 50 cts. per doz.; \$3.50 per 100; \$32 per 1,000.

Muscari botryoides (Grape Hyacinth). Pretty little early-flowering bulbs, good-sized colonies of which give dainty effects in the borders from February to May. Flowers mostly dark purple in color. These old favorites are obtainable for the first time since 1918. 50 cts. per doz.; \$3.50 per 100; \$32 per 1,000.

Muscari botryoides, Heavenly Blue. An improvement on *M. botryoides*—larger, finer and earlier. Beautiful blue. A dozen bulbs in a 6-inch pan or pot form an attractive window display. 50 cts. per doz.; \$3.50 per 100; \$32 per 1,000.

Scilla sibirica. One of the prettiest early flowering bulbs, with sprays of rich blue flowers. Suitable for naturalizing or indoor forcing. Culture the same as crocuses. 70 cts. per doz.; \$5 per 100; \$45 per 1,000.

Snowdrops. The very first spring bloomers. Should be planted liberally on lawns and borders. Large; single; white. 50 cts. per doz.; \$3.50 per 100; \$32 per 1,000.

Snowdrops. Large; double; white. 75 cts. per doz.; \$5.50 per 100; \$50 per 1,000.

Bertrand H. Farr—
Wyomissing Nurseries Co.

1250 Garfield Avenue
Wyomissing - Penna.