

## **Historic, archived document**

Do not assume content reflects current scientific knowledge, policies, or practices.



6243

1924-1925

# Hardy Ferns--Flowers



*(Aspidium Goldiana)*

**FERNDALE NURSERY**

ASKOV, MINNESOTA

A new era in landscape architecture is developing in American horticulture. The foreign style of gardening and landscape work is losing ground for a distinctly American fashion of landscape treatment and naturalistic planting, planned to accord with the natural surroundings, and therefore expressive of a perfect harmony and good taste in beautifying the grounds around our homes, and windbreak plantings. Public parks are establishing wild flower preserves. Owners of suburban and country estates are abandoning the formal for the naturalistic in the treatment and development of their grounds.

About twenty years ago we commenced studying and experimenting in the cultivation of hardy ferns of northern Minnesota. This experience has proven a success beyond all expectations. Our ferns are giving universal satisfaction in every state in the Union and far up into Canada. Our sales commenced about twenty years ago with a few dozen—gradually winning territory—in 1918 we sold about 8,000, in 1923 about 21,000, and last season we shipped out about 40,000. We are prepared to double the output this season.

#### PACKING AND SHIPPING—PROMPT SERVICE

We pack ferns as light as possible to secure safe arrival, consequently we must pack heavier for freight shipment, which is safe during fall and winter even if it takes a month or more on the road. Freezing enroute will not hurt dormant ferns. For spring shipment we recommend express. During the spring planting season we generally pack and ship inside of 24 hours. We are ready at all times to replace stock which arrives in poor condition due to faulty packing.

We keep an ample supply in storage cellar from which to fill orders during the winter and can ship any day between October 15th and July 1st.

When do people want their ferns? When they get out in their garden planning, they want them when they want them, and not two or three weeks later. We will give service and quality that will bring our customers and their neighbors and friends back next year for more. We have hundreds of letters from satisfied customers who say so—here is a sample:

Fresno, Cal., June 7, 1923.

Ludvig Mosbæk, Askov, Minn.

Dear Sir:

My shipment of ferns came through in fine shape and the stock is excellent. I must say that that order was filled and received by me in the best time of any in all my experience. It has taken twice as long to get stuff from Los Angeles and San Francisco.

Yours truly, (Signed) E. B. ECKHART.

#### QUALITY

Our hardy ferns are strong, heavy roots or clumps—mostly 5 years old or over—and should not be compared with common cheap mail order quality. Our mail order "Fern Bed of 20" generally runs from 15 to 20 pounds.

#### HOW TO ARRANGE PLANTING

Hardy ferns should not be planted single but in groups of the same variety to make an impression.

In the hardy border the taller growing varieties should be planted in the background, the height is indicated in inches.

## A Fern Bed for Only \$5.00

We offer prepaid by parcel post for \$5.00:

8 Ostrich Plume Ferns.

8 Lady Ferns.

4 Osmundas.

One-half assortment—10 ferns—for \$3.00.

One-fourth assortment—5 ferns—for \$1.75.

Any one fern for 50 cents.

Hardy outdoor ferns grow best in the shade or half shade and will do well in the border in groups of 3 to 5 of one variety among the flowering shrubs. They are just the thing for that shady place around your house where most flowers will not do so well; especially on the east and north sides of buildings, in groups among flowering shrubs, to protect them from wind and storms.

Of all the hardy ferns the Ostrich Plume, also called the Palm of the North, is perhaps the best as it grows the tallest and fastest of any fern. It often has as many as fifteen fronds gracefully arranged, presenting an object more beautiful than many varieties of palms. The fronds, under favorable conditions, attain a length up to four feet.

Lady fern (*Asplenium Felix Fæmina*) a large handsome fern—a wood and roadside fern—presenting many varying forms; ranks with the Ostrich and Osmunda, but is of a distinct different type.

The Osmunda Claytoniana or flowering fern is clothed with loose wool when unfolding its fronds which sometimes under favorable conditions attains a height of more than four feet—is beautifully cinnamon colored. This variety will also do well in the open or dry shady places.

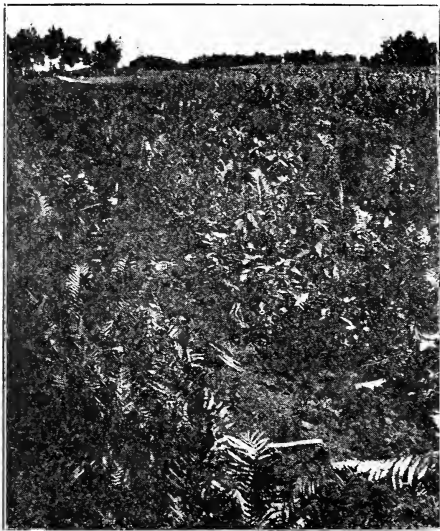
These three ferns represent three distinct types and will make a splendid combination as a background for many varieties of perennial flowers. When once established they will come back stronger year after year. They will grow in common garden soil, which can be improved by the addition of some leafmold, muck or pulverized peat, a mulch of leaves or straw or half rotten hay when planted and thereafter every fall will be of great benefit, especially in the warmer and dry climates.

Cultural directions will be included with each shipment of ferns.

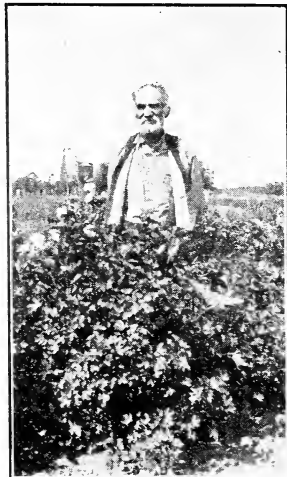


*Adiantum Pidatum*

*Adiantum Pedatum* (Maidenhair Fern), perhaps the most graceful of all, attains a height of 12 to 18 inches when grown in rich, moist, well drained, shady locations. When once established it increases from year to year. Plant about 1 inch below the surface. Maidenhair should be planted for massing only and not more than 8 inches apart. Each 50c, 10 for \$3.00, prepaid. 100, not prepaid, \$20.00.



Small Hardy Ferns in the Nursery

Ludvig Mosbæk  
The Hardy Fern Expert

**Aspidium Acrostichoides** (Christmas Fern) (Dagger Fern). An evergreen species, about a foot high, with deep green fronds simply divided. It is easily grown in shade, in good garden soil, well drained. Plant with the new crowns or buds just at the surface. Each 50c, 10 for \$3.00, prepaid. 100, not prepaid, \$20.00.

**Aspidium Christatum** Evergreen (Crested Fern), grows wild in rather wet shady places. Fronds 10 to 15 inches, generally keeping green all winter. It is easily grown, the crown should be planted just above the surface. Each 50c, 10 for \$3.00, prepaid.

**Aspidium Christatum** (var. *Clintonianna*), a large fern of *Christatum*; attains a height of 2 feet or more, when grown in moist, rich places. To produce massed effect it should be planted a foot apart, the crowns level with the surface. Each 50c, 10 for \$3.00, prepaid. 100, not prepaid, \$20.

**Aspidium Goldiana** (Goldies Fern). This fern, when grown under ideal conditions, attains a height of three feet, its peculiar grace and beauty makes it desirable in all fern gardens. It is one of the very best spe-

cies for growing as an individual specimen and ranks with the Ostrich and the *Osmundas* in size and vigorous beauty. Plant the crown level with the surface and if massed effects are desired, 12 inches apart. Each 50c, 10 for \$3.00, prepaid. 100, not prepaid, \$20.00. Selected extra strong specimens 75c, prepaid.

**Aspidium Thelypteris** (*Dryopteris Thelypteris*) Marsh Shield Fern, a foot high with fronds about 2½ in. wide. We see this growing wild in large patches in open, sunny places. It is benefitted by adding leafmold or pulverized peat. It should be planted only for massing, 8 inches apart; or for edging; it will spread and multiply. A very fine little fern. Each 50c, 10 for \$3.00, prepaid. 100, not prepaid, \$20.00.

**Asplenium Felix Faemina** (Lady Fern), a large handsome fern standing from one to three feet in height. A wood and roadside fern doing well in all parts of the country and presenting many varying forms. Plant in the sun or shade with the crown just below the surface. Each 50c, 10 for \$3.00, prepaid. 100, not prepaid, \$20.00.

**Dicksonia Punctilobula** (Hay-Scented or Gossamer Fern), 12 to 18 inches high. Will grow in sun or shade if planted in rich, porous soil 8 inches apart. It will soon form a compact mass or border along the walk. Each 50c, 10 for \$3.00, prepaid. 100, not prepaid, \$20.

**Onoclea Sensibilis** (Sensitive Fern) grows from 6 to 36 inches high, according to moisture, doing its best in rather wet locations. Grows in sun or shade and multiplies by underground runners. Plant 12 inches apart, cover crown with  $\frac{1}{2}$  inch of soil. Each 50c, 10 for \$3.00, prepaid. 100, not prepaid, \$20.00.

**Onoclea Struthiopteris** (Cstrich Fern), grows in a crown, fronds 2 to 4 feet by 6 to 10 inches wide, a very erect, handsome species, graceful as a palm. One of the most satisfactory for the amateur, always giving satisfaction in the open or shaded nook. Use lots of manure, leaf mold or well rotted peat and it will multiply by underground runners, especially so in moist, sandy or peat soil. Plant crown level with surface and mulch in winter. This magnificent plant luxuriates in soil

subject to an annual overflow. Its vase-like masses of foliage suggest the Cinnamon fern but the fertile fronds are dark green and is one of the tallest of our ferns and should be planted well back. Each 50c, 10 for \$3.00, prepaid. 100, not prepaid, \$20.

**Osmunda Cinnamomea** (Cinnamon Fern), a large fern growing in a crown 2 to 5 feet high, 8 inches wide, beautiful, cinnamon colored leaves. This will thrive in quite wet soil, or moist, shady places, in peat or common garden soil. Each 50c, 10 for \$3.00, prepaid. 100, not prepaid, \$20.00.

**Osmunda Claytoniana** (Interrupted or Flowering Fern), clothed with loose wool when unfolding its fronds but soon becomes perfectly smooth. This fern feels at home in rather dry shaded places or in open sun and does very well under cultivation. Each 50c, 10 for \$3.00, prepaid. 100, not prepaid, \$20.00.

**Osmunda Regalis** (Royal Fern), pale green fronds 2 to 3 feet. It can be grown in still water, 2 to 3 inches deep. Each 50c, 10 for \$3.00, prepaid. 100, not prepaid, \$20.00.

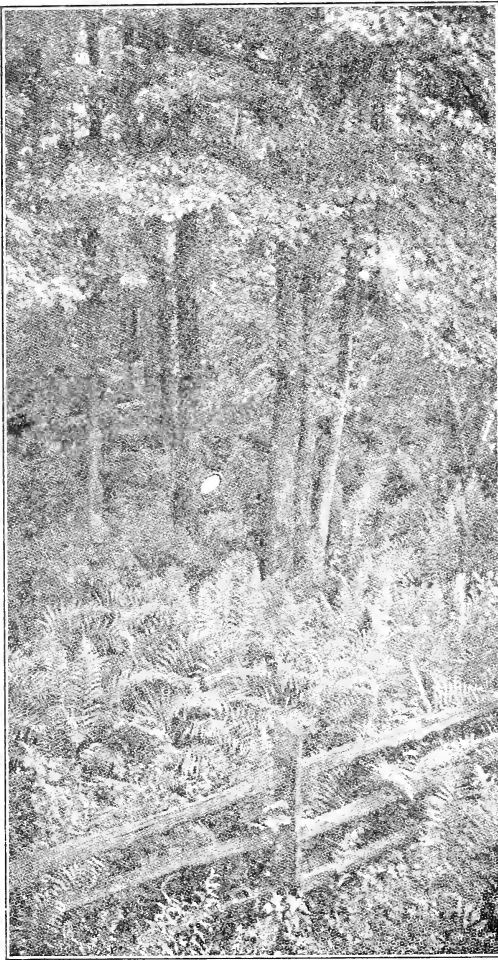


OSMUNDA IN THE BACKGROUND SHIELD FERN IN THE FOREGROUND

**Phegopteris Dryopteris.** A very fine little fern for moist and dense shady places, fronds from 4 to 6 in. Each 50c, 10 for \$3.00, prepaid. 100, not prepaid, \$20.00.

**Polypodium Vulgare** (Common Polypody). One of the best evergreen species for rockwork; grows 4 to 10 inches high, forming a dense mass. Plant 4 to 6 inches apart and cover the new buds slightly. Each 50c, 10 for \$3.00, prepaid. 100, not prepaid, \$20.00.

Not prepaid—any of these ferns: 40c each, 10 for \$2.50, or 100 for \$20.00. When cash with order—packing free.



OSTRICH PLUME FERN



Hardy Ferns in the Nursery



Evergreen Border

Entrance to Ferndale Nursery



## Hardy Perennials and Wild Flowers

After 20 years with the hardy ferns we have gradually come to study, propagate and cultivate hardy perennials and wild flowers. Requests from our satisfied customers have forced us into this. It is quite a problem on which we are working the year around; we have learned considerable, but still have a great deal to learn. We have learned to our satisfaction that our soil and climate are excellent for this line, our spring comes late compared with more southerly locations, it is better to ship plants south in the spring than to ship them north. Our plants are dormant from 3 to 8 weeks later than in states south of us. In this we have a great advantage as you will see by this.

On June 6th we shipped 200 Delphinium, 2 years old, and 100 Gaillardia and received the following letter a few days later:

Mt. Holly, New Jersey, June 9th, 1924.  
Plants arrived in very good condition.  
Respectfully,  
R. I. GIBBONS.

On June 28th we shipped 100 two year old perennials and received the following a few days later:

Well satisfied with your stock.  
CORNELIUS DE VRIES, River Forest, Ill.

We have not yet been able to assemble and cultivate all the varieties worthy of consideration but are adding to our collection right along, and we are in a position to locate and furnish any native perennials worth planting. Some varieties are best moved at certain times of the year and such plants will be booked and shipped accordingly.

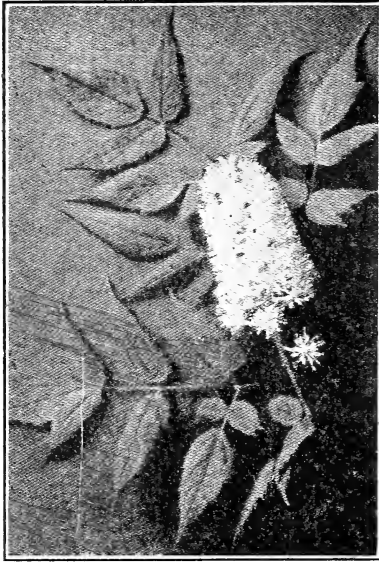
Do not hesitate to write us or criticize us in regard to our list of plants, and the quality of our stock on arrival. Your co-operation is most cordially invited.



Foundation Planting  
Ferndale Nursery

- Achillea Millifolium. White. June, July.
- Achillea Millifolium. Roseum.
- Achillea Ptarmica. The Pearl. Pure white double flowers all summer, long stemmed, excellent for cut flowers.
- Achillea Boule de Neige. New, an improvement on the Pearl, with more compact perfect flowers, not quite as long stemmed.
- Actea Alba. White Baneberry. Racemes of white flowers, white fruit, fine for rockwork or shade. May, June.
- Aconitum. Monkshood. In varieties.
- Agrostemma. Flos Jovis. Pink, stout, erect plant with silvery foliage. June, July.
- Allysum. (Rock Madwort), Saxatile Compacta. A dwarf plant for sunny positions in rock garden or in front of border. Bears a great abundance of yellow flowers in May. 12 inches.
- Anemone. Windflower. Canadensis or Pensylvanica.

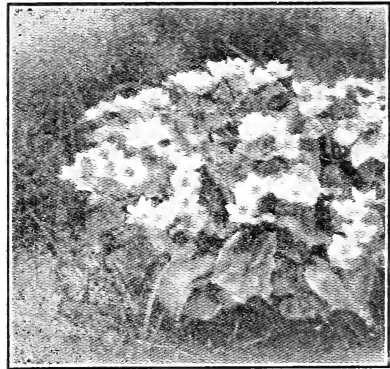
Prices on this page: 50c each; 3 for 75c; 10 for \$2.00; prepaid by parcel post. Not prepaid: 1 for 25c; 3 for 60c; 10 for \$1.75. Unless Otherwise Quoted.



Actea Alba in Flower

- Anemone Patens. Pasque Flower. Erect, with 5 to 7 purplish sepals.
- Anchusa Italica. Dropmore. Gentian blue flowers, 4 to 5 feet. June, July.
- Anthemis. Kelway. Clear yellow. June—October.
- Aquilegia (Columbine) Canadensis. Yellow and scarlet. Two feet. May June.
- Aquilegia Chrysantha. Very graceful; soft yellow.
- Aquilegia Coerulea. Blue and white.
- Aquilegia, long spurred. From Mrs. Scott Elliot's hybrids, one of the most elegant for cut flowers and the open border.
- Aquilegia. Mixed double and single, 3 year old strong roots.
- Arabis Alpina. Rock Cress. Pure white flowers in dense masses.
- Arisaema Triphyllum. Jack in the Pulpit. Bulbs.
- Artimessia Lactiflora. Three to four feet. Dark green, finely cut foliage, branched panicles of fragrant white flowers.
- Asclepias Tuberosa. Butterfly Weed. Thrive on dry sandy soil, large heads of orange flowers.

- Aster (Michaelmas Daisy) Acres. Lavender blue, two feet. July and August.
- Aster. Beauty of Colwall. Upright, compact, free branching, blue, four feet. September and October.
- Aster. Feltham. Large clear blue.
- Aster. St. Egwin. Large clear pink, compact, 3 feet.
- Aster. Nova Anglia. Clear purple. An excellent hardy free bloomer, four feet.
- Aster. Hardy mixed.
- Bleeding Heart. See Dielytra.
- Bocconia Cordata. Plum Poppy. Creamy white in terminal panicles, July and August.
- Boltonia Asteroides. White, 5 to 6 feet. September and October.
- Boltonia Latisquama. Upright, lavender pink, 3 to 5 feet. September and October.
- Budleia Variabilis Magnifica. Summer Lilac. 4 to 6 inches, long lilac panicles. July to September.
- Caltha Palustris. Marsh Marigold. Yellow. April—June.
- Campanula Medium. Canterbury Bells. Blue, pink and white, separate or mixed.
- Campanula Percicifolia. Blue or white and mixed.
- Carnation. Grenadin. A beautiful strain of hardy pink, semi to full double, blooming all summer, red, pink and white or mixed.
- Carnation. Vienna. White and pink or mixed.



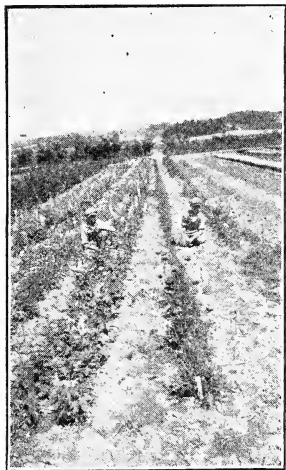
Caltha Palustris—Marsh Marigold

Prices on this page: 50c each; 3 for 75c; 10 for \$2.00; prepaid by parcel post. Not prepaid: 1 for 25c; 3 for 60c; 10 for \$1.75. Unless Otherwise Quoted.

- Centaurea Montanna. Blue cornflower, 2 feet. July—September.
- Cerastium Tomentosa. Snow in Summer. Leaves silvery white, pure white flowers, 4 to 6 inches, fine for edging and mixed border.
- Chelone. Shell Flower. Two feet; bearing many spikes of large flower heads summer and fall.
- Chrysanthemum Maxima. Shasta Daisy. Alaska. Hardy, large, white; 18 to 24 inches. July, Aug.
- Cimicifuga Racemosa. Black Snake-root. White flowers in elongated racemes; very ornamental. Three to five feet.
- Claytonia Virginica. Large rose colored flowers; early spring; shade.
- Columbine. See Aquilegia.
- Convallaria Majalis. Lily of the Valley.
- Cypripedium. Hardy Orchids. Moccasin flowers. These sell by the bud and not by the plant. Plants sometimes carry up to 7 flowering buds.
- Cypripedium. Acaule, purple moccasin flower, 5 buds for .....\$1.25
- Cypripedium. Pubescens, yellow Lady Slipper, 5 buds for .....\$1.50
- Cypripedium. Spectabile. Showy Lady Slipper. Grows about 2 feet tall; Rose, purple and white flowers; 5 buds for .....\$2.00



Sweet William and Elm



Delphinium

- Daisy. See Shasta Daisy and Pyrethrum.
- Delphinium. Larkspur. One of our best cut flowers.
- Delphinium. Belladonna. Light sky blue.
- Delphinium. Bellamosa. A dark blue type of Belladonna.
- Delphinium. Chinensis. Fine feathery foliage and intense gentian blue flowers.
- Delphinium. Formosum. Blue Dove. Dark blue.
- Delphinium. Gold Medal Hybrids. The colors range from nearly white to shades of blue and purple.
- Dianthus Alwoodi. New perpetual flowering, hardy, pink.
- Dianthus. Barbatus, Sweet William, Diadematus, Latifolius, Atrocceinea, Newport Pink, Nigricans, Scarlet Beauty. Separate or mixed.
- Dianthus. Mixed—an array of the most beautiful colored flowers.
- Dianthus. Plumarius. Hardy, garden pink. Also called grass pink.
- Dielytra Spectabilis. Bleeding Heart. Each 75c, 3 for \$2, 10 for \$6, prepaid. Not prepaid: 60c each, 3 for \$1.50.
- Dicentra Cucularia. Dutchman's Breeches. April and May.
- Digitalis. Foxglove. Well known old fashioned flower. Mixed.

Prices on this page: 50c each; 3 for 75c; 10 for \$2.00; prepaid by parcel post. Not prepaid: 1 for 25c; 3 for 60c; 10 for \$1.75. Unless Otherwise Quoted.

Dodecathean Media. Shooting Star or American Cyclamen. A pretty rose colored to white, flowers in May and June.

Eryngium Amethystine. Sea Holly. Blue thistle like heads of flowers, steel blue.

Eupatorium Ageratoidis. White snakeroot, 6 to 8 feet, white. September to November.

Eupatorium Colistinum. Hardy ageratum, lavender\* blue. August to November.

Euphorbia Corrolata. Flowering Spurge. White. July to September.

Funkia—Plantain Lily. Easy to handle, broad massive foliage makes them attractive for the border, also when not in bloom.

Gaillardia. Blanket Flower. Grandiflora.

Gentiana Andrewsii. Cluster of blue flowers. August and September.

Geum Cocaneum. (Mrs. Bradsham). Large, double, fiery red, flowers all summer, 18 inches.

Gypsophilla Paniculata. Baby's Breath. Mass of delicate misty white bloom.

Golden Rod. See Solidage.

Hardy Grasses. Eranthus Ravenna. Plume grass, 4 to 5 feet.

Hardy Grasses. Eulalia Japonica var. White, green and yellow striped leaves, 4 to 5 feet.

Hardy Grasses. Pennisetum Japonicum. Hardy Fountain grass, 3 to 4 feet.

Hellenium. Sneezeweed. Riverton Gem. 2 to 3 feet, yellow. August to October.

Helianthus. Hardy Sunflower. 5 to 6 feet. Yellow.

Heliopsis. Pitcheriana. Orange Sunflower. Yellow, 3 feet.

Hemerocallis. Day Lily. Orange, 4 to 5 feet.

Hepatica Triloba. Liver leaf blue.

Iberis Sempervirens. Candytuft. Pure white, choice for cutting.

Hypericum. Henry. Yellow, 1—2 ft. Iris Christata. Crested Iris. Dwarf light blue.

Iris Versicolor. With pretty blue flowers; 1 to 2 feet.

Iris. Blue and purple.

Iris. In many named varieties.

Larkspur. See Delphinium.

Lathyrus Latifolius. Hardy Perennial Sweet Pea. White, pink and red or mixed.

Liatris Scariosa. Button Blazing Star. Purple, 2 to 3 feet. July to September.

Linum. Hardy perennial Flax. Blue, all summer, excellent for border and rockery.

Lilium Canadensis. Yellowish red. July and August.

Lilium Philadelphicum. Orange red spotted; 1 to 2 open upright bell-shaped flowers.

Lilium Superbum. Orange, 4 to 5 ft. drooping flowers.

Lilium Tigrinum. The well known spotted tiger lily.

Lily of the Valley. Old favorite, white fragrant.

Loebelia Cardinalis. Rich fiery cardinal red flowers, 2 to 3 feet. July to September.

Lupinus. Hardy perennial Lupin. Roseum, Albus. White. Atrocoeruleum. Blue or mixed.

Lycnis Chalcedonica. Ragged Robin. Two feet; scarlet.

Lythrum Superbum Roseum. Rose colored flower, 3 to 4 feet. July to September.

Mertensia Virginica. Blue Bells. 12 to 15 inches; drooping panicles; blue fading to pink, early spring.

Monarda Didyma. Brilliant crimson scarlet, 2 to 3 feet. July-August.



Gypsophilla Paniculata

Prices on this page: 50c each; 3 for 75c; 10 for \$2.00; prepaid by parcel post. Not prepaid: 1 for 25c; 3 for 60c; 10 for \$1.75. Unless Otherwise Quoted.

- Myosotis Palustris. True Forget-Me-Not.  
 Oenothera Speciosa. Evening Primrose. White. May to August.  
 Papaver Nudicaule. Orange, white, yellow or mixed.  
 Papaver Orientalis. Oriental Poppy. Scarlet.  
 Penstemon. Beards Tongue. Avallance. A very large milk-white flower of perfect form.

## PEONIES

Prices are for divisions. Can furnish transplanted clumps of many varieties at the double price—not prepaid.

- Baroness Schroeder. Very large, milk white, tall, fragrant, free bloomer, midseason. Prepaid \$2.  
 Bertha. Bright crimson. Prepaid 60c; not prepaid 50c.  
 Couronne d' Or. White with yellow tints, center petals tipped with carmine, free bloomer, late. Prepaid 80c; not prepaid 70c.  
 Delicatissima. Pink, large, compact bloomer in great profusion, one of the best all around sorts, midseason. Prepaid 60c; not prepaid 50c.  
 Delachei. Rose type, violet crimson tipped silver, strong free bloomer, • fragrant, late midseason. Prepaid 60c; not prepaid 50c.  
 Duchess d'Nemours. Guard petals white, center lemon yellow, cup shaped, fragrant strong grower and free bloomer. Prepaid 60c; not prepaid 50c.  
 Eugene Verdier. Pink, large, rose type. Outer petals lilac white, very erect, rather dwarf habit, with extra stout stems. Prepaid \$2.50; not prepaid \$2.40.  
 Edules Superba. Dark pink, large flat crown, upright grower, very fragrant, early, strong and upright, free bloomer. Prepaid 60c; not prepaid 50c.  
 Felix Crousse. Very brilliant red, globular bomb shaped, fragrant bloomer, midseason. Prepaid \$1.00; not prepaid 90c.  
 Festiva Maxima. Very large, globular rose type, pure white, center flecked crimson, early. Most popular old standard white. Prepaid 60c; not prepaid 50c.  
 Floral Treasure. Clear pink, lighter at center, very fragrant, large compact excellent, blooms in clusters, good cut flower. Prepaid 60c; not prepaid 50c.  
 Fragrance. Medium compact, tall bomb, fragrant, dark pink, late, good cut flower. Prepaid 60c; not prepaid 50c.  
 Francis Willard. Very large rounded flower, opens an exquisite blush white with an occasional touch of carmine changing to pure white. Prepaid \$8.00.  
 Grandiflora. Rose type, early, white salmon and sulphur-yellow, fragrant. Prepaid 60c; not prepaid 50c.  
 Golden Harvest. Pale pink and creamy white with apricot salmon and yellow intermixed. Very fragrant, globular, blooms in clusters. Prepaid 60c; not prepaid 50c.  
 Grover Cleveland. Rose type, late, very large and full, dark crimson. Prepaid \$2.10; not prepaid \$2.00.  
 Karl Rosenfeldt. Semi rose type, midseason, rich velvety crimson. Prepaid \$3.10; not prepaid \$3.00.  
 Le Cygne. Rose type, midseason, christened "The Swan", creamy white. Unquestionably the finest of all white Peonies. Prepaid \$20.00.  
 Marie Crousse. Bomb type, midseason, soft salmon pink, a most desirable peony. Prepaid \$4.10; not prepaid \$4.00.  
 Mary Brand. Red, very large, semi rose, midseason, very profuse bloomer, considered the best bright dark red peony in cultivation. Prepaid \$6.10; not prepaid \$6.00.  
 Marie Lemoine. Flowers enormous, ivory white, occasional narrow carmine tracings, very late, erect stems. Prepaid \$1.10; not prepaid \$1.00.  
 Milton Hill. Rose type, late, flowers large cupped, clear soft flesh color, one of the finest varieties in existence. Prepaid \$3.10; not prepaid \$3.00.

Prices on this page: 50c each; 3 for 75c; 10 for \$2.00; prepaid by parcel post. Not prepaid: 1 for 25c; 3 for 60c; 10 for \$1.75. Unless Otherwise Quoted.

Mme. D'Verneville. Early, white, carmine tipped, overlaid with a sheen of delicate blush with a pronounced pink center intermixed with golden stamens. Prepaid 60c; not prepaid 50c.

Martha Bullock. Pink, mammoth cup shaped blossoms, deep rose pink in center shading to silvery shell pink in outer petals, agreeable fragrance, most desirable for cut flowers of enormous size. Prepaid \$30.00.

Mons Jules Elie. Bomb type, immense globular, very full flowers, color: lilac pink overlaid with a sheen of silver. Ideal cut flower, a king among peonies. Considered M. Crousse's masterpiece. Prepaid \$1.50; not prepaid \$1.40.

Nigra. Dark red. Prepaid 60c; not prepaid 50c.

Octavia Damay. Blush or light pink, tipped carmine, fragrant, very large, flat, compact, free bloomer, dwarf grower. Prepaid \$1.10; not prepaid \$1.00.

Officinalis Rubra. A large round bloom of varied crimson. This is the "Piney" of old time gardens, earliest of all. Prepaid \$1.60; not prepaid \$1.50.

Philomele. Bright violet, rose guards and short narrow amber yellow petals, free bloomer in clusters. Fine for landscape, a novel and distinct variety. Prepaid 75c; not prepaid 65c.

Queen Victoria. White medium, early, large, full, compact bloom. One of the best varieties for cut flowers. Prepaid 60c; not prepaid 50c.

Rosa Bonheur. Brilliant light pink, a magnificent high class cut flower, very fragrant, large, compact, perfect shape, very erect, bloom in clusters. Prepaid \$10.00.

Sara Bernhardt. Apple blossom pink with petals silver tipped. Semi rose type, late midseason. Prepaid \$5.00.

Solange. Rose type, midseason, color: rare deep orange salmon overlaid with a delicate tender reddish brown, most unique colored of all varieties. Prepaid \$10.00.

Theresa. Rose type, midseason, color: rich salmon pink with a glossy reflex, of enormous size. Prepaid \$8.00.

Triumph De L'exposition De Lille. Hydrangea pink, plastered with crimson tints, sweet scented, large compact, very double, perfect. Prepaid 85c; not prepaid 75c.

## HARDY PERENNIAL PHLOX

Prices of hardy Phlox, all varieties, prepaid: 1 for 50c, 3 for \$1.25, 10 for \$3.00. Not prepaid: 1 for 35c, 3 for \$1.00, 10 for \$2.50.

Bridesmaid. White crimson eye.

Champs Elysees. Fine rich crimson.

Eclairee. Bright carmine with light halo.

F. G. Von Lassburg. Splendid, pure white.

Miss Lingard. White splendid foliage, very large.

Mrs. Jenkins. White, immense panicles.

Mrs. R. P. Struthers. Bright rosy red with crimson eye.

Rynstrom. Deep pink, large flowers.

Siebold. Vivid orange scarlet.

Thor. Deep salmon pink, red eye.

H. O. Wijers. White with red center.

Phlox Subulata Rosea. Moss pink, dwarf trailing with moss-like foliage.

Phlox Divaricata Canadensis. Blue lavender, fragrant.

Physostegia Virginica. False Dragon-head. Alba. Pure white and pink, each separate or mixed, 1 to 2 feet. July and August.



Trialground Perennial Flowers

Platycodon Japonicum. Balloon Flower. Bluebell shaped flowers, two feet. June to October.

Potentilla Formosa. Quinquifol red. June to August.

Primula Veris. Hardy primulas, mixed.

Pyrethrum Hybridum. Hardy Daisy. A group of graceful free flowering plants, range in colors from pure white to the most brilliant scarlet, all summer, 2 to 3 feet.

Pyrethrum Uliginosum. Giant Daisy. Large white daisy like flowers, 3 to 4 feet. July to September.

Ranunculus. Buttercup. Yellow. May.

Rudbeckia Purpurea. Purple Cornflower. Flowers extra large reddish purple, brown cone shaped center, 3 feet. July to October.

Salvia Azurea. Meadow Sage. Rocky Mountain Sage. Pretty sky blue flowers, 3 to 4 feet. August and September.

Sanguinaria Canadensis. Bloodroot. Pure white flowers, early spring. The large leathery leaves appear later, plant in shade or rock garden.

Saponaria Ocyroides Splendens. Bright pink flowers, low trailing for border and rockeries.



Sedum Spectabile

Sedum. Acre. Golden Moss. Foliage green, flowers bright yellow, for rockery and covering graves.

Sedum Spectabilis. Broad thick, light green foliage, immense heads of showy soft rose flowers.

Sempervivium Tinctorum. Houseleek. Hen and chicken.

Shasta Daisy. Chrysanthemum Maximum Alaska. Bear a profusion of large white flowers all summer, fine for cut flowers, 2 to 3 feet.

Solidago Juncea. Early Goldenrod. Yellow flowers in large graceful clusters composed of numerous racemes, 2 to 4 feet. July to Sept.

Solidago Canadensis. Large yellow plume like flower, clusters. 2 to 5 feet. August to October.

Solidago Graminifolia. Lance-leaved Golden Rod. Yellow flat topped flower clusters, 2 to 4 feet. August to October.

Spirea Philipendula. Goat's Beard. Meadow Sweet. Elegant border plant with feathery plumes of flowers, neat attractive foliage.

Statice Latifolia. Sea Lavender. Minute purplish flowers in immense candelabra-like heads, cut and dried will last for months.

Stockesia Cyana. Cornflower Aster. A most charming lavender blue, blossom from June to October. 18 to 24 inches.

Sweet William. See Dianthus Barbatus.

Tanacetum Vulgare. Tansy Bitter Button. Flowers yellow in flat topped clusters composed of round discs or buttons, 2 to 3 feet.

Thalictrum Polygamum. Meadow Rue. White mistlike flowers, 3 to 5 feet. June to September.

Tradiscantia Virginica. Spiderwort. Produces a succession of blue flowers all summer, 2 feet.

Trillium Grandiflorum. Wood Lily. Excellent for shady positions in the border, large pure white flowers in early spring, 12 to 18 inches. Ask for special prices on 1,000 lots in August. Can furnish other varieties of Trillium.

Veronica Longifolia. Speedwell. Stout erect stems with intense deep blue flowers, 2 to 3 ft. July and August.

Vinca Minor. Periwinkle. Blue Myrtle, a beautiful trailing evergreen with large flowers.

Viola Blanda. White Violet. May and June.

Prices on this page: 50c each; 3 for 75c; 10 for \$2.00; prepaid by parcel post. Not prepaid: 1 for 25c; 3 for 60c; 10 for \$1.75. Unless Otherwise Quoted.

*Viola Canadensis*. Canadian Violet. Leafy-stemmed blue violet.

*Viola Cornuta*. A most desirable family for edging the hardy border or garden. Bloom from May till late fall if prevented from going to seed. Blue Perfection, light blue. White Perfection, a fine white, papilio, blue and white. Each separate or mixed.

*Viola Palmata*. Palm Leaved Violet. Blue with bearded side petals, palmately cleft leaves with 5 to 7 rounded lobes; excellent.

*Viola Pedata*. Bird Foot Violet. Blue or purple violet leaves on long petioles in dense tufts.

*Viola Odorata*. Hardy Russian Violet. Double deep purple flowers of exquisite fragrance.

*Viola Cuculata*. A beautiful variable species. Deep purple to light blue. The two upper pedals darker, leaves heart shaped on long stems from base.

*Viola Pubescens*. Downy Yellow Violet. A large handsome yellow violet.

*Yucca Filamentosa*. Adam's Needle.

We can furnish almost any perennials and wild flowers not listed here, we have collectors in different parts of the country and shall be pleased to book orders to be filled at the proper time for transplanting.



*Viola Cuculata*



American Arbor Vita



Evergreens  
Ready for Windbreak Planting

**HEDGE PLANTS**

*Salix Uralensis*.—Prof. N. E. Hansen of Yankton, S. D., found this plant in Siberia and we have experimented with it for a number of years. It has proven a very valuable hedge plant for our northern climate. With its purplish bark and small green linear leaves, graceful drooping branches, it provides a most charming hedge, whether sheared or left to grow a natural hedge. It can be cut back to the ground any time after years and will grow a beautiful hedge the first year. The *Salix Uralensis* out- rivals the Privet or Liguistrum in beauty and hardness.

	Not prepaid:	10	100
1 to 2 feet, branched ..	\$1.50	\$10.00	
2 to 3 feet, branched ..	2.00	15.00	
Spirea Van Houttie:			
1 to 2 feet .....	2.50	20.00	
2 to 3 feet .....	3.50	30.00	
American Arbor Vitae:			
10 to 12 inches .....	3.00	25.00	
12 to 18 inches .....	3.50	30.00	
18 to 24 inches .....	4.50	40.00	
24 to 36 inches .....	6.00	55.00	

For ornamental trees, shrubs and general nursery stock ask for special list.



**ORNAMENTAL EVERGREENS AND WINDBREAKS**

The grandeur of evergreens is unexcelled. When you know evergreens you feel in their presence the hush of the vast forest—evergreens signifying permanency—defying time and the elements. In snowy winter it gives a comforting note of color in the bleak landscape. An evergreen is like an old friend where the stress of years, the strife of a lifetime only make richer his noble character. A home surrounded by evergreens is like a man with many true friends; they give shelter and comfort to man and beast, save fuel and feed during the cold winter if planted as a windbreak around farms and homes.

What we said about hardy perennials and ferns in regard to shipping late in spring is no less true of the evergreens. Years ago when we commenced to build our nursery we bought seedlings from Illinois and Iowa. When these seedlings arrived here they were sprouting while frost was hardly out of our soil. The seedlings had a setback and often we lost more than half, while if it had been vice versa—that we could have had our plants from a northern location—we would have had 100% success. Take that into consideration and get your evergreen plants where they are yet dormant when you are ready to plant and where they have the vigor and hardiness obtained in our winters where the temperature occasionally goes 40 degrees below. We are located in Pine county. Pine county was famous for its grand pines before the lumber barons devastated this region.

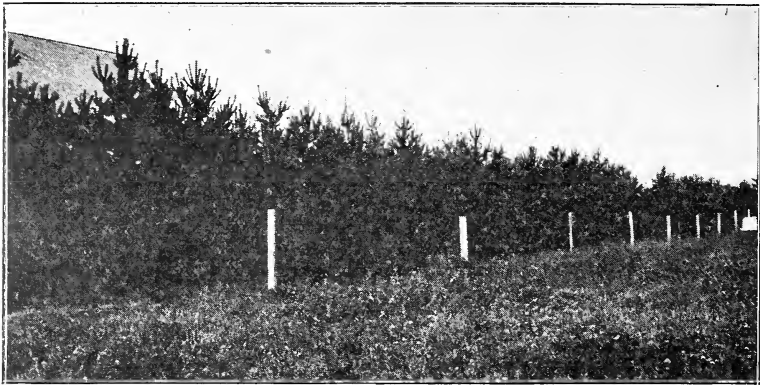
Our evergreen trees are transplanted and root pruned several times, thereby attaining a root system that insures success in planting.

Prices on these specimen Evergreens include balling and burlapping, cost of packing and boxing will be charged extra at cost.

	Height: 12-18"	18-24"	2-3'	3-4'	4-5'	5-6'
American Arbor Vitae, White Cedar.....	\$0.50	\$1.00	\$1.50	\$2.50	\$5.00	\$7.00
American Arbor Vitae, Compacta .....	2.50	5.00				
American Arbor Vitae, Globosa .....	2.50	5.00				
American Arbor Vitae, Pyramidalis .....	1.50	2.50	4.00			
Abies Balsamea Balsam Fir .....	.50	1.00	2.00	4.00	5.00	
Abies Douglacii .....	.60					
Cupressus Thuioides .....	1.00	1.50				
Juniperus Canadensis, Creeping Juniper..	1.00	3.00	5.00			
Juniperus Hibernica, Irish Juniper .....		1.50	3.00			
Juniperus Sabina, Savin Juniper .....	1.50	2.50	3.50			
Juniperus Virginiana, Red Cedar .....	.75	1.50	2.50			
Picea Alba, White Spruce .....	1.00	1.50	3.00	4.00	5.00	7.00
Picea Exelsa, Norway Spruce .....	.50	1.00	2.00	3.00	4.00	5.00
Picea Pungens, Colorado Blue Spruce ....	2.00	5.00	8.00			
Pinus Resinosa, Red Pine .....			2.00	3.00		
Pinus Strobus, White Pine .....	.50	1.00	2.00	3.00	4.00	5.00
Pinus Sylvestris, Scotch Pine .....	.50	1.00	2.00	3.00	4.00	5.00
Taxus Canadensis .....	2.00	3.00				



Evergreen Seedlings



This windbreak is 6 years after planting 2—3 ft. plants around Chr. Morgen- sen's farm, 1¼ miles northwest of Askov. They were cultivated the same as corn or potatoes for 2—3 years. The outside row is American Arbor Vitae planted 6 feet apart; the other three rows are Spruce, Pine and Fir, 10 ft. apart. The Arbor Vitae exposed to full light in the outside row will hold its branches clear down to the ground thereby throwing the cold wind over and beyond build- ings and keeping the snow from drifting and piling up in the farm yard.

We offer for windbreak planting, with Arbor Vitae for the outside row, our selection:

	25	100
12 to 18 inches .....	\$ 9.50	\$30.00
18 to 24 inches .....	13.25	50.00
2 to 3 feet .....	17.00	65.00

We charge extra for packing and boxing at cost and if wanted with ball of dirt wrapped in burlap add 12c each for 12—18 inch, 20c each for 18—24 inch and 25c each for 2—3 feet plants. If you call for these plants with wagon or truck to be loaded direct from the field we allow a discount of 5c each. We will quote you on quantities in any variety from seedlings and up.

**FLOWERING AND ORNAMENTAL SHRUBS AND TREES**  
**Prices Not Prepaid.**

	1	10		1	10
Barberis Thunbergie .....	40c	\$3.50	Snowberry .....	35c	3.00
Coral Berry .....	35c	3.00	Snowball .....	50c	4.50
Cornus Siberica .....	35c	3.00	Spirea—		
Elder, golden leaved .....	40c	3.50	Anthony Waterer, Troebel-		
Honeysuckle, pink or white..	40c	3.50	li, Thunbergi, Van Houtie,		
Hydrangea, Pan. grandiflora..	50c	4.50	and others .....	35c	3.00
Lilac, white or purple .....	50c	4.50	Willow, Niobe weeping .....	50c	4.00
			Syringa, gr. Mock Orange .....	50c	4.50

ROSES—Alfred Colomb, bright crimson; Frau Karl Drusky, large silver white; Paul Neyron, bright pink; Gruss and Teplitz, velvety crimson; Caroline Testout, bright satiny rose; and others; strong field grown: \$1; 5 for \$4.

**FRUIT—Not Prepaid.**

APPLES—Dutches, Hibernial, Patten's Greening, Wealthy, Florence Crab, Whitney Crab, and others, 2—3 years old: \$1; 10 for \$7.50.  
 PLUMS—Opatha, Sapa, Waneta and others, 2—3 years old: \$1; 10 for \$7.50.  
 GRAPES—Beta and Alpha; Currant, red; Gooseberry, Carrie: 30c; 10 for \$2.50.  
 RASPBERRY—Latham: 10 for \$1.50; 100 for \$8; 1,000 for \$50.  
 RASPBERRY—Redpath: 10 for \$2; 100 for \$12.  
 STRAWBERRY—Dunlap: 100 for \$1.50; 1,000 for \$10.  
 STRAWBERRY—Everbearing Progressive: 25 for \$1; 100 for \$3.

**ROAD AND STREET TREES**

**Elm and Maple.**

	Each		Each
6—8 feet, 10 for \$9.00 .....	\$1.00	10—12 feet, 1½—2 inch diameter..	2.00
8—10 feet, 1—1½ inch diameter ..	1.50	10—12 feet, 2—2½ inch diameter..	3.00