

## **Historic, archived document**

Do not assume content reflects current scientific knowledge, policies, or practices.



G2.11

LIBRARY  
JAN 14 1925

Thirteenth Annual

# Descriptive List

— of —

## Cantaloupe, Other Vine Seeds and Specialties

SEASON 1925



Colorado Record the Past Season from 60 Acres 54 Cars Shipped.  
Net Returns, \$25,843.59. (See Page No. 4.)

ISSUED BY

# GARWOOD & WOODSIDE

## ROCKY FORD, COLORADO

◆ ◆ ◆

### GROWERS OF HIGH GRADE VINE SEEDS

D. N. Shoemaker

JAN 13 1925

# INFORMATION FOR PURCHASERS

---



**WE PAY THE TRANSPORTATION CHARGES.** At the prices quoted in this Catalog we deliver the Seed at your station by Mail or Express. Our terms are strictly cash with order (unless satisfactory arrangements have been made beforehand). Remittances should be made by Postoffice or Express Money Order, Bank Draft or Registered Letter. Amounts of less than \$1 may be sent in Postage Stamps. If personal checks are sent they must be certified by your banker. We will ship seed C. O. D. by Express, provided 10 per cent of the amount of the purchase price accompanies the order.

**USE OUR ORDER SHEET,** carefully filling out the blank spaces at the top for shipping directions. Use one line for each kind of seed ordered.

Always carry out the price of each item.

Keep a copy of your order. (This is very important.)

We exercise the utmost care in filling orders, striving to be correct in every detail; yet in the press of business, errors sometimes occur, in which event we wish to be promptly notified of the fact and will make such corrections as will be satisfactory.

**WHEN TO ORDER.** We strongly advise our customers to send in their orders immediately upon receipt of this Catalog, as they will then have the seeds on hand when they need them, and avoid the unnecessary delay often caused by the rush of the busy season. It is advisable to order while our stock is complete.

**MARKET GARDENERS AND LARGE PLANTERS** should write for special prices, stating variety and quantity required.

**WARRANTEES.** Seed of the best quality will often fail through improper treatment, such as planting the seed too deep or too shallow, in soil that is too wet or too dry, or planting when the soil is so cold that the seed is apt to decay. The young plants are liable to various accidents. Cold or dry air may check their growth or destroy them. Insects above or below the ground may attack them, and many other contingencies may arise to prevent the very best seeds from giving satisfaction. The Cantaloupe Seed we send out was grown from selected stock seed and saved from fields grown exclusively for seed purposes, from stock that shows true to variety type, from well-netted, fully matured, standard-size melons of the best seed qualities; the seed was saved before frost; was hand-cut, thoroughly washed and cured, all light seed fanned out, and of standard germination. While we use every precaution in sending out pure and reliable seed, but we in common with other responsible seed houses, sell our seed subject to the following disclaimer, it being that adopted by the American Seed Trade Association (namely): We, Garwood & Woodside, give no warranty, express or implied, as to description, quality, productiveness or any other matter of any seeds we send out, and will not be in any way responsible for the crop. If the purchaser does not accept the goods on these terms they are to be returned at once.

**GARWOOD & WOODSIDE.**

**OUR RESPONSIBILITY.** As to our financial and business standing, we refer to The Peoples' Home Bank of Rocky Ford, Any Business Firm of Rocky Ford, The "Packer" of Kansas City, The "Produce News" of New York. Always enclose a two-cent stamp when writing for reference.

---

**PLEASE REMEMBER THAT THE PRICES QUOTED HEREIN INCLUDE DELIVERY AT YOUR STATION**

---

# ORDER SHEET

## *Garwood & Woodside*

ROCKY FORD, COLORADO

Please read "How to Order" (in front of catalog). More order sheets will be sent upon request. Always write letters on a separate sheet from your order.

Date .....	192.....	Ship by..... —Cross out two	) Mail ) Express ) Freight	Amount Enclosed  Cash \$.....  Draft .....
Your Name .....				P. O. Order .....
(Very Plain)				Express Order .....
Postoffice .....				Stamps .....
County .....		State .....		
Street and No. )		R. F. D. No. )		
P. O. Box No. )		Name of Town to which you wish )		
Name of Town to which you wish )		Freight or Express Shipment made )		

We, Garwood & Woodside, give no warranty, expressed or implied, as to description, quality, productiveness or any other matter of any seeds we send out, and will not be in any way responsible for the crop. If the purchaser does not accept the goods on these terms, they are at once to be returned.

QUANTITY			KINDS OF SEED	PRICE	
Lbs.	Ozs.	Pkts.			
			<b>CANTALOUPE</b>		
			Improved Salmon Tint No. 10-25 .....		
			Salmon Tint No. 25 .....		
			Hearts of Gold .....		
			Edwards Perfecto .....		
			Pink Meat or (Burrell Gem) .....		
			Eden Gem .....		
			Imperial Gem or (Imp. Early Watters .....		
			Pearl Pink or (Abbott's Pearl) .....		
			New Early "H. B." .....		
			<b>WATERMELON</b>		
			Kleckley's Sweet .....		
			Tom Watson .....		
			Excel .....		
			White Seeded Angeleno .....		
			Black Seeded Angeleno .....		

(See Other Side)

We Pay All Postage and Express Charges at the Prices Listed in Catalog.

QUANTITY			KINDS OF SEED	PRICE
Lbs.	Ozs.	Pkts.		
			<b>WATERMELON, CONT'D.</b>	
			Klondike .....	
			Delicious Winter .....	
			<b>HONEY DEW</b>	
			Green Meat .....	
			Salmon Tint .....	
			Casaba, Golden Beauty .....	
			Musk Melon, Persian or Armenian .....	
			<b>CUCUMBER</b>	
			Early Fortune .....	
			Davis Perfect .....	
			Klondike .....	
			<b>LETTUCE</b>	
			New York Special or (Wonderful) .....	
			also called	
			Los Angeles Market and Mountain Iceberg .....	
			<b>CAULIFLOWER</b>	
			Early Snowball .....	

With each order we will send a packet of any of our favorite varieties of Cantaloupe Seed to anyone who will send us the names of five market gardeners, or five people who buy vine seeds.

(Write names below)

---



---



---



---



---



---



---



---



---



---

# TO OUR FRIENDS AND CUSTOMERS

It is with pleasure that we present herewith our thirteenth annual Descriptive List of Cantaloupe, other Vine Seeds and Specialties for season of 1925.

The season of 1924 was the dryest ever recorded in this district. The spring was late; no growing weather during May, and scarcely any rain since. After mid-summer water for irrigation was scarce and weather very hot, which cut the yield of many seed crops extremely short. However, the seed that did mature is of the best quality ever produced, of the highest germination and strongest vitality, and will average 20% heavier in weight than last season.

There is a shortage of seed of several varieties of cantaloupe. Bookings of early orders have been considerably increased over former seasons, and from present indications there will be a shortage of select cantaloupe seed before the demand is filled.

Please remember our NEW YORK SPECIAL LETTUCE SEED. We guarantee that there is no better seed produced than the stock we offer.

Please note that we are now carrying the finest DANISH GROWN SNOWBALL CAULIFLOWER SEED.

Our consistent aim is to make "Quality" the first consideration; next to make our prices as low as good seed can be sold.

From "grower to grower." Our object is to grow the best seed that can be produced and supply the grower direct, without the seed passing through the hands of several dealers, whereby it often loses its identity. We do not grow seed under contract for seedmen nor for "Uncle Sam."

Our planting stocks are kept up to the highest standard by systematic selection. Our seed-growing is carried on in the most up-to-date manner. The seed we offer is the best selection from fields grown exclusively for seed purposes; was saved from stock true to type, from well-netted, fully matured, standard-size melons of the best seed qualities. Our seed was all cut by hand and cured before frost, is thoroughly cleaned, all light seed fanned out, and is of the highest germination.

While we don't claim to have the only good seed on the market, we do claim that there is none better than the grade of seed we offer.

Our motto: "BEST SEEDS ONLY, AND A SQUARE DEAL TO ALL."

We want to supply growers who want and appreciate good seed. If after ordering from us you have any cause for complaint, we want you to write us fully at once, as just criticism is an aid to improvement.

Your orders, either large or small, will be appreciated and receive our prompt personal attention.

We will be glad to answer any inquiries for information on subjects pertaining to the cantaloupe business.

We solicit a share of your order for the coming season.

January 1, 1925.

Sincerely yours,

GARWOOD & WOODSIDE.

Please Remember That the Prices Quoted Herein Include Delivery at Your Station.

## CANTALOUPE SEED

BUY ROCKY FORD CANTALOUPE SEED AT ROCKY FORD

THE ROCKY FORD DISTRICT PRODUCES AND SUPPLIES MORE THAN 90% OF THE CANTALOUPE SEED USED IN THE ENTIRE WORLD. PRACTICALLY ALL OF THE CANTALOUPE SEED HANDLED BY THE SEED TRADE IS SECURED EITHER DIRECTLY OR INDIRECTLY FROM THIS DISTRICT. THEREFORE, WOULD IT NOT BE GOOD BUSINESS POLICY TO BUY YOUR CANTALOUPE SEED DIRECT FROM ROCKY FORD, AND DIRECT FROM THE PRODUCERS BEFORE IT PASSES THROUGH SO MANY HANDS?

PLEASE THINK THIS MATTER OVER CAREFULLY AND GIVE US A TRIAL ORDER.



### SALMON TINTED CANTALOUPE 10-25

THE LEADING COMMERCIAL VARIETY

This Cantaloupe is an IMPROVED STRAIN of the Salmon Tinted Pollock No. 25

This melon was first introduced in a commercial way a few years ago, and has proved generally satisfactory, especially in California. During the past season nearly 16,000 cars of cantaloupes were shipped from the Imperial Valley of California. Over 90% of this total were of the 10-25 variety.

In general appearance it resembles the well-known Pollock No. 25. It averages a little larger in size; the netting is heavier and more prominent. The objectionable stripe so common in the old strain is practically eliminated in the improved strain. The flesh shows a stronger salmon tint and is very fine grained. It produces a heavy crop with less unmarketable melons than any variety yet introduced.

We were fortunate in having a large acreage of this melon. The crop was pronounced by all who saw it as the finest crop in the valley.

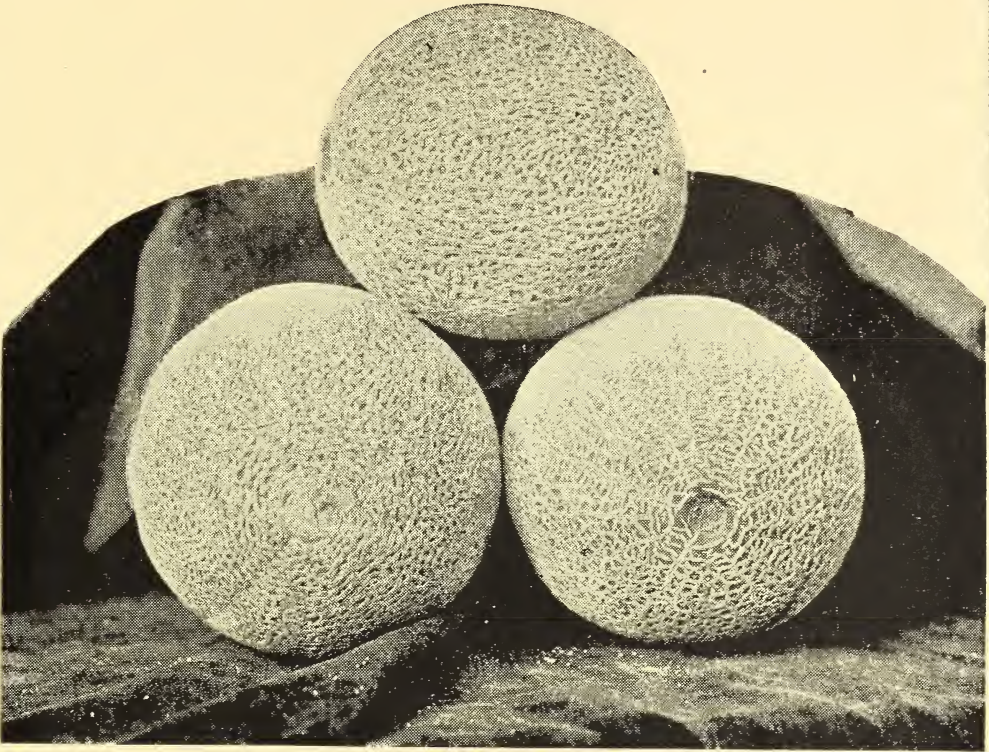
We make but two cuttings from our seed fields. The seed is harvested under our personal supervision. We offer the best grade of seed that can be obtained through any source and are in a position to fill all orders received at the following prices:

Per Pkt., 10c; per oz., 15c; ¼ lb., 50c; ½ lb., 90c; per lb., \$1.50; 10 to 25 lbs., @ \$1.25 per lb.

Associations and growers using larger quantities, write for special prices.



## CANTALOUPE SEED



## SALMON TINTED ROCKY FORD

Generally known as the Salmon Tinted Pollock No. 25.

**BEST SHIPPER—SPLENDID KEEPER**  
(Short crop.)

In many sections of the country, the Pollock No. 25 has proven far more satisfactory than the 10-25. It has a firmer flesh and a much **SMALLER SEED CAVITY** and is a far better long-distance shipper.

Although of recent introduction, the Salmon Tinted Cantaloupe quickly became the most popular variety ever introduced. In recent years we have had but little call for seed of the green-fleshed strains. This new strain is highly rust-resistant and yields a heavy crop.

It is nearly as early as the Eden Gem and very prolific. The melons run very uniform in size. In shape it is a trifle longer than the Eden Gem, practically all run solid net, without any indication of the ribs. The netting is extremely heavy and very light colored when matured. The seed cavity is small. The flesh changes from a deep green near the rind to a rich salmon pink near the seed cavity; fine grained and very solid. The attractive color of the flesh and the unsurpassed flavor will appeal to the most highly cultivated tastes. Its fine appearance attracts the particular trade and commands the highest market price wherever introduced.

Our seed was saved from first-class melons in every particular.

We offer this select seed at the following prices:

Per oz., 15c; per lb., \$1.50; 10 to 25 lbs., @ \$1.25.

Associations and growers using larger quantities, write for prices.



## HEARTS OF GOLD OR IMPROVED HOODOO

### THE GREATEST MONEY MAKER

Fast becoming the most popular melon introduced in recent years.

This splendid melon has been extensively grown in Michigan for several years, and is rapidly becoming one of the leading commercial varieties in California, Colorado and other important growing sections. When shipped in the proper condition it usually outsells most other varieties.

Tom Sakai, a prominent Japanese Grower in this district, grew 60 acres of Hearts of Gold the past season, from which he shipped 54 cars. His net proceeds (less freight and commission) were \$25,843.59, which we believe breaks the record in this valley for that size acreage.

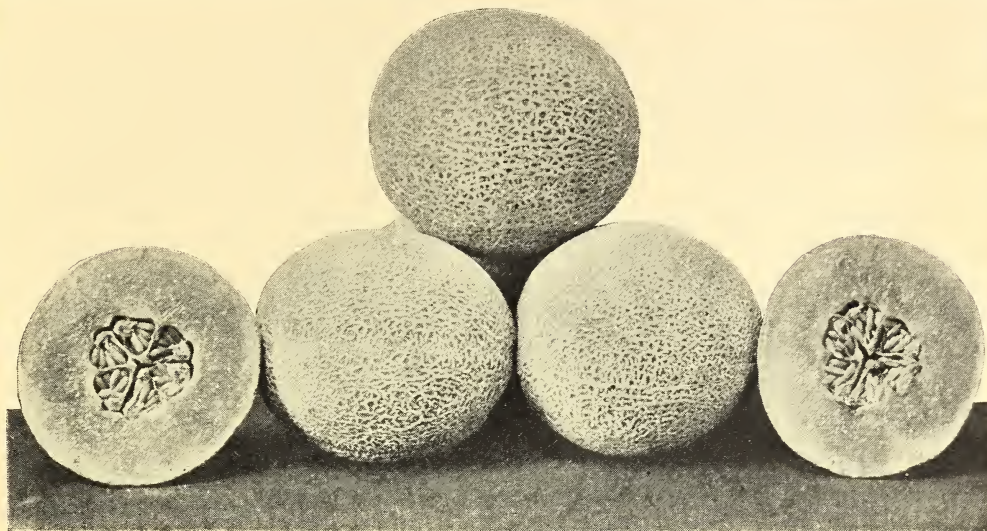
The vines are hardy, strong, vigorous growers and rarely affected by rust. It is very early and prolific; has been known to mature in 70 days from planting.

The melons run from oval to oblong in shape; very uniform in size, averaging a little larger than the Rocky Ford varieties. While it is a ribbed melon, the ribs are not prominent and very heavily netted. The flesh is a rich orange color, fine grained and of excellent flavor. The seed cavity is small. The melon does not turn yellow when ripe but retains its natural green color and remains solid and firm for days after it is picked from the vine.

We recommend that every one give it a thorough trial. We are sure that it will give satisfaction. The seed we offer is of our own growing from Michigan Stock.

Pkt., 10c; oz., 15c; ¼ lb., 50c; lb., \$1.50.

Associations and growers using larger quantities, write for prices.



## EDWARDS PERFECTO

This splendid new cantaloupe has by far the **SMALLEST SEED CAVITY** of any of the Rocky Ford strains and is one of the best shipping melons yet introduced.

The Perfecto Cantaloupe was developed and named several years ago by Mr. J. A. Edwards, an old cantaloupe grower here, who has been so situated that he could not give the time necessary for its perfect development. Last spring Mr. Edwards furnished us his best **stock seed** and made a three-year contract with us for the growing and exclusive handling of his Perfecto Seed.

While there are several inferior strains of this variety listed by others under various names and numbers, **WE ALONE HAVE THE ORIGINATOR'S STOCK.**

There are two distinct types of this melon. The salmon tint and the Pink or Red Meat. The Salmon Tint is a large oblong shaped melon finely netted with extra small seed cavity and unsurpassed keeping and shipping qualities.

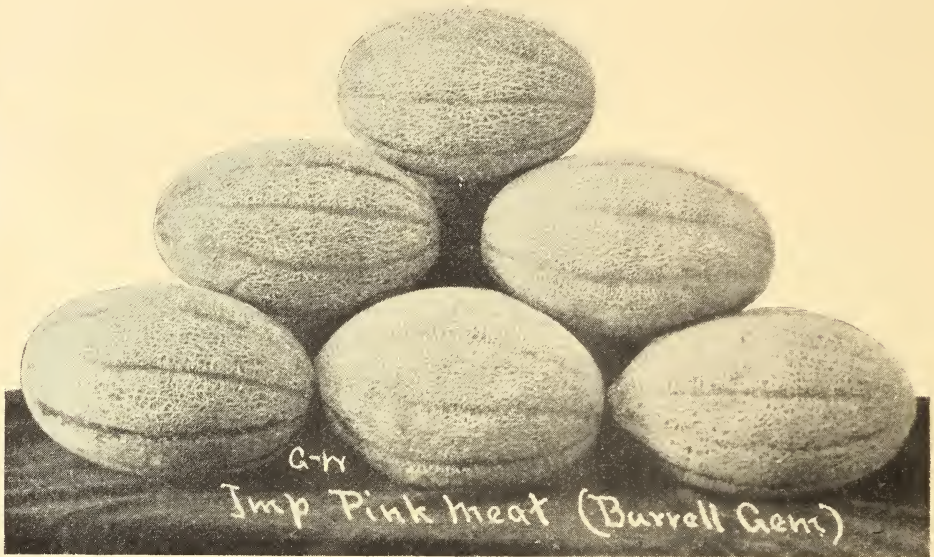
The Pink or Red meated strain is oval in shape (see cut above) covered with a fine gray netting. The flesh is very dark salmon tinted, almost red, firm and fine grained with a flavor surpassed by none, and seed cavity very small. It is one of the best keeping and shipping melons we know of. It outsold all the other Rocky Ford varieties the past season. Wherever introduced the trade calls for more Perfectos. Try it and be convinced of its splendid all around qualities.

In districts where the vines make a vigorous growth, the Perfecto should be planted farther apart both in rows and hills than the other Rocky Ford varieties, as it makes a much stronger growth and larger vines.

We had very fine seed crops of both the Salmon Tinted and Pink Meat strains the past season and offer select seed of either strain at the following prices:

Pkt., 10c; oz., 15c;  $\frac{1}{4}$  lb., 40c; per lb., \$1.50.

Associations and growers using larger quantities, write for special prices.



## PINK MEAT CANTALOUPE

(Also known as the Burrell Gem, Osage Gem, Ordway Pink Meat, Pink Queen, Etc.)

This melon has become as popular in many markets as the Rocky Ford strains.

The melon is larger than the "Rocky Ford," averaging about 6 inches in length, tapering at the ends, and 4½ to 5 inches in diameter, with well-defined ribs, heavily netted, with a distinct stripe between. The flesh is a rich salmon color, very thick and fine grained. It has a rich, spicy flavor, excelled by none. The seed cavity is unusually small, which accounts for its superior shipping qualities. Nearly half of the shipments from this district are of this variety. The melons are wrapped in attractive pink wrappers and packed in one-layer crates holding from twelve to fifteen melons.

Until recent years the acreage planted for market outside of this district was limited, but during past seasons there has been considerable acreage planted in other sections of the country with splendid results. We have had very favorable reports from sections in the East and South where, during dry seasons, they did fine.

The Pink Meat has outsold all other varieties from this district for several years and brought record prices. We have customers who use as high as 1,000 pounds of this seed each season.

We feel it our duty to warn the growers in districts where the rainfall is excessive that the vines are not only liable to blight, but melons crack open as well. Where the above conditions do not prevail it is a very profitable melon to plant. Our seed of this variety is as pure as can be obtained anywhere.

Our seed crops of this variety were the finest we ever produced.

We offer select seed at the following prices: Per oz., 15c per lb. \$1.50; 10 to 25 lbs., @ \$1.25 per lb.

Associations and growers using larger quantities, write for special prices.



## OUR IMPROVED EDEN GEM CANTALOUPE

Our improved strain of Eden Gem is the earliest of the solid net type and as rust-resistant as any yet introduced.

It produces vigorous vines and is extremely prolific. The melons run very uniform in size, nearly all standards, and over 90 per cent solid net. The netting is very heavy and dense, which, with the thick flesh, makes it an ideal long-distance shipper. The flesh varies from green to light golden in color, is fine grained and very solid; the flavor is unsurpassed.

Our stock seed has been selected for years along certain lines and we now have a strain that is far superior to the original.

While the green-fleshed melon is still a leader in some growing sections of the South and East, it is being rapidly superseded by the salmon tinted strains. Yet, many claim that the flavor is far superior to the salmon tint, and a close second to the original green fleshed cantaloupe that made the Rocky Ford District famous as a cantaloupe and seed-producing center. Where a green-fleshed cantaloupe is desired, our Improved Eden Gem is the very best in existence.

During the past season the manager of the largest shipping firm in this district requested us to supply him with Eden Gems for his personal use, stating that they were the sweetest yet and had retained the old time Rocky Ford flavor not found in the salmon tint strains.

We have but one grade of this seed. It was saved from first-class melons in every particular. We make but two cuttings from our seed fields. We offer select seed of our Improved Eden Gem, while our limited supply lasts, at the following prices: Per oz., 15c; per lb., \$1.50; 10 to 25 lbs., @ \$1.25 per lb. Associations using larger quantities, write for prices.



### WOODSIDE'S IMPERIAL GEM

**This is the best early Cantaloupe introduced to date.**

In appearance and general habits it is similar to the Early Watters. However, the two great objectionable points in the Watters—the tendency of the vines to blight and the large seed cavity in the melon have been practically eliminated in this improved strain. It is as early as the Watters, almost as rust-resistant as the Pollock strains and nearly as thick fleshed, which makes it an ideal shipping melon.

The plants are strong, vigorous growers from the start. This strain is extremely prolific, the first setting often showing twelve to fifteen marketable melons to the hill.

The netting covers the entire melon and is almost as heavy as that of the Eden Gem. It matures several days earlier.

We class it as a green-fleshed melon, but the color will vary somewhat. The flavor is similar to the original Rocky Ford, which many contend was the "sweetest of all."

Do not fail to give it a trial. Our prices for select seed are as follows:

**Per oz., 15c; lb., \$1.50; 10 lbs. to 25 lbs., @ \$1.25 per lb.**

**For larger quantities, write for prices.**

### ABBOTT'S PEARL OR PEARL PINK

This melon is rapidly becoming a general favorite in many sections. The vines are hardy and vigorous. The fruit averages a little larger than the Rocky Fords. The shape is almost round, slightly oval. The color is a whitish green, showing no ribs, and heavily netted with a wide, coarse netting. The flesh is a deep salmon color to the rind, fine grained and very firm. The **flavor is unsurpassed**. The **seed cavity is extremely small**, therefore it is one of the best keepers and an excellent shipping melon.

Do not pick this melon until it will slip. If picked as soon as it will slip it will keep for days and ship anywhere. It is one of the very best melons for home use and shipping yet introduced.

The seed we offer is the best we have ever seen of this variety.

**Per pkt., 10c; oz., 15c; ¼ lb., 50c; lb. \$1.50; 5 to 10 lbs., @ \$1.40.**

**Write for prices on larger quantities.**

## NEW EARLY CANTALOUPE



This cantaloupe was introduced in the Imperial Valley, California, last spring by a Chicago Produce Firm, under the name of the "H. B." It is a selection from an early strain of cantaloupe that had been marketed for several years by a Japanese Grower at Brawley, California. On May 19 the first three cars of cantaloupes were shipped from the Imperial Valley and nearly two cars of the lot were of this new variety.

This melon should have had at least three years more selection before being introduced in a commercial way, as it not only runs irregular in shape, size and netting, but varies in color of flesh.

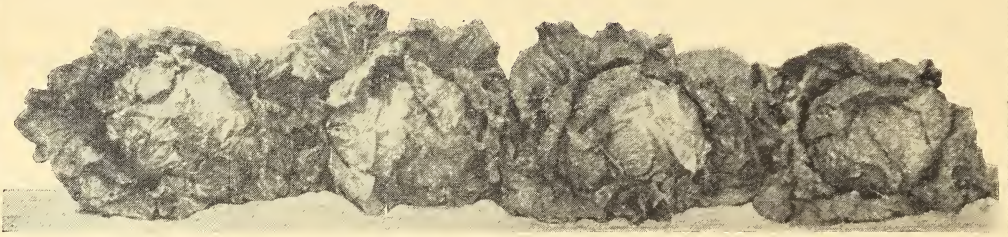
The best early type is rather large, oblong in shape and somewhat ribbed and creased. It rather resembles the Pink Meat or Burrell Gem in shape and netting. The flesh is a rather dark salmon color, fine grained and of excellent flavor. It appears to be a good shipper and to have good keeping qualities. However, at this time the greatest redeeming feature is its earliness. The Introducer claims it is two weeks earlier than the other commercial varieties shipped from the Imperial Valley. From personal observation we believe it is at least one week earlier.

Our seed was grown here from seed saved in the Imperial Valley the past spring. The first melons matured in 75 days. We selected our seed from melons of as uniform size as possible, leaving fully 50 per cent of the crop in the field. Therefore, we believe that we have as good strain of this melon to offer as can be obtained.

The seed supply is naturally limited this season. We had orders booked for most of the crop when planted. We cannot sell over 5 pounds to any one customer. We offer this seed as long as it lasts at the following prices:

Pkt., 10c; oz., 25c;  $\frac{1}{4}$  lb., 75c; lb., \$2.50.

## OUR SPECIALTY



## NEW YORK SPECIAL (WONDERFUL) LETTUCE

Also called

LOS ANGELES MARKET AND MOUNTAIN ICEBERG

(Short Crop.)

This Wonderful Head Lettuce has become the leading shipping variety in the United States. Several thousand cars were shipped from the Imperial Valley, California, the past season; there were also hundreds of cars shipped from other sections of California, from Arizona, Colorado, Idaho and Washington.

Many of the California Shippers and Eastern Produce Dealers ship and sell the New York under the name of "Iceberg." This name is erroneous. While the Iceberg is similar in some respects, it is light green in color with a decided brown tinge on the outer edges of the leaves. If you want to plant New York do not order "Iceberg."

This variety is a hardy, rapid grower, deep-rooted and drought-resistant; slow to run to seed and a sure header. It produces closely folded, solid heads of immense size (often weighing 2 to 3 pounds). The inner portion is beautifully blanched to a creamy white. The heart is solid, very sweet, tender and crisp, and free from bitterness. The outer leaves are a deep, rich green and slightly curled on the edges.

The New York is a very light seeder and yields less than half the seed compared with other standard sorts. Owing to the extreme hardness, each head has to be cut open to enable the seed stock to come through. The seed ripens uneven, requiring several pickings, which are done by hand, as is most of the cleaning. The cost of producing a crop of this seed is more than double the cost of other kinds, which, with the light yield, naturally makes the price more than double that of other varieties.

We have made a **SPECIALTY** of this variety since its introduction in the Imperial Valley, California, several years ago. We are among the largest handlers of the "New York" in the country, furnishing seed to many of the largest Distributing Firms in the important growing sections. We have individual customers who buy 3,000 pounds annually. Our sales the past season were over 16,000 pounds.

The seed we offer is the **Flat Head Type**. It was grown especially for us by the most experienced and responsible growers in California. We guarantee that there is no better lettuce seed produced than the seed we offer. We carry over a large quantity of lettuce seed each year, as the year old seed produces a better, surer crop and shows much stronger germination than the new seed.

New seed—Pkt., 10c; oz., 25c; ¼ lb., 75c; lb., \$2.50.

Old seed—Pkt., 15c; oz., 30c; ¼ lb., \$1.00; lb., \$3.50.

Associations and growers using larger quantities, write for special prices.



## EARLY SNOWBALL CAULIFLOWER



**THIS VARIETY IS THE STANDARD BY WHICH ALL OTHERS ARE JUDGED. IT IS THE BEST FOR EITHER EARLY OR LATE, FOR FORCING OR FOR COLD FRAMES.**

The Snowball is of the finest quality. It is a sure header and produces solid snow-white heads averaging 8 to 10 inches in diameter. The plants are short and stocky, the leaves small and pointed. The dwarf compact growth permits planting one-third more on the same space of ground than with other varieties. More seed of this variety used than of all other varieties combined.

The most important problem confronting **Cauliflower Growers** is one of securing **GOOD SEED**. The seed we offer is the Henderson strain. Our seed was grown for us under contract by the best known Growers in Denmark, and shipped direct from these Growers to us.

You will make no mistake in ordering our extra select Danish grown seed.

**Pkt., 20c; ¼ oz., 75c; ½ oz., \$1.35; oz., \$2.25; 4 ozs., \$8.00; ½ lb., \$14.00; lb., \$25.00.**



## SALMON TINTED HONEY DEW

(Very Short Crop.)

**SOMETHING NEW.** This is a Honey Dew melon in every respect, except in color of the flesh and in flavor. The flesh is **SALMON TINT** to the rind. It has a rich, spicy flavor, which is entirely different from the insipid flavor of the Honey Dew. In size it will average smaller than the green meated Honey Dew, and it matures several days **EARLIER**.

The demand has been so great since we introduced this grand new melon that we have been unable to supply it.

The ordinary strain of this melon shows many ribs like a muskmelon. Our strain is the true, smooth Honey Dew type.

OUR crop the past season ran fully 90 per cent salmon tint.

We advise every grower to give it a trial.

Our supply of seed is very short. We offer it while it lasts at the following prices:

Per pkt., 10c; oz., 20c;  $\frac{1}{4}$  lb., 70c;  $\frac{1}{2}$  lb., \$1.25; per lb., \$2.00.

For larger quantities, write for prices.

## GREEN MEATED HONEY DEW MELON

(Short Crop.)

We know of no other melon, fruit or vegetable that has ever come into popular favor as rapidly as has the Honey Dew melon. This melon, unknown a few years ago, is now offered on the menus of all dining cars, hotels and restaurants throughout the country.

The Honey Dew is not a strong competitor of the cantaloupe, and will not take the place of the cantaloupe, as it is on the casaba order, and is really a fall and winter melon. However, it is far superior to any casaba yet introduced and has taken the lead of that class of melons.

Although classed as a fall or winter melon, the acreage planted in the early-growing districts, such as the Imperial Valley, California, Arizona and New Mexico, shows a large increase each season and has proven very profitable to the grower. The first shipments of Honey Dew melons from the Imperial Valley sold for \$1.00 per melon the past season.

The average size of the melon is 6 inches in diameter and 7 to 8 in length, weighs 5 to 6 pounds. The skin is smooth, with an occasional net; is a creamy yellow when ripe. The flesh is an emerald green, very thick,

**HONEY DEW MELON—(Continued)**

melting and fine grained; can be eaten to the extreme rind. The seed cavity is very small; the rind impervious to water. The melon does not shrink in weight, is not easily bruised, and is a splendid shipper.

It matures about ten days later than the Rocky Ford Cantaloupes and is very prolific; yields at the rate of 8,000 to 10,000 melons per acre. The melon slips from the vine when ripe and will keep for several weeks. The late-maturing ones may be kept until Christmas.

The following sized crates are used here: Jumbo—Height, 7½ in.; width, 16¼ in.; length, 23½ in. Standards—6½x16¼x23½. Ponies—5¾x14½x23½. Melons are carefully packed in excelsior from five to twelve per crate, according to size.

Do not plant near cantaloupes or casabas, as it shows a tendency to mix badly with both.

We urge every grower to try this new melon, if only a few hills for their own use. We offer a very select strain of seed this season at the following prices: Pkt., 10c; oz., 15c; ¼ lb., 50c; ½ lb., 80c; lb., \$1.50.

For large quantities, write for prices.

**GOLDEN BEAUTY CASABA**

While favorably known in California for several years, the Casaba has but recently become known in the large markets throughout the country. It was formerly classed as a Fall or Winter melon, but during the past two seasons it has been grown in the Imperial Valley and shipped with the early cantaloupes and watermelons.

From the Turlock district, California, hundreds of cars of Casabas are shipped every season. During the past season the Golden Beauty Casaba often sold at much higher prices than the Honey Dew.

This melon grows from 6 to 8 inches in diameter, is nearly round, slightly pointed at the stem end. The wrinkled skin is a beautiful golden yellow and the rind is very hard. The flesh is pure white and very thick. The Golden Beauty is the best flavored Casaba and the most popular market variety.

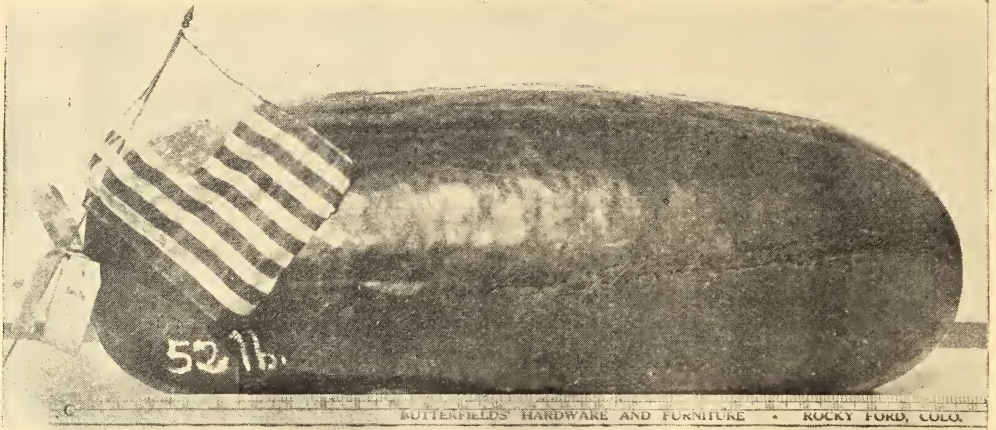
We sell several hundred pounds of seed of this variety each season. The seed we offer is our own Colorado grown.

Pkt., 10c; oz., 20c; ¼ lb., 60c; lb., \$2.00.

Write for prices on larger quantities.

**NOTE—**Do not pick for shipping until they lose their green, shiny appearance. They are not in best condition for eating until the rind will give under pressure.

## WATERMELONS



## IMPROVED KLECKLEY SWEET

The "sweetest of all" watermelons—the best home and nearby market melon yet introduced.

The melon in cut above was awarded first premium at our fair, fall of 1919. It weighed 52 pounds and was the finest specimen ever shown here.

This splendid variety is the finest flavored melon introduced in recent years. No other melon has ever attained such popularity for home use and nearby markets. As originally introduced, the rind was too thin and tender to admit shipping, but by careful selection this defect has been largely overcome.

The Improved Kleckley Sweet is the Rocky Ford Strain.

In this new strain now offered there is developed a melon with a shell hard enough to carry to market, having been carefully selected for a series of years for this result. The rind is not thick, but the skin is so hard and tough that it resists the jolts and jars of travel to a remarkable degree, and at the present time is the favorite shipping melon with our Colorado growers, and rapidly growing in favor in other sections of the country. The melons grow 18 to 24 inches in length, 10 to 12 inches through, averaging about 25 pounds in weight, oblong in form, with very dark green skin, flesh deep scarlet red, with solid heart, stringless, with few seeds, set near the rind. The flavor is unexcelled. Don't fail to plant this splendid melon for home use or nearby markets.

Select stock seed true to name (saved from the largest and best melons) —per oz., 10c; per ¼ lb., 30c; ½ lb., 60c; per lb., \$1.00; 10 to 25 lbs., @ 90c per lb.

## WHITE SEEDED ANGELENO

The Angeleno melons are the most popular varieties produced in California. The melons are almost round, with an attractive dark green rind with a tinge of yellow showing through the green when ready to pick. The flesh is stringless and bright red to the rind. Cannot be excelled in flavor.

**Important Notice**—Owing to the tendency of the seed of this melon to split open, we advise you to soak the seed in water for only a few hours. It soon closes and is ready to plant, and every seed will germinate, but if planted before soaking, the seed fills with dirt and decays. **Please heed this notice.**

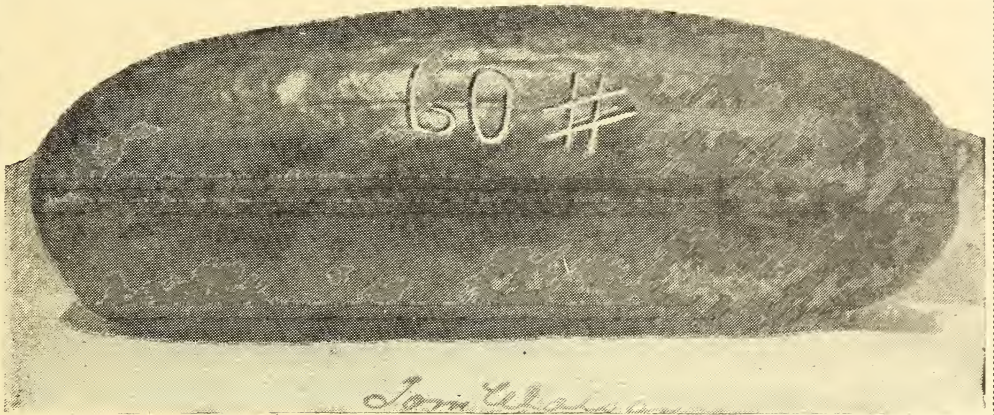
## BLACK SEEDED ANGELENO

Many prefer a black seeded melon. This melon is the result of crossing the Angeleno with the black seeded Chilian, and some of the black seeded variety will show the stripe of the Chilian.

Both the Angelenos are good shippers and cannot be beat for home use. We sell hundreds of pounds of each variety every season. Our seed is northern California grown and there is none better. Price, either variety:

Pkt., 10c; oz., 15c; ¼ lb., 50c; lb., \$1.25.

For larger quantities, write for prices.



The Watson originated in Georgia, the "home of the watermelon." The fruit is very large, many melons weighing 50 to 60 pounds and measuring 18 to 24 inches in length. The skin is a dark, mottled green; the flesh an intense, bright red, solid and tender; the heart is very large, with a very small seed area. The rind is very thin, but exceedingly tough, which accounts for its excellent shipping qualities. The flavor is second to none. This grand new melon has become one of the most popular of all shipping melons.

Our seed was selected from the choicest, earliest ripe melons, weighing from 30 pounds up. No better or purer strain can be had. Per oz., 10c; ¼ lb., 35c; per lb., \$1.00; 10 to 25 lbs., @ 85c per lb.

Associations and others using larger quantities, write for special prices.

### THE EXCEL

A new watermelon and very popular wherever introduced.

It is a large oblong melon, dark green in color, with faint stripes. The flesh is of fine quality and intense red to the rind. It is a larger melon than the Tom Watson and as good a shipper. Where a large melon is required the Excel will fill the bill. Pkt., 10c; oz., 15c; ¼ lb., 35c; lb., \$1.00.

For larger quantities, write for prices.

### KLONDIKE

One of the best flavored watermelons yet introduced.

This is an oblong melon, slightly ribbed, medium green rind.

The flesh is bright red, melting and deliciously sweet; contains but few small seeds.

This melon is not a good long-distance shipper, but cannot be excelled for home use. Pkt., 10c; oz., 20c; ¼ lb., 60c; lb., \$2.00.

Write for prices on larger quantities.

### DELICIOUS WINTER WATERMELON

Also Called

#### THE KING AND QUEEN AND WINTER QUEEN

This splendid new melon is fast forcing itself into favor because of its many good qualities. It has generally been known as a Winter melon, however, there were many cars shipped from this district during the early fall; they were crated in Honey Dew crates and packed in excelsior. Wherever introduced they sold at good prices, far outselling the ordinary watermelons.

The melon is round; color a very light green, faintly striped with a darker green. When fully ripe, closely resembles the Honey Dew in size and color, except the light stripe. It has a thin tough rind. The flesh is a bright pink, solid and stringless, with a few small black shiny seeds set firmly near the rind. The flavor is delicious. Should not be eaten as soon as picked from the vine, but stored away until fully ripened.

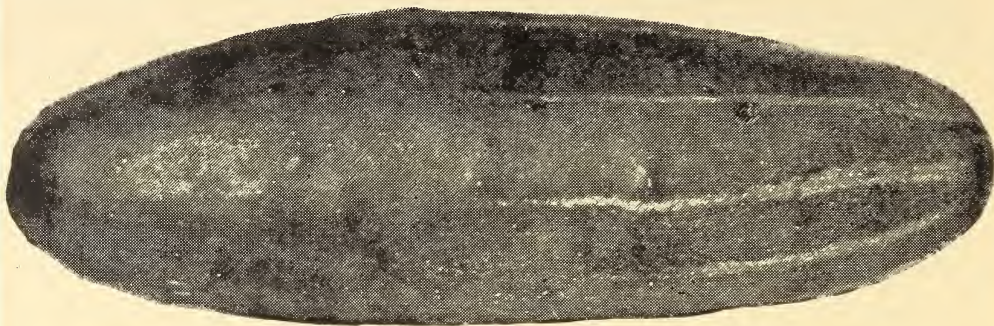
It will keep nearly all winter and is a great treat when all other melons are gone. We advise every lover of watermelons to give it a trial.

Pkt., 10c; oz., 15c; ¼ lb., 50c; per lb., \$1.50.

Write for prices on larger quantities.

## SUPERIOR CUCUMBER SEED

We list but three varieties, which, in our judgment, are the most profitable market cucumbers for all sections of the country.



### EARLY FORTUNE

A great favorite with Southern Shippers.

One of the finest types of the White Spine ever produced.

In some respects it resembles the Davis Perfect; the cucumbers when fully grown measure about nine inches in length, slightly tapering at the ends. The color is a rich dark green. The flesh is thick and firm and pure white in color; it has but few seeds.

The vines are vigorous growers, set fruit early and are very productive.

The EARLY FORTUNE is recommended as one of the very best EARLY MARKET VARIETIES.

We highly recommend a trial either for shipping or for home use.

Price—Pkt., 5c; oz., 10c; ¼ lb., 30c; lb., \$1.00; 10 to 25 lbs., 85c per lb.

### DAVIS' PERFECT CUCUMBER

This valuable new cucumber is a general favorite in the large growing districts.

This ideal cucumber is equally good for growing under glass or outdoor culture. When grown out of doors it resembles the hothouse product so closely that dealers will pay the same high prices for it as for the hothouse-grown.

The color is a dark, glossy green, shape slender and symmetrical, average length 10 to 12 inches. Contains but few seeds and is ideal for slicing. The vines are extremely vigorous and productive and resist blight better than other long sorts. A great favorite in all sections of the South for shipping to northern markets. For market gardeners it is one of the most profitable varieties yet introduced.

Price—Pkt., 5c; oz., 10c; ¼ lb., 30c; lb., \$1.00; 10 to 25 lbs., 90c per lb.

### KLONDIKE CUCUMBER

This splendid shipping cucumber is an improved strain of the White Spine type. It is a very attractive dark green variety with a green that stays for days after being picked and shipped. The cucumbers are from 7 to 8 inches long, 2 to 2½ inches in diameter, very regular in size and shape, very crisp and unsurpassed for slicing. It makes excellent pickles when young. The vines are extremely vigorous and productive and resist blight better than other long sorts. A great favorite in Florida and other sections of the South for shipping to northern markets. For market gardeners it is the most profitable variety known today. Seed crops of this variety very short the past season.

Price—Pkt., 5c; oz., 10c; ¼ lb., 35c; ½ lb., 60c; lb., \$1.00; 5 to 25 lbs., 85c per lb. For larger quantities, write for prices.

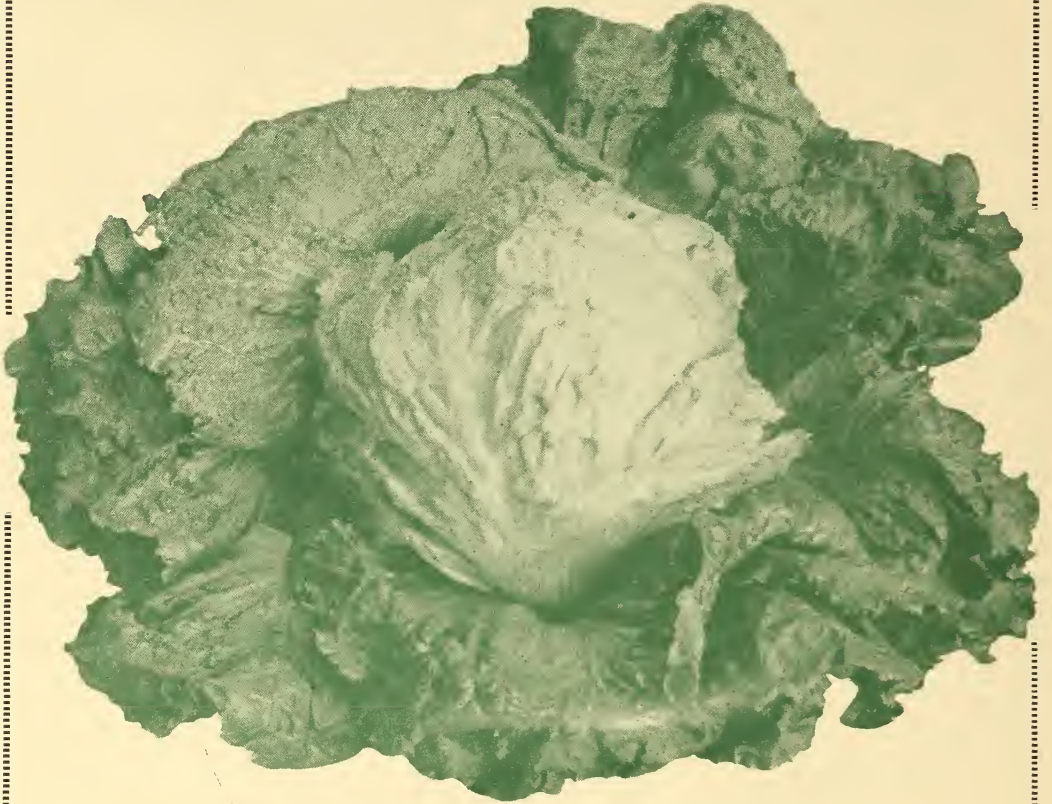
# SELECT CANTALOUPE SEED OUR SPECIALTY



Our Mr. Garwood has been handling cantaloupe seed in this district since 1906. For many years we have devoted all of our time and energies toward producing a better grade of cantaloupe seed, and from the many encouraging letters received from all sections of the country we feel that our efforts are being rewarded.

**WE BELIEVE THAT THERE IS GOING TO BE A SHORTAGE OF SELECT CANTALOUPE SEED LONG BEFORE THE PLANTING SEASON IS OVER. THEREFORE WE WOULD URGE EVERY GROWER TO ORDER AS SOON AS POSSIBLE TO INSURE GETTING A SUPPLY OF SELECT SEED.**

HEADQUARTERS FOR



NEW YORK SPECIAL LETTUCE  
SEED

Also Known as

LOS ANGELES MARKET

In Colorado as the

MOUNTAIN ICEBERG

THE GRANDEST HEAD LETTUCE EVER INTRODUCED

*We sell thousands of pounds of this variety every season. We strongly advise every grower to give it a trial.*