

Historic, archived document

Do not assume content reflects current scientific knowledge, policies, or practices.

Griffing Nurseries

Wholesale Catalog



SEASON 1924-25



CHERRY LAUREL (*Laurus-cerasus carolina*). Known also as Southern Laurel and Wild Peach. We are growing fine large specimens for Landscape use. Matched pairs. Sheared forms.

BEAUMONT, - TEXAS

TO OUR MANY WHOLESALE CUSTOMERS

The new season bids fair to be the best in the history of nursery and landscape activities. Thanks to our foresight in the past, we have gradually developed our ornamental plant production until this phase of our business is second to none. Our efforts are being more and more concerted in wholesale distribution and for your particular needs we issue this catalogue which will present our stock together with its qualities and advantages in such manner that you may select from our carefully and accurately graded plants, just the class and quality suited for your particular need. Your patronage is solicited on the basis of full comparison of our stock with that of the general market. We encourage personal visits and urge as many as can do so to personally select their plants in our nurseries where the actual growing stock speaks for itself better than any printed word or electrotype. With full appreciation of the large patronage we have enjoyed in the past we submit our 1924-25 offerings to both old and new customers whom we hope to serve in a better manner than ever before with our increased facilities and the finest fields of stock produced in long experience.

We Make Our Bow



With the thought that you want to know more about us and some of the pertinent facts of our history, a summary of the Griffing Nurseries as to their origin and business progress is offered for your information. We believe that our record will offer assurance of careful

personal attention to your orders by men whose long years of training and experience make them exceptionally dependable and responsible.

Nearly forty years have elapsed since the Griffing organization began to supply trees and plants. In a small nursery on land owned by Father Griffing near Jacksonville, Florida, five Griffing brothers began nursery activities.

Conscientious and energetic in their work they followed out the best practices, and operating under the Griffing policy adopted at that time and religiously followed through all the years since, business flourished to such an extent that few years had elapsed before branch nurseries were established in southern Florida, Alabama, Louisiana and various points in Texas.

Griffing Brothers, as the concern was then known,

set up records which have never been approached by any other concern in the quantity of trees and plants distributed, and so successful were their efforts that a reputation was thoroughly established, placing them on the highest plane among nurserymen and horticulturists.

As time progressed and each branch developed a great patronage, the production of stock at each location became more of an individual matter, it always being the purpose to grow and distribute only plants best adapted to the sections being served. As the Interstate Inspection Laws regulating the shipment of nursery stock became more intricate and complicated between States, it was decided to apportion the interests among the brothers, letting each branch run as a separate concern.

In this way the Griffing Nurseries of today came into the ownership of Walter Griffing, and continues to serve the southwestern territory in the best possible manner. Each year has shown phenomenal progress, not only in the management and organization, but also in the nature of the new plants produced.

At the present time the Griffing Nurseries are the largest growers of nursery stock in the southwest. Large enough to supply every want, yet specialized to such an extent that personal attention and supervision can be given every phase of the business.

This, in brief, is the history of the Griffing Nurseries of Beaumont, Texas.

Specialists In Evergreen and Landscape Material

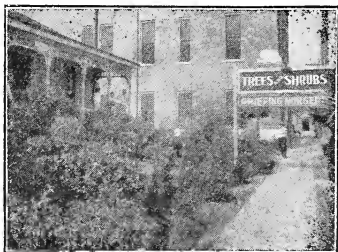
Long ago we were considered pioneers in the landscape development of the southwest. Many of the most beautiful parks and home grounds in and around Beaumont were laid out and planted by us, and are now growing as permanent memorials to our activities. We take pride in showing our friends and customers these plantings when they visit us, and as they vary in age of planting from one to eight years, a customer can also ascertain the character and ultimate size of the plants etc., by visiting these plantings. Most dealers, nurserymen, landscape gardeners and architects prefer to visit us and obtain their landscape material from us as expert growers, than to attempt production themselves or purchase from inexperienced nurseries who do not know how to grow, dig, ball, pack and ship the stock according to the very best methods.

Recognition of our efforts has come year after year from landscape men and customers throughout the territory we serve. This is the age of specialists. We specialize in growing first class landscape material and have discontinued all active landscape work outside our home town. We keep in close contact with landscape development and have experts, college graduates, in our employ to work out these problems in order to assist our customers and help point out their needs and requirements.

The growing of ornamental stock has been developed to a high degree at our nursery. Many new plants from other sections and countries are added to our test block in an experimental way, every year, until their adaptability has been proven. Our descriptions are based on local conditions and plant habits in our nurseries. The nature of the old and new, has been so carefully studied



Young Coniferous Evergreens as We Grow Them.



A Display Yard at Griffing's Nursery

that we are able to produce plants far superior to the ordinary nursery-row plants. Our stock is spaced and pruned in such manner that each plant is permitted to attain maximum development and perfection in the nursery row. We select for propagating purposes only plants which seem to excel the ordinary type. Through this continued process of selection our Broadleaf and Coniferous Evergreens have attained such a marked degree of beauty that they seem to differ considerably

from plants grown in the old way.

We grow fruit trees and various other classes of trees and plants but in some instances, where we have not the most favorable conditions for the production, we handle stock grown by expert growers on brokerage basis. However, we grow Sub-Tropical trees by the thousands, such as Citrus, Figs, Pecans, Japanese Persimmons, and such other classes as cannot be grown by nurseries further north, to an advantage.

Griffing Trees Are Different

Beginning with propagation the greatest skill is utilized in the production of our plants. Frequent root pruning and transplanting give added vigor and stronger plants. Our rows are wide apart and the spacing of the plants in the rows is at such intervals as to permit the best development of each individual plant. We direct the growth by proper pruning at the various seasons when close attention means a difference between a specimen plant and a common loosely developed unsymmetrical plant.

Our Conifers are well shaped and symmetrical and are so trained that they attain the ideal form for the species. Our Broadleaf Evergreens are so handled as to give compact thickly branched plants, heavily fol-

iated and capable of making a complete display when planted out. Even deciduous stock is pruned and trained into bushy, shapely plants of great perfection.

Our stock is so graded that the buyer is enabled to get the class of stock and quality of plant best suited to his particular demand. If he contemplates the choicest piece of work and wants only the very best of material, we have this for him, and so careful is our grading method that he is assured that each plant will come up to his requirements. In work of less importance where greater economy predominates, we have plants to suit this particular need without necessitating the payment of one flat price for all degrees of quality.

BALLING

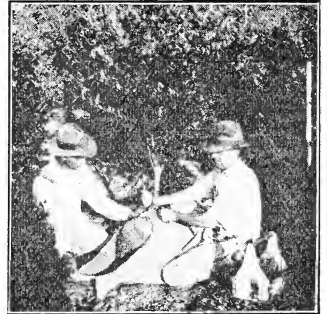
AS DONE IN THE GRIFFING WAY AT THE GRIFFING NURSERIES



Removing the root system without shock.



No roots exposed to the air.



The dirt can't break away from the roots.

Balling and Burlapping (B) is lifting a plant with its root system intact or nearly so in a solid ball of the earth in which it grew.

Lifting a plant from Sandy, Gravel, Clay or Crumbling Soils, which fails to serve the purpose of protecting the roots from the air is NOT Balling.

Long ago we realized that for Evergreens especially, some such method was essential, to the nursery business. Balling and Burlapping was by far the most practical. The difficulty lay in the fact that few soils were adapted to such handling. After close study of soils from Florida to Mexico, we found at our Rosedale Nursery the most IDEAL SOIL COMPOSITION and STRUCTURE. A black, waxy, fertile soil of the greatest tenacity has made the Griffing Balled and Burlapped plants known throughout the country.

Our plants (B) ship better. They grow better. They hold up better on display in yards or ground. They give immediate effects in landscape plantings. They take the low freight rates. Planting is easier and quicker, the maintenance is less.

Balling is insurance against loss and your customers will demand it. Balled plants mean better business, more satisfied customers, greater beauty in your plantings and a reputation for using the best and most dependable material.

Your inquiries concerning shipments, rates, weights, sizes, etc. will be gladly and promptly answered. If you have used our material you know the value of our Balled stock. If you have never used it, you need only a trial order to be fully convinced that we have only told the half. Once a customer, always a customer, is our experience with Balled plants.

SYMBOLS

For greater simplicity Balled and Burlapped stock is indicated by the letter "B" in column headed "Class." Stock not balled is indicated in this column by the letters "N.B."

TELEGRAPH CODE

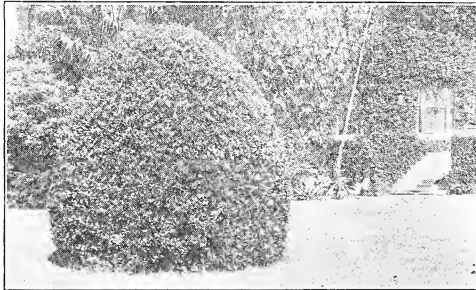
Telegraph order messages in the Nurserymen's Telegraph Code, adopted in 1923, will receive our most prompt attention. This code saves us both money. Let's use it.

STUDY THE PICTURES AS YOU TURN THE PAGES

Why We Solicit Your Patronage

Being familiar with all angles of landscape development, we are in a position to know the viewpoint of the buyer. We know the expenses and conditions which he must meet, and in this way we are better able to meet his particular wants and handle his business than the man who is interested merely in the production of plants without specially studying their future usage in the various means and plans of handling landscape work which are now being practiced in the South. Our own experiences in sales yard and display ground work as well as in the professional landscape field where a high standard is set, and certain ethical practices are carried out, put us in position in many instances to be of material service to our buyers through suggestions and information which we are able to give.

We are also located at Kountze in the sandy hill section where certain conditions are ideal for the production of other kinds of nursery stock. Solid clay soil makes production of Pecans very successful, and the specific requirements of good rose production and certain other ornamentals are fully met at this location. Here we have also natural flowing water to care for the propagation of plants, a newly developed division, which is probably producing more plants for our own use and for sale than any other such concern in the South. A combination of all these features, indicates how thoroughly we are equipped, for the business which we have developed, and is a basis for our request for your patronage.



Sheared Griffings Wax Ligustrum. We Train Many Varieties Into Shapely Specimen Plants

Our wholesale business is directed in person by Mr. W. C. Griffing, whose wide travel and extensive knowledge makes this feature a point worthy of consideration to the new buyer. Our office management is such that we are often told that of all the nurseries operating in the South we have the most businesslike and efficient system for handling orders, stock records, correspondence and other aspects of the business which are concentrated in our central office at Beaumont, Texas, in the heart of the city, where we have the greatest convenience in the way of telephone, telegraph, traffic, shipping, banking and other facilities.

Our nurseries are directed by men of long experience, and every department is handled by a specialist in his particular line, a thing which is impossible in small concerns where one man must serve in a multitude of capacities. All of this tends to give better service and great efficiency in the handling of orders.

We have our own loading stations convenient to the nursery where cars can be loaded most promptly, and in this way the ninety solid carloads of balled and burlapped stock which we shipped this past season for landscape use was in every case handled with the greatest efficiency. We have three hundred acres in nursery rows producing salable plants. A portion of this is the heavy black land of the Gulf Coast, which is so extremely fertile and well adapted to the production of Evergreen stock. Better color is given to the foliage and more stocky development to the individual plants. Irrigation facilities are available at the Rosedale Nursery and during any prolonged drought we are able to thoroughly water the nursery which is a great economic feature.



Dwarf Crimson Crape Myrtle in Nursery Row. Compact Bushy Stock is Produced by Expert Care

NOMENCLATURE AND GRADING

Always alert to improve our service and methods, we instantly appreciated the great value to be derived from the use of the American Joint Committee's "Standardized Plant Names."

The acceptance of common names for general usage is a feature of great interest to the customer as well as to our employees, for the technical nomenclature of the plants will be accurate while the everyday usage of the Latin names can be dispensed with. We have likewise adopted the grading method as regards quality, as approved by the American Nurserymen's Association. "X" indicates Stocky Grade. "XX" indicates Very Bushy. "XXX" indicates Very Bushy Specimens. We have also let these same symbols apply as regards other desirable characteristics, and every "X" means additional merit above an ordinarily good plant.

Having heard discussions in conventions on the merits of printing minimum grade only, and from experience finding this to be an efficient and practical method, we show only the figures of the minimum measurement. The grading, however, is the same as formerly, it usually being the case that the minimum grade quoted also includes all plants up to the next measurement, the average being the same. This feature avoids customers specifying or wanting all maximum grades as we frequently have had them expect, at the prices of smaller grades.



Olanders in the Nursery. Quantity and Quality Mean Good Values for You.

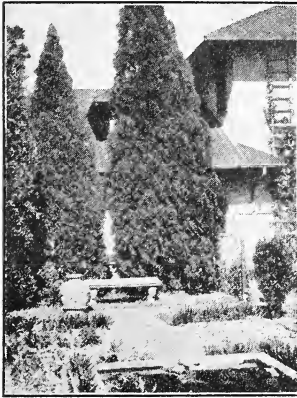
KEY NUMBER

The Key Number used on your order is a time saver. It indicates to us the class, quality, grade and price with one set of figures.

A SALES YARD WITH OUR BALLED STOCK PULLS THE BUSINESS

Coniferous Evergreens

Nature uses Conifers in all climes and our most beautiful natural landscape scenery is frequently dominated by these long lived Evergreens of constant beauty. Our plants have been selected and chosen after long decades of experience with hundreds of types and varieties. Those we grow are dependable.



Pyramidal Conifers in Formal Planting.



Correct Usage of Tall Conifers. Use Freely.

ARBORVITAE

Visitors to our nurseries never fail to enthuse over the beautiful blocks of *Arborvitae*s (*Thuja*). Many common types of *Arborvitae*s are widely grown and familiar to most planters. The new varieties produced during recent years have replaced many of the coarser types. Rich color and perfect form have been attained by careful selection and expert propagation.

American or Occidental *Arborvitae*s (*Thuja occidentalis*)

AMERICAN GLOBE (T. oc.) A low flattened globe of light green.

Key	Class	Quality	Height	10	100
1W4	B.	XXX	1½ ft.	15.50	125.00
2W4	B.	XXX	1 ft.	12.70	100.00
3W4	B.	X	1 ft.	9.50	75.00

Chinese or Oriental *Arborvitae*s (*Thuja orientalis*)

This class has been formerly called *Biotas* by the Southern nurserymen. It contains those varieties which have the foliage flattened, edge outward. The best *arborvitae*s for the South are in this group which offers every type of form and color desired.

BAKER'S HYBRID (T. or.) A fine pyramidal type which is unexcelled for its tall, columnar growth, filling a place in ornamental planting for which there has long been a great need. A hybrid product, it has all the good qualities of the Oriental class, vigorous growth, intense coloring, and distinctive appearance.

Key	Class	Quality	Height	10	100
1W4	B.	XX	6 ft.	51.30	410.40
2W4	B.	XX	5 ft.	43.50	348.00
3W4	B.	XX	4 ft.	35.50	284.00
4W4	B.	XX	3 ft.	27.50	220.00
5W4	B.	XX	2 ft.	20.00	160.00
6W4	B.	XX	1½ ft.	16.00	128.00
7W4	N.B.		1½ ft.	8.75	70.00
8W4	N.B.		1 ft.	7.50	60.00

REMEMBER

We are Evergreen Specialists. Our Conifers are a Hobby with us.

BONITA

BONITA (*T. orientalis*) We have limited quantities. This new variety is said by many to be the most beautiful, which is the origin of its name *Bonita*, meaning in Spanish, "Pretty." The foliage is different from the other varieties and is very compact, the individual leaflets lie perfectly flat and in close layers, edge outward. Very deep green in color, the metallic blue of the blossoms in season makes delightful contrast. Very slow in growth; used where dwarf types are preferred; never becomes shaggy. Plant where a full compact oval is desired.

Key	Class	Quality	Height	10	100
1W4	B.	XXXX	3 ft.	71.00	568.00
2W4	B.	XXX	2½ ft.	47.00	376.00
3W4	B.	XXX	2 ft.	39.50	316.00

BERCKMANS GOLDEN (*T. or.*) Dwarf Golden and *Aurea Nana*. A fitting companion for the *Bonita*. As contrast for shades of green this variety is greatly in demand. We have a regular patronage for much of our stock which is exceptionally compact and well filled.

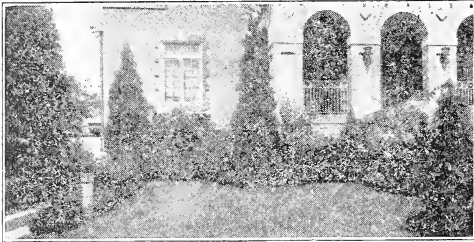
Key	Class	Quality	Height	10	100
1W4	B.	XXX	4 ft.	61.00	488.00
2W4	B.	XXX	3 ft.	43.50	348.00
3W4	B.	XXX	2½ ft.	35.50	284.00
4W4	B.	XXX	2 ft.	31.30	250.40
5W4	B.	XX	2 ft.	27.50	220.00
6W4	B.	XXX	1½ ft.	22.00	176.00
7W4	B.	XX	1½ ft.	18.50	148.00
8W4	B.	XX	1 ft.	16.00	128.00
9W4	N.B.		1½ ft.	12.00	96.00
10W4	N.B.		1 ft.	7.50	60.00



Landscape Groups—Conifers Predominating.

A TRIAL ORDER OF OUR BALLED EVERGREENS WILL CONVINCE YOU

CONIFEROUS EVERGREENS—Continued



Beautiful Planting Illustrating Value of Conifers.

CHINESE COMPACT (T. or. seedlings) Objection to the common Chinese arborvitae is the open method of branching, the lack of density in its foliage, and the resulting coarse quality. We carefully chose from thousands of plants those which show exceptionally dense foliage and shapely form. They have wide bases and taper to pointed tips, being wide and full.

Key	Class	Quality	Height	10	100
1W4	B.	XXXX	7 ft.	52.50	420.00
2W4	B.	XXXX	6 ft.	45.00	360.00
3W4	B.	XXXX	5 ft.	37.50	300.00
4W4	B.	XXX	5 ft.	32.50	260.00
5W4	B.	XXX	4 ft.	24.00	195.00
6W4	B.	X	4 ft.	19.00	155.00
7W4	B.	XXX	3 ft.	17.50	140.00
8W4	B.	X	3 ft.	12.50	100.00
9W4	B.	XX	2 ft.	10.00	80.00

CHINESE PYRAMID (T. or. Seedlings). Through careful selection we have grouped in this class those plants having dense foliage and compact form but with narrow pyramidal shape. In quality and beauty they equal the Compact Chinese but differ in form only. These classes are being used in preference to the common Chinese which lacks uniformity and general quality.

Key	Class	Quality	Height	10	100
1W4	B.	XXX	7 ft.	35.00	280.00
2W4	B.	XXX	6 ft.	30.00	240.00
3W4	B.	XXX	5 ft.	25.00	200.00
4W4	B.	XX	4 ft.	20.00	160.00
5W4	B.	XX	3 ft.	15.00	120.00
6W4	B.	XX	2 ft.	10.00	80.00



A Hardy Selection of Our Plants Used Above the Coastal Belt.

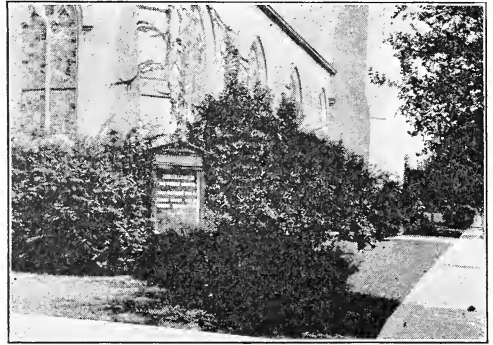
COMPACT GREEN (T. or.) Another new variety of the highest type. Our stock is the only lot we know of. The color is rich light green; compact, pyramidal, no other variety we have grown is exactly like it. It seems to be one of the best introductions for general usage.

Key	Class	Quality	Height	10	100
1W4	B.	XX	4 ft.	34.50	275.00
2W4	B.	XXX	3 ft.	28.25	225.00

Goldspire

GOLDSPIRE (T. or.) Formerly called *Conspicua*, and sometimes called *Elegantissima*, over which it is a great improvement. The name of this most beautiful Arborvitae is well chosen, very aptly describing its characteristic beauty. Tall and slender, tapering gracefully from a comparatively narrow base to a shapely pointed tip, it is truly a gold spire among the other shrubs and plants with its bright display of rich golden foliage, more pronounced than in any other variety. We have a beautiful block of large specimens. You need these for your best jobs.

Key	Class	Quality	Height	10	100
1W4	B.	XXX	8 ft.	93.80	750.40
2W4	B.	XXX	7 ft.	81.30	650.40
3W4	B.	XXX	6 ft.	71.00	568.00
4W4	B.	XXX	5 ft.	58.80	470.40



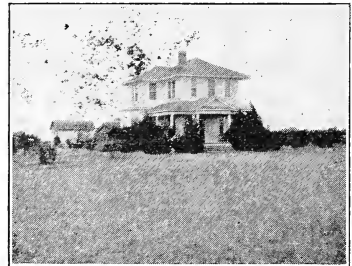
Church Landscaped with Evergreens

ORIENTAL (T. or.) Common Chinese. Our plants are vigorous and well grown.

Key	Class	Quality	Height	10	100
1W4	B.	X	3 ft.	10.00	80.00
2W4	B.	X	2 ft.	7.50	60.00
3W4	N.B.		3 ft.	6.50	55.00
4W4	N.B.		2 ft.	4.50	40.00

ORIENTAL PYRAMIDAL (T. or.) Propogated from cuttings of the true Pyramidal type, one of the best arborvitae grown. Ours are very uniform and symmetrical, heavily foliaged and exceptionally compact.

Key	Class	Quality	Height	10	100
1W4	B.	XXX	8 ft.	66.30	530.40
2W4	B.	XXX	7 ft.	58.80	470.40
3W4	B.	XXX	6 ft.	50.00	400.00
4W4	B.	XXX	5 ft.	43.50	348.00
5W4	B.	XX	4 ft.	35.50	284.00
6W4	B.	XX	3 ft.	27.50	220.00



Manager's Home, Rosedale Nursery

CONIFEROUS EVERGREENS—Continued

ROSEDALE (T. or hybrid) We have splendid specimens for balling. They will make your sales yard show up and add to your plantings.

Key	Class	Quality	Height	10	100
1W4	B.	XX	3 ft.	31.25	250.00
2W4	B.	XXX	2½ ft.	22.00	175.00
3W4	B.	XXX	2 ft.	15.70	125.00
4W4	E.	XXX	1½ ft.	12.50	100.00
5W4	E.	X	1 ft.	9.50	75.00
6W4	N.B.		2 ft.	9.50	75.00
7W4	N.B.		1½ ft.	8.25	65.00
8W4	N.B.		1 ft.	5.70	45.00

TEXAS BLUE (T. or hybrid) Texana Glauca. The blue color of this variety is its distinctive quality.

Key	Class	Quality	Height	10	100
1W4	B.	XX	5 ft.	39.00	312.00
2W4	B.	XX	4 ft.	31.30	250.40
3W4	B.	XXX	3 ft.	25.00	200.00
4W4	B.	XX	2 ft.	16.00	128.00
5W4	B.	X	1½ ft.	12.00	106.00
6W4	B.	X	1 ft.	10.50	84.00
7W4	N.B.		2 ft.	10.50	84.00
8W4	N.B.		1½ ft.	8.00	64.00
9W4	N.B.		1 ft.	7.50	60.00

BEEFWOOD

BEEFWOOD, Australian Pine. (Casuarina stricta). One of the fastest growing Evergreens known. Resembles the Pine Tree in many respects. Stands cold to about 20 degrees above zero.

Key	Class	Quality	Height	10	100
1W4	B.	XX	7 ft.	35.00	280.00
2W4	B.	XX	6 ft.	30.00	240.00
3W4	B.	XX	5 ft.	25.00	200.00

Balling Gives Immediate Effect



Just After Planting.



How it Looked Before.

1. Italian Cypress.
2. Prostrate Juniper.
3. Pyramidal Arborvitae.
4. Cape Jasmine.
5. Abelia.
6. Graceful Privet.
7. Photinia.
8. Pittosporum.
9. Upright Privet.
10. Griffins Wax.

Cypress

The Cypress group is very satisfactory in regard to hardiness, vigorous growth, general adaptability, and freedom from disadvantages of disease and insect pests. Some of the most distinctive conifers are among the many varieties of Cypress. All have high quality and are suited for prominent positions.

ARIZONA CYPRESS (C. arizonica). We offer a choice lot of these, always popular with the retail trade.

Key	Class	Quality	Height	10	100
1W4	B.	XX	6 ft.	55.00	440.00
2W4	B.	XXX	5 ft.	50.00	400.00
3W4	B.	XX	5 ft.	45.00	360.00
4W4	B.	XXX	4 ft.	40.00	320.00
5W4	E.	X	4 ft.	32.50	260.00
6W4	B.	XXX	3 ft.	30.00	240.00
7W4	B.	XXX	2 ft.	20.00	160.00
8W4	B.	X	2 ft.	16.50	135.00
9W4	B.	XXX	1½ ft.	15.00	120.00
10W4	B.	X	1½ ft.	12.50	100.00

SPREADING ITALIAN CYPRESS (C. sempervirens horizontalis.) Horizontal Cypress. More and more demanded for picturesque beauty. Can be sheared into matched specimens. The spreading type is rich in appearance and differs in its horizontal branching method. The lower branches are parallel with the ground and wide-spreading.

Key	Class	Quality	Height	10	100
1W4	B.	XX	8 ft.	72.50	580.00
2W4	B.	XX	7 ft.	62.50	500.00
3W4	B.	XX	6 ft.	52.50	420.00
4W4	B.	X	6 ft.	45.00	360.00
5W4	B.	XX	5 ft.	42.50	340.00
6W4	B.	XX	4 ft.	32.50	260.00
7W4	B.	XX	3 ft.	22.50	180.00
8W4	B.	XX	2 ft.	16.50	135.00

ITALIAN CYPRESS (Cupressus sempervirens). We have some splendid large specimens of the most choice type, straight, symmetrical, well filled, rich in color. The best we have had in years.

Key	Class	Quality	Height	10	100
1W4	B.	XXX	9 ft.	112.50	900.00
2W4	B.	X	9 ft.	103.25	825.00
3W4	B.	XXX	8 ft.	100.00	800.00
4W4	B.	X	8 ft.	90.50	725.00
5W4	B.	XXX	7 ft.	87.50	700.00
6W4	B.	X	7 ft.	78.25	625.00
7W4	B.	XXX	6 ft.	75.00	600.00
8W4	B.	X	6 ft.	65.70	525.00
9W4	B.	XXX	5 ft.	62.50	500.00
10W4	B.	X	5 ft.	53.25	425.00
11W4	B.	XXX	4 ft.	50.00	400.00
12W4	B.	X	4 ft.	49.70	325.00
13W4	B.	XXX	3 ft.	37.50	300.00
14W4	B.	X	3 ft.	28.25	225.00
15W4	B.	XXX	2 ft.	25.00	200.00
16W4	B.	X	2 ft.	20.70	165.00

Large Conifers should have solid balls. Our soil gives us a natural advantage. The big specimens hold up and grow well.

USE THE KEY NUMBERS FOR TIME SAVERS

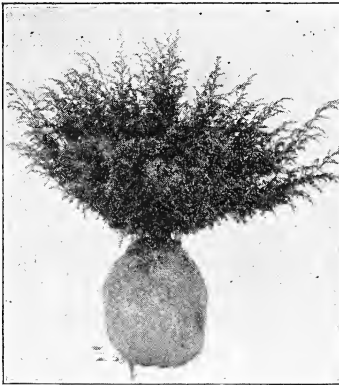
Junipers

The red cedars indicated the great adaptability of fancy Junipers for Southern planting and during recent years we have collected and grown a stock of finely assorted varieties in all forms, types and colors. They give low shrubs, so much in demand, without the compact formal shape of the Arborvitae. Everywhere they have met great popularity and for the best planting a collection of Junipers give the greatest distinctiveness. We are evergreen specialists and the class of stock we produce in the Juniper group is unsurpassed anywhere.

COMMON JUNIPER (J. communis). Silvery blue color, irregular growth. Very satisfactory for banking purposes, being lower priced than the selected specimen forms described below.

Key	Class	Quality	Height	10	100
1W4	B.	X	5 ft.	25.00	200.00
2W4	B.	X	4 ft.	20.00	160.00
3W4	P.	X	3 ft.	15.00	120.00
4W4	B.	X	2 ft.	10.00	80.00

COMMON HORIZONTAL JUNIPER (J. communis). J. communis horizontalis. Selected Common Junipers having branches parallel with ground, tapering from wide base to pointed tip. Very attractive, used for Deodar Cedar is less expensive planting.



Prostrate (Canada) Juniper

COMMON PYRAMIDAL JUNIPER (J. communis). J. communis pyramidalis. Branching method, upright. Same color and characteristics as the Horizontal except in form. A splendid pyramidal conifer.

Key	Class	Quality	Height	10	100
1W4	B.	XX	6 ft.	45.00	360.00
2W4	B.	XX	5 ft.	37.50	300.00
3W4	B.	XX	4 ft.	30.00	240.00
4W4	B.	XX	3 ft.	22.50	180.00

JAPANESE (J. chinensis). J. chinensis Japonica. Dark rich green, airy foliage and irregular, sprangled upright branches make this an exceptionally good variety for foundations or attractive groups.

Key	Class	Quality	Height	10	100
1W4	B.	XXX	4 ft.	60.00	480.00
2W4	B.	XXX	3 ft.	45.00	360.00
3W4	B.	XXX	2 ft.	30.00	240.00

JAPANESE, DWARF, (J. chinensis). Flat, blue, prickly, very dwarf creeper of slow growth. For edging fine groups of taller conifers.

Key	Class	Quality	Width	10	100
1W4	B.	XXX	18 in.	22.50	180.00
2W4	B.	X	18 in.	17.50	140.00
3W4	B.	XXX	12 in.	15.00	120.00
4W4	B.	X	12 in.	10.00	80.00

PFITZER JUNIPER. (J. chinensis). J. pfitzeriana. The handsomest of the Chinese Juniper varieties, the Pfitzeriana is the most satisfactory spreading Juniper in this climate. We have found it ideal for the Southwest. Unusually beautiful in its distinctive grayish color and irregular, flat spreading growth. For terrace planting, prominent low groups, about foundations, and as specimens it cannot be excelled.

Key	Class	Quality	Width	10	100
1W4	B.	XXXX	5 ft.	62.50	500.00
2W4	B.	XXXX	4 ft.	50.00	400.00
3W4	B.	XXX	3 ft.	37.50	300.00
4W4	B.	XXX	2 ft.	25.00	200.00
5W4	B.	XXX	1½ ft.	19.00	155.00

PROSTRATE (CANADA) JUNIPER (J. communis). J. canadensis, J. communis depressa. Grey-green color, no main stem, but the branches grow in irregular form giving a flaring vase effect. For places where low shrubs only two to three feet high are wanted.

Key	Class	Quality	Width	10	100
1W4	B.	XXXX	3 ft.	30.00	240.00
2W4	B.	XX	3 ft.	25.00	200.00
3W4	B.	XXXX	2 ft.	22.50	180.00
4W4	B.	XX	2 ft.	17.50	140.00
5W4	B.	X	1½ ft.	15.00	120.00
6W4	B.	X	1 ft.	10.00	80.00

SAVIN JUNIPER (J. sabina). This fills a space in the dark green Junipers, making a size larger and a little more upright than the Pfitzer of the prostrate type.

Key	Class	Quality	Width	10	100
1W4	B.	XX	3 ft.	37.50	300.00
2W4	B.	XXX	2 ft.	31.25	250.00
3W4	B.	X	2 ft.	20.70	165.00
4W4	B.	XXX	1½ ft.	18.75	150.00
5W4	B.	X	1½ ft.	14.50	115.00

SPINY GREEK JUNIPER (J. excelsa). J. excelsa stricta. This little Juniper is very popular for its bright bluish color, compact growth, and pyramidal form. Excellent for conifer groups, for specimens or for tubs and urns. In this latter use we have seen them resist neglect for several years and continue to thrive.

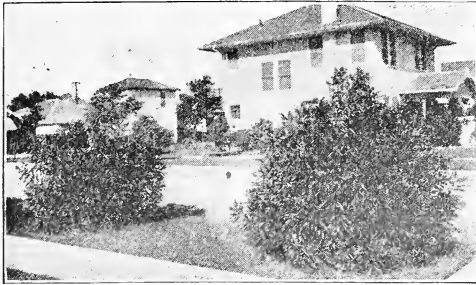
Key	Class	Quality	Height	10	100
1W4	B.	XX	1 ft.	15.00	120.00
2W4	B.	X	9 in.	10.00	80.00

REDCEDAR (Juniper Virginia). The well-known Southern type.

REDCEDAR (Juniper Virginia) Platte River Type. Bronze Winter color.

Key	Class	Quality	Height	10	100
1W4	B.	X	10 ft.	55.00	440.00
2W4	B.	XXX	8 ft.	60.00	480.00
3W4	B.	XXX	6 ft.	45.00	360.00
4W4	B.	X	6 ft.	40.00	320.00
5W4	B.	XXX	5 ft.	37.50	300.00
6W4	B.	X	5 ft.	32.50	260.00
7W4	B.	XXX	4 ft.	30.00	240.00
8W4	B.	X	4 ft.	20.00	160.00
9W4	B.	XXX	3 ft.	22.50	180.00
10W4	B.	X	3 ft.	15.00	120.00
11W4	B.	X	2 ft.	10.00	80.00

SEE INDEX INSIDE BACK COVER—YOU'LL FIND IT THERE



Oleander Planting in Parkway.

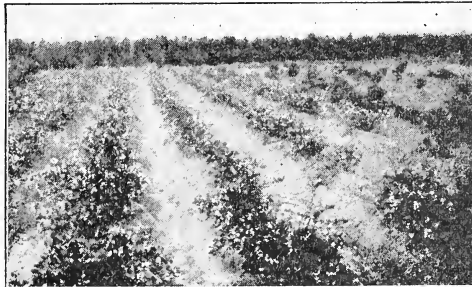


The Architect's Porch Box Filled with Evergreens

Broadleaf Evergreen Shrubs

Predominate Southern Plantings

The popularity of Evergreen plantings has increased materially, especially in the South, during recent years. We firmly believe that no other nursery offers so many varieties of Broadleaf Evergreens or Conifers in the quantity and quality of stock that we offer. Visitors from the North tell us that our nurseries in winter look fully as attractive as theirs do during the summer. All plants in this catalog will give entire satisfaction in the way of strong vitality, vigorous growth, freedom from insects and disease pests. We have visited throughout the country in an effort to collect all available varieties that might prove adaptable to the conditions of the southwest.



GLOSSY ABELIA (*Abelia Grandiflora*.) Our abelias are heavy and stocky, thickly branched and densely foliaged. They cost more than those grown like hedge plants, (just one year rooted cuttings.) Some of the largest buyers have told us that we have the finest plants they have ever seen and that they are worth every penny we ask. We hand prune them frequently during the growing season to produce compact, uniform plants. You will want a big order from our fine blocks.

Key	Class	Quality	Height	10	100
1W4	B.	XX	4 ft.	49.00	320.00
2W4	B.	XXX	3½ ft.	37.50	300.00
3W4	B.	XX	3½ ft.	32.50	260.00
4W4	B.	XXX	3 ft.	30.00	240.00
5W4	B.	XX	3 ft.	27.50	220.00
6W4	B.	XXX	2½ ft.	25.00	200.00
7W4	B.	XX	2½ ft.	22.50	180.00
8W4	B.	XXX	2 ft.	20.00	160.00
9W4	B.	XX	2 ft.	17.50	140.00
10W4	B.	XXX	1½ ft.	15.00	120.00
11W4	B.	XX	1½ ft.	12.50	100.00
12W4	B.	XXX	1 ft.	10.00	80.00
13W4	B.	XX	1 ft.	7.50	60.00
14W4	N.B.	2 ft.	5.00	40.00
15W4	N.B.	1 ft.	4.00	35.00

BOX (*Buxus*). Common Boxwood (*B. sempervirens*). Japanese (*B. japonica*).

Key	Class	Quality	Height	10	100
1W4	B.	XX	1½ ft.	22.50	180.00
2W4	B.	XX	1 ft.	15.00	120.00
3W4	B.	XX	9 in.	10.00	80.00

CAMPHOR TREE (*Cinnamomum Camphora*). Bush Form. Throughout the coastal region the Camphor tree is known for the rich evergreen foliage so characteristic of the lower South. In few trees or shrubs do we find such marvelous color changes. The new growth as it comes out in spring is a wine and bronze color before it develops, and certain of the older leaves are constantly acquiring a bright vermilion red.

Key	Class	Quality	Height	10	100
1W4	B.	XXX	7 ft.	52.50	420.00
2W4	B.	XXX	6 ft.	45.00	360.00
3W4	B.	XXX	5 ft.	37.50	300.00
4W4	B.	XX	5 ft.	32.50	260.00
5W4	B.	XXX	4 ft.	30.00	240.00
6W4	B.	XX	4 ft.	25.00	200.00
7W4	B.	XXX	3 ft.	22.50	180.00
8W4	B.	XX	3 ft.	17.50	140.00
9W4	B.	XXX	2 ft.	15.00	120.00
10W4	B.	XX	2 ft.	12.50	100.00
11W4	B.	XX	1½ ft.	10.00	80.00
12W4	B.	X	1½ ft.	7.50	60.00
13W4	N.B.	X	3 ft.	7.50	60.00
14W4	N.B.	2 ft.	5.00	40.00
15W4	N.B.	1 ft.	4.00	35.00

While our prices are as low as any, yet our aim is not to be the cheapest; value is our big consideration and aim. Constant care bestowed upon trees in bringing them to the best nurtured condition makes for cost. We could reduce nurturing costs and consequently selling costs, but that would not be giving Quality and Value. The best Value for the Money—that is our desire.

90 CARLOAD SHIPMENTS OF BALLED STOCK LAST SEASON!

BROADLEAF EVERGREEN SHRUBS—Continued

Cape Jasmine

CAPE JASMINE (*Gardenia floridus*). Every Southern home should have specimens of this beautiful evergreen shrub.

Key	Class	Quality	Height	10	100
1W4	B.	XXX	4 ft.	23.00	160.00
2W4	B.	XXX	3 ft.	15.00	120.00
3W4	B.	XX	3 ft.	12.50	100.00
4W4	B.	XXX	2 ft.	10.00	80.00
5W4	B.	XX	2 ft.	7.50	60.00
6W4	B.	XXX	1 ft.	5.00	40.00
7W4	B.	XX	1 ft.	4.50	40.00
8W4	B.	X	1 ft.	3.50	30.00
9W4	N.B.	X	3 ft.	5.00	40.00
10W4	N.B.	X	2 ft.	3.50	30.00
11W4	N.B.	X	1 ft.	2.00	15.00



Balled Cape Jasmine. A Splendid Shrub for General Use at Low Cost. Fine Showings. Use Them Freely.

EVERBLOOMING TYPE

FLORIDA CAPE JASMINE (*Gardenia floridus*). Everblooming, the improved Florida variety blooms continually through the season, and foliage is heavier and darker green.

Key	Class	Quality	Height	10	100
1W4	B.	XXX	4 ft.	25.00	200.00
2W4	B.	XXX	3 ft.	19.00	155.00
3W4	B.	XX	3 ft.	15.00	120.00
4W4	B.	XXX	2 ft.	12.50	110.00
5W4	B.	XX	2 ft.	10.00	80.00
6W4	B.	XXX	1 ft.	6.50	55.00
7W4	B.	XX	1 ft.	5.00	49.00
8W4	B.	X	1 ft.	4.00	35.00
9W4	N.B.	X	3 ft.	6.50	55.00
10W4	N.B.	X	2 ft.	5.00	40.00
11W4	N.B.	X	1 ft.	4.00	35.00

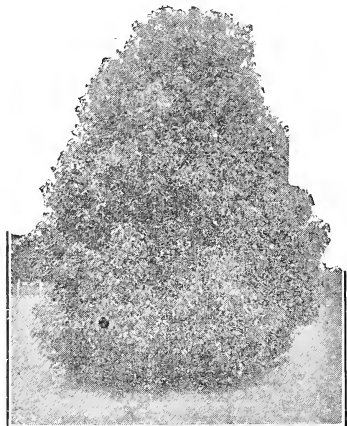
Cherry-Laurel

CHERRY-LAUREL, CAROLINA (*Laurocerasus caroliniana*). Wild Peach. Southern Laurel. One of the most beautiful broad leaf evergreens. Glistening green foliage of medium shade. Upright growth, attaining considerable height. Can be shaped to any desired form and kept at any height. We have trained some wonderful specimens adapted to prominent use in fine plantings where tall, shapely evergreens of wide or narrow cone shapes are wanted. Always beautiful, the white plum-like blossoms of the Cherry-Laurel make it highly desirable for spring effects. We offer the finest block of choice plants we have ever grown, filled out well and showing the highest quality. No recommendation can be too high for these beautiful plants. We know they will move on sight. Early reservations are advised.

Key	Class	Quality	Height	10	100
1W4	B.	XX	9 ft.	85.00	680.00
2W4	B.	XXX	8 ft.	80.00	640.00
3W4	B.	XX	8 ft.	75.00	600.00
4W4	B.	X	8 ft.	72.50	580.00
5W4	B.	XXX	7 ft.	70.00	560.00
6W4	B.	XX	7 ft.	65.00	520.00
7W4	B.	X	7 ft.	62.50	500.00
8W4	B.	XXX	6 ft.	60.00	480.00
9W4	B.	XX	6 ft.	55.00	440.00
10W4	B.	X	6 ft.	52.50	420.00
11W4	B.	XXX	5 ft.	50.00	400.00
12W4	B.	XX	5 ft.	45.00	360.00
13W4	B.	XXX	4 ft.	40.00	320.00
14W4	B.	XX	4 ft.	35.00	280.00
15W4	B.	X	4 ft.	32.50	260.00
16W4	B.	XXX	3 ft.	30.00	240.00
17W4	B.	XX	3 ft.	25.00	200.00
18W4	B.	XX	2 ft.	17.50	140.00
19W4	N.B.	X	5 ft.	25.00	200.00
20W4	N.B.	X	4 ft.	17.50	140.00
21W4	N.B.	X	3 ft.	12.50	100.00

FEIJOA (*Feijoa sellowiana*). Pineapple Guava. Distinct evergreen foliage, oval in shape, olive green above and silvery white beneath. Hardy.

Key	Class	Quality	Height	10	100
1W4	B.	XXX	3 ft.	30.00	240.00
2W4	B.	XXX	2 ft.	20.00	160.00
3W4	B.	XX	1½ ft.	15.00	120.00
4W4	B.	X	1½ ft.	10.00	80.00
5W4	B.	X	1 ft.	7.50	60.00



Camphor Tree (Bush Form) See Page 96.

VISIT US—WE ARE PROUD TO SHOW THE STOCK WE GROW

BROADLEAF EVERGREEN SHRUBS—Continued

STRAWBERRY, GUAVA (*Psidium cattleianum*). More hardy than those produced in the Tropical sections. The foliage is of rich dark green color, very glossy, thick, and leathery in texture. Evergreen and bears delicious fruit. Semi-hardy.

Key	Class	Quality	Height	10	100
1W4	B.	XXX	2 ft.	20.00	160.00
2W4	B.	XXX	1½ ft.	15.00	120.00
3W4	B.	XX	1½ ft.	12.50	100.00
4W4	B.	XXX	1 ft.	10.00	80.00
5W4	B.	XX	1 ft.	7.50	60.00
6W4	B.	X	9 in.	5.00	40.00

INKBERRY (*Ilex glabra*). A southern native we have found of value in landscape work in our desire to increase the good varieties in general usage.

Key	Class	Quality	Height	10	100
1W4	B.	X	2 ft.	15.00	120.00
2W4	B.	X	1½ ft.	11.50	95.00
3W4	B.	X	1 ft.	10.00	80.00

Primrose Jasmine

JASMINE, PRIMROSE (*Jasminum primulinum*). Italian Jasmine, as this yellow flowering beauty has been called, is a great favorite with California landscape men. It is hardy and vigorous. Fine for masses.

Key	Class	Quality	Height	10	100
1W4	B.	XXX	3 ft.	17.50	140.00
2W4	B.	XX	3 ft.	15.00	120.00
3W4	B.	XXX	2 ft.	12.50	100.00
4W4	B.	X	2 ft.	10.00	80.00
5W4	B.	XX	1½ ft.	7.50	60.00
6W4	N.B.		3 ft.	7.50	60.00
7W4	N.B.		2 ft.	5.00	40.00
8W4	N.B.		1 ft.	4.00	35.00

LAURUSTINUS (*Viburnum tinus*). Paniced heads of white blossoms.

Key	Class	Quality	Height	10	100
1W4	B.	XX	1½ ft.	22.50	180.00
2W4	B.	XX	1 ft.	15.00	120.00
3W4	B.		1 ft.	12.50	100.00
4W4	B.		9 in.	10.00	80.00

Loquat

LOQUAT (*Eriobotrya japonica*). Japan Plum. This large leaf evergreen used as big shrub or small tree is a beauty for masses or as specimens. Its usage is unlimited. Vigorous growth and ease of transplanting makes it a winner. Leaves the size of the Magnolia, fuzzy, dark green, new growth creamy to pale green. Flowers in winter, very fragrant, Fruit golden. Edible.

Key	Class	Quality	Height	10	100
1W4	B.	XXX	5 ft.	50.00	400.00
2W4	B.	XX	5 ft.	45.00	360.00
3W4	B.	XXX	4 ft.	49.00	320.00
4W4	B.	XX	4 ft.	35.00	280.00
5W4	B.	XXX	3 ft.	30.00	240.00
6W4	B.	XX	3 ft.	25.00	200.00
7W4	B.	XXX	2 ft.	20.00	160.00
8W4	B.	XX	2 ft.	15.00	120.00
9W4	B.	X	1½ ft.	12.50	100.00
10W4	B.	X	1 ft.	10.00	80.00

Magnolia

SOUTHERN (*M. grandiflora*). The grand old Giant Bay of the South. Large white flowers. Stands shearing into large specimens.

Key	Class	Quality	Height	10	100
1W4	B.	XX	6 ft.	55.00	440.00
2W4	B.	XXX	5 ft.	50.00	400.00
3W4	B.	XXX	4 ft.	40.00	320.00
4W4	B.	X	4 ft.	32.50	260.00
5W4	B.	XXX	3 ft.	30.00	240.00
6W4	B.	X	3 ft.	22.50	180.00
7W4	B.	XXX	2 ft.	20.00	160.00
8W4	B.	X	2 ft.	17.50	140.00

Magnolia

SWEETBAY (*M. glauca*). The small flowering native with medium leaves, silvery underneath. Large shrub or used as tree.

Key	Class	Quality	Height	10	100
1W4	B.	XX	5 ft.	50.00	400.00
2W4	B.	XX	4 ft.	40.00	320.00
3W4	B.	XX	3 ft.	30.00	240.00

Myrtle



Rosemary Myrtle. Spicy Scented Foliage.

ROSEMARY (*M. communis microphylla*). Myrtus microphyllum. The fine leaf plant of characteristic aroma and white orange-blossom-like flowers. Stands shearing. We have some very compact plants of high quality.

Key	Class	Quality	Height	10	100
1W4	B.	XXXXX	3 ft.	50.00	400.00
2W4	B.	XXX	2 ft.	20.00	160.00
3W4	B.	XX	2 ft.	17.50	140.00
4W4	B.	XXX	1½ ft.	15.00	120.00
5W4	B.	XX	1½ ft.	14.00	115.00
6W4	B.	XXX	1 ft.	12.50	100.00
7W4	B.	XX	1 ft.	10.00	80.00

TRUE (*M. communis*) Roman Myrtle. The large leaves tinged bronze in winter. Some big specimens for landscape use.

Key	Class	Quality	Height	10	100
1W4	B.	XXXX	3 ft.	30.00	240.00

Nandina

NANDINA (*N. domestica*). The popularity of this plant has been tremendous since we first offered them some years ago. We offer stocky bushes which will color up well, this being the strongest feature demanded.

Key	Class	Quality	Height	10	100
1W4	B.	XX	3 ft.	56.25	450.00
2W4	B.	XX	2½ ft.	47.00	375.00
3W4	B.	X	2½ ft.	40.70	325.00
4W4	B.	XX	2 ft.	37.50	300.00
5W4	B.	X	2 ft.	31.25	250.00
6W4	B.	XX	1½ ft.	28.25	225.00
7W4	B.	X	1½ ft.	25.00	200.00
8W4	B.	XX	1 ft.	22.00	175.00
9W4	B.	X	1 ft.	18.75	150.00
10W4	B.	X	9 in.	15.70	125.00
11W4	B.	X	5 in.	12.50	100.00

BROADLEAF EVERGREEN SHRUBS—Continued

SEIFRIED & TROEGER
Landscape Architects
CHICAGO, ILLINOIS

Alexandria, La.
Jan. 22, 1923

Mr. W. C. Griffing.
Dear Sir:

Enclosed please find list of planting material to be shipped via freight to the Greenwood Development Co., Pineland, La.

The planting material that I received at Baton Rouge for the Roselawn Cemetery was satisfactory in every respect and at present I am constructing a cemetery here and having nearly completed same, am in the market for the enclosed list of material.

Very truly yours,
A. G. SEIFRIED.



Nandina Domestica
Scarlet Winter Color.



BALLED OLEANDER
The Characteristic Shrub for the Gulf Coast.

Oleanders

Pink and White

OLEANDER (Nerium). Pink and White. Oleanders are the standby for southern planters. More effect for the money can be had with them than with any other plant. They hold up well, transplant well, and bloom the first season. For tubs and containers they have long been favorites and are coming into greater demand again after a few years decline of this usage. We have the most vigorous, stocky, uniform bushes to be found. You will find their generous use profitable and they "take" with the retail trade. The two varieties here listed are the strongest growing of the more generally planted kinds.

Key	Class	Quality	Height	10	100
1W4	B.	XXX	6 ft.	30.00	240.00
2W4	B.	XX	6 ft.	25.00	200.00
3W4	B.	XXX	5 ft.	25.00	200.00
4W4	B.	XX	5 ft.	20.00	160.00
5W4	B.	XXX	4 ft.	20.00	160.00
6W4	B.	XX	4 ft.	17.50	140.00
7W4	B.	XXX	3 ft.	15.00	120.00
8W4	B.	X	3 ft.	10.00	80.00
9W4	B.	XXX	2 ft.	10.00	80.00
10W4	B.	X	2 ft.	7.50	60.00
11W4	N.B.	X	5 ft.	10.00	80.00
12W4	N.B.	X	4 ft.	7.50	60.00
13W4	N.B.	X	3 ft.	5.00	40.00
14W4	N.B.		2 ft.	3.50	30.00
15W4	N.B.		1 ft.	2.00	15.00

New Red

OLEANDER, RED. This variety has blood red blossoms of striking beauty. Side by side with other kinds we have seen them withstand freezing weather without injury to a single leaf. All Oleanders come up from the roots after severe freezing, but this variety seems to be unusually resistant.

Key	Class	Quality	Height	10	100
1W4	B.	XXX	6 ft.	45.00	360.00
2W4	B.	XX	6 ft.	40.00	320.00
3W4	B.	XXX	5 ft.	37.50	300.00
4W4	B.	XX	5 ft.	32.50	260.00
5W4	B.	XXX	4 ft.	30.00	240.00
6W4	B.	XX	4 ft.	25.00	200.00
7W4	B.	XXX	3 ft.	22.50	180.00
8W4	B.	X	3 ft.	17.50	140.00
9W4	B.	XXX	2 ft.	15.00	120.00
10W4	B.	X	2 ft.	10.00	80.00
11W4	N.B.	X	5 ft.	12.50	100.00
12W4	N.B.	X	4 ft.	10.00	80.00
13W4	N.B.	X	3 ft.	7.50	60.00
14W4	N.B.		2 ft.	5.00	40.00
15W4	N.B.		1 ft.	3.50	30.00

CAUTION: Never lift small B. & B. stock by the top or branches. Lift the ball itself by grasping it with both hands, so as not to loosen roots in the ball.

BROADLEAF EVERGREEN SHRUBS—Continued

Fancy Oleanders

FANCY VARIETIES. We are Oleander Specialists and for years have been growing the best varieties. Annual trips over the coast country in search of new types have brought our stock to the point where we list more accurately described types than any firm we know. As novelties for your retail customers you will find these business getters. We will only sell a limited quantity of each variety for we must keep our stocks up to meet the great demand for the fancy types. You will want a nice lot of these and should place your order early.

No. 2	Twice Doubled Red	No. 14	Double White
No. 3	Doubled Dark Red	No. 15	Double Pink, variegated foliage
No. 4	Single, Peachblow	No. 16	Single Light Buff
No. 5	Double Yellow	No. 17	Single Dark Buff
No. 6	Peachblow Double Yellow	No. 18	Single Watermelon Pink
No. 7	Double Light Pink	No. 19	Double Light Pink
No. 8	Single Pink	No. 21	Single White
No. 9	Single Very Light Pink	No. 22	Single variegated
No. 10	Single Very Red	No. 23	Single Lavender
No. 11	Single Yellow Canary	No. 24	Double Lavender
No. 12	Single Light Pink	No. 26	Single Dwarf Red
No. 29	Twice Doubled Lavender	No. 28	Thrice Doubled Dark Pink
No. 33	White, Pink Center		Coral Pink

Key	Class	Quality	Height	10	100
1W4	B.	XXX	5 ft.	37.50	300.00
2W4	B.	XX	5 ft.	32.50	260.00
3W4	B.	XXX	4 ft.	30.00	240.00
4W4	B.	XX	4 ft.	25.00	200.00
5W4	B.	XXX	3 ft.	22.50	180.00
6W4	B.	X	3 ft.	17.50	140.00
7W4	B.	XXX	2 ft.	15.00	120.00
8W4	B.	X	2 ft.	10.00	80.00
9W4	N.B.	X	5 ft.	12.50	100.00
10W4	N.B.	X	4 ft.	10.00	80.00
11W4	N.B.	X	3 ft.	7.50	60.00
12W4	N.B.	X	2 ft.	5.00	40.00
13W4	N.B.		1 ft.	3.50	30.00

Photinia

PHOTINIA, LOW (*P. serrulata.*) *P. dentata.* One of the finest evergreens and one that is being used more and more during the past few seasons. Moderately upright: large leaves of dark green with new growth first blood red, then tan and fawn color and in winter some of the old leaves crimson. We have never offered more beautiful specimens of this variety than we are now growing. For variety in your work, use Photinias.

Key	Class	Quality	Height	10	100
1W4	B.	XXX	5 ft.	37.50	300.00
2W4	B.	XX	5 ft.	32.50	260.00
3W4	B.	XXX	4 ft.	30.00	240.00
4W4	B.	XX	4 ft.	25.00	200.00
5W4	B.	XXX	3 ft.	22.50	180.00
6W4	B.	XX	3 ft.	17.50	140.00
7W4	B.	XXX	2 ft.	15.00	120.00
8W4	B.	XX	2 ft.	12.50	100.00
9W4	B.	X	1½ ft.	10.00	80.00

PITTIOSPORUM

TOBIRA (*P. Tobira*). An evergreen unequalled in desirable qualities. Can be sheared to any desired shape or permitted to grow informally, forming a very bushy, compact, wide-spreading shrub. Small creamy blossoms of delightful fragrance.

Key	Class	Quality	Height	10	100
1W4	B.	XXX	2½ ft.	37.50	300.00
2W4	B.	X	2 ft.	20.00	160.00
3W4	B.	X	1½ ft.	15.00	120.00
4W4	B.	X	1 ft.	10.00	80.00
5W4	B.	X	9 in.	7.50	60.00

ROSEMARY (*Rosemarinus officinalis*). Gray-green, sage color, low shrub, very desirable.

Key	Class	Quality	Height	10	100
1W4	B.	XXX	1½ ft.	15.00	120.00
2W4	B.	XX	1½ ft.	12.50	100.00
3W4	B.	XXX	1 ft.	10.00	80.00
4W4	B.	XX	1 ft.	9.00	75.00
5W4	B.	XX	6 in.	7.50	60.00
6W4	B.	X	6 in.	6.50	55.00

The Finest Broadleaf Evergreens

The Privet (*Ligustrum*) Group

Griffings Southern Selection

All The New and Popular Varieties Offered

A group essential to landscaping. The word, Privet (*Ligustrum*) refers to a large family of plants whose individual members are widely different in their various characters. The group is by far the largest and most generally successful among our broad-leaf evergreens. Individually and as a group, their beauty is unrivalled. All of the Privets are valuable for ornamental planting because of rich coloring; clean habit; vigorous, healthy nature. Panicles of fragrant white blossoms are borne profusely in spring, followed by showy fruits in shades of purple resembling wild grapes.

Our early recognition of the beauty and importance of this great group caused us to devote the closest attention to the observation, selection, and development of the various types, and, with recent introductions we have made, together with those contemplated for the future, we have observed the need for a simple classification of the pronounced types for the convenience of our trade, and with the idea of encouraging greater familiarity with the new varieties among the many people who have learned the beauty and value of this group in their landscape and ornamental planting, we have prepared the following classification based on very broad principles.

BROADLEAF EVERGREEN SHRUBS—Continued

THICK GLOSSY LEAF TYPE (Lucidums)

The glossy leaf type is marked in having very glossy or shiny foliage of rich, dark green color shading from almost black in some varieties to a light mottled effect in others. Height varies from low to tall and nature of growth is widely different in various varieties. This is probably the most distinctive type and has the highest quality and best texture in the family.



Worthy of its Name, Griffings Wax

CRINKLYLEAF. A new variety of our own origination. A sport from the Graceful or old Nepalense type. Leaves medium size, pointed, very glossy and thick, distinctly twisted, making a most unusual effect. Fine for specimens or massing. As good as most Lucidums with a more striking appearance. The blackish green color so desirable is had in this new variety. Growth is upright but very full.

Key	Class	Quality	Height	10	100
1W4	B.	XXX	5 ft.	37.50	300.00
2W4	B.	XX	5 ft.	32.50	260.00
3W4	B.	XXX	4 ft.	30.00	240.00
4W4	B.	XX	4 ft.	25.00	200.00
5W4	B.	XXX	3 ft.	22.50	180.00
6W4	B.	XX	2 ft.	15.00	120.00
7W4	B.	XX	1½ ft.	12.50	100.00
8W4	B.	X	1½ ft.	11.50	95.00
9W4	B.	XX	1 ft.	10.00	80.00
10W4	B.	X	1 ft.	7.50	60.00
11W4	N.B.		1½ ft.	6.50	55.00
12W4	N.B.		1 ft.	5.00	40.00
13W4	N.B.		6 in.	4.00	35.00

GRIFFINGS WAX. Japanese Compact Wax. Ligustrum Lucidum Compacta. The finest broadleaf evergreen grown for the southland. We obtained it in a bankrupt stock of the Alvin Japanese Nurseries, in a large shipment of Lucidum Privets imported from Japan. This one plant was a sport or mutation. The unusual beauty of it was instantly noted by us, and it was carefully segregated and a stock propagated from it. Grafting was practiced altogether to keep the type true. Then it was placed on the market. No ornamental shrub has sold to such an extent. Each year we have sold many solid cars of this variety alone, and many customers were turned down because the supply ran out.

The leaves are very thick and waxy, the upper surface being highly glossed of black green color and the under side of a lighter shade. The plant is very compact and heavily branched. Ideal in form and development. Our stock is symmetrical and uniform. Holds up indefinitely when balled and is the most popular plant on the southern market. It sells to the retail buyer at sight. Where it is known it is demanded in all plantings. Do not confuse Griffing's Wax with the common lucidums on the market which resemble it to some extent, but do not have the dark color, the high gloss, nor the compact form. The Griffing's Wax grows in the shade or in full sunlight. It is not injured by rain drips. In any difficult place it will thrive better than other evergreen or ornamental plants.

Attains 6 feet and more, but so wide and compact in form that it is readily kept at any height desired. Is used for hedges of high quality, for beautiful groups and masses in every location, and as specimen plants about houses and grounds. Can be sheared into perfect forms like the laurel and bays of England and Holland. Used in tubs with great success. For your best work use the Griffing's Wax and be sure of pleased customers. Never injured by insect or disease in all the time we have grown them.

Key	Class	Quality	Height	10	100
1W4	B.	XXXX	6 ft.	90.00	720.00
2W4	B.	XXXXX	5 ft.	75.00	600.00
3W4	B.	XXX	3 ft.	30.00	240.00
4W4	B.	XXX	2½ ft.	25.00	200.00
5W4	B.	XXX	2 ft.	20.00	160.00
6W4	B.	X	2 ft.	17.50	140.00
7W4	B.	XXX	1½ ft.	15.00	120.00
8W4	B.	XX	1½ ft.	14.00	115.00
9W4	B.	X	1½ ft.	12.50	100.00
10W4	B.	XXX	1 ft.	11.50	95.00
11W4	B.	XX	1 ft.	10.00	80.00
12W4	B.	X	1 ft.	9.00	75.00
13W4	N.B.	XX	2 ft.	10.00	80.00
14W4	N.B.	X	2 ft.	9.00	75.00
15W4	N.B.	XX	1½ ft.	6.50	55.00
16W4	N.B.	X	1½ ft.	5.50	44.00
17W4	N.B.	XX	1 ft.	5.00	40.00
18W4	N.B.	X	1 ft.	4.00	35.00



Griffings Wax in Nursery

BALLED EVERGREENS WILL BRING YOU BUSINESS

BROADLEAF EVERGREEN SHRUBS—Continued

Graceful

GRACEFUL. Formerly called *Ligustrum nepalense* and *Lucidum nepalense*. Dark, blackish green color. Medium size, pointed leaves, borne very thickly on the upright curving branches. For medium plantings this is the ideal shrub, better than the choice lilacs of northern usage. Comes between the tall stiff Upright type and the compact form of the Griffing's Wax. Makes the best show of any evergreen obtainable at the same cost. We have large blocks of beautiful plants to meet the heavy demand created since our introduction of this excellent type.

Key	Class	Quality	Height	10	100
1W4	B.	XXXXXX	8 ft.	75.00	600.00
2W4	B.	XXX	7 ft.	44.00	355.00
3W4	B.	XXX	6 ft.	37.50	300.00
4W4	B.	XXX	5 ft.	31.50	255.00
5W4	B.	XX	5 ft.	27.50	220.00
6W4	B.	XXX	4 ft.	25.00	200.00
7W4	B.	XX	4 ft.	21.50	175.00
8W4	B.	XXX	3 ft.	19.00	155.00
9W4	B.	XX	3 ft.	15.00	120.00
10W4	B.	XXX	2 ft.	12.50	100.00
11W4	B.	XX	2 ft.	11.50	95.00
12W4	B.	XX	1½ ft.	10.00	80.00
13W4	B.	XX	1 ft.	9.00	75.00
14W4	N.B.		3 ft.	10.00	80.00
15W4	N.B.		2 ft.	7.50	60.00
16W4	N.B.		1½ ft.	6.00	50.00
17W4	N.B.		1 ft.	4.50	40.00
18W4	N.B.		6 in.	3.50	30.00



Upright Privet. Unequaled for narrow places or for high point in groups and masses. Rich color, high quality

Upright

UPRIGHT. *Nobilis*, *Pyramidale*. *L. pyramidale vulgare*. All branches grow in upright position with dark, glossy green foliage resembling the Graceful. Unexcelled for planting at high points, corners, between windows, or any point where a tall evergreen of medium narrow width is desired. Like the Graceful, it holds up for months in the Ball and never fails to fill a large space in a planting with immediate effect. Our plants are showing up wonderfully in the nursery.

Key	Class	Quality	Height	10	100
1W4	B.	XXX	10 ft.	75.00	600.00
2W4	B.	XXX	8 ft.	60.00	480.00
3W4	B.	XXX	7 ft.	35.00	280.00
4W4	B.	XXX	6 ft.	30.00	240.00
5W4	B.	XXX	5 ft.	25.00	200.00
6W4	B.	XX	5 ft.	20.00	160.00
7W4	B.	XXX	4 ft.	20.00	160.00
8W4	B.	XX	4 ft.	15.00	120.00
9W4	B.	XXX	3 ft.	15.00	120.00
10W4	B.	XX	3 ft.	10.00	80.00
11W4	B.	XXX	2 ft.	10.00	80.00
12W4	E.	XX	2 ft.	9.00	75.00
13W4	B.	XX	1½ ft.	7.50	60.00
14W4	B.	XX	1 ft.	6.50	55.00
15W4	N.B.		3 ft.	10.00	80.00
16W4	N.B.		2 ft.	7.50	60.00
17W4	N.B.		1½ ft.	6.00	50.00
18W4	N.B.		1 ft.	4.50	40.00
19W4	N.B.		6 in.	3.50	30.00



Glossy Leaf Privet with Conifers and Vines Give Ideal Landscape Effects

VARIEGATED NEPAL. *Iwata*. Variegated Compact Wax. *L. nepalense* variegated. We have an excellent type, very compact and bushy. Somewhat slower and smaller than the Griffing's Wax.

Key	Class	Quality	Height	10	100
1W4	E.	XXX	5 ft.	62.50	500.00
2W4	B.	XXX	4 ft.	50.00	400.00
3W4	E.	XXX	3 ft.	37.50	300.00
4W4	B.	XXX	2 ft.	25.00	200.00
5W4	B.	XXX	1½ ft.	17.50	140.00
6W4	B.	XX	1½ ft.	15.00	120.00
7W4	B.	XX	1 ft.	12.50	100.00

NEPAL. Foliage is solid green instead of mottled as above.

Key	Class	Quality	Height	10	100
1W4	B.	XX	2 ft.	17.50	140.00
2W4	B.	XX	1½ ft.	14.00	115.00
3W4	B.	XX	1 ft.	10.00	80.00

DON'T LIFT SMALL BALLED STOCK BY THE TOPS—LIFT THE BALL

BROADLEAF EVERGREEN SHRUBS—Continued

Fine Leaf Type

This type includes those varieties having very small foliage of light green color without the distinguishing, glossy, thick nature of other varieties. Loose growing and more open, the feathery branching is very attractive. Height varies from medium to tall and is readily controlled by pruning.



Shaped Chinese Privet

Amur

AMUR. (*Ligustrum amurense*) Amoor River Privet. We list here only choice, bushy stock, heavily foliated for good landscape effects. Grown wide spaced and well pruned.

Key	Class	Quality	Height	10	100
1W4	B.	XXX	7 ft.	35.00	280.00
2W4	B.	XXX	6 ft.	39.00	240.00
3W4	B.	XXX	5 ft.	25.00	200.00
4W4	B.	X	5 ft.	22.50	180.00
5W4	B.	XXX	4 ft.	20.00	160.00
6W4	B.	XX	4 ft.	15.00	120.00
7W4	B.	XX	3 ft.	12.50	100.00
8W4	B.	XX	2 ft.	10.00	80.00

SHAPED CHINESE (*L. sinense*). These plants have been carefully sheared from the youngest stages to make very compact full plants which can be used for boxwood with good effect. Ideal for making hedges with immediate results or for use in tubs. As specimens on lawns where formal effects are desired they show up better than any other plant adapted to the South.

Key	Class	Quality	Height	10	100
1W4	B.	XXXX	5 ft.	50.00	400.00
2W4	B.	XXXX	4 ft.	40.00	320.00
3W4	B.	XXX	4 ft.	35.00	280.00
4W4	B.	XXXX	3 ft.	30.00	240.00
5W4	B.	XXX	3 ft.	25.00	200.00
6W4	B.	XXX	2 ft.	17.50	140.00
7W4	B.	XXX	1½ ft.	15.00	120.00
8W4	B.	XX	1½ ft.	10.00	80.00

Large Leaf Type

This division includes the varieties characterized by exceptionally large leaves of various thickness and finish. Color varies from dull brownish-green to golden-yellow. Height of this type is generally tall; easily controlled by pruning.

Bigleaf

BIGLEAF. Formerly called *L. macrophyllum*. This is a grafted true type, better than any selected type of *L. japonica*. Exceptionally large leaves. Dark green, glossy above. Has very high quality and gives an entirely different appearance from the common Japanese Privet. Suited for prominent places in good plantings. Makes a very large bushy shrub. In transplanting they hold their leaves and make a big showing in new jobs.

Key	Class	Quality	Height	10	100
1W4	B.	XXX	8 ft.	50.00	400.00
2W4	B.	XX	8 ft.	40.00	320.00
3W4	B.	XXX	7 ft.	40.00	320.00
4W4	B.	XX	7 ft.	35.00	280.00
5W4	B.	XXX	6 ft.	35.00	280.00
6W4	B.	XX	6 ft.	30.00	240.00
7W4	B.	XXX	5 ft.	30.00	240.00
8W4	B.	XX	5 ft.	25.00	210.00
9W4	B.	XXY	4 ft.	25.00	210.00
10W4	B.	XX	4 ft.	20.00	160.00
11W4	B.	XX	3 ft.	15.00	120.00
12W4	B.	XX	2 ft.	10.00	80.00
13W4	N.B.		5 ft.	15.00	120.00
14W4	N.B.		4 ft.	12.50	100.00
15W4	N.B.		3 ft.	10.00	80.00

CALIFORNIA (*L. evalifolium*). The common Privet, not desirable for good work, being rapidly replaced by the choice glossy leaf evergreen varieties.

Key	Class	Quality	Height	10	100
1W4	B.	XXX	8 ft.	35.00	280.00
2W4	B.	XXX	7 ft.	30.00	240.00
3W4	B.	XX	6 ft.	25.00	200.00
4W4	B.	XX	5 ft.	20.00	160.00
5W4	B.	XX	4 ft.	15.00	120.00
6W4	B.	XX	3 ft.	12.50	100.00
7W4	B.	XX	2 ft.	10.00	80.00
8W4	N.B.		4 ft.	7.50	60.00
9W4	N.B.		3 ft.	6.50	55.00
10W4	N.B.		2 ft.	5.00	40.00

Goldenleaf

GOLDENLEAF Formerly called *Ligustrum marginatum aurea*. Very similar in size and growth to the Bigleaf but the new leaves are bright golden green or pure golden. Makes a splendid display of color and is widely popular. We have the only stock of the real golden type. Old leaves are tinged with the golden cast at seasons and at other times are rich green.

Key	Class	Quality	Height	10	100
1W4	B.	XXX	8 ft.	50.00	400.00
2W4	B.	XXX	7 ft.	40.00	320.00
3W4	B.	XXX	6 ft.	35.00	280.00
4W4	B.	XXX	5 ft.	30.00	240.00
5W4	B.	XX	4 ft.	29.00	160.00
6W4	B.	XX	3 ft.	15.00	120.00
7W4	B.	X	2 ft.	12.50	100.00
8W4	B.	X	1½ ft.	10.00	80.00
9W4	N.B.		3 ft.	10.00	80.00
10W4	N.B.		2 ft.	7.50	60.00
11W4	N.B.		1 ft.	5.00	40.00

JAPANESE (*L. japonica*). Being replaced in general usage by the improved types, Bigleaf, Goldenleaf, etc.

Key	Class	Quality	Height	10	100
1W4	B.	XXX	8 ft.	35.00	280.00
2W4	B.	XXX	7 ft.	30.00	240.00
3W4	B.	XX	7 ft.	27.50	220.00
4W4	B.	XXX	6 ft.	25.00	200.00
5W4	B.	XX	6 ft.	22.50	180.00
6W4	B.	XXX	5 ft.	20.00	160.00
7W4	B.	XX	5 ft.	17.50	140.00
8W4	B.	XXX	4 ft.	15.00	120.00
9W4	B.	XX	4 ft.	12.50	100.00



Concrete Road to the Nursery Through the Pines.

DECIDUOUS SHRUBS

The great majority of brilliant flowering shrubs and many other ornamental varieties lose their foliage in winter (Deciduous). For gorgeous color displays they should be promiscuously used in landscape plantings. Their winter barren period is brief in our Southern section and the color changes in autumn make the absence of leaves in winter less lamented. Usually flowering shrubs are best planted in groups of from 3 to 20 or more.

CHASTE-TREE. (*Vitex agnus-castus*). Lavender Bush
One of the best deciduous shrubs for summer blossoms. We have very strong plants, well branched, stocky. Fine for color effects in masses. Foliage aromatic.

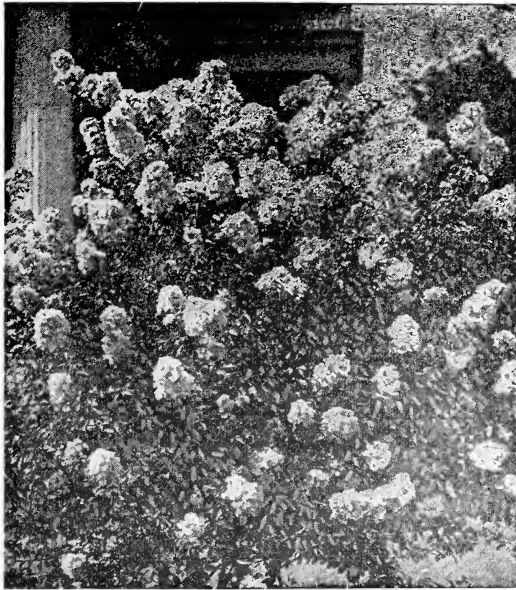
Key	Class	Quality	Height	10	100
1W4	B.	XXX	5 ft.	20.00	160.00
2W4	B.	XXX	4 ft.	15.00	120.00
3W4	B.	XXX	3 ft.	10.00	80.00
4W4	N.B.	XX	4 ft.	6.50	55.00
5W4	N.B.	X	3 ft.	5.00	40.00
6W4	N.B.	X	2 ft.	3.00	25.00
7W4	N.B.	X	1 ft.	2.00	20.00

CORALBERRY (*Symphoricarpos vulgaris*) Indian Currant. Our stock is a heavy fruiting type, dense foliage development in summer.

Key	Class	Quality	Height	10	100
1W4	B.	XXX	2 ft.	12.50	100.00
2W4	B.	XX	1½ ft.	10.00	80.00
3W4	N.B.		2 ft.	6.50	55.00
4W4	N.B.		1½ ft.	5.00	40.00

Graceful flowering shrubs with attractive foliage enhance the beauty as well as the value of the home. Make liberal use of them.

Crape Myrtle



Griffings Dwarf Crimson Crape Myrtle—One of the Prettiest and Best Shrubs.

CRAPE MYRTLE (*Lagerstromieia indica*). The favorite flowering shrub of the South, hardy and heavy bloomer, it paints the landscape in summer months with its brilliant blossoms in tones of crimson, red, pink, purple, and other shades. Frequently termed the "Lilac of the South."

Griffings Crimson

GRIFFINGS CRIMSON. The watermelon pink or cerise color so much desired is very pronounced in this variety. The flower heads are exceptionally large and fluffy, the color rich, clear and bright. No shrub makes such a gorgeous display in a planting as this. The compact natural growth is easily controlled by pruning so as to make a very dwarfed plant. We prune our young plants several times to induce thick branching with dense foliage and many flower buds. Interplanted with evergreens, beautiful effects are obtained. Massed in groups of any size, a display of color unrivaled is had the first summer. The crape myrtle is the lilac of the South. They deserve the most generous usage and the demand of recent years indicates its great popularity. Our type is recognized by our trade as being the best on the market. For big developments, sub-divisions, parks, etc., they can be used by the thousand to great advantage. As a shrub to alternate with street trees they have met wide favor.

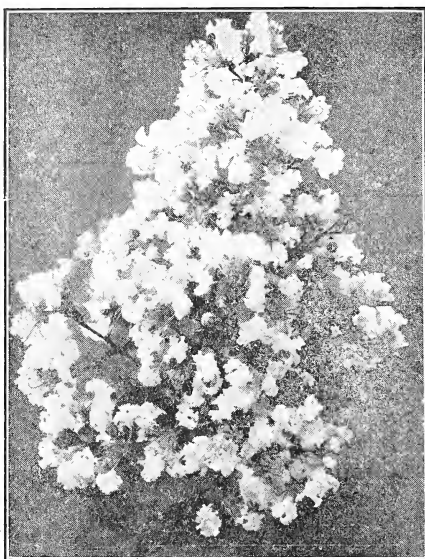
Baker Dwarf Blue

BAKER DWARF BLUE. A genuine dwarf and in great demand because of the distinctive, unusual color. We have never been able to supply the demand. This year we offer immense blocks of heavy branched plants for good effect the first summer. Pruning has increased the natural compact nature. This is going to be one of the most popular flowering shrubs. Use them generously for blue color.

Key	Class	Quality	Height	10	100
1W4	B.	XXX	3 ft.	24.00	195.00
2W4	B.	XXX	2½ ft.	20.00	160.00
3W4	B.	XXX	2 ft.	16.50	135.00
4W4	B.	XX	1½ ft.	12.50	100.00
5W4	N.B.	X	2 ft.	10.00	80.00
6W4	N.B.	X	1½ ft.	9.00	75.00
7W4	N.B.	X	1 ft.	6.50	55.00

Key	Class	Quality	Height	10	100
1W4	B.	XX	5 ft.	22.50	180.00
2W4	B.	XXX	4 ft.	20.00	160.00
3W4	B.	X	4 ft.	17.50	140.00
4W4	B.	XXX	3 ft.	17.50	140.00
5W4	B.	X	3 ft.	15.00	120.00
6W4	B.	XXX	2½ ft.	15.00	120.00
7W4	B.	X	2½ ft.	12.50	100.00
8W4	B.	XXX	2 ft.	12.50	100.00
9W4	B.	X	2 ft.	10.00	80.00
10W4	B.	XXX	1½ ft.	10.00	80.00
11W4	B.	X	1½ ft.	7.50	60.00
12W4	B.	XXX	1 ft.	7.50	60.00
13W4	B.	X	1 ft.	5.00	40.00
14W4	N.B.	XX	5 ft.	11.50	95.00
15W4	N.B.		5 ft.	10.00	80.00
16W4	N.B.	XX	4 ft.	10.00	80.00
17W4	N.B.		4 ft.	9.00	75.00
18W4	N.B.	XX	3 ft.	9.00	75.00
19W4	N.B.		3 ft.	7.50	60.00
20W4	N.B.	XX	2½ ft.	7.50	60.00
21W4	N.B.		2½ ft.	6.50	55.00
22W4	N.B.	XX	2 ft.	6.50	55.00
23W4	N.B.		2 ft.	4.00	35.00
24W4	N.B.	XX	1½ ft.	4.00	35.00
25W4	N.B.		1½ ft.	2.50	20.00
26W4	N.B.	XX	1 ft.	2.50	20.00
27W4	N.B.		1 ft.	1.50	15.00

DECIDUOUS SHRUBS—Continued



Purple Grape Myrtle Elscsem.

PINK. The light pastel shade of this variety is excellent in many locations. Our bushes have been pruned and are very bushy.

Key	Class	Quality	Height	10	100
1W4	B.	XX	3 ft.	17.50	140.00
2W4	B.	XX	2 ft.	12.50	100.00
3W4	N.B.		3 ft.	7.50	60.00
4W4	N.B.		2 ft.	4.00	35.00
5W4	N.B.		1 ft.	1.50	15.00

White

WHITE. Most white crape myrtles are dingy, or have a purple center that detracts from their beauty. Ours are snow white, bright, and very fluffy. A fitting companion for the Blue and Griffing Crimson, where striking effects are desired.

Key	Class	Quality	Height	10	100
1W4	B.	XX	5 ft.	22.59	180.00
2W4	B.	XXX	4 ft.	20.00	160.00
3W4	B.	XX	4 ft.	17.50	140.00
4W4	B.	XXX	3 ft.	17.50	140.00
5W4	B.	XX	3 ft.	15.00	120.00
6W4	B.	XXX	2½ ft.	15.00	120.00
7W4	B.	XX	2½ ft.	12.50	100.00
8W4	B.	XXX	2 ft.	12.50	100.00
9W4	B.	XX	2 ft.	10.00	80.00
10W4	P.	XXX	1½ ft.	10.00	80.00
11W4	E.	XX	1½ ft.	7.50	60.00
12W4	E.	XXX	1 ft.	7.50	60.00
13W4	E.	XX	1 ft.	5.00	40.00
14W4	N.B.		5 ft.	10.00	80.00
15W4	N.B.		4 ft.	9.00	75.00
16W4	N.B.		3 ft.	7.50	60.00
17W4	N.B.		2½ ft.	6.50	55.00
18W4	N.B.		2 ft.	4.00	35.00
19W4	N.B.		1½ ft.	2.50	20.00
20W4	N.B.		1 ft.	1.50	15.00

PRUNING DECIDUOUS SHRUBS

After flowering, by pruning you can keep the varieties within any desired size, making for a more profuse bloom, greater vigor, and retention of the same effect, and the planting will be just as pretty ten years hence, its growth being kept within proper bounds for a maximum of beauty.

Purple Grape Myrtle

PURPLE. The rich color of this variety is very desirable. In background it adds distance. The distribution is much less than that of other varieties, hence making it a novel addition to most plantings. The shade of purple is rich and bright in our type, not a faded out magenta so often seen. Combinations of crape myrtle colors make the most exquisite effects obtainable with southern material.

Key	Class	Quality	Height	10	100
1W4	B.	XXX	7 ft.	25.00	200.00
2W4	B.	X	7 ft.	20.00	160.00
3W4	B.	XXX	6 ft.	20.00	100.00
4W4	B.	X	6 ft.	17.50	140.00
5W4	B.	XXX	5 ft.	17.50	140.00
6W4	B.	X	5 ft.	15.00	120.00
7W4	B.	XXX	4 ft.	15.00	120.00
8W4	B.	X	4 ft.	12.50	100.00
9W4	B.	XXX	3 ft.	12.50	100.00
10W4	P.	X	3 ft.	10.00	30.00
11W4	B.	XXX	2 ft.	10.00	80.00
12W4	B.	X	2 ft.	7.50	60.00
13W4	N.B.		7 ft.	10.00	80.00
14W4	N.B.		6 ft.	9.00	75.00
15W4	N.B.		5 ft.	7.50	60.00
16W4	N.B.		4 ft.	6.50	55.00
17W4	N.B.		3 ft.	5.00	40.00
18W4	N.B.		2 ft.	4.00	35.00

Deutzia

DEUTZIA (Deutzia). Through new varieties has become one of the most widely used deciduous shrubs. Masses of blossoms appear in early spring, giving a great floral display early in the season.

FORTUNE (D. scabra fortunei).

SNOWFLAKE (D. scabra candidissima) Pure white blossoms.

PRIDE OF ROCHESTER (D. scabra). Large double white flowers tinged rose.

FUZZY (D. scabra).

Key	Class	Quality	Height	10	100
1W4	B.	XX	3 ft.	12.50	100.00
2W4	E.	XX	2 ft.	10.00	80.00
3W4	N.B.		3 ft.	6.50	55.00
4W4	N.B.		2 ft.	5.00	40.00
5W4	N.B.		1 ft.	4.00	35.00

DOGWOOD (Cornus). Bloodtwig (C. sanguinea). Red stem Dogwood and Cornus siberica. Stems are blood red in winter. Flowers, white, small, borne in great heads.

Key	Class	Quality	Height	10	100
1W4	B.	XX	3 ft.	12.50	100.00
2W4	B.	XX	2 ft.	10.00	80.00
3W4	N.B.		3 ft.	6.50	55.00
4W4	N.B.		2 ft.	5.00	40.00
5W4	N.B.		1 ft.	4.00	35.00

Forsythia

FORSYTHIA (Forsythia). Golden Bell. Graceful shrubs with shiny dark green foliage. Medium height. Yellow blossoms borne before leaves appear in spring.

BORDER (F. intermedia). Midseason bloomer.

FORTUNE (F. suspensa fortunei). Branches recurve gracefully.

GREENSTEM (F. virdissima). Very attractive foliage, glossy green.

Key	Class	Quality	Height	10	100
1W4	B.	XX	3 ft.	12.50	100.00
2W4	B.	XX	2 ft.	10.00	80.00
3W4	N.B.		3 ft.	6.50	55.00
4W4	N.B.		2 ft.	5.00	40.00
5W4	N.B.		1 ft.	4.00	35.00

SEND YOUR LISTS IN EARLY—WE WANT TO SERVE YOU

DECIDUOUS SHRUBS--Continued

Honeysuckle Bush

(LONICERA)

A splendid group of flowering shrubs well adapted to massing and foundation planting.

MORROW. (*L. morrowi*). Strong growing bush, light pink flowers, followed by red berries.

MORROW. Same except blossoms dark pink.

TATARIAN, PINK. Large, upright shrub, bright pink blossoms. The berries very ornamental.

TATARIAN, WHITE (*L. tatarica*). Large bush, upright growth, white flowers.

WHITE BELLE. Pure white blossoms.

WINTER HONEYSUCKLE (*L. fragrantissima*). White blossoms very fragrant, followed by bright colored berries.

Key	Class	Quality	Height	10	100
1W4	B.	XX	3 ft.	12.50	100.00
2W4	B.	XX	2 ft.	10.00	80.00
3W4	N.B.		3 ft.	6.50	55.00
4W4	N.B.		2 ft.	5.00	40.00
5W4	N.B.		1 ft.	4.00	35.00

OTASKA HYDRANGEA

HYDRANGEA. (*Hydrangea opuloides*). Best of French variety especially adapted for the Gulf Coast sections. The large heads of white, pink and blue are exquisite. Hydrangeas appear at their best when planted in groups or partially shaded places. Hydrangea colors are uncertain blooming pink in certain soils and blue in others, so we cannot guarantee specific colors.

Key	Class	Quality	Height	10	100
1W4	8 in. Pot or B&B	XX		12.50	100.00
2W4	5 in. Pot or B&B	XXX		7.50	60.00
3W4	5 in. Pot or B&B	X		5.00	40.00
4W4	3 in. Pot or B&B	XXX		5.00	40.00
5W4	3 in. Pot or B&B	X		3.00	25.00

PURPLELEAF PLUM (*Prunus cerasifera*). *Prunus pissardi*. Thundercloud Plum. Fine to use as small tree or as a shrub. Contrasts well with Goldenleaf Privet. Gives distance to backgrounds.

Key	Class	Quality	Height	10	100
1W4	B.	XX	5 ft.	17.50	140.00
2W4	B.	XX	4 ft.	12.50	100.00
3W4	B.	XX	3 ft.	7.50	60.00
4W4	B.	XX	2 ft.	5.00	40.00

PUSSY WILLOW (*S. discolor*). The popularity of the sprigs in spring and an increasing attempt to have seasonal effects in plantings makes this shrub very desirable. The foliage is attractive and it makes fine groups or masses.

Key	Class	Quality	Height	10	100
1W4	B.	XX	5 ft.	15.00	120.00
2W4	B.	XX	4 ft.	12.50	100.00
3W4	N.B.		5 ft.	7.50	60.00
4W4	N.B.		4 ft.	6.50	55.00
5W4	N.B.		3 ft.	5.00	40.00

FLOWERING POMEGRANATE (*Punica Granatum*). An old historical fruit. Thrives throughout the South, making a large shrub or small tree. Fruit is liked by many.

Great abundance of bright colored blossoms, making very attractive mass planting.

Key	Class	Quality	Single White		100
			Height	10	
1W4	B.	XX	5 ft.	15.00	120.00
2W4	B.	XX	4 ft.	12.50	100.00
3W4	N.B.		5 ft.	7.50	60.00
4W4	N.B.		4 ft.	6.50	55.00
5W4	N.B.		3 ft.	5.00	40.00

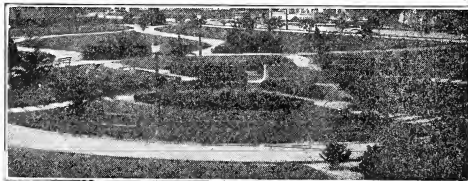
Pinxter Flower

PINXTER FLOWER (*Azalea nudiflorum*). Wild Bush Honeysuckle. Wild azalea. In many sections of the South the native woods are glorified in the early spring with the rich pink blossoms of this shrub. Groups of these among the coniferous Evergreens will give wonderful results.

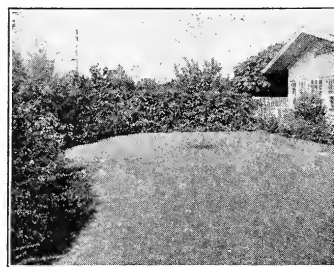
Key	Class	Quality	Height	10	100
1W4	B.	XX	3 ft.	12.50	100.00
2W4	B.	XX	2 ft.	10.00	80.00

QUINCE, FLOWERING (*Cydonia japonica*). Known as Japanese Quince and Firebush.

Key	Class	Quality	Height	10	100
1W4	B.	XX	3 ft.	12.50	100.00
2W4	B.	XX	2 ft.	10.00	80.00
3W4	N.B.		3 ft.	6.50	55.00
4W4	N.B.		2 ft.	5.00	40.00
5W4	N.B.		1 ft.	4.00	35.00



Corner in Beaumont's Most Beautiful Park Just After Being Laid Out and Planted by Us.



Open Lawn and Border Planting.

Spirea

Dainty, graceful, flowering shrub, very desirable for informal hedges, mass or specimen planting, and for bordering the taller growing shrubs.

S. BILLARDI. Attain 6 feet. Flowers bright pink, borne in panicles 5 to 8 inches long.

S. DOUGLASI. Pink or rose colored flowers in late summer.

S. VAN HOUTTEI. The well known Bridal Wreath. Widely grown favorite with dense foliage. White blooms in early spring. Leaves persistent in fall, a desirable feature.

Key	Class	Quality	Height	10	100
1W4	B.	XXX	4 ft.	12.50	100.00
2W4	B.	XXX	3 ft.	10.00	80.00
3W4	B.	XXX	2 ft.	7.50	60.00
4W4	N.B.	X	4 ft.	6.50	55.00
4W4	N.B.	X	3 ft.	5.00	40.00
6W4	N.B.	X	2 ft.	4.00	35.00

SUMAC (*Rhus Typhina*). Staghorn variety, noted for brilliant scarlet foliage in autumn, important for color Twigs velvety. Hardy, wide range, used in landscape plantings throughout the country.

Key	Class	Quality	Height	10	100
1W4	B.		3 ft.	12.50	100.00
2W4	B.		2 ft.	10.00	80.00
3W4	N.B.		3 ft.	6.50	55.00
4W4	N.B.		2 ft.	5.00	40.00
5W4	N.B.		1 ft.	4.00	35.00

EVERY "X" MEANS ADDITIONAL QUALITY AND DESIRABILITY

DECIDUOUS SHRUBS—Continued

Shrub-Althea

SHRUB-ALTHEA (*Hibiscus syriacus*). Also known as Rose-of-Sharon. Favorite old-fashioned upright flowering shrub.

ARDENS. Double; lilac with carmine center fading to a light blue violet.

BOULE DE FEU. Very double; deep red. Dwarf grower.

CRIMSON. Deep rich color.

DUCHESS DE BRABRANT. Double; red

JEANNE D'ARC. Very double; snow white.

LADY STANLEY. Semi-double; rosy white.

PAONIFLORA. Double; white, cherry-red center. Medium size.

PINK STRIPED. Double; white, pink blotches.

PRINCE LOUISE. Large, double; pink flower. Free bloomer. Dwarf habit. One of the best.

SNOWSTORM. Flowers pure white, single; blooms continuously all summer. Very effective and popular.

Key	Class	Quality	Height	10	100
1W4	B.	XX	4 ft.	15.00	120.00
2W4	B.	XX	3 ft.	12.50	100.00
3W4	B.	XX	2 ft.	7.50	60.00
4W4	N.B.		4 ft.	6.50	55.00
5W4	N.B.		3 ft.	5.00	40.00
6W4	N.B.		2 ft.	4.00	35.00
7W4	N.B.		1 ft.	2.50	20.00

SWEET SHRUB (*Calycanthus floridus*). Unusual chocolate-colored flowers, double, very fragrant; blossoms borne entire length of stem.

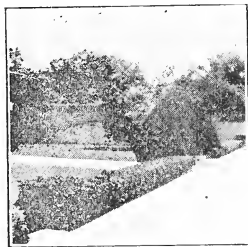
Key	Class	Quality	Height	10	100
1W4	B.		3 ft.	12.50	100.00
2W4	B.		2 ft.	10.00	80.00
3W4	N.B.		3 ft.	6.50	55.00
4W4	N.B.		2 ft.	5.00	40.00
5W4	N.B.		1 ft.	4.00	35.00

WIGELEA-DIERVILLA. Medium to large shrubs, spreading habit; great masses of bright color in late spring.

Key	Class	Quality	Height	10	100
1W4	B.	XX	3 ft.	12.50	100.00
2W4	B.	XX	2 ft.	10.00	80.00
3W4	N.B.		3 ft.	6.50	55.00
4W4	N.B.		2 ft.	5.00	40.00
5W4	N.B.		1 ft.	4.00	35.00

Plants are kept in our nurseries until they have gotten the habit of correct growth. Vigor and beauty is grown into them so that they will not only transplant successfully but keep on increasing in beauty.

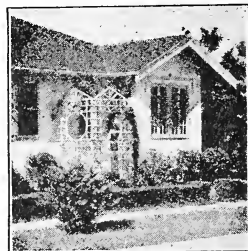
HEDGE PLANTS



Camphor Hedge

The man selling hedge plants or using them in his plantings must say more about them than just the fact that they are planted close and in straight rows. Beautiful effects are gained with hedges and opportunities for their use are numerous. Many shrubs are suited for hedges of either formal (Sheared) or informal or natural (Unsheared) kind. We are offering the most generally used hedge plants under this division but we grow such quantities of all good varieties that we can supply Crape Myrtles, grafted evergreen Privets and other plants for this purpose in unlimited quantity.

Hedges usually are slow in development. A great deal depends on the stock planted. Heavy, fibrous root systems mean quick, rank growth. We offer stock that is exceptionally well adapted for hedge planting and will really produce results you want.



Amur Privet Hedge

AMUR PRIVET (*L. amurensis*). Amoor River Privet. Most popular hedge of the South. Very beautiful, practically evergreen, dense in growth, very compact and establishes a very good hedge in one year. Hardy and adapted to general planting. Permits shearing to any height or shape. Pruning the first year should be very frequent, keeping new growth cut back at all times, just permitting about 1-2 inch of new growth to remain after each pruning.

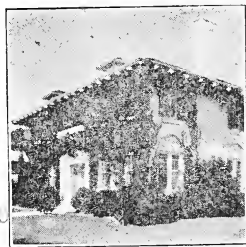
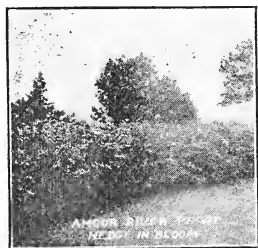
Key	Class	Quality	Height	10	100
1W4	2 yr.	X	4 ft.	10.00	75.00
2W4	2 yr.	X	3 ft.	7.50	50.00
3W4	1 yr.	X	2 ft.	6.00	40.00
4W4	1 yr.	X	1½ ft.	4.00	30.00
5W4	1 yr.		1 ft.	3.00	20.00

BAMBOO (Dwarf and Medium Growth Classes). Bamboo Can be sheared and made into living green walls, very high and narrow, or rounded and full. A stately appearance due to the large size is obtained better than with other hedges. The dwarf kind can be kept three to six feet high and very compact. Is unusual and due to the ease with which it is grown, makes an ideal hedge for many purposes. Informally grown (without shearing) it makes splendid screens and borders of great beauty.

Key	Grade	10	100
1W4	Divisions 6-8 Stalks	6.90	49.00
2W4	Divisions 4-6 Stalks	4.00	30.00
3W4	Divisions 3-5 Stalks	3.00	20.00

CAMPHOR. (*Cinnamomum camphora*). For the southern territory the camphor is an ideal hedge plant. Light green with beautiful color variations, it can be sheared into any form and kept at any height. Green and bright at every season, it gives an appearance of quality and unusual beauty not attainable with more common hedges. Can be grown very wide or very narrow and two feet or ten feet high. Growth quite fast. For cemeteries, public grounds, large homes, etc., it is an ideal hedge.

Key	Class	Quality	Height	10	100
1W4		X	10 in.	6.00	40.00
2W4		X	8 in.	4.00	30.00
3W4		X	6 in.	3.00	20.00



Showing Value of Vines in Landscape Planting.

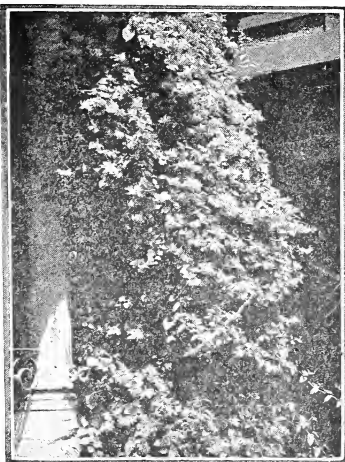
Vines and Creepers

CAROLINA-JESSAMINE (*Gelsemium sempervirens*). Yellow Jasmine. This beautiful native of the South is one of the best vines grown. Beautiful yellow golden blossoms in early spring, delightfully perfumed. Very hardy and thrifty. For arbors, pergolas, porches, etc it is excellent. Planted among shrubs and trees where it clambers among them, giving unity to the group.

CREEPER, ENGLEMANN (*Ampelopsis quinquefolia engelmanni*). One of the best creeper type vines for walls and columns.

CREEPER, VIRGINIA (*Ampelopsis quinquefolia*). The old reliable creeper for general use.

HONEYSUCKLE (*Lonicera Japonica*). The favorite of grandmother's day and unsurpassed for evergreen foliage and fragrance. Use for beauty over bare corners, on fences, in trees, among the shrub borders, and it makes a beautiful



hedge when planted closely without support. Use them to cover wire and board fences.

IVY, BOSTON (*Ampelopsis tricuspidata*). Japanese Creeper. For walls. Bright autumn colors.

CREEPER, PAINTED TRUMPET (*Bignonia speciosa*). Orange colored, trumpet shaped blossoms. Grows on wood walls.

WISTERIA (*W. sinensis*). Well known, woody vine with beautiful blossoms in spring. Picturesque among conifers or on pergolas, porches, etc.

BEAN, KUDZU (*Phaseolus thunbergiana*). When established this is among the fastest growing vines for porch, fence, arbor or pergola planting.

Key		Grade	10	100
1W4	3 yr.		7.50	60.00
2W4	2 yr.		6.50	55.00
3W4	1 yr.		5.00	40.00

BOUGAINVILLEA (*B. spectabilis*). Japan Paper Flower. Beautiful tropical shrubby vine with evergreen foliage and floral whorls of bright purplish red. Very popular.

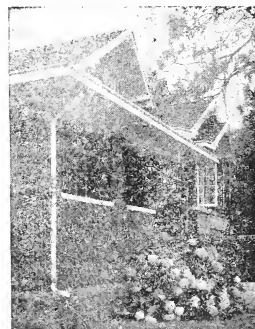
CLEMATIS, SWEET AUTUMN (*C. paniculata*). White flowering, very fragrant. Great shade maker. Fine for screening windows and porches.

CLIMBING FIG (*Ficus pumila*). Climbing Rubber (*Ficus repens*) Most perfect Creeper for any masonry wall. Evergreen.

IVY, ENGLISH (*Hedera helix*). Evergreen, thick leathery leaves.

Key	Class	10	100
1W4	From 8 in. Pot	7.50	60.00
2W4	From 5 in. Pot	6.50	55.00
3W4	From 3 in. Pot	5.00	40.00

Don't forget to include Cape Jasmine in your order. Cheap and good for general use.



Otatska Hydrangea and Ficus Repens

ROSES

We have always been leaders in rose production. In the early days of our history we gave quantity production our attention and grew tens of thousands in scores of varieties. In recent years we have specialized in the production of a limited list, including those with which the average home grower can usually have splendid success. Our long experience has shown us that while every variety of rose has some difference, a list of two or three dozen varieties usually includes those accepted as standards and give ample range of choice in color, and other characteristics. The retail trade throughout the South knows the Griffing roses. All varieties grafted, field grown, healthy and vigorous.

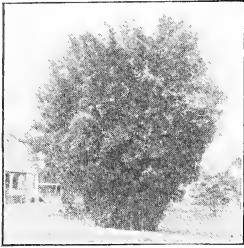


GROUP I.				
Key	Class	Grade	10	100
1W4	Extra large	No. 1	6.50	55.00
2W4		No. 2	4.00	30.00
3W4		No. 3	3.00	24.00
GROUP II.				
Key	Class	Grade	10	100
1W4	Extra large	No. 1	5.00	40.00
2W4		No. 2	3.50	30.00
3W4		No. 3	2.00	15.00

WRITE FOR OUR SURPLUS LIST OF ROSES

BAMBOOS AND GRASSES

AND MISCELLANEOUS PLANTS



Bamboo

These beautiful, graceful plants are of the greatest value in landscape planting. They are entirely hardy, easily grown, give beautiful effects and fill large spaces. No other plants make such a big display for the low cost. In shrub borders, for backgrounds, screens, hedge rows, etc., or for fine big specimens on the lawn they answer every demand. We have ideal conditions for their production and offer fine, rich colored, vigorous plants. The best varieties are offered.



Eulalia Grass

FEATHER (B. vulgaris). Large, graceful, green foliage and stems, feathery appearance.

NINGALA (A. falcata). Small, fern-like, green foliage and stems.

SILVERSTRIPE (Hort. var. of A. Simoni). Silver or white stripe in leaf, otherwise like the Feather variety.

GOLDEN. (Hort. var. of B. vulgaris). Stems golden, penciled with green. Foliage green.

Key	Class		10	100
1W4	Division Clump	12-15 Stalk	10.00	80.00
2W4	Division Clump	6-12 Stalk	7.50	60.00
3W4	Division Clump	4- 6 Stalk	5.00	40.00
4W4	Small Division	3- 4 Stalk	4.00	35.00

GIANT BAMBOO (A. Dendrocalamus)

The canes of this type attain 40 feet and over and are as large as a man's arm. Fine for tall, tropical skyline effects or specimens.

Key	Class		10	100
1W4	B. Clump	5-8 Stalk	10.00	80.00
2W4	B. Clump	3-5 Stalk	7.50	60.00
3W4	B. Clump	1-3 Stalk	5.00	40.00

CACTUS, SPINELESS (Opuntia). Spineless type of Pricklypear. Our variety is hardy.

Key	Class		10	100
1W4	Rooted Plants		6.50	55.00
2W4	Leaf Cuttings		2.50	20.00

CRINUM (Crinum). Milk-and-wine Lily. Candy stripe of pink on creamy white. Fine bulbs for landscape beds, and interplanting with shrubs. The foliage is very attractive in itself and blossoms from July until frost. Flowers have commercial demand with florists.

Key	Class		10	100
1W4	One Year Stools		5.00	40.00
2W4	Divided Bulbs		1.50	12.00

GRASSES

EULALIA (Miscanthus). A beautiful plant for specimens. Very airy and graceful. Beautiful effects at low cost. We offer **Maiden Grass** which is solid green in color; **Striped Grass**, which has white pin stripes lengthwise of the blades; and **Zebra Grass** which has white bars cross-wise of the blades. These varieties offer variation in effects and have great value in landscape planting.

Key	Class		10	100
1W4	B Large Clumps		7.50	60.00
2W4	B Medium Clumps		5.00	40.00
3W4	Small Divisions		3.50	30.00



Pampas Grass

PAMPAS

Pampas Grass. (Cortaderia)
Plume Grass. Fountain Grass
 Beautiful long blades of light green giving a fountain-like effect. The large plumes of creamy silver produced in summer make wonderful pictures in the planting. Fine for specimens. Very popular and in great demand.

Key	Class		10	100
1W4	B Large Clumps		10.00	80.00
2W4	B Medium Clumps		7.50	60.00
3W4	Small Divisions		4.00	35.00

UMBRELLA-SEDGE (Cyperus alternifolius). Umbrella Grass. Long round green stems terminated by umbrella shaped leaf clusters. Fine water effects. Excellent about pools or fountains. Make good specimens planted alone or excellent for group plantings and very distinctive effects.

Key	Class		10	100
1W4	B Large Clumps		10.00	80.00
2W4	B Medium Clumps		7.50	60.00
3W4	Small Divisions		4.00	35.00



Planting of Griffings Arizona Ash, Second Year

PALMS

FOR OUT DOOR PLANTING

The hardy Palms we list are safe for outside planting from the Coast back about 150 miles and should be extensively planted in the home grounds, parks and streets, and there is nothing that gives a more inviting, tropical effect to our Northern visitors than to come where they may be among the waving Palms and enjoy the mild winters of the Southern climate.

BLACKBURN PALMETTO (*S. blackburniana*). Rich green leaves and stems. Attain considerable height. Very hardy. A beautiful palm for any position where the fan leaf type is wanted. Is especially recommended for the northern border of the palm belt.

Key	Class	Caliper	10	100
1W4	B	9 in.	50.00	400.00
2W4	B	6 in.	35.00	280.00
3W4	B.	4 in.	25.00	200.00



Mexican Washington

WASHINGTON PALMS

MEXICAN WASHINGTON (*Washingtonia Robusta*). The palm that made California famous as the Palm State. Tall growing, very attractive. The leaves never turn yellow. We have some very large specimens which have met with favor with our local trade and we offer them in limited quantities to the wholesale buyers. Large trunks, well developed, big heads of leaves, all combined to give a real palm which will transplant readily.

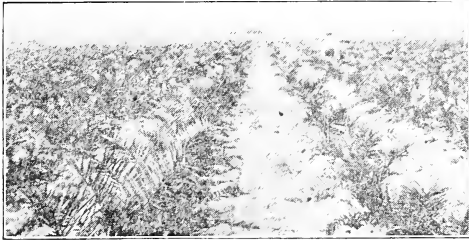
Key	Class	Caliper	10	100
1W4	B.	24 in.	120.00	960.00
2W4	B.	18 in.	90.00	720.00
3W4	B.	14 in.	70.00	560.00
4W4	B.	12 in.	60.00	480.00
5W4	B.	8 in.	40.00	320.00
6W4	B.	6 in.	30.00	240.00
7W4	B.	4 in.	22.50	180.00
8W4	B.	3 in.	15.00	120.00
9W4	B.	2 in.	12.50	100.00

WINDMILL (*Trachycarpus excelsa*). Another hardy variety. Trunks very slender, covered with brown filament, dark green leaves in well developed crown, smaller than Washington. Used sometimes like Italian Cypress and frequently as specimens.

Key	Class	Caliper	10	100
1W4	B.	6 in.	40.00	320.00
2W4	B.	4 in.	30.00	240.00



Method of Measuring Palms Through the Trunk
See Caliper Measure



Canary Dates

CANARY DATES

CANARY DATE (*Phoenix canariensis*). Pinnate leaves. The most ornamental variety of all. For lawns and boulevards it has the greatest popularity. Our palms grow very stocky in the heavy black land, having strongly developed leaves and large thick, pronounced trunks. More leaves according to caliper than on the palms grown in the more southern sections where development is quick and very tender. The same grades we offer when compared with others we have seen are worth three times as much.

Key	Class	Caliper	10	100
1W4	B.	8 in.	60.00	480.00
2W4	B.	6 in.	45.00	360.00
3W4	B.	5 in.	37.50	300.00
4W4	B.	4 in.	27.50	220.00
5W4	B.	3 in.	20.00	160.00
6W4	B.	2 in.	15.00	120.00

CAROLINA PALMETTO (*Sabal palmetto*). Very hardy, fan leaf type.

Key	Class	Caliper	10	100
1W4	B.	8 in.	32.50	360.00
2W4	B.	6 in.	25.00	200.00
3W4	B.	4 in.	15.00	120.00
4W4	B.	2 in.	10.00	80.00

PINDO (*Cocos australis*). Very hardy. Silvery gray. leaves with pronounced recurve. Beautiful for specimens or features. Fruit delicious.

Key	Class	Caliper	10	100
1W4	B.	10 in.	100.00	800.00
2W4	B.	7 in.	70.00	560.00
3W4	B.	5 in.	50.00	400.00



Canary Palms in Parking

SHADE and ORNAMENTAL TREES

ARIZONA ASH

ARIZONA ASH (*Fraxinus velutina*). Evergreen Ash. Griffing's Rio Grande Ash. *Fraxinus Rio Grande*. Each year the popularity of this tree increases remarkably. Not entirely evergreen, it is the first to come into full leaf in spring. Several weeks ahead of most trees. The foliage is a very light, bright green. Later in the season the foliage is darker, the upper surface of the leaves being quite glossy. The bark is grayish-white, very attractive. The foliage falls after all other deciduous trees are bare. Makes nice lawn or shade tree in two or three seasons.

Key	Class	Caliper	Height	10	100
1W4	B.	3 in.	10 ft.	75.00	600.50
2W4	B.	2½ in.	10 ft.	50.00	400.00
3W4	B.	2 in.	9 ft.	42.50	349.00
4W4	B.	1½ in.	8 ft.	35.00	280.00
5W4	B.	1 in.	7 ft.	25.00	200.00
6W4	N.B.	2 in.	8 ft.	25.00	200.00
7W4	N.B.	1½ in.	7 ft.	17.50	140.00
8W4	N.B.	1 in.	6 ft.	12.50	100.00
9W4	N.B.		5 ft.	7.50	60.00

CAMPHOR

CAMPHOR (*Cinnamomum camphora*). The one-stem or tree form camphor has been quite popular but we recommend planting the bush form and later pruning out all but one stem after good growth is made. See the prices of Bush form Camphors under Broadleaf Evergreens.

Key	Class	Quality	Height	10	100
1W4	B.		7 ft.	52.50	429.00
2W4	B.		6 ft.	45.00	360.00
3W4	B.		5 ft.	37.50	309.00
4W4	B.		4 ft.	30.00	240.00
5W4	B.		3 ft.	22.50	180.00
6W4	B.		2 ft.	15.00	120.00
7W4	B.		1½ ft.	10.00	80.00
8W4	N.B.		5 ft.	17.50	140.00
9W4	N.B.		4 ft.	12.50	100.00
10W4	N.B.		3 ft.	7.50	60.00
11W4	N.B.		2 ft.	5.00	40.00
12W4	N.B.		1 ft.	4.00	35.00

CATALPA, UMBRELLA (*C. bignonioides*). Catalpa Bungei. Has been overdone but is desirable for some locations. We have a good stock and can supply any quantity.

Key	Class	Quality	Height	10	100
1W4	N.B.	3 ft. spread	6 ft.	20.00	160.00
2W4	N.B.	2 ft. spread	6 ft.	15.00	120.00

COTTONWOOD, SOUTHERN. (*Populus deltoides*). Well known, demanded for quick growth, and drought resistance.

Key	Class	Quality	Height	10	100
1W4	N.B.		10 ft.	7.50	60.00
2W4	N.B.		8 ft.	6.50	55.00
3W4	N.B.		6 ft.	5.00	40.00

ELM, AMERICAN. (*Ulmus americana*.)

Key	Class	Quality	Height	10	100
1W4	N.B.		8 ft.	15.00	120.00
2W4	N.B.		6 ft.	10.00	80.00

EUCALYPTUS (*Eucalyptus*). Australian Gum Tree. *Rudus* and *Rostrata* offered.

Key	Class	Quality	Height	10	100
1W4	B.		5 ft.	20.00	160.00
2W4	B.		4 ft.	15.00	120.00
3W4	B.		3 ft.	10.00	80.00

HACKBERRY (*Celtis occidentalis*). Sometimes called Sugarberry. Fine shade.

Key	Class	Quality	Height	10	100
1W4	N.B.		9 ft.	20.00	160.00
2W4	N.B.		8 ft.	15.00	120.00
3W4	N.B.		7 ft.	10.00	80.00

MAPLE, NORWAY (*Acer platanoides*). For street or lawn.

Key	Class	Quality	Height	10	100
1W4	N.B.		8 ft.	12.50	100.00
2W4	N.B.		6 ft.	7.50	60.00



Griffings Arizona Ash Especially adapted to Costal Planting. Compare this Photo (taken a year later) with that on page 22.

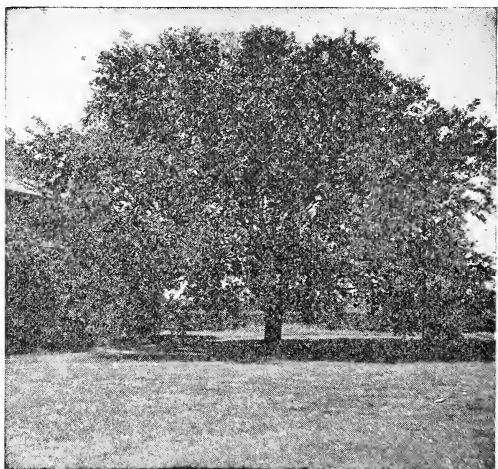
MULBERRY, TEAS WEEPING (*Morus*). *Morus pendula*. Branches recurve to ground, very odd and interesting.

Key	Top	10	100
1W4	Heavy 5 ft. Stem	12.50	100.00
2W4	Medium 5 ft. Stem	10.00	80.00

LIVE OAK

OAK, LIVE (*Quercus virginiana*). The grand old evergreen of the South unexcelled in the tree world for beauty and desirability. For large lawns and wide parkings no better trees can be recommended. After attaining several inches caliper they grow quite fast, contrary to the usual idea. We have never seen prettier, straighter, better headed trees than we are now offering in all sizes. Due to the heavy black land in which they are grown and the six foot spacings allowed the larger trees, we can dig the largest sizes with fine balls of soil and you can supply your customer with trees ten and twelve years old, sure to grow and make a fine showing. Live oaks should be planted in great quantities in every town in the South.

Key	Class	Caliper	Cut to	10	100
1W4	B&B	5 in.	9 ft.	150.00	1200.00
2W4	B&B	4 in.	8 ft.	125.00	1000.00
3W4	B&B	3 in.	7½ ft.	100.00	800.00
4W4	B&B	2½ in.	7 ft.	75.00	600.00
5W4	B&B	2 in.	7 ft.	50.00	400.00
6W4	B&B	1½ in.	7 ft.	25.00	280.00



Live Oak, Unquestionably the Best Shade Tree for the South.

PIN OAK

OAK, PIN (*Quercus palustris*). The tall pyramidal form of this tree makes it desirable for any planting. Well known. We have exceptionally straight trunks and shapely heads.

Key	Class	Quality	Height	10	100
1W4	N.B.		8 ft.	20.00	160.00
2W4	N.B.		7 ft.	15.00	120.00
3W4	N.B.		6 ft.	10.00	80.00
4W4	N.B.		5 ft.	7.50	60.00

WATER OAK

OAK, WATER (*Quercus nigral*). Ever in demand for its many desirable qualities. We have a beautiful large stock price same as Willow Oak.

WILLOW OAK

OAK, WILLOW (*Quercus phellos*). This variety is being recognized as one of the most desirable oaks and is in great demand. We have a fine block of straight trees with well shaped heads.

Key	Class	Quality	Height	10	100
1W4	B&B	5 in.	8 ft.	150.00	1200.00
2W4	B&B	4 in.	8 ft.	125.00	1000.00
3W4	B&B	3 in.	7½ ft.	100.00	800.00
4W4	B&B	2½ in.	7 ft.	75.00	600.00
5W4	B&B	2 in.	7 ft.	50.00	400.00
6W4	B&B	1½ in.	7 ft.	25.00	280.00

POPLAR, CHINESE (*P. lasiocarpa*), very desirable, not widely distributed.

Key	Class	Quality	Height	10	100
1W4	N.B.		6 ft.	10.00	80.00
2W4	N.B.		5 ft.	8.00	65.00
3W4	N.B.		4 ft.	6.00	50.00

LOMBARDY POPLARS

POPULAR, LOMBARDY (*P. nigra*). In landscape jobs few trees have the value of Lombardy Poplars for quick effects. They show up the first season and give skyline and background long before any other variety can be grown to any considerable height. We have ideal conditions for the production of these trees and they make stocky trunks, are thickly branched, and unusually strong and vigorous. Balled trees will make remarkable growth the first year. For formal effects they are used where Italian Cypress would be too expensive. Among groups of shrubs they give variety and interest to the plantings. Last year we had to reserve blocks which were in strong demand in order to produce big trees for this year's use.

Key	Class	Qual.	Cal.	Height	10	100
1W4	B.	XX	2½ in.	10 ft.	50.00	400.00
2W4	B.	XX	2 in.	8 ft.	30.00	240.00
3W4	B.	XX		6 ft.	15.00	120.00
4W4	N.B.			8 ft.	7.50	60.00
5W4	N.B.			7 ft.	6.50	55.00
6W4	N.B.			6 ft.	5.00	40.00
7W4	N.B.			5 ft.	4.00	35.00
8W4	N.B.			4 ft.	3.00	25.00
9W4	N.B.			3 ft.	2.00	20.00
10W4	N.B.			2 ft.	1.00	10.00
11W4	N.B.			1 ft.	.50	4.00

REDBUD (*Cercis canadensis*). A fine small flowering tree used as large shrub.

Key	Class	Quality	Height	10	100
1W4	N.B.		8 ft.	15.00	120.00
2W4	N.B.		7 ft.	12.50	100.00
3W4	N.B.		6 ft.	10.00	80.00
4W4	N.B.		4 ft.	7.50	60.00

SWEETGUM (*Liquidambar styraciflua*). Wonderful color effects, pyramidal head for skyline.

Key	Class	Quality	Height	10	100
1W4	N.B.		6 ft.	6.50	55.00
2W4	N.B.		5 ft.	5.00	40.00
3W4	N.B.		4 ft.	4.00	35.00

Tallow Trees

TALLOWTREE (*Sapium sebiferum*). Chinese Tallow. Cleanest of deciduous trees. Compact, dense head of small bright green leaves. A beautiful shade tree and very desirable for streets or avenues, anywhere in the south. Highly desirable for any purpose. Attains 40 ft. In mid-summer and late fall when so many trees have yellow and brown falling leaves, the Tallowtree is beautifully fresh and green. Highly recommended.



Tallow Trees We Planted in Modern Subdivision

Key	Class	Qual.	Cal.	Height	10	100
1W4	B.	2½ in.		10 ft.	40.00	320.00
2W4	B.	2 in.		9 ft.	35.00	280.00
3W4	B.	1½ in.		8 ft.	30.00	240.00
4W4	B.	1 in.		7 ft.	20.00	160.00
5W4	N.B.	1½ in.		7 ft.	15.00	120.00
6W4	N.B.	1 in.		6 ft.	10.00	80.00
7W4	N.B.			5 ft.	5.00	40.00
8W4	N.B.			4 ft.	4.00	35.00
9W4	N.B.			3 ft.	3.00	25.00
10W4	N.B.			2 ft.	2.00	20.00
11W4	N.B.			1 ft.	1.00	10.00

TEXAS UMBRELLA-TREE (*Melia umbraculiformis*). Chinaberry. Umbrella China. The true umbrella headed tree.

Key	Class	Quality	Height	10	100
1W4	N.B.		8 ft.	20.00	160.00
2W4	N.B.		7 ft.	10.00	80.00
3W4	N.B.		6 ft.	7.50	60.00
4W4	N.B.		5 ft.	5.00	40.00
5W4	N.B.		4 ft.	4.00	35.00
6W4	N.B.		3 ft.	3.00	25.00

WILLOW, BABYLON WEeping. (*S. babylonica*). Quick growing, beautiful form for backgrounds and borders or as specimens.

Key	Class	Quality	Height	10	100
1W4	B.		8 ft.	40.00	320.00
2W4	B.		6 ft.	30.00	240.00
3W4	N.B.		8 ft.	20.00	160.00
4W4	N.B.		6 ft.	10.00	80.00
5W4	N.B.		5 ft.	7.50	60.00
6W4	N.B.		4 ft.	5.00	40.00
7W4	N.B.		3 ft.	4.00	35.00

WILLOW, BRITTLE (*S. fragilis*). Upright form, fine for tall masses.

Key	Class	Quality	Height	10	100
1W4	B.		8 ft.	30.00	240.00
2W4	B.		6 ft.	20.00	160.00
3W4	N.B.		8 ft.	15.00	120.00
4W4	N.B.		6 ft.	7.50	60.00
5W4	N.B.		5 ft.	5.00	40.00
6W4	N.B.		4 ft.	4.00	35.00
7W4	N.B.		3 ft.	3.00	25.00



Our General Offices and Display Grounds in the Heart of Beaumont's Business District.

SERVICE, QUALITY AND FAIR VALUES BUILT OUR BUSINESS

NUT AND FRUIT TREES

While we have greatly extended our business in Ornamentals and Roses during recent years, we have by no means neglected the **great commercial Horticulture** so important to the South. We are constantly building up and increasing the production of Pecan Trees, Fruit trees, Grapes and Small Fruits, for we find as those planted a few years ago come into bearing in all parts of the South, it is almost impossible to keep up with the demand. So while we love the Ornamental side of the business, we have no inclination or could not afford to neglect the Fruits and Nuts.

OUR RECORD

The Griffing Nurseries have grown, distributed and planted **more fruit and nut trees** in the South than any other nursery or organization. This is a record which we are proud of and justly so.

Berries

The fields and woodlands of the lower South are the native home of Dewberries and Blackberries. There is no place in the world where they are more productive or the quality better.

The improved cultivated varieties offered here are the choicest of their kind and a few plants will give you many dishes of choice fruit during the season.

CORY THORNLESS BLACKBERRY. Mr. Cory, the introducer, says that **Thornless Blackberries** are not an experiment any more; they are a fact. They have proved themselves to be superior in every way. Better flavored, heavier producers, better shippers and canners. The introducer discovered them at Jamestown, California. They produce a good crop the third year after planting. Ripens about June 1st, and continues to bear until

August. The berries are very large and grow in clusters, making very easy picking.

PARKER THORNLESS DEWBERRY. Mr. Jim Parker of Oklahoma, the introducer, says this is going to be the best and earliest berry in the South. Prolific bearer, fine flavor, large size berries.

Price of Cory Thornless Blackberry and Parker Thornless Dewberry:

Key	Class		
1W4	2 Year	1.25	10.00
2W4	1 Year.....	.75	5.00

Austin Dewberries McDonald Blackberry		Lawton Blackberry	
Key	Class		
1W4	2 Year	.70	6.25
2W4	1 Year	.50	3.75

Figs

It is admitted by all that the Fig thrives in all portions of the cotton belt of the South as in no other section of the world, as the trees may be found growing in door-yards, near trash piles, in chicken runs, and near buildings in a most luxuriant manner, and producing enormous crops of luscious fruit.

No fruit is more valuable in the southern fruit garden than Figs. No home pantry is complete without canned and preserved figs for winter use. Figs come into bearing very early, and for that reason commend themselves to the home grower. With proper selection of varieties fruit may be secured from June to November.

Fresh figs on the market meet with ready sale for preserving and for table use. When properly packed they can be transported several hundred miles.

COMMERCIAL FIG GROWING

Commercial fig growing for supplying preserving plants is gradually extending throughout the South. Plantings should be made on heavy soils. They can be planted 10 to 12 feet apart in rows 15 to 18 feet. The yield is very heavy, thousands of pounds of fruit being produced per acre.

They require good fertilization, intense cultivation, heavy pruning (Magnolia variety) and if regularly sprayed with Bordeaux Mixture, will hold their foliage late in the season, greatly extending the producing period.



Fruit Trees Are Ornamental As Well As Crop Producers



Young Fig Tree With Fruit

BRUNSWICK. Large, purplish-black; good quality; early bearer; ripens throughout the season.

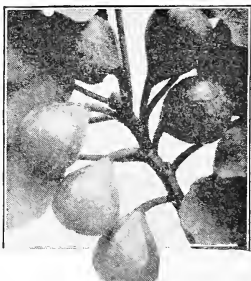
CELESTIAL. Sometimes called Little Sugar Fig; the sweetest of all varieties. Ripens in midseason.

LEMON. Large, lemon colored, retaining natural color when preserved. Ripens early.

GREEN ISCHIA. Light, transparent-green; flesh crimson. Best extremely late fig. Prolific; bears young.

MAGNOLIA. Large size, light colored. Vigorous grower; prolific; excellent for preserving, this variety being one of the favorite with Texas planters on black waxy land.

Key	Class		
1W4	2 Year	7.00	60.00
2W4	5 Feet	4.50	35.00
3W4	4 Feet	3.50	30.00
4W4	3 Feet	2.50	20.00
5W4	2 Feet	1.75	14.00
6W4	1½ Feet	1.40	10.00
7W4	1 Foot	1.00	8.50



Celestial Figs

Grapes

In the lower South two distinct types have proven their worthiness for general planting, and in no section can a greater quantity of the choicest fruit per acre, be produced. The grape should be more generally planted in the home garden and commercial vineyards. Every home in the South should have a shade arbor of some strong growing variety of grapes.

SOUTHERN MUSCADINE CLASS

This class of grapes is native to the South and is well known and loved by all southern people. Fruit clusters not so large as the Bunch varieties, but the flavor is excellent. For jellies, preserves, grape juices, wines and table use they are unexcelled. Usually trained on overhead arbors 6 1-2 or 7 feet high, consisting of posts with wire or wood frame-work. Pruning is not commonly practiced. Plant 20 to 30 feet for arbors.

MUSCADINE GRAPES

EDEN (Black)	MALE MUSCADINE, Purple
FLOWERS (Black)	SAN ALBA (White)
JAMES (Black)	THOMAS (Red)
WHITE SCUPPERNONG (White)	

Key	Class	10	100
1W4	3 Year	3.50	30.00
2W4	2 Year	2.50	20.00
3W4	1 Year	1.60	12.50

BUNCH GRAPES

AGAWAN (Red)	FERN MUNSON (Purple)
CARMAN (Black)	MOORE EARLY (Black)
CONCORD (Blue)	NIAGARA (White)
DELAWARE (White)	PRESIDENT ((Bluish)

Key	Class	10	100
1W4	3 Year	2.50	20.00
2W4	2 Year	2.00	15.00
3W4	1 Year	1.40	10.00

Peaches

Every home garden should contain peach trees. It is the leading fruit of the South, viewed from the standpoint of the commercial orchardist, farmer or home planter. If the right varieties are chosen it succeeds over a much wider territory. No fruit is more healthful and no other affords more pleasure and profit for such small outlay. Plant a few new trees each year for a continual supply for home. Cultivate, fertilize and spray regularly.

Coast Varieties

For planting along the Gulf Coast the following varieties have proven most successful.

ANGEL, FREESTONE. July 1st. White flesh, juicy, acid.

IMPERIAL. Very large oblong, whitish yellow, washed red. Flesh white, sweet. One of the best for the Gulf section. Freestone. June 25th.

HALL'S YELLOW, Freestone, July 1st; Large; yellow, fine quality.

HONEY, Freestone. June 5th. Creamy-white, tinted red; sweet.

JEWELL, Freestone. May 15th to 30th. The earliest Peach on the market; all alone and unexcelled for Gulf Coast section where it has proved to be a great success. Medium size, light yellow; juicy, rich and melting.

PALLAS. Deep red, flesh white, freestone. June 20th, to 30th.

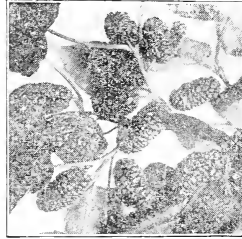
Great Southern Peach Belt Varieties

The following varieties we recommend 100 miles and more from the Coast, on well-drained lands.

CHINESE CLING	GOVERNOR HOGG
EARLY WHEELER	INDIAN CLING
ELBERTA	MINNIE STANFORD
GREENSBORO	STINSON LATE

Key	Height	10	100
1W4	5 feet up	5.00	40.00
2W4	2 feet	3.00	22.50

Mulberries



For shade in backyards or lots and in poultry runs, the mulberry is the best tree we know. The fruit will feed chickens or pigs for months. Mulberry trees thrive in any location.

HICK'S EVERBEARING. Enormous bearer; fruit ripening three months annually from May.

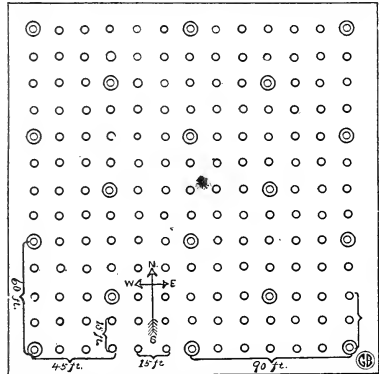
MERRITT, Finest Mulberry. The earliest variety; berries very large and full. Ripens during April and

May. No farm complete without some Merritt Mulberries. A place in every home yard for this tree.

NEW AMERICAN. A vigorous grower, with fine large leaves and producing large black fruit.

RUSSIAN. A well-known black variety.		10	100
Key	Height		
1W4	8 feet	6.00	50.00
2W4	6 feet	4.50	35.00
3W4	5 feet	3.00	25.00
4W4	4 feet	2.20	15.00
5W4	3 feet	1.50	12.00

AN ORCHARD SUGGESTION



©Pecan-Diagonally planted, 45 to 90 ft.
 ○ Peach, Plum, Orange, Fig, Kumquat,
 Interplanted 15 ft. squares.

Pears

Because of blight, the list of adapted pears for the South is limited. Ours are from "Blight Proof" strains and are highly resistant to this disease.

DIXIE. A new variety, originated in Southern Georgia. Crop is regular, very heavy, of fine quality and the trees have always been absolutely free from blight.

GARBER. Rapid grower, good quality. Ripens in September.

KIEFFER. Large. The business Pear in many parts of the South. Late.

LE CONTE. Strong grower, early bearer. Fruit large. Good shipper; early.

PINEAPPLE (SAND). Name adopted by American Pomological Society. An excellent preserving or canning pear. When cooked, holds its white color, not turning brown like most varieties of pears. As an eating pear it is fine when fruit is picked nearly fully matured and ripened in a cool dark place; is an absolutely certain crop in the South. Very large, juicy, good shipper. Blight proof.

Key	Height	10	100
1W4	6 feet	5.00	40.00
2W4	5 feet	4.00	35.00
3W4	4 feet	3.25	27.50
4W4	3 feet	2.25	20.00
5W4	2 feet	1.75	15.00
6W4	1½ feet	1.25	10.00

PLUMS

The Coast Varieties of plums are becoming more popular each year and more widely planted. The trees thrive and produce well in all of the lower South.

EXCELSIOR. Remarkably strong growth, fruit medium to large size; reddish purple; flesh firm, yellowish. A most valuable southern plum.

GONZALES. Very large, red, good shipper, fine quality. Originated in South Texas. June.

HAPPINESS. Very large, glowing red; flesh firm, rich, juicy. June 10.

HOYT. Bears in long clusters. Medium to large, purplish red. Meat dark yellow, pit small.

MCCARTNEY. Very early, oblong, transparent-yellow; strong grower; productive. Very early.

TERRELL. Large, nearly round, reddish-yellow wine-red when fully ripe. Very fine quality. June 1st.

Key	Class	Height	10	100
1W4	2 Year	5 feet	6.25	50.00
2W4	1 Year	2 feet	3.00	25.00

Pomegranate

A novel southern fruit; highly appreciated by many and thrive well.

COMMON FRUITING		SWEET FRUITING	
Key	Height	10	100
1W4	4 feet	6.25	50.00
2W4	3 feet	5.00	37.50
3W4	2 feet	3.75	32.25
4W4	1½ feet	2.75	25.00
5W4	1 foot	1.75	15.00

JAPANESE PERSIMMON

Are destined to become one of the leading fruits of the cotton belt and the lower South. This may seem an extravagant statement, but as soon as there is enough of the fruit on the market for the people to learn the richness and deliciousness, the demand will increase far in excess of the supply. Where the Persimmon is known on the market, it finds ready sale.

GAILEY. The pollinating variety to be planted among other varieties; one to every seven or eight is recommended.

HACHIYA. Very large, oblong. Conical with rounded point. Reddish-yellow. Trees vigorous and attractive.

HYAKUME. Very large, roundish-oblong, flattened at the ends; skin light, bluish-yellow; flesh light brown; meaty, not astringent even while hard.

TANE NASHI. The best known and most popular variety; large, conical, pointed. Early bearer, early ripening and productive. Seedless.

TRIUMPH. Yellowish-red, tomato shape; fine grained, and of very fine quality. The choicest of all varieties.

YEMON. Large, tomato-shape; somewhat foursided; flesh yellowish; generally seedless.

ZENGI. Medium size, but one of the most valuable and reliable. Tree sturdy, long lived and very prolific.

TEXAS NATIVE PERSIMMON. The many demands for this well known native fruit have induced us to grow them both for shade and fruit.

Key	Class	CaL.	Height	10	100
1W4	2 Year	1½ in.		15.00	125.00
2W4	2 Year	1 in.		12.50	100.00
3W4			6 feet	6.50	50.00
4W4			5 feet	4.50	35.00
5W4			4 feet	3.50	25.00
6W4			3 feet	2.50	20.00
7W4			2 feet	2.00	18.00
8W4			1½ feet	1.50	12.00



GRIFFINGS PAPER-SHELL PECANS

Pecans Are The Highest Quality and Highest Priced Nuts in the World.

The improved paper-shell pecan nuts hold first place and command the highest price of all the world's nuts.

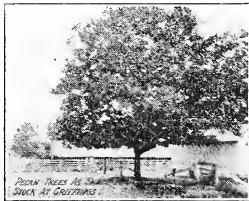
Pecan Nuts are in demand constantly at good prices for culinary purposes and for the making of candies, etc. Nuts are gradually taking the place of meats in the staple daily diet of the world's people. In this the pecan will assume first place, because it is the richest in nutriment of all the nuts.

Free—Special Book on Pecans—Bulletin No. 66
A special book of 32 pages devoted entirely to the growing and marketing of pecans. We will be glad to send you this book free, if you are interested in pecans.

Well Known Varieties

We could lengthen our list of varieties considerably by adding the West Texas types, but the scab is so bad on these varieties, that we do not recommend them. We grow varieties adapted to the general South and Gulf Coast and that pecan section including East Texas to the San Antonio district and along the coast.

The A. & M. College Pecan experts say that the West Texas varieties are not adapted to the section above referred to.



FROTSCHER. One of the best known varieties; remarkably thin shell; splendid cracking qualities; large size.

PRESIDENT. This nut probably embraces more of the characteristics of a perfect nut than any other. Oblong, slightly compressed with a sharply pointed base; large size; texture fine.

SCHLEY. One of the best; kernel plump; superior in quality, richness, flavor.

STUART. A variety generally considered the standard by which other nuts are judged.

SUCCESS. Size large to very large; shell moderately thin; kernel usually plump; quality rich; flavor very good.

TECHE. Commences bearing very young; medium size; quality good; a profitable, practical variety.

VAN DEMAN. One of the most attractive in appearance, very rich and well flavored. Medium, large, elongated. A well known variety.

Key	Caliper	Height	10	100
1W4	2 in.	8 feet	40.00	350.00
2W4	1½ in.	7 feet	30.00	260.00
3W4		7 feet	20.00	175.00
4W4		6 feet	16.00	145.00
5W4		5 feet	13.50	125.00
6W4		4 feet	11.00	95.00
7W4		3 feet	8.00	70.00
8W4		2 feet	6.50	55.00
9W4		1½ feet	5.00	40.00

Griffings Special Variety Pecans Prove Best by Every Test

WE GROW ALL LEADING COAST VARIETIES—BUT THESE THREE ARE BEST

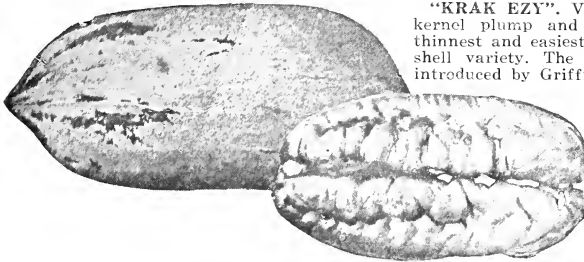
BRADLEY. The Bradley has taken every prize where shown on account of richness of meat. You will make no mistake in planting this variety exclusively. Shell thin, easily cracked, permitting kernels to be removed whole. Comes into bearing younger and more prolific than most other varieties.

BIG "Z". We are the exclusive propagators of the Big "Z" Pecan. Originated by Mr. Zink in Mississippi. The size averages 38 to 40 to the pound. Shell thin, appearance fine, kernel rich, yellow, crisp and of fine flavor. Very early and prolific bearer.



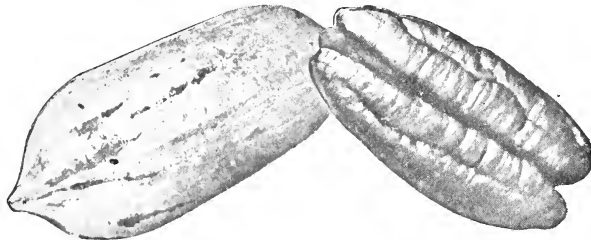
SPECIAL VARIETY "BRADLEY"

"KRAK EZY". Very thin shell, can be easily cracked in the hand; kernel plump and sweet and can be removed whole; this is the thinnest and easiest to crack of any we have ever seen. A true paper-shell variety. The vigorous grower, very prolific. This variety was introduced by Griffing Brothers 15 years ago. Found a chance seedling and on account of its cracking qualities, named it "Krak Ezy."



SPECIAL VARIETY "BIG Z"

Key	Caliper	Height	10	100
1W4	Branched 2 in.	8 feet	50.00	425.00
2W4	Branched 1½ in.	7 feet	37.50	325.00
3W4		7 feet	25.00	210.00
4W4		6 feet	20.00	180.00
5W4		5 feet	15.00	135.00
6W4		4 feet	12.50	110.00
7W4		3 feet	10.00	85.00
8W4		2 feet	8.00	75.00
9W4		1½ feet	6.50	55.00



SPECIAL VARIETY "KRAK EZY"

Citrus Fruit

Everyone should plant Citrus in the Coast section of Louisiana and Texas for profit and pleasure.

For all the Black, waxy and stiff clay or shallow sandy lands in Texas and Louisiana, oranges should be budded on Citrus Trifoliolate root. For Delta land along the lower Mississippi and Rio Grande Rivers, and deep muck or deep sandy soil, oranges should be budded on native Florida sour orange root.

Low-branching Orange Trees. Many years experience has proved to us that the Orange trees should be branched close to the ground. This allows you to bank dirt around them during winter months for protection.

All Our Citrus Trees are Low-Branched and sold according to grade, numbers and caliper size at the bud.

We Prune Bare-Rooted Citrus. From 30 to 40 percent of the growth is removed before digging.

Improved Satsuma

We have been keeping close records on bud selection of various Satsuma trees and have found a great difference in the so-called Satsuma, in its bearing qualities and hardiness. One selection has developed superior qualities over others, so we have particularly selected one that we have propagated a few hundred trees from and are offering it for those who want something that has superior quality and quick results.

Key	Class	Grade	Caliper	10	100
1W4	B.	3 yr., bearing		60.00	500.00
2W4	B.	No. 3	1-2—5-8 in.	22.50	175.00
3W4	B.	No. 2	3-8—1-2 in.	16.50	140.00
4W4	N.B.	No. 2	3-8—1-2 in.	10.00	90.00
5W4	N.B.	No. 1	1-4—3-8 in.	8.00	70.00

THE PICTURES SHOW GRIFFING STOCK—STUDY THEM

Satsuma Orange

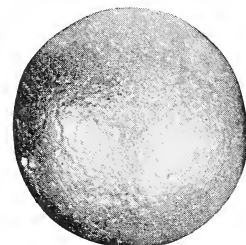
SATSUMA ORANGE. The Satsuma Orange does not do so well on any other root except the *Citrus trifoliata*. The early market Orange for the Coast sections. Satsuma is the hardiest orange known. There is no risk in growing Satsuma on *Citrus trifoliata* along the Gulf Coast. Begins bearing the second year after planting and becomes a profitable crop the third year thereafter. This is the ideal Orange to eat—the loose, tender rind or skin on the loosely adhering segments enable one to remove the segments or plugs and eat the fruit without the aid of a knife. Fruit medium size, flattened; color deep orange; flesh fine grained, tender, juicy, sweet and delicious, with a peculiar agreeable flavor found in no other Orange; entirely seedless. Tree entirely thornless.

COMMERCIAL ROUND ORANGES

LUE. Known as Lue Gim Gong from the originator. Said by Florida growers to be a leader, hardy and long season.

WASHINGTON NAVEL. The famous California Orange.

VALENCIA. Best late Orange.



Lue Orange

Key	Class	No.	Cal.	10	100
1W4	B.	No. 4	5-8—3-4 in.	25.00	200.00
2W4	B.	No. 3	1-2—5-8 in.	17.50	150.00
3W4	B.	No. 2	3-8—1-2 in.	12.50	110.00
4W4	B.	No. 1	1-4—3-8 in.	10.00	85.00
5W4	N.B.	No. 4	5-8—3-4 in.	15.00	125.00
6W4	N.B.	No. 3	1-2—5-8 in.	10.00	90.00
7W4	N.B.	No. 2	3-8—1-2 in.	7.50	60.00
8W4	N.B.	No. 1	1-4—3-8 in.	6.50	55.00
9W4	N.B.	No. 0	1-8—1-4 in.	5.00	40.00

Kumquat

KUMQUAT (*Fortunella japonica*).

The sweet-skin orange sometimes called Kinkan Orange. Very delicious as a fruit and the evergreen shrub with golden fruits and orange-like blossoms is highly ornamental.

MARUMI. Small round fruit.

MEIWA. Sweet, rounded. Best of all Kumquats for eating purposes.

NAGAMI. Oblong fruit.

Key	Class	No.	Cal.	10	100
1W4	B.	No. 5	3-4—1 in.	27.50	225.00
2W4	B.	No. 4	5-8—3-4 in.	22.50	200.00
3W4	B.	No. 3	1-2—5-8 in.	15.00	135.00
4W4	B.	No. 2	3-8—1-2 in.	12.50	110.00
5W4	B.	No. 1	1-4—3-8 in.	10.00	85.00
6W4	N.B.	No. 3	1-2—5-8 in.	10.00	90.00
7W4	N.B.	No. 2	3-8—1-2 in.	7.50	60.00
8W4	N.B.	No. 1	1-4—3-8 in.	6.50	55.00
9W4	N.B.	No. 0	1-8—1-4 in.	5.00	40.00

Grapefruit

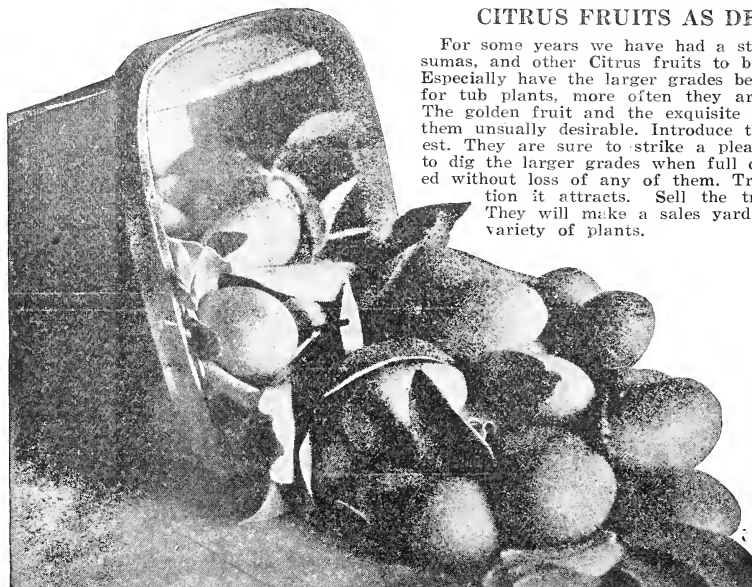
(*Citrus Grandis*)

MARSH SEEDLESS. The Famous Breakfast Health Fruit. Well known everywhere.

Key	Class	Qual.	No.	Cal.	10	100
1W4	B.	XX	No. 3	1-2—5-8 in.	16.50	140.00
2W4	B.	XX	No. 2	3-8—1-2 in.	13.50	110.00
3W4	B.	XX	No. 1	1-4—3-8 in.	11.00	90.00
4W4	N.B.	X	No. 4	5-8—3-4 in.	13.50	110.00
5W4	N.B.	X	No. 3	1-2—5-8 in.	11.00	95.00
6W4	N.B.	X	No. 2	3-8—1-2 in.	8.50	70.00
7W4	N.B.		No. 1	1-4—3-8 in.	7.00	60.00
8W4	N.B.		No. 0	1-8—1-4 in.	5.50	45.00

CITRUS FRUITS AS DECORATIVE PLANTS

For some years we have had a strong demand for Kumquats, Satsumas, and other Citrus fruits to be used as ornamental evergreens. Especially have the larger grades been used as specimens. Frequently for tub plants, more often they are used among the other shrubs. The golden fruit and the exquisite fragrance of the blossoms makes them unusually desirable. Introduce them in your plantings for interest. They are sure to strike a pleasing note. We are often enabled to dig the larger grades when full of fruit and they can be replanted without loss of any of them. Try this and see what wide attention it attracts. Sell the trees in fruit to your customers. They will make a sales yard display unequalled by any other variety of plants.



SERVICE BULLETINS FREE

We have obtained and Disseminated Information of great value which is contained in the following Service Bulletins, a few of which are now available.

GRIFFING'S SERVICE BULLETINS. No. 66, "The Pecan;" No. 76, "The Fig Tree;" No. 56, "Shade and Ornamental Trees, Shrubs and Landscaping the Home."

CITRUS BUYERS NOTICE: We contemplate heavy orders, some large reservations already being made. For years we have been unable to meet the demand. The extensive plantings last year will be an incentive for a great additional acreage. Place your orders early to insure getting choice stock in the quantity desired.

BUSINESS TERMS

DISCOUNTS. 10% off for Cash With Order. 5% thirty days. Trade acceptance or secured notes for over 30 days.

CARLOADS—It requires comparatively few B&B (Balled and Burlapped) shrubs and trees to make a minimum car; small balls, from 300 to 500; medium balls, 200 to 350; and large balls, from 100 to 200. Who cannot use that many during the spring season, or on a few landscape jobs? Our B&B stock does not require heeling in, as the Balls are solid.

VISIT US AND SELECT YOUR STOCK: We have 300 acres in nursery rows. Many of our largest customers come to buy their stock annually; it will repay you many times. Railroad fare one way refunded to new customers for car orders.

TREES SELECTED AND MARKED by the customer in the nursery will be charged in accordance with their value and prices in this list will not govern.

RAILROADS IN TEXAS give a special Balled and Burlapped (B&B) rate. In less than carloads, **FOURTH CLASS.** In Carloads, minimum weight 24,000 pounds, **CLASS "C."**

WE GUARANTEE all our stock to be in good condition and true to name on leaving our hands, but we do not guarantee it to grow under all conditions, nor do we make up any loss whatever due to climatic effects, or after culture on the part of the purchaser and stock repacked or resold and then only at first cost. The risks and cost of transportation are to be borne by purchaser.

REFERENCES—For those who do not know us, we refer to any leading Nurseryman in the United States, Dunn and Bradstreet's Mercantile Agencies, Banks and business houses in Beaumont and Port Arthur, Texas.

MEMBERS OF American, Southwestern, and Southern Nurseryman's Association, also F. T. D. American Florists and American Rose Growers Association.

COMPLAINTS—Should there be any reason for complaint, we must be notified on receipt of goods; otherwise we cannot entertain it. We make it a point to give all reasonable claims proper consideration.

The Wholesale Prices in this list apply only on wholesale quantities. We cannot undertake to supply long and much assorted lists, or pack up agents or club orders. Save on advance above our printed rates according to quantity.

INDEX

Abelia	9	Dogwood	18	Norway Maple	24
Althea	20	Dwarf Crape Myrtle	17	Nuts	29
Amoor River Privet.....	20	Eucalyptus	24	Oak	25
Amur Privet	16	Evergreen Ash	24	Oleanders	12-13
Arborvitae	5	Ficus Repen	21	Oranges	29-30
Arizona Cypress	17	Figs	26	Palms	23
Ash, Arizona	24	Flowering Pomegranate	19	Pampas Grass	22
Australian Pine	7	Forsythia	18	Pecans	28-29
Balling	3	Fruits	26-30	Peaches	27
Bamboos	20-22	Gardenia	10	Pears	27
Beefwood	7	Golden Leaf Privet	16	Persimmons	28
Biotas	5	Graceful Privet	15	Photinia	13
Blackberries	26	Grading	4	Pin Oak	25
Boston Ivy	21	Grapes	27	Pinxter Flower	19
Boxwood	9	Grapefruit	30	Pittosporum	13
Bridal Wreath	19	Griffings Wax	14	Plums	25
Broadleaf Evergreen Shrubs..	9-13	Griffings Dwarf Crimson	17	Poplars	25
Business Terms	31	Guava, Strawberry	11	Pomegranate, Fruiting	28
Cactus	22	Hackberry	24	Privet	13-16
California Privet	16	Hedge Plants	20	Purple Leaf Plum	19
Camphor Tree Standard	24	Honeysuckle	19	Pussy Willow	19
Camphor Bush Form	9	Hydrangea	19	Quince	19
Camphor Hedge	20	Improved Satsuma	29	Red Bud	25
Cape Jasmine	10	Inkberry	11	Red Cedar	8
Carolina Jasmine	21	Italian Cypress	7	Roses	21
Cedar	8	Ivy, English	21	Satsuma Oranges	30
Chaste Tree	17	Japanese Privet	16	Shade Trees	24
Cherry Laurel	10	Jasmine, Primrose	11	Southern Laurel	10
Chinese Poplar	25	Junipers	8	Spirea	19
Clematis	21	Key Number	4	Sumac	19
Coniferous Evergreens	5	Kudzu Vine	21	Sweet Shrub	20
Coralberries	17	Kumquat	30	Sweet Gum	25
Cottonwood	24	Laurustinus	11	Tallow Tree	25
Crape Myrtle	17	Ligustrum	13-16	Teas Weeping Mulberry	24
Creepier Virginia	20	Live Oak	24	Texas Umbrella	25
Creepier Engelmann	20	Lombardy Poplar	25	Umbrella Sedge	22
Crimun Lily	22	Loquat	11	Vines and Creepers	21
Cydonia Japonica	19	Magnolia	11	Vitex	17
Cypresses	7	Mulberry	24	Water Oak	25
Deciduous Shrub	17	Myrtle	11	Wigelea	20
Deutzia	18	Nandina	11	Wisteria	21
Dewberries	26	Nomenclature	4	Willow	25

PROOF OF THE PUDDING

FOR those unacquainted with our Balled Trees. This illustration shows our Rosedale Manager lifting a Balled Bigleaf Privet as it was dug from the ground before the burlap covering had been put on as an absolute protection for the roots.



THE POINT IS THIS

THEY NEVER BREAK Out of Our Plastic, Black, Waxy Soil, Even Though No Burlap Used. Safer for You, Better for Customer. You Need Such Trees.

GRIFFING NURSERIES

BEAUMONT, TEXAS