

## **Historic, archived document**

Do not assume content reflects current scientific knowledge, policies, or practices.





624)

1925

JAN 28 1925



David Knight

# Profit Producing Plants

from the  
Pioneer Grower  
of Small Fruits



Champion  
Everbearing

David Knight & Son, Sawyer, Mich., U. S. A.







# Knight's "Purebred" Strawberry Plants

*Are the Natural Result of Our 40 Years' Successful Growing and Square Dealing*

**A**BOUT this time every year you come squarely face to face with the question "Where can I buy better strawberry plants this year—plants that will net me bigger crops of berries, and bigger prices for them?" Every year you receive anywhere from a dozen to a score of catalogs, all claiming their products to be the best. Naturally, you ask yourself, "How am I to know?"

That isn't always an easy question to answer; but there are certain reasons why we believe you will find *Knight's "Purebred" Plants* to be profit producers for you when set out on your own land, and fruited under conditions as you have them; and we have produced this catalog with the earnest wish that it may help you, not only to a wise decision; but also to proper culture of the plants after you receive them.

## GROWN BY THOSE WHO KNOW HOW.

Several causes combine to make *Knight's "Purebred" Strawberry Plants* the big, sure croppers that they are. In the first place, we have been selecting, propagating, growing and shipping plants *now for 40 years*. Back in 1885 we printed our first "catalog." It was just a small folder, describing only one variety; and but 200 copies were mailed. However, every year since then the list has been larger, mailed to a constantly increasing number of *thoroughly pleased customers*: until now we are shipping millions of plants every season to patrons in nearly every State in the Union.

## 40 YEARS OF SUCCESSFUL GROWING

proves both our honesty and the high quality of our stock. Our plants *must* have been *moneymakers*; and our methods of dealing *must* have been *honest*; otherwise we would either be today a small and unreliable concern, or else we would long since have been out of business entirely.

As a matter of fact, only one other Nurseryman in Berrien County can boast of having done business continuously for even 35 years. In other words, we are pioneers in the strawberry industry. Our

*Virgin land, Fall-plowed. It is difficult to imagine this new land under control and producing enormous crops of strawberry plants. But that's exactly what happens on our farm every year.*



business has grown from practically nothing in 1885 to *one of the largest of its kind in the country today*; and our present prosperity is due entirely to the fact that year after year we have produced and sold *stronger, more productive and more profitable fruit plants* than ever before. This is your assurance that your order with us will bring you good, healthy, true-to-name plants—this, in other words, *guarantees* the success of *your* strawberry patch.

**AN ACTUAL STATEMENT OF FACTS**—That, from cover to cover, is exactly what we have aimed to make our present catalog. We have endeavored to have both illustrations and statements all perfectly truthful. We own all our own engravings; and you can be certain every picture illustrates its subject. The Champion berries shown on front cover, for instance, were actually grown on our own land. They were picked on the afternoon of October 21, 1924; were photographed the following day; and the plates are made directly from these photographs.



*From an actual photograph. It is root systems like these, grown on choice highland soil, that make KNIGHT'S "PUREBREDS" produce such big crops of luscious, marketable berries.*

Glowing catch phrases; overdrawn illustrations; and possibly lower prices; may attract you. But that is only one more reason why you are safe with *Knight's Profit Producing Fruit Plants*—the very same that have made money for thousands of enthusiastic fruit growers the country over.

## PRODUCED IN THE WORLD'S SMALL-FRUIT-PLANT PARADISE.

The county where we live—Berrien County, Michigan—is second in the United States in the quantities of strawberries produced. However, it is *an easy first* in the yearly number of strawberry plants grown and shipped. About twenty nurserymen supply millions of them, and the reason is not far to seek. Natural conditions here are almost perfect. The soil is ideal—deep, rich and loose. The climate is tempered by Lake Michigan, and very equable. An abundant rain-fall makes possible enormous yields.

It is in such environments that *Knight's "Purebred" Profit Producing Plants* are grown, and nowhere can better stock be produced. In fact, the enormous root systems of our plants are *a surprise and delight* to those who receive them for the first time. Such stock cannot help but grow if given proper care.

## GROWN IN NEW HIGHLANDS.

As shown by an illustration herewith, *Knight's "Purebred" Strawberry Plants* are all grown on highland soil, a large proportion of which is new ground, cleared year by year. This insures *hardy, vigorous, healthy plants*, with *unusually large white root systems*. Working over this raw land and putting it in shape for strawberry plants, represents much hard labor; but the work is well repaid by the abundance of *strong, vigorous, well-rooted plants* produced. This is good business for you; since it produces the kind of plants that will *ship well and grow well for you in your own soil*. This means that you will come back to us next year for your strawberry plants, just as thousands of other people are doing year after year, once they have tested the quality of *Knight's "Purebreds."*

If your order is placed with us, you will receive the same kind of stock that large growers the country over have used and depended upon for years; stock that has made *big money for others*, and will just as surely make *big money for you*.





**THE LATEST EQUIPMENT AND METHODS INSURE HEALTHY PLANTS.**

The big root systems and sturdy vitality of *Knights' "Purebreds"* are not entirely accounted for by the soil in which they are grown. During our 40 years in this business we have gradually adopted new and constantly improved methods of growing, digging, packing and shipping. We now use modern conveniences of every kind in our work; and our plant selection, year after year, has increased the productiveness, and enlarged the size of the fruit to an extent that cannot be equalled by firms of less experience. We use trucks, tractors, power sprayers, and special cultivators. We cultivate and hoe continuously during the season when plants are growing. This conserves the moisture and helps to produce *large, vigorous and healthy plants* which thrive under *all climatic conditions*. Our own practical, scientific methods of preparing the soil, growing the plants, digging and packing them for shipment, insure *more health* and *more vitality* than they could possibly have even in this soil without such careful methods.

**OUR SPECIAL METHODS OF PROPAGATING AND GROWING INSURE BIG CROPS OF BIG BERRIES.**

The plants which we use in setting our new patches are all selected with the greatest care. In other words, they are *"the cream of the cream,"* proven out by years of consecutive growing. So careful is our inspection, that no weak or imperfect plants are permitted to be the mother plants of the stock we send you. We set out our strawberry patches in the Spring. The plants make their growth of runners and new

*Setting out the mother plants in one of our nursery fields. Only the strongest, most vigorous young plants are used.*



Our raspberries, blackberries, currants, gooseberries, grapes and asparagus are also selected and grown with the utmost care.

**FRESHLY DUG, CAREFULLY PACKED.** We could fill several pages quoting enthusiastic letters from customers in nearly every State in the Union, complimenting us upon our efficient packing, and the safe arrival of our shipments. These letters did not just happen. In fact, nowhere is the result of our years of experience more evident than in our careful methods of digging and packing.



*Spraying KNIGHT'S "PUREBREDS." Our clean, hardy, thrifty plants are the result of constant, careful cultivation during the growing season.*

**KNIGHT'S "PUREBRED"**

**PLANTS** are so carefully dug, that the entire root systems are preserved. Wire bound crates of different sizes, baskets and packages take care of strawberry plants, and smaller orders of cane plants. Large orders of cane plants are packed in strong boxes and barrels. Spagnum moss, secured in carload lots in Wisconsin, is the packing material.

Through long experience we have learned just how damp this moss must be, and just how to pack for different distances. Accordingly, wherever our customers live, the plants will reach even the most remote destinations in perfect condition.

This is of the utmost importance to you. Whoever you patronize should have this knowledge, gained only by long experience, and many failures with berries can be traced to a lack of careful packing. *Often improperly packed plants fail to produce, even when they still retain sufficient vitality to live.* You can rest assured that your shipment of *Knights' "Purebreds"* will come to hand in perfect growing and producing shape.

**OUR Guarantee is YOUR Protection**

We guarantee that all of our plants are strong, healthy, free from diseases, full count and true to label.

That they are freshly dug, properly packed, and promptly shipped.

That all plants shipped by express will reach their destination in good growing condition.

That if any order from us does not reach you in just the condition mentioned we will, upon immediate notice and proper proof, refill your order or refund your purchase price.

It is mutually understood, however, between the purchaser and ourselves that we shall not be liable for a greater sum than that paid for such stock.

**WE FURTHER GUARANTEE** that all plants we ship you **WILL LIVE AND GROW** thru the first summer. If any fail to do so we will replace them at one-half the original purchase price; providing the complaint, proof of loss and remittance is received on or before October 15th.

plants during the fast growing season of Summer and early Fall. The following Spring we *dig up the whole row.* The mother plant and the smaller and weaker young plants are all thrown away, thus only the best selected stock is sent out to the trade. You, therefore, not only receive selected stock; but the plants are produced from *mother plants that have never borne fruit.*



*Mr. A. R. Knight, son of David Knight, has grown up in the business.*





A field of KNIGHT'S "PUREBRED" STRAWBERRY PLANTS. Note the vigorous, luxurious growth of real producers. We have millions of plants like these.

For instance, Mr. Lucy, of Wickliff, Kentucky, writes: "My strawberry plants arrived in good condition. I lost only three. My rows are solid. Everyone says my bed of strawberries is the finest they have ever seen. Thanks for your prompt shipment."

**OUR SUGGESTIONS FOR GROWING WILL HELP YOU.**

On the following page we give some valuable suggestions which are worth dollars to you in securing big crops of big berries from our plants. These suggestions are not merely "stock", but are the result of Mr. David Knight's years of experience and observation in the small fruit plant business.

While we aim to ship our customers nothing but the highest grade of plants which can be produced; yet we realize that there are always questions of soil, local climate and method of planting which will arise. We shall be pleased to help you solve these problems. Write us about your difficulties, and we will be glad to correspond personally with you, and do everything in our power to help you make real profits. In no other way can we prove more conclusively that we really have our customers' best interests at heart.

**CAN YOU AFFORD TO EXPERIMENT WITH "CHEAP" STRAWBERRY PLANTS?** Mr. John R. Svenson of Gowrie, Iowa, thinks not. On April 8th, 1924 he wrote us as follows:

"Enclosed find order for plants. I used to get the best strawberry plants from you after dealing with six other firms in \* \* \* \* and \* \* \* \* I used to sell a few plants to neighbors but now refer them to you. We had good luck last year. Off of 20 rows 200 feet long we sold over \$220.00 worth of berries, besides what we used and gave away."

We quote Mr. Svenson's letter to illustrate this point: That while you may be offered plants at a lower price than ours, yet the amount you would save would offset *many times over* by the loss of the big crop and top market berries you are sure to receive from Knight's "Purebreds".

United States Government reports show the average yield of strawberries in the United States to be around 4,500 quarts per acre. From Mr. Svenson's letter we estimate he had about one-quarter acre from which he picked 1,600 quarts, or at the rate of 6,400 quarts per acre; and this amount is not unusual with Knight's

"Purebreds" as they often yield at the rate of 8,000 quarts to the acre.

As between ordinary plants and Knight's "Purebreds" the comparison of profit and loss is too obvious for comment.

One Acre of  
Ordinary Plants  
4,500 quarts

Value at 15c per  
quart—\$675.00

One Acre of  
Knight's "Purebreds"  
6,400 quarts

Value at 15c per  
quart—\$960.00

Buy your strawberry plants to make *the dollars of profit* from the *big, luscious, attractive yields*; not to save a few cents in the price of the plants. Knight's "Purebreds" are *true economy*. It costs no more to grow them than the average kind—*why experiment?*

**A GUARANTEE THAT REALLY MEANS WHAT IT SAYS.** Thousands of our customers will tell you that the *Knight Guarantee*, reproduced on another page, *really does protect them*. Guarantees do not really mean anything unless backed by a reliable and responsible concern; one which really intends to stay in business; and which has the interest of its customers honestly at heart. Our 40 years' success in the nursery business proves the strength of our guarantee—you run *absolutely no risk* when you order Knight's "Purebreds".

**EARLY ORDERS ARE BOTH ADVISABLE AND PROFITABLE. KNIGHT'S PROFIT PRODUCING "PUREBRED" PLANTS** are in such demand that every year we must return hundreds of late orders. Don't make the mistake of waiting. If you cannot order *today*, at least order *early*. Enclosed with this catalog is a complete price list with order blank and self addressed return envelope. Make your order out plainly. Special instructions for this will be found in the enclosed price list.

If you are short of funds, send one-third with order *now*; we will hold the stock for you, and balance may be remitted later, before shipping season opens. This will absolutely insure you against omitting to order until too late to secure the goods.

**OUR CASH DISCOUNT FOR EARLY ORDERS.** *Every order accompanied by cash, and reaching us before March 1st, is entitled to a 10% cash discount from list.*

This makes it distinctly to your advantage to see to it that your order reaches us promptly. Such early orders are always given preference, and secure *the choice of plants*. You have absolutely *nothing to lose*, and *everything to gain* by ordering promptly as above. Better look our catalog over at once, reach your decision, and order *today*.



KNIGHT'S "PURE-BREDS" are packed with care and skill by expert workmen. This insures your crops and profits.





# Timely Hints that Spell Strawberry Success

## A Word of Personal Advice from the Veteran Grower Himself

I LIKE to think back over a half century at times. I like to think of the time, forty-five years ago, when, on a rented farm only one mile from our present location, I first got interested in growing strawberries.

My entire capital—nearly—was ambition, good health, strength and a young family to work for. And the necessity of providing for the future gave me visions of the future. I could see the time when popular demand for berries would cause thousands of acres to be devoted to their growth; I could see the need for millions of plants to set those acres, and my experience through the first few years convinced me that nowhere in the world could such healthy, vigorous, and productive plants be produced as right here on the south-east shore of Lake Michigan.

The result of these convictions was the first few folders, listing the old Wilson's Albany strawberry, that I mailed in 1885. My experiences during the forty years since that first plant circular was mailed, and the foundation of our business laid, have given me a knowledge of the berry business more than I have space to tell. I am giving below but a few of the fundamental principles of growing small fruits successfully. If they do not cover your individual problem, then write us a personal letter; we will be only too glad to advise with you at any time.

**KIND OF LAND REQUIRED.** Any good, well drained soil suited to the growth of ordinary farm crops will grow good strawberries. But a mellow, sandy soil, or a sandy loam, is preferable to the heavier types of soil, and as strawberries require large quantities of water, a soil that retains moisture, while still being well drained, is desirable. Clover, vetch and other leguminous crops are excellent to precede strawberries, but don't use land that has been in sod for some time or you will very likely have trouble with the white grub which eats off the young plants when set.

**PREPARING THE LAND.** When available, well-rotted stable manure should be used liberally; ten to twenty tons to the acre should be applied, preferably in the fall previous to spring planting. Plowing under green manuring crops is excellent to supply humus when yard manure is not available. In the spring, plow moderately deep and thoroughly disk, harrow and roll the land. The idea being to get the ground in the best mechanical shape possible before plants are set. Remember the ordinary preparation for general farm crops is not sufficient. A few times more going over with disk and harrow means little in work but much in your future success.

**TIME TO PLANT.** In the Central and Northern states, early spring is the best time of the year to set out plants. Order your plants shipped from the 1st to 20th of April and try to arrange to have the ground ready to set them right out as soon as they arrive.

**HEELING-IN PLANTS.** If weather is not favorable or you are not ready to set plants when they arrive, then, by all means, heel them in the ground until you are ready. *Don't fail to do this.* Dig a V-shaped trench in a shady place, large enough to accommodate the roots without curling them up. Cut the strings that bind the bundles and draw the earth up over the roots to the crown, packing it down firmly. Soak the roots thoroughly in water before putting them in the trench.

### METHODS OF SETTING PLANTS—THE HILL SYSTEM.

With this system the rows should be 30 inches apart and the plants 15 inches apart in the row, thus using about 14,000 plants to the acre. Keep all runners removed. This causes the individual plants to become very large as there is no vitality being used to produce runners and new plants. The ground should be marked off in check rows so that the cultivation



one way can be done with a horse and the other way with a hand cultivator. This system requires plenty of manure and fertilizer, also constant attention to cultivation and runner cutting, but the large plants thus established have a sufficient fruiting surface to produce an enormous crop, and berries grown by the hill system are of unusually good size, quality and appearance.

### THE MATTED ROW.

This is the most common system of strawberry growing and is very popular where berries are grown in a commercial way on a large scale, as less labor is required in setting and caring for the patch and the quantity of berries produced is usually larger than by the other system. The rows are marked off 3 1/2 feet apart and the plants set from 18 to 20 inches apart in the row. Let all the runners and plants form that wish to, but when hoeing and cultivating you should keep the rows from 18 to 24 inches in width. The only disadvantage with this system is that sometimes plants set too thickly, which results in producing small fruit,

but this can be overcome by thinning out some of the plants. There is less work required with the matted row than any other system and, where the rows are kept thinned and not allowed to get too wide, they will produce more fruit and of practically as good size and quality as though grown by the hill system.

### SETTING PLANTS.

Your ground should be worked up mellow and free from clods *just before planting.* After this is done, mark off the ground according to the system of planting you are going to use. A flat dibble or trowel should be used for making the holes, although when two people are working together the spade is a good tool for this purpose as one can go ahead and make holes with the spade while the other follows and places the plants in the holes and firms them in.

After pushing the dibble or spade in the ground it should be worked forward and backward a little so as to make the hole large enough for the roots to be straightened out—fan shape—before the dirt is firmed around them. It is very important that the crown of the plant is just at the surface of the ground—not above or below. The roots of the plants should be wet just before setting and it is also a good plan to trim off the roots by about one-third.

### CULTIVATION.

Cultivation should commence as soon as the plants are set and continue every ten days or two weeks all during the growing season. This is done not only to destroy weeds, but to conserve moisture. After a rain the soil packs down and a baked surface is soon formed which breaks up in large clods, so it is best to get in with the cultivator just as soon after a rain as possible. When a season is severely dry, the cultivator constantly going will form a dust mulch, thus preventing the evaporating of such moisture as remains in the ground and this, in many instances, saves patches that otherwise would be ruined.

Proper cultivation has a wonderful effect upon plant growth and anyone who does not attend to this most important part of the work cannot expect to get maximum results.

### CARE OF PATCH AFTER FRUITING.

After harvesting the first crop of fruit, mow off the foliage with a mower or scythe. This cleans out the dead leaves but does not hurt the crowns. After it is well dried out rake this rubbish to the space between the rows and burn it. In this way you not only clean your patch and make it easier to work but also destroy all insects and plant diseases. After getting rid of the foliage it is a good plan to plow a furrow on each side of the row, cutting the bed to about eight or twelve inches.

After this is done throw manure into furrows and level up with a cultivator.

**REMEMBER—**We are always glad to help you with your plant problems.







# Knights CHAMPION The New Everbearing Wonder

**KNIGHT'S CHAMPION STRAWBERRY (Per)** has a record of producing over \$2,000.00 worth of fruit from a single acre, and we sincerely believe it to be the best all around Everbearing Strawberry ever produced.

You may have tried to grow Everbearing Strawberries in the past and have been disappointed; but no one who has grown Champions, and has given them the proper culture, has ever, to our knowledge, met with failure. No other everbearer, under the most favorable conditions, will produce as much fruit as Champion, *by half*. No other will give you *as large berries* and of *so delicious flavor*. Nor will any other sort produce its fruit *for so long a season*.

By a small expenditure for plants, and following a few simple instructions, (see page 5), anyone with a large or small piece of ground may secure much pleasure and profit. You can harvest *many large, handsome, delicious strawberries*—the most delightful of all fruits—not only through the short month of June, but *all during August, September, October*, and many times *far into November*.

The originator of Champion Strawberry made the unchallenged and unquestioned statement, that in 1920 he produced from one acre 352 sixteen-quart cases. These brought the grower, in 129 days, \$2,057.20. Our original supply was purchased four years ago, directly from the introducer, and we have always been exceedingly careful to keep our blocks of Champion entirely separate from any other variety, so you can feel every confidence that the Champion you receive from us are *absolutely pure and up to the standard in every way*.

In planting such a strong cropper as Champion, you should remember that plenty of good fertilizer will help tremendously. Prepare your ground for 100 bushel corn crop, and your Champion plants will produce big, luscious berries accordingly.

Our supply of Champion this year, as well as all other varieties of strawberry plants, is limited. Throughout this entire plant section the shortage is fully 40 per cent over last year's crop. For that reason the price has been advanced somewhat, but the demand for Champion is so great that our supply will not last through the season and the only way you can be sure of getting what you want is by placing your order *now*.

**KNIGHT'S MASTODON. (Perfect)** When we saw the fruit of this brand new Everbearer for the first time last fall we could hardly believe our eyes. We didn't believe berries of such immense size ever would, or ever could, be grown in the fall.

All other Everbearers have some similarity between them, but Mastodon is a different type entirely. So different, so large and beautiful, so productive and delicious that one almost wonders if it is real. As yet we don't know if it will do as well everywhere as it did here last year, and in Indiana where it originated; but, if it does, it will surely revolutionize strawberry growing. More about Mastodon on back cover. *Read it now.*

**KNIGHT'S PROGRESSIVE EVERBEARING. (Per)** For years Progressive was the most popular and widely planted of the Everbearing strawberries. Up to the time that Champion came on the market no other variety was so generally successful. And it is still used in large quantities by berry growers in all sections of the country. The fruit is of good size, rich deep crimson in color, of excellent quality and immensely productive. Progressive plants set in the spring will not only produce a big crop of berries the same summer and fall, but the following spring will give you as big a crop as any of the spring varieties. Progressive is always in demand and we have as fine plants with which to supply you as we have ever grown, but the crop is short and the supply will be exhausted early.

**THE SECRET OF EVERBEARING SUCCESS.** The planting and care of Everbearing Strawberries is much the same as for spring sorts. But there are some exceptions and those exceptions are very liable to spell the difference between success and failure.

You must have good, mellow, well-drained soil, and into this should be plowed or spaded a liberal application of barnyard manure, for it must be remembered that the Everbearers produce so much fruit, and over such a long season, that they must be well supplied with plant food. Preparation of the soil, otherwise, is the same as for the spring sorts.

For the best results use the hill system of planting, making the rows 30 inches apart and the plants 15 inches apart in the rows. *Keep all blossoms and runners removed until July 1st to 15th.* By August 1st you will commence to get ripe fruit and you will not be without it from then on until cold weather.

**Here is one of the main secrets of success:** By the last of August or first of September most of the plants will be throwing out more blossoms and green fruit than they can possibly develop. On a single Champion plant we have counted as many as 300 blossoms and berries in all stages. It is impossible for one plant to develop that many large, ripe berries. If left alone they will produce some good sized fruit, but the most of it will be undersized and misshapen. This is true of other fruits, as well as grain and vegetables. Peaches set too thick on the trees have to be thinned in order to get the desired size. Too many stalks of corn in a hill will produce mubbins, etc.

So in order to get fancy berries you must pinch off enough of the fruit stems so the plant will not be overloaded. This is not a big job, but a very necessary one.

Let us repeat—Success with Everbearers is assured if you

- SELECT GOOD SOIL.
- GIVE GOOD CARE.
- GROW IN HILL SYSTEM.
- KEEP FIRST BLOOM AND ALL RUNNERS REMOVED.
- THIN OUT FRUIT STEMS IF THEY SET TOO THICK.



*A showing of KNIGHT'S CHAMPION EVERBEARING. These berries were grown by us and photographed October 22, 1924. Champion plants will produce prolifically the first season they are set out, commencing with the first garden truck and ending with the frost.*



# 1925 Price List of Knight's "Pure-bred" Fruit Plants

## Everbearing Strawberries

	25	50	75	100	200	300	400	1000
Champion.....	\$0.75	\$1.40	\$1.90	\$2.60	\$4.00	\$5.50	\$6.70	\$15.00
Progressive.....	.75	1.40	1.90	2.60	4.00	5.50	6.70	15.00
Mastodon.....	6 Plants, \$2.50.							

## June Bearing Strawberries

Aroma.....	\$0.40	\$0.70	\$1.00	\$1.20	\$1.85	\$2.60	\$3.10	\$ 7.00
Brandywine.....	.35	.65	.90	1.15	1.75	2.55	2.90	6.50
Bun Special.....	.40	.70	1.00	1.20	1.85	2.60	3.10	7.00
Cooper.....	.75	1.40	1.90	2.50	4.00	5.50	6.70	15.00
Dr. Burrill.....	.30	.55	.80	1.00	1.60	2.20	2.70	6.00
Eaton.....	.40	.70	1.00	1.20	1.85	2.60	3.10	7.00
Gandy.....	.40	.70	1.00	1.20	1.85	2.60	3.10	7.00
Gibson.....	.25	.45	.65	.85	1.35	1.70	2.20	5.00
Glen Mary.....	.40	.70	1.00	1.20	1.85	2.60	3.10	7.00
Haverland.....	.25	.45	.65	.85	1.35	1.70	2.20	5.00
Howard No. 17.....	.50	.80	1.20	1.40	2.15	2.95	3.55	8.00
Premier.....	.40	.70	1.00	1.20	1.85	2.60	3.10	7.00
Sample.....	.35	.65	.90	1.15	1.75	2.55	2.90	6.50
Senator Dunlap.....	.25	.40	.60	.80	1.20	1.65	2.00	4.50
Teddy R.....	.50	.80	1.20	1.40	2.15	2.95	3.55	8.00

## Black Raspberries

	12	25	50	75	100	200	300	400	1000
Black Pearl.....	\$0.75	\$1.35	\$2.50	\$3.35	\$4.25	\$6.65	\$9.15	\$11.10	\$25.00
Cumberland.....	.60	1.00	1.75	2.50	3.45	5.35	7.35	8.90	20.00
Honeysweet.....	1.25	2.00	3.50	5.00	6.90	10.70	14.75	17.80	40.00
Kansas.....	.75	1.35	2.50	3.35	4.25	6.65	9.15	11.10	25.00
Plum Farmer.....	.60	1.00	1.75	2.50	3.45	5.35	7.35	8.90	20.00

## Red Raspberries

Cuthbert.....	\$0.75	\$1.35	\$2.50	\$3.35	\$4.25	\$6.65	\$9.15	\$11.10	\$25.00
King.....	.60	1.00	1.75	2.50	3.10	4.80	6.60	8.00	18.00
St. Regis.....	.75	1.35	2.50	3.35	4.25	6.65	9.15	11.10	25.00

## Blackberries

Eldorado.....	\$0.75	\$1.35	\$2.50	\$3.35	\$4.25	\$6.65	\$9.15	\$11.10	\$25.00
---------------	--------	--------	--------	--------	--------	--------	--------	---------	---------

## Dewberries

Lucretia.....	\$0.60	\$1.00	\$1.75	\$2.50	\$3.10	\$4.80	\$6.60	\$8.00	\$18.00
---------------	--------	--------	--------	--------	--------	--------	--------	--------	---------

## Currants

	Ea.	6	12	25	50	75	100	200	300	400	1000
Perfection.....	\$1.40	\$2.00	\$3.65	\$6.25	\$10.75	\$15.50	\$21.40	\$33.35	\$45.74	\$55.55	\$125.00
Wilder.....	.20	1.00	1.80	3.00	5.25	7.50	10.30	16.00	22.00	26.65	60.00

## Gooseberries

Downing.....	\$1.25	\$2.50	\$4.00	\$7.00	\$10.00	\$13.80	\$21.40	\$29.50	\$35.60	\$80.00
--------------	--------	--------	--------	--------	---------	---------	---------	---------	---------	---------

## Grapes

Concord 2 yr. No. 1.....	\$1.25	\$2.25	\$4.40	\$7.50	\$10.00	\$11.65	\$18.65	\$25.20	\$30.80	\$70.00	
Concord 1 yr. No. 1.....	.15	.75	1.25	2.00	3.50	5.00	6.90	10.70	14.75	17.80	40.00
Concord 1 yr. No. 2.....	.08	.40	.60	1.00	1.75	2.50	3.45	5.35	7.35	8.90	20.00
Moore's E 2 yr. No. 1.....	.35	1.85	3.35	4.85	9.00	12.35	15.00	24.00	32.40	39.60	90.00
Moore's E 1 yr. No. 1.....	.20	1.00	1.80	3.00	5.25	7.50	10.30	16.00	22.00	26.65	60.00
Niagara 2 yr. No. 1.....	.35	1.85	3.35	4.85	9.00	12.35	15.00	24.00	32.40	39.60	90.00
Niagara 1 yr. No. 1.....	.20	1.00	1.80	3.00	5.25	7.50	10.30	16.00	22.00	26.65	60.00

## Asparagus

Washington.....	\$1.25	\$2.50	\$4.00	\$7.00	\$10.00	\$13.80	\$21.40	\$29.50	\$35.60	\$80.00
Palmetto.....	.65	1.15	1.45	1.65	2.65	3.60	4.40	10.00		

## Climbing Roses

	Each	6	12	25	50	75	100
Dorothy Perkins.....	\$0.30	\$1.50	\$2.50	.....	.....	.....	.....
Excelsa.....	.30	1.50	2.50	.....	.....	.....	.....
Paul's Scarlet.....	.50	2.50	4.25	.....	.....	.....	.....

## Monthly Roses

Frau Karl Druschki.....	\$ .50	\$2.50	\$4.25	.....	.....	.....	.....
J. B. Clark.....	.50	2.50	4.25	.....	.....	.....	.....

## Ornamentals

Spirea V. H.....	\$ .18	\$1.00	\$1.95	\$3.85	\$7.20	\$10.10	\$12.60
Hydrangea P. G.....	.45	2.55	4.85	9.55	18.00	25.30	31.50
Barberry Thun.....	.18	1.00	1.95	3.85	7.20	10.10	12.60

## Gladiolus

Panama.....	\$ .08	\$ .45	\$ .85	\$1.70	\$3.20	\$4.50	\$5.60
Schwaben.....	.08	.45	.85	1.70	3.20	4.50	5.60
America.....	.10	.55	1.00	2.10	4.00	5.60	7.00
Mrs. Francis King.....	.10	.55	1.00	2.10	4.00	5.60	7.00
Halley.....	.08	.45	.85	1.70	3.20	4.50	5.60
L'Immaculee.....	.10	.55	1.00	2.10	4.00	5.60	7.00
War.....	.10	.55	1.00	2.10	4.00	5.60	7.00
KNIGHT'S "Purebred" Collection.....	.....	.....	40	75	1.25	.....	2.50

**DON'T FORGET**—All orders at full list price accompanied by cash and reaching us by March 1st are entitled to a 10% discount.



## Read Carefully Before Making Out Order

### *Doing Business with Knight is Both Easy and Safe*

You can reach us easily. Post Office, Express Office and Telegraph Office are at Sawyer, Michigan. Bell telephone in our office.

Some of your neighbors would probably appreciate our catalog. Give us their names and copies will be mailed to them.

**ORDER EARLY.** Do not delay placing your orders until you are ready to plant. The earlier orders are placed the better it is for you and for us. All orders are booked in rotation as received, therefore it is to your advantage to get your order placed early before varieties you wish are gone.

**HOW TO ORDER.** Use the order sheet found in this catalog, being sure to write your name and address plainly, and fill out all blanks carefully with reference to where you want your plants shipped, whether you want them sent by express, freight or mail, and at what time.

**HOW WE SHIP.** Express is much the safer way and, as there is a general special rate applied to nursery stock, the cost is not exorbitant. We guarantee express shipments to reach destination in good condition. Raspberry, blackberry and other heavy plants can be shipped safely by freight early in the season and considerable transportation charges saved thereby. However, all freight shipments go at consignee's risk.

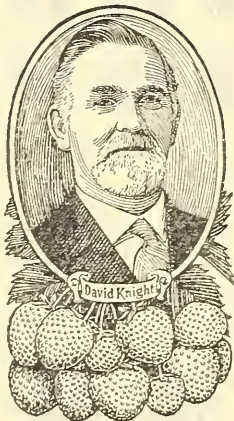
**PARCEL POST.** Plants may be sent by mail at a reasonable expense. For instance, 100 strawberry plants can be sent anywhere in the 1st zone for about 7c; 2nd zone, 7c; 3rd zone, 10c; 4th zone, 15c; 5th zone, 20c; 6th zone, 25c; 7th zone, 31c; 8th zone, 36c. We cannot give you a very close estimate on raspberry and blackberry plants as they vary so much in weight. **No orders shipped C. O. D.**

**SHIPPING SEASON** commences about March 15 and continues until about May 15.

**TERMS.** Cash with order, or part cash when order is sent, the balance to be sent before shipment.

**REMITTANCES.** Send money by Check, Draft, Post Office Money Order, Express Money Order or Registered Mail. Currency sent in a letter without registering is at sender's risk.

**COMPLAINTS.** Complaints, if any, must be made within ten days after receipt of stock.



### **A BARGAIN**

**\$3.50** *Per Thousand for Some of Our Best Strawberry Plants*

Occasionally, when hauling plants from the fields to the packing house the labels on a crate or two will become lost and we cannot be sure of the varieties they contain. This also happens at times after the plants reach the packing house. Instead of guessing at what they are we consider this stock as mixed and sell it as such at reduced prices. If you want plants just for fruit then these will give you as good results as though you received and kept different varieties separate, and at considerable saving in price.

*Remember—These are plants from our very best varieties and are a big bargain at \$3.50 per thousand.*

### **To Determine the Number of Plants Required to Set an Acre of Land**

Multiply the distance in feet between the rows by the distance the plants are apart in the rows and the product will be the number of square feet for each plant or hill; which divided into the number of feet in an acre (43,560) will give the number of plants required to the acre.







# What Customers Say

*A Few Enthusiastic Statements About*

## KNIGHT'S "PURE-BRED" PLANTS

Greenfield, Mass., 5/4/24

Dear Sirs:- Received the 6,000 Champion plants. Thanks. Never saw better plants. Enclosed find check for 4,000 more Champion.

Yours truly, A. R. Noyes.

Sheridan, Ind., 3/31/24

Sirs:- I am not in the market for plants this spring but just want to tell you of what we got last year. You remember we bought 1,000 Dunlap and 1,000 Gibson from you last year. We studied several catalogs, then trusted to luck and got plants from six nurseries. We set them in same kind of soil, gave them same care, all set about same time and under same conditions. Got two poor stands. The others did very well. But the plants we bought of you—Say Boy, they just tried themselves. Lost a few plants but the rest sure did grow and if they produce berries as they grow plants we will be more than pleased.

Yours truly, Alva L. Boone.

Petersburg, Ind., 3/12/24

Gentlemen:- I like your way of advertising fine. You do it with good plants and right prices. If that policy was followed more we would not have to pay so much for what we buy.

Yours truly, E. E. Smith.

St. Louis, Mo., 4/15/24

Gentlemen:- The plants were received in good order and at just the right time for planting as the season is late here this year. The plants are just fine and I am well pleased with them.

Yours truly, Mrs. B. Buder.

Bellingham, Mass., 6/1/24

Dear Sir:- About two weeks ago I received some blackberry plants from you and thank you for them. I planted them with care and think they will do well. The raspberry bushes are doing well, only lost six which I think very good. I will want more plants next year and will also tell my neighbors and friends about you.

Yours truly, Myra L. Moore.

Van Buren, Ark., 4/11/24

Dear Sirs:- I received the berry plants and will say that they are the finest plants I ever saw. If the fruit is as fine as the plants, I sure will be pleased.

Very truly, G. L. Stamps.

Coffeen, Ill., 12/29/24

Gentlemen:- Send me your new berry book and prices. The strawberry plants we got from you last year were sure fine.

Yours very truly, Homer A. Sharp.

Millers Falls, Mass., 4/22/24

Dear Sirs:- Kindly give me price on 500 Champion plants to be shipped in April. Your plants I received last year were the best I ever saw. Everyone wanted to buy plants from them.

Yours truly, A. R. Noyes.

Framingham, Mass., 5/23/24

Dear Sirs:- The Eldorado blackberry plants came all right and I thank you for them. The strawberry plants I bought are growing fine, have not lost one yet.

Yours truly, James A. Bartlett.

Princeton, Ill., 7/26/24

Gentlemen:- Will you please send me your catalog of small fruits. We saw and sampled some of the berries that came from your place. They were extra fine. We want some like them.

Respectfully, Rev. W. J. Seekins.

Rochester, Wash., 5/22/24

Gentlemen:- I am in receipt of the plants. They surely are fine looking. The express man remarked how well they looked. Just as bright looking as if they were just dug.

Yours truly, J. B. McConnell.

Homestead, Fla., 4/23/24

Dear Sirs:- The strawberry plants that you sent me by parcel post arrived in fine shape and I think they were the best rooted plants I ever saw and they started right off growing.

Yours truly, Thos. Bremer.

Please write the names and addresses of any acquaintances or friends who might be interested in, or buyers of small fruit plants.





## Knight's Extra Early Howard No. 17<sup>(P E R)</sup>

### *The Early Strawberry With an Extra Long Fruiting Season*

**THE BEST EARLY STRAWBERRY UNDER CULTIVATION.** That is exactly what we think of Howard No. 17. If you have never grown it you don't know the pleasure you've missed. Wish you could have seen our Howard's at harvest time last year. They were a sight worth traveling miles to behold.

For the first few pickings most of the berries are double. Not fan shape like Wm. Belt, but two distinct and beautifully formed berries connected only at base and tip. They were stunning in the boxes and brought the very top prices.

Later they do not grow double but are beautifully and regularly formed, very large and never becoming small or misshapen during a season that commences with extra early sorts and lasts as long as the late varieties. In fact, we have never seen another variety with such a long fruiting season.

They are a bright, rich glossy crimson in color and the combination of large size, perfect shape, handsome appearance and excellent quality leaves nothing to be desired.

Don't hesitate to order freely of Howard, wherever you live, as it has been tried in every section of the country with wonderful success, and will just as surely prove a winner for you. People kept begging for "just a few more Howards" last spring so we didn't save as many as we should for our own planting and our supply is not large. If you come early, though, we can take care of you.

Howard No. 17 and Premier are quite similar. In fact, many claim them to be identical. However, Howard No. 17 was grown before Premier was ever heard of, and we have always believed that there is a slight difference. It is surely the best early strawberry ever introduced. We have many instances of customers getting from 50c to \$1.00 per crate more for Howard No. 17 than for other varieties, and from Washington to Maine we haven't one report that is other than very favorable.



*The HOWARD No. 17 commences to fruit with the extra early sorts, and it lasts almost as long as the late varieties. Berries beautifully formed and colored.*

#### HOWARD IS ENTHUSIASTICALLY PRAISED

*Valparaiso, Ind., 4-8-24.*

*Gentlemen: I herewith hand you check for which please ship me 50 Moore's Early Grape plants. I can highly recommend the Howard No. 17 as being the finest and best strawberry that I have ever seen, barring none. And the Black Pearl raspberry is certainly the peer of all black caps.*

*Yours truly, J. W. Whitaker.*

**PREMIER (PER).** This is one of the finest early berries grown. It is classed as early but it might just as well be called mid-season or late as it keeps right on producing beautiful, large, high quality berries from very early until very late. The plants are large and healthy, root deeply and seem to thrive in any soil. We have never heard a complaint of Premier, nor have we heard of a section where it does not do well. If you have a trade that demands an early berry, one of large size, fine quality and handsome appearance, then be sure to include Premier in your order.

**COOPER (PER).** This variety has had a wonderful sale during the past two years and it seems to merit the confidence placed in it. Cooper is probably the largest strawberry grown and it is also a heavy cropper, so the amount of fruit produced is enormous. It is a mid-season, staminate variety. The fruit is of a beautiful bright red color and of excellent quality. On account of its large size and beautiful appearance it sells at a premium over most other sorts and is especially recommended for supplying home markets.

**BUN SPECIAL (PER).** This is a mid-season, staminate variety that the introducer describes as "*A perfect strawberry.*" The plants are strong and vigorous with large crowns that throw out the right amount of strong fruit stems. The berries are very large, of a bright red, attractive color, uniform in shape and size and of excellent quality. We advise including some Bun Special in your order as it appears to be a new variety of real merit.

**EATON (PER).** We quote from the introducer's description in part. "Eaton is a mid-season to late variety, staminate, a strong plant maker, some of the leaf stalks measuring eighteen inches, with fruit stems in proportion. The berries are of a deep red color which extends to the heart of the fruit, and are of exceptional size, a perfect cone in form, holding this shape to the last; and has never been known to produce a misshapen berry, nor any with white or green tips."



*KNIGHT'S MASTODON—something new in Ever-bearers. Berries are of amazingly large size and delicious flavor.*





DAVID KNIGHT & SON  
SAWYER



PIONEER NURSERYMEN  
MICH. U.S.A.



## Knight's Wonderful

MIDSEASON

# Gibson (P E R)

*Has Made More Money for  
Fruit Growers Than Any  
Other Variety Ever Grown*

Growers everywhere report that for size, color and quality of berries produced, the famous GIBSON is certainly a wonder. A better and more productive berry has never been grown. Over half of the strawberry growers' fields in many sections are planted to this paying variety. When set out with Howard No. 17 as an extra early variety, and Senator Dunlap as a medium early, it makes a combination that will supply you with berries during a long season. And when Teddy R. or Sample is your late variety, you will extend your berry harvest by several days more.

The Gibson berry is large, evenly colored with a glossy dark red firm flesh, and a rich strawberry flavor. It stands shipping well, and reaches market in prime condition. It continues in size even to the end of the season. Has a longer fruiting season than any other mid-season variety.

We are proud that we can claim to be the original introducers of this splendid berry.

More than fifteen years ago a colony of German farmers near Benton Harbor, Michigan were growing and shipping to the Chicago market a berry of such superior size, quality, color and firmness, that they were topping the sales by from 50c to \$1.00 per crate over other varieties. They would not sell any plants, but one of our Sawyer German farmers was a relative and a few were given to him.

In two years he had a nice stand. During the fruiting season, he invited us to come and see his wonderful new berry. We did so, and knew immediately that we were looking at the very best variety we had ever seen, and that it was our duty to introduce it to the world. So we made arrangements for plants and in the spring of 1911 gave a full page of space in our catalog to the description and introduction of this new berry, called *Gibson*.

During the years since, *Gibson* has been more widely planted and has made more money for fruit growers than any other variety ever grown.

Whether you have a home market, distant market or canning factory to supply, plant *Gibson* for your main crop and you will make more money than with any other variety.

*The GIBSON berry the real king of mid-season sorts. Large yields, and a wonderful shipper. Perfect flowering, and goes well with imperfect varieties.*

Knight's Reliable  
MIDSEASON

# Dunlap (P E R)

*"King of the  
Canners"*

If you love shortcake, you will appreciate one made with Senator Dunlap, and a can of them during the winter months is a treat unsurpassed in firmness and rich flavor.

Both the canning factory and the housewife demand this grand old variety on account of its splendid flavor and dark, rich, beautiful color. Dunlap has been the old standby for years and is still as largely grown as any other one variety.

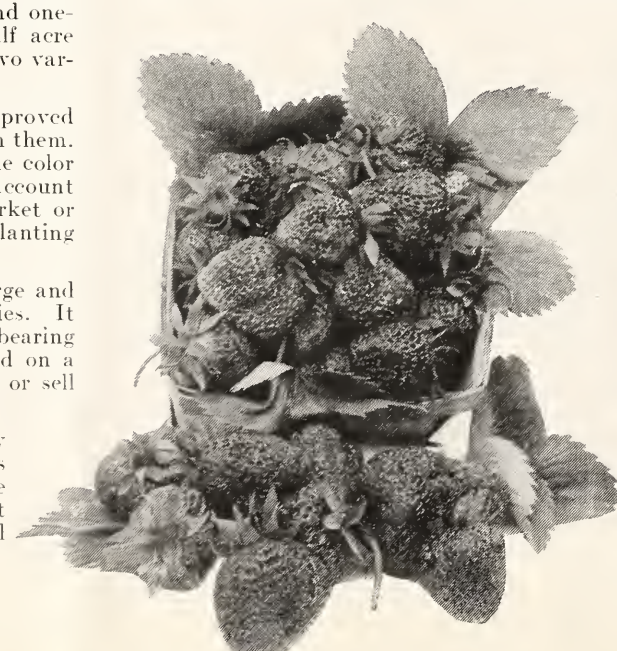
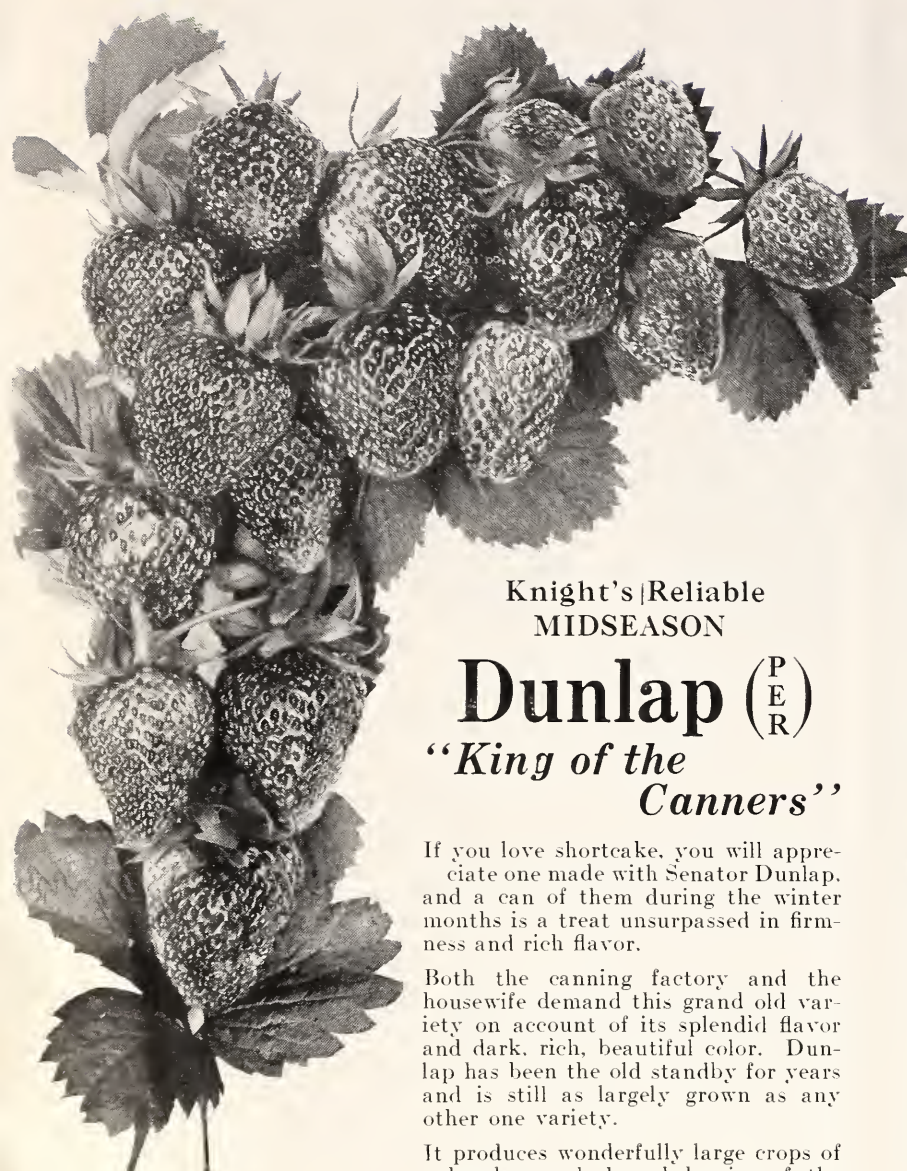
It produces wonderfully large crops of handsome dark red berries of the highest quality. It makes a profuse

plant growth, and is so healthy and hardy that it does well in every section of the country. One of our customers in 1919 harvested and sold \$4,230 worth of Dunlap and Gibson from four and one-half acres. Nearly \$1,000 to the acre for a four and one-half acre patch is an unusual showing and we doubt if any other two varieties would have equalled it.

**DR BURRILL (PER).** It is claimed that Dr. Burrill is an improved Dunlap. We can find very little, if any, difference between them. But it is surely a wonderful producer of good size, handsome color and fine quality berries, and is very profitable to grow on account of the immense crops produced. For home use, home market or distant shipping it will give good service and we recommend planting freely of it.

**HAVERLAND (IMP.)** Exceedingly productive. Fruit large and fine. One of the most popular of the well-tested varieties. It will stand more frost than most any other variety, often bearing large crops when others are killed. We can always depend on a large crop. Few varieties will produce more fruit per acre or sell for more money. Demand for plants is always great.

**GLEN MARY (PER).** A strong, vigorous-growing, healthy plant. Some seasons it has pollen to fertilize itself, but it is better to plant it next to some perfect-blooming variety, like Dunlap or Gibson. The berry is so large and fine looking it always commands the highest price in market. It needs good soil, good culture, and plenty of room in the row.







# Knights' Reliable Late Varieties

*Are Sure Money Makers*

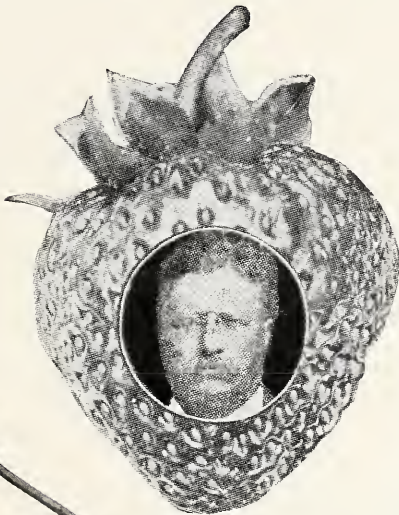
You can depend upon them for Big Crops  
when other varieties are off the market.

*The  
Late-Season*

## Theodore Roosevelt (I M P.)

*Is a Marvel of  
Sturdy Productiveness*

Large  
Uniform  
Brilliant  
Red  
Berries  
That  
Look  
Well  
and  
Sell  
Well



**BRANDYWINE (PER.)** A vigorous, perfect-blooming plant; tall fruit stalks; broad, heavy, dark green foliage. Plants productive, having four and five stalks heavily loaded with large to very large berries. Medium red, somewhat like Gandy, only a little more dull; large yellow seeds on surface. Flesh red clear through, firm, somewhat acid, but with sprightly flavor; ripens medium to quite late. Does best on heavy loam or heavy clay. Like all large berries, they should have plenty of room in the row, so they can build up strong stools.

**THEODORE ROOSEVELT IS A MARVEL OF PRODUCTIVENESS AND STAMINA.** Popular opinion has literally forced this wonderful late strawberry to the front since we discovered and introduced it four years ago. No variety has been so closely watched and guarded by our field men, owing to its notable difference from other sorts and its many fine qualities.

Teddy Roosevelt is a strawberry easy to describe, because its many good qualities are so pronounced. The plant itself is rugged and strong with exceptionally stout, upright stalks, which bear the sprays of heavy fruit clear of the ground, even in very dry weather. Leaves are large and dark green, retaining their natural color until frost. The berries are large and uniformly conical, coloring all over at the same time with a peculiar, brilliant red which makes them very attractive on the vines as well as in the boxes.

Unlike most late varieties, Teddy R. has no tough, tasteless core, but is meaty all the way through, with an exquisite flavor very much like that of wild fruit. Calyx is large, dark green, adding greatly to the appearance. There is certainly no better berry for shipping than Teddy R. and it can be depended upon for a full crop when other varieties are off the market and there is no competition.

Planted with Gibson or Howard No. 17 this hardy pistillate will top off the season as no other late berry can. Don't fail to try a few thousand this spring and be convinced.

**AROMA (PER.)** One of the old standard varieties that, in certain sections, continues to be a favorite in spite of the many new varieties being introduced. Fruit is very large, bright red in color to the center, and has a delicious flavor. It is productive and firm of texture, making it a great shipping berry. It has a long fruiting season and continues good until the end. The demand for this variety is usually far in excess of the supply.

**GANDY (PER.)** This is a good, reliable, late fruiting variety. Its berries are very large, well colored, uniform in shape, firm and a good shipper. The plants are healthy, hardy, and do well both in the north and in the south.

**SAMPLE (IMP.)** A valuable, large, late variety. Sample has scored such a marked success in many places that no progressive grower can afford not to plant some of it. The successful man is he who tests all really promising varieties and in that way quickly finds those suited to his own soil, climate, etc.



*The AROMA, one of the best late standard varieties. Large, thrifty plants, and good sized rich red berries.*





*The Black Pearl Raspberry which produces big loads of luscious fruit.*

# Knights "Purebred" Raspberries

## *A Profitable Crop --- Easy to Cultivate*

Either red or black Raspberries are a profitable crop wherever grown, and after being planted are not hard to care for. As with strawberries the same land that will produce good corn or potatoes will also grow good Raspberries and with just about the same amount of cultivating and hoeing that you would give corn and potatoes.

Black Raspberries should be set from 3 to 3½ feet in the row and the rows 7 feet apart. As soon as growth starts and plants are from 18 to 20 inches high, pinch out the top of each cane, which causes them to send out laterals and gives a larger fruiting surface for the following year.

Red Raspberries should be set 2 feet in the row, and the rows 6 to 8 feet apart. Do not pinch off the tips of these, but the rapid-growing kinds, such as Cuthbert, should be cut back somewhat in the spring.

After the fruiting season of both reds and blacks, cut out the old wood, thus allowing the new stalks to make a good growth for the coming season.

### **Black Raspberries**

**BLACK PEARL.** This variety originated near St. Joseph, Missouri, a few years ago and the fruit-growers in that section and the middle west generally have found it so profitable that they are planting more heavily of it than of all other varieties combined.

One grower writes: "I have grown the Black Pearl Raspberry now for three years, and find it the best and earliest blackcap Raspberry grown in the middle west. Earlier than Kansas and much more prolific than Cumberland." Another grower writes: "I have found them to be superior in many ways to the Cumberland and Kansas blackcap. They seem to be good drought-resisters and never winter-kill. The bushes will stand up under a big load of fruit and never tumble down like other varieties do."

If you want to grow Raspberries that will bring high market prices, or if you grow for your own table, you can't go wrong on Black Pearl.

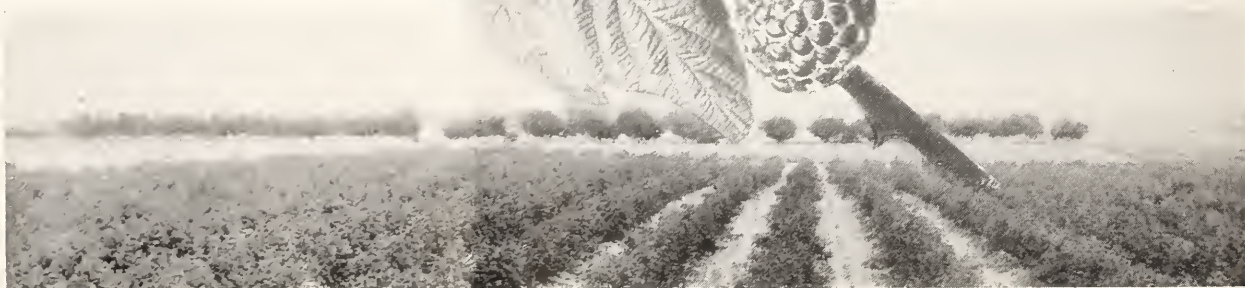
**HONEYSWEET.** In 1919 we purchased our first *Honeysweet* plants. At that time we were a little skeptical of the claims made for this variety. But after fruiting it four summers we are skeptical no longer.

*Honeysweet* is a distinctive variety in every way—in the vigorous growth of its plants—in the beautiful light green foliage—in the large jet black fruit, without a sign of bloom—in the firmness of the fruit, which does not crumble and will stand up longer after being picked than any other sort—in the enormous crop produced—and in its delightful flavor which is indeed distinctive and different from all other blackcaps.

The increasing demand for this fine new blackcap will deplete our stock before the season is over. So it would be well to place your order early for those who wait too long will be disappointed we are sure.



*For big crops of delicious strawberries, try KNIGHT'S "PURE-BRED" CHAMPIONS. See page 6.*



*The Honeysweet black raspberry is noted for its sweet flavor. Produces large, firm black fruit in enormous quantities.*





Van Horne, Iowa, 5-15-24.

Dear Friends: I received the plants in fine shape. We are all pleased with them. They are doing fine. It pays to get plants of Knight. I am more than pleased with that one Honeysweet plant I got from you three years ago. We got 6 quarts off four canes. They bear the heaviest of any berries I ever saw, and the best.

Yours truly, James M. Fry.

**CUMBERLAND.** This is the largest of all the old standard blackcaps and one of the very best. New ones come and go, but since the Cumberland was introduced several years ago, it has been forging steadily ahead, until at present we believe there are more Cumberland grown than any other two varieties. There is only one reason for this and that is that they are money-makers.

They are healthy, vigorous growers, throwing up stout, stocky, well-branched canes that produce immense crops of magnificent berries. The fruit is large and firm, the quality is fine. Ripens in mid-season and continues for two to three weeks.

All black raspberry plants, including Cumberland are a short crop this year. Make certain you will receive your plants by ordering early.

**PLUM FARMER.** This is now considered one of the old standard varieties and, in some sections, is used as the main crop. The plants make a strong healthy growth and produce a large crop of good-sized berries. On account of its being early, the crop is produced before markets are flooded and good prices are usually obtained.

**KANSAS.** One of the best and most widely known early varieties. In some sections it is planted more extensively than any other sort. The canes are strong and healthy and produce large crops of fruit. Berries are jet black, of good size, firm, sweet, and of best quality.

Kansas has been a general favorite for several years and we have sold thousands of plants from which we hear of excellent results. No matter whether you grow for your own table or for market, Kansas should be in your garden.



Year in and year out raspberries are an exceedingly profitable crop. This patch of them cleared better than \$500.00 to the acre.

## Red Raspberries

**KING.** Since its introduction several years ago, the King has been rapidly growing in public favor, until at the present time it takes the lead of all early varieties. Fruit is of good size and of a bright, beautiful color; it is firm and of exceptionally good quality. Immensely productive and commencing to ripen early, it always commands a good price in market. Making a selection from the old standards, our advice would be to plant King for early and Cuthbert for late, and you will always be assured of a profitable crop.

**ST. REGIS.** This variety is unusual from the fact that it produces fruit from early summer until late fall. It is the earliest Raspberry to ripen, coming with the last of Strawberries. The spring crop is the main crop; but they continue, in smaller quantities, of course, all during the summer and autumn. By the last of August the new growth of wood, which has been maturing during the summer, is ready to bear fruit and continues to do so until stopped by frosts. The fruit is of good size, a beautiful brilliant crimson color, of delicious flavor and firm enough to ship to distant markets. In our opinion St. Regis will never be grown as extensively as Cuthbert and King for commercial purposes, but everyone should have some of them in order to enjoy delicious red Raspberries on their tables all during the season.

**CUTHBERT.** This is one of the most valuable of the old standard varieties. It has been widely grown in all sections of the country and has given excellent results both for home use and commercial purposes. Cuthbert is a good, vigorous grower and produces bountifully large and bright red berries. Probably no other red Raspberry is grown so extensively as the Cuthbert and the demand for plants is always heavy.



The CUMBERLAND black raspberry—largest of our standard black caps, and a sure money-maker.



The KING Red Raspberry ripens early.





The **ELDORADO** Blackberry bears large clusters of large jet black fruit.

## Currants

There should be at least a few currant plants in every garden.

The fruit makes excellent jams and jellies, and the plants are hardy and easy to grow. Currants require a rich soil which retains moisture well. The plants should be set 3 to 4 feet apart and the rows 5 to 6 feet apart. Keep well hoed, cultivated and trimmed.

**Note**—On account of Federal Quarantine we cannot ship Currant and Gooseberry plants west of the Mississippi river.

**PERFECTION.** A variety that has created a big sensation for several years past. It was propagated by scientific principles from the Fay's Prolific and the White Grape, and so successfully was it crossed that it possesses most of the good qualities of both. It won the famous Patrick Barry Medal, the committee making the following report: "Season of ripening same as Cherry and Fay. Color bright red; a good grower. Size very large, larger than Fay and Cherry, clusters very long. Productive resembling the White Grape in this respect. Quality fine. Not so acid as Fay and other red sorts. As a table Currant, cannot be surpassed. An important fact is that it has a long stem making it easy to pick." In addition, Perfection won highest awards at the Pan-American Exposition and a gold medal at the St. Louis World's Fair. The call for the Perfection has been so great since its introduction that there have never been enough plants to supply the demand.

**WILDER.** A remarkable variety, for which we predict great popularity, both for table and market. One of the strongest growers and most productive. Bunch and berries very large, bright attractive red color, even when dead ripe; hangs on bushes in fine condition for handling as late as any known variety. Compared with the celebrated Fays, is equal in size, with longer bunch, better in quality, with much less acidity; ripens at the same time, continues on bush much longer; fully as prolific, in some trials largely outyielding it. Strong plants.

## Gooseberries

Excellent fruits for making jellies. The bushes are hardy and vigorous. Cultivate Gooseberries the same as Currants.

**DOWNING.** A very strong, vigorous grower. Healthy and free from mildew. It produces great quantities of large, pale green, tender-skinned berries of splendid quality. It is one of the oldest and most widely grown varieties and is excellent for family use and very profitable for market.



Downing Gooseberries are excellent for jellies. Bushes hardy and vigorous.

## Knight's "Purebred" Blackberries

In planting your Blackberry patch, select land that is full of humus and retains moisture well, for this crop ripens at a time when we can naturally expect dry weather, and if your patch is on land that quickly dries out, the crop will suffer. Culture for Blackberries is the same as raspberries, only they need more room and should be set 3 to 4 feet apart in the row and the rows from 7 to 8 feet apart.

**ELDORADO.** We have grown practically all varieties of blackberries, but Eldorado is so much superior to all others that we now grow and sell only that one variety. Eldorado is unusually hardy. We have never known it to winter-kill or fail to produce an exceptionally fine crop of fruit. Even in the far northwest it is grown without winter protection. The berries are very large, jet black and of excellent quality. They are borne in large clusters and ripen well together. In a word, Eldorado is the greatest blackberry in cultivation and we can assure you that you will not be disappointed in it. Our plants are strong and heavily rooted but our supply is small this year, so it will not be safe to delay placing your order for the amount you will want.

## Dewberries

**LUCRETIA.** Acknowledged by all fruit growers and horticulturists to be the finest dewberry grown. Lucretia commences to ripen from a week to ten days earlier than blackberries. The fruit is very large, of a shiny black color and deliciously sweet and luscious. Don't be without this wonderful berry. Our superior, heavily rooted plants cost no more than ordinary ones. Get your order placed early for our supply is limited.





# Knight's "Purebred" Grapes

## The Big Money Crop

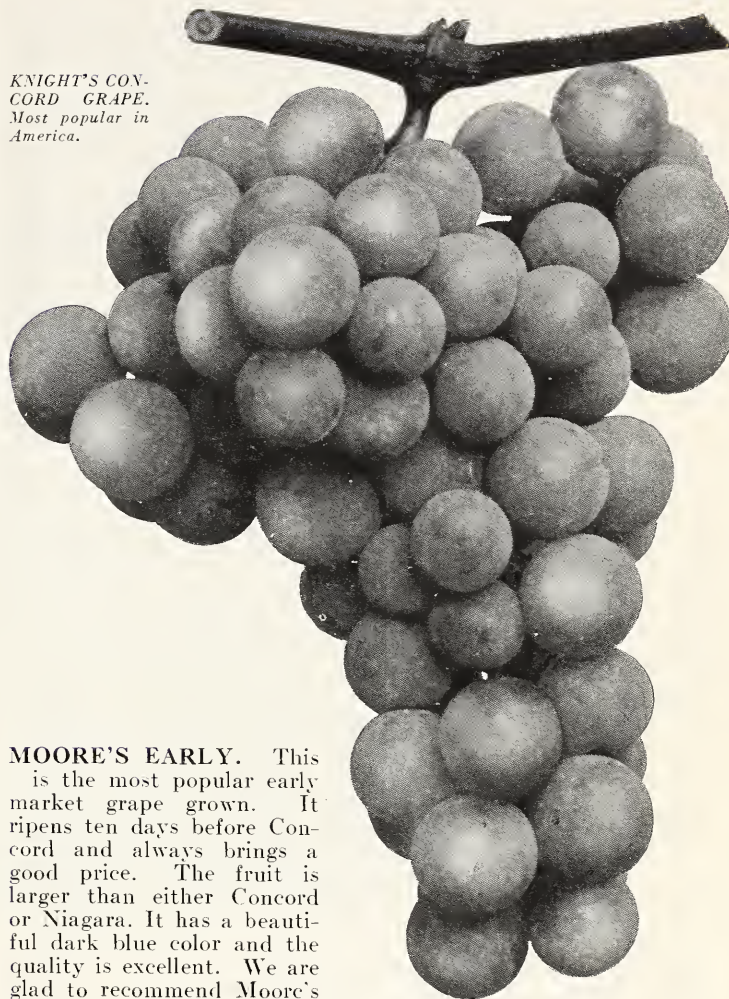
If you live within ten miles of any city of 5,000 or more people, then set an acre—two acres—five or ten acres of grapes—mostly Concord—*this very spring*. The demand for them is increasing faster by far than the ability to supply and those who grasp the opportunity *right now* will reap the harvest. *Knight's "Purebred"* Northern grown, heavily rooted plants will give you quicker returns, larger crops and bigger profits. Don't be misled. Set Knight's Purebreds and you will harvest some fruit the second year, considerable the third year and a full crop the fourth year.

Any good dry soil with sufficient drainage is suitable for growing Grapes, if the exposure and the climate are favorable. Before planting, plow, harrow, and pulverize thoroughly down to a depth of 12 to 18 inches. Plant in rows 8 to 10 feet apart and the plants 10 to 12 feet in the rows. There are so many methods of pruning, different methods being adapted to different localities, that we will not dwell on that point, only to say that proper pruning is very essential to the successful growing of Grapes, and the method that is proving best in your locality is the one for you to follow. We have a good supply of fine plants, but not enough to last through the season. Avoid disappointment and money loss by ordering today.

**CONCORD.** Blue. Decidedly the most popular Grape in America, and deservedly so. Bunch large, compact; berries large, covered with rich bloom; skin tender, but sufficiently firm to carry to distant markets; flesh juicy, sweet, pulpy, tender; vine strong grower, very hardy, healthy and productive. For general cultivation the most reliable and profitable variety grown.

**NIAGARA.** White. Occupies the same position among the white varieties as Concord among the black, the leading profitable market sort. Bunch and berries greenish white, changing to pale yellow when fully ripe. Skin thin but tough, quality much like Concord. Niagara will thrive and produce big crops almost anywhere. It does well in Michigan and south to the most southern states.

*KNIGHT'S CONCORD GRAPE.  
Most popular in America.*



**MOORE'S EARLY.** This is the most popular early market grape grown. It ripens ten days before Concord and always brings a good price. The fruit is larger than either Concord or Niagara. It has a beautiful dark blue color and the quality is excellent. We are glad to recommend Moore's Early very highly as we know it will please you.

*Palmetto Asparagus, the good old variety. Grown here especially for Chicago market.*



# Knight's "Purebred" Asparagus

Asparagus will grow well in almost any soil except low, damp ground, but the land should be under good cultivation and free from weeds. Plant in trenches 10 inches deep, and 4½ feet apart. Place plants in the trench 12 to 18 inches apart, spreading roots out flat. Then cover with 2 or 3 inches of soil, allowing shoots to come up through and get a foot or so in height before filling the trench up level. After the first good freeze, cut off tops and burn. Then cover bed with well rotted manure; if none is available apply some commercial fertilizer in the spring, which should be harrowed in before growth starts.

**WASHINGTON Rust-Proof.** This is a new variety put out by the Department of Agriculture at Washington. The claims made for it that it is superior to all other varieties because of its resistance to blight and other diseases, and because it is larger and more productive, have been proven over a wide area of country. Start a bed of Washington Rust-Proof this year.

**PALMETTO.** The old stand-by—early—large—very productive—wonderful flavor. Fifty plants will supply a small family. You make no mistake when planting Palmetto Asparagus.





# Knight's "Purebred" Ornamentals

*A Moderate Planting will Permanently Beautify  
Your Home and Add \$\$ to Its Sales Value*

Our customers of late years are becoming more prosperous. Berry growers the country over want to improve their home surroundings. Every season we receive letter after letter asking if we cannot supply some good flowers and shrubs, such as are best adapted for country homes.

Accordingly, we have prepared the following list, all of which we know from experience to be hardy and well adapted to the beautifying of your own home grounds. We are well stocked with excellent plants, and the descriptions will readily tell you about the different kinds. In no other way can a few dollars be spent to bring so much satisfaction to yourself, your family and your neighbors as by beautifying your home and making it a more attractive place in which to live.

## Climbing Roses

June is not June without some hardy climbing roses. Such a mass of foliage and riot of color can be had from no other source. They will do well in any good soil with only the usual care of other ornamentals. We are listing below three of the very best and most beautiful Climbers grown. One or several of each will add much to the beauty and value of your home.

**PAUL'S SCARLET CLIMBER.** A recent introduction, but so striking that it won a gold medal from Rose Societies for being the best climbing rose. The brilliant, partly double flowers are a vivid flaming scarlet in color and are borne in clusters of from 4 to 20. They're *beautiful*. Get some this year.

**DOROTHY PERKINS.** Clear, transparent flowers of a beautiful shell pink color. Flowers are borne in large clusters and are very double the petals being daintily crinkled. The bush is rapid growing hardy and does well everywhere.

**EXCELSA.** (Red Dorothy Perkins) Fine crimson scarlet. One of the



*Country Residence of Mr. A. R. Knight, showing beautiful landscaping. You will observe that we "take our own medicine."*



*Spirea Van Houttei (Bridal Wreath). Most beautiful of Spireas*

best climbing roses producing its bloom in large clusters. It's a vigorous grower, healthy, beautiful; an asset to any home.

## Everblooming Monthly Roses

Nothing is quite so dainty, quite so fragrant as the bloom of a Monthly Rose. They are a source of all-summer joy to us in our own yard and they will do the same for you. We have only room to list two, so have selected the two we like the best, and if you will set out a half dozen, or a dozen, of these strong two-year-old plants this spring you will be repaid many times over before the first summer has passed.

**FRAU KARL DRUSCHKI** (Snow Queen; White American Beauty)

The finest snow white hybrid perpetual Rose. Very fine, double, and durable flowers, and large, long-pointed buds of firstclass form. The open flowers are very large, perfectly double and delightfully fragrant; petals are shell-shaped. In our opinion it is the grandest new Rose that has been introduced in many a year. Certainly no other white rose can begin to compare with it.

**J. B. CLARK.** This

splendid new Rose is perfectly hardy, unusually large and expresses in every way the characteristics of the Remontant type. It is robust in growth, with clean, heavy foliage. Flowers are large and superbly constructed; deep scarlet overlaid crimson.



*Frau Karl Druschki rose (White American Beauty). Perpetual; delightfully fragrant; petals a beautiful shell shape.*





## Gladioli

No summer flowering bulbs will give you so much real pleasure and satisfaction as the well selected *Gladiolus* varieties listed below. They will thrive in any good garden soil and you can have succession of bloom by continuing to plant at two weeks intervals from early April until the last of June. The bulbs should be planted from three to four inches deep and from four to six inches apart in the row. All of our bulbs are *flowering size*. *Guaranteed* to bloom this summer.

**PANAMA.** Fine, large, pink. Flowers wax-like and wide open. A favorite.

**SCHWABEN.** Canary yellow. New. Very handsome. Very popular.

**AMERICA.** Soft lavender pink. Free bloomer. Very fine.

**MRS. FRANCIS KING.** Flame red. Very large flowers on long spikes. Gorgeous.

**HALLEY.** Delicious salmon pink, with large creamy blotch. Don't miss this one.

**L'IMMACULEE.** Pure white on long spikes. Beautiful. The best white.

**WAR.** Deep brilliant red. Flowers large, wide open. Strong grower. Fine.

### KNIGHT'S CHOICE GLADIOLI MIXTURE.

If you love fine Gladioli but don't care to keep the varieties separate, then this mixture is just what you want—and it's a bargain. Composed of the very best varieties. Gorgeous at blooming time—a riot of color. All bulbs full flowering size—full of life—ready to delight you and your friends this very summer. A dollar's worth of this mixture will give you ten dollars' worth of pleasure.



*A little careful landscaping will make your house a REAL home.*

## Flowering Shrubs

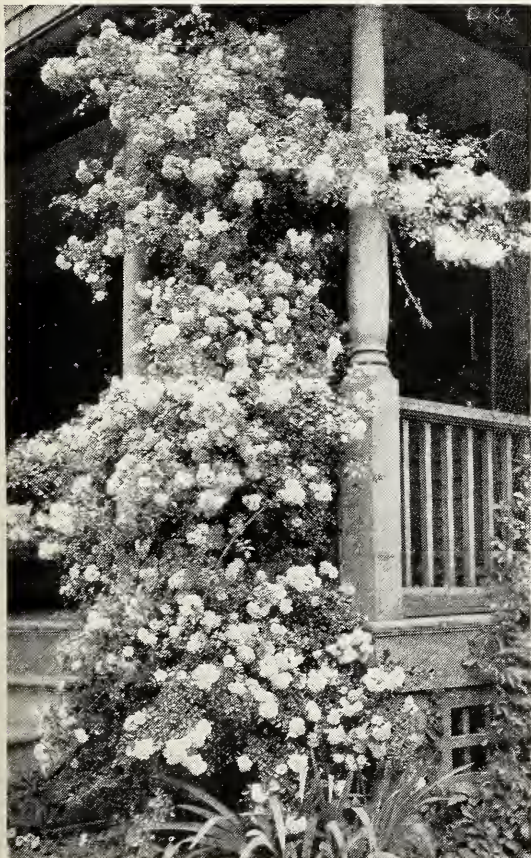
**SPIREA VAN HOUTTEI.** Four to six feet. One of the finest shrubs grown. The branches droop gracefully and when covered with bloom the latter part of May it is a beautiful sight. Makes a nice hedge to divide the lawn from the

garden; foliage is beautiful at all seasons. Perfectly hardy. Is sometimes croneously called Bridal Wreath. Much used in all good landscape work.

### HYDRANGEA PANICULATA GRANDIFLORA.

One of the most valuable hardy shrubs. It attains a height of 5 to 6 feet and is perfectly hardy everywhere. The flowers are white, borne in immense pyramidal panicles nearly a foot in length. It commences flowering in August and continues until October. The plant should be cut back every spring at least half a season's growth, as the flowers are borne on new wood and are much finer when the plant is treated in this way. One of the finest shrubs, and valuable on account of its late-flowering properties.

**BERBERIS THUNBERGII.** (Japanese Barberry). No foundation or open planting of shrubbery is complete without a liberal use of Japanese Barberry. Being dwarf in form it is indispensable for use in front of and between larger shrubs. Planted alone it is very effective, either sheared to a desired form or allowed to grow in the graceful drooping way it will naturally. In fall the foliage turns a beautiful gold and scarlet and when the leaves fall the bright red berries give a touch of vivid color to the landscape.



*Dorothy Perkins Climbing Rose (Pink Rambler). Large clusters of shell-pink flowers, with dainty fragrance.*



*KNIGHT'S Gladioli bulbs are beautiful for Summer cut flowers. Blooms last for two weeks.*





DAVID KNIGHT & SON  
SAWYER



PIONEER NURSERYMEN  
MICH. U.S.A.



# Knights MASTODON —The Big New Everbearing Sensation



MASTODONS  
Less than 1/2 size.

You'll get the  
surprise of your  
life when you  
pick your first

State Department of Agriculture  
CERTIFICATE OF NURSERY INSPECTION No. 3175

This is to certify, that I have examined the nursery stock of DAVID KNIGHT & SON, Sawyer, Michigan, and find it apparently free from dangerous insects and dangerously contagious tree and plant diseases.

This certificate to be void after July 31, 1925.

BUREAU OF FOODS AND STANDARDS,  
L. R. Taft,  
Chief Horticulturist.

Lansing, Michigan, October 25th, 1924.

We predict that, within the next few months, more people will be talking about, and interested in, MASTODON than any other berry grown. It will be the most important strawberry introduction of the past decade, providing it proves its adaptability to all sections.

There are not many MASTODON plants in existence. We have a few thousand of them and would much rather set all of the plants we have with the idea of growing a good crop and bringing the price down within reach of all next year. Our first intention was to do that, but we finally decided to make a limit of six plants to a customer, which will give us a wide distribution without depleting our planting stock too heavily.

The price of 6 plants is \$2.50. Too much, we admit—only for one thing. If these six plants produce the enormously large, handsome berries on your land next fall that they did here last fall, then you will consider the price very reasonable indeed and you will be ready and anxious to order several thousand next spring.

Six plants will prove the value of MASTODON on your soil as well as 600, but don't delay sending for them as **500 orders of six plants each is all we will accept.**

## Knights All-Season Combination Small Fruit Gardens

During the past three years the popularity and value of our *Knights All-Season Strawberry Garden* (Now listed as Offer No. 1) has been proven by the thousands of orders received for it. We have added two more gardens this year. They are priced at a decided saving and are ideal for a small plantation.

**HOWARD No. 17—The Early Wonder.** Very large, beautifully formed berries. Commence to bear with extra early sorts and last into late season.

**GIBSON — The Mid-Season Stand-By.** A proven money-maker. Extra large berry of unusual color, quality and firmness. Delicious for short cake.

**THEODORE ROOSEVELT — The New Late Berry.** Large, beautifully colored berries, with an exquisite flavor much like the wild fruit.

**CHAMPION — Prolific Everbearer.** Has a record of 250 fine, large berries to a single plant. A wonderful producer.

Combination Offer No. 1  
100 Howard No. 17  
100 Gibson  
100 Teddy Roosevelt  
100 Champion

All for  
**\$5.00**

Combination Offer No. 2  
6 King Red Raspberry  
12 Honeysweet Black Cap  
6 Concord Grape  
50 Champion Strawberry

All for  
**\$2.95**

Combination Offer No. 3  
12 King Red Raspberry  
25 Honeysweet Black Cap  
12 Concord Grape  
100 Champion Strawberry

All for  
**\$5.15**

Members: American Association of Nurserymen, Western Association of Nurserymen, Michigan Association of Nurserymen.