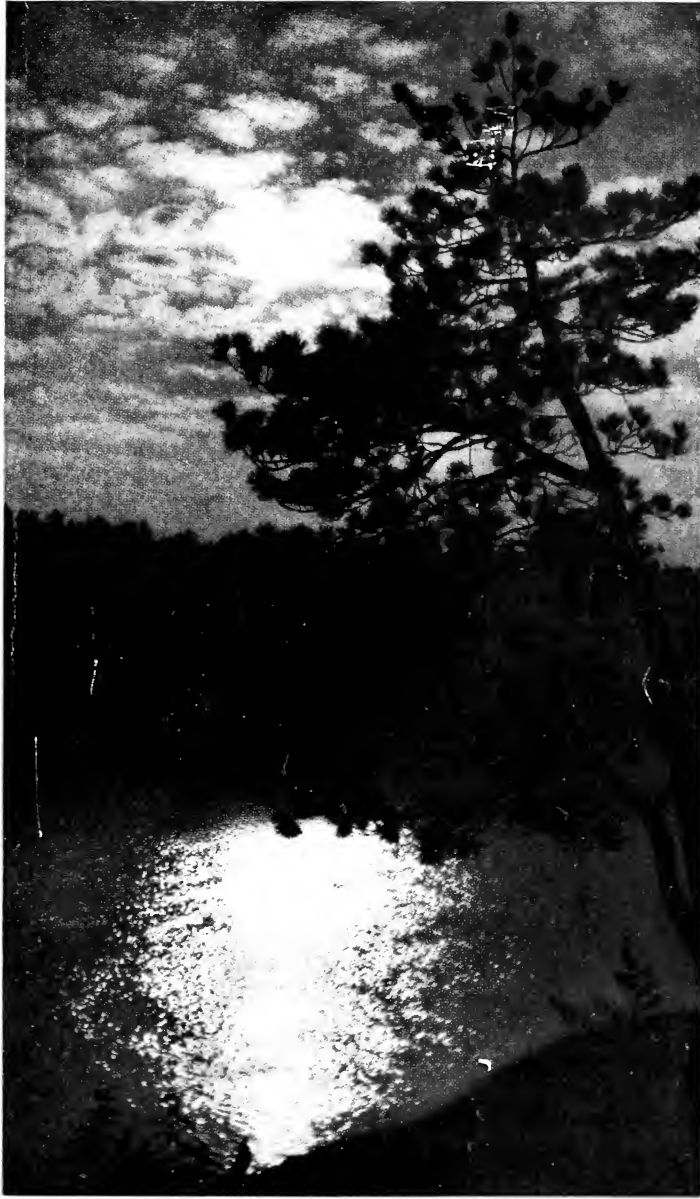


Historic, archived document

Do not assume content reflects current scientific knowledge, policies, or practices.

62.23



1925

*"The Pine, a silent sentinel of the night,
Predominates o'er all in lordly right."*

HILL'S EVERGREENS

Our Guarantee

We guarantee that all goods purchased from us will reach you safely and in good condition, be found true to name and prove entirely satisfactory, or we cheerfully refund money paid.

THE D. HILL NURSERY CO., Inc.

D. Hill President



FIRST NATIONAL BANK

CAPITAL \$300,000.00

DUNDEE, ILL.

STATE OF ILLINOIS
INCORPORATED UNDER THE LAWS
OF ILLINOIS AND LICENSED

TO WHOM IT MAY CONCERN:

The D. Hill Nursery Company are pioneers in the Evergreen nursery business, having been in successful operation in Dundee since 1955.

They have here one of the largest Evergreen nurseries in the world and the high quality of their product has brought them a large patronage.

They have the highest reputation for honesty and fair dealing and we confidently recommend them to anyone desiring goods in their line.

THE FIRST NATIONAL BANK

Charles H. Cook
President.



DUNDEE STATE BANK

CAPITAL AND SURPLUS \$170,000.00

DUNDEE, ILLINOIS.

TO WHOM IT MAY CONCERN:

I am glad to recommend the D. Hill Nursery Company Inc. to anyone desiring to purchase evergreens etc. I have known Mr. David Hill for over thirty years, and his sons all their lives, and all have the highest reputation of square dealing.

By careful attention to the quality of their stock, they have gradually built up an immense business, and are shipping stock to all parts of the world.

F. W. Rice
President

Business Terms

PRICES. Prices in this catalog are F. O. B. Dundee, Illinois. There are no charges for packing or delivery to the railroad station. This catalog cancels all previous catalogs and price lists. Prices are subject to change without notice.

TERMS. See page 70 for full information about cash discounts.

RATES. Five trees of same variety and size will be furnished at 10 rate, 50 of same variety and size at 100 rate.

OUR RESPONSIBILITY. We exercise the greatest care to have all stock genuine and reliable and hold ourselves prepared to replace on proper proof all that proves untrue. In case of any error on our part, it is mutually agreed between the purchaser and ourselves, that we shall not at any time be held responsible for a greater amount than the original price of goods.

ADJUSTMENTS. Any errors or omissions in execution of orders will be satisfactorily adjusted if we are notified immediately upon receipt of goods.

OUR SHIPPING FACILITIES. On account of our close proximity to Chicago (the great railway center), we have direct access to all the leading railroads. In most cases specimen Evergreens dug with solid earth balls are shipped by freight.

YOUR CORRESPONDENCE IS INVITED

Hill's New Introductions

Hill's Silver Juniper
Juniperus scopulorum
See page 16

Hill's Pyramidal Arborvitae
Thuja pyramidalis
See page 49

Hill's Mugho Pine
Pinus Mugo compacta
See page 36

Hill's Waukegan Juniper
Juniperus Sabina prostrata
See page 28



HILL'S PYRAMIDAL
ARBOR VITAE

HILL'S MUGHO PINE

HILL'S WAUKEGAN JUNIPER



Among all the landscape material used for foundation plantings, Evergreens reign supreme. Height, color, form and adaptability sum up the obvious points, but the real value lies in the joy that the possession of good Evergreens gives to the owner. In this planting are Pfitzeriana Juniper, Hill's Mugho Pine, Hill's Silver Juniper, and various Arborvitae



A Personal Greeting

To Old Friends and New:

Each year I realize more and more that any catalog can give no more than a *suggestion* of the grandeur of Evergreens, as I have learned to know them through the association of a lifetime.

When you know Evergreens, you feel in their presence the hush of the vast forest—you see the silent sentinels, Evergreens, typifying permanency—defying time and the elements.

The Evergreen is something nature has given man to typify eternal promise—the promise that Spring shall always come again. In snowy winter, it gives the only note of comforting color in the bleak landscape. In summer it adds serenity to the riot of colors that the smiling sun coaxes forth from nature. An Evergreen is like an old friend—the stress of years—the strife of a lifetime only make richer his noble character. So is a home surrounded by Evergreens like a man with many true friends. As the poet says:

"A toss of my cap to the Cedars!
The lovingest trees that be,
The time tides roll and the seasons veer,
Yet tender, sweeter, year by year,
My Cedars are true to me."

In the storehouse of nature are many things beyond your power to possess, but any lover of nature can surround his home with Evergreens. In their manner is grace—in their color is rest—in their presence is inspiration—their influence is perpetual. An Evergreen is truly a tree with a great and noble character.

D. Hill



A bird's-eye view of the Hill Nursery

Hill's Evergreens

IN order to provide Specimen Evergreens in uniform quality that come up to the Hill standard, a process of careful individual selection is rigidly followed. When Hill's Evergreens are four to five years old, we go through our immense blocks and select the very best trees of uniform color, symmetry, and habit of growth to transplant and grow into individual specimens. Out of our blocks of thousands, only a few hundred Evergreens are selected that come up to our *specimen standards*. This accounts for the perfection of each individual Hill Specimen Evergreen.

Transplanting and Root-Pruning

Frequent transplanting and root-pruning give Hill's Specimen Evergreens masses of fine, fibrous feeding-roots. This, together with annual shearing, results in heavy, bushy, symmetrical tops.



Cultivating



Digging



Packing

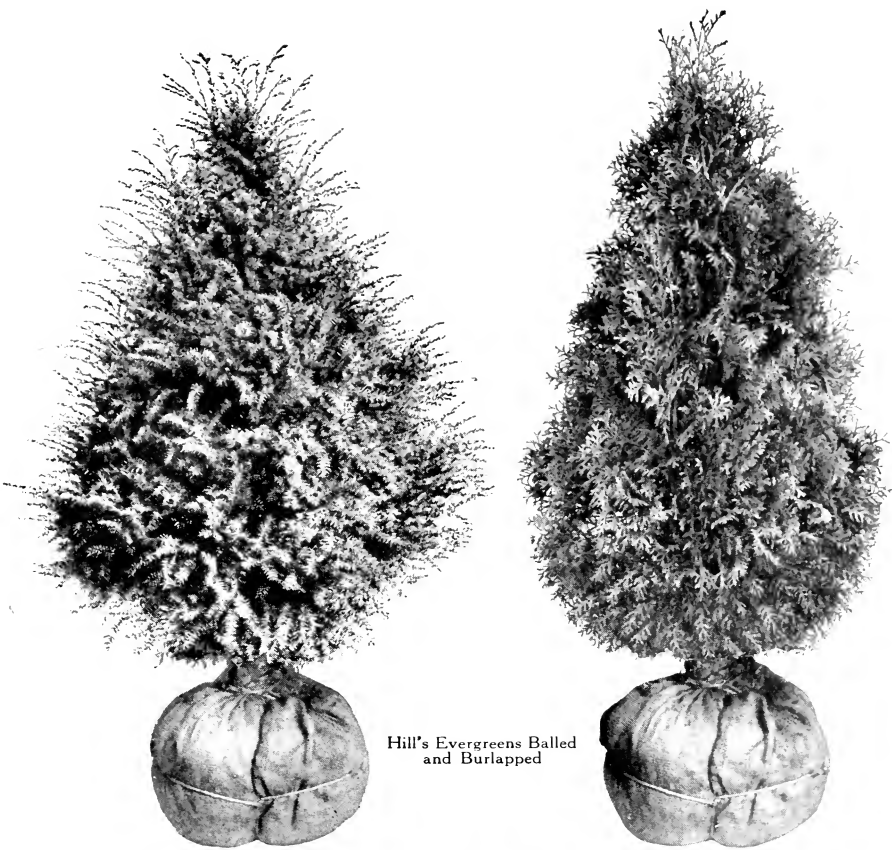
Hand-Dug, Balled, and Burlapped

Every Hill Specimen Evergreen is carefully hand-dug, leaving a large earth-ball about the roots, which is securely burlapped. Our soil contains just enough clay so that earth-ball remains intact. This method of digging leaves the roots undisturbed in a ball of rich nursery soil and insures the success of Hill's Specimen Evergreens in the hands of the planter. As additional protection, each earth-ball is securely burlapped.

Careful Packing

Seeing that your Evergreens are carefully packed is of equal importance. Our nearly seventy years' expert knowledge in properly packing Evergreens for long-distance shipments is your guarantee of safe arrival.

Landscape Service. Should you desire the service of a competent Landscape Architect to assist you in the proper arrangement of your trees, we will gladly put you in touch with one in your immediate locality. We are in direct communication with all the leading Landscape Architects and can easily refer you to the one best qualified to handle your problems.



Hill's Evergreens Balled and Burlapped



A block of specimen Red-Cedars in Hill's Nursery

Concolor Fir (*Abies concolor*)

*I remember, I remember,
The fir trees tall and high;
I used to think their slender spires
Were close against the sky.—HOOD.*

The name Concolor, given to this tree by Dr. Engelmann, who discovered it about the middle of the last century, signifies even color—both the upper and under sides of the needles are beautiful grayish blue.

Many years ago, Mr. D. Hill, while on a visit to the Colorado Rockies, was keenly impressed with the distinctive attractiveness of the Concolor Fir. Chiefly through his efforts this beautiful Fir has been introduced to American planters. Concolor Fir is also known as Silver Fir and White Fir.

A well-known evergreen authority writes: "Concolor Fir is the showiest of all Firs, because it is the nearest to blue. In my opinion it is the cheeriest of all Evergreens in winter. It retains its lower branches, has no insect enemies, and is the best Fir tree to withstand heat and drought."

As an ornamental tree, Concolor Fir must be considered as a decided acquisition, the general outline being symmetrical but without stiffness. The spread of branches in young and healthy trees being wide in proportion to the height, warns intending planters that sufficient space should be given for perfect development.

The form from Colorado is best adapted to planting. It retains a distinctly pyramidal outline and is branched to the base. The large, flat leaves, thickly disposed on the branches, are very noticeable and give it a very dignified appearance.

We are careful to obtain our seed-supply from northern Colorado, which produces trees of absolute hardiness, with striking foliage varying in color from light green to deep soft blue and with medium short needles. The new growth in spring is of silvery whiteness, very beautiful.

The strain of Concolor Fir from New Mexico, where seed is cheap and always abundant, is much inferior, inclined to winter-kill, and is of rather straggly, open appearance. Our trees are guaranteed the true Colorado type, excellent in form and color.

For tall backgrounds, screens, or choice individual specimens, Concolor Fir is an ideal tree.

			Each	10
1	to 1½ feet xxx	B&B	\$4 25	\$40 00
1½	to 2 feet xxx	B&B	5 25	50 00
2	to 3 feet xxx	B&B	6 50	60 00
3	to 4 feet xxx	B&B	8 50	80 00



Without Evergreens even the most pretentious mansion is desolate indeed but with their refining and softening influence charming effects in color and line are obtained



CONCOLOR FIR



Colorado Douglas Fir is one of America's most valuable evergreens, at home in almost any situation

Douglas Fir (*Abies Douglasii*; *Pseudotsuga taxifolia*)

*The towering firs in conic forms arise,
And with a pointed spear divide the skies.*

The Fir is a symbol of rugged strength, of endurance, and permanency. You enter a virgin forest of Fir with the same sense of vastness and reverence as in a great cathedral. The Firs are among the grandest of nature's triumphs.

Since Dr. Archibald Menzies, a ship surgeon with Van Couver's expedition, first discovered it on Vancouver Island, in the year 1791, the Douglas Fir has been known by nearly thirty specific and varietal names. The name *Pseudotsuga taxifolia* is now generally used. *Pseudotsuga* signifies like hemlock, or false hemlock, and *taxifolia* indicates its resemblance to the foliage of taxus, the yew. It was subsequently found in 1827 by David Douglas, a Scotch explorer, and was later named in his honor.

There are two distinct forms of Douglas Fir—one the dark green, gigantic-growing timber tree of the northwestern Pacific Coast area, and the other the type from Colorado. The latter variety is the one recommended, both for its hardiness and its great beauty.

The typical form of young trees is an open, broad, sharp-pointed pyramid; the lower branches are straight or somewhat drooping, and the middle or higher ones trend upward.

Our plants are the type from northern Colorado, the seed being collected in deep gorges of high altitudes, where the blue and silvery foliage is characteristic. The growth is compact and symmetrical with rather short needles, in contrast to southern Colorado and New Mexico types which are of doubtful hardiness, irregular, and open growing. By personally supervising the collection of seed we grow only the genuine Colorado type, and can thus assure our customers that the trees from our nursery are superior in color and habit of growth—a tree that is widely appreciated in both Europe and America.

It reaches 60 feet or more in height, with a spread of branches 12 to 18 feet. It is a rapid grower and thrives well in almost any situation. Plant with plenty of room for future development.

			Each	10
1	to 1½ feet xx	B&B	\$2 00	\$17 50
1½	to 2 feet xx	B&B	2 25	20 00
1½	to 2 feet xxx	B&B	2 75	25 00
2	to 3 feet xxx	B&B	3 75	35 00
3	to 4 feet xxx	B&B	5 50	50 00

Five of same variety and size at 10 rate. Each x indicates one transplanting.
B&B signifies balled and burlapped.



You can duplicate this planting with Dwarf Mountain Pine, *Juniperus virginiana glauca*, Pfitzeriana Juniper, American Arborvitae, and Woodward's Globe Arborvitae at a cost of only \$50 to \$75. Think of what this planting would mean around your home.



Hemlock (*Tsuga canadensis*). Winter's winds and snows hold no terrors for our northern Hemlock.
We propagate only the hardy northern strain

American Hemlock

(*Abies (Tsuga) canadensis*)

O Hemlock Tree! O Hemlock Tree!
 How faithful are thy branches.
 Green not alone in summertime,
 But in the winter's frost and rime,
 O Hemlock Tree! O Hemlock Tree!
 How faithful are thy branches.—LONGFELLOW.

The historic cup of Hemlock, the deadly drug that for centuries was one of the favorite methods of suicide among the Greeks, has no connection with our Hemlock tree. The former was a biennial plant. The Hemlock tree is harmless and described by practically all writers as "One of the best known and most beautiful of all native conifers."

Just what the word Hemlock stands for is unexplained, although the second syllable "lock" signifies "plant."

The late Josiah Hoopes, in his "Book of Evergreens," says: "The long, slender branches, drooping gracefully to the ground, present so beautiful a picture, it is indeed difficult to surpass it, and when we compare the rich dark green foliage of a healthy plant that is varied so exquisitely with the marked glaucousness of the under side of the leaves, we must admire a tree which presents such diversity of charms. A great mistake is continually being made by planting the Hemlock in dry situations; for while it cannot thrive in wet and swampy ground, it greatly prefers a rather moist, deep loamy soil and cool location, the better if partially shaded. In such spots the beauty of the foliage and luxuriant growth speedily develop themselves in the highest degree."

The regular conical form, tapering evenly from a broad base to a long, straight, and thrifty shoot, is the common shape of this tree.

As a screen or hedge the Hemlock is greatly admired as it bears the shears well, grows thriftily, and is of a dark green color and very dense. The results are most satisfactory.

The Hemlock will remain small for many years if sheared, so that it can be especially recommended for foundation groups and small yards.

In the past, many Hemlocks in American nurseries were imported from Europe, where they were propagated from seed collected in America in the southern states (the Carolinas, Tennessee, etc.). When these trees were shipped to America to colder climates they produced rather inferior types of trees which often winter-scalded, turned a ragged brown, or were killed outright. The value of our strain of Hemlock is based on seed selection from northern sources only, insuring trees of hardiness and free, graceful, upright growth.

		Each	10	
1	to 1½ feet xx.....	B&B	\$1 75	\$15 00
1½	to 2 feet xx.....	B&B	2 75	25 00
1½	to 2 feet xxx.....	B&B	3 25	30 00
2	to 3 feet xxx.....	B&B	4 25	40 00

Five of same variety and size at 10 rate. Each x indicates one transplanting.
 B&B signifies balled and burlapped.



The Hemlock makes beautiful hedges, on account of its density of growth and ease of shearing.
 For other Hedge Evergreens see page 67

Red-Cedar (*Juniperus virginiana*)

*Oh, here's a glee to the cedars,
Our staunch old friends and true!
What boots the snow, when wild winds blow;
For never a change do the cedars know
All the long years through.*

The Red-Cedar is America's best advertised Evergreen. Nature planted it over almost all the North American continent. From the land of snow and ice, down through to the far South, it is found in one form or another—tall and narrow trees, low and bushy trees, and all intermediate shapes, are found in various localities. The type shown in this picture is the narrow, compact, pyramidal type which is the only form we grow.

It is one of the most useful and characteristic trees of our American landscapes, rivaling the Italian cypress in beauty, because of its extra narrow, pyramidal habit and dark green to bluish foliage. It is adapted for planting in all sections of the country.

The origin of the word Juniper is traced to the Latin words, *juvenis* (young) and the verb *parvere* (to produce). Presumably it is so named on account of a curious habit of producing two entirely different looking sets of foliage on the same tree, namely the awl-shaped pointed young or juvenile leaves, and the mature appressed-to-the-stem adult foliage.

The wood of Red-Cedar is an important commercial product. It is especially noted for its ability to resist the effects of moisture, which has led to its being largely used for fence-posts and sills of buildings. It is also notable for its fragrance, which helps to prevent the attacks of moths on garments, and, in consequence, it is much used for closets and chests. Cedar wood is also utilized for making lead pencils.

In season the tree bears bright blue and silvery berries containing the seeds which require, under natural conditions, two or three years to germinate. The berries are a great attraction to birds. Red-Cedar can be trimmed into any shape or size, which makes it desirable for hedges and also for topiary work.

It is interesting to note that from this tree various other varieties of Junipers are produced by grafting, including *Juniperus glauca*, *J. Cannartii*, *J. Schottii*, and *J. elegantissima*, *Lee*, mentioned in the following pages.

The popular name "Red-Cedar" is applied to it on account of its beautiful red-colored wood, which is correct and appropriate enough when it is thoroughly matured or seasoned, but its young or sap-wood is creamy white in color.

For best development Red-Cedar needs a dry soil and full sun. The type we grow will reach 20 to 30 feet and grows quite rapidly. The ease with which it can be sheared makes it possible to use it in any location wanted.

As winter comes on, the tips of the new foliage present a pinkish appearance and make a very beautiful picture. The early spring color is very bright green, gradually darkening during the summer.

Its good habit of retaining foliage to the ground and making so thick and dense a growth makes it desirable for a screen and many other uses. Plenty of Red-Cedar in your home landscape will always give satisfaction.

	Each	10
1 to 1½ feet xx.....	B&B \$1 75	\$15 00
1½ to 2 feet xx.....	B&B 2 00	17 50
2 to 3 feet xxx.....	B&B 2 75	25 00
3 to 4 feet xxx.....	B&B 3 25	30 00
4 to 5 feet xxx.....	B&B 6 50	60 00
6 to 7 feet xxxx.....	B&B 12 50	120 00
7 to 8 feet xxxxx.....	B&B 15 00	

Five of same variety and size at 10 rate. Each x indicates one transplanting. B&B signifies balled and burlapped.



Foliage and Berries of Red-Cedar



RED CEDAR (*Juniperus Virginiana*)



Juniperus virginiana glauca see opposite page;

Silver Cedar (*Juniperus virginiana glauca*)

Choice Pyramid. Soft Blue Color

In this variety, the entire young growths are of almost silvery whiteness, which changes to beautiful bluish green in winter. It never grows very large—not over 15 to 20 feet—and it can be kept even smaller if desired.

This is one of the foremost among the interesting group of Junipers that have been developed from *J. virginiana* (Red-Cedar). We constantly strive to improve our strain by careful selection, and reproduce only the best types, most true to form, color, compactness, and habits of growth. In grafting this tree, we are careful to use for understocks only the dependable Red-Cedar, insuring hardiness and longevity.

One season is required in the greenhouse for making the grafts and getting the trees started. Next, we transplant them into beds where they are shaded with lath shades and carefully watered, weeded, and cultivated. After two years in these beds, the plants are 6 to 10 inches in height. They are next planted in rows in the nursery where each tree is carefully fastened, with three or four ties, to an iron stake. At the end of the two years that they remain in this stage, we start selling the sizes listed as (xx). The trees are then five years old. The larger sizes (xxx) are transplanted again before being sold. This continual process of transplanting, trimming, and careful attention to every detail insures plants that will give satisfaction in the hands of the planter.

During the past few years this tree has increased in popularity until it is now found in every section of the country. It is one of the few Evergreens that grows just as well in the South as in our colder northern states.

If left untrimmed it makes long, graceful shoots and develops more of an open growth than shown in our colored picture.

We have been unable to find the exact origin of this variety, although it is mentioned in writings of sixty years ago and is found in the English nursery catalogues of the early 70's.

		Each	10
1½	to 2 feet xx.....	B&B	\$3 25
2	to 3 feet xxx.....	B&B	6 50
3	to 4 feet xxx.....	B&B	8 50
4	to 5 feet xxxx.....	B&B	11 00

Five of same variety and size at 10 rate. Each x indicates one transplanting.
B&B signifies balled and burlapped.



This foundation planting of Arborvitæ, Junipers and Spruces with the "baby" trees in the window-boxes, gives the residence a touch of character not soon forgotten

Hill's Silver Juniper

(*Juniperus scopulorum*)

A Remarkable New Introduction by D. Hill

This species of Juniper, native to the Black Hills, has a tendency to produce a large proportion of trees with beautiful blue foliage. At the same time it is quite variable in habit, producing many variations. We grow the seedling type and are also raising six grafted forms.

Hill's Silver Juniper is narrow, compact, and symmetrical. It has one single stem, in contrast to some varieties of Junipers with several stems. This makes it safe from heavy snows and wind. The inner foliage does not turn brown, as in the Irish and Swedish Junipers, but remains a good, healthy color throughout the tree.

In the fall months the berries begin to appear, some of them clear sky-blue, others darker, and silver colored. The berries, $\frac{1}{8}$ inch in diameter, are borne abundantly and are very attractive to the song-birds.

Hill's Silver Juniper can be used anywhere that Junipers are needed in landscaping. In foundation planting, borders, groups, masses, or individually, it can be planted with good taste. Its narrow habit of growth also makes it desirable in formal plantings or wherever a narrow Evergreen is needed.

	Each	10
2 to 3 feet xxx.....	B&B	\$4 50 \$42 50

Var. *Pyramidalis viridifolia*

A bright green form, having a new distinct foliage and habit of growth. An interesting valuable new Juniper.

	Each
1 to 1½ feet xxx.....	B&B \$3 50

Juniperus chinensis Sargentii

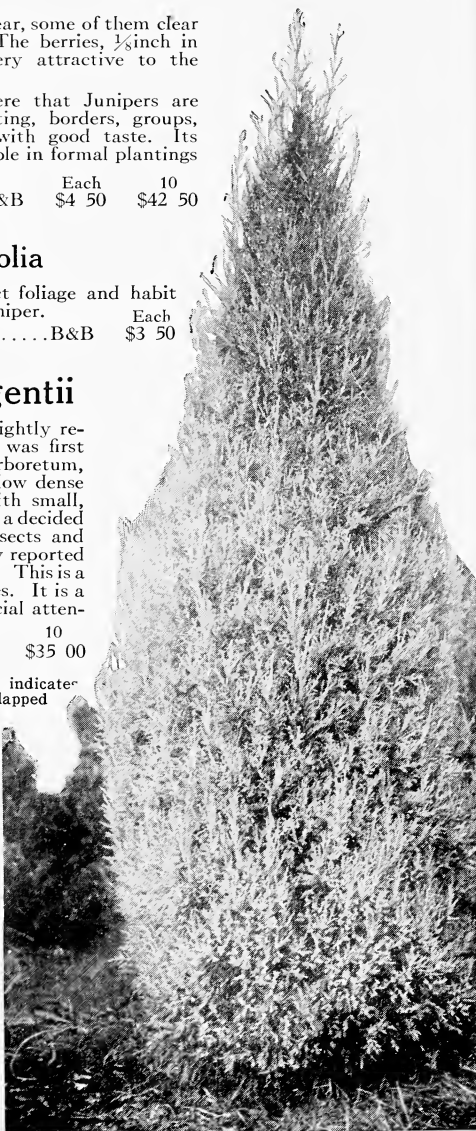
This is an interesting creeping variety slightly resembling *Juniperus chinensis procumbens*. It was first collected by Professor Sargent of the Arnold Arboretum, in Japan in the autumn of 1892. It forms a low dense mat with wide-spreading branches covered with small, dark green, scale-like leaves. Some trees have a decided bluish cast. It is free from all attack of insects and fungous diseases, and in the Arboretum is now reported to be the handsomest of the prostrate Junipers. This is a rare tree seldom offered in American nurseries. It is a comparatively new variety that deserves special attention.

	Each	10
10 to 12 inches xx.....	B&B	\$3 75 \$35 00

Five of same variety and size at 10 rate. Each x indicates one transplanting. B&B signifies balled and burlapped

“In forming plans for embellishing a field, an artist without taste employs straight lines, circles, and squares, because these look best upon paper. He perceives not that to humour and adorn nature is the perfection of his art, and that nature, neglecting regularity, distributes her objects in great variety with a bold hand.”—Lord Cairns' Elements of Criticism

(Printed in 1750)



Hill's Silver Juniper

Juniperus Cannartii

(*Juniperus virginiana Cannartii*)

Handsome, Dark Green

This is a pyramidal, compact grower of medium size, reaching 15 to 20 feet. With only a few moments trimming each spring, it can be kept at any size wanted. It has rich green, heavy tufted foliage. Some trees bear blue and silver berries, which adhere late in autumn and are greatly enjoyed by birds.

This is a choice and rare variety grown by grafting, a process to which we have given special attention. The original trees were introduced from Europe some years ago and stocks are still quite scarce. This is one of the best Evergreens for house foundation groups.

	Each	10
1½ to 2 feet xx.....B&B	\$3 75	\$30 00
2 to 3 feet xxx.....B&B	6 50	60 00
3 to 4 feet xxx.....B&B	8 50	80 00

Schottii Juniper

(*Juniperus virginiana Schottii*)

A pyramidal variety differing from its mother plant, the Red-Cedar, principally in its light yellowish green color. It does not change color in winter, but keeps its bright green foliage throughout the year. The growth is compact and symmetrical and it stands trimming well.

It is valuable in landscape work for its fine pyramidal shape and bright color. Use it for borders, foundation groups, and similar uses. Grows rapidly, needs plenty of sun.

The origin of this tree is not definitely established, although it is thought to have originated in one of the European nurseries some years ago.

	Each	10
1½ to 2 feet xx.....B&B	\$3 25	\$30 00
3 to 4 feet xxx.....B&B	8 50	80 00
5 to 6 feet xxx.....B&B	16 50	

Lee's Golden Juniper

(*Juniperus virginiana elegantissima, Lee*)

Here is a tree that will give variation to the green and blue colors of other Evergreens.

It is rather broad and bushy, with slightly drooping, rich, creamy golden foliage. Unless kept low by trimming, it will grow 10 to 15 feet high. It has the characteristic Juniper foliage, soft and lacy, easily trimmed. It is beautiful in combination with almost any other variety. Likes a fairly sunny location. Ours is an improved strain of exquisite color and growth. Very hardy.

	Each	10
1 to 1½ feet xx.....B&B	\$4 25	\$40 00
1½ to 2 feet xx.....B&B	5 25	50 00
2 to 3 feet xxx.....B&B	7 50	

Five of same variety and size at 10 rate. Each x indicates one transplanting. B&B signifies balled and burlapped.

The various upright Junipers including Red-Cedar, and the three varieties mentioned on this page bear a family resemblance but still are distinct in color and habit. A planting of these forms together will be found very pleasing.



Juniperus Cannartii



Lee's Golden Juniper

PFITZERIANA JUNIPER



Pfitzeriana Juniper

(Juniperus chinensis Pfitzeriana)

Fifteen years ago this remarkable tree was almost unknown, yet it is today in the front rank of ornamental Evergreen trees. Its great popularity is well earned. This is a Juniper that thrives in the hot climate of the South and still comes through the cold northern winters without a scratch. Nothing bothers it as it seems to be practically immune from plant pests of all kinds. If left alone it assumes an attractive, low, broad, irregular form, but by staking up one of the leaders it takes the form of a pyramid, like the specimen shown in the colored picture.

The Arnold Arboretum says: "The handsomest of the Chinese Juniper varieties, the Pfitzeriana, which grows in the form of a low, broad pyramid, is the most satisfactory of all Junipers in this climate. Fortunately, it can now be found in American nurseries."

Pfitzeriana Juniper, *continued*

It was originated in Pfitzer's Nursery in Germany. Ludwig Spaeth, famous German nurseryman and horticulturist, introduced it into general cultivation. Through him we obtained our original plants for propagating. By propagating our own stock from selected trees we are able to insure our customers the true type of robust trees with the gray or blue-green foliage. It is said that the original tree has now grown to about 12 feet in height and about the same diameter; 8 to 10 feet is the size attained by average trees. When planted in borders or foundation plantings they may be easily kept small by shearing.

Pfitzeriana Juniper is graceful, but still possessing a most unusual irregularity of growth that takes the eye of anyone who appreciates the value of this type of tree in the landscape planting.

Juniperus Kosteri is a somewhat similar tree sometimes sold as Pfitzeriana; in reality it is a *J. virginiana* variety and lacks some of the good features of Pfitzeriana.

	Each	10	
1½ to 2 feet xx.....	F&B	\$3 75	\$35 00
2 to 2½ feet xxx.....	R&B	5 50	50 00
2½ to 3 feet xxx.....	E&B	8 00	70 00

Chinese Juniper

(*Juniperus chinensis*)

This is a native of northeastern Asia. It does remarkably well in cultivation in the United States and thrives in all parts of the country. It is superior to our own Red-Cedar in some respects. The color is bright fresh green at all seasons. It grows equally well in the North and in the South, and is remarkably free from injurious plant diseases. It grows from 12 to 20 feet and makes a broad, bushy, dense tree.

The small trees look alike, but when maturing the distinct male and female forms are seen.

	Each	10	
10 to 12 inches xx.....	B&B	\$2 00	\$17 50
1 to 1½ feet xx.....	B&B	2 50	20 00
1½ to 2 feet xx.....	B&B	3 00	25 00

Juniperus chinensis columnaris

A New Variety

This is a variety introduced to cultivation by the United States Department of Agriculture, through the late F. N. Meyer. It forms a distinct, narrow pyramid with all the leaves acicular or needle-shaped. The foliage is remarkably decorative. There are two forms—the blue and the green—which we can now furnish in good plants of the true variety. Like other forms of *J. chinensis*, they are very hardy and also retain their desirable color effect during the winter.

	Each	10	
Blue Form			
1½ to 2 feet xx.....	B&B	\$3 50	\$30 00
2 to 3 feet xxx.....	B&B	7 00	60 00
3 to 4 feet xxx.....	B&B	9 00	80 00
Green Form			
1½ to 2 feet xx.....	B&B	3 50	30 00
3 to 4 feet xxx.....	B&B	8 00	70 00
4 to 5 feet xxx.....	B&B	10 00	90 00

Five of same variety and size at 10 rate. Each x indicates one transplanting. B&B signifies balled and burlapped



This planting shows the attractive effect of a border of Pfitzeriana Juniper. When untrimmed, as in the picture, the growth is spreading

Savin Juniper in Folk Lore

In the rural districts of certain parts of Russia, the leaves of the Savin Juniper were believed to possess a great effect against witches, for which purpose they hung branches of it over the door of their houses. The berries have long been known to possess medicinal properties and are so used in modern times. The ancient Germans, it is said, gave Savin to their horses to give them strength in battle. It was known in cultivation in England prior to 1548, as it is mentioned in Turner's "Names of Herbes" published in that year.



Savin Juniper (*Juniperus Sabina*) in foreground and insert. Other trees in this group are Colorado Blue Spruce, *Juniperus canadensis*, and *J. Canadensis*

Savin Juniper (*Juniperus Sabina*)

A low, much-branched shrub, but sometimes growing 4 to 5 feet high in the lower Alps in southern Europe. It also occurs in the Pyrenees, in Spain, and in Greece, but always as a mountain plant.

Its branches are spreading, dense, much ramified, and abundantly furnished with short, straight, tufted branchlets, which are well clothed with foliage. Its berries are blackish purple or dark violet in color, some smooth and shining, some glaucous or powdery, all of them small, round, or oval, about the size of small currants.

The recent work, "The Cultivated Evergreens," says: "The Savin Juniper and its varieties are the most generally useful Junipers in Canada." They are particularly effective when covering steep slopes or planted among rocks or in sandy places, where they look much at home.

Planted 4 to 6 feet apart, it forms an excellent border to larger evergreens in the background. It is also desirable as a low tree in foundation groups and beds of Evergreens in general. It does well in smoky atmospheres.

1 to 1½ feet xx.....	B&B	Each	10
1 to 1½ feet xxx.....	B&B	\$3 75	\$35 00
1½ to 2 feet xxx.....	B&B	4 25	40 00
		4 75	45 00

Japanese Trailing Juniper

(*Juniperus chinensis procumbens*)

The following description is taken from a bulletin of the Arnold Arboretum, Harvard University: "This is the best known of the prostrate Junipers which Japan has sent to the gardens of the West. It is a plant with wide-spreading procumbent stems, blue-green, sharply pointed leaves marked on the upper surface by two white lines. It is perfectly hardy."

Reaches from 10 to 15 feet in diameter, but can be kept smaller by trimming. It never grows over 8 to 12 inches high, but makes a rapid growth of long branches that cling tight to the ground. This variety can be used in almost any planting—for beds, for low borders, terraces, hillsides, and rock gardens—as it thrives even under adverse conditions.

There is considerable variance among varieties offered as Procumbens, but we are careful to propagate only from the true strain of hardy, compact-growing plants we imported direct from Japan.

1 to 1½ feet xxx.....	B&B	Each	10
		\$4 50

Slender Greek Juniper

(*Juniperus excelsa stricta*)

An extremely glaucous form of compact, slender habit. Has a distinct grayish color and on account of its slow growth and dense habit is desirable for foundation plantings, rock-gardens, etc. Native of Greece and Asia.

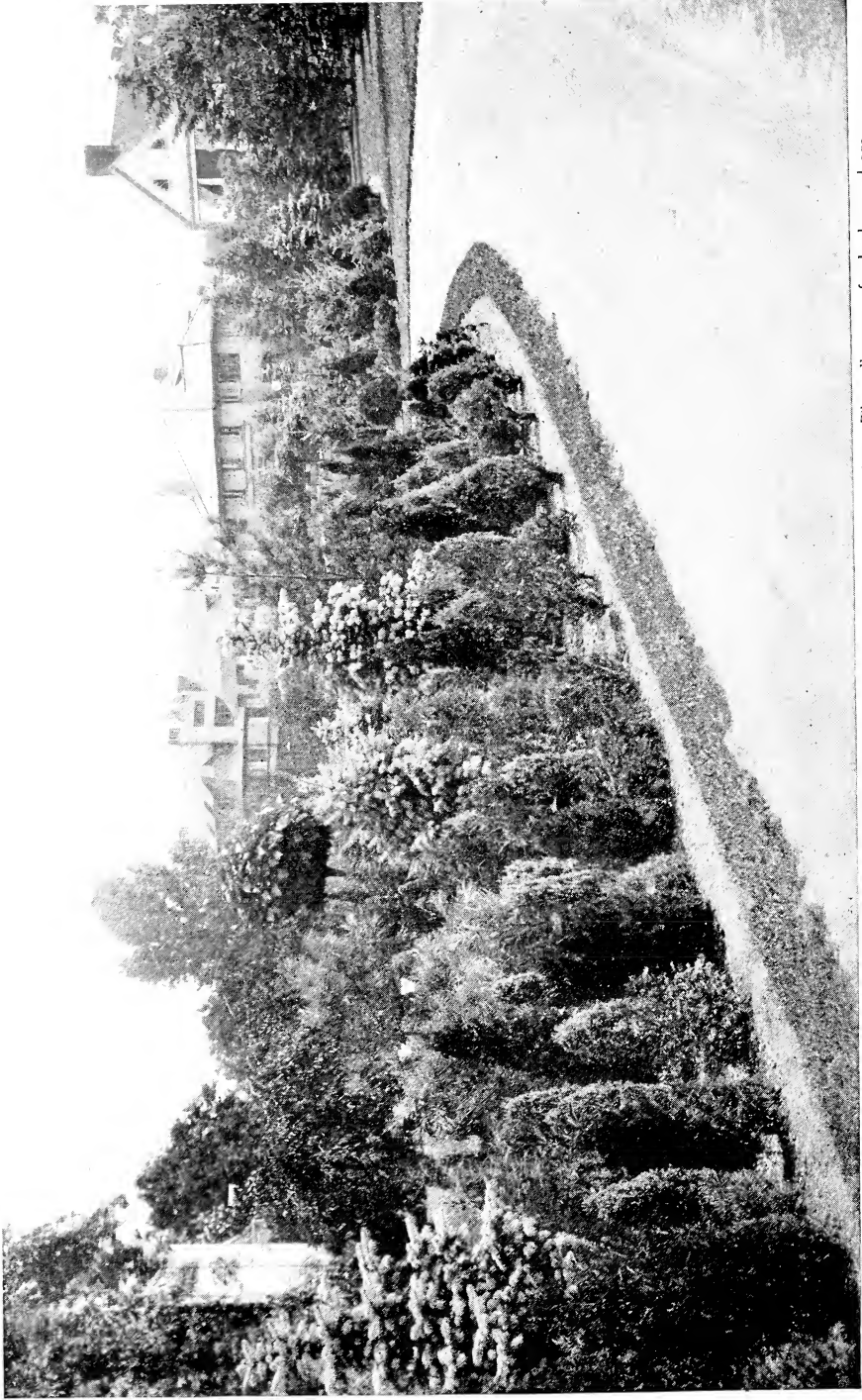
1 to 1½ feet xx.....	B&B	Each	10
		\$3 25	\$30 00

Five of same variety and size at 10 rate. Each x indicates one transplanting.

B&B signifies balled and burlapped.



By proper selection of small or slow growing Evergreens, such as these, a foundation planting can be made to last for years. Annual or perennial flowers planted between the Evergreens give them color in summer



In plantings of this kind such trees as Junipers, Dwarf Pines, Yews, and Arborvitas are appropriate. The taller trees for background are Douglas Fir, Blue Spruce, Austrian and White Pine

Juniperus Sabina tamariscifolia

An excellent creeping dwarf variety. The foliage is fine in texture; average height is 1 foot, with a spread of 6 to 8 feet when full grown. Sometimes called Gray Carpet Juniper and the name Tamarisk-leaved Juniper is also applied to it. It is said to occur wild in Sicily, Greece, and other places. A very vigorous grower, forming a compact and perfect mat of bluish or gray-green. Grows very dense and never changes in color. Our stock is propagated from true stock from the Kew Gardens in England.

		Each	10
10 to 12 inches xx.....	B&B	\$3 25	\$30 00
1 to 1½ feet xxx.....	B&B	5 25	50 00

Juniperus virginalis globosa

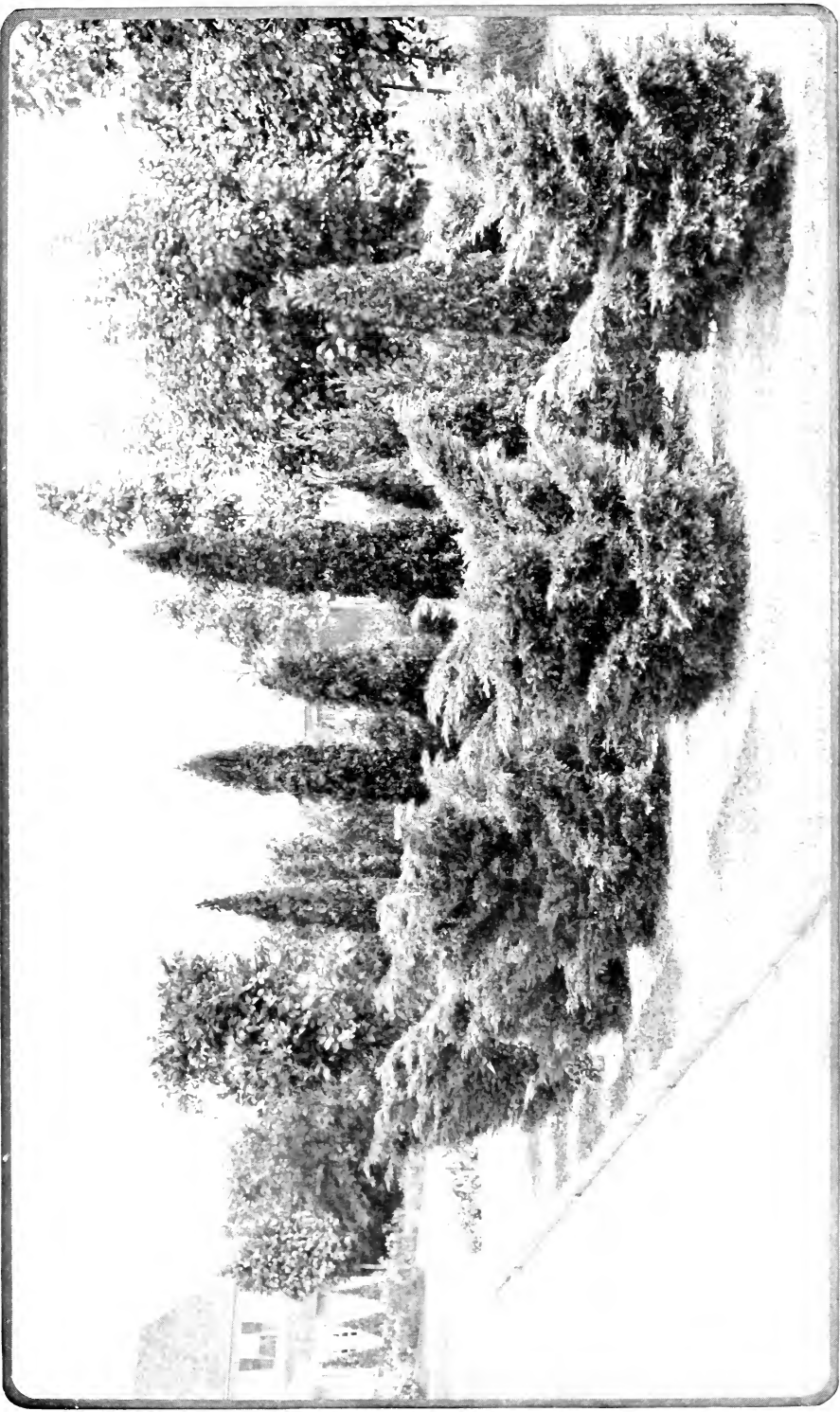
Perfectly round, very dense in growth, with many short branchlets covered with soft dark green foliage. Excellent for planting among perennials, in rock-gardens, Japanese gardens, and in situations requiring Evergreens that will remain small. The trees we offer were imported direct from Japan and have been growing in our nursery several years.

		Each	10
Green type, 15 by 15 inches xxx.....	B&B	\$5 75	\$55 00

Five of same variety and size at 10 rate. Each x indicates one transplanting.
B&B signifies balled and burlapped.



Specimen of *Juniperus Sabina tamariscifolia*. American Yew (*Taxus canadensis*) in background



An unusual but fascinating treatment—Juniperus chinensis Pfitzeriana punctuated with Hill's Pyramidal Arborvitae (*Thuja occidentalis pyramidalis*)



Juniperus canadensis is perfectly at home on hillsides or on plains, as a single specimen or in groups.
The broad, spreading habit gives it a distinct character among Evergreens

Juniperus canadensis

Sometimes catalogued as *Juniperus communis*, which is erroneous. The name *J. communis depressa* is also applied, which is a synonym.

Excellent Ground-Cover

This is a rather low spreading plant, extending along the surface of the ground, often to a distance of 7 to 8 feet in every direction. The extremities of the branches are usually ascending, but rarely to a greater height than 3 feet.

The leaves are sharp-pointed, gray-green, marked on the upper surface by broad white bands, light silvery beneath.

It is a very vigorous, many-stemmed tree, at home on sandy or gravelly hillsides fully exposed to the sun. It grows rapidly but may be kept small by trimming.

It grows native over a wide area in eastern and northern America and varies somewhat in its habit, according to the locality. We obtain our seed from Wisconsin as we find this produces the best type.

Planted 3 to 4 feet apart in a massed border, it forms an excellent frontage to a group of larger conifers.

The berries are globular, smooth, shining, and dark purple in color, "azure studded." They mature at the end of the third year, when they are used for medicinal purposes and manufacturing of spirits. Evidence of this latter fact is contained in these lines of Tennyson:

The Birch Tree swang her fragrant bair;

The Bramble cast her berry;

The gin within the Juniper

Began to make him merry.

		Each	10
10 to 12 inches xx.....	B&B	\$2 50	\$22 50
1 to 1½ feet xx.....	B&B	2 75	25 00
1½ to 2 feet xx.....	B&B	3 00	27 50
1 to 1½ feet xxx.....	B&B	3 50	30 00
1½ to 2 feet xxx.....	B&B	3 75	32 50

Juniperus canadensis aurea

The golden form is very similar in habit to the green variety; the foliage, however, is a brilliant golden color, which it holds during the entire year. Our plants are reproduced from a carefully selected strain of extra-good color and compact form.

		Each	10
1 to 1½ feet xx.....	B&B	\$4 75	\$45 00
1½ to 2 feet xx.....	B&B	5 75	55 00

Five of same variety and size at 10 rate. Each x indicates one transplanting.
B&B signifies balled and burlapped.



Juniperus canadensis. We grow both the green and the golden type

Hill's Waukegan Juniper (*Juniperus Sabina prostrata*)

Hill's New Introduction

A new variety introduced by D. Hill in 1915. A number of distinctive features, including habit of growth, type of foliage, and color of foliage, makes it entirely distinct from other sorts, and places it among the most desirable introductions in creepers produced in recent years.

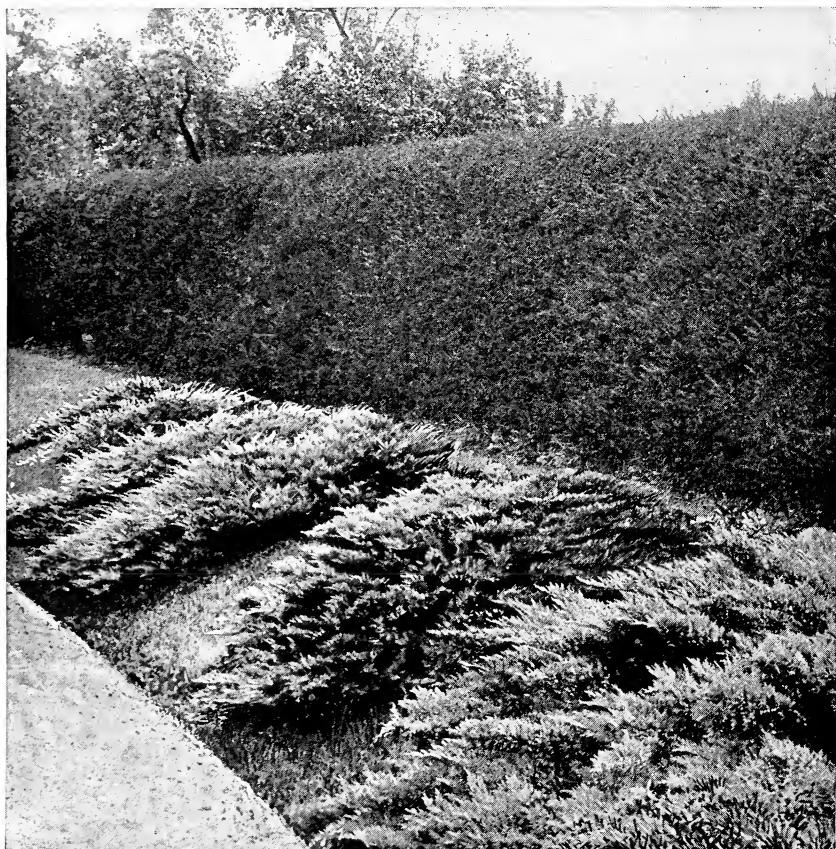
The illustration shows the general habit of growth, which is low and compact, thus making a dense mat over the surface of the ground, which is in strong contrast to the open growth of other varieties of this type. While it grows close to the ground, not over 6 to 8 inches in height even under the best conditions, it may spread out to a distance of 12 feet or more, depending largely upon the soil, the attention given, and the planting conditions.

Hill's Waukegan Juniper instantly attracts attention because of the exquisite color of the foliage. This is soft blue in spring and summer, but changes to a shade of rich purple in late fall. The new growth and the old growth, which vary in color at different seasons of the year, give the variety a distinction and character not found in others of the class. A few specimens of Hill's Waukegan Juniper will give new life and interest to a planting of the darker green varieties of evergreens.

Soil conditions seem to have comparatively little influence on the growth of this variety, as it succeeds equally well in rich garden soils, on rocky slopes, on terraces, and similar positions. As a ground-cover, for rock-gardens, for Japanese gardens, or as an edging to Evergreen borders, it is unsurpassed. In such positions both color and form are pleasingly emphasized. Shown in colors on page 1.

		Each	10
1 to 1½ feet xx.....	B&B	\$4 00	\$37 50
1½ to 2 feet xx.....	B&B	5 25	50 00
1½ to 2 feet xxx.....	B&B	5 75	55 00

Five of same variety and size at 10 rate. Each x indicates one transplanting.
B&B signifies balled and burlapped.



Hill's Waukegan Juniper



In this superb foundation group of Evergreens you will find Pyramidal Arborvitae, Blue Spruce, Yew, Hill's Mugo Pine, and Jumpers in variety. From the rocky hills of New England to the western slopes of the Sierras, landscape planners find that Evergreens are most serviceable trees.

Hill's Mugho Pine

(*Pinus Mugho compacta*)

True Dwarf Form

Along the borderlands between Silesia and Bohemia, in Central Europe, lies a range of mountains known as the Riesengebirge Range. Within a limited area in this locality, we find the desirable true dwarf type of Hill's Mugho Pine.

Evergreens on the higher mountains and in cold countries have, naturally, a harder fight for existence, and, in common with other species, become dwarfed. The more inhospitable and wind-swept the locality, the smaller the trees become, until, at length, one gets a prostrate shrub. At the outposts of vegetation, high up on the mountain sides, we find hardy, persistent Evergreens, buffeted by the mountain blizzards and snows. In such rugged surroundings is the native home of Hill's Mugho Pine.

Through the most vigilant efforts, each year, when a crop of seeds is available, we obtain seeds direct from this source, although it costs eight to ten times more than that of the usual type. Other forms of mountain Pines are found elsewhere, but, as far as is known, no other locality produces a type like the Hill's Mugho Pine.

The old definition, "Short and stout and round about" fits the Hill's Mugho Pine. The growth is dense and low, which is clearly shown in these pictures. The single specimen on opposite page shows a tree covered with new spring growth, resembling hundreds of little candles. After the spring season passes, these buds develop into needles and branches. The annual growth of each branch will average 4 to 5 inches.

It never grows over 4 to 5 feet tall, but spreads out 6, 8, or more feet in diameter when full grown. By annual shearing it can be kept as small as desired; in fact, the trees shown in the bed planting were kept for several years at a height of not more than 8 inches and 3 feet in diameter. It does not have one main stem or trunk, but numerous stems which branch out close to the ground, spreading horizontally and then turning upward in even, regular growth. The color is deep green in summer and winter. It is entirely free from insects or pests of any kind, and will grow in any location where it has plenty of sun.

				Each	10
8	to 10	inches xx	B&B	\$2 00	\$17 50
10	to 12	inches xx	B&B	2 50	22 50
1	to 1½	feet xxx	B&B	3 25	30 00
1½	to 2	feet xxx	B&B	4 25	40 00

Five of same variety and size at 10 rate. Each x indicates one transplanting.
B&B signifies balled and burlapped.

We ceaselessly endeavor to maintain a reputation for fairness, integrity and trustworthiness; to do a clean business, satisfactory alike to us and to our customers. Our best business comes from those who send us their orders year after year; they know they can depend on us for good stock and an absolutely square deal. We are proud of these customers—proud of the reputation Hill's Evergreens have made, but we are not satisfied. Each succeeding year will find us trying to improve our methods in every department—growing, packing, shipping—to the end that we may better serve the people who look to us for Evergreens.



A section of a field of Hill's Mugho Pine, one of the best low Evergreens





Austrian or Black Pine (*Pinus nigra austriaca*) makes a lovely lawn specimen—deep green in color, a compact pyramid in form

Austrian Pine (*Pinus nigra austriaca*)

*I saw, far off, the dark top of a Pine
Look like a cloud—a slender stem, the tie
That bound it to its native earth.*

—WORDSWORTH, in "The Pine on Monte Mario."

Sixty years ago Josiah Hoopes in his "Book of Evergreens" makes this reference to the qualities of Austrian Pine, and the record of over half a century bears out his observations: "We desire to advocate the claims of the Austrian Pine for planting wherever a strong hardy Evergreen is desired. In groups or for avenues in particular situations, it is one of the most available trees at our command. Taking into account its rapidity of growth and the certainty with which it will speedily produce an effect, owing also to the peculiar prominence of its general outline, we consider it unrivaled."

Any question as to its hardiness is disputed, in view of a report from a Canadian authority who says: "Austrian Pine is perhaps the most ornamental exotic Pine which thrives in Canada. It is a handsome tree and makes a good lawn specimen."

Mr. C. S. Harrison, eminent Evergreen authority, says: "The Austrian Pine is a compact, symmetrical, and sturdy tree. I see one from my window which was planted in poor soil twenty-five years ago. It is a beautiful pyramid about 30 feet tall. The lower branches touch the ground."

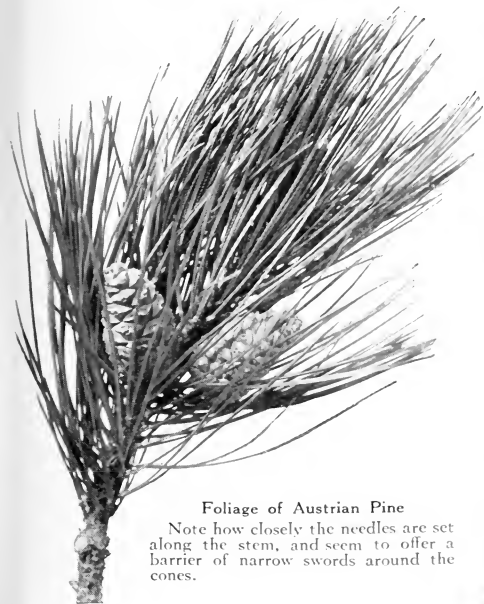
The leaves are two in a sheath, straight and slender, from 4 to 5 inches long, and of such a deep rich green color that it is known in some parts of the world as the "Black Pine." No tree shows such remarkable resistance to the trying conditions of city planting. Coal gas and smoky atmospheres have no effect on its growth. It is a tree equally satisfactory for seashore planting and for the inland country.

Owing to the long tap-root which Austrian Pine makes, it requires extra care in transplanting to avoid losses. For this reason, it is advisable to use trees of moderate size which have been at least twice transplanted and therefore sure to withstand transplanting without a serious set-back.

In old trees planted in the open, the diameter of the branch-spread often nearly equals the height of the tree, but in the native forests of Austria and other parts of Europe it makes a tall tree often over 100 feet high. Annual growth has been observed to be, under favorable conditions, from 12 to 18 inches or more.

			Each	10
1	to 1½ feet xx	B&B	\$2 00	\$17 50
1½	to 2 feet xx	B&B	2 25	20 00
1½	to 2 feet xxx	B&B	2 75	25 00
2	to 3 feet xxx	B&B	3 25	30 00

Five of same variety and size at 10 rate. Each x indicates one transplanting.
B&B signifies balled and burlapped.

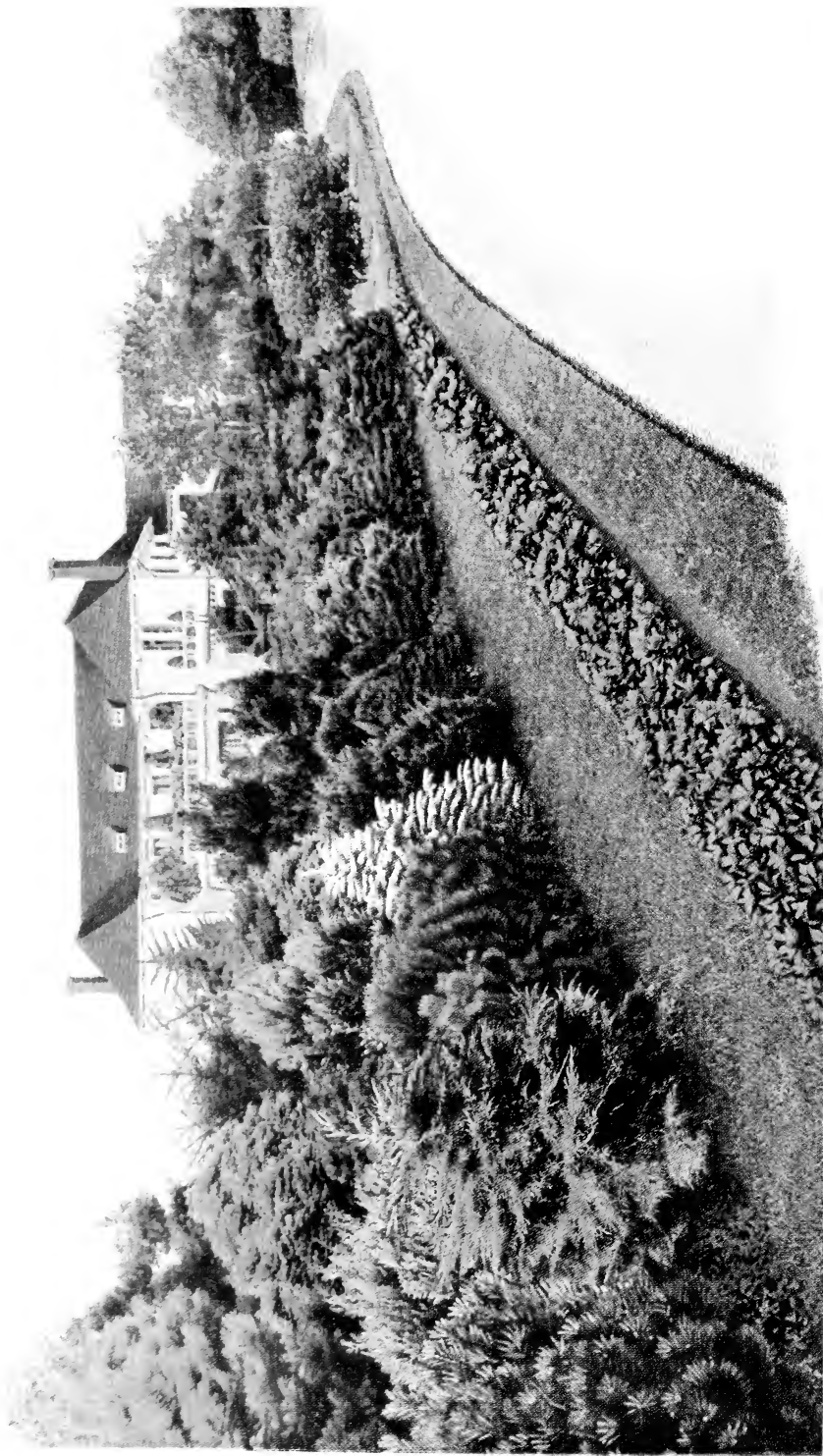


Foliage of Austrian Pine

Note how closely the needles are set along the stem, and seem to offer a barrier of narrow swords around the cones.

Attract the Song-Birds

It has been observed that birds will travel for miles to make their home in the shelter of Evergreens, which form a substantial shelter and nesting-place, especially for those birds that stay for the winter months. Among Evergreens there are several varieties the fruits of which make excellent food for birds: American Yew, Japanese Yew, Red-Cedar, *Juniperus virginiana glauca*, *J. Can-nartii*, and Hill's Silver Juniper are well supplied with berries.



Evergreens in variety form the most picturesque boundary hedge or screen imaginable. In color of foliage, in habit of growth, and natural beauty, they are unsurpassed.

Ponderosa Pine (*Pinus ponderosa*)

Sometimes called the Bull Pine, on account of the heavy, massive needles which are from 6 to 10 inches long, of deep green color on the surface and bluish white underneath. It is an extremely handsome ornamental tree, very drought-resistant, and hardy. Grows tall and upright, a well-rounded pyramidal shape.

1 to 1½ feet xx.....	B&B	Each \$1 75	10 \$15 00
1½ to 2 feet xxx.....	B&B	2 75	25 00

Swiss Stone Pine (*Pinus Cembra*)

One of the most interesting of Pines, producing edible seeds or nuts. Its growth is slow, rarely exceeding 1 foot each season. It is a beautiful tree of neat growth and perfect hardihood, and one that succeeds in many soils and situations.

The Swiss Stone Pine is deservedly in favor for creating certain effects in landscape gardening, which are unobtainable with any other species. The growth is close, compact, and spire-like.

1½ to 2 feet xxx.....	B&B	Each \$4 75	10
-----------------------	-----	-------------	----------

Japanese Table Pine (*Pinus Tanyosha globosa*)

This is really the oddest appearing Evergreen we offer. It has a short, stocky stem, about 6 to 8 inches long, that branches out evenly, forming a perfectly flat-topped tree, hence the name "Table Pine." Foliage is soft, light green. We introduced this tree from Japan, its native home.

3½ by 3½ feet xxx.....	B&B	Each \$20 00	10
------------------------	-----	--------------	----------

Five of same variety and size at 10 rate. Each x indicates one transplanting.
B&B signifies balled and burlapped.



Spruces, Junipers and Yews provide a pleasant foundation group as well as a low screen, which gives privacy to the porch and house



A screen or shelter belt of Evergreens in variety is a distinct asset to a large estate. In addition to the protection afforded, the varying colors give pleasing contrasts for the entire year

White Pine (*Pinus Strobus*)

King of the Forest

*What is the secret the pine trees know,
That keeps them whispering soft and low?
All day long in the breezes swaying,
What can it be they are always saying?*

The White Pine is the largest of all conifers native to the eastern part of the United States. The crowns of mature White Pines in mixed forests conspicuously overtop the surrounding hardwoods.

It readily adapts itself to both dry and moist soils, for it is found on the poorest and driest sand, and on steep, rocky slopes, and also on moist clay flats and river-bottoms. White Pine can endure considerable shade for a number of years, but as it becomes older it requires more and more light for its development.

It grows rapidly (each season's growth is plainly noticeable, as shown in this picture) and has long, flexible needles, whitish beneath. On account of its fast growth and subsequent immense size, it makes a wonderful tree for tall backgrounds, shelter from winds, and for tall screens. Please note that Hill's White Pines are several times transplanted. This produces a better top-growth as well as an abundance of roots.

		Each	10
2 to 3 feet xxx.....	B&B	\$3 25	\$30 00
3 to 4 feet xxx.....	B&B	4 50	40 00
4 to 5 feet xxx.....	B&B	6 50	60 00
5 to 6 feet xxx.....	B&B	8 50	80 00



White Pine (*Pinus Strobus*). Each tier of branches is one year's growth

Scotch Pine

(*Pinus sylvestris*)

This well-known tree, though tall, seldom grows straight, and the branches shoot out rather obliquely. The bark is rough and cracked and the leaves are short, pungent, concave on the upper surface, convex on the under, and of a pale green color.

This is the common Pine in Europe where it has been a valuable tree for timber and ornament for centuries. It is familiarly known in Scotland as "Scot's Fir."

The rapidity of growth, great hardiness, and the facility with which it may be grown on almost all soils, has rendered this tree a great favorite. However, it prefers a cool, gravelly subsoil that is well drained, and will then form a handsome tree. It always inclines more to the picturesque than to the beautiful.

We obtain our seed from Sweden where the best form grows exactly suited to American conditions. Years of testing have shown that seed from other sources is likely to be inferior, and the trees unsatisfactory.

	Each	10
1 to 1½ feet xx.. B&B	\$1 75	\$15 00
2 to 3 feet xxx. B&B	3 25	30 00

Five of same variety and size at 10 rate.

Each x indicates one transplanting.

B&B signifies balled and burlapped.



Scotch Pine (*Pinus sylvestris*). A fast grower with strong, heavy branches

COLORADO BLUE SPRUCE

A TRIUMPH IN EVERGREEN GROWING



Colorado Blue Spruce (*Picea pungens glauca*)

Glistening Silver Blue in Color

Other trees there are of almost every imaginable form and color, but here is truly the culmination of Nature's highest effort to produce the beautiful. Picture in your mind a perfectly shaped tree with an abundance of heavy foliage of a rich glistening blue, which flashes and sparkles in the sunlight, and you can form only a faint idea of the magnificent beauty of this truly marvelous tree.

The glory of the Blue Spruce is its foliage, which is an intense steel-blue. It has created a sensation throughout the United States and Europe, and is indeed a triumph in Evergreen-growing.

"Colorado Blue Spruce has a regal grace, stern and unyielding in outline, like an oak among the Conifers. There is probably no state in the Union where it will not thrive. Hardy, healthy and wonderfully beautiful, it should be welcomed to every home."—C. S. HARRISON.

For a great many years we have been headquarters for Blue Spruces and always maintain a large and interesting stock. The rich blue color, a pronounced characteristic of all of these specimens, enhances the value of the Colorado Blue Spruce for single trees or for group plantings.

	Each	10
3 to 4 feet xxxx.....	B&B	\$15 00

Koster's Blue Spruce (*Picea pungens Kosteriana*)

	Each	10
3 to 4 feet xxxx.....	B&B	\$18 50

Five of same variety and size at 10 rate. Each x indicates one transplanting.
B&B signifies balled and burlapped.

"What is the difference between Colorado Blue Spruce and Koster's Blue Spruce?" customers often ask us. When seeds of Colorado Spruce are planted in the nursery, 75 per cent of the trees are green and the balance of various shades of blue. These blue trees are sold as Colorado Blue Spruce. Such trees make beautiful symmetrical specimens, considered by many as superior to Koster's Blue Spruce. All Koster's Blue Spruce are grown from grafts (or from cuttings). The color is usually steel blue, all trees being uniform in color.



"The Colorado Blue Spruce is the handsomest tree on the Rocky Mountain Trail. A fluffy, silver-tipped flowing robe it wears. It bears the call and scold of squirrel and the echoes in the canyon. At its feet the water ouzel sings and the chipmunk plays. By it the columbine blooms. Near by, in autumn, the white-limbed aspens shake their golden leaves. On its frosty top sits the haughty, handsome wit, the crested jay. A playground are its arms for child-like, cheery chickadees. The Silver Spruce is an evergreen poem of the wild and gets into one's heart like a bolly bock."—ENOS A. MILLS.



The stress of winter only adds to the beauty of the home surrounded by Evergreens

Black Hills Spruce

(*Picea canadensis*)

The Black Hills Spruce is hardiest of all Spruces, symmetrical, compact and bushy in habit of growth; in fact, the very smallest trees soon form round, sturdy, compact bodies. As the tree grows and develops, it continues to carry this particular style of growth and generally becomes the most compact growing specimen of the Spruce family; even in old trees the lower branches are retained, thus forming a close ground-cover.

Botanically, the Black Hills Spruce is considered a close relative of White Spruce, which has developed its distinct characteristics through long centuries of living in the Black Hills country of Dakota.

The foliage varies from green to bluish tint, and all trees are remarkable for their bright fresh color.

Black Hills Spruce was first introduced to commercial culture by Mr. D. Hill many years ago and has since become widely planted throughout the country.

		Each	10
10 to 12 inches xx	B&B	\$1 75	\$16 50
1 1/2 to 2 feet xxx.....	B&B	4 50	40 00
2 to 3 feet xxx.....	B&B	5 50	50 00
3 to 4 feet xxx.....	B&B	6 50	60 00



Norway Spruce—the time-honored Christmas Tree

Hill's Norway Spruce

(*Picea excelsa*)

For many years, Norway Spruce has been highly appreciated because of its rapid growth, its thriftiness, and its heavy masses of deep green foliage—in fact, one seldom finds a bare branch. Some of the finest old hedges are of Norway Spruce, as the trees can readily be pruned to any desired height. On farms and around homes all over the country, Norway Spruce windbreaks are giving substantial protection to stock and buildings.

Norway Spruce is a tall, picturesque, and hardy tree, graceful in all its lines, and well adapted to planting over a wide range of territory. The spreading and drooping branches add a picturesque touch to the landscape.

As the Norway Spruce prevails over a wide range of European territory, there are many sources from which to obtain seed. Careful experiments and close study for many years have proved to us that seed from the higher elevation in the Swiss Alps insures a superior type of Norway Spruce for America—therefore we use this seed exclusively.

		Each	10
1 to 1 1/2 feet xx.....	B&B	\$1 75	\$15 00
1 1/2 to 2 feet xx.....	B&B	2 00	17 50
2 to 3 feet xxx.....	B&B	2 75	25 00

Five of same variety and size at 10 rate. Each x indicates one transplanting. B&B signifies balled and burlapped.



In color the foliage of Black Hills Spruce varies from a delicate bluish tint to deep green.
The tree is compact, rather bushy, and entirely hardy.

American White Spruce (*Picea alba*)

A native of the northern part of America, its range extending to the coasts of the Arctic Ocean, attaining heights from 25 to 50 feet. It is thoroughly hardy, free-growing, not particular about soil, but prefers moist to dry situations.

A compact and upright grower of great longevity. Trees over fifty years old remain well branched at bottom, retain their pyramidal form, and annually make an upward growth. It will grow on a great variety of soils, bear crowding well, and also stand severe trimming. Being a native of cold climates it grows most successfully when planted north of a line from Philadelphia to St. Louis.

White Spruce is especially suitable for tall background, shelters, windbreaks, and tall screens. When it is desired to develop single specimens, they should be allowed 12 to 15 feet for full spread of the branches. It is fairly rapid in growth, with light green foliage, slightly tinged with blue.

The best type prevails through northern Wisconsin, where our seed is gathered from carefully selected grounds.

		Each	10
1	to 1½ feet xx	B&B \$2 00	\$17 50
1½	to 2 feet xx	B&B 2 50	20 00
2	to 3 feet xxx	B&B 3 75	35 00
3	to 4 feet xxx	B&B 4 75	45 00

Five of same variety and size at 10 rate. Each x indicates one transplanting. B&B signifies balled and burlapped.



White Spruce (*Picea alba*) retains its graceful drooping habit for years

Only Evergreen trees can add such charm and dignity to your home. These magnificent specimens are Concolor Fir (*Abies concolor*)





The greatest beauty of Evergreens is brought out by close contact of various varieties; their changing colors, their varying forms of growth and foliage are seen to best advantage in groups and borders

Siberian Arborvitae

(*Thuja occidentalis Wareana*)

Dark Green; Conical

Raised by and named for Mr. Thomas Ware, an English nurseryman, who produced it about 1850. It matures at 6 to 8 feet. It is conical in outline and covered with dark green foliage which is somewhat different from the American Arborvitae, being much heavier and deeply crested. The branches are short and stiff. It is much used for foundation planting and frequently for hedges. The name Siberian has been given to it because of its rugged constitution. A symmetrical, compact grower, very long lived.

The winter color of the Siberian Arborvitae—a lasting dark green—is an important feature of these most desirable trees.

A. D. Webster, in his book on "Coniferous Evergreens" describes it: "Of dense neat habit and remarkable for the deep green of the foliage. It is very desirable for ornamental planting, being regular of growth, of deep foliage tint, and with the branchlets clustered and compact at the ends of the branches."

If you have never seen an Arborvitae in bloom you do not realize the intricate processes by which nature insures reproduction. In this species the male and female flowers are borne on the same tree, but each sort is usually on different twigs. They are minute, inconspicuous, elongated bodies, especially the female flowers, borne at the ends of the twigs and opening, as a rule, in early spring. The thin, gauzy seed-wings attached on two sides of the seed render them very buoyant, so that they are carried by the wind for long distances.

1½ to 2 feet xxx.....	B&B	Each \$4 75	10 \$45 00
-----------------------	-----	-------------	------------

Five of same variety and size at 10 rate. Each x indicates one transplanting.
B&B signifies balled and burlapped.



Siberian Arborvitae (*Thuja occidentalis Wareana*)

Douglas Golden Arborvitae

(*Thuja occidentalis Douglasii aurea*)

A really valuable golden form originated by Robert H. Douglas. A good golden color, not so bright as Peabody's, but a superior grower, forming a broad, bushy, heavy specimen. Its unusual bright golden color adds contrast and a novel touch when planted with other Evergreens. Can be easily sheared and kept at any height or form desired. Like all bright-colored Evergreens, this tree should be used with a background of good dark green varieties.

1 to 1½ feet xx.....	B&B	Each	10
2 to 3 feet xxx.....	B&B	\$2 75	\$25 00
		3 75	35 00

Douglas Pyramidal Arborvitae

(*Thuja occidentalis Douglasii pyramidalis*)

Its foliage is feathery, somewhat crested, and of a good dark green color. In habit the tree is pyramidal, resembling the well-known Pyramidal Arborvitae. It grows 12 to 15 feet in height, and can be used to good advantage for sentinels or for any formal effects.

2 to 3 feet xxx.....	B&B	Each	10
		\$3 75	\$35 00

Parsons' Compact Arborvitae

(*Thuja occidentalis compacta*)

There is considerable mixture in this variety throughout the country, but we continue to confine our propagation to the true Parsons form. It is of slow growth, broad, compact and very hardy with charming oval form. Possibly the best known of the dwarf forms. Ultimate growth about 5 feet in diameter, each branchlet being about 3 inches long by 4 inches across.

1 to 1½ feet xxx.....	B&B	Each	10
		\$2 75	\$25 00

Thuja occidentalis Rosenthalii

Broad, symmetrical pyramid; rich dark green. This variety, on account of its bright winter color, is one of the best of all forms of Pyramidal Arborvitae. It is as yet a variety little known among planters but one that is well liked wherever it has been tried.

10 to 12 inches xx.....	B&B	Each	10
1 to 1½ feet xxx.....	B&B	\$2 25	\$20 00
		3 00	27 50

Five of same variety and size at 10 rate. Each x indicates one transplanting.
B&B signifies balled and burlapped.

Rock Gardens

Oriental mystery and romance seem to cluster around a Rock garden, giving a peculiar fascination and charm that appeal to everyone, and even the smallest gardens may be the embodiment of quaintness and daintiness.

After a most careful investigation we engaged the services of Mr. T. R. Otsuka, a thoroughly experienced Japanese landscape architect, who has proved his ability in America as well as in Japan. Some of the most notable types of Rock gardens in this country have been created by Mr. Otsuka.

The ideas and principles of the Japanese garden may be adapted to large or small areas just as readily as English gardening. One garden may be awe-inspiring with its gigantic proportions and mystic grandeur. The other may be small, quaint and sublime to the finest degree.

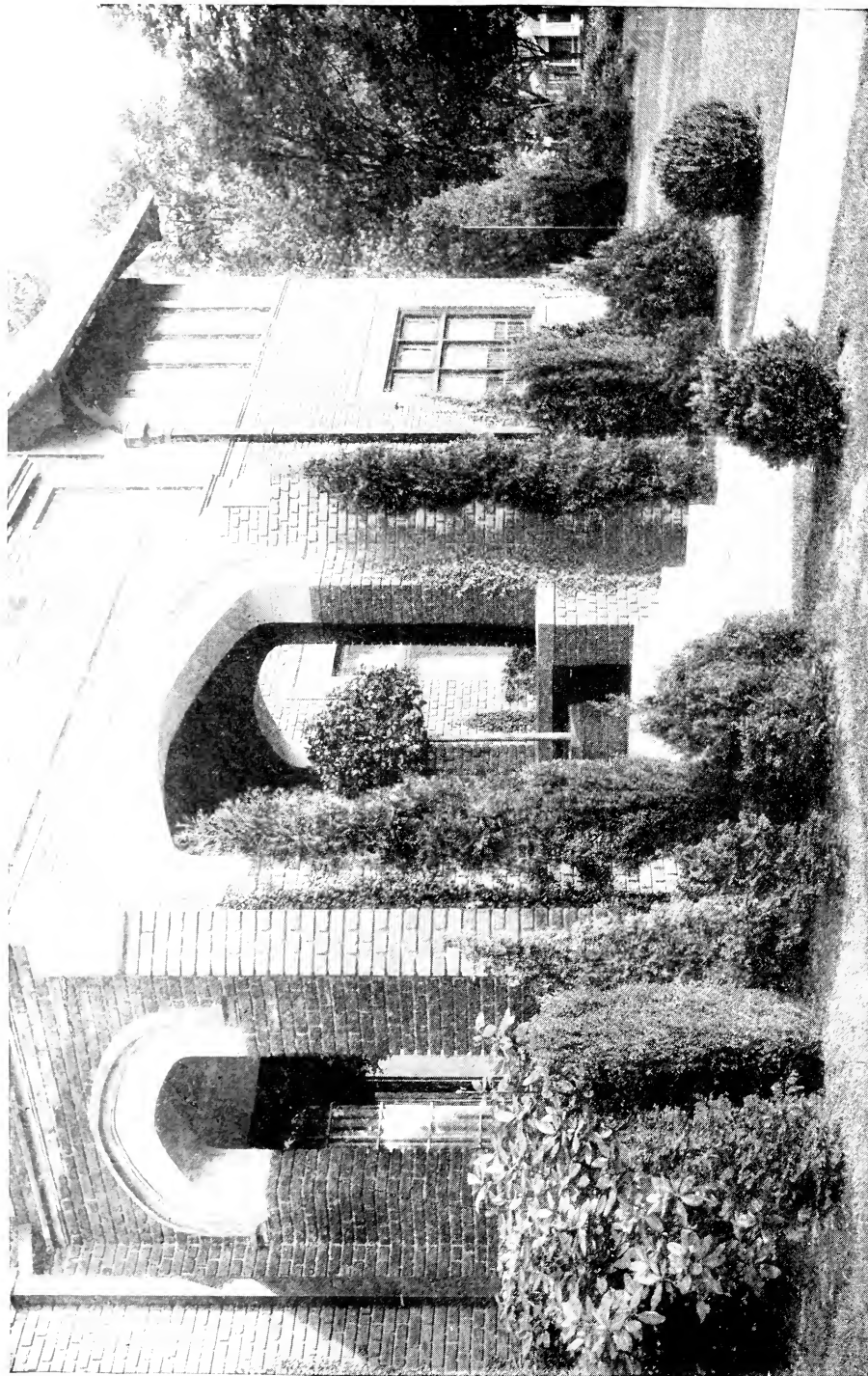
Not unlike other worth-while arts, the Japanese garden must give full satisfaction all the year around. Whether dressed in the green foliage of summer or the white mantle of winter, it should be an ever-changing canvas interpreting the moods of the season.

A Rock garden is little, if any, more costly than the ordinary type of garden, and especially is this true when the work is directed by Mr. Otsuka, who uses all suitable local material that you are able to supply, and will make use also of the labor on your own place. This enables him to do the work at a nominal cost and in an extremely short time.

We have perfect confidence in Mr. Otsuka and can recommend him to any of our customers who may be interested in Rock and Japanese gardens. If desired, he will make personal calls on prospective clients in any part of the country, in which case his charges are based on his traveling expenses plus a consultation fee of \$25 per day.



Sweeping Pines, Spruces and Firs, mirrored in the rock garden's pool, bring the quiet of the woods to your garden. Trailing rock plants and dwarf evergreens complete the scene. This garden installed on grounds of Mr. D. Hill by F. R. Ouska



The sharp lines and angles of the entrance are softened and made pleasing. The Pyramidal Arborvitae are correctly used. American Arborvitae, favorite Hemlocks, and the Red-Cedars are a combination which looks well almost anywhere.

Hill's Pyramidal Arborvitae

(*Thuja occidentalis pyramidalis*)

Habit

Narrow and Compact

The native American Arborvitae was one of the first Evergreen to be cultivated and taken to European gardens. Records are found of it being known and used there over 400 years ago. It is natural that a tree cultivated for so many years should develop many forms and types, at least fifty now being generally known.

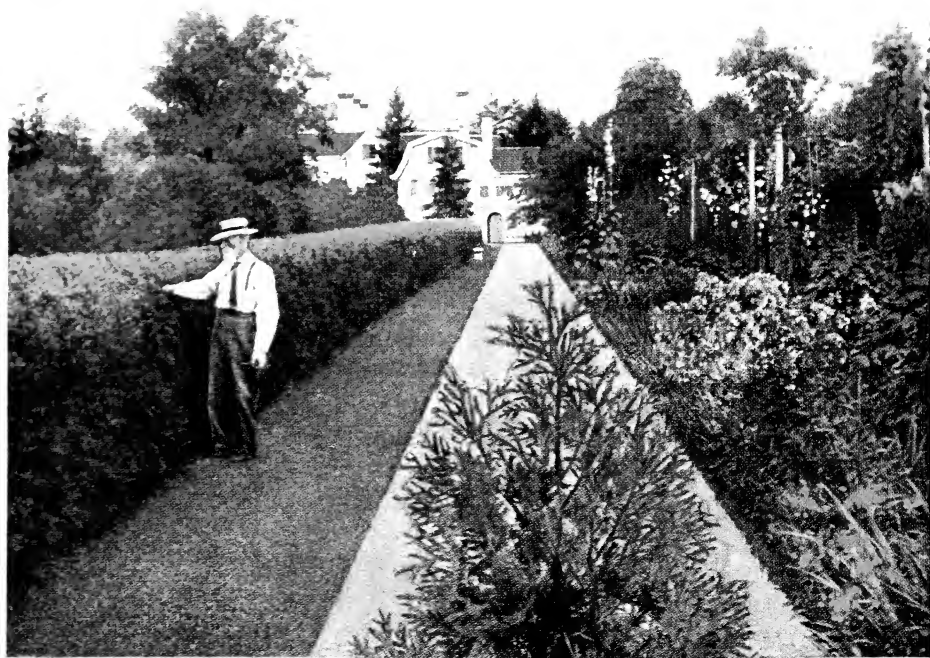
Years ago we realized the shortcomings, in many respects, of the Pyramidal Arborvitae then on the market. Specimens in many cases were open-growing, uneven in growth, and of poor color. Then we started experimenting. Specimens were secured from fully a score of sources in both Europe and America. All these were placed in the nursery and diligently watched for any poor qualities and for any superior characteristics. By careful attention to selection and propagation, Hill's Pyramidal Arborvitae was finally developed.

The features to be desired in a Pyramidal Arborvitae were dense, compact growth, narrow and pyramidal form, deep rich green color at all seasons, uniform habit of each tree and hardiness to withstand conditions here in the northern states. Planters everywhere tell us that Hill's Pyramidal Arborvitae answers this description better than any other type. It reaches a height of 15 to 20 feet and usually measures not more than 2 feet in diameter at the base. With few exceptions, it has but one main stem, which makes it less liable to damage from snow.

Each 10
2 to 3 ft. xxx. B&B \$4 25 \$40 00

Five of same variety and size
at 10 rate. Each x indicates one
transplanting. B&B signifies balled
and burlapped.





AMERICAN ARBOR VITAE

The leading Evergreen
hedge plant. Equally
attractive as a specimen



American Arborvitae (*Thuja occidentalis*)

“White Cedar”

How little I know of that Arborvitae, when I have heard only what science can tell me.—THOREAU.

Trees of this genus are of ancient origin, representatives of *Thuja occidentalis* having existed throughout the northern hemisphere in early periods of the earth's history. Its introduction into American gardens took place at the beginning of landscape development in America. It was probably the first American coniferous tree cultivated in Great Britain, having been introduced prior to 1597, in which year it was mentioned by Gerrard in his "Historie of Plants."

The American Arborvitae is the mother tree from which upward of fifty distinct types have been developed, varying in color from deep green to bright golden and ranging in size from little dwarfs to tall pyramidal specimens. The native forests of Arborvitae have long been of great commercial value for timber, producing tall, straight trunks much used for telegraph poles.

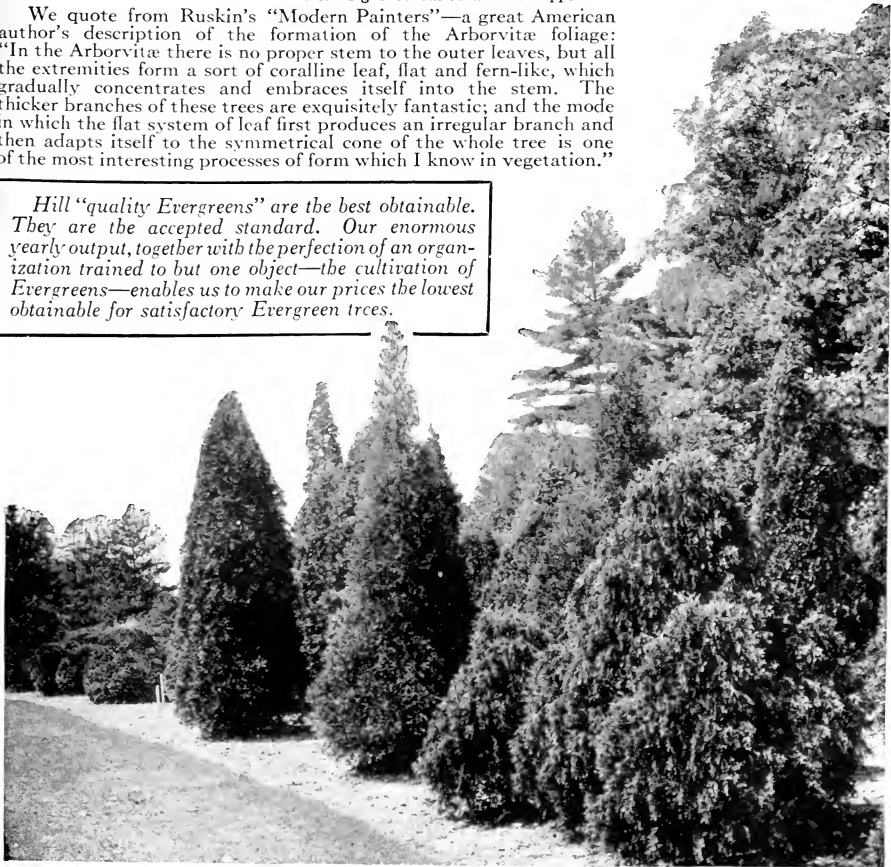
The Arborvitae is very hardy and dependable in almost any situation. A moist location is preferred. Stands trimming well, and for this reason is widely used for hedge purposes. Complete information regarding hedges will be found on page 60. The rate of growth and ultimate height depend largely upon conditions. It usually grows bushy at the bottom and tapering toward the top. Foliage is very soft and flexible and of fine deep green color. Covering such a wide range in its native growths, trees from some sections are open-growing and undesirable, but we are careful to obtain our seed from certain sections of northern Wisconsin, producing stock of absolute hardness, good green color, and compact habit of growth.

			Each	10
1½	to 2 feet xx B&B	\$1 75	\$15 00
2	to 3 feet xxx B&B	3 25	30 00
3	to 4 feet xxx B&B	5 50	50 00
4	to 5 feet xxx B&B	6 50	60 00

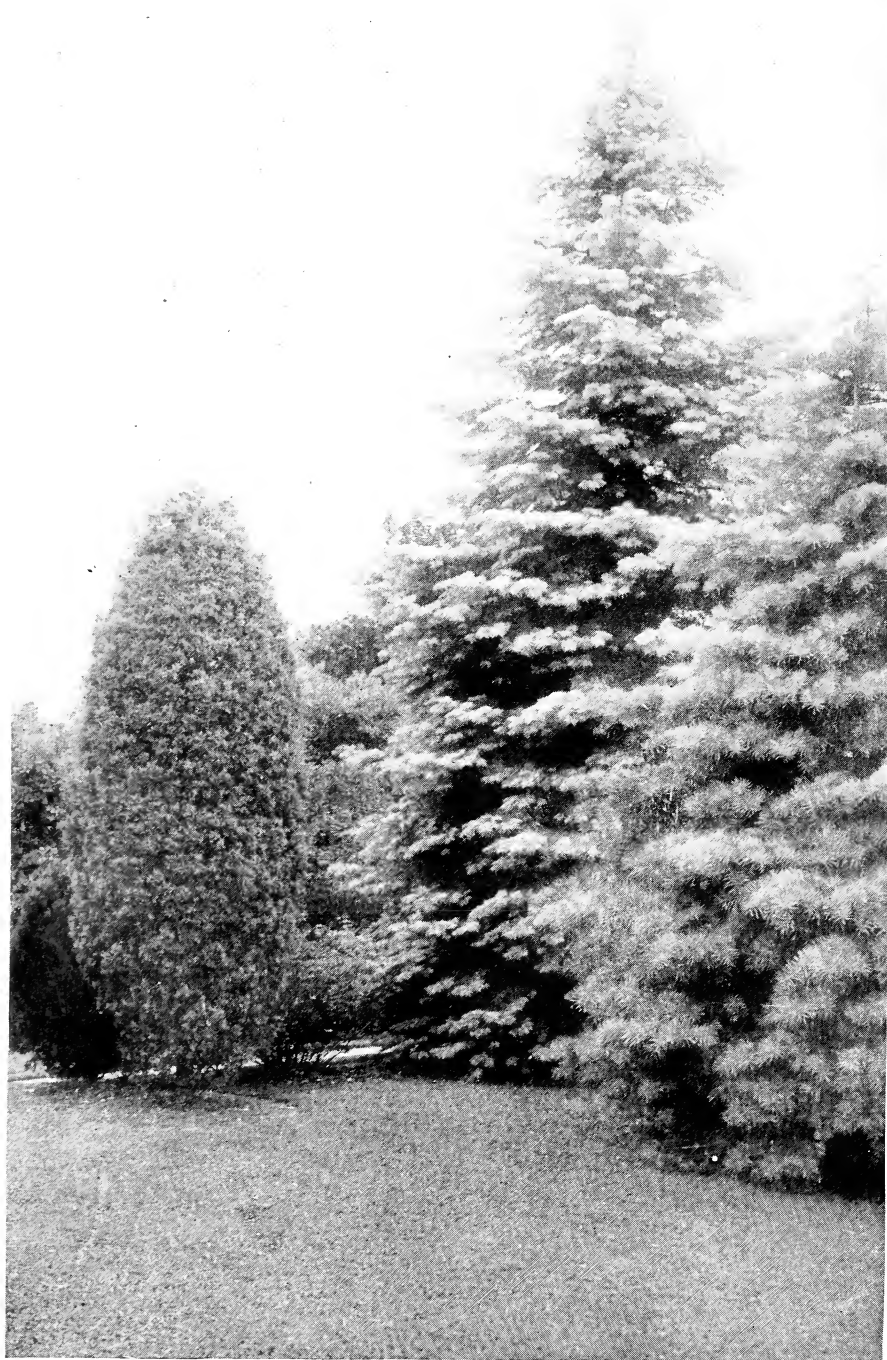
Five of same variety and size at 10 rate. Each x indicates one transplanting.
B&B signifies balled and burlapped.

We quote from Ruskin's "Modern Painters"—a great American author's description of the formation of the Arborvitae foliage: "In the Arborvitae there is no proper stem to the outer leaves, but all the extremities form a sort of coralline leaf, flat and fern-like, which gradually concentrates and embraces itself into the stem. The thicker branches of these trees are exquisitely fantastic; and the mode in which the flat system of leaf first produces an irregular branch and then adapts itself to the symmetrical cone of the whole tree is one of the most interesting processes of form which I know in vegetation."

Hill "quality Evergreens" are the best obtainable. They are the accepted standard. Our enormous yearly output, together with the perfection of an organization trained to but one object—the cultivation of Evergreens—enables us to make our prices the lowest obtainable for satisfactory Evergreen trees.



Few Evergreens cover such a broad field of usefulness as do the Arborvitae. In all parts of the country they add their charm to landscape work and home plantings



Such trees become a permanent part of the home environment—as much cherished as the home itself

Woodward's Globe Arborvitae

(*Thuja occidentalis Woodwardii*)

Without doubt, one of the best globe-formed Arborvitae in our list. It maintains the natural globe shape without trimming, and under good conditions will reach 3 feet in height and diameter. It is especially fine for low borders, for foundation groups, for tubs, or for urns. The variety was originated and introduced by Mr. Manning, proprietor of the Reading Nurseries, Reading, Mass., and named after his son, J. Woodward Manning. A few plants, presented to Mr. Hill by the introducer shortly before his death, form the basis of our stock. Therefore, we can justly say that all trees are from the true strain.

There are, no doubt, at least twenty-five varieties of so-called Globe Arborvitae offered by nurserymen. Some are excellent for certain situations, but many are alike except for variation so slight as to be almost unnoticeable. We have tested globe forms in all kinds of soil and planting conditions and can recommend the Woodward's to our customers as giving the best satisfaction for general landscape use.

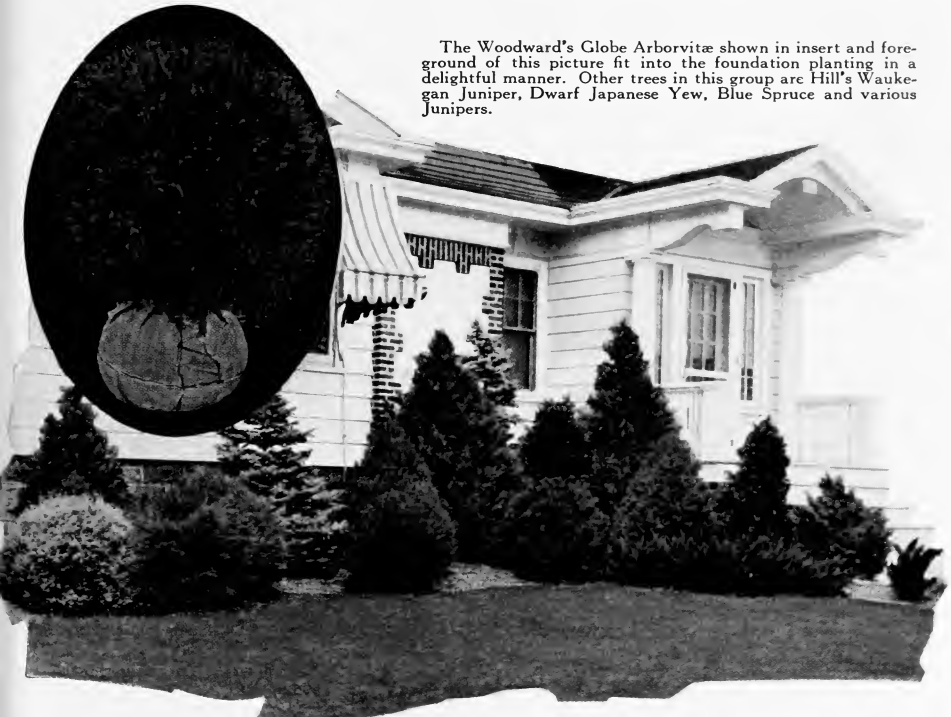
The propagation of Woodward's Globe Arborvitae has been carried on under the favorable conditions that surround the production of all of Hill's Evergreens, and which tend to make our Evergreens standard among all producers.

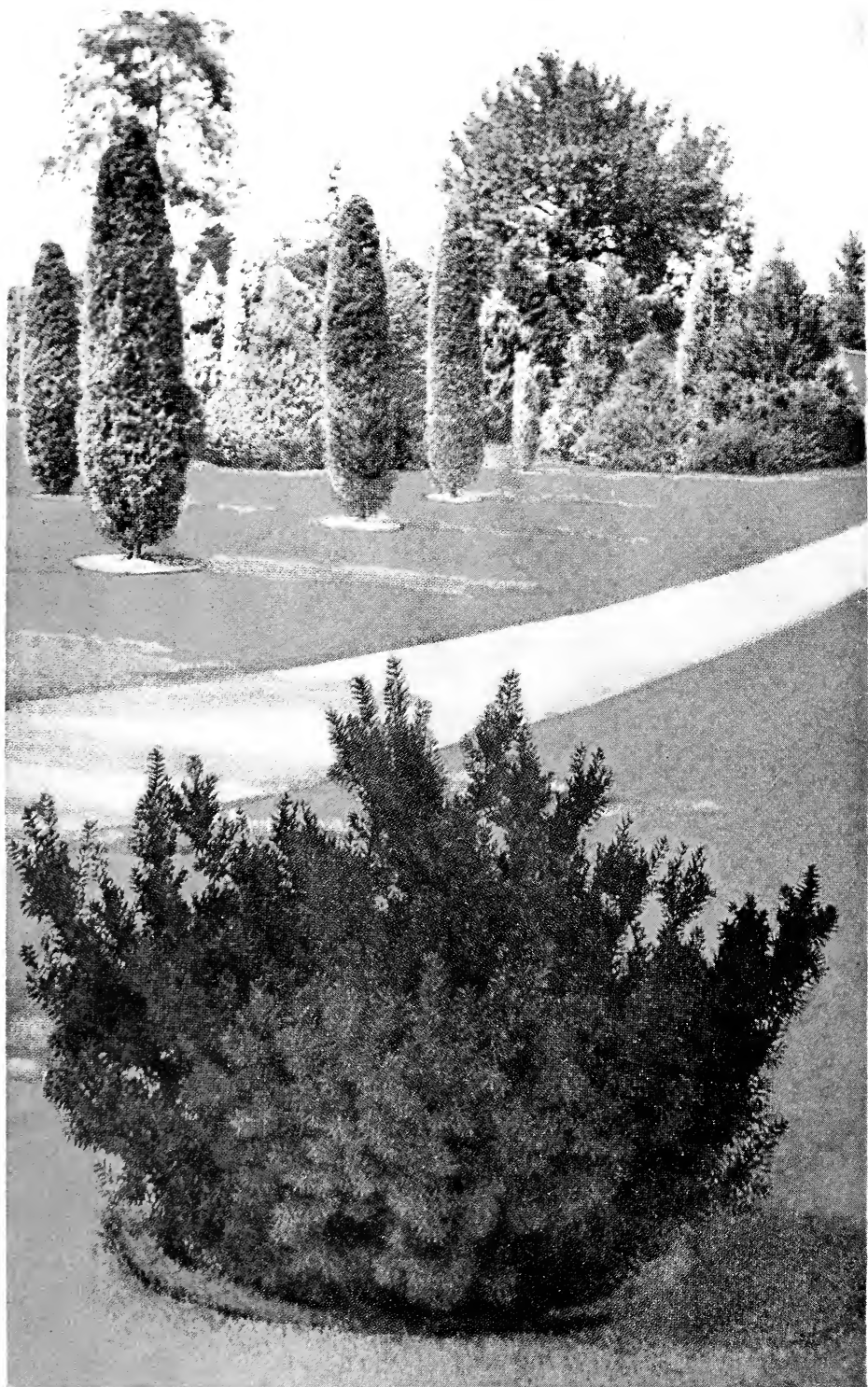
		Each	10
10 by 12 inches xx.....	B&B	\$2 25	\$20 00
1 by 1 foot xxx.....	B&B	3 25	30 00

As everybody knows, "Arborvitae" is Latin for "Tree of Life." It is highly significant that the Japanese name for the tree, "Hiba," has exactly the same meaning. The Chinese call it "Hak"—"Everlasting Life." The permanent, lively bright green color of the Arborvitae is suggestive of perpetual existence. By some authorities it is claimed the name "Thuja" is derived from "Thuyon," a sacrifice, in consequence of the pungent twigs and resin being formerly used in the East to produce incense in sacrifices. With their single directness the Indians knew the Arborvitae as "Feather Leaf," a term aptly descriptive of the lacy, feathery foliage.

Five of same variety and size at 10 rate. Each x indicates one transplanting.
B&B signifies balled and burlapped.

The Woodward's Globe Arborvitae shown in insert and foreground of this picture fit into the foundation planting in a delightful manner. Other trees in this group are Hill's Waukegan Juniper, Dwarf Japanese Yew, Blue Spruce and various Junipers.





An irregular and picturesque outline, a rich dark green color, and a dwarf compact habit separate the Dwarf Japanese Yew from others of the family. It is absolutely hardy and adapted to all conditions of landscape work

THE BEST EVERGREENS FOR SHADY PLACES

The Yews (*Taxus*)

In the Old World the Yew tree is a tradition, with a history interwoven with the growth of civilization. The Fortingal Yew, in England, 56 feet in circumference, proved by the rings of its stump that it had lived almost 3,000 years. Many interesting books have been written on the history of this one genus of trees. Not all varieties of Yew will stand the rigors of our climate, but the three selected types described on this page are among the best for American gardens.

American Yew (*Taxus canadensis*)

A valuable, hardy, dwarf evergreen, seldom growing more than 2 to 3 feet above the ground. The drooping branches are densely clothed with dark green foliage which assumes a reddish tint in winter, thus making the plant a conspicuous object in landscape. In autumn the branches are loaded with scarlet-colored berries. The variety thrives well in shade and can be trimmed to any desirable shape.

	Each	10
10 to 12 inches xx.....	B&B	\$3 25 \$30 00

Japanese Yew (*Taxus cuspidata*)

A distinctly valuable variety growing from 40 to 50 feet high, but under cultivation it may be somewhat smaller. A report from the Arnold Arboretum states that "this Yew is the most valuable plant which Japan has furnished our northern states." The Japanese Yew has been cultivated throughout Japan from time immemorial, and was introduced into America many years ago; it at once took its place as one of the most noteworthy and valuable Evergreens in cultivation. In growth it is close, upright, and compact, with dark green foliage and brilliant scarlet fruits. It has successfully withstood extremes of heat and cold in America and is reported to be perfectly hardy in Minneapolis, Minn. The seed from which we grow our plants is secured from a high, cold altitude of northern Japan.

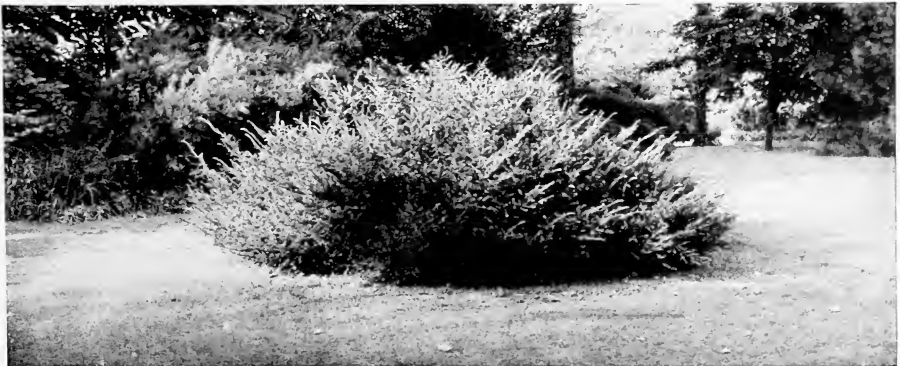
	Each	10
1 to 1½ feet xx.....	B&B	\$4 25 \$40 00

Dwarf Japanese Yew (*Taxus cuspidata brevifolia*)

Similar to *T. cuspidata*, but is dwarfish and compact in habit of growth, which is irregular and picturesque in outline; ultimately the plant may become 3 to 4 feet high, and 5 feet or more in width. The branches are covered with little bunches of black-green foliage which retains the rich color entirely throughout the winter, thus adding to its many other points of superiority and making it one of the most valuable Yews. Prof. C. S. Sargent, director of the Arnold Arboretum, Jamaica Plain, Mass., in visiting our nurseries was greatly impressed with the fine appearance of our stock of this valuable variety. He referred specifically to its absolute hardiness and adaptability to all American conditions, and said that he believed that it would become one of the most popular Yews. The illustration of Japanese Yew on opposite page is worthy of careful study, as it pictures this most excellent variety in its natural loveliness.

	Each	10
1 to 1½ feet xxx.....	B&B	\$6 25 \$60 00
1½ to 2 feet xxxx.....	B&B	8 00 75 00
2 to 2½ feet xxxx.....	B&B	10 00 90 00

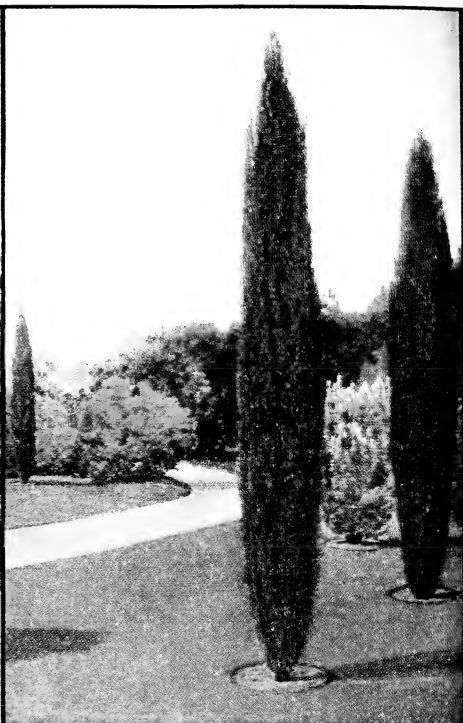
Five of same variety and size at 10 rate. Each x indicates one transplanting.
B&B signifies balled and burlapped.



American Yew (*Taxus canadensis*). Don't forget the Yew for a shady corner—it will do well there



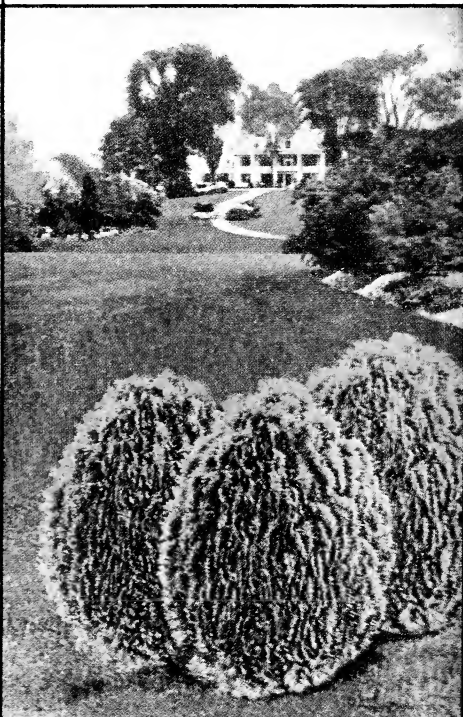
Cupressus Lawsoniana
Lawson's Cypress



Cupressus sempervirens pyramidalis
Italian Cypress



Cedrus Deodara
Himalayan Cedar



Biota orientalis aurea nana
Berckman's Golden Arborvitae

Leading Evergreens for Less Severe Climates

Out of the many hundreds of varieties of Evergreens cultivated in various countries and in our own country, there are, of course, those not able to withstand the winters in the colder sections of the United States. Trees shown on this page include varieties well known and widely used in the Southern States, Pacific Coast States and some sections near the Atlantic Coast. On account of their more or less tender nature we are able to grow them here in the nursery only in the smaller grades such as are usually bought by nurserymen to line out and grow on into salable sizes. To anyone interested in small plants around 6 to 8 inches in height, we will be glad to quote prices on request. We can also give you the names of leading nursery firms in your locality where you can obtain sizable plants. We give here only descriptions and show on opposite page some of the best-known and popular varieties in color.

Chinese Arborvitæ (*Biota orientalis*)

The familiar Arborvitæ of the South. Upright, parallel branches; beautiful green color. The seedling type.

Berckman's Golden Arborvitæ

(*Biota orientalis aurea nana*)

Deep rich golden in color, compact and bushy. Grows 6 to 8 feet high. Color and form shown in color plate on opposite page. The leading *Biota*.

Biota orientalis Bonita

Broad cone-shaped. Beautiful rich green. Rather small and of slow growth.

Biota orientalis compacta

Light green, compact foliage, with round shape and dwarf habit of growth. It is quite similar to *Biota aurea nana*, except that it does not have the golden tip to the foliage.

Biota orientalis elegantissima

This is one of the leading golden varieties. It grows in the form of a pyramid, taller and narrower in shape than the *Biota aurea nana*.

Biota orientalis pyramidalis

Very well-formed, compact, uniform, pyramidal tree. It grows broad at the base and tapers to a point at the top. Deep green in color.

Biota orientalis texana glauca

A new variety of worthy merit. It has soft blue foliage, makes a good strong growth, and forms an upright pyramidal tree.

Himalayan Cedar (*Cedrus Deodara*)

Feathery artistic blue foliage. Considered the most beautiful ornamental Cedar for the Atlantic, Southern and Pacific Coast States. Makes a large specimen of upright pyramidal habit. Shown in natural colors on opposite page.

Cedar of Lebanon (*Cedrus libani*)

This is a pyramidal grower of dark green color. One of the oldest known trees, being frequently mentioned in Biblical history.

Cupressus Lawsoniana Alunii

The foliage is a bluish metallic hue; branches close and compact, growing nearly parallel with the trunk.

Royal Italian Cypress

(*Cupressus Lawsoniana Royalii*)

This is the extremely shaft-like tree; seen in pictures of Italian gardens.

Arizona Cypress (*Cupressus arizonica*)

Foliage beautiful glaucous blue. Handsome pyramidal-growing tree. Native of Arizona.

Italian Cypress

(*Cupressus sempervirens pyramidalis*)

This is the familiar, tall, extremely narrow, formal-looking tree seen and admired by tourists in California. Pictured on opposite page.

Lawson's Cypress (*Cupressus Lawsoniana*)

This beautiful, pyramidal, symmetrical tree is shown in color plate opposite. Several types of Lawson's Cypress are obtainable in nurseries, the leading one being *C. Lawsoniana Alunii*.

Japanese Cypress (*Retinospora obtusa*)

One of the oldest trees of Japan. The famous miniature trees often seen in florists' shops are largely of this species. Has horizontal, fern-like branches, slightly drooping.

Pea-fruited Cypress (*Retinospora pisifera*)

Japanese Evergreen from which there are a large number of forms, some being golden, others with distinct foliage formations.

Plume-like or Green Retinospora

(*Retinospora plumosa*)

Small, dense tree of conical outline. Foliage bright green; plume-like branches.

Golden-plumed Cypress

(*Retinospora plumosa aurea*)

Held highly sacred in the Orient. New growth is rich golden hue, changing to green with age.

Retinospora pisifera aurea

The new growth is a rich creamy golden yellow, eventually changing to greener hues. Very distinct and showy.

Retinospora squarrosa Veitchii

A low, densely branched tree, with feathery spreading branches. Foliage silvery blue, soft and dense. Very distinct.

Spreading English Yew (*Taxus repandens*)

Dwarf; excellent for edging, grouping, or covering banks. Foliage lustrous green.

Select Your Evergreens from This Page

For the convenience of those not so familiar with Evergreens in their different habits, we have divided the important varieties into groups: Very Dwarf, Dwarf, Medium, and Tall.

Trailing, Creeping, or Very Dwarf

Fine for Rockeries, Borders, Edging, or Ground-Covers. All prostrate or creeping forms, 1 to 2 feet high at maturity, spread 8 to 15 feet in diameter.

Juniperus canadensis.....	Page 27	Juniperus Sabina tamariscifolia.....	Page 24
Juniperus canadensis aurea.....	27	Juniperus virginialis globosa.....	24
Japanese Trailing Juniper.....	21	Parsons' Compact Arborvitæ.....	46
Hill's Waukegan Juniper.....	28		

Dwarf or Low-Growing Varieties

Excellent for Foundation Plantings, Low Groups, Terraces, and Conifer Beds. Splendid where permanent effects are wanted without obstructing the view. Average height, 4 to 6 feet at maturity.

Chinese Juniper.....	Page 18	Japanese Table Pine.....	Page 35
Juniperus chinensis columnaris.....	18	American Yew.....	55
Pfitzer's Juniper.....	19	Dwarf Japanese Yew.....	55
Greek Juniper.....	21	Douglas Golden Arborvitæ.....	46
Savin Juniper.....	21	Thuya occidentalis Rosenthallii.....	46
Juniperus pyramidaformia Hillii.....	23	Siberian Arborvitæ.....	45
Hill's Mugho Pine.....	30	Woodward's Globe Arborvitæ.....	53

Medium-Height Varieties

Excellent for borders to add contrast to flowering shrubs. Fine for corners to give accent and add height to plantings of creeping or low-growing Evergreens. Good for sentinels or markers at each side of entrance steps, windows, or in garden. Average height, 8 to 15 feet at maturity.

Hemlock.....	Page 11	Hill's Silver Juniper.....	Page 16
Juniperus Cannartii.....	17	Swiss Stone Pine.....	35
Lee's Golden Juniper.....	17	Japanese Yew.....	55
Juniperus glauca.....	15	American Arborvitæ.....	51
Hill's Pyramidal Juniper.....	23	Douglas Pyramidal Arborvitæ.....	46
Juniperus Schottii.....	17	Hill's Pyramidal Arborvitæ.....	49

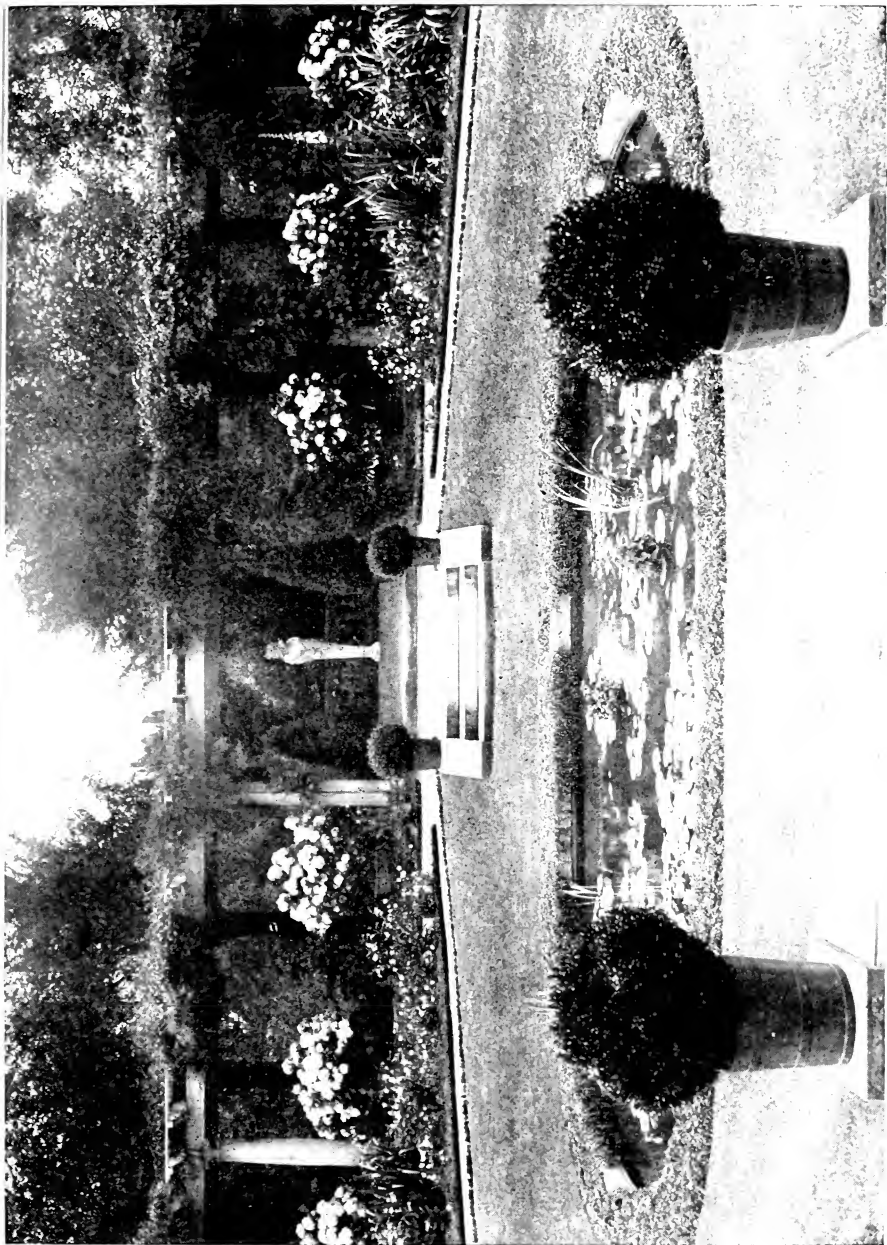
Tall-Growing Varieties

For planting in Masses, Heavy Screens, Windbreaks, or High Hedges; Small Groups to frame a vista; Single Specimens where an imposing specimen is wanted to carry out some special effect. Average height, 30 to 60 feet at maturity.

Concolor Fir.....	Page 6	Koster's Blue Spruce.....	Page 39
Douglas Fir.....	9	Colorado Blue Spruce.....	39
Red-Cedar.....	12	Austrian Pine.....	33
White Spruce.....	42	Ponderosa Pine.....	35
Black Hills Spruce.....	40	White Pine.....	37
Norway Spruce.....	40	Scotch Pine.....	37



The owner of the bed of Evergreens shown here used to spend half the price of the Evergreens each year in bedding plants and perennials—now he avoids replacing and expensive upkeep and enjoys the year-round beauty of Evergreens



God gave all men the earth to love, but since our hearts are small,
Ordnained for each, one spot should prove beloved over all.
— Rudy and Kipling

Hill's Hedges

Attractive, Durable, Inexpensive

The wide variety of uses a Hedge will serve on your grounds is almost without end and the various shapes and sizes into which it may be trimmed makes it possible to grow a hedge in almost any situation. It will be found that a Hedge is just as effective in keeping out intruders as a fence; the branches soon form an almost impenetrable barrier.

Planting and Cultural Care

Smaller sizes, 1 to 2 feet, such as those offered below, ought to be planted about 1 foot apart. Such an arrangement provides plenty of room for development and still gives the hedge a compact appearance right from the start. In trimming the hedge, the item of first importance is to see that the bottom part has access to air and sunlight. In other words, trim in an oval shape or in some manner so that the bottom of the hedge is wider and tapers toward the top.

Prices

	25	50	75	100
American Arborvitae				
10 to 12 inches xx.....	\$9 50	\$18 50	\$27 00	\$35 00
1 to 1½ feet xx.....	10 75	21 00	30 75	40 00
1½ to 2 feet xx.....	13 25	26 00	38 25	50 00
Red-Cedar				
1 to 1½ feet xx.....	10 75	21 00	30 75	40 00
1½ to 2 feet xx.....	13 25	26 00	38 25	50 00
Japanese Barberry				
1 to 1½ feet xx.....	8 25	16 00	23 25	30 00

Amoor River Privet (North) (*Ligustrum amurense*)

HARDY PRIVET HEDGE

	10	100
The ideal hardy hedge plant; grows rapidly and makes an ideal hedge.	\$2 00	\$15 00
10 to 12 inches, heavy	2 50	20 00
18 to 24 inches, heavy	3 50	30 00
2 to 3 feet, heavy		

Each x indicates one transplanting.

Evergreen Windbreaks

The comforting influence of an Evergreen windbreak can scarcely be realized unless you have stepped behind a row of sturdy Evergreens on a blustering winter's day. In farming sections, especially in the prairie states, the Evergreen windbreak has long been recognized as an important factor in protecting the home, stock and buildings.

If you are interested in farm property you will find an Evergreen windbreak a wonderful investment. We have in our files letters from farm owners all over the country testifying they have received one thousand to five thousand dollars more for their farms when planted with Hill's Evergreen Windbreaks.

There are several plans of planting a windbreak. A popular and economical one is to space them 10 feet apart in a single row. This gives the trees the proper room to develop. If you desire quicker results, space the trees 5 feet apart in a single row. After a time this method will require cutting out every other tree.

Prices of Windbreak Evergreens

Norway Spruce (*Picea excelsa*)

	25	50	75	100
1 to 1½ feet xx.....	\$9 50	\$18 50	\$26 00	\$35 00
1½ to 2 feet xx.....	13 25	26 00	38 25	50 00

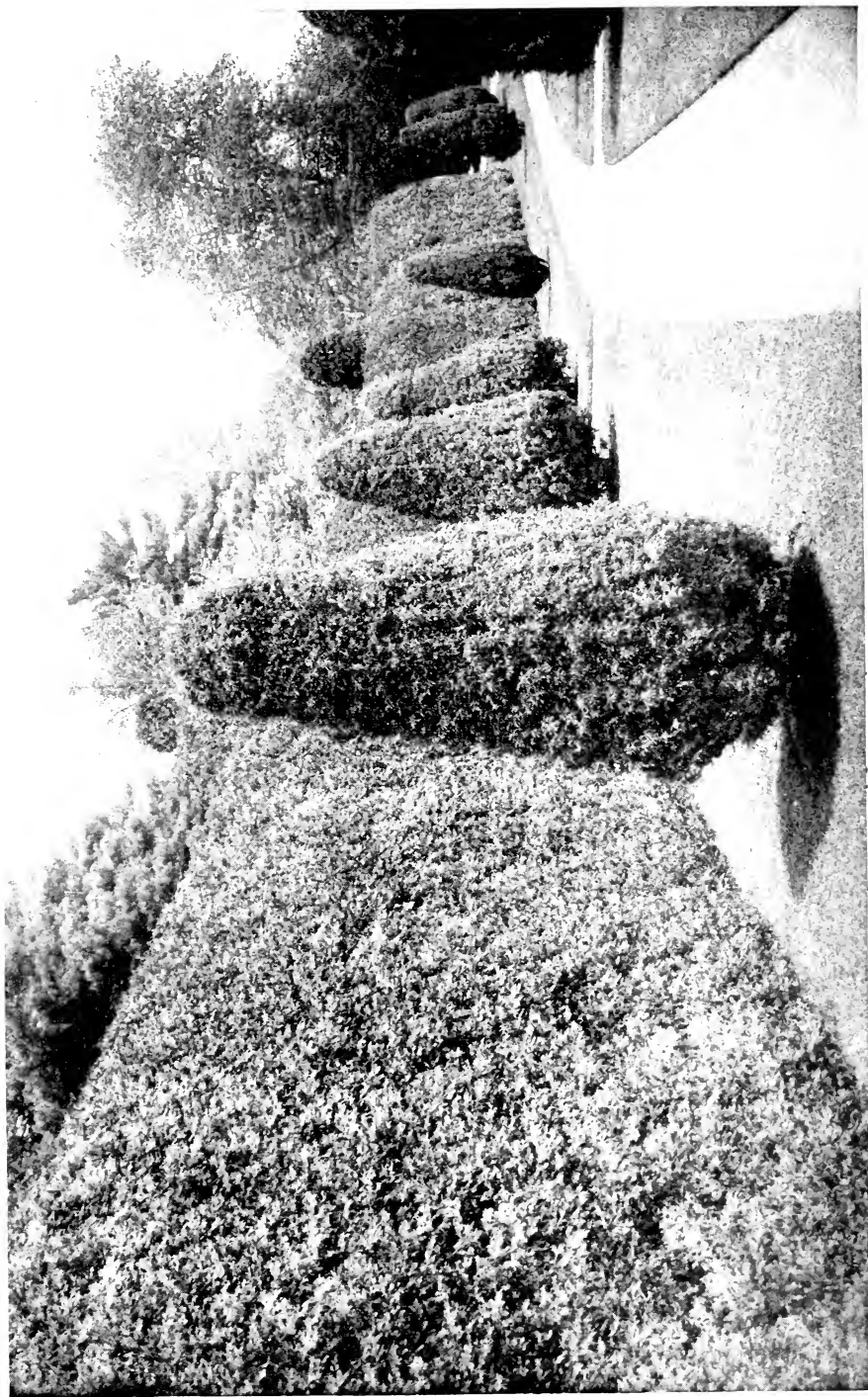
Scotch Pine (*Pinus sylvestris*)

1 to 1½ feet xx.....	9 50	18 50	26 00	35 00
----------------------	------	-------	-------	-------

Austrian Pine (*Pinus austriaca*)

10 to 12 inches xx.....	10 75	21 00	30 75	40 00
1 to 1½ feet xx.....	13 25	26 00	38 25	50 00

Each x indicates one transplanting.



The great value of American Arborvitae lies in the dense, impenetrable growth, its excellent green color and ready response to shearing. Such a hedge can be grown in only a few seasons with American Arborvitae.

Hill's Dwarf Evergreens

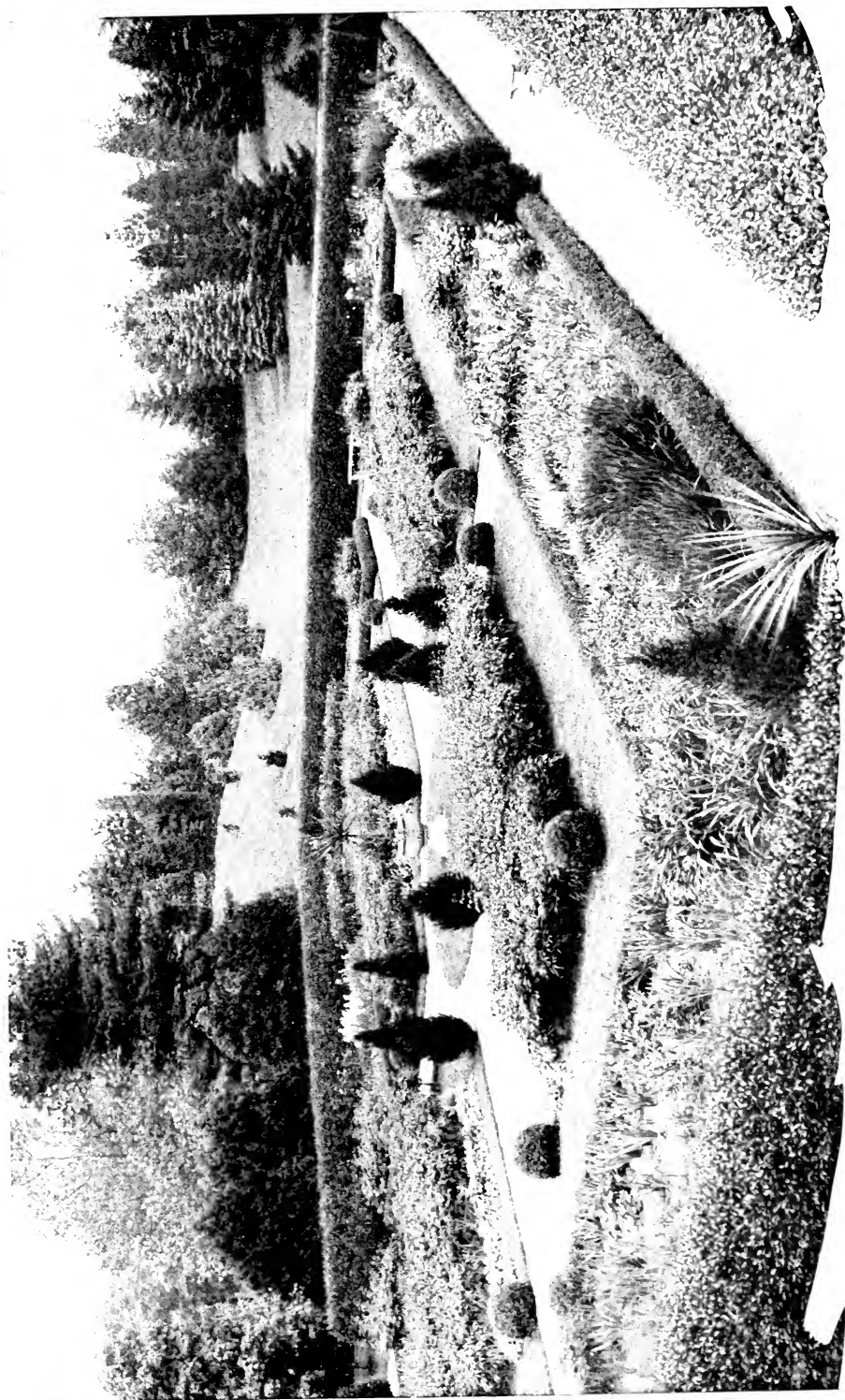
Distinctive Varieties for Japanese Gardens, Rock-Gardens, Foundations, Terraces, Etc.

	Each	10
Juniperus canadensis (<i>J. communis depressa</i>)		
1 to 1½ feet xx.....	B&B \$2 75	\$25 00
1½ to 2 feet xx.....	B&B 3 00	27 50
1 to 1½ feet xxx.....	B&B 3 50	30 00
1½ to 2 feet xxx.....	B&B 3 75	32 50
Juniperus canadensis aurea (<i>J. communis depressa aurea</i>)		
1 to 1½ feet xx.....	B&B 4 75	45 00
1½ to 2 feet xx.....	B&B 5 75	55 00
Juniperus chinensis Pfitzeriana. Pfitzer's Juniper. 1½ to 2 feet xx.....	B&B 3 75	35 00
2 to 2½ feet xxx.....	B&B 5 50	50 00
2½ to 3 feet xxx.....	B&B 8 00	70 00
Juniperus chinensis procumbens. Japanese Trailing Juniper.		
1 to 1½ feet xxx.....	B&B 4 50	
Juniperus Sabina. Savin Juniper. 1 to 1½ feet xx.....	B&B 3 75	35 00
1 to 1½ feet xxx.....	B&B 4 25	40 00
1½ to 2 feet xxx.....	B&B 4 75	45 00
2 to 2½ feet xxx.....	B&B 6 25	60 00
Hill's Waukegan Juniper (<i>Juniperus Sabina prostrata</i>) 1 to 1½ feet xx.....	B&B 4 00	37 50
1½ to 2 feet xx.....	B&B 5 25	50 00
1½ to 2 feet xxx.....	B&B 5 75	55 00
Juniperus Sabina tamariscifolia. 10 to 12 inches xx.....	B&B 3 25	30 00
1 to 1½ feet xxx.....	B&B 5 25	50 00
Juniperus virginialis globosa. (Light green.) 15 by 15 inches xxx.....	B&B 5 75	55 00
Hill's Mugho Pine (<i>Pinus Mugbo compacta</i>). 8 to 10 inches xx.....	B&B 2 00	17 50
10 to 12 inches xx.....	B&B 2 50	22 50
1 to 1½ feet xxx.....	B&B 3 25	30 00
1½ to 2 feet xxx.....	B&B 4 25	40 00
Pinus Tanyosha globosa. Japanese Table Pine.		
3½ by 3½ feet xxx.....	B&B 20 00	
Taxus canadensis. American Yew. 10 to 12 inches xx.....	B&B 3 25	30 00
Taxus cuspidata. Japanese Yew. 1 to 1½ feet xx.....	B&B 4 25	40 00
Taxus cuspidata brevifolia. Dwarf Japanese Yew. 1 to 1½ feet xxx.....	B&B 6 25	60 00
1½ to 2 feet xxx.....	B&B 8 00	75 00
2 to 2½ feet xxx.....	B&B 10 00	90 00
Thuja occidentalis compacta. Parsons' Compact Arborvitæ.		
1 to 1½ feet xxx.....	B&B 2 75	25 00
Thuja occidentalis Woodwardii. Woodward's Globe Arborvitæ.		
10 to 12 inches xx.....	B&B 2 25	20 00
1 by 1 foot xxx.....	B&B 3 25	30 00

Five of same variety and size at 10 rate. Each x indicates one transplanting.
B&B signifies balled and burlapped.



An added charm of Evergreens is revealed in their widely contrasting growing habits. Red-Cedar and Pyramidal Arborvitæ are the prominent trees in this planting



Formal gardens are always at their best when evergreens in variety are used freely. Without the background of Spruces and Pines and Jumpers, the protecting hedge of Hemlock, and the specimen evergreens that guard the pathways, this garden would be mediocre indeed.

Small Evergreens for Transplanting



This is the second stage in the growth of Hill's Evergreens. When two years old the trees are planted in beds in rows where they remain two years. Trees in this picture are four years old. See trees listed as once transplanted on opposite page.



This field shows the third stage of development of Hill's Evergreens. Such trees are twice transplanted, six years old. See opposite page for list of varieties and prices on twice transplanted Evergreens.

Small Evergreens for Transplanting

Customers having extensive grounds to develop will be interested in these small trees, to plant out into rows and grow on. These sizes are not recommended for immediate use. Cultural directions with each shipment.

Hill's Evergreen Seedlings

	Inch	100	1,000
Abies balsamea, Balsam Fir.....	2-4	\$10 00	\$90 00
Abies concolor, Concolor Fir.....	4-6	10 00	90 00
Abies Douglasii, Douglas Fir.....	6-8	10 00	90 00
Biota orientalis, Chinese Arborvita.....	6-8	5 00	40 00
Juniperus chinensis, Chinese Juniper.....	2-4	10 00	90 00
Juniperus communis, English Juniper.....	6-8	9 00	80 00
Hill's Silver Juniper, <i>Juniperus scopulorum</i>	6-8	20 00	190 00
Juniperus virginiana, Red-Cedar.....	6-8	9 00	80 00
Larix europæa, European Larch.....	6-8	5 00	40 00
Picea alba, White Spruce.....	6-8	9 00	80 00
Picea canadensis, Black Hills Spruce.....	4-6	10 00	90 00
Picea Engelmannii, Engelmann Spruce.....	4-6	8 00	70 00
Picea excelsa, Norway Spruce.....	6-8	5 00	40 00
Picea pungens, Colorado Blue Spruce.....	4-6	11 00	100 00
Pinus austriaca, Austrian Pine.....	4-6	10 00	90 00
Pinus Banksiana, Jack Pine.....	6-8	5 00	40 00
Pinus montana uncinata, Single-Stem Mountain Pine.....	6-8	13 00	120 00
Pinus ponderosa, Ponderosa Pine.....	4-6	5 00	40 00
Pinus sylvestris, Scotch Pine.....	6-8	6 00	50 00
Thuja occidentalis, American Arborvita.....	2-4	6 00	50 00

Fifty of same variety and size at 100 rate; 500 at the 1,000 rate. Order in bundles of 50.

Hill's Once-Transplanted Evergreens

	Inch	100	1,000
Abies balsamea, Balsam Fir.....	x	4-6	\$15 00
Abies Douglasii, Douglas Fir.....	x	8-10	27 00
Abies (Tsuga) canadensis, Hemlock.....	x	4-6	25 00
Abies Veitchii, Veitch's Fir.....	x	6-8	18 00
Juniperus communis suecica, Swedish Juniper.....	x	6-8	30 00
Juniperus Sabina, Savin Juniper.....	x	6-8	50 00
Hill's Waukegan Juniper (<i>Juniperus Sabina prostrata</i>).....	x	6-8	60 00
Larix europæa, European Larch.....	x	12-18	12 00
Picea excelsa, Norway Spruce.....	x	8-10	16 00
Picea pungens, Colorado Blue Spruce.....	x	8-10	32 50
Pinus austriaca, Austrian Pine.....	x	10-12	18 00
Pinus Banksiana, Jack Pine.....	x	10-12	16 00
Hill's Mugho Pine (<i>Pinus Mugho compacta</i>).....	x	4-6	30 00
Pinus ponderosa, Ponderosa Pine.....	x	6-8	12 00
Pinus Strobus, White Pine.....	x	6-8	16 00
Pinus sylvestris, Scotch Pine.....	x	6-8	15 00
Retinospora filifera aurea.....	x	8-10	50 00
Retinospora filifera, (Green.).....	x	6-8	25 00
Retinospora pisifera, (Green.).....	x	6-8	30 00
Retinospora pisifera aurea.....	x	6-8	30 00
Retinospora plumosa aurea.....	x	6-8	25 00
Retinospora plumosa, (Green.).....	x	6-8	25 00
Retinospora squarrosa Veitchii.....	x	6-8	30 00
Taxus canadensis, American Yew.....	x	8-10	25 00
Taxus cuspidata, Japanese Yew.....	x	4-6	50 00
Taxus cuspidata brevifolia, Dwarf Japanese Yew.....	x	4-6	50 00
Thuja occidentalis, American Arborvita.....	x	6-8	17 00
Thuja occidentalis compacta, Parsons' Compact Arborvita.....	x	6-8	40 00
Thuja occidentalis Douglasii aurea, Douglas Golden Arborvita.....	x	8-10	50 00
Thuja occidentalis Ellwangeriana, Tom Thumb Arborvita.....	x	6-8	45 00
Thuja occidentalis Hoveyi, Hovey's Arborvita.....	x	6-8	45 00
Hill's Pyramidal Arborvita (<i>Thuja occidentalis pyramidalis</i>).....	x	6-8	40 00
Thuja occidentalis recurva nana.....	x	6-8	50 00
Thuja occidentalis Wareana sibirica, Siberian Arborvita.....	x	6-8	50 00
Thuja occidentalis Woodwardii, Woodward's Globe Arborvita.....	x	6-8	45 00

Twenty-five, 50 or 75 at the 100 rate. Order in bundles of 25.

Hill's Twice-Transplanted Evergreens

	Inch	10	100
Abies concolor, Concolor Fir.....	xx	8-10	\$10 00
Abies Douglasii, Douglas Fir.....	xx	10-12	6 00
Juniperus virginiana, Red-Cedar.....	xx	12-18	6 00
Picea alba, White Spruce.....	xx	10-12	9 00
Picea excelsa, Norway Spruce.....	xx	12-18	5 00
Picea pungens, Colorado Blue Spruce.....	xx	10-12	8 00
Pinus austriaca, Austrian Pine.....	xx	10-12	6 00
Pinus sylvestris, Scotch Pine.....	xx	12-18	6 00

Five of same variety and size at 10 rate; 50 at the 100 rate. Order in bundles of 5.



Boxwoods

These are choice specimens grown for us in California. They are equal in every respect to the specimens formerly imported from Europe.

Boxwoods are ideal for use in tubs at entrances, balconies, terraces and elsewhere around the home. They are for summer decoration and must be moved inside, except in very mild climates.

Trees are priced balled and burlapped, F. O. B. Dundee, ready for tubbing. We do not furnish tubs, but these can usually be obtained locally at reasonable rates.

Our stock is limited and orders must be placed well in advance of shipping time.

Pyramid Shaped

28 inches.....	B&B	Each
32 inches.....	B&B	\$8 00
		10 00

Ball Shaped

14 x 14 inches.....	B&B	7 00
16 x 16 inches.....	B&B	8 00
18 x 18 inches.....	B&B	10 00

B&B signifies balled and burlapped



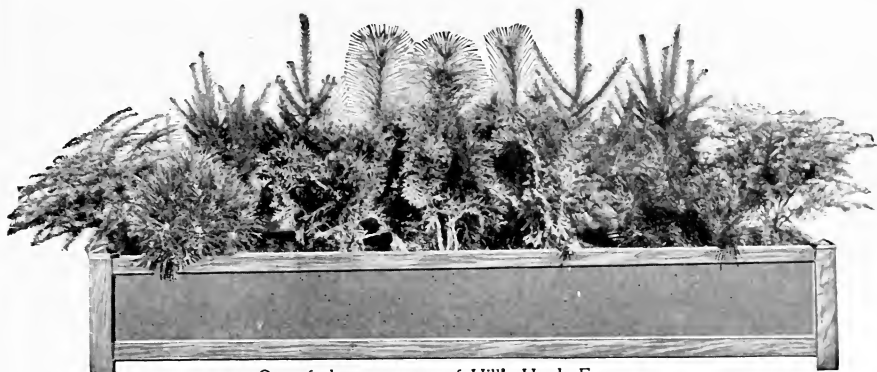
Xmas Trees



Supply the Xmas Tree Market
in Your Locality
with Home-Grown Trees

You can easily grow a plantation of Xmas Trees to supply your local market. Small, transplanted sizes of Norway Spruce rapidly grow into money. Each year wild trees are getting scarcer and it will be only a few seasons until the cutting of wild trees will be prohibited. You can start selling in three or four years at \$1 each and up.

Send for prices and complete information



One of the many uses of Hill's Hardy Evergreens

Hill's Evergreens for Window-Boxes

See to it, during the winter months, that your window-boxes, urns, etc., are filled with hardy Evergreens, just as you see to it that geraniums and vincas are there for Decoration Day. A window-box planted with growing Evergreens of different varieties and colors will add much to the appearance of the porch, windows or any room in the house. For winter decoration, Hill's Hardy Evergreens are indispensable. The charming foliage effects and rare fragrance of Evergreens are remarkable, adding color, warmth, and cheerfulness, while their rugged hardiness permits outdoor or indoor use all the year around.

NOTE.—In estimating number of trees required figure about one tree per foot of window-box—thus a 3-foot box would require four plants, etc. If your boxes are fairly wide—8 inches or more—you can use two rows of trees. Plant in good black dirt and keep watered well.

Norway Spruce. Conical; compact; deep green.	5	10
1 to 1½ feet xx.....	\$2 00	\$4 00
1½ to 2 feet xx.....	2 75	5 50
American Arborvitæ. Pyramidal; compact; light green.		
1 to 1½ feet xx.....	2 50	5 00
1½ to 2 feet xx.....	3 00	6 00
Red-Cedar. Pyramidal; feathery foliage.		
1 to 1½ feet xx.....	2 50	5 00
1½ to 2 feet xx.....	3 00	6 00
Juniperus canadensis. Low, spreading; bushy.		
1 to 1½ feet xx.....	7 50	15 00

SPECIAL TRIAL OFFER \$6

15 Window-Box Evergreens, assorted as follows:

5 Norway Spruce.....	1 to 1½ feet xx
5 Red-Cedar.....	1 to 1½ feet xx
5 American Arborvitæ.....	1 to 1½ feet xx

In case lots as listed above, only \$6 f. o. b. Dundee

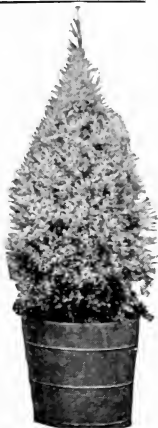
Hill's Evergreens for Tubbing

Thrive in Outdoor Winter Weather

Hill's Evergreens for tubbing stand at the head of the list of hardy plants suitable for outside decoration, both summer and winter. They are easily moved from place to place, require little attention, are always green and are never injured by continued cold or freezing.

Can be used in hallways, entrances, balconies, or sun-parlors and will remain a permanent decoration wherever placed. In summer or winter they attractively add to their surroundings. The trees should be given a liberal supply of water, as in the close atmosphere of indoor life moisture is evaporated rapidly. With this slight attention the trees can be kept in good condition for several seasons, although they are not likely to increase in size to any extent.

		Each	Pair
Red-Cedar. 2 ft.....	B&B	\$3 00	\$5 50
3 ft.....	B&B	3 50	6 50
Hill's Pyramidal Arborvitæ. 2 ft.....	B&B	4 50	8 00
3 ft.....	B&B	5 50	10 00
Woodward's Globe Arborvitæ. 12 x 12 in.....	B&B	3 75	7 00
American Arborvitæ. 2 ft.....	B&B	2 75	5 00
2½ ft.....	B&B	3 25	6 00



Red-Cedar



Do you know the delightful combination of colors obtainable in Evergreens? The bright blue of the sky, the rich deep green of a well-kept lawn, and the rich, golden tint of a goldenrod are all shades of color found in beautiful Evergreen trees. A border of Evergreens, irregular in form and of various shades, will transform the barest walls into a thing of beauty.

Evergreen Vines and Ground-Cover

Some of the principal uses of ground-cover are as follows: In rockeries, bordering walks and drives, bordering shrubs and flower-beds, under Evergreen and shrub plantings, in semi-shade or dense shade, or steep terraces, in cemetery plots, for winter window-boxes, among stepping-stones, and many others.

Japanese Spurge

(*Pachysandra terminalis*)

A splendid Evergreen ground-cover with thick, glossy, green foliage, forming a dense mat, making low-growing cover plant. Excellent for edging, underplanting, etc. Does well in dense shade where grass will not grow. Keeps its leaves all winter and is very hardy. Grows 6 to 9 inches tall and spreads along the ground.

	Strong plants	25	50	100
6 to 8 inches (transplanted).....		\$4 00	\$7 00	\$12 00

Evonymus radicans vegeta

This is an Evergreen vine that has no rival among all vines, either Evergreen or Deciduous. In late fall and winter it produces an abundance of showy red fruit and yellow pods. By means of aerial rootlets it clings closely to brick or stone walls; soon makes a good covering. The growth is rapid.

	Strong plants	25	50	100
6 to 8 inches (transplanted).....		\$6 00	\$11 00	\$20 00



Japanese Spurge (*Pachysandra terminalis*). Stays green all winter and is perfectly hardy.
The plant in the corner is Japanese Barberry

When to Plant Hill's Evergreens

There are two seasons in which Evergreens can be transplanted with safety—spring and fall.

The spring-planting season usually begins about the first of April and continues until late May, or even to the first few days of June. The time may vary somewhat from year to year, according to the weather conditions and the locality. Therefore, it may be said that any time during April and May is favorable for transplanting, unless it be in the extreme northern or the extreme southern part of the country.

The second season for transplanting usually starts about the first of September and continues until the end of November. Under certain weather conditions it may be possible to move Evergreens earlier in the fall, but in this climate the trees do not harden their growth and are not in proper shape to be removed until the middle of September.

So far as possible all orders are filled and shipped in rotation as received. That is, if you order early in the season the trees will be dug and shipped as early as can be done with safety. On the other hand, the trees may be delivered at a special date if such delivery is necessary. We are always glad to follow our customers' wishes whenever possible.

Caring for Hill's Evergreens

Much more space could be given to the subject than is at our command in this catalogue. To discuss Evergreen culture and give full details would require a special booklet. There are, however, a few well-defined principles that will be of value to every planter.

First. Do not let the boxes containing the trees stand in the sun or wind. Put them in a cool, shaded place. After the box is opened, take out each tree and submerge the earth-ball in a tub of water for half an hour or more. Then stand the trees together in an upright position in a shaded place and out of the wind. Throw a covering of hay or loose packing material about the earth-balls, wetting this to retain the moisture.

Second. The soil must be carefully prepared, giving as much attention to this as you would for a choice vegetable-garden. If the soil is rocky, stony, or otherwise unfit for plant-life, it should be removed and the excavation filled in with good black dirt. Soil containing sand, clay, or loam is perfectly satisfactory for Evergreens and no special attention need be given. The soil should, however, be thoroughly spaded and fined, until a mellow bed is formed, having the soil free from lumps or stones.

Third. When planting, dig the hole a few inches wider and deeper than necessary to admit the earth-ball. Set the tree straight and 2 to 3 inches deeper than it stood in the nursery. (You can find the soil-line upon the stem.) Leave the burlap around the earth-ball, but cut the string, as the burlap helps to anchor the tree and soon rots away. Tramp the dirt firmly, packing the soil tightly. When the hole is nearly full, pour in at least two full pails of water, then throw in loose dirt to fill the hole. Remove tie string from the top and carefully straighten out the branches.

Fourth. Evergreens require considerable water, and a thorough wetting once a week is better than a light daily watering. Let the garden hose run half an hour, or until the soil is thoroughly wet. Then keep the top soil loose and mellow by hoeing and cultivating.

Fifth. Cultivating and Fertilizing. An area should be left around each tree so that the ground can be kept thoroughly pulverized and not allowed to dry out. The best way to fertilize Evergreens is to apply a mulch of hay, leaves, or straw in the fall, and then spade this into the top soil in the spring. Do not put stable manure in the holes when planting as it may burn the roots.

Terms of Payment—Cash with Order

Orders should be placed as soon as possible after receiving catalogue, or before some varieties are sold out. We start spring shipments about April 1, and continue on until May 25. The nursery business is different from other lines in that orders are usually placed two to three months in advance of shipment. However, to induce early orders, we offer generous cash discounts which give you good interest on your money, as follows:

1. CASH ORDERS

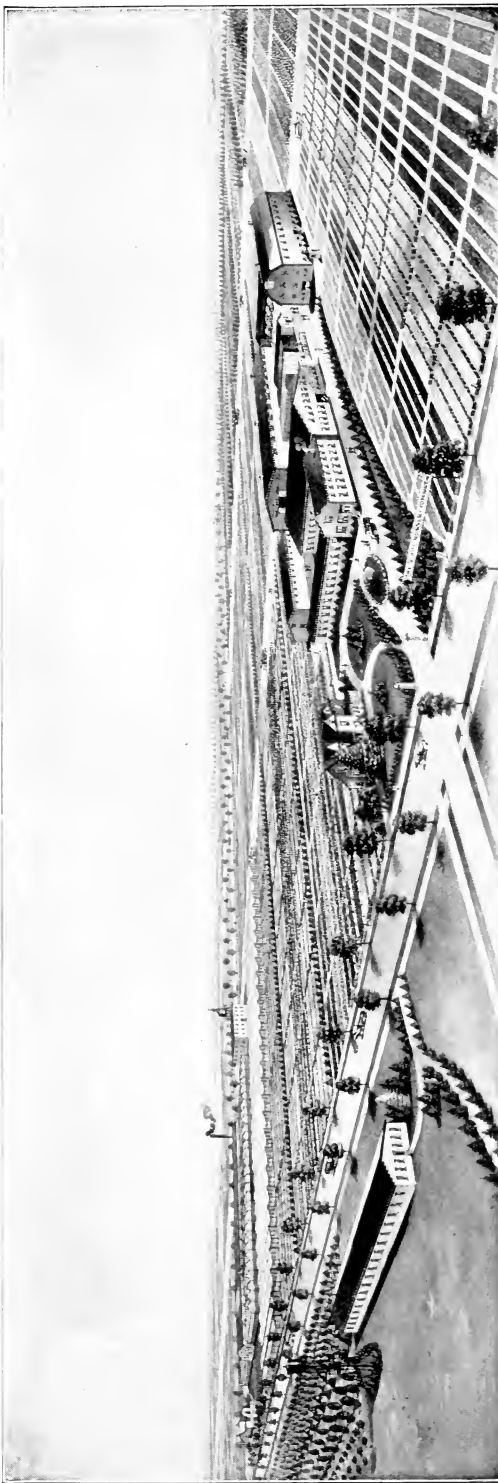
- Orders mailed during January, deduct 5 per cent cash discount.
- Orders mailed during February, deduct 4 per cent cash discount.
- Orders mailed during March, deduct 3 per cent cash discount.
- Orders mailed during April and May, deduct 2 per cent cash discount.

2. C. O. D. ORDERS

- C. O. D. orders will be accepted when one-half amount is sent as cash deposit, and balance will be collected on delivery. No cash discount is allowed on C. O. D. orders.

3. CHARGE ORDERS

- Goods will be shipped on charge account to responsible public institutions, park boards, etc. Individuals desiring charge account should first supply their bank and commercial references, allowing time for investigation, and, if found satisfactory, the account will be accepted. No charge account opened for less than \$100. Terms are 30 days net. No discounts allowed on charge orders.



The Home of Hill's Evergreens

Here is shown our complete nursery establishment, consisting of nurseries, office, packing-sheds, stables, box-making plant, storage, boarding-house, greenhouses, and tree seed-cleaning establishment, all modernly equipped and maintained for the handling of your orders in the most prompt and efficient manner. The fields of growing stock contain the most complete line of Choice Specimen Evergreens in America. Sixty years' experience, and more, in the digging, packing, and shipping of Evergreens is your guarantee of complete satisfaction and a square deal.

THE D. HILL NURSERY CO., INC.

Evergreen Specialists—Largest Growers in America

DUNDEE, ILLINOIS

A Word of Appreciation

To our many friends and patrons who have written us about the quality of the stock received, and expressed their appreciation of the treatment given, we return our most sincere thanks. Such expressions of confidence are highly appreciated.

Half a Century of Hill Quality

Conscientious effort, unbounded enthusiasm, careful study and tests of every new species introduced, has made the name of D. Hill synonymous with "high quality" in Evergreens. For more than sixty years we have worked to achieve this position, and in the years to come there will be no abatement in our efforts to maintain the reputation, to keep our old friends, to make new ones, and to furnish stock that will add to the prestige already secured.

Your Success with Hill's Evergreens Is of the Greatest Importance to Us

We shall do everything reasonable to help our customers succeed with these trees, for your success means our success. Your interests are our interests and no firm is more careful in filling orders; we assure you of the best possible treatment whether the order is large or small. It is on this record that we ask your business for the season of 1925 and for many years thereafter.

SPECIAL OFFER No. 100

Hill's Mugho Pine (*Pinus Mugho compacta*)

1 to 1½ feet Balled and Burlapped

\$3.25 Each

Truly a sensational triumph in Evergreen-growing. It excites the wonder and admiration of all. The Hill strain, which we have developed through years of type selection, is a low, close, compact grower, having many stems and is of excellent green color. The branches, tipped with the new growth in the spring, closely resemble tiny candlesticks over the entire tree.



Hill's Mugho Pine (*Pinus Mugho compacta*)

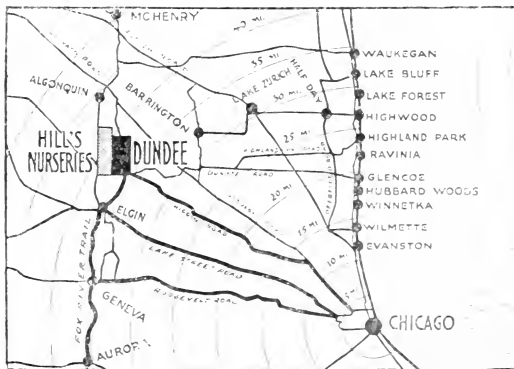
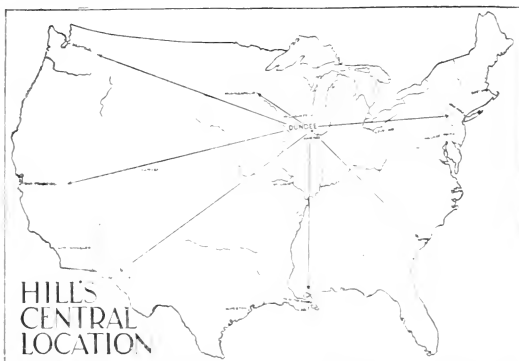
It should be in every lawn or garden of every lover of beautiful Evergreens. Described by an eminent horticulturist as a "marvel of rich beauty." It grows to perfection in all parts of the country and is absolutely hardy.

Thousands took advantage of this wonderful offer last season and many expressed great surprise at the magnificence of the tree. The illustration shows the tree dug with ball of earth and burlapped ready to box and ship to you.

As our friends become acquainted with it, they join us in admiration of its exquisite form and delicate beauty.

INDEX

	PAGE		PAGE
<i>Abies canadensis</i> (Tsuga canadensis) (American Hemlock)	11	<i>Picea pungens</i> Kosteriana (Koster's Blue)	39
concolor	9	Pinus Pice	30-37
Douglasii (Pseudotsuga taxifolia) (Douglas)	12	Cembra Swiss Stone	35
Cedar, Red- (see also Juniperus)	12	Mugho compacta Hill's Mugho	30, 31
Juniperus (Juniper)	12	nigra austriaca Austrian	33
canadensis	27	ponderosa	35
canadensis aurea	27	Strobis White	37
chinensis Chinese	19	sylvensis Scotch	37
chinensis columnaris	19	Tanyosha globosa Japanese Table	35
chinensis Pfitzeriana (Pfitzer's)	18	Pseudotsuga taxifolia (see Abies)	9
chinensis procumbens (Japanese Trailing)	21	Taxus Yew canadensis American	55
chinensis Sargentii	15	cuspidata (Japanese)	55
excelsa stricta (Slender Greek)	21	cuspidata brevifolia (Dwarf Japanese)	55
Sabina Savin	21	Thuja Arborvitae	45-53
Sabina prostrata Hill's Waukegan	28	occidentalis American	51
Sabina tamariscifolia	24	occidentalis compacta Parsons' Compact	46
scopulorum Hill's Silver	15	occidentalis Douglasii aurea Douglas Golden	46
scopulorum pyramidalis viridifolia	16	occidentalis Douglasii pyramidalis Douglas	46
virginiana (Red-Cedar)	12	Pyramidal	46
virginiana Cannartii	17	occidentalis pyramidalis Hill's Pyramidal	49
virginiana elegantissima, Lee Lee's Golden	17	occidentalis Rosenthalii	46
virginiana glauca Silver Cedar	15	occidentalis Wareana Siberian	45
virginiana pyramidiiformia Hillii Hill's	23	occidentalis Woodwardii (Woodward's Globe)	53
Dundee	23	Tsuga canadensis (see Abies)	11
virginiana pyramidalis Hill's Pyramidal	23	Evergreen Hedges	60
virginiana Schottii	17	Small Evergreens for Transplanting	65
virginialis globosa	24	Evergreen Vines and Ground-Covers	69
Picea Spruce	39-42	Boxwoods	66
alba White	42	Window-Box Evergreens	67
canadensis Black Hills)	40	Windbreak Evergreens	60
excelsa Norway)	40	Dwarf Evergreens	62
pungens glauca (Colorado Blue)	39	Leading Evergreens for Less Severe Climates	57



Paved road from Chicago brings you direct to our Nursery
Heavy lines indicate paved roads

How to Reach Our Nursery

Visitors are always welcome. We are conveniently located only 42 miles northwest of Chicago.

When coming by the way of Chicago, you are directed to the C. & N. W. Depot on Madison Street, from where it is an interesting ride of one hour and thirty minutes direct to Dundee.

For an hourly service from Chicago, take the C. A. & E. Electric Line at Wells Street and Jackson Boulevard, direct to Elgin, transferring to the Dundee - Carpentersville car, getting off at Stop No. 4, from where it is but a two-minute walk direct to our office, which is located right on the nursery grounds.

THE D. HILL NURSERY CO., Inc.

Evergreen Specialists—Largest Growers in America

DUNDEE, ILLINOIS

FOUNDED 1855

500 ACRES