

## **Historic, archived document**

Do not assume content reflects current scientific knowledge, policies, or practices.



62.23


**NAPERVILLE NURSERIES**
  
**NAPERVILLE ~ ILLINOIS**  
 PLANT MATERIAL *for* LANDSCAPE-HORTICULTURAL  
*and* FORESTRY PROJECTS



ESTABLISHED 1866  
 ~ ~ ~  
**GENERAL PRICE LIST**  
**SPRING 1925**  
 ~ ~ ~  
 CATALOGUE No 181 CANCELS  
 PREVIOUS GENERAL PRICE LISTS

# ADVICE TO CORRESPONDENTS, DIRECTIONS TO CUSTOMERS AND CONDITIONS OF SALE

All prices named herein are:

a. Limited to Spring, 1925, and supersede those of any previous General Price Lists.

b. For goods f. o. b. Nurseries or cars Naperville, Illinois, exclusive of any packing, express, freight or transportation charges; packing charges are extra in addition to cost of plants. No charge for packing car lot orders in bulk.

c. Subject to cancellation or change without further notice upon prior sale or depletion of our stock of goods.



## QUANTITY RATES WILL BE APPLIED AS FOLLOWS:

- 1 to 4 plants inclusive of any one item will be billed at the single rate.
- 5 to 24 plants inclusive of any one item will be billed at the ten rate.
- 25 and up of any one item will be billed at the hundred rate.

Order in lots of 5 and 10 or multiples thereof as far as possible.

# GENERAL PRICE LIST SPRING 1925

☛ Whenever we are asked by customers to make special selection of items for them we add 15% to catalog prices for items selected.

☛ All nursery stock selected or tagged by customers in the nursery will be charged for according to the value of the plants chosen.

**ORDERS.** Write plainly and give explicit directions as to address and mode of shipment, whether by freight, express, etc.

Orders are accepted and all shipments made subject to delays or inability to ship or deliver by reason or on account of strikes, accidents, droughts, fire, floods, frost, hail, sleet, war conditions and orders, railroad or express embargoes, priority or other transportation orders, prior sale of stock, car shortage, or any other cause or causes for delay in shipment or delivery of goods which are beyond our control.

Due to general conditions of weather, possible labor shortage and other contingencies, during the digging and shipping season, we do not guarantee to fill all items of an order or orders placed with us in one or first shipment.

**GUARANTEE AND CLAIMS.** In growing and furnishing all Nursery stock, we exercise the utmost diligence and care to have it true to name, and will, on proper proof, to our satisfaction, replace any that will prove otherwise or refund the amount paid. Any and all sales made by us do not include any warranty expressed, or implied, as to quality, description, productiveness, growth, or any other matter or qualifications pertaining to the Nursery stock sold.

It is mutually agreed and understood between the Purchaser and Ourselves, that in any case we shall not be liable for a sum greater than the amount originally paid us for any tree or plants, etc., that prove untrue.

**IN MAKING ALL SHIPMENTS WE CAREFULLY CONSIDER CONDITIONS IN GENERAL AND ACT ACCORDINGLY.**

**ALL SHIPMENTS AT PURCHASER'S RISK.**

In absence of specific shipment instructions, we are to route all shipments according to our best judgment without assuming responsibility.

If destination is a Pre-Paid Station, freight charges will be prepaid by us and charged for on invoice.

Claims for errors or shortage must be filed with us within Ten (10) days after receipt of goods. No claims for errors or shortage in excess of purchase price will be considered.

**PAYMENTS OF ACCOUNTS TO BE AS FOLLOWS:—**

a. 30 days net cash, except Fall and Spring accounts with the Nursery Trade, which are due on December 1st and June 1st respectively; 2% discount if paid within 10 days from date of shipment or invoice. For cash in advance a 3% cash discount is allowed.

b. All accounts after dates due are subject to sight draft and interest charges at rate of 6% per annum, without further notice.

c. Payments for partial shipments shall be due on basis of dates of invoices covering them.

d. Cash or satisfactory references with order, if purchaser has no credit established with us.

Packing charges are extra in addition to the cost of plants. No charge for packing car lot orders in bulk. When remittance accompanies order for plants, packing charges will be invoiced when goods are shipped.

Certificate of inspection will be furnished with each shipment.

Address all communications, orders and remittances to

**NAPERVILLE NURSERIES, Naperville, DuPage County, Illinois.**



## Trees

		Each	Per 10	Per 100
<b>ACER campestre</b>	Hedge Maple			
	3-4 inch (branched to ground).....	20.00	150.00	
<b>dasycarpum (saccharinum)</b>	Silver Maple			
	6 inch caliper Specimens.....	30.00		
	8 inch caliper Specimens.....	50.00		
<b>wieri</b>	Wier Maple			
	6-8 feet .....	2.00	15.00	140.00
	1¼-1½ inch .....	5.00	40.00	300.00
	1½-2 inch .....	6.00	55.00	450.00
	2-2½ inch .....	7.00	65.00	550.00
	3-3½ inch, Lowbranched .....	12.50	100.00	
	4 -5 inch, Lowbranched Specimens .....	20.00		
<b>platanoides</b>	Norway Maple			
	1¼-1½ inch .....	5.00	40.00	350.00
	1½-2 inch, once transplanted .....	6.00	50.00	450.00
	2-2½ inch, twice transplanted Specimens.....	8.00	70.00	650.00
	2½-3 inch, once transplanted .....	9.00	80.00	750.00
	5- 6 inch, twice transplanted Specimens.....	50.00	400.00	
	6- 7 inch, twice transplanted Specimens.....	60.00	500.00	
	8-10 inch, twice transplanted Specimens.....	125.00	1000.00	
<b>schwedleri</b>	Schwedler Maple			
	8-10 feet, Lowbranched .....	7.00	65.00	
	1½-2 inch, twice transplanted.....	10.00		
	2½-3 inch, twice transplanted.....	18.00		
	4 -5 inch, twice transplanted Specimens..	60.00	450.00	
	5 -6 inch and up, twice transplanted Specimens—Prices upon application.			
<b>pseudoplatanus</b>	Sycamore Maple			
	6-7 inch Specimens.....	50.00	400.00	
<b>rubrum</b>	Red Maple			
	5-6 inch Specimens.....	60.00	500.00	

# GENERAL PRICE LIST SPRING 1925

		Each	Per 10	Per 100
<b>ACER</b> <i>saccharum</i>	Sugar Maple			
8-10 feet .....		4.00	30.00	250.00
1½-2 inch .....		5.00	40.00	350.00
2-2½ inch .....		6.00	50.00	475.00
2½-3 inch .....		8.00	70.00	
3½-4 inch Specimen, twice transplanted.....		18.00	150.00	
4-5 inch Specimen, twice transplanted.....		30.00	250.00	
5-6 inch Specimen, twice transplanted.....		40.00	300.00	
<b>*AILANTHUS</b> <i>glandulosa</i>	(tree of heaven) Ailanthus			
3-4 feet .....		.60	4.50	30.00
4-5 feet .....		1.00	7.00	50.00
5-6 feet .....		1.25	10.00	75.00
8-10 feet .....		3.00	25.00	200.00
<b>*ALNUS</b> <i>rugosa</i>	Hazel Alnus			
2-3 feet .....		.60	5.00	40.00
3-4 feet .....		.70	6.00	50.00
4-5 feet .....		1.00	9.00	80.00
<b>BETULA</b> <i>alba</i> var. <i>pendula</i>	European Weeping Birch			
6-8 feet B. & B. Specimens, branches to ground		20.00	150.00	
<i>*lutea</i>	Yellow Birch			
6-8 feet .....		2.50	20.00	175.00
1½-2 inch .....		4.00	35.00	250.00
<i>*nigra</i>	River Birch			
6-8 feet .....		3.00	25.00	200.00
1½-2 inch .....		4.00	30.00	250.00
<i>*papyrifera</i>	Canoe Birch			
7-8 feet .....		3.00	25.00	200.00
2½-3 inch Caliper.....		7.00	60.00	500.00
<i>*populifolia</i>	Gray Birch			
8-10 feet .....		4.00	30.00	250.00
1½-2 inch .....		5.00	40.00	350.00
<b>CARPINUS</b> <i>caroliniana</i>	American Hornbeam			
6-7 feet B. & B.....		25.00	200.00	
<b>CATALPA</b> <i>bignonioides nana</i>	Umbrella Catalpa (Bungei)			
2 year, 5-6 feet.....		3.00	25.00	220.00
<b>CELTIS</b> <i>occidentalis</i>	Hackberry			
3-4 feet .....		.40	3.50	30.00
5-6 feet .....		1.20	9.00	70.00
8-10 feet .....		2.25	16.00	150.00
1½-2 inch .....		2.50	22.00	200.00
2-2½ inch .....		6.00	50.00	400.00
3-3½ inch .....		10.00	90.00	800.00
<b>*CERCIS</b> <i>canadensis</i>	American Redbud			
4-5 feet .....		2.50	20.00	150.00
<b>*CORNUS</b> <i>florida</i>	Flowering Dogwood			
5-6 feet .....		2.00	17.00	150.00
<b>CRATAEGUS</b> <i>coccinea</i>	Thicket Hawthorn			
2-3 feet .....		.80	7.00	60.00
3-4 feet .....		.90	8.00	70.00
4-5 feet .....		1.50	12.00	100.00
5-7 feet, Lowbranched .....		1.80	15.00	130.00
8-10 feet, Lowbranched Specimens .....		12.50	100.00	
<i>crusgalli</i>	Cockspur Thorn			
4-5 feet .....		1.80	15.00	
<i>*punctata</i>	Dotted Hawthorn			
3-4 feet .....		1.10	9.00	80.00
	Larger Sizes, Prices on application.			
<b>FAGUS</b> <i>sylvatica</i>	European Beech			
5-7 feet, Lowbranches B. & B. Specimens.....		11.00	90.00	
<b>FRAXINUS</b> <i>americana alba</i>	American White Ash			
1-1½ inch .....		2.00	15.00	120.00
1½-2 inch .....		3.00	22.50	200.00
2-3 inch, twice transplanted.....		7.00	60.00	500.00
3-3½ inch .....		10.00	80.00	
<i>lanceolata (viridis)</i>	Green Ash			
2-2½ inch, twice transplanted.....		7.00	60.00	500.00

# NAPERVILLE NURSERIES

		Each	Per 10	Per 100
<i>quadrangulata</i>	American Blue Ash			
1-1½ inch		6.00	50.00	400.00
1½-2 inch		8.00	65.00	650.00
<b>GLEDITSCHIA triacanthos</b>	Common Honeylocust			
5-6 feet		.80	6.00	40.00
6- 8 feet		1.20	10.00	80.00
8-10 feet		1.80	14.00	120.00
1½-2 inch		2.50	22.50	200.00
2-2½ inch		8.00	70.00	600.00
2½-3 inch		12.00	110.00	800.00
3- 4 inch		25.00	200.00	
5, 6-7, 8, 10 and 12 inch sizes—Prices on application.				
<i>incrmis</i>	Thornless Honeylocust			
6-8 feet		1.50	12.50	100.00
<b>GYMNOCLADUS dioica (cana-</b>	Kentucky Coffetree			
<b>densis)...</b>				
2-3 feet		1.00	8.00	60.00
3-4 feet		1.80	15.00	120.00
4-5 feet		2.50	20.00	180.00
6-8 feet		3.50	30.00	250.00
<b>JUGLANS cinera</b>	Butternut			
5-6 feet		1.50	12.50	100.00
<i>nigra</i>	Black Walnut			
3-4 feet		.70	5.00	40.00
4-5 feet		1.00	8.00	70.00
5-6 feet		1.50	12.50	100.00
<b>LARIX europaea (decidua)</b>	European Larch			
3-4 inch B. & B. Specimens		20.00	175.00	
<i>laricina (americana)</i>	American Larch			
3 inch B. & B. Specimens		20.00	175.00	
<b>MALUS ioensis</b>	Prairie Crab			
2-3 feet		.80	7.00	60.00
3-4 feet		.95	8.50	75.00
4-5 feet		1.25	10.00	90.00
5-6 feet		1.50	11.35	125.00
<b>*MORUS alba tatarica</b>	Russian Mulberry			
4-5 feet, heavy		.60	6.00	50.00
<b>PHELLODENDRON amurense</b>	Amur Corktree			
5-6 feet		1.50	12.00	100.00
6-8 feet		2.50	20.00	150.00
<b>POPULUS alba nivea</b>	Silver Poplar			
4-5 feet		.50	4.00	30.00
<i>eugenei</i>	Carolina Poplar			
1-1½ inch		1.00	7.00	60.00
1½-2 inch		3.00	25.00	200.00
2-2½ inch		4.00	35.00	300.00
2½-3 inch		4.50	40.00	350.00
3- 4 inch		6.50	50.00	450.00
<i>nigra italica</i>	Lombardy Poplar			
4-5 feet		.50	3.50	20.00
5-6 feet, Lowbranched		.60	3.50	30.00
6-8 feet, Lowbranched		1.00	8.00	70.00
8-10 feet, Lowbranched		1.60	12.50	100.00
1¼-1½ inch, Lowbranched		2.00	15.00	125.00
1½-2 inch, Lowbranched		3.00	25.00	
<i>tremuloides</i>	Quaking Aspen			
8-10 feet		4.50	35.00	300.00
2-2½ inch, Lowbranched		5.50	45.00	400.00
<b>PRUNUS americana</b>	American Plum			
2-3 feet		.30	2.50	20.00
3-4 feet		.40	3.50	25.00
4-5 feet, Lowbranched		.50	4.50	40.00
5-7 feet Lowbranched		.60	5.00	45.00
<i>padus (cerasus padus)</i>	European Bird Cherry			
4-5 feet (Heavy)		1.30	10.00	80.00



# GENERAL PRICE LIST SPRING 1925

		Each	Per 10	Per 100
* <i>pennsylvanica</i>	Pin Cherry			
	8-10 feet	2.00	15.00	120.00
* <i>serotina</i> ( <i>Cerasus serotina</i> )	Black Cherry			
	3-4 feet	.60	4.00	35.00
	4-5 feet, Lowbranched	.75	6.00	50.00
	5-6 feet, Lowbranched	.80	7.50	65.00
	6-8 feet, Lowbranched	.90	8.00	75.00
<i>pumila</i>	Dwarf Sandcherry			
	2-3 feet	.60	5.00	40.00
<b>QUERCUS</b> <i>alba</i>	White Oak			
	2-3 feet	1.50	10.00	80.00
	3-4 feet	2.00	15.00	125.00
<i>macrocarpa</i>	Mossycup Oak			
	6-8 feet	2.75	22.50	180.00
	1-1½ inch, twice transplanted	3.50	30.00	250.00
	1½-2 inch, twice transplanted	4.50	35.00	300.00
	2-2½ inch	6.00	50.00	
<i>palustris</i>	Pin Oak			
	2-3 feet	1.25	9.00	75.00
	3-4 feet	1.75	13.00	110.00
	2-2½ inch	7.00	60.00	500.00
	2½-3 inch	8.00	70.00	650.00
<i>robur</i>	English Oak			
	4-6 inch Caliber	40.00	300.00	
<b>ROBINIA</b> <i>pseudoacacia</i>	Common Locust			
	5-6 feet, transplant	.75	6.50	50.00
	6-8 feet	.90	8.00	70.00
<b>SALIX</b> <i>babylonica dolorosa</i>	Wisconsin Weeping Willow			
	4-5 feet (bush)	.50	4.50	40.00
	6-8 feet (bush)	.80	7.00	60.00
<i>discolor</i>	Pussy Willow			
	4-5 feet (bush)	.60	5.00	40.00
	5-6 feet (bush)	1.00	9.00	70.00
<i>pentandra</i> ( <i>laurifolia</i> )	Laurel Willow			
	3-4 feet (bush)	.50	4.00	30.00
	5-6 feet (bush)	.70	6.00	40.00
<i>vitellina aurea</i>	Russian Golden Willow			
	3-4 feet (bush)	.60	4.50	50.00
<b>SYRINGA</b> <i>japonica</i>	Japanese Tree Lilac			
	3-4 feet	1.20	9.00	70.00
	4-5 feet	1.50	12.00	100.00
* <b>TILIA</b> <i>americana</i> ( <i>glabra</i> )	American Linden			
	5-6 feet	2.00	16.00	140.00
	2-3 feet	8.00	70.00	650.00
	5-6 and 6-8 inch sizes, prices on application.			
<b>ULMUS</b> <i>americana</i>	American Elm			
	1¼-1½ inch, once transplanted	2.50	22.50	200.00
	1½-2 inch	5.00	40.00	350.00
	2-2½ inch, once transplanted	6.00	50.00	450.00
	3-inch, once transplanted	10.00	80.00	700.00
	2½-3 inch Specimens, twice transplanted	12.00	110.00	1,000.00
	3¼-4 inch Specimens, twice transplanted	22.50	180.00	
	4 inch Specimens, twice transplanted	25.00	225.00	2,000.00
	4½-5 inch Specimens, twice transplanted	40.00	350.00	3,000.00
	6 inch and 7-8 inch sizes, prices on application.			
<i>campestris</i> ( <i>procera</i> )	English Elm			
	2-2½ inch, twice transplanted, Specimens	7.50	65.00	550.00
	3-3½ inch, twice transplanted, Specimens	9.00	80.00	
	4-4½ inch	16.00	140.00	
	5-6 inch	35.00		
<i>glabra</i> <i>camperdowni</i>	Camperdown Elm			
	3 year head Specimens, twice transplanted	25.00	150.00	
<i>pumila</i>	Dwarf Asiatic Elm			
	4-5 feet	1.50	12.00	100.00
	5-6 feet	2.00	15.00	125.00

# NAPERVILLE NURSERIES



## Evergreens

		Each	Per 10	Per 100
<b>ABIES concolor</b>	White Fir			
2-3 feet, B. & B.....		7.00	60.00	
4-5 feet, B. & B.....		13.00	120.00	
5-6 feet, B. & B.....		19.00	180.00	
6-7 feet, B. & B.....		25.00	225.00	
<b>douglasi</b> (See Pseudotsuga)				
<b>CHAMAECYPARIS pisiferi plumosa aurea</b>	Goldenplume Retinospora			
18-24 inch, B. & B.....		4.50	40.00	350.00
2-3 feet, B. & B.....		6.00	55.00	500.00
<b>JUNIPERUS chinensis</b>	Chinese Juniper			
3-4 feet, B. & B.....		8.00	70.00	
<b>pfitzeriana</b>	Pfitzer Juniper			
18-24 inch Spread, B. & B.....		5.50	45.00	400.00
2-3 feet Spread, B. & B.....		9.00	80.00	700.00
<b>communis (canadensis)</b>	Common Juniper			
1½-2 feet Spread, B. & B.....		4.00	30.00	250.00
2-2½ feet Spread, B. & B.....		5.00	40.00	350.00
<b>depressa</b>	Prostrate Juniper			
18-24 inch spread, B. & B.....		5.00	37.50	350.00
2-2½ feet Spread, B. & B.....		6.00	45.00	425.00
2½-3 feet Spread, B. & B.....		7.00	60.00	
<b>hibernica (stricta)</b>	Irish Juniper			
2-3 feet, B. & B.....		4.50	35.00	300.00
3-4 feet, B. & B.....		5.00	45.00	400.00
4-5 feet, B. & B.....		9.00	75.00	
<b>suecica (fastiagata)</b>	Swedish Juniper			
3-4 feet, B. & B.....		4.50	40.00	375.00
4-5 feet, B. & B.....		7.00	60.00	500.00
<b>horizontalis (prostrata)</b>	Creeping Juniper			
18-24 inch Spread, B. & B.....		7.00	55.00	500.00

# GENERAL PRICE LIST SPRING 1925

	Each	Per 10	Per 100
<b>sabina cupressifolia</b> Cypress Savin			
15-18 inch, B. & B.....	4.50	35.00	300.00
18-24 inch, B. & B.....	5.00	40.00	360.00
2-2½ feet, B. & B.....	7.00	60.00	500.00
<b>virginiana</b> Redcedar			
3-4 feet, B. & B.....	4.00	35.00	
4-5 feet, B. & B.....	8.00	70.00	600.00
5-6 feet, B. & B.....	9.00	80.00	750.00
6-7 feet, B. & B., twice transplanted.....	14.00	125.00	1,100.00
7-8 feet, B. & B., twice transplanted.....	20.00	175.00	1,500.00
8-10 feet, B. & B., twice transplanted.....	32.50	275.00	
10 feet, B. & B., twice transplanted (Heavy)...	50.00	400.00	
<b>PICEA canadensis albertiana</b> Alberta (Black Hills) Spruce			
2-3 feet, B. & B.....	5.00	40.00	375.00
3-4 feet, B. & B.....	6.00	50.00	
<b>excelsa</b> Norway Spruce			
2-3 feet, B. & B.....	3.00	25.00	200.00
3-4 feet, B. & B.....	4.50	37.50	350.00
6-8 feet, B. & B.....	12.50	100.00	
8-10 feet, B. & B.....	15.00	135.00	
<b>pungens viridis</b> Green Colorado Spruce			
2-3 feet, B. & B.....	5.00	40.00	
3-4 feet (Selected green), B. & B.....	7.50	70.00	
4-5 feet (Selected green), B. & B.....	12.00	100.00	
5-6 feet (Selected green), B. & B.....	16.00	140.00	
6-7 feet, B. & B.....	25.00	200.00	
<b>glauca</b> Blue Colorado Spruce			
4-5 feet, B. & B. (Selected blue).....	25.00	200.00	
5-6 feet, B. & B. (Selected blue).....	30.00	275.00	
Sizes 8-14 feet or Specimens—Prices on application.			
<b>PINUS banksiana</b> Jack Pine			
6-8 feet, B. & B.....	8.00	70.00	600.00
<b>montana mughus (prostrata)</b> Mugho Pine			
12-18 inch, B. & B.....	4.00	35.00	325.00
18-24 inch, B. & B.....	6.00	55.00	500.00
2-2½ feet, B. & B.....	7.00	60.00	
<b>ponderosa</b> Western Yellow Pine			
6-8 feet, B. & B.....	20.00	150.00	
<b>resinosa</b> Red Pine			
2-3 feet, B. & B.....	4.00	35.00	300.00
3-4 feet, B. & B.....	5.00	45.00	400.00
<b>strobus</b> White Pine			
3-4 feet, B. & B.....	4.00	30.00	
4-5 feet, B. & B.....	6.50	55.00	500.00
5-6 feet, B. & B.....	10.00	90.00	800.00
6-8 feet, B. & B.....	14.00	120.00	1000.00
<b>sylvestris</b> Scotch Pine			
3-4 feet, B. & B.....	4.50	35.00	300.00
4-5 feet, B. & B.....	5.00	45.00	400.00
6-8 feet, B. & B.....	25.00	200.00	
<b>PSEUDOTSUGA douglasi (taxifolia)</b> Douglas-fir			
3-4 feet, B. & B.....	6.00	50.00	
4-5 feet, B. & B.....	8.00	70.00	
5-6 feet, B. & B.....	12.00	110.00	1,000.00
6-8 feet, B. & B.....	17.50	150.00	1,200.00
8-10 feet, B. & B.....	32.50	300.00	2500.00



# NAPERVILLE NURSERIES



	Each	Per 10	Per 100
<b>THUJA occidentalis</b> American Arborvitae			
2-3 feet, B. & B.....	3.50	30.00	250.00
3-4 feet, B. & B.....	5.00	45.00	400.00
4-5 feet, B. & B.....	7.50	60.00	550.00
5-6 feet, B. & B.....	12.00	100.00	
6-7 feet, B. & B.....	16.00	140.00	
<b>douglasi aurea</b> Douglas Golden Arborvitae			
2-3 feet, B. & B.....	4.00	35.00	300.00
<b>ellwangeriana</b> Tom Thumb Arborvitae			
10-12 inch, B. & B.....	2.00	17.50	150.00
12-15 inch, B. & B.....	2.50	20.00	180.00
<b>globosa</b> American Globe Arborvitae			
12-15 inch, B. & B.....	3.00	25.00	225.00
<b>hoveyi aurea</b> Hovey Arborvitae			
12-15 inch, B. & B.....	3.00	22.50	200.00
15-18 inch, B. & B.....	4.00	35.00	300.00
<b>pyramidalis (fastigiata)</b> American Pyramidal Arborvitae			
2-3 feet, B. & B.....	4.50	40.00	
3-4 feet, B. & B.....	6.50	55.00	
4-5 feet, B. & B.....	10.00	90.00	
5-6 feet, B. & B.....	12.50	100.00	
<b>wareana (robusta)</b> Siberian Arborvitae			
1-1½ feet, B. & B.....	3.25	27.50	250.00
1½-2 feet, B. & B.....	4.00	40.00	350.00
2-3 feet .....	6.00	50.00	
<b>orientalis (Biota)</b> Oriental Arborvitae			
4-5 feet, B. & B.....	9.00	80.00	
5-6 feet, B. & B.....	12.50	100.00	
<b>TSUGA canadensis (abies candensis)</b> Canada Hemlock			
2-3 feet, B. & B.....	6.00	50.00	500.00
3-4 feet, B. & B.....	8.00	70.00	700.00

☛ All Nursery stock selected or tagged by customers in the nursery will be charged for according to the value of the plants chosen.

☛ Whenever we are asked by customers to make special selection of items for them we add 15 per cent to the catalog price for items selected.



# GENERAL PRICE LIST SPRING 1925

## Shrubs

	Each	Per 10	Per 100
<b>ACANTHOPANAX pentaphyllum</b> Aralia Pentaphylla			
2-3 feet .....	.60	5.00	45.00
<b>AMELANCHIER canadensis</b> (botryapium) Downy Shadblow			
18-24 inch .....	5.00	4.00	30.00
<b>ARALIA chinensis mandschurica</b> Manchurian Aralia			
3-4 feet .....	.90	8.00	70.00
4-5 feet .....	1.10	9.50	90.00
<b>spinosa</b> Devils-Walkingstick			
3-4 feet .....	.95	8.00	70.00
4-5 feet .....	1.10	9.50	85.00
6-8 feet .....	2.00	18.00	
<b>ARONIA arbutifolia</b> Red Chokeberry			
12-18 inch .....	.40	3.00	25.00
2-3 feet .....	.70	6.00	50.00
<b>melanocarpa</b> (nigra) Black Chokeberry			
12-18 inch .....	.40	3.25	22.00
18-24 inch .....	.55	5.00	40.00
2-3 feet .....	.70	6.00	50.00
<b>BERBERIS thunbergi</b> Japanese Barberry			
12-18 inch .....	.35	2.50	20.00
18-24 inch .....	.45	3.50	30.00
2-2½ feet .....	.55	4.50	40.00
<b>minor</b> Box Barberry			
10-15 inch, 2 year .....	.55	4.50	36.00
<b>BUDDLEIA davidi variabilis</b> Orange-eye Butterflybush			
2 year, No. 1 .....	.50	4.50	40.00
<b>CALYCANTHUS floridus</b> Common Sweet-shrub			
2-3 feet .....	.75	6.50	55.00
<b>CEPHALANTHUS occidentalis</b> Buttonbush			
2-3 feet .....	.50	4.00	30.00
3-4 feet .....	.60	4.50	36.00
<b>CHIONANTHUS virginica</b> White Fringe-tree			
3-4 feet .....	2.50	20.00	
<b>CORNUS alba siberica</b> Coral Dogwood			
2-3 feet .....	.50	4.00	30.00
3-4 feet .....	.50	4.50	40.00
4-5 feet .....	.65	5.50	50.00
** <b>alternifolia</b> Pagoda Dogwood			
18-24 inch .....	.40	3.00	25.00
4-5 feet .....	.80	7.00	60.00
* <b>amomum</b> (Sericea) Silky Dogwood			
4-5 feet .....	.60	5.00	45.00
* <b>paniculata</b> Gray Dogwood			
18-24 inch .....	.35	2.50	20.00
2-3 feet .....	.45	3.50	30.00
3-4 feet .....	.60	5.00	45.00
4-5 feet .....	.70	6.00	50.00
<b>rugosa</b> (Cercinata)			
4-5 feet .....	1.20	1.10	100.00

# NAPERVILLE NURSERIES

		Each	Per 10	Per 100
<b>sanguinea</b>	Bloodtwig Dogwood			
4-5 feet .....		.70	6.00	50.00
<b>*stolonifera</b>				
3-4 feet .....		.50	4.00	30.00
4-5 feet .....		.60	5.00	45.00
<b>flaviramea</b>	Goldentwig Dogwood			
2-3 feet .....		.50	4.00	36.00
3-4 feet .....		.70	6.00	50.00
<b>*CORYLUS americana</b>	American Hazelnut			
2-3 feet .....		.70	5.50	45.00
3-4 feet .....		.80	6.50	
4-5 feet .....		.90	1.00	
<b>COTONEASTER acutifolia</b>	Peking Cotoneaster			
2-3 feet .....		.60	4.50	36.00
3-4 feet .....		.70	5.50	45.00
<b>simonsi</b>	Simons Cotoneaster			
18-24 inch .....		1.00	9.00	80.00
3 feet .....		2.00	15.00	125.00
<b>CRATAEGUS</b> (See Trees)				
<b>CYDONIA japonica</b>	Flowering Quince			
12-18 inch .....		.50	4.00	
18-24 inch .....		.65	5.50	50.00
<b>DEUTZIA lemoinei</b>	Lemoine Deutzia			
2-2½ feet .....		.75	6.50	60.00
<b>scabra plena</b>	Double Rose Deutzia			
4-5 feet .....		.65	5.50	45.00
<b>Pride of Rochester</b>	Pride of Rochester Deutzia			
3-4 feet .....		.60	5.00	40.00
<b>*DIERVILLA sessilifolia</b>	Southern Bush-Honeysuckle			
4-5 feet .....		.90	8.00	70.00
<b>**trifida (Ionicera)</b>	Dwarf Bush-Honeysuckle			
2 feet .....		.65	5.50	45.00
<b>ELAEAGNUS angustifolia</b>	Russian-Olive			
2-3 feet (shrub form).....		.50	4.00	30.00
<b>*EUONYMUS alatus</b>	Winged Euonymus			
18-24 inch .....		.70	6.00	50.00
<b>*americanus</b>	Brook Euonymus			
18-24 inch .....		.45	3.50	
2-3 feet .....		.55	4.50	
<b>atropurpureus</b>	Wahoo			
18-24 inch .....		.50	4.00	30.00
2-3 feet .....		.60	5.50	45.00

# GENERAL PRICE LIST SPRING 1925

	Each	Per 10	Per 100
<b>EXOCHORDA grandiflora</b>			
(racemosa) Common Pearlbrush			
3-4 feet .....	.90	8.00	
<b>*FORSYTHIA intermedia</b> Border Forsythia			
2-3 feet .....	.45	3.50	30.00
3-4 feet .....	.60	5.00	40.00
<b>suspensa</b> Weeping Forsythia			
3-4 feet .....	.60	5.00	40.00
<b>fortunei</b> Fortune Forsythia			
3-4 feet .....	.55	4.50	40.00
<b>aurea</b> Golden Fortune Bell			
4-5 feet .....	.70	6.00	50.00
<b>**HAMAMELIS virginiana</b> Common Witch-hazel			
12-18 inch .....	.50	4.00	35.00
18-24 inch .....	.60	5.50	45.00
<b>HIBISCUS syriacus</b>			
Single Purple			
Double Purple			
Pure Single White			
Double White with Pink center			
Single White with Pink Center			
Double Pink slightly variegated			
3-4 feet .....	.75	6.00	50.00
(for late fall or spring shipment only.)			
<b>HYDRANGEA arborescens grandiflora</b>			
Snowhill Hydrangea			
2-3 feet .....	.90	8.00	70.00
<b>paniculata grandiflora</b> Peegee Hydrangea			
2-3 feet, 2 year (shrub form) .....	.90	8.00	70.00
<b>*LIGUSTRUM amurense</b> Amur Privet (North)			
2-3 feet, 4 canes and up .....	.35	2.50	20.00
2-3 feet, 6 canes and up (Heavy) .....	.45	3.75	30.00
3-4 feet, 6 canes and up (Heavy) .....	.60	5.00	40.00



# NAPERVILLE NURSERIES

	Each	Per 10	Per 100
<b>*ibota</b> <span style="float: right;">Ibota Privet</span>			
18-24 inch .....	.40	2.80	22.00
2-3 feet, heavy.....	.45	3.50	30.00
<b>regelianum</b> <span style="float: right;">Regel Privet</span>			
18-24 inch (from cuttings).....	.55	4.50	36.00
2-2½ feet .....	.60	5.00	45.00
<b>vulgare</b> <span style="float: right;">European Privet</span>			
2-3 feet, 6 canes and up (Heavy).....	.35	2.50	20.00
3-4 feet, 6 canes and up (Heavy).....	.40	3.50	25.00
<b>albomarginatum</b> <span style="float: right;">Silveredge European Privet</span>			
4-5 feet .....	.50	4.00	30.00
<b>acuminatum (ciliatum)</b>			
3-4 feet .....	.50	4.00	30.00
<b>**LONICERA bella albida</b> <span style="float: right;">White Bell Honeysuckle</span>			
4-5 feet .....	.60	5.00	45.00
<b>chrysantha</b> <span style="float: right;">Creamy-bell Honeysuckle</span>			
2-3 feet .....	.50	4.00	35.00
3-4 feet .....	.60	5.00	40.00
<b>morrowi</b> <span style="float: right;">Morrow Honeysuckle</span>			
3-4 feet .....	.55	4.50	36.00
4-5 feet .....	.65	5.00	50.00
<b>tatarica grandiflora</b> <span style="float: right;">Bride Honeysuckle</span>			
2-3 feet .....	.40	3.50	30.00
3-4 feet .....	.50	4.50	36.00
<b>ruprechtiana</b> <span style="float: right;">Manchurian Honeysuckle</span>			
4-5 feet .....	.80	7.00	60.00
<b>*PHILADELPHUS coronarius</b> <span style="float: right;">Sweet Mockorange</span>			
3-4 feet .....	.50	4.00	35.00
4-5 feet .....	.65	5.50	50.00
5-6 feet .....	.70	6.00	55.00
<b>florepleno</b> <span style="float: right;">Double Mockorange</span>			
4-5 feet .....	.65	5.50	50.00
5-6 feet .....	.70	6.00	55.00
<b>grandiflorus</b> <span style="float: right;">Big Philadelphia</span>			
4-5 feet .....	.65	5.50	50.00
6-7 feet .....	1.25	10.00	80.00
<b>nanus</b> <span style="float: right;">Dwarf Sweet Philadelphia</span>			
3 feet .....	.50	4.00	35.00
<b>gordonianus</b> <span style="float: right;">Gordon Mockorange</span>			
4-5 feet .....	.65	5.50	50.00
5-6 feet .....	.75	6.00	55.00
<b>lemoinei</b> <span style="float: right;">Lemoine Mockorange</span>			
2-3 feet .....	.80	7.00	60.00
<b>*nivalis</b> <span style="float: right;">Snowbank Philadelphia</span>			
3-4 feet .....	.45	3.50	30.00
4-5 feet .....	.50	4.50	40.00
5 feet .....	.70	6.00	50.00
6-8 feet .....	.90	8.00	70.00
<b>zeyheri</b> <span style="float: right;">Zeyher Mockorange</span>			
3-4 feet .....	.50	4.00	35.00
4-5 feet .....	.65	5.50	50.00
6-8 feet (specimens).....	3.00	22.50	200.00



# GENERAL PRICE LIST SPRING 1925

		Each	Per 10	Per 100
<b>PHYSOCARPUS monogymus</b>				
3 feet .....		.80	7.00	60.00
<b>opulifolius</b>	Common Ninebark			
3-4 feet .....		.40	2.80	22.00
4-5 feet .....		.50	4.50	40.00
5-6 feet .....		.60	5.50	50.00
<b>luteus</b>	Goldenleaf Ninebark			
3-4 feet .....		.50	4.00	36.00
4-5 feet .....		.60	5.00	40.00
<b>PHOTINIA villosa</b>	Christmas Berry			
3-4 feet .....		.70	6.00	55.00
4-5 feet .....		.90	8.00	70.00
<b>*POTENTILLA fruticosa</b>	Shrubbery Cinquefoil			
18-24 inch .....		.50	4.00	30.00
2-3 feet .....		.60	5.00	40.00
<b>PRUNUS glandulosa sinensis</b>	Double Pinkflowering Almond			
18-24 inch (budded).....		.60	5.00	40.00
2-3 feet (budded).....		.70	6.00	50.00
3-4 feet (own roots).....		1.30	11.00	100.00
3-4 feet (budded).....		1.10	9.00	80.00
<b>glabra albiplena</b>	Double Whiteflowering Almond			
2-3 feet (own roots).....		.90	8.00	70.00
3-4 feet (own roots).....		1.00	9.00	80.00
<b>tomentosa</b>	Nanking Cherry			
3-4 feet .....		.90	8.00	70.00
<b>triloba plena</b>	Double Flowering Plum			
2-3 feet (Budded) .....		.80	7.00	60.00
3-4 feet (1 year buds).....		1.00	9.00	80.00
<b>virginiana</b>	Common Chokecherry			
3-4 feet .....		.60	5.00	40.00
4-5 feet .....		.80	7.00	60.00
<b>PTELIA trifoliata</b>	Common Hoptree			
4-5 feet .....		.60	5.00	40.00
5-6 feet .....		.90	7.00	60.00
<b>*RHAMNUS caroliniana</b>	Common Buckthorn			
4-5 feet .....		.80	6.00	50.00
<b>cathartica</b>	Common Buckthorn			
2-3 feet .....		.40	3.00	20.00
3-4 feet .....		.45	3.50	25.00
4-5 feet .....		.55	4.50	40.00
<b>*frangula</b>	Glossy Buckthorn			
3-4 feet .....		.60	4.50	35.00
<b>*RHODOTYPOS kerrioides</b>	Jetbead			
2-3 feet .....		.80	7.50	60.00
3-4 feet .....		1.00	9.00	80.00
<b>*RHUS canadensis (aromatica)</b>	Fragrant Sumac			
18-24 inches .....		.70	6.00	50.00
2-2½ feet .....		.80	7.00	
<b>copallina</b>	Shining Sumac			
4-5 feet .....		.70	6.00	50.00
5-7 feet .....		1.00	9.00	80.00



# NAPERVILLE NURSERIES



		Each	Per 10	Per 100
<b>cotinus atropurpurea</b>	Purple Smoketree			
2-3 feet .....		1.20	11.00	
5-6 feet .....		2.00	15.00	
<b>*glabra</b>	Smooth Sumac			
3-4 feet .....		.50	4.00	30.00
4-5 feet .....		.60	5.00	40.00
6-7 feet .....		.70	6.00	50.00
<b>*typhina (hirta)</b>	Staghorn Sumac			
5-6 feet .....		.55	4.50	40.00
6-8 feet .....		.60	5.50	44.00
8-12 feet .....		.75	6.00	55.00
<b>*laciniata</b>	Shredded Sumac			
3-4 feet .....		.60	5.00	40.00
4-5 feet .....		.70	6.00	50.00
6-7 feet (Heavy) .....		1.50	12.00	100.00
<b>**RIBES alpinum</b>	Mountain Currant			
18-24 inches (Bushy) .....		.70	6.00	50.00
<b>americanum (floridum)</b>	Black Currant			
3-4 feet .....		.50	4.00	30.00
<b>aureum</b>	Slender Golden Currant			
3-4 feet .....		.70	6.00	50.00
<b>*cynosbati</b>	Pasture Gooseberry			
3-4 feet .....		.65	5.00	40.00
<b>ROBINIA hispida</b>	Rose-acacia			
3-4 feet .....		.80	6.00	

Roses

<b>*ROSA blanda</b>	Meadow Rose			
2-3 feet .....		.45	3.50	30.00
3-4 feet .....		.50	4.50	36.00
<b>humilis</b>	Pasture Rose			
2-3 feet .....		.45	3.60	30.00
<b>lucida (virginiana)</b>	Virginia Rose			
2-3 feet .....		.45	3.50	30.00
3-4 feet .....		.50	4.50	36.00
<b>alba</b>	White Virginia Rose			
2 feet .....		1.00	8.00	....
<b>multiflora</b>	Japanese Rose			
3-4 feet .....		.50	4.00	30.00
4-5 feet .....		.60	4.50	40.00
<b>nitida</b>	Bristly Rose			
15-18 inch .....		.50	4.50	40.00
<b>palustris (carolina)</b>	Swamp Rose			
2-3 feet .....		.50	4.00	35.00
<b>rubiginosa</b>	Sweetbriar			
3-4 feet .....		.70	6.00	50.00

# GENERAL PRICE LIST SPRING 1925

		Each	Per 10	Per 100
<b>rugosa</b>	<b>Rugosa Rose</b>			
18-24 inch .....		.50	4.00	36.00
2-3 feet .....		.60	5.50	50.00
3-4 feet .....		.80	7.00	60.00
<b>alba</b>	<b>White Rugosa Rose</b>			
2-3 feet .....		.80	7.50	60.00
<b>setigera (single pink)</b>	<b>Prairie Rose</b>			
2 year, 18x24 inch.....		.35	2.80	25.00
2 year, 2-2½ feet.....		.40	3.50	30.00
<b>wichuriana</b>	<b>Wichurian Rose</b>			
3 year .....		.60	5.00	40.00



## CLIMBING ROSES

<b>Dorothy Perkins, Very Dark Pink (one of the best).</b>				
<b>Excelsa (Red Dorothy Perkins), extra fine.</b>				
<b>Tausendschon, White Flushed Pink.</b>				
<b>White Dorothy Perkins, Double Pure White.</b>				
<b>Wichuriana, Memorial Rose, Single Red.</b>				
2 year No. 1.....		.70	6.00	50.00
<b>Cl. American Beauty</b>				
<b>Crimson Rambler, Double Crimson.</b>				
<b>Graf. Zeppelin, Coral Red.</b>				
<b>Hiawatha, Single Bright Crimson.</b>				
2 year No. 1.....		.80	7.00	60.00
<b>Dr. W. Van Fleet, Flesh Pink, one of the best.</b>				
<b>Silver Moon, Pure White.</b>				
2 year No. 1.....		.90	8.00	70.00

## DWARF POLYANTHA OR "BABY" ROSES

<b>Baby Dorothy, Pink.</b>				
<b>Baby Rambler, Crimson.</b>				
<b>Ellen Paulson, Dark Pink.</b>				
<b>George Elger, Yellow.</b>				
<b>Orleans, Brilliant Red.</b>				
2 year No. 1.....		1.10	9.50	80.00



# NAPERVILLE NURSERIES



**Arthur R. Goodwin**, Coppery, Orange Red, one of the best copper colored.  
**Duchess of Wellington**, Intense Saffron-Yellow, stained Rich Crimson, best yellow.  
**Escarlate**, Scarlet-Red, one of the best.  
**Edward Mawley**, Deep Velvety Crimson, one of the best.  
**Florence Pemberton**, Creamy White, Suffused Pink.  
**General MacArthur**, Bright, Scarlet-Red, one of the very best.  
**Gruss an Teplitz**, Scarlet, constantly in bloom, reliable old timer and one of the best.  
**Jonkheer J. L. Mock**, Deep Pink, outside petals Silvery Rose.  
**Joseph Hill**, Pink, Salmon shaded, outside petals Pink Copper.  
**Kaiserin Augusta Victoria**, White, fine form, one of the best White.  
**Killarney**, Pink, favorite bedding rose.

	Each	Per 10	Per 100
<b>Killarney Brilliant</b> , Deep, Rosy Carmine.			
2 year No. 1.....	1.10	9.00	80.00
<b>RUBUS odoratus</b> Flowering Raspberry			
4-5 feet .....	.70	6.00	50.00
<b>*SAMBUCUS canadensis</b> American Elder			
2-3 feet .....	.50	4.00	35.00
3-4 feet .....	.60	5.00	44.00
4-5 feet .....	.70	5.50	50.00
<b>acutiloba</b> Cutleaf American Elder			
3-4 feet .....	.60	5.00	45.00
4-5 feet .....	.70	6.00	50.00
<b>**pubens</b> Scarlet Elder			
3-4 feet .....	.80	7.00	60.00
<b>SORBARIA sorbifolia</b> ( <b>Spirea sorbifolia</b> )      Ural False-Spirea			
3-4 feet .....	.70	6.00	50.00
<b>SPIRAEA arguta</b> Garland Spirea			
18-24 inch .....	.45	3.60	30.00
2-2½ feet .....	.70	6.00	50.00
<b>billiardi</b> Billiard Spirea			
3-4 feet .....	.50	4.00	35.00
<b>bumalda Anthony Waterer</b> Anthony Waterer Spirea			
10-12 inch .....	.50	3.50	25.00
18-24 inch .....	.60	4.50	40.00
<b>froebeli</b> Froebel Spirea			
18-24 inch .....	.40	3.00	25.00
2-3 feet .....	.60	5.00	40.00
<b>japonica ovalifolia</b> ( <b>callosa alba</b> )      White Japanese Spirea			
10-12 inch .....	.45	3.50	25.00
12-15 inch .....	.50	4.00	30.00
15-18 inch .....	.55	4.50	36.00
<b>latifolia</b> ( <b>bethlehemensis</b> )      Pink Meadow Spirea			
2-3 feet .....	.50	4.00	30.00
3-4 feet .....	.60	4.50	40.00
4-5 feet .....	.70	5.50	50.00
<b>margaritae</b> Margarita Spirea			
2-3 feet .....	.60	4.50	40.00
<b>prunifolia plena</b> Double Bridal Wreath			
2-3 feet .....	.65	5.50	45.00
3-4 feet .....	.80	7.00	60.00

# GENERAL PRICE LIST SPRING 1925

		Each	Per 10	Per 100
<i>salicifolia (siberica)</i>	Willowleaf Spirea			
3-4 feet .....		.60	5.00	45.00
<i>sorbifolia</i> (See <i>Sorbaria</i> )				
<i>thunbergi</i>	Thunberg Spirea			
18-24 inch .....		.60	5.00	45.00
2-3 feet .....		.70	6.00	55.00
3-4 feet .....		.85	7.50	65.00
<i>*tomentosa</i>	Hardhack			
2-3 feet .....		.60	4.25	36.00
<i>vanhoutti</i>	Vanhoutte Spirea			
2-3 feet .....		.40	3.25	25.00
3-4 feet .....		.50	4.00	35.00
4-5 feet .....		.60	5.00	45.00
<i>*SYMPHORICARPOS mollis (Acutus)</i>	Spreading Snowberry			
3-4 feet .....		.60	5.00	40.00
<i>occidentalis</i>	Western Snowberry			
2 feet .....		.60	5.00	40.00
<i>*racemosus</i>	Common Snowberry			
2-3 feet .....		.50	3.50	25.00
3-4 feet .....		.60	4.00	30.00
<i>vulgaris</i>	Coralberry			
2-3 feet .....		.40	3.00	25.00
3-4 feet .....		.50	4.00	30.00
<i>aurea</i>	Goldentipped Coralberry			
2-3 feet .....		.50	4.00	30.00
<i>SYRINGA japonica</i> (See under trees)				
<i>josikea</i>	Hungarian Lilac			
12-18 inch .....		.50	4.00	36.00
18-24 inch .....		.60	5.00	45.00
2-3 feet .....		.70	6.00	55.00
3-4 feet .....		.80	7.00	60.00
4-5 feet .....		1.00	9.00	80.00
<i>henryi lutesce</i>	Henry Lutesce Lilac			
12-18 inch .....		.60	4.50	36.00
18-24 inch .....		.70	6.00	50.00
2-3 feet .....		.90	8.00	70.00
<i>Chinensis (rothomagensis)</i>	Chinese Lilac			
3-4 feet .....		1.00	9.00	90.00
<i>persica</i>	Persian Lilac			
3-4 feet .....		1.10	9.50	90.00
<i>alba</i>	White Persian Lilac			
3-4 feet .....		1.30	11.00	100.00
<i>villosa</i>	Late Lilac			
12-18 inch .....		.50	4.00	32.00
18-24 inch .....		.60	5.00	40.00
2-3 feet .....		.70	6.00	50.00

**NAPERVILLE NURSERIES**

		Each	Per 10	Per 100
<b>vulgaris</b>	<b>Common Lilac</b>			
18-24 inch .....		.40	3.00	25.00
2-3 feet .....		.60	5.00	40.00
3-4 feet .....		.70	6.00	50.00
4-5 feet .....		.90	7.50	65.00
 <b>SYRINGA in variety</b>				
Alphonse Lavallea .....	3-4 feet & 4-5 feet			
Charles the Tenth, Single Reddish Purple.....	.....2-3 feet, 3-4 feet, 4-5 feet			
Congo, Single Dark Red.....	4-5 feet			
Emile Lemoine, Double Rose Pink.....	4-5 feet			
La Tour d' Auvergne, Double Pink.....	4-5 feet			
Ludwig Spaeth, Single Dark Purple.....	4-5 feet			
Madame Lemoine, Double White.....	4-5 feet			
Michel Buchner, Double Pale Lilac.....	4-5 feet			
President Grevy, Double Rose Lilac.....	3-4 feet			
Princess Alexandra, Double White.....	4-5 feet			
Rubra de Marley, Single Pale Lilac.....	4-5 feet			
2-3 feet .....		.90	8.00	
3-4 feet .....		1.30	11.00	
4-5 feet .....		1.60	14.00	
 <b>TAMARIX pentandra (hispida-aestivalis) Fivestamen Tamarix</b>				
2-3 feet .....		.60	5.00	40.00
 <b>amurensis</b>	<b>Amur Tamarix</b>			
3-4 feet .....		.45	3.50	30.00
4-5 feet .....		.70	6.00	
 <b>**VIBURNUM acerifolium</b> <b>Mapleleaf Viburnum</b>				
2-3 feet .....		.90	8.00	70.00
 <b>affine hypomalacum (pubescens) Viburnum Pubescens</b>				
18-24 inch .....		.60	5.00	40.00
2-3 feet .....		.70	6.00	50.00
3-4 feet .....		.80	7.00	60.00
 <b>carlesi</b> <b>Fragrant Viburnum</b>				
12-18 inch .....		4.50	30.00	
 <b>cassinoides</b> <b>Withe-rod</b>				
4-5 feet .....		1.30	12.00	100.00
 <b>*dentatum</b> <b>Arrowwood</b>				
2-3 feet .....		.55	4.50	40.00
3-4 feet .....		.75	6.00	55.00
4-5 feet .....		.90	8.00	70.00
 <b>lantana</b> <b>Wayfaring-tree</b>				
2-3 feet .....		.65	5.50	50.00
3-4 feet .....		.80	7.00	66.00
4-5 feet .....		1.00	9.00	80.00
 <b>lentago</b> <b>Nannyberry</b>				
2-3 feet .....		.65	5.50	50.00
3-4 feet .....		.75	6.50	60.00
4-5 feet .....		.80	7.00	70.00
5-6 feet .....		1.00	9.00	80.00

# GENERAL PRICE LIST SPRING 1925

		Each	Per 10	Per 100
<b>*molle (venosum)</b>	<b>Veiny Viburnum</b>			
2-3 feet .....		.70	6.00	50.00
3-4 feet .....		.80	6.50	55.00
<b>opulus sterile</b>	<b>Common Snowball</b>			
18-24 inch .....		.70	6.00	50.00
2-3 feet .....		.90	8.00	70.00
3-4 feet .....		1.00	9.00	80.00
4-5 feet .....		1.20	11.00	
<b>*prunifolium</b>	<b>Blackhaw</b>			
18-24 inch .....		.70	6.00	50.00
2-3 feet .....		.85	7.50	65.00
<b>tomentosum</b>	<b>Doublefile Viburnum</b>			
2-3 feet .....		.90	8.00	
<b>plicatum (plenum)</b>	<b>Japanese Snowball</b>			
3 feet .....		1.30	11.00	
<b>WEIGELIA amabilis</b>	<b>Rose Weigelia</b>			
4-5 feet .....		.80	7.00	60.00
<b>hybrida Eva Rathke</b>				
2-3 feet .....		1.10	10.00	90.00
<b>rosea</b>	<b>Pink Weigelia</b>			
2-3 feet .....		.60	5.00	45.00
3-4 feet .....		.70	6.00	50.00
<b>ZANTHOXYLUM americanum</b>	<b>Common Prickly-ash</b>			
3-4 feet .....		.60	5.00	40.00
4-5 feet .....		.70	6.00	50.00

## Vines

<b>AKEBIA quinata</b>	<b>Fiveleaf Akebia</b>			
2 year .....		.85	7.50	
<b>*AMPELOPSIS heterophylla</b>	<b>Porcelain Ampelopsis</b>			
3 year .....		.60	5.00	40.00
<b>quinquefolia</b>	<b>Virginia Creeper</b>			
3 year .....		.45	3.50	25.00
<b>engelmanni</b>	<b>Engelmann Creeper</b>			
2 year .....		.25	2.00	17.50
3 year .....		.40	3.00	25.00
<b>tricuspidata veitchi</b>	<b>Japanese Creeper</b>			
2 year .....		.90	8.00	70.00
<b>ARISTOLOCHIA siphon</b>	<b>Dutchmans-pipe</b>			
2 year .....		1.25	11.00	100.00
<b>BIGNONIA radicans</b>	<b>Trumpet creeper</b>			
2 year .....		.50	3.50	30.00
3 year .....		.60	4.50	35.00
<b>CELASTRUS scandens</b>	<b>American Bittersweet</b>			
2 year .....		.50	3.50	30.00
<b>orbiculatus (articulatus)</b>	<b>Oriental Bittersweet</b>			
2 year .....		.50	3.50	30.00
3 year .....		.60	4.50	40.00



# NAPERVILLE NURSERIES



	Each	Per 10	Per 100
<b>CLEMATIS paniculata</b> Sweet Autumn Clematis			
2 year .....	.50	4.00	30.00
*virginiana Virgins-Bower			
2 year .....	.50	4.00	30.00
Hybrids Large Flowering Clematis			
henryi Large Creamy White Clematis			
jackmanni Violet Purple Clematis			
Mad. Andre Red Clematis			
Romonii Crimson Clematis			
4 inch paper pots .....	1.25	9.00	80.00
<b>EUONYMUS radicans var. vegetus</b> Bigleaf Wintercreeper			
2 year .....	.80	7.00	55.00
<b>LONICERA japonica aureo-reticulata</b> Yellow Net Japanese Honeysuckle			
2 year .....	.65	5.50	50.00
halleana Hall's Japanese Honeysuckle			
2 year .....	.40	3.00	25.00
sempervirens Trumpet Honeysuckle			
3 year .....	.50	4.00	30.00
* <b>LYCIUM chinense</b> Chinese Matrimony-vine			
2-3 feet .....	.40	3.00	25.00
3-4 feet .....	.50	4.50	30.00
<b>PERIPLOCA graeca</b> Grecian Silkvine			
3 year .....	.60	5.00	40.00
** <b>VITIS aestivalis</b> Summer Grape			
2 year .....	.35	2.50	20.00
labruska Fox Grape			
1 year .....	.40	3.00	25.00
vulpina Riverbank Grape			
3 year .....	.50	4.00	30.00
* <b>WISTERIA frutescens</b> American Wisteria			
3 year .....	.80	7.00	60.00
magnifica Yelloweye Wisteria			
3 year .....	.70	6.00	50.00
*sinensis Chinese Wisteria			
2 year .....	.70	6.00	50.00
*alba White Chinese Wisteria			
2 year .....	.80	7.00	60.00





# GENERAL PRICE LIST SPRING 1925

## Perennials

FIELD GROWN. ONE YEAR, EXCEPT WHERE NOTED.

	Each	Per 10	Per 100
Varieties marked with a (*) are particularly adapted for the rock garden.			
ACHILLEA ageratum, yellow..... Sweet Yarrow .....	.25	2.00	15.00
millefolium roseum .....	.25	1.80	16.00
ptarmica, pearl white..... Sneezewort .....	.20	1.80	15.00
—Boule de Neige, white.....	.25	1.80	16.00
ACONITUM fischeri..... Azure Monkshood.....	.35	3.00	
napellus, soft purple..... Aconite .....	.30	2.70	24.00
Sparks, dark purple.....	.35	3.00	
volubile latisectum..... Arbor Monkshood.....	.35	3.00	
ACORUS calamus .....	.25	2.00	
AETHIONEMA coridifolium..... Lebanon Stonecress..	.25	2.00	
AGROSTEMMA coronaria alba..... White Campion .....	.20	1.80	
—Walkeri .....	.20	1.80	
*ALYSSUM rostratum .....	.25	2.00	15.00
*Saxatile Compactum..... Dwarf Goldentuft.....	.25	2.00	15.00
sulphureum .....	.25	2.00	15.00
ANCHUSA barrelieri .....	.25	2.00	
italica, Dropmore, gentian blue. Italian Bugloss.....	.25	2.00	15.00
Opal, pale blue.....	.25	2.00	15.00
ANEMONE Hupehensis.....	.35	3.00	
japonica, Queen Charlotte..... Japanese Anemone....	.40	3.50	
Whirlwind .....	.40	3.50	
ANTHEMIS kelwayii			
Golden yellow..... Camomile .....	.20	1.80	14.00
*AQUILEGIA Canadensis			
2 year (Native)..... American Columbine..	.25	2.00	15.00
chrysantha, 2 year..... Golden Columbine .....	.25	2.00	
*coerulea, blue .....	.25	2.00	18.00
—Rose Queen, rose shades.....	.25	2.00	18.00
flabellata nana alba, white.. Fan Columbine.....	.20	1.80	15.00
Mrs. Scott Elliott's strain..... Longspurred Columb..	.25	2.00	18.00
nivea grandiflora, white.....	.25	2.00	15.00
Skinneri .....	.20	1.80	15.00
vulgaris, blue .....	.20	1.80	15.00
*ARABIS, alpina superba, white... Alpine Rock Cress....	.25	2.00	
*ARENARIA montana, white..... Mountain Sandwort... .25	2.00	18.00	
ARMERIA (See Statice)			
ARTEMISIA lactiflora .....	.30	2.50	20.00
ASCLEPIAS, tuberosa (Native), orange.. Butterfly Weed..	.25	2.00	15.00
ASPERULA odorata .....	.25	2.00	15.00
*ASTER, alpina, blue and white... Rock Aster .....	.25	2.00	15.00
*alpina, sub-coeruleus, lavender blue.. India Aster.....	.25	2.00	15.00
Novae Angliae (Native)..... New England Aster... .25	2.40	22.00	
—rosea, pink .....	.25	2.50	24.00
Novae, Beauty of Colwall, double blue.....	.25	2.50	24.00
Climax, lavender blue.....	.25	2.80	
Feltham Blue, aneline blue.....	.25	2.50	
St. Egwin, soft pink.....	.25	2.40	22.00
White Queen, white.....	.25	2.40	22.00
tartaricus, blue .....	.20	1.50	12.00
ASTILBE arendsi .....	.50		
Gladstone, white .....	.50		
Peach Blossom, pink.....	.50		
Queen Alexandra, deep pink.....	.50		
BAPTISIA australis .....	.25	2.00	18.00



# NAPERVILLE NURSERIES



	Each	Per 10	Per 100
<b>BELLIS</b> perennis .....English Daisy .....	.20	1.80	
<b>BOCCONIA</b> cordata, 2 yr.....Plume Poppy.....	.20	1.80	15.00
latisquama.....White Boltonia.....	.25	2.00	15.00
<b>BOLTONIA</b> asteroides .....	.25	2.00	15.00
<b>CAMPANULA</b> alliarifolia.....Spurred Bellflower...	.25	2.00	18.00
*carpatica, blue .....	.25	2.00	18.00
Carpatica alba .....	.25	2.00	18.00
lactiflora .....	.25	2.00	18.00
latifolia macrantha.....Royal Bellflower .....	.25	2.00	18.00
persicifolia grandiflora, blue...Peachleaf Bellflower..	.25	2.00	15.00
—alba, white .....	.25	2.00	15.00
pyramidalis, blue or white.....Chimney Bellflower...	.25	2.00	15.00
Rapunuloides .....	.25	2.00	15.00
*—rotundifolia .....	.25	2.00	
<b>CASSIA</b> Marilandica .....	.25	2.00	
<b>CENTAUREA</b> dealbata, pink.....Persian Centaurea....	.30	2.50	
macrocephala .....	.25	2.00	15.00
montana, blue .....	.25	2.00	15.00
ruthenica, straw color, 2 yr...Ruthenian Centaurea..	.25	2.00	
<b>CEPHALARIA</b> alpina.....Yellow Cephalaria....	.25	2.00	
* <b>CERASTIUM</b> tomentosum.....Snow in Summer.....	.25	2.00	15.00
<b>CHELONE</b> glabra (Native).....White Turtlehead.....	.25	2.00	15.00
lyoni .....	.25	2.00	
<b>CHRYSANTHEMUM</b> leucanthemum			
White Lady.....	.25	2.00	15.00
maximum .....	.20	2.00	15.00
King Edward VII.....	.25	2.00	18.00
nipponicum .....	.25	2.00	
Hardy, larger flowering			
Autumn Glow .....	.25	2.40	24.00
Golden Queen.....	.25	2.40	24.00
Indian .....	.25	2.40	24.00
Old Homestead.....	.25	2.40	24.00
Victory .....	.25	2.40	24.00
<b>CIMICIFUGA</b> racemosa			
(Native) white.....	.25	2.40	22.00
<b>CLEMATIS</b> davidiana, pale blue...Fragrant Clematis ...	.30	2.80	
integrifolia, dark blue .....	.30	2.50	22.00
recta, white .....	.30	2.50	
<b>CONVALLARIA</b> Majalis.....Lily of the Valley....	.35	3.20	30.00
<b>COREOPSIS</b> , lanceolata grand....Big Coreopsis.....	.18	1.60	15.00
<b>DELPHINIUM</b> formosum			
Deep blue.....	.25	2.40	20.00
Hybrids			
Belladona, sky blue.....	.25	2.40	20.00
Bellamosum, rich blue.....	.25	2.40	20.00
Chinensis, blue and white... ..	.20	1.80	18.00
English mixed.....	.25	2.40	24.00
<b>DIANTHUS</b> barbatus alba, white...Sweet William .....	.20	1.80	15.00
Pink Beauty.....	.25	2.00	15.00
Scarlet Beauty .....	.25	2.00	15.00
*deltoides, rose.....	.25	2.00	15.00
*plumarius Cyclops.....	.25	2.00	15.00
<b>DICENTRA</b> eximia (Native).....Fringed Bleeding Heart	.25	2.40	
spectabilis .....	.90	8.00	
<b>DICTAMNUS</b> fraxinella, alba ....White Gas Plant.....	.35	3.20	30.00
rubra .....	.40	3.50	
<b>DIGITALIS</b> gloxiniaeflora,			
White and rose.....	.20	1.80	15.00
grandiflora, 2 yr.....	.20	1.80	15.00

# GENERAL PRICE LIST SPRING 1925

	Each	Per 10	Per 100
ECHINACEA <i>purpurea</i> .....Coneflower .....	.25	2.00	15.00
ECHINOPS <i>ritro</i> .....	.25	2.00	15.00
<i>sphaerocephalus</i> , silver gray...Common Globe Thistle	.25	2.00	15.00
ERIGERON <i>speciosus grandiflorus</i>			
Violet .....	.25	2.20	18.00
Coulteri, white .....	.25	2.00	
ERYNGIUM <i>amethystinum</i> , 2 yr....Amethyst Eryngo.....	.25	2.00	15.00
<i>giganteum</i> .....	.20	1.80	15.00
<i>oliverianum</i> , steel blue.....	.30	2.50	
EUONYMUS <i>radicans vegetus</i> , 2 yr..Bigleaf Winter Creeper	.50	4.50	40.00
— <i>acutus</i> , 2 year.....	.50	4.50	40.00
EUPATORIUM <i>urticaefolium (ageratoides)</i>			
(Native) .....	.20	1.80	16.00
<i>coelestinum</i> , lavender.....	.25	2.20	20.00
<i>Fraseri E. aromaticum melissoides</i> .....	.25	2.20	16.00
EUPHORBIA <i>corollata</i> (Native)....Flowering Spurge.....	.25	2.20	
FILIPENDULA <i>palmata</i> , crimson...Siberian Meadowsweet	.40	3.50	
<i>ulmaria</i> , 2 yr., white.....	.25	2.20	20.00
GAILLARDIA			
Kelway's Exhibition Strain..Perennial Gaillardia ..	.20	1.80	15.00
GEUM, Mrs. Brawshaw,			
Double scarlet.....	.30	2.50	20.00
GRASSES			
<i>Eulalia japonica</i> .....	.25	2.40	
<i>Pennisetum japonica</i> .....	.25	2.00	
<i>Phalaris arundinacea variegata</i> ..	.20	2.00	15.00
GYPSOPHILA <i>paniculata</i> .....	.20	1.80	15.00
* <i>Repens</i> , 2 yr.....	.25	2.00	15.00
HELENIUM, <i>autumnale superbum</i>			
Yellow .....	.25	2.40	20.00
— <i>rubrum</i> .....	.25	2.40	
<i>Hoopseii</i> , orange yellow.....	.20	1.50	12.00
Riverton Beauty, pale yellow.....	.25	2.40	
Riverton Gem, wallflower red.....	.25	2.40	
* <i>HELINATHEMUM</i> , <i>mutabile</i> .....	.25	2.00	
HELIANTHUS <i>atrorubens (sparsi-</i>			
<i>folius)</i> .....	.20	1.50	12.00
<i>maximiliani</i> .....	.25	2.20	20.00
<i>mollis</i> .....	.25	2.20	20.00
<i>multiflorus floro pleno</i> .....	.25	2.20	20.00
<i>rigidus</i> , Mrs. Melish.....	.25	2.20	20.00
<i>orgyalis</i> .....	.25	2.20	20.00
HELIOPSIS <i>pitcheriana</i> .....	.20	1.80	15.00
HEMEROCALLIS <i>flava</i>			
Clear yellow.....	.25	2.20	20.00
<i>fulva</i> , orange.....	.20	1.80	15.00
<i>thunbergii</i> , pale sulphur.....	.25	2.20	20.00
* <i>HEPATICAC</i> <i>acutiloba</i> , blue.....	.25	2.00	16.00
* <i>triloba</i> , blue.....	.25	2.00	18.00
HESPERIS <i>matronalis</i> .....	.25	2.00	16.00
<i>alba</i> .....	.25	2.00	16.00
HEUCHERA <i>brizoides</i> , crimson...Pinkbells .....	.35	3.00	
— <i>gracillima</i> , bright rose....	.35	3.00	
<i>sanguinea</i> , coralred.....	.35	3.00	
HIBISCUS, Mallow Marvels			
White and pink mixed..Great Rosemallow....	.25	2.00	15.00
HOLLYHOCK, double,			
White, yellow, salmon and pink.....	.20	1.80	15.00

# NAPERVILLE NURSERIES

	Each	Per 10	Per 100
<b>HOSTA (Funkia)</b>			
coerulea ..... Blue Plantainlily .....	.35	3.00	24.00
— aurea variegata			
Yellow banded foliage.....	.35	3.00	
— Thomas Hogg			
White banded foliage.....	.50	4.00	
fortunei, lavender..... Fortune Plantainlily..	.35	3.00	24.00
lancifolia ..... Lanceleaf Plantainlily..	.35	3.00	24.00
subcordata grandiflora..... White Plantainlily...	.50	4.00	36.00
<b>HYACINTHUS candicans</b> , white.... Summer Hyacinth....	.25	2.00	
<b>*IBERIS gibraltarica</b> ..... Gibraltar Candytuft... .25	.25	2.00	18.00
*jucunda (See Aethionema)			
*sempervirens ..... Evergreen Candytuft..	.25	2.00	18.00
<b>INULA ensifolia</b> , 2 yr., yellow..... Swordleaf Inula .....	.25	2.00	15.00
glandulosa superba			
2 yr. yellow..... Caucasian Inula.....	.25	2.00	15.00
<b>IRIS GERMANICA</b>			
strong divisions ..... German Iris			
Aurea, rich chrome yellow.....	.20	2.00	18.00
Caprice, delicate purple.....	.25	2.20	20.00
Celeste, pale azure blue.....	.20	1.80	16.00
Flavescens, soft yellow.....	.20	1.80	16.00
Florentina alba, white.....	.20	1.80	15.00
Her Majesty, rose pink and crimson .....	.25	2.00	
King, rich crimson and yellow.....	.35	3.00	24.00
Kochi, richest velvety, claret purple .....	.25	2.00	
Mad. Chereau, white edged with blue .....	.20	1.80	16.00
Nibelungen, violet purple and soft yellow .....	.30	2.50	22.00
Pallida Dalmatica, lavender, extra fine .....	.35	3.00	24.00
Parisiensis, deep purple.....	.20	1.50	12.00
Pacquette, light rosy claret.....	.25	2.20	20.00
Sherwin-Wright, golden yellow .....	.25	2.20	20.00
Queen of May, lavender, pink shading to rose pink...	.25	2.20	20.00
<b>IRIS KAEMPFERI</b> , mixed, 2 yr.... Japanese Iris .....	.20	1.80	15.00
Gold Bound, white.....	.30	2.80	
Purple and gold.....	.30	2.80	
Pyramide, Lilac blue, veined .....	.30	2.80	
<b>*IRIS cristata</b> , light blue (Native)... Crested Iris .....	.25	2.00	15.00
orientalis sanguinea .....	.25	2.00	15.00
ochroleuca, 2 yr..... Yellowband Iris.....	.25	2.20	
*pumila, dwarf, blue.....	.20	1.80	15.00
*—hybrids, blue, yellow and white .....	.20	1.80	16.00
pseudacorus (Native)..... Yellow Flag Iris.....	.25	2.00	15.00
siberica, blue..... Siberian Iris.....	.25	1.80	16.00
—hybrids .....	.25	1.80	14.00
—Snow Queen, white.....	.25	2.20	18.00
*verna, dwarf, violet blue			
(Native) ..... Vernal Iris.....	.25	2.00	15.00
<b>LATHYRUS latifolius</b> , pink beauty. Perennial Pea.....	.25	2.00	15.00
<b>LAVANDULA officinalis (vera)</b> .... True Lavender.....	.25	2.00	15.00
<b>LIATRIS pycnostachya</b>			
(Native), purple..... Cattail Gayfeather....	.20	1.80	15.00
<b>LILIUM auratum</b> ,			
White striped yellow.. Goldband Lily.....	.60	5.00	
candidum, pure white..... Madonna Lily .....	.40	3.50	
regale (myriophyllum) ..... Royal Lily.....	.80	7.50	
speciosum rubrum, rich red.... Speciosum Lily.....	.60	5.00	
superbum, orange .....	.30	2.50	
Tigrinum Flore Plena..... Double Tiger Lily....	.25	2.40	
tigrinum splendens, orange red. Giant Tiger Lily.....	.25	2.40	20.00

# GENERAL PRICE LIST SPRING 1925

	Each	Per 10	Per 100
LINUM perenne, blue.....	Perennial Flax.....	.25	2.00
flavum .....	Golden Flax.....	.25	2.00
LOBELIA cardinalis,			
Brilliant scarlet.....	Cardinal Flower.....	.25	2.40
syphilitica,			
Long, spikes (Native) ..	Large Blue Lobelia... ..	.25	2.00
LUPINUS polyphyllus, clear blue... ..	Washington Lupin... ..	.25	2.00
—albus, white.....		.25	2.00
rosea, pink.....		.25	2.00
LYCHNIS alpina, rose.....	Arctic Campion.....	.20	1.80
chalconica, brilliant scarlet..	Maltese Cross.....	.20	1.80
haageana, scarlet.....	Haage Campion.....	.20	1.80
viscaria rosea .....	Clammy Campion.....	.20	1.80
—splendens .....	Rosepink Campion.....	.20	1.80
LYSIMACHIA nummularia			
(Native) yellow.....	Moneywort .....	.20	1.50
Lysimachia vulgaris .....		.20	1.80
LYTHRUM roseum superbum.....	Rose Loose-strife....	.25	2.00
MENTHA peperita.....	Peppermint .....	.25	2.00
pulegium .....	Pennyroyal .....	.25	2.00
MERTENSIA virginica (Native) ..	Virginia Blue Bells... ..	.25	2.00
MONARDA didyma, Cambridge,			
Scarlet .....	Oswego Beebalm .....	.25	2.00
Didyma Rosea, rose.....	Rose Beebalm .....	.25	2.00
MONTBRETIA aurantiaca .....		.12	1.00
Golden West .....		.15	1.20
Rayon d'Or.....		.10	.80
MYOSOTIS alpestris .....	Alpine Forget-Me-Not..	.25	2.00
palustris .....	True Forget-Me-Not... ..	.25	2.20
NEPETA mussini, lavender blue... ..	Catmint .....	.25	2.20
OENTHERA fraseri, yellow.....	Evening primrose....	.25	2.00
missouriensis, pale yellow.....	Ozark Sundrops.....	.25	2.00
PACHYSANDRA *terminalis, 2 yr..	Japanese Pachysandra	.25	2.00
PAEONIA CHINENSIS			
Baroness Schroeder, flesh white.....		2.00	...
Couronne d'Or,			
white golden reflex.....		1.00	8.00
Cytheree, white center			
edged carmine .....		1.50	14.00
Delachei amaranth, purple			
with crimson reflex.....		1.50	14.00
Edulis Superba, dark pink.....		1.00	8.00
Felix Crousse, brilliant red.....		1.50	14.00
Festiva Maxima, white, center			
flecked crimson.....		1.50	14.00
Karl Rosenfield, dark crimson.....		3.00	...
Mons, Jules Elie,			
glossy lilac pink.....		3.00	...
Rosea Superba,			
deep cerise pink.....		1.50	14.00
PAPAVER orientale,			
Orange-scarlet .....	Oriental Poppy.....	.25	2.00
Orientale, Mrs. Perry			
Salmon pink.....		.30	2.50
Perry's White, Satiny white.....		.30	2.50
—salmon-rose shades.....		.30	2.50
nudicaule, *orange yellow.....	Iceland Poppy.....	.25	2.20



# NAPERVILLE NURSERIES



	Each	Per 10	Per 100
<b>PENTSTEMON digitalis</b> , white....Foxglove Penstemon..	.20	1.80	15.00
torreyi (Native), crimson.....Torrey Penstemon.....	.20	1.80	15.00
<b>PHLOX panniculata</b>			
Annie Cook, flesh pink.....	.30	2.50	
Antonin Merci, soft grayish-white, white center...	.35	3.00	
Baron von Dedem, scarlet-blood-red.....	.25	2.00	
Bridesmaid, tall, pure white, crimson eye.....	.25	2.00	20.00
Champs Elysee, a bright rose-magenta.....	.25	2.00	
Elizabeth Campbell, light salmon, pink center...	.35	3.00	
Frau Anthony Buckner, the best white.....	.25	2.00	18.00
General Chanzy, bright salmon.....	.30	2.40	
Independence, large pure white.....	.25	2.00	15.00
Jeanne d'Arc, a good late flowering pure white...	.25	2.00	16.00
Miss Lingaard, white early.....	.25	2.00	16.00
Riverton Jewel, a lovely shade of mauve rose...	.35	3.00	
Rhineland, salmon-pink .....	.35	3.00	
Rynstrom, rose, white center.....	.30	2.50	20.00
R. P. Struthers (tall), rosy carmine with claret-redeye, fine .....	.25	2.00	18.00
Tapis Blanc .....	.30	2.40	20.00
Thor. A most beautiful and lively shade of deep salmon-pink suffused and overlaid with a scarlet glow .....	.30	2.50	20.00
*Divaricata, lavender (Native)..Blue Phlox.....	.25	2.20	20.00
<b>Subulata alba</b> , white			
April and May.....Mosspink .....	.25	2.20	20.00
—*lilacina, soft lilac.....	.25	2.00	18.00
—rosea, pink, April and May (Native) .....	.25	2.20	20.00
<b>PHYSALIS francheti</b> .....Chinese Lantern Plant	.25	2.40	
<b>PHYSOSTEGIA virginica</b>			
Pink (Native).....False Dragon Head... ..	.25	2.00	15.00
—alba .....	.25	2.00	
<b>PLATYCODON mariesi</b> , blue.....Maries Balloon Flower	.20	1.80	15.00
—alba .....	.20	1.80	15.00
<b>POLEMONIUM humile richardsoni</b> .Dwarf Polemonium... ..	.25	2.00	16.00
* <b>PRIMULA veris</b> , alba, white.....	.25	2.00	18.00
<b>PYRETHRUM hybridum</b> Kelways..Painted Lady.....	.25	2.00	15.00
uliginosum, white.....Giant Daisy .....	.25	2.00	15.00
<b>RANUNCULUS acris flore pleno</b>			
Yellow .....	.25	2.00	18.00
repens flore pleno, yellow.....Double Creeping Buttercup .....	.25	2.00	18.00
<b>RUDBECKIA laciniata</b>			
Golden Glow.....Cutleaf Coneflower ... ..	.20	1.80	15.00
neumanni, yellow black center..Showy Coneflower....	.20	1.80	16.00
purpurea (See ECHINACEA)			
<b>SALVIA azurea grandiflora</b> .....Azure Salvia .....	.25	2.00	18.00
globosa, white.....Roundtol Sage .....	.25	2.00	
nemorosa .....	.25	2.20	20.00
—alba .....	.25	2.40	
turkestanica, silvery pink.....	.25	2.40	22.00
Pitcheri, gentian blue.....Great Azur Salvia....	.25	2.40	
* <b>SAPONARIA ocymoides</b>			
2 yr., rose.....Rock Soapwort.....	.25	2.00	
<b>SCABIOSA caucasica</b> , blue.....Caucasian Scabiosa... ..	.25	2.20	20.00
—alba, white.....	.25	2.40	
japonica, lavender.....Japanese Scabiosa....	.25	2.00	

# GENERAL PRICE LIST SPRING 1925

	Each	Per 10	Per 100
*SEDUM acre.....Goldmoss .....	.20	1.80	
japonica macrophylla.....Pinkwax Sedum .....	.25	2.00	15.00
*kamtschaticum .....	.25	2.00	
maximowiczii, yellow.....Amur Sedum.....	.25	1.80	15.00
*sieboldii, rose-pink.....	.25	2.00	
*spectabile, pink.....Showy Sedum.....	.25	2.00	15.00
—brilliant .....	.25	2.00	15.00
spurium coccinum .....	.25	2.00	
stahli .....	.25	2.40	
SIDALCEA candida .....	.25	2.00	
Rose Queen.....	.25	2.00	15.00
murrayana, rose pink .....	.25	2.00	15.00
SOLIDAGO canadensis (Native)....	.20	1.80	15.00
*STACHYS lanata, 2 yr.....	.22	2.00	18.00
STATICE armeria, white.....	.25	2.00	15.00
rosea .....	.25	2.00	15.00
*latifolia, 2 yr., lavender blue...Sea Lavender .....	.25	2.00	15.00
tatarica, 2 yr., white.....	.25	2.00	
*STOKESIA cyanea, blue (Native)..	.25	2.00	15.00
—alba .....	.25	2.00	
*THALICTRUM adiantifolia, 2 yr...Maidenhair Meadowrue .....	.25	2.00	18.00
aquilegifolium, 2 yr.....	.25	2.00	18.00
glaucum, 2 yr.....	.25	2.00	18.00
*minus, 2 yr.....	.25	2.00	15.00
THERMOPSIS Caroliniana.....	.25	2.00	
TRADESCANTIA virginica (Native) .....	.25	2.00	
TRILLIUM grandiflorum.....	.20	1.80	15.00
TROLLIUS europaeus .....	.30	2.50	24.00
*TUNICA saxifraga, pink.....	.25	2.00	15.00
VALERIANA (See Centranthus) officinalis, white.....	.20	1.80	15.00
VERBASCUM longifolium panno- sum .....	.25	2.40	
VERONICA amethystina, blue....	.25	2.00	15.00
*gentianoides, pale blue.....	.25	2.00	18.00
*incana, deep blue.....	.25	2.40	20.00
longifolia sessilis, deep blue.Clump Speedwell.....	.25	2.00	16.00
Spicata, blue .....	.25	2.00	18.00
—alba .....	.25	2.20	
virginica .....	.25	2.00	
*VINCA minor .....	.25	2.00	18.00
VIOLA cornuta *admiration Rich deep purple.....	.20	1.80	15.00
*lutea splendens, yellow.....	.20	1.80	15.00
*White Perfection, pure white.....	.20	1.80	
*odorata semperflorans .....	.20	1.80	15.00
YUCCA filamentosa.....	.25	2.40	22.00
*glauca (Native), 3 yr.....	.35	3.00	25.00

# NAPERVILLE NURSERIES

## Fruits

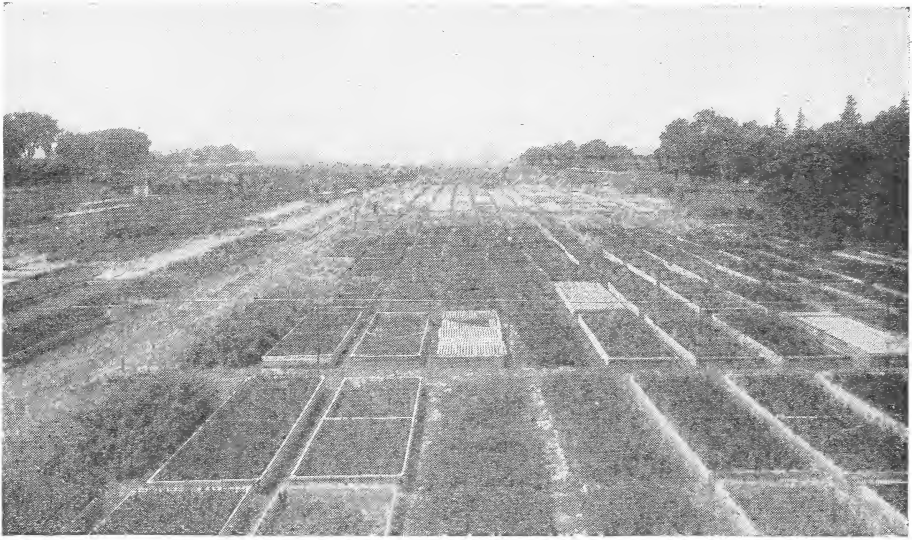
	Each	Per 10	Per 100
<b>APPLES</b> in variety, 11-16 inch and up.....	1.30	11.00	100.00
<b>Summer:</b>			
Chenango			McIntosh Red
Early Harvest			Minkler
Early Strawberry			Pound Sweet
Yellow Transparent			Roxbury Russet
<b>Fall:</b>			Tolman's Sweet
Duchess			Winesap
Jefferis			Wolf River
Wealthy			
Snow			
<b>Winter:</b>			
Baldwin			
Ben Davis			
Delicious			
Grimes Golden			
Jonathan			
King			
<b>CRAB APPLE</b> , 11-16 inch and up.....	1.25	11.00	100.00
Hyslop			Red Siberian
Yellow Siberian			Transcendent
<b>CHERRIES</b> , 11-16 inch and up.....	1.80	17.00	160.00
Early Richmond			Montmorency
7/8 inch and up, Heavy.....	2.60	25.00	220.00
<b>PEACHES</b> , 5-6 feet.....	1.00	9.00	80.00
Champion, Crawford's Early, Crosby, Elberta			
<b>PEARS, Standard Varieties</b>			
5-6 feet, 11-16 inch and up.....	1.80	16.00	150.00
Duchess			*Kiefer
Clapp's Favorite			*Koonce
Bartlett			Lawrence
Dwarf varieties, 5-8 inch and up.....	1.40	13.00	120.00
Bartlett, Duchess, Flemish Beauty, Seckel			
<b>PLUMS</b> , American varieties, 5-6 feet, 11-16 inch and up. ....	1.30	12.00	110.00
Cheney			Hawkeye
DeSota			Milton
Forest Garden			Quaker
Hammer			Stoddard
European varieties, 5-6 ft., 11-16 in. and up. ....	1.80	17.00	160.00
Lombard, Moore's Arctic, Reine Claude, Yellow Egg			
Japanese varieties, 5-6 ft., 11-16 in. and up. ....	1.80	17.50	160.00

## Small Fruits

<b>BLACKBERRIES</b> , Mercereau, Snyder's			
2 year .....	\$ 0.15	\$ 1.25	\$ 10.00
<b>CURRENTS</b>			
Black Champion, 2 year No. 1.....	.30	2.25	20.00
Perfection, 3 year No. 1.....	.50	4.00	35.00
White Grape, 2 year No. 1.....	.35	2.80	22.00
<b>GOOSEBERRIES</b> , Downing, Red Jacket, Transparent			
2 year .....	.60	5.00	40.00
<b>RASPBERRIES</b>			
Kansas, Gregg, Cumberland (Black).....	.12	1.00	8.00
Cuthbert, Loudon, St. Regis (Red).....	.12	1.00	8.00
Columbian (Purple) .....	.15	1.25	10.00
<b>GRAPES</b>			
2 year, No. 1.....	.50	4.00	35.00
<b>Red</b>			<b>White</b>
Delaware	Beta	Diamond	Niagara
<b>Black</b>	Concord		Pockington
	Worden		^
<b>STRAWBERRIES</b> .....	\$12.50 per 1,000,	\$2.00 per 100	
Early	Big Joe	Dr. Burrill	Dunlap
Premier	Mid Season	Klondyke	Brandywine
St. Louis	Aroma	Late	Gandy
Progressive (Everbearing)			
<b>ASPARAGUS</b> , 2 year.....	\$22.50 per 1,000,	\$3.00 per 100	
Bonvallet's, Giant, Conover's Colossal, Early Argenteil, Palmetto.			
<b>RHUBARB</b> Victoria, 2 year.....	.50	2.00	15.00



# Lining Out Stock



Where Our Lining Out Stock Is Grown

**A Special List of Our Offerings May Be Had Upon Request.**

---

We are often asked in regard to **Trees, Shrubs** and **Vines** which will thrive reasonably well in partial or heavier shade.

Although no strict ruling can be made in general we have indicated herein our best information and experience as follows:

One star \* to the left of varieties **for partial shade.**

Two stars \*\* to the left **for heavier shade.**

---

*Department of Agriculture, Division of Plant Industry*

*OFFICE OF CHIEF INSPECTOR*

No. 179

Urbana, Ill., Sept. 3, 1924.

*This Is To Certify* that the growing nursery stock and premises of *Naperville Nurseries*, F. W. von Oven, Prop., situated at Naperville, Illinois, have been inspected by a duly appointed inspector of this office, according to the provisions of the Plant Inspection Act of 1917, as amended in 1919, and that said nursery and premises are apparently free from dangerous insects and dangerous plant diseases.

This certificate is valid until September 1, 1925, unless sooner revoked.

P. A. GLENN, Chief Inspector. B. M. DAVISON, Director.

