

## **Historic, archived document**

Do not assume content reflects current scientific knowledge, policies, or practices.



62,41

1925

LIBRARY  
RECEIVED  
JAN 20 1925  
U.S. Department of Agriculture

Nursery Catalogue  
(Descriptive)

# FRUIT TREES

## Plants, Vines, Etc.

QUALITY FIRST



PRICES RIGHT

ROSES, SHRUBS AND  
ORNAMENTALS

# Peach Belt Nurseries

Established 1867

Bangor --: --: Michigan

## INTRODUCTION

In presenting this catalogue, we desire to extend our thanks for the past patronage of our many customers; and solicit your future orders. We are always glad to assist prospective buyers in choosing the varieties best suited for their particular locality.

Our aim is to grow only the best standard kinds—those which have proven by past experience to be most suitable for market and garden. In this way we are assured stock that will prove profitable to our patrons. Fancy varieties, at fancy prices, nearly always bring disappointment to the grower.

We guarantee our trees, plants, etc., to grade up to standard, both in size and quality. The greatest care is exercised to grow strong, hardy stock; and great precaution taken to insure its being true to name. If however, there should be any error; we agree, upon proper proof of same, to replace with other stock or refund the original purchase price; but are not liable for further damages. No sales made without this understanding.

**Notice**—Orders for spring delivery should be sent in as early as possible. We will book your order and hold same for shipment when wanted for planting. Terms are—Cash before shipment; or, we will send (Orders of \$10.00 or larger) C. O. D., providing one-fourth of the purchase price accompanies the order.

## PEACH BELT NURSERIES

HAMILTON, CROSS CO.

Bangor, Michigan

## APPLES

The apple is universally recognized as the most desirable fruit of the United States, both for its great variety of delicious flavors and its food value. Either as a commercial crop or for home use, a well selected orchard of a few varieties is one of the best investments that any land owner can make.

We recommend the planting of either one year or two year old trees, in preference to older trees for best results.

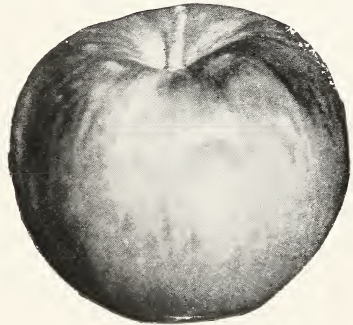
### Summer Apples

**Duchess**—Large size, streaked with red and yellow; juicy sub-acid. Well known market variety. Hardy and vigorous grower. September.

**Golden Sweet**—Handsome, large yellow apple. Sweet, is good for market. Tree rather spreading. Productive. Aug.-Sept.

**Red Astrachan**—Is large, juicy and rich. One of the best early cooking and eating apples. Vigorous and good bearer. August.

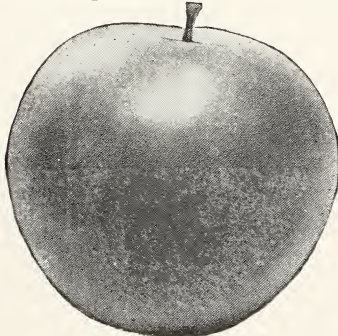
**Yellow Transparent**—Good size. Color, clear yellow. Popular market variety. Upright grower, early bearer. July-August.



Wealthy

### Fall Apples

**Chenango (Strawberry)**—Rather large, oblong, conic. Yellow and crimson striped. Very tender, mild, pleasant flavor. Vigorous and productive.



Winter Banana

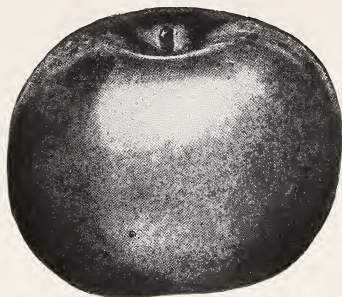
**Maiden Blush**—Medium size, yellow, with red cheek. Flesh tender. Mild flavor. Sept.-Oct.

**Wealthy**—Of medium size, is smooth; nearly covered with dark red. Bears heavy. Good market apple. Oct.-Jan.

**Shiawasse Beauty**—One of the very best late fall apples. Flesh white, juicy. Fine flavor. Beautiful red stripes. Excellent for eating or cooking. Oct.-Jan.

**Ribston**—Fine eating apple. Resembles the Spitzenberg. Size is medium to large.

## Winter Varieties



King

Flesh white, tender and juicy. Excellent quality. Old time favorite. Oct.-Nov.

**Grimes Golden**—Probably the best of the yellow apples. Valued highly for both home and market. Tree early bearer, strong grower, and very productive. Blossoms late so as to often escape late frosts which injure other varieties. One of the best sorts. Nov. to January.

**King**—Large and showy. Splendid quality. Red color. Flesh crisp, tender and juicy. Tree vigorous and hardy. Nov.-Jan.

**King David**—Medium size, dark red apple. Takes a high polish. Tree is an early bearer and very productive. Flesh tart and juicy. A good keeper. Market or home use.

**Jonathan**—Medium size, yellow, nearly covered with red, fine grained; juicy, tender and mild. Tree vigorous and good bearer. One of the most popular market varieties. Nov.-April.

**McIntosh Red**—Medium size; smooth; yellow and crimson. Highest quality. Tree vigorous, spreading. Good annual bearer. Market or home use. Nov.-Feb.

**Northern Spy**—Large, red striped apple. Well known favorite. Tree very hardy and vigorous; bears late as a rule. Dec.-June.

**Rhode Island Greening**—Old time variety. Green with red blush. Medium to large. One of the best cooking apples known. Heavy bearer. Strong grower. Dec.-March.

**Rome Beauty**—Large; yellow with red striping. Crisp and juicy. Good shipper and keeper. Hangs well on tree. Blooms late. Bears very early, often the second year. Great market apple.

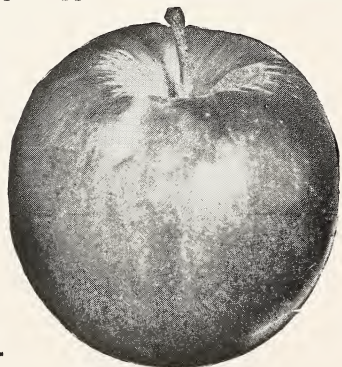
**Stayman's Winesap**—Improvement on the old Winesap. Medium; greenish yellow with red

**Baldwin**—Medium to large. Well known old standard apple. Does not bear young. Nov.-March.

**Winter Banana**—Medium size, yellow with red blush. High quality. Has a banana perfume and flavor. Popular for home use and market.

**Delicious**—Fruit medium to large, dark red. Crisp, juicy and mild flavored. Fine keeper and shipper. Tree a strong grower. A popular eating apple.

**Snow (Fameuse)**—Medium size, green with red stripes. Excellent quality. Old time favorite.



Stayman's Winesap

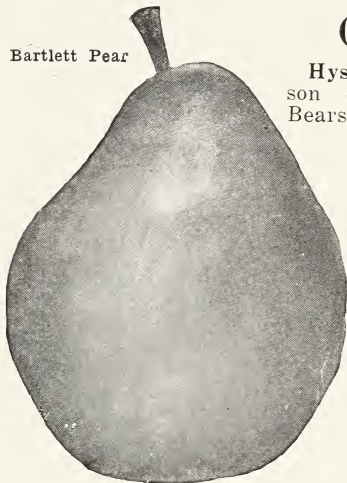
stripes. Fine grained, juicy, crisp. Early bearer. Vigorous. Good keeper. Nov.-Feb.

**Talman Sweet**—The standard winter sweet apple. Fine for eating or cooking. Valuable market variety. Vigorous and productive. Dec.-Mar.

**Wagener**—Well known and popular apple. Tree bears young and heavy. Medium size, red. Of fine quality. Good keeper.

**Steel (Canada) Red**—We believe this variety to be the best of all red apples, either for eating, cooking or for market. The tree is productive and hardy. Color a beautiful crimson stripe on green. Size medium to large. Excellent quality.

Bartlett Pear



**Bartlett**—The standard market pear. Large, rich yellow with red blush. Strong grower. Bears early and abundantly. Aug.-Sept.

**Seckel** — Small size, yellowish brown; sometimes called Sugar Pear. Flavor of excellent quality. Tree slow grower, but hardy. August.

**Kieffer**—Well known everywhere; medium large; yellow and crimson, with russet and brown. Good flavor when properly ripened. Used extensively as a canner. Vigorous, early bearer and productive. Sept.-Oct.

**Bosc**—One of the very best. Yellow, red blush. Bears well. Tree should be top worked to obtain best results.

## CRAB APPLES

**Hyslop**—Large, round. Color, crimson on yellow. Vigorous grower. Bears abundantly in clusters. Sept.

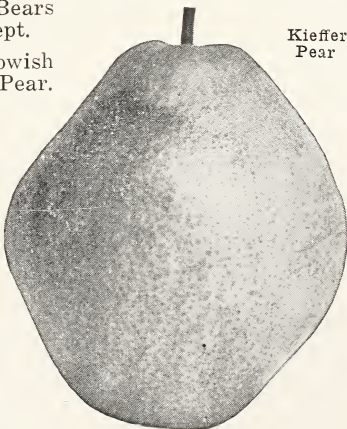
**Transcendent**—Medium size. Yellow with red cheek. Strong grower. Popular for eating and for jelly making.

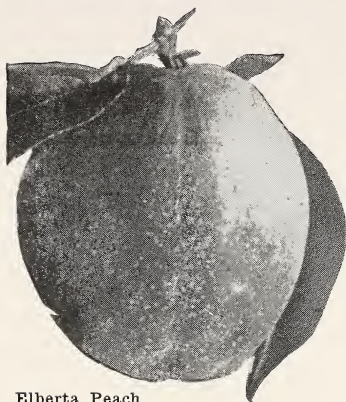
## PEARS

The pear is one of the most delicious of fruits, popular wherever grown. We list only those kinds we consider worth growing and assure our customers of good, hardy stock.

**Clapp's Favorite** — Large; lemon-yellow with red cheek. Rich flavor. Tree hardy and productive. August.

Kieffer Pear





Elberta Peach

## PEACHES

Varieties listed in order of ripening

**Carman**—White flesh. Semcling. Elberta type. Large size. Fine flavor. Best, early white peach. Very hardy in the bud. Good shipper.

**Crane's Early Yellow** (St. John)—Large, showy peach. A freestone. Yellow flesh, red cheek. Good quality. A shy bearer in some places.

**Weed's Large Barnard**—Of good size; yellow with red cheek. A beautiful peach, and our favorite for canning. Moderate bearer.

**Rochester**—Valuable yellow fleshed peach. Very early, ripening about Aug. 10-15. Crawford type; hardy and productive. Large size. Beautiful appearance. Good shipper and fine quality.

**New Prolific**—Popular Michigan variety. Good size; yellow flesh. Good for eating, canning and shipping. Hardy and productive.

**Kalamazoo**—Very similar to the Prolific. Bears early. Hardy and reliable.

**Early Elberta**—Few days earlier than Elberta—but is not the same peach. We would prefer the latter.

**Elberta**—The most popular standard market peach ever introduced. Large and showy. Vigorous grower and productive. Does well in all peach growing sections. Middle of September.

**J. H. Hale**—Popular in most sections. Has not proven so good in this locality. Is undoubtedly self-sterile and requires other kinds well mixed to produce well. Also needs good soil. Size, small to large on same tree. Quality fine. A showy peach where it gets the size.

**Gold Drop**—Popular canning variety. Medium sized yellow peach. Fine quality. Very productive and vigorous. Pits small, freestone.

**Lemon Free**—Medium large, roundish. Color, light yellow. Flesh yellow. A good canner. Regular and prolific bearer. October.

**Brackett**—Fine, late, yellow skinned peach. Large to very large. Yellow flesh. Good flavor. Freestone. Ripens at a good time for home market or shipping.



Carman Peach

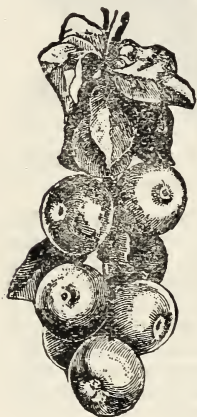


# PEACH BELT NURSERIES

BANGOR, MICHIGAN

## CATALOGUE SUPPLEMENT

New additions to our regular line of nursery stock. Our supply of these varieties is limited for this season; but we expect to have larger quantities next year. Orders should be placed early before stock is all sold.



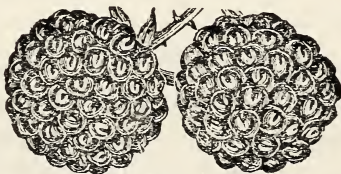
**Cortland Apple**—Originated at the Geneva, N. Y. Experimental Station. A valuable winter apple, being a cross between the McIntosh Red and the Ben Davis. Combines the excellent quality and color of the McIntosh with the longer keeping quality of the Ben Davis. Hangs well on the tree. Price, 1 year old, 2-4 feet, 75 cents each.

**Golden Winesap Apple**—Originated in the west. Tree vigorous and productive. Fruit, medium to large. Color, clear yellow with a red blush. Good keeper and spicy flavor. Price, 1 year old, 2-4 feet, 75 cents, each.

**Ranier Apple**—A new apple from the western coast. Has been awarded a medal for its high merit. Claimed to be an improvement on the Red Delicious, with splendid flavor, color, size and keeping quality. Fine for market or home use. Price, 1st class trees, 3-5 feet, \$1.00, each.

**Pineapple Pear**—Claimed to be blight proof. Good grower. Medium sized fruit. Price, 1 year, 2-4 feet, \$1.00, each.

**Columbia Purple Raspberry**—One of the very best berries for table use or canning; we prefer it to either the Red or Black. Large size, beautiful purple color. Strong grower and heavy producer. Price 1 plant, 25 cents; 4 for \$1.00; 10 for \$2.00. Postpaid.



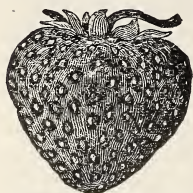
**Waterhouse Sweet Cherry**

—A yellow sweet; valuable because it is a strong pollenizer for other varieties. One Waterhouse should be set with each 15 or 20 other kind. Quality excellent. Price, 3-5 feet 80 cents, each.



**Latham Red Raspberry**

—An extra large bright red berry of fine flavor. We fruited this kind for the first time this summer (1923) and believe it to be far superior to the King for a money-maker. Larger than the King or Cuthbert, some berries measuring nearly an inch in diameter. Strong, sturdy canes and good bearers. Price, 1 plant 35 cents; 3 for \$1.00; 10 for \$2.50. Postpaid.



**Champion Everbearer Strawberry**—We obtained our first plants direct from the the originator so as to be sure of having the genuine. On our own ground, this variety has grown better and produced heavier than the Progressive; also, given us larger berries with a better flavor. We considered it the best Everbearer we have yet tried. Price 10 plants 50 cents; 25

for \$1.00. 50 for \$1.50. 100 for \$2.00. Postpaid.

**NOTICE**—All Strawberry and Raspberry plants should be planted where they will get plenty of moisture during their producing season.

**AMERICA Plum** --- Very early, yellow flesh  
Good flavor and size. Color is yellow with red cheek  
Extremely hardy and productive. Bears young.  
Price -- 1 yr Trees, 3 to 5 ft. 50 cts each

## PLUMS

The plum does best in a rather heavy soil with some clay. Several varieties should be planted together for best results.

### Domestic Varieties

**German Prune**—Purple, medium size. Good quality.

**Felleberg** (Italian Prune)—Larger and better than the above. Reddish-purple. Fine quality.

**Reine Claude** (Green Gage)—Good size, rich and juicy. Popular for canning.

**Grand Duke**—Fruit large. Dark, reddish purple. Good quality.

**Monarch**—A large round plum. Dark purple. Late season. Excellent quality. Fine for home canning.

### Japan and Hybrid Varieties

**Burbank**—Fruit is large. Color, red. Yellow flesh. Sweet and juicy.

**Hansen's Hybrids**—Extra early bearers; generally producing heavily the second year after planting. Very productive and fine quality.

**Waneta**—Best quality, extra large. Red color, delicious flavor. Rapid grower and hardy. Fine for the home garden.

**Sapa**—Color when fully ripe is black. It hangs well on the tree. Tender and juicy. Fine flavor. Productive.

**Omaha**—Large, round and red. Flesh is firm, juicy and sweet. Tree is a strong grower and productive. Season early.

**Compass Cherry Plum**—A cross between the Miner Plum and the Sand Cherry. We have trees blossom in the nursery row.



Waneta Plums

## QUINCES

**Champion**—Very large; greenish-yellow. Delicate flavor. Cooks up tender. Vigorous and productive. Best for sections not subject to early frosts.

**Orange**—Large, bright golden yellow; firm flesh and good flavor. A very popular, old variety.

## CHERRIES

Cherries are easily picked and always in good demand. Also they make a very attractive as well as profitable roadside tree,

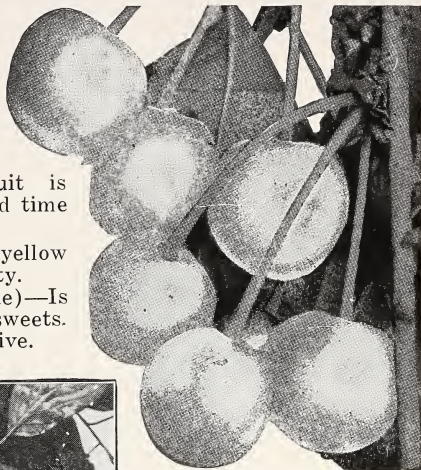
### SWEET VARIETIES

**Bing**—Large fruit, is nearly black. Fine flavored. Strong grower.

**Black Tartarian**—Fruit is black, rich and juicy. Old time favorite.

**Gold**—Good sized yellow cherry. Very good quality.

**Napoleon (Royal Anne)**—Is one of the best yellow sweets. Firm and juicy. Productive.



Compass Cherry

**Compass**—Fruit a bright red, sweet and juicy. Resembles a sour cherry and has a plum-like pit. Is unusually hardy and a very heavy bearer. Does well in some locations where the cherry fails. Fine for home canning.

**Yellow Spanish**—Strong grower and good bearer. Is yellow with red cheek. Of good size, sweet and juicy.

**Windsor**—Large, dull red, flesh firm and good quality. Largely planted for commercial orchards.

### SOUR VARIETIES

**Baldwin**—Large fruit of dark red color. Of highest quality.

**Early Richmond**—Medium size, dark red; early. Tree good grower.

**Montmorency**—Is most widely planted for the market and canning factories. Good grower, hardy and productive. June.

**Late Duke**—Is medium large, short, heart-shaped. Light red. Good flavor. Excellent quality. Tree strong, upright grower. Bears well.

## RASPBERRIES

**Black Cumberland**—Considered the best. Only kind we list.

**Red Cuthbert**—Fine quality for eating and canning. Excellent flavor.

**King**—Popular red kind for market. Firm and stands shipping. Bright red fruit. Good bearer. Strong canes.

**Latham**—One of the largest and best of the red berries. A newer kind and very promising. Hardy, vigorous and productive. Supply of plants limited.

## CURRENTS

Cannot be shipped into quarantined districts. Pay well for market.

**Diploma**—Vigorous and productive. Fruit large and solid. Fine quality. Medium late.

**London Market**—Most popular variety for Michigan. Heavy bearer, fruit large where properly trimmed. We prefer this variety for shipping.

**Pomona**—Fruit medium to large. Bright red; fine flavor. Good producer and shipper.

**Perfection**—Highly recommended. Fruit large and bears well.

**Wilder**—Well known red currant.

**White Grape Currant**—Standard white currant. Bears well.

**Black Naples**—One of the best black varieties.

## APRICOT

**Superb**—Only kind we list. Hardy Russian variety. Late bloomer. Salmon color. Flesh yellow and very good. Vigorous and productive.

## NUT TREES

More nut trees should be planted; they produce food of highest value, and are gaining in popularity as a commercial proposition.

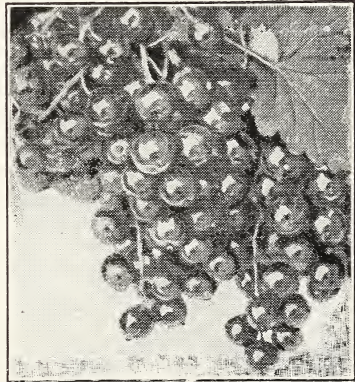
**Hard Shell Almond, Ridenhower**—Adapted for any peach growing section.

**Walnut, Japan**—Looks like an English Walnut. Has a butternut flavor. Bears young, generally at 3 years, and a good cropper.

**Black Walnut**—Well known variety of nut tree.

**Butternut**—A valuable nut. Widely grown.

**American Sweet Chestnut**—Good bearer. Nuts bring good price on the market when fresh.



Perfection Currants

## GOOSEBERRIES

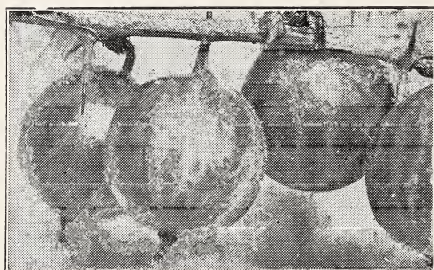
This fruit is of importance, being very highly valued in its green state for pies, tarts, puddings, etc. When ripe it is very agreeable as a dessert fruit, maturing at an acceptable time, following the season of cherries. The gooseberry requires a deep soil, well manured, and if inclined to be dry should be mulched to retain the moisture.

### Quarantined in some districts

**Chautauqua** — A large sized berry. Strong growing bush.

**Downing**—Popular berry for canning factories. Bears well.

**Houghton**—Is another well known berry. Heavy producer of medium sized fruit. Strong grower.



Downing Gooseberries

**Pearl**—Cross between Houghton and a large English variety. Hardy, free from mildew. Vigorous and productive.

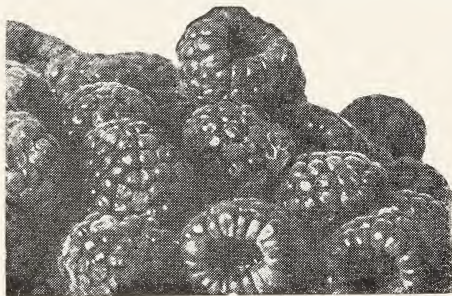
**Poorman**—Fruit large; brilliant red. Bush very vigorous and productive. One of the best.

**Red Jacket**—Fruit large and reddish green. Subject to mildew.

**Pride of Michigan**—Similar to Downing but a heavier bearer. Strong grower.

## BLACKBERRIES

**Eldorado**—Only one we have. Considered one of the very best. Fruit large, good quality. Hardy and a good bearer.



Eldorado Blackberries

### Asparagus

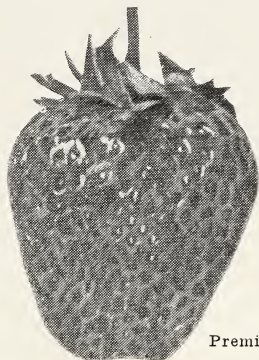
**Washington Rust Resistant**—A popular variety.

**Columbian Mammoth White**—Vigorous grower.

### Rhubarb

**Giant Victoria**—Vigorous and fine quality.

## STRAWBERRIES



Premier

**Premier**—Strong grower and plant maker. Berry large, good red color. Quality excellent. Productive and considered one of the best early kinds.

**Dunlap** (Mid-Season)—This old standard has long been listed as the best all around berry yet produced. Bears heavily on all sorts of soils. Quality the highest. For home, market or canning factories.

**Gibson** (Mid-Season) — Another popular berry. Size, productiveness and quality make it a good paying kind.

**Collins** (Mid-Season)—Excellent canning berry. Strong producer of good sized berries.

**Uncle Jim**—Very popular for the table. Extra large and sweet.

### LATE VARIETIES

**Aroma**—Well known late kind. Berry similar to the Dunlap.

**Gandy**—Old, reliable sort. Plant on heavy, moist soil.

**Chesapeake**—A profitable variety ripening ahead of the Gandy. Not a heavy plant maker. Fruit large and handsome.

### EVERBEARERS.

**Progressive**—Most widely planted of this type of berry. Resembles the Dunlap in quality. Good plant maker.

**Champion**—A more recent addition of the everbearer. Likely to prove more profitable than the Progressive. Is certainly worth a trial in all berry localities.

## GRAPES

**Agawam** (Red or Amber)—A handsome, large size berry of very good quality. Vigorous.

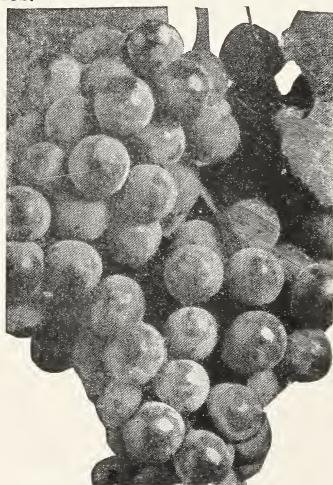
**Delaware** (Red)—Berry small but excellent flavor. Compact bunches.

**Concord** (Blue) — Standard blue grape. Widely planted. Has large bunches of good sized berries. Popular.

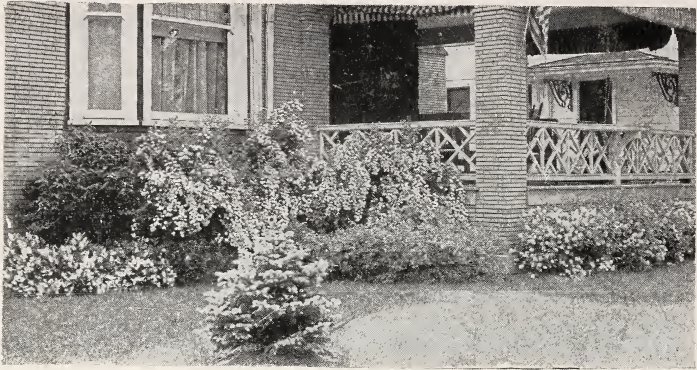
**Worden**—Good quality of blue grape, ripening ahead of the Concord about a week.

**Campbell's Early** (Blue-black) —Excellent, large size berry and large compact bunches.

**Niagara** (White)—The very best white grape, having size, quality and productiveness.



Concord Grapes



## ORNAMENTALS

**Spirea Van Houetti**—Masses of pure white flowers. Popular.

**Spirea Prunifolia**—The old fashioned "Bridal Wreath."

**Spirea, Golden**—White flowers, golden foliage, turning darker.

**Hydrangea (Paniculata)**—Large trusses of white flowers.

**Hydrangea (Hills of Snow)**—Everblooming Hydrangea. White flowers.

**Syringa**—White flowers. Good for hedges or planted alone.

**Lilac**—Purple or White.

**Lilac, Persian**—Purple flowers, strong grower.

**Althea (Rose of Sharon)**—Pink or white.

**Bush Honeysuckle**—White flowers.

**Snowberry**—White flowers followed by white berries. Does well in shady places.

**Forsythia (Golden Bell)**—Yellow flowers, very early.

### CLIMBING VINES

**Boston Ivy.** **Hall's Honeysuckle,** white flowers. **Scarlet Trumpet Honeysuckle.** **Dutch Pipe.** **Clematis,** white. **Purple Wisteria.**

### HEDGE PLANTS

**Japan Barberry.** **Privet**—very attractive.

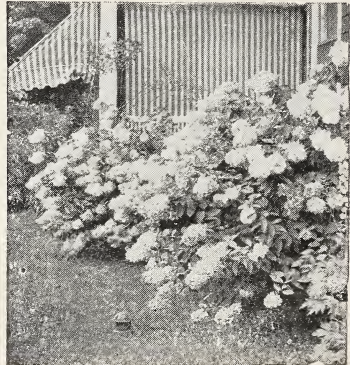
### EVERGREENS

**Norway Spruce.** **Arbor Vitae.**

### ROSES

**Climbing**—Red, pink or white.

**Bush**—Red, pink or white.



Hydrangea