

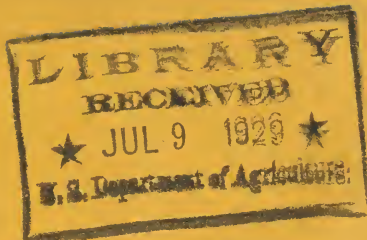
## **Historic, Archive Document**

Do not assume content reflects current scientific knowledge, policies, or practices.



62,57

1925



Sunnybrook

Iris

Garden







# SUNNYBROOK SEEDLINGS.

- ARISTOCRAT**—S. soft mauve with a pinkish caste, dome shaped, very broad and wavy. F. deeper in tone, creamy at throat, veined maroon, with a blotch of darker color at throat which gives a most distinctive appearance to the flower. Very tall. \$5.00
- AUTOCRAT (Isolda)**—S. bright clear blue, pointed dome shaped F. veined with darker blue, shading to lighter at edges, very tall, with large flowers of great substance and noble appearance. 2.00
- CARMENCITA**—S. soft rosy lilac, shaded to old gold at edges, F. velvety crimson, edged lighter. Very warm, rich coloring, large flower, tall and vigorous grower. 1.00
- CAVALIER**—S. fine clear blue, dome shaped, F. deep velvety blue purple, white at throat with blue veins. Of the coloring of Perfection, but a much larger flower of Pallida type, very strong and upstanding. 1.00
- MAY ROSE**—S. and F. soft bright rose pink, flower of good size and substance. 1.00
- MOONSTONE**—S. and F. soft, luminous blue with an almost translucent appearance. While not large, this is a very lovely iris and most floriferous. 2.00
- OPAL**—S. very large, wavy and overlapping, lavender, softly shaded mauve. F. lavender, overlaid with rose, blue shading at each side of throat and running down middle of F. The whole flower is enormous in size, beautifully wavy in effect, gracefully branched, and with an indescribably opalescent appearance. 5.00
- PINK PEARL**—S. and F. a most delicious shade of soft pink, delicately luminous. Not a very tall grower, but a most valuable and unusual color. 5.00
- RED CROSS**—S. pinkish lavender, sometimes flecked and splashed with the red of the falls. F. red. A freakish iris which most frequently has five bearded falls with one standard, while on the same stalk will appear a perfectly normal bloom. 1.50
- TAFFETA**—S. when first opened are a very unusual tone of brown shaded with blue and gold, later they are soft fawn color. F. fawn shot with blue, giving the whole flower an appearance of changeable blue and gold which is very charming and unusual. Flowers are large, borne on tall stems and the plant is vigorous and carries many flowering stalks. .75

Price per dozen, 10 times price of one.





- TOREADOR**—S. brilliant orange, shot with bronze. F. rich, glowing red. The strong Spanish coloring of this iris and its very large sturdy flowers, combined with the vigorous growth of the plant make it a most valuable border iris. \$1.50
- SIBIRICA, BUTTERFLY, (Mme. Butterfly)**—This is the true Siberian type, very tall and graceful, the flowers lightly carried on long branching stalks, about two and a half inches across and of a lovely clear porcelain blue, without a trace of purple, nearly five feet tall. 1.50
- ORIENTALIS, SUNNYBROOK**—This is a cross between the two Sibirica Orientalis irises, Blue King and Snow Queen, with the taller growth, larger flowers and spreading falls of the latter, but the flowers are of the exquisite shade of greyish blue known as Alice blue, a most rare color in the garden. The plant is very vigorous and increases rapidly and carries many flower stalks. .75

## GENERAL COLLECTION.

### BEARDED IRIS.

- AFTERGLOW, (Sturtevant, 1917)**—A light blended self of greyish lavender, shading to yellow at the center. 1.50
- ALBERT VICTOR**—S. and F. soft blue, overlaid with lavender, very tall with large flowers, fragrant and free blooming. .25
- ALBICANS, (Species)**—One of the best and largest whites, somewhat resembling Florentina but absolutely white and of heavier texture. The foliage has a tendency to twist and is short, broad and very nearly evergreen. In this locality it is hardy and floriferous but needs to be separated frequently to prevent its dying out. .50
- ALCAZAR, (Vilmorin, 1910)**—S. light violet. F. purple with bronze veinings at throat, a magnificent variety of giant size and great substance 1.00
- AMBASSADEUR, (Vilmorin, 1920)**—S. smoky bronze, finely dotted brown; F. dark velvety maroon. Considered the finest of Vilmorin's seedlings. Like Prosper Laugier in coloring but much larger and finer in every way. 5.00
- ANNA FARR, (Farr, 1913)**—S. white, lightly bordered pale blue F. pure white with blue markings at base. Immense flower with delicious scent. 2.00
- ARCHEVEQUE, (Vilmorin, 1911)**—S. deep purple violet, F. velvety red purple, very rich color and large flower. .75
- AUREA, (Jacques, 1830)**—S. and F. pure rich chrome yellow, large flowers. The pink tone in the yellow of this flower makes it far more attractive in color than Mrs. Sherwin Wright, though not so striking. .35

Price per dozen, 10 times price of one.



<b>AURORA</b> , (Foster, 1909)—Self colored pallida of pure pinkish lilac of good carrying tone.	\$ .75
<b>BRIDE</b> , (Caparne, 1901) Intermediate—S. and F. pure white, large flowers.	.35
<b>BERCHTA</b> , (Goos & Koeneman)—S. bronzy yellow, F. violet, bordered bronze.	.50
<b>BLUE JAY</b> , (Farr, 1913)—S. light clear blue, F. intense dark blue.	.50
<b>BROOKLYN</b> —S. pearl grey with faintest flush of yellow, F. soft lavender, large flowers and free blooming.	.25
<b>CANDELABRE</b> , (Vilmorin, 1911)—S. and F. deep blue, much lighter at throat, with purple dots, giving the flower a most unique and unusual appearance.	1.00
<b>CARTHUSIAN</b> , (Marshall, 1906)—Enormous bluish lavender flowers born on 4 foot massive stems, throat white.	1.50
<b>CATERINA</b> , (Foster, 1909)—Very like the above, but not quite so sturdy in growth and with a soft overlay of mauve on the lavender falls. An exquisite iris.	1.50
<b>CHESTER HUNT</b> , (Farr, 1913)—S. celestial blue, F. dark blue bordered pale blue.	.75
<b>CLUNY</b> , (Vilmorin, 1920)—A very large flower in mauve tones, tall and of graceful habit.	3.00
<b>CRUSADER</b> , (Foster, 1913)—Very large, stout textured flowers of a pure, clear blue. One of the finest of Sir Michael Foster's seedlings.	5.00
<b>DALMARIUS</b> , (Goos & Koeneman, 1907)—Cross between Pallida Dalmatica and Darius. S. soft grey, F. darker, shaded violet brown. Very distinct and very floriferous.	.35
<b>DALILA</b> , (Denis, 1814)—S. flesh tinted, F. dahlia purple. A free flowering plant of unusually rich contrast in color.	1.50
<b>DARIUS</b> , (Parker, 1873)—S. rich canary yellow, F. lilac, shaded into white at edge.	.25
<b>DOROTHEA</b> , (Caparne, 1901)—Intermediate. S. pearl grey, F. light blue flecked darker, a very large iris for its type.	.50
<b>DR. BERNICE</b> , (Hooper)—Very effective color combination on the order of Jacquesiana. S. coppery bronze. F. velvety crimson.	.25
<b>EDOUARD MICHEL</b> , (Verdier, 1904)—S. and F. rich wine red, large flower, beautifully waved petals. Stock scarce.	2.00

Price per dozen, 10 times price of one.



<b>ELDORADO, (Vilmorin, 1910)</b> —Very distinct and rich, large flowers on well branched stems. S. yellowish bronze, shaded heliotrope, F. violet purple, touched down the sides with yellow, yellow at throat, giving the flower a most unusual golden effect.	\$1.00
<b>ERICH, (Farr, 1913)</b> —S. light violet, flushed with rose, F. bright purple, wide flaring, fragrant.	.50
<b>FLAVESCENS</b> —S. and F. delicate shade of soft yellow, tall and sweet scented, fine for massing, early.	.35
<b>FIRMAMENT, (Groschner, 1920)</b> —A very early variety having two shades of bright clear blue. 24 inches.	1.00
<b>FLORENTINA, (Introduced about 1500 A. D.)</b> —Blue white slightly flushed lavender, very large, long flowers, fragrant and one of the earliest.	.25
<b>FRO</b> —S.brilliant yellow, F.rich red brown, large rounded flowers.	.50
<b>GAGUS, (Goos &amp; Koeneman, 1910)</b> —S. light yellow, F. crimson with yellow reticulations and edge.	.25
<b>GREY MORN, (Sturtevant, 1920)</b> —A rather long slender flower of unusual greyish lavender, very lovely as a cut flower; stalks well branched.	1.00
<b>HER MAJESTY, (Perry, 1903)</b> —S. lovely rose pink, F. deeper, veined bright crimson. A very lovely iris with a great deal of character.	.50
<b>INNOCENZA, (Lemoine, 1854)</b> —S. and F. ivory white, slight reticulations of violet at throat, a fine white iris of good substance, very floriferous.	.25
<b>IRIS KING, (Goos &amp; Koeneman, 1907)</b> —S. old gold, F. velvety crimson maroon edged with a broad band of gold. Very fine form and rich color.	.35
<b>ISOLINE, (Vilmorin, 1904)</b> —S. lilac pink, F. deep old rose, yellow at throat. Very large flower gracefully held on branching stalk, a grand distinct iris, demanding admiration wherever shown.	.65
<b>IVORINE, (Caparne, 1901)</b> —An Intermediate of large size; flower pure creamy white of good substance. Very floriferous.	.35
<b>JAMES BOYD, (Farr, 1915)</b> —S. clear light blue, F. dark violet, tipped and edged lighter.	.75
<b>JUNIATA, (Farr, 1909)</b> —S. and F. clear blue, very tall and floriferous. Fragrant.	.25

Price per dozen, 10 times price of one.



<b>JEANNE d'ARC, (Verdier, 1907)</b> —S. very large and ruffled, somewhat spreading, white, delicately penciled lilac, F. white, edged lilac at base. The standards, being somewhat loosely held, flutter in the breeze in a truly delightful manner. Stock scarce.	\$ .75
<b>KHARPOT</b> —S. deep lavender, F. deep rich purple, S. very long and drooping, whole flower extremely large and handsome, very early.	.25
<b>KOCHII</b> —S. and F. rich dark claret, one of the darkest in color. Early.	.25
<b>LA NEIGE, (Verdier, 1912)</b> —An exquisite iris which looks as if carved out of ivory, S. and F. warm white with no markings whatever, the flowers crisp in outline and firmly held, very floriferous.	2.50
<b>LEDA, (Farr, 1909)</b> —S. and F. white lightly frilled pinkish lilac.	.50
<b>LENT A. WILLIAMSON, (Williamson, 1918)</b> —S. soft violet, F. velvety, royal purple. The whole flower of magnificent size and shape and wonderful rich coloring.	2.00
<b>LEONIDAS</b> —S. clear lavender, F. rosy mauve, tall and handsome.	.35
<b>LEWIS TROWBRIDGE, (Farr, 1913)</b> —S. bright violet, F. blue violet, shaded rose, large.	.75
<b>LOHENGRIN, (Goos &amp; Koeneman, 1910)</b> —Very large bold flower, of sturdy habit. S. and F. pinkish mauve with white shading at throat.	.25
<b>LORELEY, (Goos &amp; Koeneman, 1909)</b> —S. light yellow, sometimes flecked with the purple of the falls. F. purple, edged yellow.	.35
<b>LOUTE, (Vilmorin, 1904)</b> —S. light mauve with bronze sheen, F. soft red violet, very large flower.	1.00
<b>MARY GARDEN, (Farr, 1913)</b> —S. pale yellow, flushed pale lavender, F. cream white, minutely dotted and veined maroon, very distinct.	.50
<b>MERCEDES, (Verdier, 1905)</b> —Cream ground finely sanded with purple, giving the effect of a self color.	2.00
<b>MERLIN, (Sturtevant, 1917)</b> —A very large, sturdy flower, with pink violet tones.	1.00
<b>MINNEHAHA, (Farr, 1913)</b> —S. cream white, shaded yellow, F. cream, heavily reticulated maroon, a very fine large iris, unusual color.	1.00
<b>MITHRAS, (Goos &amp; Koeneman, 1910)</b> —S. light yellow, F. brilliant wine red with a narrow border of deep yellow.	.35

Price per dozen, 10 times price of one.





<b>MME. CHEREAU, (Lemoine, 1844)</b> —S. and F. white with a delicate pencilling of clear blue at the edges. A tall iris and very floriferous.	\$ .25
<b>MONSIGNOR, (Vilmorin, 1907)</b> —S. rich satiny violet, F. same with deep velvety splashes of purple leaving border of lighter color. Very large and floriferous, flowers of beautiful form.	1.00
<b>MONTEZUMA, (Farr, 1909)</b> —A very unusual iris, S. yellow, dotted red, F. lighter and veined velvety brown.	1.00
<b>MRS. ALAN GRAY, (Foster, 1909)</b> —S. and F. delicate mauve, not so pink as Queen of May but purer in tone. A beautiful iris.	.50
<b>MRS. HORACE DARWIN, (Foster, 1893)</b> —S. and F. white, upper part of falls reticulated violet.	.25
<b>MRS. NEUBRONNER, (Ware)</b> —S. and F. deep golden yellow, the deepest of any yellow variety.	.35
<b>MRS. REUTHE, (Ware)</b> —S. and F. white shaded and veined blue grey, very large flower and beautiful soft coloring.	.25
<b>NIBELUNGEN, (Goos &amp; Koeneman, 1910)</b> —S. fawn and yellow, F. violet purple on bronze. Very large flowers, strong vigorous grower.	.25
<b>NOKOMIS, (Farr, 1915)</b> —S. pale lavender white, F. dark violet blue bordered white.	.50
<b>OPERA, (Vilmorin, 1916)</b> —An intense, rich red bicolor, very effective.	2.50
<b>OSSIAN, (1863)</b> —S. clear straw yellow, F. bluish violet, held horizontally, the whole flower having a great deal of character.	.35
<b>OTHELLO, (Lemoine, 1848)</b> —S. rich blue, F. dark purple, late.	.25
<b>FALLIDA DALMATICA, (before 1600)</b> —This is the true variety and a magnificent iris, with immense flowers of light blue, the falls overlaid with rosy lavender. The foliage is very broad and glaucous, and the plant strong growing.	.50
<b>PARISIANA, (Vilmorin, 1911)</b> —S. white ground dotted and shaded light purple, F. white, frilled at the edge with lilac, large flower.	1.00
<b>PERFECTION, (Barr)</b> —S. bright, clear blue. F. dark velvety purple shaded black. Very fine.	.25
<b>POWHATAN, (Farr, 1913)</b> —S. light violet, F. reddish purple large flower.	.35

Price per dozen, 10 times price of one.



PRINCESS VICTORIA LOUISE, (Goos & Koeneman, 1910)—S. soft clear yellow. F. rich plum, bordered cream, very floriferous and a rapid grower.	\$ .25
PROSPER LAUGIER, (Verdier, 1914)—Large flower of the richest coloring. S. bronze, shaded crimson, F. rich velvety crimson.	.65
QUAKER LADY, (Farr, 1909)—S. lavender with yellow shadings, F. old gold with ageratum blue overlaying the lower part of petals. Lovely and quaint.	.50
QUEEN ALEXANDRA, (Barr)—S. fawn shaded with violet, F. lilac, sturdy growth and good sized flower.	.50
QUEEN CATERINA, (Sturtevant, 1918)—A large iridescent pale lavender of great refinement and unusually attractive.	4.00
QUEEN OF MAY, (Salter, before 1859)—S. and F. fine rose lilac, almost a pink iris. Tall.	.25
RHEIN NIXE, (Goos & Koeneman, 1910)—S. pure white, F. violet, edged white. A very fine and striking iris of pure color, tall and free flowering.	.25
SHEKINAH, (Sturtevant, 1918)—The best of the tall yellows, and the first pale yellow of pallida habit.	3.00
SHERBERT, (Sturtevant, 1918)—A very large and attractive flower, ecru shaded with purple, strong growing and very unusual. 4 feet.	2.00
SHERWIN WRIGHT, (Kohankie, 1915)—S. and F. pure deep yellow without markings of any kind. A brilliant color but not as fine in tone as Aurea. Very valuable color in garden.	.50
SHREWSBURY, (Farr, 1916)—S. rosy bronze, F. violet purple with a conspicuous orange beard which makes this flower most noticeable.	.50
SWEET LAVENDER, (Bliss, 1919)—A very lovely iris of unusual charm. The strong spikes often carry a dozen flowers of of a soft lavender shading to pinkish lilac, with crinkled edges and a crepy texture.	3.00
TAMERLAN, (Vilmorin, 1904)—S. broadly rounded and somewhat waved, lavender violet, F. deep violet. Very large flowers.	1.00
TRAUTLIEB, (Goos & Koeneman, 1899)—S. and F. lovely uniform soft rose.	.50
WYOMISSING, (Farr, 1909)—Soft creamy rose, F. somewhat darker, shaded lighter toward edge.	.50
ZUA, (Crawford, 1914)—S. and F. soft pale lavender. The texture of the whole flower is distinct from any other bearded iris, being like heavy frosted crepe. Low growing and early. Fragrant.	2.00
MIXTURE of fine Bearded Iris.	7.50

Each, 12 cents ; per 100,

Price per dozen, 10 times price of one.



## BEARDLESS IRISES OF VARIOUS SPECIES.

- CRISTATA**, (Crested or *Evansia* species)—This is a native of this country and is a small plant with creeping roots, growing about 3 inches high with a rich amethyst blue flower. It increases rapidly in a well drained soil. \$ .35
- DOROTHEA K. WILLIAMSON**, (Williamson, 1918)—A hybrid iris of unusual appearance. The color is a brilliant but velvety purple, the flower when fully opened being almost flat, the foliage narrow and of rather a yellow green. 2.00
- SPURIA**, **MRS. TAIT**, (syn. *Longipetala Superba*)—Soft porcelain blue, with very long, pale blue falls, having a golden blotch at the base, free bloomer and very hardy. .35
- PSEUDACORUS**—Tall, bright yellow. Though really a marsh-loving plant, this iris does well even in a dry, sandy soil—splendid for naturalizing. .25
- TECTORUM**—The flower is more the shape of *Germanica* type but the S. have a jagged crest white with brown marking, the flower itself is blue purple and has splashes of a darker shade. A very lovely iris. .35
- TECTORUM, ALBA**—A most exquisite iris, like the type except that it is pure white and the crest is marked with gold. With the slight protection given by a hedge or strong growing plants, this iris is perfectly hardy and a rarely lovely flower. Both *Tectorum* and *Alba* seed freely and come true to type. 2.00
- WILSONI**—This is a very interesting species. Collected in China by E. H. Wilson. It is of the grassy-leaved type such as *Siberica*, but is entirely distinct in having a pale yellow blossom. Does better in good soil, preferably, but not necessarily, moist. 1.50
- VERSICOLOR ROSEA**—A strikingly red form of the native iris. This is very unusual and was much admired at the Bronx Botanical Garden. 1.50
- SIBIRICA, ACUTA**—Dwarf form, flowers blue, reticulated white, .35
- SIBIRICA, ALBA GRANDIFLOA**—Flowers white with brown reticulations at throat. .25
- ORIENTALIS, BLUE KING**—A larger flowered variety found by Mr. Barr in Japan, deep purplish blue. \$10 per 100 for 50 or more. .15
- ORIENTALIS, EMPEROR**, (Species collected in Japan by E. H. Wilson)—Large flowers, borne on stalks 4 ft. tall, of very fine form and of a deep violet color. 2.00

Price per dozen, 10 times price of one.



<b>SIBERICA, LACTEA</b> —A small dainty flower of milky white, delicately poised on a slender stalk.	\$ .35
<b>SIBERICA, LADY GODIVA</b> —This variety of Siberian Iris is very scarce and owing to its unusually early blooming season which is with the first of the tall bearded irises, it has great value. The flowers themselves are white with a soft suffusion of pinky lavender, hard to describe. Very lovely as a cut flower.	.50
<b>ORIENTALIS, LADY NORTHCLIFF</b> —A great improvement on the type, broad falls of rich violet, reticulated white.	3.00
<b>SIBIRCA, PERRY'S BLUE</b> —A large flower of clear blue with horizontal falls. Probably the finest Siberian iris.	1.50
<b>ORIENTALIS, RED EMPEROR, (Sturtevant, 1918—Cleveland, 1924)</b> —A seedling of Emperor with the large flowers and very wide petals of its parent but of a striking shade of wine red, a color entirely unique in this species. The effect of this plant is almost sensational and because of its size and color has frequently been mistaken for a Japanese iris.	3.00
<b>ORIENTALIS, TRUE BLUE, (Freyer, 1919)</b> —A great improvement on the type. Flowers of good clear blue. Very lovely planted with Snow Queen.	.50
<b>PERRY'S BLUE SEEDLINGS</b> —These come in all shades of purple and blue, toning down to white, and many are very fine plants though not sufficiently distinct to name. \$18.00 per 100.	.35
<b>EMPEROR SEEDLINGS</b> —These also come from white to purple and in many cases are as fine in color, shape and size as the parent. \$18.00 per 100.	.35
<b>MIXED SIBIRICA and ORIENTALIS SEEDLINGS.</b> —These come in many shades of white, blue and purple, many very lovely and all as good as, if not better, than the older types. \$15.00 per 100.	.25

## JAPANESE IRIS.

<b>AIRSHIP, (Childs)</b> —Three enormous petals of thick crepy texture and a color effect of changeable blue and red purples almost impossible to describe.	2.00
<b>AMETHYST, (Childs)</b> —Three very large wavy petals of most exquisite, soft lavender.	.65
<b>AZURE, (Childs)</b> —Double, immense, beautifully waved flowers of soft mauve blue, with dark halo surrounding the yellow blotch at throat.	.75

Price per dozen, 10 times price of one.





<b>BETH HALLOCK</b> —Double, white with a wide band of plum color at edges, a tall and striking flower.	\$ .40
<b>CLOUDY SKY, (Kumoma-No-Sora)</b> —These immense white, crepy petals with sky blue halo surrounding the yellow blotch at throat. A somewhat smaller edition of Morning Mists.	.65
<b>FIREFLY, (Uji-No-Hotaru)</b> —The latest to bloom, a very deep purple with golden blotch at throat, a tall and imposing flower.	.50
<b>KAMATA</b> —Single, deepest sky-blue, veined white.	.65
<b>LESTER LOVETT</b> —Very large double flower of bright, clear blue with white halo, a very fine variety.	.75
<b>MAHOGANY</b> —Double, very dark, red purple, veined maroon.	.50
<b>MORNING MISTS</b> —This is the most magnificent of the single Japanese irises, often measuring 12 inches across. The petals are of a lovely thick crepy texture, very wavy and pure frosty white with a sky blue lightly dusted across the center of the flower.	2.00
<b>MRS. SAXTON, (Childs)</b> —A large and very double white, tall and vigorous with flowers of firm substance and good keeping qualities. About the best of the double whites.	.60
<b>NIGHTFALL, (Childs)</b> —Single, deep wine red with overlay of velvety black, great wavy petals. One of the darkest of all.	1.00
<b>NORMA</b> —Double, exquisite, lavender pink with clear blue halo surrounding yellow blotch at base of petals. Very large flower.	.75
<b>PAINTED LADY</b> —A very tall and handsome flower, 6 large petals of white, sometimes veined with plum, inner petals edged with plum.	.40
<b>PINK PROGRESS</b> —Single, beautiful mauve pink with sky-blue halo.	.65
<b>QUAKERESS, (Hallock)</b> —This old variety is now almost extinct and I am very fortunate in having a limited stock to offer for sale. It is one of the most beautiful of all Japanese irises and while not as large as some, the lovely, artistic color combination of deep pinkish mauve and sky blue halo make it an acquisition for any garden. As a cut flower it is unusually beautiful.	2.00
<b>SINGLE WHITE</b> —A tall white iris with flowers of firm substance and good keeping qualities. The best single white.	.60

Price per dozen, 10 times price of one.



STEEL BLUE—Exquisite soft lavender blue, self colored with mauve halo, a delightfully cool and delicate color, 3 petals.	\$ .65
TEMPLETON—Very double, light violet, mottled reddish pink and white.	.35
TURBAN—Double, grey ground, heavily overlaid and veined with blue.	.35
VICTOR—Double, white, veined with blue—very large and fine, with long period of bloom.	.60
NO. 35—An unusual flower in its orchid-like coloring, blue lavender overlaid with pink mauve.	.50
MIXED Japanese Iris.	.25

### HEMEROCALLIS--YELLOW DAY LILY.

HEM. DR. REGEL—Rich orange yellow, tall and fragrant, blooms in June-July.	.35
HEM. FLAVA—This is the Lemon Lily of old fashioned gardens, clear pale yellow and very sweet scented. June-July.	.35
HEM. FULVA—The Orange Lily, large flowers of a tawny orange, tall and strong growing.	.25
HEM. LUTEOLA—One of the loveliest varieties, blooms in June shortly after Queen of May, which it resembles, though the plant is somewhat hardier. The color is an exquisite one of warm soft yellow, the flowers sweet and the stem tall and strong.	.50
HEM. QUEEN OF MAY—Very like Luteola but not quite as hardy. The foliage is sometimes cut back by a late frost.	.50
HEM. KWANSO, fl. pl.—The double flowering form of Fulva with a more attractive shade of orange, the flowers double and most effective.	.35
HEM. THUNBERGI—A tall pale yellow resembling Flava; somewhat later in blooming season.	.35

HARDY PINK, GLADYS CRANFIELD—This is undoubtedly the finest introduction among hardy pinks. The flowers are nearly twice as large as the older varieties. They are single, soft pink, with a deep maroon center, with a long blooming season and remarkably vigorous. .40

OLD FASHIONED YELLOW SCOTCH BRIAR ROSE—This is one of the yellow roses frequently seen around old farm houses. It resembles Harrison's yellow but is somewhat more double. It is practically disease-proof and quickly grows into a large shrub if left unpruned. Blooms earlier than other roses. 1.50

Price per dozen, 10 times price of one.



## GARDEN ACCESSORIES.

- GARDEN BASKART** (See cut on back cover)—This handy little basket on wheels fills a want that has been acutely felt in the past, especially by women gardeners and every owner of one has been delighted with it. The Baskart stands 22½ inches high, is 14 inches across and 11 inches from front to back. The handle is 14 inches long and it has rubber-tired wheels and an iron rest to hold it upright. \$4.00
- ENGLISH GARDEN GLOVES**—These are chamois slip-on gloves, very soft and easy to work in and, having no opening at the palm, no dirt can sift in. One size only. Per pair, 1.25
- INDESTRUCTIBLE GARDEN LABELS**—These are made of aluminum and the name stamped, and weather cannot efface the letters or destroy the labels. In ordering please PRINT the names desired to avoid mistakes. Each, .03 ; 100 2.50
- KNEELING CUSHION with TOOL BAG Combined**—Made in different colors of awning cloth with khaki lining. This was invented by a women gardener and is most practical, being stuffed with cotton and very strongly made. The bag attached can be snapped shut when not in use, and is most useful for carrying tools, note book, labels, twine, etc. 4.00

---

Write me of unusual things you want for the garden and I will gladly try to obtain them for you.

---

Join the American Iris Society. Annual dues \$3.00. Checks payable to Arthur H. Scott, Treasurer, Front and Market Streets, Chester Pa.



TERMS :

Cash with order.

Every precaution is taken to send stock true to name and I will cheerfully replace any that does not prove so.

Orders accepted subject to stock on hand.

Shipment will be made by Express, except for very small orders, which will be sent by Parcel Post.

In the descriptions, S. indicates the Standards or upper petals; F. the Falls or lower petals.

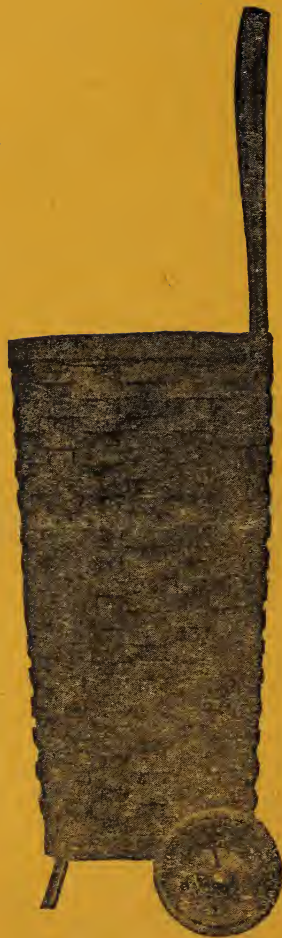
MRS. FRANCES E. CLEVELAND

SUNNYBROOK IRIS GARDEN

EATONTOWN,

--

NEW JERSEY



GARDEN BASKART