

Historic, Archive Document

Do not assume content reflects current scientific knowledge, policies, or practices.

267

HARDY HERBACEOUS *and* ALPINE PLANTS



NEW SPRING CAT
NOT READY TO BE
MAILED IN FEB.

TWENTIETH EDITION
Autumn, 1925

The WAYSIDE GARDENS CO.,
MENTOR, OHIO

America's Greatest Producers of Hardy Perennials

WAYSIDE GARDENS

Mentor, Ohio

Twenty-five miles east of Cleveland, on the Cleveland-Painesville Road,
at Stop 67, C. P. & E. Electric Line
Telephone, Mentor 39-K
Telephone, Painesville 702-W.

READ CAREFULLY

All of the stock offered is grown on our own grounds, that grown from cuttings and divisions we know to be clean and true. Plants grown from seeds are from seed stocks obtained from the most reliable sources.

OUR PLANTS ARE ALL FIELD GROWN, ARE GIVEN CONSTANT CARE AND CULTIVATION AND WHEN SENT OUT ARE STRONG AND WELL DEVELOPED, MUCH LARGER AND WORTH A GREAT DEAL MORE MONEY THAN POT-GROWN PLANTS.

We do not divide our plants before shipping but send the entire plant as dug. Dividing is only done in rare cases and only then because it is necessary to get the best results.

If, after receiving, you are not satisfied with the quality of the stock, let us know and we will replace anything you mention without charge or without question.

TERMS OF PAYMENT

Customers unknown to us will please send cash or references with their order. It is impossible for us to make immediate shipment to new clients who do not send references or cheque with their order. **NOT SENDING REFERENCES OR ENCLOSING CHEQUE CAUSES DELAY IN THE FORWARDING OF THE STOCK YOU ORDER.**

GUARANTEES

We guarantee all stock furnished by us to be first-class, true to name, and larger than pot-grown plants, all of a size so as to give immediate results.

However, there are so many causes for failure over which we have no control that we can assume no responsibility after stock is delivered. Poor soil, unfavorable weather, ignorant or careless culture—all contribute to failure and are beyond our control.

QUANTITIES ORDERED

We do not sell less than three plants of a kind unless offered otherwise; twenty-five plants are sold at hundred rate. Five hundred at thousand rate.

RISK

All goods are at purchaser's risk after they are delivered to the forwarding companies and we receive their receipt for the shipment in good condition.

SHIPPING DIRECTIONS

Please give explicit shipping directions, stating whether stock is to be shipped by freight or express, and by what route.

Small shipments can be sent by parcel post. All such shipments will be sent insured, insurance and postage to be paid by the customer.

THE WAYSIDE GARDENS COMPANY

E. H. SCHULTZ
President

MENTOR, OHIO

J. J. GRULLEMANS
Sec'y-Treas.

Largest Growers of Hardy Plants in America



The Vogue of Old-Fashioned Hardy Flowers



ODAY, more than ever before, lovers of flowers everywhere, are seeking for their gardens the better forms of those Old-Fashioned Flowers of Grandmother's Days, many of which are indigenous to our soils, while other new and rare types continue to appear from various sources, both here and from foreign countries.

Maintaining our position as leading American growers of Hardy Herbaceous, Alpine and Rock Plants, we here present our 1926 Catalogue of what we believe to be the greatest and most representative collection of these classes ever produced by one single American concern.

Without arrogating to ourselves the credit of having originated many of these Perennial Garden Favorites, we pride ourselves on the magnificent quality and variety of our stock, the exceptional beauty and rareness of many, of which we are exclusive producers in this country, and lastly in the magnitude of our industry (the largest in this country), amply reflected in our 1925 returns, whereby close to four million plants left our grounds for points all over the U. S. A. and Canada.

With such achievements behind us, we look forward to, and are splendidly prepared to meet even a greater demand in 1926 for our justly famous Wayside Gardens "Quality" Perennials.

(We will gladly give prospective customers references and information about our stocks and growing methods; we can also furnish names of leading American landscape architects who use our plants.)

WAYSIDE GARDENS CO.

MENTOR, OHIO.



Achillea Ptarmica, "The Pearl."



Aconitum Fischeri.



The Lovely Aethionema.

ACHILLEA (Milfoil or Yarrow).

Plants suitable for dry, sunny places. The dwarf kinds are useful for carpeting or for rockeries; the taller varieties as border plants.

	Three	Doz.	100
Eupatorium (syn. filipendulina). 3 to 4 feet. Flat heads of brilliant yellow flowers; finely cut foliage. Blooms all Summer	\$0.85	\$2.50	\$15.00
Millefolium roseum (Rosy Milfoil). July to October. Rosy pink flowers in dense heads, on stems 18 inches high. Effective on edge of shrubbery or in border85	2.50	15.00
Perry's White . 1 to 2 feet. June to September. A choice new variety; pure white flowers over one inch across; broad, overlapping petals. Nothing better for cutting85	2.50	15.00
Ptarmica, The Pearl . Pure white, double flowers all Summer. Prized for cutting85	2.50	15.00
Ptarmica, Boule de Neige . New. An improvement on "The Pearl" with fuller and more perfect flowers. Best for borders85	2.50	15.00
Tomentosa . 6 to 8 inches. July to September. Bright yellow flowers. Excellent for rockeries85	2.50	15.00

ACONITUM (Monkshood).

Summer- and late Autumn-flowering plants with bold spikes of hood-shaped flowers, thriving in either sun or shade. The roots are poisonous and should not be planted where the tubers might be mistaken for vegetables. Deliv- ery from October 15th to March 15th. Tubers cannot freeze.

	Three	Doz.	100
Fischeri . A dwarf variety with pale blue flowers. 18 in. September ...	\$1.35	\$4.00	\$10.00
Napellus (True Monkshood). 3 to 4 feet. July to August. Large dark blue flowers in a raceme ...	1.50	4.50	
Napellus alba . 2 to 4 feet. July to August. An effective plant. White flowered form of Napellus	1.50	4.50	
Carneum . 2 to 2½ feet. July to August. This variety has variegated red and white flowers; effective	1.50	4.50	
Wilsoni . 5 to 6 feet. September. A recent introduction from North China; strong, stately habit with light violet-blue flowers	3.00	9.00	

ACORUS (Sweet Flag).

Calamus. 2 feet. June-July. Leaves sword shape, erect; flowers inconspicuous. Root stock pungent, aromatic. Thrives best in moist soil, and may be grown in shallow water or dry land

	Three	Doz.	100
.....	.85	2.50	15.00

ACTAEA (Baneberry).

Alba. 2½ feet. A very much improved form, having long spikes of clear white flowers. Good for cutting; effective border plant ...

	1.00	3.00	20.00
Rubra	1.00	3.00	20.00

ADONIS (Pheasant's Eye).

Amurensis (Spring Adonis). Early, yellow flowers 50c each;

	1.50	5.00
.....	1.50	5.00

AETHEOPAPPUS (Centaurea).

	.85	2.50	18.00
Pulcherrimus85	2.50	18.00

AETHIONEMA (Persian Candytuft).

Grandiflora. Strong, twiggy bushes, covered with long, slender spikes of rosy pink flowers. One of our best rock plants. 9 inches

	.85	2.50	18.00
.....	.85	2.50	18.00

Persicum. Somewhat deeper in color than Grandiflora

	.85	2.50	18.00
.....	.85	2.50	18.00

AGROSTEMMA (Rose Campion).

Stout, erect growing plants with silvery foliage, which contrasts well with the showy flowers, which are produced during June and July. Three Doz. 100
Coronaria (Mullein Pink). Bright rosy crimson. 2½ to 3 feet ... \$0.85 \$2.50 \$15.00
Walkerii. Large heads of deep rosy red flowers85 2.50 15.00

AJUGA (Bugleweed).

A useful plant for the rockery and for carpeting the ground, particularly in shady positions, as under trees where grass will not grow; flowers in May and June. Three Doz. 100
Genevensis. Grows 6 to 8 inches high; dense spikes of blue flowers. \$0.85 \$2.50 \$18.00
Reptans rubra. Grows 3 to 4 inches high, with deep purplish blue flowers85 2.50 15.00

ALYSSUM (Rock Madwort).

Very popular for beds, borders and Winter flowering; of easiest culture and very free blooming. Seed may be sown very early in the Spring and up to June 15th, also in the Fall for early Spring blooming. Three Doz. 100
Saxatile compactum. Broad masses of bright yellow flowers in early Spring. An excellent plant for the rockery or front of borders. 1 ft. \$0.85 \$2.50 \$15.00
Wiersbichi. Dense masses of canary-yellow flowers. Splendid rock or edging plant. 9 inches .. .85 2.50 15.00

AMSONIA.

Tabernaemontana. 2 to 3 feet. Late May and early June. Small and numerous flowers of light blue in panicles. Smooth foliage resembling the olive. For the hardy border or planted among shrubbery.. 1.20 3.50 25.00

ANCHUSA (Alkanet).

For producing a mass effect of brilliant blue, the Anchusas cannot be surpassed. Dropmore, the darkest one, is most effective. Opal has larger flowers and is the best of the tall varieties, producing a solid sheet of soft turquoise-blue. They should be treated as biennials, as the old plants exhaust themselves at the end of two or three years. They reproduce themselves, however, from self-sown seed. The blooming season can be extended for several weeks by cutting the spikes as soon as the flowers fade, thus preventing seeding.

Three Doz. 100
Dropmore. Tall spikes of beautiful blue flowers, flowering all Summer. Rough, broad foliage. 4 to 5 feet \$0.85 \$2.50 \$15.00
Opal. Very beautiful variety, with large, pale blue flowers. 3 to 4 ft. .85 2.50 15.00
Myosotidiflora. A distinct, dwarf perennial variety from Russia, with clusters of charming blue flowers resembling forget-me-nots. An effective rock plant for shady places. 1 foot 1.00 3.00 20.00
Pride of Dover. New. The finest deep, rich blue of all. 3 to 5 feet. (Sold out for this season).

ANTHEMIS (Marguerite).

Tinctoria. Handsome, finely cut foliage, and large, golden yellow flowers produced all Summer. Succeeds in the poorest soil85 2.50 15.00
Montana. Pale yellow flowers, excellent for cutting. 2 feet. June to October 1.00 3.00 20.00

ARABIS (Rock Cress).

Alpina. Pure white flowers produced in dense masses, splendid for border and rockery work, and last quite some time when cut85 2.50 15.00
Alpina flore pleno. Same as above but with double white flowers; very fine rock plant 3.00 20.00 180.00

AURICULA (Swiss Primrose).

Mixed Auriculas should be in every rock garden; flowers are heavily covered with a mealy substance which makes them look like butterfly wings. Three Doz. 100
Choice Mixed Hybrids 1.20 3.50 25.00



Anchusa Italica.



Alyssum Saxatile.



Arabis Alpina.



Anemone Pulsatilla.



Anemone Hupehensis.



Asclepias Tuberosa.

ANEMONE (Windflower).

ANEMONE JAPONICA (Japanese Anemone).

Valuable plants suitable for massing or single specimens. They grow rapidly and are profuse in bloom, gaining strength and beauty each year. The blooming period extends from August till mid-November, the large, open flowers furnishing abundant cut flowers and a brilliant field display. Cover plants in Winter. We offer strong, field-grown roots only.

	Three	Doz.	100
Alba. Purest white, with yellow center. 2 to 3 feet	\$0.85	\$2.50	\$18.00
Alice. Large flowers of rosy carmine ... (Delivery Spring, 1926).			
Kriemhilde. Double, rich pink; of excellent form	1.00	3.00	20.00
Richard Ahrends (Sold out for this season).			
Rubra. Beautiful rosy red; stamens bright yellow	1.35	4.00	30.00
Queen Charlotte. Abundant semi-double flowers, broad and perfectly formed; "La France" pink 2 to 3 feet85	2.50	18.00
Whirlwind. Excellent double white flowers. 2 to 3 feet85	2.50	18.00

VARIOUS ANEMONES.

Hupehensis (Early Anemone). Was originally introduced from central China, is closely allied to Anemone japonica, which, in a miniature form, it resembles. The plant grows from 10 to 12 inches high and from early in August until late in Autumn; produces an abundance of flowers about 1½ inches in diameter, of a pleasing mauve-rose	1.00	3.00	20.00
Pulsatilla (Pasque Flower). Grows from 9 to 12 inches high and produces violet or purple flowers during April and May. An interesting plant for the rockery or well drained border	1.00	3.00	20.00
Pulsatilla rubra. Of dwarf habit with reddish purple flowers ...	1.00	3.00	20.00
Sylvestris. Fine for cool, moist corner of rock garden or border. Large, white blossoms on nodding stems of about 12 inches. Very free blooming. May and June ...	1.00	3.00	20.00

ARENARIA (Sandwort).

Montana. A hardy perennial growing in close tufts, profusely covered with small, silvery white flowers which appear quite early in the season. Excellent as an edging plant in formal gardens. Suitable for rockeries in sunny places. Flowers resemble small, white, upturned morning glories	1.00	3.00	20.00
Grandiflora. From the Pyrenees Mountains. Covers itself with its pure, snow-white flowers. One of the best of all rock plants. May..	1.00	3.00	20.00

ASCLEPIAS (Butterfly Weed).

Tuberosa. Attractive native plants, flowering during July and August, and growing about 2½ feet high. Umbels of bright orange colored flowers85	2.50	15.00
------------------------------------------------------------------------------------------------------------------------------------------------------------	-----	------	-------

ASPERULA (Woodruff).

Odorata. 6 to 8 inches high. May. Habit erect; leaves usually in a whorl of eight, finely toothed. Increases rapidly and is used for carpeting shady places and for edgings. Heads of snowy white flowers. A fine, scented herb ...	1.15	3.50	25.00
--------------------------------------------------------------------------------------------------------------------------------------------------------------------------------------------------------------------------------------------	------	------	-------

ASPHODELUS (King's Spear).

Luteus. Tall spikes of bright yellow, lily-like flowers; very fragrant; swordlike foliage; fine for borders85	2.50	15.00
--------------------------------------------------------------------------------------------------------------------------	-----	------	-------

AQUILEGIA (Columbine).

As a cut flower the Long-Spurred Aquilegias are the daintiest of our outdoor grown flowers. They come in blues, whites and yellows, and shades of pink and rose in strains reasonably true. Practically all the various shades and colors are in the Coerulea Hybrids. They remain in bloom for a long season and are vigorous and long lived. They are not at all particular as to soil or location, although they prefer a sandy loam and a moist but well drained, sunny position, and usually make themselves at home in any hardy border or rockery. Their period of flowering covers the late Spring and early Summer months. Taken as a whole, they are a most important part of the hardy garden, and should be grown in quantity by every lover of old-fashioned garden flowers.

	Three	Doz.	100
Coerulea. Blue shades	\$1.00	\$3.00	\$20.00
Crimson Queen. Beautiful crimson flowers with long spurs	1.00	3.00	20.00
Snow Queen. The best white, long-spurred variety known85	2.50	15.00
Chrysantha. Beautiful golden yellow flowers; blooms for two months85	2.50	15.00
Chrysantha alba. A white variety of the above85	2.50	15.00
Canadensis (Common American Columbine). The native bright red and yellow variety, and one of the brightest85	2.50	15.00
Wayside Pink. A beautiful strain of nothing but clear pink colors. We do not think that they can be surpassed85	2.50	15.00
Mrs. Scott Elliott Hybrids. There is not a better mixture grown in the world than by Mrs. Scott Elliott, who has taken the highest awards at all the European exhibitions. Wonderful colors with very long-spurred flowers. Our stock is from seed from this source, absolutely true strain	1.00	3.00	20.00
Long Spurred Hybrids. Mixture85	2.50	15.00

ARTEMISIA (Sage Brush).

Lactiflora. A tall growing plant of fine foliage and heads of small white flowers in August and September, which fill the garden with fragrance. A splendid and graceful cut flower

	.85	2.50	15.00
--	-----	------	-------

ARMERIA (Sea Pink or Thrift).

Attractive dwarf plants that will succeed in any soil, forming evergreen tufts of bright green foliage, from which innumerable flowers appear in dense heads, on stiff, wiry stems, from 9 to 12 inches high. They flower more or less continuously from early Spring until late in the Fall. Very useful in the rockery and border edgings.

	Three	Doz.	100
Bee's Ruby (New). A wonderful free-blooming variety, bearing great quantities of rosy carmine flowers. 12 to 18 inches high. (Sold out for this season).			
Lauchiana rosea. Bright rose. 3 to 6 inches	\$0.85	\$2.50	\$15.00
Formosa. 6 to 8 inches85	2.50	15.00
Robusta. 8 to 10 inches. June to October. Large, crimson flowers. Very useful for edging and cutting	1.00	3.00	20.00
Maritima (Thrift or Cushion Pink). 3 to 6 inches. May and June. Valuable for edging; flowers fine purple; foliage grasslike, evergreen85	2.50	15.00
Maritima alba. 3 to 6 inches. May and June. Tufts of deep green foliage; white flowers85	2.50	15.00



Aquilegia—Columbine.



Armeria—Sea Thrift.



Arenaria Montana.



Artemisia Lactiflora.



Aster, Elta.



Aster, Novi-Belgi Climax.



Aster, Novi-Angliae.

HARDY ASTERS (Michaelmas Daisies).

The many species, widely distinct from each other in habit and form, are with a few exceptions, all native of North America. It is in Europe, however, that our Asters have been most highly appreciated. Many improvements have been made by European growers, and many hybrid forms have been produced by crossing the different species. For the best results, they require division and replanting every third year.

ASTER (Michaelmas Daisy).

	Three	Doz.	100
Anita Ballard. Double flowers of a clear petunia-violet	\$1.50	\$4.50	\$35.00
Blue Gem. Double flowers of rich blue	1.50	4.50	35.00
Charm. Very double violet-blue flowers	1.50	4.50	35.00
Erica. A beautiful clear pink; large double flowers	1.50	4.50	35.00
Elta (New). Double flowers of pale lilac. Very handsome shade ...	1.50	4.50	35.00
Feltham Blue. A pretty aniline-blue, very free85	2.50	18.00
Glory of Colwall. Good sized, almost double; ageratum-blue flowers85	2.50	18.00
Grey Lady. Exquisite shade of opal, with large, semi-double flowers. Extra fine	1.50	4.50	35.00
Heather Glow. Extra large flowers, freely produced, of a delightful rose-pink shade. 4½ feet. (Sold out for this season).			
Joan Vaughan. Large, semi-double flowers of deepest blue	1.50	4.50	35.00
Lady Lloyd. A very fine, clear rose-pink. Lasts exceedingly well. 3 feet	1.50	4.50	35.00
Mauve Queen. Very large, semi-double flowers of clear mauve. 4 feet	1.50	4.50	35.00
Maid of Colwall. Pure white; the finest of all whites. Long, loose spikes of huge flowers	1.50	4.50	35.00
Maggie Perry. Very large flowers, frequently 2½ inches across, loosely arranged in large trusses, of a pleasing tone of soft mauve. Most distinct and striking novelty.	1.15	3.50	25.00
Mrs. Raynor. The deepest red of all Asters	1.15	3.50	25.00
Nancy Ballard. Deep purplish-mauve flowers, semi-double in form; flower heads are branched, completely covered with masses of bloom	1.50	4.50	35.00
Novae-angliae roseum superbum. This is a new introduction of our own, and is by far the best Aster we have ever seen. Color almost red and a profuse bloomer85	2.50	18.00
Novi-belgi Climax. One of the best and showiest, with large, pyramidal spikes of large, light lavender-blue flowers; very free; 5 feet85	2.50	18.00
Novi-belgi St. Egwin. A pleasing rosy pink; very free blooming; 3 to 4 feet85	2.50	18.00
Perry's White. The finest white Michaelmas Daisy yet introduced; perfect in habit and remarkably free flowering. The stout stems are well branched and covered with flowers 2½ inches across ..	1.00	3.00	20.00
Peggy Ballard. Large, pyramidal sprays of double, rosy mauve flowers. 3 feet	1.50	4.50	35.00
Queen of Colwall (New). One of the finest of late introductions; large stout branching stems, covered with pale mauve blooms. Tall ...	1.50	4.50	35.00
Robinson V. C. A pretty bluish mauve, double flowers borne in long sprays	1.50	4.50	35.00
Robert Parker. Pale heliotrope; 4 feet85	2.50	18.00
Snowdrift. Branching, pyramidal heads of semi-double, snow-white flowers. One of the best. (Sold out).			
Thompsoni. Large, pale blue flowers borne in huge spikes. Very fine. (Sold out for this season).			

NEW JAPANESE HARDY ASTER

Three Doz. 100

Mauve Cushion. Distinct species which has attracted much attention by its unique habit of growth, its floriferousness and lateness in flowering. It forms a circular cushion-like plant 2½ feet across, the center of the plant rarely exceeding 9 inches in height, gradually tapering to 3 to 4 inches at the outside; the flowers, of delicate mauve, with silvery white reflection, measure over 1¼ inches in diameter, and are produced in such lavish profusion as to completely cover the plant; the blooms are at their best in November \$1.00 \$3.00 \$20.00

ASTER AMELLUS.

Elegans. Long, graceful sprays of soft lavender85 2.50 15.00

ASTER ALPINUS (Dwarf Alpine Aster).

Goliath. Indispensable for the rockery or edge of hardy borders; 6 to 10 inches high, and bears large showy, bluish purple flowers in May and June 1.20 3.50 25.00

Alpinus albus. Large, white flowers. .85 2.50 15.00

Sub-coeruleus. Forms a dense tuft of leaves, from which issue many leafless stems 12 inches high bearing in June and July massive bluish violet flowers 3 inches in diameter85 2.50 15.00

Ericoides (Big Bear). Rich violet with orange center 1.20 3.00 20.00

Tataricus. Distinct, large bluish violet; very late; 6 feet85 2.50 15.00

ASTILBE (See Spirea).

AUBRIETIA (Rock Cress or False Wall Cress).

One of the daintiest and most delicately beautiful of all dwarf, creeping plants for carpeting beds or rockeries, forming brilliant sheets of blue, crimson or rose for many weeks. Massed on rockeries or in borders with white Arabis and yellow Alyssum, it forms a charming contrast. A gem for planting in crevices of rocks or wall, forming a cataract of color.

Three Doz. 100
Graeca. Lilac-blue \$0.85 \$2.50 \$18.00
Purpurea. Rich, purplish blue85 2.50 18.00

BAPTISIA (False Indigo).

Australis. Dark blue, pea-shaped flowers in June; suitable for the hardy border or wild garden. Very attractive foliage. 2 feet85 2.50 15.00

BELLIS (Double English Daisy).

Perenne. Mammoth white snowball. .60 1.75 12.00
Perenne. Mammoth pink Longfellow. .60 1.75 12.00

BETONICA (Betony).

Grandiflora. Close tufty foliage with bright rose flowers85 2.50 15.00

BERGAMOT (See Monarda).

BELAMCANDA (See Pardonthus Chinensis).

BLEEDING HEART (See Dicentra).

BOCCONIA (Plume Poppy).

Cordata. A noble hardy perennial, beautiful in foliage and flower, and adapted for planting in the shrubby borders, center of beds, and in bold groups in any position. It will grow in any soil or situation, attaining 6 to 8 feet in height. Flowers creamy white in terminal panicles during July and August85 2.50 15.00

BOLTONIA (False Chamomile).

A showy native hardy perennial plant with large, single, Aster-like flowers; in bloom during the Summer and Autumn months, and with its thousands of flowers open at one time produces a very showy effect.

Three Doz. 100
Latisquama. Pink, slightly tinged with lavender. 4 to 6 feet \$0.85 \$2.50 \$15.00



Aubrietia.



Boltonia Latisquama.



Betonica Grandiflora.



Cerastium tomentosum.



Catananche.



Centaurea dealbata.

BUDDLEIA (Butterfly Bush).

Three Doz. 100

Variabilis magnifica. This is really a shrub, but the top usually freezes back, and new growth starts from the root like other perennials. Plants grow three to four feet and are covered with long racemes of lilac-like flowers in July. The best location is in good, rich, well drained soil in a sunny situation. It attracts the butterflies, and as many as fifty have been counted about a plant in a single afternoon. Each 50c. . . \$1.50 \$5.00 \$45.00

BUPHTHALMUM (Ox-eye Daisy).

Salicifolium. Bears large, rich, golden yellow flowers through the Summer. 2 feet85 2.50 18.00

CALLA.

Elliottiana. A grand rich golden yellow variety of the Arum Lily. (For Spring delivery only) 1.70 5.00 35.00

CALLIRHOE (Poppy Mallow).

Involucrata. An elegant trailing plant, with finely divided foliage and large saucer-shaped flowers of bright rosy crimson, with white centers, which are produced all Summer and Fall85 2.50 18.00

CALAMINTHA (Calamint).

Alpina. A very graceful little rock plant; growing 6 inches high, with rich purple flowers85 2.50 15.00

CARNATIONS (Hardy Border).

Double Scarlet70 2.00 15.00
Double White70 2.00 15.00

Choice Mixed. Seedlings from seed supplied by a specialist. Strong plants that will furnish an abundance of flowers. We strongly recommend this grand strain for cut flowers. They keep up a most wonderful supply from June till frost70 2.00 15.00

CARYOPTERIS (Blue Spirea).

Mastacanthus incana. A handsome hardy perennial; grows about 3 feet high and produces rich lavender-blue flowers in great profusion the whole length of the branches. A valuable plant either for bedding or pot culture, blooming continuously from early in September until cut by frost 1.35 4.00 30.00

CASSIA (Indian Senna).

Marylandica. Handsome pinnate foliage and numerous racemes of showy yellow flowers; an extremely desirable plant of the easiest culture85 2.50 18.00

CATANANCHE (Cupid's Dart).

Caerulea. 2 feet. July and August. Heads of pretty deep blue flowers on long stems. Profuse and excellent cut flower85 2.50 18.00

CENTRANTHUS (See Valeriana).

CENTAUREA (Hardheads or Knapweed).

Makes a fine display in the border; also excellent for cutting. Three Doz 100

Babylonica. Showy yellow flowers, suitable for planting in shrubbery and large borders \$0.85 \$2.50 \$15.00

Dealbata. Large and striking rose-pink flowers. June-July. 2 feet . . .85 2.50 15.00

Macrocephala. Large thistle-like, golden yellow flowers; useful for cutting and showy in borders. July and August. 3½ feet85 2.50 15.00

Montana (Perennial Corn Flower). Grows 2 feet high, bearing large violet-blue flowers from July to September85 2.50 15.00

Montana alba85 2.50 15.00

Ruthenica. Very tall plant with handsome, lemon-yellow flowers. July-September. 5 feet85 2.50 18.00

CALYSTEGIA (See Vines).	Three	Doz.	100
CEPHALARIA (Roundhead).			
<i>Tatarica</i> . 6 feet. July and August. Flat heads of showy cream-white flowers. Suited for rear of borders, where effects are desired ..	\$.100	\$3.00	\$20.00
CERATOSTIGMA (See Plumbago Larpentae).			
CERASTIUM (Snow-in-Summer).			
<i>Tomentosum</i> . A low-growing plant having silvery white foliage and producing an abundance of snow-white flowers. Especially suitable for rock or border purposes85	2.50	15.00
CAMPANULA (Bellflower).			
Indispensable hardy garden flowers, of much variety of form, some being of tall and imposing habit, while others are dwarf, compact little plants, suitable for edging, rockwork, etc. They like a good, rich soil, and last much longer in bloom if planted in a half-shady place. All of the taller growing kinds should be staked to prevent injury from high winds.			
	Three	Doz	100
Alliariaefolia . A grand border plant with tall spikes of long, pendent bells. 3 feet	\$.100	\$3.00	\$20.00
Bononiensis . Small, blue flowers borne profusely on slender stems. June. 2½ feet	1.00	3.00	20.00
Carpatica (Carpathian Harebell). A pretty species growing in compact tufts, not exceeding 8 inches high; flowers clear blue, held erect on wiry stems. It begins blooming in June, continuing until October. As an edging for a hardy border or for the rockery it is unsurpassed85	2.50	15.00
Carpatica alba . A pure white form of the preceding85	2.50	15.00
Elegans . Fine Campanula for borders and rockeries. Height 18 inches. Blooms all Summer85	2.50	15.00
Glomerata . A favorite old-fashioned herbaceous plant producing deep blue flowers in large, close heads. Height 18 inches85	2.50	15.00
Grandis (Great Bellflower). 1½ feet. May and June. Very showy, large, saucer-shaped flowers, rich violet-blue	1.00	3.00	20.00
Grandis alba . A white form of the above	1.00	3.00	20.00
Latifolia macrantha . 3 feet. June and July. Very handsome, enormous drooping bells of fine satiny lilac and deep purplish shades ..	1.00	3.00	20.00
Lactiflora coerulea . Pale blue flowers during July and August. 2½ feet85	2.50	18.00
Persicifolia grandiflora (White). One of the finest Campanulas, with large, handsome white bell-shaped flowers. A great acquisition. Height 2 feet	1.00	3.00	20.00
Persicifolia grandiflora alba flore pleno . Double-flowered form of the above	1.15	3.50	25.00
Persicifolia grandiflora (Blue). An excellent companion to the white variety, the large bright blue flowers making an effective contrast. Height 2 feet	1.00	3.00	20.00
Persicifolia grandiflora coerulea flore pleno . Double-flowered form of the above	1.15	3.50	25.00
Pyramidalis . Mixed colors. An elegant pot plant. Height 4 feet. .85	.85	2.50	15.00
Raddeana . Violet-blue, bell-shaped flowers. A grand dwarf sort. 9 inches	1.00	3.00	20.00
Rotundifolia (Blue Bells of Scotland or Harebells). 1 foot. June to August. In the wild it is more slender and taller than in the garden; clear blue flowers. Especially suited for crevices in the rock garden, or steep slopes, if planted to show pendent habit	1.15	3.50	25.00
Trachelium (Coventry Bells). 2 to 3 feet. July and August. Sturdy, hairy plant, with light purple, somewhat drooping flowers	1.15	3.50	25.00



Campanula Rotundifolia.



Campanula Carpatica.



Campanula, Double Persicifolia.



Campanula Latifolia.



Clematis Davidiana.



Cicicifuga—Snakeroot.



Coreopsis Grandiflora.

CAMPANULA MEDIUM (Canterbury Bells).

These imposing herbaceous hardy biennials are profusely covered with large, bell-shaped flowers; extremely showy in shrubberies and mixed borders. Height 3 feet. Plants potted in October make most beautiful plants for the conservatory and greenhouse in the Spring, coming into flower, without being forced in any way, about two months before those in open ground.

	Three	Doz.	100
Calycanthemum (Cup and Saucer). Large, semi-double flowers, each resembling a cup and saucer.			
Pink. Beautiful variety; charming pink flowers	\$0.50	\$1.50	\$10.00
White. Similar to preceding, but flowers are white50	1.50	10.00
Blue50	1.50	10.00
Medium (Single Canterbury Bells).			
Pink. Beautiful rich shade50	1.50	10.00
Blue. Light flowers50	1.50	10.00
White. Large, white flowers50	1.50	10.00
Medium flore pleno (Double Canterbury Bells).			
Blue50	1.50	10.00
White50	1.50	10.00
Pink. Delicate color, harmonizing well with the blue and white..	.50	1.50	10.00

CHELONE (Shellflower).

Handsome perennials, growing about two feet high, and bearing numerous spikes of large flower heads, Summer and Fall.

	Three	Doz.	100
Glabra alba. Terminal spikes of creamy white flowers	\$0.85	\$2.50	\$15.00
Lyoni. Heads of showy purplish red flowers85	2.50	15.00

CHEIRANTHUS (Siberian Wallflower).

Allioni. A beautiful rock plant. Dazzling fiery orange flowers, on stems about a foot high. Best used as a biennial as it frequently blooms itself to death

CIMICIFUGA (Snakeroot).

Racemosa. Handsome species bearing in July and August spikes of pure white flowers; well suited for planting at the back of border, or for naturalizing at the edge of the woods. 4 to 6 feet

COREOPSIS (Tickseed).

Grandiflora. An improved variety with large, bright yellow flowers; one of the best hardy plants. Fine for cut flowers all Summer long.

CRUCIANELLA (Crosswort).

Stylosa. Early flowering hardy perennial, suitable for rock work; bright purple, ball-shaped flowers. Height 6 inches. Unique ..

CONVALLARIA (Lily-of-the-Valley).

Majalis. This popular and fragrant subject repays for being well treated. Grand for massing near shrubs or along shaded borders.

Native Pips50	1.50	7.00
Native Clumps (in Fall only) ...	1.35	4.00	30.00
Imported Pips (Berlin strain)85	2.50	15.00

CORONILLA (Crown Vetch).

Varia. A strong creeper; good for covering rough banks; showy heads of pink and white, pea-shaped flowers. 1 to 2 feet. June-August

CLEMATIS, DWARF (Shrubby).

Davidiana. A most desirable variety, with fresh, bright green foliage and tubular bell-shaped flowers of deep lavender-blue during August and September; deliciously fragrant; 2½ feet ...

1.35	4.00	30.00	
Integrifolia coerulea. A good border plant, growing from 18 to 24 inches high, producing its small but interesting porcelain-blue flowers from June to August	1.35	4.00	30.00
Recta. Grows from 2 to 3 feet high, and produces fragrant, pure white flowers in very large, showy clusters during June and July	2.35	7.00	50.00

CHRYSANTHEMUMS.

Hardy Chrysanthemums are undoubtedly one of the best of border plants, coming in with a grand display of color and cut flowers when other plants are on the wane. In our estimation one cannot plant too many. From September until frost one can literally gather armfuls from a seemingly inexhaustible supply.

HARDY OLD-FASHIONED VARIETIES
Full Field-Grown Clumps—Not Divisions.

We collected from old gardens some of the old-fashioned Chrysanthemums which are really hardy and which bloom in October and November, after all other outdoor flowers are gone. Often in bloom when the snow is on the ground; are very showy. 3 to 4 feet high. When in bloom are a perfect mass of flowers.

	Three	Doz.	100
Old-Fashioned Hardy Pink	\$0.85	\$2.50	\$18.00
Old-Fashioned Hardy Red85	2.50	18.00
Old-Fashioned Hardy White85	2.50	18.00
Old-Fashioned Hardy Yellow	1.00	3.00	20.00

CHOICE NAMED VARIETIES

The varieties offered below comprise the choicest new hardy outdoor sorts, that need but a light covering to carry them through the Winter. We have chosen the earliest to bloom, so that the full enjoyment of these best-of-all Autumn flowers may be derived by those in northern territories where Winter comes early. Best results are obtained from pot-grown plants. Supplied from 2 1/4-inch pots in Spring only.

EARLY-FLOWERING VARIETIES

(In full bloom from September 15th on).

	Three	Doz.	100
Carmelite (Glory of Seven Oaks). Golden yellow	\$0.85	\$2.50	\$15.00
Provence. Rose-pink, tipped rosy red85	2.50	15.00
Firelight. Scarlet and carmine85	2.50	15.00
Carrie. Rich yellow blooms85	2.50	15.00
Idolph. A pleasing salmon-pink85	2.50	15.00
Mrs. H. Craig. Yellow, overlaid with orange-crimson85	2.50	15.00
Petit Louis. Rose-pink with bronze center85	2.50	15.00
Brune Poitevine. Deep velvety-red.	.85	2.50	15.00
Argenteuillais. Scarlet, tipped yellow85	2.50	15.00
Skibo. Yellow with reddish center.	.85	2.50	15.00

LATE SUMMER AND EARLY AUTUMN VARIETIES

(In full bloom from October 1st onward).

Nellie Blake. Reddish-copper85	2.50	15.00
Tints of Gold. Large, beautiful bronze shade85	2.50	15.00
Zelia. A fine orange-bronze85	2.50	15.00
Cranfordia. Large golden yellow ..	.85	2.50	15.00
Mrs. H. Harrison. Medium sized bluish pink85	2.50	15.00
October Gold. Rich golden bronze.	.85	2.50	15.00
Edna. Creamy white85	2.50	15.00
Adironda. A fine bronze85	2.50	15.00
Oconto. Splendid pure white85	2.50	15.00
Mrs. Phillips. Beautiful single pink.	.85	2.50	15.00
Mahogany. Reddish bronze85	2.50	15.00
Harvest Home. Fine golden yellow.	.85	2.50	15.00

MIDSEASON VARIETIES

(In full bloom from October 15th onward).

Red Button. Reddish bronze button; hardy and free flowering85	2.50	15.00
Firefly. Bright red; very showy85	2.50	15.00
Ruth. Claret-red85	2.50	15.00
Mitzi. Yellow, with reddish center.	.85	2.50	15.00
Mrs. F. H. Bergen. Bright pink85	2.50	15.00
White Doty. Splendid white85	2.50	15.00
Snowdrop. Pure white button; dwarf85	2.50	15.00
Nellie Kleris. Incurved clear pink.	.85	2.50	15.00
Comoleta. Medium sized pure yellow.	.85	2.50	15.00
Rose Travena. Very large deep rose-pink85	2.50	15.00
Capt. E. H. Cook. Dark rose with brownish center85	2.50	15.00
Marie Antoinette. Deep pink85	2.50	15.00
Boston. Beautiful bronzy orange. Tall and branched85	2.50	15.00
Indian. Copperish red85	2.50	15.00
Lucifer. Fine ox-blood-red85	2.50	15.00



Hardy Chrysanthemums.



Pompon Chrysanthemums.



Button Chrysanthemums.



Shasta Daisy, Mrs. C. Lowthian Bell.



Daisy, Gloria of Wayside.



Daisy, Etoile d'Or.

CHRYSANTHEMUM MAXIMUM (Shasta Daisy).

The improved varieties of Marguerite, all allied to the Shasta Daisy that adorns our fields in the Spring, are among the most useful of our garden flowers. Not only have these flowers been greatly improved in size and form, but there are now early and late blooming varieties which give a succession of long-stemmed flowers so valuable for vase decoration during four months of the year. *Gloria of Wayside* is a variety worthy of attention, and *Etoile d'Or* is robust and free-flowering. Mrs. C. Lowthian Bell has enormous flowers with strong stems. The Shasta Daisy has a yellow center with long, white petals, the slender stems springing from the base of the plant, and is most attractive either in the perennial border or as a cut flower. Common kinds like Alaska have been discontinued.

FOR MAY FLOWERING

	Three	Doz	100
Leucanthemum flore pleno (Double White Shasta Daisy). Flowers double pure white of medium size, excellent for cutting; each plant produces from 30 to 50 flowers; perfectly hardy without any protection. Our latest and best addition to the Shasta Daisies	\$0.85	\$2.50	\$15.00
Gloria of Wayside. Abundant flowers and blooms early in May; excellent85	2.50	15.00

FOR JULY FLOWERING, ONWARD

Sutton's Perfection. Beautiful flowers, having long, pure white petals with small, yellow centers. A great favorite. Height 2½ feet	1.20	3.50	25.00
Mrs. C. Lowthian Bell. This magnificent white Marguerite is undoubtedly the largest flowered variety of this class. Flowers frequently measure six inches across, with very broad petals of great substance. Height 2½ to 3 feet..	1.20	3.50	25.00

FOR SUMMER AND LATE FLOWERING

Etoile d'Or. Another of the large-flowered English type, producing the largest and best flowers of any we have	1.20	3.50	25.00
Arcticum (The Arctic Daisy). Among fall-flowering perennials this is a perfect gem. It forms an attractive rosette-like clump of pretty dark green foliage, and in September multitudes of flower stems appear, terminated by pure white flowers 2 to 2½ inches in diameter. These begin to develop during the last week in September, and continue in good condition throughout October, and frequently into November	1.00	3.00	20.00
Uliginosum (syn. Pyrethrum). Giant Daisy. Grows 3 to 4 feet high, covered with large, white, daisy-like flowers from June to September85	2.50	15.00

CYPRIPEDIUM (Lady's Slipper).

Hardy orchids that thrive in a moist peaty soil, in shade or partial shade; flowers are very interesting with their odd shapes and uncommon colors and markings.

	Three	Doz.	100
Acaule (Lady's Slipper; Moccasin Flower). This is often called the Red Lady Slipper, but the flower is rose-purple in color	\$1.00	\$3.00	\$20.00
Pubescens (Large Yellow Lady's Slipper). Very much like Parviflorum, only the flowers are larger. This should be planted in a rich bed in which leaf-mold should be a part, in some moist, yet well drained shady spot	1.20	3.50	25.00
Spectabile (Showy Lady's Slipper). The finest and most showy of all our orchids. It grows about two feet high, bearing along the stalk several rather large, roundish leaves, and on top one or two quite large, rose-purple or nearly white flowers	1.20	3.50	25.00

DAPHNE (See Shrubs, page 50).

Price	4.50	15.00
-------------	------	-------

DELPHINIUM (Larkspur).

English Delphiniums are the most beautiful hardy plants in cultivation, for they have such an immense variety of beauty and increase in size, in beauty, and often in quantity, year after year. Some varieties grow 8 feet high in rich soil. They have immense spikes of most beautiful flowers of every imaginable shade of blue, and their season is long; in fact, they will bloom from Spring till Fall.

The culture of Delphiniums is exceedingly simple. They thrive in almost any position, and may be planted at any time of the year, provided that in Summer the plants are not too forward, and that they be well watered if the weather is dry. The soil may be a rich, friable loam, which suits them finely; but any soil, even hot and sandy, if well watered and manured, will give excellent results. Placed in lines, as a background to a border, or in groups of, say, three plants at intervals, the effect of the Delphinium is exceedingly fine. A succession of flowers may be expected from Spring to early Autumn, especially if the spikes, which have done flowering early, be cut down to the ground; fresh growth will then be produced which will give blossoms. Watering in Summer will increase size of spike and flower. Top-dressing is greatly recommended on certain soils, instead of the bare surface of the ground being left exposed to the sun. Some of the neater dwarf Alpine and other hardy plants may be utilized to plant between and around Delphiniums. Coal ashes strewn over the crowns will protect the plants from slugs through the Winter and Spring. Any garden soil suits the Delphiniums.

Three Doz. 100

Choicest Wayside Garden Un-named Hybrids here offered are the newest, the best and the finest to be secured anywhere. The range of colors varies from the palest shade of blue to the deepest indigo-blue and royal-purple with many intermediary pastel tones of mauve, pink and lavender blendings. Among these new hybrids are flowers of huge size in both single and double forms. This strain has been raised from seed saved from the finest named kinds in creation. Visitors at our nursery proclaim them the best they have ever seen. Those who wish to perfect their already much prized borders cannot afford to overlook these wonderful hybrids . . . \$1.50 \$4.50 \$35.00

Imported Strain (Blackmore and Langdon's). Grown from seed of famous named sorts. Introduced by England's foremost grower of Delphiniums.

1-year-old plants	1.00	3.00	18.00
2-year-old plants	1.20	3.50	25.00

Belladonna. They are our best blue cut flower, are perfectly hardy and established plants produce a number of spikes, giving three crops during the season. They are in demand by every florist for decorating, the light blue Belladonna combining especially well with other flowers. The two- and three-year-old plants of Belladonna can be forced in the greenhouse to great advantage.

1-year. Light sky-blue	.85	2.50	15.00
2-year. Light sky-blue. Select for forcing	1.00	3.00	18.00
3-year. Light sky-blue. Select for forcing	1.20	3.50	25.00

Bellamosa. A dark blue of the type of Belladonna with the color of the old Formosum variety, but not liable to mildew like the latter and of stronger growth.

1-year	.85	2.50	15.00
2-year. Select for forcing	1.00	3.00	18.00
3-year. Select for forcing	1.20	3.50	25.00

Chinense. A very pretty variety, with fine feathery foliage and intense gentian-blue flowers in open panicles

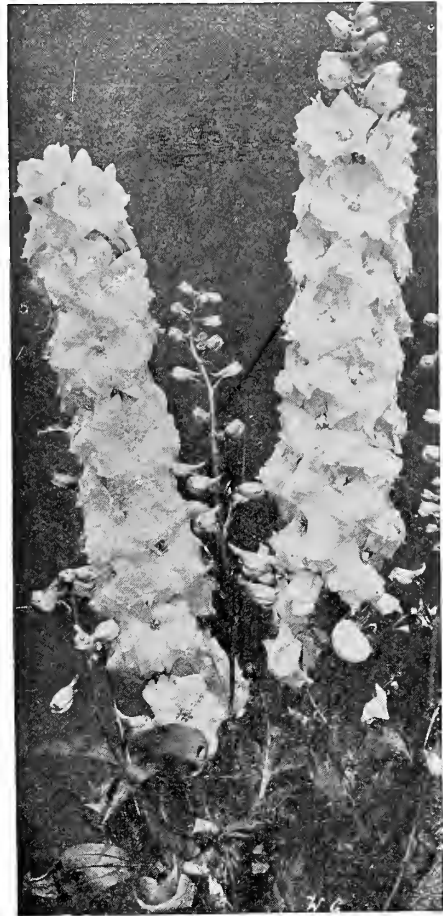
	.85	2.50	15.00
--	-----	------	-------

Chinense album. A pure white form of the above

	.85	2.50	15.00
--	-----	------	-------

Formosum. The old-fashioned dark blue Larkspur

	.85	2.50	15.00
--	-----	------	-------



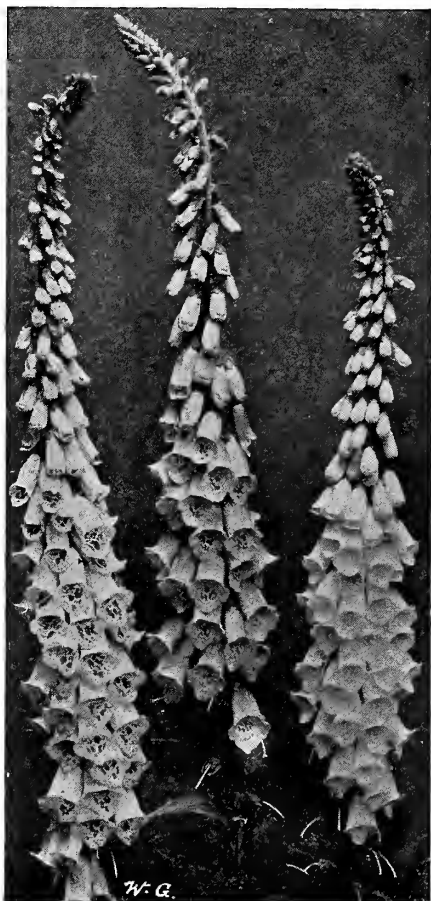
Delphinium, "Wayside Hybrids."



Delphinium Belladonna.



Dielytra—Bleeding Heart.



Digitalis, Shirley Hybrids.

DESMODIUM (Tick Trefoil).

	Three	Doz	100
Penduliflorum. An exceedingly graceful shrublike plant covered with purplish red flowers in Summer time when little else is in bloom. Strikingly beautiful	\$1.70	\$5.00	\$35.00

DICTAMNUS (Gas Plant).

The Dictamnus is one of the most satisfactory hardy plants in cultivation, both on account of splendid flowers and its rich, durable foliage.

	Three	Doz	100
Fraxinella rubra	\$1.35	\$4.00	\$30.00
Fraxinella alba	1.35	4.00	30.00

DIELYTRA OR DICENTRA (Bleeding Heart).

A hardy perennial with heart-shaped, rose-colored flowers in drooping spikes. The base of the flower is furnished with two sheathlike spurs. One of the best border plants; perfectly hardy and easily cultivated. Flowers in April or May. The Bleeding Heart is one of the choicest members of the old-fashioned gardens. They prefer the shaded nooks in the border.

	Three	Doz.	100
Spectabilis (Bleeding Heart or Seal Flower). An old-fashioned favorite; its long racemes of graceful heart-shaped pink flowers are always attractive, it is used largely for forcing, and is perfectly at home in any part of the hardy border, and especially valuable for planting in clumps. Each, 60c.	\$1.70	\$5.00	\$40.00

Eximia (Plumy Bleeding Heart). A dwarf-growing sort, with beautiful finely cut foliage and showy racemes of pretty pink flowers throughout the season. Too much cannot be said for this fine border plant as it is equally at home in full shade or sun and perfectly hardy anywhere. Bailey's "Encyclopedia of American Horticulture" says in description: "The handsomest foliage of any border plant in the entire collection." This variety of Bleeding Heart is the only kind which will replace the Spectabilis which is so hard to get. Will grow in any climate under any conditions.

2-year-old	1.20	3.50	25.00
1-year-old (Strong)85	2.50	15.00

DIGITALIS (Foxglove).

For stately and picturesque beauty it is not to be surpassed, and, planted in masses in the garden among shrubs or naturalized on the edge of woods, in the orchards or along brooks, it is extremely effective and satisfactory. It is a biennial, but, as it renews itself from self-sown seed, it may be treated as a perennial.

	Three	Doz.	100
Giant Shirley Foxgloves. We were able to buy the first seed offered by the originator a year ago and now have a fine lot of field-grown plants of the Giant Shirley Foxgloves. They are a genuine "Shirley" production of extraordinary size and vigor, growing 6 to 7 feet tall. The flower-heads are over 3 feet long, crowded with big, bell-shaped blossoms. Colors range from white and shell-pink to deepest rose, many attractively dotted with crimson or chocolate. Furthermore, they are more apt to be of perennial habit than the old-fashioned Foxgloves	\$1.00	\$3.00	\$20.00

Ambigua or grandiflora. 2 to 3 feet. June and July. A hardy plant, with yellowish flowers, marked with brown. Effective in groups in wild garden	1.00	3.00	20.00
---------------------------------------------------------------------------------------------------------------------------------------------------------	------	------	-------

Gloxiniaeflora. 3 to 4 feet. June and July. A popular variety, ranging in color from rose to deep purple. Robust habit	.85	2.50	15.00
-------------------------------------------------------------------------------------------------------------------------------	-----	------	-------

Gloxiniaeflora alba. 2 feet. June and July. The white-flowered Foxglove	.85	2.50	15.00
--------------------------------------------------------------------------------	-----	------	-------

Lanata. Dwarf variety; flowers are a deep purple	.85	2.50	15.00
---------------------------------------------------------	-----	------	-------

Mixed Colors. Fine new strain	.85	2.50	15.00
--------------------------------------	-----	------	-------

DIANTHUS (Pinks).

HYBRID GARDEN PINKS

Without the spicy fragrance of the Hardy Pinks a garden is incomplete. Their perfect form and rich coloring make them great favorites for Summer bouquets. June.

	Three	Doz.	100
Delicata (Double). Beautiful pink, shaded cream	\$1.20	\$3.50	\$25.00
Elsie . Deep rose-pink, flowers all Summer	1.20	3.50	25.00
White Reserve . Continuous flowering; pure white	1.20	3.50	25.00
Essex Witch . Delicate pink; finely fringed	1.20	3.50	25.00
Her Majesty . Very large; purest white	1.20	3.50	25.00

DIANTHUS ALLWOODI

(New Perpetual-Flowering Hardy Pink).

This is a most important addition to our list of perennial plants. They are perfectly hardy and flower continuously from early Spring until late in Autumn; the flowers are much more substantial and larger than the old type of Hardy Pinks, and are borne on long stems suitable for cutting; deliciously clove scented. All good, thrifty, young plants.

	Three	Doz.	100
Robert . Old rose-pink with maroon center	\$1.35	\$4.00	\$30.00
Jean . Pure white with violet center.	1.35	4.00	30.00
Mixed . Single and double; all colors. Strong, field-grown plants	1.35	4.00	30.00

DIANTHUS PLUMARIUS (Clove Pinks).

Pink purplish and white, fragrant flowers on long spikes. Handsome, glaucous green foliage. For border or rock garden. It will bloom continuously if flowers are cut off when they begin to fade.

	Three	Doz.	100
Semperflorens . Blooms throughout the Summer	\$0.85	\$2.50	\$15.00

DIANTHUS HEDDEWIGI (Japanese Pinks).

Flowers are very large and of the most brilliant colors, varying from pure white to the richest crimson, while many are beautifully laced or striped. For bedding purposes they are of immense value during the entire Summer, and they also furnish elegant flowers for bouquets.

	Three	Doz.	100
Mixed Varieties	\$0.85	\$2.50	\$15.00

VARIOUS VARIETIES

Suitable for dry rockeries, dry walls or any other hot, dry, sunny spot. Almost all Pinks are of the easiest culture and will thrive in any well drained soil and sunny position.

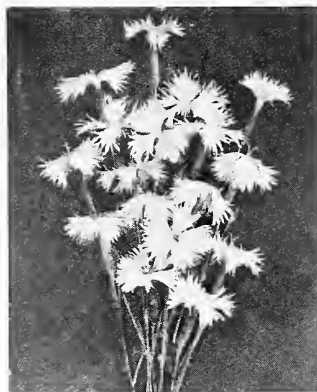
	Three	Doz.	100
Arenarius (Sand-Loving Pink). This Pink delights in a sandy soil and sun. Flowers white with carmine ring, deeply fringed and fragrant. Excellent for dry, hot places. 6 inches	\$0.85	\$2.50	\$15.00
Caesius grandiflorus (Cheddar Pink). It is very compact in growth and makes a cushion of glaucous leaves from which, in May, spring the sweet smelling, rose colored flowers. It varies as much as from four inches to ten inches in height. It is easily grown and very fine for the rock garden. 6 inches	1.00	3.00	20.00
Cruentus . Dense heads of flowers on long stems. Deep red. Fine border plant	1.00	3.00	20.00
Deltoides (Maiden Pink). A beautiful little plant with narrow leaves and bearing a profusion of small, crimson flowers during June and July. Easily grown on rockery ..	.85	2.50	15.00
Deltoides albus . A charming white form of the above variety85	2.50	15.00
Deltoides "Brilliant" . Glowing crimson-red; a most striking rock plant85	2.50	15.00
Speciosus . A free-flowering, lavender-pink variety; flowers are finely cut, giving a lacy effect; wonderfully sweet scented, growing anywhere like all other varieties under this heading; the hotter and dryer the spot the more they are at home85	2.50	15.00



Dianthus Barbatus.



Dianthus Deltoides.



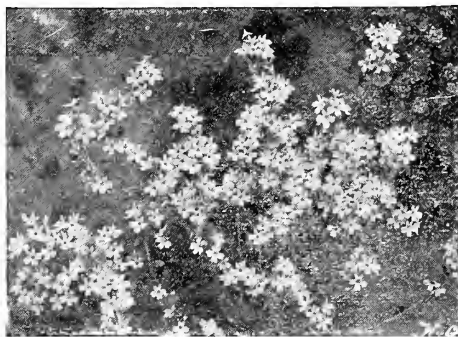
Dianthus Speciosus.



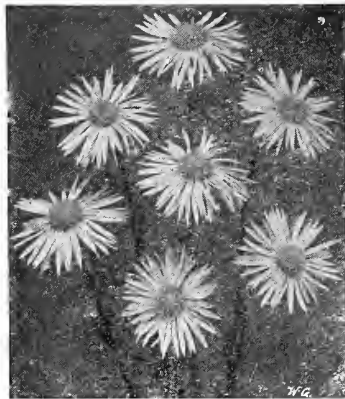
Dianthus Plumarius.



Doronicum.



Erinus Alpinus.



Erigeron.



Eryngium.

DIANTHUS BARBATUS (Sweet William).

The Sweet William is a fine plant which produces great masses of bloom of extremely rich and varied colors. The flowers are lasting and fine for cutting.

	Three	Doz.	100
Newport Pink. Watermelon pink or salmon-rose. 18 inches	\$0 85	\$2 50	\$15.00
Holborn Glory. A very fine auricula-eyed variety; white with a well marked and distinct eye85	2.50	15.00
Scarlet Beauty. Rich deep scarlet, bright green foliage, very fine ..	.85	2.50	15.00
Maroon Beauty. Extra choice strain85	2.50	15.00
White Beauty. Pure white85	2.50	15.00
Latifolius atrococcineus fl. pl. (Everlasting Hybrid Sweet William). Beautiful Summer bedding variety producing masses of brilliant fiery crimson flowers all season..	.85	2.50	15.00
Mixed Colors85	2.50	15.00

DRACOCEPHALUM (Dragonhead).

Very showy border plants when in flower. Hardy. Delight in a cool situation.

	Three	Doz.	100
Ruyschianum japonicum. Flowers white, central lobe of corolla with a blue border and white spots, might be called a blue Physostegia. 2 feet	\$1 00	\$3 00	\$20.00

DORNICUM (Leopardbane).

Caucasicum. Large, bright yellow flowers; one of the most effective early Spring flowering perennials. Effective as a single plant, or in a hardy border. It is a splendid flower for cutting, as it carries well and stands a long time in water. They succeed well everywhere

	1.70	5.00	40.00
Harpur Crewe (Plantaginium excelsum). A much improved form of the preceding, having large, rich golden yellow flowers, of grand decorative value when cut. 3 feet. (For Fall, 1925, delivery)	1.70	5.00	40.00

ECHINACEA (Coneflower).

(See Rudbeckia Purpurea).

ECHINOPS (Globe Thistle).

Ritro. Interesting and showy thistle-like plants with globular heads of deep metallic blue flowers, which can be dried and remain attractive for a long time. 2 to 3 feet..

EDELWEISS (See Leontopodium).

ERIANTHUS (Plume Grass).

(See Grasses).

EPILOBIUM (Willow Herb).

Angustifolium. Crimson flowers; very showy among shrubbery. 3 to 4 feet. June-August

ERIGERON (Fleabane).

A very effective genus of Michaelmas Daisy-like plants usually with pink and purple flowers. They flourish in any garden soil, are indispensable for groups and flower borders, and are excellent for cutting. June to August.

	Three	Doz.	100
Antwerpia. Large, deep blue flowers, 2 inches across	\$1 00	\$3.00	\$20.00
B. Ladhams. Beautiful mauve-pink; fine flowers; an entirely new and pleasing color	1.00	3.00	20.00
Coulteri. Spreading masses of pure white flowers; very effective ..	1.00	3.00	20.00
Fontainebleau. 2 feet. Pale blue with rich golden center; a new and striking color	1.00	3.00	20.00
Mesa Grande. 18 inches. Violet-blue; distinct from all others; fine for cutting	1.00	3.00	20.00
(All the above are for Fall, 1925, delivery).			
Quakeress. Rosy lavender; free bloomer	1.00	3.00	20.00
Speciosus. 2 feet. June and July. Large, handsome blue flowers, violet tinted and yellow centers..	.85	2.50	15.00

ERINUS.

Alpinus. Pretty rosettes of foliage and racemes of rosy purple flowers. A first rate rock plant and also invaluable for establishing on old walls or between steps 4 inches. May-June

ERYSIMUM (Hedge Mustard).

These plants do well in the front row of a border and on dry banks. They like full exposure to sunlight, and in the Spring months are completely covered with bright flowers. Three Doz. 100

Pulchellum (Fairly Wallflower). Dwarf plant with sulphur-yellow flowers. 6 inches\$0.85 \$2.50 \$15.00

ERYNGIUM (Sea Holly).

Finely cut, spiny foliage and thistle-like heads of flowers of a beautiful steel blue. Very decorative in the hardy border, and useful for dry bouquets in Winter. Three Doz. 100

Amethystinum (syn. oliverianum). The true blue Thistle, with amethyst stems and bracts\$1.20 \$3.50 \$25.00

Planum. Deep blue cones85 2.50 15.00

EULALIA (See Grasses).

EUPATORIUM (Hardy Ageratum).

A splendid native plant, growing 6 to 10 inches high; immense heads of purplish pink flowers; fine for naturalizing along streams and ponds, and for planting among shrubbery. Three Doz. 100

Fraseri\$0.85 \$2.50 \$15.00

Coelestinum. Lavender flowers. August to frost85 2.50 15.00

EUPHORBIA (Milkwort).

Corollata (Flowering Spurge). Showy and useful native plant growing about 18 inches high, and bearing from June till August umbels of pure white flowers with a small green eye 1.00 3.00 20.00

Myrsinites. A pretty prostrate species, bluish foliage, with crowded heads of yellow flowers. 1.00 3.00 20.00

FERNS (Hardy Varieties).

The cultivation of Hardy Ferns is remarkably simple. All they want is a light alluvial soil, a little loam and peat or leaf-mould sufficient to keep the soil light and open, plenty of moisture, positions varying from partial to deep shade. The Aspleniums and many others will grow on walls, chinks of rocks, etc. Many will revel in full sunshine in any ordinary border. There is scarcely a garden or even a back yard where Ferns cannot be grown successfully. Anyone commencing with a few specimens will soon be induced to go on collecting until he has made a feature both interesting to himself, and also to all who see them. Three Doz. 100

Adiantum pedatum (Hardy Maiden-hair Fern). Most attractive of our native Ferns; black stems with delicate green fronds\$0.85 \$2.50 \$15.00

Aspidium acrostichoides (Wood Fern). (Polystichum). An evergreen species with deep green, divided fronds. Should be planted in a shady position. 12 inches .. .85 2.50 15.00

Aspidium spinulosum (Dryopteris spinulosa). Spinulosa Woodfern. An evergreen variety that requires rich, well drained soil. 18 to 24 inches85 2.50 15.00

Asplenium filix foemina (Lady Fern). Grows in shade or sun. Large and handsome. 3 feet85 2.50 15.00

Dicksonia punctilobula (Dennstaedtia punctilobula). Hay-Scented or Gossamer Fern. Grows well in either sun or shade. 18 to 24 inches. Very erect with broad fronds, of a soft, woolly texture. .85 2.50 15.00

Onclea sensibilis (Sensitive Fern). Requires wet places either in sun or shade. 12 inches85 2.50 15.00

Struthiopteris germanica (The Ostrich Fern). A very graceful species with finely cut pinnules, growing 2 to 3 feet high85 2.50 15.00

Osmunda Claytoniana (Interrupta). A distinct and very beautiful native species; foliage velvety green, with prominent brown spores in middle of fronds ... Each, 30c..

Cinnamomea (Cinnamon Fern). Erect fronds, drooping at tips, with bright cinnamon colored spores at end of fronds; a very conspicuous variety ... Each, 30c..

Regalis (The Royal Fern). Wonderful in damp, marshy places, where its rich yellowish green foliage and olden stems make very striking subjects. Each, 30c..

Woodsia obtusa. Large rosettes of curious hoary foliage. Fronds one foot in length; very free-growing85 2.50 15.00



Ferns.



Ferns.



Ferns.



Gaillardia, Improved English.



Feverfew—Matricaria.



Geranium Ibericum.



Geum, Lady Stratheden.

FEVERFEW (*Matricaria*).

	Three	Doz.	100
Little Gem. A most useful border plant and valuable Summer cut flower, with large, double, white flowers. June until October. 18 to 24 inches	\$0.85	\$2.50	\$15.00
Golden Ball Dwarf yellow85	2.50	15.00

FOXGLOVE (See *Digitalis*).

FUNKIA (*Plantain Lily*).

The Plantain Lilies are among the easiest plants to manage; their broad, massive foliage makes them attractive subjects for the border even when not in flower. They succeed equally well in sun or shade.

	Three	Doz.	100
Aurea variegata. Golden variegated-leaved	\$1.00	\$3.00	\$20.00
Coerulea. Broad green leaves; blue flowers in June85	2.50	15.00
Glaucia. A very pretty Japanese species, with distinctive bluish foliage	1.70	5.00	40.00
subcordata grandiflora. Very large pure white, lily-shaped, fragrant flowers in August and September. .	1.35	4.00	30.00
Variegata. Variegated foliage; blue flowers. Beautiful edging plant ..	.85	2.50	15.00

GAILLARDIA (*Blanket Flower*).

Improved English Strain. We consider the Gaillardia one of the most desirable hardy plants in cultivation, and our strain of these brilliant flowered plants to be the finest extant. Though such an ornamental addition to the herbaceous border, the perennial Gaillardia is content with extremely simple treatment. Dig the soil deeply and enrich with well-rotted manure. We recommend the Gaillardia for bedding purposes as well as for borders. Everyone will have noticed how grandly Gaillardias have thriven through droughts; they seem hardly to need water. The gay blossoms are obtainable in perpetual profusion from June to November and the greater the drought and scarcity of other flowers the more the utility of the perennial Gaillardia is demonstrated. No more beautiful and brilliant sight can be imagined than a large bed of Gaillardias, with their profusion of highly colored flowers of all shades. Some of the varieties of our improved strain measure fully 5 inches in diameter.

	Three	Doz.	100
Choicest Mixed Colors	\$0.85	\$2.50	\$15.00

GENTIANA (*Blue Gentian*).

Andrews. One of the most fascinating native plants. The flowers, which are tightly closed, are borne at the top of a stem from 6 to 8 inches long, and are an intense deep blue. Blooms best in moist places. July and October..	1.00	3.00	20.00
Thibetica. Very hardy variety; creamy white	1.00	3.00	20.00

GERANIUM (*Crane's Bill*).

Ibericum. Handsome serrated foliage. Large, lilac-blue flowers, blooming all Summer; compact, bushy plants. 18 inches85	2.50	15.00
Sanguineum album. Fine rock plant.	1.00	3.00	20.00

GEUM (*Avens*).

Coccineum Mrs. Bradshaw (<i>Chilense</i>). A splendid new variety, with large, double flowers of a fiery red, blooming nearly all Summer. Peculiarly attractive. 18 inches85	2.50	15.00
Lady Stratheden. A new introduction of great merit. Rich golden yellow blossoms, counterpart of G. Mrs. Bradshaw. Fine for hardy garden	1.00	3.00	20.00

GILLENIA (*Bowman's Root*).

Trifoliata. A strong growing plant; admirable for the border or for use in connection with shrubs, with handsome trifoliate foliage and numerous white flowers tinged with pink. 3 feet85	2.50	15.00
------------------------------------------------------------------------------------------------------------------------------------------------------------------------------------------------------	-----	------	-------

GRASSES (Hardy Ornamental).

The ornamental grasses can be used with telling effect in borders, large beds, or by the margin of ponds and lakes. They are often used with small shrubs and medium sized trees in wide borders. The Eulalias planted singly on lawns where the soil is deep and rich, take care of themselves and grow rapidly into large specimens. In large, round beds, with ornamental grasses as the principal feature, the effect is heightened by the addition of such plants as Cannas or dwarf-flowering plants near the margin.

	Three	Doz.	100
Elymus glaucus (Blue Lime Grass). Handsome grass with narrow glaucous silvery foliage. Well adapted for the border or edge of beds with taller sorts	\$0.85	\$2.50	\$15.00
Erianthus ravennae (Plume Grass or Hardy Pampas). 10 to 12 feet high, frequently throwing up 30 to 50 flower spikes. Closely resembles Pampas Grass	1.20	3.50	25.00
Eulalia gracillima univittata (Japan Rush). Graceful habit, with very narrow foliage; of a bright green color, with a silvery midrib. 6 to 7 feet85	2.50	15.00
Eulalia japonica . Long, narrow, graceful green foliage, and when in flower the attractive plumes are 6 to 7 feet high	1.20	3.50	25.00
Eulalia japonica variegata . Very ornamental; long, narrow leaves, striped green, white, and often pink or yellow	1.00	3.00	20.00
Eulalia japonica zebrina (Zebra Grass). The long blades of this variety are marked with broad, yellow bands across the leaf. It makes a very attractive specimen plant for the lawn. 6 to 10 feet..	1.35	4.00	30.00
Festuca glauca (Blue Fescue Grass). 12 to 15 inches. Ornamental grass. Grown for dense tufts of very narrow bluish leaves. Used for edgings or for contrast with darker foliage. Desirable for rock garden85	2.50	15.00
Fennisetum japonicum (Fountain Grass). A beautiful grass whose flower heads are produced in the greatest profusion. Color rich mahogany, conspicuously tipped with white	1.00	3.00	20.00
Phalaris arundinacea variegata (Variegated Ribbon Grass). Leaves longitudinally striped with white; very ornamental; sometimes run wild about old places. 18 inches.	.85	2.50	15.00

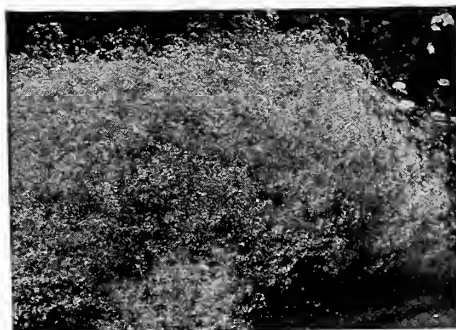
GYPHOPHILA (Baby's Breath).

Very branching or spreading, slender plants, with scant foliage when in bloom. Of easiest culture in open, rather dry places. Desirable where a mass of delicate, misty bloom will fill in a bare place.

	Three	Doz.	100
Paniculata compacta . When in bloom in August and September it forms a symmetrical mass 2 to 3 feet in height and as much through, of minute white flowers having a beautiful gauzelike appearance	\$0.85	\$2.50	\$15.00
Bokejeka (Acutifolia). Rose colored "Baby's Breath." Tall, graceful grower, and a wonderful cut flower85	2.50	15.00
Repens . A beautiful trailing plant for the rockery, with clouds of small, white and pink flowers in July and August85	2.50	15.00
Paniculata flore pleno . A light and graceful cut flower, compatible with all others, no matter of what shape or color; masses of minute double white flowers. (Plants offered are grafted, and we guarantee all plants sold to be double).	1.70	5.00	40.00



Funkia Variegata.



Gypsophila Paniculata.



Pampas Grass.



Funkia Coerulea.



Helienium.



Helianthemum.



Helianthus.



Helianthus Multiflorus fl. pl.

HELIENIUM (Sneezewort).

Tall growing plants closely allied to the Sunflower; bearing in late Summer and Fall great masses of large, daisy-like flowers in shades of yellow and orange.

	Three	Doz.	100
Autumnale superbum. Broad heads of deep golden yellow flowers in late Summer. Grows 5 to 6 feet high	\$1.00	\$3.00	\$20.00
Autumnale rubrum. A splendid new variety; deep ox-blood-red, changing to terra cotta. 5 to 6 feet. September	1.00	3.00	20.00
Bigelovi. Quick growing, branching plants, 2 to 3 feet; quite showy during August with terminal clusters 1½ inches, deep yellow flowers; brown centered	1.00	3.00	20.00
Julisonne. Brilliant golden yellow, with brownish center; new and very distinct	1.50	4.00	35.00
Pumilum magnificum. Large, golden yellow flowers; one of the most floriferous and useful border plants in cultivation	1.50	4.00	35.00
Pumilum aurantiacum (New). Large, bright yellow flowers, possibly better than the preceding	1.50	4.00	35.00
Riverton Beauty. Pure lemon-yellow, with large disc of purplish black	1.00	3.00	20.00
Riverton Gem (New). Old gold, suffused with bright terra cotta, changing to wallflower-red. August to October	1.00	3.00	20.00
Wyndley. A grand, bushy variety, with large, spreading heads of golden yellow flowers, shot and stained with reddish mahogany. 3 feet	1.50	4.00	35.00

HELIANTHUS (Hardy Sunflower).

The perennial Sunflower should always be planted in masses, where they may have plenty of room, against background of shrubbery, or naturalized in wild gardens or woodlands. They produce a grand effect impossible to describe. In combination with hardy Asters, where broad color effects are wanted in late Summer, they have few equals. They are profuse bloomers, producing an unlimited supply of flowers for decoration.

	Three	Doz.	100
Acutifolius. An extremely beautiful October variety, with large flowers of a delightful shade of golden yellow	\$0.85	\$2.50	\$15.00
Miss Mellish. An improved variety of Helianthus lactiflorus; of taller growth and having larger flowers. A decided improvement and most beautiful sort	.85	2.50	15.00
Maximiliani. The latest of all. Golden yellow flowers in graceful sprays in October. Fine for cutting. 6 feet	.85	2.50	15.00
Multiflorus fl. pl. Clear yellow; closely resembling a Dahlia in shape and finish. 4 feet	.85	2.50	15.00
Sparcifolius. The best of the Summer-blooming varieties of hardy Sunflowers. Flowers 3 inches in diameter and freely produced. Plant grows 3 to 4 feet high, and spreads rapidly. Fine for the border, and for planting among shrubs	1.00	3.00	20.00

HELIANTHEMUM (Rock or Sun Rose).

Low-growing evergreen plants, forming broad clumps, and which during their flowering season, July to September, are hidden by a mass of bloom; for the front of the border, the rockery, or a dry, sunny bank.

	Three	Doz.	100
Mutabile. Golden yellow	\$1.00	\$3.00	\$20.00
Pink Shades	1.00	3.00	20.00
Red Shades	1.00	3.00	20.00
Appeninum	1.00	3.00	20.00
Choice Mixed Varieties	.85	2.50	18.00

HEPATICA (Liver Leaf).

Coerulea. A pretty native, Spring-flowering plant, with blue flowers; prefers shade, but will do fairly well in an open situation in moist, rich loam. We offer large, established clumps, each consisting of about 6 large crowns	.85	2.50	15.00
-------------------------------------------------------------------------------------------------------------------------------------------------------------------------------------------------------------------------------------------	-----	------	-------

HELIOPSIS (Hardy Zinnia).

Similar in general habit to Helianthus, but commencing to flower earlier in the season. July and August. Of dwarf habit, rarely exceeding 3 feet in height. Very valuable for cutting.

	Three	Doz.	100
Pitcheriana. A desirable variety. The flowers are of a beautiful deep golden yellow, about two inches in diameter, very thick texture and a useful cut flower..	\$0.85	\$2.50	\$15.00
Scabra excelsa. A new variety with very rich chrome yellow flowers, turning to a bright yellow as they mature. These are almost double, having from 4 to 5 rows of petals, and are produced very profusely. The plant is about 3 feet high, and from mid-July to the end of September makes an effective display	1.20	3.50	20.60

HEMEROCALLIS (Yellow Day Lily).

Hemerocallis have long been favorites in our garden, and are always included in any list of the most popular hardy plants. All of the varieties of Hemerocallis are desirable and beautiful. The tall, graceful, grasslike foliage is very handsome and sets off the charming lily-like flowers very effectively. They look particularly well naturalized along streams or on moist banks, and will thrive most luxuriantly in shade.

	Three	Doz.	100
Flava (Lemon Lily). Sweet scented, clear, full yellow; 2½ feet. Flowers in June	\$0.85	\$2.50	\$15.00
Fulva (Brown Day Lily). Coppery orange, shaded crimson. 3 feet. July85	2.50	15.00
Dr. Regel. Handsome, rich orange-yellow flowers in May. Very fragrant. Fine for cutting. 1½ feet. .85	.85	2.50	15.00
Thunbergi. Much like Flava, but flowers in July, a month later, and 6 to 10 inches of the upper portion of the flower scapes are thickened and flattened85	2.50	15.00
Florham. A strong grower, 3 to 3½ feet high, large, trumpet-shaped flowers; rich, golden yellow, with Indian yellow markings. June and July	1.00	3.00	20.00
Kwanso. Large, double-flowered variety, with rich, golden bronze flowers	1.00	3.00	20.00
Middendorfi major. A very striking variety, with huge rich, orange-yellow flowers85	2.50	15.00

HESPERIS (Sweet Rocket).

Matronalis. 2 to 3 feet. June and July. Fragrant purple flowers in showy spikes. Desirable for wild garden, shrubby or mixed border. .85

HEUCHERA (Coralbells).

Beautiful plants for front row of borders, with slender, fairy-like spikes of richly colored flowers; most striking in the garden and light and graceful for cutting.

	Three	Doz.	100
Americana. 1½ to 2 feet. July. A native plant with greenish yellow flowers; foliage mottled. Rock garden or edging of border	\$0.85	\$2.50	\$18.00
Erizoides. We have thoroughly tested this new Heuchera and find it one of the most desirable hardy plants introduced in many years. It has the same foliage and habit as Heuchera sanguinea, but the color is not so brilliant, though five or six times as many flowers are produced. Blooms in May ...	1.20	3.50	25.00
Sanguinea. 12 to 18 inches. June to September. Flowers bright crimson; very free-flowering. Nice for cutting. Excellent for rock garden. 1.20	1.20	3.50	25.00
Sanguinea Mixed Hybrids. All shades of red and coral	1.00	3.00	20.00



Hemerocallis Thunbergi.



Heliopsis.



Heuchera Hybrids.



Hepatica Coerulea.



Double Hollyhock.



Hibiscus, Crimson-Eye.



Hyacinthus Candicans.

HOLLYHOCKS (Althea Rosea).

The Hollyhock is an old garden favorite, full of sentiment and association with a distant past. It is a plant of strong, vigorous growth and noble aspect, with elegant camellia-like flowers that form perfect rosettes of the most lovely shades of color. They require a deep, rich soil and a sunny corner, but will repay by their gorgeous and lavish bloom all the attention bestowed upon them. Painters choose Hollyhocks as subjects for floral paintings oftener than any other flower. We suppose the reason for this is that artists have a keener appreciation of beauty than other people, and recognize that the common single Hollyhock is one of the most stately, picturesque and beautiful plants in the world. Nothing can be more effective than a large group of single Hollyhocks, and once planted they will literally take care of themselves even if planted in the grass. We know of patches that have not been cultivated or disturbed in any way for twenty years. Some people think double Hollyhocks are more beautiful than single. They are mistaken, although the doubles are beautiful, but inclined to be topheavy. Hollyhocks planted in the Fall will bloom the following Summer.

	Three	Doz.	100
Double. Separate colors, red, maroon, white, yellow, pink, Newport pink, white with purple base, bright rose, dark purple, apple blossom, pale lilac	\$0.85	\$2.50	\$15.00
New Allegheny. Immense semi-double flowers, with fringed edges.	.85	2.50	15.00
Single. Red, white, pink and mixed. (Our Hollyhocks are free from disease and rust. Clean, strong, one-year-old stock; two-year-old plants are never sent out, as they are not satisfactory)85	2.50	15.00

HIBISCUS (Mallow).

Mallow Marvels. A robust type of upright habit, producing an abundance of flowers of enormous size in all the richest shades of crimson, pink and white.

	Three	Doz.	100
Mixed Colors. 2 year	\$0.85	\$2.50	\$15.00

Moscheutos (Swamp Rosemallow). Flowers 6 inches in diameter. Red or pink. 2 year

.85	2.50	15.00
-----	------	-------

Moscheutos "Crimson Eye." Flowers of immense size; of the purest white, with a large spot of deep velvety crimson in the center ...

.85	2.50	15.00
-----	------	-------

New Giant-Flowering Marshmallow. A wonderfully improved form of our greatly admired native Marshmallow or Rosemallow, in which not only the colors have been greatly intensified, but in which flowers of enormous size, frequently 10 to 12 inches in diameter, have been developed. Equally at home in all positions, having the same vigor in dry and wet ground; perfectly hardy and are very floriferous, blooming from early in July until late in September. They are the most beautiful and hardy of all herbaceous plants, their dignified spikes of huge blossoms make them indispensable for large groups and mixed borders. We offer three distinct colors.

Red, Pink or White. Strong three-year-old	1.20	3.50	20.00
Red, Pink and White. Strong two-year-old85	2.50	18.00

HIERACIUM (Hawkweed).

Aurantiacum. 6 to 12 inches. June to October. Small clusters of dandelion-like flowers; orange color, on leafless stems; foliage shaggy in tufts near ground

.85	2.50	15.00
-----	------	-------

HYACINTHUS CANDICANS.

Twenty to thirty white, pendent, bell-shaped flowers on stalks 3 to 4 feet high. Blooms early and till late Fall. One of the best of all hardy bulbs for the herbaceous border

.50	1.50	10.00
-----	------	-------

HYPERICUM (St. John's Wort).

	Three	Doz.	100
Moserianum. A most desirable border plant, of free and graceful habit, producing long, slender, much branched stems, leafy to the base and all drooping towards the ends, apparently from the weight of the flowers and buds, although the flowers face so none of their beauty is lost. It is marvelously free flowering, of large size, measuring from 2 to 2½ inches in diameter; in color a rich golden yellow, rendered still more effective by the numerous yellow stamens and crimson anthers, and blooms continuously the entire season. 2 feet	\$1.35	\$4.00	\$30.00
Henryi. The same as Moserianum, though slightly more upright in growth and much hardier and better suited for cold climates ..	1.50	4.50	35.00

IBERIS (Hardy Candytuft).

Most desirable dwarf plants, 8 to 10 inches, with evergreen foliage, which is completely hidden with dense heads of flowers early in the Spring.

	Three	Doz.	100
Sempervirens. Very dwarf and covered with a sheet of white, a particularly fine rock plant.			
1-year-old plants	\$0.85	\$2.50	\$15.00
2-year-old clumps	1.20	3.50	25.00
Little Gem. Dwarf, pure white flowers in June. Glaucous blue foliage. Splendid rock or edging plant; perfectly hardy. 6 inches.	1.30	4.00	30.00

INULA (Fleabane).

Golden Beauty. Free-flowering border plants with yellow flowers ..	.85	2.50	15.00
---------------------------------------------------------------------------	-----	------	-------

INCARVILLEA (Hardy Gloxinia).

Large, rich rose, Begonia-like flowers with deep yellow throats, produced all through the Summer. A hardy perennial which succeeds well in borders and is equally valuable for greenhouse decoration. Height 18 inches.

	Three	Doz.	100
Delavayi. Rose-pink flowers produced in large trusses	\$1.00	\$3.00	\$20.00

IRISES (Species).

Some very interesting sorts are here listed and described; many of them splendid for naturalizing and large, permanent plantings.

	Three	Doz.	100
Cristata (Evansia). A dainty native creeping species, only 3 inches in height; flowers rich amethyst-blue; a gem for the rock garden. May	\$0.85	\$2.75	\$18.00
Tectorum (Evansia). (Syn., Tomioloepha). A rare and beautiful species from China and Japan, with delicately crested flowers of the most beautiful blue. This is the "Roof Iris" of Japan, where it is grown on the thatched roofs of the cottages. This Iris has proved hardy with us, but as the foliage is evergreen, it is benefited and will bloom more profusely if protected with a slight covering of straw. One foot. June	1.00	3.00	20.00

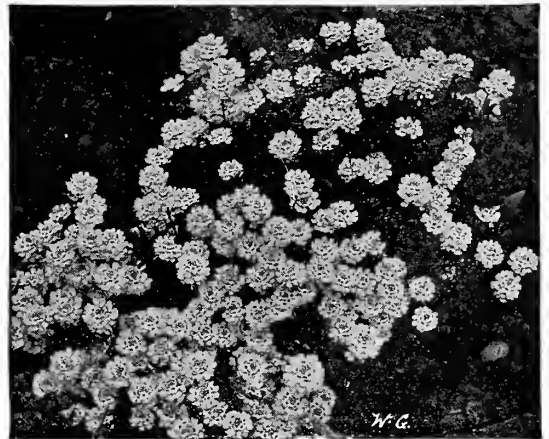
IRIS PUMILA.

These beautiful little Irises do not grow over 4 inches high, and bloom in April and May. They are fine for bordering flower beds or planting in front of the tall Irises.

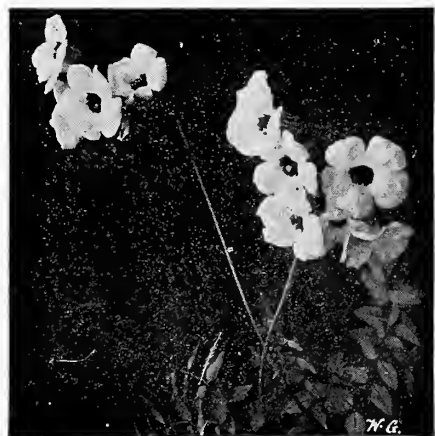
	Three	Doz.	100
Coerulea. Dark violet-blue	\$0.85	\$2.75	\$18.00
Excelsa. A splendid pale lemon-yellow85	2.75	18.00
Schneecuppe. A large, showy, pure white85	2.75	18.00



Hypericum Moserianum.



Iberis—Sempervirens.



Incarvillea.



Iris Kaempferi—Japanese Iris.



Iris Pumila, Varieties.



Siberian Irises.

IRIS KAEMPFERI (Japanese Iris).

The magnificent Iris Kaempferi belong to the Apogons, and a field of them in bloom is a most gorgeous sight. Seeing them for the first time, one cannot withhold an exclamation of surprise, and having once seen can never forget their striking beauty.

Culture. The secret of success is to keep the ground well stirred, never allowing it to bake or become hard. Any good mellow clay loam will grow Japanese Irises to perfection, if well enriched. They like plenty of moisture during the growing season, but flooding with water is not a necessity, as many suppose. Water standing over the plants for a great length of time in Winter is fatal to them.

Time to Plant. Latter part of August to the beginning of October is the best time. Late plantings should be protected by a light covering of straw or leaves after the ground is permanently frozen, to prevent roots from being heaved out of ground by frost. In northern sections late planting had best be deferred until Spring.

	Three	Doz.	100
Azure. Double. Immense flower, exquisitely wavy; mauve-blue with darker halo surrounding the yellow blotch at base of petals	\$1.35	\$4.00	\$30.00
Dominator. Single. Rich indigo-blue with narrow white stripes and light center. One of the finest and richest colors	1.35	4.00	30.00
Gold Bound. A fine double, pure white, enriched by a creamy glow from the gold banded center.	1.35	4.00	30.00
Indo. Single. Broad, wavy petals of great size, color dark rich blue, only slightly veined. The yellow central blotch is unusually bright.	1.35	4.00	30.00
La Favorite. Large, fine, white, freely veined blue, and a rich purple center	1.35	4.00	30.00
Mount Hood. Double. Light blue shaded darker, bright orange center	1.35	4.00	30.00
Ondine. Single. White; flowers are of immense size; very free flowering	1.35	4.00	30.00
Purple and Gold. Enormous double flowers ten inches across; early and free blooming. Color rich violet-purple with white petaloids, tipped violet. The conspicuous golden throat extends outward in sharp bluish white rays.	1.35	4.00	30.00
Pyramid. Double. Violet-purple veined white in center of each petal	1.35	4.00	30.00
Shadow. Single. Self color, reddish purple	1.35	4.00	30.00
Mixed Colors. Both single and double varieties. Splendid mixture	1.00	3.00	20.00

IRIS SIBIRICA (Siberian Iris).

Vigorous, free-flowering varieties of the easiest culture, fine for the flower border, for naturalizing and for water-side planting.

	Three	Doz.	100
Snow Queen. An exquisite new, hardy Iris; the flowers are of a snowy whiteness, large and well formed, produced in great abundance; foliage light and graceful. A gem for flower border or water-side. 3 feet high	\$1.00	\$3.00	\$20.00
Superba. Large, violet-blue flowers; handsome foliage. Fine border plant and a grand subject for planting near water, where it blooms profusely	.85	2.50	15.00

IRIS GERMANICA (German or Flag Iris).

The Iris is one of the finest, if not the finest, of our hardy plants. Not particular as to soil or location, but asking only that the sun shine on it. It throws up spikes of bloom that are marvelous in their delicacy of structure and the colorings which are exquisitely dainty are wonderful in their blendings and variety.

They are very effective planted in groups and if used for borders are particularly desirable in that the foliage remains fresh and upright after the blossom stalks are removed.

Plant in late August or early September preferably. Spring will do also.

The roots offered in this list are from plants transplanted a year ago and are of a size large enough to bloom next Spring. The collection is up to date and consists of the best and newest standard varieties.

Twenty-five roots at 100 rate, 250 roots of a kind at 1000 rate. We guarantee the usual Wayside Gardens quality. The letter "S" refers to the standards or upright petals, "F" the falls or drooping petals.

Choice New Introductions

Cecil Minturn (New). Soft cattleya-rose. A beautiful flower with broad petals, gracefully waved and crinkled; one of the finest Irises for size and extreme beauty ... Each, \$2.00

Lent. A. Williamson. Rated in 1922 by the American Iris Society as the finest Iris in the world. S. Campanula blue-violet; F. rich royal purple with yellow beard. Very tall and distinct Each, \$1.50

Lord of June. S. lavender-blue; F. rich violet-purple. A magnificent variety of gigantic size Each, \$1.25

Mme. Chobant (Denis, 1916). 36 inches. A clover-scented Plicata type. Prussian-red with light brownish veins, on a pale chalcodony ground. One of the most beautiful of all Iris Each, \$1.50

Queen Caterina (Sturt). A mid-season variety of a beautiful clear orchid-purple veined with brilliant gold; the whole being further enhanced with a bright orange beard Each, \$2.00

Skeldinah (Sturt). A delightful shade of pale yellow shading to amber in the throat, with a lemon colored beard. This is a true yellow Pallida, and the first of the type. A most uncommon and very handsome variety Each, \$1.50

General List of German Iris

Varieties marked with (*) have distinctive points of real merit, and are in our opinion the best of the moderate priced varieties.

	Three	Doz.	100
Alcazar (Vilmorin, 1910). Certificate, N. H. F., 1909; F. C. C. R. H. S., 1916. S. light bluish violet; F. deep purple with bronze-veined throat. Striking flower \$1.20 \$3.50 \$25.00			
*Archeveque (Vilmorin, 1911). Certificate R. H. S., 1916. S deep purple-violet; F. deep velvety violet. 24 inches 1.35 4.00 30.00			
Brooksiana. Charming flowers of neat form, self colored delicate rose-lilac, without veining. Beautiful in masses85 2.50 15.00			
Candelabre 1.00 3.00 20.00			
*Caterina (Foster, 1909). A. M., R. H. S., 1916. Lavender-blue and lilac of same coloring as Pallida Dalmatica, but taller, with more graceful stem. A beautiful flower, but a poor grower in cold sections. 48 inches 1.35 4.00 30.00			
Caprice (Vilmorin, 1904). Certificate, N. H. F., 1916. S. rosy red; F. deeper rosy red. Large and handsome. 24 inches 1.00 3.00 20.00			



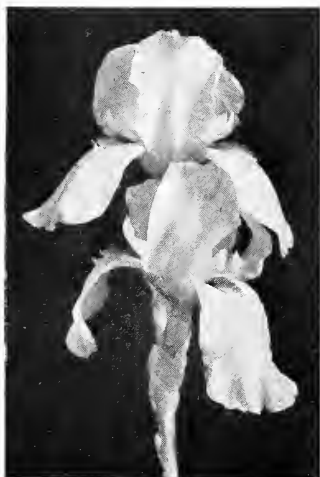
German Iris, Lord of June.



Iris Tectorum.



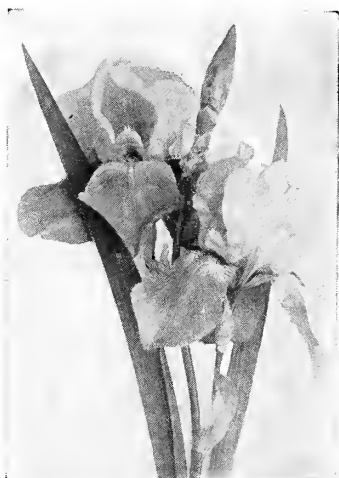
Iris Cristata.



Iris, Helga.



Iris Monsignor.



Iris, Oriflamme.

IRIS GERMANICA—Continued.

	Three	Doz.	100
*Cherubin. This may be described as a pale edition of Her Majesty. The standards are very pale lilac, the falls are pale lilac thinly veined with purple	\$1.15	\$3.50	\$25.00
Fairy (Kennicott, 1905). White, delicately bordered and suffused pale blue. The tallest standard variety giving a white effect. Not new but not known or appreciated as it should be. 40 inches85	2.50	15.00
Helga. Lemon-yellow with pearl shading. Huge flower85	2.50	15.00
Ingeborg (Goos & Koenemann, 1908). A. M., R. H. S., 1916. The only pure white intermediate in general cultivation. Strong grower and free bloomer	1.00	3.00	20.00
*Isoline. Round standards of pale pinkish buff, strongly flushed mauve; the sharply reflexed falls are Chinese violet with russet tints at the sides; bewildering shades but most attractive	1.35	4.00	30.00
Juniata. A stately plant with gracefully carried mauve to manganese violet blossoms	1.00	3.00	20.00
*Jeanne d'Arc (Verdier, 1907). S. very large and ruffled, somewhat spreading, white, delicately penciled lilac; F. white edged lilac at base. The standards being somewhat loosely held, flutter in the breeze in a truly delightful manner	1.00	3.00	20.00
*King of Iris (Goos & Koenemann, 1907). A. M., R. H. S., 1916. S. clear lemon-yellow; F. rich maroon, bordered yellow. Brilliant colors. Large flowers. Very fine. 24 inches	1.20	3.50	25.00
Lorely. Light yellow, blue falls bordered cream	1.00	3.00	20.00
*Leonidas. Standards clear mauve; falls rosy mauve. Big, of fine form, handsome	1.20	3.50	25.00
*Loute (Vilmorin, 1904). S. light mauve with bronze sheen; F. soft red-violet, very large flower	1.35	4.00	30.00
Madame Chereau. White, elegantly frilled with a wide border of clear blue85	2.50	18.00
Mandraliscae. Rich lavender-purple, tall, large and handsome; very early70	2.00	15.00
Mithras. Yellow, falls wine-red, bordered yellow85	2.50	15.00
Monsignor. It possesses a distinctive and pleasing shape, rich coloring and a dark outline to the segments for emphasis. Standards violet; falls heavily veined purple, leaving a border of the violet; late to flower	1.00	3.00	20.00
Mrs. Alan Gray. A delicate lavender-pink that appears pinker in the shadow, a variety of rather early bloom85	2.50	15.00
Midnight. A rich deep purple, the finest in this color; a fine cut flower85	2.50	15.00
Nibelungen (Goos & Koenemann, 1910). S. fawn and yellow; F. violet-purple on bronze. Very large flowers; strong, vigorous grower85	2.50	15.00
*Nuée d'Orange (Verdier, 1905). (Syn., Storm Cloud). Cert., N. H. F., 1905. S. slaty gray; F. bronze and purple. Large flowers. 24 inches ..	1.00	3.00	20.00
*Oriflamme (Vilmorin, 1904). Cert., N. H. F., 1905; A. M., R. H. S., 1916. S. light blue; F. rich violet-purple. Immense, handsome flowers of Ames form. 30 inches ..	1.20	3.50	25.00
*Pallida Dalmatica (True). A. M., R. H. S., 1916. S. lavender; F. clear, deep lavender. A variety of this name is mentioned in Gerard's Herbal in 1597, and it has been grown in this country more than one hundred years and is often seen in old gardens, but the true variety is still scarce. Unsurpassed in its class. 40 inches.	1.00	3.00	20.00

ORDER SHEET

The Wayside Gardens Company

Stop 67

Mentor, Ohio

Ship to (Name) _____ Date _____ 192__

Street or R. F. D. No. } _____ Ship by _____
(State whether by Freight, Express or Mail.)

Town or City } _____ Money Order Enclosed for \$ _____

County _____ State _____ Cheque Enclosed for \$ _____

Charge to _____ Address _____

May we substitute an equally good variety if any of the kinds ordered are sold out _____ No _____ Yes _____

Do not write in this column	Quantity	NAME	Price per Dozon	Price per 100	Total Price

25 plants of a kind sold at 100 rate; 6 plants of a kind at ten rate. Not less than 3 plants of a kind sold except where noted.

IRIS GERMANICA—Continued.

	Three	Doz.	100
Parisiana (Vilmorin, 1911). S. white ground, dotted and shaded lilac-purple; F. white, frilled at the edge with lilac. Large flowers. 30 inches	\$0.85	\$2.50	\$15.00
*Prosper Laugier (Verdier, 1914). Cert., N. H. F. 1905; A. M. R. H. S., 1916. S. light bronze-red; F. velvety ruby-purple, with white beard yellow tipped. Very handsome. Vigorous growth. 36 in. ...	1.20	3.50	25.00
Perfection (Barr, about 1880). H. C., R. H. S., 1916. S. light blue; F. dark, velvety violet-black with orange beard. Handsome flower that attracts much attention in mass. 38 inches85	2.50	15.00
Princess Victoria Louise (Goos & Koenemann, 1910). S. sulphur-yellow; F. rich plum, bordered cream. 30 inches85	2.50	15.00
Rhein Nixe (Goos & Koenemann, 1910). A. M. R. H. S., 1916. S. white; F. violet-blue with white edge. Tall and large. Very fine. Strong grower. 30 inches85	2.50	15.00
Tamerlan (Vilmorin, 1904). S. broadly rounded and somewhat waved, lavender-violet. Very large flowers	1.20	3.50	25.00
Thorbeck . S. bluish white; F. deep velvety purple; a very striking and rich contrast	1.00	3.00	20.00
Walhalla (Goos & Koenemann, 1908). S. and F. blue and purple. Strong grower and free bloomer85	2.50	15.00
Windham . S. soft lavender-pink; F. heavily veined with a darker shade; very large flower85	2.50	15.00

LATHYRUS (Everlasting Sweet Pea).

Latifolius. These Everlasting Peas are but little known in this country, but are great favorites in England. They are extremely showy and fine. Charming climbers for covering trellises, arbors, etc.

	Three	Doz.	100
White Pearl. A great improvement on the older white variety, the stems giving from 12 to 15 flowers each85	2.50	15.00
Pink Beauty. Large racemes of pleasing deep rose flowers85	2.50	15.00
Red. The well known red Everlasting Pea85	2.50	15.00

LAVANDULA (Lavender).

Vera. This is the true Sweet Lavender; grows about 18 inches high; delightfully fragrant blue flowers in July and August
 1.00 | 3.00 | 20.00 |

Nana. Is a very fine new dwarf English introduction. Good for edging and planting between roses. 1.20
 3.50 | 25.00 |

LEONTOPODIUM (Edelweiss).

Alpinum. A well known Alpine with pretty white leaves and small yellow flowers which are surrounded by starlike heads of leaves, clothed with a dense white, woolly substance. A splendid plant for the rock garden. 4 to 5 inches. June to August
 1.20 | 3.50 | 25.00 |

LIATRIS (Blazing Star or Gay Feather).

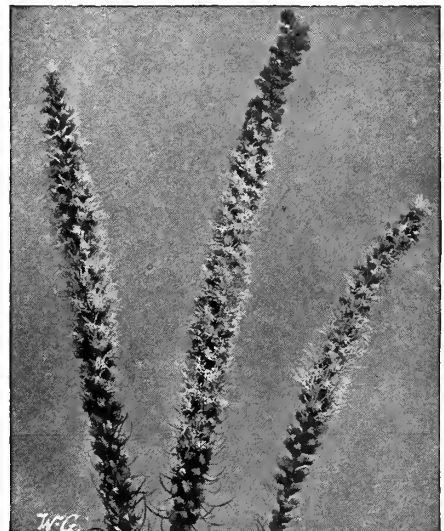
Pycnostachya. The popular name of this plant is Kansas Gay Feather. Nothing can be planted that will attract more attention on account of its unusual appearance; but it is beautiful as well as odd. It blooms in midsummer and throws up long, narrow spikes of rich purple flowers, which last a long time. A peculiarity of this plant is its great attraction for butterflies
 1.00 | 3.00 | 20.00 |



Leontopodium—Edelweiss.



Lathyrus Latifolius.



Liatris—Blazing Star.



Lysimachia Clethroides.



Linum Perenne.



Lychnis Chalcedonica.



Lychnis Haageana.

LILY-OF-THE-VALLEY (See Convallaria).

LINARIA (Toad Flax).	Three	Doz.	100
Dalmatica. Fine for borders or perennial garden. Glaucous blue foliage and spikes of golden yellow blossoms; miniature Snapdragon. Loves a sunny spot in well drained soil			
	\$0.85	\$2.50	\$15.00

LINUM (Flax).

A desirable plant for the border or rockery, growing 2 feet high, with light, graceful foliage and large flowers all Summer.

	Three	Doz.	100
Flavum. Fine variety with transparent, yellow blossoms	\$0.85	\$2.50	\$15.00
Narbonnese. Forms a spreading clump of attractive foliage with a profusion of azure-blue flowers with white eye. Very handsome for the rockery	1.00	3.00	20.00
Perenne. Very attractive, both in foliage and bloom. Flowers beautiful pale blue on slender, graceful stems	.85	2.50	15.00
Perenne. White	.85	2.50	15.00

LOBELIA (Indian Paintbrush).

Handsome border plants, thriving in any ordinary garden soil, but preferring a moist, deep loam. Season August till late September.

	Three	Doz.	100
Cardinalis (Cardinal Flower). Rich, fiery cardinal flowers. Strong plants, often producing ten to eighteen spikes. 24 to 30 inches long	\$0.85	\$2.75	\$18.00

LYCHNIS (Campion).

A fine old-fashioned flower, bearing large heads of brilliantly colored flowers, that live up the border during Summer and early Autumn.

	Three	Doz.	100
Alpina. Dwarf, rose-pink	\$1.00	\$3.00	\$20.00
Chalcedonica. Heads of vivid scarlet flowers, blooming a long time. One of the brightest plants in the hardy border. 3 feet	.85	2.50	15.00
Viscaria splendens. Brilliant red.	.85	2.50	15.00
Haageana. 1 foot. June to August. Very showy; producing orange-red, scarlet or crimson flowers nearly 2 inches across	1.00	3.00	20.00
Viscaria flore pleno. A fine double variety; fine for cutting	1.00	3.00	20.00

LYCORIS (Golden Spider Lily).

Squamigera (Amaryllis Halli). The attractive green foliage appears in early Spring, ripens and dies down in July. Shortly after, the flower stems bearing delicate lilac-pink flowers make their appearance. 2 feet. July	1.35	4.00	30.00
----------------------------------------------------------------------------------------------------------------------------------------------------------------------------------------------------------------------------------	------	------	-------

LYTHRUM (Purple Loosestrife).

Superbum roseum. Very showy; splendid for banks of streams and ponds	.85	2.50	18.00
-----------------------------------------------------------------------------	-----	------	-------

LYSIMACHIA (Loosestrife).

Clethroides. Long, recurved spikes of pure white flowers, from July to September. A desirable variety. 2 feet	1.00	3.00	20.00
Nummularia (Creeping Jenny or Moneywort). Valuable for planting under trees or shrubs where grass will not grow	.85	2.50	15.00
Fortunei. A neat variety, growing about 18 inches high, with dense, upright spikes of white flowers in August	1.00	3.00	20.00

LILIES (Hardy Garden Varieties).

Noble and beautiful flowers which are too frequently strangers in American gardens. It is always with a touch of sadness that we note the infrequency of Lilies in American gardens. No flower, it seems to us, is at once so noble and so beautiful. Nor is there lack of variety. Furthermore, the Lily is singularly valuable for its charming effect on the skyline of the garden when in bloom.

There is a notion that Lilies are "hard to grow." Some of the rarer species are, it is true; they not only stubbornly refuse to make themselves at home in the garden, unless conditions are precisely to their liking, but some of them cannot endure the northern Winter without the necessary covering of litter, which many other tender plants require. Unless one goes in for Lilies to the extent of making a hobby of them, however, these can all be left to the collector and there will be quite enough species remaining to give one a Lily season in the three months' duration of which loveliness follows loveliness with breaks of only relatively brief length. We say species for the reason that the Lilies in cultivation show an exceptionally low percentage of horticultural varieties. Possibly because Nature made every species perfect to begin with, the hand of the hybridizer has been loath to endeavor to "paint the Lily," as it were.

The varieties which we offer in these three pages are such as have, with us, withstood the Summer's drought and the severest of Winters, and have thus proven themselves worthy of a place in your garden.

DELIVERY—This depends upon the arrival of the bulbs from our foreign sources. Many get here too late for Autumn planting, thus necessitating carrying over the bulbs until Spring. Those marked (**) thus, should be planted in the Fall only; those marked (*) may be planted in Spring or Fall, preferably the latter; all the others are for Spring delivery.

	Each	Doz.	100
Auratum (Golden-Banded Japan Lily). Undoubtedly one of the finest. Its large, graceful, fragrant flowers are composed of six petals of a delicate ivory-white color, thickly studded with chocolate-crimson spots and striped through the center a golden yellow; 3 to 5 feet. July to September.			
Large bulbs	\$0.55	\$5.50	\$40.00
Mammoth bulbs70	7.00	50.00

Auratum platyphyllum. Also called "Macranthum." This is a robust growing form; the stem is stouter and attains a greater height; the leaves are much broader; enormous flowers, white, richly spotted yellow. Undoubtedly the choicest of all.			
Large bulbs55	5.50	40.00
Mammoth bulbs75	7.50	55.00

Auratum rubro vittatum. Similar to the above but the flowers are dark rose-pink	1.00	10.00	75.00
----------------------------------------------------------------------------------------------	------	-------	-------

Batemani. Strong stems with five to ten flowers of a reddish orange color. July-August. 3 to 4 feet.40	4.00	30.00
------------------------------------------------------------------------------------------------------------------	-----	------	-------

Browni odorum. A vigorous grower with large, trumpet-shaped flowers of clear white, veined outside with purplish maroon90	9.00	65.00
--------------------------------------------------------------------------------------------------------------------------------------	-----	------	-------

*Canadense. Our dainty, beautiful native Lily. Graceful and charming flowers30	2.75	18.00
-------------------------------------------------------------------------------------------	-----	------	-------

**Candidum (Madonna or Annunciation Lily). This is the old-fashioned garden Lily, and one of the most beautiful. Ready in September only. First size35	3.50	30.00
-------------------------------------------------------------------------------------------------------------------------------------------------------------------	-----	------	-------

*Chalcedonicum (Scarlet Turk's Cap Lily). Small flowers in loose clusters with recurved, bright red petals. A handsome and attractive Lily. July. 3 to 4 feet	1.50	15.00	
----------------------------------------------------------------------------------------------------------------------------------------------------------------------------	------	-------	--



Lilium Auratum.



Lilium Browni.



Lilium Canadense.



Lilium Candidum.



Lilium Hansoni.



Regal Lily.

LILIES—Continued.

	Each	Doz.	100
Colchicum (Scovitzianum). A beautiful lemon-yellow Lily, produced in pyramidal clusters of drooping, waxlike flowers. June. 4 to 5 feet	\$1.25	\$12.00	\$85.00
*Davuricum . This beautiful Lily comes from the home of L. tenuifolium in Siberia. It resembles a native Philadelphicum. It is of easy culture, grows two or three to five upright scarlet flowers, dotted black30	2.75	18.00
Giganteum (Easter Lily). 4 to 5 feet. July and August. Most majestic of all the Lilies. White, fragrant, funnel-shaped flowers50	4.00	30.00
Hansoni . Most desirable; not particular in its cultural requirements and extremely handsome in flower, does well in light loam. Plant among shrubs and low plants to protect young shoots, this being one of the earliest Lilies to appear in the Spring. The stem reaches a height of 4 to 5 feet, carrying blossoms 2 inches across, regularly reflexed, the petals being of a bright orange spotted more or less with brown, of a waxy texture. Admirable for pot culture. June flowering60	6.50	50.00
*Henryi . A new Japanese Lily that has made a sensation in Europe. It has the same form and appearance as the Speciosum varieties, but the flowers are bright orange-yellow. We grow this variety now ourselves from seed. They are as hardy as a tree. Shipment October 1st to May 1st60	6.50	50.00
Krameri . Unique for its color and grows from 2 to 4 feet high. The funnel-shaped finely formed flowers are 6 inches or more in length and as much across, of a beautiful clear pink color, often shaded bluish40	4.00	30.00
*Martagon (Dalmaticum, Turk's Cap Lily). A handsome Lily, bearing clusters of purple, waxlike flowers. Thrives best in partial shade. June. 5 feet40	4.00	30.00
Pardalinum (Leopard Lily). Flowers reflexed, bright yellow at base, spotted brownish purple, remainder orange-scarlet. 3 to 4 feet. July and August35	3.00	20.00
Philadelphicum . A handsome native Lily with yellow, cup-shaped flowers, spotted maroon and shaded orange at ends of petals. Good for naturalizing. July. 3 feet. Large bulbs30	3.00	20.00
Pomponicum . A brilliant red Turk's Cap Lily. Much like Chalcedonicum, but with the heads of flowers rather more loosely arranged. June. 3 to 4 feet75	7.50	60.00
Pyrenaicum (Yellow Turk's Cap Lily). A Lily of easy cultivation, with many small, yellow flowers, dotted brown. Reflexed petals. June. 3 feet60	6.00	45.00
*Regale or myriophyllum (The Regal Lily). It is absolutely hardy, and is excellent for forcing. It has been predicted that this will become the Easter Lily of the future, and being so hardy, may be grown at home. The flowers are white, slightly suffused with pink, with a beautiful shade of canary-yellow at the center, and extending part way up the trumpet. It is delightfully perfumed, reminding one of the Jasmine, and lacking the heavy, oppressive odor of most Lilies. Blooms out-of-doors early in July.			
Flowering size . Strong bulbs60	6.50	50.00
Large size85	9.50	75.00

LILIES—Continued.

	Each	Doz.	100
Rubellum. Beautiful small Lily. The color varies from a deep rose-pink to almost white, with yellow anthers; very fragrant, small funnel-shaped flowers; grows 1½ feet high. It does best in light soil ..	\$.50	\$4.00	\$30.00
Speciosum album. The Speciosum or Lancifolium are the most important of all the Japanese Lilies, always satisfactory. The variety here offered has large, white flowers of great substance, with a greenish band running through the center of each petal.			
Large bulbs55	5.50	40.00
Mammoth bulbs75	7.50	55.00
Speciosum magnificum. Magnificent large flowers of rich deep red.			
Large bulbs55	5.50	40.00
Mammoth bulbs75	7.50	55.00
Speciosum melpomene. A darker shade of red and crimson markings than the preceding.			
Large bulbs55	5.50	40.00
Mammoth bulbs75	7.50	55.00
*Superbum. 3 to 4 feet. July. Flowers bright reddish orange, conspicuously spotted25	2.50	15.00
*Tenuifolium (Siberian Coral Lily). A most delicate and charming species. Growing from 1 to 2 feet high, it bears often from 1 to 12 or more nodding rich scarlet flowers40	4.00	30.00
*Tenuifolium "Golden Gleam." Similar in form to the preceding. Flowers are a delicate apricot shade75	7.50	55.00
*Testaceum (Excelsum or Nankeen Lily). This is one of the finest of all Lilies. The color is difficult to describe, being a shading of dull apricot with orange-yellow anthers. A most graceful Lily and a good companion to <i>L. candidum</i> . June-July. 5 feet. Extra large flowering bulbs	2.00	22.00	180.00
*Thunbergianum (elegans) sanguineum. Dark crimson. The Thunbergianums are all of the easiest culture and bloom in June35	3.50	25.00
*Tigrinum flore pleno (The double Tiger Lily). The only Double Tiger Lily worth growing30	2.75	18.00
*Tigrinum simplex (The well known Single Tiger Lily). Of easiest culture and worthy of general planting on account of stateliness.30	2.75	18.00
Wallacei. A handsome Lily of a beautiful shade of the warmest apricot with rosy shading. August. 1½ to 2 feet50	5.00	40.00
Washingtonianum. A beautiful Lily from California, with large, reflexed flowers, varying in color from light to a rich wine color, slightly spotted deeper. This variety requires a moist but well drained situation. June-July. 3 to 5 feet. Extra large bulbs ..	.75	8.00	60.00
Willmottiae. One of the finest garden Lilies, although little known. Lovely in its graceful habit, slender foliage and heads of vivid orange-red flowers and kindly in its vigorous and thrifty constitution. July-August. 3 to 4 feet ..	1.00	10.00	75.00



Lilium Superbum.



Lilium Testaceum.



Lilium Speciosum.



Lilium Davuricum.



Lupinus.



Mertensia Virginia.



Montbretia.

LUPINUS (Lupines).

The Lupines produce beautiful long spikes of pea-shaped flowers a foot long on stems three feet high. They are perfectly hardy but cannot endure drought, and must be planted in well prepared garden soil and kept watered in dry weather.

	Three	Doz.	100
Wayside Gardens New Sweet-Scented Hybrids (Polyphyllus). A wonderful new strain that may be classed among the most beautiful of all hardy flowers. Colors are both rich and delicate in shades of blue, mauve, pink, etc., and the flowers are borne in long spikes that for size and beauty rival giant Snapdragons. The added novelty of being sweet scented, makes these one of the best garden plants we have ever distributed	\$1.35	\$4.00	\$30.00
Polyphyllus (Hardy Lupin). Clear blue. 3 to 4 feet. June-September.	1.00	3.00	20.00
Polyphyllus albus . A white variety.	1.00	3.00	20.00
Polyphyllus roseus . A splendid new variety, with flowers of beautifully shaded rose	1.00	3.00	20.00
Polyphyllus, Sunshine . Pure yellow	1.35	4.00	30.00
Polyphyllus, Rosy Morn . Deep pink	2.75	8.00	60.00
Polyphyllus, Ruby King . Ruby-red.	1.35	4.00	30.00
Polyphyllus, Moerhelmi . Pink	1.00	3.00	20.00

MATRICARIA (See Feverfew; Mayweed).

MAZUS.

Rugosus . A dwarf and interesting Alpine plant from the Himalayan Mountains, covered in early Spring with dainty lilac and white flowers. 4 inches	1.00	3.00	20.00
-----------------------------------------------------------------------------------------------------------------------------------------------------------	------	------	-------

MERTENSIA (Blue Bells).

Virginia . An early Spring-flowering plant, growing about 1 to 1½ feet high with drooping panicles of handsome light blue flowers, fading to clear pink; one of the most interesting of our native Spring flowers	.85	2.50	15.00
--------------------------------------------------------------------------------------------------------------------------------------------------------------------------------------------------------------------------	-----	------	-------

MONARDA OR BERGAMOT (Oswego Tea).

Showy plants growing from 2 to 3 feet high, succeeding in any soil or position, with aromatic foliage, and producing their bright flowers during July and August.

	Three	Doz.	100
Didyma, Cambridge Scarlet . Brilliant crimson-scarlet	\$0.85	\$2.50	\$15.00

MONTBRETIA (Tritonia).

One of the brightest of our Summer-flowering bulbs, and should be set during April or May. They should be protected during the Winter with a heavy covering of leaves or litter.

	Three	Doz.	100
Crocsmæflora . Pure yellow, reverse of petals orange; large flowers		\$1.50	\$10.00
King Edmund . A robust grower with large, open flowers, rich yellow, with a carmine-blotched center		1.50	10.00
Lord Nelson . A handsome dark-stemmed variety, flowers of great substance, of a rich deep orange, outside vermilion		1.50	10.00
Prometheus . Large, rich orange, marked with deep red at center..		1.50	10.00
Rheingold . A beautiful clear golden yellow; large spike and very vigorous grower		1.50	10.00
Speciosa . Richest of all in color; flowers large of intense scarlet shade		1.50	10.00

MITELLA (Bishop's Cap).

Diphylia . A gem for a shady position. Feathery spikes of creamy white flowers. 12 to 18 inches. May and June	1.00	3.00	20.00
----------------------------------------------------------------------------------------------------------------------	------	------	-------

MYOSOTIS (Forget-me-not).

	Three	Doz.	100
Alpestris (Alpine Forget-me-not). Splendid for naturalizing on edge of ponds and streams; also for beds, borders and rockeries . . .	\$0.85	\$2.50	\$15.00
Falustris semperflorens. Large, rich blue flowers with yellow eye; a charming plant for damp places and a more profuse bloomer than the type85	2.50	15.00

NEPETA (Ground Ivy; Catnip; Catmint).

Mussini. An excellent plant for any position, but especially useful in the rock garden. Of dwarf, compact habit, producing masses of bloom of a beautiful shade of lavender. 1 to 1½ feet85	2.50	15.00
------------------------------------------------------------------------------------------------------------------------------------------------------------------------------------------------------------	-----	------	-------

NIEREMBERGIA (Cup Flower).

Rivularis. A charming dwarf creeping Alpine plant, bearing large creamy white, cup-shaped flowers from June till September; most desirable plants for the rockery. 1.00	3.00	20.00
--------------------------------------------------------------------------------------------------------------------------------------------------------------------------------	------	-------

OENOTHERA (Evening Primrose).

Elegant for a sunny position in the border or on the rockery, blooming all Summer.

	Three	Doz.	100
Fraseri. 1 foot June to October. Flowers large, pale yellow	\$0.85	\$2.50	\$18.00
Fruticosa major. 2 feet. June to September. A strong growing plant, forming a dense, bush-like specimen; flowers deep yellow, in profusion	1.00	3.00	20.00
Youngi. 2 feet. June to August. A strong, stocky, large-leaved plant with firm, shiny foliage; numerous bright lemon-yellow flowers. .	1.00	3.00	20.00
Missouriensis. 10 inches. June to August. A low species with prostrate, ascending branches; profuse bloomer. Solitary flowers, often 5 inches across. Good for rock garden or border85	2.50	15.00
Speciosa. Pure white flowers 3 inches across. 18 inches	1.00	3.00	20.00

ONOSMA (Golden Drop).

Stellulatum. A rare and beautiful plant for the rock garden. It forms an evergreen tuft of leaves and bears during May and June drooping clusters of amber colored, drop-shaped blossoms, deliciously almond scented. It should be given a sunny, well drained position. 9 to 12 inches. 1.20

	3.50	25.00
--	------	-------

PACHYSANDRA (Japanese Spurge).

Terminalis. A trailing plant 6 to 8 inches high, forming broad mats of bright glossy green foliage and small spikes of flowers during May and June. A ground cover, which will grow in all shady situations and the only plant which will thrive under pine trees; better and harder than Ivy or any other shade-loving, dwarf plant.

	Doz.	100	1000
Strong, 1-year, field-grown plants.	\$1.75	\$12.00	\$100.00
2-year plants	2.00	15.00	125.00

PARDANTHUS (Blackberry Lily).

Very pretty perennial with lily-like flowers of a very handsome appearance. Requires a rich soil and a sheltered situation in Winter.

	Three	Doz.	100
Chinensis. Flowers orange colored, spotted with purple-brown. 18 inches	\$1.00	\$3.00	\$20.00

PAPAVER NUDICAULE (Iceland Poppy).

The plant is of neat habit, forming a tuft of bright green, fernlike foliage, from which spring throughout the entire season, a profusion of slender, leafless stems 1 foot high, each graced with charming cup-shaped flowers.

	Three	Doz.	100
Baker's Sunbeam Mixture	\$0.85	\$2.50	\$15.00
Miniature flore pleno or Double Nudicaule85	2.50	15.00



Pachysandra Terminalis.



Myosotis Palustris.



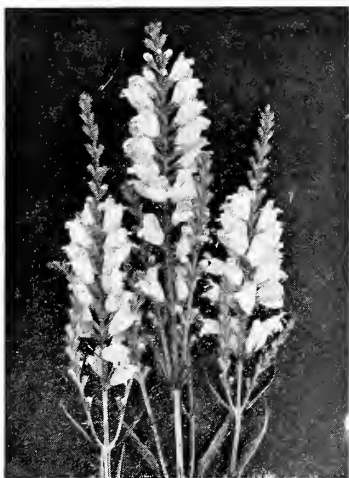
Papaver Nudicaule.



Papaver, Mrs. Perry.



Pentstemon Digitalis.



Physostegia Virginica, Vivid.

PAPAVER (Poppy).

Oriental Poppies are the regal representatives of this popular genus, growing 3 to 3½ feet high, and far surpassing in splendor of bloom all the annual and biennial kinds, and for a gorgeous display of rich and brilliant coloring nothing equals them during their period of flowering in May and June, and whether planted singly or in masses their large flowers and freedom of bloom render them conspicuous in any position. They are of the easiest culture; almost any kind of soil suits them, but they do best in deep, rich loam. Set the plants out in the Fall or early Spring before the first of May—give them water occasionally during dry spells in the early part of the season. Mulch with stable litter in the Fall; and they will increase in size and floriferousness for several years. We offer the best of the latest introductions, as well as the distinct standard varieties.

	Three	Doz.	100
Orientele (Oriental Poppy). Tremendous scarlet, cup-shaped blooms of brightest crimson-scarlet, with large, purplish black blotches at base of petals, creating a wonderful contrast when bloom is fully open. Clumps of these throughout the border add a brilliancy that no other flower can provide ..	\$0.85	\$2.50	\$15.00
Orientele, Apricot Queen. Large, apricot	1.00	3.00	20.00
Orientele, Beauty of Livermore. Crimson, with black blotch; fine flowers	1.00	3.00	20.00
Orientele, Flanders. Maroon shaded crimson. (Sold out until next season).			
Orientele, Mrs. Perry. Orange-apricot; very fine85	2.50	15.00
Orientele, Princess Victoria Louise. Bright salmon-scarlet; very fine ..	1.00	3.00	20.00
Orientele, Perry's White (New. The most distinct break in Oriental Poppies that has yet been made; the flowers are a fine satiny white with a crimson-maroon blotch at the base of each petal. (Sold out until next season.)			
Orientele Hybrids, Mixed. Saved from named sorts of the large perennial Poppies85	2.50	15.00

PENTSTEMON (Beard Tongue).

Most useful and showy perennials. Some varieties are not hardy. Those below are perfectly so. June and July. 3 feet.

	Three	Doz.	100
Barbatus Torreyi. Spikes of bright scarlet flowers from June till August. A very effective plant for hardy beds	\$0.85	\$2.50	\$15.00
Digitalis. White Foxglove-like spikes85	2.50	15.00
Huntington's Shell Pink (New). A wonderful addition to this class. Spike is not as tall and "stringy" as Torreyi, and flowers are more plentiful on the spike. Color is a bright, clean shell-pink. Perfectly hardy in any soil or climate ...	1.35	4.00	30.00

PHYSOSTEGIA (False Dragonhead).

Virginica. Forms large clumps 3 to 4 feet high, bearing long spikes of delicate pink flowers, tubular in form. July and August85	2.50	15.00
Virginica alba. Pure white85	2.50	15.00
Virginica, Vivid. This is a seedling of our own; it blooms three weeks later than the others and the flowers are a deeper color pink; much larger and better, lasting a long time when cut	1.00	3.00	20.00

POTENTILLA (Cinquefoil).

Charming plants for the border, with brilliant single or double flowers that are produced in profusion from June to August. Succeeds in any soil. 18 inches.

	Three	Doz.	100
Mixed Colors	\$0.85	\$2.50	\$15.00

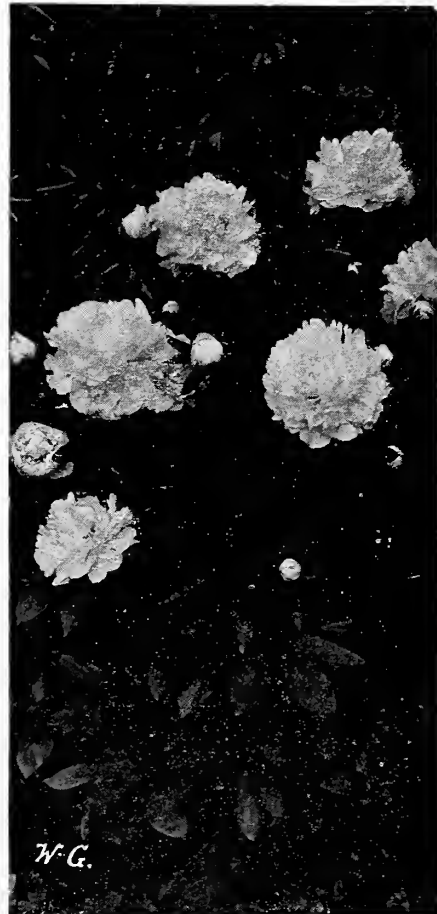
PEONIES

The varieties we offer are arranged alphabetically, and where known, the name and date of the introducer immediately follows in parentheses. As color comes first in the choice of Peonies, we have placed the color on the same line as the name. Size and type naturally appeal next, and so follow the color. Having found these satisfactory in any variety described, one naturally next looks for the character and habit of the plant. To further aid purchasers we shall be pleased to give by letter further information to intending purchasers. Figures following name indicate rating by American Peony Society.

	3-5 Eyes		3-Yr.
	Each	Doz.	Clumps
			Each
Albert Crousse. 8.6. (Crousse, 1893). Very fresh salmon-pink, delicate color. Large, compact bomb shape; fragrant; erect; medium height. Late	\$1.00	\$10.00	\$2.50
Albatre. 8.7. (Crousse, 1885). Milk white center, petals tinged lilac. Large, compact, rose type bloom; strong, vigorous grower and free bloomer. Midseason80	8.00	2.00
Avalanche. 8.7. (Crousse, 1886). Creamy white, slightly flecked with carmine. Large, compact crown type; fragrant; strong growth. Midseason	1.50	15.00	3.50
Augustin d'Hour. 7.8. Bomb type; midseason. Extremely large; showy, perfectly built bloom. Color very deep, rich, brilliant solferino-red with slight silvery reflex. It is a taller grower and larger flower than Felix Crousse	1.25	12.00	3.00
Baroness Schroeder. 9.0. Rose type; late. White with shadings of flesh. This is one of the finest Peonies. Its immense flowers of great substance with high chalice-shaped center are freely produced, lasting a long time. Very fragrant	2.50	25.00	4.50
Claire Dubois. 8.7. Very large, double, globular flowers; color rich clear satiny pink, with glossy reflex. One of the most desirable pink Peonies. Late midseason ..	1.50	15.00	3.50
Couronne d'Or. 8.1. (Calot, 1873). White with yellow tints arising from a few stamens showing amidst the petals. Center petals tipped with carmine. Large, rather full flower of superb form. Strong grower and very free bloomer. Good keeper. Late75	7.50	1.50
Duchesse de Nemours. 8.1. (Calot, 1856). Guard petals white, center lemon-yellow, cup-shaped; at first it develops into a large bloom, gradually fading to white; fragrant; strong grower and free bloomer. Extra good commercial variety. Follows two to three days later than Festiva Maxima.60	6.00	1.50
Edulis Superba. 7.6. (Lemon, 1834). Dark pink, even color; large, loose, flat crown when fully open. Very fragrant; upright growth; early bloomer. One of the best commercial Peonies. There is much confusion over this variety being sold under twenty or more different names60	6.00	1.50
Eugenie Verdier. 8.6. Late. Very large, compact blooms of pale hydrangea-pink, with outer guard petals lilac-white; fragrant; extra strong stems	2.50	25.00	4.50
Felix Crousse. 8.4. (Crousse, 1881). Very brilliant red. Medium to large, globular, typical bomb shape; fragrant; strong growth. Stems rather weak. Midseason ..	.60	6.00	1.50
Festiva Maxima. 9.3. (Mieliez, 1851). Paper-white, crimson markings in center. Very large and full, rose type; very tall, strong growth. Early80	8.00	2.00
Germaine Bigot. 8.5. (Des, 1902). Very large, medium compact, flat crown. Pale lilac-rose, center prominently flecked crimson. 2 (130). Strong, erect, medium height; free bloomer; midseason ..	2.00	20.00	4.00



Couronne d'Or.



Duchesse de Nemours.



Eugenie Verdier.



Mad. Crousse.

PEONIES—Continued.

	3-5 Eyes		3-Yr. Clumps Each
	Each	Doz.	
Gloire de Boskoop. 7.6. Pure white. Tall, strong grower; choice variety	\$0.60	\$6.50	\$1.25
Karl Rosenfield. 8.8. Very large flower, globular, semi-rose type. Extremely vigorous grower, tall, and free-flowering. As an early red it has no equal	1.50	15.00	3.50
Kelway's Glorious. 9.8. Flowers large, full, double rose type; cream-white, overlaid with a soft blush of rose; very exquisite; fragrant; late midseason. Considered by many as the finest of Kelway's Peonies. (Sold out for this season).			
La Tulipe. 7.5. (Calot, 1872). (Syn. Multi-color Calot, '73). Lilac-white, outer petals striped with crimson. Large, flat, rose type; fragrant; very tall, strong growth. Late midseason75	7.50	1.75
Lady Alexandra Duff. 9.1. Delicate pale pink fading to white. Main flower large, cup-shaped, rose type. Blossoms form side buds often semi-double, exposing the anthers; fragrant	4.00	45.00	12.00
Le Cygne. 9.9. Very large, perfectly formed flower, freely produced; cream-white with a touch of green at the heart. The finest white. Received the highest rating of any Peony	2.50		
Madame Ducl. 7.9. (Mech., 1880). Large, globular, typical bomb. Light mauve-rose, 1(153), with silvery reflex. Fragrant. Strong grower, medium height; very free. Extra75	7.50	1.75
Mme. Emile Galle. 8.5. (Crousse, 1881). Very soft pink, changing to milk-white in center. Very large, compact, flat, rose type; tall, strong, fragrant. Late75	7.50	1.75
Mme. Crousse. 7.9. Pure white with faint crimson markings. Large, globular, crown type; fragrant; medium height. Midseason75	7.50	1.75
Mme. Foral. (Crousse, 1881). Enormous, very full, double bloom; color glossy, deep pink with a silvery reflex; known as the "Princess of Pink Peonies," a title it well deserves and proudly carries. Extra fine75	7.50	1.75
Mlle. Leonie Calot. 8.1. (Calot, 1861). Very delicate shell pink, center darker. Medium size, very compact, globular; on weak stems. Late midseason75	7.50	1.75
Marie Lemaine. 8.5. (Calot, 1869). Pure white with cream-white center. Large, very compact, rose type; pleasing fragrance; medium height; extra strong stems. Very late75	7.50	1.75
Marguerite Gerard. 8.4. (Crousse, 1892). Very pale salmon-pink, fading to almost white. Large, compact, rose type; very strong growth. Late75	7.50	2.00
Marie. 8.5. (Calot, 1868). Lilac-white fading to milk-white. Medium size, compact, rose type; fragrant; very tall. Very late60	6.00	1.50
Mons. Dupont. 8.3. Very large, cup-shaped flower; ivory-white; center petals splashed with carmine. The golden stamens show at the base of the petals; fragrant; a strong grower; very tall; midseason. (Sold out for this season).			
Mons. Martin Cahuzac. 8.8. Medium sized, globular, semi-rose type. Dark purple-garnet with black reflex. The darkest Peony known. Strong, vigorous grower, free bloomer; midseason	2.50	25.00	5.00
Martha Bulloch (Brand, 1907). Mammoth cup-shaped blossom often 9 to 12 inches across. The largest of the good Peonies. Deep rose-pink in the center, shading to silvery shell-pink in the outer petals. Stalks strong and erect. (Sold out for this season).			

PEONIES—Continued.

	3-5 Eyes		3-Yr.
	Each	Doz.	Clumps Each
Octavie de May. 85. Very large, flat crown. Guards and center pale hydrangea-pink, collar almost white. Rather dwarf habit; but free, fragrant, midseason bloom.	1.00	\$6.00	\$2.00
Officialis Rubra fl. pl. Rich deep crimson; the great Decoration Day Peony.	1.00	7.00	1.00
President Taft. 87. A vigorous, strong grower, a profuse bloomer, every shoot being crowned by a big bloom. The flower is really of enormous size; there may be Peony flowers as large, but none larger. The color is a delicate hydrangea-pink, completely enveloped in a halo of angelic white. The fragrance is delicious. It is certainly a glorious, gorgeous flower, very large and double.	1.50	15.00	3.00
Rubra Superba. 72. (Richardson, 1871). Deep carmine-crimson. Large; fragrant, rose type; medium height. Very late.	1.00	10.00	2.50
Sarah Bernhardt. 90. Late. Flat, compact, semi-rose type. Uniform mauve-rose, silver tip. Erect, tall, free.	5.00		
Solange. 97. Flower very large, compact; rose type; outer petals delicate waxy white, deepening toward the center with shades of orange and golden brown. One of the most beautiful Peonies in existence; a strong grower and a late, free bloomer.	4.00	45.00	9.00
Therese. 98. A most desirable variety of a charming shade of violet-rose, changing to lilac-white. Develops a high crown; strong grower and very free bloomer. A splendid addition to the midseason sorts of which it is one of the best.	4.00	45.00	9.00
Venus. 83. (Kelway). Exquisite pointed buds, opening into large, compact flowers of delicate shell-pink with a collar of flesh-white. Extra good both as a garden flower and as a cut flower. One of the best in our collection. Midseason.	1.00	10.00	2.50

NEW JAPANESE PEONIES

A type not very generally known, but in every community wherever established is awakening great interest and enthusiasm. The opened flowers are of extra wide spread, with one or more layers of broad guard petals which act as a cup to the mounded center. In place of the pollen-bearing stamens which center the Single Peony flowers, in this class the stamens and anthers are greatly enlarged into narrow, thick, twisted petaloids of various colors, forming a dense cushion.

We heartily recommend our list to those who want something different from the other fellows; and to Peony planters generally, as types which will add zest and beauty to their gardens.

Orders for the following booked now for September delivery.

	Strong Divisions, Each	
No. 6. Gunpoo-no-nishiki. All-over violet rose, lower petals striped with white; full crown center.	\$	6.00
No. 11. Yoochi-no-tsuki. Six- to eight-inch flowers with prominent cushion center; white, occasionally flushed pink, with amber cream petaloids.	5.00	
No. 15. Fuyajo. This is the darkest, richest and most distinctively Japanese of our group. Broad rounded guards of dull—although velvety—mahogany. The fine, curly petaloids form a conspicuous, dense center; garnet, streaked on reverse side and heavily tipped with light bronze.	10.00	
No. 20. Fuji-no-mine. A very large and free-blooming sort; white, with rich cream center.	6.00	
No. 42. "Rose of Nippon." A wonderfully free bloomer, a persistent mass of brilliant 6-inch flowers. Very deep rose, the broadly prominent center darkened by carmine, and illuminated by countless starpoints of both silver and gold. Many centers are slightly tufted.	5.00	
No. 47. Fuji-zome-gorono. Inexpressibly beautiful in its matchless symmetry and delicate color tones. Immense, flattened, poppy-shaped flowers borne very freely. The two-layered guards are broadly rounded, an exquisite shade of satiny, wisteria-pink. The crinkly cushion is pure gold, toned warmly towards the base with coral. A most charming color combination.	7.00	



Avalanche.



Japanese Peony.



Phlox, Miss Lingard,



Phlox, Europa.

PEONIES—Continued.

	Strong Divisions, Each
No. 88. Oki-no-nami. Tall, free flowering and showy. Pale hydrangea-pink, with full, fine-cut center of peach-pink and cream. It does not require a strong imagination to get the Japanese descriptive impression	\$ 5.00
No. 135. Kara-ori-nishiki. This shows uniquely fluted petals, with ends deeply indented. These are white, irregularly streaked and tipped with lilac-red. The center is medium sized, but bright with deep gold filaments, and carmine seed pods.	5.00

PHLOX.

PHLOX DECUSSATA (Hardy Phlox).

Perennial Phloxes succeed in almost any soil enriched with manure in Spring, and in hot weather an occasional soaking of water. If the first spikes of bloom are removed as soon as over, they will produce a second supply of flowers, continuing the display until late in Autumn. These later blooms are often finer than the first. (We offer nothing but strong, 2-year-old plants).

	Three	Doz.	100
*Athis. Deep, clear salmon. Very fine	\$0 85	\$2 50	\$15 00
*Africa. Ruby-crimson with darker center	1 50	4 50	
Antonin Mercie. Clear lilac with white eye. Extra large	1 00	3 00	20 00
Beacon. Brilliant cherry-red	1 00	3 00	20 00
B. Comte. Rich satiny amaranth ..	.85	2 50	15 00
*Clara Benz. Brilliant rosy carmine, with white eye and violet halo; medium tall	1 50	4 50	
Crepuscle. White with delicate mauve suffusion and rosy purple eye85	2 50	18 00
Champs Elysee. Fine, rich crimson ..	.85	2 50	18 00
Commander. Beautiful New. Crimson-red with darker eye. The most striking of Phloxes	1 20	3 50	25 00
*Evelyn. Rich salmon-rose; flowers large and of perfect form. 3 feet ..	1 50	4 50	
*Graf Zeppelin. White with red eye; better than Europa	1 50	4 50	
Eclairer. Bright carmine with light halo. Large flower85	2 50	15 00
Eiffel Tower. Pink with deep pink eye. Very tall grower	1 00	3 00	20 00
Elizabeth Campbell. Bright salmon-pink, with lighter shadings and dark red eye; one of the handsomest and most attractive ..	1 20	3 50	25 00
*Ethel Pritchard. Grand light lilac ..	1 50	4 50	
Europa. A new variety, white with large crimson-carmine eye. Very large flower and truss85	2 50	15 00
Fuerbrand. Bright vermilion-scarlet. New variety	1 20	3 50	25 00
Gefion. Tender peach-blossom pink with bright rose eye, creating a soft mauve effect. Flower and truss very large on erect, compact stems85	2 50	15 00
*Imperator. Brilliant, dark carmine-red flowers, with darker eye ..	1 50	4 50	
Jules Sandeau. Large, fine, very free flowering pure pink	1 00	3 00	20 00
La Vague. An improvement over older varieties of similar color, with immense, conical heads, borne in great profusion. Warm mauve with emphatic carmine eye ..	.85	2 50	15 00
Miss Lingard (See page 39)85	2 50	15 00
Mrs. Jenkins. White; immense panicles; free bloomer85	2 50	15 00
Mrs. Scholten. New. Dark salmon-pink flowers in enormous pyramidal spikes	1 20	3 50	25 00
Mrs. Milly van Hoboken. New. Soft pink, without eye. Large flowers on long, erect spike ..	1 35	4 00	30 00
Prof. Verschow. Bright carmine, overlaid with orange-scarlet ..	.85	2 50	15 00
Pantheon. Clear, deep, carmine-pink with faint halo	1 00	3 00	20 00
Rheinlander. A beautiful salmon pink, with flowers and trusses of immense size	1 00	3 00	20 00
R. P. Struthers. Bright rosy-carmine, with claret-red eye	1 00	3 00	20 00
Rijnstroom. Lively rose-pink, much like Paul Neyron rose. Immense trusses of flowers85	2 50	15 00

PHLOX—Continued.

	Three	Doz.	100
Thor. A beautiful lively shade of deep salmon-pink, suffused and overlaid with a scarlet glow; has aniline-red eye	\$1.00	\$3.00	\$20.00
*Vald Jensen. Beautiful salmon-pink with white eye. One of the newest and best	1.50	4.50	
Von Lassburg. Splendid pure white; very large trusses; free bloomer; medium early	1.00	3.00	20.00
White Lady. Very fine late pure white85	2.50	15.00

PHLOX SUFFRUTICOSA.

An early-flowering type with flower heads quite as large as the Decussata types.

	Three	Doz.	100
Belle Pyramide. Same habit as Lingard, but color is rose-pink	\$1.50	\$4.50	
Miss Lingard. The best Phlox in cultivation. It produces immense heads of beautiful white flowers in June and blooms again in September and October. Splendid foliage and habit, and free from attacks of red spider. Better results will be had if old flowers are cut off85	2.50	15.00
Nettie Stuart. Deep pink; same habit as Miss Lingard	1.50	4.50	

PHLOX ARENDSI.

Originated by successfully crossing the early Phlox canadensis with the showy Phlox decussata. Flowers from the latter part of May to July. 1 foot.

	Three	Doz.	100
Louise. Light lilac with carmine eye	\$1.00	\$3.00	\$20.00
Amanda. Lilac-mauve, lighter eye... ..	1.00	3.00	20.00

PHLOX SUBULATA (Moss or Mountain Pink).

An early Spring-flowering type with pretty mosslike, ever-green foliage, which, during the flowering season, in April and May, is hidden under the masses of bloom. An excellent plant for the rockery, the border, and invaluable for carpeting the ground or covering graves.

	Three	Doz.	100
Rosea. Rose-pink. Fine for covering banks; thrives in hot, dry situations, and blooms profusely ..	\$0.85	\$2.50	\$15.00
Alba. Pure white85	2.50	15.00
Lilacina. Light lilac85	2.50	15.00
Vivid. Bright fiery rose. We would say that this is the finest free-flowering dwarf plant there is ..	1.00	3.00	20.00

VARIOUS PHLOX.

Amoena. This is one of the best varieties for carpeting the ground, the rockery or the border. It grows but 4 inches high, and in Spring is a sheet of rich bright pink flowers85	2.50	15.00
Divaricata canadensis. One of our native species, which is worthy of extensive planting, commencing to bloom early in April, and continuing through May, with large, fragrant, lavender flowers on stems 10 inches high85	2.50	15.00

PHYSALIS (Chinese Lantern Plant).

Francheti. An ornamental variety of the Winter Cherry, forming dense bushes about 2 feet high, producing freely its bright orange-scarlet, lantern-like fruits, which, when cut, will last all Winter. Very attractive plant85	2.50	15.00
-------------------------------------------------------------------------------------------------------------------------------------------------------------------------------------------------------------------------------------------	-----	------	-------

PINKS (Hardy Garden).

(See Dianthus).

PLATYCODON (Balloon Flower).

Grandiflora. Blue. 18 inches. June to October. Large, showy, deep blue flowers. Good for rock garden and border75	2.00	12.00
Grandiflora alba. White-flowered form of the above75	2.00	12.00
Mariesi. Blue. 12 to 15 inches. July until late September. A beautiful dwarf species, with broad, thick foliage and large, deep violet-blue flowers85	2.50	15.00
Mariesi alba. White-flowered form of the above85	2.50	15.00



Phlox Subulata.



Phlox Amoena.



Phlox Divaricata.



Platycodon.



Primula Cashmeriana.



Primula Veris.



Pyrethrums.

PLUMBAGO (Leadwort).

	Three	Doz.	100
Larpetae. One of the most desirable border and rock plants. It is of dwarf, spreading habit, growing 6 to 8 inches high, covered with deep blue flowers during the Summer and Fall	\$0.85	\$2.50	\$15.00

POLEMONIUM (Jacob's Ladder).

Humile coeruleum (Richardsoni). Erect stems of sky-blue flowers. 1 to 1½ feet. June to July85	2.50	15.00
Humile album. A white variety of the preceding85	2.50	15.00
Reptans (Greek Valerian). Dwarf, bushy plant of graceful growth. Showy blue flowers. Rock garden and fine border plant	1.00	3.00	26.00

POLYGONATUM (Solomon's Seal).

Multiflorum major. Pendent sprays of greenish white flowers borne on long stems, 2 feet. May and June. A grand plant for a shady position, where it has plenty of room to show off its wonderful pendulous sprays of bells. Fine for cutting85	2.50	18.00
-----------------------------------------------------------------------------------------------------------------------------------------------------------------------------------------------------------------------------------------------------------	-----	------	-------

PRIMULA (Hardy Primrose).

Splendid little plants for naturalizing near shrubs, in the border or shaded nooks on the rockery.

	Three	Doz.	100
Cashmeriana (New). Large, globular heads of a pleasing purplish blue shade; prefers a moist shaded situation	\$0.85	\$2.50	\$18.00
Veris Hybrids. This strain includes various shades of lilac, purple and violet, as well as a wide range of buff, orange, salmon and rich reds approaching scarlet in intensity. Quite hardy and of vigorous growth	1.00	3.00	20.00
Vulgaris. The old English Primrose with pale yellow flowers	1.35	4.00	30.00

PRUNELLA (Self-head; Heal-all).

Grandiflora. Violet or purple flowers all Summer. Fine for the rockery or slightly shaded parts of the hardy border. Succeeds in any soil not excessively dry ...	1.00	3.00	20.00
--------------------------------------------------------------------------------------------------------------------------------------------------------------------------	------	------	-------

PYRETHRUM (Persian or Painted Daisy).

The Pyrethrums are so simply and easily cultivated that they may be recommended to all who possess a garden. They are perfectly hardy and absolutely invaluable for cut flowers through the Summer and early Fall. The flowers are bright and elegantly borne on long stems; most convenient for decoration. In form, the double varieties are somewhat aster- or chrysanthemum-like, and as their chief beauty is in the months of May and June, they may well be designated Spring Chrysanthemums, possessing the advantage over the Chrysanthemums of being able to withstand the severest Winter without protection. The single-flowered varieties are variable colored Marguerites and possess a range of color and hardness that Marguerites might envy in vain. Nothing can surpass the Pyrethrum profusion of flowers throughout the entire Summer from May to July, and the blossoms are not injured by storm or sun. As a cut flower, their long stems make them ideal for decorative purposes. Their position should be in the border or in beds.

	Three	Doz.	100
All Colors Mixed. Strong, 2-year clumps	\$1.00	\$3.00	\$20.00
Strong, 1-year clumps85	2.50	15.00

RANUNCULUS (Buttercups).

Repens fl. pl. A pretty, double-flowering, bright golden yellow buttercup; masses of flowers in May and June85	2.50	15.00
---------------------------------------------------------------------------------------------------------------------------	-----	------	-------

RUBECKIA (Coneflower).

Golden Glow. One of the most popular hardy plants. Grows six feet high, producing masses of large, double, golden yellow flowers, shaped like a cactus dahlia75	2.00	12.00
Newmanni. The perennial form of the "Black-Eyed Susan." Deep orange-yellow flowers, with a dark purple cone; long, wiry stems 3 feet high; blooms all Summer75	2.00	12.00
Purpurea (Giant Purple Coneflower). Peculiar reddish purple flowers, with a very large, brown, cone-shaped center. Blooms from July to October. 3 feet85	2.50	15.00

RUDEBECKIA—Continued.

	Three	Doz.	100
Maxima. A rare and attractive variety, growing 5 feet high, with large, glaucous green leaves and bright yellow flowers 5 to 6 inches across, with a cone 2 inches high; flowers continuously from June to September	\$0.85	\$2.50	\$18.00
SALVIA (Meadow Sage).			
Azurea. A Rocky Mountain species. Grows 3 to 4 feet high, producing during August and September pretty sky-blue flowers in the greatest profusion85	2.50	15.00
Farinacea. Beautiful pale blue flowers85	2.50	15.00
Pitcheri. Similar to the above, but of more branching habit and large flowers of a rich gentian-blue color, and one of the most admired plants by the many visitors to our nurseries during the early Autumn. 3 to 4 feet	1.20	3.50	25.00
Pratensis. Dwarf blue flowers in June	1.00	3.00	20.00
Turkestanica. Extremely decorative sweet scented foliage and showy whorls of white flowers surrounded by pale pink	1.00	3.00	20.00
Virgata nemorosa. Distinct and effective foliage with showy whorls of white flowers	1.00	3.00	20.00
SANTOLINA (Lavender Cotton; Ground Cypress).			
A sweet smelling, dwarf, evergreen perennial, with delicate, silver-white foliage, useful as rock or border plants; also largely used in carpet bedding.			
	Three	Doz.	100
Chamaecyparissus (incana). 1 foot	\$0.85	\$2.50	\$18.00
SAPONARIA (Soapwort).			
Ocymoides splendens. Pretty border and rockery plant; flowers rosy pink85	2.50	18.00
Ocymoides alba. A grand pure white-flowering plant for wall or rockery85	2.50	18.00
SAXIFRAGA (Megasea).			
Ligulata. These will thrive in any kind of soil and in any position. Grow about 1 foot high, and are admirable for the front of the border or shrubbery, forming masses of handsome, broad, deep green foliage, which alone renders them useful, while the pretty flowers, which appear very early in the Spring, some almost as soon as the frost is out of the ground, make them doubly effective	1.50	4.50	35.00
SCABIOSA (Pin Cushion Flower).			
Handsome border plants, succeeding in any ordinary soil if well drained and in a sunny location, and should be grown in every garden where cut flowers are wanted; they last a long time when picked and placed in water.			
	Three	Doz.	100
Caucasica (Blue Bonnet). A soft and charming shade of lavender; commences to bloom in June, throwing stems 18 to 24 inches high until September	\$1.20	\$3.50	\$25.00
Caucasica alba (White Bonnet). The white form of the preceding	1.35	4.00	30.00
Japonica. Lavender-blue flowers, from July to September; 2 feet ..	.85	2.50	18.00
Pennsylvanica (Cephalaria tatarica). Large golden yellow flowers, similar to the true Scabiosa in form. 5 feet	1.00	3.00	20.00
SCUTELLARIA (Skull Cap).			
Baicalensis coelestina. Short, wiry stems, clothed with clear blue Snapdragon-shaped flowers. One foot. June to August	1.20	3.50	25.00
SENECIO (Groundsel).			
Clivorum. Forms a neat tuft of foliage, from which spring up from July to October a succession of 3-foot stems, with clusters of orange-yellow flowers	1.00	3.00	20.00
SIDALCEA (Greek Mallow).			
Erect-growing, more or less branching plants, producing their showy flowers during June and July. They will succeed in any garden soil in a sunny position.			
	Three	Doz.	100
Rosy Gem. Pretty, bright rose colored flowers. 2 to 3 feet	\$0.85	\$2.50	\$18.00



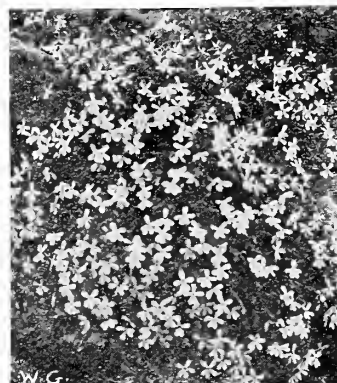
Rudbeckia—Coneflower.



Salvia Pratensis.



Scabiosa.



Saponaria Ocymoides.



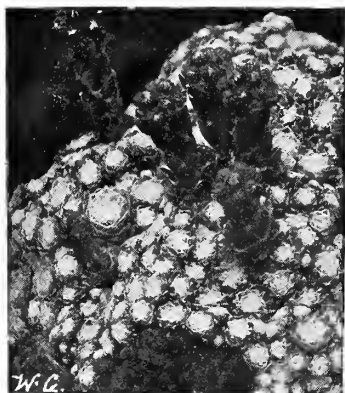
Sedum Spurium Coccineum.



Sedum Sexangulare.



Sedum Spectabile.



Sempervivum.

SILENE (Catchfly).

	Three	Doz.	100
Schafta (Autumn Catchfly). A charming border or rock plant, growing from 4 to 6 inches high, with masses of bright pink flowers from July to October	\$0.85	\$2.50	\$15.00
Alpestris . Dwarf rock plant, dainty pure white flowers in May and June	1.00	3.00	20.00

SISYRINCHIUM (Satin Lily or Blue-Eyed Grass).

Bermudianum . A pretty early Spring and Fall flowering plant with blue flowers and grasslike foliage85	2.50	15.00
-----------------------------------------------------------------------------------------------------------------	-----	------	-------

SEDUM (Stonecrop).

DWARF VARIETIES.

America's greatest rock plant. Suitable for the rockery, carpet-bedding, covering of graves, etc.

	Three	Doz.	100
Aizoon . Bright yellow flowers. 1 foot. July and August	\$0.85	\$2.50	\$18.00
Acra (Golden Moss). Much used for covering graves; foliage green; flowers bright yellow85	2.50	15.00
Ewersi . Rose colored flowers, with glaucous gray foliage; sub-trailing habit85	2.50	15.00
Sarmentosum . Excellent dwarf variety for rockeries or border edgings85	2.50	15.00
Glaucum . Excellent dwarf variety for rockeries or border edgings ..	.85	2.50	18.00
Ternatum . Excellent dwarf variety for rockeries or border edgings ..	.85	2.50	18.00
Sexangulare . Very dark green foliage; yellow flowers85	2.50	15.00
Sieboldi . Round, succulent, glaucous foliage; bright pink flowers in August and September	1.20	3.50	25.00
Stolonifera . One of the most desirable; flat, succulent leaves; flowers purplish pink; July and August; 6 inches85	2.50	15.00
Spurium coccineum . A beautiful rosy crimson-flowered form; July and August; 6 inches85	2.50	15.00
Stahli . Very fine rock plant	1.00	3.00	20.00

ERECT-GROWING VARIETIES.

Useful and pretty plants for the border, producing their interesting flowers during late Summer and Fall.

	Three	Doz.	100
Spectabile . One of the prettiest erect-growing species, attaining a height of 18 inches, with broad, light green foliage and immense heads of handsome, showy, rose colored flowers; indispensable as a late Fall-blooming plant	\$0.85	\$2.50	\$15.00
Spectabile "Brilliant" . A rich colored form of the preceding, being a bright amaranth-red85	2.50	15.00

DWARF AND RARE SEDUMS.

Kamschaticum . Orange-yellow flowers, with prostrate, green foliage, turning golden in Autumn	1.35	4.00	30.00
Kamschaticum fol. var. Similar to above, but has attractive, variegated foliage	1.35	4.00	30.00
Obtusatum . Golden yellow flowers, with emerald-green foliage, shaded bronze. 3 inches	1.35	4.00	30.00
Pruniatum Forsterianum . Pretty, glaucous, bluish green leaves, of a trailing habit, with golden yellow flowers	1.00	3.00	20.00

SEMPERVIVUM (House Leek).

Curious and interesting plants forming rosettes of succulent leaves of varying colors. Good for rockeries, dry banks, carpet bedding or walls. (For Fall delivery, 1926).

	Three	Doz.	100
Arachnoideum (Cobweb House Leek). Leaves in rosettes usually connected by silvery threads. Flowers bright red. 6 inches	\$1.35	\$4.00	\$30.00
Atroviolaceum . Large rosettes of a deep green color; shaded red ...	1.35	4.00	30.00
Browni . Grayish green rosettes ...	1.35	4.00	30.00
Falconetti . Deep green, very compact	1.35	4.00	30.00
Funcki . Light green rosettes, with heavy edges - flowers bright purplish red	1.35	4.00	30.00
Hookeri . Grayish green leaves in flat rosettes, flowers dull red ...	1.35	4.00	30.00

SPIREA (Goat's Beard; Meadow Sweet).

Elegant border plants with feathery plumes of flowers and neat, attractive foliage; succeeds in all locations.

	Three	Doz.	100
Kneiffi. Very graceful foliage, finely cut into hairlike segments, with large cream colored flower spikes. \$2.00	\$8.00	\$70.00	
Ulmaria fl. pl. The well known double "Meadow Sweet." Creamy white flowers	1.00	3.00	20.00
Venusta. A fine plant for moist situation, large, flat heads of pink flowers	2.00	8.00	
Filipendula (Dropwort). Numerous corymbs of white flowers on stems 15 inches high. June and July; pretty fernlike foliage	.85	2.50	18.00
Filipendula flore pleno. 12 to 18 inches. June and July. Double white flowers, fernlike foliage	1.00	3.00	20.00
Aruncus. 4 feet. June. Produce long, feathery panicles of white flowers, forming graceful plumes.	2.00	8.00	70.00
Palmata elegans. 3 feet. June to August. Graceful plumes of lovely light pink flowers. Fine for waterside planting	1.00	3.00	20.00

SPIREA ASTILBE.

(Arendsii and Japonica Hybrids).

Hybrid varieties of very vigorous growth, producing many-branched, feathered heads of flowers in June and July. They prefer a half-shady, moist position in any ordinary garden soil. Field grown clumps.

	Three	Doz.	100
America. Deep pink; excellent forcing variety	\$2.00	\$7.00	\$50.00
Petsy Cuperius. The drooping spikes of flowers have a length of over 2 feet, and are a beautiful creamy white, with pink centers. 5 to 6 feet	2.75	10.00	75.00
Brunhilde. Creamy white, shaded lilac	2.00	7.00	50.00
Ceres. Light rosy pink, with silvery hue	2.00	7.00	50.00
Davidi. Large plumes of violet flowers; 5 to 6 feet	2.00	7.00	50.00
Deutschland. Purple pink	2.75	10.00	75.00
Emde. Rich magenta	2.75	10.00	75.00
Grandis rosea maxima. A splendid pink sort growing 4 feet high	2.00	7.00	50.00
Gladstone. 18 inches. June-July. A fine variety. Immense trusses of flowers are as white as snow, borne on erect, strong stocks	2.00	7.00	50.00
Gunther. Rosy pink	3.00	10.00	75.00
Marguerite Van Rechteren. Grows about 5 feet high. The flower stem has a length of over 3 feet. The very fine fringed flowers are bright red tinged with dark lilac.	2.00	7.00	50.00
Meta Immink. Dense plumes of bright pink. Very fine	2.00	7.00	50.00
Mowe. Bright pink	2.75	10.00	75.00
Prof. Wellen. Loose panicles of small, white flowers; exceedingly pretty	3.00	10.00	75.00
Rheinland. A lovely blend of rich crimson and salmon	2.75	10.00	75.00
Rubens. Rosy red; new and good; fine for forcing	2.00	7.00	50.00
Salland. Grows over 6 feet high with flowers of a distinct red color	2.00	7.00	50.00
Queen Alexandra. Light pink; good for forcing	2.00	7.00	50.00
Vesta. New. Tall, lilac-rose spikes; beautiful garden variety	2.75	10.00	75.00
Van Den Bosch. Good border plant.	2.75	10.00	75.00



Spirea Gladstone.



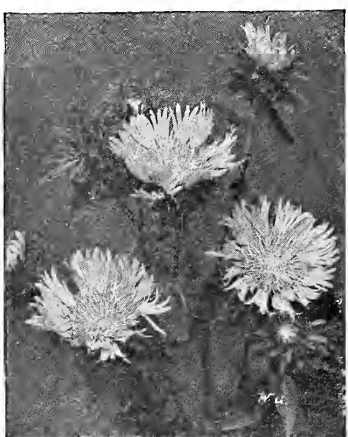
Astilbe Arendsi Hybrid, Grandis Rosea Maxima.

STACHYS (Woundwort).

Lanata. Fine old-fashioned cottage garden plant for edging; useful in rock garden; dwarf; soft silvery foliage; flowers useless. 4 inches	.85	2.50	15.00
--------------------------------------------------------------------------------------------------------------------------------------------------	-----	------	-------



Statice Latifolia.



Stokesia Cyanea.



Tradescantia Virginica.



Trillium Grandiflorum.

STATICE (Great Sea Lavender).

	Three	Doz.	100
Latifolia. A valuable plant either for the border or rockery, with tufts of leathery leaves and immense candelabra-like heads, frequently 1½ feet high and 2 feet across, of purplish blue, minute flowers during July and August. These, if cut and dried, last in perfect condition for months ...	\$.85	\$2.50	\$15.00
Incana. White form of the above ..	.85	2.50	15.00

STENANTHIUM (Mountain Feather Fleece).

Robustum. A rare perennial, with showy panicles of pure white, fleecy flowers in August and September on stems 4 to 5 feet high; requires a moist, semi-shady position ..

	.85	2.50	18.00
--	-----	------	-------

STOKESIA (Cornflower Aster; Stokes' Aster).

A most charming and beautiful native hardy plant which, for many seasons, has been the most admired flower on our grounds. The plant grows from 18 to 24 inches high, bearing freely from early July until late in October, its handsome lavender-blue centaurea-like blossoms, which measure from 4 to 5 inches across. It is of the easiest culture, succeeding in any open, sunny position, desirable as a single plant in the hardy border and effective in masses or beds of any size.

	Three	Doz.	100
Cyanea coerulea. Beautiful light blue ..	\$.85	\$2.50	\$18.00
Cyanea coerulea alba. White-flowered form of above. 1 to 1½ feet85	2.50	18.00
Mixed. Shades of blue, white, violet and purple ..	.85	2.50	18.00

SWEET WILLIAM (See Dianthus Barbatus).

TEUCRIUM (Germander).

Chamaedrys. Shrublike habit. Excellent plant. Glossy green foliage, purple flower spikes in July and August. 1 foot ..

	1.70	5.00	40.00
--	------	------	-------

THYMUS (Thyme).

The charming Mountain Thymes make a perfect, close, fragrant carpet on hot, dry, sunny banks where grass is difficult to establish; they are a sheet of blossom in June and July. Excellent for carpeting patches of Spring-flowering bulbs

(*These varieties ready Fall, 1925).

	Three	Doz.	100
*Serpillum (White Mountain Thyme). Forms dense mats of dark green foliage and clouds of white flowers. 3 to 4 inches. June-July ..	\$.85	\$2.50	\$18.00
*Lanuginosus (Woolly-leaved). Woolly foliage with bright pink flowers ..	1.00	3.00	20.00
*Coccineum. Plants become completely covered with brilliant crimson-scarlet flowers ..	1.20	3.50	25.00
*Album. A wonderful contrast with the preceding; flowers a sheet of white ..	1.20	3.50	25.00
*Citriodorus aureus. The golden yellow form of the well known "Lemon Thyme" ..	1.00	3.00	20.00
Vulgaris. 6 inches. June and July. An old garden plant, being grown as a sweet herb; flowers small, lilac or purplish, in terminal, interrupted spikes; foliage very fragrant. Fine for rock garden85	2.50	18.00

TIARELLA (Miterwort).

Cordifolia. 6 to 12 inches. May. An elegant plant with fine foliage and small, creamy white, star-shaped flowers. Prefers partial shade ..

	.85	2.50	18.00
--	-----	------	-------

TRADESCANTIA (Spiderwort).

Virginiana. Produces a succession of blue flowers all Summer. 2 feet ..

	.85	2.50	15.00
virginiana alba. A white-flowered form ..	.85	2.50	15.00

TRILLIUM (Wood Lily or Wake Robin).

Grandiflorum. Excellent plants for shady positions in the hardy border, or in a sub-aquatic position. Large, pure white flowers in early Spring. 12 to 18 inches ..

	.85	2.50	15.00
--	-----	------	-------

THERMOFSIS (False Lupine; Buffalo).

	Three	Doz.	100
Caroliniana. A showy, tall-growing plant, attaining a height of 3 to 4 feet, producing long spikes of yellow flowers in June and July ..	\$1.00	\$3.00	\$20.00

THALICTRUM (Meadow Rue).

Aquilegifolium. Graceful foliage like that of Columbine, and rosy purple flowers from May to July. 2 to 3 feet ..	.85	2.50	18.00
Aquilegifolium album. White form of the above ..	.85	2.50	18.00
Adiantifolium. A beautiful variety, with foliage like the Maidenhair Fern and miniature white flowers in June ..	.85	2.50	18.00
Dipterocarpum. A pretty and distinct species, with flowers of a charming shade of lilac-mauve, which is brightened by a bunch of lemon-yellow stamens and anthers. The plant is of strong growth, about 4 feet high. The dainty flowers are produced in graceful sprays during August and September ..	1.20	3.50	25.00
Minus. Dwarf, with Maidenhair fernlike foliage ..	2.00	15.00	125.00

TRITOMA (Red Hot Poker; Flame Flower; Torch Lily).

Pfitzeri (The Everblooming Flame Flower). The free and continuous blooming qualities of this variety have made it one of the great bedding plants, and when we consider that there are few flowering plants which are suitable for massing under our severe climatic conditions it is little wonder that such an elegant subject should become so popular. Succeeds in any ordinary garden soil, but responds quickly to liberal treatment. Hardy if given protection, but the most satisfactory method of Wintering is to bury the roots in sand in a cool cellar. In bloom from August to October, with spikes 3 to 4 feet high, and heads of bloom of a rich orange-scarlet producing a grand effect either planted singly in the border or in masses ..	1.00	3.00	20.00
Quartiniana. A strong growing thick stalked variety, blooming late in May with flower cones 10 to 12 inches long. Orange-red at first, but yellow on bottom half as bloom matures. Perfectly hardy here; does not need protection ..	1.20	3.50	25.00
Uvaria grandiflora. 3 to 4 feet. The old-fashioned, late-flowering sort, with flowers rich red changing to salmon-pink. Needs slight protection ..	1.20	3.50	25.00

TROLLIUS (Globe Flower).

Europaeus, Orange Globe. Desirable free-flowering plants, producing their giant bright yellow, buttercup-like blossoms on stems 1 to 2 feet high from May until August; succeed admirably in the border in a half-shady position ..	1.70	5.00	40.00
--------------------------------------------------------------------------------------------------------------------------------------------------------------------------------------------------------------------------------------------	------	------	-------

TUNICA (Coat Flower).

Saxifraga. A pretty tufted plant with light pink flowers, produced all Summer. Useful either for the rockery or the border ..	.85	2.50	18.00
--------------------------------------------------------------------------------------------------------------------------------------	-----	------	-------

VALERIANA (Valerian; Garden Heliotrope).

Coccinea. Showy heads of old rose flowers. June to October. 2 feet. ..	.85	2.50	18.00
Officinalis (Hardy Garden Heliotrope). Produces showy heads of rose-tinted white flowers during June and July, with delicious, strong heliotrope odor, 3 to 4 feet ..	1.00	3.00	20.00



Pfitzer's Tritoma



Thalictrum Aquilegifolium.



Trollius, Orange Globe.



Veronica Amethystina.



Veronica Longifolia Subsessilis.



Viola, G. Wermig.

VERONICA (Speedwell).

A family containing some of the most beautiful subjects for the hardy garden and rockery. Given a rich, well drained soil in an open situation in full sun, they will all thrive in an amazing manner.

THREE CHOICE VERONICAS FOR SPRING, 1926.

	Three	Doz	100
Amethystina "Royal Blue." Beautiful spikes of rich Gentian-blue flowers. 1 foot June and July. \$1.20		\$3.50	\$25.00
Rupestris Treham. A fine dwarf trailing variety with clear blue flowers	1.20	3.50	25.00
True Blue. Literally covers itself with blossoms of intense blue. 1 foot. (Sold out for this season).			

THE FOLLOWING ARE OBTAINABLE THIS FALL.

Amethystina. 8 to 12 inches. June. A slender species, with short spikes of amethyst-blue flowers.	1.00	3.00	20.00
Incana. 1 foot. July and August. A white, woolly plant; flowers numerous; blue. Has good appearance, both in and out of bloom. Useful in rockery or border85	2.50	18.00
Longifolia subsessilis. 2 feet. July to September. One of the handsomest blue-flowering plants. Perfectly hardy and increases in strength and beauty each year. Spikes completely studded with beautiful blue flowers; fine for cutting and one of the best plants for the hardy border85	2.50	15.00
Rrepens. 3 to 4 inches. May and June. A useful rock or carpeting plant with light blue flowers	1.00	3.00	20.00
Rupestris. A fine rock plant growing 3 to 4 inches high; thickly matted, deep green foliage, hidden in Spring under a cloud of bright blue flowers	1.00	3.00	20.00
Spicata. 18 inches. June and July. Long spikes of violet-blue flowers. .85	.85	2.50	18.00
Spicata alba. Long spikes of snowy white flowers	1.00	3.00	20.00
Spicata rosea. 2 feet. June to September. Much-branched variety with pink flowers	1.20	3.50	25.00
Virginica (Great Virginian Speedwell). A free-growing perennial which likes the bright sunshine. Flowers white or pale blue. 2 to 6 feet. August to September	1.00	3.00	20.00

VERBASCUM (Mullein).

Olympicum (Greek Mullein). The showiest of the entire family of more than thirty varieties. The foliage is silvery white, with leaves often 3 feet long. The flowers are yellow, and are produced in quantity for about three weeks in midsummer. Succeeds best in a dry situation. 3 to 5 feet85	2.50	18.00
Wayside Gardens Hybrids. An excellent strain produced from a very superior grade of English Hybrids. Colors are most interesting85	2.50	18.00

VIOLA (Tufted Pansy).

This is the best edging plant for the hardy border or garden; when properly cared for, these plants remain in full bloom from May until October. The great secret of their continuous bloom, though, is the fact that they must be sheared several times during the season, so that the flowers do not go to seed.

CORNUTA HYBRIDS.

	Three	Doz.	100
Jersey Gem (New). Possesses the dwarf habit and continuity of blooming of the true horned Viola (<i>V. cornuta</i>), and the vigorous, bushy growth and roundish foliage of the finest English bedding varieties. Color is pure, rich violet, and slightly perfumed. (Sold out for this season).			
G. Wermig. A variety of Tufted Pansy, forming clumps which are covered with rich, violet-blue flowers the entire season	1.00	3.00	20.00

VIOLA CORNUTA—Continued.

	Three	Doz.	100
Turingia. Rich blue flowers with white spots	\$0.50	\$1.50	\$10.00
Admiration. Light blue50	1.50	10.00
Golden Yellow50	1.50	10.00
White Perfection50	1.50	10.00
Purple Queen50	1.50	10.00
Rose Queen50	1.50	10.00
Mixed. Many shades and markings..	.50	1.50	10.00

VIOLA ODORATA (Sweet Violet).

The variety listed below is suited for forcing under glass; and perfectly hardy, and is covered with flowers in early Spring and wonderfully sweet scented.

	Three	Doz.	100
Gov. Herrick. Rich, deep purple ..	\$0.85	\$2.50	\$18.00
Double Russian. Not suited for forcing under glass, but is perfectly hardy, producing in early Spring large, double, deep purple flowers of exquisite fragrance. (Sold out for this season).			

VINCA (Periwinkle or Trailing Myrtle).

Minor. A trailing, evergreen plant, used extensively for carpeting the ground under shrubs or trees or on graves, where it is too shady for grass or other plants to thrive.	.85	2.50	18.00
-------------------------------------------------------------------------------------------------------------------------------------------------------------------------------------	-----	------	-------

WALLFLOWER.

The old fragrant favorite; mixed colors; choice English imported strain including yellow, brown, etc. Plant in Spring only85	2.50	18.00
----------------------------------------------------------------------------------------------------------------------------------	-----	------	-------

WULFENIA.

Carinthiaca. A rare plant for the rock garden. Glossy, deep green leaves and handsome spikes of rich blue flowers. 9 to 12 inches. July	1.20	3.50	25.00
------------------------------------------------------------------------------------------------------------------------------------------------------	------	------	-------

YUCCA (Adam's Needle).

Filamentosa. Among hardy plants there is nothing more effective and striking for isolated positions on the lawn or on dry banks where few other plants thrive. It is also indispensable for the rockery. Its broad, swordlike, evergreen foliage and immense branching spikes of drooping, creamy white flowers, rising to a height of 6 feet, render it a bold and handsome subject wherever placed. Should be planted in Spring.			
3-year-old plants	1.00	3.00	20.00
4-year-old plants	1.50	4.50	35.00

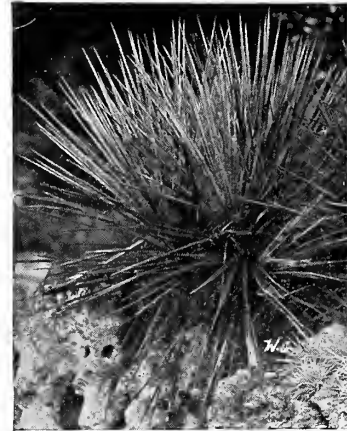
CLIMBING PLANTS AND VINES

AMPELOPSIS (Ivy).

	Each	Doz.	100
Veitchi (Boston Ivy or Japan Ivy). The most popular climbing plant for covering brick walls, stone or wooden walls, trees, etc. When it becomes established it is of very rapid growth, and clings to the smoothest surface with the tenacity of Ivy. The foliage is of a rich olive-green during the Summer, changing to various shades of bright crimson and scarlet in the Fall. In planting Ampelopsis of all kinds, the plants, if still in a dormant condition, should be cut down to within 6 inches of the ground, so that the new growth may cling to the wall or tree from the bottom up.			
Extra strong, 2-year-old plants ..	\$0.50	\$5.00	\$40.00



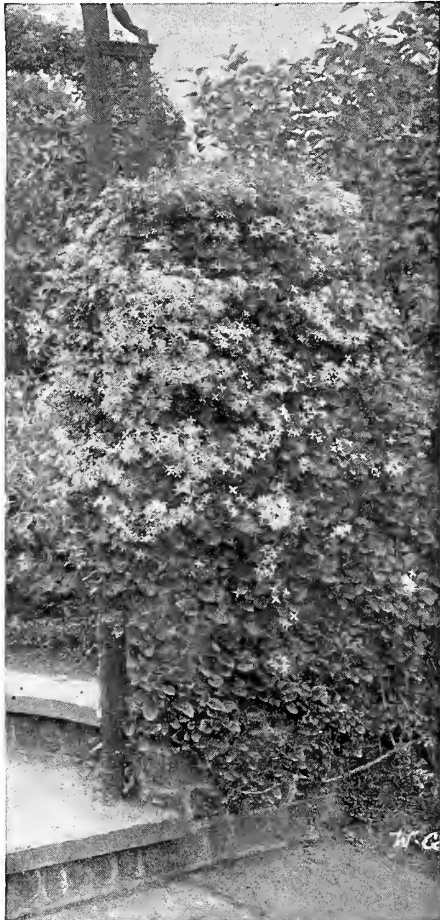
Viola Cornuta.



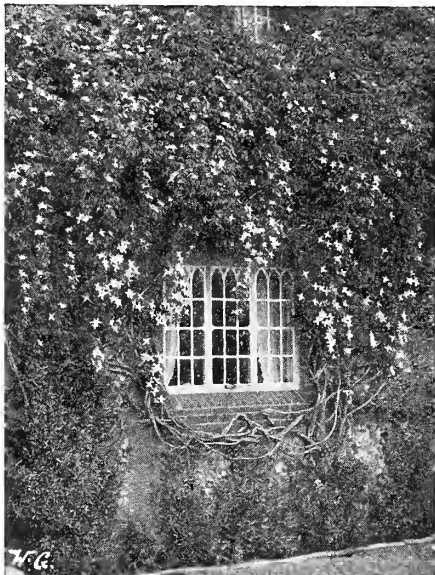
Yucca Filamentosa.



Clematis Jackmani.



Clematis Paniculata.



Clematis Montana.

ARISTOLOCHIA (Dutchman's Pipe).

	Each	Doz.	100
Sipho. A vigorous and rapid-growing climber, bearing singular brownish colored flowers, resembling in shape a pipe. Its flowers, however, are of little value compared to its light green leaves, which are of very large size, and retain their color from early Spring to late Fall. Perfectly hardy strong plants			
	\$1.25	\$12.00	

BIGNONIA (Trumpet Vine).

For covering unsightly places, stumps, rock work, or wherever a showy flowering vine is desired, the Bignonias will be found very useful. The flowers are large, attractive, and borne profusely when the plants attain a fair size.

	Each	Doz.	100
Radicans. Dark red, orange throat, free blooming and very hardy	\$0.40	\$4.00	\$30.00

CALYSTEZIA (California Rose).

Pubescens (The Double Japanese Convolvulus). A vigorous climbing vine with attractive, double pink flowers. (Sold out for this season).

CLEMATIS (Virgin's Bower).

Paniculata (Japanese Virgin's Bower). This handsome hardy climber is one of the choicest and most satisfactory climbing flowering plants. Of strong, rapid growth, with small, dense, cheerful green foliage, and pure white, deliciously fragrant flowers, which appear in the greatest profusion in August and September, followed by silvery feathery seed pods, which make an attractive appearance until midwinter.

	Three	Doz.	100
1 year	\$0.85	\$2.50	\$15.00
2 year	1.00	3.00	20.00
3 year	1.35	4.00	30.00

Flammula. Very beautiful climber; white flowers; wants a sunny exposure

	Each, \$1.00	3.00	11.00
Jackmani. Beautiful, large, deep purple flowers			

Montana Perfecta (Anemone Clematis). A strong, vigorous, extremely hardy variety, thriving under most adverse conditions. Its large, white flowers expand in April and May, and it is the best of our Spring climbers

	1.70	4.00	30.00
Montana rubens. Flowers rosy-pink, with beautiful green foliage, shaded bronze			

	1.70	4.00	30.00
Orientalis (Tangutica or Graveolens. This is the beautiful "Golden Clematis" admired for its rich yellow flowers in midsummer; a vigorous, free-flowering and hardy vine, often flowering again in Autumn			
	1.00	3.00	20.00

EUONYMUS (Evergreen Bittersweet).

The trailing Euonymus are particularly desirable for their dense, evergreen foliage and extreme hardiness, some varieties on account of this taking the place of the English Ivy for wall covering, others that of the boxwood as an edging plant. Makes a splendid ground cover, and one of the best creepers for rockeries.

	Three	Doz.	100
Radicans. Deep green foliage, useful for covering low foundation walls, or may be clipped the same as boxwood for an edging plant	\$1.70	\$ 5.00	\$40.00

Radicans variegata. A beautiful small-leaved, green and white variegated form of the same habit as the type	1.70	5.00	40.00
--------------------------------------------------------------------------------------------------------------------	------	------	-------

Radicans vegetus (Evergreen Bittersweet). A strong growing variety, with larger leaves than the type, and producing bright orange-red berries, which remain on the plant the greater part of the Winter. As an evergreen, absolutely hardy wall cover, this plant is unequalled. An enthusiastic horticultural writer predicts that it will become as popular for this purpose here as the Ivy is in England. Extra strong	1.70	5.00	40.00
-----------------------------------------------------------------------------------------------------------------------------------------------------------------------------------------------------------------------------------------------------------------------------------------------------------------------------------------------------------------------------------------------------------------------------------	------	------	-------

HEDERA (Ivy).

The famous English Ivy with its familiar evergreen, glossy foliage is unfortunately not very hardy in this climate, and requires Winter protection where it is exposed to chilly winds on open walls. It can, however, be planted with perfect safety as a ground cover or as an edging to flower beds.

	Three	Doz.	100
Helix (English Ivy). 4-inch pots..	\$1.70	\$5.00	\$40.00

LONICERA (Honeysuckle).

Their vining qualities are all that can be desired, but the fragrance of their flowers makes their strongest bid for favor.

	Three	Doz.	100
Halleana. Color an intermingling of white and yellow. Extremely fragrant and most satisfactory ..	\$1.20	\$3.50	\$25.00

POLYGONUM (Silver Lace Vine).

Auberti. A splendid hardy climber of strong, vigorous growth, attaining height of 25 or more feet, producing during Summer and Fall great foamy sprays of white flowers, and a well established plant during its long period of flowering is a great mass of bloom. Not only does it thrive well in the eastern and middle states, but we have seen it in equally good condition in Oregon, Colorado and California, adapting itself to the most varied climatic conditions ..

	1.70	5.00	40.00
--	------	------	-------

PUERARIA (Kudzu Vine).

The most rapid growing vine in cultivation, often attaining a growth of 40 feet in a single season. Especially desirable for immediate effect for dense shade, as its leaves are large.

	Three	Doz.	100
Thunbergiana (Jack-and-the-Bean-Stalk). Small, pea-shaped, rosy purple flowers, heart-shaped leaves. It will grow anywhere. Field-grown plants ..	\$1.35	\$4.00	\$30.00

WISTERIA.

Woody vines with tightly clinging habit, for pergolas, arbors, trellises, etc., especially ornamental in early Summer when they are resplendent with their large, drooping clusters of fragrant blossoms.

	Three	Doz.	100
Sinensis (Chinese Wisteria). Bunches of pale lilac, deliciously scented blossoms in great profusion all over the vine. Strong plants ..	\$1.70	\$5.00	\$40.00
Sinensis alba. A white-flowered form of the type. Strong plants..	1.70	5.00	40.00

HARDY SHRUBS

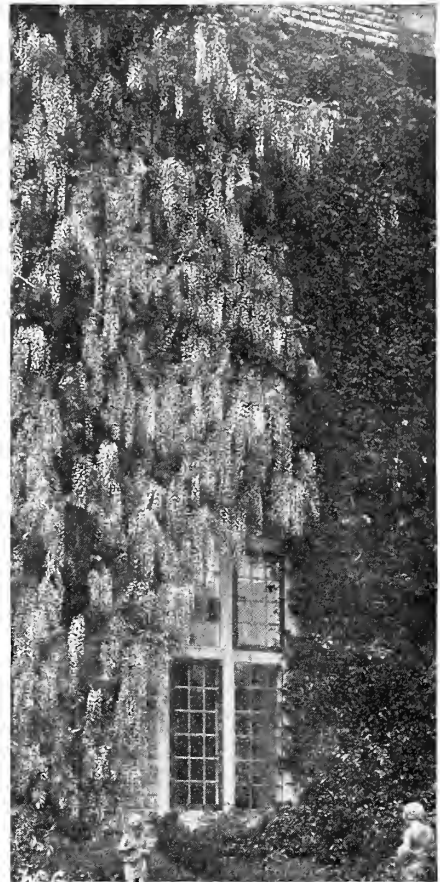
Varieties Used With Herbaceous Plants in Hardy Plant Borders and Rock Gardens

BUDDLEIA (Summer Lilac).

	Three	Doz.	100
Variabilis magnifica (Butterfly Bush). This is properly a shrub, but the top usually freezes back, and new growth starts from the root like other perennials. Plants grow three to four feet and are covered with long racemes of lilac-like flowers in July. The best location is in good, rich, well drained soil in a sunny situation. \$1.50	\$5.00	\$45.00	

CARYOPTERIS (Blue Spirea).

Mastacanthus. A handsome hardy perennial; grows about 3 feet high and produces rich lavender-blue flowers in great profusion the whole length of the branches. A valuable plant either for bedding or pot culture, blooming continuously from early in September until cut by frost ..	1.35	4.00	30.00
-----------------------------------------------------------------------------------------------------------------------------------------------------------------------------------------------------------------------------------------------------------------------------------------------	------	------	-------



Wisteria Sinensis.



Caryopteris Mastacanthus.



Cotoneaster Horizontalis.



Daphne Cneorum.



Barberry Hedge.

HARDY SHRUBS —Continued.

COTONEASTER (Rock Spray). Each Doz. 100

Horizontalis (Prostrate Cotoneaster). A low shrub with almost horizontal branches. Native of China. Leaves dark green, about half an inch long; flowers pinkish white; fruit bright red; attractive in rockeries. A most desirable ground cover, and should be largely planted. Cannot be transplanted unless from pots.

Strong, 5-inch pot plants\$0.75 \$ 7.50

DAPHNE (Garland Flower).

Cneorum. Handsome dwarf shrubs, mostly evergreen; excellently suited for planting near the front of shrubberies, with odorous, pink flowers and handsome foliage 1.50 15.00

Large clumps 2.00 20.00

DESMODIUM (Tick Trefoil).

Penduliflorum. An exceedingly graceful shrublike plant covered with purplish red flowers in Summer time when little else is in bloom. Strikingly beautiful 50 4.50 35.00

HYPERICUM (St. John's Wort).

Henryi. The same as Moserianum, though slightly more upright in growth and much hardier and better suited for cold climates50 4.00 30.00

Moserianum. (See page 23)..... 4.00 20.00

VITEX (Chaste-tree; Hemp-tree).

Macrophylla. In general habit similar to V. Agnus Castus, but much stronger in all its parts, the foliage being larger while the trusses of lavender-blue flowers are fully double the size. It blooms from July to September, and is likely to become as popular as the Butterfly Shrub, to which we consider it far superior 1.00 10.00 90.00

DWARF SHRUBS AND EVERGREENS

(For Rock and Alpine Gardens).

ANDROMEDA (Lily-of-the-Valley Shrub).

Catesbaei (Leucothoe). A valuable plant with oblong shiny foliage dark green in Summer, turning to a bronzy red in the Fall. The fragrant white flowers are borne in pendulous racemes. Adapted for woodland planting\$1.00

AZALEA (Pinxter Flower; Swamp Honeysuckle).

Amoena (Japanese Evergreen Azalea). A dwarf shrub with double purplish red flowers in May; is especially adapted for borders and rock gardens; needs some protection in northern latitudes. Should be planted in sheltered positions and will abundantly repay for any care given it 2.00

Mollis (Japanese Azalea). Of dwarf habit; resembles rhododendron; good foliage; flowers in all shades of red, yellow and orange; perfectly hardy, thriving in sunny positions anywhere. Excellent for mass planting. It must not come in contact with barnyard manure 2.00

BUDDLEIA (Summer Lilac).

Farquhari (New). A low-growing pendulous, spreading shrub, with rich green foliage and silvery reverse, bearing in late Summer long racemes of purple flowers 1.00

HEDGE PLANTS

BERBERIS (Barberry). Doz. 100 1000

Thunbergi (Japan Barberry). Where a dwarf deciduous hedge is wanted, nothing equals this beautiful Barberry. Requires but little pruning to keep in shape. The leaves are small, light green, and towards Fall assume rich, brilliant colors, the fruit or berries becoming scarlet. Absolutely hardy. Plant 12 to 15 inches apart.

Extra strong, 3-year-old plants. 12 to 18 inches high\$3.00 \$20.00 \$150.00

SPIREA (Meadow Sweet).

Van Houttei (Bridal Wreath). The grandest of all the Spiraea, and one of the very best of all shrubs. A complete fountain of pure white bloom in May and June 2.00 15.00 140.00

BULBS FOR FALL PLANTING

In order to complete our service in furnishing hardy material for gardens, we are herewith offering an excellent selection of Imported Dutch Bulbs. Varieties most suitable for forcing are indicated by a star (*).

We are doing this upon request of our customers who have been most insistent in their demand that we furnish them with bulbs of the same high quality as the plants we send out. We are able to give this service due to the fact that our secretary and treasurer, Mr. J. J. Grullemans is a son of the owner of the firm of J. J. Grullemans & Sons, Lisse, Holland, who are the second largest bulb growers in the world.

DARWIN TULIPS

The figure following the name indicates the relative time of flowering.

	10	100
Baronne de la Tonnaye. 4. Bright rose, margined blush rose. Height 26 inches	\$0.55	\$ 4.50
*Bartigon. A very showy, shapely flower of good substance on strong stem; fiery crimson with pure white base, broadly ringed deep blue. It is splendid for forcing. 28 inches..	1.15	9.00
*Bleu Aimable. 4. Pale lavender, with white base, starred blue; beautiful flower of distinct shape. Height 25 inches	1.25	10.00
Clara Butt. 4. Clear pink, flushed salmon-rose; inside much deeper, with blue base. beautiful out-of-doors. Height 21 inches ..	.75	4.50
*Crepuscule. 3. Lilac-white, with dark rosy flush at tips of petals; large flower. Height 28 inches	1.45	12.00
*Dal Ongaro. 4. Pale lavender-violet; inside dark bluish violet with pure white base. Height 28 inches80	7.00
*Dream. 2. Pale heliotrope, inside deep violet with blue base. Height 27 inches60	5.50
*Europe. 2. Salmon-scarlet, shaded rose with white base; medium sized flower on strong stem. Height 22 inches65	5.50
*Euterpe. 2. Silvery mauve-lilac, edged paler lilac, white base with blue halo; a long flower of exquisite color. Height 28 inches.	.60	5.00
*Faust. 2. Dark purple-maroon with blue base; vry large flower. Height 30 inches	1.35	11.00
Fen Brilliant. 2. The most glorious scarlet Tulip ever raised, large and beautifully shaped flower on strong stem; one of the first to bloom. Height 28 inches	1.00	8.00
*Flamingo. 4. Soft shell-pink; medium sized flowers of refined form. Height 28 inches..	1.00	8.00
*La Candeur; syn., White Queen. 2. Almost white when mature; with black anthers; medium size. Height 24 inches55	4.50
*La Tulipe Noire. 3. Dark maroon-black, the blackest of all the Tulips. Large flower. Height 25 inches80	7.00
*Madame Krelage. 2. Bright lilac-rose, margined pale silvery rose; inside soft rose-pink; long flower. Height 28 inches70	6.00
*Margaret; syn., Gretchen. 3. Silvery pale rose, flushed white, inside soft pink with white base marked blue. Height 22 inches..	.50	4.50
*Massachusetts. 2. Vivid pink, edged rosy white, white base. Large flower of beautiful color. Height 26 inches70	6.00
*Mr. Farncombe Sanders. 2. Scarlet; inside vivid cerise-scarlet with white base; large. Flower of perfect shape. One of the best among the reds. Height 25 inches	1.00	7.00
*Pride of Haarlem. 1. Brilliant rosy carmine with blue base; very large flower on tall, strong stems; sweet scented. Unsurpassed for borders. Height 25 inches75	5.50
Painted Lady. 3. Creamy white, tinged soft heliotrope. Height 27 inches55	4.50
*Princess Elizabeth. 2. Clear deep pink, changing with age to rose-pink, white base. Large flower. Height 26 inches	1.15	9.00
*Professor Rauwenhof. 3. Bright cherry-red with scarlet glow inside; brilliant blue base. Enormous flower. Height 28 inches	\$1.05	\$ 8.00
*Reverend Ewbank. 2. Soft lavender-violet with silvery gray flush, white base; good sized flower of beautiful color. Height 22 inches60	5.50
*Sophrosyne. 2. Soft rosy lilac, edged silvery white; inside deep rose with dull blue base. Height 29 inches80	7.00
*Viola. 2. Dark violet; strong, large flower..	1.25	10.00
Fine Mixture of Darwins. As imported. Not to be compared with ordinary mixtures55	5.00



Darwin Tulips.

Herbaceous and Alpine Plants

MAMMOTH BREEDER TULIPS

	10	100
Apricot. Dull, bronzy buff, shaded ruddy apricot above base	\$1.00	\$ 8.00
Bronze Queen. Soft buff, inside tinged golden bronze80	6.00
Cardinal Manning. Dark rosy violet85	6.00
Dom Pedro. Coffee brown-maroon, shaded... ..	1.45	12.00
Godet Parfait. Bright violet; striking color; extra large flowers which keep wonderfully. ..	1.40	12.00
Golden Bronze. Rich golden brown	1.00	9.00
Louise XIV. Rich dark purple, shaded steel-blue, heavily flushed bronze, edged golden brown; enormous size and stately bearing ..	2.00	18.00
Mon Tresor. 3. Indian red, with orange tone at edge of petals; inside dull blood-red, with yellow base marked bronze; a medium sized flower; quite distinct. Height 25 inches ..	1.00	7.50
Panorama or Fairy. Deep orange-red, shaded mahogany; immense flower	1.00	7.50
Prince of Orange. Orange-red, lighter border. ..	1.10	8.00
Turenne. Dark blue, heavily flushed bronze at margin; very large flower bud	1.00	8.00
Yellow Perfection. Light bronze-yellow, edged golden	1.10	8.00
Finest Mixed Colors75	6.00

PARROT OR DRAGON TULIPS

	10	100
Finest Mixed Parrots	\$.05	\$4.00

COTTAGE OR MAY-FLOWERING TULIPS

	10	100
Bouton d'Or. Deep golden yellow; of great value for cutting	\$.055	\$ 4.50
Ellen Willmott. One of the finest May-flowering Tulips. Flowers very large, beautifully shaped, soft creamy yellow, deliciously fragrant55	4.50
Flava. Lemon-yellow on tall stem	1.60	14.00
Inglescombe Pink. Salmon-pink, blue base; very brilliant45	4.50
Inglescombe Yellow. Glossy canary-yellow. The large, globular flower has the true shape of the Darwin Tulip, hence is called the Yellow Darwin45	4.50
John Ruskin. Salmon-rose, edged lemon-yellow; inside deep rosy lilac, with margin of yellow; large flower of fine shape. Height 16 inches70	6.00
Moonlight. New. Light, soft yellow60	5.00
Mrs. Moon. Pure yellow, large. The best of all yellow late Tulips85	6.75
Parisian Yellow. Golden yellow; pointed ..	.60	4.50
Picotee or Maiden's Blush. Long, clear white; the petals, which are pointed and elegantly reflexed, are beautifully margined and penciled on edges with bright pink55	4.50
The Fawn. Large; light grayish rose, changing to rosy white. Distinct75	6.00
Special Mixture of Late Single Tulips50	4.50

DOUBLE EARLY TULIPS

	10	100
*Boule de Neige (Purity). 10-M. Pure white, large, peony-like flower; is a splendid forcer and bedder	\$.075	\$ 6.50
*Couronne d'Or. 11-M. Golden yellow flushed orange; a magnificent flower of great beauty and size; strong stems, holding flower upright; fine forcer75	6.50
Mr. Van Der Hoef. A yellow sport of Murillo with all its superb qualities. One of the very finest of the primrose-yellow, double Tulips. A very lovely flower. Height 13 inches	1.50	12.00
Murillo. Delicate blush pink. A very fine flower with a lovely color. An old variety but still one of the handsomest of the double Tulips. It forces very easily75	6.00
Vuurbaak. 12-M. Bright scarlet; splendid bedder; large, well shaped flowers on strong stems60	5.50
Superb Double Mixture. Our own special mixture which we recommend for best results in beds of mixed colors. This mixture is made up of equal proportions of above named varieties55	5.00



Breeder Tulip, Apricot.

CHOICE SINGLE EARLY TULIPS

	10	100
Couleur Cardinal. 12-D. Outside bronze-scarlet, inside glittering crimson; large, fine flowers. Fine for bedding and late forcing. ..	\$1.00	\$ 7.75
Flamingo. 12-C. White, flaked bright carmine-rose. A sport from White Hawk, having its artistic shape with its more or less crinkled petals70	6.00
*Goldfinch. 10-B. The true Yellow Prince. Golden yellow; sweet scented; forces easily and early, lasts long when cut; retains color. ..	.65	5.50
*Joost Van Vondel (White Lady Boreel). 12-B. The largest and most intense of the white early Tulips. Splendid forcer and bedder65	5.50
*Keizerskroon (Grand Duc). 14-B. Carmine-scarlet with broad yellow border. This old variety, which forces well, remains a great favorite for bedding; should be planted by itself85	7.00
Le Reve; syn., American Lac; Hobbema; Sarah Bernhardt. 4. Old rose; very large flower on a strong stem. Beautiful when grown out-of-doors. Fine for late forcing. Height 13 inches	1.00	9.00
*Mon Tresor. 11-B. Pure golden yellow; extra fine, large flower. One of the best and easiest forcers70	6.00
Rising Sun. 2. Very deep golden yellow; long, huge flower of very handsome form and habit. A sport of Duchesse de Parma, which excels all yellow Tulips for bedding or forcing. Height 16 inches	1.00	9.00
*Rose Luisante. 10-C. Dark silky rose; the finest rose variety. Both a forcer and bedder. ..	1.00	9.00
*Vermilion Brilliant. 10-B. Bright vermilion; best of its class. Forces very readily; fine bedder. Large	1.00	9.00
White Beauty. This is a pure white sport of Pink Beauty and it is destined to become quite as popular as its parent. Flowers large, of fine substance and purest white ..	.85	7.50
Superb Single Mixed. This is our own special mixture which we recommend where the best results are desired in beds of mixed colors. This mixture is made up of the above named sorts and in equal proportion of each variety55	5.00

GIANT TRUMPET DAFFODILS

YELLOW TRUMPET DAFFODILS

Emperor. Large, rich yellow trumpet; primrose perianth; fine for cutting. Mammoth bulbs	10	100
.....\$1.00		\$ 9.00
Glory of Leiden. Trumpet yellow; perianth soft yellow; of largest size and always satisfactory. Mammoth bulbs90	8.00
Golden Spur. Native of the Netherlands. Large lobed trumpets, rich, deep self-yellow; perianth large and spreading; early. Mammoth bulbs90	8.50
King Alfred. Uniform golden yellow; this variety stands unrivaled in size and beauty. Its round, fleshy petals, its immense, elegantly recurved and beautifully fluted trumpet, and its sturdy growth proclaim it the King of Daffodils. Mammoth bulbs	2.25	20.00

BICOLOR TRUMPET DAFFODILS

Empress. Very large and beautiful white perianth; rich yellow trumpet. Mammoth bulbs	10	100
.....\$1.00		\$ 9.00
Mrs. Walter T. Ware. Very free-flowering and early; beautiful golden yellow trumpet, well expanded and frilled at the base85	7.00
Victoria. Large, erect flowers; creamy white perianth and rich yellow trumpet; forces easily. The earliest of the Bi-colors. Mammoth bulbs	1.00	9.00

WHITE TRUMPET DAFFODILS

Madame de Graaff. Perianth white; trumpet pale primrose, passing off white	10	100
.....\$1.25		\$10.00

THE SHORT TRUMPET OR CROWN DAFFODILS

NARCISSUS INCOMPARABILIS

Lucifer. Large, sulphur-white, loosely formed perianth; cup chrome-yellow, edged bright orange-red	10	100
.....\$0.75		\$ 7.00
Sir Watkin (Giant Welsh Chalice Flower). Largest of the Incomparabilis varieties; fine for forcing; cup yellow; perianth primrose. Mammoth bulbs	1.00	9.00

NARCISSUS BARRI

Conspicuous. Large, spreading yellow perianth; fine scarlet cup; strong grower, fine blooming and durable cut flower variety ..	10	100
.....\$0.80		\$ 7.00
Firebrand. Creamy white perianth, intense fiery red cup; very distinct95	8.00

NARCISSUS LEEDSI

Mrs. Langtry. White perianth and white cup; largely used for forcing; free bloomer	10	100
.....\$0.60		\$ 5.00
White Lady. Broad white perianth; dainty cup, shaded soft lemon. Beautifully crinkled. A very pretty flower	1.10	9.00

DOUBLE-FLOWERED DAFFODILS

Alba plena odorata. Double, pure white; sweet scented and fine for naturalizing, especially in shady, moist locations	10	100
.....\$0.60		\$ 5.00
Orange Phoenix or Eggs and Bacon. Sulphur-yellow, crimson center70	6.00
The Double Von Sion or Golden Yellow Daffodil. Fine for the garden and is forced in great quantities for cut flowers. Mammoth bulbs ..	.80	7.00

POET'S NARCISSI

Glory of Lisse. An improved form of Poeticus Ornatus; extra large flower; late forcer ..	10	100
.....\$1.00		\$ 8.00
Ornatus. Early; pure white cup, margined scarlet; forces very easily. Double-crown bulbs50	4.50

POETAZ HYBRID DAFFODILS

Elvira. Pure white, with yellow cup; most popular	10	100
.....\$0.75		\$ 6.00
Klondyke. Yellow, with golden yellow eye ...	1.00	9.00



Narcissus, Emperor.

NARCISSUS ODORUS (JONQUILS)

Campernelle rugulosus. Large, rich yellow flowers, borne very freely, and fine for cutting	10	100
.....\$0.60		\$ 5.00

PAPER-WHITE GRANDIFLORA

First Size Selected Bulbs	10	100
.....\$0.70		\$ 5.00
Extra Large Mammoth Bulbs75	5.50

NARCISSI FOR NATURALIZING

Naturalizing Daffodils, meaning planting them scattered irregularly in quantity, is a rare pleasure. They "bring sunshine into shady places" most delightfully. A lightly wooded bank or open meadow, covered with these golden flowers is a charming sight, as is a grove of white birches carpeted with them. A fairly good rule to follow is, the paler the Daffodil the more it enjoys the shade.

All varieties mixed, \$40.00 per case of thousand extra heavy bulbs.

\$375.00 per ten thousand bulbs.

Not less than 250 bulbs sold for \$10.00; 500 at \$20.00. All charges included except expressage from Mentor. Guaranteed to bloom profusely.

Herbaceous and Alpine Plants

HYACINTHS

First size bulbs as listed below, \$2.50 per 10; \$20.00 per 100.

BLUSH WHITE

General Vetter. White, shaded blush, changing to pure white when in full bloom. Strong grower with large, well filled spikes.

LIGHT ROSE AND PINK

General De Wet. Lively light pink with a lighter center; large trusses with good sized bells. Fine for forcing or bedding.

Lady Derby. Beautiful, clear rose-pink, with large, compact trusses. Early and fine for forcing and bedding.

LIGHT BLUE AND LILAC

Perle Brilliant. Light blue, tinged lavender; splendid spikes with large, substantial bells. A fine pot Hyacinth and good for bedding.

Queen of the Blues. Clear light porcelain-blue; a strong growing variety with large, well formed trusses. One of the best of its color, particularly for bedding.

PURE WHITE

La Grandesse. Pure white with fine, compact spikes. The best late forcing variety; fine for bedding as well.

L'Innocence. This is the most satisfactory all-around pure white. Compact spikes with large bells. Does well indoors and out.

RED AND DEEP ROSE

Gertrude. Deep rose-pink; compact spikes on good stems. A very popular forcing variety; also used for bedding.

La Victoire. Shiny carmine-rose, with large, well filled spikes. A splendid bedding variety.

BLUE AND DARK BLUE

Grand Maitre. Deep blue with long, compact spikes of large bells, on strong stems. One of the most popular blues; fine for pots as well as bedding.

King of the Blues. Dark violet-blue; splendid, large trusses. One of the best known blue Hyacinths. Good for late forcing and bedding.

YELLOW AND ORANGE

City of Haarlem. The finest of the yellows. Well formed trusses of orange-yellow bells. An excellent variety for forcing and bedding.

FEATHER AND GRAPE HYACINTHS

These will grow in any good garden soil, and are excellent for borders that are shaded by trees. They should be planted in large clumps, and be allowed to remain several years undisturbed. They are also well adapted for pot culture and for rockwork.

The Grape Hyacinth is a most interesting flower, perfectly hardy, robust in habit, and admirably suited for the adornment of vases, for which purpose clumps should be planted in the reserve border.

FEATHER HYACINTHS - *Muscari Plumosus*

	10	100
Plumosus. Pretty pale mauve	\$0.50	\$ 4.50

GRAPE HYACINTHS - *Muscari Botryoides*

	10	100
White Grape Hyacinth	\$0.50	\$ 4.00
Light Blue Grape Hyacinth30	2.75

Heavenly Blue. Immense heads of rich bright blue flowers. Excellent for cutting40	3.50
----------------------------------------------------------------------------------------------	-----	------

ROMAN HYACINTHS

Splendid for early forcing. Can be had in bloom in December.

	10	100
White. Selected	\$1.25	\$10.00

ERANTHIS HYEMALIS (Winter Aconite).

	10	100
A very hardy, bulbous plant with beautiful, bright yellow flowers, produced in early Spring on stems about 6 inches high. Excellent for naturalizing in half-shady positions	\$0.50	\$ 3.00



First Size Hyacinths.

CHIONODOXA (Glory-of-the-Snow).

A hardy early-flowering, bulbous plant which is closely allied to the Scilla, but differs among other characteristics in having a short tube to the corolla. A good companion to the Scilla and Snowdrop.

	10	100
Luciliae. Pure white center gradually merging into blue, the color becoming more intense towards the tips of the petals. A conspicuously beautiful bedding and border flower; it also shows to great advantage in pots	\$0.40	\$ 3.00
Sardensis. Charming flowers of a rich gentian-blue. First class certificate, R. H. S.40	3.00

IXIA (African Corn Lily).

These charming, half-hardy bulbs from the Cape of Good Hope are very ornamental for indoor culture, or planted in cold frames or outdoors in well drained and protected borders. The flowers are of the most brilliant, rich and varied hues.

	10	100
Fine Mixture. All colors	\$0.50	\$ 4.00

CROCUS—NEW LARGE-FLOWERING

	10	100
King of the Whites. Large purple, white edge.	\$0.25	\$ 2.00
Maximilian. Pale blue35	3.00
Mont Blanc. Pure white25	2.00
Mammoth Yellow50	3.00
Sir Walter Scott. White, striped lilac25	2.00
Purpurea grandiflora. Purple35	3.00

SCILLA (Squill; Harebell).

All the varieties of Scilla Campanulata and the Nutans family are splendid for naturalizing because they will flower in shady places. Both have bells like small hyacinths, forming long and graceful spikes. The Scilla Sibirica is used as a companion to Crocus, for borders or massing.

	10	100
Campanulata alba maxima. Large, pure white.	\$0.50	\$ 3.00
Campanulata, Excelsior. Large, bright blue ..	.50	4.00
Campanulata, Rosy Queen. Soft lilac-rose ..	.60	5.00
Nutans. These are larger than Campanulata.		
Nutans alba major. White50	3.00
Nutans, Blush Queen. Delicate lilac-rose60	5.00
Nutans coerulea (Bluebell). Violet-blue50	3.00
Sibirica, Blue. Invaluable for indoor decoration. The lovely ultramarine-blue flowers contrast admirably with Roman Hyacinths and other early-flowering bulbs. The Blue Squill is perfectly hardy, and should be largely grown in the open border in conjunction with Snowdrops. It is also valuable for small beds, and for making marginal lines in the geometric garden45	4.00
Bifolia. Dwarf, rich blue flowers, which bloom with the Winter Aconite in March. Excellent for clumps, edgings, and rock-work45	4.00

FRITILLARIA

	10	100
Meleagris (Snake's Head or Guinea Hen Flower). An elegant species, growing from 10 to 18 inches high, bearing in Spring curious drooping bell-shaped flowers, most of which are very oddly marked, many being checkered and splashed white and purple, cream and maroon, etc. Perfectly hardy and splendid for naturalizing. Mixed colors	\$0.60	\$ 4.50

FREESIA

This is one of the most beautiful of all Cape bulbs, possessing a peculiar grace of form, and its fragrance is most delightful, one pot of five or six bulbs being sufficient to perfume a whole house. As cut flowers, they are extremely valuable.

	10	100
Purity. A magnificent, snowy white, of very large size and great length of stem. A truss bearing from 8 to 10 buds, of which six are often open at one time. Mammoth bulbs	\$0.80	\$ 5.00

SNOWDROPS

One of the earliest flowers of Spring. They can be planted in borders or lawns. Flowers white.

	10	100
Single	\$0.40	\$3.00



Lilium Candidum

LILIUM CANDIDUM (Madonna Lily).

Choice Northern Grown. Arrive in August or September.
The favorite Lily of the old-fashioned garden. Produces strong, stiff stems, studded with pure, glistening white flowers, that enliven the perennial flower garden and contrast beautifully with the green shrubbery of June, frequently growing 4½ feet high.

Plant some bulbs during September and October and enjoy a big crop of flowers next June; or put up, store in cold frame, and force for early Winter in the greenhouse or conservatory. Our bulbs of this splendid Lily are grown in Northern France, and are of the true, thick-petaled variety, which is much superior in habit and flowering qualities to that of the cheap, loose, southern grown bulbs. Our stock from the north of France is hardy and will live in your garden indefinitely.

	10	100
Selected Bulbs	\$2.50	\$20.00
Mammoth Bulbs	3.50	30.00

Our bulbs of this splendid white Lily are the finest that come to America and are much larger than those usually sent out. We supply the best bulbs only, from Northern France.

Planting Table for Plants and Bulbs

PLANTING. The table below shows the number of plants or bulbs required to fill a circular bed of the dimensions given. In planting begin at outside row—where 6 inches apart, 3 inches from edge of bed; where 12 inches apart, 6 inches from edge of bed. It is customary among professionals in planting a bed to set the plants or bulbs somewhat closer together in the two outer rows, giving more space between each plant or bulb toward the center of the bed.

Diameter of bed	6 in. apart	12 in. apart	18 in. apart	24 in. apart	30 in. apart	Diameter of bed	6 in. apart	12 in. apart	18 in. apart	24 in. apart	30 in. apart
3 feet	28	7				12 feet	452	113	50	28	18
4 "	48	12	6			13 "	528	132	59	33	22
5 "	80	20	8			14 "	612	153	68	39	25
6 "	112	28	13	7		15 "	704	176	78	44	28
7 "	152	38	17	9		16 "	804	201	89	50	32
8 "	200	50	23	12		17 "	904	226	100	57	36
9 "	256	64	28	16		18 "	1016	254	113	63	40
10 "	320	80	36	20	13	19 "	1132	283	126	71	46
11 "	380	95	42	24	16	20 "	1256	314	139	78	50

A square bed will take about the same number of plants. For an oval bed, add length and breadth and divide by two. For example, an oval 9 feet long by 7 feet wide will require same number of plants as circular bed 8 feet in diameter.

HERBS

The plants offered below are all strong roots, and will make an abundant growth the first season.

Price, except where noted, 25c each; \$2.50 per 12; \$18.00 per 100.

ASPARAGUS ROOTS, Colossal and Palmetto. 2-year, \$1.50 per 100; \$10.00 per 1000. 3-year, \$2.50 per 100; \$15.00 per 1000.

BALM (*Melissa officinalis*). For culinary purposes.

CHAMOMILE (*Anthemis nobilis*). Has medicinal qualities.

CHIVES. For flavoring.

HOP ROOTS (*Humulus lupulus*).

HOREHOUND (*Marrubium vulgare*). Has medicinal qualities.

HORSERADISH ROOTS. Used for sauces. 50c per 10; \$2.00 per 100.

HYSSOP (*Hyssopus officinalis*). Has medicinal qualities.

LAVENDER, True (*Lavandula officinalis*). For oil and distilled water.

MARJORAM, Pot (*Origanum onites*). Used in seasoning.

RHUBARB ROOTS, Linnaeus and St. Martins.

ROSEMARY (*Rosmarinus officinalis*). Yields aromatic oil and water.

RUE (*Ruta graveolens*). Said to have medicinal qualities.

SAGE, Common (*Salvia officinalis*). A culinary herb, also used in medicine.

SAVORY, Winter (*Satureia montana*). Used as a culinary herb.

TANSY HERB (*Tanacetum vulgare*).

THYME (*Thymus vulgaris*). Used in seasoning.

WOODRUFF (*Asperula odorata*). Used in flavoring wine.

WORMWOOD (*Artemisia absinthium*). Has medicinal qualities.

Special Announcement to Garden Clubs

DURING the past summer we have secured about two hundred colored lantern slides of the most popular hardy perennials for both border and rock gardens. While this does not embrace every class offered in our catalog, yet we hope to add to the collection so that by next year we will have a complete collection of slides showing the plants under actual growing conditions in our nursery.

Further, we are prepared to make arrangements with Mr. Shipman, of Willoughby, Ohio, who is a very keen naturalist and a wonderful photographer to show his collections of colored slides of birds and bird life and also wild flowers. Incidentally, we are indebted to Mr. Shipman for helping us in tinting our slides.

Garden Clubs interested in having these very instructive colored slides shown should write us for further information and conditions under which they may be obtained.

IMPORTANT

Last season we were very unfortunate in receiving seed of Sweet Williams which was not true to color. This we were not able to know until the plants bloomed.

If every customer who ordered Sweet Williams will let us know how many plants they bought from us which did not flower true to color, we will replace them without charge either this fall or in the spring of 1926.

INDEX

<p>Achillea 2 Aconitum 2 Acorus 2 Actaea 2 Adam's Needle 47 Adonis 2 Aetheopappus 2 Aetionema 2 Agrostemma 3 Ajuga 3 Alkanet 3 Althea Rosea 22 Alyssum 3 Ampelopsis 47 Amsonia 3 Anchusa 3 Andromeda 50 Anemone 4 Anthemis 3 Aquilegia 5 Arabis 3 Arenaria 4 Aristolochia 48 Armeria 5 Artemisia 5 Asclepias 4 Asperula 4 Aspidodelus 4 Asters 6, 7 Aubretia 7 Avens 18 Azalea 50</p> <p>Baby's Breath 19 Balloon Flower 39 Baneberry 2 Baptisia 7 Barberry 50 Beard Tongue 34 Bellflower 9 Bellis 7 Berberis 50 Bergamot 32 Betonica 7 Betsy 7 Bignonia 48 Bishop's Cap 32 Blackberry Lily 33 Blanket Flower 18 Blazing Star 27 Bleeding Heart 14 Bluebells 32 Blue-eyed Grass 42 Blue Gentian 18 Blue Spirea 8, 49 Bocconia 7 Boltonia 7 Bowman's Root 18 Buddleia 8, 49 Buffalo 45 Bugleweed 3 Bulbs 51-55 Bupthalamum 8 Buttercup 40 Butterfly Bush 8 Butterfly Weed 4</p> <p>Calamintha 8 California Rose 48 Calla 8 Callirhoe 8 Calystegia 9, 48 Campanula 9 Campanula Medium 10 Campion 28 Canterbury Bells 10 Carnations 8 Caryopteris 8, 49 Cassia 8 Catananche 8 Catchfly 42 Catnip 33 Cephalaria 9 Centaurea 2, 8 Cerastium 9 Ceratostigma 9 Chaste-tree 50 Cheiranthus 10 Chelone 10 Chinese Lantern Plant 39 Chionodoxa 54 Chrysanthemums 11, 12 Chrysanthemum Maximum 12 Cimicifuga 10 Cinquefoil 34 Clematis 10, 48 Coat Flower 45 Columbine 5 Coneflower 16, 40 Convallaria 10 Corallbells 21 Coreopsis 10 Cornflower Aster 44 Coronilla 10</p>	<p>Cotoneaster 50 Crane's Bill 18 Crocus 54 Crosswort 10 Crown Vetch 10 Crucianella 10 Cup Flower 33 Cupid's Dart 8 Cyripedium 12</p> <p>Daffodils 53 Daphne 12, 50 Delphinium 13 Desmodium 14, 50 Dianthus 15, 16 Dianthus Barbatus 16 Dictamnus 14 Dicentra 14 Dielytra 14 Digitalis 14 Doronicum 16 Dracocephalum 16 Dragonhead 16 Dutchman's Pipe 48</p> <p>Echinacea 16 Echinops 16 Edelweiss 16, 27 English Daisy 16 Epilobium 54 Eranthis Hyemalis 16 Erianthus 16 Erigeron 16 Erinus 16 Eryngium 17 Erysimum 48 Euonymus 17 Eupatorium 17 Euphorbia 33 Evening Primrose 27 Everlasting Sweet Pea 37</p> <p>False Chamomile 7 False Dragonhead 34 False Indigo 7 False Lupine 45 Ferns 17 Feverfew 18 Flame Flower 45 Flax 28 Fleabane 16, 23 Freesia 55 Fritillaria 55 Forget-me-not 33 Foxglove 14 Funkia 18</p> <p>Gaillardia 18 Garden Heliotrope 45 Garland Flower 50 Gas Plant 14 Gay Feather 27 Gentiana 18 Geranium 18 Geum 18 Gillenia 18 Globe Flower 45 Globe Tbstle 16 Goat's Beard 43 Golden Drop 33 Golden Spider Lily 28 Grasses 19 Great Sea Lavender 44 Greek Mallow 41 Ground Cypress 41 Groundsel 41 Gypsophila 19</p> <p>Hardheads 8 Hardy Ageratum 17 Hardy Candytuft 23 Hardy Gloriosa 23 Hardy Primrose 40 Hardy Sunflower 40 Hardy Zinnia 21 Harebell 55 Hawkweed 22 Hedera 49 Hedge Mustard 17 Helium 20 Helianthemum 20 Helianthus 20 Heliopsis 21 Hemerocallis 50 Hemp-tree 50 Hepatica 20 Hesperis 21 Heuchera 21 Hibiscus 22 Hieracium 22 Hollyhocks 22</p>	<p>Honeysuckle 49 House Leek 42 Hyacinths 54 Hyacinthus Candicans 22 Hypericum 23, 50</p> <p>Iberis 23 Incarvillea 23 Indian Pink 28 Indian Senna 8 Inula 23 Iris 23-27 Ivy 47, 49 Ixia 54</p> <p>Jacob's Ladder 40 Japanese Spurge 33</p> <p>King's Spear 4 Knapweed 8 Kudzu Vine 49</p> <p>Lady's Slipper 12 Larkspur 13 Lathyrus 27 Lavandula 27 Lavender 27 Lavender Cotton 41 Leadwort 40 Leontopodium 27 Leopardbane 16 Liatris 27 Lilics 29-31 Lilium Candidum 55 Lily-of-the-Valley 10 Lily-of-the-Valley Sbrub. 50 Linaria 28 Linum 28 Liver Leaf 20 Lobelia 28 Lonicera 49 Loosetrife 28 Lupinus 32 Lychnis 28 Lycoris 28 Lysimachia 28 Lythrum 28</p> <p>Mallow 22 Marguerite 3 Matricaria 18 Mazus 32 Meadow Rue 45 Meadow Sage 41 Meadow Sweet 43, 50 Megasea 41 Mertensia 32 Milfoil 2 Milkwort 17 Mitella 32 Miterwort 44 Monarda 32 Monkshood 2 Montbretia 32 Mountain Feather Fleece 44 Mullein 46 Myosotis 33</p> <p>Narcissi 53 Nepeta 33 Nierembergia 33</p> <p>Oenothera 33 Onosma 33 Oswego Tea 32 Ox-eye Daisy 8</p> <p>Pachysandra 33 Painted Daisy 40 Papaver 34 Papaver Nudicaule 33 Pardonthus 33 Pentstemon 34 Peonies 35-38 Periwinkle 47 Persian Candytuft 2 Persian Daisy 40 Pheasant's Eye 2 Phlox 38, 39 Physalis 39 Physostegia 34 Pincushion Flower 41 Pinks 15 Pinxter Flower 50 Plantain Lily 18 Planting Table 55 Platycodon 39 Plumbago 40 Plume Grass 16 Plume Poppy 7 Polygonatum 40 Polemonium 40</p> <p>Polygonum 49 Poppy 34 Poppy Mallow 8 Potentilla 34 Primula 40 Prunella 40 Pueraria 49 Purple Loosestrife 28 Pyrethrum 40</p> <p>Ranunculus 40 Red Hot Poker 45 Rock Cress 3, 7 Rock Madwort 3 Rock Rose 20 Rock Spray 50 Rosc Campion 3 Roundhead 9 Rudbeckia 40, 41</p> <p>Sage Brush 5 Salvia 41 Sandwort 4 Santolina 41 Saponaria 41 Satin Lily 42 Saxifraga 41 Scabiosa 41 Scilla 55 Scutellaria 41 Sea Holly 17 Sea Pink 5 Sedum 42 Sempervivum 42 Senecio 41 Shasta Daisy 12 Shellflower 10 Sidalcea 41 Silene 42 Silver Lace Vine 49 Sisyrinchium 42 Skull Cap 41 Snakeroot 10 Snowdrops 55 Snow-in-Summer 9 Soapwort 41 Solomon's Seal 40 Speedwell 46 Spiderwort 44 Spirea 43, 50 Squill 55 Stachys 43 Statice 44 Stenanthium 44 St. John's Wort 23, 50 Stokesia 44 Stokes' Aster 44 Stonecrop 42 Summer Lilac 49 Sun Rose 20 Swamp Honeysuckle 50 Sweet Flag 2 Sweet Rocket 21 Sweet William 16</p> <p>Thalictrum 45 Thermopsis 45 Thrift 5 Thymus 44 Tiarella 44 Tickseed 44 Tick Trefoil 14, 50 Toad Flax 28 Torch Lily 45 Tradescantia 44 Trailing Myrtle 47 Trillium 44 Tritonia 32, 45 Trollius 45 Trumpet Vine 48 Tufted Pansy 46, 47 Tulips 51, 52 Tunica 45</p> <p>Valeriana 45 Verbascum 46 Veronica 46 Vinca 47 Viola 46, 47 Virgin's Bower 10, 48 Vitex 50</p> <p>Wake Robin 44 Wallflower 10, 47 Willow Herb 16 Windflower 4 Winter Aconite 54 Wisteria 49 Wood Lily 44 Woodruff 4 Woundwort 43 Wulfenia 47 Yarrow 2 Yellow Day Lily 21 Yucca 47</p>
--------------------------------------------------------------------------------------------------------------------------------------------------------------------------------------------------------------------------------------------------------------------------------------------------------------------------------------------------------------------------------------------------------------------------------------------------------------------------------------------------------------------------------------------------------------------------------------------------------------------------------------------------------------------------------------------------------------------------------------------------------------------------------------------------------------------------------------------------------------------------------------------------------------------------------------------------------------------------------------------------------------------------------------------------------------------------------------------------------------------------------------------------------------------------------------------------------------------------------------------------------------------------------------------------------------------------------------------------------------------------------------------------------------------------------------------------------------------------------------------------------------------------------------------------------------------------------------------------------------------------------------------------------------------------------------------------------------------------------------------------------------------------------------------------------------------------------------------------------------------------------------------------------------------------------------------------------------------------------------------------------------------------------------------------------------------------------------------------------------------------------------------------------------------------------------------------------------------------------------------------------------------------------------------------------------------------------------------------------------------------------------------------------------------------------------------------------------------------------------------------------------------------------------------------------------------------------------------------------------------------------------------------------------------------------------------------------------------------------------------------------------------------------------------------------------------------------------------------------------------------------------------------------------------------------------------------------------------------------------------------------------------------------------------------------------------------------------------------------------------------------------------------------------------------------------------------------------------------------------------------------------------------------------------------------------------------------------------------------------------------------------------------------------------------------------------------------------------------------------------------------------------------------------------------------------------------------------------------------------------------------------------------------------------------------------------------------------------------------------------------------------------------------------------------------------------------------------------------------------------------------------------------------------------------------------------------------------------------------------------------------------------------------------------------------------------------------------------------------------------------------------------------------------------------------------------------------------------------------------------------------------------------------------------------------------------------------------------------------------------------------------------------------------------------------------------------------------------------------------------------------------------------------------------------------------------------------------------------------------------------------------------------------------------------------	-------------------------------------------------------------------------------------------------------------------------------------------------------------------------------------------------------------------------------------------------------------------------------------------------------------------------------------------------------------------------------------------------------------------------------------------------------------------------------------------------------------------------------------------------------------------------------------------------------------------------------------------------------------------------------------------------------------------------------------------------------------------------------------------------------------------------------------------------------------------------------------------------------------------------------------------------------------------------------------------------------------------------------------------------------------------------------------------------------------------------------------------------------------------------------------------------------------------------------------------------------------------------------------------------------------------------------------------------------------------------------------------------------------------------------------------------------------------------------------------------------------------------------------------------------------------------------------------------------------------------------------------------------------------------------------------------------------------------------------------------------------------------------------------------------------------------------------------------------------------------------------------------------------------------------------------------------------------------------------------------------------------------------------------------------------------------------------------------------------------------------------------------------------------------------------------------------------------------------------------------------------------------------------------------------------------------------------------------------------------------------------------------------------------------------------------------------------------------------------------------------------------------------------------------------------------------------------------------------------------------------------------------------------------------------------------------------------------------------------------------------------------------------------------------------------------------------------------------------------------------------------------------------------------------------------------------------------------------------------------------------------------------------------------------------------------------------------------------------------------------------------------------------------------------------------------------------------------------------------------------------------------------------------------------------------------------------------------------------------------------------------------------------------------------------------------------------------------------------------------------------------------------------------------------------------------------------------------------------------------------------------------------------------------------------------------------------------------------------------------------------------------------------------------------------------------------------------------------------------------------------------------------------------------------------------------------------------------------------------------------------------------------------------------------------------------------------------------------------------------------------------------------------------------------------------------------------------------------------------------------------------------------------------------------------------------------------------------------------------------------------------------------------------------------------------------	-----------------------------------------------------------------------------------------------------------------------------------------------------------------------------------------------------------------------------------------------------------------------------------------------------------------------------------------------------------------------------------------------------------------------------------------------------------------------------------------------------------------------------------------------------------------------------------------------------------------------------------------------------------------------------------------------------------------------------------------------------------------------------------------------------------------------------------------------------------------------------------------------------------------------------------------------------------------------------------------------------------------------------------------------------------------------------------------------------------------------------------------------------------------------------------------------------------------------------------------------------------------------------------------------------------------------------------------------------------------------------------------------------------------------------------------------------------------------------------------------------------------------------------------------------------------------------------------------------------------------------------------------------------------------------------------------------------------------------------------------------------------------------------------------------------------------------------------------------------------------------------------------------------------------------------------------------------------------------------------------------------------------------------------------------------------------------------------------------------------------------------------------------------------------------------------------------------------------------------------------------------------------------------------------------------------------------------------------------------------------------------------------------------------------------------------------------------------------------------------------------------------------------------------------------------------------------------------------------------------------------------------------------------------------------------------------------------------------------------------------------------------------------------------------------------------------------------------------------------------------------------------------------------------------------------------------------------------------------------------------------------------------------------------------------------------------------------------------------------------------------------------------------------------------------------------------------------------------------------------------------------------------------------------------------------------------------------------------------------------------------------------------------------------------------------------------------------------------------------------------------------------------------------------------------------------------------------------------------------------------------------------------------------------------------------------------------------------------------------------------------------------------------------------------------------------------------------------------------------------------------------------------------------------------------------------------------------------------------------------------------------------------------------------------------------------------------------------------------------------------------------------------------------------------------------------------------------------------------------------------------------------------------------------------------------------------------------------------------------------------------------------------------------------------------------------------------------------------------------------------------------------------------------------------------------------------------------------------------------------------------------------------------------------------------------------------------------------------------------------------------------------------------------------------------------------------------------------------------------------------------------------------------------------------------------------------------------------------------------------------------------------------------------------------------------------------------------------------------------------------------------------------------------------------------------------------------------------------------------------------------------------------------------------------------------------------------------------------------------------------------------------------------------------------------------------------------------------------------------------------------------------------------------------------------------------------------------------------------------------------------------------------------------------------------------------------------------------------------------------------------------------------------------------------------------------------------------------------------------------------------------------------------------------------------------------------------------------------------------------------------------------------------------------------------------------------------------------------------------------------------------------------------------------------------------------------------------------------------------------------------------------------------------------------------------------------------------------------------------------------------------------------------------------------------------------------------------------------------------------------------------------------------------------------------------------------------------------------------------------------------------------------------------------------------------------------------------------------------------------------------------------------------------------------------------------------------------------------------------------------------------------------------------------------------------------------------------------------------------------------------------------------------------------------------------------------------------------------------------------------------------------------------------------------------------------------------------------------------------------------------------------------------------------------------------------------------------------------------------------------------------------------------------------------------------------------------------------------------------------------------------------------------------------------------------------------------------------------------------------------------------------------------------------------------------------------------------------------------------------------------------------------------------------------------------------------------------------------------------------------------------------------------------------------------------------------------------------------------------------------------------------------------------------------------------------------------------------------------------------------------------------------------------------------------------------------------------------------------------------------------------------------------------------------------------------------------------------------------------------------------------------------------------------------------------------------------------------------------------------------------------------------------------------------------------------------------------------------------------------------------------------------------------------------------------------------------------------------------------------------------------------------------------------------------

