

Historic, Archive Document

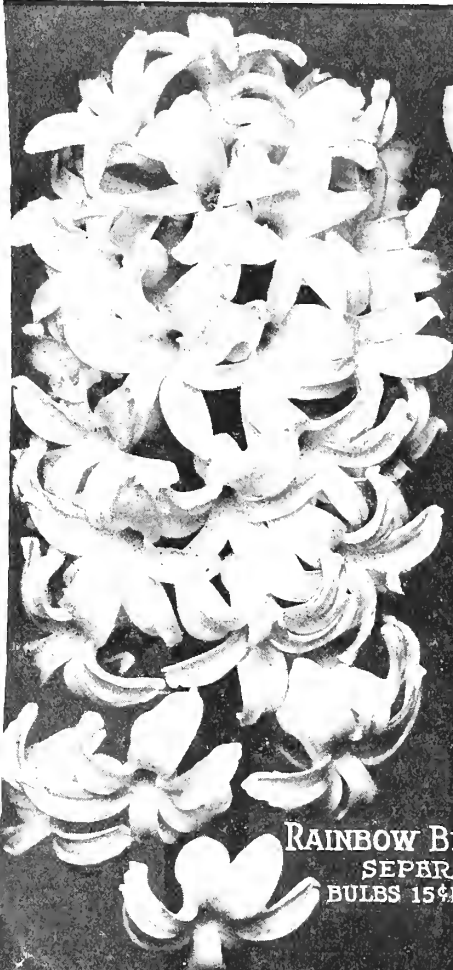
Do not assume content reflects current scientific knowledge, policies, or practices.

Plant *Bulbs*

THIS FALL AND
ENJOY SPRING FLOWERS

VADCO GIANT DARWIN TULIPS MIXED

6 BULBS FOR 30¢
12 FOR 50¢
100 FOR \$4.00
POSTPAID



RAINBOW BEDDING HYACINTHS

SEPARATE COLORS OR MIXED
BULBS 15¢ EACH 6 FOR 75¢ 12 FOR \$1.50
POSTPAID

VAN ANTWERP'S BULBS *and* SEEDS FOR FALL PLANTING Season 1925

VADCO EARLY RED VALENTINE BEANS

PRICE PRT 10¢
1/2 LB. 20¢ 1 LB. 40¢
POSTPAID

VADCO ALL HEAD EARLY CABBAGE

PRICE PRT 10¢ - OZ. 25¢
1/4 LB. 75¢ - 1 LB. \$2.50
POSTPAID

PAPER WHITE NARCISSI MAMMOTH-FLOWERING

6 BULBS FOR 35¢
12 FOR 60¢
POSTPAID

Van Antwerp's *Seed Store*

THE BEST ONLY

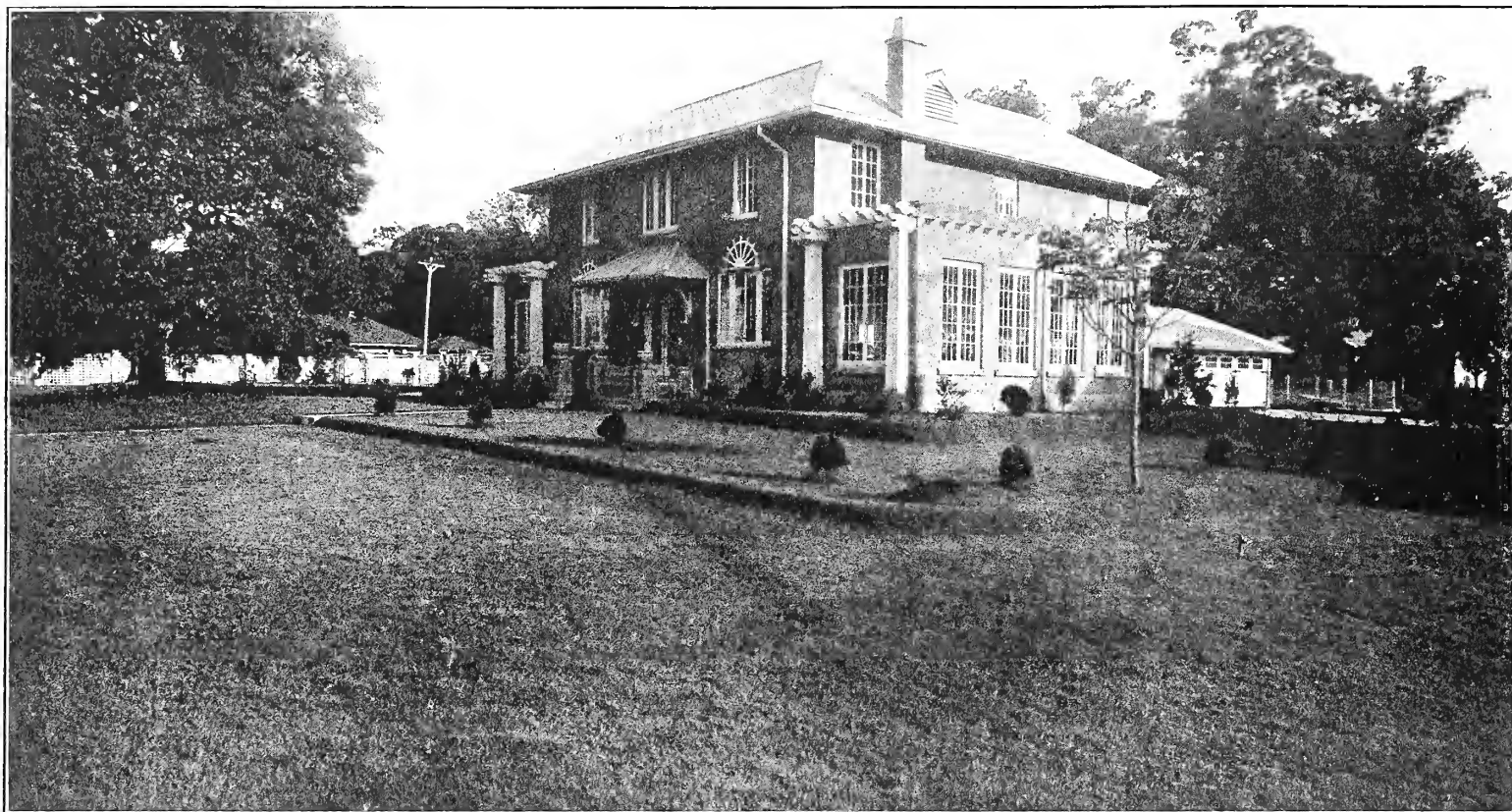
Van Antwerp Building

CORNER DAUPHIN AND ROYAL STREETS

MOBILE

ALABAMA

You Can Also Have a Beautiful Lawn



Beautiful New Home and Lawn of Mr. Geo. E. Glover, Ashland Place, Mobile.

Through the courtesy of Mr. Geo. E. Glover, we reproduce the above photo of Mr. Glover's new home and lawn. This photo was taken last spring after ten weeks of continued dry weather and shows how beautiful this velvety green lawn looked at that time. Results like these can only be obtained by sowing grass seed of the highest grade and quality. Loding and Day, Landscape Gardeners, of Mobile, designed and planted the grounds around this home and they selected Van Antwerp's Lawn Grass Seed as the best.

Van Antwerp's Winter Lawn Grass Seed is a studied formula containing such grasses as are adapted to our Southern soil and climate and free from any noxious weeds seeds. You can also have a beautiful velvety green lawn by sowing Van Antwerp's Winter Lawn Grass Seed from September till end of January, although for best results the lawn should be seeded during October or November.

For new or remade lawns, spade or plow twelve inches deep, removing all stones

or litter. Apply fifty pounds of hydrated air slacked lime to every thousand square feet and harrow or rake in. About ten days after liming apply one hundred pounds Wizard Brand Pulverized Sheep Manure to every thousand square feet. Avoid using stable or barnyard manure as it produces weeds. After applying the sheep manure the surface should be raked over until it is fine, smooth and level. Sow the seed by hand or seed sower, using care to cover the entire surface and rake or harrow in the seed. When the seed is raked in roll the surface with an iron roller or for a small lawn the ground can be leveled with the back of a spade. The lawn should be carefully watched and all weeds pulled up or cut with a knife as they appear from time to time.

Price: VAN ANTWERP'S WINTER LAWN GRASS SEED—Lb. 40c; 2 lbs. 75c; 5 lbs. \$1.75; 10 lbs. \$3.00; 20 lbs. \$6.00; 50 lbs. \$14.00; 100 lbs. \$27.50. Price includes payment of postage or express by us.

STIM-U-PLANT

This fertilizer comes in tablet form and you simply insert the tablets in soil near the plant. Complete instructions for use with every package. Price: Small size (30 tablets) 25c; 100 tablets 75c; large can (1,000 tablets) \$3.50, postpaid.

BONE MEAL

A splendid fertilizer for every soil; supplies abundant nourishment to plants over a long period. Excellent for rose-beds, flower-beds, garden and for top-dressing lawns. Price: 5 lbs. 30c; 10 lbs. 55c; 25 lbs. \$1.25; 50 lbs. \$2.25; 100 lbs. \$4. Postage, express or freight extra.

SHEEP MANURE

In the garden, the hot bed, the cold-frame, for fruit trees, in flower beds and pots and on the lawn, Sheep Manure will give most excellent results. Price: 5 lbs. 35c; 10 lbs. 60c; 25-lb. bag 90c; 50 lbs. \$1.75; 100 lbs. \$3.00. Postage, express or freight extra.



Lady Thompson Strawberries

STRAWBERRY PLANTS

CULTURE—Strawberries require but little room and attention and will do well in any soil adapted to ordinary farm or garden crops. In preparing to plant Strawberries the soil should be prepared to a good depth and enriched with well-rotted stable manure or good commercial fertilizer. Plant in rows 3½ feet apart and 18 inches apart in the row, which will require in round numbers 8,000 plants per acre. Or if in rows 3½ feet by 2 feet apart in row, 6,000 plants per acre. In garden plot where cultivating is to be done entirely by hoe, plant 2 feet by 2 feet each way, at this distance a plat of ground 50 by 50 feet will take 600 plants. A good loamy sandy soil about 10 to 12 inches deep over clay subsoil is best.

Klondike —The best all-around mid-season berry and well adapted generally over the South. Very Prolific. In season for two or more weeks. Large, bright red berries. Klondike is the most popular variety of all.

Aroma —Very large, late maturing, berries solid, deep red, uniform in size; does well in this section. Perfect blooming.

Lady Thompson —One of the most profitable of the Strawberries for Southern planting, combining large size and good shipping quality.

Missionary —One of the best up-to-date berries. It is a clean, healthy plant and succeeds anywhere. Very good shipped and fine flavor.

Prices of Strawberry Plants for even quantities of any variety: 25 plants 50c; 50 plants 75c; 100 plants \$1.00; 300 plants \$2.00; 500 plants \$3.00; 1,000 plants \$5.50, postpaid.

NOTE—No plants shipped to Florida. No plants sent C. O. D. Delivery cannot be made before October 1st, which is the best time to put out Strawberry Plants in the South. Send us your order now, we will ship at proper planting time.

WHAT YOU CAN PLANT IN THE FALL

Vegetable Seeds—See pages 3, 4 and 5.

Vegetable Plants—See page 5.

Flower Seeds—See pages 6 and 7.

Bulbs, Hyacinths, Tulips, Etc.—See pages 8, 9, 10 and 11.

QUANTITY	CATALOG NUMBER	Names of Seeds or Other Articles Wanted	PRICE	
			Dollars	Cents
		Amount brought forward		
		TOTAL		

Please write below the names and addresses of a few of your friends who are interested in and buyers of **BULBS and SEEDS**, and we will send them a copy of this catalog free.

NAME	POST OFFICE	COUNTY	STATE

OUR BIG ANNUAL SEED CATALOG IS FREE

PLANT A FALL GARDEN

Grow What You Eat

VAN ANTWERP'S VEGETABLE SEEDS For Summer and Fall Sowing

Having a fall garden of both vegetables and flowers is gaining in popularity every year in the South. In many cases the fall vegetable crop proves as profitable as the spring crop and quite a number of the vegetable seeds planted in the spring can also be planted successfully in the fall. Look over the vegetable seeds listed in this catalog and select those you like best as they can all be planted during the summer and fall months.

Your order will be filled with the same high grade VAN ANTWERP'S TESTED SEEDS as supplied to thousands of the critical market gardeners in the Southern States.

COMPLETE LIST OF VEGETABLE SEEDS AND PLANTING INSTRUCTIONS

Please refer to our spring catalog for a complete list of vegetable seeds, also instructions for planting all varieties of seeds and if you did not receive a copy of this valuable catalog or mislaid the copy sent you, we will gladly mail you another copy free of charge.

KINDLY USE THE PINK ORDER SHEET WHEN MAKING OUT YOUR ORDER.

Bush Beans

No. 31—Vadco Extra Early Red Valentine, Improved Round Pod —Vines erect, with coarse, dark green leaves; pods medium length, curved, cylindrical, with crease in back; very fleshy, crisp and tender. Pkt. 10c; ½ lb. 20c; 1 lb. 40c; 2 lbs. 70c, postpaid. Not prepaid, 15 lbs. (peck) \$2.50; 60 lbs. (bushel) \$9.00.

No. 21—Black Valentine —Pkt. 10c; 1 lb. 40c; 2 lbs. 75c, postpaid. Not prepaid, 15 lbs. (peck) \$2.75; 60 lbs. (bushel) \$10.50.

No. 23—Burpee's Stringless Green Pod —The straight, long, green, thick pods are absolutely stringless and of a beautiful appearance. Pkt. 10c; ½ lb. 20c; 1 lb. 40c; 2 lbs. 75c, postpaid. Not prepaid, 15 lbs. (peck) \$3.00.

No. 39—Refugee 1000 to 1 —A very popular fall variety. Pods 5 to 5½ inches long, round, color light green. Pkt. 10c; ½ lb. 25c; 1 lb. 45c; 2 lbs. 80c. Not prepaid, 15 lbs. (peck) \$2.75; 60 lbs. (bushel) \$10.50.

No. 22—Bountiful —Pkt. 10c; ½ lb. 20c; 1 lb. 40c; 2 lbs. 75c, postpaid. Not prepaid, 15 lbs. (peck) \$2.75; 60 lbs. (bushel) \$10.50.

No. 55—Sure Crop Stringless Wax —Handsome, rich yellow pods are 6 to 7 inches long, almost round, very meaty and sweet; stringless. Pkt. 10c; ½ lb. 20c; 1 lb. 40c; 2 lbs. 75c, postpaid. Not prepaid, 15 lbs. (peck) \$3.00; 60 lbs. (bushel) \$11.00.

No. 47—Currie's Rustproof Black Wax —Pkt. 10c; ½ lb. 20c; 1 lb. 40c; 2 lbs. 75c. Not prepaid, 15 lbs. \$3.00; 60 lbs. \$11.00.

No. 52—Hodson Wax —Pkt. 10c; ½ lb. 20c; 1 lb. 40c; 2 lbs. 75c, postpaid.

No. 49—Davis White Wax Bush —Pkt. 10c; ½ lb. 20c; 1 lb. 40c; 2 lbs. 75c, postpaid.

No. 75—Henderson's Bush Lima —A Dwarf Butter Bean, which requires no poles; it grows from 18 to 24 inches high. Pkt. 10c; ½ lb. 20c; 1 lb. 40c; 2 lbs. 75c, postpaid. Not prepaid, 15 lbs. (peck) \$4.00; 60 lbs. (bushel) \$15.00.

No. 71—Vadco Fordhook Bush Lima —Pkt. 10c; ½ lb. 25c; 2 lbs. 90c, postpaid. Not prepaid, 15 lbs. (peck) \$5.50.

No. 70—Calico Bush, or Jackson Wonder —Flourishes in driest weather and practically drought-proof. Flavor rich and delicious. Seed of brownish color. Pkt. 10c; ½ lb. 20c; 1 lb. 40c; 2 lbs. 70c.



Sure Crop Stringless Wax Beans No. 55.

Pole Beans

No. 112—Vadco Kentucky Wonder, or Old Homestead —A very prolific sort, producing its long pods in large clusters. Pkt. 10c; ½ lb. 20c; 1 lb. 40c; 2 lbs. 75c, postpaid. Not prepaid, 15 lbs. (peck) \$3.25; 60 lbs. (bushel) \$12.00.

No. 116—McCasland —A white prolific pole bean of the finest quality. ½ lb. 20c; 1 lb. 40c; 2 lbs. 75c, postpaid.

No. 101—Vadco Small White Lima, Carolina, or Sieva —Matures in 70 days. Vines vigorous, but short, with many short branches, so that they are sometimes grown without poles. Pkt. 10c; ½ lb. 20c; 1 lb. 40c; 2 lbs. 75c, postpaid. Not prepaid, 15 lbs. (peck) \$3.50; 60 lbs. (bushel) \$12.50.

No. 97—Large Lima —A well-known and excellent variety. Pkt. 10c; ½ lb. 20c; 1 lb. 40c; 2 lbs. 75c, postpaid.

No. 81—Pole Calico or Florida Butter —It blooms and bears profusely all through the season. It will make an abundant crop when others fail. It bears pods from the very first bloom that appears on the plants. Pkt. 10c; ½ lb. 20c; 1 lb. 40c; 2 lbs. 70c, postpaid.

Cabbage Seed

No. 215—Vadco All-Head Early —Our strain of special value because of close adherence to the type in habit of growth and the shape and quality of the head. Pkt. 10c; oz. 25c; ¼ lb. 75c; 1 lb. \$2.50, postpaid.

No. 248—Stein's Early Flat Dutch —The heads are large for the size of the plant, nearly round and somewhat flattened, close, firm and very solid. (See illustration.) Pkt. 10c; oz. 25c; ¼ lb. 75c; 1 lb. \$2.75.

No. 212—Improved Early Summer —Large, round and very solid heads; almost as heavy as the late varieties and resisting the heat admirably. Oz. 50c; ¼ lb. 85c; 1 lb. \$3.00, postpaid.

No. 227—All Seasons —Heads very large, round, solid and of fine quality, keeping as well as the Winter sorts. Pkt. 10c; oz. 25c; ¼ lb. 75c; 1 lb. \$2.50, postpaid.

No. 197—Extra Early Jersey Wakefield —Pkt. 10c; oz. 25c; ¼ lb. 75c; 1 lb. \$2.50, postpaid.

No. 199—Vadco Large Charleston Wakefield —A little larger and later than the Early Jersey Wakefield, the heads being as solid, but less pointed and considerably larger. Pkt. 10c; oz. 25c; ¼ lb. 75c; 1 lb. \$2.50, postpaid.

No. 232—Louisville Large Drumhead —Finest strain of Drumhead in existence. Pkt. 10c; oz. 25c; ¼ lb. 75c; 1 lb. \$2.50, postpaid.

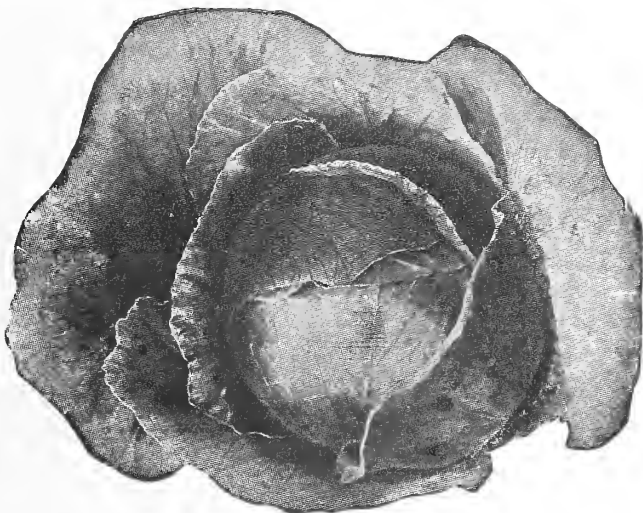
No. 207—Gulf City Drumhead —Very compact, solid and excellent flavor. Pkt. 10c; oz. 25c; ¼ lb. 75c; 1 lb. \$2.50, postpaid.

No. 222—Succession —A few days later than Early Summer. Pkt. 10c; oz. 25c; ¼ lb. 75c; 1 lb. \$2.50, postpaid.

No. 201—Copenhagen Market —Pkt. 10c; oz. 25c; ¼ lb. 75c; 1 lb. \$2.50.

No. 243—Drumhead Savoy —Heads large; short stalk; compact grower; an excellent keeper. Pkt. 10c; oz. 25c; ¼ lb. 75c; 1 lb. \$2.50, postpaid.

Frostproof Cabbage Plants—See Page 5



Stein's Early Flat Dutch Cabbage No. 248.

VAN ANTWERP'S VEGETABLE SEEDS

Beets and Mangels

- No. 157—Vadco Mobile Market** —Has short, upright top, remarkably uniform roots. Skin and flesh dark red, sweet and tender. Very popular with market gardeners. Good for bunching for market and has lasting quality. Pkt. 10c; oz. 15c; ¼ lb. 40c; lb. \$1.50, postpaid.
- No. 158—Detroit Dark Red** —The flesh is tender and the flavor decidedly sweet. A popular favorite for canning because of its extra deep dark red color. Pkt. 10c; oz. 15c; ¼ lb. 30c; lb. \$1.00, postpaid.
- No. 121—Crosby's Egyptian** —Pkt. 10c; oz. 15c; ¼ lb. 35c; lb. \$1.00, postpaid.
- No. 153—Long Blood** —Matures in 65 days. Pkt. 10c; oz. 15c; ¼ lb. 35c; lb. \$1.00, postpaid.
- No. 163—Swiss Chard, or Silver Beet** —The large white ribs are creamed like asparagus. Swiss Chard takes the place of spinach during the hot weather. Pkt. 10c; oz. 15c; ¼ lb. 35c; lb. \$1.00, postpaid.
- No. 171—Mammoth Long Red Mangel** —This is the giant among Mangels. The roots are of enormous size, very regular and clean. Oz. 10c; ¼ lb. 25c; lb. 75c, postpaid.
- No. 175—Golden Tankard Mangel** —Smooth, yellow flesh; small, yellow-stemmed top; length 15 inches, diameter 5 inches, shape cylindrical. Oz. 10c; ¼ lb. 30c; lb. \$1.00, postpaid.

Carrots

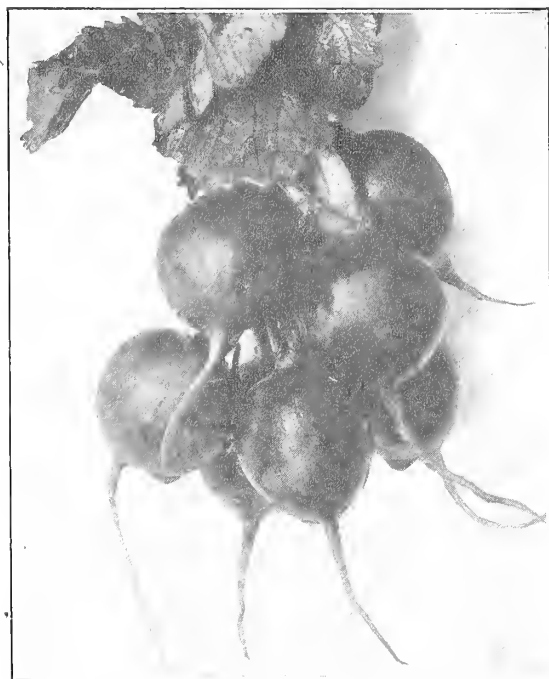
- No. 257—Vadco Pride of the Market** —A half-long sort, unexcelled in quality, uniform in growth; deep orange-colored roots about 5 inches long. Pkt. 10c; oz. 15c; ¼ lb. 35c; lb. \$1.25, postpaid.
- No. 267—Danver's Half Long** —Color is a bright orange-scarlet. It is a very heavy cropper. Pkt. 10c; oz. 15c; ¼ lb. 30c; lb. \$1.00, postpaid.
- No. 264—Chantenay** —Pkt. 5c; oz. 15c; ¼ lb. 25c; lb. 85c, postpaid.
- No. 259—Half-Long Scarlet French** —Pkt. 5c; oz. 15c; ¼ lb. 25c; lb. 85c, postpaid.
- No. 255—Oxheart** —Pkt. 5c; oz. 15c; ¼ lb. 25c; lb. 85c, postpaid.
- No. 269—Improved Long Orange** —A fine winter sort for table, market and stock. Pkt. 5c; oz. 10c; ¼ lb. 25c; lb. 75c, postpaid.

Cauliflower

- No. 275—Vadco New Early Snowflake** —By far the quickest cauliflower grown. Ten to fifteen days earlier than any other variety of cauliflower with immense large, white heads that are solid and very compact. Pkt. 25c; ¼ oz. 75c; ½ oz. \$1.25; oz. \$2.25; ¼ lb. \$8.00; lb. \$30.00.
- No. 277—Early Snowball** —Exceedingly early and hardy. Pkt. 15c; ¼ oz. 65c; ½ oz. \$1.15; oz. \$2.00; ¼ lb. \$7.50; lb. \$28.00, postpaid.
- No. 285—Large Algiers** —A valuable late sort. Pkt. 10c; ¼ oz. 50c; ½ oz. 90c; oz. \$1.75; ¼ lb. \$5.00; lb. \$18.50.

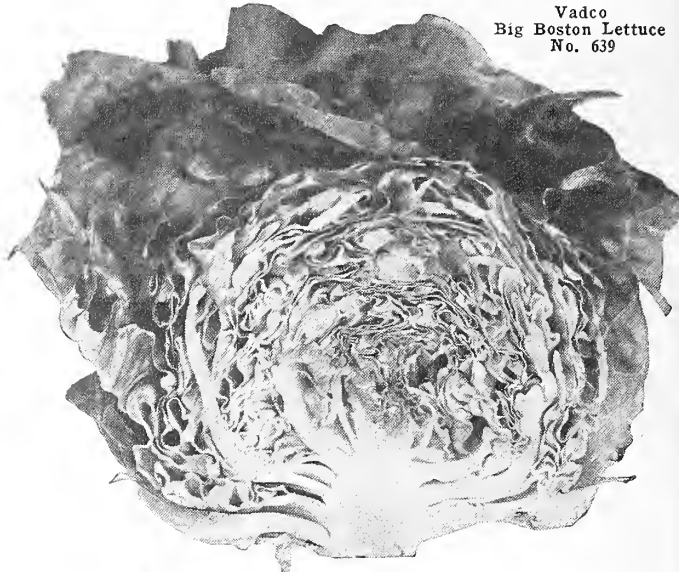
Collards

- No. 331—Vadco Creole** —Old standard sort in use in the South for years. Oz. 15c; ¼ lb. 35c; lb. \$1.00, postpaid.
- No. 329—Georgia, or Southern** —Pkt. 5c; oz. 15c; ¼ lb. 30c; lb. 85c, postpaid.
- No. 333—Cabbage** —Oz. 20c; ¼ lb. 40c; lb. \$1.25, postpaid.



Early Scarlet Globe Radishes No. 919.

Vadco
Big Boston Lettuce
No. 639



Lettuce Seed

- No. 639—Vadco Selected Big Boston** —A solid head of great size. Has very few wasted leaves; indeed, the plant is nearly all heart, exceedingly crisp and sweet. Well adapted for fall culture. Pkt. 10c; oz. 25c; ¼ lb. 75c; lb. \$2.50, postpaid.
- No. 659—New York or Wonderful Lettuce** —Plants are rich green, growing more than 15 inches in diameter. A quick seller in the markets because of its crispness and excellent flavor. Pkt. 10c; oz. 30c; ¼ lb. \$1.00; lb. \$3.50, postpaid.
- No. 657—Mignonette** —Pkt. 10c; oz. 20c; ¼ lb. 50c; lb. \$2.00, postpaid.
- No. 649—Vadco Iceberg** —A beautiful variety, being exceedingly crisp and tender, growing a long time before running to seed. Pkt. 10c; oz. 25c; ¼ lb. 85c; lb. \$3.00, postpaid.
- No. 669—Paris Cos** —Strong and upright, producing long leaves. Pkt. 10c; oz. 20c; ¼ lb. 65c; lb. \$2.00, postpaid.

Kale, or Borecole

- No. 612—Vadco Extra Dwarf Curled Scotch** —Largely grown for supplying "greens" during the fall, winter and spring. The plants are hardy. Pkt. 10c; oz. 15c; ¼ lb. 35c; lb. \$1.25, postpaid.
- No. 615—Tall Curled Scotch** —Pkt. 5c; oz. 10c; ¼ lb. 35c; lb. \$1.00, postpaid.

Mustard

- No. 755—Vadco Fancy Curled** —The most beautiful of all curled Mustard. Leaves curved outward like a fine ostrich plume, rich, dark green in color. Pkt. 5c; oz. 10c; ¼ lb. 30c; lb. \$1.00, postpaid.
- No. 765—Broad-Leaved** —Pkt. 5c; oz. 10c; ¼ lb. 25c; lb. 75c, postpaid.

Kohl-Rabi

- No. 619—Early White Vienna** —Large, light green head and short leaves. Pkt. 10c; oz. 25c; ¼ lb. 75c; lb. \$2.50, postpaid.
- No. 620—Early Purple Vienna** —Pkt. 10c; oz. 25c; ¼ lb. 75c; lb. \$2.50, postpaid.

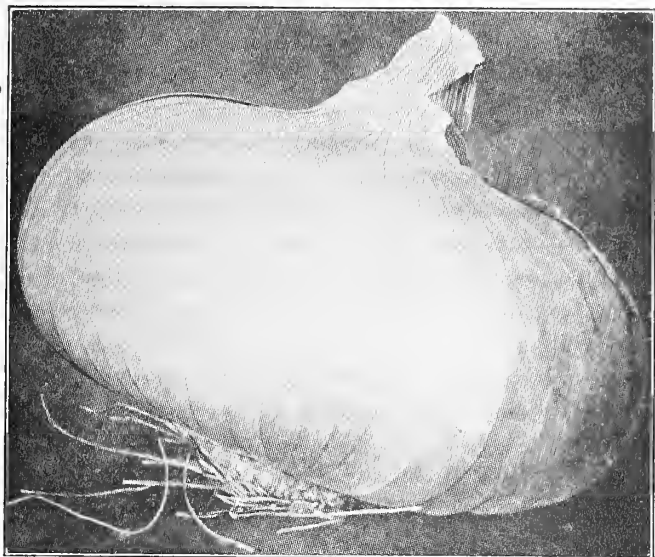
Parsley

- No. 797—Vadco Double-Curled** —Plants of dwarf compact growth, and the young leaves have the edges heavily crimped. Pkt. 10c; oz. 15c; ¼ lb. 35c; lb. \$1.00, postpaid.
- No. 795—Plain, or Single Parsley** —Pkt. 5c; oz. 15c; ¼ lb. 25c; lb. 75c, postpaid.

Radishes for Fall Sowing

- No. 923—Scarlet Turnip White-Tipped** —Matures in 20 days. A very early Radish, quite popular with market-gardeners. Pkt. 5c; oz. 15c; ¼ lb. 30c; lb. 85c, postpaid.
- No. 919—Early Scarlet Globe** —One of the best for forcing or for early outdoor sowing. Perfect in shape and color. Pkt. 10c; oz. 15c; ¼ lb. 30c; lb. 85c, postpaid.
- No. 935—Cincinnati Market** —It is the standard market radish in a number of Southern trucking centers. Pkt. 5c; oz. 10c; ¼ lb. 25c; lb. 85c, postpaid.
- No. 941—Vadco White Icicle** —It produces beautiful, long white roots, extremely early. Pkt. 5c; oz. 10c; ¼ lb. 25c; lb. 85c, postpaid.
- No. 932—Early Long Scarlet** —Oz. 10c; ¼ lb. 25c; lb. 85c, postpaid.
- No. 951—Celestial, or White Chinese** —Extra fine, large, white variety, often growing a foot in length. Pkt. 5c; oz. 10c; ¼ lb. 25c; lb. 85c.
- No. 953—Chinese Rose** —Of a half-long shape, bright rose color. The best winter variety. Pkt. 5c; oz. 15c; ¼ lb. 30c; lb. \$1.00, postpaid.
- No. 959—Black Spanish** —(Winter). This is sown during the fall and early winter. It is olive-shaped. Pkt. 5c; oz. 15c; ¼ lb. 30c; lb. \$1.00, postpaid.

FOR SUMMER AND FALL PLANTING



Vadco Crystal White Wax Bermuda Onion No. 775.

Onion Seed

No. 775—Vadco Crystal White Wax Bermuda — (Feneriffe grown) — The only Pure White Bermuda Onion, thus making a ready seller in the retail market. Except in color it is identical with the other Bermudas, having all those desirable qualities of the older sorts combined with much more handsome appearance. Pkt. 10c; ½ oz. 25c; oz. 50c; ¼ lb. \$1.75; 1b. \$6.50, postpaid.

No. 786—Yellow Bermuda —The standard variety for shipping. It is light yellow or straw color. Pkt. 10c; ½ oz. 20c; oz. 35c; ¼ lb. \$1.25; 1b. \$4.00, postpaid.

No. 792—Red Bermuda —Same as White Bermuda, only pale red in color. Pkt. 10c; ½ oz. 20c; oz. 35c; ¼ lb. \$1.25; 1b. \$4.00, postpaid.

No. 784—Vadco Red Creole —The outer skin is a light red color; very firm, sweet and tender. Pkt. 10c; oz. 25c; ¼ lb. 75c; 1b. \$2.50, postpaid.

No. 785—Yellow Globe Danvers —A standard sort and one of the most desirable; an excellent keeper and very productive. Pkt. 10c; oz. 25c; ¼ lb. 75c; 1b. \$2.50, postpaid.

Onion Sets and Onion Plants

No. 780—Bermuda Onion Sets —The genuine White or Yellow Bermuda Onion that produces the big commercial crops. Pint 20c; qt. 30c; 2 qts. 55c, postpaid. Not prepaid 8 lbs. (peck) \$1.25; 32 lbs. (bushel) \$4.50.

No. 778—Silver Skin —Excellent variety for family use. Skin and flesh pure white. Pint 20c; qt. 35c; 2 qts. 60c, postpaid. Not prepaid, 8 lbs. (peck) \$1.15; 32 lbs. (bushel) \$4.00.

No. 779—Yellow Danvers —Standard variety, globe shaped, large size; one of the principal sorts. Pint 20c; qt. 30c; 2 qts. 55c, postpaid. Not prepaid, 8 lbs. (peck) \$1.15; 32 lbs. (bushel) \$4.00.

Shallots—Multiplying Green Onions —They grow rapidly and multiply, and can be divided during the winter when the tops are dry. Pint 20c; qt. 35c; 2 qts. 60c, postpaid. Not prepaid, 8 lbs. (peck) \$1.25; 32 lbs. (bushel) \$4.50.

You can have fine matured onions from these plants ten days to two weeks ahead of onions from sets and way ahead of onions from seeds.

We can supply the following varieties of ONION PLANTS: White or Yellow Bermuda and Red Creole. Price in lots of 100 plants or over, 50c per 100, postpaid.

Garden Peas

No. 817—Early Alaska —This is an extra-early Pea, blue in color, earlier by a few days than any other kind; very fine and prolific. Pkt. 10c; ½ lb. 20c; 1b. 30c; 2 lbs. 55c, postpaid. Not prepaid, 15 lbs. (peck) \$2.50; 60 lbs. (bushel) \$9.00.

No. 813—Prolific Early Market —Very prolific. Pods 2½ inches long, blunt end, light green. Height, 30 inches. Very largely used for fall planting. Pkt. 10c; ½ lb. 20c; 1 lb. 40c; 2 lbs. 65c, postpaid. Not prepaid, 15 lbs. (peck) \$2.50; 60 lbs. (bushel) \$9.00.

No. 825—Vadco Thomas Laxton —It is early, a heavy bearer and professional growers as well as home gardeners say it is the greatest pea of today. Pkt. 10c; ½ lb. 25c; 1b. 40c; 2 lbs. 70c, postpaid. Not prepaid, 14 lbs. (peck) \$3.00; 56 lbs. (bushel) \$11.50.

No. 821—Gradus or Prosperity —The earliest, largest-podded and most popular of the wrinkled varieties. Vines are vigorous and healthy, growing 2 to 3 feet high. Pkt. 10c; ½ lb. 20c; 1b. 40c; 2 lbs. 70c, postpaid. Not prepaid, 14 lbs. (peck) \$2.75; 56 lbs. (bushel) \$10.50.

No. 832—Nott's Excelsior —Pkt. 10c; ½ lb. 20c; 1b. 35c; 2 lbs. 65c, postpaid. Not prepaid, 14 lbs. (peck) \$2.50; 56 lbs. (bushel) \$9.50.

Spinach Seed

No. 978—Virginia Savoy —The new Blight Resistant Spinach. The low-growing wide spreading habit is desirable for a winter spinach. Pkt. 5c; oz. 10c; ¼ lb. 15c; 1b. 50c, postpaid.

No. 967—Vadco Bloomsdale Savoy Spinach —This is the leading variety used in Texas and Virginia. Pkt. 5c; oz. 10; ¼ lb. 15c; 1b. 40c, postpaid.

No. 968—Broad-Leaved Flanders —Pkt. 5c; oz. 10c; ¼ lb. 15c; 1b. 50c, postpaid.

Turnips

No. 1099—Vadco Purple or Red Top Globe —Most popular variety for general planting. Medium early, globe shaped, handsome appearance and heavy cropper in all parts. Pkt. 5c; oz. 10c; ¼ lb. 20c; ½ lb. 35c; 1b. 65c; 5 lbs. \$3.00, postpaid.

No. 1093—Vadco Pomeranian White Globe — Handsome, popular variety, useful both for table and stock. Pkt. 5c; oz. 10c; ¼ lb. 20c; ½ lb. 35c; 1b. 65c; 5 lbs. \$3.00, postpaid.

No. 1101—Vadco Japanese New —The color is a pure white, both outside and inside; solid and meaty. Ready for the table or market in 70 days. A heavy cropper and a good winter keeper. Pkt. 10c; oz. 15c; ¼ lb. 35c; ½ lb. 60c; 1b. \$1.10; 5 lbs. \$5.00, postpaid.

No. 1097—Early Red, or Purple-Top Strap-Leaved —Very early, and a favorite market variety. Pkt. 5c; oz. 10c; ¼ lb. 20c; ½ lb. 35c; 1b. 65c; 5 lbs. \$3.00, postpaid.

No. 1087—Early White Flat Dutch —Quick-growing early sort. Pkt. 5c; oz. 10c; ¼ lb. 20c; ½ lb. 35c; 1b. 65c; 5 lbs. \$3.00, postpaid.

No. 1095—Long White, or Cow Horn —Pkt. 5c; oz. 10c; ¼ lb. 20c; ½ lb. 35c; 1b. 65c; 5 lbs. \$3.00, postpaid.

No. 1091—Yellow, or Amber Globe —A beautifully formed, yellow-fleshed variety. One of the best for general crop. Pkt. 10c; ½ lb. 35c; 1b. 65c; 5 lbs. \$3.00, postpaid.

No. 1103—Southern Seven Top, or Salad —This, the hardiest of all sorts, may be left standing in the open ground during winter. Pkt. 5c; oz. 10c; ¼ lb. 25c; ½ lb. 45c; 1b. 80c; 5 lbs. \$3.75, postpaid.

No. 1112—American Purple-Top Yellow Rutabaga —This is a selected strain, which makes much larger and finer roots than the ordinary strains. Pkt. 5c; oz. 10c; ¼ lb. 20c; ½ lb. 35c; 1b. 65c; 5 lbs. \$3.00, postpaid.

Vegetable Plants

COLLARD PLANTS
CREOLE OR GEORGIA

LETTUCE PLANTS
BIG BOSTON
ICEBERG
CRISP AS ICE
MIGNONETTE

BEEF PLANTS
MOBILE MARKET
CROSBY'S EGYPTIAN

	Postpaid
25 plants	\$0.25
50 plants	.35
100 plants	.60
200 plants	1.00
300 plants	1.25
400 plants	1.50
500 plants	1.75
All	Postpaid

CAULIFLOWER PLANTS
EARLY SNOWBALL
LARGE ALGIERS

CELERY PLANTS
GOLDEN SELF-BLANCHING

PARSLEY PLANTS
THYME PLANTS
SAGE PLANTS

	Postpaid
12 plants	\$0.25
25 plants	.50
50 plants	.75
100 plants	1.25

	Postpaid
	50c
Per Dozen	



Our Frost-Proof Cabbage Plants Are Strong, Sturdy, Well Grown Stock. NO PLANTS SHIPPED C. O. D.

Van Antwerp's Frost-Proof Cabbage Plants

We offer the following varieties: Early Jersey Wakefield, Large Charleston Wakefield, Flat Dutch, All-Head Early, Early Summer, Succession and Drumhead.

PRICES BY PARCEL POST, 50 Plants 35c—In lots of 100, 200, 300 or 400 plants, at 50c per 100 plants; 500 plants for \$1.75; 1,000 or more at \$3.00 per 1,000 plants, postpaid.

Orders are filled by the 100, not 250 or 350. These prices are for even quantities of one variety to a package; if you ordered 200 of one variety and 300 of another variety, you would remit at the 100 rate.

PRICES BY EXPRESS—Customer paying express charges. In lots of 1,000 to 4,000 plants at \$2.00 per 1,000; 5,000 or more at \$1.75 per 1,000. Plants packed for express shipment, 1,000 or 2,000 plants of a variety to a package, weight about 25 pounds per 1,000 plants, packed for shipment.

NOTE.—No plant orders accepted from Florida, because of restrictions of the Plant Quarantine Law causing delays in plants arriving at destination. No plants sent C. O. D.

Many Beautiful Flowers for Summer and Fall Planting



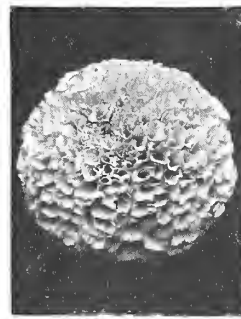
Gaillardia No. 2610.



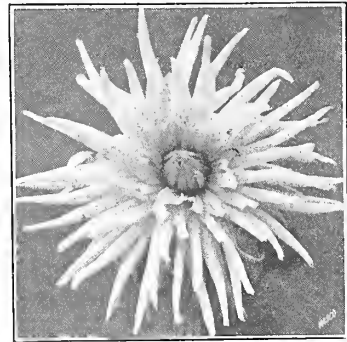
Phlox No. 3000.



Pansy No. 2920.



Marigold No. 2790.



Dahlia No. 2510.

ALYSSUM (Mad Wort)

No. 2019—"Carpet of Snow" or Little Gem—Pure white, very dwarf and sweet scented; the best white flowering border plant. Pkt. 10c; oz. 75c.

No. 2023—Alyssum, Saxtile Compacta, Yellow—A beautiful dwarf hardy perennial for spring beds or edging a flower border. The flowers are produced in large clusters and are of a deep pure yellow. Pkt. 15c; ¼ oz. 40c.

ANTIRRHINUM—Snapdragon

You will be delighted with this bedding and border plant with its long blooming season. The long, showy spikes of tubular flowers are very beautiful and showy.

No. 2040—Vadco Farms' Mixture Tall Varieties—Pkt. 10c; ¼ oz. 40c; oz. \$1.40.

The following separate colors: Pkt. each 10c; 3 pkts. 25c. No. 2053—Blood Red. No. 2055—Deep Scarlet. No. 2057—Light Pink. No. 2054—Dark Maroon. No. 2059—Orange-Scarlet. No. 2061—White. No. 2063—Yellow.

AQUILEGIA (Columbine)

No. 2070—Vadco Farms' Double-Flowering, Long-Spurred Hybrids, Mixed—Beautiful long-spurred, large double flowers, formed of several rows of cornucopia-like petals and in various shades. Pkt. 25c.

No. 2080—Single, Large-Flowering, Mixed Colors—Pkt. 10c; ¼ oz. 40c; 1 oz. \$1.25.

BALSAM—Lady-Slipper

The old and familiar Touch-Me-Not or Lady-Slipper improved until those familiar with the old forms would hardly recognize the large waxy flowers. They grow luxuriantly all through the South with little attention in any good garden soil, and well repay one for the little trouble.

No. 2170—Vadco's Farms' Tall Double Mixed. Pkt. 10c; ¼ oz. 40c; oz. \$1.25.

The following separate colors in Double Balsam, 10c per pkt.; 3 pkts. 25c.

No. 2181—White. No. 2183—Rose.
No. 2185—Yellow. No. 2187—Scarlet.
No. 2189—Purple.

BELLIS PERENNIS (English Daisy)

A low growing spring flowering plant. Loves a shady place and will reward the gardener with a mass of blossoms.

No. 2210—Vadco Farms' Double Mixed—Pkt. 10c; ¼ oz. \$1.00.

CANTERBURY BELLS (Companula Medium)

Grows about 3 feet high and bears double and single varieties of blue, white, purple and red flowers.

No. 2280—Vadco Farms' Single Mixed—Pkt. 10c; ¼ oz. 50c.
No. 2290—Double Mixed—Pkt. 10c; ¼ oz. 50c.

CALENDULA—POT MARIGOLD

They make fine cut-flowers; attractive beds and borders and bloom profusely until frost. In Florida and along the Gulf Coast they do well into the winter.

No. 2240—Vadco Farms' Double Mixed—Pkt. 10c; 3 pkts. 25c; ½ oz. 35c; oz. 60c.

No. 2241—Lemon King—Large very double lemon flowers. Pkt. 10c; ¼ oz. 25c.

No. 2243—Prince of Orange—A fine deep orange; double. Pkt. 10c; ¼ oz. 25c.

CANDYTUFT

A well-known garden favorite for beds, borders and edging.

No. 2260—Vadco Farms' Fancy Mixed—Pkt. 10c; ¼ oz. 25c; oz. 75c.

No. 2261—Giant Hyacinth-Flowered or Improved Empress—As the result of extra care and painstaking selection this is now the finest of all the white varieties. Pkt. 10c; ¼ oz. 35c; oz. \$1.25.

COREOPSIS

No flower is longer in bloom during the whole season than Coreopsis. It is a most excellent cut flower, lasting well; color, bright yellow. Hardy perennial.

No. 2443—Pkt. 10c; 3 pkts. 35c; ½ oz. 50c.

CARNATIONS—Marguerite

An extra vigorous race. The plants are trim in habit, perpetual, and flower abundantly; are highly fragrant and have beautiful double flowers.

No. 2310—Mixed—Pkt. 10c; ¼ oz. 50c.

EVERBLOOMING CARNATIONS

Plants thick-set and bushy; stalks stiff and upright, bearing immense double blossoms of perfect regularity, some with fringed edges, some with smooth, some with rich solid colors, others tinted and blended.

No. 2320—Mixed Pkt. 25c; 2 pkts. 40c.

DAHLIAS

These grand autumn flowers can be as easily raised from seed.

No. 2510—Vadco Finest Double Mixed—Seeds saved from choicest double flowers, including shades of red, pink, dark maroon, yellow, white, etc. Pkt. 10c; 3 pkts. 25c.

No. 2520—Finest Single Mixed—Will produce brilliant flowers running through a wide range of striking colors. Pkt. 10c; 3 pkts. 25c.

DELPHINIUM HARDY PERENNIAL

LARKSPURS

These are taller than the annual sorts and their brilliant flower spikes arrest your attention even at a distance.

No. 2530—Vadco Farms' Finest Single Mixed—Pkt. 10c; ¼ oz. 50c; 1 oz. \$1.50.

DIGITALIS (Foxglove)

Stately, old-fashioned border plants, affording dense spikes of large brilliantly colored flowers.

No. 2580—Vadco Prize Mixed—Many shades and markings. Pkt. 10c; 3 pkts. 25c; ¼ oz. 40c.

DIANTHUS OR PINKS

Hardy annuals, about one foot high, and bearing beautifully colored single and double blossoms in profusion.

No. 2550—Vadco Fancy Double Mixed Chinese—Pkt. 10c; 3 pkts. 25c; ½ oz. 75c.

No. 2560—Heddewigii (Japanese Pink)—Finest Single, Mixed. Pkt. 10c; ¼ oz. 75c.

No. 2570—Vadco Plumarius (Grass Pink, Pheasant Eye or Scotch Pink)—A single hardy perennial pink with light colored flowers. Pkt. 10c; 3 pkts. 25c; ¼ oz. 60c.

GAILLARDIA

A very showy garden plant, with brilliant flowers, in scarlet and yellow, blended and shaded.

No. 2610—Vadco Perennial Varieties Mixed—Pkt. 10c; 3 pkts. 25c; ½ oz. 50c.

No. 2620—Double Mixed Annual (Picta Lorenziana)—A. Pkt. 10c; ¼ oz. 25c.

HOLLYHOCK

Some grow to the top of the second-story window and in some gardens they only grow 8 to 10 feet tall. The double ones are usually about 6 feet tall.

No. 2700—Vadco Farms' Choice Double Mixed—Pkt. 10c; 3 pkts. 25c; ¼ oz. 75c.

No. 2710—Single Fine Mixed—Pkt. 10c; ¼ oz. 50c.

LARKSPUR

Well-known rapid growing annual with long erect spikes of beautiful double flowers.

No. 2750—Vadco Emperor Fancy Mixture—Pkt. 10c; 3 pkts. 25c; ½ oz. 50c; 1 oz. 85c.

The following separate colors in Tall Emperor Larkspur: No. 2751—White. No. 2757—Light Blue. No. 2753—Bright Rose. No. 2759—Deep Red. No. 2755—Dark Blue. Price, 10c per pkt.; any 3 pkts. 25c, or 1 pkt. each the 5 colors for 35c, postpaid.

MARIGOLDS (African)

These grand African Marigolds produce densely double flowers, 8 to 10 inches in circumference.

No. 2790—Vadco Farms' Mixture of Tall African Marigolds—Pkt. 10c; 3 pkts. 25c; ½ oz. 60c; oz. \$1.00.

No. 2791—African Orange—Enormous flowers of perfect shape, deep golden orange. 2½ feet. Pkt. 10c; ¼ oz. 35c.

No. 2793—African Lemon—A charming color. 2½ feet. Pkt. 10c; ¼ oz. 35c.

MIGNONETTE

A well-known hardy annual producing thickly set flowers of modest colors, and pleasing fragrance.

No. 2820—Vadco Sweet Scented Mixed—Pkt. 10c; 3 pkts. 25c; ½ oz. 50c; 1 oz. 85c.

NASTURTIUMS

Tom Thumb, Dwarf

No. 2850—Vadco Farms' Mammoth Flowering Dwarf Nasturtiums, Mixed. These wonderful new Nasturtiums produce flowers twice the size of the old-time dwarf mixed. Oz. 10c; ¼ lb. 35c; 1 lb. \$1.25, postpaid.

Tall, or Climbing

No. 2860—Vadco Farms' Mammoth Flowering Climbing Nasturtiums, Mixed. Mixed by ourselves from all the choice separate colors, including new and rare varieties. Oz. 10c; ¼ lb. 35c; 1 lb. \$1.25, postpaid.

PANSIES

No. 2920—Vadco Farms' Exhibition Mixed. The result of years of scientific culture in raising Pansies. Pkt. 25c; ½ oz. \$1.50.

No. 2930—Royal Mixture. This mixture comprises a large number of colorings. Pkt. 15c; 2 pkts. 25c; ½ oz. \$1.00.

PHLOX DRUMMONDI

The easiest grown of all annual flowers in the South.

No. 3000—Vadco Farms' Finest Large Flowering Varieties Mixed—Pkt. 10c; 3 pkts. 25c; ¼ oz. 75c; oz. \$2.50.

No. 3020—Hardy Perennial Phlox (Decussata)—This is the perennial phlox which grows 3 feet high. Soak seed for 24 hours before sowing. Pkt. 25c; 2 pkts. 40c.

POPPY

No. 3030—Vadco Farms' Shirley, Finest single Mixed. Dainty flowers on slender stems, in the most delicate shades, varying in color: Pkt. 10c; ¼ oz. 25c; oz. 75c.

No. 3050—Double "Featherball" Mixed. These double-fringed annual Poppies are very beautiful. Pkt. 10c; ¼ oz. 25c; 1 oz. 75c.

No. 3070—ORIENTALE (the large Oriental Poppy). A hardy plant, bearing large brilliant crimson flowers, with a black blotch on each petal. Pkt. 15c; 2 pkts. 25c.

SWEET WILLIAM

Old-fashioned flower, growing about 1½ feet high with large clusters of flowers in all shades from white to dark red.

No. 3180—Vadco Farms' Single Mixed—All colors. Pkt. 10c; ½ oz. 30c; ¼ oz. 50c.

No. 3190—Double Mixed—All colors. Pkt. 10c; ½ oz. 40c; ¼ oz. 65c.

MAMMOTH VERBENAS

The trusses and individual flowers of our Mammoth Verbenas are of the largest size, of brilliant colors.

No. 3230—Vadco Farms' Mammoth Mixed. Finest colors. Pkt. 10c; ½ oz. 50c; 1 oz. 85c.

WALL FLOWER

These perennials make nice bushy plants, 1½ feet high, bearing various colored flowers.

No. 3260—Vadco Large Double Mixed Colors. Pkt. 15c; 2 pkts. 25c.

No. 3270—Large-Flowering Single, Mixed Colors—Pkt. 10c; 3 pkts. 25c; ¼ oz. \$1.25; 1 oz. \$4.00.

Van Antwerp's Sweet Peas

Sweet Peas Should Be Planted in the Fall

CULTURE—Ordinary good garden soil is suitable for Sweet Peas. Seed should be sown in trenches about 4 inches deep and covered to a depth of 2 inches, still allowing the center of the trench to remain at least 2 inches below the level of the ground, that water may be retained.

Separate Colors Spencer Sweet Peas

- No. 3401—APPLE BLOSSOM SPENCER—Bright rose.
- No. 3402—ASTA OHN—Beautiful clear lavender.
- No. 3403—BLANCHE FERRY SPENCER—Pink.
- No. 3404—COUNTESS SPENCER—Clear pink.
- No. 3405—DOBBIES CREAM—Cream-yellow.
- No. 3406—ETTA DYKE—Large white.
- No. 3407—FLORA NORTON—Light blue.
- No. 3408—GEORGE HERBERT—Rosy cream.
- No. 3410—GEORGE SHAWYER—Beautiful orange.
- No. 3409—NUBIAN—The finest deep chocolate.
- No. 3411—OTHELLO—Very dark maroon.
- No. 3412—ROYAL PURPLE—Large purple.
- No. 3413—STERLING STENT—Salmon orange.
- No. 3414—VERMILION BRILLIANT—Scarlet.
- No. 3415—WEDGEWOOD—Dark blue.

Each per packet 10c; 3 pkts. 25c; oz. 40c; ¼ lb. \$1.50; lb. \$5.00.

One full sized packet each the 15 varieties of Spencer Waved Sweet Peas as listed above, mailed postpaid for \$1.00. Order collection No. 520.

New Early-Flowering Spencers

Bloom four weeks earlier than the late Spencers, and under congenial conditions flower continuously for four months.

Price Early Flowering Varieties: Pkt. 20c; oz. 65c; ¼ lb. \$2.25; lb. \$7.50.

- No. 3371—EARLY SNOWFLAKE—Pure white.
- No. 3372—EARLY HEATHER BELL—Lavender.
- No. 3373—EARLY CANARY BIRD—Yellow.
- No. 3374—EARLY WARBLER—Rich mauve.
- No. 3375—EARLY YARRAWA—Rose-pink.
- No. 3376—EARLY ILLUMINATOR—Salmon.
- No. 3380—MIXTURE OF EARLY FLOWERING SPENCERS. Mixed by ourselves from above named varieties and will produce a charming effect. Pkt. 15c; oz. 50c; ¼ lb. \$1.50; lb. \$5.00.

Vadco Giant Spencer Mixed Sweet Peas

The varieties included in our mixture will produce from three to four flowers on a stem. (See illustration.) No. 3350. Pkt. 10c; oz. 25c; ¼ lb. 75c; lb. \$2.50, postpaid.



Giant Spencer Sweet Peas Mixed No. 3350.



Our New Dahlia Flowered Zinnia No. 3300. Pkt. 15c; 2 pkts. 25c; ¼ oz. 75c.

Zinnias

You Can Plant Zinnias Up to September 1st in the South

Our Zinnias are grown especially for us by an expert California grower and are the finest that money can buy. Zinnias are hardy annuals in the South and can be grown in any good garden soil, but we recommend a liberal supply of fertilizer.

CULTURE—Sow the seed in good soil. Thin out or transplant 1 to 2 feet apart in rows 2 to 3 feet apart when plants are about 2 inches high.

The following separate colors of GIANT ZINNIAS: Each per packet 10c; 3 pkts. 25c; ¼ oz. 50c; ½ oz. \$1.00; oz. \$1.75.

- | | |
|-------------------------|------------------------|
| No. 3340—OUILLED TYPE | No. 3324—CANARY YELLOW |
| No. 3321—APRICOT BUFF | No. 3338—GOLDEN YELLOW |
| No. 3325—CRIMSON | No. 3326—DEEP FLESH |
| No. 3327—LAVENDER | No. 3331—SALMON ROSE |
| No. 3329—PURPLE | No. 3335—SHRIMP PINK |
| No. 3334—SCARLET | No. 3323—BRIGHT ROSE |
| No. 3336—WHITE | |
| No. 3322—APRICOT ORANGE | |

No. 3337—GOLDEN PHEASANT.

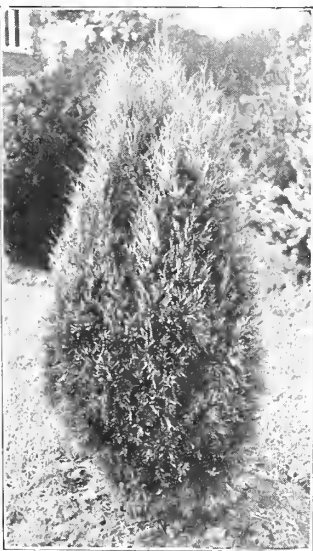
No. 3310—Vadco Giant Zinnias Mixed Colors—This is a mixture of all the separate colors of Giant Zinnias mixed by ourselves. Pkt. 10c; 3 pkts. 25c; ¼ oz. 50c; ½ oz. 85c; oz. \$1.50.

No. 3300—Vadco New Dahlia Flowered Double Mixed—(See illustration.) Mixed from new varieties of Dahlia Flowered Zinnias. Pkt. 15c; 2 pkts. 25c; ¼ oz. 75c; ½ oz. \$1.25; 1 oz. \$2.00.

No. 525—Pride of the South Zinnia Collection

One packet each of the 15 choice separate colors of GIANT ZINNIAS as listed above. The 15 packets for \$1.00, postpaid.

Shrubs and Plants for the Front of Your Home



Arbor-Vitae

Dwarf Boxwood

Largely used for edging and border work; is of very slow growth. Price, 8 to 10 inches, 60c each; 6 for \$3.00; 12 for \$6.00, prepaid.

A few evergreen and flowering shrubs planted around your home will add to its attractiveness besides increasing the value of your property.

NOTE—If you order shrubs and plants you will receive them in a separate package and shipped to you direct from our growers. No plant order accepted from Florida.

Dwarf Arbor-Vitae

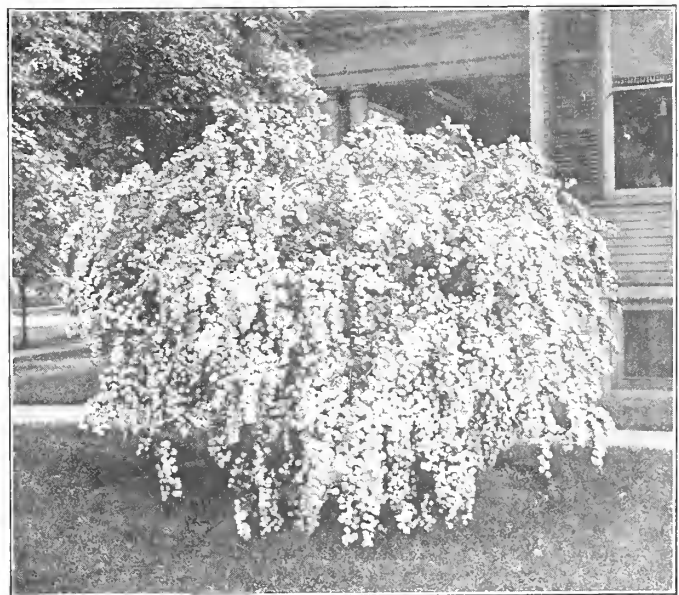
Bonita—The most beautiful of all the dwarf growing, green Arbor-Vitae; is of extremely compact growth, cone-shape and beautiful color which it retains throughout the winter. Price, 8 to 10 inches, \$1.00 each; 1 to 2 feet, \$1.75 each; 2 to 3 feet, \$2.50 each prepaid.

Magnolia Grandiflora

(Southern Evergreen Magnolia)—A beautiful pyramidal evergreen tree with large, pure white flowers. Foliage dark green. Tree large, handsome and vigorous. Price, 8 to 10 inches, 25c each; 3 for 70c; 12 for \$2.40, prepaid.

Spirea Van Houttei

Bridal Bower (Spirea Van Houttei)—The strongest growing of all the Spireas, and considered by many horticulturists to be the most beautiful and satisfactory shrub grown. Grows about 6 feet tall, with spreading and drooping branches which in early Spring are a solid mass of snowy white blossoms, from which the name is derived. It is perfectly hardy and grows anywhere. Highly desirable for specimen or mass planting. Price, Large Clumps, \$1.25 each; 6 for \$6.50; 12 for \$12.00, prepaid.



Spirea Van Houttei

Azalea Plants

This beautiful hardy shrub is particularly well adapted to our Southern soil and climate. They bloom continuously from Christmas till Easter and no other shrub produces such a charming effect as the Azalea.

We can supply the following separate varieties: Pink, White, Salmon and Red. From 4 to 6-inch pots, \$1.75 each. From 8 to 10 inch pots, \$3.00 each, prepaid.

Imported
Direct
By Us
For You

THE WORLD'S

BEST BULBS

FOR FALL PLANTING

From
Holland
France
Japan

IMPORTANT NOTICE

The cream of the World's Best Flowering Bulbs are imported each year by Van Antwerp's. These choice bulb roots are shipped us direct from the leading growers in Holland, France, Japan and California, and they usually reach Mobile the latter part of August. This special Fall Catalog is issued in July, although October and November are the best months to plant bulbs in the Southern States. This early issue of our catalog will give our customers an opportunity to make a suitable selection of the bulbs they need for Fall Planting. Don't wait till planting time to send us your bulb order but mail it just as soon as you receive this catalog and we will ship you the bulbs when we receive them from Europe. You will receive them at correct planting time. If you order bulbs and seeds the seeds will be shipped you by return mail and the bulbs later.

Planting and Care of Bulbs

When planting bulbs in the garden loosen up the soil well. If it is wet or heavy soil, put a handful of sand under the bulb for drainage. Bonemeal mixed with the soil or put on the earth over the bulb will assure you of extra fine flowers. For outdoor planting we recommend putting out bulbs in October or November.

Hyacinths, Tulips, Narcissus, and similar large bulbs should be planted from four to six inches deep, smaller bulbs such as Crocus, three inches deep. Most bulbous flowers bloom in April when planted in Fall.

For house culture there is nothing more beautiful than a bowl of sweet-scented Paper-White Narcissus, California Freesia or Chinese Sacred Lilies.

These bulbs can be started indoors in September and will produce blooms by Christmas. They can be grown in pots of soil, pebbles or Bulb Fibre.

Van Antwerp's Prepared Bulb Fibre is a complete substitute for soil, scientifically prepared for use in receptacles without drainage. It is clean and odorless; no saucers necessary, no fear of staining the woodwork or table coverings. And bulbs really grow better in it than in soil, for it absorbs and holds an even moisture, and on account of its fluffiness allows the roots to penetrate freely.

Exhibition Hyacinths—Named Varieties

This size of bulb is known as "top-roots," the largest size of Hyacinths imported into this country from Holland. They are the bulbs that are grown for those massive spikes of bloom you see exhibited at national Flower Shows.

GRANDEUR A'MERVEILLE—Charming rosy white; very popular variety.

KING OF THE BLUES—Dark glossy indigo blue; fine bells.

GARIBALDI—Rich glossy crimson.

MENELIK—New. Almost black; best of its color; large truss.

KING OF THE BELGIANS—Brilliant scarlet.

MORENO—Large bright pink; a great favorite.

KING OF THE YELLOWS—Tall handsome spike of rich deep yellow.

L'INNOCENCE—Massive pure white; extra fine.

SIR WM. MANSFIELD—Ruby violet, splendid bells and truss, good bedder.

GERTRUDE—Charming rich crimson rose.

GRAND MAITRE—Deep lavender blue; large compact truss with very dark stem.

ENCHANTRESS—Pale porcelain blue; handsome spike; fine for exhibition.

Price: Any of the above varieties of Exhibition Hyacinth Bulbs: 25c each; 6 for \$1.50; 12 for \$2.75; 50 for \$10.00, postpaid.

SPECIAL COLLECTION OF 12 BULBS—This collection contains 1 bulb of each of the above 12 named Hyacinths. The 12 for \$2.50, postpaid.

SPECIAL COLLECTION OF 36 BULBS—This collection contains 3 bulbs of each of the above 12 named Hyacinths. The 36 bulbs for \$7.00, postpaid.

Van Antwerp's Special Bedding Hyacinths

Van Antwerp's Special Bedding Hyacinths are great favorites as they can be planted indoors or outside. The bulbs should be planted 4 inches deep and 8 to 10 inches apart. We offer them in six separate colors which makes them especially valuable for bedding in designs enabling one to obtain the exact color effect desired.

Special Crimson
Special Light Pink

Special Lavender Blue
Special Dark Blue

Special Snow White
Special Yellow

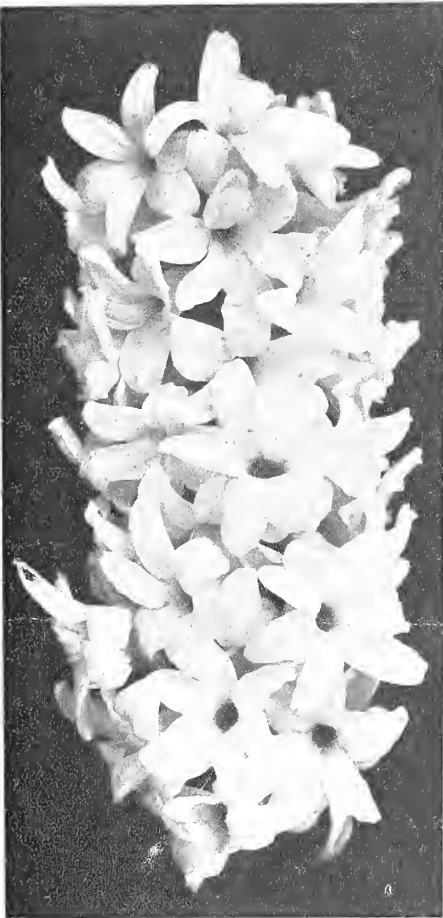
Price of Bulbs: 15c each; 6 bulbs for 75c; 12 for \$1.50; 50 for \$5.75; 100 for \$11.00.

Vadco Famous Rainbow Hyacinths Mixed Colors

Price: 15c each; 3 bulbs for 40c; 6 for 75c; 12 for \$1.50; 50 for \$5.00; 100 for \$10.00.



Bed of Vadco Famous Rainbow Bedding Hyacinths Mixed.



Exhibition Hyacinth.

Early French Roman Hyacinths

French Roman Hyacinths come into bloom before the Dutch Hyacinths and while not as large, frequently produce 3 to 5 graceful spikes of bloom from one bulb. They may be grown outdoors in the South but their chief use is for planting in pots and bowls of fibre for indoor blooming. We offer three separate colors in these French Roman Hyacinths: White, Pink and Blue. Price of Bulbs: 15c each; 3 for 40c; 6 for 75c; 12 for \$1.35, postpaid.

Grow Bulbs in Your Own Home In Van Antwerp's Prepared Bulb Fibre

Without Drainage.

Price: 1 quart 20c; 2 qts. 35c; 4 qts. 65c; 8 qts. \$1.15, postpaid.

25c Book Free

WITH EVERY \$2.00 ORDER

If your order for bulbs amounts to \$2.00 or over we will include absolutely FREE a copy of our 16-page Book on Bulb Culture. Remember you must ask for it.

PLANT BULBS THIS FALL
AND ENJOY SPRING FLOWERS

TULIPS

For outdoor planting Tulips are exceedingly effective and are perhaps the most popular of all Dutch bulbs, but, unfortunately, they do not stand our Southern climate as well as the Narcissi and Hyacinth.

The Giant Darwin Tulips known as the aristocrats of the Tulip family, also the Breeder Tulips, are the only varieties of tulips that

Giant Darwin Tulips.

will grow successfully in Southern States. The Single and Double Early Tulips which are popular in the North are not satisfactory in the South, and if planted usually prove disappointing. On this account we only list these Early Tulips in mixed colors. In order that our customers would be assured of the very finest varieties in Giant Darwin Tulips we asked our grower in Holland to make a selection for us of the choicest colors and easiest grown sorts, and we list his selection on this page.

Tulip Bulbs should be planted 3 inches deep and about 5 inches apart.

Remember you get the finest bulbs that Holland produces and the usual high grade Van Antwerp quality.

Giant Darwin Tulip Bulbs The Eighteen Best Varieties for the South

Baronne de la Tonnaye—A long and beautiful flower, rose shaded blush. 60c per doz.; \$4.25 per 100.

Clara Butt—Beautiful soft salmon rose; large flower of remarkable beauty. 60c per doz.; \$4.50 per 100.

Dream—Large cup-shaped flower of heliotrope with silvery lilac margin; blue base. 80c per doz.; \$5.50 per 100.

Europe—Large globular flower of glowing salmon-scarlet shaded rose. 80c per doz.; \$5.50 per 100.

Gretchen (Margaret)—Lovely globular flower of delicate blush and silvery pink. 70c per doz.; \$5.00 per 100.

Harry Veitch—Brilliant blood-red with blue base; splendid for borders and also for forcing. 70c per doz.; \$5.00 per 100.

Inglescombe Yellow—While this belongs to the May-flowering Cottage Garden type, it is frequently called the "Yellow Darwin." 60c per doz.; \$4.50 per 100.

King Harold—Attractive flower of dark maroon-scarlet. 70c per doz.; \$5.00 per 100.

La Tulipe Noire (The Black Tulip)—A large glossy black flower, a rarity. 70c per doz.; \$5.00 per 100.

Madame Krelage—Extra large flower of rich pink, tinted lilac. 80c per doz.; \$6.00 per 100.

Mr. Farncombe Sanders—Beautiful scarlet with clear white base. 85c per doz.; \$6.00 per 100.

Mrs. Potter Palmer (Fashion)—A beautiful large new variety of deep violet-purple with a bluish sheen on the outer petals. 70c per doz.; \$5.00 per 100.

Painted Lady—One of the best of the white Darwins. 70c per doz.; \$5.00 per 100.

Pride of Haarlem—Large flower of charming old-rose color. 75c per doz.; \$5.50 per 100.

Rev. H. Ewbank—Broad flower of silvery lavender. 70c per doz.; \$5.00 per 100.

The Sultan—Charming flower of glossy maroon. 75c per doz.; \$5.50 per 100.

White Queen—Pure white faintly flushed with blush in places. 70c per doz.; \$5.00 per 100.

William Pitt—One of the largest and grandest of the Darwins; brilliant carmine, center of petals overspread with dark red. 80c per doz.; \$6.00 per 100.

Vadco Giant Darwin Mixture—Comprising a great variety of beautiful shades and colors mixed from named sorts. ½ doz. 25c; 50c per doz.; \$4.00 per 100.

Six Bulbs, any variety, Sold at Dozen Rate.

Van Antwerp's Special Offer of 18 Darwin Tulip Bulbs

18 bulbs, 1 each of above 18 choice named varieties of Darwin Tulips for \$1.00 postpaid. } \$1.00 COLLECTION Postpaid



PLEASE USE THE ORDER FORM WHEN MAKING OUT YOUR ORDER.

Breeder Tulips

Nature's happiest color combinations of purple and bronze, gray and lilac, yellow and bronze, brown and orange are revealed to us in this class. Breeders grow as tall and their flowers are as large as those of the Darwins.

Price, all varieties of Breeder Tulips, 3 for 30c; 6 for 50c; \$1.00 per doz.; \$7.00 per 100.

Dom Pedro—The finest deep coffee brown.

Apricot—Apricot, flushed orange.

Bronze Queen—Soft buff tinged with golden-bronze.

Cardinal Manning—Claret-red with rosy bronze sheen.

Prince of Orange or Sunset—Rich terra-cotta red, margined orange red.

Hamlet—Dark bronze, light tinged.

Jules Favre—Bronze.

Medea—Salmon-carmine; one of the largest.

Mon Tresor—Brown-red.

Yellow Perfection—Light bronze yellow.

Special Breeder Tulip Collection

Contains 1 bulb each of above 10 superior named varieties of Breeder Tulips for 80c, postpaid.

Our Rainbow Mixtures of Early Tulips

Rainbow Single Early Mixture—Mixed by ourselves from named varieties, and contains all first sized bulbs. ½ doz. 25c; 50c per doz.; \$4.00 per 100.

Rainbow Double Early Tulip Mixture—This is a superior mixture from named sorts and contains many beautiful colors. ½ doz. 25c; 50c per doz.; \$4.00 per 100.

Cottage or May-Flowering Tulips

Superb Mixture of Cottage Tulips—60c per doz.; \$4.50 per 100.

Parrot Tulips

Superfine Mixture of Parrot Tulips—60c per doz.; \$4.50 per 100.

Bargain Bulb Collection

24 Bulbs \$1.00

Here is the greatest value in a collection of High Grade Bulbs ever offered by any Seed firm.

Look what you get for one dollar postpaid:

6 Darwin Tulips Mixed
6 Mixed Bedding Hyacinths
6 Giant Mixed Crocus
6 Single Yellow Jonquils

The 24 bulbs all for one dollar postpaid.

Bulb Book free with each collection.

Crocus

Crocuses are among the very earliest to bloom in the Spring and the great variety of colors makes them very attractive if planted in masses of white, blue, yellow, purple and striped. Crocuses are easily flowered in the house in Winter in pots of soil or fibre.

Prices, named varieties, ½ dozen bulbs, 15c; 30c per dozen; \$2.00 per 100, postpaid.

Albion—Charming lavender flowers with white and violet stripes.

Baron von Brunow—Large pure white flowers; fine.

Mont Blanc—Large pure white flowers; fine.

Purpurea Grandiflora—Large purple.

Sir Walter Scott—White, with blue stripes.

Yellow Mammoth—Very popular Crocus; large bulbs which produce several flowers each of rich yellow.

Van Antwerp's Mixture of Giant Flowering Crocus—Especially mixed for us by experts in Holland; contains all colors and shades. (See illustration.) Price for mixed bulbs 25c per dozen; \$1.50 per 100.



Crocus The Joy of Early Spring.

Your Last Chance to Get Imported

NARCISSI and DAFFODIL BULBS

Our Government Has Prohibited Their Importation After 1925

SPECIAL NOTICE

We regret very much that after 1925 no more Narcissi or Daffodil Bulbs can be imported from Europe. The Federal Horticultural Board has prohibited their importation after this year. For many years Narcissi and Daffodils have been the glory of our American gardens, and we hope that the government may raise the ban, although so far all efforts to have the ruling set aside have proved a failure. Of course some bulbs are now grown in this country, but so far this work is only in the experimental stage and it will be many years before this country will produce half as many bulbs as are now imported from Holland each year. Narcissi bulbs do exceedingly well in the Southern States and we recommend a liberal planting this year as prices will be very much higher next year. We will be glad to quote special prices on Narcissi bulbs to parties intending to plant a large place for commercial purposes. Remember you will have a ready sale for all the Narcissi Bulbs you can raise for many years. Narcissi Bulbs should be planted 4 inches deep and 6 to 12 inches apart.

Order early as the demand will far exceed the supply this year.

Single Trumpet Daffodils

Emperor—A giant flower with a yellow trumpet and primrose petals. One of the finest of all Narcissus, both for growing in pots and for bedding. (See illustration.) 3 bulbs, 30c; \$1.00 per doz.; \$8.00 per 100, postpaid.

King Alfred—The largest and finest pure yellow daffodil in commerce; immense flowers of intense yellow; trumpet large and open with a deeply filled mouth. 25c each; \$3.00 per doz.

Barri Conspicuous—A flower of great beauty; broad spreading yellow perianth; short crown edged orange-scarlet. 70c per doz.; \$5.00 per 100, postpaid.

Firebrand—Perianth creamy white, shaded lemon at base; fiery red cup. \$1.00 per doz.; \$8.00 per 100, postpaid.

Glory of Noordwijk—A grand, large yellow trumpet. 3 bulbs 30c; \$1.00 per doz.; \$8.00 per 100, postpaid.

Golden Spur—Extra large, all yellow flowers; very early and extremely free-flowering. Height 18 inches. 3 bulbs 30c; \$1.00 per doz.; \$8.00 per 100, postpaid.



NarCISSI growing in Fibre.

Empress—Fine robust growing kind, having very large flowers with a deep yellow fluted cup and white petals. 3 bulbs, 30c; \$1.00 per doz.; \$8.00 per 100, postpaid.

Sir Watkin—Perianth butter yellow; crown deep golden. Height 21 inches. \$1.00 per doz.; \$8.00 per 100.

Mme. de Graff—Perianth pure white; trumpet opens primrose but turns white, a beautiful flower of graceful carriage. 3 bulbs 30c; \$1.00 per dozen.

Glory of Leiden—Immense large, fluted trumpet of rich yellow; broad, overlapping perianth of bright yellow; sturdy stems and broad leathery foliage. 3 bulbs 30c; \$1.00 per doz.

Victoria—Bicolor trumpet daffodil; broad perianth of creamy white; large, broad fluted trumpet of rich yellow. 3 bulbs 30c; \$1.00 per dozen.

White Lady—Pure white perianth, and a bold fluted cup of pale citron passing to white. Height 15 inches. 85c per doz.; \$6.50 per 100, postpaid.

Double Daffodils

Orange Phoenix (Eggs and Bacon)—Large, double rose-shaped white flowers with a reddish orange center. 75c per doz.; \$5.50 per 100, postpaid.

Silver or Sulphur Phoenix—Double, rose-shaped white flowers with a sulphur colored center. 75c per doz.; \$5.50 per 100, postpaid.

Von Sion—The well-known double yellow daffodil. Large, double, golden yellow. Very fine for forcing or garden growing. 85c per doz.; \$6.50 per 100, postpaid. All prices quoted include payment of postage by us.

OLD-FASHIONED

Jonquilla or Jonquils

Many people confuse the old-fashioned Jonquil with the Narcissus or Daffodil. The Jonquils listed below are small bulbs and produce small flowers which are very fragrant. Intending purchasers should use care in ordering and not confuse the Jonquils with the Narcissi or Daffodils.

Single Jonquils—Beautiful rich yellow flowers; very fragrant. 6 bulbs 30c; 12 for 50c; 25 for \$1.00; 100 for \$3.50.

Double Jonquils—Heads of small but very double deep yellow flowers, powerfully scented. 6 bulbs 40c; 75c per dozen; \$6.00 per 100, postpaid.

White Polyanthus Narcissi

Paper-White Grandiflora—Are more largely used for early forcing for cut flowers than any other kind of bulbs. They produce pure white flowers that are very fragrant. Paper-Whites can be grown successfully in pots of soil, pebbles, or Prepared Bulb Fibre. 3 bulbs 20c; 60c per dozen; \$4.50 per 100, postpaid

Soleil d'Or—Golden yellow, sometimes called the Yellow Paper-White. It is a great favorite with amateurs and gardeners for forcing. 3 bulbs 30c; \$1.00 per doz.; \$7.00 per 100, postpaid.

6 bulbs sold at the dozen rate.

The Hardy, Cluster-Flowered Daffodils

Alsace—Pure white, with yellow cup, having a slight reddish edge when nearly opened. 3 bulbs 30c; \$1.00 per doz.

Elvira—The flowers are pure white with yellow cup, and are borne in clusters. 3 bulbs 30c; \$1.00 per doz.

Irene—Broad flowers, borne 7 to 8 on a stem; 3 stems to a bulb. The largest yellow. 3 bulbs 30c; \$1.00 per doz.

Poeticus (Pheasant's Eye, or Poet's Narcissus)—Flowers snow white, with beautiful lemon yellow cup edged with bright orange-red. 50c per doz.; \$4.00 per 100, postpaid.

Freesias

These are among the most fragrant of all bulbs and can be easily forced. They are adaptable for house culture only, and grow extremely well in pots of soil or bowls filled with Van Antwerp's Prepared Bulb Fibre. The exquisite delicate perfume emitted from one bowl of these will scent a large room.

"FARDEL" COLORED—These novelty Freesias are rapidly becoming very popular on account of their lovely and unique coloring. We offer the mixed colors, which include shades of pink, mauve, purple, violet, blue, yellow, and orange. 70c per doz.; \$5.00 per 100.

PURITY—The best variety, producing large sprays of purest white flowers of immense size and delicious fragrance. 40c per doz.; \$3.00 per 100.

Snowdrops

In the early Spring months there is nothing more beautiful than a sheet of the snowy, graceful blossoms of the Snowdrops. Beds and effects of surpassing beauty may be arranged with Snowdrops in the center.

Single Snowdrops—40c per doz.; \$3.00 per 100, postpaid.

Double Snowdrops—60c per doz.; \$4.50 per 100, postpaid.



Emperor Trumpet Daffodil.

Chinese Sacred Lily

This is the Joss Flower of the Orient, the lily grown to decorate the temples of worship of the Chinese on their New Year's Day. It will flower profusely when grown in pebbles and water. 20c each; \$2.25 per doz.



Freesias Purity.

MISCELLANEOUS BULBS for THE SOUTH

BE SURE TO READ THIS PAGE OVER, YOU'LL FIND MANY CHOICE BULBS

German Iris

These beautiful Irises bloom early in the spring, and because of their great variety of colors, they make a magnificent show. They are perfectly hardy and thrive in almost any soil, especially where they are exposed to the full sun. No home-garden is complete without a few clumps scattered about, and they are also excellent for massing and bordering.

GERMAN IRIS MIXED—Mixed from named varieties. They will produce a charming effect. 15c each; \$1.50 per doz., postpaid.

Japanese Iris

This queen of the large-flowering Irises is very attractive. It flowers a little later than the German Iris, which adds greatly to its popularity. The flowers are of an enormous size and there are single and double varieties, both being equally attractive.

DOUBLE AND SINGLE MIXED—Splendid range of colors. 15c each; \$1.50 per doz. postpaid.

Spanish Iris

Special mixture from named varieties, a choice selection of colors. 80c per doz.; \$6.00 per 100.

Peony Roots

Large 3- to 5-eye roots in the following colors: Exhibition Double White, Pink, Crimson or Mixed Colors. Large roots, 50c each; \$5.00 per doz.

Anemone - Windflower

These popular flowers of French origin are exceedingly useful as a decorative plant for house or garden, and fine for cutting. 60c per doz.; \$4.50 per 100.

Calla Lilies

AETHIOPICA, or LILY OF THE NILE—The old favorite White Calla Lily makes a very pretty pot plant. They can be grown in the greenhouse or home, and produce large snow white lilies. Only one bulb should be put in each pot. 35c each; \$3.50 per doz.

GODFREY EVERBLOOMING CALLA—This new hybrid is a true everblooming variety. 35c each; \$3.50 per doz.

ELLIOTTIANA—The golden yellow Calla. Blooms 4 to 5 inches across; foliage deep green, spotted white. Extra large bulbs, 50c each; \$5.00 per doz.

Grape Hyacinths

These very curious and pretty little Hyacinths are perfectly hardy and of the easiest culture, they thrive and increase in either sunny or partially shaded positions in the garden.

BLUE GRAPE HYACINTHS—40c per doz.; \$3.00 per 100, postpaid.

WHITE GRAPE HYACINTHS—60c per doz.; \$4.00 per 100, postpaid.

Lily of the Valley Pips

Lily of the Valley Pips are the best of all for forcing purposes and will do fine for you for pot or box growing this coming winter in the house. They produce strong spikes of 12 to 18 extra large, pure white bells each and are delightfully fragrant. The new crop generally arrives in November. We will book your order and ship to you as soon as they reach Mobile. Very easy for anybody to grow.

Price—Large size Crowns or Pips, 85c per doz.; 25 for \$1.50; 50 for \$2.75; 100 for \$5.00.



Lily of the Valley Growing in Van Antwerp's Bulb Fibre.

Oxalis

Charming little half-trailing or bushy plants particularly adapted for pot culture and hanging baskets, the foliage alone is very attractive and when in flower they are exceedingly pretty.

BERMUDA BUTTERCUP—This is one of the finest winter-flowering plants for pot culture, it is a strong luxuriant grower, and the great profusion of bloom produced in uninterrupted abundance for weeks is astonishing. The flowers are of the purest bright buttercup yellow. 5c each; 40c per doz.; \$2.50 per 100.

GRAND DUCHESS—A California variety of great beauty; of dwarf sturdy growth throwing large exquisite flowers well above the foliage. Extremely free flowering. **Price** for either, White, Pink, or Lavender, 5c each; 40c dozen; \$2.50 per 100.

Scillas—Bluebells

SCILLA SIBERICA—Beautiful hardy spring bulbs, producing in profusion masses of exquisite rich blue flowers.

They should be largely planted as undergrowth in Hyacinth beds, etc. Grown in pots they may be had in bloom from Christmas until April. 6 bulbs 25c; 50c per doz.; \$3.50 per 100.

SIBERICA ALBA—The new white flowering variety, very beautiful. 6 bulbs 30c; 60c per doz.; \$4.50 per 100.

Famous Creole Easter Lilies

The Creole Easter Lily is by far the best lily for outdoor or indoor planting in the South. These bulbs are especially grown for Van Antwerp's by a Southern grower and are adapted to our climate and soil. We can supply extra size bulbs measuring 7 to 9 inches in circumference, which, if properly grown, will produce 8 to 10 flowers.

Price: VADCO CREOLE EASTER LILY BULBS—Extra Size Bulbs, 25c each; 3 for 65c; \$2.50 per dozen; \$18.00 per 100, postpaid.

Hardy Lilies

For Outdoor Planting

For color, fragrance, beauty and variety of form, nothing can equal these grand flowers; whether grown in pots or grouped in the hardy plant border, where their hardiness makes them so desirable, they are always an object of beauty.

Lily Bulbs, being of late maturity, are not ready before October and November (the best time to plant them).

LILIUM AURATUM (The Gold-Banded Lily of Japan)—The most beautiful variety of all the Lily family; should be in every garden. Flowers white, dotted crimson, with a clear golden band running through the center of each petal; very fragrant. Mammoth bulbs, 40c each; \$4.00 per dozen.

LILIUM SPECIOSUM RUBRUM—Large bulbs producing attractive white flowers shaded and spotted with rose and red. Mammoth bulbs, 50c each; \$5.00 per dozen.

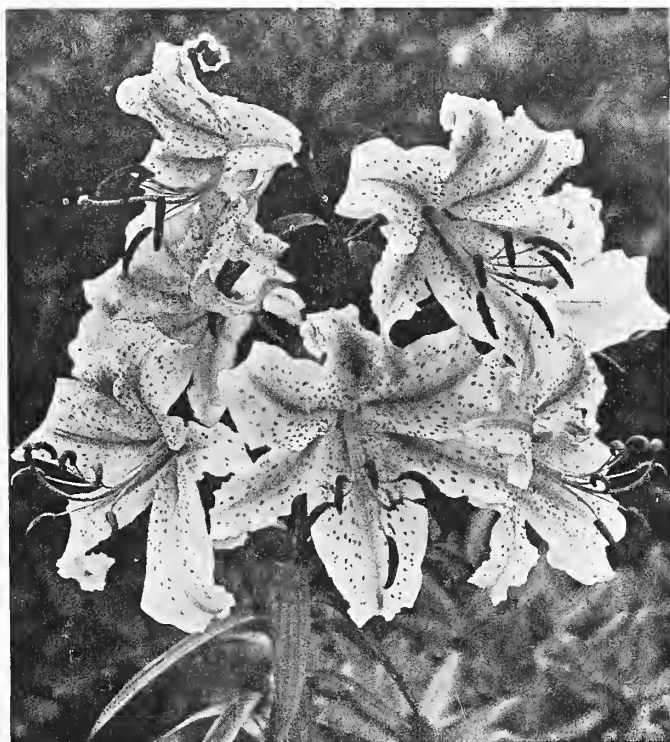
SUPERBUM (Our Native Turk's Cap Lily)—Rich orange-red petals, tipped red and dark spotted. 4 to 6 feet high. Blooms July and August. 25c each; \$2.50 per dozen.

TIGRINUM SPLENDENS (Tiger Lily)—The grandest of the Tiger Lilies. Black polished stem, sometimes 6 feet high. Very large pyramids of flowers, orange-red spotted with black. 3 to 5 feet high. Blooms in August. 25c each; \$2.50 per dozen; \$10.00 per 100.

Lilium Candidum (Madonna or Annunciation Lily)

This is one of the oldest, loveliest and best known Lilies. Can only be planted in fall. Ours is the thick-petaled type, imported by us from Northern France. The flowers, of which there are three to twenty on each stem, are snow-white, with heavy yellow stamens, and of the most delightful fragrance. It is hardy and will thrive in any ordinary soil, preferring plenty of light and air. Blooms in the open ground.

MAMMOTH SIZE—35c each; \$3.50 per dozen.



Lilium Auratum The Gold-Banded Lily of Japan.

Directions for Ordering

By carefully observing the following directions, mistakes and misunderstandings will be very largely avoided:

We pay the Postage or Express on all Seeds, Bulbs or Plants listed in this catalog, except where otherwise specified. We guarantee safe delivery of the goods at your home.

HOW TO ORDER. Please be careful to sign your Name, Post Office, Rural Route, and State on every order. Be sure to tell us your nearest express office, should you desire shipment by express. Write plainly and use the order form.

CASH WITH ORDER. Ours is a cash business and our prices are made on that basis. Customers are requested to remit when ordering. If seeds or bulbs are wanted C. O. D., 25 per cent, or one-fourth of the amount of the order, must accompany the order. **No Plants Shipped C. O. D.**

We give no warranty, express or implied, as to description, quality, productiveness or any other matter of any Seeds, Bulbs or Plants we send out, and we will not be in any way responsible for the crop. No responsible seedsmen gives any warranty. **Prices quoted in this catalog are subject to change without notice.**

Van Antwerp's

Bulbs and Seeds

Special
Catalog

For Fall
Planting

Season
1925

Season
1925



TURNIP COLLECTION

25c

Postpaid

7 FULL OUNCES

7 VARIETIES

This famous Bargain Turnip Collection contains one full ounce of each of the following turnips for Fall planting:

- 1 oz. Yellow or Amber Globe.....
- 1 oz. Red Top Strap Leaf.....
- 1 oz. Pomeranian White Globe.....
- 1 oz. Purple Top Rutabaga.....
- 1 oz. Purple Top Globe.....
- 1 oz. Early White Flat Dutch.....
- 1 oz. Southern Seven Top.....

Send only
25c
for this big
7 ounce
Turnip
Collection.

7 ounces all for 25c postpaid. Order Collection No. 20.

Special
Offer
Old-
Fashioned
Fragrant
Single
Jonquil
Bulbs

Price

6 Bulbs 30c

12 Bulbs 50c

25 Bulbs \$1.

100 Bulbs

\$3.50

Postpaid



A BED OF OLD-FASHIONED FRAGRANT SINGLE JONQUILS.

Your
Last Chance
to Get
Imported
Narcissi
and
Jonquil
Bulbs

Our Govern-
ment Has
Prohibited
Their
Importation
After 1925

See Page 10

VAN ANTWERP'S SEED STORE, MOBILE, ALABAMA