

## **Historic, archived document**

Do not assume content reflects current scientific knowledge, policies, or practices.



# Bass Pecan Company

LUMBERTON,  
MISSISSIPPI

Largest Pecan Nursery  
In The World

From *Bass Pecan Co*  
Address *Lumberton Miss*



U. S. DEPARTMENT OF AGRICULTURE  
Official Business. Penalty for private use to avoid the  
payment of postage, \$300.

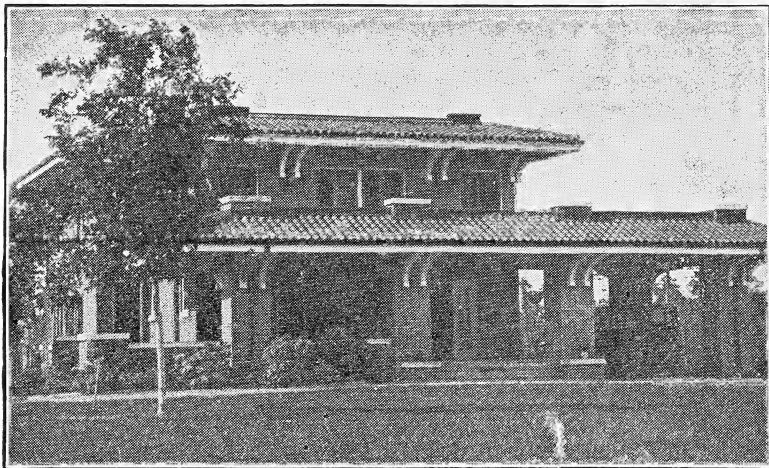
U. S. DEPARTMENT OF AGRICULTURE,

WASHINGTON, D. C.

BUREAU OF PLANT INDUSTRY,  
Horticultural Investigations,

8-4767

GOVERNMENT PRINTING OFFICE



**Our Home—Pecans for Shade**

## **Just a Word, Please!**

Seventeen years ago this was one of the smallest nurseries in the South growing and selling pecan trees. Today it is over four times the largest pecan nursery in the world. Careful, energetic and scientific work, coupled with our well known honesty, reliability, conservatism and natural love and great belief in the papershell pecan has made our success in growing papershell pecan trees remarkable. We now enjoy the pleasure of being recognized as the most scientific and reliable experts in the South.

In going to press with this catalog—one million copies—we especially desire to thank our thousands of friends and customers not only for the business they have given us but for their belief in us, their loyalty to us and confidence in us. Your appreciation has been a big reward for the hard work and many up-hill struggles we have had. Again, we thank you.

## **Visit The Bass Pecan Nurseries**

It would be a real pleasure to us for you or any of your friends to visit our nurseries and orchards. You would see orchards loaded down with pecans. You would see thousands of small trees in the nursery rows blooming and bearing not any higher than your head. You would see thousands and thousands of the strongest, thriftiest, straightest, smoothest, most healthful, vigorous and best rooted pecan nursery trees in the world.

Come! Visit our nurseries. Be judge and jury yourself. Condemn us if we are wrong, be our friends if we are right.



**One of Our Young Bred-up Pecan Orchards**

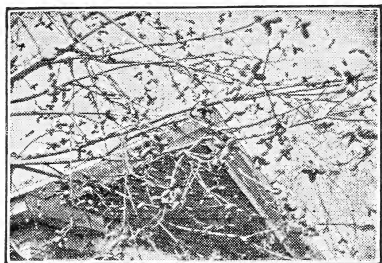
## **Big Money in Growing Pecans**

Years ago we thought there was big money in growing papershell pecans. Today we know it. Honestly we believe we have trees eighteen years old that will produce \$100.00 worth of nuts each this year. Our orchards are set 60 feet apart or twelve trees to the acre. The crops of pecans and other crops grown on this land up to now, we are satisfied, have not only paid for the land, paid the taxes and every other expense but have left us at least \$1,000.00 per acre profit. This simply means that in eighteen years we not only have an orchard that has paid for itself and \$1,000.00 per acre profit but now promises to pay \$1,000.00 per acre profit annually.

We have many customers who would not take \$500.00 per single tree for pecan trees they bought of us a few years ago. They are making them beautiful shade trees and bearing big crops of rich and delicious pecans.

## **The Importance of Papershell Pecans**

The pecan tree is the only fruit tree known that gets better with age for over 100 years. Every year the crop increases wonderfully. The value of the land planted to pecan trees goes up for your lifetime and the lifetime of your children. It is not a perishable fruit, and you do not have to rush to gather it or store in expensive cold storage. You can hold your pecan crop and take your time about gathering. It is the least perishable and most profitable fruit known.



**Branches Loaded With Our  
Fine Pecans**

as "one of the very finest of nature's choice products. A pound of pecans contains more nourishment than any other known food. In the next century nuts will largely, if not entirely, take the place of meats on the bill of fare—and the pecan will assume its place at the head of the list of nourishing and digestible foodstuffs."

Think how much more healthy we would be eating pecans instead of some dead beast. How much nicer it would be to pick pecans off a tree for food than to kill some beast to get it. Then just think how much cleaner it would be also. The time will come—prepare for it—plant a pecan orchard.

## **One of the Safest of All Investments**

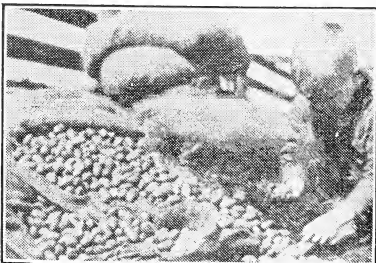
There is no comparison in the element of safety and certainty of results in raising pecans as compared to raising fruit.

Lightning, rains, wind storms and droughts do not ruin pecan orchards. Fruit trees, thousands of them, are lost each year by blight or disease, but not so with pecans. The man with the fruit farm must sell his product quickly or it will spoil on his hands. The pecan grower markets his crop leisurely, for pecans keep fresh for many months.

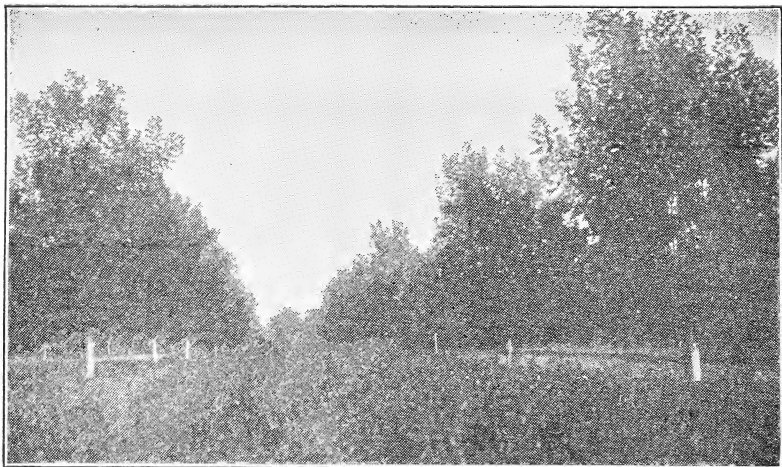
Unlike cotton, corn, and other things that must be planted each year, one planting of pecans lasts a lifetime. And the older the tree, the larger the yield. The heaviest yield on record was made by a tree whose age was estimated by horticultural experts at over 400 years. There is no reason why your trees should not do as well.

## **Pecans High in Price and Food Value**

The delicious bred-up papershell pecan is the highest priced nut in the world. No other nut approaches it either in price, quality or flavor. Fine pecans are now bringing from 50c to \$1.00 per pound wholesale. Walnuts, almonds, etc., less than half this price. Dr. J. H. Kellogg, of the famous Battle Creek Sanatorium, says: "I regard the pecan



**Stratifying Selected Seed Pecans**



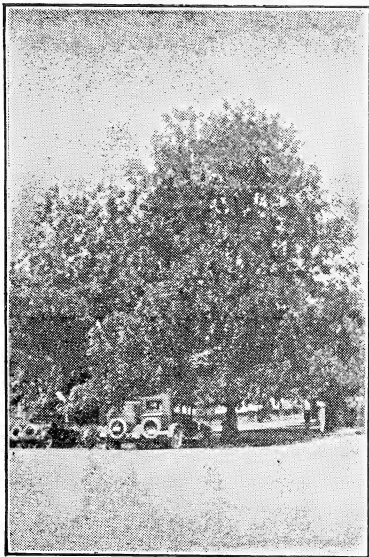
Fine Crop of Soja Bean Hay in One of Our Pecan Orchards

## Our Budded and Grafted Trees Quick Bearers

Our budded and grafted papershell pecan trees bear very young, as a rule, where well taken care of. Hundreds of our customers have had our bred-up pecans to bear for them the second or third year set out. Thousands of our trees bear in the nursery now. Buds and grafts are carefully selected from the finest young trees in the world. Every one is highly bred-up and its quality guaranteed. Why buy trees from unknown growers and dealers when you can get them nearly as cheap from the best known and largest growers in the world? The quality of our trees is finer and in the end our trees are the cheapest in the world today. Remember, the pecan trees you set out will last a lifetime and longer. It is very poor business judgment to buy inferior trees that will be an eye-sore to you every day of your life just to save a few cents on each tree. We are honest in thinking you will get \$10.00 back for every single cent more you pay us for our trees. Don't be sorry—get our early bearing and highly bred-up trees. You will always be glad you did.

## Pecan Orchards Better Than Life Insurance

An amount equal to the annual premium on a \$5,000 life insurance policy, invested in planting a pecan grove annually, will in a few years yield an amount equal to the face value of the policy, and the yield increases for fifty years. You do not have to die to reap the reward. You can live and enjoy it. Your widow, children and grandchildren can enjoy the annual income for a century thereafter. Parents, young men, women and guardians of children, wishing to make a small investment where it is surest and best, will find in a pecan grove an income for life, which can be obtained in no other way so quickly and cheaply.



**Park Under Pecan Trees—  
Nothing Better**

## **Pecan Trees for Shade**

Why plant non-bearing and unprofitable trees for shade, when the smooth, straight, thrifty and vigorous papershell pecan trees make the finest and longest-lived shade trees known? Single shade pecan trees often make \$50.00 to \$75.00 worth of the choicest and most nutritious nuts known. Think what a pleasure it is to get from one to five bushels of these big thin-shelled nuts off single trees instead of absolutely nothing from oaks, elms, etc. Hundreds of people are getting rid of other shade trees and putting out our high grade papershell pecan trees. They will last for 100 years and get more profitable every year. Pictures in this treatise will show you the exceptional and stately beauty of the high grade pecan. They are positive proof of the shade-producing qualities of the

papershell pecan tree. Get our large size trees for quick shade and early fruit. Especially large, smooth, straight trees for shade.

## **Plant Pecans in Your Fields**

The best place for setting out pecan trees is in cultivated lands. The trees can be set successfully in the rows of any cultivated crop—where a little space is given for the tree. Cotton is an ideal nurse crop for pecans, and no one can get a pecan orchard going as cheaply as a cotton farmer. The trees can be set in the rows and the cultivation and fertilizer that you give the cotton will be the ideal thing to start your pecan trees in life. Injury from the “nigger and mule” can be safely avoided by driving up stakes around the tree. Lands used for melons, cantaloupes, tomatoes, potatoes, etc., are ideal for pecans and will scarcely interfere with the growing of your truck. By this gradual transition from cotton, truck or peanut crops to the pecan orchard it is possible to change a precarious annual crop into a permanent paying investment without the loss of the land for a single season. Proper cultivation of the soil stimulates the growth of young pecan trees and helps them to produce nuts at an early age.





**Looking Down Our Nursery Rows—Strong, Thrifty, Vigorous and Healthy Stock**

## **Fine Pecan Land for Sale**

We have several thousand acres of fine pecan land for sale on easy terms and in large or small tracts right here at Lumberton, which is just 90 miles from New Orleans and only 60 miles from the Gulf Coast. Fine schools, churches, gravel roads and excellent people throughout this section. Pecans, Satsuma oranges, peaches, apples, plums, grapes, figs, Japanese persimmons and all other kinds of fruit do well. In addition all kinds of farm and truck crops do fine here. Land can be bought at \$10.00 to \$50.00 per acre, depending on location, etc. Come and see the great opportunities here. We will gladly show you.

## **\$1,000.00 Per Acre Refused**

Friends thought we were crazy to turn down an offer of \$1,000.00 per acre for our pecan orchard. Sometimes we did, too. The offer still holds good but our best trees will pay a high rate of interest on \$10,000.00 per acre this year. Our orchards are not for sale. We are planting new ones each year. We believe pecan growing is the easiest, most profitable and healthful proposition open to the people of the South. The proof is before us.

## **Don't Look for Cheap Fruit Trees**

Fear them! They are dangerous. Stunted, runty culls of poor varieties are worked off on the people who look for the cheapest. The best are worth ten times as much to you and will cost you just a few cents more. You put out something that will either show your good judgment for a lifetime or be a sorrow and disappointment to you when you set out a pecan tree. Get the best, if only one-tenth as many. Our trees will bear nuts worth from 5c to 25c per pound more than the next best.



One of Our Fine 8-Year-Old Pecan Orchards

## Pecan Growing Better Than Fruit Growing

You know that many fortunes have been made in fruit growing. But where one pecan tree dies thousands and even millions of fruit trees die. Fruit trees blight and take San Jose scale, but not so with the pecan. While early fall frosts and late spring freezes kill millions of dollars' worth of fruit, the pecan flourishes. The fruit dealer is at the mercy of the wholesale buyer because his product will soon rot. He must sell quickly and gather the fruit in all sorts of bad weather. The pecan grower can take his time. Pecans keep for many months. They do not deteriorate while in transit to market. The cost of maintaining a fruit farm is considerable; the cost of maintaining a pecan farm insignificant. The life of a fruit orchard is of short duration; the life of a pecan orchard is such that it will bring you a life income and continue to do the same for your children and your grandchildren.

### **This Is Your Opportunity—Grasp It!**

Did you know that 98 people out of every 100 in the United States never succeed beyond making a bare living? It is not because they lack the opportunity or even because they never have the capital. It is the failure to grasp the opportunity when it does come. This has kept the poor poor indeed, and the ability to see a good thing and make the most of it today instead of putting it off until some other time has made the rich rich. If you are an optimist and believe that the opportunities of today are as good as those of yesterday, and have the courage to grasp opportunity when she calls and the patience to wait a few years for that wealth that 98 per cent of the people fail to get, you cannot afford not to put out some of our high-grade budded and grafted papershell pecan trees this very year. If you are a pessimist, you will let this type of opportunity pass. You will be what 98 per cent of the people are—toilers.

## A Beautiful Picture

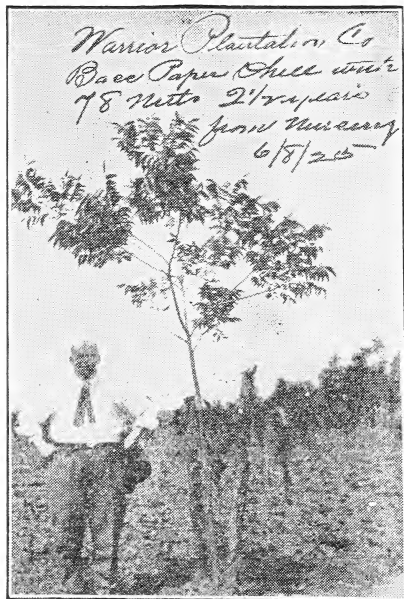
Consider what it means to own land! Something that can never be stolen, burnt, lost or taken from you or your heirs—land that will never need any great amount of care or cultivation. Then picture to yourself on this land a tree, which is one of Nature's hardiest offsprings; which lives and produces increasing crops every year for more than a century; which requires less and less attention as it grows older and more profitable. This is not open only to the rich, the average man or woman can grasp this opportunity. Take now—today—the step that means a life income to you and protects your dear ones from want.

## A Substantial Life Income

And a handsome inheritance for life for those who are dearest to you! Think what it means! Think what it means to be independent, to be able to look into the future without fear of old age, failing health, accident, increasing family responsibilities, money panics, uncongenial employment—troubles which overtake 98 people out of every 100. Can you afford to put it off another year?

## Adaptability and Soil

Pecan trees adapt themselves to and thrive on a wide range of soils; the alluvial soil of the river bottoms, the rolling red lands, the clay loams, the sandy pipe lands, the buckshot lands, the flat woods and the rolling lands of the more immediate coast regions seem equally adapted. Don't put pecan trees on seepy or crawfishy land. If you can't put your trees on land that would make a good crop of cotton or some other staple crop under the proper fertilization and cultivation, don't plant them. Land that is unfit for everything else is unfit for pecans. But you can grow pecans on poor land that is well drained by fertilizing them for three or four years; for after they once get a good start they send their roots down deep into the ground and feed on soil never reached by other plant roots.



One of Our Bred-Up Early Bearing Trees Strutting Its Stuff

Warrior Plantation Co  
Bee Paper Shell  
78 Nuts 2 1/2 years  
from nursery  
6/8/25



**I. H. Bass and Baby Ray Bass in the Middle of One of Our Fine Young Orchards**

## **Fine Papershell Pecans for Sale**

We grow thousands of pounds of pecans each season and can furnish you mighty fine pecans at from 35c to \$1.00 per pound, depending on amount you want, quality, etc. Tell us your wants and get our prices, etc.

## **Pecans for Professional and Salaried People**

A pecan orchard is the ideal investment for salaried and professional people. Physicians, lawyers, dentists, professors and school teachers, and all others earning a steady, moderate income, have their best opportunity for making and saving their money in a pecan grove. For pecans are the easiest crop to grow, cultivate and market. Unlike grain, truck and small fruit, replanting is not necessary. Once planted, a pecan tree lives and grows and bears for hundreds of years. Very little attention is required from the start, and this grows less and less as the trees get older. The crop is constant, easily and cheaply gathered. It does not rot or spoil; the demand for this greatest of all food nuts is strong and rapidly increasing. The world's biggest markets are only a few hours from your doors. A five or ten-acre orchard will send your children to school and give them a college education and a start in life when they get out of school.

## **Quality Pecan Trees Are the Cheapest**

Strong, thrifty and well-rooted pecan trees live and grow off remarkably well. Runty and stunted stock die badly. Many nurserymen carelessly expose the roots of the trees to the sun and air before they ship them. Most all dig and heel in the trees weeks before they ship. Our trees are freshly dug and unexposed. Freshly dug trees are much better.

## **The South Has a Monopoly on Pecans**

Papershell pecan nuts cannot be grown successfully anywhere else in the world. The world must necessarily look to the Sunny South for her supply of the King of all nuts. Our opportunity here is unusually great. Why neglect it?



Thrifty Pecan Nursery Stock in Our Young Orchard

### **Distance for Planting**

On lands of only fair fertility, plant sixty by sixty feet. If on good hammock or a class of land that will produce good farm crops without the aid of fertilizer, we would plant seventy by seventy feet, and not less. Use the square system for planting your pecan trees. Anybody can lay them off on the square. This is the very best and most economical way of planting pecan trees.

### **Your Trees Pruned and Prepared for You**

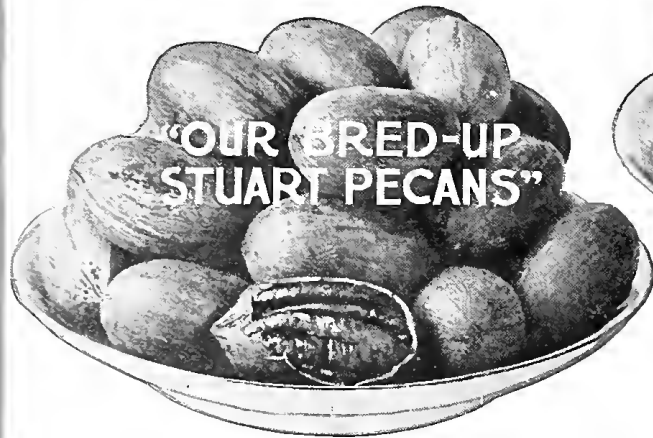
We endeavor to send out properly pruned trees, just as if we were going to plant them ourselves, leaving the planter nothing to do but to set them out. The taller grades of trees should be top-trimmed, as it balances the top against unavoidable loss of some roots when the tree is transplanted. Proper pruning insures the tree living and a good growth. Where trees are properly pruned, handled and planted, there is no reason why any of them should die. Our prices are made on the height of the trees when dug. When properly top-trimmed, the height is often materially reduced. Therefore, if the height of a trimmed tree, when received, is less than the catalog height, this is the explanation.

### **Pecan Growing and Stock Farming**

No two industries can be better combined than pecan growing and stock farming. In this section of the South you can pasture your cattle nine months of the year. What can make a prettier sight than to see your own fine blooded stock grazing between high grade pecan trees that are producing you a princely revenue?



# These Are the Three Most Popular Varieties



**Stuart**

The Stuart is ranked at the top of the entire list of fine papershell pecans as a commercial success. It is one of the oldest of the budded and grafted varieties and has been tried out thoroughly in more places than any other pecan. The nuts are large to very large, fill unusually well and always command a good price. The Stuart is a beautiful nut and the tree is the hardest and easiest to grow, being very vigorous and healthy and a heavy bearer. A plate of beautiful Stuart papershell pecans is shown on the back cover of this folder. You are safe in planting the Stuart pecan for it is giving better results than any other variety in the South today. Our bred-up, budded and grafted Stuart trees are extra choice in every way.

## Soil Conditions Adapted to Pecans

Land that will grow hickory or oak trees will grow fine pecans. It has also been well said that any land that will grow cotton will grow pecans. Well-drained land is needed for best results. Practically any average land in the South will grow fine pecans.



**Schley**

Our experience with the Schley is that it is an ideal pecan. It is an early bearer. Fills very full. It is thin shelled and cracks easily. The nuts are of medium size and bring the highest market price. Our stock of bred-up Schley trees make certain that those you plant will thrive and bear well if properly cared for.



**Success**

The Success has probably attracted more attention than any other variety of papershell pecan that has been recently introduced. Although it is not the largest nut, the kernel has proved to be the heaviest in a test of fourteen varieties made during recent years. The Success is ovate in form. It has a thin shell and cracks readily. The kernel is plump and heavy and of excellent flavor. The tree is of good, sturdy growth and a heavy bearer. The Success is one of the most popular varieties of our fine, bred-up papershell pecan trees.

## Satisfaction Guaranteed or Money Back

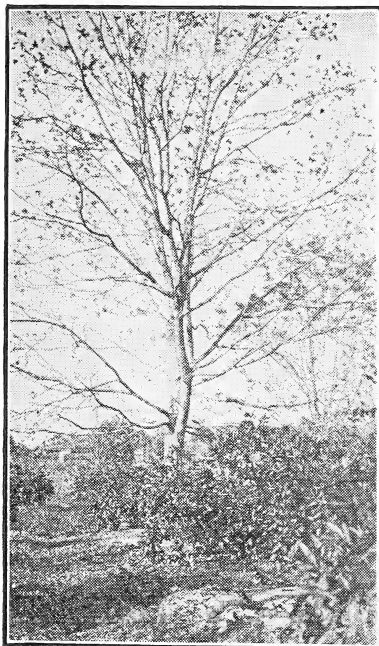
For the finest trees, place your order with us at once. Ten per cent of the total amount of your order will reserve for you the choicest trees in our nursery. Remember, we absolutely guarantee perfect satisfaction. If you are not pleased in every respect with the trees we send you, we expect you to return them at our expense and we will refund you the full purchase price.

### PRICE LIST

#### BASS' BRED-UP EARLY BEARING, PAPER-SHELL PECAN TREES

| Size                 | Each   | Five    | Ten     | 100      |
|----------------------|--------|---------|---------|----------|
| 2-3 Feet.....        | \$ .90 | \$ 4.25 | \$ 8.00 | \$ 75.00 |
| 3-4 Feet.....        | 1.00   | 4.75    | 9.00    | 85.00    |
| 4-5 Feet.....        | 1.20   | 5.75    | 11.00   | 100.00   |
| 5-6 Feet.....        | 1.35   | 6.50    | 13.00   | 120.00   |
| 6-7 Feet.....        | 1.50   | 7.25    | 14.00   | 135.00   |
| 7 Feet to Large..... | 2.00   | 9.00    | 16.50   | 150.00   |
| Large.....           | 2.50   | 12.00   | 22.50   | 200.00   |
| Extra Large.....     | 3.50   | 17.00   | 30.00   | 275.00   |
| Extra Special.....   | 4.00   | 19.00   | 35.00   | 325.00   |

**NO ORDERS ACCEPTED FOR LESS THAN \$5.00**



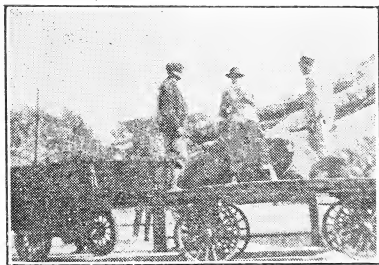
Pecans and Oranges on Same Land

## More Than Fifty Varieties of the Papershell Pecans— Which is the Best?

There are more than fifty different varieties of the papershell pecan, and out of this number we have selected the kinds we list as the best all-round varieties. One variety will excell others in one particular or more, but fall so short of equalling them in other ways that it has to be discarded as an undesirable sort. The varieties we list have all been tested and proved to be suitable to the different kinds of soil we have in the cotton belt of the South. Naturally one kind will suit one soil better than another, and it is for this reason that every buyer should tell the nurseryman the kind of soil he has and get his advice about variety. But we have no hesitancy in saying that the Stuart, Success, Schley and Bass Papershell are the peers of them all as all-around nuts, and are the safest of all to plant.

## What Size Trees Should Be Planted?

It has been our experience that the larger size of pecan trees where well dug and packed can be safely transplanted all over the South. We have for several years specialized in large pecan trees and our customers report unusually good results in living, growing and early bearing trees. Of course, the large trees will bear earlier and will be more out of the way of the plow and of your stock. They will cost you more, but you will save from one to three years in their bearing and in ten or twelve years one crop of one or two of the years you have saved will pay the difference in many large and small pecan trees. We have some of our extra large trees set one year ago this Spring that have more than forty pecans on them now. You can be sure that when you buy our big trees you will get a big fine root system and that the roots will be so well packed in damp moss that the trees will live and grow fast if properly put out.



Loading Our Bred-Up Pecan Trees





Our Children in One of Our Young Pecan Orchards

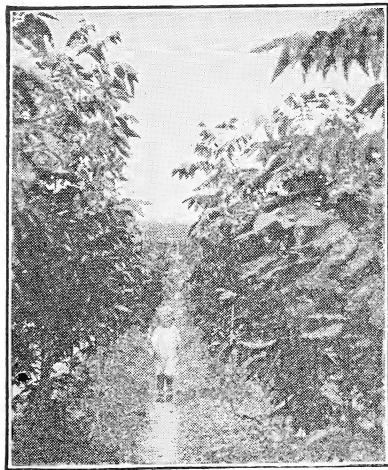
## One Planting Lasts a Lifetime

Cotton, corn, truck—practically every thing has to be planted over again every year. Practically every thing except pecans. One planting lasts a lifetime. What else can you put out that will make you good profits every year, steadily make you larger profits, and continue not only all your lifetime but on through the lifetime of your youngest child? What else will do that—except pecans? One thousand dollars has been offered for proof that any single pecan tree ever quit bearing, or died, on account of old age. You can't say this for any other fruit tree that grows.

## Turn Those Waste Places Into a Profitable Orchard

Everybody who lives in the country or in a small town has several "waste" spaces on his land. Spaces that are unsightly and unproductive. Our fine, healthy papershell pecan trees, with their rich and luxuriant foliage, shapely tops and stately trunks, will not only beautify these waste spaces but will in a few short years bear a harvest of delicious nuts that will bring in enough money to pay all your taxes, pay your insurance, keep your buildings and fences painted and in repair and besides leave you a nice little sum of Christmas money. One planting lasts a lifetime and that doesn't cost much.

Think what it would mean to you to provide now so that no matter what happens you would live in ease and comfort in your declining years. Hundreds of people in the South are taking the step now that will bring the assurance of that comfort to them.



Baby Ray Bass in Thrifty Stock

## Largest Yields From Oldest Trees

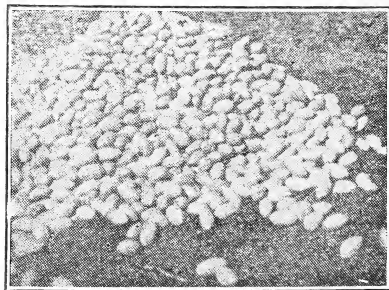
The improved bred-up papershell pecans usually begin to bear the second or third year set out. As the trees get older the bearings grow heavier. The largest crops of pecans on record have all been made by the largest and oldest trees. And there is no record of any pecan tree dying or failing to produce its annual harvest of nuts on account of old age.

The older the pecan tree gets the less work and attention it requires. It is almost completely self-nourishing—sending its roots down into soil so deeply that it feeds on elements unreached by the root system

of any other tree or plant. Pecan growing is a permanent investment and one that becomes increasingly profitable as the years roll on.

## We Plant the Finest Seed Pecans

Most nurserymen claim it makes no difference what kind of seed pecans you plant if you bud or graft them from fine varieties. We do not believe this. The seed pecan you plant will always furnish the root system of the tree—naturally this root system will show some characteristics of its worthless parent. Then, too, if your tree dies below the bud or graft you have nothing but the worthless wild pecan. Our trees will likely bear fine pecans even if they do die below the bud or graft because the parent supplying the root system is a fine variety. Our experience and observation convinces us that the cheapest pecan tree is the very best one. Life is too short to risk cheap, low grade trees. Get the best—we guarantee to give them to you.



Our Fine Seed Pecans



**The Finest Rooted Pecan Trees  
In the World—Bar None**

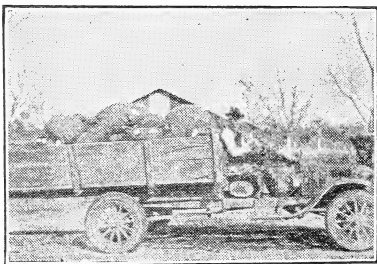
diameter. To secure the best results, manure, care and cultivation must be bestowed upon the trees."

## Cultivation

Our experience with pecans shows us that they grow off well on cut-over land without cultivation, but the universal opinion seems to be that they will do better where the land is cultivated. In "Nut Culture," the United States Department of Agriculture, under this heading, says: "This should be thorough the first three years, or until the trees are of good size. Cultivate as for cotton crop, and keep the grass and weeds from around the trees by hoeing or mulching. Trees thus cultivated in Mississippi that are thirteen years old have grown to be twelve inches in diameter, and yield from a barrel to a barrel and a half of nuts annually. Other trees of the same age, and not cultivated, are but four inches in

## Fertilizing

If you desire to plant on land rather poor in fertility, thoroughly mix with the soil two or three shovelful of well-rotted compost when you plant the tree, or one or two pounds of bone meal. The best fertilizer after the tree is planted is to scatter manure around the tree. The more the better—one-half to one bushel to the tree, if possible. Do not bank it up around the tree, but scatter it around it for two or three feet. When it rains the substance will be taken down to the roots. Put this around your trees in the late winter if possible, so that the trees will be able to get a fine growth in the spring. When the trees are old enough to bear, use potash in some form—wood ashes will do.



**3,500 Pounds Our Fine Pecans—  
\$1,750 Worth On One Truck**



### Blight Proof Pineapple Pear Limb

No tree offers greater possibilities than the Blight Proof Pineapple Pear. This is one of the Sand Pears and is a wonderful fruit. The trees live easily, grow off very rapidly, come into bearing early and seem to be entirely Blight Proof. We know of lots of these old trees in this section that make from 25 to 75 bushels of pears annually. The trees grow well and bear fine without cultivation. In the yard, along the roadway, etc., they do fine and take up no valuable space. The greatest fault is their tendency to bear too heavily. You often have to prop up and brace the trees. Be sure to plant a few trees—our extra special size is the finest we ever saw. They are already beautifully headed up and will do wonders for you.

### PRICES ON PEARS

| Size                    | Each   | Ten    | 100    |
|-------------------------|--------|--------|--------|
| 3 to 4 Feet.....        | \$ .45 | \$ .40 | \$ .30 |
| 4 to 5 Feet.....        | .55    | .50    | .40    |
| 5 to 6 Feet.....        | .70    | .60    | .50    |
| 6 to 7 Feet.....        | .90    | .70    | .60    |
| Large Size.....         | 1.15   | 1.00   | .75    |
| Extra Special Size..... | 1.50   | 1.25   | 1.00   |

# The Finest Small Fruits for the Southern Home

For years our thousands of customers throughout the South have been asking us where they could get a few fine peach, apple, plum, grape, fig, persimmon, pear, etc., for their home orchard. It was hard to tell them because often they were disappointed by the grower. To eliminate this trouble and assure our friends of the best that can be bought we have personally inspected some of the largest general nurseries and selected the following excellent stock. We know there is no better grown—you can get cheaper but not better. We guarantee it true to variety, free of disease and to please you in every respect or will promptly refund your money. We are offering these fruits not because we want to handle them but because of our desire to be of all the service possible to our good friends and customers. On large orders special prices will be cheerfully quoted.



Apples

## APPLES

Red June—Fine for Home Use  
Delicious—Very Popular and Fine

|                | Each   | 10     |
|----------------|--------|--------|
| 3 to 4 ft..... | \$ .30 | \$2.50 |
| 4 to 6 ft..... | .60    | 5.00   |

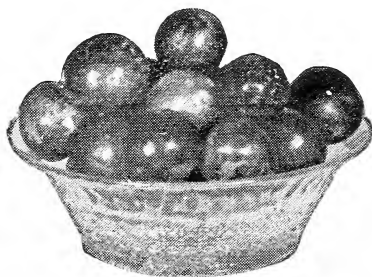


Peaches

## PEACHES

Elberta—Finest Market Variety  
Mayflower—Very Early and Profitable.

|                | Each   | 10     |
|----------------|--------|--------|
| 3 to 4 ft..... | \$ .30 | \$2.50 |
| 4 to 6 ft..... | .60    | 5.00   |



Red June Plums

## PLUMS

Burbank—An Extra Good One  
Red June—Finest of All.

|                | Each   | 10     |
|----------------|--------|--------|
| 3 to 4 ft..... | \$ .50 | \$4.00 |
| 4 to 6 ft..... | .65    | 6.00   |



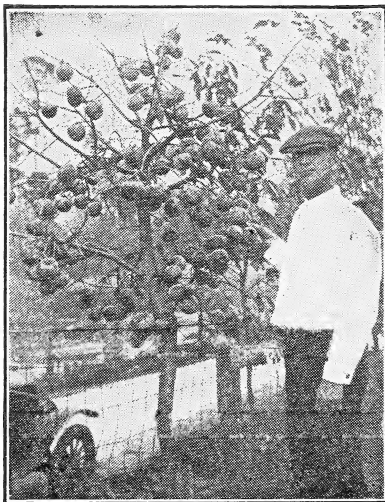
Mother Bass Enjoying Our Satsuma Oranges. Over 750 Oranges  
On This Young Tree

# SATSUMA ORANGES

What could be prettier than seeing your mother at the ripe age of 70 enjoying over 750 beautiful yellow, ripe and luscious oranges on a 3-year-old tree? Just set out our fine trees and you will soon have trees loaded down with fine oranges. The Satsuma bears young, stands lots of cold, bears very heavily and is the finest eating orange in the world. They are easy to peel without getting them all over you. We have never had anything make as much clear profit for us, real pleasure and satisfaction as the Satsuma orange. Try them.

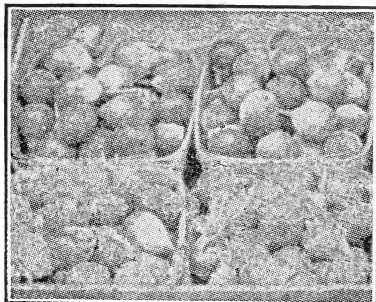
## SATSUMA ORANGES

| Size                | Each  | Ten   | 100   |
|---------------------|-------|-------|-------|
| 6 to 12 Inches...   | \$.40 | \$.30 | \$.20 |
| 12 to 24 Inches.... | .50   | .40   | .30   |
| 24 to 36 Inches.... | .75   | .60   | .50   |



Our Japanese Persimmon Loaded  
to Capacity

# FINE FRUITS EVERY HOME SHOULD HAVE



Celeste Fig—the Finest in the World

## FIGS

Celeste—Best of All for Home Use or Canning

|                | Each   | 10     |
|----------------|--------|--------|
| 3 to 4 ft..... | \$ .35 | \$3.00 |
| 4 to 5 ft..... | .50    | 4.50   |

## JAPANESE PERSIMMONS

Tane-Nashi—Best of All

Triumph—Very Early and Fine.

|                | Each   | 10     |
|----------------|--------|--------|
| 3 to 4 ft..... | \$ .50 | \$4.50 |
| 4 to 5 ft..... | .60    | 5.00   |

## SOUTHERN SCUPPERNONG

Scuppernong—Large Bronze Colored Berries

|             | Each   | 10     |
|-------------|--------|--------|
| 1 Year..... | \$ .35 | \$3.00 |
| 2 Year..... | .50    | 4.00   |

## GRAPES

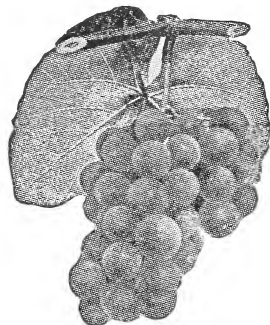
Concord—Best General Purpose Grape—Black

Niagara—Rapid Grower, Fine Fruit—White

|                   | Each   | 10     |
|-------------------|--------|--------|
| 2 Year No. 1..... | \$ .25 | \$2.00 |

## A Real Home

Without figs, grapes, scuppernongs, Japanese persimmons, peaches, apples, plums, pears and Satsuma oranges no home is the home it could be with them. These fruits are easy to raise, take up little space, give lots of fine fresh fruits that are fine tonics for any system and the jellies and preserves, etc., cannot be excelled.

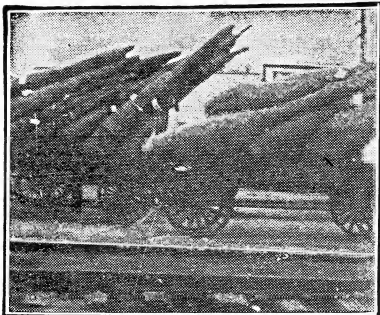


Our Grapes Cannot Be Excelled

# BASS PECAN COMPANY

LUMBERTON, MISS.

Largest Growers of Pecan Trees in the World



**Your Trees Are Protected and Baled Like This by Us.**

well set in all these months but the best time is when you are ready and can give the trees the best attention in setting them out. If you cannot set your trees early, at least book your order at once so you can have some of the finest trees reserved for you.

**Rules for Setting Pecan and Fruit Trees Right**

1. Never allow the roots of the trees to become dry or exposed to the atmosphere for any length of time from the time they reach you until they are set in the ground.

2. Wet the bundle just as soon as you can and if not ready to set out at once dig a hole and put roots in and cover up well. Place in a shady place if possible.

3. Set your trees at once upon arrival or heel-in promptly as above.

4. Have a large hole for your tree. Three feet square and three feet deep will not be too large for pecans. Holes about 12 inches wide and one to two feet deep will do for fruit trees. Use dynamite to blast the hole with if possible.

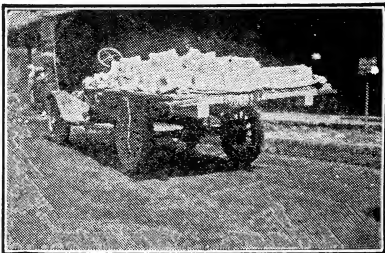
5. Set the tree about the same depth it stood in the nursery.

6. Fill in the hole with the best top soil, packing the dirt well around the roots, especially the tap root. Keep the roots of the trees out straight in their natural position and do not bend them down by the tree.

7. Mix thoroughly with the soil to be used to fill in the hole a peck or half bushel of well rotted manure or compost or some good guano, being very careful not to allow it to come into contact with the roots in ANY QUANTITY, for if it does it will scald them and do more harm than good.

8. If the soil is dry when the trees are set, it is a good idea to pour a bucketful of water to each tree when the hole is nearly filled and then fill the hole completely up.

9. Pour one bucketful of water to each tree once a week during very dry spells in Summer. Make a basin-like hole at the base of the tree. Pour water and as soon as it is soaked in good fill completely up with dry dirt. This holds in the moisture and also keeps the ground from baking.



**Mailing Our Catalogues. We Issue 1,000,000 Copies Annually.**

**The Right Time To Set Papershell Pecan and Fruit Trees**

The sooner the trees are set after the leaves shed in the Fall (about November 20th) and the trees become dormant, the better will be your prospects for them living, and the more vigorous will they grow off and naturally the earlier they will come into bearing. Don't wait to set your pecan and fruit trees but set them just as soon as you can, in November, December, January or February. Pecan trees live and do



## Terms and Conditions of Sale

**Terms** are cash with order. We pay spot cash for everything and sell the same way. It saves us a lot of bookkeeping and annoyance and enables us to sell our high-grade bred-up trees cheaper.



**How to Send Money**—Send money any way that is most convenient to you. We do not have to pay exchange on checks.

**We Cannot Ship Trees by Mail**—Except Small Fruits.

**Our Shipping Facilities** are exceptionally good. We are near the depots of two railroads and have open stations both day and night. Also have long distance telephone and telegraph service. You can get us over the telephone any time.

**Our Trees Always Freshly Dug**—We can dig and ship your trees any day.

**Order Early**—The demand for our high-grade bred-up trees far exceeds the supply, and it is very imperative that you send in your order early. Those who order early naturally receive the choicest stock.

**Guarantee**—We guarantee every tree sent out to be well grown, properly handled and packed and true to variety.

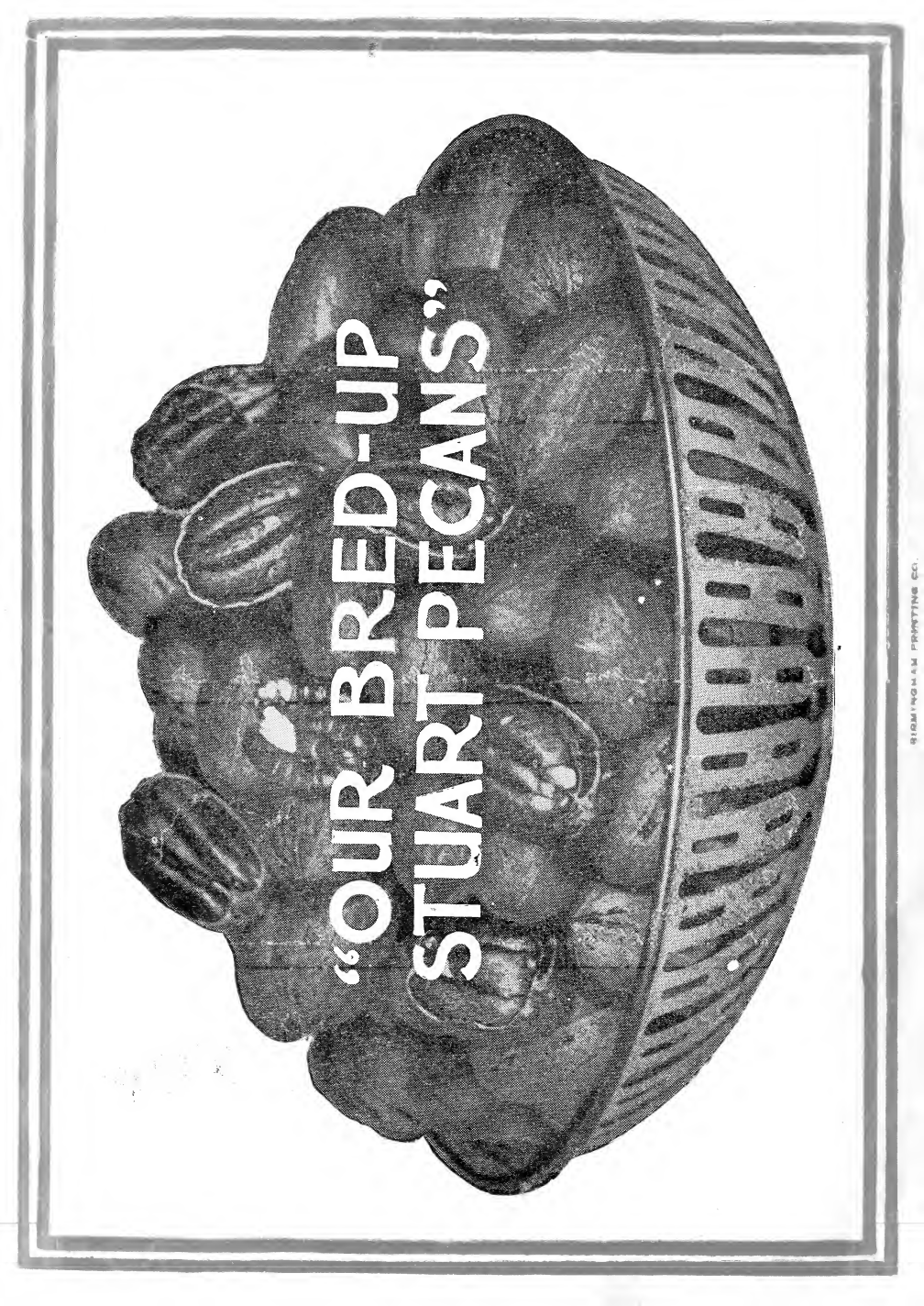
**Mistakes**—We take great interest in our work, and probably make as few mistakes as any one, yet we are not infallible, therefore stand ready to make good any mistakes that may occur as far as possible, or if any varieties ordered should accidentally not prove true to label, we will either replace the same free of charge or refund the purchase price, but are not liable for further damages.

**Time of Shipment**—Unless otherwise instructed, orders received during the shipping season will be forwarded as soon as possible after receipt of the order.

**Substitution**—If out of the varieties ordered we will send the ones we know to be the equal or superior unless instructed not to substitute.

**No Charge for Packing or Drayage**—We carefully pack and tag all trees free of charge.

**Our Trees Free of Disease**—A certificate of inspection of the Mississippi State Entomologist guaranteeing our trees to be free of disease accompanies each bundle of trees. All inspection laws of other States are complied with



**“OUR BRED-UP  
STUART PECANS”**