

Historic, archived document

Do not assume content reflects current scientific knowledge, policies, or practices.

1926

WHOLESALE PRICE LIST
OF
**Ground-Cover
Plants**

PACHYSANDRA
ENGLISH IVY
EUONYMUS
VINCA MINOR
WILD THYME
COTONEASTER
BOXWOOD
GARDEN-WARE
HURDLE FENCE
ETC.

Hugh B. Barclay, Narberth, Pa.

Special Note

BECAUSE the demand for some of my plant specialties is very erratic, and some plants will not continue to grow in 2¼-inch pots after becoming pot bound, I do not carry in stock at all times over 1000 plants of such stock, and orders for **MORE** than this amount in pots must be grown for you. Especial prices will be quoted on such stock grown for you.

This rule does not apply to Pachysandra, Vinca Minor, English Ivy, or Euonymus, which are always on hand in any quantity.

WHOLESALE PRICES
of
Ground-Cover Plants

PACHYSANDRA

ENGLISH IVY

EUONYMUS

VINCA MINOR

WILD THYME

COTONEASTER

BOXWOOD

GARDEN-WARE

HURDLE FENCE

ETC.

Hugh B. Barclay

NARBERTH, PA.

INDEX

	Page
<i>Ajuga reptans</i>	5
<i>Ajuga genevensis</i>	5
Boxwood	5
Cotoneaster	5
<i>Euonymus radicans</i>	6-7
<i>Euonymus Kewensis</i>	6
<i>Euonymus vegetus</i>	7
<i>Euonymus Carrerii</i>	7
<i>Euonymus colorata</i>	7
<i>Euonymus acutus</i>	7
English Ivy. (Large Leaf)	8
English Ivy. (Small Leaf)	8
<i>Lonicera</i> . (Honeysuckle)	8
<i>Lychimachia</i> . (Moneywort)	9
<i>Nepeta Mussinii</i>	9
<i>Nepeta glecoma</i>	9
<i>Nepeta glecoma variegata</i>	9
<i>Pachysandra terminalis</i> . (Japanese Spurge) ..	10-11-12-13
<i>Phlox subulata</i>	14
<i>Phlox Divaricata</i>	14
<i>Rhododendron</i>	15
Rose Max Graf	15
Sedums	15
Thyme	16
<i>Veronica rupestris</i>	16
<i>Veronica repens</i>	16
<i>Vinca minor</i> (Periwinkle)	17
<i>Wisteria</i>	17
Melrosine	17
Hurdle Fence	18-19
Garden-Ware	14-20

Foreword

FOR the past five years I have been engaged in growing Ground-Cover Plants in large quantities for use by Landscape Architects, and others, whose plantings require plants of this character in quantity.

As the areas to be covered are usually large, it is essential that I sell these plants as reasonably as possible and still furnish a satisfactory plant for the purpose.

By economical methods of propagation and by selling the plants as small field plants or directly from 2¼-inch pots, in which they are allowed to grow and remain until fully pot bound, instead of reshifting into 3½ or 4-inch pots, the expense of reshifting is eliminated, no excess soil is shipped, packing charges are lessened, and plants ship more safely and are better and more quickly planted.

Also and more important than all is the proven fact that Ground-Cover Plants should be planted closely for permanent and immediate effect.

With larger plants widely spaced each plant must grow a great deal to completely cover the space between plants, while the smaller plants closely spaced have each to grow but little before a solid carpet is formed, which excludes the sun from their root system, conserves moisture, and eliminates weeds. Such plantings continue to flourish for years with occasional mulching and moderate care.

To my prospective new customers I would say that I sell yearly hundreds of thousands of plants to Landscape Architects and Nurserymen. These continued and increased sales must prove the merits of my system of growing and planting.

My stock is of uniform grade or it will not be shipped. Packing is properly and promptly done. Prices are F. O. B. Narberth, Pa., on the Main Line of the Pennsylvania Railroad. **TERMS ARE NET CASH, NO CHARGE MADE FOR PACKING. SATISFACTORY REFERENCES MUST BE GIVEN FROM UNKNOWN CUSTOMERS.**

HUGH B. BARCLAY

NARBERTH, PA.

PLANTING DIRECTIONS

HEAVY SOILS

Few plants enjoy heavy soil even if rich, and for such soils I advise the addition of 2 inches of sand, added and dug into the soil not more than 4 to 6 inches deep. If soil is rich no manure need be added. Plant firmly.

MEDIUM SOILS

Addition of 1 inch of sand and 1 inch of Granulated Peat Moss, or fine compost, dug 4 to 6 inches deep (not deeper). No manure unless soil is poor. Plant firmly.

LIGHT SOILS

Addition of 2 inches of Granulated Peat Moss or Leaf Mould or Compost, Peat Moss preferred. Add manure if soil is poor, but do not dig such under more than 6 inches, except for *Euonymus* or similar deep-rooted plants. Plant firmly.

VERY POOR LIGHT SOIL

Add manure and Peat Moss (or Compost), 2 inches of each. Dig in deeper, about 8 inches, level and add 1 inch more Peat Moss. Dig lightly and plant firmly.

HARD GROUND

The soil about many new homes where grading has been done will be found to be extremely hard from the presence of clay subsoil with the top soil. Such soil should be first broken up well by deep digging. Two inches of sand and 2 inches of Peat Moss or manure added, again turned and well broken up, and then another inch each of sand and Peat Moss added and dug in 4 or 6 inches deep. Plant firmly.

UNDER TREES

The soil under large trees is invariably poor, and contains little humus. Bearing in mind that ANY PLANT planted under a tree has keen competition, any added attention to the preparation of the soil is good advice. I advise first the digging of the soil to be planted to a depth of 6 to 8 inches. Add 3 inches of manure and 2 inches of Peat Moss or Compost, and sand if the soil is very heavy. Dig well again, add another inch of Compost or Peat Moss, and dig lightly in. Plant firmly.

MULCHING

A light mulch, one-half to 1 inch of Granulated Peat Moss, Buckwheat Hulls, or fine Compost, is beneficial to any planting and where possible should be given after planting.

Ajuga reptans (Bugle)

Nearly evergreen plant with rather heavy foliage, and blue flowers. Hardy and suitable for garden positions, and does very well as a ground-cover in partial shade.

PRICES

Size	Distance to Plant Inches	Per Each	Per 100	Per 1000
Small Field Plants	.8-10	\$0.10	\$8.00	\$60.00
2¼-inch Pot Plants	.10-12	.15	10.00	85.00

10 at the 100 Rate, 250 at the 1000 Rate

Over 1000 are grown to your order

Ajuga genevensis

A most excellent cover plant in semi-shade, not entirely evergreen, but nearly so; clear blue flowers in June.

PRICES

	Per Each	Per 100	Per 1000
Small Field Plants	\$0.10	\$8.00	\$60.00
2¼-inch Pot Plants	.15	10.00	85.00

10 at the 100 Rate, 250 at the 1000 Rate

Over 1000 are grown to your order

Dwarf Box (Buxus suffruticosa)

I grow considerable Dwarf Box for Edging. Stock is excellent. Heavy and of even grade.

PRICES

	Per Each	Per 100	Per 1000
4-6 in.	\$0.25	\$22.00	\$200.00
6-8 in., Heavy	.40	30.00	275.00

10 at the 100 Rate, 250 at the 1000 Rate

Cotoneaster horizontalis

No better or more beautiful plant known for Terraces, Slopes, Tops of low walls, Foundation planting, etc. Fan shaped, prostrate branches, and red berries in Fall.

Field grown stock does not transplant safely, so I only offer excellent stock from 3½-inch and six-inch pots.

PRICES

Size	Distance to Plant Inches	Per Each	Per 100	Per 1000
3-inch Pots	.18-24	\$0.75	\$50.00	\$400.00
6-inch Pots	.24-36	1.25	100.00

10 at the 100 Rate, 250 at the 1000 Rate

Euonymus radicans

A small leaved evergreen vine, clinging climber, very suitable for low walls, stone or brick houses, slopes and terraces, as an edging plant for gardens, in place of boxwood, among shrubs and evergreens, and for vases and window-boxes.

Euonymus is perfectly hardy, will stand some shade, and is altogether a plant too little used.

PRICES

Size	Distance to		Per Each	Per 100	Per 1000
	Plant				
	Inches				
One-Year	10-12		\$0.10	\$8.00	\$50.00
Two-Year	12-18		.25	12.00	100.00
Three-Year	18-24		.40	20.00	175.00

10 at the 100 Rate, 250 at the 1000 Rate
Special Prices in Over 1000 Lots

Euonymus radicans variegata

A variegated green and white form of *Euonymus radicans*, and extremely beautiful for contrasts. Suitable for every purpose that suits the above and as hardy.

PRICES

Prices and sizes are the same as *Euonymus radicans*.

Euonymus Kewensis

Perhaps the best evergreen ground-cover plant for a myriad of uses about a home, except in dense shade or where some height is desired. Forms a perfect mat of small leaved green, resembling *Mitchella repens*, foliage turns bronze red in cold weather, will cling and climb to a height of two feet or more if desired. Most excellent for low walls, rockeries, areaway copings, low slopes and terraces, edges of pools, etc. Scarcity of stock has kept the price high, however, I now have about 200,000 plants to offer, and have priced it so you can use it. Plants have been established in the pots for two years.

PRICES

Size	Distance to		Per Each	Per 100	Per 1000
	Plant				
	Inches				
Two-Year Field	12-18		\$0.20	\$10.00	\$85.00
1½-inch Pots	12-18		.20	10.00	85.00

10 at the 100 Rate, 250 at the 1000 Rate
Special Prices in Over 1000 Lots

Euonymus vegetus (Evergreen Bittersweet)

Climbing or semi-prostrate evergreen vine, covered in Fall and Winter with red berries similar to Bittersweet. Rather a slow grower, but when established makes one of the most beautiful vines possible. Splendid for low walls, terraces, slopes, and planted on top of embankment walls.

PRICES

Size	Distance to	Per Each	Per 100	Per 1000
	Plant Inches			
One-Year	18-24	\$0.25	\$18.00	\$150.00
Two-Year	24-36	.50	30.00	200.00
Three-Year	36-48	.75	40.00
Five-Year	48	2.00	175.00

10 at the 100 Rate, 250 at the 1000 Rate

Euonymus Carrerii

Similar to the above but a more upright grower and has no berries. Used at entrance gate posts and similar positions. Hardy and highly desirable.

PRICES

Prices and sizes are the same as for *Euonymus vegetus*.

Euonymus radicans acutus

Similar to the type, but with more pointed leaves, lighter in color. A rapid grower and evidently the best *Euonymus* yet for steep banks as it is a very prostrate grower, showing no inclination to climb, roots at every place it touches soil and would be excellent to hold banks. Turns bronze-red in cold weather.

Size	Distance to	Per Each	Per 100	Per 1000
	Plant Inches			
Two-Year Field	24-36	\$0.50	\$40.00	\$350.00
2¼-inch Pots	18-24	.25	20.00	150.00

10 at the 100 Rate, 250 at the 1000 Rate

Euonymus radicans Colorata

A new *Euonymus*, similar to *acutus*, but has larger, rounder leaves, prostrate creeper of rapid growth and excellent for steep banks, etc., turns bronzy red in Winter. This plant and *Euonymus acutus* are the best evergreen plants I know of for steep banks in sun or partial shade.

Size	Distance to	Per Each	Per 100	Per 1000
	Plant Inches			
One-Year Field ..	18-24	\$0.50	\$40.00	\$200.00
Two-Year Field ..	24-36	1.00	90.00	500.00

Small Leaved English Ivy

I have a large stock of this beautiful Ivy, similar to the large leaved variety, but with small foliage, and much more beautiful for many effects. Not as rapid a grower as the other, but presumed to be more hardy, though it is seldom that the large leaved ivy is injured.

For vases, window boxes, embankments, etc., in sun or partial shade, this Ivy is unusually good.

PRICES

Size	Distance to Plant		Per Each	Per 100	Per 1000
	Inches				
2½-inch Pots	8-10		\$0.20	\$12.00	\$85.00
4 -inch Pots	12-18		.50	45.00

10 at the 100 Rate, 250 at the 1000 Rate

Large Leaved English Ivy (Hedera Helix)

The well-known large leaved evergreen clinging ivy so much used for walls and houses.

The uses for this plant are very numerous and it is seldom used enough anywhere, for it is a beautiful vine, free from insects and disease, and a rapid grower.

As a border for garden beds or to outline walks, etc., and as a ground-cover in all semi-shady places it is excellent and will do well if properly planted.

The secret is to use smaller plants and more of them to quickly cover all the bare soil, rather than long, large plants which must be pinned down and which cannot be clipped as well.

PRICES

Size	Distance to Plant		Per Each	Per 100	Per 1000
	Inches				
2½-inch Pots	10-12		\$0.15	\$8.00	\$70.00
4 -inch Pots	18		.50	35.00

10 at the 100 Rate, 250 at the 1000 Rate

Lonicera Halliana (Halls Honeysuckle)

The native Honeysuckle we know so well, and which helps much to make Pennsylvania roadsides beautiful to other State visitors, though we do not ourselves appreciate the plant.

For covering fences, steep banks and unsightly places it has no equal, and should be much more freely planted. Perfectly hardy, free from disease, and of rapid growth. It can be cut at will and easily kept within bounds.

PRICES

Size	Distance to Plant		Per Each	Per 100	Per 1000
	Inches				
Small Field Plants	10-12		\$0.10	\$6.00	\$40.00
2¼-inch Pot Plants	12-16		.15	10.00	75.00
4 -inch Pot Plants	18-24		.40	30.00	250.00

10 at the 100 Rate, 250 at the 1000 Rate
Over 1000 are grown to your order

Lychimachia nuemalaria (Moneywort)

A semi-evergreen creeper, with light green foliage, and covered in early summer with thousands of bright yellow flowers. Height 1 to 2 inches. An old-fashioned plant seen growing wild in old gardens. Excellent for moist places in sun or semi-shade. Suitable for paved terraces, rockeries, steep banks, etc.

PRICES

Size	Distance to	Per Each	Per 100	Per 1000
	Plant Inches			
Small Field Plants..	8-12	\$0.10	\$8.00	\$40.00
2¼-inch Pot Plants.	10-12	.15	10.00	75.00

10 at the 100 Rate, 250 at the 1000 Rate
Over 1000 are grown to your order

Nepeta Mussinii

A comparatively new plant, not evergreen. It has sage green foliage, and is a mass of foamy blue flowers in May. If cut after blooming it blooms as freely in the Fall. Height 1 foot. Perfectly hardy.

A very beautiful and satisfactory plant for mass effect in the garden or border, and splendid for steep banks, etc. Our demand from landscape men is increasing, so it must be good.

PRICES

Size	Distance to	Per Each	Per 100	Per 1000
	Plant Inches			
Small Field Plants..	10 16	\$0.15	\$8.00	\$50.00
2¼-inch Pot Plants.	10-16	.20	10.00	85.00

10 at the 100 Rate, 250 at the 1000 Rate
Over 1000 are grown to your order

Nepta. glecoma (Ground Ivy)

A very useful and beautiful creeper. Semi-evergreen. Height 2 inches. Particularly suited to moist locations. Rapid grower. Flowers blue.

PRICES

Size	Distance to	Per Each	Per 100	Per 1000
	Plant Inches			
Small Field Plants..	8-10	\$0.10	\$8.00	\$50.00
2¼-inch Pot Plants.	10-12	.15	10.00	75.00

10 at the 100 Rate, 250 at the 1000 Rate
Over 1000 are grown to your order

Nepeta glecoma varigata

A variegated form of *Nepeta glecoma* and used the same.

PRICES

Prices are the same as for *Nepeta glecoma*.

Over 1000 are grown to your order



Courtesy WM. PITKIN, Jr., Landscape Architect

Showing effective use of

PACHYSANDRA TERMINALIS (JAPANESE SPURGE)

The WONDER PLANT for SHADY PLACES

The most generally useful Evergreen Ground-Cover Plant in the World.

Grows to a height of 6-8 inches and forms a thick mat of clean, cool, green foliage. Hardy under all conditions.

The one suitable plant for Shady Positions, Borders, Foundation Plantings, Cemeteries, Window Boxes, etc.

I have over 3½ millions of this plant in various sizes. Such is my faith in its value to you.



Pachysandra terminalis

The plant of a thousand uses and the best plant for those uses, bar none. Evergreen always. Hardy under all conditions. Disease free. Even height of six inches. Growing in DENSE SHADE OR FULL SUN gladly, under any condition of soil or exposure, and adding 100 per cent. to the appearance of any planting as well as benefiting the planting by shading the soil.

SOME OF ITS MAIN USES ARE:

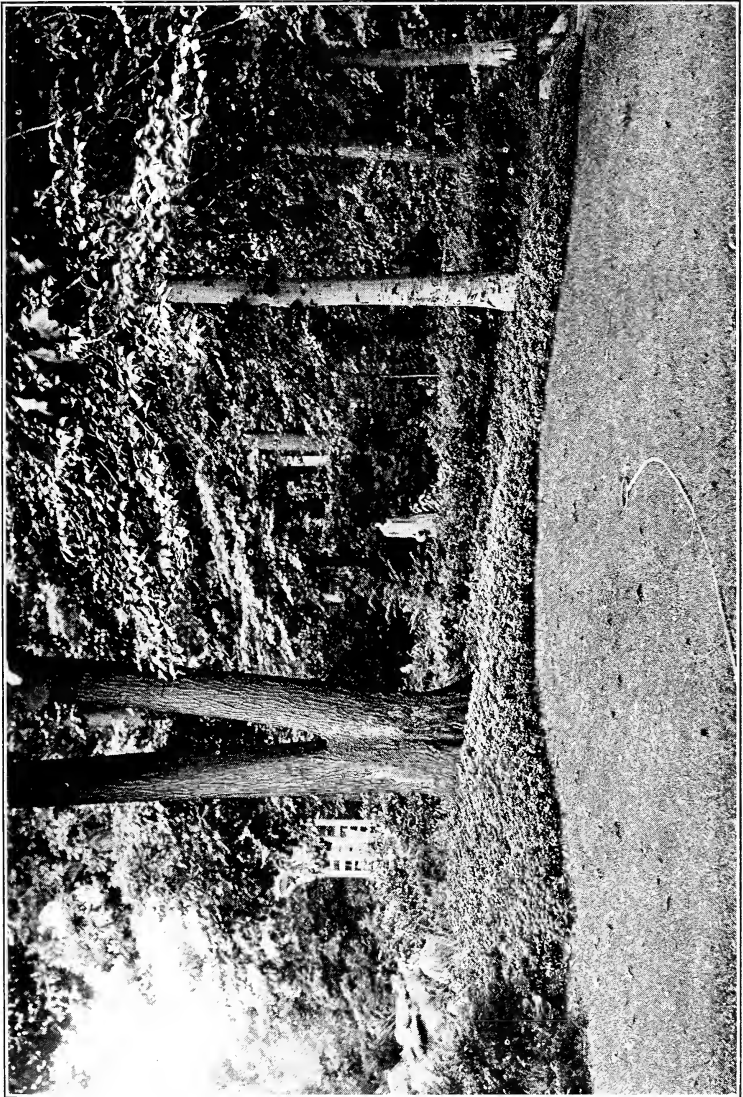
- Under all evergreen plantings.
- Under all shrub plantings.
- For areaway copings.
- For loggia and enclosed porch uses.
- For winter and summer window boxes.
- For shrub and flower bed borders.
- For bordering walks and drives.
- For steep terraces in sun or shade.
- For city yards it is ideal.
- For cemetery plots.
- For dense shade under any kind of trees.

I advise the use of one-year field, two-year field, or 2¼-inch pots, PLANTED CLOSELY in preference to larger pot or field plants widely spaced, as PACHYSANDRA NEEDS THE SHADE OF ITS OWN FOLIAGE TO PROMOTE PROPER GROWTH. Also by close planting the creeping stolons come up to fill the vacant spaces quickly. With larger plants the stolons will not cover the space for several years. Also the root system of large plants is no greater than with small plants grown from cuttings (not divisions, for divisions will make no root system). My plants are grown from cuttings entirely, rooted in sand and transplanted to field for one or more years or grown in 2¼-inch pots for TWO YEARS, that they may be pot bound and form stolons before shipping.

For extensive plantings the one-year size are best, as TWO THOUSAND OF THIS SIZE COST THE SAME AS ONE THOUSAND pot plants, and expressage is much less, and the closer planting of the one-year field plants will give best results.

All sizes of plants can be safely shipped and planted at any season. One-year field plants should be planted 4 to the square foot and less space is better. Two-year field and 2¼-inch pot plants 3 to the square foot and less space is better.

Prepare soil as directed under planting directions. No further care is required.



Pachysandra as a Border Plant

PRICES

Size	Distance to Plant Inches	Per 100	Per 1000	Per 2000
One-Year Field.	.4 to sq. ft.	\$6.00	\$50.00	\$85.00
Two-Year Field.	.3 to sq. ft.	7.00	65.00
2¼-inch Pots	...3 to sq. ft.	10.00	85.00

10 at the 100 Rate, 250 at the 1000 Rate

SPECIAL PRICES GIVEN ON LOTS OF MORE THAN 2000

I can supply any quantity, any time.

Phlox subulata

Too well known to need description. I have the following varieties: Rosea, White and Lilacina.

PRICES

Size	Distance to	Per Each	Per 100	Per 1000
	Plant Inches			
Small Field Plants..	12-18	\$0.10	\$8.00	\$60.00
2¼-inch Pots	12-18	.15	10.00	85.00

10 at the 100 Rate, 250 at the 1000 Rate

Over 1000 are grown to your order

Phlox Divaricata

The light blue Phlox so suitable for mass plantings in semi-shady positions.

PRICES

Size	Distance to	Per Each	Per 100	Per 1000
	Plant Inches			
2¼-inch Pots	12-18	\$0.15	\$10.00	\$85.00

10 at the 100 Rate, 250 at the 1000 Rate

Over 1000 are grown to your order

Garden Ware

Write me for information, discounts, etc., on this Garden-Ware.

It is a most profitable line to carry for nurserymen and florists, as the demand is increasing.

Our Ware is fully guaranteed, the variety extensive and designs excellent.

Factory is wonderfully equipped to handle all orders promptly.

Shipments may be made direct to your customers, and catalogs will be supplied you. See other page.

Rhododendron and Laurel

I have my own collector who ships for me from Virginia or Pennsylvania.

The very best of plants of any size, properly dug and graded.

I shall be glad to quote you in mixed or straight sizes in car-load lots on hand. Rhododendron maximum, Carolianum and Catabiense also on collected Red Cedar in car lots.

Rose Max Graf

The very best Rose I have yet seen for clothing steep banks or waste places.

A Hybrid of Rugosa and Wichuriana, it combines the best qualities of both. Nearly evergreen, a very rapid grower; foliage, insect and mildew proof, habit of growth prostrate, flowers are deep pink single resembling the wild rose.

The foliage being larger it does not lie quite as closely to the ground as Wichuriana and this foliage is more crinkled and attractive than Wichuriana.

Its rapid growth will permit of wide planting, three feet apart at least.

At present I can only offer for spring delivery a few thousand of the small size and a few thousand of the larger size.

PRICES

	Distance to Plant Inches	Per 100	Per 1000
2 $\frac{1}{4}$ -inch Pots	24	\$25.00	\$200.00
4 -inch Pots	36-48	50.00

10 at the 100 Rate, 250 at the 1000 Rate

Sedums

All of the Sedums are excellent for dry, sunny positions, steep banks, terraces, garden borders, paved walks, etc.

PRICES

Variety	Size	Per Each	Per 100	Per 1000
Spurium Coccineum, 2 $\frac{1}{4}$ -inch Pots..		\$0.15	\$10.00	\$75.00
Acre,	" "	.15	10.00	75.00
Sexangulare,	" "	.15	10.00	75.00
Sieboldi,	" "	.15	10.00	75.00
Stolonifera,	" "	.15	10.00	75.00
Album,	" "	.15	10.00	75.00
Kamtschaticum,	" "	.15	10.00	75.00

Per each \$0.15, 10 at the 100 Rate, 250 at the 1000 Rate

Over 1000 are grown to your order

Wild Thyme

A species of Thyme found growing wild on New England hills, and a most delightful and unusual plant.

Nearly evergreen, creeping, height 2 inches, hardy, prefers full sun, but will grow in partial shade also.

This plant is extremely suitable for paved terraces, rockeries, garden borders, steep banks, and best of all for garden walks, or planted among the grass on the lawn.

The foliage is very fragrant and the plant will allow of being mown with a lawn mower, so it will give you fragrant walks and lawns, delightful to walk upon, without injury to the Thyme.

The flowers are not beautiful, being small and lavender in color, but the fragrance and ease of growing make this a most desirable plant.

PRICES

Size	Distance to Plant Inches	Per Each	Per 100	Per 1000
2¼-inch Pots	10-18	\$0.15	\$10.00	\$85.00

10 at the 100 Rate, 250 at the 1000 Rate

I can supply any quantity.

Veronica rupestris (Creeping Speedwell)

A prostrate creeping plant with almost evergreen foliage, and myriads of gentian blue flowers in spring.

Height 2 inches. Hardy and a rapid grower, but does not become a weed. Prefers sun or semi-shade.

Excellent for borders of garden beds, steep terraces, paved walks, rockeries, etc.

PRICES

Size	Distance to Plant Inches	Per Each	Per 100	Per 1000
2¼-inch Pot Plants.	10-12	\$0.15	\$10.00	\$85.00

10 at the 100 Rate, 250 at the 1000 Rate

Veronica repens

A beautiful creeper forming solid mossy mats of foliage, nearly evergreen, covered in early spring with thousands of light blue or white flowers. Most excellent for paved walks, rockeries and tops of walls. Sun or semi-shade.

PRICES

	Distance to Plant Inches	Per 100	Per 1000
2½-inch Pots	8-12	\$10.00	\$85.00

10 at the 100 Rate, 250 at the 1000 Rate

Over 1000 are grown to your order

Vinca Minor (Periwinkle)

Next to Pachysandra, as a cover plant for positions less shady than Pachysandra will thrive in, or in combination with it for borders, etc. Too well known to need describing, but too little used as a rule.

The one-year and two-year size are grown from divisions the time specified in clay soil and not to be confused with divisions which are generally from old plantings growing in leaf mold and not readily transplantable.

The 2¼-inch pot plants are heavy and have been clipped to thicken them up and are well pot bound to ship well.

PRICES

	Distance to Plant	Per 100	Per 1000
One-Year Field Size4 to sq. ft.	\$5.00	\$30.00
Two-Year Field Size2 to sq. ft.	8.00	45.00
2¼-inch Pot Plants2 to sq. ft.	10.00	85.00

10 at the 100 Rate, 250 at the 1000 Rate

Special Prices on Lots of Over 1000

I can supply any quantity, any time.

Wisteria Chinensis

A vine very well known but not used often for its best purpose, that of covering steep banks and low walls. Such uses of this plant are beautiful and make the waste places a decided joy. Purple or lavender flowers. Rapid grower. Perfectly hardy.

PRICES

Size	Distance to Plant	Per Each	Per Doz.	Per 100
6-inch Pots 3-4 ft.	\$1.00	\$10.00	\$90.00

50 of Any Size Sold at the 100 Rate

“Melrosine”

I catalog this Insecticide because I am the **ORIGINATOR** of it, and know it to be all that is claimed for it.

Without doubt it is the best remedy for rose bugs yet devised, and if used as directed will positively rid gardens of this pest.

It is also rapidly becoming the best general all-around insecticide, for it kills other insects as readily as rose bugs, **INCLUDING THE JAPANESE BEETLE**.

Melrosine is **NON-Poisonous** and pleasant and harmless to use, except to insects. It does not discolor or burn flowers or foliage, and can be used readily for all house and garden plants.

It is used diluted with twenty or more parts of water.

PRICES

½ Pint	\$0.50
1 Pint	1.00
1 Quart	1.75
½ Gallon	3.25
1 Gallon	6.00

English Hurdle Fence



I sell yearly a great deal of this most satisfactory and pleasing Fence. Made, under my supervision, of seasoned split chestnut (not sawed chestnut) of heavier construction than usual, this Fence is both serviceable and attractive for the small or large estate.

The Five Bar height makes a fence 4 feet high when set, and is extensively used for stock fences, paddocks, etc., for sheep, cattle or horses, and for enclosing extensive grounds.

The Four Bar Fence (same spacing of bars, but a foot lower than the Five Bar) makes a Fence most ideal for the Garden or small estate. Rustic and stable in appearance, easily erected and permanent, being of heavy careful construction, with end posts creosoted to withstand decay.

The cost of this fencing is moderate too, but very little more than a Privet Hedge, and as it requires no care, much cheaper in the end.

Ideal for Roses, Grapes, etc., and best of all, does not rob the Garden of needed nourishment as does a hedge.

English Hurdle Fence (*Continued*)

Panels of both heights are 8 feet 3 inches long, 12 Panels making 100 feet of Fence.

PRICES

Five-Bar Fence

100 Panels or more \$2.75 each, F. O. B. Factory
(About 33¢ a foot)

Less than 100 Panels \$3.00 each, F. O. B. Factory
(About 36¢ a foot)

Four-Bar Fence

100 Panels or more \$2.60 each, F. O. B. Factory
(About 32¢ a foot)

Less than 100 Panels \$2.85 each, F. O. B. Factory
(About 34¢ a foot)

Freight will approximate from 15¢ to 25¢ per Panel

Gates with irons can be furnished as follows:

3½-foot Gates \$5.00 each
8 -foot Gates 10.00 each

These Gates are of heavy construction with round end posts. An 8-foot Gate made from a regular panel of Fence, with irons, may be had for \$5.00 each.

Garden Ware

I am interested in the manufacture of this Ware. Sold through The Barclay Company. The ware is a guaranteed composition of Crushed Marble or Granite. The variety of design is extensive, and good, and comprises Vases and Urns, Bird Baths, Fountains, Sun Dials, Gazing Globes, Benches, Tables, Garden Statuary, etc.

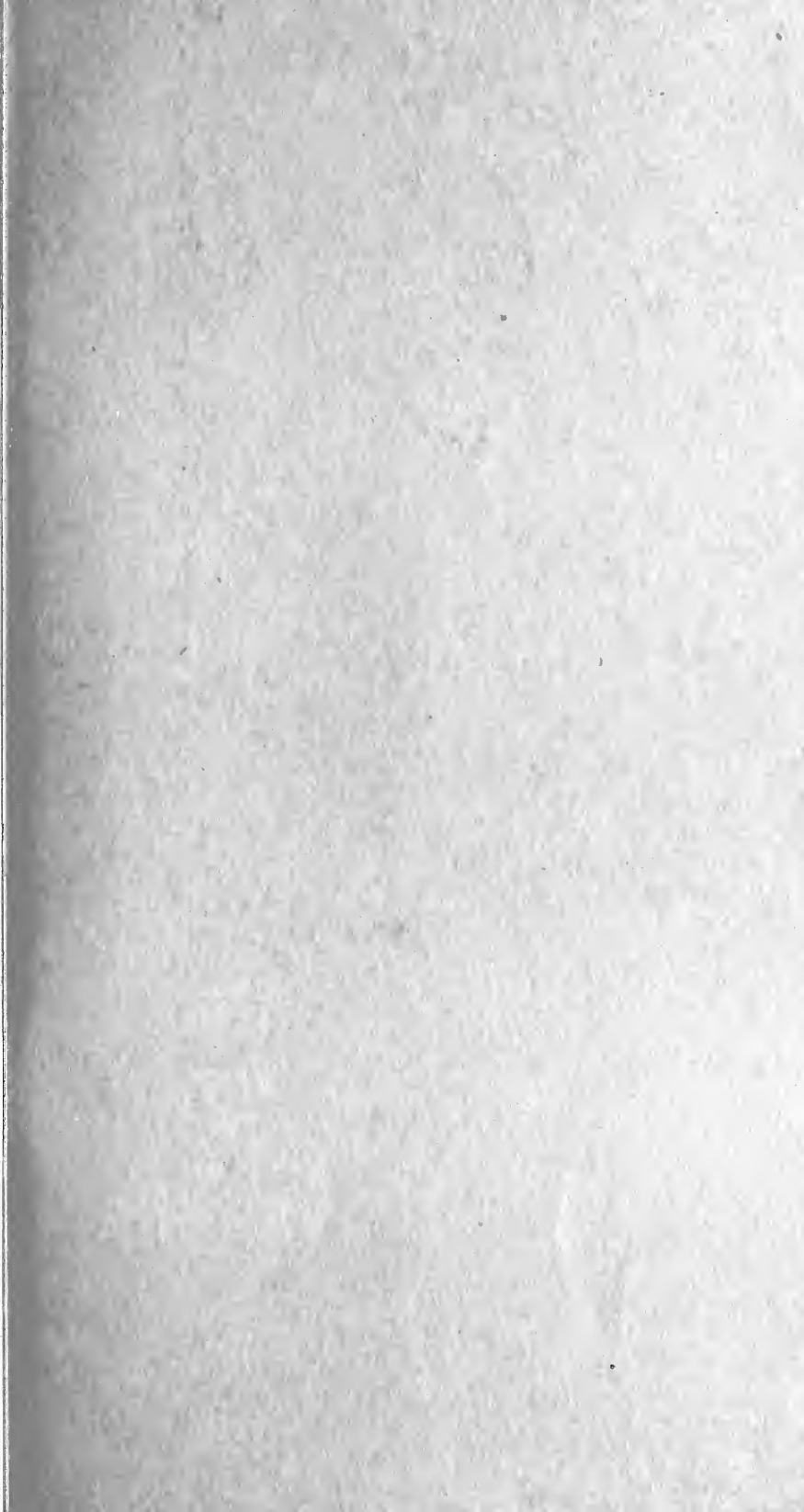
I shall be pleased to send you the catalog upon request.


Special Discounts are allowed Nurserymen, Florists and Landscape Architects.

In addition, I import from France and Italy Antique and unusual Oil Jars, and reproductions in Terra Cotta of beautiful Jars, Vases, etc. I also collect for sale, modern and Antique American Pottery, Antique Settees, Iron Benches, etc., which are extremely suitable for old-fashioned Gardens.

From Southern France I import quantities of Garden ornaments, Climbing Cats, Dogs, Cranes, Frogs, Ducks, Geese, Turtles, etc., etc., in white and colored glazes. These are most moderately priced and well designed and constructed.

Photographs of many of these articles will be submitted you upon request.





WHOLESALE PRICE LIST
OF
**Ground-Cover
Plants**

PACHYSANDRA
ENGLISH IVY
EUONYMUS
VINCA MINOR
WILD THYME
COTONEASTER
BOXWOOD
GARDEN-WARE
HURDLE FENCE
ETC.

Hugh B. Barclay, Narberth, Pa.