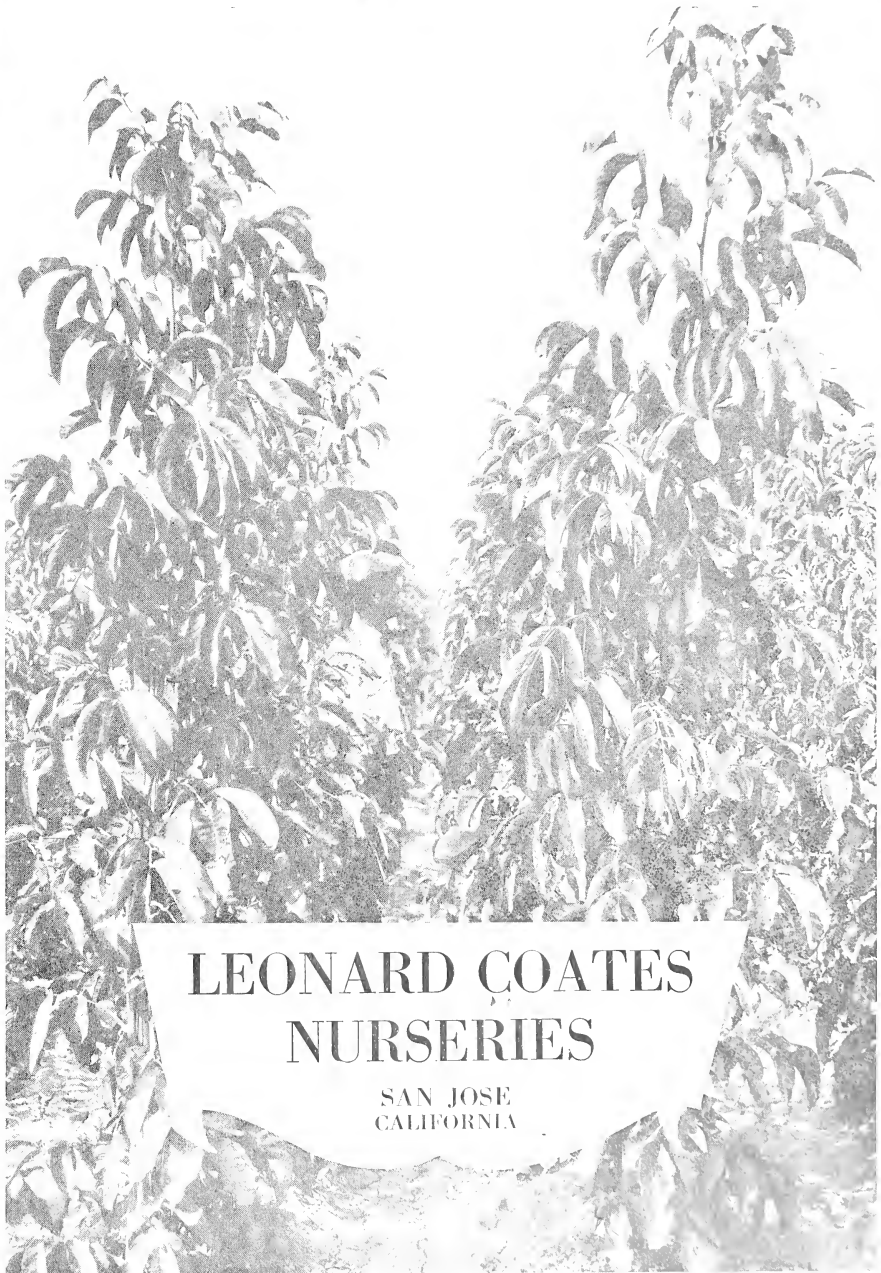


Historic, Archive Document

Do not assume content reflects current scientific knowledge, policies, or practices.

6209

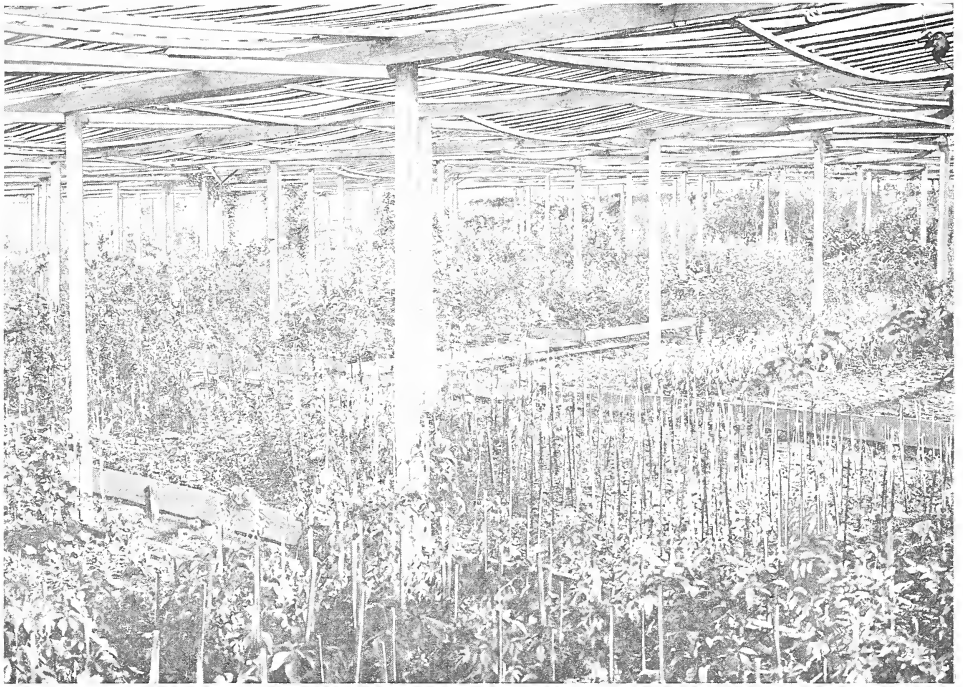
Ornamental and Fruit Tree Catalogue - 1926



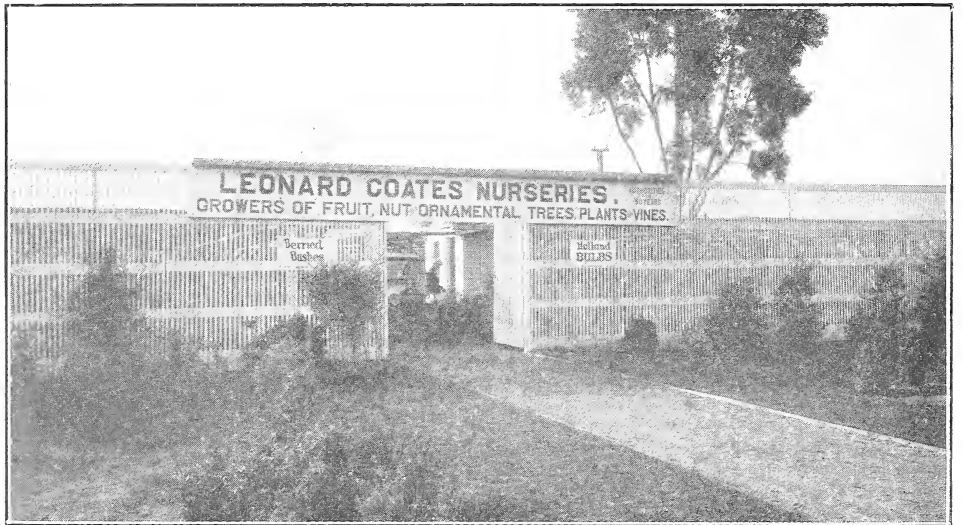
**LEONARD COATES
NURSERIES**

SAN JOSE
CALIFORNIA

WALNUTS IN NURSERY ROW



Picture showing Lath House for growing Ornamentals on our 70 acre Nursery and ranch at Morgan Hill, California.



Our Lath House and Salesyard at 1835 The Alameda, San Jose, California

ORNAMENTAL and FRUIT TREE CATALOG

OFFICE AND SALESYARD. Our office and salesyard at, 1835 The Alameda, San Jose (on the San Francisco—Los Angeles Highway, between San Jose and Santa Clara), is for the convenience of our customers and prospective customers. Visitors are always welcome.

OUR NURSERIES at Morgan Hill and Santa Cruz are located where climate, soil, and other conditions are best adapted to the particular stock grown.

FRUIT TREE STOCK we are now growing in Contra Costa County, near Brentwood, where more distinct seasons cause the deciduous trees to become dormant at the proper time; water is plentiful for irrigation, and the soil is free of all pests.

NATIVES. We have the most complete stock of Native trees and plants in Northern California, and are always advocating their planting. Many public and private grounds are being planted entirely with trees and shrubs native to California. The very best effects can be obtained from the standpoint of both beauty and utility.

CORRESPONDENCE. The founder of this nursery, Mr. Leonard Coates, has always endeavored to render the utmost service to the public by answering letters of inquiry promptly and carefully. Write us regarding all orchard and garden subjects. We are in touch with thousands of growers, and are glad to pass along any good ideas, as well as suggestions based on our own experience.

TERMS. A 20% deposit is requested when order is placed. Unless previous arrangements have been made for terms, stock will be shipped C. O. D.

SUBSTITUTIONS. Always state, in a mixed order, if substitutions may be made or not. If "no substitution" is written on order, such instructions will be carefully heeded.

RESPONSIBILITY. We cannot be held liable for any damage that may result from delays or damage in transportation.

GUARANTY. While we exercise the greatest care to have all our stock true to label, and hold ourselves in readiness, on proper proof, to replace all trees, etc., that may prove untrue to label, free of charge, or refund the amount paid, it is mutually understood and agreed to between the purchaser and ourselves that our guarantee of genuineness shall in no case make us liable for any greater sum than that originally received for said trees, etc., that may prove untrue. All orders and contracts taken depend on crop failure, flood, fire, or accident beyond our control.

COMPLAINTS. All claims for shortage, or any other possible mistakes, must be made within ten days after receipt of stock or they will not be allowed.

PACKING. This is done in the best manner, and charges made simply to cover cost of material used. No charge for cartage to railroad. The charge per bale will amount to about 25 cents to \$3.00, according to size; and for ornamental stock, from 25 cents to \$1.50 per box; small plants in flats, 15 cents each flat.

PLEASE NOTE: We sell Fruit Trees in quantities of

10 to 50 (of one variety)	at 10 rate
50 to 300 (of one variety)	at 100 rate
300 or more (of one variety)	at 1000 rate

ORNAMENTALS, five at 10 rate; for larger quantities, rates on application.

We are prepared to submit plans and estimates of cost for landscaping large or small gardens, installing automatic or other sprinkling devices, and lawn-making, as well as furnishing and planting the trees, shrubs and plants needed.

FRUIT TREES

Note: Trees may be slightly longer or shorter than grade specifics, in order to be more uniform in caliper.
Discount: 10% for cash with order.

ALMONDS

	Each	10	100	1000
"4 to 6 ft." grade.....	.60	.50	.45	.40
"3 to 4 ft." grade.....	.50	.40	.35	.30
"2 to 3 ft." grade.....	.45	.35	.30	.25
Calif. Paper Shell	Ne Plus Ultra			
Drake	Nonpareil			
I X L	Peerless			
Jordan	Texas Prolific			
Lewelling				

APPLES

	Each	10	100	1000
"4 to 6 ft." grade.....	.70	.60	.55	.50
"3 to 4 ft." grade.....	.65	.55	.50	.45
"2 to 3 ft." grade.....	.60	.50	.45	.40
(Numbers show approximate ripening order)				
Alexander	9	Langford	18	
Baldwin	14	North. Spy.....	19	
Black Ben Davis.....	20	Peasgood		
Chas. Ross.....	5	Nonesuch	11	
Delicious	23	Red Astrachan	3	
Early Harvest.....	1	Red Beitigheimer.....	8	
Gano	16	Rivers Peach.....	7	
Gravenstein	6	Skinner Seedlings	4	
Grimes Golden	21	W. W. Pearmain	22	
Hyslop		Winter Banana.....	17	
(Crab Apple)		Y. N. Pippin.....	24	
Jonathan	13	Y. Bellflower.....	12	
King David	15	Y. Siberian (Crab)		
King of Tomkins		Y. Transparent.....	2	
County	10			

APRICOTS

	Each	10	100	1000
"4 to 6 ft." grade.....	.60	.50	.45	.40
"3 to 4 ft." grade.....	.50	.40	.35	.30
"2 to 3 ft." grade.....	.45	.35	.30	.25
(Numbers show approximate ripening order)				
Barry	2	Hemskirke	7	
Blenheim	6	Moorpark	5	
Early Newcastle.....	1	Peach	3	
Grace		Royal	4	
Tilton.....			8	

CHERRIES

	Each	10	100	1000
"4 to 6 ft." grade.....	.70	.60	.55	.50
"3 to 4 ft." grade.....	.65	.55	.50	.45
"2 to 3 ft." grade.....	.60	.50	.45	.40
(Numbers show approximate ripening order)				
Bing	10	Lambert	8	
Blk. Tartarian.....	6	Mayduke		
Blk. Republican.....	7	Napoleon Big.....	9	
Burbank	3	Paul	11	
Calif. Advance		Rockport	5	

Chapman	2	Royal Ann	9
Ey. Richmond.....	4	Shelton	
Fidel	✓	Tangsi	1
Giant		Vaughan	
Great Bigarreau.....			

NECTARINES

	Each	10
"4 to 6 ft." grade.....	.60	.50
"3 to 4 ft." grade.....	.55	.45
"2 to 3 ft." grade.....	.50	.40
(Numbers show approximate ripening order)		
Advance	1	Pineapple
Boston	5	Persica
Cardinal	7	Sharpe
Early Rivers.....		Spencer
Lord Napier.....	3	Stanwick Elruge
Milton	6	

PEACHES

	Each	10	100
"4 to 6 ft." grade.....	.60	.50	.45
"3 to 4 ft." grade.....	.55	.45	.40
"2 to 3 ft." grade.....	.50	.40	.35
(Numbers show approximate ripening order)			
Acampo		Peregrine	12
Alexander	5	Prince of Wales.....	
Annabel		Prof. Opaix.....	
Australian Saucer.....	22	Illinois	14
Fay Elberta		J. H. Hale.....	25
Foster	18	Krummel	31
Hales Early.....	10	Lady Palmerston.....	23
Henrietta Cling		Late Crawford.....	25
Briggs May	4	Leader	
Chinese Fei.....		Lovell	26
Conkling	20	Leona	
Dainty	16	Mayflower	2
Duchess of		Morrisiana	30
Cornwall	6	Quality	
Duke of York.....	13	Sea Eagle	17
Early Crawford.....	19	Sneed	3
Early Elberta	11	St. John	
Elberta	24	Salway	29
Morris White.....	27	Strawberry	8
Muir	21	Vainqueur	1
Muir Perfection.....		Washington	7
Pattison	9	Wilbur	28
Noblesse		White Heath Cling	
Opulent		Sims Cling	

PEARS

	Each	10	100	1000
"4 to 6 ft." grade.....	.70	.60	.55	.50
"3 to 4 ft." grade.....	.65	.55	.50	.45
"2 to 3 ft." grade.....	.55	.45	.40	.35
(Numbers show approximate ripening order)				
Bartlett	4	King Karl.....		
Beurre D'Anjou.....	10	Le Lectier.....		
Beurre Bosc.....	8	Louis Pasteur		
Beurre Hardy		Mme. Lye Baltet.....		
Beurre Superfin		Mme. Puis		
Emile de Heyst.....		Madeline		2
Flemish Beauty		Marguerite		
Glout Morceau		Marillat		6

LEONARD COATES NURSERIES—SAN JOSE, CALIFORNIA

Bloodgood	3	Pitmaston	
Conference		Duchess	11
Duchess		Rossney	
D'Angouleme	9	St. Germain	14
Du Comice	15	San Juan	1
Easter Beurre.....	13	Seckel	7
Passe Crassanne	16	Triomphe de Vienne..	5

PERSIMMONS

		Each	10
"4 to 6 ft." grade.....		1.75	1.60
"3 to 4 ft." grade.....		1.50	1.35
Hachiya	Hyakume		

PLUMS

		Each	10	100
"4 to 6 ft." grade.....		.60	.50	.45
"3 to 4 ft." grade.....		.55	.45	.40
"2 to 3 ft." grade.....		.45	.35	.30
(Numbers show approximate ripening order)				
Amador	6	Kaga		
Anita	7	Kelsey Japan.....		29
Apex (Plumcot).....		King of Damsons.....		30
Banana	19	Lassalle		
Beauty	2	Mammoth		12
Becky Smith	11	Monk		21
Bonita		President		
Burbank	14	Primate		32
Clarice		Raisin		18
Climax	4	Rayburn		
Conquest		Sacramento		20
Crimson Drop.....	26	Santa Rosa.....		8
Decaisne		Sapa		22
Dolores	31	Satsuma		23
Earliana	1	Sharkey		15
Ex. Ey. Satsuma	3	Sharpe (Plumcot).....		
Formosa	13	Tragedy		5
Gaviota	9	Uncle Ben.....		34
Gigantic	24	Washington		27
Grand Duke.....	28	White Damson		33
Green Gage		Wickson		16
Hungarian		Wickson Seedling.....		10
Jefferson	25	Wilma		
June 4th.....		Yellow Egg		17

PRUNES

SPECIAL NOTE

To Prune Growers: A demand for the dried Coates 1418 (French) Prune has developed ahead of the supply. One Eastern Packer of high grade food products, with whom we are in correspondence, wants 100 tons the first year, 1926, as a starter, and expects to use much more later. The Coates 1418 is worth more than others of the same grade, 30-40s, so suggest you see that they are picked, dried and binned separately. Get a separate warehouse receipt. Please keep us posted regarding your tonnage and where delivered, and demand at least one cent more per pound for the best Coates 1418. The Association or Independent Packers can get more.

PRUNES ON ALMOND, APRICOT AND PEACH ROOT

	Each	10	100	1000
"4 to 6 ft." grade.....	.60	.50	.45	.40
"3 to 4 ft." grade.....	.50	.40	.35	.30
"2 to 3 ft." grade.....	.40	.30	.25	.20
Coates 1418	Imperial			
10c higher	Standard			
Clairac Mammoth	Sugar			
French Improved				

PRUNES ON MYROBOLAN ROOT

	Each	10	100	1000
"4 to 6 ft." grade.....	.65	.55	.50	.45
"3 to 4 ft." grade.....	.60	.50	.45	.40
"2 to 3 ft." grade.....	.50	.40	.35	.30
Coates 1418	Imperial			
10c higher	Standard			
Clairac Mammoth	Sugar			
French Improved				

QUINCES

	Each	10	100
"4 to 6 ft." grade.....	.70	.60	.55
"3 to 4 ft." grade.....	.65	.55	.50
Pineapple	West's Mammoth		

WALNUTS

	Each	10	100
"6 to 8 ft." grade.....	2.00	1.75	1.50
"4 to 6 ft." grade.....	1.75	1.50	1.25
"3 to 4 ft." grade.....	1.50	1.25	1.00
"2 to 3 ft." grade.....	1.25	1.00	.75
Concord	Mayette Treve		
Cutleaf	Morrow Mayette		
Eureka	Payne Seedling		
Franquette	Placencia Perfection		
Mautner	San Jose Mayette		

NORTHERN CALIFORNIA

BLACK WALNUT SEEDLINGS

Two-year-old roots grown on sandy soil and dug with a tree-digger so that an unusually fine root system is preserved:

	Each	10	100
"6 to 8 ft." grade.....	.50	.40	.35
"4 to 6 ft." grade.....	.40	.30	.25
"3 to 4 ft." grade.....	.35	.25	.20

Owing to the present shortage of grafted walnuts, many will plant seedlings; we suggest early orders.

FIGS

	Each	10	100
"3 to 4 ft." grade.....	.50	.40	.35
"2 to 3 ft." grade.....	.40	.30	.25
Black Mission	Capri		
Calimyrna	Kadota		

OLIVES

	Each	
"4 to 6 ft." grade.....	1.25	
"3 to 4 ft." grade.....	1.00	
Mission		Manzanillo

CITRUS TREES

	Each	10
3/8 to 3/4 in. cal.....	2.50	2.00
Eureka Lemon		Valentia Late Orange
Grape Fruit		Wash. Navel Orange

GRAPES

FREE LEAFLET. On request we will send with Grape orders, "The Use of Grapes in the Home" by Prof. W. V. Cruess, in charge of Fruit Products, University of California.

(Delivered in the 3rd zone, cash with order, American Varieties

	Each	10
Standard No. 1 grade.....	.35	.30
Concord		Pierce
Catawba		Niagara

European Varieties

	Each	10
Standard No. 1 grade.....	.20	.15
Cornichon		Sultana
Emperor		Thompson Seedless
Malaga		Tokay
Malvoise		Zante Currant
Muscat		Rupestris St.
Red Malaga		George. phylloxera
Rose of Peru		resistant. Not gitud.

BERRIES

Berries at "each" and "10 rate," cash with order, delivered within the 3rd zone.

Blackberries

	Each	10
Himalaya25	.20
Mammoth25	.20
Cory Thornless25	.20

Currants

Cherry25	.20
Perfection25	.20
Dewberry25	.20
Gooseberry25	.20
Loganberry25	.20

Raspberries

Cuthbert20	.15
La France20	.15
Ranere20	.15

Strawberries. (Delivered in 3rd zone)

Banner	\$2.00 per 100
Everbearing	\$2.00 per 100
Nick Ohmer	\$2.00 per 100

MISCELLANEOUS

Artichoke20 each
Asparagus, two years.....	3.00 per 100
Chestnuts	1.00 each
Feijoa	1.35 each
Filbert	1.00 each
Guavas75 each
Loquat, budded	2.50 each
Mulberry	
Persian	1.00 each
Pomegranate	
Wonderful60 each
Sweet Fruited60 each
Rhubarb25 each, \$2.00 per doz.

SEEDS

We are prepared to supply all the regular Garden, Vegetable and field seeds of highest quality, and solicit your orders.

Garden Seed, 10c a packet.. 5 or more postpaid within the third zone. Cash with order.

Aster	Petunia
Centuarea	Pansy
Cosmos	Poppy
Calliopsis	Verbena
Calendula	Sweet Peas
Eschscholtzia	Nasturtium
Larkspur	Statice
Marigold	Sweet Sultan
Mignonette	Zinnas

(Ask for any others you need)

Vegetable Seeds, 10c packet. 5 or more postpaid. Cash with order

Beet	Parsley
Carrot	Onion
Cabbage	Pumpkin
Casaaba	Pepper
Cucumber	Radish
Cauliflower	Squash
Kale	Spinach
Lettuce	Turnip
Musk Melon	Tomato
Watermelon	

(Ask for any others you need)

Vegetable Seed, 15c packet. 5 or more postpaid within the third zone. Cash with order.

Beet	Radish
Carrot	Beans
	Corn

LEONARD COATES NURSERIES—SAN JOSE, CALIFORNIA

The letters following names of ornamentals refer to price schedule on page 18. This method was adopted by us some years ago in an endeavor to avoid the old "hit or miss" method of pricing ornamental nursery stock. While there are hundreds of varieties catalogued and sold by the nurseries of to-day, there are only about 25 groups in the matter of average cost of production. When the plants are properly grouped, the buyer can rest assured that he is not being overcharged. **These Prices apply to Nursery Run. Special Prices will be made for Specimen Plants.**

DECIDUOUS TREES

(Sold with bare roots during the winter planting season; a few specimens held in large cans for delivery the balance of the year.)

ACER *campestre*. Hedge or English Maple. Recommended for Calif.....M
dasycarpum. Silver Maple. Rapid grower; excellent street tree.....M
macrophyllum. Oregon Maple. Also a native of California.....M
platanoides. Norway Maple.....M
rubrum. Scarlet Maple. Beautiful tree, but a moderate grower.....M
saccharum.....M
AESCULUS *californica*. Calif. Buckeye. Early to leaf out; white flowers.....L
hippocastanum. Horse Chestnut. Pink flowers in early spring.....N
ALBIZZIA *julibrissin*. Silk Tree. "Pink Acacia".....N
AMYGDALUS *communis*. Large flower alm. double pink.....M
communis nana. Dwarf, double pink.....M
persica. Pink flr. Peach.....1.50
persica versicolor. Pink and white; very beautiful.....1.50
persica. dbl. red flr. peach.....1.50
 Fl. alm. also in 5 gal. cans.....\$1.50
ASH. See *Fraxinus*.
BETULA *alba*. White Birch.....N
BUCKEYE. See *Aesculus*.
CASTANEA *sativa*. Spanish Chestnut.....M
CATALPA *bungei*. Manchurian C. 8 ft.\$3.00 each
speciosa. Western Catalpa. Big white flowers, very large leaves.....M
CERCIS *canadensis*. American Red Bud.M
occidentalis. California Red Bud. Smaller tree than canadensis, but equally beautiful.....M
CHERRY, flowering, see *Prunus*.
CRAB, flowering, see *Malus*.
CRATAEGUS *coccinea*. Scarlet Thorn. Large red berries.....C
crusgalli. Cockspur Thorn. Red ber.....M
double pink. Hawthorn.....M-1
oxyantha splendens. Paul's Double Scarlet Hawthorn.....M-1

DIOSPYROS *virginiana*. Common persimmon seedlings.....M
ELDER. See *Sambucus*.
ELM. See *Ulmus*.
FRAXINUS *americana*. American or White Ash.....M
velutina. Arizona Ash.....M
GINGKO *biloba*. Maiden-hair Tree.....N
GYMNOCLADUS *dioica* (*G. canadensis*) Kentucky Coffee Tree.....M
HICORIA. Pecan, a fine shade tree.....L
HORSE CHESTNUT. See *Aesculus*.
JUGLANS *californica*. Black Walnut.....K
KOELREUTERIA *paniculata*. Varnish tree. Very handsome in leaf, flower and seed.....M
LABURNUM *vulgare*. Golden Chain. Yellow flowers.....M
LARIX *decidua*. European Larch.....N
occidentalis. Western Larch.....N
LINDEN. See *Tilia*.
LOCUST. See *Robinia*.
MALUS *angustifolia*. Southern Fl. Crab M-1
Bechtels Flowering Crab (*M. ioensis bechteli*).....M-1
floribunda. Jap. Fl. Crab.....M-1
floribunda purplea.....M-1
niedwetzkayana. Redveini Crab.....M-1
spectabilis. Chinese Fl. Crab.....M-1
 Fl. Crab in 5 gal. cans.....1.75
MELIA *azedarach unbraculiformis*. Texas Umbrella.....M-1
MORUS *nigra*. Persian Mulberry. Fruit very good for home use.....N
tatarica. Russian Mulberry.....L
MT. ASH. See *Sorbus*.
MULBERRY. See *Morus*.
PAULOWNIA *tomentosa*. Royal P.....M-1
PISTACIA *vera*. Green Almond. Grows in some of the driest land.....M
PLATANUS *orientalis*. European Plane. The best all-around shade tree.....M-1
PLUM, flowering. See *Prunus*.
POPULUS. Silver Poplar.....L
Lombardy Poplar.....L
PRUNUS *cerasus*. Chinese Cherry. "Tangsi." Fruit ripens three weeks ahead of any other; also very handsome in flower and foliage, the leaves being large and light green in color.....N
cerasus. Double pink flower, cherry. In 5 gal. 3/4 ft.....each. 2.50
cerasus. Double white flower, cherry. In 5 gal. 4/5 ft.....\$2.50 each
Purple Leaved Plum (*P. pissardi*). Cherry Plum, fine for jelly.....M-1
demissa. Western Choke Cherry.....M
mume. "Dawn," Jap. Fl. Apricot.....M-1
cerasus. Weeping Fl. Cherry, 5 ft.....\$4.00 ea.
Pissardi moserii. Dbl. pink flrs.....M-1
triloba. Flowering plum. 5 gal.....\$1.50
REDBUD. See *Cercis*.

ROBINIA hispida. "Rose-acacia," rose-colored flowering Locust.....N	CYDONIA japonica. Flowering quince, strikingly beautiful red flowers.....C
langleyi. Pink flower. Locust.....N	DEUTZIA. Snowflake. (<i>D. scabra candidissima</i> .) White flower.....B
pseudacacia. Common or Black Locust. White flowersL	Fortune Deutzia. (<i>D. scabra fortunei</i>)...B
SALIX babylonica. Babylon Weeping WillowL	Pride of Rochester. Pink and red fls...B
SAMBUCUS. Golden Elder. (<i>S. canadensis aurea</i> .) Berry, black; very good for piesM	scabra crenata. Fuzzy Deutzia.....B
SOPHORA japonica. Pagoda or Chinese Scholar Tree. White flowers.....M	DIERVILLA. See Weigelia.
SORBUS aucuparia. European Mt. Ash. Very attractive red berries; a fine street treeM-1	DOGWOOD. See Cornus.
SYCAMORE. See Plantanus.	EXOCHORDA grandiflora. Pearl bush, flowers white; early, very showy.....C
TAMARIX pentandra. Pink flowers in early spring. Fast grower.....M-1	FORSYTHIA suspensa. Golden bells. Flowers yellow; early.....C
parvifloraM	viridissima. Green Stem Forsythia. More erect than preceding.....C
TAXODIUM distichum. Bald Cypress.....O	HIBISCUS syriacus. Shrub Althea. Flowers, all colors, double and single.....C
TILIA americana. American Linden.....M	HYDRANGEA opuloidea. (<i>H. hortensis</i>) Flowers pinkD
vulgaris. Common Linden.....M	Mousseline. Flowers pink.....D
ULMUS americana. American Elm.....M	Nigra. Flowers pink, stems black.....D
UMBRELLA TREE. See Melia.	paniculata. Panicle Hydrangea, fls. wh.D
WALNUT. See Juglans.	KERRIA japonica. Flrs. single or dbl.....B
WILLOW. See Salix.	LAGERSTROEMIA indica. Crape Myrtle D

DECIDUOUS SHRUBS

(Sold with bare roots during the winter planting season; a few specimens held in large cans for delivery the balance of the year.)

ABUTILON. Flowering Maple. Red, gold or white bell-shaped flowers. Very fineB	LONICERA grandiflora. Bride Honey-suckleB
ALTHEA. See Hibiscus.	rubraB
AMORPHA fruticosa. Indigo Shrub.....B	fragrantissima. Winter H.....B
BERBERIS thunbergii. Jap. Barberry. Popular hedge plant; low, compact, with yellow flowers and red berries...C	MALVAVISCUS arboreus. Wax Mal-low. Turks Cap.....A
illicifolia. Holly Barberry.....E	MATILIIJA POPPY. See Romneya.
vulgaris. European Barberry. Green leaves, yellow flowers and red berries..B	MESQUITE. See Prosopis.
Purple Barberry. (<i>B. vulgaris atro purpurea</i> .) Purple leaves.....B	MOCK ORANGE. See Philadelphus.
CAESALPINIA gillesi. Bird of Paradise. Very unusual flowers.....C	NUTTALIA cerasiformis. Oso Berry.....D
CALYCANTHUS floridus. Common sweetshrub. Large lvs., dark red flrs...B	NICOTIANA glauca. Tree Tobacco. Strong grower; flowers yellow.....A
occidentalis. Cal. sweetshrub.....B	PHILADELPHUS coronarius. Sweet Mock OrangeC
CARYOPTERS incana. Blue Spirea. Common Blue Beard. Intense sky-blue flowersC	POMEGRANATE. See Punica.
CEPHALANTHUS occidentalis. Common Button BushB	PROSOPIS juliflora. Mesquite.....C
CORNUS nuttali. Pacific Dogwood.....B	PRUNUS tomentosa. Nanking or Bush Cherry; very attractive hedge-plant, the red fruit being attractive and usefulC
CRAPE MYRTLE. See Lagerstroemia.	PUNICA granatum. Pomegranate; dbl. red or white.....C
CURRENT, flowering. See Ribes.	granatum. Paper Shell.....B
	granatum. Sweet Fruited.....B
	granatum. WonderfulB
	QUINCE, flowering. See Cydonia.
	RHUS copallina. Shining Sumach.....C
	cotinus. Common Smoke Tree.....C
	glabra. Smooth Sumach.....C
	RIBES aureum. Slender Golden Currant..C
	glutinsum. Winter Current. Pink.....C
	sanguineum. Yellow flowering.....C

ROMNEYA coulteri. Matilija Poppy. Coulter Canyon Poppy.....	C	leaves	L
SNOWBALL. See Viburnum.		(Growing in balls, unless otherwise noted.)	
SNOWBERRY. See Symphoricarpus.		ARBUTUS menziesi. Madrone.....	Potted E
SPIRAEA albiflora. Flrs. dbl. white.....	B	unedo. Strawberry tree; berries resemble strawberries, very attractive.....	F
Anthony Waterer. Flowers red.....	B	BEEFWOOD. See Casuarina.	
canescens. Hoary Spiraea.....	B	CAMPHOR. See Cinnamomum.	
prunifolia. Dbl. wh. Bridal Wreath.....	B	CAROB. See Ceratonia.	
douglasi. Douglas Spirea; flrs. pink.....	B	CASUARINA stricta. Beefwood.....	M
reevesiana. Reeves spirea; flrs. white.....	B	CERATONIA siliqua. Carob. St. Johns Bread	Potted...N
thunbergi. Thunberg Spirea; white.....	B	CINNAMOMUM camphora. Camphor.....	M
Van Houtee. (S. vanhouttei.) Flowers single white	B	ERIOBOTRYA japonica. Loquat.....	N
STYRAX californica. Snowdrop Tree.....	B	EUCALYPTUS amplifolia. Broad-leaf.....	L
STYRAX japonica. Japanese Snowbell.....	B	bosistoana. Bairnsdale Graybox.....	L
SYMPHORICARPUS racemosus. Snowberry. Red and white.....	B	citriodora. Lemon Gum.....	M
SYRINGA chinensis nana. Chinese Dwarf Lilac	D	corynocalyx. Sugar Gum.....	L
persica. Cut leaf lilac.....	C	crebra. Narrowleaf Ironbark.....	L
vulgaris. Purple, lavender and wh. flrs.....	B	ficifolia. Scarlet Gum. One of the most attractive when in bloom.....	N
VIBURNUM sterilis. Snowball.....	B	globulus. Blue Gum. Standard variety for wind-breaks.....	K
tomentosum. Jap. Snowball.....	B	gunni. Cider Gum.....	L
WEIGELA (DIERVILLA) rosea. Flrs. pink	B	leucoxylon-rosea. Pink Ironbark. Best pink flowering Eucalyptus tree. Flowers in November.....	M
Eva Rathke	C	polyanthemos. Red box. Slow growing; very ornamental	L
rosea variegata. Pink flowers. Variegated foliage	C	robusta. Brown Gum.....	L
		rostrata. Creek Gum.....	K
		rudis. Desert Gum.....	K
		sideroxylon-rosea. Rose Ironbark.....	L
		viminalis. Manna Gum.....	K
BROAD-LEAVED EVERGREEN TREES		GREVILLEA robusta. Silk Oak.....	M-1
(All Acacias growing in pots.)		LAUREL, California. See Umbellularia.	
(In balls, unless otherwise noted.)		LAUROCERASUS caroliniana. Carolina Cherry Laurel	M
ACACIA armata. Kangaroo. Thorn flrs. April and May.....	M	LIGUSTRUM japonicum. Jap. Privet.....	D
baileyana. Cootamundra Wattle. Flowers in February.....	M	potted.....	B
baileyana purpurea. Rare and very beautiful, having all the attractive points of Baileyana, with a wonderful purple tint added to the new growth		LOQUAT. See Eriobotrya.	
cultriformis. Knife acacia	B	MADRONE. See Arbutus.	
cyclops. Low spreading shrub, long leaves	C	MYRICA californica. Wax Myrtle. Ptted. N	
decurrens. Large spreading tree; flowers in July	L	OAK. See Quercus.	
decurrens-dealbata. Large tree; flowers in March	L	PEPPER TREE. See Schinus.	
latifolia. Low spreading tree; good for windbreak	L	PERSIA serrulata	E
longifolia floribunda. Slender, good for street planting; almost a continuous bloomer	L	PRUNUS ilicifolia. Hollyleaf Cherry. Beautiful planted as a hedge...potted...M	
melanoxylon. Blackwood acacia; a favorite for street planting.....	L	lyoni. (P. integrifolia). Catalina Island Cherry	potted...M
podalyraefolia. Pearl Acacia.....	N	QUERCUS agrifolia. Cal. Live Oak. potted...N	
First to bloom.		densiflora. Tan Bark Oak.....	potted...N
pravissima. Screwpod Acacia	M	ilex. Holly or Holm Oak.....	potted...M
pycnantha. Golden Wattle.....	M	morehus. Oracle Oak.....	potted...M
saligna. Willow Acacia.....	L	suber. Cork Oak.....	potted...N
verticillata. Star Acacia; needlelike		SCHINUS molle. California Pepper Tree. potted...L	
		terebinthifolius. Brazilian Pepper Tree. potted...M	



Schinus Molle

Vit's Henryi

Crataegus Crenulata

Cotoneaster Horizontalis

Ampelopsis Inconstans Lowii

STERCULIA diversifolia. Black Kurra-
jong Bottle Tree.....potted...N
STRAWBERRY TREE. See *Arbutus*.
TRISTANIA conferta. Brisbane Box.
potted...M
UMBELLULARIA californica. California
Laurelpotted...N

CONIFERS

(In balls, unless otherwise noted.)

ABIES concolor. White Fir.....P
ARBORVITAE. See *Thuja*.
CEDRUS atlantica. Mt. Atlas Cedar.....P
potted...N
deodora. Deodar Cedar.....P
libani. Cedar of Lebanon.....P
CEPHALOTAXUS harringtonia. Har-
rington Plum Yew.....P
CHAMAECYPARIS lawsoniana. Lawson
CypressO
potted...C
lawsoniana alumi. Blue Lawson Cypress P
CRYPTOMERIA japonica. Japanese
Cryptomeria, in 5 gal.....O
japonica elegans. Plume C.....O
CUPRESSUS arizonica. Arizona Cypress.
Good for background in large plant-
ings, and specimens.....N
potted...C

benthami. Bentham Cypress.....N
funeris. Mourning Cypress, in 5 gal...O
glabra. Smooth Cypress, in 5 gal.....N
goveniana. Gowen Cypress.....O
potted...N
macrocarpa. Monterey Cypress.....M
sempervirens. Italian Cypress.....O
Westermann CypressP

CYPRESS. See *Cupressus*.

FIR. See *Abies*.

JUNIPERUS californica. Cal. Juniper...O
communis. Common Juniper.....P
communis hibernica. Irish J.....P
excelsa. Spiny Greek Juniper.....P
sabina tamariscifolia. Tamarax Savin
Juniper. Creeping Trailer.....P

LIBOCEDRUS decurrens. Cal. Incense
Cedar. One of our finest native
conifersP

NUTMEG TREE. See *Torreya*.

PICEA excelsa. Norway Spruce.....O
sitchensis. Sitka Spruce.....O

PINUS attenuata. Knobcome Pine.....O
banksiana. Jack Pine.....P
canariensis. Canary Pine.....O
potted...C

coulteri. Coulter Pine.....O
excelsa. Himalayan Pine.....P
fremontianaO
Montana. Dwf. Swiss Mt. Pine.....O
muricata. Bishop Pine.....O
nigra. Austrian Pine.....O

pinasterP
pineaP
ponderosa. Western Yellow Pine.....O
radiata. Monterey Pine.....N
potted...B
sylvestris. Scotch Pine.....O
potted...C

PSEUDOTSUGA douglasi. Douglas Fir.P
REDWOOD. See *Sequoia*.

RETINISPORA ericoidesO
potted...N

SPRUCE. See *Picea*.

SEQUOIA gigantea. Calif. Big Tree or
Giant RedwoodP
1 gal. cans...N
sempervirens. Calif. Redwood.....O
potted...C

TAXUS baccata. English Yew.....P
baccata fastigiata. Irish Yew.....N

THUJA occidentalis. Am. Arborvitae.....N
potted...C
orientalis. Oriental Arborvitae.....N
orientalis aurea nana. Berckman's Gold-
en ArborvitaeP
rostedale. Rosedale Arborvitae.....P
potted...N
spiralisO
potted...N

TORREYA californica. Calif. Nutmeg
TreeP

**BROAD-LEAFED EVERGREEN
SHRUBS**

ABELIA grandiflora. Glossy Abelia.
Shiny leaves; flrs. pinkish-white; very
satisfactoryE
potted...C

ACACIA cultriformis. Knife blade Acacia
potted...B

ADENOSTOMA fasciculatum. Chamiso.
(Chaparral)C

ARCTOSTAPHYLOS glauca. Great Man-
zanitaG
5 gal. cans.....\$5.00

AUCUBA japonica. Japanese Aucuba.....C
japonica variegata. Goldust Aucuba.
potted...C

BERBERIS darwini. Darwin Barberry.
Orange Yellow flowers.....F
potted...C

elegantissimaF
potted...C

gagnepaini. Black Barberry.....D
ilicifolia. Holly Barberry.....E
knighti. Balled and potted.....D
stenophylla. Rosemary Barberry.....E
potted...C

wilsonae. Wilson Barberry.....E
potted...C

BOTTLE BRUSH. See Callistemon.	
BROOM. See Cytisus and Genista.	
BUDDLEA davidi. Orange-Eye Butterfly bush. Violet flowers.....	potted...B
asiatica	potted...C
davidi magnifica. Oxeye Butterfly Bush	B
farquahare. New	D
globosa. Globe Butterfly Bush. Yellow flower	B
madagascariensis. Winter fls., winter bloomer	potted...D
superba. New	D
BUXUS elegantissima. Variegated.....	D
aurea. Golden Box.	
sempervirens.	
sempervirens suffruticosa. Dwarf box. Trained Box. Cones. Globes Specimen plts. 2.50 and up. Small plts. for borders	W to Z
CALLISTEMON rigidum. Bottle Brush. Red flowers	E
	potted...B
CAMELIA. Pink and red.....	4.00 each
CARPENTERIA californica. Very handsome native shrub, bright green foliage, and large white flowers; prominent yellow stamens.....	potted...D
CASSIA artemesoides. Wormwood Senna.....	E
grandiflora. Senna	potted...D
tomentosa. Woolly Senna.....	potted...B
CEANOTHUS arboreus. Mt. Lilac. Sky blue	potted...D
arboreus hybridum. Pale blue.....	potted...D
incanus	D
Marie Simon	potted...D
spinosus. Sky blue.....	potted...C
thyrsiflorus. Vivid blue.....	C
verrucosus. White	C
CERASTRUM auranticum. Orange Cestrum	N
	potted...C
CHAMISO. See Adenostoma.	
CHOISYA ternata. Mexican Orange. Very fragrant white flowers.....	F
	potted...D
CHORIZEMA ilicifolium. Orange and red flowers. Can be trained as a vine also	T
CISTUS albidus. Whiteleaf Rock Rose.....	C
maculatus. Spotted Rock Rose.....	D
purpurea	C
rosea	C
COFFEE BERRY. See Rhamnus.	
COPROSMA baueri. Coral Coprosma. Looking Glass Plant.....	E
	potted...C
CORNUS capitata. Evergreen Dogwood.....	E
CORONILLA emerus. Scorpion Senna.....	E
glauca. Honey Coronilla.....	E
ladaniferus maculatus. Spotted Rock Rose	D
	potted...D
COTONEASTER francheti. Franchet Cotoneaster	E
	potted...M
frigida. Himalayan Cot.....	potted...D
harroviana	potted...D
horizontalis. Rock Cotoneaster. Very popular ground cover.....	F
	potted...C
microphylla. Rockspray Cot.....	E
	potted...M
microphylla thymifolia	F
	potted...D
pannosa. Silverleaf Cotoneaster. Grows to six or eight feet high.....	N
prostrata. New	potted 1 ft...75c
schneideri	E
	potted...C
simonsi. Simons Cotoneaster.....	E
.....	potted...C
CYTISUS canariensis. Canary Broom. elatior	B
	potted...D
fragrans. Sweet Broom.....	C
multiflorus. Portugal Broom.....	B
racemosus. Easter Broom.....	N
scoparius. Scotch Broom.....	E
	potted...B
scoparius andreanus. Paradise B.	potted...D
DIOSMA ericoides. Breath of Heaven.....	E
	potted...D
reevesi	E
DOGWOOD. See Cornus.	
ELEAGNUS pungens. Thorny Eleagnus.....	O
	potted...D
ENGLISH HOLLY. See Ilex.	
ERICA Felix Faure	E
carnea. Spring Heath	E
cotonoides	E
	potted...D
Mediterranea. Biscay Heath.....	E
	potted...D
mediterranea hybrida. Darley Heath.....	E
	potted...D
melanthera. Black-eyed Heath.....	E
persoluta. White, Garland Heath.....	E
persoluta rosea. Garland Heath.....	E
regerminas	E
stricta	E
vagens. Cornish Heath.....	D
veitchii	E
	potted...D
ESCALLONIA berteriana. White Flrs.....	E
	potted...C
exoniensis. White flowers.....	E
	potted...C
ingrami. Crimson flowers.....	E
	potted...C
langleyensis. Light pink flowers.....	E

LEONARD COATES NURSERIES—SAN JOSE, CALIFORNIA

	potted...C	LEPTOSPERMUM chapmaniF
rosea. Rose Escallonia.....	E	laevigatum. Australian Tea Tree.....E
	potted...C	potted...B
rubra. Red Escallonia.....	F	LIGUSTRUM Amoor RiverA
	potted...C	acuminatum (L. ciliatum).....B
EUONYMUS duc D'Anjou. Golden vari-		Golden California. (L. ovalifolium vari-
gated.....	D	egatum).....E
	potted...C	henryi.....potted...B
erecta compacta. Green erect.....	E	japonicum. Jap. Privet. Tree type.....C
	potted...C	ovalifolium. Calif. Privet.....per 100...7.50
japonicus. Green.....	D	sinense. Chinese Privet.....E
	potted...B	potted...C
japonica aurea marginatus. Gold margin.....E		vulgare. European Privet.....B
	potted...C	LILAC , native wild. See Ceanothus.
medio picta. (E. japonicus aurea). Gold		LIONS TAIL. See Leonotis.
center.....	E	LOBELIAA
	potted...C	LONICERA nitida. Box Honeysuckle.....E
mycophyllus. Box Leaf Burning Bush.....E		potted...B
	potted...C	MAHONIA (Berberis) aquifolium. Oregon
Pres. Gauthier.....	E	Grape. Beautiful in foliage, frs. and
	potted...D	fruit.
sieboldiana bungeanus. Winterberry		pinnata (Berberis California). Faster
Euonymus.....	E	growing than preceding. Leaves more
Silver Leaved. Silver margin.....	E	holly-like.
FABIANA imbricatapotted...C		MANZANITA. See Arctostaphylos.
FEIJOA sellowiana. Pineapple Guava.....E		MELALEUCA decussata. Lilac M.....E
	potted...C	potted...C
FREMONTIA californicapotted...F		ericifolia. Heath Melaleuca.....E
FUCHSIA magellanica gracilis. Naiad		potted...C
Fuchsia.....	potted...C	hypericifolia Dotted Melaleuca.....E
GENISTA hispanica. Spanish Broom.....CE		potted...C
	potted...B	nesophila. Pink Melaleuca.....E
hispanica nana. Dwarf Spanish		potted...C
	potted...C	MYRTUS communis. Myrtle.....E
monosperma. Bridal-Veil Broom		potted...C
	potted...C	communis variegata.....E
GORSE. See Ulex.		potted...D
GREVILLEA thelemannianapotted...D		microphylla. Rosemary Myrtle.....E
HAKEA laurina. Sea-Urchin Hakea.		potted...C
	potted...M	ralphi.....potted...D
HEATHER. See Erica.		NANDINA domesticaE
HOLLY. See Ilex.		potted...D
HYPERICUM hookerianumpotted...C		NERIUM. Oleanders. All colors.....E
moserianum. Gold Flower.....D		Dbl. red, pink, salmon pink, single
Variegated Goldflower. (H. moserian-		light pink, rose pink and white.
um tricolor).....	D	potted...C
patulum (nepalense). Japanese.		NIEREMBERGIA frutescens (atro-vio-
	potted...D	lacea). Tall Cup Flower.....potted...C
patulum henryi.....	D	OLEANDER. See Nerium.
ILEX aquifolium. English Holly.....		OSMANTHUS aquifolium. Holly Os-
crenata. Japanese Holly.....		manthus. 1 gal. cans. 1 to 1½ ft. \$1 ea.
opaca. American Holly.....potted...D		OSTEOMELES schwerinapotted...E
LAUROCERASUS lusitanica. Portugal		PACHYSANDRA terminalis. Japanese
Laurel.....	E	Pachysandra. Creeper.....R
officialis. English (Cherry). Laurel.....E		PHILADELPHUS Mexicana. Mexican
LAURUS nobilis. Grecian Laurel. 5 gal.....O		Mock Orange. 1 gal. cans.....C
potted...D		PHOTINIA arbutifolia. Xmas Berry.
LEMON. Ponderosa.....potted...E		potted...C
LEONOTIS leonorus. Lion's Tail.		serrulata
Showy orange-scarlet flowers.....C		PITTIOSPORUM crassifolium. Karo Pit-
		tosporum.....N

LEONARD COATES NURSERIES—SAN JOSE, CALIFORNIA

eugenoides. Tarata Pittosporum.....	potted...B	andersoni variegata	E
D	buxifolia	E
nigricans	potted...B		potted...R
phylleroides. Willow Pittosporum.....	potted...E	chatamica. Prostrata Trailing.....	E
tenuifolium. Tawhiwhi Pittosporum.....D		potted...S
	potted...B	cupressoides. Cypress Veronica.....	F
tobira. Tobira Pittosporum.....F	decussata purplea	D
	potted...C		potted...B
undulatum. Orange Pittosporum.....E	imperialis. Imperial Speedwell.....	E
White Tobira (P. tobira variegatum).....D	pinquefolia	(potted B)...E
POLYGALA dalmaisiana. Dalmais P.....E	reevesiiE
	potted...C	traversi. Bush SpeedwellE
PRIVET. See Ligustrum.		VIBURNUM japonicum. Japanese V.....	O
PYRACANTHA angustifolia. Narrow-		rhytidophyllum. Leatherleaf Viburnum.D E
leaf firethorn; late yellow berries.....E	suspensum (sandankwa). SandankwaD E
	potted...B	Viburnum. 1 gal.	potted...D
coccinea. Scarlet FirethornE	tinus. Laurustinus. A well-knownD
	potted...C	plant. Popular for its winter whiteE
coccinea lalandi. Laland Firethorn.E	flowers	(potted R)...E
Early yellow berries.....E	tinus variegata. Beautiful foliage.....	F
	potted...C		
crenulata. Nepal Firethorn.....E	AGAVES, DRACENAS, ORNA-	
	potted...C	MENTAL GRASSES and PALMS	
formosiana. Formosa Firethorn.....E	AGAVE americana. Century Plant. GreenS
	potted...C	leaves	50c to \$2.50...S
yunnanensis. Yunnan Firethorn.....E	americana var., Variegated leaves.T
	potted...B		potted 75c to \$3.00...T
RAPHIOLEPIS Round Leaf (umbellataE	ARUNDINARIA japonica...\$1.25 per clump	
ovata)E	ARUNDO donax. Giant Reed...\$1.25 Clump	
RHAMNUS californica. California BuckD	BAMBOO. Dwarf	\$1.25 per clump
ThornD	metake	\$1.25 per clump
Calif. TomentellaD	CHAMEROPS humilis. Dwarf Fan PalmD
purshiana. Cascara Buck Thorn.....D		3.00 to 10.00
RHUS integrifolia	potted...C	CORDYLINE australis. Green Dracena.D
ovata	potted...C		\$1.00 to \$5.00
ROSMARINUS officinalis. Rosemary.....C	ERYTHERA edulis. Guadalupe Palm.D
	potted...B		\$3.00 to \$12.00
SALVIA gregii. Red and White. BushB	GLAUCOTHEA armata. (Erythra arm-D
Salvia	potted...B	ata). Blue Palm.....	\$2.00 to \$8.00
SANTOLINA chamaecyparissus. Laven-D	PHOENIX canariensis. Canary Date P.D
der Cotton. Bare roots.....per 100...\$2.50			\$1.00 to \$5.00
SOLANUM pseudocapsicum. JerusalemC	PHORMIUM tenax. New Zealand Flax.D
CherryC		60c to \$2.50
SUMAC. See Rhus.		TRACHYCARPUS excelsa (ChameropsD
SWAINSONIA alba and rosea. Senna-B	excelsa) Windmill Palm.....	\$2.00 to \$8.00
Pea	potted...B	HESPEROYUCCA whipplei.D
TEUCRIUM fruticans. Tree Germander.....E		
	potted...D	TRAILERS	
TOYON. See Photinia.		ARMERIA vulgaris. Sea pink. BorderD
ULEX europeus. Common Gorse. Whin.....D	plants; small red flrs.....	50c per doz.
	potted...B	CONVOLVULUS mauritanicus. MoroccoR
nanus. Dwarf Gorse.....F	Convolvulus. Blue flowers.....R
	potted...D	EUONYMUS radicans. Winter Creeper.....R
VERONICA.		radicans variegataR
Every garden needs Veronicas. There		HELIANthemum. Sun Rose. All col-Q
are many kinds, and some are very		ors. One of the finest ground covers.Q
fast growers, with beautiful foliage		Flowers nearly all the year around.....Q
and flowers of different shades.		Red, pink, yellow, cream, apricot,Q
andersoni. Anderson Speedwell.....D	bronze, dbl. red and white.Q
	potted...C		

HYPERICUM calycinum	R
LEONTOPODIUM	R
LIPPIA canescens (<i>L. repens</i>). Lawn substitute. Very durable, 15 in. sq. \$1.00	
MESEMBRYANTHEMUM auranticum ...	R
MICROMERIA douglasi . Yerba Buena. Should be in every California garden. 2½ in. pot.....	W
PACKYсандRA terminalis .. Japanese Pachysandra	R
VERBENA . Giant	50c doz.
erinoides. Moss Vervain.....	Q
VINCA minor . Common Periwinkle. Butterfly Periwinkle (<i>V. minor</i> var.).....	X
VIOLETS	50c doz.
Swanley White. Double white. Princess of Wales. Large deep violet. Mrs. Astor. Violet, tinged red. J. Roddenberg. Light blue. Czar. Single white.	

CLIMBERS

AKEBIA quinata . Five leaf Akebia. Flrs. rose and pink. 1 gal.....	S
AMPELOPSIS henryana . Silver Vein Creeper	R
heterophylla var.	R
inconstans lowii	S
quinquefolia. Virginia Creeper.....	R
quinquefolia engelmanni. Engelmann. Creeper	R
sempervirens	S
tricuspidata (<i>A. veitchii</i>). Dec. Boston Ivy; clings to walls.....	R
BIGNONIA grandiflora . Chinese Trumpet Creeper. Orange and red flowers. Deciduous	S
tweedina	S
violacea. Ev. large lilac flowers.....	S
BOUGAINVILLEA sanderi (<i>Glabra sandersoniana</i>). Magenta; tender...\$1.50 each	
BOUSSINGAULTIA vasselloides . Madeira Vine. Perennial; fast grower. White flowers	50c doz.
BRIDGESIA spicata . Ev. Rare and good. Rose colored flrs. Will grow in shade..	T
CHORIZEMA ilicifolium . Orange and red flowers. Very good for cutting. potted...T	
CLEMATIS montana . Anemone Clematis. (Dec.) White flrs.....	S
paniculata. Japanese. Sweet autumn Clematis; wh. flrs.....	R
rubens	T
DOLICHOS lignosus . Australian-Pea. Rapid grower; rose colored, pea-shaped flowers	Q
FICUS pumila (<i>F. repens</i>). Climbing Fig. Clings to cement.....	S

GELSEMIUM sempervirens . Carolina Yellow Jessamine	S
HARDENBERGIA comptoniana . Deep violet	each...75
monophylla alba.....	T
monophylla lilacina.....	T
monophylla rosea.....	T
HEDERA. azorica . Large leaves.....	T
dentata aurea. Large leaves, rare.....	T
emerald gem. Leaves small; dark.....	T
helix. English Ivy	R
Japanese Tri-color. Beautiful.....	T
maculata minor	R
Mrs. Pollock	R
speciosa aurea. The most ornamental of all the Ivies. Leaves are beautifully marked with gold.....	T
JASMINUM bessianum . Rosy Jasmine. Climber or shrub	T
humile. Italian Jasmine. Yellow.....	T
officinale. Common White Jasmine. Flowers white and fragrant.....	S
primulinum. Primrose Jasmine. Double yellow flowers.....	S
LONICERA californica . Wild Honey-suckle	T
confusa	T
japonica halliana. Hall's Jap. Honey-suckle	R
japonica chinensis. Bronze leaves.....	R
MANDEVILLA suaveolens . Chile-Jasmine	T
MUEHLENBECKIA complexa . Wire Vine. Mattress Vine; tall climber.....	R
PANDOREA australis (<i>Tecoma australis</i>) Australian Pandora	S
PASSIFLORA incarnata . Maypop.....	T
manicata (<i>ignea</i>). Red Passion Fl.....	T
PLUMBAGO capensis . Cape Plumbago. Blue	S
White Cape Plumbago (<i>Capensis alba</i>)...S	
POLYGONUM baldschuanicum . Silver Fleece Vine; very strong climber; wh. flowers	S
PUERARIA thunbergiana . Kudzu-Bean. Immense grower	R
SOLANUM tuberosum . Potato Vine (Ev.) White flowers. In 1 gal. cans.....	R
SOLLYA heterophylla . Australian Blue Bell-Creeper	T
WISTERIA . Double Blue.....75c to \$1.50	
multijuga	\$1.00 to \$2.50
multijuga pink	\$1.00 to \$2.50
multijuga purpurea	\$1.00 to \$2.50
white75c to \$1.50

ROSES

Owing to the renewed interest in rose-planting in California, (most of our best roses have been shipped East in the past). we will allow 10% discount from the follow-

ing prices for 5 bushes, one or more varieties, delivered free, cash with order, within the third zone, and 20% discount for 10 or more, one or more varieties, delivered free, cash with order, within the third zone.

All first grade "two year" budded bushes. They will bloom this year, if properly planted.

BUSH ROSES

Five bushes mailed prepaid within 3rd zone.
Cash with order

ALEXANDER EMSLIE. Velvety crimson, overlaid ruby.....	.60
AMERICAN BEAUTY. Deep Rose.....	.60
BETTY. Coppery Rose.....	.65
CANDEUR LYONNAISE. Pure Wh.....	.60
CHATILLON Rose. Baby Rose, silvery carmine flrs. in large clusters.....	1.00
CHEERFUL. Orange.....	.65
CONSTANCE. Yellow.....	.75
FRAU KARL DRUSCHKI. White.....	.65
GENERAL ARTHUR. Fiery red.....	.65
GOLDEN EMBLEM. Yellow.....	1.00
GRUSS an TEPLITZ. Red.....	.65
HADLEY. Deep Crimson.....	.75
HOOSIER BEAUTY. Crimson.....	.75
HUGH DICKSON. Brilliant Crimson.....	.60
IRISH ELEGANCE. Single Apricot.....	.75
IRISH FIREFLAME. Sgle. Dp. Orange.....	.75
K. A. VICTORIA. White.....	.65
K. OF K. Scarlet.....	.75
JULIET. Old gold and scarlet; handsome bush; very hardy.....	.60
KILLARNEY BRILLIANT. Bright pink.....	.60
LADY HILLINGDON. Yellow.....	.75
LA FRANCE. Pink.....	.65
LOS ANGELES. Coral Pink.....	.65
LOUISE CATHERINE BRESLAU. Coral red.....	.75
LYON. Orange and yellow.....	.75
MADAME CAROLINE TESTOUT. Pink.....	.60
MADAME CECILLE BRUNNER. Pink.....	.65
MAD. EDOUARD HERRIOT. Scarlet.....	.65
MISS LOLITA ARMOUR. Coral Red.....	.75
MRS. CHAS. RUSSELL. Carmine.....	.65
MRS. AARON WARD. Apricot yellow.....	1.00
OPHELIA. Salmon Rose.....	.60
PAUL NEYRON. Dark Rose.....	.60
SOUV. de CLAUDIUS PERNET. Yel.....	1.50
SUNBURST. Yellow.....	.75
ULRICH BRUNNER. Cherry Red.....	.60
WM. F. DREER.....	1.00
WHITE MAMAN COCHET.....	.60

CLIMBING ROSES

BELLE of PORTUGAL. Creamy Pink.....	.75
BELLE SIEBRECHT. Pink.....	.60
CRIMSON RAMBLER.....	.60
MAMAN COCHET. White.....	.65
HOOSIER BEAUTY. Glowing Crimson.....	.75
K. A. VICTORIA. White.....	.75
LIBERTY.....	.65

LADY HILLINGDON. Yellow.....	1.50
MARECHAEL NIEL. Golden Yellow.....	1.00
MME. CAROLINE TESTOUT. Shell Pink.....	.65
MME. CECIL BRUNNER. Pink.....	.65
MME. CECILLE BRUNNER. Rosy pk.....	.65
PAUL'S SCARLET. Vivid scarlet.....	.65
RAYON D'OR. Yellow.....	.75
RED CHEROKEE (Ramona).....	.65
SINGLE PINK CHEROKEE.....	.65
SILVER MOON. Creamy White.....	.65

HOLMES GARDEN-BOOK

A practical and handy manual of pertinent information about seeds, bulbs, plants and flowers. Be you amateur or professional gardener, seedsman or florist, you will find this handy pocket-size book of 96 pages of great assistance and value. Nothing like it has ever been published. Strongly bound in cloth. \$1.00 postpaid.

PERENNIALS

Orders amounting to \$2.00 or more delivered prepaid within 3rd zone. Cash with order.

ABRONIA. Sand Verbena.....per doz.	20c
AGATHEA coelestis. Blue Daisy.....	X
AGERATUM. Floss Flower.....	V
ANCHUSA.....	X
ANTIRRHINUM. See Snapdragon.	
ASPARAGUS PLUMOSUS Ferns 15c to \$1 sprengerii.....	15c to \$1
ARALIS. See Rock Cress.	
ASTERS. Large flowering; mixed and separate colors.....	V
AQUILEGIA. See Columbine.	
BEGONIA VERNON. For bordering.....	W
BELLIS PERENNIS. English Daisy.....	V
CANNAS. Good Assortment of varieties.....	\$1.50 to \$2.50 per doz.
CANTERBURY BELLS. Campanula.....	W
CENTAUREA. Sweet Sultan.....	V
CERASTIUM.....	X
CINERARIAS. Mixed colors.....	W
COCKSCOMB. Celosia.....	X
COLUMBINE. Aquilegia.	
COREOPSIS. Golden flowers.....	V
CORAL BELLS. See Heuchera.	
COSMOS. Assorted colors.....	V
DAISIES. Shasta.....	V
Double Garden.....	V
DELPHINIUM. Larkspur.....	W
belladonna. Light Blue.....	Y
bellamosus. Dark Blue.....	Y
FEVERFEW.....	U
FORGET-ME-NOT. Myosotis.....	V
FOXGLOVES. Digitalis. Rose, yellow and purple.....	W
GAILLARDIA. Blanket Flower.....	V
GAZANIAS. Yellow and orange.....	U
GERANIUMS. Asstd. colors for bedding.....	\$1.50 per doz.
GEUM. Scarlet and golden-yellow.....	X
GOLDEN GLOW. Rudbeckia.....	W
GYPHOPHILA. Baby's Breath.....	Y
HELIOTROPE.....	X

HEUCHERA. Coral Bells.....	Y
HOLLYHOCKS. .. Single ..and double mixed colors	W
HUNNEMANIA. Bush Eschscholtzia.....	Y
LAVENDER	Y
LOBELIA cardinalis	Y
Crystal palace compacta.....	U
MARGOLD. African and French.....	V
OENOTHERA. Evening Primrose.....	X
PANSIES. Mixed colors; fine strain.....	U
PENTSTEMONS. Asstd. colors.....	W
PETUNIAS. Double and single.....	X
PHLOX. Asstd. colors.....	X
PINKS. Dianthus	W
PLUMBAGO Larpente	Y
POPPY Oriental	X
Iceland	U
RED HOT POKER. See Tritonia.....	
ROCK CRESS. For rockeries.....	X
SALVIA splendens. Scarlet	V
farinacea	Y
SALPIGLOSSIS	X
SANTOLINA. Lavender Cotton for bor- ders	U
SCABIOSA. Blue and mixed.....	X
SEA PINKS. Armeria	V
SEDUM Stonecrop	Y
SNAPDRAGONS. Antirrhinum. Red, pink and asstd. colors.....	V
STATICE. Sea Lavender.....	W
STOCKS. Separate and asstd. colors.....	V
SWEET WILLIAM	W
TRITONIA. Red Hot Poker.....	W
VALERIANA. Garden Helitrope.....	X
VIOLETS	V
VERBENAS. Separate and asstd. colors..	V
WALL FLOWERS	V
ZINNIAS. Large double mixed.....	W

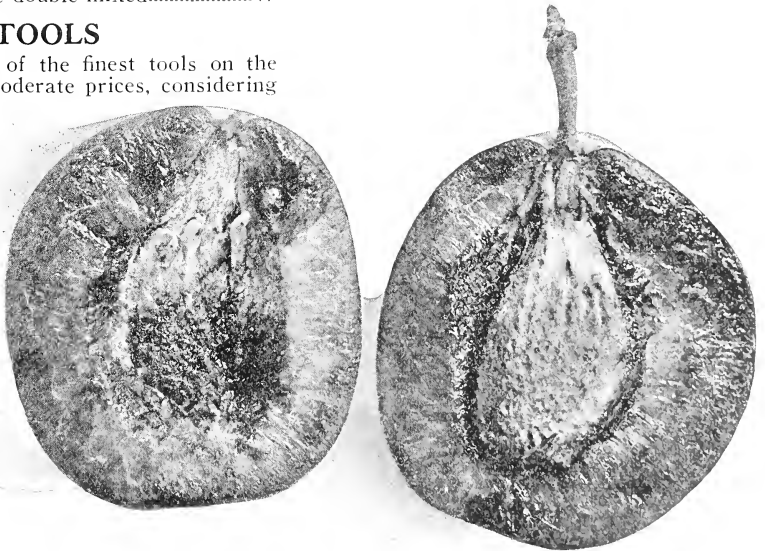
the quality. These tools are made by The Village Blacksmith Folks, of Watertown, Wisconsin. Quoting the manufacturer, in part, "Goods are more often judged by their finish and appearance—rather than by their wearing and intrinsic values—and therefore our success is dependent upon the appreciation and understanding of our processes, methods, and aims, by those engaged in their selling.

"It is a known fact and we advertise to follow very closely the 'Olden Times' way of making goods in our shop and we have made possible the making and the marketing of VILLAGE BLACKSMITH products on a commercial basis—and within the means of all who appreciate quality."

No. 660 6-inch Hedge Shears.....	2.00
No. V-140 Pruning Shears.....	1.50
No. V-14 Pruning Shears.....	2.00
No. V-19 Pruning Shears.....	4.75
T-10 Garden Trowels.....	.75
T-15 Garden Trowels.....	.45
T-20 Garden Trowels.....	.25
V-31 Grass Shears.....	.75
V-52 Grass Shears.....	.60
V-56 Grass Shears.....	1.00
No. 219 Dandelion Diggers.....	.35
No. 5½ 7-inch Sprinklers.....	2.00
No. V-15 Rose Pruning Shears.....	1.75
F-30 Spading Forks50
F-40 Spading Forks40
No. 18 Grass Hook Assortment.....	.50c to 75c ea.
No. 800 8-inch Hedge Shears.....	2.75
No. 19 Lawn Sprinklers.....	.70
Lawn Mowers.....	13.50 to 20.50

TOOLS

We offer some of the finest tools on the market at very moderate prices, considering



COATES 1418 FRENCH PRUNE

LEONARD COATES NURSERIES—SAN JOSE, CALIFORNIA

EXPLANATION OF SCHEDULE OF PRICES
ORNAMENTAL PRICE LIST

You will note that each variety among our ornamentals is followed by a letter, viz: A, G, N, etc. These letters refer to our price schedule. For instance, after the description of *Betula alba*, you will find the letter "N." Referring to this schedule you will find "N" 5-6 ft. priced \$2.00 each and \$18.00 per 10. Likewise *Hicoria*, *Pecan* is followed by "L," and has a range from 2-6 feet. You will find under "L" 4-5 ft. 70c each and \$6.30 per 10, 5-6 ft. 80c each and \$7.20 per 10, and so on.

We sell 5 of one kind at 10 rate, less at each rate.

A			3 to 4 ft.....	1.20	10.80
	Each	Per 10	4 to 5 ft.....	1.35	12.15
1 to 2 ft.....	\$.30	\$ 2.70	5 to 6 ft.....	1.50	13.50
2 to 3 ft.....	.40	3.60			
3 to 4 ft.....	.50	4.50	N		
B			In "flats," \$6.00 per 100.		
1 to 2 ft.....	.45	4.05	1 to 2 ft.....	.75	6.75
2 to 3 ft.....	.60	5.40	2 to 3 ft.....	1.10	9.90
3 to 4 ft.....	.70	6.30	3 to 4 ft.....	1.50	13.50
C			4 to 5 ft.....	1.75	15.75
1 to 2 ft.....	.60	5.40	5 to 6 ft.....	2.00	18.00
2 to 3 ft.....	.75	6.75	O		
3 to 4 ft.....	.90	8.10	1 to 2 ft.....	1.10	9.90
D			2 to 3 ft.....	1.70	15.30
1 to 2 ft.....	.75	6.75	3 to 4 ft.....	2.50	22.50
2 to 3 ft.....	.95	8.55	4 to 5 ft.....	3.50	31.50
3 to 4 ft.....	1.10	9.90	5 to 6 ft.....	5.00	45.00
E			P		
1 to 2 ft.....	1.10	9.90	1 to 2 ft.....	1.50	13.50
2 to 3 ft.....	1.35	12.15	2 to 3 ft.....	2.25	20.25
3 to 4 ft.....	1.60	14.40	3 to 4 ft.....	4.00	36.00
F			4 to 5 ft.....	6.00	54.00
1 to 2 ft.....	1.50	13.50	5 to 6 ft.....	10.00	90.00
2 to 3 ft.....	1.80	16.20	Q		
3 to 4 ft.....	2.10	18.90	4 in. pots.....	.30	2.70
G			5 in. pots.....	.35	3.15
1 to 2 ft.....	2.25	20.25	6 in. pots.....	.40	3.60
2 to 3 ft.....	2.70	24.30	R		
3 to 4 ft.....	3.10	27.90	In		
K			4 in. pots.....	.40	3.60
In "flats".....	\$3.00 per 100,	\$25.00 per 1000	5 in. pots.....	.50	4.50
	Each	Per 10	6 in. pots.....	.60	5.40
1 to 2 ft.....	\$.20	\$ 1.80	S		
2 to 3 ft.....	.30	2.70	In		
3 to 4 ft.....	.40	3.60	4 in. pots.....	.50	4.50
4 to 5 ft.....	.50	4.50	5 in. pots.....	.60	5.40
5 to 6 ft.....	.60	5.40	6 in. pots.....	.70	6.30
L			T		
In "flats".....	\$4.00 per 100,	\$35.00 per 1000	In		
	Each	Per 10	4 in. pots.....	.60	5.40
1 to 2 ft.....	\$.30	\$ 2.70	5 in. pots.....	.70	6.30
2 to 3 ft.....	.45	4.05	U		
3 to 4 ft.....	.60	5.40	\$.35 per dozen		\$2.25 per 100
4 to 5 ft.....	.70	6.30	V		
5 to 6 ft.....	.80	7.20	\$.50 per dozen		\$3.50 per 100
M			W		
In "flats,"	\$5.00 per 100.		\$.75 per dozen		\$5.50 per 100
1 to 2 ft.....	.45	4.05	X		
2 to 3 ft.....	.65	5.85	\$.15 each		\$1.25 per dozen
3 to 4 ft.....	.85	7.65	Y		
4 to 5 ft.....	1.05	9.45	\$.25 each		\$2.50 per dozen
5 to 6 ft.....	1.20	10.80	Z		
M-1			\$.35 each		\$3.50 per dozen
1 to 2 ft.....	.60	5.40			
2 to 3 ft.....	.90	8.10			

GROWERS of COATES 1418 FRENCH PRUNES-

Please advise tonnage you expect to produce of the Coates 1418 French prune in 1926. We need these figures because packers of high grade food products are demanding this variety for their best pack, and are trying to locate enough fruit. Dry and bin them apart, and get a separate receipt from the Association or Packer with whom you deal. The best Coates 1418s should bring you at least one cent per pound more than the same grade of ordinary French.

I expect to produce _____ lbs. dried Coates 1418s in 1926, and the crop should increase _____ % a year for _____ years. My dried prunes are delivered to _____

Signed _____

Date _____

Post Office _____

(When filled out mail to Leonard Coates Nurseries, Box 1312, San Jose, Calif.)



2



3

1 *Berberis Aquifolium*

2 *Nandina Domestica*

3 *Eucalyptus Rudis* and *Linearis*



1 *Hypericum Moserianum*
5 English Ivy

2 *Ampelopsis Sempervirens*

3 Orchid Flowering Canna

4 *Asparagus El*

6 *Acacia Cultriformis, Acacia Baileyana, Acacia Extensa, Acacia Saligna*