

Historic, Archive Document

Do not assume content reflects current scientific knowledge, policies, or practice



68.73

1111111111

Daniels

Utility Plants

1926



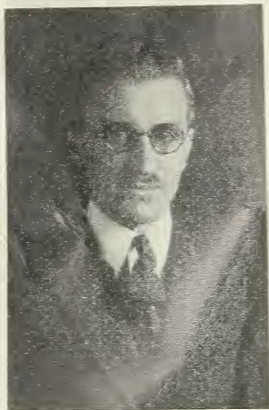
Plants that satisfy
Varieties that succeed
Service that counts
Prices that please

The Daniels Nursery

*The Northwest's Leading Utility Plant
Producers*

Franc P. Daniels, Proprietor

Long Lake, Minnesota



FRANC P. DANIELS
Proprietor

It is a pleasure to send you our newest catalog. I believe you will find it of value.

In it are described the leading standard varieties of fruit and ornamental plants for the Northwest, including the best of the new varieties originated at the great Minnesota State Fruit Breeding Farm. It is impossible to overemphasize the tremendous value of these new Minnesota originations. No modern fruit planting is complete without them. They deserve your special attention.

I want to thank our old customers for the liberal patronage they have given us in the past. Their continued patronage, together with the many testimonials we receive yearly is abundant proof that we have satisfied them. To those who place their first order with us this year I assure the same degree of satisfaction.

I depend upon the merits of our stock and the service we give to maintain and increase our business. That I have succeeded is clearly shown by the fact that each season's business has been far greater than that of the previous year. **This great and continued increase is due to our policy of furnishing well grown, hardy stock, true to name, of the best varieties available for the Northwest, sold direct to the planter at planters' prices, under a "Satisfied Customer" policy.** Another factor which has contributed liberally to the remarkable growth of our business is that I personally stand back of every sale and do not consider a transaction complete until the purchaser is satisfied. I see to it that you are pleased with your dealings with us.

Planting season is near at hand. We both benefit from early orders, so I urge that you send your order in promptly while our stock is still complete.

I want your order, not only this Spring but for years to come, and am glad at all times to let the quality of our plants and our service determine whether or not you will buy from us in future. I am confident that you will. Respectfully,

FRANC P. DANIELS, Proprietor.

N. B. I am printing my picture above, not because I am proud of it, but because most people like to know what the man they are dealing with looks like.

POINTED PARAGRAPHS FOR PROSPECTIVE PURCHASERS

UTILITY PLANTS. Our specialty is UTILITY PLANTS. By UTILITY PLANTS we mean particularly plants of PRODUCTIVE USEFULNESS, as well as plants that serve useful purposes but are not productive of usable crops. No group of plants gives greater returns for the amount of money invested than do DANIELS' UTILITY PLANTS.

OUR VARIETIES. Our list of varieties is strictly up-to-date. We have chosen them purely on their merits—because they have proven themselves to be the best varieties in existence for our rigorous Northwest climate. Our varieties bear the official stamp of approval of the highest horticultural authorities of the State and Northwest.

MINNESOTA STATE FRUIT BREEDING FARM VARIETIES. These new horticultural wonders have entirely changed the fruit growing situation in the Northwest. They have driven out of the State the bugaboo of "poor climatic conditions" and steadily advanced the frontier of fruit growing until gardens and orchards in all parts of Minnesota can now produce fruits of the highest quality, and have opened up new fields of commercial fruit growing with heretofore undreamt of possibilities for profit.

OUR PLANTS. We make every effort to produce plants of the highest quality and to so handle and pack them that they will reach the customer in 100% perfect condition. Our grades are large and are strong, well rooted specimens, sure to grow. Please do not confuse our stock with the cheap so-called "mail order" grades offered by so many concerns.

OUR PRICES. We put QUALITY above price. A poor plant is dear at any price. Plants lower priced than ours may be purchased. It is our firm belief, however, that they will prove more expensive in the end. We have put our prices as low as is consistent with the cost of producing strictly first class stock. And higher priced plants may be bought, too. But the fact that they are higher priced than ours does not necessarily make them any better than ours. The difference in price is usually explainable by less economical production, desire for greater margin of profit, or by a different method of selling.

VARIETIES WE DO NOT LIST. We are growing for our large local trade many varieties of fruits and ornamentals which are not listed in this catalog because of our small stock of each. If you want something you do not see listed, write us. The chances are we have it and can save you money on it, too.

**TONKA**

(Photo by Univ. of Minn.)

THE NEW MINNESOTA PLUMS

Unquestionably the most important horticultural development of recent years has been the breeding of this new race of hardy plums by the Minnesota State Fruit Breeding Farm. These are truly wonderful fruits. Most people in the Northwest are now familiar with them, for the agricultural press and the radio have broadcast much about them in the past few years. In quality they are second to none, and when properly tree ripened here in the Middle West are vastly superior to the shipped in Western plums which are picked and packed while green. Many of the varieties have large fruits the equal of any California plums in size and market qualities.

These wonderful new varieties should in no way be confused with the older sorts that have been grown in the Northwest previously. The trees are hardy and heavy annual bearers. These new plums bear every year, start bearing at an early age—usually the year after planting—and produce enormous crops. Judging from past performances, they will be one of the most profitable crops in Minnesota and adjoining States. Many trees have already shown an average annual fruit production of over \$10.00 each, and with 140 trees per acre the possibilities for profit are tremendous. The importance of this new group of fruits as a market crop is so well established that the formation of a statewide organization has already started, insuring easy marketing at highest prices for the commercial grower. Commercial orchards of these great plums can be made to produce tremendous profits in any part of the State, and for home use there is no more desirable fruit.

"Medium" Grades for Commercial Orchards

We have an excellent stock of medium size trees, ideal for extensive plantings.

THE THREE LEADING PLUMS**RED WING**

(Photo by Univ. of Minn.)

UNDERWOOD**The One Best Plum**

(Minnesota No. 91.) One of the strongest growing trees of the new varieties. The fruit is large, attractive red, with a firm, juicy flesh. The fruit ripens over a long period and hangs well to the tree. The season is early, usually commencing late in July and giving about two weeks of picking. One of the best commercial plums for the Northwest, and because of its long season, large, high quality fruit, and finely formed, hardy tree, is one of the best home orchard plums.

TONKA**A Commercial Winner**

(Minnesota No. 21.) Tonka is considered one of the best plums yet produced, PARTICULARLY WHERE EARLY RETURNS ARE DESIRED. The fruit is large, yellowish, overlaid with red, and the flesh is very firm. When ripened the stone is free. The flavor is sweet and the quality good. A very fine market plum, because of its splendid keeping and shipping qualities, and because of its very regular, heavy production. Mid-season.

RED WING**Surpasses Others in Size and Quality**

(Minnesota No. 12.) One of the largest of the new plums, an unexcelled variety for home use or for market. The stone is small and entirely free. When thoroughly ripe this plum may be peeled like a peach and eaten with cream and sugar. The color is yellow, overlaid with bright red. Quality very good. No planting is complete without Red Wing. Mid-season.

WINONA

(Minnesota No. 30.) A regular yielder of sweet, juicy fruit of high quality. Sufficiently firm to make a good market fruit. Produces a vigorous, well balanced tree. A profit producer. Season late.

HENNEPIN

(Minnesota No. 132.) Its dark flesh and juice makes this one of the most popular of the new plums for preserving. Firm, sweet, juicy and of good quality. Valuable for both home and market. Early mid-season.

GOLDEN ROD

(Minnesota No. 120.) Yellow. A large, firm plum and the Northwest's best yellow market plum. Makes an especially fine tree. Late mid-season.

MENDOTA

(Minnesota No. 5.) A new introduction. Quality excellent. One of the largest, most attractive fruits yet produced at the State Fruit Breeding Farm. We offer a limited number of small trees.

LA CRESCENT

(Minnesota No. 109.) Yellow. Quality of the highest. Size small, but because of its extreme earliness, hardiness and high quality, should be in every home orchard.

WACONIA

(Minnesota No. 10.) A new variety of promise. A heavy producer of large red fruit of good quality. Mid-season.

MOUND

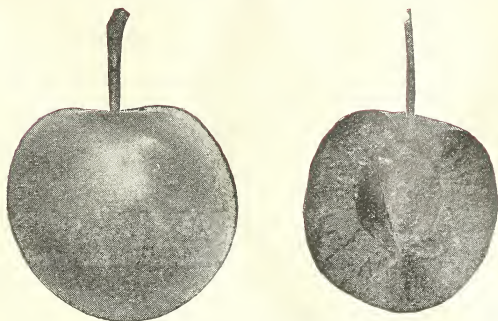
(Minnesota No. 50.) A heavy regular producer of large red plums of high market quality. Season late.

ELLIOTT

(Minnesota No. 8.) A strong growing, hardy tree. Has fruited successfully at Winnipeg. A productive regular bearer of large plums. One of the best late market plums.

MONITOR

(Minnesota No. 70.) Another most excellent late plum. Tree is hardy, well formed and productive of especially large red fruit of good quality. A leading market plum. Season late.



ZUMBRA CHERRY
(Photo by Univ. of Minn.)

CHERRIES FOR THE NORTHWEST

Thanks to the scientific plant breeding work of the State Fruit Breeding Farm, we now have three varieties of cherries, sufficiently hardy for the Northwest, which are regular heavy bearers of fruit of satisfactory quality. Because of their growth habits, these cherries, especially the Zumbra, should be headed low, and we have made a practice of this in our nursery rows. These dwarf trees will prove infinitely more satisfactory than the high headed trees being sold by nurseries who do not fully understand the growth and bearing habits of these fruits.

ZUMBRA

This remarkable cherry hybrid was the first cherry introduced by the Minnesota State Fruit Breeding Farm. It bears early, usually blooming the year after planting. Fruits as far north as Winnipeg. The very dark, almost black fruit reaches one inch in diameter and is borne in thick rope-like clusters along the wood of the last season's growth. Late.

ST. ANTHONY

(Minnesota No. 145.) This promising new cherry makes a tree which is vigorous and productive. The fruit is small to medium, and a dark, purplish black in color—firm, juicy flesh, of good quality when fully ripe and excellent for preserving. An excellent variety. Late.

NICOLLET

(Minnesota No. 144.) The newest of the Fruit Breeding Farm cherries and the most promising. The fruit is more nearly like the true cherry than anything yet produced in the Northwest. Our stock is very limited and we offer only two to four foot trees this year. Order early if you want a tree of Nicollet.

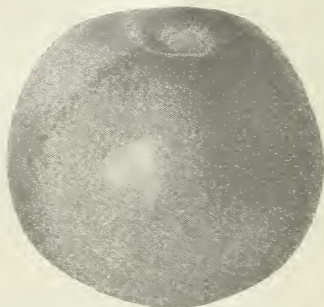
APPLES

The Thinking Man Is Planting Apple Trees Now

Popular opinion to the contrary, there probably has never been a time in the history of Minnesota and the Northwest when the outlook was more favorable for the planting of a commercial apple orchard if the proper varieties are used. Two chief factors contributing to this favorable situation are, first, the tremendous decrease in the number of trees both of bearing and non-bearing age in the past decade (a decrease of over 23% in bearing and 45% in non-bearing trees), and, second, the advent of new varieties which will make apple production in the Northwest more profitable than it has ever been heretofore. Our trees of these new varieties and of the old standard ones are well grown and guaranteed true to name. They make a dependable foundation for a highly profitable orchard.

DANIELS RED DUCHESS

The Most Profitable Early Red Apple



DANIELS RED DUCHESS

The Daniels Red Duchess is apparently a true bud sport of the old Duchess and has so been described by Professor M. J. Dorsey of Illinois, who first directed attention to this apple in an article in the American Journal of Heredity in 1917. Since

that time it has been under observation and study by the members of the staff of the Division of Horticulture at the University of Minnesota and is now being tested in over twenty experimental stations in different parts of the country. Wherever shown it has met with instant recognition as a variety surpassing other early red apples in commercial possibilities. Three years ago we purchased the original tree and all existing propagating wood of this variety for \$1,500.00.

The Daniels Red Duchess has all the good qualities of the old Duchess of Oldenburg, including its hardiness and heavy regular bearing habits. In addition, it possesses that all-important price-commanding quality of high red color. This color makes the apple sell readily at a premium of 50c to \$1.00 per bushel above other apples of the same season. Furthermore, it sells on sight and can be moved quickly at a profit even when the market is glutted with ordinary apples.

Read what two of the leading horticulturists of the country have to say regarding Daniels Red Duchess:

Professor W. H. Alderman, Chief of Division of Horticulture, University Farm, St. Paul, Minn.: "It is unquestionably the most highly colored sport of the Duchess of Oldenburg known to be in existence. . . . I can see no reason why commercial growers should continue to plant Duchess when the new sport is available in quantity sufficient to supply the demand."

Professor J. K. Shaw, Pomologist, Massachusetts Agricultural College, Amherst, Mass.: "This is certainly greatly superior to the ordinary Duchess in color."

At this time Daniels Red Duchess may be secured only from us. Our stock is limited and as we are certain to be sold out early in the season orders should be placed promptly. We offer two year lightly branched trees.

HARALSON

Minnesota's Famous Winter Apple

(Minnesota No. 90.) At last we have a real hardy winter apple for the Northwest. Haralson is Minnesota's only hardy, high quality red winter eating apple that will keep until late Spring and early Summer in ordinary storage. It has been correctly called the "NORTHWEST'S BEST WINTER APPLE." Haralson is an extremely vigorous grower, making an upright tree with strong, wide angle crotch and branching system. Highly resistant to fire blight. It bears early and is a heavy producer of bright red fruit of high quality that hangs on the tree until picked. Entirely hardy. No home or commercial orchard is complete without this valuable new variety. We offer this year only 3 to 5 ft. lightly branched trees.



HARALSON

(Photo by Univ. of Minn.)

FOLWELL

A Remarkable New Fall Apple

(Minnesota No. 237.) This valuable new State Fruit Breeding Farm introduction is highly popular with all those who know it, for there is a real place for an apple of this type and season. The tree is a vigorous free grower, with excellent crotch and branching habit. Hardy throughout Minnesota. A heavy, regular bearer. The fruit is large, about like the Northwestern Greening, greenish-yellow

strongly blushed with red. Quality very good. Keeps longer than the Wealthy. Really worth planting. We offer this year nicely branched two year trees 4 to 5 ft. in height.

STANDARD VARIETIES OF APPLE

We are offering the following varieties in well grown standard size trees, 5 to 6 ft., well rooted with strong two year tops. Best size for planting.

YELLOW TRANSPARENT. The earliest standard variety grown in Minnesota. Highly desirable except for susceptibility to blight.

DUCHESS (Oldenburg). The best known of the old early apples of the Northwest. Our new Daniels Red Duchess is vastly superior to this variety, however, and should be planted in preference to it.

PATTEN GREENING. The best "greening" for the Northwest. Hardy and heavy, regular fruiter.

NORTHWESTERN GREENING. High quality, long keeping greening. Should be planted only in favorable locations.

WEALTHY. The Northwest's most popular apple for both home and market. Hardy, beautiful red fruit. Flavor unexcelled.

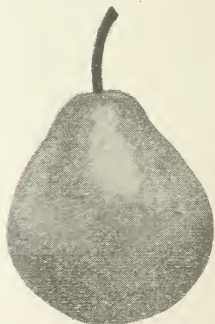
FLORENCE CRAB. The best all-round crab for general purposes. Blights very little.

TRANSCENDENT CRAB. Hardy, strong growing tree, but subject to blight some seasons. Favorite for pickling.

MINNESOTA NO. 1 PEAR

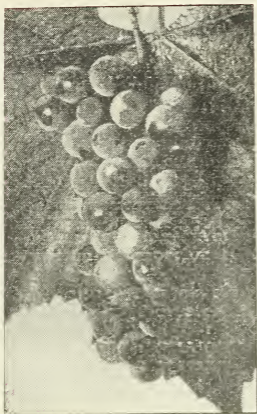
Wonderful New Pear from the State Fruit Breed- ing Farm

This high quality eating and cooking pear is another valuable production of our great State Fruit Breeding Farm, which is heralded by horticultural authorities as being the most promising and the most satisfactory pear at present known for growing in Minnesota and adjacent territory. Is especially recommended for the climate of Central and Southern Minnesota. We offer a limited stock of one year 3 to 5 ft. whips. Early ordering will be necessary to secure trees this year.



MINNESOTA No. 1

Photo by
Univ. of Minn.



BETA

(Photo by Univ. of Minn.)

crop grown in the Northwest. They bear very heavily and have consistently brought from \$3.00 to \$4.00 per bushel. Many growers reported yields of \$1,000.00 per acre. No special market is needed for them as they may be sold at profitable prices in all parts of the State. In fact, there is no community in which a proper planting of Daniels hardy grape vines will not prove a true "mortgage lifter."

BETA

The "Standard" Hardy Grape for the Northwest

The most widely grown and probably the most profitable grape in the Northwest. A heavy annual bearer. Hardy as a wild grape and produces enormous crops. It ripens so early that it may be grown far North. A planting of our fine Beta vines is a permanent investment that will prove lastingly and highly profitable.

ALPHA

A more recent introduction than the Beta. Preferred to it by most of those who have grown it. Equal to Beta in hardiness and yield and considered superior in quality. Worthy of extensive cultivation.

THE TENDER GRAPES

The tender grapes require winter protection in most parts of Minnesota.

CONCORD

Of the tender grapes we are growing only the Concord, the most generally satisfactory of this group. Quality far superior to the hardy grapes. Concord is a standard grape everywhere.

RASPBERRY MOSAIC

Mosaic is the most serious disease known to small fruit growers. Because of its great importance we are devoting this page to a discussion of it. It has been shown conclusively that the chief cause for the so-called "running out" of raspberries is the Mosaic disease.

"Running out" is simply another name for the condition found in so many raspberry fields where there is a continual falling off of production and vigor in the canes until the growth becomes

so weak and spindly, and the berries so small, so crumbly and so few, that there is neither profit nor satisfaction in growing them. The raspberry growers who have fields of "Mosaic Free" plants, those which contain little or no mosaic, are getting tremendous yields. Many plantations in the last year or two have produced \$1,000.00 or more per acre.

The successful grower of the future will plant nothing but Mosaic Free plants, for a field once established of this stock may be maintained in a vigorous, high producing state and may be made to produce tremendous profits for many years. The disease is prevalent practically everywhere. It is impossible to eradicate the mosaic from old, badly infected fields. Old fields should be maintained only as long as they pay, and in the meantime new fields should be planted with Daniels High Quality Mosaic Free Raspberry plants. "Mosaic Free" plants should preferably be set twenty rods or more from diseased fields.

Let these fine plants of ours make the foundation of a new era of raspberry growing for you—an era that will be notable for surprisingly fine growth and unusually high yields and profits—an era filled with the satisfaction that comes only to the grower who does things as they should be done and is fittingly rewarded with fine fruits and large profits.

Mosaic Free Raspberry Stock is scarce everywhere. Our stock, too, is limited. Order early.



LATHA

(Photo by Univ. I

THE LATHAM RED RASPBERRY

(Mosaic Free)

"The Country's Greatest Red"

This valuable State Fruit Breeding Farm origination, first introduced as Minnesota No. 4, has met with phenomenal success not only in Minnesota but in other sections of the country. Recent comparative tests in Connecticut showed it far superior in that State to any of the older varieties. It is rapidly replacing older varieties in the East. In Minnesota it is the one outstanding home and commercial variety.

Latham is entirely hardy in the Northwest without winter protection. The vigorous, strong canes are well able to support the enormous loads of fruit this variety produces. The berry is large, easily picked, of high quality and produced in great abundance. On

many markets it is bringing a premium of from 50 cents to \$1.00 above other varieties. At the present, Mosaic Free Latham Raspberries are producing greater profits than any other small fruit now being grown in the Northwest.

Our supply of Mosaic Free Plants is limited, but in keeping with our policy of maintaining "planters' prices" we are offering these at a very low price, considering the scarcity of the plants and the tremendous demand.

We are offering for Spring 1926 a small block of the ordinary Latham plants, selected from a field in which very little mosaic is present. We do not recommend planting stock of this type, as Mosaic Free stock is vastly superior, but will furnish them to those who desire them.

KING RED RASPBERRY

(Mosaic Free)

Best for Early Season Profits

There is no better **early** red raspberry than the King, and with our Mosaic Free plants it is possible to obtain profits from King approximating those from the Latham. As King comes a week or more earlier than Latham, it makes an ideal berry to grow in connection with the Latham, commanding the high prices of the early season and distributing the picking over a longer period. Our Mosaic Free King plants must not be confused with the ordinary King commonly grown, which is usually so seriously infested with the Mosaic disease.

THAM
niv. (Minn.)



MINNEHAHA
(Photo by Univ. of Minn.)

THE STRAWBERRY

In no group of fruits has the work of the State Fruit Breeding Farm shown its stamp more strongly than in the strawberries. In the State Horticultural Society list of recommended strawberries there is now only one June bearing variety which was there six years ago, the Dunlap. We have kept up with the rapidly changing conditions and while other nurseries have contented themselves with offering their customers the old fashioned kinds we have continually added to our propagating beds the newer and better varieties of proven worth. We offer this year an excellent stock of these epoch-making varieties, grown on new land which has never before been planted to strawberries.

PROGRESSIVE (Everbearing)

The best, most prolific and highest in quality of the everbearers. Yields two crops per year. Is the best general utility berry. Plants set this Spring will bear this Summer and Fall.

DUNLAP

Mid-season. Dunlap needs no introduction as it is the best known strawberry there is. A good market and home garden berry.

PREMIER

Early. Accepted throughout Northern United States as the one best early strawberry. Very profitable. Early, long season, with good colored fruit that maintains size to end of the season. Good shipper. Heavy producer. No commercial grower can afford to be without Premier.

THE FOUR BEST STRAWBERRIES

From the Minnesota State Fruit Breeding Farm

CHASKA

(Minnesota No. 801.) Early mid-season. A popular new variety. Fruit large, dark, glossy red. A heavy yielder and a good shipper of high quality. Produces a large crop in a short picking season. Commands high prices.

NOKOMIS

(Minnesota No. 489.) Mid-season. One of the best, highest quality berries of this group and probably the heaviest producer. Berries are a trifle soft for shipping but excellent for home or local market use.

EASYPICKER

(Minnesota No. 775.) Mid-season. Imperfect. One of the heaviest fruited yet produced and exceedingly easy to pick. Fruit medium to large with dark red flesh, entirely lacking in core or fibre at the center. Quality of the highest. An unexcelled home garden berry. Ideal with Nokomis as a pollinizer.



EASYPICKER

(Photo by Univ. of Minn.)

MINNEHAHA

(Minnesota No. 935.) Late. We consider this our most profitable June bearing variety. Especially valuable as a shipper. Minnehaha is at its best just after the heaviest picking season for other varieties, when good berries are scarce and prices for good fruit are going up again. Berries extraordinarily large, easy to pick, firm, even in wet weather, and will keep in good picking condition on the vines for three or four days. Hold their size well to the end. Plant Minnehaha heavily for shipping markets.

See our special combination offer on these four great berries on back cover of this catalog.

NOKOMIS AND EASYPICKER
MAKE THE BEST HOME GARDEN PAIR
BECAUSE OF
HIGHEST QUALITY AND YIELD



COMO

(Photo by Univ. of Minn.)

COMO GOOSEBERRY Minnesota's New Wonder Gooseberry

(Minnesota No. 43.) Described by the originators, the Minnesota State Fruit Breeding Farm, as follows: "A vigorous, productive plant with exceptionally healthy foliage. Fruit roundish or slightly oblong. Ripens green, quality fair, holds on the bushes a long time in good market condition without scalding, even in the hottest weather. The plant is only moderately thorny, many thorns dropping from the two-year-old wood." The advent of Como marks the greatest advancement made in mid-western gooseberry culture in many years. We are very fortunate to be able to offer a few plants of this remarkable new gooseberry this Spring.

CARRIE GOOSEBERRY

Carrie has been the most popular gooseberry in Minnesota and adjacent States. The plant is a prolific yielder of good sized berries, fully disease resistant. Sometimes called the "Thornless Gooseberry." We offer strong plants ready to fruit next year.

PERFECTION CURRANT Supreme in Quality

Perfection is one of the largest and finest of the currants and the outstanding variety for home use where quality, size and appearance are most appreciated. Bunches large and berries attractive bright red. It has often outyielded many of the older sorts. A wonderful fruit and should be in all gardens.

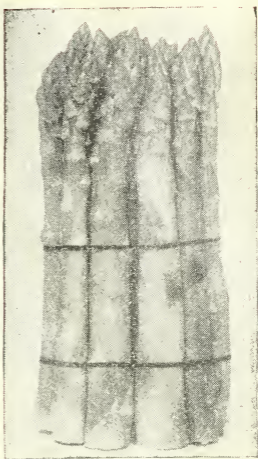
WILDER CURRANT

One of the leading commercial varieties. In some cases a more vigorous grower and heavier yielder than Perfection, although the bunches are not as large as in that variety.

PERENNIAL VEGETABLES

WASHINGTON ASPARAGUS

This great asparagus is the result of 14 years of plant breeding by the U. S. Department of Agriculture, in an effort to develop a rust-resistant asparagus surpassing all other varieties in yield and quality. It is one of the most palatable and tender



**WASHINGTON
ASPARAGUS**

varieties known, producing enormous shoots of a brilliant dark green color which retain their tenderness and do not branch until well above cutting height. Entirely free from rust. We offer Washington in two year and four year transplanted roots. The latter are ready to bear and may be cut from heavily the Spring after planting, and are best for the small home garden where quick results are wanted.

MARY WASHINGTON

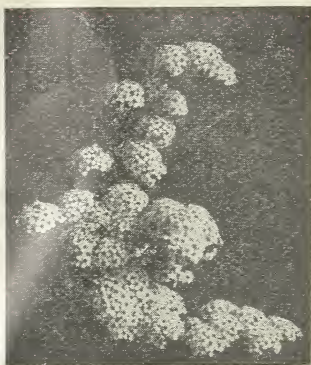
A later production of the U. S. Department of Agriculture, bred from the Washington. Contains the former's good points and possesses in addition the characteristic of even higher quality and greater productivity. Until you have grown Washington or Mary Washington you have not known what real asparagus is. We offer this variety in one year roots only.

VICTORIA RHUBARB

The most popular variety of rhubarb. We offer root division plants and two year clumps from a stock selected by a market gardener for especially high quality and fine red coloring of stem. These strong plants, that will produce uniformly tender, crisp stalks of attractive red color, should not be confused with the ordinary low quality seedling roots so commonly sold on the market. Our large two year clumps planted now will produce good crops next year.

HARDY SHRUBS

We offer here a choice list of selected hardy ornamental shrubs. We consider these varieties the pick of those suited to the Northwest, for they are all hardy, vigorous growers which need no petting nor special protection to make a growth and to produce the effect that is desired. Our plants are well grown with



SPIREA VON HOUTTEI

good roots and tops. Exceptionally fine plants for our low prices. They are 2 to 3 feet or more in height, except in cases of dwarf plants, where the height is noted, with strong, well developed roots and bushy tops. They are divided into three groups according to prices.

GROUP A

Thunberg's Barberry (Dwarf 18-24 in.)	
Buckthorn	Spirea Von Houttei

GROUP B

Caragana	Tartarian Honeysuckle
Coralberry	Lilac (Purple and White)
Red Twig Dogwood	Russian Olive
Snowberry	Mock Orange
Spirea Anthony Waterer (Dwarf 18-24 in.)	Spirea Billardi

GROUP C

Hydrangea Pee Gee

SHRUBS OF HEDGING SIZE

A small size shrub suitable for starting "live fences." Strong, well rooted plants. These plants are far lower in cost than a fence, present a more pleasing appearance, and make an ideal dividing or boundary line for one's premises. We offer two varieties in this grade.

THUNBERG'S BARBERRY. The finest low, un-sheared hedge. Red foliage in Fall and red berries all Fall and Winter.

BUCKTHORN. This hardy shrub may be made to form a sheared or un-sheared hedge of from 2 to 12 feet in height and will serve as an effective screen or stock tight "fence."

ROSES

Hardy Rugosa Rose Hybrids

The three varieties which we are growing are the best hardy rugosa rose hybrids for the Northwest. They do well throughout Minnesota and the Dakotas without Winter protection. They bear perpetually throughout the Summer beautiful double blossoms vastly superior to the old Rosa Rugosa.

Conrad F. Meyer (Silver Pink)

Hanska (Deep Red)

Sir Thomas Lipton (Pure White)

HARDY PERENNIALS

We list below the most satisfactory perennial flowers for the Northwest. Once established they will be a source of regular annual delight as they will flower abundantly for many years to come. We offer strong plants which should make a heavy growth and bloom freely this year.

One of those we list, the Chinese Lantern, is exceedingly popular now as a Winter bouquet, and in florists' shops the spikes of dried Lanterns retail at 10 cents per Lantern. Spikes bearing from three to six or more Lanterns are produced freely. They are very easily grown and furnish a welcome source of income if the Lanterns are sold, or an abundant supply of bouquets for gift and decoration purposes. We make a special price on these in 100 and 500 lots for Lantern production purposes.

Achillea the Pearl	Fall Daisy
Baby Breath	Golden Glow
Buttercup	Iris (in variety)
Chinese Lantern	Larkspur
	Physostegia

See our special Perennial Collection offer
on back cover.

ORNAMENTAL TREES

NEWPORT—Red Foliage Plum. (Minnesota No. 116.) Beautifully colored plum tree. Foliage a deep purplish red throughout the entire season. Strikingly beautiful ornamental tree. Especially attractive when in bloom. The best red foliage tree for the Northwest and one which should be in every planting where an attractively formed tree of striking color is desired.

NIobe WEeping WILLOW. The most satisfactory weeping willow for the Northwest. Superior to all other varieties.

LOMBARDY POPLAR. Always a favorite where a tree of tall, slender, spire-like growth is wanted. Hardy and quick grower.

SOFT MAPLE. A hardy, quick-growing maple that makes an excellent shade tree.

EVERGREENS

NORWAY SPRUCE. One of the most generally satisfactory evergreens for the Northwest. Hardy, long lived and rapid grower. Forms an even, symmetrical tree of beautiful color and adapts itself to varying soil types. Our well grown trees have been root pruned and transplanted several times.

NUT TREES

BLACK WALNUT AND BUTTERNUT. These two nut trees are best suited to Northwest conditions and will thrive in practically all parts of Minnesota. They make attractive shade trees as well as heavy producers of valuable nuts. The walnut especially produces valuable timber and at our low prices may be planted freely in the wood lot. Write for special prices on large quantities.

WINDBREAK TREES

GOLDEN AND LAUREL LEAF WILLOW. The two best quick growing deciduous windbreak trees for the Northwest. In addition to the protection they produce so quickly, they present at all times an interesting and attractive appearance.

PRICE SCHEDULE FOR 1926

PLUMS	1	12	100
Medium (3-4 ft.).....	\$0.80	\$8.00	\$60.00
Standard (4-5 ft.).....	.90	9.00	70.00
Large (5-6 ft.).....	1.00	10.00	80.00
Two Year (ready to fruit).....	1.25	12.50	90.00

CHERRIES

Third Size	\$0.80	\$8.00	\$60.00
Second Size.....	.90	9.00	70.00
First Size.....	1.00	10.00	80.00
Nicollet Cherry—2 to 4 ft. trees, each.....			\$2.00

APPLES

Standard varieties (5 to 6 ft.)..	\$0.85	\$8.50	\$65.00
Haralson Apple	1.50	15.00	100.00
Folwell Apple.....	1.00	10.00	80.00
Daniels Red Duchess.....	2.50	25.00	200.00

PEARS

Minn. No. 1 Pear.....	\$1.50	\$15.00	\$100.00
-----------------------	--------	---------	----------

GRAPES	1	12	25	100	1,000
Beta, 1 year.....	\$0.25	\$2.50	\$4.75	\$18.00	\$170.00
Beta, 2 year.....	.35	3.50	6.50	24.00	210.00
Alpha, 1 year.....	.30	3.00	5.50	20.00	185.00
Alpha, 2 year.....	.40	4.00	7.50	27.50	250.00
Concord, 2 year.....	.30	3.00	5.50	20.00	185.00

RASPBERRIES

	12	25	100	1,000
Latham (Mosaic Free).....	\$2.00	\$3.00	\$10.00	\$75.00
Latham (Selected)80	1.25	3.25	25.00
King (Mosaic Free)	1.00	1.75	5.00	40.00

STRAWBERRIES

	25	100	1,000
Progressive	\$1.00	\$2.50	\$20.00
Dunlap75	1.25	8.00
All other varieties80	1.50	11.00

GOOSEBERRIES

	1	12	25	100	1,000
Como	\$0.50	\$5.00	\$9.50		
Carrie25	2.50	4.75	\$18.00	\$150.00

CURRANTS

	1	12	25	100	1,000
Perfection	\$0.35	\$3.50	\$6.50	\$24.00	\$210.00
Wilder20	2.00	3.75	13.00	100.00

ASPARAGUS

	12	25	100	1,000
Mary Washington (1 yr.)..	\$0.75	\$1.00	\$2.50	\$18.00
Washington (2 yr. trp.)...	1.00	1.50	4.00	25.00
Washington (4 yr. trp.)...	2.50	4.00	12.50	

RHUBARB

	1	12	25	100	1,000
Victoria (division)...	\$0.15	\$1.50	\$3.00	\$10.00	\$80.00
Victoria (clump)....	.25	2.50	4.50	15.00	125.00

SHRUBS			
	1	12	25
Class A.....	\$0.40	\$4.00	\$7.50
Class B.....	.50	5.00	9.50
Class C.....	.75	7.50	14.00
HEDGING SHRUBS			
		25	100
Barberry (Thunberg's)	\$6.00	\$20.00	
Buckthorn	3.50	12.00	
ROSES			
		1	12
Rugosa Hybrids	\$0.80	\$8.00	
HERBACEOUS PERENNIALS			
		1	12
All varieties	\$0.25	\$2.00	
ORNAMENTAL TREES			
		1	12
Newport Red Plum, large.....	\$1.00	\$10.00	
Newport Red Plum, medium.....	.80	8.00	
Niobe Weeping Willow	1.00	10.00	
Lombardy Poplar.....	1.00	10.00	
Soft Maple.....	1.00	10.00	
NUT TREES			
		1	12
2 to 3 Feet.....	\$0.20	\$2.00	
3 to 4 Feet.....	.40	4.00	
4 to 5 Feet.....	.60	6.00	
WILLOWS			
		12	100
3 to 5 Feet.....	\$2.00	\$15.00	
5 to 7 Feet.....	3.25	25.00	
NORWAY SPRUCE			
	1	12	100
12 to 18 Inches	\$0.75	\$7.50	\$50.00
18 to 24 Inches	1.00	10.00	65.00
24 to 36 Inches	1.25	12.50	80.00

REPRESENTATIVES WANTED

We need a special representative in every community to aid us in introducing our stock and in stimulating our nursery sales in that territory, and offer a very attractive proposition to responsible persons who would like to devote part of their time to helping us in a way that is both pleasant and profitable.

CAPITALIZE THAT SEASONAL SPARE TIME!

INSTRUCTIONS FOR ORDERING

WHEN TO ORDER. As early as possible. Early ordering is a big help to us and frequently late orders cannot be filled in full. Send your order now and it will be carefully packed and shipped to you at just the time you want it.

SPECIAL PREMIUM. To encourage early ordering we offer on all orders with full cash payment sent in before April 1st a premium of additional nursery stock to the value of 10% of order.

PRICES. Prices listed in this catalog annul and supersede all prices quoted previously. All prices are F. O. B. Long Lake, Minn.

TERMS. Net cash with order; or 20% with order, balance C. O. D. By adhering strictly to this policy we can keep down costs and maintain low prices.

METHOD OF SHIPPING. Express is safest and generally the best way to ship plants. Express orders are sent transportation charges collect. Many small orders are now shipped satisfactorily by parcel post. If you desire plants to go by mail they will be sent postal charges C. O. D., unless the following amounts are added to your remittance to cover postage and special packing: For each 100 Strawberry plants, add 10c; for each 100 Raspberry plants, add 15c; for each 12 Currants, Gooseberries or Grapes, add 15c. Only small numbers of plants, and trees no larger than 3 to 4 feet, can be sent by mail.

QUARANTINE. Federal laws prohibit the shipping of Currants or Gooseberries west of Minnesota.

COMPLAINTS. Any complaints will be taken care of promptly and satisfactorily. If there is anything wrong, let us know at once, while there is still time to make amends, for we want only satisfied customers.

REPLACEMENT. We will replace plants that fail to grow first year at one-half the purchase price, provided such failure to grow is not due to neglect or improper handling on part of the purchaser.

PLANTING INSTRUCTION GUIDE sent free at any time.

GUARANTEE. We exercise the utmost care in labeling, packing and shipping our plants, and guarantee them to be true to name, and will replace free of charge any which prove to be otherwise. In no case will we be liable for more than the original cost of the plants. We cannot be held responsibility for inability to make delivery because of strikes, fires or acts of Nature, or any other cause beyond our control.

Write plainly, order early, and rest assured that you will have the best plants that money can buy.

SEND ALL ORDERS TO

THE DANIELS NURSERY
Long Lake, Minnesota

**DANIELS
WONDERFUL
HOME ORCHARD
PLUM
COLLECTION**

16 PLUM TREES
of the famous
Minnesota
Fruit Breeding
Farm Originations

Four varieties, our
selection. Long sea-
son. Highest qual-
ity. 3 to 4 ft. size.

Catalog price \$12.80

**SPECIAL BARGAIN
PRICE \$10.00**

"Full of life" trees.
Guaranteed to grow.

A complete orchard
of these wonderful
new plums for only
\$10.00!!!

**DANIELS SPECIAL
COLLECTIONS
OF MOSAIC FREE
RASPBERRY
PLANTS**

**COLLECTION A
Home Garden**

25 Latham\$3.00
25 King 1.75

Catalog price ..\$4.75

**Special Bargain
Price \$3.50**

**COLLECTION B
One Acre Commer-
cial Planting**

900 Latham ..\$67.50
900 King 36.00

Cat. price....\$103.50

**Special Bargain
Price \$92.50**

Only \$92.50 for an
acre of Mosaic Free
Raspberries!!! Plant
several acres at our
low price. Plantings
of this sort are yield-
ing \$1,000 and more
per acre annually.

**DANIELS MONEY SAVING
COMBINATION OFFERS OF OUR
REGULAR HIGH QUALITY STOCK
AT TREMENDOUS SAVINGS
FOR SPRING 1926**

**DANIELS
MINNESOTA
STRAWBERRY
GARDEN**

25 Chaska \$0.80
25 Nokomis .80
25 Easypicker .80
25 Minnehaha .80

Catalog price ..\$3.20

**Special Bargain
Price \$2.50**

THE FINEST
Strawberries Grown!
Long Season—High
Quality—Big Yield!

**DANIELS SPECIAL
PERENNIAL
GARDEN**

12 Each of Five Fine
Perennials:
Achillea the Pearl
Buttercup
Chinese Lantern
Fall Daisy
Golden Glow
60 PLANTS

Catalog Price \$10.00

**Special Bargain
Price Only \$7.50**

A full season of
bloom. A joy every
year.